

Oracle Financial Services Regulatory Reporting Solution for US Federal Reserve – Lombard Risk Integration Pack

Installation Guide

Release 8.0.8.0.0

December 2021

ORACLE®
Financial Services

Copyright © 2022 Oracle and/or its affiliates. All rights reserved.

This software and related documentation are provided under a license agreement containing restrictions on use and disclosure and are protected by intellectual property laws. Except as expressly permitted in your license agreement or allowed by law, you may not use, copy, reproduce, translate, broadcast, modify, license, transmit, distribute, exhibit, perform, publish, or display any part, in any form, or by any means. Reverse engineering, disassembly, or decompilation of this software, unless required by law for interoperability, is prohibited.

The information contained herein is subject to change without notice and is not warranted to be error-free. If you find any errors, please report them to us in writing.

If this is software or related documentation that is delivered to the U.S. Government or anyone licensing it on behalf of the U.S. Government, then the following notice is applicable:

U.S. GOVERNMENT END USERS: Oracle programs, including any operating system, integrated software, any programs installed on the hardware, and/or documentation, delivered to U.S. Government end users are “commercial computer software” pursuant to the applicable Federal Acquisition Regulation and agency-specific supplemental regulations. As such, use, duplication, disclosure, modification, and adaptation of the programs, including any operating system, integrated software, any programs installed on the hardware, and/or documentation, shall be subject to license terms and license restrictions applicable to the programs. No other rights are granted to the U.S. Government.

This software or hardware is developed for general use in a variety of information management applications. It is not developed or intended for use in any inherently dangerous applications, including applications that may create a risk of personal injury. If you use this software or hardware in dangerous applications, then you shall be responsible to take all appropriate fail-safe, backup, redundancy, and other measures to ensure its safe use. Oracle Corporation and its affiliates disclaim any liability for any damages caused by use of this software or hardware in dangerous applications.

Oracle and Java are registered trademarks of Oracle and/or its affiliates. Other names may be trademarks of their respective owners.

Intel and Intel Xeon are trademarks or registered trademarks of Intel Corporation. All SPARC trademarks are used under license and are trademarks or registered trademarks of SPARC International, Inc. AMD, Opteron, the AMD logo, and the AMD Opteron logo are trademarks or registered trademarks of Advanced Micro Devices. UNIX is a registered trademark of The Open Group.

This software or hardware and documentation may provide access to or information about content, products, and services from third parties. Oracle Corporation and its affiliates are not responsible for and expressly disclaim all warranties of any kind with respect to third-party content, products, and services unless otherwise set forth in an applicable agreement between you and Oracle. Oracle Corporation and its affiliates will not be responsible for any loss, costs, or damages incurred due to your access to or use of third-party content, products, or services, except as set forth in an applicable agreement between you and Oracle.

For information on third party licenses, click [here](#).

Document Control

Version Number	Revision Date	Changes Log
03	December 23, 2021	Updated: Post-installation Steps section for Apache Log4j Issue
03	March 06, 2020	Updated: Copying and Extracting the Software section
02	July 09, 2019	Updated: Final version published
01	July 01, 2019	Created: Draft published

Table of Contents

1	Preface	5
1.1	Audience	5
1.2	Scope	5
1.3	Prerequisites for the Audience	6
1.4	How this Guide is Organized.....	6
1.5	Documentation Accessibility	6
1.6	Access to Oracle Support	6
1.7	Related Documents.....	6
1.8	Conventions and Acronyms	7
2	Hardware and Software Requirements and Specifications.....	8
3	Preparing for Installation.....	8
3.1	Obtaining the Software.....	8
3.2	Prerequisites for Installation.....	8
3.3	Configuration for GUI Mode Installation	11
3.4	Copying and Extracting the Software.....	11
4	GUI Mode Installation	12
5	Silent Mode Installation	18
5.1	Post-installation Steps.....	19
5.2	Migration of Existing Data	19
5.2.1	<i>SCD for Account Purpose Dimension and Rule for Reg Loan Purpose</i>	<i>19</i>
5.2.2	<i>GL Type Defaulting Logic Movement from Report to T2T</i>	<i>20</i>
5.3	Post US FED Run Execution	20
6	Deploying Config Package.....	21

1 Preface

Oracle Financial Services Regulatory Reporting for US Federal Reserve – Lombard Risk Integration Pack helps the banks to comply with various guidelines issued by US Federal Reserve, including BCBS 239 regulations. It provides integrating risk data reporting systems and enhances the accuracy of reporting in banks. OFS Risk Regulatory Reporting (REG REP) Solution helps in achieving the objectives by enabling preset steps based on the generalization of a set of solutions. This is made possible by:

- Providing a centralized data storage for risk data through relevant subject areas of Financial Services Data Foundation (FSDF).
- Interfacing with a third party reporting tool such as Lombard Risk Reporter Portal to build necessary template reports to meet the regulatory expectations.

Data accuracy of risk reporting is ensured by:

- Data Governance Studio (DGS).

This document provides step-by-step instructions to install the Oracle Financial Services Regulatory Reporting for US Federal Reserve – Lombard Risk Integration Pack (OFS REG REP US FED) Release 8.0.8.0.0.

This chapter discusses the following topics:

- [Audience](#)
- [Scope](#)
- [Prerequisites for the Audience](#)
- [How this Guide is Organized](#)
- [Documentation Accessibility](#)
- [Access to Oracle Support](#)
- [Related Documents](#)
- [Conventions and Acronyms](#)

1.1 Audience

This Manual is meant for Oracle Financial Services Regulatory Reporting for US Federal Reserve – Lombard Risk Integration Pack System Administrator. It provides step-by-step instructions necessary for installing the OFS REG REP US FED application components.

1.2 Scope

This manual provides a step-wise instruction to install Oracle Financial Services Regulatory Reporting for US Federal Reserve– Lombard Risk Integration Pack.

1.3 Prerequisites for the Audience

The document assumes you have experience in installing Enterprise components. A good understanding and knowledge of the following is expected from the administrator before starting the actual installation:

- OFSAA Architecture
- Oracle Financial Services Regulatory Reporting for US Federal Reserve – Lombard Risk Integration Pack Components Architecture
- Deployment of OFSAA Configuration Package on Lombard Risk AgileREPORTER Platform
- UNIX Commands
- Database Concepts and Administrator Commands
- Web Server/ Web Application Server Deployment

1.4 How this Guide is Organized

The Installation Manual is organized into the following sections:

- Prerequisites section identifies the hardware and base software environment that is required for a successful installation and functioning of the Oracle Financial Services Regulatory Reporting for US Federal Reserve – Lombard Risk Integration Pack.
- Installing the Application section details the steps to be followed during the installation.
- Post installation Activities section details the steps that are required to be performed after a successful installation of Oracle Financial Services Regulatory Reporting for US Federal Reserve – Lombard Risk Integration Pack.

1.5 Documentation Accessibility

For information about Oracle's commitment to accessibility, visit the Oracle Accessibility Program website at <http://www.oracle.com/pls/topic/lookup?ctx=acc&id=docacc>

1.6 Access to Oracle Support

Oracle customers have access to electronic support through My Oracle Support. For information, visit <http://www.oracle.com/pls/topic/lookup?ctx=acc&id=info> or visit <http://www.oracle.com/pls/topic/lookup?ctx=acc&id=trs> for the hearing impaired.

1.7 Related Documents

This section identifies additional documents related to Oracle Financial Services Regulatory Reporting for US Federal Reserve – Lombard Risk Integration Pack. You can access Oracle documentation online from Documentation Library ([OHC](#)):

- Oracle Financial Services Regulatory Reporting for US Federal Reserve – Lombard Risk Integration Pack User Guide
- Oracle Financial Services Analytical Applications Infrastructure Environment Check Utility Guide (present in this [OHC](#) Documentation Library)
- Oracle Financial Services Analytical Applications Infrastructure Installation Guide 8.0.8.0.0 (present in this [OHC](#) Documentation Library)

1.8 Conventions and Acronyms

Conventions	Description
	References to sections or chapters in the manual are displayed in <i>Italics</i> . Screen names are displayed in the following manner: Introduction screen Options and buttons are displayed in Bold .
OFSAAI	Oracle Financial Services Analytical Applications Infrastructure
OFS AAAI	Oracle Financial Services Advanced Analytical Applications Infrastructure Application Pack
RHEL	Red Hat Enterprise Linux
Atomic Schema	Database schema where the application data model is uploaded.
Config Schema	Database schema which contains setup related configurations and metadata.
OFS REG REP USFED	Oracle Financial Services Regulatory Reporting for US Federal Reserve – Lombard Risk Integration Pack

2 Hardware and Software Requirements and Specifications

This section describes the various Operating System, Database, Web Server, and Web Application Server version and other variant details on which this release of the OFS Regulatory Reporting for US Federal Reserve – Lombard Risk Integration Pack (OFS REG REP US FED) application has qualified.

Refer to the [Technology Matrix](#) for Hardware and Software requirements for this release.

3 Preparing for Installation

This Minor Release of OFS REG REP US FED – Lombard Risk Integration Pack is cumulative and includes all enhancements and bug fixes done since the OFS REG REP US FED – Lombard Integration Pack v8.0.7.0.0 release. For more information, refer the Oracle Financial Services Regulatory Reporting for US Federal Reserve – Lombard Risk Integration Pack User Guide Release 8.0.8.0.0 on [OHC](#).

3.1 Obtaining the Software

This release of OFS REG REP US FED 8.0.8.0.0 can be downloaded from the Oracle Support Site (<https://support.oracle.com>). Log in and search for **29394472** under Patches and Updates.

You need to have a valid Oracle account in order to download the software.

3.2 Prerequisites for Installation

This installer has Fresh install capabilities and following are the prerequisites to install OFS REG REP US FED application:

- Oracle Financial Services Analytical Applications Infrastructure (OFSAAI) 8.0.8.0.0 (patch **29538056**) plus other prerequisite OFSAAI patches (see **Section 1.1 Pre-Installation Requirements** of [OFS AAI Installation Guide](#)) should be installed and configured in your Machine ([OHC](#) Documentation Library).
- Oracle Financial Services Data Foundation (OFSDF) 8.0.8.0.0 (patch **29627211**) plus other prerequisite OFSDF patches (see **Section 3.1 Installer and Installation Prerequisites** of [OFSDF Installation Guide](#)) should be installed and configured in your Machine ([OHC](#) Documentation Library).
- Oracle Financial Services Regulatory Reporting for US Federal Reserve – Lombard Risk Integration Pack Guide 8.0.7.0.0 (patch **28877382**).
- AgileREPORTER version **19.2.1-b291**
- AgileREPORTER Templates version **AgileREPORTER for FED v1.17.2-b34**

- The following columns must be added on top of FSDF 8.0.8.0.0 data model and sliced model upload must be performed. The first three columns are requisite as part of OFS REG REP US FED version 8.0.7.4.1.

Column Change Type	Physical Table Name	Column Name	Logical Name	Data Type	Domain	Null Allowed ?	PK	FK	Reference Table Name	Reference Column Name	Column Comments
Add Column	FCT_REG_APPLICATION	N_BRANCH_COUNTRY_SKEY	Branch Country Surrogate Key	NUMBER(10)	SurrogateKey_Long	YES	NO	Non-Identifying	DIM_COUNTRY	N_COUNTRY_SK	Stores the country surrogate key which refer to the country in which branch issuing advance or the account is located.
Add Column	FCT_REG_APPLICATION	N_REG_PRODUCT_TYPE_SKEY	Regulatory Product Type Surrogate Key	NUMBER(10)	SurrogateKey_Long	YES	NO	Non-Identifying	DIM_REG_PRODUCT_TYPE	N_REG_PRODUCT_TYPE_SKEY	Stores the unique reference to the Regulatory Product Type. The column is populated using reclassification rule using Standard Product Type and other attributes.
Add Column	FCT_REG_ACCOUNT_SUMMARY	N_OFFSET_ACCOUNT_SKEY	Offset Account Surrogate Key	NUMBER(15)	SurrogateKey_Long_Type2	YES	NO	Non-Identifying	DIM_ACCOUNT	N_ACCOUNT_SKEY	Stores the account surrogate key that is being offset. It stores the loan account number which this liability account is offsetting. There can be multiple savings account offsetting a loan, but a liability account would not offset more than one loan account.
Add Column	FCT_REG_ACCOUNT_SUMMARY	N_NON_LEASE_PRINCIPAL_COMPONENT_RCY	Non-lease Principal Component In Reporting Currency	NUMBER(22,3)	Amount	YES	NO				Stores non lease component in reporting currency of a lease contract that is treated as a loan.
Add Column	FCT_REG_ACCOUNT_SUMMARY	N_NON_LEASE_UNEARNED_INCOME_RCY	Non-lease Unearned Income In Reporting Currency	NUMBER(22,3)	Amount	YES	NO				Stores unamortized portion of unearned income in reporting currency.

Column Change Type	Physical Table Name	Column Name	Logical Name	Data Type	Domain	Null Allowed ?	PK	FK	Reference Table Name	Reference Column Name	Column Comments
Add Column	FCT_COMMON_ACCOUNT_SUMMARY	N_NON_LEASE_PRINCIPAL_COMP	Non-lease Principal Component	NUMBER(22,3)	Amount	YES	NO				Stores non lease component of a lease contract that is treated as a loan.
Add Column	FCT_COMMON_ACCOUNT_SUMMARY	N_NON_LEASE_UNEARNED_INCOME	Non-lease Unearned Income	NUMBER(22,3)	Amount	YES	NO				Stores unamortized portion of unearned income.
Add Column	STG_LEASES_CONTRACTS	N_NON_LEASE_PRINCIPAL_COMP	Non-lease Principal Component	NUMBER(22,3)	Amount	YES	NO				Stores non lease component of a lease contract that is treated as a loan.
Add Column	STG_LEASES_CONTRACTS	N_NON_LEASE_UNEARNED_INCOME	Non-lease Unearned Income	NUMBER(22,3)	Amount	YES	NO				Stores unamortized portion of unearned income.
Add Column	FCT_REG_LOANS_SERVICED	F_REG_LTV_FLAG	Regulatory Loan To Value Flag	CHAR(1)	Flag	YES	NO				Indicates that Current LTV is less than 2. This column is populated using a Compute Rule. List of Values: Y: Current LTV less than 2. N: Current LTV is 2 or more.

- Ensure that you have executed **.profile** before you trigger the installation.
- Ensure that the FICServer is up and running before you trigger the installation. For information on restarting the services, Refer *Oracle Financial Services Analytical Applications Infrastructure Release 8.0.2.0.0 Installation Guide* ([OHC](#) Documentation Library) for more information.

3.3 Configuration for GUI Mode Installation

To install OFS_REG_REP_USFED in GUI mode, you need to ensure the below software and configurations are available:

- Install and configure any PC X Server software such as Open Text Exceed (formerly Hummingbird Exceed) on the user desktop system from which the installation is triggered.
- Configure DISPLAY variable.

Ensure to set the DISPLAY variable on the system on which the OFSAA is installed, to point to the user desktop system where the PC X Server software has been installed.

Syntax:

```
export DISPLAY=hostname:n.n1
```

where, hostname is the IP Address/ Host Name of the user desktop system and n is the sequence number (usually 0).

For example: 10.11.12.13:0.0 or myhostname:0.0

3.4 Copying and Extracting the Software

Once you obtain the installer, copy the installer (in BINARY mode) to the system on which the OFS_REG_REP_USFED application components are installed.

NOTE You must be logged in to the UNIX operating system as a non-root user.

1. Download the unzip utility (OS specific) `unzip_<os>.Z`, and copy it in Binary mode to any directory and include the directory in your PATH variable. If you already have the unzip utility to extract the contents of the downloaded archive, skip to the next step.
2. Execute `chmod 751 OFS_REG_REP_USFED_8.0.8.0.0_GENERIC.zip`
3. Uncompress the unzip installer file using the command:

```
uncompress unzip_<os>.Z
```

NOTE If you notice an error message “`uncompress: not found [No such file or directory]`”, contact your UNIX administrator.

4. Execute `unzip -a <name of the file to be unzipped>`
 For example: `unzip -a OFS_REG_REP_USFED_8.0.8.0.0_GENERIC.zip`
5. Execute `chmod -R 755 OFS_REG_REP_USFED`

4 GUI Mode Installation

The OFS_REG_REP_USFED installer can be installed in both GUI and silent mode.

For executing the installer in silent mode, refer to the section [Silent Mode Installation](#).

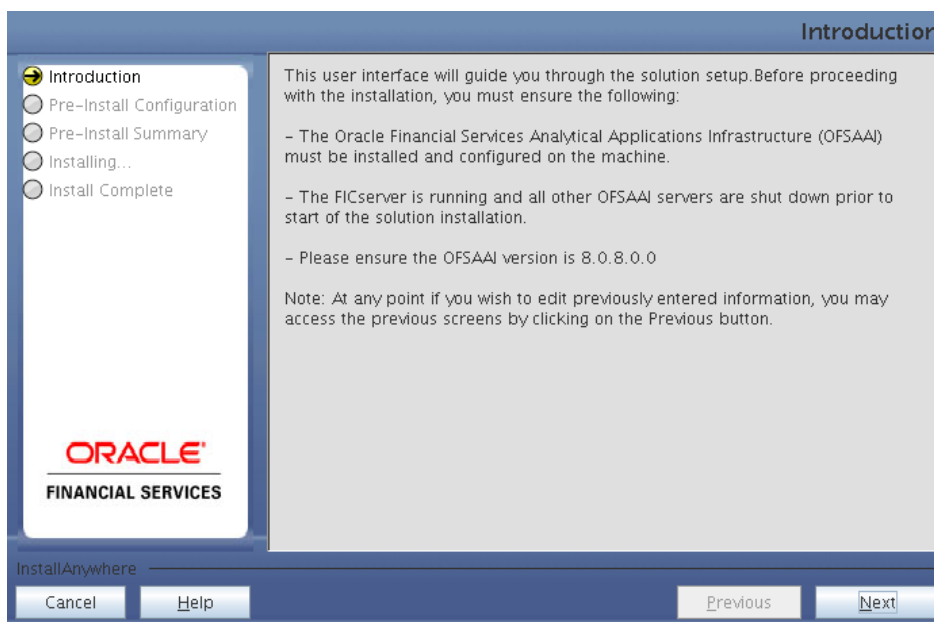
For running in GUI mode, follow these steps:

1. Log in to the system as `non-root` user
2. Execute the user `.profile` file
3. Navigate to installer location `OFS_REG_REP_USFED/bin`
4. Run the installer in GUI Mode by executing the command:
`./Setup.sh GUI`



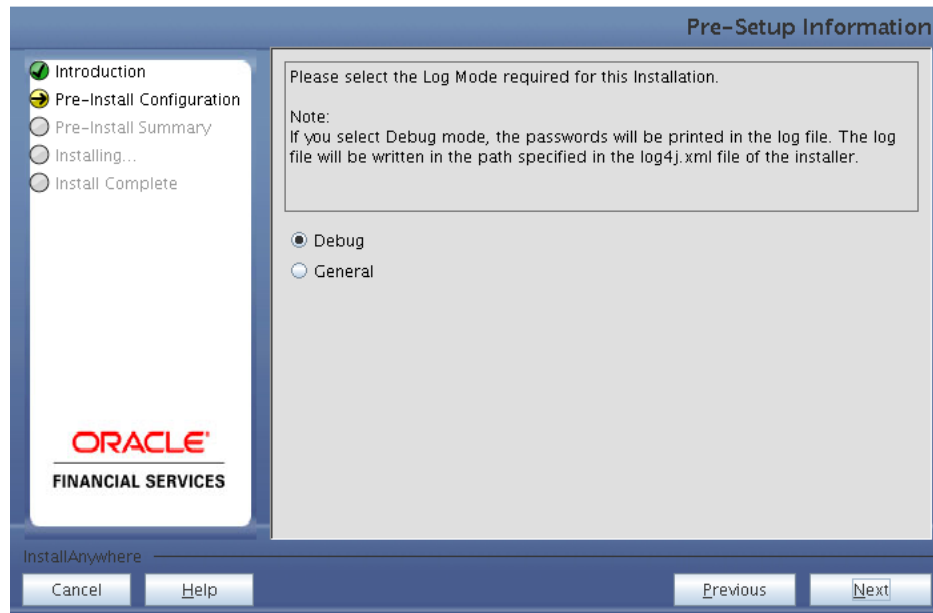
Installation Splash Screen

5. The **Introduction** screen displays the prerequisites for installation. Ensure that the prerequisites are satisfied before you proceed.



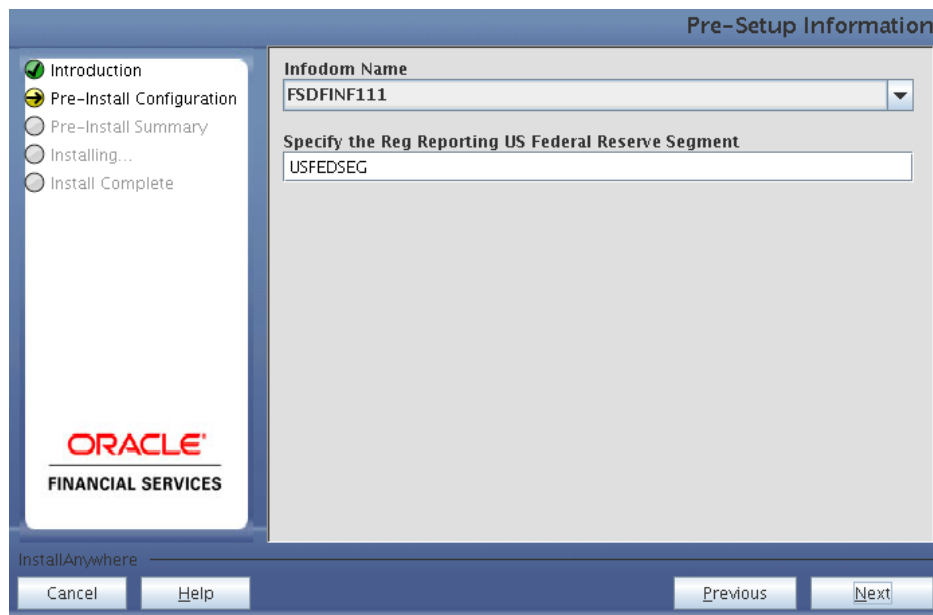
Introduction Screen

6. Choose the **Log Mode** for this installer. If you select, **Debug**, the Passwords are printed in the log file.



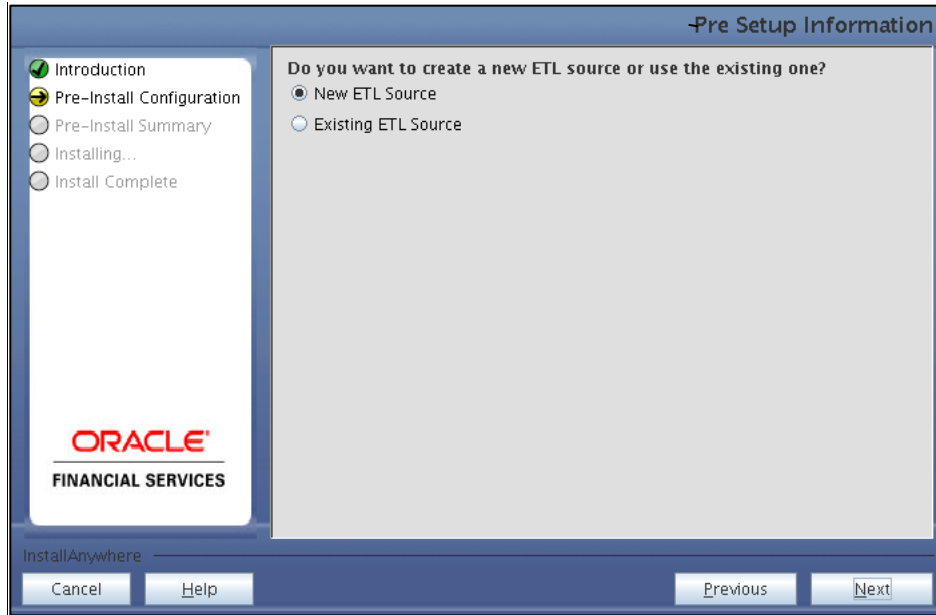
Pre-Setup Information – Log Mode Screen

7. In the **Pre-Setup Information** screen, specify the existing infodom name to be used for the application installation and click **Next**.



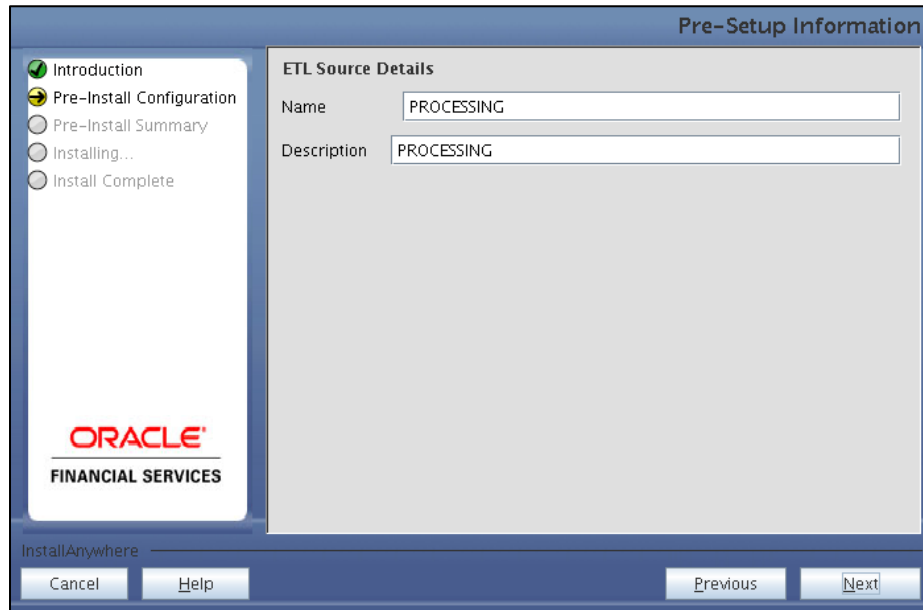
Pre-Setup Information – Infodom Type Screen

- In the **Pre-Setup Information** screen, select **New ETL Source** and click **Next**.



Pre-Setup Information – ETL Source Selection Screen

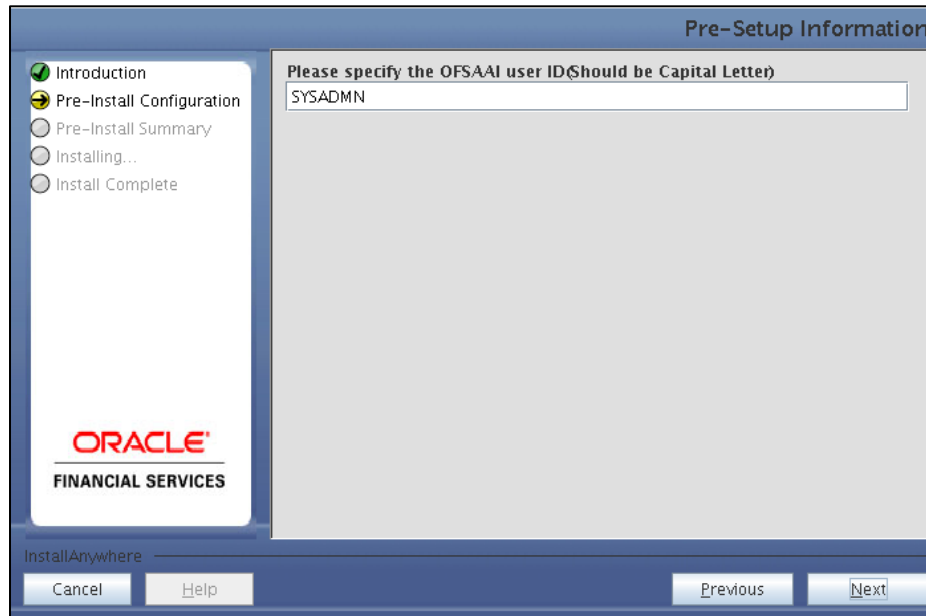
- In the **Pre-Setup Information** screen, enter the **ETL Source Details** and click **Next**.



Pre-Setup Information – ETL Source Details Screen

10. In the **Pre-Setup Information** screen, enter the **OFSAAI User ID** and click **Next**.

Default Value is: **SYSADMN**



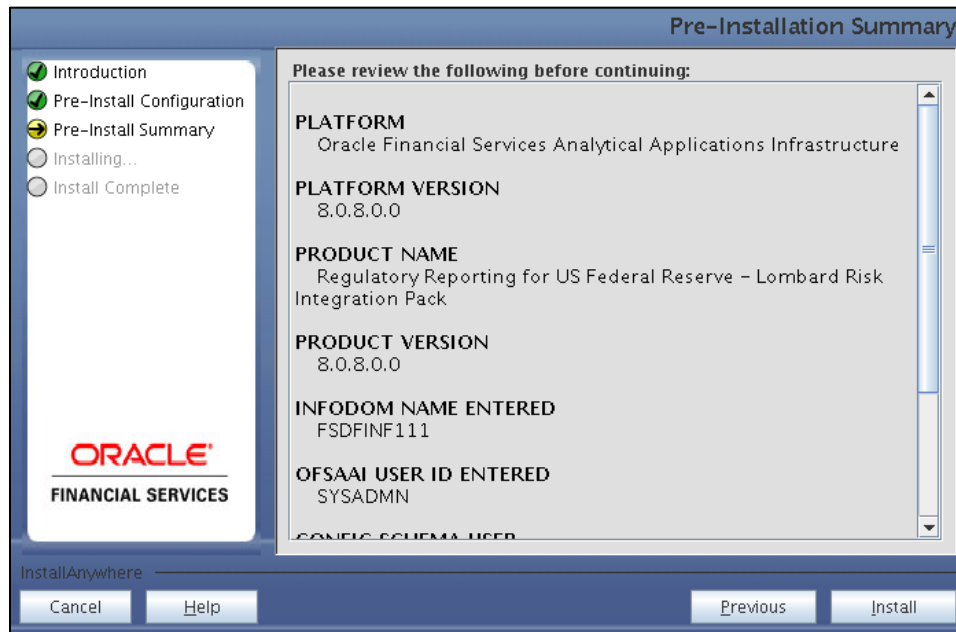
Pre-Setup Information – OFSAAI User ID Screen

11. The **Pre-Install Configuration (Please Wait)** screen is displayed.



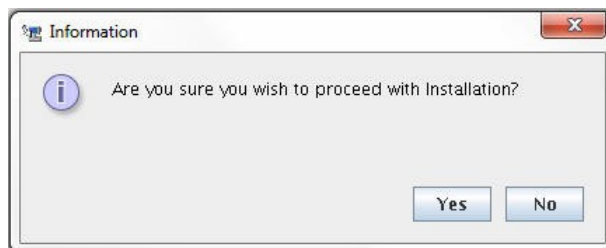
Pre-Install Configuration – Please Wait Screen

12. Review the settings in the **Pre-Installation Summary** screen and click **Install**.

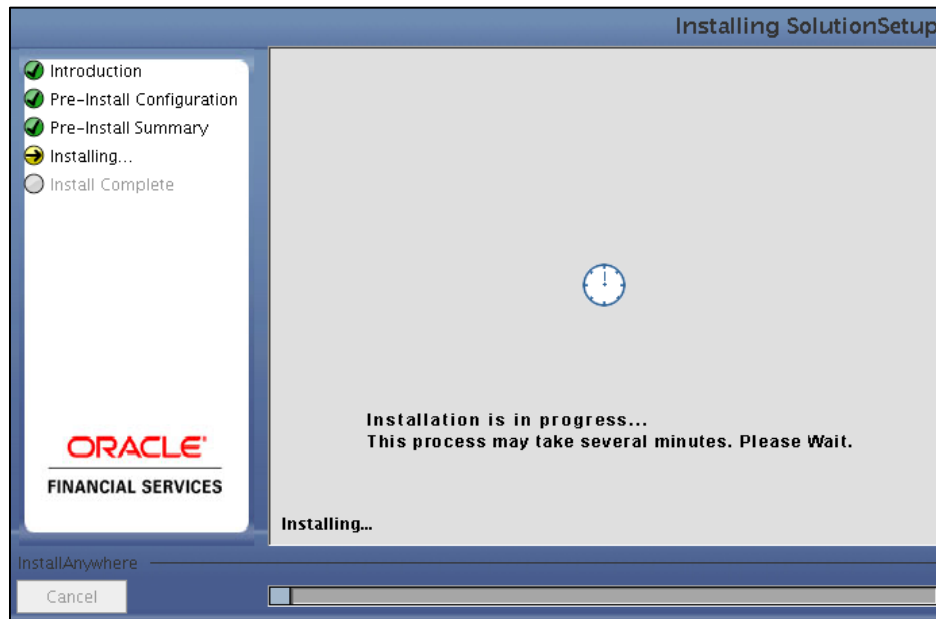


Pre-Installation Summary Screen

13. The following message is displayed. Select **Yes** to begin the installation process.

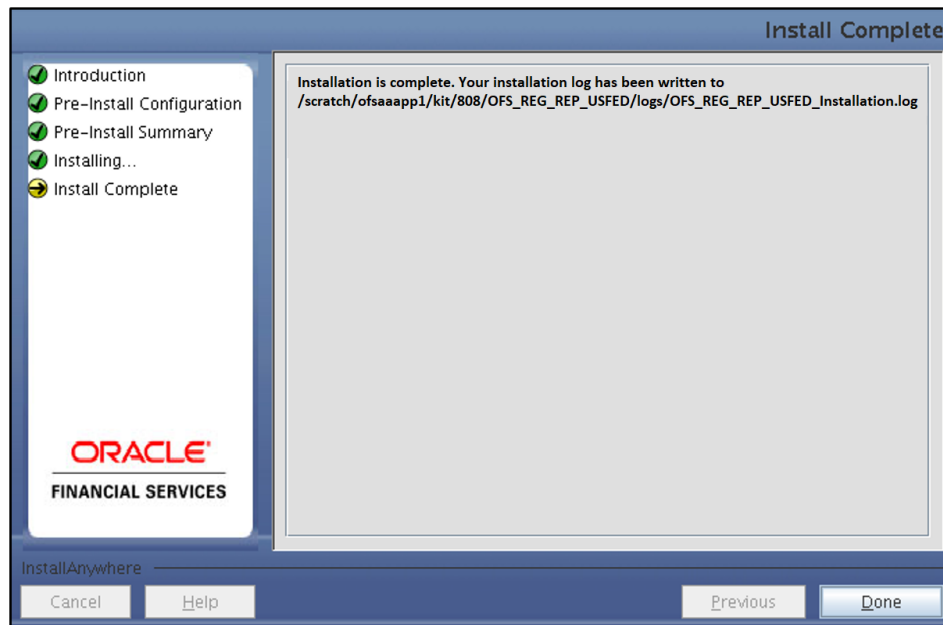


14. The **Installing SolutionSetup** screen is displayed.



Installing Solution Setup Screen

15. The **Install Complete** screen is displayed.



Install Complete Screen

16. Refer to the log file created in the path `/OFS_REG_REP_USFED/logs` of installer directory for any error messages.

17. Click **Done** to complete the installation.

5 Silent Mode Installation

Silent installation is achieved via a properties file (**Silent.props**) that must be updated with proper values, before attempting to install using the silent mode. Follow these steps to install in Silent Mode:

1. Navigate to installer directory **OFS_REG_REP_USFED/conf** containing the template file **Silent.template**.
2. Create a copy of this file and rename the copy as **Silent.props**.
3. Edit the **Silent.props** file and specify the parameters as per the requirements.

The following table lists all the properties that must be specified.

Property Name	Description of Property	Permissible Values	Comments
LOG_MODE	Mode for logging	1 = Debug 0 = General	OPTIONAL. Default is 0.
INFODOM_NAME	Specify name of Information Domain (Infodom) into which you wish to install	For example: FSDFINFO	MANDATORY. Specify Infodom Name Value where FSDF Application is installed.
APPFTP_LOG_PATH	Specify the Infodom App Maintenance log path	For example: /scratch/ofsaapp1/ftpshare/FSDFINFO/logs	MANDATORY. Path value must be same as the path which was given during FSDF installation.
DBFTP_LOG_PATH	Specify the Infodom DB Maintenance log path	For example: /scratch/ofsaapp1/ftpshare/FSDFINFO/logs	MANDATORY. Path value must be same as the path which was given during FSDF installation.
SEGMENT_1_CODE	Specify the US Federal Reserve Segment Code	For example: USFEDSEG	MANDATORY
ETL_APPSRC_TYPE	Specify if you want to create new ETL Source or use an existing one	0 = If you want to create a new ETL Source 1 = If you want to use an existing Source	MANDATORY. Default is 0.
ETL_SRC_1_NAME	Specify the ETL Source Name where ETL Area Definitions are deployed	For example: PROCESSING	MANDATORY
ETL_SRC_1_DESC	Specify the description for the ETL Source	For example: PROCESSING	MANDATORY WHEN ETL_APPSRC_TYPE = 0

4. Log in to the system as **non-root** user
5. Execute the user **.profile**

6. Navigate to installer location `OFS_REG_REP_USFED/bin`
7. Run the installer in SILENT Mode with the following command:
`./Setup.sh SILENT`

Refer to the console log for any error messages.

5.1 Post-installation Steps

Perform the following instructions after successful installation of the 8.0.8.0.0 Minor release:

- Apply the OFS AAI **33663417** mandatory patch.

ATTENTION

On the 10th of December 2021, Oracle released Security Alert CVE-2021-44228 in response to the disclosure of a new vulnerability affecting Apache Log4J before version 2.15. The application of the **33663417** Mandatory Patch fixes the issue.

For details, see the My Oracle Support Doc ID [2827801.1](#).

Ensure that you reapply the **33663417** Mandatory Patch whenever you install or upgrade the application or apply an incremental patch.

- Refer to the log file in the `/OFS_REG_REP_USFED/logs` directory to ensure that there are no errors reported.
- Generate the application EAR / WAR file and redeploy the application on the configured Web Application Server. For more information on generating and deploying EAR / WAR file, refer to the Post Installation Configuration section in [Oracle Financial Services Advanced Analytical Applications Infrastructure Pack Installation Guide – Release 8.0.2.0.0](#).
- Restart all the OFSAA services. For more information, see the Start/Stop Infrastructure Services section in [Oracle Financial Services Advanced Analytical Applications Infrastructure Pack Installation Guide – Release 8.0.2.0.0](#).
- Execute Resave batches to reflect the changes.
- Perform Source Model generation for US FED Processing Source. For more information, see the Generating Source Models section in [Oracle Financial Services Advanced Analytical Applications Infrastructure Pack Installation Guide – Release 8.0.2.0.0](#)
- Perform the additional configurations if required as mentioned under the Additional Configurations section in [OFS AAI Release 8.0.2.0.0 Installation Guide](#).

The Oracle Financial Services Regulatory Reporting for US Federal Reserve – Lombard Risk Integration Pack (OFS REG REP US FED) is now ready for use. If you encounter any problems during set up, contact OFSAA Support at [Oracle Support](#).

5.2 Migration of Existing Data

5.2.1 SCD for Account Purpose Dimension and Rule for Reg Loan Purpose

Account Purpose Dimension has SCD and Seeded Values. As part of regularization, the tables are treated as SCD and from this release Regulatory Loan Purpose Rule

(RLUS_FLAS_REG_LOAN_PURPOSE_01) is moved to a Mapper (MPFD_ACCT_REG_LOAN_PURPOSE) Based Rule (RLUS_FRAS_REG_LOAN_PURPOSE_MAP).

The Mapper can be configured from OFSAAI for mapping between Account Purpose and Regulatory Loan Purpose Dimensions.

If you wish to continue with existing seeded values of Account Purpose Dimension, then execute the [MPFD_ACCT_REG_LOAN_PURPOSE_DEFAULT.sql](#) file in the Atomic Schema.

As the Target Surrogate Key column moved from Fact Loan Account Summary to Fact Regulatory Account Summary, to update the historical data (Previous Executed Runs), you can execute the attached [REG_LOAN_PURPOSE_UPDATE.sql](#) file in the Atomic Schema, which copies data from Fact Loan Account Summary to Fact Regulatory Account Summary for the existing run.

5.2.2 GL Type Defaulting Logic Movement from Report to T2T

If GL Type is missing for accounts, then it used to be defaulted at the Reporting layer as value “AST” (Asset). As the logic is moved to T2T, to update the historical data (Previous Executed Runs), you can execute the [N_GL_TYPE_DEFAULT.sql](#) file in the Atomic Schema, which updates data of GL Type Surrogate Key of Fact Regulatory Account Summary for “MSG” and “OTH” (Missing and Others).

5.3 Post US FED Run Execution

Perform the following instructions after US FED Run Execution:

1. For prior date reporting, please see the [Prior Date Reporting](#) document.
2. Execute <<INFODOM>>_REG_RUNEXE_RESAVE batch to populate **RUNEXESUMM** table.
Lombard AgileREPORTER would display additional filters of Run Execution ID and Run Status during report retrieval based on RUNEXESUMM table.
 - a. Run Execution ID is Run Execution Identifier concatenated with Run Description.
 - b. Run Status shows the status of US FED Run Execution.
 - c. Define the entities as SOLO or CONSOLIDATED in Lombard AgileREPORTER before retrieving returns.
3. Execute all the REFRESH batches to refresh the Derived Entities.

6 Deploying Config Package

This section describes the order to deploy the config package after saving the derived entities:

1. To deploy the product configuration on AgileREPORTER using the package `OFSAA_REG_REP_USFED_80800.zip` bundled inside `Config_Package` directory of installer:

- a. Navigate to `<LombardAgileREPORTER>/bin` directory under the installed location
- b. Add a new configuration with the following command:

```
./config.sh -a <Config_Package Full Path>
```

For example:

```
./config.sh -a /scratch/kit/80800/OFS_REG_REP_USFED/  
Config_Package/OFSAA_REG_REP_USFED_80800.zip
```

2. Update the Alias with the following command:

```
./config.sh -ea OFSAA_REG_REP_USFED_80800 -iv 8.0.8.0.0 -alias "OFSAA  
FED DATA SOURCE" -aif /scratch/agile/bin/aliasinfo.properties
```

If you encounter any problems during deployment, contact OFSAA Support at [Oracle Support](#).

OFSAAI Support Contact Details

- Contact Infrastructure support at <https://flexsupp.oracle.com> if you have installed ERM and FCCM applications.
- Raise an SR in <https://support.oracle.com> if you have any queries related to EPM applications.

Send Us Your Comments

Oracle welcomes your comments and suggestions on the quality and usefulness of this publication. Your input is an important part of the information used for revision.

- Did you find any errors?
- Is the information clearly presented?
- Do you need more information? If so, where?
- Are the examples correct? Do you need more examples?
- What features did you like most about this manual?

If you find any errors or have any other suggestions for improvement, indicate the title and part number of the documentation along with the chapter/section/page number (if available) and contact the Oracle Support.

Before sending us your comments, you might like to ensure that you have the latest version of the document wherein any of your concerns have already been addressed. You can access My Oracle Support site which has all the revised/recently released documents.

