

Oracle Financial Services
Regulatory Reporting for
European Banking Authority
(OFS AGILE RP EBA)

Installation Guide

Release 8.0.3.0.0

December 2016



DOCUMENT CONTROL

| Version Number | Revision Date | Changes Done |
|--|---------------------------|--|
| 1.0 | Created: December 2016 | Document contents are categorized to appropriate sections and structured considering all the 8.0.3 features. |
| Created by: Sreejith Pai / Naveen Harry D'Cruz | Reviewed by: Sreejith Pai | Approved by: Nandeesh S / Surag Ramachandran |

Executive Summary

The document consists of all the installation, Pre and Post configuration procedures which have been structured considering all the 8.0.3.0.0 features. You can find the latest copy of this document in [OTN library](#) which includes all the recent additions/revisions (if any) done till date.

Before you begin the installation, ensure that you have an access to Oracle Support Portal with the required login credentials to quickly notify us for any specific issues. You can obtain one by contacting [Oracle Support](#).

TABLE OF CONTENTS

| | |
|--|-----------|
| PREFACE..... | 4 |
| Audience..... | 4 |
| Scope 4 | |
| Prerequisites for the Audience..... | 5 |
| How this Guide is Organized | 5 |
| Documentation Accessibility | 5 |
| Access to Oracle Support..... | 5 |
| Related Documents..... | 5 |
| Conventions and Acronyms | 6 |
| 1 HARDWARE AND SOFTWARE REQUIREMENTS AND SPECIFICATIONS | 7 |
| 1.1 Configurations Supported for Java 7..... | 7 |
| 1.2 Configurations Supported for Java 8..... | 9 |
| 2 PREPARING FOR INSTALLATION..... | 12 |
| 2.1 Obtaining the Software..... | 12 |
| 2.2 Prerequisites for Installation | 12 |
| 2.3 Configuration for GUI Mode Installation..... | 12 |
| 2.4 Copying and Extracting the Software..... | 13 |
| 3 ORACLE FINANCIAL SERVICES REGULATORY REPORTING FOR EUROPEAN BANKING AUTHORITY | 14 |
| 4 SILENT MODE INSTALLATION..... | 21 |
| 5 POST INSTALLATION ACTIVITIES..... | 23 |
| 6 CONFIG PACKAGE DEPLOYMENT..... | 24 |

Preface

Oracle Financial Services Regulatory Reporting for European Banking Authority (OFS_AGILE_RP_EBA) enables the customers to enables the banks to comply with BCBS 239 regulations. It integrates risk data reporting systems and enhances the accuracy of reporting in banks. OFS Risk Regulatory Solution (RRS) helps in achieving the objectives by enabling preset steps based on the generalization of a set of solutions. This is made possible by:

- Providing a centralized data storage for risk data through relevant subject areas of Financial Services Data Foundation (FSDF).
- Interfacing with a Regulatory Reporting tool – OFS AgileREPORTER to build necessary template reports to meet the regulatory expectations.
- Managing accuracy of risk reporting through Data Governance Studio (DGS).

This document provides step-by-step instructions to install the Oracle Financial Services Regulatory Reporting for European Banking Authority (OFS_AGILE_RP_EBA) Release 8.0.3.

This chapter discusses the following topics:

- [Audience](#)
- [Scope](#)
- [Prerequisites for the Audience](#)
- [How this Guide is organized](#)
- [Documentation Accessibility](#)
- [Access to Oracle Support](#)
- [Recommended Environment](#)
- [Related Documents](#)
- [Conventions and Acronyms](#)

Audience

This Manual is meant for Oracle Financial Services Regulatory Reporting for European Banking Authority System Administrator. It provides step-by-step instructions necessary for installing the OFS_AGILE_RP_EBA application components.

Scope

This manual provides a step-wise instruction to install Oracle Financial Services Regulatory Reporting for European Banking Authority.

Prerequisites for the Audience

Following are the expected preparations before starting the actual installation:

The document assumes you have experience in installing Enterprise components. Basic knowledge about the Oracle Financial Services Data Foundation Application Pack components, OFSAA Architecture, UNIX commands, Database concepts and Web Server/ Web Application Server is recommended.

How this Guide is Organized

The Installation Manual is organized into the following chapters.

- **Pre Requisites** section identifies the hardware and base software environment that is required for a successful installation and functioning of the Oracle Financial Services Regulatory Reporting for European Banking Authority.
- **Installing the Application** section details the steps to be followed during the installation.
- **Post installation Activities** section details the steps that are required to be performed after a successful installation of Oracle Financial Services Regulatory Reporting for European Banking Authority.

Documentation Accessibility

For information about Oracle's commitment to accessibility, visit the Oracle Accessibility Program website at <http://www.oracle.com/pls/topic/lookup?ctx=acc&id=docacc>

Access to Oracle Support

Oracle customers have access to electronic support through My Oracle Support. For information, visit <http://www.oracle.com/pls/topic/lookup?ctx=acc&id=info> or visit <http://www.oracle.com/pls/topic/lookup?ctx=acc&id=trs> if you are hearing impaired.

Related Documents

This section identifies additional documents related to Oracle Financial Services Regulatory Reporting for European Banking Authority. You can access Oracle documentation online from Documentation Library ([OTN](#)):

- Oracle Financial Services Regulatory Reporting for European Banking Authority User Guide
- Oracle Financial Services Data Foundation Installation Manual Release 8.0.3.1.0 Java 7 and Java 8
- Oracle Financial Services Analytical Applications Infrastructure Environment Check Utility Guide (present in this [OTN Documentation Library](#))

Conventions and Acronyms

| Conventions | Description |
|------------------|--|
| | References to sections or chapters in the manual are displayed in <i>Italics</i> . Screen names are displayed in the following manner: Introduction screen Options and buttons are displayed in Bold . |
| OFSAAI | Oracle Financial Services Analytical Applications Infrastructure |
| OFS AAAI | Oracle Financial Services Advanced Analytical Applications Infrastructure Application Pack |
| RHEL | Red Hat Enterprise Linux |
| Atomic Schema | Database schema where the application data model is uploaded. |
| Config Schema | Database schema which contains setup related configurations and metadata. |
| OFS_AGILE_RP_EBA | Oracle Financial Services Regulatory Reporting for European Banking Authority. |

1 Hardware and Software Requirements and Specifications

This section describes the various Operating System, Database, Web Server, and Web Application Server version and other variant details on which this release of the OFS Regulatory Reporting for European Banking Authority (OFS_AGILE_RP_EBA) application has qualified.

1.1 Configurations Supported for Java 7

The following table shows the minimum hardware and software requirements for OFS_AGILE_RP_EBA (Java 7) application on each machine.

| Requirement | Sub-Category | Value |
|--|--|--|
| Operating System | Oracle Linux / Red Hat Enterprise Linux (x86-64) | Oracle Linux Server release 5.3 up to 5.10 - 64 bit Oracle Linux Server release 6.0 and above - 64 bit Note: Same versions of RHEL are supported. |
| | Shell | KORN Shell (KSH) |
| <p>Note: If the operating system is RHEL, install the package <code>lsb_release</code> using one of the following commands by logging in as <code>root</code> user:</p> <ul style="list-style-type: none"> • <code>yum install redhat-lsb-core</code> • <code>yum install redhat-lsb</code> | | |
| Java Runtime Environment | Oracle Linux / Red Hat Enterprise Linux | Oracle Java Runtime Environment (JRE) 1.7.x - 64 bit |
| Oracle Database Server and Client | <p>Oracle Database Server Enterprise Edition 11g Release 2 (11.2.0.3.0 +) - 64 bit RAC/ Non-RAC with/ without partitioning option</p> <p>Oracle Database Server Enterprise Edition 12c Release 1 (12.1.0.1.0 +)- 64 bit RAC/ Non-RAC with/ without partitioning option</p> <p>Oracle Client 11g Release 2 (11.2.0.3.0+) - 64 bit</p> <p>Oracle Client 12c Release 1 (12.1.0.1.0+) - 64 bit</p> <p>Oracle 11g Release 2 (11.2.0.3+) JDBC driver (Oracle thin driver)</p> <p>Oracle 12C Release 1 (12.1.0.1+) JDBC driver (Oracle thin driver)</p> <p>Note: Ensure that the following patches are applied: Oracle Server 12c, v12.1.0.1 – 17082699 Oracle Server 12c, v12.1.0.2 - 19392604, 19649591</p> <p>Also for latest information, refer http://support.oracle.com/, 12.1.0.2 Bundle Patches for Engineered Systems and DB In-Memory - List of Fixes in each Bundle (Doc ID 1937782.1)</p> | |

| Requirement | Sub-Category | Value |
|------------------------------------|--|--|
| OLAP | Oracle Hyperion Essbase | V 11.1.2.1+ (Server and Client) with Oracle 11g Database V 11.1.2.3+ (Server and Client) with Oracle 12c Database |
| | Oracle OLAP | V 11.2.0.3+ with Oracle 11g Database V 12.1.0.1+ with Oracle 12c Database |
| | Note: Oracle Hyperion Essbase & Oracle OLAP is required only if you are using the OLAP feature of OFSAAI. For Oracle OLAP, ensure that you have configured the Oracle Database server with OLAP option. | |
| Web Server/ Web Application Server | Oracle Linux / Red Hat Enterprise Linux | Oracle HTTP Server 11.1.1.1/ Apache HTTP Server 2.2.x/ IBM HTTP Server <ul style="list-style-type: none"> • Oracle WebLogic Server 12.1.2+ (64 bit) • IBM WebSphere Application Server 8.5+ with bundled IBM Java Runtime (64 bit) • Apache Tomcat 8.0.x (64 bit) |
| | Note: OFSAA Infrastructure web component deployment on Oracle WebLogic Server with Oracle JRockit is not supported. | |
| Desktop Requirements | Operating System | MS Windows 7/ Windows 8/ Windows 8.1 |
| | Browser | MS Internet Explorer 9 , 10(Compatibility Mode) and 11 (Compatibility Mode) Oracle Java plug-in 1.7.0+* (64- bit) Turn on Pop-up blocker settings. For more information, refer Internet Explorer Settings . |
| | Office Tools | MS Office 2007/ 2010/2013 Adobe Acrobat Reader 8 or above |
| | Screen Resolution | 1024*768 or 1280*1024 |
| Directory Services | - | OFSAAI is qualified on both OPEN LDAP 2.2.29+ and Oracle Internet Directory v 11.1.1.3.0. However, it can be integrated with other directory services software like MS Active Directory. |
| | Note: Configuration of Directory services software for OFSAAI installation is optional. For more information on configuration, see Infrastructure LDAP Configuration . Open LDAP needs to be installed on MS Windows Server machine only. | |

1.2 Configurations Supported for Java 8

The following table shows the minimum hardware and software requirements for installing OFS_AGILE_RP_EBA (Java 8) application on each machine.

| Requirement | Sub-Category | Value |
|---|--|--|
| Operating System | Oracle Linux / Red Hat Enterprise Linux (x86-64) | Oracle Linux Server release 5.3 up to 5.10 - 64 bit Oracle Linux Server release 6.0 and above - 64 bit Note: Same versions of RHEL are supported. |
| | Shell | KORN Shell (KSH) |
| <p>Note:</p> <p>If the operating system is RHEL, install the package <code>lsb_release</code> using one of the following commands by logging in as <code>root</code> user:</p> <ul style="list-style-type: none"> • <code>yum install redhat-lsb-core</code> • <code>yum install redhat-lsb</code> | | |
| Java Runtime Environment | Oracle Linux / Red Hat Enterprise Linux | Oracle Java Runtime Environment (JRE) 1.8.x - 64 bit |
| Oracle Database Server and Client | <p>Oracle Database Server Enterprise Edition 11g Release 2 (11.2.0.3.0+) - 64 bit RAC/ Non-RAC with/ without partitioning option</p> <p>Oracle Database Server Enterprise Edition 12c Release 1 (12.1.0.1.0+) - 64 bit RAC/ Non-RAC with/ without partitioning option</p> <p>Oracle Client 11g Release 2 (11.2.0.3.0+) - 64 bit</p> <p>Oracle Client 12c Release 1 (12.1.0.1.0+) - 64 bit</p> <p>Oracle 11g Release 2 (11.2.0.3+) JDBC driver (Oracle thin driver)</p> <p>Oracle 12C Release 1 (12.1.0.1+) JDBC driver (Oracle thin driver)</p> <p>Note:</p> <p>Ensure that the following patches are applied:</p> <p>Oracle Server 12c, v12.1.0.1 – 17082699</p> <p>Oracle Server 12c, v12.1.0.2 - 19392604, 19649591</p> <p>Also for latest information, refer http://support.oracle.com/, 12.1.0.2 Bundle Patches for Engineered Systems and DB In-Memory - List of Fixes in each Bundle (Doc ID 1937782.1)</p> | |
| OLAP | Oracle Hyperion Essbase | V 11.1.2.1+ (Server and Client) with Oracle 11g Database V 11.1.2.3+ (Server and Client) with Oracle 12c Database |
| | Oracle OLAP | V 11.2.0.3+ with Oracle 11g Database V 12.1.0.1+ with Oracle 12c Database |

| Requirement | Sub-Category | Value |
|------------------------------------|--|---|
| | <p>Note: Oracle Hyperion Essbase & Oracle OLAP is required only if you are using the OLAP feature of OFSAAI. For Oracle OLAP, ensure that you have configured the Oracle Database server with OLAP option.</p> | |
| Web Server/ Web Application Server | Oracle Linux / Red Hat Enterprise Linux | Oracle HTTP Server 11.1.1.1/ Apache HTTP Server 2.2.x/ IBM HTTP Server <ul style="list-style-type: none"> • Oracle WebLogic Server 12.1.3+ (64 bit) • Apache Tomcat 8.0.x (64 bit) <p>Note: IBM WebSphere 8.5.x (Full Profile) on Java 8 is not available.</p> |
| | <p>Note: OFSAA Infrastructure web component deployment on Oracle WebLogic Server with Oracle JRockit is not supported.</p> | |
| Desktop Requirements | Operating System | MS Windows 7/ Windows 8/ Windows 8.1 |
| | Browser | MS Internet Explorer 9 , 10(Compatibility Mode) and 11 (Compatibility Mode) Oracle Java plug-in 1.7.0+* (64- bit) Turn on Pop-up blocker settings. For more information, refer Internet Explorer Settings . |
| | Office Tools | MS Office 2007/ 2010/2013 Adobe Acrobat Reader 8 or above |
| | Screen Resolution | 1024*768 or 1280*1024 |
| Other Software | Directory Services | OFSAAI is qualified on both OPEN LDAP 2.2.29+ and Oracle Internet Directory v 11.1.1.3.0. However, it can be integrated with other directory services software like MS Active Directory. |
| | <p>Note: Configuration of Directory services software for OFSAAI installation is optional. For more information on configuration, see Infrastructure LDAP Configuration. Open LDAP needs to be installed on MS Windows Server machine only.</p> | |

OFS_AGILE_RP_EBA application recommends the following software combinations for deployment.

Recommended Software Combinations

| Operating System | Database | Web Application Server | Web Server |
|---|-----------------|---|---|
| Oracle Linux 5.3 up to 5.10/ 6.0 and above | Oracle Database | Oracle WebLogic Server/ Apache Tomcat Server | Oracle HTTP Server/ Apache HTTP Server |

2 Preparing for Installation

This chapter provides necessary information to review before installing the OFS_AGILE_RP_EBA Application v8.0.3.0.0. This chapter includes the following topics:

- [Obtaining the Software](#)
- [Prerequisites for Installation](#)
- [Configuration for GUI Mode Installation](#)
- [Copying and Extracting the Software](#)

2.1 Obtaining the Software

This release of OFS_AGILE_RP_EBA 8.0.3.0.0 can be downloaded from the Oracle Software Delivery Cloud (<https://edelivery.oracle.com>). You need to have a valid Oracle account in order to download the software.

2.2 Prerequisites for Installation

The following are the prerequisites to install OFS_AGILE_RP_EBA application:

- OFS Analytical Applications Infrastructure 8.0.3.1.0 should be installed and configured in your Machine.
- OFS FSDF 8.0.3.1.0 Application Pack should be installed and configured in your Machine.
- OFS AgileREPORTER 8.0.3.0.0 Application should be installed and configured in your Machine.
- Make sure you have executed **.profile** before you trigger the installation.
- Make sure FIC Server is up and running before you trigger the installation. For information on restarting the services, Refer OFS AAI Release 8.0.3.1.0 Installation Guide ([OTN Documentation library](#)) for more information.

2.3 Configuration for GUI Mode Installation

To install OFS_AGILE_RP_EBA in GUI mode, you need to ensure the below software and configurations are available:

- Install and configure any PC X Server software such as Open Text Exceed (formerly Hummingbird Exceed) on the user desktop system from which the installation is triggered.
- Configure DISPLAY variable.

Ensure to set the DISPLAY variable on the system on which the OFSAA is installed, to point to the user desktop system where the PC X Server software has been installed.

Syntax:

```
export DISPLAY=hostname:n.n1
```

where, hostname is the IP Address/ Host Name of the user desktop system and n is the sequence number (usually 0).

For example, 10.11.12.13:0.0 or myhostname:0.0

2.4 Copying and Extracting the Software

Once you obtain the installer, copy the installer (in BINARY mode) to the system on which the OFS_AGILE_RP_EBA application components are installed.

NOTE: You must be logged in to the UNIX operating system as a non-root user.

1. Download the unzip utility (OS specific) `unzip_<os>.Z`, and copy it in Binary mode to any directory and include the directory in your PATH variable. If you already have the unzip utility to extract the contents of the downloaded archive, skip to the next step.

2. Uncompress the unzip installer file using the command:

```
uncompress unzip_<os>.Z
```

NOTE: In case you notice an error message "uncompress: not found [No such file or directory]" when the package is not installed, contact your UNIX administrator.

3. Give EXECUTE permission to the file using the command:

```
chmod 751 unzip_<os>
```

For example, `chmod 751 unzip_sparc`

4. Extract the contents of the OFS_AGILE_RP_EBA 8.0.3.0.0 in the Download Directory installer archive file using the following command:

```
unzip OFS_AGILE_RP_EBA_8.0.3.0.0_<os>.zip
```

NOTE: DO NOT rename the Application installer folder name on extraction from the archive.

5. Give below permission to the installer folder. Navigate to the Download Directory and execute the command:

```
chmod -R 755 OFS_AGILE_RP_EBA
```

3 Oracle Financial Services Regulatory Reporting for European Banking Authority

The OFS_AGILE_RP_EBA installer can be installed in both GUI and silent mode.

For executing the installer in silent mode, refer to the section [Silent Mode Installation](#).

For running in GUI mode:

- 1) Log in to the system as **non-root user**
- 2) Execute the user **.profile**
- 3) Navigate to installer location **OFS_AGILE_RP_EBA/bin**
- 4) Run the installer in GUI Mode by executing the command:

```
./setup.sh GUI
```

Refer to the below steps for installation in GUI mode:

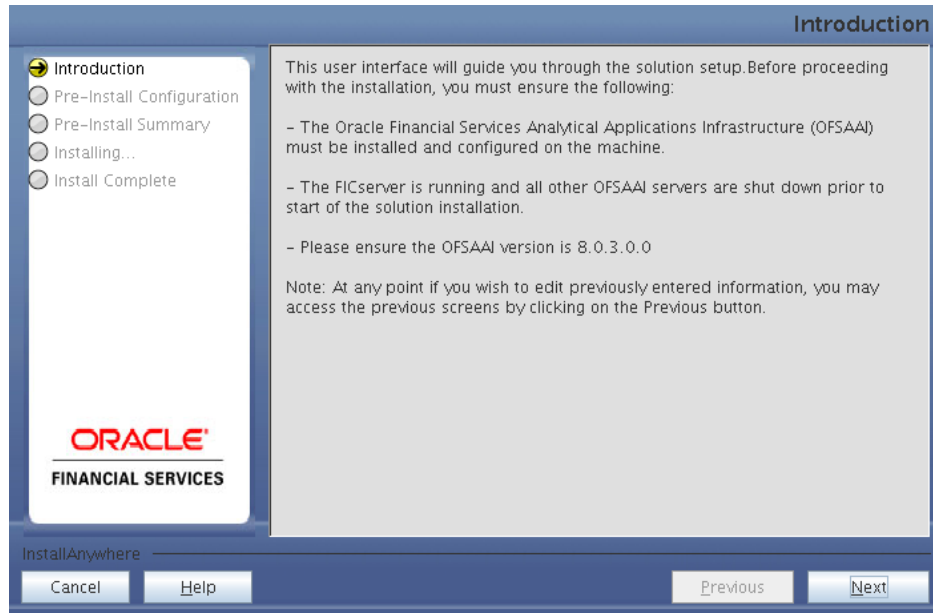
1. Execute the following command to start the installation for Oracle Financial Services Regulatory Reporting for European Banking Authority:

```
./setup.sh GUI
```



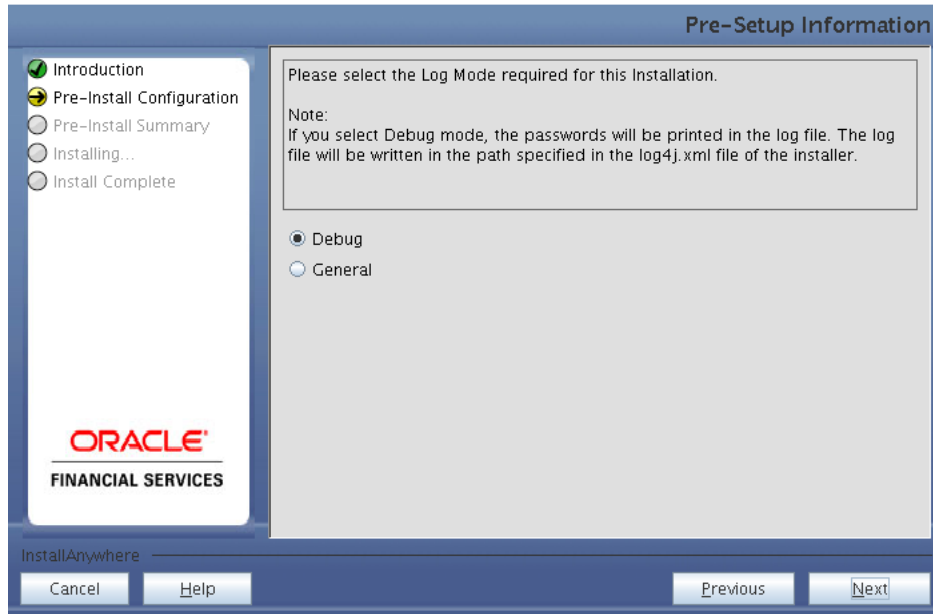
Installation Splash Screen

2. The **Introduction** screen displays the prerequisites for installation. Ensure that the prerequisites are satisfied before you proceed.



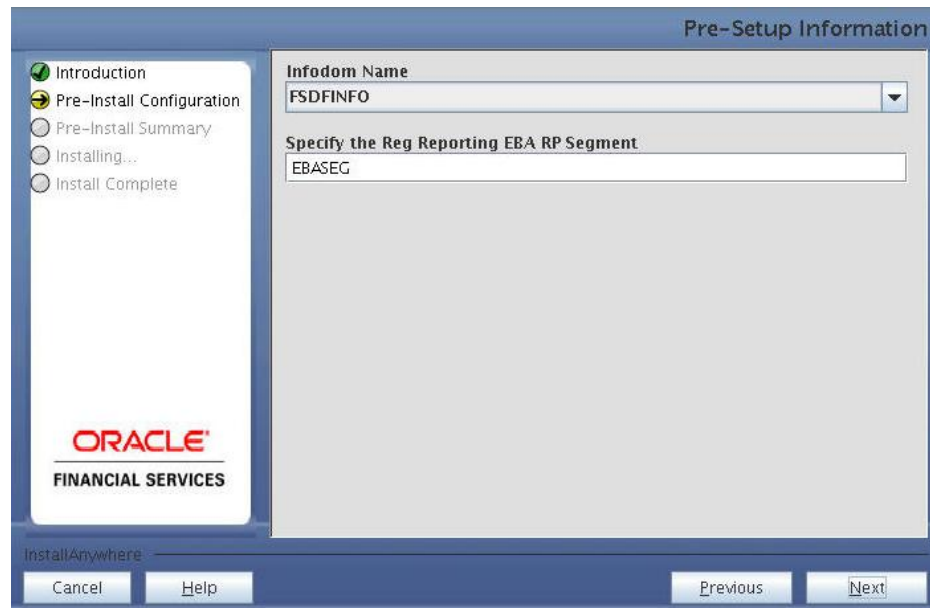
Introduction Screen

3. Choose the **Log Mode** for this installer. If you select, **Debug**, the Passwords are printed in the log file.



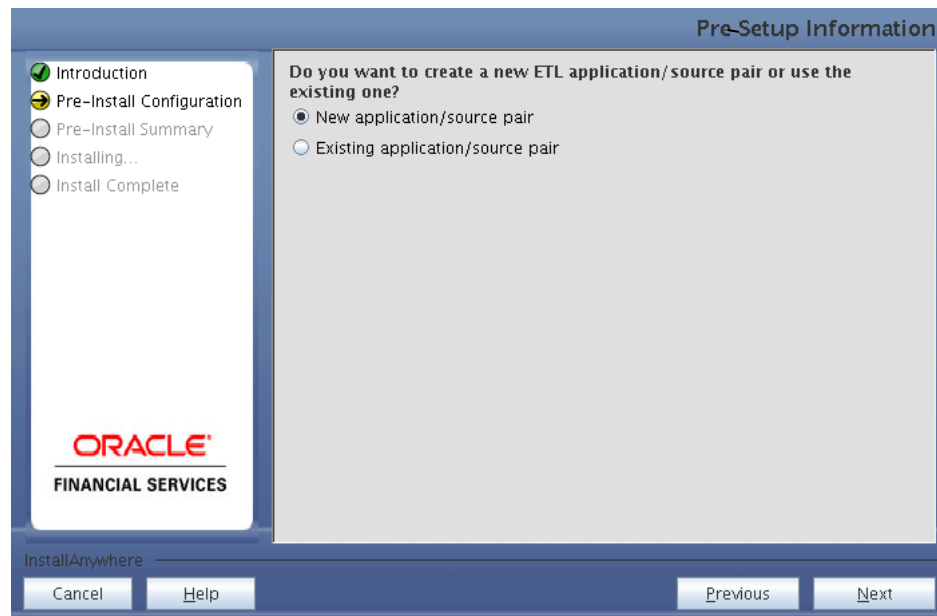
Pre-Setup Information – Log Mode Screen

4. In the **Pre-Setup Information** screen, specify the existing infodomain name to be used for the application installation and click **Next**.



Pre-Setup Information – Infodomain Type Screen

5. In the **Pre-Setup Information** screen, select **New application/source pair** to create a new ETL application and click **Next**.



Pre-Setup Information – ETL Application Selection Screen

6. In the **Pre-Setup Information** screen, enter the **ETL Application Name & Description** as you wish and **ETL Source Name & Description** as you wish. Then click **Next**.

The screenshot shows the 'Pre-Setup Information' window. On the left is a navigation pane with the following items: Introduction (checked), Pre-Install Configuration (selected), Pre-Install Summary, Installing..., and Install Complete. The main area is titled 'Pre-Setup Information' and contains two sections: 'ETL Application Details' and 'ETL Source Details'. Under 'ETL Application Details', the 'Name' field contains 'EBA' and the 'Description' field contains 'EBA Application'. Under 'ETL Source Details', the 'Name' field contains 'PROCESSING' and the 'Description' field contains 'Processing Source'. At the bottom left is the Oracle Financial Services logo. At the bottom right are buttons for 'Cancel', 'Help', 'Previous', and 'Next'.

Pre-Setup Information – ETL Application Details Screen

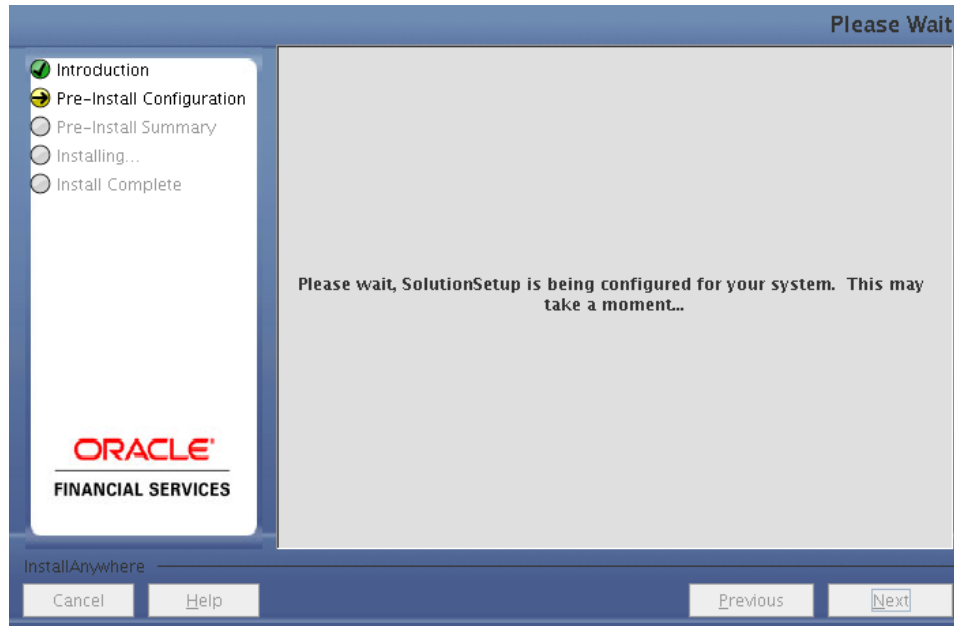
7. In the **Pre-Setup Information** screen, enter the **OFSAAI User ID** and click **Next**.

Default Value is: **SYSADMN**

The screenshot shows the 'Pre-Setup Information' window. The navigation pane is the same as in the previous screenshot. The main area is titled 'Pre-Setup Information' and contains a single section: 'Please specify the OFSAAI user ID(should be Capital Letter)'. Below this text is a text input field containing 'SYSADMN'. At the bottom left is the Oracle Financial Services logo. At the bottom right are buttons for 'Cancel', 'Help', 'Previous', and 'Next'.

Pre-Setup Information – OFSAAI User ID Screen

8. The **Pre-Install Configuration (Please Wait)** screen is displayed.



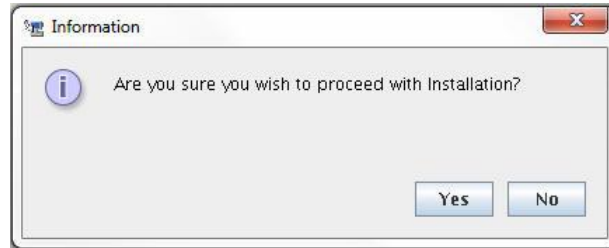
Pre-Install Configuration – Please Wait Screen

9. Review the settings in the **Pre-Installation Summary** screen and click **Install**.

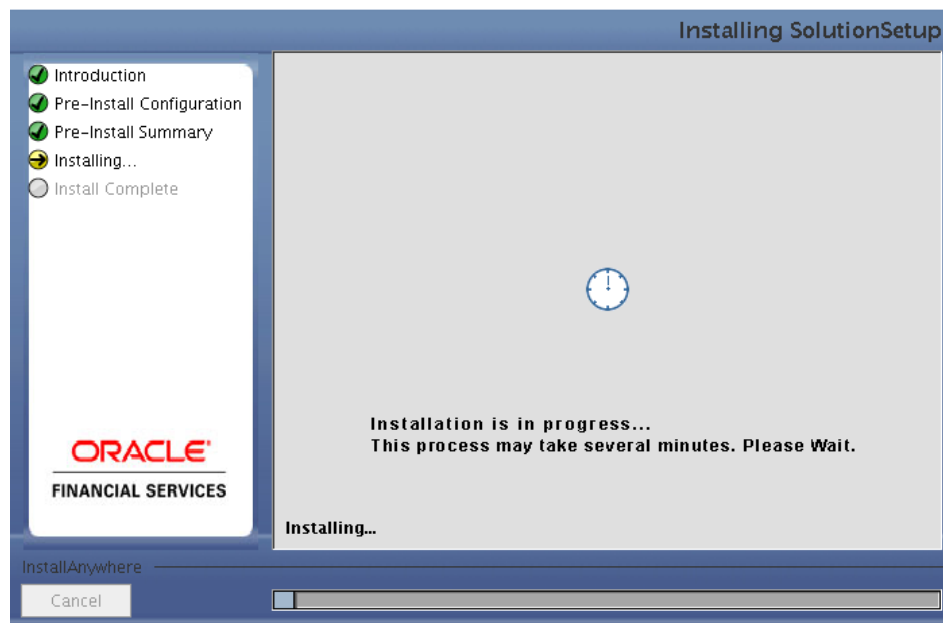


Pre-Installation Summary Screen

10. The following message is displayed. Select **Yes** to begin the installation process.

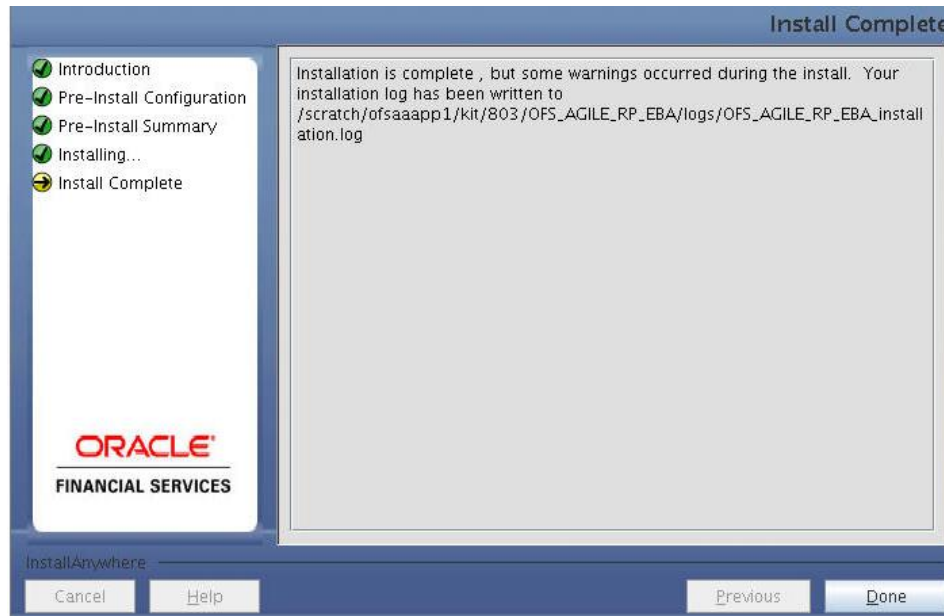


11. The **Installing SolutionSetup** screen is displayed.



Installing SolutionSetup Screen

12. The **Install Complete** screen is displayed.



Install Complete Screen

13. Refer to the log file created in the path `/OFS_AGILE_RP_EBA/logs` of installer directory for any error messages.

14. Click **Done** to complete the installation.

4 Silent Mode Installation

Silent installation is achieved via a properties file (**Silent.props**) that must be updated with proper values, before attempting to install using the silent mode. Follow the below steps to install the product in Silent Mode:

- 1) Navigate to installer directory `OFS_AGILE_RP_EBA/conf` containing the template file **Silent.template**.
- 2) Create a copy of this file and rename the copy as **Silent.props**.
- 3) Edit the **Silent.props** file and specify the parameters as per the requirements.

The following table lists all the properties that must be specified.

| Property Name | Description of Property | Permissible Values | Comments |
|-----------------|--|---|---|
| LOG_MODE | Mode for logging | 0 = Debug 1= General | Optional; Default : 0 |
| INFODOM_NAME | Specify name of Information Domain (Infodom) into which you wish to install. | For example: OFSBFNDINFO | MANDATORY. Specify Infodom Name Value where FSDF Application is got installed |
| APPFTP_LOG_PATH | Specify the Infodom App Maintenance log path | For example: /home/ftpshare/OFSBFNDINFO/logs | MANDATORY. Path value should be same as the path which was given during FSDF installation |
| DBFTP_LOG_PATH | Specify the Infodom DB Maintenance log path | For example: /home/ftpshare/OFSBFNDINFO/logs | MANDATORY. Path value should be same as the path which was given during FSDF installation |
| SEGMENT_1_CODE | Specify the European Banking Authority Segment Code | For example: EBARPSEG | MANDATORY |
| ETL_APPSRC_TYPE | Please specify if you want create new ETL App/Src pair or use an existing one. | 0 = If you want to create a new ETL app/src pair 1 = If you want to use an existing pair | MANDATORY |

| | | | |
|------------------|--|------------------------------------|------------------------------------|
| ETL_APP_1_NAME | Specify the ETL Application Name where the Definitions will be deployed. | For example: EBA | MANDATORY |
| ETL_SRC_1_1_NAME | Specify the ETL Source Name into ETL Area Definitions will be deployed | For example: PROCESSING | MANDATORY |
| ETL_APP_1_DESC | Please give description for the ETL Application | For example: EBA Application | MANDATORY WHEN ETL_APPSRC_TYPE = 0 |
| ETL_SRC_1_1_DESC | Please give description for the ETL Source | For example: EBA Processing Source | MANDATORY WHEN ETL_APPSRC_TYPE = 0 |

- 1) Log in to the system as **non-root** user
- 2) Execute the user **.profile**
- 3) Navigate to installer location **OFS_AGILE_RP_EBA/bin**
- 4) Run the installer in SILENT Mode with the following command:

```
./setup.sh SILENT
```

Refer to the console log (or the **preinstall.log** file) for any error messages.

5 Post Installation Activities

After the installation is complete, perform the following activities:

- Refer to the log file in the path `/OFS_AGILE_RP_EBA/logs` to ensure that there are no errors reported.
- Restart all the OFSAAI Servers. Refer OFS AAI Release 8.0.3 Installation Guide ([OTN Documentation](#) library) for more information.

The Oracle Financial Services Regulatory Reporting for European Banking Authority is now ready for use. If you encounter any problems during set up, contact OFSAA Support at [Oracle Support](#).

6 Config Package and Template Package Deployment

This section describes the order to deploy the config package after saving the derived entities:

1. To deploy the product configuration on AgileREPORTER using the package **AR_ECR_Package_v1_25_0_4.zip** bundled inside **Template_Package** folder of installer:

- a. Navigate to **<AgileREPORTER>/bin** under the installed location
- b. Add a new configuration with the following command:

```
./config.sh -a <Template_Package Full Path>
```

For example:

```
./config.sh -a  
/scratch/kit/803/OFS_AGILE_RP_EBA/Template_Package/  
AR_ECR_Package_v1_25_0_4.zip
```

2. To deploy the product configuration on AgileREPORTER using the package **OFSAA_REG_REP_EBA_80300.zip** bundled inside **Config_Package** folder of installer:

- a. Navigate to **<AgileREPORTER>/bin** under the installed location
- b. Add a new configuration with the following command:

```
./config.sh -a <Config_Package Full Path>
```

For example:

```
./config.sh -a /scratch/kit/803/OFS_AGILE_RP_EBA/Config_Package/  
OFSAA_REG_REP_EBA_80300.zip
```

- c. Activate the configuration with the following command:

```
./config.sh -t OFSAA_REG_REP_EBA_80300 -iv 8.0.3.0.0
```

- d. Update the Alias with the following command:

```
./config.sh -ea OFSAA_REG_REP_EBA_80300 -iv 8.0.3.0.0 -alias  
"OFSAA EBA DATA SOURCE" -aif  
<AgileREPORTER>/bin/aliasinfo.properties
```

If you encounter any problems during deployment, contact OFSAA Support at [Oracle Support](#).



Oracle Financial Services Regulatory Reporting for European Banking Authority (OFS AGILE RP EBA)

Installation Guide

Oracle Corporation
World Headquarters
500 Oracle Parkway
Redwood Shores, CA 94065
U.S.A.

Worldwide Inquiries:

Phone: +1.650.506.7000

Fax: +1.650.506.7200

www.oracle.com/us/industries/financial-services/

Copyright © 2016 Oracle Financial Services Software Limited. All rights reserved.

No part of this work may be reproduced, stored in a retrieval system, adopted or transmitted in any form or by any means, electronic, mechanical, photographic, graphic, optic recording or otherwise, translated in any language or computer language, without the prior written permission of Oracle Financial Services Software Limited.

Due care has been taken to make this Installation Guide and accompanying software package as accurate as possible. However, Oracle Financial Services Software Limited makes no representation or warranties with respect to the contents hereof and shall not be responsible for any loss or damage caused to the user by the direct or indirect use of this Installation Guide and the accompanying Software System. Furthermore, Oracle Financial Services Software Limited reserves the right to alter, modify or otherwise change in any manner the content hereof, without obligation of Oracle Financial Services Software Limited to notify any person of such revision or changes.

All company and product names are trademarks of the respective companies with which they are associated.
