

Oracle® Hospitality e7 Point-of-Sale Installation Guide



Release 4.4 EU
E95132-01
May 2018

The Oracle logo, consisting of a solid red square with the word "ORACLE" in white, uppercase, sans-serif font centered within it.

ORACLE®

Oracle Hospitality e7 Point-of-Sale Installation Guide, Release 4.4 EU

E95132-01

Copyright © 2011, 2018, Oracle and/or its affiliates. All rights reserved.

This software and related documentation are provided under a license agreement containing restrictions on use and disclosure and are protected by intellectual property laws. Except as expressly permitted in your license agreement or allowed by law, you may not use, copy, reproduce, translate, broadcast, modify, license, transmit, distribute, exhibit, perform, publish, or display any part, in any form, or by any means. Reverse engineering, disassembly, or decompilation of this software, unless required by law for interoperability, is prohibited.

The information contained herein is subject to change without notice and is not warranted to be error-free. If you find any errors, please report them to us in writing.

If this software or related documentation is delivered to the U.S. Government or anyone licensing it on behalf of the U.S. Government, then the following notice is applicable:

U.S. GOVERNMENT END USERS: Oracle programs, including any operating system, integrated software, any programs installed on the hardware, and/or documentation, delivered to U.S. Government end users are "commercial computer software" pursuant to the applicable Federal Acquisition Regulation and agency-specific supplemental regulations. As such, use, duplication, disclosure, modification, and adaptation of the programs, including any operating system, integrated software, any programs installed on the hardware, and/or documentation, shall be subject to license terms and license restrictions applicable to the programs. No other rights are granted to the U.S. Government.

This software or hardware is developed for general use in a variety of information management applications. It is not developed or intended for use in any inherently dangerous applications, including applications that may create a risk of personal injury. If you use this software or hardware in dangerous applications, then you shall be responsible to take all appropriate fail-safe, backup, redundancy, and other measures to ensure its safe use. Oracle Corporation and its affiliates disclaim any liability for any damages caused by use of this software or hardware in dangerous applications.

Oracle and Java are registered trademarks of Oracle and/or its affiliates. Other names may be trademarks of their respective owners.

Intel and Intel Xeon are trademarks or registered trademarks of Intel Corporation. All SPARC trademarks are used under license and are trademarks or registered trademarks of SPARC International, Inc. AMD, Opteron, the AMD logo, and the AMD Opteron logo are trademarks or registered trademarks of Advanced Micro Devices. UNIX is a registered trademark of The Open Group.

This software or hardware and documentation may provide access to or information about content, products, and services from third parties. Oracle Corporation and its affiliates are not responsible for and expressly disclaim all warranties of any kind with respect to third-party content, products, and services unless otherwise set forth in an applicable agreement between you and Oracle. Oracle Corporation and its affiliates will not be responsible for any loss, costs, or damages incurred due to your access to or use of third-party content, products, or services, except as set forth in an applicable agreement between you and Oracle.

Contents

Preface	4
<hr/>	
1 Prerequisites	1
<hr/>	
Compatible POS Hardware	1
Compatible Hardware Peripherals	2
Back-Office PC	3
Upgrading	4
Prerequisite Information	5
2 Software Installation	2-1
<hr/>	
CAL-Standalone Installation	2-1
CAL-Server Installation	2-1
Back-Office PC Software	2-2
Standalone Installation	2-10
3 Backup and Restore a Database	3-1
<hr/>	
Preliminary	3-1
Backup the Database	3-1
Restore the Database	3-2
Retrieve the Database	3-3
Backup Database Definitions	3-3
Restore Database Definitions	3-4
Appendix A e7 System Config File	A-1
<hr/>	

Preface

Oracle Hospitality e7 Point-of-Sale (POS) is a Restaurant Management System targeting individual restaurateurs in segments like table-service and quick-service restaurants, delis, sandwich shops, bars, and more. In addition to the standard POS functionality, e7 Point-of-Sale provides time & attendance, real-time inventory, comprehensive reporting, customer management, and can be integrated to the Oracle Hospitality Cloud Services Reporting and Analytics, Gift and Loyalty, and Inventory Management.

Purpose

This document provides guidance for setting up a PC server, for installing e7 on workstations, and for backing up and restoring the e7 database.

Audience

This document is intended for all users of Oracle Hospitality e7 POS version 4.4 EU.

Customer Support

To contact Oracle Customer Support, access My Oracle Support at the following URL:

<https://support.oracle.com>

When contacting Customer Support, please provide the following:

- Product version and program/module name
- Functional and technical description of the problem (include business impact)
- Detailed step-by-step instructions to re-create
- Exact error message received and any associated log files
- Screenshots of each step you take

Documentation

Oracle Hospitality product documentation is available on the Oracle Help Center at <http://docs.oracle.com/en/industries/hospitality/>

Revision History

Date	Description of Change
May 2018	Initial publication.

1

Prerequisites

Before installing, review the information in this chapter to verify that software and hardware compatibility.

- [Compatible POS Hardware](#)
- [Compatible Hardware Peripherals](#)
- [Back-Office PC](#)
- [Prerequisite Steps](#)

Compatible POS Hardware

The following Workstations and Mobile Devices are supported by e7 POS version 4.4 EU.

Hardware Type	Description	Operating System or Firmware Version	Remarks
Stationary POS Device	Workstation 4LX	OS: Microsoft Windows CE 6.0 R3 OS image: GR 1.4 CAL (min): 6.1.3.68 BIOS: H1003c	
Stationary POS Device	Workstation 5	OS: Microsoft Windows CE 6.0 R3 OS image: GR 2.1 CAL (min): 7.1.3.68 BIOS: G1025	
Stationary POS Device	Workstation 5A	OS: Microsoft Windows CE 6.0 R3 OS image: GR 2.0 CAL (min): 13.1.3.101 BIOS: Q2010g	
Stationary POS Device	Workstation 5A	OS: Microsoft POSReady2009 OS image: 2.1 CAL (min): 3.1.3..117 BIOS: Q2011d	
Stationary POS Device	Workstation 6	OS: Microsoft Windows Embedded 8.1 Industry Pro OS image: M3.7 CAL (min): 3.1.3..129 BIOS: W1300k	
Portable POS Device	MICROS Tablet R-Series	OS: Microsoft Windows EC7 OS image: PV1.4 CAL (min): 21.1.3.124	Does not support mobile operations.

Hardware Type	Description	Operating System or Firmware Version	Remarks
			Use of the Base Station is mandatory.
Mobile POS Device	Zebra MC40	OS: Microsoft Windows EC 7 OS image: MC40M0c70BenU81.44.02v1.1	Does not support integrated scanner.
Mobile POS Device	WebDT 430SC	OS: Microsoft Windows CE 6.0 R3 OS image: DT430SCUSMicrosC600.0001.03202012 or DT430SCENUSTC600.0009.01242015	

Compatible Hardware Peripherals

The following printers, scanners, and cash drawers are supported by e7 POS version 4.4 EU.

Hardware Type	Description	Operating System or Firmware Version	Remarks
Thermal Printer	Epson TM-T88 IV (serial, IDN, Ethernet)	Printer FW: 10.02 Ethernet: 1.01 IDN: 2.04	
Thermal Printer	Epson TM-T88 V (serial, IDN, Ethernet)	Printer FW: 30.12 Ethernet: 1.07a IDN: 2.04 or 4.02	
Thermal Printer	Bixolon SRP350 (serial)	Printer: 6.34	
Thermal Printer	Bixolon SRP350II (serial)	Printer FW: v01.04 STB072011	
Thermal Printer	Bixolon SRP350III (serial)	Printer FW: v01.00 STB010214	
Thermal Printer	Bixolon SRP350plus (serial, Ethernet)	Printer: 01.05. STB 081511 Ethernet FW: IFA-EP v2.1	
Thermal Printer	Bixolon SRP350plusII (serial, Ethernet)	Printer FW: v01.09a STB083012 Ethernet FW: IFA-EP v2.1	

Hardware Type	Description	Operating System or Firmware Version	Remarks
Thermal Printer	Bixolon SRP350plusIII (serial, Ethernet)	Printer: Ethernet/Serial On Board	
Impact Printer	Epson TM-U220B (serial, IDN, Ethernet)	BIOS: 5.00 MI BooT: 5.00 MI Ethernet: 1.07a IDN: 2.04. or 4.02	
Impact Printer	Bixolon SRP275 (serial, Ethernet)	Printer: 01.01 STB 080411 Ethernet FW: 2.1	
Impact Printer	Bixolon SRP275II (serial, Ethernet)	Printer: 01.01STB2011.08.25 Ethernet FW: 2.1	
Slip Printer	Epson TM-U295 (serial)	BIOS: 3.00 Boot: 3.00	
Mobile Printer	Bixolon SPP-R200 (Bluetooth, WLAN)	V1.01 STOB 030609	Bluetooth only supported with handheld devices.
Mobile Printer	Bixolon SPP-R200II (Bluetooth, WLAN)	V01.00 STOBa GLP051915	Bluetooth only supported with handheld devices.
Mobile Printer	Bixolon SPP-R300 (Bluetooth, WLAN)	V1.01 STOB 111811	Bluetooth only supported with handheld devices.
Scanner	Symbol LS2208 (serial)	n/a	
Cash Drawer	APG Series 4000	n/a	Requires Series-1 or Series-2 DIN connector.
Cash Drawer	APG Series 100	n/a	Requires Series-1 or Series-2 DIN connector.
Cash Drawer	APG Vasario	n/a	Requires Series-1 or Series-2 DIN connector.
Cash Drawer	APG Flip Top	n/a	Requires Series-1 or Series-2 DIN connector.

Back-Office PC

The e7 Back Office allows running administrative tasks in the background without interrupting the restaurant operations. For example, administrative tasks are closing the day, pulling reports, adjust prices, correct employee time punches etc. However, all these administrative tasks can also be done directly at the point-of-sale device. This makes the use of a Back-Office PC optional.

There are just a few functions in e7 making the use of a Back-office PC mandatory, which include the following:

- Connecting to Gift and Loyalty
- Safekeeping of Report/Historical/Time-Card Details up to 750 days (instead of 45, 60, 60 days respectively)
- Serial PMS Interface (TCP/IP PMS interface does not require a Back-Office PC)
- WinPrint Interface

Using the e7 Back-Office application requires one of the following operating systems:

- Microsoft Windows 7 Professional (32- bit and 64-bit)
- Microsoft Windows 8.1 Professional (32 bit and 64-bit)
- Microsoft Windows 10 Professional (32 bit and 64-bit)

For the proper configuration, you must take into account that the e7 Back-Office application consumes:

- 512MB RAM
- 20 GB Hard Disk

Upgrading

Before you start upgrading an existing e7 system:

1. Close all open checks.
2. Backup the Database and copy to a save location.
3. Close the e7 application.

Upgrading from version 3.x to 4.x requires that you first upgrade to version 4.0.0 before you upgrade to a higher version.

Table 1-1 - Upgrade From Version To Version Conversion

Upgrade to version ↓	Upgrade from Version									
	3.0.3	3.1.0	3.2.0	3.2.1	3.3.1	4.0.0	4.0.1	4.0.3	4.1.0	4.2.0
3.1.0	✓	✗	✗	✗	✗	✗	✗	✗	✗	✗
3.2.0	✓	✓	✗	✗	✗	✗	✗	✗	✗	✗
3.2.1	✓	✓	✓	✗	✗	✗	✗	✗	✗	✗

3.3.1	✓	✓	✓	✓	✗	✗	✗	✗	✗	✗
4.0.0	✓	✓	✓	✓	✓	✗	✗	✗	✗	✗
4.0.1	✗	✗	✗	✗	✗	✓	✗	✗	✗	✗
4.0.3	✗	✗	✗	✗	✗	✓	✓	✗	✗	✗
4.1.0	✗	✗	✗	✗	✗	✓	✓	✓	✗	✗
4.2.0	✗	✗	✗	✗	✗	✓	✓	✓	✓	✗
4.3.0	✗	✗	✗	✗	✗	✓	✓	✓	✓	✓

Prerequisite Information

Sensitive Data: Be aware that e7 writes data in plain text to the database, except for all passwords that are written to the DB as hash strings. Keep this in mind when installing v4.x.EU, especially when using the Customer Management module that holds personal data in the database as plain text.

MICROS Tablet R-Series: Depending on hardware configuration, the MICROS Tablet may be equipped with a wireless network card. Before starting the e7 installation, decide on one network connection to use and disable the other network card.

Keep in mind that e7 requires the Tablet to be plugged into the Base Station continuously. Mobile operation is not supported.

2

Software Installation

The Client Application Loader (CAL) technology is used to install and update the e7 software on workstations. The Client Application Loader (CAL) is a mechanism that allows for the seamless distribution, installation, and maintenance of software. To install, software CAL-packages need to be created and transferred to the workstation. Each consists of an installation script and associated files.

The e7 setup provides the following 4 CAL-package:

- Platform update package
- CAL update package
- BIOS update package
- E7 Software package

e7 provides two approaches to install the software

- CAL-Standalone Installation – This installation will be used when e7 should be installed on workstations only, without a Back-Office PC.
- CAL-Server Installation – This installation is used when a Back-Office PC is configured in the system.

CAL-Standalone Installation

Within the CAL-Standalone approach, the CAL-packages are copied to an USB drive that are inserted in the workstation. The installation process is started by running an executable.



Figure 2-1 - CAL-Standalone Installation

CAL-Server Installation

Along with the e7 Back-Office setup, the CAL-Server will be installed on the PC and the CAL-packages copied on that PC. The Oracle MICROS Workstations are shipped with a pre-installed CAL-Client that establishes a connection to the CAL-Server. In case the CAL-Server holds newer CAL-Packages than installed on the workstation, the newer packages are transferred to the workstation and will be installed automatically.

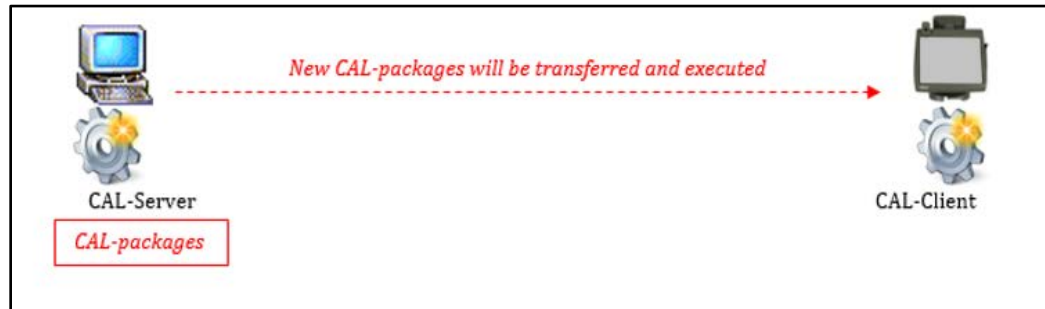


Figure 2-2 - CAL-Server Installation

The following sections provide instructions on how to install/upgrade the e7 software by using either the CAL-Standalone or CAL-Server approach.

Back-Office PC Software

Prerequisites

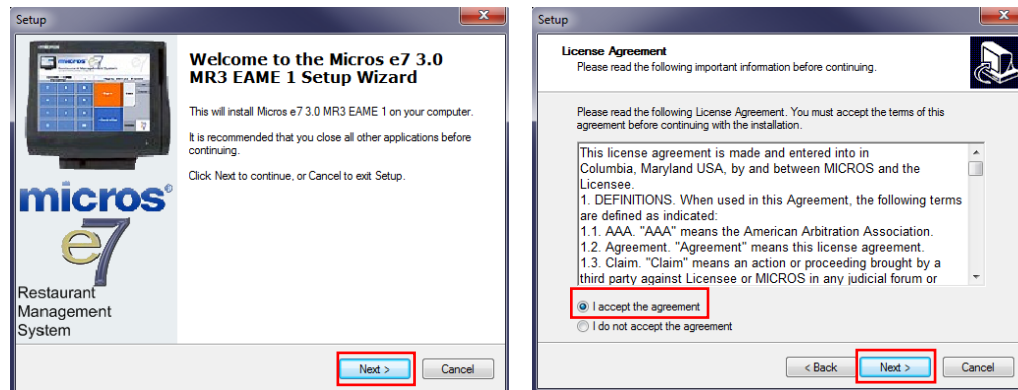
When installing e7 on a Back-Office PC running Microsoft Windows 8 or higher, you must activate Microsoft's .NET Framework 3.5.

To activate Microsoft .NET Framework 3.5:

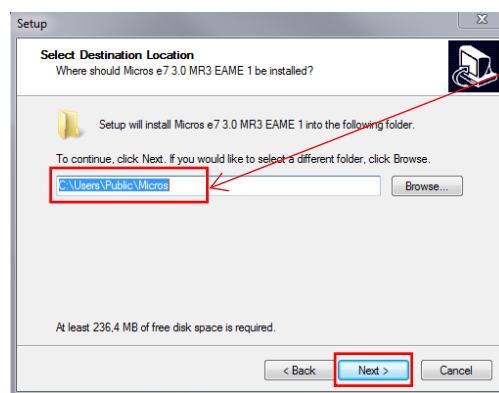
1. Ensure you have an Internet connection.
2. Open the Control Panel, select **Programs and Features**, and then select **Turn Windows features on or off**.
3. Activate the **.NET Framework 3.5 (includes .NET2.0 and 3.0)** feature.
4. Copy the **Oracle Hospitality e7 Point-of-Sale Version a.b.c.EU.zip** file onto your e7 PC (where a.b.c represents the version number: a=main version, b=minor version, c=Revision. E.g., Oracle Hospitality e7 Point-of-Sale Version 4.1.0.EU.zip).
5. Extract the zip-file to a temporary folder on your PC.

e7 Software Installation

1. Browse to the folder where the files have been extracted in the previous section. Open the folder: `...\Oracle Hospitality e7 Point-of-Sale Version a.b.c.EU\Back-Office-PC_Installation`
2. Stop all instances of e7 on workstations.
3. Run the **e7setup_a.b.c.EU.exe** on your Back-Office PC.
4. Click **Next**, accept the license agreement, and then click **Next**.



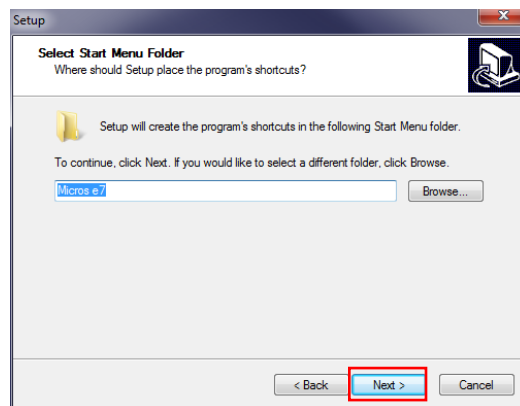
5. Select the installation folder, and then click **Next**. It is recommended to keep the suggested installation path.



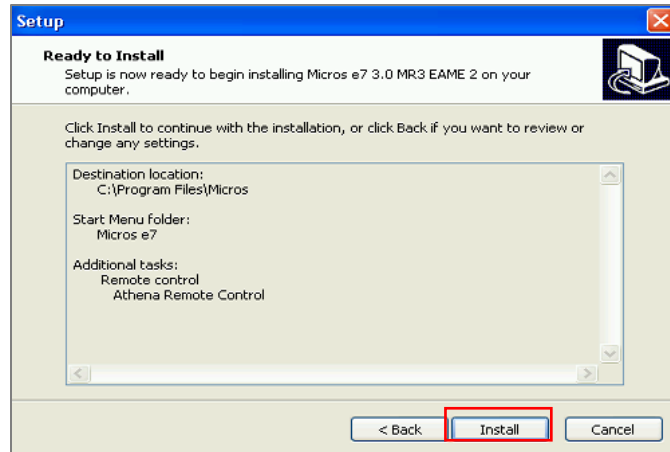
Recommended installation folder:

Microsoft Windows 7/8.1/10 Pro

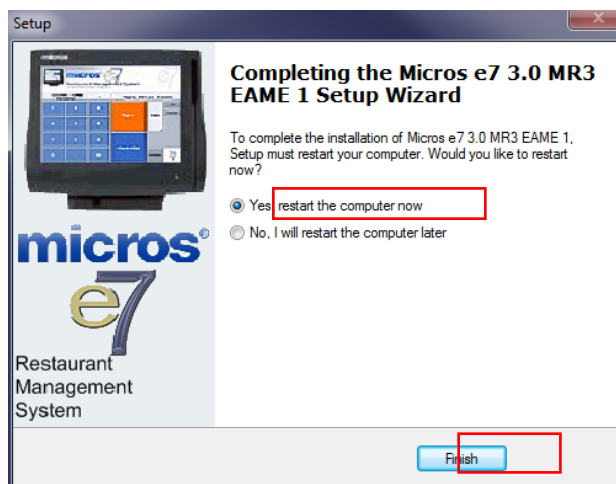
6. Click **Next**.



7. Review the installation settings, and then click **Install**.



8. Select Yes, restart the computer now, and then Finish.



9. In case of an upgrade the installation is completed at this point. The workstations will be updated automatically.
In case of an initial installation or update to version 4.3. EU, continue with the next steps.
10. After restarting, the e7 Network Identification screen opens. Enter the **Network Location ID** (initial installation only). The Location ID can be any string and is commonly the name of the restaurant. The Location ID must be spelled exactly the same on all workstations and the PC and is case-sensitive.
11. The e7 application automatically starts. Click **OK** to confirm the security update message.
12. Generate an encryption key to enable ringing transactions:
 - a. Insert a USB drive, and then click the **Security** tab.
 - b. Click **Generate New Key**, enter the database user's credentials, and then click **Yes** each time you are prompted by the key generator.
 - c. Store the USB drive in a secure location so that it can be retrieved when a database restoration is required.

13. For new installations, you can now restore a database. See [Backup and Restore a Database](#) for instructions.

CAL-Server Installation: Workstation 4LX / 5 / 5A (WinCE)

Client Application Loader (CAL) Setup

In case of an update, the workstations will be updated automatically. Proceed to [e7 Software Installation for Workstation 4LX / 5 / 5A \(WinCE\)](#).

The following steps are only required for an initial installation.

1. On the workstation start the CAL-Client:
 - a. Reboot the workstation so the CAL starts automatically.
 - b. Ensure the workstation is connected to the network.
 - c. Select **Start, Programs, CAL**, and then click **Reconfigure CAL**.
2. The CAL-Client scans the network to find a CAL-Server.
3. On the Select CAL Server screen, select your PC by clicking on the entry, and then click **Next**.

MICROS CAL - Select CAL Server

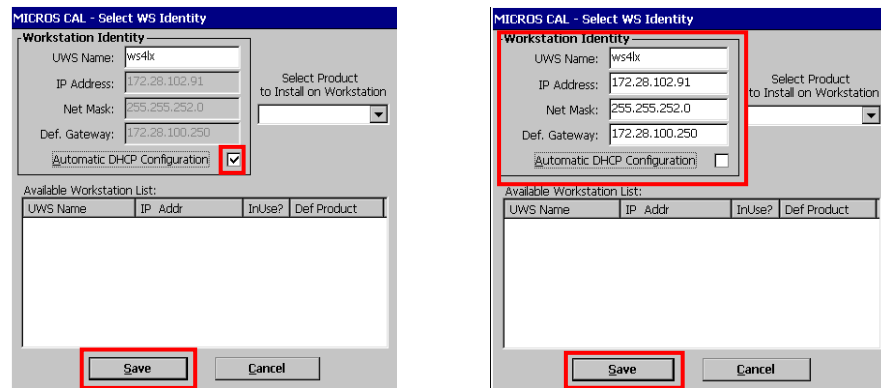
Server Name: e7 PC
Server IP/URL : 172.28.102.121
POS Type: MICROS e7
CAL Enabled:

Available Servers:

Server Name	POS Type
e7 PC	MICROS e7

Buttons: Cancel, Search Again, Next >>

4. Depending on your network configuration, **DHCP** or **Static IP**, set the parameter accordingly:
 - a. For DHCP, select **Automatic DHCP Configuration**, and then click **Save**.
 - b. For Static IP, deselect **Automatic DHCP Configuration**, enter the **IP Address**, **Net Mask**, and **Default Gateway**, and then click **Save**.

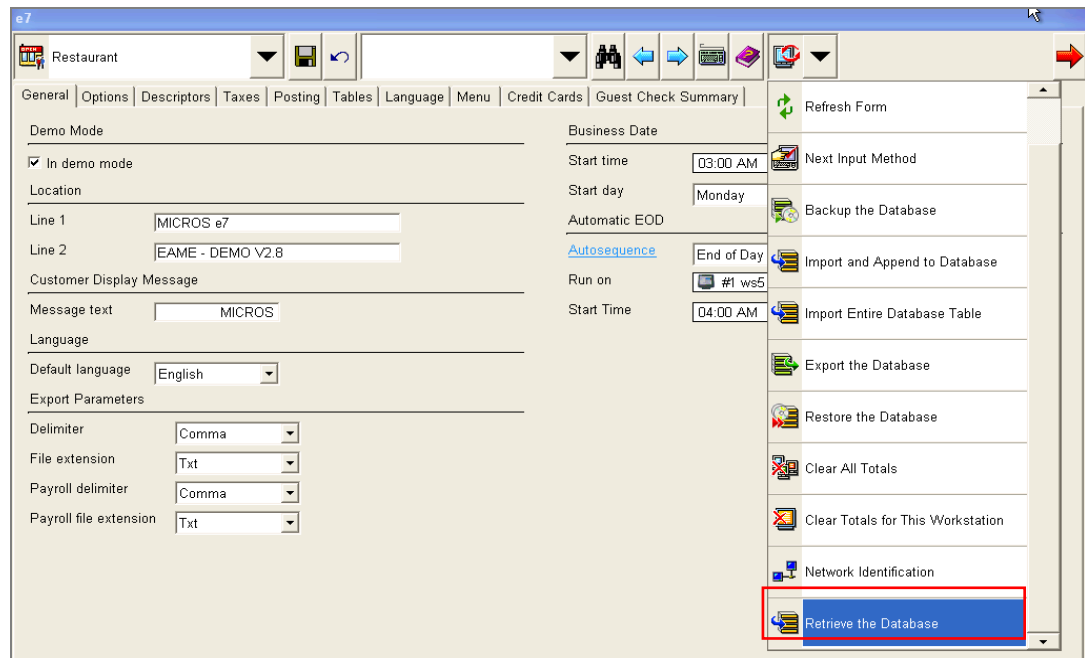


5. The CAL will automatically update the workstation with the recent software.

e7 Software Installation for Workstation 4LX / 5 / 5A (WinCE)

The following steps have to be completed for an initial installation and an update to version 4.3.0.EU.

1. After the initial installation or update to version 4.3.0.EU, the e7 Network Identification screen opens. Enter the following:
 - a. **Workstation number** (initial installation only): Insert an appropriate workstation number from 1 to 6. Each number can only be used once.
 - b. **Network location ID** (initial installation only): The Location ID can be any string and is commonly the name of the restaurant. The Location ID must be spelled exactly the same on all workstations and the PC and is case-sensitive.
2. Click **OK**, and then **OK** again.
3. The e7 application will start automatically with an empty database. Click **OK** to confirm the security update.
4. For initial installation only: To retrieve the database from the PC, click the right drop-down box, and then click **Retrieve the Database**.



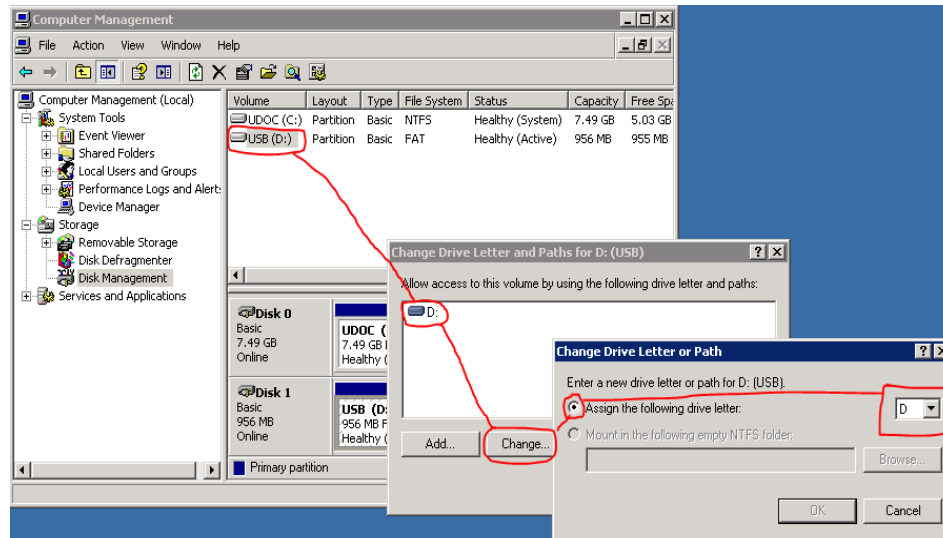
5. Click **Refresh Form**. The installation is now completed.

CAL-Server Installation: Workstation 5A / 6 (Win32)

Prerequisites

The following steps are only required for an initial installation. For an update, proceed to [e7 Software Installation for Workstation 5A / 6 \(Win32\)](#).

1. Connect an USB keyboard and turn on the workstation.
2. Starting the workstation for the first time will automatically start the Windows XP Professional Setup wizard that guides you through the setup procedure.
3. If you intend to use the USB thumb drive for database and journal backups, it is mandatory to assign the drive letter "D" to the USB thumb drive.
4. Open Disk Management.
 - a. **WS5A-POSReady2009:** On the Microsoft Windows Desktop, right-click on **My Computer**, and then click **Manage**. The Computer Management window opens. Click **Disk Management**.
 - b. **WS6-Windows Embedded 8.1:** Open the **Search** field. Type 'Create and Format Hard Disk Partitions' and execute.
5. Right-click on the USB thumb drive intended to use for backups, and then select **Change Drive Letter and Path**.
6. Click **Change**, select **Assign the following drive letter**, and then select **D**.
7. Click **OK** to save the changes.



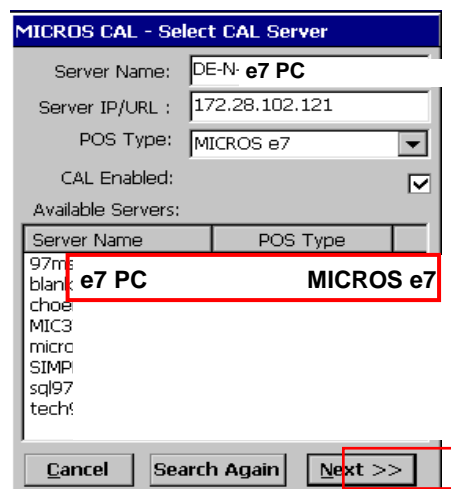
Client Application Loader (CAL) Setup

In case of an update, the workstations will be updated automatically. Proceed to [e7 Software Installation for Workstation 5A / 6 \(Win32\)](#).

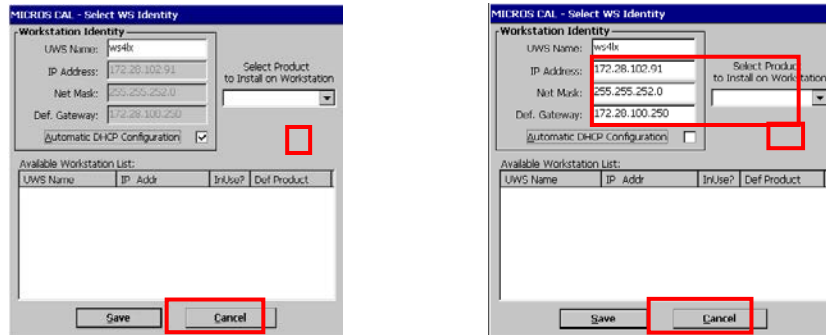
The following steps are only required for an initial installation.

1. Install the CAL application by executing the file 'setup.exe' located in
 - a. **WS5A-POSReady2009:** C:\B\Win32 CAL Client v101\...
 - b. **WS6-Windows Embedded 8.1:** C:\Bin\CALClient_129\...
2. Once the installation of the CAL application is completed, the workstation reboots and starts the CAL.

Note: If the network is not connected the "Network not connected – Please reconnect" message opens. Click **OK** to confirm and establish a network connection.
3. The CAL-Client scans the network to discover a CAL-Server.
4. On the Select CAL Server screen, select your PC by clicking on the entry, and then click **Next**.



5. Depending on your network configuration, **DHCP** or **Static IP**, set the parameter accordingly:
 - a. For DHCP, select **Automatic DHCP Configuration**, and then click **Save**.
 - b. For Static IP, deselect **Automatic DHCP Configuration**, enter the **IP Address**, **Net Mask**, and **Default Gateway**, and then click **Save**.

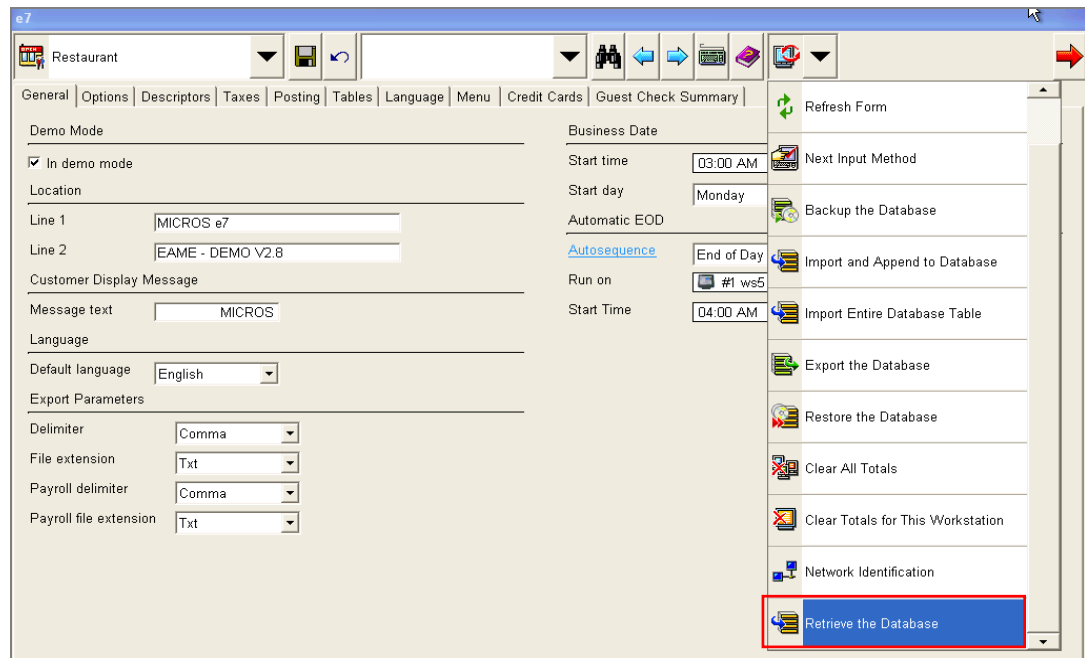


6. The CAL will automatically update the workstation with the recent software.

e7 Software Installation for Workstation 5A / 6 (Win32)

The following steps have to be completed for an initial installation and an update to version 4.3.0.EU.

1. After the initial installation or update to version 4.3.0.EU, the e7 Network Identification screen opens. Enter the following:
 - a. **Workstation number** (initial installation only): Insert an appropriate workstation number from 1 to 6. Each number can only be used once.
 - b. **Network location ID** (initial installation only): The Location ID can be any string and is commonly the name of the restaurant. The Location ID must be spelled exactly the same on all workstations and the PC and is case-sensitive.
2. Click **OK**, and then **OK** again.
3. The e7 application will start automatically with an empty database. Click **OK** to confirm the security update.
4. For initial installation only: To retrieve the database from the PC, click the right drop-down box, and then click **Retrieve the Database**.



5. Click **Refresh Form**. The installation is now completed.

Mobile Device Installation: DT430SC / MC40

A CAL-Server Installation procedure is not available. To install the mobile device software, refer to the [Standalone Installation](#) section.

Database User Account

Create and assign a user account for accessing the database. Do not use an existing employee, because this credential cannot perform Point-of-Sale functions.

1. Click Add New Employee.
2. On the General tab, enter a last name.
3. On the Job Information tab, select a default job.
4. On the Security tab, select Update Enhanced Security, create login credentials, select This is a database user, and then click Save.

Standalone Installation

Workstation 4LX / 5 / 5A / and Tablet R-Series (Microsoft Windows CE)

Prerequisites

1. Copy the Oracle Hospitality e7 Point-of-Sale Version `a.b.c.EU.zip` on your e7 PC where `a.b.c` represents a wildcard for the version number (`a`=main version, `b`=minor version, `c`=revision), i.e. "Oracle Hospitality e7

Point-of-Sale Version 4.1.0.EU.zip”. Extract the zip-file to a temporary folder on your PC.

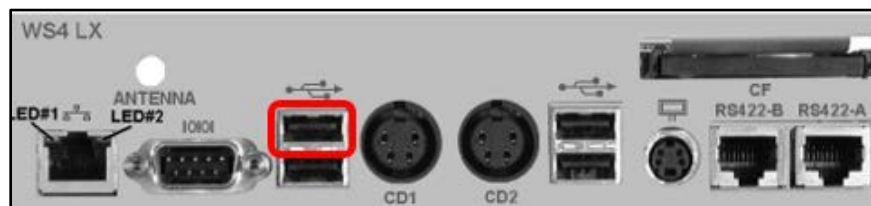
2. Browse to the folder where the files have been extracted in the previous step. Open the ...\Oracle Hospitality e7 Point-of-Sale Version a.b.c.EU\Standalone Installation\ folder and you will find the following folders:

- \MC40
- \mTablet-R-Series
- \WebDT430
- \WS4LX
- \WS5
- \WS_Win32
- \WS5A-CE

3. Copy the relevant folder to the USB stick.

4. Insert the USB stick to the USB port as indicated below (red framed):

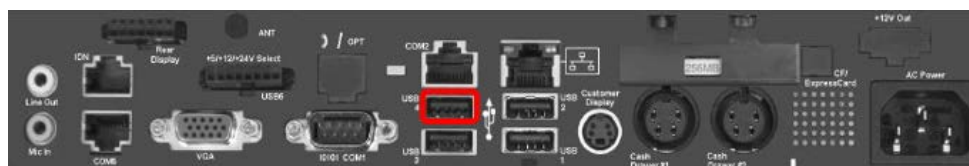
WS4LX



WS5



WS5A

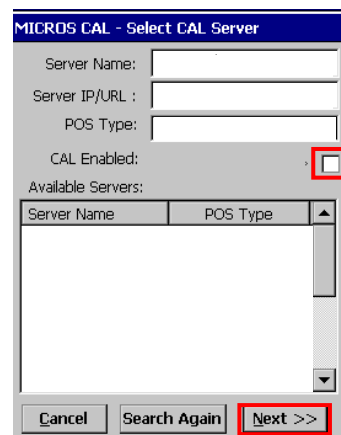


Base Station R-Series



e7 Software Installation for Workstation 4LX / 5 / 5A / Tablet R-Series (Microsoft Windows CE)

1. Turn on the workstation. If the e7 update starts, exit the e7 application.
2. If the CAL Client starts and scans the network, wait until completed, and then disable the CAL Client as follows.
3. The CAL-Client scans the network to find a CAL-Server.
4. Uncheck **CAL Enabled**, and then click **Next**. The MICROS CAL window closes.



5. Open Microsoft Windows Explorer on the Workstation by clicking on the **My Device** icon or by selecting **Start, Programs, and Windows Explorer**.
6. The USB thumb drive will appear in the Explorer as USBDISK or Hard Disk. Double click the drive.
7. Install the **PLATFORM Update**:
 - a. Depending on your type of workstation, open the **mTablet-R-Series, WS5A, WS5, or WS4LX** folder.
 - b. Open the **1_EngPlatform** folder and run **StandAloneInstall.exe**.
 - c. The workstation will reboot once the installation is completed. If the folder is empty, proceed with the next step.
8. Install the **CAL Update**:
 - a. Depending on your type of workstation, open the **mTablet-R-Series, WS5A, WS5, or WS4LX** folder.
 - b. Open the **2_McrsCAL** folder and run **StandAloneInstall.exe**.
 - c. The workstation will reboot once the installation is completed. If the folder is empty, proceed with the next step.
9. Install the **BIOS Update**:
 - a. Depending on your type of workstation, open the **mTablet-R-Series, WS5A, WS5, or WS4LX** folder.
 - b. Open the **3_Bios** folder and run **StandAloneInstall.exe**.
 - c. After the installation the workstation will reboot. The workstation will reboot once the installation is completed. If the folder is empty, proceed with the next step.

10. Install the e7 Software:

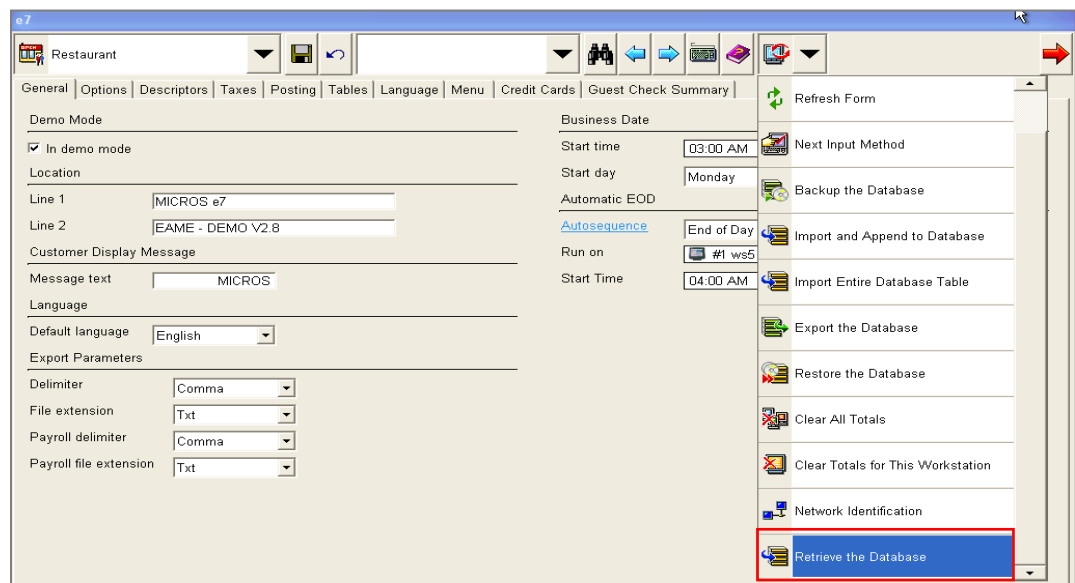
- a. Depending on your type of workstation, open the **mTablet-R-Series, WS5A, WS5, or WS4LX** folder.
- b. Open the **4_e7** folder and run **StandAloneInstall.exe**.
- c. The workstation will reboot once the installation is completed.

Note: When installing e7 on a Tablet, set the display to landscape orientation during the installation process.

Note: When the version to install is equal or below the version currently installed on the workstation, a blue screen appears for a short moment and the installation process will be stopped. In this case, continue to the next step.

The following steps have to be completed for an initial installation and an update to version 4.3.0.EU.

1. After the initial installation or update to version 4.3.0.EU, the e7 Network Identification screen opens. Enter the following:
 - a. **Workstation number** (initial installation only): Insert an appropriate workstation number from 1 to 6. Each number can only be used once.
 - b. **Network location ID** (initial installation only): The Location ID can be any string and is commonly the name of the restaurant. The Location ID must be spelled exactly the same on all workstations and the PC and is case-sensitive.
2. Click **OK**, and then **OK** again.
3. The e7 application will start automatically with an empty database. Click **OK** to confirm the security update.
4. If the previously installed workstation is the first one in the e7 system, refer to the [Backup and Restore a Database](#) section for instructions. Otherwise, continue to the next step.
5. To retrieve the database from another device, click on the right drop-down box, and then select **Retrieve the Database**.



6. Click **Refresh Form**. The installation is now completed.

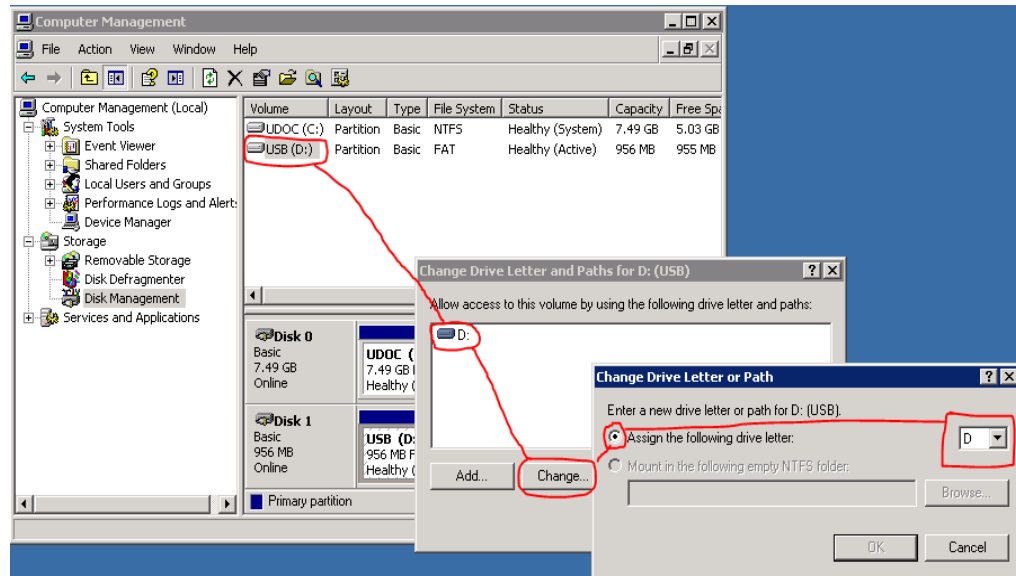
Workstation 5A / 6 (Win32)

Prerequisites

1. Copy the **Oracle Hospitality e7 Point-of-Sale Version a.b.c.EU.zip** on your e7 PC where *a.b.c* represents a wildcard for the version number (a=main version, b=minor version, c=revision), i.e. "Oracle Hospitality e7 Point-of-Sale Version 4.1.0.EU.zip". Extract the zip-file to a temporary folder on your PC.
2. Browse to the folder where the files have been extracted in the previous step. Open the ...\`Oracle Hospitality e7 Point-of-Sale Version a.b.c.EU\Standalone Installation\` folder and you will find the following folders:
 - \MC40
 - \mTablet-R-Series
 - \WebDT430
 - \WS4LX
 - \WS5
 - \WS_Win32
 - \WS5A-CE
3. Open the **WS_Win32** folder and copy the **WS_Win32_e7_setup_a.b.c.EU.exe** file to an USB stick.

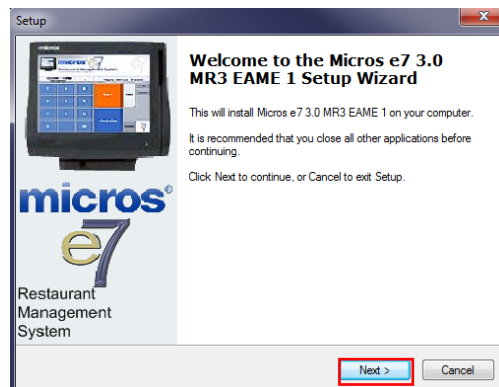
The following steps are required for an initial installation. For an upgrade, proceed to the next section.

1. Connect an USB keyboard and turn on the workstation.
2. Starting the workstation for the first time will automatically start the Window XP Professional Setup wizard that guides you through the setup procedure.
3. Setup the Network (TCP/IP) according to your network.
4. If you intend to use the USB thumb drive for database and journal backups, it is mandatory to assign the drive letter "D" to the USB thumb drive.
5. Open Disk Management.
 - a. **WS5A-POSReady2009:** On the Microsoft Windows Desktop, right-click on **My Computer**, and then click **Manage**. The Computer Management window opens. Click **Disk Management**.
 - b. **WS6-Windows Embedded 8.1:** Open the **Search** field. Type in 'Create and Format Hard Disk Partitions' and execute.
6. Right-click on the USB thumb drive intended to use for backups, and then select **Change Drive Letter and Path**.
7. Click **Change**, select **Assign the following drive letter**, and then select **D**.
8. Click **OK** to save the changes.

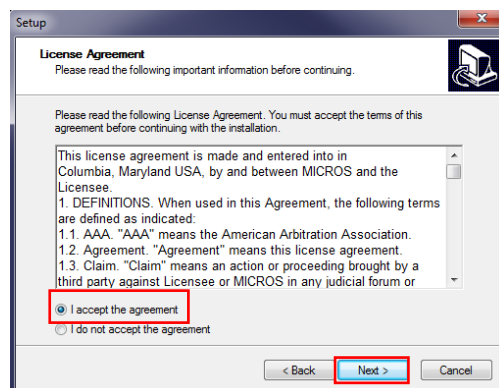


e7 Software Installation for Workstation 5A / 6 (Win32)

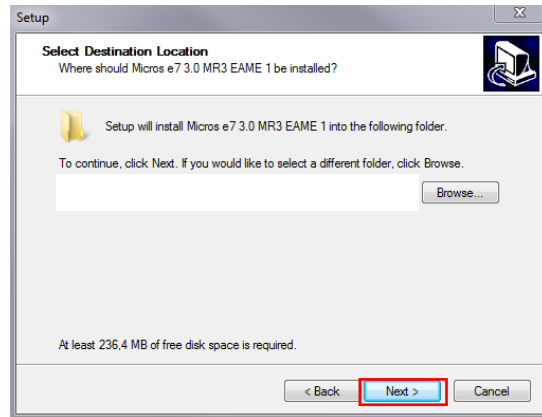
1. Insert the USB stick and execute the `WS_Win32_e7_setup_a.b.c.EU.exe` file.
2. The Welcome screen opens. Click **Next** to continue.



3. Accept the license agreement, and then click **Next**.



4. Use the default installation path, and then click **Next**.



Recommended installation folder:

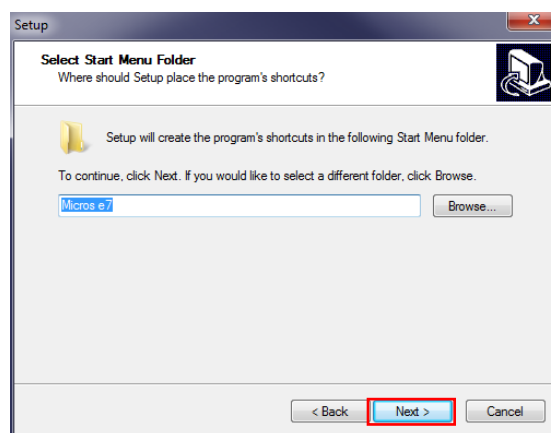
WS5A-POSReady2009:

C:\Program Files\MICROS

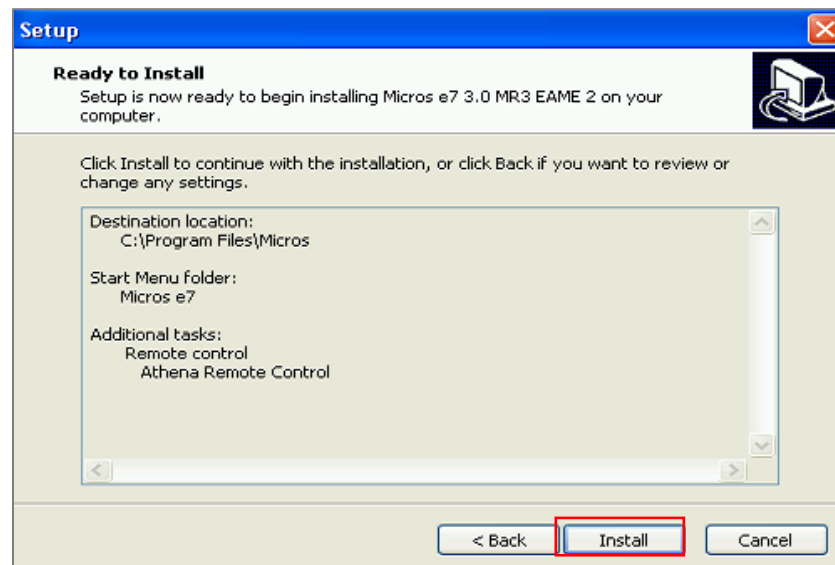
WS6-Windows Embedded 8.1:

C:\Users\Public\Micros

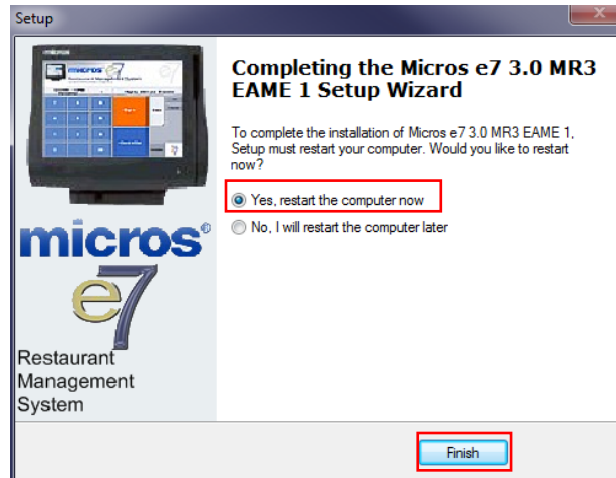
5. Click Next.



6. Review the installation settings, and then click Install.



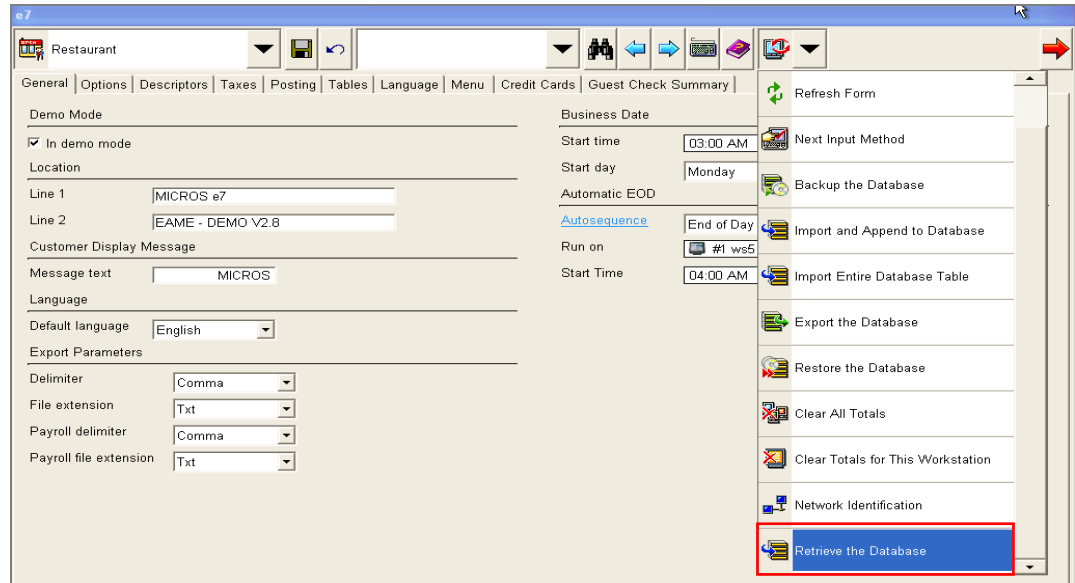
7. To complete the installation, select Yes, restart the computer now, and then click Finish.



In case of an upgrade, the installation is completed at this point.

In case of an initial installation or update to version 4.3.0.EU, continue with the next steps.

1. After the initial installation or update to version 4.3.0.EU, the e7 Network Identification screen opens. Enter the following:
 - a. **Workstation number** (initial installation only): Insert an appropriate workstation number from 1 to 6. Each number can only be used once.
 - b. **Network location ID** (initial installation only): The Location ID can be any string and is commonly the name of the restaurant. The Location ID must be spelled exactly the same on all workstations and the PC and is case-sensitive.
2. Click **OK**, and then **OK** again.
3. The e7 application will start automatically with an empty database. Click **OK** to confirm the security update.
4. If the previously installed workstation is the first one in the e7 system, refer to the [Backup and Restore a Database](#) section for instructions. Otherwise, continue to the next step.
5. To retrieve the database from another device, click on the right drop-down box, and then select **Retrieve the Database**.



6. Click **Refresh Form**. The installation is now completed.

Mobile Device Installation

DT430SC

Prerequisites

To run a Mobile device in an e7 system, at least one workstation or a Back-Office PC must be running the e7 application.

1. Copy the **Oracle Hospitality e7 Point-of-Sale Version a.b.c.EU.zip** on your e7 PC where *a.b.c* represents a wildcard for the version number (*a*=main version, *b*=minor version, *c*=Revision), i.e. "Oracle Hospitality e7 Point-of-Sale Version 4.1.0.EUA.zip".
2. Extract the zip-file to a temporary folder on your PC.
3. Browse to the folder where the files have been extracted in the previous step. Open the ...\Oracle Hospitality e7 Point-of-Sale Version *a.b.c.EU*\Standalone Installation\ folder and copy the **WEBDT430** folder to an USB stick.
4. If not already done, connect the DT430 to the Wireless Network
5. Insert the USB stick to the USB port indicated below



e7 Software Installation for DT430SC

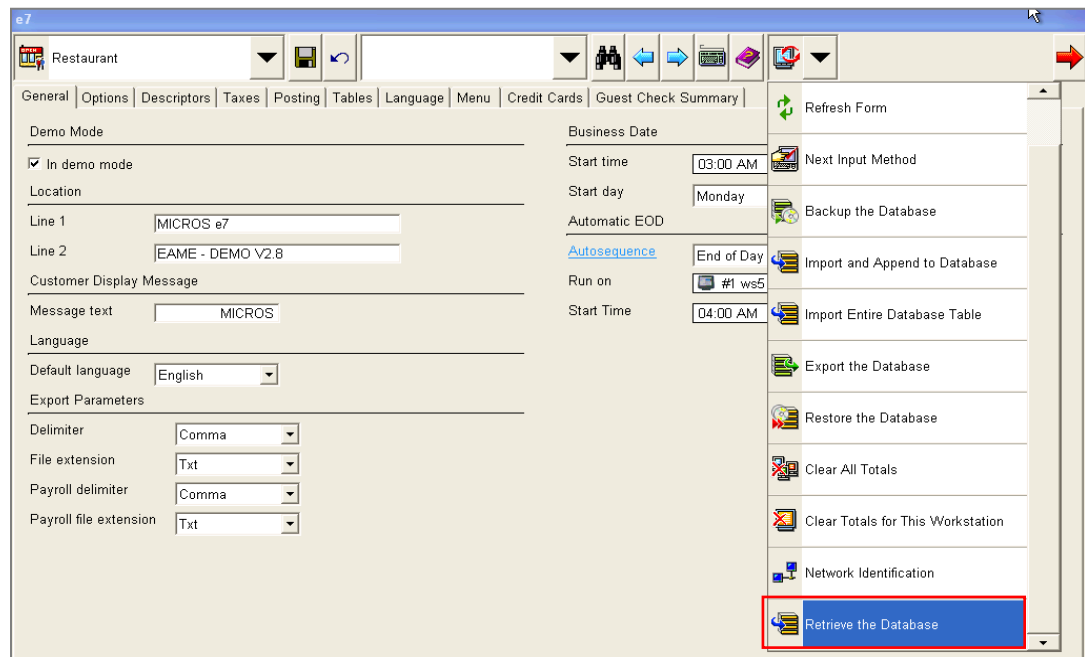
On the DT430SC, browse to the USB stick and open the ...\\WEBDT430 folder. Copy the entire **micros** folder to the **ResidentFlash** folder on the DT430SC.

To create a desktop shortcut for the e7 application:

1. On the DT430, browse to ...\\micros\\e7\\ and select the **e7.exe** file.
2. Select **File, Send To**, and then **Desktop as Shortcut**.
3. Return to the Desktop.

The following steps have to be completed for an initial installation and an update to version 4.3.0.EU.

1. After the initial installation or update to version 4.3.0.EU, the e7 Network Identification screen opens. Enter the following:
 - a. **Workstation number** (initial installation only): Insert an appropriate workstation number from 1 to 6. Each number can only be used once.
 - b. **Network location ID** (initial installation only): The Location ID can be any string and is commonly the name of the restaurant. The Location ID must be spelled exactly the same on all workstations and the PC and is case-sensitive.
2. Click **OK**, and then **OK** again.
3. The e7 application will start automatically with an empty database. Click **OK** to confirm the security update.
4. For initial installation only: To retrieve the database from the PC, click the right drop-down box, and then click **Retrieve the Database**.



5. Click **Refresh Form**. The installation is now completed.

MC40

Prerequisites

To run a Mobile Device in an e7 system, at least one workstation or a Back-Office PC must be running the e7 application.

1. Connect the MC40 to your PC.
2. If the Microsoft **Windows Mobile Device Center** is installed, it starts up and represents the MC40 as a disk drive named 'Compact'.
If it is not installed, setup the USB port on the MC40:
 - a. Select **Start, Control Panel**, and then **USBConfig**.
 - b. Click the USB Port Mode tab, and then select **USB Client Mode**.
 - c. Click the USB Client Mode tab, activate **Mass Storage**, and then select **Application**.
 - d. Click **OK**.
 - e. Connect the MC40 to the USB port of your PC.
3. Copy the **Oracle Hospitality e7 Point-of-Sale Version a.b.c.EU.zip** on your e7 PC where *a.b.c* represents a wildcard for the version number (a=main version, b=minor version, c=Revision), i.e. "Oracle Hospitality e7 Point-of-Sale Version 4.1.0.EUA.zip".
4. Extract the zip-file to a temporary folder on your PC.
5. Browse to the folder where the files have been extracted in the previous step.
6. Open the ...\Oracle Hospitality e7 Point-of-Sale Version *a.b.c.EU*\Standalone Installation\ folder and copy the entire **MC40** folder to **Compact** (or **Local Disk**) on your PC.
7. When completed, disconnect the MC40 from your PC.
8. Connect the MC40 to the wireless network and setup the network parameters.

e7 Software Installation for the MC40

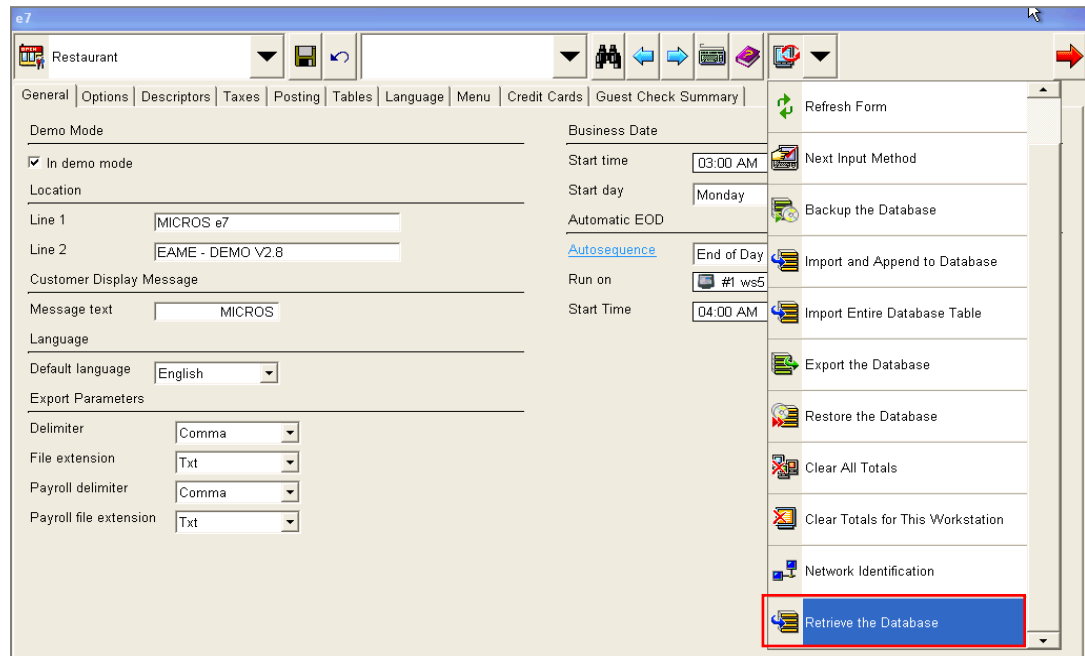
On the MC40, open the `Application\MC40\4_e7\` folder and execute the **StandAloneInstall.exe** file.

Once the installation is complete, the device will reboot. Double-click the **e7** icon on the desktop to start the application.

The following steps have to be completed for an initial installation and an update to version 4.3.0.EU.

1. After the initial installation or update to version 4.3.0.EU, the e7 Network Identification screen opens. Enter the following:
 - a. **Workstation number** (initial installation only): Insert an appropriate workstation number from 1 to 6. Each number can only be used once.
 - b. **Network location ID** (initial installation only): The Location ID can be any string and is commonly the name of the restaurant. The Location ID must be spelled exactly the same on all workstations and the PC and is case-sensitive.
2. Click **OK**, and then **OK** again.
3. The e7 application will start automatically with an empty database. Click **OK** to confirm the security update.

4. For initial installation only: To retrieve the database from the PC, click the right drop-down box, and then click **Retrieve the Database**.



5. Click **Refresh Form**. The installation is now completed.

3

Backup and Restore a Database

Preliminary

The e7 database can be backed up to and restored from a compressed file. These are located in the ...\`MICROS\`e7\`\DbBackups` folder and must be named either “backup.001.gz” or “backup.002.gz”.

When backing up a database, e7 compresses all data from the ...\`\e7\`db folder into the “backup.001.gz” file and stores it in the ...\`MICROS\`e7\`\DbBackups` folder.

When “backup.001.gz” already exists, e7 stores the compressed data in the “backup.002.gz” file. If “backup.001.gz” and “backup.002.gz” already exist, then e7 compares the date and time of creation and overrides the older file.

When restoring a database, e7 checks the ...\`MICROS\`e7\`\DbBackups` folder for a file named “backup.001.gz” or “backup.002.gz”. If one of these files exists, then e7 restores the database from that file. If both files exist, e7 compares the time and date of creation and restores the most recent file.

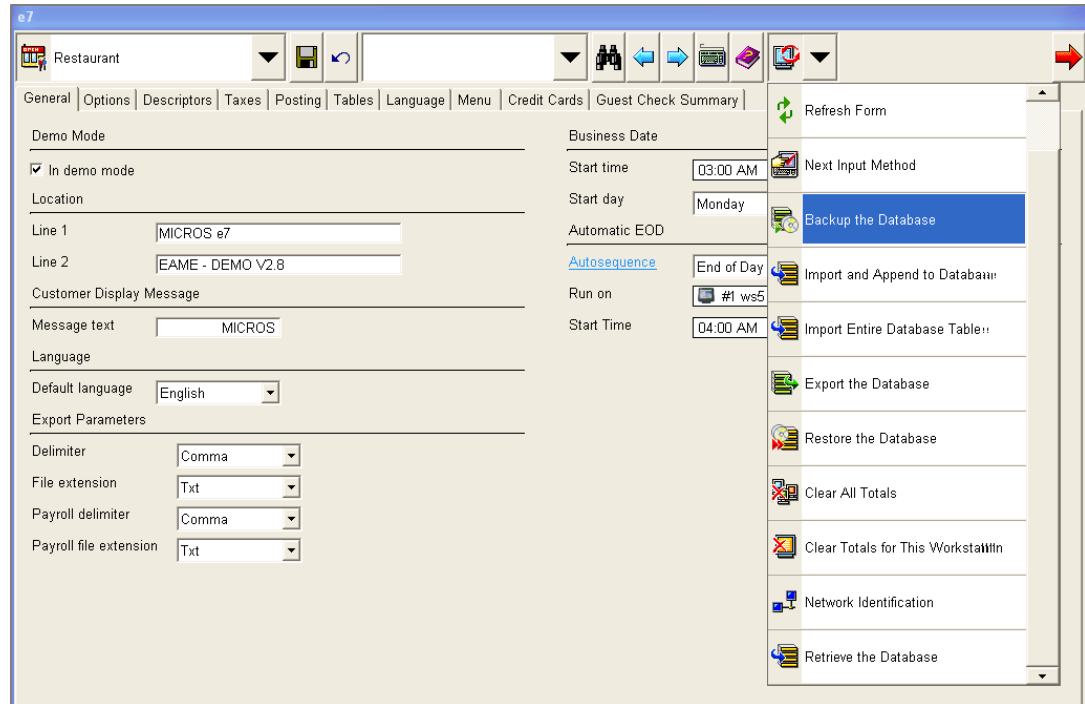
If you want to keep “backup.001.gz” or “backup.002.gz” without overriding it, then you must rename the file.

Note: You cannot backup a database taken from an e7 version higher than the one currently installed.

Backup the Database

The **Backup the Database** function copies the complete database including configuration data (definitions), historical report data, as well as open and closed checks to a compressed file.

1. At a PC or Workstation, open the **Configurator Module**.
2. Click the drop-down box on the right, and then select **Backup the Database**.
3. The backup file is copied to ...\`MICROS\`e7\`\DbBackups`.



Restore the Database

The **Restore the Database** function replaces the complete e7 database including configuration data (definitions), historical report data, as well as open and closed checks from a compressed file.

e7's proprietary file based database has been replaced with an SQLite DB. As a result of this change, the **Restore** function in e7 has been amended to support SQLite databases only. Therefore, depending on the database version, two different approaches are used to restore a database in version 4.x.

Restore a database taken from a version 3.x backup

1. Close the e7 application.
2. Go to ...\`Micros\e7\db` and delete the complete content of this folder.
3. Go to ...\`Micros\e7\DbBackups` and copy the "backup.00x.gz" file.
4. Insert the USB drive with the encryption key.
5. Restart the e7 application.
6. When e7 starts up, the v.3.x database will be restored automatically.

Restore a database from a version 4.x backup file

1. Start e7.
2. When e7 is started with an empty database, the Configurator Tool open with an error message. Click **OK** to confirm.

3. Copy the database file to `\{installation path}\Micros\e7\DbBackups`.
4. Ensure the database is named either “backup.001.gz” or “backup.002.gz”.
5. Insert the USB drive with the encryption key.
6. Open the **Configurator**, click the drop-down box on the right, and then select **Restore the Database**.
7. On all other workstation in the system, you must use the **Retrieve All Definitions** function from the device where the database definitions has been restored.

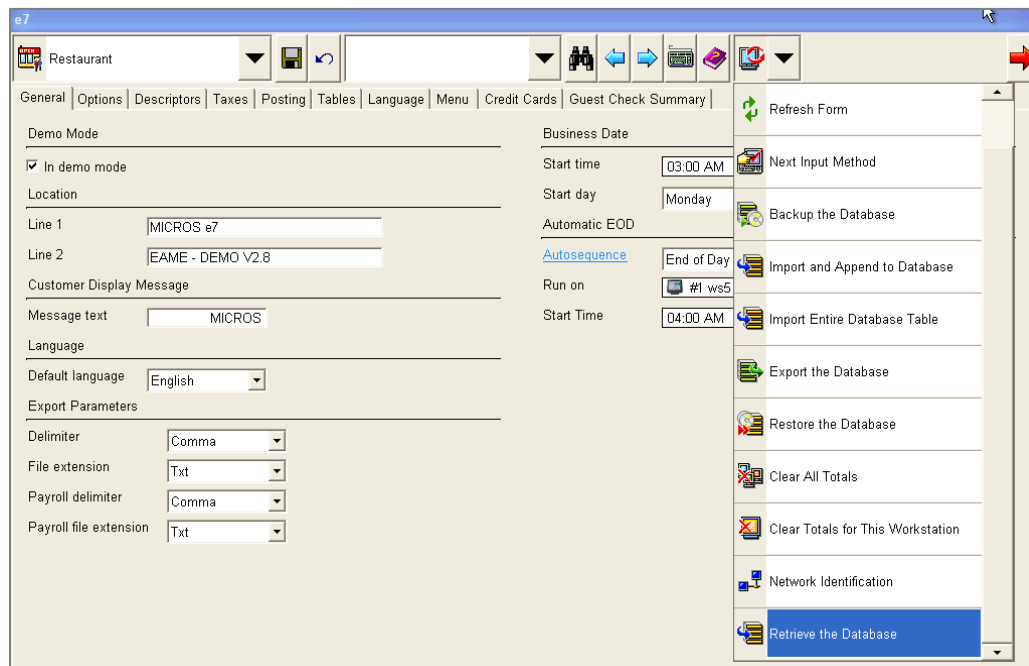
Retrieve the Database

The **Retrieve the Database** function retrieves the complete database from another e7 terminal in the system, including configuration data (definitions), historical report data, open and closed checks.

This procedure requires that at least one e7 device is installed and running a database. If so, all database definitions can be retrieved from another device on the network. This allows a new workstation to be brought online quickly by retrieving the definition information from another device.

To retrieve a database:

1. Open the Configurator, click the drop-down box on the right, and then select **Retrieve the Database**.
2. Click **Yes** to confirm.

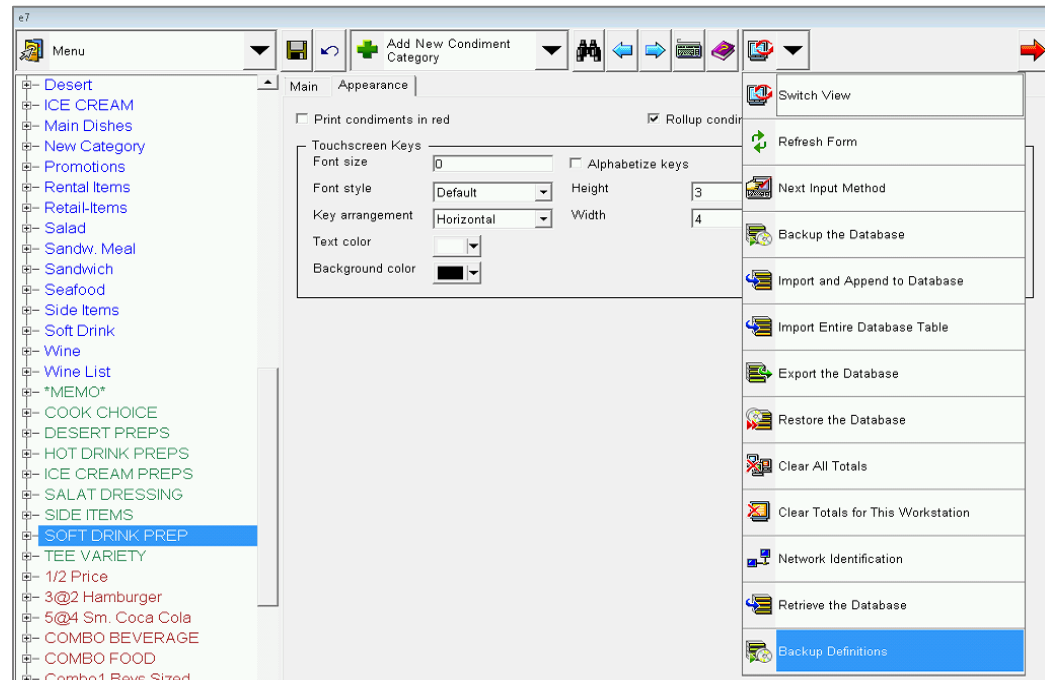


Backup Database Definitions

Database Definitions mean all configuration data such as menu items, touchscreen, discounts payments, etc. Database Definitions do not include revenue data such as historical report data or open and closed checks.

To backup Database Definitions:

1. At a PC or Workstation, open the **Configurator Module**.
2. Click the drop-down box on the right, and then select **Backup Definitions**.
3. A compressed backup file is copied to ...*Micros*e7*DbBackups* and named 'Backup_def.001.gz' or 'Backup_def.002.gz'.



Restore Database Definitions

The **Restore Definitions** function can be toggled on or off (the default is off).

Before this function can be available in the Configurator Module, you must setup the following key, and then restart e7 afterwards:

"PosConfig.EnableDbRestoreDefs" value="True"

The key is located in ...*micros*e7*Cfg*e7*config.txt* and needs to be set to "True" on each workstation that will have the Restore Definitions function available in the Configurator.

Attention: The following points have to be considered when using the Backup/Restore function:

- The e7 version the backup definition file has been created on has to be identical with the e7 version the definition file will be restored on.
- Backup/Restore definitions is supported within the same e7 system/database.

- Using a backup definition file to be restored in a different system requires a “clear all totals” before performing a restore definitions.
- It's strongly recommended not to delete menu items or employees while editing a database. Menu items should be set to Hide on display and employees should be set to Inactive rather than be deleted.
- If the system consists of more than one workstation, after restoring definitions, you must Retrieve All Definitions on all other workstations. The Retrieve Newer Definitions will not synchronize the databases.

Note: In version 4.0, e7's proprietary file based database has been replaced with a SQLite DB. As a result of this change, the **Restore Database Definitions** function in e7 has been amended to support SQLite databases only. Therefore, a **Database Definitions** backup file from version 3.x cannot be restored. To restore Database Definitions, see [Restore a database from a version 4.x backup file](#).

Appendix A

e7 System Config File

Always Show Business Day Warning

```
<add key="AlwaysShowBdWarning" value="True" />
```

True (default): Warning message for incorrect business days appears with each Clock-In, Sign-In and Open/Pick-up Check.

False: Warning message for incorrect business days appears only once per user.

Database Import

```
<add key="PosConfig.EnableDbImport" value="True" />
```

True (default): Database definitions can be imported

False: The "Import Database function is not available in the configurator.

Restore Definitions:

```
<add key="PosConfig.EnableDbRestoreDefs" value="False" />
```

True: A database definition file can be restored (complete database definitions)

False (default): The "Restore Definitions" function is not available in the configurator.

Run OPS on PC (in demo mode):

```
<add key="InterMd" value="False" />
```

True: OPS can be run on PC assumed the system is in DEMO MODE (!)

False (default): Running OPS on PC is denied.

Note: To take effect of changes made in the above keys requires restarting e7.

Important: Do **NOT** change the following keys:

```
<add key="LastDefaultLangIndex" value="0" />
```

```
<add key="DefaultLangIsUnicode" value="True" />
```

```
<add key="PosConfig.MenuTreeItemHeight" value="23" />
```

```
<add key="POSConfigToolbarConfig" value="FormMenu,RecordToobar,RecordMenu,MiscToolbar,MiscMenu,ReturnToOpsToolbar" />
```

```
<add key="PosConfig.TreeViewFontSize" value="12" />  
<add key="PosConfig.FontStyle" value="0" />  
<add key="PosConfig.TreeViewFontStyle" value="0" />  
<add key="WorkStationType" value="None" />  
<add key="PcDefObjectNumber" value="1" />  
<add key="UwsObjectNumber" value="0" />
```