

Dashboard

Oracle FLEXCUBE Universal Banking

Release 12.87.05.0.0

Part No. E94311-01

June 2018

Dashboard User Guide
June 2018
Oracle Financial Services Software Limited

Oracle Park

Off Western Express Highway
Goregaon (East)
Mumbai, Maharashtra 400 063
India

Worldwide Inquiries:

Phone: +91 22 6718 3000

Fax: +91 22 6718 3001

www.oracle.com/financialservices/

Copyright © 2007, 2018, Oracle and/or its affiliates. All rights reserved.

Oracle and Java are registered trademarks of Oracle and/or its affiliates. Other names may be trademarks of their respective owners.

U.S. GOVERNMENT END USERS: Oracle programs, including any operating system, integrated software, any programs installed on the hardware, and/or documentation, delivered to U.S. Government end users are "commercial computer software" pursuant to the applicable Federal Acquisition Regulation and agency-specific supplemental regulations. As such, use, duplication, disclosure, modification, and adaptation of the programs, including any operating system, integrated software, any programs installed on the hardware, and/or documentation, shall be subject to license terms and license restrictions applicable to the programs. No other rights are granted to the U.S. Government.

This software or hardware is developed for general use in a variety of information management applications. It is not developed or intended for use in any inherently dangerous applications, including applications that may create a risk of personal injury. If you use this software or hardware in dangerous applications, then you shall be responsible to take all appropriate failsafe, backup, redundancy, and other measures to ensure its safe use. Oracle Corporation and its affiliates disclaim any liability for any damages caused by use of this software or hardware in dangerous applications.

This software and related documentation are provided under a license agreement containing restrictions on use and disclosure and are protected by intellectual property laws. Except as expressly permitted in your license agreement or allowed by law, you may not use, copy, reproduce, translate, broadcast, modify, license, transmit, distribute, exhibit, perform, publish or display any part, in any form, or by any means. Reverse engineering, disassembly, or decompilation of this software, unless required by law for interoperability, is prohibited.

The information contained herein is subject to change without notice and is not warranted to be error-free. If you find any errors, please report them to us in writing.

This software or hardware and documentation may provide access to or information on content, products and services from third parties. Oracle Corporation and its affiliates are not responsible for and expressly disclaim all warranties of any kind with respect to third-party content, products, and services. Oracle Corporation and its affiliates will not be responsible for any loss, costs, or damages incurred due to your access to or use of third-party content, products, or services.

Contents

1. Preface	1-1
1.1 Introduction.....	1-1
1.2 Audience.....	1-1
1.3 Documentation Accessibility.....	1-1
1.4 Organization	1-1
1.5 Acronyms and Abbreviations.....	1-2
1.6 Related Documents	1-2
1.7 Glossary of Icons.....	1-2
2. An Overview	2-1
2.1 Introduction.....	2-1
2.2 Dashboard Organization.....	2-1
3. Maintenances	3-1
3.1 Introduction.....	3-1
3.2 Maintaining Origination Dashboard Details	3-1
3.2.1 <i>Specifying the Mapping Details</i>	3-2
3.3 Maintaining Origination Dashboard Role Details.....	3-3
4. Dashboards	4-1
4.1 Introduction.....	4-1
4.2 Loan Officer (Maker) Dashboard	4-1
4.2.1 <i>My Transaction Event Status</i>	4-2
4.2.2 <i>Parked Loans</i>	4-2
4.2.3 <i>EOD Exceptions</i>	4-3
4.2.4 <i>Bulletin Board</i>	4-4
4.2.5 <i>Watch List Accounts</i>	4-5
4.2.6 <i>Wakala to Murabaha Conversion</i>	4-6
4.3 Loan Authorizer Dashboard.....	4-6
4.3.1 <i>Pending New Loans</i>	4-7
4.3.2 <i>Pending Life Cycle Events</i>	4-7
4.3.3 <i>EOD Exceptions</i>	4-8
4.3.4 <i>Bulletin Board</i>	4-8
4.4 Loan Supervisor Dashboard.....	4-8
4.4.1 <i>Loan User Event Wise Report</i>	4-9
4.4.2 <i>EOD Exceptions</i>	4-10
4.4.3 <i>Bulletin Board</i>	4-10
4.5 Trade Maker Dashboard.....	4-11
4.5.1 <i>My Transaction Event Status</i>	4-11
4.5.2 <i>Parked Transactions</i>	4-12
4.5.3 <i>EOD Exceptions</i>	4-12
4.5.4 <i>Bulletin Board</i>	4-12
4.6 Trade Authorizer Dashboard	4-13
4.6.1 <i>Pending New Contracts</i>	4-13
4.6.2 <i>Pending Life Cycle Events</i>	4-13
4.6.3 <i>EOD Exceptions</i>	4-14
4.6.4 <i>Bulletin Board</i>	4-14

4.7	Trade Supervisor Dashboard	4-14
4.7.1	<i>Trade User Event Wise Report</i>	4-15
4.7.2	<i>Trade Re-assignment</i>	4-16
4.7.3	<i>EOD Exceptions</i>	4-17
4.7.4	<i>Bulletin Board</i>	4-17
4.8	Branch Manager Dashboard	4-17
4.8.1	<i>TDs Maturing Details</i>	4-17
4.8.2	<i>Loans Maturing Details</i>	4-18
4.8.3	<i>Business Opportunities</i>	4-19
4.8.4	<i>Watch List Accounts</i>	4-19
4.8.5	<i>Pending Authorization Contracts</i>	4-20
4.8.6	<i>Bulletin Board</i>	4-20
4.9	Relationship Manager Dashboard	4-21
4.9.1	<i>Business Opportunities</i>	4-21
4.9.2	<i>Business Done for the Month – Self</i>	4-22
4.9.3	<i>Business Done for the Month – Team</i>	4-22
4.9.4	<i>Customer Upgrade/Downgrade</i>	4-22
4.9.5	<i>Loans & TDs Maturing</i>	4-23
4.9.6	<i>Bulletin Board</i>	4-24
4.10	Origination Dashboards.....	4-24
4.11	Organizing Dashboards.....	4-25

1. Preface

1.1 Introduction

This document is designed to help acquaint you with the features of Dashboard, which is the landing page of Oracle FLEXCUBE. Information from multiple products is integrated and displayed as Dashboard on the home page of the application.

This manual explains the functionality of Dashboard facility and the various Dashboards present in the system. Besides providing these details, the manual also provides a list of Dashboards mapped to the role of the bank staff logged on to the system.

1.2 Audience

This manual is intended for the following User/User Roles:

Role	Function
Loan/Trade Officers	To view a summary of the transactions assigned to them, messages and EOD exceptions, if any
Loan/Trade Authorizers	To view unauthorized transactions assigned to them, messages and EOD exceptions, if any
Loan/Trade Supervisors	To view subordinate wise summary report of the transactions, messages and EOD exceptions, if any
Branch/Relationship Managers	To view details of the transactions completed by them and their team

1.3 Documentation Accessibility

For information about Oracle's commitment to accessibility, visit the Oracle Accessibility Program website at <http://www.oracle.com/pls/topic/lookup?ctx=acc&id=docacc>.

1.4 Organization

This manual is organized into the following chapters:

Chapter 1	<i>About this Manual</i> gives information on the intended audience. It also lists the various chapters covered in this User Manual..
Chapter 2	<i>An Overview</i> gives an overview of the Dashboard facility in Oracle FLEX-CUBE
Chapter 3	<i>Dashboards</i> gives detailed information on Dashboards assigned to each 'User Role' and also about the organization of these Dashboards
Chapter 4	<i>Function ID Glossary</i> has alphabetical listing of Function/Screen ID's used in the module with page references for quick navigation.

1.5 Acronyms and Abbreviations

Abbreviation	Description
System	Unless and otherwise specified, it shall always refer to Oracle FLEXCUBE
EOD	End of Day
DFI	Dashboard Function ID





1.6 Related Documents

You may need to refer to any or all of the User Manuals while working on the XP module:

- Procedures

1.7 Glossary of Icons

This User Manual may refer to all or some of the following icons.

Icons	Function
	Exit
	Add row
	Delete row
	Option List

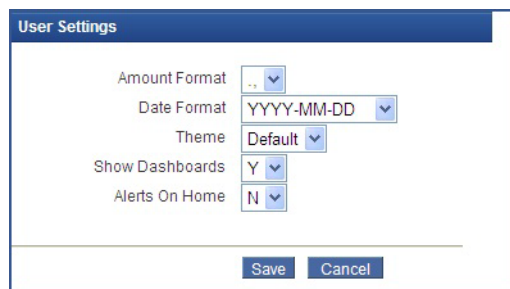
2. An Overview

2.1 Introduction

Dashboards are the tiny windows displayed on the landing page of the Application. Dashboard renders quick and crisp information of specific transactions or tasks mapped to the 'User Role' of the Bank staff, who logs on to the system.

2.2 Dashboard Organization

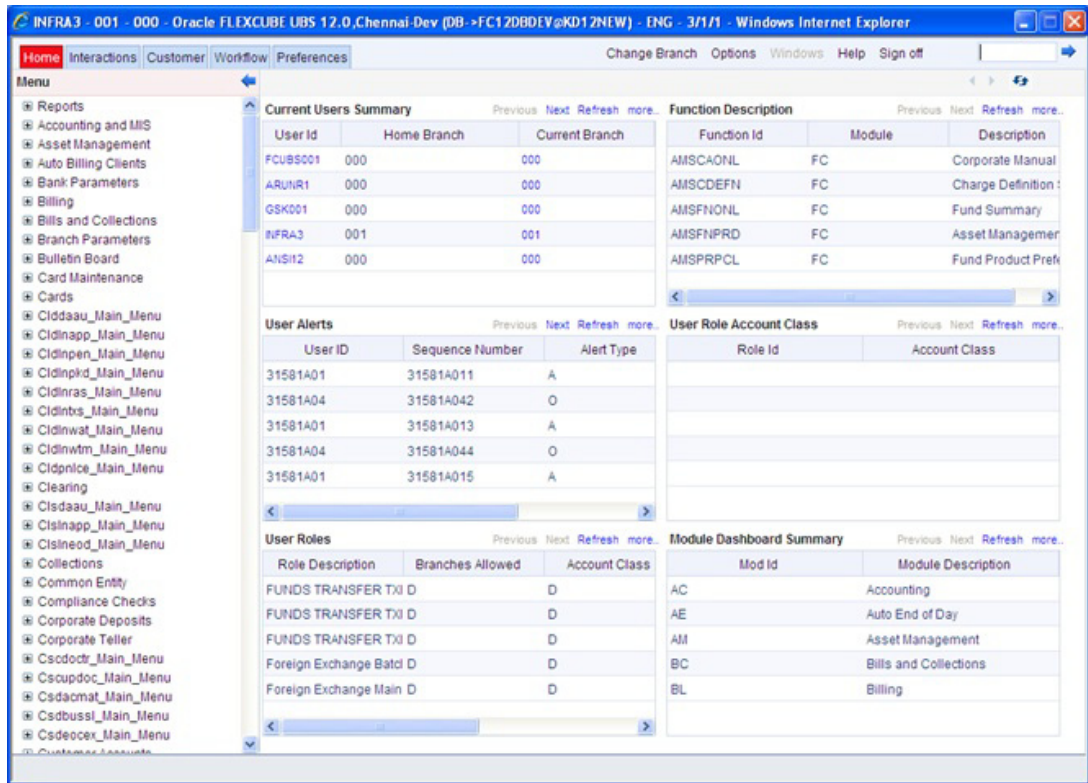
Oracle FLEXCUBE facilitates integration of Information from multiple products and displays it as Dashboard on the home page, also called the landing page of the application; however, you can view these dashboards, only if the 'Show Dashboard' field value is maintained as 'Y' at the 'User Settings' level.



Setting	Value
Amount Format	..
Date Format	YYYY-MM-DD
Theme	Default
Show Dashboards	Y
Alerts On Home	N

Oracle FLEXCUBE organizes Dashboards to provide comprehensive and consolidate snapshot in tiny windows, to access information easily. Thus, helping the bank staff to; analyze, monitor, and make better decisions which in turn help save time and cost.

Landing page is designed to display six Dashboards distributed in three rows with two Dashboards per row, without vertical scroll bar.



Note

- If less than six Dashboards are mapped, then the unfilled frames are blank.

The height and width of all Dashboards are fixed; however, the number of columns per Dashboard varies based on the size and name of the columns specified at Dashboard design level. Since the height of each Dashboard is fixed, only the first 5 records can be viewed at a time. If the Dashboard contains more than 5 records, then the following buttons and links at the top of each Dashboard aid in viewing them:

Button/Link	Functionality
Previous	Click the button to view the previous set of 5 records.
Next	Click the button to view the next set of records. However, if there are more than 5 entries then only the next five can be viewed.
Refresh	Click the button to manually refresh and view the first five records.
More	Click this link to launch a screen with more information similar to that of the current Dashboard.

The following hyperlink facilities are also available in each Dashboard:

- Column-wise link – Each column in the Dashboard can be mapped to a different Function ID to provide column-wise hyperlinks. Click the hyperlink in a particular column to launch the corresponding Function ID. A link to a particular column is limited only to that column.

- Row wise link – Each row in the Dashboard can be mapped to a different Function ID to provide row-wise hyperlinks. Click the hyperlink in a particular row to launch the corresponding Function ID. A link to a particular row is the same across all fields in that row.

Note

- Hyperlinked rows and columns are highlighted to distinguish them from others. When a row/column link is clicked, the clicked row/column gets highlighted respectively.
-

You can map any number of Dashboard function IDs (DFI) to a specific 'Role' or 'User' at Role Mapping and Dashboard Mapping level. If DFIs are mapped at 'Dashboard Mapping' level, then to enable Dashboards you need to map the corresponding functions/assigned roles at 'Role Mapping' level. You can also specify sequence order of DFIs at 'Dashboard Mapping' level, however, you can specify the same at 'Role Mapping' level. If multiple roles are added and the sequence is not specified, then the system will sort and display the DFIs alphabetically. If DFIs are mapped to 'User', then you can specify the display order for each DFI individually.

3. Maintenances

3.1 Introduction

As part of general maintenance required for the successful functioning of Dashboard, you should maintain the following in the system:

- Origination Dashboard Maintenance
- Origination Dashboard Role Maintenance

3.2 Maintaining Origination Dashboard Details

You can maintain dashboard related information using the 'Origination Dashboard Maintenance' screen. You can invoke this screen by typing 'ORDDSHMT' in the field at the top right corner of the Application tool bar and clicking the adjoining arrow button.

Sequence Number	Queue Type	Queues	Report Id	Fields	Actions	Mapping Details
<input checked="" type="checkbox"/>						Mapping Details

Specify the following details:

Dashboard Id

Specify the dashboard id here.

Dashboard Description

The system displays the dashboard description in the task pane.

Main Menu

Specify the main menu name here,

Language Code

Specify the language code of the dashboard.

Sequence Number

Specify the sequence number for the dashboard. It is used to sequence the order in which the frames are displayed in dashboard.

Queue Type

Select the queue type from the adjoining drop-down list. This list displays the following values:

- Queue - If you select this option, then system displays all valid queue ids in the 'Queue Id' option list.

- Count - If you select this option, then system displays the title for the frame selected. This is used when you want to configure a summary dashboard having multiple queue and their corresponding count.

Queue ID

If the 'Queue Type' is 'Queue', then the adjoining option list displays all valid queue ids maintained in the system. If the 'Queue Type' is 'Count', then the adjoining option list displays the title for the view.

Report Id

Select the report id for the dashboard from the adjoining option list. This list displays all valid report ids maintained in the system.

Fields

System displays the fields of the dashboard here, based on the fields selected from the 'Mapping Details' screen.

Actions

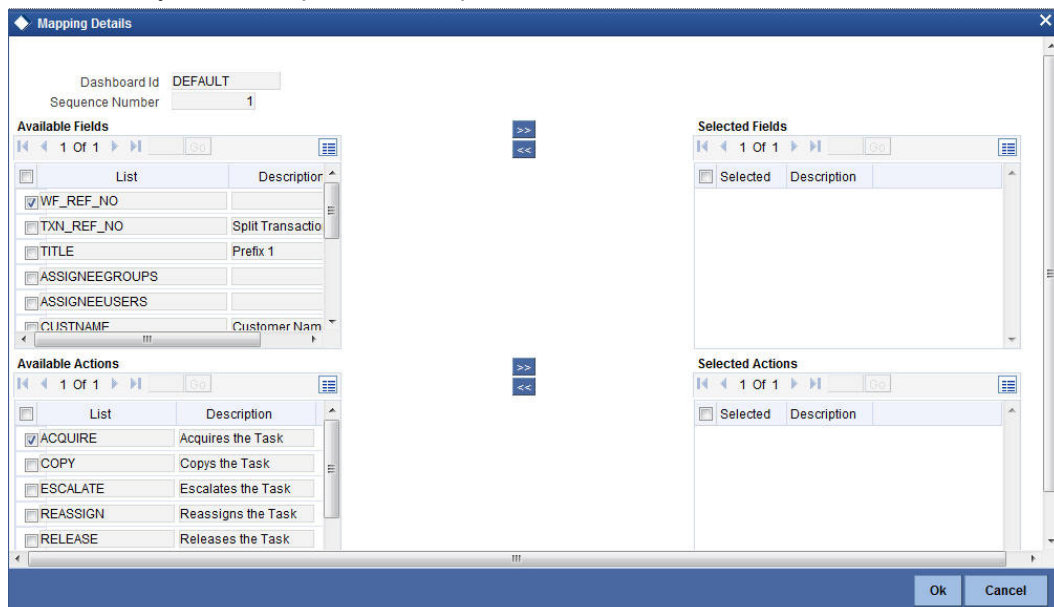
System displays the fields of the dashboard here, based on the fields selected from the 'Mapping Details' screen.

Note

Each dashboard should have minimum one and maximum six frames. If more than six dashboards are mapped to the main menu dashboard, then system displays the error message, "Cannot map more than 6 Queues for a Dashboard."

3.2.1 Specifying the Mapping Details

You can select the fields and actions by clicking the 'Mapping Details' button in the 'Origination Dashboard Maintenance' screen. This screen is used to select the action and columns that you want to perform on a particular frame of the dashboard ..



In this screen, you can select the required fields and actions for the dashboard from the Available Fields and Available Actions. Available fields displays all the queues maintained from SMDQUEMT screen, if the option selected is Count in queue type. Available action displays all the actions listed in the header of the task bar. On clicking the right-arrow button,

system moves the selected fields and actions to the Selected Fields and Selected Actions sections respectively. Similarly, to de-select an action or a field, click the left-arrow button. Available fields displays blank if the queue type is selected queue and if the option is selected as 'Queue'. The mapping details are not allowed if the queue type is selected as BAM. The system displays an error message as “No field mappings available for selected queue criteria”.

3.3 Maintaining Origination Dashboard Role Details

You can define the role and user for each dashboard using the 'Origination Dashboard Role Maintenance' screen. You can invoke this screen by typing 'ORDDSHRL' in the field at the top-right corner of the Application tool bar and clicking the adjoining arrow button.

Specify the following details:

Dashboard Id

Select the dashboard id from the adjoining option list. This list displays all valid dashboard ids maintained in the system.

Description

System displays the description for the selected dashboard id.

Map To

Select the dashboard mapping from the adjoining drop-down list. This list displays the following values:

- Role - If you select this option, then you can map the dashboard user with specific roles.
- User - If you select this option, then you can map the dashboard to a user.

User/Role Id

Select the user id or role id (based on the mapping type) from the adjoining option list. This list displays all valid user ids and role ids maintained in the system. You can select the appropriate one.

Default

Check this box to indicate that the dashboard should be included in the Quick View frame for a specific user or role.

If a dashboard is mapped as default for a role or user id, then you cannot map another dashboard as default. The system displays an error as “User /Role already has default dashboard” in such case.

If there are different dashboards mapped to role and user id having the same role, then dashboard mapped to the user id will take precedence over the dashboard mapped as default for the role.

4. Dashboards

4.1 Introduction

Oracle FLEXCUBE facilitates the availability of the following Dashboards based on the 'User Role' you are mapped to:

- My Transaction Event Status
- Parked Loan/Transactions
- EOD Exceptions
- Bulletin Board
- Watch List Accounts
- Wakala To Murabaha
- Pending New Loans/Contracts
- Pending Life Cycle Events
- TD's Maturing details
- Loan's Maturing Details
- Business Opportunities
- Watch List Accounts
- Pending Authorization transactions
- Loan/Trade User Event Wise Report
- Trade Re-assignment
- Business Done for the Month
 - Self
 - Team
- Customer Upgrade / Downgrade
- Loan & TD Account Maturing
- Origination Dashboards

Each 'User Role' would not require all of the above, hence the system enables grouping of these Dashboards based on the 'User Role'.

The following sections explain, in detail, the features associated with each Dashboard, the groups, and the 'User Role' associated with each group.

4.2 Loan Officer (Maker) Dashboard

Loan Officer of a Bank generates loans for the bank and maintains complete details related to loan transactions. Also, monitors, analyzes, and assess the credit worthiness of the borrowers. The following Dashboards are made available to assist a Loan Officers in their assignments:

- My Transaction Event Status – To view the status of the authorized and unauthorized loan transactions event wise.
- Parked Loans – To view the status of the loan applications put on hold for pending information.
- EOD Exceptions – To view the list of EOD exceptions of the loan accounts encountered for previous and current working day.

- Bulletin Board – To view the list of Bulletin messages received.
- Watch List Accounts – To keep watch on their overdue loan transactions.
- Wakala to Murabaha conversion – To view the list of loan transactions which needs to be converted to Murabaha on the current date, based on Wakala mature days configured at 'RM Report Parameterization' level.

4.2.1 **My Transaction Event Status**

'My Transaction Event Status' Dashboard displays the event status of authorized and authorized transactions of CL, LE, CI, and MO accounts; processed by the Maker for the current date and event wise. The Dashboard displays the following transaction details, after verifying the DFI mapped and validating if the 'Show Dashboard' check box is checked. The system also validates if the current user has multi-branch/centralized access to display other branch accounts.

- Customer ID
- Account Number
- Currency
- Amount – Amount Financed
- Auth Status
- Product Code
- Module Code
- Event Code

Customer ID	Account Number	Currency	Amount	Auth Status	Product Code	Module Code	Event Code
029005318	029CLPL123060004	USD	75,500.00	A	CLPL	CL	DSBR
029005318	029CLPL123060004	USD	75,500.00	A	CLPL	CL	BOOK
029005318	029CLR1123060008	USD	100,000.00	A	CLR1	CL	NCON
029005318	029CLR1123060008	USD	100,000.00	A	CLR1	CL	BOOK

A hyperlink is provided to the 'Account Number' column. Click the link to invoke the corresponding contract detailed screen based on the module of the account and the event of the contract. However;

- If you click an unauthorized transaction, the system will display the corresponding current event screen processed.
- If you click an authorized transaction, the system will display the module contract screen.

4.2.2 **Parked Loans**

'Parked Loans' Dashboard displays the loan transactions of CL, LE, CI, and MO; which are put on hold for pending information. This Dashboard facilitates working on the pending information required in completing the transactions without any delay. The Dashboard displays the following details of the transactions on hold, after verifying the DFI mapped and validating if the 'Show Dashboard' check box is checked. The system also validates if the current user has multi-branch/centralized access to display other branch accounts.

- Customer ID
- Account Number

- Currency
- Amount – Amount Financed
- Last Updated Date
- Product Code
- Module code

My Parked Loans

more.

Customer ID	Account Number	Currency	Amount	Last Updated Date	Product Code	Module Code
000000168	029COM1122160004	GBP	100 000,00	2012-08-03 14:38:46	COM1	CL
029004260	029BTAW121850002	GBP	10 000,00	2012-07-03 14:57:28	BTAW	CI
029004420	029CLR1121850002	USD	10 000,00	2012-07-03 14:09:12	CLR1	CL
029004260	029MUU1121850002	GBP	10 000,00	2012-07-03 14:55:32	MUU1	CI
029004420	029MOAA121850001	USD	10 000,00	2012-07-03 14:35:17	MOAA	MO

A hyperlink is provided to the 'Account Number' column. Click the link to invoke the corresponding contract detail screen.

4.2.3 EOD Exceptions

'EOD Exceptions' Dashboard lists the EOD exceptions of the loan accounts encountered for previous and current working day. The Dashboard displays the following details, after verifying the DFI mapped and validating if the 'Show Dashboard' check box is checked. The system also validates if the current user has multi-branch/centralized access to display other branch accounts.

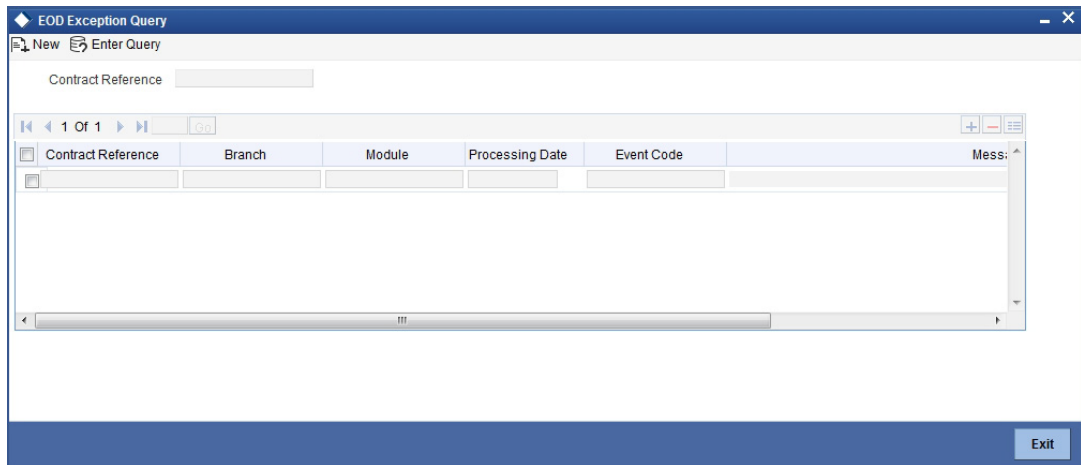
- Account Number – Loan Account No or Reference No
- Processing Date – Date on which the exception is logged
- Operation – Event for which the exception occurred
- Maker ID

EOD Exceptions Log

more.

Account Number	Processing Date	Operation	Maker ID
029MOAA121850003	30-AUG-12	STCH	29460A03
029MOAA121850003	31-AUG-12	STCH	29460A03
029IFU112480017	01-SEP-12	RCAL	32847A02
001CL22112730002	01-NOV-12	PENL	32601A02
001CL22112730002	03-OCT-12	PENL	32601A02

A hyperlink is provided to the account number column. Click the link to invoke the 'EOD Exception Query' screen.



This screen displays the following, EOD message and event details, for the contract event screen:

- Contract Reference
- Branch
- Module
- Event Code
- Message

4.2.4 **Bulletin Board**

'Bulletin Board' Dashboard lists all or any of the following bulletin messages configured to you across all branches:

- Public news or messages
- Product information
- Policies and Notices of the bank
- System messages
- Adhoc or unplanned messages, if any.

The following details of the message are displayed in the Dashboard:

- Reference Number – Bulletin Reference No
- Message Description – Bulletin concise description

Bulletin Board ◀ ▶ ↻ more.

Reference Number	Message Description
000RMBM120610008	Test Message:: Revised interest rates.
000RMBM12061000A	Bonus for all Employees.

A hyperlink is provided to the Message ID column. Click the link to invoke the 'Bulletin Detail' screen.

For further details about Bulletin Board, refer 'Bulletin_Board' User Manual.

4.2.5 Watch List Accounts

A loan officer of the Bank will have a watch on loan transactions;

- To advise borrowers on the management of their finances, if the loan becomes delinquent
- To take action to collect outstanding amounts

'Watch List Accounts' Dashboard displays this watch list of authorized loan accounts; assigned to the Maker for the current date and latest event. The Dashboard displays the following transaction details after verifying the DFI mapped and validating if the 'Show Dashboard' check box is checked. The system also validates if the current user has multi-branch/centralized access to display other branch accounts.

- Customer ID – Customer Id of the loan borrower
- Name – Customer Name
- Account Number – Loan Account No or Reference No
- Currency – Currency in which the loan is availed
- Overdue Amount – Overdue Amount of all the components
- RM ID – Relationship Manager Id
- Product Code – Loan Product
- Module Code
- Event Code

Watch list Transactions more

Customer ID	Name	Account Number	Currency	Overdue Amount	RM ID	Product Code	Module Code	Event Code
001004430	loan cust8	001MOAAINR000007	INR	8 791,91	31642RM02	MOAA	MO	ACCR
001004428	loan cust7	001WAK1122470004	GBP	100 000,00		WAK1	CI	DSBR
029004420	loan Cust4	029WAK1122160008	USD	100 000,00		WAK1	CI	DSBR
029004260	loan Cust3	001MOAAGBP000001	GBP	96 911,87	31642RM01	MOAA	MO	PROV
001004428	loan cust7	001WAK1122470006	GBP	100 000,00		WAK1	CI	DSBR

A hyperlink is provided to the account number column. Click the link to invoke the corresponding contract detailed screen.

4.2.6 Wakala to Murabaha Conversion

'Wakala to Murabaha Conversion' Dashboard displays a list of Wakala transaction to be converted to Murabaha on the current day, based on Wakala mature days configured at 'RM Report Parameterization' level. The Dashboard displays the following transaction details after verifying the DFI mapped and validating if the 'Show Dashboard' check box is checked. The system also validates if the current user has multi-branch/centralized access to display other branch accounts.

- Customer ID – Customer Id of the loan borrower
- Account No – Loan Account No
- CCY – Currency in which the loan is availed
- Amount – Loan Amount

Wakala to Murabaha more

Customer ID	Name	Account Number	Currency	Amount
029005317	RM LOAN1	029WAK1123060006	GBP	100,000.00

A hyperlink is provided to the account number column. Click the link to invoke the corresponding 'Wakala Contract Detailed' screen

4.3 Loan Authorizer Dashboard

Loan Authorizer of a Bank approves loans for the bank and evaluates credit records and payment histories of the customer, to decide on approving the loans. The following Dashboards are made available to assist a Loan Authorizers in their assignments:

- Pending New Loans – To view the list of new loan transactions, which are pending for approval for the current date.

- Pending Life Cycle Events – To view a list of VAMI, Rollover, Payment, and Re-Negotiation loan contracts, which are pending for authorization.
- EOD Exceptions – To view the list of EOD exceptions of the loan accounts encountered for previous and current working day.
- Bulletin Board – To view the list of Bulletin messages received.

4.3.1 Pending New Loans

'Pending New Loans' Dashboard displays the list of new CL, CI, MO, and LE loan transactions, which are pending for approval; assigned to the role. The Dashboard displays the following transaction details, after verifying the DFI mapped and validating if the 'Show Dashboard' check box is checked. The system also validates if the current user has multi-branch/centralized access to display other branch accounts.

- Customer ID – Customer ID of the loan borrower
- Account Number – Loan Account No or Reference No
- Currency – Currency in which the loan is availed
- Amount – Loan Financed
- Branch Code
- Maker ID – Loan Officer who booked
- Product Code
- Module Code
- Event Code

Pending Transaction - New Loans more.

Customer ID	Account Number	Currency	Amount	Branch Code	Maker ID	Product Code	Module Code	Event Code
029005317	029CLPL123060008	GBP	100,000.00	029	29460M11	CLPL	CL	BOOK

A hyperlink is provided to the 'Account Number' column. Click the link to invoke the corresponding contract detailed screen, based on the module of the account and the event of the contract.

Note

Accounts with current event as Book/INIT are listed.

4.3.2 Pending Life Cycle Events

'Pending Life Cycle Events' Dashboard displays a list of VAMI, Rollover, Payment, and Re-Nego loan contracts of CL, CI, MO, and LE; which are pending for authorization. The Dashboard displays the following details of the transactions on hold, after verifying the DFI mapped and validating if the 'Show Dashboard' check box is checked. The system also validates if the current user has multi-branch/centralized access to display other branch accounts.

- Customer ID – Customer ID of the loan borrower
- Account Number – Loan Account No or Reference No

- Currency – Currency in which the loan is availed
- Amount – Loan Amount
- Branch Code
- Maker ID – Loan Officer who booked
- Product Code
- Module Code
- Event Code

Pending Transaction - Life Cycle events more

Customer ID	Account Number	Currency	Amount	Branch Code	Maker ID	Product Code	Module Code	Event Code
029005318	029LENW123060012	USD	100,000.00	029	29460M11	LENW	LE	DSBR
029004427	029LENW121850007	GBP	100,000.00	029	29460M11	LENW	LE	VAMB
029005318	029CLPL123060003	USD	100,000.00	029	29460M11	CLPL	CL	REVP
029004260	029CLP1122770004	JPY	1,000	029	29460M11	CLP1	CL	VAMI
001005320	029LENW123060001	GBP	100,000.00	029	29460M11	LENW	LE	DSBR

A hyperlink is provided to the 'Account Number' column. Click the link to invoke the corresponding contract event screen or current event authorization screen.

Note

Accounts with current event other than Book/INIT are listed.

4.3.3 EOD Exceptions

'EOD Exceptions' Dashboard lists the EOD exceptions of the loan accounts encountered for previous and current working day. The system also validates if the current user has multi-branch/centralized access to display other branch accounts.

For further details on 'EOD Exceptions' Dashboard, refer 'EOD Exceptions' section under 'Loan Officer (Maker) Dashboard' section of this chapter.

4.3.4 Bulletin Board

'Bulletin Board' Dashboard lists all or any of the following bulletin messages configured to you across all branches:

- Public news or messages
- Product information
- Policies and Notices of the bank
- System messages
- Adhoc or unplanned messages, if any.

For further details on Bulletin Board Dashboard, refer 'Bulletin Board' section under 'Loan Officer (Maker) Dashboard' section of this chapter.

4.4 Loan Supervisor Dashboard

Loan Supervisor of a Bank manages the Loan Servicing Department of the bank. Also, directly supervisors the duties of department staff, coordinates with the staff for coverage in

related areas of the department. The following Dashboards are made available to assist a Loan Supervisors in their assignments:

- Loan User Event Wise Report – To view the user event wise report for the loan transactions.
- EOD Exceptions – To view the list of EOD exceptions of the loan accounts encountered for previous and current working day.
- Bulletin Board – To view the list of Bulletin messages received.

4.4.1 Loan User Event Wise Report

'Loan User Event Wise Report' Dashboard displays the user event wise report for; unauthorized and authorized loan transactions of the current date and all on-hold loan transactions of the Users. The Dashboard displays the following transaction details, after verifying the DFI mapped and validating if the 'Show Dashboard' check box is checked. The system also validates if the current user has multi-branch/centralized access to display other branch accounts.

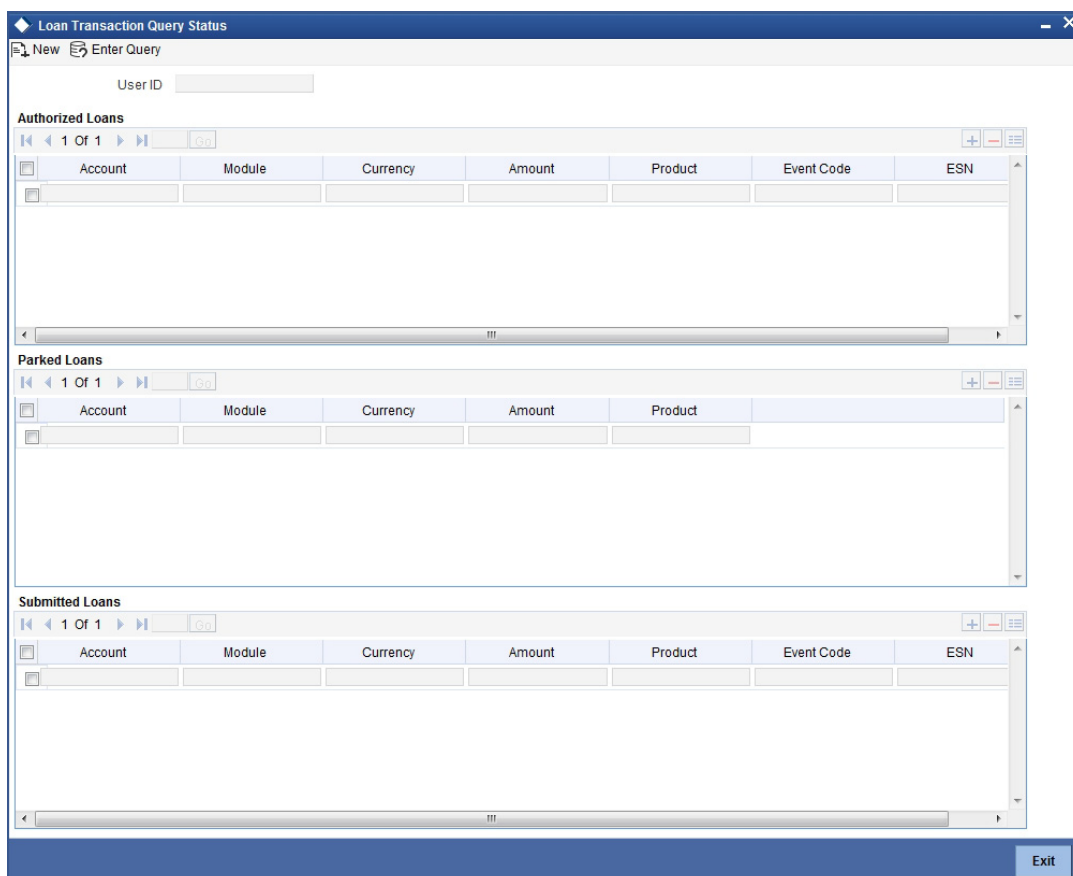
- User ID – User list based on the supervisor mapped at 'User Maintenance' level
- Authorized – Provides count of event wise accounts authorized by the current 'User' for the current date.
- Submitted – Provides count of event wise accounts processed by the current 'User' for the current date
- Parked – This provides count of accounts on-hold by the current 'User'

Loan User wise report ◀ ▶ ↻ more..

User ID	Authorized	Submitted	Parked
29460S01	0	0	1
29460M04	0	0	4
29460A03	9	0	0
29460M03	1	0	7
29460M02	3	0	8

A hyperlink is provided to the 'User ID' column. Click the link to invoke the corresponding 'Loan Transaction Query Status' screen with the contract details processed by the user. The following details are displayed:

- Account Number
- Module
- CCY
- Amount
- Product
- Event Code
- ESN
- Status - ('A','U','H')



4.4.2 EOD Exceptions

'EOD Exceptions' Dashboard lists the EOD exceptions of the loan accounts encountered for previous and current working day. The system also validates if the current user has multi-branch/centralized access to display other branch accounts.

For further details on 'EOD Exceptions' Dashboard, refer 'EOD Exceptions' section under 'Loan Officer (Maker) Dashboard' section of this chapter.

4.4.3 Bulletin Board

Bulletin Board' Dashboard lists all or any of the following bulletin messages configured to you across all branches:

- Public news or messages
- Product information
- Policies and Notices of the bank
- System messages
- Adhoc or unplanned messages, if any.

For further details on Bulletin Board Dashboard, refer 'Bulletin Board' section under 'Loan Officer (Maker) Dashboard' section of this chapter.

4.5 Trade Maker Dashboard

Trade Maker of a Bank generates Trade contracts for the bank and maintains complete details related to Trade transactions. Also, monitors, analyzes, and assess the credit worthiness of the transactions. The following Dashboards are made available to assist a Trade Makers in their assignments:

- My Transaction Event Status – To view the status of the authorized and unauthorized trade transactions.
- Parked Transactions – To view the status of the trade applications put on hold for pending information.
- EOD Exceptions – To view the list of EOD exceptions that Trade Maker has encountered for previous and current working day transactions.
- Bulletin Board – To view the list of Bulletin messages received.

4.5.1 My Transaction Event Status

'My Transaction Event Status' Dashboard displays the status of authorized and unauthorized Trade transactions; assigned to the role for the current date and event wise processed by the 'User'. The Dashboard displays the following transaction details after verifying the 'DFI mapped, validating if the 'Show Dashboard' check box is checked, and verifying the multi-branch accessibility:

- Customer ID
- Contract Reference – Trade reference No
- Currency
- Amount – Trade amount
- Auth Status
- Module
- Product Code
- Event code

Note

- If more than one event is initiated on a single stage, then the system displays all events initiated on that day.
 - On-hold contracts are not listed.
-

My Transaction status ◀ ▶ more

Customer ID	Contract Reference	Currency	Amount	Status	Module	Product Code	Event Code
001000123	029ILUB122470001	GBP	10,000.00 U	LC	ILUB	ILUB	BISS
029004260	029OSBB122160002	GBP	15,000.00 A	IB	OSBB	OSBB	AMND
029004260	029OSBB121850001	GBP	9,000.00 A	IB	OSBB	OSBB	RAIT

A hyperlink is provided to the 'Contract Reference Number' column. Click the link to invoke the corresponding contract detailed screen based on the module of the account and the event of the contract. However;

- If you click an unauthorized transaction, the system will display the corresponding current event screen processed.

- If you click an authorized transaction, the system will display the module contract detail screen.

4.5.2 Parked Transactions

'Parked Loans' Dashboard displays the trade transactions, which are put on hold for pending information for the current date and latest event. This Dashboard facilitates working on the pending information required in completing the transactions without any delay. The Dashboard displays the following details of the transactions on hold, after verifying the DFI mapped, validating if the 'Show Dashboard' check box is checked, and verifying the multi-branch accessibility:

- Customer ID
- Contract Reference – Trade reference No
- Currency
- Amount – Trade amount
- Last Updated
- Status
- Module
- Product Code

Parked Transactions more.

Customer ID	Contract Reference	Currency	Amount	Last Updated	Status	Module	Product Code
001000123	001SGLC121850003	GBP	10,000.00	2012-07-03	A	LC	SGLC
001000123	001EUSD121850004	GBP	10,000.00	2012-07-03	U	BC	EUSD
001000118	001GUIB121850003	GBP	10,000.00	2012-07-03	U	LC	GUIB

A hyperlink is provided to the 'Reference Number' column. Click the link to invoke the corresponding contract detail screen.

4.5.3 EOD Exceptions

'EOD Exceptions' Dashboard lists the EOD exceptions that Trade Maker has encountered for previous and current working day for a particular branch or based on Multibranch role mapping for that User.

For further details on 'EOD Exceptions' Dashboard, refer 'EOD Exceptions' section under 'Loan Officer (Maker) Dashboard' section of this chapter.

4.5.4 Bulletin Board

'Bulletin Board' Dashboard lists all or any of the following bulletin messages configured to you across all branches:

- Public news or messages
- Product information
- Policies and Notices of the bank
- System messages
- Adhoc or unplanned messages, if any.

For further details on Bulletin Board Dashboard, refer 'Bulletin Board' section under 'Loan Officer (Maker) Dashboard' section of this chapter.

4.6 Trade Authorizer Dashboard

Trade Authorizer of a Bank approves trades for the bank and evaluates the contract details and checks the credit worthiness, to decide on approving the contracts. The following Dashboards are made available to assist a Loan Authorizers in their assignments:

- Pending New Contracts – To view the list of new contract transactions, which are pending for approval for the current date.
- Pending Life Cycle Events – To view a list of AMND, Rollover, AVAL, and Liquidation etc of trade contracts, which are pending for authorization.
- EOD Exceptions – To view the list of EOD exceptions that Trade Authorizer has encountered for previous and current working day.
- Bulletin Board – To view the list of Bulletin messages received.

4.6.1 Pending New Contracts

'Pending New Contracts' Dashboard displays the list of new Trade transactions, which are pending for approval; assigned to the role. The Dashboard displays the following transaction details, after verifying the DFI mapped, validating if the 'Show Dashboard' check box is checked, and verifying the multi-branch accessibility:

- Customer ID – Customer ID of the loan borrower
- Contract Reference – Trade Reference No
- Currency – Currency in which the loan is availed
- Amount – Trade amount
- Maker ID – Trade Officer who booked
- Module
- Product Code
- Event Code

Pending new contracts more

Customer ID	Contract Reference	Currency	Amount	Maker ID	Module	Product Code	Event Code
001000123	029LUB122470001	GBP	10000	T35721M01	LC	ILUB	BISS
029004260	029LNB122470001	GBP	5000	T35721M02	LC	ILNB	BISS

A hyperlink is provided to the 'Reference Number' column. Click the link to invoke the corresponding contract detailed screen.

4.6.2 Pending Life Cycle Events

'Pending Life Cycle Events' Dashboard displays a list of AMND, Rollover, AVAL, Liquidation etc, of trade contracts; which are pending for authorization. The Dashboard displays the following details of the transactions on hold, after verifying the DFI mapped, validating if the 'Show Dashboard' check box is checked, and verifying the multi-branch accessibility:

- Customer ID – Customer ID of the loan borrower
- Contract Reference – Trade Reference No

- Currency – Currency in which the trade contract is availed
- Amount – Trade Amount
- Maker ID – Trade Maker who booked
- Module
- Product Code
- Event Code

Pending Transaction - Life Cycle events more

Customer ID	Account Number	Currency	Amount	Branch Code	Maker ID	Product Code	Module Code	Event Code
029005318	029LENV123060012	USD	100,000.00	029	29460M11	LENW	LE	DSBR
029004427	029LENV121850007	GBP	100,000.00	029	29460M11	LENW	LE	VAMB
029005318	029CLPL123060003	USD	100,000.00	029	29460M11	CLPL	CL	REVP
029004260	029CLP1122770004	JPY	1,000	029	29460M11	CLP1	CL	VAMI
001005320	029LENV123060001	GBP	100,000.00	029	29460M11	LENW	LE	DSBR

A hyperlink is provided to the 'Reference Number' column. Click the link to invoke the corresponding contract event screen or current event authorization screen.

4.6.3 EOD Exceptions

'EOD Exceptions' Dashboard lists the EOD exceptions that Trade Authorizer has encountered for previous and current working day for a particular branch or based on Multibranch role mapping for that User.

For further details on 'EOD Exceptions' Dashboard, refer 'EOD Exceptions' section under 'Loan Officer (Maker) Dashboard' section of this chapter.

4.6.4 Bulletin Board

'Bulletin Board' Dashboard lists all or any of the following bulletin messages configured to you across all branches:

- Public news or messages
- Product information
- Policies and Notices of the bank
- System messages
- Adhoc or unplanned messages, if any.

For further details on Bulletin Board Dashboard, refer 'Bulletin Board' section under 'Loan Officer (Maker) Dashboard' section of this chapter.

4.7 Trade Supervisor Dashboard

Trade Supervisor of a Bank manages the Trade Servicing Department of the bank. Also, directly supervisors the duties of department staff, coordinates with the staff for coverage in related areas of the department. The following Dashboards are made available to assist a Trade Officers in their assignments:

- Trade User Event Wise Report – To view the user event wise report for the trade transactions.
- Re-assignment – To view the list of contracts which are on-hold.

- EOD Exceptions – To view the list of EOD exceptions that Trade Supervisor has encountered for previous and current working day.
- Bulletin Board – To view the list of Bulletin messages received.

4.7.1 Trade User Event Wise Report

'Trade User Event Wise Report' Dashboard displays the user event wise report for the trade transactions which are unauthorized, authorized, or on-hold, for the current date. The Dashboard displays the following transaction details, after verifying the DFI mapped and validating if the 'Show Dashboard' check box is checked:

- User ID – User list based on the supervisor mapped at 'User Maintenance' level
- Authorized – Provides count of authorized contracts initiated and modified for the current date.
- Submitted – Provides count of contracts processed by the current 'User' for the current date
- Parked – Provides count of contracts on-hold initiated and modified

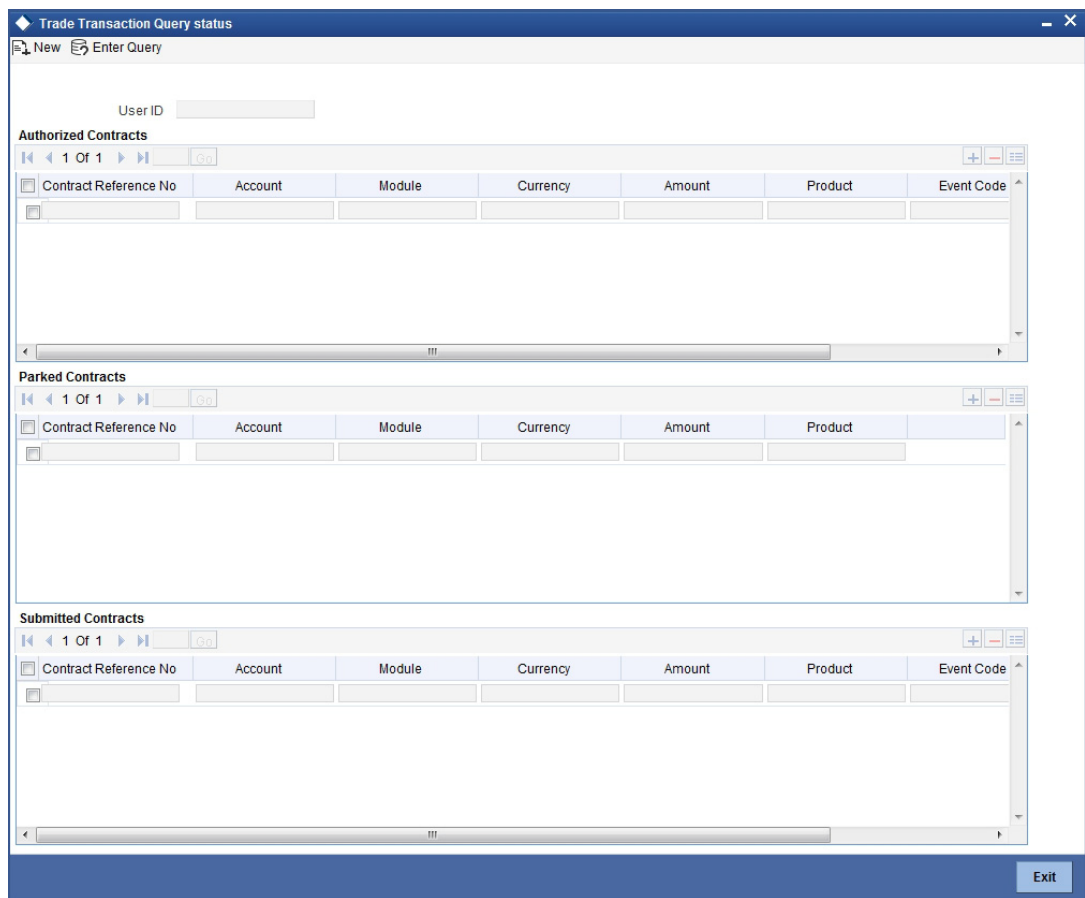
Trade User wise report

more.

User ID	Authorized	Parked	Submitted
T35721M01	0	0	1
T35721M02	0	2	1

A hyperlink is provided to the 'User ID' column. Click the link to invoke the corresponding 'New Trade Transaction Query Status' screen with the contract details processed by the user. The following details are displayed:

- Contract Reference No
- Account Number
- Module
- CCY
- Amount
- Product
- Event Code
- ESN
- Status - ('A','U','H')



4.7.2 Trade Re-assignment

'Trade Re-assignment' Dashboard displays the list of trade contracts, which are on-hold. The Trade Supervisor of the bank can check the number of contracts available with each User and can reassign the contracts to a different User, if needed. The Dashboard displays the following transaction details, after verifying the DFI mapped and validating if the 'Show Dashboard' check box is checked:

- User Id
- Contract Reference
- Account
- Module
- Currency
- Amount
- Product

Trade Reassignment more...

User ID	Contract Reference	Account	Module	Currency	Amount	Product
T35721M02	001ILNB121850010	001000123	LC	GBP	10,000.00	ILNB
T35721M02	029SGLC121850006	029004260	LC	GBP	10,000.00	SGLC

A hyperlink is provided to the 'Contract Reference' column. Click the link to invoke the corresponding 'Trade Re-assignment' screen with the contract details processed by the user.

4.7.3 **EOD Exceptions**

'EOD Exceptions' Dashboard lists the EOD exceptions that Trade Supervisor has encountered for previous and current working day for a particular branch or based on Multibranch role mapping for that User.

For further details on 'EOD Exceptions' Dashboard, refer 'EOD Exceptions' section under 'Loan Officer (Maker) Dashboard' section of this chapter.

4.7.4 **Bulletin Board**

'Bulletin Board' Dashboard lists all or any of the following bulletin messages configured to you across all branches:

- Public news or messages
- Product information
- Policies and Notices of the bank
- System messages
- Adhoc or unplanned messages, if any.

For further details on Bulletin Board Dashboard, refer 'Bulletin Board' section under 'Loan Officer (Maker) Dashboard' section of this chapter.

4.8 **Branch Manager Dashboard**

Branch Manager supervises the daily operations of the Bank. Also, directs the bank branches and department, resolves the customer issues and ensures maintenance of service standards. The following Dashboards are made available to assist Branch Managers in their assignments:

- TDs maturing details – To view list of TDs which are maturing in next 'X' days, based on the mature days
- Loans maturing details – To view list of loans which are maturing in next 'X' days, based on the mature days
- Business Opportunities – To view list of customers who are eligible for the schemes in the current branch
- Watch list accounts – To keep watch on the accounts with available amount less than the threshold amount
- Pending Authorization contracts – To monitor the transactions which are pending for authorization
- Bulletin board – To view the list of Bulletin messages received

4.8.1 **TDs Maturing Details**

'TDs Maturing Details' Dashboard displays a list of TDs which are maturing in next 'X' days, based on the mature days maintained at 'RM Report Parameter' level, for the 'Branch manager' role. Both multi branch access and centralized role are supported for this Dashboard. The Dashboard displays the following transaction details, after verifying the DFI mapped, validating if the 'Show Dashboard' check box is checked, and verifying the multi-branch accessibility:

- Customer ID
- Account No
- Account Class

- Maturity Date
- Currency
- Amount – Maturity Amount
- Telephone

TDs maturing details more.

Customer Id	Account No	Account Class	Maturity Date	Currency	Amount	Telephone
029004227	0290000000013	TDA2	2012-11-01	GBP	25,874.94	Mob:9633256589 / Tel:01125658965
029004227	0290000000014	TDA2	2012-11-01	GBP	25,874.94	Mob:9633256589 / Tel:01125658965
029004227	0290000000015	TDA2	2012-11-01	GBP	25,874.94	Mob:9633256589 / Tel:01125658965
029004227	0290000000016	TDA2	2012-11-01	GBP	25,874.94	Mob:9633256589 / Tel:01125658965
029004227	0290000000017	TDA2	2012-11-01	GBP	25,874.94	Mob:9633256589 / Tel:01125658965

A hyperlink is provided to the 'Account Number' column. Click the link to invoke the corresponding 'TD Account' screen. The 'RM Report Parameters' facilitates configuration of the TD mature days.

4.8.2 Loans Maturing Details

'Loans Maturing Details' Dashboard displays a list of loans which are maturing in next 'X' days, based on the mature days maintained at 'RM Report Parameter' level, for the 'Branch manager' role. Both multi branch access and centralized role are supported for this Dashboard. The Dashboard displays the following CL, LE, CI, COM and MO contract details, after verifying the DFI mapped, validating if the 'Show Dashboard' check box is checked, and verifying the multi-branch accessibility:

- Customer ID
- Account Number
- Maturity Date
- Currency
- Amount
- Maturity Date
- Module Code
- Description
- Telephone

Loans maturing details more.

Customer ID	Account Number	Currency	Amount	Maturity Date	Module Code	Description	Telephone
029004202	029CLBR122160001	GBP	1,000.00	2013-08-03	CL	NormalBearing- Branch Merger	Mob:-- / Tel:--
029004228	029CLP1122160017	GBP	1,000.00	2013-08-03	CL	CL_PDC_TENOR_PRC	Mob:-- / Tel:--
029000115	029MUU1112480002	GBP	100,000.00	2012-09-05	CI	Mudarabah Auto DSBR	Mob:-- / Tel:--
029000115	029MUU1112480010	GBP	100,000.00	2012-09-05	CI	Mudarabah Auto DSBR	Mob:-- / Tel:--
029000115	029MSHR112480012	GBP	100,000.00	2012-12-01	CI	Musharaka Auto DSBR Normal Bearing	Mob:-- / Tel:--

A hyperlink is provided to the 'Account Number' column. Click the link to invoke the corresponding 'Loan Account' screen. The 'RM Report Parameters' facilitates configuration of the Loan mature days.

4.8.3 Business Opportunities

'Business Opportunities' Dashboard displays list of customers who are eligible for the schemes in the current branch for the current date. Both multi branch access and centralized role are supported for this Dashboard. The Dashboard displays the following details, after verifying the DFI mapped and validating if the 'Show Dashboard' check box is checked:

- Customer ID
- Customer Name
- Scheme
- Scheme Description
- Scheme End Date
- Telephone

Customer Id	Customer Name	Scheme	Scheme Description	Scheme End Date	Telephone
029004300	Damian	COVENTIONAL_SAVINGS2	COVENTIONAL_SAVIN	2015-09-05	Mob:-- / Tel:08022584245
029004300	Damian	COVENTIONAL_SAVINGS1	COVENTIONAL_SAVIN	2015-09-05	Mob:-- / Tel:08022584245
029004301	LEWIS	RPSHEMECLDASH1	RP SCHEME - CL DASH	2015-10-03	Mob:89774585784 / Tel:0805784874
029004301	LEWIS	COVENTIONAL_SAVINGS1	COVENTIONAL_SAVIN	2015-09-05	Mob:89774585784 / Tel:0805784874
029004302	LIVINGSTON	COVENTIONAL_SAVINGS2	COVENTIONAL_SAVIN	2015-09-05	Mob:-- / Tel:--

A hyperlink is provided to the 'Customer ID' and 'Scheme' column. Click 'Customer ID' link to invoke the corresponding 'Customer Scheme Linkages' screen. Click 'Scheme' link to invoke the corresponding 'Scheme Details' screen. Click 'More' to invoke the 'Scheme Summary' screen.

4.8.4 Watch List Accounts

Bank Manager of the bank monitors the accounts with available amount less than the threshold amount and then informs the customer to maintain the minimum threshold amount in the account. Both multi branch access and centralized role are supported for this Dashboard. The Dashboard displays the following details based on the negative balance threshold parameter maintained at 'RM Report parameterization' level, after verifying the DFI mapped, validating if the 'Show Dashboard' check box is checked, and verifying the multi-branch accessibility:

- Customer ID
- Account Number – CASA Account No
- Account Description
- Currency – Account Currency
- Amount – Available balance

Watch List Accounts

more.

Customer Id	Account Number	Account Description	Currency	Amount
029004313	0290000000100	EVERETT Acc 1	GBP	-1,070.00
029004264	0290000000103	ROB	GBP	-600.00
029004268	0290000000105	KLEBBA Acc 1	GBP	-700.00
029004230	0290000000106	KIRBY	GBP	-740.00
029004269	0290000000112	KNAPP Acc 2	GBP	-1,203.55

A hyperlink is provided to the 'Account Number' column. Click 'Account Number' link to invoke the corresponding 'Account Maintenance' screen.

4.8.5 Pending Authorization Contracts

Bank Manager of the bank monitors the accounts which are pending for authorization. The Dashboard displays the following details of loan, CASA, and TD accounts for the current branch, which are pending for approval, after verifying the DFI mapped and validating if the 'Show Dashboard' check box is checked:

- Customer ID
- Account Number – Loan/CASA/TD
- Currency
- Amount
- Module Code
- Event

Pending authorization transactions						
Customer ID	Account Number	Currency	Amount	Module Code	Event	
023000482	023MUDD112480002	GBP	10000	CI	DSBR	
005000172	005CLAM112830006	GBP	15000	CL	DSBR	
004000111	00400011102	GBP	5000	CO	BOOK	
026000297	1111111152	GBP	0	CO	BOOK	
WB2000722	WB200072201	GBP	-5062.76	CO	BOOK	

A hyperlink is provided to the 'Account Number' column. Click 'Account Number' link to invoke the corresponding 'Account Maintenance' screen.

4.8.6 Bulletin Board

'Bulletin Board' Dashboard lists all or any of the following bulletin messages configured to you across all branches:

- Public news or messages
- Product information
- Policies and Notices of the bank
- System messages
- Adhoc or unplanned messages, if any.

For further details on Bulletin Board Dashboard, refer 'Bulletin Board' section under 'Loan Officer (Maker) Dashboard' section of this chapter.

4.9 Relationship Manager Dashboard

Relationship Manager is the contact point for a customer within the bank. They communicate among different groups of people for complaints and to resolve problems. They also help the bank in improving trade by promoting the products, services, and solutions to the customers. The following Dashboards are made available to assist Relationship Managers in their assignments:

- Business Opportunities – To view list of RM customers who are eligible for the schemes
- Business done for the month–Self – To view the details of the business done by the Relationship Manager for the month
- Business done for the month–Team – To view the details of the business done by the their sub-ordinates for the month
- Customer Upgrade/Downgrade – To view the list of customers who had a change in the credit rating on the current date
- Loans & TD's maturing – To view the list of Loans and TD accounts which will mature within the specified days
- Bulletin Board – To view the list of Bulletin messages received

4.9.1 Business Opportunities

'Business Opportunities' Dashboard displays list of RM customers who are eligible for the schemas in the current branch for the current date. The Dashboard displays the following details, after verifying the DFI mapped and validating if the 'Show Dashboard' check box is checked:

- Customer ID
- Customer Name
- Scheme ID
- Scheme Description
- Scheme End Date
- Telephone

Customer Id	Customer Name	Scheme	Scheme Description	Scheme End Date	Telephone
029004300	Damian	COVENTIONAL_SAVINGS2	COVENTIONAL_SAVIN	2015-09-05	Mob:-- / Tel:08022584245
029004300	Damian	COVENTIONAL_SAVINGS1	COVENTIONAL_SAVIN	2015-09-05	Mob:-- / Tel:08022584245
029004301	LEWIS	RPSHEMECLDASH1	RP SCHEME - CL DASH	2015-10-03	Mob:89774585784 / Tel:0805784874
029004301	LEWIS	COVENTIONAL_SAVINGS1	COVENTIONAL_SAVIN	2015-09-05	Mob:89774585784 / Tel:0805784874
029004302	LIVINGSTON	COVENTIONAL_SAVINGS2	COVENTIONAL_SAVIN	2015-09-05	Mob:-- / Tel:--

A hyperlink is provided to the 'Customer ID' and 'Scheme' column. Click 'Customer ID' link to invoke the corresponding 'Customer Scheme Linkages' screen. Click 'Scheme' link to invoke the corresponding 'Scheme Details' screen. Click 'More' to invoke the 'Scheme Summary' screen.

4.9.2 Business Done for the Month – Self

'Business Done for the Month – Self' Dashboard displays the details of the business done by the relationship manager for the month. It also lists the current local branch customers mapped to RM, the active accounts, and the sum of amount grouped based on the module, customer, product and currency. The Dashboard displays the following details for the loan, CASA, and TD accounts, after verifying the DFI mapped and validating if the 'Show Dashboard' check box is checked:

- Module Code
- Customer ID
- Product Code – Transaction product code
- Currency
- Amount – Transaction Amount (Loan - Amount Financed/TD amount deposited/ CASA Available balance)

Business Done for month-Self

more..

Module Code	Customer ID	Product Code	Currency	Amount
TD	029004228	TDA2	GBP	20,000.00
TD	029004229	TDA2	GBP	10,000.00
CO	029004230	SAVIN	GBP	0.00
MO	029004260	MOAA	GBP	100,000.00
CL	029004260	CLP1	GBP	100,000.00

4.9.3 Business Done for the Month – Team

'Business Done for the Month – Team' Dashboard displays the details of the business done by the RM and their sub-ordinates for the month. It also lists the current local branch customers mapped to RM's sub-ordinates, the active accounts, and the sum of amount grouped based on the module, customer, product, currency, and maker ID. The Dashboard displays the following details for the loan, CASA, and TD accounts, after verifying the DFI mapped and validating if the 'Show Dashboard' check box is checked:

- Module Code
- Customer ID
- Product Code – Transaction product code
- Currency
- Amount – Transaction Amount (Loan - Amount Financed/TD amount deposited/ CASA Available balance)
- Maker Id – RM's sub-ordinate's ID

Business Done for month-Team

more..

Module Code	Customer ID	Product Code	Currency	Amount	Maker ID
TD	029004194	TDA2	GBP	10,000.00	31642RM03
TD	029004195	TDA2	GBP	10,000.00	31642RM03
TD	029004228	TDA2	GBP	20,000.00	31642RM01
TD	029004229	TDA2	GBP	10,000.00	31642RM01
CO	029004230	SAVIN	GBP	0.00	31642RM01

4.9.4 Customer Upgrade/Downgrade

'Customer Upgrade/Downgrade' Dashboard displays list of customers who had a change in the credit rating, on the current date. It lists the current local branch customers mapped to RM.

This Dashboard lists customers mapped to logged RM, whose credit rating changed as on the current date. The Dashboard displays the following, after verifying the DFI mapped and validating if the 'Show Dashboard' check box is checked:

- Customer Id
- Previous Credit Rating
- Latest Credit Rating

Customer Upgrade / Downgrade		
Customer No	Previous Credit Rating	Latest Credit Rating
001004121	5	6
001004122	7	8
001004123	9	10

[more...](#)

4.9.5 Loans & TDs Maturing

'Loans & TD's Maturing' Dashboard displays list of Loans and TD accounts which will mature within the specified days, based on the parameters maintained at 'RM Report Parameterization' level. It lists Loan and TD accounts in current branch, for customers mapped to logged RM. The Dashboard displays the following details for the CL, MO, CI, LE loan accounts, and TD accounts for the current branch, after verifying the DFI mapped and validating if the 'Show Dashboard' check box is checked:

- Customer ID
- Account No – Loan/TD account No
- Module code
- Maturity Date – TD maturity date/Loan Maturity date
- Currency
- Amount – Loan Amount Financed/TD amount
- Maker ID

TD & Loan Accounts Maturing more...

Customer ID	Account No	Module Code	Maturity Date	Currency	Amount	Maker ID
029000144	029CORP112480002	CL	2012-09-05	GBP	100,000.00	SYSTEM
029000144	029XCOR00125	CL	2012-10-30	GBP	100,000.00	32840A01
029000144	029CORP112480005	CL	2012-09-05	GBP	100,000.00	SYSTEM
029000144	029CORP112480006	CL	2012-09-05	GBP	100,000.00	SYSTEM
029000144	029CORP112480007	CL	2012-09-05	GBP	100,000.00	SYSTEM

A hyperlink is provided to the 'Account Number' column. Click the link to invoke the corresponding 'Loan/TD Account Details' screen.

4.9.6 Bulletin Board

'Bulletin Board' Dashboard lists all or any of the following bulletin messages configured to you across all branches:

- Public news or messages
- Product information
- Policies and Notices of the bank
- System messages
- Adhoc or unplanned messages, if any.

For further details on Bulletin Board Dashboard, refer 'Bulletin Board' section under 'Loan Officer (Maker) Dashboard' section of this chapter.

4.10 Origination Dashboards

Oracle FLEXCUBE allows you to configure dashboards with multiple queues, count various queues and map dashboards to specific user roles or users.

Queue Name	Count
Escalated	0
Expired	0
Aging	0
High	0
TODAY	0

Following are the features of Origination Dashboards:

- Blow Up - On clicking the 'Blow Up' button, system gives a detailed view of the particular frame in the dashboard.
- Refresh - On clicking the 'Refresh' button, system refreshes the particular frame in the dashboard.
- Filter Search - On checking the 'Filter' box, system displays the filter criteria. Using the filter option, you can search a particular task in a particular queue dashboard as well as in all queue dashboards.
- Actions - You can select task-specific actions such as Acquire, Copy, Release, Status, Resume, etc, on the dashboard queues.
- Tool Tip - You can view the details of the task when you place the cursor on the Workflow Reference Number of a particular task in the queue frames of the dashboard.

Note

Each dashboard has minimum one to maximum six frames.

Following are the pre-configured dashboards available in the system:

- Default Dashboard - This dashboard lists the Assigned, Acquired, Pending, Completed, High Priority tasks along with the Action List which lists the Escalated, Expired, Aging, High Priority and Today queue count.
- Cancelled Applications - This dashboard lists the cancelled Applications in Retail Lending, Corporate Lending, CASA and Trade.
- High Priority - This dashboard lists the high priority Applications in Retail Lending, Corporate Lending, CASA and Trade.
- High Value - This dashboard lists the high value Applications in Retail Lending, Corporate Lending, CASA and Trade.
- Quick View - This dashboard can be mapped to the Quick View frame. It displays details such as task count in each category (Escalated, Expired, Aging, High Priority and Today queue count) and Assigned, Acquired and High Priority Queue Dashboard.

You can click on workflow reference number to launch the application. The system launches the queue on click of the queue name in the count dashboards.

In addition to the pre-configured dashboards, you can create additional dashboards using the 'Origination Dashboard Maintenance' screen.

For more details on Origination Dashboard Maintenance, refer section titled, 'Maintaining Origination Dashboard Details' in chapter, 'Maintenances' in this User Manual.

4.11 Organizing Dashboards

As mentioned earlier, you can position and sequence individual dashboards based on DFI mapping. The system facilitates filtering of Dashboards. The function ID assigned to each dashboard and the criteria based on which each Dashboard is filtered is detailed in the following table:

Function ID	Dashboard name	Filter Criteria	Order Criteria
Loan Maker			
CLSLNTEXS	My Transaction Event status	CL, LE, MO, CI, Commitment Authorised/Unauthorised Event wise Accounts for the Maker. Based on branch access permissions Current branch/Multi Branch/Centralized.	Order by Account Number in ascending order, Event Sequence Number in descending order

CLSLNPKD	Parked Loans	CL, LE, MO, CI, Commitment On-Hold Accounts for the Maker. Based on branch access permissions Current branch/Multi Branch/Centralized.	Order by Last updated date aged one first
CSSEODEX	EOD Exceptions	CL, LE, MO, CI, Commitment Accounts gone into EOD exception from last working day to current branch date. Based on branch access permissions Current branch/Multi Branch/Centralized.	Order by Account Number in ascending order
CSSBULBD	Bulletin Board	Bulletin messages mapped to the required role and are active.	Order by Message Reference Number
CLSLNWAT	Watch list transactions	CL, LE, MO, CI, Commitment Authorised Accounts of latest event for the Maker ,which has overdue of any components equal to or greater than one day. Based on branch access permissions Current branch/Multi Branch/Centralized.	Order by Account Number in ascending order
CLSLNWTM	Wakala to Murabaha	CI Authorised Accounts of latest event for the Maker based on the Wakala expiry days set at RM Parameterisation Maintenance (includes from and to date). Based on branch access permissions Current branch/Multi Branch/Centralized.	Order by Account Number in ascending order
Loan Authorizer			

CLSLNPEN	Pending New Loans	CL, LE, MO, CI, Commitment Accounts of latest event wise to the assigned user as per the operational hierarchy. Based on branch access permissions Current branch/Multi Branch/Centralized.	Order by Account Number in ascending order
CLSPNLCE	Pending Life cycle events	CL, LE, MO, CI, Commitment Accounts of latest event wise to the assigned user as per the operational hierarchy. Based on branch access permissions Current branch/Multi Branch/Centralized. All events other than BOOK and INIT.	Order by Account Number in ascending order
CSSEODEX	EOD Exceptions	CL, LE, MO, CI, Commitment Accounts gone into EOD exception from last working day to current branch date. Based on branch access permissions Current branch/Multi Branch/Centralized.	Order by Account Number in ascending order
CSSBULBD	Bulletin Board	Bulletin messages mapped to the required role and are active.	Order by Message Reference Number
Loan Supervisor			
CLSLNURP	Loan User Event Wise Dashboard	Event wise Count of the Submitted/Authorised/Parked CL, LE, MO, CI, and Commitment Accounts of the Maker, Authoriser and Supervisor User Id. Based on branch access permissions Current branch/Multi Branch/Centralized.	Order by User ID

CSSEODEX	EOD Exceptions	CL, LE, MO, CI, Commitment Accounts gone into EOD exception from last working day to current branch date. Based on branch access permissions Current branch/Multi Branch/Centralized.	Order by Account Number in ascending order
CSSBULBD	Bulletin Board	Bulletin messages mapped to the required role and are active	Order by Message Reference Number
Trade Maker			
LCSTMSTS	My Transaction Event status	LC, BC, LI and IB Authorised/Unauthorised Event wise contracts for the Maker. Based on branch access permissions Current branch/Multi Branch/Centralized.	Order by contract reference Number in ascending order, Event Sequence Number in descending order
LCSTMPAT	Parked Transactions	LC, BC, LI and IB contracts Put on hold for the maker. Based on branch access permissions Current branch/Multi Branch/Centralized	Order by Last updated date aged first
LCSEODTX	EOD Exceptions	LC, BC, LI and IB contracts gone into EOD exception from last working day to current branch date. Based on branch access permissions Current branch/Multi Branch/Centralized	Order by contract reference Number in ascending order
CSSBULBD	Bulletin Board	Bulletin messages mapped to the Trade maker role, Active	Order by Message Reference Number
Trade Authorizer			

LCSTAPEN	Pending new contracts	LC, BC, LI, IB contracts with BISS, INIT, BOOK, BCFM, BADV and BPRE triggered pending for authorization. Based on branch access permissions Current branch/Multi Branch/Centralized and to the assigned user as per the operational hierarchy	Order by contract reference Number in descending order.
LCSTAPLC	Pending Life cycle events	LC, BC, LI, IB with Latest Event other than new contracts pending for authorization. Based on branch access permissions Current branch/Multi Branch/Centralized and to the assigned user as per the operational hierarchy	Order by contract reference Number in descending order.
LCSEODTX	EOD Exceptions	LC, BC, LI and IB contracts gone into EOD exception from last working day to current branch date. Based on branch access permissions Current branch/Multi Branch/Centralized	Order by contract reference Number in ascending order
CSSBULBD	Bulletin Board	Bulletin messages mapped to the Trade Authoriser role, Active	Order by Message Reference Number
Trade Supervisor			
CSSTRURP	Trade User Event wise Report	Event wise Count for the Submitted/Authorised/Parked LC, BC, LI, IB contracts of the Maker, Authoriser and Supervisor User Id. Based on branch access permissions Current branch/Multi Branch/Centralized.	Order By User ID
CSSTRRAS	Trade Reassignment	LC, BC, LI and IB contracts Put on hold in the system. Based on branch access permissions Current branch/Multi Branch/Centralized and as per the operational hierarchy maintained.	Order by contract reference Number in ascending order

LCSEODTX	EOD Exceptions	LC, BC, LI and IB contracts gone into EOD exception from last working day to current branch date. Based on branch access permissions Current branch/Multi Branch/Centralized.	Order by contract reference Number in ascending order
CSSBULBD	Bulletin Board	Bulletin messages mapped to the Trade Supervisor role, Active	Order by Message Reference Number
Branch Manager			
CLSBTDMD	TD's Maturing Details	All TDs (Normal, Recurrent Deposit, Auto Deposit) that are getting matured in next X days (RM Param) including from and to date. Based on branch access permissions Current branch/Multi Branch/Centralized.	Nearest Maturity first
CLSBLNMD	Loan's Maturing Details	All Loans (CL, LE, MO, CI, COM) Active accounts, that are getting matured in next X days (RM Param) including from and to date Based on branch access permissions Current branch/Multi Branch/Centralized.	Nearest Maturity first
CLSBOPPP	Business Opportunities	Relationship pricing Open & Active scheme with active linkage to RP Customer for logged in branch	Order by Cust ID
CLSBWLST	Watch List Accounts	Accounts having account currency available balance below negative threshold balance set at RM Param Based on branch access permissions Current branch/Multi Branch/Centralized.	Order by account number
CLSBPNAU	Pending Authorization transactions	Pending auth transactions of CASA, TD (Normal, Recurrent Deposit, Auto Deposit), Loans(CL, LE, MO, CI) accounts for the Current branch.	Group by module code, order by customer ID

CSSBULBD	Bulletin Board	Bulletin messages mapped to the required role and are active.	Order by Message Reference Number
Relationship Manager			
CSSRM-BOP	Business Opportunities	Relationship pricing Open & Active scheme with active linkage to RP Customer of the RM	Order by Cust ID
CSSRMBS	Business done for the month - self	Arithmetic sum of contract amount (TD-Deposit, Loan-Amount Financed, CASA- Account CCY available balance) grouped by Module, Customer, Product and Currency. CL, LE, MO, CI/TDs (Normal, Recurrent Deposit, Auto Deposit)/CASA booked for customer attached with logged in RM for the current branch and month	Grouped by Module, Customer, Product and Currency and Order by Cust ID
CSSRMBT	Business done for the month - Team	Arithmetic sum of contract amount (TD-Deposit, Loan-Amount Financed, CASA- Account CCY available balance) grouped by Module, Customer, Product and Currency. CL, LE, MO, CI/TDs (Normal, Recurrent Deposit, Auto Deposit)/CASA booked for customer attached with logged in RM and subordinate RM for the current branch and month	Grouped by Module, Customer, Product and Currency and Order by Cust ID
CSDRMCU	Customer Upgrade / Downgrade	CREDIT_RATING modified on current date, current branch for the customer attached to logged in RM	Order by Cust ID
CSSRMTD	Loan & TD account maturing	CL, LE, MO, CI or TDs (Normal, Recurrent Deposit, Auto Deposit) getting matured within next X days (RM report parameter) including from and to date for the customer attached to logged in RM	Order by Cust ID
CSSBULBD	Bulletin Board	Bulletin messages mapped to the required role and are active.	Order by Message Reference Number

