

**Oracle FLEXCUBE Universal Banking ® 12.87.05.0.0  
Development Workbench - Screen Customizer**

**June** 2018



---

## Contents

|       |                         |   |
|-------|-------------------------|---|
| 1     | Preface .....           | 3 |
| 1.1   | Audience.....           | 3 |
| 1.2   | Related Documents ..... | 3 |
| 2     | Introduction .....      | 4 |
| 3     | Screen Customizer ..... | 4 |
| 3.1   | DataBlocks .....        | 5 |
| 3.1.1 | Data Block Field.....   | 5 |
| 3.2   | Screens .....           | 6 |
| 3.3   | FieldSet .....          | 6 |
| 4     | Generated Units.....    | 7 |
| 5     | Examples .....          | 8 |

---

# 1 Preface

This document describes the Screen Customizer functionality available in Oracle FLEXCUBE Development Workbench for Universal Banking and guides the developers on how to use this feature.

## 1.1 Audience

This document is intended for FLEXCUBE Application developers/users that use Development Workbench to develop various FLEXCUBE components.

To Use this manual, you need conceptual and working knowledge of the below:

| <i>Proficiency</i>   | <i>Resources</i>   |
|--|--|
| FLEXCUBE Functional Architecture   | Training programs from Oracle Financial Software Services. |
| FLEXCUBE Technical Architecture  | Training programs from Oracle Financial Software Services. |
| FLEXCUBE Object Naming conventions   | Development Overview Guide                                 |
| Working knowledge of Web based applications                                      | Self Acquired  |
| Working knowledge of Oracle Database   | Oracle Documentations                                      |
| Working knowledge of XML files   | Self Acquired  |
| Working Knowledge of Oracle FLEXCUBE Development Workbench for Universal Banking | User Manuals   |

## 1.2 Related Documents

[04-Development WorkBench\\_Screen\\_Development-I.docx](#)  
[05-Development WorkBench\\_Screen\\_Development-II.docx](#)

## 2 Introduction

This document gives information about the following topics:

- [Chapter 2 , "Introduction"](#)
- [Chapter 3 , "Screen Customizer"](#)
- [Chapter 4 , "File Generation"](#)

## 3 Screen Customizer

The Oracle FLEXCUBE Development Workbench Screen Customizer allows users to do UI changes on a screen. If only the screen layout of the function id has to be modified, developer can use the Screen Customizer feature rather than Function Generation feature.

Only the screen layout changes and UI field properties will be allowed to change in the Screen Customizer

**Note : Only Load action is possible in Screen Customizer.**

Only three nodes will be present in Screen Customizer as shown in the figure

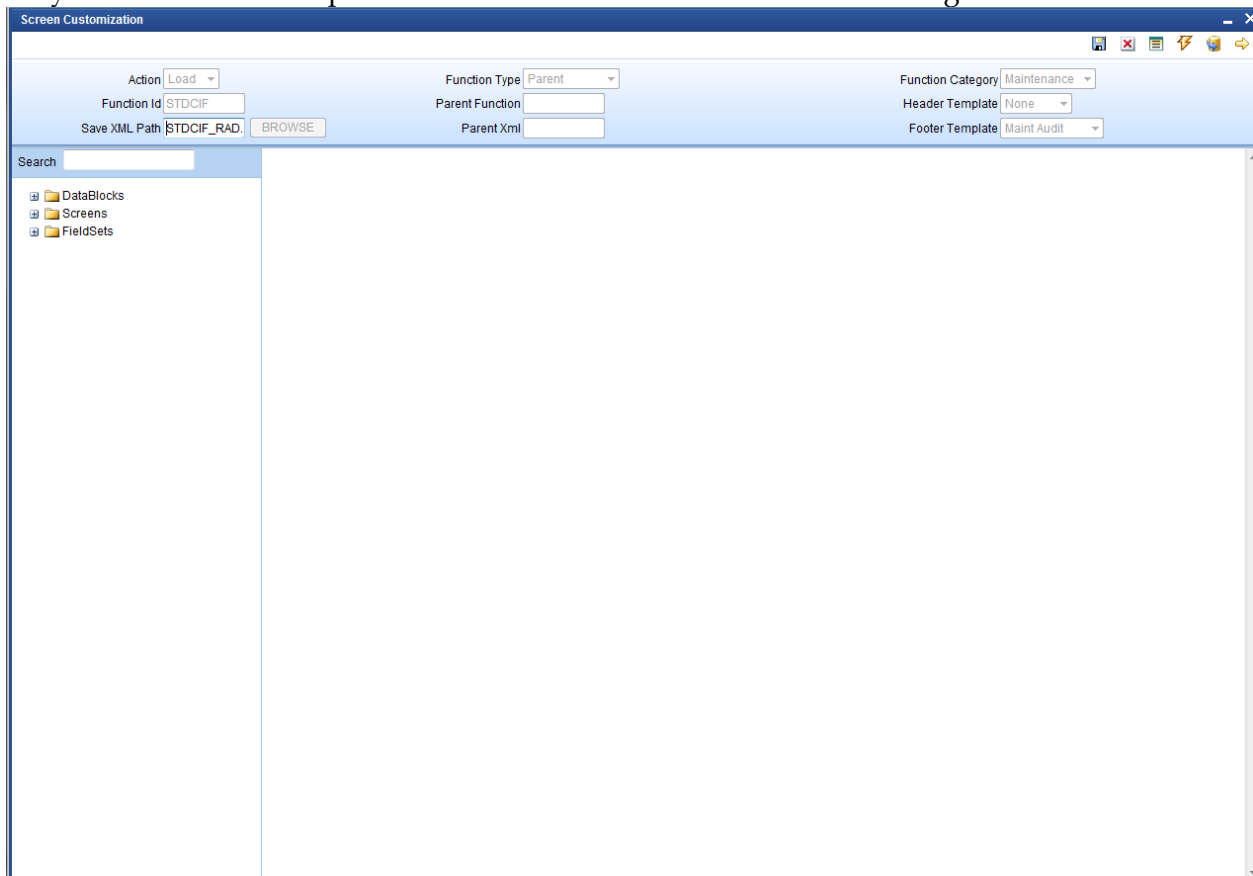


Fig 3.1: Screen Customizer Screen

## 3.1 DataBlocks

Data Block properties would not be allowed to change in Screen Customizer. New Data Blocks and Block Fields also cannot be added. Deletion/Renaming of blocks and fields are also not allowed in Screen Customizer

### 3.1.1 Data Block Field

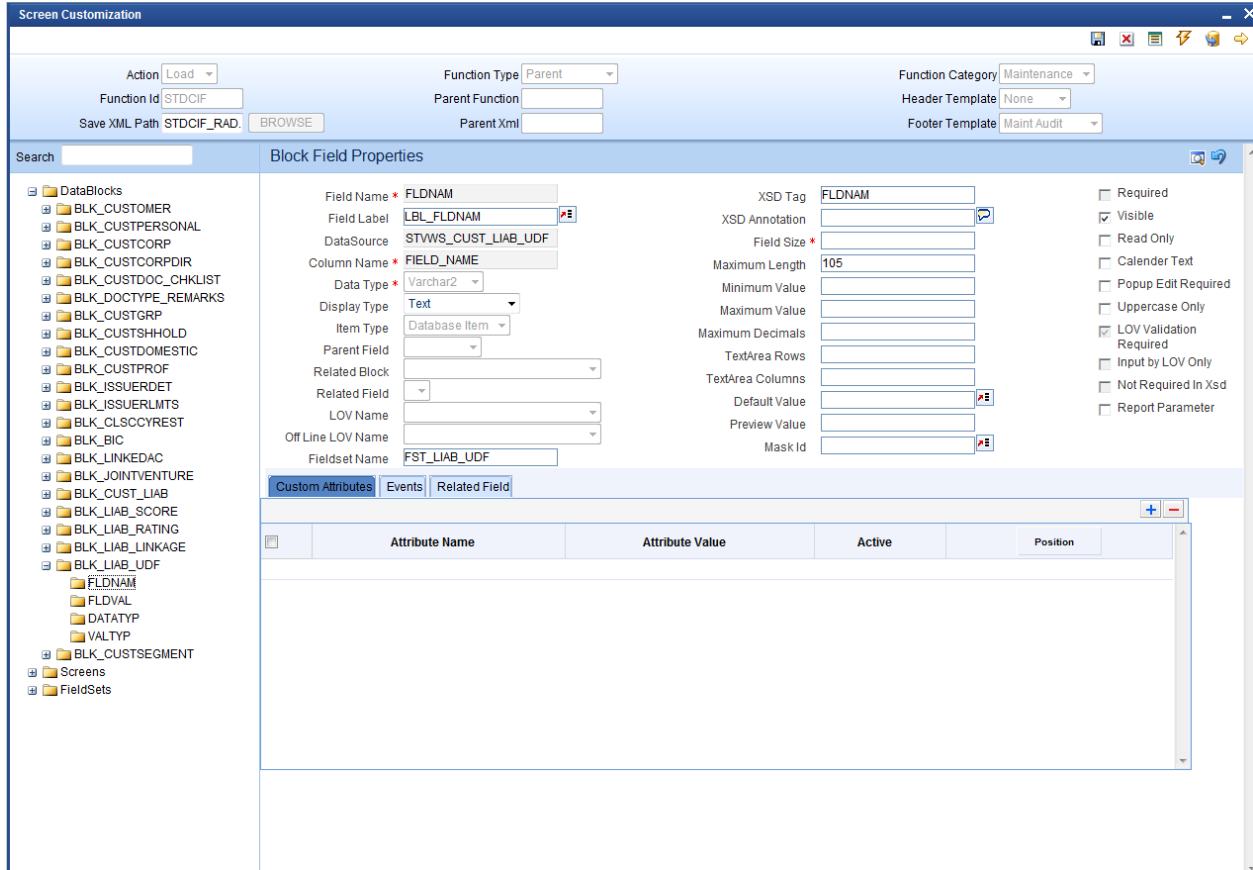


Fig 3.1.1: Data Block Field in Screen Customizer

User will be allowed to change below properties at data block field level.

- Display Type
- Field Size
- Preview Value

- Popup Edit Required
- Visible
- Upper Case only
- Read Only

### 3.2 Screens

All the actions can be performed in the Screen level. Developer can add, modify, delete, and rename the screens, tabs and sections. Note that deletion and renaming will be allowed only if the element is created in the working release.

### 3.3 FieldSet

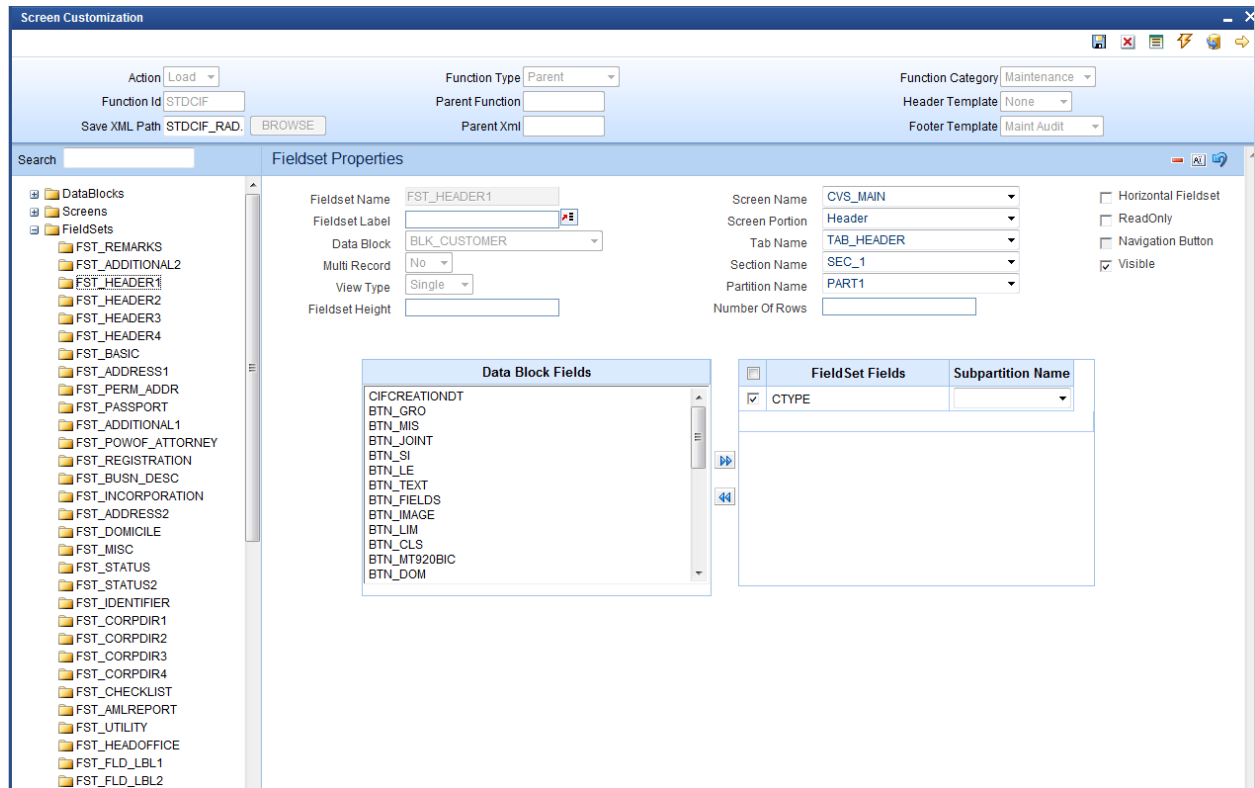


Fig 3.3.1: Field sets in Screen Customizer

In fieldset developer can change screen properties, display type from Vertical to Horizontal, read-only property etc. **Data Block to which field set is attached cannot be changed.** Field set fields can be re arranged as per requirement.

## 4 Generated Units

Development Workbench will generate only UI related units in Screen Customizer

1. Radxml
2. Screen Xml (i.e. Lang Xml)
3. System JS (JavaScript File)

Deploy language xml and system JavaScript file in FLEXCUBE application server to reflect the changes done to the function id in Screen Customizer

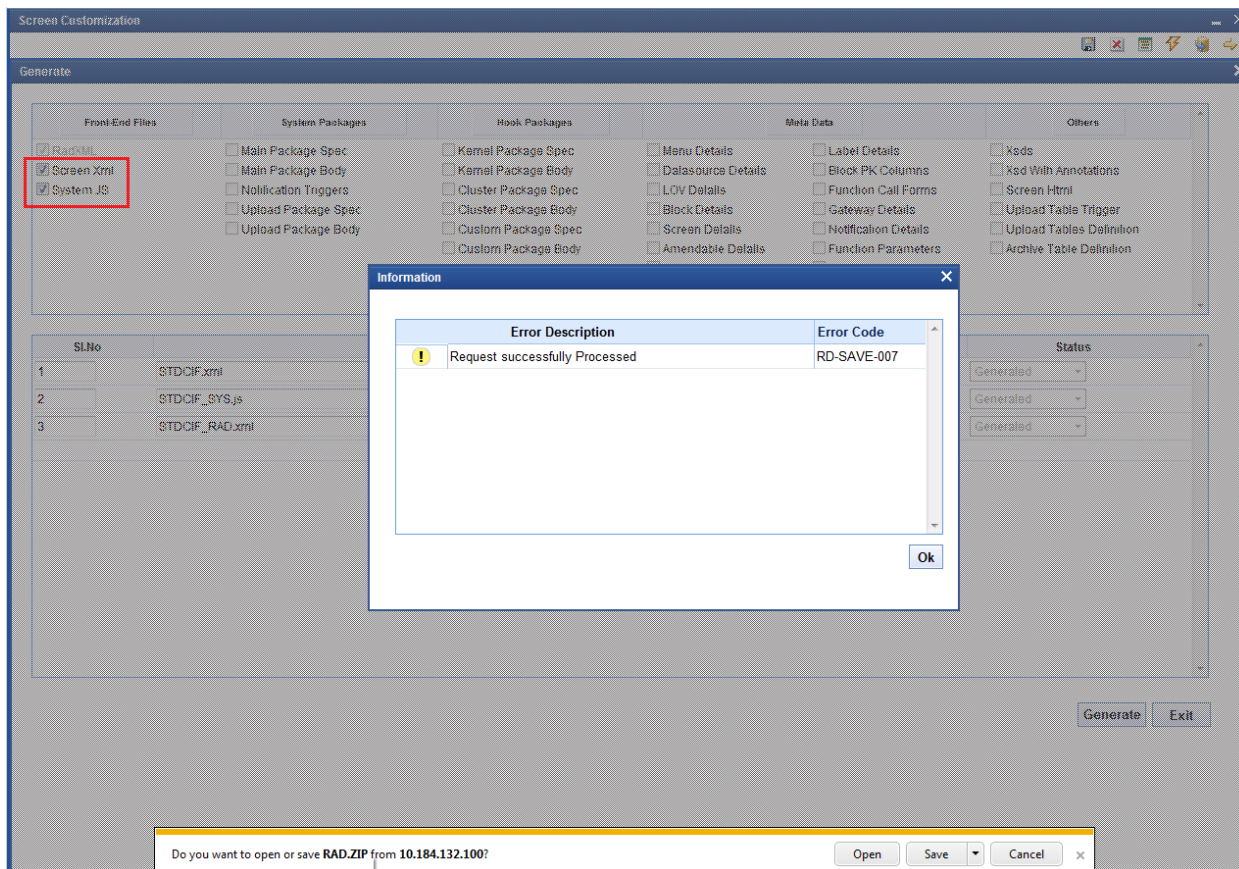


Fig 4.1: Generation of files in Screen Customizer

## 5 Examples

### Example 1:

**Requirement: Hide a Field in the screen**

Below screenshots shows how Screen Customizer can be used for this purpose.

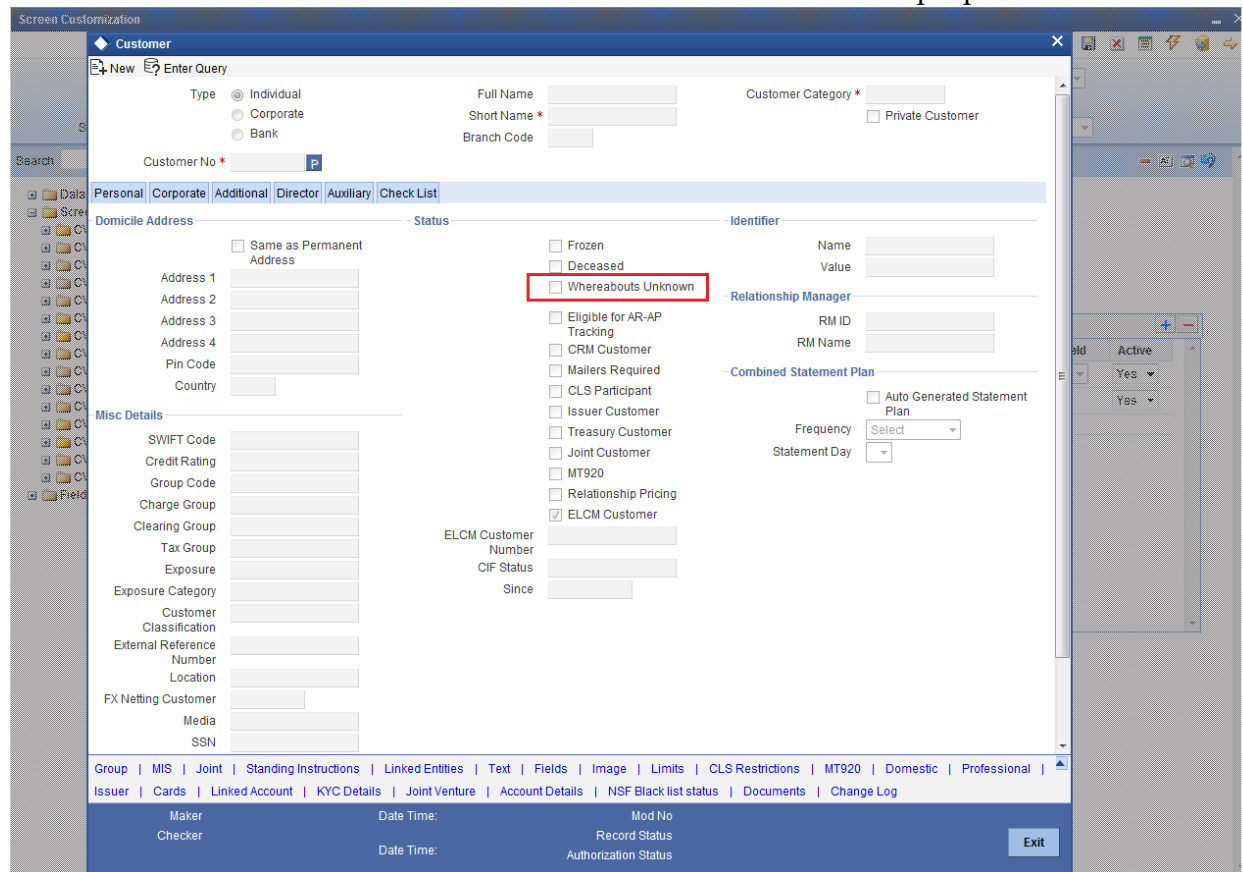


Fig 3.3.1: A preview with 'Whereabouts Unknown' checkbox set as visible

If *Whereabouts Unknown* field is not required, uncheck the visible flag.



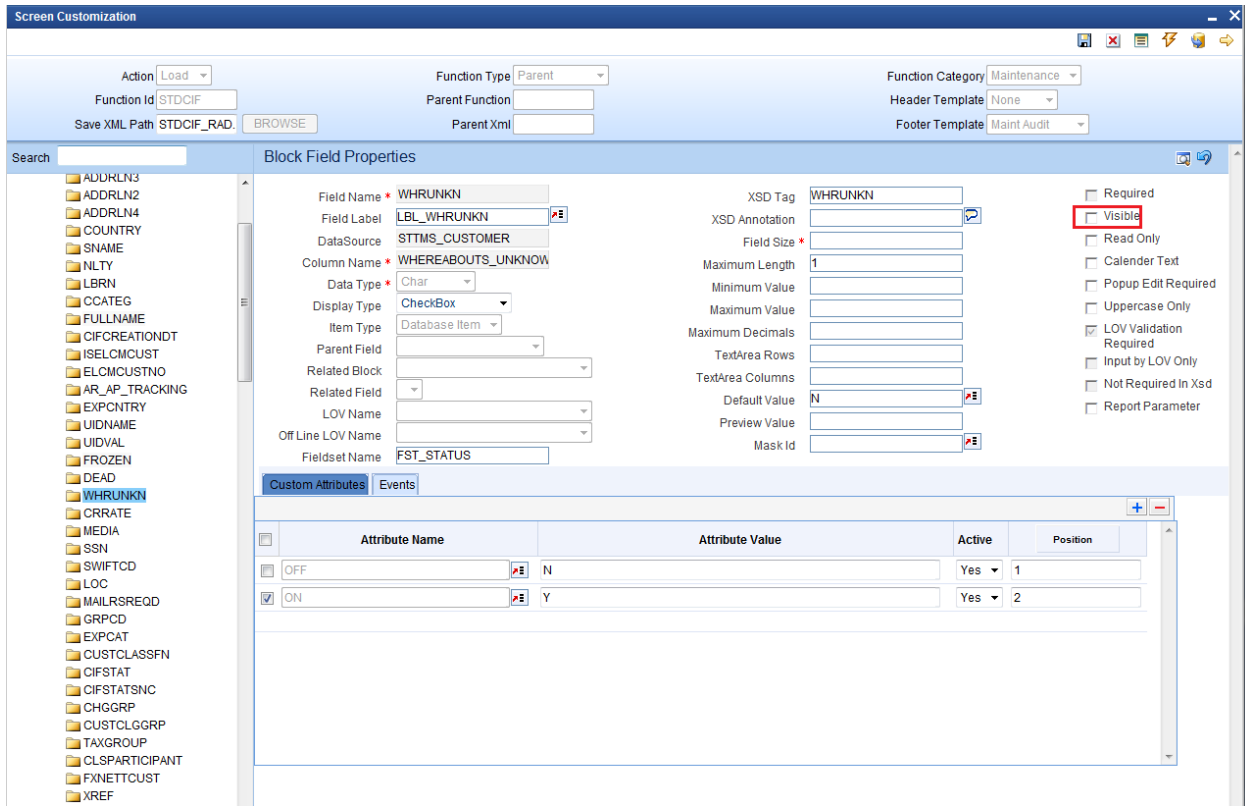


Fig 3.3.2: Setting the field invisible



Fig 3.3.3: The field invisible on screen after deploying units generated from screen customizer

**Example 2:**

**Requirement:** Adding a new Tab to the Screen. Move fields from one tab to another

As shown in below screenshot Main Tab contains Unique Identifier Field set. This field has to be moved to a new tab

The screenshot shows a 'Customer' form with the following sections and fields:

- Customer Info:** Type (Individual, Corporate, Bank), Full Name, Short Name, Branch Code, Customer Category, Private Customer checkbox, Customer No.
- Personal / Corporate / Additional / Director / Auxiliary / Check List:** Navigation tabs.
- Domicile Address:** Same as Permanent Address checkbox, Address 1-4, Pin Code, Country.
- Status:** Frozen, Deceased, Whereabouts Unknown, Eligible for AR-AP Tracking, CRM Customer, Mailers Required, CLS Participant, Issuer Customer, Treasury Customer, Joint Customer, MT920, Relationship Pricing, ELCM Customer (checked).
- Identifier (circled in red):** Name, Value.
- Relationship Manager:** RM ID, RM Name.
- Combined Statement Plan:** Auto Generated Statement Plan checkbox, Frequency dropdown, Statement Day dropdown.
- Misc Details:** SWIFT Code, Credit Rating, Group Code, Charge Group, Clearing Group, Tax Group, Exposure, Exposure Category, Customer Classification, External Reference Number, Location, FX Netting Customer, Media, SSN.
- ELCM Customer:** ELCM Customer Number, CIF Status, Since.
- Footer:** Group | MIS | Joint | Standing Instructions | Linked Entities | Text | Fields | Image | Limits | CLS Restrictions | MT920 | Domestic | Professional | Issuer | Cards | Linked Account | KYC Details | Joint Venture | Account Details | NSF Black list status | Documents | Change Log. Maker, Checker, Date Time, Mod No, Record Status, Authorization Status, Exit button.

Fig 3.3.4: The section 'Unique Identifier'

In Screen Customizer, developer can add the new tab . Modify the properties of the field set .i.e. attach to this new tab.

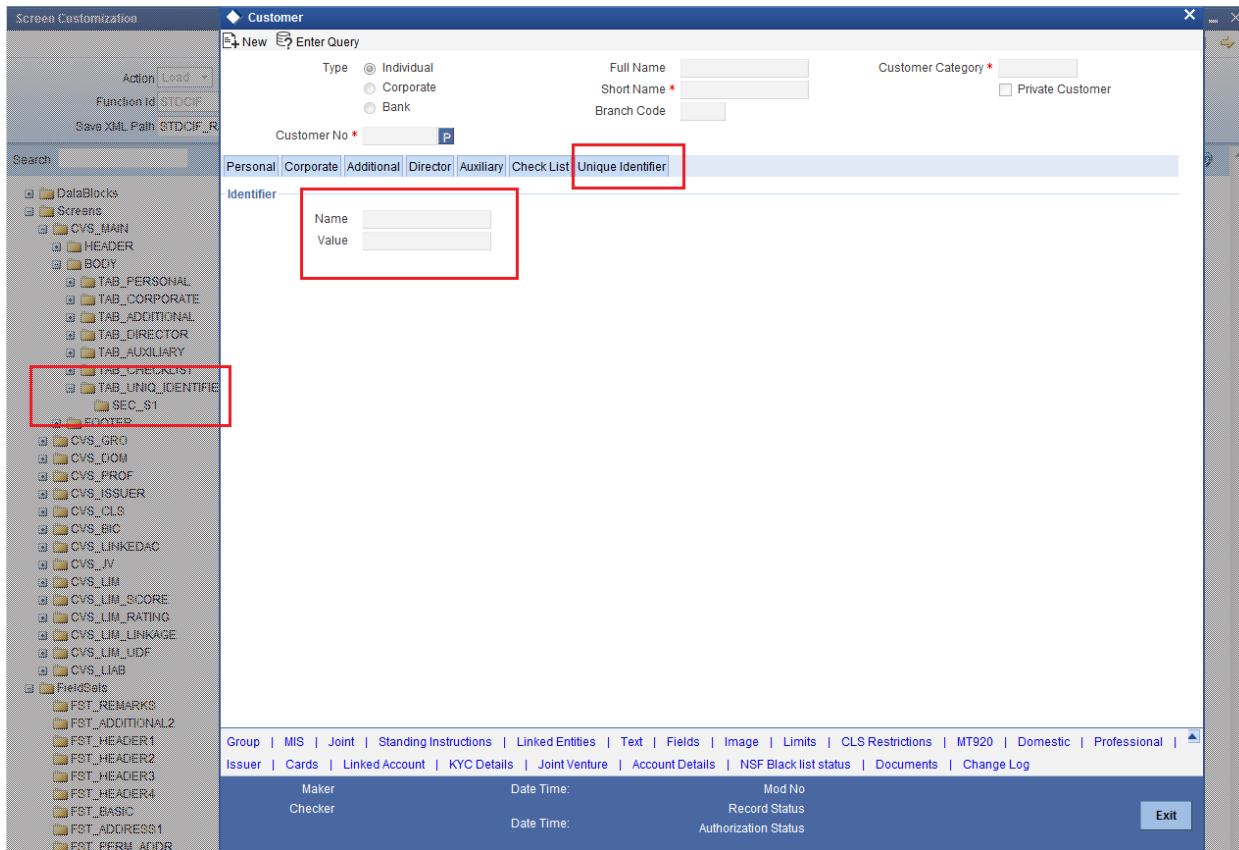


Fig 3.3.5: Section 'Unique Identifier' moved to a new tab



Development Workbench - Screen Customizer  
June 2018

Oracle Corporation  
World Headquarters  
500 Oracle Parkway  
Redwood Shores, CA 94065  
U.S.A.

Worldwide Inquiries:  
Phone: +1.650.506.7000  
Fax: +1.650.506.7200  
[www.oracle.com/ financial\\_services/](http://www.oracle.com/financial_services/)

Copyright © 2017-2018 Oracle Financial Services Software Limited. All rights reserved.

No part of this work may be reproduced, stored in a retrieval system, adopted or transmitted in any form or by any means, electronic, mechanical, photographic, graphic, optic recording or otherwise, translated in any language or computer language, without the prior written permission of Oracle Financial Services Software Limited.

Due care has been taken to make this document *Development Workbench - Screen Customizer* and accompanying software package as accurate as possible. However, Oracle Financial Services Software Limited makes no representation or warranties with respect to the contents hereof and shall not be responsible for any loss or damage caused to the user by the direct or indirect use of this *Development Workbench - Screen Customizer* and the accompanying Software System. Furthermore, Oracle Financial Services Software Limited reserves the right to alter, modify or otherwise change in any manner the content hereof, without obligation of Oracle Financial Services Software Limited to notify any person of such revision or changes.

All company and product names are trademarks of the respective companies with which they are associated.