

Oracle Banking Virtual Account Management
User Interface Installation Guide
Release 14.1.0.0.0
July 2018



Oracle Banking Virtual Account Management User Interface Installation Guide

Oracle Financial Services Software Limited
Oracle Park
Off Western Express Highway
Goregaon (East)
Mumbai, Maharashtra 400 063
India
Worldwide Inquiries:
Phone: +91 22 6718 3000
Fax: +91 22 6718 3001
www.oracle.com/financialservices/

Copyright © 2018, Oracle and/or its affiliates. All rights reserved.

Oracle and Java are registered trademarks of Oracle and/or its affiliates. Other names may be trademarks of their respective owners.

U.S. GOVERNMENT END USERS: Oracle programs, including any operating system, integrated software, any programs installed on the hardware, and/or documentation, delivered to U.S. Government end users are “commercial computer software” pursuant to the applicable Federal Acquisition Regulation and agency-specific supplemental regulations. As such, use, duplication, disclosure, modification, and adaptation of the programs, including any operating system, integrated software, any programs installed on the hardware, and/or documentation, shall be subject to license terms and license restrictions applicable to the programs. No other rights are granted to the U.S. Government.

This software or hardware is developed for general use in a variety of information management applications. It is not developed or intended for use in any inherently dangerous applications, including applications that may create a risk of personal injury. If you use this software or hardware in dangerous applications, then you shall be responsible to take all appropriate failsafe, backup, redundancy, and other measures to ensure its safe use. Oracle Corporation and its affiliates disclaim any liability for any damages caused by use of this software or hardware in dangerous applications.

This software and related documentation are provided under a license agreement containing restrictions on use and disclosure and are protected by intellectual property laws. Except as expressly permitted in your license agreement or allowed by law, you may not use, copy, reproduce, translate, broadcast, modify, license, transmit, distribute, exhibit, perform, publish or display any part, in any form, or by any means. Reverse engineering, disassembly, or decompilation of this software, unless required by law for interoperability, is prohibited. The information contained herein is subject to change without notice and is not warranted to be error-free. If you find any errors, please report them to us in writing.

This software or hardware and documentation may provide access to or information on content, products and services from third parties. Oracle Corporation and its affiliates are not responsible for and expressly disclaim all warranties of any kind with respect to third-party content, products, and services. Oracle Corporation and its affiliates will not be responsible for any loss, costs, or damages incurred due to your access to or use of third-party content, products, or services.

Table of Contents

- 1. PREFACE 1-1**
 - 1.1 INTRODUCTION 1-1
 - 1.2 AUDIENCE..... 1-1
 - 1.3 DOCUMENTATION ACCESSIBILITY 1-1
 - 1.4 ORGANIZATION..... 1-1
 - 1.5 RELATED DOCUMENTS 1-1

- 2. DOMAIN AND CLUSTER CONFIGURATION 2-1**
 - 2.1 ORACLE BANKING VIRTUAL ACCOUNT MANAGEMENT UI DOMAIN (OBVAMUI)..... 2-1
 - 2.1.1 *Post Domain Creation Configurations* 2-7

- 3. DEPLOYMENTS 3-1**
 - 3.1 STEPS TO DEPLOY AS APPLICATION..... 3-1

1. Preface

1.1 Introduction

This guide would help you to install the OBVAM UI on designated environment. It is assumed that all the prior setup is already done related with WebLogic managed server creation. It is recommended to use dedicated managed server for OBVAM UI.

1.2 Audience

This document is intended for WebLogic admin or ops-web team who are responsible for installing the OFSS banking products.

1.3 Documentation Accessibility

For information about Oracle's commitment to accessibility, visit the Oracle Accessibility Program website at <http://www.oracle.com/pls/topic/lookup?ctx=acc&id=docacc>.

1.4 Organization

This installation user guide would allow you to install following:

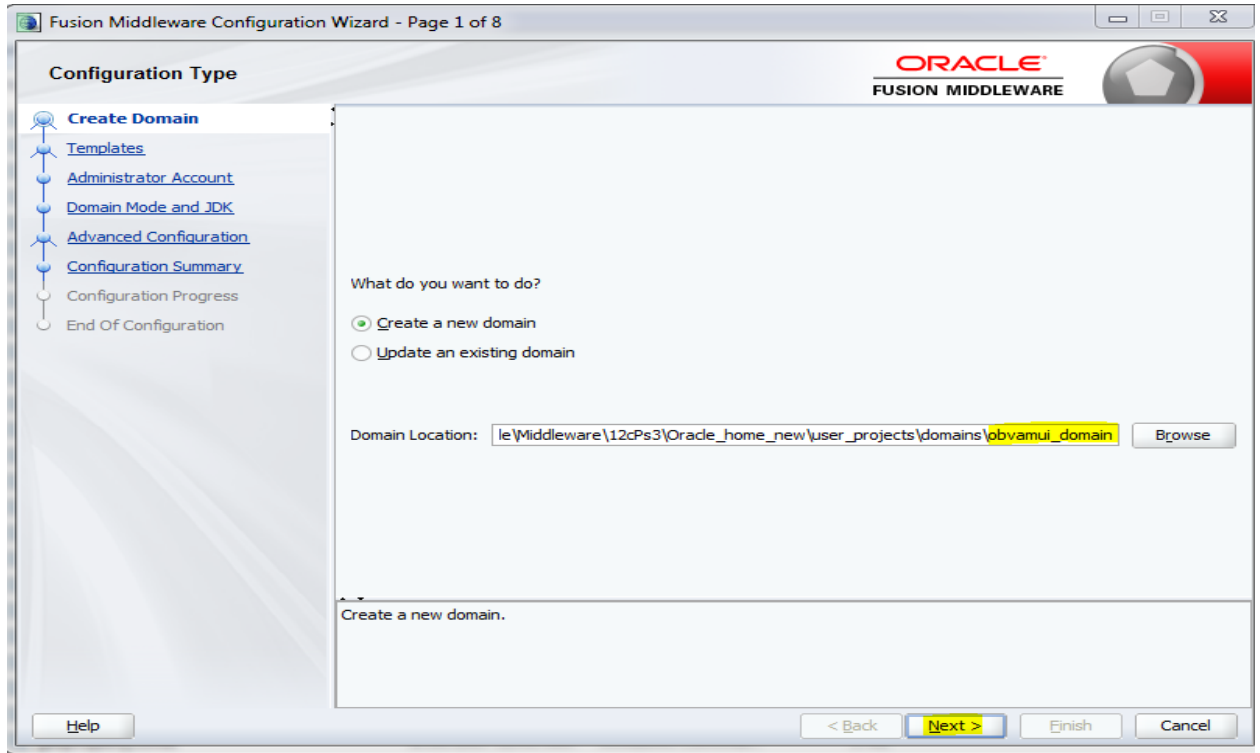
- OBVAM UI

1.5 Related Documents

- Common Core Services Installation Guide
- Day 0 Setup Guide
- LDAP Setup Guide
- Oracle Banking Virtual Account Management Annexure
- Oracle Banking Virtual Account Management Pre-Installation Guide
- Oracle Banking Virtual Account Management Services Installation Guide
- Plato Infrastructure Services Installation Guide
- Security Management System Services Installation Guide
- SSL Setup Guide

2. Domain and Cluster Configuration

2.1 Oracle Banking Virtual Account Management UI Domain (OBVAMUI)



Fusion Middleware Configuration Wizard - Page 6 of 15

Administration Server

ORACLE
FUSION MIDDLEWARE

- Create Domain
- Templates
- Administrator Account
- Domain Mode and JDK
- Advanced Configuration
- Administration Server**
- Managed Servers
- Clusters
- Server Templates
- Machines
- Virtual Targets
- Partitions
- Configuration Summary
- Configuration Progress
- End Of Configuration

Server Name: AdminServer

Listen Address: All Local Addresses

Listen Port: 8101

Enable SSL:

SSL Listen Port:

Port number must be between 1 and 65535, and different from SSL listen port and coherence port.

Help < Back Next > Finish Cancel

Fusion Middleware Configuration Wizard - Page 7 of 15

Managed Servers

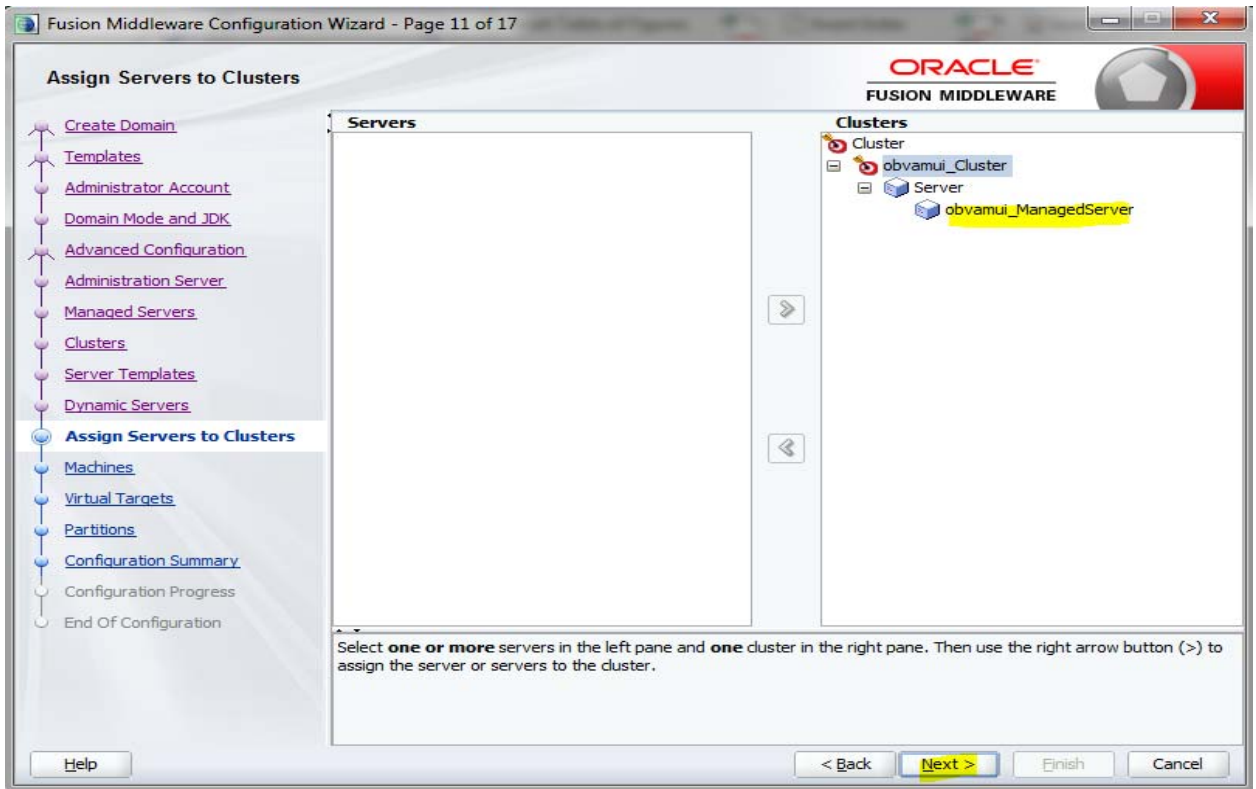
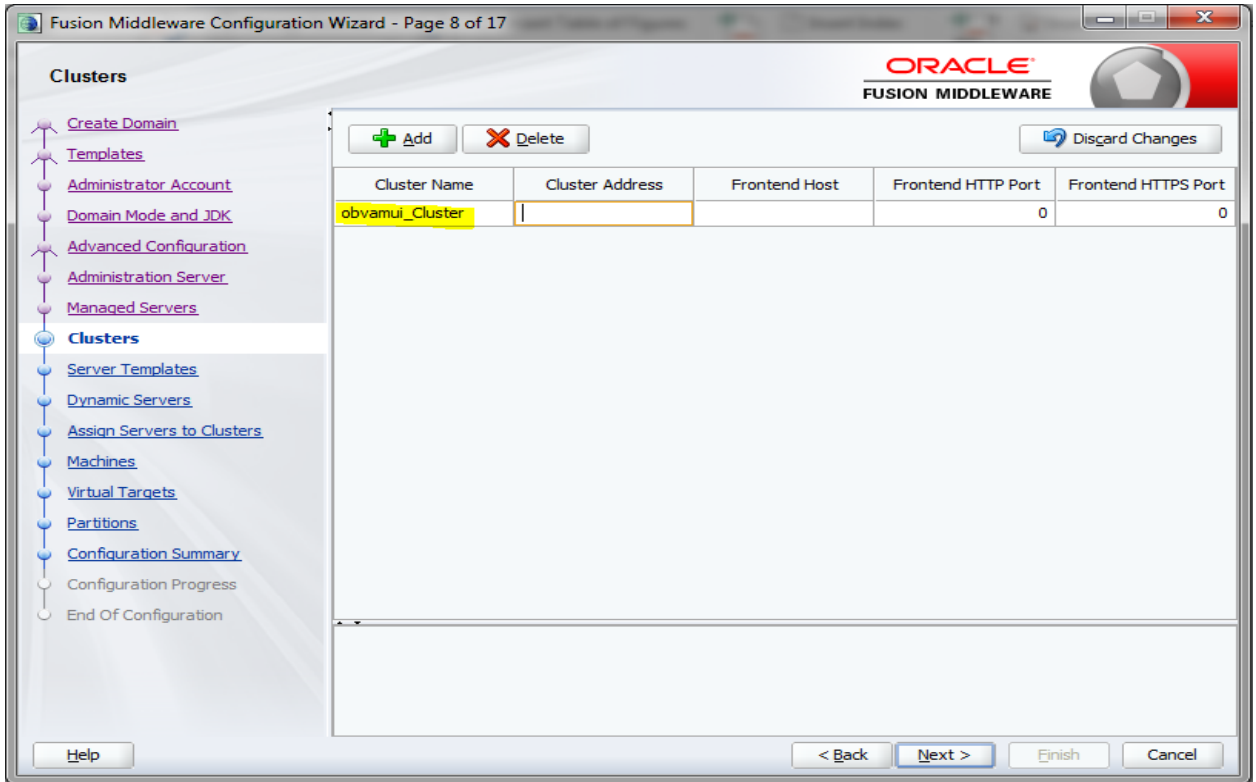
ORACLE
FUSION MIDDLEWARE

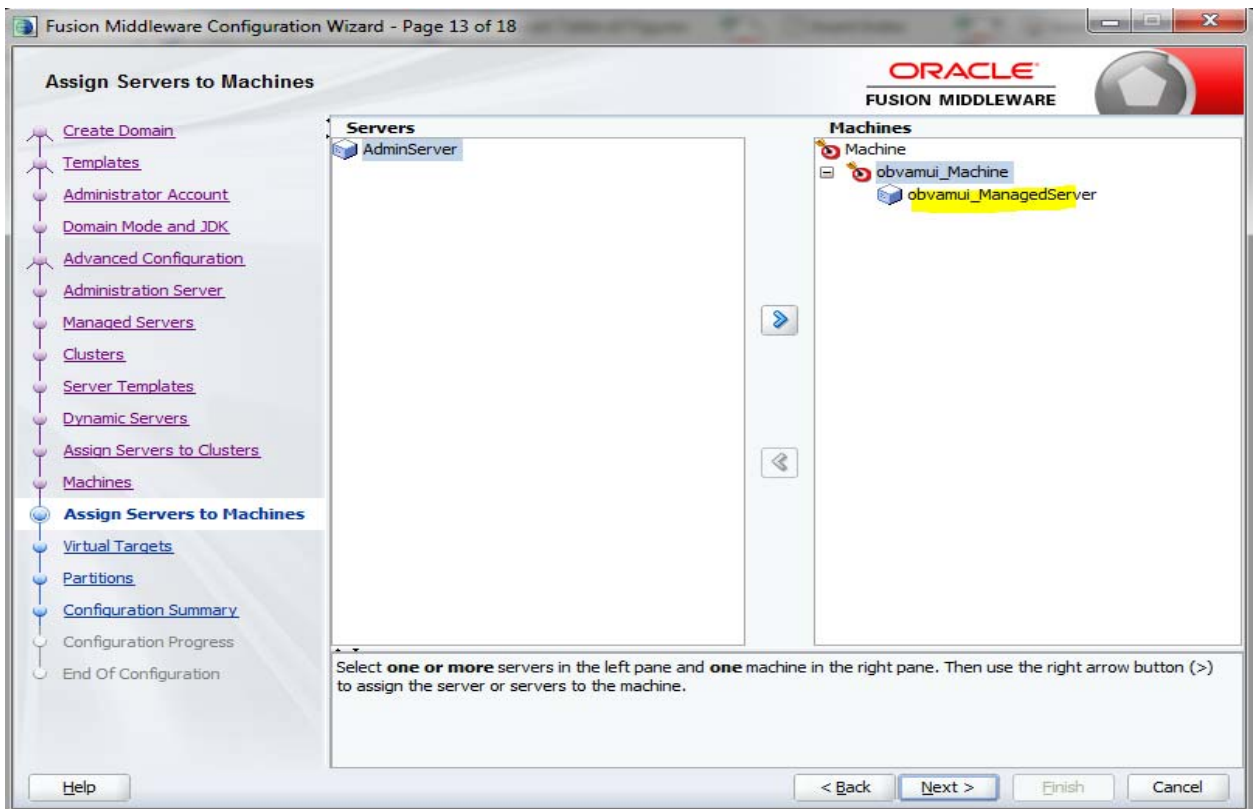
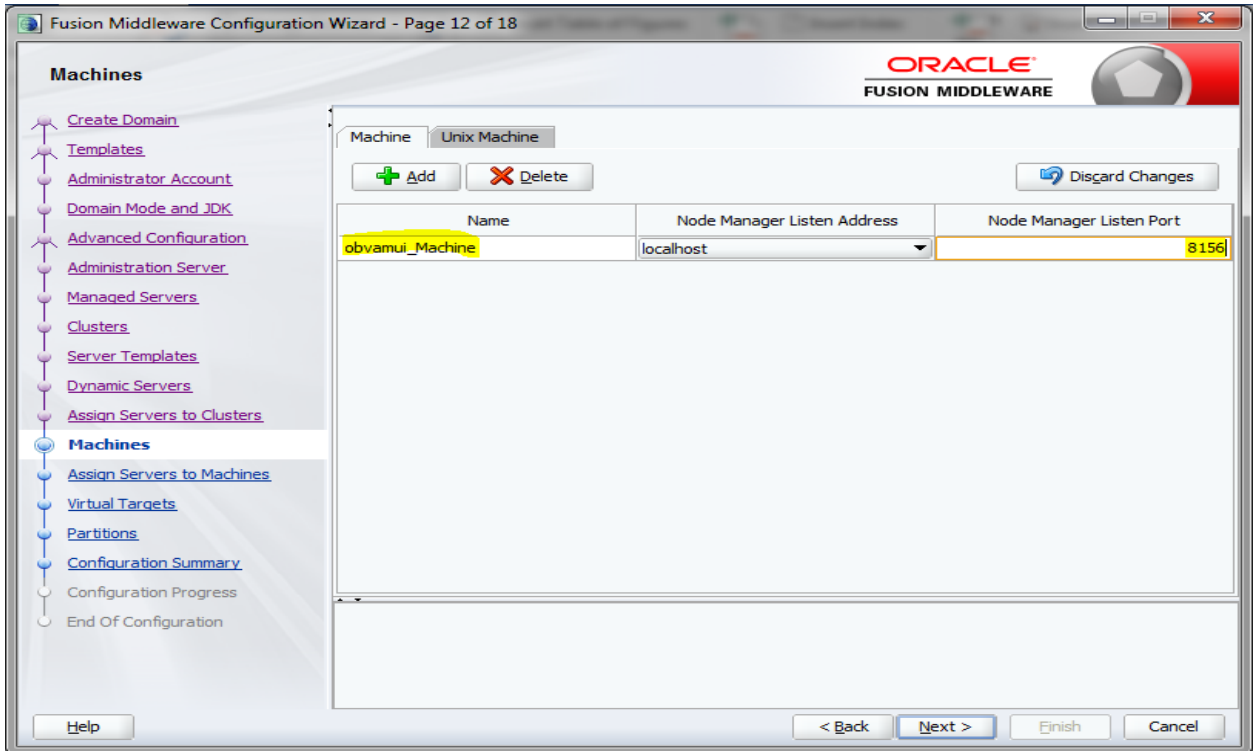
- Create Domain
- Templates
- Administrator Account
- Domain Mode and JDK
- Advanced Configuration
- Administration Server
- Managed Servers**
- Clusters
- Server Templates
- Machines
- Virtual Targets
- Partitions
- Configuration Summary
- Configuration Progress
- End Of Configuration

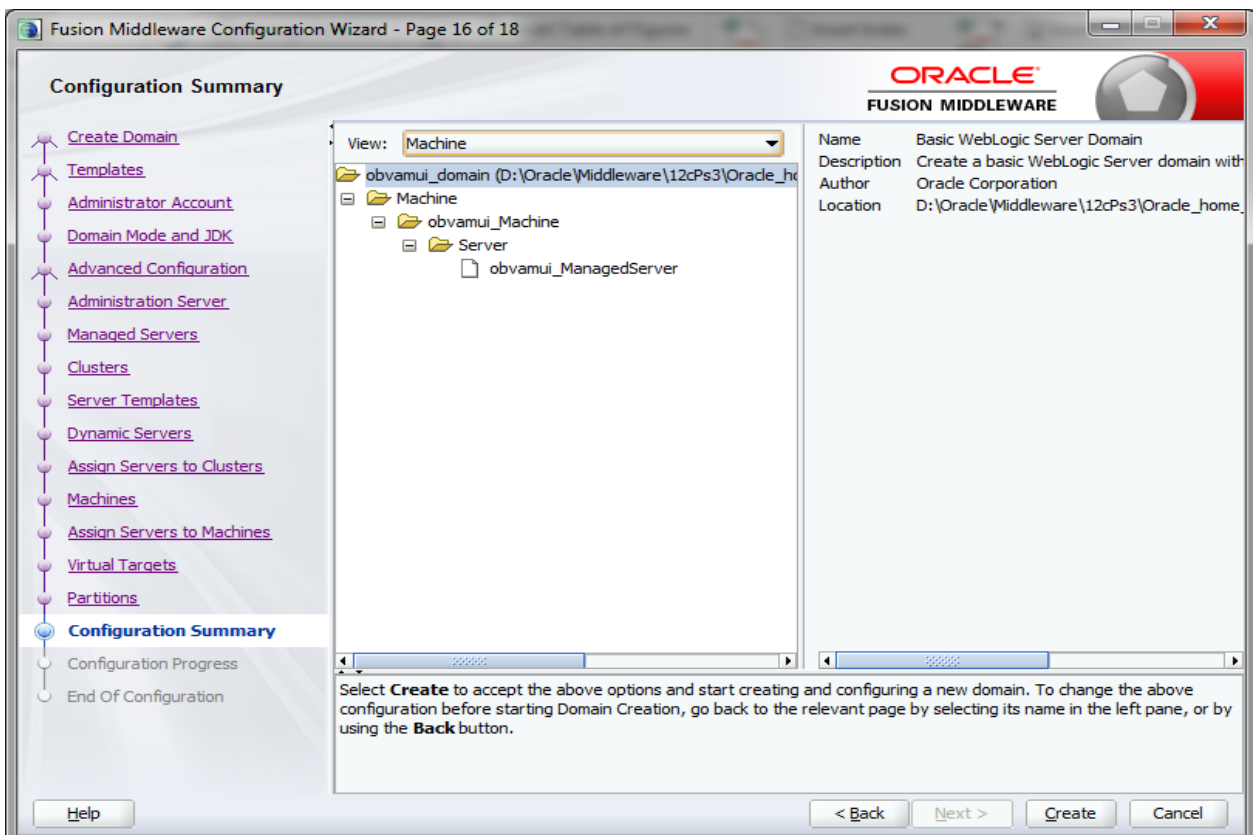
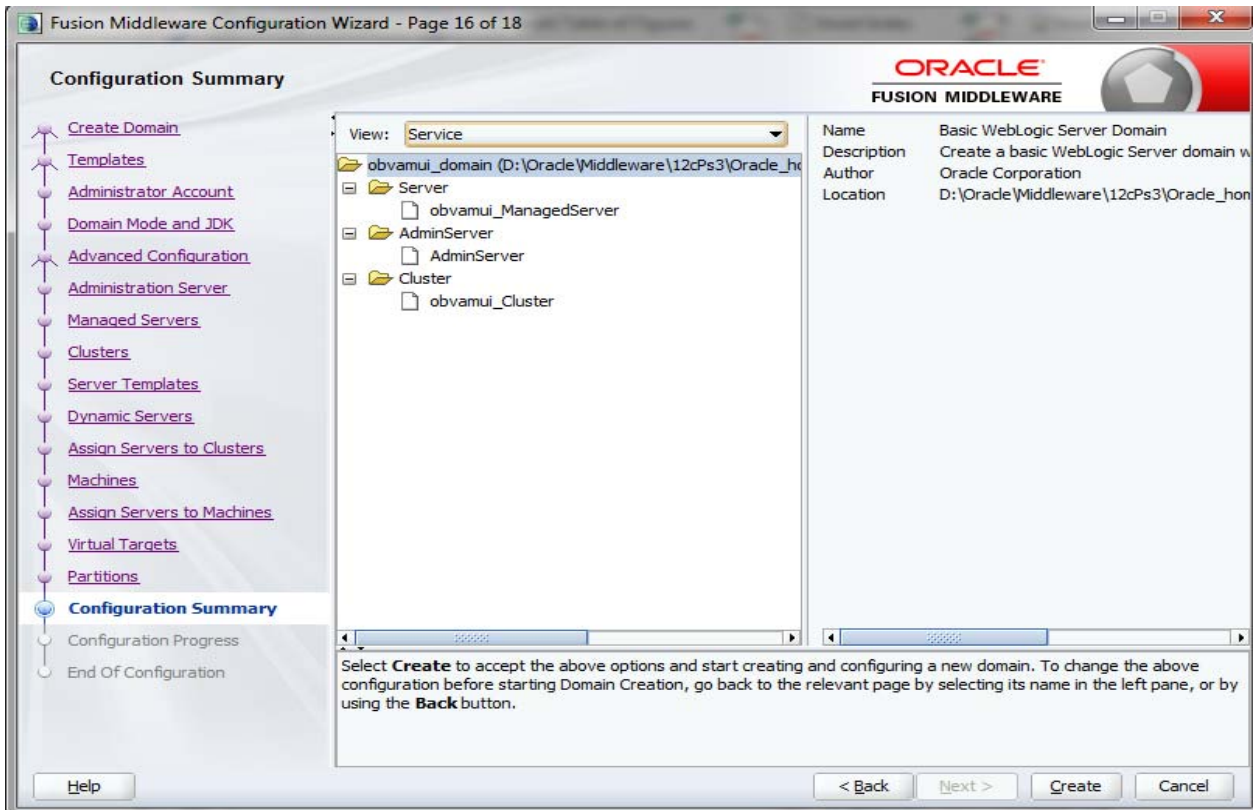
+ Add Clone X Delete Discard Changes

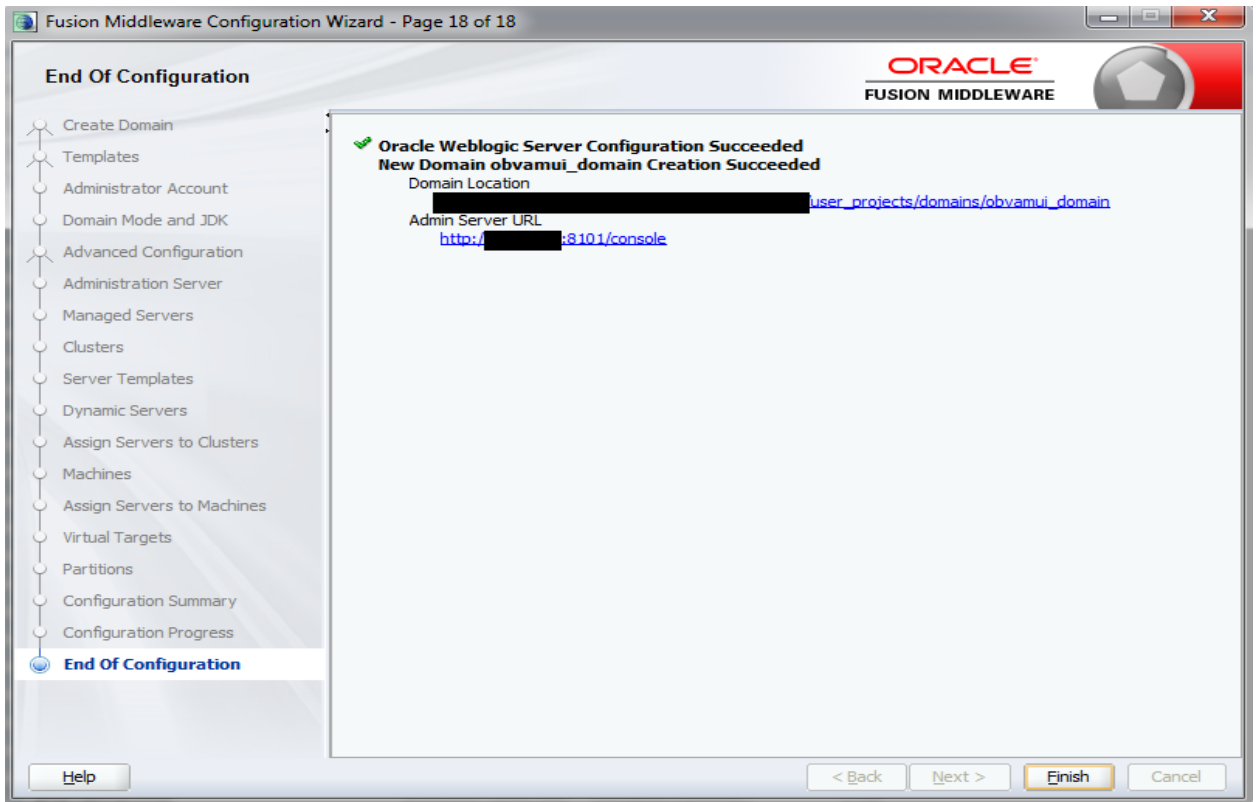
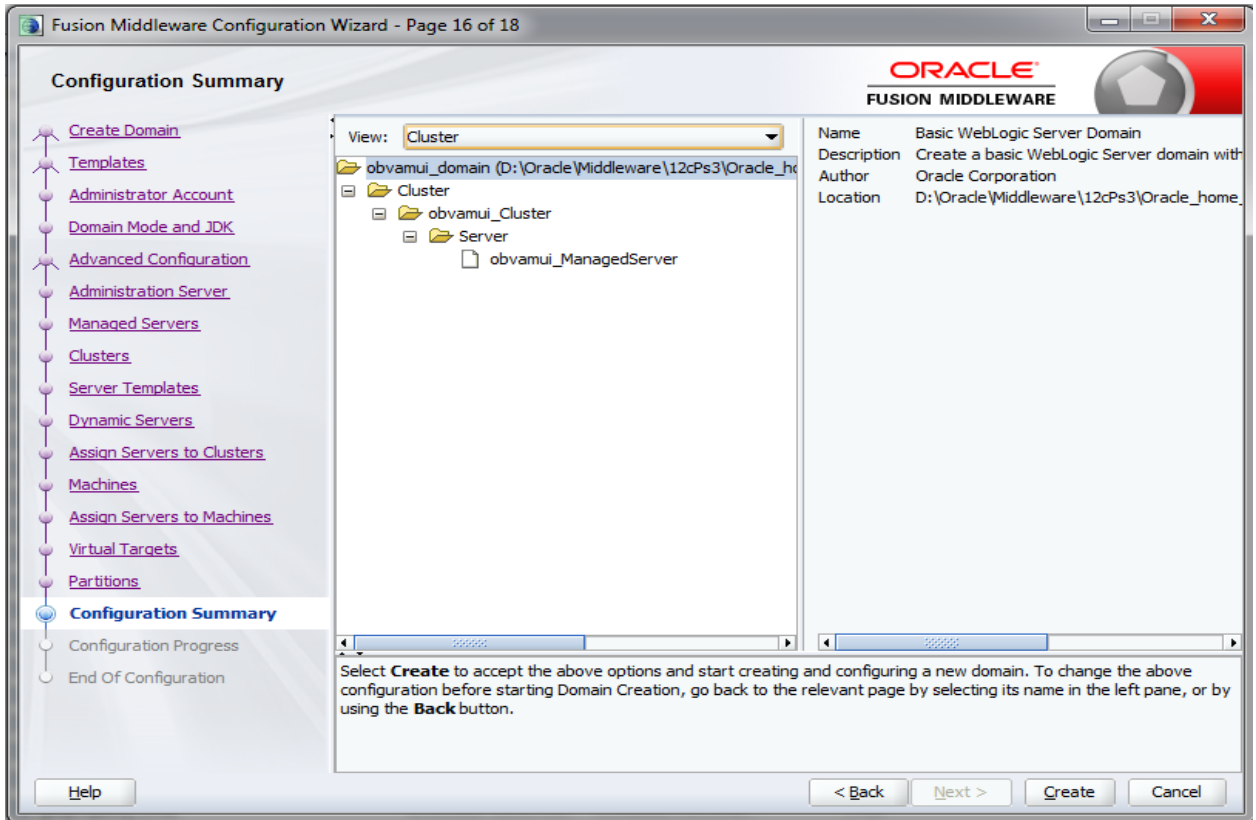
Server Name	Listen Address	Listen Port	Enable SSL	SSL Listen Port
obvamui_ManagedServer	All Local Addresses	8103	<input type="checkbox"/>	Disabled

Help < Back Next > Finish Cancel









Click the **Lock & Edit** button to modify, add or delete items in this domain.

Lock & Edit

Release Configuration

Domain Structure

- obvamui_domain
 - Domain Partitions
 - Environment
 - Servers
 - Clusters
 - Coherence Clusters
 - Resource Groups
 - Resource Group Templates
 - Machines
 - Virtual Hosts
 - Virtual Targets
 - Work Managers
 - Concurrent Templates
 - Resource Management

How do I...
 • Create Managed Servers

Summary of Servers

Configuration | Control

A server is an instance of WebLogic Server that runs in its own Java Virtual Machine (JVM) and has its own configuration. This page summarizes each server that has been configured in the current WebLogic Server domain.

Customize this table

Servers (Filtered - More Columns Exist)

Click the **Lock & Edit** button in the Change Center to activate all the buttons on this page.

New Clone Delete Showing 1 to 2 of 2 Previous | Next

Name	Type	Cluster	Machine	State	Health	Listen Port
AdminServer(admin)	Configured			RUNNING	OK	8101
obvamui_ManagedServer	Configured	obvamui_Cluster	obvamui_Machine	SHUTDOWN	Not reachable	8103

New Clone Delete Showing 1 to 2 of 2 Previous | Next

Click the **Lock & Edit** button to modify, add or delete items in this domain.

Lock & Edit

Release Configuration

Domain Structure

- obvamui_domain
 - Domain Partitions
 - Environment
 - Servers
 - Clusters
 - Coherence Clusters
 - Resource Groups
 - Resource Group Templates
 - Machines
 - Virtual Hosts
 - Virtual Targets
 - Work Managers
 - Concurrent Templates
 - Resource Management

Summary of Clusters

This page summarizes the clusters that have been configured in the current WebLogic Server domain. A cluster defines groups of WebLogic Server servers that work together to increase scalability and reliability.

Customize this table

Clusters (Filtered - More Columns Exist)

Click the **Lock & Edit** button in the Change Center to activate all the buttons on this page.

New Clone Delete Showing 1 to 1 of 1 Previous | Next

Name	Cluster Address	Cluster Messaging Mode	Migration Basis	Default Load Algorithm	Replication Type	Cluster Broadcast Channel	Servers
obvamui_Cluster		Unicast	Database	Round Robin	(None)		obvamui_ManagedServer

New Clone Delete Showing 1 to 1 of 1 Previous | Next

Click the **Lock & Edit** button to modify, add or delete items in this domain.

Lock & Edit

Release Configuration

Domain Structure

- obvamui_domain
 - Domain Partitions
 - Environment
 - Servers
 - Clusters
 - Coherence Clusters
 - Resource Groups
 - Resource Group Templates
 - Machines
 - Virtual Hosts
 - Virtual Targets
 - Work Managers
 - Concurrent Templates
 - Resource Management

Summary of Machines

A machine is the logical representation of the computer that hosts one or more WebLogic Server instances (servers). WebLogic Server uses configured machine names to determine the optimum server in a cluster to which certain tasks, such as HTTP session replication, are delegated. The Administration Server uses the machine definition in conjunction with Node Manager to start remote servers. This page displays key information about each machine that has been configured in the current WebLogic Server domain.

Customize this table

Machines

Click the **Lock & Edit** button in the Change Center to activate all the buttons on this page.

New Clone Delete Showing 1 to 1 of 1 Previous | Next

Name	Type
obvamui_Machine	Machine

New Clone Delete Showing 1 to 1 of 1 Previous | Next

2.1.1 Post Domain Creation Configurations

Once finished, refer oracle fusion middleware documents for more details on how to start admin server, node manager and managed servers.

1. Create boot.properties file under
/user_projects/domains/XXXXdomainNameXXX/servers/AdminServer/security
2. Edit boot.properties and give username and password details.
3. Go to /user_projects/domain/sms_domain/bin
4. Run startWeblogic.cmd (or .sh if operating system is linux)
5. Go to /user_projects/domains/ sms _domain/bin
6. Run setNMJavaHome.cmd (.sh)
7. Go to /user_projects/domains/sms_domain/nodemanager
8. And, edit nodemanager.properties as required (securelistner = false if ssl and keystore is not given) And in admin console also go to Machines > sms_Machine > Node Manager > Type > Plain > Save
9. Go to /user_projects/domains/sms_domain/bin
10. Run startNodeManager.cmd (or .sh if operating system is linux)

11. Start all managed servers.
12. Login console and verify servers and clusters.

Click the *Lock & Edit* button to modify, add or delete items in this domain.

Lock & Edit
Release Configuration

Domain Structure

- sms_domain
 - Domain Partitions
 - Environment
 - Servers
 - Clusters
 - Coherence Clusters
 - Resource Groups
 - Resource Group Templates
 - Machines
 - Virtual Hosts
 - Virtual Targets
 - Work Managers
 - Concurrent Templates
 - Resource Management

How do I...

- Create Managed Servers

Summary of Servers

Configuration Control

A server is an instance of WebLogic Server that runs in its own Java Virtual Machine (JVM) and has its own configuration. This page summarizes each server that has been configured in the current WebLogic Server domain.

Customize this table

Servers (Filtered - More Columns Exist)

Click the *Lock & Edit* button in the Change Center to activate all the buttons on this page.

New Clone Delete Showing 1 to 2 of 2 Previous | Next

Name	Type	Cluster	Machine	State	Health	Listen Port
AdminServer(admin)	Configured			RUNNING	OK	8010
WLS_SMS	Configured	sms_Cluster	sms_Machine	SHUTDOWN	Not reachable	8013

New Clone Delete Showing 1 to 2 of 2 Previous | Next

Click the *Lock & Edit* button to modify, add or delete items in this domain.

Lock & Edit
Release Configuration

Domain Structure

- sms_domain
 - Domain Partitions
 - Environment
 - Servers
 - Clusters
 - Coherence Clusters
 - Resource Groups
 - Resource Group Templates
 - Machines
 - Virtual Hosts
 - Virtual Targets
 - Work Managers
 - Concurrent Templates
 - Resource Management

Summary of Clusters

This page summarizes the clusters that have been configured in the current WebLogic Server domain. A cluster defines groups of WebLogic Server servers that work together to increase scalability and reliability.

Customize this table

Clusters (Filtered - More Columns Exist)

Click the *Lock & Edit* button in the Change Center to activate all the buttons on this page.

New Clone Delete Showing 1 to 1 of 1 Previous | Next

Name	Cluster Address	Cluster Messaging Mode	Migration Basis	Default Load Algorithm	Replication Type	Cluster Broadcast Channel	Servers
sms_Cluster		Unicast	Database	Round Robin	(None)		WLS_SMS

New Clone Delete Showing 1 to 1 of 1 Previous | Next

view changes and restarts

Click the *Lock & Edit* button to modify, add or delete items in this domain.

Lock & Edit
Release Configuration

Domain Structure

- rms_domain
 - Domain Partitions
 - Environment
 - Servers
 - Clusters
 - Coherence Clusters
 - Resource Groups
 - Resource Group Templates
 - Machines
 - Virtual Hosts
 - Virtual Targets
 - Work Managers
 - Concurrent Templates
 - Resource Management

Summary of Machines

A machine is the logical representation of the computer that hosts one or more WebLogic Server instances (servers). WebLogic Server uses configured machine names to determine the optimum server in a cluster to which certain tasks, such as HTTP session replication, are delegated. The Administration Server uses the machine definition in conjunction with Node Manager to start remote servers. This page displays key information about each machine that has been configured in the current WebLogic Server domain.

Customize this table

Machines

Click the *Lock & Edit* button in the Change Center to activate all the buttons on this page.

New Clone Delete Showing 1 to 1 of 1 Previous | Next

Name	Type
sms_Machine	Machine

New Clone Delete Showing 1 to 1 of 1 Previous | Next

3. Deployments

3.1 Steps to Deploy as Application

[Note: Server names, Domain names need not to be same as this doc provides]

Steps to Deploy archives as application on weblogic is same for all the above except for managed server and domain where we deploy will differ. Find the below screenshots to see how deployment of archive as application is done on weblogic.

1. Extract the zip file under “UI” folder.
2. Open `app-shell\common\js\util\config\config.json` file change “apiGatewayURL” to point your API gateway service.
3. Copy app-shell folder and paste it to your server. Example: `scratch/deployment`.
4. Open Weblogic console and navigate to the Deployments

Summary of Deployments

This page displays the list of Java EE applications and standalone application modules installed to this domain.

You can update (redeploy) or delete installed applications and modules from the domain by selecting the checkbox next to the application name and then using the controls on this page.

To install a new application or module for deployment to targets in this domain, click **Install**.

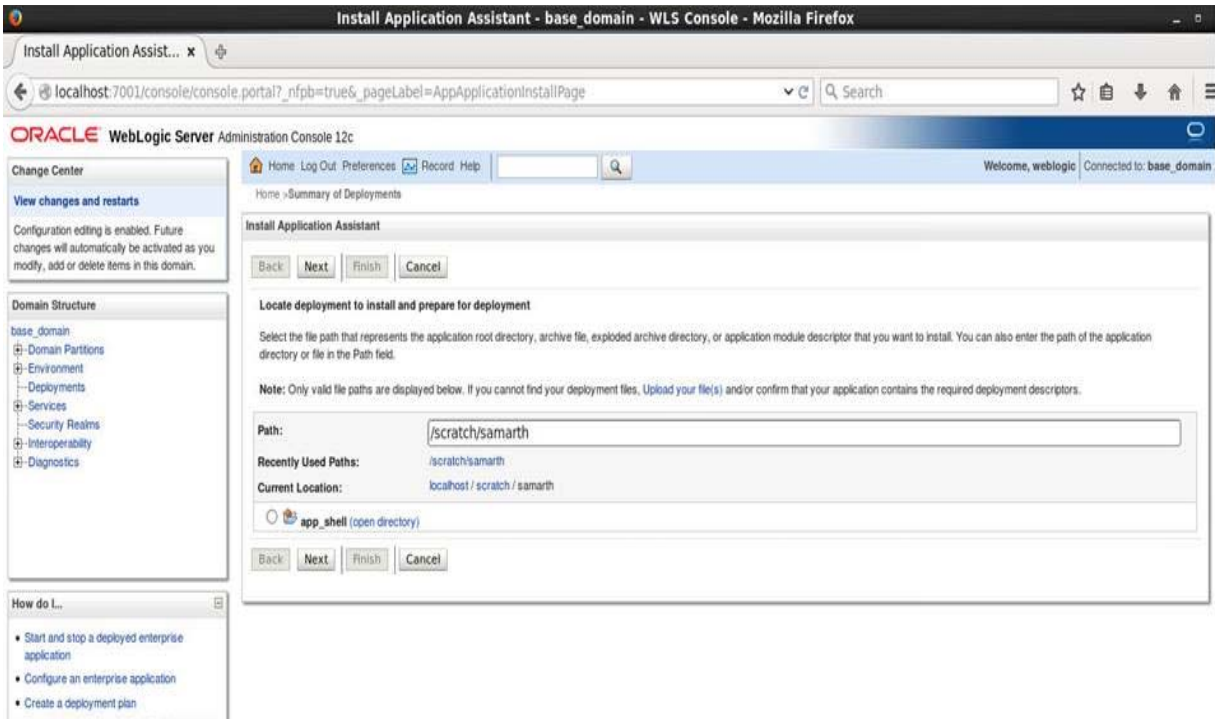
[Customize this table](#)

<input type="checkbox"/>	Name	State	Health	Type	Targets	Scope	Domain Partitions	Deployment Order
<input type="checkbox"/>	app_shell	Active	OK	Web Application	AdminServer	Global		100

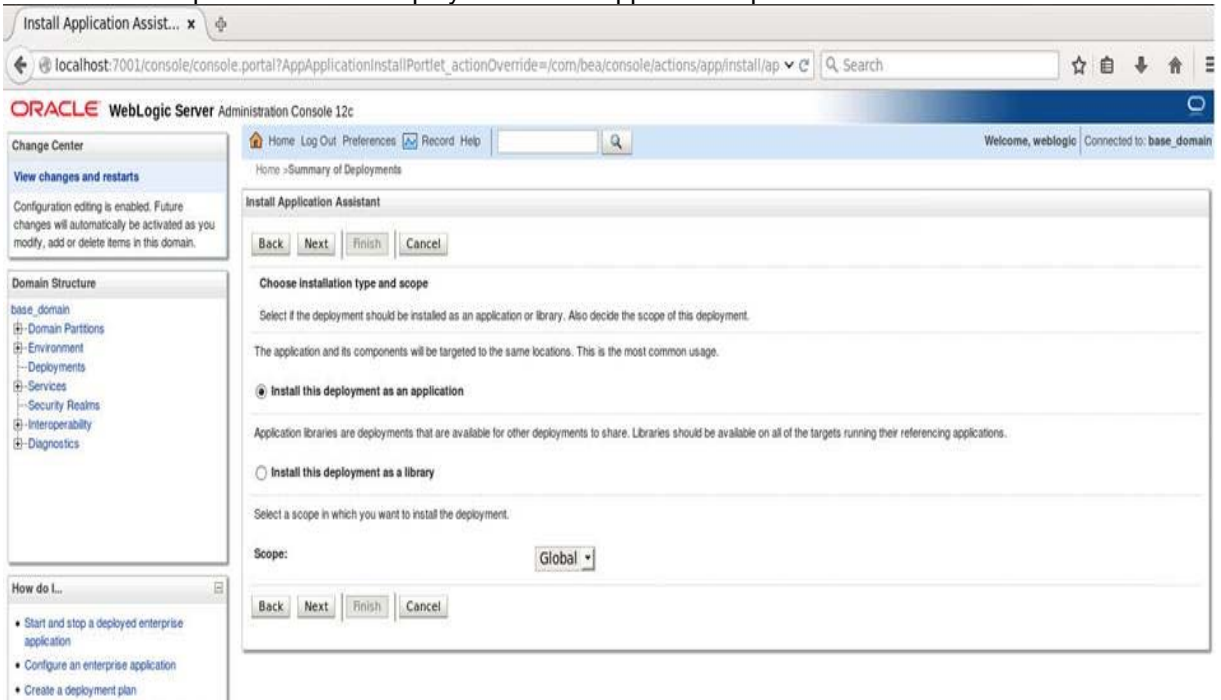
localhost:7001/console/console.portal?_nfpb=true&_pageLabel=AppDeploymentsControlPage&AppD...ofPortlethandle=com.bea.console.handlers.IMXHandle!com.bea.Nam

Authentic

5. Click **install**, paste folder location on **path** and press “Enter”, select the `app_shell` directory.



6. Check the option install this deployment as an application option and click Next



7. Name the **deployment as app_shell** and click **Next**.

8. Check the option **"No i will review the configuration later"** and click **Finish**.

9. Navigate to the **control** tab click on **start** and select the option **"servicing all requests"** and Click on **Yes**.

The screenshot shows the Oracle WebLogic Server Administration Console 12c interface. The main content area is titled "Summary of Deployments" and includes a "Control" tab. Below the tab, there is a table of deployments. The table has columns for "State", "Health", "Type", "Targets", "Scope", and "Domain Partitions". The deployment "app-shell" is listed with a state of "Active" and a health of "OK".

Deployment Name	State	Health	Type	Targets	Scope	Domain Partitions
app-shell	Active	OK	Web Application	AdminServer	Global	

10. Verify state is **Active**. If yes please try to open the URL in this format.
<http://HostName:PortNo/app-shell/>