

Oracle Banking Corporate Lending Process Management

Annexure

Release 14.1.0.0.0

Part No. E97309-01

July 2018





Oracle Banking Corporate Lending Process Management Annexure  
July 2018  
Version 14.1.0.0.0

Oracle Financial Services Software Limited  
Oracle Park  
Off Western Express Highway  
Goregaon (East)  
Mumbai, Maharashtra 400 063  
India

Worldwide Inquiries:  
Phone: +91 22 6718 3000  
Fax: +91 22 6718 3001  
<https://www.oracle.com/industries/financial-services/index.html>

Copyright © 2018, Oracle and/or its affiliates. All rights reserved.

Oracle and Java are registered trademarks of Oracle and/or its affiliates. Other names may be trademarks of their respective owners.

**U.S. GOVERNMENT END USERS:** Oracle programs, including any operating system, integrated software, any programs installed on the hardware, and/or documentation, delivered to U.S. Government end users are “commercial computer software” pursuant to the applicable Federal Acquisition Regulation and agency-specific supplemental regulations. As such, use, duplication, disclosure, modification, and adaptation of the programs, including any operating system, integrated software, any programs installed on the hardware, and/or documentation, shall be subject to license terms and license restrictions applicable to the programs. No other rights are granted to the U.S. Government.

This software or hardware is developed for general use in a variety of information management applications. It is not developed or intended for use in any inherently dangerous applications, including applications that may create a risk of personal injury. If you use this software or hardware in dangerous applications, then you shall be responsible to take all appropriate failsafe, backup, redundancy, and other measures to ensure its safe use. Oracle Corporation and its affiliates disclaim any liability for any damages caused by use of this software or hardware in dangerous applications.

This software and related documentation are provided under a license agreement containing restrictions on use and disclosure and are protected by intellectual property laws. Except as expressly permitted in your license agreement or allowed by law, you may not use, copy, reproduce, translate, broadcast, modify, license, transmit, distribute, exhibit, perform, publish or display any part, in any form, or by any means. Reverse engineering, disassembly, or decompilation of this software, unless required by law for interoperability, is prohibited.  
The information contained herein is subject to change without notice and is not warranted to be error-free. If you find any errors, please report them to us in writing.

This software or hardware and documentation may provide access to or information on content, products and services from third parties. Oracle Corporation and its affiliates are not responsible for and expressly disclaim all warranties of any kind with respect to third-party content, products, and services. Oracle Corporation and its affiliates will not be responsible for any loss, costs, or damages incurred due to your access to or use of third-party content, products, or services.

# Table of Contents

- 1. ANNEXURE..... 1-1
  - 1.1 INTRODUCTION ..... 1-1
  - 1.2 HOW TO CREATE DOMAIN AND CLUSTER CONFIGURATION ..... 1-1
    - 1.2.1 *Post Domain Creation Configurations* ..... 1-11
  - 1.3 HOW TO CREATE DATASOURCE ..... 1-12
  - 1.4 HOW TO DEPLOY APPLICATION ..... 1-17
  - 1.5 HOW TO RESTART SERVERS ..... 1-23
  - 1.6 HOW TO COMPILE DDL AND INC ..... 1-27
  - 1.7 HOW TO CHECK PORT NUMBER ..... 1-27

# 1. ANNEXURE

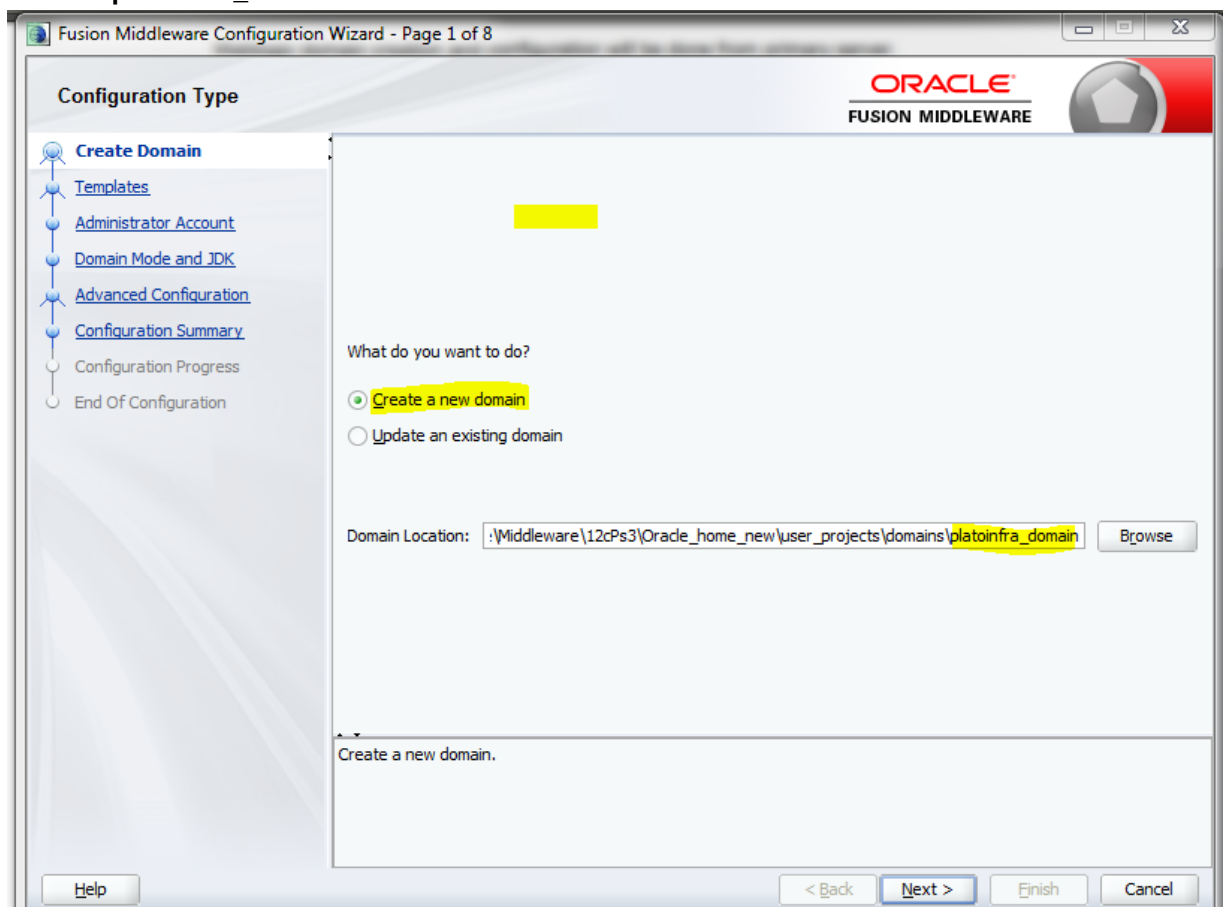
## 1.1 Introduction

This document is a supporting document, while installing OBCLPM application you may find reference.

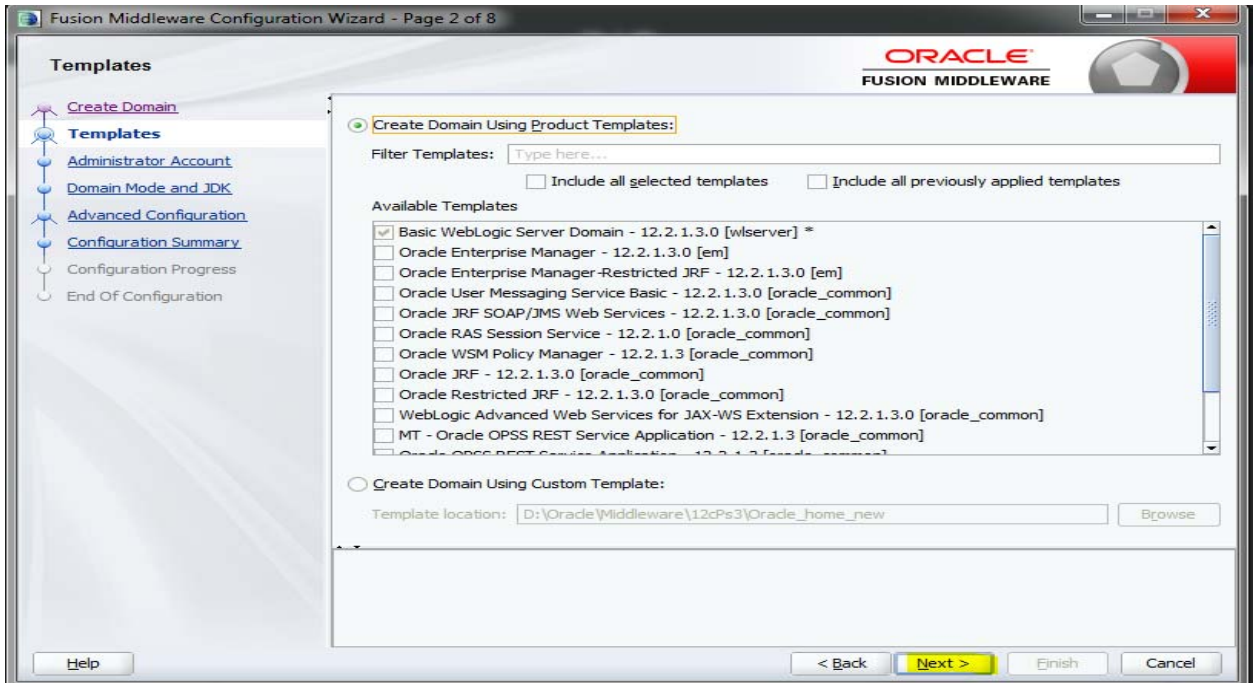
## 1.2 How to create Domain and Cluster Configuration

[Note: Name need not to be same as provided in Screenshot.]

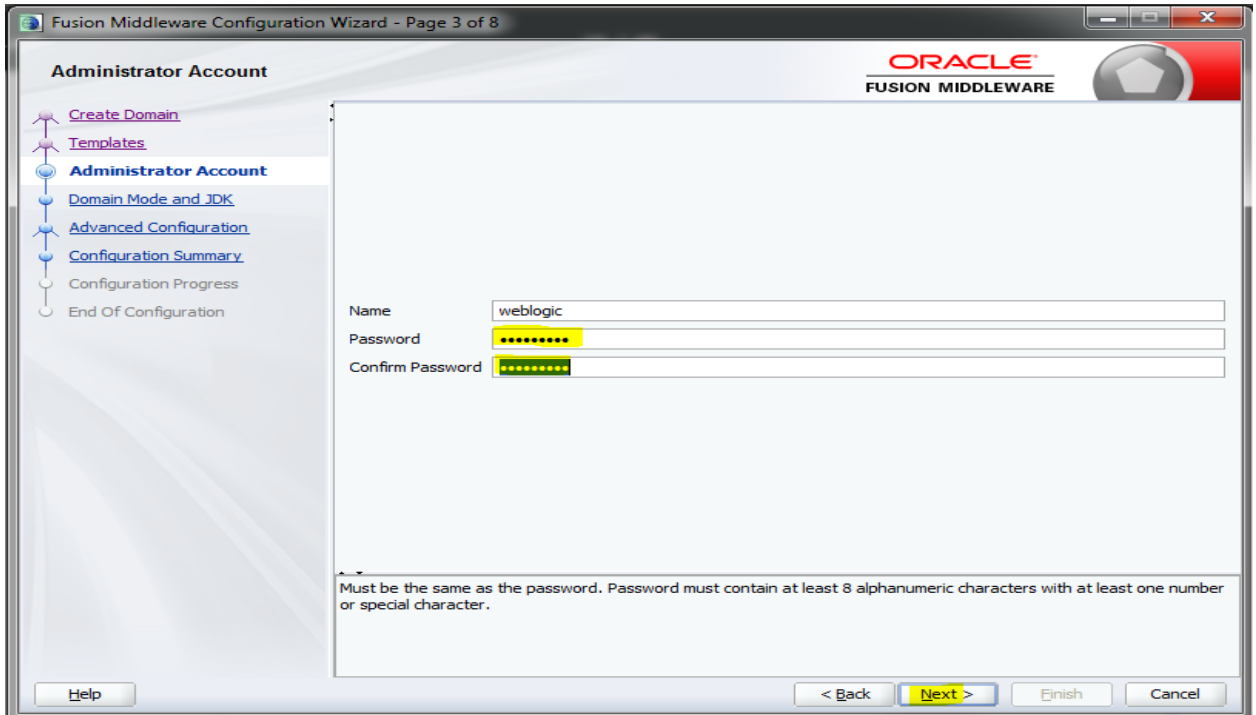
1. Go to `/oracle_common/common/bin` and run `config.cmd` (or `.sh` if operating system is linux) and below the below screen shots to create domain with required cluster and server configurations.
2. Select **Create a new domain** and provide domain name. Example: **"platoinfra\_domain"**



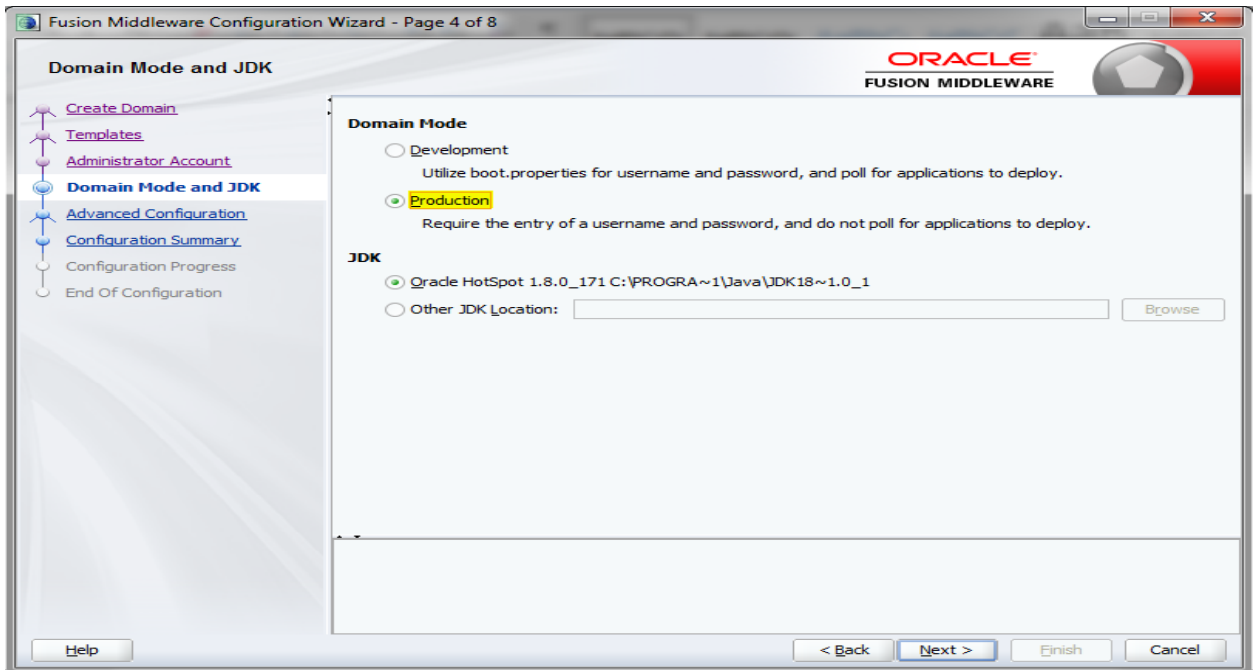
3. Click **next** to create simple domain with default templates.



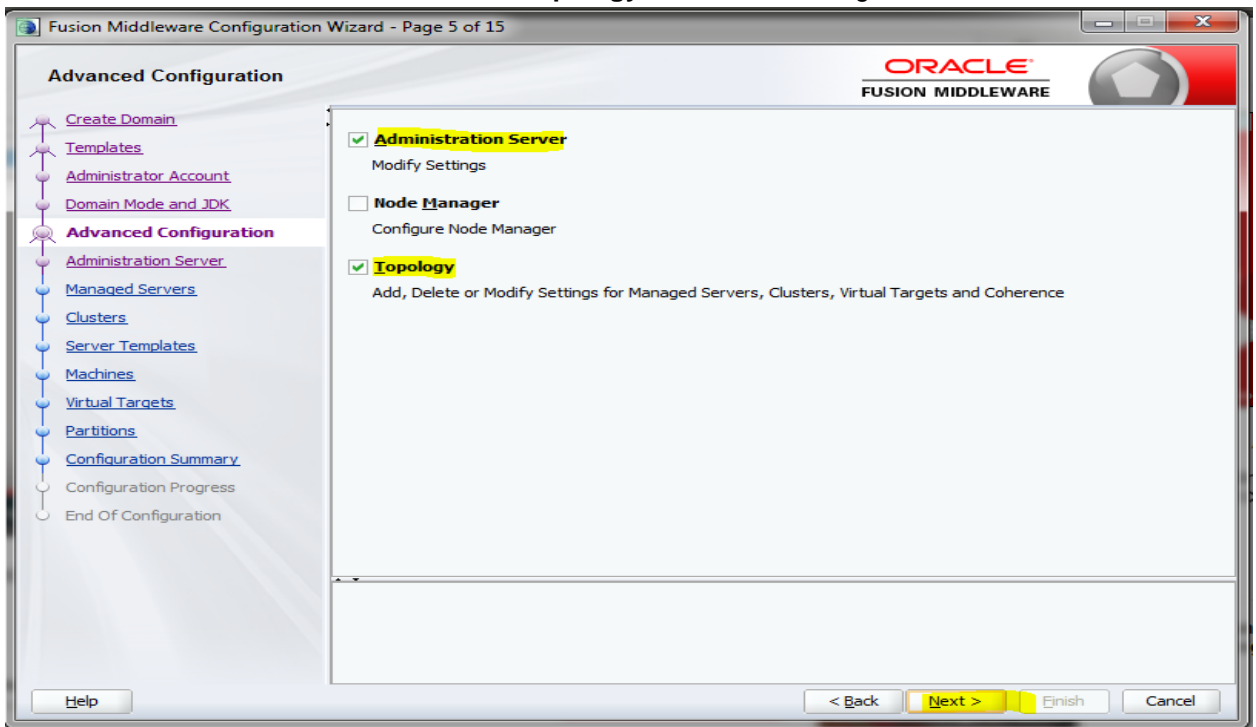
4. Set password and confirm, click **next** to proceed.



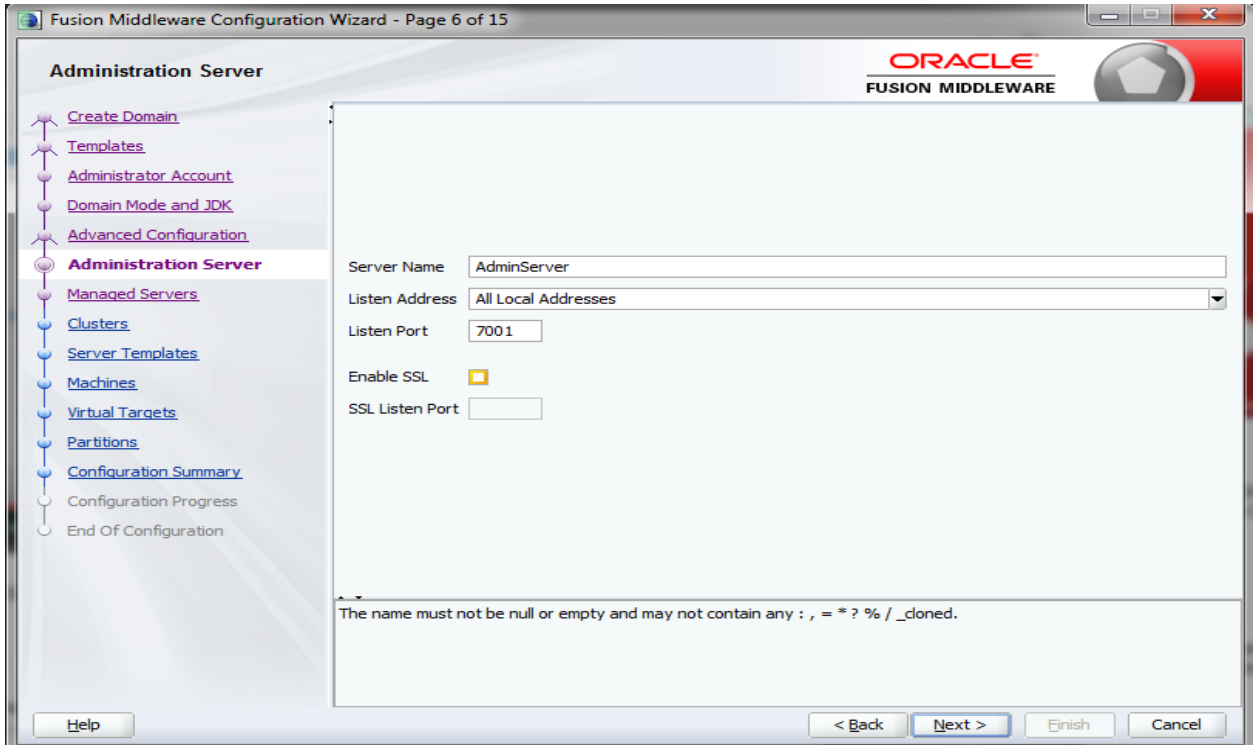
5. Select Domain mode as **Production** and select **jdk**.



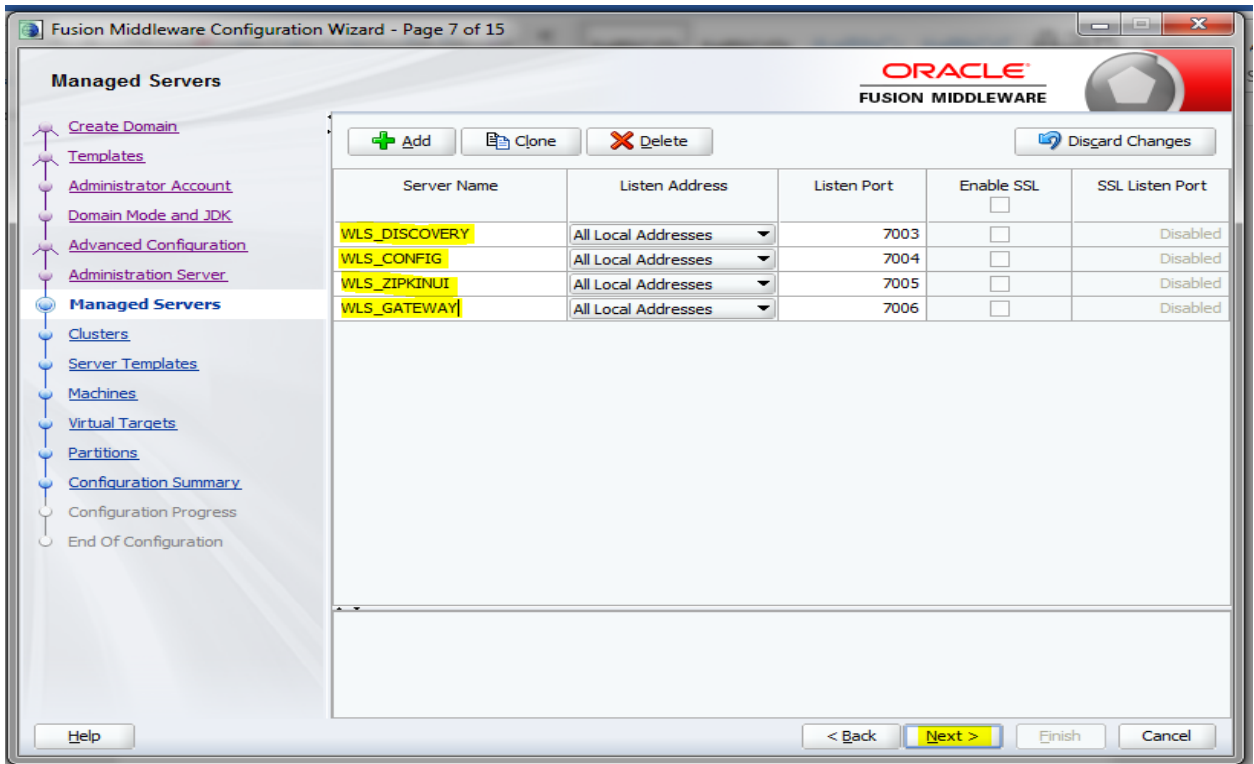
6. Select **Administration Server** and **Topology** in advanced configurations.



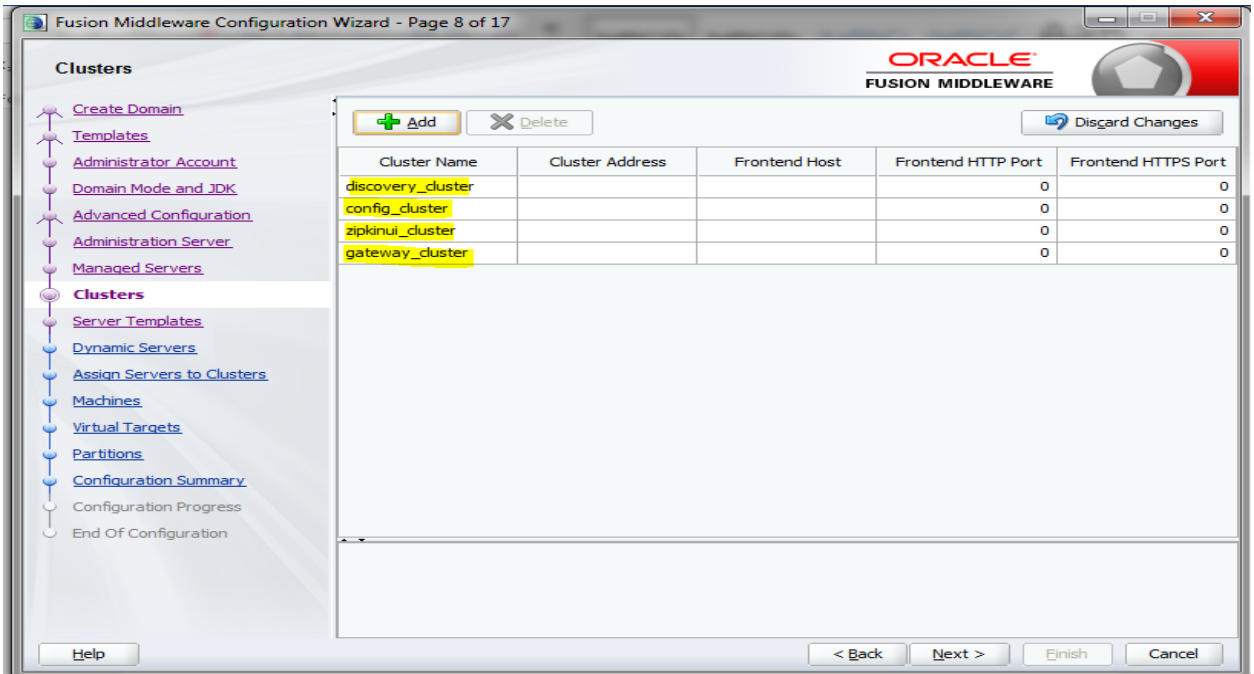
7. Edit the **port** and **host** configurations as required and click **next**.



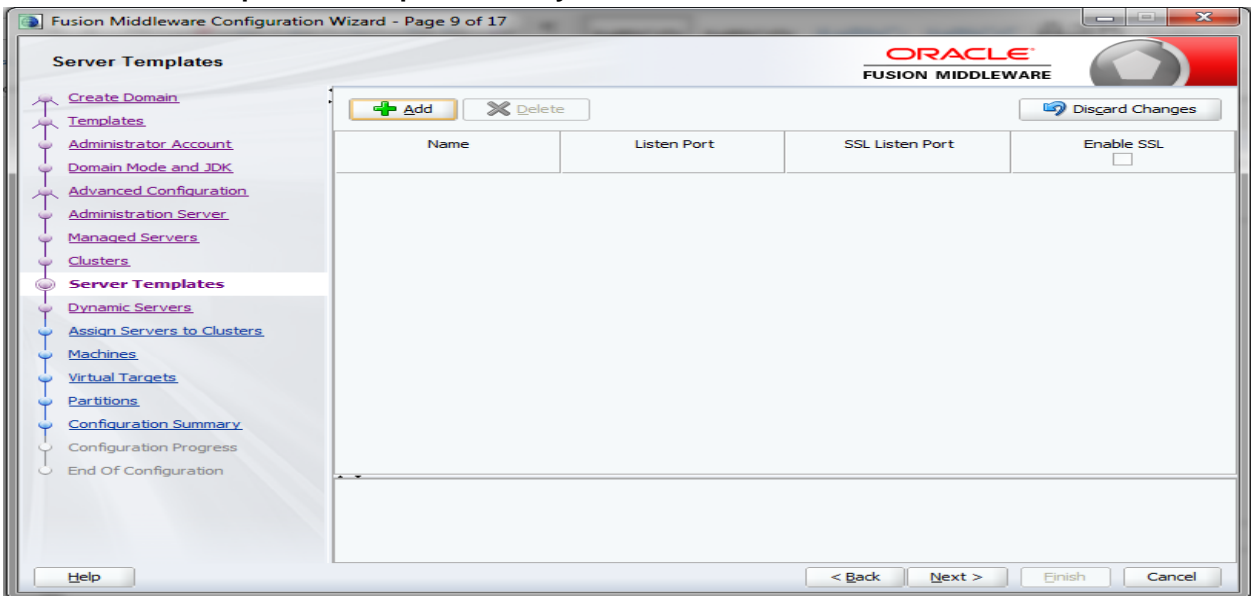
8. Add managed servers **and provide meaningful name**, edit listen address and port as required. Example: **WLS\_DISCOVERY**, **WLS\_CONFIG**, **WLS\_ZIPKINUI**, **WLS\_GATEWAY**.



9. Add 4 clusters one for each **managed servers**, name the clusters as 'discovery\_cluster, config\_cluster, zipkinui\_cluster, gateway\_cluster'.

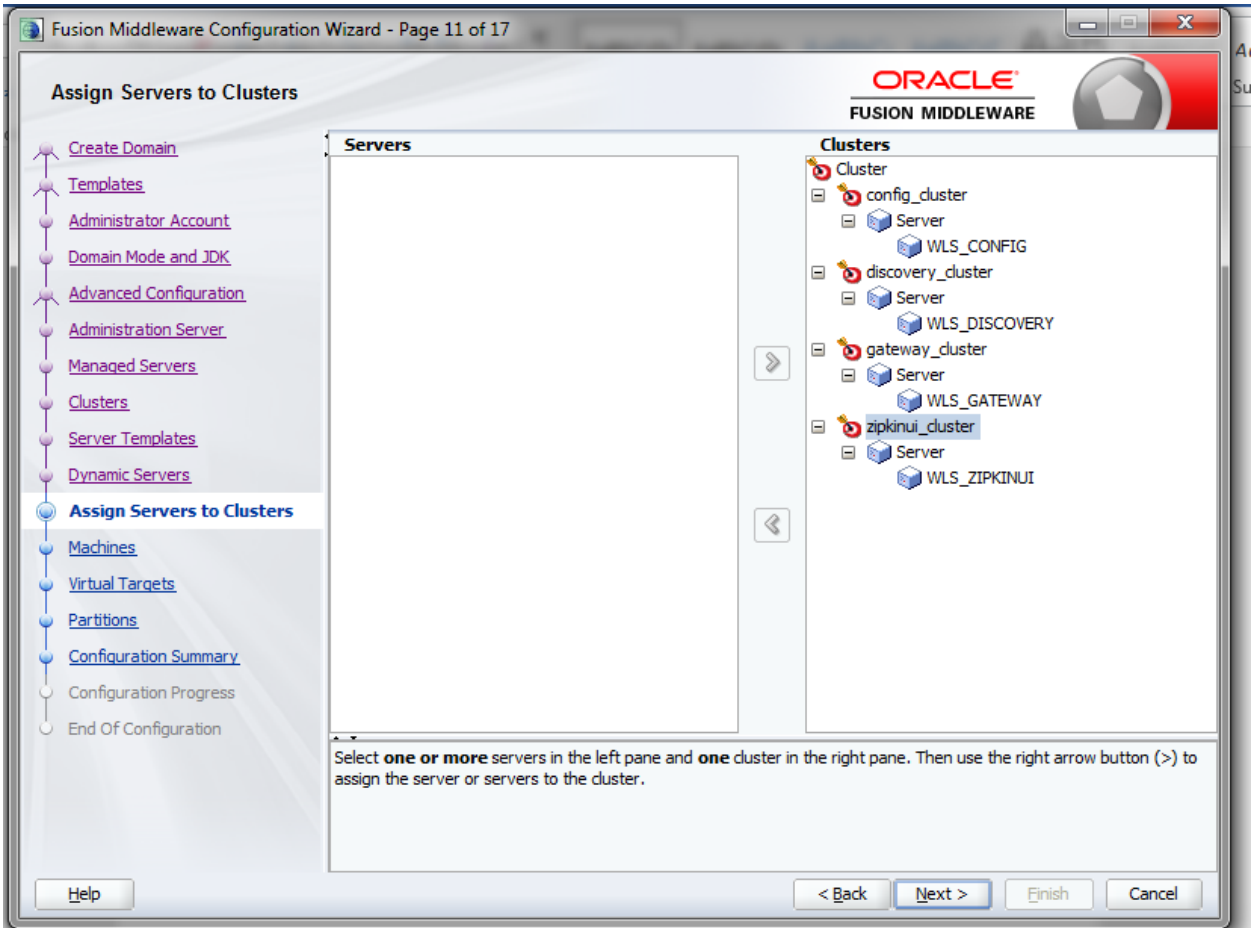


10. You can skip server templates and dynamic servers.

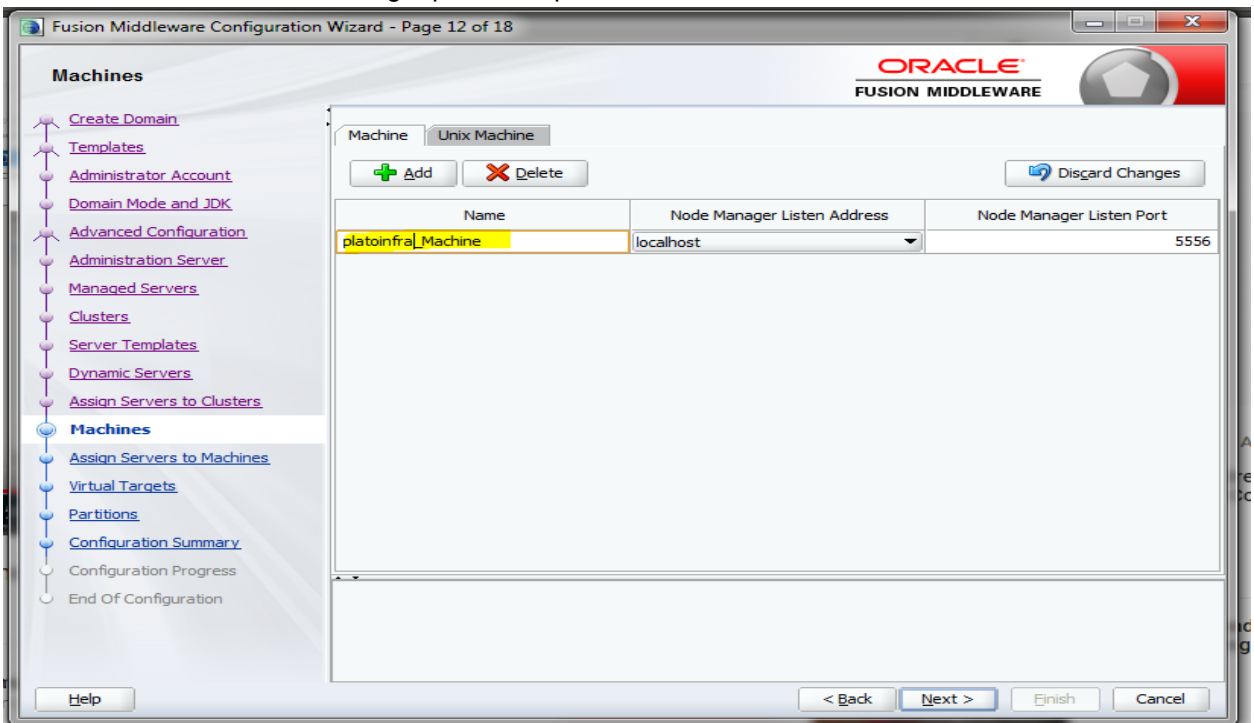


11. Assign clusters with servers.

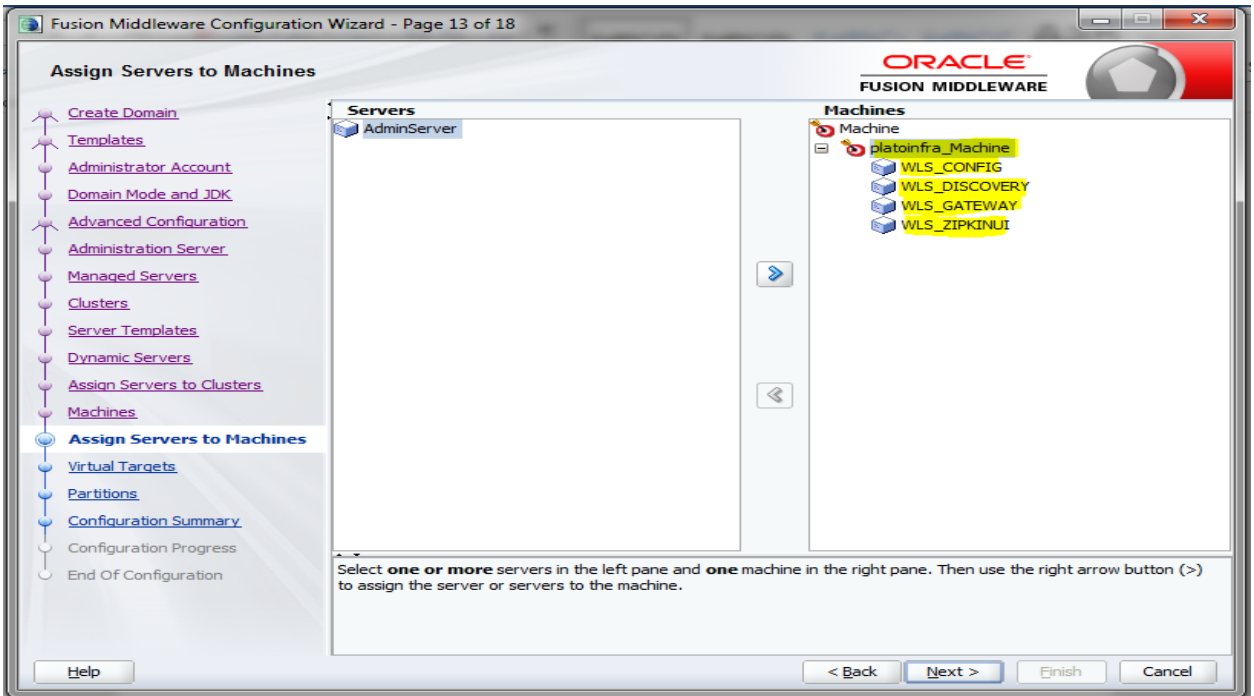




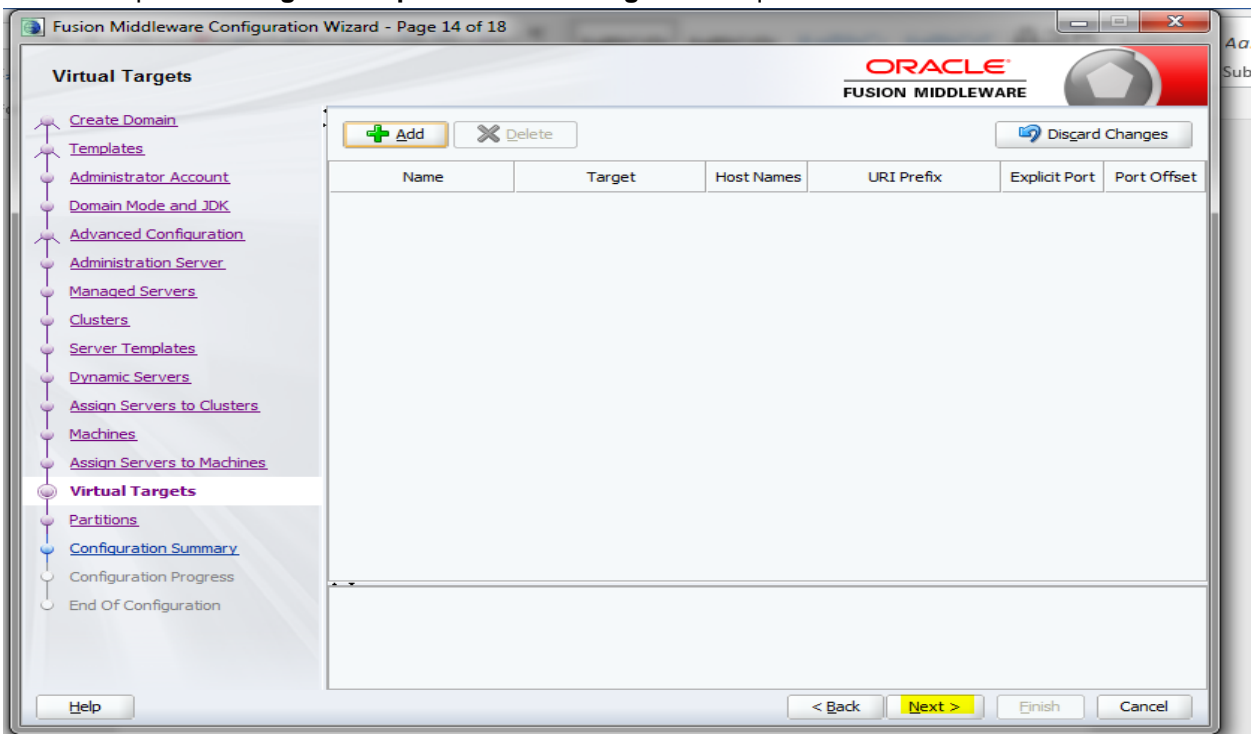
12. Add **Machine/ Unix Machine** based on operating system and configure name, listen address and node manager port as required.

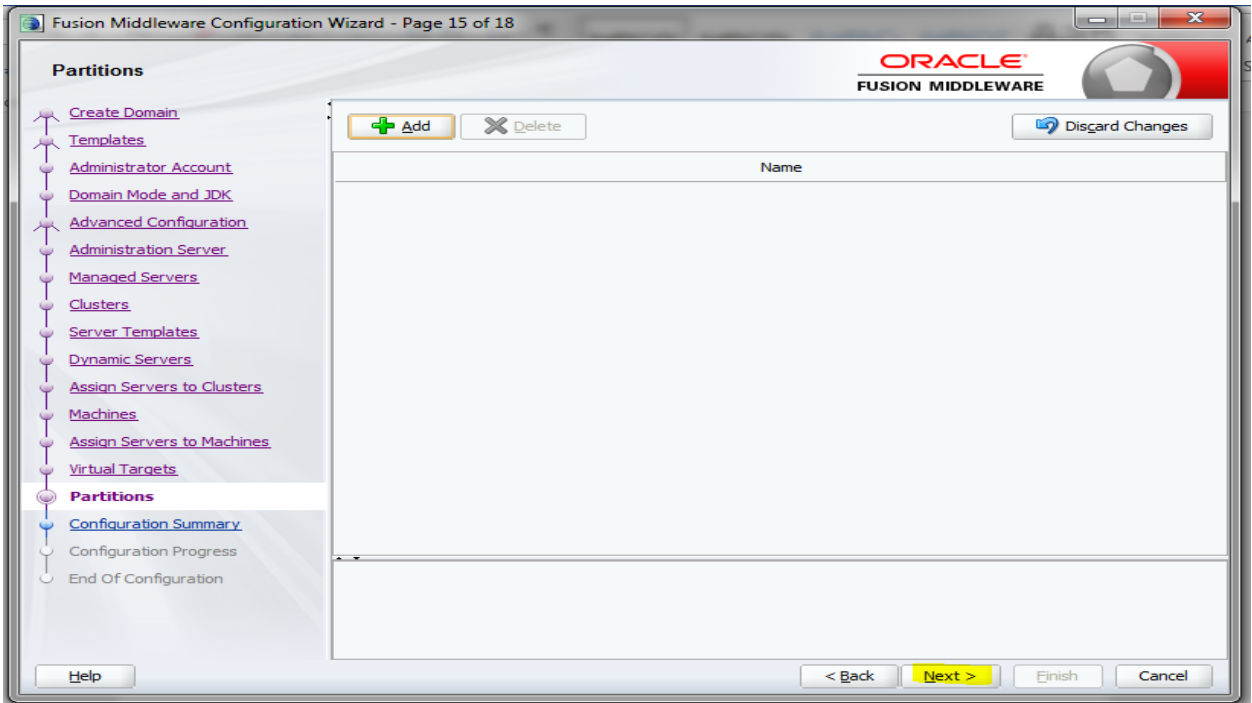


13. Map all managed servers under the machine created.

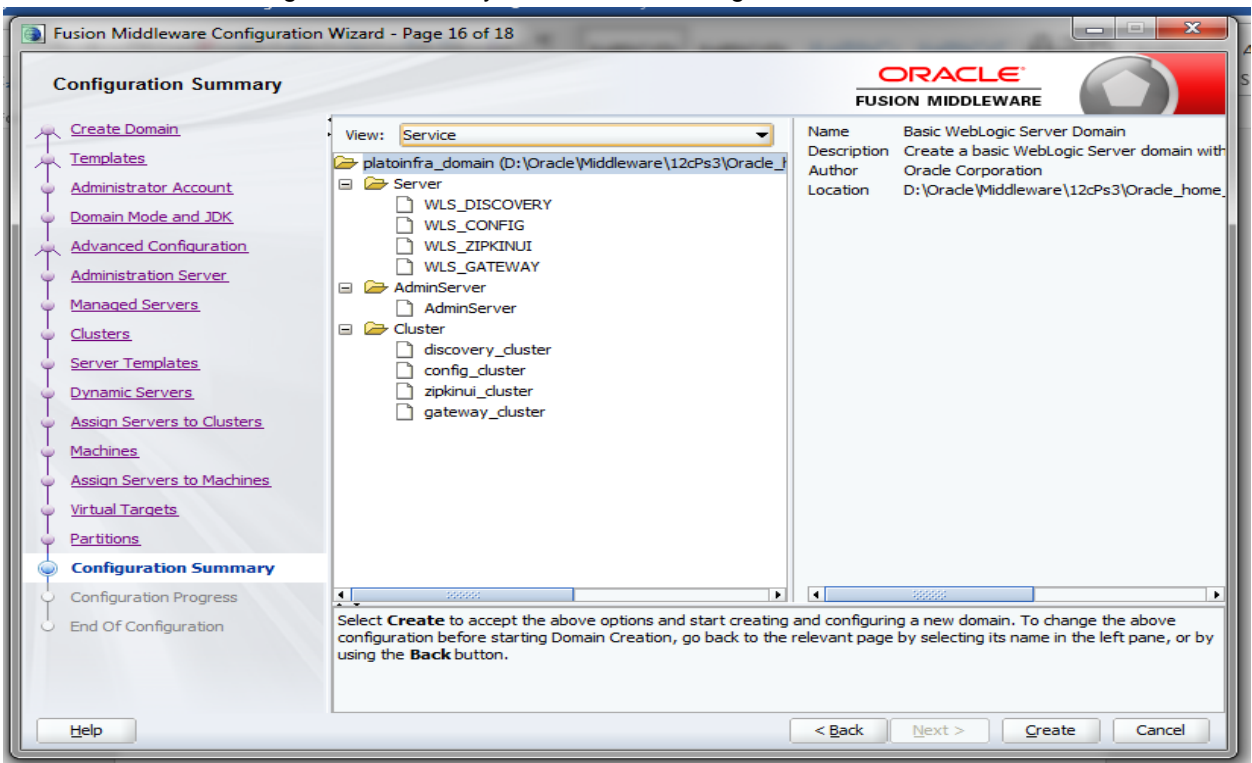


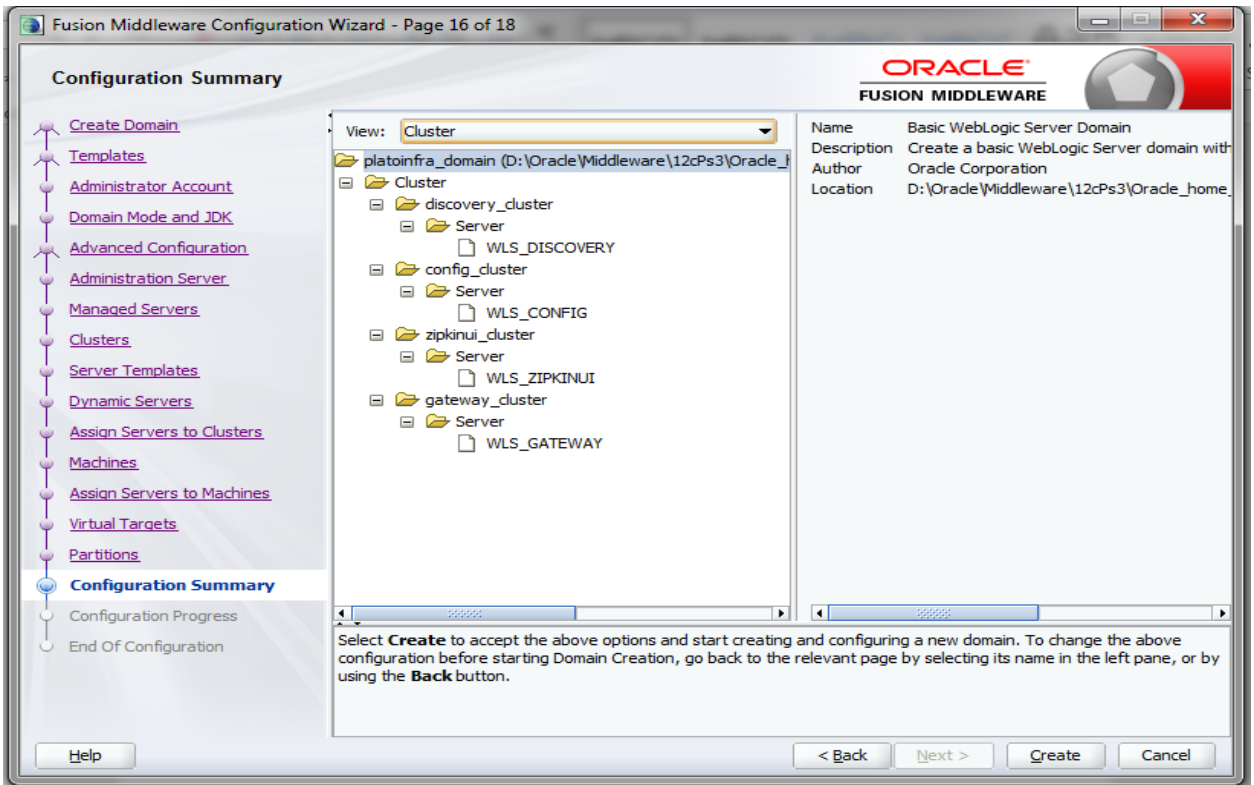
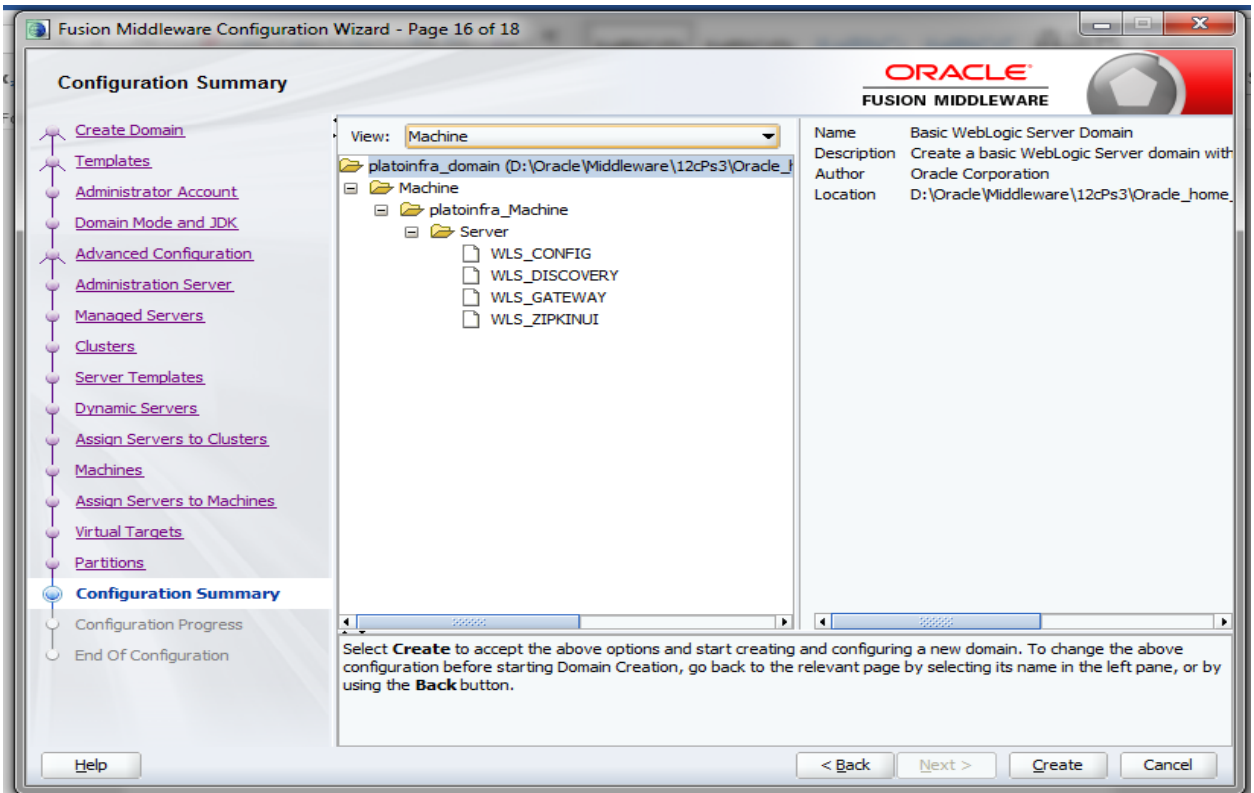
14. Skip virtual targets and partitions or configure as required.

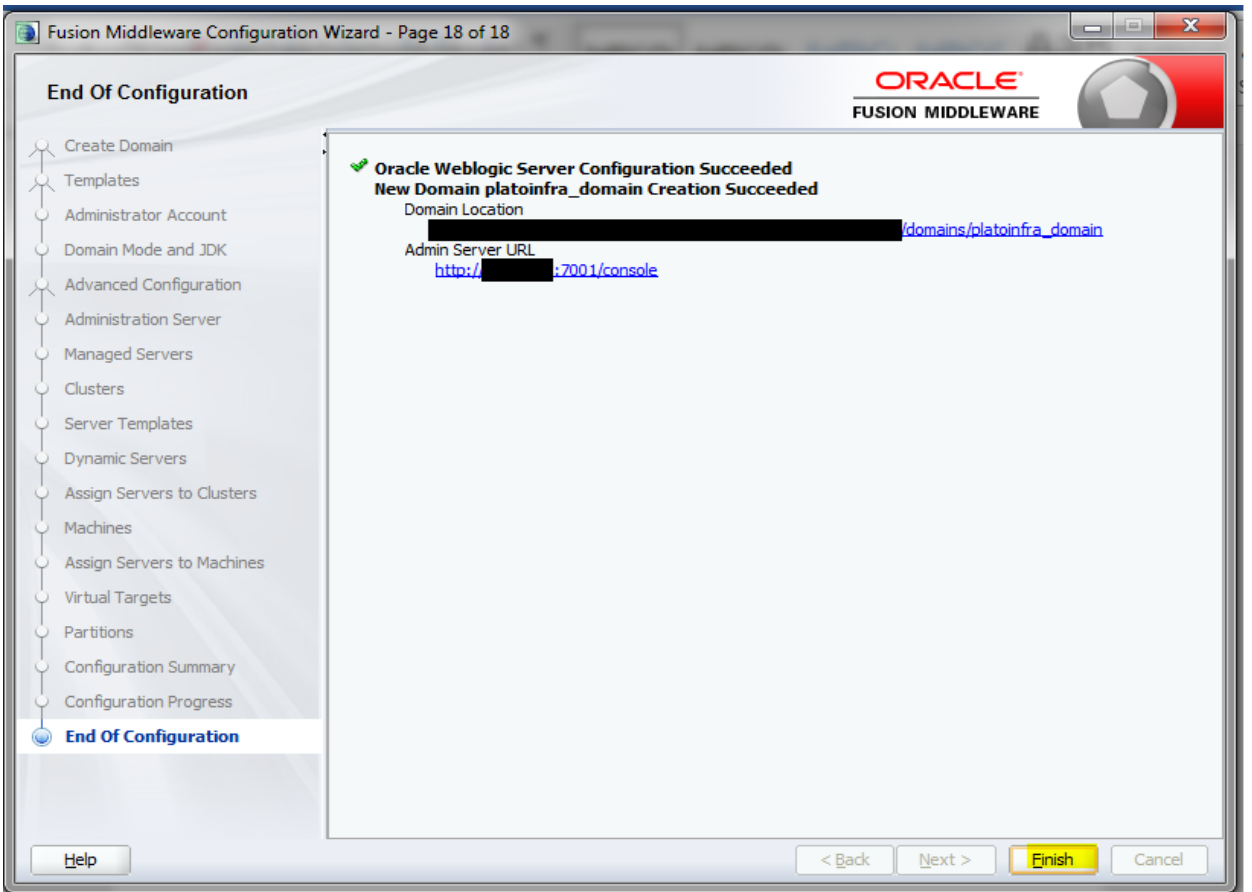
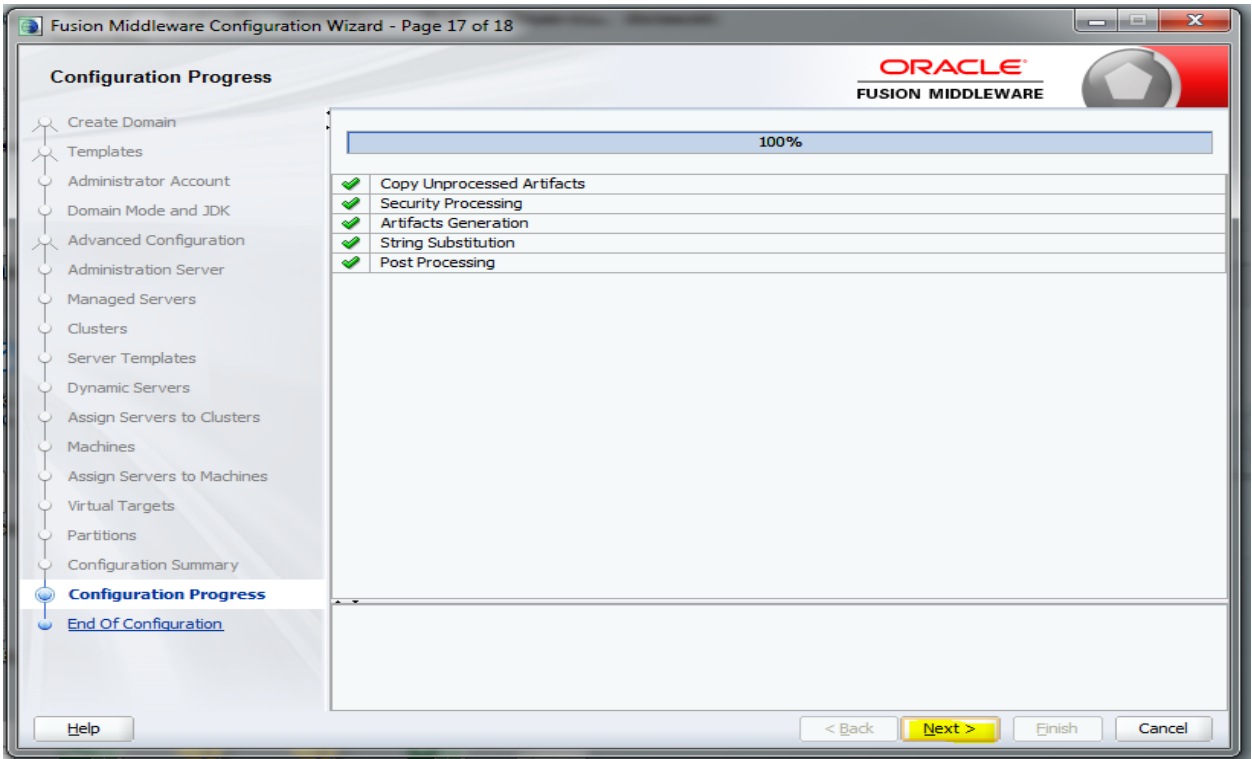




15. Check the configuration summary and confirm creating domain.







16. Click **Finish** to complete the procedure.

## 1.2.1 Post Domain Creation Configurations

Once finished, refer oracle fusion middleware documents for more details on how to start admin server, node manager and managed servers.

1. Go to /user\_projects/domain/platoinfra\_domain/bin
2. Edit setDomainEnv.cmd (.sh if operating system is linux)

And set these java options

**set JAVA\_OPTIONS=%JAVA\_OPTIONS% -Dplato.services.config.uri=http://<HOST>:7004**

Check and give valid host address and port numbers

```

)
set POST_CLASSPATH=%EXT_POST_CLASSPATH%
)
)
if NOT "%WEBLOGIC_EXTENSION_DIRS%"==" (
set JAVA_OPTIONS=%JAVA_OPTIONS% -Dweblogic.ext.dirs=%WEBLOGIC_EXTENSION_DIRS%
)
set JAVA_OPTIONS=%JAVA_OPTIONS%
set JAVA_OPTIONS=%JAVA_OPTIONS% -Dplato.services.gateway.port=7006 -Dplato.services.config.port=7004 -Dplato.services.config.uri=http://localhost:7004
@REM SET THE CLASSPATH
if NOT "%WLP_POST_CLASSPATH%"==" (
if NOT "%CLASSPATH%"==" (
set CLASSPATH=%WLP_POST_CLASSPATH%;%CLASSPATH%
) else (
set CLASSPATH=%WLP_POST_CLASSPATH%
)
)
)

```

3. Create boot.properties file under /user\_projects/domains/XXXXdomainNameXXX/servers/AdminServer/security
4. Edit boot.properties and give username and password details.

```

#Thu May 03 15:52:07 IST 2018
password=
username=

```

5. Run startWeblogic.cmd (or .sh if operating system is linux)
6. Go to /user\_projects/domains/platoinfra\_domain/bin
7. Run setNMJavaHome.cmd (.sh)
8. Go to /user\_projects/domains/platoinfra\_domain/nodemanager
9. And edit nodemanager.properties as required( securelistner = false if ssl and keystore is not given) And in admin console also go to Machines- > platoinfra\_Machine -> Node Manager -> Type -> Plain -> Save
10. Go to /user\_projects/domains/platoinfra\_domain/bin
11. Run startNodeManager.cmd (or .sh if operating system is linux )
12. Start all managed servers.
13. Login console and verify servers and clusters

Click the *Lock & Edit* button to modify, add or delete items in this domain.

Lock & Edit

Release Configuration

**Domain Structure**

- platoinfra\_domain
  - Domain Partitions
    - Partition Work Managers
  - Environment
    - Servers**
    - Clusters
    - Coherence Clusters
    - Resource Groups
    - Resource Group Templates
    - Machines
    - Virtual Hosts
    - Virtual Targets
    - Work Managers
    - Concurrent Templates

**How do I...**

- Create Managed Servers
- Clone servers
- Delete Managed Servers

**Summary of Servers**

Configuration Control

A server is an instance of WebLogic Server that runs in its own Java Virtual Machine (JVM) and has its own configuration.

This page summarizes each server that has been configured in the current WebLogic Server domain.

Customize this table

**Servers (Filtered - More Columns Exist)**

Click the *Lock & Edit* button in the Change Center to activate all the buttons on this page.

New Clone Delete Showing 1 to 5 of 5 Previous | Next

Name	Type	Cluster	Machine	State	Health	Listen Port
AdminServer(admin)	Configured			RUNNING	OK	7001
WLS_CONFIG	Configured	config_cluster	platoinfra_Machine	SHUTDOWN	Not reachable	7004
WLS_DISCOVERY	Configured	discovery_cluster	platoinfra_Machine	SHUTDOWN	Not reachable	7003
WLS_GATEWAY	Configured	gateway_cluster	platoinfra_Machine	SHUTDOWN	Not reachable	7006
WLS_ZIPKINUJ	Configured	zipkinui_cluster	platoinfra_Machine	SHUTDOWN	Not reachable	7005

Click the *Lock & Edit* button to modify, add or delete items in this domain.

**Lock & Edit**

Release Configuration

**Domain Structure**

- platoinfra\_domain
  - Domain Partitions
    - Partition Work Managers
  - Environment
    - Servers
      - Clusters**
        - Coherence Clusters
        - Resource Groups
        - Resource Group Templates
        - Machines
        - Virtual Hosts
        - Virtual Targets
        - Work Managers
        - Concurrent Templates

**How do I...**

- Configure clusters
- Assign server instances to clusters

Click the *Lock & Edit* button to modify, add or delete items in this domain.

**Lock & Edit**

Release Configuration

**Domain Structure**

- platoinfra\_domain
  - Domain Partitions
    - Partition Work Managers
  - Environment
    - Servers
      - Clusters
      - Coherence Clusters
      - Resource Groups
      - Resource Group Templates
      - Machines**
      - Virtual Hosts
      - Virtual Targets
      - Work Managers
      - Concurrent Templates

**How do I...**

- Create and configure machines
- Assign server instances to machines
- Clone machines

**Summary of Clusters**

This page summarizes the clusters that have been configured in the current WebLogic Server domain.

A cluster defines groups of WebLogic Server servers that work together to increase scalability and reliability.

**Customize this table**

**Clusters (Filtered - More Columns Exist)**

Click the *Lock & Edit* button in the Change Center to activate all the buttons on this page.

New Clone Delete Showing 1 to 4 of 4 Previous | Next

Name	Cluster Address	Cluster Messaging Mode	Migration Basis	Default Load Algorithm	Replication Type	Cluster Broadcast Channel	Servers
config_cluster		Unicast	Database	Round Robin	(None)		WLS_CONFIG
discovery_cluster		Unicast	Database	Round Robin	(None)		WLS_DISCOVERY
gateway_cluster		Unicast	Database	Round Robin	(None)		WLS_GATEWAY
zipkinui_cluster		Unicast	Database	Round Robin	(None)		WLS_ZIPKINUI

New Clone Delete Showing 1 to 4 of 4 Previous | Next

**Summary of Machines**

A machine is the logical representation of the computer that hosts one or more WebLogic Server instances (servers). WebLogic Server uses configured machine names to determine the optimum server in a cluster to which certain tasks, such as HTTP session replication, are delegated. The Administration Server uses the machine definition in conjunction with Node Manager to start remote servers.

This page displays key information about each machine that has been configured in the current WebLogic Server domain.

**Customize this table**

**Machines**

Click the *Lock & Edit* button in the Change Center to activate all the buttons on this page.

New Clone Delete Showing 1 to 1 of 1 Previous | Next

Name	Type
platoinfra_Machine	Machine

New Clone Delete Showing 1 to 1 of 1 Previous | Next

## 1.3 How to Create Datasource

- Steps for creating data source is given below.
- Start **AdminServer**, **Node Manager** and make sure all the **managed servers** (targets) are in running mode.

**Summary of Servers**

**Configuration** Control

A server is an instance of WebLogic Server that runs in its own Java Virtual Machine (JVM) and has its own configuration.

This page summarizes each server that has been configured in the current WebLogic Server domain.

**Customize this table**

**Servers (Filtered - More Columns Exist)**

Click the *Lock & Edit* button in the Change Center to activate all the buttons on this page.

New Clone Delete Showing 1 to 5 of 5 Previous | Next

Name	Type	Cluster	Machine	State	Health	Listen Port
AdminServer(admin)	Configured			RUNNING	OK	7001
WLS_CONFIG	Configured	config_cluster	platoinfra_Machine	RUNNING	OK	7004
WLS_DISCOVERY	Configured	discovery_cluster	platoinfra_Machine	RUNNING	OK	7003
WLS_GATEWAY	Configured	gateway_cluster	platoinfra_Machine	RUNNING	OK	7006
WLS_ZIPKINUI	Configured	zipkinui_cluster	platoinfra_Machine	RUNNING	OK	7005

New Clone Delete Showing 1 to 5 of 5 Previous | Next

- Go to **Services > Datasources > New > Generic Datasource**.

**View changes and restarts**

Click the *Lock & Edit* button to modify, add or delete items in this domain.

Lock & Edit

Release Configuration

**Domain Structure**

- platoinfra\_domain
  - Domain Partitions
  - Environment
  - Deployments
  - Services
    - Messaging
    - Data Sources
    - Persistent Stores
    - Foreign JNDI Providers
    - Work Contexts
    - XML Registries
    - XML Entity Caches
    - jCOM

**View changes and restarts**

No pending changes exist. Click the Release Configuration button to allow others to edit the domain.

Lock & Edit

Release Configuration

**Domain Structure**

- platoinfra\_domain
  - Domain Partitions
  - Environment
  - Deployments
  - Services
    - Messaging
    - Data Sources
    - Persistent Stores
    - Foreign JNDI Providers
    - Work Contexts
    - XML Registries
    - XML Entity Caches
    - jCOM
    - Mail Sessions

Home > Summary of Deployments > Summary of Servers > Summary of JDBC Data Sources

**Summary of JDBC Data Sources**

Configuration | Monitoring

A JDBC data source is an object bound to the JNDI tree that provides database connectivity through a pool of JDBC connections. Applications can look up a data source on the database connection from a data source.

This page summarizes the JDBC data source objects that have been created in this domain.

Customize this table

Data Sources (Filtered - More Columns Exist)

New | Delete

Generic Data Source	Type	JNDI Name	Targets
GridLink Data Source			
Multi Data Source			
Proxy Data Source			
UCP Data Source			

There are no items to display

4. Give **datasource** name and **jndi** name and click **Next**.



**Create a New JDBC Data Source**

Back | Next | Finish | Cancel

---

**JDBC Data Source Properties**

The following properties will be used to identify your new JDBC data source.  
 \* Indicates required fields

---

What would you like to name your new JDBC data source?

\* **Name:**

---

What scope do you want to create your data source in ?

**Scope:**

---

What JNDI name would you like to assign to your new JDBC Data Source?

**JNDI Name:**

---

What database type would you like to select?

**Database Type:**

---

Back | Next | Finish | Cancel

5. Select **Thin for Service Connections (Instant)** and click next.

**Create a New JDBC Data Source**

Back | Next | Finish | Cancel

---

**JDBC Data Source Properties**

The following properties will be used to identify your new JDBC data source.

---

**Database Type:** Oracle

---

What database driver would you like to use to create database connections? Note: \* indicates that the driver is explicitly supported by Oracle WebLogic Server.

**Database Driver:**

---

Back | Next | Finish | Cancel

6. **Uncheck support for Global Transactions.**

**Create a New JDBC Data Source**

**Transaction Options**

You have selected non-XA JDBC driver to create database connection in your new data source.

Does this data source support global transactions? If yes, please choose the transaction protocol for this data source.

**Supports Global Transactions**

Select this option if you want to enable non-XA JDBC connections from the data source to participate in global transactions using the *Logging Last Resource* (LLR) transaction option Emulate Two-Phase Commit.

**Logging Last Resource**

Select this option if you want to enable non-XA JDBC connections from the data source to emulate participation in global transactions using JTA. Select this option only if your application can participate in the global transaction.

**Emulate Two-Phase Commit**

Select this option if you want to enable non-XA JDBC connections from the data source to participate in global transactions using the one-phase commit transaction processing. With this option, the application can participate in the global transaction.

**One-Phase Commit**

7. Give **database connection** details and click next to test connection.

**Create a New JDBC Data Source**

**Connection Properties**

Define Connection Properties.

What is the name of the database you would like to connect to?

**Database Name:**

What is the name or IP address of the database server?

**Host Name:**

What is the port on the database server used to connect to the database?

**Port:**

What database account user name do you want to use to create database connections?

**Database User Name:**

What is the database account password to use to create database connections?

**Password:**

**Confirm Password:**

Additional Connection Properties:

**oracle.jdbc.DRCPConnectionClass:**

Messages

✓ Connection test succeeded.

Create a New JDBC Data Source

Test Configuration | Back | Next | Finish | Cancel

Test Database Connection

Test the database availability and the connection properties you provided.

What is the full package name of JDBC driver class used to create database connections in the connection pool?

(Note that this driver class must be in the classpath of any server to which it is deployed.)

Driver Class Name:

8. Select **targets** to deploy data source.

Create a New JDBC Data Source

Back | Next | Finish | Cancel

Select Targets

You can select one or more targets to deploy your new JDBC data source. If you don't select a target, the data source

Servers
<input type="checkbox"/> AdminServer

Clusters
<input checked="" type="checkbox"/> config_cluster <input type="radio"/> All servers in the cluster <input checked="" type="radio"/> Part of the cluster <input checked="" type="checkbox"/> WLS_CONFIG
<input checked="" type="checkbox"/> discovery_cluster <input type="radio"/> All servers in the cluster <input checked="" type="radio"/> Part of the cluster <input checked="" type="checkbox"/> WLS_DISCOVERY
<input type="checkbox"/> gateway_cluster <input type="radio"/> All servers in the cluster <input type="radio"/> Part of the cluster <input type="checkbox"/> WLS_GATEWAY
<input type="checkbox"/> zipkinui_cluster <input type="radio"/> All servers in the cluster <input type="radio"/> Part of the cluster <input type="checkbox"/> WLS_ZIPKINUI

Back | Next | Finish | Cancel

9. View created **datasources** and verify **jndi** name and targets.

Summary of JDBC Data Sources

**Configuration** Monitoring

A JDBC data source is an object bound to the JNDI tree that provides database connectivity through a pool of JDBC connections. Applications can look up a data source on the JNDI tree and then borrow a database connection from a data source.

This page summarizes the JDBC data source objects that have been created in this domain.

Customize this table

Data Sources (Filtered - More Columns Exist)

New Delete Showing 1 to 1 of 1 Previous Next

Name	Type	JNDI Name	Targets
PLATO	Generic	jdbc/PLATO	WLS_CONFIG, WLS_DISCOVERY

New Delete Showing 1 to 1 of 1 Previous Next

### 10. Activate changes after confirming details.

**Change Center**

**View changes and restarts**

Pending changes exist. They must be activated to take effect.

Activate Changes

Undo All Changes

**Domain Structure**

platoinfra\_domain

Domain Partitions

Home Log Out Preferences Record Help

Home > Summary of Deployments > Summary of Servers > Summary of JDBC Data Sources

**Summary of JDBC Data Sources**

**Configuration** Monitoring

A JDBC data source is an object bound to the JNDI tree that provides database connectivity through a pool of JDBC connections. Applications can look up a data source on the JNDI tree and then borrow a database connection from a data source.

This page summarizes the JDBC data source objects that have been created in this domain.

**Change Center**

**View changes and restarts**

Click the *Lock & Edit* button to modify, add or delete items in this domain.

Lock & Edit

Release Configuration

**Domain Structure**

platoinfra\_domain

- Domain Partitions
- Environment
- Deployments
- Services
  - Messaging
  - Data Sources**
  - Persistent Stores
  - Foreign JNDI Providers
  - Work Contexts
  - XML Registries
  - XML Entity Caches
  - JCOM
  - Mail Sessions

**How do I...**

- Create JDBC generic data sources
- Create JDBC GridLink data sources

Home Log Out Preferences Record Help

Home > Summary of Deployments > Summary of Servers > Summary of JDBC Data Sources

**Messages**

All changes have been activated. No restarts are necessary.

**Summary of JDBC Data Sources**

**Configuration** Monitoring

A JDBC data source is an object bound to the JNDI tree that provides database connectivity through a pool of JDBC connections. Applications can look up a data source on the JNDI tree and then borrow a database connection from a data source.

This page summarizes the JDBC data source objects that have been created in this domain.

Customize this table

Data Sources (Filtered - More Columns Exist)

Click the *Lock & Edit* button in the Change Center to activate all the buttons on this page.

New Delete

Name	Type	JNDI Name	Targets
PLATO	Generic	jdbc/PLATO	WLS_CONFIG, WLS_DISCOVERY

New Delete

## 1.4 How to Deploy Application

Steps to Deploy archives as application on weblogic is same for all the above except for managed server and domain where we deploy will differ. Find the below screenshots to see how deployment of archive as application is done on weblogic.

- 1 Go to **Deployments**

**View changes and restarts**  
Click the *Lock & Edit* button to modify, add or delete items in this domain.

Lock & Edit  
Release Configuration

**Domain Structure**  
platoinfra\_domain  
+ Domain Partitions  
+ Environment  
**Deployments**  
+ Services  
+ Security Realms  
+ Interoperability  
+ Diagnostics

**Home**  
Home Page

**Information and Resources**

**Helpful Tools**

- Configure applications
- Configure GridLink for RAC Data Source
- Configure a Dynamic Cluster
- Recent Task Status
- Set your console preferences

**General Information**

- Common Administration Task Descriptions
- Read the documentation
- Ask a question on My Oracle Support

**Domain Configurations**

**Domain**

- Domain

**Resource Group Templates**

- Resource Group Templates

**Interoperability**

- WTC Servers
- Jolt Connection Pools

**Domain Partitions**

- Domain Partitions
- Partition Work Managers

**Resource Groups**

- Resource Groups

**Deployed Resources**

- Deployments**

**Environment**

- Servers

**Diagnostics**

- Log Files
- Diagnostic Modules
- Built-in Diagnostic Modules
- Diagnostic Images

**How do I...**

- Search the configuration

2 Click on **Lock and Edit** and then click on **Install**.

**View changes and restarts**  
No pending changes exist. Click the Release Configuration button to allow others to edit the domain.

Lock & Edit  
Release Configuration

**Domain Structure**  
platoinfra\_domain  
+ Domain Partitions  
+ Environment  
**Deployments**  
+ Services  
+ Security Realms  
+ Interoperability  
+ Diagnostics

**Home > Summary of Deployments**  
Summary of Deployments

Configuration Control Monitoring

This page displays the list of Java EE applications and standalone application modules installed to this domain.

You can update (redeploy) or delete installed applications and modules from the domain by selecting the checkbox next to the application name and then clicking the Update or Delete button.

To install a new application or module for deployment to targets in this domain, click **Install**.

**Customize this table**

**Deployments**

Install Update Delete

<input type="checkbox"/>	Name	State	Health	Type	Targets	Scope	Domain Partitions
There are no items to display							

Install Update Delete

**View changes and restarts**  
No pending changes exist. Click the Release Configuration button to allow others to edit the domain.

Lock & Edit  
Release Configuration

**Domain Structure**  
platoinfra\_domain  
+ Domain Partitions  
+ Environment  
+ Deployments  
+ Services  
+ Security Realms

**Home > Summary of Deployments**  
Install Application Assistant

Back Next Finish Cancel

**Locate deployment to install and prepare for deployment**

Select the file path that represents the application root directory, archive file, exploded archive directory, or application module descriptor that you want to install. You can also enter the path directory or file in the Path field.

**Note:** Only valid file paths are displayed below. If you cannot find your deployment files, **Upload your file(s)** and/or confirm that your application contains the required deployment descriptor

**Path:** D:\

**Recently Used Paths:** (none)

**Current Location:** localhost \ D:

3 Select archive by clicking on **Upload your file(s)** button, **choose file** and click **next**.

**View changes and restarts**  
No pending changes exist. Click the Release Configuration button to allow others to edit the domain.

Lock & Edit  
Release Configuration

**Domain Structure**  
platoinfra\_domain  
+ Domain Partitions  
+ Environment  
+ Deployments  
+ Services  
+ Security Realms  
+ Interoperability  
+ Diagnostics

**Home > Summary of Deployments**  
Install Application Assistant

Back Next Finish Cancel

**Upload a deployment to the Administration Server**

Click the Browse button below to select an application or module on the machine from which you are currently browsing. When you have located the application or module, click the Upload button to upload the application or module to the Administration Server.

**Deployment Archive:** **Choose File** No file chosen

**Upload a deployment plan (this step is optional)**

A deployment plan is a configuration which can supplement the descriptors included in the deployment archive. A deployment will work without a deployment plan. This deployment plan archive will be a directory of configuration information packaged as a .jar file. See related links for additional information.

**Deployment Plan Archive:** **Choose File** No file chosen

Back Next Finish Cancel

4 After archive is uploaded, click **next**.

Home > Summary of Deployments

### Install Application Assistant

Back Next Finish Cancel

**Upload a deployment to the Administration Server**

Click the Browse button below to select an application or module on the machine from which you are currently browsing. When you have located the file, click Administration Server.

**Deployment Archive:** Choose File **plato-discov...ce-1.0.0.war**

**Upload a deployment plan (this step is optional)**

A deployment plan is a configuration which can supplement the descriptors included in the deployment archive. A deployment will work without a deployment plan. This deployment plan archive will be a directory of configuration information packaged as a .jar file. See related links for additional information about deployment plans.

**Deployment Plan Archive:** Choose File No file chosen

Back Next Finish Cancel

How do I...

## ORACLE WebLogic Server Administration Console 12c

Home Log Out Preferences Record Help

Home > Summary of Deployments

### Messages

✓ The file **plato-discovery-service-1.0.0.war** has been **uploaded successfully** to the Administration Server.

### Install Application Assistant

Back Next Finish Cancel

**Locate deployment to install and prepare for deployment**

Select the file path that represents the application root directory, archive file, export directory or file in the Path field.

**Note:** Only valid file paths are displayed below. If you cannot find your deployment, click the Refresh button.

**Path:** [Empty]

**Recently Used Paths:** (none)

**Current Location:** **service-1.0.0.war \ app**

plato-discovery-service-1.0.0.war

Back Next Finish Cancel

5 Select option to **Install this deploy as application** and click **next**.

**View changes and restarts**

No pending changes exist. Click the Release Configuration button to allow others to edit the domain.

Lock & Edit

Release Configuration

**Domain Structure**

- platoinfra\_domain
  - Domain Partitions
  - Environment
  - Deployments
  - Services
  - Security Realms
  - Interoperability
  - Diagnostics

How do I...

Home > Summary of Deployments

**Install Application Assistant**

Back Next Finish Cancel

**Choose installation type and scope**

Select if the deployment should be installed as an application or library. Also decide the scope of this deployment.

The application and its components will be targeted to the same locations. This is the most common usage.

**Install this deployment as an application**

Application libraries are deployments that are available for other deployments to share. Libraries should be available on all servers.

Install this deployment as a library

Select a scope in which you want to install the deployment.

Scope: Global

Back Next Finish Cancel

6 Select **target servers/clusters** on which application has to be deployed and the **next**.

Configuration button to allow others to edit the domain.

Lock & Edit

Release Configuration

**Domain Structure**

- platoinfra\_domain
  - Domain Partitions
  - Environment
  - Deployments
  - Services
  - Security Realms
  - Interoperability
  - Diagnostics

**How do I...**

- Start and stop a deployed enterprise application
- Configure an enterprise application
- Create a deployment plan
- Target an enterprise application to a server instance
- Test the modules in an enterprise application

**System Status**

Health of Running Servers as of 12:21 PM

Failed (0)
Critical (0)
Overloaded (0)

Back Next Finish Cancel

**Select deployment targets**

Select the servers and/or clusters to which you want to deploy this application. (You can reconfigure deployment targets at any time.)

**Available targets for plato-discovery-service-1.0.0 :**

Servers
<input type="checkbox"/> AdminServer

Clusters
<input type="checkbox"/> config_cluster <ul style="list-style-type: none"> <li><input type="radio"/> All servers in the cluster</li> <li><input type="radio"/> Part of the cluster               <ul style="list-style-type: none"> <li><input type="checkbox"/> WLS_CONFIG</li> </ul> </li> </ul>
<input checked="" type="checkbox"/> discovery_cluster <ul style="list-style-type: none"> <li><input type="radio"/> All servers in the cluster</li> <li><input checked="" type="radio"/> Part of the cluster               <ul style="list-style-type: none"> <li><input checked="" type="checkbox"/> <b>WLS_DISCOVERY</b></li> </ul> </li> </ul>
<input type="checkbox"/> gateway_cluster <ul style="list-style-type: none"> <li><input type="radio"/> All servers in the cluster</li> <li><input type="radio"/> Part of the cluster               <ul style="list-style-type: none"> <li><input type="checkbox"/> WLS_GATEWAY</li> </ul> </li> </ul>
<input type="checkbox"/> zipkinui_cluster <ul style="list-style-type: none"> <li><input type="radio"/> All servers in the cluster</li> <li><input type="radio"/> Part of the cluster               <ul style="list-style-type: none"> <li><input type="checkbox"/> WLS_ZIPKINUI</li> </ul> </li> </ul>

Back Next Finish Cancel

**Change Center**

**View changes and restarts**

No pending changes exist. Click the Release Configuration button to allow others to edit the domain.

Lock & Edit

Release Configuration

**Domain Structure**

- platoinfra\_domain
  - Domain Partitions
  - Environment
  - Deployments
  - Services
  - Security Realms
  - Interoperability
  - Diagnostics

**How do I...**

- Start and stop a deployed enterprise application
- Configure an enterprise application
- Create a deployment plan

Home > Summary of Deployments

**Install Application Assistant**

Back Next Finish Cancel

**Optional Settings**

You can modify these settings or accept the defaults.

\* Indicates required fields

**General**

What do you want to name this deployment?

\* Name: plato-discovery-service-1.0.0

**Security**

What security model do you want to use with this application?

- DD Only:** Use only roles and policies that are defined in the deployment descriptors.
- Custom Roles:** Use roles that are defined in the Administration Console; use policies that are defined in the d
- Custom Roles and Policies:** Use only roles and policies that are defined in the Administration Console.
- Advanced:** Use a custom model that you have configured on the realm's configuration page.

**Source Accessibility**

How should the source files be made accessible?

**View changes and restarts**

No pending changes exist. Click the Release Configuration button to allow others to edit the domain.

Lock & Edit

Release Configuration

**Domain Structure**

- platoinfra\_domain
  - Domain Partitions
  - Environment
  - Deployments
  - Services
  - Security Realms
  - Interoperability
  - Diagnostics

**How do I...**

- Start and stop a deployed enterprise application
- Configure an enterprise application
- Create a deployment plan
- Target an enterprise application to a server instance
- Test the modules in an enterprise application

**System Status**

Health of Running Servers as of 12:22 PM

Home > Summary of Deployments

**Install Application Assistant**

Back Next Finish Cancel

**Review your choices and click Finish**

Click Finish to complete the deployment. This may take a few moments to complete.

**Additional Configuration**

In order to work successfully, this application may require additional configuration. Do you want to review this application's configuration after completing this assistant?

- Yes, take me to the deployment's configuration screen.**
- No, I will review the configuration later.**

**Summary**

**Deployment:** [redacted] upload/plato-discovery-service-1.0.0.war/app/plato-discovery-service-1.0.0.war

**Name:** plato-discovery-service-1.0.0

**Staging Mode:** Use the defaults defined by the chosen targets

**Plan Staging Mode:** Use the same accessibility as the application

**Security Model:** DDOnly: Use only roles and policies that are defined in the deployment descriptors.

**Scope:** Global

**Target Summary**

Components	Targets
plato-discovery-service-1.0.0	WLS_DISCOVERY

Back Next Finish Cancel

## 7 Click save and activate changes.

**Change Center**

**View changes and restarts**

Pending changes exist. They must be activated to take effect.

Activate Changes

Undo All Changes

**Domain Structure**

- platoinfra\_domain
  - Domain Partitions
  - Environment
  - Deployments
  - Services
  - Security Realms
  - Interoperability
  - Diagnostics

Home > Summary of Deployments > plato-discovery-service-1.0.0

Welcome,

**Settings for plato-discovery-service-1.0.0**

Overview Deployment Plan Configuration Security Targets Control Testing Monitoring Notes

Save

Use this page to view the installed configuration of a Web application.

**Name:** plato-discovery-service-1.0.0 The name of this application deployment

**Scope:** Global Specifies if this Web application is access resource group template. More Info...

**Context Root:** plato-discovery-service The specific path at which this Web app



Home > Summary of Deployments > plato-discovery-service-1.0.0

**View changes and restarts**  
Click the *Lock & Edit* button to modify, add or delete items in this domain.

Lock & Edit  
Release Configuration

**Domain Structure**  
platoinfra\_domain  
 + Domain Partitions  
 + Environment  
 + Deployments  
 + Services  
 + Security Realms  
 + Interoperability  
 + Diagnostics

**Messages**  
✔ All changes have been activated. No restarts are necessary.

**Settings for plato-discovery-service-1.0.0**  
Overview | Deployment Plan | Configuration | Security | Targets | Control | Testing | Monitoring | Notes

Click the *Lock & Edit* button in the Change Center to modify the settings on this page.

Save

Use this page to view the installed configuration of a Web application.

**Name:** plato-discovery-service-1.0.0  
**Scope:** Global  
**Context Root:** /plato-discovery-service

8 Click **deployments >Control** to changes the state of application from prepared to active status.

Home > Summary of Deployments > plato-discovery-service-1.0.0 > Summary of Deployments

**View changes and restarts**  
Click the *Lock & Edit* button to modify, add or delete items in this domain.

Lock & Edit  
Release Configuration

**Domain Structure**  
platoinfra\_domain  
 + Domain Partitions  
 + Environment  
 + **Deployments**  
 + Services  
 + Security Realms  
 + Interoperability  
 + Diagnostics

**Summary of Deployments**  
Configuration | **Control** | Monitoring

This page displays the list of Java EE applications and standalone application modules installed to this domain.  
You can update (redeploy) or delete installed applications and modules from the domain by selecting the checkbox next to the application name and then using the controls on this page.  
To install a new application or module for deployment to targets in this domain, click **Install**.

Customize this table

**Deployments**  
Install | Update | Delete

Name	State	Health	Type	Targets	Scope	Domain Partitions	Deployment Order
<input type="checkbox"/> plato-discovery-service-1.0.0	Prepared	✔ OK	Web Application	WLS_DISCOVERY	Global		100

Showing 1 to 1 of 1 Previous | Next

9 Under deployment click on **Start dropdown** and Click **Start all requests**.

Home > Summary of Deployments > plato-discovery-service-1.0.0 > Summary of Deployments

**View changes and restarts**  
Click the *Lock & Edit* button to modify, add or delete items in this domain.

Lock & Edit  
Release Configuration

**Domain Structure**  
platoinfra\_domain  
 + Domain Partitions  
 + Environment  
 + Deployments  
 + Services  
 + Security Realms  
 + Interoperability  
 + Diagnostics

**Summary of Deployments**  
Configuration | **Control** | Monitoring

This page displays the list of Java EE applications and standalone application modules installed to this domain.  
You can start and stop applications and modules from the domain by selecting the checkbox next to the application name and then using the controls on this page.

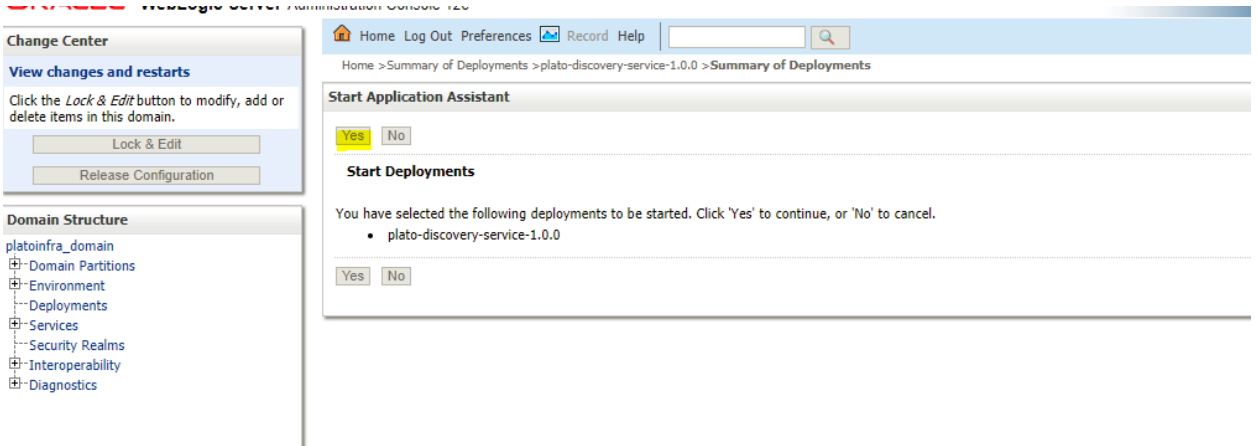
Customize this table

**Deployments**  
Start | Stop

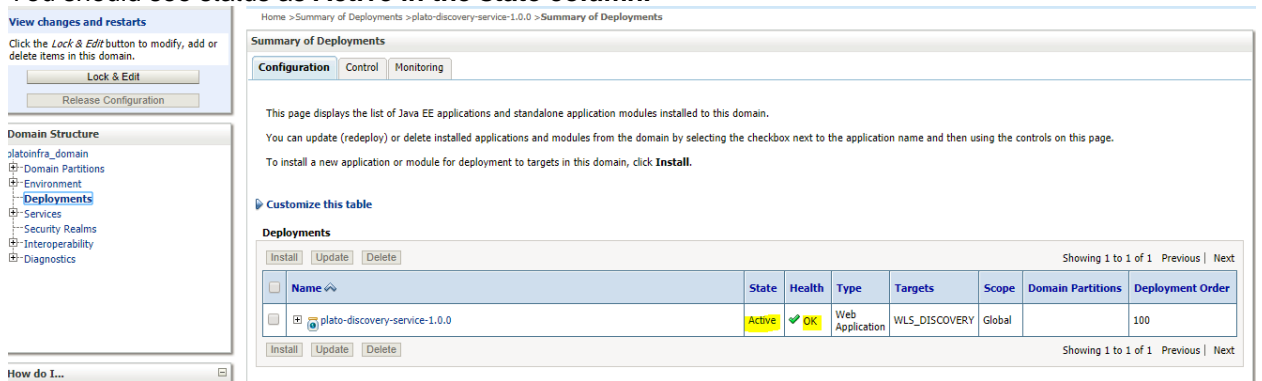
Name	State	Health	Type	Targets	Scope	Domain Partitions
<input type="checkbox"/> plato-discovery-service-1.0.0	Prepared	✔ OK	Web Application	WLS_DISCOVERY	Global	

Showing 1 to 1 of 1 Previous | Next

10 Click on **Yes**.

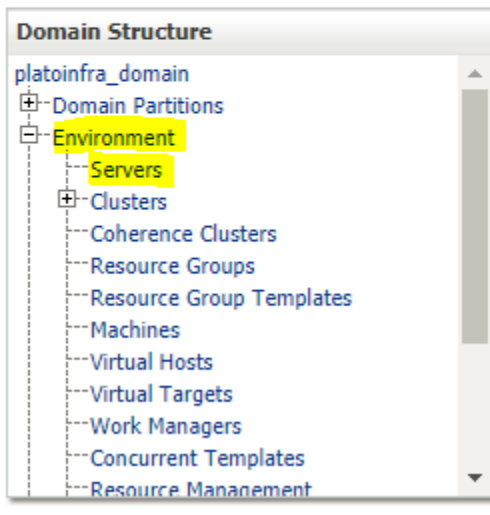
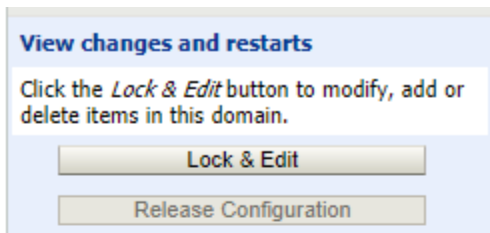


You should see status as **Active** in the state column.



## 1.5 How to Restart Servers

- 1 Go to **Environment > Servers**.



- 2 Click on **Control**

**View changes and restarts**  
Click the *Lock & Edit* button to modify, add or delete items in this domain.

Lock & Edit  
Release Configuration

**Domain Structure**  
platoinfra\_domain  
+ Domain Partitions  
+ Environment  
+ Servers  
+ Clusters  
+ Coherence Clusters  
+ Resource Groups  
+ Resource Group Templates  
+ Machines  
+ Virtual Hosts  
+ Virtual Targets  
+ Work Managers  
+ Concurrent Templates  
+ Resource Management

**How do I...**

- Create Managed Servers
- Clone servers
- Delete Managed Servers
- Delete the Administration Server
- Start and stop servers

Home > Summary of Deployments > plato-discovery-service-1.0.0 > Summary of Deployments > Summary of Servers

**Summary of Servers**

Configuration Control

A server is an instance of WebLogic Server that runs in its own Java Virtual Machine (JVM) and has its own configuration.  
This page summarizes each server that has been configured in the current WebLogic Server domain.

Customize this table

**Servers (Filtered - More Columns Exist)**  
Click the *Lock & Edit* button in the Change Center to activate all the buttons on this page.

New Clone Delete Showing 1 to 5 of 5 Previous | Next

Name	Type	Cluster	Machine	State	Health	Listen Port
AdminServer(admin)	Configured			RUNNING	OK	7001
WLS_CONFIG	Configured	config_cluster	platoinfra_Machine	RUNNING	OK	7004
WLS_DISCOVERY	Configured	discovery_cluster	platoinfra_Machine	RUNNING	OK	7003
WLS_GATEWAY	Configured	gateway_cluster	platoinfra_Machine	RUNNING	OK	7006
WLS_ZIPKINUI	Configured	zipkinui_cluster	platoinfra_Machine	RUNNING	OK	7005

New Clone Delete Showing 1 to 5 of 5 Previous | Next

### 3 Select servers to shutdown.

**Change Center**

**View changes and restarts**  
Click the *Lock & Edit* button to modify, add or delete items in this domain.

Lock & Edit  
Release Configuration

**Domain Structure**  
platoinfra\_domain  
+ Domain Partitions  
+ Environment  
+ Servers  
+ Clusters  
+ Coherence Clusters  
+ Resource Groups  
+ Resource Group Templates  
+ Machines  
+ Virtual Hosts  
+ Virtual Targets  
+ Work Managers  
+ Concurrent Templates  
+ Resource Management

**How do I...**

- Start and stop servers
- Start Managed Servers from the Administration Console
- Restart SSL
- Start Managed Servers in Admin mode

Home Log Out Preferences Record Help Welcome, weblogic | Connected to: platoinfra\_domain

Home > Summary of Deployments > plato-discovery-service-1.0.0 > Summary of Deployments > Summary of Servers

**Summary of Servers**

Configuration Control

Use this page to change the state of the servers in this WebLogic Server domain. Control operations on Managed Servers require starting the Node Manager. Starting Managed Servers in Standby mode requires the domain-wide administration port.

Customize this table

**Servers (Filtered - More Columns Exist)**

Start Resume Suspend Shutdown Restart SSL Showing 1 to 5 of 5 Previous | Next

Server	When work completes	Machine	State	Status of Last Action
AdminServer(admin)	Force shutdown now		RUNNING	None
<input checked="" type="checkbox"/> WLS_CONFIG		platoinfra_Machine	RUNNING	TASK COMPLETED
<input checked="" type="checkbox"/> WLS_DISCOVERY		platoinfra_Machine	RUNNING	None
<input checked="" type="checkbox"/> WLS_GATEWAY		platoinfra_Machine	RUNNING	TASK COMPLETED
<input checked="" type="checkbox"/> WLS_ZIPKINUI		platoinfra_Machine	RUNNING	TASK COMPLETED

Start Resume Suspend Shutdown Restart SSL Showing 1 to 5 of 5 Previous | Next

### 4 Click yes to confirm shutdown.

**Change Center**

**View changes and restarts**  
Click the *Lock & Edit* button to modify, add or delete items in this domain.

Lock & Edit  
Release Configuration

**Domain Structure**  
platoinfra\_domain  
+ Domain Partitions  
+ Environment  
+ Servers  
+ Clusters  
+ Coherence Clusters  
+ Resource Groups  
+ Resource Group Templates  
+ Machines

Home Log Out Preferences Record Help

Home > Summary of Deployments > plato-discovery-service-1.0.0 > Summary of Deployments > Summary of Servers

**Server Life Cycle Assistant**

Yes No

**Forcibly Shutdown Servers**

You have selected the following servers to be immediately shut down. Press 'Yes' to continue or 'No' to cancel.

- WLS\_DISCOVERY

Yes No

### 5 You should see status as shown below (highlighted).

Click the *Lock & Edit* button to modify, add or delete items in this domain.

Lock & Edit  
Release Configuration

Domain Structure

- platoinfra\_domain
  - Domain Partitions
    - Environment
      - Servers
      - Clusters
        - Coherence Clusters
        - Resource Groups
        - Resource Group Templates
        - Machines
        - Virtual Hosts
        - Virtual Targets
        - Work Managers
        - Concurrent Templates
        - Resource Management

How do I...
 

- Start and stop servers
- Start Managed Servers from the Administration Console
- Restart SSL
- Start Managed Servers in Admin mode

Messages

✓ A request has been sent to immediately shut down the selected servers.

Summary of Servers

Configuration Control

Use this page to change the state of the servers in this WebLogic Server domain. Control operations on Managed Servers require starting the Node Manager. Starting Managed Servers in Standby mode requires the domain-wide administration port.

Customize this table

Servers (Filtered - More Columns Exist)

Start Resume Suspend Shutdown Restart SSL

Server	Machine	State	Status of Last Action
AdminServer(admin)		RUNNING	None
WLS_CONFIG	platoinfra_Machine	RUNNING	TASK COMPLETED
WLS_DISCOVERY	platoinfra_Machine	FORCE_SUSPENDING	TASK IN PROGRESS
WLS_GATEWAY	platoinfra_Machine	RUNNING	TASK COMPLETED
WLS_ZIPKINUI	platoinfra_Machine	RUNNING	TASK COMPLETED

Showing 1 to 5 of 5 Previous | Next

View changes and restarts

Click the *Lock & Edit* button to modify, add or delete items in this domain.

Lock & Edit  
Release Configuration

Domain Structure

- platoinfra\_domain
  - Domain Partitions
    - Environment
      - Servers
      - Clusters
        - Coherence Clusters
        - Resource Groups
        - Resource Group Templates
        - Machines
        - Virtual Hosts
        - Virtual Targets
        - Work Managers
        - Concurrent Templates
        - Resource Management

How do I...
 

- Create Managed Servers
- Clone servers
- Delete Managed Servers
- Delete the Administration Server
- Start and stop servers

Home > Summary of Deployments > plato-discovery-service-1.0.0 > Summary of Deployments > Summary of Servers

Summary of Servers

Configuration Control

A server is an instance of WebLogic Server that runs in its own Java Virtual Machine (JVM) and has its own configuration. This page summarizes each server that has been configured in the current WebLogic Server domain.

Customize this table

Servers (Filtered - More Columns Exist)

Click the *Lock & Edit* button in the Change Center to activate all the buttons on this page.

New Clone Delete

Name	Type	Cluster	Machine	State	Health	Listen Port
AdminServer(admin)	Configured			RUNNING	OK	7001
WLS_CONFIG	Configured	config_cluster	platoinfra_Machine	RUNNING	OK	7004
WLS_DISCOVERY	Configured	discovery_cluster	platoinfra_Machine	SHUTDOWN	Not reachable	7003
WLS_GATEWAY	Configured	gateway_cluster	platoinfra_Machine	RUNNING	OK	7006
WLS_ZIPKINUI	Configured	zipkinui_cluster	platoinfra_Machine	RUNNING	OK	7005

Showing 1 to 5 of 5 Previous | Next

6 Once shutdown is completed, go to control and select the servers to start and click on yes to confirm action.

View changes and restarts

Click the *Lock & Edit* button to modify, add or delete items in this domain.

Lock & Edit  
Release Configuration

Domain Structure

- platoinfra\_domain
  - Domain Partitions
    - Environment
      - Servers
      - Clusters
        - Coherence Clusters
        - Resource Groups
        - Resource Group Templates
        - Machines
        - Virtual Hosts
        - Virtual Targets
        - Work Managers
        - Concurrent Templates
        - Resource Management

How do I...
 

- Start and stop servers
- Start Managed Servers from the Administration Console
- Restart SSL
- Start Managed Servers in Admin mode

Home > Summary of Deployments > plato-discovery-service-1.0.0 > Summary of Deployments > Summary of Servers

Summary of Servers

Configuration Control

Use this page to change the state of the servers in this WebLogic Server domain. Control operations on Managed Servers require starting the Node Manager. Starting Managed Servers in Standby mode requires the domain-wide administration port.

Customize this table

Servers (Filtered - More Columns Exist)

Start Resume Suspend Shutdown Restart SSL

Server	Machine	State	Status of Last Action
AdminServer(admin)		RUNNING	None
WLS_CONFIG	platoinfra_Machine	RUNNING	TASK COMPLETED
WLS_DISCOVERY	platoinfra_Machine	SHUTDOWN	TASK COMPLETED
WLS_GATEWAY	platoinfra_Machine	RUNNING	TASK COMPLETED
WLS_ZIPKINUI	platoinfra_Machine	RUNNING	TASK COMPLETED

Showing 1 to 5 of 5 Previous | Next

### View changes and restarts

Click the *Lock & Edit* button to modify, add or delete items in this domain.

### Domain Structure



### Server Life Cycle Assistant

#### Start Servers

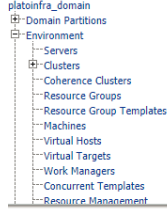
You have selected the following servers to be started. Press 'Yes' to continue or 'No' to cancel.

- WLS\_DISCOVERY

### View changes and restarts

Click the *Lock & Edit* button to modify, add or delete items in this domain.

### Domain Structure



### How do I...

- Start and stop servers
- Start Managed Servers from the Administration Console
- Restart SSL
- Start Managed Servers in Admin mode

### Messages

A request has been sent to the Node Manager to start the selected servers.

### Summary of Servers

Configuration **Control**

Use this page to change the state of the servers in this WebLogic Server domain. Control operations on Managed Servers require starting the Node Manager. Starting Managed Servers in Standby mode requires the domain-wide administration port.

#### Customize this table

Servers (Filtered - More Columns Exist)

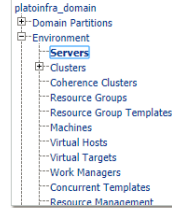
Start	Resume	Suspend	Shutdown	Restart SSL				
<input type="checkbox"/>					<b>Server</b>	<b>Machine</b>	<b>State</b>	<b>Status of Last Action</b>
<input type="checkbox"/>					AdminServer(admin)		RUNNING	None
<input type="checkbox"/>					WLS_CONFIG	platoinfra_Machine	RUNNING	TASK COMPLETED
<input type="checkbox"/>					WLS_DISCOVERY	platoinfra_Machine	STARTING	TASK IN PROGRESS
<input type="checkbox"/>					WLS_GATEWAY	platoinfra_Machine	RUNNING	TASK COMPLETED
<input type="checkbox"/>					WLS_ZIPKINUI	platoinfra_Machine	RUNNING	TASK COMPLETED

7 When all requested servers are running, go to deployments and check if deployments are in active state.

### View changes and restarts

Click the *Lock & Edit* button to modify, add or delete items in this domain.

### Domain Structure



### How do I...

- Create Managed Servers
- Clone servers
- Delete Managed Servers
- Delete the Administration Server
- Start and stop servers
- View objects in the JNDI tree

### Summary of Servers

Configuration **Control**

A server is an instance of WebLogic Server that runs in its own Java Virtual Machine (JVM) and has its own configuration.

This page summarizes each server that has been configured in the current WebLogic Server domain.

#### Customize this table

Servers (Filtered - More Columns Exist)

Click the *Lock & Edit* button in the Change Center to activate all the buttons on this page.

New	Clone	Delete							
<input type="checkbox"/>			<b>Name</b>	<b>Type</b>	<b>Cluster</b>	<b>Machine</b>	<b>State</b>	<b>Health</b>	<b>Listen Port</b>
<input type="checkbox"/>			AdminServer(admin)	Configured			RUNNING	OK	7001
<input type="checkbox"/>			WLS_CONFIG	Configured	config_cluster	platoinfra_Machine	RUNNING	OK	7004
<input type="checkbox"/>			WLS_DISCOVERY	Configured	discovery_cluster	platoinfra_Machine	RUNNING	OK	7003
<input type="checkbox"/>			WLS_GATEWAY	Configured	gateway_cluster	platoinfra_Machine	RUNNING	OK	7006
<input type="checkbox"/>			WLS_ZIPKINUI	Configured	zipkinui_cluster	platoinfra_Machine	RUNNING	OK	7005

Home > Summary of Deployments > plato-discovery-service-1.0.0 > Summary of Deployments > Summary of Servers > Summary of Deployments

**Summary of Deployments**

Configuration Control Monitoring

This page displays the list of Java EE applications and standalone application modules installed to this domain.

You can update (redeploy) or delete installed applications and modules from the domain by selecting the checkbox next to the application name and then using the controls on this page.

To install a new application or module for deployment to targets in this domain, click **Install**.

Customize this table

Deployments

Install Update Delete Showing 1 to 1 of 1 Previous Next

Name	State	Health	Type	Targets	Scope	Domain Partitions	Deployment Order
<input type="checkbox"/> plato-discovery-service-1.0.0	Active	OK	Web Application	WLS_DISCOVERY	Global		100

Install Update Delete Showing 1 to 1 of 1 Previous Next

View changes and restarts

Click the **Lock & Edit** button to modify, add or delete items in this domain.

Lock & Edit

Release Configuration

Domain Structure

- platoinfra\_domain
  - Domain Partitions
  - Environment
  - Deployments
  - Services
  - Security Realms
  - Interoperability
  - Diagnostics

How do I...

- Install an enterprise application
- Configure an enterprise application

## 1.6 How to Compile DDL and INC

Follow below steps to compile DDL and INC-

[Note: Below steps are valid, if you are using Oracle Database.]

1. Open **Command Prompt**.
2. Run the command **sqlplus USERNAME/PASSWORD@HostName:PortNo/ServiceName**

```
C:\Users\>sqlplus //@1

SQL*Plus: Release 12.2.0.1.0 Production on Mon Jun 11 17:48:59 2018

Copyright (c) 1982, 2016, Oracle. All rights reserved.

Last Successful login time: Mon Jun 11 2018 17:10:22 +05:30
```

3. Type @ and navigate to your DDL or INC folder. Give fully qualified address of DDL file.

Example:

@D:\OBCLPM\Installer\OBCLPM\_14.1.0.0.0\SMS\Database\DDL\SMS\_TW\_ROLE.DDL

```
PROCESSING FOR SMS_TW_ROLE

Table created.

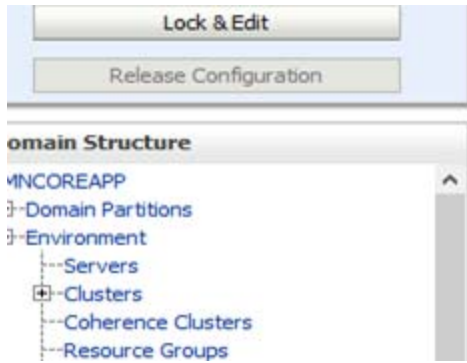
Table altered.
```

4. Done

## 1.7 How to Check Port Number

Follow below steps to check port numbers:

1. Login to WebLogic console using user ID and password.
2. Click on **Environment** and **Server**.



- Under Servers (Filtered - More Columns Exist) section you will be able to see all the server listed.

<input type="checkbox"/>	Name ↕	Type	Cluster	Machine	State	Health	Listen Port
<input type="checkbox"/>	AdminServer(admin)	Configured			RUNNING	✔ OK	7020
<input type="checkbox"/>	managed_server1	Configured		Machine1	RUNNING	✔ OK	7023

- Done