

**Oracle® Hospitality Cruise Meal Count
System**

Release Notes

Release 8.0

F10079-02

February 2019

Copyright © 2015, 2019, Oracle and/or its affiliates. All rights reserved.

This software and related documentation are provided under a license agreement containing restrictions on use and disclosure and are protected by intellectual property laws. Except as expressly permitted in your license agreement or allowed by law, you may not use, copy, reproduce, translate, broadcast, modify, license, transmit, distribute, exhibit, perform, publish, or display any part, in any form, or by any means. Reverse engineering, disassembly, or decompilation of this software, unless required by law for interoperability, is prohibited.

The information contained herein is subject to change without notice and is not warranted to be error-free. If you find any errors, please report them to us in writing.

If this software or related documentation is delivered to the U.S. Government or anyone licensing it on behalf of the U.S. Government, then the following notice is applicable:

U.S. GOVERNMENT END USERS: Oracle programs, including any operating system, integrated software, any programs installed on the hardware, and/or documentation, delivered to U.S. Government end users are "commercial computer software" pursuant to the applicable Federal Acquisition Regulation and agency-specific supplemental regulations. As such, use, duplication, disclosure, modification, and adaptation of the programs, including any operating system, integrated software, any programs installed on the hardware, and/or documentation, shall be subject to license terms and license restrictions applicable to the programs. No other rights are granted to the U.S. Government.

This software or hardware is developed for general use in a variety of information management applications. It is not developed or intended for use in any inherently dangerous applications, including applications that may create a risk of personal injury. If you use this software or hardware in dangerous applications, then you shall be responsible to take all appropriate fail-safe, backup, redundancy, and other measures to ensure its safe use. Oracle Corporation and its affiliates disclaim any liability for any damages caused by use of this software or hardware in dangerous applications.

Oracle and Java are registered trademarks of Oracle and/or its affiliates. Other names may be trademarks of their respective owners.

Intel and Intel Xeon are trademarks or registered trademarks of Intel Corporation. All SPARC trademarks are used under license and are trademarks or registered trademarks of SPARC International, Inc. AMD, Opteron, the AMD logo, and the AMD Opteron logo are trademarks or registered trademarks of Advanced Micro Devices. UNIX is a registered trademark of The Open Group.

This software or hardware and documentation may provide access to or information about content, products, and services from third parties. Oracle Corporation and its affiliates are not responsible for and expressly disclaim all warranties of any kind with respect to third-party content, products, and services unless otherwise set forth in an applicable agreement between you and Oracle. Oracle Corporation and its affiliates will not be responsible for any loss, costs, or damages incurred due to your access to or use of third-party content, products, or services, except as set forth in an applicable agreement between you and Oracle.

Contents

Preface	4
Purpose	4
Audience	4
Customer Support.....	4
Documentation	4
Revision History.....	4
1 Features and Updates.....	5
Release 8.0.300.40	5
2 System Requirements, Supported Systems, and Compatibility.....	7
System Requirements/Suggested Hardware	7
3 Installation and Upgrade.....	8
4 Resolved Issues.....	9
Release Notes 8.0.000.x Build	9
Release Notes 8.0.100 Build	10
Release Notes 8.0.200 Build	12
Release Notes 8.0.300 Build	14
Release Notes 8.0.301.01 Build	18
Release Notes 8.0.303.04 Build	18

Preface

Oracle Hospitality Cruise Dining Room Management consists of Oracle Hospitality Cruise Fine Dining System, Oracle Hospitality Cruise Meal Count System, and Oracle Hospitality Cruise Shipside Base for SilverWhere. Used all together or as individual modules, they provide an integrated solution with Oracle Hospitality Cruise Shipboard Property Management System, enabling detailed consumer analysis and the refinement of restaurant menus, quantities, and procedures. You can transfer data to the shore side Oracle Hospitality Fleet Management system for consolidation into the guest's profile.

Purpose

These Release Notes provide a brief overview of additions, enhancements, and corrections implemented in this software release. Their intent is informative, not instructional. Review Meal Count System's product documentation, including technical and application advisories for previous versions, for detailed information on installation, upgrade, configuration, and general use.

Audience

This document is intended for project managers, application specialist and users of Oracle Hospitality Cruise Meal Count System.

Customer Support

To contact Oracle Customer Support, access My Oracle Support at the following URL:
<https://support.oracle.com>

When contacting Customer Support, please provide the following:

Product version and program/module name

Functional and technical description of the problem (include business impact)

Detailed step-by-step instructions to re-create

Exact error message received and any associated log files

Screen shots of each step you take

Documentation

Oracle Hospitality product documentation is available on the Oracle Help Center at
<http://docs.oracle.com/en/industries/hospitality/>

Revision History

Date	Description of Change
2016	<ul style="list-style-type: none">Initial publication
August 2018	<ul style="list-style-type: none">Update document format
February 2019	<ul style="list-style-type: none">Revised version number

1 Features and Updates

This section describes the Features and Updates in Meal Count System.

Release 8.0.300.40

Important Note:

To guarantee compatibility, Meal Count Version .40 or higher is required when SPMS is .800 or above.

This is due to a changed pass phrase database encryption storage in SPMS

Interface database. The Meal Count Interface has been enhanced to be more flexible and reliable in weak network environments. The changes are as below:

New Grid:

A new grid in the interface module has been added where each printer and its current status is listed. This status is being refreshed when the interface is being started. The interface status is being refreshed every 30 seconds.

Printer Status:

	Printer	↑	Status
▶ ●	192.168.11.242		Standby waiting (BP:0)
●	192.168.11.253		Printer Offline (BP:35)
●	192.168.9.1		Printer Offline (BP:0)
●	192.168.9.2		Printer Offline (BP:0)

Printer Status:

When the printers go offline, the interface will detect this when sending the next print job to that printer. When printers come online, the interface will detect the new printers every 30 seconds.

When the printer row shows "Standby waiting (BP:#)" the # represents the count of checks from that printer that had to be sent to the backup printer.

Error Handling:

Added new error handling when the printer is offline or busy (out of paper, lid open and others).

Threads:

Threads are self-recovering should the printer go offline. Once the printer is back online and can connect, the thread will resume.

Backup Printer:

When a check has been printed to the backup up printer, the check is marked in bold letters at the top "BACKUP PRINTER and IP address of primary printer" so that it can be seen right away that the check did not get printed to the original printer on the check itself. This way, the waiter can check the primary printer and solve any issue such as out of paper, switched of and others.

Print Handling:

Primary Printer online: Check will print within 2 seconds on primary printer

Primary Printer out of paper or cover open: Interface will retrying to print to primary printer until paper has been replaced or cover has been closed

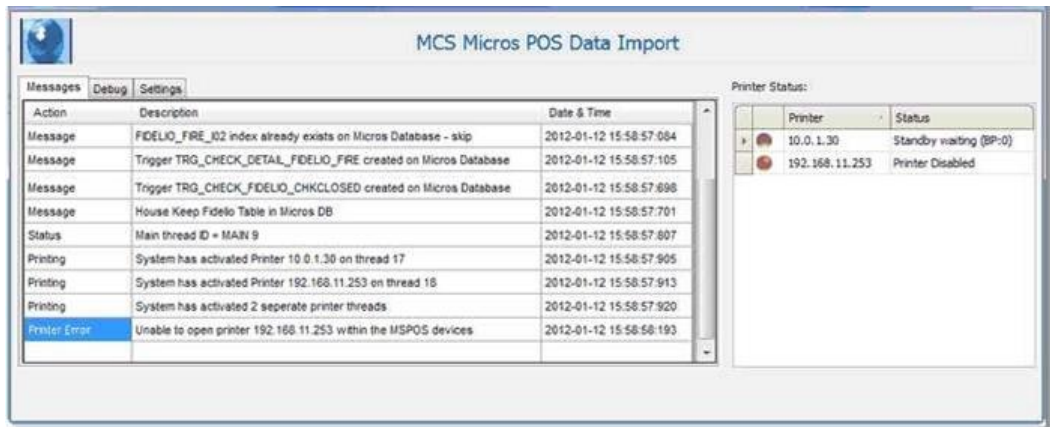
Primary Printer switched off, or off the network: Interface will send print job to backup printer immediately

Layout:

Corrected the centering issue for the large font items on the check.

Handling:

If a check has been closed, it will **not** print a prep check. If for some reason a check did not get printed a few days ago and the interface is being reset today, it will not retry to print that check. Only OPEN checks will get reprinted if necessary.



2 System Requirements, Supported Systems, and Compatibility

This section describes the minimum requirements to use the Meal Count System.

System Requirements/Suggested Hardware

- LCD or plasma wide screen or a projector and a screen (multiple displays can be placed if more than one galley is present). HDMI cables might be required, and/or adapters for display ports.
- Or
- Wireless keyboard and mouse for display to be placed in the chef's office for easy access to display host PCs. Batteries will be required.
- Wall mount for LCD/plasma screen or ceiling mount for projector.
- HP Compaq Business Desktop or virtual machine, minimum 4 GB RAM and 4 CPUs to be used as an Interface PC. The 4 GB of RAM is an important requirement to avoid performance issues and printing delays.
- AFL Panel PC 8.4" as scanning station.
- Turbo CF Card 8 GB for above Panel PC.
- MICROS Point-of-Sale (POS) stations.
- EPSON TM-T88V-Multi-Lingual printers that has a communication board with an inbuilt Web Service that supports ePOS.
- Symbol LS9208 or DS9208 USB Scanner with stand and cable for the scanning station.
- To guarantee compatibility, Meal Count Version .40 or higher is required when SPMS is .800 or above.

Optional

- MC70 or MC55 as Mobile Micros Terminal
- Cradle kit for above Mobile Micros Terminal
- Battery for above Mobile Micros Terminal
- Symbol Holster for Mobile Micros Terminal
- Tablets:
 - Minimum 2 GB of RAM
 - Screen resolution recommended is 1600 x 900
 - OS support for Windows 8.1 pro

3 Installation and Upgrade

Refer to Oracle Hospitality Cruise Meal Count System Installation Guide for more information.

4 Resolved Issues

Release Notes 8.0.000.x Build

TPID	Module	Description
Release 8.0.0.18		
7098	Configuration Module	The issue with Configuration Today number duplicating production counts has been corrected.
Release 8.0.0.17		
7054	Interface	Fixed the issue with creation of instatement for SQL exclude statement in interface.
Release 8.0.0.16		
7046	Interface	Removed all references of the Watchdog application from the MCS interface.
Release 8.0.0.15		
7003	Interface	Interface enhancements to remove requirement that server information must be in MCS for checks to print.
7005	Interface	Interface has been modified so that if a menu has two items with the same micros ID, interface will no longer return an error and crash. See also Duplicate Menu Item IDs.
7006	Configuration Module	Added the ability to directly link locations with Micros RVC via the configuration application, and also auto enables those RVCs that are linked to a location.
7004	Configuration Module	Added to menu overview an extra column between the item position and item code to display the items MICROS link ID as shown below: Interface has been modified and the purging of check function has been removed as it proved not to be very practical.
Release 8.0.0.10		
6128	Control Panel	Add default sort to Report Overview grid so that reports are by default sorted by Name/ Title.
6129	Control Panel	Add default sort to Menu Overview grid so that Menus are by default sorted by Name/Title.
6130	Control Panel	When adding or editing a daily event, changes the Time edit from AM/PM time to 24Hour time for ease of use.
6131	Control Panel and Display	Added the ability to add sort order of meal in a Menu

TPID	Module	Description
6132	Control Panel	Added Copy and Paste functionality for Menus
6133	Display	Added a screen saver which displays the time when there is no current active event.
6138	Display	Added column totals to the Menu Overview totaling the Prepared, ordered, served and remaining.
5849	Control Panel	Menu bars option Tile Vertical and Tile Horizontal icons where reversed.
5850	Control Panel	Fixed issue when user tries to delete a Restaurant and got the add/edit Restaurant form.
6134	Control Panel	Fixed issue in Menu Overview grid where the value in column "count menu used" and "Menu Type" was not correct
6135	Control Panel	Closed a few memory leaks in the interface module
6136	Control Panel	When deleting folders from the tree view, sub folders where not being deleted and remain as orphaned entries in the database.
6137	Control Panel	When importing a new report, values imported from the embedded tags would not show in the properties until the report properties were closed and re-opened.

Release Notes 8.0.100 Build

TPID	Module	Description
Release 8.0.100.3		
1000	Clients	Full support of Windows 7 All Meal Count System Applications can now be run on Microsoft Windows 7 Operating System
1001	Reports	Added the COST data into several reports
1002	Display	Inside the display configuration, the user can choose between the traditional display layout of previous MCS versions, or the new enhanced layout.
1003	Display	The system can hold several display pages with different background images. Pages can be rotated in a specific order.
1004	Display	The system can now host a brief description of each meal item which might be used together with the meal image for screensaver purposes.
1005	Display	The system has now two levels of warnings when prepared meals are running out.

TPID	Module	Description
		<p>Orange indicators when the prepared meals are running low.</p> <p>Red indicators when the prepared meals are about to run out.</p> <p>At which amount of meals the indicators start flashing, can be configured individually.</p>
1006	Configurator	Search function in all grid views.
1007	Display	New splash screen showing the number of pages which are being loaded.
1008	Configurator	<p>Most grid view now showing a total line on the bottom of the screen, accumulating figures.</p> <p>The Meal Configuration can now hold a meal description and a display text. The display text is limited to 20 characters.</p>
1009	Time Synchronization	With client 8.0.1.3 the display and scanning station PCs are syncing their system time and date with the Oracle server, when the MCS application is being started (24-Oct-2010)
6636	Configurator	<p>It is now possible to configure different display pages with different layouts. Those pages can now rotate in a defined order showing different kind of information.</p> <p>Course display pages are only part of the rotation if meals belonging to that course have been ordered. The course page will be excluded from the rotation when no more orders are outstanding. The moment a meal which is part of that course has been ordered again (late orders) the page will be back in rotation.</p>
6774	Configurator	<p>It is now possible to pre select a menu kind in order to avoid the long scrolling through a list of all meals.</p> <p>While setting up the menus, the user can now select e.g. Appetizers and in the field below, only appetizers will narrow down the search for the desired menu item</p>
6793	Display	<p>Split Displays. It is now possible to have several display locations showing different kind of courses.</p> <p>For example, the display in the hot galley would only show the main courses and starters which are being prepared in the hot galley.</p> <p>Salads or cold appetizers can be displayed only on the display of the cold galley. The display location can be set per meal.</p>
6820	Scanning Station	In order to exit the scanning station application, the user must now provide a password. A numeric password can be set individually.

TPID	Module	Description
		This will prevent that users will access other applications available on the scanning station PC. Please see BarCode Scanner Stations.
6826	Configurator	Added security rights management to the system. This gives complete control of who can do what. User groups are being taken from the SPMS set up onboard. Please see User Security.
6882	Configurator	In printer station set up, it is now possible to link the MICROS workstation ID as shown in the MICROS EMC. No more need to look up any object numbers inside the MICROS database.
6987	Configurator	It is now possible to configure in which course any special menu items are being printed. This set up is being done per Event.
7513	Configurator	It is now possible to edit the figures for the PREPARED count in grid view, instead of accessing each meal separately.
7603	Configurator	If the user enters a second event for the same times and the same restaurant as an existing event, the system now displays a warning message.
7508	Display	Removed the screensaver clock from the application and added the possibility to show meal pictures with a brief description (dietary facts, etc.) during off-meal times. Other display pages like gangway status or shore excursion figures can also be used.
8160	Configurator	It is now possible to branch folders in the menu section. The Branch Folder feature will branch the folder selected and all its SUB folders ONLY with menus included.
8162	Configurator	The total amount of events for the day and the total amount of expected pax are being shown on the bottom of the grid view.

Release Notes 8.0.200 Build

TPID	Module	Description
Release 8.0.200.35		
	Data Imports	It is now possible to import menu item data from XML files. The set-up has to be customized individually.
	Data Exports	It is now possible to export menu item data into XML files. The set-up has to be customized individually.

TPID	Module	Description
	Display	Enhanced the MCS display to also include dynamic SQL display objects Now it is possible to create custom object pages. This kind of pages can be individually configured to display any (ANY!) data which exists in the SPMS or MCS database. To display this kind of data, common SQL commands can be used. Those pages can be further customized with colors, backgrounds and different fonts. In addition, these pages can be exported and imported into other MCS databases. This also allows to show the accumulated totals from different RVCs on the same display.
	Interface	Added option to print short description on check. If this option is enabled, the item description which is being printed on the check will be taken from the meal configuration field "Display Check" and not from the regular item description.
11257	Display	Corrected the inconsistent naming of the Display Page Layout section and Add/Edit Display section.
	Gangway Count	The gangway page display added the applicable counts twice which lead to an incorrect total count. This has been corrected.
	Interface	The printing speed of meal count checks has been an issue in difficult network environments. The enhanced interface of this version contains several new features which increases the printing speed of Meal Count Checks. It is now also possible to filter meal count items by family or major group. Multi-threading printing is supported. New triggers will be inserted into micros db for faster processing of meal count checks.
	Status Bar	The current Meal Count Version number is now being displayed in the lower status bar:
	System	Naming corrections. Some naming corrections have been made to standardize the naming throughout the application. The application experienced problems when deleting display pages from display locations and when adding CO Pages to the display pages section. This has been corrected.
	Data Export	When running a data export the item code is now being included.

Release Notes 8.0.300 Build

TPID	Module	Description
Release 8.0.300.33		
12190	Interface/Database	It is now possible to run the Meal Count Interface with MICROS environments on Oracle and on MS-SQL.
12191	Database Trigger	Added additional control before MICROS DB tables and triggers are created. The interface will check if menu item filters and restaurants in MCS configuration have been set up. If not, the interface will display a message. If yes, the triggers will be placed in the MICROS db.
	User Maintenance	In order to use MCS as a standalone application, a different user maintenance module had to be integrated. MCS does not rely on the FC-SPMS user tables.
10340	System Folder	When copying a parent folder into a child folder, the system was breaking the link and no longer show the folder. This has been corrected.
	Interface	Modified Interface executable to avoid time out errors when importing MICROS master data The application has been changed to prevent the system from trying to import MICROS master data if an import is already active. Previous versions did not have this fix and the interface timed out with an error message.
12430	Configurator	In previous versions the configurator crashed when no table shape has been selected. This has been corrected.
12517	Configurator	In previous versions the configurator was crashing when Station ID contained alpha characters. This has been corrected.
12518	Configurator	The Configurator was crashing when restaurant stations have been deleted from restaurant configuration section. This has been corrected.
12548	Interface/Database	Enhanced the Interface capability to support configuration fields change in MSSQL or Oracle environment. When configuring the interface, the user must select if the MICROS environment is Oracle or MS-SQL since both environments require different settings for the configuration fields to change their names accordingly.
12263	Interface	The interface application will only import data from RVC which contain the pms8.isl link

TPID	Module	Description
		The interface application will only import data from RVC which contain the pms8.isl link. This avoids unnecessary data in MCS.
12258	Configurator	Active Events past midnight. In previous versions when an event was configured to go longer than midnight, the system doesn't print the meal count item names on checks. Only the MICROS item names are being printed. This has been corrected.
12191	Database	Added additional control before Micros DB tables and triggers are created to insure RVC and item filter setting are present
11557	Configurator	If the Meal Type or Code is missing in the Meal set up, the Box gives a warning but closes. The user has to start from the beginning. This has been corrected.
11587	Interface	Enhanced the MCS interface so that it updates the MCRC_ENABLED field based on the RVC linked to each display. When the interface is restarted or if the Rebuild MICROS triggers is pressed, the system will auto update the MCRC_Enabled values.
12277	Data Export	When exporting menus, the configurator is crashing when the user is trying to export a menu, and did not put a check mark into any box. This has been corrected and a warning box is being displayed to make at least one selection.
12298	System	MCS is using the DB password and encryption keys from SPMS. This has been changed that MCS can have its own values.
Release 8.0.300.40		
12500	Display	The display application had problems displaying correct box sizes when only one or two shore excursions were available in SPMS. The boxes were squeezed and not nice to look at. This has been corrected. The shore excursion page will always adjust the boxes to the size of seven lines.
Release 8.0.300.42		
	Interface	In previous interface versions, any print job was sent to a backup printer when the primary printer experienced issues while cutting. The application will no longer send those checks to any backup printer as technically the check was printed, but not cut.

TPID	Module	Description
		In previous interface versions, any print job would continuously cycle if the designated backup printer was switched off. This has been corrected.
Release 8.0.300.47		
13361	Display	In previous versions, the display stopped rotating if it loses connection to the db server. To prevent this, an active reconnection engine has been added that will display a message to the user that the connection has been lost and why. This engine will continuously attempt to reconnect to the db server. The display will recover if a network connection is available and the rotation will run as normal.
	Grid Font	In previous versions, the display grid column headers would not take the same font as the grid cell font. This has been corrected.
	Display Rotation	In previous versions, the display page "Today's Meals" rotation would occasionally change between meals at different intervals. This has been corrected. Also corrected the pages configured for "Always" and "Exclude meal times" that did not rotate correctly.
	Interface	In previous versions, the interface grid showing the printers status would not refresh if a printer went "offline" or "out of paper" or "lid open".
	Display	In previous versions, the display application would crash when checking for display page updates. This has been corrected.
	DB Encryption	In previous versions, an error would appear on modules with DBs using SPMS 8xx versions and using the new database password encryption. This has been corrected.
	Offline Printing	In previous versions, the interface application would aggressively try to reconnect to any Offline printers which would cause the application to crash. This has been corrected.
	Printer Status	In previous versions, the printer status in the interface application did not update the printer status grid of the interface after it was flagged as offline. This has been corrected.
	Display	In previous versions it occasionally happened that a display lost the event after a remote reload request for a display was executed. This has been corrected.

TPID	Module	Description
	Printer	In previous versions, the interface application was trying to reconnect to that printer continuously. With this version, the interface will only attempt to reconnect if there is a check for that printer to print. If cannot print that check it will send it to the backup printer.
	Configurator	If the IP address in the MCS configuration section contained any space characters, that printer did not work correctly. This interface now performs an automated check at startup and will insure that all printer settings are without any spaces.
	Printer	All changes to any printer configuration in MCS set up section require a restart of the interface. All settings are being loaded into memory during start up to avoid any unnecessary data downloads from the database. A new setting has been introduced which allows the configuration of retry attempts the interface should do if the printer does not reply during the first print job. The setting should be set to 0. It can be changed for testing only.
	Interface	Previous interface versions behaved in a more aggressive manner in regards to distributing the print jobs. This was done to compensate for weak network environments. This feature has been fine-tuned and the interface is acting less aggressive
Release 8.0.300.55		
	Bill Printing	In previous versions, the check header was not centered. This has been corrected. Improved "Transaction Print" method for faster printing
Release 8.0.300.60		
	System	Remove DBA rights from FidelioMCS user This option has been added to the database installer exe
13361	System	Use of Fidelio password for the FidelioMCS user This option has been added to the database installer exe.

Release Notes 8.0.301.01 Build

TPID	Module	Description
14891	Interface	The Interface did a slow printing when the DB get larger. Introducing new Tables TEMPD and TEMPI The Daily Menu will be load into Memory for faster printing.

Release Notes 8.0.303.04 Build

TPID	Module	Description
1357	Interface	MCS Feature to reprint meal count checks from MICROS workstation The Interface can now reprint a MCS check via a MICROS Terminal
12865	Check Printing	MCS Make Meal Count check much smaller There is only one width available 56.
15318		The user could open the same object several times There are tabs to see which view is already open.
15146	Interface	Interface slows down as the database gets larger. Therefore the processing interface logic has been changed. Previous logic would import check first, then print check. Now we have the check printed first and then the data is inserted into the meal count db. Events are now loaded into memory as are workstation properties, RVC properties, Server properties. If any these properties change on the MICROS side, a get master data must be done so that the new values are loaded into the memory.
15145	Performance	In previous version, loading of Menu and meals took a long time. This has been changed to load the form without drawing all Meals / Menu. User must select a folder before list items are drawn. If the user selects the root of the tree view ("Menus", "Meals") user will be advise it could take some time and must confirm if he/she wants to continue.
14768	Configurator	Events End next Day is faulty Fixed Event preparation can be added at the correct date.