

Oracle® Identity Governance

Configuring the Microsoft Teams Application



12c (12.2.1.3.0)

F44393-02

May 2022

The Oracle logo, consisting of a solid red square with the word "ORACLE" in white, uppercase, sans-serif font centered within it.

ORACLE®

Oracle Identity Governance Configuring the Microsoft Teams Application, 12c (12.2.1.3.0)

F44393-02

Copyright © 2022, Oracle and/or its affiliates.

Primary Author: Oracle Corporation

This software and related documentation are provided under a license agreement containing restrictions on use and disclosure and are protected by intellectual property laws. Except as expressly permitted in your license agreement or allowed by law, you may not use, copy, reproduce, translate, broadcast, modify, license, transmit, distribute, exhibit, perform, publish, or display any part, in any form, or by any means. Reverse engineering, disassembly, or decompilation of this software, unless required by law for interoperability, is prohibited.

The information contained herein is subject to change without notice and is not warranted to be error-free. If you find any errors, please report them to us in writing.

If this is software or related documentation that is delivered to the U.S. Government or anyone licensing it on behalf of the U.S. Government, then the following notice is applicable:

U.S. GOVERNMENT END USERS: Oracle programs (including any operating system, integrated software, any programs embedded, installed or activated on delivered hardware, and modifications of such programs) and Oracle computer documentation or other Oracle data delivered to or accessed by U.S. Government end users are "commercial computer software" or "commercial computer software documentation" pursuant to the applicable Federal Acquisition Regulation and agency-specific supplemental regulations. As such, the use, reproduction, duplication, release, display, disclosure, modification, preparation of derivative works, and/or adaptation of i) Oracle programs (including any operating system, integrated software, any programs embedded, installed or activated on delivered hardware, and modifications of such programs), ii) Oracle computer documentation and/or iii) other Oracle data, is subject to the rights and limitations specified in the license contained in the applicable contract. The terms governing the U.S. Government's use of Oracle cloud services are defined by the applicable contract for such services. No other rights are granted to the U.S. Government.

This software or hardware is developed for general use in a variety of information management applications. It is not developed or intended for use in any inherently dangerous applications, including applications that may create a risk of personal injury. If you use this software or hardware in dangerous applications, then you shall be responsible to take all appropriate fail-safe, backup, redundancy, and other measures to ensure its safe use. Oracle Corporation and its affiliates disclaim any liability for any damages caused by use of this software or hardware in dangerous applications.

Oracle, Java, and MySQL are registered trademarks of Oracle and/or its affiliates. Other names may be trademarks of their respective owners.

Intel and Intel Inside are trademarks or registered trademarks of Intel Corporation. All SPARC trademarks are used under license and are trademarks or registered trademarks of SPARC International, Inc. AMD, Epyc, and the AMD logo are trademarks or registered trademarks of Advanced Micro Devices. UNIX is a registered trademark of The Open Group.

This software or hardware and documentation may provide access to or information about content, products, and services from third parties. Oracle Corporation and its affiliates are not responsible for and expressly disclaim all warranties of any kind with respect to third-party content, products, and services unless otherwise set forth in an applicable agreement between you and Oracle. Oracle Corporation and its affiliates will not be responsible for any loss, costs, or damages incurred due to your access to or use of third-party content, products, or services, except as set forth in an applicable agreement between you and Oracle.

Contents

1 About the Connector

1.1	Certified Components	1-2
1.2	Usage Recommendation	1-3
1.3	Certified Languages	1-3
1.4	Supported Connector Operations	1-4
1.5	Connector Architecture	1-4
1.6	Use Cases Supported by the Connector	1-6
1.7	Connector Features	1-7
1.7.1	Full Reconciliation and Incremental Reconciliation	1-7
1.7.2	Limited Reconciliation	1-8
1.7.3	Support for the Connector Server	1-8
1.7.4	Transformation and Validation of Account Data	1-8

2 Creating an Application by Using the Connector

2.1	Process Flow for Creating an Application By Using the Connector	2-1
2.2	Prerequisites for Creating an Application By Using the Connector	2-2
2.2.1	Registering the Client Application	2-2
2.2.2	Downloading the Connector Installation Package	2-3
2.3	Creating an Application By Using the Connector	2-4

3 Configuring the Connector

3.1	Basic Configuration Parameters	3-1
3.2	Advanced Settings Parameters	3-3
3.3	Attribute Mappings	3-8
3.3.1	Attribute Mappings for the Target Application	3-8
3.4	Correlation Rules	3-10
3.4.1	Correlation Rules for the Target Application	3-11
3.5	Reconciliation Jobs	3-12

4 Performing Postconfiguration Tasks for the Connector

4.1	Configuring Oracle Identity Governance	4-1
4.1.1	Creating and Activating a Sandbox	4-1
4.1.2	Creating a New UI Form	4-2
4.1.3	Publishing a Sandbox	4-2
4.1.4	Updating an Existing Application Instance with a New Form	4-2
4.2	Harvesting Entitlements and Sync Catalog	4-3
4.3	Managing Logging for the Connector	4-3
4.3.1	Understanding Log Levels	4-3
4.3.2	Enabling Logging	4-4
4.4	Configuring the IT Resource for the Connector Server	4-6
4.5	Localizing Field Labels in UI Forms	4-7
4.6	Configuring SSL	4-9

5 Using the Connector

5.1	Configuring Reconciliation	5-1
5.1.1	Performing Full Reconciliation and Incremental Reconciliation	5-1
5.1.2	Performing Limited Reconciliation	5-1
5.2	Configuring Reconciliation Jobs	5-2
5.3	Configuring Provisioning	5-3
5.3.1	Guidelines on Performing Provisioning Operations	5-3
5.3.2	Performing Provisioning Operations	5-3
5.4	Connector Objects Used for Groups Management	5-4
5.4.1	Lookup Definitions for Groups Management	5-4
5.4.2	Reconciliation Rules and Action Rules for Groups Management	5-6
5.4.2.1	Reconciliation Rule for Groups	5-6
5.4.2.2	Reconciliation Action Rules for Groups	5-6
5.4.2.3	Viewing Reconciliation Rules	5-7
5.4.2.4	Viewing Reconciliation Action Rules	5-8
5.4.3	Reconciliation Scheduled Jobs for Groups Management	5-8
5.5	Uninstalling the Connector	5-9

6 Extending the Functionality of the Connector

6.1	Configuring Transformation and Validation of Data	6-1
6.2	Configuring Action Scripts	6-1
6.3	Configuring the Connector for Multiple Tenants	6-2

7 Known Issues and Limitations

8 A Files and Directories in the Connector Installation Package

Abstract

Documentation for resource administrators and target system integration teams that describes how to onboard applications pertaining to Microsoft Teams into Oracle Identity Governance.

List of Figures

1-1	Microsoft Teams Connector	1-5
2-1	Overall Flow of the Process for Creating an Application By Using the Connector	2-2
3-1	Default Attribute Mappings for MS Teams MStTeamsGroup	3-10
3-2	Predefined Situations and Responses for a MS Teams Target Application	3-12
5-1	Reconciliation Rule for Groups	5-7
5-2	Reconciliation Action Rules for Groups	5-8

List of Tables

1-1	Certified Components	1-2
1-2	Supported Connector Operations	1-4
1-3	Supported Connector Features Matrix	1-7
3-1	Parameters in the Basic Configuration	3-1
3-2	Advanced Settings Parameters	3-4
3-3	Default Attributes for MS Teams Target Application	3-8
3-4	Default Attribute Mappings for MSTeamsGroup	3-10
3-5	Predefined Identity Correlation Rule for a MS Teams Connector	3-11
3-6	Predefined Situations and Responses for a MS Teams AD Target Application	3-12
3-7	Parameters of the MS Teams Full User Reconciliation Job	3-13
3-8	Parameters of the MS TeamsTarget User Delete Reconciliation Job	3-14
3-9	Parameters of the Reconciliation Jobs for Entitlements	3-14
4-1	Log Levels and ODL Message Type:Level Combinations	4-4
4-2	Parameters of the IT Resource for the Azure AD Connector Server	4-6
5-1	Entries in the Lookup.MSTeams.GM.Configuration Lookup Definition	5-4
5-2	Entries in the Lookup.MSTeams.GM.ProvAttrMap Lookup Definition	5-5
5-3	Entries in the Lookup.MSTeams.GM.ReconAttrMap Lookup Definition	5-5
5-4	Action Rules for Groups Reconciliation	5-6
5-5	Action Rules for Groups Reconciliation	5-7
5-6	Attributes of the MS Teams Group Reconciliation Job	5-8
8-1	Files and Directories in the Microsoft Teams Connector	8-1

Preface

This guide describes the connector that is used to on board the Microsoft Teams application to Oracle Identity Governance.

Audience

This guide is intended for resource administrators and target system integration teams.

Documentation Accessibility

For information about Oracle's commitment to accessibility, visit the Oracle Accessibility Program website at <http://www.oracle.com/pls/topic/lookup?ctx=acc&id=docacc>.

Access to Oracle Support

Oracle customers that have purchased support have access to electronic support through My Oracle Support. For information, visit <http://www.oracle.com/pls/topic/lookup?ctx=acc&id=info> or visit <http://www.oracle.com/pls/topic/lookup?ctx=acc&id=trs> if you are hearing impaired.

Related Documents

For information about installing and using Oracle Identity Governance 12.2.1.3.0, visit the following Oracle Help Center page:

<http://docs.oracle.com/middleware/12213/oig/index.html>

For information about Oracle Identity Governance Connectors 12.2.1.3.0 documentation, visit the following Oracle Help Center page:

<http://docs.oracle.com/middleware/oig-connectors-12213/index.html>

Conventions

The following text conventions are used in this document:

Convention	Meaning
boldface	Boldface type indicates graphical user interface elements associated with an action, or terms defined in text or the glossary.
<i>italic</i>	Italic type indicates book titles, emphasis, or placeholder variables for which you supply particular values.
monospace	Monospace type indicates commands within a paragraph, URLs, code in examples, text that appears on the screen, or text that you enter.

Legal Disclaimer

This Software may enable You to link to, transfer Your Content or Third Party Content to, or otherwise access, third parties' websites, platforms, content, products, services, and

information (“Third Party Services”). Oracle does not control and is not responsible for Third Party Services.

ORACLE PROVIDES ACCESS TO THE THIRD PARTY SERVICES “AS IS”. ORACLE DOES NOT MAKE ANY COMMITMENTS OR PROVIDE WARRANTIES OR REPRESENTATIONS ABOUT THE THIRD PARTY SERVICES, THE FUNCTIONS OF THE THIRD PARTY SERVICES, OR THE RELIABILITY, AVAILABILITY, OR ABILITY OF THE THIRD PARTY SERVICES. TO THE EXTENT PERMITTED BY LAW, ORACLE EXCLUDES ALL WARRANTIES WITH REGARD TO THE THIRD PARTY SERVICES.

Your use of the Third Party Services are governed by Your agreement with the Third Party. You are solely responsible for: (a) complying with the terms of access and use of Third Party Services, including any Third Party Privacy Policy; and (b) ensuring that such access and use, including through passwords, credentials or tokens issued or otherwise made available to You, is authorized by the terms of access and use for such Third Party Services.

You agree to continue to comply with the terms of the Agreement for the Software and that Oracle may discontinue Your access to the Third Party Services at any time without liability to You.

1

About the Connector

Oracle Identity Governance is a centralized identity management solution that provides self service, compliance, provisioning and password management services for applications residing on-premises or on the Cloud. Oracle Identity Governance connectors are used to integrate Oracle identity Governance with the external identity-aware applications.

The Microsoft Teams connector lets you create and onboard MS Teams applications in Oracle Identity Governance.

Note:

In this guide, the connector that is deployed using the **Applications** option on the **Manage** tab of Identity Self Service is referred to as an **AOB application**.

From Oracle Identity Governance release 12.2.1.3.0 onward, connector deployment is handled using the application onboarding capability of Oracle Identity Self Service. This capability lets business users to onboard applications with minimum details and effort. The connector installation package includes a collection of predefined templates (XML files) that contain all the information required for provisioning and reconciling data from a given application or target system. These templates also include basic connectivity and configuration details specific to your target system. The connector uses information from these predefined templates allowing you to onboard your applications quickly and easily using only a single and simplified UI.

Application onboarding is the process of registering or associating an application with Oracle Identity Governance and making that application available for provisioning and reconciliation of user information.


The following topics provide a high-level overview of the MS Teams connector:

- [Certified Components](#)
- [Usage Recommendation](#)
- [Certified Languages](#)
- [Supported Connector Operations](#)
- [Connector Architecture](#)
- [Use Cases Supported by the Connector](#)
- [Connector Features](#)

1.1 Certified Components

These are the software components and their versions required for installing and using the Microsoft Teams connector.

Table 1-1 Certified Components

Component	Requirement for AOB Application
Oracle Identity Governance or Oracle Identity Manager	<p>You can use any one of the following releases:</p> <ul style="list-style-type: none"> Oracle Identity Governance 12c (12.2.1.4.0) Oracle Identity Governance 12c (12.2.1.3.0)
	<div style="border: 1px solid #0070C0; padding: 10px; background-color: #E6F2FF;"> <p> Note:</p> <p>Ensure that you download and apply the patch 27861122 from My Support Oracle for 12c PS3. Failing to apply this patch prevents you from successfully testing connection between Oracle Identity Governance and your target system.</p> </div>
Oracle Identity Governance or Oracle Identity Manager JDK	JDK 1.8 and later
Target systems	Azure AD
Connector Server	11.1.2.1.0 or 12.2.1.3.0
Connector Server JDK	JDK 1.8 and later
Target API version	Microsoft graph API v1.0 and Authentication API version v2.0

1.2 Usage Recommendation

If you are using Oracle Identity Governance 12c (12.2.1.3.0) or later, then use the latest 12.2.1.x version of this connector. Deploy the connector using the **Applications** option on the **Manage** tab of Identity Self Service.

1.3 Certified Languages

These are the languages that the connector supports.

- Arabic
- Chinese (Simplified)
- Chinese (Traditional)
- Czech
- Danish
- Dutch
- English
- Finnish
- French
- French (Canadian)
- German
- Greek
- Hebrew
- Hungarian
- Italian
- Japanese
- Korean
- Norwegian
- Polish
- Portuguese
- Portuguese (Brazilian)
- Romanian
- Russian
- Slovak
- Spanish
- Swedish
- Thai
- Turkish

1.4 Supported Connector Operations

These are the list of operations that the connector supports for your target system.

Table 1-2 Supported Connector Operations

Operation	Supported
User Management	
Create user	Yes
Update user	Yes
Enable user	Yes
Disable user	Yes
Delete user	Yes
Reset Password	Yes
MS Teams Management	
Create groups to the user	Yes
Delete groups from the user	Yes
Reconcile groups to the user	Yes
Teams Group Assignment	
Add Teams Group to the user	Yes
Remove Teams Group from the user	Yes

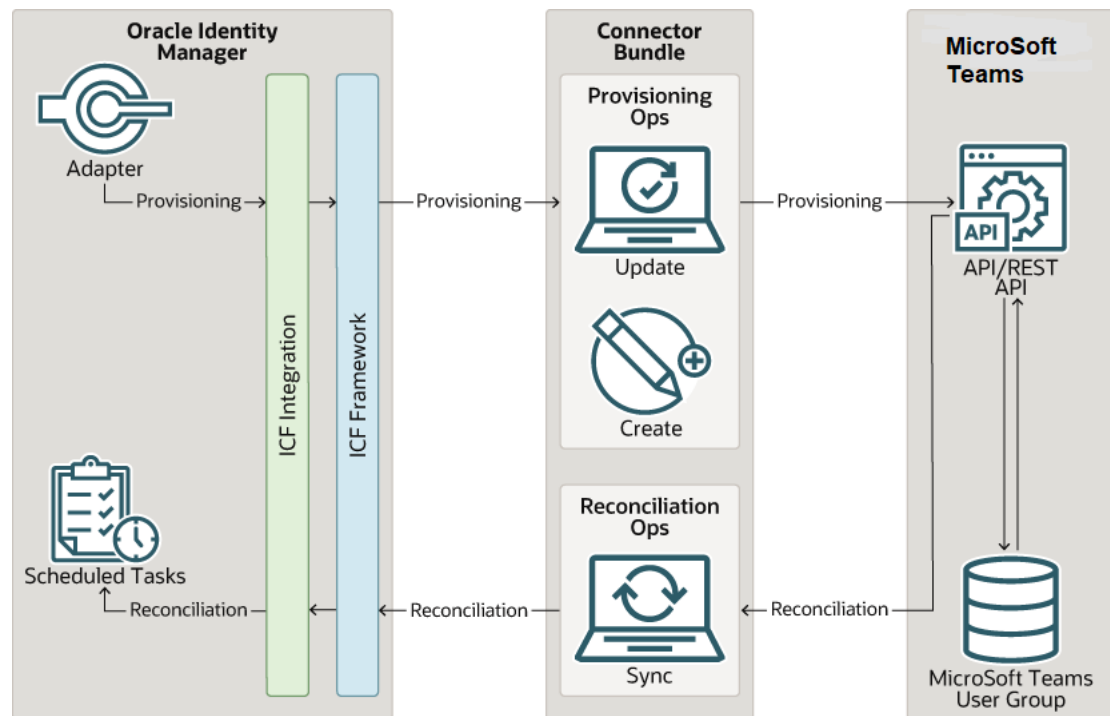
1.5 Connector Architecture

The Microsoft Teams connector is implemented by using the Identity Connector Framework (ICF).

The ICF is a component that is required in order to use Identity Connector. ICF provides basic reconciliation and provisioning operations that are common to all Oracle Identity Governance connectors. In addition, ICF provides common features that developers would otherwise need to implement on their own, such as, buffering, time outs, and filtering. ICF is distributed together with Oracle Identity Governance. Therefore, you do not need to configure or modify ICF.

[Microsoft Teams Connector](#) shows the architecture of the Microsoft Teams connector.

Figure 1-1 Microsoft Teams Connector



The connector is configured to run in one of the following modes:

- Account management

Account management is also known as target resource management. In this mode, the target system is used as a target resource and the connector enables the following operations:

- Provisioning

Provisioning involves creating, updating, or deleting users on the target system through Oracle Identity Governance. During provisioning, the Adapters invoke ICF operation, ICF in turn invokes create operation on the Microsoft Teams Identity Connector Bundle and then the bundle calls the target system API (Microsoft Azure Active Directory (AD) Graph API) for provisioning operations. The API on the target system accepts provisioning data from the bundle, carries out the required operation on the target system, and returns the response from the target system back to the bundle, which passes it to the adapters.

- Target resource reconciliation

During reconciliation, a scheduled task invokes an ICF operation. ICF in turn invokes a search operation on the Microsoft Teams Identity Connector Bundle and then the bundle calls Azure AD API for Reconciliation operation. The API extracts user records that match the reconciliation criteria and hands them over through the bundle and ICF back to the scheduled task, which brings the records to Oracle Identity Governance.

Each record fetched from the target system is compared with Microsoft Teams resources that are already provisioned to OIM Users. If a match is found, then the update made to the Microsoft Teams (Azure AD) record from the target system is copied to the Microsoft Teams resource in Oracle Identity Governance. If no match is

found, then the `userPrincipalName` of the record is compared with the User Login of each OIM User. If a match is found, then data in the target system record is used to provision a Microsoft Teams resource to the OIM User.

The Microsoft Teams Identity Connector Bundle communicates with the Microsoft Graph API using the HTTPS protocol. The Microsoft Graph API provides programmatic access to Azure Active Directory through REST API endpoints. Apps can use the Microsoft Graph API to perform create, read, update, and delete (CRUD) operations on directory data and directory objects, such as users, groups.

 **See Also:**

Understanding the Identity Connector Framework in *Oracle Fusion Middleware Developing and Customizing Applications for Oracle Identity Governance* for more information about ICF

1.6 Use Cases Supported by the Connector

The Microsoft Teams connector is used to integrate Oracle Identity Governance with Azure AD to ensure that all Microsoft Teams accounts are created, updated, and deactivated on an integrated cycle with the rest of the identity-aware applications in your enterprise.

The Microsoft Teams connector supports management of identities for Cloud Identity, Synchronized Identity, and Federated Identity models of Azure AD. In a typical IT scenario, an organization using Oracle Identity Governance wants to manage accounts, groups, roles and licenses across Azure AD Cloud Service. The following are some of the most common scenarios in which this connector can be used:

- **Azure AD User Management**

An organization using Microsoft Teams wants to integrate with Oracle Identity Governance to manage identities. The organization wants to manage its user identities by creating them in the target system using Oracle Identity Governance. The organization also wants to synchronize user identity changes performed directly in the target system with Oracle Identity Governance. In such a scenario, a quick and an easy way is to install the Microsoft Teams connector and configure it with your target system by providing connection information.

To create a new user in the target system, fill in and submit the OIM process form to trigger the provisioning operation. The connector executes the `CreateOp` operation against your target system and the user is created on successful execution of the operation. Similarly, operations like delete and update can be performed.

To search or retrieve the user identities, you must run a scheduled task from Oracle Identity Governance. The connector will run the corresponding `SearchOp` against the user identities in the target system and fetch all the changes to Oracle Identity Governance.

- **MS Teams Group Support**

Microsoft Teams is a proprietary business communication platform developed by Microsoft, as part of the Microsoft 365 family of products. By using the Azure AD, users can share files, organize meetings from their calendar, and sync with other

Office apps like MS OneNote, MS OneDrive, and Skype for Business. This improves collaboration and communication while simultaneously aiding the adoption of Office 365.

1.7 Connector Features

The features of the connector include support for connector server, full reconciliation, limited reconciliation, and reconciliation of deleted account data.

[Table 1-3](#) provides the list of features supported by the AOB application.

Table 1-3 Supported Connector Features Matrix

Feature	AOB Application
Full reconciliation	Yes
Limited reconciliation	Yes
Delete reconciliation	Yes
Use connector server	Yes
Transformation and validation of account data	Yes
Perform connector operations in multiple domains	Yes
Support for paging	Yes
Test connection	Yes
Reset password	Yes
MS Teams management	Yes

The following topics provide more information on the features of the AOB application:

- [Full Reconciliation and Incremental Reconciliation](#)
- [Limited Reconciliation](#)
- [Support for the Connector Server](#)
- [Transformation and Validation of Account Data](#)

1.7.1 Full Reconciliation and Incremental Reconciliation

You can perform full reconciliation to bring all existing user data from the target system to Oracle Identity Governance.

After the first full reconciliation run, you can configure your connector for incremental reconciliation if the target system contains an attribute that holds the time stamp at which an object is created or modified.

In the Microsoft Teams connector, the incremental reconciliation option is not enabled by default. The connector supports incremental reconciliation only if the target system contains an attribute that holds the time stamp at which an object is created or modified.

 **Note:**

The connector supports incremental reconciliation if the target system contains an attribute that holds the timestamp at which an object is created or modified.

You can perform a full reconciliation run at any time. See [Performing Full Reconciliation and Incremental Reconciliation](#) for more information about performing full and incremental reconciliation.

1.7.2 Limited Reconciliation

You can reconcile records from the target system based on a specified filter criterion. To limit or filter the records that are fetched into Oracle Identity Governance during a reconciliation run, you can specify the subset of added or modified target system records that must be reconciled.

You can set a reconciliation filter as the value of the Filter Suffix attribute of the user reconciliation scheduled job. The Filter Suffix attribute helps you to assign filters to the API based on which you get a filtered response from the target system.

For more information, see [Performing Limited Reconciliation](#).

1.7.3 Support for the Connector Server

Connector Server is one of the features provided by ICF. By using one or more connector servers, the connector architecture permits your application to communicate with externally deployed bundles.

A Java connector server is useful when you do not want to execute a Java connector bundle in the same VM as your application. It can be beneficial to run a Java connector on a different host for performance improvements if the bundle works faster when deployed on the same host as the native managed resource.

 **See Also:**

Using an Identity Connector Server in *Oracle Fusion Middleware Developing and Customizing Applications for Oracle Identity Manager* for more information about installing and configuring connector server and running the connector server

1.7.4 Transformation and Validation of Account Data

You can configure transformation and validation of account data that is brought into or sent from Oracle Identity Governance during reconciliation and provisioning operations by writing Groovy scripts while creating your application.

For more information, see Validation and Transformation of Provisioning and Reconciliation Attributes in *Oracle Fusion Middleware Performing Self Service Tasks with Oracle Identity Governance*.

2

Creating an Application by Using the Connector

Learn about onboarding applications using the connector and the prerequisites for doing so.

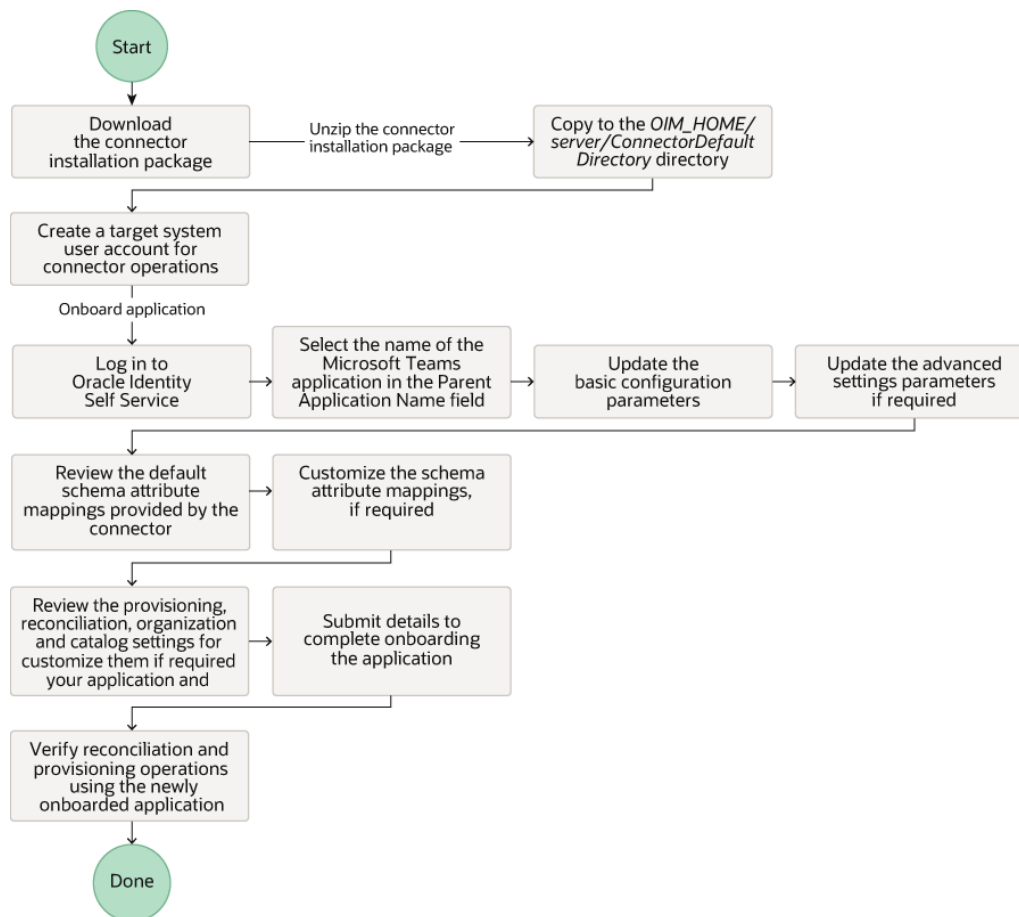
- [Process Flow for Creating an Application By Using the Connector](#)
- [Creating an Application By Using the Connector](#)
- [Prerequisites for Creating an Application By Using the Connector](#)
- [Creating an Application By Using the Connector](#)

2.1 Process Flow for Creating an Application By Using the Connector

From Oracle Identity Governance release 12.2.1.3.0 onward, connector deployment is handled using the application onboarding capability of Identity Self Service.

[Figure 2-1](#) is a flowchart depicting high-level steps for creating an application in Oracle Identity Governance by using the connector installation package.

Figure 2-1 Overall Flow of the Process for Creating an Application By Using the Connector



2.2 Prerequisites for Creating an Application By Using the Connector

Learn about the tasks that you must complete before you create the application.

- [Registering the Client Application](#)
- [Downloading the Connector Installation Package](#)

2.2.1 Registering the Client Application

Registering a client application (that is, the Azure AD connector) with the target system is a step that is performed before creating an application instance so that the connector can access Microsoft Graph APIs. It also involves generating the client ID and client secret for authenticating to the target system and setting the permissions for the client application.

Pre-provisioning involves performing the following tasks on the target system:

1. Register your client application with Microsoft Azure Active Directory to provide secure sign in and authorization for your services. You can register your client application by creating an application in the Microsoft Azure Management Portal.
2. Generate the client ID and client secret values for your client application. Note down these values as they are required while configuring IT resource parameters.
3. Specify the permissions that the client application requires to access the target system. To do so:
 - a. Assign the **Read and write domains** and **Read and write directory data** application permissions that the client application requires on Windows Azure Active Directory.
 - b. Assign the following delegated permissions that the client application requires on Windows Azure Active Directory:
 - Read and write directory data
 - Read and write all groups
 - Read all groups
 - Access the directory as the signed-in user
 - Read directory data
 - Read all user's full profiles
 - Read all user's basic profiles
 - Sign in and read user profile
 - c. Add the client application to "Company Administrator" and "User Account Administrator" in the Azure AD administrative roles. Visit the following Microsoft support URL for detailed information: <https://support.microsoft.com/en-in/kb/3004133>

This provides the necessary permissions for the client application to perform the Change Password and Delete user and group membership operations.

2.2.2 Downloading the Connector Installation Package

You can obtain the installation package for your connector on the Oracle Technology Network (OTN) website.

To download the connector installation package:

1. Navigate to the OTN website at <http://www.oracle.com/technetwork/middleware/id-mgmt/downloads/connectors-101674.html>.
2. Click **OTN License Agreement** and read the license agreement.
3. Select the **Accept License Agreement** option.

You must accept the license agreement before you can download the installation package.

4. Download and save the installation package to any directory on the computer hosting Oracle Identity Governance.
5. Extract the contents of the installation package to any directory on the computer hosting Oracle Identity Governance. This creates a directory named *CONNECTOR_NAME-RELEASE_NUMBER*.
6. Copy the *CONNECTOR_NAME-RELEASE_NUMBER* directory to the *OIG_HOME/server/ConnectorDefaultDirectory* directory.

2.3 Creating an Application By Using the Connector

You can onboard an application into Oracle Identity Governance from the connector package by creating a Target application. To do so, you must log in to Identity Self Service and then choose the **Applications** box on the **Manage** tab.

The following is the high-level procedure to create an application by using the connector:

 **Note:**

For detailed information on each of the steps in this procedure, see *Creating Applications of Oracle Fusion Middleware Performing Self Service Tasks with Oracle Identity Governance*.

1. Create an application in Identity Self Service. The high-level steps are as follows:
 - a. Log in to Identity Self Service either by using the **System Administration** account or an account with the **ApplicationInstanceAdministrator** admin role.
 - b. Ensure that the **Connector Package** option is selected when creating an application.
 - c. Update the basic configuration parameters to include connectivity-related information.
 - d. If required, update the advanced setting parameters to update configuration entries related to connector operations.
 - e. Review the default user account attribute mappings. If required, add new attributes or you can edit or delete existing attributes.
 - f. Review the provisioning, reconciliation, organization, and catalog settings for your application and customize them if required. For example, you can customize the default correlation rules for your application if required.
 - g. Review the details of the application and click **Finish** to submit the application details.

The application is created in Oracle Identity Governance.

- h. When you are prompted whether you want to create a default request form, click **Yes** or **No**.

If you click **Yes**, then the default form is automatically created and is attached with the newly created application. The default form is created with the same name as the application. The default form cannot be modified later. Therefore, if you want to customize it, click **No** to manually create a new form and attach it with your application.

2. Verify reconciliation and provisioning operations on the newly created application.

 **See Also:**

- [Configuring the Connector](#) for details on basic configuration and advanced settings parameters, default user account attribute mappings, default correlation rules, and reconciliation jobs that are predefined for this connector
- [Configuring Oracle Identity Governance](#) for details on creating a new form and associating it with your application, if you chose not to create the default form

3

Configuring the Connector

While creating a target or an authoritative application, you must configure connection-related parameters that the connector uses to connect to Oracle Identity Governance with your target system and perform connector operations. In addition, you can view and edit attribute mappings between the process form fields in Oracle Identity Governance and target system columns, predefined correlation rules, situations and responses, and reconciliation jobs.

- [Basic Configuration Parameters](#)
- [Advanced Settings Parameters](#)
- [Attribute Mappings](#)
- [Correlation Rules](#)
- [Reconciliation Jobs](#)

3.1 Basic Configuration Parameters

These are the connection-related parameters that Oracle Identity Governance requires to connect to a Microsoft Teams application. These parameters are common for both target applications and authoritative applications.



Note:

Unless specified, do not modify entries in the below table.

Table 3-1 Parameters in the Basic Configuration

Parameter	Mandatory ?	Description
authenticationType	Yes	Enter the type of authentication used by your target system. For this connector, the target system OAuth2.0 client credentials. This is a mandatory attribute while creating an application. Do <i>not</i> modify the value of the parameter. Default value: client_credentials

Table 3-1 (Cont.) Parameters in the Basic Configuration

Parameter	Mandatory ?	Description
authenticationServerUrl	Yes	Enter the URL of the authentication server that validates the client ID and client secret for your target system. Sample value: https://login.microsoftonline.com/ / idmconnector.onmicrosoft.com/oauth2/v2.0/token
clientId	Yes	Enter the client identifier (a unique string) issued by the authorization server to your client application during the registration process. You obtained the client ID while performing the procedure described in Configuring the Newly Added Application.
clientSecret	Yes	Enter the secret key used to authenticate the identity of your client application. You obtained the secret key while performing the procedure described in Configuring the Newly Added Application.
Scope	Yes	Enter the scope of your client application. Default value: https://graph.microsoft.com/.default
host	Yes	Enter the host name of the machine hosting your target system. This is a mandatory attribute while creating an application. Sample value: graph.microsoft.com
uriPlaceholder	Yes	Enter the key-value pair for replacing place holders in the relURIs. The URI place holder consists of values which are repeated in every relative URL. Values must be comma separated. For example, tenant ID and API version values are a part of every request URL. Therefore, we replace it with a key-value pair. Sample value: "api_version;v1.0"

Table 3-1 (Cont.) Parameters in the Basic Configuration

Parameter	Mandatory ?	Description
port	No	Enter the port number at which the target system is listening. Sample value: 443
proxyHost	No	Enter the name of the proxy host used to connect to an external target.
proxyPassword	No	Enter the password of the proxy user ID of the target system user account that Oracle Identity Governance uses to connect to the target system.
proxyPort	No	Enter the proxy port number.
proxyUser	No	Enter the proxy user name of the target system user account that Oracle Identity Governance uses to connect to the target system. Sample value: 80
sslEnabled	No	If the target system requires SSL connectivity, then set the value of this parameter to <code>true</code> . Otherwise set the value to <code>false</code> . Default value: <code>true</code>

3.2 Advanced Settings Parameters

These are the configuration-related entries that the connector uses during reconciliation and provisioning operations.

Note:

- Unless specified, do not modify entries in the below table.
- All parameters in the below table are mandatory.

Table 3-2 Advanced Settings Parameters

Parameter	Description
relURIs	<p>This entry holds the relative URL of every object class supported by this connector and the connector operations that can be performed on these object classes. This is a mandatory attribute while creating an application.</p> <p>Default value: "<code>__ACCOUNT__.CREATEOP=/\$(api_version)/users"</code>, "<code>__ACCOUNT__.UPDATEOP=/\$(api_version)/users/\$(__UID__)\$</code>", "<code>__ACCOUNT__.SEARCHOP=/\$(api_version)/users?\$(Filter Suffix)&\$select=assignedLicenses,userType,displayName,givenName,userPrincipalName,id,city,usageLocation,accountEnabled,mailNickname,surname,country&\$top=\$(PAGE_SIZE)&\$skiptoken=\$(PAGE_TOKEN)\$</code>", "<code>__ACCOUNT__=/\$(api_version)/users/\$(__UID__)\$?\$(select=assignedLicenses,displayName,givenName,userPrincipalName,id,city,usageLocation,accountEnabled"</code>, "<code>__TEAMS__.SEARCHOP=/beta/groups?\$(filter=resourceProvisioningOptions/Any(x:x+eq+'Team')&\$top=\$(PAGE_SIZE)&\$skiptoken=\$(PAGE_TOKEN)\$</code>", "<code>__TEAMS__.member=/\$(api_version)/teams/\$(__UID__)\$/members/\$ref?"</code>, "<code>__ACCOUNT__.__TEAMS__=/\$(api_version)/groups/\$(__TEAMS__.id)/members/\$ref"</code>, "<code>__ACCOUNT__.__TEAMS__.DELETEOP=/\$(api_version)/groups/\$(__TEAMS__.id)/members/\$(__UID__)\$/ref"</code>" "<code>__ACCOUNT__.__TEAMS__.SEARCHOP=/\$(api_version)/users/\$(__UID__)\$/joinedTeams"</code>, "<code>__ACCOUNT__.manager.SEARCHOP=/\$(api_version)/users/\$(__UID__)\$/manager"</code>, "<code>__ACCOUNT__.manager=/\$(api_version)/users/\$(__UID__)\$/manager/\$ref"</code>"</p>
nameAttributes	<p>This entry holds the name attribute for all the objects that are handled by this connector. For example, for the <code>__ACCOUNT__</code> object class that it used for User accounts, the name attribute is <code>userPrincipalName</code>.</p> <p>Default value: "<code>__ACCOUNT__.userPrincipalName"</code>, "<code>__TEAMS__.displayName"</code>"</p>

Table 3-2 (Cont.) Advanced Settings Parameters

Parameter	Description
uidAttributes	<p>This entry holds the uid attribute for all the objects that are handled by this connector.</p> <p>For example, for <code>User</code> accounts, the uid attribute is <code>objectId</code>.</p> <p>In other words, the value <code>ACCOUNT.objectId</code> in <code>decode</code> implies that the <code>UIDAttribute</code> (that is, <code>GUID</code>) of the connector for <code>ACCOUNTObject</code> class is mapped to <code>objectId</code> which is the corresponding uid attribute for user accounts in the target system.</p> <p>Default value: <code>"__ACCOUNT__.id", "__TEAMS__.id"</code></p>
opTypes	<p>This entry specifies the HTTP operation type for each object class supported by the connector. Values are comma separated and are in the following format: <code>OBJ_CLASS.OP=HTTP_OP</code></p> <p>In this format, <code>OBJ_CLASS</code> is the connector object class, <code>OP</code> is the connector operation (for example, <code>CreateOp</code>, <code>UpdateOp</code>, <code>SearchOp</code>), and <code>HTTP_OP</code> is the HTTP operation (<code>GET</code>, <code>PUT</code>, or <code>POST</code>).</p> <p>Default value: <code>"__ACCOUNT__.CREATEOP=POST", "__ACCOUNT__.UPDATEOP=PATCH", "__ACCOUNT__.SEARCHOP=GET", "__ACCOUNT__.TESTOP=GET", "__ACCOUNT__.manager.CREATEOP=PUT", "__ACCOUNT__.manager.UPDATEOP=PUT", "__ACCOUNT__.__TEAMS__.UPDATEOP=POST"</code></p>
pageSize	<p>The number of resources/users that appears on a page for a search operation.</p> <p>Default value: 100</p>
pageTokenAttribute	<p>The attribute in response payload that denotes the next page token.</p> <p>Default value: <code>odata.nextLink</code></p>
pageTokenRegex	<p>This attribute is used in the URL while reconciliation to support pagination.</p> <p>Default value: <code>(?<=skiptoken=).*</code></p>
Any Incremental Recon Attribute Type	<p>By default, during incremental reconciliation, Oracle Identity Governance accepts timestamp information sent from the target system only in Long datatype format. Setting the value of this parameter to <code>True</code> indicates that Oracle Identity Governance will accept timestamp information in any datatype format.</p> <p>Default value: <code>True</code></p>

Table 3-2 (Cont.) Advanced Settings Parameters

Parameter	Description
jsonResourcesTag	<p>This entry holds the json tag value that is used during reconciliation for parsing multiple entries in a single payload.</p> <p>Default value: <code>"__ACCOUNT__=value", "__TEAMS__=value"</code></p>
httpHeaderContentType	<p>This entry holds the content type expected by the target system in the header.</p> <p>Default value: application/json</p>
httpHeaderAccept	<p>This entry holds the accept type expected from the target system in the header.</p> <p>Default value: application/json</p>
specialAttributeTargetFormat	<p>This entry lists the format in which an attribute is present in the target system endpoint.</p> <p>For example, the alias attribute will be present as <code>aliases.alias</code> in the target system endpoint. Values are comma separated and are presented in the following format: <code>OBJ_CLASS.ATTR_NAME=TARGET_FORMAT</code></p> <p>Default value <code>"__ACCOUNT__.manager=id", "__TEAMS__.member=url", "__TEAMS__.member=value", "__ACCOUNT__.TEAMS__=value"</code></p>
specialAttributeHandling	<p>This entry lists the special attributes whose values should be sent to the target system one by one ("SINGLE"). Values are comma separated and are in the following format: <code>OBJ_CLASS.ATTR_NAME.PROV_OP=SINGLE</code></p> <p>For example, the <code>__ACCOUNT__.manager.UPDATEOP=SINGLE</code> value in decode implies that during an update provisioning operation, the manager attribute of the <code>__ACCOUNT__</code> object class must be sent to the target system one-by-one.</p> <p>Default value <code>"__ACCOUNT__.TEAMS__.CREATEOP=SINGLE", "__ACCOUNT__.TEAMS__.UPDATEOP=SINGLE", "__ACCOUNT__.manager.CREATEOP=SINGLE", "__ACCOUNT__.manager.UPDATEOP=SINGLE", "__ACCOUNT__.TEAMS__.ADDATTRIBUTE=SINGLE", "__ACCOUNT__.TEAMS__.REMOVEATTRIBUTE=SINGLE"</code></p>

Table 3-2 (Cont.) Advanced Settings Parameters

Parameter	Description
customPayload	<p>This entry lists the payloads for all operations that are not in the standard format.</p> <p>Default value: <code>"__ACCOUNT__.__TEAMS__.UPDATEOP={\"@odata.id\": \"https://graph.microsoft.com/v1.0/directoryObjects/\$(__UID__)\$\"}, \"__ACCOUNT__.__TEAMS__.CREATEOP={\"@odata.id\": \"https://graph.microsoft.com/v1.0/directoryObjects/\$(__UID__)\$\"}, \"__ACCOUNT__.manager.CREATEOP={\"@odata.id\": \"https://graph.microsoft.com/v1.0/directoryObjects/\$(manager)\$\"}, \"__ACCOUNT__.manager.UPDATEOP={\"@odata.id\": \"https://graph.microsoft.com/v1.0/directoryObjects/\$(manager)\$\"}"</code></p>
statusAttributes	<p>This entry lists the name of the target system attribute that holds the status of an account. For example, for the <code>__ACCOUNT__</code> object class that it used for User accounts, the status attribute is <code>accountEnabled</code>.</p> <p>Default value: <code>"__ACCOUNT__.accountEnabled"</code></p>
passwordAttribute	<p>This entry holds the name of the target system attribute that is mapped to the <code>__PASSWORD__</code> attribute of the connector in OIM.</p> <p>Default value: <code>passwordProfile.password</code></p>
targetObjectIdentifier	<p>This entry specifies the key-value pair for replacing place holders in the reURIs. Values are comma separated and in the <i>KEY;VALUE</i> format.</p> <p>Default value: <code>__ACCOUNT__.__GROUP__=securityEnabled;true, \"__ACCOUNT__.__OFFICEGROUP__=securityEnabled;false\", \"__ACCOUNT__.__ROLE__=@odata.type;#microsoft.graph.directoryRole"</code></p>
childFieldsWithSingleEnd	<p>This entry specifies special attributes data coming in from a single end point response.</p> <p>Default value: <code>"__GROUP__", "__ROLE__", "__OFFICEGROUP"</code></p>

3.3 Attribute Mappings

The attribute mappings on the Schema page vary depending on whether you are creating a target application.

- [Attribute Mappings for the Target Application](#)

3.3.1 Attribute Mappings for the Target Application

The Schema page for a target application displays the default schema (provided by the connector) that maps Oracle Identity Governance attributes to target system attributes. The connector uses these mappings during reconciliation and provisioning operations.

Default Attributes for MS Teams Target Application

[Table 3-3](#) lists the user-specific attribute mappings between the process form fields in Oracle Identity Governance and MS Teams target application attributes. The table also lists whether a specific attribute is used during provisioning or reconciliation and whether it is a matching key field for fetching records during reconciliation.

If required, you can edit the default attribute mappings by adding new attributes or deleting existing attributes as described in *Creating a Target Application in Oracle Fusion Middleware Performing Self Service Tasks with Oracle Identity Governance*.

Table 3-3 Default Attributes for MS Teams Target Application

Display Name	Target Attribute	Data Type	Mandatory Provisioning Property?	Provisioning Field?	Reconciliation Field?	Key Field?	Case Insensitive?	Advanced Flag Settings
Object Id	__UID__	String	No	Yes	Yes	Yes	Yes	Yes
User Principal Name	__NAME__	String	Yes	Yes	Yes	No	Not applicable	Yes
Password	__PASSWORD__	String	No	Yes	No	No	Not applicable	Yes
First Name	givenName	String	No	Yes	Yes	No	Not applicable	Yes
Last Name	surname	String	No	Yes	Yes	No	Not applicable	Yes
Display Name	displayName	String	Yes	Yes	Yes	No	Not applicable	Yes
User Type	userType	String	No	No	Yes	No	Not applicable	Yes
Usage Location	usageLocation	String	No	Yes	Yes	No	Not applicable	Yes
City	city	String	No	Yes	Yes	No	Not applicable	Yes

Table 3-3 (Cont.) Default Attributes for MS Teams Target Application

Display Name	Target Attribute	Data Type	Mandatory Provisioning Property?	Provision Field?	Recon Field?	Key Field?	Case Insensitive?	Advanced Flag Settings
Country	country	String	No	Yes	Yes	No	Not applicable	Yes
Manager	manager	String	No	Yes	Yes	No	Not applicable	Yes
Preferred Language	preferredLanguage	String	No	Yes	Yes	No	Not applicable	Yes
Mail NickName	mailNickname	String	Yes	Yes	Yes	No	Not applicable	Yes
MSTeams Server		Long	Yes	No	Yes	Yes	No	Yes
Change Password On Next Logon	passwordProfile.forceChangePasswordNextSignIn	String	No	Yes	No	No	Not applicable	Yes
Account Enabled	accountEnabled	String	No	Yes	Yes	No	Not applicable	Yes
Status	__ENABLE__	String	No	No	Yes	No	Not applicable	Yes

Default Attribute Mappings shows the default User account attribute mappings.

+ Add Attribute

Application Attribute				Provisioning Property		Reconciliation Properties			
Identity Attribute	Display Name	Target Attribute	Data Type	Mandatory	Provision Field	Recon Field	Key Field	Case Insensitive	
Select a value	Object Id	__UID__	String	<input type="checkbox"/>	<input checked="" type="checkbox"/>	<input checked="" type="checkbox"/>	<input checked="" type="checkbox"/>	<input checked="" type="checkbox"/>	✕ ⋮
Select a value	User Principal N	__NAME__	String	<input checked="" type="checkbox"/>	<input checked="" type="checkbox"/>	<input checked="" type="checkbox"/>	<input type="checkbox"/>	<input type="checkbox"/>	✕ ⋮
Select a value	Password	__PASSWORD__	String	<input type="checkbox"/>	<input checked="" type="checkbox"/>	<input type="checkbox"/>	<input type="checkbox"/>	<input type="checkbox"/>	✕ ⋮
Select a value	First Name	givenName	String	<input type="checkbox"/>	<input checked="" type="checkbox"/>	<input checked="" type="checkbox"/>	<input type="checkbox"/>	<input type="checkbox"/>	✕ ⋮
Select a value	Last Name	surname	String	<input type="checkbox"/>	<input checked="" type="checkbox"/>	<input checked="" type="checkbox"/>	<input type="checkbox"/>	<input type="checkbox"/>	✕ ⋮
Select a value	Display Name	displayName	String	<input checked="" type="checkbox"/>	<input checked="" type="checkbox"/>	<input checked="" type="checkbox"/>	<input type="checkbox"/>	<input type="checkbox"/>	✕ ⋮
Select a value	User Type	userType	String	<input type="checkbox"/>	<input type="checkbox"/>	<input checked="" type="checkbox"/>	<input type="checkbox"/>	<input type="checkbox"/>	✕ ⋮
Select a value	Usage Location	usageLocation	String	<input type="checkbox"/>	<input checked="" type="checkbox"/>	<input checked="" type="checkbox"/>	<input type="checkbox"/>	<input type="checkbox"/>	✕ ⋮
Select a value	City	city	String	<input type="checkbox"/>	<input checked="" type="checkbox"/>	<input checked="" type="checkbox"/>	<input type="checkbox"/>	<input type="checkbox"/>	✕ ⋮
Select a value	Country	country	String	<input type="checkbox"/>	<input checked="" type="checkbox"/>	<input checked="" type="checkbox"/>	<input type="checkbox"/>	<input type="checkbox"/>	✕ ⋮
Select a value	Manager	manager	String	<input type="checkbox"/>	<input checked="" type="checkbox"/>	<input checked="" type="checkbox"/>	<input type="checkbox"/>	<input type="checkbox"/>	✕ ⋮

MS Teams Entitlement

[Default Attribute Mappings for MSTEamsGroup](#) lists the group forms attribute mappings between the process form fields in Oracle Identity Governance and MS Teams target application attributes. The table lists whether a given attribute is mandatory during provisioning. It also lists whether a given attribute is used during reconciliation and whether it is a matching key field for fetching records during reconciliation.

If required, you can edit the default attribute mappings by adding new attributes or deleting existing attributes as described in [Creating a Target Application](#) in Oracle Fusion Middleware Performing Self Service Tasks with Oracle Identity Governance.

Table 3-4 Default Attribute Mappings for MSTEamsGroup

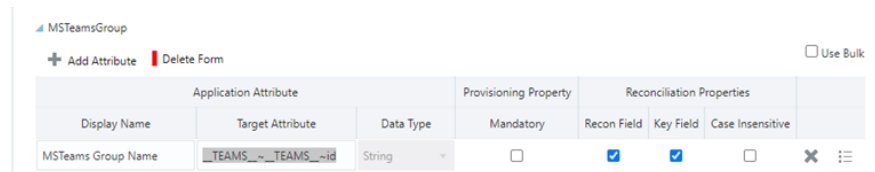
Display Name	Target Attribute	Data Type	Mandatory Provisioning Property?	Recon Field?	Key Field?	Case Insensitive?
MSTEams Group Name	__TEAMS_~__TEAM S__~id	String	No	Yes	Yes	No

MS Teams MSTEamsGroup Entitlement

lists the group forms attribute mappings between the process form fields in Oracle Identity Governance and MS Teams target application attributes. The table lists whether a given attribute is mandatory during provisioning. It also lists whether a given attribute is used during reconciliation and whether it is a matching key field for fetching records during reconciliation.

If required, you can edit the default attribute mappings by adding new attributes or deleting existing attributes as described in [Creating a Target Application](#) in Oracle Fusion Middleware Performing Self Service Tasks with Oracle Identity Governance.

Figure 3-1 Default Attribute Mappings for MS Teams MSTEamsGroup



3.4 Correlation Rules

Learn about the predefined rules, responses and situations for Target and Authoritative applications. The connector uses these rules and responses for performing reconciliation.

- [Correlation Rules for the Target Application](#)

3.4.1 Correlation Rules for the Target Application

When you create a target application, the connector uses correlation rules to determine the identity to which Oracle Identity Governance must assign a resource.

Predefined Identity Correlation Rules

By default, the MS Teams connector provides a simple correlation rule when you create a target application. The connector uses this correlation rule to compare the entries in Oracle Identity Governance repository and the target system repository, determine the difference between the two repositories, and apply the latest changes to Oracle Identity Governance.

[Table 3-6](#) lists the default simple correlation rule for a MS Teams AD connector. If required, you can edit the default correlation rule or add new rules. You can create complex correlation rules also. For more information about adding or editing simple or complex correlation rules, see *Updating Identity Correlation Rule in Oracle Fusion Middleware Performing Self Service Tasks with Oracle Identity Governance*.

Table 3-5 Predefined Identity Correlation Rule for a MS Teams Connector

Target Attribute	Element Operator	Identity Attribute	Case Sensitive?
__NAME__	Equals	User Login	No

In this identity rule:

- __NAME__ is a single-valued attribute on the target system that identifies the user account.
- User Login is the field on the OIG User form.

[Simple Correlation Rule for MS Teams Target Application](#) shows the simple correlation rule for a MS Teams AD target application.

Settings (This step is optional)

User

The application is already setup with default attributes. You can review and customize them as per your need.

Preview Settings

Provisioning Reconciliation Organization Catalog

Below are pre-defined rules that have been set for you.

Identity Correlation Rule

Choose Type of Correlation Rule

Simple Correlation Rule Complex Correlation Rule

+ Add Rule Element

Target Attribute	Element Operator	Identity Attribute	Case Sensitive	Delete
__NAME__	Equals	User Login	<input type="checkbox"/>	<input type="button" value="X"/>

Rule Operator

AND

Predefined Situations and Responses

The MS Teams connector provides a default set of situations and responses when you create a target application. These situations and responses specify the action that Oracle Identity Governance must take based on the result of a reconciliation event.

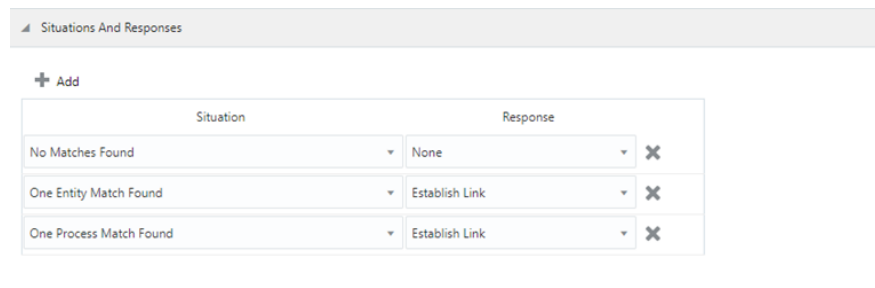
[Table 3-6](#) lists the default situations and responses for a MS Teams Target application. If required, you can edit these default situations and responses or add new ones. For more information about adding or editing situations and responses, see [Updating Situations and Responses in Oracle Fusion Middleware Performing Self Service Tasks with Oracle Identity Governance](#)

Table 3-6 Predefined Situations and Responses for a MS Teams AD Target Application

Situation	Response
No Matches Found	None
One Entity Match Found	Establish Link
One Process Match Found	Establish Link

[Predefined Situations and Responses for a MS Teams Target Application](#) shows the situations and responses for a MS Teams that the connector provides by default.

Figure 3-2 Predefined Situations and Responses for a MS Teams Target Application



3.5 Reconciliation Jobs

These are the reconciliation jobs that are automatically created in Oracle Identity Governance after you create the application.

User Reconciliation Jobs

You can either use these predefined jobs or edit them to meet your requirements. Alternatively, you can create custom reconciliation jobs. For information about editing these predefined jobs or creating new ones, see [Updating Reconciliation Jobs in Oracle Fusion Middleware Performing Self Service Tasks with Oracle Identity Governance](#).

The following reconciliation jobs are available for reconciling user data:

- **MS Teams Full User Reconciliation:** Use this reconciliation job to reconcile user data from a target application.
- **MS Teams Limited User Reconciliation:** Use this reconciliation job to reconcile user data from an authoritative application.

[Table 3-7](#) describes the parameters of the MS Teams Full User Reconciliation job.

Table 3-7 Parameters of the MS Teams Full User Reconciliation Job

Parameter	Description
Application name	Name of the AOB application with which the reconciliation job is associated. This value is the same as the value that you provided for the Application Name field while creating your target application. Do <i>not</i> change the default value.
Filter Suffix	Enter the search filter for fetching user records from the target system during a reconciliation run. Sample value when incremental recon is enabled: <code>&\$filter=displayName+eq+'JAN2KKA1'</code> Sample value when incremental recon is not enabled: <code>&\$filter=displayName+eq+'Aug11'</code> For more information about creating filters, see Performing Limited Reconciliation .
Object Type	This parameter holds the name of the object type for the reconciliation run. Default value: <code>User</code> Do <i>not</i> change the default value.
Scheduled Task Name	Name of the scheduled task used for reconciliation. Do <i>not</i> modify the value of this parameter.
Incremental Recon Attribute	Enter the name of the attribute that holds the timestamp at which the token record was modified.
Latest Token	This parameter holds the value of the target system attribute that is specified as the value of the Incremental Recon Attribute parameter. The Latest Token parameter is used for internal purposes. By default, this value is empty.

**Note:**

Do not enter a value for this parameter. The reconciliation engine automatically enters a value in this parameter.

Sample value:

```
<String>2017-11-30T04:44:29Z</String>
```

Target Delete User Reconciliation Job

The MS Teams User Target Delete Recon job is used to reconcile data about deleted users from a MS Teams target application. During a reconciliation run, for each deleted user

account on the target system, the MS Teams resource is revoked for the corresponding OIM User.

Table 3-8 Parameters of the MS TeamsTarget User Delete Reconciliation Job

Parameter	Description
Application name	Name of the application you created for your target system. This value is the same as the value that you provided for the Application Name field while creating your target application. Do <i>not</i> modify this value.
Object Type	This parameter holds the type of object you want to reconcile. Default value: <code>User</code> Note: If you configure the connector to provision users to a custom class (for example, <code>InetOrgPerson</code>) then enter the value of the object class here.

Reconciliation Jobs for Entitlements

The following jobs are available for reconciling entitlements:

- MSTEams Group Lookup Reconciliation
- MSTEams Manager Lookup Reconciliation

The parameters for all the reconciliation jobs are the same.

Table 3-9 Parameters of the Reconciliation Jobs for Entitlements

Parameter	Description
Application Name	Current AOB application name with which the reconciliation job is associated. Default value: <code>teams1</code> Do <i>not</i> modify this value.
Code Key Attribute	Name of the connector attribute that is used to populate the Code Key column of the lookup definition (specified as the value of the Lookup Name attribute). Default value: <code>__UID__</code> Do <i>not</i> modify this value.
Decode Attribute	Name of the connector attribute that is used to populate the Decode column of the lookup definition (specified as the value of the Lookup Name attribute). Default value: <code>__NAME__</code>

Table 3-9 (Cont.) Parameters of the Reconciliation Jobs for Entitlements

Parameter	Description
Lookup Name	<p>Enter the name of the lookup definition in Oracle Identity Governance that must be populated with values fetched from the target system.</p> <p>Depending on the Reconciliation job that you are using, the default values are as follows:</p> <ul style="list-style-type: none">• For MSTeams Group Lookup Reconciliation: Lookup.MSTeams.TeamsGroups• For MSTeams Manager Lookup Reconciliation: Lookup.MSTeams.Manager <p>If you create a copy of any of these lookup definitions, then enter the name of that new lookup definition as the value of the Lookup Name attribute.</p>
Object Type	<p>Enter the type of object you want to reconcile.</p> <p>Depending on the reconciliation job that you are using, the default values are as follows:</p> <ul style="list-style-type: none">• For MSTeams Group Lookup Reconciliation: __TEAMS__• For MSTeams Manager Lookup Reconciliation: User <p>Note: Do not change the value of this parameter.</p>

4

Performing Postconfiguration Tasks for the Connector

These are the tasks that you can perform after creating an application in Oracle Identity Governance.

- [Configuring Oracle Identity Governance](#)
- [Harvesting Entitlements and Sync Catalog](#)
- [Managing Logging for the Connector](#)
- [Configuring the IT Resource for the Connector Server](#)
- [Localizing Field Labels in UI Forms](#)
- [Configuring SSL](#)

4.1 Configuring Oracle Identity Governance

During application creation, if you did not choose to create a default form, then you must create a UI form for the application that you created by using the connector.



Note:

Perform the procedures described in this section only if you did not choose to create the default form during creating the application.

The following topics describe the procedures to configure Oracle Identity Governance:

- [Creating and Activating a Sandbox](#)
- [Creating a New UI Form](#)
- [Publishing a Sandbox](#)
- [Updating an Existing Application Instance with a New Form](#)

4.1.1 Creating and Activating a Sandbox

You must create and activate a sandbox to begin using the customization and form management features. You can then publish the sandbox to make the customizations available to other users.

See *Creating a Sandbox and Activating a Sandbox* in *Oracle Fusion Middleware Developing and Customizing Applications for Oracle Identity Governance*.

4.1.2 Creating a New UI Form

You can use Form Designer in Oracle Identity System Administration to create and manage application instance forms.

See *Creating Forms By Using the Form Designer in Oracle Fusion Middleware Administering Oracle Identity Governance*.

While creating the UI form, ensure that you select the resource object corresponding to the newly created application that you want to associate the form with. In addition, select the **Generate Entitlement Forms** check box.

4.1.3 Publishing a Sandbox

Before publishing a sandbox, perform this procedure as a best practice to validate all sandbox changes made till this stage as it is difficult to revert the changes after a sandbox is published.

1. In Identity System Administration, deactivate the sandbox.
2. Log out of Identity System Administration.
3. Log in to Identity Self Service using the xelsysadm user credentials and then activate the sandbox that you deactivated in Step 1.
4. In the Catalog, ensure that the application instance form for your resource appears with correct fields.
5. Publish the sandbox. See *Publishing a Sandbox in Oracle Fusion Middleware Developing and Customizing Applications for Oracle Identity Governance*.

4.1.4 Updating an Existing Application Instance with a New Form

For any changes that you do in the schema of your application in Identity Self Service, you must create a new UI form and update the changes in an application instance.

To update an existing application instance with a new form:

1. Create and activate a sandbox.
2. Create a new UI form for the resource.
3. Open the existing application instance.
4. In the Form field, select the new UI form that you created.
5. Save the application instance.
6. Publish the sandbox.

 **See Also:**

- *Creating a Sandbox and Activating a Sandbox in Oracle Fusion Middleware Developing and Customizing Applications for Oracle Identity Governance*
- *Creating Forms By Using the Form Designer in Oracle Fusion Middleware Administering Oracle Identity Governance*
- *Publishing a Sandbox in Oracle Fusion Middleware Developing and Customizing Applications for Oracle Identity Governance*

4.2 Harvesting Entitlements and Sync Catalog

You can populate Entitlement schema from child process form table, and harvest roles, application instances, and entitlements into catalog. You can also load catalog metadata.

To harvest entitlements and sync catalog:

1. Run the scheduled jobs for lookup field synchronization listed in [Reconciliation Jobs](#).
2. Run the Entitlement List scheduled job to populate Entitlement Assignment schema from child process form table.
3. Run the Catalog Synchronization Job scheduled job.

 **See Also:**

Predefined Scheduled Tasks in *Oracle Fusion Middleware Administering Oracle Identity Governance* for a description of the Entitlement List and Catalog Synchronization Job scheduled jobs

4.3 Managing Logging for the Connector

Oracle Identity Governance uses the Oracle Diagnostic Logging (ODL) logging service for recording all types of events pertaining to the connector.

The following topics provide detailed information about logging:

- [Understanding Log Levels](#)
- [Enabling Logging](#)

4.3.1 Understanding Log Levels

When you enable logging, Oracle Identity Manager automatically stores in a log file information about events that occur during the course of provisioning and reconciliation operations. ODL is the principle logging service used by Oracle Identity Manager and is based on `java.util.Logger`. To specify the type of event for which you want logging to take place, you can set the log level to one of the following:

- `SEVERE.intValue()+100`

- This level enables logging of information about fatal errors.

 - SEVERE

This level enables logging of information about errors that might allow Oracle Identity Manager to continue running.
 - WARNING

This level enables logging of information about potentially harmful situations.
 - INFO

This level enables logging of messages that highlight the progress of the application.
 - CONFIG

This level enables logging of information about fine-grained events that are useful for debugging.
 - FINE, FINER, FINEST

These levels enable logging of information about fine-grained events, where FINEST logs information about all events.

These message types are mapped to ODL message type and level combinations as shown in the below table.

Table 4-1 Log Levels and ODL Message Type:Level Combinations

Java Level	ODL Message Type:Level
SEVERE.intValue()+100	INCIDENT_ERROR:1
SEVERE	ERROR:1
WARNING	WARNING:1
INFO	NOTIFICATION:1
CONFIG	NOTIFICATION:16
FINE	TRACE:1
FINER	TRACE:16
FINEST	TRACE:32

The configuration file for OJDL is logging.xml, which is located at the following path:
DOMAIN_HOME/config/fmwconfig/servers/OIM_SERVER/logging.xml

Here, DOMAIN_HOME and OIM_SERVER are the domain name and server name specified during the installation of Oracle Identity Manager.

4.3.2 Enabling Logging

Perform this procedure to enable logging in Oracle WebLogic Server.

To enable logging in Oracle WebLogic Server:

1. Edit the logging.xml file as follows:

- a. Add the following blocks in the file:

```
<log_handler name='MSTeams-handler'
level=' [LOG_LEVEL] 'class='oracle.core.ojdl.logging.ODLHandlerFactory'>

    <property name='logreader:' value='off' />
    <property name='path' value=' [FILE_NAME] ' />
    <property name='format' value='ODL-Text' />
    <property name='useThreadName' value='true' />
    <property name='locale' value='en' />
    <property name='maxFileSize' value='5242880' />
    <property name='maxLogSize' value='52428800' />
    <property name='encoding' value='UTF-8' />
</log_handler>
```

```
<logger name="ORG.IDENTITYCONNECTORS.GENERICREST" level="[LOG_LEVEL]"
useParentHandlers="false">
    <handler name="MSTeams-handler" />
    <handler name="console-handler" />
</logger>
```

```
<logger name="ORG.IDENTITYCONNECTORS.RESTCOMMON" level="[LOG_LEVEL]"
useParentHandlers="false">
    <handler name="MSTeams-handler" />
    <handler name="console-handler" />
</logger>
```

- b. Replace both occurrences of **[LOG_LEVEL]** with the ODL message type and level combination that you require. [Table 4-1](#) lists the supported message type and level combinations. Similarly, replace **[FILE_NAME]** with the full path and name of the log file in which you want log messages to be recorded. The following blocks show sample values for **[LOG_LEVEL]** and **[FILE_NAME]**:

```
<log_handler name='MStears-handler'
level='NOTIFICATION:1' class='oracle.core.ojdl.logging.ODLHandlerFactor
y'>
    <property name='logreader:' value='off' />
    <property name='path'
value='F:\MyMachine\middleware\user_projects\domains\base_domain1\serv
ers\oim_server1\logs\oim_server1-diagnostic-1.log' />
    <property name='format' value='ODL-Text' />
    <property name='useThreadName' value='true' />
    <property name='locale' value='en' />
    <property name='maxFileSize' value='5242880' />
    <property name='maxLogSize' value='52428800' />
    <property name='encoding' value='UTF-8' />
</log_handler>
```

```
<logger name="ORG.IDENTITYCONNECTORS.GENERICREST"
level="NOTIFICATION:1" useParentHandlers="false">
    <handler name="MStears-handler" />
    <handler name="console-handler" />
</logger>
```

```
<logger name="ORG.IDENTITYCONNECTORS.RESTCOMMON"
level="NOTIFICATION:1" useParentHandlers="false">
  <handler name="MSteams-handler"/>
  <handler name="console-handler"/>
</logger>
```

With these sample values, when you use Oracle Identity Governance, all messages generated for this connector that are of a log level equal to or higher than the `NOTIFICATION:1` level are recorded in the specified file.

2. Save and close the file.
3. Set the following environment variable to redirect the server logs to a file:
 - For Microsoft Windows: `set WLS_REDIRECT_LOG=FILENAME`
 - For UNIX: `export WLS_REDIRECT_LOG=FILENAME`

Replace **FILENAME** with the location and name of the file to which you want to redirect the output.

4. Restart the application server.

4.4 Configuring the IT Resource for the Connector Server

If you have used the Connector Server, then you must configure values for the parameters of the Connector Server IT resource.

After you create the application for your target system, the connector creates a default IT resource for the Connector Server. The name of this default IT resource is `Microsoft Teams Connector Server`.

In Oracle Identity System Administration, search for and edit the AzureAD Connector Server IT resource to specify values for the parameters of IT resource for the Connector Server listed in the below table. For more information about searching for IT resources and updating its parameters, see *Managing IT Resources in Oracle Fusion Middleware Administering Oracle Identity Governance*.

Table 4-2 Parameters of the IT Resource for the Azure AD Connector Server

Parameter	Description
Host	Enter the host name or IP address of the computer hosting the Connector Server. Sample value: <code>HostName</code>
Key	Enter the key for the Connector Server.
Port	Enter the number of the port at which the Connector Server is listening. Sample value: <code>8763</code>
Timeout	Enter an integer value which specifies the number of milliseconds after which the connection between the Connector Server and Oracle Identity Governance times out. If the value is zero or if no value is specified, the timeout is unlimited. Sample value: <code>0</code> (recommended value)

Table 4-2 (Cont.) Parameters of the IT Resource for the Azure AD Connector Server

Parameter	Description
UseSSL	<p>Enter <code>true</code> to specify that you will configure SSL between Oracle Identity Governance and the Connector Server. Otherwise, enter <code>false</code>.</p> <p>Default value: <code>false</code></p> <p>Note: It is recommended that you configure SSL to secure communication with the connector server. To configure SSL, see <i>Configuring SSL for Java Connector Server</i> in <i>Oracle Fusion Middleware Developing and Customizing Applications for Oracle Identity Governance</i>.</p>

4.5 Localizing Field Labels in UI Forms

You can localize UI form field labels by using the resource bundle corresponding to the language you want to use. Resource bundles are available in the connector installation media.

To localize field labels that is added to the UI forms:

1. Log in to Oracle Enterprise Manager.
2. In the left pane, expand **Application Deployments** and then select **oracle.iam.console.identity.sysadmin.ear**.
3. In the right pane, from the Application Deployment list, select **MDS Configuration**.
4. On the MDS Configuration page, click **Export** and save the archive (`oracle.iam.console.identity.sysadmin.ear_V2.0_metadata.zip`) to the local computer.
5. Extract the contents of the archive, and open the following file in a text editor:

```
SAVED_LOCATION\xliffBundles\oracle\iam\ui\runtime\BizEditorBundle.xlf
```

Note:

You will not be able to view the `BizEditorBundle.xlf` file unless you complete creating the application for your target system or perform any customization such as creating a UDF.

6. Edit the `BizEditorBundle.xlf` file in the following manner:
 - a. Search for the following text:

```
<file source-language="en" original="/xliffBundles/oracle/iam/ui/runtime/BizEditorBundle.xlf" datatype="x-oracle-adf">
```

- b. Replace with the following text:

```
<file source-language="en" target-language="LANG_CODE" original="/xliffBundles/oracle/iam/ui/runtime/BizEditorBundle.xlf" datatype="x-oracle-adf">
```

In this text, replace LANG_CODE with the code of the language that you want to localize the form field labels. The following is a sample value for localizing the form field labels in Japanese:

```
<file source-language="en" target-language="ja" original="/
xliffBundles/oracle/iam/ui/runtime/BizEditorBundle.xlf"
datatype="x-oracle-adf">
```

- c. Search for the application instance code. This procedure shows a sample edit for MS Teams Application instance. The original code is:

```
<trans-unit id="$
{adfBundle['oracle.adf.businesseditor.model.util.BaseRuntimeResou
rceBundle']}
['persdef.sessiondef.oracle.iam.ui.runtime.form.model.user.entity
.userEO.UD_USER_PRINCIPAL_NAME__c_description']}>">
<source>User Principal Name</source><target/>
</trans-unit>
<trans-unit
id="sessiondef.oracle.iam.ui.runtime.form.model.RSAForm.entity.Az
ureADFormEO.UD_USER_PRINCIPAL_NAME__c_LABEL"><source>First
</trans-unit><trans-
unitid="sessiondef.oracle.iam.ui.runtime.form.model.MSTeams.entit
y.MSTeamsEO.UD_MSTEAMSR_USER_PRINCIPAL_NAM__c_LABEL">Name</
source><target/></trans-unit>
    <trans-unit
    id="$
    {adfBundle['oracle.adf.businesseditor.model.util.BaseRuntimeResou
rceBundle']}
    ['persdef.sessiondef.oracle.iam.ui.runtime.form.model.user.entity
.userEO.UD_MSTEAMSR_USER_PRINCIPAL_NAM__c_description']}>"><source
>User Principal Name</source><target/></trans-unit><trans-unit

id="sessiondef.oracle.iam.ui.runtime.form.model.MSTeamsRel.entity
.MSTeamsRelEO.UD_MSTEAMSR_USER_PRINCIPAL_NAM__c_LABEL"><source>Us
er Principal Name</source><target/></trans-unit>
```

- d. Open the resource file from the connector package, for example MicrosoftTeams_ja.properties, and get the value of the attribute from the file, for example,

```
global.udf.UD_GA_USR_USER_PRINCIPAL_NAME
=\u30A2\u30AB\u30A6\u30F3 \u30C8\u540D.
```

- e. Replace the original code shown in Step 6.c with the following:

```
<trans-unit id=id="$
{adfBundle['oracle.adf.businesseditor.model.util.BaseRuntimeResou
rceBundle']}
['persdef.sessiondef.oracle.iam.ui.runtime.form.model.user.entity
.userEO.UD_MSTEAMSR_USER_PRINCIPAL_NAM__c_description']}>">
<source>Account Name</source>
<target>\u30A2\u30AB\u30A6\u30F3\u30C8\u540D</target>
</trans-unit> <trans-
```

```
unitid=id="sessiondef.oracle.iam.ui.runtime.form.model.MSTeamsRel.entit
ty.MSTeamsRelEO.UD_MSTEAMSR_USER_PRINCIPAL_NAM__c_LABEL">
<source>Account Name</source>
<target>\u30A2\u30AB\u30A6\u30F3\u30C8\u540D</target>
</trans-unit>
```

- f. Repeat Steps 6.a through 6.d for all attributes of the process form.
 - g. Save the file as BizEditorBundle_*LANG_CODE*.*xml*. In this file name, replace *LANG_CODE* with the code of the language to which you are localizing. Sample file name: BizEditorBundle_ja.xml.
7. Repackage the ZIP file and import it into MDS.

See Also:

Deploying and Undeploying Customizations in *Oracle Fusion Middleware Developing and Customizing Applications for Oracle Identity Governance* for more information about exporting and importing metadata files

8. Log out of and log in to Oracle Identity Governance.

4.6 Configuring SSL

Configure SSL to secure data communication between Oracle Identity Governance and the Azure AD target system.

Note:

If you are using this connector along with a Connector Server, then there is no need to configure SSL. You can skip this section.

To obtain SSL, follow the below steps:

1. Obtain the SSL public key certificate (`stamp2.login.microsoftonline`) from `login.microsoftonline.com`.
2. Using OpenSSL command extract the certificate.

OpenSSL Command:

Export cmd

Note:

Obtain SSL from **graph.microsoft.com** while using `OpenSSL` cmd.

```
echo| openssl s_client -connect graph.microsoft.com:443 -showcerts >stamp2.crt
```

To configure SSL:

1. Obtain the SSL public key certificate of Azure AD. (As mentioned above)

2. Copy the public key certificate of Azure AD to the computer hosting Oracle Identity Governance
3. Run the following keytool command to import the public key certificate into the identity key store in Oracle Identity Governance:

```
keytool -import -alias ALIAS -trustcacerts -file CERT_FILE_NAME -  
keystore KEYSTORE_NAME -storepass PASSWORD
```

In this command:

- ALIAS is the public key certificate alias.
- CERT_FILE_NAME is the full path and name of the certificate store (the default is cacerts).
- KEYSTORE_NAME is the name of the keystore.
- PASSWORD is the password of the keystore.

```
keytool -import -alias serverwl -trustcacerts -file supportcert.pem - keystore  
client_store.jks -storepass weblogic1
```

The following are sample values for this command:

- ```
keytool -import -keystore /jre/lib/security/cacerts -file /
BaltimoreCyberTrustRoot.crt -storepass changeit -alias
BaltimoreCyberTrustRoot_1 keytool -import -keystore /jre/lib/
security/cacerts -file /MicrosoftITTLSCA1.crt -storepass changeit -
alias MicrosoftITTLSCA1_1
```
- ```
keytool -import -keystore /server/lib/DemoTrust.jks -file /  
BaltimoreCyberTrustRoot.crt -storepass DemoTrustKeyStorePassPhrase  
-alias BaltimoreCyberTrustRoot_1 keytool -import -keystore /  
server/lib/DemoTrust.jks -file /MicrosoftITTLSCA1.crt -storepass  
DemoTrustKeyStorePassPhrase -alias MicrosoftITTLSCA1_1
```

 **Note:**

Change the parameter values passed to the keytool command according to your requirements. Ensure that there is no line break in the keytool arguments • Ensure that the system date for Oracle Identity Governance is in sync with the validity date of the SSL certificate to avoid any errors during SSL communication.

5

Using the Connector

You can use the connector for performing reconciliation and provisioning operations after configuring your application to meet your requirements.

- [Configuring Reconciliation](#)
- [Configuring Reconciliation Jobs](#)
- [Configuring Provisioning](#)
- [Connector Objects Used for Groups Management](#)
- [Uninstalling the Connector](#)

5.1 Configuring Reconciliation

You can configure the connector to specify the type of reconciliation and its schedule.

This section discusses the following topics related to configuring reconciliation:

- [Performing Full Reconciliation and Incremental Reconciliation](#)
- [Performing Limited Reconciliation](#)

5.1.1 Performing Full Reconciliation and Incremental Reconciliation

Full reconciliation involves reconciling all existing user records from the target system into Oracle Identity Governance. After you create the application, you must first perform full reconciliation.

To perform a full reconciliation run, remove (delete) any value currently assigned to the Latest Token and Filter suffix parameters and run one of the reconciliation jobs listed in the [Reconciliation Jobs](#) section.

In the MS Teams connector, the incremental reconciliation option is not enabled by default. The connector supports incremental reconciliation only if the target system contains an attribute that holds the timestamp at which an object is created or modified.

5.1.2 Performing Limited Reconciliation

Limited or filtered reconciliation is the process of limiting the number of records being reconciled based on a set filter criteria.

By default, all target system records that are added or modified after the last reconciliation run are reconciled during the current reconciliation run. You can customize this process by specifying the subset of added or modified target system records that must be reconciled. You do this by creating filters for the reconciliation module.

You can perform limited reconciliation by creating filters for the reconciliation module. An example `Filter Suffix` value that is valid in the API version 1.6 is as follows:

Filter Suffix value : `&$filter=startswith(displayName, 'john.doe')`

This connector provides a Filter Suffix attribute (a scheduled task attribute) that allows you to use any of the attributes of the target system to filter target system records. You specify a value for the Filter Suffix attribute while configuring the user reconciliation scheduled job.

**Note:**

Specify a value for the Filter Suffix attribute in a format that is supported by the Microsoft Graph APIs you are using. For example:

- **Sample Filter Suffix**
`%20and%20startswith(displayName, 'user1')`
- **Sample Filter Suffix**
`&$filter=startswith(displayName, 'user1')`

5.2 Configuring Reconciliation Jobs

Configure reconciliation jobs to perform reconciliation runs that check for new information on your target system periodically and replicates the data in Oracle Identity Governance.

You can apply this procedure to configure the reconciliation jobs for users and entitlements.

To configure a reconciliation job:

1. Log in to Identity System Administration.
2. In the left pane, under System Management, click **Scheduler**.
3. Search for and open the scheduled job as follows:
 - a. In the Search field, enter the name of the scheduled job as the search criterion. Alternatively, you can click **Advanced Search** and specify the search criterion.
 - b. In the search results table on the left pane, click the scheduled job in the Job Name column.
4. On the Job Details tab, you can modify the parameters of the scheduled task:
 - **Retries:** Enter an integer value in this field. This number represents the number of times the scheduler tries to start the job before assigning the Stopped status to the job.
 - **Schedule Type:** Depending on the frequency at which you want the job to run, select the appropriate schedule type. See *Creating Jobs in Oracle Fusion Middleware Administering Oracle Identity Governance*.

In addition to modifying the job details, you can enable or disable a job.

5. On the **Job Details** tab, in the Parameters region, specify values for the attributes of the scheduled task.

 **Note:**

Values (either default or user-defined) must be assigned to all the attributes. If even a single attribute value is left empty, then reconciliation is not performed.

6. Click **Apply** to save the changes.

 **Note:**

You can use the Scheduler Status page in Identity System Administration to either start, stop, or reinitialize the scheduler.

5.3 Configuring Provisioning

You can configure the provisioning operation for the Azure AD connector.

This section provides information on the following topics:

- [Guidelines on Performing Provisioning Operations](#)
- [Performing Provisioning Operations](#)

5.3.1 Guidelines on Performing Provisioning Operations

These are the guidelines that you must apply while performing provisioning operations.

- For a Create User provisioning operation, you must specify a value for the User Principal Name field along with the domain name. For example, `jdoe@example.com`, it is mandatory field, other mandatory fields are Display Name, Password, MailNickname, and Usage Location.
- During a group provisioning operation you must enter a value for the DisplayName and MailNickname fields. The value in the MailNickname field should not include spaces.

5.3.2 Performing Provisioning Operations

You create a new user in Identity Self Service by using the Create User page. You provision or request for accounts on the Accounts tab of the User Details page.

To perform provisioning operations in Oracle Identity Governance:

1. Log in to Identity Self Service.
2. Create a user as follows:
 - a. In Identity Self Service, click **Manage**. The Home tab displays the different Manage option. Click **Users**. The Manage Users page is displayed.
 - b. From the Actions menu, select **Create**. Alternatively, you can click **Create** on the toolbar. The Create User page is displayed with input fields for user profile attributes.
 - c. Enter details of the user in the Create User page.
3. On the Account tab, click **Request Accounts**.

4. In the Catalog page, search for and add to cart the application instance for the connector that you configured earlier, and then click **Checkout**.
5. Specify value for fields in the application form and then click **Ready to Submit**.
6. Click **Submit**.



See Also:

Creating a User in *Oracle Fusion Middleware Performing Self Service Tasks with Oracle Identity Governance* for details about the fields on the Create User page

5.4 Connector Objects Used for Groups Management

Learn about the objects that are used by the connector to perform group management operations such as create and delete.

- [Lookup Definitions for Groups Management](#)
- [Reconciliation Rules and Action Rules for Groups Management](#)
- [Reconciliation Scheduled Jobs for Groups Management](#)

5.4.1 Lookup Definitions for Groups Management

The lookup definitions for Groups are automatically created in Oracle Identity Governance after you create the application by using the connector.

- Lookup.MSTeams.GM.Configuration
- Lookup.MSTeams.GM.ProvAttrMap
- Lookup.MSTeams.GM.ReconAttrMap

Lookup.MSTeams.GM.Configuration

The `Lookup.MSTeams.GM.Configuration` lookup definition holds configuration entries that are specific to the group object type. This lookup definition is used during group management operations when your target system is configured as a target resource.

Table 5-1 Entries in the Lookup.MSTeams.GM.Configuration Lookup Definition

Code Key	Decode	Description
Provisioning Attribute Map	Lookup.MSTeams.GM.ProvAttrMap	This entry holds the name of the lookup definition that stores attribute mappings between Oracle Identity Governance and the target system. This lookup definition is used during provisioning operations.

Table 5-1 (Cont.) Entries in the Lookup.MSTeams.GM.Configuration Lookup Definition

Code Key	Decode	Description
Recon Attribute Map	Lookup.MSTeams.GM.ReconAttrMap	This entry holds the name of the lookup definition that stores attribute mappings between Oracle Identity Governance and the target system. This lookup definition is used during reconciliation.

Lookup.MSTeams.GM.ProvAttrMap

Lookup.MSTeams.GM.ProvAttrMap lookup definition holds mappings between process form fields (Code Key values) and target system attributes (Decode). This lookup definition is preconfigured and is used during group provisioning operations.

Table 5-2 Entries in the Lookup.MSTeams.GM.ProvAttrMap Lookup Definition

Group Field on Oracle Identity Governance	MSTeams Field
Display Name	__NAME__
ObjectId	__UID__
Description	description
Owner[LOOKUP]	owner
Templates[LOOKUP]	templates

Lookup.MSTeams.GM.ReconAttrMap

The Lookup.MSTeams.GM.ReconAttrMap lookup definition holds mappings between resource object fields (Code Key values) and target system attributes (Decode). This lookup definition is preconfigured and is used during target resource group reconciliation runs.

Table 5-3 Entries in the Lookup.MSTeams.GM.ReconAttrMap Lookup Definition

Group Field on Oracle Identity Governance	MSTeams Field
OIM Org Name	OIM Organization Name

 **Note:**

This is a connector attribute. The value of this attribute is used internally by the connector to specify the organization of the groups in Oracle Identity Governance.

Table 5-3 (Cont.) Entries in the Lookup.MSTeams.GM.ReconAttrMap Lookup Definition

Group Field on Oracle Identity Governance	MSTeams Field
Display Name	__NAME__
ObjectId	__UID__
Description	description
Owner[LOOKUP]	owner

5.4.2 Reconciliation Rules and Action Rules for Groups Management

Reconciliation rules are used by the reconciliation engine to determine the identity to which Oracle Identity Governance must assign a newly discovered account on the target system. Reconciliation action rules define that actions the connector must perform based on the reconciliation rules.

- [Reconciliation Rule for Groups](#)
- [Reconciliation Action Rules for Groups](#)
- [Viewing Reconciliation Rules](#)
- [Viewing Reconciliation Action Rules](#)

5.4.2.1 Reconciliation Rule for Groups

The following is the process-matching rule for groups:

Rule name: MSTeams Group Recon Rule

Rule element: Organization Name Equals OIM Org Name

In this rule element:

- Organization Name is the Organization Name field of the OIM User form.
- OIM Org Name is the organization name of the groups in Oracle Identity Governance. OIM Org Name is the value specified in the Organization Name attribute of the MSTeams Group Recon scheduled job.

[Table 5-4](#) lists the action rules for groups reconciliation.

Table 5-4 Action Rules for Groups Reconciliation

Rule Condition	Action
No Matches Found	None
One Entity Match Found	Establish Link
One Process Match Found	Establish Link

5.4.2.2 Reconciliation Action Rules for Groups

[Table 5-5](#) lists the action rules for groups reconciliation.

Table 5-5 Action Rules for Groups Reconciliation

Rule Condition	Action
No Matches Found	None
One Entity Match Found	Establish Link
One Process Match Found	Establish Link

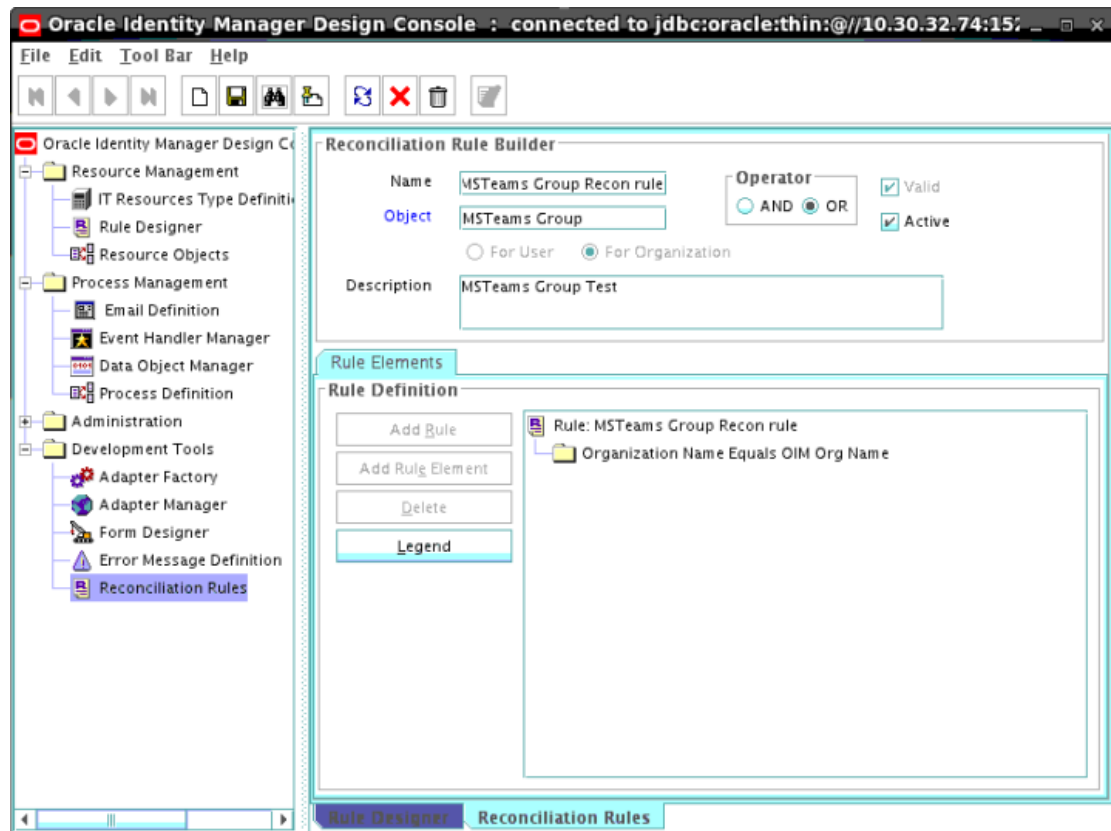
5.4.2.3 Viewing Reconciliation Rules

After you create the application by using the connector, you can view the reconciliation rule by performing the following steps:

1. Log in to the Oracle Identity Governance Design Console.
2. Expand **Development Tools**.
3. Double-click **Reconciliation Rules**.
4. Search for the **MSTeams Group Recon Rule** rule.

[Reconciliation Rule for Groups](#) shows the reconciliation rule for groups.

Figure 5-1 Reconciliation Rule for Groups



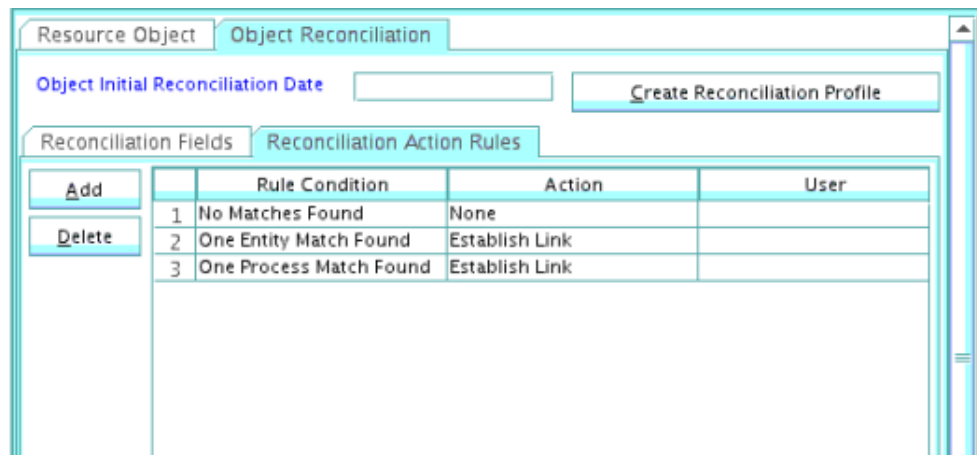
5.4.2.4 Viewing Reconciliation Action Rules

After you create the application by using connector, you can view the reconciliation action rules for groups by performing the following steps:

1. Log in to the Design Console.
2. Expand **Resource Management**, and double-click **Resource Objects**.
3. Search for and open the **MSTeams Group** resource object.
4. Click the **Object Reconciliation** tab, and then click the **Reconciliation Action Rules** tab. The **Reconciliation Action Rules** tab displays the action rules defined for this connector.

[Reconciliation Action Rules for Groups](#) shows the reconciliation action rules for groups.

Figure 5-2 Reconciliation Action Rules for Groups



5.4.3 Reconciliation Scheduled Jobs for Groups Management

After you create an application, reconciliation scheduled jobs are automatically created in Oracle Identity Governance. You must configure these scheduled jobs to suit your requirements by specifying values for its attributes.

You must specify values for the attributes for MSTeams Group Recon. [Table 5-6](#) describes the attributes of the MSTeams Group Reconciliation job.

Table 5-6 Attributes of the MS Teams Group Reconciliation Job

Attribute	Description
Filter Suffix	Enter the search filter for fetching user records from the target system during a reconciliation run. See Performing Limited Reconciliation for more information about this attribute.

Table 5-6 (Cont.) Attributes of the MS Teams Group Reconciliation Job

Attribute	Description
Object Type	This attribute holds the name of the object type for the reconciliation run. Default value: <code>Group</code> Note: Do not change the default value.
Incremental Recon Attribute	Attribute that holds the timestamp at which the token record was modified.
OIM Organization Name	Enter the name of the Oracle Identity Governance organization in which reconciled groups must be created or updated.
IT Resource Name	Enter the name of the IT resource for the target system installation from which you want to reconcile user records. Default value: <code>MSTeamsGroup</code>
Resource Object Name	This attribute holds the name of the resource object used for reconciliation. Default value: <code>MSTeamsGroup</code> Note: Do not change the default value.
Scheduled Task Name	Name of the scheduled task used for reconciliation. Default value: <code>MSTeams Group Reconciliation</code> Do <i>not</i> modify the value of this attribute.

5.5 Uninstalling the Connector

Uninstalling the Microsoft Teams connector deletes all the account-related data associated with its resource objects.

If you want to uninstall the connector for any reason, then run the Uninstall Connector utility. Before you run this utility, ensure that you set values for `ObjectType` and `ObjectValues` properties in the `ConnectorUninstall.properties` file. For example, if you want to delete resource objects, scheduled tasks, and scheduled jobs associated with the connector, then enter `"ResourceObject"`, `"ScheduleTask"`, `"ScheduleJob"` as the value of the `ObjectType` property and a semicolon-separated list of object values corresponding to your connector as the value of the `ObjectValues` property.

For example: `MSTeams User; MSTeams Group`

Note:

If you set values for the `ConnectorName` and `Release` properties along with the `ObjectType` and `ObjectValue` properties, then the deletion of objects listed in the `ObjectValues` property is performed by the utility and the Connector information is skipped.

For more information, see Uninstalling Connectors in *Oracle Fusion Middleware Administering Oracle Identity Governance*.

6

Extending the Functionality of the Connector

You can extend the functionality of the connector to address your specific business requirements.

This section discusses the following topics:

- [Configuring Transformation and Validation of Data](#)
- [Configuring Action Scripts](#)
- [Configuring the Connector for Multiple Tenants](#)

6.1 Configuring Transformation and Validation of Data

Configure transformation and validation of user account data by writing Groovy script logic while creating your application.

You can configure transformation of reconciled single-valued user data according to your requirements. For example, you can use First Name and Last Name values to create a value for the Full Name field in Oracle Identity Governance.

Similarly, you can configure validation of reconciled and provisioned single-valued data according to your requirements. For example, you can validate data fetched from the First Name attribute to ensure that it does not contain the number sign (#). In addition, you can validate data entered in the First Name field on the process form so that the number sign (#) is not sent to the target system during provisioning operations.

To configure transformation or validation of user account data, you must write Groovy scripts while creating your application. For more information about writing Groovy script-based validation and transformation logic, see *Validation and Transformation of Provisioning and Reconciliation Attributes of Oracle Fusion Middleware Performing Self Service Tasks with Oracle Identity Governance*.

6.2 Configuring Action Scripts

You can configure **Action Scripts** by writing your own Groovy scripts while creating your application.

These scripts can be configured to run before or after the enable, disable, or delete an account provisioning operations. For example, you can configure a script to run before every user creation operation.

For information on adding or editing action scripts, see *Updating the Provisioning Configuration in Oracle Fusion Middleware Performing Self Service Tasks with Oracle Identity Governance*.

6.3 Configuring the Connector for Multiple Tenants

You must clone the application of your base application to configure it for multiple tenants.

The following example illustrates this requirement:

XYZ corporation has multiple tenants including an independent schema. To meet the requirement posed by such a scenario, you must clone your application which copies all configurations of the base application into the cloned application. For more information about cloning applications, see *Cloning Applications in Oracle Fusion Middleware Performing Self Service Tasks with Oracle Identity Governance*.

7

Known Issues and Limitations

This is a known issues and limitation associated with the Microsoft Teams Directory connector.

Preconfig XML file does not get imported as expected when another generic connector is already installed

If you are creating the Microsoft Teams connector application in a scenario when another generic connector is already installed or created, then the `xml/MicrosoftTeams-pre-config.xml` file will not get imported as expected.

Workaround: As a workaround, perform the Deployment Manager import.

Note: Verify prepopulation status of the static lookup definition. If the lookup data is not getting populated, you must import the `xml/MicrosoftTeams-pre-config.xml` pre config XML file manually. For example, `Lookup.MSTeams.Languages`.

8

A Files and Directories in the Connector Installation Package

These are the components of the connector installation package that comprise the Microsoft Teams connector.

[Table 8-1](#) describes the files and directories in the Microsoft Teams Connector Installation Package.

Table 8-1 Files and Directories in the Microsoft Teams Connector

File in the Installation Package	Description
bundle/ org.identityconnectors.genericrest-12.3.0.jar	This JAR is the ICF connector bundle. Note: If you try to install any other generic rest connector like AzureAD on top of the Microsoft Teams connector, then the generic rest bundle jar org.identityconnectors.genericrest-12.3.0.jar must be replaced with the latest generic rest jar or replaced with the Microsoft Teams bundle jar.
Files in the resources directory	Each of these resource bundles contains language-specific information that is used by the connector. During connector installation, these resource bundles are copied to Oracle Identity database. Note: A resource bundle is a file containing localized versions of the text strings that are displayed on the Administrative and User Console. These text strings include GUI element labels and messages.
xml/MicrosoftTeams-target-template.xml	This file contains definitions for the connector objects required for creating a Target application. It includes certain details required to connect Oracle Identity Governance with the target system. It also includes configuration details specific to your target system, attribute mappings, correlation rules, and reconciliation jobs.
xml/MicrosoftTeams-pre-config	This XML file contains definitions for the connector objects associated with any non-User object such as Groups.