

Oracle Real-Time Scheduler
Map Editor Installation Guide
Release 2.3.0.3.0 for Windows
F11058-01

November 2018

Copyright © 2000, 2018 Oracle and/or its affiliates. All rights reserved.

This software and related documentation are provided under a license agreement containing restrictions on use and disclosure and are protected by intellectual property laws. Except as expressly permitted in your license agreement or allowed by law, you may not use, copy, reproduce, translate, broadcast, modify, license, transmit, distribute, exhibit, perform, publish, or display any part, in any form, or by any means. Reverse engineering, disassembly, or decompilation of this software, unless required by law for interoperability, is prohibited.

The information contained herein is subject to change without notice and is not warranted to be error-free. If you find any errors, please report them to us in writing.

If this is software or related documentation that is delivered to the U.S. Government or anyone licensing it on behalf of the U.S. Government, then the following notice is applicable:

U.S. GOVERNMENT END USERS: Oracle programs, including any operating system, integrated software, any programs installed on the hardware, and/or documentation, delivered to U.S. Government end users are "commercial computer software" pursuant to the applicable Federal Acquisition Regulation and agency-specific supplemental regulations. As such, use, duplication, disclosure, modification, and adaptation of the programs, including any operating system, integrated software, any programs installed on the hardware, and/or documentation, shall be subject to license terms and license restrictions applicable to the programs. No other rights are granted to the U.S. Government.

This software or hardware is developed for general use in a variety of information management applications. It is not developed or intended for use in any inherently dangerous applications, including applications that may create a risk of personal injury. If you use this software or hardware in dangerous applications, then you shall be responsible to take all appropriate fail-safe, backup, redundancy, and other measures to ensure its safe use. Oracle Corporation and its affiliates disclaim any liability for any damages caused by use of this software or hardware in dangerous applications.

Oracle and Java are registered trademarks of Oracle and/or its affiliates. Other names may be trademarks of their respective owners.

Intel and Intel Xeon are trademarks or registered trademarks of Intel Corporation. All SPARC trademarks are used under license and are trademarks or registered trademarks of SPARC International, Inc. AMD, Opteron, the AMD logo, and the AMD Opteron logo are trademarks or registered trademarks of Advanced Micro Devices. UNIX is a registered trademark of The Open Group.

This software or hardware and documentation may provide access to or information about content, products, and services from third parties. Oracle Corporation and its affiliates are not responsible for and expressly disclaim all warranties of any kind with respect to third-party content, products, and services unless otherwise set forth in an applicable agreement between you and Oracle. Oracle Corporation and its affiliates will not be responsible for any loss, costs, or damages incurred due to your access to or use of third-party content, products, or services, except as set forth in an applicable agreement between you and Oracle.

Contents

Chapter 1

Installing the Map Editor	1-1
Overview	1-2
Component	1-2
Component Release Version	1-2
Installing the Map Editor	1-3
Map Editor Installation	1-3
Starting the Map Editor.....	1-4

Chapter 1

Installing the Map Editor

The Map Editor is a utility that enables reading third-party vector mapping data, allows selection of geographic areas-of-interest, and produces map files.

This guide provides information on how to install the Oracle Real-Time Scheduler Map Editor in a Windows environment. It includes:

- [Overview](#)
 - [Component](#)
 - [Component Release Version](#)
- [Installing the Map Editor](#)
- [Starting the Map Editor](#)

Overview

The Oracle Real-Time Scheduler Map Editor is pre-configured to work straight out-of-the-box with minimal configuration changes.

Please read through this document thoroughly before beginning the product installation. It guides you through a successful product installation. Make sure to complete the tasks in the required order before proceeding to any post-installation steps.

Component

The Oracle Real-Time Scheduler Map Editor system consists of a single component, Map Editor.

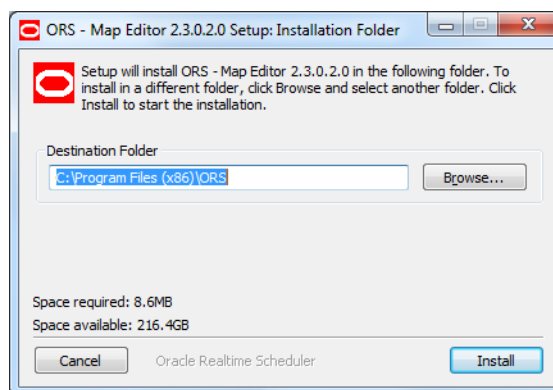
Component Release Version

The Oracle Real-Time Scheduler Map Editor components release version is Map Editor-2.3.0.3.0.

Installing the Map Editor

To install or upgrade the Oracle Real-Time Scheduler Map Editor on each client workstation:

1. Download the Oracle Real-Time Scheduler V2.3.0.3 MapEditor installation package from Oracle Software Delivery Cloud.
2. Copy the Map Editor installer (map_editor-2.3.0.3.0-WIN64.exe) from the installation package and place it on an appropriate media.
3. Double-click the executable.
4. Select the destination folder where the setup must install the Map Editor.

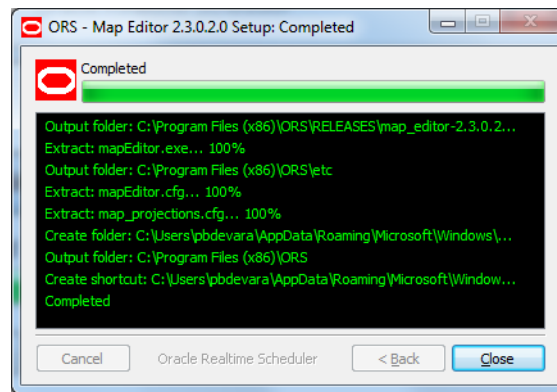


By default the Map Editor is installed under “C:\Program Files (x86)\ORS” directory.

Specify a different location by typing in the exact location or by navigating to the location using **Browse**.

5. Click **Install**.

6. To check the status and the location of the sub-directories and files installed as part of this setup, click **Show details**. The details are displayed as below.

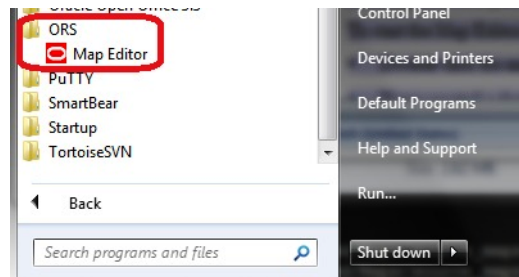


The Map Editor installation is now complete.

Starting the Map Editor

The Map Editor requires no configuration prior to starting the application.

The installer creates a desktop application shortcut to the mapEditor.exe file.



Select **Start > ORS > Map Editor** to start the Map Editor application.