

Oracle® Retail Home

User Guide

Release 22.1.102

F54218-01

February 2022

F54218-01

Copyright © 2022, Oracle and/or its affiliates. All rights reserved.

Primary Author:

Contributing Author:

Contributor:

This software and related documentation are provided under a license agreement containing restrictions on use and disclosure and are protected by intellectual property laws. Except as expressly permitted in your license agreement or allowed by law, you may not use, copy, reproduce, translate, broadcast, modify, license, transmit, distribute, exhibit, perform, publish, or display any part, in any form, or by any means. Reverse engineering, disassembly, or decompilation of this software, unless required by law for interoperability, is prohibited.

The information contained herein is subject to change without notice and is not warranted to be error-free. If you find any errors, please report them to us in writing.

If this software or related documentation is delivered to the U.S. Government or anyone licensing it on behalf of the U.S. Government, the following notice is applicable:

U.S. GOVERNMENT END USERS: Oracle programs, including any operating system, integrated software, any programs installed on the hardware, and/or documentation, delivered to U.S. Government end users are "commercial computer software" pursuant to the applicable Federal Acquisition Regulation and agency-specific supplemental regulations. As such, use, duplication, disclosure, modification, and adaptation of the programs, including any operating system, integrated software, any programs installed on the hardware, and/or documentation, shall be subject to license terms and license restrictions applicable to the programs. No other rights are granted to the U.S. Government.

This software or hardware is developed for general use in a variety of information management applications. It is not developed or intended for use in any inherently dangerous applications, including applications that may create a risk of personal injury. If you use this software or hardware in dangerous applications, then you shall be responsible to take all appropriate fail-safe, backup, redundancy, and other measures to ensure its safe use. Oracle Corporation and its affiliates disclaim any liability for any damages caused by use of this software or hardware in dangerous applications.

Oracle and Java are registered trademarks of Oracle and/or its affiliates. Other names may be trademarks of their respective owners.

Intel and Intel Xeon are trademarks or registered trademarks of Intel Corporation. All SPARC trademarks are used under license and are trademarks or registered trademarks of SPARC International, Inc. AMD, Opteron, the AMD logo, and the AMD Opteron logo are trademarks or registered trademarks of Advanced Micro Devices. UNIX is a registered trademark of The Open Group.

This software or hardware and documentation may provide access to or information on content, products, and services from third parties. Oracle Corporation and its affiliates are not responsible for and expressly disclaim all warranties of any kind with respect to third-party content, products, and services. Oracle Corporation and its affiliates will not be responsible for any loss, costs, or damages incurred due to your access to or use of third-party content, products, or services.

Value-Added Reseller (VAR) Language

Oracle Retail VAR Applications

The following restrictions and provisions only apply to the programs referred to in this section and licensed to you. You acknowledge that the programs may contain third party software (VAR applications) licensed to Oracle. Depending upon your product and its version number, the VAR applications may include:

- (i) the **MicroStrategy** Components developed and licensed by MicroStrategy Services Corporation (MicroStrategy) of McLean, Virginia to Oracle and imbedded in the MicroStrategy for Oracle Retail Data Warehouse and MicroStrategy for Oracle Retail Planning & Optimization applications.
- (ii) the **Wavelink** component developed and licensed by Wavelink Corporation (Wavelink) of Kirkland, Washington, to Oracle and imbedded in Oracle Retail Mobile Store Inventory Management.
- (iii) the software component known as **Access Via**[™] licensed by Access Via of Seattle, Washington, and imbedded in Oracle Retail Signs and Oracle Retail Labels and Tags.
- (iv) the software component known as **Adobe Flex**[™] licensed by Adobe Systems Incorporated of San Jose, California, and imbedded in Oracle Retail Promotion Planning & Optimization application.

You acknowledge and confirm that Oracle grants you use of only the object code of the VAR Applications. Oracle will not deliver source code to the VAR Applications to you. Notwithstanding any other term or condition of the agreement and this ordering document, you shall not cause or permit alteration of any VAR

Applications. For purposes of this section, "alteration" refers to all alterations, translations, upgrades, enhancements, customizations or modifications of all or any portion of the VAR Applications including all reconfigurations, reassembly or reverse assembly, re-engineering or reverse engineering and recompilations or reverse compilations of the VAR Applications or any derivatives of the VAR Applications. You acknowledge that it shall be a breach of the agreement to utilize the relationship, and/or confidential information of the VAR Applications for purposes of competitive discovery.

The VAR Applications contain trade secrets of Oracle and Oracle's licensors and Customer shall not attempt, cause, or permit the alteration, decompilation, reverse engineering, disassembly or other reduction of the VAR Applications to a human perceivable form. Oracle reserves the right to replace, with functional equivalent software, any of the VAR Applications in future releases of the applicable program.

Contents

Send Us Your Comments	vii
Preface	ix
Audience	ix
Documentation Accessibility	ix
Related Documents	ix
Customer Support	ix
Review Patch Documentation	x
Improved Process for Oracle Retail Documentation Corrections	x
Oracle Retail Documentation on the Oracle Help Center (docs.oracle.com)	x
Conventions	x
1 Home Dashboard	
Retail Home Dashboard	1-1
Dashboard Controls	1-1
Roles	1-2
Refresh	1-2
Tiles	1-2
Batch Status Banner	1-3
2 Welcome Screen	
Included Links	2-1
3 Requesting Role Access	
Role Request	3-1
Current Role Access	3-1
Requesting Access	3-2
Removing Access	3-2
Request History	3-3
Accessibility Features	3-4
Color Settings	3-4
Screen Readers	3-4

Send Us Your Comments

Oracle Retail Home User Guide, Release 22.1.102

Oracle welcomes customers' comments and suggestions on the quality and usefulness of this document.

Your feedback is important, and helps us to best meet your needs as a user of our products. For example:

- Are the implementation steps correct and complete?
- Did you understand the context of the procedures?
- Did you find any errors in the information?
- Does the structure of the information help you with your tasks?
- Do you need different information or graphics? If so, where, and in what format?
- Are the examples correct? Do you need more examples?

If you find any errors or have any other suggestions for improvement, then please tell us your name, the name of the company who has licensed our products, the title and part number of the documentation and the chapter, section, and page number (if available).

Note: Before sending us your comments, you might like to check that you have the latest version of the document and if any concerns are already addressed. To do this, access the Online Documentation available on the Oracle Technology Network Web site. It contains the most current Documentation Library plus all documents revised or released recently.

Send your comments to us using the electronic mail address: retail-doc_us@oracle.com

Please give your name, address, electronic mail address, and telephone number (optional).

If you need assistance with Oracle software, then please contact your support representative or Oracle Support Services.

If you require training or instruction in using Oracle software, then please contact your Oracle local office and inquire about our Oracle University offerings. A list of Oracle offices is available on our Web site at <http://www.oracle.com>.

Preface

This document describes the Oracle Retail Home user interface. It provides step-by-step instructions to complete most tasks that can be performed through the user interface.

Audience

This document is for users and administrators of Oracle Retail Home. This includes merchandisers, buyers, business analysts, and administrative personnel.

Documentation Accessibility

For information about Oracle's commitment to accessibility, visit the Oracle Accessibility Program website at <http://www.oracle.com/pls/topic/lookup?ctx=acc&id=docacc>.

Access to Oracle Support

Oracle customers that have purchased support have access to electronic support through My Oracle Support. For information, visit <http://www.oracle.com/pls/topic/lookup?ctx=acc&id=info> or visit <http://www.oracle.com/pls/topic/lookup?ctx=acc&id=trs> if you are hearing impaired.

Related Documents

For more information, see the following documents in the Oracle Home Release 22.1.102 documentation set:

- *Oracle Retail Home Security Guide*
- *Oracle Retail Home Administration Guide*

Customer Support

To contact Oracle Customer Support, access My Oracle Support at the following URL: <https://support.oracle.com>

When contacting Customer Support, please provide the following:

- Product version and program/module name
- Functional and technical description of the problem (include business impact)

- Detailed step-by-step instructions to re-create
- Exact error message received
- Screen shots of each step you take

Review Patch Documentation

When you install the application for the first time, you install either a base release (for example, 13.1) or a later patch release (for example, 13.1.2). If you are installing the base release and additional patch releases, read the documentation for all releases that have occurred since the base release before you begin installation. Documentation for patch releases can contain critical information related to the base release, as well as information about code changes since the base release.

Improved Process for Oracle Retail Documentation Corrections

To more quickly address critical corrections to Oracle Retail documentation content, Oracle Retail documentation may be republished whenever a critical correction is needed. For critical corrections, the republication of an Oracle Retail document may at times not be attached to a numbered software release; instead, the Oracle Retail document will simply be replaced on the Oracle Technology Network Web site, or, in the case of Data Models, to the applicable My Oracle Support Documentation container where they reside.

This process will prevent delays in making critical corrections available to customers. For the customer, it means that before you begin installation, you must verify that you have the most recent version of the Oracle Retail documentation set. Oracle Retail documentation is available on the Oracle Technology Network at the following URL:

<http://www.oracle.com/technetwork/documentation/oracle-retail-100266.html>

An updated version of the applicable Oracle Retail document is indicated by Oracle part number, as well as print date (month and year). An updated version uses the same part number, with a higher-numbered suffix. For example, part number E123456-02 is an updated version of a document with part number E123456-01.

If a more recent version of a document is available, that version supersedes all previous versions.

Oracle Retail Documentation on the Oracle Help Center (docs.oracle.com)

Oracle Retail product documentation is also available on the following Web site:

<https://docs.oracle.com/en/industries/retail/index.html>

(Data Model documents can be obtained through My Oracle Support.)

Conventions

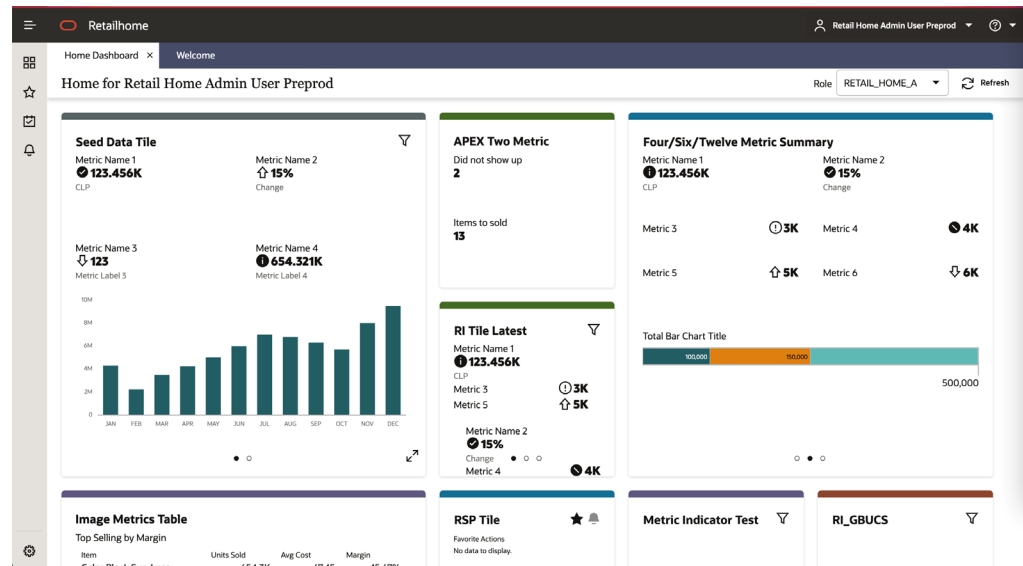
The following text conventions are used in this document:

Convention	Meaning
boldface	Boldface type indicates graphical user interface elements associated with an action, or terms defined in text or the glossary.
<i>italic</i>	Italic type indicates book titles, emphasis, or placeholder variables for which you supply particular values.
monospace	Monospace type indicates commands within a paragraph, URLs, code in examples, text that appears on the screen, or text that you enter.

Home Dashboard

Retail Home is a portal-type application for the RGPU enterprise. The UI consists of a tile-based configurable dashboard that highlights important metrics and KPIs across RGPU applications. The profile-based dashboards are configured by a Retail Home administrator for each enterprise role.

Figure 1–1 Home Dashboard



Retail Home Dashboard

The user can access the Retail Home dashboard via the Tasks menu. To access the dashboard, click Home Dashboard in the task menu.

Dashboard Controls

The user can see a set of controls at the top of the dashboard. On this bar, the user can see and select their current role and refresh the data on the dashboard.

Figure 1–2 Dashboard Controls



Roles

Roles define what information a user sees on the dashboard. The selected role determines which tiles appear on the dashboard, and which reports, if any, appears in the banner and contextual area. Roles must be configured by an administrator before the user will see any content on their dashboard.

Users who have more than one role can switch between the roles that are assigned to them. To see the list of assigned roles, click on the Role LOV near the end of the banner.

Note: Roles will only be listed if the user has been granted that role, and if a dashboard has been defined for that role.

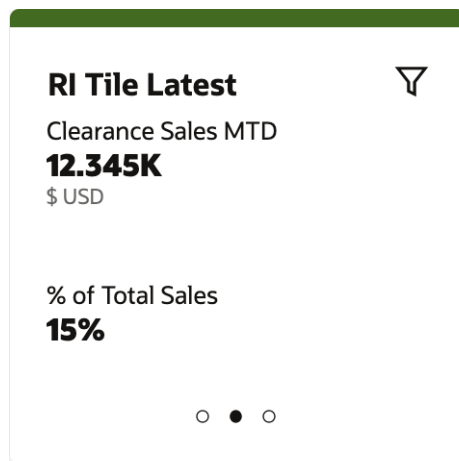
Refresh

The user can refresh their dashboards using the refresh button.

Tiles

The main area of the dashboard contains a collection of tiles. A tile may correspond to an application, link, or other source of information which the user can access. Inside a tile, the user may find at-a-glance information such as metrics, reports, user notifications, links, or other relevant content, depending on how the tile was configured.

Figure 1–3 Dashboard Tile



Each tile may have multiple pages of content. The user has several options to move between pages of content.

First, RGBU enterprise application tiles that have been configured to support favorites and notifications will display a favorites and notifications icon in the tile header.

Second, when the user hovers a tile, previous and next arrows will appear on the sides of the tile. By clicking these arrows, the user will move to the corresponding page in the tile.

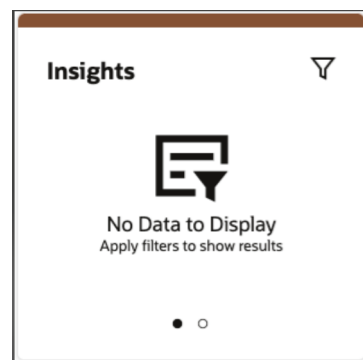
Third, at the bottom of the tile, the user can see a row of icons corresponding to each page in the tile, where the current page's icon filled in. The user can click any of these icons to go directly to that page within the tile.

Fourth, tiles may be configured to support filter options specified by the user. Pressing the filter icon in the upper-right corner of the tile will open the filter dialog to provide values to filter data by:

Figure 1–4 Filter Dialog for a Tile

When dashboard tiles are initially loaded, if required filters do not have values entered, the following message is displayed for the corresponding tile page.

Figure 1–5 No Data to Display

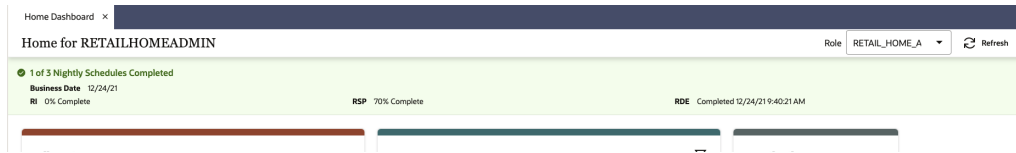


The user will have to click on the filter icon to enter the required filter values before tile page can be rendered with content.

Batch Status Banner

The dashboard displays a banner while batch jobs are currently running or active.

Note: Some Oracle Retail Products may not allow users to access the application while a batch process is running. Please consult the product-specific documentation.

Figure 1–6 Batch Status Banner

The banner displays the following for the current business date:

- The number of jobs scheduled and the jobs that are complete.
- After a job is complete, a **Completed** status beside the job name, along with the completion time.
- If a job is currently running, the banner shows the percentage of completion.
- If a job hasn't started, the banner shows **0% Complete** for the job.

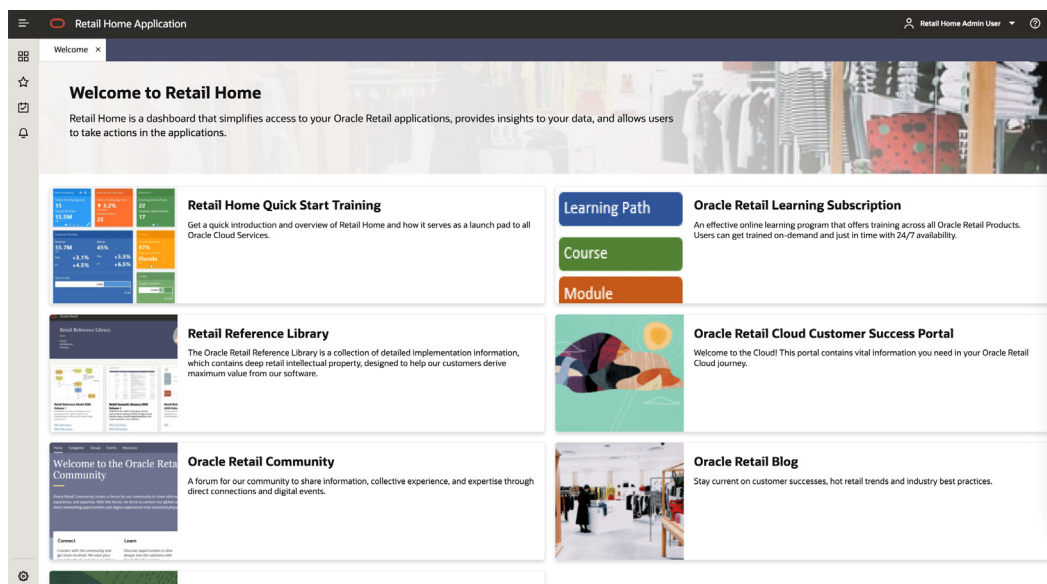
Welcome Screen

Included Links

The Welcome Screen, shown when a user first logs in to Retail Home, contains links to the following useful items. Descriptions of each of these are on the Welcome Screen.

- Retail Home Quick Start Training
- Oracle Retail Learning Subscription
- Retail Reference Library
- Oracle Retail Cloud Customer Success Portal
- Oracle Retail Community
- Oracle Retail Blog
- Oracle Retail Rack

Figure 2–1 Welcome Screen Showing the Retail Reference Library



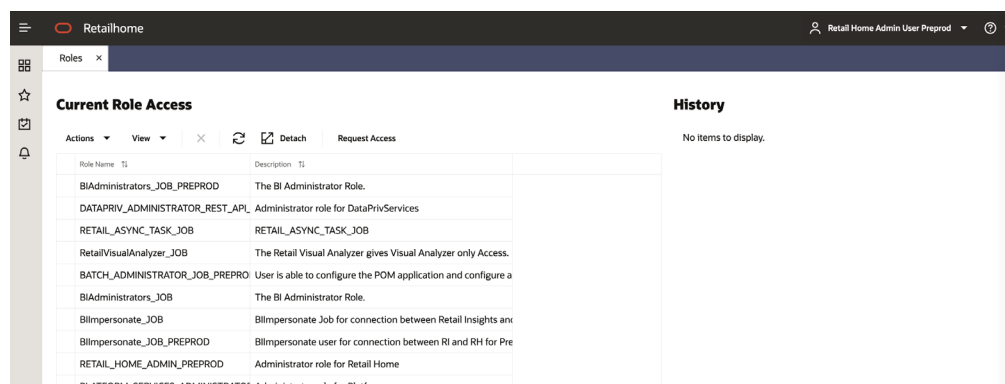
Requesting Role Access

In RGBU enterprise applications, roles are used to determine which applications, data, and actions the user has access to. Retail Home provides users with a screen to request access to new roles, as well as request that roles be removed from their access.

Role Request

The user can access the Role Requests screen in Retail Home through the Tasks menu. To access the Role Requests screen, click Roles in the Tasks menu. The Role Requests screen is shown in the diagram below.

Figure 3–1 Role Request Screen



Current Role Access

On the screen, the user will see a table labeled Current Role Access (see below.) This table lists all the roles currently assigned to the user, along with a description of each role.

Figure 3–2 Current Role Access

Current Role Access

Actions View Detach Request Access

Role Name	Description
BIAdministrators_JOB_PREPROD	The BI Administrator Role.
DATAPRIV_ADMINISTRATOR_REST_API_ROLE	Administrator role for DataPrivServices
RETAIL_ASYNC_TASK_JOB	RETAIL_ASYNC_TASK_JOB
RetailVisualAnalyzer_JOB	The Retail Visual Analyzer gives Visual Analyzer only Access.

Requesting Access

To request access to a new role, the user must select the Request Access button on the table's toolbar or select the table's Actions menu and then select the Request Access item from the menu.

Figure 3–3 Requesting Access

The screenshot shows a web interface for requesting access. At the top, there's a header 'Roles x' and a close button. Below that is the form title 'Request Access for Self' with a close button. The main section is titled 'Select Roles'. It features a search filter, a 'Sort By' dropdown menu currently set to 'Name, A-Z', and a list of roles. The first role, 'ACCOUNTS_PAYABLE_MANAGER_JOB', is highlighted in green. To the right of the list, there is a 'Justification' field with a 'Required' label and an 'Approver's Email' field containing the email address 'navya.nn@oracle.com'.

After doing this, the user will see the Request Access for Self form, shown above.

Here, the user can search, filter, and select the roles they want to access. To find a specific role, the user may change the sort order between "Name, A-Z" and "Name, Z-A". The user may also enter part or all of the role's name into the filter input box, which will filter the results to only those roles with names that contain the filter text.

The user may select one or more roles from this list.

After selecting roles, the user must provide some business justification for the request in the Justification field. Below the Justification field, the user will also see the Approver's Email who will be responsible for handling their request.

Finally, the user may select the Submit button when they have finished filling out the request. A request will be submitted for each selected role. The user may also select Cancel at any time if they do not want to submit the request.

Removing Access

To request to remove access to a role in the Current Role Access table, the user must first select the role in the table. Then, the user must select the delete icon button on the table's toolbar, or select the table's Actions menu and then select the Remove Access item from the menu.

Figure 3-4 Remove Access

Remove Access

Remove access from Bllmpersonate_JOB_PREPROD

* Justification Required

Approver's Email sivaranjani.sundarraj@oracle.com

Cancel OK

After doing this, the user will see the Remove Access prompt, shown above.

Similar to requesting access, the user will be prompted for justification for the request and will see the Approver's Email.

Request History

On the Role Requests screen, the user will also see their History of requests and removals.

Figure 3-5 Request History

History		
ALLOCATION_MANAGER_JOB	Access Requested 11/06/18	admin@somewhere.com
ALLOCATOR_JOB	Removal Requested 11/06/18	admin@somewhere.com
ARCHITECT_JOB	Access Requested 11/06/18	admin@somewhere.com
ARCHITECT_JOB	Access Requested 11/06/18	admin@somewhere.com

For each item in the history, the user can see which role was requested, whether they requested to access or remove access to the role, the date that the request was made, and the email address of the approver who is responsible for handling their request.

Accessibility Features

Retail Home runs in browsers and is designed to integrate with existing browser accessibility options and tools. In most cases no additional effort is required for accessibility beyond what a user already does for their browser of choice. Some specific configurations that may be useful are detailed in this chapter.

Color Settings

The color display of dashboard tiles can be customized by administrators. All color schemes are de-signed to be high-contrast, and all functional UI elements use high-contrast color settings.

Graphs on tiles leverage the Oracle JET UI to display data in an accessible fashion and integrating ap-plications can fully customize the display of the data.

Screen Readers

The Retail Home application is fully compatible with screen readers. All functional elements are properly labelled and all UI elements support keyboard interaction.