

**Oracle® Retail AI Foundation Cloud
Services**

Administration Guide

Release 22.2.302.0

F61477-01

August 2022

F61477-01

Copyright © 2022, Oracle and/or its affiliates. All rights reserved.

Primary Author: Judith Meskill

Primary Author: Nathan Young

This software and related documentation are provided under a license agreement containing restrictions on use and disclosure and are protected by intellectual property laws. Except as expressly permitted in your license agreement or allowed by law, you may not use, copy, reproduce, translate, broadcast, modify, license, transmit, distribute, exhibit, perform, publish, or display any part, in any form, or by any means. Reverse engineering, disassembly, or decompilation of this software, unless required by law for interoperability, is prohibited.

The information contained herein is subject to change without notice and is not warranted to be error-free. If you find any errors, please report them to us in writing.

If this is software or related documentation that is delivered to the U.S. Government or anyone licensing it on behalf of the U.S. Government, then the following notice is applicable:

U.S. GOVERNMENT END USERS: Oracle programs, including any operating system, integrated software, any programs installed on the hardware, and/or documentation, delivered to U.S. Government end users are "commercial computer software" pursuant to the applicable Federal Acquisition Regulation and agency-specific supplemental regulations. As such, use, duplication, disclosure, modification, and adaptation of the programs, including any operating system, integrated software, any programs installed on the hardware, and/or documentation, shall be subject to license terms and license restrictions applicable to the programs. No other rights are granted to the U.S. Government.

This software or hardware is developed for general use in a variety of information management applications. It is not developed or intended for use in any inherently dangerous applications, including applications that may create a risk of personal injury. If you use this software or hardware in dangerous applications, then you shall be responsible to take all appropriate fail-safe, backup, redundancy, and other measures to ensure its safe use. Oracle Corporation and its affiliates disclaim any liability for any damages caused by use of this software or hardware in dangerous applications.

Oracle and Java are registered trademarks of Oracle and/or its affiliates. Other names may be trademarks of their respective owners.

Intel and Intel Xeon are trademarks or registered trademarks of Intel Corporation. All SPARC trademarks are used under license and are trademarks or registered trademarks of SPARC International, Inc. AMD, Opteron, the AMD logo, and the AMD Opteron logo are trademarks or registered trademarks of Advanced Micro Devices. UNIX is a registered trademark of The Open Group.

This software or hardware and documentation may provide access to or information about content, products, and services from third parties. Oracle Corporation and its affiliates are not responsible for and expressly disclaim all warranties of any kind with respect to third-party content, products, and services unless otherwise set forth in an applicable agreement between you and Oracle. Oracle Corporation and its affiliates will not be responsible for any loss, costs, or damages incurred due to your access to or use of third-party content, products, or services, except as set forth in an applicable agreement between you and Oracle.

Value-Added Reseller (VAR) Language

Oracle Retail VAR Applications

The following restrictions and provisions only apply to the programs referred to in this section and licensed to you. You acknowledge that the programs may contain third party software (VAR applications) licensed to Oracle. Depending upon your product and its version number, the VAR applications may include:

- (i) the **MicroStrategy** Components developed and licensed by MicroStrategy Services Corporation (MicroStrategy) of McLean, Virginia to Oracle and imbedded in the MicroStrategy for Oracle Retail Data Warehouse and MicroStrategy for Oracle Retail Planning & Optimization applications.
- (ii) the **Wavelink** component developed and licensed by Wavelink Corporation (Wavelink) of Kirkland, Washington, to Oracle and imbedded in Oracle Retail Mobile Store Inventory Management.
- (iii) the software component known as **Access Via™** licensed by Access Via of Seattle, Washington, and imbedded in Oracle Retail Signs and Oracle Retail Labels and Tags.
- (iv) the software component known as **Adobe Flex™** licensed by Adobe Systems Incorporated of San Jose, California, and imbedded in Oracle Retail Promotion Planning & Optimization application.

You acknowledge and confirm that Oracle grants you use of only the object code of the VAR Applications. Oracle will not deliver source code to the VAR Applications to you. Notwithstanding any other term or condition of the agreement and this ordering document, you shall not cause or permit alteration of any VAR Applications. For purposes of this section, "alteration" refers to all alterations, translations, upgrades, enhancements, customizations or modifications of all or any portion of the VAR Applications including all reconfigurations, reassembly or reverse assembly, re-engineering or reverse engineering and recompilations or reverse compilations of the VAR Applications or any derivatives of the VAR Applications. You acknowledge that it shall be a breach of the agreement to utilize the

relationship, and/or confidential information of the VAR Applications for purposes of competitive discovery.

The VAR Applications contain trade secrets of Oracle and Oracle's licensors and Customer shall not attempt, cause, or permit the alteration, decompilation, reverse engineering, disassembly or other reduction of the VAR Applications to a human perceivable form. Oracle reserves the right to replace, with functional equivalent software, any of the VAR Applications in future releases of the applicable program.

Contents

Send Us Your Comments	vii
Preface	ix
Audience.....	ix
Documentation Accessibility	ix
Related Documents	ix
Customer Support.....	x
Improved Process for Oracle Retail AI Foundation Cloud Services Documentation Corrections	x
Oracle Retail AI Foundation Cloud Services Documentation on the Oracle Technology Network.....	x
Conventions.....	x
1 Administrative Tasks	
Oracle Support	1-1
Oracle Identity Cloud Service User and Group Management	1-1
IDCS or OCI IAM and Oracle Retail AI Foundation Cloud Services Enterprise Roles	1-2
Oracle Retail AI Foundation Cloud Services Default Enterprise Roles	1-2
Nightly Batch File Uploads	1-5
Adding Authorized Keys	1-5
Steps – Log into WinSCP	1-6
Steps to Upload the Batch File	1-8
Export File Downloads	1-8
Archiving_Reports – Agent Creation and Execution	1-8
Data Visualization Usage	1-12
Accessing the Application	1-12
Managing User Content	1-12
2 Oracle Digital Assistance	
Cloud Administration	2-1
A General Privacy and Security Information	
Privacy by Design	A-1
Data Minimization	A-1
Data Deletion	A-2
Right to Access / Right to Forget	A-2

Data Portability	A-2
Encryption	A-2
Data Masking	A-2

Send Us Your Comments

Oracle® Retail AI Foundation Cloud Services Administration Guide, Release 22.2.302.0

Oracle welcomes customers' comments and suggestions on the quality and usefulness of this document.

Your feedback is important, and helps us to best meet your needs as a user of our products. For example:

- Are the implementation steps correct and complete?
- Did you understand the context of the procedures?
- Did you find any errors in the information?
- Does the structure of the information help you with your tasks?
- Do you need different information or graphics? If so, where, and in what format?
- Are the examples correct? Do you need more examples?

If you find any errors or have any other suggestions for improvement, then please tell us your name, the name of the company who has licensed our products, the title and part number of the documentation and the chapter, section, and page number (if available).

Note: Before sending us your comments, you might like to check that you have the latest version of the document and if any concerns are already addressed. To do this, access the Online Documentation available on the Oracle Technology Network Web site. It contains the most current Documentation Library plus all documents revised or released recently.

Send your comments to us using the electronic mail address: retail-doc_us@oracle.com

Please give your name, address, electronic mail address, and telephone number (optional).

If you need assistance with Oracle software, then please contact your support representative or Oracle Support Services.

If you require training or instruction in using Oracle software, then please contact your Oracle local office and inquire about our Oracle University offerings. A list of Oracle offices is available on our Web site at <http://www.oracle.com>.

Preface

This guide describes the administration tasks for Oracle Retail AI Foundation Cloud Services.

Audience

This guide is intended for administrators.

This guide describes the administration tasks for Oracle Retail AI Foundation Cloud Services.

Documentation Accessibility

For information about Oracle's commitment to accessibility, visit the Oracle Accessibility Program website at <http://www.oracle.com/pls/topic/lookup?ctx=acc&id=docacc>.

Access to Oracle Support

Oracle customers that have purchased support have access to electronic support through My Oracle Support. For information, visit

<http://www.oracle.com/pls/topic/lookup?ctx=acc&id=info> or visit

<http://www.oracle.com/pls/topic/lookup?ctx=acc&id=trs> if you are hearing impaired.

Related Documents

For more information, see the following documents in the Oracle Retail AI Foundation Cloud Services documentation set:

- *Oracle Retail AI Foundation Cloud Services Administration Guide*
- *Oracle Retail AI Foundation Cloud Services Implementation Guide*
- *Oracle Retail AI Foundation Cloud Services Release Readiness Guide*
- *Oracle Retail Analytics and Planning Cloud Services Data Interface*
- *Oracle Retail AI Foundation Cloud Services User Guide*
- *Oracle Retail AI Foundation Cloud Services Assortment and Space Optimization User Guide*
- *Oracle Retail AI Foundation Cloud Services Inventory Optimization User Guide*
- *Oracle Retail AI Foundation Cloud Services Promotion Markdown and Offer Optimization User Guide*

Customer Support

To contact Oracle Customer Support, access My Oracle Support at the following URL:

<https://support.oracle.com>

When contacting Customer Support, please provide the following:

- Product version and program/module name
- Functional and technical description of the problem (include business impact)
- Detailed step-by-step instructions to re-create
- Exact error message received
- Screen shots of each step you take

Improved Process for Oracle Retail AI Foundation Cloud Services Documentation Corrections

To more quickly address critical corrections to Oracle Retail AI Foundation Cloud Services documentation content, Oracle Retail AI Foundation Cloud Services documentation may be republished whenever a critical correction is needed. For critical corrections, the republication of an Oracle Retail AI Foundation Cloud Services document may at times not be attached to a numbered software release; instead, the Oracle Retail AI Foundation Cloud Services document will simply be replaced on the Oracle Technology Network Web site, or, in the case of Data Models, to the applicable My Oracle Support Documentation container where they reside.

Oracle Retail AI Foundation Cloud Services documentation is available on the Oracle Technology Network at the following URL:

<http://www.oracle.com/technetwork/documentation/oracle-retail-100266.html>

An updated version of the applicable Oracle Retail AI Foundation Cloud Services document is indicated by Oracle part number, as well as print date (month and year). An updated version uses the same part number, with a higher-numbered suffix. For example, part number E123456-02 is an updated version of a document with part number E123456-01.

If a more recent version of a document is available, that version supersedes all previous versions.

Oracle Retail AI Foundation Cloud Services Documentation on the Oracle Technology Network

Oracle Retail AI Foundation Cloud Services product documentation is available on the following web site:

<http://www.oracle.com/technetwork/documentation/oracle-retail-100266.html>

(Data Model documents are not available through Oracle Technology Network. You can obtain these documents through My Oracle Support.)

Conventions

The following text conventions are used in this document:

Convention	Meaning
boldface	Boldface type indicates graphical user interface elements associated with an action, or terms defined in text or the glossary.
<i>italic</i>	Italic type indicates book titles, emphasis, or placeholder variables for which you supply particular values.
monospace	Monospace type indicates commands within a paragraph, URLs, code in examples, text that appears on the screen, or text that you enter.

Administrative Tasks

This chapter describes the processes for maintaining users and roles as well as batch processes. For information regarding standard end user activities such as creating and viewing reports, see the *Oracle Retail AI Foundation Cloud Services User Guide*.

Oracle Support

It is considered to be a best practice to have all Oracle Retail AI Foundation Cloud Services support requests submitted through a single point of contact for that customer environment; the client designated administrator is usually designated to perform this role.

The link to use when submitting Service Requests (SR) is:

<https://support.oracle.com>

Oracle Identity Cloud Service User and Group Management

Oracle Identity Cloud Service (IDCS) or Oracle Cloud Infrastructure Identity and Access Management (OCI IAM) is Oracle's cloud native security and identity platform. They provide a powerful set of hybrid identity features to maintain a single identity for each user across cloud, mobile, and on-premises applications. IDCS or OCI IAM enables single sign on (SSO) across all applications in a customer's Oracle Cloud tenancy. Customers can also integrate IDCS or OCI IAM with other on-premise applications to extend the scope of this SSO.

IDCS or OCI IAM is available in two tiers: Foundation and Standard.

- IDCS or OCI IAM Foundation: Oracle provisions this free version of Oracle Identity Cloud Service for customers that subscribe to Oracle Software-as-a-Service (SaaS), Oracle Platform-as-a-Service (PaaS), and Infrastructure-as-a-Service (IaaS) applications. A customer can use this version to provide basic identity management functionality including user management, group management, password management, and basic reporting.
- IDCS or OCI IAM Standard: This licensed edition provides customers with an additional set of features to integrate with other Oracle Cloud services, including Oracle Cloud SaaS and PaaS, custom applications hosted on-premises, on Oracle Cloud, or on a third-party cloud, as well as third-party SaaS applications. Features listed in this pricing tier are applicable for both Enterprise users and Consumer users.

Details of the specific features available in each tier and IDCS or OCI IAM Standard Tier licensing model are available in *Administering IDCS or OCI IAM*. Retail Insights Cloud Service Suite only requires the Foundation Tier, as the Foundation Tier includes key features such as User and Group Management, Self-Service Profile Management and Password Reset, SSO. However, Oracle Retail AI Foundation Cloud Services customers may wish to consider licensing the Standard Tier of IDCS or OCI IAM to have access to more advanced identity features including Identity Synchronization with Microsoft Active Directory, SSO for Third

Party Cloud Services and Custom Applications, Multi-Factor Authentication and generic SCIM Templates.

IDCS or OCI IAM and Oracle Retail AI Foundation Cloud Services Enterprise Roles

When any Oracle Retail AI Foundation Cloud Services cloud service is provisioned, Oracle Retail AI Foundation Cloud Services Enterprise Roles are seeded into the customer's IDCS or OCI IAM instance as Groups. It is expected that customers will also have other groups defined for other cloud services that use this IDCS or OCI IAM instance.

Upon provisioning a new cloud service instance, Oracle Retail AI Foundation Cloud Services creates a single delegate customer administrator user. The customer administrator user has the ability to define password complexity and rotation rules. All Application User maintenance is performed by Customer Administrators via IDCS or OCI IAM. A key feature of IDCS or OCI IAM is that basic user maintenance can be further delegated via identity self-service. When application users are created in IDCS or OCI IAM, they must be associated with an appropriate Oracle Retail AI Foundation Cloud Services Enterprise group to access Retail Insights Cloud Service Suite.

For instructions on managing users and groups in IDCS or OCI IAM, follow the Manage Users and Groups IDCS or OCI IAM document at the following URL:

<https://docs.oracle.com/en/cloud/paas/identity-cloud/index.html>

<https://docs.oracle.com/en-us/iaas/Content/Identity/home.htm>

Oracle Retail AI Foundation Cloud Services Default Enterprise Roles

Oracle Retail AI Foundation Cloud Services is built with role-based access. Permissions are associated with roles.

The following roles are available:

Table 1–1 User Roles

Job Role	Role Description
AIF Platform	
ADMINISTRATOR_JOB	A user who understands all the parameters driving the application and is responsible for their configuration as well as managing the credential store for CE, RPM, and so on.
ANALYTIC_EXPERT_JOB	Responsible for understanding the retailer's business, has some business analytics training, and has been trained in the use of the CDT and DT applications.
ASSORTMENT_PLANNER_JOB	The Assortment Planner is responsible for creating the category assortments, to meet the roles, strategies, and tactics set for the category by the Category Manager. Multiple category assortments are created, for each cluster or store. One planner can be responsible for multiple categories.
CLUSTERING_ADMINISTRATOR_JOB	Responsible for planning, building, and analyzing store clusters based on a variety of store and category attributes to support assortment, pricing, and space planning business processes in the Store Clustering Module.
CUSTOMER_ANALYST_JOB	Develops customer segments and analyzes their customer shopping and buying behavior to determine customer differentiation, trends, and opportunities in Customer Segmentation Module.
CUSTOMER_SEGMENT_ADMINISTRATOR_JOB	Responsible for analytical defaults and configuration, testing, and model diagnosis. This includes Filter, Sampling and Attribute Mining in the Customer Segmentation Module.

Table 1–1 (Cont.) User Roles

Job Role	Role Description
DATA_LAKE_HUE_ANALYST_JOB	Analyst role for accessing data lake.
DATA_LAKE_HUE_ADMIN_JOB	Administrator role for accessing data lake.
FORECAST_ANALYST_JOB	Reviews and approves forecasts on a day-to-day basis. An advanced forecast analyst may also be responsible for forecast parameter maintenance and demand modeling activities.
HOS_FORECAST_ANALYST_JOB	A user who understands the restaurant's business, has some business analytics training, and has been trained in the use of the Forecasting application.
HOS_FORECAST_CORPORATE_ANALYST_JOB	Responsible for ensuring the efficient running and profitability of multiple stores in a restaurant chain. This user works with the store manager to review and override the daily sales forecasts, as needed.
HOS_FORECAST_STORE_MANAGER_JOB	Responsible for overseeing stock levels and ordering supplies to meet a restaurant's profitability and quality goals. This user reviews, overrides, and approves the daily sales forecast of menu item groups. The store manager is typically responsible for one store.
MARKET_ANALYST_JOB	Reviews customer segments with business experts, suited (distinctly) for targeted promotion, category and assortment planning, targeted pricing, customer, and market basket analytics in Customer Segmentation module.
MARKET_BASKET_ANALYSIS_JOB	A user who understands the retailer's business, has some business analytics training, and is responsible for reviewing sales transaction affinity analysis.
MERCHANDISER_JOB	A Store Merchandiser (or In-Store Merchandiser) is an hourly employee who executes the placement and assembly of retail fixtures, adjustment of shelves and arrangement and placement of product on the shelves in accordance with CAD drawings and planograms.
ORCL_ADMIN_JOB	Oracle Cloud Administration role for a retailer using Innovation Workbench using APEX Workspace.
RETURN_LOGISTICS_JOB	A user who is familiar with the retailer's product categories and has been trained in the use of the AE application.
SIZE_PROFILE_ANALYST_JOB	Responsible for system parameter maintenance to support size profile calculations. May also be responsible for approval of size profiles. A user who understands size and profile estimations and is able to review and submit them for the retailer's business.
SIZE_PROFILE_OPT_JOB	A user who understands size and profile estimations and is able to review and submit them for the retailer's business.
SOCIAL_ANALYTICS_JOB	A user who understands the retailer's business, has some business analytics training, and has been trained in the use of the Social Analytics application.
ATTRIBUTE_EXTRACTION_JOB	A user who is familiar with the retailer's product categories and has been trained in the use of the Attribute Extraction.
ATTRIBUTE_BINNING_JOB	A user who understands the retailer's business, has some business analytics training, and has been trained in the use of the CDT application and attribute binning application.
MENU_RECOMMENDATION_JOB	A user who understands the restaurant's business, has some business analytics training, and has been trained in the use of the Menu Recommendation.
DATA_SCIENCE_ANALYST_JOB	Data Science Analyst role for a retailer using Innovation Workbench using APEX Workspace
DATA_SCIENCE_ADMINISTRATOR_JOB	Data Science Administration role for Retailer using Innovation Workbench using APEX Workspace
DATA_SCIENCE_ORCL_ADMIN_JOB	Data Science Cloud Administration role for a retailer using Innovation Workbench using APEX Workspace
DATA_SCIENCE_OLDS_ADMIN_JOB	Role to enable the administration of python notebook service under Innovation Workbench

Table 1–1 (Cont.) User Roles

Job Role	Role Description
DATA_SCIENCE_OLDS_ANALYST_JOB	Role to enable the Python notebook for an analyst under Innovation Workbench.
POSLOGS_SERVICE_JOB	Point of Sales broadcast listener role to enable integration between AI Foundation Cloud Services and Oracle XStore.
PLATFORM_SERVICES_ADMINISTRATOR_ABSTRACT	Platform Services role required for accessing services.
Assortment Space Optimization	
CATEGORY_MANAGER_JOB	Product-assortment-centric user who is interested in viewing ASO results and in the translation of data between CMPO, Retail Analytics, and ASO.
SPACE_PLANNER_JOB	A Store Planner is a corporate employee with responsibility for designing the layout of floor plans, department sizes and locations, the layout of fixtures and aisles, applying health, safety and welfare guidelines, and managing and publishing floor-plan versions. This user is also responsible for the day-to-day micro-space optimization activities.
MERCHANDISING_ANALYST_JOB	Main business user responsible for day-to-day micro-space optimization activities
SPACE_ADMINISTRATOR_JOB	Responsible for general system setup and configuration tasks related to the business
FORECAST_MANAGER_JOB	Responsible for analytical configuration, testing, and model diagnosis.
Promotions and Markdowns Optimization	
BUYER_JOB	Responsible for a department or departments and makes the budget decisions for pricing recommendations. Approves or rejects an OO run. Responsible for the translation of data between OO and Oracle Retail Price Management (RPM) and Oracle Retail Customer Engagement (CE).
PRICING_ANALYST_JOB	Main business user responsible for day-to-day pricing optimization activities (e.g., creating scenarios).
PRICING_MANAGER_JOB	Responsible for analytical configuration, testing, and model diagnosis. Oversees the work done by the pricing analyst.
PRICING_ADMINISTRATOR_JOB	Responsible for the general system setup and configuration tasks related to the business.
Offer Optimization	
CHATBOT_QNA_VIEW_JOB	Conversational AI role to enable frequently asked question types of bot conversation.
CHATBOT_SERVICE_JOB	Conversational AI role to enable integration between AI Foundation Cloud Services and Oracle Chatbot.
CHATBOT_VIEW_JOB	Conversational AI role to enable real time bot conversations.
TARGETED_OFFER_JOB	User who probably works in the marketing department and who is responsible for accepting or rejecting targeted offers that are sent out to customers.
Inventory Optimization	
INVENTORY_ANALYST_JOB	Works closely with the buyer to ensure product distribution aligns to strategy. Main business user responsible for day-to-day inventory optimization activities (e.g., reviewing strategies, recommendations, and so on).

Note that in stage and pre-production environments, users are assigned roles that are appended with `_PREPROD`.

Nightly Batch File Uploads

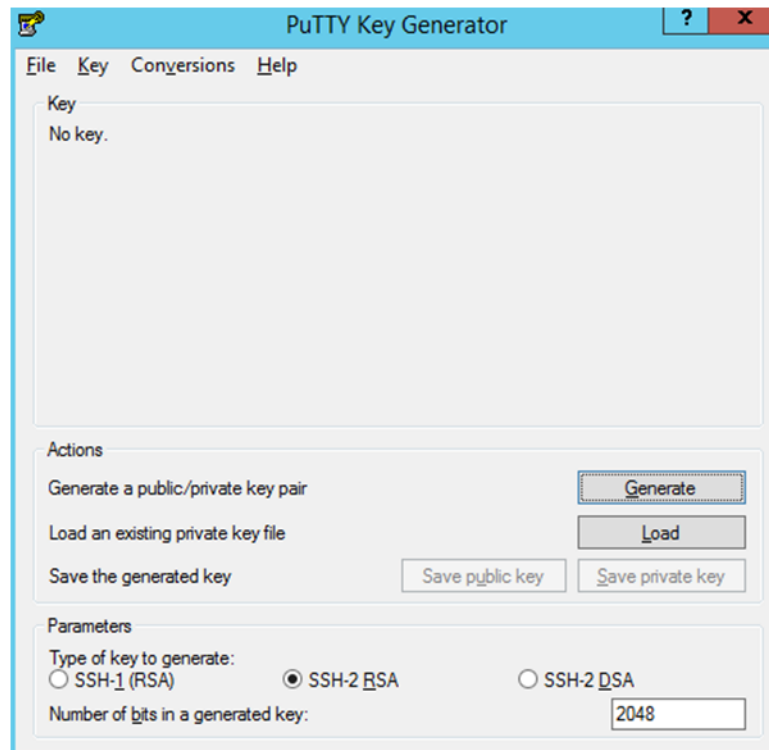
This section describes the file upload process. For details regarding file contents and formatting refer to the *Oracle Retail AI Foundation Cloud Services Implementation Guide*. The Private/Public Keys must be generated and the public Key must be associated with your SFTP Account for the file uploads. The [Adding Authorized Keys](#) section describes the step-by-step method to generate the Keys (2048 bit RSA Keys).

Adding Authorized Keys

Here is the process to generate a 2048 bit RSA key and add the same to the SFTP server. This is done with the help of WinSCP tool on Windows. However, the same can be done using ssh-keygen on Linux as well.

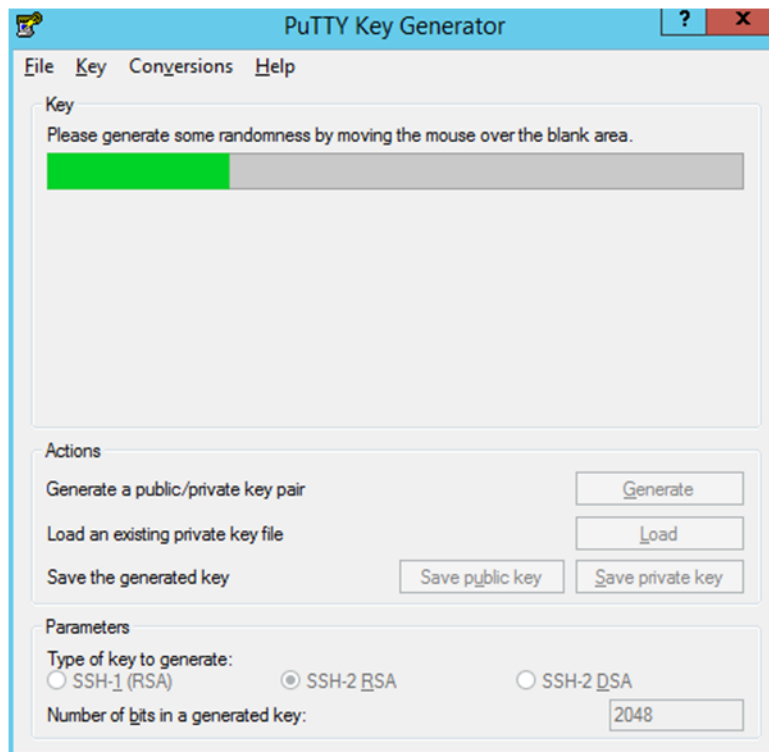
1. Launch WinSCP and select Tools -> Run PuttyGen.
2. Select "SSH-2 RSA" for the type of key to generate and enter "2048" for the number of bits in a generated key field. Click **Generate**.

Figure 1–1 Key Generator



3. Move the mouse over the blank space in the window until the key is generated.

Figure 1–2 Key Generator Progress

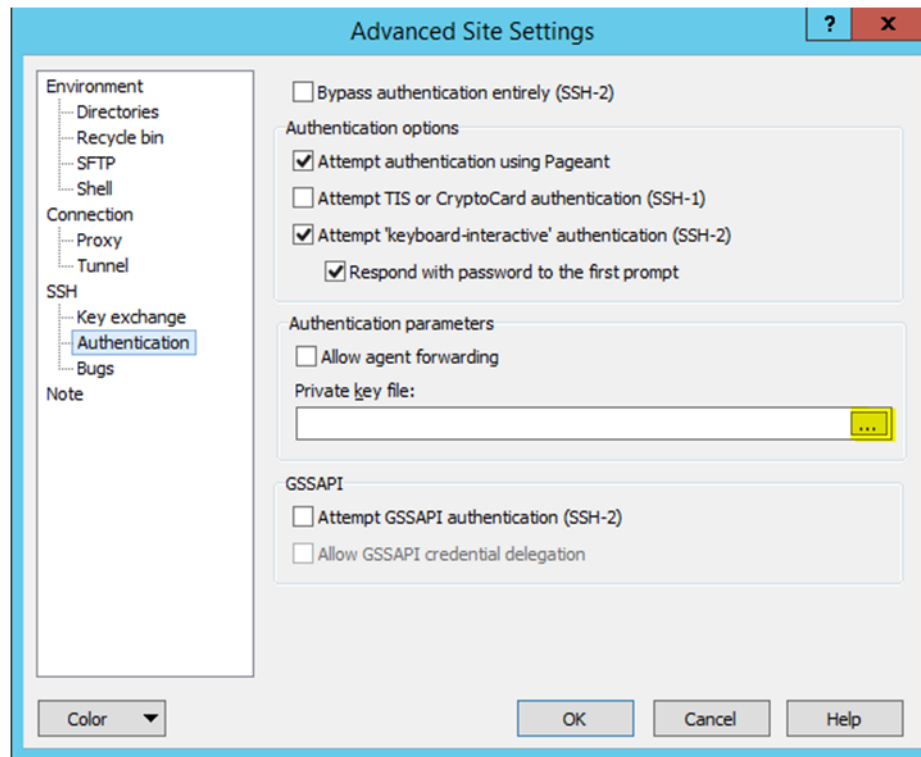


4. Once the key is generated, click the **Save public key** button to save the public key to a file.
5. Click the **Save private key** button to save the Private key to a file. Confirm to save it with/without a passphrase.
6. Open an SR with Oracle Support, to associate the Public half of the Key with your SFTP account (attach the Key with the SR).

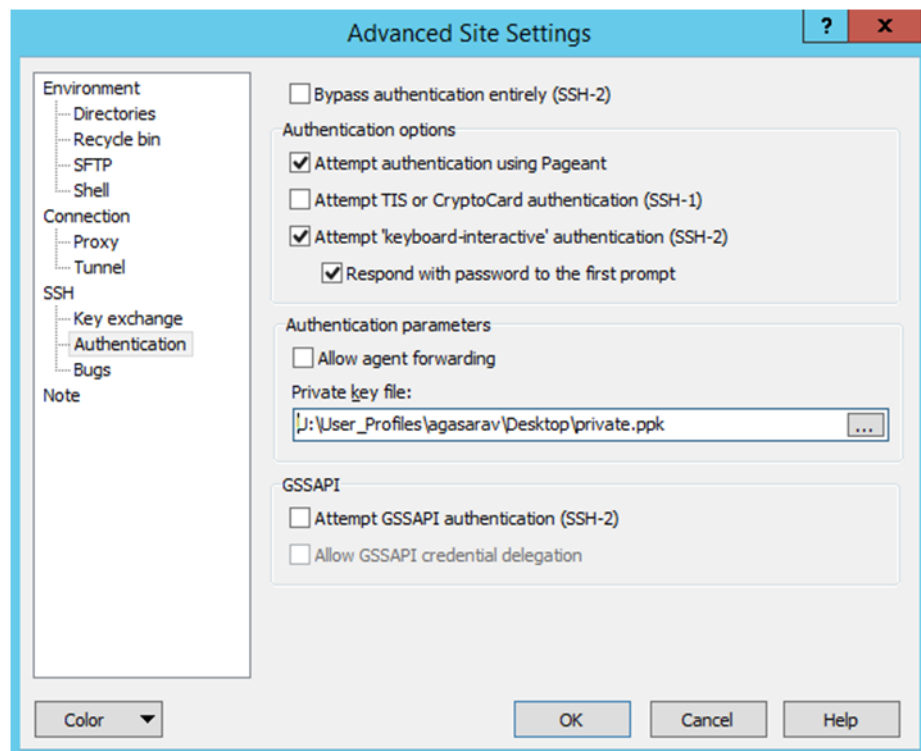
Steps – Log into WinSCP

The Upload steps uses the private key generated in the earlier section.

1. Launch WinSCP and connect to <SFTP Server> using port 22.
2. Enter the username and click **Advanced**.
3. Click **Authentication**.
4. In the Private Key File field, click the **Browse** button and select the private key created in the earlier section.

Figure 1–3 Advanced Site Settings Dialog

5. After loading the private key file, click **OK**.

Figure 1–4 Private Key File Loaded

6. Click **Login**. The window does not prompt for a password and logs into the SFTP server. Provide a passphrase if one has been set up.

Steps to Upload the Batch File

Log into the WinSCP by following the [Steps – Log into WinSCP](#) section.

1. Transfer all data files to the directory /<SFTP User>.
2. Create a directory called COMMAND under /<SFTP User> if it does not already exist.
3. Change to the /<SFTP User>/COMMAND directory.
4. Transfer an empty file called COMPLETE.

Export File Downloads

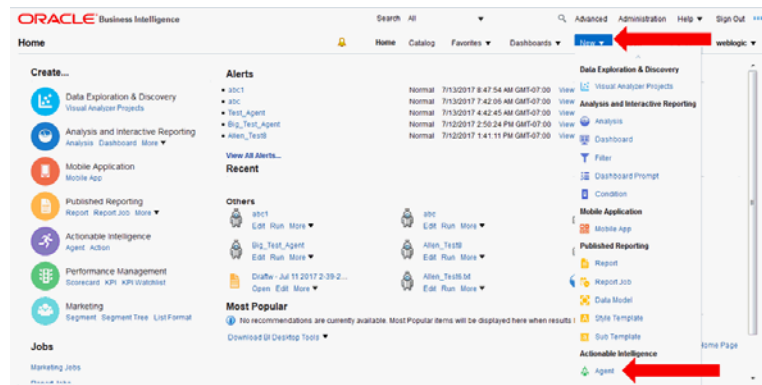
Log into the WinSCP by following the [Steps – Log into WinSCP](#) section. Here is the download file process.

1. Change directory to /<SFTP User>/EXPORT.
2. Download all data files.

Archiving_Reports – Agent Creation and Execution

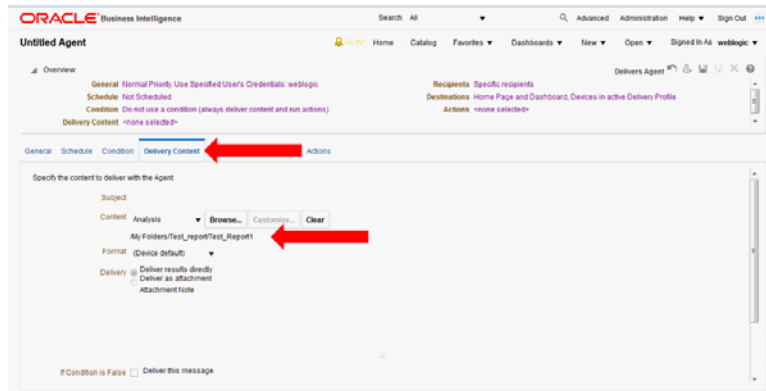
1. After creating an Analysis (report) that must be refreshed and saved to a file for downloading, from the OBIEE home screen select **New -> Agent**.

Figure 1–5 Create a New Agent



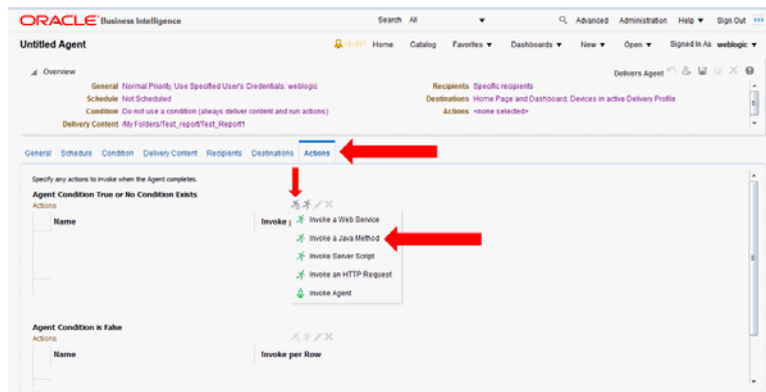
2. After setting the schedule for the Agent execution, go to the Delivery Content tab and select the analysis report. The other settings on this tab such as format will be overridden by other selections on the Actions tab.

Figure 1–6 Delivery Content Tab



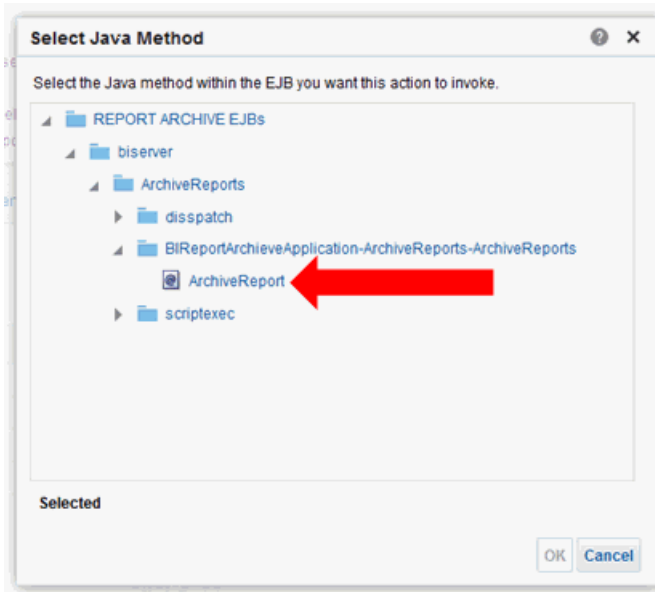
3. Ignore the Recipients and Destinations tabs. Go to the Actions tab and add a new Action that Invokes a Java Method.

Figure 1–7 Action Tab



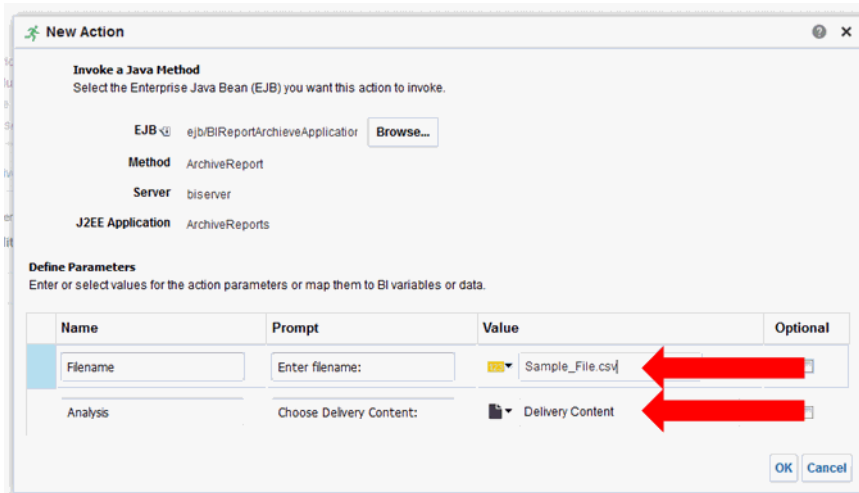
4. Select "REPORT ARCHIVE EJBS / biserver / ArchiveReports / BIReportArchiveApplication-ArchiveReports-ArchiveReports / ArchiveReport".

Figure 1–8 Select Java Method



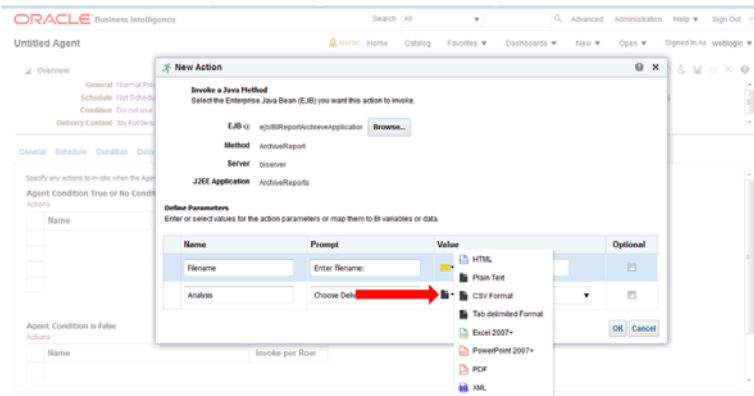
5. Enter the filename that the report must be written to and select **Delivery Content**.

Figure 1–9 New Action Window



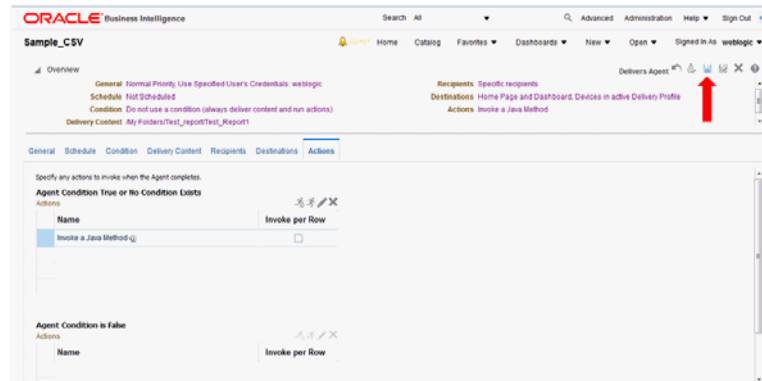
6. Click the small black page icon with the turned corner and select the file format to be written, then click **OK**.

Figure 1–10 Select File Format



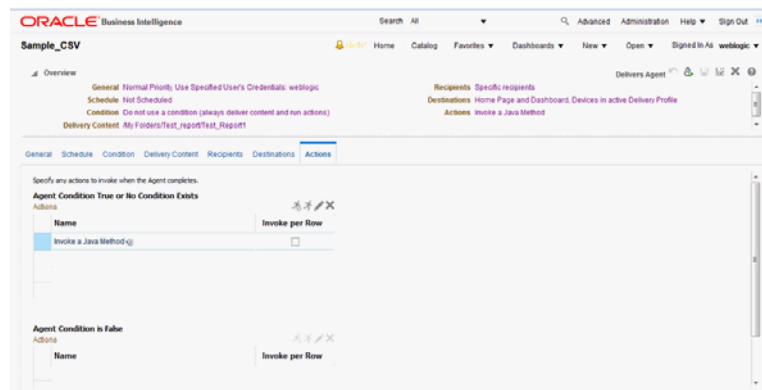
7. Click **Save Agent** and give the Agent a name. At this point the Agent has been defined and will execute according to the defined schedule.

Figure 1–11 Save the Agent

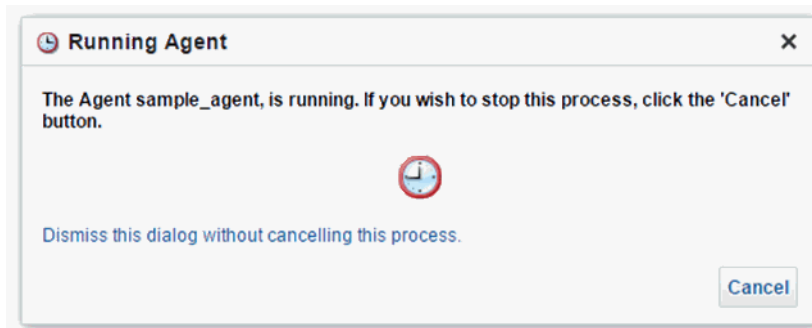


8. If you would like to do an immediate execution of the Agent, you can click **Run Agent Now**.

Figure 1–12 Execute the Agent



The following dialog box displays while the agent is running:

Figure 1–13 Running Agent Dialog Box

Data Visualization Usage

All implementations of Oracle Retail AI Foundation Cloud Services and Retail Insights Cloud Services include Oracle Data Visualization (DV) as a tool for custom analytics and reporting. Administrators should be aware of how DV is maintained as part of your Oracle Cloud environments so that you can manage user-created content and access permissions in the tool.

Accessing the Application

The URL to access the DV application is below, where xxx and yyy are the specific identifiers for your environment.

<https://xxx-yyy-rsi-ris.oracleindustry.com/dv/?pageid=home>

Permission to access DV can be granted through IDCS or OCI IAM using the group RetailVisualAnalyzer_JOB (or its PREPROD equivalent). DV access is also granted automatically if you have certain Retail Insights groups assigned, such as BIAuthors_JOB or RIApplicationAdministrator_JOB.

Managing User Content

User-created content comes in several forms and each type of content is managed separately, as defined below.

Table 1–2 DV User Content

Object Type	Usage
Projects	<p>DV reports and analyses are saved as Project files in the Oracle Analytics Catalog. In Oracle AI Foundation Cloud Services solutions, you may only use two assigned folders in the catalog: /My Folders/ and /Shared Folders/Custom/. You must not save or modify projects in any other location, as these two folders are the only ones designated for backup between upgrades/patches.</p> <p>Projects have their own permissions assigned and are not granted to anyone but the owner by default. The owner must grant the object to administrators if you want them to be centrally managed.</p>
Datasets	<p>Users can create datasets by uploading Excel spreadsheets or by querying pre-defined database connections.</p> <p>Datasets have their own permissions assigned and are not granted to anyone but the owner by default. The owner must grant the object to administrators if you want them to be centrally managed.</p>
Connections	<p>Database connections are managed by Oracle at this time, end users are not expected to create or modify these objects.</p>

Table 1–2 (Cont.) DV User Content

Object Type	Usage
Data Flows	Data flows are used to combine multiple datasets or perform complex transformations and data mining algorithms. Data flows cannot be seen or administered by anyone but the object owner.
Jobs and Schedules	Data flows are executed using Jobs, which can also be scheduled to run periodically. Only the data flow owner can modify jobs and the associated schedules, even though the jobs are visible to other users.

Oracle Digital Assistance

Oracle Digital Assistance (ODA) is a NLP and Machine Learning-based cloud service that enables application-specific interactions. It is a virtual user that assists end users with complex engagements using transactional data to review key business insights and exceptions. It also provides out-of-the-box knowledge sharing by responding to typical Q&A-style questions for customer service and support. ODA features are supported using voice along with conversational interface to distill end user intents, invoke actions, and provide reasonable responses. This enhances consulting services with minimal training and support.

Digital assistance is not a replacement for a web application but a channel that allows the user to complete context-driven tasks using a combination of text messages, voice and, simple UI.

This chapter lists the tasks that a Cloud Administrator must complete to enable digital assistance.

Cloud Administration

As part of cloud administration and deployment, there are two key task that must be performed in a cloud environment:

- Oracle Autonomous Mobile Cloud Enterprise
- Oracle AI Foundation Cloud Services

The following tasks must be performed in the Oracle Autonomous Mobile Cloud Enterprise:

- Accessing/Provisioning Bot Service

Here is the URL to use for Oracle Autonomous Mobile Cloud Enterprise.

<https://docs.oracle.com/en/cloud/paas/mobile-autonomous-cloud/service-administration/getting-started.html#GUID-B958C87C-027F-4BF5-A523-C6B64DB64718>

- Set up SSL certificates for AI Foundation Cloud Services

<https://docs.oracle.com/en/cloud/paas/mobile-autonomous-cloud/manage/credentials-csf-keys-and-certificates.html#GUID-C6467B5F-E07D-4947-8A8A-D511457861E2>

The following tasks must be performed in the Oracle AI Foundation Cloud Services.

- Set up SSL certificates for Bot Service in AI Foundation Cloud Services. The Cloud Team must know how to do this.
- Create users and set up roles.

CHATBOT_SERVICE_JOB	Chatbot Service Role will be configured with Webservices for getting data from application database for transactional bots
---------------------	--

CHATBOT_VIEW_ROLE	Role to enable Transactional bot in application UI in the contextual area
QNA_VIEW_ROLE	Role to enable QnA bot in application UI in the contextual area

- Test if you are able to access Bot using following url:
<http://<hostname or ip>:8080/botsui/bot>

General Privacy and Security Information

This appendix described data privacy and security.

Privacy by Design

In support of data privacy enhancements, retail applications have created a data privacy web service interface and command line tool to provide retailers with services for requesting access to personal information for review and forget/update the personal information if requested.

Here are examples of the personal information.

- Full Name
- Home address
- Email address
- Date of birth

The following features are provided by RI for using the data privacy command line the tool:

- Right to Access (RTA)

Retailers can accept and respond to end-user requests for data access, correction, and deletion for individual end-user data records they store in the Oracle service.

- Right to be Forgot (RTF)

In support of an end-user's right to request to forget/update personal information, retailers can delete/update (mask) an end-user's personal data during the services period. Certain data that is critical for the business or that is part of the legal requirement may not be deleted.

Data Minimization

RI uses the database role, enterprise role, and application role to control who has access to the data. Via the front-end, RI provides default enterprise roles based on their corresponding application roles provided by RI. Users assigned to a specific enterprise role can only access a specific function area. See [Chapter 1](#) for details. At the database level, different database roles are assigned to different type of users. The front-end user role only has read permission to RI data. The batch user role has read, insert, update, and delete permission to RI data.

In the future release, RI will provide customers with controls and tools to configure data purging based on certain criteria in order to minimize the amount of data used and the length of storage.

Data Deletion

RI is a Business Intelligence system that stores the customer centric/ merchandising data for a specified time limit only, as this is required for making business decisions. When data reaches the threshold, it is deleted from the system.

Customers will have access to controls to configure data purging in a future release of RI.

Right to Access / Right to Forget

RI provides a web service interface (file RetailAppsDataPrivServices-7.0.1-RetailAppsDataPrivServices.ear) for right to access and right to forget. The service provides a REST call to return end-user information based on a provided key and provides a REST call to forget the end-user based on a provided key. The feature is also available via the command line by using jar file RetailAppsDataPrivServices-7.0.1-RetailAppsDataPrivTool.jar

RI provides three groups (type_id) for right to access and right to forget.

- CustomerRecord
By providing the customer number as key, the end user can access or forget the PII data for the customer, customer address, and history sales information related to this customer.
- Employee
By providing the employee number as key, the end user can access or forget the PII data for the employee.
- Supplier
By providing the primary contact name as key, the end user can access or forget the supplier contact name and supplier contact phone number information.

Data Portability

RI provides the capability for the end users to export the downloaded report to transmit data to another controller.

Encryption

RI uses Oracle Transparent Data Encryption TDE tablespace encryption to encrypt entire RI tablespaces.

Data Masking

Oracle data redaction is used for RI data masking. A data redaction policy has been created in RI on columns W_PARTY_PER_D. ETHNICITY_NAME and W_PARTY_PER_D. ETHNICITY_CODE. Only users who are granted EXEMPT REDACTION POLICY can view the data. Out of the box, only the RI batch user is granted EXEMPT REDACTION POLICY.