

Oracle Banking Corporate Lending Process Management

User Interface Installation Guide

Release 14.3.0.0.0

Part No. F18230-01

May 2018





Oracle Banking Corporate Lending Process Management User Interface Installation Guide
May 2018
Version 14.3.0.0.0

Oracle Financial Services Software Limited
Oracle Park
Off Western Express Highway
Goregaon (East)
Mumbai, Maharashtra 400 063
India

Worldwide Inquiries:
Phone: +91 22 6718 3000
Fax: +91 22 6718 3001
<https://www.oracle.com/industries/financial-services/index.html>

Copyright © 2018, Oracle and/or its affiliates. All rights reserved.

Oracle and Java are registered trademarks of Oracle and/or its affiliates. Other names may be trademarks of their respective owners.

U.S. GOVERNMENT END USERS: Oracle programs, including any operating system, integrated software, any programs installed on the hardware, and/or documentation, delivered to U.S. Government end users are “commercial computer software” pursuant to the applicable Federal Acquisition Regulation and agency-specific supplemental regulations. As such, use, duplication, disclosure, modification, and adaptation of the programs, including any operating system, integrated software, any programs installed on the hardware, and/or documentation, shall be subject to license terms and license restrictions applicable to the programs. No other rights are granted to the U.S. Government.

This software or hardware is developed for general use in a variety of information management applications. It is not developed or intended for use in any inherently dangerous applications, including applications that may create a risk of personal injury. If you use this software or hardware in dangerous applications, then you shall be responsible to take all appropriate failsafe, backup, redundancy, and other measures to ensure its safe use. Oracle Corporation and its affiliates disclaim any liability for any damages caused by use of this software or hardware in dangerous applications.

This software and related documentation are provided under a license agreement containing restrictions on use and disclosure and are protected by intellectual property laws. Except as expressly permitted in your license agreement or allowed by law, you may not use, copy, reproduce, translate, broadcast, modify, license, transmit, distribute, exhibit, perform, publish or display any part, in any form, or by any means. Reverse engineering, disassembly, or decompilation of this software, unless required by law for interoperability, is prohibited.
The information contained herein is subject to change without notice and is not warranted to be error-free. If you find any errors, please report them to us in writing.

This software or hardware and documentation may provide access to or information on content, products and services from third parties. Oracle Corporation and its affiliates are not responsible for and expressly disclaim all warranties of any kind with respect to third-party content, products, and services. Oracle Corporation and its affiliates will not be responsible for any loss, costs, or damages incurred due to your access to or use of third-party content, products, or services.

Table of Contents

- 1. PREFACE 1-1**
 - 1.1 INTRODUCTION 1-1
 - 1.2 AUDIENCE..... 1-1
 - 1.3 DOCUMENTATION ACCESSIBILITY 1-1
 - 1.4 ORGANIZATION..... 1-1

- 2. DOMAIN AND CLUSTER CONFIGURATION 2-1**
 - 2.1 OBCLPM UI DOMAIN CONFIGURATION 2-1
 - 2.1.1 *Prerequisites*..... 2-1
 - 2.1.2 *Steps to Create Domain*..... 2-1
 - 2.1.3 *Post Domain Creation Configurations*..... 2-11

- 3. DEPLOYMENTS 3-1**
 - 3.1 STEPS TO DEPLOY AS APPLICATION..... 3-1

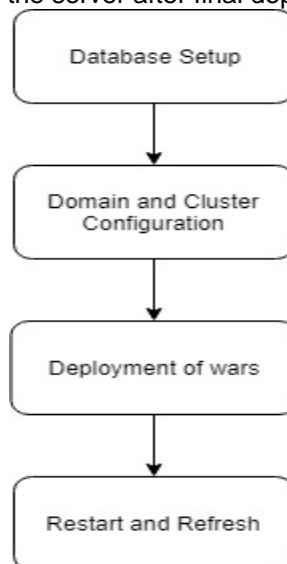
- 4. RESTARTS AND REFRESH..... 4-1**
 - 4.1 RESTARTING SERVERS 4-1

1. Preface

1.1 Introduction

This guide would help you to install the OBCLPM UI on designated environment. It is assumed that all the prior setup is already done related with WebLogic managed server creation. It is recommended to use dedicated managed server for OBCLPM UI.

The installation procedure includes a series of steps that are defined in subsequent sections for the deployment of services. Section 2 explains the procedure to perform the domain and cluster configuration. This setup includes the creation of domains and clusters in the weblogic server. After the domain creation is done, the war files of each of the services are deployed. Section 3 covers the procedure to deploy each of the application war files into the servers. Section 4 explains the procedure to restart and refresh the server after final deployments.



1.2 Audience

This document is intended for WebLogic admin or ops-web team who are responsible for installing the OFSS banking products.

1.3 Documentation Accessibility

For information about Oracle's commitment to accessibility, visit the Oracle Accessibility Program website at <http://www.oracle.com/pls/topic/lookup?ctx=acc&id=docacc>.

1.4 Organization

This installation user guide would allow you to install following:

- Oracle Banking Corporate Lending Process Management User Interface Application

1.5 Related Documents

- Common Core Services Installation Guide
- Day-0 Setup Guide
- LDAP Setup Guide
- Oracle Banking Corporate Lending Process Management Annexure
- Oracle Banking Corporate Lending Process Management BPMN Process Installation Guide

- Oracle Banking Corporate Lending Process Management Pre-Installation Guide
- Oracle Banking Corporate Lending Process Management Services Installation Guide
- Plato Infrastructure Services Installation Guide
- Process Flow Services Installation Guide
- Process Maintenance and Worklist Guide
- Security Management System Services Installation Guide
- SSL Setup Guide

2. Domain and Cluster Configuration

2.1 OBCLPM UI Domain Configuration

2.1.1 Prerequisites

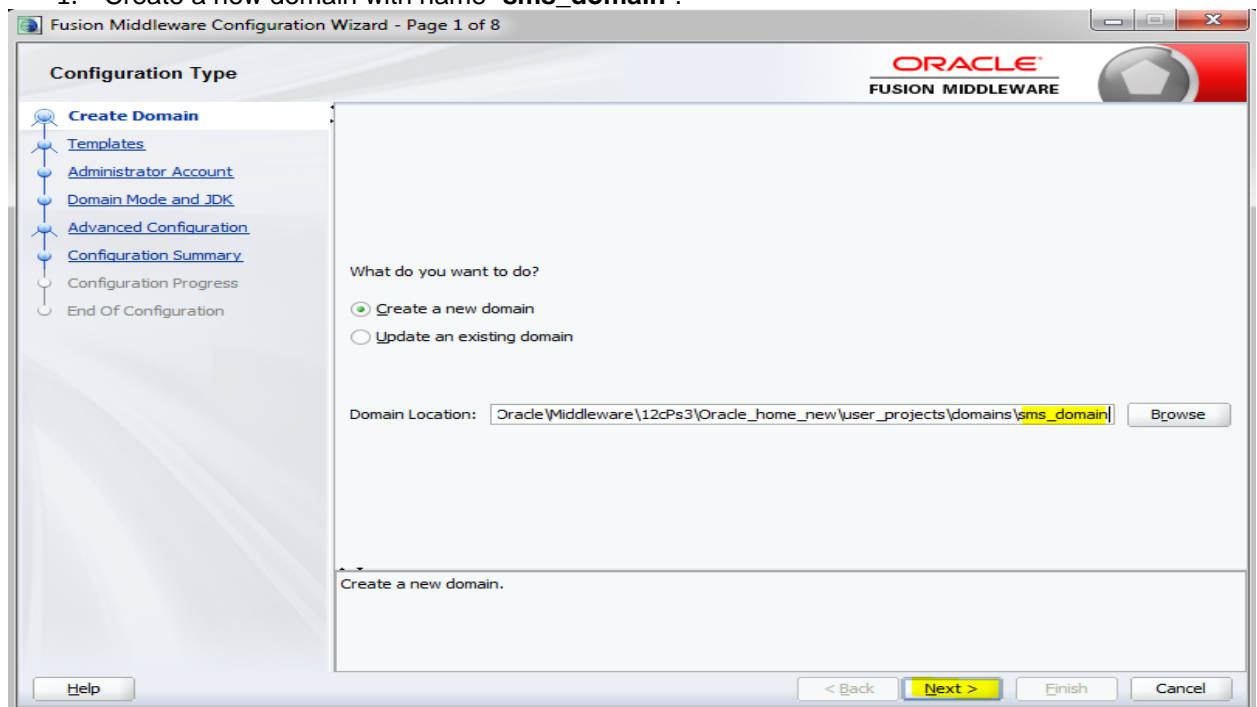
- Machine should have Java JDK1.8.0_171 has installed.
- Oracle Fusion Middleware 12cR2 12.2.1.3 has to be installed on the machine.

2.1.2 Steps to Create Domain

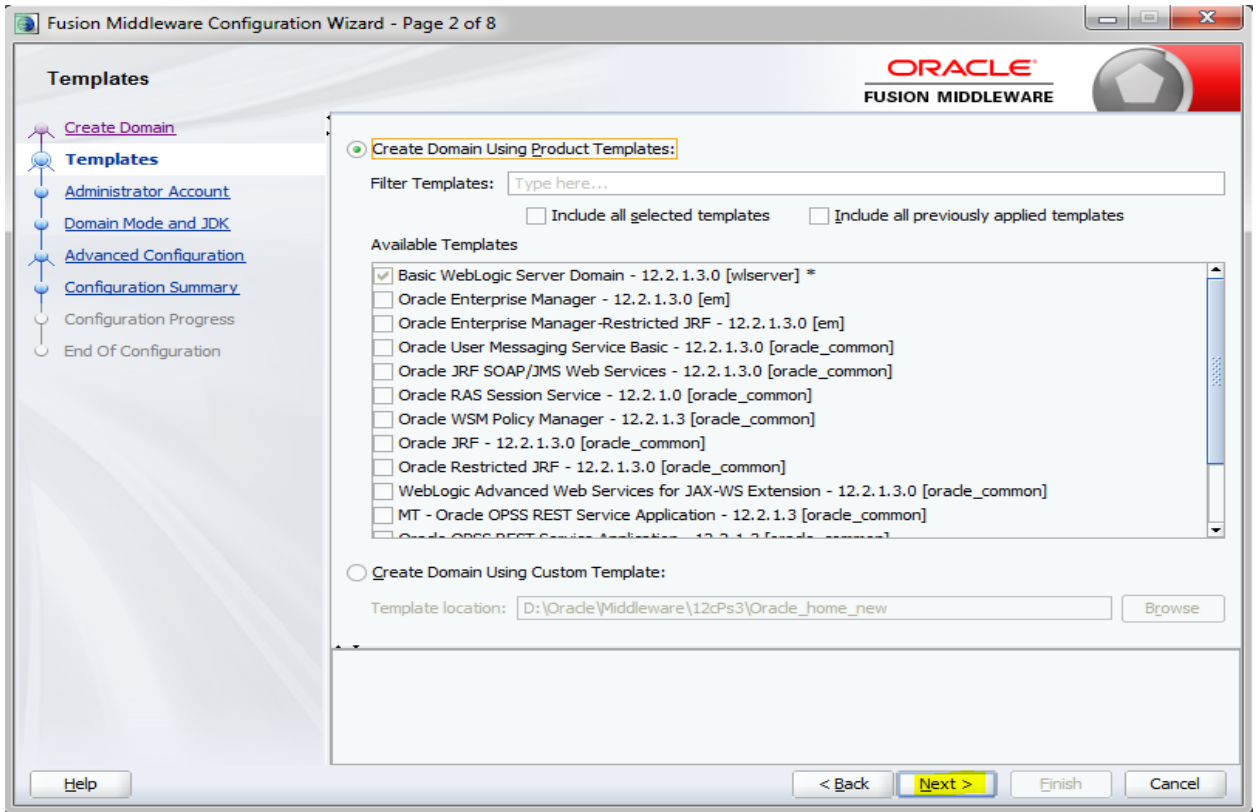
[Note: Name need not to be same as provided in Screen shot and domain name are used for write document]

Go to `/oracle_common/common/bin` and run `config.cmd` (or `.sh` if operating system is linux) and below the below screen shots to create domain with required cluster and server configurations.

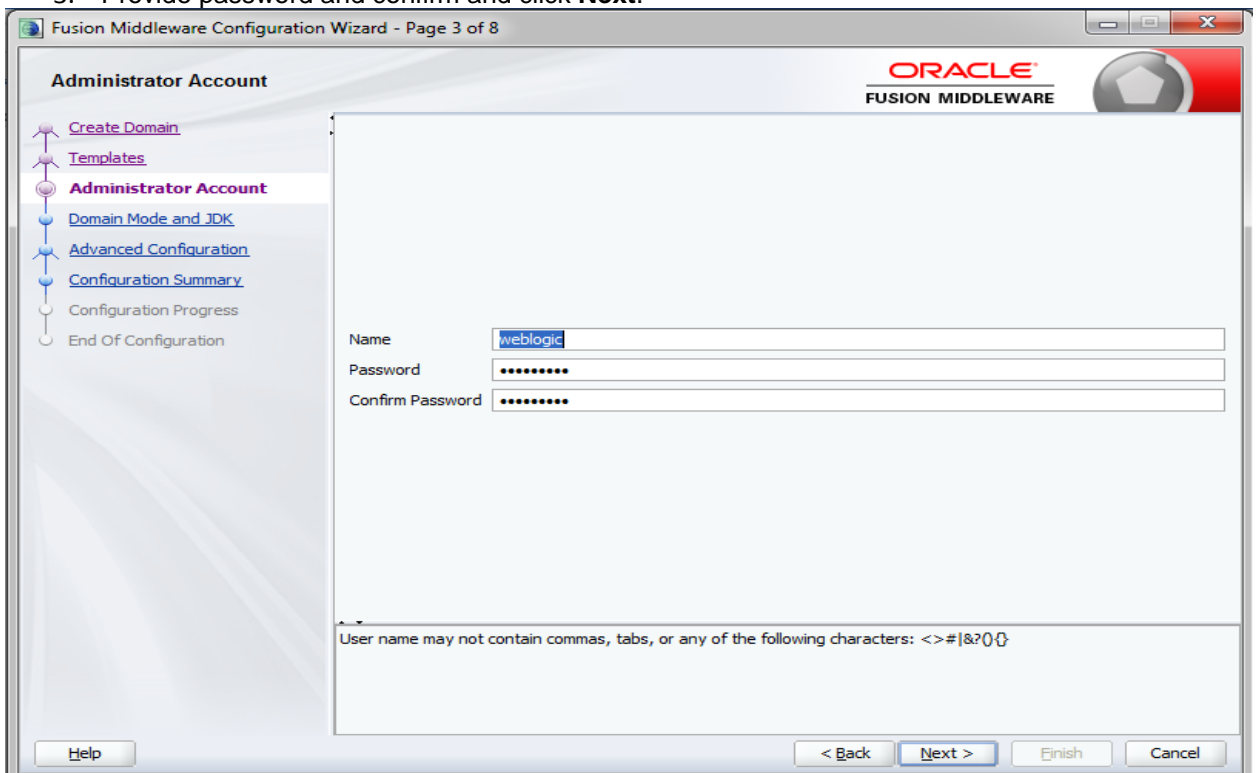
1. Create a new domain with name “**sms_domain**”.



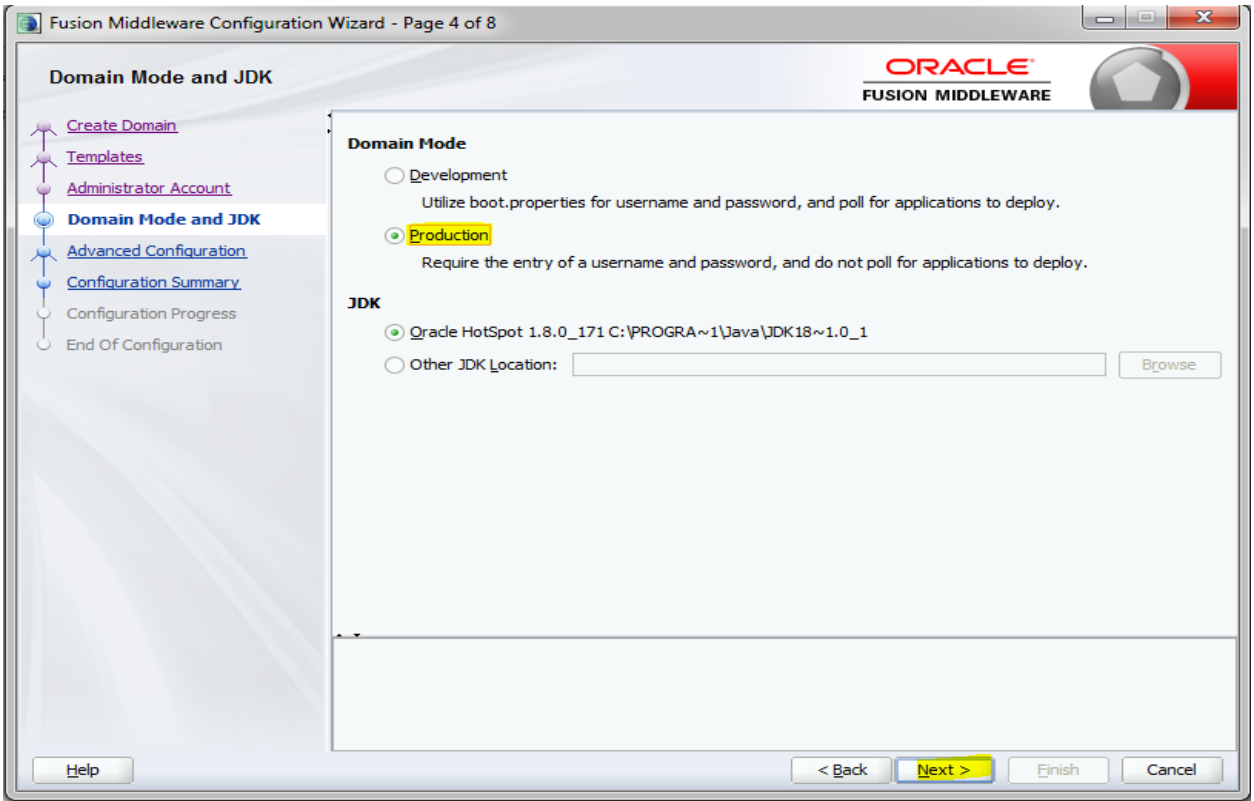
2. Use default templates and click next.



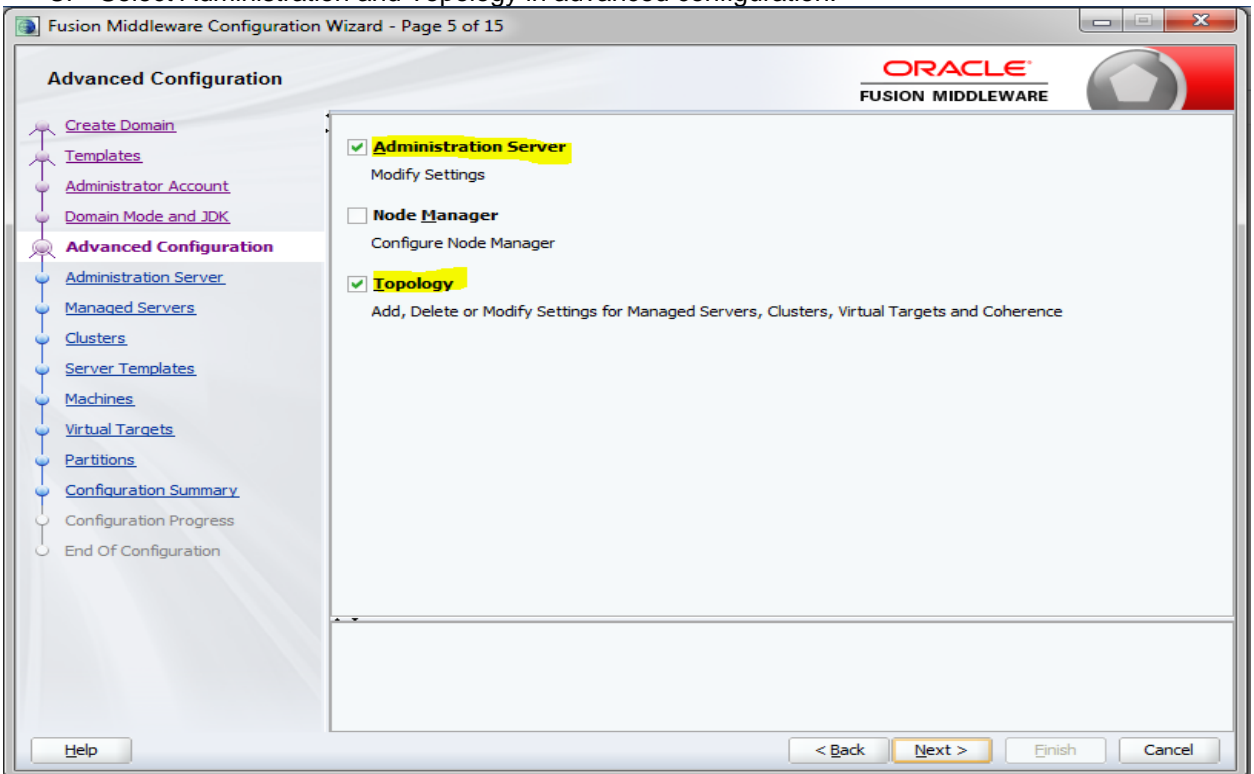
3. Provide password and confirm and click **Next**.



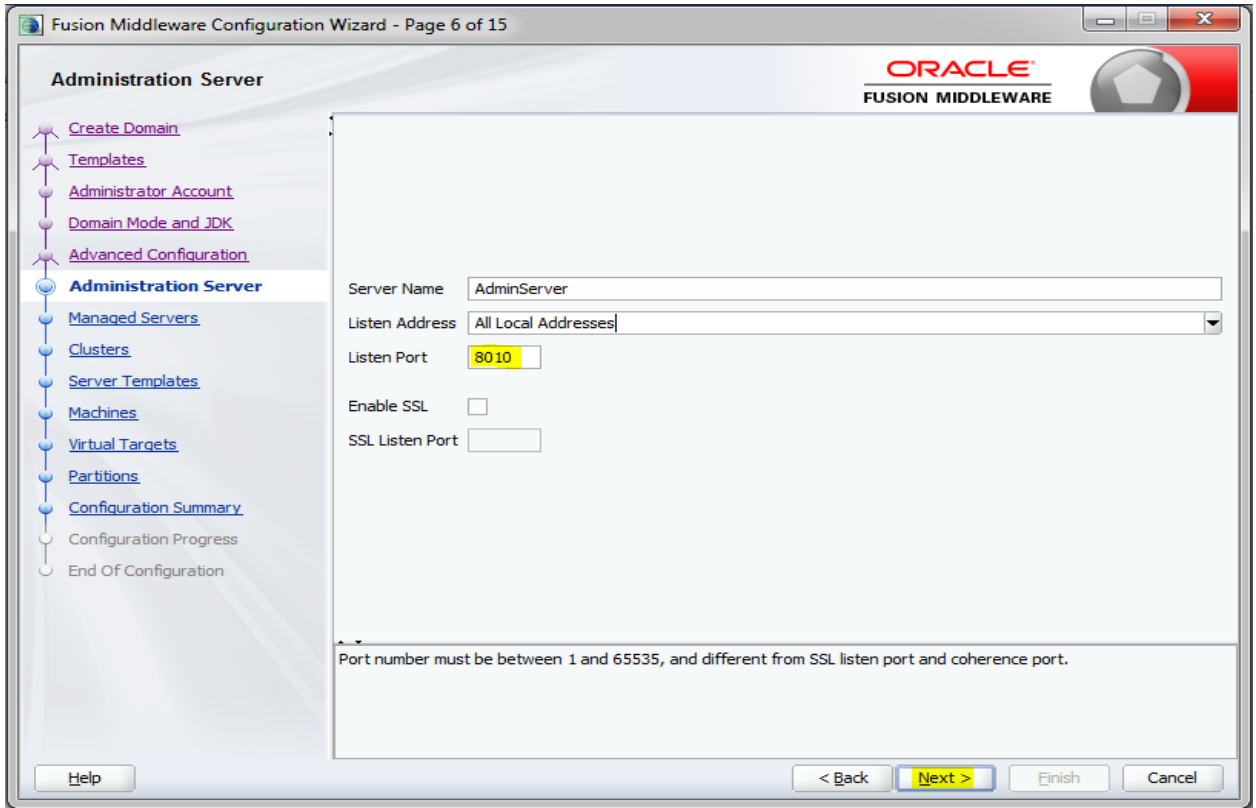
4. Select production mode and jdk and click **Next**.



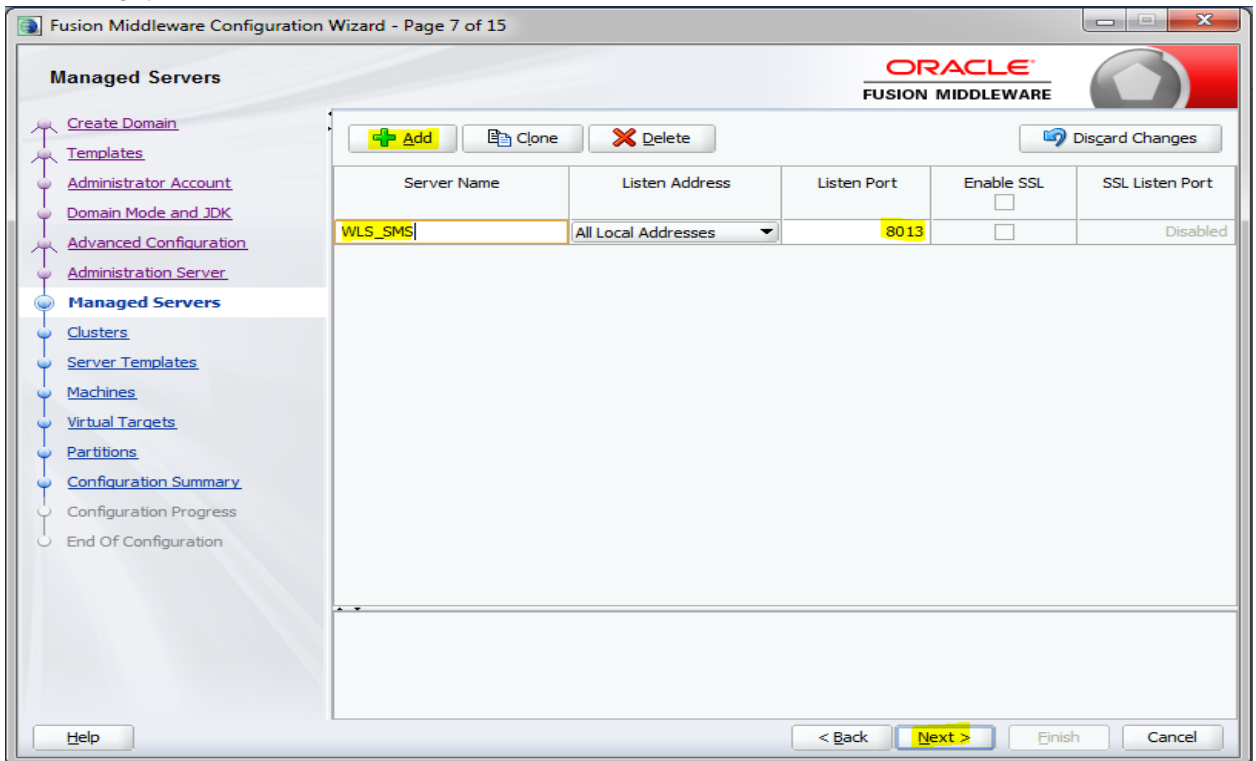
5. Select Administration and Topology in advanced configuration.



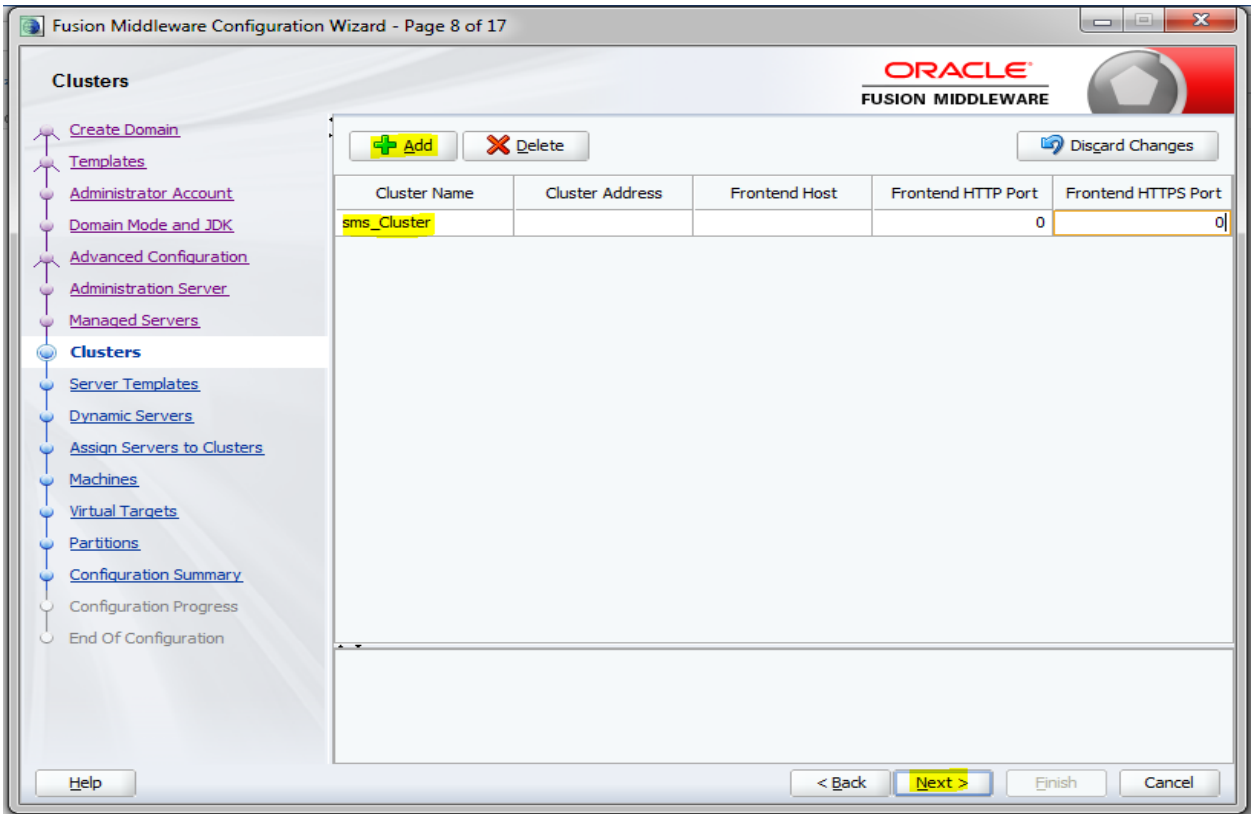
6. Configure port and listen addresses and Click next.



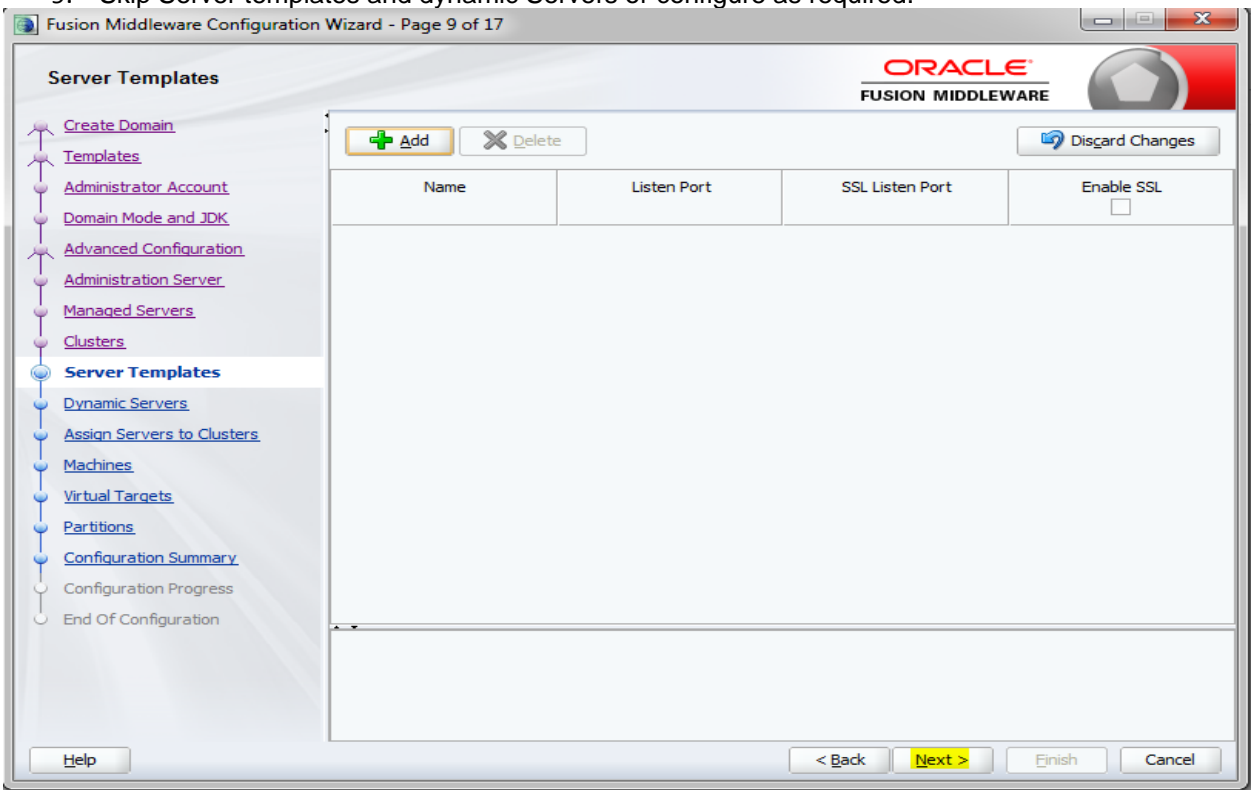
7. Create new Managed Server 'WLS_SMS', configure listen port and address and click next.

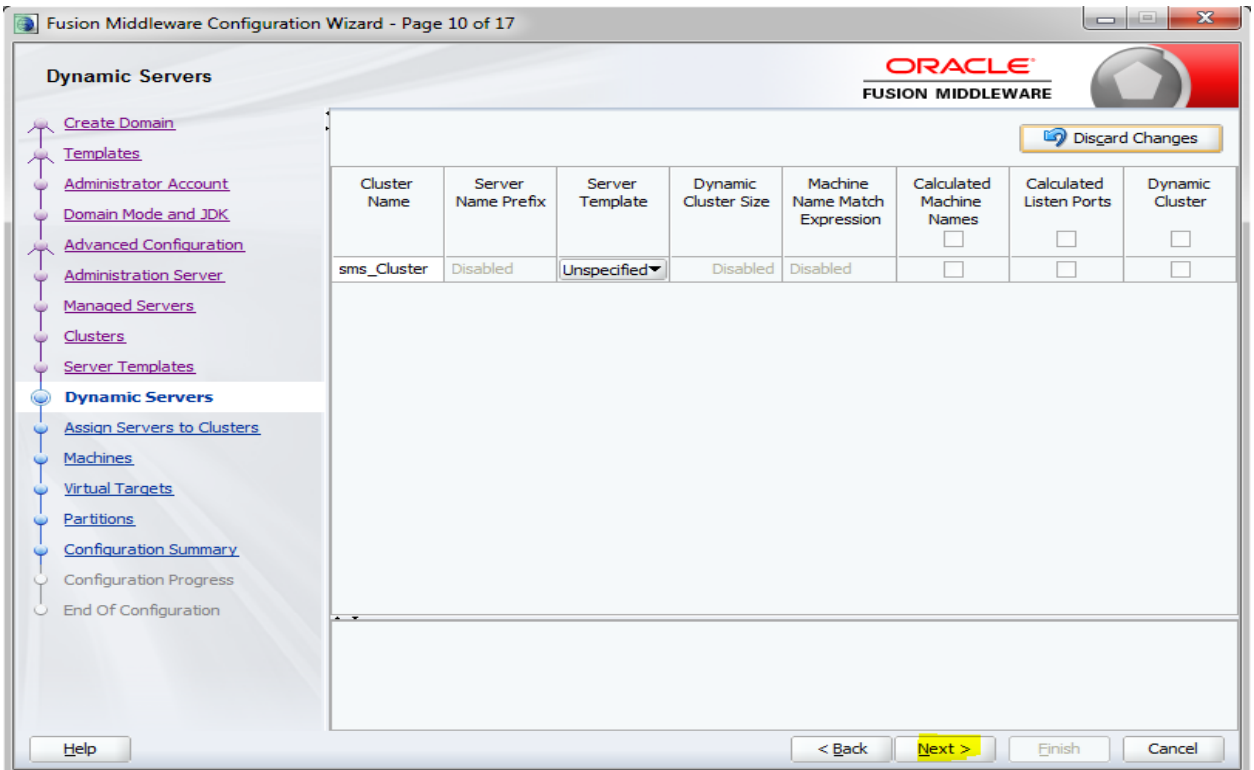


8. Create cluster 'sms_Cluster' for the managed server for one to one node mapping.

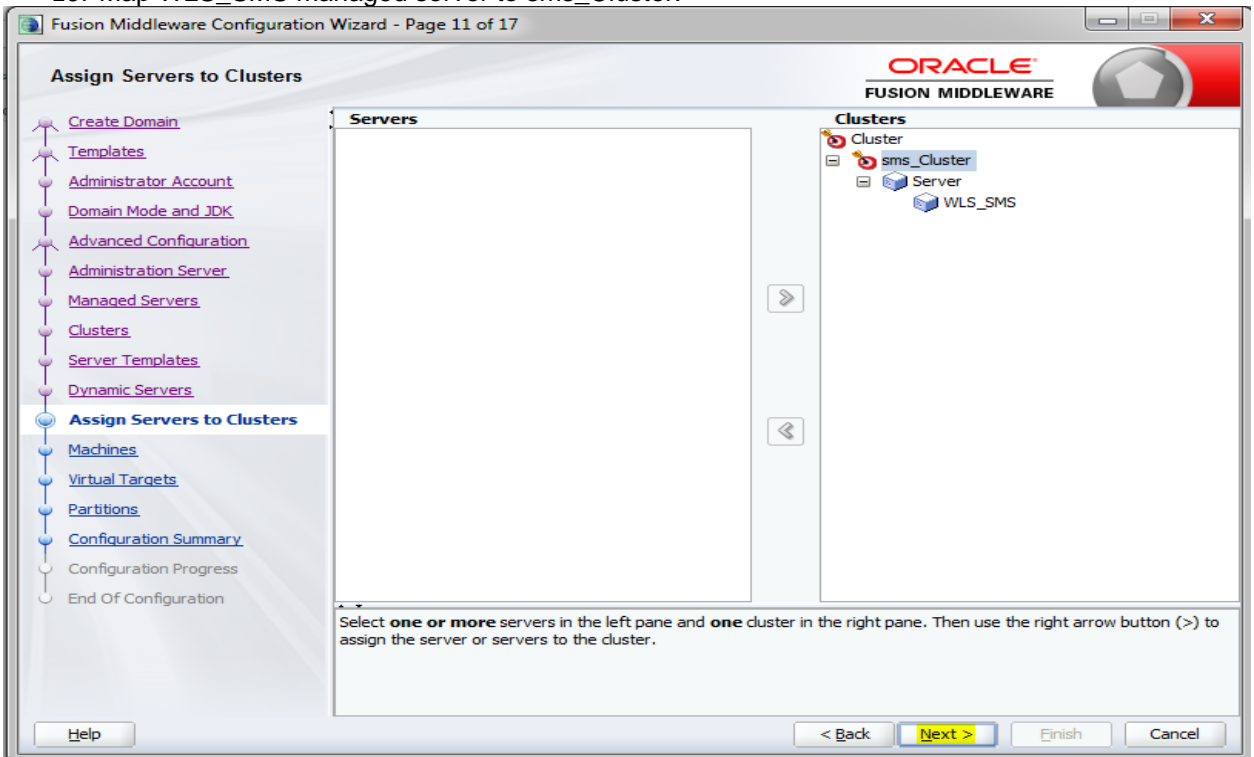


9. Skip Server templates and dynamic Servers or configure as required.

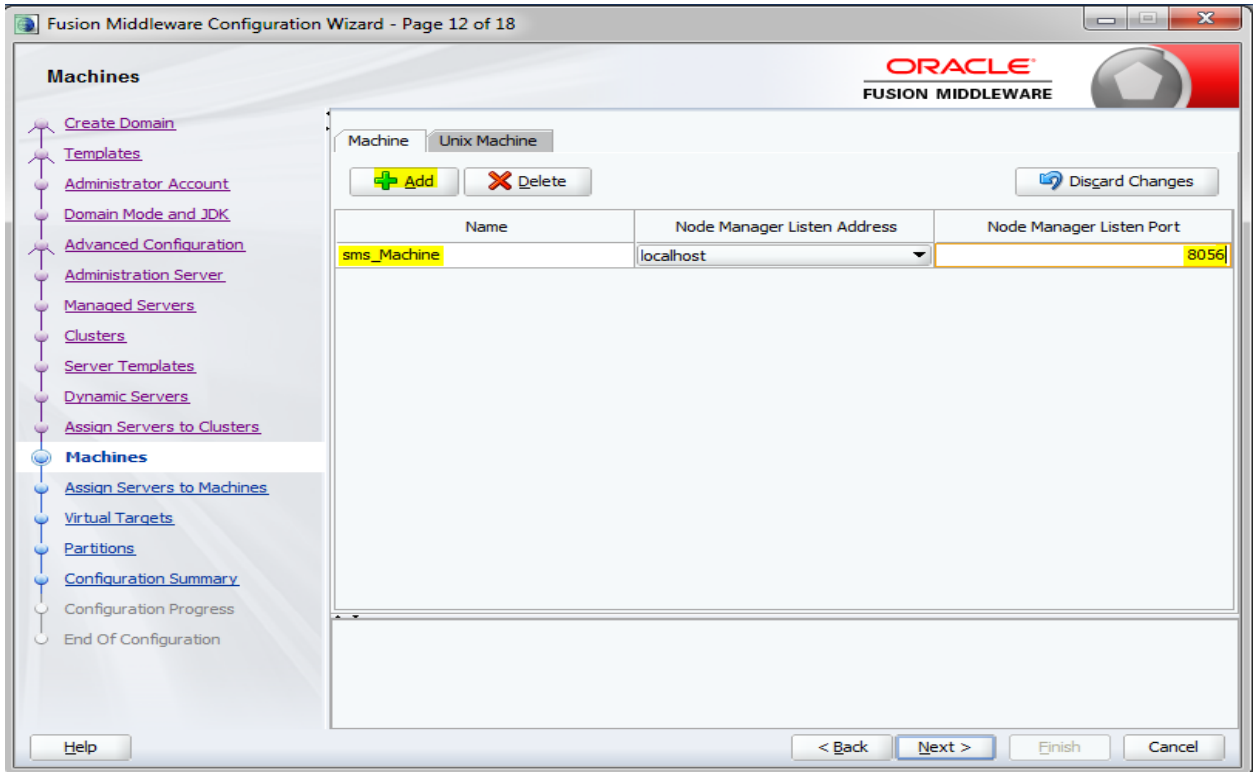




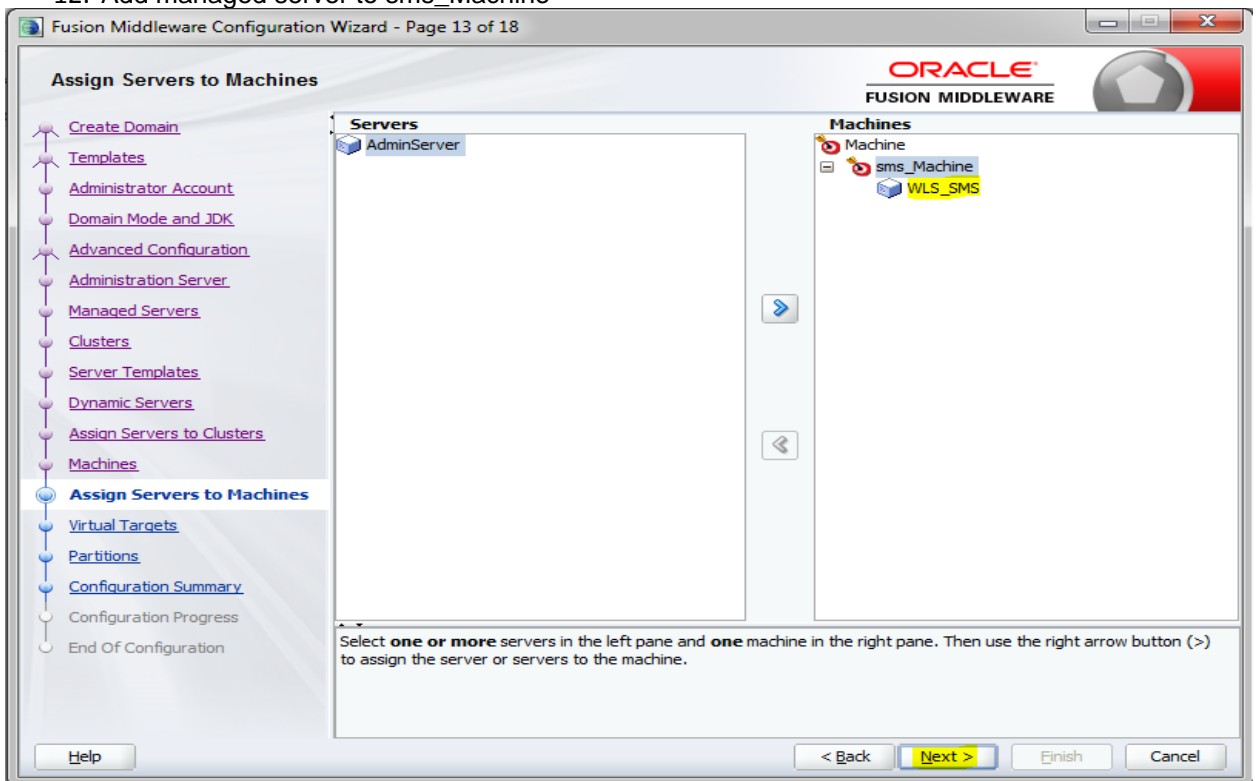
10. Map WLS_SMS managed server to sms_Cluster.



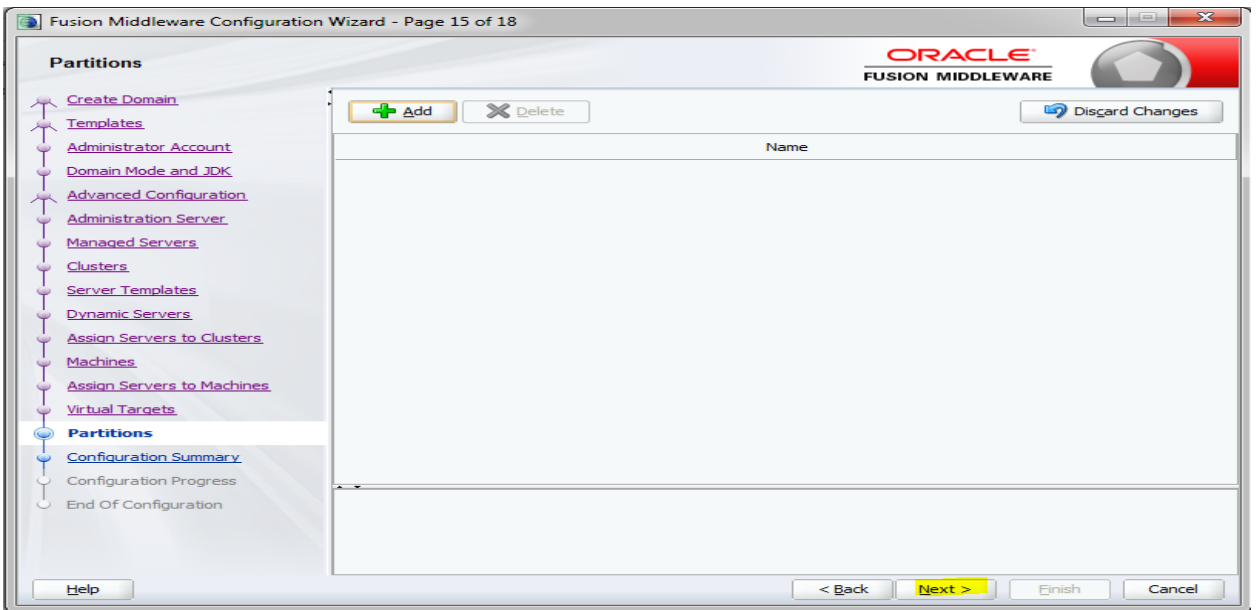
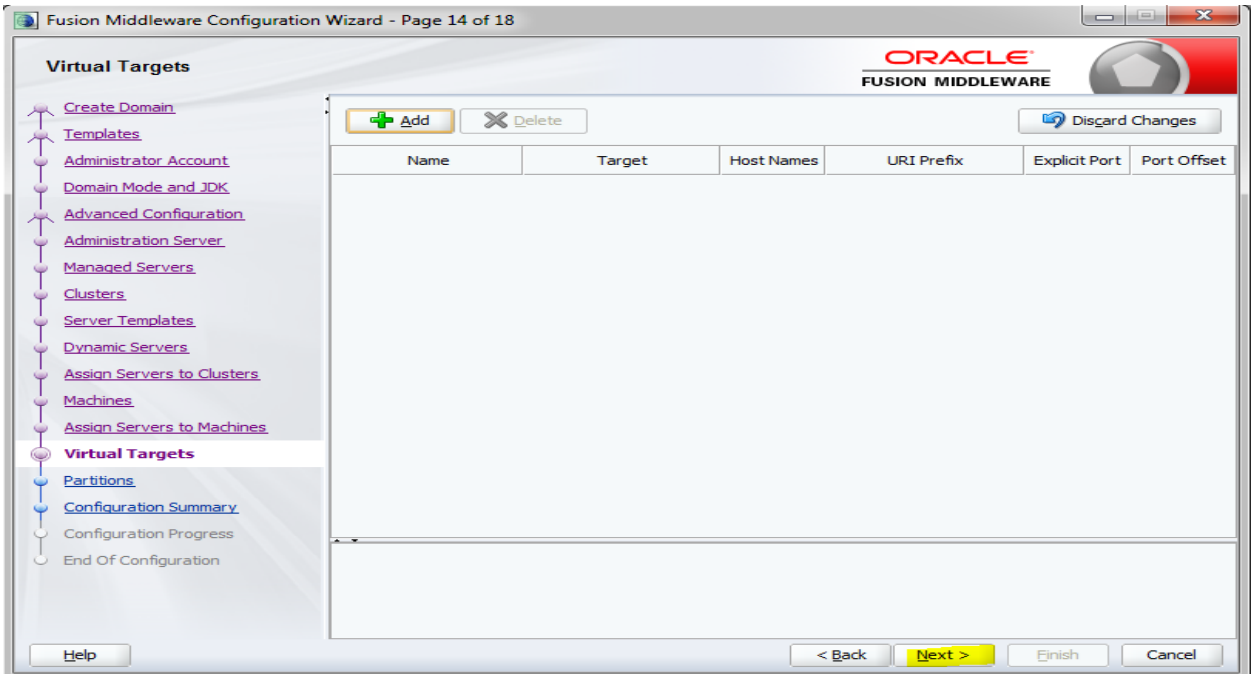
11. Add new machine (unix machine if operating system is Unix) with name sms_Machine and configure node manager listen port.



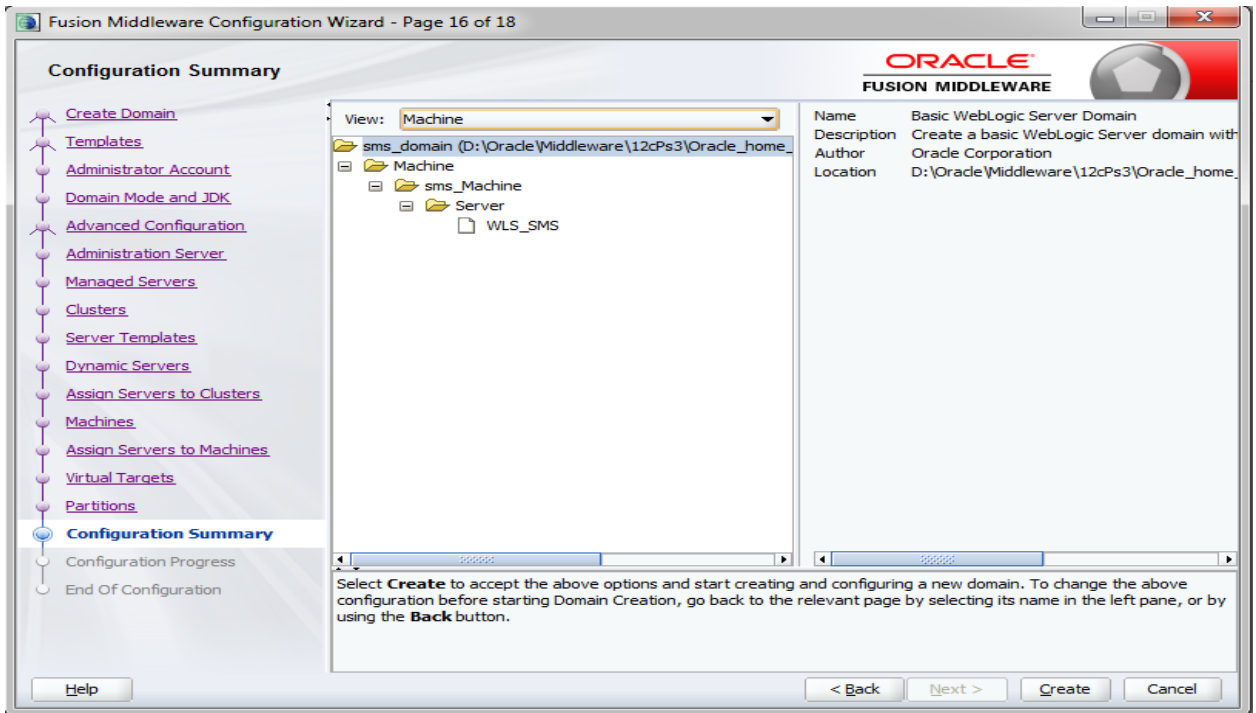
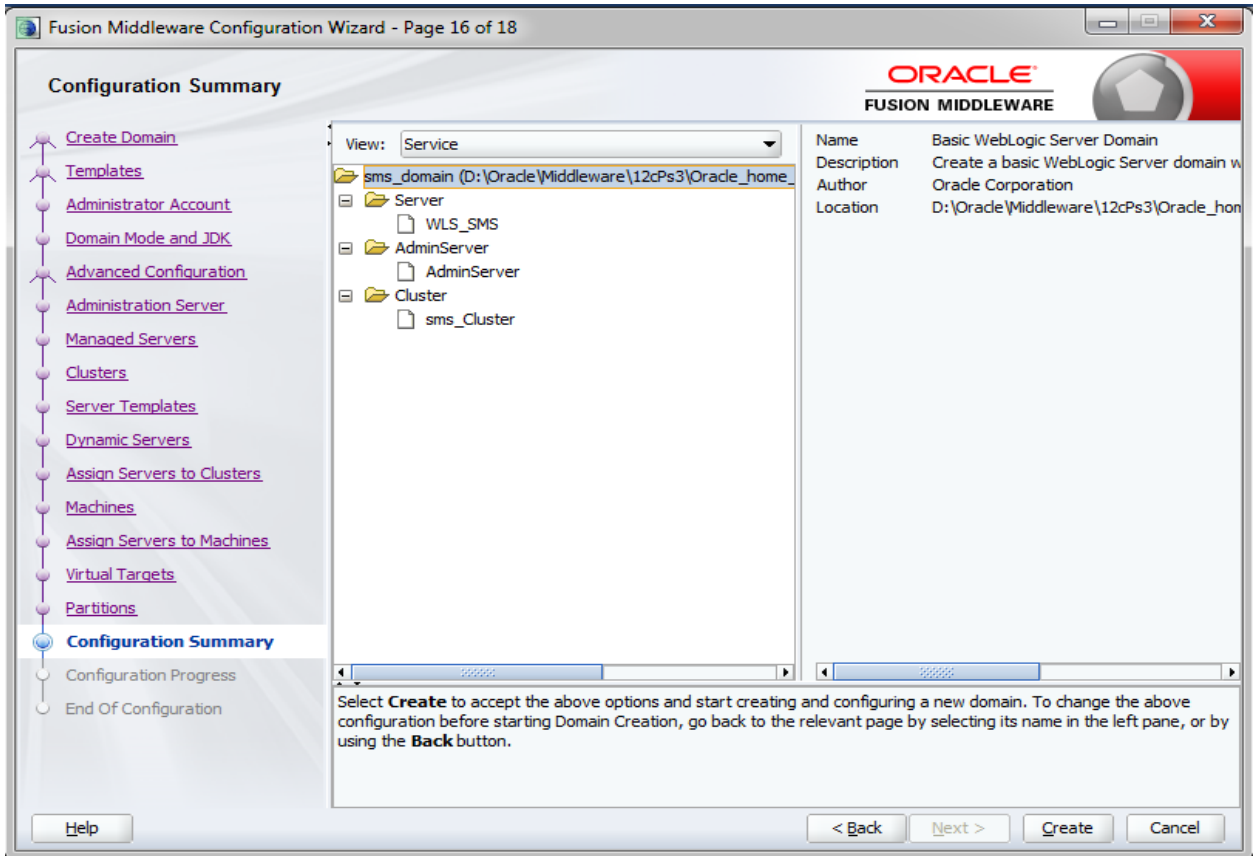
12. Add managed server to sms_Machine

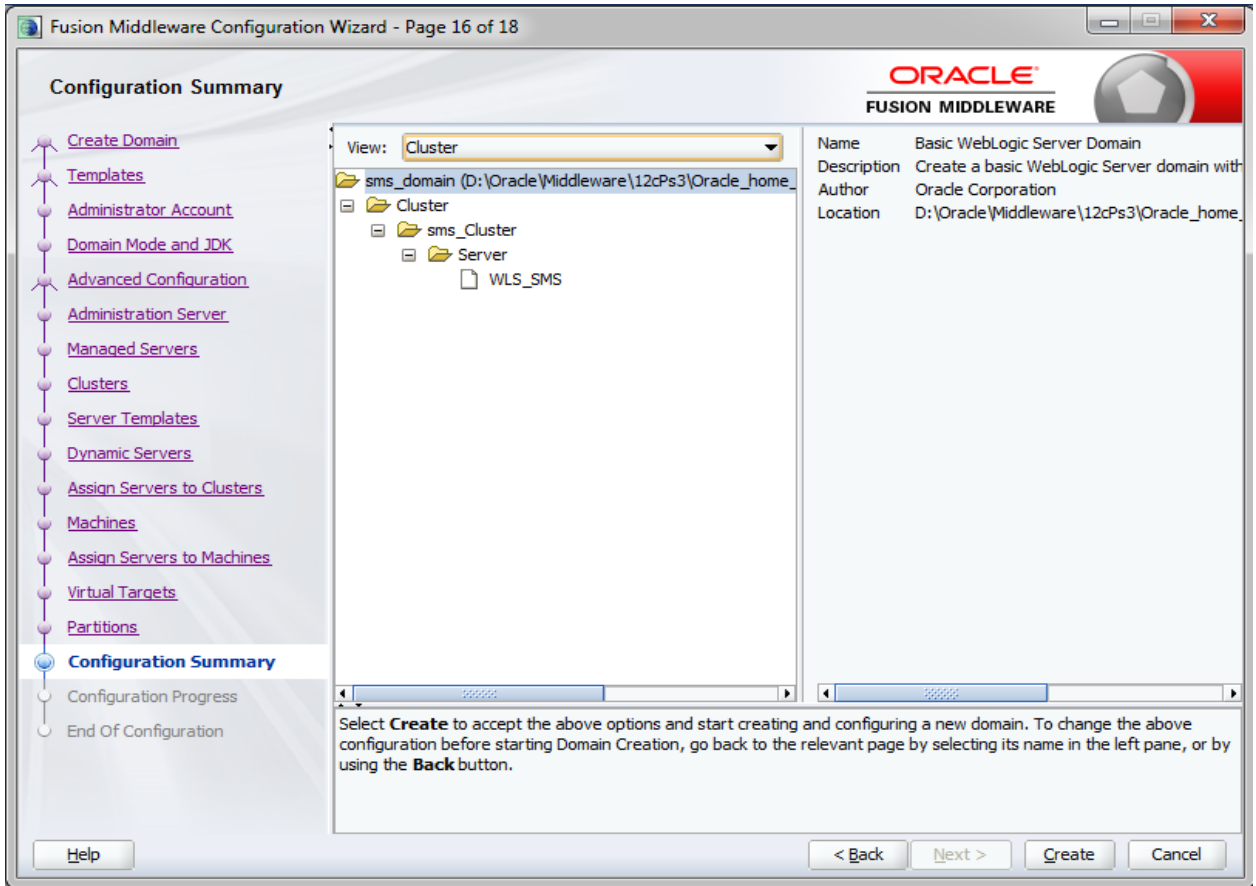


13. Skip virtual targets and partitions or configure as required.

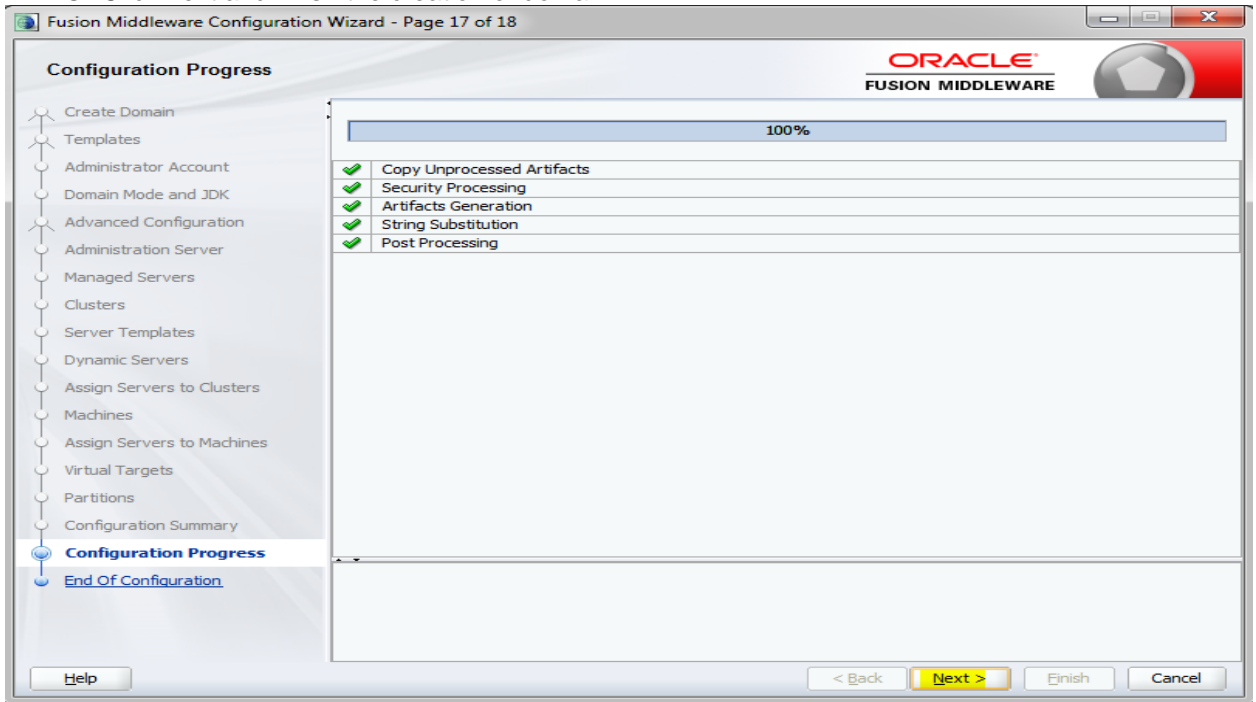


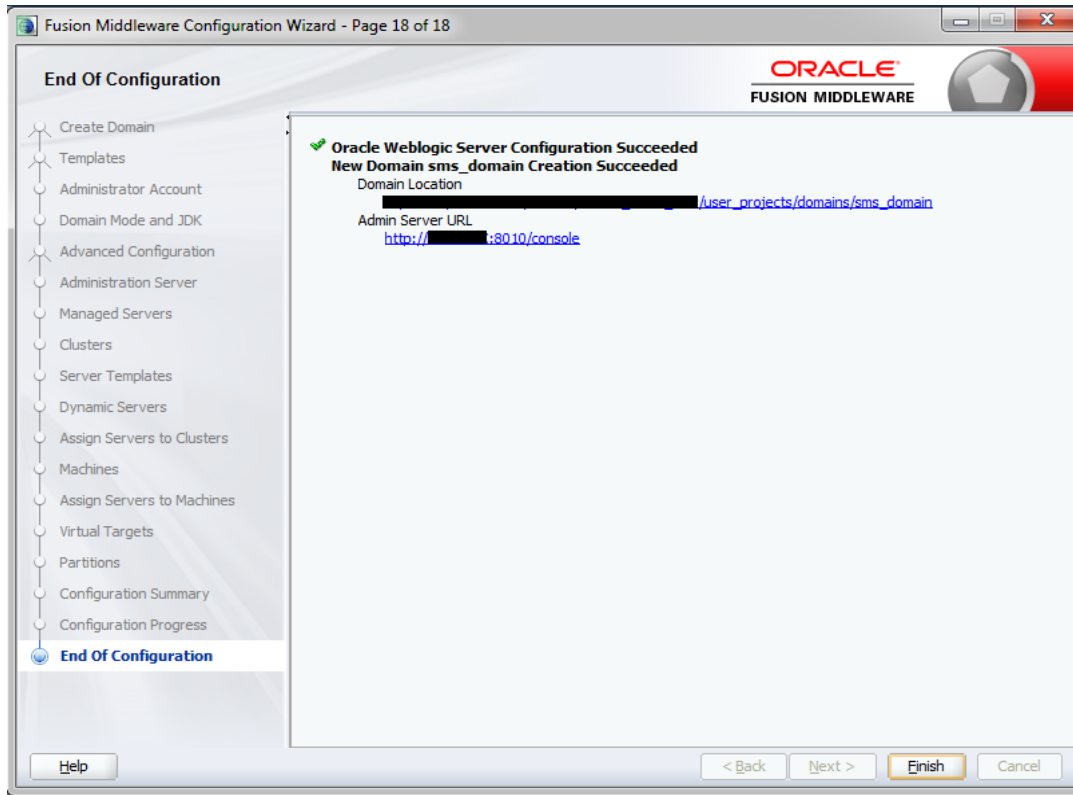
14. Check the configuration summary, confirm and click create





15. Click next and finish the creation of domain.





2.1.3 Post Domain Creation Configurations

1. Once finished, refer oracle fusion middleware documents for more details on how to start admin server, node manager and managed servers.
2. Create boot.properties file under
/user_projects/domains/XXXXdomainNameXXX/servers/AdminServer/security
3. Edit boot.properties and give username and password details.
4. Go to /user_projects/domain/sms_domain/bin
5. Run startWeblogic.cmd (or .sh if operating system is linux)
6. Go to /user_projects/domains/ sms _domain/bin
7. Run setNMJavaHome.cmd (.sh)
8. Go to /user_projects/domains/ sms _domain/nodemanager
9. And edit nodemanager.properties as required (securelistner = false if ssl and keystore is not given) and in admin console also Go to Machines > sms_Machine > Node Manager > Type > Plain > Save.
10. Go to /user_projects/domains/ sms _domain/bin
11. Run startNodeManager.cmd (or .sh if operating system is linux)
12. Start all managed servers.
13. Login console and verify servers and clusters

Click the *Lock & Edit* button to modify, add or delete items in this domain.

[Lock & Edit](#)
[Release Configuration](#)

Domain Structure

- sms_domain
 - Domain Partitions
 - Environment
 - Servers
 - Clusters
 - Coherence Clusters
 - Resource Groups
 - Resource Group Templates
 - Machines
 - Virtual Hosts
 - Virtual Targets
 - Work Managers
 - Concurrent Templates
 - Resource Management

How do I...

- Create Managed Servers

Summary of Servers

Configuration Control

A server is an instance of WebLogic Server that runs in its own Java Virtual Machine (JVM) and has its own configuration. This page summarizes each server that has been configured in the current WebLogic Server domain.

[Customize this table](#)

Servers (Filtered - More Columns Exist)

Click the *Lock & Edit* button in the Change Center to activate all the buttons on this page.

[New](#) [Clone](#) [Delete](#) Showing 1 to 2 of 2 Previous | Next

<input type="checkbox"/>	Name ↕	Type	Cluster	Machine	State	Health	Listen Port
<input type="checkbox"/>	AdminServer(admin)	Configured			RUNNING	OK	8010
<input type="checkbox"/>	WLS_SMS	Configured	sms_Cluster	sms_Machine	SHUTDOWN	Not reachable	8013

[New](#) [Clone](#) [Delete](#) Showing 1 to 2 of 2 Previous | Next

Click the *Lock & Edit* button to modify, add or delete items in this domain.

[Lock & Edit](#)
[Release Configuration](#)

Domain Structure

- sms_domain
 - Domain Partitions
 - Environment
 - Servers
 - Clusters
 - Coherence Clusters
 - Resource Groups
 - Resource Group Templates
 - Machines
 - Virtual Hosts
 - Virtual Targets
 - Work Managers
 - Concurrent Templates
 - Resource Management

Summary of Clusters

This page summarizes the clusters that have been configured in the current WebLogic Server domain. A cluster defines groups of WebLogic Server servers that work together to increase scalability and reliability.

[Customize this table](#)

Clusters (Filtered - More Columns Exist)

Click the *Lock & Edit* button in the Change Center to activate all the buttons on this page.

[New](#) [Clone](#) [Delete](#) Showing 1 to 1 of 1 Previous | Next

<input type="checkbox"/>	Name ↕	Cluster Address	Cluster Messaging Mode	Migration Basis	Default Load Algorithm	Replication Type	Cluster Broadcast Channel	Servers
<input type="checkbox"/>	sms_Cluster		Unicast	Database	Round Robin	(None)		WLS_SMS

[New](#) [Clone](#) [Delete](#) Showing 1 to 1 of 1 Previous | Next

view changes and restarts

Click the *Lock & Edit* button to modify, add or delete items in this domain.

[Lock & Edit](#)
[Release Configuration](#)

Domain Structure

- sms_domain
 - Domain Partitions
 - Environment
 - Servers
 - Clusters
 - Coherence Clusters
 - Resource Groups
 - Resource Group Templates
 - Machines
 - Virtual Hosts
 - Virtual Targets
 - Work Managers
 - Concurrent Templates
 - Resource Management

Summary of Machines

A machine is the logical representation of the computer that hosts one or more WebLogic Server instances (servers). WebLogic Server uses configured machine names to determine the optimum server in a cluster to which certain tasks, such as HTTP session replication, are delegated. The Administration Server uses the machine definition in conjunction with Node Manager to start remote servers. This page displays key information about each machine that has been configured in the current WebLogic Server domain.

[Customize this table](#)

Machines

Click the *Lock & Edit* button in the Change Center to activate all the buttons on this page.

[New](#) [Clone](#) [Delete](#) Showing 1 to 1 of 1 Previous | Next

<input type="checkbox"/>	Name ↕	Type
<input type="checkbox"/>	sms_Machine	Machine

[New](#) [Clone](#) [Delete](#) Showing 1 to 1 of 1 Previous | Next

3. Deployments

3.1 Steps to Deploy as Application

[Note: Server names and Domain names need not be the same as this document provides.]

Steps to Deploy archives as application on weblogic is same for all the above except for managed server and domain where we deploy will differ. Find the screenshots to see how deployment of archive as application is done on weblogic.

1. Extract the zip file under “UI” folder.
2. Open Weblogic console and navigate to the Deployments

Summary of Deployments

Configuration Control Monitoring

This page displays the list of Java EE applications and standalone application modules installed to this domain.

You can update (redeploy) or delete installed applications and modules from the domain by selecting the checkbox next to the application name and then using the controls on this page.

To install a new application or module for deployment to targets in this domain, click **Install**.

Customize this table

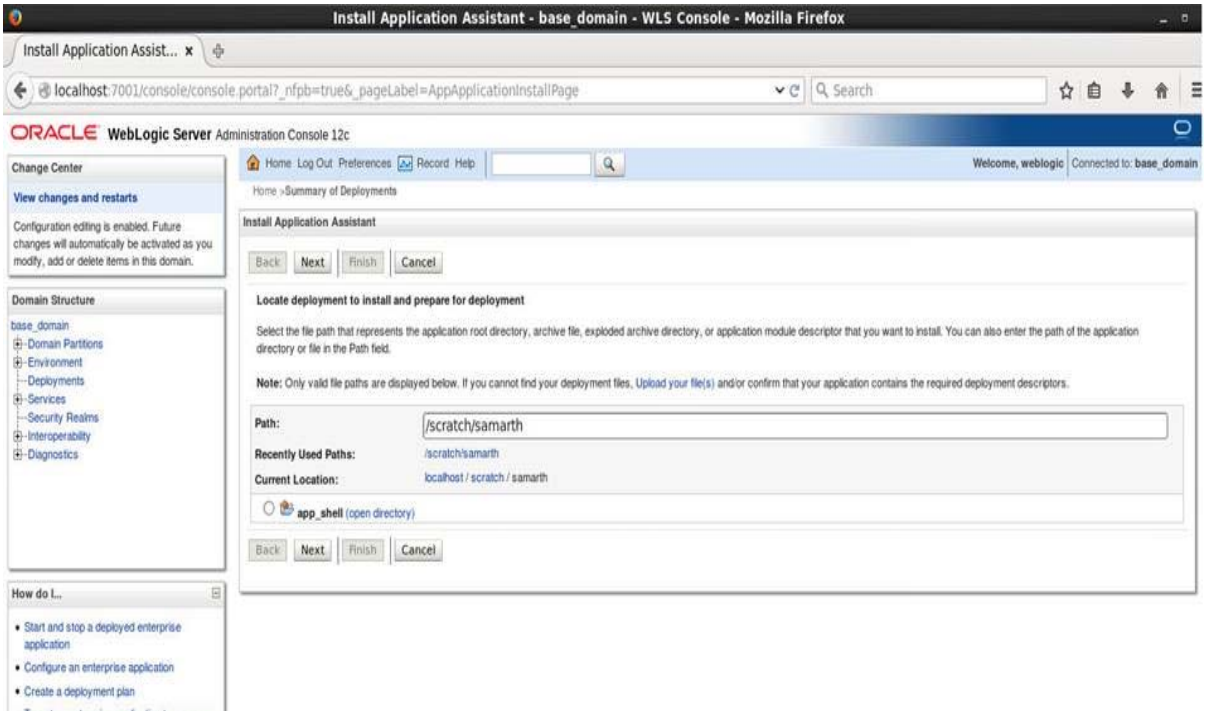
<input type="checkbox"/>	Name	State	Health	Type	Targets	Scope	Domain Partitions	Deployment Order
<input type="checkbox"/>	app_shell	Active	OK	Web Application	AdminServer	Global		100

Showing 1 to 1 of 1 Previous | Next

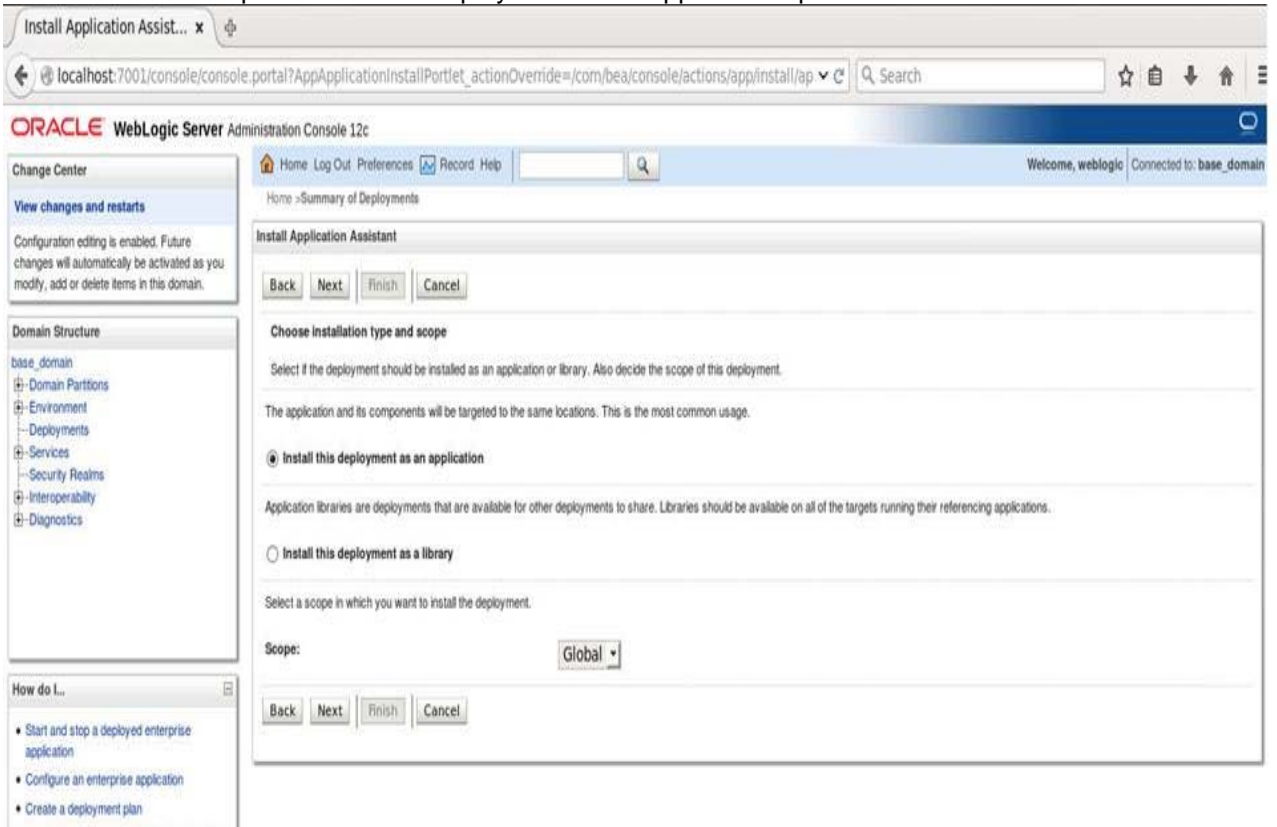
How do I...

- Install an enterprise application
- Configure an enterprise application
- Update (redeploy) an enterprise application
- Monitor the modules of an enterprise application
- Deploy EJB modules
- Install a Web application

3. Click on install and click on Upload your files, locate the extracted folder and select it, click on next



4. Check the option install this deployment as an application option and click Next.



5. Name the deployment and click Next.

6. Check the option "No i will review the configuration later" and click Finish.

7. Navigate to the control tab click on start and select the option "servicing all requests".

Change Center

View changes and restarts

Configuration editing is enabled. Future changes will automatically be activated as you modify, add or delete items in this domain.

Domain Structure

- base_domain
 - Domain Partitions
 - Environment
 - Deployments
 - Services
 - Security Realms
 - Interoperability
 - Diagnostics

How do I...

- Configure an enterprise application
- Start applications and modules
- Stop applications and modules
- View the modules of an enterprise application

Home > Summary of Deployments

Summary of Deployments

Configuration Control Monitoring

This page displays the list of Java EE applications and standalone application modules installed to this domain.

You can start and stop applications and modules from the domain by selecting the checkbox next to the application name and then using the controls on this page.

Customize this table

Deployments

Start Stop Showing 1 to 1 of 1 Previous Next

	State	Health	Type	Targets	Scope	Domain Partitions
<input type="checkbox"/> Servicing all requests Servicing only administration requests <input checked="" type="checkbox"/> app_star	Active	OK	Web Application	AdminServer	Global	

Start Stop Showing 1 to 1 of 1 Previous Next

4. Restarts and Refresh

Once everything is deployed, restart all the managed servers. And for each application call path “/refresh” for refreshing the configuration properties.

4.1 Restarting Servers

1. Go to Environment > Servers

The screenshot shows the Oracle WebLogic Server console interface. At the top, there is a panel titled "View changes and restarts" with the instruction: "Click the *Lock & Edit* button to modify, add or delete items in this domain." Below this instruction are two buttons: "Lock & Edit" and "Release Configuration". Below the panel is the "Domain Structure" tree, which is expanded to show the "Environment" folder, and within it, the "Servers" folder is highlighted in yellow.

2. Click on Control and select servers to shutdown and click yes to confirm shutdown.

The screenshot shows the Oracle WebLogic Server console interface. At the top, there is a panel titled "View changes and restarts" with the instruction: "Click the *Lock & Edit* button to modify, add or delete items in this domain." Below this instruction are two buttons: "Lock & Edit" and "Release Configuration". Below the panel is the "Domain Structure" tree, which is expanded to show the "Environment" folder, and within it, the "Servers" folder is highlighted in yellow. Below the tree is the "Summary of Servers" page, which has tabs for "Configuration" and "Control". The "Control" tab is selected. The page contains a table of servers with the following data:

Name	Type	Cluster	Machine	State	Health	Listen Port
AdminServer(admin)	Configured			RUNNING	OK	7001
WLS_CONFIG	Configured	config_cluster	platoinfra_Machine	RUNNING	OK	7004
WLS_DISCOVERY	Configured	discovery_cluster	platoinfra_Machine	RUNNING	OK	7003
WLS_GATEWAY	Configured	gateway_cluster	platoinfra_Machine	RUNNING	OK	7006
WLS_ZIPKINUI	Configured	zipkinui_cluster	platoinfra_Machine	RUNNING	OK	7005

Change Center

View changes and restarts

Click the *Lock & Edit* button to modify, add or delete items in this domain.

Domain Structure

- platoinfra_domain
 - Domain Partitions
 - Environment
 - Servers
 - Clusters
 - Coherence Clusters
 - Resource Groups
 - Resource Group Templates
 - Machines
 - Virtual Hosts
 - Virtual Targets
 - Work Managers
 - Concurrent Templates
 - Resource Management

How do I...

- Start and stop servers
- Start Managed Servers from the Administration Console
- Restart SSL
- Start Managed Servers in Admin mode

Home > Summary of Deployments > plato-discovery-service-1.0.0 > Summary of Deployments > Summary of Servers

Welcome, weblogic | Connected to: platoinfra_domain

Summary of Servers

Configuration **Control**

Use this page to change the state of the servers in this WebLogic Server domain. Control operations on Managed Servers require starting the Node Manager. Starting Managed Servers in Standby mode requires the domain-wide administration port.

Showing 1 to 5 of 5 Previous | Next

Customize this table

Servers (Filtered - More Columns Exist)

Server	When work completes	Machine	State	Status of Last Action
<input type="checkbox"/> AdminServer(admin)	<input type="button" value="Force shutdown now"/>		RUNNING	None
<input checked="" type="checkbox"/> WLS_CONFIG		platoinfra_Machine	RUNNING	TASK COMPLETED
<input checked="" type="checkbox"/> WLS_DISCOVERY		platoinfra_Machine	RUNNING	None
<input checked="" type="checkbox"/> WLS_GATEWAY		platoinfra_Machine	RUNNING	TASK COMPLETED
<input checked="" type="checkbox"/> WLS_ZIPKINUI		platoinfra_Machine	RUNNING	TASK COMPLETED

Showing 1 to 5 of 5 Previous | Next

Change Center

View changes and restarts

Click the *Lock & Edit* button to modify, add or delete items in this domain.

Domain Structure

- platoinfra_domain
 - Domain Partitions
 - Environment
 - Servers
 - Clusters
 - Coherence Clusters
 - Resource Groups
 - Resource Group Templates
 - Machines
 - Virtual Hosts
 - Virtual Targets
 - Work Managers
 - Concurrent Templates
 - Resource Management

Home > Summary of Deployments > plato-discovery-service-1.0.0 > Summary of Deployments > Summary of Servers

Server Life Cycle Assistant

Forcibly Shutdown Servers

You have selected the following servers to be immediately shut down. Press 'Yes' to continue or 'No' to cancel.

- WLS_DISCOVERY

Click the *Lock & Edit* button to modify, add or delete items in this domain.

Domain Structure

- platoinfra_domain
 - Domain Partitions
 - Environment
 - Servers
 - Clusters
 - Coherence Clusters
 - Resource Groups
 - Resource Group Templates
 - Machines
 - Virtual Hosts
 - Virtual Targets
 - Work Managers
 - Concurrent Templates
 - Resource Management

How do I...

- Start and stop servers
- Start Managed Servers from the Administration Console
- Restart SSL
- Start Managed Servers in Admin mode

Messages

A request has been sent to immediately shut down the selected servers.

Summary of Servers

Configuration **Control**

Use this page to change the state of the servers in this WebLogic Server domain. Control operations on Managed Servers require starting the Node Manager. Starting Managed Servers in Standby mode requires the domain-wide administration port.

Showing 1 to 5 of 5 Previous | Next

Customize this table

Servers (Filtered - More Columns Exist)

Server	Machine	State	Status of Last Action
<input type="checkbox"/> AdminServer(admin)		RUNNING	None
<input type="checkbox"/> WLS_CONFIG	platoinfra_Machine	RUNNING	TASK COMPLETED
<input checked="" type="checkbox"/> WLS_DISCOVERY	platoinfra_Machine	FORCE_SUSPENDING	TASK IN PROGRESS
<input type="checkbox"/> WLS_GATEWAY	platoinfra_Machine	RUNNING	TASK COMPLETED
<input type="checkbox"/> WLS_ZIPKINUI	platoinfra_Machine	RUNNING	TASK COMPLETED

Showing 1 to 5 of 5 Previous | Next

View changes and restarts
Click the *Lock & Edit* button to modify, add or delete items in this domain.

Domain Structure
platoinfra_domain
 + Domain Partitions
 - Environment
 + Servers
 - Clusters
 - Coherence Clusters
 - Resource Groups
 - Resource Group Templates
 - Machines
 - Virtual Hosts
 - Virtual Targets
 - Work Managers
 - Concurrent Templates
 - Resource Management

How do I...

- Create Managed Servers
- Clone servers
- Delete Managed Servers
- Delete the Administration Server
- Start and stop servers

Home > Summary of Deployments > plato-discovery-service-1.0.0 > Summary of Deployments > Summary of Servers

Summary of Servers
Configuration **Control**

A server is an instance of WebLogic Server that runs in its own Java Virtual Machine (JVM) and has its own configuration.
This page summarizes each server that has been configured in the current WebLogic Server domain.

Customize this table
Servers (Filtered - More Columns Exist)
Click the *Lock & Edit* button in the Change Center to activate all the buttons on this page.

Name	Type	Cluster	Machine	State	Health	Listen Port
AdminServer(admin)	Configured			RUNNING	OK	7001
WLS_CONFIG	Configured	config_cluster	platoinfra_Machine	RUNNING	OK	7004
WLS_DISCOVERY	Configured	discovery_cluster	platoinfra_Machine	SHUTDOWN	Not reachable	7003
WLS_GATEWAY	Configured	gateway_cluster	platoinfra_Machine	RUNNING	OK	7006
WLS_ZIPKINUI	Configured	zipkinui_cluster	platoinfra_Machine	RUNNING	OK	7005

3. Once shutdown is completed, go to control and select the servers to start and confirm action.

View changes and restarts
Click the *Lock & Edit* button to modify, add or delete items in this domain.

Domain Structure
platoinfra_domain
 + Domain Partitions
 - Environment
 + Servers
 - Clusters
 - Coherence Clusters
 - Resource Groups
 - Resource Group Templates
 - Machines
 - Virtual Hosts
 - Virtual Targets
 - Work Managers
 - Concurrent Templates
 - Resource Management

How do I...

- Start and stop servers
- Start Managed Servers from the Administration Console
- Restart SSL
- Start Managed Servers in Admin mode

Home > Summary of Deployments > plato-discovery-service-1.0.0 > Summary of Deployments > Summary of Servers

Summary of Servers
Configuration **Control**

Use this page to change the state of the servers in this WebLogic Server domain. Control operations on Managed Servers require starting the Node Manager. Starting Managed Servers in Standby mode requires the domain-wide administration port.

Customize this table
Servers (Filtered - More Columns Exist)
Click the *Lock & Edit* button in the Change Center to activate all the buttons on this page.

Server	Machine	State	Status of Last Action
AdminServer(admin)		RUNNING	None
WLS_CONFIG	platoinfra_Machine	RUNNING	TASK COMPLETED
WLS_DISCOVERY	platoinfra_Machine	SHUTDOWN	TASK COMPLETED
WLS_GATEWAY	platoinfra_Machine	RUNNING	TASK COMPLETED
WLS_ZIPKINUI	platoinfra_Machine	RUNNING	TASK COMPLETED

View changes and restarts
Click the *Lock & Edit* button to modify, add or delete items in this domain.

Domain Structure
platoinfra_domain
 + Domain Partitions
 - Environment
 + Servers
 - Clusters
 - Coherence Clusters
 - Resource Groups
 - Resource Group Templates

Home > Summary of Deployments > plato-discovery-service-1.0.0 > Summary of Deployments > Summary of Servers

Server Life Cycle Assistant

Start Servers

You have selected the following servers to be started. Press 'Yes' to continue or 'No' to cancel.

- WLS_DISCOVERY

View changes and restarts
Click the *Lock & Edit* button to modify, add or delete items in this domain.

Lock & Edit
Release Configuration

Domain Structure
platoinfra_domain
Domain Partitions
Environment
Servers
Clusters
Coherence Clusters
Resource Groups
Resource Group Templates
Machines
Virtual Hosts
Virtual Targets
Work Managers
Concurrent Templates
Resource Management

How do I...

- Start and stop servers
- Start Managed Servers from the Administration Console
- Restart SSL
- Start Managed Servers in Admin mode

Home > Summary of Deployments > plato-discovery-service-1.0.0 > Summary of Deployments > Summary of Servers

Messages
A request has been sent to the Node Manager to start the selected servers.

Summary of Servers
Configuration Control

Use this page to change the state of the servers in this WebLogic Server domain. Control operations on Managed Servers require starting the Node Manager. Starting Managed Servers in Standby mode requires the domain-wide administration port.

Customize this table

Servers (Filtered - More Columns Exist)

Start Resume Suspend Shutdown Restart SSL Showing 1 to 5 of 5 Previous Next

Server	Machine	State	Status of Last Action
AdminServer(admin)		RUNNING	None
WLS_CONFIG	platoinfra_Machine	RUNNING	TASK COMPLETED
WLS_DISCOVERY	platoinfra_Machine	STARTING	TASK IN PROGRESS
WLS_GATEWAY	platoinfra_Machine	RUNNING	TASK COMPLETED
WLS_ZIPKINUI	platoinfra_Machine	RUNNING	TASK COMPLETED

Start Resume Suspend Shutdown Restart SSL Showing 1 to 5 of 5 Previous Next

4. When all requested servers are running, go to deployments and check if deployments are in actual state.

View changes and restarts
Click the *Lock & Edit* button to modify, add or delete items in this domain.

Lock & Edit
Release Configuration

Domain Structure
platoinfra_domain
Domain Partitions
Environment
Servers
Clusters
Coherence Clusters
Resource Groups
Resource Group Templates
Machines
Virtual Hosts
Virtual Targets
Work Managers
Concurrent Templates
Resource Management

How do I...

- Create Managed Servers
- Clone servers
- Delete Managed Servers
- Delete the Administration Server
- Start and stop servers
- View objects in the JNDI tree

Home > Summary of Deployments > plato-discovery-service-1.0.0 > Summary of Deployments > Summary of Servers

Summary of Servers
Configuration Control

A server is an instance of WebLogic Server that runs in its own Java Virtual Machine (JVM) and has its own configuration. This page summarizes each server that has been configured in the current WebLogic Server domain.

Customize this table

Servers (Filtered - More Columns Exist)

Click the *Lock & Edit* button in the Change Center to activate all the buttons on this page.

New Clone Delete Showing 1 to 5 of 5 Previous Next

Name	Type	Cluster	Machine	State	Health	Listen Port
AdminServer(admin)	Configured			RUNNING	OK	7001
WLS_CONFIG	Configured	config_cluster	platoinfra_Machine	RUNNING	OK	7004
WLS_DISCOVERY	Configured	discovery_cluster	platoinfra_Machine	RUNNING	OK	7003
WLS_GATEWAY	Configured	gateway_cluster	platoinfra_Machine	RUNNING	OK	7006
WLS_ZIPKINUI	Configured	zipkinui_cluster	platoinfra_Machine	RUNNING	OK	7005

New Clone Delete Showing 1 to 5 of 5 Previous Next

View changes and restarts
Click the *Lock & Edit* button to modify, add or delete items in this domain.

Lock & Edit
Release Configuration

Domain Structure
platoinfra_domain
Domain Partitions
Environment
Deployments
Services
Security Realms
Interoperability
Diagnostics

How do I...

- Install an enterprise application
- Configure an enterprise application

Home > Summary of Deployments > plato-discovery-service-1.0.0 > Summary of Deployments > Summary of Servers > Summary of Deployments

Summary of Deployments
Configuration Control Monitoring

This page displays the list of Java EE applications and standalone application modules installed to this domain. You can update (redeploy) or delete installed applications and modules from the domain by selecting the checkbox next to the application name and then using the controls on this page. To install a new application or module for deployment to targets in this domain, click **Install**.

Customize this table

Deployments

Install Update Delete Showing 1 to 1 of 1 Previous Next

Name	State	Health	Type	Targets	Scope	Domain Partitions	Deployment Order
plato-discovery-service-1.0.0	Active	OK	Web Application	WLS_DISCOVERY	Global		100

Install Update Delete Showing 1 to 1 of 1 Previous Next