

Recovery Management Operation Utility
Oracle FLEXCUBE Universal Banking
Release 12.87.06.0.0
[May] [2020]



Table of Contents

- 1. RECOVERY MANAGEMENT UTILITY INSTALLATION 1-1
 - 1.1 INTRODUCTION 1-1
 - 1.2 BUILDING APPLICATION FOR SETUP 1-1
 - 1.2.1 *Installation Method 1* 1-2
 - 1.2.2 *Installation Method 2* 1-4
 - 1.2.3 *Installation Method 3* 1-7
 - 1.2.4 *Installation Method 4* 1-10

1. Recovery Management Utility Installation

1.1 Introduction

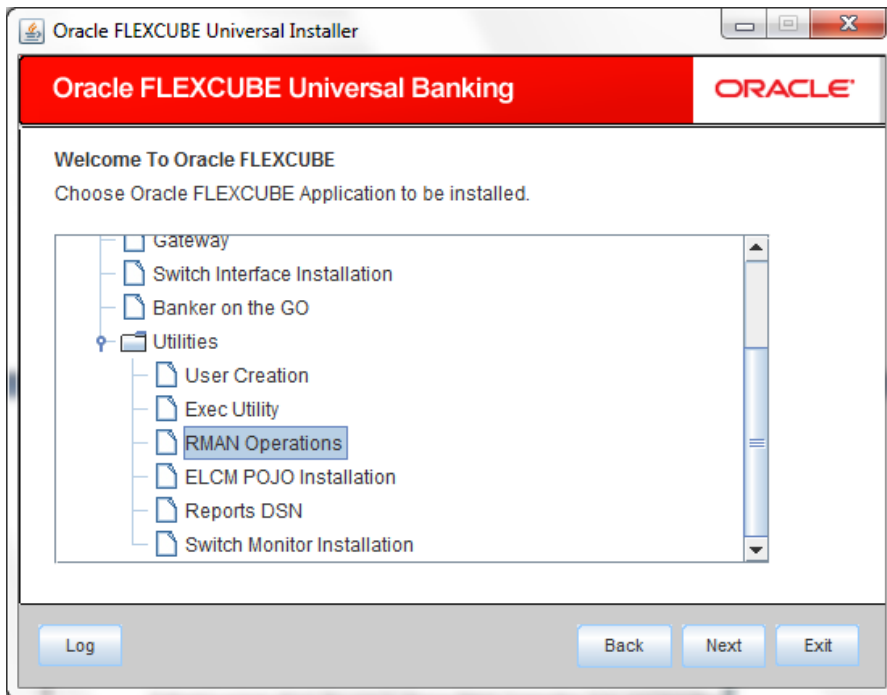
This document explains the process involved in installing recovery management (RMAN) Operation Utility. This Utility comprises of the following processes:

- RMAN Backup
- RMAN Restoration

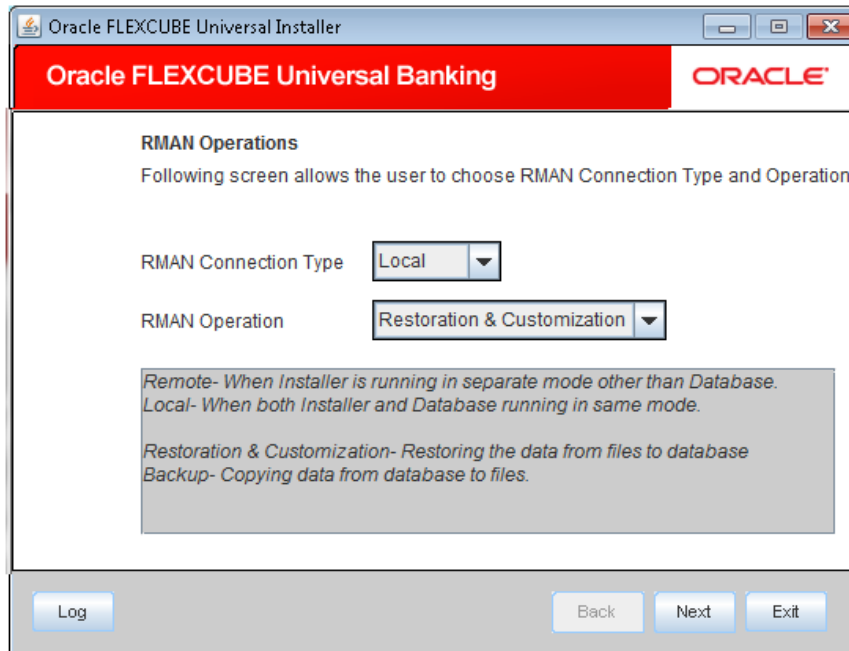
1.2 Building Application for Setup

To build the application for setup using the installer, follow the steps given below.

1. Double-click 'FCUBSInstaller.bat' batch file to launch Oracle FLEXCUBE Universal Installer. The following screen is displayed.



2. Select the application to be installed. Select 'RMAN Operations'.
3. Click 'Next' and following screen is displayed:



4. Specify the following details:

RMAN Connection Type

Specify the RMAN Connection Type. Select the appropriate one from the drop-down list.

RMAN Operation

Specify the RMAN Operation. Select the appropriate one from the drop-down list.

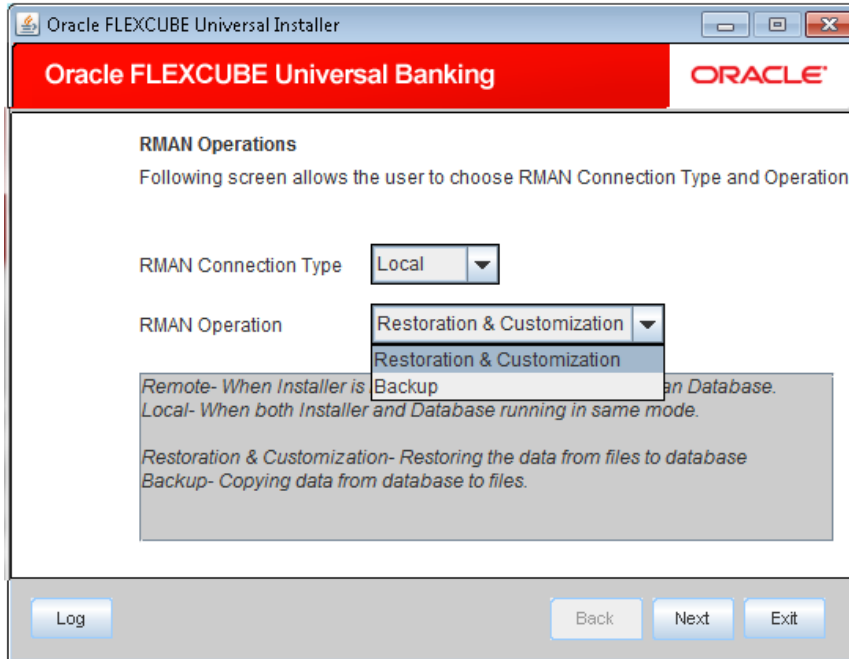
5. Click 'Next' to proceed.

Based on the selected RMAN Connection Type and RMAN Operation, the RMAN utility installation differs.

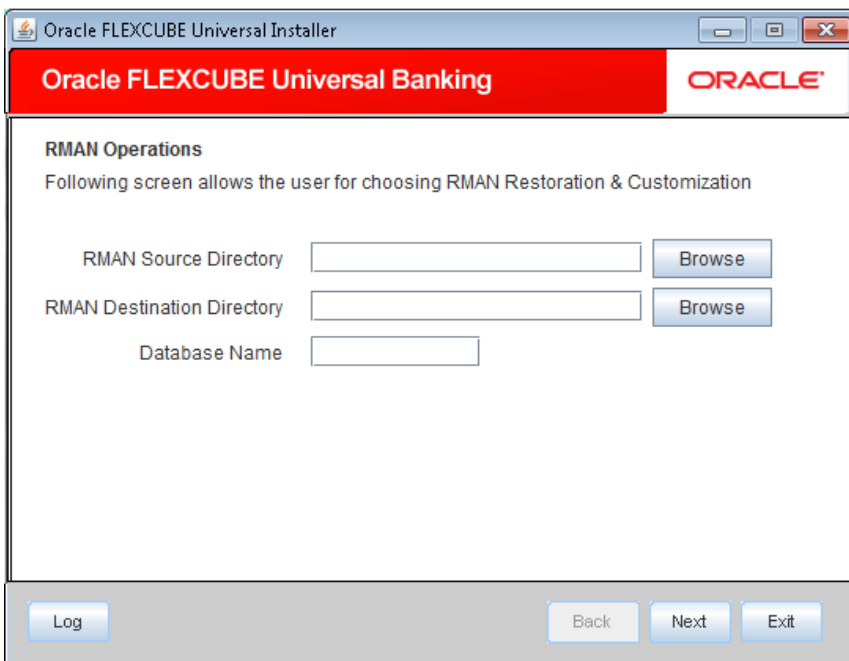
1.2.1 Installation Method 1

RMAN Connection Type - Local

RMAN Operation - RMAN Restoration and Customization



1. Click 'Next' to proceed. The following screen is displayed



2. Specify the following details

RMAN Source Directory

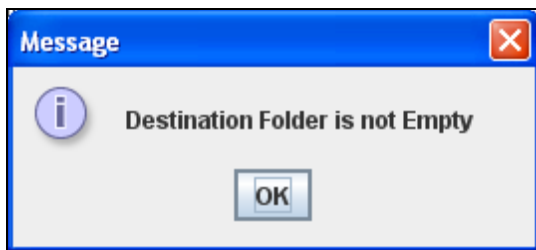
1. Specify the location of the RMAN source directory. The source directory will have the following folders:
 - Init.ora

- convertscript.rman
- transportscript.sql
- oInstall_dbf.tar

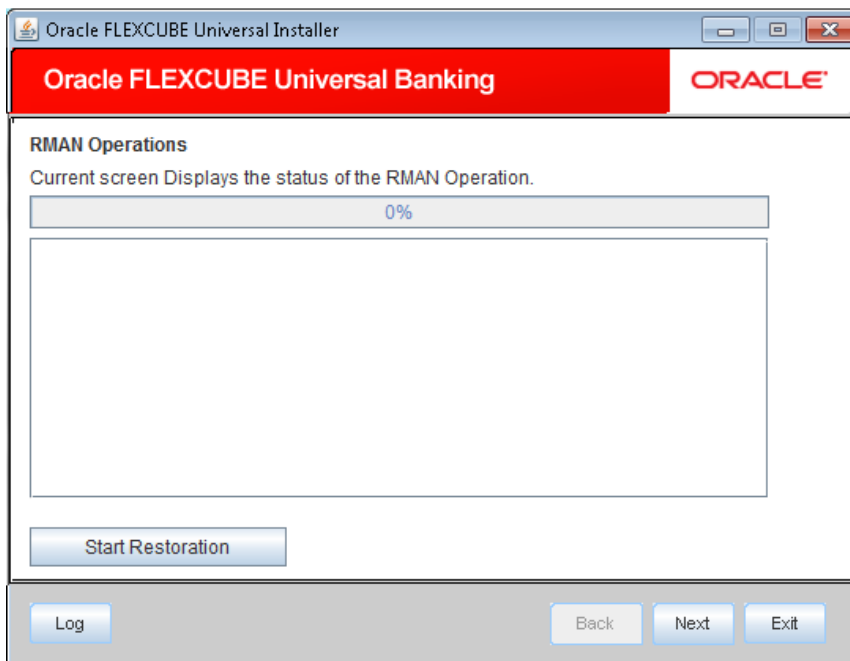
2. Select the source directory with help of 'Browse' button.

RMAN Destination Directory

1. Specify the location where the application should be setup. Use the 'Browse' button to browse and select the destination directory.
2. Selected destination directory should be empty, otherwise following message is displayed:



3. Specify a name for the database to be created.

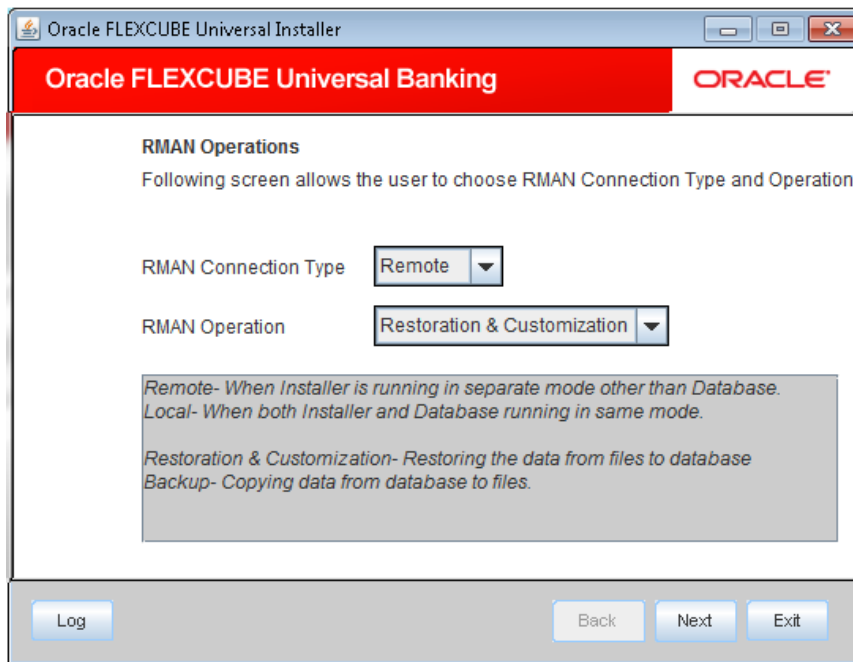


4. Click 'Start Restoration' to start the restoration process.
5. Once the restoration process is completed, it gets redirected to the main screen.

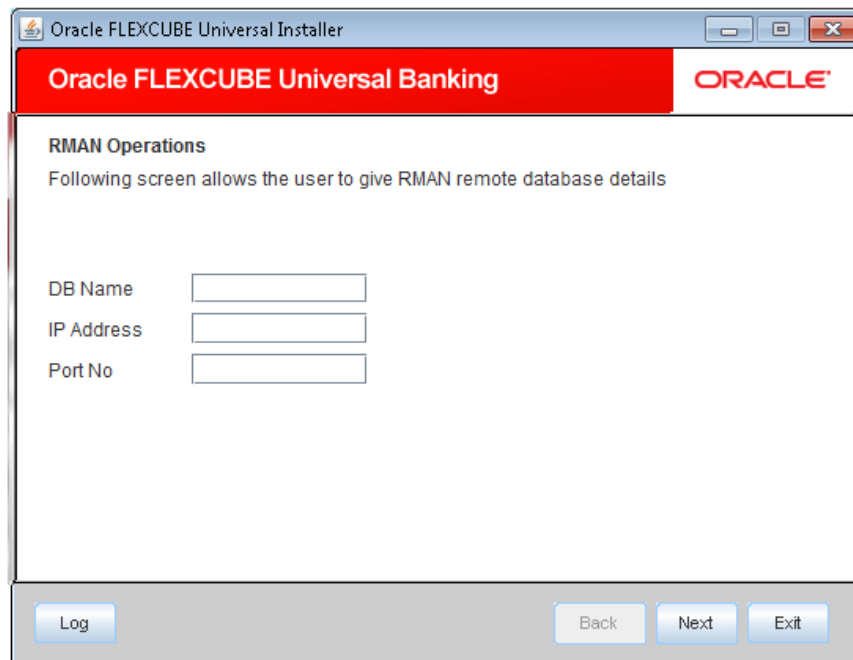
1.2.2 Installation Method 2

RMAN Connection Type - Remote

RMAN Operation - RMAN Restoration and Customization



1. Click 'Next' to proceed. The following screen is displayed



2. Specify the following Remote database details.

DB Name

Specify the name of the database.

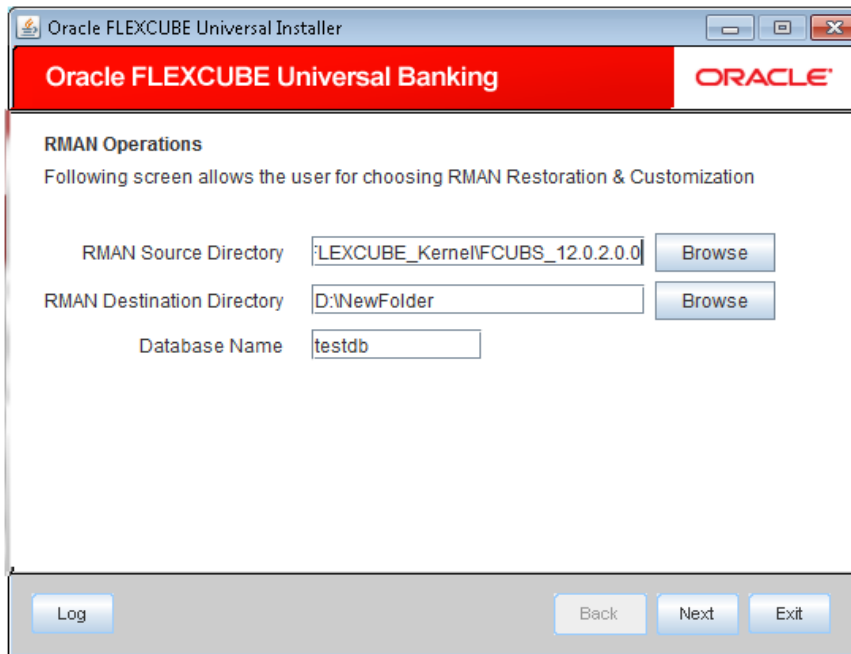
IP Address

Specify the IP address.

Port No

Specify the port number.

3. Click 'Next' to proceed. The following screen is displayed.



The screenshot shows the 'Oracle FLEXCUBE Universal Installer' window. The title bar reads 'Oracle FLEXCUBE Universal Installer'. The main window has a red header with 'Oracle FLEXCUBE Universal Banking' and the 'ORACLE' logo. Below the header, the section is titled 'RMAN Operations' with the subtitle 'Following screen allows the user for choosing RMAN Restoration & Customization'. There are three input fields: 'RMAN Source Directory' with the value 'FLEXCUBE_Kernel\FCUBS_12.0.2.0.0', 'RMAN Destination Directory' with the value 'D:\NewFolder', and 'Database Name' with the value 'testdb'. Each of the first two fields has a 'Browse' button to its right. At the bottom of the window, there are four buttons: 'Log', 'Back', 'Next', and 'Exit'.

4. Specify the following details:

RMAN Source Directory

Specify the location of the RMAN source directory. The source directory will have the following folders:

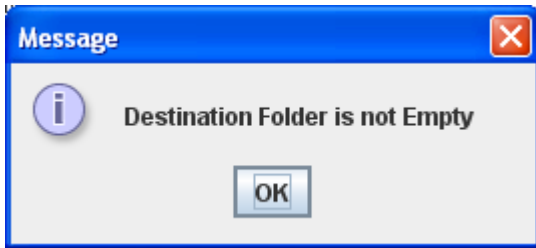
- Init.ora
- convertscript.rman
- transportscript.sql
- oInstall_dbf.tar

Use the 'Browse' button to browse and select the source directory.

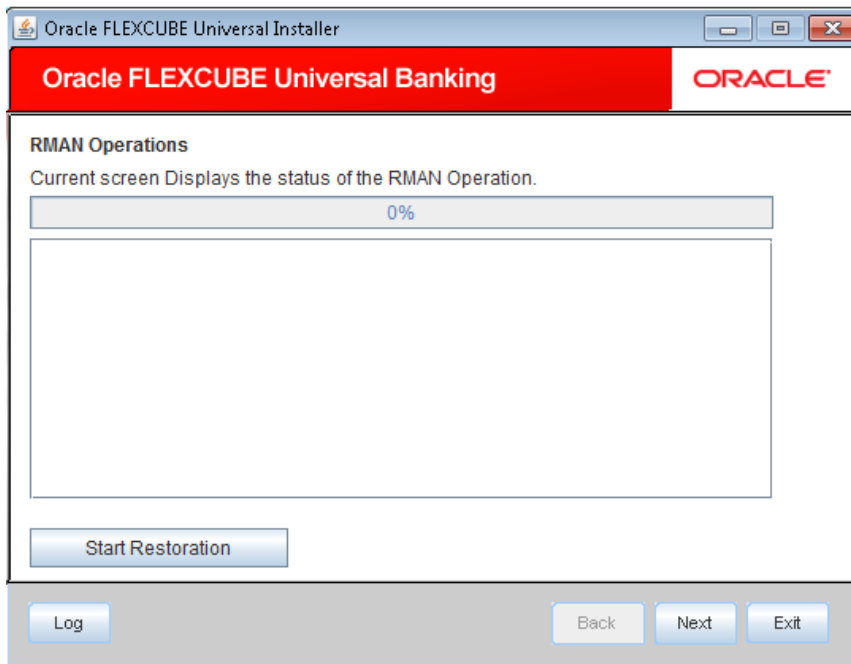
RMAN Destination Directory

Specify the location where the application should be setup. Use the 'Browse' button to browse and select the destination directory.

Selected destination directory should be empty , if not the following message is displayed



5. Specify a name for the database to be created.
6. Click 'Next' to proceed. The following screen is displayed

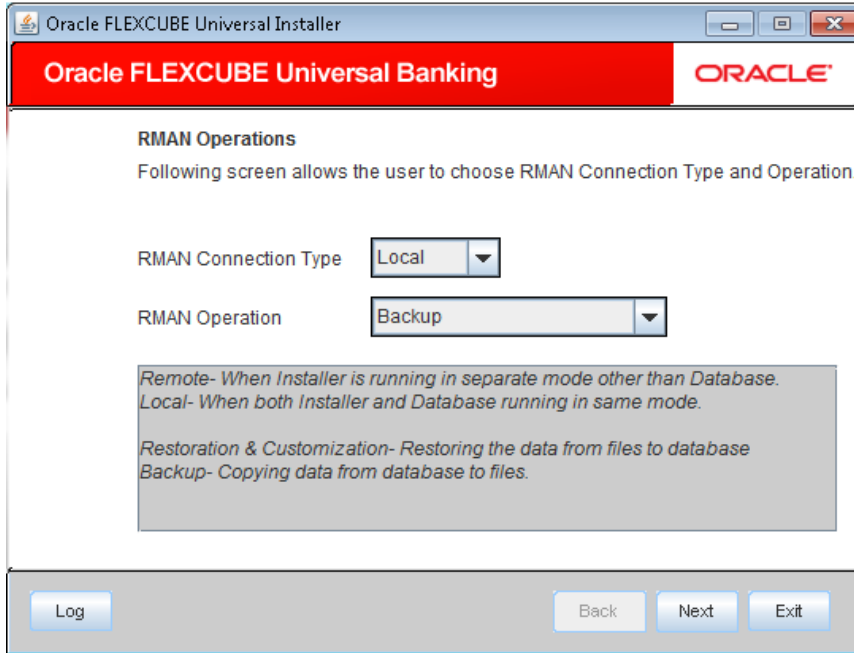


7. Click 'Start Restoration' to start the restoration process.
8. Once the restoration process is completed, it gets redirected to the main screen

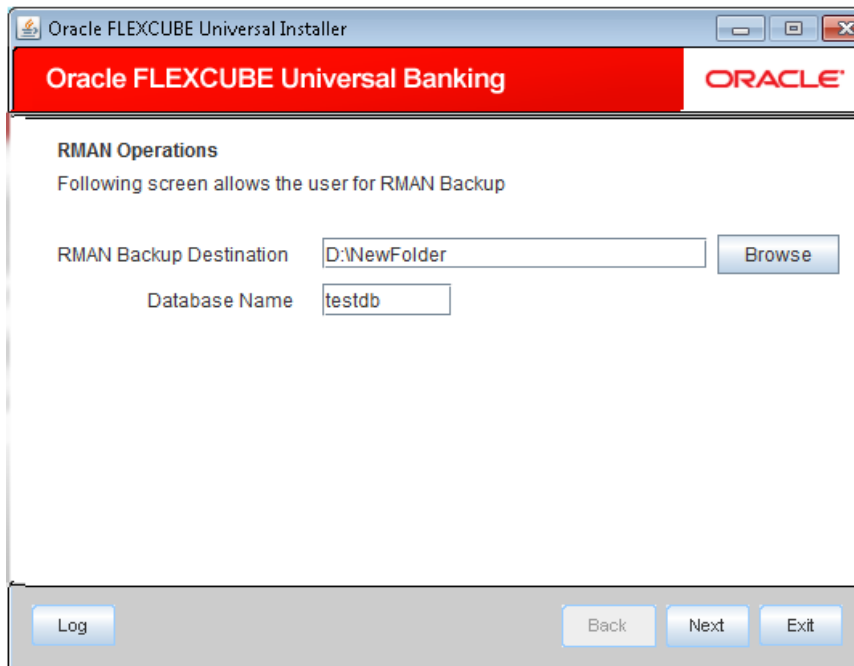
1.2.3 **Installation Method 3**

RMAN Connection Type - Local

RMAN Operation - RMAN Backup



1. Click 'Next' to proceed. The following screen is displayed.



2. Specify the following details

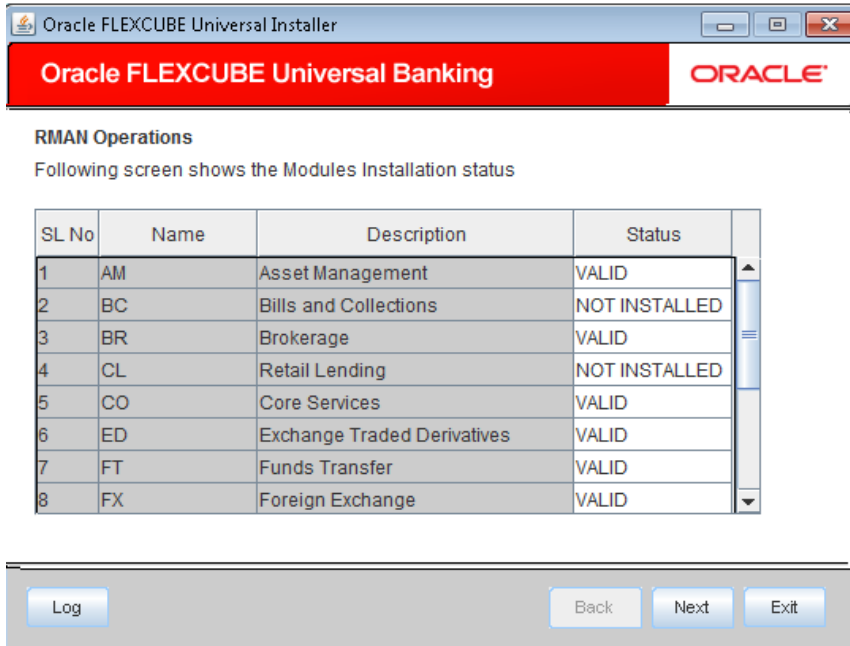
RMAN Destination Directory

Specify the location where the application should be setup. Use the 'Browse' button to browse and select the destination directory.

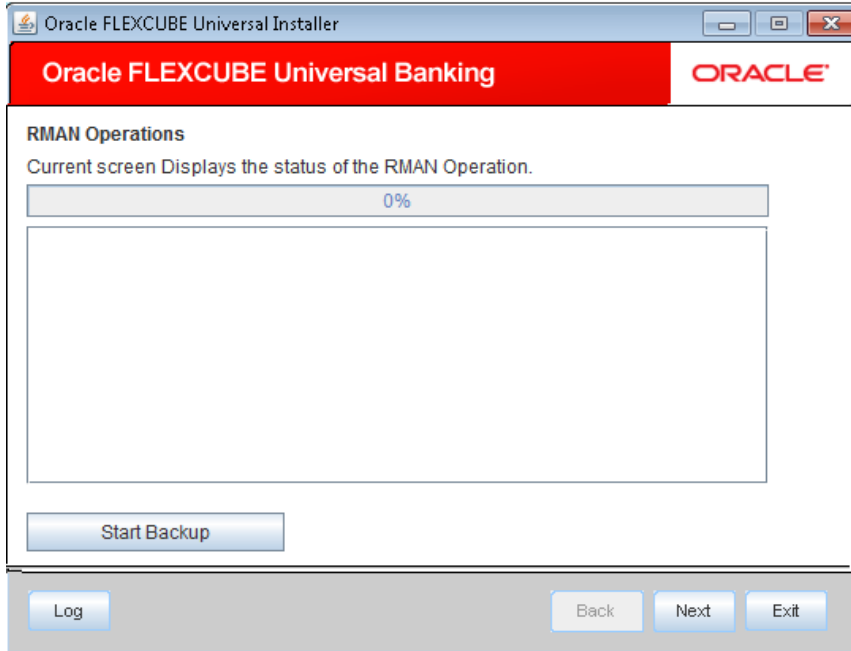
Database Name

Specify the name of the Database from which the Backup has to be taken and the RMAN sources are to be created.

3. Click 'Next' to proceed. The following screen displays the status of the modules installed before taking the backup.



4. Click 'Next' to proceed. The following screen is displayed

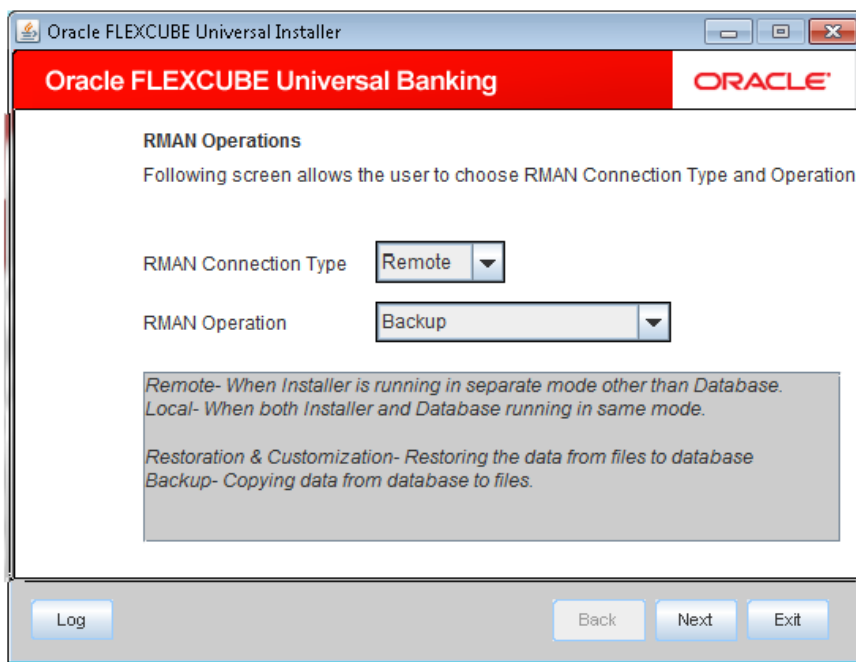


5. Click 'Start Backup' to start the Backup process.
6. Once the process is completed, it gets redirected to the main screen.

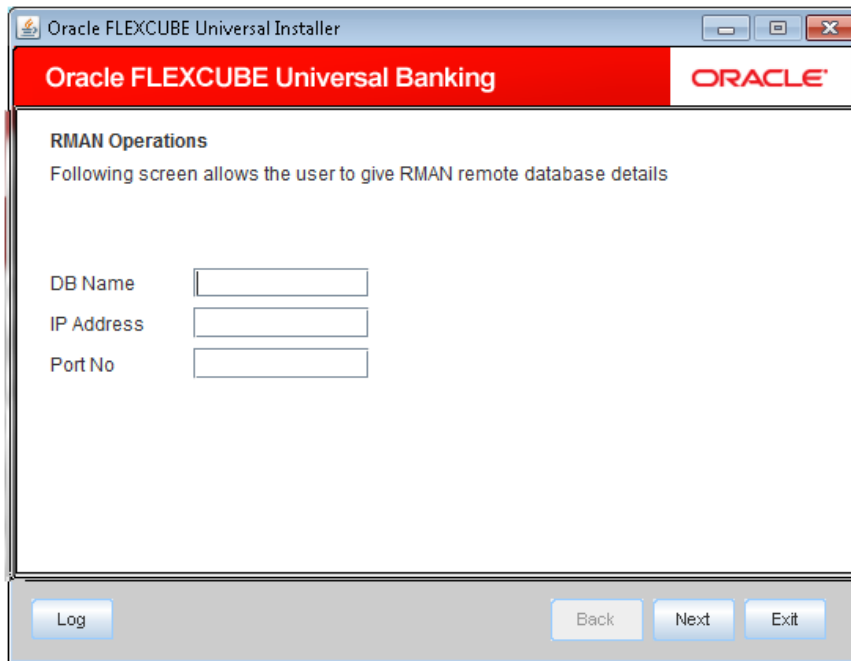
1.2.4 Installation Method 4

RMAN Connection Type - Remote

RMAN Operation - RMAN Backup



1. Click 'Next' to proceed. The following screen is displayed



The screenshot shows a window titled "Oracle FLEXCUBE Universal Installer". The window has a red header bar with the text "Oracle FLEXCUBE Universal Banking" and the "ORACLE" logo. Below the header, the text "RMAN Operations" is displayed, followed by the instruction "Following screen allows the user to give RMAN remote database details". There are three input fields: "DB Name", "IP Address", and "Port No". At the bottom of the window, there are four buttons: "Log", "Back", "Next", and "Exit".

2. Specify the following Remote database details.

DB Name

Specify the name of the database.

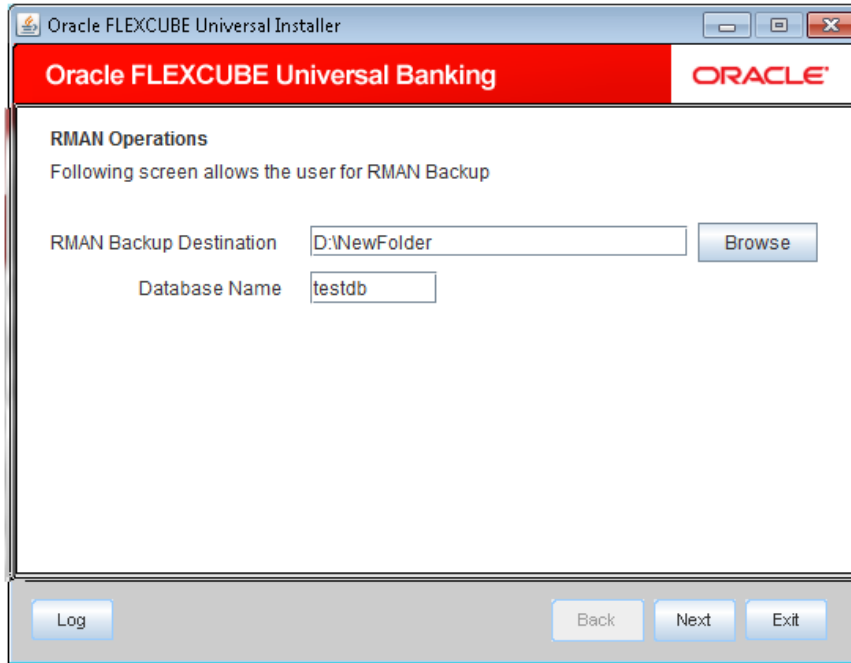
IP Address

Specify the IP address.

Port No

Specify the port number.

3. Click 'Next' to proceed. The following screen is displayed.



4. Specify the following details

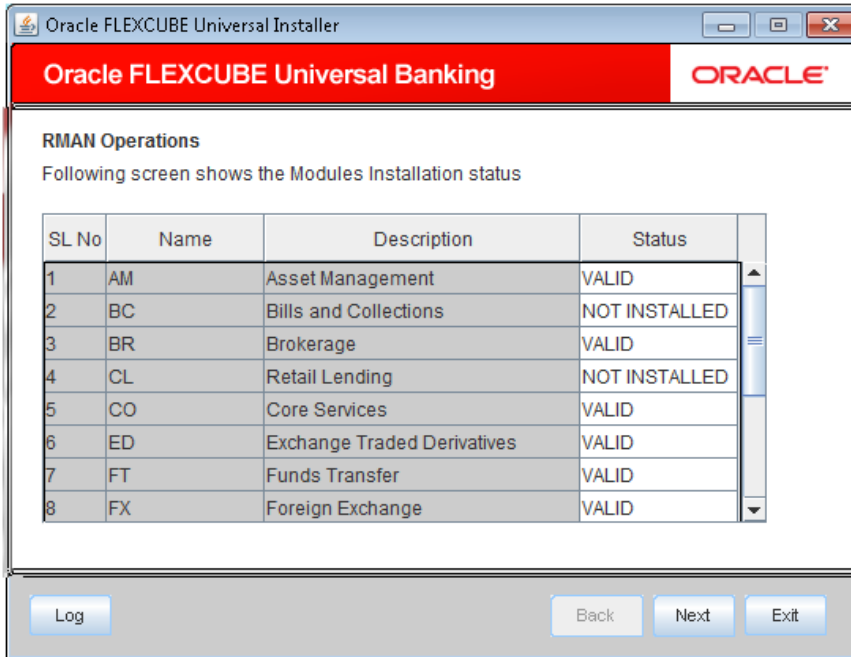
RMAN Destination Directory

Specify the location where the application should be setup. Use the 'Browse' button to browse and select the destination directory.

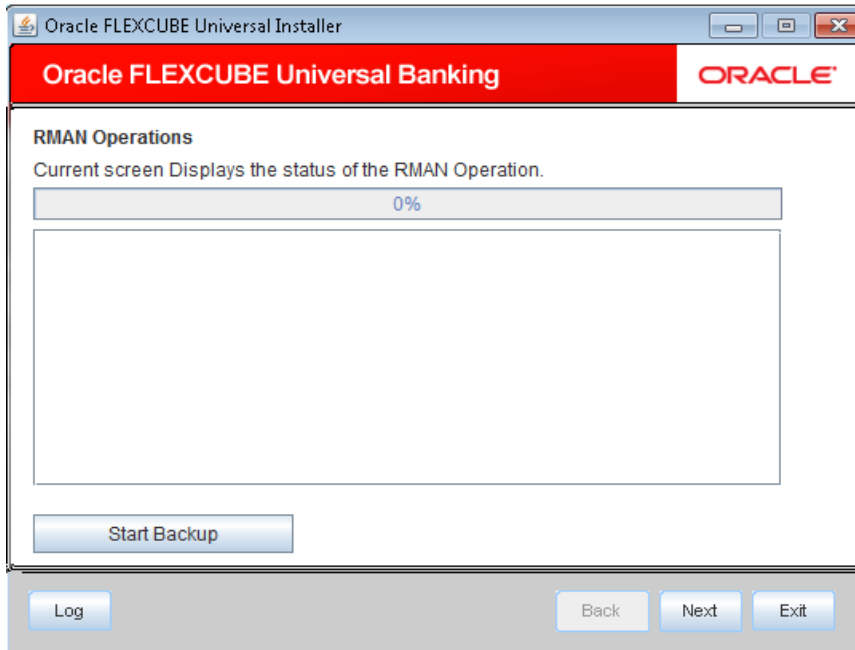
Database Name

Specify the name of the Database from which the Backup has to be taken and the RMAN sources are to be created.

5. Click 'Next' to proceed. The following screen displays the status of the modules installed before taking the backup.



6. Click 'Next' to proceed. The following screen is displayed:



7. Click 'Start Backup' to start the Backup process.
8. Once the process is completed, you are navigated to the main screen.



Recovery Management Operations Utility
[May] [2020]
Version 12.87.06.0.0

Oracle Financial Services Software Limited
Oracle Park
Off Western Express Highway
Goregaon (East)
Mumbai, Maharashtra 400 063
India

Worldwide Inquiries:
Phone: +91 22 6718 3000
Fax: +91 22 6718 3001
www.oracle.com/financialservices/

Copyright © [2007], [2020], Oracle and/or its affiliates. All rights reserved.

Oracle and Java are registered trademarks of Oracle and/or its affiliates. Other names may be trademarks of their respective owners.

U.S. GOVERNMENT END USERS: Oracle programs, including any operating system, integrated software, any programs installed on the hardware, and/or documentation, delivered to U.S. Government end users are "commercial computer software" pursuant to the applicable Federal Acquisition Regulation and agency-specific supplemental regulations. As such, use, duplication, disclosure, modification, and adaptation of the programs, including any operating system, integrated software, any programs installed on the hardware, and/or documentation, shall be subject to license terms and license restrictions applicable to the programs. No other rights are granted to the U.S. Government.

This software or hardware is developed for general use in a variety of information management applications. It is not developed or intended for use in any inherently dangerous applications, including applications that may create a risk of personal injury. If you use this software or hardware in dangerous applications, then you shall be responsible to take all appropriate failsafe, backup, redundancy, and other measures to ensure its safe use. Oracle Corporation and its affiliates disclaim any liability for any damages caused by use of this software or hardware in dangerous applications.

This software and related documentation are provided under a license agreement containing restrictions on use and disclosure and are protected by intellectual property laws. Except as expressly permitted in your license agreement or allowed by law, you may not use, copy, reproduce, translate, broadcast, modify, license, transmit, distribute, exhibit, perform, publish or display any part, in any form, or by any means. Reverse engineering, disassembly, or decompilation of this software, unless required by law for interoperability, is prohibited.

The information contained herein is subject to change without notice and is not warranted to be error-free. If you find any errors, please report them to us in writing.

This software or hardware and documentation may provide access to or information on content, products and services from third parties. Oracle Corporation and its affiliates are not responsible for and expressly disclaim all warranties of any kind with respect to third-party content, products, and services. Oracle Corporation and its affiliates will not be responsible for any loss, costs, or damages incurred due to your access to or use of third-party content, products, or services.