

# **Oracle® Database Gateway for VSAM**

User's Guide

11g Release 1 (11.1)

**B31054-01**

July 2007

Oracle Database Gateway for VSAM User's Guide, 11g Release 1 (11.1)

B31054-01

Copyright © 2005, 2007, Oracle. All rights reserved.

Primary Author: Jeanne Wiegelmann

Contributing Author: Maitreyee Chaliha, Sami Zeitoun, Oussama Mkaabal

Contributor: Vira Goorah, Peter Wong

The Programs (which include both the software and documentation) contain proprietary information; they are provided under a license agreement containing restrictions on use and disclosure and are also protected by copyright, patent, and other intellectual and industrial property laws. Reverse engineering, disassembly, or decompilation of the Programs, except to the extent required to obtain interoperability with other independently created software or as specified by law, is prohibited.

The information contained in this document is subject to change without notice. If you find any problems in the documentation, please report them to us in writing. This document is not warranted to be error-free. Except as may be expressly permitted in your license agreement for these Programs, no part of these Programs may be reproduced or transmitted in any form or by any means, electronic or mechanical, for any purpose.

If the Programs are delivered to the United States Government or anyone licensing or using the Programs on behalf of the United States Government, the following notice is applicable:

U.S. GOVERNMENT RIGHTS Programs, software, databases, and related documentation and technical data delivered to U.S. Government customers are "commercial computer software" or "commercial technical data" pursuant to the applicable Federal Acquisition Regulation and agency-specific supplemental regulations. As such, use, duplication, disclosure, modification, and adaptation of the Programs, including documentation and technical data, shall be subject to the licensing restrictions set forth in the applicable Oracle license agreement, and, to the extent applicable, the additional rights set forth in FAR 52.227-19, Commercial Computer Software--Restricted Rights (June 1987). Oracle USA, Inc., 500 Oracle Parkway, Redwood City, CA 94065.

The Programs are not intended for use in any nuclear, aviation, mass transit, medical, or other inherently dangerous applications. It shall be the licensee's responsibility to take all appropriate fail-safe, backup, redundancy and other measures to ensure the safe use of such applications if the Programs are used for such purposes, and we disclaim liability for any damages caused by such use of the Programs.

Oracle, JD Edwards, PeopleSoft, and Siebel are registered trademarks of Oracle Corporation and/or its affiliates. Other names may be trademarks of their respective owners.

The Programs may provide links to Web sites and access to content, products, and services from third parties. Oracle is not responsible for the availability of, or any content provided on, third-party Web sites. You bear all risks associated with the use of such content. If you choose to purchase any products or services from a third party, the relationship is directly between you and the third party. Oracle is not responsible for: (a) the quality of third-party products or services; or (b) fulfilling any of the terms of the agreement with the third party, including delivery of products or services and warranty obligations related to purchased products or services. Oracle is not responsible for any loss or damage of any sort that you may incur from dealing with any third party.

---

---

# Contents

<b>Preface</b> .....	vii
Audience .....	vii
Documentation Accessibility .....	vii
Related Documents .....	viii
Conventions .....	viii
<b>1 Getting Started with Oracle Database Gateways</b>	
Overview .....	1-1
Oracle Heterogeneous Services .....	1-1
Oracle Database Gateways .....	1-2
Gateway Architecture .....	1-3
Gateway Process Flow .....	1-4
Setup Flow .....	1-5
<b>2 Gateway Features and Restrictions</b>	
Accessing VSAM Data .....	2-1
SQL Support .....	2-2
Transaction Support .....	2-3
Pass-Through Feature .....	2-3
Naming Rules .....	2-4
Rules for Naming Objects .....	2-4
Case Sensitivity .....	2-4
Data Types .....	2-5
Binary Literal Notation .....	2-5
Data Type Conversion .....	2-5
SQL Execution .....	2-5
Row Selection .....	2-5
Empty Strings .....	2-6
Empty Bind Variables .....	2-6
Locking .....	2-6
Handling Non-Relational Data .....	2-6
Restrictions .....	2-7
SQL Restrictions .....	2-7
Unsupported SQL Functions .....	2-7
SQL Syntax .....	2-7

Transaction Capability .....	2-8
Transactional Integrity .....	2-9
COMMIT or ROLLBACK in PL/SQL Cursor Loops .....	2-9
Pass-Through Feature .....	2-9
Database Links .....	2-9
Data Types .....	2-9
Encrypted Format Login .....	2-9
Data Dictionary Views and PL/SQL.....	2-9
VSAM Restrictions .....	2-10
General VSAM Restrictions.....	2-10
Restrictions Specific to VSAM (CICS).....	2-10
Restrictions Specific to VSAM Batch.....	2-10
<b>3 Normalizing Non-Relational Data</b>	
<b>Overview of Normalizing Non-Relational Data</b> .....	3-1
<b>About Arrays</b> .....	3-1
<b>Representing Metadata</b> .....	3-1
<b>Methods of Handling Arrays</b> .....	3-5
Virtual Views .....	3-5
Sequential Flattening (Bulk Load of Array Data).....	3-7
<b>4 Setting the Array Handling Policy</b>	
<b>Setting the Default Behavior for Array Handling</b> .....	4-1
<b>Modifying the Default Behavior During Metadata Import</b> .....	4-2
<b>Modifying the Array Handling Policy for a Specific Table</b> .....	4-3
<b>A Data Type Conversion</b>	
<b>Conversion of Atomic Data Types</b> .....	A-1
<b>Conversion of Non-Atomic Data Types</b> .....	A-4
<b>Conversion of Decimal Data Types</b> .....	A-4
<b>Conversion of Scaled Data Types</b> .....	A-5
<b>B Supported SQL Syntax and Functions</b>	
<b>Supported SQL Statements</b> .....	B-1
DELETE .....	B-1
INSERT .....	B-1
SELECT .....	B-1
UPDATE .....	B-2
<b>Oracle Functions</b> .....	B-2
Functions Not Supported by VSAM .....	B-2
Functions Supported by VSAM .....	B-2
Arithmetic Operators .....	B-2
Comparison Operators.....	B-3
Group Functions .....	B-3
String Functions .....	B-3
Other Functions.....	B-4

## **C Data Dictionary**

<b>Data Dictionary Support</b> .....	C-1
Accessing the Gateway Data Dictionary .....	C-1
Supported Views and Tables.....	C-2
Default Column Values.....	C-3
<b>VSAM Data Dictionary Descriptions</b> .....	C-3

## **D Globalization Support**

<b>Character Set Terminology</b> .....	D-1
<b>Globalization Support Settings</b> .....	D-2

## **E Examples**

<b>COBOL Copybook Example</b> .....	E-1
-------------------------------------	-----

## **Index**



---

---

# Preface

This manual describes the Oracle Database Gateway for VSAM, which enables Oracle client applications to access VSAM data through Structured Query Language (SQL). The gateway, with the Oracle Database, creates the appearance that all data resides on a local Oracle Database, even though the data can be widely distributed.

## Audience

This manual is intended for Oracle database administrators who perform the following tasks:

- Installing and configuring the Oracle Database Gateway for VSAM
- Diagnosing gateway errors
- Using the gateway to access VSAM data

---

---

**Note:** You should understand the fundamentals of Oracle Database Gateways before using this guide to install or administer the gateway.

---

---

## Documentation Accessibility

Our goal is to make Oracle products, services, and supporting documentation accessible, with good usability, to the disabled community. To that end, our documentation includes features that make information available to users of assistive technology. This documentation is available in HTML format, and contains markup to facilitate access by the disabled community. Accessibility standards will continue to evolve over time, and Oracle is actively engaged with other market-leading technology vendors to address technical obstacles so that our documentation can be accessible to all of our customers. For more information, visit the Oracle Accessibility Program Web site at

<http://www.oracle.com/accessibility/>

### Accessibility of Code Examples in Documentation

Screen readers may not always correctly read the code examples in this document. The conventions for writing code require that closing braces should appear on an otherwise empty line; however, some screen readers may not always read a line of text that consists solely of a bracket or brace.

### Accessibility of Links to External Web Sites in Documentation

This documentation may contain links to Web sites of other companies or organizations that Oracle does not own or control. Oracle neither evaluates nor makes any representations regarding the accessibility of these Web sites.

### TTY Access to Oracle Support Services

Oracle provides dedicated Text Telephone (TTY) access to Oracle Support Services within the United States of America 24 hours a day, seven days a week. For TTY support, call 800.446.2398.

## Related Documents

For more information, see the following documents in the Oracle Database Gateway 11g Release 1 (11.1) documentation set:

- *Oracle Database New Features*
- *Oracle Call Interface Programmer's Guide*
- *Oracle Enterprise Manager Administrator's Guide*
- *Oracle Database Administrator's Guide*
- *Oracle Application Developer's Guide - Fundamentals*
- *Oracle Database Concepts*
- *Oracle Database Performance Tuning Guide and Reference*
- **Oracle Database Performance Planning**
- *Oracle Database Error Messages*
- *Oracle Database Globalization Support Guide*
- *Oracle Database Reference*
- *Oracle SQL Reference*
- *Oracle Net Services Administrator's Guide*
- *SQL\*Plus User's Guide and Reference*
- *Oracle Database Heterogeneous Connectivity Administrator's Guide*
- *Oracle 2 Day DBA*
- *Oracle Database Security Guide*

## Conventions

The following text conventions are used in this document:

<b>Convention</b>	<b>Meaning</b>
<b>boldface</b>	Boldface type indicates graphical user interface elements associated with an action, or terms defined in text or the glossary.
<i>italic</i>	Italic type indicates book titles, emphasis, or placeholder variables for which you supply particular values.
monospace	Monospace type indicates commands within a paragraph, URLs, code in examples, text that appears on the screen, or text that you enter.



---

# Getting Started with Oracle Database Gateways

This chapter contains the following sections:

- [Overview](#)
- [Oracle Heterogeneous Services](#)
- [Oracle Database Gateways](#)
- [Gateway Architecture](#)
- [Gateway Process Flow](#)
- [Setup Flow](#)

## Overview

Heterogeneous data access is a problem that affects a lot of companies. A lot of companies run several different database systems. Each of these systems stores data and has a set of applications that run against it. Consolidation of this data in one database system is often hard—in large part because many of the applications that run against one database may not have an equivalent that runs against another. Until such time as migration to one consolidated database system is made feasible, it is necessary for the various heterogeneous database systems to interoperate.

Oracle Database Gateways provide the ability to transparently access data located in a non-Oracle system from an Oracle environment. This transparency eliminates the need for application developers to customize their applications to access data from different non-Oracle systems, thus decreasing development efforts and increasing the mobility of the application. Applications can be developed using a consistent Oracle interface for both Oracle and VSAM.

Gateway technology is composed of two parts: a component that has the generic technology to connect to a non-Oracle system, which is common to all the non-Oracle systems, called Heterogeneous Services, and a component that is specific to the non-Oracle system that the gateway connects to. Heterogeneous Services, in conjunction with the Database Gateway agent and Oracle Connect for IMS, VSAM, and Adabas Gateways, enables transparent access to non-Oracle systems from an Oracle environment.

## Oracle Heterogeneous Services

Heterogeneous Services provides the generic technology for connecting to non-Oracle systems. As an integrated component of the database, Heterogeneous Services can

exploit features of the database, such as the powerful SQL parsing and distributed optimization capabilities.

Heterogeneous Services extend the Oracle SQL engine to recognize the SQL and procedural capabilities of the remote non-Oracle system and the mappings required to obtain necessary data dictionary information. Heterogeneous Services provides two types of translations: the ability to translate Oracle SQL into the proper dialect of the non-Oracle system and the ability to handle data dictionary translations so that the metadata of the non-Oracle system is displayed in the local format. For situations where no translations are available, native SQL can be issued to the non-Oracle system using the pass-through feature of Heterogeneous Services.

Heterogeneous Services also maintains the transaction coordination between Oracle and the remote non-Oracle system, such as providing the global transaction protocol to ensure distributed transaction integrity, even for non-Oracle systems that do not natively support global transactions.

**See Also:** *Oracle Database Heterogeneous Connectivity Administrator's Guide* for more information about Heterogeneous Services.

## Oracle Database Gateways

Oracle Database Gateway for VSAM allows Oracle client applications to access VSAM data through Structured Query Language (SQL). The gateway, with the Oracle database server, creates the appearance that all data resides on a local Oracle database server, even though data might be widely distributed. If data is moved from this data source to an Oracle database, no changes in the client application's design or function are needed because the gateway handles all differences in data types or SQL functions between the applications and the database.

Using Oracle SQL, Oracle client applications can access the VSAM data source as if the data was stored in an Oracle table. A single SQL statement can access data residing in Oracle and VSAM data sources, performing heterogeneous joins and subselects. This means that you can develop one set of portable applications to use against Oracle and these non-relational data sources. You can continue to develop new information systems without losing your investment in existing data and applications.

Transactions updating Oracle and this non-relational data source are automatically protected by the Oracle global transactions feature. Use of synonyms is another Oracle feature. By setting up synonyms in the Oracle database server that point to database links to VSAM files, the physical location of the data is transparent to the client application. This allows future migration of data from VSAM to Oracle to be transparent to the client applications.

The gateway requires the Oracle database server, Oracle Connect for IMS, VSAM, and Adabas Gateways, and Oracle Studio for IMS, VSAM, and Adabas Gateways. All other Oracle products are optional. However, using other Oracle products with the gateway can greatly extend the gateway's capabilities.

The gateway can be installed on a computer where the Oracle database is installed, or on a second, standalone machine. Each configuration has its advantages and disadvantages. The issues to consider when you determine where to install the gateway are network traffic, availability of the operating system platform, hardware resources, and storage.

Oracle Connect for IMS, VSAM, and Adabas Gateways must be installed on the z/OS system where the VSAM data source is installed. To be able to configure and manage Oracle Connect for IMS, VSAM, and Adabas Gateways, you need to install Oracle

Studio for IMS, VSAM, and Adabas Gateways on a computer running Windows or Linux.

## Gateway Architecture

The gateway is invoked by the listener. The gateway is not multi-threaded and cannot support shared database links. Each gateway session spawns a separate gateway process, and connections cannot be shared.

The gateway is located on a Windows or UNIX computer. The non-relational data source resides on a computer running IBM z/OS. The Oracle database server can reside on the same machine as the gateway or on another machine.

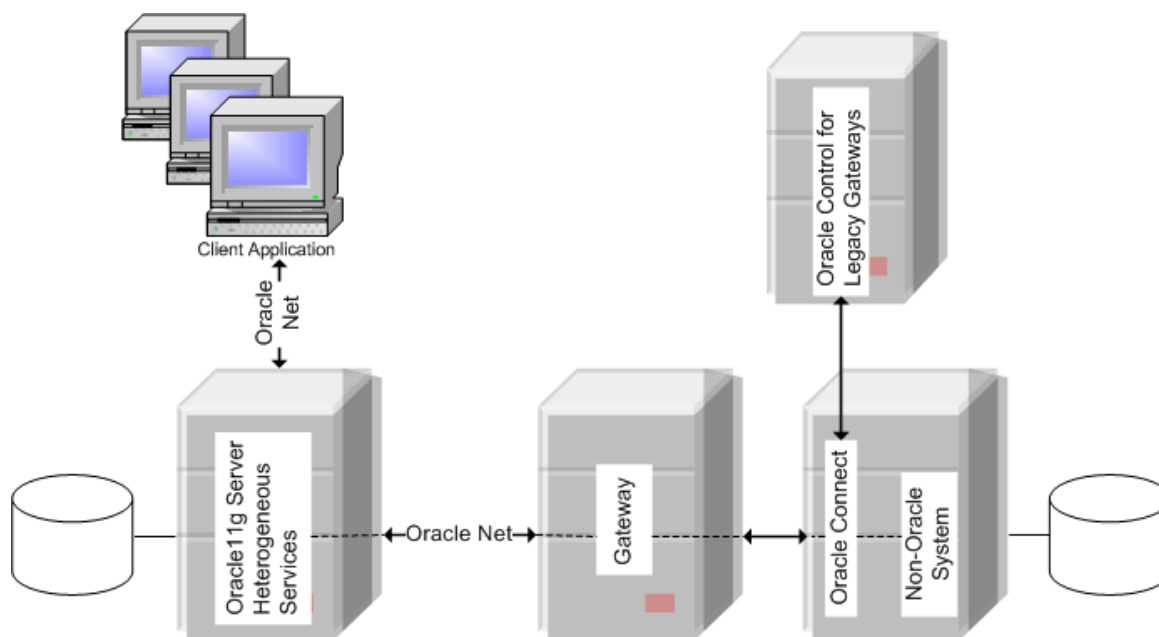
The gateway interacts with the Oracle database server to interface between client applications and the VSAM data source, as shown in [Figure 1-1](#).

---

**Note:** The non-Oracle system in [Figure 1-1](#) and [Figure 1-2](#) represents the VSAM data source.

---

**Figure 1-1 Gateway Processing**



- Client applications, such as Developer, connect to the Oracle database server by using Oracle Net.
- The Oracle database server, which includes Heterogeneous Services and the database itself, resides on a single system. This Oracle database server also stores definitions of database links for the non-Oracle system.
- The gateway to VSAM resides on a second system.
- The VSAM data source, together with Oracle Connect for IMS, VSAM, and Adabas Gateways, resides on a third system, which is an IBM z/OS platform.
- Oracle Studio for IMS, VSAM, and Adabas Gateways, which is used to configure Oracle Connect for IMS, VSAM, and Adabas Gateways, resides on a fourth system, which can be running a Windows or Linux operating system.

- The Oracle database server on the first system uses Oracle Net to connect directly to the VSAM gateway on the second system. The gateway itself uses the Oracle Connect for IMS, VSAM, and Adabas Gateways protocol to connect to Oracle Connect for IMS, VSAM, and Adabas Gateways, which then connects to the non-Oracle system using the same protocol.

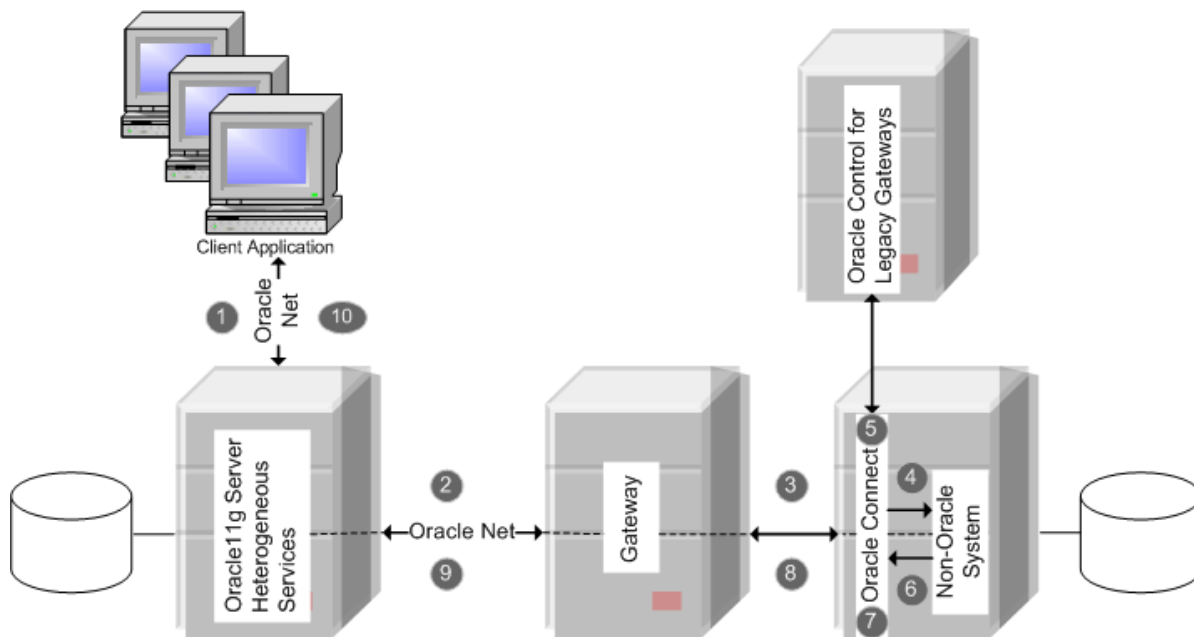
The Oracle database server and the gateway work together to present the appearance of a single Oracle database to the client. All data accessed by the client appears to reside in a single Oracle database. The client application sends a request to the Oracle database server, and the Oracle database server sends the request to the gateway.

For the first transaction in a session, the gateway logs into the VSAM data source using a username and password that is valid in the respective data source. The gateway converts the SQL statement to a native VSAM statement, and the VSAM data source performs the request. The gateway converts the retrieved data to a format compatible with the Oracle database server and returns the results to the Oracle database server, which returns the results to the client application.

## Gateway Process Flow

Figure 1–2 shows a typical gateway process flow. The steps explain the sequence of the events that occurs when a client application queries the VSAM data source through the gateway.

Figure 1–2 Gateway Process Flow



1. The client application sends a query over Oracle Net to the Oracle database server.
2. The Oracle database server sends the query over to the gateway, again using Oracle Net.
3. The gateway passes the query on to Oracle Connect for IMS, VSAM, and Adabas Gateways.
4. For the first transaction in a session, Oracle Connect for IMS, VSAM, and Adabas Gateways logs into the VSAM data source using a user name and password that is valid in the respective data source.

5. Oracle Connect for IMS, VSAM, and Adabas Gateways converts the Oracle SQL statement into a data access operation understood by the data source.
6. Oracle Connect for IMS, VSAM, and Adabas Gateways retrieves the data.
7. Oracle Connect for IMS, VSAM, and Adabas Gateways converts the retrieved data into a format compatible with the Oracle database server.
8. Oracle Connect for IMS, VSAM, and Adabas Gateways passes the data to the gateway using the Oracle Connect for IMS, VSAM, and Adabas Gateways protocol.
9. The gateway returns the query results to the Oracle database server, again using Oracle Net.
10. The Oracle database server passes the query results to the client application by using Oracle Net. The database link remains open until the gateway session is finished or the database link is explicitly closed.

## Setup Flow

To be able to access VSAM data, you need to perform the tasks described in the following list, in the specified order. Each step in the list directs you to the relevant manual or chapter.

1. Install Oracle Connect for IMS, VSAM, and Adabas Gateways

**See:** *Oracle Connect Installation and Configuration Guide for IBM z/OS* for information on installing Oracle Connect for IMS, VSAM, and Adabas Gateways

2. Install Oracle Studio for IMS, VSAM, and Adabas Gateways

**See:** *Oracle Database Gateway for IMS, VSAM, and Adabas Installation and Configuration Guide for Microsoft Windows* or *Oracle Database Gateway for IMS, VSAM, and Adabas Installation and Configuration Guide for UNIX*

3. Configure Oracle Connect for IMS, VSAM, and Adabas Gateways

**See:** *Oracle Database Gateway for IMS, VSAM, and Adabas Installation and Configuration Guide for Microsoft Windows* or *Oracle Database Gateway for IMS, VSAM, and Adabas Installation and Configuration Guide for UNIX*

4. Set up the connection to Oracle Connect for IMS, VSAM, and Adabas Gateways

**See:** *Oracle Database Gateway for IMS, VSAM, and Adabas Installation and Configuration Guide for Microsoft Windows* or *Oracle Database Gateway for IMS, VSAM, and Adabas Installation and Configuration Guide for UNIX*

5. Set up the VSAM data source

**See:** *Oracle Database Gateway for IMS, VSAM, and Adabas Installation and Configuration Guide for Microsoft Windows* or *Oracle Database Gateway for IMS, VSAM, and Adabas Installation and Configuration Guide for UNIX*

6. Set up the data source metadata

**See:** *Oracle Database Gateway for IMS, VSAM, and Adabas Installation and Configuration Guide for Microsoft Windows or Oracle Database Gateway for IMS, VSAM, and Adabas Installation and Configuration Guide for UNIX*

7. Install Oracle Database Gateway for VSAM

**See:** *Oracle Database Gateway for IMS, VSAM, and Adabas Installation and Configuration Guide for Microsoft Windows or Oracle Database Gateway for IMS, VSAM, and Adabas Installation and Configuration Guide for UNIX*

8. Configure Oracle Database Gateway for VSAM

**See:** *Oracle Database Gateway for IMS, VSAM, and Adabas Installation and Configuration Guide for Microsoft Windows or Oracle Database Gateway for IMS, VSAM, and Adabas Installation and Configuration Guide for UNIX*

---

---

## Gateway Features and Restrictions

After the gateway is installed and configured, you can use the gateway to access the Virtual Storage Access Method (VSAM) data, pass VSAM commands from applications to the VSAM database, perform distributed queries, and copy data.

This chapter contains the following sections:

- [Accessing VSAM Data](#)
- [SQL Support](#)
- [Handling Non-Relational Data](#)
- [Restrictions](#)

### Accessing VSAM Data

You can access VSAM data either directly or under CICS, as follows:

- **VSAM (CICS):** If your VSAM files are installed under CICS, the VSAM (CICS) data source accesses VSAM by making calls from the external CICS interface (EXCI) to a CICS program that is provided as part of the Oracle Connect installation. This CICS program does the actual VSAM reads and writes from within CICS.

When you access VSAM data using this data source, the following restrictions apply:

- SQL DELETE operations are not supported for ESDS files.
- Using an alternate index to access an entry sequenced data set (ESDS) file is not supported.
- A non-unique alternate index for a key sequenced data set (KSDS) file is not supported.
- **VSAM Batch:** This data source connects directly to the VSAM data and is limited if the VSAM files are managed by CICS. In this case, it is recommended to use this data source for read-only access to VSAM files. However, this may not give you adequate read integrity if some changes are buffered by CICS. Another alternative is to use the VSAM under CICS data source.

When you access VSAM data using the VSAM/Batch data source, the following restrictions apply:

- Transactions are not supported when you access VSAM directly. When you update VSAM data, the update is committed immediately. You cannot issue rollback to un-commit the update.
- Locking is not supported.

- You cannot update an array value (a child record in a hierarchical table) when the parent record is included in the SQL in a subquery.
- SQL DELETE operations are not supported for ESDS files.
- An relative record data set (RRDS) file cannot have an alternate index.
- The primary key of a KSDS file must be one segment only (however, it can be several consecutive fields). You cannot modify the primary key value of a KSDS file.

Oracle Connect for IMS, VSAM, and Adabas Gateways supports VSAM data on IBM z/OS platforms. VSAM files of types Key Sequenced Data Structure (KSDS), Entry Sequenced Data Set (ESDS), and Relative Record Data Set (RRDS) are supported.

## SQL Support

Oracle Database Gateway for VSAM supports SQL-based data access, allowing developers and applications to use this common and standard syntax for retrieving and updating VSAM data, and for using SELECT, INSERT, UPDATE, and DELETE statements.

While SQL is supported by relational database management systems, it is not available for legacy, non-relational data such as VSAM data. This means that Oracle Database Gateway for VSAM goes beyond the functionality provided by other Oracle gateways that connect to relational databases, as those merely deal with the translation and delegation of SQL to the target database. Oracle Database Gateway for VSAM takes care of the translation of the SQL statements into system and file specific access primitives, and their execution in an optimized manner, effectively serving as the SQL processor for the non-relational system.

In terms of SQL support, the gateway supports a wide range of SQL capabilities, from basic SQL statements to statements that include advanced features, such as joining of data from multiple VSAM sources, use of subselects, and support of data manipulation functions. In addition, the gateway optimizes query performance by supporting such advanced capabilities in where clauses, processing most of them before returning the data to Oracle.

Because VSAM is a non-relational system, its data model is not normalized. The gateway provides a complete normalization process that imports existing legacy metadata and produces a relational format that can be used by Oracle users. A key consideration in the normalization process takes care of the hierarchical data structures that are common in VSAM, such as arrays.

Going through the import process, the gateway translates the hierarchical structures and embedded arrays into a relational model that maps the hierarchy to several tables. In addition, the process automatically generates the necessary foreign constraints that can later be retrieved using regular Oracle Data Dictionary queries.

In respect to the data dictionary, the gateway provides all the necessary information although the actual data dictionary is not located in the Oracle database. The gateway supports standard data dictionary queries, making the interaction with the non-Oracle data completely transparent to the user, and taking care of translating the non-Oracle model into the Oracle standard data dictionary format including joins across non-Oracle data dictionary tables.

While the typical use case only supports the retrieval of information using SELECT statements, the gateway also supports data manipulation using INSERT, UPDATE, and DELETE statements. Furthermore, it supports advanced options such as distributed transactions.



To summarize, Oracle Database Gateway for VSAM offers robust SQL support and relational access to non-relational, proprietary, legacy VSAM data. The following topics provide more information about specific SQL features and their support by the gateway.

This section includes the following topics:

- [Transaction Support](#)
- [Pass-Through Feature](#)
- [Naming Rules](#)
- [Data Types](#)
- [SQL Execution](#)
- [Locking](#)

**See Also:** [Supported SQL Syntax and Functions](#) on page B-1 for details; [SQL Restrictions](#) on page 2-7 for restrictions.

## Transaction Support

The VSAM (CICS) data source supports global transactions.

To use Oracle Connect for IMS, VSAM, and Adabas Gateways with global transactions, you must have RRS installed and configured and have CICS TS 1.3 or later installed.

The VSAM file participating in the 1PC or global transaction must be defined as recoverable. To define a file as recoverable, perform these steps.

1. Install the VSAM file under CICS.
2. In CICS, go to the recovery parameters section of the relevant file.
3. Set the value of the RECOVERY parameter to `Backoutonly` and the value of the `Fwdrecovlog` parameter to `no`.

## Pass-Through Feature

You can import a COBOL copybook to define a VSAM record structure of an existing VSAM data set. However, you can also create a VSAM data set and define its record structure by using the pass-through feature. You can then view this structure in Oracle Studio for IMS, VSAM, and Adabas Gateways.

---



---

**Note:** This option is not supported when you access VSAM data under CICS.

---



---

Use the `DBMS_HS_PASSTHROUGH` package in a PL/SQL block to specify the statement to be passed to the VSAM database, as follows:

```
DECLARE
    num_rows INTEGER;
BEGIN
    num_rows := DBMS_HS_PASSTHROUGH.EXECUTE_IMMEDIATE@VSAM('command');
END;
/
```

Where `command` cannot be one of the following:

- BEGIN TRANSACTION
- COMMIT
- ROLLBACK
- SAVE
- SHUTDOWN
- VSAM tool commands

For example, to create a table using the pass-through feature, run the following command:

```
SQL> declare
  ret integer;
begin
  ret := dbms_hs_passthrough.execute_immediate@dg4vsam('
    create table sample(I int,c char(10))');
end;
/
PL/SQL procedure successfully completed.
```

The DBMS\_HS\_PASSTHROUGH package supports passing bind values and executing SELECT statements.

---

---

**Note:** TRUNCATE cannot be used in a pass-through statement.

---

---

**See Also:** *PL/SQL Packages and Types Reference* and Chapter 3 of *Oracle Database Heterogeneous Connectivity Administrator's Guide* for more information about the DBMS\_HS\_PASSTHROUGH package.

## Naming Rules

Naming rule issues include the following:

- [Rules for Naming Objects](#)
- [Case Sensitivity](#)

### Rules for Naming Objects

The concept of owner does not exist for objects from VSAM or VSAM/CICS data sources. The userid of the dblink is not used to qualify the object. The owner field in the data dictionary tables (see [Appendix C, "Data Dictionary"](#) for details) is hardcoded as VSAM. You must not use an explicit owner qualifier to reference VSAM or VSAM/CICS tables. Using an explicit owner name results in a message like the following:

```
ORA-00942: table or view does not exist
```

**See Also:** *Oracle Database Reference* and VSAM documentation for more information on naming objects and *Oracle Database Error Messages* for more information on error messages.

### Case Sensitivity

Object names are not case sensitive. Both Oracle Studio for IMS, VSAM, and Adabas Gateways and the gateway automatically use upper case for data source metadata.

## Data Types

Data type issues include the following:

- [Binary Literal Notation](#)
- [Data Type Conversion](#)

### Binary Literal Notation

Oracle SQL uses hexadecimal digits surrounded by single quotes to express literal values being compared or inserted into columns defined as data type RAW.

This notation is not converted to syntax compatible with the VSAM VARBINARY and BINARY data types (a 0x followed by hexadecimal digits, surrounded by single quotes).

For example, the following statement is not supported:

```
SQL> INSERT INTO BINARY_TAB@VSAM VALUES ('0xff')
```

Where BINARY\_TAB contains a column of data type VARBINARY or BINARY. Use bind variables when inserting into or updating VARBINARY and BINARY data types.

### Data Type Conversion

VSAM does not support implicit date conversions. Such conversions must be explicit.

For example, the gateway issues an error for the following SELECT statement:

```
SELECT DATE_COL FROM TEST@VSAM WHERE DATE_COL = "1-JAN-2001";
```

To avoid problems with implicit conversions, add explicit conversions, as in the following:

```
SELECT DATE_COL FROM TEST@VSAM WHERE DATE_COL = TO_DATE("1-JAN-2001")
```

**See Also:** [Appendix C, "Data Dictionary"](#) for more information about restrictions on data types and *Oracle Database Error Messages* for more information on error messages.

## SQL Execution

Query issues include the following:

- [Row Selection](#)
- [Empty Strings](#)
- [Empty Bind Variables](#)

### Row Selection

VSAM evaluates a query condition for all selected rows before returning any of the rows. If there is an error in the evaluation process for one or more rows, no rows are returned even though the remaining rows satisfy the condition.

Oracle evaluates the query condition row-by-row and returns a row when the evaluation is successful. Rows are returned until a row fails the evaluation.

**See Also:** *Oracle Database Error Messages* for more information on error messages.

### Empty Strings

Oracle processes an empty string in a SQL statement as a null value. VSAM processes an empty string as an empty string.

Comparing to an empty string

The Gateway passes literal empty strings to the VSAM database without any conversion. If you intended an empty string to represent a null value, VSAM does not process the statement that way; it uses the empty string.

You can avoid this problem by using NULL or IS NULL in the SQL statement instead of the empty string syntax, as in the following example:

```
SELECT * from "emp"@VSAM where "ename" IS NULL;
```

Selecting an empty string

For VARCHAR columns, the gateway returns an empty string to the Oracle Database as NULL value.

For CHAR columns, the gateway returns the full size of the column with each character as empty space (' ').

### Empty Bind Variables

For VARCHAR bind variables, the gateway passes empty bind variables to the VSAM database as a NULL value.

## Locking

The locking model for a VSAM database differs significantly from the Oracle model. The gateway depends on the underlying VSAM behavior, so Oracle applications that access VSAM through the gateway can be affected by the following possible scenarios:

- Read access may block write access.
- Write access may block read access.
- Statement-level read consistency is not guaranteed.

**See Also:** VSAM documentation for information about the VSAM locking model.

## Handling Non-Relational Data

Non-relational data sources require metadata, which is kept separately from the data itself. This metadata is stored as a data source definition in a data source repository, on the machine where the data source is defined. It lets you access the data from a non-relational database with SQL commands.

The metadata is imported and maintained using Oracle Studio for IMS, VSAM, and Adabas Gateways. If COBOL copybooks describing the data source records are available, you can import the metadata by using the metadata import procedure in the Design perspective, on the Metadata tab. If the metadata is provided in a number of COBOL copybooks that use different filter settings, you first import the metadata from copybooks with the same settings and later the metadata from other copybooks.

When the non-relational data contains arrays, these arrays can be exposed as follows:

- As virtual views. This method generates a virtual view for every array in the parent record that contains all the array members.

- As a sequential view (a single table). This method maps all the record fields of the non-relational file to a single table that contains both parent and child records.

## Restrictions

The following sections describe the restrictions and include suggestions for dealing with them if possible:

- [SQL Restrictions](#)
- [VSAM Restrictions](#)

## SQL Restrictions

Restrictions related to SQL are described in the following sections:

- [Unsupported SQL Functions](#)
- [SQL Syntax](#)
- [Transaction Capability](#)
- [Transactional Integrity](#)
- [COMMIT or ROLLBACK in PL/SQL Cursor Loops](#)
- [Pass-Through Feature](#)
- [Database Links](#)
- [Data Types](#)
- [Encrypted Format Login](#)
- [Data Dictionary Views and PL/SQL](#)

### Unsupported SQL Functions

When an unsupported SQL function is used in an UPDATE, DELETE, or INSERT statement, an error occurs.

See [Supported SQL Syntax and Functions](#) on page B-1 for a list of the supported functions.

### SQL Syntax

[Table 2–1](#) lists the restrictions that apply to SQL syntax.

**Table 2–1 SQL Syntax Restrictions**

Syntax	Restriction
WHERE CURRENT OF clause	UPDATE and DELETE statements with the WHERE CURRENT OF clause are not supported by the gateway because they rely on the Oracle ROWID implementation. To update or delete a specific row through the gateway, a condition style WHERE clause must be used.
CONNECT BY clause	The gateway does not support the CONNECT BY clause in a SELECT statement.
ROWID	The Oracle ROWID implementation is not supported.

**Table 2–1 (Cont.) SQL Syntax Restrictions**

Syntax	Restriction
Subqueries in INSERT statement	<p>Subqueries of INSERT statements cannot use multiple aliases for the same table. For example, the following statement is not supported:</p> <pre>SQL&gt; INSERT INTO "emp_target"@VSAM       SELECT a."empno" FROM "emp_source"@VSAM a,       "emp_source"@VSAM b WHERE       b."empno"=9999</pre>
EXPLAIN PLAN statement	The EXPLAIN PLAN statement is not supported.
Date arithmetic	<p>The following SQL expressions do not function correctly with the gateway:</p> <pre>date + number number + date date - number date1 - date2</pre> <p>Statements with the preceding expressions are sent to the VSAM database without any translation. Since VSAM does not support these date arithmetic functions, the statements return an error.</p> <p><b>See Also:</b> <i>Oracle Database Error Messages</i> for more information on error messages.</p>
String functions	<p>If you concatenate numeric literals using the "  " operator when using the gateway to query a VSAM database, the result is an arithmetic addition. For example, the result of the following statement is 18:</p> <pre>SQL&gt; SELECT 9    9 FROM DUAL@VSAM;</pre> <p>The result is 99 when using Oracle to query an Oracle database.</p>
Schema names and PL/SQL	<p>If you do not prefix a VSAM database object with its schema name in a SQL statement within a PL/SQL block, the following error message occurs:</p> <pre>ORA-6550 PLS-201 Identifier table_name must be declared.</pre> <p>Change the SQL statement to include the schema name of the object.</p> <p><b>See Also:</b> <i>Oracle Database Error Messages</i> for more information on error messages.</p>

### Transaction Capability

The gateway does not support savepoints. If a distributed update transaction is under way involving the gateway and a user attempts to create a savepoint, the following error occurs:

```
ORA-02070: database dblink does not support savepoint in this context
```

By default, the VSAM-CICS data source supports global transactions. If the VSAM-CICS data source is configured differently in Oracle Studio for IMS, VSAM, and Adabas Gateways, see the *Oracle Database Heterogeneous Connectivity Administrator's Guide* for configuration information.

**See Also:** *Oracle Database Error Messages* for more information on error messages.

## Transactional Integrity

The VSAM batch data source only supports auto-commit mode. Therefore, the gateway cannot guarantee transactional integrity. Each UPDATE, INSERT, and DELETE statement is immediately committed on the VSAM side and cannot be rolled back.

---

---

**Note:** You can choose to run the gateway for the VSAM batch data source in read-only mode by setting the HS\_FDS\_TRANSACTION\_MODE parameter to READ\_ONLY. Carefully weigh the advantages and disadvantages of executing updates on the VSAM data source using the gateway.

---

---

## COMMIT or ROLLBACK in PL/SQL Cursor Loops

Any COMMIT or ROLLBACK issued in a PL/SQL cursor loop closes all open cursors, which can result in the following error:

```
ORA-1002: fetch out of sequence
```

To prevent this error, move the COMMIT or ROLLBACK statement outside the cursor loop.

**See Also:** *Oracle Database Error Messages* for more information on error messages.

## Pass-Through Feature

VSAM commands cannot be issued using the pass-through feature. You should only use the pass-through feature to issue CREATE TABLE statements under the VSAM batch data source that result in the creation of a VSAM data set whose record format is exposed to Oracle Studio for IMS, VSAM, and Adabas Gateways.

## Database Links

The gateway is not multithreaded and cannot support shared database links. Each gateway session spawns a separate gateway process and connections cannot be shared.

## Data Types

The FLOAT data type precision is (7).

The VARBINARY data type is reported as BINARY.

## Encrypted Format Login

Oracle Database no longer supports the initialization parameter DBLINK\_ENCRYPT\_LOGIN. Up to version 7.3, this parameter's default true value prevented the password for the login user ID from being sent over the network (in the clear). Later versions automatically encrypt the password.

## Data Dictionary Views and PL/SQL

Do not refer to data dictionary views in SQL statements contained within PL/SQL blocks.

## VSAM Restrictions

When accessing VSAM data, the following restrictions apply:

- [General VSAM Restrictions](#)
- [Restrictions Specific to VSAM \(CICS\)](#)
- [Restrictions Specific to VSAM Batch](#)

### General VSAM Restrictions

The following restrictions apply to both the VSAM Batch data source and the VSAM (CICS) data source:

- DDL is not supported.
- Record-level locking is not supported.
- Record-level sharing (RLS) is not supported.
- UPDATE operations on arrays (OCCURS clauses) are not supported. See [Normalizing Non-Relational Data](#) on page 3-1 for details on handling arrays.
- Compressed VSAM files are only supported if the compression package makes the compression transparent.
- Records in ESDS files cannot be deleted from a table. Therefore, when deleting a record from a table, first make sure that it is not included in a file of type ESDS.

### Restrictions Specific to VSAM (CICS)

The following restrictions apply to the VSAM (CICS) data source only:

- SQL DELETE operations are not supported for ESDS files.
- Using an alternate index to access an ESDS file is not supported.
- A non-unique alternate index for a KSDS file is not supported.

### Restrictions Specific to VSAM Batch

The following restrictions apply to the VSAM Batch data source only:

- Transactions are not supported when accessing VSAM directly.  
When accessing VSAM under CICS, global transactions are supported.
- Locking is not supported.
- SQL DELETE operations are not supported for ESDS files.
- An RRDS file cannot have an alternate index.



---

---

## Normalizing Non-Relational Data

This section describes the support methods that Oracle Connect for IMS, VSAM, and Adabas Gateways applies to normalize non-relational data. It includes the following topics:

- [Overview of Normalizing Non-Relational Data](#)
- [Representing Metadata](#)
- [Methods of Handling Arrays](#)

**See Also:** *Oracle Database Gateway for IMS, VSAM, and Adabas Installation and Configuration Guide for Microsoft Windows* or *Oracle Database Gateway for IMS, VSAM, and Adabas Installation and Configuration Guide for UNIX* for information on importing metadata into Oracle Studio for IMS, VSAM, and Adabas Gateways.

### Overview of Normalizing Non-Relational Data

Oracle Connect for IMS, VSAM, and Adabas Gateways exposes a purely relational front end through the HOA API. However, it connects to non-relational data sources, which include non-relational data models. As such, Oracle Connect for IMS, VSAM, and Adabas Gateways provides a logical mapping that exposes the non-relational constructs in a relational manner. The most prevalent problem in this domain is the issue of arrays, which is described in this section.

### About Arrays

An array is a group of similar elements of the same size. Arrays contain a series of data elements that are of the same data type, which can be simple or complex (group). A specific element is defined and accessed by its position in the array, which is provided by an index.

Arrays are a convenient way to store a fixed amount of data that is accessed in an unpredictable fashion. They are not efficient, however, when you need to insert or delete individual elements of the array.

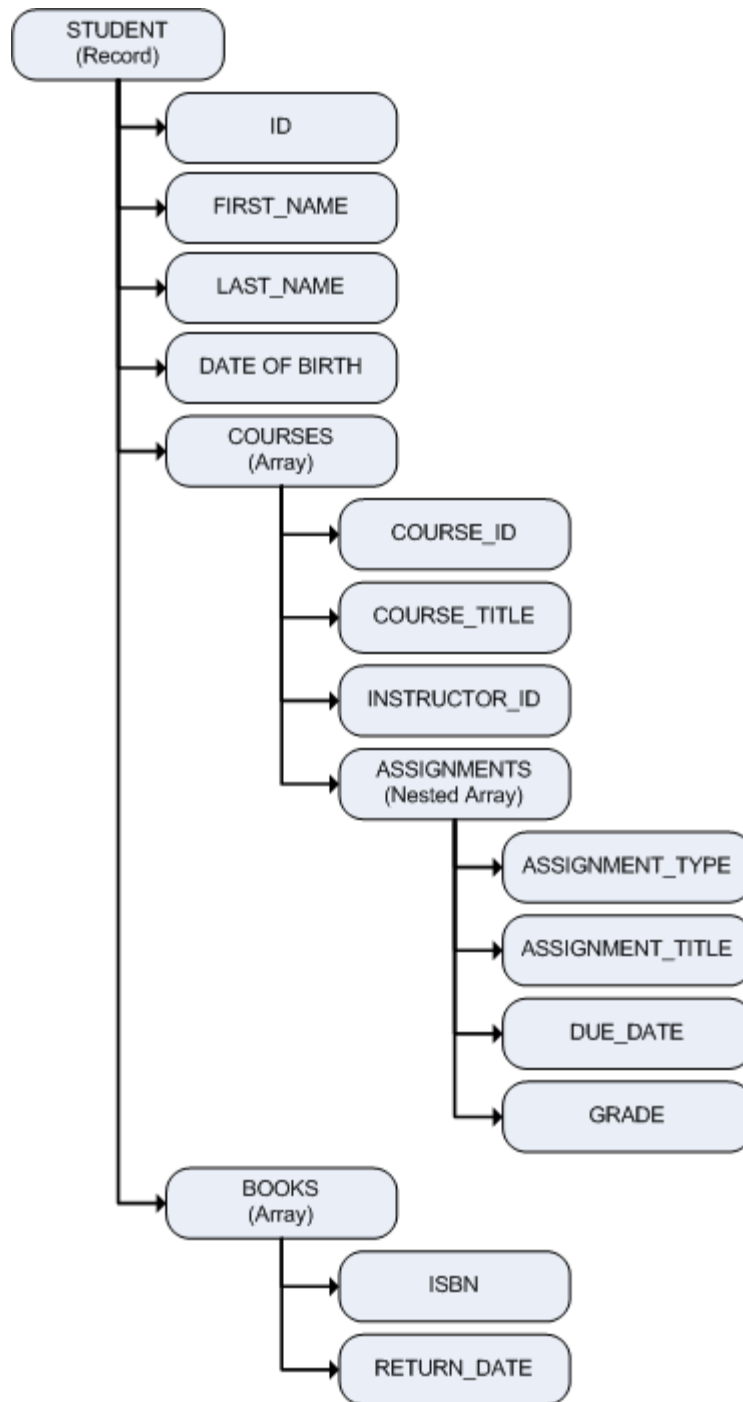
### Representing Metadata

Before looking at the different methods of handling arrays, you should understand how metadata is represented in Oracle Studio for IMS, VSAM, and Adabas Gateways.

[Figure 3-1](#) shows an example record with arrays and nested arrays.

See Also: [COBOL Copybook Example](#) on page E-1

**Figure 3–1 Arrays and Nested Arrays**



When you import this metadata into Oracle Studio for IMS, VSAM, and Adabas Gateways, the import process creates a data dictionary definition that is equivalent to the original structure, usually mapping the fields one to one. The import process also writes all primary and foreign key definitions to the ALL\_CONSTRAINTS table.

Oracle Studio for IMS, VSAM, and Adabas Gateways represents the flattened view of the metadata on the table editor’s Columns tab, as shown in [Figure 3–2](#).

**Figure 3–2 Representation of Metadata on the Columns tab in Oracle Studio for IMS, VSAM, and Adabas Gateways**

Column name	Data type	Size	Scale	Dimension	Offset	Fixed offset	Primary Key Column
ID	numstr_u	8	0	0	0	<input type="checkbox"/>	<input type="checkbox"/>
FIRST_NAME	string	32		0	8	<input type="checkbox"/>	<input type="checkbox"/>
LAST_NAME	string	32		0	40	<input type="checkbox"/>	<input type="checkbox"/>
DATE_OF_BIRTH	int4			0	72	<input type="checkbox"/>	<input type="checkbox"/>
NUMOF_COURSES	uint2			0	76	<input type="checkbox"/>	<input type="checkbox"/>
NUMOF_BOOKS	uint2			0	78	<input type="checkbox"/>	<input type="checkbox"/>
+ COURSES	group			0	80	<input type="checkbox"/>	<input type="checkbox"/>
+ COURSE	group			8	0	<input type="checkbox"/>	<input type="checkbox"/>
COURSE_ID	numstr_u	8	0	0	0	<input type="checkbox"/>	<input type="checkbox"/>
COURSE_TITLE	string	48		0	8	<input type="checkbox"/>	<input type="checkbox"/>
INSTRUCTOR_ID	numstr_u	8	0	0	56	<input type="checkbox"/>	<input type="checkbox"/>
NUMOF_ASSIGNMENTS	uint2			0	64	<input type="checkbox"/>	<input type="checkbox"/>
+ ASSIGNMENTS	group			4	66	<input type="checkbox"/>	<input type="checkbox"/>
ASSIGNMENT_TYPE	string	12		0	0	<input type="checkbox"/>	<input type="checkbox"/>
ASSIGNMENT_TITLE	string	48		0	12	<input type="checkbox"/>	<input type="checkbox"/>
DUE_DATE	int4			0	60	<input type="checkbox"/>	<input type="checkbox"/>
GRADE	numstr_s	2	1	0	64	<input type="checkbox"/>	<input type="checkbox"/>
+ BOOKS	group			0	2720	<input type="checkbox"/>	<input type="checkbox"/>
+ BOOK	group			5	0	<input checked="" type="checkbox"/>	<input checked="" type="checkbox"/>
ISBN	string	10		0	0	<input type="checkbox"/>	<input type="checkbox"/>
RETURN_DATE	uint4			0	10	<input type="checkbox"/>	<input type="checkbox"/>

Table 3–1 describes the different columns shown in Figure 3–2.

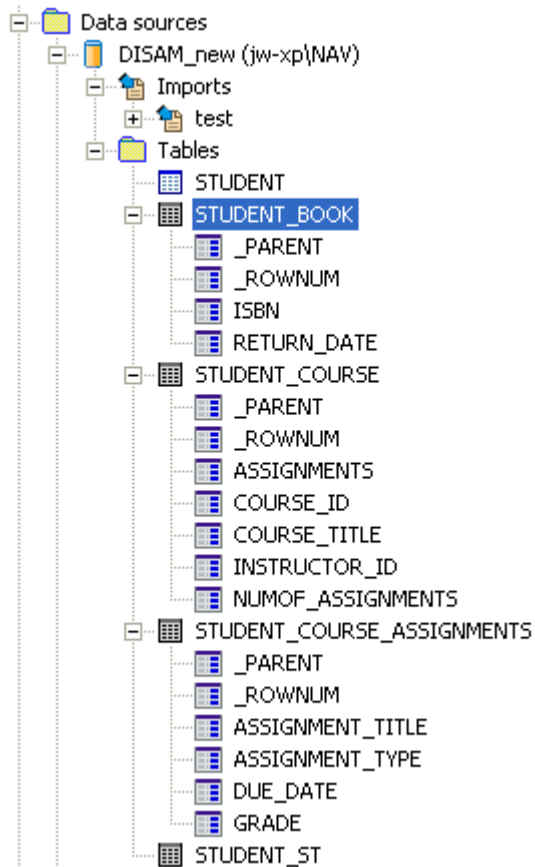
The (+) to the left of a column indicates a group field. This type of field usually has a Dimension value. This value is not mandatory, but it optimizes the access to an array. You can click (+) to display the group members. In Figure 3–2, all groups are expanded.

**Table 3–1 Metadata Column Tab Definition**

Column	Description
Column name	The name of the column.
Data type	The data type of the column. Selecting this field displays a drop-down box listing the possible data types.
Size	The size of the column for data types of a non-fixed size.
Scale	The information entered in this field depends on the data type: For decimal data types, this is the number of digits to the right of the decimal place. This number must not be greater than the number of digits. The default value is 0. For scaled data types, this is the total number of digits. The number must be negative.
Dimension	The maximum number of entries of an array. An array has a dimension other than zero. This value is not mandatory, but it optimizes the access to an array.
Offset	Not relevant for arrays.
Fixed offset	Not relevant for arrays.
Primary Key Column	The column is part of the table's primary key.

The tree in the Metadata view displays a normalized view of the tables, as shown in Figure 3–3, where STUDENT\_BOOK, STUDENT\_COURSE, and STUDENT\_COURSE\_ASSIGNMENTS are virtual views and STUDENT\_ST is a single table, also called sequential view.

**Figure 3–3 Normalized View of the Tables in the Metadata View**



The following SQL query on the Oracle data dictionary produces the result shown in [Example 3–1](#). In this query, *data source* is the name of the data source from which the metadata was created. The result shows the metadata of the original table after virtual arrays were created.

```
SQL> select TABLE_NAME,COLUMN_NAME,DATA_TYPE from ALL_TAB_COLUMNS@dg4[data_source]
where table_name like 'STUDENT%';
```

**Example 3–1 SQL Query Result**

TABLE_NAME	COLUMN_NAME	DATA_TYPE
STUDENT	ID	NUMBER
STUDENT	FIRST_NAME	CHAR
STUDENT	LAST_NAME	CHAR
STUDENT	DATE_OF_BIRTH	CHAR
STUDENT	NUMOF_COURSES	NUMBER
STUDENT	NUMOF_BOOKS	NUMBER
STUDENT_BOOK	BOOK_ROWNUM	NUMBER
STUDENT_BOOK	ISBN	CHAR
STUDENT_BOOK	RETURN_DATE	CHAR
STUDENT_COURSE	COURSE_ROWNUM	NUMBER
STUDENT_COURSE	COURSE_ID	NUMBER
STUDENT_COURSE	COURSE_TITLE	CHAR
STUDENT_COURSE	INSTRUCTOR_ID	NUMBER
STUDENT_COURSE	NUMOF_ASSIGNMENTS	NUMBER
STUDENT_COURSE_ASSIGNMENTS	COURSE_ROWNUM	NUMBER
STUDENT_COURSE_ASSIGNMENTS	ASSIGNMENTS_ROWNUM	NUMBER

STUDENT_COURSE_ASSIGNMENTS	ASSIGNMENT_TYPE	CHAR
STUDENT_COURSE_ASSIGNMENTS	ASSIGNMENT_TITLE	CHAR
STUDENT_COURSE_ASSIGNMENTS	DUE_DATE	CHAR
STUDENT_COURSE_ASSIGNMENTS	GRADE	NUMBER
STUDENT_ST	__LEVEL	VARCHAR2
STUDENT_ST	__SEQUENCE	NUMBER
STUDENT_ST	COURSE_ROWNUM	NUMBER
STUDENT_ST	ASSIGNMENTS_ROWNUM	NUMBER
STUDENT_ST	BOOK_ROWNUM	NUMBER
STUDENT_ST	ID	NUMBER
STUDENT_ST	FIRST_NAME	CHAR
STUDENT_ST	LAST_NAME	CHAR
STUDENT_ST	DATE_OF_BIRTH	CHAR
STUDENT_ST	NUMOF_COURSES	NUMBER
STUDENT_ST	NUMOF_BOOKS	NUMBER
STUDENT_ST	COURSE_ID	NUMBER
STUDENT_ST	COURSE_TITLE	CHAR
STUDENT_ST	INSTRUCTOR_ID	NUMBER
STUDENT_ST	NUMOF_ASSIGNMENTS	NUMBER
STUDENT_ST	ASSIGNMENT_TYPE	CHAR
STUDENT_ST	ASSIGNMENT_TITLE	CHAR
STUDENT_ST	DUE_DATE	CHAR
STUDENT_ST	GRADE	NUMBER
STUDENT_ST	ISBN	CHAR
STUDENT_ST	RETURN_DATE	CHAR

41 rows selected.

## Methods of Handling Arrays

Oracle Studio for IMS, VSAM, and Adabas Gateways lets you handle arrays by using the following methods:

- [Virtual Views](#)
- [Sequential Flattening \(Bulk Load of Array Data\)](#)

---



---

**Note:** Objects from virtual views and sequential flattening are described by Oracle Gateways as tables.

---



---

See [Chapter 4, "Setting the Array Handling Policy"](#) for information on how to define array handling settings.

## Virtual Views

Exposing arrays as virtual views is a commonly used technique to handle arrays. It generates a virtual view for every array in the parent record that contains all the array members. Virtual views contain primary key fields from the parent to connect the parent and the virtual view. Optionally, they can also contain all fields from the parent table.

During the import process or when you set the virtual array policy on the table level, Oracle Studio for IMS, VSAM, and Adabas Gateways generates virtual views and names them by appending the array name to the parent name. When an array includes another array, the name of the resulting virtual table consists of the parent name, the array name, and the name of the nested array, as follows:

```
parentName_arrayName_nestedArrayName
```

For example, a parent table called `STUDENT` with an array called `COURSE` and a nested array called `ASSIGNMENTS` is represented by the virtual view `STUDENT_COURSE_ASSIGNMENTS` (see [Figure 3-5](#)).

The number of nested-array levels is not limited.

Virtual views include the following:

- The array member columns from the original structure.
- The fields from the parent’s first unique key, or all parent fields, depending on the selection you make during the import process or when setting the virtual array policy on the table level.

If all parent fields are included in the virtual view, the parent’s indexes are available in the view definition and can be used for efficient optimization strategies.

---

**Note:** Inherited keys lose their uniqueness in the virtual view.

---

- If the view does not include all parent fields, the primary key fields (if the primary key is not the parent’s first unique key).
- If selected, a column called `<array_name>_ROWNUM`, which identifies the row in the array.

The unique key and `<array_name>_ROWNUM` columns are generated automatically. Together, they uniquely identify each row in the virtual view and form a unique key.

[Figure 3-4](#) shows the `STUDENT_BOOKS` virtual view with the two array member columns (`ISBN` and `RETURN_DATE`) and the column that identifies the row in the array (`BOOK_ROWNUM`).

**Figure 3-4 Virtual View `STUDENT_BOOKS`**

BOOK_ROWNUM	ISBN	RETURN_DATE
1	1234	2004-05-02
1	5678	2005-03-11
1	5334	2003-12-29
2	7843	2003-12-29
1	8039	2003-12-15
2	4930	2003-12-12
1	4738	2003-04-23
2	2849	2003-06-18
1	2849	2003-09-15
2	8943	2004-01-13
3	7832	2004-01-20
1	1820	2003-10-30
2	9493	2003-11-16
3	2819	2003-11-16

Oracle Studio for IMS, VSAM, and Adabas Gateways also maintains primary and foreign key definitions that connect between the parent table and the array tables. This allows graphical tools to easily match parent and array.

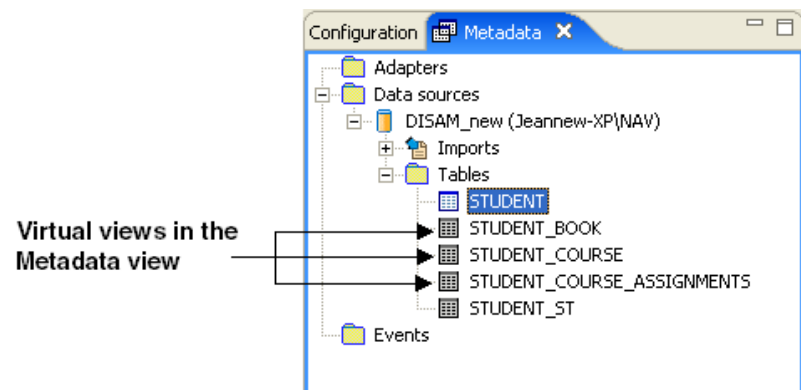
When working with virtual views, consider the following limitations:

- Virtual views are read-only.
- Virtual views do not support arrays within variants that have a selector field.

Including all parent fields in the virtual view greatly reduces the need for performing join operations because this in itself is an implicit join. In general, the query processor can devise efficient access strategies because Oracle Connect for IMS, VSAM, and Adabas Gateways copies all relevant indexes from the parent to the virtual view.

Oracle Studio for IMS, VSAM, and Adabas Gateways indicates virtual views by using a different colored icon in the Metadata view, as shown in Figure 3-5.

**Figure 3-5** Display of Virtual Views in Oracle Studio for IMS, VSAM, and Adabas Gateways



## Sequential Flattening (Bulk Load of Array Data)

Performing a bulk load of complex data from a non-relational system to a relational database requires a carefully thought-out algorithm that keeps I/O operations at a minimum.

In a bulk load scenario, a method such as [Virtual Views](#) requires a full scan of the physical file for every single array. An efficient method of performing this task presents a kind of row-wise normalization, called sequential flattening. This method reads all data in the physical file in a single scan.

Sequential flattening replaces arrays in a non-relational system by a sequence of rows. It maps all the record fields of the non-relational file to a single table that contains both parent and child records. In this way, sequential flattening enables the reception of a stream of data by using a single `SELECT` statement.

The sequentially flattened view of a complex table is referred to as a *single table* or *sequential view*. You can choose to create a sequential view in Oracle Studio for IMS, VSAM, and Adabas Gateways by selecting the **Generate sequential view** check box during the Metadata Model Selection step of the Metadata Import procedure. The single table is read-only.

**See Also:** *Oracle Database Gateway for IMS, VSAM, and Adabas Installation and Configuration Guide for Microsoft Windows* or *Oracle Database Gateway for IMS, VSAM, and Adabas Installation and Configuration Guide for UNIX* for details on importing metadata into Oracle Studio for IMS, VSAM, and Adabas Gateways.

The flattened table is called `<table>_ST`, where `<table>` is the name of the parent table and `ST` indicates a single table. For example, if a parent table is called `STUDENT`, the single table, or sequential view, is called `STUDENT_ST`.

The structure of the single table is identical to the original table's structure, except that Oracle Connect for IMS, VSAM, and Adabas Gateways removes all array dimensions

and adds some control fields. When reading a record, Oracle Connect for IMS, VSAM, and Adabas Gateways performs a tree traversal of the parent and its array hierarchy. Each record in the resulting recordset deals with a specific array member; other arrays are nulled out.

The sequentially flattened single table includes the following columns:

- The parent fields, that is the non-repeating fields.
- The array fields for all arrays within the parent.
- For each array, an optional column called <array\_name>\_ROWNUM, which identifies the row in the array. This column is generated automatically for the array.

The sequentially flattened single table includes a record (row) for each array record.

See [Figure 3-1](#) for an illustration of arrays and nested arrays.

[Figure 3-6](#) shows the metadata that sequential flattening produces for a data source with three arrays (COURSE, ASSIGNMENTS, and BOOK) in the SQL View window. The window presents read-only information about each of the columns in the table.

**Figure 3-6 SQL View of the Single Table's Metadata**

Name	Data type	Size	Scale	Precision	Nullable
COURSE_ROWNUM	int	4	0	0	true
ASSIGNMENTS_ROWNUM	int	4	0	0	true
BOOK_ROWNUM	int	4	0	0	true
ID	number	8	0	8	false
FIRST_NAME	string	32	0	32	false
LAST_NAME	string	32	0	32	false
DATE_OF_BIRTH	datetime	6	0	0	true
NUMOF_COURSES	int	4	0	0	false
NUMOF_BOOKS	int	4	0	0	false
COURSE_ID	number	8	0	8	true
COURSE_TITLE	string	48	0	48	true
INSTRUCTOR_ID	number	8	0	8	true
NUMOF_ASSIGNMENTS	int	4	0	0	true
ASSIGNMENT_TYPE	string	12	0	12	true
ASSIGNMENT_TITLE	string	48	0	48	true
DUE_DATE	datetime	6	0	0	true
GRADE	number	2	-1	2	true
ISBN	string	10	0	10	true
RETURN_DATE	datetime	6	0	0	true

The following table describes the information presented in this window.

**Table 3-2 SQL View Window**

Information Type	Description
Name	The name of the column.
Data Type	The data type supported by that column. For example, string or integer.
Size	Indicates the maximum size allowable for the data in the column. The size is in standard units for the data type. For example, a string with size 40 can have no more than forty characters.
Scale	Indicates the number of digits allowed after the decimal point for a numeric value.



**Table 3–2 (Cont.) SQL View Window**

Information Type	Description
Precision	Indicates the total number of digits allowed for a numeric value in the column. If the value has a scale of one or more, then the total number of digits allowed before the decimal point is the precision value minus the scale value. For example, a value with precision 4 and scale 2 can be no larger than 99.99.
Nullable	Indicates whether the column can have a null value. If True, the column is nullable.

Figure 3–7 shows the actual single table after running a SELECT clause. It contains a column for each row in the preceding SQL view.

**Figure 3–7 STUDENT\_ST with All Parent and Child Records**

Details of the first course. The three rows show the course assignments.

Once the first course has been retrieved, the next course is retrieved with its assignments.

Following all the courses, the next array (BOOK) is retrieved.

These rows belong to a single parent record.

COURSE_ROWNUM	ASSIGNMENTS_ROWNUM	BOOK_ROWNUM	ID	FIRST_NAME	LAST_NAME	DATE_OF_BIRTH	NUMOF_COURSES	NUMOF_BOOKS	COURSE_ID	COURSE_TITL
1	1		6	Julie	Walter	1984-08-05	2	3	6	Advanced C...
1	2		6	Julie	Walter	1984-08-05	2	3	6	Advanced C...
1	3		6	Julie	Walter	1984-08-05	2	3	6	Advanced C...
2	1		6	Julie	Walter	1984-08-05	2	3	7	Statistics an...
2	2		6	Julie	Walter	1984-08-05	2	3	7	Statistics an...
2	3		6	Julie	Walter	1984-08-05	2	3	7	Statistics an...
		1	6	Julie	Walter	1984-08-05	2	3		
		2	6	Julie	Walter	1984-08-05	2	3		
		3	6	Julie	Walter	1984-08-05	2	3		

Open chapter

A SQL describe of this single table produces the following result:

Name	Null?	Type
__LEVEL	NOT NULL	VARCHAR2 (64)
__SEQUENCE	NOT NULL	NUMBER (11)
COURSE_ROWNUM		NUMBER (10)
ASSIGNMENTS_ROWNUM		NUMBER (10)
BOOK_ROWNUM		NUMBER (10)
ID	NOT NULL	NUMBER (8)
FIRST_NAME	NOT NULL	CHAR (32)
LAST_NAME	NOT NULL	CHAR (32)
DATE_OF_BIRTH	NOT NULL	CHAR (8)
NUMOF_COURSES	NOT NULL	NUMBER (10)
NUMOF_BOOKS	NOT NULL	NUMBER (10)
COURSE_ID		NUMBER (8)
COURSE_TITLE		CHAR (48)
INSTRUCTOR_ID		NUMBER (8)
NUMOF_ASSIGNMENTS		NUMBER (10)
ASSIGNMENT_TYPE		CHAR (12)
ASSIGNMENT_TITLE		CHAR (48)
DUE_DATE		CHAR (8)
GRADE		NUMBER (2, 1)
ISBN		CHAR (10)
RETURN_DATE		CHAR (8)

This table shows all the columns of the single table.



---

---

## Setting the Array Handling Policy

This chapter contains the following sections:

- [Setting the Default Behavior for Array Handling](#)
- [Modifying the Default Behavior During Metadata Import](#)
- [Modifying the Array Handling Policy for a Specific Table](#)

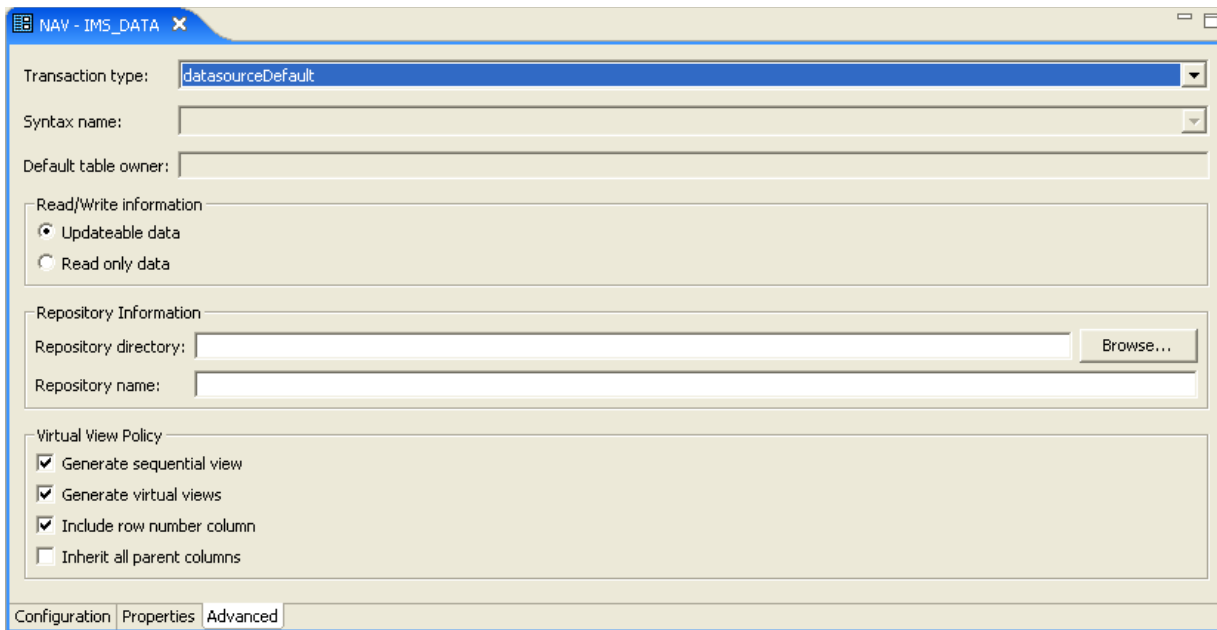
### Setting the Default Behavior for Array Handling

You can define the default behavior for array handling at the data source level when configuring the data source properties.

See *Oracle Database Gateway for IMS, VSAM, and Adabas Installation and Configuration Guide for Microsoft Windows* or *Oracle Database Gateway for IMS, VSAM, and Adabas Installation and Configuration Guide for UNIX* for details on configuring data source properties.

Perform the following steps to set the default behavior:

1. Right-click the data source and select **Edit Data Source**.  
The Configuration Properties screen opens.
2. On the **Advanced** tab, in the **Virtual View Policy** section, configure how arrays will be handled by selecting the relevant check boxes. The following options are available:
  - **Generate sequential view**: Select this option if you want to map a non-relation file to a single table.
  - **Generate virtual views**: Select this option if you want to have an individual table created for every array in the non-relational file.
  - **Include row number column**: Select this option if you want to include a column that specifies the row number in the virtual or sequential view.
  - **Inherit all parent columns**: Select this option if you want the virtual views to include all the columns of the parent record.

**Figure 4–1** Setting the Default Behavior for Handling Arrays

3. Save your settings.

## Modifying the Default Behavior During Metadata Import

During the metadata import procedure, the Metadata Model Selection step lets you modify the array handling policy for the tables to be imported. You can define specific settings per table or keep the default values, which are inherited from the settings that you defined on the data source level (see [Setting the Default Behavior for Array Handling](#)). After importing a table, you can change its array handling settings on the **Modeling** tab of the table editor (see [Modifying the Array Handling Policy for a Specific Table](#)).

See *Oracle Database Gateway for IMS, VSAM, and Adabas Installation and Configuration Guide for Microsoft Windows* or *Oracle Database Gateway for IMS, VSAM, and Adabas Installation and Configuration Guide for UNIX* for details on the import procedure per data source.

Perform the following steps to select the metadata model.

1. In the Import Wizard, click **Next** until you reach the Metadata Model Selection step.
2. Select from the following:
  - **Default values for all tables:** Select this option if you want to apply the same values to all tables to be imported.

---

**Note:** Selecting this check box discards all table-specific settings.

---

- **Generate sequential view:** Select this option if you want to map a non-relation file to a single table.
- **Generate virtual views:** Select this option if you want to have an individual table created for every array in the non-relational file.

- **Virtual views include row number:** Select this option if you want to include a column that specifies the row number in the virtual or sequential view.
- **Virtual views inherit all parent columns:** Select this option if you want the virtual views to include all the columns of the parent record.
- **Specific virtual array view settings per table:** Select this option if you want to apply different values to the tables to be imported. Then select the relevant check boxes.

**Figure 4–2** *Selecting the Metadata Model*

**Metadata Model Selection** Step 5 of 6

Default values for all tables

- Generate sequential view
- Generate virtual views
- Virtual views include row number
- Virtual views inherit all parent columns

Specific virtual array view settings per table

Table Name	Generate Sequential View	Generate Virtual Views	Include Row Number Column	Inherit all Parent Columns
STUDENT	<input checked="" type="checkbox"/>	<input checked="" type="checkbox"/>	<input checked="" type="checkbox"/>	<input type="checkbox"/>

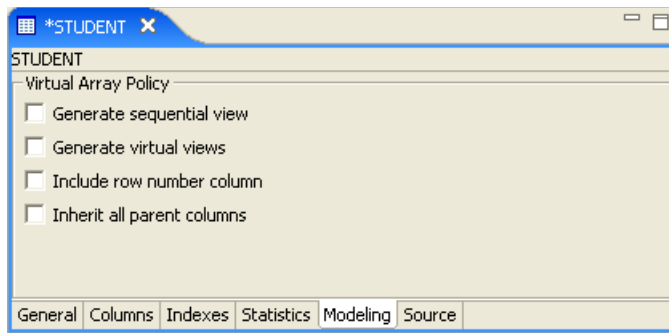
3. Click **Next** to continue to the next step, then click **Finish**.

## Modifying the Array Handling Policy for a Specific Table

You can also change the array handling policy on the table level. Perform the following steps to modify the policy for a specific table:

1. Right-click the data source and select **Edit metadata**.  
The Metadata view opens on the node of the respective data source.
2. Expand the data source node, and then expand the **Tables** node.
3. Double-click the table whose array handling settings you want to modify.  
The table editor opens.
4. On the **Modeling** tab, configure how arrays will be handled by selecting the relevant check boxes. The following options are available:
  - **Generate sequential view:** Select this option if you want to map a non-relation file to a single table.
  - **Generate virtual views:** Select this option if you want to have an individual table created for every array in the non-relational file.
  - **Include row number column:** Select this option if you want to include a column that specifies the row number in the virtual or sequential view.
  - **Inherit all parent columns:** Select this option if you want the virtual views to include all the columns of the parent record.

**Figure 4–3** *Modifying the Array Handling Policy on the Table Level*



5. Save your settings.

Oracle Studio for IMS, VSAM, and Adabas Gateways creates new virtual views.

---



---

## Data Type Conversion

This appendix contains the following section:

- [Conversion of Atomic Data Types](#)
- [Conversion of Non-Atomic Data Types](#)
- [Conversion of Decimal Data Types](#)
- [Conversion of Scaled Data Types](#)

### Conversion of Atomic Data Types

The gateway converts atomic data types in the advanced data dictionary (ADD) to Oracle data types as described in [Table A-1](#).

**Table A-1 Atomic Data Types**

ADD Data Type	Oracle Data Type	Details
apt_date	DATE	Date packed into a 4-character string. Format: DMY Y Example: 23-Jul-1998 is represented by four bytes: 19, 98, 7, and 23.
apt_time	DATE	ADD date-time format.
bit	NUMBER (3)	Single bit within a byte. Size: 1 byte. Format: datatype="bit" onBit="n" Where <i>n</i> specifies which bit (within a byte) the field uses. If more than one bit is defined, then the additional bits may be defined sequentially within the same byte (or bytes, if the number of bits requires this much space).
bits	NUMBER (3)	A signed number of bits within a byte. Size: 1 bit to 1 byte Format: <field name="name" datatype="bits" onBit="n" size="m" /> Where <i>n</i> specifies which bit (within a byte) to start from and <i>m</i> is the number of bits. If <i>n</i> is not specified then <i>n</i> defaults to 1 for the first occurrence of the field and is contiguous thereafter. The maximum number of bits you can map is 32.

**Table A-1 (Cont.) Atomic Data Types**

<b>ADD Data Type</b>	<b>Oracle Data Type</b>	<b>Details</b>
cstring	VARCHAR2	A null-terminated string of alphanumeric characters; maximum length must be specified. An extra byte is required for the null flag.
cv_datetime	DATE	CorVision date-time format.
date	DATE	Date format.
date6	DATE	Date in a string having the form YYMMDD
date8	DATE	Date in a string having the form YYYYMMDD
dfloat	FLOAT(49)	Double floating-point number (D_FLOAT) Size: 8 bytes Range: 0.29E-38 to 1.7E38 Precision: 16 digits.
filler	RAW	Allocation for future use, string type; length must be specified.
fixed_cstring	FLOAT(49)	A fixed null-terminated string of numeric characters; length must be specified. An extra byte is required for the null flag.
int1	NUMBER(3)	Signed byte integer. Size: 1 byte Range: -128 to +127
int2	NUMBER(5)	Signed word integer. Size: 1 byte Range: -32768 to +32767
int3	NUMBER(10)	Signed integer Size: 3 bytes
int4	NUMBER(10)	Signed long integer. Size: 4 bytes Range: -2147483648 to +2147483647
int6	NUMBER(10)	Signed integer Size: 6 bytes
int_date	DATE	Date in a four-byte integer having the form YYMMDD or YYYYMMDD. Example, 23-Jul-1998 has the form: 980723 or 19980723.
jdate	DATE	Julian date Size: 2 bytes Bits 0-6: (non-century) year Bits 7-15: day of the year
logical	NUMBER(10)	Signed long integer Values: 1 for true, 0 for false
mvs_date	DATE	z/OS date format.
mvs_datetime	DATE	z/OS date-time format.
mvs_time	DATE	z/OS time format.



**Table A-1 (Cont.) Atomic Data Types**

<b>ADD Data Type</b>	<b>Oracle Data Type</b>	<b>Details</b>
padded_str_date	DATE	Padded date format, not null-terminated.
padded_str_datetime	DATE	Padded date format, not null-terminated.
padded_str_time	DATE	Padded date format, not null-terminated.
phdate	DATE	Size: 2 bytes Bits 0-6: (non-century) year Bits 7-10: number of month Bits 11-15: day of month
single	FLOAT(23)	Single floating-point number (F_FLOAT). Size: 4 bytes Range: 0.29E-38 to 1.7E38 Precision: 6 digits
str_date	CHAR(10)	Atomic date string Size: 10 characters Format: YYYY-MM-DD
str_datetime	CHAR(19)	Atomic date-time string. Size: 19 characters Format: YYYY-MM-DD HH:MM:SS
str_time	CHAR(8)	Atomic date string Size: 8 characters Format: HH:MM:SS
string	CHAR	String of alphanumeric characters; length must be specified.
time	DATE	Time format.
timestamp	DATE	Date-time format.
ubits	NUMBER(3)	An unsigned number of bits within a byte. Size: 1 bit to 1 byte Format: <field name="name" datatype="bits" onBit="n" size="m"/> Where <i>n</i> specifies which bit (within a byte) to start from and <i>m</i> is the number of bits. If <i>n</i> is not specified, then <i>n</i> defaults to 1 for the first occurrence of the field and its contiguous thereafter. The maximum number of bits you can map is 31.
uint1	NUMBER(3)	Unsigned byte integer. Size: 1 byte Range: 0 to +254
uint2	NUMBER(10)	Unsigned word integer. Size: 2 bytes Range: 0 to +65534
uint4	NUMBER(11)	Signed long integer Size: 4 bytes Range: 0 to +4,294,967,294

**Table A-1 (Cont.) Atomic Data Types**

ADD Data Type	Oracle Data Type	Details
uint6	NUMBER	Unsigned integer. Size: 6 bytes
unicode	VARCHAR2	A null-terminated alphanumeric unicode string. Maximum length must be specified.
varstring	VARCHAR2	16-bit count, followed by a string.
varstring4	VARCHAR2	32-bit count, followed by a string.

## Conversion of Non-Atomic Data Types

The gateway converts non-atomic data types to Oracle data types as described in [Table A-2](#).

**Table A-2 Non-atomic Data Types**

ADD Data Type	Oracle Data Type	Details
binary	RAW	Unknown data type, string type; length must be specified.
nls_string	CHAR	A string based on language and driven by table.

## Conversion of Decimal Data Types

The gateway converts decimal data types to Oracle data types as described in [Table A-3](#).

**Table A-3 Decimal Data Types**

ADD Data Type	Oracle Data Type	Details
decimal	NUMBER	Packed decimal Maximum number of digits: 31 Maximum fractions: 11 Length = int (number of digits/2) + 1 bytes
numeric_cstring	NUMBER	A null-terminated string of numeric characters; maximum length must be specified. An extra byte is required for the null flag.
numstr_bdn	NUMBER	Signed numeric string. Sign is the first character of the string. Maximum number of digits: 31 Maximum fractions: 11 <b>Note:</b> the number of fractions includes the decimal point.
numstr_nlo	NUMBER	Signed numeric string. A left overpunched sign is implemented. Maximum number of digits: 31 Maximum fractions: 11
numstr_nl	NUMBER	Signed numeric string. Sign is the first character of the string. Maximum number of digits: 31 Maximum fractions: 11
numstr_nr	NUMBER	Signed numeric string. Sign is the last character of the string. Maximum number of digits: 31 Maximum fractions: 11

**Table A-3 (Cont.) Decimal Data Types**

<b>ADD Data Type</b>	<b>Oracle Data Type</b>	<b>Details</b>
numstr_s	NUMBER	Signed numeric string. A right overpunched sign is implemented. Maximum number of digits: 31 Maximum fractions: 11 The number must be right-justified (for example, "1234N" is -12345). The number can be left-padded by either spaces or zeros. If a scale is provided, it is a fixed positional scale. No decimal point is provided in the data (for example, a value of "1234E" with scale 2 is interpreted as "123.45").
numstr_u	NUMBER	Unsigned numeric string. Maximum number of digits: 31 Maximum fractions: 11
numstr_zoned	NUMBER	Signed numeric string Maximum number of digits: 31 Maximum fractions: 11

## Conversion of Scaled Data Types

The gateway converts scaled data types to Oracle data types as described in [Table A-4](#).

**Table A-4 Scaled Data Types**

<b>ADD Data Type</b>	<b>Oracle Data Type</b>	<b>Details</b>
scaled_int1	NUMBER	Signed byte integer. Size: 1 byte Range: -128 to +127 Maximum: 3
scaled_int2	NUMBER	Single word integer. Size: 2 bytes Range: -32768 to +32767 Maximum: 5
scaled_int3	NUMBER	Signed integer. Size: 3 bytes
scaled_int4	NUMBER	Signed long integer. Size: 4 bytes Range: -2147483648 to +2147483647 Maximum: 10
scaled_int6	NUMBER	Signed integer Size: 6 bytes
scaled_int8	NUMBER	Signed quadword. Size: 4 bytes Range: -2147483648 to +2147483647 Maximum: 10

**Table A-4 (Cont.) Scaled Data Types**

<b>ADD Data Type</b>	<b>Oracle Data Type</b>	<b>Details</b>
scaled_uint1	NUMBER	Unsigned byte integer. Size: 1 byte Range: 0 to +254 Maximum: 3
scaled_uint2	NUMBER	Unsigned word integer. Size: 2 bytes Range: 0 to +65534 Maximum: 5
scaled_uint4	NUMBER(5)	Unsigned long integer Size: 4 bytes Range: 0 to +4,294,967,294 Maximum: 10

---

---

---

## Supported SQL Syntax and Functions

This appendix contains the following sections:

- [Supported SQL Statements](#)
- [Oracle Functions](#)

**See Also:** *Oracle Database SQL Reference* for detailed descriptions of keywords, parameters, and options and the VSAM documentation for details of executing SQL statements in a transaction.

### Supported SQL Statements

With a few exceptions, the gateway provides full support for Oracle `DELETE`, `INSERT`, `SELECT`, and `UPDATE` statements.

The gateway does not support Oracle data definition language (DDL) statements. No form of the Oracle `ALTER`, `CREATE`, `DROP`, `GRANT`, or `TRUNCATE` statements can be used. Instead, for `ALTER`, `CREATE`, `DROP`, and `GRANT` statements, use the pass-through feature of the gateway if you need to use DDL statements against the VSAM database.

---

---

**Note:** `TRUNCATE` cannot be used in a pass-through statement.

---

---

#### DELETE

The `DELETE` statement is fully supported. However, only Oracle functions supported by VSAM can be used.

**See Also:** "[Functions Supported by VSAM](#)" on page B-2 for a list of supported functions.

#### INSERT

The `INSERT` statement is fully supported. However, only Oracle functions supported by VSAM can be used.

**See Also:** "[Functions Supported by VSAM](#)" on page B-2 for a list of supported functions.

#### SELECT

The `SELECT` statement is fully supported, with these exceptions:

- `CONNECT BY` *condition*

- NOWAIT
- START WITH *condition*
- WHERE CURRENT OF

## UPDATE

The UPDATE statement is fully supported. However, only Oracle functions supported by VSAM can be used. Also, you cannot have SQL statements in the subquery that refer to the same table name in the outer query. Subqueries are not supported in the SET clause.

**See Also:** ["Functions Supported by VSAM"](#) on page B-2 for a list of supported functions.

## Oracle Functions

All functions are evaluated by the VSAM database after the gateway has converted them to VSAM SQL.

### Functions Not Supported by VSAM

Oracle SQL functions with no equivalent function in VSAM are not supported in DELETE, INSERT, or UPDATE statements, but are evaluated by the Oracle Database if the statement is a SELECT statement. That is, the Oracle Database performs post-processing of SELECT statements sent to the gateway.

If an unsupported function is used in a DELETE, INSERT, or UPDATE, statement, the following Oracle error occurs:

```
ORA-02070: database db_link_name does not support function in this context
```

**See Also:** *Oracle Database Error Messages* for more information on error messages.

### Functions Supported by VSAM

The gateway translates the following Oracle Database functions in SQL statements to their equivalent VSAM functions:

- [Arithmetic Operators](#)
- [Comparison Operators](#)
- [Group Functions](#)
- [String Functions](#)
- [Other Functions](#)

#### Arithmetic Operators

The following table specifies the arithmetic operators.

Oracle	VSAM
+	+
-	-

Oracle	VSAM
*	*
/	/

### Comparison Operators

The following table specifies the comparison operators.

Oracle	VSAM
=	=
>	>
<	<
>=	>=
<=	<=
<>, !=, ^=	<>, !=
IS NOT NULL	IS NOT NULL
IS NULL	IS NULL

### Group Functions

The following table specifies the group functions.

Oracle	VSAM
AVG	AVG
COUNT	COUNT
MAX	MAX
MIN	MIN
SUM	SUM

### String Functions

The following table specifies the string functions.

Oracle	VSAM
	+ ( <i>expression1</i> + <i>expression2</i> )
ASCII	ASCII
CHR	CHAR
INSTR	CHARINDEX
LENGTH	CHAR_LENGTH
LOWER	LOWER
SUBSTR (second argument cannot be a negative number)	SUBSTRING
UPPER	UPPER

**Other Functions**

The following table specifies the other functions.

<b>Oracle</b>	<b>VSAM</b>
ABS	ABS
CEIL	CEILING
COS	COS
EXP	EXP
FLOOR	FLOOR
LN	LOG
LOG	LOG10
MOD	%
NVL	IS NULL
POWER	POWER
ROUND	ROUND
SIN	SIN
SQRT	SQRT
TAN	TAN



---

---

## Data Dictionary

The Oracle Database Gateway for VSAM translates a query that refers to an Oracle Database data dictionary table into a query that retrieves the data from a VSAM data dictionary. You perform queries on data dictionary tables over the database link in the same way you query data dictionary tables in the Oracle Database. The gateway data dictionary is similar to the Oracle Database data dictionary in appearance and use.

This appendix contains the following sections:

- [Data Dictionary Support](#)
- [VSAM Data Dictionary Descriptions](#)

### Data Dictionary Support

Data dictionary information is stored in the gateway's advanced data dictionary (ADD). The views and tables that the gateway supports provide information on the following:

- The tables existing in the data source
- The columns for each table
- The primary key for each table
- The foreign keys for each table
- Which primary key each foreign key references
- The existing users and indexes

The following topics describe the Oracle Database Gateway for VSAM data dictionary support.

### Accessing the Gateway Data Dictionary

Accessing an ADD record definition is identical to accessing a data dictionary table or view definition on an Oracle database. You issue a SQL `SELECT` statement specifying a database link. The Oracle Database data dictionary view and column names are used to access the gateway data dictionary. Synonyms of supported views are also acceptable. For example, the following statement queries the data dictionary table `ALL_TABLES`:

```
SQL> SELECT * FROM ALL_TABLES@VSAM;
```

When a data dictionary access query is issued, the gateway:

1. Maps the requested table, view, or synonym to one or more ADD names.

2. Processes the query within the gateway.
3. May convert the retrieved data to give it the appearance of the Oracle Database data dictionary table.
4. Passes the data dictionary information to the Oracle Database.

## Supported Views and Tables

The gateway supports the following views and tables:

- ALL\_CATALOG
- ALL\_CONS\_COLUMNS
- ALL\_IND\_COLUMNS
- ALL\_OBJECTS
- ALL\_TAB\_COMMENTS
- ALL\_USERS
- DBA\_CATALOG
- DBA\_OBJECTS
- DICTIONARY
- USER\_CATALOG
- USER\_CONS\_COLUMNS
- USER\_IND\_COLUMNS
- USER\_OBJECTS
- USER\_TAB\_COMMENTS
- USER\_USERS
- ALL\_COL\_COMMENTS
- ALL\_CONSTRAINTS
- ALL\_INDEXES
- ALL\_TAB\_COLUMNS
- ALL\_TABLES
- ALL\_VIEWS
- DBA\_TAB\_COLUMNS
- DICT\_COLUMNS
- DUAL
- USER\_COL\_COMMENTS
- USER\_CONSTRAINTS
- USER\_INDEXES
- USER\_TAB\_COLUMNS
- USER\_TABLES
- USER\_VIEWS

No other Oracle Database data dictionary tables or views are supported. If you use an unsupported view, Oracle Database returns a message that no more rows are available.

If you want to select data dictionary views using `SELECT FROM DBA_*`, first connect as Oracle user `SYSTEM` or `SYS`. Otherwise, you receive the following error message:

```
ORA-28506: Parse error in data dictionary translation for %s stored in %s
```

Queries through the gateway of any data dictionary table or view beginning with `ALL_` can return rows from VSAM even when access privileges for those VSAM objects have not been granted. When querying an Oracle database with the Oracle data dictionary, rows are returned only for those objects you are permitted to access.

**See Also:** *Oracle Database Error Messages* for more information on error messages.

## Default Column Values

There is a minor difference between the gateway data dictionary and a typical Oracle Database data dictionary. The Oracle Database columns that are missing in a VSAM data dictionary table are filled with zeros, spaces, null values, or default values, depending on the column type.

## VSAM Data Dictionary Descriptions

The gateway data dictionary tables and views provide the following information:

- Name, datatype, and width of each column.
- The contents of columns with fixed values.

In the descriptions that follow, the values in the Null? column may differ from the Oracle Database data dictionary tables and views. Any default value is shown to the right of an item.

---



---

**Note:** In all data dictionary tables, the OWNER column has the value VSAM.

---



---

[Table C-1](#) describes the ALL\_CATALOG table.

**Table C-1** ALL\_CATALOG

Name	Null?	Type	Value
OWNER	NOT NULL	VARCHAR2 (30)	VSAM
TABLE_NAME	NOT NULL	VARCHAR2 (30)	-
TABLE_TYPE	-	VARCHAR2 (11)	"TABLE"

[Table C-2](#) describes the ALL\_COL\_COMMENTS table.

**Table C-2** ALL\_COL\_COMMENTS

Name	Null?	Type	Value
OWNER	NOT NULL	VARCHAR2 (30)	VSAM
TABLE_NAME	NOT NULL	VARCHAR2 (30)	-
COLUMN_NAME	NOT NULL	VARCHAR2(30)	-

**Table C-2 (Cont.) ALL\_COL\_COMMENTS**

Name	Null?	Type	Value
COMMENTS	NOT NULL	CHAR (1)	-

Table C-3 describes the ALL\_CONS\_COLUMNS table.

**Table C-3 ALL\_CONS\_COLUMNS**

Name	Null?	Type	Value
OWNER	NOT NULL	VARCHAR2 (30)	VSAM
CONSTRAINT_NAME	NOT NULL	VARCHAR2 (30)	-
TABLE_NAME	NOT NULL	VARCHAR2 (30)	-
COLUMN_NAME	-	VARCHAR2 (4000)	-
POSITION	-	FLOAT (49)	-

Table C-4 describes the ALL\_CONSTRAINTS table.

**Table C-4 ALL\_CONSTRAINTS**

Name	Null?	Type	Value
OWNER	NOT NULL	VARCHAR2 (30)	VSAM
CONSTRAINT_NAME	NOT NULL	VARCHAR2 (30)	-
CONSTRAINT_TYPE	-	VARCHAR2 (1)	"R" or "P"
TABLE_NAME	NOT NULL	VARCHAR2 (30)	-
SEARCH_CONDITION	NOT NULL	CHAR (1)	-
R_OWNER	-	VARCHAR2 (30)	VSAM
R_CONSTRAINT_NAME	-	VARCHAR2 (30)	-
DELETE_RULE	-	VARCHAR2 (9)	-
STATUS	NOT NULL	CHAR (1)	-
DEFERRABLE	NOT NULL	CHAR (1)	-
DEFERRED	NOT NULL	CHAR (1)	-
VALIDATED	NOT NULL	CHAR (1)	-
GENERATED	NOT NULL	CHAR (1)	-
BAD	NOT NULL	CHAR (1)	-
RELY	NOT NULL	CHAR (1)	-
LAST_CHANGE	-	DATE	NULL

Table C-5 describes the ALL\_IND\_COLUMNS table.

**Table C-5 ALL\_IND\_COLUMNS**

Name	Null?	Type	Value
INDEX_OWNER	NOT NULL	VARCHAR2 (30)	-
INDEX_NAME	NOT NULL	VARCHAR2 (30)	-
TABLE_OWNER	NOT NULL	VARCHAR2 (30)	-

**Table C-5 (Cont.) ALL\_IND\_COLUMNS**

<b>Name</b>	<b>Null?</b>	<b>Type</b>	<b>Value</b>
TABLE_NAME	NOT NULL	VARCHAR2 (30)	-
COLUMN_NAME	-	VARCHAR2 (4000)	-
COLUMN_POSITION	NOT NULL	FLOAT (49)	-
COLUMN_LENGTH	NOT NULL	FLOAT (49)	-
DESCEND	-	VARCHAR2 (4)	NULL

Table C-6 describes the ALL\_INDEXES table.

**Table C-6 ALL\_INDEXES**

<b>Name</b>	<b>Null?</b>	<b>Type</b>	<b>Value</b>
OWNER	NOT NULL	VARCHAR2 (30)	VSAM
INDEX_NAME	NOT NULL	VARCHAR2 (30)	-
INDEX_TYPE	NOT NULL	CHAR (1)	-
TABLE_OWNER	NOT NULL	VARCHAR2 (30)	-
TABLE_NAME	NOT NULL	VARCHAR2 (30)	-
TABLE_TYPE	NOT NULL	CHAR (5)	"TABLE"
UNIQUENESS	-	VARCHAR2 (9)	"UNIQUE" or "NONUNIQUE"
COMPRESSION	NOT NULL	CHAR (1)	-
PREFIX_LENGTH	NOT NULL	NUMBER (10)	0
TABLESPACE_NAME	NOT NULL	CHAR (1)	-
INI_TRANS	NOT NULL	NUMBER (10)	0
MAX_TRANS	NOT NULL	NUMBER (10)	0
INITIAL_EXTENT	NOT NULL	NUMBER (10)	0
NEXT_EXTENT	NOT NULL	NUMBER (10)	0
MIN_EXTENTS	NOT NULL	NUMBER (10)	0
MAX_EXTENTS	NOT NULL	NUMBER (10)	0
PCT_INCREASE	NOT NULL	NUMBER (10)	0
PCT_THRESHOLD	NOT NULL	NUMBER (10)	0
INCLUDE_COLUMN	NOT NULL	NUMBER (10)	0
FREELISTS	NOT NULL	NUMBER (10)	0
FREELIST_GROUPS	NOT NULL	NUMBER (10)	0
PCT_FREE	NOT NULL	NUMBER (10)	0
LOGGING	NOT NULL	CHAR (1)	-
BLEVEL	NOT NULL	NUMBER (10)	0
LEAF_BLOCKS	NOT NULL	NUMBER (10)	0
DISTINCT_KEYS	-	FLOAT (49)	-
AVG_LEAF_BLOCKS_PER_KEY	NOT NULL	NUMBER (10)	0

**Table C-6 (Cont.) ALL\_INDEXES**

<b>Name</b>	<b>Null?</b>	<b>Type</b>	<b>Value</b>
AVG_DATA_BLOCKS_PER_KEY	NOT NULL	NUMBER(10)	0
CLUSTERING_FACTOR	NOT NULL	NUMBER(10)	0
STATUS	NOT NULL	CHAR(1)	NULL
NUM_ROWS	NOT NULL	NUMBER(10)	0
SAMPLE_SIZE	NOT NULL	NUMBER(10)	0
LAST_ANALYZED	-	DATE	NULL
DEGREE	NOT NULL	CHAR(1)	NULL
INSTANCES	NOT NULL	CHAR(1)	NULL
PARTITIONED	NOT NULL	CHAR(1)	NULL
TEMPORARY	NOT NULL	CHAR(1)	-
GENERATED	NOT NULL	CHAR(1)	-
SECONDARY	NOT NULL	CHAR(1)	-
BUFFER_POOL	NOT NULL	CHAR(1)	-
USER_STATS	NOT NULL	CHAR(1)	-
DURATION	NOT NULL	CHAR(1)	-
PCT_DIRECT_ACCESS	NOT NULL	NUMBER(10)	0
ITYP_OWNER	NOT NULL	CHAR(1)	-
ITYP_NAME	NOT NULL	CHAR(1)	-
PARAMETERS	NOT NULL	CHAR(1)	-
GLOBAL_STATS	NOT NULL	CHAR(1)	-
DOMIDX_STATUS	NOT NULL	CHAR(1)	-
DOMIDX_OPSTATUS	NOT NULL	CHAR(1)	-
FUNCIDX_STATUS	NOT NULL	CHAR(1)	-

Table C-7 describes the ALL\_OBJECTS table.

**Table C-7 ALL\_OBJECTS**

<b>Name</b>	<b>Null?</b>	<b>Type</b>	<b>Value</b>
OWNER	-	VARCHAR2(30)	VSAM
OBJECT_NAME	-	VARCHAR2(30)	-
SUBOBJECT_NAME	-	VARCHAR2(1)	NULL
OBJECT_ID	-	NUMBER	0
DATA_OBJECT_ID	-	NUMBER	0
OBJECT_TYPE	-	VARCHAR2(18)	"TABLE" or "INDEX"
CREATED	-	DATE	NULL
LAST_DDL_TIME	-	DATE	NULL
TIMESTAMP	-	VARCHAR2(1)	NULL

**Table C-7 (Cont.) ALL\_OBJECTS**

<b>Name</b>	<b>Null?</b>	<b>Type</b>	<b>Value</b>
STATUS	-	VARCHAR2 (1)	NULL
TEMPORARY	-	VARCHAR2 (1)	NULL
GENERATED	-	VARCHAR2 (1)	NULL
SECONDARY	-	VARCHAR2 (1)	NULL

Table C-8 describes the ALL\_TAB\_COLUMNS table.

**Table C-8 ALL\_TAB\_COLUMNS**

<b>Name</b>	<b>Null?</b>	<b>Type</b>	<b>Value</b>
OWNER	NOT NULL	VARCHAR2 (30)	VSAM
TABLE_NAME	NOT NULL	VARCHAR2 (30)	-
COLUMN_NAME	NOT NULL	VARCHAR2 (30)	-
DATA_TYPE	-	VARCHAR2 (106)	-
DATA_TYPE_MOD	NOT NULL	CHAR (1)	-
DATA_TYPE_OWNER	NOT NULL	CHAR (1)	-
DATA_LENGTH	NOT NULL	FLOAT (49)	-
DATA_PRECISION	-	FLOAT (49)	-
DATA_SCALE	-	FLOAT (49)	-
NULLABLE	-	VARCHAR2 (1)	"Y" or "N"
COLUMN_ID	NOT NULL	FLOAT (49)	-
DEFAULT_LENGTH	NOT NULL	NUMBER (10)	0
DATA_DEFAULT	NOT NULL	CHAR (1)	-
NUM_DISTINCT	NOT NULL	NUMBER (10)	0
LOW_VALUE	NOT NULL	NUMBER (10)	-
HIGH_VALUE	NOT NULL	NUMBER (10)	-
DENSITY	NOT NULL	NUMBER (10)	0
NUM_NULLS	NOT NULL	NUMBER (10)	0
NUM_BUCKETS	NOT NULL	NUMBER (10)	0
LAST_ANALYZED	-	DATE	NULL
SAMPLE_SIZE	NOT NULL	NUMBER (10)	0
CHARACTER_SET_NAME	NOT NULL	CHAR (1)	-
CHAR_COL_DEC_LENGTH	NOT NULL	NUMBER (10)	0
GLOBAL_STATS	NOT NULL	CHAR (1)	-
USER_STATS	NOT NULL	CHAR (1)	-
AVG_COL_LEN	NOT NULL	NUMBER (10)	0

Table C-9 describes the ALL\_TAB\_COMMENTS table.

**Table C-9 ALL\_TAB\_COMMENTS**

<b>Name</b>	<b>Null?</b>	<b>Type</b>	<b>Value</b>
OWNER	NOT NULL	VARCHAR2 (30)	VSAM
TABLE_NAME	NOT NULL	VARCHAR2 (30)	-
TABLE_TYPE	-	VARCHAR2 (11)	"TABLE"
COMMENTS	NOT NULL	CHAR (1)	-

Table C-10 describes the ALL\_TABLES table.

**Table C-10 ALL\_TABLES**

<b>Name</b>	<b>Null?</b>	<b>Type</b>	<b>Value</b>
OWNER	NOT NULL	VARCHAR2 (30)	VSAM
TABLE_NAME	NOT NULL	VARCHAR2 (30)	-
TABLESPACE_NAME	NOT NULL	CHAR (1)	-
CLUSTER_NAME	NOT NULL	CHAR (1)	-
IOT_NAME	NOT NULL	CHAR (1)	-
PCT_FREE	NOT NULL	NUMBER (10)	0
PCT_USED	NOT NULL	NUMBER (10)	0
INI_TRANS	NOT NULL	NUMBER (10)	0
MAX_TRANS	NOT NULL	NUMBER (10)	0
INITIAL_EXTENT	NOT NULL	NUMBER (10)	0
NEXT_EXTENT	NOT NULL	NUMBER (10)	0
MIN_EXTENTS	NOT NULL	NUMBER (10)	0
MAX_EXTENTS	NOT NULL	NUMBER (10)	0
PCT_INCREASE	NOT NULL	NUMBER (10)	0
FREELISTS	NOT NULL	NUMBER (10)	0
FREELIST_GROUPS	NOT NULL	NUMBER (10)	0
LOGGING	NOT NULL	CHAR (1)	-
BACKED_UP	NOT NULL	CHAR (1)	-
NUM_ROWS	-	FLOAT (49)	-
BLOCKS	-	FLOAT (49)	-
EMPTY_BLOCKS	NOT NULL	NUMBER (10)	0
AVG_SPACE	NOT NULL	NUMBER (10)	0
CHAIN_CNT	NOT NULL	NUMBER (10)	0
AVG_ROW_LEN	NOT NULL	NUMBER (10)	0
AVG_SPACE_FREELIST_BLOCKS	NOT NULL	NUMBER (10)	0
NUM_FREELIST_BLOCKS	NOT NULL	NUMBER (10)	0
DEGREE	NOT NULL	CHAR (1)	-
INSTANCES	NOT NULL	CHAR (1)	-
CACHE	NOT NULL	CHAR (1)	-



**Table C-10 (Cont.) ALL\_TABLES**

<b>Name</b>	<b>Null?</b>	<b>Type</b>	<b>Value</b>
TABLE_LOCK	NOT NULL	CHAR (1)	-
SAMPLE_SIZE	NOT NULL	NUMBER (10)	0
LAST_ANALYZED	-	DATE	NULL
PARTITIONED	NOT NULL	CHAR (1)	-
IOT_TYPE	NOT NULL	CHAR (1)	-
TEMPORARY	NOT NULL	CHAR (1)	-
SECONDARY	NOT NULL	CHAR (1)	-
NESTED	NOT NULL	CHAR (1)	-
BUFFER_POOL	NOT NULL	CHAR (1)	-
ROW_MOVEMENT	NOT NULL	CHAR (1)	-
GLOBAL_STATS	NOT NULL	CHAR (1)	-
USER_STATS	NOT NULL	CHAR (1)	-
DURATION	NOT NULL	CHAR (1)	-
SKIP_CORRUPT	NOT NULL	CHAR (1)	-
MONITORING	NOT NULL	CHAR (1)	-

Table C-11 describes the ALL\_USERS table.

**Table C-11 ALL\_USERS**

<b>Name</b>	<b>Null?</b>	<b>Type</b>	<b>Value</b>
USERNAME	NOT NULL	VARCHAR2 (30)	-
USER_ID	-	NUMBER	0
CREATED	-	DATE	NULL

Table C-12 describes the ALL\_VIEWS table.

**Table C-12 ALL\_VIEWS**

<b>Name</b>	<b>Null?</b>	<b>Type</b>	<b>Value</b>
OWNER	NOT NULL	VARCHAR2 (30)	VSAM
VIEW_NAME	NOT NULL	VARCHAR2 (30)	-
TEXT_LENGTH	NOT NULL	NUMBER (10)	0
TEXT	NOT NULL	CHAR (1)	-
TYPE_TEXT_LENGTH	NOT NULL	NUMBER (10)	0
TYPE_TEXT	NOT NULL	CHAR (1)	-
OID_TEXT_LENGTH	NOT NULL	NUMBER (10)	0
OID_TEXT	NOT NULL	CHAR (1)	-
VIEW_TYPE_OWNER	NOT NULL	CHAR (1)	-
VIEW_TYPE	NOT NULL	CHAR (1)	-

[Table C-13](#) describes the DBA\_CATALOG table.

**Table C-13 DBA\_CATALOG**

Name	Null?	Type	Value
OWNER	NOT NULL	VARCHAR2 (30)	VSAM
TABLE_NAME	NOT NULL	VARCHAR2 (30)	-
TABLE_TYPE	-	VARCHAR2 (11)	"TABLE"

[Table C-14](#) describes the DBA\_OBJECTS table.

**Table C-14 DBA\_OBJECTS**

Name	Null?	Type	Value
OWNER	-	VARCHAR2 (30)	VSAM
OBJECT_NAME	-	VARCHAR2 (128)	-
SUBOBJECT_NAME	-	VARCHAR2 (1)	NULL
OBJECT_ID	-	NUMBER	0
DATA_OBJECT_ID	-	NUMBER	0
OBJECT_TYPE	-	VARCHAR2 (18)	"TABLE" or "INDEX"
CREATED	-	DATE	NULL
LAST_DDL_TIME	-	DATE	NULL
TIMESTAMP	-	VARCHAR2 (1)	NULL
STATUS	-	VARCHAR2 (1)	NULL
TEMPORARY	-	VARCHAR2 (1)	NULL
GENERATED	-	VARCHAR2 (1)	NULL
SECONDARY	-	VARCHAR2 (1)	NULL

[Table C-15](#) describes the DBA\_TAB\_COLUMNS table.

**Table C-15 DBA\_TAB\_COLUMNS**

Name	Null?	Type	Value
OWNER	NOT NULL	VARCHAR2 (30)	VSAM
TABLE_NAME	NOT NULL	VARCHAR2 (30)	-
COLUMN_NAME	NOT NULL	VARCHAR2 (30)	-
DATA_TYPE	-	VARCHAR2 (106)	-
DATA_TYPE_MOD	NOT NULL	CHAR (1)	-
DATA_TYPE_OWNER	NOT NULL	CHAR (1)	-
DATA_LENGTH	NOT NULL	FLOAT (49)	-
DATA_PRECISION	-	FLOAT (49)	-
DATA_SCALE	-	FLOAT (49)	-
NULLABLE	-	VARCHAR2 (1)	"Y" or "N"
COLUMN_ID	NOT NULL	FLOAT (49)	-

**Table C-15 (Cont.) DBA\_TAB\_COLUMNS**

<b>Name</b>	<b>Null?</b>	<b>Type</b>	<b>Value</b>
DEFAULT_LENGTH	NOT NULL	NUMBER(10)	0
DATA_DEFAULT	NOT NULL	CHAR(1)	-
NUM_DISTINCT	NOT NULL	NUMBER(10)	0
LOW_VALUE	NOT NULL	NUMBER(10)	-
HIGH_VALUE	NOT NULL	NUMBER(10)	-
DENSITY	NOT NULL	NUMBER(10)	0
NUM_NULLS	NOT NULL	NUMBER(10)	0
NUM_BUCKETS	NOT NULL	NUMBER(10)	0
LAST_ANALYZED	-	DATE	NULL
SAMPLE_SIZE	NOT NULL	NUMBER(10)	0
CHARACTER_SET_NAME	NOT NULL	CHAR(1)	-
CHAR_COL_DEC_LENGTH	NOT NULL	NUMBER(10)	0
GLOBAL_STATS	NOT NULL	CHAR(1)	-
USER_STATS	NOT NULL	CHAR(1)	-
AVG_COL_LEN	NOT NULL	NUMBER(10)	0

Table C-16 describes the DBA\_COLUMNS table.

**Table C-16 DICT\_COLUMNS**

<b>Name</b>	<b>Null?</b>	<b>Type</b>	<b>Value</b>
TABLE_NAME	NOT NULL	VARCHAR2(30)	-
COLUMN_NAME	NOT NULL	VARCHAR2(30)	-
COMMENTS	NOT NULL	CHAR(1)	-

Table C-17 describes the DICTIONARY table.

**Table C-17 DICTIONARY**

<b>Name</b>	<b>Null?</b>	<b>Type</b>	<b>Value</b>
TABLE_NAME	NOT NULL	VARCHAR2(30)	-
COMMENTS	NOT NULL	CHAR(1)	-

Table C-18 describes the DUAL table.

**Table C-18 DUAL**

<b>Name</b>	<b>Null?</b>	<b>Type</b>	<b>Value</b>
DUMMY	NOT NULL	VARCHAR2(1)	-

Table C-19 describes the USER\_CATALOG table.

**Table C-19 USER\_CATALOG**

Name	Null?	Type	Value
TABLE_NAME	NOT NULL	VARCHAR2 (30)	-
TABLE_TYPE	-	VARCHAR2 (11)	"TABLE"

Table C-20 describes the USER\_COL\_COMMENTS table.

**Table C-20 USER\_COL\_COMMENTS**

Name	Null?	Type	Value
TABLE_NAME	NOT NULL	VARCHAR2 (30)	-
COLUMN_NAME	NOT NULL	VARCHAR2 (30)	-
COMMENTS	NOT NULL	CHAR (1)	-

Table C-21 describes the USER\_CONS\_COLUMNS table.

**Table C-21 USER\_CONS\_COLUMNS**

Name	Null?	Type	Value
OWNER	NOT NULL	VARCHAR2 (30)	VSAM
CONSTRAINT_NAME	NOT NULL	VARCHAR2 (30)	-
TABLE_NAME	NOT NULL	VARCHAR2 (30)	-
COLUMN_NAME	-	VARCHAR2 (4000)	-
POSITION	-	FLOAT (49)	-

Table C-22 describes the USER\_CONSTRAINTS table.

**Table C-22 USER\_CONSTRAINTS**

Name	Null?	Type	Value
OWNER	NOT NULL	VARCHAR2 (30)	VSAM
CONSTRAINT_NAME	NOT NULL	VARCHAR2 (30)	-
CONSTRAINT_TYPE	-	VARCHAR2 (1)	"R" or "P"
TABLE_NAME	-	VARCHAR2 (30)	-
SEARCH_CONDITION	NOT NULL	CHAR (1)	-
R_OWNER	NOT NULL	VARCHAR2 (1)	-
R_CONSTRAINT_NAME	-	VARCHAR2 (30)	-
DELETE_RULE	-	VARCHAR2 (9)	NULL
STATUS	NOT NULL	CHAR (1)	-
DEFERRABLE	NOT NULL	CHAR (1)	-
DEFERRED	NOT NULL	CHAR (1)	-
VALIDATED	NOT NULL	CHAR (1)	-
GENERATED	NOT NULL	CHAR (1)	-
BAD	NOT NULL	CHAR (1)	-
RELY	NOT NULL	CHAR (1)	-

**Table C-22 (Cont.) USER\_CONSTRAINTS**

<b>Name</b>	<b>Null?</b>	<b>Type</b>	<b>Value</b>
LAST_CHANGE	-	DATE	NULL

Table C-23 describes the USER\_IND\_COLUMNS table.

**Table C-23 USER\_IND\_COLUMNS**

<b>Name</b>	<b>Null?</b>	<b>Type</b>	<b>Value</b>
INDEX_NAME	NOT NULL	VARCHAR2 (30)	-
TABLE_NAME	NOT NULL	VARCHAR2 (30)	-
COLUMN_NAME	-	VARCHAR2 (4000)	-
COLUMN_POSITION	NOT NULL	FLOAT (49)	-
COLUMN_LENGTH	NOT NULL	FLOAT (49)	-
DESCEND	-	VARCHAR2 (4)	"DESC" or "ASC"

Table C-24 describes the USER\_INDEXES table.

**Table C-24 USER\_INDEXES**

<b>Name</b>	<b>Null?</b>	<b>Type</b>	<b>Value</b>
INDEX_NAME	NOT NULL	VARCHAR2 (30)	-
INDEX_TYPE	NOT NULL	CHAR (1)	-
TABLE_OWNER	NOT NULL	VARCHAR2 (30)	-
TABLE_NAME	NOT NULL	VARCHAR2 (30)	-
TABLE_TYPE	NOT NULL	CHAR (5)	"TABLE"
UNIQUENESS	-	VARCHAR2 (9)	"UNIQUE" or "NONUNIQUE"
COMPRESSION	NOT NULL	CHAR (1)	-
PREFIX_LENGTH	NOT NULL	NUMBER (10)	0
TABLESPACE_NAME	NOT NULL	CHAR (1)	-
INI_TRANS	NOT NULL	NUMBER (10)	0
MAX_TRANS	NOT NULL	NUMBER (10)	0
INITIAL_EXTENT	NOT NULL	NUMBER (10)	0
NEXT_EXTENT	NOT NULL	NUMBER (10)	0
MIN_EXTENTS	NOT NULL	NUMBER (10)	0
MAX_EXTENTS	NOT NULL	NUMBER (10)	0
PCT_INCREASE	NOT NULL	NUMBER (10)	0
PCT_THRESHOLD	NOT NULL	NUMBER (10)	0
INCLUDE_COLUMN	NOT NULL	NUMBER (10)	0
FREELISTS	NOT NULL	NUMBER (10)	0
FREELIST_GROUPS	NOT NULL	NUMBER (10)	0
PCT_FREE	NOT NULL	NUMBER (10)	0

**Table C-24 (Cont.) USER\_INDEXES**

<b>Name</b>	<b>Null?</b>	<b>Type</b>	<b>Value</b>
LOGGING	NOT NULL	CHAR(1)	-
BLEVEL	NOT NULL	NUMBER(10)	0
LEAF_BLOCKS	NOT NULL	NUMBER(10)	0
DISTINCT_KEYS	-	FLOAT(49)	-
AVG_LEAF_BLOCKS_PER_KEY	NOT NULL	NUMBER(10)	0
AVG_DATA_BLOCKS_PER_KEY	NOT NULL	NUMBER(10)	0
CLUSTERING_FACTOR	NOT NULL	NUMBER(10)	0
STATUS	NOT NULL	CHAR(1)	-
NUM_ROWS	NOT NULL	NUMBER(10)	0
SAMPLE_SIZE	NOT NULL	NUMBER(10)	0
LAST_ANALYZED	-	DATE	NULL
DEGREE	NOT NULL	CHAR(1)	-
INSTANCES	NOT NULL	CHAR(1)	-
PARTITIONED	NOT NULL	CHAR(1)	-
TEMPORARY	NOT NULL	CHAR(1)	-
GENERATED	NOT NULL	CHAR(1)	-
SECONDARY	NOT NULL	CHAR(1)	-
BUFFER_POOL	NOT NULL	CHAR(1)	-
USER_STATS	NOT NULL	CHAR(1)	-
DURATION	NOT NULL	CHAR(1)	-
PCT_DIRECT_ACCESS	NOT NULL	NUMBER(10)	0
ITYP_OWNER	NOT NULL	CHAR(1)	-
ITYP_NAME	NOT NULL	CHAR(1)	-
PARAMETERS	NOT NULL	CHAR(1)	-
GLOBAL_STATS	NOT NULL	CHAR(1)	-
DOMIDX_STATUS	NOT NULL	CHAR(1)	-
DOMIDX_OPSTATUS	NOT NULL	CHAR(1)	-
FUNCIDX_STATUS	NOT NULL	CHAR(1)	-

[Table C-25](#) describes the USER\_OBJECTS table.

**Table C-25 USER\_OBJECTS**

<b>Name</b>	<b>Null?</b>	<b>Type</b>	<b>Value</b>
OBJECT_NAME	-	VARCHAR2(128)	-
SUBOBJECT_NAME	-	VARCHAR2(1)	NULL
OBJECT_ID	-	NUMBER	0
DATA_OBJECT_ID	-	NUMBER	0

**Table C-25 (Cont.) USER\_OBJECTS**

<b>Name</b>	<b>Null?</b>	<b>Type</b>	<b>Value</b>
OBJECT_TYPE	-	VARCHAR2 (18)	"TABLE" or "INDEX"
CREATED	-	DATE	NULL
LAST_DDL_TIME	-	DATE	NULL
TIMESTAMP	-	VARCHAR2 (1)	NULL
STATUS	-	VARCHAR2 (1)	NULL
TEMPORARY	-	VARCHAR2 (1)	NULL
GENERATED	-	VARCHAR2 (1)	NULL
SECONDARY	-	VARCHAR2 (1)	NULL

Table C-26 describes the USER\_TAB\_COLUMNS table.

**Table C-26 USER\_TAB\_COLUMNS**

<b>Name</b>	<b>Null?</b>	<b>Type</b>	<b>Value</b>
TABLE_NAME	NOT NULL	VARCHAR2 (30)	-
COLUMN_NAME	NOT NULL	VARCHAR2 (30)	-
DATA_TYPE	-	VARCHAR2 (106)	-
DATA_TYPE_MOD	NOT NULL	CHAR (1)	-
DATA_TYPE_OWNER	NOT NULL	CHAR (1)	-
DATA_LENGTH	NOT NULL	FLOAT (49)	-
DATA_PRECISION	-	FLOAT (49)	-
DATA_SCALE	-	FLOAT (49)	-
NULLABLE	-	VARCHAR2 (1)	"Y" or "N"
COLUMN_ID	NOT NULL	FLOAT (49)	-
DEFAULT_LENGTH	NOT NULL	NUMBER (10)	0
DATA_DEFAULT	NOT NULL	CHAR (1)	-
NUM_DISTINCT	NOT NULL	NUMBER (10)	0
LOW_VALUE	NOT NULL	NUMBER (10)	0
HIGH_VALUE	NOT NULL	NUMBER (10)	0
DENSITY	NOT NULL	NUMBER (10)	0
NUM_NULLS	NOT NULL	NUMBER (10)	0
NUM_BUCKETS	NOT NULL	NUMBER (10)	0
LAST_ANALYZED	-	DATE	NULL
SAMPLE_SIZE	NOT NULL	NUMBER (10)	0
CHARACTER_SET_NAME	NOT NULL	CHAR (1)	-
CHAR_COL_DECL_LENGTH	NOT NULL	NUMBER (10)	0
GLOBAL_STATS	NOT NULL	CHAR (1)	-
USER_STATS	NOT NULL	CHAR (1)	-

**Table C-26 (Cont.) USER\_TAB\_COLUMNS**

Name	Null?	Type	Value
AVG_COL_LEN	NOT NULL	NUMBER(10)	0

Table C-27 describes the USER\_TAB\_COMMENTS table.

**Table C-27 USER\_TAB\_COMMENTS**

Name	Null?	Type	Value
TABLE_NAME	NOT NULL	VARCHAR2(30)	-
TABLE_TYPE	-	VARCHAR2(11)	"TABLE"
COMMENTS	NOT NULL	CHAR(1)	-

Table C-28 describes the USER\_TABLES table.

**Table C-28 USER\_TABLES**

Name	Null?	Type	Value
TABLE_NAME	NOT NULL	VARCHAR2(30)	-
TABLESPACE_NAME	NOT NULL	CHAR(1)	-
CLUSTER_NAME	NOT NULL	CHAR(1)	-
IOT_NAME	NOT NULL	CHAR(1)	-
PCT_FREE	NOT NULL	NUMBER(10)	0
PCT_USED	NOT NULL	NUMBER(10)	0
INI_TRANS	NOT NULL	NUMBER(10)	0
MAX_TRANS	NOT NULL	NUMBER(10)	0
INITIAL_EXTENT	NOT NULL	NUMBER(10)	0
NEXT_EXTENT	NOT NULL	NUMBER(10)	0
MIN_EXTENTS	NOT NULL	NUMBER(10)	0
MAX_EXTENTS	NOT NULL	NUMBER(10)	0
PCT_INCREASE	NOT NULL	NUMBER(10)	0
FREELISTS	NOT NULL	NUMBER(10)	0
FREELIST_GROUPS	NOT NULL	NUMBER(10)	0
LOGGING	NOT NULL	CHAR(1)	-
BACKED_UP	NOT NULL	CHAR(1)	-
NUM_ROWS	-	FLOAT(49)	-
BLOCKS	-	FLOAT(49)	-
EMPTY_BLOCKS	NOT NULL	NUMBER(10)	0
AVG_SPACE	NOT NULL	NUMBER(10)	0
CHAIN_CNT	NOT NULL	NUMBER(10)	0
AVG_ROW_LEN	NOT NULL	NUMBER(10)	0
AVG_SPACE_FREELIST_BLOCKS	NOT NULL	NUMBER(10)	0
NUM_FREELIST_BLOCKS	NOT NULL	NUMBER(10)	0



**Table C-28 (Cont.) USER\_TABLES**

<b>Name</b>	<b>Null?</b>	<b>Type</b>	<b>Value</b>
DEGREE	NOT NULL	CHAR(1)	-
INSTANCES	NOT NULL	CHAR(1)	-
CACHE	NOT NULL	CHAR(1)	-
TABLE_LOCK	NOT NULL	CHAR(1)	-
SAMPLE_SIZE	NOT NULL	NUMBER(10)	0
LAST_ANALYZED	-	DATE	NULL
PARTITIONED	NOT NULL	CHAR(1)	-
IOT_TYPE	NOT NULL	CHAR(1)	-
TEMPORARY	NOT NULL	CHAR(1)	-
SECONDARY	NOT NULL	CHAR(1)	-
NESTED	NOT NULL	CHAR(1)	-
BUFFER_POOL	NOT NULL	CHAR(1)	-
ROW_MOVEMENT	NOT NULL	CHAR(1)	-
GLOBAL_STATS	NOT NULL	CHAR(1)	-
USER_STATS	NOT NULL	CHAR(1)	-
DURATION	NOT NULL	CHAR(1)	-
SKIP_CORRUPT	NOT NULL	CHAR(1)	-
MONITORING	NOT NULL	CHAR(1)	-

Table C-29 describes the USER\_USERS table.

**Table C-29 USER\_USERS**

<b>Name</b>	<b>Null?</b>	<b>Type</b>	<b>Value</b>
USERNAME	NOT NULL	VARCHAR2(30)	-
USER_ID	-	NUMBER	0
ACCOUNT_STATUS	-	VARCHAR2(4)	"OPEN"
LOCK_DATE	-	DATE	NULL
EXPIRY_DATE	-	DATE	NULL
DEFAULT_TABLESPACE	-	VARCHAR2(1)	NULL
TEMPORARY_TABLESPACE	-	VARCHAR2(1)	NULL
CREATED	-	DATE	NULL
INITIAL_RSRC_CONSUMER_GROUP	-	VARCHAR2(1)	NULL
EXTERNAL_NAME	-	VARCHAR2(1)	NULL

Table C-30 describes the USER\_VIEWS table.

**Table C-30 USER\_VIEWS**

<b>Name</b>	<b>Null?</b>	<b>Type</b>	<b>Value</b>
VIEW_NAME	NOT NULL	VARCHAR2(30)	-

**Table C-30 (Cont.) USER\_VIEWS**

<b>Name</b>	<b>Null?</b>	<b>Type</b>	<b>Value</b>
TEXT_LENGTH	NOT NULL	NUMBER(10)	0
TEXT	NOT NULL	CHAR(1)	-
TYPE_TEXT_LENGTH	NOT NULL	NUMBER(10)	0
TYPE_TEXT	NOT NULL	CHAR(1)	-
OID_TEXT_LENGTH	NOT NULL	NUMBER(10)	0
OID_TEXT	NOT NULL	CHAR(1)	-
VIEW_TYPE_OWNER	NOT NULL	CHAR(1)	-
VIEW_TYPE	NOT NULL	CHAR(1)	-

---

---

## Globalization Support

The main aspect of the Globalization Support in Oracle Connect for IMS, VSAM, and Adabas Gateways is the recognition of the different characters associated with a language and the way they are encoded in various operating systems and data sources. For each supported language, a special definition file called a character set file is supplied where all the language related information is stored. For complex languages such as Chinese, Japanese, and Korean, a special library is also provided where specific conversion rules are implemented.

As a distributed product that accesses heterogeneous data sources on varied platforms, Oracle Connect for IMS, VSAM, and Adabas Gateways offers seamless conversion of text between the different character encodings used on the different platforms. Examples of such automatic conversion include:

- Conversion between ASCII based encoding on open systems and EBCDIC based encoding on IBM mainframes and AS/400 machines
- Conversions to and from Unicode for databases that store data in Unicode
- Conversions between different encodings of the same language used on different platforms
- Conversions of legacy data stored using old character encodings (such as 7-bit encoding) into the current platform encoding standard

Getting this kind of seamless Globalization Support requires the proper setting of the character set definitions according to the kind of encoding in use in the various data sources and platforms.

This section discusses the different encoding schemes in use, the character set definitions required and other Globalization Support related aspects, and contains information on the following topics:

- [Character Set Terminology](#)
- [Globalization Support Settings](#)

### Character Set Terminology

The following terminology is used to describe character sets.

#### Single-Byte Character Sets

In a single-byte character set, each character is represented by a single-byte value, that is, a number between 1 and 255, inclusive. Single-byte character sets are typical of Western languages. For example, in the ISO-8859-1 (Latin) character set, the character 'A' is represented by the single byte value of 65, whereas in the US-EBCDIC character

set (or in the IBM-037 character set), the same character is represented by the single-byte value of 193.

### Multibyte Character Sets

In a multibyte character set, some or all of the characters are represented by more than one byte value. Multibyte character sets are typical in complex languages such as Chinese, Japanese and Korean.

### Unicode Character Sets

Unicode is a universal numbering of all known characters, with each character identified by a unique number - its codepoint. Unicode has several encoding schemes, of which Oracle Application Development Framework Controller API Reference supports UTF-8 and, to a lesser extent, UCS-2.

Since the product uses 8-bit characters, the only Unicode encoding that qualifies as a 'character set' is the UTF-8 encoding. The product supports UCS-2 in its data sources (through special Unicode data types).

### Customized Character Sets

The Globalization Support of Oracle Connect can be customized to add new languages and character sets not currently supported as well as to introduce special conversion cases. The customization involves editing special character set source files and building .cp files from them using the NAV\_UTIL program.

## Globalization Support Settings

The minimal globalization Support configuration amounts to adding the HS\_LANGUAGE parameter to the HS initialization parameter file and telling the product what national language is in use.

For information on how to add the parameter to the HS initialization parameter file, see *Oracle Database Gateway for IMS, VSAM, and Adabas Installation and Configuration Guide for Microsoft Windows* or *Oracle Database Gateway for IMS, VSAM, and Adabas Installation and Configuration Guide for UNIX*.

### To set the language in Studio

1. In the Design perspective, open the machine for which you want to set the language.
2. Open the Bindings list and right-click the NAV binding.
3. Select **Edit Binding**.
4. Open the **Misc** category and fill in the language parameter with the desired language code from [Globalization Support Language Codes](#).
5. Save the change. New servers will use the language selected.

When a language is selected, a default character set is automatically used based on the language and the platform. [Table D-1](#) summarizes the languages, their codes, and their character sets.

**Table D-1 Globalization Support Language Codes**

EBCDIC CP Name	Description	Base ASCII CP	Multibyte
AR8EBCDIC420	Arabic bilingual	AR8ISO8859P6	
AR8EBCDICX	Arabic + Latin	AR8ISO8859P6	

**Table D-1 (Cont.) Globalization Support Language Codes**

<b>EBCDIC CP Name</b>	<b>Description</b>	<b>Base ASCII CP</b>	<b>Multibyte</b>
BLT8EBCDIC1112	Baltic multilingual	BLT8ISO8859P13	
CL8EBCDIC1025	Cyrillic multilingual	CL8ISO8859P5	
CL8EBCDIC1158	Cyrillic Ukraine + Euro	CLMSWIN1251	
D8EBCDIC1141	Austria - Germany + Euro	WE8ISO8859P15	
D8EBCDIC273	Germany - Austria	WE8ISO8859P1	
DK8EBCDIC1142	Denmark - Norway + Euro	WE8ISO8859P15	
DK8EBCDIC277	Denmark - Norway	NE8ISO8859P10	
EE8EBCDIC870	Latin 2 multilingual	EE8ISO8859P2	
EL8EBCDIC423	Greece	EL8ISO8859P7	
EL8EBCDIC875	Greece	EL8ISO8859P7	
EL8EBCDIC875R	Greece	EL8ISO8859P7	
F8EBCDIC1147	France + Euro	WE8ISO8859P15	
F8EBCDIC297	France	WE8ISO8859P1	
I8EBCDIC1144	Italy + Euro	WE8ISO8859P15	
I8EBCDIC280	Italy	WE8ISO8859P1	
IW8EBCDIC1086	Hebrew	IW8ISO8859P8	
IW8EBCDIC424	Hebrew	IW8ISO8859P8	
JA16DBCS	Japan	JA16SJIS	Yes
JA16EBCDIC930	Japan	JA16SJIS	Yes
KO16DBCS	Korea	KO16KSC5601	Yes
S8EBCDIC1143	Finland - Sweden + Euro	WE8ISO8859P15	
S8EBCDIC278	Finland - Sweden	WE8ISO8859P1	
TH8TISEBCDIC	Thai IS 620-2533 EBCDIC 8-bit	TH8TISASCII	
TR8EBCDIC1026	Turkey	WE8ISO8859P9	
WE8EBCDIC1047	Latin 1	WE8ISO8859P1	
WE8EBCDIC1140	USA, Canada + Euro	WE8ISO8859P15	
WE8EBCDIC1145	Spanish + Euro	WE8ISO8859P15	
WE8EBCDIC1146	UK + Euro	WE8ISO8859P15	
WE8EBCDIC1148	International ECECP + Euro	WE8ISO8859P15	
WE8EBCDIC1148	Western Europe + Euro	WE8ISO8859P15	
WE8EBCDIC284	Spanish	WE8ISO8859P1	
WE8EBCDIC285	UK	WE8ISO8859P1	
WE8EBCDIC37	USA + Canada	WE8ISO8859P1	
WE8EBCDIC37	Canadian French	WE8ISO8859P1	
WE8EBCDIC500	Western Europe	WE8ISO8859P1	
WE8EBCDIC871	Iceland	NE8ISO8859P10	
WE8EBCDIC924	Latin 9	WE8ISO8859P9	

**Table D-1 (Cont.) Globalization Support Language Codes**

<b>EBCDIC CP Name</b>	<b>Description</b>	<b>Base ASCII CP</b>	<b>Multibyte</b>
ZHS16DBCS	Simplified Chinese	ZHS16CGB231280	Yes
ZHT16DBCS	Traditional Chinese	ZHT16BIG5	Yes

## Examples

This section contains the following topics:

- [COBOL Copybook Example](#)

### COBOL Copybook Example

Figure E-1 shows a COBOL copybook that illustrates arrays and nested arrays.

**Figure E-1 Metadata Example in COBOL**

The OCCURS clause marks an array.      The DEPENDING ON clause marks a counter field for the array, if one exists.      The array ASSIGNMENTS is a nested array within COURSES.

```

01  STUDENT.
   20  ID                                     PIC 9(8).
   20  FIRST_NAME                            PIC X(32).
   20  LAST_NAME                             PIC X(32).
   *
   20  DATE_OF_BIRTH                         PIC S9(8) COMP.
   20  NUMOF_COURSES                         PIC 9(4) COMP.
   20  NUMOF_BOOKS                           PIC 9(4) COMP.
   20  COURSES.
      ▶ 25  COURSE OCCURS 8 TIMES DEPENDING ON NUMOF_COURSES.
          30  COURSE_ID                       PIC 9(8).
          30  COURSE_TITLE                    PIC X(48).
          30  INSTRUCTOR_ID                   PIC 9(8).
          30  NUMOF_ASSIGNMENTS               PIC 9(4) COMP.
          30  ASSIGNMENTS OCCURS 4 TIMES DEPENDING ON NUMOF_ASSIGNMENTS.
              40  ASSIGNMENT_TYPE             PIC X(12).
              40  ASSIGNMENT_TITLE           PIC X(48).
          *
              40  DUE_DATE                   PIC S9(8) COMP.
              40  GRADE                      PIC S9V9.
   20  BOOKS.
      25  BOOK OCCURS 1 TO 5 TIMES DEPENDING ON NUMOF_BOOKS.
          30  ISBN                            PIC X(10).
          *
          30  RETURN_DATE                     PIC 9(8) COMP.

```





---

---

# Index

## A

---

accessing VSAM data, 2-1

ADD

- atomic data types, A-1
- decimal data types, A-4
- non-atomic data types, A-4
- scaled data types, A-5

advanced data dictionary

*See* ADD

ALTER statement, B-1

arithmetic operators, B-2

array handling

- modifying default, 4-2
- normalized tables, 3-5
- overview, 3-1
- sequential flattening, 3-7
- setting default, 4-1
- setting policy, 4-1
- table settings, 4-3

## C

---

case rules, 2-4

commands, passing to database, 2-9

COMMIT, restrictions, 2-9

Comparison operators, B-3

CONCAT operator, 2-8

CREATE statement, B-1

cursor loops, restrictions, 2-9

## D

---

data definition language, B-1

data dictionary tables, C-1

data dictionary views, 2-9

data dictionary, views, C-2

data source restrictions, 2-10

data types

- ADD atomic data types, A-1
- ADD decimal, A-4
- ADD non-atomic, A-4
- ADD scaled, A-5
- conversion, 2-5
- FLOAT, 2-9
- VARBINARY, 2-9

data, accessing, 2-1

data, non-relational, 3-1

database, locking, 2-6

databases, passing commands, 2-9

decimal data, packed, A-4

default, array handling, 4-1

DELETE statement, B-1, B-2

DROP statement, B-1

## E

---

encrypted format login, 2-9

errors

ORA-02070, 2-8, B-2

ORA-1002, 2-9

ORA-28506, C-3

ORA-6550, 2-8

## F

---

FLOAT data type, 2-9

format login, encrypted, 2-9

functions, B-3

functions, unsupported, 2-7

## G

---

gateways

data dictionary tables, C-1

pass-through feature, 2-3

restrictions, 2-7

SQL restrictions, 2-7

supported functions, B-1

supported SQL syntax, 2-2, B-1

GRANT statement, B-1

group functions, B-3

## H

---

handling arrays

normalized tables, 3-5

overview, 3-1

sequential flattening, 3-7

hexadecimal notation, 2-5

## I

---

import, array handling behavior, 4-2  
INSERT statement, B-1, B-2

## L

---

locking, database, 2-6

## M

---

metadata  
array handling behavior, 4-2  
representing, 3-1

## N

---

naming rules, objects, 2-4  
non-relational data, normalizing, 3-1  
normalizing non-relation data, 3-1

## O

---

objects, naming rules, 2-4  
ORA-02070 error, 2-8, B-2  
ORA-1002 error, 2-9  
ORA-28506 error, C-3  
ORA-6550 error, 2-8

## P

---

packed decimal data, ADD, A-4  
passing commands to database, 2-9  
pass-through feature, 2-3  
PL/SQL, 2-9  
policy, array handling, 4-1

## R

---

representing metadata, 3-1  
restrictions  
COMMIT, 2-9  
data source, 2-10  
gateways, 2-7  
ROLLBACK, 2-9  
SQL, 2-7  
ROLLBACK, restrictions, 2-9  
ROWID, 2-7

## S

---

savepoint support, 2-8  
SELECT statement, B-1, C-1  
sequential flattening, 3-7  
sequential view, 3-7  
single table, 3-7  
SQL execution, 2-5  
SQL functions, unsupported, 2-7  
SQL syntax, supported, 2-2, B-1  
statements  
ALTER, B-1  
CREATE, B-1

DROP, B-1  
GRANT, B-1  
SELECT, B-1  
select, C-1  
UPDATE, B-2  
string functions, B-3

## T

---

transaction  
capability, 2-8  
integrity, 2-9  
TRUNCATE statement, B-1

## U

---

unsupported SQL functions, 2-7  
UPDATE statement, B-2

## V

---

VARBINARY data type, 2-9  
views, data dictionary, 2-9  
VSAM data, accessing, 2-1