

Oracle[®] MICROS Symphony

Transaction Services Generation 2 API

Reference Guide



Release 1.0
F36951-04
April 2023

The Oracle logo, consisting of a solid red square with the word "ORACLE" in white, uppercase, sans-serif font centered within it.

ORACLE[®]

Oracle MICROS Symphony Transaction Services Generation 2 API Reference Guide Release 1.0

F36951-04

Copyright © 2020, 2023, Oracle and/or its affiliates. All rights reserved.

This software and related documentation are provided under a license agreement containing restrictions on use and disclosure and are protected by intellectual property laws. Except as expressly permitted in your license agreement or allowed by law, you may not use, copy, reproduce, translate, broadcast, modify, license, transmit, distribute, exhibit, perform, publish, or display any part, in any form, or by any means. Reverse engineering, disassembly, or decompilation of this software, unless required by law for interoperability, is prohibited.

The information contained herein is subject to change without notice and is not warranted to be error-free. If you find any errors, please report them to us in writing.

If this software or related documentation is delivered to the U.S. Government or anyone licensing it on behalf of the U.S. Government, then the following notice is applicable:

U.S. GOVERNMENT END USERS: Oracle programs, including any operating system, integrated software, any programs installed on the hardware, and/or documentation, delivered to U.S. Government end users are "commercial computer software" pursuant to the applicable Federal Acquisition Regulation and agency-specific supplemental regulations. As such, use, duplication, disclosure, modification, and adaptation of the programs, including any operating system, integrated software, any programs installed on the hardware, and/or documentation, shall be subject to license terms and license restrictions applicable to the programs. No other rights are granted to the U.S. Government.

This software or hardware is developed for general use in a variety of information management applications. It is not developed or intended for use in any inherently dangerous applications, including applications that may create a risk of personal injury. If you use this software or hardware in dangerous applications, then you shall be responsible to take all appropriate fail-safe, backup, redundancy, and other measures to ensure its safe use. Oracle Corporation and its affiliates disclaim any liability for any damages caused by use of this software or hardware in dangerous applications.

Oracle and Java are registered trademarks of Oracle and/or its affiliates. Other names may be trademarks of their respective owners.

Intel and Intel Xeon are trademarks or registered trademarks of Intel Corporation. All SPARC trademarks are used under license and are trademarks or registered trademarks of SPARC International, Inc. AMD, Opteron, the AMD logo, and the AMD Opteron logo are trademarks or registered trademarks of Advanced Micro Devices. UNIX is a registered trademark of The Open Group.

This software or hardware and documentation may provide access to or information about content, products, and services from third parties. Oracle Corporation and its affiliates are not responsible for and expressly disclaim all warranties of any kind with respect to third-party content, products, and services unless otherwise set forth in an applicable agreement between you and Oracle. Oracle Corporation and its affiliates will not be responsible for any loss, costs, or damages incurred due to your access to or use of third-party content, products, or services, except as set forth in an applicable agreement between you and Oracle.

Contents

Preface	iv
<hr/>	
1 Introduction	1-1
<hr/>	
Response Codes	1-1
2 Authentication	2-1
<hr/>	
Authorization Code Flow with PKCE	2-1
Authorize	2-2
Sign In	2-3
Get or Refresh a Token	2-5
Using the id_token in API Calls	2-6
3 Organization API	3-1
<hr/>	
Paths	3-1
Resources	3-19
Definitions	3-24
4 Configuration API	4-1
<hr/>	
Paths	4-1
Resources	4-18
Definitions	4-26
5 Checks API	5-1
<hr/>	
Paths	5-1
Resources	5-13
Definitions	5-15
6 Connection Status	6-1
<hr/>	
Paths	6-1

Preface

Purpose

This document describes the Symphony Transaction Services Generation 2 (STSG2) API feature set for Oracle MICROS Food and Beverage and includes a detailed specification for each API message.

Audience

This document is intended for developers who develop integrations for exchanging data with Oracle MICROS Symphony.

Customer Support

To contact Oracle Customer Support, access My Oracle Support at the following URL:

<https://support.oracle.com>

When contacting Customer Support, please provide the following:

- Product version and program/module name
- Functional and technical description of the problem (include business impact)
- Detailed step-by-step instructions to re-create
- Exact error message received and any associated log files
- Screenshots of each step you take

Documentation

Oracle Food and Beverage product documentation is available on the Oracle Help Center at <http://docs.oracle.com/en/industries/food-beverage/>

Revision History

Date	Description of Change
December 2020	Initial publication
April 2021	Updated for the Symphony version 19.2.1 release
September 2021	Updated Image Link section
April 2023	Updated the Configuration API chapter: <ul style="list-style-type: none">• Made various formatting and spelling corrections.• Made various updates to some descriptions. Added Combo Menu Item Price section in the Configuration API chapter

1

Introduction

The Symphony Transaction Services Gen2 (STSG2) API is a cloud offering that is provisioned by Oracle and available for use with new deployments of the Symphony Cloud Service starting with version 19.2.

STSG2 provides a RESTful interface for transaction processing and complementary services that will be available both in the cloud as well as within the location. The exposed APIs are stateless and highly scalable, supporting large multi-tenanted Oracle Food and Beverage Cloud environments.

The Organizations API provides the ability to get information about the following subject areas:

- Organizations (as well as search for locations within an organization)
- Locations
- Revenue Centers

The Configuration API provides the ability to get information about the following subject areas using the organizational related details acquired from the Organizations API:

- Tables
- Menu (menu items, condiments, condiment rules, pricing)
- Discounts
- Service Charges
- Tenders

The Checks API provides the ability to calculate, create and manage checks within a revenue center using the details acquired from the Organizations and Configuration APIs. The exposed endpoints fall into the following subject areas:

- Calculations
- Check Operations

Response Codes

HTTP response codes will be one of the following:

- 2xx - Indicates successful call: 200 (OK) or 201 (Created).
- 4xx - Indicates unsuccessful call: not authorized, not found, unacceptable header, or unsupported media type.
- 500 - Indicates internal error, plus the exceptionDetailType JSON object:
- 503 - Indicates a service is currently unavailable.

2

Authentication

STSG2 APIs utilizes tokens provided by the OpenID Connect (OIDC) authentication protocol. Users of this API are expected to send a request to the Enterprise Back Office OpenID provider (OP). The OP authenticates the end user and responds with an ID token and a refresh token. The client can then send a request with the ID token to the STSG2 API endpoint.

Successful OAuth transactions require the Oracle OP to issue an `id_token` for use in authenticating an API call. An `id_token` represents an authentication issued to the client application containing credentials used to access protected OAuth resources.

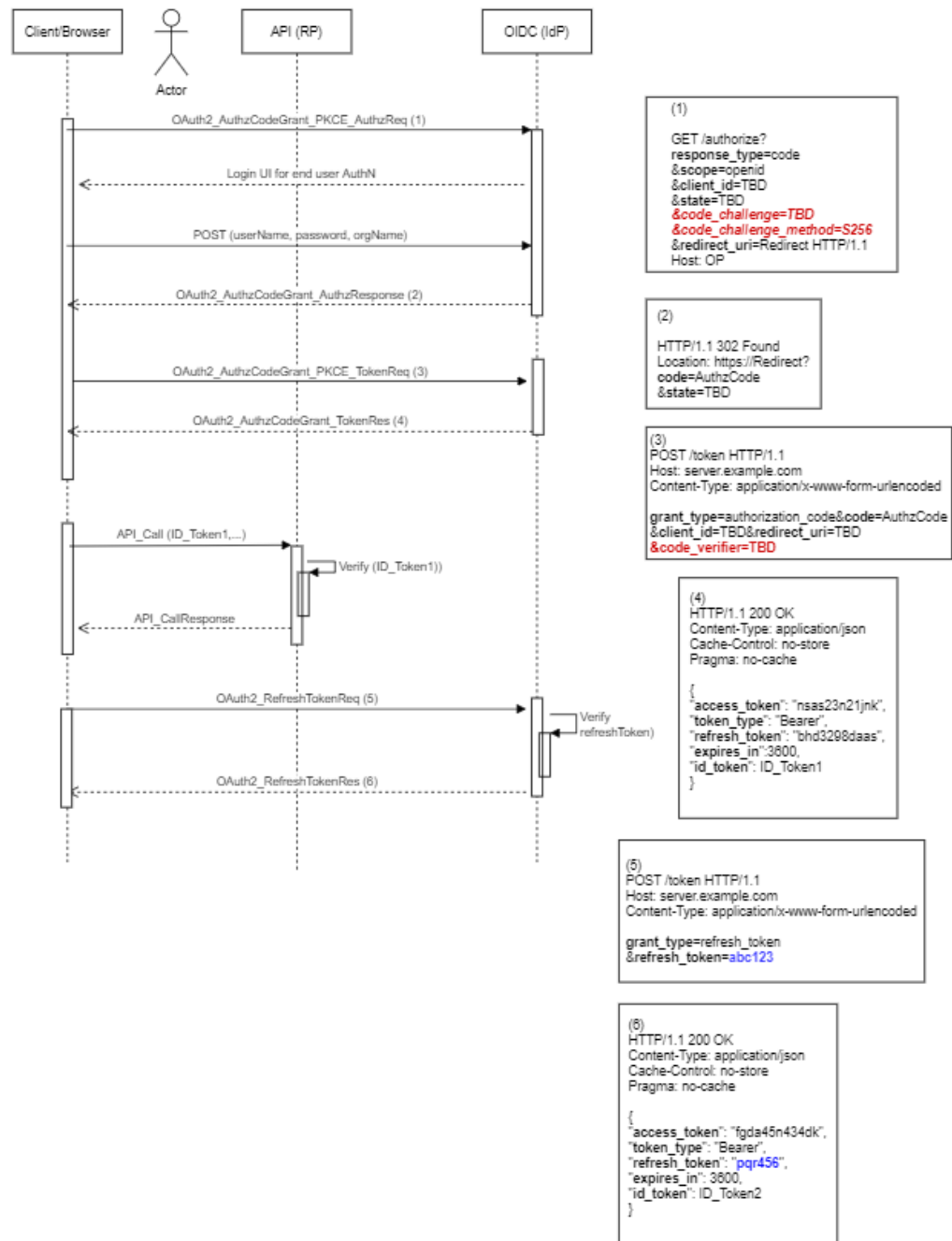
Use the following links to get more information:

- [Authentication](#) in *Business Intelligence API Guide* provides general information about authentication.
- [Adding API Accounts](#) in the *Reporting and Analytics User Guide* explains how to add an API account.
- [Symphony Transaction Services API](#) in the *Reporting and Analytics User Guide* explains how to configure an API account for STS Gen 2.

Authorization Code Flow with PKCE

Authorization code flow with proof key for code exchange (PKCE) is for public clients who cannot keep their client secret confidential. PKCE allows dynamic client secrets to be generated which allows the OIDC server to bind code exchange request to the original authorization code request.

A crypto random value is generated and sent to an authorized endpoint to get the authorization code. Then, to get the token, the originally generated random value is sent along with the code, so that OIDC server will validate if the same client requests the token for which the code was sent.



Authorize

Your application passes the following for obtaining a token:

- URL :`{{HOST}}/oidc-provider/v1/oauth2/authorize`
- Operation Type: GET
- Header:

- Parameters:
 - **scope*** - openid.
 - **response_type*** - OAuth 2.0 Response Type value that determines the authorization processing flow to be used, including what parameters are returned from the endpoints used when using the Authorization Code Flow ("code" is the only valid option allowed).
 - **client_id*** - OAuth 2.0 Client Identifier valid at the Authorization Server.
 - **redirect_uri*** - Redirection URI to which the response will be sent. This URI must exactly match one of the Redirection URI values for the client pre-registered at the OP (for machine clients, always use `apiaccount://callback`).
 - **code_challenge*** - this is a 43-128 character long client generated string that is first hashed using SHA-256 and then Base 64 encoded.
 - **code_challenge_method*** - must be set to "S256".

- Request:

```
{
  scope:"openid",
  response_type:"code",
  client_id:"MDAwMDAwMDAwMDAwMC0wMDAwLTAwMDAwMDAwMDAwMDAwLjkyMW
  U2YzBiLTY2MzYtNDkzMi04NGU4LTZlZmRhMDEzY TE5Ng==",
  redirect_uri:"apiaccount://callback",
  state:999,
  code_challenge:"NWV1YzU0MTdkOTRjZmQ1ZTc3ODh1NmQ4NjVmNWQ2YjMzYmQyN
  jZlYTB1YzA2NzYyYzA5NmEwNzg4NTI3Yzk0Yw==",
  code_challenge_method:"S256"
}
```

Sign In

In this step, you submit the user's login credentials to the server. On successful login, an authorization code will be returned in the response which can then be exchanged for an `id_token` in the next step.

Your application will pass the following for obtaining an authorization code:

- URL : `{{HOST}}/oidc-provider/v1/oauth2/signin`
- Operation Type: POST
- Content-Type: `application/x-www-form-urlencoded`
- Header:
- Parameters:
 - **username*** - user with machine Client API access privileges.
 - **password***

- **orgname***
- Cookies (these will be processed through the application code, not the browser):
 - **client_id*** - OAuth 2.0 Client Identifier valid at the Authorization Server.
 - **redirect_uri*** - Redirection URI to which the response will be sent. This URI must exactly match one of the Redirection URI values for the client pre-registered at the OP.
 - **state** – optional.
 - **code_challenge*** - this is a 43-128 character-long string that is first hashed using SHA-256 and then Base 64 encoded.
 - **code_challenge_method*** - must be set to “S256”.

- Request:

```
{
  username:"abc",
  password:"password123",
  orgname:"test"
}
```

The response returns the authorization code:

- **Status 200**

```
{
  "nextOp": "redirect",
  "success": "true",
  "redirectUrl": "?code=<auth_code>"
}
```

- **Status 401**

```
{
  "status": 401,
  "message": "invalid.credentials",
  "code": "AUTHENTICATION_INVALID"
}
```


3

Organization API

The STSG2 Organization Service is used to interact with organizations, locations, and revenue centers within the organization. It also provides a search capability to support the ability to find locations in an organization or revenue centers within a single location based on geographic location.

Paths

The {basePath} for resources on the Organization API is:

<https://{host}/api/v1/>

The Organization API provides access to organizations, locations, and revenue center resources.

An organization has one or more locations and each location has one more revenue centers. The identifier for an organization in the API is "orgShortName", the identifier for a location in the API is "locRef", and the identifier for a revenue center in the API is "rvcRef". The identifiers for locations are not unique across all organizations and similarly the identifiers for revenue centers are not unique across all locations within an organization. Since there is no uniqueness the path to access each of the resources must include its parent resource. For this reason we end up with the following paths to GET each resource.

GET ../organizations

The API returns a list of organizations with which the integrator is privileged to interact.

GET {basePath}/organizations

Content-Type: application/json

Request

/organizations

/organizations?offset=1&limit=2

Query Parameters

Name	Description	Type	Required	Example
offset	The offset from start of collection to the first item for this request. If offset is not included in the request then all objects returned.	Integer	No	1
limit	The maximum number of items to return in this request.	Integer	No	2

200 Response

```
{
  "offset": 1,
  "limit": 2,
  "count": 2,
  "items": [
    { organization_3 (see Organization JSON Object) },
    { organization_4 (see Organization JSON Object) }
  ]
}
```

Name	Description	Type	Always Present	Example
offset	The offset of the start of the current page in the collection.	Integer	No	1
limit	The limit used for the current page.	Integer	No	2

Name	Description	Type	Always Present	Example
count	Total number of items in the collection for all pages.	Integer	No	2
items	Array of Organization JSON objects. If there are no organizations configured, this array will be empty.	Array	Yes	See Organization object

Other Responses

Error Response Code	Description	Type	Always Present	Example
400	Response contains the Problem Details object.	JSON Object	No	{ (Problem Details object) }
401	401 Unauthorized.		No	
403	403 Forbidden.		No	
404	404 Requested resource not found.		No	

GET ../organizations/{orgShortName}

The API returns details about a specific organization.

GET {basePath}/organizations/{orgShortName}

Content-Type: application/json

Request

/organizations/tfoinc

Path Parameters

Name	Description	Type	Required	Example
orgShortName	The organization identifier.	String	Yes	"tfoinc"

Headers

Name	Description	Type	Required	Example
If-Modified-Since	Standard http caching header (http caching link).	String	No	Wed, 21 Oct 2015 07:28:00 GMT
If-None-Match	Standard http caching header (http caching link).	String	No	"8b573604"

200 Response

```
{  
  organization_1 (see Organization JSON Object)  
}
```

Headers

Name	Description	Type	Always Present	Example
Last-Modified	A timestamp indicating the date and time at which the origin server believes the selected representation was last modified. See RFC 7232 Section 2.2 (http caching link).	String	No	Wed, 21 Oct 2015 07:28:00 GMT

Name	Description	Type	Always Present	Example
ETag	The current entity-tag for the selected representation. See RFC 7232 Section 2.3 (http caching link).	String	No	"8b573604"

Body

Name	Description	Type	Always Present	Example
	Response contains the Organization Object.	JSON Object	Yes	See Organization object

304 Response**Header**

Name	Description	Type	Always Present	Example
Last-Modified	A timestamp indicating the date and time at which the origin server believes the selected representation was last modified. See RFC 7232 Section 2.2 (http caching link).	String	No	Wed, 21 Oct 2015 07:28:00 GMT
ETag	The current entity-tag for the selected representation. See RFC 7232 Section 2.3 (http caching link).	String	No	"8b573604"

Name	Description	Type	Always Present	Example
	Not modified.			

Error Response Codes

Error Response Code	Description	Type	Always Present	Example
400	Response contains the Problem Details object.	JSON Object	No	{ (Problem Details object) }
401	401 Unauthorized.		No	
403	403 Forbidden.		No	
404	404 Requested resource not found.		No	

GET ../locations

The API returns a list of locations with which the integrator is privileged to interact within an organization.

GET {basePath}/organizations/{orgShortName}/locations

Content-Type: application/json

Request

/organizations/tfoinc/locations

/organizations/tfoinc/locations?offset=0&limit=2

Path Parameters

Name	Description	Type	Required	Example
orgShortName	The organization identifier.	String	Yes	"tfoinc"

Query Parameters

Name	Description	Type	Required	Example
offset	The offset from start of collection to the first item for this request. If offset is not included in the request then all objects returned.	Integer	No	0
limit	The maximum number of items to return in this request.	Integer	No	2

200 Response

```
{
  "offset": 0,
  "limit": 2,
  "count": 2,
  "items": [
    { location_1 (see Location JSON Object) },
    { location_2 (see Location JSON Object) }
  ]
}
```

Name	Description	Type	Always Present	Example
offset	The offset of the start of the current page in the collection.	Integer	No	0

Name	Description	Type	Always Present	Example
limit	The limit used for the current page.	Integer	No	2
count	Total number of items in the collection for all pages.	Integer	No	2
items	Array of Location JSON objects. If there are no locations configured, this array will be empty.	Array	Yes	See Location object

Other Responses

Error Response Code	Description	Type	Always Present	Example
400	Response contains the Problem Details object.	JSON Object	No	{ (Problem Details object) }
401	401 Unauthorized.		No	
403	403 Forbidden.		No	
404	404 Requested resource not found.		No	

GET ../locations/{locRef}

The API returns details about a specific location in an organization.

GET {basePath}/organizations/{orgShortName}/locations/{locRef}

Content-Type: application/json

Request

/organizations/tfoinc/locations/fdmnh144

Path Parameters

Name	Description	Type	Required	Example
orgShortName	The organization identifier.	String	Yes	"tfoinc"
locRef	The location identifier.	String	Yes	"fdmnh144"

Headers

Name	Description	Type	Required	Example
If-Modified-Since	Standard http caching header (http caching link).	String	No	Wed, 21 Oct 2015 07:28:00 GMT
If-None-Match	Standard http caching header (http caching link).	String	No	"8b573604"

200 Response

```
{
  location_1 (see Location JSON Object)
}
```

Headers

Name	Description	Type	Always Present	Example
Last-Modified	A timestamp indicating the date and time at which the origin server believes the selected representation was last modified. See RFC 7232 Section 2.2 (http caching link).	String	No	Wed, 21 Oct 2015 07:28:00 GMT

Name	Description	Type	Always Present	Example
ETag	The current entity-tag for the selected representation. See RFC 7232 Section 2.3 (http caching link).	String	No	"8b573604"

Body

Name	Description	Type	Always Present	Example
	Response contains the Location Object.	JSON Object	Yes	See Location object

304 Response**Header**

Name	Description	Type	Always Present	Example
Last-Modified	A timestamp indicating the date and time at which the origin server believes the selected representation was last modified. See RFC 7232 Section 2.2 (http caching link).	String	No	Wed, 21 Oct 2015 07:28:00 GMT
ETag	The current entity-tag for the selected representation. See RFC 7232 Section 2.3 (http caching link).	String	No	"8b573604"

Name	Description	Type	Always Present	Example
	Not modified.			

Error Response Codes

Error Response Code	Description	Type	Always Present	Example
400	Response contains the Problem Details object.	JSON Object	No	{ (Problem Details object) }
401	401 Unauthorized.		No	

Error Response Code	Description	Type	Always Present	Example
403	403 Forbidden.		No	
404	404 Requested resource not found.		No	

GET ../revenueCenters

The API returns a list of revenue centers the integrator is privileged to interact with in a location.

GET {basePath}/organizations/{orgShortName}/locations/{locRef}/revenueCenters

Content-Type: application/json

Request

/organizations/tfoinc/locations/fdmnh144/revenueCenters

/organizations/tfoinc/locations/fdmnh144/revenueCenters?offset=5&limit=2

Path Parameters

Name	Description	Type	Required	Example
orgShortName	The organization identifier.	String	Yes	"tfoinc"
locRef	The location identifier.	String	Yes	"fdmnh144"

Query Parameters

Name	Description	Type	Always Present	Example
offset	The offset from start of collection to the first item for this request. If offset is not included in the request, response will start with the first object in the collection.	Integer	No	5
limit	The maximum number of items to return in this request. If limit is not included in the request then all objects returned.	Integer	No	2

200 Response

```
{
  "offset": 5,
  "limit": 2,
  "count": 20,
```

```

    "items": [
      { revenueCenter_11 (see Revenue Center JSON Object) },
      { revenueCenter_12 (see Revenue Center JSON Object) }
    ]
  }

```

Name	Description	Type	Always Present	Example
offset	The offset of the start of the current page in the collection.	Integer	No	5
limit	The limit used for the current page.	Integer	No	2
count	Total number of items in the collection for all pages.	Integer	No	20
items	Array of Revenue Center JSON objects. If there are no revenue centers configured, this array will be empty.	Array	Yes	See Revenue Center object

Other Responses

Error Response Code	Description	Type	Always Present	Example
400	Response contains the Problem Details object.	JSON Object	No	{ (Problem Details object) }
401	401 Unauthorized.		No	
403	403 Forbidden.		No	
404	404 Requested resource not found.		No	

GET ../revenueCenters/{rvcRef}

The API returns details about a specific revenue center in a location.

GET {basePath}/organizations/{orgRef}/locations/{locRef}/revenueCenters/{rvcRef}

Content-Type: application/json

Request

/organizations/tfoinc/locations/fdmnh144/revenueCenters/42

Path Parameters

Name	Description	Type	Required	Example
orgShortName	The organization identifier.	String	Yes	"tfoinc"
locRef	The location identifier.	String	Yes	"fdmnh144"
rvcRef	The revenue center identifier.	Integer	Yes	42

Headers

Name	Description	Type	Required	Example
If-Modified-Since	Standard http caching header (http caching link).	String	No	Wed, 21 Oct 2015 07:28:00 GMT
If-None-Match	Standard http caching header (http caching link).	String	No	"8b573604"

200 Response

```
{
  (Revenue Center Object)
}
```

Headers

Name	Description	Type	Always Present	Example
Last-Modified	A timestamp indicating the date and time at which the origin server believes the selected representation was last modified. See RFC 7232 Section 2.2 (http caching link).	String	No	Wed, 21 Oct 2015 07:28:00 GMT

Name	Description	Type	Always Present	Example
ETag	The current entity-tag for the selected representation. See RFC 7232 Section 2.3 (http caching link).	String	No	"8b573604"

Body

Name	Description	Type	Always Present	Example
	Response contains the Revenue Center Object.	JSON Object	Yes	See Revenue Center object.

304 Response**Header**

Name	Description	Type	Always Present	Example
Last-Modified	A timestamp indicating the date and time at which the origin server believes the selected representation was last modified. See RFC 7232 Section 2.2 (http caching link).	String	No	Wed, 21 Oct 2015 07:28:00 GMT
ETag	The current entity-tag for the selected representation. See RFC 7232 Section 2.3 (http caching link).	String	No	"8b573604"

Name	Description	Type	Always Present	Example
	Not modified.			

Error Response Codes

Error Response Code	Description	Type	Always Present	Example
400	Response contains the Problem Details object.	JSON Object	No	{ (Problem Details object) }
401	401 Unauthorized.		No	
403	403 Forbidden.		No	
404	404 Requested resource not found.		No	

GET ../search/locations

The API returns a list of locations within an organization based on distance from the given geo-coordinate.

GET

`https://{host/path}/api/v1/search/locations?orgShortName={orgShortName}&latitude={latitude}&longitude={longitude}`

Content-Type: application/json

Request

`/search/locations?orgShortName=tfoinc&latitude=40.763188&longitude=-73.914835&radius=50000&floor=1&`

`count=2`

Query Parameters

Name	Description	Type	Required	Example
orgShortName	The organization identifier.	String	Yes	"tfoinc"
latitude	Latitude of the location's geocoordinate set.	Number	Yes	40.763188
longitude	Longitude of the location's geocoordinate set.	Number	Yes	-73.914835
radius	Radius in meters in which to search from the point defined by the geocoordinate set.	Integer	No	5000
count	Maximum number of locations to return.	Integer	No	2

200 Response

```

{
  "items": [
    {
      "distance": 6788,
      "location": { (location_1 (see Location JSON
Object)) }
    },
    {
      "distance": 7439,
      "location": { (location_2 (see Location JSON
Object)) }
    }
  ]
}

```

Name	Description	Type	Always Present	Example
distance	The distance in meters between the location and the point defined in the request.	Integer	Yes	6788
location	The Location object.	Object	Yes	See Location object

Other Responses

Error Response Code	Description	Type	Always Present	Example
400	Response contains the Problem Details object.	JSON Object	No	{ (Problem Details object) }
401	401 Unauthorized.		No	
403	403 Forbidden.		No	
404	404 Requested resource not found.		No	

GET ../search/revenueCenters

The API returns a list of revenue centers within a location based on distance from the point defined in the request and/or the floors provided in the "floor" query parameter.

GET https://{host/path}/api/v1/search/revenueCenters

?orgShortName={orgShortName}&locRef={locRef}&latitude={latitude}&longitude={longitude}

Content-Type: application/json

Request

/search/revenueCenters?orgShortName=tfoinc&locRef=fdmnh144&latitude=40.763188&longitude=-73.914835&radius=5000&count=2

/search/revenueCenters?orgShortName=tfoinc&locRef=fdmnh144&floor=3

Query Parameters

Name	Description	Type	Required	Example
orgshortname	The organization identifier.	String	Yes	"tfoinc"
locref	The location identifier.	String	Yes	"fdmnh144"
latitude	Latitude of the revenue center's geocoordinate set.	Number	No	40.763188
longitude	Longitude of the revenue center's geocoordinate set.	Number	No	-73.914835
floor	Additional attribute to define the floor of the revenue center if needed.	String	No	"3"
radius	Radius in meters in which to search from the point defined by the geocoordinate set.	Integer	No	5000
count	Maximum number of revenue centers to return.	Integer	No	2

200 Response

```
{
  "items": [
    {
      "distance": 6788,
      "revenueCenter": { (revenueCenter_1 (see Revenue
Center JSON Object))
    },
    {
      "distance": 7439,
```

```

        "revenueCenter": { (revenueCenter_2 (see Revenue
Center JSON Object))
    }
}
]
}

```

Name	Description	Type	Always Present	Example
distance	The distance in meters between the revenue center and the point defined in the request.	Integer	Yes	6788
revenueCenter	The Revenue Center object.	Object	Yes	See Revenue Center object

Other Responses

Error Response Code	Description	Type	Always Present	Example
400	Response contains the Problem Details object.	JSON Object	No	{ (Problem Details object) }
401	401 Unauthorized.		No	
403	403 Forbidden.		No	
404	404 Requested resource not found.		No	

Resources

Organizations

An organization is the overarching organizational entity for a specific customer in Oracle Food and Beverage Cloud Products. An organization includes one or more locations.

Content-Type: application/json

```
{
  "orgShortName": "tfoinc",
  "name": "The Food Organization Inc"
}
```

Name	Description	Type	Always Present	Example
orgShortName	The organization identifier.	String	Yes	"tfoinc"
name	Full name of the organization.	String	Yes	"The Food Organization Inc"

Location

A location represents the places of business within a customer's organization. A location can have one or more revenue centers.

Content-Type: application/json

```
{
  "orgShortName": "tfoinc",
  "locRef": "fdmnh144",
  "name": "Food Manhattan",
  "consumerName": "East Village"
  "currency": "USD",
  "languages": [ "en-US", "fr-CA", "es-ES" ]
  "timeZone": { (TimeZone) },
  "phoneNumber": "555-555-5555"
  "address": { (Address) },
  "notes": "Use side entrance for takeout",
  "geoLocation": { (GeoLocation) },
  "posPlatform": { (PosPlatform) },
  "extensions": { (Extended Data) }
}
```

Name	Description	Type	Always Present	Example
orgShortName	The organization identifier.	String	Yes	"tfoinc"
locRef	The location identifier.	String	Yes	"fdmnh144"
name	This location's name.	String	Yes	"Food Manhattan"
consumerName	The consumer-facing name of the location.	String	No	"East Village"
currency	The primary currency of the location. Pricing displayed is based on this currency. Value is user-defined and comes from the currency form in Symphony Enterprise Management Console.	String	No	"USD"
languages	Array of language culture reference strings configured for the location. First value is default.	Array	No	["en-US","fr-CA","es-ES"]
timeZone	Object containing the representations of the time zone configured for the location.	String	No	see Time Zone object

Name	Description	Type	Always Present	Example
phoneNumber	The phone number for the location.	String	No	"555-555-5555"
address	Object containing the address details of the physical location.	Object	No	see Address object
notes	Additional comments/detail about the location.	String	No	"Use side entrance for takeout"
geoLocation	Object containing geographic coordinates of the location.	Object	No	See Geolocation object
posPlatform	Defines the point of sale (POS) platform operating at the location.	Object	Yes	See Pos Platform object
extensions	JSON Object of vendor-specific data.	Object	No	See Extended Data object

Revenue Center

A revenue center represents the organizational entity that produces and sells items and services.

Content-Type: application/json

```
{
  "orgShortName": "tfoinc",
  "locRef": "fdmnh144",
  "rvcRef": 42,
  "name": "Food Manhattan RVC2",
  "consumerName": "Seasonal Market",
  "orderTypes": [ { (Order Type) } ],
  "address": { (Address) },
  "geoLocation": { (GeoLocation) },
  "tables": [ "1", "2", "3", "B1", "B2" ] ,
  "extensions": { (Extended Data) },
  "phoneNumber": "555-555-5555"
}
```

Name	Description	Type	Always Present	Example
orgShortName	The organization identifier.	String	Yes	"tfoinc"
locRef	The location identifier.	String	Yes	"fdmnh144"
rvcRev	The revenue center's reference.	Integer	Yes	42
name	The revenue center's name.	String	Yes	"Food Manhattan RVC2"
consumerName	The consumer-facing name of the revenue center.	String	No	"Seasonal Market"
orderTypes	Array of order types that are available at this revenue center. If there are no orderTypes configured, this array will be empty.	Array	Yes	See Order Type object
address	Object containing the address details of the revenue center.	Object	No	See Address object
geoLocation	Object containing geographic coordinates of the revenue center.	Object	No	See GeoLocation object

Name	Description	Type	Always Present	Example
tables	Array of restaurant table identifiers.	Array	No	["1", "2", "3", "B1", "B2"]
extensions	JSON Object allowing the addition of Extension Data.	Object	No	See Extension Data object
phoneNumber	The phone number for the revenue center.	String	No	"555-555-5555"

Definitions

Time Zone

Common representations of the time zone configured for the location.

```
{  
  "ianaName": "America/New_York",  
  "windowsName": "Eastern Standard Time",  
  "tzIndex": 23  
}
```

Name	Description	Type	Always Present	Example
ianaName	Common time zone representation used on Linux OS.	String	Yes	"America/New_York"
windowsName	Common time zone representation used on Windows OS.	String	Yes	"Eastern Standard Time"
tzIndex	Integer representation of the index column provided by Microsoft related to time zones.	Integer	Yes	23

Address

Address and related details of a location or revenue center.

```
{
  "addressLine1": "144 W 54th St",
  "addressLine2": "Suite 11B",
  "addressLine3": "",
  "floor": "42A",
  "locality": "New York",
  "region": "NY",
  "postalCode": "10019",
  "country": "USA"
  "notes": "Use West entrance for curbside orders"
}
```

Name	Description	Type	Always Present	Example
addressLine1	Street address, PO Box.	String	No	"144 W 54th St"
addressLine2	Suite/apartment number, floor.	String	No	"Suite 11B"
addressLine3	Additional address information.	String	No	
floor	Additional attribute to define the level or floor of the location if needed.	String	No	"42A"
locality	City/town.	String	No	"New York"
region	State/county/province.	String	No	"NY"
Postalcode	Postal code, US zip code.	String	No	"10019"
country	Name of country or country code.	String	No	"USA"
notes	Additional comments/details for the address.	String	No	"Use West entrance for curbside orders"

ExtensionData

An object used to add supplemental information about a location or revenue center in the organization service.

```
{  
  "<custom field>": { (Object) }  
}
```

Name	Description	Type	Always Present	Example
<custom field>	A JSON object containing a custom object required by the integrator which can be configured as a data extension from Enterprise Management Console.	Object	No	(properly formatted JSON)

GeoLocation

Object containing geographic coordinates.

```
{  
  "geolocation": { "latitude": 40.763188, "longitude": -  
73.914835 }  
}
```

Name	Description	Type	Always Present	Example
latitude	Latitude of the location's geocoordinate set minimum: -90 maximum: 90	Number	Yes	40.763188
longitude	Longitude of the location's geocoordinate set minimum: -180 maximum: 180	Number	Yes	-73.914835

OrderType

An order type is a sales category, such as “Dine In”, “Take Out”, or “Delivery”. Each order type is represented by an integer value as well as a string description; however, only the integer value can be used with the checks service.

```
{
  "orderTypes": [
    { "orderTypeRef": 1, "name": "Eat In" },
    { "orderTypeRef": 2, "name": "Take Out" }
  ]
}
```

Name	Description	Type	Always Present	Example
orderTypeRef	Identifier for the order type minimum: 1	Integer	Yes	1
name	Name of the order type.	String	No	“Eat In”

PosPlatform

Object containing the source point of sale (POS) system's type and version.

```
{
  "posPlatform": { "name": "Oracle.Simphony", "version": "2" }
}
```

Name	Description	Type	Always Present	Example
name	The type of POS platform in use.	String	Yes	"Oracle.Simphony"
version	The version of the source POS system.	String	Yes	"2"

ProblemDetails

Problem details is used as standard model for reporting details when HTTP error status code is returned. This definition is defined by [RFC7807](#).

```
{
  "type": "error:validation",
  "title": "Required value not specified.",
  "details": " The orgShortName value is required."
  "instance": "required_value_missing"
}
```

Name	Description	Type	Always Present	Example
type	A URI reference that identifies the problem type. When this member is not present, its value is assumed to be "about:blank".	String	No	"error:validation"
title	A short, human-readable summary of the problem type.	String	No	"Required value not specified."
details	A human-readable explanation specific to this occurrence of the problem.	String	No	"The orgShortName value is required."
instance	A URI reference that identifies the specific occurrence of the problem. It may or may not yield further information if dereferenced.	String	No	"required_value_missing"

4

Configuration API

The STSG2 Configuration Service is used to interact with POS system configuration including tables, menus, discounts, service charges, and tenders. Items are configured for each revenue center. Available revenue centers can be obtained from the Organization Service.

Paths

The {basePath} for resources on the Configuration API is:

<https://{host/path}/api/v1/>

The Configuration API provides access to the menu, discount, service charge, and tender resources configured for a revenue center.

Because each revenue center is uniquely identified by a combination of the {orgShortName}, {locRef}, and {rvcRef} then the path to each of the resources includes these values.

GET menus/summary

Get a summary of all available menus.

GET {basePath}/menus/summary

Content-Type: application/json

Request

/menus/summary?orgShortName=tfoinc&locRef=fdmnh144& rvcRef=42

Query Parameters

Name	Description	Type	Required	Example
orgShortName	The organization identifier.	String	Yes	"tfoinc"
locRef	The location identifier.	String	Yes	"fdmnh144"
rvcRef	The revenue center identifier.	Integer	Yes	42

200 Response

```
{
  "items": [
    { (Menu Summary) }
  ]
}
```

Name	Description	Type	Always Present	Example
items	Array of Menu Summary objects. If there are no menus configured that meet the query parameters, this array will be empty.	Array	Yes	See Menu Summary object

GET menus/{menuId}

A menu describes the set of items that can be ordered from a revenue center. The menu includes the menu items, prices, and related information necessary to order an item.

GET {basePath}/menus/{menuId}

Content-Type: application/json

Request

/menus/1233

Headers

Name	Description	Type	Required	Example
Simphony-OrgShortName	The organization identifier.	String	Yes	"tfoinc"
Simphony-LocRef	The location identifier.	String	Yes	"fdmnh144"
Simphony-RvcRef	The revenue center identifier.	String	Yes	42
If-Modified-Since	Standard http caching header (http caching link).	String	No	Wed, 21 Oct 2015 07:28:00 GMT
If-None-Match	Standard http caching header (http caching link).	String	No	"8b573604"

Path Parameters

Name	Description	Type	Required	Example
menuId	The identifier for an individual menu.	String	Yes	"1233"

200 Response

```
{
  (Menu)
}
```

Headers

Name	Description	Type	Always Present	Example
Last-Modified	A timestamp indicating the date and time at which the origin server believes the selected representation was last modified. See RFC 7232 Section 2.2 (http caching link).	String	No	Wed, 21 Oct 2015 07:28:00 GMT
ETag	The current entity-tag for the selected representation. See RFC 7232 Section 2.3 (http caching link).	String	No	"8b573604"

Body

Name	Description	Type	Always Present	Example
	Response contains the Menu object.	JSON Object	Yes	See Menu object

304 Response**Headers**

Name	Description	Type	Always Present	Example
Last-Modified	A timestamp indicating the date and time at which the origin server believes the selected representation was last modified. See RFC 7232 Section 2.2 (http caching link).	String	No	Wed, 21 Oct 2015 07:28:00 GMT
ETag	The current entity-tag for the selected representation. See RFC 7232 Section 2.3 (http caching link).	String	No	"8b573604"

Name	Description	Type	Always Present	Example
	Not modified.			

Other Responses

Error Response Code	Description	Type	Always Present	Example
400	Response contains the Problem Details object.	JSON Object	No	{ (Problem Details object) }
404	404 Requested resource not found.		No	

GET discounts/collection

The discount collection is a list of discounts that can be used when interacting with the checks endpoint. The API returns a collection of discounts that can be used at the specified revenue center.

GET {basePath}/discounts/collection

Content-Type: application/json

Request

/discounts/collection?orgShortName=tfoinc&locRef=fdmnh144&rcRef=42

Query Parameters

Name	Description	Type	Required	Example
orgShortName	The organization identifier.	String	Yes	"tfoinc"
locRef	The location identifier.	String	Yes	"fdmnh144"
rcRef	The revenue center identifier.	Integer	Yes	42

Headers

Name	Description	Type	Required	Example
If-Modified-Since	Standard http caching header (http caching link).	String	No	Wed, 21 Oct 2015 07:28:00 GMT
If-None-Match	Standard http caching header (http caching link).	String	No	"8b573604"

200 Response

```
{
  "orgShortName": "tfoinc",
  "locRef": "fdmnh144",
  "rvcRef": 42,
  "items": [ { (Discount Object) } ]
}
```

Headers

Name	Description	Type	Always Present	Example
Last-Modified	A timestamp indicating the date and time at which the origin server believes the selected representation was last modified. See RFC 7232 Section 2.2 (http caching link).	String	No	Wed, 21 Oct 2015 07:28:00 GMT
ETag	The current entity-tag for the selected representation. See RFC 7232 Section 2.3 (http caching link).	String	No	"8b573604"

Body

Name	Description	Type	Always Present	Example
orgShortName	The organization identifier.	String	Yes	"tfoinc"
locRef	The location identifier.	String	Yes	"fdmnh144"
rvcRef	The revenue center identifier.	Integer	Yes	42
items	Array of Discounts.	Array	Yes	See Discount object

304 Response

Headers

Name	Description	Type	Always Present	Example
Last-Modified	A timestamp indicating the date and time at which the origin server believes the selected representation was last modified. See RFC 7232 Section 2.2 (http caching link).	String	No	Wed, 21 Oct 2015 07:28:00 GMT
ETag	The current entity-tag for the selected representation. See RFC 7232 Section 2.3 (http caching link).	String	No	"8b573604"

Name	Description	Type	Always Present	Example
	Not modified.			

Other Responses

Error Response Code	Description	Type	Always Present	Example
400	Response contains the Problem Details object.	JSON Object	No	{ (Problem Details object) }

GET serviceCharges/collection

The service charge collection is a list of service charges that can be used when interacting with the checks endpoint. The API returns a collection of service charges that can be used at the specified revenue center.

GET {basePath}/serviceCharges/collection

Content-Type: application/json

Request

/serviceCharges/collection?orgShortName=tfoinc&locRef=fdmnh144&rvRef=42

Query Parameters

Name	Description	Type	Required	Example
orgShortName	The organization identifier.	String	Yes	"tfoinc"
locRef	The location identifier.	String	Yes	"fdmnh144"
rvRef	The revenue center identifier.	Integer	Yes	42

Headers

Name	Description	Type	Required	Example
If-Modified-Since	Standard http caching header (http caching link).	String	No	Wed, 21 Oct 2015 07:28:00 GMT
If-None-Match	Standard http caching header (http caching link).	String	No	"8b573604"

200 Response

```
{
  "orgShortName": "tfoinc",
  "locRef": "fdmnh144",
  "rvRef": 42,
  "items": [ { (Service Charge Object) } ]
}
```


Headers

Name	Description	Type	Always Present	Example
Last-Modified	A timestamp indicating the date and time at which the origin server believes the selected representation was last modified. See RFC 7232 Section 2.2 (http caching link).	String	No	Wed, 21 Oct 2015 07:28:00 GMT
ETag	The current entity-tag for the selected representation. See RFC 7232 Section 2.3 (http caching link).	String	No	"8b573604"

Body

Name	Description	Type	Always Present	Example
orgShortName	The organization identifier.	String	Yes	"tfoinc"
locRef	The location identifier.	String	Yes	"fdmnh144"
rvcRef	The revenue center identifier.	Integer	Yes	42
items	Array of Service Charges.	Array	Yes	See Service Charge object

304 Response**Header**

Name	Description	Type	Always Present	Example
Last-Modified	A timestamp indicating the date and time at which the origin server believes the selected representation was last modified. See RFC 7232 Section 2.2 (http caching link).	String	No	Wed, 21 Oct 2015 07:28:00 GMT
ETag	The current entity-tag for the selected representation. See RFC 7232 Section 2.3 (http caching link).	String	No	"8b573604"

Name	Description	Type	Always Present	Example
Not modified.				

Other Responses

Error Response Code	Description	Type	Always Present	Example
400	Response contains the Problem Details object.	JSON Object	No	{ (Problem Details object) }
404	404 Requested resource not found.		No	

GET tenders/collection

The tender collection is a list of tenders that can be used for payment when interacting with the checks endpoint. The API returns a collection of tenders for the specified revenue center.

GET {basePath}/tenders/collection

Content-Type: application/json

Request

/tenders/collection?orgShortName=tfoinc&locRef=fdmnh144&rvRef=42

Query Parameters

Name	Description	Type	Required	Example
orgShortName	The organization identifier.	String	Yes	"tfoinc"
locRef	The location identifier.	String	Yes	"fdmnh144"
rvRef	The revenue center identifier.	Integer	Yes	42

Headers

Name	Description	Type	Required	Example
If-Modified-Since	Standard http caching header (http caching link).	String	No	Wed, 21 Oct 2015 07:28:00 GMT
If-None-Match	Standard http caching header (http caching link).	String	No	"8b573604"

200 Response

```
{
  "orgShortName": "tfoinc",
  "locRef": "fdmnh144",
  "rvRef": 42,
  "items": [ { (Tender Object) } ]
}
```

Headers

Name	Description	Type	Always Present	Example
Last-Modified	A timestamp indicating the date and time at which the origin server believes the selected representation was last modified. See RFC 7232 Section 2.2 (http caching link).	String	No	Wed, 21 Oct 2015 07:28:00 GMT
ETag	The current entity-tag for the selected representation. See RFC 7232 Section 2.3 (http caching link).	String	No	"8b573604"

Body

Name	Description	Type	Always Present	Example
orgShortName	The organization identifier.	String	Yes	"tfoinc"
locRef	The location identifier.	String	Yes	"fdmnh144"
rvcRef	The revenue center identifier.	Integer	Yes	42
items	Array of Tenders.	Array	Yes	See Tenser object

304 Response**Header**

Name	Description	Type	Always Present	Example
Last-Modified	A timestamp indicating the date and time at which the origin server believes the selected representation was last modified. See RFC 7232 Section 2.2 (http caching link).	String	No	Wed, 21 Oct 2015 07:28:00 GMT
ETag	The current entity-tag for the selected representation. See RFC 7232 Section 2.3 (http caching link).	String	No	"8b573604"

Name	Description	Type	Always Present	Example
Not modified.				

Other Responses

Error Response Code	Description	Type	Always Present	Example
400	Response contains the Problem Details object.	JSON Object	No	{ (Problem Details object) }

GET taxes

Get tax configuration for a revenue center. This request provides the tax class that is referenced by menu items and the tax rates and tax types referenced by the tax classes. The tax classes will indicate which tax rates are active when that tax class is used by an item.

GET {basePath}/taxes

Content-Type: application/json

Request

/taxes?orgShortName=tfoinc&locRef=fdmnh144&rcRef=42

Query Parameters

Name	Description	Type	Required	Example
orgShortName	This organization identifier	string	Y	"tfoinc"
locRef	The location identifier	string	Y	"fdmnh144"
rcRef	The revenue center identifier	integer	Y	42

Headers

Name	Description	Type	Required	Example
If-Modified-Since	Standard http caching header (http caching link).	String	No	Wed, 21 Oct 2015 07:28:00 GMT

Name	Description	Type	Required	Example
If-None-Match	Standard http caching header (http caching link).	String	No	"8b573604"

200 Response

```
{
  "orgShortName": "tfoinc",
  "locRef": "fdmnh144",
  "rvcRef": 42,
  "taxClasses": [ { (Tax Class Object) } ],
  "taxRates": [ { (Tax Rate Object) } ]
}
```

Headers

Name	Description	Type	Always Present	Example
Last-Modified	A timestamp indicating the date and time at which the origin server believes the selected representation was last modified. See RFC 7232 Section 2.2 (http caching link).	String	No	Wed, 21 Oct 2015 07:28:00 GMT
ETag	The current entity-tag for the selected representation. See RFC 7232 Section 2.3 (http caching link).	String	No	"8b573604"

Body

Name	Description	Type	Always Present	Example
orgShortName	The organization identifier.	String	Yes	"tfoinc"
locRef	The location identifier.	String	Yes	"fdmnh144"
rvcRef	The revenue center identifier.	Integer	Yes	42
taxClasses	Array of tax classes referenced by menu items in the requested revenue center.	array	Y	see Tax Class Object
taxRates	Array of tax rates referenced by menu items in the requested revenue center.	array	Y	see Tax Rate Object

304 Response

Headers

Name	Description	Type	Always Present	Example
Last-Modified	A timestamp indicating the date and time at which the origin server believes the selected representation was last modified. See RFC 7232 Section 2.2 (http caching link).	String	No	Wed, 21 Oct 2015 07:28:00 GMT
ETag	The current entity-tag for the selected representation. See RFC 7232 Section 2.3 (http caching link).	String	No	"8b573604"

Other Responses

Error Response Code	Description	Type	Always Present	Example
400	Response contains the Problem Details object.	JSON Object	No	{ (Problem Details object) }

GET items/unavailable

Get a menu item availability status for menu items.

GET {basePath}/menus/items/unavailable

Content-Type: application/json

Request

items/unavailable?orgShortName=tfoinc&locRef=fdmnh144& rvcRef=42

Query Parameters

Name	Description	Type	Required	Example
orgShortName	The organization identifier.	String	Yes	"tfoinc"
locRef	The location identifier.	String	Yes	"fdmnh144"

Name	Description	Type	Required	Example
rvcRef	The revenue center identifier.	Integer	Yes	42

Headers

Name	Description	Type	Required	Example
If-None-Match	Standard http caching header (http caching link).	String	No	"8b573604"

200 Response

```
{
  "orgShortName": "tfoinc",
  "locRef": "fdmnh144",
  "rvcRef": 42,
  "items": [ { (Menu Item Availability) } ]
}
```

Name	Description	Type	Always Present	Example
orgShortName	The organization identifier.	String	Yes	"tfoinc"
locRef	The location identifier.	String	Yes	"fdmnh144"
rvcRef	The revenue center identifier.	Integer	Yes	42
items	Array of Menu Item Availability Items.	Array	Yes	See Menu Item Availability object

Headers

Name	Description	Type	Always Present	Example
ETag	The current entity-tag for the selected representation. See RFC 7232 Section 2.3 (http caching link).	String	No	"8b573604"

304 Response

Headers

Name	Description	Type	Always Present	Example
ETag	The current entity-tag for the selected representation. See RFC 7232 Section 2.3 (http caching link).	String	No	"8b573604"

Name	Description	Type	Always Present	Example
	Not modified.			

Other Responses

Error Response Code	Description	Type	Always Present	Example
400	Response contains the Problem Details object.	JSON Object	No	{ (Problem Details object) }

Resources

Menu Summary

Summary details of a menu without its related items.

```
application/json
{
  "menuId": "tfoinc:fdmnh144:42",
  "name": "fdmnh1441233",
  "description": "The bar menu",
  "orgShortName": "tfoinc",
  "locRef": "fdmnh144",
  "rvcRef": 42
}
```

Name	Description	Type	Always Present	Example
menuId	System generated unique reference for this menu.	String	Yes	"tfoinc:fdmnh144:42"
name	Generated name for the specific menu.	String	No	"fdmnh1441233"
description	Description of the menu.	String	No	"The bar menu"
orgShortName	The organization identifier.	String	Yes	"tfoinc"
locRef	The location identifier.	String	Yes	"fdmnh144"
rvcRef	The revenue center identifier.	Integer	Yes	42

Menu

The set of items that can be ordered. In addition to the menu's summary details the menu includes the menu items, prices, and related information necessary to order those items.

application/json

```
{
  "orgShortName": "tfoinc",
  "locRef": "fdmnh144",
  "rvcRef": 42,
  "menuId": "tfoinc:fdmnh144:42",
  "name": "fdmnh1441233",
  "description": "The lunch menu",
  "menuItems": [ { (Menu Item) } ],
  "comboMeals": [ { (Combo Meal) } ],
  "condimentItems": [ { (Condiment Item) } ],
  "condimentGroups": [ { (Condiment Group) } ],
  "familyGroups": [ { (Family Group Item) } ],
  "allergens": [ { (Allergen) } ]
}
```

Name	Description	Type	Always Present	Example
orgShortName	The organization identifier.	String	Yes	"tfoinc"
locRef	The location identifier.	String	Yes	"fdmnh144"
rvcRef	The revenue center identifier.	Integer	Yes	42
menuId	System generated unique reference for this menu.	String	Yes	"tfoinc:fdmnh144:42"
name	Generated name for the specific menu.	String	No	"fdmnh1441233"
description	Description of the menu.	String	No	"The lunch menu"
menuItems	Array of Menu Items.	Array	Yes	see Menu Item object
comboMeals	Array of Combo Meals.	Array	Yes	see Combo Meal object
condimentItems	Array of Condiment Items.	Array	Yes	see Condiment Item object

Name	Description	Type	Always Present	Example
condimentGroups	Array of Condiment Groups.	Array	Yes	see Condiment Group object
familyGroups	Array of Family Group Items.	Array	Yes	see Family Group Item object
allergens	Array of Allergen.	Array	Yes	see Allergens object

Discount

Definition of a discount that can be applied to a transaction.

application/json

```
{
  "discountId": 726123,
  "name": "RST WK PRMO",
  "consumerName": { (Translated String) },
  "consumerDescription": { (Translated String) },
  "images": [ { (Image Link) } ],
  "type": "percentage",
  "value": 5.00,
  "extensions": { (Extended Data) },
}
```

Name	Description	Type	Always Present	Example
discountId	The discount identifier.	Integer	Yes	726123
name	The name of the discount defined in the POS.	Object	Yes	"RST WK PRMO"
consumerName	Name defined for use in a consumer interface.	Object	No	See Translated String object
consumerDescription	Description defined for consumer interface.	Object	No	See Translated String object
images	Array of Image objects.	Array	No	See Image Link object
type	The type of the discount ("amount" or "percentage").	String	Yes	"percentage"
value	The amount or percentage of the preset discount. If value is not present, then it is an open discount.	Number	No	5.00
extensions	An object containing additional attributes for item.	Object	No	See Extension Data object

Service Charge

application/json

```
{
  "serviceChargeId": 262912,
  "name": "Dlvry Chrg",
  "consumerName": { (Translated String) },
  "consumerDescription": { (Translated String) },
  "images": [ { (Image Link) } ],
  "type": "amount",
  "value": 7.00,
  "extensions": { (Extension Data) },
}
```

Name	Description	Type	Always Present	Example
serviceChargeId	The object number reference of the service charge.	Integer	Yes	262912
name	The name of the service charge defined in the POS.	String	Yes	"Dlvry Chrg"
consumerName	Name defined for use in a consumer interface.	Object	No	See Translated String object
consumerDescription	Description defined for consumer interface.	Object	No	See Translated String object
images	Array of Image objects.	Array	No	See Image Link object
type	The type of the service charge ("amount" or "percentage").	String	Yes	"amount"
value	The amount or percentage of the preset service charge. If value is not present, then it is an open service charge.	Number	No	7.00
extensions	An object containing additional attributes for the item.	Object	No	See Extension Data object

Tender

application/json

```
{
  "tenderId": 262912,
  "name": "Svc Ttl"
  "consumerName": { (Translated String) },
  "consumerDescription": { (Translated String) },
  "images": [ { (Image Link) } ],
  "type": "service total",
  "extensions": { (Extension Data) }
}
```

Name	Description	Type	Always Present	Example
tenderId	The tender's object number reference.	Integer	Yes	262912
name	The name of the tender defined in the POS.	String	Yes	"Svc Ttl"
consumerName	Name defined for use in a consumer interface.	Object	No	See Translated String object
consumerDescription	Description defined for consumer interface.	Object	No	See Translated String object
images	Array of Image objects.	Array	No	See Image Link object
type	The type of the tender ("service total" or "payment").	String	Yes	"service total"
extensions	An object containing additional attributes for the item.	Object	No	See Extension Data object

Tax Class

application/json

```
{
  "taxClassId": 72,
  "activeTaxRateRefs": [
    1,
    5,
    7
  ]
}
```

Name	Description	Type	Always Present	Example
taxClassId	The tax class identifier	integer	Y	72
activeTaxRateRefs	Array of references to active tax rate items for this tax class	array	N	[1, 5, 7]

Tax Rate

application/json

```
{
  "taxRateId": 47,
  "percentage": 4.0,
  "taxType": "inclusive",
  "name": "{ (Translated String) }"
}
```

Name	Description	Type	Always Present	Example
taxRateId	The tax class identifier	integer	Y	47
percentage	The percentage of the tax rate	number	Y	4.0
taxType	The type of the tax rate	string	Y	"Add On"
name	The name of the tax rate defined in the point of sale	Object	Y	See Translated String object

Menu Item Availability

application/json

```
{  
  "menuItemId": "822815",  
  "definitions": [ { (Menu Item Availability Data) } ]  
}
```

Name	Description	Type	Always Present	Example
menuItemId	The menu item's object number reference.	Integer	Yes	822815
definitions	Array containing one or more definitions for the menu item.	Array	Yes	See Menu Item Availability Data object

Definitions

Menu Item

```
{
  "menuItemId": "822815",
  "name": { (Translated String) },
  "familyGroupRef": 1,
  "definitions" : [ { (Menu Item Definition) } ],
  "dietaryInformation": ["vegan", "low sodium"],
  "tags": ["online", "seasonal"],
  "tagGroups": [ { (Tag Groups) } ]
}
```

Name	Description	Type	Always Present	Example
menuItemId	The menu item's object number reference.	Integer	Yes	822815
name	The name of the menu item defined in the POS.	Object	Yes	See Translated String object
familyGroupRef	The reference to the family group item in the menu's family group collection.	Integer	Yes	1
definitions	Array containing one or more definitions for the menu item.	Array	Yes	See Menu Item Definition object
dietaryInformation	Array of Dietary values (strings).	Array	No	"vegan"
tags	Array of tag values (strings).	Array	No	"online"
tagGroups	Array of tagGroups containing one or more tags objects (strings).	Array	No	See Tag Groups object

Menu Item Definition

Menu item definitions define additional details about a menu item. Each menu item can have up to 64 menu item definitions.

```
{
  "definitionSequence": 1,
  "name": { (Translated String) },
  "name2": { (Translated String) },
  "consumerName": { (Translated String) },
  "consumerDescription": { (Translated String) },
  "images": [ { (Image Link) } ],
  "tags": ["online", "seasonal"],
  "allergens": [ { (Allergens) } ],
  "nutritionalData": [ { (Nutritional Data) } ],
  "options": ["containsAlcohol"],
  "consumerAdvisoryText": "Consuming raw or undercooked meats,
  poultry, seafood, shellfish, or eggs may increase your risk of
  food borne illness",
  "prices": [ (Menu Item Price) ],
  "slus": [ { (Menu Item SLU) } ],
  "taxClassRef": 72,
  "defaultCondiments": [ { (Default Condiment) } ],
  "condimentGroupRules": [ { (Condiment Group Rule) } ],
  "extensions": { (Extension Data) }
}
```

Name	Description	Type	Always Present	Example
definitionSequence	The sequence number of the definition.	Integer	Yes	1
name	The name of the item.	Object	Yes	See Translated String object
name2	The second name of the item.	Object	Yes	See Translated String Object
consumerName	Name defined for use in a consumer interface.	Object	No	See Translated String object

Name	Description	Type	Always Present	Example
consumerDescription	Description defined for consumer interface.	Object	No	See Translated String object
images	Array of Image objects.	Array	No	See Image Link object
tags	Array of tag values (strings).	Array	No	"seasonal"
allergens	Array of Allergen objects that apply to this menu item.	Array	No	See Allergen object
nutritionalData	Array of nutritional data objects for the menu item. It is assumed that nutritional data are defined where the serving size is one of the menu item.	Array	No	See Nutritional Data object
options	Array of options. One or more of the following values are allowed: "containsAlcohol "	Array	No	["containsAlcohol"]
consumerAdvisoryText	Consumer advisory description related to this item.	String	No	"Consuming raw or undercooked meats, poultry, seafood, shellfish, or eggs may increase your risk of food borne illness"
prices	Array of zero or more prices for the item.	Array	No	See Menu Item Price object
slus	Array of screen look up (SLU) objects representing the SLUs configured on the Menu Item Definition.	Array	No	See Menu Item SLU object
taxClassRef	The tax class reference associated with the definition	integer	N	72
defaultCondiments	The default condiments for the item.	Array	Yes	See Default Condiment object.

Name	Description	Type	Always Present	Example
condimentGroupRules	The condiment rules.	Array	No	See Condiment Group Rule object
extensions	An object containing additional attributes.	Object	No	See Extension Data object

Menu Item Price

Menu item price is the amount charged for the sale of a menu item. Menu item prices are configured per menu item definition. Each definition can have up to eight prices.

```
{  
  "priceSequence": 1,  
  "price": 1.12,  
  "name": "Add"  
}
```

Name	Description	Type	Always Present	Example
priceSequence	The price sequence number.	Integer	Yes	1
price	The price that can be used when adding the menu item to a check.	Number	Yes	1.12
name	Describes some facet of the price; an example might be a size. Price name is populated with the name of the menu level the priceSequence is associated with. If the price is available on "All Levels", the name attribute will not be included for that record in the response. Similarly if the menu level name is blank, the name attribute won't be included.	String	No	"Add"

Menu Item Availability Data

```
{
  "definitionSequence": 1
}
```

Name	Description	Type	Always Present	Example
definitionSequence	The sequence number of the definition.	Integer	Yes	1

Family Group Item

```
{
  "familyGroupItemID": 1,
  "name": { (Translated String) },
  "consumerName": { (Translated String) },
  "consumerDescription": { (Translated String) },
  "images": [ { (Image Link) } ]
}
```

Name	Description	Type	Always Present	Example
familyGroupItemID	The family group item's object number reference.	Integer	Yes	1
name	The name of the item.	Object	Yes	See Translated String object
consumerName	Name defined for use in a consumer interface.	Object	No	See Translated String object
consumerDescription	Description defined for consumer interface.	Object	No	See Translated String object
images	Array of Image objects.	Array	No	See Image Link object

Combo Meal Item

```
{
  "comboMealId": 4443,
  "name": "Sandwich & Drink",
  "menuItemRef": 42,
  "comboGroups": [ { (Combo Group Item) } ]
}
```

Name	Description	Type	Always Present	Example
comboMealId	The combo meal identifier.	Integer	Yes	4443
name	Name of the combo meal item.	String	Yes	"Sandwich & Drink"
menuItemRef	A reference to the main item used when ordering a combo meal.	Integer	Yes	42
comboGroups	Array of Combo Group items from which user will make selections to complete definition of the combo.	Array	Yes	See Combo Group Item object

Combo Group Item

```
{
  "comboGroupId": 4443,
  "name": "Hot Side",
  "count": 1,
  "isMainGroup": true,
  "prices": [ (Combo Menu Item Price) ],
  "menuItems": [ { (Combo Menu Item) } ]
}
```

Name	Description	Type	Always Present	Example
comboGroupId	The combo meal identifier.	Integer	Yes	4443
name	The name of the combo group.	String	Yes	"Hot Side"
count	The number of items to select from the group when adding the combo meal to a check.	Integer	No	2
isMainGroup	When true, indicates this group is the "main group". Options: true or false.	Boolean	No	true
prices	An array of zero or more prices for the combo menu item.	Array	No	See Combo Menu Item Price object
menuItems	The collection of menu items that are selected when picking items from this combo group. Array of Combo Menu Items.	Array	Yes	See Combo Menu Item object

Combo Menu Item

```
{
  "menuItemRef": 443,
  "count": 2,
  "prices": [ { (Combo Menu Item Price) } ]
}
```

Name	Description	Type	Always Present	Example
menuItemRef	The identifier of the menu item that represents this side item.	Integer	Yes	443
count	The number of items to select from the group when adding the combo meal to a check.	Integer	No	2
prices	An array of zero or more prices for the combo menu item.	Array	Yes	See Combo Menu Item Price object

Combo Menu Item Price

Combo menu item price is the amount charged for the sale of a combo menu item.

```
{
  "priceSequence": 1,
  "price": 1.12
}
```

Name	Description	Type	Always Present	Example
priceSequence	The price sequence number.	Integer	Yes	1
price	The price that can be used when adding the menu item to a check.	Number	Yes	1.12

Condiment Item

```
{
  "condimentId": "822815",
  "name": { (Translated String) },
  "familyGroupRef": 51,
  "definitions": [ { (Menu Item Definition) } ],
  "dietaryInformation": ["vegan", "low sodium"],
  "tags": ["online", "seasonal"],
  "tagGroups": [ { (Tag Groups) } ]
}
```

Name	Description	Type	Always Present	Example
condimentId	The menu item's object number reference.	Integer	Yes	822815
name	The name of the menu item defined in the POS.	Object	Yes	See Translated String object
familyGroupRef	The family group object number reference.	Integer	Yes	51
definitions	Array containing one or more definitions for the menu item.	Array	Yes	See Condiment Item Definition object
dietaryInformation	Array of Dietary values (strings).	Array	No	"vegan"
tags	Array of tag values (strings).	Array	No	"online"
tagGroups	Array of tagGroups containing one or more tags objects (strings).	Array	No	See Tag Groups object

Condiment Item Definition

```

{
  "number": 1,
  "name": { (Translated String) },
  "name2": { (Translated String) },
  "consumerName": { (Translated String) },
  "consumerDescription": { (Translated String) },
  "images": [ { (Image Link) } ],
  "tags": ["online", "seasonal"],
  "allergens": [ { (Allergens) } ],
  "prices": [ (Menu Item Price) ],
  "nutritionalData": [ { (Nutritional Data) } ],
  "options": ["containsAlcohol"],
  "extensions": { (Extension Data) }
}

```

Name	Description	Type	Always Present	Example
number	The number of the definition.	Integer	Yes	1
name	The name of the item.	Object	Yes	See Translated String object
name2	The second name of the item.	Object	Yes	See Translated String object
consumerName	Name defined for use in a consumer interface.	Object	No	See Translated String object
consumerDescription	Description defined for consumer interface.	Object	No	See Translated String object
images	Array of Image objects.	Array	No	See Image Link object
tags	Array of tag values (strings).	Array	No	"online"
allergens	Array of Allergen objects that apply to this menu item.	Array	No	See Allergen object
prices	Array of zero or more prices for the item.	Array	No	See Menu Item Price object

Name	Description	Type	Always Present	Example
nutritionalData	Array of nutritional data objects for the menu item condiment. It is assumed that nutritional data are defined where the serving size is one of the menu items.	Array	No	See Nutritional Data object
options	Array of options. One or more of the following values are allowed: "containsAlcohol "	Array	No	["containsAlcohol"]
extensions	An object containing additional attributes for the group.	Object	No	See Extension Data object

Condiment Group

```
{
  "condimentGroupId": 285765,
  "name": { (Translated String) },
  "consumerName": { (Translated String) },
  "consumerDescription": { (Translated String) },
  "condimentItemRefs": [
    "569775",
    "569776",
    "569777"
  ],
  "images": [ { (Image Link) } ]
}
```

Name	Description	Type	Always Present	Example
condimentGroupId	The condiment group's object number reference.	Integer	Yes	293385
name	The name of the condiment rule defined in the POS.	Object	Yes	See Translated String object
consumerName	Name defined for use in a consumer interface.	Object	No	See Translated String object
consumerDescription	Description defined for consumer interface.	Object	No	See Translated String object
condimentItemRefs	An array of integer references to the condiment items in this group. If no condiments are configured this array will be empty.	Array	Yes	["569775", "569776", "569777"]
images	Array of Image objects.	Array	No	See Image Link object

Condiment Group Rule

```
{  
  "condimentGroupRef": 293385,  
  "minimumCount": 1,  
  "maximumCount": 9  
}
```

Name	Description	Type	Always Present	Example
condimentGroupRef	The object number reference of the condiment group the rule is associated with.	Integer	Yes	293385
minimumCount	Minimum number of condiments to select from this group. A value of "0" indicates no minimum.	Integer	Yes	1
maximumCount	Maximum number of condiments to select from this group. A value of "0" indicates no maximum.	Integer	Yes	9

Default Condiments

```
{
  "condimentRef": 201,
  "quantity": 2
}
```

Name	Description	Type	Always Present	Example
condimentRef	A reference to the condiment.	Integer	Yes	201
quantity	The quantity of condiment applied by default.	Integer	Yes	2

Translated String

```
{
  "en-US": "coffee",
  "es-ES": "café",
  "lt-LT": "kavos"
}
```

Name	Description	Type	Always Present	Example
<language-Code>	<p><language-code> is the key of a map/dictionary where the key value one of the languages available at the location (see organization : location service).</p> <p>The value is the string in the language identified by the key.</p>	String	Yes	"en-US": "coffee", "es-ES": "café", "lt-LT": "kavos"

Menu Item Screen Lookup

Screen look ups (SLUs) are used to allow the grouping of similar items in various user interfaces and are configured against the menu item definition.

```
{  
  "sluNumber": 2,  
  "sluId": 23,  
  "name": { (Translated String) }  
}
```

Name	Description	Type	Always Present	Example
sluNumber	Represents the SLU property name of the POS menu item definition. SLU2 is sluNumber = 2, SLU8 is sluNumber = 8 etc. SLU is sluNumber = 1.	Integer	Yes	2
sluld	The POS identifier for the SLU.	Integer	Yes	23
name	The name of the SLU.	Object	No	See Translated String object

Extension Data

Supplemental configuration details used to provide additional information about the parent object.

```
{  
  type:<string,object> map  
}
```

Name	Description	Type	Always Present	Example
	Container for extension data configured in POS.	String/object	No	

Image Link

Usage Note: Images URLs hosted by Oracle should not be distributed and utilized directly by downstream applications. Image URLs are provided to give external systems access to pull images associated with Oracle configuration and then cache those images in a performance appropriate environment for their consumption.

```
{
  "index": 1
  "url": "https://oracleObjectStore.com/images/coffee822815.jpg",
  "altText": "pizza",
  "description": "pizza description",
  "isCloudImage": true,
  "size": "string"
}
```

Name	Description	Type	Always Present	Example
index	Identifier for the image. Available from 19.2.1 release.	String	No	1
url	The URL of one of the menu item's images.	String	Yes	"https://oracleObjectStore.com/images/coffee822815.jpg"
altText	Image alternative text.	String	No	"pizza"
description	Description text for the image.	String	No	"pizza description"
isCloudImage	True or false.	Boolean	No	true
size	Image size.	String	No	"string"

Allergens

```
{
  "allergenId": "Beef",
  "name": { (Translated String) }
}
```

Name	Description	Type	Always Present	Example
allergenId	Identifier for an allergen.	String	Yes	"Beef"
name	Name of the allergen.	String	No	See Translated String object

Nutritional Data

```
{
  "nutritionalItemId": "sodium",
  "value": 475,
  "unitOfMeasure": "milligrams",
  "name": { (Translated String) }
}
```

Name	Description	Type	Always Present	Example
nutritionalItemId	Identifier for a nutritional item.	String	Yes	"sodium"
value	The amount of the nutritional item associated with the menu item.	Integer	No	475
unitOfMeasure	Unit of measure for nutritional item.	String	No	"Milligrams"
name	Name of nutritional item.	String	Yes	See Translated String object

Tag Groups

```
{
  "id": "web ordering",
  "tags": ["online", "seasonal"]
}
```

Name	Description	Type	Always Present	Example
id	Unique identifier for the tag group	String	Yes	"web ordering"
tags	Array of tag values (strings).	Array	Yes	"online"

ProblemDetails

Problem details is used as standard model for reporting details when HTTP error status code is returned. This definition is defined by [RFC7807](#).

```
{
  "type": "error:validation",
  "title": "Required value not specified.",
  "details": " The orgShortName value is required."
  "instance": "required_value_missing"
}
```

Name	Description	Type	Always Present	Example
type	A URI reference that identifies the problem type. When this member is not present, its value is assumed to be "about:blank".	String	No	"error:validation"
title	A short, human-readable summary of the problem type.	String	No	"Required value not specified."
details	A human-readable explanation specific to this occurrence of the problem.	String	No	"The orgShortName value is required."
instance	A URI reference that identifies the specific occurrence of the problem. It may or may not yield further information if dereferenced.	String	No	"required_value_missing"

5

Checks API

The STSG2 Checks API is used to create and manage the checks within a revenue center (use the Organization Service to locate a revenue center). Configuration content (for example, menu items or discounts) from the Configuration API is used to populate a check.

Paths

The {basePath} for resources on the Checks API is:

<https://{host/path}/api/v1/>

The Checks API provides access to the get and modify checks in a revenue center. The context of the operation is defined by the {orgShortName}, {locRef}, and {rvcRef} parameters. In many cases the operations are executed by routing request to on-premises services. This has an increased latency over requests that are processed by cloud-base services.

Check operations that include a check in the request, get the value of the {orgShortName}, {locRef}, and {rvcRef} from the request body via the check header. Check operations that do not include check in the requests, specify these values in the header.

POST checks/Calculator

The API used to calculate totals on a check. The orgShortName, locRef, and rvcRef in the check header are used to define the context of the operation.

POST {basePath}/checks/calculator

Content-Type: application/json

Request

Headers

Name	Description	Type	Required	Example
Simphony-OrgShortName	Organization identifier.	String	Yes	"tfoinc"
Simphony-LocRef	Location identifier.	String	Yes	"fdmnh144"
Simphony-RvcRef	Revenue center identifier.	Integer	Yes	42
Accept-Language	Identifies the language that is desired for the response.	String	No	"en-US"

Request Body

Name	Description	Type	Required	Example
	Request body contains the Check Object.	JSON Object	Yes	{ (Check Object) }

200 Response

```
{
  (Check Object)
}
```

Name	Description	Type	Always Present	Example
	Response contains the Check Object.	JSON Object	Yes	See Check object

Other Responses

Name	Description	Type	Always Present	Example
400	Response contains the Problem Details object.	JSON Object	No	{ (Problem Details object) }

POST checks

API to create a new check. The orgShortName, locRef, and rvcRef values in the check header are used to define the location and revenue center where the operation will occur.

POST {basePath}/checks

Content-Type: application/json

Request**Headers**

Name	Description	Type	Required	Example
Simphony-OrgShortName	Organization identifier.	String	Yes	"tfoinc"
Simphony-LocRef	Location identifier.	String	Yes	"fdmnh144"
Simphony-RvcRef	Revenue center identifier.	Integer	Yes	42
Accept-Language	Identifies the language that is desired for the response.	String	No	"en-US"

Request Body

Name	Description	Type	Required	Example
	Request body contains the Check Object.	JSON Object	Yes	{ (Check Object) }

200 Response

```
{  
  (Check Object)  
}
```

Name	Description	Type	Always Present	Example
	Response contains the Check Object.	JSON Object	No	See Check object

Other Responses

Error Response Code	Description	Type	Always Present	Example
400	Response contains the Problem Details object.	JSON Object	No	{ (Problem Details object) }

POST checks/{checkRef}/round

API adds a round to an existing check. If for some reason the update can't be made to the check due to the check's state at the POS, an appropriate HTTP response and response code will be returned. This operation does not alter items already on the check from previous rounds.

POST {basePath}/checks/{checkRef}/round

Content-Type: application/json

Request

/checks/929aacee2c6d42c78ae877e824c28eed00000431/round

Headers

Name	Description	Type	Required	Example
Simphony-OrgShortName	Organization identifier.	String	Yes	"tfoinc"
Simphony-LocRef	Location identifier.	String	Yes	"fdmnh144"
Simphony-RvcRef	Revenue center identifier.	Integer	Yes	42
Accept-Language	Identifies the language that is desired for the response.	String	No	"en-US"

Path Parameters

Name	Description	Type	Required	Example
checkRef	Check identifier.	String	Yes	"929aacee2c6d42c78ae877e824c28eed00000431"

Request Body

Name	Description	Type	Required	Example
	Request body contains the Check Object.	JSON Object	Yes	{ (Check Object) }

200 Response

```
{
  (Check Object)
}
```

Name	Description	Type	Always Present	Example
	Response contains the Check Object.	JSON Object	Yes	See Check object

Other Responses

Error Response Code	Description	Type	Always Present	Example
400	Response contains the Problem Details object.	JSON Object	No	{ (Problem Details object) }

DELETE checks/{checkRef}

API cancels the requested check from the specified revenue center if present and in a state where cancelation is allowed. Request uses the checkRef that can be found in the check header once a check has been created at the POS.

DELETE {basePath}/checks/{checkRef}

Request

/checks/929aacee2c6d42c78ae877e824c28eed00000431

Headers

Name	Description	Type	Required	Example
Simphony-OrgShortName	Organization identifier.	String	Yes	"tfoinc"
Simphony-LocRef	Location identifier.	String	Yes	"fdmnh144"
Simphony-RvcRef	Revenue center identifier.	Integer	Yes	42

Path Parameters

Name	Description	Type	Required	Example
checkRef	Check identifier.	String	Yes	"929aacee2c6d42c78ae877e824c28eed00000431"

204 Response

Name	Description	Type	Always Present	Example
	The check has been successfully voided.		No	

Other Responses

Error Response Code	Description	Type	Always Present	Example
400	Response contains the Problem Details object.	JSON Object	No	{ (Problem Details object) }
404	HTTP 404 Resource not found.		No	

GET checks

API returns the available open checks from the specified revenue center. Options to return all checks meeting a specified set of criteria is supported via query parameters. The details in these responses can then be used to retrieve the details of a specific check.

GET {basePath}/checks

Content-Type: application/json

Request

/checks?checkEmployeeRef=65&sinceTime=2020-12-31T23:59Z

/checks?orderTypeRef=2&includeClosed=true

/checks?checkNum=976&sinceTime=2020-12-31T23:59Z&includeClosed=true

Headers

Name	Description	Type	Required	Example
Accept-Language	Identifies the language that is desired for the response.	String	No	"en-US"
Simphony-OrgShortName	The organization identifier.	String	Yes	"tfoinc"
Simphony-LocRef	The location identifier.	String	Yes	"fdmnh144"
Simphony-RvcRef	The revenue center identifier.	Integer	Yes	42

Query Parameters

Name	Description	Type	Required	Example
checkEmployeeRef	The reference number of the employee that owns the check. Allows returning of checks for only a targeted employee.	Integer	No	65
sinceTime	Only checks created on or after this time are returned in the result. Date time is UTC.	String	No	"2020-12-31T23:59Z"
checkNumbers	Only checks with these numbers are returned. It is possible to get more than one check with the same check number.	Integer	No	976

Name	Description	Type	Required	Example
orderTypeRef	Only checks of this order type are included in the results.	Integer	No	2
includeClosed	When true, both open and closed checks are included in the results, otherwise only closed checks are included. If not included as a query parameter will be assumed to be false.	Boolean	No	true

200 Response

```
{
  "items": [ { (Check Header Object) } ]
}
```

Name	Description	Type	Always Present	Example
	Array of Check Header JSON objects. If there are no checks that meet the criteria of the request this array will be empty.	JSON Object	Yes	See Check Header object.

Other Responses

Error Response Code	Description	Type	Always Present	Example
400	Response contains the Problem Details object.	JSON Object	No	{ (Problem Details object) }
404	404 Requested resource not found.		No	

GET checks/{checkRef}

API returns the requested check from the specified revenue center using the checkRef which can be found in the check status response once a check has been created at the POS or by using one of the other known query parameters with the GET Checks endpoint to retrieve the checkRef.

GET {basePath}/checks/{checkRef}

Content-Type: application/json

Request

/checks/929aacee2c6d42c78ae877e824c28eed00000431

Headers

Name	Description	Type	Required	Example
Accept-Language	Identifies the language that is desired for the response.	String	No	"en-US"
Simphony-OrgShortName	The organization identifier.	String	Yes	"tfoinc"
Simphony-LocRef	The location identifier.	String	Yes	"fdmnh144"
Simphony-RvcRef	The revenue center identifier.	Integer	Yes	42

Path Parameters

Name	Description	Type	Required	Example
checkRef	Check identifier.	String	Yes	"929aacee2c6d42c78ae877e824c28eed0000431"

200 Response

```
{
  "items": [ { (Check Object) } ]
}
```

Name	Description	Type	Always Present	Example
	Response contains an array including the Check Object. If no check was found meeting the criteria of the request the returned array will be empty.	JSON Object	Yes	See Check object.

Other Responses

Error Response Code	Description	Type	Always Present	Example
400	Response contains the Problem Details object.	JSON Object	No	{ (Problem Details object) }
404	The checkRef was not found at the revenue center requested.			

GET checks/{checkRef}/printed

API returns an array of strings containing text suitable for printing on a 40-column printer.

GET {basePath}/checks/{checkRef}/printed

Content-Type: application/json

Request

/checks/929aacee2c6d42c78ae877e824c28eed00000431/printed

Headers

Name	Description	Type	Required	Example
Accept-Language	Identifies the language that is desired for the response.	String	No	"en-US"
Simphony-OrgShortName	The organization identifier.	String	Yes	"tfoinc"
Simphony-LocRef	The location identifier.	String	Yes	"fdmnh144"
Simphony-RvcRef	The revenue center identifier.	Integer	Yes	42

Path Parameters

Name	Description	Type	Required	Example
checkRef	Check identifier.	String	Yes	"929aacee2c6d42c78ae877e824c28eed0000431"

200 Response

```
{
  "items": [ { (Array of strings) } ]
}
```

Name	Description	Type	Always Present	Example
	Response contains an Array of Strings formatted for printing.	JSON Object	Yes	<pre>{ "items": ["12 STS Page 2", "-----", "CHK 75 TBL 2/1", " 11/3/2020 ", "-----", " DineIn ", " 1 Cheese Balls 10.00 ", " 1 Nachos 120.00 ", " *SPECIAL REQUESTS* ", " Please include extra sauce on side ", " 1 Cheese Balls 10.00 ", " STS Open \$ SC 1.23 ", " 1 Cheese Balls 10.00 ", " CashAuto \$151.23 ", " Subtotal \$150.00 ", " Other \$1.23 ", " Payment \$151.23 ", "Change Due \$0.00", " ----- Check Closed ----- ", " 11/3/2020 5:02 PM "] }</pre>

Other Responses

Error Response Code	Description	Type	Always Present	Example
400	Response contains the Problem Details object.	JSON Object	No	<pre>{ (Problem Details object) }</pre>
404	The checkRef was not found at the revenue center requested.			

Resources

Check

application/json

```
{
  "header": { (Check Header) },
  "menuItems": [ { (Check Menu Item) } ],
  "comboMeals": [ { (Check Combo Meal Item) } ],
  "discounts": [ { (Check Discount Item) } ],
  "serviceCharges": [ { (Check Service Charge Item) } ],
  "extensions": [ { (Check Extension Item) } ],
  "taxes": [ { (Check Tax Item) } ],
  "tenders": [ { (Check Tender Item) } ],
  "totals": { (Check Totals) }
}
```

Name	Description	Type	Always Present	Example
header	The check header.	Object	Yes	See Check Header object
menuItems	Array of menu items. If there were no menu items on the check the returned array will be empty.	Array	Yes	See Check Menu Item object
comboMeal	Array of combo meal items. If there were no combo meal items on the check the returned array will be empty.	Array	Yes	See Check Combo Meal Item object
discounts	Array of discount items. If there were no discounts on the check the returned array will be empty.	Array	Yes	See Check Discount Item object
serviceCharges	Array of service charge items. If there were no service charges on the check the returned array will be empty.	Array	Yes	See Check Service Charge Item object
extensions	Array of extension items.	Array	No	See Check Extension Item object

Name	Description	Type	Always Present	Example
taxes	Array of tax item. If there were no taxable items on the check the returned array will be empty.	Array	Yes	See Check Tax Item object
tenders	Array of tender items. If there were no tenders on the check the returned array will be empty. It is important to note that only one tender is supported with each POST request, however multiple tenders can be included in the response.	Array	Yes	See Check Tender Item object
totals	The check totals.	Object	No	See Check Totals object

Definitions

Check Header

```
{
  "orgShortName": "tfoinc",
  "locRef": "fdmnh144",
  "rvcRef": "42",
  "checkRef": "929aacee2c6d42c78ae877e824c28eed00000431",
  "idempotencyId": "fd636ddfa7d5461eae1e31e0b756545a",
  "checkNumber": 42139,
  "checkName": "Smith",
  "checkEmployeeRef": 88,
  "orderTypeRef": 1,
  "tableName": "23b",
  "tableGroupNumber": 1
  "openTime": "2020-12-31T23:59:59Z",
  "fireTime": "2020-12-31T23:59:59Z",
  "guestCount": 3,
  "language": "en-US"
  "isTrainingCheck": true,
  "informationLines": " ",
  "status": "open"
}
```

Name	Description	Type	Always Present	Example
orgShortName	The organization identifier.	String	Yes	"tfoinc"
locRef	The location identifier.	String	Yes	"fdmnh144"
rvcRef	The revenue center identifier.	Integer	Yes	42
checkRef	The unique check reference generated by the POS system when the check is created.	String	No	"929aacee2c6d42c78ae877e824c28eed00000431"

Name	Description	Type	Always Present	Example
idempotencyId	A unique identifier for the request generated by the integrator. This should be a UUID v4 formatted value minus dashes. <i>Pattern: [0-9a-f]{32}</i> .	String	Yes	"fd636ddfa7d5461eae1e31e0b756545a"
checkNumber	A check identifier generated by the POS when the check is created.	Integer	No	42139
checkName	The reference for the check provided at time of check creation. This must be unique among all open checks at the revenue center.	String	No	"Smith"
checkEmployeeRef	The identifier of the employee that is used for the operations. <i>Simphony: the employee object number.</i>	Integer	Yes	88
orderTypeRef	The order type identifier from the revenue center configuration.	Integer	Yes	1
tableName	The table for the check from the revenue center configuration.	String	No	"23b"
tableGroupNumber	The table-group of the check. Assigned by POS and indicates the number of checks open checks with the same table.	Integer	No	1
openTime	The time the check is opened/created. Time is UTC.	String	Yes	"2020-12-31T23:59:59Z"

Name	Description	Type	Always Present	Example
fireTime	The time requested for the order to "fire" to the kitchen. This is when preparation will start. If not provided, the current time is assumed. The dateTime in requests should be reflected in the Location/RVCs localized time, while responses will be shown in Zulu/UTC+0.	String	No	"2020-12-31T23:59:59Z"
guestCount	The number of guests on the check.	Integer	No	3
language	The language culture reference associated with the check. This value is used to return "name" property of check items in a desired language.	String	No	"en-US"
isTrainingCheck	Flag used to identify a training check.	Boolean	No	false
informationLines	An array of strings containing text that may appear on the guest check. Consult the POS administrator to determine what is supported by their configuration.	Array	No	
status	Information about the status of the check. Status options: open - indicates the check has a balance due and is 'open' (meaning it can be modified). closed - indicates the check has been paid in full and is 'closed' (meaning it cannot be modified).	String (enum)	Yes	"open", "closed"

Check Totals

```
{
  "subtotal": 20.00,
  "subtotalDiscountTotal": -1.00,
  "autoServiceCharge": 1.00,
  "serviceChargeTotal": 0.00,
  "taxTotal": 1.20,
  "paymentTotal": 5.00,
  "totalDue": 15.20
}
```

Name	Description	Type	Always Present	Example
subtotal	The subtotal of the check. This is the sum of net menu item totals. The net menu item total for a single menu item is (menu item total + item discounts + surcharge).	Number	No	20.00
subtotalDiscountTotal	The total of discounts applied to the subtotal.	Number	No	-1.00
autoServiceChargeTotal	The total of service charges automatically added to the check.	Number	No	0.00
serviceChargeTotal	The service charge total of the check.	Number	No	0.00
taxTotal	The tax total of the check. This value excludes any inclusive tax.	Number	No	1.20
paymentTotal	The total of the payments on the check.	Number	No	5.00
totalDue	The remaining balance due for the check.	Number	Yes	15.20

Comments

The values from the check total object relate in the following way:

 subtotal (sum of menu items sales - discounts)
- discountTotal
+ autoServiceChargeTotal
+ serviceChargeTotal
+ taxTotal
- paymentTotal
= totalDue

Check Menu Item

```
{
  "menuItemId": 822815,
  "definitionSequence": 1,
  "name": "coffee",
  "quantity": 2,
  "unitPrice": 1.50,
  "priceSequence": 1,
  "total": 3.00,
  "seat": 1,
  "referenceText": "Include insulated sleeve",
  "itemDiscounts": [ { (Check Discount Item) } ],
  "surcharge": 0.00,
  "condiments": [ { (Check Condiment Item) } ],
  "extensions": [ { (Check Extension Item) } ]
}
```

Name	Description	Type	Always Present	Example
menuItemId	The menu item's POS identifier.	Integer	Yes	822815
definitionSequence	The menu item definition sequence identifier. Indicates the definition of item that is used. This value is ignored on Oracle.RES platform.	Integer	Yes	1
name	The name of the menu item defined in the POS.	String	No	"coffee"
quantity	The quantity of this menu item. If present minimum value is 1.	Number	No	2
unitPrice	The price associated with the item.	Number	No	1.50
priceSequence	The price sequence number to set the appropriate price level.	Integer	No	1

Name	Description	Type	Always Present	Example
total	The total cost of the item (extended to account for the quantity).	Number	No	3.00
seat	Seat number of item on the check.	Integer	No	1
referenceText	Additional text associated with the item. maxLength: 20	String	No	"Include insulated sleeve"
itemDiscounts	Array of discounts applied to the menu item.	Array	No	See Check Discount Item object
surcharge	The calculated surcharge amount based on the rate configured for the surcharge associated with the item.	Number	No	0.00
condiments	Array of condiments represented in menu item JSON objects. If there are no condiments configured, this array will be empty.	Array	Yes	See Check Condiment object
extensions	Array of extension detail.	Array	No	See Check Extension Item object

Check Condiment Item

```
{
  "condimentId": 822815,
  "definitionSeq": 1,
  "name": "coffee",
  "quantity": 2,
  "unitPrice": 1.50,
  "priceSequence": 1,
  "total": 3.00,
  "seat": 1,
  "referenceText": "Include insulated sleeve",
  "itemDiscounts": [ { (Check Discount Item) } ],
  "surcharge": 0.00
}
```

Name	Description	Type	Always Present	Example
condimentId	The menu item's POS identifier.	Integer	Yes	822815
definitionSequence	The menu item definition sequence identifier. Indicates the definition of item that is used. This value is ignored on Oracle.RES platform.	Integer	Yes	1
name	The name of the menu item defined in the POS.	String	No	"coffee"
quantity	The quantity of this item. If present minimum value is 1.	Integer	No	2
unitPrice	The price that should be used for the item.	Number	No	1.50
priceSequence	The price sequence number to set the appropriate price level.	Integer	No	1
total	Amount of item for the specified quantity.	Number	No	3.00
seat	Seat number of item on the check.	Integer	No	1

Name	Description	Type	Always Present	Example
referenceText	Additional text associated with the item.	String	No	"Include insulated sleeve"
itemDiscounts	Array of discounts applied to the menu item.	Array	No	See Check Discount Item object
surcharge	Surcharge amount.	Number	No	0.00

Check Combo Meal Item

```
{
  "comboMealId": 1,
  "seat": 1,
  "comboItem": { (Check Menu Item) },
  "mainItem": { (Check Menu Item) },
  "sideItems": [ { (Check Menu Item) } ],
  "extensions": [ { (Check Extension Item) } ]
}
```

Name	Description	Type	Always Present	Example
comboMealId	Combo meal object number.	Integer	Yes	1
seat	Seat assignment for the item.	Integer	No	1
comboItem	Combo meal menu item (for example, Burger Combo).	Object	Yes	See Check Menu Item object
mainItem	Combo meal main item (for example, Hamburger).	Object	Yes	See Check Menu Item object
sideItems	Combo meal side items (for example, French Fries or Coke).	Array	Yes	See Check Menu Item object
extensions	Array of extension detail.	Array	No	See Check Extension Item object

Check Discount Item

```
{
  "discountId": 726123,
  "name": "Restaurant Week",
  "seat": 1,
  "referenceText": "Additional discount text",
  "total": -5.00,
  "isAutomatic": true,
  "extensions": [ { (Check Extension Item) } ]
}
```

Name	Description	Type	Always Present	Example
discountId	The discount's object number reference.	Integer	Yes	726123
name	The name of the discount defined in the POS.	String	No	"Restaurant Week"
seat	Seat number of item on the check.	Integer	No	1
referenceText	Additional text associated with the discount.	String	No	"Additional discount text"
total	The value of the discount for the associated line number.	Number	Yes	-5.00
isAutomatic	Flag to indicate the item was applied by automatically by the POS system.	Boolean	No	true
extensions	Array of extension detail.	Array	No	See Check Extension Item object

Check Service Charge Item

```
{
  "serviceChargeId": 293385,
  "name": "Delivery Charge",
  "seat": 1,
  "total": 5.00
  "referenceText": "Additional service charge text",
  "extensions": [ { (Check Extension Item) } ]
}
```

Name	Description	Type	Always Present	Example
serviceChargeId	The service charge's object number reference.	Integer	Yes	293385
name	The name of the service charge.	String	No	"Delivery Charge"
total	The total of the service charge.	Number	Yes	5.00
seat	Seat number of item on the check.	Integer	No	1
referenceText	Additional text associated with the service charge.	String	No	"Additional service charge text"
extensions	Array of extension detail.	Array	No	See Check Extension Item object

Check Extension Item

Object that can contain extensibility detail to be stored with the check.

```
{
  "displayName": "my extension detail",
  "appName": "my app",
  "dataName": "data name",
  "dataType": "string",
  "data": "mi-extn data",
  "options": [
    "printondisplay",
    "printonreceipt",
    "printInKitchen",
    "IncludeInApiResponse"
  ]
}
```

Name	Description	Type	Always Present	Example
displayName	A string displayed and/or printed if this item is displayed or printed.	String	Yes	"my extension detail"
appName	The name of the application associated with this data.	String	Yes	"my app"
dataName	Name of the data stored by this extensibility item.	String	Yes	"data Name"
datatype	Describes the type of data stored by this extensibility item.	String	Yes	"string"
data	The data payload for the extensibility data.	String	Yes	"mi-extn data"
options	Array of options. One or more of the following values are allowed: "printondisplay", "printonreceipt", "printInKitchen", "IncludeInApiResponse"	Array	No	["printondisplay", "printonreceipt", "printInKitchen", "IncludeInApiResponse"]

Check Tax Item

```
{  
  "taxRateId": 1,  
  "name": "Sales VAT",  
  "total": 1.34  
}
```

Name	Description	Type	Always Present	Example
taxRateId	The tax rate identifier.	Integer	Yes	1
name	The name of the tax.	String	No	"Sales VAT"
total	The total of the tax at for this rate.	Number	No	1.34

Check Tender Item

```
{
  "tenderId": 1176,
  "name": "Pay on Pickup",
  "total": 5.00,
  "chargedTipTotal": 1.25,
  "referenceText": "Additional tender text",
  "extensions": [ { (Check Extension Item) } ]
}
```

Name	Description	Type	Always Present	Example
tenderId	Tender identifier.	Integer	Yes	1176
name	The name of the tender defined in the POS.	String	No	"Pay on Pickup"
total	The total of the tender item.	Number	Yes	5.00
chargedTipTotal	The amount of charged tip to apply to the transaction. This amount is the portion of the payment that represents the charged tip.	Number	No	1.25
referenceText	Additional text associated with the tender.	String	No	"Additional tender text"
extensions	Array of extension detail.	Array	No	See Check Extension Item object

ProblemDetails

Problem details is used as standard model for reporting details when HTTP error status code is returned. This definition is defined by [RFC7807](#).

```
{
  "type": "error:validation",
  "title": "Required value not specified.",
  "details": " The orgShortName value is required."
  "instance": "required_value_missing"
}
```

Name	Description	Type	Always Present	Example
type	A URI reference that identifies the problem type. When this member is not present, its value is assumed to be "about:blank".	String	No	"error:validation"
title	A short, human-readable summary of the problem type.	String	No	"Required value not specified."
details	A human-readable explanation specific to this occurrence of the problem.	String	No	"The orgShortName value is required."
instance	A URI reference that identifies the specific occurrence of the problem. It may or may not yield further information if dereferenced.	String	No	"required_value_missing"
posDetails	(Problem Details Extension) Contains a list of the problem details from the POS System processing the request.	Array	No	See POS Error Detail Item object

Fiscal Item

Model of a fiscal item.

```
{  
  "dataName": "taxId",  
  "dataType": "string",  
  "data": "37ARZPT4384Q1MT"  
}
```

Name	Description	Type	Always Present	Example
dataName	Fiscal data name.	String	No	"taxId"
dataType	Data type of the fiscal data extension.	String	No	"string"
data	String representation of the data value.	String	No	"37ARZPT4384Q1MT"

POS Error Detail

```
{  
    "code": "general_pos_error",  
    "message": "Employee Object Number 17 is in training  
mode, operation not allowed"  
}
```

Name	Description	Type	Always Present	Example
code	Short, unique identifier for the type of error.	String	No	"general_pos_error"
message	A human-readable explanation specific to this occurrence of the problem.	String	No	"Employee Object Number 17 is in training mode, operation not allowed."

6

Connection Status

The STSG2 Connection Status API is used to retrieve the connection status for a specified revenue center.

Paths

The {basePath} for resources on the Connection Status API is:

<https://{host/path}/api/v1/>

API to indicate status of check processing for a revenue center.

This request checks to see if STS has a connection for this property. The value of the connection status now does not represent a guarantee that the connection status will be the same at any point in the future.

HEAD connection status

API to indicate the state of the connection for a specific revenue center for servicing requests from the STSG2 cloud endpoints. The value returned is the last known state of the connection at the time of the request and could change at any time.

HEAD {basePath}/checks/connectionStatus

Content-Type: application/json

Request

/checks/connectionStatus

Headers

Name	Description	Type	Required	Example
Simphony-OrgShortName	The organization identifier.	String	Yes	"tfoinc"
Simphony-LocRef	The location identifier.	String	Yes	"fdmnh144"
Simphony-RvcRef	The revenue center identifier.	Integer	Yes	42

200 Response

Name	Description	Type	Always Present	Example
	Indicates if the location is currently connected.			

Other Responses

Error Response Code	Description	Type	Always Present	Example
400	Response contains the Problem Details object.	JSON Object	No	{ (Problem Details object) }
404	There is currently no on property device connected to receive orders.			