

Oracle® Hospitality Cruise Shipboard Property Management System Gangway Security User Guide



Release 20.1

F33489-02

January 2022

The Oracle logo, consisting of a solid red square with the word "ORACLE" in white, uppercase, sans-serif font centered within it.

ORACLE®

Oracle Hospitality Cruise Shipboard Property Management System Gangway Security User Guide, Release 20.1

F33489-02

Copyright © 2017, 2022, Oracle and/or its affiliates.

This software and related documentation are provided under a license agreement containing restrictions on use and disclosure and are protected by intellectual property laws. Except as expressly permitted in your license agreement or allowed by law, you may not use, copy, reproduce, translate, broadcast, modify, license, transmit, distribute, exhibit, perform, publish, or display any part, in any form, or by any means. Reverse engineering, disassembly, or decompilation of this software, unless required by law for interoperability, is prohibited.

The information contained herein is subject to change without notice and is not warranted to be error-free. If you find any errors, please report them to us in writing.

If this is software or related documentation that is delivered to the U.S. Government or anyone licensing it on behalf of the U.S. Government, then the following notice is applicable:

U.S. GOVERNMENT END USERS: Oracle programs (including any operating system, integrated software, any programs embedded, installed or activated on delivered hardware, and modifications of such programs) and Oracle computer documentation or other Oracle data delivered to or accessed by U.S. Government end users are "commercial computer software" or "commercial computer software documentation" pursuant to the applicable Federal Acquisition Regulation and agency-specific supplemental regulations. As such, the use, reproduction, duplication, release, display, disclosure, modification, preparation of derivative works, and/or adaptation of i) Oracle programs (including any operating system, integrated software, any programs embedded, installed or activated on delivered hardware, and modifications of such programs), ii) Oracle computer documentation and/or iii) other Oracle data, is subject to the rights and limitations specified in the license contained in the applicable contract. The terms governing the U.S. Government's use of Oracle cloud services are defined by the applicable contract for such services. No other rights are granted to the U.S. Government.

This software or hardware is developed for general use in a variety of information management applications. It is not developed or intended for use in any inherently dangerous applications, including applications that may create a risk of personal injury. If you use this software or hardware in dangerous applications, then you shall be responsible to take all appropriate fail-safe, backup, redundancy, and other measures to ensure its safe use. Oracle Corporation and its affiliates disclaim any liability for any damages caused by use of this software or hardware in dangerous applications.

Oracle, Java, and MySQL are registered trademarks of Oracle and/or its affiliates. Other names may be trademarks of their respective owners.

Intel and Intel Inside are trademarks or registered trademarks of Intel Corporation. All SPARC trademarks are used under license and are trademarks or registered trademarks of SPARC International, Inc. AMD, Epyc, and the AMD logo are trademarks or registered trademarks of Advanced Micro Devices. UNIX is a registered trademark of The Open Group.

This software or hardware and documentation may provide access to or information about content, products, and services from third parties. Oracle Corporation and its affiliates are not responsible for and expressly disclaim all warranties of any kind with respect to third-party content, products, and services unless otherwise set forth in an applicable agreement between you and Oracle. Oracle Corporation and its affiliates will not be responsible for any loss, costs, or damages incurred due to your access to or use of third-party content, products, or services, except as set forth in an applicable agreement between you and Oracle.

Contents

Preface

Prerequisites, Supported Systems and Compatibility

1 Gangway Security Device

2 Gangway Security Application

Preface

The Gangway Security is an add-on Oracle Hospitality Cruise Shipboard Property Management System (SPMS) application that runs on a Windows 10 IoT platform. The functions are to process passenger and crew embarkation, manage movements through the Gangway using a Windows 10 Mobile /Tablet, and to provide an accurate head count of real time passenger, crew, and visitors status..

Audience

This document is intended for project managers, application specialists and users of Oracle Hospitality Cruise Shipboard Property Management System.

Customer Support

To contact Oracle Customer Support, access My Oracle Support at the following URL:

<https://support.oracle.com>

When contacting Customer Support, please provide the following:

- Product version and program/module name
- Functional and technical description of the problem (include business impact)
- Detailed step-by-step instructions to re-create
- Exact error message received
- Screenshots of each step you take

Documentation

Oracle Hospitality product documentation is available on the Oracle Help Center at <http://docs.oracle.com/en/industries/hospitality/>.

Revision History

Table 1 Revision History

Date	Description of Change
September 2020	Initial Publication
January 2022	<ul style="list-style-type: none">• Reworded the magnetic card reader function to use swipe instead of scan.

Prerequisites, Supported Systems and Compatibility

This section describes the minimum requirements for the Mobile Mustering module.

Prerequisites

- Gangway Security.exe version 8.0.6
- Complete set up of Mobile Mustering and Gangway Security Application Server and requirement listed in Mobile Mustering and Gangway Security Installation Guide for more information

Supported Operating System/Technology

- See Compatibility Matrix at <http://docs.oracle.com/en/industries/hospitality/>.
- Does not support Barcode/RFID scanning.

Supported Hardware

- Oracle MICROS 721 Tablet
- Windows Mobile device with a camera

Compatibility

SPMS version 20.1 or later. For customers operating on version 20.1 and below, database upgrade to the recommended or latest version is required

1

Gangway Security Device

The Gangway Security is an add-on application to Oracle Hospitality Cruise Shipboard Property Management System (SPMS) that simplifies the ship's access to management, handling of passenger and crew embarkation and movements through the Gangway using a Windows 10 Mobile/Tablet.

Using the Device

Once the device is setup and connected to the OHCruiseWebService, you can login by swiping your crew board card, or manually enter the login credentials at the login page.

Logging into the Device

1. At the device login page, tap on **Please use your Card to login**
2. Place the cursor at the search bar and swipe the board through the card reader, or tap **Login Manually** to enter the login ID and password.
3. Tap **Login** to continue.

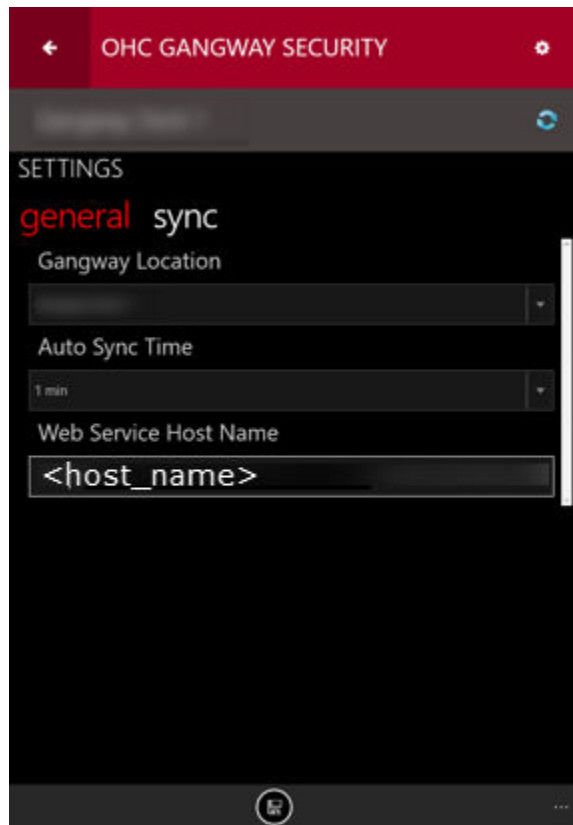
Device Settings

The Settings page enables you to configure the Gangway Location assignment, and setting the Auto Sync Time and Webservice Hostname. You can access the page from the top right corner of the page and it consists of two tabs: **General** and **Sync**. This function is disabled to crew or users without the Administrator access.

The options in the General tab are:

- **Gangway Location:** Allow changing of Gangway Location. The registered mode is always shown at the top panel of the Menu page.
- **Auto Sync Time:** Define the minute(s) for the next sync to occur.
- **Web Service Host Name:** Allow you to set the Webservice Hostname

Figure 1-1 Gangway Settings



Synchronization

The Sync function obtains the latest database from the Mobile Server through a preset synchronization process and the device operating mode must be **Online**. The Sync tab contains the following options:

- **Full Sync:** Performs Full Synchronization on the device. The process deletes the existing database from the device and downloads the newest database, including all photos from the server. The function is launched manually and the button is disabled when the device is downloading the photos from the server.
- **Full Data:** Only perform database Synchronization on the device. The process deletes the existing database from the device and re-download the newest database. The function is launch manually.
- **Reset Data:** Performs Data Cleaning on the device. This function deletes *all* data rows and download the newest.

Note:

The system prompts a message when the you run the Full Sync or Reset Data. Use this function only for troubleshooting purposes. *Do not* use this for real-time emergency. Proceed with caution.

When a Full Sync or Data Sync completes successfully, the login screen appears.

2

Gangway Security Application

The application Main page enables you to obtain the passenger information by swiping the board card, or access other functions within the Main menu tab.

The page consist of three sections:

- **Green:** Coming onboard
- **Blue:** Going ashore
- **Red:** Displays the picture last card swiped.

Profile

The Profile page provides a detail view of the profile and is accessible from the **Main Menu** tab

Figure 2-1 Profile Information

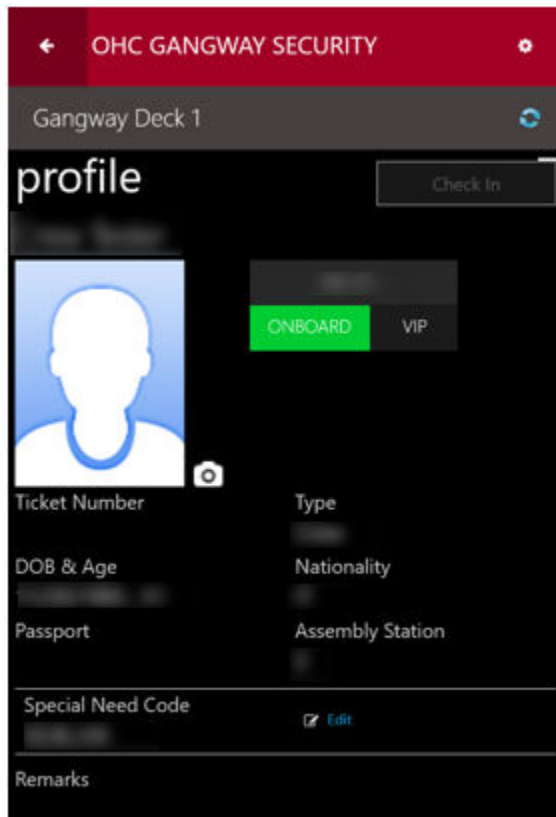


Table 2-1 Profile Page Field Description

Field Name	Description
Passenger's name	Passenger's first and last name.
Profile Photo/Camera	Profile photo of the passenger. Camera function allow capturing of new picture.
Cabin number	Registered cabin number.
Gangway Status	Green Icon with left arrow = Onboard Passenger. Blue Icon with right arrow = Ashore Passenger.
Reservation Status	RR = Reserved, RE = Expected Arrival, CC = Check In, CL = Expected to disembark, DD = Disembarked.
Passenger Status	Displays the passenger class For example: S = Senior, A = Adult, C = Child, I = Infant, J = Junior. Linked to RES.RES_PAXCLASS.
Ticket Number	Displays the ticket number linked to the booking.
Type	The passenger type, P = Passenger, C = Crew and V = Visitor. Linked to RES.RES_TAG.
DOB & Age	Displays the date of birth and age of the passenger.
Passport	Displays an encrypted passport number of selected passenger. Linked to UXP.UXP_H_PASSNO.
Assembly Station	Displays the assembly station assigned.
Special Need Code	Displays the special need code associated to the booking. Linked to RES.RES_HANDICAPCODE.
Check In	This button is active for "Expected to arrive" passenger only. The registration of the gangway movement depends on the value defined in Parameter, ' Mobile ', ' Check-In Status '.

Search

The Search function consists of four sub-tabs and the default view is "All".

- **All:** Displays all search results (default).
 - **Onboard:** Displays only the onboard account.
 - **Shoreside:** Displays search results of passenger ashore.
 - **Custom:** Advanced search option with a custom filter.
1. Tap the **Menu** button to open the Search function. The registered gangway station is shown at the header of the page

2. Tap the **Search** tab, enter the guest name in the **Search bar**, and tap the **Search** button.
3. The returned search results are based on the station in which you are currently logged in. To search for a guest registered at another station, navigate to **Custom** tab.
4. To narrow down the search, navigate to **Custom** tab, select the criteria using the drop-down menu and tap **Apply**.
5. Tapping the name opens the profile screen. For field descriptions, see [Table 2-1](#).

Updating Profile Picture

At the point of reservation, the system loads a standard stock picture to the booking. You must retake the passenger photo using below steps.

1. Locate the passenger profile and then tap the **Camera** button beside the photo.
2. Tap the **Camera** button to retake the picture.
3. Tap **Done** to save.

Editing Special Needs

1. From the profile page, tap the **Edit Special Need Code** and select the appropriate code from the list.
2. Tap the **Check mark** button to save.

Gangway Counts

The Counts page records the movements registered at the Gangway and provide a total passenger count onboard/ashore when a passenger board card is swiped.

Figure 2-2 Gangway Count

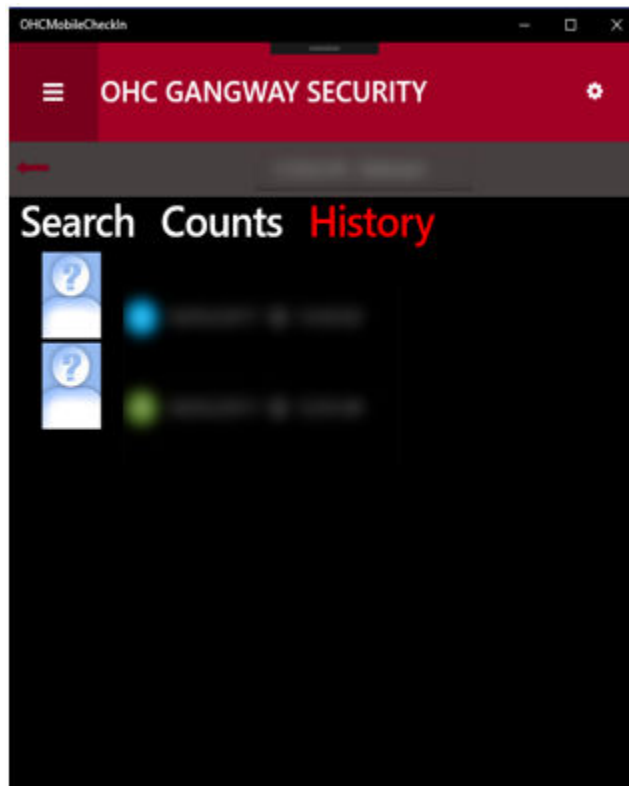
	GUESTS	CREW	TOTAL
Onboard			
Shoreside			
Expected			
Checked-In Today			
Checked-In Total			

- **Onboard:** Contains all onboard persons (passengers/crew/total), including checked out and are still on board.
- **Shoreside:** Contains all ashore persons (passengers/crew/total).
- **Expected:** Contains all persons expected today (passengers/crew/total)
- **Checked-In Today:** Contains all person expected today (passengers/crew/total), that has checked in today.
- **Checked-In Total:** Contains all onboard persons that has checked in-today and past date (passengers/crew/total).

Visitors Onboard: Displays only onboard visitors count

History

The **History** button redirects you to the Recent History page. The view lists the last record processed on the current device and shows an empty page if there are no movements recorded.

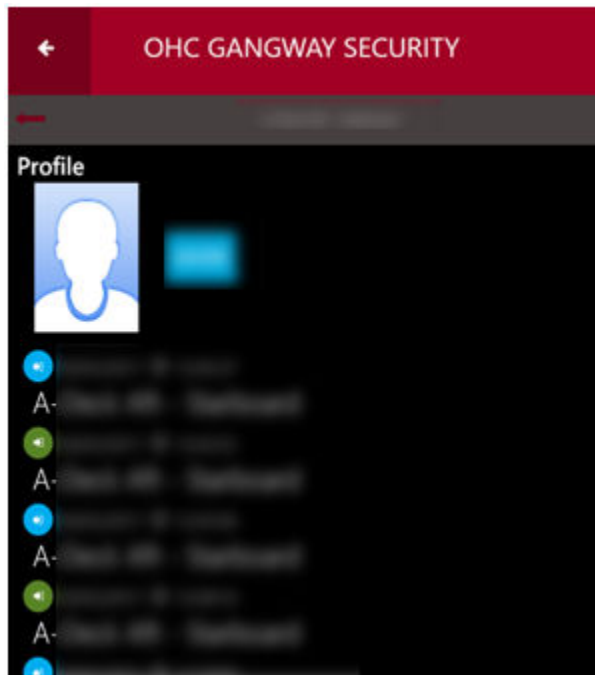
Figure 2-3 Record History

For every gangway movement, it display as follows:

- Person's picture and name.
- Movement direction (Ashore or Onboard).
- Date and Time.

When tapping on the person's record, it lists all the movement history for that person. It also shows the status of the last synchronization with the server.

Figure 2-4 Single Person Detail Movement View



The list consists of the following items:

- Date/time of the gangway movement.
- Gangway location (name of the gangway location where the person was processed).
- Movement Activity (Green icon – going onboard, Blue icon – going ashore).
- Entries in the list are sorted by date/time; the most recent is displayed on top.

Log Search

The Log Search function is an advanced search function that searches for a person by location, movement, status, and others. This function is enabled by placing a check mark in the **Log Search** check box under the **Search** tab, and it is comprised of two tabs: **Gangway Log** and **Security Log**.

Gangway Log

You can use the Gangway Log to search for a person by:

- Gangway location
- Movement
- Type
- Date From/To
- Time From/To
- First name/Last name
- Cabin

- First/Last Name

Figure 2-5 Gangway Log

The search results shown is according to the filters set and when the **Search** button is pressed. The results contains a list of gangway movements in the following format:

- **Person's tag:** P = Passenger, C = Crew, V = Visitor.
- **Person's name:** Displays person's name and replaces the remaining characters with dots for longer names.
- **Movement direction:** Onboard/Ashore.
- **Time stamp:** Date/time logged.

Tap **Gangway Log** to return to the Search page

Security Log

You can use the Security Log to search the movement history by status; for example Embarking, Disembarking or Denied List, Cabin number, Booking number, and Name.

Figure 2-6 Gangway Security Log

The screenshot displays the 'OHC GANGWAY SECURITY' application interface. At the top, there is a red header bar with a back arrow on the left, the title 'OHC GANGWAY SECURITY' in the center, and a settings gear icon on the right. Below the header is a grey bar with a refresh icon. The main content area has a dark background and features three tabs: 'search' (highlighted in red), 'counts', and 'history'. Under the 'search' tab, there is a checked checkbox for 'Log Search'. Below this, there are two options: 'Gangway Log' and 'Security Log', with 'Security Log' highlighted in red. There are three dropdown menus: 'Type' (set to 'All'), 'Movement' (set to 'Both ways'), and 'Status' (set to 'All'). Below these is a text input field labeled 'Cabin/Name/Booking Number'. At the bottom of the search filters is a 'search' button.