

# Oracle® Hospitality Cruise Shipboard Property Management System EONE Interface User Guide



Release 20.1  
F37047-01  
November 2020



Oracle Hospitality Cruise Shipboard Property Management System EONE Interface User Guide, Release 20.1

F37047-01

Copyright © 2020, 2021, Oracle and/or its affiliates.

This software and related documentation are provided under a license agreement containing restrictions on use and disclosure and are protected by intellectual property laws. Except as expressly permitted in your license agreement or allowed by law, you may not use, copy, reproduce, translate, broadcast, modify, license, transmit, distribute, exhibit, perform, publish, or display any part, in any form, or by any means. Reverse engineering, disassembly, or decompilation of this software, unless required by law for interoperability, is prohibited.

The information contained herein is subject to change without notice and is not warranted to be error-free. If you find any errors, please report them to us in writing.

If this is software or related documentation that is delivered to the U.S. Government or anyone licensing it on behalf of the U.S. Government, then the following notice is applicable:

U.S. GOVERNMENT END USERS: Oracle programs (including any operating system, integrated software, any programs embedded, installed or activated on delivered hardware, and modifications of such programs) and Oracle computer documentation or other Oracle data delivered to or accessed by U.S. Government end users are "commercial computer software" or "commercial computer software documentation" pursuant to the applicable Federal Acquisition Regulation and agency-specific supplemental regulations. As such, the use, reproduction, duplication, release, display, disclosure, modification, preparation of derivative works, and/or adaptation of i) Oracle programs (including any operating system, integrated software, any programs embedded, installed or activated on delivered hardware, and modifications of such programs), ii) Oracle computer documentation and/or iii) other Oracle data, is subject to the rights and limitations specified in the license contained in the applicable contract. The terms governing the U.S. Government's use of Oracle cloud services are defined by the applicable contract for such services. No other rights are granted to the U.S. Government.

This software or hardware is developed for general use in a variety of information management applications. It is not developed or intended for use in any inherently dangerous applications, including applications that may create a risk of personal injury. If you use this software or hardware in dangerous applications, then you shall be responsible to take all appropriate fail-safe, backup, redundancy, and other measures to ensure its safe use. Oracle Corporation and its affiliates disclaim any liability for any damages caused by use of this software or hardware in dangerous applications.

Oracle and Java are registered trademarks of Oracle and/or its affiliates. Other names may be trademarks of their respective owners.

Intel and Intel Inside are trademarks or registered trademarks of Intel Corporation. All SPARC trademarks are used under license and are trademarks or registered trademarks of SPARC International, Inc. AMD, Epyc, and the AMD logo are trademarks or registered trademarks of Advanced Micro Devices. UNIX is a registered trademark of The Open Group.

This software or hardware and documentation may provide access to or information about content, products, and services from third parties. Oracle Corporation and its affiliates are not responsible for and expressly disclaim all warranties of any kind with respect to third-party content, products, and services unless otherwise set forth in an applicable agreement between you and Oracle. Oracle Corporation and its affiliates will not be responsible for any loss, costs, or damages incurred due to your access to or use of third-party content, products, or services, except as set forth in an applicable agreement between you and Oracle.

# Contents

## Preface

---

## 1 EONE Interface

---

|  |     |
|--|-----|
| Parameters Settings                                      | 1-1 |
| Setting Up Message Queues                                | 1-1 |
| Contingency Reason Code                                  | 1-2 |
| Supported Message Type from JDE E1                       | 1-2 |
| Supported Message from SPMS to JDE E1                    | 1-4 |
| Creating Shipboard Keypair and Certificate               | 1-4 |
| Exporting Shipboard Certificate                          | 1-5 |
| Exporting Shipboard Keypair                              | 1-7 |
| Importing Shipboard Keypair (Once Per Ship BIZ02 Engine) | 1-7 |
| Importing Shipboard Certificate (Once Per Shore Node)    | 1-9 |

# Preface

EONE is an interface that receives and help processes the Crew's master data, scheduled embarkation information, address details, emergency contact details, crew effects list, immigration data, and check-in & check-out request from JD Edwards EONE (JDE E1) system.

## Audience

This document is intended for project managers, application specialists, system administrators and users of Oracle Hospitality Cruise Shipboard Property Management System. (SPMS)

## Customer Support

To contact Oracle Customer Support, access My Oracle Support at the following URL:

<https://support.oracle.com>

When contacting Customer Support, please provide the following:

- Product version and program/module name
- Functional and technical description of the problem (include business impact)
- Detailed step-by-step instructions to re-create
- Exact error message received
- Screenshots of each step you take

## Documentation

Oracle Hospitality product documentation is available on the Oracle Help Center at <http://docs.oracle.com/en/industries/hospitality/>.

## Revision History

**Table 1 Revision History**

| Date          | Description of Change |
|---------------|-----------------------|
| November 2020 | Initial Publication   |

# 1

## EONE Interface

The following section describes the parameters available to the EONE Interface, setup and usage of the EONE Interface, communication messages, and the use of keypair and certificate.

### Parameters Settings

For EONE Interface to work seamlessly, there are two parameter groups that you need to configure:

- **System Parameter-EONE:** This is set up in **OHC Administration, System Setup menu, Database Parameter menu.**
- **Interface Parameter:** This is set up in **EONE Interface, Settings tab, EONE.**

**Table 1-1 Parameter Group EONE**

| PAR Name    | PAR Value | Description   |
|-------------|-----------|---|
| Backup Days | 0         | This parameter defines the number of days that older reservation records will be deleted.<br><br>The default value is 0<br>You can also set this value in EONE Interface Parameter, 'Delete reservation Data older than'. |

### Setting Up Message Queues

The below section guides you on how to create the incoming/outgoing message queue.

1. Ensure the Microsoft Message Queue (MSMQ) server features are turned on.
2. Go to **Control Panel, Administration Tools, and Computer Management.**
3. In Computer Management, expand the **Services and Applications** tree view and click **Message Queuing.**
4. Right-click the **Private Queues** and select **New. Private Queue.**
5. Enter the **Queue name** and check the **Transactional** check box.
6. Click **OK** to save.
7. Repeat steps 4 to 6 for Outgoing Message Queue.

## Contingency Reason Code

A Contingency Reason Code is needed when you enable or disable the contingency mode and this is set up in the OHC Administration module.

1. Login to the OHC Administration module.
2. Go to **System Codes** option and select **EONE Enable Contingency Mode Reason Code** or **EONE Disable Contingency Mode Reason Code**.
3. Right-click the left pane of the setup window and select **Add New**.
4. Enter a **short code**, **description** and **comments**. For example, COMM for Communication Issue.
5. The **Enabled** check box is checked by default. Removing the check mark will disable the code.
6. Click **Apply** to save.
7. To enter more codes, repeat the above steps.

## Supported Message Type from JDE E1

The SPMS supports nine (9) different types of messages from JDE E1 system, and they are listed below.

**Table 1-2 Supported Message Type from JDE E1**

| Message Type        | Description  |
|---------------------|--|
| CrewPrimaryManifest | <p>This manifest is provided by the JDE E1 system and it contains the master crew data. SPMS must receive these mandatory data before you can transfer other message types for the same crew. JDE E1 system produces the employee/crew ID and it <b>MUST</b> be unique across all fleet.</p> <p>JDE E1 must send a valid OPO_ID (from ship SPMS database). Messages with invalid ID received will not be processed and is return with a failure message.</p> |

**Table 1-2 (Cont.) Supported Message Type from JDE E1**

| Message Type       | Description  |
|--------------------|--|
| CrewScheduleChange | <p>This message contains the crew's scheduled embarkation details, consisting of all the mandatory information for the embarkation process.</p> <p>There are three (3) schedule types that SPMS accept:</p> <p><b>SRA</b></p> <ul style="list-style-type: none"> <li>• SPMS will ONLY cancel the reservation if the crew is under the expected list.</li> <li>• SPMS will not perform any operation if the crew already checked-in/checked out.</li> <li>• SPMS DOES NOT DELETE crew reservation physically from its database except during database maintenance via ADPI.</li> </ul> <p><b>SRON</b></p> <ul style="list-style-type: none"> <li>• If the crew account is under the expected list, SPMS will update the expected sign-on date, sign-on port, expected sign-off date, expected sign-off port and other information in this message type into the SPMS database.</li> <li>• If the crew has already checked-in, the system will not update the expected sign-on date and expected sign-on port. All other information in this message will be updated in the Crew record.</li> <li>• If the crew already check-out, checked-out from SPMS, and there is no matching sign-on date, no changes will be made</li> </ul> <p><b>SROF</b></p> <ul style="list-style-type: none"> <li>• If the crew is under the expected list, all fields below will be updated; Expected Sign on date/port, Expected Sign off date/port.</li> <li>• If the crew is already checked-in (sign-on), only the expected sign-off date/port will be updated when the sign-on date matches the actual check-in date of the crew member.</li> <li>• If the crew is already checked-out from SPMS, it will be updated as a future reservation for the crew member if the previous same sign-on date data exist for this crew member.</li> </ul> |
| CrewSignOn         | <p>This is a crew check-in request from JDE E1 to SPMS to check-in the crew in reference.</p>  |
| CrewSignOff        | <p>This is a crew check out request from JDE E1 to SPMS to check out crew members.</p>   |
| CrewAddress        | <p>This message updates the crew's address details from JDE E1 to SPMS. Only the home address is updated.</p>  |

**Table 1-2 (Cont.) Supported Message Type from JDE E1**

| Message Type         | Description  |
|----------------------|--|
| CrewEffects          | This message will add/append the effects belonging to the crew.  |
| CrewImmigration      | Updates Immigration Data consisting of 4 types of data, the master Passport/travel document, Seaman Document data, Brazilian and Mexican Visa information. |
| CrewAddressEmergency | This message updates the crew's emergency contact address details into SPMS.   |

## Supported Message from SPMS to JDE E1

**Table 1-3 Supported Message from SPMS to JDE E1**

| Message Type               | Description  |
|----------------------------|--|
| Success Message            | EONE interface will send a successful message to JDE E1 when the message received is processed successfully. |
| Failure Message            | A failure message is sent from the JDE E1 interface for any of the messages that it cannot process.          |
| Contingency On/Off Message | A message is sent from the JDE E1 interface when the contingency mode changes.                               |

## Creating Shipboard Keypair and Certificate

The shipboard keypair is used for messages destined for the shipboard. The data sent from the shore system is encrypted with the shipboard public key and is decrypted by the ship system using a shipboard private key.

There are many ways to create a keypair and certificate. Here, we will be creating a keypair with a self-signed certificate using the .NET 2.0 “**makecert.exe**” utility, provided in MS .NET Framework 2.0 SDK. On one of the shipboard server nodes, the command to run is:

```
makecert -r -pe -n "CN= BizTalk Shipboard XX" -sr localmachine -ss My -sky exchange
```

You are to replace the “XX” with the 2-digit shipcode.

You can also create the PFX file on any machine and import it into the local machine. See [Exporting Shipboard Keypair](#) and [Importing Shipboard Keypair \(Once Per Ship BIZ02 Engine\)](#) for steps to export/import a keypair.

There are other things you can do with the makecert utility, including directly outputting the certificate to a file. However, generating a PFX file directly is not one of these functions. If you need to automate the entire process, the alternative is to create a pvk file with the “sv” tag along with the cer file, then using cert2spc to convert the .cer file



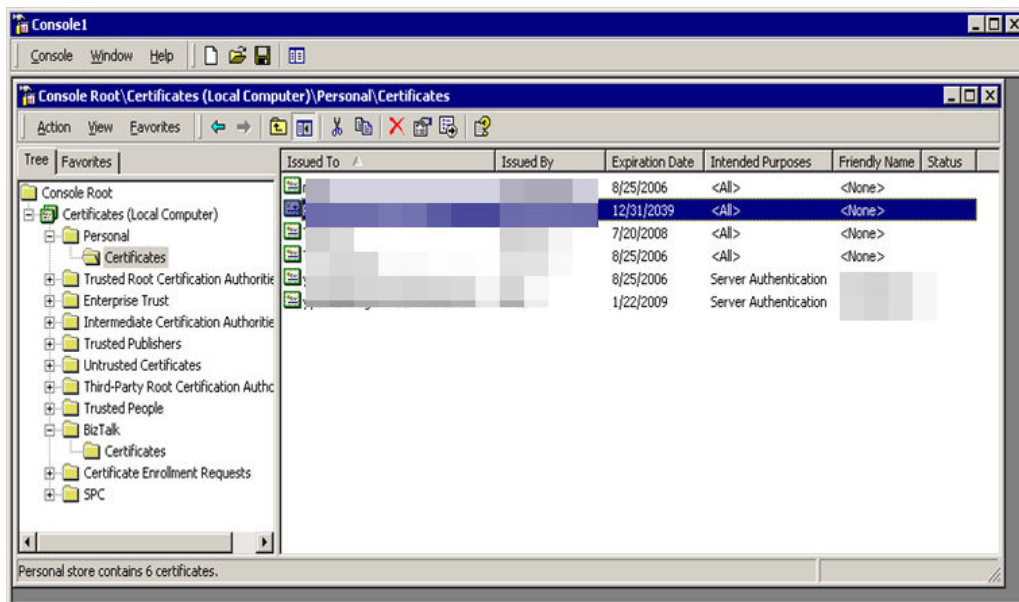
to an spc file, then using “pvkimport –pfx” to merge the spc and pvk files into a PFX file.

Below are the explanation of tags:

- -r – Creates a self-signed certificate, issuer will be the same as the CN.
- -pe – Marks the private key as exportable when inserted into the OS Key Container
- -n – Specified the X.500 standard subject certificate name.
- -sr – The subject certificate store **location**. Options here are “localmachine” for machine-level keys, or “currentuser” (default) for the current user.
- -ss – The subject certificate store **name**. Using “My” makes the certificate go into the “Personal”
- -sky – The subject keytype. This can be “signature” or “exchange”. If you are sending messages, this MUST be “exchange”.

When opening the MMC for “Local Computer” certificates, you should see something similar to below. Notice the Certificates (Local Computer) / Personal / Certificates is showing the new certificate.

**Figure 1-1 Console Root Window**



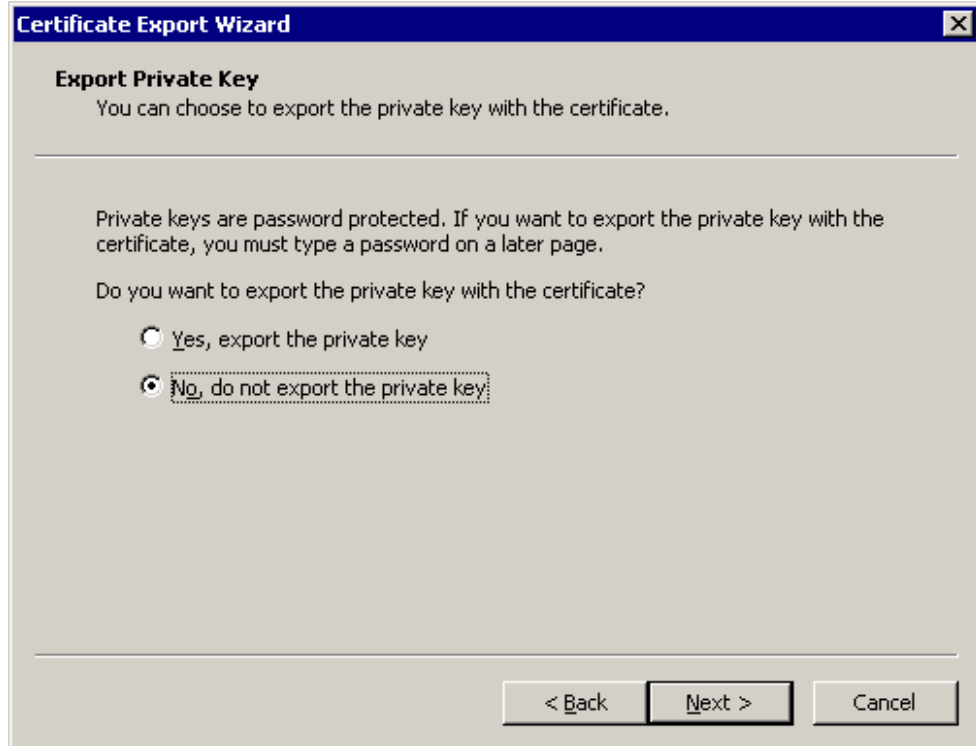
When opening up the details of the certificate, you can see at the bottom, “You have a private key that corresponds to this certificate.” This means the OS Key Container public/private keypair is associated with the certificate in the Certificate Store and we are all good to decrypt items as they come into this “BizTalk” Node.

## Exporting Shipboard Certificate

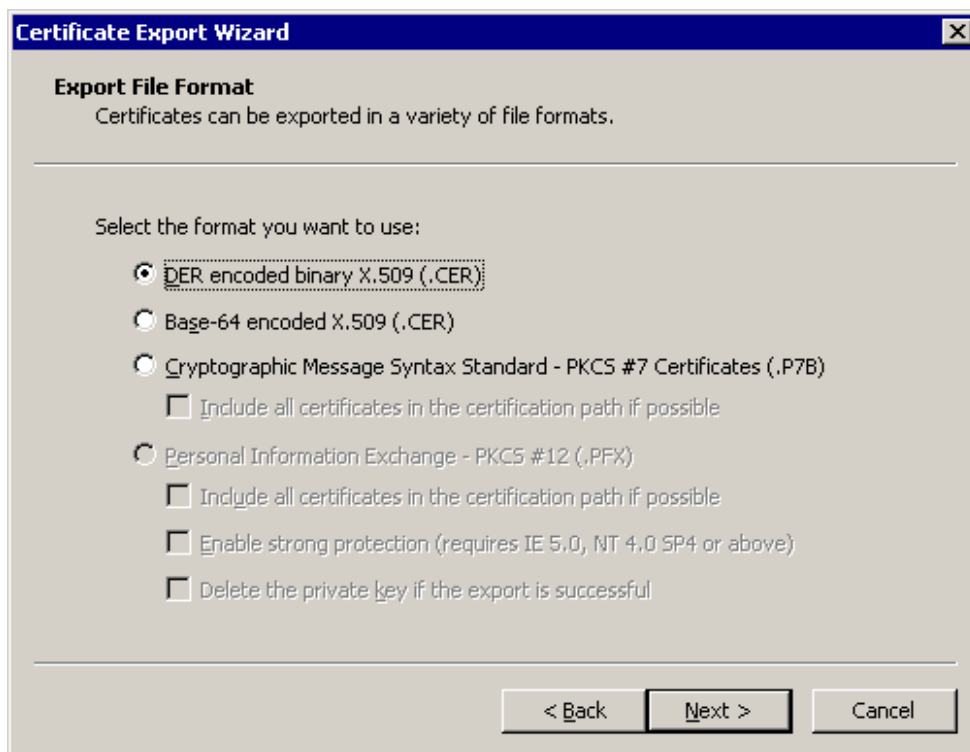
1. Expand the **Certificates (Local Computer)**, then **Personal**, and then the **Certificate** folder.

2. Right-click the certificate and select **All Task**, then **Export**.
3. Within the wizard, select “**NO Do not export the private key**”, and click **Next**.

**Figure 1-2 Certificate Export Wizard —Export Private Key**



4. Choose the **DER encoded binary format** and click **Next**.

**Figure 1-3 Certificate Export Wizard —Export File Format**

5. Save the output file to the file system as “BizTalk Shipboard XX” and click **Finish**. This creates the CER file.

## Exporting Shipboard Keypair

1. Right-click the certificate and select **All Task**, then **Export**.
2. Within the wizard, select “**YES export the private key**”, and click **Next**. See [Figure 1-2](#)
3. Choose the PFX format (your only option). Leave strong protection enabled.
4. Supply the password and output the file to the file system as “BizTalk Shipboard XX” and follow the steps to complete the creation. This creates the PFX file.

### Note:

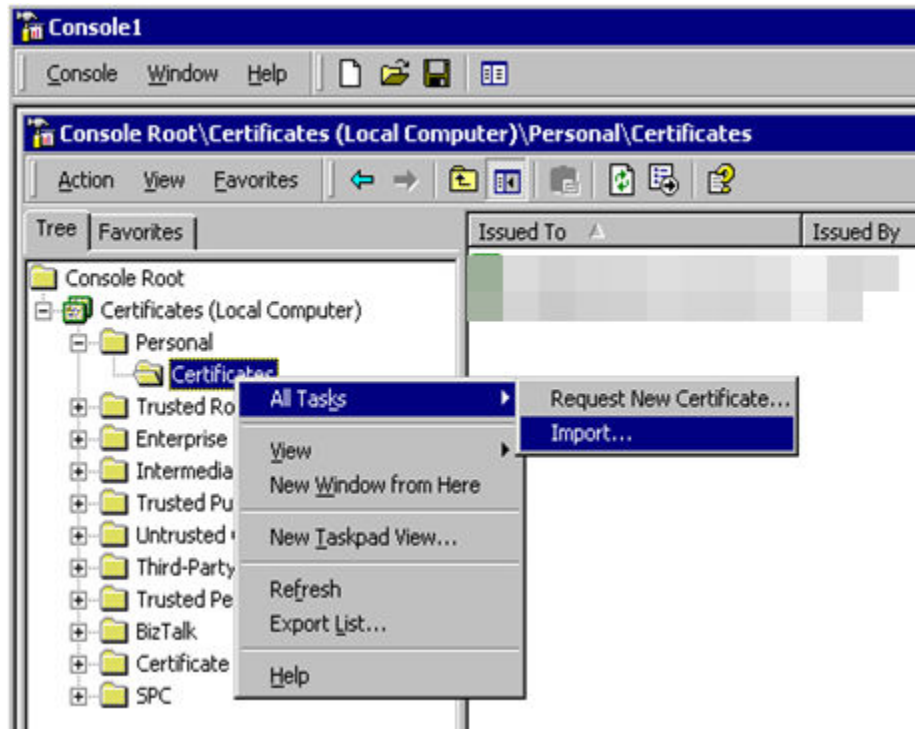
This PFX file has the private key in it. Be careful with who you share the file access and make sure only appropriate people know the password.

## Importing Shipboard Keypair (Once Per Ship BIZ02 Engine)

Perform the following on ALL Shipboard BizTalk nodes that will be running the BizTalk 2002 engine.

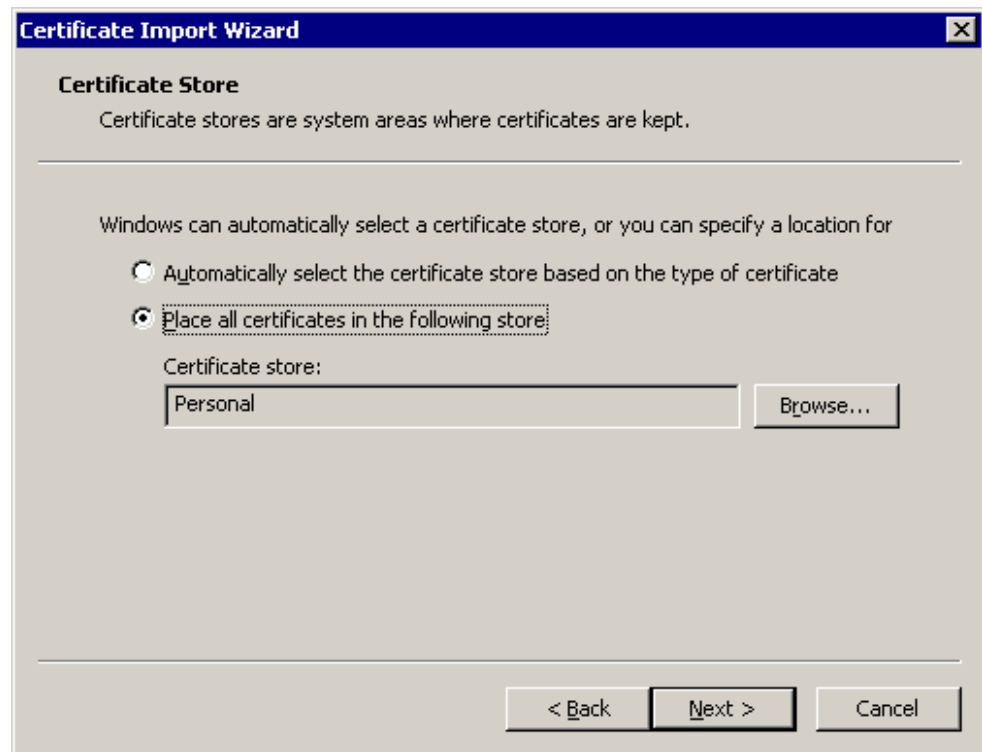
1. Copy the PFX file to the node you are working on.
2. At the **Personal, Certificates** folder, right-click and select **All Tasks**, then **Import**.

Figure 1-4 Certificate Container



3. When specifying the file to import, change the “Files of Type” to be “Personal Information Exchange (\*.pfx, \*.p12)” and select the “BizTalk Shipboard XX.pfx” file.
4. When prompted, enter the password and **DO NOT check the “Mark this key as exportable.”** This is to prevent the key from being re-export and use elsewhere.
5. Select the option “**Place all certificates in the following store**” and use the default “**Personal**” store.

Figure 1-5 Certificate Import Wizard — Certificate Store



6. Copy and paste the certificate to the **local computer, trusted root certification authorities folder** in the snap-in

 **Note:**

Do not forget to go back and do this step on ALL Shipboard BizTalk nodes that will be running a BizTalk 2002 Engine.

## Importing Shipboard Certificate (Once Per Shore Node)

Perform the following on ALL Shoreside BizTalk nodes that will be running a BizTalk host.

1. Copy the CER file to the node you are working on.
2. At the Console `Root\Certificates (Local Computer)`, right-click the "Other People" folder.
3. Select **All Tasks**, then **Import**.
4. When specifying the file to import, change the "Files of Type" to "X.509 Certificate (\*.cer;\*.crt)" and select the "BizTalk Shipboard XX.cer" file.
5. At the Certificate Import Wizard, choose "Place all certificates in the following store" and use the default **Other People** store, then click **Next**.
6. Copy and paste the certificate to the **local computer, trusted root certification authorities folder** in the snap-in.