

Messaging System User Guide

# **Oracle Banking Treasury Management**

Release 14.5.0.14.0

**Part No. G36707-01**

May 2025

Messaging System User Guide  
Oracle Financial Services Software Limited  
Oracle Park

Off Western Express Highway  
Goregaon (East)  
Mumbai, Maharashtra 400 063  
India

Worldwide Inquiries:

Phone: +91 22 6718 3000

Fax: +91 22 6718 3001

<https://www.oracle.com/industries/financial-services/index.html>

Copyright © 2025, Oracle and/or its affiliates. All rights reserved.

Oracle and Java are registered trademarks of Oracle and/or its affiliates. Other names may be trademarks of their respective owners.

U.S. GOVERNMENT END USERS: Oracle programs, including any operating system, integrated software, any programs installed on the hardware, and/or documentation, delivered to U.S. Government end users are “commercial computer software” pursuant to the applicable Federal Acquisition Regulation and agency-specific supplemental regulations. As such, use, duplication, disclosure, modification, and adaptation of the programs, including any operating system, integrated software, any programs installed on the hardware, and/or documentation, shall be subject to license terms and license restrictions applicable to the programs. No other rights are granted to the U.S. Government.

This software or hardware is developed for general use in a variety of information management applications. It is not developed or intended for use in any inherently dangerous applications, including applications that may create a risk of personal injury. If you use this software or hardware in dangerous applications, then you shall be responsible to take all appropriate failsafe, backup, redundancy, and other measures to ensure its safe use. Oracle Corporation and its affiliates disclaim any liability for any damages caused by use of this software or hardware in dangerous applications.

This software and related documentation are provided under a license agreement containing restrictions on use and disclosure and are protected by intellectual property laws. Except as expressly permitted in your license agreement or allowed by law, you may not use, copy, reproduce, translate, broadcast, modify, license, transmit, distribute, exhibit, perform, publish or display any part, in any form, or by any means. Reverse engineering, disassembly, or decompilation of this software, unless required by law for interoperability, is prohibited.

The information contained herein is subject to change without notice and is not warranted to be error-free. If you find any errors, please report them to us in writing.

This software or hardware and documentation may provide access to or information on content, products and services from third parties. Oracle Corporation and its affiliates are not responsible for and expressly disclaim all warranties of any kind with respect to third-party content, products, and services. Oracle Corporation and its affiliates will not be responsible for any loss, costs, or damages incurred due to your access to or use of third-party content, products, or services.

---

# Contents

<b>1. Preface .....</b>	<b>1-1</b>
1.1 Introduction .....	1-1
1.2 Audience .....	1-1
1.3 Documentation Accessibility .....	1-1
1.4 Organization .....	1-1
1.5 Glossary of Icons .....	1-2
1.6 Related Documents .....	1-3
<b>2. Messaging System - An Overview .....</b>	<b>2-1</b>
2.1 Introduction .....	2-1
2.2 Features Provided for Processing Outgoing Messages .....	2-1
2.3 Features Provided for Processing of Incoming Messages .....	2-2
2.4 Archival and Retrieval of Information .....	2-2
2.5 Set- up Messaging Preferences .....	2-2
2.6 Message Notification Process .....	2-2
2.6.1 Messaging Process .....	2-3
2.6.2 Outgoing EMS Process .....	2-3
2.6.3 Incoming EMS Process .....	2-5
<b>3. Maintaining Messaging Branch Preferences .....</b>	<b>3-1</b>
3.1 Messaging Branch Parameters Maintenance .....	3-1
3.1.1 Invoking Messaging Branch Parameters Maintenance screen .....	3-1
3.2 Message Type Maintenance .....	3-4
3.2.1 Maintaining Message Types .....	3-5
3.3 Swift Tag Maintenance .....	3-6
3.3.1 Querying for SWIFT Message Tag Description .....	3-7
3.4 PDE Validations on SWIFT Messages .....	3-8
3.4.1 Processing PDE Messages .....	3-8
<b>4. Maintaining Addresses for Customer .....</b>	<b>4-1</b>
4.1 Customer Address .....	4-1
4.1.1 Maintaining Address at Customer (CIF) Level .....	4-1
4.1.2 Change Log Button .....	4-6
4.1.3 Viewing Customer Address .....	4-7
<b>5. Maintaining Advice Formats .....</b>	<b>5-1</b>
5.1 Advice Format Maintenance .....	5-1
5.1.1 Maintaining Advice Format Details .....	5-1
5.2 Automatic Printing of Advices Generated during EOD Processing .....	5-5
5.2.1 Starting the Background Process .....	5-5
5.2.2 Printing of Advices .....	5-6
<b>6. Processing Outgoing Messages .....</b>	<b>6-1</b>
6.1 Outgoing Messages Browser Summary .....	6-2
6.1.1 Generating Messages from Outgoing Browser .....	6-2
6.1.2 Performing Operations on an Outgoing Message .....	6-5
<b>7. Retrieving an Archived Message .....</b>	<b>7-1</b>
7.1 Message History Retrieval Summary Screen .....	7-1

7.1.1	Invoking Message History Retrieval Summary Screen .....	7-1
7.1.2	View Message Button.....	7-2
<b>8.</b>	<b>Processing Incoming Messages .....</b>	<b>8-1</b>
8.1	Incoming Messages.....	8-1
8.1.1	Background Processing of Incoming Messages.....	8-1
8.1.2	Manual Processing of Incoming Messages.....	8-1
8.1.3	Invoking Incoming Message Browser Screen .....	8-2
8.1.4	Operations that you can perform on an Incoming Message.....	8-5
8.1.5	Viewing Details of Incoming Message.....	8-8
8.1.6	Editing Incoming Message .....	8-9
<b>9.</b>	<b>Defining Free Format Messages .....</b>	<b>9-1</b>
9.1	Free Format Message Maintenance.....	9-1
9.1.1	Invoking Free Format Message Maintenance Screen.....	9-1
9.1.2	Message Tab.....	9-3
9.1.3	SWIFT Message Details Tab.....	9-4
9.1.4	Free Format Text Tab.....	9-4
9.1.5	Saving the Record .....	9-5
9.2	FFT Template Maintenance .....	9-5
9.2.1	Maintaining SWIFT FFT Template .....	9-6
<b>10.</b>	<b>Making Query .....</b>	<b>10-1</b>
10.1	Advanced Search .....	10-1
10.1.1	Invoking Advanced Search Screen .....	10-2
10.1.2	Making Query based on more than one criterion .....	10-2
10.1.3	Selecting Same Criterion to Apply One or More Conditions.....	10-3
10.1.4	Ordering Details of Query.....	10-4
10.1.5	Using Wildcards to make Query.....	10-5
<b>11.</b>	<b>Processing SWIFT Messages .....</b>	<b>11-1</b>
11.1	Treasury Markets - Foreign Exchange, Money Markets and Derivatives.....	11-2
11.1.1	MT 300 Foreign Exchange Confirmation.....	11-2
11.1.2	MT 304 Advice/Instruction of a Third Party Deal.....	11-5
11.1.3	MT 305 Foreign Currency Option Confirmations.....	11-11
11.1.4	MT 306 Foreign Currency Option Confirmation.....	11-13
11.1.5	MT 320 Fixed Loan/Deposit Confirmation .....	11-19
11.1.6	MT 330 Call/Notice Loan/Deposit Confirmation .....	11-24
11.1.7	MT 340 Forward Rate Agreement Confirmation.....	11-27
11.1.8	MT 341 Forward Rate Agreement Settlement Confirmation .....	11-30
11.1.9	MT 350 Advice of Loan/Deposit Interest Payment .....	11-33
11.1.10	MT 360 Single Currency Interest Rate Derivative Confirmation.....	11-35
11.1.11	MT 361 Cross Currency Interest Rate Swap Confirmation .....	11-45
11.1.12	MT 362 Interest Rate Reset/Advice of Payment .....	11-57
11.1.13	MT 364 Single Currency Interest Rate Derivative Termination/ Recouponsing Con- firmation .....	11-62
11.1.14	MT 365 Cross Currency Interest Rate Swap Termination/Recouponsing Confirma- tion .....	11-65
11.2	CoSecurities Markets .....	11-69
11.2.1	MT 517 Trade Confirmation Affirmation .....	11-69
11.2.2	MT 518 Market-Side Securities Trade Confirmation .....	11-70
11.2.3	MT 540 Receive Free .....	11-76
11.2.4	MT 541 Receive Against Payment .....	11-79
11.2.5	MT 542 Deliver Free.....	11-83

11.2.6	<i>MT 543 Deliver Against Payment</i>	11-87
11.2.7	<i>MT 592 Request for Cancellation</i>	11-90
11.2.8	<i>MT 598 Proprietary Message</i>	11-90
11.3	Treasury Markets - Metals	11-91
11.3.1	<i>MT 643 Notice of Drawdown/Renewal</i>	11-91
11.3.2	<i>MT 644 Advice of Rate and Amount Fixing</i>	11-93
11.3.3	<i>MT 645 Notice of Fee Due</i>	11-94
11.3.4	<i>MT 646 Payment of Principal and/or of Interest</i>	11-96
11.3.5	<i>MT 649 General Syndicated Facility Message</i>	11-97
<b>12.</b>	<b>Other Message Maintenance</b>	<b>12-1</b>
12.1	Introduction	12-1
12.2	Maintaining Message Media Formats	12-1
<b>13.</b>	<b>Processing of MX Messages as per ISO 20022</b>	<b>13-1</b>
13.1	Introduction	13-1
13.2	MX Message Notification to OBTR from OBPM	13-2
13.2.1	<i>Maintenance Required in OBPM</i>	13-2
<b>14.</b>	<b>Reports</b>	<b>14-1</b>
14.1	SMS Log Report	14-1
14.1.1	<i>Generating Security Management System Log Report</i>	14-1
14.1.2	<i>Contents of Report</i>	14-2
14.2	Unsuccessful Messages Report	14-3
14.2.1	<i>Generating Upload Exception Report</i>	14-3
14.2.2	<i>Contents of Report</i>	14-3
14.3	Successful Messages Report	14-4
14.3.1	<i>Generating Successful Message Report</i>	14-4
14.3.2	<i>Contents of Report</i>	14-4
14.4	Daily Swift Message Status Report	14-5
14.4.1	<i>Generating Daily Swift Message Status Report</i>	14-5
14.4.2	<i>Contents of the Report</i>	14-5
14.5	Statement Message Status Report	14-6
14.5.1	<i>Generating Statement Message Status Report</i>	14-6
14.5.2	<i>Contents of the Report</i>	14-7
<b>15.</b>	<b>Function ID Glossary</b>	<b>15-1</b>

---

# 1. Preface

## 1.1 Introduction

This manual is designed to help acquaint you with the Common Core - Electronic Messaging Service module of Oracle FLEXCUBE.

The module supports various types of media. Besides standard media modes like Mail, Telex and SWIFT you can also use other media types supported by the Media Control System (MCS) installed at the node at which the database of your branch is installed. Oracle FLEXCUBE gives native support for media like Mail, Telex, and SWIFT using EMS as the MCS.

This user manual is a supplement to the Common Core - Electronic Messaging Service user manual and contains only specific functionalities and information related to Oracle FCUBS Messaging. Hence, this document should be read in conjunction with the Common Core - Electronic Messaging Service User Manual from the perspective of completeness in flow and understanding.

In addition to this User Manual, you can find answers to specific features and procedures, in the Online Help. It can be invoked by choosing Help Contents from the Help Menu of the software. You can further obtain information about to a particular field by placing the cursor on the relevant field and striking the <F1> key on the keyboard.

## 1.2 Audience

This manual is intended for the following User/User Roles:

Role	Function
Back office data entry clerk	Input functions for contracts
Back office managers/officers	Authorization functions
Product Managers	Product definition and authorization
End of Day operators	Processing during End of Day/Beginning of Day
Financial Controller/Product Managers	Generation of reports

## 1.3 Documentation Accessibility

For information about Oracle's commitment to accessibility, visit the Oracle Accessibility Program website at <http://www.oracle.com/pls/topic/lookup?ctx=acc&id=docacc>.

## 1.4 Organization





This manual is organized into the following chapters:

Chapter	Description
Chapter 1	<i>About this Manual</i> gives information on the intended audience. It also lists the various chapters covered in this User Manual.

<b>Chapter 2</b>	<i>Messaging System - An Overview</i> is a snapshot of the features that the module provides.
<b>Chapter 3</b>	<i>Maintaining Messaging Branch Preferences</i> specifies the messaging branch preferences.
<b>Chapter 4</b>	<i>Maintaining Media Types</i> discusses the procedure to maintain details of the media through which messages can be transmitted from and to your bank.
<b>Chapter 5</b>	<i>Maintaining Media Control Systems</i> discusses details pertaining to Media Control Systems.
<b>Chapter 6</b>	<i>Maintaining Addresses for a Customer</i> discusses the procedure for maintaining addresses for the customers.
<b>Chapter 7</b>	<i>Maintaining Advice Formats</i> explains the procedure for maintaining advice formats.
<b>Chapter 8</b>	<i>Processing Outgoing Messages</i> explains the procedure involved in generating an outgoing message.
<b>Chapter 9</b>	<i>Retrieving an Archived Message</i> deals with the process of retrieving archived messages.
<b>Chapter 10</b>	<i>Processing Incoming Messages</i> explains processing all incoming messages.
<b>Chapter 11</b>	<i>Defining Free Format Messages</i> explains process of defining free format messages.
<b>Chapter 12</b>	<i>MakingQuery</i> explains the query process.
<b>Chapter 13</b>	<i>Processing SWIFT Messages</i> explains about the SWIFT messages and the categories supported in Oracle FLEXCUBE.
<b>Chapter 14</b>	<i>Reports</i> provides a list of reports that can be generated in this module.
<b>Chapter 15</b>	<i>Function ID Glossary</i> has alphabetical listing of Function/Screen ID's used in the module with page references for quick navigation.

## 1.5 Glossary of Icons

This User Manual may refer to all or some of the following icons:

<b>Icons</b>	<b>Function</b>
	Exit
	Add row
	Delete row
	Option List

## 1.6 **Related Documents**

You may need to refer to any or all of the User Manuals while working on the Messaging module:

- Core Services
- Core Entities
- Procedures
- Settlements
- Interest
- Common Core - Messaging



---

## 2. Messaging System - An Overview

### 2.1 Introduction

The Messaging module of Oracle FLEXCUBE is designed to handle your outgoing and incoming messages. The module supports various types of media. Besides standard media modes like Mail, Telex and SWIFT you can also use other media types supported by the Media Control System (MCS) installed at the node at which the database of your branch is installed. Oracle FLEXCUBE gives native support for media like Mail, Telex, and SWIFT using EMS as the MCS.

While defining a product, you can indicate the messages that should be generated for the events that take place during the lifecycle of contracts involving the product. When the events for which a message should be generated occur, the message will be automatically generated and sent to the concerned party. The message will be transmitted to the customer's address through the media that you have specified, and in the format and language that you maintain for the customer – message combination.

While entering the details of a contract you can choose to generate or suppress the message. You also have the option to prioritize the urgency with which a SWIFT message should be generated.

This chapter contains the following sections:

- [Section 2.2, "Features Provided for Processing Outgoing Messages"](#)
- [Section 2.3, "Features Provided for Processing of Incoming Messages"](#)
- [Section 2.4, "Archival and Retrieval of Information "](#)
- [Section 2.5, "Set- up Messaging Preferences"](#)
- [Section 2.6, "Message Notification Process"](#)

### 2.2 Features Provided for Processing Outgoing Messages

In the case of outgoing messages, the module provides for the generation of messages using formats that you can define. By maintaining message formats you can ensure consistency across the branches of your bank. The module provides a host of features to enter or authorize testwords and to interface with media control systems to actually generate the message.

#### **Several customer addresses for a given media**

With Oracle FLEXCUBE's multi-branch set up, the customers of your bank can operate their accounts from several locations. Based on the convenience of your customers, you can send messages to locations of their choice.

Oracle FLEXCUBE provides for the setting up of several addresses for a given customer - media combination.

In addition, you can also associate a language with an address. All messages sent to the address will be expressed in the language that you indicate.

#### **Free format messages**

In the course of your daily banking operations you may want to generate messages that are not automatically generated by the system or you may have to communicate a message that is very specific to a customer.

In Oracle FLEXCUBE, you can personalize a message by defining a free format message and linking it to a customer - address combination. Whenever the message is to be generated it will bear the personalized format that you have defined.

### **MCS maintenance**

The messages that are sent from and delivered to your bank are transmitted and received from sources that are external to Oracle FLEXCUBE. In Oracle FLEXCUBE, these external sources are called Media Control Systems (MCS).

In a distributed environment, the database of a branch is located in a node or server. The MCS of the messages are also installed in a node. Thus, while defining an MCS you need to also indicate the node in which it is installed.

## **2.3 Features Provided for Processing of Incoming Messages**

In case of incoming messages, you can set up of various message queues and direct incoming messages to them. You can further grant selective access to the queues to personnel at your bank who are authorized to handle incoming messages.

## **2.4 Archival and Retrieval of Information**

Archival is the process of storing old messages for future retrieval. While defining messaging preferences for your branch, you can specify the number of days for which an outgoing message should be kept in the Outgoing Message Browser. Messages will be automatically archived after the number of days specified for your branch.

You can retrieve the messages that have been archived at anytime and process them just as you would any other message.

## **2.5 Set- up Messaging Preferences**

You can specify messaging preferences that will govern the workflow aspects of the messaging system module at your branch. You can indicate the following preferences:

- The number of days for which outgoing messages should be kept in the Browser for every branch
- Whether a testword is required for Telex messages
- The activities on a message that require authorization
- The PDE (Possible Duplication Emission) Archival period
- The text for duplication check
- The Hold Mail text to be displayed
- The Swift Key arrangement values
- Whether Authorization is required for the actions like Cancel, Hold, Change Node, Test Word. etc. on a Generated Message.

## **2.6 Message Notification Process**

This chapter contains the following sections:

- [Section 2.6.1, "Messaging Process"](#)
- [Section 2.6.2, "Outgoing EMS Process"](#)
- [Section 2.6.3, "Incoming EMS Process"](#)

## **2.6.1 Messaging Process**

The Electronic Messaging Process is for both incoming and outgoing messages in Oracle FLEXCUBE.

In Incoming EMS Process, a job is scheduled to poll the incoming folder on timely basis. Once a message is received in the folder, the job picks the message and sends it to an internal JMS queue. An MDB listening on the queue reads the message and identifies the media and processes the message.

In Outgoing EMS Process a job is scheduled to poll the outgoing messages that are generated but not handed off. Each messages polled is sent to an internal JMS queue. An MDB, acting upon the internal JMS queue picks the message from queue and sends the message to appropriate destination (Folder, or e-mail, or JMS queue).

## **2.6.2 Outgoing EMS Process**

The Outgoing EMS Process is in two layers. The EMS process as part of jobs in FCJ scheduler, polls the outgoing message table of FLEXCUBE for generated and un-send messages. The job then sends minimal data about the message to be handed off, to an internal JMS queue. The EMS process as part of an MDB that listens on internal JMS queue builds final message and sends to their intended destinations.

The 'EMS out' job is available as factory shipped.

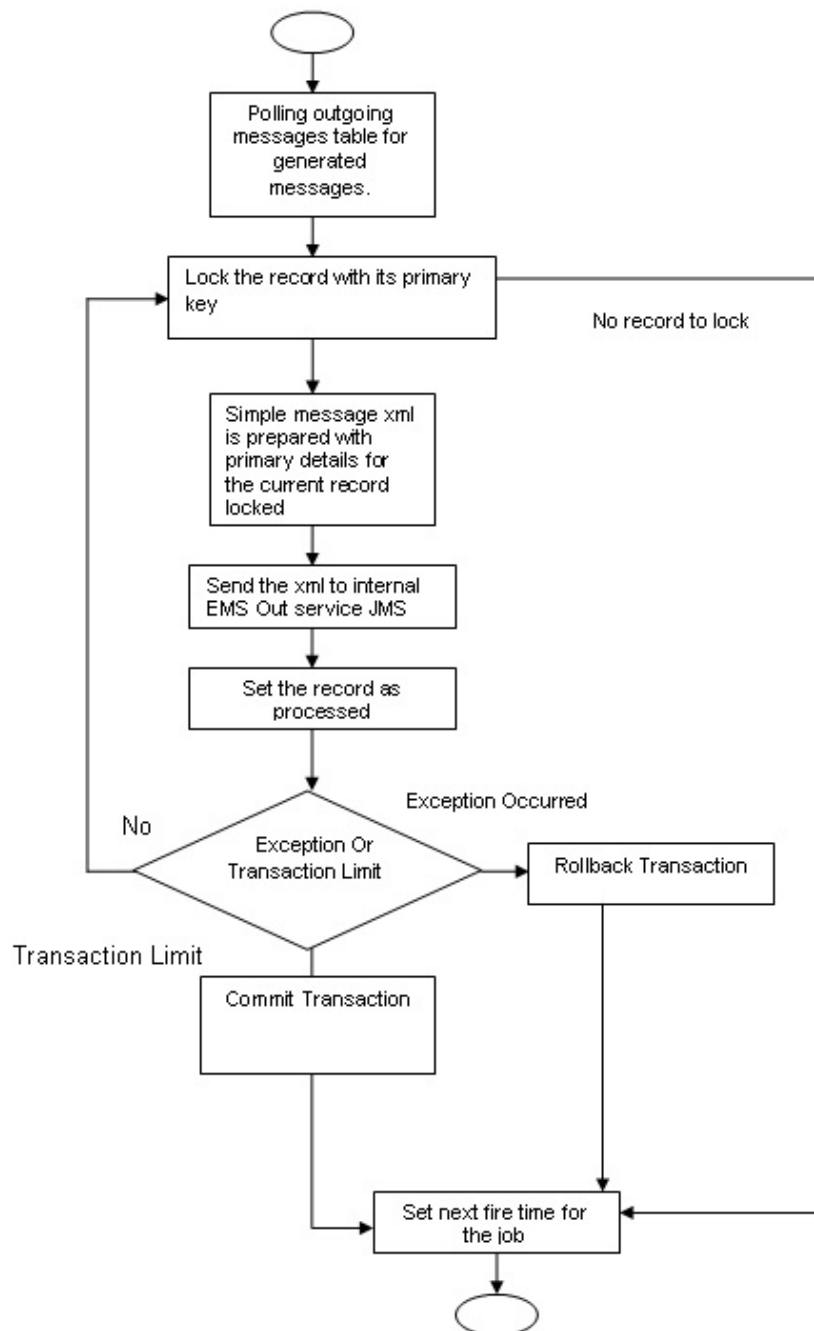
The Outgoing EMS Process as part of jobs scheduler is as follows:

- Once the job is triggered, it polls outgoing messages table for generated and unsent messages.
- Each message is then sent to an internal JMS queue.
- The job is then rescheduled to fire next time.

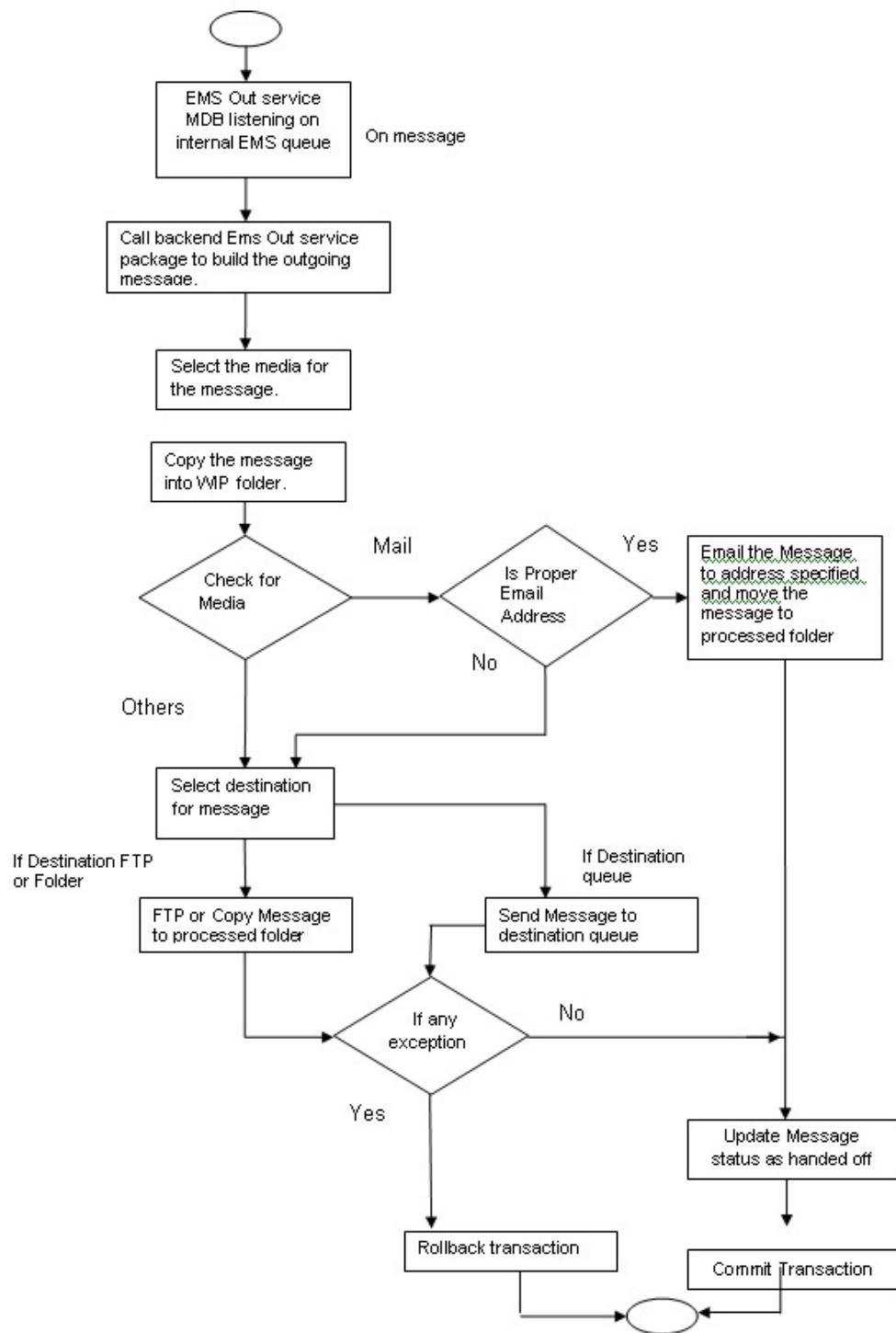
The Outgoing EMS Process in MDB is as follows:

- An MDB listens on the internal EMS outgoing queue and it builds the final message sent to intended destinations.
- In case of any exception while processing, message is sent to a deferred queue.

The following diagram illustrates outgoing EMS process in scheduler.



The following diagram illustrates outgoing EMS process in MDB.



### 2.6.3 Incoming EMS Process

The Incoming EMS Process is in two layers. The EMS process as part of jobs in FCJ scheduler, polls the pre configured folder for messages and sends the messages read, to EMS internal queue. The EMS process as part of an MDB listening on internal JMS queue, identifies the message from queue and calls the incoming messages service package to process the message.

The 'EMS in' job is available as factory shipped.

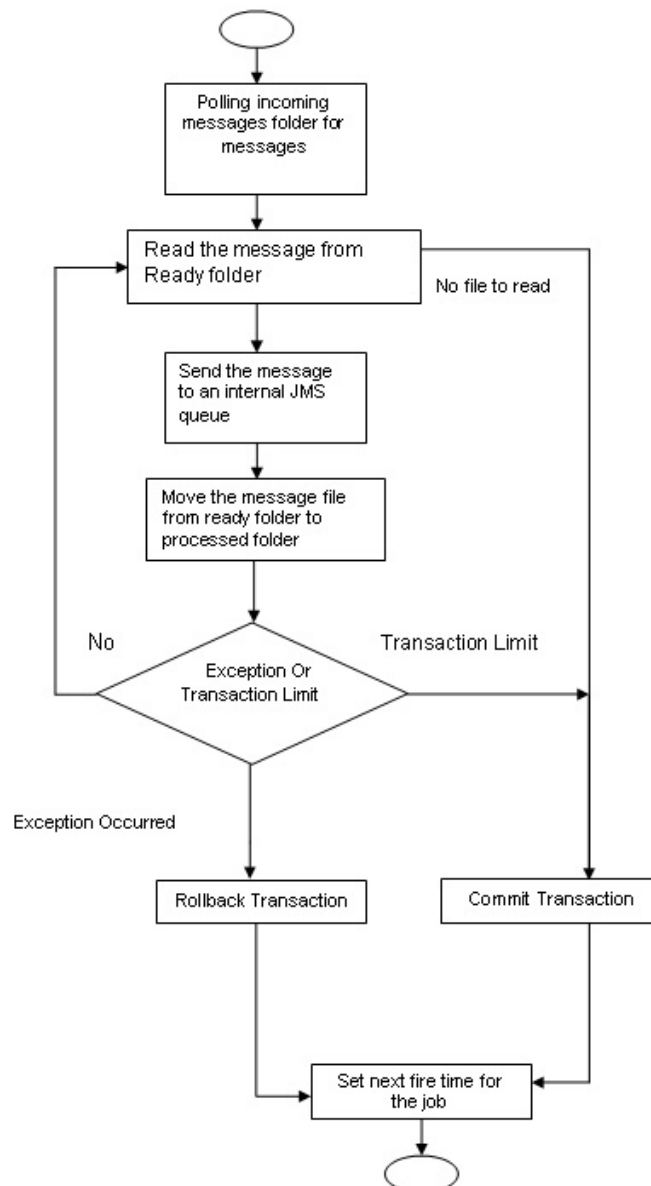
The Incoming EMS Process as part of jobs scheduler is as follows:

- Once the job is triggered, it polls for messages in a folder (Configured for incoming messages).
- Each message is then sent to an internal JMS queue.
- The job is then rescheduled to fire next time.

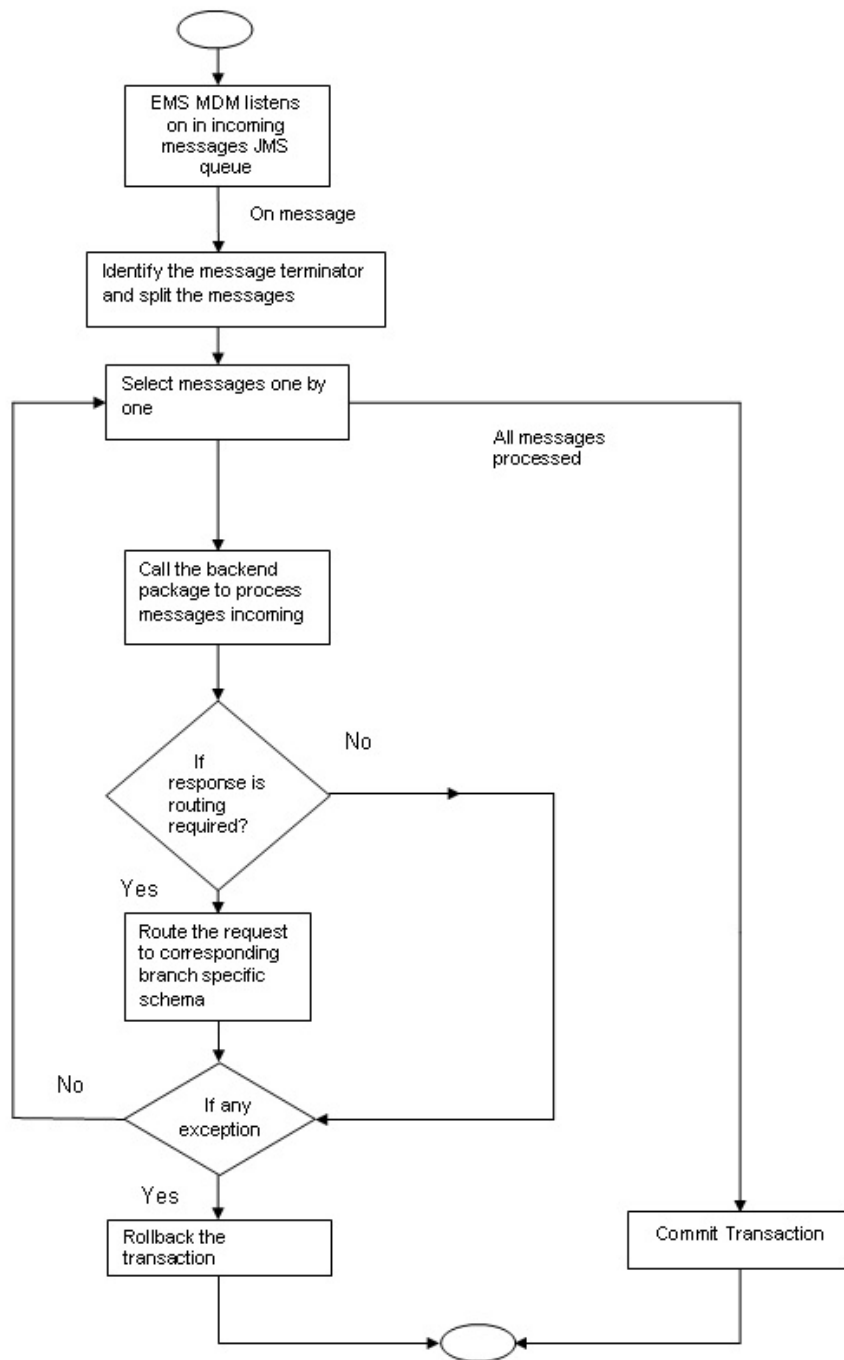
The Incoming EMS Process in MDB is as follows:

- An MDB that listens on the internal EMS incoming queue receives the message.
- The media details are identified and incoming message processing package is called to process the message.
- In case of any exception while processing, message is sent to a deferred queue.
- In case of messages directly arriving to JMS queue instead of a folder; the same MDB is configured to listen on specific queue.

The following diagram illustrates incoming EMS process in Job Scheduler..



The following diagram illustrates incoming EMS process in MDB.



---

## 3. Maintaining Messaging Branch Preferences

The messaging preferences that you indicate for your branch will govern the workflow aspects of the messaging system module. You can specify messaging preferences for your branch in the 'Messaging Branch Preferences' screen. In this screen you can indicate:

- The number of days for which outgoing messages should be kept in the browser
- Whether a test word is required for telex messages
- The activities on a message that require authorization
- The PDE Functional Validation / archive period
- The Text for hold mail and duplicate check

---

### Note

You can specify preferences only for the branch from which you logged onto Oracle FL-EXCUBE.

---

This chapter contains the following sections:

- [Section 3.1, "Messaging Branch Parameters Maintenance"](#)
- [Section 3.2, "Message Type Maintenance"](#)
- [Section 3.3, "Swift Tag Maintenance"](#)
- [Section 3.4, "PDE Validations on SWIFT Messages"](#)
- [Section 3.4, "PDE Validations on SWIFT Messages"](#)

### 3.1 Messaging Branch Parameters Maintenance

This section contains the following topic:

- [Section 3.1.1, "Invoking Messaging Branch Parameters Maintenance screen"](#)

#### 3.1.1 Invoking Messaging Branch Parameters Maintenance screen

To invoke the 'Treasury Messaging Branch Parameters Maintenance' screen, type 'MSDTRPRF' in the field at the top right corner of the Application tool bar and click the adjoining arrow button.

If you are maintaining preferences for a new branch of your bank, click the 'New' button on the Application toolbar. The 'Messaging Branch Parameters Maintenance' screen is displayed without any details.

If you are calling a branch preference record that has already been defined, double-click a record of your choice from the summary screen. In the 'Summary' screen, all the branch preference records that you have entered will be displayed in a tabular form.



The screen is shown below:

Treasury Messaging Branch Parameters Maintenance

New Enter Query

**Branch Preference**

Branch \*  
Message Archive Period 7  
PDE Archive Period  
Text for Duplicate  
Hold Mail Text

Test Word check ☐ Yes ☐ No  
PDE Functional Validation  
SK Arrangement No Validation  
Duplicate Advice Tracking

**Authorization**

☒ Cancel  
☒ Hold  
☒ Change Node  
☒ Test Word  
☐ Auth Repair Incoming  
☒ Carry Forward  
☒ Change Media  
☒ Regenerate  
☒ Change Address  
☒ Reinstate  
☒ Release  
☒ Branch Move  
☒ Test Word Check  
☒ Change Priority

**Fields**

Maker	Date Time:	Mod No	Record Status
Checker	Date Time:		Authorization Status

Exit

## **Branch Preference**

In the 'Treasury Messaging Branch Parameters Maintenance' screen you can only maintain (create or modify) the preferences for the current logged in branch. However, you can view the preferences maintained for other branches.

Following are the details captured here:

### **Branch**

Specify the branch for which you are maintaining the preferences.

### **Message Archive Period**

Archival is the process of storing old messages for future retrieval. You can specify the number of days for which an outgoing message should be kept in the Outgoing Message Browser.

A message will be automatically archived after the number of days that you specify. You can un-archive the details of outgoing message that has been archived by invoking the 'Message History Retrieval' screen. After you un-archive an outgoing message you can process it just as you would any other outgoing message.

---

#### **Note**

It is recommended that you indicate a value of 'one' in this field. In this case, only those messages that have been triggered for generation today will be displayed in the Outgoing Message Browser.

---

### **PDE Archive Period**

Specify the number of days for which messages should be kept in the queue for PDE Possible Duplicate Emission) identification. System does not consider messages for PDE identification post the PDE archive period maintained here.

---

#### **Note**

The PDE archive period should be less than or equal to message archival days.

---

### **Text for Duplicate**

Every message is maintained in the Outgoing Browser, as an un-generated copy of the original. When the copy is generated, it will contain, along with the contents of the original message, any additional text that you have maintained in the Text for Duplicate field.

### **Hold Mail Text**

All the mail advices generated for a customer for whom 'Add Hold Mail Text' is checked at the Customer Address Maintenance would have the hold mail text maintained in this field. This text will be displayed on top of the message.

### **Test Word Check**

You can indicate whether a testword needs to be entered before a telex message is generated from and received at your branch. You can state your preference from the Yes/No option that is available.

### **PDE Functional Validation**

Check this box to indicate that system should identify an outgoing message as PDE (Possible Duplicate Emission) using functional key or not.

The PDE validation is done either using the hash value of the SWIFT message or using the tag/field value of the message. If this option is checked, Oracle FLEXCUBE identifies duplicate messages by performing PDE functional validations also. Hash value based validation shall be done irrespective of this option being checked.

### **Indicating the activities that require authorization**

You can perform several activities on a message that is to be generated from your branch and on those that have come in for your branch. For example, from the outgoing or incoming browser, you can change the address to which a message should be sent.

In the branch preferences screen, you can indicate the activities which when performed on an incoming or outgoing message, would require subsequent manual authorization for the message. Several activities have been listed in this screen. A message, on which an activity which has been selected in this screen is performed, would require subsequent manual authorization for the activity to take effect. A message, on which an activity not selected in this screen is performed, would be automatically authorized with the activity taking effect.

The activities that you can choose from are:

- Cancel
- Hold
- Change Node
- Testword
- Auth Repair Incoming
- Carry Forward
- Change Media
- Regenerate
- Change Address
- Reinstate
- Release
- Carry Forward
- Branch Move
- Change Media
- Change Priority

- Testword Check
- Auth Repair Incoming

A message on which you perform an activity that requires authorization will be available for further processing only after it is authorized.

### **SK Arrangement**

You can choose the action to be performed on the message based on the Swift Key arrangement with the receiver. The options available for choosing are:

- **Validate** – If you choose this option, the system validates if a SK arrangement exists between your bank and the receiver. If Yes, then the original SWIFT message is generated otherwise, the message will go to repair.
- **Generate FFT**- If you choose this option, the system validates if a SK arrangement exists between your bank and the receiver. If Yes, then the original SWIFT message is generated otherwise, MT 999 (Free Format Messages) will be generated instead of the SWIFT message.
- **No Validation**- If you choose this option, you are instructing the system not to Validate but send the original SWIFT message always.

Processing SWIFT Messages if SK arrangement is 'Validate' in the static messaging table:

- Oracle FLEXCUBE checks for the value in the branch's SK arrangement Field
- If the field value is 'No validate', Oracle FLEXCUBE will generate messages the normal way.
- If the SWIFT keys have been exchanged then the swift message will be generated
- If SWIFT keys have not been exchanged with the receiver and the value of SK arrangement for the branch is 'Generate FFT' then the message MT999 would be generated instead of original SWIFT message.

### **Duplicate Advice Tracker**

Check this box to track the duplicate advices. When an advice is duplicated or regenerated, the word 'Reprint' appears over the advice. Generation of MT999.

- Message header is changed from the original header to MT999
- That portion of the message after tag 21 will be prefixed with tag 79 followed by the original SWIFT message
- The message will be populated with the same contents as the original SWIFT message with the respective SWIFT tags
  - The system will generate MT999 even if the SWIFT Key Arrangement does not exist with the receiver.

### **Saving the record**

After you have made the mandatory entries, save the record. This record should be authorized before the End of Day process (EOD) is run.

Click 'Exit' or 'Cancel' button to return to the Application Browser.

## **3.2 Message Type Maintenance**

This section contains the following topic:

- [Section 3.2.1, "Maintaining Message Types "](#)

### 3.2.1 Maintaining Message Types

You can maintain message types in Oracle FLEXCUBE through the 'Treasury Message Type Maintenance' screen. To invoke 'Message Type Maintenance' screen, type 'MSDTRMTM' in the field at the top right corner of the Application tool bar and click the adjoining arrow button.

Treasury Message Type Maintenance

New Enter Query

Module \*  
Message Type \*  
Description \*  
Priority \* Normal  
Maximum Message Count  
Purge Message  
Acknowledgment Nak Processing

Swift Messages For Product Setup

SWIFT Message Type  
Consolidated Message Type

Generate at input  
Show In Product

Fields

Maker	Date Time:	Mod No	Record Status
Checker	Date Time:		Authorization Status

Exit

You will need to capture the following information in this screen:

#### Module

Specify the module for which you are maintaining message types. The adjoining option list displays all module codes available in Oracle FLEXCUBE. You can select the appropriate one.

#### Message Type

Specify the message type for which SWIFT codes can be maintained.

#### Description

Enter a brief description of the message type.

#### Priority

Specify the priority in which a message is to be sent is displayed. You have the option to change the priority. To change the priority specified for a message, click the button marked 'Change Priority'. Thereafter, select an option from the option-list that is available for this field.

#### SWIFT Message Type

Indicate the SWIFT message type in which the free format message should expressed. For the following message types in BC module, you need to indicate the SWIFT message type as MT999:

- DISCREPANCY\_REQ
- ACCEPT\_REFUSAL
- DISCREPANCY\_AUT

#### Maximum Message count

Maximum number of message send to the message types

#### Purge Message

Purging of message allowed based on the selection.

#### Acknowledgement Nak Processing

Acknowledgement Nak processing allowed based on the selection.

### Generate at input

Check this box to indicate that this message is to be generated at the time of input of the contract, and not after authorization.

### Show in product

Check this box to indicate that this message will be available in the product to be maintained against a particular event.

#### 3.2.1.1 Viewing Message/Advice

Select a message/ advice and click 'View' button to view the complete message/advice. The system will display the following details in a new window..

The screenshot shows a window titled "Message" with a blue header and footer. The main area is white. At the top, there are three columns of input fields: "Reference Number" (with a red "DCN" and an asterisk), "Receiver/Sender", and "Sub Message Type". Below these are "ESN/Version Number", "Message Type", and "SWIFT Sub Message Type". Further down are "SWIFT Message Type", "Remarks", "Reject Reason", and "Message Trailers". A blue bar at the bottom right contains an "Exit" button. A small blue bar in the middle right says "< 1 Of 1 >".

You can view the following details:

- Reference number of the message/advice
- Document number generated for the message/advice
- Version number of the message/advice
- Receiver/sender of the message
- Type of the message
- Type of the SWIFT message
- Complete text of the message/advice
- Remarks, if any
- Reject reason, if any
- Message trailer

## 3.3 Swift Tag Maintenance

This section contains the following topic:

- [Section 3.3.1, "Querying for SWIFT Message Tag Description"](#)

### 3.3.1 Querying for SWIFT Message Tag Description

You can query for tag descriptions for SWIFT messages using the screen 'Treasury Swift Tag Maintenance' screen. You can invoke the screen by typing 'MSDTRSWT' in the field at the top right corner of the Application tool bar and click the adjoining arrow button.

The screen is as shown below:

Treasury Swift Tag Maintenance

New Enter Query

**Swift Tag Maintenance**

SWIFT Message/Sub Message Type \_\_\_\_\_

Description \_\_\_\_\_

Envelope Message Type \_\_\_\_\_

**Tag Description**

1 Of 1 Go

Tag Name	Description	Tag Option	Lines	Sequence	Repeatable	All Options
----------	-------------	------------	-------	----------	------------	-------------

Maker Date Time: Mod No Record Status

Checker Date Time: Authorization Status

Exit

Specify the following fields:

#### Swift Tag Maintenance

##### **Swift Message/Sub Message Type**

Specify the swift message/sub message type. The adjoining list displays a list of message types maintained in the system. Choose the appropriate one.

##### **Description**

The system displays the message description.

##### **Envelope Message Type**

The system displays envelope message type based on the message/sub-message type selected.

#### Tag Description

##### **Tag Name**

The system displays the tag name.

##### **Description**

The system displays the description.

##### **Tag Option**

Displays whether the tag is optional (O) or mandatory (M).

##### **Lines**

The system displays the number of lines required for the tag.

##### **Sequence**

The system displays the tag sequence number.

**Repeatable**

Indicates whether the tag is repeatable or not.

**All Options**

Indicates all options.

**Sequence Name**

Specify the sequence number.

---

**Note**

Swift message tag descriptions are factory shipped. However, it can also be maintained using this screen.

---

## 3.4 **PDE Validations on SWIFT Messages**

This section contains the following topics:

- [Section 3.4.1, "Processing PDE Messages"](#)

### 3.4.1 **Processing PDE Messages**

The system detects the messages (Incoming/Outgoing) as PDE messages by performing the validations discussed in the above section. The Incoming and Outgoing PDE messages are processed by the system in the following manner:

#### 3.4.1.1 **Incoming PDE Messages**

In the case of incoming messages, EMS picks up the incoming messages and inserts it into a data store. If the incoming message has a PDE trailer (message contains the text '*PDE:*') then the system will mark the process status as 'Stopped due to PDE'. After due validations, you can release the message from the incoming PDE message queue. Once these messages are accepted it will continue to get uploaded as a normal message. If the PDE trailer is NOT present in the incoming message, then the message upload will continue as normal.

In the case of incoming messages with a PDE trailer, the 'PDE Flag' check box in the 'Incoming Message Browser' screen will be checked.

*For more details on the PDE indication of an incoming message in the Incoming Message Browser, refer section 'Viewing the details of an Incoming Message' in 'Processing Incoming Messages' chapter of this User Manual.*

#### 3.4.1.2 **Outgoing PDE Messages**

In the case of outgoing messages you can decide to do any of the following if the system detects a message as a duplicate, based on the PDE validations:

- Auto release the message with the PDE trailer
- Release the message without the PDE trailer
- Reject the message

System displays an override when it finds a message to be a duplicate one. In this case the message is parked in the PDE queue and you can either opt to release the message without the PDE trailer or else release it with the PDE trailer. If you opt to release the message with the PDE trailer then the message is appended with PDE, else the message is released without PDE. You can also choose to reject the message. In this case the message status will

be changed to 'E' (Exception) and this will not be picked up by EMS (Electronic Messaging System).

Due to message size restrictions in Oracle FLEXCUBE, sometimes a single message is physically split into multiple parts and each one is stored in a distinct record in the outgoing message data store. A message is marked as 'PDE' if ALL the split messages are found to be duplicates.

---

**Note**

All the messages in the PDE queue (Incoming and Outgoing) are completely processed by EMS prior to initiating EOD operations.

---

*For more details on outgoing messages in PDE queue refer section 'Processing Outgoing Messages with PDE Trailer' in 'Processing Outgoing Messages' chapter of this User Manual.*



---

## 4. Maintaining Addresses for Customer

The messages and advices that are sent to the customers of your bank can be transmitted to various addresses through the media types that you maintain in the 'Media Maintenance' screen. In this 'Address Maintenance' screen, some of the details that can be maintained are:

- the media through which messages to a customer should be transmitted
- the address(es) of a customer for each media type
- the answer-back code for a telex advice
- a 'Test Word' for the customer
- the messages that should be sent to an address
- the language in which messages should be sent to a customer address

A customer of your bank can have several addresses for a given media. To distinguish between one address and another for the same media, you can capture an address for every 'Location'.

---

### Note

The addresses that you maintain for a customer in this screen are in addition to the ones maintained in the Customer Information File (CIF) of the Core module.

---

This chapter contains the following sections:

- [Section 4.1, "Customer Address"](#)

## 4.1 Customer Address

This section contains the following topics:

- [Section 4.1.1, "Maintaining Address at Customer \(CIF\) Level"](#)
- [Section 4.1.2, "Change Log Button"](#)
- [Section 4.1.3, "Viewing Customer Address"](#)

### 4.1.1 Maintaining Address at Customer (CIF) Level

You also have the provision to maintain customer addresses at the customer (CIF) level. You can invoke the 'Treasury Customer Address Maintenance' screen by typing 'MSDTRCAD' in the field at the top right corner of the Application tool bar and clicking on the adjoining arrow button.

The screen is shown below:

Treasury Customer Address Maintenance

New Enter Query

**Customer Address**

Customer No \*  
Location \*  
Country  
Answerback  
Add Hold Mail Text

Media \*  
Language  
Test Keyword  
Send by Email

Name  
Address Code  
Address 1 \*  
Address 2  
Address 3  
Address 4

**50F Party Details**

Fields | Change Log

Maker	Date Time:	Mod No	Record Status
Checker	Date Time:		Authorization Status

Exit

If you are maintaining a new address for a customer select 'New' from the Actions Menu, or click new icon on the toolbar. The screen is displayed without any details.

If you are calling a customer address record that has already been defined, double-click on a record from the summary screen. In the 'Summary' screen, all the customer address records that you have entered are displayed in a tabular form.

### Customer No

Specify the customer (CIF) number, assigned to a customer in the 'Customer Information Maintenance' screen, before you capture the different addresses of the customer. The name of the customer whose address you are maintaining is automatically displayed when you indicate the customer's identifier.

### Media

The types of media for which you can capture addresses include Mail, E-Mail, Telex, SWIFT, FAX and FILEACT interface to TIPA network. The Media details maintained in 'Media Maintenance' screen will appear in the list of values.

### Location

As discussed earlier, a customer of your bank can have several addresses for the same media. To differentiate between one address of a customer and another for a given media, it is mandatory for you to specify a unique location for each address. The location that you specify for an address is used as a unique identifier for the customer address.

### Language

In this field, you can specify the language in which the messages sent to the address should be expressed. You can choose a language code from the option list available against this field.

The language code that you specify is taken to be the default language in which all messages sent to the address are expressed.

---

**Note**

Remember that to send a message to a customer in a particular language you should have also maintained a message format for the chosen language through the 'Advice Format Maintenance' screen.

---

**Country**

Here, you select the relevant country code where your customer resides. All countries maintained through the 'Country Name Maintenance' screen are made available here.

**Answerback**

Specify the answerback code for the customer. This field is applicable only if a message is transmitted through 'Telex'. It cannot be more than 20 characters in length. It is a free format text.

**Test Keyword**

Enter the test word allotted to a customer. This field is applicable only if the message is transmitted through Telex (i.e. media is TELEX).

**Send by E-mail**

If your customer has an e-mail address, you can opt to capture it by clicking on the box adjacent to the 'Send by E-Mail' option. Enter the e-mail address for the customer, media and location combination in the first Address field. You can capture addresses such as fax, mail, etc., for the combination in the remaining address fields.

**Name**

Specify the name of the customer here.

**Address Code**

Select the address code from the adjoining address code value list.

**Address**

Enter the detailed address to which messages and advices generated should be sent to, for a particular customer account under the selected media and location combination. The format of the address depends on the media through which the message is transmitted.

If the address is for the media type mail, you can enter the customers address in the four rows under this field. Each line that you enter can contain a maximum of 35 characters.

If the media of transmission is Telex, the address should be expressed numerically.

If you are defining a SWIFT address, the address should be of eight or eleven characters alphanumeric.

---

**Note**

The valid address (e-mail or Telex or SWIFT) must be entered in the first line of the Address field only for it to be used.

---

**Add Hold Mail Text**

If this option is checked, then all the mail advice generated for this customer and location would have the hold mail text displayed on top of the message. As a consequence, these mail advices would not be dispatched to the customer unless required. Check this box to indicate you want the hold mail text to be displayed on top of the message indicating the branch.

## 50F Party Details

Specify the party details related to the ordering customer as a 5-line input here. Line 1 indicates the party identifier and lines 2 to 5 indicate the name and address details of the party.

You can use either of the following line formats with option F:

- Line 1 (Party Identifier) /34x (Account)
- Lines 2-5 (Name & Address) 1!n/33x (Number)(Details)

Or

- Line 1 (Party Identifier) 4!a/2!a/27x4!a/30x (Code)(Country Code)( Identifier)
- Lines 2-5 (Name & Address) 1!n/33x (Number)(Details)

The details specified here are used for a stricter validation of the details related to the ordering customer. The validations are carried out according to the rules indicated below:

- Validations for line1, party identifier (applicable for the second format listed above):
  - Line 1 has to comply with (Code)(Country Code)(Identifier) format where the country code should be a valid ISO country code
  - The first 4 characters specified should be a valid party identifier code supported by SWIFT
- Validations for lines 2 to 5, name and address details of the party:
  - The first line must start with number 1
  - Line numbers must appear in numerical order
  - Line number 2 cannot be used without line number 3 and vice versa
  - Line number 4 cannot be used without line number 5 and vice versa
  - Line number 4 should have the format YYYYMMDD and this date must not be greater than the date on which the message was sent to SWIFT
  - Line numbers 3, 5, 6 and 7 should be followed by a valid ISO country code
  - Line numbers 3, 4, 5, 6, 7 and 8 should not repeat. Line numbers 1 and 2 can repeat.
  - Line 8 is used as additional information. When the account identifier format is used, then in the case of Line 8 being used, either line 6 or line 7 should be used. When the party code identifier format is used, then Line 8 can be the continuation of line 1, line 6 or line 7. Line 6 or 7 need not be mandatorily be used

During contract input, the ordering customer record is searched in the customer addresses maintained and if found the corresponding 50F details are defaulted to the contract. If not found, the address details default from customer maintenance.

These validations are carried out for the following outgoing message types and appropriate error messages are displayed incase of any mismatches.

- MT101
- MT102
- MT102+
- MT103
- MT103+
- MT210

#### 4.1.1.1 Specifying Message Address

For a customer address - message type combination, you can indicate the branch (es) from which the message can be sent to the address. With Oracle FLEXCUBE, you can offer your customers the facility to effect a transaction from any of the branches of your bank. Hence, you can indicate the branches from where a message should be generated. You can select a branch code from the option list that is available.

---

##### **Note**

You can use the wildcard 'All' indicating that the message can be sent to the address in the defined format from all the branches of your bank. For example, if you indicate 'All' in the branch field for the message type 'payment message' it would mean that the address is applicable whenever a payment message is generated from any of the branches of your bank.

---

#### **Message Type**

A message type is always associated with a module. You should indicate the messages to be sent to the address you have defined for the customer, by picking up the message types for the respective module.

---

##### **Note**

You can use the wildcard 'All' indicating that all messages for the customer should be sent to the address being defined.

---

In this screen you should indicate:

- **Module + Message Type** -- Accounting (AC) + Account Statement
- **Branch** -- London
- **Module** -- All
- **Copies** -- 1

#### **Copies**

You can indicate the number of copies of the message that should be sent to this location each time it is generated. The number you specify here, will be the default number of copies of the message that will be generated each time a message is sent to this location through the media you have specified.

If you indicate that more than one copy should be sent to a location, the first message will be the original and the others will be marked as 'copy'.

---

##### **Note**

For payment messages, Oracle FLEXCUBE will default 'one' indicating that only one payment message will be generated. You will not have an option to change it.

---

#### **Format**

You can specify the format in which a message should be sent to a customer's address. The default format for a message type needs to be defined through the 'Advice Format Maintenance' screen.

You can choose to use the default format defined for the message type or you can indicate another format for the message. If you leave this field blank the default format specified for a

message type in the Advice Format screen will be used. However, if you want to personalize a message to make it specific to a customer, you can indicate the code of the format that should be used for the advice - customer combination.

For example, you have maintained a standard format for the account statements that are sent from your bank in the Advice Format screen.

However, for Mr. Andrew Scott, a non-resident customer you want to personalize the account statement rather than send him the standard one defined in the Advice Format screen.

To make this possible you can indicate the code of a format that you defined specific to Mr. Scott. Whenever an account statement is sent to Mr. Scott from your bank, it will be in the format that you have defined in this screen.

---

**Note**

The special format should first be defined in the advice format screen before it can be associated with Mr. Scott's address.

---

**Primary Address**

When defining addresses for a message type, you have to identify an address as the primary address. This option will be available only if the message type is 'FX\_CONFIRMN'.

If you maintain multiple FX Confirmation Message types for the 'SWIFT' Media for a customer across different locations, the T-Copy will be generated only for the address that is marked as the 'Primary Address' of the counterparty.

**Confirmation Message**

Check this box to automatically match the MM and FX confirmation messages. The confirmation messages are matched based on the confirmation rule maintained.

Auto matching of confirmation messages is enabled only if the 'Confirmation Message' is checked for the combination of customer, branch, message type, module, location and media.

*Refer the 'Continuous Linked Settlements' chapter of the Foreign Exchange User Manual for details on processing CLS deals in Oracle FLEXCUBE.*

#### **4.1.2 Change Log Button**

You can view the customer's previous addresses and changes made to the address using the 'View' screen. You can also determine the number of changes made to the address till date, who made the changes, when was the change made, and whether the change has been

authorized or not. To invoke this screen, click 'Change Log' button within the 'Treasury Customer Address Maintenance' screen.

The screenshot shows a 'View' window with a dark blue header and a light blue sidebar. The main content area is divided into several sections:

- Records:** A table with columns: Modification Number, Modification Status, First Authorization Status, Authorization Status, Maker ID, and Maker Date S. The first row contains the values: 1, N, A, Unauthorized, DOCUMEN2, and 2012-11-07 1. Navigation buttons (back, forward, search) are at the top.
- Remarks:** Four text input fields labeled: Maker Remarks, First Checker Remarks, Maker Override Remarks, and Checker Remarks.
- Warnings:** A table with columns: Warning Code and Warning Description. It includes navigation buttons at the top.
- Fields:** A table with columns: Field Name, Old Value, and New Value. It includes navigation buttons at the top.

At the bottom right, there are three buttons: Accept, Reject, and Cancel.

To view the changes made on a particular date, double-click the 'View Changes' button corresponding to the desired date under 'Maker Date Stamp'. A detailed screen appears containing changes made on the given date.

### 4.1.3 **Viewing Customer Address**

You can view the address details maintained in the 'Treasury Customer Address Maintenance' screen using the 'Treasury Customer Address Summary' screen. You can

invoke this screen by typing 'MSSTRCAD' in the field at the top right corner of the Application tool bar and clicking on the adjoining arrow button.

In the above screen, you can base your queries on any or all of the following parameters and fetch records:

- Authorization Status
- Customer Number
- Media
- Record Status
- Location

Select any or all of the above parameters for a query and click 'Search' button. The records meeting the selected criteria are displayed.

If you are allowed to query customer information, system displays the following details pertaining to the fetched records:

- Authorization Status
- Record Status
- Customer Number
- Location
- Media



---

## 5. Maintaining Advice Formats

The advices that are generated from your bank will have a definite format. In the 'Advice Format Maintenance' screen you can specify formats and indicate the messages and advices that should use the formats you have defined.

By maintaining message formats you can ensure consistency across the branches of your bank. You can maintain advice formats either by:

- Using the format editor on the screen to enter the format, or
- Importing the format from an ASCII file which can be located either on the:
  - Server
  - Client

---

### Note

Message formats are maintained at the bank level and will be applicable to all the branches of your bank.

---

This chapter contains the following sections:

- [Section 5.1, "Advice Format Maintenance"](#)
- [Section 5.2, "Automatic Printing of Advices Generated during EOD Processing"](#)

### 5.1 Advice Format Maintenance

This section contains the following topic:

- [Section 5.1.1, "Maintaining Advice Format Details"](#)

#### 5.1.1 Maintaining Advice Format Details

You can invoke the 'Treasury Advice Format Maintenance' screen by typing 'MSDTRAFM' in the field at the top right corner of the Application tool bar and clicking on the adjoining arrow button.

If you are maintaining a new advice format, click the 'New' button on the Application tool bar. The 'Advice Format Maintenance' screen is displayed without any details.

You can specify the following details pertaining to a format.

## Format

In Oracle FLEXCUBE, each format that you define is identified by a fifteen-character code called a Format code. You can follow your own convention for devising this code.

The code that you assign to a format should be unique as it is used to identify the format. You can compare simple conditions while defining message formats. When you need to use a format that you have defined, you need to just specify the code assigned to the format. The details of the format will automatically become applicable to the message. After you assign a code to a format you can indicate:

- The number of lines that should be contained in a page when the advice is printed.
- The number of columns that should be contained in a page when the advice is printed.
- The language of the message.
- The form type attached to the format.

## Language

A message can be sent to a customer in different languages. To make this possible, you need to maintain a format in different languages. While maintaining addresses for a customer in the 'Customer Address Maintenance' screen you can indicate the format and language in which a message should be sent.

## Format Type

Specify the form type that applies to the message. Select a form type from the adjoining option-list.

## Entering an advice format using the format editor

To enter a format using the format editor, click free format text icon positioned next to Format Text. In the note pad that is invoked you can actually tailor an advice to suit your requirements. The format editor has certain keywords which signify different options which you can use to create a format. The following table contains a comprehensive list of the key words that can be used in the format editor.

Keyword	Significance
---------	--------------

#RH	Indicates the start of the report header section.
#PH	Indicates the beginning of the header for a page.
#EH	Indicates both the end of the header section of the report or the end header of a page.
#RF	Indicates the start of the report footer section.
#PF	Indicates the start of the footer of a page.
#EF	Indicates both the end of the footer of a report or page.
#B	Indicates the start of the body of the message.
#EB	Indicates the end of the body of the message.
#CL	Indicates that you can collapse a line.
#EC	Indicates the end of a line that you have collapsed.
#LOOP	Indicates the beginning of a loop.
#END- LOOP	Indicates the end of a loop.
#IF	Indicates a conditional section.
#ANDIF	Indicates a conditional section.
#ORIF	Indicates a conditional section.
#ENDIF	Indicates the end of a conditional.

#### **Importing an advice format from an ASCII file on the server**

The server indicates the machine on which the database of your bank is installed. To import a format from an ASCII file on the server:

1. Click against the field marked Server.
2. Specify the full path to the file on the server which contains the format you want to import.
3. Thereafter, click 'Import' button.

The file containing the format of the message will be displayed on the screen.

#### **Importing an advice format from an ASCII file on the client**

Client refers to your own machine. To import a format from an ASCII file on the client:

1. Click against the field marked Client.
2. Specify the full path to the file on the client which contains the format you want to import.
3. Thereafter, click 'Import' button.

The file containing the format of the message will be displayed on the screen.

#### **Message Format**

After you have defined a format and assigned it a code you can indicate the list of messages that should use the format.

The format that you define for a message in this screen is taken to be the default format that will be used whenever the message is generated from your bank.

For each message that you specify, you can also indicate the specific details of the following, for which the format should be used:

- Module
- Message Type
- Branch
- Currency
- Product
- Media

Thus, you can specify a different format for the various combinations of the above.

To add a message to the list of messages that can use the format, enter the details of the message and click add icon. To delete a message from the list, select the message and click delete icon.

---

### Note

For all the five combinations you can use the wildcard 'ALL' indicating that the format is applicable for records in that category. For example, if you indicate 'ALL' in the branch field for the message type payment message it would mean that the format is applicable whenever a payment message is generated from any of the branches of your bank.

---

### Saving the record

After you have made the mandatory entries, save the record. A user, bearing a different Login ID should authorize an advice format maintenance record that you have created, before the End of Day processes (EOD) are begun.

Click 'Exit' or 'Cancel' button to return to the Application Browser.

In the summary screen, all the advice format records that have already been saved, will be displayed in a tabular form; double-click a record of your choice to open it. You can also invoke this screen by typing 'MSSTRAFM' in the field at the top right corner of the Application tool bar and clicking on the adjoining arrow button.

Treasury Advice Format Summary

Search Advanced Search Reset Clear All

Case Sensitive

Authorization Status  Record Status

Language  Format

Format Type

Records per page 15 1 Of 1 Go Lock Columns 0

Authorization Status	Record Status	Language	Format	Format Type
----------------------	---------------	----------	--------	-------------

Exit

## 5.2 Automatic Printing of Advices Generated during EOD Processing

In addition to generation of advices, Oracle FLEXCUBE automatically prints the advices that are scheduled to be generated during End Of Day (EOD) processing. Account Statements, Loan statements are examples of advices that are scheduled to be generated during EOD processing.

This section contains the following topics:

- [Section 5.2.1, "Starting the Background Process"](#)
- [Section 5.2.2, "Printing of Advices"](#)

### 5.2.1 Starting the Background Process

In Oracle FLEXCUBE, you need to run the background process to generate and print advices. In addition to the generation of the advices, system will also print the advices that are scheduled to be generated during EOD processing. You can start or stop a process in the 'Jobs Browser' screen. You can invoke the 'Jobs Browser' screen by typing 'CSSJOBBER' in the field at the top right corner of the Application tool bar and click on the adjoining arrow button.

The screen is as shown below:

Summary

Job Module  Process

Status

Search Advanced Search Reset

Records per page 15 1 Of 1 Go

Job Module	Process	Process Sequence Number	Status
------------	---------	-------------------------	--------

Start Stop

Status N - Stopped T - Running H - Halted

Exit

In the above screen, you can base your queries on any or all of the following parameters and fetch records:

- Job Module
- Process
- Status

Select any or all of the above parameters for a query and click 'Search' button. The records meeting the selected criteria are displayed.

System displays the following details pertaining to the fetched records:

- Job Module
- Process
- Process Sequence Number
- Status

Check the required process in the search results table and click 'Start' button to start the process. Click 'Stop' button to stop the process, at any point.

### **5.2.2 Printing of Advices**

In Oracle FLEXCUBE, advices are generated during batch processing. If you have started the background process, system will search for the messages that are not generated. The advices may be of two kinds:

- Advices that are not generated during contract authorization (If you had not opted for message generation at the time of contract authorization)
- Advices that are scheduled to be generated during End of Day operations.
- As soon as the message is generated, system will check whether the advice was scheduled to get generated during EOD. If so, the advice will be sent for spooling and printing.

If the advice is not scheduled to be generated during EOD, system will move on to generate the next advice without printing the advice.

---

## 6. Processing Outgoing Messages

Here, the procedure involved in generating an outgoing message is explained. To recall, you have already maintained:

- The type of messages that can be generated at your bank
- Formats for the various messages
- The media through which messages should be transmitted
- A media control system to receive and transmit messages for a given media
- The addresses for a customer for a given media

In each module of Oracle FLEXCUBE, you can define products. While defining products you also indicate the messages that should be associated with an event in the life cycle of a contract involving the product.

A contract goes through several events during its life-cycle. A message for an event is triggered for generation when the event is authorized.

For example, you have defined a product to cater to short term loans. You have indicated that the following messages should be generated when events take place:

Event	Message
INITIATION	Initiation Advice
LIQUIDATION	Liquidation Advice

---

### Note

In this context advices and messages are commonly referred to as messages.

---

Depending on the product - message - customer details that you have set up, Oracle FLEXCUBE determines the address and the media through which the message should be transmitted.

If a message is to be transmitted through mail, it has to be printed. If the message is to be transmitted through Telex, you will have to enter the testword (if it is required for the message). The messages that are to be transmitted through media like Telex and SWIFT will be sent by the Media Control System (MCS) which is connected to the node in which the database of your branch is installed.

A message that is triggered for generation can be sent in the background or can be generated on-line. An outgoing message will be processed based on the preference that you state.

---

### Note

The messages that are triggered by an automatic event like the generation of a tracer for an LC, billing notice and delinquency notice for a loan, etc., will be put in the Outgoing Browser by the automatic function itself. This is because events triggered by an automatic function do not require authorization.

---

This chapter contains the following sections:

- [Section 6.1, "Outgoing Messages Browser Summary"](#)

## 6.1 Outgoing Messages Browser Summary

This section contains the following topics:

- [Section 6.1.1, "Generating Messages from Outgoing Browser"](#)
- [Section 6.1.2, "Performing Operations on an Outgoing Message"](#)

### 6.1.1 Generating Messages from Outgoing Browser

If the background message process is not running, all the messages that are triggered for generation will be displayed in the Outgoing Message Browser from where you can generate the message.

You can generate messages from the Outgoing Browser at any time in the day. You can invoke the 'Treasury Outgoing Message Browser Summary' screen by typing 'MSSTROBR' in the field at the top right corner of the Application tool bar and clicking on the adjoining arrow button.

Treasury Outgoing Message Browser Summary

Search Advanced Search Reset Clear All

Case Sensitive

Branch 000 Document Number Reference Number

Module Message Type Receiver

Media SWIFT Message Type Message Status

Hold/Release Status Acknowledgement Status Authorization Status

Delivered Status Bulk Reference No Bulk Preference Name

Records per page 15 1 Of 1 Go Lock Columns 0

Branch	Document Number	Reference Number	Module	Message Type	Sub Message Type	Receiver	Currency	Amount	Media	SWIFT Message Type	SWIFT Sub Me
--------	-----------------	------------------	--------	--------------	------------------	----------	----------	--------	-------	--------------------	--------------

Generate | Hold | Cancel | TW Input | Change Node | Change Address | Print | Undo | Change Priority | Resend | Release | Reinstate | TW Auth | Change Media | Change Branch | View | Authorize | Handoff | Details | On-Line Auth | Copy | Carry Forward | Spool

Exit

### Viewing Outgoing Messages

You can view features of the outgoing messages based on any of the following criteria.

- Branch
- Document Number
- Reference Number
- Module
- Message Type
- Receiver
- Media
- Swift Message Type
- Hold/Release Status
- Acknowledgement Status
- Authorization Status
- Delivered Status
- Bulk Reference Number
- Bulk Preference Name
- Bulk Status - The bulk status can be one of the following:
  - INPROGRESS - Indicates that bulking is identified for the DCN
  - BULK\_SUCC - Indicates that the bulking operation is successfully completed



- BULK\_FAIL - Indicates that the bulking operation failed
- FILESENT\_SUCC- Indicates that the bulked file is sent to the destination
- FILESENT\_FAIL - Indicates that bulked file was not sent as sending failed
- Destination Type
- SWIFT LAU

Click 'Search' button. The system identifies all outgoing messages satisfying the specified criteria and displays the following details for each outgoing message:

- Branch
- Document Number
- Reference Number
- Module
- Message Type
- Sub Message Type
- Receiver
- Currency
- Amount
- Media
- Swift Message Type
- SWIFT Sub Message Type
- Node
- Priority
- Customer Name
- Address
- Address2
- Address3
- Address4
- Location
- Message Status
- Testword
- Exception
- Running number
- Hold/Release Status
- Test Amount
- Test date
- Test Currency
- Test word Narrative
- Acknowledgement Status
- Hold Mail
- External Reference
- Delivery By
- RTGS Network
- Entry By
- Maker Date Stamp

- Authorized By
- Checker Date Stamp
- Authorization Status
- Once Authorized
- Modification Number
- DCN LIST
- Bulk
- Selected
- Testing Status
- Any or Original
- Original DCN
- Delivered Status
  - RTGS Network will be defaulted for the following message types:
    - CUST\_TSFR\_RTGS
    - BANK\_TSFR\_RTGS
    - DIRDR\_RTGS

RTGS Message type and its description are shown in the table below:

Message	Description	SWIFT Message
CUST_TSFR_RTGS	Used when a Pay message generation is for a corporate and sent through the RTGS Network.	MT 103
BANK_TSFR_RTGS	Used when a message belongs to an interbank deal and sent through the RTGS Network.	MT 202
DIRDR_RTGS	Used when a direct debit message is sent through the RTGS Network.	MT 204

- From Date
- To Date
- Bulk Reference No
- Bulk Reference Name
- Bulk Status
- File Type
- Swift Net Connectivity
- Folder Name
- Queue Name
- Destination Type
- SWIFT LAU

---

#### Note

- If none of the criteria is selected, then the system displays all the messages in the outgoing browser.

- Funding Status will be updated during the processing of incoming MT102 and MT109.
- 

## 6.1.2 **Performing Operations on an Outgoing Message**

The operations that you can perform on an outgoing message are determined by the rights that you are assigned with, at Security Management System (SMS) level. If a function in the Outgoing Browser is disabled, then the function is not allowed for the record.

Check the box against the message(s) for which you need to perform an operation and then click the corresponding operation. The action performed will require authorization, if maintained at the Messaging Branch Preferences level.

The system allows only 'Print', 'View' and 'Detail' actions for messages generated by External Payment system.

The following operations can be performed on the outgoing messages:

### **Generate**

Click to generate an outgoing message. You can generate un-generated and repaired messages.

When you click 'Generate', the system checks the contract status for which the message is generated and will not generate a message in the following condition:

- If the contract is reversed
- If the message is on hold
- If the message maintenance is not authorized and the message is moved to repair queue

### **Hold**

Click if you need to temporarily stop generating an outgoing message. Authorizing Supervisor can view details and then release the messages or change their status to Carry Forward, which in turn can be released on further authorization.

---

### **Note**

Messages with Hold status must either be carried forward or released, before you execute the EOD processes at the branch; else the system displays an error message. However, if the message is cancelled, then the system will not display error message, though the status is 'Hold'.

---

### **Cancel**

Click if you need to cancel an outgoing message. You can cancel messages with 'Un-generated' and 'Hold' status.

### **TW Input**

Click if you need to input testword for Telex messages which were moved to 'Repair' status.

### **Change Node**

Click if you need to change the node from which an outgoing message is generated.

In a distributed environment, the database of one or more branches of your bank will be located at a node or a server. Hence a Media Control System will be installed and defined specifying the node at which it is installed.

When you click 'Node', the system displays the details of the individual message providing an option to change the 'Node'. Select the node you need to change from the adjoining option list.

---

**Note**

MCS status at the node in which the database of your bank is installed should be passive.

---

**Change Address**

Click if you need to change the address to which an outgoing message has to be sent. Enter the new address to which the message should be sent and click 'OK' to save.

---

**Note**

Change of address can be done only before a message is generated.

---

**Print/Spool**

Click if you need to print an outgoing message. When you click 'Print', option will be provided to select spool or print on-line.

Messages that are transmitted through mail and those cancelled should be printed. You can also choose to print the details of messages transmitted through other media types.

The system provides an option to spool the advices in PDF format. When you click the 'Print/Spool' button, you can view the selected advice in PDF file. You can also view the SWIFT tag description.

**Undo**

Click if you need to reverse the last action you performed on an outgoing message at 'Outgoing Messages Browser' level

**Change Priority**

Click if you need to change the priority, for sending a payment message which is yet to be generated.

---

**Note**

In the Background, Oracle FLEXCUBE generates messages on the priority basis.

---

**Resend**

Click if you need to regenerate and resend a message which was generated and sent.

**Release**

Click if you need to release a message which is on hold.

**Reinstate**

Click if you need to reinstate cancelled outgoing messages.

**TW Auth**

Click if you are provided rights to authorize testword entered for a Telex message. While authorizing you have to reenter the testword.

**Change Media**

Click if you need to change the media through which a message is transmitted, before it would be generated. Media of transmission of a message is changed if there is a failure of the medium at the recipient's end.

---

**Note**

The selected media through which a message is transmitted should be available to the recipient.

---

**Change Branch**

Click if you need to send an outgoing message from another branch. Select the branch to which the message needs to be moved from the adjoining option list.

You change the branch of a message for the following reasons:

- If there is a failure of a medium at the bank's or the counterparty's end
- If the branch is located closer to the location of the customer's address.

**View**

Click if you need to view the contents of a generated outgoing message. Viewing multiple messages is not supported.

**Authorize**

Click to authorize, if you are provided authorization rights for an operation at the Messaging Branch Preferences level. Messages should be authorized before sending them.

**HandOff**

Click if you need to hand-off a generated message to MCS to save the date in an ASCII format.

**Details**

Click if you need to view the details of a generated outgoing message. Viewing details of multiple messages is not supported

**On-line Auth**

Click to authorize online, if you are provided online authorization rights for an operation at the Messaging Branch Preferences level. Messages should be authorized before sending them.

**Copy**

Click if you need to send a copy of an outgoing message to another customer involved in a contract. You will provide the following to options:

- Any–Select to implement the following changes:
  - Select media from an adjoining option list
  - Specify name of the recipient
  - Specify the location of the recipient
  - Specify the address of the recipient
- Original–Select to copy the message in the original form

**Carry Forward**

Click if you need to Carry Forward an outgoing message which is on 'Hold' for subsequent days.

---

**Note**

Messages which have been Carried Forward can be put back on Hold.

---

---

**Note**

If an advice is not generated, then the system generates, spools, and moves it to the client work station.

---

## 7. Retrieving an Archived Message

Archival is the process of storing old messages for future retrieval. To recall, while defining messaging preferences for your branch you have also specified the number of days for which an outgoing message should be kept in the Outgoing Message Browser.

A message will be automatically archived after the number of days that you specified in the 'Messaging Branch Preferences' screen. You can choose to retrieve the outgoing messages that have been archived by invoking the 'Message History Retrieval Summary' screen.

This chapter contains the following section:

- [Section 7.1, "Message History Retrieval Summary Screen"](#)

### 7.1 Message History Retrieval Summary Screen

This section contains the following topics:

- [Section 7.1.1, "Invoking Message History Retrieval Summary Screen"](#)
- [Section 7.1.2, "View Message Button"](#)

#### 7.1.1 Invoking Message History Retrieval Summary Screen

You can invoke the Treasury Message History Retrieval Summary' screen by typing 'MSSTRUAR' in the field at the top right corner of the Application tool bar and clicking on the adjoining arrow button. The Unarchive Outgoing message screen is displayed.

Treasury Message History Retrieval Summary

Search Advanced Search Reset Clear All

Case Sensitive

Module Reference Number  
Message Type Media  
Receiver Date

Records per page 15 1 Of 1 Go Lock Columns 0

Module	Reference Number	Message Type	Media	Receiver	Date
--------	------------------	--------------	-------	----------	------

View Message

In the above screen, you can base your queries on any or all of the following parameters and fetch records:

- Module
- Reference Number
- Message Type
- Media
- Receiver
- Date

Select any or all of the above parameters for a query and click 'Search' button. The records meeting the selected criteria are displayed.

System displays the following details pertaining to the fetched records:

- Module
- Reference Number
- Message Type
- Media
- Receiver
- Date

### 7.1.2 View Message Button

You can invoke the 'Treasury Message' screen by typing 'MSDTRVMS' in the field at the top right corner of the Application tool bar and clicking on the adjoining arrow button. .

Treasury Message

Enter Query

Reference Number  Receiver or Sender  Sub Message Type

Event Sequence Number or Version Number  Message Type  SWIFT Message Type  SWIFT Sub Message Type

Message

1 Of 1

Exit

You can view the following details in this screen:

- Reference Number
- DCN
- ESN/Version Number
- Receiver/Sender
- Message Type
- SWIFT Message Type
- Sub Message Type
- SWIFT Sub Message Type

Click 'Exit' or 'Cancel' to return to the Application Browser.



---

## 8. Processing Incoming Messages

To recall, in the 'MCS Maintenance' screen, you have indicated the Media Control Systems that are connected to the node in which the database of your branch is installed. You have also specified the media that the MCS should handle. Besides, you have specified a hand-off directory into which all incoming messages transmitted through a specific media should be stored.

The final destination of an incoming message is the end user queue. These queues represent departments responsible for acting on the received messages.

This chapter contains the following sections:

- [Section 8.1, "Incoming Messages"](#)

### 8.1 Incoming Messages

This section contains the following topics:

- [Section 8.1.1, "Background Processing of Incoming Messages"](#)
- [Section 8.1.2, "Manual Processing of Incoming Messages"](#)
- [Section 8.1.3, "Invoking Incoming Message Browser Screen"](#)
- [Section 8.1.4, "Operations that you can perform on an Incoming Message"](#)
- [Section 8.1.5, "Viewing Details of Incoming Message"](#)
- [Section 8.1.6, "Editing Incoming Message"](#)

#### 8.1.1 Background Processing of Incoming Messages

All incoming messages that are intended for your bank will be handled based on the MCS specifications that you have maintained for your branch. You can choose to receive the incoming messages in the ASCII format from an MCS, and manually direct them to the appropriate queues, or indicate that the background process should automatically pickup incoming messages from an MCS and transfer them to the appropriate queues.

If you indicate that incoming messages for your branch should be processed in the background, messages will be routed to the relevant queues as and when they come in without manual intervention.

You can configure the background process to begin when the Beginning of Day process is run or you can invoke it at any time in the day. This screen (TRSJOBRR) can also be used to check whether the background process is running for outgoing and incoming messages.

Messages that are transmitted by mail will have to be handled manually. Messages transmitted through media like Telex and S.W.I.F.T. will be automatically routed to the relevant queues. A unique reference number (DCN) is assigned to each incoming message.

Incoming messages, which have an error, will be moved to the error queue.

#### 8.1.2 Manual Processing of Incoming Messages

You will have to manually process incoming messages if:

- the background message process is not running
- to route messages that cannot be routed to a user queue automatically

If the background process is not running, the messages that have come in to your bank will be stored in the incoming directory located on the node at which the database of your branch is installed. To recall, you have specified this directory in the 'MCS maintenance' screen. On invoking the Incoming Message Browser, you should upload all the messages from the directory on the node. All the incoming messages will be displayed in the Incoming Browser.

### 8.1.3 Invoking Incoming Message Browser Screen

From the 'Treasury Incoming Message Browser Summary' screen, you can receive messages that have come in through the MCS connected to the node in which the database of your branch is installed. You can invoke the 'Treasury Incoming Message Browser Summary' screen by typing 'MSSTRIBR' in the field at the top right corner of the Application tool bar and clicking on the adjoining arrow button.

#### 8.1.3.1 Features on Incoming Message Browser

From the Incoming Message Browser you can:

- upload incoming messages from the incoming directory on the node
- check Testwords for Telex messages
- authorize the Testword check for messages
- link an incoming message to a contract
- route the incoming messages to appropriate queues

You can query for the records based on any or all of the following:

- Branch
- Document Number
- Reference No
- Sender
- Media
- Swift Message Type
- SWIFT Sub Message Type
- Testword
- Authorized
- Status

- Suppress Message
- Process Status
- Queue

The following details of an incoming message will be displayed:

- Branch
  - Document Number (DCN) assigned to the incoming message -- the DCN is the delivery control number used to identify the message.
- Reference No
- Sender- the name address and location of the sender of the message
- Media - the media through which the message was transmitted
- SWIFT Message Type of the message
- SWIFT Sub Message Type
- Customer Name – the name of the sender of the message
- Address 1–4 – the location of the sender of the message
- Location – the location of the sender of the message
- Testword (in case of a Telex message)
- Entry By
- Release Time
- Running Number
- Authorized
- Checker Date Stamp
- Checker ID
- Status
- Suppress Message
- External Reference
- Process Status
- Modification Number
- Media Control System
- Message Status
- Once Auth
- Value Date
- Amount
- PDE Flag
- Queue
- Message Sequence Number
- Customer Reference Number
- SWIFT LAU
- LAU Validation
- RTGS Network

You can set some of the above parameters to make a query. Specify the details in the respective fields and click 'Search' button to view the details.

## **Checking the testword for a telex message**

Telex messages that come into your bank need to be checked for validity if you have specified so in the messaging branch preferences screen. This is done by entering a testword. The test word that you enter depends on the testword arrangement with the counterparty, the important aspects of the message like customer, date and currency.

If the testword you enter does not match the telex testword the message is registered as a defective message and put into the repair status.

### **External Reference Number**

This is a unique message identification number that will be used to identify an incoming message coming from an external system. This is defined as the ICN number. On upload of an incoming message into Oracle FLEXCUBE, this number, given by the external system, will be stored in Oracle FLEXCUBE and passed on to the contract generated as a result of the incoming message. If the incoming message results in an outgoing message, the ICN number will be linked to the outgoing message also.

This number will help you in creating a relationship between the incoming message, the resultant contract in Oracle FLEXCUBE, and the outgoing message, if any.

If an Incoming message results in an outgoing contract (outgoing message), Oracle FLEXCUBE will store the External reference number (ICN Number) at the following levels.

- Incoming Message Level
- Contract Level (Resulted due to the Incoming message)
- Outgoing message (As a result of the above contract)

### **RTGS Network**

The service identifier of the RTGS network will be picked up from field 113 of block 3 header of the incoming message and displayed here.

For TARGET 2 clearing network, the service identifier specified for the network in the 'Clearing Networks' screen will be defaulted and displayed here.

### **Status**

You can filter the records based on the status. The drop-down list displays the following statuses:

- Unprocessed
- Processed
- Repair
- Suppressed
- Funding Exception
- Pending Cover Match
- Failed Verification
- Pending Authorization
- Pending liquidation
- Pending Auth Receipt

#### 8.1.4 Operations that you can perform on an Incoming Message

Action	Operation
<b>View Delete</b>	<b>Viewing and deleting the contents of a message</b> <ol style="list-style-type: none"><li>1. To view the contents of an incoming message:</li><li>2. Highlight the message you want to view and</li><li>3. Click the 'View Message' button on the Browser</li><li>4. The contents of the message will be displayed in a separate screen.</li></ol>
<b>Print</b>	<b>Printing a message</b> <p>You can choose to print the details of an incoming message. To print the details of an incoming message,</p> <ol style="list-style-type: none"><li>1. Highlight the message you want to print and</li><li>2. Click the 'Print button' on the Browser</li></ol> <p>When you select the print option, you will be prompted to indicate whether you want to spool or directly print the message. You can also view the SWIFT tag description</p>
<b>Change Branch</b>	<b>Changing the Branch of the message</b> <ol style="list-style-type: none"><li>1. Select the message for which Branch has to be changed</li><li>2. Click on "Change Branch" button.</li></ol> <p>The details of the message will be displayed with only the Branch field enabled. Choose the new branch from the list of values provided and save the message.</p>
<b>TW Auth</b>	<b>Authorizing a Testword</b> <p>A telex message for which you entered a testword should be authorized before it can be routed to a user queue (if you have specified so in the Branch Preferences screen).</p> <p>To authorize a test word that was entered for a telex message, click the 'TW Auth' button from the Browser on this screen.</p> <p>During the authorization of a testword the authorizer will be required to re-enter the testword.</p>

<b>Move To Queue</b>	<p><b>Routing a message to a queue</b></p> <p>After you have made the checks that are necessary for the media through which a message is transmitted you can route the message to a user queue. To change the queue in which an incoming message should be stored:</p> <ol style="list-style-type: none"> <li>1. Select the message</li> <li>2. Click the 'Move to Queue' button</li> <li>3. Select a queue from the adjoining option list</li> </ol> <p>The message will be automatically moved to the queue that you specify. The final destination of an incoming message is the end-user queue. These queues represent departments or printers responsible for acting on the received messages. Once a message is lodged into an end user queue, it can be viewed on-screen or printed by the users who have access to the queue.</p> <p>You can move messages from one end user queue to another as well.</p> <p>For a message that was transmitted through Telex, you should enter the testword and have it authorized before you can route it to the relevant end user queue.</p>
<b>Link Contract</b>	<p><b>Linking the message to a contract</b></p> <p>In the browser, select the message with which you want to associate a contract and click on the 'Link Contract' button. The Reference Number option-list is enabled for the selected message. You can select the appropriate contract from the list. The message will be subsequently associated with the contract selected here.</p>
<b>Upload</b>	<p><b>Uploading incoming messages</b></p> <p>If the background process for incoming messages is not running you will have to upload the messages that have come into your bank from the incoming directory on the node to which your branch is connected.</p> <p>To upload messages from the incoming directory (specified in the MCS maintenance screen) click the 'Upload' button. All messages that were stored in the Incoming Directory will be uploaded to Oracle FLEXCUBE and displayed in the Incoming Message Browser.</p>
<b>Edit</b>	<p><b>Editing the Incoming Message</b></p> <p>Click 'Edit Message' button if you wish to make changes to the SWIFT message, especially the messages marked for repair. This is explained in the next Section.</p>

<b>Authorize</b>	<p><b>Authorizing the Incoming Message</b></p> <p>Use 'Authorize' button to authorize the message. All the amendments made to a SWIFT payment message have to be authorized by a user with appropriate authorization rights. At the time of authorizing, Oracle FLEXCUBE will display the earlier version of the SWIFT payment message along with the amended version, in the same window.</p> <p>A list of all the errors due to which the message was marked for repair is also displayed. The authorizer can view all the errors and also verify the changes that were made to correct them. After verification, if all the details are found to be appropriate, the message is authorized.</p> <p>Oracle FLEXCUBE maintains a detailed audit log of all amended SWIFT Payment Messages. The following details are captured for each authorized message:</p> <ul style="list-style-type: none"> <li>• User ID of the person who authorized the amendments</li> <li>• Date and time of authorization</li> </ul> <p>At any point during the verification and authorization process, the authorizer can choose to cancel the entire operation without changing the status of the message.</p>
<b>Force</b>	<p><b>Force Releasing Messages</b></p> <p>Use 'Force Release' button to forcibly release all Payment Message Transactions with 'Funding Exception' status and insufficient funds. In other words, the system will post the required accounting entries for such transactions regardless of insufficient funds in the accounts. However, an override will be displayed. The system will also maintain a detailed audit trail for such transactions. A user with appropriate rights can perform this function.</p>

<p><b>Suppress</b></p>	<p><b>Suppressing the Incoming Message</b></p> <p>To suppress a message, click 'Suppress' button in the Incoming Browser and invoke the 'Suppress Message' screen. The following options are available to suppress a Payment Message:</p> <ul style="list-style-type: none"> <li>• Suppress Message Generation</li> <li>• Suppress Full</li> <li>• No Suppress</li> </ul> <p><b>Specifying the 'Suppress Message Generation' option</b></p> <p>If you select this option, Oracle FLEXCUBE will stop the generation of the Payment Message. However, the system will post the necessary accounting entries for the messages being suppressed.</p> <p><b>Indicating the 'Suppress Full' option</b></p> <p>If you select the full suppress option for a message, the system will not post the related accounting entries. Advice generation will also be stopped. In other words, the system will not pick up the Payment Message for any further processing.</p> <p><b>Specifying the 'No Suppress' option</b></p> <p>A message marked with the 'No Suppress' option will be processed like any other normal Incoming SWIFT Payment Message.</p> <p><b>Specifying the remarks for a suppressed message</b></p> <p>You can specify the reason for suppressing a Payment Message in the 'Remarks' field.</p>
<p><b>Change Address</b></p>	<p>Receiver address details can be modified if logged in user has privileges.</p>

Click 'Exit' or 'Cancel' to return to the Application Browser.

### 8.1.5 Viewing Details of Incoming Message

You can view an incoming message in the Incoming Message Summary screen by selecting the message and clicking 'Details' button.



The following details regarding the incoming message are displayed in the above screen:

- DCN
- Reference Number
- Sender
- Media
- Swift Message Type
- Queue
- Operation
- Status
- Currency
- Amount
- Value Date
- External Reference Number
- Multi Credit Reference Number
- Branch
- Media Control System
- Node
- Test Word
- Repair Reason
- Name
- Address
- Location
- Process
- PDE Flag
- Suppress Options
- Remarks
- Auth By
- Entry By
- Mod No
- Checker Date Stamp
- Maker Date Stamp
- Suppress Status
- Funding Exception Status
- Cover Match Status
- Authorization Status

### **8.1.6 Editing Incoming Message**

An incoming message can be edited by invoking the 'Edit' function in the Incoming Messages Browser. On pressing the 'Edit Message' button, the message is displayed in edit mode. Only a user with requisite rights for editing can edit an incoming message.

The screen is as shown below:

Treasury Edit Swift Message

Reference No  
Sender  
SWIFT Message Type

Current Version  
Previous Version

Mod Number  
Remove Trailer

New Message  
1 Of 1  
Go

Old Message  
1 Of 1  
Go

Fields	Field Tag	Field Value	Desc
--------	-----------	-------------	------

Fields	Field Tag	Field Name	Field Value
--------	-----------	------------	-------------

Message Trailer  
Old Message Trailer

Exit

If editing is possible for the user, the message is displayed and is available for amendment. The list of fields, which can be modified are maintained through back-end database tables appropriately during implementation of Oracle FLEXCUBE. Most typically, fields like amount, currency would be maintained as non-modifiable whereas fields such as value date could be maintained as modifiable. Based on the maintenance in these tables, the appropriate fields are enabled for amendment.

On saving the amendment of the message, a new version is created and must be authorized. The screen shown above displays two versions of an incoming message. If the verifier needs to reject the change for any reason the same can be mentioned in the 'Reject Reason' field.

---

#### Note

In the case of incoming messages with a PDE trailer, the 'PDE Flag' check box in the 'Incoming Message Browser' screen will be checked. In the 'Edit Message' screen, check 'Remove Trailer' option to remove the PDE trailer (message contains the text `{'PDE:'}`) and save the message.

---

•

---

## 9. Defining Free Format Messages

In the course of your daily banking operations you may want to generate messages that are not automatically generated by the system or you may have to communicate a message that is very specific to a customer. You can enter the details of such messages in the form of a free format message.

The details of a Free Format Message can be entered in the Free Format Message Maintenance screen. In this screen some of the details you can indicate are:

- The format of the message
- The recipient of the message
- The media through which the message should be transmitted
- The address and location to which the Free Format Message should be sent

This chapter contains the following sections:

- [Section 9.1, "Free Format Message Maintenance"](#)
- [Section 9.2, "FFT Template Maintenance"](#)

### 9.1 Free Format Message Maintenance

This section contains the following topics:

- [Section 9.1.1, "Invoking Free Format Message Maintenance Screen"](#)
- [Section 9.1.2, "Message Tab"](#)
- [Section 9.1.3, "SWIFT Message Details Tab"](#)
- [Section 9.1.4, "Free Format Text Tab"](#)
- [Section 9.1.5, "Saving the Record"](#)

#### 9.1.1 Invoking Free Format Message Maintenance Screen

You can also invoke the 'Treasury Free Format Message Maintenance' screen by typing 'MSDTRFFT' in the field at the top right corner of the Application tool bar and clicking on the adjoining arrow button. The screen is shown below:

Treasury Free Format Message Maintenance

New Enter Query

Document Number

Module \* LS

Customer \*

Media \*

Location

Node

Date YYYY-MM-DD

Name \*

Address \*

Form \* ADV

Copies 1

Message SWIFT Message Details Free Format Text

Message

Message

Fields

Maker	Date Time:	Mod No	Record Status
Checker	Date Time:		Authorization

Exit

##### 9.1.1.1 Features of Free Format Message Screen

You can specify the following details on this screen.

**Document Number**

System generates the document number on save.

**Module**

Select the module from the drop-down menu, for which you are entering the details in this screen.

**Customer**

Select the code of the customer to whom the message is addressed, from the option list. If the recipient is not a customer of your bank, then specify his/her name in this field.

**Media**

You can indicate the media through which the Free Format Message should be transmitted. The media through which you can channel a Free Format Message depends on the media types that you have maintained for your branch in the 'Media Maintenance' screen. You can choose a media code from the option list that is available.

**Location**

You should also specify the location of the address. To recall, the location that you specify for an address is the unique identifier between the other addresses of the customer for a given media.

The address of the customer will be automatically displayed based on the customer-location-media combination that you indicate if it has already been maintained in the system.

**Node**

You can indicate the node from where this Free Format Message has to be generated.

**Name**

In the case of a walk-in customer, enter the name of the customer to whom the message is to be addressed. If the recipient of the message is a customer of your bank, the customer's name will be automatically displayed when you indicate the customer's CIF number in the "Customer" field.

**Address**

If the recipient of the message is a customer of your bank, the customer's address will be automatically displayed based on the Customer-Media-Location combination that you have specified.

You will be required to enter the address in the case of a Walk-in customer. The format of the address depends on the media through which the Free Format Message is transmitted.

If the address is for the media type Mail, you can enter the customer's address in the four rows under this field. Each line that you enter can contain a maximum of 35 characters.

If the media of transmission is Telex, the address should be expressed numerically.

If you are defining a SWIFT address, the address should be of eight or eleven alphanumeric characters.

**Contract Reference**

You can indicate the code assigned to the customer who is the recipient of the message. This is the code that you assigned to the customer in the Customer Information File (CIF). This option list displays all the contract reference number for those branches for which you have access right.

**External Reference Number**

The system displays external reference number on save.

## **Form**

If the message to be sent is in the form of a template, you can choose the template from the option list.

## **Hold**

Messages that are put on hold are temporarily stopped from being generated. If you have indicated that messages should be generated in the background, the Free Format Message that you have defined will be immediately sent when you save the record. If for some reason you do not want to immediately send the message, you can place it on hold. In this case, the message will appear in the Outgoing Message Browser, but will be in the hold status. You will have to release the message before you generate it from the Outgoing Browser.

## **Copies**

Enter the number of copies of the Free Format Message that should be sent to the customer at the time it is generated.

If you indicate that more than one copy should be sent to a location, the first message will be the original and the others will be marked as 'copy'.

## **Testword Required**

Indicate whether a test word needs to be inserted the telex message manually before it is generated from your branch.

The following details are displayed on the screen:

- Reference Number
- Date
- Tags

### **9.1.1.2 Importing Advice Format from an ASCII File on the Server**

The server indicates the machine on which the database of your bank is installed. To import a format from an ASCII file on the server:

- Select the radio button against 'Server'.
- Specify the full path to the file on the server which contains the format you want to import.
- Thereafter, click 'Import' button.

The file containing the format of the message will be displayed on the screen.

### **9.1.1.3 Importing Advice Format from ASCII File on Client**

Client refers to your own machine. To import a format from an ASCII file on the client:

- Click against the field marked Client,
- Specify the full path to the file on the client which contains the format you want to import, and
- Thereafter, click 'Import' button.

The file containing the format of the message will be displayed on the screen.

## **9.1.2 Message Tab**

You can enter the details of a Free Format Message either by:

- Using the format editor on the screen, or

- Importing the format from an ASCII file. This can be located either on the server or the client.

### Template ID

Select template id from the option list.

Click 'P' button to populate the template details into field 79 by resolving the substitution variables. You can modify the fields under Tag 79. However, the substitution variables are already resolved and defaulted. While modifying the message, you should specify the values directly and not the substitution variables again. System formats the amount and date based on default format at the application level.

### 9.1.3 SWIFT Message Details Tab

You can view the SWIFT messages by clicking the 'SWIFT Messages' tab. The screen will be displayed as follows.

### 9.1.4 Free Format Text Tab

To enter a format using the format editor, click free format text icon positioned next to the text of the message. In the note pad that is invoked you can actually tailor an advice to suit your requirements. Keywords to format the advice (similar to what is used in the Advice Format Maintenance) can be used here too in order to get the desired format. The following table contains a comprehensive list of the key words that can be used in the format editor.

Keyword	Significance
#NL	Indicates the number of lines that should be contained in a page when the message is printed

#NC	Indicates the number of columns that should be contained in a page when the message is printed
#RH	Indicates the start of the Report Header section
#PH	Indicates the beginning of the Header for a page
#EH	Indicates both the end of the Header section of the report or the end of Header section of a page
#RF	Indicates the start of the Report Footer section
#PF	Indicates the start of the Footer of a page
#EF	Indicates both the end of the Footer of a report or page
#B	Indicates the start of the body of the message
#EB	Indicates the end of the body of the message
#CL	Indicates that you can collapse a line
#EC	Indicates the end of a line that you have collapsed
#LOOP	Indicates the beginning of a loop
#END- LOOP	Indicates the end of a loop
#IF	Indicates a Conditional section
#ANDIF	Indicates a Conditional section
#ORIF	Indicates a Conditional section
#ENDIF	Indicates the end of a Conditional section

A Free Format Message will be sent depending on your specifications in the 'Background Process' screen.

- If the background process is running, a free format text that you define will be immediately sent at the time you save the record.
- If the background process is not running, the Free Format Message that you have defined will be displayed in the Outgoing Message browser from where you can process as you would any other outgoing message.

### 9.1.5 **Saving the Record**

After you have made the mandatory entries, save the record. A free format record that you have defined should be authorized by a user bearing a different login ID, before the End of Day (EOD) process is run. Click 'Exit' or 'Cancel' to return to the Application Browser.

## 9.2 **FFT Template Maintenance**

This section contains the following topics:

- [Section 9.2.1, "Maintaining SWIFT FFT Template"](#)

## 9.2.1 Maintaining SWIFT FFT Template

System has the facility to create SWIFT templates for free format messages with the help of resolver for predefined variable fields (for example; amount, applicant/beneficiary name, tenor, maturity etc.). This helps avoiding predation of message which are repetitive in nature for example bill acceptance message, availment confirmation or payment tracers etc. A dictionary of field resolvers is available in Oracle FLEXCUBE. You can create template as and when required with the combination of hard coated text and the field resolvers.

You can define templates for Free Format Messages which contains Template id, Language code and Free Format Text (Only for MT499 and MT799) using the 'Swift FFT Template screen Maintenance' screen. You can invoke this screen by typing 'MSDTRFFT' in the field at the top right corner of the Application tool bar and clicking the adjoining arrow button.

Treasury Free Format Message Maintenance

New Enter Query

Document Number

Module \* LS

Customer \*

Media \*

Location

Node

Date YYYY-MM-DD

Name \*

Address \*

Form \* ADV

Copies 1

Message SWIFT Message Details Free Format Text

Message

Message

Fields

Maker	Date Time:	Mod No	Record Status
Checker	Date Time:		Authorization Status

Exit

Specify the following details:

### Template ID

Specify the template id.

### Language Code

Specify a valid language code. The adjoining option list displays all the valid language code maintained in the system. You can choose the appropriate one.

### Free Format Text

Specify the Substitution Variables. You can identify these variables by prefixing them with '@' or by some other special character.

### Swift Message Type

Select the Swift Message type from the drop-down list. You have the following options:

- MT799
- MT499
- MT999



Following are the substitute variables:

Message	Substitution Variables	Description
MT799	LC_AMOUNT	LC Amount
	LC_CCY	LC Currency
	LC_LIABILITY	LC Outstanding Amount
	ISSUE_DATE	LC Issue Date
	LC_TENOR	LC Tenor
	EXPIRY_DATE	LC Expiry Date
	EXPIRY_PLACE	LC Expiry Place
	CLOSURE_DATE	LC Closure Date
	LC_CONTRACT_REF	LC Contract Reference Number
	LC_USER_REF	LC User Reference Number
	SHIPMENT_FROM	Shipment From
	SHIPMENT_TO	Shipment To
	PORT_LOADING	Port of Loading
	PORT_DISCHARGE	Port of Discharge
	CREDIT_AVL_WITH	Credit Available with
	INCO_TERM	Inco Term
	APPLICABLE_RULE	Applicable Rule
	BENEFICIARY	Beneficiary
	APPLICANT	Applicant
	REIMB_BANK	Reimbursing Bank
	OLD_BEN	Old Beneficiary before the amendment
	OLD_REM	Old Reimbursing bank before the amendment

Message	Substitution Variables	Description
MT499	OLD_ADV	Old Advising bank before the amendment
	APP_BANK	Applicant Bank
	CLAIM_BANK	Claiming Bank
	CNF_BANK	Confirming Bank
	ADV_BANK	Advising Bank
	ADV_THRU_BANK	Advice Thru Bank
	LATEST_SHIPMENT_DATE	Latest Shipment Date
	SHIPMENT_PERIOD	Shipment Period
	CONFIRMED_AMT	Confirmed LC Amount
	UNCONFIRMED_AMT	Unconfirmed LC Amount
	AVAILED_AMOUNT	Availed Amount
	REB_UT_AMOUNT	Reimbursement Amount undertaken
	REB_NUT_AMOUNT	Reimbursement Amount not undertaken
	DRAWER	Drawer
	DRAWEE	Drawee
	FORFAIT_HOUSE	Forfaiting house / bank
	REMIT_BANK	Remitting Bank
	COL_BANK	Collecting Bank
	DISC_BANK	Discounting Bank
	NEGO_BANK	Negotiating Bank
	TRF_BANK	Transferee Bank
	BILL_AMT	Bill Amount
	BILL_CCY	Bill Currency
	OS_AMOUNT	Bill Outstanding amount
	VALUE_DATE	Bill Value date
	TRANSACTION_DATE	Bill transactions date
	TRANSIT_DAYS	Transit days
	BILL_TENOR	Bill Tenor
	BILL_MATURITY	Bill Maturity date

Message	Substitution Variables	Description
	LIQUIDATION_DATE	Bill Liquidation date
	INCO_TERM	Inco Term
	OUR_LC_REF	Our LC Ref No
	THEIR_LC_REF	Their LC Ref No
	BC_CONTRACT_REF	BC Contract Reference Number
	BC_USER_REF	BC User Reference Number
	BROK_DETAILS	Broker, Brokerage and Brokerage Currency
	SHIPMENT_FROM	Shipment From
	SHIPMENT_TO	Shipment To

Message	Substitution Variables	Description
MT999	LC_CCY	LC Currency
	LC_LIABILITY	LC Outstanding Amount
	ISSUE_DATE	LC Issue Date
	LC_TENOR	LC Tenor
	EXPIRY_DATE	LC Expiry Date
	EXPIRY_PLACE	LC Expiry Place
	CLOSURE_DATE	LC Closure Date
	LC_CONTRACT_REF	LC Contract Reference Number
	LC_USER_REF	LC User Reference Number
	SHIPMENT_FROM	Shipment From
	SHIPMENT_TO	Shipment To
	PORT_LOADING	Port of Loading
	PORT_DISCHARGE	Port of Discharge
	CREDIT_AVL_WITH	Credit Available with
	INCO_TERM	Inco Term
	APPLICABLE_RULE	Applicable Rule
	BENEFICIARY	Beneficiary
	APPLICANT	Applicant
	REIMB_BANK	Reimbursing Bank
	OLD_BEN	Old Beneficiary before the amendment
	OLD_REM	Old Reimbursing bank before the amendment
	OLD_ADV	Old Advising bank before the amendment
	APP_BANK	Applicant Bank
	CLAIM_BANK	Claiming Bank
	CNF_BANK	Confirming Bank
	ADV_BANK	Advising Bank
	ADV_THRU_BANK	Advice Thru Bank
	LATEST_SHIPMENT_DATE	Latest Shipment Date
	SHIPMENT_PERIOD	Shipment Period

Message	Substitution Variables	Description
	CONFIRMED_AMT	Confirmed LC Amount
	UNCONFIRMED_AMT	Unconfirmed LC Amount
	AVAILED_AMOUNT	Availed Amount
	REB_UT_AMOUNT	Reimbursement Amount undertaken
	REB_NUT_AMOUNT	Reimbursement Amount not undertaken
	DRAWER	Drawer
	DRAWEE	Drawee
	FORFAIT_HOUSE	Forfaiting house / bank
	REMIT_BANK	Remitting Bank
	COL_BANK	Collecting Bank
	DISC_BANK	Discounting Bank
	NEGO_BANK	Negotiating Bank
	TRF_BANK	Transferee Bank
	BILL_AMT	Bill Amount
	BILL_CCY	Bill Currency
	OS_AMOUNT	Bill Outstanding amount
	VALUE_DATE	Bill Value date
	TRANSACTION_DATE	Bill transactions date
	TRANSIT_DAYS	Transit days
	BILL_TENOR	Bill Tenor
	BILL_MATURITY	Bill Maturity date
	LIQUIDATION_DATE	Bill Liquidation date
	INCO_TERM	Inco Term
	OUR_LC_REF	Our LC Ref No
	THEIR_LC_REF	Their LC Ref No
	BC_CONTRACT_REF	BC Contract Reference Number
	BC_USER_REF	BC User Reference Number
	BROK_DETAILS	Broker, Brokerage and Brokerage Currency
	SHIPMENT_FROM	Shipment From
	SHIPMENT_TO	Shipment To

In case of a Bill contract under an LC, the system resolves all tags applicable to MT799 and MT499. In such cases, the tags related to Bills are resolved based on the corresponding Bill contract. Similarly, the tags related to LC are resolved based on the LC contract which is linked to the Bill contract.

---

## 10. Making Query

When you are in the Outgoing or Incoming Message Browser, all the messages that were transmitted from and received at your branch are displayed. This may amount to hundreds of messages. To avoid wading through this mass of data, you can make a query to obtain information that is relevant to you at a particular time.

For example, you may want to obtain information on the messages that were sent to just two customers, on a specific date. Or you may want to see all outgoing messages across modules, sent during a specific period. The Advanced Search function makes this possible for you.

This chapter contains the following section:

- [Section 10.1, "Advanced Search"](#)

### 10.1 Advanced Search

This section contains the following topics:

- [Section 10.1.1, "Invoking Advanced Search Screen"](#)
- [Section 10.1.2, "Making Query based on more than one criterion"](#)
- [Section 10.1.3, "Selecting Same Criterion to Apply One or More Conditions"](#)
- [Section 10.1.4, "Ordering Details of Query"](#)
- [Section 10.1.5, "Using Wildcards to make Query"](#)

### 10.1.1 Invoking Advanced Search Screen

To make an advanced search, click 'Advanced Search' button either from the Outgoing or Incoming Browser as the case may be. The 'Advanced Summary' screen is displayed.

Advanced Search

Case Sensitive

- Unique Reference Number
- Generated Status
- Account Number
- Message Type
- Process Date
- Message Date
- Message Id
- File Reference Number

Query

Operator  Value  To

And Or ( ) Accept

Query

☐ Fields Operator Value

Clear Query

Order By

Order By Ascending Accept

Query

☐ Fields Value

Clear Query

Ok Cancel

The Query screen, will display all the fields that appear in the messaging module. These fields form the criteria based on which you can make a query.

If you do not wish to carry the query through, click 'Clear Query' button. The query screen is cleared and you can proceed to make a new query.

### 10.1.2 Making Query based on more than one criterion

Suppose you want to obtain information based on more than one criterion. For example, you may want to view the details of all the guarantees generated for the Letters of Credit module from your branch located at London.

#### Procedure

The procedure to make such a query involves the following steps:

Action	Button
Accept	The Accept button
And	The And button

Step 1



Select 'Module' under 'Fields', and then from the Operator drop-down list choose Equal To and LC under Value. Then click the Accept button.

#### *Step 2*

Click the 'And' button. Repeat step one with the criteria value, as Message type, select Guarantee under value clicking accept and add buttons in the sequence described for the first criterion.

#### *Step 3*

Click the 'And' button. Repeat step one with the criteria value, as Branch select London under Value clicking accept and add buttons in the sequence described for the first criterion.

#### *Step 4*

The query that you have made will be displayed in the Query screen. Check it for correctness and click 'Ok' button.

The Outgoing Message Browser will display details of all the Guarantees generated for the MM module from your branch at London.

### **10.1.3 Selecting Same Criterion to Apply One or More Conditions**

Now, you may want to make a query to see the debit advices (in the Letters of Credit module) that were generated from the London branch involving three different customers (Wendy Klien, Silas Reed and Keturah Smith).

This involves specifying a customer code one by one all of which come under the same criterion module -- LC (listed out under Fields) and indicating a message type for which you want details. This is where the 'Or' button on the query screen comes into play. You can choose to use the keyboard to key in the query or you can follow the following procedure to make a query.

#### **Procedure**

##### *Step 1*

Select Module under Fields, and then from the Operator drop-down list choose Equal To and MM under Value. Then click the 'Accept' button.

##### *Step 2*

Click the And button. Repeat step one with criteria Field as "Branch", Operator being "Equal To" and "London" under Value. Click the 'Accept' and 'Add' buttons in the sequence described in Step 1.

##### *Step 3*

Click the And button. Repeat step one for Field with the criteria value, as Message Type. Then select Debit message under Value clicking the 'Accept' and 'Add' buttons in the sequence described for the first criterion.

##### *Step 4*

To cull out details of the debit advices involving these three customers, click the And button. Repeat Step 1 with the 'Field' as 'Name'. Select say Ms. Keturah Smith under Value. Then click the accept button.

To select another customer, click the Or button and then click Name in the Fields list, specify the Operator as Equal To and pick out the customer name Mr. Silas Reed from the Value option list then click the Accept button.

Repeat the process for the third customer, Ms. Wendy Klien.

#### Step 5

The query that you have made is displayed on the Query screen.

MODULE = MM AND BRANCH = LONDON AND MSG\_TYPE = DR\_ADV AND NAME = SILAS REED OR NAME = KETURAH SMITH OR NAME = WENDY KLIEN

Check it for correctness and click 'Ok' button to see the query through. The Outgoing Message Browser will display details of all the debit advices generated for the MM module from your branch at London to the three customers that you specified.

### 10.1.4 Ordering Details of Query

Oracle FLEXCUBE also provides you the option to order the information that you have made a query on. You can further specify that the ordered information should be arranged in ascending or descending order.

Suppose you have made a query to obtain details of the debit messages that were generated by the Data Entry module of Oracle FLEXCUBE, and you wish to order the information in the ascending order of the customer to whom the message was sent.

Make the query following the procedure detailed under the head making a Query after you have specified the entire criterion for the query, select the required ordering option from the Order By drop-down list. The list contains the following options:

- Ascending

- Descending

Click the option of your choice, say, Descending.

Click the 'Accept' button and click 'Ok'. The details of the query that you have made will be displayed on the Outgoing Browser ordered on the basis of the customer to whom the message was sent. The details will further be sorted in the alphabetic order.

If you decide to cancel the ordering you have specified, click 'Clear Query'. The screen clears and you can specify a new order.

### 10.1.5 **Using Wildcards to make Query**

You need not always specify the criteria for a query. You can use wild cards such as:at oa

Wild Card	Description	Implication
_	Underscore	To match a single character
%	Percent	To match any string of multiple characters

#### **Using %**

For instance, if you have to check the messages relating to one particular MM product LD01, you can query for records with Reference Number like '%LD01%' since all the contract reference numbers with that product will invariably contain that string.

Once you click the Accept button and make a query, the 'Outgoing Message Browser' screen displays all the Free Format Texts.

#### **Using And**

When you are searching for strings of specific length which vary in only one character – for instance, all branches like 001, 002, 003 – can be represented as 00\_. Searching for 00\_ will fetch all the messages for all these three branches.

---

## 11. Processing SWIFT Messages

SWIFT is the 'Society for Worldwide Interbank Financial Telecommunication', a member-owned cooperative through which the financial world conducts its business operations with speed, certainty and confidence. SWIFT enables customers to automate and standardise financial transactions, thereby lowering costs, reducing operational risk and eliminating inefficiencies from their operations.

SWIFT is solely a carrier of messages. It does not hold funds nor does it manage accounts on behalf of customers, nor does it store financial information on an on-going basis. As a data carrier, SWIFT transports messages between two financial institutions. This activity involves the secure exchange of proprietary data while ensuring its confidentiality and integrity.

There are four key areas that SWIFT services fall under within the financial marketplace. They are Securities, Treasury and Derivatives, Trade Services, and Payments & Cash Management.

SWIFT messages consist of five blocks of data including three headers, message content, and a trailer. They are identified in a consistent manner. They all start with the literal 'MT' which denotes Message Type. This is followed by a 3-digit number that denotes the message type, category, and group. The following are the categories of a message:

Category	Description
Category 1	Customer Payments and Cheques
Category 2	Financial Institution Transfers
Category 3	Treasury Markets - Foreign Exchange, Money Markets and Derivatives
Category 4	Collections and Cash Letters
Category 5	Securities Markets
Category 6	Treasury Markets - Metals
Category 7	Documentary Credits and Guarantees
Category 8	Travellers Cheques
Category 9	Cash Management and Customer Status
Category n	Common Group Messages

Oracle FLEXCUBE interfaces with external payment system for generation of Category 1: Customer Payments and Cheques and Category 2: Financial Institution Transfers messages.

The following SWIFT message types are generated for the various transfers that are initiated through Oracle FLEXCUBE.

This chapter contains the following sections:

- [Section 11.1, "Treasury Markets - Foreign Exchange, Money Markets and Derivatives"](#)
- [Section 11.2, "CoSecurities Markets"](#)
- [Section 11.3, "Treasury Markets - Metals"](#)
-

## **11.1 Treasury Markets - Foreign Exchange, Money Markets and Derivatives**

This section contains the following topics:

- [Section 11.1.1, "MT 300 Foreign Exchange Confirmation"](#)
- [Section 11.1.2, "MT 304 Advice/Instruction of a Third Party Deal"](#)
- [Section 11.1.3, "MT 305 Foreign Currency Option Confirmations"](#)
- [Section Note, ""](#)
- [Section Note, ""](#)
- [Section 11.1.6, "MT 330 Call/Notice Loan/Deposit Confirmation"](#)
- [Section 11.1.7, "MT 340 Forward Rate Agreement Confirmation"](#)
- [Section 11.1.8, "MT 341 Forward Rate Agreement Settlement Confirmation"](#)
- [Section 11.1.9, "MT 350 Advice of Loan/Deposit Interest Payment"](#)
- [Section 11.1.10, "MT 360 Single Currency Interest Rate Derivative Confirmation"](#)
- [Section 11.1.11, "MT 361 Cross Currency Interest Rate Swap Confirmation"](#)
- [Section 11.1.12, "MT 362 Interest Rate Reset/Advice of Payment"](#)
- [Section 11.1.13, "MT 364 Single Currency Interest Rate Derivative Termination/Recouponing Confirmation"](#)
- [Section 11.1.14, "MT 365 Cross Currency Interest Rate Swap Termination/Recouponing Confirmation"](#)

### **11.1.1 MT 300 Foreign Exchange Confirmation**

This message is exchanged by or on behalf of the institutions or corporate, party A and party B, which have agreed to a foreign exchange contract.

This message may also be sent by a money broker to the two parties (party A and party B) for which the broker arranged the deal.

This message is also used when one of the trading parties is a fund manager as the fund manager has to specify the fund for which he is dealing.

The MT 300 is used to:

- confirm the details of a new contract between the parties
- confirm an exercised foreign currency option
- confirm the details of an amendment to a previously sent confirmation
- Cancel a previously sent confirmation.

Maximum Length: 10000

### 11.1.1.1 Format Specifications

#### Mandatory Sequence A General Information

Field Tag	Field Name	Format	Mandatory/ Optional
15A	New Sequence	Empty field	M
20	Sender's Reference	16x	M
21	Related Reference	16x	O
22A	Type of Operation	4!c	M
94A	Scope of Operation	4!c	O
22C	Common Reference	4!a2!c4!n4!a2!c	M
17T	Block Trade Indicator	1!a	O
17U	Split Settlement Indicator	1!a	O
82a	Party A	A or J	M
87a	Party B	A or J	M
83a	Fund or Beneficiary Customer	A or J	O
77D	Terms and Conditions	6*35x	O

The system does not support the use of NDF codes (/VALD/, /SETC/, /FIX/) in the field 77D of MT 300 in Sequence A.

#### Mandatory Sequence B Transaction Details

Field Tag	Field Name	Format	Mandatory/ Optional
15B	New Sequence	Empty field	M
30T	Trade Date	8!n	M
30V	Value Date	8!n	M
36	Exchange Rate	12d	M

#### Mandatory Subsequence B1 Amount Bought

Field Tag	Field Name	Format	Mandatory/ Optional
32B	Currency, Amount	3!a15d	M
53a	Delivery Agent	A or J	O
56a	Intermediary	A or J	O

57a	Receiving Agent	A or J	M
-----	-----------------	--------	---

#### **Mandatory Subsequence B2 Amount Sold**

<b>Field Tag</b>	<b>Field Name</b>	<b>Format</b>	<b>Mandatory/ Optional</b>
33B	Currency, Amount	3!a15d	M
53a	Delivery Agent	A or J	O
56a	Intermediary	A or J	O
57a	Receiving Agent	A or J	M
58a	Beneficiary Institution	A or J	O

#### **Optional Sequence C Optional General Information**

<b>Field Tag</b>	<b>Field Name</b>	<b>Format</b>	<b>Mandatory/ Optional</b>
15C	New Sequence	Empty field	M
29A	Contact Information	4*35x	O
24D	Dealing Method	4!c[/35x]	O
84a	Dealing Branch Party A	A, B, D, or J	O
85a	Dealing Branch Party B	A, B, D, or J	O
88a	Broker Identification	A, D, or J	O
71F	Broker's Commission	3!a15d	O
26H	Counterparty's Reference	16x	O
21G	Broker's Reference	16x	O
72	Sender to Receiver Information	6*35x	O

### 11.1.1.2 Optional Sequence D Split Settlement Details

Field Tag	Field Name	Format	Mandatory/Optional
15D	New Sequence	Empty field	M
17A	Buy (Sell) Indicator	1!a	M
32B	Currency, Amount	3!a15d	M
53a	Delivery Agent	A, D, or J	O
56a	Intermediary	A, D, or J	O
57a	Receiving Agent	A, D, or J	M
58a	Beneficiary Institution	A, D, or J	O
16A	Number of Settlements	5n	M

---

**Note**

In option J, Party Identification must be specified as a list of pairs (Code)(Value). The codes must be placed between slashes ('/')

---

### 11.1.2 MT 304 Advice/Instruction of a Third Party Deal

This message is sent by a fund manager to a custodian bank as an advice of/instruction to settle a third party foreign exchange deal.

The definition of third party must be agreed up front between the fund manager and the custodian relative to deals executed by the custodians' treasury area on behalf of the fund manager.

It is used to:

- provide details about a new deal
- provide a settlement notification
- amend a previously sent message
- cancel a previously sent message

This message may also be sent to the member of a centralised settlement system or directly to the centralised settlement system.



### 11.1.2.1 Format Specifications

#### Mandatory Sequence A General Information

Field Tag	Field Name	Format	Mandatory/ Optional
15A	New Sequence	Empty field	M
20	Sender's Reference	16x	M
21	Related Reference	16x	O
22A	Type of Operation	4!c	M
94A	Scope of Operation	4!c	M
17O	Open Indicator	1!a	O
17F	Final Close Indicator	1!a	O
17N	Net Settlement Indicator	1!a	O
83a	Fund	A or J	M
82a	Fund Manager	A or J	M
87a	Executing Broker	A or J	M
81a	Central Counterparty Clearing House (CCP)	A, D, or J	O
89a	Clearing Broker	A, D, or J	O
17I	Payment versus Payment Settlement Indicator	1!a	O
77H	Type, Date, Version of the Agreement	6a[/8!n][//4!n]	O
14C	Year of Definitions	4!n	O
32E	Settlement Currency	3!a	O
30U	Valuation Date	8!n	O
14S	Settlement Rate Source	3!a2n[/4!n/4!c]	O
21A	Reference to Opening Instruction	16x	O
14E	Clearing or Settlement Session	35x	O

**Mandatory Sequence B Forex Transaction Details**

Field Tag	Field Name	Format	Mandatory/ Optional
15B	New Sequence	Empty field	M
30T	Trade Date	8!n	M
30V	Value Date	8!n	M
36	Exchange Rate	12d	M
39M	Payment Clearing Centre	2!a	O

**Mandatory Subsequence B1 Amount Bought**

Field Tag	Field Name	Format	Mandatory/ Optional
32B	Currency, Amount Bought	3!a15d	M
53a	Delivery Agent	A or J	M
56a	Intermediary	A or J	O
57a	Receiving Agent	A or J	O

**Mandatory Subsequence B2 Amount Sold**

Field Tag	Field Name	Format	Mandatory/ Optional
33B	Currency, Amount Sold	3!a15d	M
53a	Delivery Agent	A or J	O
56a	Intermediary	A or J	O
57a	Receiving Agent	A or J	M
58a	Beneficiary Institution	A or J	O

**Optional Sequence C Optional General Information**

Field Tag	Field Name	Format	Mandatory/ Optional
15C	New Sequence	Empty field	M
21A	Reference to the Associated Trade	16x	O
21G	Executing Broker's Reference	16x	O
22U	Underlying Product Identifier	6a	O
35B	Identification of Financial Instrument	[ISIN1!e12!c] [4*35x]	O
22V	Execution Venue	35x	O
98D	Execution Timestamp	8!n6!n[,3n]/ [N]2!n[2!n]]	O
98G	Confirmation Timestamp	8!n6!n[,3n]/ [N]2!n[2!n]]	O
98H	Clearing Timestamp	6!n[,3n]/ [N]2!n[2!n]]	O
29A	Contact Information	4*35x	O
34C	Commission and Fees	4!c/ [N]3!a15d	O
72	Sender to Receiver Information	6*35x	O

**Optional Repetitive Subsequence C1 Unique Transaction Identifier**

Field Tag	Field Name	Format	Mandatory/ Optional
22L	Reporting Jurisdiction	35x	M
22M	UTI Name-space/Issuer Code	30x	M

Field Tag	Field Name	Format	Mandatory/ Optional
22N	Transaction Identifier	32x	M

**Optional Repetitive Subsequence C1a Prior Unique Transaction Identifier**

Field Tag	Field Name	Format	Mandatory/ Optional
22P	PUTI Name-space/Issuer Code	30x	M
22R	Prior Transaction Identifier	32x	M

**Optional Sequence D Accounting Information**

Field Tag	Field Name	Format	Mandatory/ Optional
15D	New Sequence	Empty field	M
21P	Reference to Previous Deals	16x	O
17G	Gain (Loss) Indicator	1!a	O
32G	Currency, Amount	3!a15d	O
34B	Commission and Fees - Currency and Amount	3!a15d	O
30F	Commission and Fees - Settlement Date	8!n	O

**Optional Sequence E Net Amount to be Settled**

Field Tag	Field Name	Format	Mandatory/ Optional
15E	New Sequence	Empty field	M
17G	Gain (Loss) Indicator	1!a	M
32G	Currency, Amount	3!a15d	M
53a	Delivery Agent	A, D, or J	O

Field Tag	Field Name	Format	Mandatory/ Optional
56a	Intermediary	A, D, or J	O
57a	Receiving Agent	A, D, or J	O
58a	Beneficiary Institution	A, D, or J	O

---

**Note**

In option J, Party Identification must be specified as a list of pairs (Code)(Value). The codes must be placed between slashes ("/")

---

### 11.1.3 **MT 305 Foreign Currency Option Confirmations**

This message type is exchanged between the financial institutions which have agreed to a foreign currency option contract.

It is used to confirm the details of:

- a new contract between the parties
- an amendment to a previously agreed contract
- the cancellation of a confirmation
- the surrender of an option by the buyer (holder) to the seller (grantor) for compensation.

Maximum Length: 2000

### 11.1.3.1 Format Specifications

Field Tag	Field Name	Format	Mandatory/ Optional
15A	New Sequence		M
20	Transaction Reference Number	16x	M
21	Related Reference	16x	M
22	Code/Common Reference	8a/ 4!a2!c4!n4!a2!c	M
23	Further Identification	16x	M
94A	Scope of Operation	4!c	O
82a	Party A	A, , or J	M
87a	Party B	A, , or J	M
83a	Fund or Beneficiary Customer	A,, or J	O
30	Date Contract Agreed/Amended	6!n	M
31C	Earliest Exercise Date	6!n	O
31G	Expiry Details	6!n/4!n/12a	M
31E	Final Settlement Date	6!n	M
26F	Settlement Type	9a	M
32B	Underlying Currency and Amount	3!a15d	M
36	Strike Price	12d	M
33B	Counter Currency and Amount	3!a15d	M
37K	Premium Price	3!a12d	M
34a	Premium Payment	P or R	M
53a	Sender's Correspondent	A, B, or D	O
56a	Intermediary	A or D	O
57a	Account With Institution	A or D	M
77D	Terms and Conditions	6*35x	O
72	Sender to Receiver Information	6*35x	O

---

#### Note

In option J, Party Identification must be specified as a list of pairs (Code)(Value). The codes must be placed between slashes ('/')

---

#### **11.1.4 MT 306 Foreign Currency Option Confirmation**

This message is exchanged to confirm a foreign currency option contract, by or on behalf of the institutions or corporate, party A and party B, which have agreed to it.

A money broker may also send this message to the two parties (party A and party B) for which he arranged the deal. If there are two money brokers involved in arranging a deal between party A and party B, this message can also be exchanged between these money brokers.

The message is used to confirm/notify the details of:

- a new contract between the parties
- an amendment to a previously agreed contract
- the cancellation of a confirmation
- a trigger event: knock-in/knock-out of an option, hitting of a trigger level
- the close out of an option

Maximum Length: 10000



### 11.1.4.1 Format Specifications

#### Mandatory Sequence A General Information

Field Tag	Field Name	Format	Mandatory/Optional
12G	Option Type	4!c	O
15A	New Sequence	Empty field	M
20	Sender's Reference	16x	M
21	Related Reference	16x	O
22A	Type of Operation	4!c	M
94A	Scope of Operation	4!c	O
22C	Common Reference	4!a2!c4!n4!a2!c	M
21N	Contract Number Party A	16x	M
21B	Contract Number Party B	16x	O
12F	Option Style	4!c	M
12E	Expiration Style	4!c	M
17A	Barrier Indicator	1!a	M
17F	Non-Deliverable Indicator	1!a	M
22K	Type of Event	4!c[/35x]	M
30U	Date of Trigger Hit	8!n	O
29H	Location of Trigger Hit	4!c	O
82a	Party A	A, , or J	M
87a	Party B	A,, or J	M
83a	Fund or Beneficiary Customer	A, , or J	O
77H	Type, Date, Version of the Agreement	6a[/8!n][//4!n]	M
77D	Additional Conditions	6*35x	O
14C	Year of Definitions	4!n	O

#### Mandatory Sequence B Transaction Details

Field Tag	Field Name	Format	Mandatory /Optional
15B	New Sequence	Empty field	M

17V	Buy (Sell) Indicator	1!a	M
30T	Trade Date	8!n	M
30X	Expiration Date	8!n	M
29E	Expiration Location and Time	4!c/4!n	M
30a	Final Settlement Date	F or J	M

#### Optional Subsequence B1 Premium Details

Field Tag	Field Name	Format	Mandatory/ Optional
37K	Premium Price	3!a12d	O
30V	Premium Payment Date	8!n	M
34B	Premium Currency and Amount	3!a15d	M

#### Optional Subsequence B2 Calculation Agent

Field Tag	Field Name	Format	Mandatory/ Optional
84a	Calculation Agent	A, B, D, or J	O

#### Optional Sequence C Settlement Instructions for Payment of Premium

Field Tag	Field Name	Format	Mandatory/ Optional
15C	New Sequence	Empty field	M
53a	Delivery Agent	A, , or J	O
86a	Intermediary 2	A, , or J	O
56a	Intermediary	A, , or J	O
57a	Receiving Agent	A, , or J	M
58a	Beneficiary Institution	A, , or J	O

**Optional Sequence D Vanilla Block**

<b>Field Tag</b>	<b>Field Name</b>	<b>Format</b>	<b>Mandatory/ Optional</b>
15D	New Sequence	Empty field	M
30P	Earliest Exercise Date	8!n	O
30Q	Intermediate Exercise Date	8!n	O
26F	Settlement Type	9a	M
32B	Put Currency and Amount	3!a15d	M
36	Strike Price	12d	M
33B	Call Currency and Amount	3!a15d	M

**Optional Sequence E Payout Amount**

<b>Field Tag</b>	<b>Field Name</b>	<b>Format</b>	<b>Mandatory /Optional</b>
15E	New Sequence	Empty field	M
33E	Currency, Amount	3!a15d	M
30H	Touch Payment Date	8!n	O
53a	Delivery Agent	A, , or J	O
86a	Intermediary 2	A, , or J	O
56a	Intermediary	A, , or J	O
57a	Receiving Agent	A,, or J	M
58a	Beneficiary Institution	A, , or J	O

**Optional Sequence F Barrier Block**

<b>Field Tag</b>	<b>Field Name</b>	<b>Format</b>	<b>Mandatory/ Optional</b>
15F	New Sequence	Empty field	M
22G	Type of Barrier	4!c	M
37J	Barrier Level	12d	M
37L	Lower Barrier Level	12d	O

**Optional Subsequence F1 Barrier Window Block**

<b>Field Tag</b>	<b>Field Name</b>	<b>Format</b>	<b>Mandatory/ Optional</b>
------------------	-------------------	---------------	----------------------------

30G	Barrier Window Start Date and End Date	8!n/8!n	M
29J	Location and Time for Start Date	4!c[/4!n]	M
29K	Location and Time for End Date	4!c/4!n	M

**Optional Sequence G Trigger Block**

Field Tag	Field Name	Format	Mandatory/ Optional
15G	New Sequence	Empty field	M
22J	Type of Trigger	4!c	M
37U	Trigger Level	12d	M
37P	Lower Trigger Level	12d	O
32Q	Currency Pair	3!a/3!a	M

**Optional Sequence H Non Deliverable Option Block**

Field Tag	Field Name	Format	Mandatory/ Optional
15H	New Sequence	Empty field	M
14S	Settlement Rate Source, Settlement Rate Location, Settlement Rate Time (HHMM)	3!a2!n	M
32E	Settlement Currency	3!a	M

**Optional Sequence I Additional Information**

Field Tag	Field Name	Format	Mandatory/ Optional
15I	New Sequence	Empty field	M
29A	Contact Information	4*35x	O
24D	Dealing Method	4!c[/35x]	O
88a	Broker Identification	A or D	O
71F	Broker's Commission	3!a15d	O
21G	Broker's Reference	16x	O
72	Sender to Receiver Information	6*35x	O

**Optional Sequence L Additional Amounts**

Field Tag	Field Name	Format	Mandatory/ Optional
15J	New Sequence	Empty field	M
18A	Number of Repetitions	5n	M
30F	Payment Date	8!n	M
32H	Currency, Payment Amount	[N]3!a15d	M

53a	Delivery Agent	A, , or J	O
86a	Intermediary 2	A, , or J	O
56a	Intermediary	A, , or J	O
57a	Receiving Agent	A, , or J	M

---

**Note**

In option J, Party Identification must be specified as a list of pairs (Code)(Value). The codes must be placed between slashes ('/')

---

### **11.1.5 MT 320 Fixed Loan/Deposit Confirmation**

This message is exchanged to confirm a fixed term loan/deposit contract, in order to confirm/notify the details of:

- a new contract between the parties
- an amendment to a previously agreed contract
- the cancellation of a confirmation
- a rolled over/renewed contract between the parties
- the maturity of a contract

This message is exchanged by or on behalf of the institutions or corporate, party A and party B, who have agreed to a fixed term loan/deposit contract. A money broker may also send this message to the two parties (party A and party B) for which he arranged the deal.

Maximum Length: 10000

### 11.1.5.1 Format Specifications

#### Mandatory Sequence A General Information

Field Tag	Field Name	Format	Mandatory/ Optional
15A	New Sequence	Empty field	M
20	Sender's Reference	16x	M
21	Related Reference	16x	O
22A	Type of Operation	4!c	M
94A	Scope of Operation	4!c	O
22B	Type of Event	4!c	M
22C	Common Reference	4!a2!c4!n4!a2! c	M
21N	Contract Number Party A	16x	O
82a	Party A	A, D, or J	M
87a	Party B	A, D, or J	M
83a	Fund or Instructing Party	A, D, or J	O
77D	Terms and Conditions	6*35x	O

**Mandatory Sequence B Transaction Details**

<b>Field Tag</b>	<b>Field Name</b>	<b>Format</b>	<b>Mandatory/ Optional</b>
15B	New Sequence	Empty field	M
17R	Party A's Role	1!a	M
30T	Trade Date	8!n	M
30V	Value Date	8!n	M
30P	Maturity Date	8!n	M
32B	Currency and Principal Amount	3!a15d	M
32H	Amount to be Settled	[N]3!a15d	O
30X	Next Interest Due Date	8!n	O
34E	Currency and Interest Amount	[N]3!a15d	M
37G	Interest Rate	[N]12d	M
14D	Day Count Fraction	7x	M
30F	Last Day of the First Interest Period	8!n	O
38J	Number of Days	1!a3!n	O

**Mandatory Sequence C Settlement Instructions for Amounts Payable by Party A**

<b>Field Tag</b>	<b>Field Name</b>	<b>Format</b>	<b>Mandatory/ Optional</b>
15C	New Sequence	Empty field	M
53a	Delivery Agent	A, D, or J	O
86a	Intermediary 2	A, D, or J	O
56a	Intermediary	A, D, or J	O
57a	Receiving Agent	A, D, or J	M
58a	Beneficiary Institution	A, D, or J	O

**Mandatory Sequence D Settlement Instructions for Amounts Payable by Party B**

<b>Field Tag</b>	<b>Field Name</b>	<b>Format</b>	<b>Mandatory/ Optional</b>
15D	New Sequence	Empty field	M
53a	Delivery Agent	A, D, or J	O



86a	Intermediary 2	A, D, or J	O
56a	Intermediary	A, D, or J	O
57a	Receiving Agent	A, D, or J	M
58a	Beneficiary Institution	A, D, or J	O

**Optional Sequence E Settlement Instructions for Interests Payable by Party A**

<b>Field Tag</b>	<b>Field Name</b>	<b>Format</b>	<b>Mandatory/ Optional</b>
15E	New Sequence	Empty field	M
53a	Delivery Agent	A, D, or J	O
86a	Intermediary 2	A, D, or J	O
56a	Intermediary	A, D, or J	O
57a	Receiving Agent	A, D, or J	M
58a	Beneficiary Institution	A, D, or J	O

**Optional Sequence F Settlement Instructions for Interests Payable by Party B**

<b>Field Tag</b>	<b>Field Name</b>	<b>Format</b>	<b>Mandatory/ Optional</b>
15F	New Sequence	Empty field	M
53a	Delivery Agent	A, D, or J	O
86a	Intermediary 2	A, D, or J	O
56a	Intermediary	A, D, or J	O
57a	Receiving Agent	A, D, or J	M
58a	Beneficiary Institution	A, D, or J	O

### Optional Sequence G Tax Information

Field Tag	Field Name	Format	Mandatory/ Optional
15G	New Sequence	Empty field	M
37L	Tax Rate	12d	M
33B	Transaction Currency and Net Interest Amount	3!a15d	M
36	Exchange Rate	12d	O
33E	Reporting Currency and Tax Amount	3!a15d	O

### Optional Sequence H Additional Information

Field Tag	Field Name	Format	Mandatory/ Optional
15H	New Sequence	Empty field	M
29A	Contact Information	4*35x	O
24D	Dealing Method	4!c[/35x]	O
84a	Dealing Branch Party A	A, B, D, or J	O
85a	Dealing Branch Party B	A, B, D, or J	O
88a	Broker Identification	A, D, or J	O
71F	Broker's Commission	3!a15d	O
26H	Counterparty's Reference	16x	O
21G	Broker's Reference	16x	O
72	Sender to Receiver Information	6*35x	O

### Optional Sequence I Additional Amounts

Field Tag	Field Name	Format	Mandatory/ Optional
15I	New Sequence	Empty field	M
18A	Number of Repetitions	5n	M
30F	Payment Date	8!n	M
32H	Currency, Payment Amount	[N]3!a15d	M
53a	Delivery Agent	A, D, or J	O
86a	Intermediary 2	A, D, or J	O

56a	Intermediary	A, D, or J	O
57a	Receiving Agent	A, D, or J	M

### 11.1.6 **MT 330 Call/Notice Loan/Deposit Confirmation**

This message is exchanged to confirm a call/notice loan/deposit contract.

The message is used to confirm/notify the details of:

- a new contract between the parties
- an amendment to a previously agreed contract
- the cancellation of a confirmation
- an increase or decrease in the balance of the account, in an already agreed contract
- a change in the interest rate
- a change in the period of notice
- the closing of a contract, i.e. final redemption of the loan/deposit balance to zero and all interest paid

This message is sent by or on behalf of the institution or corporate, party A and party B, who have agreed to a call/notice loan/deposit contract.

Maximum Length: 10000

#### 11.1.6.1 **Format Specifications**

##### **Mandatory Sequence A General Information**

Field Tag	Field Name	Format	Mandatory/Optional
15A	New Sequence	Empty field	M
20	Sender's Reference	16x	M
21	Related Reference	16x	O
22A	Type of Operation	4!c	M
94A	Scope of Operation	4!c	O
22B	Type of Event	4!c	M
22C	Common Reference	4!a2!c4!n4!a2!c	M
21N	Contract Number Party A	16x	O
82a	Party A	A, D, or J	M
87a	Party B	A, D, or J	M
83a	Fund or Instructing Party	A, D, or J	O
77D	Terms and Conditions	6*35x	O

**Mandatory Sequence B Transaction Details**

Field Tag	Field Name	Format	Mandatory/ Optional
15B	New Sequence	Empty field	M
17R	Party A's Role	1!a	M
30T	Trade Date	8!n	M
30V	Value Date	8!n	M
38A	Period of Notice	3n	M
32B	Currency and Balance	3!a15d	O
32H	Principal Amount to be Settled	[N]3!a15d	O
30X	Interest Due Date	8!n	O
34E	Currency and Interest Amount	[N]3!a15d	O
37G	Interest Rate	[N]12d	M
14D	Day Count Fraction	7x	M
30F	Last Day of the Next Interest Period	8!n	O
38J	Number of Days	1!a3!n	O

**Mandatory Sequence C Settlement Instructions for Amounts Payable by Party A**

Field Tag	Field Name	Format	Mandatory/ Optional
15C	New Sequence	Empty field	M
53a	Delivery Agent	A, D, or J	O
86a	Intermediary 2	A, D, or J	O
56a	Intermediary	A, D, or J	O
57a	Receiving Agent	A, D, or J	M
58a	Beneficiary Institution	A, D, or J	O

**Mandatory Sequence D Settlement Instructions for Amounts Payable by Party B**

Field Tag	Field Name	Format	Mandatory/ Optional
15D	New Sequence	Empty field	M
53a	Delivery Agent	A, D, or J	O
86a	Intermediary 2	A, D, or J	O

56a	Intermediary	A, D, or J	O
57a	Receiving Agent	A, D, or J	M
58a	Beneficiary Institution	A, D, or J	O

#### Optional Sequence E Settlement Instructions for Interests Payable by Party A

Field Tag	Field Name	Format	Mandatory/ Optional
15E	New Sequence	Empty field	M
53a	Delivery Agent	A, D, or J	O
86a	Intermediary 2	A, D, or J	O
56a	Intermediary	A, D, or J	O
57a	Receiving Agent	A, D, or J	M
58a	Beneficiary Institution	A, D, or J	O

#### Optional Sequence F Settlement Instructions for Interests Payable by Party B

Field Tag	Field Name	Format	Mandatory/ Optional
15F	New Sequence	Empty field	M
53a	Delivery Agent	A, D, or J	O
86a	Intermediary 2	A, D, or J	O
56a	Intermediary	A, D, or J	O
57a	Receiving Agent	A, D, or J	M
58a	Beneficiary Institution	A, D, or J	O

### Optional Sequence G Tax Information

Field Tag	Field Name	Format	Mandatory/ Optional
15G	New Sequence	Empty field	M
37L	Tax Rate	12d	M
33B	Transaction Currency and Net Interest Amount	3!a15d	M
36	Exchange Rate	12d	O
33E	Reporting Currency and Tax Amount	3!a15d	O

### Optional Sequence H Additional Information

Field Tag	Field Name	Format	Mandatory/ Optional
15H	New Sequence	Empty field	M
29A	Contact Information	4*35x	O
24D	Dealing Method	4!c[/35x]	O
84a	Dealing Branch Party A	A, B, D, or J	O
85a	Dealing Branch Party B	A, B, D, or J	O
26H	Counterparty's Reference	16x	O
72	Sender to Receiver Information	6*35x	O

#### 11.1.7 **MT 340 Forward Rate Agreement Confirmation**

This message is exchanged by or on behalf of the institutions or corporates, party A and party B, who have agreed to a forward rate agreement (FRA).

The confirmed transaction is covered by an ISDA (International Swaps and Derivatives Association), Deutscher Rahmenvertrag für Finanztermingeschäfte, FRABBA (British Bankers' Association) or AFB (Association Française de Banques) Master Agreement. These agreements are either signed or under negotiation.

A money broker may also send this message to the two parties (party A and party B) for which he arranged the deal.

If there are two money brokers involved in arranging a deal between party A and party B, this message is also exchanged between these money brokers.

The message is used to confirm/notify the details of:

- a new contract between the parties
- an amendment to a previously agreed contract
- the cancellation of a confirmation

Maximum Length: 10000

### 11.1.7.1 **Format Specifications**

#### **Mandatory Sequence A General Information**

<b>Field Tag</b>	<b>Field Name</b>	<b>Format</b>	<b>Mandatory/ Optional</b>
15A	New Sequence	Empty field	M
20	Sender's Reference	16x	M
21	Related Reference	16x	O
22A	Type of Operation	4!c	M
94A	Scope of Operation	4!c	O
22C	Common Reference	4!a2!c4!n4!a2! c	M
23D	Type of FRA	10a	M
21N	Contract Number Party A	16x	O
21B	Contract Number Party B	16x	O
82a	Party A	A or D	M
87a	Party B	A or D	M
77H	Type, Date, Version of the Agreement	6a[/8!n][//4!n]	M
14C	Year of Definitions	4!n	O

#### **Mandatory Sequence B Transaction Details**

<b>Field Tag</b>	<b>Field Name</b>	<b>Format</b>	<b>Mandatory/ Optional</b>
15B	New Sequence	Empty field	M
30T	Trade Date	8!n	M
32B	Currency, Notional Amount	3!a15d	M
30F	Effective Date	8!n	M
30P	Termination Date	8!n	M
37M	Fixed Rate	[N]12d	M
14F	Floating Rate Option	24x	M

**Optional Subsequence B1 AFB and FRABBA Details**

Field Tag	Field Name	Format	Mandatory/ Optional
30V	Fixing Date	8!n	M
38D	Contract Period	4n	M

**Mandatory Subsequence B2 Other Details**

Field Tag	Field Name	Format	Mandatory/ Optional
38G	Designated Maturity	2n1!a/2n1!a	M
14D	Floating Rate Day Count Fraction	7x	M
17F	FRA Discounting	1!a	M
18A	Number of Repetitions	5n	M
22B	Financial Centre	4!c	M

**Mandatory Sequence C Settlement Instructions for Settlement Amount Payable by Party B**

Field Tag	Field Name	Format	Mandatory/ Optional
15C	New Sequence	Empty field	M
53a	Delivery Agent	A, D, or J	O
86a	Intermediary 2	A, D, or J	O
56a	Intermediary	A, D, or J	O
57a	Receiving Agent	A, D, or J	M
58a	Beneficiary Institution	A, D, or J	O

**Mandatory Sequence D Settlement Instructions for Settlement Amount Payable by Party A**

Field Tag	Field Name	Format	Mandatory/ Optional
15D	New Sequence	Empty field	M
53a	Delivery Agent	A, D, or J	O
86a	Intermediary 2	A, D, or J	O
56a	Intermediary	A, D, or J	O



57a	Receiving Agent	A, D, or J	M
58a	Beneficiary Institution	A, D, or J	O

#### Optional Sequence E Additional Information

Field Tag	Field Name	Format	Mandatory/ Optional
15E	New Sequence	Empty field	M
29A	Contact Information	4*35x	O
24D	Dealing Method	4!c[/35x]	O
88a	Broker Identification	A or D	O
71F	Broker's Commission	3!a15d	O
21G	Broker's Reference	16x	O
72	Sender to Receiver Information	6*35x	O

#### Optional Sequence F Additional Amounts

Field Tag	Field Name	Format	Mandatory/ Optional
15F	New Sequence	Empty field	M
18A	Number of Repetitions	5n	M
30F	Payment Date	8!n	M
32H	Currency, Payment Amount	[N]3!a15d	M
53a	Delivery Agent	A, D, or J	O
86a	Intermediary 2	A, D, or J	O
56a	Intermediary	A, D, or J	O
57a	Receiving Agent	A, D, or J	M

### 11.1.8 MT 341 Forward Rate Agreement Settlement Confirmation

This message is exchanged by or on behalf of the institutions or corporates, party A and party B, who have agreed to a forward rate agreement (FRA).

It is used to confirm the settlement details of the forward rate agreement when the settlement rate has been fixed on the fixing date.

The message is also used for:

- an amendment to a previously agreed settlement message
- the cancellation of a settlement message

Maximum Length: 10000

### 11.1.8.1 Format Specifications

#### Mandatory Sequence A General Information

Field Tag	Field Name	Format	Mandatory/Optional
15A	New Sequence	Empty field	M
20	Sender's Reference	16x	M
21	Related Reference	16x	O
22A	Type of Operation	4!c	M
94A	Scope of Operation	4!c	O
22C	Common Reference	4!a2!c4!n4!a2!c	M
23D	Type of FRA	10a	M
21N	Contract Number Party A	16x	O
21B	Contract Number Party B	16x	O
82a	Party A	A or D	M
87a	Party B	A or D	M
29A	Contact Information	4*35x	O
72	Sender to Receiver Information	6*35x	O

#### Mandatory Sequence B Transaction Details

Field Tag	Field Name	Format	Mandatory/Optional
15B	New Sequence	Empty field	M
30T	Trade Date	8!n	M
32B	Currency, Notional Amount	3!a15d	M
30F	Effective Date	8!n	M
30P	Termination Date	8!n	M
37M	Fixed Rate	[N]12d	M

#### Optional Subsequence B1 AFB and FRABBA Details

Field Tag	Field Name	Format	Mandatory/Optional
30V	Fixing Date	8!n	O

38D	Contract Period	4n	O
-----	-----------------	----	---

#### **Mandatory Sequence C Settlement Instructions for the Settlement Amount**

<b>Field Tag</b>	<b>Field Name</b>	<b>Format</b>	<b>Mandatory/ Optional</b>
15C	New Sequence	Empty field	M
37R	Settlement Rate	[N]12d	M
34E	Settlement Currency and Amount	[N]3!a15d	M
53a	Delivery Agent	A, D, or J	O
86a	Intermediary 2	A, D, or J	O
56a	Intermediary	A, D, or J	O
57a	Receiving Agent	A, D, or J	M
58a	Beneficiary Institution	A, D, or J	O

#### **11.1.9 MT 350 Advice of Loan/Deposit Interest Payment**

It is used to inform that an interest amount has been paid to the account of the beneficiary with the receiving agent mentioned in the message.

The message may also be used to notify the details of:

- an amendment to a previously sent advice
- the cancellation of an advice

This message is sent by or on behalf of the institution or corporate, party A who has borrowed cash from the institution or corporate, party B.

Maximum Length: 10000

### 11.1.9.1 Format Specifications

#### Mandatory Sequence A General Information

Field Tag	Field Name	Format	Mandatory/Optional
15A	New Sequence	Empty field	M
20	Sender's Reference	16x	M
21	Related Reference	16x	O
22A	Type of Operation	4!c	M
94A	Scope of Operation	4!c	O
22C	Common Reference	4!a2!c4!n4!a2!c	M
21N	Contract Number Party A	16x	O
82a	Party A	A, D, or J	M
87a	Party B	A, D, or J	M
83a	Fund or Instructing Party	A, D, or J	O
72	Sender to Receiver Information	6*35x	O

#### Mandatory Sequence B Interest Information

Field Tag	Field Name	Format	Mandatory/Optional
15B	New Sequence	Empty field	M
30G	Interest Period	8!n/8!n	M
32B	Currency and Principal Amount	3!a15d	M
30V	Value Date of Interest Payment	8!n	M
34B	Currency and Interest Amount	3!a15d	M
37J	Interest Rate	12d	M
14D	Day Count Fraction	7x	M
30F	Next Interest Payment Date	8!n	O

**Mandatory Sequence C Settlement Instructions**

Field Tag	Field Name	Format	Mandatory/ Optional
15C	New Sequence	Empty field	M
53a	Delivery Agent	A, D, or J	O
86a	Intermediary 2	A, D, or J	O
56a	Intermediary	A, D, or J	O
57a	Receiving Agent	A, D, or J	M
58a	Beneficiary Institution	A, D, or J	O

**Optional Sequence D Tax Information and Broker's Commission**

Field Tag	Field Name	Format	Mandatory/ Optional
15D	New Sequence	Empty field	M
34B	Transaction Currency and Interest Amount	3!a15d	M
33B	Transaction Currency and Net Interest Amount	3!a15d	M
36	Exchange Rate	12d	O

**Optional Subsequence D1 Tax Details**

Field Tag	Field Name	Format	Mandatory/ Optional
37L	Tax Rate	12d	M
33E	Reporting Currency and Tax Amount	3!a15d	M

**Optional Subsequence D2 Broker's Commission Information**

Field Tag	Field Name	Format	Mandatory/ Optional
71F	Broker's Commission	3!a15d	M
37L	Tax Rate on Broker's Commission	12d	O
33E	Reporting Currency and Tax Amount on Broker's Commission	3!a15d	O

**11.1.10 MT 360 Single Currency Interest Rate Derivative Confirmation**

This message is exchanged by or on behalf of the institutions or corporates, party A and party B, which have agreed to a single currency interest rate swap, a cap, a collar or a floor. The

confirmed transaction is covered by a BBAIRS (British Bankers' Association Interest Rate Swap), ISDA (International Swaps and Derivatives Association), Deutscher Rahmenvertrag für Finanztermingeschäfte or AFB (Association Française de Banques) Master Agreement.

The message also covers deals which are not part of an ISDA, AFB, Deutscher Rahmenvertrag für Finanztermingeschäfte or BBAIRS Master. In this case, party A and party B must have another bilateral agreement in place.

This message may also be sent by a money broker to the two parties (party A and party B) for which the broker arranged the deal.

If there are two money brokers involved in arranging a deal between party A and party B, this message is also exchanged between these money brokers.

The MT 360 may be used to:

- confirm the details of a new transaction between the parties
- correct a previously sent confirmation
- cancel a previously sent confirmation

Maximum Length: 10000

### 11.1.10.1 Format Specifications

#### Mandatory Sequence A General Information

Field Tag	Field Name	Format	Mandatory/Optional
15A	New Sequence	Empty field	M
20	Sender's Reference	16x	M
21	Related Reference	16x	O
22A	Type of Operation	4!c	M
94A	Scope of Operation	4!c	O
22C	Common Reference	4!a2!c4!n4!a2! c	M
23A	Identification of the Swap	10a/5a	M
21N	Contract Number Party A	16x	M
21B	Contract Number Party B	16x	O
30T	Trade Date	8!n	M
30V	Effective Date	8!n	M
30P	Termination Date	8!n	M
14A	Business Day Convention	9a	O
32B	Currency, Notional Amount	3!a15d	M
82a	Party A	A or D	M
87a	Party B	A or D	M
83a	Fund or Beneficiary Customer	A, D, or J	O
17A	Collateral Agreement Indicator	1!a	O
77H	Type, Date, Version of the Agreement	6a[/8!n][//4!n]	M
77D	Additional Conditions	6*35x	O
14C	Year of Definitions	4!n	M
72	Sender to Receiver Information	6*35x	O

#### Optional Sequence B Fixed Interest Payable by Party B

Field Tag	Field Name	Format	Mandatory/Optional
-----------	------------	--------	--------------------



15B	New Sequence	Empty field	M
37U	Fixed Rate	12d	O
37N	Details of Interest Rate	6*35x	O

**Optional Subsequence B1 Interest Details**

<b>Field Tag</b>	<b>Field Name</b>	<b>Format</b>	<b>Mandatory/ Optional</b>
18A	Number of Repetitions	5n	M
30F	Payment Date	8!n	M
32M	Currency, Payment Amount	3!a15d	O
17F	Period End Date Adjustment Indicator	1!a	O
14D	Day Count Fraction	7x	O
14A	Business Day Convention	9a	M
18A	Number of Repetitions	5n	M
22B	Financial Centre	4!c	M

**Optional Sequence C Floating Interest Payable by Party B**

<b>Field Tag</b>	<b>Field Name</b>	<b>Format</b>	<b>Mandatory/ Optional</b>
15C	New Sequence	Empty field	M
14F	Floating Rate Option	24x	M
37J	Cap Rate	12d	O
37L	Floor Rate	12d	O
37N	Details of Interest Rate	6*35x	O

**Optional Subsequence C1 Interest Details**

<b>Field Tag</b>	<b>Field Name</b>	<b>Format</b>	<b>Mandatory/ Optional</b>
14J	Reset Date Specification	5a	M
14G	Averaging Frequency and Method	1!a/8!a	O
38E	Designated Maturity	2n1!a	M
18A	Number of Repetitions	5n	M
30F	Payment Date	8!n	M
17F	Period End Date Adjustment Indicator	1!a	M
14D	Day Count Fraction	7x	M

14A	Business Day Convention	9a	M
18A	Number of Repetitions	5n	M
22B	Financial Centre	4!c	M
37R	Spread	[N]12d	O

**Optional Subsequence C2 Compounding Details**

Field Tag	Field Name	Format	Mandatory/ Optional
22D	Compounding Type	4!c	M
18A	Number of Repetitions	5n	M
30X	Compounding Date	8!n	M

**Optional Subsequence C3 Interpolation for Stub Periods**

Field Tag	Field Name	Format	Mandatory/ Optional
38G	First Stub Period, Interpolation Period	2n1!a/2n1!a	O
38H	Last Stub Period, Interpolation Period	2n1!a/2n1!a	O

**Mandatory Sequence D Payment Instructions for Interest Payable by Party B**

Field Tag	Field Name	Format	Mandatory/ Optional
15D	New Sequence	Empty field	M
53a	Delivery Agent	A or D	O
56a	Intermediary	A or D	O
86a	Second Intermediary	A or D	O
57a	Receiving Agent	A or D	M

**Optional Sequence E Fixed Interest Payable by Party A**

Field Tag	Field Name	Format	Mandatory/ Optional
15E	New Sequence	Empty field	M
37U	Fixed Rate	12d	O
37N	Details of Interest Rate	6*35x	O

**Optional Subsequence E1 Interest Details**

Field Tag	Field Name	Format	Mandatory/ Optional
18A	Number of Repetitions	5n	M
30F	Payment Date	8!n	M

32M	Currency, Payment Amount	3!a15d	O
17F	Period End Date Adjustment Indicator	1!a	O
14D	Day Count Fraction	7x	O
14A	Business Day Convention	9a	M
18A	Number of Repetitions	5n	M
22B	Financial Centre	4!c	M

#### Optional Sequence F Floating Interest Payable by Party A

Field Tag	Field Name	Format	Mandatory/ Optional
15F	New Sequence	Empty field	M
14F	Floating Rate Option	24x	M
37J	Cap Rate	12d	O
37L	Floor Rate	12d	O
37N	Details of Interest Rate	6*35x	O

#### Optional Subsequence F1 Interest Details

Field Tag	Field Name	Format	Mandatory/ Optional
14J	Reset Date Specification	5a	M
14G	Averaging Frequency and Method	1!a/8!a	O
38E	Designated Maturity	2n1!a	M
18A	Number of Repetitions	5n	M
30F	Payment Date	8!n	M
17F	Period End Date Adjustment Indicator	1!a	M
14D	Day Count Fraction	7x	M
14A	Business Day Convention	9a	M
18A	Number of Repetitions	5n	M
22B	Financial Centre	4!c	M
37R	Spread	[N]12d	O

**Optional Subsequence F2 Compounding Details**

Field Tag	Field Name	Format	Mandatory/ Optional
22D	Compounding Type	4!c	M
18A	Number of Repetitions	5n	M
30X	Compounding Date	8!n	M

**Optional Subsequence F3 Interpolation for Stub Periods**

Field Tag	Field Name	Format	Mandatory/ Optional
38G	First Stub Period, Interpolation Period	2n1!a/ 2n1!a	O
38H	Last Stub Period, Interpolation Period	2n1!a/ 2n1!a	O

**Mandatory Sequence G Payment Instructions for Interest Payable by Party A**

Field Tag	Field Name	Format	Mandatory/ Optional
15G	New Sequence	Empty field	M
53a	Delivery Agent	A or D	O
56a	Intermediary	A or D	O
86a	Second Intermediary	A or D	O
57a	Receiving Agent	A or D	M

**Optional Sequence H Amortising Schedule**

Field Tag	Field Name	Format	Mandatory /Optional
15H	New Sequence	Empty field	M
18A	Number of Repetitions	5n	M
30G	Variable Notional Start and End Date	8!n/8!n	M
32U	Outstanding Notional Currency and Amount	3!a15d	M
14A	Business Day Convention	9a	M
18A	Number of Repetitions	5n	M

22B	Financial Centre	4!c	M
-----	------------------	-----	---

**Optional Sequence L Additional Amounts Payable by Party B**

<b>Field Tag</b>	<b>Field Name</b>	<b>Format</b>	<b>Mandatory/ Optional</b>
15L	New Sequence	Empty field	M
18A	Number of Repetitions	5n	M
22E	Type of Payment	4!c	M
30F	Payment Date	8!n	M
32M	Currency, Payment Amount	3!a15d	M
14A	Business Day Convention	9a	M
18A	Number of Repetitions	5n	M
22B	Financial Centre	4!c	M
53a	Delivery Agent	A or D	O
56a	Intermediary	A or D	O
86a	Second Intermediary	A or D	O
57a	Receiving Agent	A or D	O

**Optional Sequence M Additional Amounts Payable by Party A**

Field Tag	Field Name	Format	Mandatory/ Optional
15M	New Sequence	Empty field	M
18A	Number of Repetitions	5n	M
22E	Type of Payment	4!c	M
30F	Payment Date	8!n	M
32M	Currency, Payment Amount	3!a15d	M
14A	Business Day Convention	9a	M
18A	Number of Repetitions	5n	M
22B	Financial Centre	4!c	M
53a	Delivery Agent	A or D	O
56a	Intermediary	A or D	O
86a	Second Intermediary	A or D	O
57a	Receiving Agent	A or D	O

**Optional Sequence N Optional General Information**

Field Tag	Field Name	Format	Mandatory/ Optional
15N	New Sequence	Empty field	M
29A	Contact Information	4*35x	O
24D	Dealing Method	4!c[/35x]	O
88a	Broker Identification	A or D	O
71F	Broker's Commission	3!a15d	O
21G	Broker's Reference	16x	O

**11.1.11 MT 361 Cross Currency Interest Rate Swap Confirmation**

This message is exchanged by or on behalf of the institutions or corporates, party A and party B, which have agreed to a cross currency interest rate swap covered by a BBAIRS (British Bankers' Association Interest Rate Swap), Deutscher Rahmenvertrag für Finanztermingeschäfte or an ISDA (International Swaps and Derivatives Association) Master Agreement.

The message also covers deals which are not part of an ISDA, Deutscher Rahmenvertrag für Finanztermingeschäfte or BBAIRS Master. In this case, party A and party B must have another bilateral agreement in place, except under AFB (Association Française de Banques)



Master (until the AFB does define the interbank confirmation for cross currency swaps, the MT 361 cannot be used to confirm such transactions).

This message may also be sent by a money broker to the two parties (party A and party B) for which the broker arranged the deal.

If there are two money brokers involved in arranging a deal between party A and party B, this message is also exchanged between these money brokers.

The message may be used to:

- confirm the details of a new transaction between the parties
- correct a previously sent confirmation
- cancel a previously sent confirmation

Maximum Length: 10000

### 11.1.11.1 Format Specifications

#### Mandatory Sequence A General Information

Field Tag	Field Name	Format	Mandatory/Optional
15A	New Sequence	Empty field	M
20	Sender's Reference	16x	M
21	Related Reference	16x	O
22A	Type of Operation	4!c	M
94A	Scope of Operation	4!c	O
22C	Common Reference	4!a2!c4!n4!a2!c	M
23A	Identification of the Swap	10a/5a	M
21N	Contract Number Party A	16x	M
21B	Contract Number Party B	16x	O
30T	Trade Date	8!n	M
30V	Effective Date	8!n	M
30P	Termination Date	8!n	M
14A	Business Day Convention	9a	O
32B	Party B Currency and Notional Amount	3!a15d	M
33B	Party A Currency and Notional Amount	3!a15d	M
82a	Party A	A or D	M
87a	Party B	A or D	M
83a	Fund or Beneficiary Customer	A, D, or J	O
17A	Collateral Agreement Indicator	1!a	O
77H	Type, Date, Version of the Agreement	6a[/8!n][//4!n]	M
77D	Additional Conditions	6*35x	O
14C	Year of Definitions	4!n	M
72	Sender to Receiver Information	6*35x	O

#### Optional Sequence B Fixed Interest Payable by Party B

Field Tag	Field Name	Format	Mandatory/ Optional
15B	New Sequence	Empty field	M
37U	Fixed Rate	12d	O
37N	Details of Interest Rate	6*35x	O

#### Optional Subsequence B1 Interest Details

Field Tag	Field Name	Format	Mandatory/ Optional
18A	Number of Repetitions	5n	M
30F	Payment Date	8!n	M
32M	Currency, Payment Amount	3!a15d	O
17F	Period End Date Adjustment Indicator	1!a	O
14D	Day Count Fraction	7x	O
14A	Business Day Convention	9a	M
18A	Number of Repetitions	5n	M
22B	Financial Centre	4!c	M

#### Optional Sequence C Floating Interest Payable by Party B

Field Tag	Field Name	Format	Mandatory/ Optional
15C	New Sequence	Empty field	M
14F	Floating Rate Option	24x	M
37J	Cap Rate	12d	O
37L	Floor Rate	12d	O
37N	Details of Interest Rate	6*35x	O

#### Optional Subsequence C1 Interest Details

Field Tag	Field Name	Format	Mandatory/ Optional
14J	Reset Date Specification	5a	M

14G	Averaging Frequency and Method	1!a/8!a	O
38E	Designated Maturity	2n1!a	M
18A	Number of Repetitions	5n	M
30F	Payment Date	8!n	M
17F	Period End Date Adjustment Indicator	1!a	M
14D	Day Count Fraction	7x	M
14A	Business Day Convention	9a	M
18A	Number of Repetitions	5n	M
22B	Financial Centre	4!c	M
37R	Spread	[N]12d	O

**Optional Subsequence C2 Compounding Details**

Field Tag	Field Name	Format	Mandatory/Optional
22D	Compounding Type	4!c	M
18A	Number of Repetitions	5n	M
30X	Compounding Date	8!n	M

**Optional Subsequence C3 Interpolation for Stub Periods**

Field Tag	Field Name	Format	Mandatory/Optional
38G	First Stub Period, Interpolation Period	2n1!a/ 2n1!a	O
38H	Last Stub Period, Interpolation Period	2n1!a/ 2n1!a	O

**Mandatory Sequence D Payment Instructions for Interest Payable by Party B**

Field Tag	Field Name	Format	Mandatory/Optional
15D	New Sequence	Empty field	M
53a	Delivery Agent	A or D	O
56a	Intermediary	A or D	O
86a	Second Intermediary	A or D	O
57a	Receiving Agent	A or D	M

**Optional Sequence E Fixed Interest Payable by Party A**

Field Tag	Field Name	Format	Mandatory/Optional
15E	New Sequence	Empty field	M
37U	Fixed Rate	12d	O
37N	Details of Interest Rate	6*35x	O

**Optional Subsequence E1 Interest Details**

<b>Field Tag</b>	<b>Field Name</b>	<b>Format</b>	<b>Mandatory/Optional</b>
18A	Number of Repetitions	5n	M
30F	Payment Date	8!n	M
32M	Currency, Payment Amount	3!a15d	O
17F	Period End Date Adjustment Indicator	1!a	O
14D	Day Count Fraction	7x	O
14A	Business Day Convention	9a	M
18A	Number of Repetitions	5n	M
22B	Financial Centre	4!c	M

#### **Optional Sequence F Floating Interest Payable by Party A**

<b>Field Tag</b>	<b>Field Name</b>	<b>Format</b>	<b>Mandatory/Optional</b>
15F	New Sequence	Empty field	M
14F	Floating Rate Option	24x	M
37J	Cap Rate	12d	O
37L	Floor Rate	12d	O
37N	Details of Interest Rate	6*35x	O

#### **Optional Subsequence F1 Interest Details**

Field Tag	Field Name	Format	Mandatory /Optional
14J	Reset Date Specification	5a	M
14G	Averaging Frequency and Method	1!a/8!a	O
38E	Designated Maturity	2n1!a	M
18A	Number of Repetitions	5n	M
30F	Payment Date	8!n	M
17F	Period End Date Adjustment Indicator	1!a	M
14D	Day Count Fraction	7x	M
14A	Business Day Convention	9a	M
18A	Number of Repetitions	5n	M
22B	Financial Centre	4!c	M
37R	Spread	[N]12d	O

#### Optional Subsequence F2 Compounding Details

Field Tag	Field Name	Format	Mandatory/Optional
22D	Compounding Type	4!c	M
18A	Number of Repetitions	5n	M
30X	Compounding Date	8!n	M

#### Optional Subsequence F3 Interpolation for Stub Periods

Field Tag	Field Name	Format	Mandatory/Optional
38G	First Stub Period, Interpolation Period	2n1!a/ 2n1!a	O
38H	Last Stub Period, Interpolation Period	2n1!a/ 2n1!a	O

#### Mandatory Sequence G Payment Instructions for Interest Payable by Party A

Field Tag	Field Name	Format	Mandatory/Optional
15G	New Sequence	Empty field	M

53a	Delivery Agent	A or D	O
56a	Intermediary	A or D	O
86a	Second Intermediary	A or D	O
57a	Receiving Agent	A or D	M



**Optional Sequence H Amortizing Schedule for Party B**

<b>Field Tag</b>	<b>Field Name</b>	<b>Format</b>	<b>Mandatory/ Optional</b>
15H	New Sequence	Empty field	M
18A	Number of Repetitions	5n	M
30G	Variable Notional Start and End Date	8!n/8!n	M
32U	Outstanding Notional Currency and Amount	3!a15d	M
14A	Business Day Convention	9a	M
18A	Number of Repetitions	5n	M
22B	Financial Centre	4!c	M

**Optional Sequence I Amortizing Schedule for Party A**

<b>Field Tag</b>	<b>Field Name</b>	<b>Format</b>	<b>Mandatory/ Optional</b>
15I	New Sequence	Empty field	M
18A	Number of Repetitions	5n	M
30G	Variable Notional Start and End Date	8!n/8!n	M
32U	Outstanding Notional Currency and Amount	3!a15d	M
14A	Business Day Convention	9a	M
18A	Number of Repetitions	5n	M
22B	Financial Centre	4!c	M

**Optional Sequence J Exchanges of Principal Payable by Party B**

<b>Field Tag</b>	<b>Field Name</b>	<b>Format</b>	<b>Mandatory/ Optional</b>
15J	New Sequence	Empty field	M
18A	Number of Repetitions	5n	M
22X	Type of Exchange	4!c	M
30F	Payment Date	8!n	M
32M	Currency, Payment Amount	3!a15d	M

53a	Delivery Agent	A or D	O
56a	Intermediary	A or D	O
86a	Second Intermediary	A or D	O
57a	Receiving Agent	A or D	M
14A	Business Day Convention	9a	M
18A	Number of Repetitions	5n	M
22B	Financial Centre	4!c	M

**Optional Sequence K Exchanges of Principal Payable by Party A**

<b>Field Tag</b>	<b>Field Name</b>	<b>Format</b>	<b>Mandatory/ Optional</b>
15K	New Sequence	Empty field	M
18A	Number of Repetitions	5n	M
22X	Type of Exchange	4!c	M
30F	Payment Date	8!n	M
32M	Currency, Payment Amount	3!a15d	M
53a	Delivery Agent	A or D	O
56a	Intermediary	A or D	O
86a	Second Intermediary	A or D	O
57a	Receiving Agent	A or D	M
14A	Business Day Convention	9a	M
18A	Number of Repetitions	5n	M
22B	Financial Centre	4!c	M

**Optional Sequence L Additional Amounts Payable by Party B**

<b>Field Tag</b>	<b>Field Name</b>	<b>Format</b>	<b>Mandatory/ Optional</b>
15L	New Sequence	Empty field	M
18A	Number of Repetitions	5n	M
22E	Type of Payment	4!c	M
30F	Payment Date	8!n	M
32M	Currency, Payment Amount	3!a15d	M
14A	Business Day Convention	9a	M
18A	Number of Repetitions	5n	M
22B	Financial Centre	4!c	M
53a	Delivery Agent	A or D	O
56a	Intermediary	A or D	O
86a	Second Intermediary	A or D	O
57a	Receiving Agent	A or D	O

**Optional Sequence M Additional Amounts Payable by Party A**

Field Tag	Field Name	Format	Mandatory/ Optional
15M	New Sequence	Empty field	M
18A	Number of Repetitions	5n	M
22E	Type of Payment	4!c	M
30F	Payment Date	8!n	M
32M	Currency, Payment Amount	3!a15d	M
14A	Business Day Convention	9a	M
18A	Number of Repetitions	5n	M
22B	Financial Centre	4!c	M
53a	Delivery Agent	A or D	O
56a	Intermediary	A or D	O
86a	Second Intermediary	A or D	O
57a	Receiving Agent	A or D	O

**Optional Sequence N Optional General Information**

Field Tag	Field Name	Format	Mandatory/ Optional
15N	New Sequence	Empty field	M
29A	Contact Information	4*35x	O
24D	Dealing Method	4!c[/35x]	O
88a	Broker Identification	A or D	O
71F	Broker's Commission	3!a15d	O
21G	Broker's Reference	16x	O

**11.1.12 MT 362 Interest Rate Reset/Advice of Payment**

This message is exchanged by or on behalf of the financial institutions, Party A and Party B, who have agreed to a single or cross currency interest rate derivative transaction, including caps, collars and floors.

This message may be used to:

- advise the details of the determination of the floating interest rate(s)

- advise the details of the payment of interest at the end of an interest period
- cancel a previously sent reset/advice
- correct errors in a previously sent reset/advice

Maximum Length: 2000

### 11.1.12.1 Format Specifications

#### Mandatory Sequence A General Information

Field Tag	Field Name	Format	Mandatory/ Optional
15A	New Sequence	Empty field	M
20	Sender's Reference	16x	M
21	Related Reference	16x	O
22A	Type of Operation	4!c	M
94A	Scope of Operation	4!c	O
22C	Common Reference	4!a2!c4!n4!a2!c	M
23A	Identification of the Swap	10a/5a	M
21N	Contract Number Party A	16x	M
21B	Contract Number Party B	16x	O
30V	Effective Date	8!n	M
30P	Termination Date	8!n	M
82a	Party A	A or D	M
87a	Party B	A or D	M
83a	Fund or Beneficiary Customer	A, D, or J	O
29A	Contact Information	4*35x	O
72	Sender to Receiver Information	6*35x	O

#### Optional Sequence B Interest Rate/Principal Payable by Party B

Field Tag	Field Name	Format	Mandatory/ Optional
15B	New Sequence	Empty field	M
33F	Calculation Notional Currency and Amount	3!a15d	M
30X	Period Start Date	8!n	M
30Q	Period End Date	8!n	O
37G	Reset Rate	[N]12d	M
37J	Cap Rate	12d	O

37L	Floor Rate	12d	O
37R	Spread	[N]12d	M
37M	Total Rate	[N]12d	M
30F	Payment Date	8!n	M
32H	Currency, Interest Amount	[N]3!a15d	O
33E	Currency, Principal Exchange Amount	3!a15d	O
37N	Details of Interest Rate	6*35x	O

**Optional Sequence C (Net) Amount(s) Payable by Party B**

<b>Field Tag</b>	<b>Field Name</b>	<b>Format</b>	<b>Mandatory/ Optional</b>
15C	New Sequence	Empty field	M
18A	Number of Repetitions	5n	M
30F	Payment Date	8!n	M
32M	Currency, Payment Amount	3!a15d	M
53a	Delivery Agent	A or D	O
56a	Intermediary	A or D	O
86a	Second Intermediary	A or D	O
57a	Receiving Agent	A or D	M

**Optional Sequence D Interest Rate/Principal Payable by Party A**

Field Tag	Field Name	Format	Mandatory/ Optional
15D	New Sequence	Empty field	M
33F	Calculation Notional Currency and Amount	3!a15d	M
30X	Period Start Date	8!n	M
30Q	Period End Date	8!n	O
37G	Reset Rate	[N]12d	M
37J	Cap Rate	12d	O
37L	Floor Rate	12d	O
37R	Spread	[N]12d	M
37M	Total Rate	[N]12d	M
30F	Payment Date	8!n	M
32H	Currency, Interest Amount	[N]3!a15d	O
33E	Currency, Principal Exchange Amount	3!a15d	O
37N	Details of Interest Rate	6*35x	O

**Optional Sequence E (Net) Amount(s) Payable by Party A**

Field Tag	Field Name	Format	Mandatory/ Optional
15E	New Sequence	Empty field	M
18A	Number of Repetitions	5n	M
30F	Payment Date	8!n	M
32M	Currency, Payment Amount	3!a15d	M
53a	Delivery Agent	A or D	O
56a	Intermediary	A or D	O
86a	Second Intermediary	A or D	O
57a	Receiving Agent	A or D	M

**11.1.12.2 Processing Incoming MT362**

During STP, the system picks up an incoming MT362 message and extracts the following details from Sequence D for auto confirmation:



- The currency and interest amount to be paid (Field 32H)
- The currency and principal to be exchanged (Field 33E)
- The payment due date (Field 30F)

After the above details are extracted, the corresponding interest and principal schedule on that date is compared with the details extracted as mentioned above. The following details are considered for matching:

- The schedule due date
- The amount of the schedule
- The currency of the schedule
- The pay and receive flag of the schedule

If the details match, the schedule will be marked as 'Confirmed'. The same approach is followed for party B whose details are extracted from sequence B of the message. After the message is processed, the message is marked as 'Processed'. You can view the message status in the incoming browser. After the corresponding schedules are marked as confirmed, they can be viewed in the contract confirmation screen. After confirmation, 'Media' will be updated as 'SWIFT' and 'Authorization Status' as 'Auto' in this screen.

RCON is triggered post confirmation and can be viewed under 'Contract Online' screen.

#### **11.1.13 MT 364 Single Currency Interest Rate Derivative Termination/ Recou- poning Confirmation**

This message is exchanged by or on behalf of the institutions or corporates, party A and party B, which have agreed to the termination, partial termination or recouping of a single currency interest rate swap, a cap, a collar or a floor. The terminated/recouped transaction is covered by a BBAIRS, ISDA or AFB or another bilateral agreement.

This message may be used to:

- confirm the details of the partial or full termination of an existing transaction between the parties
- confirm the details of the recouping of an existing transaction
- correct a previously sent termination/recouping
- cancel a previously sent termination/recouping

Maximum Length: 10000

### 11.1.13.1 Format Specifications

#### Mandatory Sequence A General Information

Field Tag	Field Name	Format	Mandatory/Optional
15A	New Sequence	Empty field	M
20	Sender's Reference	16x	M
21	Related Reference	16x	O
22A	Type of Operation	4!c	M
94A	Scope of Operation	4!c	O
22B	Type of Event	4!c	M
22C	Common Reference	4!a2!c4!n4!a2!c	M
23A	Identification of the Swap	10a/5a	M
21N	Contract Number Party A	16x	M
21B	Contract Number Party B	16x	O
30T	Termination/Recoupons Trade Date	8!n	M
30Q	Termination/Recoupons Effective Date	8!n	M
30P	Original Termination Date	8!n	M
30V	Original Effective Date	8!n	M
32B	Current Currency, Notional Amount	3!a15d	M
82a	Party A	A or D	M
87a	Party B	A or D	M
83a	Fund or Beneficiary Customer	A, D, or J	O
22D	Accrual of Interest Specification	4!c	O
32G	New Currency, Notional Amount	3!a15d	O
37N	Details of Interest Rate	6*35x	O
29A	Contact Information	4*35x	O
72	Sender to Receiver Information	6*35x	O

**Optional Sequence B Fixed Interest Payable by Party B**

<b>Field Tag</b>	<b>Field Name</b>	<b>Format</b>	<b>Mandatory/ Optional</b>
15B	New Sequence	Empty field	M
37U	Current Fixed Rate	12d	M
37P	New Fixed Rate	12d	O

**Optional Sequence E Fixed Interest Payable by Party A**

<b>Field Tag</b>	<b>Field Name</b>	<b>Format</b>	<b>Mandatory/ Optional</b>
15E	New Sequence	Empty field	M
37U	Current Fixed Rate	12d	M
37P	New Fixed Rate	12d	O

**Optional Sequence L Fee Payable by Party B**

<b>Field Tag</b>	<b>Field Name</b>	<b>Format</b>	<b>Mandatory/ Optional</b>
15L	New Sequence	Empty field	M
30F	Payment Date	8!n	M
32M	Currency, Payment Amount	3!a15d	M
53a	Delivery Agent	A or D	O
56a	Intermediary	A or D	O
86a	Second Intermediary	A or D	O
57a	Receiving Agent	A or D	M

**Optional Sequence M Fee Payable by Party A**

<b>Field Tag</b>	<b>Field Name</b>	<b>Format</b>	<b>Mandatory/ Optional</b>
15M	New Sequence	Empty field	M
30F	Payment Date	8!n	M
32M	Currency, Payment Amount	3!a15d	M

53a	Delivery Agent	A or D	O
56a	Intermediary	A or D	O
86a	Second Intermediary	A or D	O
57a	Receiving Agent	A or D	M

#### **11.1.14 MT 365 Cross Currency Interest Rate Swap Termination/Recouponing Confirmation**

This message is exchanged by or on behalf of the institutions or corporates, party A and party B, which have agreed to the termination, partial termination or recouponing of a cross currency interest rate swap. The terminated/recouponed transaction is covered by a BBAIRS, ISDA or another bilateral agreement.

The message may be used to:

- confirm the details of the partial or full termination of an existing transaction between the parties
- confirm the details of the recouponing of an existing transaction
- correct a previously sent termination/recouponing
- Cancel a previously sent termination/recouponing

Maximum Length: 10000

### 11.1.14.1 Format Specifications

#### Mandatory Sequence A General Information

Field Tag	Field Name	Format	Mandatory/Optional
15A	New Sequence	Empty field	M
20	Sender's Reference	16x	M
21	Related Reference	16x	O
22A	Type of Operation	4!c	M
94A	Scope of Operation	4!c	O
22B	Type of Event	4!c	M
22C	Common Reference	4!a2!c4!n4!a2!c	M
23A	Identification of the Swap	10a/5a	M
21N	Contract Number Party A	16x	M
21B	Contract Number Party B	16x	O
30T	Termination/Recouponing Trade Date	8!n	M
30Q	Termination/Recouponing Effective Date	8!n	M
30P	Original Termination Date	8!n	M
30V	Original Effective Date	8!n	M
32B	Party B Current Currency, Notional Amount	3!a15d	M
33B	Party A Current Currency, Notional Amount	3!a15d	M
82a	Party A	A or D	M
87a	Party B	A or D	M
83a	Fund or Beneficiary Customer	A, D, or J	O
22D	Accrual of Interest Specification	4!c	O
32G	Party B New Currency, Notional Amount	3!a15d	O
33E	Party A New Currency, Notional Amount	3!a15d	O
37N	Details of Interest Rate	6*35x	O
29A	Contact Information	4*35x	O

72	Sender to Receiver Information	6*35x	O
----	--------------------------------	-------	---

#### Optional Sequence B Fixed Interest Payable by Party B

Field Tag	Field Name	Format	Mandatory/ Optional
15B	New Sequence	Empty field	M
37U	Current Fixed Rate	12d	M
37P	New Fixed Rate	12d	O

#### Optional Sequence E Fixed Interest Payable by Party A

Field Tag	Field Name	Format	Mandatory/ Optional
15E	New Sequence	Empty field	M
37U	Current Fixed Rate	12d	M
37P	New Fixed Rate	12d	O

#### Optional Sequence J Re-exchange of Principal Payable by Party B

Field Tag	Field Name	Format	Mandatory/ Optional
15J	New Sequence	Empty field	M
30F	Payment Date	8!n	M
32M	Currency, Payment Amount	3!a15d	M
53a	Delivery Agent	A or D	O
56a	Intermediary	A or D	O
86a	Second Intermediary	A or D	O
57a	Receiving Agent	A or D	M

**Optional Sequence K Re-exchange of Principal Payable by Party A**

<b>Field Tag</b>	<b>Field Name</b>	<b>Format</b>	<b>Mandatory/ Optional</b>
15K	New Sequence	Empty field	M
30F	Payment Date	8!n	M
32M	Currency, Payment Amount	3!a15d	M
53a	Delivery Agent	A or D	O
56a	Intermediary	A or D	O
86a	Second Intermediary	A or D	O
57a	Receiving Agent	A or D	M

**Optional Sequence L Fee Payable by Party B**

<b>Field Tag</b>	<b>Field Name</b>	<b>Format</b>	<b>Mandatory/ Optional</b>
15L	New Sequence	Empty field	M
30F	Payment Date	8!n	M
32M	Currency, Payment Amount	3!a15d	M
53a	Delivery Agent	A or D	O
56a	Intermediary	A or D	O
86a	Second Intermediary	A or D	O
57a	Receiving Agent	A or D	M

**Optional Sequence M Fee Payable by Party A**

<b>Field Tag</b>	<b>Field Name</b>	<b>Format</b>	<b>Mandatory/ Optional</b>
15M	New Sequence	Empty field	M
30F	Payment Date	8!n	M
32M	Currency, Payment Amount	3!a15d	M
53a	Delivery Agent	A or D	O
56a	Intermediary	A or D	O
86a	Second Intermediary	A or D	O

57a	Receiving Agent	A or D	M
-----	-----------------	--------	---

## 11.2 **CoSecurities Markets**

This section contains the following topics:

- [Section 11.2.1, "MT 517 Trade Confirmation Affirmation"](#)
- [Section 11.2.2, "MT 518 Market-Side Securities Trade Confirmation"](#)
- [Section 11.2.3, "MT 540 Receive Free"](#)
- [Section 11.2.4, "MT 541 Receive Against Payment "](#)
- [Section 11.2.5, "MT 542 Deliver Free"](#)
- [Section 11.2.6, "MT 543 Deliver Against Payment"](#)
- [Section 11.2.7, "MT 592 Request for Cancellation"](#)
- [Section 11.2.8, "MT 598 Proprietary Message"](#)

### 11.2.1 **MT 517 Trade Confirmation Affirmation**

This message is sent by an instructing party, e.g. client, or its authorized representative, to a financial institution which had previously sent a trade confirmation/contract note.

This message is used to positively affirm the details of a previously received confirmation/contract note. This message binds the Sender and the Receiver of the message to the trade details contained in the confirmation being affirmed.

This message may be sent directly between the parties to the trade or via an ETC service provider.

Maximum Length: 10000



### 11.2.1.1 Format Specifications

#### Mandatory Sequence A General Information

Field Tag	Field Name	Field Description	Format	Mandatory/Optional
16R		Start of Block	GENL	M
20C	Reference	Sender's Message Reference	:4!c//16x	M
23G		Function of the Message	4!c[/4!c]	M
98a	Date/Time	Preparation Date/Time	A, C, or E	O
95a	Party	(see qualifier description)	P, Q, or R	M
25D	Status Code	Affirmation Status	:4!c/[8c]/4!c	O

#### Mandatory Repetitive Subsequence A1 Linkages

Field Tag	Field Name	Field Description	Format	Mandatory/Optional
16R		Start of Block	LINK	M
13a	Number Identification	Linked Message	A or B	O
20C	Reference	(see qualifier description)	:4!c//16x	M
16S		End of Block	LINK	M

#### End of Subsequence A1 Linkages

Field Tag	Field Name	Field Description	Format	Mandatory/Optional
16S		End of Block	GENL	M

### 11.2.2 MT 518 Market-Side Securities Trade Confirmation

This message is sent by an executing party to its trade counterparty. It is used to confirm the details of a trade.

It may also be used to:

- request the cancellation of a previously sent confirmation
- re-send a confirmation previously sent
- provide a third party with a copy of the message (be it the confirmation or request for cancellation) being sent

This message may include, where necessary, the settlement details of the trade.

The market confirmation may be:

- exchanged directly or via an ETC service provider between two trade counterparties for mutual comparison of the trade details
- sent by one trade party to allege the trade against its counterparty, either directly or via an ETC service provider

Maximum Length: 10000

### 11.2.2.1 **Format Specifications**

#### **Mandatory Sequence A General Information**

<b>Field Tag</b>	<b>Field Name</b>	<b>Field Description</b>	<b>Format</b>	<b>Mandatory/Optional</b>
16R		Start of Block	GENL	M
20C	Reference	Sender's Message Reference	:4!c//16x	M
23G		Function of the Message	4!c[/4!c]	M
98a	Date/Time	Preparation Date/Time	A, C, or E	O
22F	Indicator	Trade Transaction Type	:4!c/[8c]/4!c	M

#### **Optional Repetitive Subsequence A1 Linkages**

<b>Field Tag</b>	<b>Field Name</b>	<b>Field Description</b>	<b>Format</b>	<b>Mandatory/Optional</b>
16R		Start of Block	LINK	M
13a	Number Identification	Linked Message	A or B	O
20C	Reference	(see qualifier description)	:4!c//16x	M
16S		End of Block	LINK	M
16S		End of Block	GENL	M

### Mandatory Sequence B Confirmation Details

Field Tag	Field Name	Field Description	Format	Mandatory/ Optional
16R		Start of Block	CONFDET	M
98a	Date/Time	(see qualifier description)	A, B, C, or E	M
90a	Price	Deal Price	A or B	M
92A	Rate	(see qualifier description)	:4!c//[N]15d	O
99A	Number Count	(see qualifier description)	:4!c//[N]3!n	O
94a	Place	(see qualifier description)	B, C, or F	O
19A	Amount	Settlement Amount	:4!c//[N]3!a15d	O
22a	Indicator	(see qualifier description)	F or H	M
11A	Currency	(see qualifier description)	:4!c//3!a	O

### Mandatory Repetitive Subsequence B1 Confirmation Parties

Field Tag	Field Name	Field Description	Format	Mandatory/ Optional
16R		Start of Block	CONFPTY	M
95a	Party	(see qualifier description)	P, Q, R, or S	M
97a	Account	(see qualifier description)	A or B	O
98a	Date/Time	Processing Date/Time	A or C	O
20C	Reference	Processing Reference	:4!c//16x	O
70a	Narrative	(see qualifier description)	C or E	O
22F	Indicator	(see qualifier description)	:4!c/[8c]/4!c	O
s16S		End of Block	CONFPTY	M

## End of Subsequence B1 Confirmation Parties

Field Tag	Field Name	Field Description	Format	Mandatory /Optional
36B	Quantity of Financial Instrument	Quantity of Financial Instrument Confirmed	:4!c//4!c/15d	M
35B		Identification of the Financial Instrument	[!SIN1!e12!c] [4*35x]	M

## Optional Subsequence B2 Financial Instrument Attributes

Field Tag	Field Name	Field Description	Format	Mandatory/Optional
16R		Start of Block	FIA	M
94B	Place	Place of Listing	:4!c/[8c]/4!c/[30x]	O
22F	Indicator	(see qualifier description)	:4!c/[8c]/4!c	O
12a	Type of Financial Instrument	(see qualifier description)	A, B, or C	O
11A	Currency	Currency of Denomination	:4!c//3!a	O
98A	Date/Time	(see qualifier description)	:4!c//8!n	O
92A	Rate	(see qualifier description)	:4!c//[N]15d	O
13a	Number Identification	(see qualifier description)	A or B	O
17B	Flag	(see qualifier description)	:4!c//1!a	O
90a	Price	(see qualifier description)	A or B	O
36B	Quantity of Financial Instrument	(see qualifier description)	:4!c//4!c/15d	O
35B		Identification of the Financial Instrument	[!SIN1!e12!c] [4*35x]	O
70E	Narrative	Financial Instrument Attribute Narrative	:4!c//10*35x	O
16S		End of Block	FIA	M

**End of Subsequence B2 Financial Instrument Attributes**

Field Tag	Field Name	Field Description	Format	Mandatory /Optional
13B	Number Identification	Certificate Number	:4!c/[8c]/30x	O
70E	Narrative	(see qualifier description)	:4!c//10*35x	O
16S		End of Block	CONFDET	M

**Optional Sequence C Settlement Details**

Field Tag	Field Name	Field Description	Format	Mandatory/Optional
16R		Start of Block	SETDET	M
22F	Indicator	(see qualifier description)	:4!c/[8c]/4!c	M
11A	Currency	(see qualifier description)	:4!c//3!a	O

**Optional Repetitive Subsequence C1 Settlement Parties**

Field Tag	Field Name	Field Description	Format	Mandatory/Optional
16R		Start of Block	SETPRTY	M
95a	Party	(see qualifier description)	C, P, Q, R, or S	M
97a	Account	Safekeeping Account	A or B	O
98a	Date/Time	Processing Date/Time	A or C	O
20C	Reference	Processing Reference	:4!c//16x	O
70a	Narrative	(see qualifier description)	C or D	O
16S		End of Block	SETPRTY	M

**Optional Repetitive Subsequence C2 Cash Parties**

Field Tag	Field Name	Field Description	Format	Mandatory/Optional
16R		Start of Block	CSHPRTY	M
95a	Party	(see qualifier description)	P, Q, R, or S	M

97A	Account	(see qualifier description)	:4!c//35x	O
98a	Date/Time	Processing Date/Time	A or C	O
20C	Reference	Processing Reference	:4!c//16x	O
70C	Narrative	Party Narrative	:4!c//4*35x	O
16S		End of Block	CSHPRTY	M

#### Optional Repetitive Subsequence C3 Amounts

Field Tag	Field Name	Field Description	Format	Mandatory/Optional
16R		Start of Block	AMT	M
17B	Flag	(see qualifier description)	:4!c//1!a	O
19A	Amount	(see qualifier description)	:4!c//[N]3!a15d	M
98a	Date/Time	Value Date/Time	A or C	O
92B	Rate	Exchange Rate	:4!c//3!a/3!a/15d	O
16S		End of Block	AMT	M

#### End of Subsequence C3 Amounts

Field Tag	Field Name	Field Description	Format	Mandatory/Optional
16S		End of Block	SETDET	M

### Optional Repetitive Sequence D Other Parties

Field Tag	Field Name	Field Description	Format	Mandatory/Optional
16R		Start of Block	OTHRPTY	M
95a	Party	(see qualifier description)	P, Q, R, or S	M
97a	Account	(see qualifier description)	A or B	O
70C	Narrative	Party Narrative	:4!c//4*35x	O
20C	Reference	Processing Reference	:4!c//16x	O
16S		End of Block	OTHRPTY	M

### Optional Sequence E Two Leg Transaction Details

Field Tag	Field Name	Field Description	Format	Mandatory /Optional
16R		Start of Block	REPO	M
98a	Date/Time	(see qualifier description)	A, B, or C	O
22F	Indicator	(see qualifier description)	:4!c/[8c]/4!c	O
20C	Reference	(see qualifier description)	:4!c//16x	O
92a	Rate	(see qualifier description)	A, C, or F	O
99B	Number Count	(see qualifier description)	:4!c//3!n	O
19A	Amount	(see qualifier description)	:4!c//[N]3!a15d	O
70C	Narrative	Second Leg Narrative	:4!c//4*35x	O
16S		End of Block	REPO	M

#### 11.2.3 MT 540 Receive Free

This message is sent by an account owner to an account servicer (account servicing institution). The account owner may be a global custodian which has an account with its local agent (sub custodian) or an investment management institution or a broker/dealer which has an account with their custodian.

This message is used to instruct a receipt of financial instruments free of payment. It may also be used to request a cancellation or pre-advise an instruction.

Maximum Length: 10000

### 11.2.3.1 Format Specifications

#### Mandatory Sequence A General Information

Field Tag	Field Name	Field Description	Format	Mandatory/Optional
16R		Start of Block	GENL	M
20C	Reference	Sender's Message Reference	:4!c//16x	M
23G		Function of the Message	4!c[/4!c]	M
98a	Date/Time	Preparation Date/Time	A,C or E	O

#### Optional Repetitive Subsequence A1

Field Tag	Field Name	Field Description	Format	Mandatory/Optional
16R		Start of Block	LINK	M
20C	Reference	(see qualifier description)	:4!c//16x	M
36B	Quantity of Financial Instrument	Quantity of Financial Instrument to be Paired-off	:4!c//4!c/15d	O
16S		End of Block	LINK	M
16S		End of Block	GENL	M



### Mandatory Sequence B Trade Details

Field Tag	Field Name	Field Description	Format	Mandatory /Optional
16R		Start of Block	TRADEDET	M
94B	Place	Place of Trade	:4!c/[8c]/4!c/[30x]	O
98a	Date/Time	(see qualifier description)	A, B, C, or E	M
90a	Deal	Deal Price	A or B	O
99A	Number Count	Number of Days Accrued	:4!c/[N]3!n	O
35B		Identification of the Financial Instrument	[ISIN1!e12!c]	M
70E	Narrative	(see qualifier description)	:4!c//10*35x	O
16S		End of Block	TRADEDET	M

### Mandatory Repetitive Sequence C Financial Instrument/Account

Field Tag	Field Name	Field Description	Format	Mandatory /Optional
16R		Start of Block	FIAC	M
36B	Quantity of Financial Instrument	Quantity of Financial Instrument to be settled	:4!c//4!c/15d	M
95a	Party	Account Owner	P or R	O
97a	Account	(see qualifier description)	A or B	M
16S		End of Block	FIAC	M

### Optional Sequence D Two Leg Transaction Details

Field Tag	Field Name	Field Description	Format	Mandatory /Optional
16R		Start of Block	REPO	M
98a	Date/Time	(see qualifier description)	A, B, or C	O
22F	Indicator	(see qualifier description)	:4!c/[8c]/4!c	O
20C	Reference	(see qualifier description)	:4!c//16x	O
92a	Rate	(see qualifier description)	A, C, or F	O

19A	Amount	(see qualifier description)	:4!c/[N]3!a15d	O
70C	Narrative	Second Leg Narrative	:4!c/4*35x	O
16S		End of Block	REPO	M

#### **Mandatory Sequence E Settlement Details**

Field Tag	Field Name	Field Description	Format	Mandatory/Optional
16R		Start of Block	SETDET	M
22F	Indicator	(see qualifier description)	:4!c/[8c]/4!c	M

#### **Mandatory Repetitive Subsequence E1 Settlement Parties**

Field Tag	Field Name	Field Description	Format	Mandatory/Optional
16R		Start of Block	SETPRTY	M
95a	Party	(see qualifier description)	C, P, Q, R, or S	M
97a	Account	Safekeeping Account	A or B	O
16S		End of Block	SETPRTY	M

#### **Optional Repetitive Subsequence E3 Amount**

Field Tag	Field Name	Field Description	Format	Mandatory/Optional
16R		Start of Block	AMT	M
19A	Amount	(see qualifier description)	:4!c/[N]3!a15d	M
16S		End of Block	AMT	M
16S		End of Block	SETDET	M

### **11.2.4 MT 541 Receive Against Payment**

This message is sent by an account owner to an account servicer (account servicing institution). The account owner may be a global custodian which has an account with its local agent (sub custodian) or an investment management institution or a broker/dealer which has an account with their custodian.

This message is used to instruct a receipt of financial instruments against payment. It may also be used to request a cancellation or pre-advise an instruction

Maximum Length: 10000

### 11.2.4.1 Format Specifications

#### Mandatory Sequence A General Information

Field Tag	Field Name	Field Description	Format	Mandatory/Optional
16R		Start of Block	GENL	M
20C	Reference	Sender's Message Reference	:4!c//16x	M
23G		Function of the Message	4!c[/4!c]	M
98a	Date/Time	Preparation Date/Time	A,C or E	O

#### Optional Repetitive Subsequence A1

Field Tag	Field Name	Field Description	Format	Mandatory/Optional
16R		Start of Block	LINK	M
20C	Reference	(see qualifier description)	:4!c//16x	M
36B	Quantity of Financial Instrument	Quantity of Financial Instrument to be Paired-off	:4!c//4!c/15d	O
16S		End of Block	LINK	M
16S		End of Block	GENL	M

#### Mandatory Sequence B Trade Details

Field Tag	Field Name	Field Description	Format	Mandatory/Optional
16R		Start of Block	TRADEDET	M
94B	Place	Place of Trade	:4!c/[8c]/4!c/[30x]	O
98a	Date/Time	(see qualifier description)	A, B, C, or E	M
90a	Deal	Deal Price	A or B	O
99A	Number Count	Number of Days Accrued	:4!c//[N]3!n	O
35B		Identification of the Financial Instrument	[ISIN1!e12!c]	M
70E	Narrative	(see qualifier description)	:4!c//10*35x	O
16S		End of Block	TRADEDET	M

### Mandatory Repetitive Sequence C Financial Instrument/Account

Field Tag	Field Name	Field Description	Format	Mandatory /Optional
16R		Start of Block	FIAC	M
36B	Quantity of Financial Instrument	Quantity of Financial Instrument to be settled	:4!c//4!c/15d	M
95a	Party	Account Owner	P or R	O
97a	Account	(see qualifier description)	A or B	M
16S		End of Block	FIAC	M

### Optional Sequence D Two Leg Transaction Details

Field Tag	Field Name	Field Description	Format	Mandatory/Optional
16R		Start of Block	REPO	M
98a	Date/Time	(see qualifier description)	A, B, or C	O
22F	Indicator	(see qualifier description)	:4!c/[8c]/4!c	O
20C	Reference	(see qualifier description)	:4!c//16x	O
92a	Rate	(see qualifier description)	A, C, or F	O
19A	Amount	(see qualifier description)	:4!c//[N]3!a15d	O
70C	Narrative	Second Leg Narrative	:4!c//4*35x	O
16S		End of Block	REPO	M

### Mandatory Sequence E Settlement Details

Field Tag	Field Name	Field Description	Format	Mandatory/Optional
16R		Start of Block	SETDET	M
22F	Indicator	(see qualifier description)	:4!c/[8c]/4!c	M

**Mandatory Repetitive Subsequence E1 Settlement Parties**

Field Tag	Field Name	Field Description	Format	Mandatory /Optional
16R		Start of Block	SETPRTY	M
95a	Party	(see qualifier description)	C, P, Q, R, or S	M
97a	Account	Safekeeping Account	A or B	O
16S		End of Block	SETPRTY	M

**Optional Repetitive Subsequence E3 Amount**

Field Tag	Field Name	Field Description	Format	Mandatory /Optional
16R		Start of Block	AMT	M
19A	Amount	(see qualifier description)	:4!c//[N]3!a15d	M
16S		End of Block	AMT	M
16S		End of Block	SETDET	M

**Repetitive Optional Sequence F Other Parties**

Field Tag	Field Name	Field Description	Format	Mandatory/Optional
16R		Start of Block	OTHRPRTY	M
95a	Party	(see qualifier description)	C, P, R, Q or S	M
97A	Account	(see qualifier description)	:4c//35x	O
70a	Narrative	(see qualifier description)	E,D or C	O
20C	Reference	Reference	:4c//16x	O
16S		End of Block	OTHRPRTY	M

**11.2.5 MT 542 Deliver Free**

This message is sent by an account owner to an account servicer (account servicing institution). The account owner may be a global custodian which has an account with its local agent (sub custodian) or an investment management institution or a broker/dealer which has an account with their custodian.

This message is used to instruct a delivery of financial instruments free of payment. It may also be used to request a cancellation or pre-advise an instruction.

Maximum Length: 10000

### 11.2.5.1 Format Specifications

#### Mandatory Sequence A General Information

Field Tag	Field Name	Field Description	Format	Mandatory/Optional
16R		Start of Block	GENL	M
20C	Reference	Sender's Message Reference	:4!c//16x	M
23G		Function of the Message	4!c[/4!c]	M
98a	Date/Time	Preparation Date/Time	A, C or E	O
99B	Number Count	(see qualifier description)	:4!c//3!n	O

#### Optional Repetitive Subsequence A1

Field Tag	Field Name	Field Description	Format	Mandatory/Optional
16R		Start of Block	LINK	M
20C	Reference	(see qualifier description)	:4!c//16x	M
16S		End of Block	LINK	M
16S		End of Block	GENL	M

#### Mandatory Sequence B Trade Details

Field Tag	Field Name	Field Description	Format	Mandatory/Optional
16R		Start of Block	TRADEDET	M
94B	Place	Place of Trade	:4!c/[8c]/4!c/[30x]	O
98a	Date/Time	(see qualifier description)	A, B, C, or E	M
90a	Price	Deal Price	A or B	O
35B		Identification of the Financial Instrument	[ISIN1!e12!c]	M
16S		End of Block	TRADEDET	M

**Mandatory Repetitive Sequence C Financial Instrument/Account**

Field Tag	Field Name	Field Description	Format	Mandatory /Optional
16R		Start of Block	FIAC	M
36B	Quantity of Financial Instrument	Quantity of Financial Instrument to be Settled	:4!c//4!c/15d	M
95a	Party	Account Owner	P or R	O
97a	Account	(see qualifier description)	A or B	M
94a	Place	Place of Safekeeping	B, C, or F	O
16S		End of Block	FIAC	M

**Optional Sequence D Two Leg Transaction Details**

Field Tag	Field Name	Field Description	Format	Mandatory /Optional
16R		Start of Block	REPO	M
98a	Date/Time	Closing Date/Time	A, B, or C	O
22F	Indicator	(see qualifier description)	:4!c/[8c]/4!c	O
20C	Reference	(see qualifier description)	:4!c//16x	O
92a	Rate	(see qualifier description)	A, C, or F	O
99B	Number Count	(see qualifier description)	:4!c//3!n	O
19A	Amount	(see qualifier description)	:4!c//[N]3!a15d	O
70C	Narrative	Second Leg Narrative	:4!c//4*35x	O
16S		End of Block	REPO	M

**Mandatory Sequence E Settlement Details**

Field Tag	Field Name	Field Description	Format	Mandatory/Optional
16R		Start of Block	SETDET	M
22F	Indicator	(see qualifier description)	:4!c/[8c]/4!c	M

**Mandatory Repetitive Subsequence E1 Settlement Parties**



Field Tag	Field Name	Field Description	Format	Mandatory/Optional
16R		Start of Block	SETPRTY	M
95a	Party	(see qualifier description)	C, P, Q, R, or S	M
16S		End of Block	SETPRTY	M

#### Repetitive Optional Subsequence E2 Cash Parties

Field Tag	Field Name	Field Description	Format	Mandatory/Optional
16R		Start of Block	CSHPRTY	M
95a	Party	(see qualifier description)	P, R, Q or S	M
97A	Account	(see qualifier description)	:4c//35x	O
70a	Narrative	(see qualifier description)	E,D or C	O
16S		End of Block	CSHPRTY	M

#### Optional Repetitive Subsequence E3 Amount

Field Tag	Field Name	Field Description	Format	Mandatory/Optional
16R		Start of Block	AMT	M
19A	Amount	(see qualifier description)	:4!c//[N]3!a15d	M
16S		End of Block	AMT	M
16S		End of Block	SETDET	M

#### Repetitive Optional Sequence F Other Parties

Field Tag	Field Name	Field Description	Format	Mandatory/Optional
16R		Start of Block	OTHRPRTY	M
95a	Party	(see qualifier description)	C, P, R, Q or S	M
97A	Account	(see qualifier description)	:4c//35x	O

70a	Narrative	(see qualifier description)	E,D or C	O
20C	Reference	Reference	:4c//16x	O
16S		End of Block	OTHRPTY	M

## 11.2.6 MT 543 Deliver Against Payment

This message is sent by an account owner to an account servicer (account servicing institution). The account owner may be a global custodian which has an account with its local agent (sub custodian) or an investment management institution or a broker/dealer which has an account with their custodian.

This message is used to instruct a delivery of financial instruments against payment. It may also be used to request a cancellation or pre-advise an instruction.

Maximum Length: 10000

### 11.2.6.1 Format Specifications

#### Mandatory Sequence A General Information

Field Tag	Field Name	Field Description	Format	Mandatory/Optional
16R		Start of Block	GENL	M
20C	Reference	Sender's Message Reference	:4!c//16x	M
23G		Function of the Message	4!c[/4!c]	M
98a	Date/Time	Preparation Date/Time	A, C or E	O
99B	Number Count	(see qualifier description)	:4!c//3!n	O

#### Optional Repetitive Subsequence A1

Field Tag	Field Name	Field Description	Format	Mandatory/Optional
16R		Start of Block	LINK	M
16S		End of Block	LINK	M
16S		End of Block	GENL	M

**Mandatory Sequence B Trade Details**

Field Tag	Field Name	Field Description	Format	Mandatory/Optional
16R		Start of Block	TRADEDET	M
94B	Place	Place of Trade	:4!c/[8c]/4!c/[30x]	O
98a	Date/Time	(see qualifier description)	A, B, C, or E	M
90a	Price	Deal Price	A or B	O
35B		Identification of the Financial Instrument	[ISIN1!e12!c]	M
16S		End of Block	TRADEDET	M

**Mandatory Repetitive Sequence C Financial Instrument/Account**

Field Tag	Field Name	Field Description	Format	Mandatory /Optional
16R		Start of Block	FIAC	M
36B	Quantity of Financial Instrument	Quantity of Financial Instrument to be Settled	:4!c//4!c/15d	M
95a	Party	Account Owner	P or R	O
97a	Account	(see qualifier description)	A or B	M
16S		End of Block	FIAC	M

**Optional Sequence D Two Leg Transaction Details**

Field Tag	Field Name	Field Description	Format	Mandatory/Optional
16R		Start of Block	REPO	M
98a	Date/Time	(see qualifier description)	A, B, or C	O
22F	Indicator	(see qualifier description)	:4!c/[8c]/4!c	O
20C	Reference	(see qualifier description)	:4!c//16x	O
92a	Rate	(see qualifier description)	A, C, or F	O

99B	Number Count	(see qualifier description)	:4!c//3!n	O
19A	Amount	(see qualifier description)	:4!c//[N]3!a15d	O
70C	Narrative	Second Leg Narrative	:4!c//4*35x	O
16S		End of Block	REPO	M

#### Mandatory Sequence E Settlement Details

Field Tag	Field Name	Field Description	Format	Mandatory/Optional
16R		Start of Block	SETDET	M
22F	Indicator	(see qualifier description)	:4!c/[8c]/4!c	M
95a	Party	(see qualifier description)	C, P, Q, R, or S	M

#### Repetitive Optional Subsequence E2 Cash Parties

Field Tag	Field Name	Field Description	Format	Mandatory/Optional
16R		Start of Block	CSHPRTY	M
95a	Party	(see qualifier description)	P, R, Q or S	M
97A	Account	(see qualifier description)	:4c//35x	O
70a	Narrative	(see qualifier description)	E,D or C	O
16S		End of Block	CSHPRTY	M

#### Mandatory Repetitive Subsequence E3 Amount

Field Tag	Field Name	Field Description	Format	Mandatory/Optional
16R		Start of Block	AMT	M
19A	Amount	(see qualifier description)	:4!c//[N]3!a15d	M
16S		End of Block	AMT	M
16S		End of Block	SETDET	M

## Repetitive Optional Sequence F Other Parties

Field Tag	Field Name	Field Description	Format	Mandatory/Optional
16R		Start of Block	OTHRPRTY	M
95a	Party	(see qualifier description)	C, P, R, Q or S	M
97A	Account	(see qualifier description)	:4c//35x	O
70a	Narrative	(see qualifier description)	E,D or C	O
20C	Reference	Reference	:4c//16x	O
16S		End of Block	OTHRPRTY	M

### 11.2.7 MT 592 Request for Cancellation

This message type is sent by a financial institution to request a second financial institution to consider cancellation of the SWIFT message identified in the request.

If the Receiver of the request for cancellation has already acted on the message for which cancellation is requested, the MT n92 asks for a retransfer, ie, reversal, with the beneficiary's consent.

Maximum Length: 2000

#### 11.2.7.1 Format Specifications

Field Tag	Field Name	Format	Mandatory/Optional
20	Transaction Reference Number	16x	M
21	Related Reference	16x	M
11S	MT and Date of the Original Message	3!n 6!n [4!n6!n]	M
79	Narrative Description of the Original Message	35*50x	O
	Copy of at least the Mandatory Fields of the Original Message	Copy of fields	O

### 11.2.8 MT 598 Proprietary Message

This message type is used by financial institutions, with their own offices, and/or with other financial institutions with which they have established bilateral agreements.

It is used as an envelope for a specified message included in it.

It allows for the definition of a unique format for which another message type is not available or applicable.

It also allows financial institutions to use message types which are awaiting live implementation on the SWIFT system.

Maximum Length: 10000

#### **11.2.8.1 Format Specifications**

<b>Field Tag</b>	<b>Field Name</b>	<b>Format</b>	<b>Mandatory/Optional</b>
20	Transaction Reference Number	16x	M
12	Sub-Message Type	3!n	M
77E	Proprietary Message	120*78x	M

### **11.3 Treasury Markets - Metals**

This section contains the following topics:

- [Section 11.3.1, "MT 643 Notice of Drawdown/Renewal"](#)
- [Section 11.3.2, "MT 644 Advice of Rate and Amount Fixing"](#)
- [Section 11.3.3, "MT 645 Notice of Fee Due"](#)
- [Section 11.3.4, "MT 646 Payment of Principal and/or of Interest"](#)
- [Section 11.3.5, "MT 649 General Syndicated Facility Message"](#)

#### **11.3.1 MT 643 Notice of Drawdown/Renewal**

This message type is sent by the agent of the facility to the providers of funds.

It gives notice of the borrower(s) request for drawdown(s)/renewal(s) on a given date. This request may require the provision of new funds or the re-borrowing of previously disbursed funds.

The MT 643 allows for the handling of drawdown(s)/renewal(s) with differing characteristics. It specifies the currency (ies), amount(s), period(s) and interest rate origin(s).

Maximum Length: 2000

### 11.3.1.1 Format Specifications

#### Mandatory Sequence A Identification of the Facility

Field Tag	Field Name	Format	Mandatory/ Optional
20	Transaction Reference Number	16x	M
21	Related Reference	16x	O
23	Further Identification	16x	M
27	Sequence of Total	1!n/1!n	O
29A	From	4*35x	O
29B	To the Attention of	4*35x	O
88D	Borrower(s)	[/1!a]/ 34x] 4*35x	M
32A	Original Facility Amount	6!n3!a15d	M

#### Optional Repetitive Sequence B Existing Drawings

Field Tag	Field Name	Format	Mandatory/ Optional
26P	Drawing Identification	3!a/4x	M
31F	Drawdown Period	6!n[/6!n]/ 35x]	O
32P	Repayment of Principal	6!n3!a15d	O
33a	Interest Amount	P or R	M
71C	Details of Adjustments	6*35x	O
34a	Net Interest Amount	P or R	O
57a	Account With Institution	A, B, or D	O
72	Sender to Receiver Information	6*35x	O

#### Mandatory Repetitive Sequence C New Drawing(s)

Field Tag	Field Name	Format	Mandatory/ Optional
26N	Drawing Identification (New)	3!a/4x	M
32E	Selected Currency	3!a	O

31F	Drawdown Period	6!n[/6!n][//35x]	M
31R	Rate Fixing Date	6!n[/6!n]	O
32B	Amount of Drawdown	3!a15d	M
33B	Receiver's Participation	3!a15d	M
57a	Account With Institution	A, B, or D	O
72	Sender to Receiver Information	6*35x	O

### 11.3.2 **MT 644 Advice of Rate and Amount Fixing**

This message type is sent by the agent of the facility to the providers of funds.

It specifies the interest rate applicable for a drawdown/renewal for a specified interest period, whether the end date of that period is set or not. When applicable, this message type will also set the exchange rate.

Maximum Length: 2000

#### 11.3.2.1 **Format Specifications**

##### **Mandatory Sequence A Identification of the Facility**

Field Tag	Field Name	Format	Mandatory/Optional
20	Transaction Reference Number	16x	M
21	Related Reference	16x	O
27	Sequence of Total	1!n/1!n	O
29A	From	4*35x	O
29B	To the Attention of	4*35x	O
88D	Borrower(s)	[/1!a]/34x] 4*35x	M
32A	Original Facility Amount	6!n3!a15d	M



### **Mandatory Repetitive Sequence B Specification of the Drawing and Related Data**

<b>Field Tag</b>	<b>Field Name</b>	<b>Format</b>	<b>Mandatory/ Optional</b>
26a	Drawing Identification	N or P	M
31F	Interest Period	6!n[/6!n][[/35x]	M
33B	Receiver's Participation	3!a15d	O
36	Exchange Rate	12d	O
37G	Basis Rate	[N]12d	M
37M	Interest Margin	[N]12d	O
37R	Reserve Interest	[N]12d	O
37a	Total Interest Rate	A, B, C, D, E, or F	O
34a	Differential Amount	P or R	O
57a	Account With Institution	A, B, or D	O
72	Sender to Receiver Information	6*35x	O

#### **11.3.3 MT 645 Notice of Fee Due**

This message type is sent by the agent of the facility to the signatories thereto or to the parties to the offer.

It specifies flat and variable fees, payable on the same date, which are due to the Receiver.

Maximum Length: 2000

### 11.3.3.1 Format Specifications

#### Mandatory Sequence A Identification of the Facility and Flat Fees

Field Tag	Field Name	Format	Mandatory/ Optional
20	Transaction Reference Number	16x	M
21	Related Reference	16x	O
29A	From	4*35x	O
29B	To the Attention of	4*35x	O
88D	Borrower(s)	[/1!a]/ 34x] 4*35x	M
32A	Original Facility Amount	6!n3!a15d	M
71B	Flat Fees	6*35x	O

#### Optional Repetitive Sequence B Variable Fees

Field Tag	Field Name	Format	Mandatory/ Optional
23	Type of Fee	16x	M
31F	Fee Period	6!n[/6!n][//35x]	M
33B	Computation Base Amount	3!a15d	O
34B	Fee Amount	3!a15d	M
37a	Fee Rate	A, B, C, D, E, or F	O
72	Sender to Receiver Information	6*35x	O

#### Mandatory Sequence C Summation of Fees

Field Tag	Field Name	Format	Mandatory/ Optional
71C	Summary of Variable Fees	6*35x	O
33A	Total Fees	6!n3!a15d	M
34A	Amount to be Transferred	6!n3!a15d	O
57a	Account With Institution	A, B, or D	O
72	Sender to Receiver Information	6*35x	O

### 11.3.4 **MT 646 Payment of Principal and/or of Interest**

This message type is sent by the agent of a facility to the providers of funds.

It provides advice of payments and/or prepayments of principal and/or payment of interest on the same value date, which are not related to any subsequent drawing or renewal. It specifies (to the Receiver) the amount with respect to principal and/or interest.

Maximum Length: 2000

#### 11.3.4.1 **Format Specifications**

##### **Mandatory Sequence A Identification of the Facility**

<b>Field Tag</b>	<b>Field Name</b>	<b>Format</b>	<b>Mandatory/ Optional</b>
20	Transaction Reference Number	16x	M
21	Related Reference	16x	O
23	Further Identification	16x	M
29A	From	4*35x	O
29B	To the Attention of	4*35x	O
88D	Borrower(s)	[/1!a][/34x] 4*35x	M
32A	Original Facility Amount	6!n3!a15d	M
26P	Drawing Identification	3!a/4x	O

##### **Mandatory Repetitive Sequence B Interest Calculation**

<b>Field Tag</b>	<b>Field Name</b>	<b>Format</b>	<b>Mandatory/ Optional</b>
31F	Interest Period	6!n[/6!n][//35x]	O
33B	Computation Base Amount	3!a15d	O
34N	Interest Amount	[N]6!n3!a15d	O
37a	Interest Rate	A, B, C, D, E, or F	O
72	Sender to Receiver Information	6*35x	O

### **Mandatory Sequence C Principal Payment/Sum of Interest Due**

<b>Field Tag</b>	<b>Field Name</b>	<b>Format</b>	<b>Mandatory /Optional</b>
32A	Total Principal Amount Repaid/Prepaid	6!n3!a15d	M
32N	Principal Amount Due to Receiver	[N]6!n3!a15d	O
33N	Gross Interest Amount Due to Receiver	[N]6!n3!a15d	O
34N	Net Interest Amount Due to Receiver	[N]6!n3!a15d	O
34a	Total Amount Transferred	P or R	O
57a	Account With Institution	A, B, or D	O
71C	Details of Adjustments	6*35x	O
72	Sender to Receiver Information	6*35x	O

#### **11.3.5 MT 649 General Syndicated Facility Message**

This message type may be sent by any financial institution involved in a facility to another financial institution in the facility.

It is used for any communications related to syndicated facilities for which specific message types have not been defined.

This message type may be used throughout the life of the facility.

Maximum Length: 2000

##### **11.3.5.1 Format Specifications**

<b>Field Tag</b>	<b>Field Name</b>	<b>Format</b>	<b>Mandatory/ Optional</b>
20	Transaction Reference Number	16x	M
21	Related Reference	16x	O
27	Sequence of Total	1!n/1!n	O
29A	From	4*35x	O
29B	To the Attention of	4*35x	O
88D	Borrower(s)	[/1!a]/ 34x] 4*35x	M
32a	Facility Amount	A or B	O
79	Narrative	35*50x	M



---

## 12. Other Message Maintenance

### 12.1 Introduction

Apart from the maintenances mentioned in previous sections, if Multi Bank Cash Concentration facility is allowed, the following maintenances need to be done during implementation. This is necessary only if they have not been maintained earlier.

This chapter contains the following section:

- [Section 12.2, "Maintaining Message Media Formats"](#)

### 12.2 Maintaining Message Media Formats

You can invoke the 'Treasury Message Media format Maintenance' screen by typing 'MSDTRMFM' in the field at the top right corner of the Application tool bar and clicking on the adjoining arrow button.

Fields					
Maker	Date Time:	Mod No	Record Status		Exit
Checker	Date Time:		Authorization Status		

The multiple media support for same location and message type is enabled in OBTR.

Static data is released with specific Module code, Message Type, and Media details. The static data for Currency field is \*.\*. The following fields have ALL options for multiple media support:

- Product
- Branch
- Format

---

#### Note

The Format Field has ALL option only for static maintenance. These static data are released to support message generation for Multiple media. We recommend you do not use the static data for any other purpose.

---

## 13. Processing of MX Messages as per ISO 20022

### 13.1 Introduction

ISO 20022 is a multi part International Standard prepared by ISO Technical Committee TC68 Financial Services.

It is a messaging standard for exchanging electronic messages. It uses XML syntax and offers structured rich data. This format is already used by many real-time, low-value, and high-value clearing systems around the world. Offers richer references and improved remittance information.

Under ISO 20022, financial institutions will be changing the messages they send and receive via SWIFT from the legacy MT (message type) format to the new MX (message type XML) format, which is more transparent, holds more data and is expected to boost interoperability between banks.

For banks, the most important difference between SWIFT MT messages and the new MX message format used for ISO 20022 is that MX messages are far richer in data. Banks have the opportunity to leverage this data to enhance everything from sanctions and compliance processes to customer analytics.

The primary difference between ISO 20022 and SWIFT messages is their respective formats. Both styles of message are text-based, but SWIFT messages use a notation that is peculiar to SWIFT whereas ISO 20022 uses a standardized XML-based syntax for messages.

ISO 20022 organizes financial definitions in business areas. These business areas are uniquely identified by four-character codes called business area codes. The ISO 20022 catalog includes over 800 messages covering the following business areas:

- acmt: Account Management
- auth: Authorities Communications
- caaa: Acceptor to Acquirer Card Transactions
- cain: Acquirer to Issuer Card Transactions
- catm: Card Terminal Management
- catp: ATM Card Transactions
- caam: ATM Management
- pacs: Payments Clearing and Settlement
- pain: Payments Initiation
- camt: Cash Management
- remt: Payments Remittance Advice
- fxtr: Foreign Exchange Trade
- colr: Collateral Management
- setr: Securities Trade
- secl: Securities Clearing
- sese: Securities Settlement
- semt: Securities Management
- seev: Securities Events
- tsin: Trade Services Initiation
- tsmt: Trade Services Management

- reda: Reference Data

## 13.2 MX Message Notification to OBTR from OBPM

OBTR interfaces with external payment system OBPM for generation of MX message type for the payment messages. The MX message gets generated in OBPM and a notification is received in OBTR. The user can view the generated MX message in OBTR.

MT Number	MT Name	MX ID	MX Name
MT 103	Single Customer Credit Transfer	pacs.008	FItoFICustomerCreditTransfer
MT 202	General Financial Institution Transfer	pacs.009	FinancialInstitutionCredit Transfer

This section contains the following sub-sections:

- [Maintenance Required in OBPM](#)

### 13.2.1 Maintenance Required in OBPM

The maintenance required in OBPM are given below:

- In the **Source Maintained Details (PMDSORCE)** screen, the **Source Code** must be maintained for the MX message type maintenance.
- In the **External Notification Queue Detailed (PMDEXTNT)** screen, the **Notification System Class** must be maintained as **OBTR**.
- In the **Network Code Maintenance (PMDNWCOD)** screen, the **Network Code** must be maintained as **SWIFTISO**.
- In the **Source Network Preferences Detailed (PMDSORNW)**, the **Network Code** must be maintained as **SWIFTISO** which is mapped to source code, and the **Transaction Type** as **Outgoing**.
- In the **Network Rule Detailed (PMDNWRLE)** screen, the **Channel Type** must be maintained as **SWIFTMX** and network code must be **SWIFTISO** for the respective network rule.



---

## 14. Reports

All activities that are performed in the Messaging System (MS) module are recorded. The inputs you have made at different stages are pieced together and can be extracted in the form of meaningful reports as and when you may require them. The various report programs and reporting features available under the Messaging System module are explained in this chapter.

You can generate the following reports for the Messaging System module:

- SMS Log Report
- Successful Messages Report
- Unsuccessful Messages Report

This chapter contains the following sections:

- [Section 14.1, "SMS Log Report"](#)
- [Section 14.2, "Unsuccessful Messages Report"](#)
- [Section 14.3, "Successful Messages Report"](#)
- [Section 14.4, "Daily Swift Message Status Report"](#)
- [Section 14.5, "Statement Message Status Report"](#)

### 14.1 **SMS Log Report**

This section contains the following topics:

- [Section 14.1.1, "Generating Security Management System Log Report"](#)
- [Section 14.1.2, "Contents of Report"](#)

#### 14.1.1 **Generating Security Management System Log Report**

You can select the following options based on which the report can be generated.

- You can specify the operation date for which the report has to be generated.
- You can generate the report for specific User ID
- You can also generate the report based on the operation

To invoke the screen 'Treasury Security Management System Log Report', type 'MSRTRLRT' in the field at the top right corner of the Application tool bar and clicking on the adjoining arrow button. The screen 'Treasury Security Management System Log Report' is displayed below:

You can specify the following parameters:

#### **User ID**

Specify valid User ID for which you want to generate the report from the adjoining option list.

#### **Operation**

Select valid mode of operation for which you want to generate the report from the adjoining drop-down list.

#### **Operation Date**

Select operation date of the selected operation for which you want to generate the report from the adjoining calendar.

### **14.1.2 Contents of Report**

The parameters specified while generating the report are printed at the beginning of the report. The contents of the SMS Log Report have been discussed under the following heads:

#### **14.1.2.1 Header**

The Header carries the title of the Report, information on the branch code, the branch date, the user id, the module name, the date and time at which the report was generated and the page number of the report.

Field	Description
Body Branch	This is the branch code
Document Reference	This is the document control number generated by the system.
User ID	This is the user ID.
Date	This is the date of the log.
Operation	This is the type of operation.
Receiver	This is the name of the receiver.

Currency	This is the currency.
Amount	This is the amount specified in sending messages.
Terminal ID	This is the terminal ID.

## 14.2 Unsuccessful Messages Report

This section contains the following topics:

- [Section 14.2.1, "Generating Upload Exception Report"](#)
- [Section 14.2.2, "Contents of Report"](#)

### 14.2.1 Generating Upload Exception Report

To invoke the 'Treasury Upload Exception' screen, type 'MSRTRPEX' in the field at the top right corner of the Application tool bar and clicking on the adjoining arrow button. The screen is displayed below:

### 14.2.2 Contents of Report

The contents of the Unsuccessful Messages Report have been discussed under the following heads:

#### 14.2.2.1 Header

The Header carries the title of the Report, information on the branch code, the branch date, the user id, the module name, the date and time at which the report was generated and the page number of the report.

#### 14.2.2.2 Body

##### **Reference Number**

This is the reference number of the repair.

##### **Repair Reason**

This is the reason for the repair.

## 14.3 Successful Messages Report

This section contains the following topics:

- [Section 14.3.1, "Generating Successful Message Report"](#)
- [Section 14.3.2, "Contents of Report"](#)

### 14.3.1 Generating Successful Message Report

You can generate Successful Messages report using 'Successful Messages Report' screen. To invoke the screen, type 'MSRTRPSX' in the field at the top right corner of the Application tool bar and clicking on the adjoining arrow button. The screen is displayed below:

Treasury Successful Messages Report

Report Format PDF

Report Output View

Printer At Client

Printer

Ok Cancel

### 14.3.2 Contents of Report

The contents of the Successful Messages Report have been discussed under the following heads:

#### 14.3.2.1 Header

The Header carries the title of the report, information on the branch code, the branch date, the user id, the module name, the date and time at which the report was generated and the page number of the report.

#### 14.3.2.2 Body

##### **External Reference**

This is the external reference number of the contract.

##### **FLEXCUBE Reference Number**

This is the Oracle FLEXCUBE number.

##### **Contract Status**

This is the contract status of the contract.

##### **Auth Status**

This is the authorization status of the contract.

##### **Maker ID**

This is the ID of the maker.

**Maker Date Stamp**

This is the date on which the maker created the contract.

**Checker ID**

This is the ID of the checker.

**Checker Date Stamp**

This is the date on which the checker verified the contract.

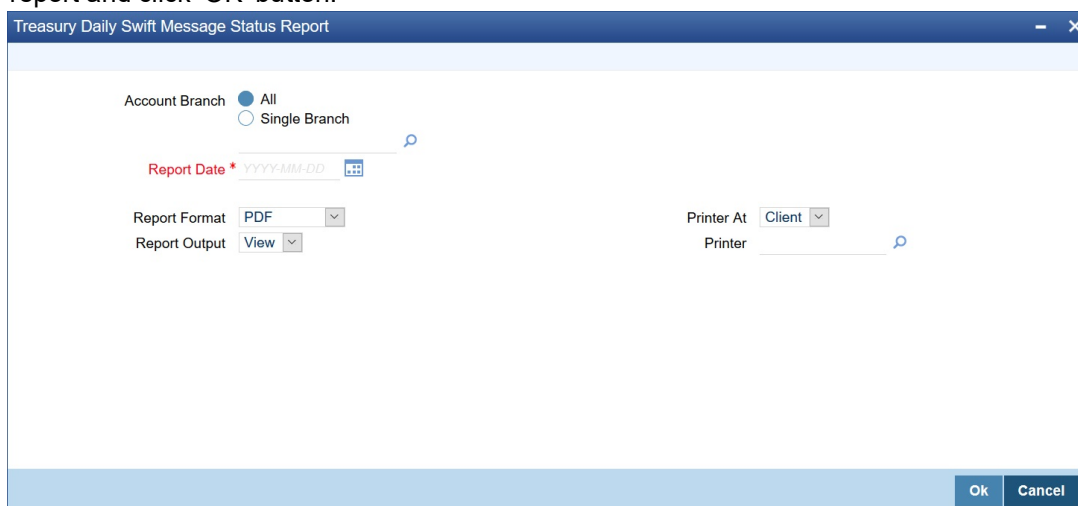
## 14.4 Daily Swift Message Status Report

This section contains the following topics:

- [Section 14.4.1, "Generating Daily Swift Message Status Report"](#)
- [Section 14.4.2, "Contents of the Report"](#)

### 14.4.1 Generating Daily Swift Message Status Report

You can invoke 'Treasury Daily Swift Message Status Report' screen by typing 'MSRTRSFT' in the field at the top right corner of the Application tool bar and click the adjoining arrow button. The system will display 'Print Options' screen. Set your preferences as to printing the report and click 'OK' button.

**Account Branch**

You can generate this report for all the branches or a single branch alone. You can indicate the branch for which the report is being generated using the following options:

- All – If you choose this, the system will generate the report for all the branches.
- Single – If you choose this, you need to specify the branch code for which the report should be generated. The option list displays all valid branch codes maintained in the system. Choose the appropriate one.

**Report Date**

Specify the report date from the adjoining calendar list.

### 14.4.2 Contents of the Report

The parameters specified while generating the report are printed at the beginning of the report. Other content displayed in the report is as follows:

### Header

The 'Header' carries the title of the report, branch code, branch date, user ID, module from which the report has been generated, date and time at which the report has been generated and the page number of the report.

### Body

You can find the following details in the body of the report:

Field	Description
Date of Receiving	Indicates the date of receiving
Value Date	Indicates the value date
Remitting Bank	Indicates the name of remitting bank
Branch Name	Indicates the name of the branch
Amount of Remittance	Indicates the amount of remittance
Currency of Remittance	Indicates the currency of remittance
Serial Numbers	Indicates the serial numbers
Contract Reference	Indicates the contract reference
Sender	Indicates the name of the sender

## 14.5 Statement Message Status Report

This section contains the following topics:

- [Section 14.5.1, "Generating Statement Message Status Report"](#)
- [Section 14.5.2, "Contents of the Report"](#)

### 14.5.1 Generating Statement Message Status Report

You can invoke 'Statement Message Status Report' screen by typing 'MSRSTMSG' in the field at the top right corner of the Application tool bar and click the adjoining arrow button. The

system will display 'Print Options' screen. Set your preferences as to printing the report and click 'OK' button.

### Branch Code

You can generate this report for all the branches or a single branch alone. You can indicate the branch for which the report is being generated using the following options:

- All – If you choose this, the system will generate the report for all the branches.
- Single – If you choose this, you need to specify the branch code for which the report should be generated. The option list displays all valid branch codes maintained in the system. Choose the appropriate one.

### Date

Specify the date from the adjoining calendar list.

## 14.5.2 Contents of the Report

The parameters specified while generating the report are printed at the beginning of the report. The contents of Counterparty Confirmation Pending report have been discussed under the following heads:

### Header

The 'Header' carries the title of the report, branch code, branch date, user ID, module from which the report has been generated, date and time at which the report has been generated and the page number of the report.

### Body of the Report

You can find the following details in the body of the report:

Field	Description
Branch	Indicates the branch code
Branch Date	Indicates the branch date
Status	Indicates the status
Module	Indicates the module code
Document Reference	Indicates the document reference number

Reference Number	Indicates the reference number
Message Type	Indicates the type of message
Swift Message Type	Indicates the swift message type
Address	Indicates the address
Currency	Indicates the currency of the transaction
Amount	Indicates the amount



---

## 15. Function ID Glossary

### C

CSSJOBBER ..... 5-5

### M

MSDPREF ..... 3-1

MSDTRAFM ..... 5-1

MSDTRCAD ..... 4-1

MSDTRFFT ..... 9-1, 9-6

MSDTRMFM ..... 12-1

MSDTRMTM ..... 3-5

MSDTRPRF ..... 3-1

MSDTRSWT ..... 3-7

MSDTRVMS ..... 7-2

MSRSTMSG ..... 14-6

MSRTRLRT ..... 14-2

MSRTRPEX ..... 14-3

MSRTRPSX ..... 14-4

MSRTRSFT ..... 14-5

MSSTRAFM ..... 5-4

MSSTRCAD ..... 4-8

MSSTRIBR ..... 8-2

MSSTROBR ..... 6-2

MSSTRUAR ..... 7-1