
PeopleSoft Campus Solutions 9.2 (through Update Image 19) Installation

November 2020

PeopleSoft Campus Solutions 9.2 (through Update Image 19) Installation

Copyright © 2020, Oracle and/or its affiliates.

This software and related documentation are provided under a license agreement containing restrictions on use and disclosure and are protected by intellectual property laws. Except as expressly permitted in your license agreement or allowed by law, you may not use, copy, reproduce, translate, broadcast, modify, license, transmit, distribute, exhibit, perform, publish, or display any part, in any form, or by any means. Reverse engineering, disassembly, or decompilation of this software, unless required by law for interoperability, is prohibited.

The information contained herein is subject to change without notice and is not warranted to be error-free. If you find any errors, please report them to us in writing.

If this is software or related documentation that is delivered to the U.S. Government or anyone licensing it on behalf of the U.S. Government, then the following notice is applicable:

U.S. GOVERNMENT END USERS: Oracle programs (including any operating system, integrated software, any programs embedded, installed or activated on delivered hardware, and modifications of such programs) and Oracle computer documentation or other Oracle data delivered to or accessed by U.S. Government end users are "commercial computer software" or "commercial computer software documentation" pursuant to the applicable Federal Acquisition Regulation and agency-specific supplemental regulations. As such, the use, reproduction, duplication, release, display, disclosure, modification, preparation of derivative works, and/or adaptation of i) Oracle programs (including any operating system, integrated software, any programs embedded, installed or activated on delivered hardware, and modifications of such programs), ii) Oracle computer documentation and/or iii) other Oracle data, is subject to the rights and limitations specified in the license contained in the applicable contract. The terms governing the U.S. Government's use of Oracle cloud services are defined by the applicable contract for such services. No other rights are granted to the U.S. Government.

This software or hardware is developed for general use in a variety of information management applications. It is not developed or intended for use in any inherently dangerous applications, including applications that may create a risk of personal injury. If you use this software or hardware in dangerous applications, then you shall be responsible to take all appropriate fail-safe, backup, redundancy, and other measures to ensure its safe use. Oracle Corporation and its affiliates disclaim any liability for any damages caused by use of this software or hardware in dangerous applications.

Oracle and Java are registered trademarks of Oracle and/or its affiliates. Other names may be trademarks of their respective owners.

Intel and Intel Inside are trademarks or registered trademarks of Intel Corporation. All SPARC trademarks are used under license and are trademarks or registered trademarks of SPARC International, Inc. AMD, Epyc, and the AMD logo are trademarks or registered trademarks of Advanced Micro Devices. UNIX is a registered trademark of The Open Group.

This software or hardware and documentation may provide access to or information about content, products, and services from third parties. Oracle Corporation and its affiliates are not responsible for and expressly disclaim all warranties of any kind with respect to third-party content, products, and services unless otherwise set forth in an applicable agreement between you and Oracle. Oracle Corporation and its affiliates will not be responsible for any loss, costs, or damages incurred due to your access to or use of third-party content, products, or services, except as set forth in an applicable agreement between you and Oracle.

Documentation Accessibility

For information about Oracle's commitment to accessibility, visit the Oracle Accessibility Program website at <http://www.oracle.com/pls/topic/lookup?ctx=acc&id=docacc>.

Access to Oracle Support

Oracle customers that have purchased support have access to electronic support through My Oracle Support. For information, visit <http://www.oracle.com/pls/topic/lookup?ctx=acc&id=info> or visit <http://www.oracle.com/pls/topic/lookup?ctx=acc&id=trs> if you are hearing impaired.

Contents

Preface

About This Documentation 5
 Understanding This Documentation 5
 Audience 5
 Typographical Conventions 6
 Products 7
 Related Information 8
 Comments and Suggestions 8

Installing PeopleSoft Campus Solutions 9.2 Applications 9

Preparing for the PeopleSoft Campus Solutions 9.2 Installation 9
 Verifying the PeopleTools Version 9
 Installing Application Files to the Custom PS_APP_HOME Location 10
 Verifying the Demo Database Size 10
 Using the Fluid User Interface 10
 Reviewing Licensing Notes 13
 Setting Up Equation Engine Security 13
 Transferring and Compiling Additional Component COBOL for PeopleSoft Campus Solutions 14
 Understanding Additional COBOL Component for PeopleSoft Campus Solutions 14
 Using Additional Component COBOL for PeopleSoft Campus Solutions 14
 Compiling Additional Component COBOL on Microsoft Windows 16
 Compiling Additional Component COBOL on UNIX 21
 Using the IBM COBOL Compiler on IBM AIX 24
 Installing Database Audit Triggers for PeopleSoft Student Records 28
 Understanding Database Audit Triggers 28
 Using Audit Triggers 28
 Installing the Audit Triggers 29
 Adjusting PeopleTools EDI Manager for Financial Aid Processes 30
 Updating the ECOUTMAP.SQC File 30
 Modifying the ECIN0001.SQR File 31
 Using CPU Space for PeopleSoft Academic Advising 31
 Running the SFA_ECQUEUE_TABLES_RESET Script 32
 Configuring Your PeopleSoft Hosted Documentation Website 32
 Using the User Profiles Management Result Table 32
 Understanding the Audience for this Information 32
 Using the User Profiles Management Clean Up Pages 33

Installing PeopleSoft Campus Solutions 9.2 Application	35
Setting Up Installation Options	36
Running Conversion Programs Using PeopleSoft Application Engine	37
Activating PeopleSoft Student Administration Integration Pack Service Operations and Handlers	38
Activating PeopleSoft Student Administration Integration Pack Service Routings	49
Activating PeopleSoft Student Administration Integration Pack Queues	53

About This Documentation

This preface discusses:

- Understanding This Documentation
- Audience
- Typographical Conventions
- Products
- Related Information
- Comments and Suggestions

Understanding This Documentation

This documentation is designed to direct you through a basic PeopleSoft installation. It is not a substitute for the database administration documentation provided by your relational database management system (RDBMS) vendor, the network administration documentation provided by your network vendor, or the installation and configuration documentation for additional software components that are used with PeopleSoft products.

Required updates to this installation documentation are provided in the form of "Required for Install" incidents, which are available on My Oracle Support.

Instructions for installing Oracle's PeopleSoft PeopleTools are provided in PeopleSoft PeopleTools installation guides. Application-specific installation instructions are provided in a separate document for the PeopleSoft application. For instance, if you are installing Oracle's PeopleSoft Customer Relationship Management (CRM), you need both the PeopleSoft PeopleTools installation guide and the additional instructions provided for installing PeopleSoft CRM.

To find the installation documentation for PeopleSoft PeopleTools or for your PeopleSoft application, go to My Oracle Support and search for the installation guide for your product and release.

Note. Before proceeding with your installation, check My Oracle Support to ensure that you have the latest version of this installation guide for the correct release of the PeopleSoft product that you are installing.

Audience

This documentation is written for the individuals responsible for installing and administering the PeopleSoft environment. This documentation assumes that you have a basic understanding of the PeopleSoft system. One of the most important components in the installation and maintenance of your PeopleSoft system is your on-site expertise.

You should be familiar with your operating environment and RDBMS and have the necessary skills to support that environment. You should also have a working knowledge of:

- SQL and SQL command syntax.
- PeopleSoft system navigation.
- PeopleSoft windows, menus, and pages, and how to modify them.
- Microsoft Windows.

Oracle recommends that you complete training, particularly the PeopleSoft Server Administration and Installation course, before performing an installation.

See Oracle University <http://education.oracle.com>.

Typographical Conventions

To help you locate and understand information easily, the following conventions are used in this documentation:

Convention	Description
Monospace	Indicates a PeopleCode program or other code, such as scripts that you run during the install. Monospace is also used for messages that you may receive during the install process.
<i>Italics</i>	Indicates field values, emphasis, and book-length publication titles. Italics is also used to refer to words as words or letters as letters, as in the following example: Enter the letter <i>O</i> .
Initial Caps	Field names, commands, and processes are represented as they appear on the window, menu, or page.
lower case	File or directory names are represented in lower case, unless they appear otherwise on the interface.
Menu, Page	A comma (,) between menu and page references indicates that the page exists on the menu. For example, "Select Use, Process Definitions" indicates that you can select the Process Definitions page from the Use menu.
Cross-references	Cross-references that begin with <i>See</i> refer you to additional documentation that will help you implement the task at hand. We highly recommend that you reference this documentation. Cross-references under the heading <i>See Also</i> refer you to additional documentation that has more information regarding the subject.
" " (quotation marks)	Indicate chapter titles in cross-references and words that are used differently from their intended meaning.
⇒ (line-continuation arrow)	A line-continuation arrow inserted at the end of a line of code indicates that the line of code has been wrapped at the page margin. The code should be viewed or entered as a continuous line of code, without the line-continuation arrow.
Note. Note text.	Text that begins with <i>Note</i> . indicates information that you should pay particular attention to as you work with your PeopleSoft system.

Convention	Description
Important! Important note text.	A note that begins with <i>Important!</i> is crucial and includes information about what you need to do for the system to function properly.
Warning! Warning text.	A note that begins with <i>Warning!</i> contains critical configuration information or implementation considerations; for example, if there is a chance of losing or corrupting data. Pay close attention to warning messages.

Products

This documentation may refer to these products and product families:

- Oracle® BPEL Process Manager
- Oracle® Enterprise Manager
- Oracle® Tuxedo
- Oracle® WebLogic Server
- Oracle's PeopleSoft Application Designer
- Oracle's PeopleSoft Change Assistant
- Oracle's PeopleSoft Change Impact Analyzer
- Oracle's PeopleSoft Data Mover
- Oracle's PeopleSoft Process Scheduler
- Oracle's PeopleSoft Pure Internet Architecture
- Oracle's PeopleSoft Customer Relationship Management
- Oracle's PeopleSoft Financial Management
- Oracle's PeopleSoft Human Resources Management Systems
- Oracle's PeopleSoft Enterprise Learning Management
- Oracle's PeopleSoft Pay/Bill Management
- Oracle's PeopleSoft PeopleTools
- Oracle's PeopleSoft Enterprise Performance Management
- Oracle's PeopleSoft Interaction Hub
- Oracle's PeopleSoft Staffing Front Office
- Oracle's PeopleSoft Supply Chain Management

See <http://www.oracle.com/us/products/applications/peoplesoft-enterprise/index.html> for a list of PeopleSoft Enterprise products.

Related Information

Oracle provides reference information about PeopleSoft PeopleTools and your particular PeopleSoft application. The following documentation is available on My Oracle Support:

- Product documentation for PeopleTools: Getting Started with PeopleTools for your release. This documentation provides a high-level introduction to PeopleSoft PeopleTools technology and usage.
- Product documentation for PeopleSoft Application Fundamentals for your PeopleSoft application and release. This documentation provides essential information about the setup, design, and implementation of your PeopleSoft application.

To access documentation on My Oracle Support, go to <https://support.oracle.com>.

To access PeopleSoft Online Help (PeopleBooks), go to the Oracle PeopleSoft Online Help site:

www.peoplesoftonlinehelp.com

To install additional component software products for use with PeopleSoft products, including those products that are packaged with your PeopleSoft products, you should refer to the documentation provided with those products, as well as this documentation.

Comments and Suggestions

Your comments are important to us. We encourage you to tell us what you like, or what you would like changed about our documentation, PeopleSoft Online Help (PeopleBooks), and other Oracle reference and training materials. Please send your suggestions to:

PSOFT-Infodev_US@oracle.com

While we cannot guarantee to answer every email message, we will pay careful attention to your comments and suggestions. We are always improving our product communications for you.

Installing PeopleSoft Campus Solutions 9.2 Applications

This chapter discusses:

- Preparing for the PeopleSoft Campus Solutions 9.2 Installation
- Setting Up Equation Engine Security
- Transferring and Compiling Additional Component COBOL for PeopleSoft Campus Solutions
- Installing Database Audit Triggers for PeopleSoft Student Records
- Adjusting PeopleTools EDI Manager for Financial Aid Processes
- Using CPU Space for PeopleSoft Academic Advising
- Running the SFA_ECQUEUE_TABLES_RESET Script
- Configuring Your PeopleSoft Hosted Documentation Website
- Using the User Profiles Management Result Table
- Installing PeopleSoft Campus Solutions 9.2 Application

Preparing for the PeopleSoft Campus Solutions 9.2 Installation

This section discusses:

- Verifying the PeopleTools Version
- Installing Application Files to the Custom PS_APP_HOME Location
- Verifying the Demo Database Size
- Using the Fluid User Interface
- Reviewing Licensing Notes

Verifying the PeopleTools Version

All new installs of PeopleSoft Campus Solutions 9.2 require PeopleTools 8.58.05 or higher. Upgrade customers need to check the Upgrade Home Page for the PeopleTools requirements for their specific upgrade path.

Important! This document is not a stand-alone installation guide. It does not contain PeopleTools installation instructions. When installing PeopleSoft Campus Solutions, be sure to use both the PeopleTools Installation Guide for your database platform and these supplemental PeopleSoft Campus Solutions installation instructions.

See PeopleSoft PeopleTools Installation guide for your database platform and for your current PeopleTools release, available on My Oracle Support.

Installing Application Files to the Custom PS_APP_HOME Location

You can elect to install your PeopleSoft application files into a custom location that is identified by the PS_APP_HOME environment variable.

You can continue to install applications into PS_HOME using the traditional approach, or you can install to the custom location PS_APP_HOME. Electing to continue using the traditional PS_HOME structure brings no impact to your implementation, and you can carry on the same as before. However, if you are seeking further modularity and more streamlined implementations, then installing your PeopleSoft application into a separate PS_APP_HOME location is an attractive alternative.

For more information about PS_APP_HOME and the corresponding instructions to configure and implement this option, you can refer to the following documentation that is available on My Oracle Support, the Oracle Technology Network and the Hosted PeopleBooks web sites:

See PeopleSoft: PeopleTools installation guide for your database platform for more information on database creation.

See *PeopleTools: System and Server Administration*.

Note. For the purposes of this installation document, use the reference PS_APP_HOME as the location where the application files will reside. If you are not implementing the custom PS_APP_HOME location, then this variable will be equal to PS_HOME.

Verifying the Demo Database Size

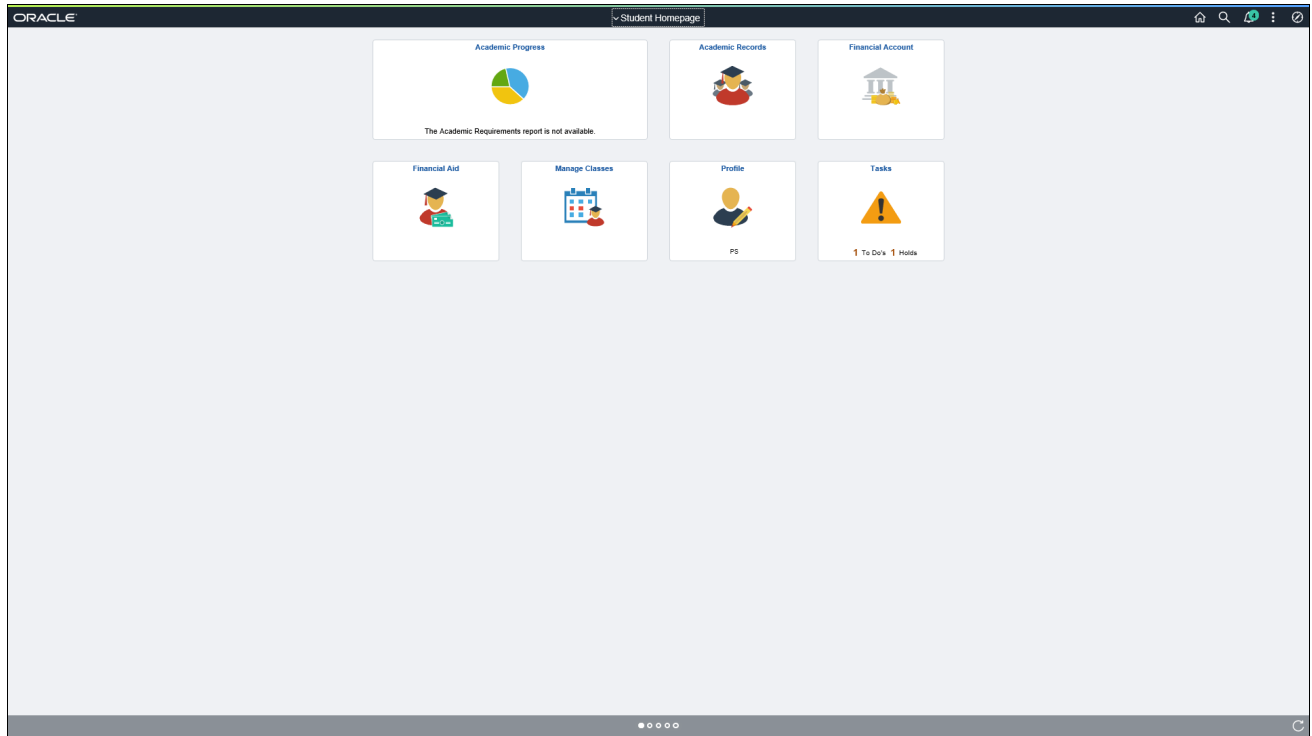
The following table lists the approximate PeopleSoft Campus Solutions 9.2 Demo database size for each RDBMS platform.

RDBMS Platform	Approximate Database Size
Oracle — ANSI	17 GB
Oracle — Unicode	17 GB
Microsoft SQL Server	6 GB
Microsoft SQL Server — Unicode	7.8 GB

Using the Fluid User Interface

When you sign in to your PeopleSoft application, you may see the PeopleSoft Fluid User Interface by default. To access the menu items, as seen in the classic user interface, from the PeopleSoft Fluid User Interface:

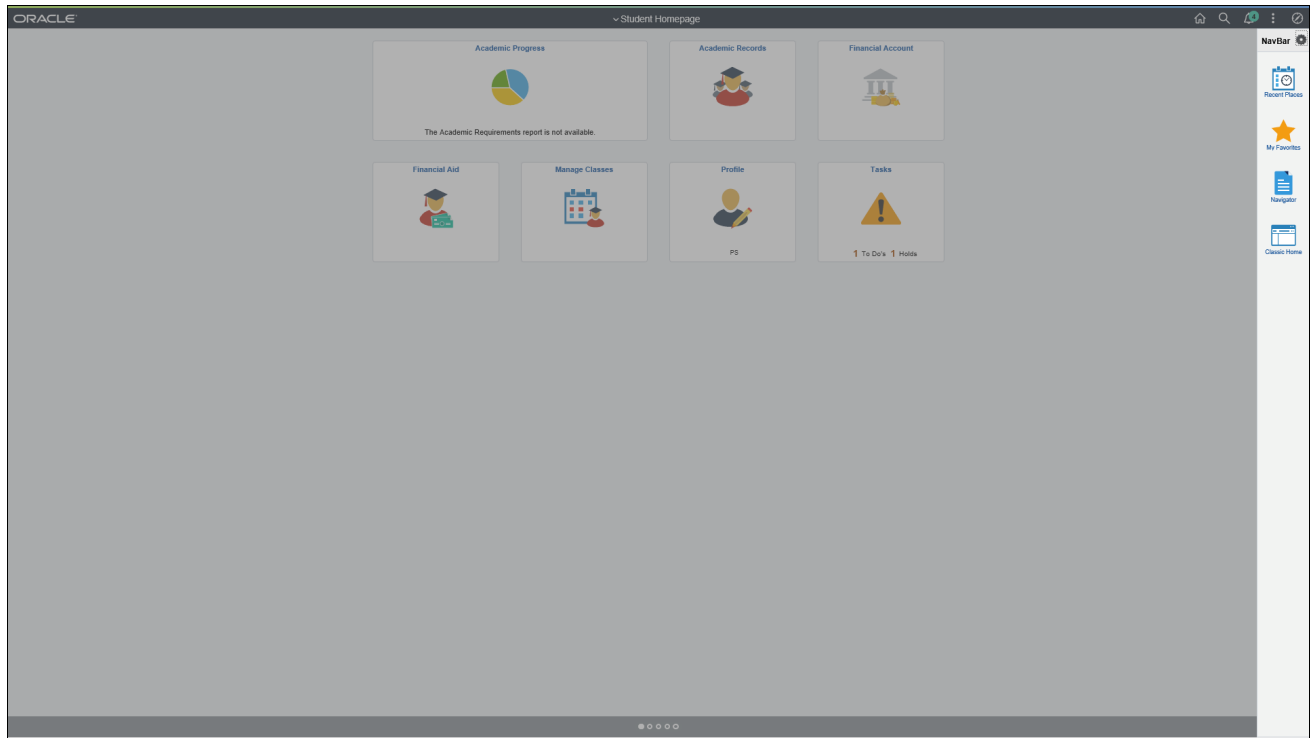
1. On the PeopleSoft Fluid User Interface, shown in this example, select (press) the NavBar button at the top right, which looks like a compass.



PeopleSoft Fluid User Interface home page

The Navigation bar (NavBar) side page appears.

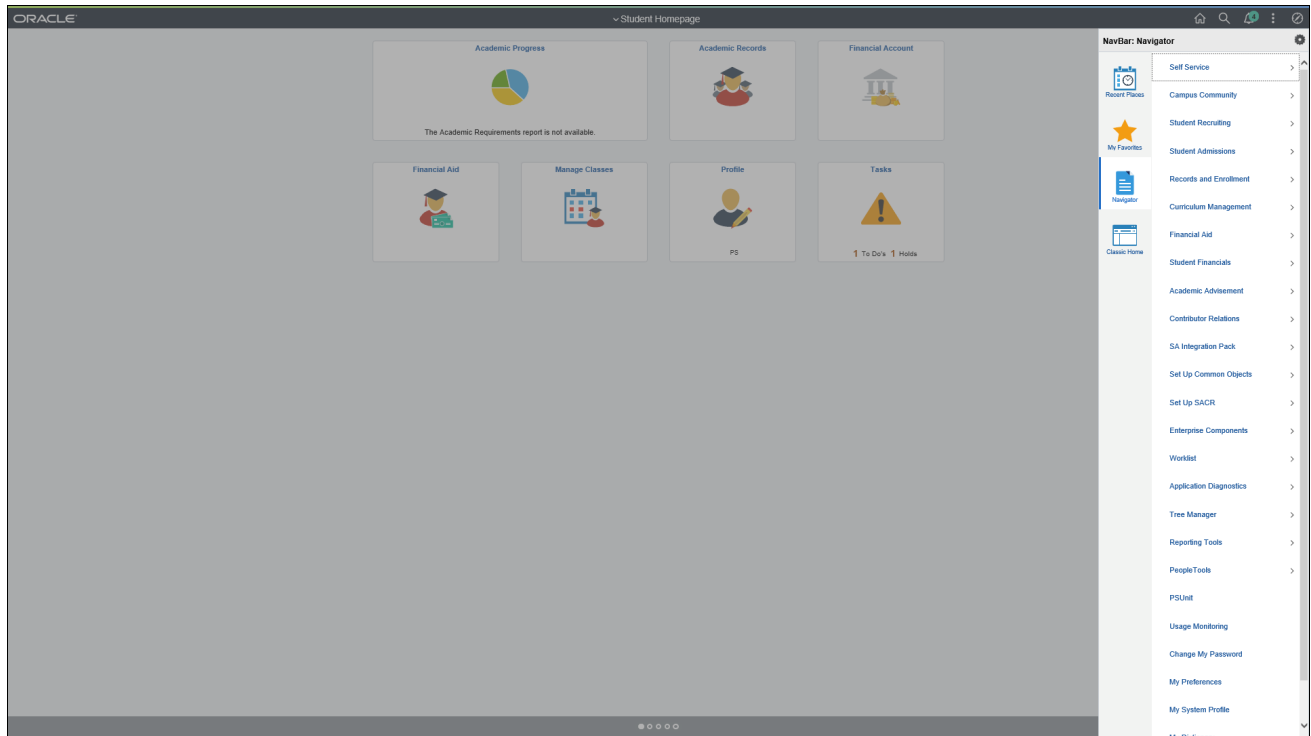
2. Select (press) Navigator.



NavBar side page

The menu structure appears.

3. Navigate to the desired item, such as Student Recruiting or PeopleTools.



Navigator side page with PeopleSoft menu items

See Also

PeopleTools: Applications User's Guide, "Working With Fluid Homepages"

PeopleTools: Fluid User Interface Developer's Guide

Reviewing Licensing Notes

Review the licensing notes for PeopleSoft Campus Solutions 9.2. These licensing notes contain supplemental licensing information related to the licensing of PeopleSoft products and products from other vendors that PeopleSoft uses as part of our infrastructure.

See Licensing Notes for Oracle's PeopleSoft Campus Solutions (CS) 9.2, My Oracle Support, Doc ID 2013381.1

Task 1-1: Setting Up Equation Engine Security

Oracle delivers Equation Security with all public access to all equation objects activated within the authorized equation components. Your institution may not want to provide this level of access to all of your equation users. For example, you may want to limit who can read certain tables and views and who can execute certain equation sql objects.

See *PeopleSoft Campus Solutions: Campus Solutions Application Fundamentals "Equation Engine Programmers Guide."*

Task 1-2: Transferring and Compiling Additional Component COBOL for PeopleSoft Campus Solutions

This section discusses:

- Understanding Additional COBOL Component for PeopleSoft Campus Solutions
- Using Additional Component COBOL for PeopleSoft Campus Solutions
- Compiling Additional Component COBOL on Microsoft Windows
- Compiling Additional Component COBOL on UNIX
- Using the IBM COBOL Compiler on IBM AIX

Understanding Additional COBOL Component for PeopleSoft Campus Solutions

This task details the use of additional COBOL Component for PeopleSoft Campus Solutions.

To compile PeopleTools COBOL programs,

See PeopleTools Installation guide for your database platform and PeopleTools release, available on My Oracle Support.

Task 1-2-1: Using Additional Component COBOL for PeopleSoft Campus Solutions

PeopleSoft Campus Solutions is delivered with additional component COBOL sources referred to as INAS (Institutional Needs Analysis System) that does not compile correctly using the standard PeopleSoft method described in the PeopleTools installation guide. The following sections describe how to compile the INAS COBOLs for all operating system platforms.

INAS COBOL sources, which are licensed from The College Board, have a naming standard based upon the academic year to which they apply. The following table lists the names of the INAS COBOL files where "yy" refers to the academic year (for example, FMCALC19.cbl, and FMCALC20.cbl, FMCALC21.cbl).

The values of "yy" for recent Academic Aid years are as follows:

- 2018–2019: yy = 19
- 2019–2020: yy = 20
- 2020–2021: yy = 21

Copy Books	Programs
FEDyy.CBL	FMCALCyy.CBL
FEDEXTyy.CBL	FMRJCTyy.CBL
FEDORIyy.CBL	FMSNTyy.CBL

Copy Books	Programs
FEDWRKyy.CBL	FMTWEKyy.CBL
FMCNSTyy.CBL	IMCALCyy.CBL
FUNCWAppy.CBL	IMMAPIyy.CBL (No longer provided starting in 2019-2020)
GLOBALyy.CBL	IMMAPOyy.CBL
IMCNSTyy.CBL	IMMSGEyy.CBL
INARyy.CBL	IMPLUSyy.CBL
PROWRKyy.CBL	INFUNCyy.CBL
TAXPRMyyy.CBL	ININARyy.CBL
IWKGLByyy.CBL	INLCLyy.CBL (No longer provided starting in 2018-2019)
IMRyy.CBL	INMIGRyy.CBL (No longer provided starting in 2019-2020)
IMREXTyy.CBL	INTAXyy.CBL
FMRyy.CBL	INASccyy.CBL (No longer provided starting in 2021-2022)
FMREXTyy.CBL	INASy1y2.CBL

In a Unicode environment, the COBOLs in the following list fail to compile during the "Compiling COBOL" section of the PeopleTools installation guide. The errors occur because required COBOL sources are not copied to the temporary compile directory by cblbld.bat or pscbl.mak while the build runs.

- FAPINAS1
- FAPINAS2
- FAPINAS3
- FAPINAS4
- FAPINAS5
- FAPINAS6
- FAPINAS7
- FAPINAS8
- FAPINAS9
- FAPINAS0
- IMPLUS10
- IMPLUS11
- IMPLUS12
- IMPLUS13

- IMPLUS14
- IMPLUS15
- IMPLUS16
- IMPLUS17
- IMPLUS18
- IMPLUS19
- IMPLUS20
- IMPLUS21

See PeopleSoft PeopleTools Installation guide for your database platform and for your current PeopleTools release, available on My Oracle Support.

On UNIX, the errors can be ignored because psobl.mak copies all of the COBOLs that successfully compile to PS_HOME/cblbin directory. Also, the errors should go away after compiling additional component COBOL on UNIX. So, subsequent recompiles should be clean.

See "Compiling Additional Component COBOL on UNIX," to know how to successfully compile the remaining files so that all sources are built.

On Microsoft Windows, cblbld.bat stops after the twelve errors occur and does not copy the compiled COBOL files to the PS_HOME\CBLBINU directory. Because of this, the compiled *.exe's., *.gnt's, and *.int's should be manually copied from the compile directory to the PS_HOME\cblbinu directory after cblbld.bat stops.

See Compiling Additional Component COBOL on Microsoft Windows.

In an ANSI environment on Microsoft Windows, the COBOL compiling process described in the PeopleTools 8.58 Installation Guide removes all compiled COBOLs from PS_HOME\cblbina before copying the new files in. This also removes the INAS COBOLs that are created in this task. As a result, you need to repeat the task "Compiling Additional Component COBOL on Microsoft Windows" after a PeopleSoft COBOL recompile using cscblbld.bat so that the INAS objects are replaced.

Task 1-2-2: Compiling Additional Component COBOL on Microsoft Windows

This section discusses:

- Understanding COBOL Compilation on Microsoft Windows
- Compiling Additional Component COBOL on Microsoft Windows with a PS_HOME Setup
- Compiling Additional Component COBOL on Microsoft Windows with a PS_APP_HOME Setup
- Compiling COBOL on Microsoft Windows with a PS_CUST_HOME Setup

Understanding COBOL Compilation on Microsoft Windows

A new Windows COBOL compile routine, CSCBLBLD.BAT, has been created that incorporates the INAS COBOL files into the overall Campus Solutions 9.2 Windows COBOL compile process. Campus Solutions 9.2 customers using the Windows platform should use the CSCBLBLD.BAT compile routine instead of the existing PeopleTools compile routine CBLBLD.BAT when compiling or recompiling the entire Campus Solutions 9.2 application codeline.

See PeopleTools Installation guide for your database platform, "Installing and Compiling COBOL on Windows" for your current PeopleTools release, available on My Oracle Support, to compile a single, non-INAS, PeopleSoft Application program.

To compile COBOL with CSCBLBLD.BAT, set up the appropriate environment variables on the machine from which you will compile COBOL. This should be either your file server or a machine that has access to your file server.

You can do this from a command prompt window. The following table gives the environment variables and their purposes:

Environment Variable	Purpose
PS_HOME	PeopleSoft home directory- that is, the drive letter and high-level PeopleSoft directory where you installed PeopleTools. Your Campus Solutions 9.2 application software can reside here as well if you are running in a traditional 'combined' environment.
PS_APP_HOME	PeopleSoft Application home directory- that is, the drive letter and high-level directory where you installed the PeopleSoft Campus Solutions 9.2 application software.
PS_CUST_HOME	PeopleSoft Application customized home directory- that is, the drive letter and high-level directory containing your customized PeopleSoft COBOL programs.
COBROOT	Drive letter and root directory of the COBOL compiler (Required).
PATH	PATH is an environment variable on operating systems like DOS, Unix, Linux, and Microsoft Windows, specifying a set of directories where executable programs are located. In general, each executing process or <i>user session</i> has its own PATH setting.

For example, in a PS_HOME setup, you could enter the following at the DOS command prompt:

```
set PS_HOME=C:\CS920
set PS_APP_HOME=C:\CS920
set COBROOT="C:\Program Files\VisualCobol140"
```

For a PS_APP_HOME setup, you could enter the following at the DOS command prompt:

```
set PS_HOME=C:\PTinstalled
set PS_APP_HOME=C:\CSAppInstalled
set COBROOT="C:\Program Files\VisualCobol140"
```

For a PS_CUST_HOME setup, you could enter the following at the DOS command prompt:

```
set PS_HOME=C:\PTinstalled
set PS_APP_HOME=C:\CSAppInstalled
set PS_CUST_HOME=C:\CUSTCSAppinstalled
set COBROOT="C:\Program Files\VisualCobol140"
```

For installing Net Express, use installation path:

```
set COBROOT="C:\Program Files\VisualCobol140"
```

For installing Visual COBOL, use installation path:

```
set COBROOT="C:\Program Files\VisualCobol40"
```

Note. If you choose the Unicode option while running the PeopleSoft Installer, the file UNICODE.CFG is created in the `<PS_HOME>\setup` directory. UNICODE.CFG automatically triggers the batch file CSCBL2UNI.BAT when you run CSCBLBLD.BAT. Another batch file, CSCBLRTCPY.BAT, copies four DLLs (CBLINTS.DLL, CBLRTSS.DLL, CBLVIOS.DLL, COB32API.DLL) from the Micro Focus compiler directory (identified by `%COBROOT%` setting) into the appropriate CBLBIN directory (CBLBINA or CBLBINU) when you run CSCBLBLD. These files are needed for COBOL to run; they can reside anywhere as long as they are in the path.

Ensure to check whether you need to apply any late-breaking patches.

See My Oracle Support, Patches & Updates.

The PATH environment variable will need to be modified to include the directories where the CSCBLBLD.BAT program and its associated subroutines reside. For example, if the customer is in a decoupled environment and CSCBLBLD.BAT and its associated subroutines reside in `PS_HOME\setup`, then the PATH environment variable should be modified as follows:

```
set PATH=%PATH%;%PS_HOME%\setup
```

If the customer is in a decoupled environment with a `PS_APP_HOME` setup, then the PATH environment variable will need to be modified as follows:

```
set PATH=%PATH%;%PS_APP_HOME%\setup;%PS_HOME%\setup
```

If the customer is in a decoupled environment with a `PS_CUST_HOME` setup, then the PATH environment variable will need to be modified as follows:

```
set PATH=%PATH%;%PS_CUST_HOME%\setup;%PS_APP_HOME%\setup;%PS_HOME%\setup
```

Compiling Additional Component COBOL on Microsoft Windows with a PS_HOME Setup

This section assumes that you installed both PeopleSoft PeopleTools and PeopleSoft Application software to `PS_HOME`, and that you have not set up or defined `PS_CUST_HOME`.

To compile COBOL with CSCBLBLD.BAT:

1. Open a command prompt window if you do not have one open already, and change directories to `PS_HOME\setup`.
2. Execute CSCBLBLD.BAT as follows:

```
cscblbld <compile drive> <compile directory> PS_HOME
```

where:

- `<compile drive>`- Enter the drive letter for the drive containing the directory where the compile takes place.
- `<compile directory>`- Enter the directory where the compile takes place. CSCBLBLD.BAT will create the compile directory for you if it does not already exist.

Note. Ensure that there is a space between the `<compile drive>` and `<compile directory>` parameters; they are treated as two different parameters within the CSCBLBLD.BAT batch program. In addition, the first character in the `<compile directory>` parameter should be a back-slash (`\`). You should also ensure that you have write permission to `<compile drive>` and `<compile directory>` as the compile process will take place there.

For example, the following command will take the COBOL source from PS_HOME\src\cbl and do the compile process under c:\temp\compile:

```
cscblbld c: \temp\compile PS_HOME
```

Make note of the information that is displayed on the screen while the process is running; it provides the locations of important files that you will need to examine.

- After you have successfully compiled your source code, all of the executables should have been placed in your <PS_HOME>\CBLBIN<X> directory (this directory will be named CBLBINA or CBLBINU, depending on whether you are using ANSI or Unicode). Make sure that all of the files were copied correctly to this directory.
- If the files were copied correctly, you can delete the entire temporary compile directory to free space on your disk drive.

Note. You may want to keep the files in the compile directory for testing purposes. Make sure that you have enough space on the drive where <compile directory> is located. Estimate about three times the amount in the <PS_HOME>\CBLBIN<X> directory.

Compiling Additional Component COBOL on Microsoft Windows with a PS_APP_HOME Setup

This section assumes that you installed PeopleSoft application software to a PS_APP_HOME directory that is different from the PS_HOME directory where you installed PeopleSoft PeopleTools. It also assumes that there is no separate PS_CUST_HOME directory with customized COBOL source files.

To compile:

- Change directory to PS_APP_HOME\setup:

```
cd %PS_APP_HOME%\setup
```

- The usage for running CSCBLBLD.BAT is:

```
cscblbld <compile drive> <compile directory> PS_APP_HOME
```

where:

- <compile drive>- Enter the drive letter for the drive containing the directory where the compile takes place.
- <compile directory>- Enter the directory where the compile takes place. CSCBLBLD.BAT will create the compile directory for you if it does not already exist.

Note. Ensure that there is a space between the <compile drive> and <compile directory> parameters; they are treated as two different parameters within the CSCBLBLD.BAT batch program. In addition, the first character in the <compile directory> parameter should be a back-slash (\). You should also ensure that you have write permission to <compile drive> and <compile directory> as the compile process will take place there.

For example, the following command will take the COBOL source from PS_APP_HOME\src\cbl and do the compile process under c:\temp\compile:

```
cscblbld c: \temp\compile PS_APP_HOME
```

- After you have successfully compiled your source code, all of the executables should have been placed in your <PS_APP_HOME>\CBLBIN<X> directory (this directory will be named CBLBINA or CBLBINU, depending on whether you are using ANSI or Unicode). Make sure that all of the files were copied correctly

to this directory.

- If the files were copied correctly, you can delete the entire temporary compile directory to free space on your disk drive.

Note. You may want to keep the files in the compile directory for testing purposes. Make sure that you have enough space on the drive where *<compile directory>* is located. Estimate about three times the amount in the *<PS_APP_HOME>\CBLBIN<X>* directory.

Compiling COBOL on Microsoft Windows with a PS_CUST_HOME Setup

This section assumes that you installed PeopleSoft application software to a PS_APP_HOME directory that is different from the PS_HOME directory where you installed PeopleSoft PeopleTools. It also assumes that you have set up a PS_CUST_HOME environment variable for customized COBOL source files.

To compile:

- Change directory to *PS_APP_HOME\setup*:

```
cd %PS_APP_HOME%\setup
```

- The usage for running CSCBLBLD.BAT is:

```
cscblbld <compile drive> <compile directory> PS_CUST_HOME
```

where:

- <compile drive>*- Enter the drive letter for the drive containing the directory where the compile takes place.
- <compile directory>*- Enter the directory where the compile takes place. CSCBLBLD.BAT will create the compile directory for you if it does not already exist.

Note. Ensure that there is a space between the *<compile drive>* and *<compile directory>* parameters; they are treated as two different parameters within the CSCBLBLD.BAT batch program. In addition, the first character in the *<compile directory>* parameter should be a back-slash (\). You should also ensure that you have write permission to *<compile drive>* and *<compile directory>* as the compile process will take place there.

For example, the following command will take the COBOL source from PS_CUST_HOME\src\cbl and do the compile process under c:\temp\compile:

```
cscblbld c: \temp\compile PS_CUST_HOME
```

- Delivered (that is, non-customized) PeopleSoft PeopleTools and PeopleSoft Application COBOL compiled executables will be placed under the *<PS_HOME>\CBLBIN<X>* directory. Customized PeopleSoft Application or PeopleSoft PeopleTools COBOL compiled executables will be placed under the *<PS_CUST_HOME>\CBLBIN<X>* directory (this directory will be named CBLBINA or CBLBINU, depending on whether you are using ANSI or Unicode).
- If the files were copied correctly, you can delete the entire temporary compile directory to free space on your disk drive.

Note. You may want to keep the files in the compile directory for testing purposes. Make sure that you have enough space on the drive where *<compile directory>* is located. Estimate about three times the amount in the *<PS_CUST_HOME>\CBLBIN<X>* directory.

Task 1-2-3: Compiling Additional Component COBOL on UNIX

This section discusses:

- Understanding COBOL Compilation on UNIX
- Setting Environment Variables
- Compiling COBOL on UNIX with a PS_HOME Setup
- Compiling COBOL on UNIX with a PS_APP_HOME Setup
- Compiling COBOL on UNIX with a PS_CUST_HOME Setup

Understanding COBOL Compilation on UNIX

A new UNIX COBOL compile routine, `pscbles.mak`, has been created that incorporates the INAS COBOL files into the overall Campus Solutions 9.2 UNIX COBOL compile process. Campus Solutions 9.2 customers using the UNIX platform should use the `pscbles.mak` COBOL compile routine instead of the existing `psubl.mak` COBOL compile routine when compiling or recompiling the entire Campus Solutions 9.2 application codeline.

See PeopleTools Installation guide for your database platform, "Installing and Compiling COBOL on UNIX" for your current PeopleTools release, available on My Oracle Support, to compile a single, non-INAS, PeopleSoft Application program.

Setting Environment Variables

To set environment variables:

1. Set `PS_HOME` environment variable in the UNIX shell prompt from which you want to run the COBOL compile. You can run `PS_HOME/psconfig.sh` with the following command to set the `PS_HOME` environment variable in the shell:

```
cd <PS_HOME>
. ./psconfig.sh
```

2. Verify if `PS_HOME` is set with the following command:

```
$ echo $PS_HOME
$ /home/<user>/PTinstalled
```

3. Update the `$PATH` system variable as follows:

In an environment with a `PS_HOME` setup, or a decoupled environment where `PS_HOME` points to the same directory as `PS_APP_HOME`, the `$PATH` system variable should be modified as follows:

```
$ export PATH=$PS_HOME/setup:$PATH
```

In a decoupled environment with a `PS_APP_HOME` setup, the `$PATH` system variable should be modified as follows:

```
$ export PATH=$PS_APP_HOME/setup:$PS_HOME/setup:$PATH
```

In a decoupled environment with a `PS_CUST_HOME` setup, the `$PATH` system variable should be modified as follows:

```
$ export PATH=$PS_CUST_HOME/setup:$PS_APP_HOME/setup:$PS_HOME/setup:⇒
$PATH
```

- If you have not already done so, download all required patches to your file server, and from there FTP the contents of src\cbl\base and src\cbl\unix over to src/cbl on the relevant application or batch server.

Note. When you copy patches over from the file server, the files need to have a lowercase cbl extension and an uppercase program name; for example, PATCH.cbl.

Use the shell scripts pscblcs.mak and inasbl1*.mak, found in *PS_APP_HOME/setup*, to do the PeopleSoft Additional Component COBOL compilations.

The compilation procedure depends upon how you set up your installation environment.

The different compilation procedures are:

- Compiling COBOL on UNIX with a PS_HOME setup.
- Compiling COBOL on UNIX with a PS_APP_HOME setup.
- Compiling COBOL on UNIX with a PS_CUST_HOME setup.

Compiling COBOL on UNIX with a PS_HOME Setup

This section discusses compiling COBOL on UNIX when PS_APP_HOME is same as PS_HOME.

Assume that you installed the PeopleSoft Application software to a *PS_APP_HOME* directory that is the same as the *PS_HOME* directory where you installed PeopleSoft PeopleTools. This also assumes that there is no separate PS_CUST_HOME directory with customized COBOL source files.

To compile:

- Change to the *PS_HOME/setup* directory by using the following command:

```
cd $PS_HOME/setup
```

- Use *either one* of the following compile command as per your requirement:

To compile the entire Campus Solutions 9.2 COBOL codeline, including INAS, use the following command:

```
./pscblcs.mak PS_HOME
```

The dynamic compile creates INT, LST, and GNT files, which are copied to the following locations:

File	Location
INT	<i>PS_HOME/src/cbl/int</i>
LST	<i>PS_HOME/src/cbl/lst</i>
GNT	<i>PS_HOME/cblbin</i>

To recompile any one, or all, of the active Aid Year's additional component COBOL, that is, INAS, you can run *any one or all* of the following commands:

```
./inasbl19.mak PS_HOME
./inasbl20.mak PS_HOME
./inasbl21.mak PS_HOME
```

Warning! The proposed ISO 2000 COBOL features are enabled. Please refer to PeopleTools documentation for details, and do not rely on these features from Micro Focus COBOL due to changes in the proposed COBOL standard.

Compiling COBOL on UNIX with a PS_APP_HOME Setup

This section discusses compiling COBOL on UNIX when PS_APP_HOME is different from PS_HOME.

Assume that you installed the PeopleSoft Application software to a PS_APP_HOME directory that is different from the PS_HOME directory where you installed PeopleSoft PeopleTools. This also assumes that there is no separate PS_CUST_HOME directory with customized COBOL source files.

To compile:

1. Set the PS_APP_HOME environment variable with the following command:

```
PS_APP_HOME=/home/<user>/CSAppinstalled; export PS_APP_HOME
```

2. Change to the PS_APP_HOME/setup directory with the following command:

```
cd $PS_APP_HOME/setup
```

3. Use *either one* of the following compile command as per your requirement:

- To compile the entire Campus Solutions 9.2 COBOL codeline, including INAS, use the following command:

```
./pscblcs.mak PS_APP_HOME
```

- To recompile any one, or all, of the active Aid Year's additional component COBOL, that is, INAS, you can run *any one or all* of the following commands:

```
./inasbl19.mak PS_APP_HOME
```

```
./inasbl20.mak PS_APP_HOME
```

```
./inasbl21.mak PS_APP_HOME
```

PeopleSoft Application compiled COBOL programs will be placed under the appropriate PS_APP_HOME\cblbinX directory.

Compiling COBOL on UNIX with a PS_CUST_HOME Setup

This section discusses compiling COBOL on UNIX when PS_CUST_HOME environment variable is set up for customized COBOL source files.

Assume that you have set up a PS_CUST_HOME environment variable for customized COBOL source files.

To compile:

1. If PS_APP_HOME is different from PS_HOME, set the PS_APP_HOME environment variable with the following command:

```
PS_APP_HOME=/home/<user>/CSAppinstalled; export PS_APP_HOME
```

2. Set the PS_CUST_HOME environment variable with the following command:

```
PS_CUST_HOME=/home/<user>/CUSTCSAppinstalled; export PS_CUST_HOME
```

3. Change to the PS_APP_HOME/setup directory:

```
cd $PS_APP_HOME/setup
```

4. Use *either one* of the following compile command as per your requirement:

To compile the entire Campus Solutions 9.2 COBOL codeline, including INAS, under PS_CUST_HOME, use the command:

```
./pscb1cs.mak PS_CUST_HOME
```

To recompile any one, or all, of the active Aid Year's additional component COBOL, that is, INAS, you can run *any one or all* of the following commands:

```
./inasbl19.mak PS_CUST_HOME
```

```
./inasbl20.mak PS_CUST_HOME
```

```
./inasbl21.mak PS_CUST_HOME
```

PeopleSoft Application compiled COBOL programs will be placed under the appropriate *PS_CUST_HOME*\cblbinX directory.

Task 1-2-4: Using the IBM COBOL Compiler on IBM AIX

This section discusses:

- Understanding IBM COBOL Compilation on IBM AIX
- Setting Environment Variables
- Compiling COBOL on AIX with a PS_HOME Setup
- Compiling COBOL on AIX with a PS_APP_HOME Setup
- Compiling COBOL on AIX with a PS_CUST_HOME Setup

Note. In order to compile PeopleTools COBOL programs, please refer to the PeopleTools Installation guide for your database platform and PeopleTools release, available on My Oracle Support.

Understanding IBM COBOL Compilation on IBM AIX

Using psclibm.mak, as described in the "Installing and Compiling COBOL on UNIX" chapter of the PeopleTools installation guide, only compiles sources with a "P" in the third position of the file name, which is the PeopleSoft naming standard for COBOL. The INAS COBOL files do not conform to this naming standard, and are bypassed in psclibm.mak.

A new AIX COBOL compile routine, psclibmcs.mak, has been created that incorporates the INAS COBOL files into the overall Campus Solutions 9.2 AIX COBOL compile process. Campus Solutions 9.2 customers running on the IBM AIX platform should use the psclibmcs.mak COBOL compile routine in place of the existing psclibm.mak COBOL compile routine when compiling or recompiling the entire Campus Solutions 9.2 application codeline.

Setting Environment Variables

Before compiling the IBM COBOL for AIX, or before installing the files on machines where the COBOL will be run, you must specify environment variables in this section. This procedure assumes that the installation directory for PeopleSoft PeopleTools 8.58 is *PS_HOME*.

To Compile IBM COBOL successfully on AIX, below parameter need to set:

```
export OBJECT_MODE=64
```

To set the environment variables for IBM COBOL for AIX, go to the PeopleSoft PeopleTools installation directory and source the psconfig.sh script:

```
cd <PS_HOME>
```

```
./psconfig.sh
```


This section includes different procedures depending upon how you set up your installation environment.

- *PS_HOME Setup*

If you installed the PeopleSoft Application software to a *PS_APP_HOME* location that is the same as the *PS_HOME* location where you installed the PeopleSoft PeopleTools software, follow the instructions in the section Compiling COBOL on AIX with a *PS_HOME* Setup.

- *PS_APP_HOME Setup*

If you installed the PeopleSoft Application software to a *PS_APP_HOME* location that is different from the *PS_HOME* location where you installed the PeopleSoft PeopleTools software, follow the instructions in the section Compiling COBOL on AIX with a *PS_APP_HOME* Setup.

- *PS_CUST_HOME Setup*

For PeopleSoft PeopleTools 8.53 and later, you have the option to place customized COBOL baseline sources into a location referenced by the environment variable *PS_CUST_HOME*.

The *PS_CUST_HOME* directory structure must replicate that of *PS_HOME* or *PS_APP_HOME*; that is, any COBOL source file that is customized should be placed in the same relative path as was present in the original location. If you set up a *PS_CUST_HOME* directory for your customized COBOL source files, follow the instructions in the section Compiling COBOL on AIX with a *PS_CUST_HOME* Setup.

Compiling COBOL on AIX with a *PS_HOME* Setup

This section assumes that you have installed the PeopleSoft Application software in the same directory *PS_APP_HOME* where you installed the PeopleSoft PeopleTools software *PS_HOME*, and that you do not have customized COBOL source files in a *PS_CUST_HOME* directory. In addition, this procedure assumes that you have set the environment variables as described in the previous section.

This section is only required for those who need to *compile* the COBOL sources, not for those who only need to run the compiled COBOL.

To compile:

1. Change the directory to *<PS_HOME>/setup*, depending on how your installation environment is set up; for example:

```
cd $PS_HOME/setup
```

2. Update the *\$PATH* system variable to:

```
$ export PATH=$PS_HOME/setup:$PATH
```

3. Use *either one* of the following compile commands as per your requirement:

- To compile the entire Campus Solutions 9.2 COBOL codeline, including INAS, use the following command:

```
./pscblibmcs.mak <apps>
```

The optional parameter *apps* determines the location of the work area where the compilation takes place. The allowed values and compilation location for PeopleSoft product lines are listed in this table:

Product Line	Apps Parameter	Location
PeopleSoft PeopleTools	pt	<i>PS_HOME</i> /sdk/cobol/pscblpt/src
Campus Solutions	cs (default=blank)	<i>PS_HOME</i> /sdk/cobol/pscblcs/src

The compiled COBOL programs will be placed under *<PS_HOME>/CBLBIN_IBM<X>*.

<X> is A for ANSI or U for Unicode.

Note. If you see the following output during the compilation, you can ignore it:

```
Preprocessing COBOL files ls: 0653-341 The file *.cfg does not exist.
Preprocessing the file PSPBASCH.cbl Can't open input file
```

- To recompile any one, or all, of the active Aid Year's additional component COBOL, that is, INAS, you can run *any one or all* of the following commands:

```
./pscblibmin19.mak
./pscblibmin20.mak
./pscblibmin21.mak
```

Compiling COBOL on AIX with a PS_APP_HOME Setup

This section assumes that you have installed the PeopleSoft Application software in a directory *PS_APP_HOME* which is different than the PeopleSoft PeopleTools software installation directory *PS_HOME* and that you do not have customized COBOL source files in a *PS_CUST_HOME* directory. In addition, this procedure assumes that you have set the environment variables as described earlier.

This section is only required for those who need to *compile* the COBOL sources, not for those who only need to run the compiled COBOL.

To compile:

- Ensure that the directory *sdk/cobol/pscbl<apps>* is present under the *PS_APP_HOME* directory for the application you are trying to compile.

For example, for the PeopleSoft Campus Solutions Application (*apps*= blank or *cs*), then the following directory structure should be present and the user must have write access to it:

```
sdk/cobol/pscblcs
```

- Set the environment variable for *PS_HOME*, the directory where you installed the PeopleSoft software; for example:

```
PS_HOME = PTinstalled; export PS_HOME
```

- Set the environment variable for *PS_APP_HOME*, the directory where you installed the PeopleSoft Application software; for example:

```
PS_APP_HOME = CSAppinstalled; export PS_APP_HOME
```

- Update the \$PATH system variable to:

```
$ export PATH=$PS_APP_HOME/setup:$PS_HOME/setup:$PATH
```

- Change the directory to *PS_APP_HOME/setup*; for example:

```
cd $PS_APP_HOME/setup
```

- Use *either one* of the following compile command as per your requirement:

- To compile the entire Campus Solutions 9.2 COBOL codeline, including INAS, use the following command:

```
./pscblibmcs.mak <apps>
```

The optional parameter *apps* determines the location of the work area where the compilation takes place. The allowed values and compilation locations are listed in this table:

Product Line	Apps Parameter	Location
PeopleSoft PeopleTools	pt	<i>PS_HOME</i> /sdk/cobol/psclpt/src
Campus Solutions	cs (default=blank)	<i>PS_APP_HOME</i> /sdk/cobol/psclcs/src

- To recompile any one, or all, of the active Aid Year's additional component COBOL, that is, INAS, you can run *any one or all* of the following commands:

```
./pscblibmin19.mak
./pscblibmin20.mak
./pscblibmin21.mak
```

Compiling COBOL on AIX with a PS_CUST_HOME Setup

This section assumes that you have set up a *PS_CUST_HOME* environment variable for customized COBOL source files. Furthermore, it assumes that you have set the environment variables as described earlier.

This section is only required for those who need to *compile* the COBOL sources, not for those who only need to run the compiled COBOL.

To compile:

- Ensure that the directory *sdk/cobol/pscl<apps>* is present under the *PS_APP_HOME* directory for the application you are trying to compile.

For example, if the installed PeopleSoft Application is Campus Solutions (*apps*= blank or cs), then the following directory structure should be present and the user must have write access to it:

```
sdk/cobol/psclcs
```

- Set the environment variable for *PS_HOME*, the directory where you installed the PeopleSoft PeopleTools software; for example:

```
PS_HOME = PTinstalled; export PS_HOME
```

- If *PS_APP_HOME* is different from *PS_HOME*, set the environment variable for *PS_APP_HOME*, the directory where you installed the PeopleSoft Application software; for example:

```
PS_APP_HOME = CSAppinstalled`; export PS_APP_HOME
```

- Set the environment variable for *PS_CUST_HOME*, the directory where you installed the PeopleSoft

Application software; for example:

```
PS_CUST_HOME = CUSTCSAppinstalled; export PS_CUST_HOME
```

5. Update the \$PATH system variable to:

```
$ export PATH=$PS_CUST_HOME/setup:$PS_APP_HOME/setup:$PS_HOME/setup:⇒  
$PATH
```

6. Change the directory to *PS_APP_HOME/setup*; for example:

```
cd $PS_APP_HOME/setup
```

7. Use *either one* of the following compile command as per your requirement:

To compile the entire Campus Solutions 9.2 COBOL codeline, including INAS, use the following command:

```
./psclibmcs.mak cust
```

To recompile any one, or all, of the active Aid Year's additional component COBOL, that is, INAS, you can run *any one or all* of the following commands:

```
./psclibmin19.mak  
./psclibmin20.mak  
./psclibmin21.mak
```

Task 1-3: Installing Database Audit Triggers for PeopleSoft Student Records

This section discusses:

- Understanding Database Audit Triggers
- Using Audit Triggers
- Installing the Audit Triggers

Understanding Database Audit Triggers

An audit mechanism implemented using database triggers is provided for Grade changes, Degree record changes, and Security table changes. Pages and components are also being delivered to allow a user to search and review the audit records.

See *PeopleSoft Campus Solutions: Campus Solutions Application Fundamentals*

See *PeopleSoft Campus Solutions: Student Records*

Task 1-3-1: Using Audit Triggers

These triggers should be created after the data conversion is completed and the legacy data for an institution is loaded into the application tables. Otherwise, the internal load of the legacy data into the system inserts rows into the audit tables and the data load process runs slower for tables that have triggers.

Triggers are automatically dropped if the table they are defined on is dropped for any reason. If a table is dropped and then re-created, then the appropriate scripts to create the triggers for that table must be executed again.

An example of such a scenario would be as follows. Using PeopleSoft Application Designer, a field is added to one of the tables on which a trigger is defined. The build action generates an alter script which is executed using a query tool to change the table at the database level. The alter script drops the original table and recreates a new one by the same name. This causes the trigger to be dropped. You must then recreate the trigger for this table. This scenario could occur when an institution makes a modification at their site or applies a fix provided by Oracle that alters such a table. In the case of a fix, the instructions for the fix create a note about recreating the trigger.

These tables and the associated triggers are listed in the next section.

Task 1-3-2: Installing the Audit Triggers

Based on your database platform, find the appropriate trigger files under the Scripts folder and create triggers as listed in the table that follows. These are SQL files and should be run against your database using your query tool of choice. These trigger files have been tested on these databases using the release level specified by Oracle for PeopleSoft release 9.2 and therefore are certified for any database release level that is the same or higher. If you are running on a database release level prior to the one specified in the table, these trigger files may not be applicable. Consult with your database administrator before running these trigger files.

For Microsoft SQL Server database platform:

Table	Trigger File
ACAD_DEGR	SSR_MSS_ACAD_DEGR_TR.SQL
ACAD_DEGR_HONS	SSR_MSS_ACAD_DEGR_HONS_TR.SQL
ACAD_DEGR_PLAN	SSR_MSS_ACAD_DEGR_PLAN_TR.SQL
ACAD_DEGR_SPLN	SSR_MSS_ACAD_DEGR_SPLN_TR.SQL
ES_SECURITY_TBL	SSR_MSS_ES_SEC_TBL_TR.SQL
ES_SECURITY_DTL	SSR_MSS_ES_SEC_DTL_TR.SQL
STDNT_ENRL	SSR_MSS_GRADE_TR.SQL

For Oracle database platform:

Table	Trigger File
ACAD_DEGR	SSR_ORA_ACAD_DEGR_TR.SQL
ACAD_DEGR_HONS	SSR_ORA_ACAD_DEGR_HONS_TR.SQL
ACAD_DEGR_PLAN	SSR_ORA_ACAD_DEGR_PLAN_TR.SQL
ACAD_DEGR_SPLN	SSR_ORA_ACAD_DEGR_SPLN_TR.SQL
ES_SECURITY_TBL	SSR_ORA_ES_SEC_TBL_TR.SQL

Table	Trigger File
ES_SECURITY_DTL	SSR_ORA_ES_SEC_DTL_TR.SQL
STDNT_ENRL	SSR_ORA_GRADE_TR.SQL

Task 1-4: Adjusting PeopleTools EDI Manager for Financial Aid Processes

This section discusses:

- Updating the ECOUTMAP.SQC File
- Modifying the ECIN0001.SQR File

Task 1-4-1: Updating the ECOUTMAP.SQC File

EDI Manager requires some modifications for Financial Aid business processing.

Note. This task is only necessary when using the CommonLine™ 4 features. This is not necessary to implement if your institution uses Direct Lending or Common Record CommonLine processing.

In the following procedure, you use PeopleTools EDI Manager to run a process that updates the base ECOUTMAP.SQC file with the Financial Aid EDI Outbound map definitions. Make sure that the new file replaces the original file of the same name.

To update the ECOUTMAP.SQC file with Financial Aid EDI Outbound map definitions:

1. Select PeopleTools, EDI Manager on your target database.
2. Select Monitor EDI Processing, Prepare Outbound Driver.
3. Enter a Run Control ID of *FA800*. (Add it if you don't have it).
4. Enter the directory path for ECOUTMAP.SQC file, typically <PS_HOME>\SQR.
5. Select the Transaction IDs that your institution uses by checking the appropriate "Select" box.

Important! Additional Transaction IDs may appear. *It is important that only the files processed by your Financial Aid office are selected.* Consult with your Financial Aid Office staff for the required EDI transactions.

Financial Aid EDI Outbound Map Definitions are:

Transaction ID	Map ID	Description of Files Created
A004P	CL_ORIG_V4	CommonLine™ 4 Application Send
C004P	CL_CHNG_V4	CommonLine™ 4 Change Send

6. Click Save.
7. Click Run.

8. Select your server name, and click OK.
9. Monitor the execution of the SQR using the Process Monitor.

Task 1-4-2: Modifying the ECIN0001.SQR File

The ECIN0001.SQR is the PeopleTools EDI Manager Inbound EC Agent process. The default configuration of this file is set to only process individual files containing no more than 2500 rows of data. To allow the SQR to handle larger files, the SQR must be modified.

Note. This modification may be needed if the Financial Aid Office is importing and exporting large files using the CommonLine™ loan process. This is not needed for Common Record CommonLine (CRC) loan processing. Verify with the Financial Aid Office whether or not this modification is necessary for their business process.

To modify the ECIN0001.SQR file:

1. Open the ECIN0001.SQR file using a text editor and find this section:

```

Create-Array name= FILEDATA0 size = 1
  field=ecfilerowid:char:2500
  field=ecqueueinstance:number:2500
  field=filedata:char:2500
  field=luwlinenum:number:2500
  field=ectransid:char:2500
  field=message_set_nbr:number:2500
  field=message_nbr:number:2500
  field=error_misc:char:2500
  field=siblingcount:number:2500=-1    ? number of siblings detected for this parent row

```

Section of ECIN0001.SQR file

2. Modify the section by replacing the value 2500 with 35000.

This modification increases the maximum number of rows allowed in a file to 35,000 rows. You may increase the file row limit up to 64,000, if necessary.

```

Create-Array name= FILEDATA0 size = 1
  field=ecfilerowid:char:35000
  field=ecqueueinstance:number:35000
  field=filedata:char:35000
  field=luwlinenum:number:35000
  field=ectransid:char:35000
  field=message_set_nbr:number:35000
  field=message_nbr:number:35000
  field=error_misc:char:35000
  field=siblingcount:number:35000=-1    ? number of siblings detected for this parent row

```

Modified ECIN0001.SQR file

Task 1-5: Using CPU Space for PeopleSoft Academic Advising

The PeopleSoft Academic Advising process is very CPU intensive.

See PeopleTools Performance Guidelines white paper for more details, available on My Oracle Support.

Task 1-6: Running the SFA_ECQUEUE_TABLES_RESET Script

For PeopleSoft Campus Solutions, use PeopleSoft Data Mover to run this script against the PeopleSoft Campus Solutions SYS database only. You can find the `sfa_ecqueue_tables_reset.dms` script in `<PS_APP_HOME>\scripts`. You do not need to log off all clients and shut down application servers after running this script.

Task 1-7: Configuring Your PeopleSoft Hosted Documentation Website

Be aware that the *PeopleSoft Campus Solutions: Campus Solutions Application Fundamentals* contains sensitive system information, including security information. You should review this PeopleSoft Online Help (PeopleBooks) before you make it available on your documentation website.

Task 1-8: Using the User Profiles Management Result Table

This section discusses:

- Understanding the Audience for this Information
- Using the User Profiles Management Clean Up Pages

Task 1-8-1: Understanding the Audience for this Information

This section is intended to be available only to the administrator having access to your security tables. It includes sensitive security information about user IDs and passwords that are created by the User Profiles Management process. The information is included here so that it would not be part of the PeopleSoft Online Help (PeopleBooks).

Warning! The information in this section should *not* be shared with your users.

The following sections include information on how to manipulate the user IDs and passwords that are created by the User Profiles Management background process. What is documented here is the clean up process that takes place after the User Profiles Management process is run.

See *PeopleSoft Campus Solutions: Campus Solutions Application Fundamentals* "Creating and Maintaining User Profiles."

Task 1-8-2: Using the User Profiles Management Clean Up Pages

This table describes the User Profiles Management process:

Usage	Use the User Profile Clean Up Processes page to delete the temporary tables associated with the USERPROFILE processes. You also use this page to delete the result table, which holds user ID and non-encrypted password information.
Object Name	MAINT_USRPROF_DATA
Page Name	User Profile Clean Up Process.
Navigation	Set Up SACR, Security, Secure Student Administration, Process, User Profiles Mgmt - Clean Up.

User Profile Clean Up Processes

Delete temp tables created by the following processes

Create User Profiles
 Delete Role in User Profiles
 Assign Role
 Assign User Preferences

Delete result table (includes non-encrypted passwords)

Delete rows including:

Criteria Value

Delete All

Ready to delete Delete all [Explain](#)
 Ready to delete Delete all [Explain](#)

User Profile Clean Up Processes page

The section *Delete temp tables created by the following processes* includes the following options:

Create User Profiles	Select this check box to delete the temporary table PS_USRPRF_NWID_TMP, which is created by the Create User Profiles process when you run USERPROFILE.
Delete Role in User Profiles	Select this check box to delete the temporary table PS_USRPRF_DEL_TMP, which is created by the Delete Roles in User Profile process when you run USERPROFILE.
Assign Role	Select this check box to delete the temporary table PS_USRPRF_ASG_TMP, which is created by the Assign Role process when you run USERPROFILE.
Assign User Preferences	Select this check box to delete the temporary table PS_ASSN_SETVAL_TMP, which is created by the Assign User Preferences process when you run USERPROFILE.

Note. The clean up process does not delete information from the error log record (PS_ERR_LOG_USRPRF). Use your defined SQL tool to delete information from error log record as needed.

Reviewing the section *Delete result table (includes non-encrypted passwords)*:

The fields in the Delete Result Table section of the application page allow you to delete rows of data from the temporary result table (PS_USRPRF_LTR_COMM) that is created if you selected the Create Result Table check box on the User Profile Mass Creation page. This is the only place where the non-encrypted passwords are stored. It is your responsibility to frequently run the cleanup process.

The temporary result table includes a column called Ready To Delete (READY_TO_DEL) that is a Y (yes) or N (no) flag for each user ID. When the User Profiles Management process runs and the Create Result Table option is selected in the setup page (Setup SACR, Security, Secure Campus Solutions, Setup, User Profiles Mass Creation), the User Profiles Management process determines if the flag should be a Y or a N based on the Event ID you selected.

The User Profiles Management process sets the flag to N (meaning not ready to be deleted) when the Assign 3C check box is checked on the User Profile Mass Creation setup page and the Event ID specified includes a letter code set up with the Name SQC equal to CCLTRWOL. This SQC is used by the Letter Generation process to extract the user ID and the password and make the information available to add on a communication. Do not delete rows in this table if the Letter Generation process has not been run yet. After the Letter Generation process is run, the flag changes to Y to indicate that the user ID row is now ready to be deleted.

Note. Only the Letter Generation process can change the Ready to Delete flag.

The section *Delete result table (includes non-encrypted passwords)* includes the following options:

Delete rows including	Select this check box if you want to delete only selected rows in the result table. If you select this check box, select a criterion and value to be used.
Criteria	Select a criterion to be used to delete specific rows in the result table. You can select only one of the following criteria. <ul style="list-style-type: none"> • <i>ID</i>: Select to delete the row for a particular person with the employee ID that you select in the Value field. • <i>Event 3C IDs</i>: Select to delete all rows associated with the event ID that you select in the Value field. • <i>Rolename</i>: Select to delete all rows associated with the role that you select in the Value field. • <i>User ID</i>: Select to delete the row for a particular person with the user ID that you select in the Value field.
Value	Select the value you want to be used for the criterion that you selected.
Ready to Delete	Select this option if you want to delete only those rows where the READY_TO_DEL field in the temporary result table is set to <i>Yes</i> . This option prevents you from deleting the rows where the Letter Generation process has not yet been run.
Delete all (radio button/option)	Select this option to delete rows in the temporary result table where the READY_TO_DEL field is set to <i>Yes</i> or <i>No</i> .

Warning! If you select this option, you may delete rows for which the Letter Generation process has not run, and you delete the user ID and password information. There is no way to recover this information unless you reset all the passwords manually.

Delete All (check box)

Select this check box if you want to delete rows in the temporary result table without specifying any criteria. As previously described, you can also select to delete the rows marked as Ready to delete or Delete all.

Warning! If you select Delete All, you may delete rows for which the Letter Generation process has not run, and you delete the user ID and password information. There is no way to recover this information unless you reset all the passwords manually.

Explain

Use these links to see the explanation for the selected check box.

Click the Delete button to delete the selected temp tables and the selected rows in the result table. When you click Delete, you receive a warning message letting you know that you are about to delete data from the system and asking if you want to continue.

Note. The Ready to Delete and Delete all options work in conjunction with the Delete rows including and Delete All check boxes. For example, if you elect to delete certain rows based on a selected criterion and you select the Delete all option, only the rows selected by the criteria are deleted. Similarly, if you select the Delete All check box and select the Ready to Delete option, only the rows where the READY_TO_DEL field is set to *Yes* are deleted.

The fields in this area of the application page allow you to delete rows of data from the temporary result table (PS_USRPRF_LTR_COMM) that is created if you selected the Create Result Table check box on the User Profile Mass Creation page. This is the only place where the non-encrypted passwords are stored. It is your responsibility to frequently run the cleanup process.

The temporary result table includes a column called Ready To Delete (READY_TO_DEL) that is a Y (yes) or N (no) flag for each user ID. When the User Profiles Management process runs and the Create Result Table option is selected in the setup page (Setup SACR, Security, Secure Campus Solutions, Setup, User Profiles Mass Creation), the User Profiles Management process determines if the flag should be a Y or a N based on the Event ID you selected.

The User Profiles Management process sets the flag to N (meaning not ready to be deleted) when the Assign 3C check box is checked on the User Profile Mass Creation setup page and the Event ID specified includes a letter code set up with the Name SQC equal to CCLTRWOL. This SQC is used by the Letter Generation process to extract the user ID and the password and make the information available to add on a communication. Do not delete rows in this table if the Letter Generation process has not been run yet. Once the Letter Generation process is run, it changes the flag to Y to indicate the user ID row is now ready to be deleted.

Task 1-9: Installing PeopleSoft Campus Solutions 9.2 Application

This section discusses:

- Setting Up Installation Options
- Running Conversion Programs Using PeopleSoft Application Engine
- Activating PeopleSoft Student Administration Integration Pack Service Operations and Handlers
- Activating PeopleSoft Student Administration Integration Pack Service Routings
- Activating PeopleSoft Student Administration Integration Pack Queues

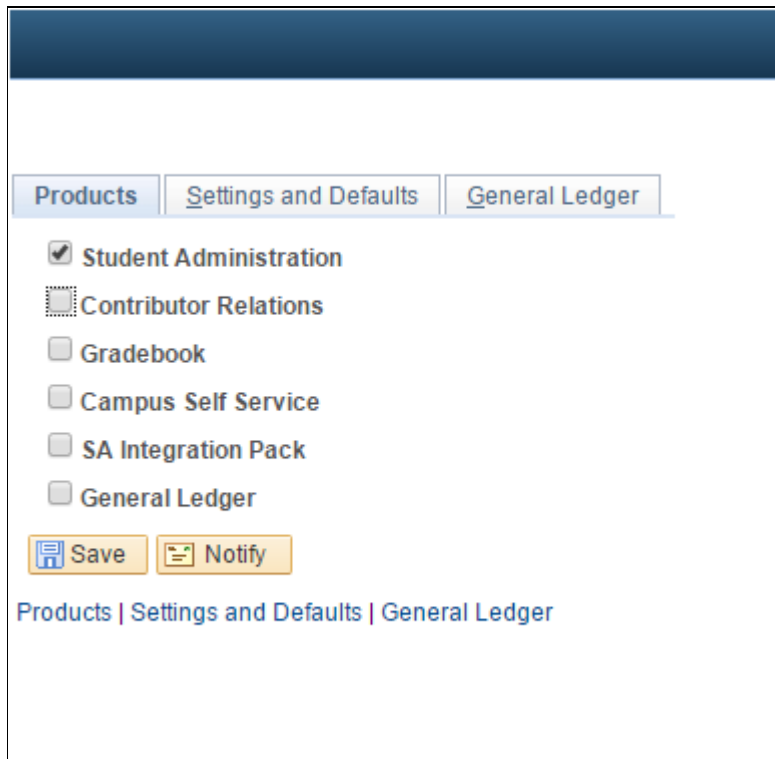
Task 1-9-1: Setting Up Installation Options

Oracle recommends that you update the product indicator check boxes on the Installation page on both your SYS and DMO databases to ensure that the licensed products are turned on and recognized.

To set up installation options:

1. Log in to the PeopleSoft application in a browser and select Set Up Common Objects, Install, Installation Table.
2. On the Products tab, select the product that you wish to activate.

Select the Student Administration check box to activate the product Student Administration, as shown in the following example:

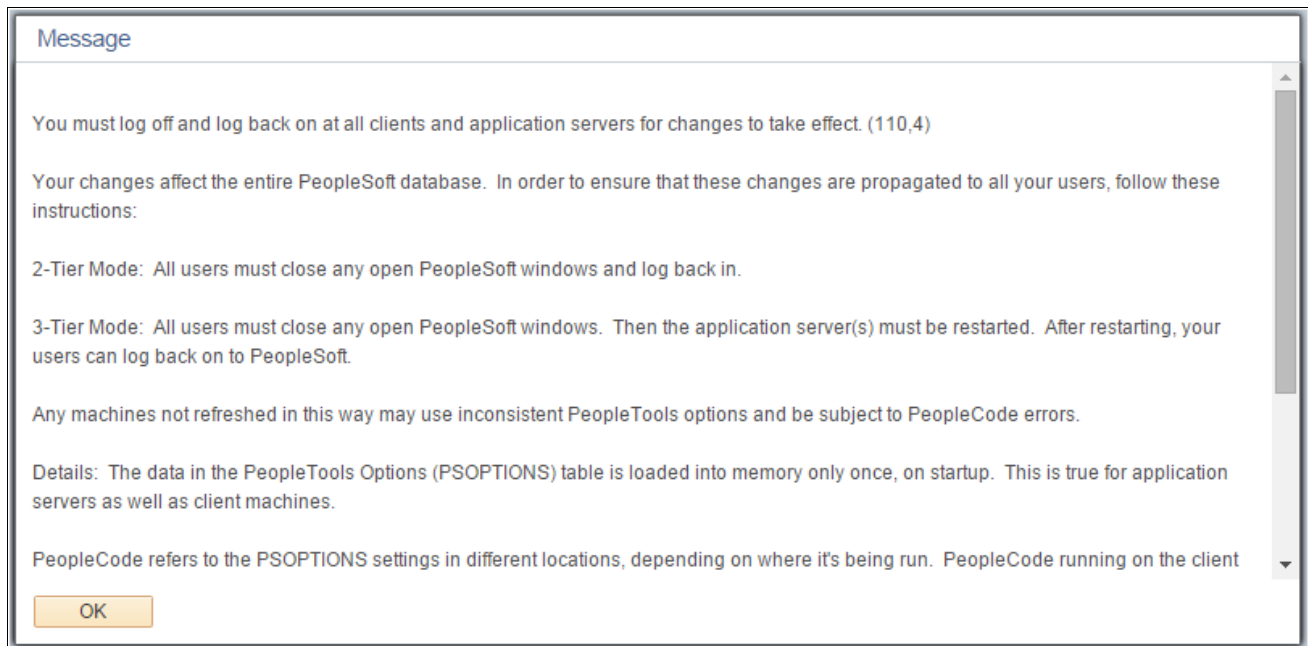


Setting Up Installation Options

3. If you wish to activate *any one or all* of the remaining licensed products, repeat step 2. The remaining licensed products are:
 - Contributor Relations
 - Gradebook
 - Campus Self Service
 - SA Integration Pack
 - General Ledger

4. Click Save.

After making changes to the Installation table, you will receive the following informational message:



Informational message

5. Log off all clients, shut down and restart all application servers, and then log back on to PeopleSoft Campus Solutions for this change to take effect.

See PeopleSoft PeopleTools, Integration Broker for your database platform and for your current PeopleTools release.

Important! The succeeding instructions, from "Running Conversion Programs Using PeopleSoft Application Engine" through "Activating PeopleSoft Student Administration Integration Pack Queues," are applicable *only if* you have selected the product SA Integration Pack as per the instructions in this section.

Task 1-9-2: Running Conversion Programs Using PeopleSoft Application Engine

Run the following scripts to initially synchronize PeopleSoft SAIP extension tables with their corresponding PeopleSoft Campus Solutions tables.

To run PeopleSoft Application Engine, run psae.exe in the directory PS_HOME\bin\client\winx86.

Note. You can also run these conversion programs by logging into PeopleSoft in the browser and selecting PeopleTools, Application Engine, Request AE.

Application Engine Program	Description
SAE_CMBN_EXT	Populates the SAE_CMBN_EXT table based on the SCTN_CMBND table.

Application Engine Program	Description
SAE_CSEC_EXT	Populates the SAE_CLASS_EXT table based on the CLASS_TBL table.
SAE_CTLG_EXT	Populates the SAE_CRSCTLG_EXT tables based on the CRSE_CATALOG table.
SAE_MBRS_EXT	Populates the SAE_INSTR_EXT table based on the CLASS_INSTR table.
SAE_OFFR_EXT	Populates the SAE_CRSOFFER_EXT table based on the CRSE_OFFER table.
SAE_TERM_EXT	Populates the SAE_TERM_EXT table based on the TERM_TBL table.
SAE_SESS_EXT	Populates the SAE_SESSION_EXT table based on the SESSION_TBL table.

See PeopleSoft PeopleTools: Integration Broker for your database platform and for your current PeopleTools release.

Task 1-9-3: Activating PeopleSoft Student Administration Integration Pack Service Operations and Handlers

Service operations for the PeopleSoft Student Administration Integration Pack (SAIP) are delivered with a status of "Inactive" in order to prevent the accidental transmission of data. To make use of these key elements of the PeopleSoft SAIP at the time of implementation, you need to set each of them to a status of "Active".

Note. For the SAIP to be functional, SAIP Integration Broker objects such as service operations, handlers, routings, and queues must be active. If you wish to activate all of the delivered SAIP Integration Broker objects, run the script `saip_activation.dms`, which can be found in `%PS_APP_HOME%\scripts`, where `%PS_APP_HOME%` is your Campus Solutions application's directory.

To activate service operations:

1. Log into the PeopleSoft application in a browser.
2. Select PeopleTools, Integration Broker, Integration Setup, Service Operations.
3. Select each of the service operations from the table that follows.
4. On the General page, select the Active check box in the Default Service Operation Version group.
5. Select the Handlers page and select the Active check box from the drop-down list for the Status column.
6. Save the page.

SCC Services.

- Here are the Service Operations and Handlers for the service SCC_INTEGRATION_SERVICE:

Service Operation	Handler
PUBLISHACADORG	NOTIFYHANDLR
PUBLISHACADORGTOTARGET	NOTIFYHANDLR
PUBLISHCLASSESECTION	NOTIFYHANDLR
PUBLISHCOMBINEDSECTION	NOTIFYHANDLR
PUBLISHCOURSETEMPLATE	NOTIFYHANDLR
PUBLISHINSTITUTION	NOTIFYHANDLR
PUBLISHINSTITUTIONTOTARGET	NOTIFYHANDLR
PUBLISHPERSON	NOTIFYHANDLR
PUBLISHSTDNTCAREERTERM	NOTIFYHANDLR
PUBLISHSTUDENTENROLLMENT	NOTIFYHANDLR
PUBLISHTERM	NOTIFYHANDLR

- Here are the Service Operation and Handler for the service SCC_URL_ADDRESSES:

Service Operation	Handler
SCC_URL_ADDRESSES_CHANGE_EVENT	SCC_URL_ADDRESSES_CHANGE_EVENT

SAIP v1.0/v1.5 Service Operations

- Here are the Service Operations and Handlers for the service SAIP_INTEGRATION_SERVICE (Event):

Service Operation	Handler
NOTIFYGROUP	NOTIFYHANDLR
NOTIFYPERSON	NOTIFYHANDLR
NOTIFYMEMBERSHIP	NOTIFYHANDLR
NOTIFYCLASSESECTION	NOTIFYHANDLR
NOTIFYCOURSEOFFERING	NOTIFYHANDLR
NOTIFYCOURSETEMPLATE	NOTIFYHANDLR
NOTIFYSECTIONASSOCIATION	NOTIFYHANDLR

- Here are the Service Operation and Handler for the service SAIP_INTEGRATION_SERVICE (Snapshot):

Service Operation	Handler
NOTIFYSNAPSHOTRESPONSE	NotifyHandler

- Here are the Service Operation and Handler for the service OUTCOMESERVICE:

Service Operation	Handler
READOUTCOMES	None

SAIP Event Services v1.0/v1.5

- Here are the Service Operations and Handlers for the service GROUPMANAGEMENTSERVICE:

Service Operation	Handler
CREATEGROUP	None
DELETEGROUP	None
UPDATEGROUP	None

- Here are the Service Operations and Handlers for the service PERSONMANAGEMENTSERVICE:

Service Operation	Handler
CREATEPERSON	None
REPLACEPERSON	None

- Here are the Service Operations and Handlers for the service COURSEMANAGEMENTSERVICE:

Service Operation	Handler
CREATEBATCHCOURSESECTION	None
CREATECOURSEOFFERING	None
CREATECOURSESECTION	None
CREATECOURSETEMPLATE	None
CREATESECTIONASSOCIATION	None
DELETECOURSEOFFERING	None
DELETECOURSESECTION	None
DELETECOURSETEMPLATE	None
DELETESECTIONASSOCIATION	None
UPDATECOURSEOFFERING	None
UPDATECOURSESECTION	None
UPDATECOURSETEMPLATE	None
UPDATESECTIONASSOCIATION	None

- Here are the Service Operations and Handlers for the service MEMBERSHIPMANAGEMENTSERVICE:

Service Operation	Handler
CREATEMEMBERSHIP	None
CREATEMEMBERSHIPS	None
DELETEMEMBERSHIP	None

- Here are the Service Operation and Handler for the service PERSON_BASIC_SYNC:

Service Operation	Handler
PERSON_BASIC_SYNC	SCC_PERSON

SAIP Snapshot Services v1.0/v1.5

- Here are the Service Operations and Handlers for the service GROUPMANAGEMENTSERVICE (Supported Services):

Service Operation	Handler
READGROUPSMGMT	REQUESTHDLR
READGROUPSFROMSAVEPOINT	REQUESTHDLR

- Here are the Service Operations and Handlers for the service GROUPMANAGEMENTSERVICE (Unsupported Services):

Service Operation	Handler
ADDGROUPRELATIONSHIP_SYNC	REQUESTHDLR
CHANGEGROUPIDENTIFIER_SYNC	REQUESTHDLR
CREATEBYPROXYGROUP_SYNC	REQUESTHDLR
CREATEGROUP_SYNC	REQUESTHDLR
DELETEDGROUP_SYNC	REQUESTHDLR
DISCOVERGROUPIDS_SYNC	REQUESTHDLR
READALLGROUPIDS_SYNC	REQUESTHDLR
READGROUPIDSFORPERSON_SYNC	REQUESTHDLR
READGROUPIDSFROMSAVEPOINT_SYNC	REQUESTHDLR
READGROUP_SYNC	REQUESTHDLR
REMOVEGROUPRELATIONSHIP_SYNC	REQUESTHDLR
REPLACEGROUP_SYNC	REQUESTHDLR
UPDATEGROUP_SYNC	REQUESTHDLR

- Here are the Service Operations and Handlers for the service PERSONMANAGEMENTSERVICE (Supported Services):

Service Operation	Handler
READPERSONS	REQUESTHDLR
READPERSONSFROMSAVEPOINT	REQUESTHDLR

- Here are the Service Operations and Handlers for the service PERSONMANAGEMENTSERVICE (Unsupported Services):

Service Operation	Handler
CHANGEPERSONIDENTIFIER_SYNC	REQUESTHDLR
CREATEBYPROXYPERSON_SYNC	REQUESTHDLR
CREATEPERSON_SYNC	REQUESTHDLR
DELETEPERSON_SYNC	REQUESTHDLR
DISCOVERPERSONIDS_SYNC	REQUESTHDLR
READALLPERSONIDS_SYNC	REQUESTHDLR
READPERSONCORE_SYNC	REQUESTHDLR
READPERSONIDSFROMSAVPOINT_SYNC	REQUESTHDLR
READPERSON_SYNC	REQUESTHDLR
REPLACEPERSON_SYNC	REQUESTHDLR
UPDATEPERSON_SYNC	REQUESTHDLR

- Here are the Service Operations and Handlers for the service COURSEMANAGEMENTSERVICE (Supported Services):

Service Operations	Handlers
READCOURSEOFFERINGS	REQUESTHDLR
READCOURSEOFFERINGSFRSAVEPT	REQUESTHDLR
READCOURSESECTIONS	REQUESTHDLR
READCOURSESECTIONSFROMSP	REQUESTHDLR
READCOURSETEMPLATES	REQUESTHDLR
READCOURSETEMPLATESFRSAVEPT	REQUESTHDLR
READSECTIONASSOCIATIONS	REQUESTHDLR
READSECTIONASSOCIATIONSFRSVPT	REQUESTHDLR

- Here are the Service Operations and Handlers for the service COURSEMANAGEMENTSERVICE (Unsupported Services):

Service Operations	Handlers
ADDCOURSESECTIONID_SYNC	REQUESTHDLR
CHANGECOURSESECIDENTIFIER_SYNC	REQUESTHDLR
CHANGECRSEOFFERIDENTIFIER_SYNC	REQUESTHDLR
CHANGECRSETEMPIDENTIFIER_SYNC	REQUESTHDLR
CHANGESECASSOCIDENTIFIER_SYNC	REQUESTHDLR
CREATEBYPROXYCOURSESEC_SYNC	REQUESTHDLR
CREATEBYPROXYCRSEOFFERING_SYNC	REQUESTHDLR
CREATEBYPROXYCRSETEMPLATE_SYNC	REQUESTHDLR
CREATEBYPROXYSECASSOC_SYNC	REQUESTHDLR
CREATECOURSEOFFERING_SYNC	REQUESTHDLR
CREATECOURSESECFCS_SYNC	REQUESTHDLR
CREATECOURSESECTION_SYNC	REQUESTHDLR
CREATECOURSETEMPLATE_SYNC	REQUESTHDLR
CREATEOFFERFROMCRSEOFFER_SYNC	REQUESTHDLR
CREATESECTIONASSOCIATION_SYNC	REQUESTHDLR
DELETECOURSEOFFERING_SYNC	REQUESTHDLR
DELETECOURSESECTION_SYNC	REQUESTHDLR
DELETECOURSETEMPLATE_SYNC	REQUESTHDLR
DELETESECTIONASSOCIATION_SYNC	REQUESTHDLR
DISCOVERCOURSEOFFERINGIDS_SYNC	REQUESTHDLR
DISCOVERCOURSESECTIONIDS_SYNC	REQUESTHDLR
DISCOVERCOURSETEMPLATEIDS_SYNC	REQUESTHDLR
DISCOVERSECTIONASSOCIDS_SYNC	REQUESTHDLR

Service Operations	Handlers
READALACTOFFRIDSFORACDSES_SYNC	REQUESTHDLR
READALLCOURSEOFFERINGIDS_SYNC	REQUESTHDLR
READALLCOURSESECTIONIDS_SYNC	REQUESTHDLR
READALLCOURSETEMPLATEIDS_SYNC	REQUESTHDLR
READALLSECTIONASSOCIDS_SYNC	REQUESTHDLR
READCOURSEOFFERINGIDSFSP_SYNC	REQUESTHDLR
READCOURSESECTION_SYNC	REQUESTHDLR
READCOURSETEMPLATEIDSFSP_SYNC	REQUESTHDLR
READCOURSEOFFERING_SYNC	REQUESTHDLR
READCOURSESECTIONIDSFSP_SYNC	REQUESTHDLR
READCOURSETEMPLATE_SYNC	REQUESTHDLR
READCRSEOFFERIDSFORTEMP_SYNC	REQUESTHDLR
READCRSESECIDSFOROFFER_SYNC	REQUESTHDLR
READSECTIONASSOCIATION_SYNC	REQUESTHDLR
READSECTIONASSOCIDSFSP_SYNC	REQUESTHDLR
REMOVEDCOURSESECTIONID_SYNC	REQUESTHDLR
REPLACECOURSEOFFERING_SYNC	REQUESTHDLR
REPLACECOURSESECTION_SYNC	REQUESTHDLR
REPLACECOURSETEMPLATE_SYNC	REQUESTHDLR
REPLACESECTIONASSOCIATION_SYNC	REQUESTHDLR
UPDATECOURSEOFFERING_SYNC	REQUESTHDLR
UPDATECOURSESECTIONSTATUS_SYNC	REQUESTHDLR
UPDATECOURSESECTION_SYNC	REQUESTHDLR
UPDATECOURSETEMPLATE_SYNC	REQUESTHDLR

Service Operations	Handlers
UPDATECRSEOFFERINGSTATUS_SYNC	REQUESTHDLR
UPDATESECTIONASSOCIATION_SYNC	REQUESTHDLR

- Here are the Service Operations and Handlers for the service MEMBERSHIPMANAGEMENTSERVICE (Supported Services):

Service Operation	Handler
READMEMBERSHIPS	REQUESTHDLR
READMEMBERSHIPSFROMSAVEPOINT	REQUESTHDLR

- Here are the Service Operations and Handlers for the service MEMBERSHIPMANAGEMENTSERVICE (Unsupported Services):

Service Operation	Handler
CHANGEMEMBERIDENTIFIER_SYNC	REQUESTHDLR
CREATEBYPROXYMEMBERSHIP_SYNC	REQUESTHDLR
CREATEMEMBERSHIP_SYNC	REQUESTHDLR
DELETEMEMBERSHIP_SYNC	REQUESTHDLR
DISCOVERMEMBERSHIPIDS_SYNC	REQUESTHDLR
READALLMEMBERSHIPIDS_SYNC	REQUESTHDLR
READMEMBERSHIPIDSFORCOLL_SYNC	REQUESTHDLR
READMEMBERSHIPIDSFORPWR_SYNC	REQUESTHDLR
READMEMBERSHIPIDSFSP_SYNC	REQUESTHDLR
READMEMBERSHIPIDSPERSON_SYNC	REQUESTHDLR
READMEMBERSHIP_SYNC	REQUESTHDLR
REPLACEMEMBERSHIP_SYNC	REQUESTHDLR
UPDATEMEMBERSHIP_SYNC	REQUESTHDLR

- Here are the Service Operation and Handler for the service BULKDATAEXCHANGEMGMTSERVICE (Supported Service):

Service Operation	Handler
ANNOUNCEBULKDATAEXCHANGE	None

LIS2.0 Services for SAIP

- Here are the Service Operations and Handlers for the service SAIP_INTEGRATION_SERVICE (Snapshot):

Service Operation	Handler
NOTIFYANNOUNCEBULKDATAEXCHANGE	NOTIFYHNDLR
NOTIFYANNOUNCEFAILUREBULKDATA	NOTIFYHNDLR

- Here are the Service Operations and Handlers for the service OUTCOMESERVICE:

Service Operation	Handler
SAE_READRESULTIDS	None
SAE_READRESULTS	None
SAE_REPLACE_LINE_ITEM	REQUESTHDLR
SAE_REPLACE_RESULTS	REQUESTHDLR

SAIP Event Services v2.0

- Here are the Service Operations and Handlers for the service GROUPMANAGEMENTSERVICE:

Service Operation	Handler
REPLACEGROUP	None
DELETEGROUP	None

- Here are the Service Operation and Handler for the service PERSONMANAGEMENTSERVICE:

Service Operation	Handler
REPLACEPERSON	None

- Here are the Service Operations and Handlers for the service COURSEOFFERINGSERVICE:

Service Operation	Handler
REPLACECOURSEOFFERING	None
DELETEOFFERING	None

- Here are the Service Operations and Handlers for the service COURSESECTIONSERVICE:

Service Operation	Handler
REPLACECOURSESECTION	None
DELETESECTION	None

- Here are the Service Operations and Handlers for the service COURSETEMPLATESERVICE:

Service Operation	Handler
REPLACECOURSETEMPLATE	None
DELETETEMPLATE	None

- Here are the Service Operations and Handlers for the service SECTIONASSOCIATIONSERVICE:

Service Operation	Handler
REPLACESECTIONASSOCIATION	None
DELETEASSOCIATION	None

- Here are the Service Operations and Handlers for the service MEMBERSHIPMANAGEMENTSERVICE:

Service Operation	Handler
REPLACEMEMBERSHIP	None
DELETEMEMBERSHIP	None

SAIP Snapshot Services v2.0

- Here are the Service Operations and Handlers for the service BULKDATAEXCHANGEMGMTSERVICE:

Service Operation	Handler
ANNOUNCEBULKDATAEXCHANGE_V2	None
ANNOUNCEFAILBULKDATAEXCHANGE	None

Service Operation	Handler
CANCELBULKDATAEXCHANGE	REQUESTHDLR
IGNOREBULKDATAEXCHANGE	REQUESTHDLR
REPORTBULKDATAEXCHANGE	REQUESTHDLR
REQUESTBULKDATAEXCHANGE	REQUESTHDLR

Note. The IMS Learning Information Services 2.0 specification defines a broad range of service operations. The SAIP delivers many of these operations in an unsupported fashion; those operations are not used within the SAIP, but in compliance with the LIS 2.0 specification will return an "Unsupported" response message if invoked from an external system.

Task 1-9-4: Activating PeopleSoft Student Administration Integration Pack Service Routings

Routings from the PeopleSoft SAIP are delivered with a status of "Inactive" in order to prevent the accidental transmission of data. In order to make use of these key elements of the PeopleSoft SAIP at implementation time, set each of the key elements to a status of "Active".

To activate routings:

1. Log in to the PeopleSoft application in a browser.
2. Select PeopleTools, Integration Broker, Integration Setup, Routings.
3. Select each of the routings in the table that follows.
4. On the Routing Definition page, select the Active check box for each routing.
5. Save the page.

Routing

- ANNOUNCEBULKDATAEXCHANGE
- CHANGEMEMBERIDENTIFIER_SYNC
- CREATEBYPROXYMEMBERSHIP_SYNC
- CREATEMEMBERSHIP_SYNC
- DELETEMEMBERSHIP_SYNC
- DISCOVERMEMBERSHIPIDS_SYNC
- NOTIFYANNOUNCEBULKDATAEXCHANGE
- NOTIFYCLASSECTION
- NOTIFYCOURSEOFFERING
- NOTIFYCOURSETEMPLATE
- NOTIFYGROUP
- NOTIFYMEMBERSHIP
- NOTIFYPERSON
- NOTIFYSECTIONASSOCIATION

- NOTIFYSNAPSHOTRESPONSE
- PUBLISHACADORG
- PUBLISHACADORTOTARGET
- PUBLISHCLASSECTION
- PUBLISHCOMBINEDSECTION
- PUBLISHCOURSETEMPLATE
- PUBLISHINSTITUTION
- PUBLISHINSTITUTIONTOTARGET
- PUBLISHPERSON
- PUBLISHSTDNTCAREERTERM
- PUBLISHSTUDENTENROLLMENT
- PUBLISHTERM
- READALLMEMBERSHIPIDS_SYNC
- READMEMBERSHIP_SYNC
- READMEMBERSHIPIDSFORCOLL_SYNC
- READMEMBERSHIPIDSFORPWR_SYNC
- READMEMBERSHIPIDSFSP_SYNC
- READMEMBERSHIPIDSPERSON_SYNC
- REPLACEMENTMEMBERSHIP_SYNC
- SAE_ADDCOURSESECTIONID_SYNC
- SAE_ADDGROUPRELATIONSHIP_SYNC
- SAE_CANCELBULKDATAEXCHANGE
- SAE_CHANGEOURSESECIDENTIFIER
- SAE_CHANGECRSETEMPIDENT_SYNC
- SAE_CHANGEGROUPIDENTIFIER_SYNC
- SAE_CHANGEOFFERIDENTIFIER_SYNC
- SAE_CHANGEPERSONIDENTIFIER_SYNC
- SAE_CHANGESECASSOCIDENT_SYNC
- SAE_COURSEOFFERINGS_INC_SNAP
- SAE_COURSETEMPLATE_INC_SNAP
- SAE_CREATEBYPROXYCOURSESEC_SYNC
- SAE_CREATEBYPROXYCRSETEMP_SYNC
- SAE_CREATEBYPROXYGROUP_SYNC
- SAE_CREATEBYPROXYPERSON_SYNC
- SAE_CREATEBYPROXYSECASSOC_SYNC
- SAE_CREATEBYPRXYCRSEOFFER_SYNC
- SAE_CREATECOURSESECFCS_SYNC
- SAE_CREATECOURSEOFFERING_SYNC

- SAE_CREATECOURSESECTION_SYNC
- SAE_CREATECOURSETEMPLATE_SYNC
- SAE_CREATEGROUP_SYNC
- SAE_CREATEOFFERFROMOFFER_SYNC
- SAE_CREATEPERSON_SYNC
- SAE_CREATESECTIONASSOC_SYNC
- SAE_DELETECOURSEOFFERING_SYNC
- SAE_DELETECOURSESECTION_SYNC
- SAE_DELETECOURSETEMPLATE_SYNC
- SAE_DELETEGROUP_SYNC
- SAE_DELETEPERSON_SYNC
- SAE_DELETESECTIONASSOC_SYNC
- SAE_DISCCRSETEMPLATEIDS_SYNC
- SAE_DISCOVERCOURSESECIDS_SYNC
- SAE_DISCOVERCRSEOFFERIDS_SYNC
- SAE_DISCOVERGROUPIDS_SYNC
- SAE_DISCOVERPERSONIDS_SYNC
- SAE_DISCOVERSECASSOCIDS_SYNC
- SAE_IGNOREBULKDATAEXCHANGE
- SAE_LMS_BAT_CRSE_SEC_CREATE
- SAE_NOTIFYANNOUNCEFAILUREBULK
- SAE_PERSONIDSFROMSAVPOINT_SYNC
- SAE_READALACTOFFRIDSACD_SYNC
- SAE_READALLCOURSESECIDS_SYNC
- SAE_READALLCRSEOFFERIDS_SYNC
- SAE_READALLCRSETEMPIDS_SYNC
- SAE_READALLGROUPIDS_SYNC
- SAE_READALLPERSONIDS_SYNC
- SAE_READALLSECASSOCIDS_SYNC
- SAE_READCOURSEOFFERING_SYNC
- SAE_READCOURSEOFFERINGS_SNAP
- SAE_READCOURSESECIDSFSP_SYNC
- SAE_READCOURSESECTION_SYNC
- SAE_READCOURSESECTIONS_SNAP
- SAE_READCOURSESECTIONSFROMSP
- SAE_READCOURSETEMPLATE_SYNC
- SAE_READCOURSETEMPLATES_SNAP
- SAE_READCRSEOFFERIDSFSP_SYNC

- SAE_READCRSETEMPIDSFSP_SYNC
- SAE_READGROUP_SYNC
- SAE_READGROUPIDSFORPERSON_SYNC
- SAE_READGROUPIDSFSP_SYNC
- SAE_READGROUPS_SNAP
- SAE_READGROUPSFROMSAVEPOINT
- SAE_READMEMBERSHIPS_INC_SNAP
- SAE_READMEMBERSHIPS_SNAP
- SAE_READOFFERIDSFORTEMP_SYNC
- SAE_READPERSON_SYNC
- SAE_READPERSONCORE_SYNC
- SAE_READPERSONS_INC_SNAP
- SAE_READPERSONS_SNAP
- SAE_READSECASSOCIATIONS_SNAP
- SAE_READSECASSOCIDSFSP_SYNC
- SAE_READSECIDSFOROFFER_SYNC
- SAE_READSECTIONASSOC_SYNC
- SAE_REMOVECOURSESECTIONID_SYNC
- SAE_REMOVEGROUPRELATIONSHIP
- SAE_REPLACE_LINE_ITEM
- SAE_REPLACE_RESULTS
- SAE_REPLACECOURSEOFFERING_SYNC
- SAE_REPLACECOURSESECTION_SYNC
- SAE_REPLACECOURSETEMPLATE_SYNC
- SAE_REPLACEGROUP_SYNC
- SAE_REPLACEPERSON_SYNC
- SAE_REPLACESECTIONASSOC_SYNC
- SAE_REPORTBULKDATAEXCHANGE
- SAE_REQUESTBULKDATAEXCHANGE
- SAE_SECTIONASSOCIATIONS_INC_SP
- SAE_UPDATECOURSEOFFERING_SYNC
- SAE_UPDATECOURSESECTION_SYNC
- SAE_UPDATECOURSESECTIONSTATUS
- SAE_UPDATECOURSETEMPLATE_SYNC
- SAE_UPDATECRSEOFFERSTATUS_SYNC
- SAE_UPDATEGROUP_SYNC
- SAE_UPDATEPERSON_SYNC
- SAE_UPDATESECTIONASSOC_SYNC

- SCC_URL_ADDRESSES_LOCAL
- UPDATEMEMBERSHIP_SYNC

Task 1-9-5: Activating PeopleSoft Student Administration Integration Pack Queues

Queues for the PeopleSoft SAIP are delivered with a status of "Pause" in order to prevent the accidental transmission of data. In order to make use of these key elements of the PeopleSoft SAIP at implementation time, you need to set each of the key elements to a status of "Run."

To set run status:

1. Log in to the PeopleSoft application in a browser.
2. Select PeopleTools, Integration Broker, Integration Setup, Queues.
3. Select each of the Queues in the table that follows.
4. For each Queue, select Run from the Queue Status drop-down menu.
5. Save the page.

IB Queue Name	Status	Description
SCC_QUEUE	RUN	Core CS Events Queue
SAE_QUEUE	RUN	SAIP Queue for publish events
SAE_SNAPSHOT_QUEUE	RUN	SAIP Queue for Snapshot announce events
SCC_URL_ADDRESSES	RUN	Campus Community Queue for URL events
PERSON_DATA	RUN	Queue for Person Events

