



ORACLE

# APACK 14.4.0.3.0 Islamic CASA

Part Number: F38223-01

---



# Accelerator Pack – Islamic CASA

---

## Contents

- Account Class Introduction
- Profit calculation Parameters
- Account Features
- Amount Blocks
- Statements, Advices and Reports

# Accelerator Pack – Islamic CASA

## Account Class Introduction

# Accelerator Pack – Islamic CASA

## Account Class Introduction

- In CASA module, Account Class acts like a product which helps to segregate different types of accounts based on their features.
- The Account Class could be defined by comprising the various features that is needed for an account as per the account type selected.
- The following are the Account types that is supported in ORACLE FLEXCUBE:
  - Current Accounts
  - Savings Accounts
  - Nostro Account

# Accelerator Pack – Islamic CASA

## Account Class Parameters

### Common Features:

- Facilities like pass book, cheque book, ATM and debit card that is needed for the account holders.
- GL Lines for the customer account balance to get reflected.
- Account Statement Format and Parameters.
- Dormancy days – post which the accounts are considered as Dormant if there is no transaction performed during these days.
- Type of balance – the accounts will normally have i.e. either debit/credit.
- Currencies that are allowed to open an account under an account class.
- Customer Categories – customers are allowed to open an account under an account class.



# Accelerator Pack – Islamic CASA

## Account Class Parameters

### Common Features:

- Document details that is needed to open an account.
- Sweep-in and reverse sweep-in parameters are available at account class to facilitate linking cover account to primary Casa account.
- Currency wise – Minimum balance to open an account, Minimum balance for Profit sharing, ATM Limit, Cash Reserve Ratio, Cash deposit limit for trust account.
- Limit tracking and overdraft facilities for current accounts.
- Profit Charges flag to enable the Profit Calculation.
- Track Accrued IC – If checked, indicates whether accrued Profit in the Profit and Charges module on an account linked to this class, would be considered while computing credit utilization for the account.

# Accelerator Pack – Islamic CASA

## Profit Calculation Parameters



# Accelerator Pack – Islamic CASA

## Profit calculation Parameters

### Profit Calculation:

- **Monthly Average Balance** – The day end balances of all the days in a month are added and the resultant value is divided by the number of days in a month.
- **Month End Balance** – The day end balance of the month end date is taken into account.
- **Minimum Balance** – The least balance available during the month will be considered as the balance basis for the purpose of profit sharing.
- **Combination of Daily Net Balance and Average Balance** – This method of calculation is similar to the average balance calculation (as explained above) with the only difference that, whenever the day end balance of an account falls below the minimum balance stipulated for the account, the contribution of that days balance will be taken as “zero” while doing summation for the month.

# Accelerator Pack – Islamic CASA

## Example

Transaction Dates	Amount	Balance in Account
Opening Balance in an account as on 1-Mar	5000 AED	5000 AED
Amount withdrawn on 8th March	2000 AED	3000 AED
Amount deposited on 20th March	2000 AED	5000 AED
Minimum Balance required to be maintained for exclusion criteria	4000 AED	NA

Profit Calculation Basis	Calculation	Amount	Inclusion in Profit Calculation
Monthly Average Balance	$((5000 * 7) + (3000 * 12) + (5000 * 12)) / 31$ (days in month)	4225.806 AED	Y
Month End Balance	Balance on last day of the month	5000 AED	Y
Average Balance with Minimum Daily Net Balance	$((5000 * 7) + (0 * 12) + (5000 * 12)) / 31$ Note: instead of 3000, 0 is taken as 3000 falls below the Minimum Balance 4000	3064.516 AED	N
Minimum Balance	Least balance available during the month	3000 AED	N

# Accelerator Pack – Islamic CASA

## Account Class Preference

Menu Path: Customer Accounts → Customer Accounts Maintenance → Account Classes

Fast Path: STDACCLS

**Islamic Account Class Maintenance**

**Preferences**

**Preferences**

- ☒ Limit Check
- ☐ Overdraft Facility
- ☒ Pass Book Facility
- ☒ Track Receivable
- ☒ Account Statistics
- ☒ Exclude Same Day Reversal Transactions from Statement
- ☒ Back Period Entry Allowed
- ☒ Profit Statement
- ☒ Available Balance Check
- ☐ Referral Required
- ☒ Status Change Automatic
- ☐ Integrated Liquidity Management
- ☒ ATM

Profit Calculation Balance Basis

Minimum Balance

Mudarabah Fund Id IAFD10005

Cash Reserve Ratio

☐ Exclude from Distribution

**Cheque Book Preferences**

- ☒ Cheque Book
- ☐ Auto Reorder of Cheque Book
- Reorder Level
- Reorder No of Leaves
- Max No of Cheque Rejections
- ☐ Consolidation for Inward Clearing
- ☒ Profit Charges
- ☒ Track Accrued Profit
- ☒ Cr Advances
- ☒ Posting Allowed
- ☐ Lodgment Book
- ☒ Replicate Customer Signature
- No of Days For Salary Block
- No of Days For Closing Unauthorized Accounts With No Activity
- No of Days For Closing Authorized Accounts With No Activity

**Passbook Preferences**

RT-Charge Product for Passbook Issue PSB

OK Exit

# Accelerator Pack – Islamic CASA

## Account Features

# Accelerator Pack – Islamic CASA

## Account Features

### Passbook:

- Passbook can be issued for an account with or without charges.
- A Passbook can have following status at a given point of time:
  - Active
  - Reissued and Active
  - Closed
  - User Defined Status

# Accelerator Pack – Islamic CASA

---

## Account Features

### Cheque Book:

- A cheque book can be issued for the Account marked to avail cheque book facility.
- A cheque has one of the following status at any given point of time:
  - Not Used
  - Used
  - Rejected
  - Stopped
  - Cancelled



# Accelerator Pack – Islamic CASA

## Account Features

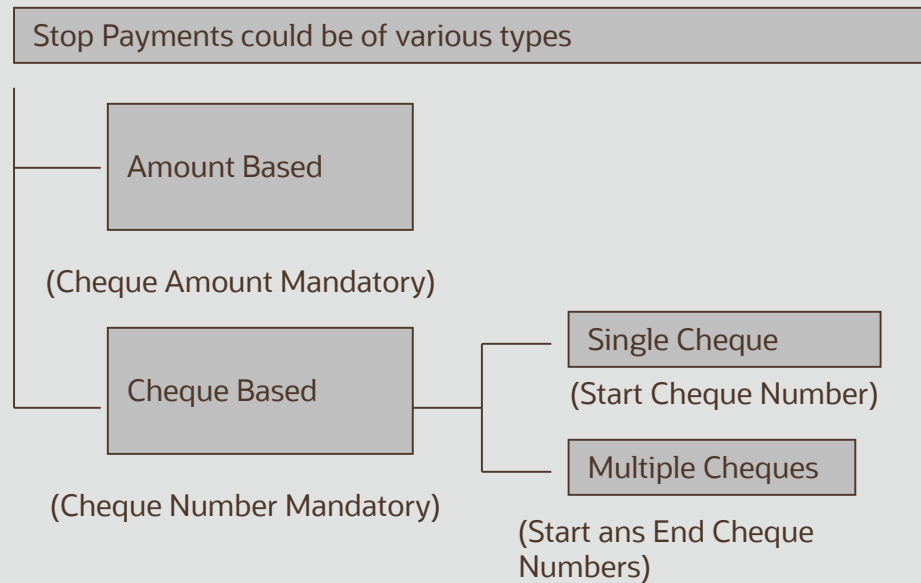
### Stop Payments:

- A Stop payment could be for a specified period in which case, the start and end dates have to be mentioned.
- A Stop payment can also be effective till revoked (or for a unspecified period). In such a case, only the start date need to be mentioned.
- A future dated stop payment instruction comes into effect after BOD for that day is run and is effective till the EOD of the expiry date.
- Amount Based Stop Payment
- Cheque Based Stop Payment
  - Single Cheque Stop payment
  - Multiple Cheques Stop Payment

# Accelerator Pack – Islamic CASA

## Account Features

### Stop Payments:



# Accelerator Pack – Islamic CASA

## Account Features

- **Contribute to PDM** – To decide whether the account will be allowed to contribute to the Fund for Profit Calculation.
- **Exclude from Distribution** – To decide whether account will be considered for Profit distribution i.e. whether account will get any portion of profit or not.
- Note : Even if an account is allowed to Contribute in Fund it can be excluded from Profit Distribution. But, if an account is not allowed to contribute to PDM then it must be excluded from Profit Distribution
- **Fund ID** – To specify the fund to which the account will contribute for Profit calculation. This is applicable only if account is included for contribution to PDM.

# Accelerator Pack – Islamic CASA

## Account Features

### Account Set for Closing:

It helps to close Saving accounts which are linked to profit module automatically by the system after the profit distribution is done.

- When the user receives any Account closure request, for which the profit distribution is due, user will make the account balance as zero and give the amount to the customer. Profit would be distributed during the next profit period.
- Note : ICPDMBT at EOTI must be configured for automatic Closure.

# Accelerator Pack – Islamic CASA

## Account Features

### Mudarabah Sweep:

- This facility is available only for the accounts which has overdraft facility. It allows a customer to attach Deposit account to its current/saving account to act as collateral.
- When account is in debit balance then during EOD, system will utilize amount from linked deposits depending upon 'Order of linkage'.
- When account is in credit balance, then during EOD, system will sweep out the utilized amount back to linked deposit (up to extent of available balance of account) depending upon 'Order of linkage'.
- Auto deposit would be created if the credit balance in the account is more than the minimum balance. If the account moves to debit balance, then it will utilize the auto deposit prior to the linked TD.



# Accelerator Pack – Islamic CASA

## Amount Blocks



# Accelerator Pack – Islamic CASA

---

## Amount Blocks

The following are the amount block scenarios:

- Funds in account could be earmarked (or Blocked) for specific purposes.
- Amount Block will block the certain amount for the customer account.
- They could be placed based on the customer request or at the behest of the Bank.

# Accelerator Pack – Islamic CASA

## Statements, Advices and Reports

# Accelerator Pack – Islamic CASA

## Statements and Advices

The following statements and advices can be generated:

### Account Statement Ad hoc:

- Ad hoc MAIL Statement
- Interim SWIFT Statement (MT941 and MT942)

### Account Statement Mail:

- Detailed Account Statement (Primary, Secondary, Tertiary)
- Summary Account Statement (Primary, Secondary, Tertiary)

### Account Statement Swift:

- Detailed Account Statement MT940 (Primary, Secondary, Tertiary)
- Summary Account Statement MT950 (Primary, Secondary, Tertiary)

# Accelerator Pack – Islamic CASA

## Account Reports

- Account Balance List – It list all the accounts with its balance in a particular branch or for the whole bank.
- Account Block – It list the Accounts that are blocked in a branch for the period specified in the report.
- Account Closure – All accounts that are closed in a particular branch will get listed in this report.
- Account Opening – Account Opening confirmation report.
- Active Account – It list all the active accounts in a particular branch.
- Customer Account – It list the complete details of an account.
- Dormant Account – It list all the accounts that moved to dormant after dormancy days.



ORACLE