

FLEXCUBE Information Server Utility
Oracle FLEXCUBE Universal Banking
Release 12.87.7.0.0
[May] [2021]



Table of Contents

- 1. FIS UTILITY 1-1
 - 1.1 INTRODUCTION 1-1
 - 1.2 SETTING UP FIS UTILITY 1-1

1. FIS Utility

1.1 Introduction

This chapter explains the steps to set up the Flexcube Information Server using Oracle FLEXCUBE Universal Banking Installer.

FLEXCUBE Information Server is Data warehouse Solution for Oracle Flexcube.

As this is a Data warehouse solution there are two schemas as follow:

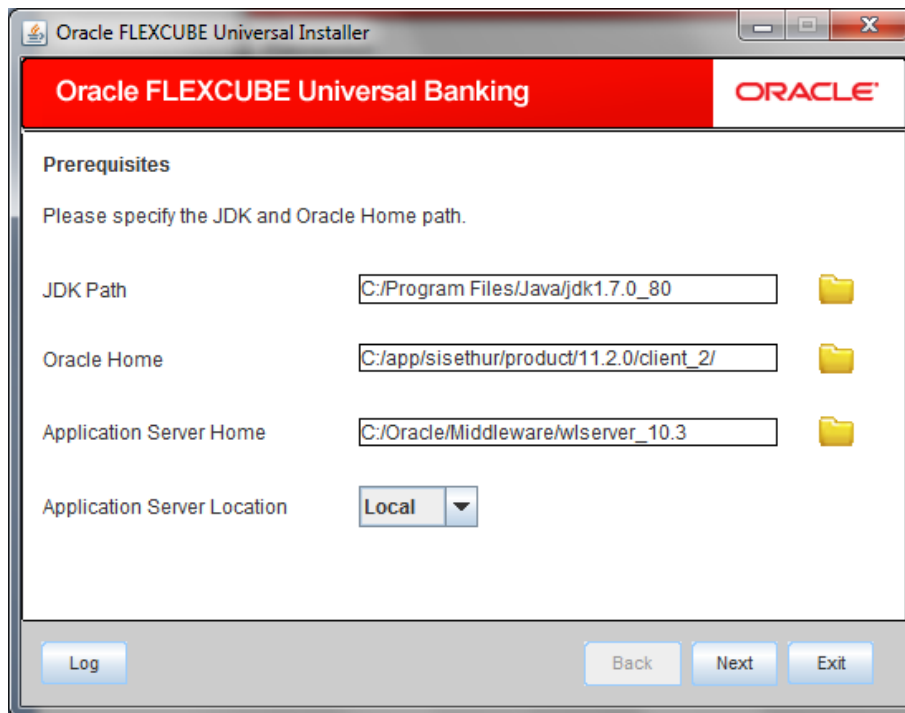
- 1) Source schema = FLEXCUBE Schema
- 2) Target Schema = FLEXCUBE Information Server schema

Note:

- From here FLEXCUBE Schema will be referred as Source schema and FLEXCUBE Information Server Schema will be referred as Target Schema for Data warehouse solution.

1.2 Setting up FIS Utility

1. Start Oracle FLEXCUBE Universal Banking Installer.



2. Specify the following details:

JDK Path

Specify the location of the JDK. You can use the directory button to browse to the JDK location.

Oracle Home


Specify the location of the Oracle Home installation. You can use the directory button to browse to the location.

Application Server Home

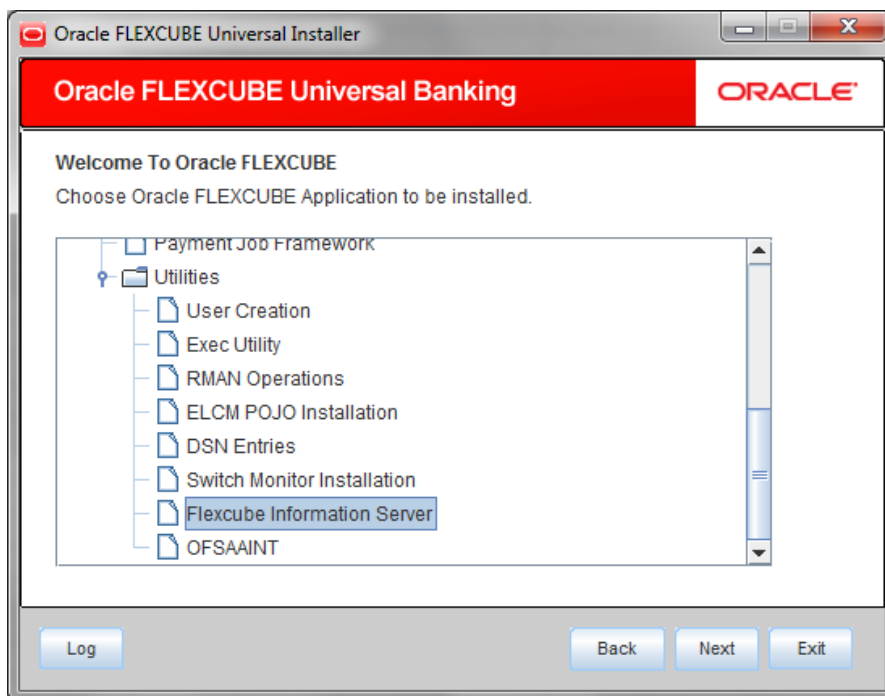
Specify the location of the application server.

Application Server Location

Specify whether application server is local or remote.

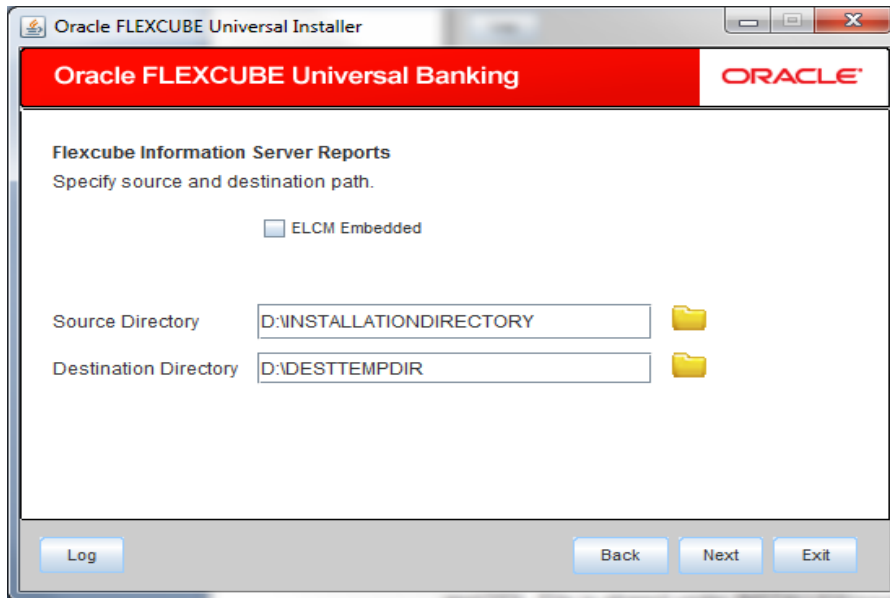
 In case any of the selected directories is incorrect, the Installer will display an appropriate error message. In that case, you need to correct the directory path and proceed.

3. Click 'Next'. The following screen is displayed.



4. Select 'Flexcube Information Server' and click 'Next'.

The following screen is displayed.



Specify the following details:

ELCM Embedded:

Tick check box if ELCM is embedded.

Source Directory

Specify the Source directory. Use the directory icon  to browse the source directory.

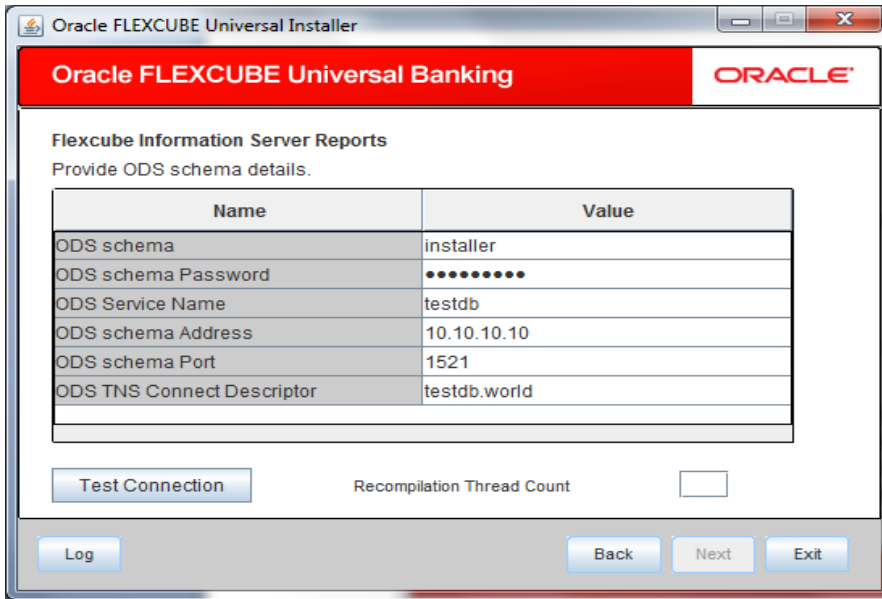
Destination Directory

Specify the destination directory. Use the directory icon  to browse the destination directory.

Click on the Next button and following screen is shown:

FIS is now integrated with Oracle Data Integrator(ODI). So, all the source database related operations are performed on a new schema called ODS. The details of this schema are captured in this screen.

Note – Both FIS and ODS are in same instance/Database referred as Reports Server in Flexcube 12.2



5. Specify the following schema details:

ODS Schema

Specify the user name to access the schema.

ODS Schema Password

Specify the schema password.

ODS Service Name

Specify the service name of database.

ODS TNS Connect Descriptor

Specify a valid connect string that contains the details for database connectivity.

ODS Schema Address

Specify the IP address of the system where the database schema is installed.

ODS Schema Port

Specify the port number.

Recompilation Thread count:

Specify Thread count for recompilation.

6. Once you have entered the details, you can test the database schema connection using 'Test Connection' button.

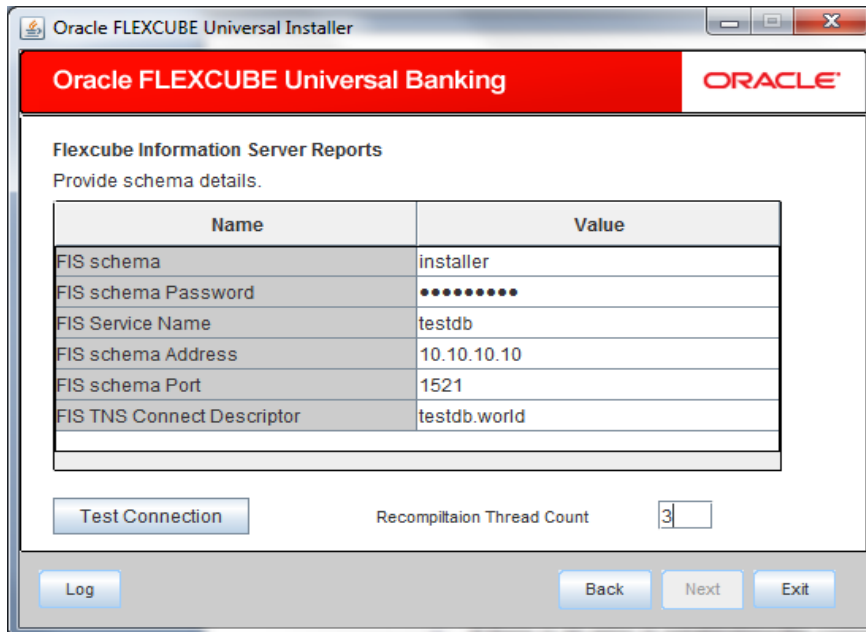


Note the following:

- If the connection is established, the installer displays a message 'Connection Successful'.
- If there is an error in establishing the connection, the system displays the message 'Invalid DB Credentials'.

If the TNS entry is not proper, the installer displays the message 'TNS entries are not proper'.

7. After testing the connection successfully, click 'Next'. The following screen is displayed.
8. Destination Schema: It will point to FIS schema as earlier and regular DDL and App object flow will continue. The scripts which were used to give the grants has to be removed.



9. Specify the following schema details:

FIS Schema

Specify the user name to access the schema.

FIS Schema Password

Specify the schema password.

FIS Service Name

Specify the service name of database.

FIS TNS Connect Descriptor

Specify a valid connect string that contains the details for database connectivity.

FIS Schema Address

Specify the IP address of the system where the database schema is installed.

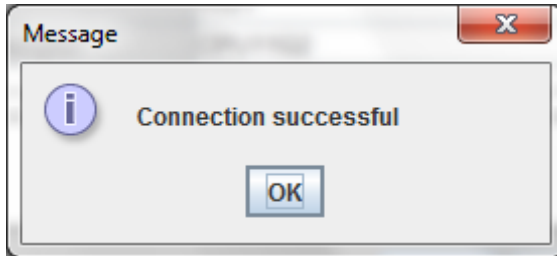
FIS Schema Port

Specify the port number. Once you have entered the details, you can test the database schema connection using 'Test Connection' button

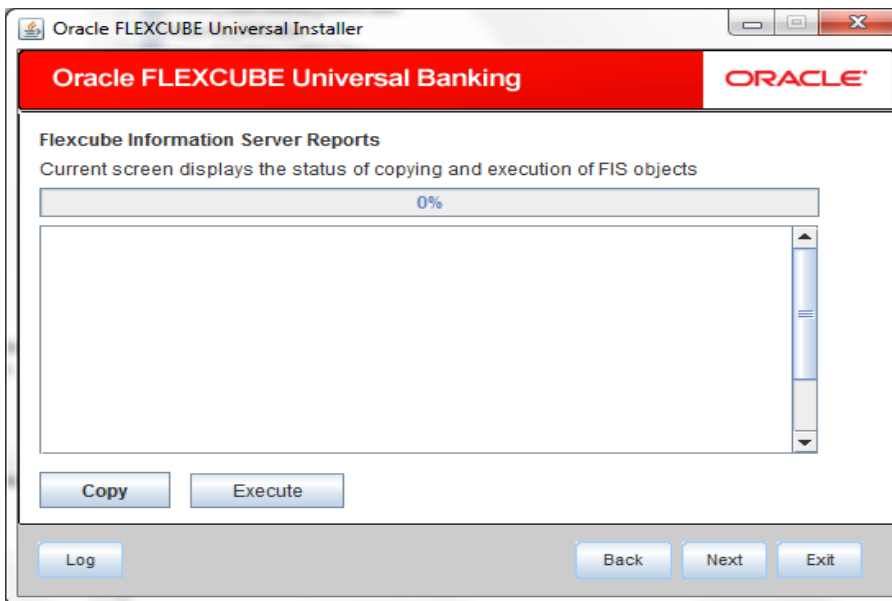
Recompilation Thread count:

Specify Thread count for recompilation.

Click Test Connection

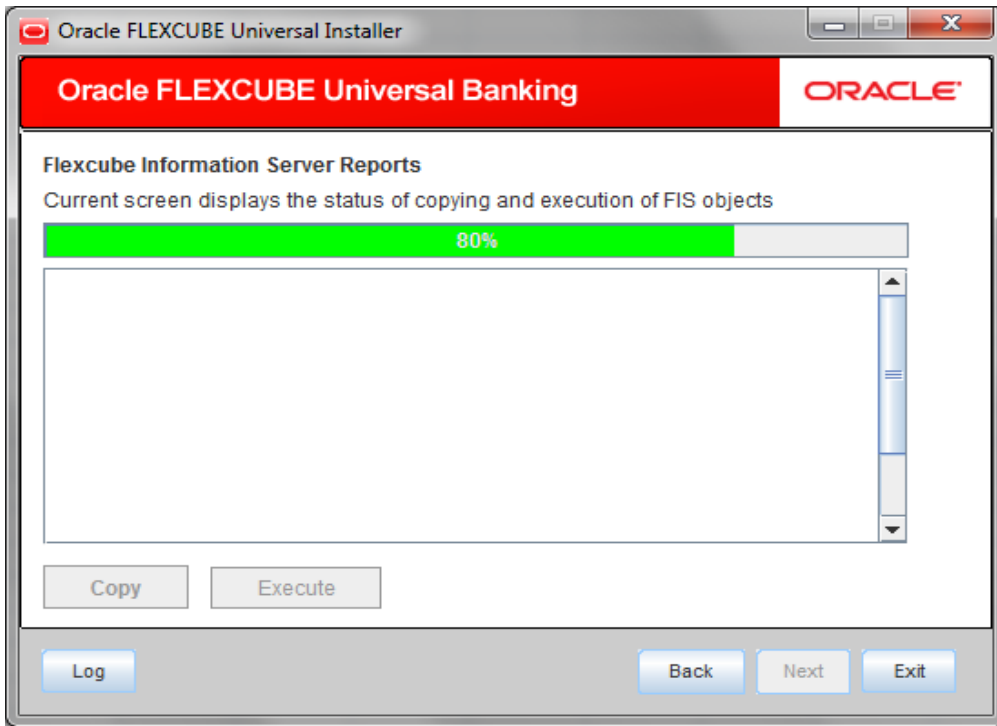


After testing the connection successfully, click 'Next' and the following screen is displayed:

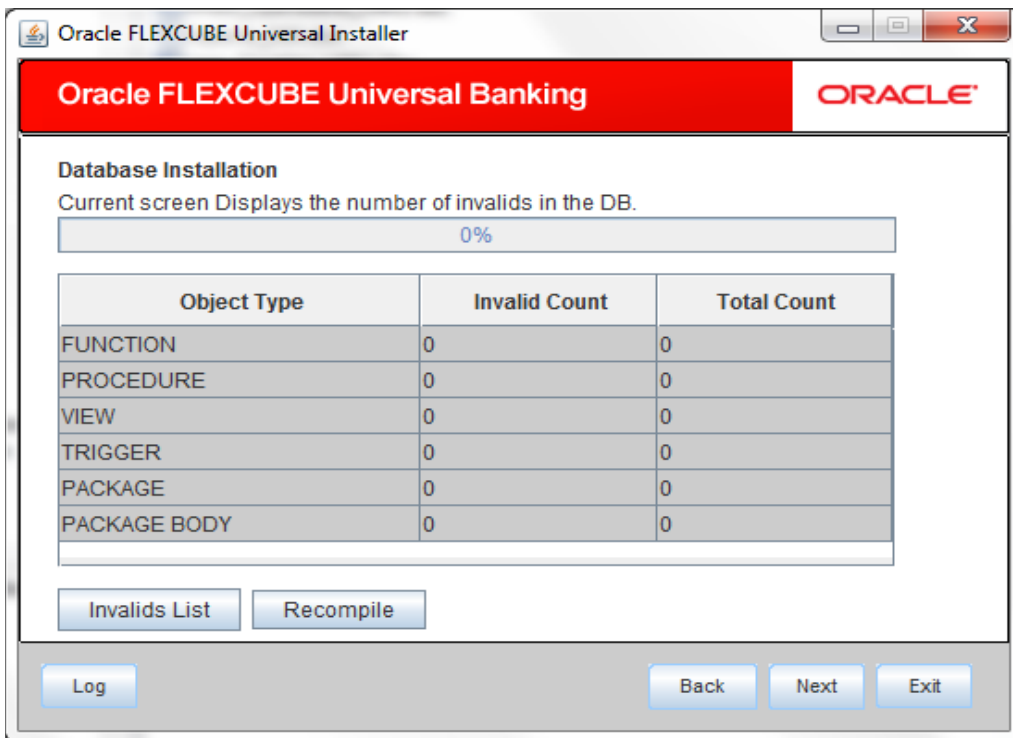


10. Click Copy. The Installer will copy the source files (scripts and the database objects) from the source directory to the destination directory. The files are taken from this location for compilation.

11. Click Execute.



12. It compiles all the db objects into the database and executes the scripts. Click on Next:



This screen is for the ODS schema. Click Recompile button to resolve any invalids. Click Next.

The same invalid display screen is again shown for the FIS schema. Click Recompile button to resolve any invalids. Click Next.



This completes the steps for FIS from Oracle Flexcube Installer. FIS installation is complete on completing ODI_Configuration under FCUBS Components > FLEXCUBE FIS.



FIS Utility
[May] [2021]
Version 12.87.7.0.0

Oracle Financial Services Software Limited
Oracle Park
Off Western Express Highway
Goregaon (East)
Mumbai, Maharashtra 400 063
India

Worldwide Inquiries:
Phone: +91 22 6718 3000
Fax: +91 22 6718 3001
www.oracle.com/financialservices/

Copyright © [2007], [2021], Oracle and/or its affiliates. All rights reserved.

Oracle and Java are registered trademarks of Oracle and/or its affiliates. Other names may be trademarks of their respective owners.

U.S. GOVERNMENT END USERS: Oracle programs, including any operating system, integrated software, any programs installed on the hardware, and/or documentation, delivered to U.S. Government end users are "commercial computer software" pursuant to the applicable Federal Acquisition Regulation and agency-specific supplemental regulations. As such, use, duplication, disclosure, modification, and adaptation of the programs, including any operating system, integrated software, any programs installed on the hardware, and/or documentation, shall be subject to license terms and license restrictions applicable to the programs. No other rights are granted to the U.S. Government.

This software or hardware is developed for general use in a variety of information management applications. It is not developed or intended for use in any inherently dangerous applications, including applications that may create a risk of personal injury. If you use this software or hardware in dangerous applications, then you shall be responsible to take all appropriate failsafe, backup, redundancy, and other measures to ensure its safe use. Oracle Corporation and its affiliates disclaim any liability for any damages caused by use of this software or hardware in dangerous applications.

This software and related documentation are provided under a license agreement containing restrictions on use and disclosure and are protected by intellectual property laws. Except as expressly permitted in your license agreement or allowed by law, you may not use, copy, reproduce, translate, broadcast, modify, license, transmit, distribute, exhibit, perform, publish or display any part, in any form, or by any means. Reverse engineering, disassembly, or decompilation of this software, unless required by law for interoperability, is prohibited.

The information contained herein is subject to change without notice and is not warranted to be error-free. If you find any errors, please report them to us in writing.

This software or hardware and documentation may provide access to or information on content, products and services from third parties. Oracle Corporation and its affiliates are not responsible for and expressly disclaim all warranties of any kind with respect to third-party content, products, and services. Oracle Corporation and its affiliates will not be responsible for any loss, costs, or damages incurred due to your access to or use of third-party content, products, or services.