

CMS – OFLO Integration Guide

Oracle FLEXCUBE Onboarding

Release 14.5.0.0.0

Part Number F41347-01

May 2021

CMS - OFLO Integration Guide

Oracle Financial Services Software Limited

Oracle Park

Off Western Express Highway

Gurgaon (East)

Mumbai, Maharashtra 400 063

India

Worldwide Inquiries:

Phone: +91 22 6718 3000

Fax: +91 22 6718 3001

<https://www.oracle.com/industries/financial-services/index.html>

Copyright © 2021, Oracle and/or its affiliates. All rights reserved.

Oracle and Java are registered trademarks of Oracle and/or its affiliates. Other names may be trademarks of their respective owners.

U.S. GOVERNMENT END USERS: Oracle programs, including any operating system, integrated software, any programs installed on the hardware, and/or documentation, delivered to U.S. Government end users are “commercial computer software” pursuant to the applicable Federal Acquisition Regulation and agency-specific supplemental regulations. As such, use, duplication, disclosure, modification, and adaptation of the programs, including any operating system, integrated software, any programs installed on the hardware, and/or documentation, shall be subject to license terms and license restrictions applicable to the programs. No other rights are granted to the U.S. Government.

This software or hardware is developed for general use in a variety of information management applications. It is not developed or intended for use in any inherently dangerous applications, including applications that may create a risk of personal injury. If you use this software or hardware in dangerous applications, then you shall be responsible to take all appropriate failsafe, backup, redundancy, and other measures to ensure its safe use. Oracle Corporation and its affiliates disclaim any liability for any damages caused by use of this software or hardware in dangerous applications.

This software and related documentation are provided under a license agreement containing restrictions on use and disclosure and are protected by intellectual property laws. Except as expressly permitted in your license agreement or allowed by law, you may not use, copy, reproduce, translate, broadcast, modify, license, transmit, distribute, exhibit, perform, publish or display any part, in any form, or by any means. Reverse engineering, disassembly, or decompilation of this software, unless required by law for interoperability, is prohibited. The information contained herein is subject to change without notice and is not warranted to be error-free. If you find any errors, please report them to us in writing.

This software or hardware and documentation may provide access to or information on content, products and services from third parties. Oracle Corporation and its affiliates are not responsible for and expressly disclaim all warranties of any kind with respect to third-party content, products, and services. Oracle Corporation and its affiliates will not be responsible for any loss, costs, or damages incurred due to your access to or use of third-party content, products, or services.

Contents

1	About this manual	1
1.1	Purpose	1
1.2	Audience	1
1.3	List of Chapters	1
1.4	Acronym and Abbreviation	1
2	Integration Guide	2
2.1	Introduction	2
2.2	Prerequisite	2
2.3	Maintenance for OFLO	2
2.4	API for OFLO	6

1 About this manual

1.1 Purpose

This manual is to help with Integration of Oracle FLEXCUBE Onboarding Product with Card Management System acting as the backend Product Processor.

1.2 Audience

This guide is primarily intended for the following user/user roles:

Table 1: Audience

Role	Function
Implementation and IT Staff	Implementation and maintenance of the software

1.3 List of Chapters

Table 2: Topics

Topics	Function
Integration Guide	This chapter helps you to integrate Oracle FLEXCUBE Onboarding product with Card Management System.

1.4 Acronym and Abbreviation

The following are some of the acronyms and abbreviations you are likely to find in the manual.

Table 3: Acronym and Abbreviation

Abbreviation	Description
CMS	Card Management System
OFLO	Oracle FLEXCUBE Onboarding

2 Integration Guide

2.1 Introduction

You can integrate Oracle FLEXCUBE Onboarding with Card Management System acting as the backend Product Processor through Oracle Banking Routing Hub. This document briefs you about the specific steps needed for integration of these two products and specific maintenances.

2.2 Prerequisite

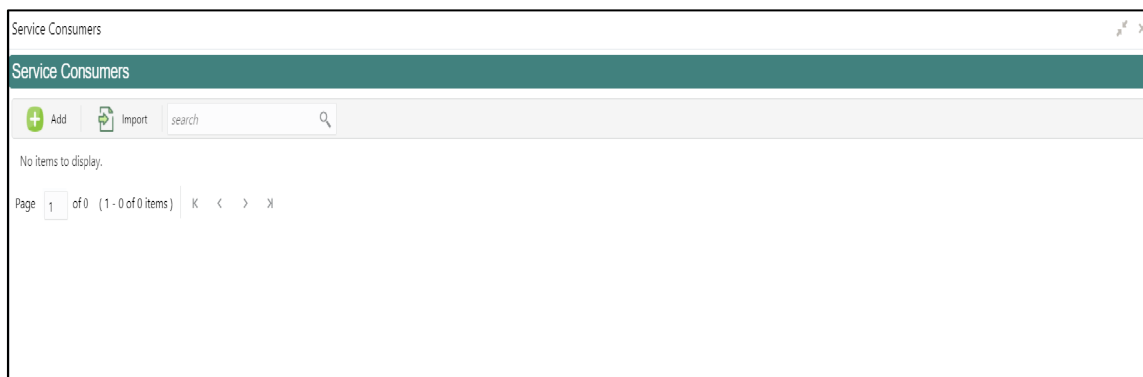
CMS system should be available, with support to list of consumer services are detailed in section 2.4.

2.3 Maintenance for OFLO

1. Maintain OBRH routing configuration in common core for CC_HOST.
2. From **Home screen**, click **Core Maintenance**.
3. Under **Core Maintenance**, click **Routing Hub**.
4. Under **Routing Hub**, click **Service Consumers**.

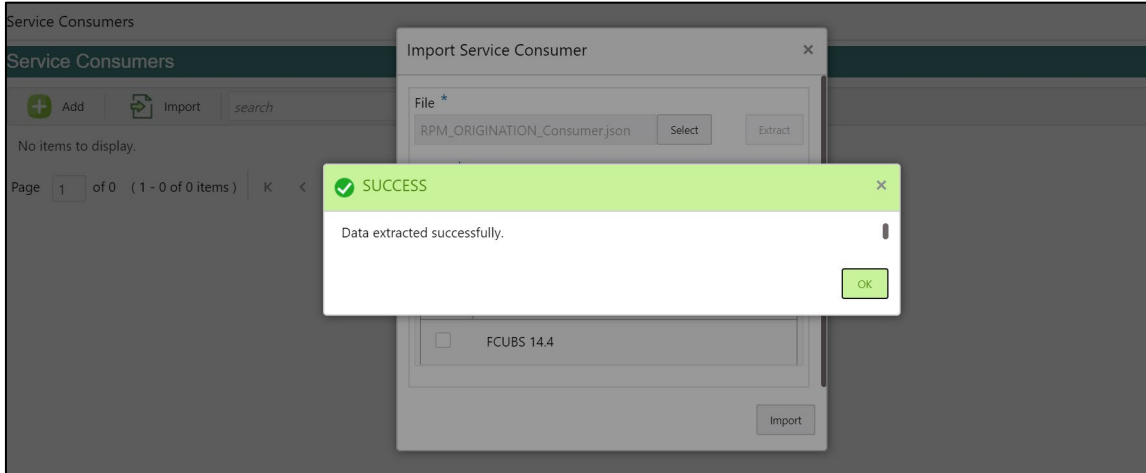
→ The **Service Consumers** screen is displayed.

Figure 1: Service Consumers



5. Click **Import** and upload the RPM_ORIGINATION_Consumer.json file provided in the release and click **Extract**.

Figure 2: Success



6. Select CC_HOST and click **Import**.

Figure 3: Confirmation

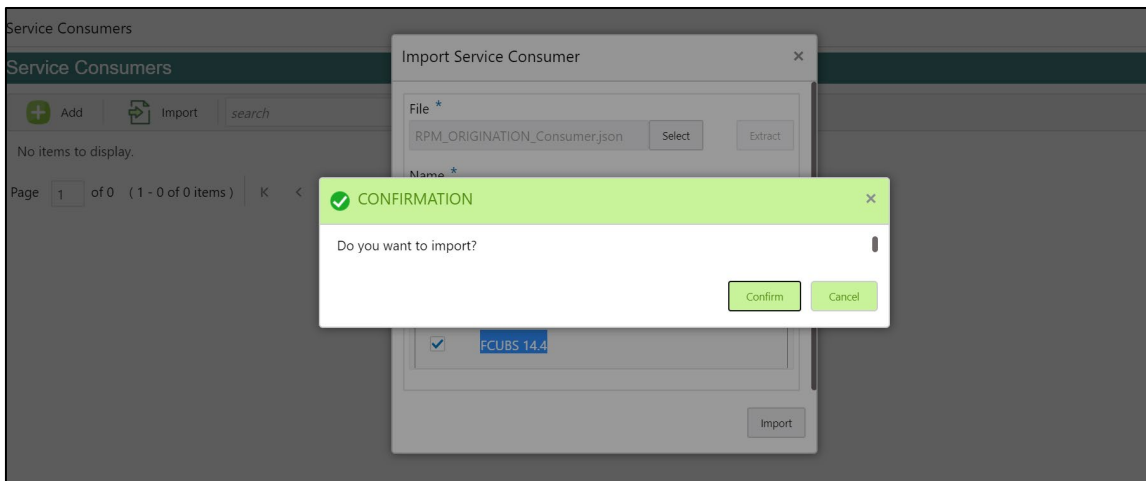
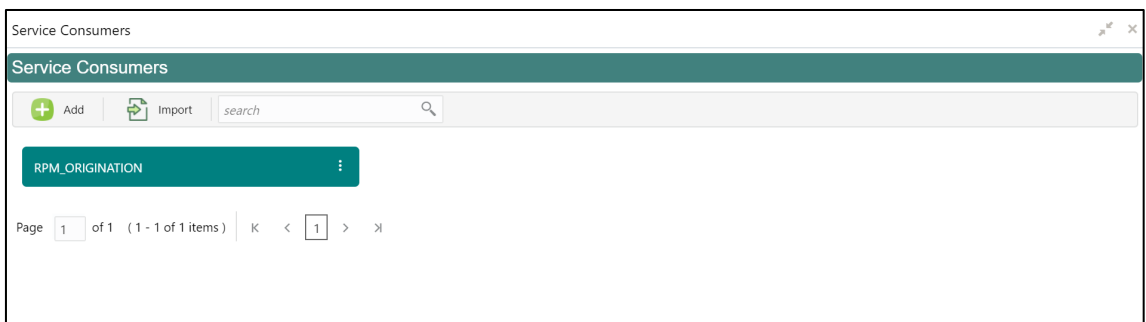


Figure 4: RPM Origination



7. Click **RPM_ORIGINATION**.
8. Under **RPM_ORIGINATION**, click **CC_HOST**.

Figure 5: RPM Origination

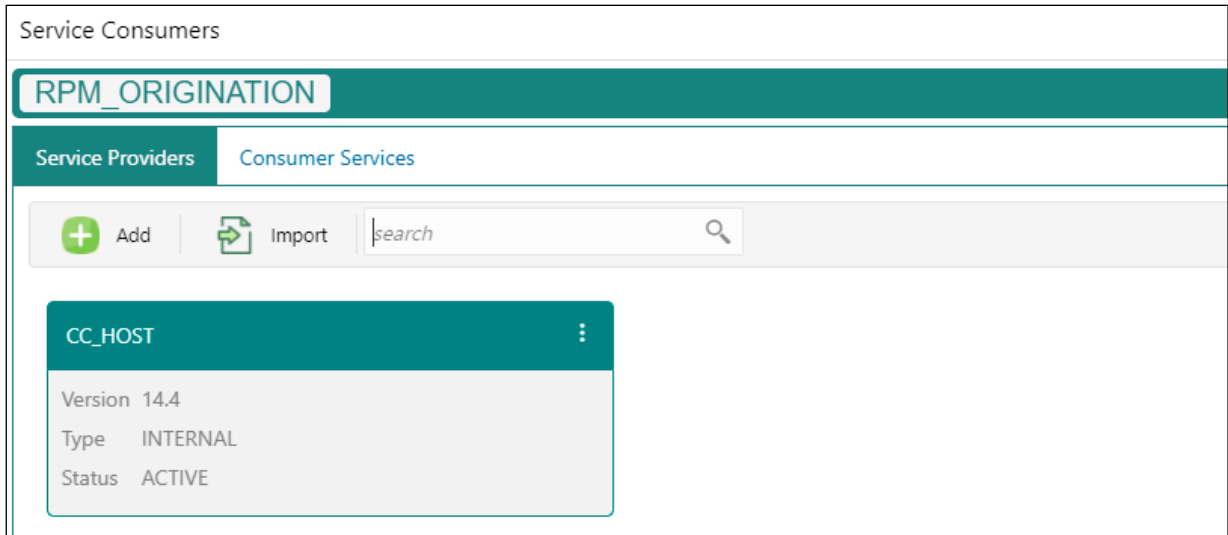
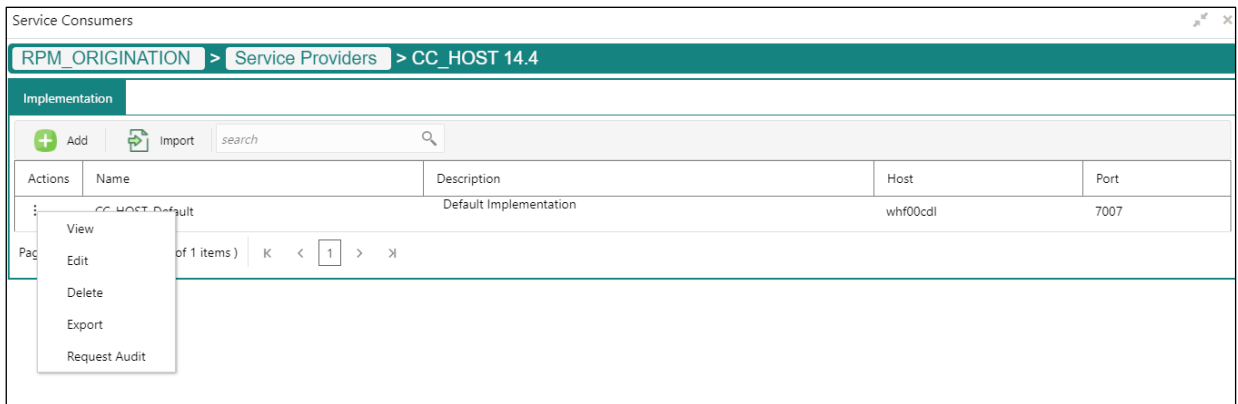
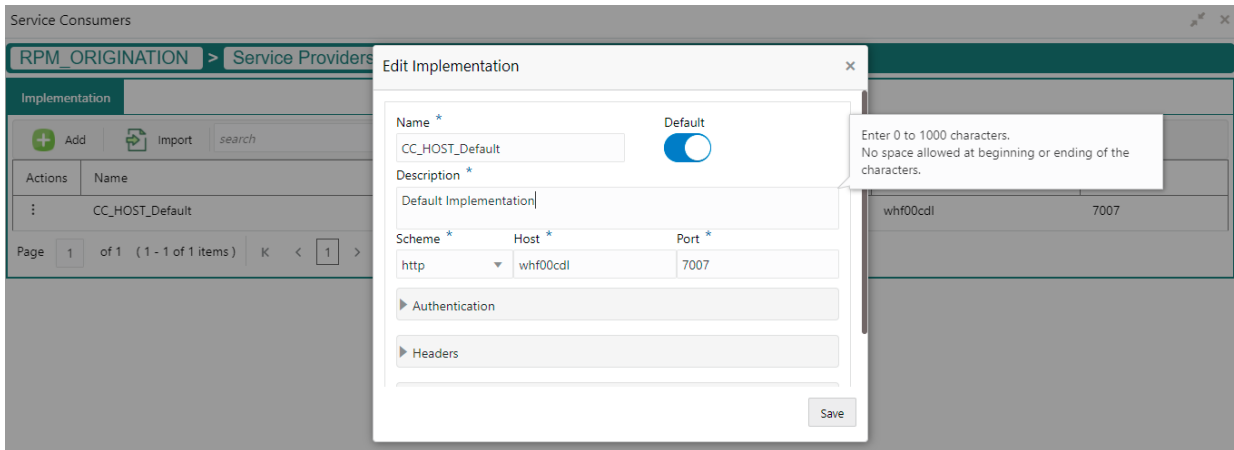


Figure 6: RPM Origination



9. Click **Edit**.
10. Change the host and port as per the FCUBS installation and save it.

Figure 7: Edit Implementation



The below consumer services will be imported.

Figure 8: Consumer Services

Actions	Name	Description
:	Get_Credit_Card_Number	Get_Credit_Card_Number
:	Get_Host_Product_Details_By_Code	Get_Host_Product_Details_By_Code
:	Get_Host_Product_Details_List	Get_Host_Product_Details_List
:	Save_Credit_Card_DS_Details	Save_Credit_Card_DS_Details
:	Update_Credit_Card_Number	Put_Credit_Card_Number

Refer **Routing Hub Configuration User Guide** for more details.

2.4 API for OFLO

1. Get_Host_Product_Details_By_Code

Parent Node: HostProductList

Field Name	Field Description	Type	Length
productCode	Host Product Code	String	4
productDescription	Host Product Description	String	50
productType		String	1

2. Get_Host_Product_Details_List

Parent Node: data

Field Name	Field Description	Type	Length
productCode	Host Product Code	String	4
productDescription	Host Product Description	String	50
productType		String	1

Child Node: components

Parent Node: data

Field Name	Field Description	Type	Length
componentName	Host Product Code	String	4
componentDescription	Host Product Description	String	50
componentType	Component Type	String	1
hostComponentType	Host Component Type	String	1
mainComponent	Main Component	String	1
componentReportingType	Reporting type Interest /Charge	String	50
ratetoUse	Rate to Use	String	50

Child Node: productUdes

Parent Node: components

Field Name	Field Description	Type	Length
productCode	Host Product Code	String	4
productDescription	Host Product Description	String	50
productType		String	1

3. Save_Credit_Card_DS_Details

Field Name	Field Description	Type	Length
processRefNo	Process Reference Number	String	35
applicationNo	Application Number	String	16

Kindly refer swagger documentation for allDSDetails for credit card application.

The screenshot shows a 'View Transformation' configuration window. It includes sections for QueryParams, Request Transformation, and Response Transformation. The Request Transformation section shows a Velocity template with the following JSON structure:

```

{
  "allDsDetails": "$body.data"
}

```

As part of response, credit card number is expected.

Field Name	Field Description	Type	Length
creditcardnumber	Credit Card Number	Long	16

4. Update_Credit_Card_Number

Use this API in case of unsynchronized call.

Field Name	Field Description	Type	Length
processRefNo	Process Reference Number	String	35
cardNumber	Credit Card Number	Integer	16