

Switch Monitor Installation
Oracle FLEXCUBE Universal Banking
Release 14.4.0.4.0
Part No. F42209-01
[May] [2021]



Table of Contents

- 1. SWITCH INTERFACE INSTALLATION FOR GATEWAY MONITOR SETUP 1-1
 - 1.1 INTRODUCTION 1-1
 - 1.2 PREREQUISITES 1-1
 - 1.3 SETTING UP SWIG MONITOR 1-1

1. SWITCH Interface Installation for Gateway Monitor Setup

1.1 Introduction

This document explains about setting up the SWIG (Switch Interface Installation for Gateway) Monitor.

1.2 Prerequisites

You need to copy the following JAR files before you start with the monitor setup.

- ojdbc6.jar
- commons-codec-Latest Qualified Version.jar
- ucp.jar

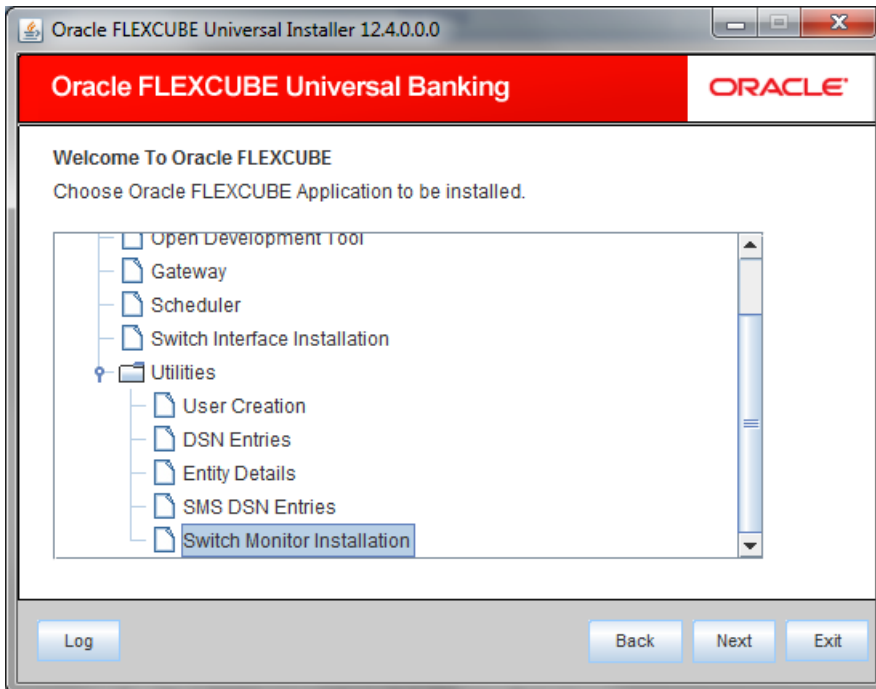
For more information on the location of the JAR files, refer to the section 'Prerequisites for Oracle FLEXCUBE Installer' in the installation manual 'Setting up Oracle FLEXCUBE Installer'.

For details on latest version of the software qualified with Oracle FLEXCUBE, refer to the release certificate.

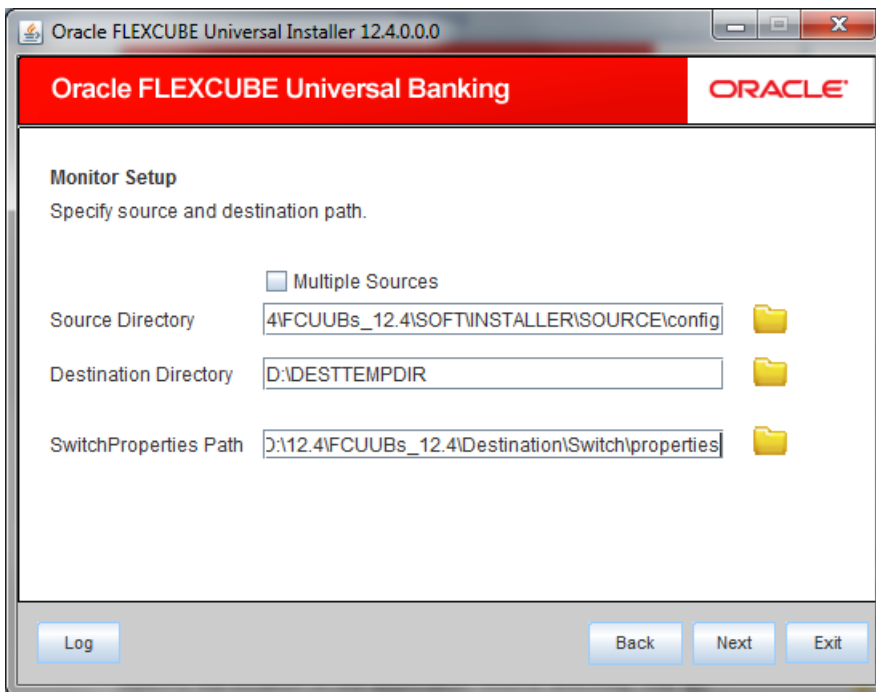
1.3 Setting up SWIG Monitor

To set up the SWIG monitor using the installer, follow the steps given below:

1. Run 'FCUBSInstaller.bat' batch file to launch Oracle FLEXCUBE Universal Banking Solution Installer. The following screen is displayed
2. Click 'Next' to proceed. The following screen is displayed.



3. Click 'Utilities' and then click 'Monitor Setup'.
4. Click 'Next'. The following screen is displayed.



5. Specify the Application Details as given below:

Source Directory

Specify the location of the application source directory. The source directory will have the following folders:

- INFRA (Copied from Shipment media)
- MAIN (Copied from Shipment media) (optional)
- Other Folders (Based on the plug-ins selected)

You can use the directory icon to browse and select the source directory.



Check the box 'Multiple Sources' to use multiple source directories.

Destination Directory

Specify the directory where the application should be setup. The installer will copy the source files from the Source Directory to the Destination Directory.

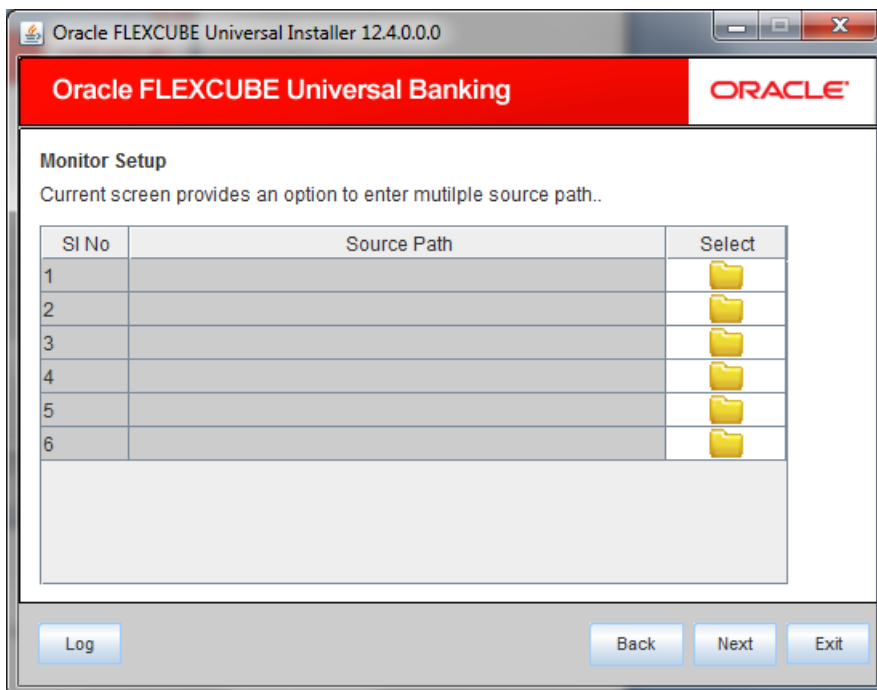
You can use the directory icon to browse and select the destination directory.

Switch Properties Path

Specify the path of the directory having Switch.properties.

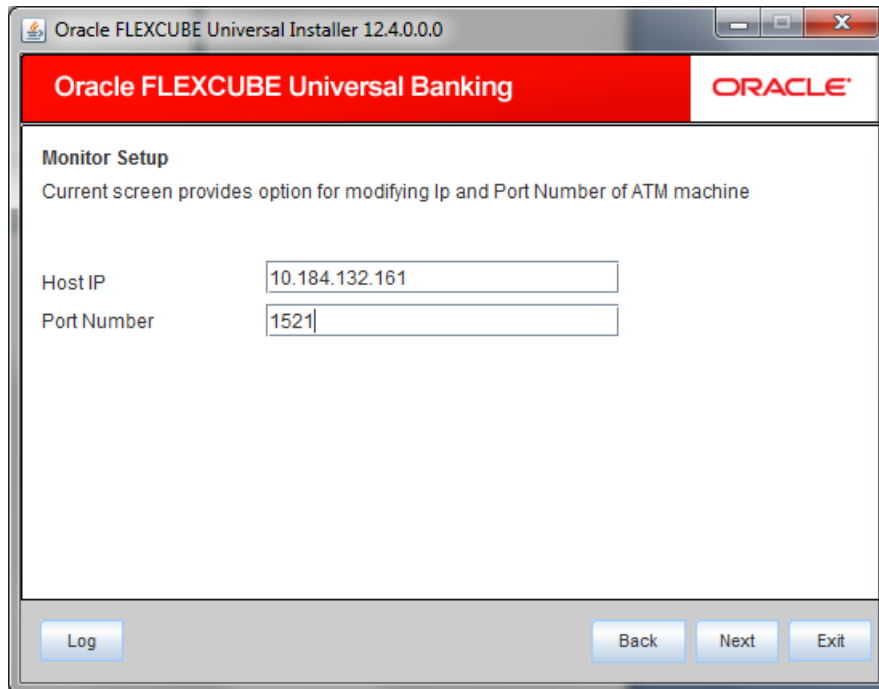
Multiple Sources

In case of Cluster/Patch releases, you can get the files from multiple source directories. If you check this box, the installer will not allow you to specify the source directory in this screen. On clicking 'Next', the following screen is displayed.



You can select all the source directories in this screen. The Installer will copy the sources from the multiple locations into the destination directory. You can have consolidated sources in the destination directory.

6. Click 'Next' to continue.



7. Specify the following details:

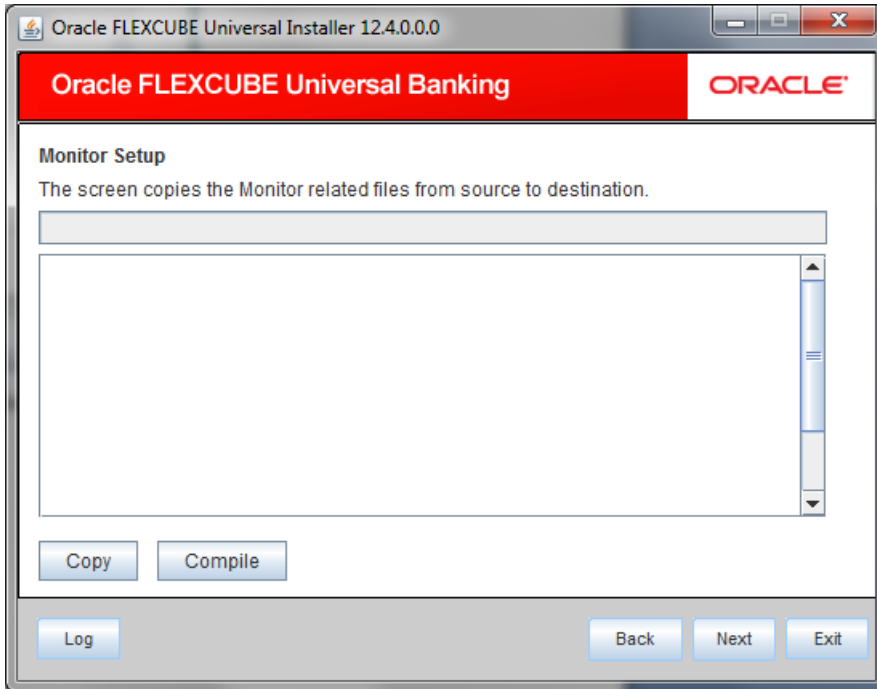
Host IP

Specify the IP address of the ATM server.

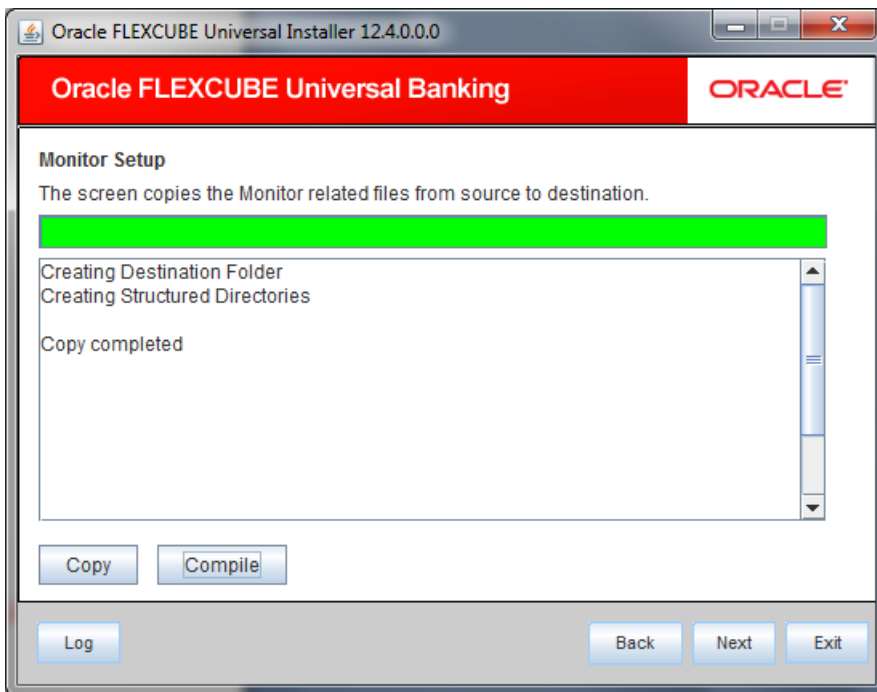
Port No

Specify the port number of the ATM server.

8. Click 'Next', The following screen is displayed.



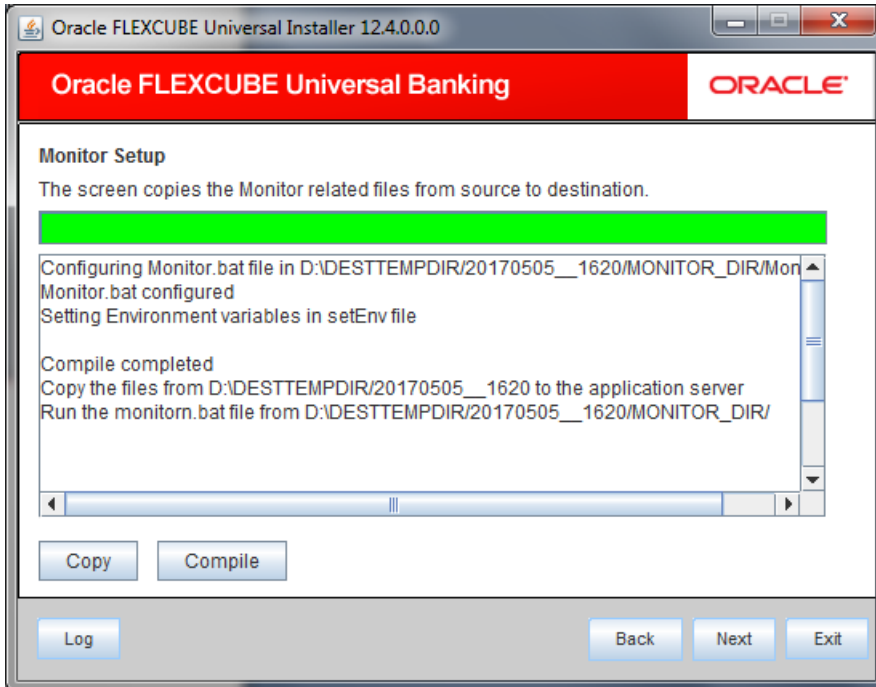
9. Click 'Copy' button to copy the monitor related files from source directory to the destination directory.



above screen.

View the copy status in the

10. Once the files are copied, click 'Compile' button.



11. The installer starts compiling the sources. You can view the status of the compilation process in the above screen. After compilation, the message as 'Compile Completed' is displayed. Then, the Installer starts building the JAR file in the destination directory.
12. The text area on the screen shows location from where the file *run.bat* or *run.sh* should be executed.
13. Copy the sources from the destination to the application server and run *MONITOR.bat* file.



Switch Monitor Setup
[May] [2021]
Version 14.4.0.4.0

Oracle Financial Services Software Limited
Oracle Park
Off Western Express Highway
Goregaon (East)
Mumbai, Maharashtra 400 063
India

Worldwide Inquiries:
Phone: +91 22 6718 3000
Fax: +91 22 6718 3001
www.oracle.com/financialservices/

Copyright © [2007], [2021], Oracle and/or its affiliates. All rights reserved.

Oracle and Java are registered trademarks of Oracle and/or its affiliates. Other names may be trademarks of their respective owners.

U.S. GOVERNMENT END USERS: Oracle programs, including any operating system, integrated software, any programs installed on the hardware, and/or documentation, delivered to U.S. Government end users are "commercial computer software" pursuant to the applicable Federal Acquisition Regulation and agency-specific supplemental regulations. As such, use, duplication, disclosure, modification, and adaptation of the programs, including any operating system, integrated software, any programs installed on the hardware, and/or documentation, shall be subject to license terms and license restrictions applicable to the programs. No other rights are granted to the U.S. Government.

This software or hardware is developed for general use in a variety of information management applications. It is not developed or intended for use in any inherently dangerous applications, including applications that may create a risk of personal injury. If you use this software or hardware in dangerous applications, then you shall be responsible to take all appropriate failsafe, backup, redundancy, and other measures to ensure its safe use. Oracle Corporation and its affiliates disclaim any liability for any damages caused by use of this software or hardware in dangerous applications.

This software and related documentation are provided under a license agreement containing restrictions on use and disclosure and are protected by intellectual property laws. Except as expressly permitted in your license agreement or allowed by law, you may not use, copy, reproduce, translate, broadcast, modify, license, transmit, distribute, exhibit, perform, publish or display any part, in any form, or by any means. Reverse engineering, disassembly, or decompilation of this software, unless required by law for interoperability, is prohibited.

The information contained herein is subject to change without notice and is not warranted to be error-free. If you find any errors, please report them to us in writing.

This software or hardware and documentation may provide access to or information on content, products and services from third parties. Oracle Corporation and its affiliates are not responsible for and expressly disclaim all warranties of any kind with respect to third-party content, products, and services. Oracle Corporation and its affiliates will not be responsible for any loss, costs, or damages incurred due to your access to or use of third-party content, products, or services.