

WebLogic Server Configuration Checklist  
Oracle Banking Payments  
Release 14.5.0.0.0  
[April] [2022]



---

# Table of Contents

<b>1. INTRODUCTION .....</b>	<b>1</b>
1.1 ABOUT THIS MANUAL.....	1
<b>2. WEBLOGIC SERVER CONFIGURATION.....</b>	<b>2</b>
2.1 CHECK LIST TO VALIDATE WEBLOGIC SERVER CONFIGURATION .....	2

---

# 1. Introduction

## 1.1 AboutThisManual

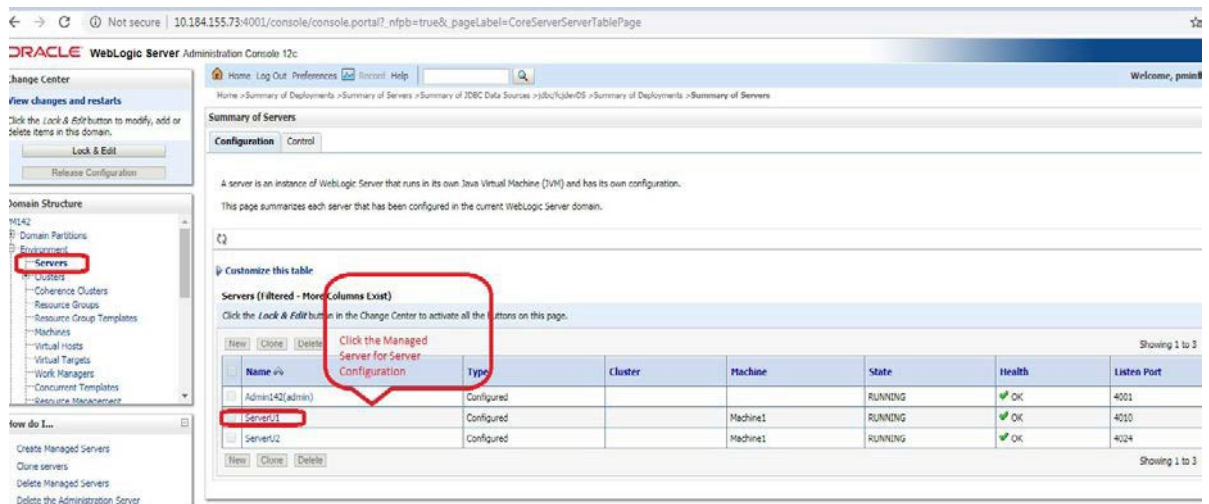
This document briefs the list of checklists to validate WebLogic Server Configuration, to make it compatible to Oracle Banking Payments 14.5.

## 2. WebLogic Server Configuration

### 2.1 Checklist to Validate WebLogic Server Configuration

Below are the list of steps to validate WebLogic Server Configuration post successful installation of Oracle Banking Payments:

1. Identify the Managed Server in which the Application EAR is deployed
  - a. Login to the WebLogic Console
  - b. Navigate to Environment --> Servers
  - c. From the List of Servers, locate and click on the Managed Server in which the Application EAR is deployed



Name	Type	Cluster	Machine	State	Health	Listen Port
Admin142(admin)	Configured			RUNNING	OK	4001
Server1	Configured		Machine1	RUNNING	OK	4010
Server12	Configured		Machine1	RUNNING	OK	4024

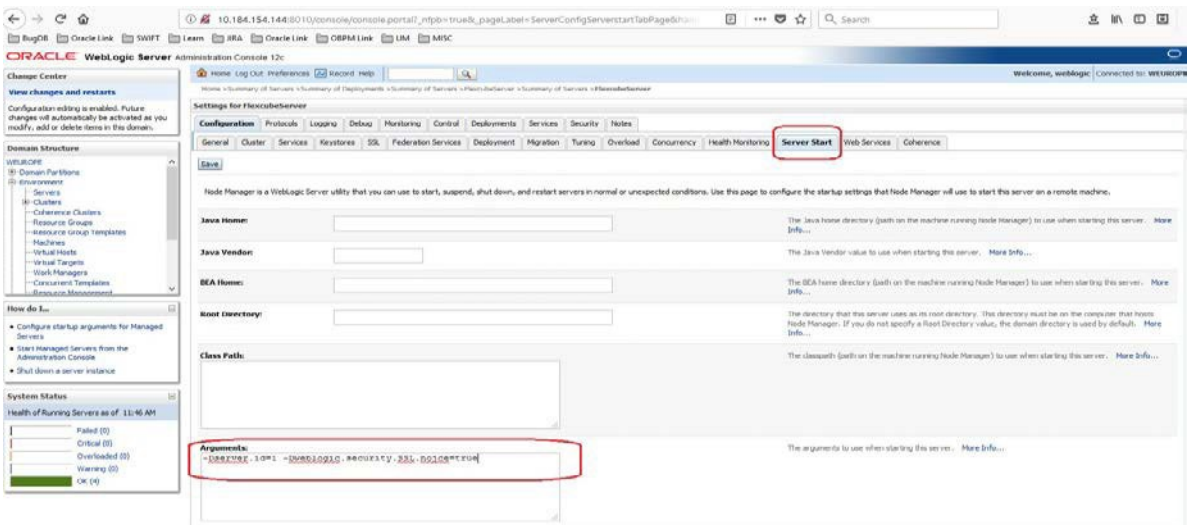
#### 2. Verifying Arguments for Reference Number Generation

- a. After clicking the Managed Server, navigate to 'Server Start' tab under the 'Configuration Tab'
- b. Verify the Arguments as shown below

**-Dserver.id=1 -Dweblogic.security.SSL.nojce=true**

#### Note

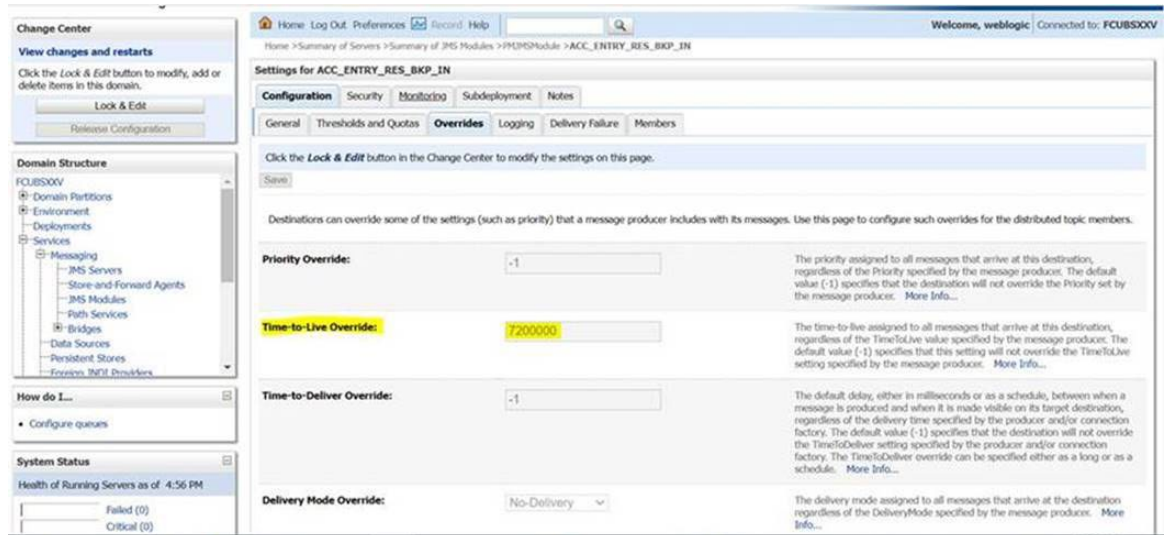
Parameter '-Dserver.id=1' is required for the Reference Number Generation in Oracle Banking Payments Transaction screens. If not set, Oracle Banking Payments Transaction screens on launch will report Error on click of NEW



### 3. Time-to-Live Override value for ACC\_ENTRY\_RES\_BKP\_IN queue

ACC\_ENTRY\_RES\_BKP\_IN hold all the JMS responses from FCUBS such as ECA, EAC, Accounting etc. Hence message should be available on queue for longer period for MDB to read and process before it move to Error ACC\_ENTRY\_RES\_BKP\_IN\_E queue.

To achieve this, there is an increase "Time-to-Live Override" property value of ACC\_ENTRY\_RES\_BKP\_IN to 7200000 (2 Hours approx.) as per below screenshot. This property available in Override tab of ACC\_ENTRY\_RES\_BKP\_IN queue.



#### 4. Data Source Setup Verification

a. Navigate to the Data Sources Configuration

b. Below Data Sources must be mapped in the Data Sources Configuration

i. Jdbc/fcjdevDS

ii. Jdbc/fcjdevDS\_GTXN

iii. Jdbc/fcjdevDS\_XA

iv. Jdbc/fcjSchedulerDS

**ORACLE WebLogic Server Administration Console 12c**

Home > Summary of JDBC Data Sources

**Summary of JDBC Data Sources**

Configuration | Monitoring

A JDBC data source is an object bound to the JNDI tree that provides database connectivity through a pool of JDBC connections. Applications can look up a data source on the JNDI tree and then borrow a database connection from a data source.

This page summarizes the JDBC data source objects that have been created in this domain.

Customize this table

**Data Sources (Filtered - More Columns Exist)**

Click the **Lock & Edit** button in the Change Center to activate all the buttons on this page.

Name	Type	JNDI Name	Targets	Scope	Domain Partitions
jdbc/fcdevDS	Generic	jdbc/fcdevDS	Server1, Server1MPS, ServerSchd	Global	
jdbc/fcdevDS_GTXN	Generic	jdbc/fcdevDS_GTXN	Server1, Server1MPS	Global	
jdbc/fcdevDS_NXA	Generic	jdbc/fcdevDS_NXA	Server1, ServerSchd	Global	
jdbc/fcSchedulerDS	Generic	jdbc/fcSchedulerDS	Server1, ServerSchd	Global	

Showing 1 to 4 of 4 Pages

c. Below listed Data Sources must be configured as NXA (Please refer to the below screenshot for Jdbc/fcdevDS\_GTXN)

i. Jdbc/fcdevDS

ii. Jdbc/fcdevDS\_GTXN

Home > Summary of Servers > Summary of JDBC Data Sources > jdbc/fcdevDS\_GTXN > Summary of JDBC Data Sources > jdbc/fcdevDS > Summary of JDBC Data Sources > jdbc/fcdevDS\_GTXN

**Settings for jdbc/fcdevDS\_GTXN**

Configuration | Targets | Monitoring | Control | Security | Notes

General | **Connection Pool** | Oracle | ONS | Transaction | Diagnostics | Identity Options

Click the **Lock & Edit** button in the Change Center to modify the settings on this page.

Save

The connection pool within a JDBC data source contains a group of JDBC connections that applications reserve, use, and then return to the pool. The connection pool and the connections within it are created when the connection pool is registered, usually WebLogic Server or when deploying the data source to a new target.

Use this page to define the configuration for this data source's connection pool.

**URL:** jdbc:oracle:thin:@wf100aen1.in.oracle.com:1523:pmimgpdtb

The URL of the database to connect to. The format of the URL varies by JDBC driver.

**Driver Class Name:** oracle.jdbc.OracleDriver

The full package name of JDBC driver class used to create the physical database connection pool. (Note that this driver class must be in the classpath of any server to which you deployed.) [More Info...](#)

**Properties:** user=CRUSR10

The list of properties passed to the JDBC driver that are used to create physical database connections. For example: server=dsServer1. List each property=value pair on a separate line. [More Info...](#)

**System Properties:**

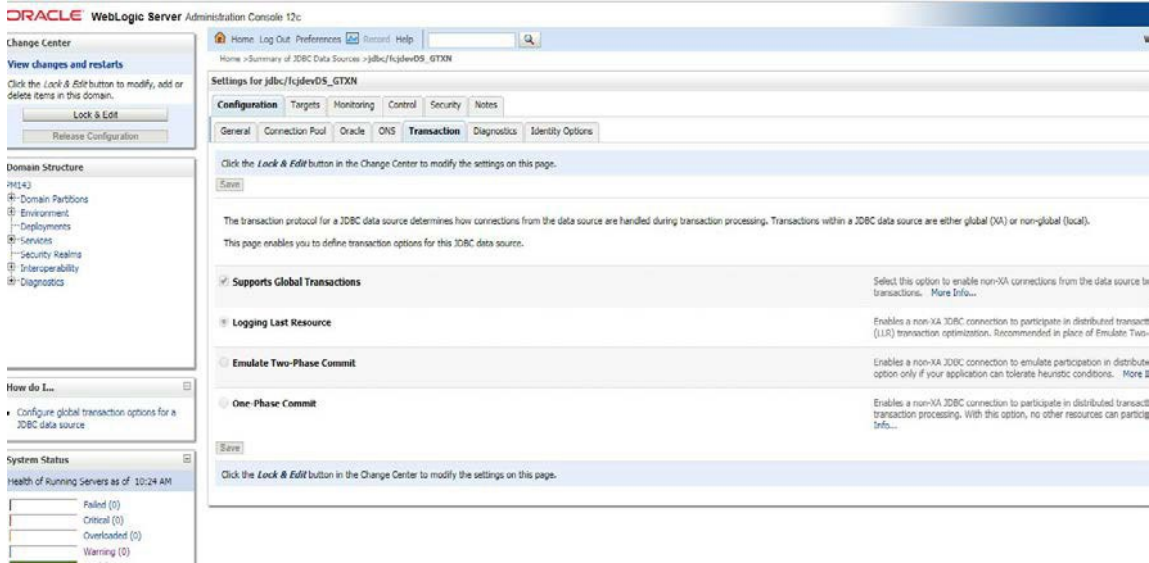
The list of System Properties names passed to the JDBC driver that are used to create connections. For example: server=dsServer1. List each property=value pair on a separate line.

**Encrypted Properties:**

The list of encrypted Properties passed to the JDBC driver that are used to create physical connections. For example: password=value. There are two ways to enter the values: values as is or the encrypted values will be visible on the screen until you save the option. List each property=value pair on a separate line. Values entered will be encrypted unless the information security, save any other changes that you wish to make to this page. [Add Security](#) button. On the Add a new Encrypted Property page, enter the property name and value. [More Info...](#)

d. Below options must be enabled for the GTXN Data Source - Jdbc/fcjdevDS\_GTXN

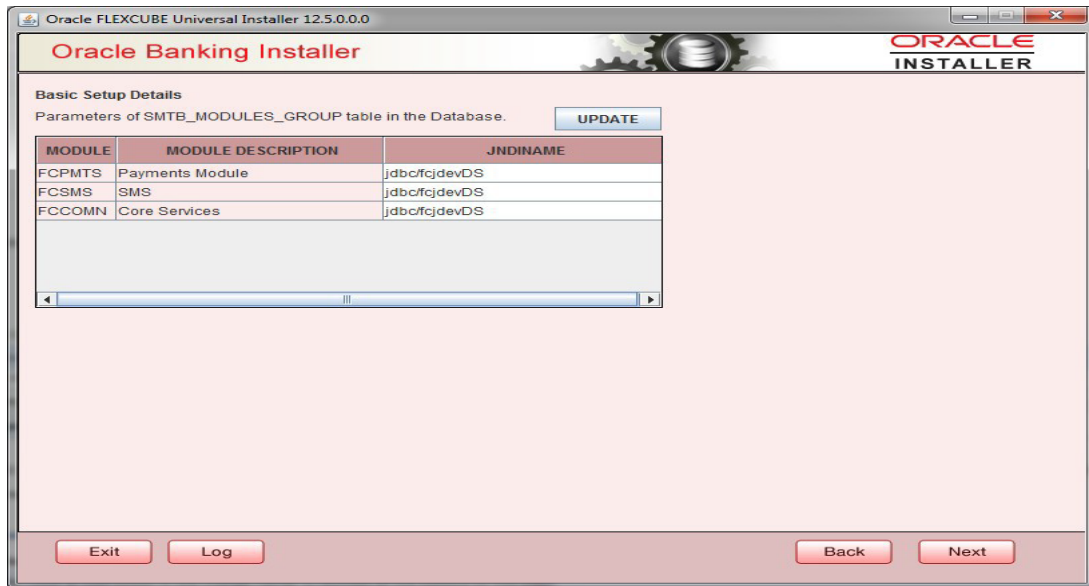
- i. Supports Global Transactions
- ii. Logging Last Resource



5. Verifying data in SMTB\_MODULES\_GROUP Table

- i. JNDI Names Input during Installation process must be verified with records in the SMTB\_MODULES\_GROUP table

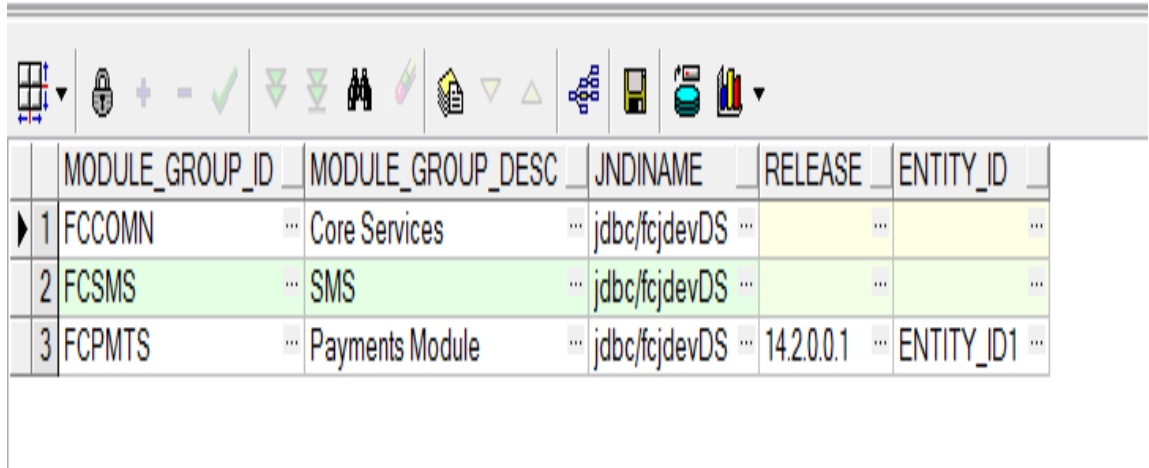
Below is the screenshot of Data Input during installation





Below is the screenshot of records in the SMTB\_MODULES\_GROUP table

```
SELECT * FROM smtb_modules_group
```



The screenshot shows a database query result in a grid view. The table has five columns: MODULE\_GROUP\_ID, MODULE\_GROUP\_DESC, JNDINAME, RELEASE, and ENTITY\_ID. There are three rows of data. The first row has ID 1, 'Core Services', 'jdbc/fc/devDS', and empty 'RELEASE' and 'ENTITY\_ID' fields. The second row has ID 2, 'SMS', 'jdbc/fc/devDS', and empty 'RELEASE' and 'ENTITY\_ID' fields. The third row has ID 3, 'Payments Module', 'jdbc/fc/devDS', '14.2.0.0.1', and 'ENTITY\_ID1'. The table is displayed in a software interface with a toolbar above it.

	MODULE_GROUP_ID	MODULE_GROUP_DESC	JNDINAME	RELEASE	ENTITY_ID
1	FCCOMN	Core Services	jdbc/fc/devDS		
2	FCSMS	SMS	jdbc/fc/devDS		
3	FCPMTS	Payments Module	jdbc/fc/devDS	14.2.0.0.1	ENTITY_ID1

---

**Note**

Post these changes restart the managed server

---



Oracle Banking Payments WebLogic Server Configuration Checklist  
[April 2022]  
Version 14.5.0.0.0

Oracle Financial Services Software Limited  
Oracle Park  
Off Western Express Highway  
Goregaon (East)  
Mumbai, Maharashtra 400 063  
India

Worldwide Inquiries:  
Phone: +91 22 6718 3000  
Fax: +91 22 6718 3001  
[www.oracle.com/financialservices/](http://www.oracle.com/financialservices/)

Copyright © 2017, 2022, Oracle and/or its affiliates. All rights reserved.

Oracle and Java are registered trademarks of Oracle and/or its affiliates. Other names may be trademarks of their respective owners.

**U.S. GOVERNMENT END USERS:** Oracle programs, including any operating system, integrated software, any programs installed on the hardware, and/or documentation, delivered to U.S. Government end users are “commercial computer software” pursuant to the applicable Federal Acquisition Regulation and agency-specific supplemental regulations. As such, use, duplication, disclosure, modification, and adaptation of the programs, including any operating system, integrated software, any programs installed on the hardware, and/or documentation, shall be subject to license terms and license restrictions applicable to the programs. No other rights are granted to the U.S. Government.

This software or hardware is developed for general use in a variety of information management applications. It is not developed or intended for use in any inherently dangerous applications, including applications that may create a risk of personal injury. If you use this software or hardware in dangerous applications, then you shall be responsible to take all appropriate failsafe, backup, redundancy, and other measures to ensure its safe use. Oracle Corporation and its affiliates disclaim any liability for any damages caused by use of this software or hardware in dangerous applications.

This software and related documentation are provided under a license agreement containing restrictions on use and disclosure and are protected by intellectual property laws. Except as expressly permitted in your license agreement or allowed by law, you may not use, copy, reproduce, translate, broadcast, modify, license, transmit, distribute, exhibit, perform, publish or display any part, in any form, or by any means. Reverse engineering, disassembly, or decompilation of this software, unless required by law for interoperability, is prohibited.  
The information contained herein is subject to change without notice and is not warranted to be error-free. If you find any errors, please report them to us in writing.

This software or hardware and documentation may provide access to or information on content, products and services from third parties. Oracle Corporation and its affiliates are not responsible for and expressly disclaim all warranties of any kind with respect to third-party content, products, and services. Oracle Corporation and its affiliates will not be responsible for any loss, costs, or damages incurred due to your access to or use of third-party content, products, or services.

