

Oracle Banking Treasury Management - ELCM Integration

## **Oracle Banking Treasury Management**

Release 14.4.0.3.0

**Part No. F43221-01**

February 2021

Oracle Banking Treasury Management - ELCM Integration User Guide  
Oracle Financial Services Software Limited  
Oracle Park

Off Western Express Highway  
Goregaon (East)  
Mumbai, Maharashtra 400 063  
India

Worldwide Inquiries:

Phone: +91 22 6718 3000

Fax: +91 22 6718 3001

<https://www.oracle.com/industries/financial-services/index.html>

Copyright © 2020, 2021 Oracle and/or its affiliates. All rights reserved.

Oracle and Java are registered trademarks of Oracle and/or its affiliates. Other names may be trademarks of their respective owners.

U.S. GOVERNMENT END USERS: Oracle programs, including any operating system, integrated software, any programs installed on the hardware, and/or documentation, delivered to U.S. Government end users are “commercial computer software” pursuant to the applicable Federal Acquisition Regulation and agency-specific supplemental regulations. As such, use, duplication, disclosure, modification, and adaptation of the programs, including any operating system, integrated software, any programs installed on the hardware, and/or documentation, shall be subject to license terms and license restrictions applicable to the programs. No other rights are granted to the U.S. Government.

This software or hardware is developed for general use in a variety of information management applications. It is not developed or intended for use in any inherently dangerous applications, including applications that may create a risk of personal injury. If you use this software or hardware in dangerous applications, then you shall be responsible to take all appropriate failsafe, backup, redundancy, and other measures to ensure its safe use. Oracle Corporation and its affiliates disclaim any liability for any damages caused by use of this software or hardware in dangerous applications.

This software and related documentation are provided under a license agreement containing restrictions on use and disclosure and are protected by intellectual property laws. Except as expressly permitted in your license agreement or allowed by law, you may not use, copy, reproduce, translate, broadcast, modify, license, transmit, distribute, exhibit, perform, publish or display any part, in any form, or by any means. Reverse engineering, disassembly, or decompilation of this software, unless required by law for interoperability, is prohibited.

The information contained herein is subject to change without notice and is not warranted to be error-free. If you find any errors, please report them to us in writing.

This software or hardware and documentation may provide access to or information on content, products and services from third parties. Oracle Corporation and its affiliates are not responsible for and expressly disclaim all warranties of any kind with respect to third-party content, products, and services. Oracle Corporation and its affiliates will not be responsible for any loss, costs, or damages incurred due to your access to or use of third-party content, products, or services.

---

# Contents

## Contents

<b>1. Preface</b> .....	<b>1</b>
1.2 Audience .....	1
1.3 Documentation Accessibility .....	1
1.4 Organization .....	1
1.5 Acronyms and Abbreviations .....	2
1.6 Glossary of Icons .....	2
1.7 Related Information Sources .....	2
<b>2. Oracle OBTRM - ELCM Integration</b> .....	<b>3</b>
2.1 Scope .....	3
2.1.1 <i>OBTRM Installation Modes</i> .....	3
2.2 Prerequisites .....	2
2.3 Integration Process .....	2
2.3.1 <i>Installation Modes</i> .....	2
2.3.2 <i>Integration Maintenance and Processing</i> .....	4
<b>3. Annexure</b> .....	<b>3</b>
<b>4. Function ID Glossary</b> .....	<b>4</b>

---

# 1. Preface

## 1.1 Introduction

This document helps you acquaint with the information on inter-connecting Oracle Banking Treasury Management (OBTRM) with Enterprise Limits and Collateral Management (ELCM).

Besides this user manual, while maintaining the interface related details, you can invoke the context sensitive help available for each field in OBTRM. This help describes the purpose of each field within a screen. You can obtain this information by placing the cursor on the relevant field and striking the <F1> key on the keyboard.

## 1.2 Audience

This manual is intended for the following User/User Roles:

Role	Function
Back office data entry Clerks	Input functions for maintenance related to the interface
End of day operators	Processing during end of day
Implementation Teams	For setting up integration

## 1.3 Documentation Accessibility

For information about Oracle's commitment to accessibility, visit the Oracle Accessibility Program website at <http://www.oracle.com/pls/topic/lookup?ctx=acc&id=docacc>.

## 1.4 Organization

This chapter is organized into following chapters:



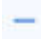

Chapter	Description
<b>Chapter 1</b>	<i>Preface</i> gives information on the intended audience. It also lists the various chapters covered in this User Manual.
<b>Chapter 2</b>	<i>OBTRM - ELCM Integration</i> explains the integration between Oracle Banking Treasury Management and Enterprise Limits and Collateral Management.
<b>Chapter 3</b>	<i>Annexure</i> provides the details of supported and unsupported functionalities of ELCM.

## 1.5 Acronyms and Abbreviations

Abbreviation	Description
System	Unless and otherwise specified, it always refers to Oracle Banking Treasury Management
OBTRM	Oracle Banking Treasury Management
ELCM	Enterprise Limits and Collateral Management
SYNC	Synchronous
ASYNC	Asynchronous
XML	Extensible Markup Language

## 1.6 Glossary of Icons

This user manual may refer to all or some of the following icons.

Icons	Function
	Exit
	Add row
	Delete row
	Option List

## 1.7 Related Information Sources

Along with this user manual you may also refer the following related resource:

- Oracle FLEXCUBE Universal Banking Installation Manual
- Common Core - Core Entities and Services User Guide
- Core Services User Guide

---

## 2. Oracle OBTRM - ELCM Integration

Banks extend various credit facilities like limits to its customers depending on their requirements. Based on the bank's business model and their target customers they have one of the following scenarios:

- Banks extending basic credit facilities to customers like overdraft or small loans who will prefer to manage the limits within the core banking system (Standalone OBTRM installation)
- Banks dealing with corporates who require trade finance and treasury that requires limit to be routed through dedicated system to manage the collateral and limit details

This chapter contains the following sections:

- [Section 2.1, "Scope"](#)
- [Section 2.2, "Prerequisites"](#)
- [Section 2.3, "Integration Process"](#)

### 2.1 Scope

This section contains the following topic:

- [Section 2.1.1, "OBTRM Installation Modes"](#)

#### 2.1.1 OBTRM Installation Modes

This document talks about two types of OBTRM installation modes. They are:

- OBTRM with No External Limits - For this installation mode limit support is within OBTRM through local facility and local collateral
- OBTRM with External Limits - The integration supports the following modes of OBTRM - Limits installation:
  - Standalone Limits system with OBTRM - SYNC Method
  - Standalone Limits system with OBTRM - ASYNC Method
  - Componentized limits installation - SYNC Method
  - Componentized limits installation - ASYNC Method
  - Embedded Limit Installation with OBTRM

Details	Standalone		Componentized		Embedded (5)
	SYNC (1)	ASYNC (2)	SYNC (3)	ASYNC (4)	
Data Storage	Different DB	Different DB	Same DB	Same DB	Same DB
Deployment	Different App.	Different App.	Same App.	Same App.	Same App.
Mode Interface	Web Services	Web Services	Web Services	Web Services	JDBC/ POJO
Limit Response Handling	Online	Deferred	Online	Deferred	Online

## 2.2 Prerequisites

Set up Oracle Banking Treasury Management Application. ELCM user will have read-only access to this application. The access is provided only to particular extraction tables.

Refer the 'Oracle FLEXCUBE Universal Banking Installation' manual.

## 2.3 Integration Process

This section contains the following topics:

- [Section 2.3.1, "Installation Modes"](#)
- [Section 2.3.2, "Integration Maintenance and Processing"](#)

### 2.3.1 Installation Modes

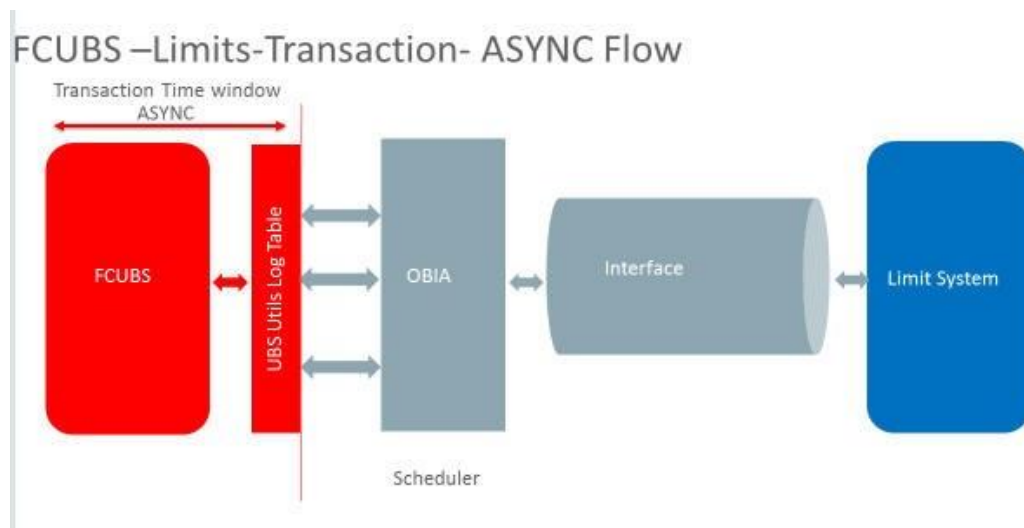
The following installation modes are described in the upcoming sections:

- ASYNC Installation for Standalone and Componentized
- SYNC Installation for Standalone and Componentized
- Embedded Limit Installation with OBTRM

#### 2.3.1.1 ASYNC Installation (Standalone and Componentized)

If the mode of limits installation is selected as ASYNC (Standalone/Componentized), the limits requests will be logged with Limits Pending Status in OBTRM Limits Queue. These pending limits requests are picked by a job to form the webservises XML requests. The status of the limit request will be updated in OBTRM based on the external limits response. The status can be Approved, Rejected or Timed-out. OBTRM will authorize the transactions that are in Approved status.

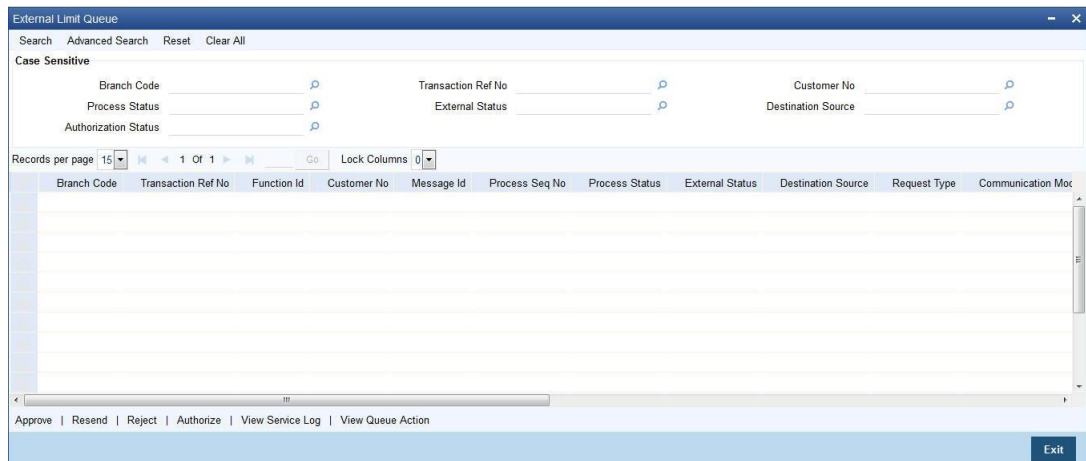
#### ASYNC Installation Architecture



#### Limit Processing Queue

You can query and perform manual actions on external limit requests using Limit Processing Queue screen. This screen supports user action only on timed out requests. You can invoke

this screen by typing 'SQSEXLMT' in the top right corner of the Application toolbar and clicking the adjoining arrow button.



You can view records based on any or all of the following criteria:

- Branch Code
- Process Status
- Authorization Status
- Transaction Ref No
- External Status
- Customer No
- Destination Source

Select any or all of the parameters for a query and click 'Search' button. The records meeting the selected criteria are displayed.

External Limit Queue supports user actions only on a timed out request. A limit request is moved to 'Timed-out' status based on the time out parameter maintained. If response is not received from the external system within the given time, the status is marked as timed out. The following actions are allowed on a timed out requests:

- Approve - Manual approval of external limits
- Reject - Manual rejection of external limits
- Authorize - Authorization of external limits approval or reject done from queue
- Resend - Resend of timed-out request

### 2.3.1.2 **SYNC Installation (Standalone and Componentized)**

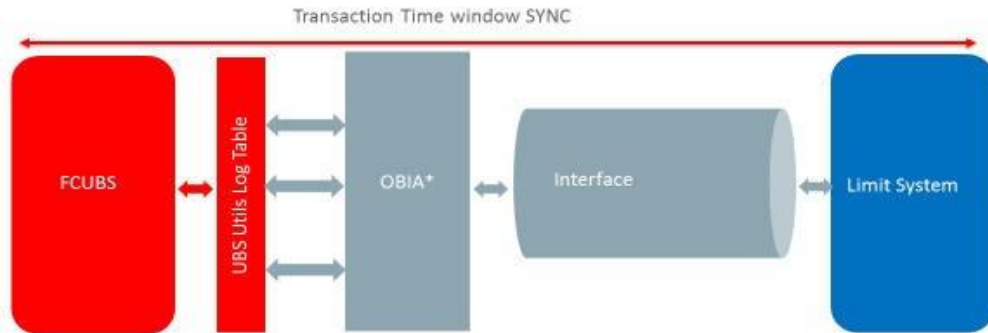
If the mode of limits installation is selected as SYNC (Standalone/Componentized):

- the limit transactions are processed in the transaction time window
- OBTRM creates the limit request during the transaction and sends it to the external limit system
- the response received from the external limit system along with the overrides and errors are displayed to the user during the transaction
- the user can approve the limits overrides and proceed with the transactions from OBTRM



## **SYNC Installation Architecture**

### FCUBS –Limits-Transaction- SYNC Flow



\* Oracle Banking Interface Adaptor

#### **2.3.1.3 Embedded Limit Installation with OBTRM**

If mode of installation is selected as embedded limits installation, then OBTRM and ELCM are installed as embedded system. All the limit utilization will be processed online and the response is provided to the user in the transaction window.

#### **2.3.2 Integration Maintenance and Processing**

##### **2.3.2.1 Installation Parameters**

You can select the required external limit setup mode and communication mode during installation.

##### **Limit Setup Mode (ELCM SETUP MODE)**

The following parameters can be used for limit setup mode:

- N - Should be used for No External Limit setup (default)
- S - Standalone OBTRM - Limits setup/ Componentized Limits setup
- E - Embedded OBTRM Limit setup

##### **External Limit Interface Mode (OBTRM EL COMM MODE)**

The following parameters can be used for external limit interface mode:

- A - Asynchronous
- S - Synchronous

This is applicable for Standalone OBTRM - Limits setup/ Componentized Limits setup.

##### **2.3.2.2 OBTRM with No External Limits Installation**

If OBTRM is installed with no external limits:

- Local facility can be created using 'External Facilities Maintenance' (STDCRFAC) screen
- Local collateral can be created using 'Local Collateral Maintenance' (STDCOLAT) screen
- Linkage can be done at customer account and module level as applicable

- OBTRM does the utilization tracking and validations for local facilities and collaterals

### **2.3.2.3 OBTRM with External Limits Installation**

If OBTRM is installed with external limits, then:

- following limit details are replicated from external system to OBTRM:
  - Liability details
  - Customer liability linkage
  - Facility details
  - Collateral details
  - Collateral pool details
- local collateral can be created using the 'Local Collateral Maintenance' (STDCOLAT) screen linkage is done at customer account and module level for local facility and collateral OBTRM tracks the limit balances and performs the validations, and hands over the utilization to the external system you can also link global limits as applicable based on the data replicated from external system for non-local limit types, OBTRM does the limit processing based on the external system response.
- In case of Batch operation OBTRM posts the utilization to external limits as Force Post

---

## 3. Annexure

### 3.1 List of Integration Features

For details on features that are supported and unsupported in OBTRM and ELCM, refer the excel sheet [Limit\\_Changes.xlsx](#)

---

## 4. Function ID Glossary

### S

SQSEXLMT .....2-3