

Party Services Installation Guide

Oracle Banking Branch

Release 14.5.2.0.0

Part Number F45529-01

August 2021

Table of Contents

1. PREFACE	1-1
1.1 INTRODUCTION	1-1
1.2 AUDIENCE.....	1-1
1.3 DOCUMENTATION ACCESSIBILITY	1-1
1.4 ORGANIZATION	1-1
1.5 RELATED DOCUMENTS	1-3
2. DATABASE SETUP.....	2-1
2.1 INTRODUCTION	2-1
2.2 PREREQUISITES	2-1
2.3 DATABASE SETUP	2-1
3. PARTY SERVICES DOMAINS CONFIGURATION.....	3-1
3.1 PREREQUISITES	3-1
3.2 PARTY SERVICE DOMAIN CREATION	3-1
4. DATA SOURCES CREATION.....	4-1
4.1 PREREQUISITES	4-1
4.2 DATA SOURCES LIST	4-1
4.3 STEPS TO CREATE DATASOURCE	4-2
4.4 ADDITIONAL DATASOURCE MAPPING.....	4-2
5. DEPLOYMENTS	5-1
5.1 PREREQUISITES	5-1
5.2 DEPLOYMENTS LIST.....	5-1
5.3 STEPS TO DEPLOY AS APPLICATION	5-2
6. RESTARTS AND REFRESH.....	6-1
6.1 RESTARTING SERVERS	6-1
7. LOGGING AREA	7-1
7.1 INTRODUCTION	7-1
7.1.1 Logging Area.....	7-1
8. PARTY UI DOMAIN AND CLUSTER CONFIGURATION	8-1
8.1 PREREQUISITES	8-1
8.2 PARTY UI DOMAIN	8-1
8.3 POST DOMAIN CREATION CONFIGURATIONS	8-9
9. PARTY USER INTERFACE DEPLOYMENTS.....	9-1
9.1 STEPS TO DEPLOY AS APPLICATION	9-1
10. RESTARTS AND REFRESH.....	10-1
10.1 RESTARTING SERVERS	10-1
11. DEPLOYMENTS	11-1
11.1 PARTY PROCESSES	11-1
11.2 UPDATING THE PROCESS	11-1
11.3 STEPS TO DEPLOY CONDUCTOR PROCESS.....	11-1

1. Preface

1.1 Introduction

This guide helps you to install the Party Services, User Interface, and Conductor Process flow on designated environments. It is assumed that all the prior setup is already done related to WebLogic installation, WebLogic managed server creation, and Oracle DB installation.

Note: For the exact version to be installed, refer to **Tech Stack** section of Release Notes.

1.2 Audience

This document is intended for WebLogic admin or ops-web team who are responsible for installing the OFSS banking products.

1.3 Documentation Accessibility

For information about Oracle's commitment to accessibility, visit the Oracle Accessibility Program website at <http://www.oracle.com/us/corporate/accessibility/index.html>.

1.4 Organization

This installation user guide would allow you to install the below mentioned Party services, UI, process flow in same order:

It is recommended to use dedicated managed server for each of the Party Services.

Party Services

1. obpy-party-maintenance-service
2. obpy-stage-services
3. obpy-party-services
4. obpy-party-kyc-services
5. obpy-businessprocess-services
6. obpy-party-handoff-services
7. obpy-party-publisher-services
8. obpy-party-adapter-services
9. obpy-party-corporate-view-services

User Interface

Follow the below steps to migrate from existing single app-shell (if deployed) to Foundation app-shell. With Foundation app-shell, UI war is split into individual component server war files. Delete any installed previous single UI app-shell war version and follow the below given steps. All the component server war files should be deployed in the same managed server.

Deploy the mentioned below Common Core war files:

1. app-shell
2. cmc-component-server
3. moc-component-server
4. sms-component-server

Deploy the Party Domain component war file:

1. obpy-component-server

Similarly, other domain component war files can be deployed

Process Workflow

The process flow zip file downloaded will contain the below Conductor representative process flow DSL JSON files which need to be imported. Refer to the “Steps to Deploy Conductor Process” section for deploying the DSL.

SNO	Process Flow Name	Description of the Process flow
1	obpy-corporate-onboarding-processflow_CPOB.json	Corporate Onboarding
2	obpy-fi-amendment-processflow_FPAM.json	Financial Institute Amendment
3	obpy-fi-onboarding-processflow_FPOB.json	Financial Institute Onboarding
4	obpy-party-onboarding-processflow_REOB.json	Retail Party Onboarding
5	obpy-retail-amendment-processflow_PAMD.json	Retail Party Amendment
6	obpy_corp_amendment_processflow_CAMD.json	Corporate Party Amendment
7	obpy_smb_amendment_processflow_SMBA.json	Small and Medium Business Party Amendment
8	obpy_smb_onboarding_processflow_RSMB.json	Small and Medium Business Party Onboarding
9	obpy_sme_amendment_processflow_SMEA.json	Small and Medium Enterprise Party Amendment
10	obpy_sme_onboarding_processflow_CSME.json	Small and Medium Enterprise Party Onboarding

1.5 **Related documents**

For more information, refer to the following documents:

- Oracle Banking Microservices Platform Foundation Installation Guide
- Common Core Services Installation Guide
- Security Management System Services Installation Guide

2. Database Setup

2.1 Introduction

In this section you are going to setup database related configuration for Party Services Installation. It is generally recommended to create different schema for each application as required. Below setup is designed to work with separate schema for each application.

2.2 Prerequisites

In this section, you are going to set up the database-related configuration for Party Services Installation. Before you proceed, ensure the pre-installation setup is done. The pre-installation setup includes the configuration of the database, setting up the **setUserOverrides.sh**. Create the required schema for each of the microservices. The schema object creations and the static data required for the microservice will be automatically created during the deployment of the microservice in the respective schema.

2.3 Database Setup

To setup DB for Retail Operations schema's to be created:

Service Name	Schema Required
obpy-stage-services	Yes (obpy-party-service schema)
obpy-party-services	Yes (obpy-party-service schema)
obpy-party-kyc-services	Yes (obpy-party-service schema)
obpy-businessprocess-services	Yes (obpy-businessprocess-services)
obpy-party-handoff-services	Yes (obpy-party-service schema)
obpy-party-publisher-services	Yes (obpy-party-service schema)
obpy-party-maintenance-service	Yes (obpy-party-service schema)
obpy-party-adapter-services	Yes (obpy-party-service schema)
obpy-party-corporate-view-services	Yes (obpy-party-service schema)

3. Party Services Domains Configuration

3.1 Prerequisites

1. The machine should have Java JDK has installed.
2. Oracle Fusion Middleware has to be installed on the machine.
NOTE: Before proceeding with below steps, complete the procedure in Oracle Banking Microservices Platform Foundation Installation Guide.
3. Steps for creating all Party domains, properties like port numbers, names will be changing based on the domain. Screenshots provided for such deviations. The domain creation process remains the same.
NOTE: For the exact version to be installed, refer to **Tech Stack** section of Release Notes.

3.2 Party Service Domain Creation

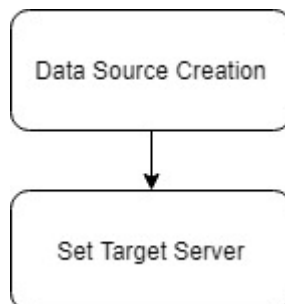
It is recommended to have separate domain for Party application. For Creating Domain and Configuration, refer to **How to create and Cluster Configuration** section in ANNEXURE-1.

Service Name	Domain Name
obpy-stage-services	Party Domain
obpy-party-services	Party Domain
obpy-party-kyc-services	Party Domain
obpy-businessprocess-services	Party Domain
obpy-party-handoff-services	Party Domain
obpy-party-publisher-services	Party Domain
obpy-party-maintenance-service	Party Domain
obpy-party-adapter-services	Party Domain
obpy-party-corporate-view-services	Party Domain

4. Data Sources Creation

4.1 Prerequisites

Database setup for Party services has to be performed prior to deployment setup. The data sources for the respective micro-services must be created first before the application deployment. Each of the data source target to their corresponding servers on which the application will be deployed. The following sections explain the list of data sources required to be created for Party services and the steps to configure them in the server.



4.2 Data sources List

The table below lists the data sources to be created on each domain prior to deployment of applications onto managed servers.

Service Name	Data source Name	Data source JNDI	Targets
obpy-stage-services	PARTY	jdbc/PARTY	Party Managed Server
obpy-party-services	PARTY	jdbc/PARTY	Party Managed Server
obpy-party-kyc-services	PARTY	jdbc/PARTY	Party Managed Server
obpy-businessprocess-services	PARTY	jdbc/OBPYBPROC	Party Managed Server
obpy-party-handoff-services	PARTY	jdbc/PARTY	Party Managed Server
obpy-party-publisher-services	PARTY	jdbc/PARTY	Party Managed Server

Service Name	Data source Name	Data source JNDI	Targets
obpy-party-maintenance-service	PARTY	jdbc/PARTY	Party Managed Server
obpy-party-adapter-services	PARTY	jdbc/PARTY	Party Managed Server
obpy-party-corporate-view-services	PARTY	jdbc/PARTY	Party Managed Server

4.3 Steps to Create Datasource

For creating a data source, refer to the **How to create Data sources** section in ANNEXURE-1.

4.4 Additional Datasource Mapping

In order to deploy the services successfully, map the following data source to all the newly created managed servers. This is required for the JNDI requirement for flyway migration.

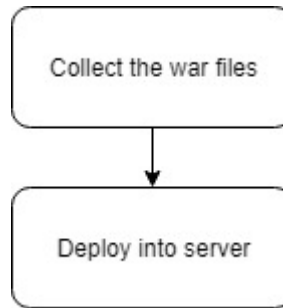
Data source Name	Data Source JNDI	Targets
PLATO	jdbc/PLATO	Party Managed Server
PLATO_UI_CONFIG	jdbc/PLATO_UI_CONFIG	Party Managed Server
SMS	jdbc/sms	Party Managed Server
COMMON CORE	jdbc/CMNCORE	Party Managed Server

Refer to Oracle Banking Microservices Platform Foundation Installation Guide, Common Core Services Installation Guide, and Security Management System Services Installation Guide for more recent details on data sources.

5. Deployments

5.1 Prerequisites

The database setup and data sources creation have to be performed prior to the application deployment stage. Each of the services corresponds to a specific war file that needs to be deployed into the server. The following sections explain the list of war files of the Retail Operations application and the steps to deploy them into the server.



5.2 Deployments List

The below table gives details of the deployments required on each domain for the Party application to run. Deploy one after the other in the same given order. The provided archive names and OSDC path are for reference purposes only. Refer to the exact archive names available as a part of the release.

Before deploying ensure that setUserOverrides.sh all placeholders' values are set correctly. Refer to the Oracle Banking Microservices Platform Foundation Installation Guide for more details. If any placeholder is missed, the deployment will fail, and incorrect values will result from errors in the application.

Application	Archive name	OSDC path	Targets
OBPY Party Maintenance Services	obpy-party-maintenance-service-{version}.war	{unzip the file} \obpy-party-maintenance-service	Party Managed Server
OBPY Stage Services	obpy-stage-services-{version}.war	{unzip the file} \stage-services	Party Managed Server
OBPY Party Services	obpy-party-services-{version}.war	{unzip the file} \obpy-party-services	Party Managed Server
Party KYC Services	obpy-party-kyc-services-{version}.war	{unzip the file} \obpy-party-kyc-services	Party Managed Server
OBPY Businessprocess Services	obpy-businessprocess-services-{version}.war	{unzip the file} \obpy-businessprocess-services	Party Managed Server
OBPY Party Handoff Services	obpy-party-handoff-services-{version}.war	{unzip the file} \obpy-party-handoff-services	Party Managed Server

Application	Archive name	OSDC path	Targets
OBPY Party Publisher Services	obpy-party-publisher-services-{version}.war	{unzip the file} lobpy-party-publisher-services	Party Managed Server
OBPY Party Adapter Services	obpy-party-adapter-services-{version}.war	{unzip the file} lobpy-party-adapter-services	Party Managed Server
OBPY Corporate View Service	obpy-party-corporate-view-services-{version}.war	{unzip the file} lobpy-party-corporate-view-services	Party Managed Server

5.3 Steps to Deploy as Application

To deploy application, refer to the **How to deploy** section in ANNEXURE-1.

NOTE: For obpy-party-adapter-services, the below placeholder value should be correctly set in the setUserOverrides.sh.

Key: ubsEndpoint

Value: Point to the host and port where the obpy-customer-services is running (Sample <http://hostname:port>)

NOTE: The obpy-customer-services is a service that needs to be deployed in FLEXCUBE Universal Banking end. Refer to Customer Service Installation Guide in FLEXCUBE Universal Banking Documentation Library.

6. Restarts and Refresh

Once everything is deployed, restart all the managed servers. And for each application call path “/refresh” for refreshing the configuration properties.

6.1 Restarting Servers

To restart the server, refer to **How to restart** section in ANNEXURE-1.

7. Logging Area

7.1 Introduction

This part of the document will talk about the logs area where after deployment of Party Applications in WebLogic server.

7.1.1 Logging Area

In general Party Application writes logs in the below area of the server-

<WEBLOGIC_DOMAIN_CONFIG_AREA/servers/APP/logs/ APP.out

Let's assume a domain has been created **party_domain** with **managed_server** name called **PARTYAPP** in the following area of the server

~/middleware/user_projects/domains/**party_domain**". Logging area for Retail Operations applications would be

~/middleware/user_projects/domains/**party_domain**/servers/**PARTYAPP**/logs/**PARTYAPP.out**.

The logging path can now be configured by setting the placeholder value for Plato.service.logging.path. For more details, refer to Oracle Banking Microservices Platform Foundation Installation Guide.

8. Party UI Domain and Cluster Configuration

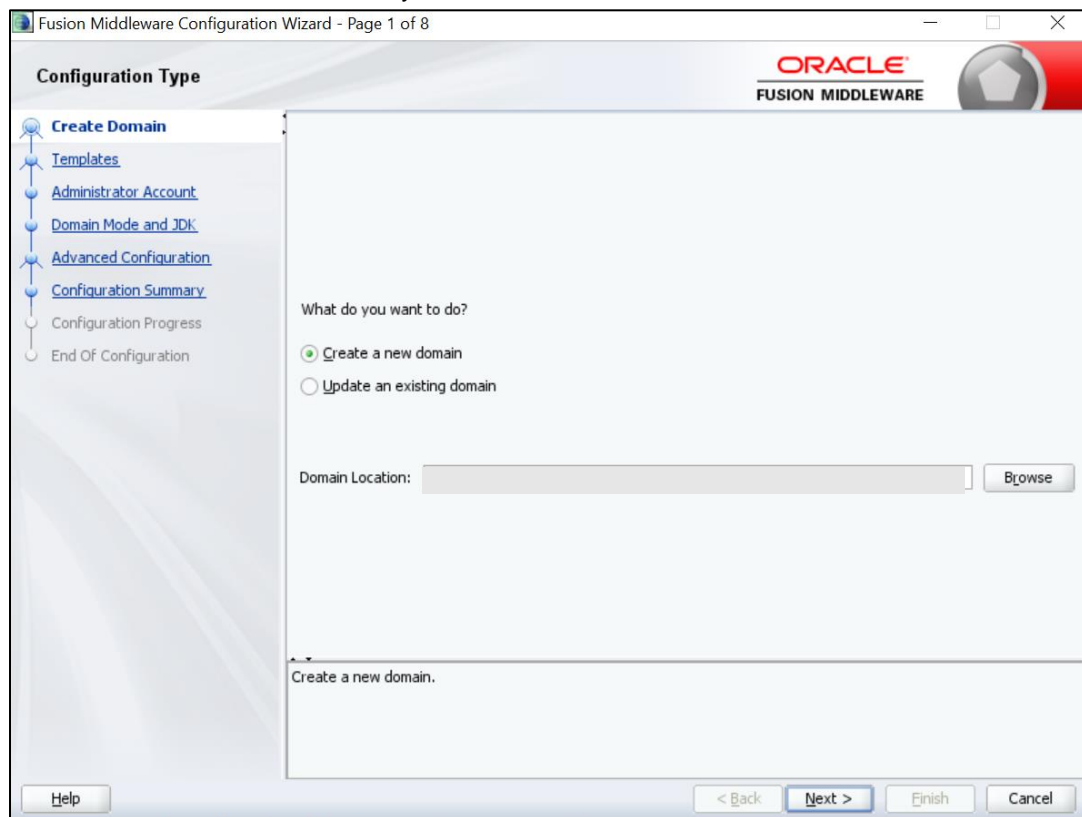
8.1 Prerequisites

1. The machine should have Java JDK has installed.
2. Oracle Fusion Middleware has to be installed on the machine.

NOTE: For the exact version to be installed, refer to **Tech Stack** section of Release Notes.

8.2 Party UI Domain

1. Click **Create Domain** tab and select **Create a new domain** option. Specify the domain location. The names used are only for references.



2. On **Administration Server** screen, specify the server details, and click **Next**.

The screenshot shows the 'Administration Server' configuration screen in the Fusion Middleware Configuration Wizard. The window title is 'Fusion Middleware Configuration Wizard - Page 6 of 16'. The Oracle logo and 'FUSION MIDDLEWARE' text are in the top right corner. On the left, a navigation pane lists the following steps: Create Domain, Templates, Administrator Account, Domain Mode and JDK, Advanced Configuration, **Administration Server** (highlighted), Node Manager, Managed Servers, Clusters, Server Templates, Machines, Virtual Targets, Partitions, Configuration Summary, Configuration Progress, and End Of Configuration. The main area contains the following fields and options:

- Server Name: AdminServer
- Listen Address: All Local Addresses (dropdown menu)
- Listen Port: 9900
- Enable SSL: ☐
- SSL Listen Port: (empty text box)

At the bottom of the main area, a note states: 'Port number must be between 1 and 65535, and different from SSL listen port and coherence port.' The bottom of the window features a 'Help' button on the left and '< Back', 'Next >', 'Finish', and 'Cancel' buttons on the right.

3. On **Managed Servers** screen, add entry for managed server, and click **Next**.

Fusion Middleware Configuration Wizard - Page 8 of 16

Managed Servers

ORACLE
FUSION MIDDLEWARE

+ Add Clone Delete Discard Changes

Server Name	Listen Address	Listen Port	Enable SSL	SSL Listen Port
ManagedServer_1	All Local Addresses	9903	<input type="checkbox"/>	Disabled

Help < Back Next > Finish Cancel

4. On **Clusters** screen, add entry for cluster, and click **Next**.

Fusion Middleware Configuration Wizard - Page 9 of 18

Clusters

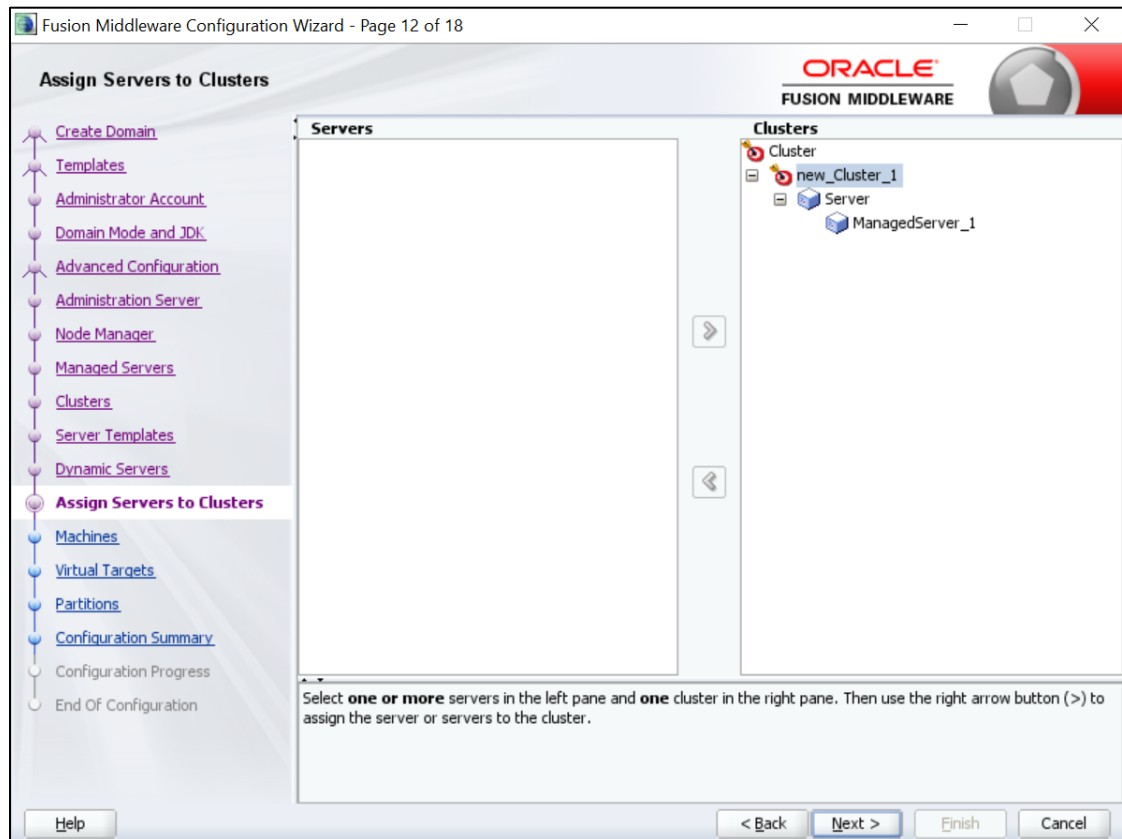
ORACLE
FUSION MIDDLEWARE

[+ Add](#) [X Delete](#) [Discard Changes](#)

Cluster Name	Cluster Address	Frontend Host	Frontend HTTP Port	Frontend HTTPS Port
new_Cluster_1			0	0

[Help](#) [< Back](#) [Next >](#) [Finish](#) [Cancel](#)

5. On **Assign Server to Cluster** screen, assign the required servers, and click **Next**.



6. On **Machines** screen, add entry for the machine, and click **Next**.

Fusion Middleware Configuration Wizard - Page 13 of 19

Machines

ORACLE
FUSION MIDDLEWARE

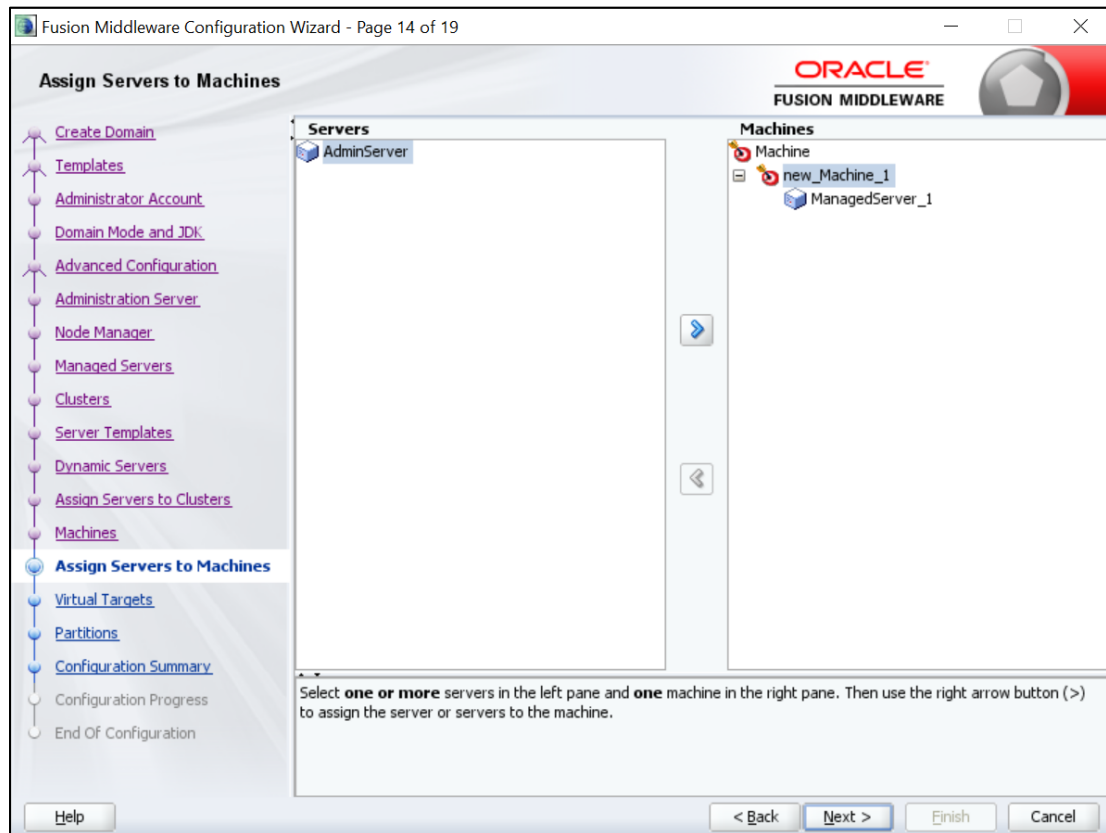
Machine: **Unix Machine**

[+ Add](#) [X Delete](#) [Discard Changes](#)

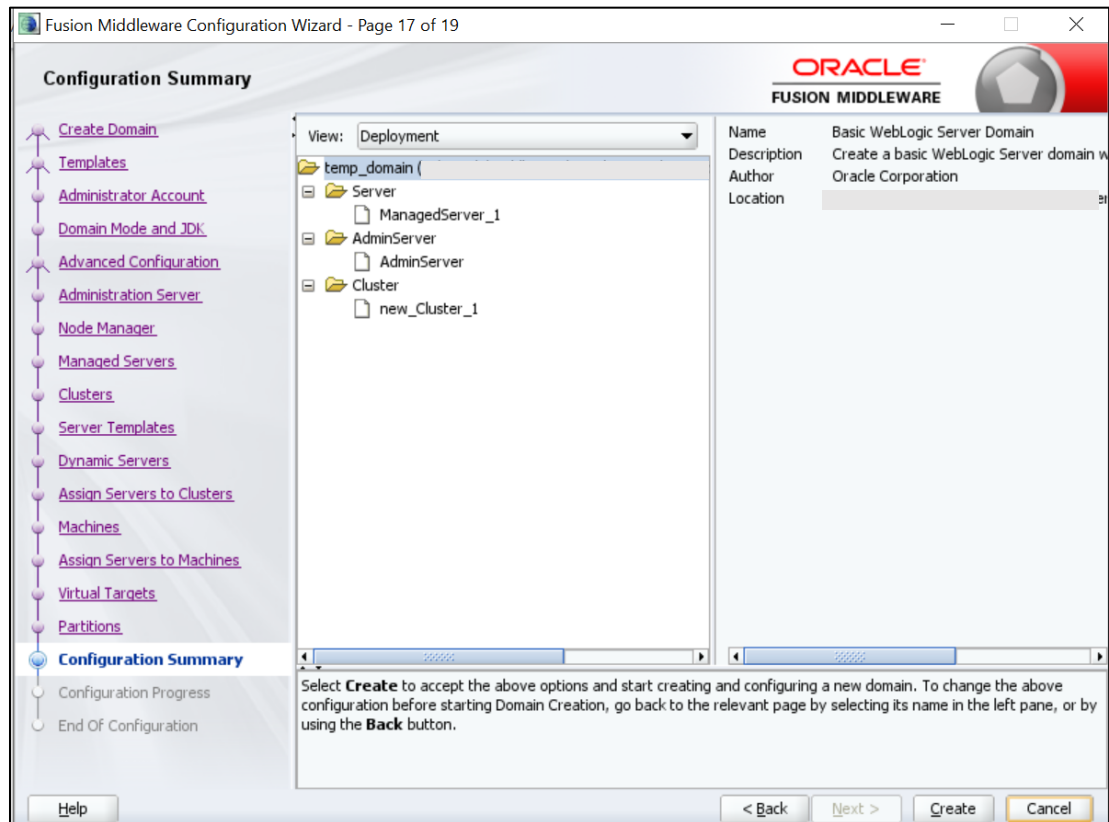
Name	Node Manager Listen Address	Node Manager Listen Port
new_Machine_1	localhost	5556

[Help](#) [< Back](#) [Next >](#) [Finish](#) [Cancel](#)

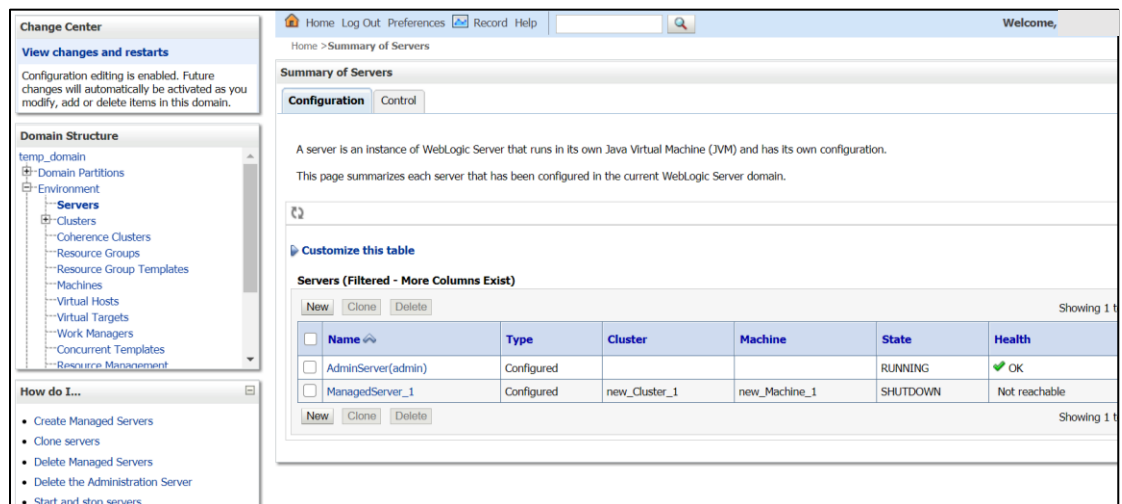
7. On **Assign Server to Machines** screen, assign the required machine, and click **Next**.



- On **Configuration Summary** screen and click **Create** to configure a new domain.



- Click **Servers** tab, select **Configuration**, and verify the configuration details of server.



- Click **Clusters** tab and verify the configuration details of cluster.

Change Center
View changes and restarts
Configuration editing is enabled. Future changes will automatically be activated as you modify, add or delete items in this domain.

Domain Structure
temp_domain
├── Domain Partitions
├── Environment
│ ├── Servers
│ │ ├── **Clusters**
│ │ ├── Coherence Clusters
│ │ ├── Resource Groups
│ │ ├── Resource Group Templates
│ │ ├── Machines
│ │ ├── Virtual Hosts
│ │ ├── Virtual Targets
│ │ ├── Work Managers
│ │ ├── Concurrent Templates
│ └── Resource Management

Summary of Clusters
This page summarizes the clusters that have been configured in the current WebLogic Server domain.
A cluster defines groups of WebLogic Server servers that work together to increase scalability and reliability.

Customize this table

Clusters (Filtered - More Columns Exist)

Name	Cluster Address	Cluster Messaging Mode	Migration Basis	Default Load Algorithm	Replication Type	Cluster Broadcast Channel
<input type="checkbox"/> new_Cluster_1		Unicast	Database	Round Robin	(None)	

- Click **Machines** tab, and verify the configuration details of machine.

Change Center
View changes and restarts
Configuration editing is enabled. Future changes will automatically be activated as you modify, add or delete items in this domain.

Domain Structure
temp_domain
├── Domain Partitions
├── Environment
│ ├── Servers
│ │ ├── Clusters
│ │ ├── Coherence Clusters
│ │ ├── Resource Groups
│ │ ├── Resource Group Templates
│ │ ├── **Machines**
│ │ ├── Virtual Hosts
│ │ ├── Virtual Targets
│ │ ├── Work Managers
│ │ ├── Concurrent Templates
│ └── Resource Management

Summary of Machines
A machine is the logical representation of the computer that hosts one or more WebLogic Server instances (servers). WebLogic Server uses configured machine names to identify the server in a cluster to which certain tasks, such as HTTP session replication, are delegated. The Administration Server uses the machine definition in conjunction with Node Manager to manage remote servers.
This page displays key information about each machine that has been configured in the current WebLogic Server domain.

Customize this table

Machines

Name	Type
<input type="checkbox"/> new_Machine_1	Machine

How do I...

- Create and configure machines
- Assign server instances to machines
- Clone machines
- Delete machines

8.3 Post Domain creation configurations

Once finished, refer oracle fusion middleware documents for more details on how to start admin server, node manager and managed servers.

- Create **boot.properties** file under **/user_projects/domains/XXXXdomainNameXXX/servers/AdminServer/security**.
- Edit **boot.properties** and give username and password details.
- Goto **/user_projects/domain/sms_domain/bin**.
- Run **startWeblogic.cmd** (or **.sh** if operating system is linux).
- Goto **/user_projects/domains/sms_domain/bin**.
- Run **setNMJavaHome.cmd** (**.sh**).
- Goto **/user_projects/domains/sms_domain/nodemanager**.
- And edit **nodemanager.properties** as required (securelistner = false if ssl and keystore is not given) And in admin console also navigate to **Machines** -> **sms_Machine** -> **Node Manager** -> **Type** -> **Plain** -> **Save**.
- Navigate to **/user_projects/domains/ sms_domain/bin**.
- Run **startNodeManager.cmd** (or **.sh** if operating system is linux).
- Start all managed servers.

Login to console and verify servers and clusters.

View changes and restarts

Configuration editing is enabled. Future changes will automatically be activated as you modify, add or delete items in this domain.

Domain Structure

temp_domain

- Domain Partitions
- Environment
 - Servers**
 - Clusters
 - Coherence Clusters
 - Resource Groups
 - Resource Group Templates
 - Machines
 - Virtual Hosts
 - Virtual Targets
 - Work Managers
 - Concurrent Templates
 - Resource Management

How do I...

- Create Managed Servers
- Clone servers
- Delete Managed Servers

Home > Summary of Servers > Summary of Clusters > Summary of Servers > Summary of Machines > Summary of Servers

Summary of Servers

Configuration Control

A server is an Instance of WebLogic Server that runs in its own Java Virtual Machine (JVM) and has its own configuration.

This page summarizes each server that has been configured in the current WebLogic Server domain.

Customize this table

Servers (Filtered - More Columns Exist)

New Clone Delete

Showing 1 to 2 of 2 Previous Next

<input type="checkbox"/>	Name ↕	Type	Cluster	Machine	State	Health	Listen Port
<input type="checkbox"/>	AdminServer(admin)	Configured			RUNNING	OK	9900
<input type="checkbox"/>	ManagedServer_1	Configured	new_Cluster_1	new_Machine_1	SHUTDOWN	Not reachable	9903

New Clone Delete

Showing 1 to 2 of 2 Previous Next

Configuration editing is enabled. Future changes will automatically be activated as you modify, add or delete items in this domain.

Domain Structure

temp_domain

- Domain Partitions
- Environment
 - Servers
 - Clusters**
 - Coherence Clusters
 - Resource Groups
 - Resource Group Templates
 - Machines
 - Virtual Hosts
 - Virtual Targets
 - Work Managers
 - Concurrent Templates
 - Resource Management

Summary of Clusters

This page summarizes the clusters that have been configured in the current WebLogic Server domain.

A cluster defines groups of WebLogic Server servers that work together to increase scalability and reliability.

Customize this table

Clusters (Filtered - More Columns Exist)

New Clone Delete

Showing 1 to 1 of 1 Previous Next

<input type="checkbox"/>	Name ↕	Cluster Address	Cluster Messaging Mode	Migration Basis	Default Load Algorithm	Replication Type	Cluster Broadcast Channel	Servers
<input type="checkbox"/>	new_Cluster_1		Unicast	Database	Round Robin	(None)		ManagedServer_1

New Clone Delete

Showing 1 to 1 of 1 Previous Next

Configuration editing is enabled. Future changes will automatically be activated as you modify, add or delete items in this domain.

Domain Structure

temp_domain

- Domain Partitions
- Environment
 - Servers
 - Clusters
 - Coherence Clusters
 - Resource Groups
 - Resource Group Templates
 - Machines**
 - Virtual Hosts
 - Virtual Targets
 - Work Managers
 - Concurrent Templates
 - Resource Management

Summary of Machines

A machine is the logical representation of the computer that hosts one or more WebLogic Server instances (servers). WebLogic Server uses configured machine names to determine the optimum server in a cluster to which certain tasks, such as HTTP session replication, are delegated. The Administration Server uses the machine definition in conjunction with Node Manager to start remote servers.

This page displays key information about each machine that has been configured in the current WebLogic Server domain.

Customize this table

Machines

New Clone Delete

Showing 1 to 1 of 1 Previous Next

<input type="checkbox"/>	Name ↕	Type
<input type="checkbox"/>	new_Machine_1	Machine

New Clone Delete

Showing 1 to 1 of 1 Previous Next

8-10

ORACLE®

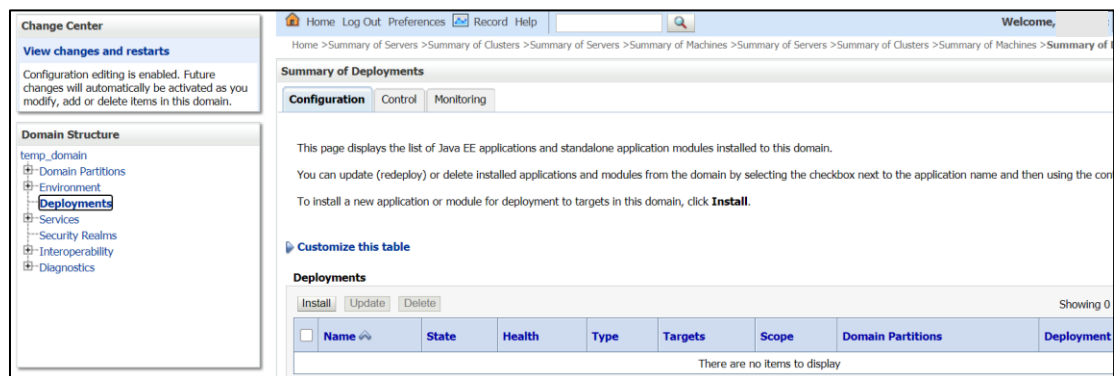
9. Party User Interface Deployments

9.1 Steps to deploy as application

NOTE: Server names, Domain names need not to be same as this doc provides.

Steps to Deploy archives as application on weblogic is same except that managed server and domain where we deploy may differ. In case of foundation app shell, the obpy-component-server.war should be deployed in the same managed server along with the other UI component war. Find the below screenshots to see how deployment of archive as application is done on weblogic:

1. Extract the obpy-component-server.war from the **UI** folder.
2. Open Weblogic console and navigate to the **Deployments**.



3. Click **Install**, select the path and press **Enter** key.

Home > Summary of Servers > PLATO > Summary of Machines > SERVICING > Summary of Deployments

View changes and restarts

No pending changes exist. Click the Release Configuration button to allow others to edit the domain.

Lock & Edit

Release Configuration

Domain Structure

- dev_domain
 - Domain Partitions
 - Partition Work Managers
 - Environment
 - Deployments
 - Services
 - Security Realms
 - Interoperability
 - Diagnostics

Install Application Assistant

Back Next Finish Cancel

Locate deployment to install and prepare for deployment

Select the file path that represents the application root directory, archive file, exploded archive directory, or a

Note: Only valid file paths are displayed below. If you cannot find your deployment files, [Upload your file\(s\)](#)

Path:

Recently Used Paths:

Current Location:

☐ obremo-app-shell-snapshot.war

Back Next Finish Cancel

4. Check the option install this deployment as an application option and click **Next**.

Configuration editing is enabled. Future changes will automatically be activated as you modify, add or delete items in this domain.

Domain Structure

- temp_domain
 - Domain Partitions
 - Environment
 - Deployments
 - Services
 - Security Realms
 - Interoperability
 - Diagnostics

How do I...

Install Application Assistant

Back Next Finish Cancel

Choose installation type and scope

Select if the deployment should be installed as an application or library. Also decide the scope of this deployment.

The application and its components will be targeted to the same locations. This is the most common usage.

☒ **Install this deployment as an application**

Application libraries are deployments that are available for other deployments to share. Libraries should be available on all of the targets running their referencing applica

☐ **Install this deployment as a library**

Select a scope in which you want to install the deployment.

Scope: Global

Back Next Finish Cancel

5. Keep clicking Next after making any specific choices (if required).

- Check the option **Yes, take me to the deployment's configuration screen** and click **Finish**.

Configuration editing is enabled. Future changes will automatically be activated as you modify, add or delete items in this domain.

Domain Structure

- temp_domain
 - Domain Partitions
 - Environment
 - Deployments
 - Services
 - Security Realms
 - Interoperability
 - Diagnostics

How do I...

- Start and stop a deployed enterprise application
- Configure an enterprise application
- Create a deployment plan
- Target an enterprise application to a server instance
- Test the modules in an enterprise application

System Status

Install Application Assistant

Back Next Finish Cancel

Review your choices and click Finish

Click Finish to complete the deployment. This may take a few moments to complete.

Additional Configuration

In order to work successfully, this application may require additional configuration. Do you want to review this application's configuration after completing this assistant?

☒ **Yes, take me to the deployment's configuration screen.**

☐ No, I will review the configuration later.

Summary

Deployment: D:\New_folder\obremo-app-shell-snapshot.war

Name: obremo-app-shell-snapshot

Staging Mode: Use the defaults defined by the chosen targets

Plan Staging Mode: Use the same accessibility as the application

Security Model: DDOnly: Use only roles and policies that are defined in the deployment descriptors.

Scope: Global

Target Summary

Components	Targets
obremo-app-shell-snapshot	AdminServer

- Navigate to the **Control** tab and click **start**. Select the option **Servicing all requests** and Click **Yes**.

Home > Summary of Servers > Summary of Clusters > Summary of Servers > Summary of Machines > Summary of Servers > Summary of Clusters > Summary of Machines > Summary of Deployments > obremo-app-shell-snapshot > Summary of Deployments

Summary of Deployments

Configuration Control Monitoring

This page displays the list of Java EE applications and standalone application modules installed to this domain.

You can start and stop applications and modules from the domain by selecting the checkbox next to the application name and then using the controls on this page.

Customize this table

Deployments

Start Stop

Deployments	State	Health	Type	Targets	Scope	Domain Partitions
Servicing all requests	Active	OK	Web Application	AdminServer	Global	
obremo-app-shell-snapshot						

Showing 1 to 1 of 1 Previous Next

How do I...

- Configure an enterprise application
- Start applications and modules
- Stop applications and modules
- View the modules of an enterprise application
- Monitor the modules of an enterprise application

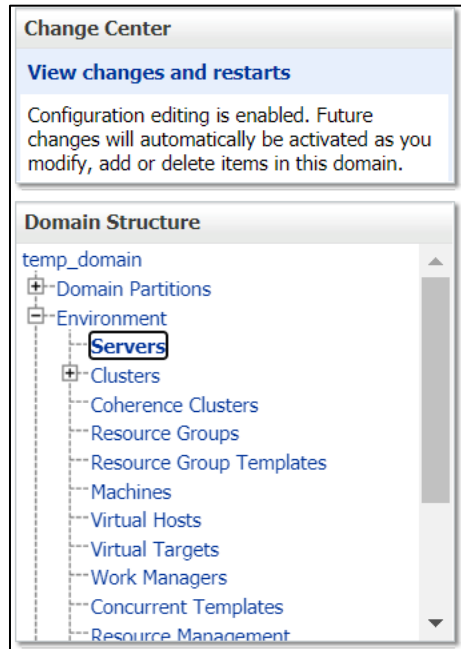
- Verify state is Active. If yes, open the URL in this format:
<http://HostName:PortNo/app-shell/>

10.Restarts and Refresh

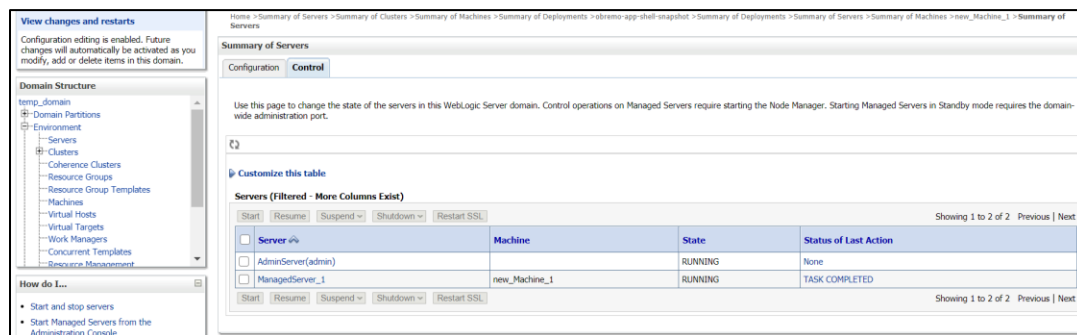
Once everything is deployed, restart all the managed servers. And for each application call path **/refresh** for refreshing the configuration properties.

10.1 Restarting Servers

1. Navigate to **Environment** and then click **Servers**.



2. Click **Control** tab and select servers to shut down and click **Yes** to confirm shutdown.



View changes and restarts
Configuration editing is enabled. Future changes will automatically be activated as you modify, add or delete items in this domain.

Domain Structure
temp_domain
├─ Domain Partitions
├─ Environment
├─ Servers
├─ Clusters
├─ Coherence Clusters
├─ Resource Groups
├─ Resource Group Templates
├─ Machines
├─ Virtual Hosts
├─ Virtual Targets
├─ Work Managers
├─ Concurrent Templates
└─ Resource Management

How do I...
• Start and stop servers
• Start Managed Servers from the Administration Console

Summary of Servers
Configuration Control

Use this page to change the state of the servers in this WebLogic Server domain. Control operations on Managed Servers require starting the Node Manager. Starting Managed Servers in Standby mode requires the domain-wide administration port.

Customize this table

Servers (Filtered - More Columns Exist)

Start Resume Suspend Shutdown Restart SSL Showing 1 to 2 of 2 Previous Next

Server	Machine	State	Status of Last Action
<input type="checkbox"/> AdminServer(admin)		RUNNING	None
<input checked="" type="checkbox"/> ManagedServer_1	new_Machine_1	RUNNING	TASK COMPLETED

Start Resume Suspend Shutdown Restart SSL Showing 1 to 2 of 2 Previous Next

View changes and restarts
Configuration editing is enabled. Future changes will automatically be activated as you modify, add or delete items in this domain.

Domain Structure
temp_domain
├─ Domain Partitions
├─ Environment
├─ Servers
├─ Clusters
├─ Coherence Clusters
├─ Resource Groups
├─ Resource Group Templates
├─ Machines
├─ Virtual Hosts
├─ Virtual Targets
├─ Work Managers
├─ Concurrent Templates
└─ Resource Management

How do I...
• Start and stop servers
• Start Managed Servers from the Administration Console

Summary of Servers
Configuration Control

Use this page to change the state of the servers in this WebLogic Server domain. Control operations on Managed Servers require starting the Node Manager. Starting Managed Servers in Standby mode requires the domain-wide administration port.

Customize this table

Servers (Filtered - More Columns Exist)

Start Resume Suspend Shutdown Restart SSL Showing 1 to 2 of 2 Previous Next

Server	Machine	State	Status of Last Action
<input type="checkbox"/> AdminServer(admin)		RUNNING	None
<input type="checkbox"/> ManagedServer_1	new_Machine_1	SHUTDOWN	TASK COMPLETED

Start Resume Suspend Shutdown Restart SSL Showing 1 to 2 of 2 Previous Next

- Once shutdown is completed, navigate to **Control** and select the servers to start and confirm action.

View changes and restarts
Configuration editing is enabled. Future changes will automatically be activated as you modify, add or delete items in this domain.

Domain Structure
temp_domain
├─ Domain Partitions
├─ Environment
├─ Servers
├─ Clusters
├─ Coherence Clusters
├─ Resource Groups
├─ Resource Group Templates
├─ Machines
├─ Virtual Hosts
├─ Virtual Targets
├─ Work Managers
├─ Concurrent Templates
└─ Resource Management

How do I...
• Start and stop servers
• Start Managed Servers from the Administration Console

Summary of Servers
Configuration Control

Use this page to change the state of the servers in this WebLogic Server domain. Control operations on Managed Servers require starting the Node Manager. Starting Managed Servers in Standby mode requires the domain-wide administration port.

Customize this table

Servers (Filtered - More Columns Exist)

Start Resume Suspend Shutdown Restart SSL Showing 1 to 2 of 2 Previous Next

Server	Machine	State	Status of Last Action
<input type="checkbox"/> AdminServer(admin)		RUNNING	None
<input type="checkbox"/> ManagedServer_1	new_Machine_1	STARTING	TASK IN PROGRESS(7 seconds)

Start Resume Suspend Shutdown Restart SSL Showing 1 to 2 of 2 Previous Next

View changes and restarts
Configuration editing is enabled. Future changes will automatically be activated as you modify, add or delete items in this domain.

Domain Structure
temp_domain
├─ Domain Partitions
├─ Environment
├─ Servers
├─ Clusters
├─ Coherence Clusters
├─ Resource Groups
├─ Resource Group Templates
├─ Machines
├─ Virtual Hosts
├─ Virtual Targets
├─ Work Managers
├─ Concurrent Templates
└─ Resource Management

How do I...
• Start and stop servers
• Start Managed Servers from the Administration Console

Summary of Servers
Configuration Control

Use this page to change the state of the servers in this WebLogic Server domain. Control operations on Managed Servers require starting the Node Manager. Starting Managed Servers in Standby mode requires the domain-wide administration port.

Customize this table

Servers (Filtered - More Columns Exist)

Start Resume Suspend Shutdown Restart SSL Showing 1 to 2 of 2 Previous Next

Server	Machine	State	Status of Last Action
<input type="checkbox"/> AdminServer(admin)		RUNNING	None
<input type="checkbox"/> ManagedServer_1	new_Machine_1	RUNNING	TASK COMPLETED

Start Resume Suspend Shutdown Restart SSL Showing 1 to 2 of 2 Previous Next

4. When all requested servers are running, navigate to **Deployments** and check if deployments are in active state.

View changes and restarts
Configuration editing is enabled. Future changes will automatically be activated as you modify, add or delete items in this domain.

Domain Structure
temp_domain
├─ Domain Partitions
├─ Environment
├─ **Deployments**
├─ Services
├─ Security Realms
├─ Interoperability
└─ Diagnostics

How do I...

- Install an enterprise application
- Configure an enterprise application
- Update (redeploy) an enterprise application

Home > Summary of Deployments > obremo-app-shell-snapshot > Summary of Deployments > Summary of Servers > Summary of Machines > new_Machine_1 > Summary of Servers > Summary of Deployments > obremo-app-shell-snapshot > Summary of Deployments

Summary of Deployments
Configuration Control Monitoring

This page displays the list of Java EE applications and standalone application modules installed to this domain.

You can update (redeploy) or delete installed applications and modules from the domain by selecting the checkbox next to the application name and then using the controls on this page.

To install a new application or module for deployment to targets in this domain, click **Install**.

Customize this table

Install Update Delete

<input type="checkbox"/>	Name	State	Health	Type	Targets	Scope	Domain Partitions	Deployment Order
<input type="checkbox"/>	obremo-app-shell-snapshot	Active	OK	Web Application	ManagedServer_1	Global		100

Install Update Delete

Showing 1 to 1 of 1 Previous Next

11.Deployments

11.1 Party Processes

The list of Conductor based processes that have to be deployed for the Party Services are:

Serial Number	Process Name	Dependent process
1	obpy-corporate-onboarding-processflow_CPOB.json	None
2	obpy-fi-amendment-processflow_FPAM.json	None
3	obpy-fi-onboarding-processflow_FPOB.json	None
4	obpy-party-onboarding-processflow_REOB.json	None
5	obpy-retail-amendment-processflow_PAMD.json	None
6	obpy_corp_amendment_processflow_CAMD.json	None
7	obpy_smb_amendment_processflow_SMBA.json	None
8	obpy_smb_onboarding_processflow_RSMB.json	None
9	obpy_sme_amendment_processflow_SMEA.json	None
10	obpy_sme_onboarding_processflow_CSME.json	None

11.2 Updating the process

Before deploying the process, the following section to be updated with the server ip/port for the end points used in the process.

For each process, open the process to find for “http_request” and modify the following in the uri.

```
"uri": "http://{{PROCESS_SERVER_HOST}}:{{PROCESS_SERVER_PORT}}/"
```

{{PROCESS_SERVER_HOST}} - IP of the Conductor server.

{{PROCESS_SERVER_PORT}} - Port of the Conductor server

11.3 Steps to Deploy Conductor Process

NOTE: Server names, Domain names need not to be same as this doc provides.

Steps to Deploy a process remains the same for all the process files. The screenshot shared below is for sample purpose only

1. Launch Postman.
2. Create a new Request (if not done already) and select **POST** method. If the process flow is already deployed and if you want to update it, then the method should be “PUT”.

3. Input the header params as shown below:

PostWorkflow

PUT

Send Save

Params Authorization Headers (3) Body Pre-request Script Tests Settings Cookies Code

▼ Headers (3)

Key-Value Edit Presets

Content-Type: application/json
branchCode: 004
userId: KARTHIKR

4. Paste the body of the message with the content from the process file.

PostWorkflow

PUT

Send Save

Params Authorization Headers (3) Body Pre-request Script Tests Settings Cookies Code

none form-data x-www-form-urlencoded raw binary GraphQL JSON Beautify

```
1 {
2   {
3     "createTime": 1581509022312,
4     "updateTime": 1582711022135,
5     "name": "CAMS",
6     "version": 1,
7     "tasks": [
8       {
9         "name": "CAMServiceGateway",
10        "taskReferenceName": "CAMServiceGateway",
11        "inputParameters": {
12          "isFromCollateralEvaluation": "${workflow.input.transactionData.moduleData.isFromCollateralEvaluation}"
13        },
14        "type": "DECISION",
15        "caseValueParam": "isFromCollateralEvaluation",
16        "decisionCases": {
17          "N": [
18            {
19              "name": "Proposal Initiation",
20              "taskReferenceName": "Initiation",
21              "isFromCollateralEvaluation": false
22            }
23          ]
24        }
25      }
26    ]
27   }
28 }
```

5. Click **Send**. Response status **204** returned from server.

PUT

Send Save

```
1022 {
1023   "inputParameters": [
1024     "partyId",
1025     "applicationNumber",
1026     "customerName"
1027   ],
1028   "outputParameters": {
1029     "rejectionRemarks": "${humantask_apprv_corp_loan.output.rejectionRemarks}",
1030     "loanGrantStatus": "${humantask_apprv_corp_loan.output.loanGrantStatus}",
1031     "emailStatus": "${CNFRM_CORP_LOAN.output.emailStatus}"
1032   },
1033   "schemaVersion": 2,
1034   "restartable": true,
1035   "workflowStatusListenerEnabled": false
1036 }
```

Body Cookies Headers (6) Test Results

Status: 204 No Content Time: 309ms Size: 281 B Save Response

Pretty Raw Preview Visualize JSON

1



Party Services Installation Guide

Oracle Financial Services Software Limited
Oracle Park
Off Western Express Highway
Goregaon (East)
Mumbai, Maharashtra 400 063
India

Worldwide Inquiries:

Phone: +91 22 6718 3000

Fax: +91 22 6718 3001

<https://www.oracle.com/industries/financial-services/index.html>

Copyright © 2021, Oracle and/or its affiliates. All rights reserved.

Oracle and Java are registered trademarks of Oracle and/or its affiliates. Other names may be trademarks of their respective owners.

U.S. GOVERNMENT END USERS: Oracle programs, including any operating system, integrated software, any programs installed on the hardware, and/or documentation, delivered to U.S. Government end users are "commercial computer software" pursuant to the applicable Federal Acquisition Regulation and agency-specific supplemental regulations. As such, use, duplication, disclosure, modification, and adaptation of the programs, including any operating system, integrated software, any programs installed on the hardware, and/or documentation, shall be subject to license terms and license restrictions applicable to the programs. No other rights are granted to the U.S. Government.

This software or hardware is developed for general use in a variety of information management applications. It is not developed or intended for use in any inherently dangerous applications, including applications that may create a risk of personal injury. If you use this software or hardware in dangerous applications, then you shall be responsible to take all appropriate failsafe, backup, redundancy, and other measures to ensure its safe use. Oracle Corporation and its affiliates disclaim any liability for any damages caused by use of this software or hardware in dangerous applications.

This software and related documentation are provided under a license agreement containing restrictions on use and disclosure and are protected by intellectual property laws. Except as expressly permitted in your license agreement or allowed by law, you may not use, copy, reproduce, translate, broadcast, modify, license, transmit, distribute, exhibit, perform, publish or display any part, in any form, or by any means. Reverse engineering, disassembly, or decompilation of this software, unless required by law for interoperability, is prohibited. The information contained herein is subject to change without notice and is not warranted to be error-free. If you find any errors, please report them to us in writing.

This software or hardware and documentation may provide access to or information on content, products and services from third parties. Oracle Corporation and its affiliates are not responsible for and expressly disclaim all warranties of any kind with respect to third-party content, products, and services. Oracle Corporation and its affiliates will not be responsible for any loss, costs, or damages incurred due to your access to or use of third-party content, products, or services.