

What's New

New Features in Primavera Gateway 22

Feature Introduced in 22.10

The following feature is available in Primavera Gateway for Gateway administrators, users, and developers.

Maximum wait time for HTTP Request to Timeout Setting: A new setting to specify the maximum wait time for HTTP Request timeouts has been added to Gateway Settings. This timeout is applicable to Primavera Cloud, P6 EPPM, and Unifier providers only. By default, the maximum wait time is set to 15 minutes.

Settings

Maximum File Size Limit (in MB)

1024

Maximum job log size for XML format (in MB)

10

☐ Enable Configurable Consent Forms

☐ Disable Logging For Jobs

☒ Enable Object Logging for Jobs

Maximum wait time for GSL Custom Steps to complete (in seconds)

5

Maximum wait time for HTTP request to timeout (in minutes)

15

Feature Introduced in 22.9

The following features are available in Primavera Gateway for Gateway administrators, users, and developers.

Jobs Log Improvements: To provide more details on start and end times of the jobs being processed on the **Monitoring** page, a new step, **Initialization**, has been added to the following providers:

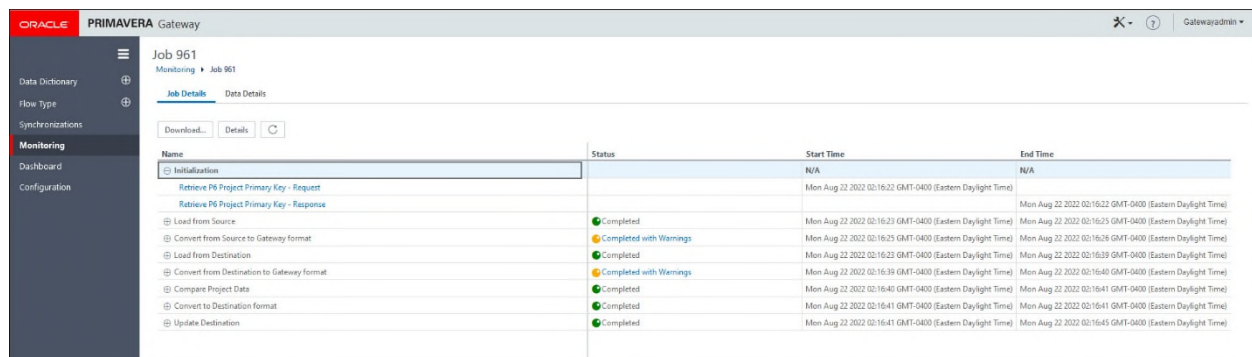
- P6 EPPM
- Primavera Cloud
- Unifier

For single project jobs, the **Initialization** step displays as the first step as shown below.

For parent-child jobs, the **Initialization** step for the parent job because the projects need to be initialized before the number of child jobs is determined. It is the only step displayed for the parent job. This step is not displayed for any child jobs. The start and end times of each step is stored in GMT and displays as per your local time.

Notes:

- “Baseline” Requests / Responses can be suffixed with a number which corresponds to the baselines selected in the relevant parameter. Numbering starts with: 0, 1, 2, 3, etc.
- Primavera Cloud has a hard limit which can cause multiple Request / Responses suffixed with a number. Numbering starts with 1, 2, 3, etc.



Name	Status	Start Time	End Time
Initialization	N/A	N/A	N/A
Retrieve P6 Project Primary Key - Request		Mon Aug 22 2022 02:16:22 GMT-0400 (Eastern Daylight Time)	
Retrieve P6 Project Primary Key - Response			Mon Aug 22 2022 02:16:22 GMT-0400 (Eastern Daylight Time)
Load from Source	Completed	Mon Aug 22 2022 02:16:23 GMT-0400 (Eastern Daylight Time)	Mon Aug 22 2022 02:16:25 GMT-0400 (Eastern Daylight Time)
Convert from Source to Gateway format	Completed with Warnings	Mon Aug 22 2022 02:16:25 GMT-0400 (Eastern Daylight Time)	Mon Aug 22 2022 02:16:26 GMT-0400 (Eastern Daylight Time)
Load from Destination	Completed	Mon Aug 22 2022 02:16:23 GMT-0400 (Eastern Daylight Time)	Mon Aug 22 2022 02:16:29 GMT-0400 (Eastern Daylight Time)
Convert from Destination to Gateway format	Completed with Warnings	Mon Aug 22 2022 02:16:39 GMT-0400 (Eastern Daylight Time)	Mon Aug 22 2022 02:16:40 GMT-0400 (Eastern Daylight Time)
Compare Project Data	Completed	Mon Aug 22 2022 02:16:40 GMT-0400 (Eastern Daylight Time)	Mon Aug 22 2022 02:16:41 GMT-0400 (Eastern Daylight Time)
Convert to Destination format	Completed	Mon Aug 22 2022 02:16:41 GMT-0400 (Eastern Daylight Time)	Mon Aug 22 2022 02:16:41 GMT-0400 (Eastern Daylight Time)
Update Destination	Completed	Mon Aug 22 2022 02:16:41 GMT-0400 (Eastern Daylight Time)	Mon Aug 22 2022 02:16:45 GMT-0400 (Eastern Daylight Time)

The **Initialization** step displays for Project Data Flows and Migration Data Flows only when you use the Project Filter options other than the *Lookup In <product>* as shown in the Synchronization wizard example below.

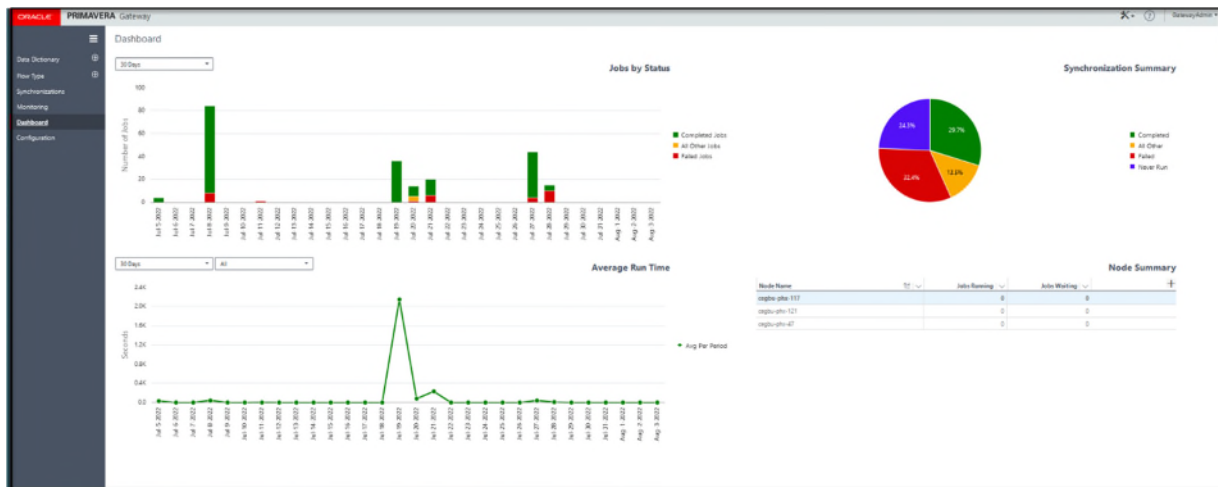
Features Introduced in 22.8

The following features are available in Primavera Gateway for Gateway administrators, users, and developers.

Introducing Dashboards: With release 22.8, we have added a new Dashboard page. This page provides a graphical overview of what is happening within your Gateway application. You can view the job status, synchronization summary, the average run time, and the status of your Gateway nodes. The charts under Job Status and Average Run Time display the status and the average run time over a selected time period. The dashboard also displays real time information on the job queue and the synchronizations that are currently being used.

You can access the **Dashboard** page from the left navigation bar. The **Dashboard** page is divided into four tiles: Job Status, Average Run Time, Synchronization Summary, and Node Summary.

- **Jobs Status:** View a stacked bar chart showing the sum of finished jobs by their job status within the selected date range. You can filter the date range by 30 days, 90 days, and 52 weeks. The following statuses are displayed: Completed Jobs, All Other Jobs, and Failed Jobs.
- **Average Run Time:** View a line chart showing the average run time for jobs within the selected date range and by specific synchronization or all synchronizations. You can filter the date range by 30 days, 90 days, and 52 weeks.
- **Synchronization Summary:** View a pie chart showing synchronizations grouped by Last Run Status value from the Synchronization page.
- **Node Summary:** View a list of all configured nodes within Gateway. For each node, it displays the jobs that are currently running and the jobs waiting to be run.



Enhanced and New Statements for Gateway Scripting Language: The following types of statements are now supported:

- **Parameter:** We have updated the **Parameter** statement to now include the provider who owns the parameter. Previously, you would need to position the sequence number for the custom step within the side (Source or Destination) of the owning parameter Provider.
- **Attribute:** A new **Attribute** statement has been added to define what should happen to a row of data. This new statement now allows you to add a new row of data anywhere within a sequence of steps. Previously to add a new row of data, you would have to add it before the Compare step.
- **Field:** A new **Field** statement allows a field to be used within a formula after it has been removed by the Compare Step.
Note: To use this option if the field will be removed, the Custom Step must be placed after Compare and before Convert to Destination Format.
- **Child Object:** This option allows for a child object of an object (Code/UDF) to be found and used in a formula. Previously, the only way to use a Code or UDF in a formula was to manually add it to the Field Mapping Template.
Note: You cannot create new child object using this option.
- **Abort:** This option allows a job to be stopped and marked Failed with a message provided in the formula. You can use this to test for a specific scenario and stop the job from processing.

Features Introduced in 22.6

The following feature is available in Primavera Gateway for Gateway developers and administrators.

Enhanced Autogenerate Feature for Field Mapping Templates: When you choose to autogenerate field mapping templates, the field mappings between Gateway and the source application, and Gateway and the destination application are now automatically selected for the Gateway field based on the usage of the fields within the respective applications. Previously, the mappings were selected based on the best field name match only. However, you can override the autogenerated mappings by removing the field mappings and add a new mapping according to your organization's needs. This feature is supported for Oracle Primavera Cloud, P6 EPPM, and Unifier.

For more details, refer to the *Setup Guides* for integration between any of the applications listed above.

Add Template

✓General

✓Criteria

3Mappings

4Summary

Primavera Cloud: Activity

Gateway: Activity

P6: Activity

Integration (String)

ActivityObjectId (String)

AccountingVariance (Double)

Add

Mappings

Primavera Cloud Field Name	Gateway Field Name	P6 Field Name	
activityWorkManagerTaskDateStatus	ActivityWorkManagerTaskDateStatus	TaskStatusDates	Delete
activityWorkManagerTaskStatus	ActivityWorkManagerTaskStatus	TaskStatusCompletion	Delete
activityWorkManagerTaskStatusIndicator	ActivityWorkManagerTaskStatusIndicator	TaskStatusIndicator	Delete
actualDuration	ActualDuration	ActualDuration	Delete
actualFinishDate	ActualFinishDate	ActualFinishDate	Delete
actualLaborCost	ActualLaborCost	ActualLaborCost	Delete
actualLaborUnits	ActualLaborUnits	ActualLaborUnits	Delete
actualMaterialCost	ActualMaterialCost	ActualMaterialCost	Delete

< Back

Auto Generate

Cancel

Next >

Legal Notices

Oracle Primavera Gateway What's New

Copyright © 1998, 2022, Oracle and/or its affiliates. All rights reserved.

Oracle and Java are registered trademarks of Oracle and/or its affiliates. Other names may be trademarks of their respective owners.

This software and related documentation are provided under a license agreement containing restrictions on use and disclosure and are protected by intellectual property laws. Except as expressly permitted in your license agreement or allowed by law, you may not use, copy, reproduce, translate, broadcast, modify, license, transmit, distribute, exhibit, perform, publish or display any part, in any form, or by any means. Reverse engineering, disassembly, or decompilation of this software, unless required by law for interoperability, is prohibited.

The information contained herein is subject to change without notice and is not warranted to be error-free. If you find any errors, please report them to us in writing.

If this is software or related documentation that is delivered to the U.S. Government or anyone licensing it on behalf of the U.S. Government, the following notice is applicable:

U.S. GOVERNMENT END USERS: Oracle programs, including any operating system, integrated software, any programs installed on the hardware, and/or documentation, delivered to U.S. Government end users are "commercial computer software" pursuant to the applicable Federal Acquisition Regulation and agency-specific supplemental regulations. As such, use, duplication, disclosure, modification, and adaptation of the programs, including any operating system, integrated software, any programs installed on the hardware, and/or documentation, shall be subject to license terms and license restrictions applicable to the programs. No other rights are granted to the U.S. Government.

This software or hardware is developed for general use in a variety of information management applications. It is not developed or intended for use in any inherently dangerous applications, including applications that may create a risk of personal injury. If you use this software or hardware in dangerous applications, then you shall be responsible to take all appropriate failsafe, backup, redundancy, and other measures to ensure its safe use. Oracle Corporation and its affiliates disclaim any liability for any damages caused by use of this software or hardware in dangerous applications.

This software or hardware and documentation may provide access to or information on content, products and services from third-parties. Oracle Corporation and its affiliates are not responsible for and expressly disclaim all warranties of any kind with respect to third-party content, products, and services. Oracle Corporation and its affiliates will not be responsible for any loss, costs, or damages incurred due to your access to or use of third-party content, products, or services.