

**Oracle® Documaker**

# **Integration with Oracle Banking Platform**

**Installation and Configuration Guide**

12.7.0

Part number: F51808-01

December 2021

Copyright © 2009, 2020, 2021 Oracle and/or its affiliates. All rights reserved.

The Programs (which include both the software and documentation) contain proprietary information; they are provided under a license agreement containing restrictions on use and disclosure and are also protected by copyright, patent, and other intellectual and industrial property laws. Reverse engineering, disassembly, or decompilation of the Programs, except to the extent required to obtain interoperability with other independently created software or as specified by law, is prohibited.

The information contained in this document is subject to change without notice. If you find any problems in the documentation, please report them to us in writing. This document is not warranted to be error-free. Except as may be expressly permitted in your license agreement for these Programs, no part of these Programs may be reproduced or transmitted in any form or by any means, electronic or mechanical, for any purpose.

If the Programs are delivered to the United States Government or anyone licensing or using the Programs on behalf of the United States Government, the following notice is applicable:

#### **U.S. GOVERNMENT RIGHTS**

Programs, software, databases, and related documentation and technical data delivered to U.S. Government customers are "commercial computer software" or "commercial technical data" pursuant to the applicable Federal Acquisition Regulation and agency-specific supplemental regulations. As such, use, duplication, disclosure, modification, and adaptation of the Programs, including documentation and technical data, shall be subject to the licensing restrictions set forth in the applicable Oracle license agreement, and, to the extent applicable, the additional rights set forth in FAR 52.227-19, Commercial Computer Software--Restricted Rights (June 1987). Oracle USA, Inc., 500 Oracle Parkway, Redwood City, CA 94065.

The Programs are not intended for use in any nuclear, aviation, mass transit, medical, or other inherently dangerous applications. It shall be the licensee's responsibility to take all appropriate fail-safe, backup, redundancy and other measures to ensure the safe use of such applications if the Programs are used for such purposes, and we disclaim liability for any damages caused by such use of the Programs.

The Programs may provide links to Web sites and access to content, products, and services from third parties. Oracle is not responsible for the availability of, or any content provided on, third-party Web sites. You bear all risks associated with the use of such content. If you choose to purchase any products or services from a third party, the relationship is directly between you and the third party. Oracle is not responsible for: (a) the quality of third-party products or services; or (b) fulfilling any of the terms of the agreement with the third party, including delivery of products or services and warranty obligations related to purchased products or services. Oracle is not responsible for any loss or damage of any sort that you may incur from dealing with any third party.

Oracle, JD Edwards, and PeopleSoft are registered trademarks of Oracle Corporation and/or its affiliates. Other names may be trademarks of their respective owners.

# Contents

- Preface ..... 4**
  - Documentation Accessibility ..... 4
  - Customer Support ..... 4
  - Contact ..... 5
  - Conventions ..... 5
- Overview ..... 6**
  - Product Overview ..... 7
  - Pre-Requisites ..... 7
  - Integration Component Overview ..... 8
- Installing Oracle Documaker Enterprise Edition Integration Extensions .. 9**
  - Update Enterprise Edition Environment ..... 9
  - Resource Configuration ..... 24
  - Web Application Configuration ..... 28
  - Validating Documaker Mobile Installation ..... 31

## Preface

This document contains information necessary for the installation and configuration of integration components to create a complete solution using Oracle Banking Platform (OBP) and Oracle Documaker.

### Audience

This document is intended for users who have installed Oracle Banking Platform and Oracle Documaker Enterprise Edition and who need to integrate the two products. Familiarity with Oracle Documaker components is recommended. Please see the Oracle Documaker Administrators Guide, particularly the Using Documaker Web Services chapter for a deeper understanding of integration components.

## DOCUMENTATION ACCESSIBILITY

### Accessibility of Links to External Web Sites in Documentation

This documentation may contain links to Web sites of other companies or organizations that Oracle does not own or control. Oracle neither evaluates nor makes any representations regarding the accessibility of these Web sites.

## CUSTOMER SUPPORT

If you have any questions about the installation or use of our products, please call +1.800.223.1711 or visit the My Oracle Support website:

<http://www.oracle.com/us/support/index.html>.

Go to My Oracle Support to find answers in the Oracle Support Knowledge Base, submit, update or review your Service Requests, engage the My Oracle Support Community, download software updates, and tap into Oracle proactive support tools and best practices.

Hearing impaired customers in the U.S. who need to speak with an Oracle Support representative may use a telecommunications relay service (TRS); information about TRS is available at <http://www.fcc.gov/cgb/consumerfacts/trs.html>, and a list of phone numbers is available at <http://www.fcc.gov/cgb/dro/trsphonebk.html>. International hearing impaired customers should use the TRS at 1.605.224.1837.

## CONTACT

USA: +1.800.223.1711

Canada: 1.800.668.8921 or +1.905.890.6690

Latin America: 877.767.2253

For other regions including Latin America, Europe, Middle East, Africa, and Asia Pacific regions: Visit- <http://www.oracle.com/us/support/contact/index.html>.

## Follow us



<https://blogs.oracle.com/insurance>



<https://www.facebook.com/oraclefs>



<https://twitter.com/oraclefs>



<https://www.linkedin.com/groups?gid=2271161>

## CONVENTIONS

The following text conventions are used in this document:

Convention	Description
<i>italic</i>	Italic type indicates book titles, emphasis, or placeholder variables for which you supply particular values.
<code>monospace</code>	Monospace type indicates commands, URLs, code in examples, and information you enter.

## Tips, Notes, and Warnings

- a. Tip provides a better way to use the software.
- b. Note contains special information and reminders.
- c. Warning contains critical information that if ignored, may cause errors or result in the loss of information.

## OVERVIEW

This document describes how to install and configure the needed components of Oracle Documaker Enterprise Edition for integration with the Oracle Banking Platform (OBP).

This chapter includes the following topics:

- *Overview* on page 6
- *Product Overview* on page 7
- *Integration Component Overview* on page 8

Reference	Description
OBP Installation Guide	This document provides instructions for installing and configuring Oracle Banking Platform.
Oracle Documaker System Requirements	This document describes the system's hardware and software requirements for the various applications that comprise Oracle Documaker.
Oracle Documaker Enterprise Edition Installation Guide	This manual provides instructions for installing Oracle Documaker Enterprise Edition.
Oracle Documaker Enterprise Edition Administrator's Guide	This manual provides in depth details regarding the use and configuration of the Oracle Documaker components.

## Product Overview

Documents are an integral part of banking transactions. For example, there are multiple documents for a loan - the loan application, supporting documents, credit approval(s), the loan disbursal, loan payment schedule, etc. These documents provide important information to both the bank and the banks' customer.

The integration of Oracle Banking Platform (OBP) and Oracle Documaker enables documentation automation for Oracle Banking Platform customers.

## Pre-Requisites

This guide assumes that you have reviewed the Oracle Documaker Enterprise Edition Installation Guide and that you are familiar with the files and directory structure as outlined in that guide. If you have any questions, please contact Oracle Support with the information listed in the back of this document.

This guide details the process to configure the OBP to Oracle Documaker integration package. It is assumed that there is an existing OBP and Oracle IPM server available to validate integration. It also assumes you have installed an Oracle Documaker Enterprise system.

## Integration Component Overview

Oracle Documaker Enterprise Edition (ODEE) is a standalone application developed for Electronic Document Automation. Integration of ODEE with Oracle OBP is completed by web service communication methods supported by both OBP and Oracle Documaker.

The Documaker Enterprise Edition installation comes with a sample set of insurance forms for installation validation and system demonstration. The OBP-Documaker Integration pack provides targeted sample banking form resources, called “Model Bank” forms that replace the sample insurance forms provided with the ODEE installation. The integration pack also provides additional components used to support the archive and distribution capabilities of the complete OBP-Documaker solution. This integration pack contains:

Resource	Description
dmres\deflib	master.lby, master.mdx, and master.dbf files for uploading into resource library tables. Contains the sample document templates for Model Bank. Updated afgjob and .dfd files for reference.
dmres\input	Sample extract file to validate the Oracle Banking Platform (OBP) and Oracle Documaker Enterprise Edition (ODEE) integration.
dmres	Fsisys.ini - updated for reference.
templates	obpemailtemplate.txt and printcontroltemplate.xml used by distribution components to format output destination specific content.

Download the integration pack from [Oracle Technology Network \(OTN\)](#). Once the integration pack is downloaded, unzip the downloaded integration zip file into a temporary source directory.



# Installing Oracle Documaker Enterprise Edition Integration Extensions

This chapter describes how to install and configure the needed components of Oracle Documaker Enterprise Edition for integration with Oracle Banking Platform (OBP).

This chapter includes the following topics:

- *Update Enterprise Edition Environment on page 9*
- *Resource Configuration on page 24*
- *Web Application Configuration on page 28*
- *Validating Documaker Mobile Installation on page 31*

## UPDATE ENTERPRISE EDITION ENVIRONMENT

Use the steps below to update and configure the Oracle Documaker Enterprise Edition environment to support integration with Oracle Banking Platform.

### Step A: Update Directories and Core Files

1. Stop both the Oracle Documaker Document Factory Service (ODDF Service) and Docupresentation service.
2. Copy the distribution template files *obpemailtemplate.txt* and *printcontroltemplate.xml* from the temporary source directory that contains the unzipped integration pack files into the Documaker directory.
3. Create the following integration point directories in the *documaker\mstrres\dmres* directory:
  - a. post
  - b. results-archive
  - c. scratch

### Step B: Configure Integration Components

<b>Note</b>	As you enter options within the Documaker Administrator, you can use the UserTag or Comment field to track the updates. This will allow you to query by a consistent value on this field to quickly summarize changes. Access these columns in the Administrator by selecting View; Columns in the properties sub-tab.
-------------	--

1. Update the transaction identification components using the Documaker Administrator web application.
  - a. Login to Oracle Documaker Administrator web application using the URL and credentials established during Oracle Documaker Enterprise Edition installation.
  - b. Click System.
  - c. Expand the Assembly Line, default name is Assembly Line 1.
  - d. Highlight the Receiver and click Configure.
  - e. On the Receiver configuration tab, click FileReceiver Context, FileReceiver Group and set the following properties.

Property	Value	Active
TextDelimiter		Unchecked
XMLDelimiter		Unchecked
XMLTagDelimiter	Recipient	Checked

- f. Click Save.
- g. Navigate to the Systems Overview tab.
- h. Highlight the Identifier and click Configure.
- i. On the Identifier configuration tab, click Identifier Context, Identifier Group and set the following properties:
- j. Click Save.

Property	Value	Active
TextDelimiter		Unchecked
XMLDelimiter		Unchecked
XMLTagDelimiter	Recipient	Checked

### Step C: Configure Archive and Distribution Integration Components

1. Navigate to the Systems Overview tab.
2. Highlight the Archiver and click Configure.
3. Create a new Context to support bursting the PUBS row print stream into individual PDF form files for archiving and distribution.

<b>Note</b>	<ul style="list-style-type: none"> <li>• All properties added in the Archive configuration are required unless otherwise noted as optional</li> <li>• Use these same steps for the remaining Context additions below.</li> </ul>
-------------	--

- a. Click on the green + to Create Context.

b. Enter the Context Name, Category, Group Name, Property and Value as listed in the first row of the table below. Leave Active as checked.

<b>Note</b>	Enter the Context Name <b>LISTENER</b> in capital letters.
-------------	--

Context Name	Category	Group Name	Property	Value
LISTENER	OBPPDFBurster	Configuration	phase.name	oracle.documaker.ecmconnector.ngpcomponents.NGPPDFBurster
LISTENER	OBPPDFBurster	Configuration	phaselistener.pdfburster.require.form.index	True
LISTENER	OBPPDFBurster	Configuration	phaselistener.pdfburster.burst.identifier	<p><b>Description:</b> Allows the PDFBurster to burst documents based on any of the form's attributes provided as metadata in the PDF, such as DocID, rather than just on the form identifier.</p> <p><b>Note:</b> Forms without a metadata value or a blank metadata value will be burst based on the form identifier.</p>
LISTENER	OBPPDFBurster	Configuration	phaselistener.pdfburster.print.identifier	<p><b>Description:</b> Allows you to specify a new PDFBurster property, "phaselistener.pdfburster.print.identifier", in ODEE's Documaker Administrator.</p> <p>The value of this new property should be set to a user-defined form metadata name, such as Zipped.</p> <p>During PDFBurster processing of a form, if it finds a form metadata name that matches the name specified in this new property, and if the value associated with that form metadata name is "Y", the form is kept.</p> <p>If the value associated with the form metadata name is "N", the form is not kept.</p> <p>If no form metadata with the specified name is found, the form is kept.</p>

c. To enable burst PDF merge, enter following configuration. (Optional)

Context Name	Category	Group Name	Property	Value
LISTENER	OBPPDFBurster	Configuration	phaselistener.pdfstitcher.name	oracle.documaker.ecmconnector.pdfstitcher.IPMPDFStitcher
LISTENER	OBPPDFBurster	Configuration	phaselistener.pdfstitcher.connection.url	As per your environment, configure IPM URL, for Example: "http://ip-address:port/imaging/ws/"
LISTENER	OBPPDFBurster	Configuration	phaselistener.pdfstitcher.connection.username	IPM Username, As per your environment

Context Name	Category	Group Name	Property	Value
LISTENER	OBPPDFBurster	Configuration	phaselistener.pdfstitcher.connection.password	IPM Username, As per your environment

<b>Note</b>	<ul style="list-style-type: none"> <li>• Keep in mind, Oracle Documaker does not validate extract file content.</li> <li>• Refer to the topic <i>Burst PDF Merge</i> on page 29 for more details.</li> </ul>
-------------	--

4. Create a new Context to support collecting and storing the feedback information for OBP to be notified of the results of generation (archive).

Context Name	Category	Group Name	Property	Value
LISTENER	OBPResultsWriter	Configuration	phase.name	oracle.documaker.ecmconnector.ngpcomponents.archiveresults.NGResultsWriter
LISTENER	OBPResultsWriter	Configuration	phaselistener.ngpresultswriter.base.directory	<i>c:\oracle\odee_1\documaker\mstrres\dmres\results-archive</i> Where this value is dynamic based on your installation location
LISTENER	OBPResultsWriter	Configuration	phaselistener.ngpresultswriter.ngpsubmit.type	ARCHIVE

5. Create a new Context to support collecting and storing the feedback information for OBP to be notified of the results of dispatch (post or email).

Context Name	Category	Group Name	Property	Value
LISTENER	OBPDispatchResultsWriter	Configuration	phase.name	oracle.documaker.ecmconnector.ngpcomponents.archiveresults.NGResultsWriter
LISTENER	OBPDispatchResultsWriter	Configuration	phaselistener.ngpresultswriter.base.directory	<i>c:\oracle\odee_1\documaker\mstrres\dmres\results-archive\</i> Where this value is dynamic based on your installation location
LISTENER	OBPDispatchResultsWriter	Configuration	phaselistener.ngpresultswriter.ngpsubmit.type	DISTRIBUTION

- 
6. Create a new Context configure the output Post destination used for output batches whose output is bursted, and zipped along with a print control file. This output will then be independently sent to or picked up by a print vendor. This destination, OBP\_Post can be customized to meet the needs of the particular print vendor used.

Context Name	Category	Group Name	Property	Value
DESTINATION	OBP_Post	Configuration	destination.name	oracle.documaker.ecmconnect or.ngpcomponents.NGPPrint Destination
DESTINATION	OBP_Post	Configuration	destination.ngp.scratch.directory	c:\oracle\odee_1\documaker\ mstrres\dmres\scratch  Where the value is dynamic based on your installation location
DESTINATION	OBP_Post	Configuration	destination.ngpprint.base.directory	c:\oracle\odee_1\documaker\ mstrres\dmres\post
DESTINATION	OBP_Post	Configuration	destination.ngpprint.pcf.template.file	c:\oracle\odee_1\documaker\ printcontroltemplate.xml
DESTINATION	OBP_Post	Configuration	phaselistener	OBPPDFBurstter
DESTINATION	OBP_Post	Configuration	phaselistener	OBPDispatchResultsWriter

Context Name	Category	Group Name	Property	Value
DESTINATION	OBP_Post	Configuration	destination.ngp.file.pattern	<p><b>(Optional)</b></p> <p>(<code>{BCHS.BCH_ID}</code>){<code>FORM NAME</code>}</p> <p><code>{GUID}</code></p> <p><code>{INDEXNO} {DocID}</code>)</p> <p><b>Description:</b> Naming convention for the bursted PDF file can be a combination of ; static text, column values, and freemarker templating formats. The format to pull from a column: <code>{BCHS.BCH_ID}</code> to use the Batch ID and this also supports other <code>dmkr_asline</code> table column values.</p> <p>Form Name, use the convention: <code>{FORMNAME}</code></p> <p>For GUID, use the convention: <code>{GUID}</code></p> <p>For Index Number, use the convention: <code>{INDEXNO}</code></p> <p>User Attributes, use the convention: <code>{UserAttribute}</code></p> <p>In other words, The user attribute should exactly match the same as defined in Studio. For example, to use the DocID as part of the PDF file name use the convention: <code>{DocID}</code></p>
DESTINATION	OBP_Post	Configuration	destination.ngp.pcfile.pattern	<p><b>(Optional)</b></p> <p><code>&lt;FormName&gt;</code>  <code>{AFORM.formName}&lt;/FormName&gt;</code>,  <code>&lt;FileName&gt;</code><code>{AFORM.fileName}&lt;/FileName&gt;</code>)</p> <p><b>Description:</b> Naming convention for the print control file can be a combination of static text, column values, and freemarker templating formats</p> <p><b>Note:</b> In the print control file template, use the following to get the form name or the file name as needed to reference the PDF:</p> <p>For a complete list of AFORM keywords that can be used, see note below.</p>

Context Name	Category	Group Name	Property	Value
DESTINATION	OBP_Post	Configuration	destination.ngpprint.zipfile.pattern	<b>(Optional)</b> <code>\${BCHS.BCH_ID}</code> <b>Description:</b> Naming convention for the zip file that includes the bursted PDF files and the print control file. Can be a combination of static text, column values, and reemarker templating formats. <code>\${BCHS.BCH_ID}</code>
DESTINATION	OBP_Post	Configuration	destination.mroprint.zipfile.pattern	<b>(Mandatory)</b> MRO zip file name  <b>Description:</b> This property is used to provide the zip file name.
DESTINATION	OBP_Post	Configuration	destination.mroprint.base.directory	<code>c:\oracle\odee_1\docu maker\mstrres\dmres\m ropost</code>
DESTINATION	OBP_Post	Configuration	phaselistener	MROBurster

**Note:** AFORM is a collection of the form elements available for reference. The content object and form element are available with the prefix AFORM. are as follows:

- formname
  - pullform
  - nonStandardPack
  - sheetNumOf
  - orientation
  - paperSize
  - paperStockId
  - tray
  - userAttributes
  - filename
7. Create a new Group within the Destination – OBP\_Post Context to set any default or mapped data that should be sent into the destination processing. This default and mapped data can be used at any point in the destination’s processing – for example, if the destination archive’s to IPM and certain values are needed for indexing, or in the case of the OBP\_Post destination, the Default and Mappings are used to capture data for the print control file.

To create a new Group, follow these Steps:

- Highlight the Category for which you want to add a new Group and click + Create Group.
- Enter the Group Name, Property and Value as shown in the first row below.
- Click on the + to Create new property and enter the Property and Value for the remaining properties listed in the table.

Group Name	Property	Value
Defaults	default	

Group Name	Property	Value	Purpose
Mappings	documentSet.recipient.context.bankName	{TRNS.KEY1}	Used for OBP Update results
	updateDocument.sessionContext.bankCode	{TRNS.KEY1}	Used for OBP Update results
	updateDocument.sessionContext.transactionBranch	{TRNS.TRNCUSSTR003}	Used for OBP Update results
	updateDocument.sessionContext.userId	{TRNS.CURRUSER}	Used for OBP Update results
	updateDocument.outboundDocumentListDTO.documentListRecordDTOs.documentDTO.jobId	{JOBS.JOB_ID}	Used for OBP Update results
	updateDocument.outboundDocumentListDTO.documentListRecordDTOs.documentDTO.recipId	{RCPS.RCP_ID}	Used for OBP Update results
	updateDocument.outboundDocumentListDTO.documentListRecordDTOs.documentDTO.setId	{TRNS.TRN_ID}	Used for OBP Update results
	BCHS.BCH_ID	{BCHS.BCH_ID}	Used for print control file creation – available variables for template to reference
	BCHS.BCHSTARTTIME	{BCHS.BCHSTARTTIME}	Used for print control file creation – available variables for template to reference
	BCHS.BCHSHEETCOUNT	{BCHS.BCHSHEETCOUNT}	Used for print control file creation – available variables for template to reference
	BCHS.BCHRCPCOUNT	{BCHS.BCHRCPCOUNT}	Used for print control file creation – available variables for template to reference



Group Name	Property	Value	Purpose
	BCHS.BCHPRTTYPE	{BCHS.BCHPRTTYPE}	Used for print control file creation – available variables for template to reference
	TRNS.KEY2	{TRNS.KEY2}	Used for print control file creation – available variables for template to reference
	RCPS.ADR_POSTALCODE	{RCPS.ADR_POSTALCODE}	Used for print control file creation – available variables for template to reference
	RCPS.ADR_COUNTRY	{RCPS.ADR_COUNTRY}	Used for print control file creation – available variables for template to reference
	RCPS.ADR_NAME	{RCPS.ADR_NAME}	Used for print control file creation – available variables for template to reference
	RCPS.ADR_CITY	{RCPS.ADR_CITY}	Used for print control file creation – available variables for template to reference
	RCPS.ADR_ADDRESS1	{RCPS.ADR_ADDRESS1}	Used for print control file creation – available variables for template to reference
	RCPS.ADR_ADDRESS2	{RCPS.ADR_ADDRESS2}	Used for print control file creation – available variables for template to reference
	RCPS.ADR_STATE	{RCPS.ADR_STATE}	Used for print control file creation – available variables for template to reference
	BCHS.BCHMIMETYPE	{BCHS.BCHMIMETYPE}	Used to differentiate the MRO types, whether it is json,xml or html

8. Create a new Context and configure the output E-mail destination used for output batches who's output is bursted, zipped, and emailed to the Receiving Party. The E-mail subject and message body are configured and use the Defaults and Mappings values as the source for variable data per implementation and batch, respectively.

Context Name	Category	Group Name	Property	Value
DESTINATION	OBP_Email	Configuration	destination.name	oracle.documaker.ecmconnect or.ngpcomponents.NGPEmail Destination

Context Name	Category	Group Name	Property	Value
DESTINATION	OBP_Email	Configuration	destination.ngp.scratch.directory	c:\oracle\odee_1\documaker\mstrres\dmres\scratch
DESTINATION	OBP_Email	Configuration	destination.ngpemail.from.address	admin@docfactory.com
DESTINATION	OBP_Email	Configuration	destination.ngpemail.mail.host	internal-mail-router.oracle.com
DESTINATION	OBP_Email	Configuration	destination.ngpemail.message.template.file	c:\oracle\odee_1\documaker\OBPEmailtemplate.txt
DESTINATION	OBP_Email	Configuration	destination.ngpemail.subject.text	\${documentSet.recipient.context.bankName}:\${FORMNAMELIST}
DESTINATION	OBP_Email	Configuration	destination.ngpprint.base.directory	where the value is dynamic based on your installation location. c:\oracle\odee_1\documaker\mstrres\dmres\post
DESTINATION	OBP_Email	Configuration	phaselistener	OBPDispatchResultsWriter
DESTINATION	OBP_Email	Configuration	phaselistener	OBPPDFBurster
DESTINATION	OBP_Email	Configuration	destination.mroemail.zipfile.pattern	MRO zip file name
DESTINATION	OBP_Email	Configuration	phaselistener	MROBurster

<b>Note</b>	The e-mail size should not exceed the maximum limit i.e.15728640 MB. E-mail delivery is failed if the PDF merge stitching exceeds this limit.
-------------	---

9. Create a new Group within the Destination – OBP\_Email Context to set any default or mapped data that should be sent into the destination processing. This default and mapped data can be used at any point in the destination’s processing – for example, if the destination archive’s to IPM and certain values are needed for indexing, or in the case of the OBP\_Post destination, the Default and Mappings are used to capture data for the print control file.

To create a new Group, follow these Steps:

- Highlight the Category for which you want to add a new Group and click + Create Group.
- Enter the Group Name, Property and Value as shown in the first row below.

- Click on the + to Create new property and enter the Property and Value for the remaining properties listed in the table.

Group Name	Property	Value
Defaults	default	
	documentSet.recipient.context.bankName	Model Bank

Group Name	Property	Value	Purpose
Mappings	destination.ngpemail.to.address	{RCPS.ADR_EMAIL}	Used for OBP Update results
	updateDocument.sessionContext.bankCode	{TRNS.TRNCUSSTR002}	Used for OBP Update results
	updateDocument.sessionContext.transactionBranch	{TRNS.TRNCUSSTR003}	Used for OBP Update results
	updateDocument.sessionContext.userId	{TRNS.TRNCUSSTR004}	Used for OBP Update results
	updateDocument.outboundDocumentListDTO.documentListRecordDTOs.documentDTO.jobId	{JOBS.JOB_ID}	Used for OBP Update results
	updateDocument.outboundDocumentListDTO.documentListRecordDTOs.documentDTO.recipId	{RCPS.RCP_ID}	Used for OBP Update results
	updateDocument.outboundDocumentListDTO.documentListRecordDTOs.documentDTO.setId	{TRNS.TRN_ID}	Used for OBP Update results
	BCHS.BCHMIMETYPE	{BCHS.BCHMIMETYPE}	Used to differentiate the MRO types, whether it is json, xml or html
	destination.ngpemail.zipfile.pattern	USER_PREFERRED_NAME {JOBS.JOB_ID}	Used to change the email attachment name

10. Create a new Context to configure the **archive destination** used for output batches where the output is broken into individual print streams per form and sent to IPM. This destination configuration provides the details for IPM access and authentication and identifies the Listener processing that should be executed within the destination.

Context Name	Category	Group Name	Property	Value
DESTINATION	OBP_Archive	Configuration	destination.name	oracle.documaker.ecmconnect or.ngpcomponents.NGPIPMD estination

Context Name	Category	Group Name	Property	Value
DESTINATION	OBP_Archive	Configuration	destination.ipm.application.name	The application name within IPM where the OBP documents should be stored.
DESTINATION	OBP_Archive	Configuration	destination.ipm.connection.string	<i>http://ip:port/imaging/ws</i>
DESTINATION	OBP_Archive	Configuration	destination.ipm.user.name	
DESTINATION	OBP_Archive	Configuration	destination.ipm.password	
DESTINATION	OBP_Archive	Configuration	phaselistener	OBPPDFBurster
DESTINATION	OBP_Archive	Configuration	phaselistener	OBPResultsWriter
DESTINATION	OBP_Archive	Configuration	phaselistener	MROBurster

11. Create a new Group within the Destination – OBP\_Archive Context to set any default or mapped data that should be sent into the destination processing. This default and mapped data can be used at any point in the destination’s processing – for example, if the destination archive’s to IPM and certain values are needed for indexing, or in the case of the OBP\_Post destination, the Default and Mappings are used to capture data for the print control file.

To create a new Group, follow these Steps:

- Highlight the Category for which you want to add a new Group and click + Create Group.
- Enter the Group Name, Property and Value as shown in the first row below and leave Active as checked.
- Click on the + to Create new property and enter the Property and Value for the remaining properties listed in the table.

Group Name	Property	Value
Defaults	default	

Group Name	Property	Value	Purpose
Mappings	DocTypeCode	{TRNS.DESCR}	Used for archive index in IPM
	PartyID	{TRNS.TRNCUSSTR001}	Used for archive index in IPM
	updateDocument.outboundDocumentListDTO.documentListRecordDTOs.documentDTO.jobId	{JOBS.JOB_ID}	Used for OBP Update results

Group Name	Property	Value	Purpose
	updateDocument.outboundDocumentListDTO.documentListRecordDTOs.documentDTO.recipId	{RCPS.RCP_ID}	Used for OBP Update results
	updateDocument.outboundDocumentListDTO.documentListRecordDTOs.documentDTO.setId	{TRNS.TRN_ID}	Used for OBP Update results
	updateDocument.sessionContext.bankCode	{TRNS.TRNCUSSTR002}	Used for OBP Update results
	updateDocument.sessionContext.transactionBranch	{TRNS.TRNCUSSTR003}	Used for OBP Update results
	updateDocument.sessionContext.userId	{TRNS.CURRUSER}	Used for OBP Update results
	BCHS.BCHMIMETYPE	{BCHS.BCHMIMETYPE}	Used to differentiate the MRO types, whether it is json,xml or html

12. Create a new Context configure the process used to update the results of generation (archive) and dispatch (distribution via OBP\_Post or OBP\_Email) back to OBP via the OBP Update service. Use the first row to create the new Context and then add the properties listed on the remaining rows.

Context Name	Category	Group Name	Property	Value
DESTINATION	OBPResultsUploader	Configuration	destination.name	oracle.documaker.ecmconnector.mockdestination.MockDestination
DESTINATION	OBPResultsUploader	Configuration	periodic.process.ngp.submit.username	The user name for the OBP Update Service security setting
DESTINATION	OBPResultsUploader	Configuration	periodic.process.ngp.submit.password	The password for the OBP Update Service security setting
DESTINATION	OBPResultsUploader	Configuration	periodic.process.ngp.submit.security.enable	False, Set this to value unless security is enabled for the OBP Update service.
DESTINATION	OBPResultsUploader	Configuration	periodic.process.collection.instance.class	oracle.documaker.ecmconnector.ngpcomponents.archiveresults.NGPSu bmitProcess

Context Name	Category	Group Name	Property	Value
DESTINATION	OBPResultsUploader	Configuration	periodic.process.collection.instance.count	1
DESTINATION	OBPResultsUploader	Configuration	periodic.process.ngp.submit.base.directory	<i>c:\oracle\odee_1\documentmaker\mstrres\dmres\results-archive</i>
DESTINATION	OBPResultsUploader	Configuration	periodic.process.ngp.submit.retry.count	5
DESTINATION	OBPResultsUploader	Configuration	periodic.process.ngp.submit.retry.wait	30000
DESTINATION	OBPResultsUploader	Configuration	periodic.process.ngp.submit.type	ARCHIVE
DESTINATION	OBPResultsUploader	Configuration	periodic.process.ngp.submit.wsdl	<i>http://ipaddress:port/com.ofss.fc.webservice/services/content/DocumentApplicationServiceSpi?WSDL</i>
DESTINATION	OBPResultsUploader	Configuration	periodic.process.repetition.count	0
DESTINATION	OBPResultsUploader	Configuration	periodic.process.repetition.wait	2000

### Step D: Configure the Debug Settings

1. Add a new Group to the Assembly Line's LOG4J Logger Category:
  - a. On the System Overview tab, click System.
  - b. Highlight the Assembly Line name. The default value is Assembly Line 1.
  - c. Click Configure.
  - d. Expand the LOG4J Logger Context.
  - e. Create a group with the following properties. Use the first row to create the group then add the remaining properties:

Group Name	Property	Value	Active
oracle.documaker.ecmconnector.ngpcomponents	priority	error	Checked
	additivity	false	Unchecked
	appender-ref	ErrorAppender	Checked
	appender-ref	LogAppender	Checked
	appender-ref	stdout	Checked
	appender-ref	roll	Checked

Group Name	Property	Value	Active
	class	oracle.documaker.log4jlogger.DFLogger	Checked

### Step E: Configure Output Batch

1. Add the new Archiver Destinations to the candidate list for use with a batching definition and update the labels on the Batchings setup tabs within the Documaker Administrator.
  - a. On the System Overview tab, Click System.
  - b. Highlight Assembly Line name. The default value is Assembly Line 1.
  - c. Click Translate.
  - d. Add two new Properties to the BCHINGS.BCHINGARCDEST Group.

ID	Local ID	Display	Description	Display Sequence
OBP_Post	en	OBP_Post	OBP Post Destination	next in sequence
OBP_Email	en	OBP_Email	OBP Email Destination	next in sequence

- e. Add one new Property to the BCHINGS.BCHINGSGNDEST Group.

ID	Local ID	Display	Description	Display Sequence
OBP_Archive	en	OBP_Archive	OBP IPM Archive Destination	next in sequence

- f. Change the Display value on the BCHINGS.BCHINGARCLBL.

ID	Local ID	Display	Description	Display Sequence
Archive	en	Dispatch-Delivery	Batchings Archive Destination Label	1

- g. Change the Display value on the BCHINGS.BCHINGSGNLBL

ID	Local ID	Display	Description	Display Sequence
Sign	en	Archive-Generation	Batchings Sign Destination Label	1

2. Update batching options to support Post and Email distribution options.
  - a. Click System.
  - b. Highlight Assembly Line name. The default value is Assembly Line 1.
  - c. Click Batchings.
  - d. Inactivate Batch, SMS and MMS batching definitions.

---

e. Configure Email batching definition:

- Confirm the Print Type: PDF and the MIME Type: application/pdf.
- Set the Dispatch-Delivery destination to: OBP\_Email.
- Set the Archive-Generation destination to: OBP\_Archive.
- Uncheck the Publish option.
- Set the value for the Rule's Tab Selection Criteria to (`{RCPS.RCBRCPNAME}`)=`'Customer_Email'`) or (`{RCPS.RCBRCPNAME}`)=`'Bank_Email'`) or (`{RCPS.RCBRCPNAME}`)=`'Guarantor_Email'`)

f. Configure Local Print batching definition:

- Confirm the Print Type: PDF and the MIME Type: application/pdf.
- Set the Dispatch-Delivery destination to: OBP\_Post.
- Set the Archive-Generation destination to: OBP\_Archive.
- Set the value for the Rule's Tab Selection Criteria to (`{RCPS.RCBRCPNAME}`)=`'Customer'`) or (`{RCPS.RCBRCPNAME}`)=`'Bank'`) or (`{RCPS.RCBRCPNAME}`)=`'Guarantor'`)

## RESOURCE CONFIGURATION

1. Make a backup of the existing `documaker\mstres\dmres` directory.
2. Update the `fsisys.ini` file located in the `documaker\mstres\dmres` directory as follows:

a. Set the `BatchingByRecip` values – to be the Model Bank recipients.

```
< BatchingByRecip >
Batch_Recip_Def      = TRUE;"BATCH1";BANK
Batch_Recip_Def      = TRUE;"BATCH1";CUSTOMER
Batch_Recip_Def      = TRUE;"BATCH1";GUARANTOR
DefaultBatch         = ERROR
Batch_Recip_Def      = TRUE;"BATCH1";BANK_EMAIL
Batch_Recip_Def      = TRUE;"BATCH1";CUSTOMER_EMAIL
Batch_Recip_Def      = TRUE;"BATCH1";GUARANTOR_EMAIL
```

b. Add the following entry to the `DocsetNames` group. If the option is already present, make sure it is not commented out:

```
GroupName3 = Key3
```

c. Update the entries in the `Key1Table` group as shown:

```
< Key1Table >
Model Bank      = Model Bank
```



---

XML = Model Bank

**d. Update the TRN\_FIELDS group as shown:**

```
< TRN_FIELDS >
  TRNNAME      = !//Recipient/Context/BankerName
  KEY1         = !//Recipient/Context/Key1
  KEY2         = !//Recipient/Context/Key2
  KEY3         = !//Recipient/Context/Key3
  KEYID        = !//Recipient/Context/KeyID
  TRNCODE      = !//Recipient/Document/TranCode
  CURRGROUP    = !//Recipient/Context/UserGroup
  DESC         = !//Recipient/Document/NGPDocID
  APPROVALSTATE = !//Recipient/Context/ApprovalState
  ACTION       = !//Recipient/Context/Action
  TRNCUSSTR001 = !//Recipient/PartyID
  TRNCUSSTR002 = !//Recipient/Context/BankCode
  TRNCUSSTR003 = !//Recipient/Context/
  TransactionBranch
  TRNCUSSTR004 = !//Recipient/Context/UserId
```

**e. Set the TRN\_FILE group as shown:**

```
< TRN_FILE >
  BinaryExt      = N
  MaxExtRecLen   = 4000
  TRNRECFMT      = KEY1, KEY2, KEY3, KEYID
  XMLTrnFields   = Yes
```

**f. Update the BaseDef option value in the Config:Correspondence group as shown:**

BaseDef = OBP

<b>Note</b>	Leave the Config called Correspondence unless you prefer to change it to your configuration name or to OBP. If so, refer to the <a href="#">Documaker Enterprise Administrator's Guide</a> Appendix for a list of items to update.
-------------	--

**g. Set the UserID value in the AFG2WIP group to the entity ID from the ENTITIES table in the dmkr\_admin schema that has Drafter permissions in Documaker Interactive. The original user will be listed as this user ID but when the OBP user accesses the document via Documaker Interactive, that user will take ownership and become the CURRUSER for the transaction.**

```
< AFG2WIP >
  USERID      = 8
```

---

**h.** Add a reference to the OBP.dal library in:

```
< DalLibraries >  
CompileWhenLoaded = No  
LIB = OBP.dal
```

3. Update the afgjob\_1.jdt file in the documaker\mstres\dmres\deflib directory by inserting this rule after the RunTriggers rule:

```
;PreTransDAL;;CALL("Locale_Convert");
```

4. Update the afgjob\_2.jdt as follows:

**a.** Add the following after the RcpDocFactory rule:

```
;IfRecipUsed;;BATCH1=Bank;  
;IfRecipUsed;;BATCH1=Customer;  
;IfRecipUsed;;BATCH1=Guarantor;  
;IfRecipUsed;;BATCH1=Bank_Email;  
;IfRecipUsed;;BATCH1=Customer_Email;  
;IfRecipUsed;;BATCH1=Guarantor_Email;
```

**b.** Add a /\* in front of the;BatchingByPageCountPerRecipINI;;;  
and;BatchingByRecipINI;2; rules.

5. Update the deflib\trnsdf.dfd to uncomment the entries for TRNCUSSTR001, TRNCUSSTR002, TRNCUSSTR003, and TRNCUSSTR004.
6. Update the deflib\trndfdfl.dfd and rcbdfdf.dfd to include a reference to KEY3. Enter the following values:

In the field list:

```
FIELDNAME = KEY3
```

In the field definition:

```
< FIELD:KEY3 >  
EXT_LENGTH = 64  
EXT_TYPE = CHAR_ARRAY  
INT_LENGTH = 64  
INT_TYPE = CHAR_ARRAY  
KEY = N  
REQUIRED = N
```

7. Make a back up of the master.mdx, master.dbf and master.lby files in the Oracle\odee\_1\documaker\mstres\dmres\deflib directory.
8. Copy the master.mdx, master.dbf and master.lby files from the temporary directory where you unzipped the OBP\_Update.zip files to Oracle\odee\_1\documaker\mstres\dmres\deflib directory.
9. Using SQL Developer or SQL Plus

- 
- a. Connect to the dmkr\_asline schema.
  - b. Delete the rows of data from these tables:

```
DMRES_LBYD
DMRES_LBYC
DMRES_LBYI
DMRES_LBYL
```

- c. Ensure to **Commit** after running the delete commands.
10. From the application tier, run deploysamplemrl.bat or deploysamplemrl.sh to load the Model Bank resources stored in the master.lby, master.mdx and master.dbf files into the DMRES\_LBY\* tables.
  11. If running on Windows, test Documaker Studio connectivity and setup your test scenario.

<b>Note</b>	For assistance in understanding and using test scenarios in Documaker Studio, see the <i>Chapter 18 - Testing your work</i> in <a href="#">Documaker Studio User Guide</a> .
-------------	--

12. Restart the ODDF Service and Docupresentation services.
  - a. Check that all processes for ODDF Service and Docupresentation service start successfully. Please refer to the [Oracle Documaker Enterprise Edition Administration Guide](#).
  - b. Copy the sampleextract.xml file from the Oracle\odee\_1\documaker\mstrres\dmres\input into the Oracle\odee\_1\documaker\hotdirectory. Use Oracle Documaker Enterprise Edition Dashboard to verify that the document processed successfully. Please refer to the [Oracle Documaker Enterprise Edition Administration Guide](#) for information on Oracle Documaker Enterprise Edition Dashboard.

<b>Note</b>	You will not be able to create new transactions within Documaker Interactive once these changes are in place as the source for all new documents is extract data from OBP.
-------------	--

- c. Validate the web services used to communicate.
  - Use the doCallIDS-GetMRLResource.txt contents as the web service validation for the Composition method supported within DWS running under WLS. This request should return a list of the forms contained within the MRL loaded into the dmkr\_asline schema.
  - Use the doPublishFromImport.txt contents as the web service validation for the Publishing method supported within DWS running under WLS. This request should return the JOB and TRNS table index values where the Status values are 999.

## WEB APPLICATION CONFIGURATION

Oracle Documaker Enterprise Edition installs three web applications – Documaker Administrator, Documaker Document Factory Dashboard, and Documaker Interactive. Within a OBP-Documaker Integrated solution, some of the capabilities of Documaker Interactive should be restricted from use. These capabilities primarily include the ability to create new documents, the ability to add additional forms to the document set and the ability to add or modify the recipients or Receiving Party information as all of this information is sourced by OBP and should not be modified externally.

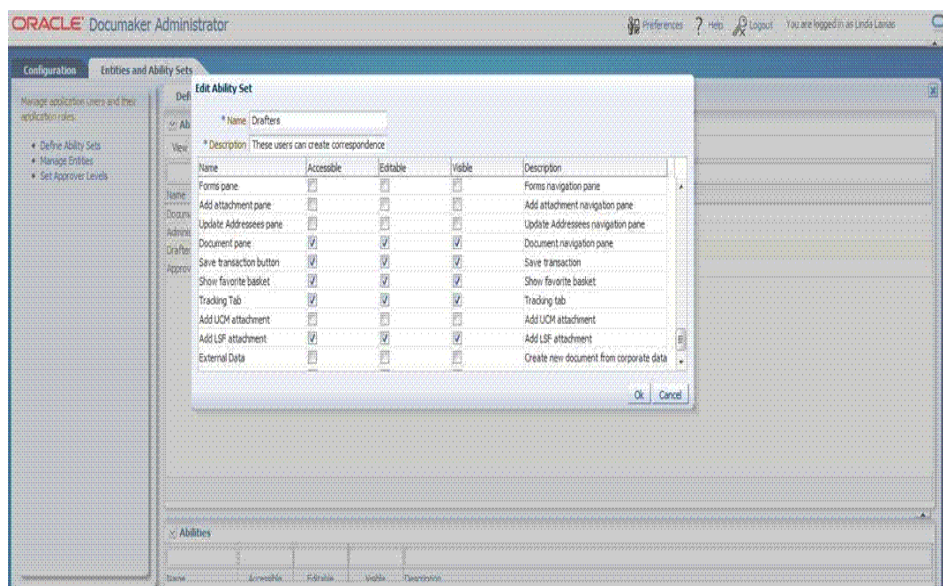
You can configure Documaker Interactive using the Entities and Abilities configuration settings within the Documaker Administrator web application.

To Disable the ability to create new documents:

1. Login to the Documaker Administrator.
2. Select the Entities and Ability Sets tab.
3. Click on the Define Ability Sets option.
4. Highlight the Drafters ability set Name.
5. Click the Pencil icon to edit the Ability Set.

The Edit Ability Set pop-up window appears.

6. Unchecked the Accessible, Editable, and Visible attributes for these rows:
  - a. Edit
  - b. New Document
  - c. Forms pane
  - d. Add attachment pane
  - e. Update Addressees pane



---

## Burst PDF Merge

Oracle Documaker Enterprise Edition supports appending or prepending external PDFs from IPM to Documaker generated burst PDFs. The external PDFs are appended or prepended as a PDF, they are not converted to a graphic prior to being appended or prepended.

Support for appending or prepending external PDFs is limited to burst PDFs. External PDFs cannot be prepended or appended to non-PDF output such as AFP, PCL, etc. When PDF is burst, all external PDFs i.e. appended or pre-pended to a form, are clubbed in the burst PDF of that form. The extract file includes the ID of the document from IPM to be appended or prepended. See the sample extracted file below.

### Sample extract.xml file

```
<Recipient>...
<Form>
  <Name></Name>
  <Data>
    <DocumentSetC>
      <FormData>
        <Name></Name>
        <extContent>
          <extPdfContentList>
            <extPdfContInfo>
              <docId>IPM_XXXXX</docId>
              <pos>PREPEND</pos>
              <manFlag>FALSE</manFlag>
              <idx>123</idx>
            </extPdfContInfo>
          </extPdfContentList>
        </extContent>
      </Data>
    </Form>
  ...</Recipient>
```

Content	Description
idx	Indicates the index of the external document. It must be unique within the extract file.

Content	Description
manFlag	<p>Indicates whether it is mandatory to append or prepend the external document referenced by the DocID.</p> <ul style="list-style-type: none"> <li>If manFlag is set to <code>True</code> and the referenced document isn't found, <code>Status 441 - Presentation Error</code>, is displayed in the Dashboard and Console.</li> <li>If the manFlag is set to <code>False</code> and the referenced document isn't found, <code>Status 999 - Completed</code> is displayed in the Dashboard and Console.</li> </ul>
pos	<p>Indicates where to insert external PDF.</p> <p>APPEND: The external PDF is appended to the burst PDF.</p> <p>PREPEND: The external PDF is prepended to the burst PDF.</p>

Oracle Documaker is configured to access the external documents for insertion into generated output. Make sure the OBPPDFBurster is configured to use this feature. Include following configuration in OBPPDFBurster to burst PDF merge:

Context Name	Category	Group Name	Property	Value
LISTENER	OBPPDFBurster	Configuration	phaselistener.pdfstitcher.name	oracle.documaker.ecmconnector.pdfstitcher.IPMPDFStitcher
LISTENER	OBPPDFBurster	Configuration	phaselistener.pdfstitcher.connection.url	As per your environment, configure IPM URL, for Example: "http://ip-address:port/imaging/ws/"
LISTENER	OBPPDFBurster	Configuration	phaselistener.pdfstitcher.connection.username	IPM Username, As per your environment
LISTENER	OBPPDFBurster	Configuration	phaselistener.pdfstitcher.connection.password	IPM Username, As per your environment

<b>Note</b>	<ul style="list-style-type: none"> <li>Keep in mind, Oracle Documaker does not validate extract file content.</li> <li>BurstPDFMerge and AlternateFileToUpload are not designed to work with each other. Therefore, when using BurstPDFMerge, do not use AlternateFileToUpload and vice versa.</li> </ul>
-------------	---

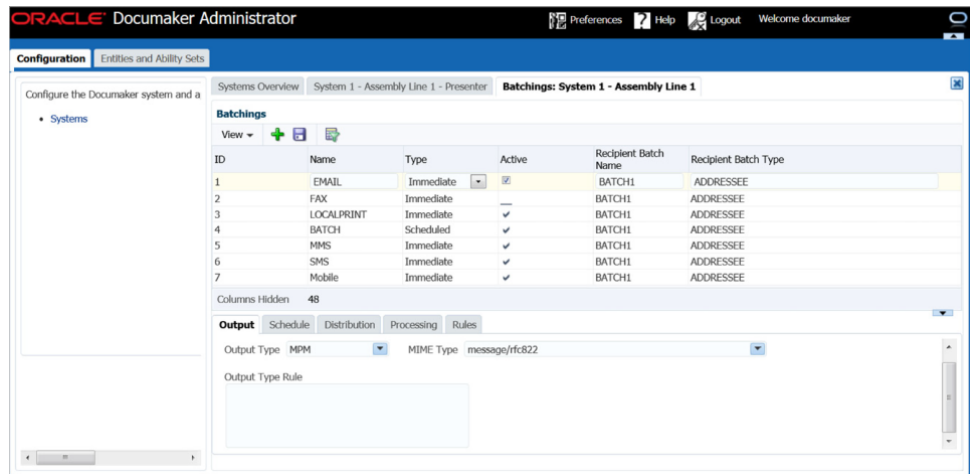
Remember, the index (idx) of the external document should be unique within the extract file. The job will not fail if the same index is assigned to multiple external documents within the extract file; the last reference external document will be used for stitching in. There may be instances a duplicate IDX value is intentionally assigned to multiple external documents in the extract file. You may have one external document you want as the 'default', but you may want to omit that document if a more specific file is available. Both could be assigned the same IDX value in the extract file, with the expectation that the latter will override the first in sequence. That way they are mutually exclusive. If a specific file is not available, the default file for that sequence is omitted but, you still get default content.

## VALIDATING DOCUMAKER MOBILE INSTALLATION

To validate your Oracle Documaker Enterprise Edition (ODEE) and Oracle Documaker Mobile installations, perform the following steps:

To Enable Mobile output, use the Documaker Administrator web application to configure the output type, destination, and handling.

1. Login to Documaker Administrator and enable the Mobile Batchings. For information on Mobile Batchings, see the “Understand Batches” topic in the ODEE.



2. In Mobile Batchings, activate the Archive Distribution and activate the Notifications property.
3. In the left panel, click Systems link. and expand System node and Assembly Linenode in the right panel.
4. Select the row containing the newly-installed assembly line for Mobile, select Archiver, and click Configure.
5. From the Archiver tab, select Filesystem-Mobile category within DESTINATION context name, and select Mappings.
6. Create an *mrolib* directory in your workspace. Copy the files and resources folder from *Oracle\odee\_1\mobile\_install\mstrres\mobile* to the following location:  
*C:\Oracle\Middleware\user\_projects\domains\example\_domain\servers\dmkr\_server\stage\mrolib*
7. Select the *destination.file.name.pattern* property and edit the value to point to *C:\Oracle\Middleware\user\_projects\domains\example\_domain\servers\dmkr\_server\stage\mrolib* directory.  
This enables the mobile output.

## Appendix A

---

# Legal Notices

### THIRD PARTY SOFTWARE NOTICES

This product includes software developed by Apache Software Foundation (<http://www.apache.org/>).

THIS SOFTWARE IS PROVIDED "AS IS" AND ANY EXPRESS OR IMPLIED WARRANTIES, INCLUDING, BUT NOT LIMITED TO, THE IMPLIED WARRANTIES OF MERCHANTABILITY AND FITNESS FOR A PARTICULAR PURPOSE ARE DISCLAIMED. IN NO EVENT SHALL THE AUTHOR OR CONTRIBUTORS BE LIABLE FOR ANY DIRECT, INDIRECT, INCIDENTAL, SPECIAL, EXEMPLARY, OR CONSEQUENTIAL DAMAGES (INCLUDING, BUT NOT LIMITED TO, PROCUREMENT OF SUBSTITUTE GOODS OR SERVICES; LOSS OF USE, DATA, OR PROFITS; OR BUSINESS INTERRUPTION) HOWEVER CAUSED AND ON ANY THEORY OF LIABILITY, WHETHER IN CONTRACT, STRICT LIABILITY, OR TORT (INCLUDING NEGLIGENCE OR OTHERWISE) ARISING IN ANY WAY OUT OF THE USE OF THIS SOFTWARE, EVEN IF ADVISED OF THE POSSIBILITY OF SUCH DAMAGE.

Copyright © 2000-2009 The Apache Software Foundation. All rights reserved.

Apache Commons Math Copyright 2001-2008 The Apache Software Foundation

This product includes software translated from the odex Fortran routine developed by E. Hairer and G. Wanner and distributed under the following license:

Copyright (c) 2004, Ernst Hairer

---

Apache License Version 2.0, January 2004 (<http://www.apache.org/licenses/LICENSE-2.0>)

THIS SOFTWARE IS PROVIDED "AS IS" AND ANY EXPRESSED OR IMPLIED WARRANTIES, INCLUDING, BUT NOT LIMITED TO, THE IMPLIED WARRANTIES OF MERCHANTABILITY AND FITNESS FOR A PARTICULAR PURPOSE ARE DISCLAIMED. IN NO EVENT SHALL THE VISIGOTH SOFTWARE SOCIETY OR ITS CONTRIBUTORS BE LIABLE FOR ANY DIRECT, INDIRECT, INCIDENTAL, SPECIAL, EXEMPLARY, OR CONSEQUENTIAL DAMAGES (INCLUDING, BUT NOT LIMITED TO, PROCUREMENT OF SUBSTITUTE GOODS OR SERVICES; LOSS OF USE, DATA, OR PROFITS; OR BUSINESS INTERRUPTION) HOWEVER CAUSED AND ON ANY THEORY OF LIABILITY, WHETHER IN CONTRACT, STRICT LIABILITY, OR TORT (INCLUDING NEGLIGENCE OR OTHERWISE) ARISING IN ANY WAY OUT OF THE USE OF THIS SOFTWARE, EVEN IF ADVISED OF THE POSSIBILITY OF SUCH DAMAGE.

Apache Commons Codec Copyright 2002-2009 The Apache Software Foundation  
Copyright (C) 2002 Kevin Atkinson ([kevina@gnu.org](mailto:kevina@gnu.org))

Apache Commons Pool  
Copyright 2001-2011 The Apache Software Foundation

Apache Jakarta Commons Lang  
Copyright 2001-2007 The Apache Software Foundation

Apache Jakarta Commons FileUpload



Copyright 2002-2006 The Apache Software Foundation

Apache Commons CLI  
Copyright 2001-2009 The Apache Software Foundation

Apache Commons Collections  
Copyright 2001-2008 The Apache Software Foundation

Apache Commons Logging  
Copyright 2003-2013 The Apache Software Foundation

Barcode4J  
Copyright 2002-2010 Jeremias Märki  
Copyright 2005-2006 Dietmar Bürkle  
Portions of this software were contributed under section 5 of the  
Apache License. Contributors are listed under: ([http://barcode4j.sourceforge.net/  
contributors.html](http://barcode4j.sourceforge.net/contributors.html))  
Copyright 2002-2010 The Apache Software Foundation

---

This product includes software distributed via the Berkeley Software Distribution (BSD) and licensed for binary distribution under the Generic BSD license.

THIS SOFTWARE IS PROVIDED BY THE COPYRIGHT HOLDERS AND CONTRIBUTORS "AS IS" AND ANY EXPRESS OR IMPLIED WARRANTIES, INCLUDING, BUT NOT LIMITED TO, THE IMPLIED WARRANTIES OF MERCHANTABILITY AND FITNESS FOR A PARTICULAR PURPOSE ARE DISCLAIMED. IN NO EVENT SHALL THE COPYRIGHT OWNER OR CONTRIBUTORS BE LIABLE FOR ANY DIRECT, INDIRECT, INCIDENTAL, SPECIAL, EXEMPLARY, OR CONSEQUENTIAL DAMAGES (INCLUDING, BUT NOT LIMITED TO, PROCUREMENT OF SUBSTITUTE GOODS OR SERVICES; LOSS OF USE, DATA, OR PROFITS; OR BUSINESS INTERRUPTION) HOWEVER CAUSED AND ON ANY THEORY OF LIABILITY, WHETHER IN CONTRACT, STRICT LIABILITY, OR TORT (INCLUDING NEGLIGENCE OR OTHERWISE) ARISING IN ANY WAY OUT OF THE USE OF THIS SOFTWARE, EVEN IF ADVISED OF THE POSSIBILITY OF SUCH DAMAGE.

Copyright © 2009, Berkeley Software Distribution (BSD)

---

This product includes software developed by the JDOM Project (<http://www.jdom.org/>).

THIS SOFTWARE IS PROVIDED "AS IS" AND ANY EXPRESSED OR IMPLIED WARRANTIES, INCLUDING, BUT NOT LIMITED TO, THE IMPLIED WARRANTIES OF MERCHANTABILITY AND FITNESS FOR A PARTICULAR PURPOSE ARE DISCLAIMED. IN NO EVENT SHALL THE JDOM AUTHORS OR THE PROJECT CONTRIBUTORS BE LIABLE FOR ANY DIRECT, INDIRECT, INCIDENTAL, SPECIAL, EXEMPLARY, OR CONSEQUENTIAL DAMAGES (INCLUDING, BUT NOT LIMITED TO, PROCUREMENT OF SUBSTITUTE GOODS OR SERVICES; LOSS OF USE, DATA, OR PROFITS; OR BUSINESS INTERRUPTION) HOWEVER CAUSED AND ON ANY THEORY OF LIABILITY, WHETHER IN CONTRACT, STRICT LIABILITY, OR TORT (INCLUDING NEGLIGENCE OR OTHERWISE) ARISING IN ANY WAY OUT OF THE USE OF THIS SOFTWARE, EVEN IF ADVISED OF THE POSSIBILITY OF SUCH DAMAGE.

Copyright (C) 2000-2004 Jason Hunter & Brett McLaughlin. All rights reserved.

---

This product includes software developed by the Massachusetts Institute of Technology (MIT).

THE SOFTWARE IS PROVIDED "AS IS", WITHOUT WARRANTY OF ANY KIND, EXPRESS OR IMPLIED, INCLUDING BUT NOT LIMITED TO THE WARRANTIES OF MERCHANTABILITY, FITNESS FOR A PARTICULAR PURPOSE AND NONINFRINGEMENT. IN NO EVENT SHALL THE AUTHORS OR COPYRIGHT HOLDERS BE LIABLE FOR ANY CLAIM, DAMAGES OR OTHER LIABILITY, WHETHER IN AN ACTION OF CONTRACT, TORT OR OTHERWISE, ARISING FROM, OUT OF OR IN CONNECTION WITH THE SOFTWARE OR THE USE OR OTHER DEALINGS IN THE SOFTWARE.

Copyright © 2009 MIT

---

This product includes software developed by Jean-loup Gailly and Mark Adler. This software is provided 'as-is', without any express or implied warranty. In no event will the authors be held liable for any damages arising from the use of this software.

Copyright (c) 1995-2005 Jean-loup Gailly and Mark Adler

---

This software is based in part on the work of the Independent JPEG Group (<http://www.ijg.org/>).

---

This product includes software developed by the Dojo Foundation (<http://dojotoolkit.org>).

THIS SOFTWARE IS PROVIDED BY THE COPYRIGHT HOLDERS AND CONTRIBUTORS "AS IS" AND ANY EXPRESS OR IMPLIED WARRANTIES, INCLUDING, BUT NOT LIMITED TO, THE IMPLIED WARRANTIES OF MERCHANTABILITY AND FITNESS FOR A PARTICULAR PURPOSE ARE DISCLAIMED. IN NO EVENT SHALL THE COPYRIGHT OWNER OR CONTRIBUTORS BE LIABLE FOR ANY DIRECT, INDIRECT, INCIDENTAL, SPECIAL, EXEMPLARY, OR CONSEQUENTIAL DAMAGES (INCLUDING, BUT NOT LIMITED TO, PROCUREMENT OF SUBSTITUTE GOODS OR SERVICES; LOSS OF USE, DATA, OR PROFITS; OR BUSINESS INTERRUPTION) HOWEVER CAUSED AND ON ANY THEORY OF LIABILITY, WHETHER IN CONTRACT, STRICT LIABILITY, OR TORT (INCLUDING NEGLIGENCE OR OTHERWISE) ARISING IN ANY WAY OUT OF THE USE OF THIS SOFTWARE, EVEN IF ADVISED OF THE POSSIBILITY OF SUCH DAMAGE.

Copyright (c) 2005-2009, The Dojo Foundation. All rights reserved.

---

This product includes software developed by W3C.

Copyright © 2009 World Wide Web Consortium, (Massachusetts Institute of Technology, Institut National de Recherche en Informatique et en Automatique, Keio University). All Rights Reserved. (<http://www.w3.org/Consortium/Legal/>)

---

This product includes software developed by Mathew R. Miller (<http://www.bluecreststudios.com>).

Copyright (c) 1999-2002 ComputerSmarts. All rights reserved.

---

This product includes software developed by Shaun Wilde and distributed via Code Project Open License (<http://www.codeproject.com>).

THIS WORK IS PROVIDED "AS IS", "WHERE IS" AND "AS AVAILABLE", WITHOUT ANY EXPRESS OR IMPLIED WARRANTIES OR CONDITIONS OR GUARANTEES. YOU, THE USER, ASSUME ALL RISK IN ITS USE, INCLUDING COPYRIGHT INFRINGEMENT, PATENT INFRINGEMENT, SUITABILITY, ETC. AUTHOR

EXPRESSLY DISCLAIMS ALL EXPRESS, IMPLIED OR STATUTORY WARRANTIES OR CONDITIONS, INCLUDING WITHOUT LIMITATION, WARRANTIES OR CONDITIONS OF MERCHANTABILITY, MERCHANTABLE QUALITY OR FITNESS FOR A PARTICULAR PURPOSE, OR ANY WARRANTY OF TITLE OR NON-INFRINGEMENT, OR THAT THE WORK (OR ANY PORTION THEREOF) IS CORRECT, USEFUL, BUG-FREE OR FREE OF VIRUSES. YOU MUST PASS THIS DISCLAIMER ON WHENEVER YOU DISTRIBUTE THE WORK OR DERIVATIVE WORKS.

---

This product includes software developed by Chris Maunder and distributed via Code Project Open License (<http://www.codeproject.com>).

THIS WORK IS PROVIDED "AS IS", "WHERE IS" AND "AS AVAILABLE", WITHOUT ANY EXPRESS OR IMPLIED WARRANTIES OR CONDITIONS OR GUARANTEES. YOU, THE USER, ASSUME ALL RISK IN ITS USE, INCLUDING COPYRIGHT INFRINGEMENT, PATENT INFRINGEMENT, SUITABILITY, ETC. AUTHOR EXPRESSLY DISCLAIMS ALL EXPRESS, IMPLIED OR STATUTORY WARRANTIES OR CONDITIONS, INCLUDING WITHOUT LIMITATION, WARRANTIES OR CONDITIONS OF MERCHANTABILITY, MERCHANTABLE QUALITY OR FITNESS FOR A PARTICULAR PURPOSE, OR ANY WARRANTY OF TITLE OR NON-INFRINGEMENT, OR THAT THE WORK (OR ANY PORTION THEREOF) IS CORRECT, USEFUL, BUG-FREE OR FREE OF VIRUSES. YOU MUST PASS THIS DISCLAIMER ON WHENEVER YOU DISTRIBUTE THE WORK OR DERIVATIVE WORKS.

---

This product includes software developed by PJ Arends and distributed via Code Project Open License (<http://www.codeproject.com>).

THIS WORK IS PROVIDED "AS IS", "WHERE IS" AND "AS AVAILABLE", WITHOUT ANY EXPRESS OR IMPLIED WARRANTIES OR CONDITIONS OR GUARANTEES. YOU, THE USER, ASSUME ALL RISK IN ITS USE, INCLUDING COPYRIGHT INFRINGEMENT, PATENT INFRINGEMENT, SUITABILITY, ETC. AUTHOR EXPRESSLY DISCLAIMS ALL EXPRESS, IMPLIED OR STATUTORY WARRANTIES OR CONDITIONS, INCLUDING WITHOUT LIMITATION, WARRANTIES OR CONDITIONS OF MERCHANTABILITY, MERCHANTABLE QUALITY OR FITNESS FOR A PARTICULAR PURPOSE, OR ANY WARRANTY OF TITLE OR NON-INFRINGEMENT, OR THAT THE WORK (OR ANY PORTION THEREOF) IS CORRECT, USEFUL, BUG-FREE OR FREE OF VIRUSES. YOU MUST PASS THIS DISCLAIMER ON WHENEVER YOU DISTRIBUTE THE WORK OR DERIVATIVE WORKS.

---

This product includes software developed by Erwin Tratar. This source code and all accompanying material is copyright (c) 1998-1999 Erwin Tratar. All rights reserved.

THIS SOFTWARE IS PROVIDED "AS IS" WITHOUT EXPRESS OR IMPLIED WARRANTY. USE IT AT YOUR OWN RISK! THE AUTHOR ACCEPTS NO LIABILITY FOR ANY DAMAGE/LOSS OF BUSINESS THAT THIS PRODUCT MAY CAUSE.

---

This product includes software developed by Sam Leffler of Silicon Graphics.

THE SOFTWARE IS PROVIDED "AS IS" AND WITHOUT WARRANTY OF ANY KIND, EXPRESS, IMPLIED OR OTHERWISE, INCLUDING WITHOUT LIMITATION, ANY WARRANTY OF MERCHANTABILITY OR FITNESS FOR A PARTICULAR PURPOSE.

IN NO EVENT SHALL SAM LEFFLER OR SILICON GRAPHICS BE LIABLE FOR ANY SPECIAL, INCIDENTAL, INDIRECT OR CONSEQUENTIAL DAMAGES OF ANY KIND, OR ANY DAMAGES WHATSOEVER RESULTING FROM LOSS OF USE, DATA OR PROFITS, WHETHER OR NOT ADVISED OF THE POSSIBILITY OF DAMAGE, AND ON ANY THEORY OF LIABILITY, ARISING OUT OF OR IN CONNECTION WITH THE

USE OR PERFORMANCE OF THIS SOFTWARE

Copyright (c) 1988-1997 Sam Leffler

Copyright (c) 1991-1997 Silicon Graphics, Inc.

---

This product includes software developed by Guy Eric Schalnat, Andreas Dilger, Glenn Randers-Pehrson (current maintainer), and others. (<http://www.libpng.org>)

The PNG Reference Library is supplied "AS IS". The Contributing Authors and Group 42, Inc. disclaim all warranties, expressed or implied, including, without limitation, the warranties of merchantability and of fitness for any purpose. The Contributing Authors and Group 42, Inc. assume no liability for direct, indirect, incidental, special, exemplary, or consequential damages, which may result from the use of the PNG Reference Library, even if advised of the possibility of such damage.

---

This product includes software components distributed by the Cryptix Foundation.

THIS SOFTWARE IS PROVIDED BY THE CRYPTIX FOUNDATION LIMITED AND CONTRIBUTORS "AS IS" AND ANY EXPRESS OR IMPLIED WARRANTIES, INCLUDING, BUT NOT LIMITED TO, THE IMPLIED WARRANTIES OF MERCHANTABILITY AND FITNESS FOR A PARTICULAR PURPOSE ARE DISCLAIMED. IN NO EVENT SHALL THE CRYPTIX FOUNDATION LIMITED OR CONTRIBUTORS BE LIABLE FOR ANY DIRECT, INDIRECT, INCIDENTAL, SPECIAL, EXEMPLARY, OR CONSEQUENTIAL DAMAGES (INCLUDING, BUT NOT LIMITED TO, PROCUREMENT OF SUBSTITUTE GOODS OR SERVICES; LOSS OF USE, DATA, OR PROFITS; OR BUSINESS INTERRUPTION) HOWEVER CAUSED AND ON ANY THEORY OF LIABILITY, WHETHER IN CONTRACT, STRICT LIABILITY, OR TORT (INCLUDING NEGLIGENCE OR OTHERWISE) ARISING IN ANY WAY OUT OF THE USE OF THIS SOFTWARE, EVEN IF ADVISED OF THE POSSIBILITY OF SUCH DAMAGE

Copyright © 1995-2005 The Cryptix Foundation Limited. All rights reserved.

---

This product includes software components distributed by Sun Microsystems.

This software is provided "AS IS," without a warranty of any kind. ALL EXPRESS OR IMPLIED CONDITIONS, REPRESENTATIONS AND WARRANTIES, INCLUDING ANY IMPLIED WARRANTY OF MERCHANTABILITY, FITNESS FOR A PARTICULAR PURPOSE OR NON-INFRINGEMENT, ARE HEREBY EXCLUDED. SUN AND ITS LICENSORS SHALL NOT BE LIABLE FOR ANY DAMAGES SUFFERED BY LICENSEE AS A RESULT OF USING, MODIFYING OR DISTRIBUTING THE SOFTWARE OR ITS DERIVATIVES. IN NO EVENT WILL SUN OR ITS LICENSORS BE LIABLE FOR ANY LOST REVENUE, PROFIT OR DATA, OR FOR DIRECT, INDIRECT, SPECIAL, CONSEQUENTIAL, INCIDENTAL OR PUNITIVE DAMAGES, HOWEVER CAUSED AND REGARDLESS OF THE THEORY OF LIABILITY, ARISING OUT OF THE USE OF OR INABILITY TO USE SOFTWARE, EVEN IF SUN HAS BEEN ADVISED OF THE POSSIBILITY OF SUCH DAMAGES.

Copyright (c) 1998 Sun Microsystems, Inc. All Rights Reserved.

---

This product includes software components distributed by Dennis M. Sosnoski.

THIS SOFTWARE IS PROVIDED BY THE COPYRIGHT HOLDERS AND CONTRIBUTORS "AS IS" AND ANY EXPRESS OR IMPLIED WARRANTIES, INCLUDING, BUT NOT LIMITED TO, THE IMPLIED WARRANTIES OF MERCHANTABILITY AND FITNESS FOR A PARTICULAR PURPOSE ARE DISCLAIMED. IN NO EVENT SHALL THE COPYRIGHT OWNER OR CONTRIBUTORS BE LIABLE FOR ANY DIRECT, INDIRECT, INCIDENTAL, SPECIAL, EXEMPLARY, OR

CONSEQUENTIAL DAMAGES (INCLUDING, BUT NOT LIMITED TO, PROCUREMENT OF SUBSTITUTE GOODS OR SERVICES; LOSS OF USE, DATA, OR PROFITS; OR BUSINESS INTERRUPTION) HOWEVER CAUSED AND ON ANY THEORY OF LIABILITY, WHETHER IN CONTRACT, STRICT LIABILITY, OR TORT (INCLUDING NEGLIGENCE OR OTHERWISE) ARISING IN ANY WAY OUT OF THE USE OF THIS SOFTWARE, EVEN IF ADVISED OF THE POSSIBILITY OF SUCH DAMAGE.

Copyright © 2003-2007 Dennis M. Sosnoski. All Rights Reserved

It also includes materials licensed under Apache 1.1 and the following XPP3 license

THIS SOFTWARE IS PROVIDED "AS IS" AND ANY EXPRESSED OR IMPLIED WARRANTIES, INCLUDING, BUT NOT LIMITED TO, THE IMPLIED WARRANTIES OF MERCHANTABILITY AND FITNESS FOR A PARTICULAR PURPOSE ARE DISCLAIMED. IN NO EVENT SHALL THE COPYRIGHT OWNER OR CONTRIBUTORS BE LIABLE FOR ANY DIRECT, INDIRECT, INCIDENTAL, SPECIAL, EXEMPLARY, OR CONSEQUENTIAL DAMAGES (INCLUDING, BUT NOT LIMITED TO, PROCUREMENT OF SUBSTITUTE GOODS OR SERVICES; LOSS OF USE, DATA, OR PROFITS; OR BUSINESS INTERRUPTION) HOWEVER CAUSED AND ON ANY THEORY OF LIABILITY, WHETHER IN CONTRACT, STRICT LIABILITY, OR TORT (INCLUDING NEGLIGENCE OR OTHERWISE) ARISING IN ANY WAY OUT OF THE USE OF THIS SOFTWARE, EVEN IF ADVISED OF THE POSSIBILITY OF SUCH DAMAGE.

Copyright © 2002 Extreme! Lab, Indiana University. All Rights Reserved

---

This product includes software components distributed by CodeProject. This software contains material that is © 1994-2005 The Ultimate Toolbox, all rights reserved.

---

This product includes software components distributed by Geir Landro.

Copyright © 2001-2003 Geir Landro (drop@destroydrop.com) JavaScript Tree - [www.destroydrop.com/hjjavascripts/tree/version 0.96](http://www.destroydrop.com/hjjavascripts/tree/version 0.96)

---

This product includes software components distributed by the Hypersonic SQL Group.

THIS SOFTWARE IS PROVIDED BY THE COPYRIGHT HOLDERS AND CONTRIBUTORS "AS IS" AND ANY EXPRESS OR IMPLIED WARRANTIES, INCLUDING, BUT NOT LIMITED TO, THE IMPLIED WARRANTIES OF MERCHANTABILITY AND FITNESS FOR A PARTICULAR PURPOSE ARE DISCLAIMED. IN NO EVENT SHALL THE COPYRIGHT OWNER OR CONTRIBUTORS BE LIABLE FOR ANY DIRECT, INDIRECT, INCIDENTAL, SPECIAL, EXEMPLARY, OR CONSEQUENTIAL DAMAGES (INCLUDING, BUT NOT LIMITED TO, PROCUREMENT OF SUBSTITUTE GOODS OR SERVICES; LOSS OF USE, DATA, OR PROFITS; OR BUSINESS INTERRUPTION) HOWEVER CAUSED AND ON ANY THEORY OF LIABILITY, WHETHER IN CONTRACT, STRICT LIABILITY, OR TORT (INCLUDING NEGLIGENCE OR OTHERWISE) ARISING IN ANY WAY OUT OF THE USE OF THIS SOFTWARE, EVEN IF ADVISED OF THE POSSIBILITY OF SUCH DAMAGE

Copyright © 1995-2000 by the Hypersonic SQL Group. All Rights Reserved

---

This product includes software components distributed by the International Business Machines Corporation and others.

THE SOFTWARE IS PROVIDED "AS IS", WITHOUT WARRANTY OF ANY KIND, EXPRESS OR IMPLIED, INCLUDING BUT NOT LIMITED TO THE WARRANTIES OF

MERCHANTABILITY, FITNESS FOR A PARTICULAR PURPOSE AND NONINFRINGEMENT. IN NO EVENT SHALL THE AUTHORS OR COPYRIGHT HOLDERS BE LIABLE FOR ANY CLAIM, DAMAGES OR OTHER LIABILITY, WHETHER IN AN ACTION OF CONTRACT, TORT OR OTHERWISE, ARISING FROM, OUT OF OR IN CONNECTION WITH THE SOFTWARE OR THE USE OR OTHER DEALINGS IN THE SOFTWARE.

Copyright (c) 1995-2009 International Business Machines Corporation and others. All rights reserved.

---

This product includes software components distributed by the University of Coimbra.

University of Coimbra distributes this software in the hope that it will be useful but DISCLAIMS ALL WARRANTIES WITH REGARD TO IT, including all implied warranties of MERCHANTABILITY or FITNESS FOR A PARTICULAR PURPOSE. In no event shall University of Coimbra be liable for any special, indirect or consequential damages (or any damages whatsoever) resulting from loss of use, data or profits, whether in an action of contract, negligence or other tortious action, arising out of or in connection with the use or performance of this software.

Copyright (c) 2000 University of Coimbra, Portugal. All Rights Reserved.

---

This product includes software components distributed by Steve Souza.

THIS SOFTWARE IS PROVIDED BY THE AUTHOR AND CONTRIBUTORS "AS IS" AND ANY EXPRESS OR IMPLIED WARRANTIES, INCLUDING, BUT NOT LIMITED TO, THE IMPLIED WARRANTIES OF MERCHANTABILITY AND FITNESS FOR A PARTICULAR PURPOSE ARE DISCLAIMED. IN NO EVENT SHALL THE COPYRIGHT OWNER OR CONTRIBUTORS BE LIABLE FOR ANY DIRECT, INDIRECT, INCIDENTAL, SPECIAL, EXEMPLARY, OR CONSEQUENTIAL DAMAGES (INCLUDING, BUT NOT LIMITED TO, PROCUREMENT OF SUBSTITUTE GOODS OR SERVICES; LOSS OF USE, DATA, OR PROFITS; OR BUSINESS INTERRUPTION) HOWEVER CAUSED AND ON ANY THEORY OF LIABILITY, WHETHER IN CONTRACT, STRICT LIABILITY, OR TORT (INCLUDING NEGLIGENCE OR OTHERWISE) ARISING IN ANY WAY OUT OF THE USE OF THIS SOFTWARE, EVEN IF ADVISED OF THE POSSIBILITY OF SUCH DAMAGE.

Copyright © 2002, Steve Souza (admin@jamonapi.com). All Rights Reserved.

---

This product includes software developed by the OpenSymphony Group (<http://www.opensymphony.com/>.)"

Copyright © 2001-2004 The OpenSymphony Group. All Rights Reserved.

---

PANTONE (R) Colors displayed in the software application or in the user documentation may not match PANTONE-identified standards. Consult current PANTONE Color Publications for accurate color. PANTONE(R) and other Pantone LLC trademarks are the property of Pantone LLC. (C) Pantone LLC, 2011.

Pantone LLC is the copyright owner of color data and/or software which are licensed to Oracle to distribute for use only in combination with Oracle Documaker. PANTONE Color Data and/or Software shall not be copied onto another disk or into memory unless part of the execution of Oracle Documaker.

---

This product includes software developed by Dave Gamble and distributed via

SourceForge.net (<http://sourceforge.net/projects/cjson/>)

THE SOFTWARE IS PROVIDED "AS IS", WITHOUT WARRANTY OF ANY KIND, EXPRESS OR IMPLIED, INCLUDING BUT NOT LIMITED TO THE WARRANTIES OF MERCHANTABILITY, FITNESS FOR A PARTICULAR PURPOSE AND NONINFRINGEMENT. IN NO EVENT SHALL THE AUTHORS OR COPYRIGHT HOLDERS BE LIABLE FOR ANY CLAIM, DAMAGES OR OTHER LIABILITY, WHETHER IN AN ACTION OF CONTRACT, TORT OR OTHERWISE, ARISING FROM, OUT OF OR IN CONNECTION WITH THE SOFTWARE OR THE USE OR OTHER DEALINGS IN THE SOFTWARE.

Copyright (c) 2009 Dave Gamble

---

This product includes software developed by the Zxing Project.

THE SOFTWARE IS PROVIDED "AS IS", WITHOUT WARRANTY OF ANY KIND, EXPRESS OR IMPLIED, INCLUDING BUT NOT LIMITED TO THE WARRANTIES OF MERCHANTABILITY, FITNESS FOR A PARTICULAR PURPOSE AND NONINFRINGEMENT. IN NO EVENT SHALL THE AUTHORS OR COPYRIGHT HOLDERS BE LIABLE FOR ANY CLAIM, DAMAGES OR OTHER LIABILITY, WHETHER IN AN ACTION OF CONTRACT, TORT OR OTHERWISE, ARISING FROM, OUT OF OR IN CONNECTION WITH THE SOFTWARE OR THE USE OR OTHER DEALINGS IN THE SOFTWARE.

Copyright (c) 2013 Zxing Project (<https://github.com/zxing/zxing>)

---

This product includes software developed by the Wintertree software.

THE SOFTWARE IS PROVIDED "AS IS", WITHOUT WARRANTY OF ANY KIND, EXPRESS OR IMPLIED, INCLUDING BUT NOT LIMITED TO THE WARRANTIES OF MERCHANTABILITY, FITNESS FOR A PARTICULAR PURPOSE AND NONINFRINGEMENT. IN NO EVENT SHALL THE AUTHORS OR COPYRIGHT HOLDERS BE LIABLE FOR ANY CLAIM, DAMAGES OR OTHER LIABILITY, WHETHER IN AN ACTION OF CONTRACT, TORT OR OTHERWISE, ARISING FROM, OUT OF OR IN CONNECTION WITH THE SOFTWARE OR THE USE OR OTHER DEALINGS IN THE SOFTWARE.

The Sentry Spelling-Checker Engine Copyright (c) 1993 Wintertree (<https://wintertree-software.com/dev/ssce/windows/index.html> )

---

Freemarker Copyright (c) 2003 The Visigoth Software Society. All rights reserved.

THIS SOFTWARE IS PROVIDED "AS IS" AND ANY EXPRESSED OR IMPLIED WARRANTIES, INCLUDING, BUT NOT LIMITED TO, THE IMPLIED WARRANTIES OF MERCHANTABILITY AND FITNESS FOR A PARTICULAR PURPOSE ARE DISCLAIMED. IN NO EVENT SHALL THE VISIGOTH SOFTWARE SOCIETY OR ITS CONTRIBUTORS BE LIABLE FOR ANY DIRECT, INDIRECT, INCIDENTAL, SPECIAL, EXEMPLARY, OR CONSEQUENTIAL DAMAGES (INCLUDING, BUT NOT LIMITED TO, PROCUREMENT OF SUBSTITUTE GOODS OR SERVICES; LOSS OF USE, DATA, OR PROFITS; OR BUSINESS INTERRUPTION) HOWEVER CAUSED AND ON ANY THEORY OF LIABILITY, WHETHER IN CONTRACT, STRICT LIABILITY, OR TORT (INCLUDING NEGLIGENCE OR OTHERWISE) ARISING IN ANY WAY OUT OF THE USE OF THIS SOFTWARE, EVEN IF ADVISED OF THE POSSIBILITY OF SUCH DAMAGE.

This software consists of voluntary contributions made by many individuals on behalf of the

Visigoth Software Society. For more information on the Visigoth Software Society, please see <http://www.visigoths.org/>

---

Copyright (c) 2000,2002,2003 INRIA, France Telecom ( <http://asm.ow2.org/>) All rights reserved.

THIS SOFTWARE IS PROVIDED BY THE COPYRIGHT HOLDERS AND CONTRIBUTORS "AS IS" AND ANY EXPRESS OR IMPLIED WARRANTIES, INCLUDING, BUT NOT LIMITED TO, THE IMPLIED WARRANTIES OF MERCHANTABILITY AND FITNESS FOR A PARTICULAR PURPOSE ARE DISCLAIMED. IN NO EVENT SHALL THE COPYRIGHT OWNER OR CONTRIBUTORS BE LIABLE FOR ANY DIRECT, INDIRECT, INCIDENTAL, SPECIAL, EXEMPLARY, OR CONSEQUENTIAL DAMAGES (INCLUDING, BUT NOT LIMITED TO, PROCUREMENT OF SUBSTITUTE GOODS OR SERVICES; LOSS OF USE, DATA, OR PROFITS; OR BUSINESS INTERRUPTION) HOWEVER CAUSED AND ON ANY THEORY OF LIABILITY, WHETHER IN CONTRACT, STRICT LIABILITY, OR TORT (INCLUDING NEGLIGENCE OR OTHERWISE) ARISING IN ANY WAY OUT OF THE USE OF THIS SOFTWARE, EVEN IF ADVISED OF THE POSSIBILITY OF SUCH DAMAGE.

---

Copyright© 2001-2016 ej-technologies GmbH (<https://www.ej-technologies.com/products/install4j/overview.html>) All rights reserved.

THIS SOFTWARE IS PROVIDED BY THE COPYRIGHT HOLDERS AND CONTRIBUTORS "AS IS" AND ANY EXPRESS OR IMPLIED WARRANTIES, INCLUDING, BUT NOT LIMITED TO, THE IMPLIED WARRANTIES OF MERCHANTABILITY AND FITNESS FOR A PARTICULAR PURPOSE ARE DISCLAIMED. IN NO EVENT SHALL THE COPYRIGHT OWNER OR CONTRIBUTORS BE LIABLE FOR ANY DIRECT, INDIRECT, INCIDENTAL, SPECIAL, EXEMPLARY, OR CONSEQUENTIAL DAMAGES (INCLUDING, BUT NOT LIMITED TO, PROCUREMENT OF SUBSTITUTE GOODS OR SERVICES; LOSS OF USE, DATA, OR PROFITS; OR BUSINESS INTERRUPTION) HOWEVER CAUSED AND ON ANY THEORY OF LIABILITY, WHETHER IN CONTRACT, STRICT LIABILITY, OR TORT (INCLUDING NEGLIGENCE OR OTHERWISE) ARISING IN ANY WAY OUT OF THE USE OF THIS SOFTWARE, EVEN IF ADVISED OF THE POSSIBILITY OF SUCH DAMAGE.

This component is distributed with the following third party components: (1) Third party components licensed under EPL v1.0; (2) JARGS (Stephen Purcell); JDOM (Brett McLaughlin & Jason Hunter); and (3) ORO (Apache Software Foundation). Please see EPL v1.0 and applicable components (#2072, 2686, 2074) for restrictions/requirements.

---

Copyright 2001-2005 (C) MetaStuff, Ltd.(<http://www.dom4j.org> ) All Rights Reserved.

THIS SOFTWARE IS PROVIDED BY METASTUFF, LTD. AND CONTRIBUTORS "AS IS" AND ANY EXPRESSED OR IMPLIED WARRANTIES, INCLUDING, BUT NOT LIMITED TO, THE IMPLIED WARRANTIES OF MERCHANTABILITY AND FITNESS FOR A PARTICULAR PURPOSE ARE DISCLAIMED. IN NO EVENT SHALL METASTUFF, LTD. OR ITS CONTRIBUTORS BE LIABLE FOR ANY DIRECT, INDIRECT, INCIDENTAL, SPECIAL, EXEMPLARY, OR CONSEQUENTIAL DAMAGES (INCLUDING, BUT NOT LIMITED TO, PROCUREMENT OF SUBSTITUTE GOODS OR SERVICES; LOSS OF USE, DATA, OR PROFITS; OR BUSINESS INTERRUPTION) HOWEVER CAUSED AND ON ANY THEORY OF LIABILITY, WHETHER IN



CONTRACT, STRICT LIABILITY, OR TORT (INCLUDING NEGLIGENCE OR OTHERWISE) ARISING IN ANY WAY OUT OF THE USE OF THIS SOFTWARE, EVEN IF ADVISED OF THE POSSIBILITY OF SUCH DAMAGE.

---

Little CMS Copyright (c) 1998-2011 (<http://www.littlecms.com/>) All Rights Reserved.

THE SOFTWARE IS PROVIDED "AS IS", WITHOUT WARRANTY OF ANY KIND, EXPRESS OR IMPLIED, INCLUDING BUT NOT LIMITED TO THE WARRANTIES OF MERCHANTABILITY, FITNESS FOR A PARTICULAR PURPOSE AND NONINFRINGEMENT. IN NO EVENT SHALL THE AUTHORS OR COPYRIGHT HOLDERS BE LIABLE FOR ANY CLAIM, DAMAGES OR OTHER LIABILITY, WHETHER IN AN ACTION OF CONTRACT, TORT OR OTHERWISE, ARISING FROM, OUT OF OR IN CONNECTION WITH THE SOFTWARE OR THE USE OR OTHER DEALINGS IN THE SOFTWARE.

Marti Maria Saguer Permission is hereby granted, free of charge, to any person obtaining a copy of this software and associated documentation files (the "Software"), to deal in the Software without restriction, including without limitation the rights to use, copy, modify, merge, publish, distribute, sublicense, and/or sell copies of the Software, and to permit persons to whom the Software is furnished to do so, subject to the following conditions: The above copyright notice and this permission notice shall be included in all copies or substantial portions of the Software.

---

Copyright (c) 2002-2007, Communications and Remote Sensing Laboratory, Universite catholique de Louvain (UCL), Belgium

Copyright (c) 2002-2007, Professor Benoit Macq

Copyright (c) 2001-2003, David Janssens

Copyright (c) 2002-2003, Yannick Verschuere

Copyright (c) 2003-2007, Francois-Olivier Devaux and Antonin Descampe

Copyright (c) 2005, Herve Drolon, FreeImage Team

All rights reserved.

THIS SOFTWARE IS PROVIDED BY THE COPYRIGHT HOLDERS AND CONTRIBUTORS "AS IS" AND ANY EXPRESS OR IMPLIED WARRANTIES, INCLUDING, BUT NOT LIMITED TO, THE IMPLIED WARRANTIES OF MERCHANTABILITY AND FITNESS FOR A PARTICULAR PURPOSE ARE DISCLAIMED. IN NO EVENT SHALL THE COPYRIGHT OWNER OR CONTRIBUTORS BE LIABLE FOR ANY DIRECT, INDIRECT, INCIDENTAL, SPECIAL, EXEMPLARY, OR CONSEQUENTIAL DAMAGES (INCLUDING, BUT NOT LIMITED TO, PROCUREMENT OF SUBSTITUTE GOODS OR SERVICES; LOSS OF USE, DATA, OR PROFITS; OR BUSINESS INTERRUPTION) HOWEVER CAUSED AND ON ANY THEORY OF LIABILITY, WHETHER IN CONTRACT, STRICT LIABILITY, OR TORT (INCLUDING NEGLIGENCE OR OTHERWISE) ARISING IN ANY WAY OUT OF THE USE OF THIS SOFTWARE, EVEN IF ADVISED OF THE POSSIBILITY OF SUCH DAMAGE.

---

Copyright (c) 2004-2013 QOS.ch (<http://www.qos.ch/shop/index>) All rights reserved.

THE SOFTWARE IS PROVIDED "AS IS", WITHOUT WARRANTY OF ANY KIND, EXPRESS OR IMPLIED, INCLUDING BUT NOT LIMITED TO THE WARRANTIES OF MERCHANTABILITY, FITNESS FOR A PARTICULAR PURPOSE AND NONINFRINGEMENT. IN NO EVENT SHALL THE AUTHORS OR COPYRIGHT HOLDERS BE LIABLE FOR ANY CLAIM, DAMAGES OR OTHER LIABILITY, WHETHER IN AN ACTION OF CONTRACT, TORT OR OTHERWISE, ARISING FROM, OUT OF OR IN CONNECTION WITH THE SOFTWARE OR THE USE OR OTHER DEALINGS IN THE SOFTWARE.

Permission is hereby granted, free of charge, to any person obtaining a copy of this software and associated documentation files (the "Software"), to deal in the Software without restriction, including without limitation the rights to use, copy, modify, merge, publish, distribute, sublicense, and/or sell copies of the Software, and to permit persons to whom the Software is furnished to do so, subject to the following conditions: The above copyright notice and this permission notice shall be included in all copies or substantial portions of the Software.

---

The Code Project Open License (CPOL) 1.02

Copyright © CodeProject, 1999-2016 (<http://www.codeproject.com/info/cpol10.aspx>) All Rights Reserved.

THE SOFTWARE IS PROVIDED "AS IS", WITHOUT WARRANTY OF ANY KIND, EXPRESS OR IMPLIED, INCLUDING BUT NOT LIMITED TO THE WARRANTIES OF MERCHANTABILITY, FITNESS FOR A PARTICULAR PURPOSE AND NONINFRINGEMENT. IN NO EVENT SHALL THE AUTHORS OR COPYRIGHT HOLDERS BE LIABLE FOR ANY CLAIM, DAMAGES OR OTHER LIABILITY, WHETHER IN AN ACTION OF CONTRACT, TORT OR OTHERWISE, ARISING FROM, OUT OF OR IN CONNECTION WITH THE SOFTWARE OR THE USE OR OTHER DEALINGS IN THE SOFTWARE.

---

Copyright (c) 1998, 1999, 2000 Thai Open Source Software Center Ltd and Clark Cooper

Copyright (c) 2001, 2002, 2003, 2004, 2005, 2006 Expat maintainers (<http://expat.sourceforge.net/>)

All Rights Reserved.

THE SOFTWARE IS PROVIDED "AS IS", WITHOUT WARRANTY OF ANY KIND, EXPRESS OR IMPLIED, INCLUDING BUT NOT LIMITED TO THE WARRANTIES OF MERCHANTABILITY, FITNESS FOR A PARTICULAR PURPOSE AND NONINFRINGEMENT. IN NO EVENT SHALL THE AUTHORS OR COPYRIGHT HOLDERS BE LIABLE FOR ANY CLAIM, DAMAGES OR OTHER LIABILITY, WHETHER IN AN ACTION OF CONTRACT, TORT OR OTHERWISE, ARISING FROM, OUT OF OR IN CONNECTION WITH THE SOFTWARE OR THE USE OR OTHER DEALINGS IN THE SOFTWARE.

---

Copyright (c) 2002-2010 Atsuhiko Yamanaka, JCraft,Inc(<http://www.jcraft.com/jsch/>) All rights reserved.

THIS SOFTWARE IS PROVIDED "AS IS" AND ANY EXPRESSED OR IMPLIED WARRANTIES, INCLUDING, BUT NOT LIMITED TO, THE IMPLIED WARRANTIES OF MERCHANTABILITY AND FITNESS FOR A PARTICULAR PURPOSE ARE DISCLAIMED. IN NO EVENT SHALL JCRAFT,INC. OR ANY CONTRIBUTORS TO

THIS SOFTWARE BE LIABLE FOR ANY DIRECT, INDIRECT, INCIDENTAL, SPECIAL, EXEMPLARY, OR CONSEQUENTIAL DAMAGES (INCLUDING, BUT NOT LIMITED TO, PROCUREMENT OF SUBSTITUTE GOODS OR SERVICES; LOSS OF USE, DATA, OR PROFITS; OR BUSINESS INTERRUPTION) HOWEVER CAUSED AND ON ANY THEORY OF LIABILITY, WHETHER IN CONTRACT, STRICT LIABILITY, OR TORT (INCLUDING NEGLIGENCE OR OTHERWISE) ARISING IN ANY WAY OUT OF THE USE OF THIS SOFTWARE, EVEN IF ADVISED OF THE POSSIBILITY OF SUCH DAMAGE.

---

This product includes software developed by Christian Bach and distributed via (<http://tablesorter.com/docs/>)

All rights reserved.

THE SOFTWARE IS PROVIDED "AS IS", WITHOUT WARRANTY OF ANY KIND, EXPRESS OR IMPLIED, INCLUDING BUT NOT LIMITED TO THE WARRANTIES OF MERCHANTABILITY, FITNESS FOR A PARTICULAR PURPOSE AND NONINFRINGEMENT. IN NO EVENT SHALL THE AUTHORS OR COPYRIGHT HOLDERS BE LIABLE FOR ANY CLAIM, DAMAGES OR OTHER LIABILITY, WHETHER IN AN ACTION OF CONTRACT, TORT OR OTHERWISE, ARISING FROM, OUT OF OR IN CONNECTION WITH THE SOFTWARE OR THE USE OR OTHER DEALINGS IN THE SOFTWARE.

Copyright (c) 2007 Christian Bach

---

This product includes software developed by Dmitry Baranovskiy and distributed via (<https://github.com/DmitryBaranovskiy>)

All rights reserved.

THE SOFTWARE IS PROVIDED "AS IS", WITHOUT WARRANTY OF ANY KIND, EXPRESS OR IMPLIED, INCLUDING BUT NOT LIMITED TO THE WARRANTIES OF MERCHANTABILITY, FITNESS FOR A PARTICULAR PURPOSE AND NONINFRINGEMENT. IN NO EVENT SHALL THE AUTHORS OR COPYRIGHT HOLDERS BE LIABLE FOR ANY CLAIM, DAMAGES OR OTHER LIABILITY, WHETHER IN AN ACTION OF CONTRACT, TORT OR OTHERWISE, ARISING FROM, OUT OF OR IN CONNECTION WITH THE SOFTWARE OR THE USE OR OTHER DEALINGS IN THE SOFTWARE.

Copyright © 2008 Dmitry Baranovskiy.

---

This product includes software developed by John Resig and distributed via (<http://jquery.com/>) All rights reserved.

THE SOFTWARE IS PROVIDED "AS IS", WITHOUT WARRANTY OF ANY KIND, EXPRESS OR IMPLIED, INCLUDING BUT NOT LIMITED TO THE WARRANTIES OF MERCHANTABILITY, FITNESS FOR A PARTICULAR PURPOSE AND NONINFRINGEMENT. IN NO EVENT SHALL THE AUTHORS OR COPYRIGHT HOLDERS BE LIABLE FOR ANY CLAIM, DAMAGES OR OTHER LIABILITY, WHETHER IN AN ACTION OF CONTRACT, TORT OR OTHERWISE, ARISING FROM, OUT OF OR IN CONNECTION WITH THE SOFTWARE OR THE USE OR OTHER DEALINGS IN THE SOFTWARE.

Copyright (c) 2011 John Resig

---

Copyright (c) Monotype Imaging, Inc (<http://www.monotype.com/>) All rights reserved.

Monotype®, Albany®, Andale®, Cumberland®, Thorndale®, MT®, WorldType® is a trademark of Monotype Imaging, Inc., registered in U.S. Patent and Trademark Office and certain other jurisdictions.

THE SOFTWARE IS PROVIDED "AS IS", WITHOUT WARRANTY OF ANY KIND, EXPRESS OR IMPLIED, INCLUDING BUT NOT LIMITED TO THE WARRANTIES OF MERCHANTABILITY, FITNESS FOR A PARTICULAR PURPOSE AND NONINFRINGEMENT. IN NO EVENT SHALL THE AUTHORS OR COPYRIGHT HOLDERS BE LIABLE FOR ANY CLAIM, DAMAGES OR OTHER LIABILITY, WHETHER IN AN ACTION OF CONTRACT, TORT OR OTHERWISE, ARISING FROM, OUT OF OR IN CONNECTION WITH THE SOFTWARE OR THE USE OR OTHER DEALINGS IN THE SOFTWARE.

---