

Data Migration User Guide

Oracle Banking Liquidity Management

Release 14.5.4.0.0

Part Number F54228-01

February 2022

Data Migration User Guide

Oracle Financial Services Software Limited
Oracle Park
Off Western Express Highway
Goregaon (East)
Mumbai, Maharashtra 400 063
India

Worldwide Inquiries:

Phone: +91 22 6718 3000

Fax: +91 22 6718 3001

<https://www.oracle.com/industries/financial-services/index.html>

Copyright © 2018, 2022, Oracle and/or its affiliates. All rights reserved.

Oracle and Java are registered trademarks of Oracle and/or its affiliates. Other names may be trademarks of their respective owners.

U.S. GOVERNMENT END USERS: Oracle programs, including any operating system, integrated software, any programs installed on the hardware, and/or documentation, delivered to U.S. Government end users are "commercial computer software" pursuant to the applicable Federal Acquisition Regulation and agency-specific supplemental regulations. As such, use, duplication, disclosure, modification, and adaptation of the programs, including any operating system, integrated software, any programs installed on the hardware, and/or documentation, shall be subject to license terms and license restrictions applicable to the programs. No other rights are granted to the U.S. Government.

This software or hardware is developed for general use in a variety of information management applications. It is not developed or intended for use in any inherently dangerous applications, including applications that may create a risk of personal injury. If you use this software or hardware in dangerous applications, then you shall be responsible to take all appropriate failsafe, backup, redundancy, and other measures to ensure its safe use. Oracle Corporation and its affiliates disclaim any liability for any damages caused by use of this software or hardware in dangerous applications.

This software and related documentation are provided under a license agreement containing restrictions on use and disclosure and are protected by intellectual property laws. Except as expressly permitted in your license agreement or allowed by law, you may not use, copy, reproduce, translate, broadcast, modify, license, transmit, distribute, exhibit, perform, publish or display any part, in any form, or by any means. Reverse engineering, disassembly, or decompilation of this software, unless required by law for interoperability, is prohibited. The information contained herein is subject to change without notice and is not warranted to be error-free. If you find any errors, please report them to us in writing.

This software or hardware and documentation may provide access to or information on content, products and services from third parties. Oracle Corporation and its affiliates are not responsible for and expressly disclaim all warranties of any kind with respect to third-party content, products, and services. Oracle Corporation and its affiliates will not be responsible for any loss, costs, or damages incurred due to your access to or use of third-party content, products, or services.

Contents

- 1 Preface 1
 - 1.1 Purpose 1
 - 1.2 Audience 1
 - 1.3 Acronyms, Abbreviations and Definitions 1
 - 1.4 Related Documents 1
- 2 Data Migration 2

1 Preface

1.1 Purpose

This guide provides the information about the data migration which needs to be performed for all the existing customer before implementing the Oracle Banking Liquidity Management February Patchset 14.5.4.0.0.

1.2 Audience

This guide is intended for the implementation teams.

1.3 Acronyms, Abbreviations and Definitions

Acronyms	Definition
DDL	Data Definition Language
DSL	Domain Specific Language

1.4 Related Documents

The related documents are as follows:

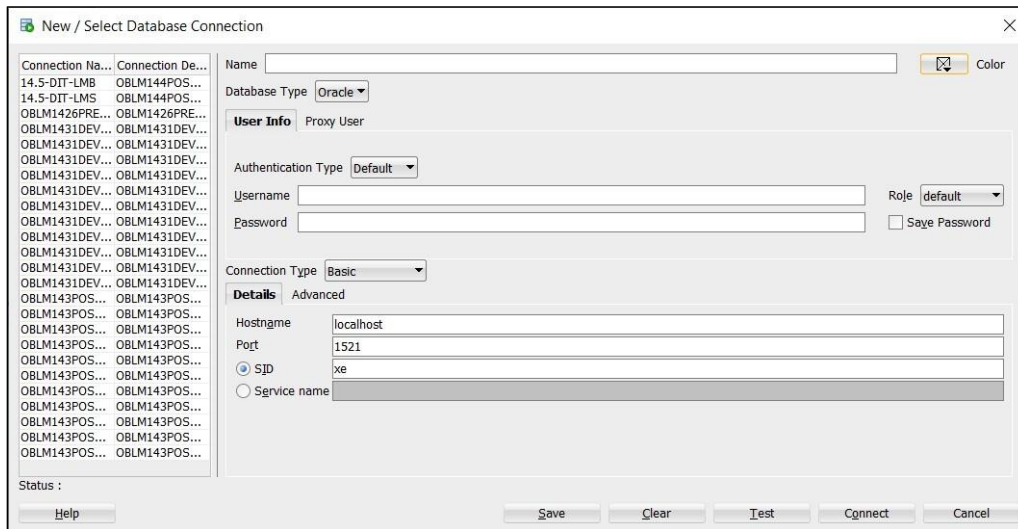
- Oracle Banking Common Core User Guide
- Oracle Banking Liquidity Management User Guide
- Oracle Banking Liquidity Management Configuration Guide

2 Data Migration

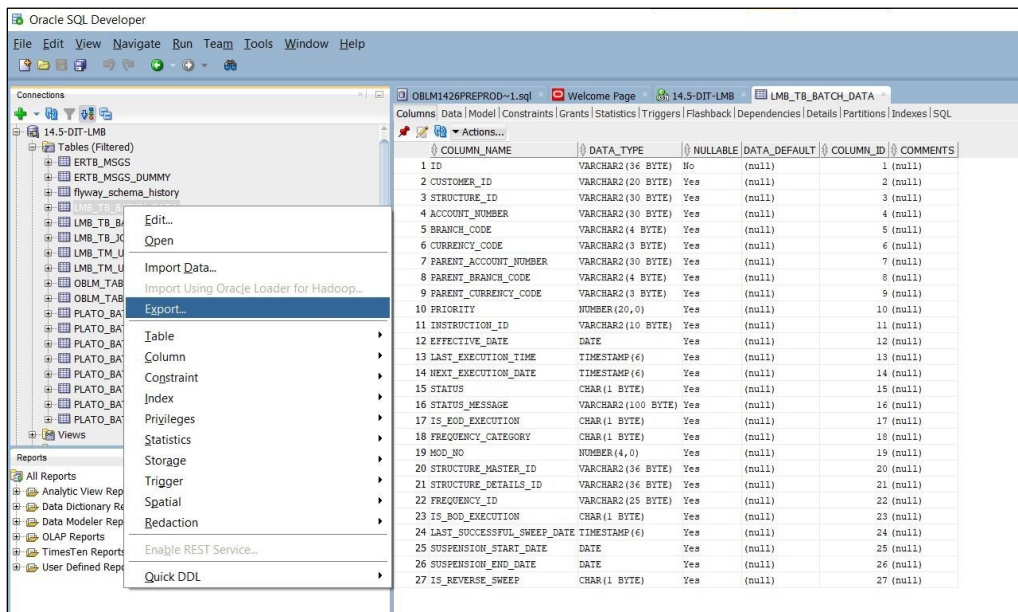
The table that holds the data for the scheduled sweeps has been moved from the schema of batch service to the schema of sweep service. The name of this table is changed from LMB_TB_BATCH_DATA to LMS_TB_SWEEP_DATA. For Newly created structures, the data gets saved directly to the new table but for the existing data, migration must be done manually.

Follow the below steps to manually migrate the data using **Oracle SQL Developer**.

1. On **Oracle SQL Developer** application, create a new connection for Batch and Sweep schema by providing the required information.

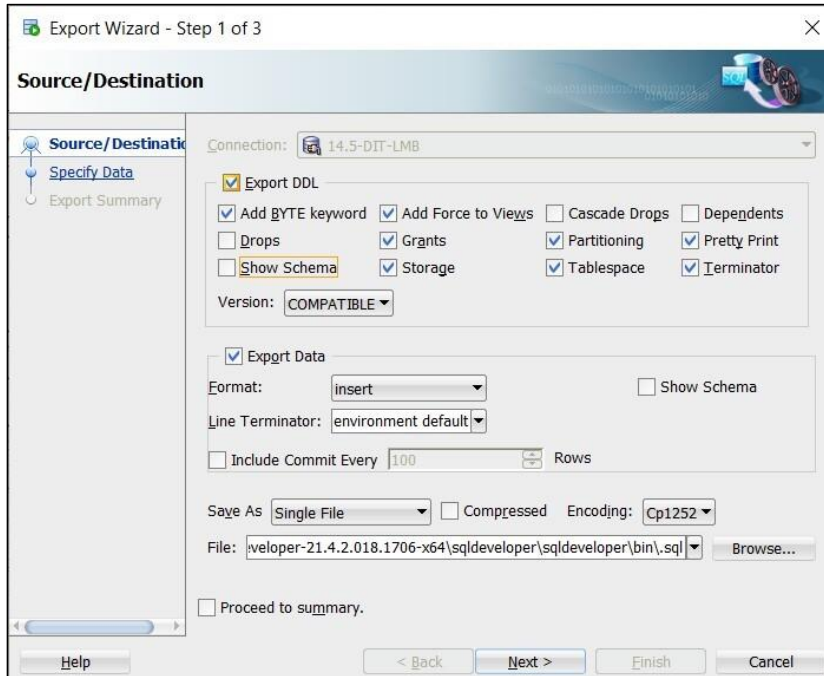


2. Double-click and provide the credentials to connect with Batch Schema.



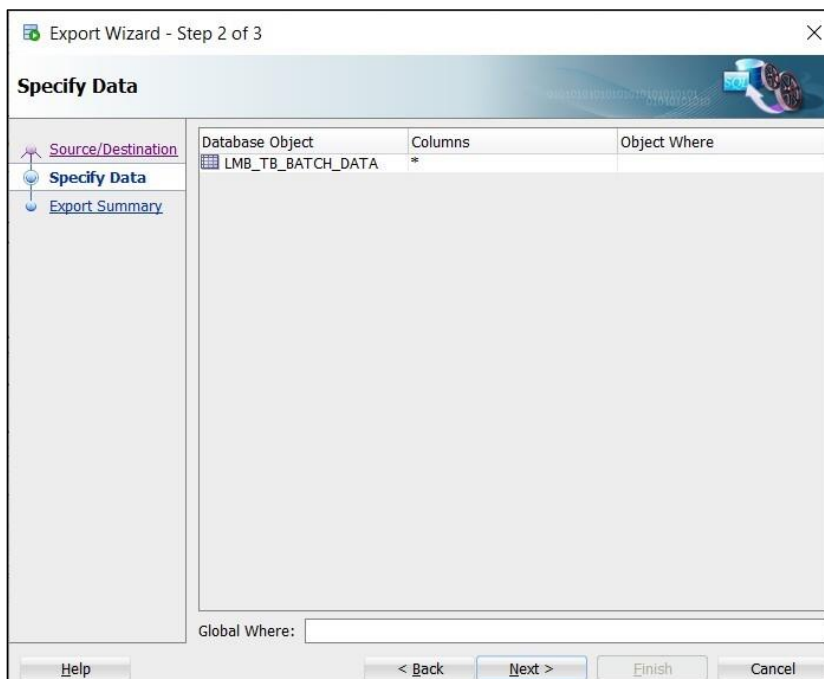
- Under **Tables**, right-click on LMB_TB_BATCH_DATA and click **Export** to export the existing data.

→ The **Export Wizard – Source/Destination** popup screen displays.



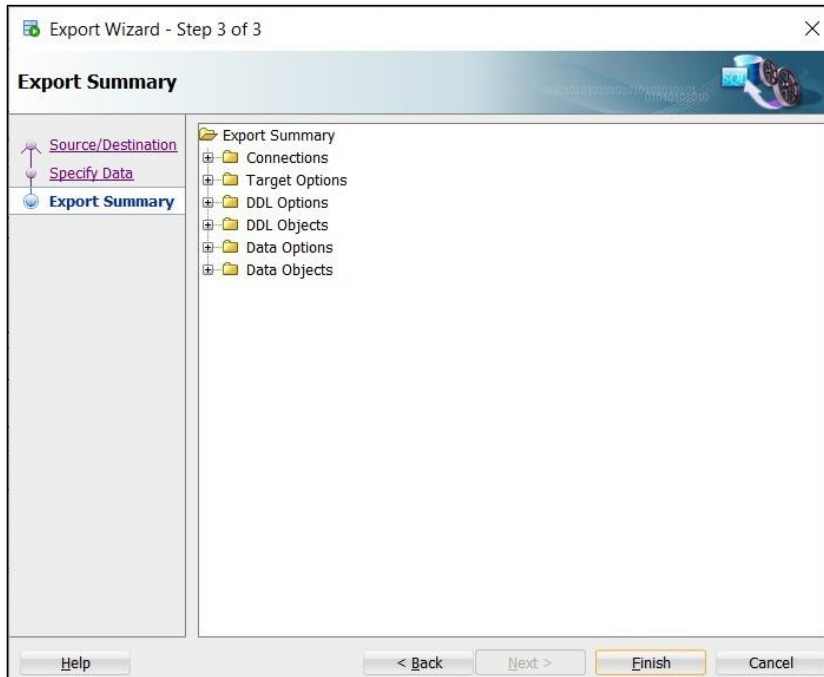
- Uncheck the **Show Schema** checkbox and select the file name.
- Click **Next**.

→ The **Export Wizard – Specify Data** screen displays.



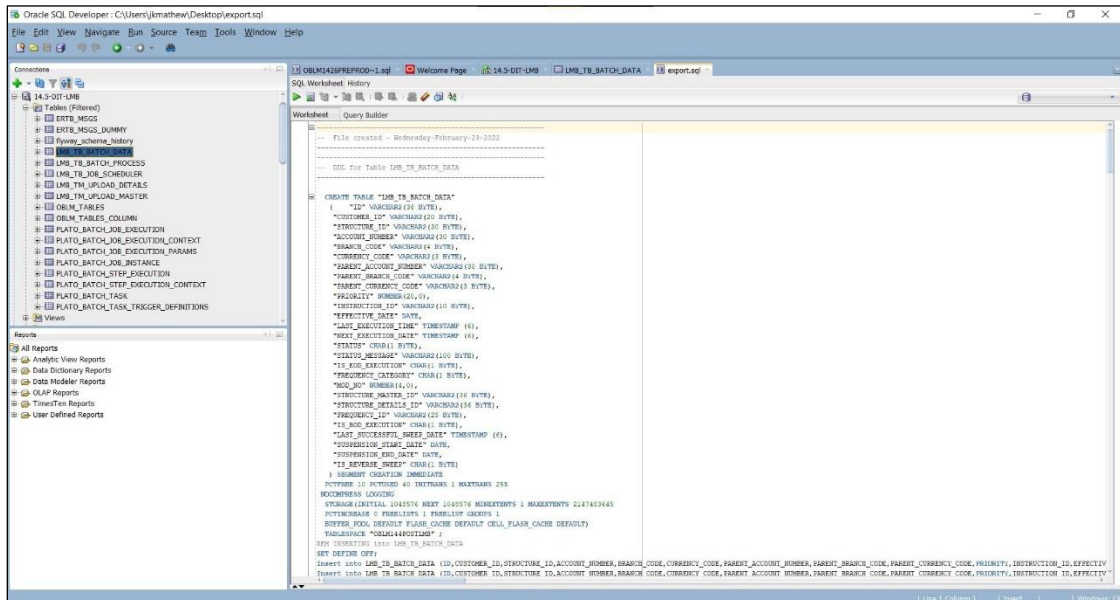
6. Click **Next**.

→ The **Export Wizard – Export Summary** screen displays.



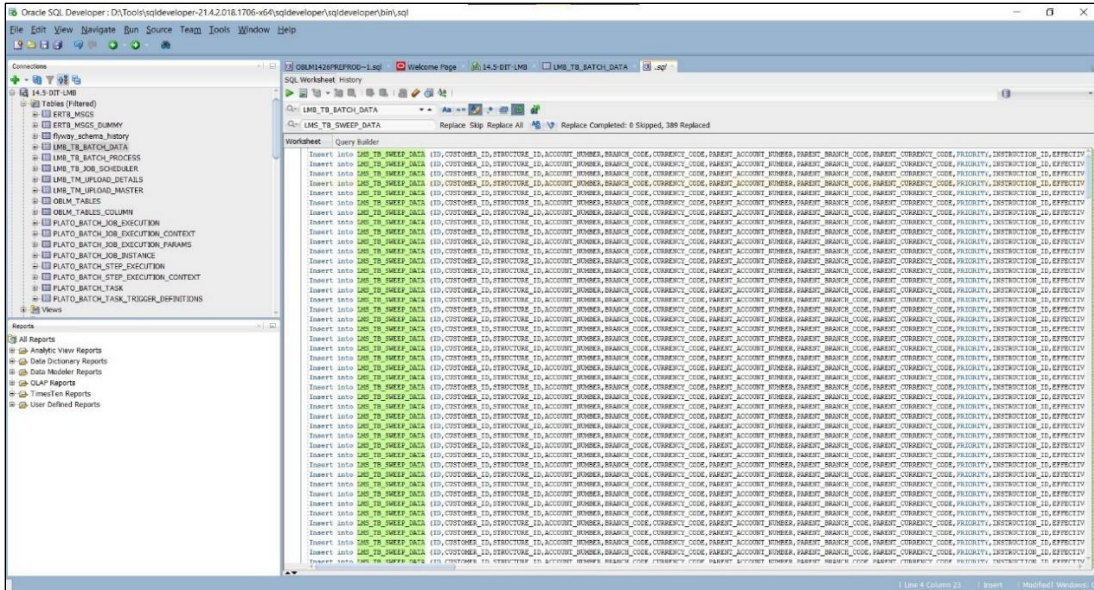
7. Click **Finish**.

→ After the Export is completed, the File gets opened.

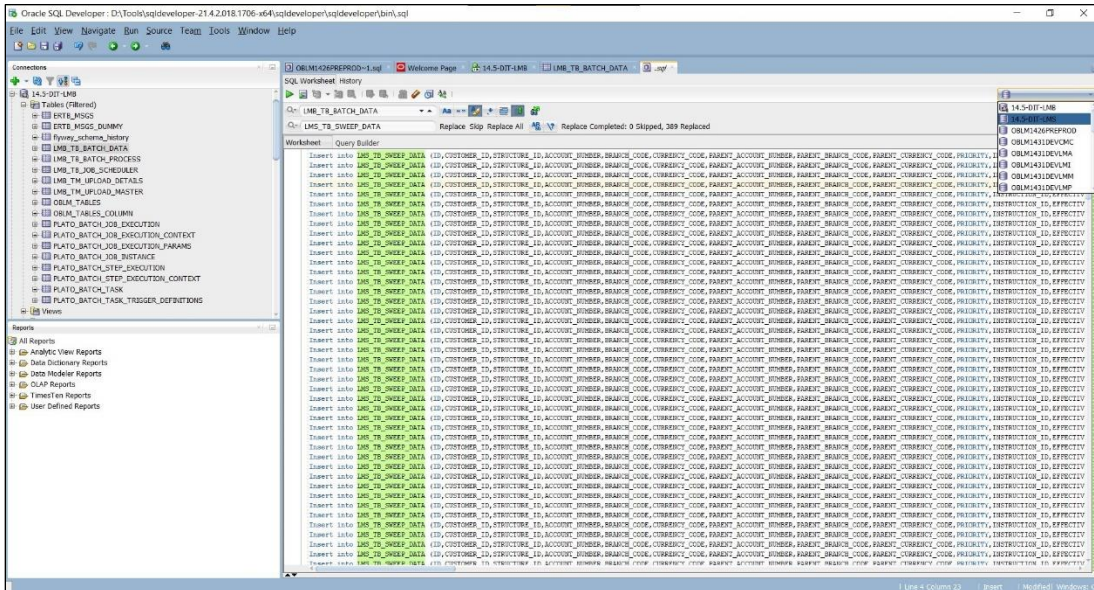


8. Remove all the DDL statements from the file and retain only the insert statements.

9. Replace all the instances of LMB_TB_BATCH_DATA with LMS_TB_SWEEP_DATA as shown.



10. In the Connection drop-down, select the Sweep Schema.



11. Press F5 button to execute the script.