

Development Workbench- Customer Landing Page
Oracle Banking Corporate Lending

Release 14.6.0.0.0

[May] [2022]



Contents

1	Preface.....	3
1.1	Audience	3
1.2	Related Documents	3
2	Overview of Customer Landing page Development for Oracle FLEXCUBE	4
2.1	Radxml	4
2.2	Extensible Development.....	4
2.3	Design Steps.....	5
2.3.1	<i>Design Process:</i>	5
2.3.2	<i>Action</i>	6
2.3.3	<i>Function Id</i>	6
2.3.4	<i>Save Xml Path</i>	7
2.3.5	<i>Function Category</i>	8
3	Master Screen.....	8
3.1.1	<i>Preferences</i>	9
3.1.2	<i>Screens</i>	11
3.1.3	<i>Adding a new Tab</i>	13
4	Detail.....	15
5	Summary	17
6	Tabs.....	17
7	Subsystems.....	18

1 Preface

This document describes the process of FLEXCUBE Screen Development using Enterprise Limits and Collateral Management Development Workbench.

1.1 Audience

This document is intended for FLEXCUBE Application developers/users that use ODT to develop various FLEXCUBE components.

To Use this manual, you need conceptual and working knowledge of the below:

<i>Proficiency</i>	<i>Resources</i>
FLEXCUBE Functional Architecture	Training programs from Oracle Financial Software Services.
FLEXCUBE Technical Architecture	Training programs from Oracle Financial Software Services.
FLEXCUBE Object Naming conventions	<i>Development Overview Guide</i>
Working knowledge of Web based applications	Self Acquired
Working knowledge of Oracle Database	Oracle Documentations
Working knowledge of PLSQL & SQL Language	Self Acquired
Working knowledge of XML files	Self Acquired
Essential knowledge on FLEXCUBE ODT	<i>02-ODT Administration.docx</i> <i>03-ODT Getting Started.docx</i>

1.2 Related Documents

[05-ODT Generation, Deployment and Release of files.docx](#)

[16-Development_of_Launch_Forms_and_Others_Screens.docx](#)

2 Overview of Customer Landing page Development for Oracle FLEXCUBE

Oracle FLEXCUBE ODT provides the developer with a user friendly console for designing and developing screens for Oracle FLEXCUBE.

ODT assist developers in designing screens with the capability of generating front end scripting files, PL/SQL Packages, Static data scripts, XSDs, Excel templates and html files. This generated code performs validations and does some processing which is common across screens in FLEXCUBE; only the Business logic specific to the screen has to be added by the Developer in back end and front end units.

Example

Release Name: FC 12.1

Release Type: KERNEL, CLUSTER, CUSTOM

ODT will generate all files and developers are supposed to add the business logic in designated units depending on the Release Type.

2.1 Radxml

ODT saves all the activities carried out by the developer in an xml file hereby referred to as **radxml**. Persistence of the screens is achieved through radxml. All the units required for the working of a screen can be generated from its radxml.

If some changes are required on the screen in a future release, the same radxml can be loaded and changes can be done on this radxml. ODT can segregate the changes done on different releases and saves the radxml accordingly.

Radxml will adhere to following naming convention

Function Id name + _RAD.xml

Example: STDCULND_RAD

2.2 Extensible Development

In extensible framework, any development on FLEXCUBE is classified as on any of the following stage (also referred to as release type)

i) **KERNEL**

This refers to the core product.

Example: FC 12.1

ii) CLUSTER

This refers to any region specific enhancements /developments done on top of the kernel product. The changes done in a cluster pack will be non invasive to the kernel product.

Example: FC 12.1 India cluster

iii) CUSTOM

Any enhancements required by the customer/bank are done on this level. It will be non invasive of the changes done in kernel and cluster packs

Example: Customizations for MODEL bank on FC 12.1 India cluster

ODT can segregate the changes done on different releases and saves the radxml accordingly. It generates the files depending on the release type and developers can add the business logic to the release type specific files. Thus the code remains non invasive of the existing code.

2.3 Design Steps

Sequence of Steps to be followed while developing a screen in ODT is:

1. Identifying the data sources and their relations
2. Logically grouping the data sources into Data Blocks
3. Designing Screen Layout
4. Logically grouping the Block Fields into Field sets
5. Attaching Call forms and launch forms if any
6. Defining LOVs
7. Designing Summary
8. Defining Actions

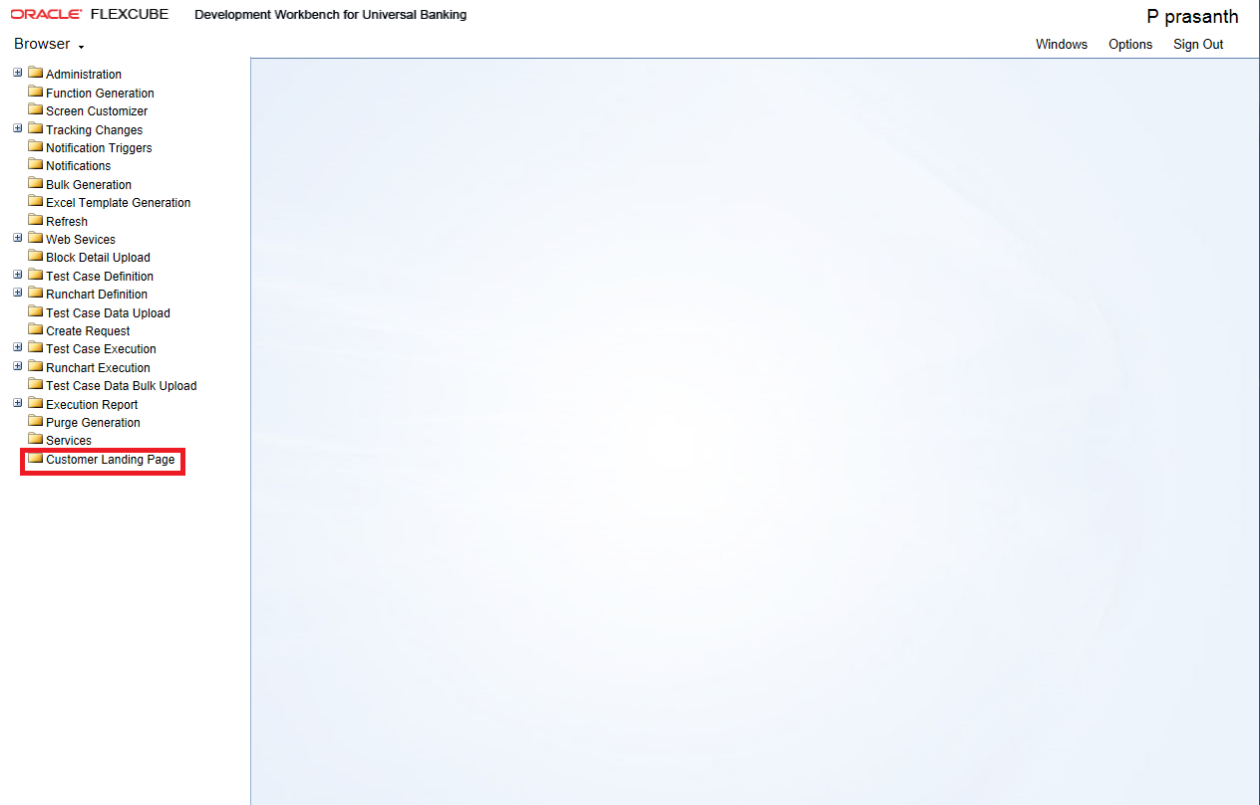
Refer respective sections for detailed explanation of each step

Saving Radxml

While Development, save radxml at constant intervals. Click on save icon in the top right for having the work. Radxml would be saved in the user directory maintained

2.3.1 Design Process:

Click on Customer Landing Page node in the browser tree found in the Landing page of ODT. Customer Landing Page window gets launched.



Oracle FLEXCUBE ODT Landing Page

While creating a new function in customer landing page in ODT, below information needs to be provided in the Header section

The Header portion of the Customer Landing Page screens consists of the following fields:

2.3.2 Action

New and Load options are provided for this field.

For a new screen development, select the action as New; if an existing screen radxml has to be loaded for customization select Load option

If the action is load then corresponding radxml has to be loaded using browser option in Save Xml Path; all the header information will get populated.

2.3.3 Function Id

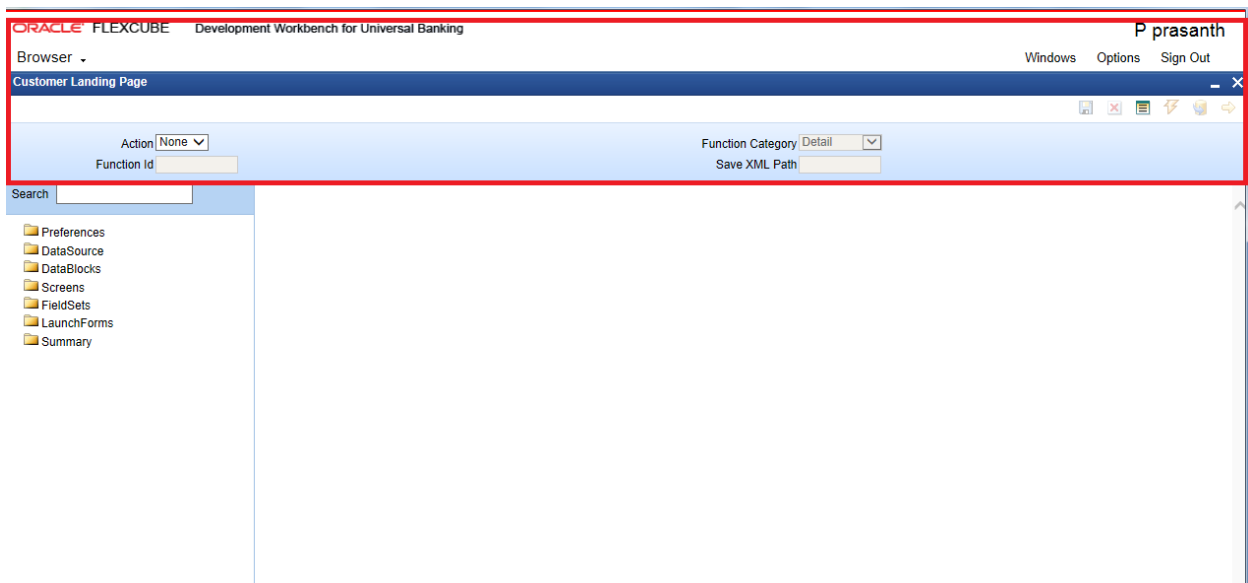
If the Action is selected as New, the function Id name needs to be specified. Function Id is the unique name with which a screen is identified.

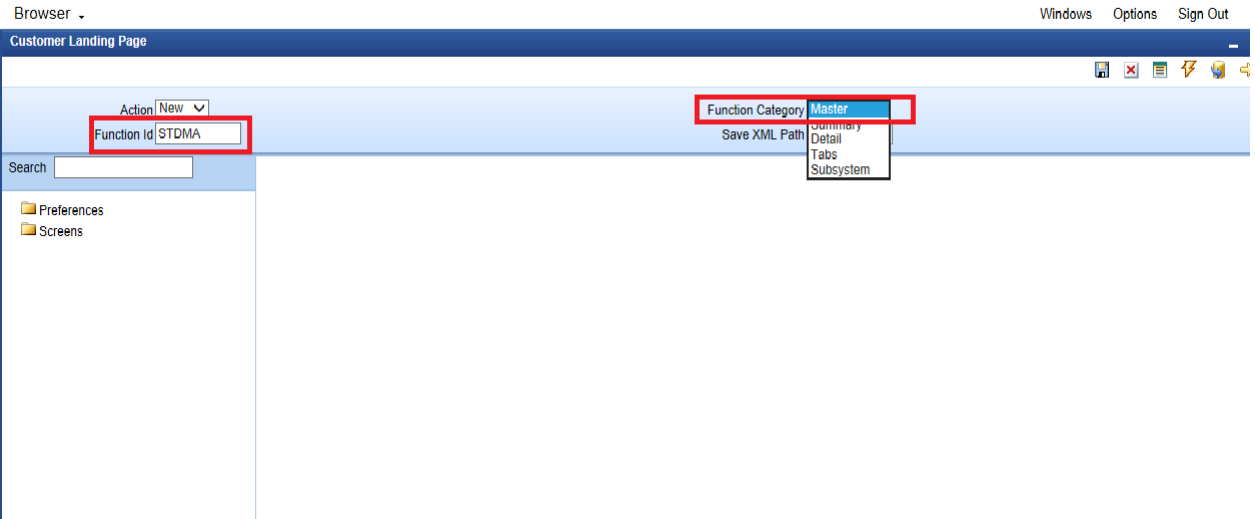
Function Id name should follow the FLEXCUBE standard naming convention.

- Function Id name to have maximum length of 8 characters
- For detail screens the third character should be 'D'
- For report screens the third character should be 'R'
- For call form function ids the third character should be 'C'
- First 2 characters should specify the module name for which the particular function id is used (recommended).

2.3.4 Save Xml Path

The label description of the field will change depending on the action .If the action is load, ODT attaches a Browse button to it so that user can browse the radxml and load it.

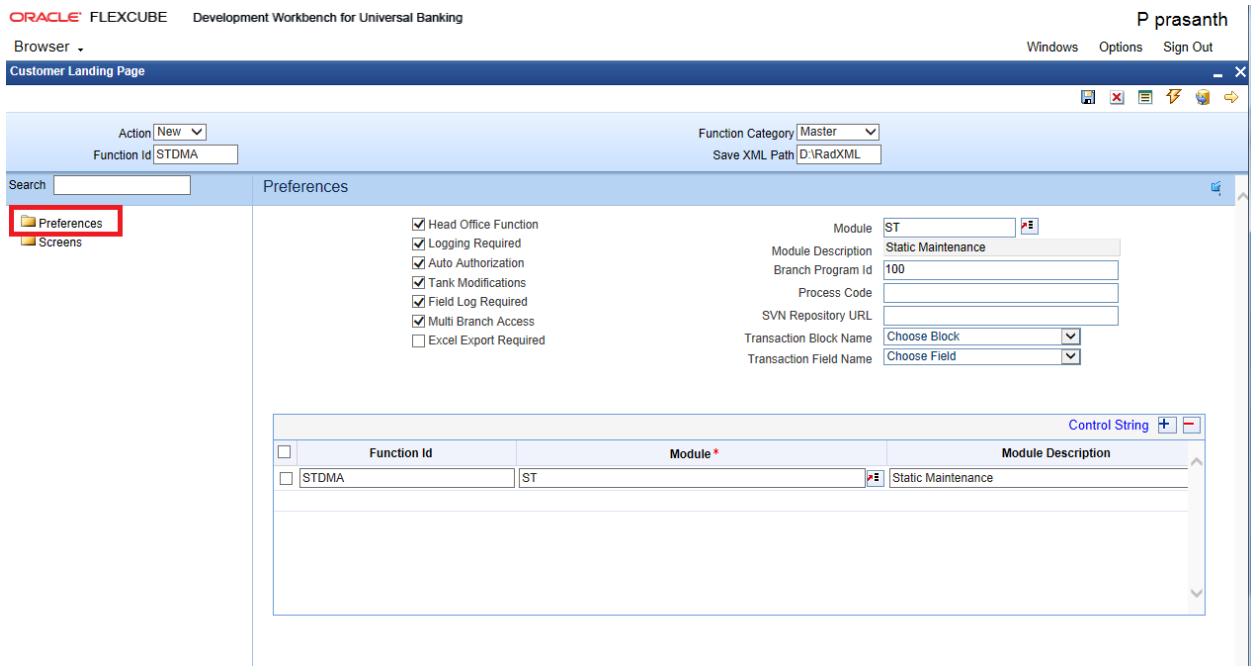




2.3.5 Function Category

These are the categories of Radxml Master, Detail, Summary, Tabs and Subsystems.

3 Master Screen



3.1.1 Preferences

Function id level preferences like module, logging required, tanking modification Main menu, Sub-Menu1, Sub-Menu2 is maintained through Preferences screen in ODT.

The data maintained in Preferences Screen will be used for generating static data script for tables SMTB_MENU, SMTB_FUNCTION_DESCRIPTION, SMTB_ROLE_DETAIL and SMTB_FCC_FCJ_MAPPING

- **Module**

It captures the Module of the function id. Developer can choose module name from the list of values provided. List of values is populated based on the modules maintained in SMTB_MODULE table of the business schema (current FLEXCUBE environment to which tool is mapped).

Module Code has to be provided mandatorily. Module name provided would be reflected in the script for SMTB_MENU generated by ODT (in module column). This will also be considered while naming the packages generated by the tool. First two characters of the packages generated will be taken from the module code maintained.

- **Module Description**

Module description gets defaulted based on the module code selected.

- **Head office Function**

It captures whether the function is a head office function or not. It will be reflected in the static script for SMTB_MENU in column HO_FUNCTION.

If the function is a head office function, only query operation will be possible at all the other branches for the particular screen.

- **Logging Required**

It captures whether logging is required for the function or not. This will also be reflected in script generated for SMTB_MENU (column LOGGING_REQD).

If this option is selected, all the request and response for the functionId will be logged in CSTB_MSG_LOG. This is used for View Change option.

- **Auto Authorization**

It captures whether Auto Authorization is allowed for the function or not. This will also be reflected in script generated for SMTB_MENU (column AUTO_AUTH).

Note that auto authorization is possible only if it is allowed at function id level, user level and the branch level.

- **Tank Modification**

It captures whether modification to be tanked for the function or not. This will be reflected in TANK_MODIFICATIONS column of SMTB_MENU table script.

If tank modification is enabled, then the record in that screen would be logged to logging tables and taken up for processing (*untanking*) in later stage during EOD operations. Currently this is applicable only for maintenance screens.

- **Field Log Required**

It captures whether field Logging is required for the function or not. This will be reflected in the FIELD_LOG_REQD column in SMTB_MENU.

If field log required is enabled, then all operations on the screen will be logged to logging tables (STTB_FIELD_LOG,STTB_RECORD_LOG etc). Currently this is applicable only for maintenance screens.

- **Excel Export Required**

This field captures whether option to export records from summary screen to excel is required

- **Multi Branch Access**

It captures whether multi branch access is required for the function Id or not. This will be reflected in MULTIBRANCH_ACCESS column of SMTB_MENU table script generated.

If multi branch access is allowed, then records of different branches for the screen can be modified from a single branch.

- **Txn Block Name**

It captures the transaction Block Name. This is applicable only if multi branch access is allowed for the screen. Select the block from the select list which contains the field for branch code

- **Txn Field Name**

It captures the transaction Field Name. This is applicable only if multi branch access is allowed for the screen. Select list provides all the block fields for the transaction block selected. Choose the field for branch code from the list.

Txn Block Name and Txn Field Name will be reflected in the system JavaScript file (SYS js) generated by ODT. Developer has to code for querying the records based on the branch code value of this field.

- **Branch Program ID**

It captures branch program id for the function.

- **Process Code**

This can be used to map which process needs to be initiated during screen launch. This is used for workflow screens.

- **SVN Repository Url**

This is applicable only if integration to SVN (version control tool) is required. Path of the SVN repository till the module needs to be provided in this field.

In the multiple entry block , developer needs to maintain all the related function Id names for the screen. ODT will default the name of the function Id to the first row of the multiple entry along with the module maintained earlier.

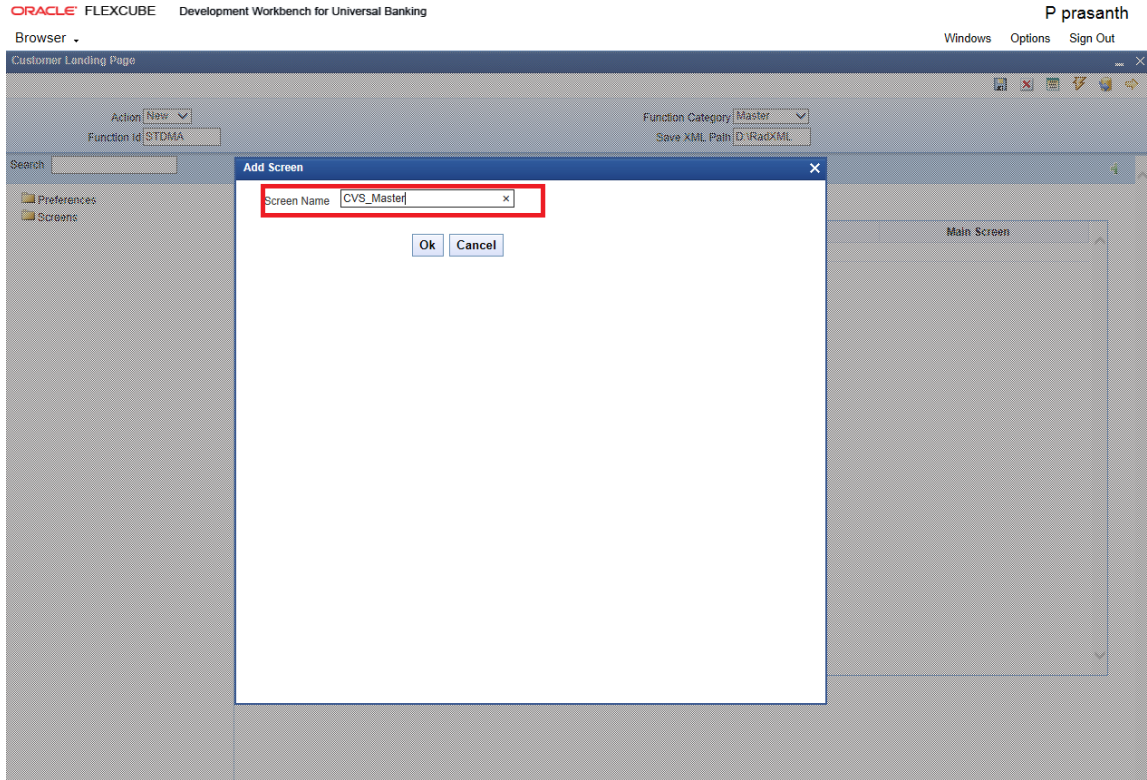
If any other function id is required for the particular screen, developer has to add the row.

Example: For FTDTRONL screen, developer designs a detail screen. He also wants to add one summary screen to the screen as well as gateway function Id for web services.

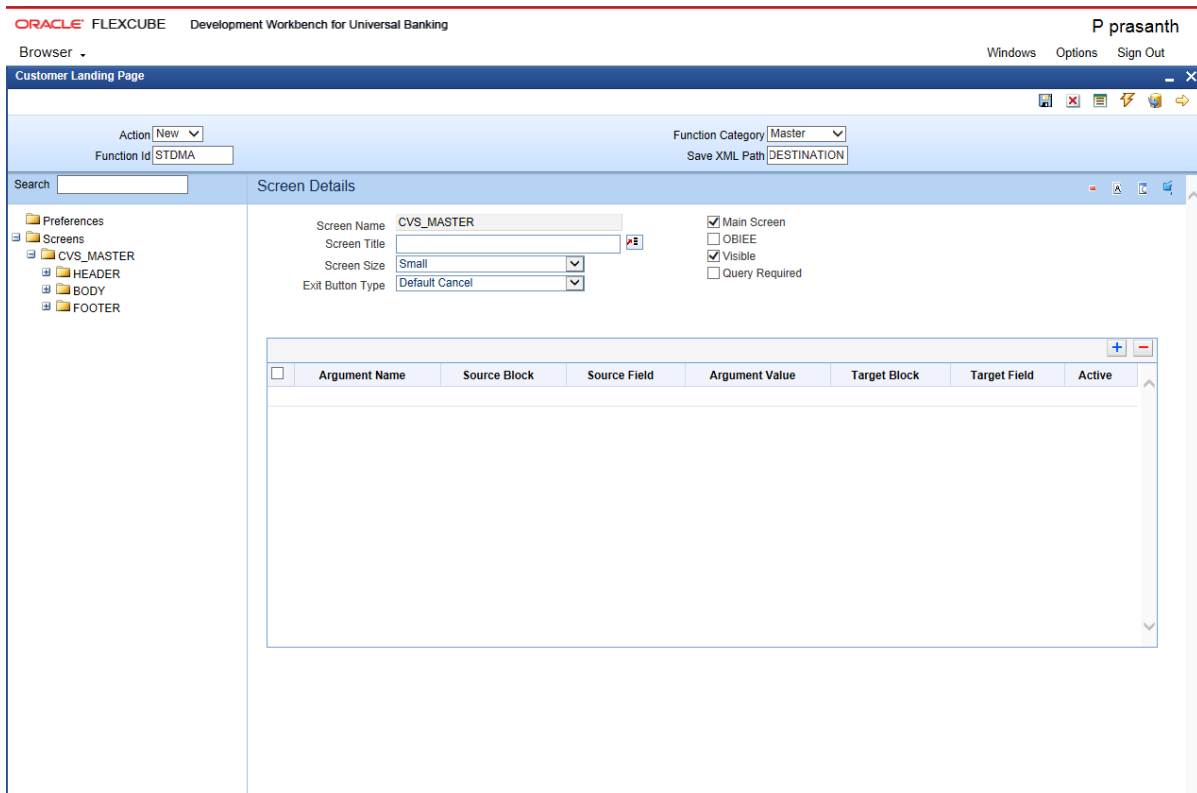
For this, he can add two new columns FTSTRONL (for summary) and FTGTRONL (for gateway operations) to the block as shown below.

3.1.2 Screens

- Right click on screens and add.
- Give the name as CVS_Master.
- Press OK.



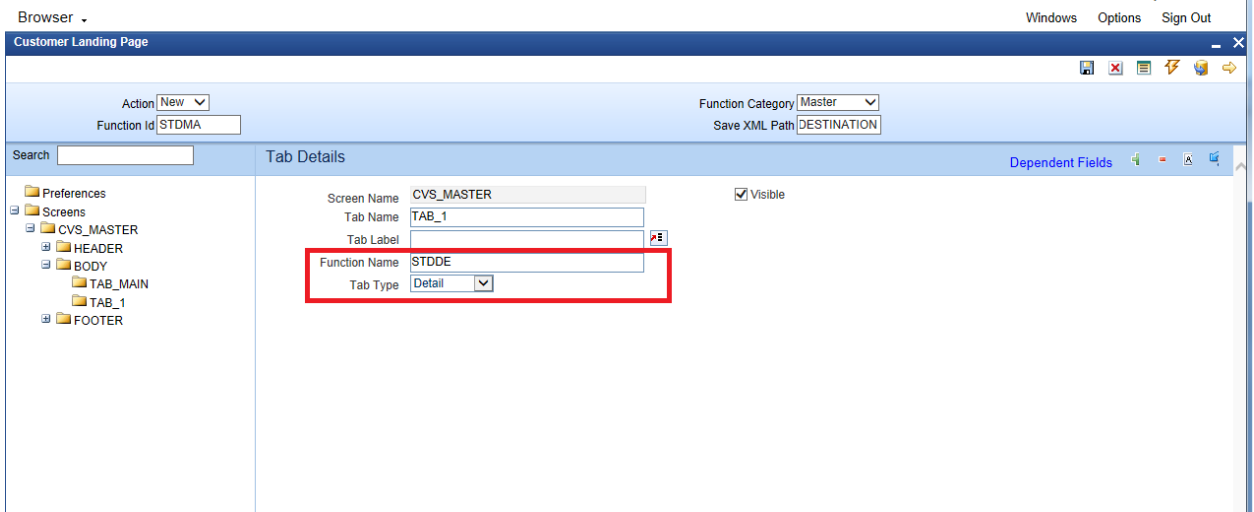
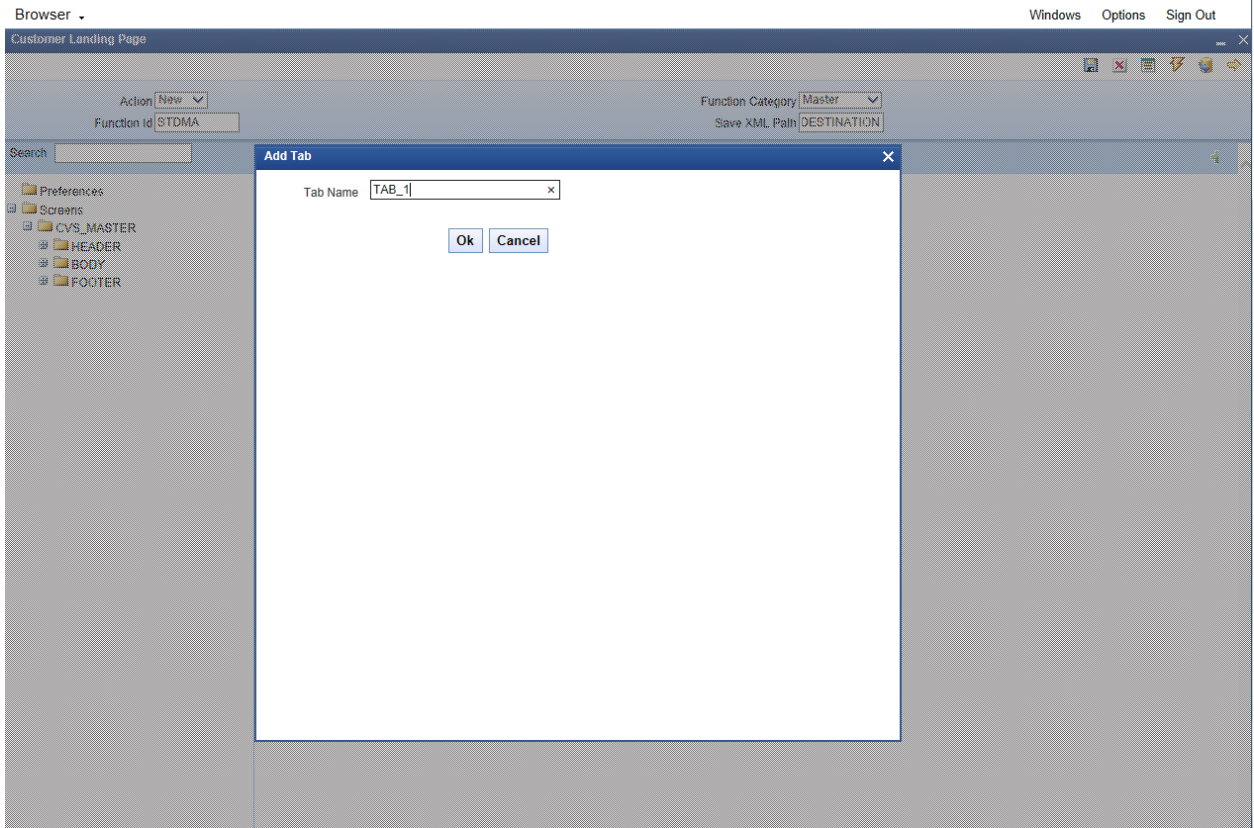
The Following UI will appear.



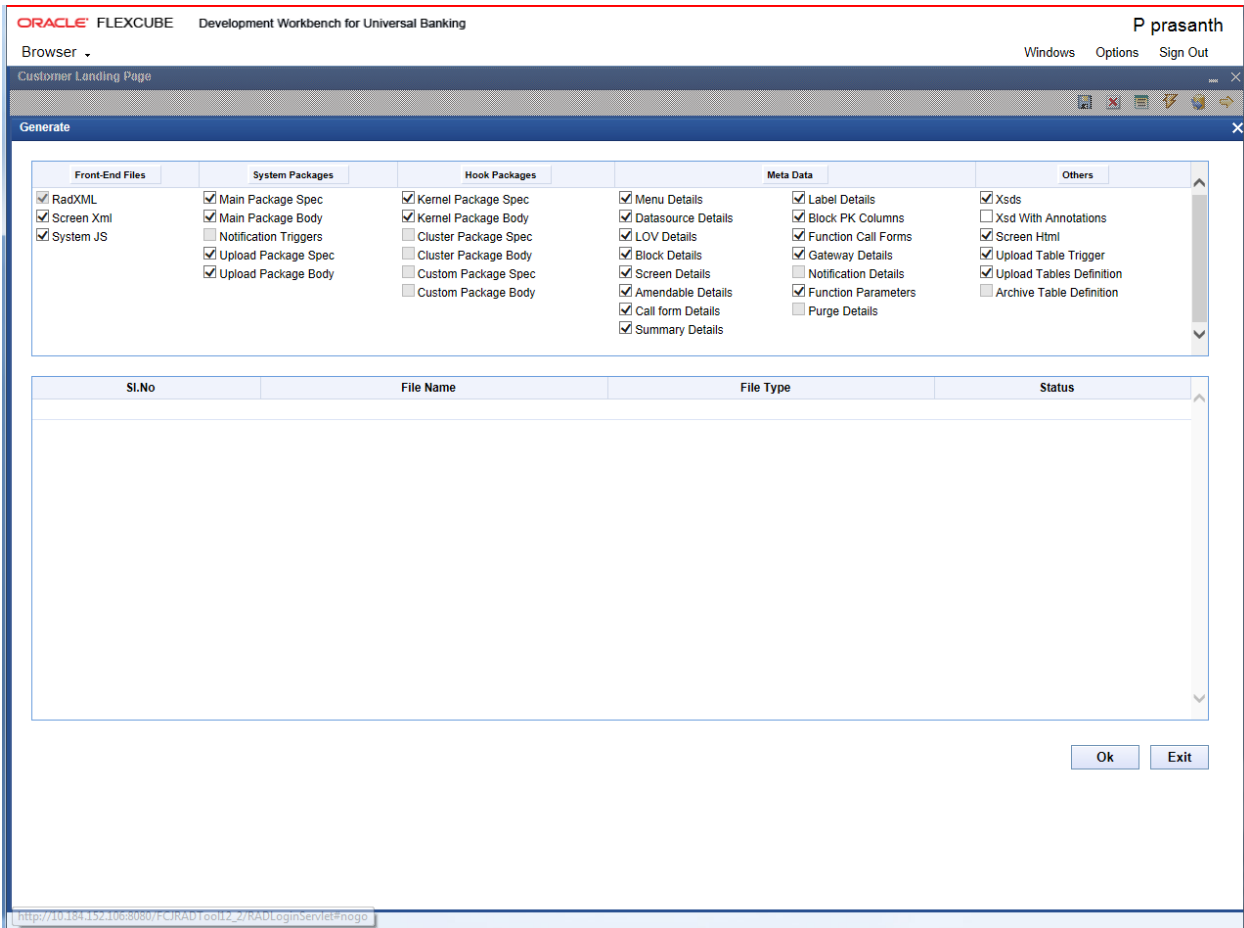
3.1.3 Adding a new Tab

- Right click on body and add.
- Give the tab name as Tab_1.
- In the Tab Details give map the function name in the function name field.
- Here it is STDDE.
- In the Tab type choose whatever you want to map here I am mapping Details.



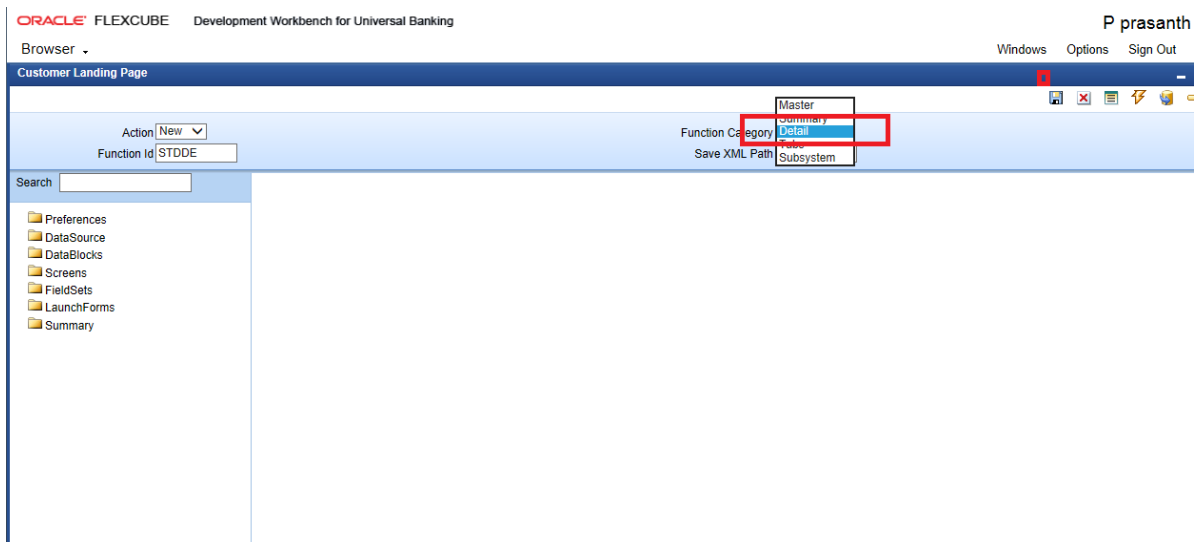


Generating Radxml and other Artifacts.



4 Detail

Function category as Detail



Module as ST in Preferences Screen

ORACLE FLEXCUBE Development Workbench for Universal Banking P prasanth

Browser - Windows Options Sign Out

Customer Landing Page

Action New
Function Id STDDE
Function Category Detail
Save XML Path DESTINATION

Search

Preferences

- Preferences
- DataSource
- DataBlocks
- Screens
- FieldSets
- LaunchForms
- Summary

Head Office Function
 Logging Required
 Auto Authorization
 Tank Modifications
 Field Log Required
 Multi Branch Access
 Excel Export Required

Module ST
Module Description Static Maintenance
Branch Program Id
Process Code
SVN Repository URL
Transaction Block Name Choose Block
Transaction Field Name Choose Field

Function Id	Module *	Module Description
<input checked="" type="checkbox"/> STDDE	ST	Static Maintenance

ORACLE FLEXCUBE Development Workbench for Universal Banking P prasanth

Browser - Windows Options Sign Out

Customer Landing Page

Action New
Function Id STDDE
Function Category Detail
Save XML Path DESTINATION

Search

Data Source Details

- Preferences
- DataSource
- CSTBS_CONTRACT_EVENT_LOG
- DataBlocks
- Screens
- FieldSets
- LaunchForms
- Summary

Data Source CSTBS_CONTRACT_EVENT_LOG

Master Yes

Relation Type One To One

Multi Record No

PK Cols CONTRACT_REF_NO-EVENT_SEQ_NO

PK Types VARCHAR2-NUMBER

Upload Table

Upload Where Clause

Parent

Relation

Where Clause

Default Order By

Type Normal

Mandatory

Adding Tables and other information. Detail screen in customer Landing page is similar to developing others Screen. For reference please follow doc.

[16-Development of Launch Forms and Others Screens.docx](#)

5 Summary

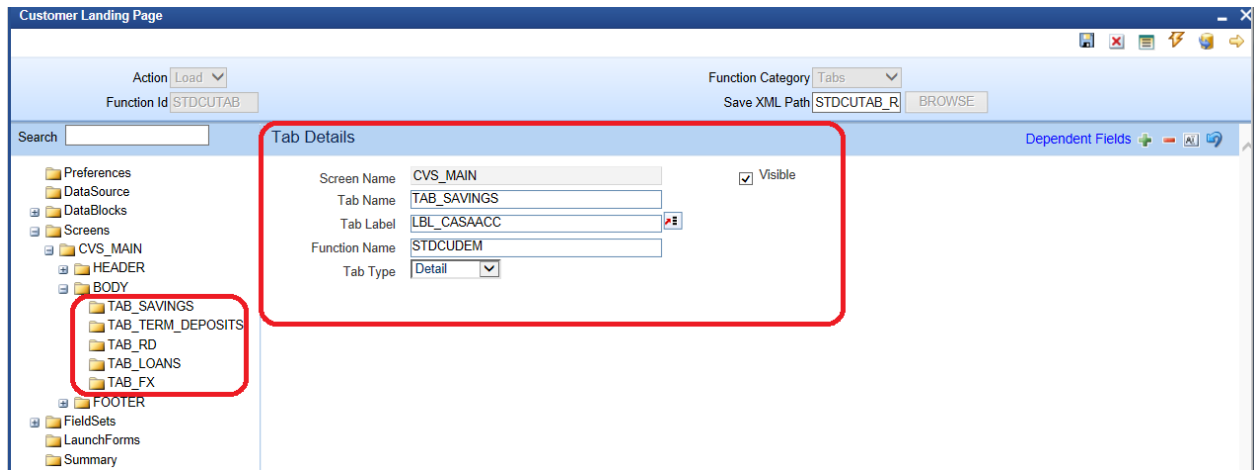
Summary screen in Customer Landing Page is similar to Summary screen in normal Function Generation.

Please follow doc as 04-Development_WorkBench_Screen_Development-I.docx

6 Tabs

Tabs screen is part of master screen, tabs screen contains group of screens in it.

Each screen is details under each tab.



7 Subsystems

The screenshot shows the 'Customer Landing Page' configuration interface. At the top, the 'Action' is set to 'Load' and the 'Function Category' is 'Subsystem'. The 'Function Id' is 'STDCUNEW'. The 'Block Field Properties' section is active, showing details for the field 'BTN_CASA_ACCNT' with the label 'LBL_CASA_ACCNT'. The 'Display Type' is 'Button' and the 'Item Type' is 'Control'. The 'Events' tab is selected, displaying a table with the following data:

Event Name	Function Name	Event Type	Button Screen	CallForm Name	Screen Name
<input checked="" type="checkbox"/> onclick		Launch Form	CVS_MAI	STDCUSAC	

This category is used to display subsystem buttons to launch screens.



Development of Customer Landing Page
[May] [2022]
Version 14.6.0.0.0

Oracle Financial Services Software Limited
Oracle Park
Off Western Express Highway
Goregaon (East)
Mumbai, Maharashtra 400 063
India

Worldwide Inquiries:
Phone: +91 22 6718 3000
Fax: +91 22 6718 3001
www.oracle.com/financialservices/

Copyright © 2007, 2022, Oracle and/or its affiliates. All rights reserved.

Oracle and Java are registered trademarks of Oracle and/or its affiliates. Other names may be trademarks of their respective owners.

U.S. GOVERNMENT END USERS: Oracle programs, including any operating system, integrated software, any programs installed on the hardware, and/or documentation, delivered to U.S. Government end users are "commercial computer software" pursuant to the applicable Federal Acquisition Regulation and agency-specific supplemental regulations. As such, use, duplication, disclosure, modification, and adaptation of the programs, including any operating system, integrated software, any programs installed on the hardware, and/or documentation, shall be subject to license terms and license restrictions applicable to the programs. No other rights are granted to the U.S. Government.

This software or hardware is developed for general use in a variety of information management applications. It is not developed or intended for use in any inherently dangerous applications, including applications that may create a risk of personal injury. If you use this software or hardware in dangerous applications, then you shall be responsible to take all appropriate failsafe, backup, redundancy, and other measures to ensure its safe use. Oracle Corporation and its affiliates disclaim any liability for any damages caused by use of this software or hardware in dangerous applications.

This software and related documentation are provided under a license agreement containing restrictions on use and disclosure and are protected by intellectual property laws. Except as expressly permitted in your license agreement or allowed by law, you may not use, copy, reproduce, translate, broadcast, modify, license, transmit, distribute, exhibit, perform, publish or display any part, in any form, or by any means. Reverse engineering, disassembly, or decompilation of this software, unless required by law for interoperability, is prohibited.

The information contained herein is subject to change without notice and is not warranted to be error-free. If you find any errors, please report them to us in writing.

This software or hardware and documentation may provide access to or information on content, products and services from third parties. Oracle Corporation and its affiliates are not responsible for and expressly disclaim all warranties of any kind with respect to third-party content, products, and services. Oracle Corporation and its affiliates will not be responsible for any loss, costs, or damages incurred due to your access to or use of third-party content, products, or services.