

# Oracle® Hospitality Hotel Property Interface IfcControl User Guide



Release 8.15.3.0  
F58399-03  
July 2023

The Oracle logo, consisting of a solid red square with the word "ORACLE" in white, uppercase, sans-serif font centered within it.

ORACLE®

Oracle Hospitality Hotel Property Interface IfcControl User Guide Release 8.15.3.0

F58399-03

Copyright ©, 2023, Oracle and/or its affiliates. All rights reserved.

This software and related documentation are provided under a license agreement containing restrictions on use and disclosure and are protected by intellectual property laws. Except as expressly permitted in your license agreement or allowed by law, you may not use, copy, reproduce, translate, broadcast, modify, license, transmit, distribute, exhibit, perform, publish, or display any part, in any form, or by any means. Reverse engineering, disassembly, or decompilation of this software, unless required by law for interoperability, is prohibited.

The information contained herein is subject to change without notice and is not warranted to be error-free. If you find any errors, please report them to us in writing.

If this software or related documentation is delivered to the U.S. Government or anyone licensing it on behalf of the U.S. Government, then the following notice is applicable:

U.S. GOVERNMENT END USERS: Oracle programs, including any operating system, integrated software, any programs installed on the hardware, and/or documentation, delivered to U.S. Government end users are "commercial computer software" pursuant to the applicable Federal Acquisition Regulation and agency-specific supplemental regulations. As such, use, duplication, disclosure, modification, and adaptation of the programs, including any operating system, integrated software, any programs installed on the hardware, and/or documentation, shall be subject to license terms and license restrictions applicable to the programs. No other rights are granted to the U.S. Government.

This software or hardware is developed for general use in a variety of information management applications. It is not developed or intended for use in any inherently dangerous applications, including applications that may create a risk of personal injury. If you use this software or hardware in dangerous applications, then you shall be responsible to take all appropriate fail-safe, backup, redundancy, and other measures to ensure its safe use. Oracle Corporation and its affiliates disclaim any liability for any damages caused by use of this software or hardware in dangerous applications.

Oracle and Java are registered trademarks of Oracle and/or its affiliates. Other names may be trademarks of their respective owners.

Intel and Intel Xeon are trademarks or registered trademarks of Intel Corporation. All SPARC trademarks are used under license and are trademarks or registered trademarks of SPARC International, Inc. AMD, Opteron, the AMD logo, and the AMD Opteron logo are trademarks or registered trademarks of Advanced Micro Devices. UNIX is a registered trademark of The Open Group.

This software or hardware and documentation may provide access to or information about content, products, and services from third parties. Oracle Corporation and its affiliates are not responsible for and expressly disclaim all warranties of any kind with respect to third-party content, products, and services unless otherwise set forth in an applicable agreement between you and Oracle. Oracle Corporation and its affiliates will not be responsible for any loss, costs, or damages incurred due to your access to or use of third-party content, products, or services, except as set forth in an applicable agreement between you and Oracle.

# Contents

Preface	vi
<hr/>	
1 General	1-1
<hr/>	
2 Install / uninstall IfcControl Software	2
<hr/>	
Install IfcControl	2
IfcControl file description:	5
Uninstall IfcControl	6
<hr/>	
3 Configure Connections	7
<hr/>	
Starting IfcControl and Initial Connection	7
Modifying a connection	9
Adding a New Connection	10
Adding Connection from remote Machines	11
<hr/>	
4 Installing Services	13
<hr/>	
Install Ifc8 as a Service	13
Configuration IfcService	17
Add Ifc8 instance to existing Ifc8 service	18
Remove from Service	20
Display Service status	20
Start Ifc Service instance	21
Stop Ifc Service	22
Upgrading Services	23
<hr/>	
5 Create New Interface from IfcControl	26
<hr/>	
Add connection	26
Define the port to be used for communication.	26
Install new IfcProcess as Service	27
Verify Ifc Service Settings	29
Complete the Installation	31
<hr/>	
6 Menu options	31
<hr/>	
IfcConnect	32
Advanced Configuration Sub-Menu	33
IfcProcess	34
View	34
SslCert. Server/Client	35

<b>7 Working with IfcControl form</b>	<b>35</b>
Understanding IfcControl connections	35
Status examples	37
Connect to an IFC instance	39
Start Connection	39
Stop Connection	41
Start / Stop Individual Interfaces	42
Start Individual Interface	43
Stop Individual Interface	43
Start / Stop Individual Remote Interfaces	43
Start Individual Remote Interface	44
Stop Individual Remote Interface	44
Start / Stop Services	45
Start Service	45
Stop Service	46
Start A Remote Service	46
Stop A Remote Service	47
IfcProcess options	48
Re-Init	48
Configuration	48
Enable Config mode	49
Simulation	49
Database Swap	49
IfcProcess and View options on a remote Machine	49
View options	50
Show LogBrowser	50
Show IfcControl log	50
Show Hidden IfcConnects	51
About	52
<b>8 Creating Secure connections (SSL certificates)</b>	<b>53</b>
Generate Certificates	53
Add certificate to the local IfcControl	56
Adding a Certificate to IFC8.Net Instance	59
<b>9 Installing IfcControl on remote PC</b>	<b>60</b>
Configure the remote IfcControl:	61
Requirement:	61
Configuration:	62

10 Multiple IfcControl instances	67
Multiple IfcControl directories:	67
Multiple IfcControl configuration files	68

---

# Preface

## Purpose

This guide explains the common handling of the Ifc8.Net IfcControl module.

## Audience

This document is intended for system administrators, support and users familiar with the Hotel Property Interface application IFC8

## Customer Support

To contact Oracle Customer Support, access Customer Support Portal at the following URL:

<https://iccp.custhelp.com>

When contacting Customer Support, please provide the following:

- Product version and program/module name
- Functional and technical description of the problem (include business impact)
- Detailed step-by-step instructions to re-create
- Exact error message received
- Screen shots of each step you take

## Documentation

Oracle Hospitality product documentation is available on the Oracle Help Center at

<http://docs.oracle.com/en/industries/hospitality/>

## Table 1 Revision History

Date	Description
May 2022	<ul style="list-style-type: none"><li>• Initial Publication</li></ul>
January 2023	<ul style="list-style-type: none"><li>• Win 11 Support</li><li>• Changes GUI Screenshots to reflect new GUI</li></ul>
July 2023	<ul style="list-style-type: none"><li>• Added Service Update automations to Documentation</li></ul>

# 1 General

IFC8 is used as the primary Property Interface application with Oracle Suite8 PMS and with Oracle Cloud PMS, OPERA PMS V5 (on-Premise & Hosting).

IFC8 is intended to be installed at the customer site for communication to certain external systems that are utilized by the site.

The IfcControl application is part of the Ifc8 version and provides option allowing display the status of current installed IFC8 instances – as application or as service in one panel. It also manages the IFC8 service installation, configuration and maintenance.

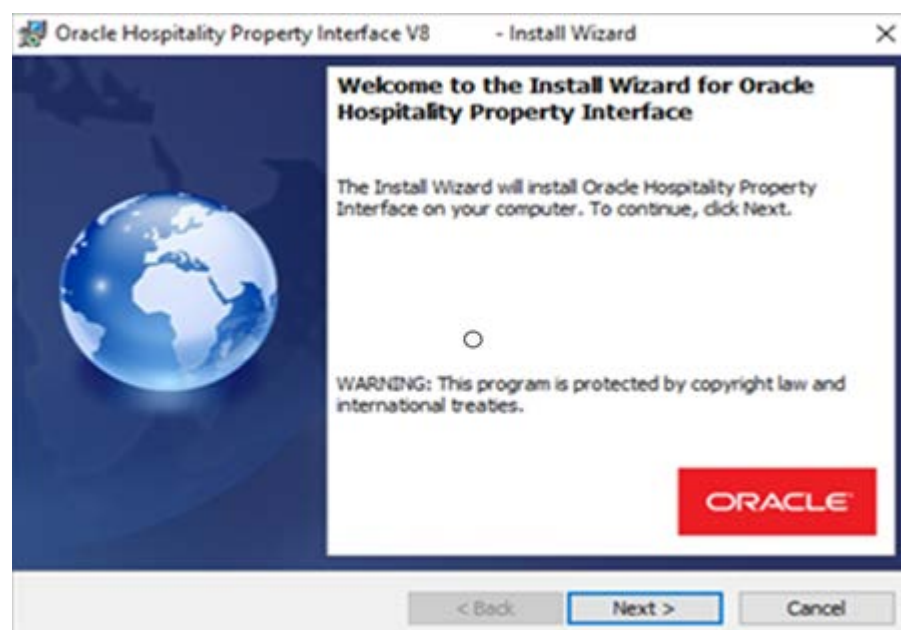
This document will outline the common configuration and handling of the IfcControl application.

## 2 Install / uninstall IfcControl Software

### Install IfcControl

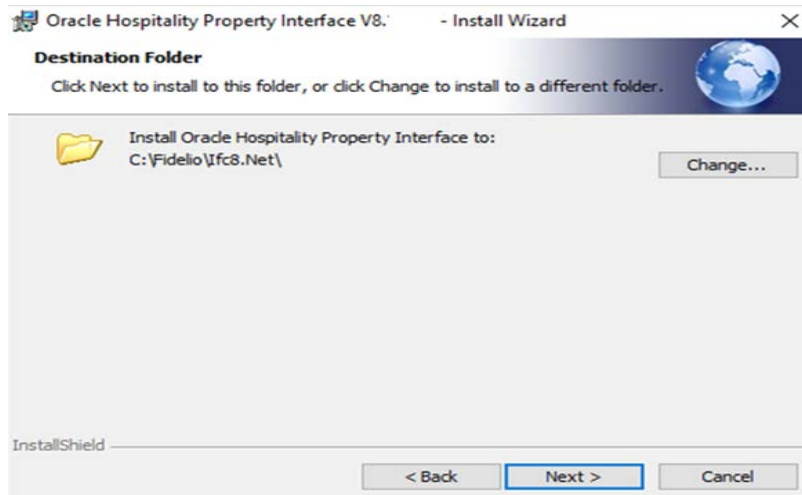
The IfcControl application is part of the IFC8.Net installer.

Run the IFC8.Net installer

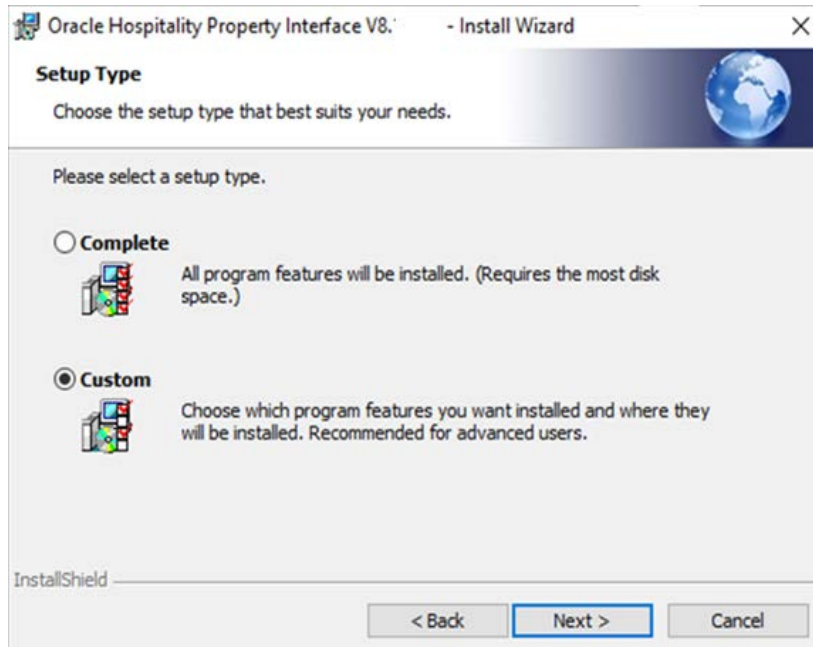


Select Next

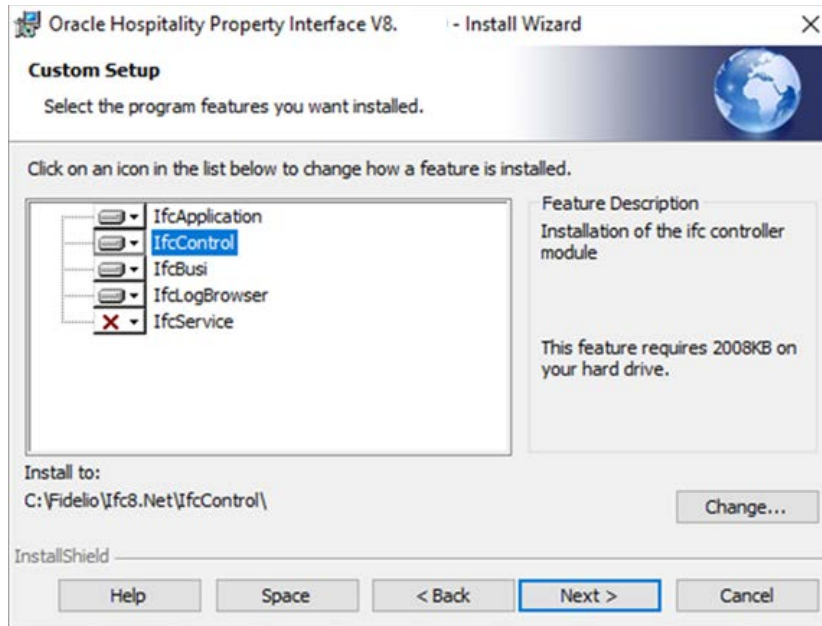




Select Next



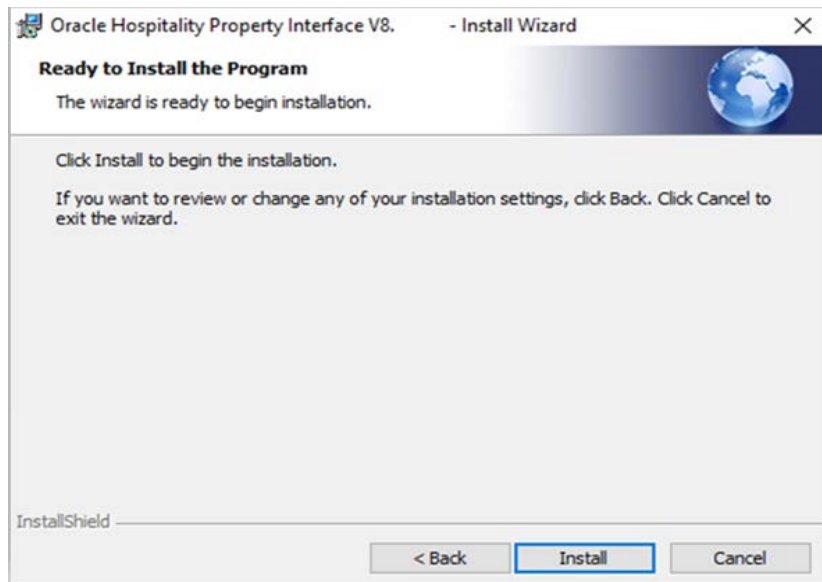
Choose Custom and Select Next



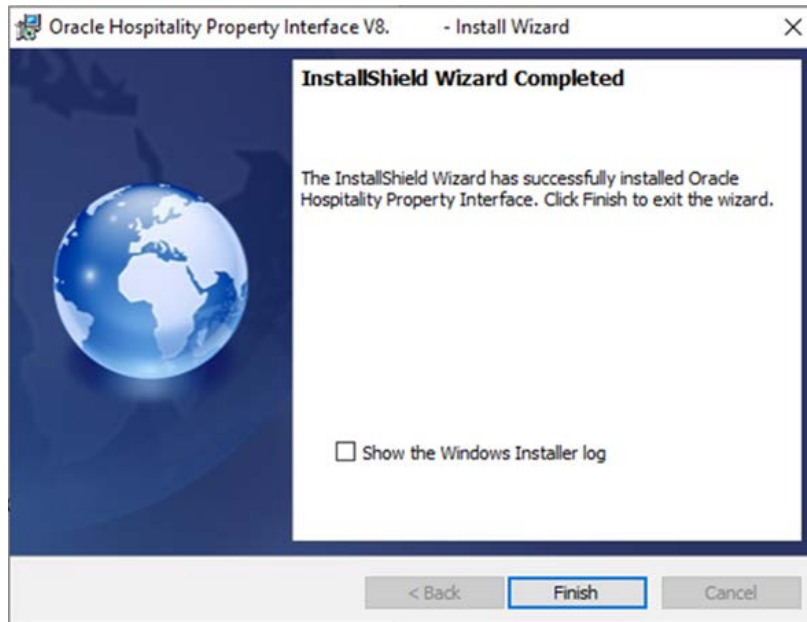
Option IfcControl is available for installation by default.

IfcControl will be installed to C:\Fidelio\Ifc8.Net\IfcControl folder

Select Next



Select Install to proceed with the installation



Select Finish to close installer

After installation you find the related files in c:\Fidelio\lfc8.Net\lfcControl folder:

Name	Date modified	Type	Size
<input checked="" type="checkbox"/> lfcControl.exe	10/05/2022 07:23	Application	126 KB
lfcControl.dll	10/05/2022 07:23	Application exten...	2,191 KB
lfcSuite8Wrapper.dll	10/05/2022 07:23	Application exten...	39 KB
Interop.FidelioDatabase.dll	10/05/2022 07:23	Application exten...	24 KB
Interop.fidelioerror.dll	10/05/2022 07:23	Application exten...	14 KB
Interop.fidelioGlobalStatus.dll	10/05/2022 07:23	Application exten...	46 KB
Interop.FidelioIfcAction.dll	10/05/2022 07:23	Application exten...	16 KB
Interop.FidelioPostings.dll	10/05/2022 07:23	Application exten...	27 KB
System.Data.Odbc.dll	10/05/2022 07:23	Application exten...	259 KB
System.Diagnostics.EventLog.dll	10/05/2022 07:23	Application exten...	129 KB
System.DirectoryServices.AccountMa...	10/05/2022 07:23	Application exten...	269 KB
System.DirectoryServices.Protocols.dll	09/05/2022 14:54	Application exten...	136 KB
System.Management.dll	10/05/2022 07:24	Application exten...	284 KB
System.ServiceProcess.ServiceControll...	10/05/2022 07:24	Application exten...	60 KB
lfcControl.deps.json	10/05/2022 07:09	JSON File	5 KB
lfcControl.runtimeconfig.dev.json	02/05/2022 22:27	JSON File	1 KB
lfcControl.runtimeconfig.json	10/05/2022 07:09	JSON File	1 KB
lfcControl.xml	11/05/2022 10:32	XML Document	3 KB

lfcControl file description:

<b>File Name</b>	<b>Description</b>	<b>Notes</b>
IfcControl.exe.config	Mandatory config file	Do not delete or change
IfcControl.dll	Data Link Library	Do not delete or change
Interop.xxx.dll	Mandatory files	Suite8 only (will always be deployed)
System*.dll	Mandatory files	Additional Libraires
IfcControl.xml	Mandatory files	Configuration file

## Uninstall IfcControl

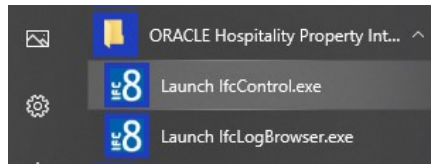
Use the Ifc8.Net installer to uninstall the IfcControl application

After deinstallation the configuration file IfcControl.xml will remain in the directory!

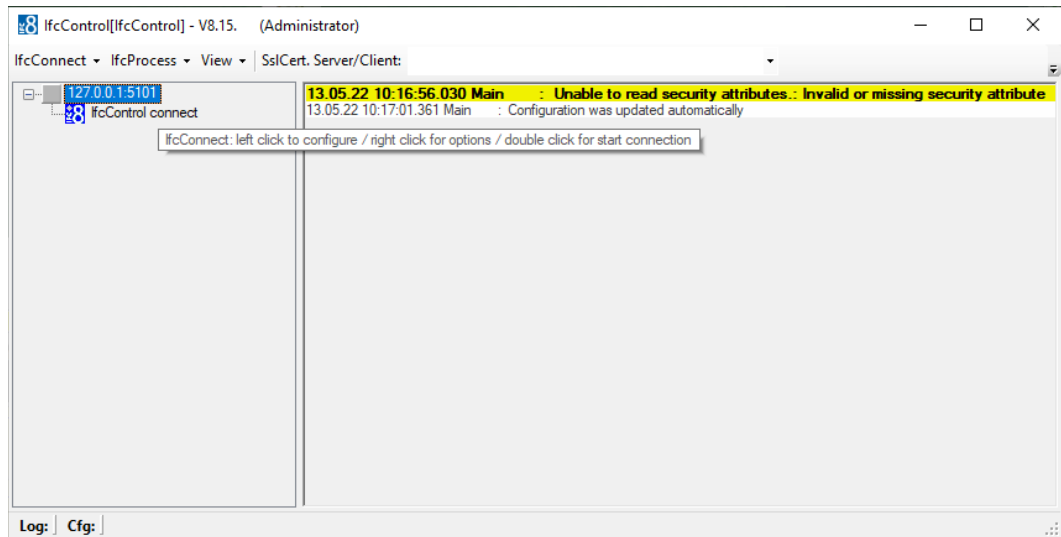
# 3 Configure Connections

## Starting IfcControl and Initial Connection

Execute IfcControl.exe from out the \\fc8.Net\IfcControl folder  
or via Windows Start Menu \ ORACLE Hospitality Property Interface folder

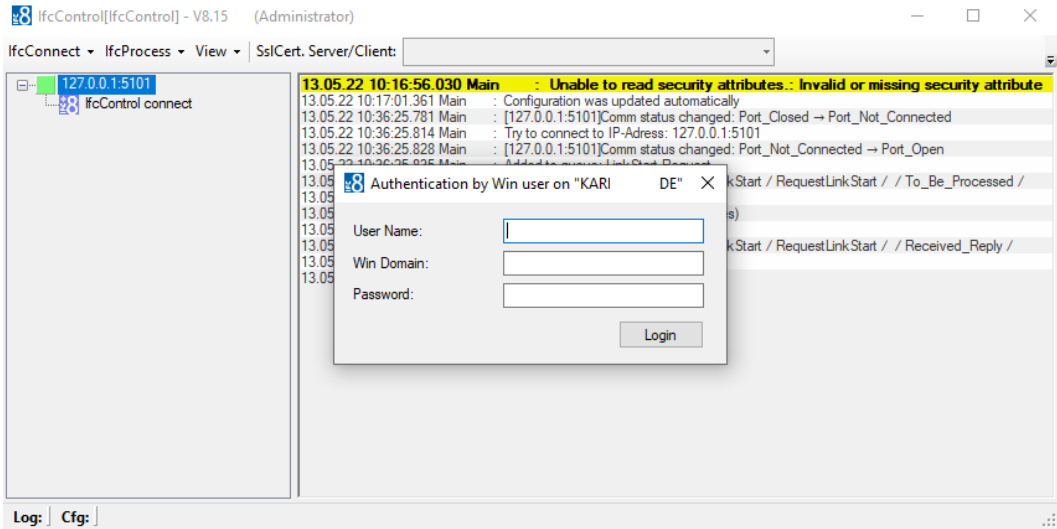


When first starting the IfcControl Program you will be presented with a blank canvas,  
Offering a default connection, Local Machine (127.0.0.1) and Default Port (5101).

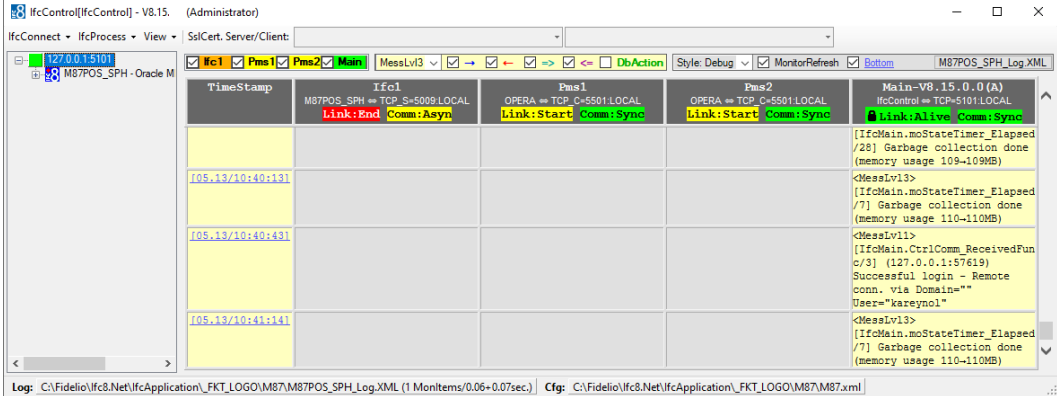


If there is an IFC8 configured with the default port up & running you can start the connection by a double-click.

A new form will appear requesting the input of your Windows credentials (Win User).



Once the credentials are correctly entered the Ifc Forms will display.

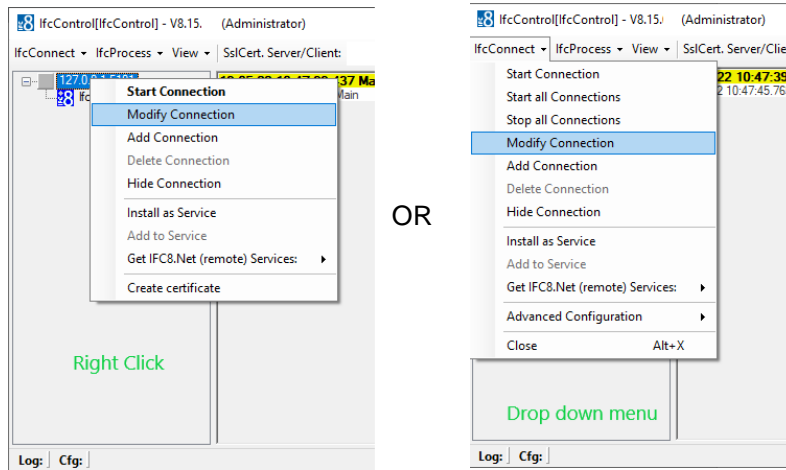


# Modifying a connection

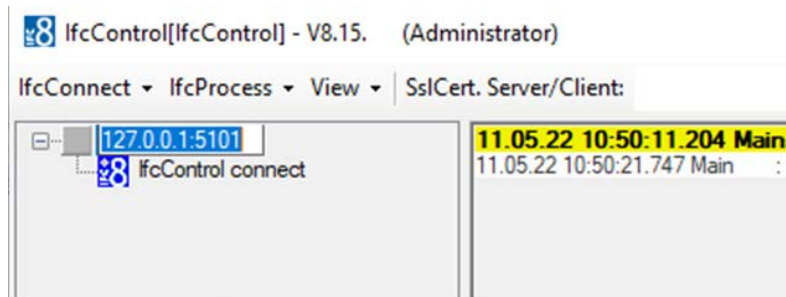
If no IFC8 connections exist with a default port or you are connecting to a remote machine you will need to modify the default connection offered.

To do this right click on the existing entry and select Modify Connection

Alternatively select Modify Connection from the Drop-Down Menu:

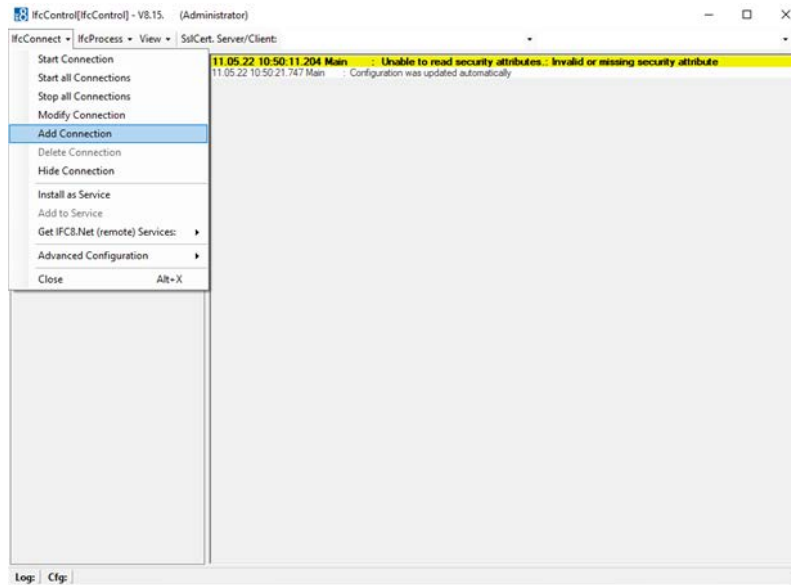


In either scenario a configuration screen will appear where you can adjust the IP Address or Port accordingly. IP Address and port are separated by a colon ( : )



# Adding a New Connection

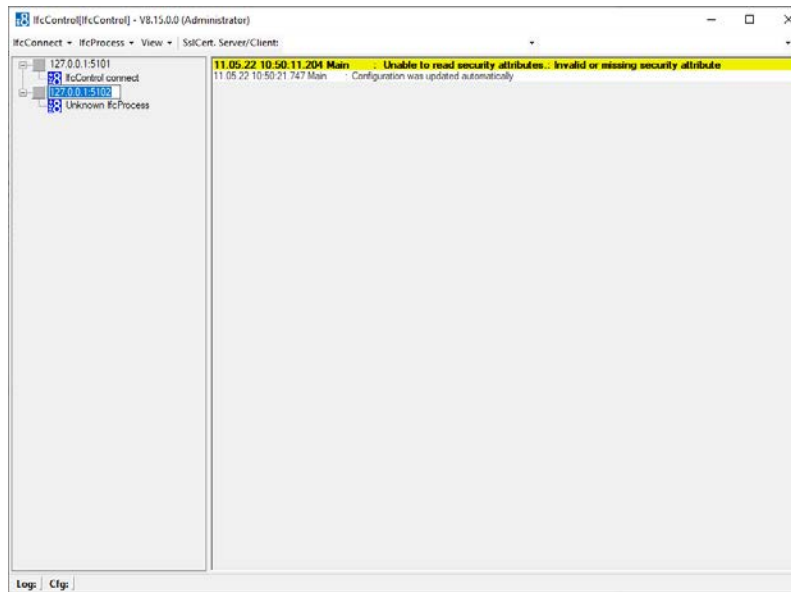
Select Add Connection from the IfcConnect drop down menu



The proceed to enter the IP Address and port of the IfcControl Object to connect to.

Port and address are separated by a colon ( : )

The Port must correspond to the Port configured in Ifc8.NET MAIN Object of the Instance you wish to connect to.

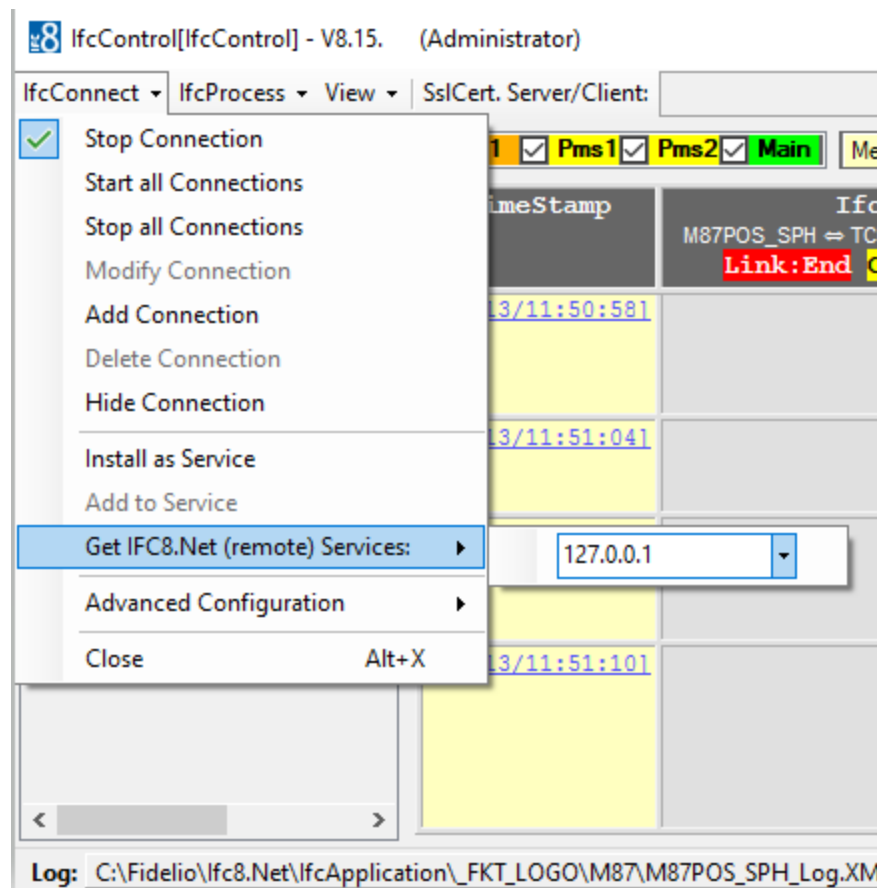




# Adding Connection from remote Machines

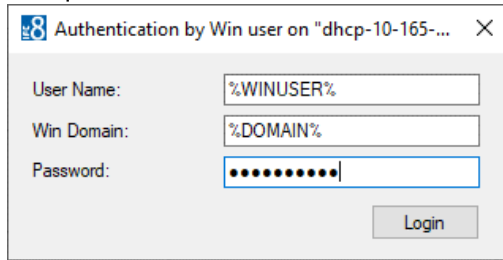
To add connection form remote machines, we have two Possibilities

- 1.) As a simple connection using the drop-down menu as explained above in the add [new connection](#) section.
- 2.) Retrieving the Ifc8 Services on a remote Machine. This is done via the drop-down menu. Select the Get IFC8.Net (remote) Services Option:



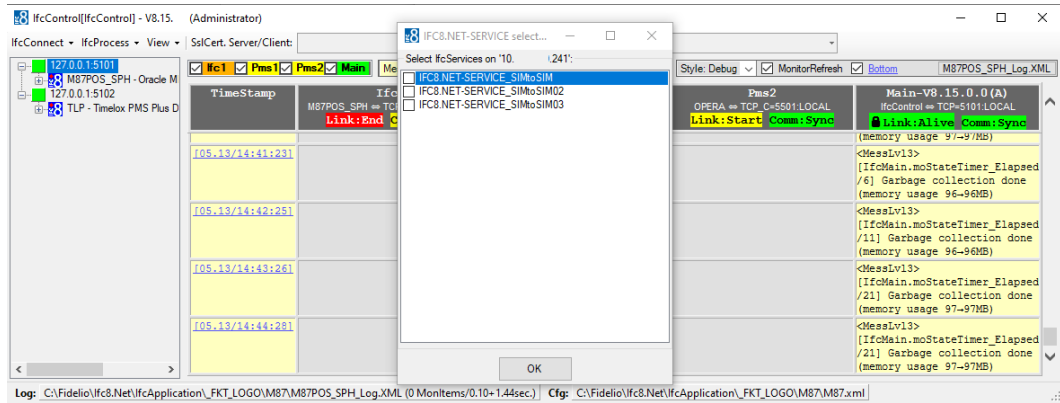
Here the IP Address of the remote Machine is entered and confirmed by enter ↵

A request for credentials for the other Machine will pop up.



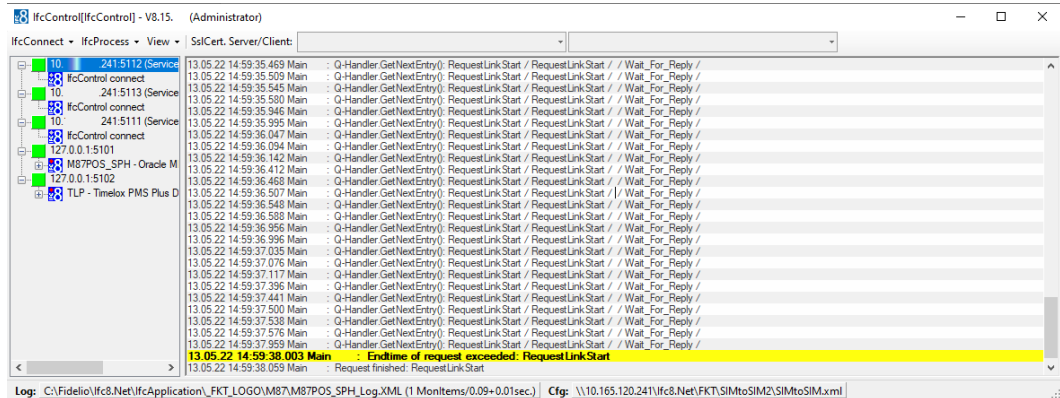
This may take some time depending on your Network / Domain structure.

When the Authentication is successful a screen will offer the services installed on the remote Machine for selection.



Mark the Ifc8 Services you wish to add to your IfcControl Configuration and select OK.

The Ifc8 Connections to the remote Services will then be available on the IfcControl form.

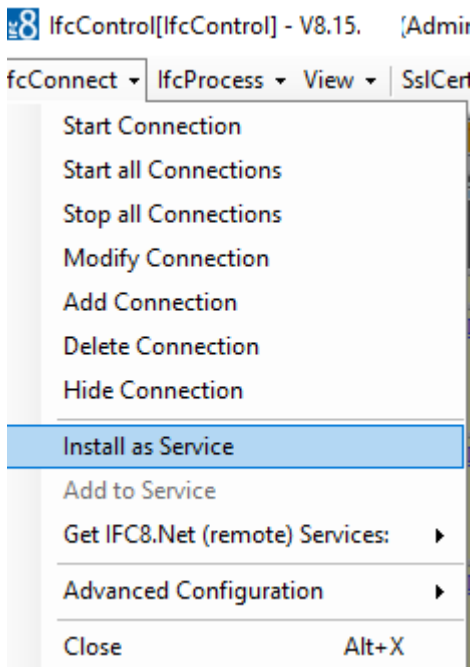


# 4 Installing Services

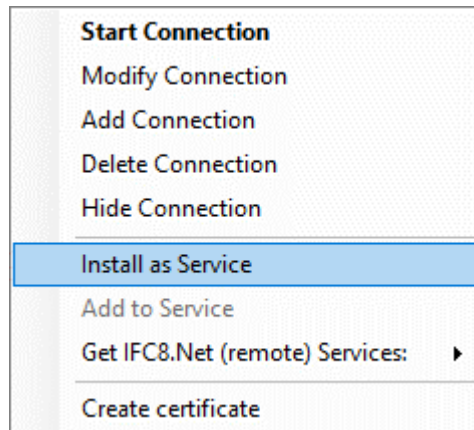
If this is the first time you are Installing Services with Ifc8.Net 8.15.x please read all the documentation pertaining to Services before proceeding. In Particular the handling Section, to ensure any choices to be made are done so on an informed basis.

## Install Ifc8 as a Service

To Install Ifc8 as a Service mark the Ifc8 connection of the Interface to be installed as a service. From the drop-down menu or by right click select.

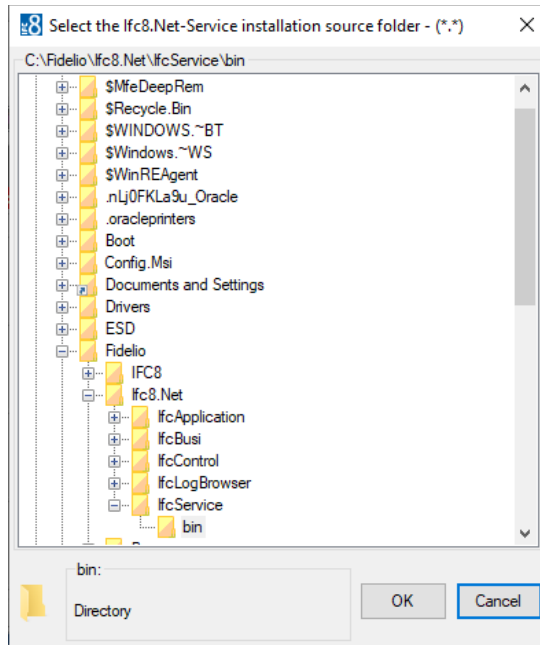


OR



The first step will be to confirm / indicate where the bin sub-directory of the services directory is located. The default would be %fidelio\Ifc8.Net\Services\Bin

If it is located somewhere else (Non-Standard Installation), it should be linked in this step.

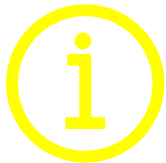
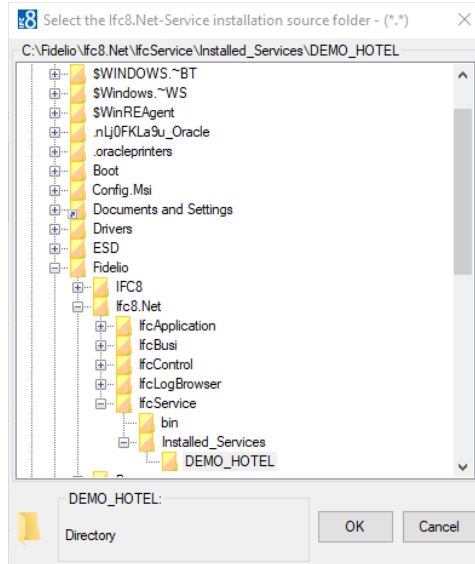


Mark the Bin Directory and select OK.

Next step is to indicate in which directory the Services are to be installed.

Recommendation is to have a “Installed Services” Directory where each individual service is installed in its own sub-directory. The Sub-Directory should carry a unique clear name. Either of the FKT\_LOGO, HOTEL, MACHINE this depends on if you wish to group Ifc8.Net Instances under one Service or not and if so according to which criteria.

Here the installation will group all Ifc8.Net Instances form one Property “Hotel Demo” together.



Ifc8.Net offers the ability to configure multiple Ifc8.Net Interfaces under one Service.

It is therefore recommended that only one Service be installed per machine or Property.

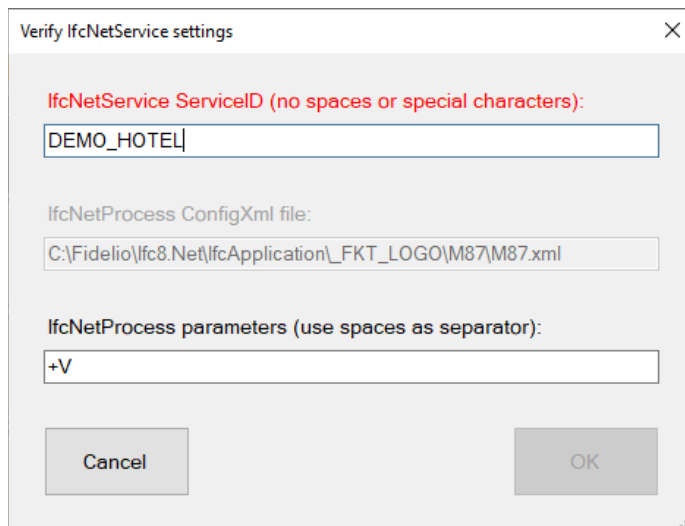
In this example the Services will be installed under  
 \Fidelio\Ifc8.Net\IfcService\Installed\_Services\Demo\_Hotel

A directory created using the ‘Make New Folder’ button.

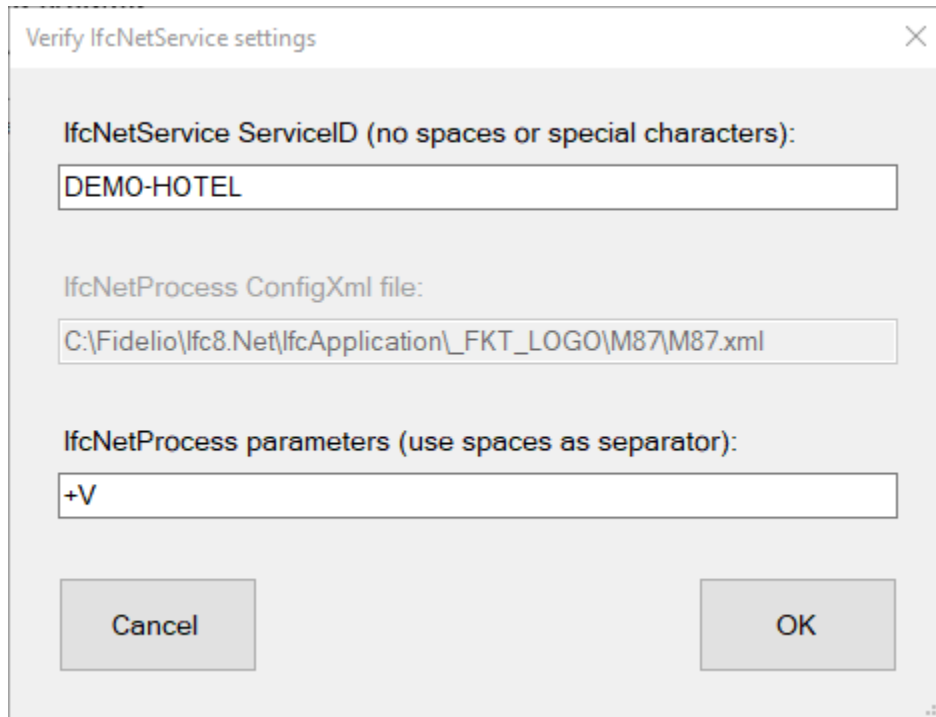
**What happens in the background:**

IfcControl will copy the IfcService files from the IfcService\bin folder into the new folder you created.

Once the directory is defined, the Service Name and parameters need to be entered.



Please Note the form will not allow you to proceed with an invalid entry.



**IfcNetService Service ID:**

Freely definable using NO special characters except for a dash / hyphen “ - “

**IfcNetProcess parameters:**

**" +A "**

**Start All Connections Automatically**

This option will start all connections associated with this service automatically

**" +C "**

**Start in Configuration Mode**

IFC8 will start in 'Configuration Mode' and will not attempt to connect to the PMS (and subsequently not to a vendor system).

**" +V "**

**Pack IHST Table and rebuild IDR V and IWKC views  
For Suite8 PMS Interface only!**

Added functionality into IFC8 to rebuild all Interface related views.  
To activate this, please add a "+V" to the command line:

This option will as well pack IHST depending on the settings in IDR V and IWKC.

If the Service is intended for an OPERA / CLOUD PMS Installations, please remove if unwanted.

# Configuration IfcService

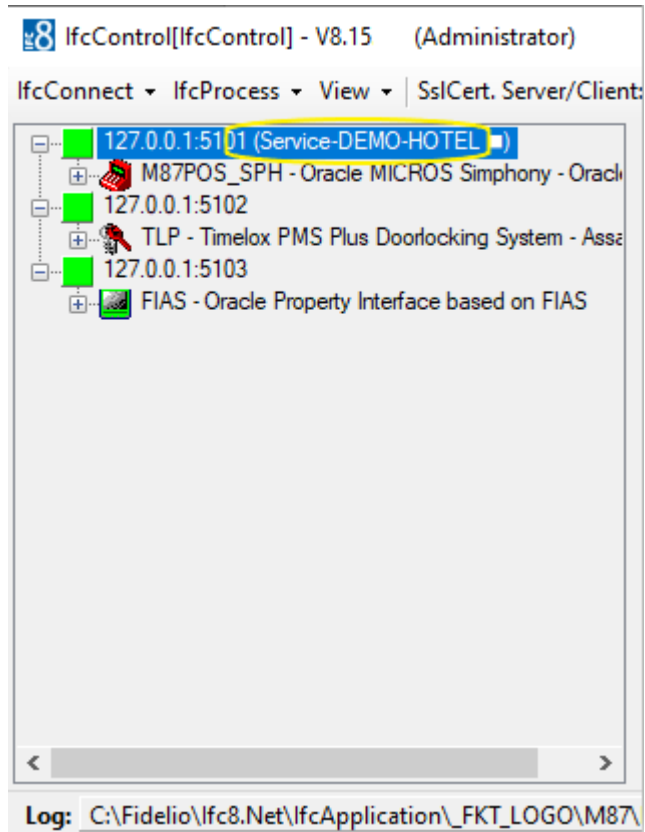
IfcControl module offers the option to configure Ifc8instances as service or remove from an installed service.

It is also possible to maintain Ifc8.Net services by starting and stopping the service.

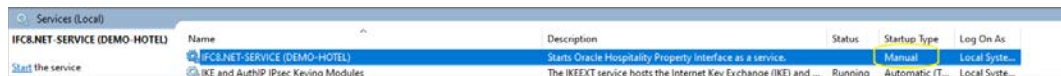
Select OK to continue

The Service will now be installed.

Once done the IfcControl shows the connection being installed as service with updated connection name



In the Windows Services list the IFC8NET-SERVICE is now visible.



**Note:** The service will be installed with StartupType = **Manual** by default.

Please ensure to change this to **Automatic** afterwards.

## Add Ifc8 instance to existing Ifc8 service

As previously stated, it is possible to combine multiple Ifc8 instances into one Ifc8 service.

This can be done when e.g., multiple Ifc8 instances of multiple Hotel properties run on the same PC and shall run as a service.

One can define one Ifc8 service containing all Ifc8 instances for one Hotel property, or One Machine, the logic of which Interfaces are combined is freely definable.

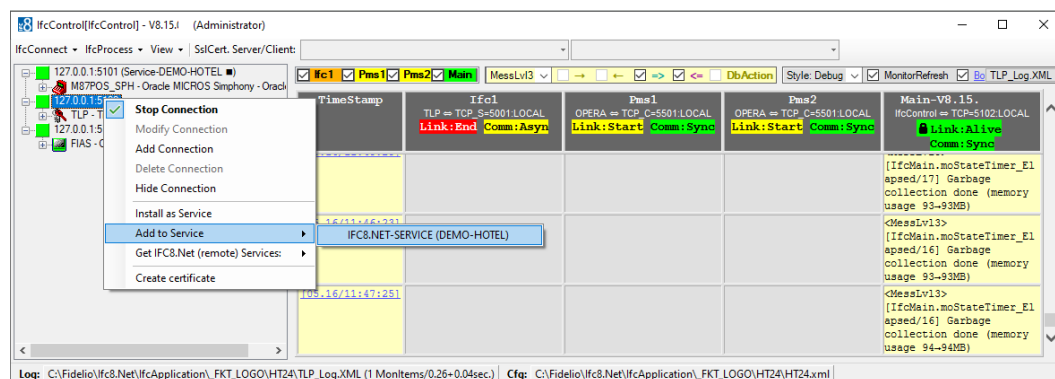
It is also possible to define One Service for One Interface

Mark the Ifc8 instance to add to a service

Select IfcConnect menu and choose Add to Service

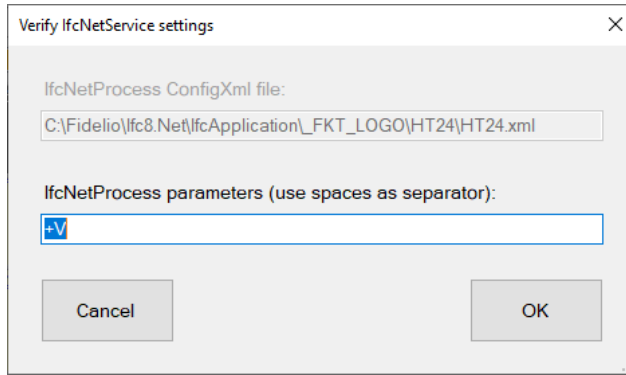
or right click marked Ifc8 instance and choose Add to Service.

The menu now offers the service the instance can be added to

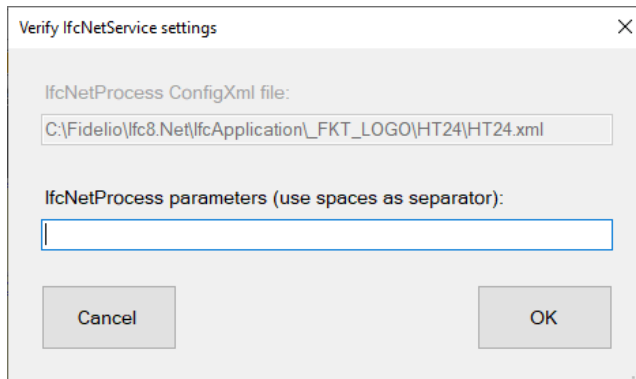


Select the desired Service and a new form will open





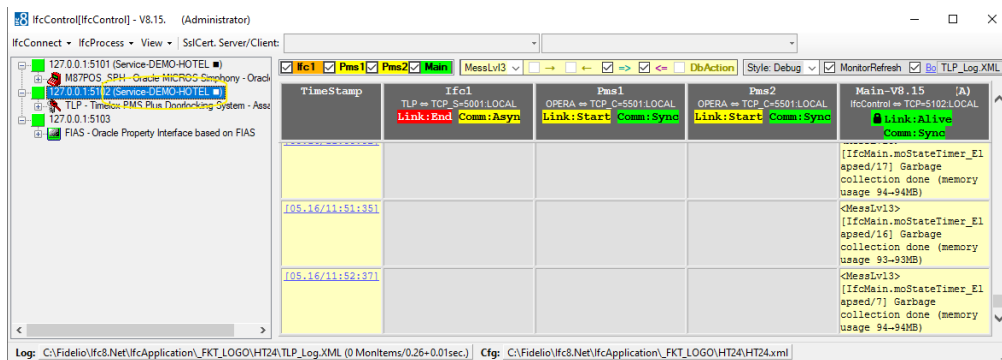
Enter the optional start parameter as required



Press OK to confirm adding to service

Press Cancel to go back.

After pressing OK IfcControl will add the Ifc8 instance to the chosen Service



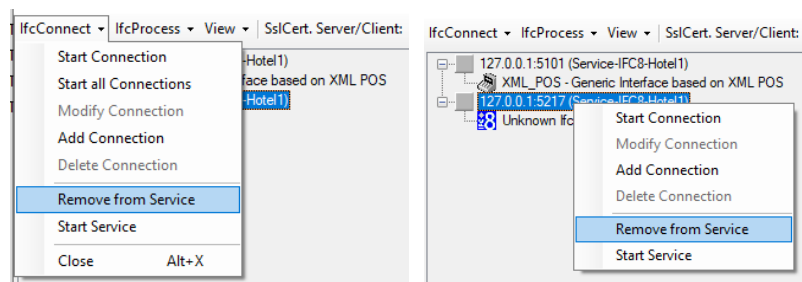
# Remove from Service

In order to remove an Ifc8 instance from an IfcService perform following steps:

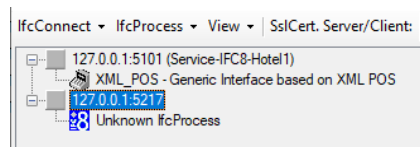
Mark the Ifc8 instance to remove from service:

Select IfcConnect – Remove from Service

or right-click the marked Ifc8 instance – Remove from Service



Once clicking on this menu item, the Ifc8 instance will be removed from the Service.



As there is no warning message, ensure to only click on Remove from Service when really desired!

# Display Service status

IfcControl will display and icon showing the current Service Status.

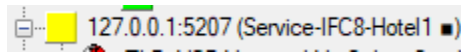
It can display if the Ifc Service instance is started, stopped or paused.

## Ifc Service status

Icon	Description
▶	Status Service started / running

- 
- Status Service stopped
  - || Status Service paused
- 

The status icon is displayed at the end of the lfc instance name



 **NOTE:**

Even the lfc Service is in status started / running it does not mean that the linked lfc process is also started and running.

## Start lfc Service instance

After installation of the lfc service instance the user can now start the service via lfcControl.

For starting or stopping the IFC8 service no lfcControl connection to the related lfc8 instance is necessary.

Mark one lfc instance of the lfcService to start

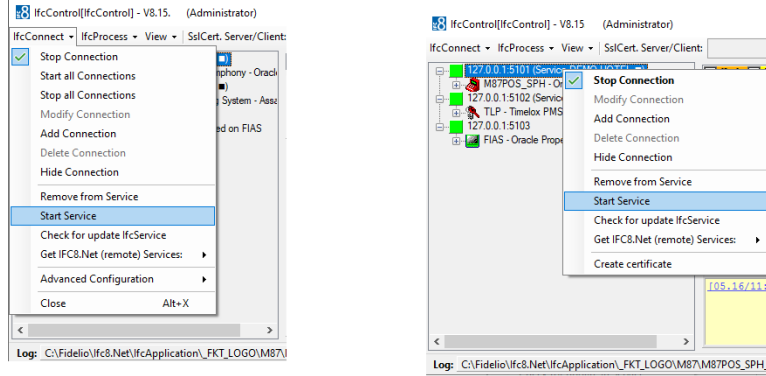
Select lfcConnect menu option or right-click on the marked connection

Select Start Service

Via lfcConnect

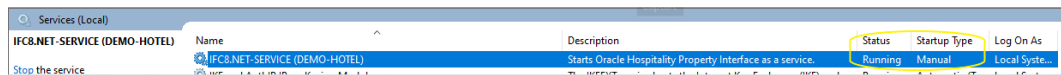
OR

Via Right Click



The Service will start.

Status can be checked in Windows Services list:

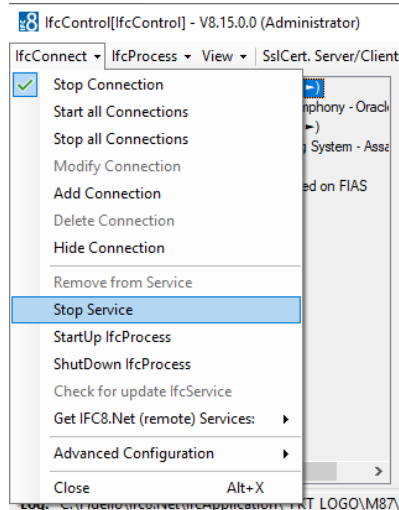


## Stop Ifc Service

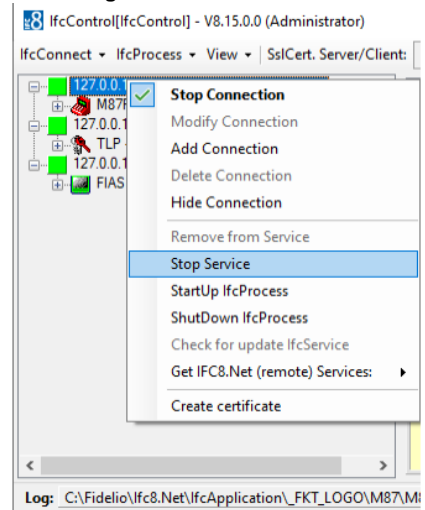
To stop a IFC8 service via IfcControl

- Mark the Ifc8 Service to stop
- Select IfcConnect menu option or right-click on the marked connection
- Select Stop Service

### Via IfcControl



### Via Right Click



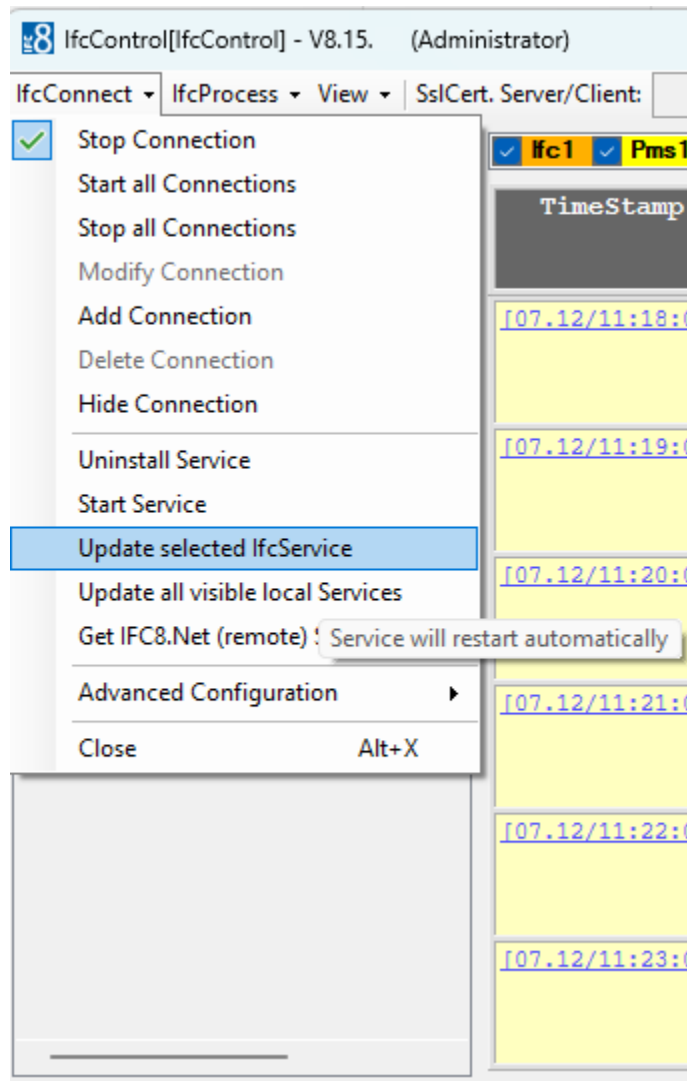
The Service will stop.

Status can be checked in Services list:



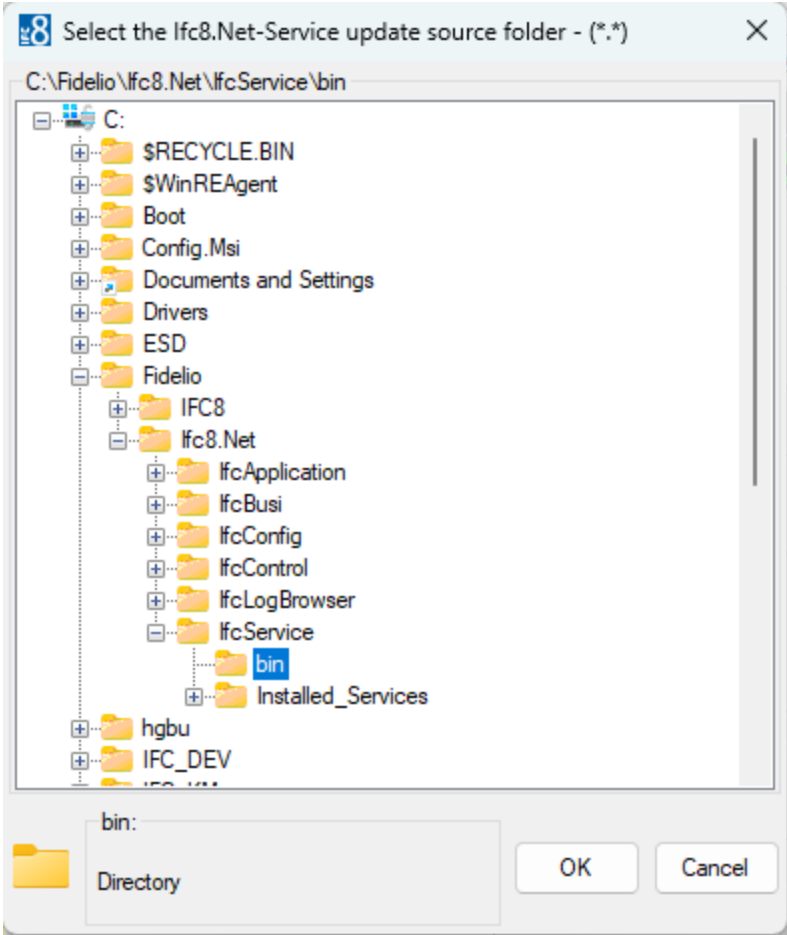
# Upgrading Services

IfcControl can upgrade local Services after a general IFC8 software Upgrade

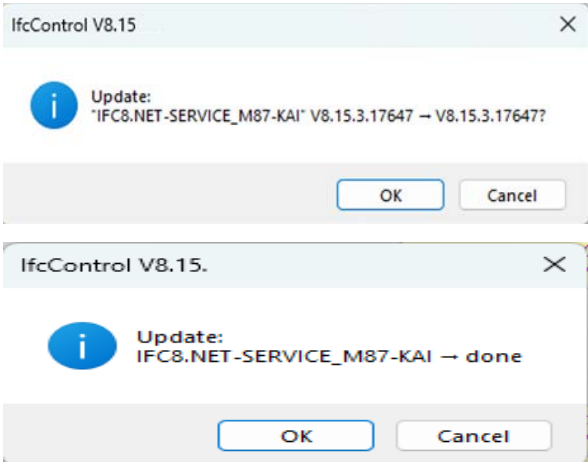


To do this simply select the Update Selected IfcService for a Singular Service or Update all Visible Services.

Then select the source bin to update from:



And IfcControl will update the service accordingly.



The IfcControl Program will then:

- Stop the Service
- Update the Service
- Update the corresponding XML Configuration File
- Restart the Service

In the case that one selects update all visible Services this will be done sequentially. In other words, first service A, then Services B etc. So, to cause the least disruption possible.



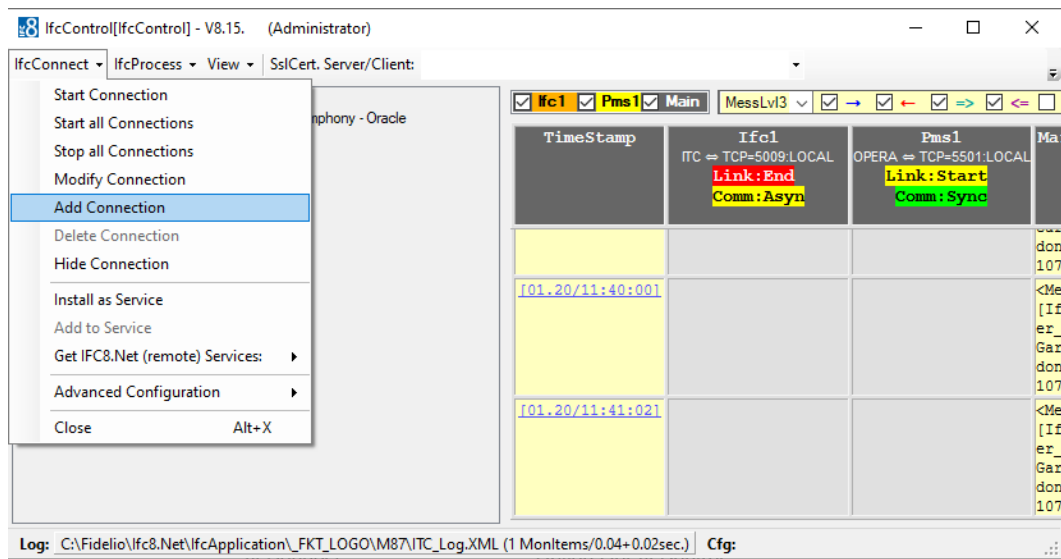
Only Visible Services will be updated!

Visible is a local Service (This Machine) that is running.

# 5 Create New Interface from IfcControl

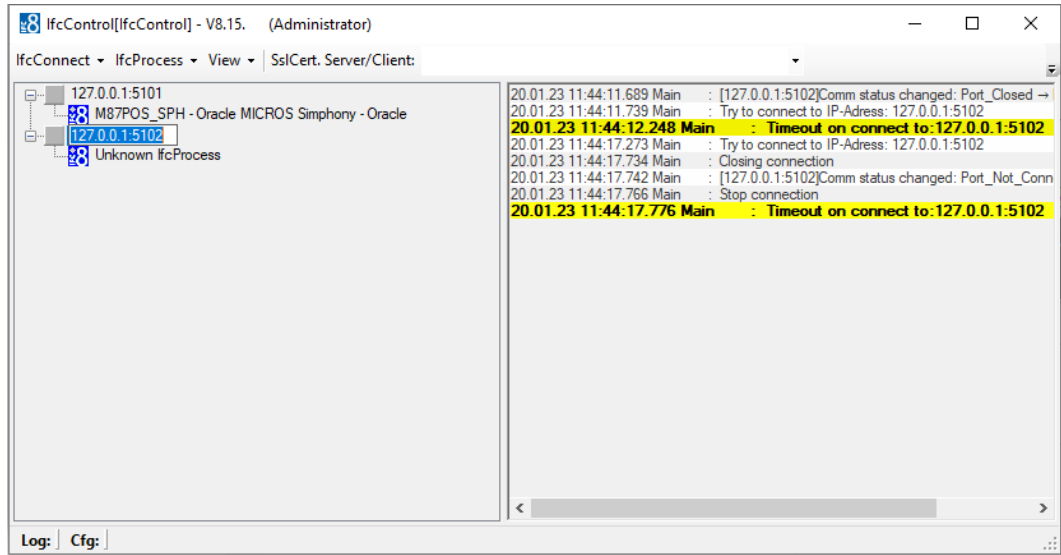
It is possible to create a new Interface from scratch out of the IfcControl Program.  
Follow the following steps.

## Add connection



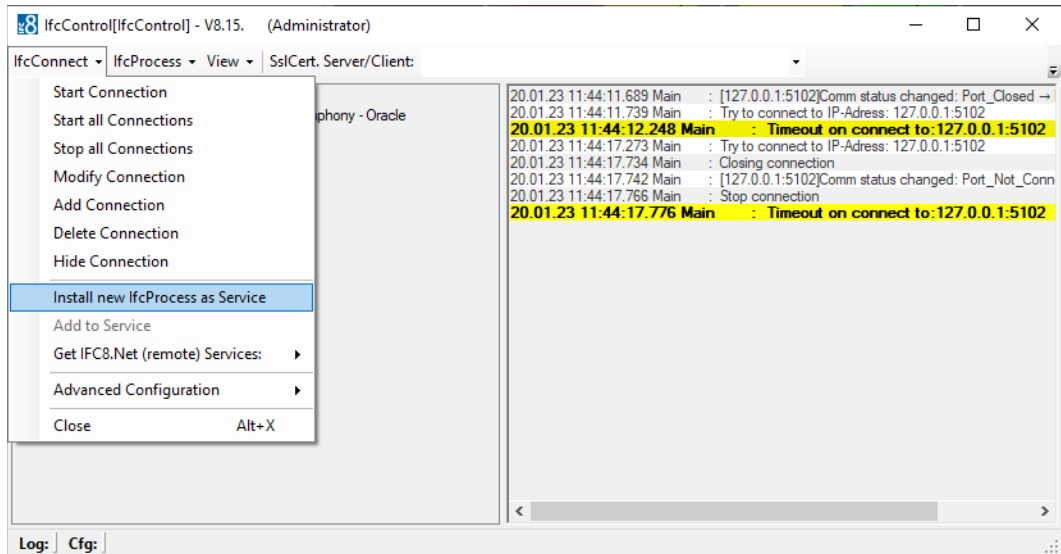
Define the port to be used for communication.



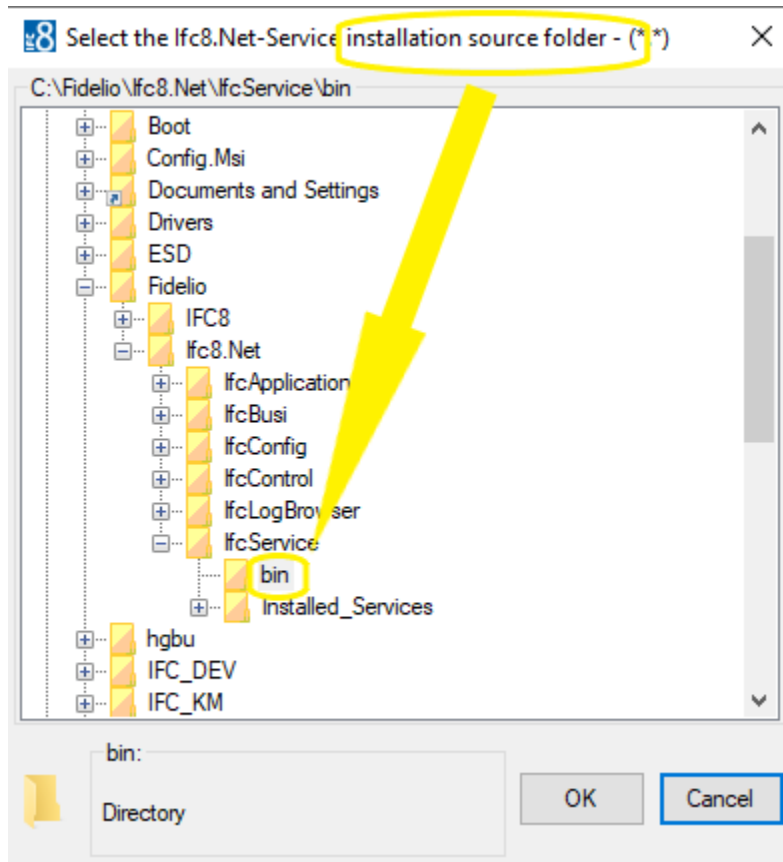


Once confirmed a new selection is available in the drop-down menu for IfcConnect.

## Install new IfcProcess as Service

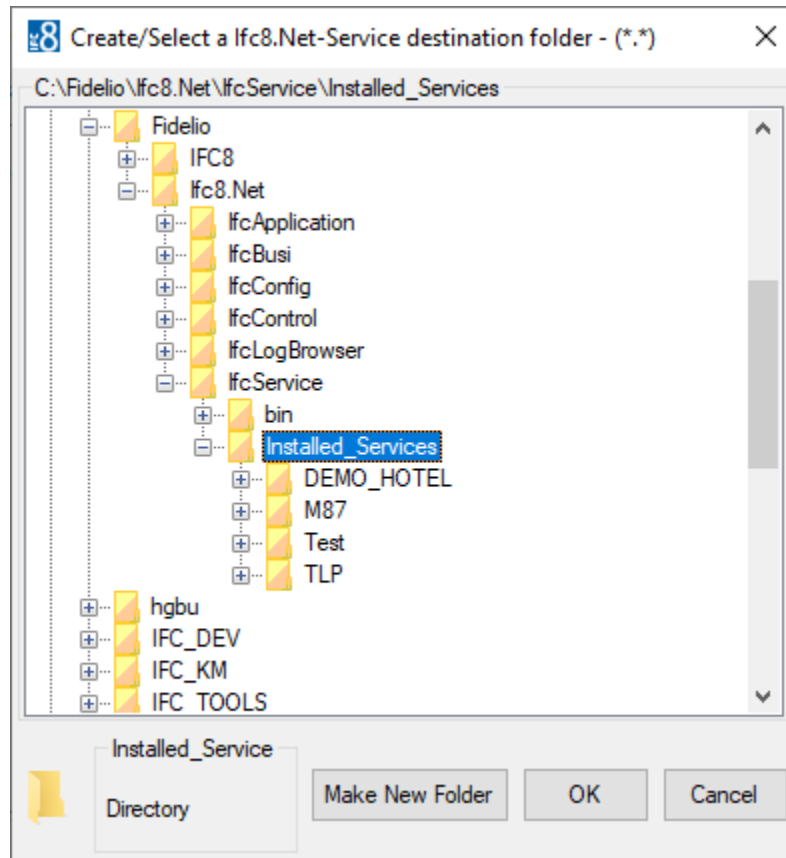


Once selected the service Installation source folder needs to be selected



By default, this would be the bin folder.

Next the Service destination folder is defined.



This can be any folder you choose. Using the “Make New Folder” one can define the location and tree structure as one wishes. In this example an Installed Services directory was created containing folder for each individual service.

## Verify Ifc Service Settings

After creating / selecting the folder you wish to use a settings verification page will appear

**Service ID:** Used to identify the Service (Usually the FKT LOGO) default is the folder name selected previously.

**Config.Xml file:** The file name for the xml file that will be saved.

**Parameters:** CP: The port to communicated on. (IfcControl to Service)  
(Required)

FI: Interface Object Parser (Default is FIAS) (Required)

CS: Server Certificate name with password inclosed in [ ] (Optional)

CC: Client Certificate name (Optional)

Adjust or remove the optional defaults as required, see example below the select OK.

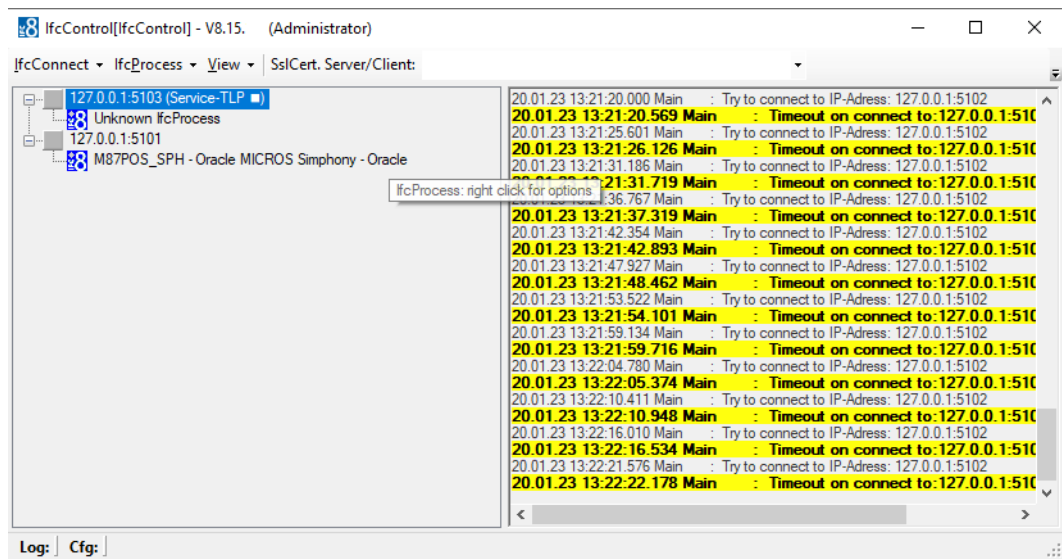
Note: Parameters are separated by the pipe symbol “ | ”



The parameter line / variables are enclosed by quotation marks “ ”

# Complete the Installation

Once completed the new connection / Interface will be listed like this.



Now proceed to start the service and then the connection.

Access to configuration is now available and one can complete any configuration options that are required.

## 6 Menu options

The IfcControl application has following Menu options:

Menu Option	Description	Notes
IfcConnect	Options for IfcControl handling	
IfcProcess	Options for IFC8 instance action	
View	Show About / Monitoring	
Ssl Cert. Server/Client	Set local certificate to use	Required for connections from IfcControl on remote PC

## IfcConnect

### Available Options

Menu Option	Description	Notes
Start Connection	Start connection to marked Ifc8 instance	Available if connection is Stopped
Stop Connection	Stop connection to marked Ifc8 instance	Available if connection is Started
Start all Connections	Start connection to all listed Ifc8 instances	
Stop All Connections	Stop specific connection to marked Ifc8 instance	
Modify Connection	Modify connection settings	Change IP address, IP port Not available for listed Ifc8.Net services <b>Modification is only possible when IfcControl is NOT connected to this instance and Ifc instance is not assigned to an IfcService instance</b>
Add Connection	Add new Connection to IFC8.Net instance	
Delete Connection	Remove Ifc8 Instance or service from IfcControl	

Menu Option	Description	Notes
Hide Connection	Hide specific connection which shall not be displayed in this IfcControl instance	
Install as Service	Install a non-service Ifc8.Net instance as a service	Only available if service not already installed
Uninstall Service	Uninstall existing Service	Only available if service is installed
Add to Service	Add a non-Service Ifc8.Net instance to existing Ifc8.Net service	
Check for Update IfcService	Allow updating IfcService files to related sub folder	Only available when Service is stopped
Get Ifc8.Net (remote) services:	Add Service Configuration from remote Machine to IfcControl instance	Only available for instances installed as service
Advanced Configuration	Access to Adv. Configuration sub-menu	See Adv. Configuration Sub-Menu description
Start Service	Start Ifc8.Net Service	Only available for instances installed as service
Stop Service	Stop Ifc8.Net Service	Only available for instances installed as service
Close	Close IfcControl	All connections will be stopped



The menu options display dynamically.

This means one will only be offered the menu options possible at any specific time.

i.e. Un-Install Service is only available if a Service is installed.

Start Connection is only available if the connection is stopped.

## Advanced Configuration Sub-Menu

Menu Option	Description	Notes
Create Certificate	Ability to create a self-signed Certificate	See Working with Certificates
Refresh Encryption	Refresh Encryption	Refresh the key used to secure the Passwords in the configuration.
Check Registry Access	Check User has necessary rights to access registry.	Needed for Security features.

## IfcProcess

Available options

Menu Option	Description	Notes
Re-init	Let Ifc8.Net reinitialize its` connections	
Configuration	Access the Ifc8.Net instance Configuration editor	
Enable / Disable Config Mode	Set/Release Ifc8.Net instance Config Mode	Dynamic menu option
Disable Config Mode	Disable Ifc8.Net instance from Config Mode	
Simulation	Open Simulation form for this specific Ifc8.Net instance	Needs user authentication
Database Swap	Start Database Resynchronization	

## View

Available options

Menu Option	Description	Notes
Show Logbrowser	Enable or disable IfcLogBrowser view	



Menu Option	Description	Notes
Show IfcControl log	Enable or disable internal IfcControl log monitor	
Show Hidden IfcConnects	Enable or disable display of hidden Ifc Connects	
About	Company Application notes / Disclaimer	

## SslCert. Server/Client

Option to allow connection between IfcControl and Ifc8.Net instances via valid SSL certificate only.

Would allow connection of IfcControl from remote PC.

Menu Option	Description	Notes
LOV Box 1	Chose <b>Server</b> certificate	Enter path of .crt certificate
LOV Box 2	Chose <b>client</b> certificate	Enter path of .pfx ertificate (requires password)

# 7 Working with IfcControl form

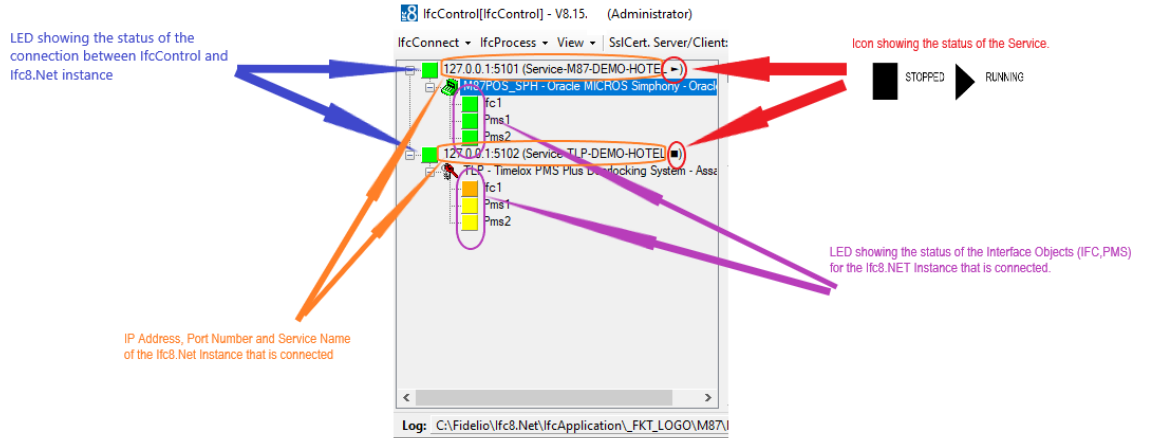
## Understanding IfcControl connections

In order to get information about the status of the IFC instance IfcControl must have a connection to the related Ifc instance.

This will be defined by adding the connection, enter the connection IP Address and the Port as of Ifc instance Configuration.

Start Connection to let IfcControl connect to the Ifc instance.

The LED's in the tree menu show the status of the Connection of IfcControl to Ifc instance respective, when Connection is established, also the link status of each Ifc instance defined.



### Ifc Control Connection status

Icon Colour	Description	Notes
Grey	Not connected	Connection stopped
Yellow	Awaiting connection	
Green	Connection established	

### Ifc instance link status

Icon Colour	Description	Notes
Red	Not connected	LinkEnd mode
Yellow	Awaiting connection	LinkStart mode
Orange	Not connected + Comm Async	Link End mode
Green	Link established	LinkAlive mode

Without IfcControl connection to the Ifc instance, no Ifc status information is available.

### Ifc Service status

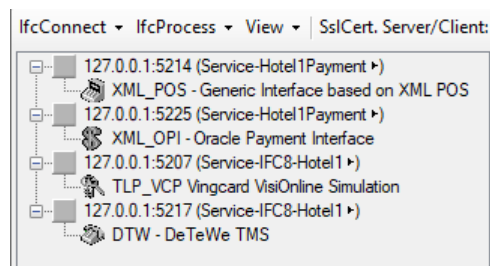
Icon	Description
▶	Status Service started / running
■	Status Service stopped
	Status Service paused

 **NOTE:**

Even the Ifc Service is in status started / running it does not mean that the linked Ifc process is also started and running.

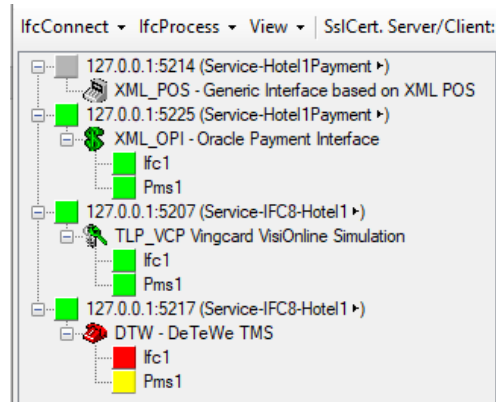
## Status examples

### Example 1:



When starting IfcControl tool all defined connections will be shown, but without current Ifc link status.

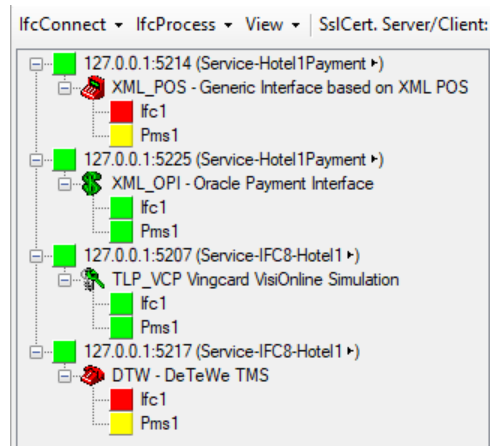
### Example 2:



The first Connection does not show any Ifc status information as IfcControl has not connected with this Ifc instance.

IfcControl has connection to the other three instances, two of them are properly initialized with the vendor system, one has no connection with the vendor system.

### Example 3:

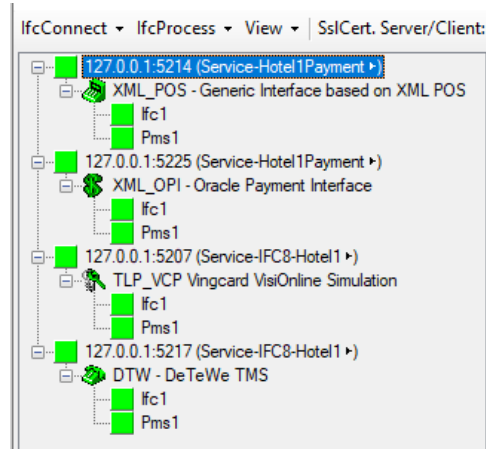


IfcControl has connection to all defined Ifc instances.

The first and the last Ifc instance are not connected with the vendor, thus show the red and yellow link status.

The second and third Ifc instance are properly connected with the vendor system and the PMS.

#### Example 4:



IfcControl has connection to all defined Ifc instances.

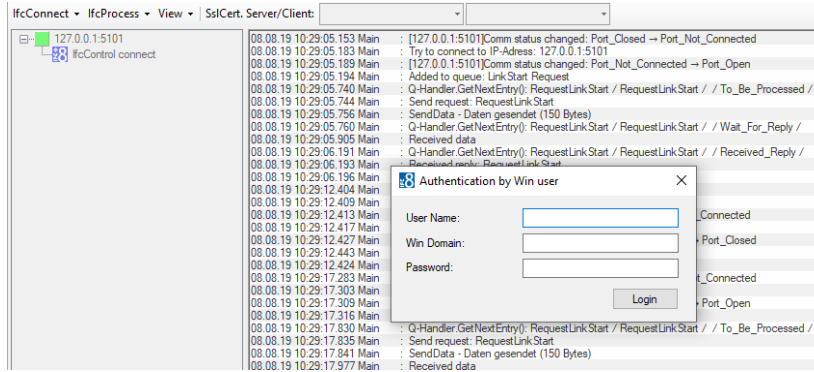
All Ifc instances are properly connected with the vendor system and the PMS.

## Connect to an IFC instance

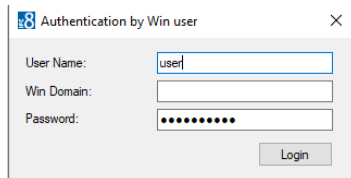
### Start Connection

To start to connect to a specific IFC8 instance select the IfcConnect Menu or right-click on the IP address of the connection and then select **Start Connection**

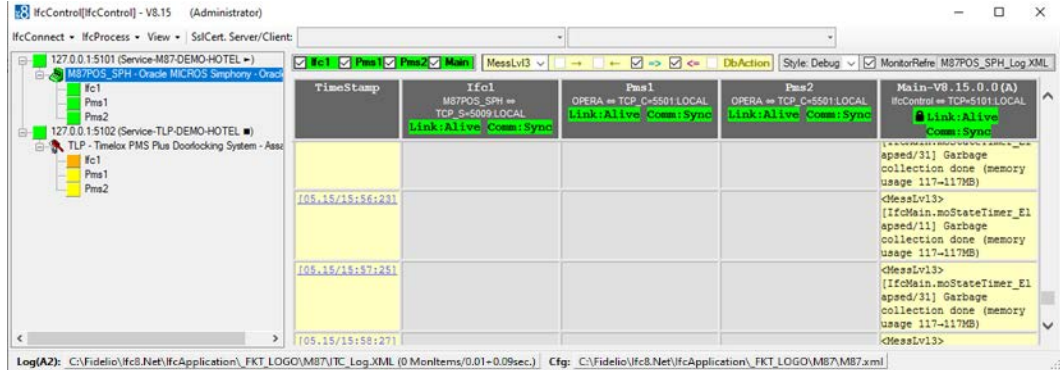
At very first connection after creation of a connection authentication is required by entering the local Windows user (user of IFC PC) credentials.



Authenticate with local Windows user:

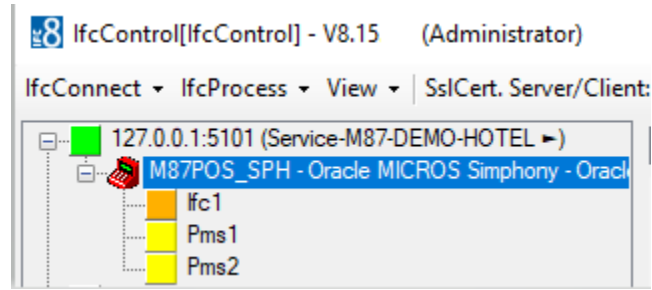


When connection to IFC8 instance via defined port is successful then the IFC8 monitoring will appear showing current communication and status







Also, on the left side in the connection tree following happens:

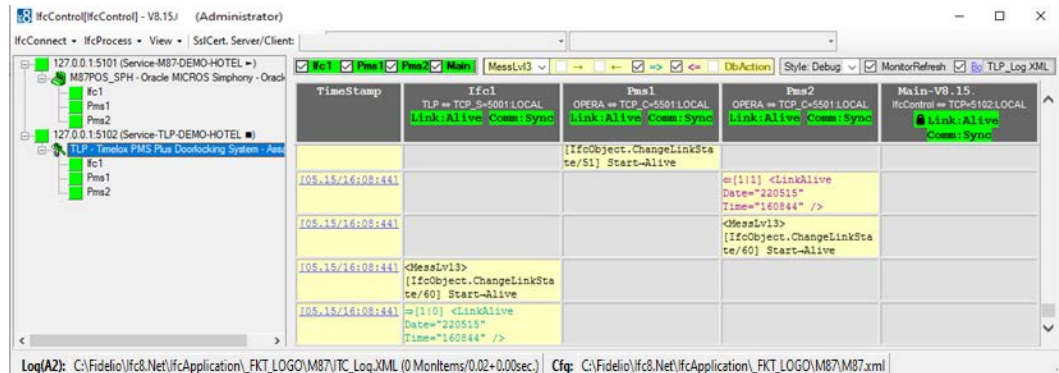
1. The Name of the IFC8 instance will be shown
2. The IFC and PMS objects will be shown
3. The instance icon and the IFC object icons will be red, yellow or green coloured depending on the IFC8 instance link status.



### Ifc instance link status

Icon Colour	Description	Notes
 Red	Not connected	LinkEnd mode
 Yellow	Awaiting connection	LinkStart mode
 Orange	Not connected + Comm Async	LinkEnd mode
 Green	Link established	LinkAlive mode

When the PMS and the vendor system are properly connected to IFC8 the status icons in IfcControl will become green and the monitoring status shows proper connection.



**Remember** that the status of the Ifc instance on the left side of the IfcControl form will only show when IfcControl is connected with the Ifc8 instance it relates to. The Ifc8 instance monitoring is always present, even IfcControl has no connection to the Ifc8 instance

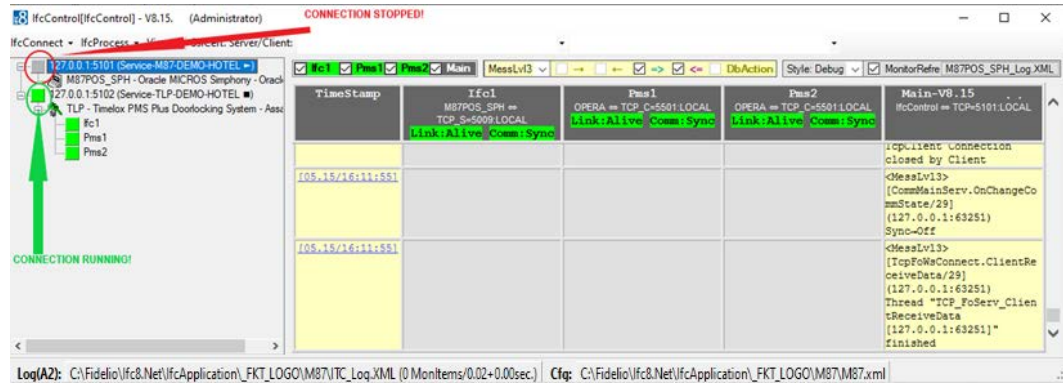
## Stop Connection

While the IfcControl has established connection to the IFC8 instance it is not possible to modify or delete a connection configuration.

In case of necessary changes first stop the connection with the instance.

For this select the IfcConnect Menu or right-click on the connection to stop and then select **Stop Connection**.

**Stop Connection** only means that the Connection of IfcControl with the IFC8 instance will be stopped/closed. The IFC8 instance itself will remain in its connection status with PMS / vendor.



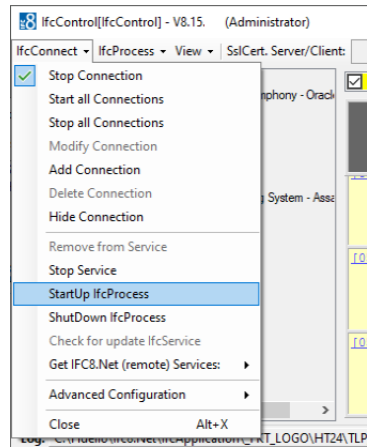
## Start / Stop Individual Interfaces



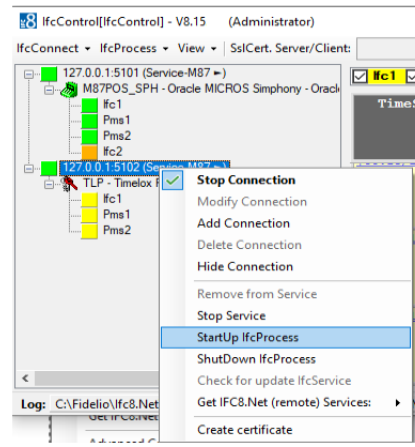
# Start Individual Interface

To Start Individual Interfaces, mark the Interface and via the Ifc Connect Menu select “StartUp IfcProcess” OR Right Click on the Interface and select “Start IfcProcess”

Via IfcConnect

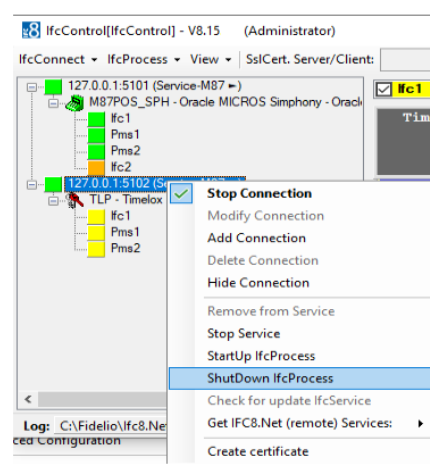
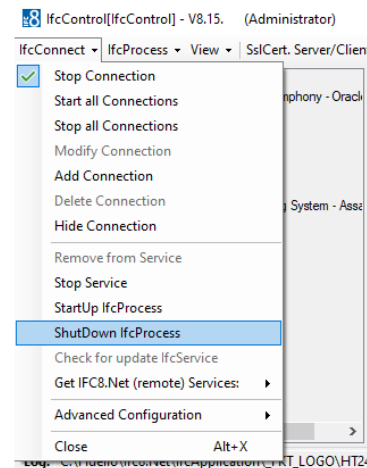


Via Right Click



# Stop Individual Interface

To Stop Individual Interfaces, mark the Interface and via the IfcConnect Menu select “ShutDown IfcProcess” OR Right Click on the Interface and select “ShutDown IfcProcess”



# Start / Stop Individual Remote Interfaces

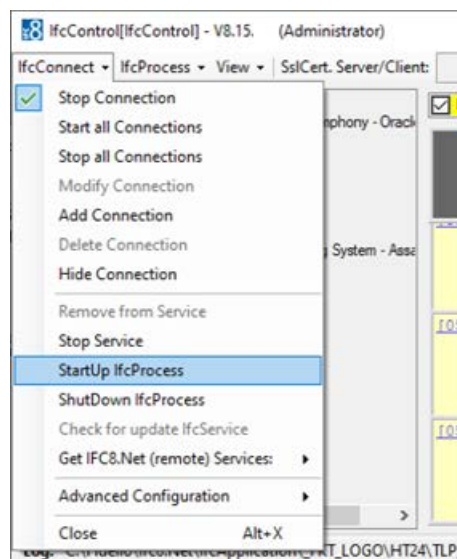


To execute this remotely the Connection must be secured by SSL (Secure Socket Layer)

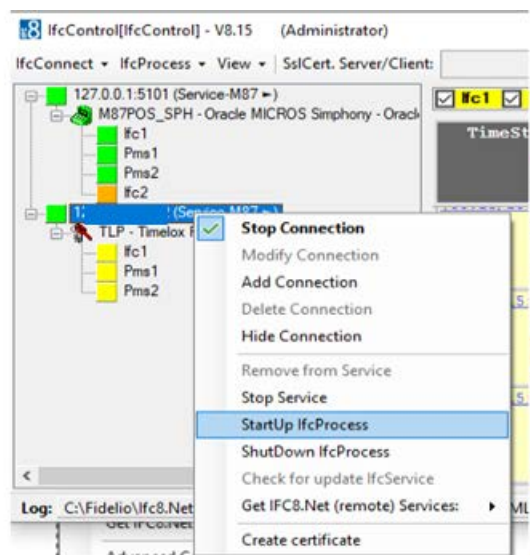
## Start Individual Remote Interface

To Start Individual Remote Interfaces, mark the Interface and via the Ifc Connect Menu select “StartUp IfcProcess” OR Right Click on the Interface and select “Start IfcProcess”

**Via IfcConnect**



**Via Right Click**

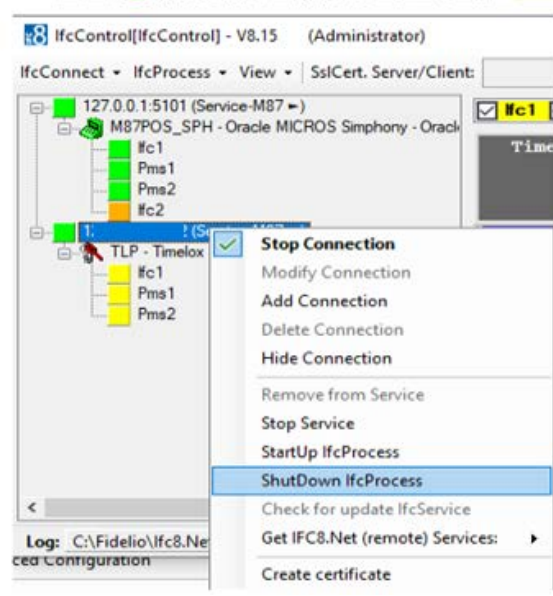
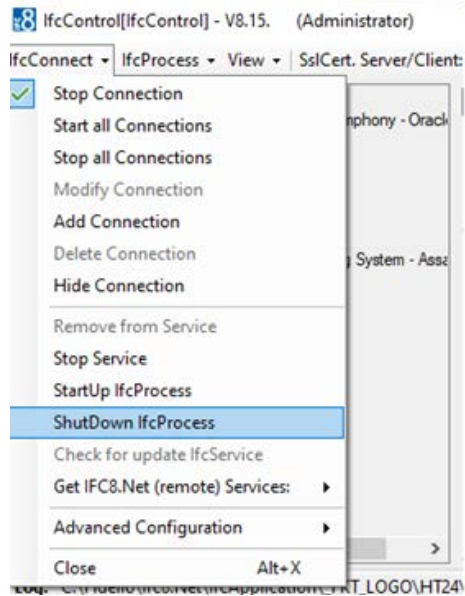


## Stop Individual Remote Interface

To Stop Individual Remote Interfaces, mark the Interface and via the IfcConnect Menu select “ShutDown IfcProcess” OR Right Click on the Interface and select “ShutDown IfcProcess”

**Via IfcConnect**

**Via Right Click**

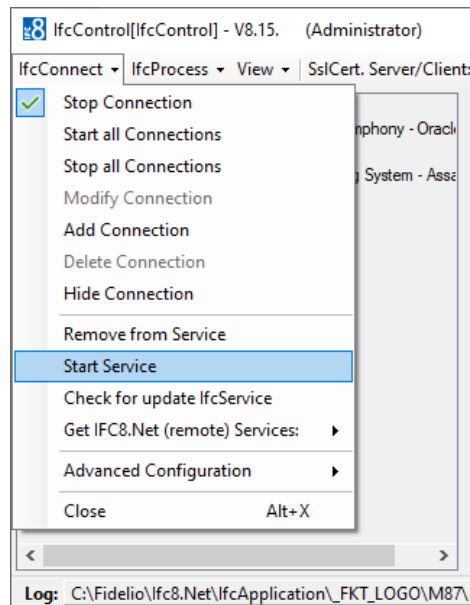


## Start / Stop Services

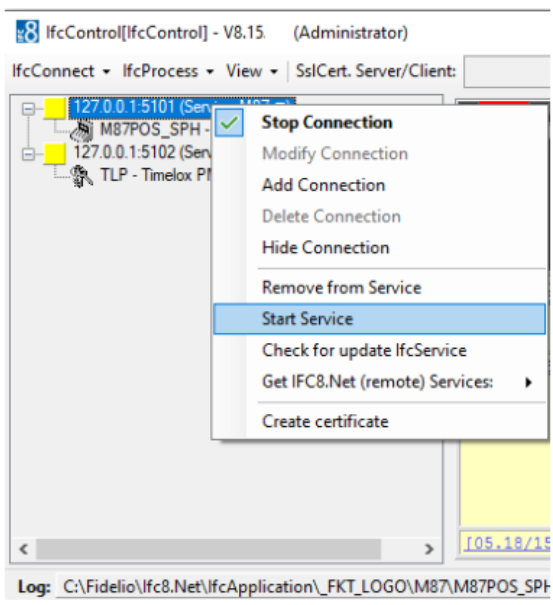
### Start Service

To Start a Service, mark the Ifc8.net Connection and via the Ifc Connect Menu select "Start Service" OR Right Click on the Ifc8.Net Connection and select "Start Service"

Via IfcConnect



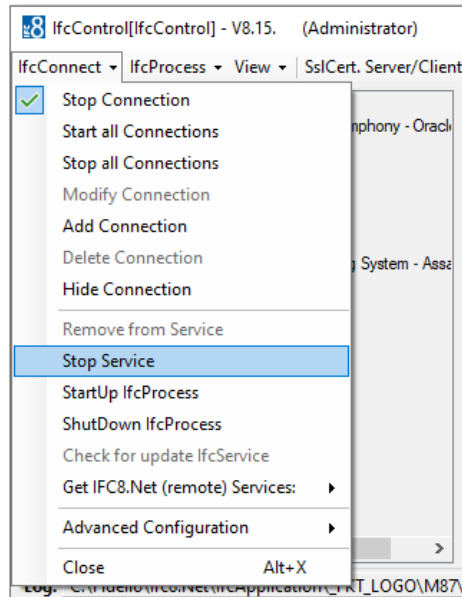
Via Right Click menu



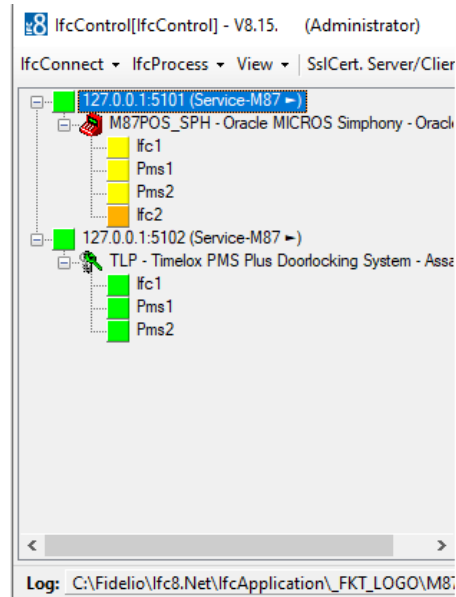
# Stop Service

To Stop a Service, mark the Ifc8.net Connection and via the Ifc Connect Menu select "Stop Service" OR Right Click on the Ifc8.Net Connection and select "Stop Service"

## Via IfcConnect



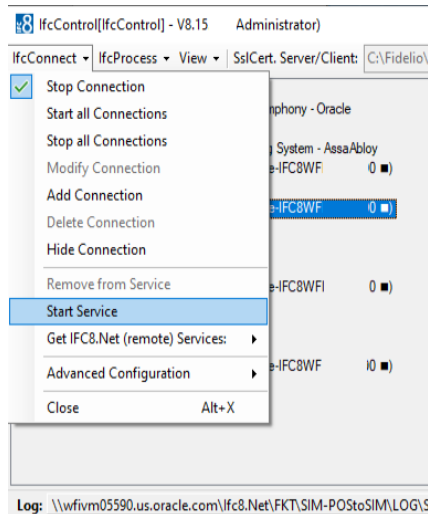
## Via Right Click menu



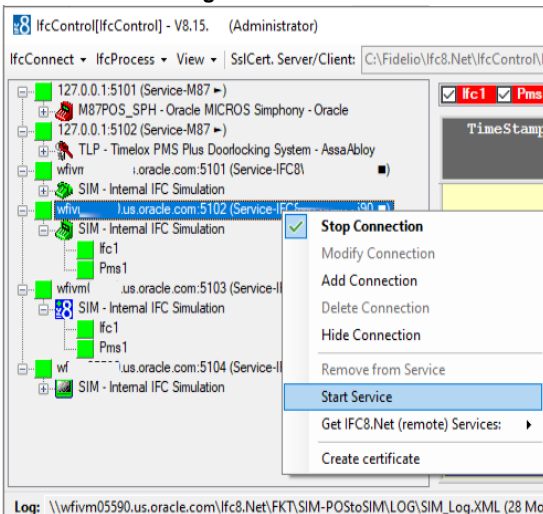
# Start A Remote Service

To Start a Remote Service, mark the Ifc8.net Connection and via the Ifc Connect Menu select "Start Service" OR Right Click on the Ifc8.Net Connection and select "Start Service"

## Via IfcConnect



## Via Right Click menu

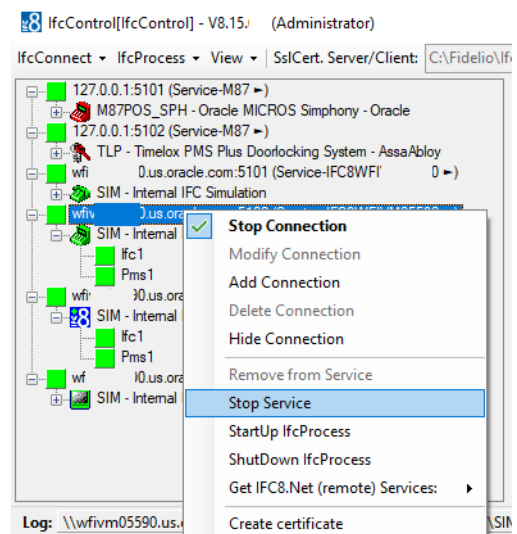
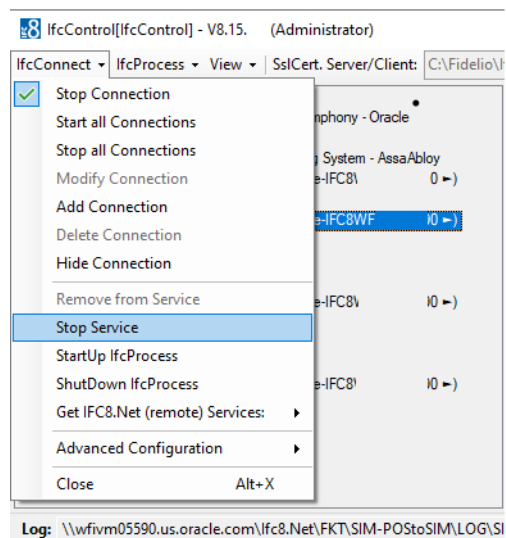




The ability to Start / Stop a remote service is controlled by the Windows domain user rights. This must be allocated to the user who wishes to do this.

## Stop A Remote Service

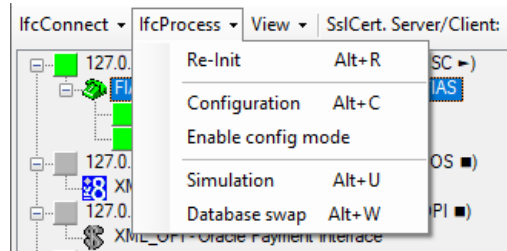
To Stop a Remote Service, mark the Ifc8.net Connection and via the Ifc Connect Menu select “Start Service” OR Right Click on the Ifc8.Net Connection and select “Start Service”



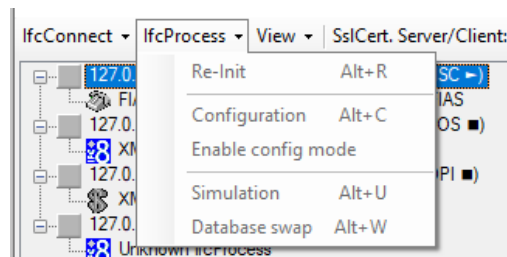
# IfcProcess options

Used to perform available action as per connected Ifc8 instance.

To use IfcProcess options requires IfcControl connection to the specific Ifc8 instance.



Ifc Process options are not available when IfcControl is not connected to the Ifc instance.



## Available options:

### Re-Init

Select "Re-Init" option to disconnect IFC instance from current connections and perform internal initialization.

Use the "Re-Init" option to restart an Ifc8 instance without need to shutting down the application or stopping the Ifc Service.

### Configuration

Select "Configuration" option to access the Configuration Editor if the specific Ifc8 instance running either as Service or as application.

Access to the Configuration requires user authentication with local Windows user credentials.

## Enable Config mode

Select “Enable Config mode” option to set the current Ifc8 instance into Configuration mode for longer configuration changes.

Config mode will disable any connections from or to Ifc8 instance.

Select “Disable Config mode” option to set current Ifc8 instance back to status to allow connections from and to Ifc8 instance.

## Simulation

Select “Simulation” option to access the internal IFC8 simulation module.

Access to the “Simulation” module requires user authentication with local Windows user credentials.

## Database Swap

Select “Database Swap” option to start a Data Resync process for the specific Ifc8 instance.

Use this option to start a DataResync process for IfcService instances or for IfcApplications running on remote Server.

## IfcProcess and View options on a remote Machine

To execute IfcProcess Options on a Remote Machine

The following Pre-requisites must be fulfilled:

- 1.) Win User with local admin rights to the remote Machine.
- 2.) A secure SSL connection from the IfcControl to the Ifc8.Net Instance

### 3.) The Remote Registry Service must be activated on the remote Machine



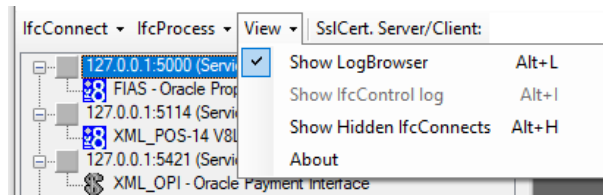
## View options

Menu Options to disable or enable the **display of current IFC8 communication** or to display hidden connections.

## Show LogBrowser

Enable or disable **displaying the current IFC8 LogBrowser Monitoring**.

Select the "View"- Menu and then select "Show LogBrowser".



By default the Ifc8.Net instance monitoring window is enabled once IfcControl has initial connection to the Ifc8.Net instance.

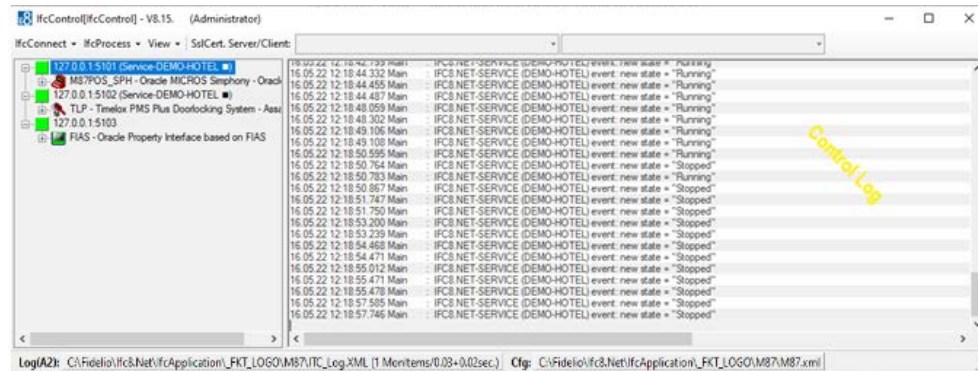
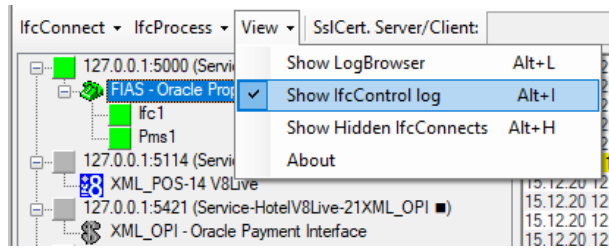
Unticking the "Show LogBrowser" menu will either show no monitoring or the internal IfcControl log – when it is marked to display.

## Show IfcControl log

Enable or disable displaying the internal IfcControl log.

Select the "View" – Menu and then Select "Show IfcControl log".





Note: this is only possible when “Show LogBrowser” option is unticked.

Unticking the “Show IfcControl log will show no monitoring.

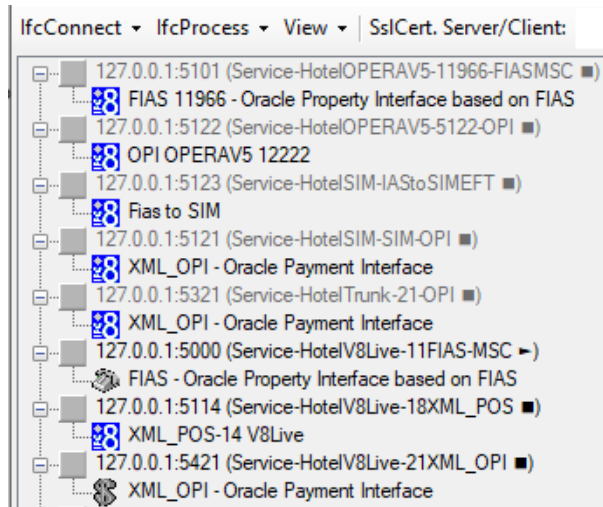
## Show Hidden IfcConnects

Displays all IfcConnections marked as “hidden” for this IfcControl instance using the “Hide Connection” option.

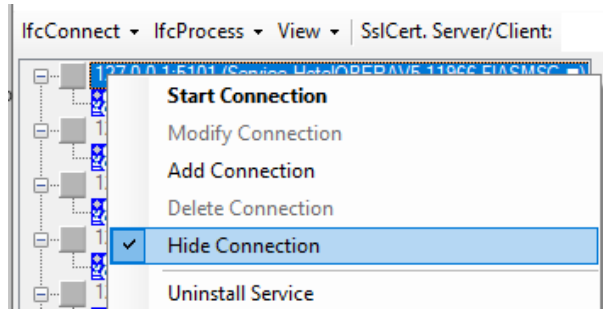
This is the only way to change back a hidden connection to unhide.

Select the Show Hidden IfcConnects to display all hidden Ifc Connections in this IfcControl instance.

Hidden IfcConnects are displayed in light-grey colour.



Unmark the “Hide Connection” option under IfcConnect or context menu of the marked hidden Ifc Connection to show the connect in the IfcControl panel list.



Unmark the Show Hidden IfcConnects to hide the IfcConnects marked as hidden.

## About

The About option shows the legal Oracle disclaimer text for this version of IfcControl.

# 8 Creating Secure connections (SSL certificates)

It is possible to run IfcControl tool on a remote PC (not the IFC PC) within the customer network and manage Ifc instances or Ifc Services installed on the IFC PC from a different PC.

Connection is only possible using SSL certificates linked in the Ifc configuration and in the IfcControl configuration.

IfcControl offers one the ability to create and implement self-signed certificates.



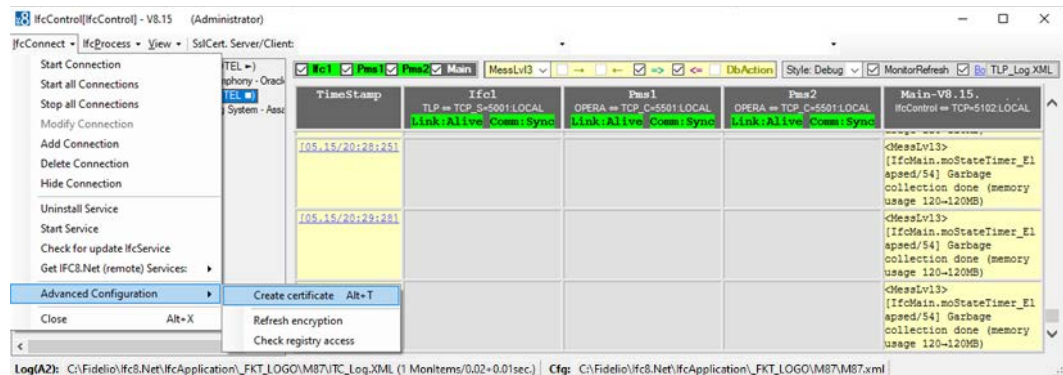
Oracle encourages the use of certificates signed by a Certified Authority.

Oracle does not accept any legal responsibility for the use of self-signed certificates, this lies with the customer. Accordingly please verify the local legal requirements and obligations.

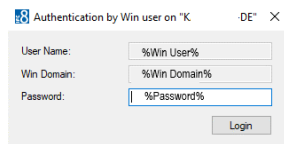
## Generate Certificates

**IfcControl:**

Create a Self-Signed Certificate by selecting Create Certificate from the Advanced Configuration Sub Menu.



Local PC user authentication is required.



Enter password for the current local user logged in to the PC.

The “Create Certificate” form will open to define the certificate path and name, password and certificate validity.

For an IfcConnect which did not have a connection with the Ifc instance the default path is the IfcControl directory and a \* \* place holder name.

\*) Adjust the directory and the certificate name as desired.

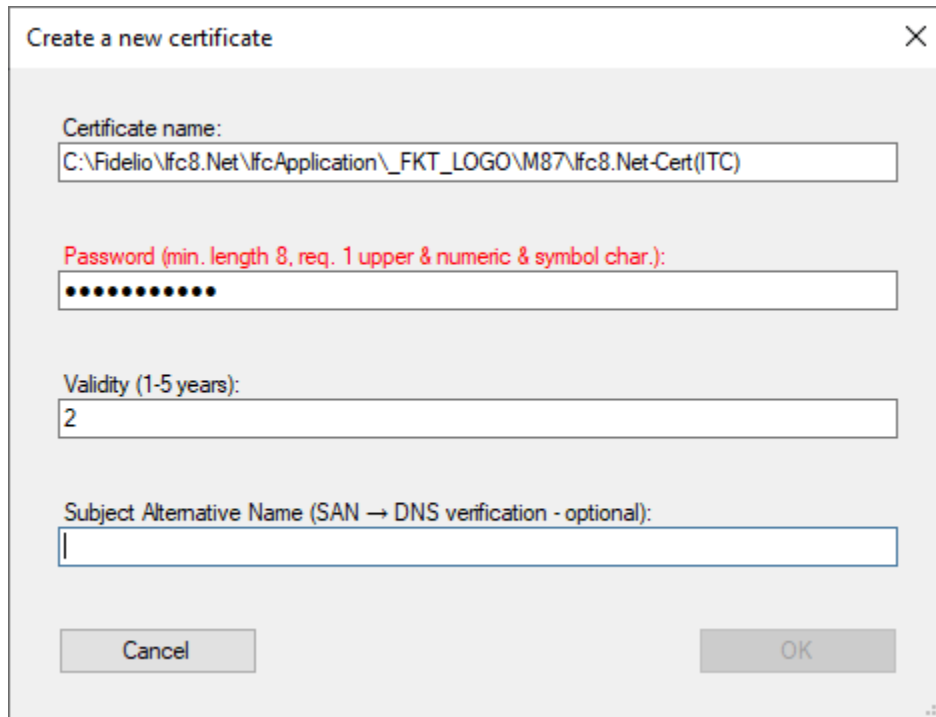
Do not take over the default certificate name!

It is not possible to create the certificate with the above default name containing the (\*).

Enter required password

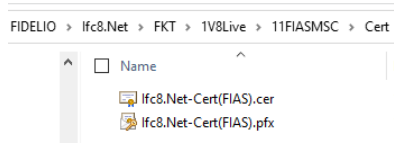
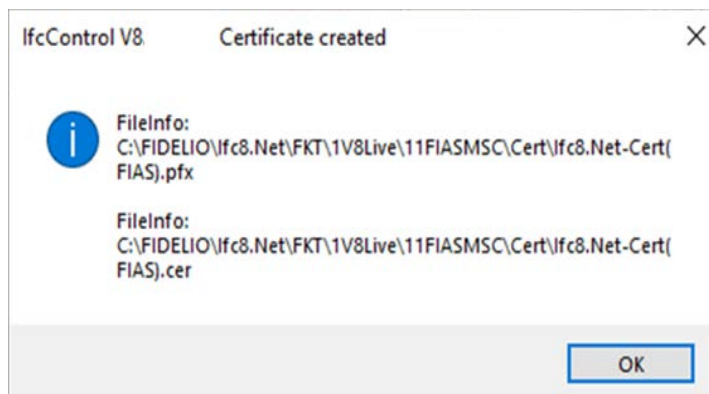
Enter required certificate validity (in years)

You do have an option to create an Alternative SAN (Subject Alternative Name) if required.



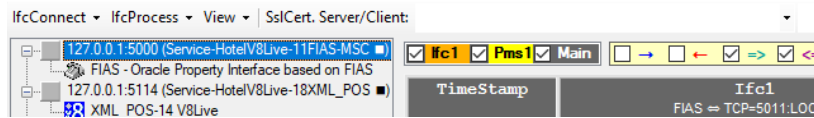
Then press OK.

Certificates will be generated and stored in the defined directory.



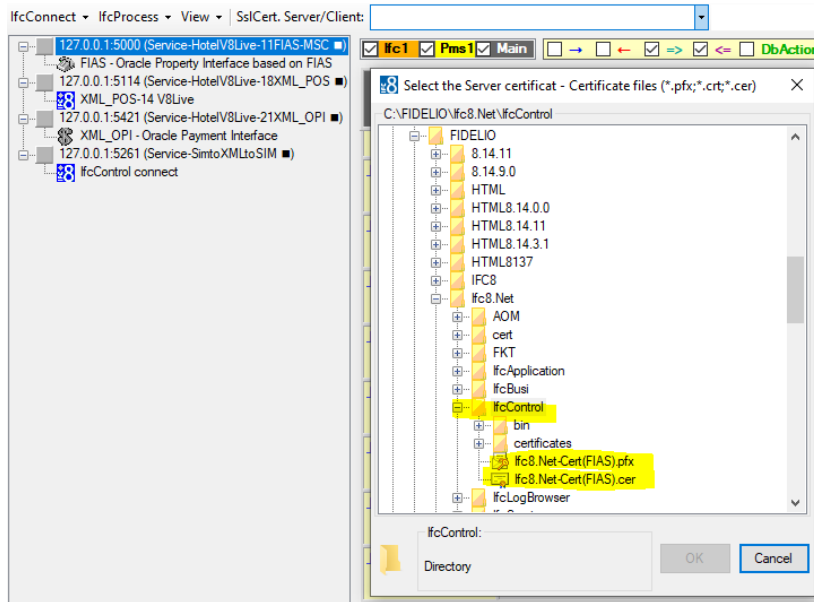
# Add certificate to the local IfcControl

In IfcControl mark the related defined Ifc Connection and make sure the connection (and the Ifc Service) is stopped.

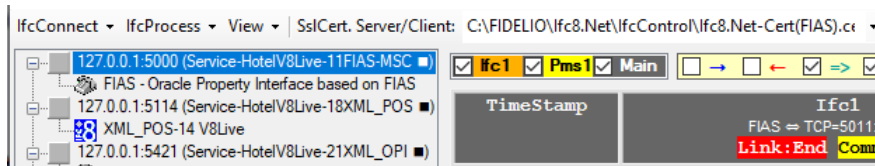


Mark the first Pick Box on the IfcControl header (SslCert. Server/Client).

Select on the arrow to open the Select file form:



Choose the desired .crt certificate which has been created and press OK.

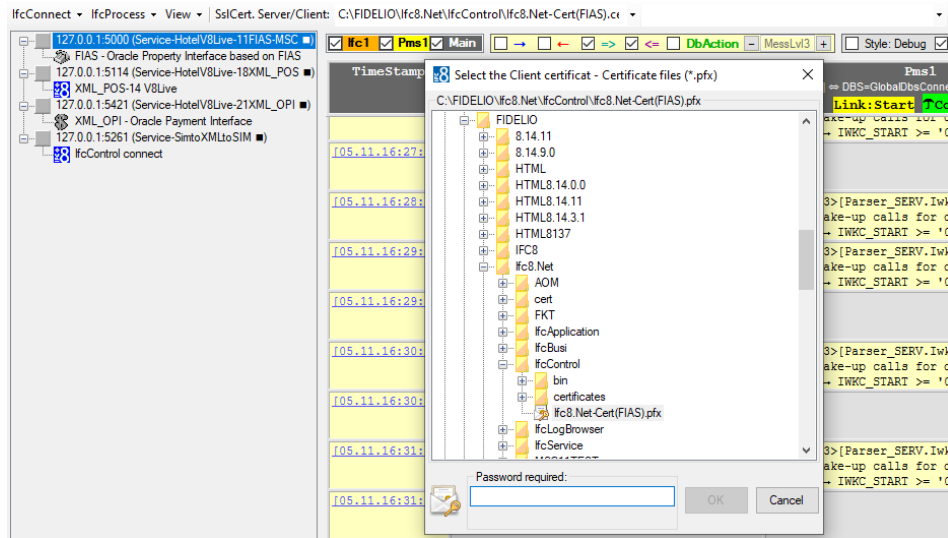
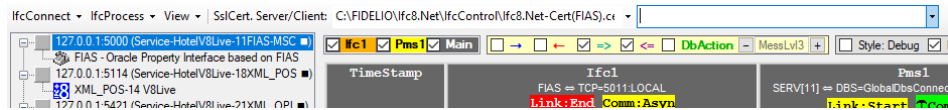


Certificate has now been linked to the Ifc connection Instance.

It is now optional to enter also the .pfx client certificate to gain mutual authentication – depending on the setup of mutual certificate in IFC instance configuration (client certificate)

Mark the second Pick Box on the IfcControl header (SslCert. Server/Client.

Select on the arrow to open the Select file form:



Enter the password generated for the certificate.

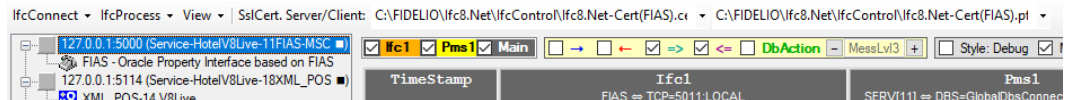
Then press ENTER.

When password is correct the certificate information will be displayed in red.

When password is incorrect related message will display.

Select OK to confirm the choice

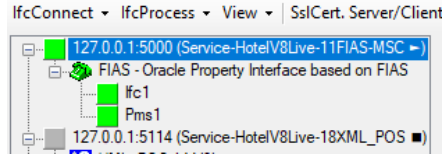
(Select Cancel to close without change.)



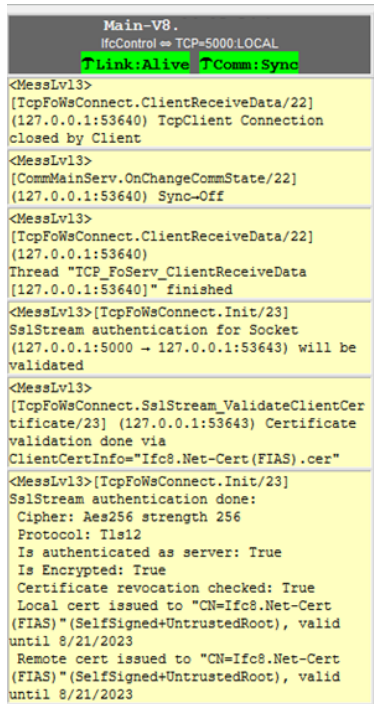
Second certificate has now been linked to the Ifc connection Instance.

Double Click on the defined Ifc Connection to see if certificate and password are valid for this connection.

If Ifc Connection is linked to a IfcService first start the Service.



In the MAIN log you can see the validation of the certificate being correct (or not).

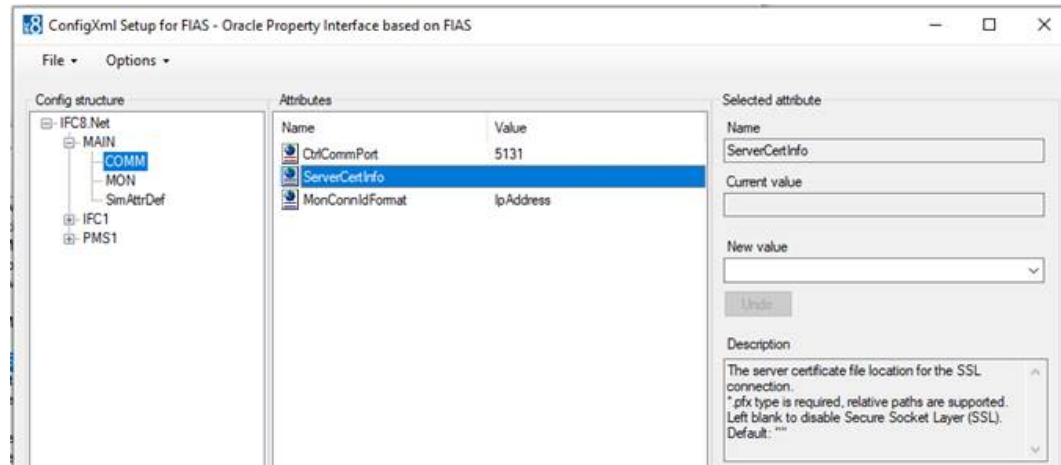


Repeat the above on the remote IfcControl application.



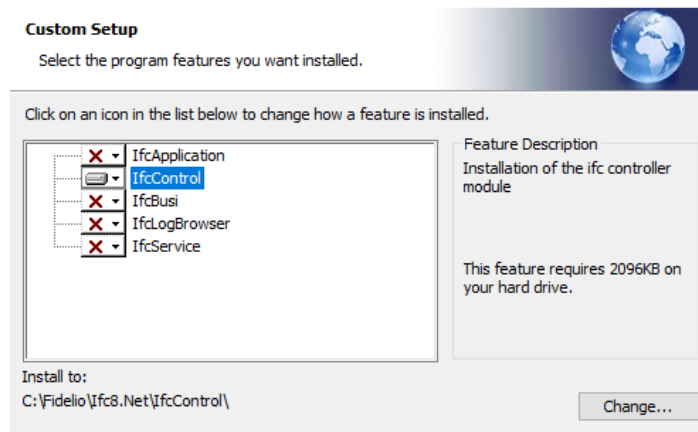
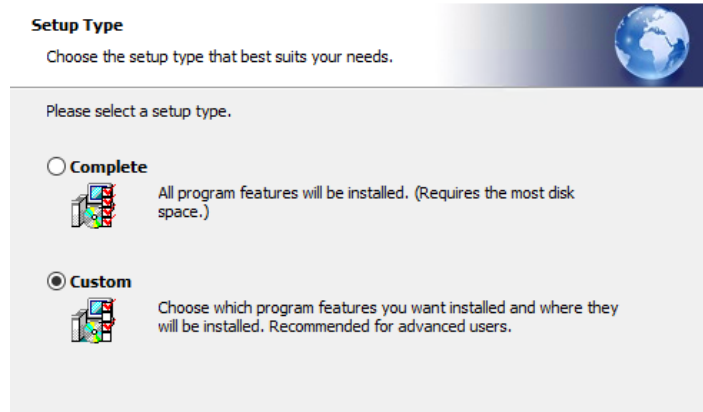
# Adding a Certificate to IFC8.Net Instance

The \*.pfx certificate is added to the IFC8.Net configuration in the MAIN->COMM section



# 9 Installing IfcControl on remote PC

Use the Ifc8.Net Install wizard and choose Custom Setup to only install the IfcControl tool

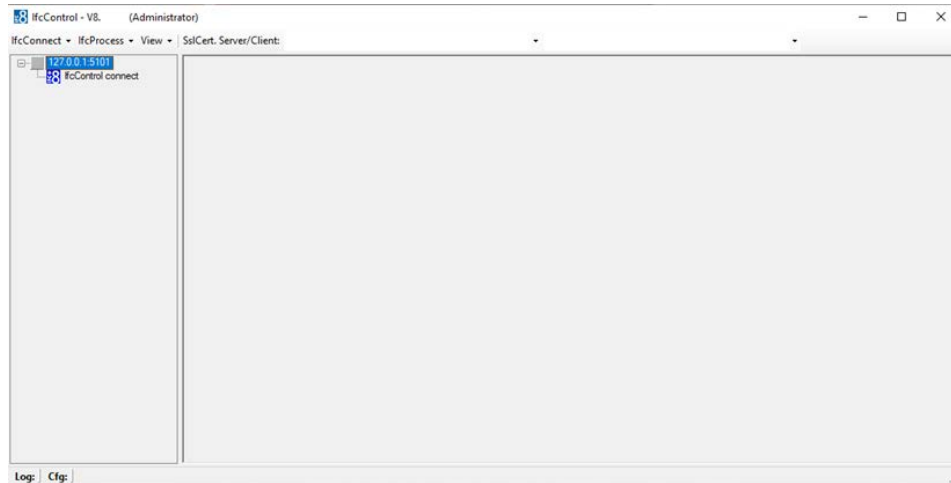


Example where only IfcControl shall be installed.

Execute the installation and after finishing, close the wizard.

Start IfcControl.exe as administrator from out the IfcControl directory.  
It is recommended to create a shortcut which will start as administrator.

IfcControl executes

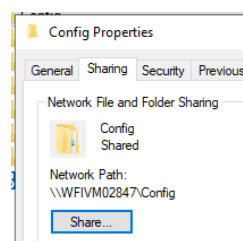


It generates a default connection record you can now use.

## Configure the remote IfcControl:

### Requirement:

- Make sure you have created a valid network connection to the the local IFC PC.
- Local IFC PC has a windows share drive activated for the IFC Configuration and log paths.  
e.g. folder  
c:\fidelio\Ifc8.Net\Config\FKT1\  
c:\fidelio\Ifc8.Net\Config\FKT2\  
c:\fidelio\Ifc8.Net\Config\FKT3\  
Folder **Config** has an active share.



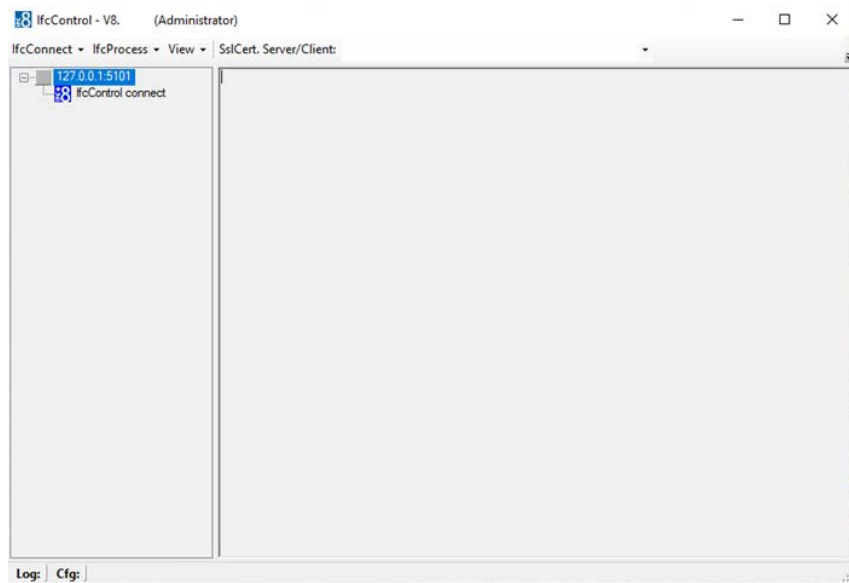
- An active network share between IfcControl PC and IFC PC
- (A pair of) certificates between IfcControl and local IFC8.Net instance

## Configuration:

Execute IfcControl.exe

IfcControl will open with a default connection to 127.0.0.1 Port 5101

Select IfcConnect / Modify connection

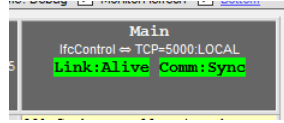


Enter the IP Address or DNS name and Connection IP port for the desired Ifc instance on the host PC.

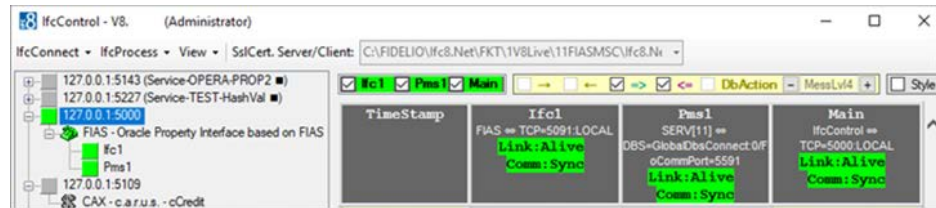
## How to find the Connection IP Port?

On the IFC PC check for the IP port defined for the IfcControl connection.

This is shown in the Logbrowser of the related IFC instance in Main log header

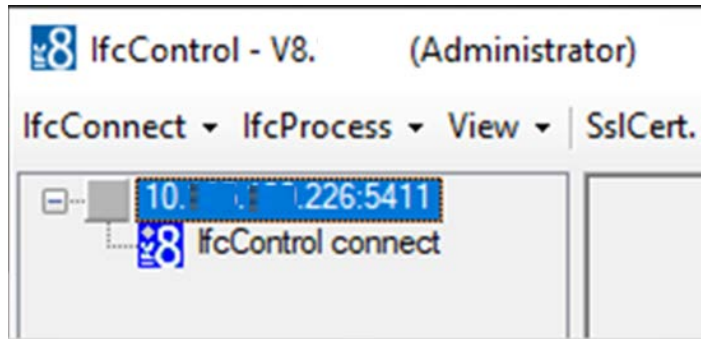


or in local IfcControl tool on the IFC PC – if already configured.



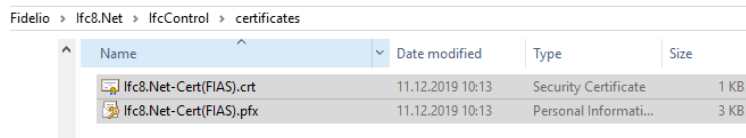
Here = 5000

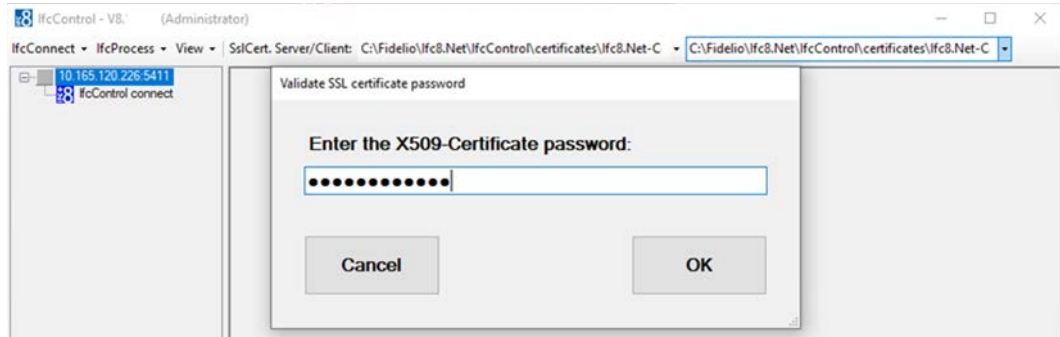
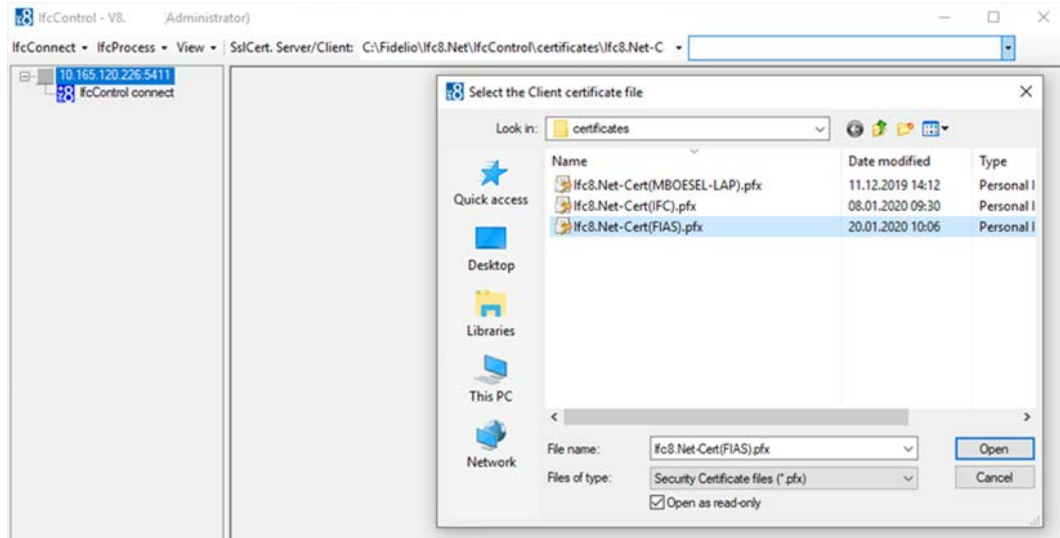
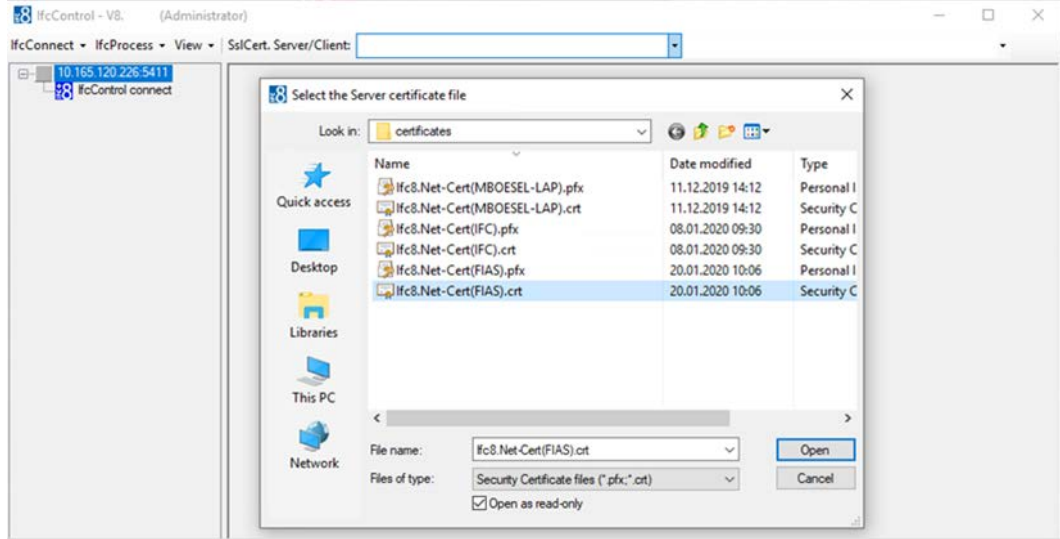
Final entry should look like this:

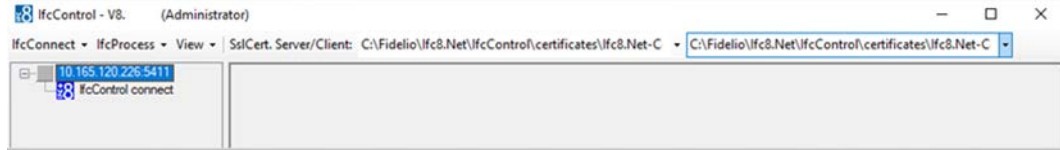


Now add the certificates to this connection as shown above.

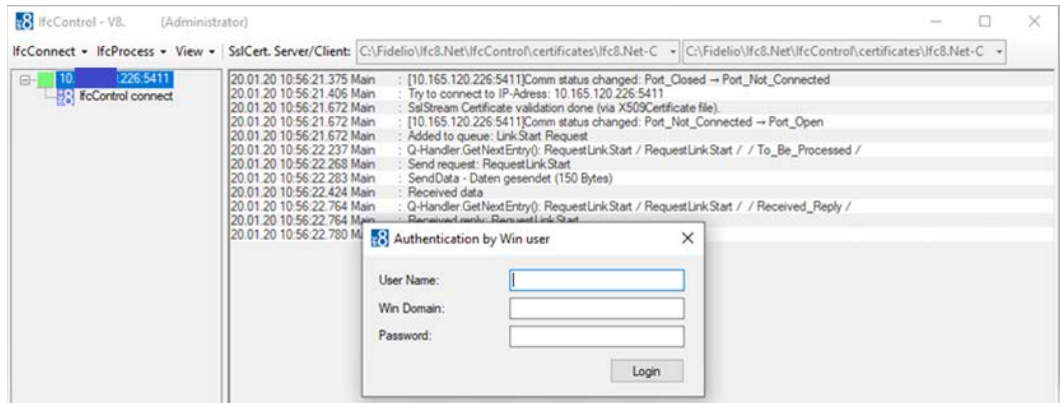
Copy both certificates to the remote PC and store them in a defined directory



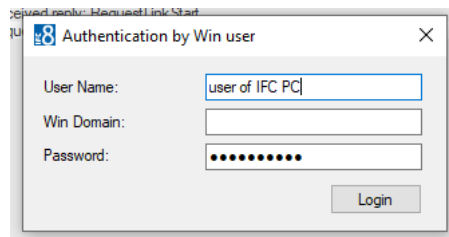




Once done start the connection by double click the connection on the left menu.



When connection to the host PC is possible the user must authenticate connection once with the windows user and password of the host PC.



In case the log file and config file are accessible (through providing a proper network connection / share) the remote IFCControl will display the current logfile browser and the

link status of the interface instance (left side).

The screenshot displays the Oracle JDeveloper IDE interface. On the left, a tree view shows the project structure with 'FAS' selected. The main window shows the 'Link' status for the 'FAS' interface. The status is 'Link: Red' and 'Conn: Async'. The log shows the following events:

TimeStamp	IPC1 - FZAS	FZAS1	Main-VB.14.1(A)
	FZAS = TCP:5091:LOCAL Link: Red Conn: Async	SERVER[1] = DBS=GlobalEbsConnect 5/FaConnPort:509 9	Link:Start Conn:Sync
100.29.14.14:16:16:1		for due: Results - INWC_START >= '08.29.14:15:10'	
100.29.14.14:17:00:1			<MsgLv13> [IfMain.noStateTimer_Elapsed/ 12] Garbage collection done (memory usage 126-126M)
100.29.14.14:17:59:1		<MsgLv13> [Parser_SERV.LvkoChk/14] Check stored wake-up calls for due: Results - INWC_START >= '08.29.14:14:10'	
100.29.14.14:18:00:1			<MsgLv13> [IfMain.noStateTimer_Elapsed/ 14] Garbage collection done (memory usage 127-127M)
100.29.14.14:18:00:1		<MsgLv13> [Parser_SERV.LvkoChk/12] Check stored wake-up calls for due: Results - INWC_START >= '08.29.14:15:10'	



# 10 Multiple IfcControl instances

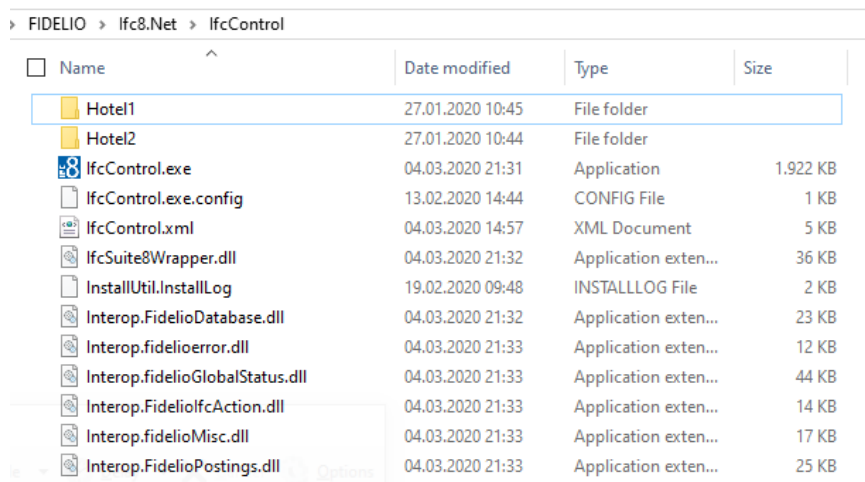
It is possible to install multiple IfcControl instances on the same PC.

When the customer wants to run multiple interfaces of multiple properties on one PC it might be useful to separate the interface instances in separate IfcControl applications as to have better overview.

In order to create another IfcControl instance there are two options:

## Multiple IfcControl directories:

Copy the whole \IfcControl directory with its containing files and give it a different name – for example the Property Name or code



Name	Date modified	Type	Size
Hotel1	27.01.2020 10:45	File folder	
Hotel2	27.01.2020 10:44	File folder	
IfcControl.exe	04.03.2020 21:31	Application	1.922 KB
IfcControl.exe.config	13.02.2020 14:44	CONFIG File	1 KB
IfcControl.xml	04.03.2020 14:57	XML Document	5 KB
IfcSuite8Wrapper.dll	04.03.2020 21:32	Application exten...	36 KB
InstallUtil.InstallLog	19.02.2020 09:48	INSTALLLOG File	2 KB
Interop.FidelioDatabase.dll	04.03.2020 21:32	Application exten...	23 KB
Interop.fidelioerror.dll	04.03.2020 21:33	Application exten...	12 KB
Interop.fidelioGlobalStatus.dll	04.03.2020 21:33	Application exten...	44 KB
Interop.FidelioIfcAction.dll	04.03.2020 21:33	Application exten...	14 KB
Interop.fidelioMisc.dll	04.03.2020 21:33	Application exten...	17 KB
Interop.FidelioPostings.dll	04.03.2020 21:33	Application exten...	25 KB

In IfcControl application header will display the folder name so one can differentiate between the applications.

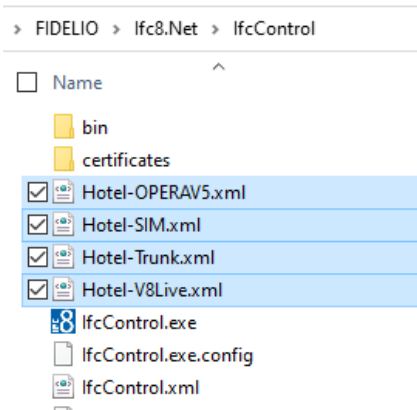


# Multiple IfcControl configuration files

Create multiple IfcControl configuration files (IfcControl.xml) and name them as per Property, chain..

Configure them separately only with the desired IFC Connections.

Use the Hide Connection option for not displaying IfcService connection for other properties, chains etc



Start the related IfcControl instance as per Shortcut linked with the related Configuration file.

