

Oracle® Hospitality Hotel Property Interface IFC8 Configuration



Release 8.15.3.0
F58409-03
July 2023

The Oracle logo, consisting of a solid red square with the word "ORACLE" in white, uppercase, sans-serif font centered within it.

ORACLE®

Oracle Hospitality Hotel Property Interface IFC8 Configuration Release 8.15.3.0

F58409-03

Copyright ©, 2023, Oracle and/or its affiliates. All rights reserved.

This software and related documentation are provided under a license agreement containing restrictions on use and disclosure and are protected by intellectual property laws. Except as expressly permitted in your license agreement or allowed by law, you may not use, copy, reproduce, translate, broadcast, modify, license, transmit, distribute, exhibit, perform, publish, or display any part, in any form, or by any means. Reverse engineering, disassembly, or de-compilation of this software, unless required by law for interoperability, is prohibited.

The information contained herein is subject to change without notice and is not warranted to be error-free. If you find any errors, please report them to us in writing.

If this software or related documentation is delivered to the U.S. Government or anyone licensing it on behalf of the U.S. Government, then the following notice is applicable:

U.S. GOVERNMENT END USERS: Oracle programs, including any operating system, integrated software, any programs installed on the hardware, and/or documentation, delivered to U.S. Government end users are "commercial computer software" pursuant to the applicable Federal Acquisition Regulation and agency-specific supplemental regulations. As such, use, duplication, disclosure, modification, and adaptation of the programs including any operating system, integrated software, any programs installed on the hardware, and/or documentation, shall be subject to license terms and license restrictions applicable to the programs. No other rights are granted to the U.S. Government.

This software or hardware is developed for general use in a variety of information management applications. It is not developed or intended for use in any inherently dangerous applications, including applications that may create a risk of personal injury. If you use this software or hardware in dangerous applications, then you shall be responsible to take all appropriate fail-safe, backup, redundancy, and other measures to ensure its safe use. Oracle Corporation and its affiliates disclaim any liability for any damages caused by use of this software or hardware in dangerous applications.

Oracle and Java are registered trademarks of Oracle and/or its affiliates. Other names may be trademarks of their respective owners.

Intel and Intel Xeon are trademarks or registered trademarks of Intel Corporation. All SPARC trademarks are used under license and are trademarks or registered trademarks of SPARC International, Inc. AMD, Opteron, the AMD logo, and the AMD Opteron logo are trademarks or registered trademarks of Advanced Micro Devices. UNIX is a registered trademark of The Open Group.

This software or hardware and documentation may provide access to or information about content, products, and services from third parties. Oracle Corporation and its affiliates are not responsible for and expressly disclaim all warranties of any kind with respect to third-party content, products, and services unless otherwise set forth in an applicable agreement between you and Oracle. Oracle Corporation and its affiliates will not be responsible for any loss, costs, or damages incurred due to your access to or use of third-party content, products, or services, except as set forth in an applicable agreement between you and Oracle.

Contents

| | |
|--|------------|
| Contents | i |
| Preface | iv |
| 1 Configure IFC Application | 1-1 |
| Valid PMS Systems | 1-1 |
| Prerequisites | 1-1 |
| Option: Configuring a New Interface | 1-2 |
| Configuring PMS Connection | 1-10 |
| OPERA PMS | 1-10 |
| Oracle Suite8 PMS | 1-12 |
| Adding Certificate to IFC8.Net Instance | 1-13 |
| Option: Migrating from Existing IFC8 | 1-14 |
| 2 Authentication by Windows User | 2-1 |
| General | 2-1 |
| Authentication form | 2-1 |
| 3 Saving the Config.XML file | 3-1 |
| First Time Saving | 3-1 |
| Saving Existing Configuration | 3-3 |
| 4 Creating Shortcut | 4-1 |
| Finding the Shortcut | 4-2 |
| 5 Configuring Editor for Config.XML | 5-1 |
| Configuring Editor Structure | 5-2 |
| Main Node | 5-5 |
| Main Node Attributes | 5-5 |
| Main Sub Nodes | 5-6 |
| Main GlobalDbsConnect0 Sub Node | 5-6 |
| Node Attributes | 5-6 |
| Main SimAttrDef Sub Node | 5-7 |
| Main COMM Sub Node | 5-8 |

| | |
|-------------------------------|-------------|
| Node Attributes | 5-8 |
| Main MON Sub Node | 5-9 |
| Node Attributes | 5-9 |
| IFC1 Node | 5-10 |
| IFC1 Node Attributes | 5-10 |
| IFC1 Sub Nodes | 5-11 |
| IFC1 PRN Sub Node | 5-11 |
| Node Attributes | 5-11 |
| IFC1 PARSE Sub Node | 5-12 |
| Node Attributes | 5-12 |
| IFC1 PROT Sub Node | 5-13 |
| Node Attributes | 5-14 |
| IFC1 COMM Sub Node | 5-15 |
| Node Attributes | 5-15 |
| COMM Sub Node TCP / TCP_S | 5-16 |
| COMM Sub Node COM / COMEx | 5-17 |
| COMM Sub Node TCP_C | 5-18 |
| PMS1 Node | 5-19 |
| PMS1 Node Attributes | 5-19 |
| PMS1 Sub Nodes | 5-20 |
| PMS1 PRN Sub Node | 5-20 |
| Node Attributes | 5-21 |
| PMS1 PARSE Sub Node | 5-1 |
| Node Attributes | 5-1 |
| PMS1 PROT Sub Node | 5-2 |
| Node Attributes | 5-2 |
| PMS1 COMM Sub Node | 5-3 |
| Node Attributes | 5-4 |
| COMM Sub Node DBS | 5-5 |
| COMM Sub Node TCP / TCP_C | 5-6 |
| COMM Sub Node COM / COMEx | 5-7 |
| COMM Sub Node TCP_S | 5-7 |
| 6 Duplicating IFC node | 6-9 |
| General | 6-9 |
| Adding Additional IFC Node | 6-9 |
| Setting Routing Options | 6-11 |
| Deleting IFC Node | 6-14 |
| 7 Duplicating PMS node | 7-16 |

| | |
|---|-------------|
| Adding Additional PMS Node for Suite8 IFC | 7-16 |
| Required additional Settings | 7-18 |
| Adding Additional PMS Node for OPERA IFC | 7-20 |
| 8 PMS OPERA Parser Node Settings | 8-22 |
| OPERA PMS Parser | 8-23 |
| Suite 8 PMS Parser | 8-25 |

Preface

IFC8/IfcApplication is part of the Hotel Property Interface (IFC8) as of Version 8.15.0.0.

IFC8 is used as the primary Property Interface application with Oracle Suite8 PMS and with Oracle OPERA PMS (On-Premises & Cloud).

IFC8 is intended to be installed at the customer site for communication to certain external systems that are utilized by the site.

Purpose

This guide explains the common parts of the Hotel Property Interface (IFC8) Configuration form.

Audience

This document is intended for consultants, technical support teams, product specialists, and others who are responsible for setting up the Oracle Hospitality Hotel Property Interface with the Oracle Hospitality Suite8 and OPERA Property Management Systems.

Customer Support

To contact Oracle Customer Support, access Customer Support Portal at the following URL:

<https://iccp.custhelp.com>

When contacting Customer Support, please provide the following:

- Product version and program/module name
- Functional and technical description of the problem (include business impact)
- Detailed step-by-step instructions to re-create
- Exact error message received
- Screen shots of each step you take
- Your contact details including an email address.

Documentation

Oracle Hospitality product documentation is available on the Oracle Help Center at

<http://docs.oracle.com/en/industries/hospitality/>

Table 1 Revision History

| Date | Description |
|--------------|---|
| June 2022 | <ul style="list-style-type: none"><li data-bbox="917 338 1144 359">• Initial Publication |
| January 2023 | <ul style="list-style-type: none"><li data-bbox="917 415 1242 436">• Windows 11 Added to OS<li data-bbox="917 443 1339 499">• Screenshots updated to reflect GUI changes |

1

Configure IFC Application

Each connection to a property vendor system requires its own instance of IFC8.

After installation of the Hotel Property Interface program (IFC8) configuration is needed to communicate with the vendor system.

IFC8 will use a configuration file it starts against reading all the configuration set. The IFC8 instance creates the configuration file at initial start.

There are two options of configuring the IFC8 instance:

- **Configure a new Interface**
a new configuration file will be created
- **Migrate from existing IFC8.13.x or IFC8.14.x Interface**
where an existing configuration file will be used

The following sections describe the basic creation or migration of the configuration file and settings:

Valid PMS Systems

- OPERA Cloud PMS
- OPERA V5 (Hosted and on Premise)
- Suite8 PMS

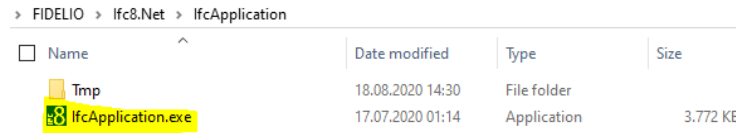
Prerequisites

- User needs a valid Local PC user and password with FULL administrative rights
- For Suite8 installations user also needs a valid Suite8 PMS user account and password with Supervisor rights. This must not be an Interface user account.

- For Suite8 installations user also needs the Database credentials to allow IFC8 accessing the Database at runtime.

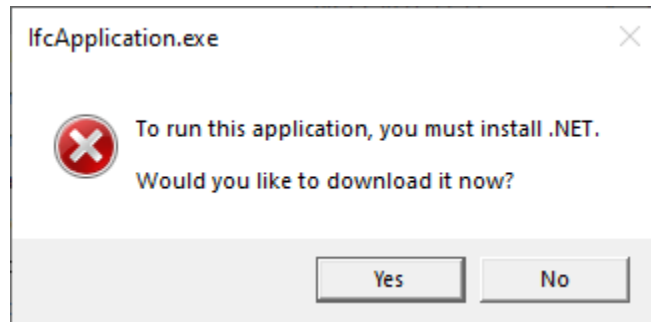
Option: Configuring a New Interface

Execute IfcApplication.exe – usually located in C:\FIDELIO\Ifc8.Net\IfcApplication



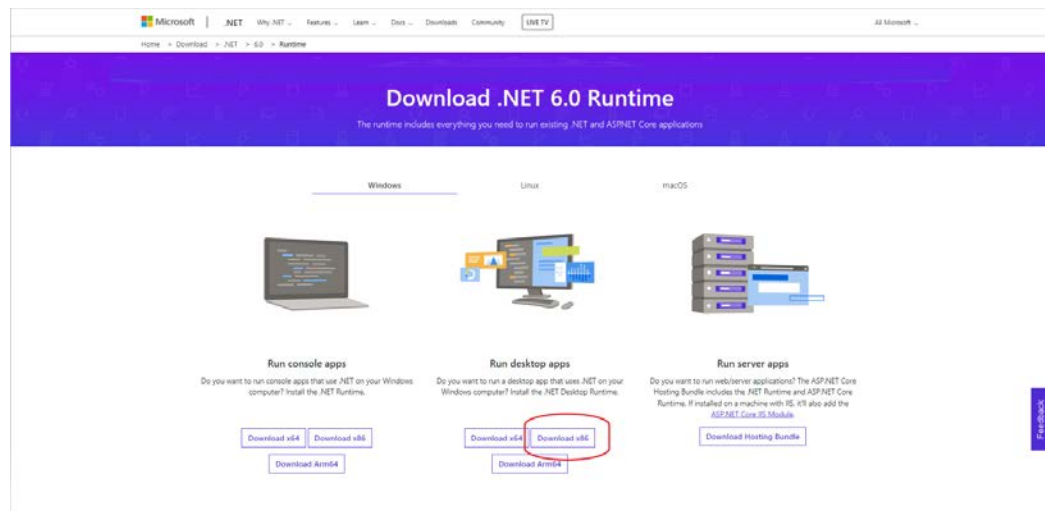
The IfcApplication will verify if .NET is installed on your Machine.

If not, you will receive a pop up message asking if you wish to Install .NET



If this is the case, please select Yes and you will be routed to the .NET Runtime Website.

An internet connection is a re-requisite. Here please select an Install the Download x86 option for windows desktop.



Once Installed please re-launch the IfcApplication to commence configuration.

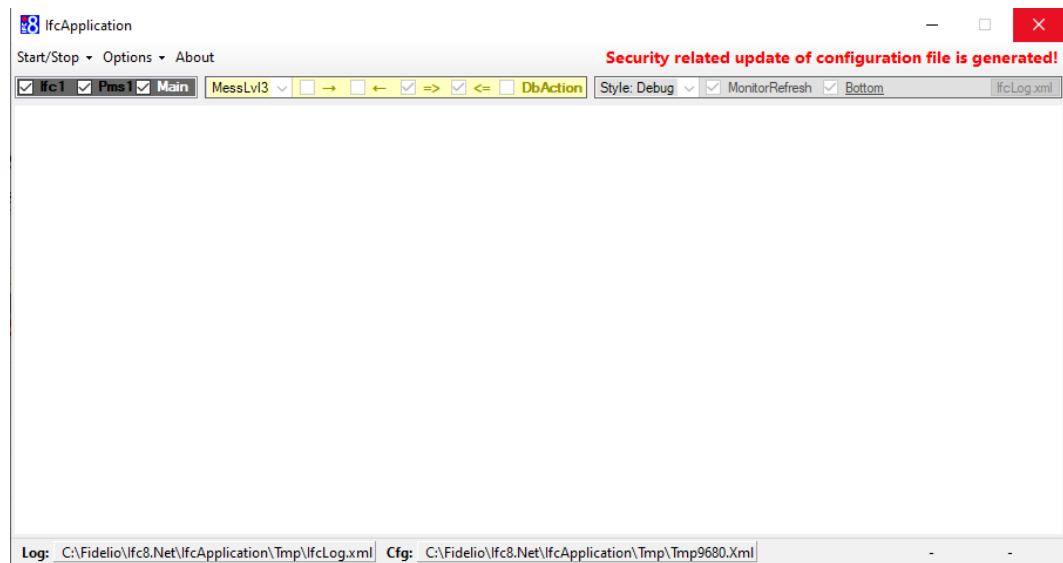
IfcApplication will automatically create a new configuration file (Config.xml) which contains all necessary tags and default settings.

IfcApplication.exe will start against this file to load related configuration. After your configuration is completed, you will need to create a short cut for launching the IfcApplication instance.

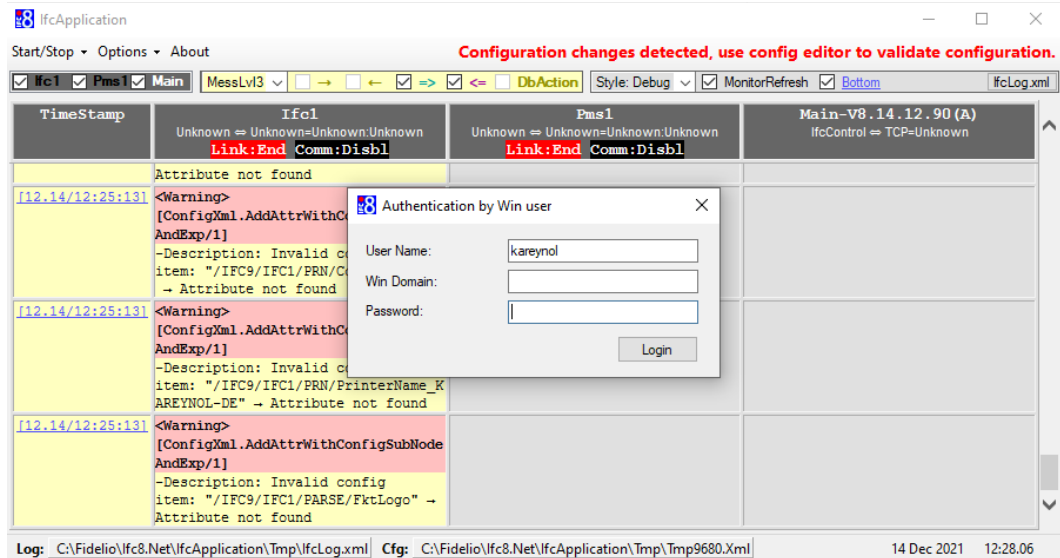
The related section can be found later in this document.

IfcApplication will launch a series of pop-up messages.

These messages appear as the current new "Config.xml" has no validated data and no security features. First you will get a message like this

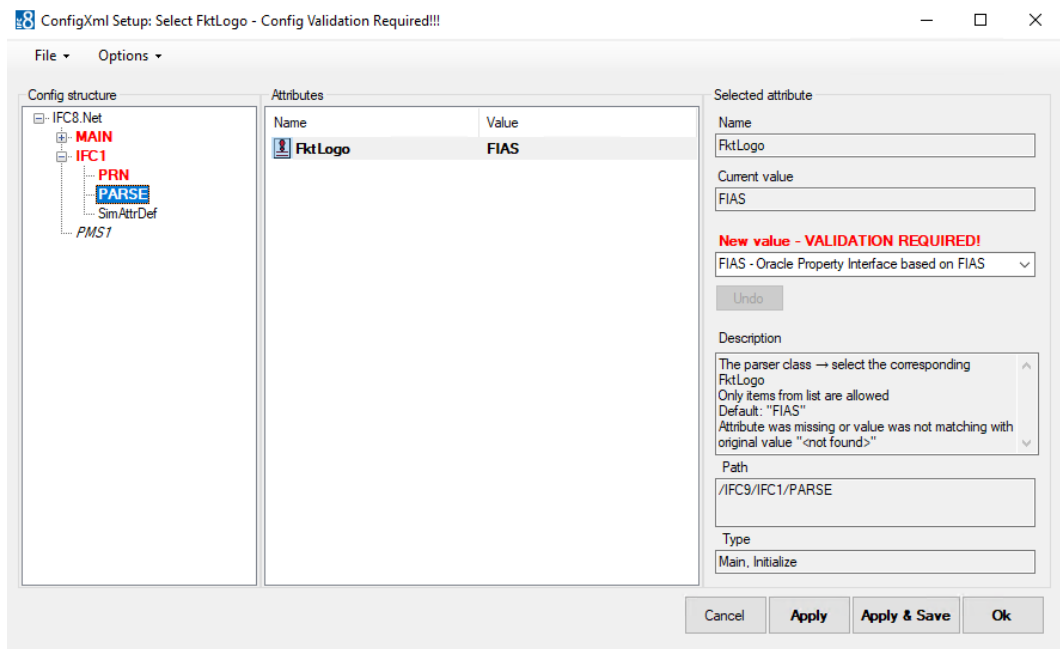


and then after a few seconds a screen asking for logon credentials:

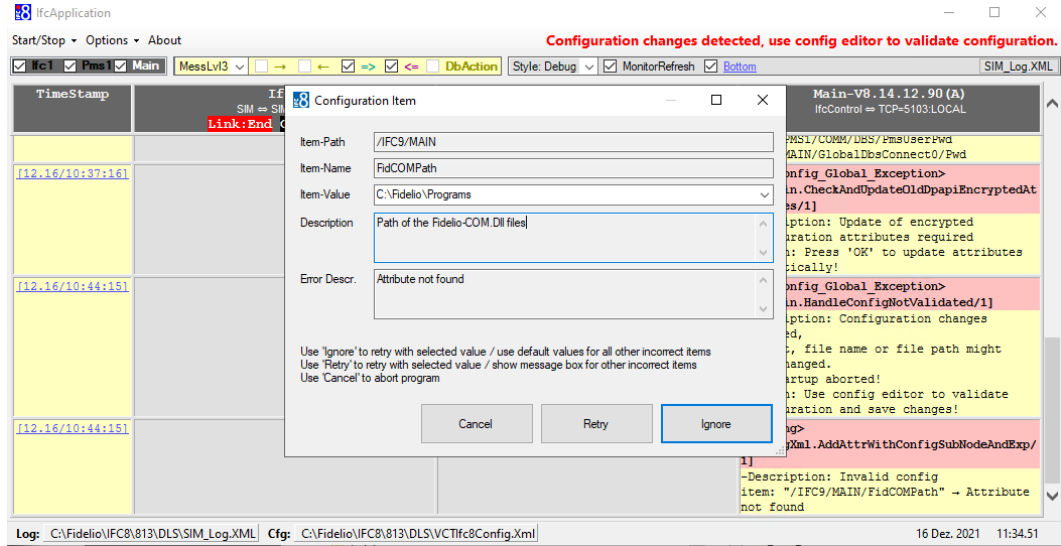


These are your local admin user credentials and password as indicated by the “Authentication by WinUser” title of the dialog box.

Once you have successfully entered your credentials the IFC. You will arrive at the IFC8 Form. Please select Apply & Save before continuing.



You may in the interim receive a message like this:



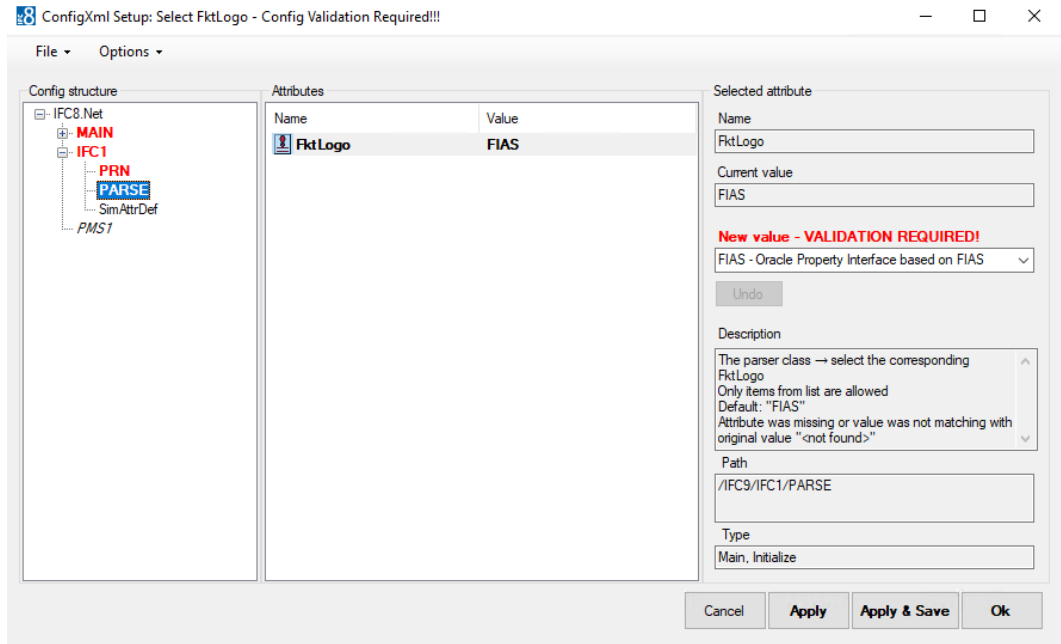
This message denotes that some configuration attributes are missing in the Config.xml file.

Define the path of the Suite8 client program files (default is c:\fidelio\programs).

1. Select **Ignore** to retry with selected value / use default values for all other incorrect items – IFC will populate configuration with default values. This is the recommended option.
2. Select **Retry** with selected value / show message box for all other incorrect items
3. Select **Cancel** to abort the program.
4. Continue with selecting **Ignore** button.

All missing attributes will be added to the Config.xml file and filled with default values.

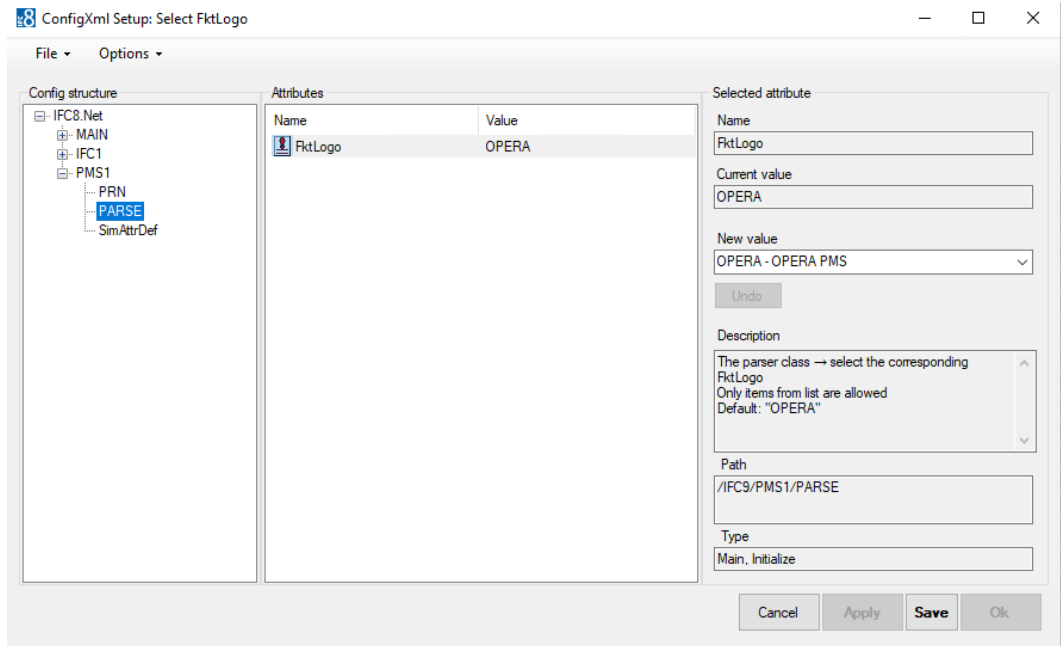
Now the Configuration form will appear again with all attributes red coloured.



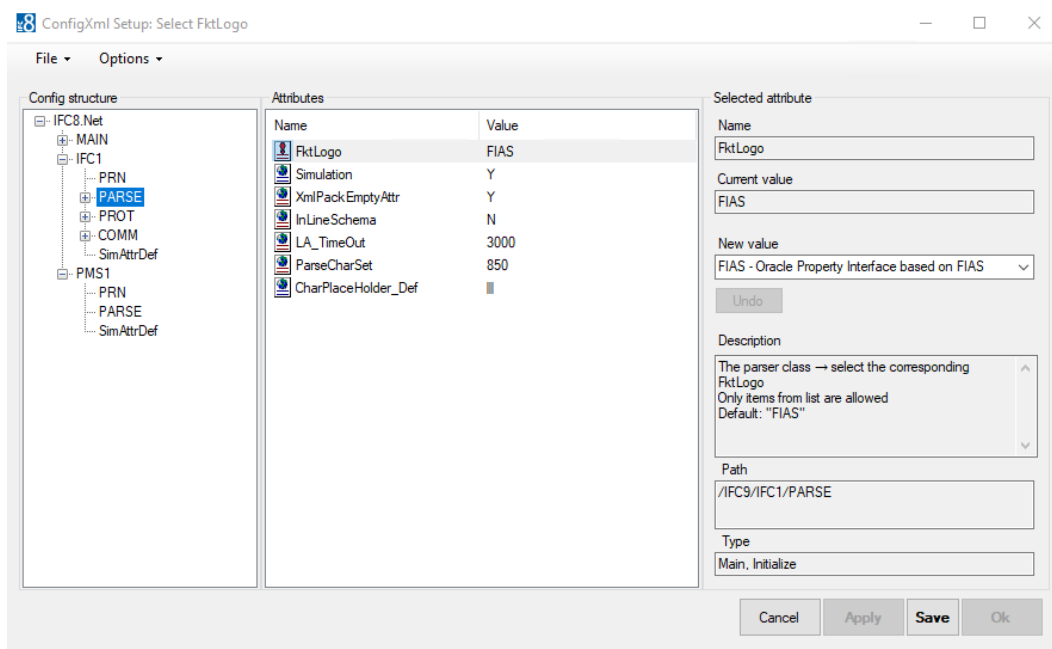
5. Select **Apply** to confirm the current settings.

The IfcApplication will internally validate the current settings and security features.

IFC reinitializes and then shows proper configuration nodes and attributes without left red marked entries.



In the IFC1/PARSE/FktLogo node select the desired FKT Logo (Parser) to use.

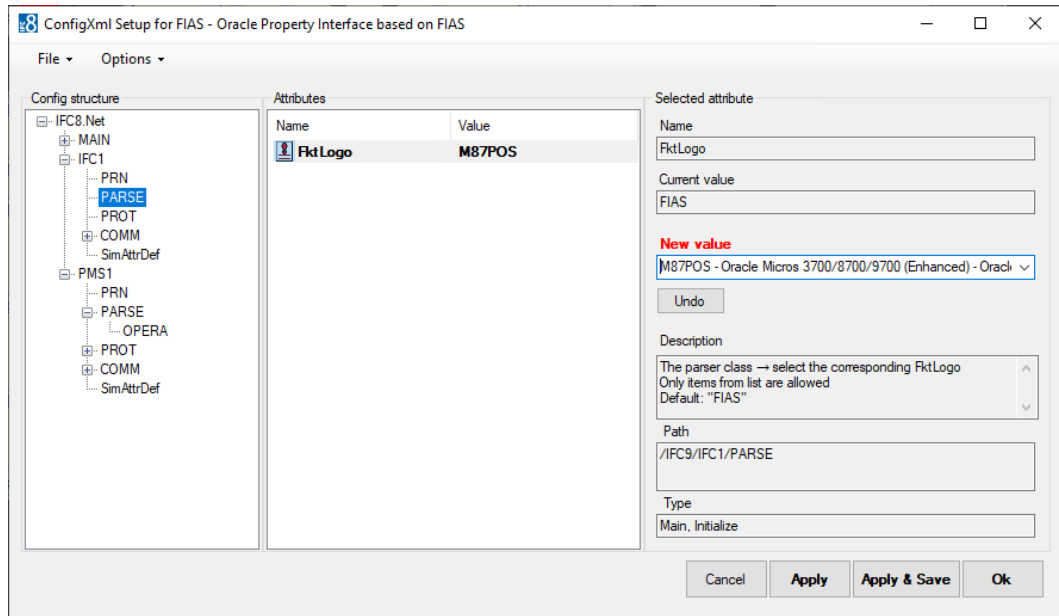


 **NOTE:**

FKT Logo is the internal code of the related Interface protocol (Message offset) IFC8 shall use to communicate with the connecting vendor system.

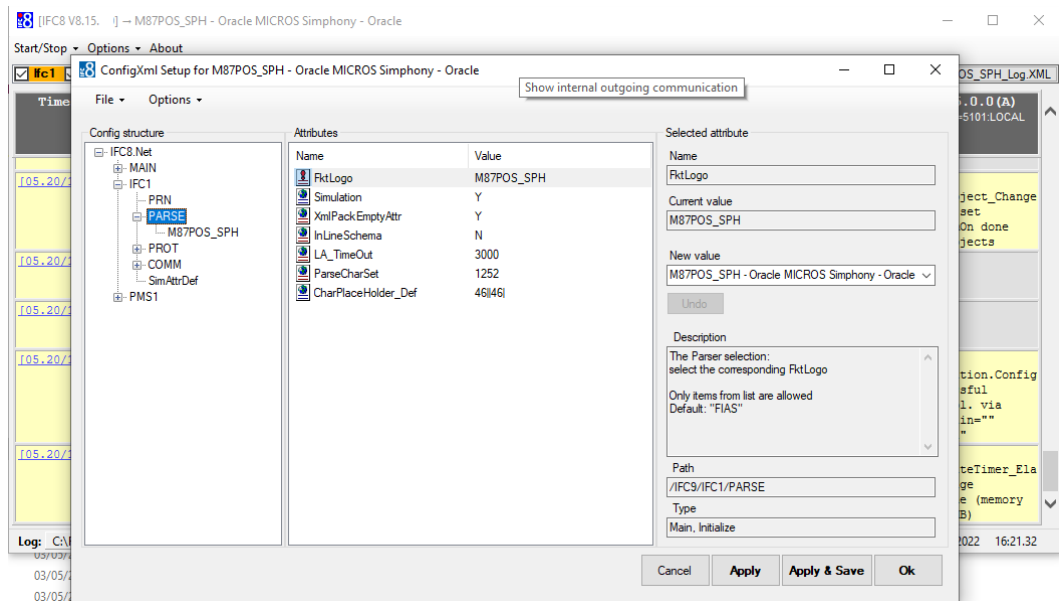
In the value list all supported FKT Logos are listed with name. If you issue finding the correct FKT Logo for your vendor system, contact your account Manager or Oracle Interface support.

The Default is FIAS change it to the desired FKT Logo.



6. Select **Apply** to confirm the value.

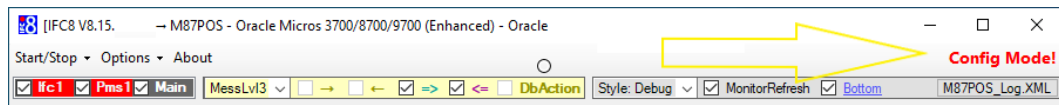
The IfcApplication will re-initialize adding the attributes for the selected FKT Logo.



It is now recommended to save the new Config.xml file.

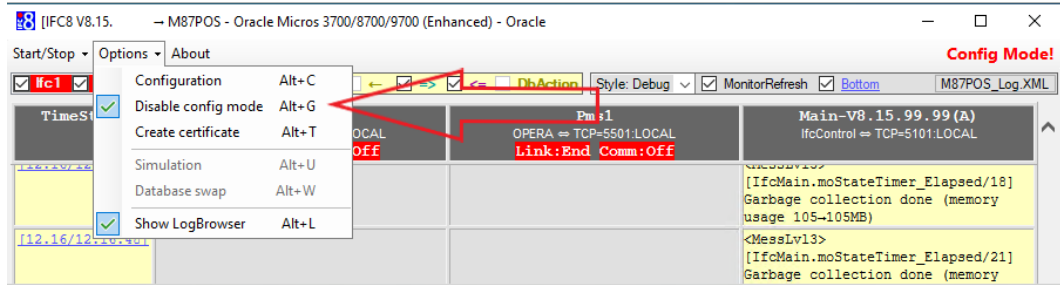
7. Go to **Save the Config.XML file** section for details.

Note that the interface has turned its status into **Config Mode**:

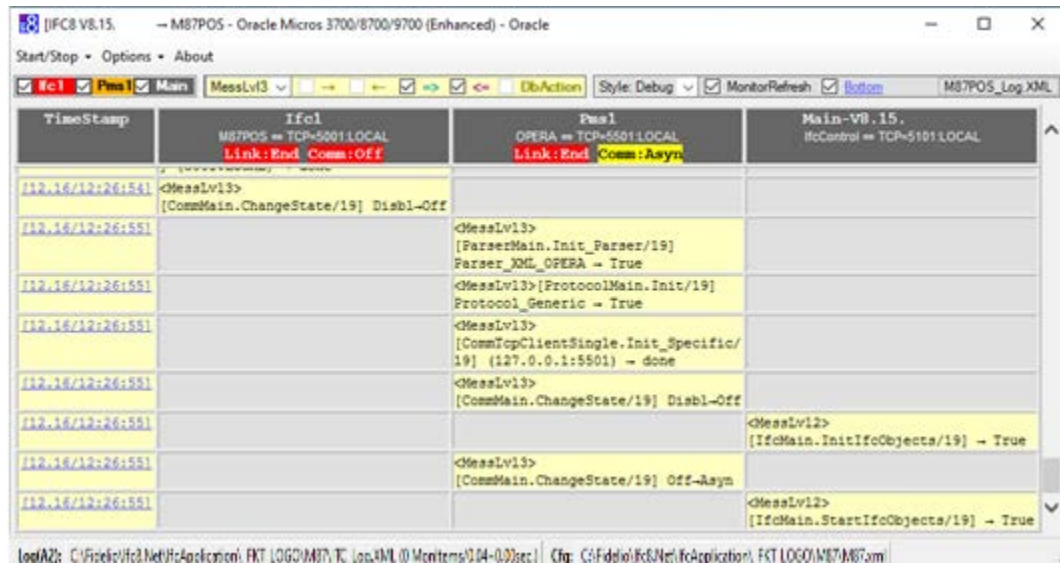


This means the Interface has shut down communication with the vendor and PMS modules (Suite8 or OPERA).

To turn off Config Mode select “Options” – “Disable config mode”



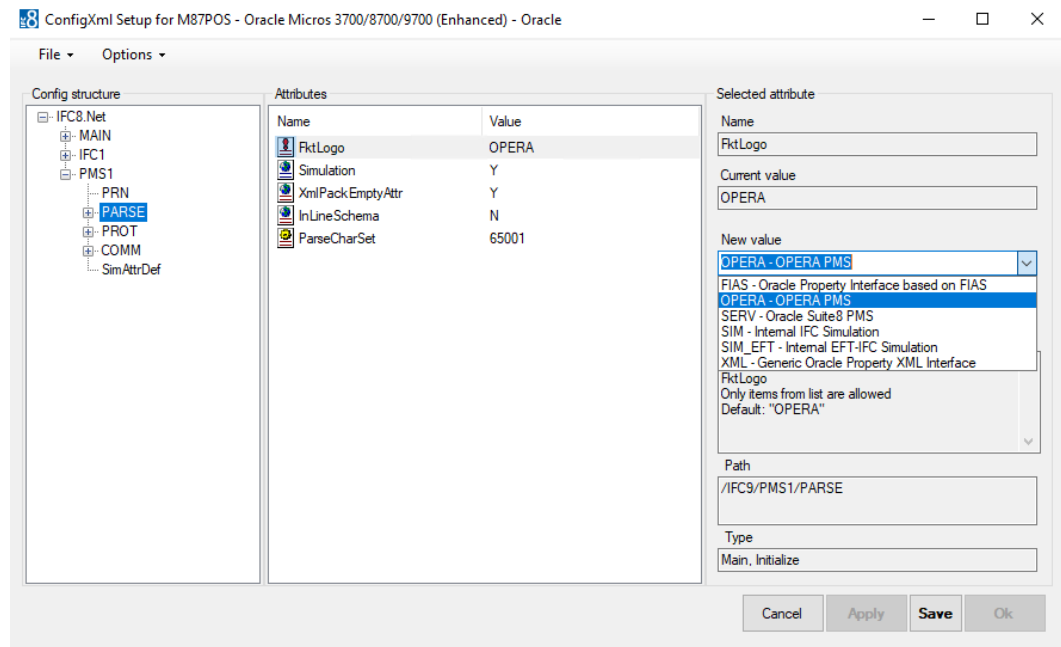
The Interface will reinitialize; however it is possible that due to missing configuration it will not initialize with the Vendor or PMS. This is identified by the RED and YELLOW **Link:End Comm:Off** and **Link:End Comm:Asyn** messages in the IFC and PMS objects respectively.



In this case continue with Configuration of the Interface via [the Configuration form editor](#).

Configuring PMS Connection

Configuration of the PMS Connection is via the PMS Node.



1. Select the Property Management System you wish to connect to.

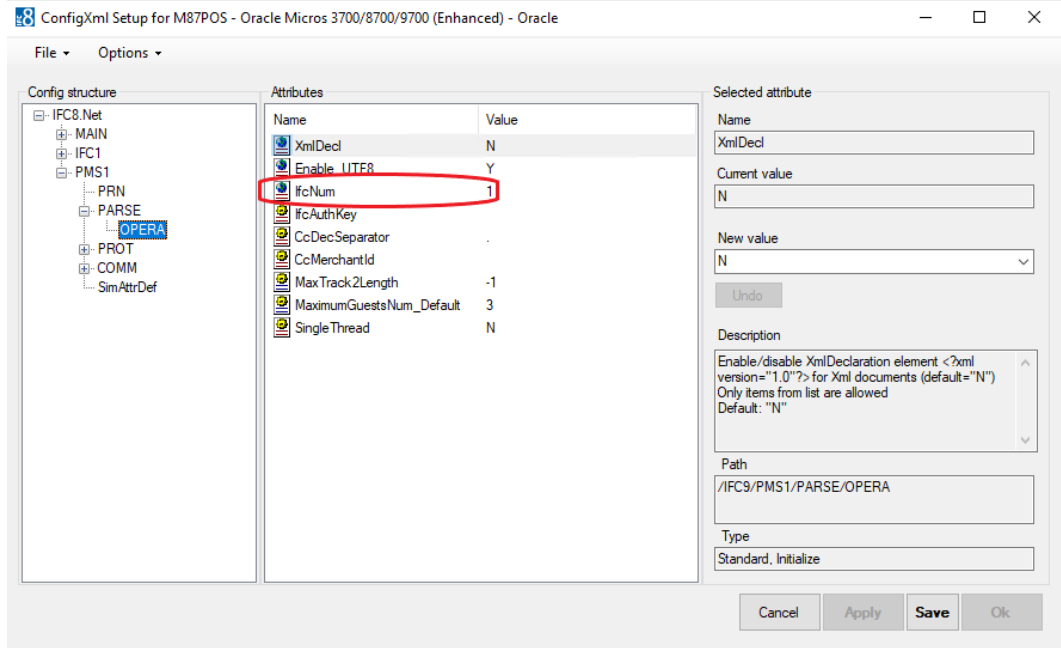
This will be one of two options:

- **OPERA** for OPERA PMS and CLOUD Installations
- **SERV** for Oracle Suite 8 PMS

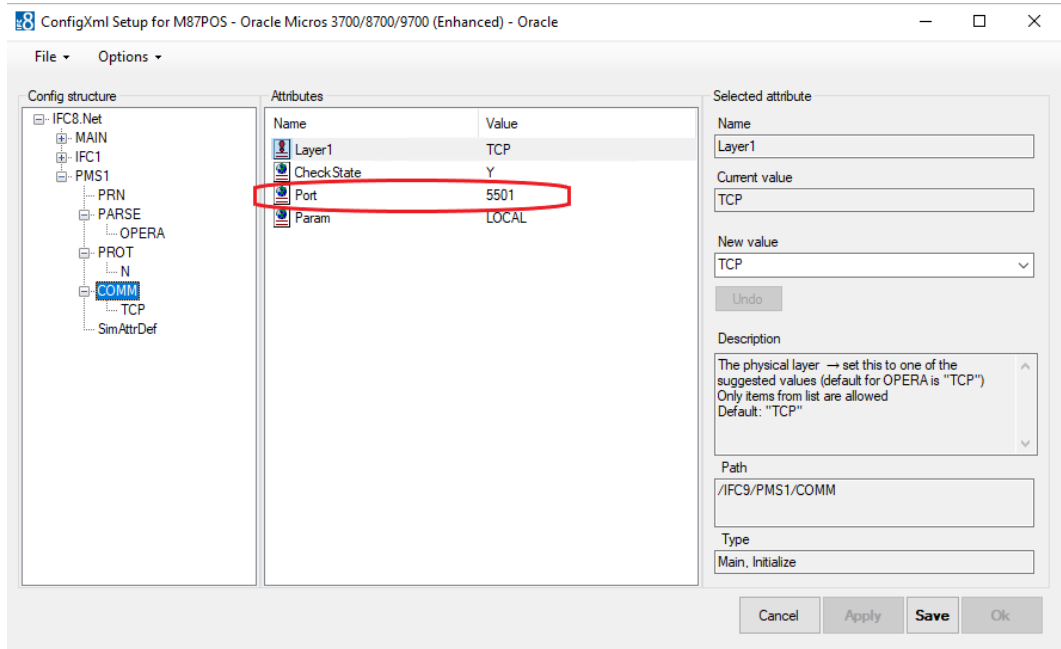
OPERA PMS

1. Select OPERA as the Parser if not there as default and select Apply.

The IfcApplication will re-initialize and the settings for the OPERA Parser will be available.



2. Configure the Ifc_Num to correspond to the Interface Number configured in OPERA PMS Configuration.
3. Next Configure the Port on which the IfcApplication will communicate to the Opera IfcController.

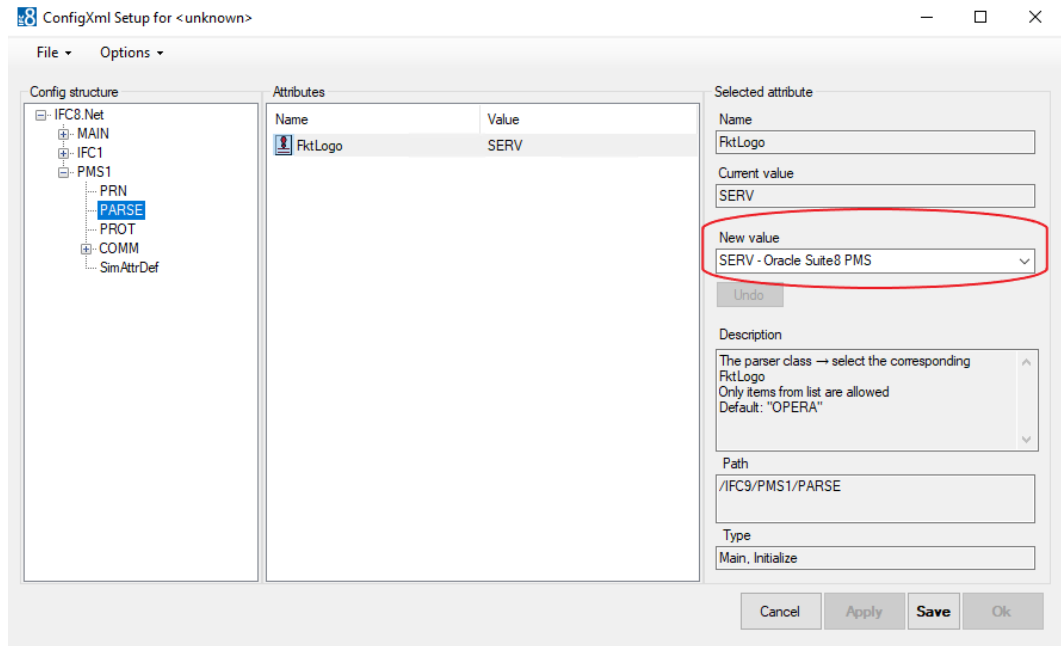


These are the basic setting for OPERA PMS to connect.

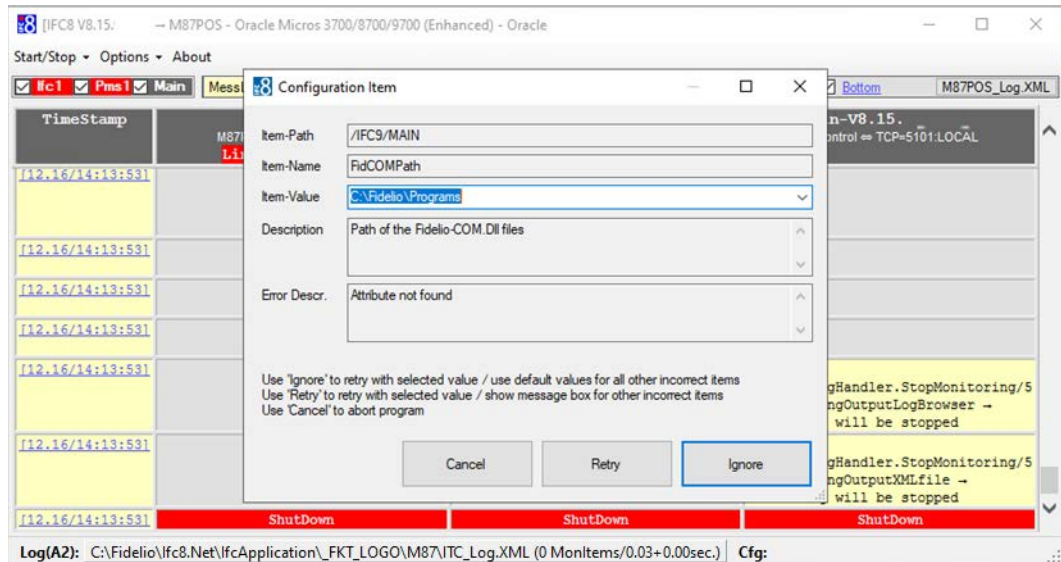
The other optional settings are explained later in this document in the [OPERA PMS Parser](#) section.

Oracle Suite8 PMS

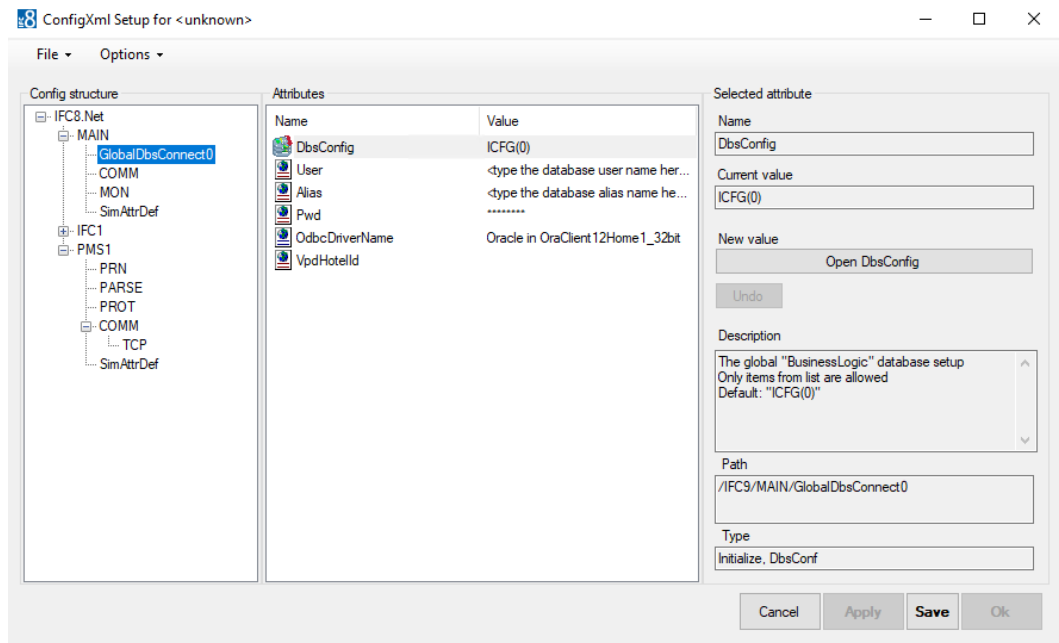
1. Select **SERV** as the Parser for Oracle Suite8 PMS and then **Apply**.



The IfcApplication will re-initialize and will verify all attributes for the SERV Parser.
If any are missing a warning message will appear.



2. Select Ignore to add missing items with their corresponding default values.
3. Next the connection details must be entered in the MAIN form.
Under the GlobalDbsConnect() the Database credentials must be entered.



- **USER:** The Database USER
- **ALIAS:** The Database Synonym
- **Pwd:** The Password for that User

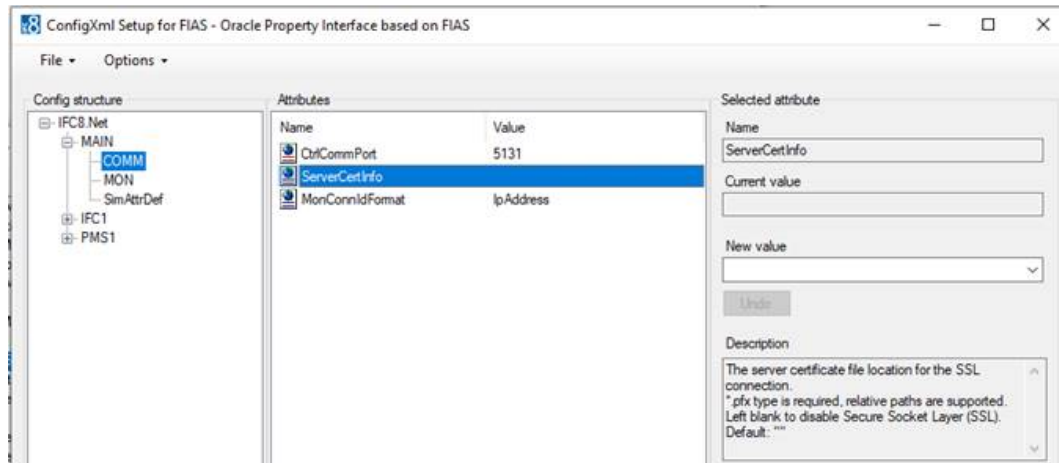
4. Once these have been entered, select **Apply** and **Save**.

The PMS Object should now be able to connect to the Suite8 PMS Instance.

The other optional in the form are explained later in this document in the [Suite 8 PMS Parser](#)

Adding Certificate to IFC8.Net Instance

The *.pfx certificate is added to the IFC8.Net configuration in the MAIN->COMM section



Option: Migrating from Existing IFC8

NOTE:

Make sure the config.xml file to migrate was started with a IFC8 VB6 version 8.13.x as to ensure all attributes and values will be able to convert.

So in case an upgrade from older IFC8 version to 8.15.x is planned, first upgrade the existing IFC8 version to IFC8.13.x before upgrading to IFC8.15.x

1. Copy the configuration file (XML) of the existing IFC8 installation to a new folder.

If you are not sure where to find them, please review your existing short cuts.

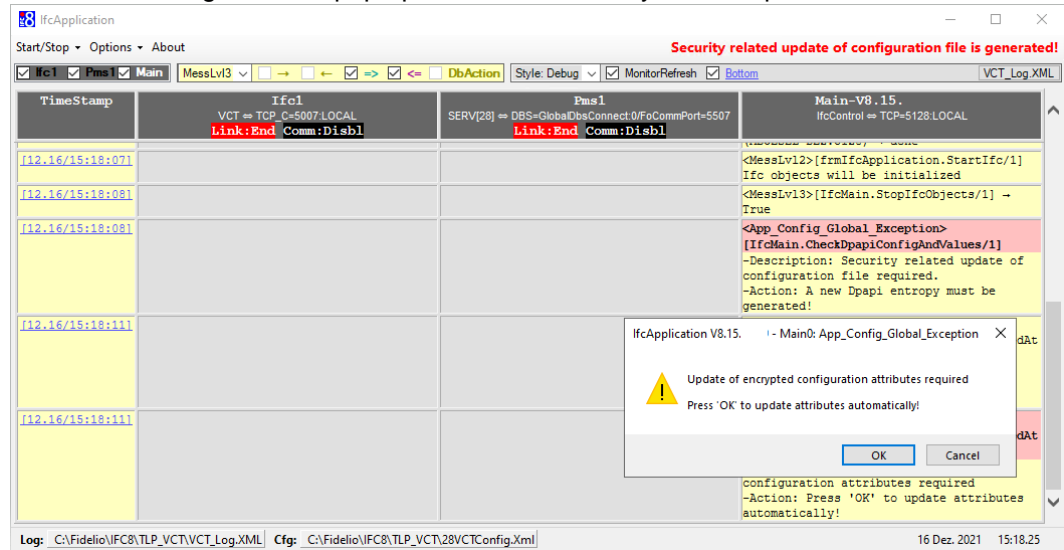
Recommendation:

2. Copy the file to a subfolder of c:\fidelio\lfc8.Net\lfcApplication (freely definable) using the IFC8 FKT Logo as directory name.

Example: c:\fidelio\lfc8.Net\lfcApplication\IHV\ (for the IHV Interface)

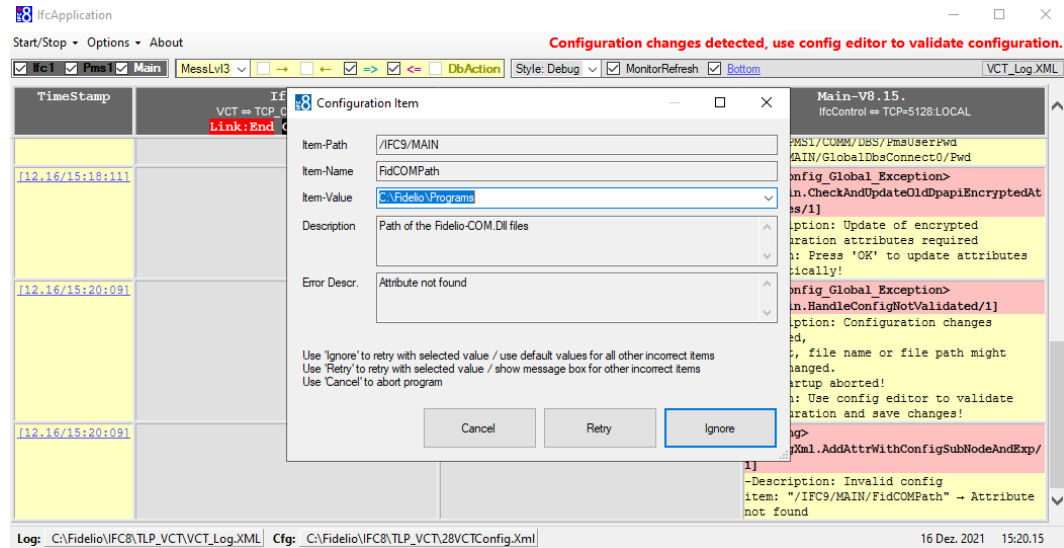
3. Create a shortcut to start lfcApplication and call this Config.xml
See section "[Create Shortcut](#)" for details.
4. Start the lfcApplication via shortcut.

The First message that will pop up because of security related updates.



5. Select **OK** to continue.

The IfcApplication will read the Config.xml and will add any missing attributes to it.



When IFC8 connects with Suite8 PMS the above path of the location of the Fidelio Program files needs to be verified by user.

6. Select **Ignore** to continue with default values for all missing attributes.

7. Select **Retry** to confirm selected value and show message box for next incorrect or missing attribute.

Possible attributes that you might need to verify:

In each case the combination of the Item-Name and the Description text will explain what the value is used for. Generally, there is no need to change the Default Value.

Use the Default Values unless you have an explicit need for a change.

If in doubt, please verify with your support team or Oracle support.

Configuration Item

Item-Path: /IFCS/MAIN

Item-Name: ShutdownTimeout

Item-Value: 8

Description: The maximum "ShutdownTimeout" property → wait for selected timeout (in seconds) before a forced shutdown is performed.

Error Descr.: Attribute not found

Use 'Ignore' to retry with selected value / use default values for all other incorrect items
Use 'Retry' to retry with selected value / show message box for other incorrect items
Use 'Cancel' to abort program

Cancel Retry Ignore

Configuration Item

Item-Path: /IFCS/FC1/PROT

Item-Name: ReplyTimeOut

Item-Value: 6000

Description: The maximum time waiting for reply record from vendor system → set this in Milliseconds (default for IHV is "3000")

Error Descr.: Attribute not found

Use 'Ignore' to retry with selected value / use default values for all other incorrect items
Use 'Retry' to retry with selected value / show message box for other incorrect items
Use 'Cancel' to abort program

Cancel Retry Ignore

Configuration Item

Item-Path: /IFCS/FC1/PROT

Item-Name: TimeoutThreadWait

Item-Value: 8500

Description: timeout after which the inbuffer is checked if no signal was received (set to "1" to wait infinite for signal) (default for IHV is "2500")

Error Descr.: Attribute not found

Use 'Ignore' to retry with selected value / use default values for all other incorrect items
Use 'Retry' to retry with selected value / show message box for other incorrect items
Use 'Cancel' to abort program

Cancel Retry Ignore

Configuration Item

Item-Path: /IFCS/FC1/PROT

Item-Name: TimeoutThreadSleep

Item-Value: 80

Description: sleep timeout for read thread (set to 0, if sleep should not be used) (default for IHV is "20")

Error Descr.: Attribute not found

Use 'Ignore' to retry with selected value / use default values for all other incorrect items
Use 'Retry' to retry with selected value / show message box for other incorrect items
Use 'Cancel' to abort program

Cancel Retry Ignore

Configuration Item

Item-Path: /IFCS/FC1/PROT

Item-Name: TimeoutThreadStop

Item-Value: 800

Description: timeout waiting for read thread to stop before thread will be aborted (default for IHV is "200")

Error Descr.: Attribute not found

Use 'Ignore' to retry with selected value / use default values for all other incorrect items
Use 'Retry' to retry with selected value / show message box for other incorrect items
Use 'Cancel' to abort program

Cancel Retry Ignore

Configuration Item

Item-Path: /IFCS/FC1/PROT/LLC_BMP

Item-Name: TimeoutWaitingForShutdown

Item-Value: 10000

Description: The maximum time waiting for current send/received sequence to finish, if shutdown was requested → set this in Milliseconds (default for IHV is "10000")

Error Descr.: Attribute not found

Use 'Ignore' to retry with selected value / use default values for all other incorrect items
Use 'Retry' to retry with selected value / show message box for other incorrect items
Use 'Cancel' to abort program

Cancel Retry Ignore

Configuration Item

Item-Path: /IFCS/FC1/COMM/TCP

Item-Name: TCP_PollEvents

Item-Value: 1

Description: TCP poll event timeout in msec. → default: "1" [disabled]

Error Descr.: Attribute not found

Use 'Ignore' to retry with selected value / use default values for all other incorrect items
Use 'Retry' to retry with selected value / show message box for other incorrect items
Use 'Cancel' to abort program

Cancel Retry Ignore

Configuration Item

Item-Path: /IFCS/PM51/PROT

Item-Name: ReplyTimeOut

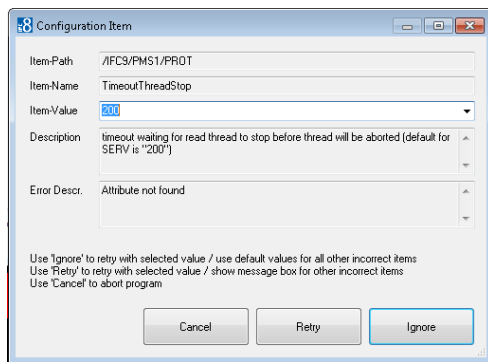
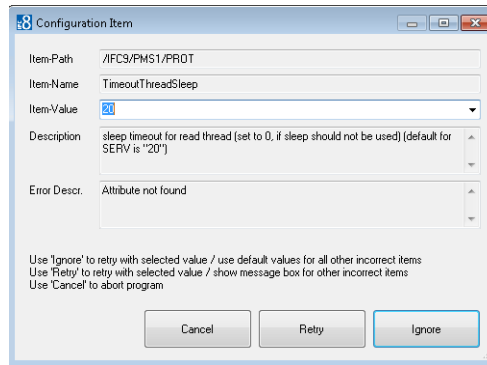
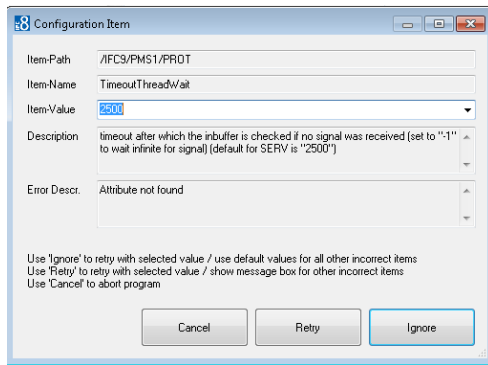
Item-Value: 6000

Description: The maximum time waiting for reply record from vendor system → set this in Milliseconds (default for SERV is "3000")

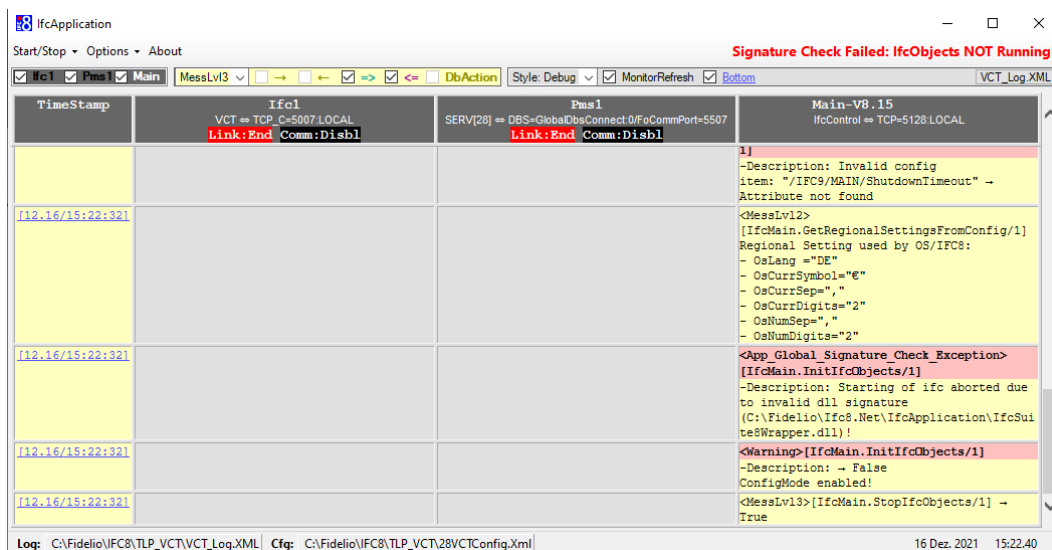
Error Descr.: Attribute not found

Use 'Ignore' to retry with selected value / use default values for all other incorrect items
Use 'Retry' to retry with selected value / show message box for other incorrect items
Use 'Cancel' to abort program

Cancel Retry Ignore

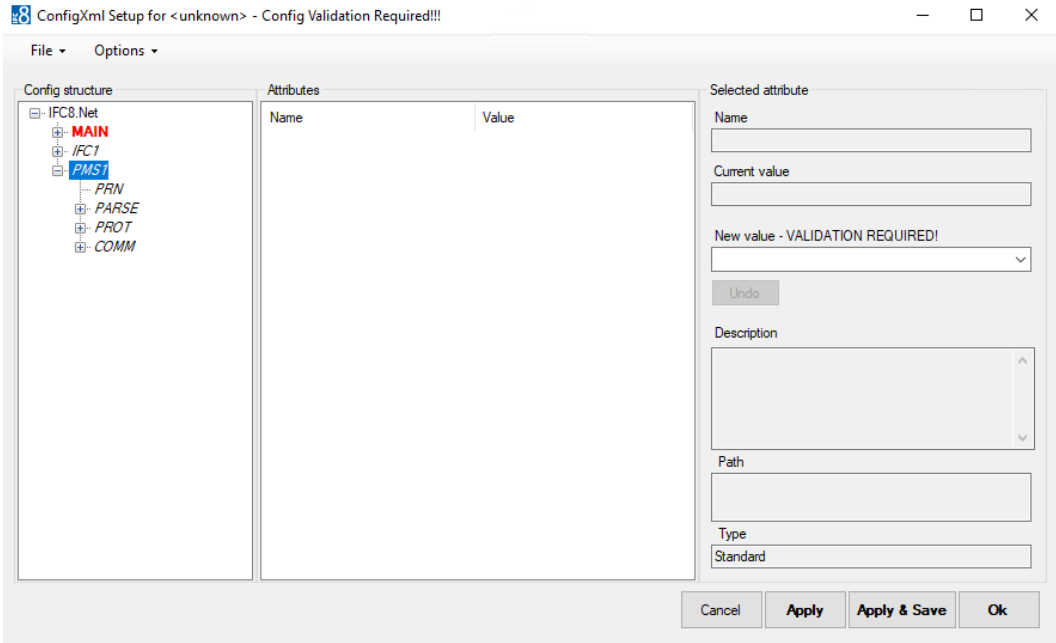


IFC8 will go on, changes its status into “Config mode” then check the hash code against the xml hash code (Security Feature) and will require the validation of current the configuration showing a warning message **“Signature Check Failed: Ifc Objects NOT Running!”**.

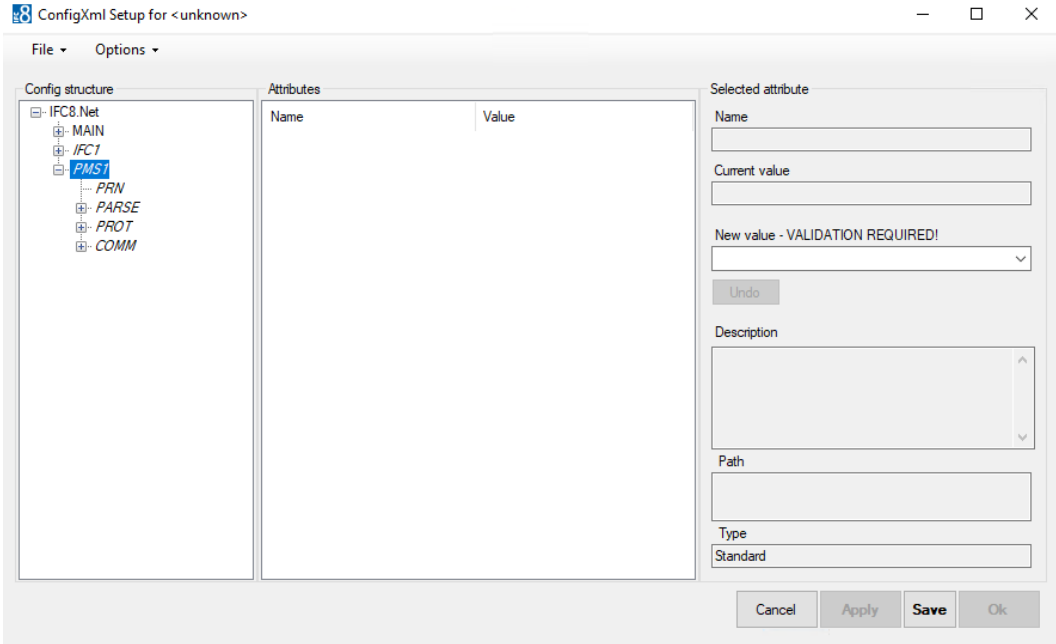


This means the IFC will not allow communication with vendor side and with PMS side (Suite8 or OPERA).

Access the Configuration Editor (Options – Configuration – access with user authentication) and you will find all or some configuration parameters coloured in red.

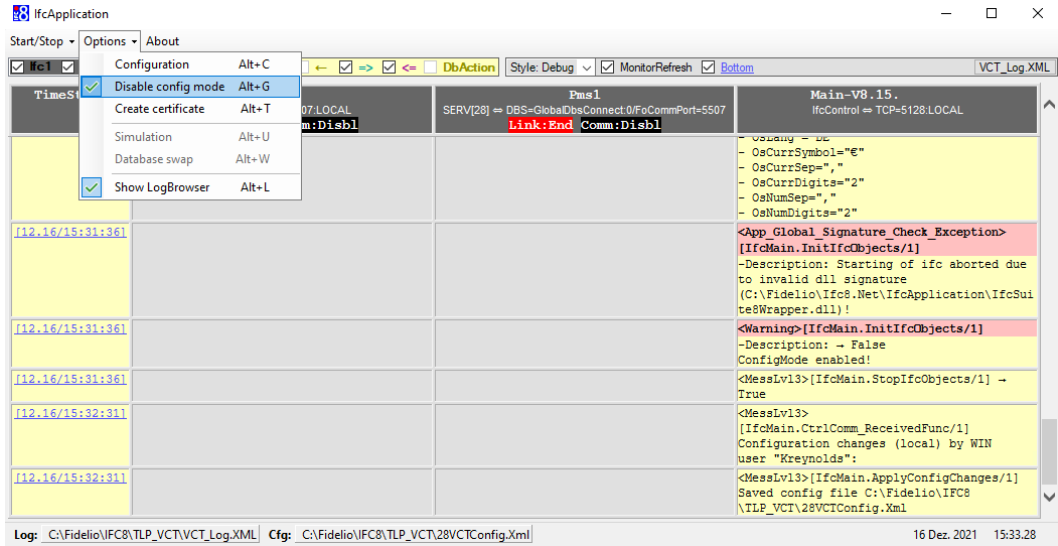


8. Select **Apply** to confirm current settings.

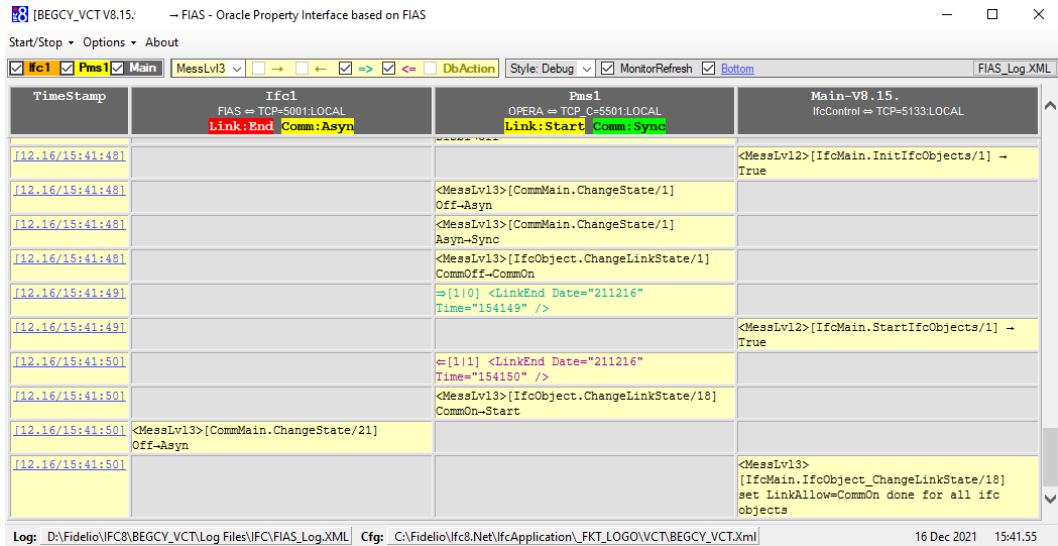


9. Select **Save** to save converted Config.xml.

In the Options menu uncheck the **Disable Config Mode** option and then the IfcApplication will be ready.



IFC8 will change its status into Link Start and attempts to create connection to the PMS (Suite8 Database or OPERA IFC Controller)



2

Authentication by Windows User

General

This additional authentication to access IFC8 config form has been added in order to set a security step for unwanted access to the IFC DB Config (Suite8 PMS) via the IFC8 Config form.

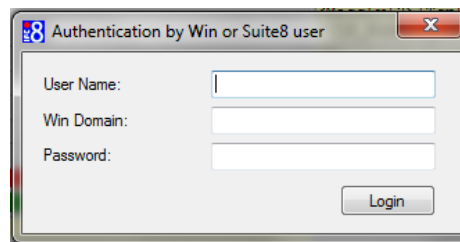
The Login is also required when IFC8 is installed for OPERA PMS!!

When selecting "Options" / "Configuration" the user will need to enter the user / pw of the local/corp. windows account active for the machine the IFC8 application is running at.

Note: Interface configuration can be accessed with the user that is currently active / the IFC is started with or with a Windows user having administrator rights!

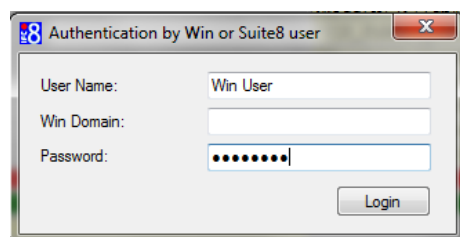
Authentication form

When IFC8 is installed against Suite8 authentication is also possible by Suite8 user credentials.

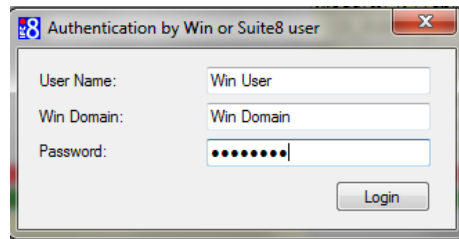


- **User Name:** Windows User Name / Suite8 user
- **Win Domain:** Domain name (when available)
- **Password:** Windows Username password / Suite8 user password

Login Win user without domain name:



Login Win user with domain name:



Authentication by Win or Suite8 user

User Name: Win User

Win Domain: Win Domain

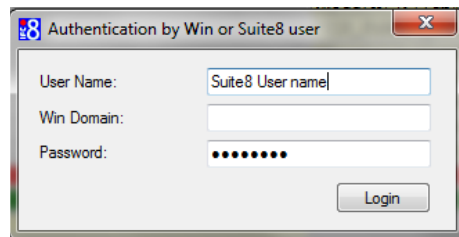
Password: ●●●●●●●●●●

Login

NOTE:

Login fails with user without administrative rights currently not logged in.

Login with Suite8 user:



Authentication by Win or Suite8 user

User Name: Suite8 User name

Win Domain:

Password: ●●●●●●●●●●

Login

NOTE:

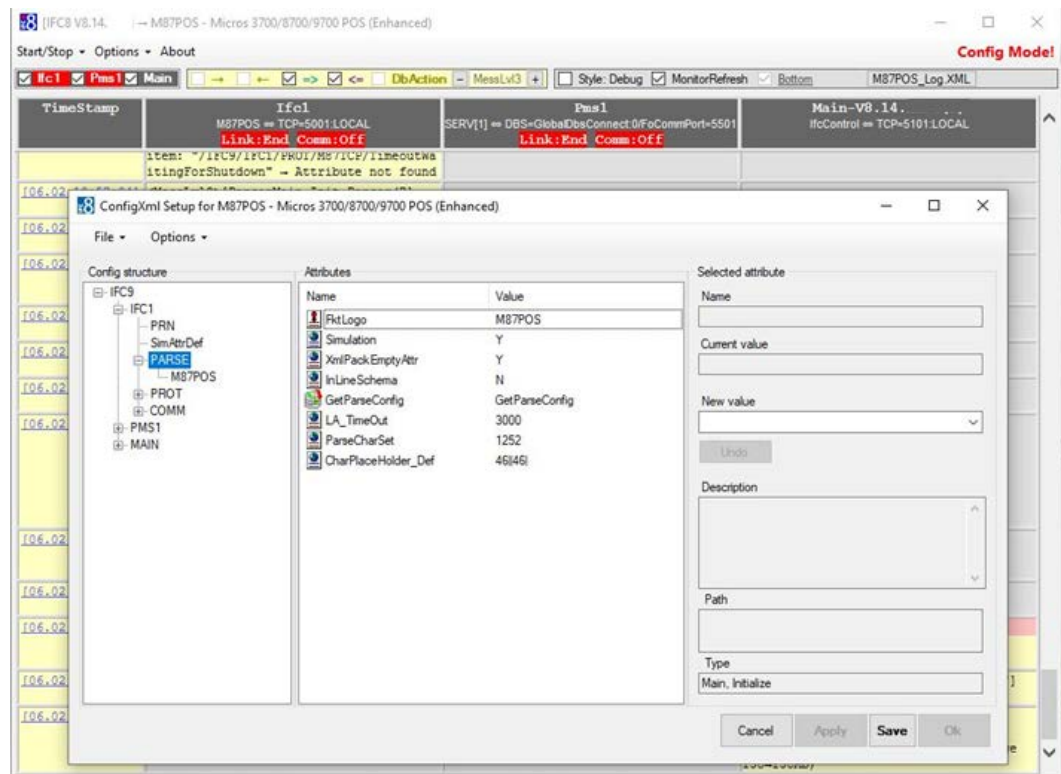
Suite8 user must not be the Interface user defined in Suite8 PMS

3

Saving the Config.XML file

First Time Saving

When a new Config.xml has been generated from the beginning via IfcApplication the log files and temporary config.xml file will be created in a \tmp subfolder of IfcApplication directory.



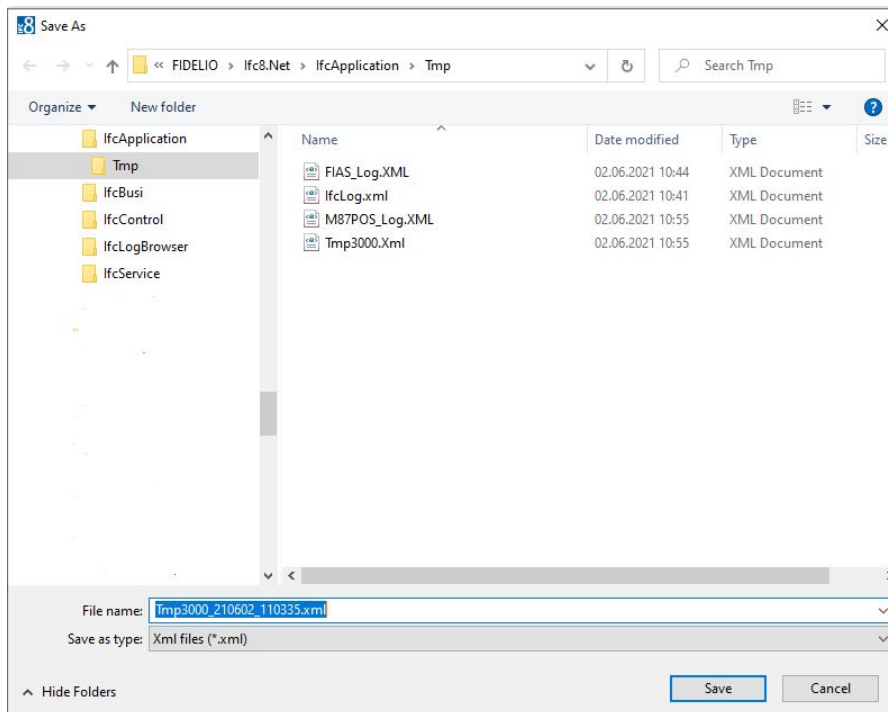
- **Selecting the Save button:**

The temporary config file will be saved as "Ifc8NetConfig.xml" in the \tmp folder of IfcApplication, without option to save it under different name in different folder.

- **Save under different name**

Select the **Menu option** "File" and then the option "Create backup file". The 'Save as' browser window opens in the \tmp folder of IfcApplication and offers to save the "tmpxxxx" file with a trailing Date and Time stamp in this folder.

The temporary config file can now be saved under a specific name into a specific folder

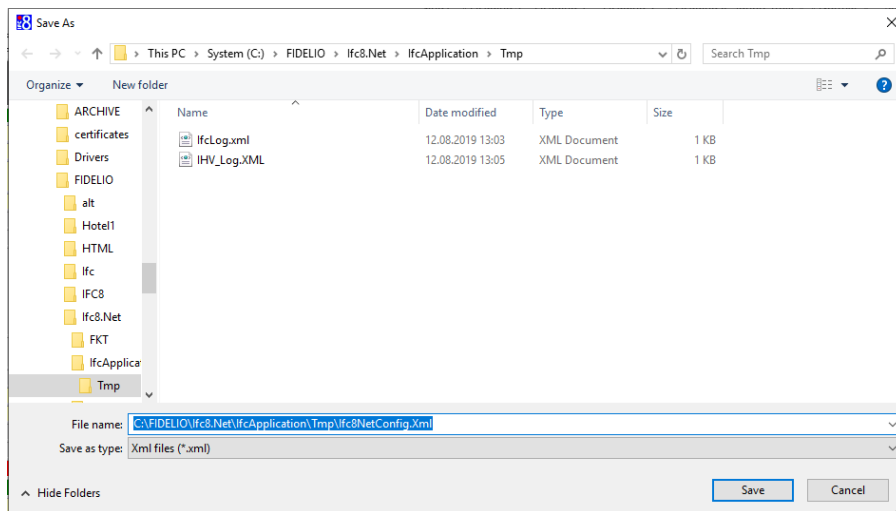


- **Selecting the Cancel button**

Will not save the configuration at this time.

- **Shut down the IfcApplication instance:**

When selecting the “Exit” option in Start/Stop menu or the “X” on the right top of IfcApplication the Application will shut down and the Save As browser window will open as to save the config.xml file in a desired folder as a desired name.



In this case you need to restart the lfc8 instance with the new Config.xml file out of the folder it is saved in.

The ...lfcApplication\tmp folder can be removed afterwards.

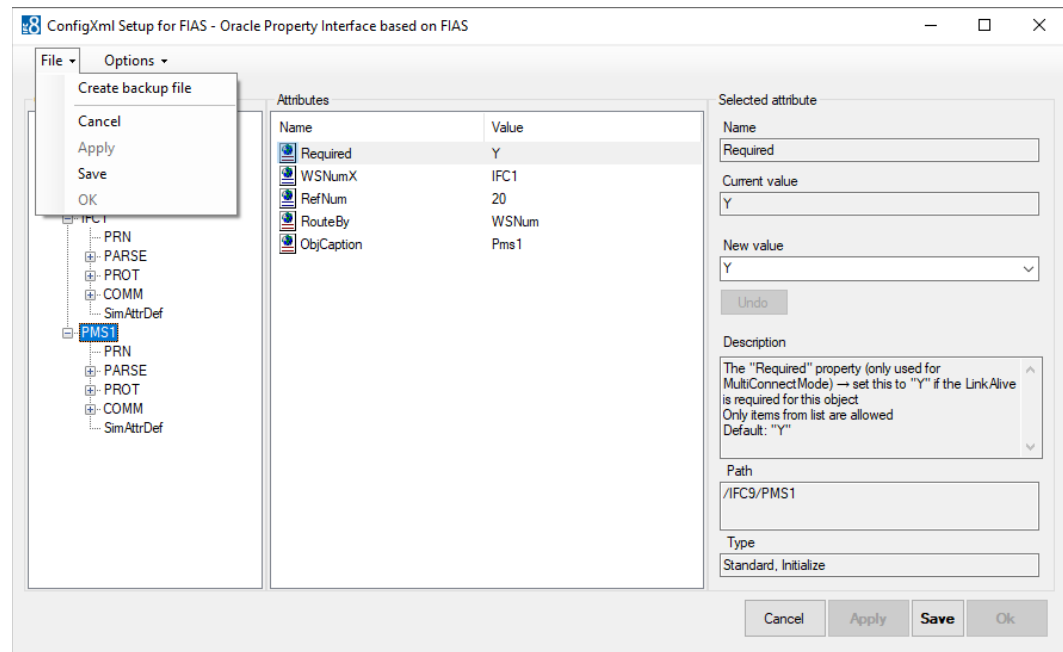
Saving Existing Configuration

To save the last changes in the Configuration form which is not active open the Configuration form via Options > Configuration

The Authentication by WinUser form will open.

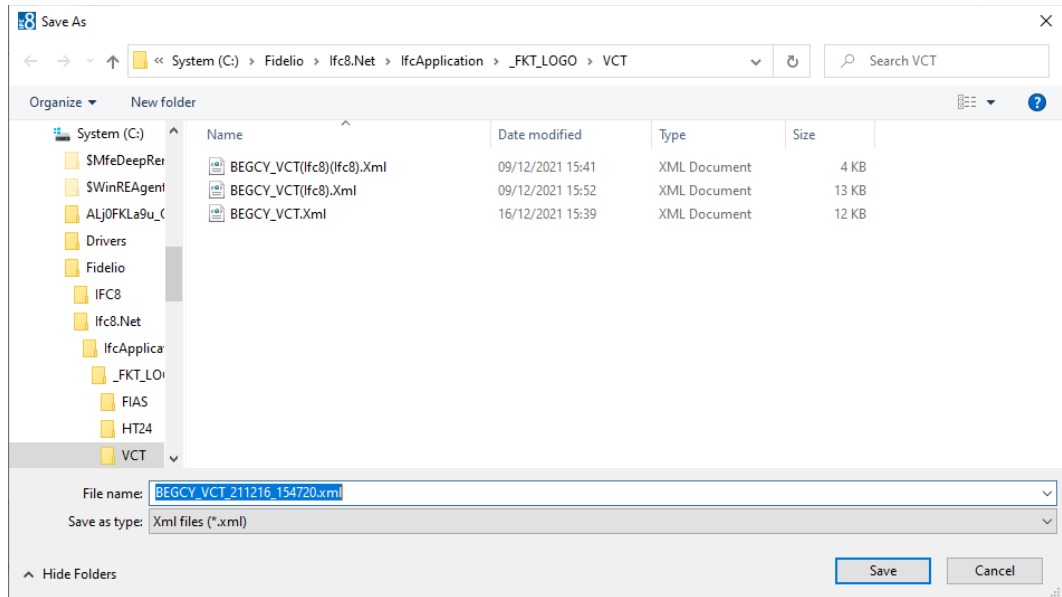
1. Go to [Authentication by WinUser](#) section for details.
2. Enter the local Windows or Suite8 user credentials and select Login.

After entering the correct credentials, the Configuration form opens:



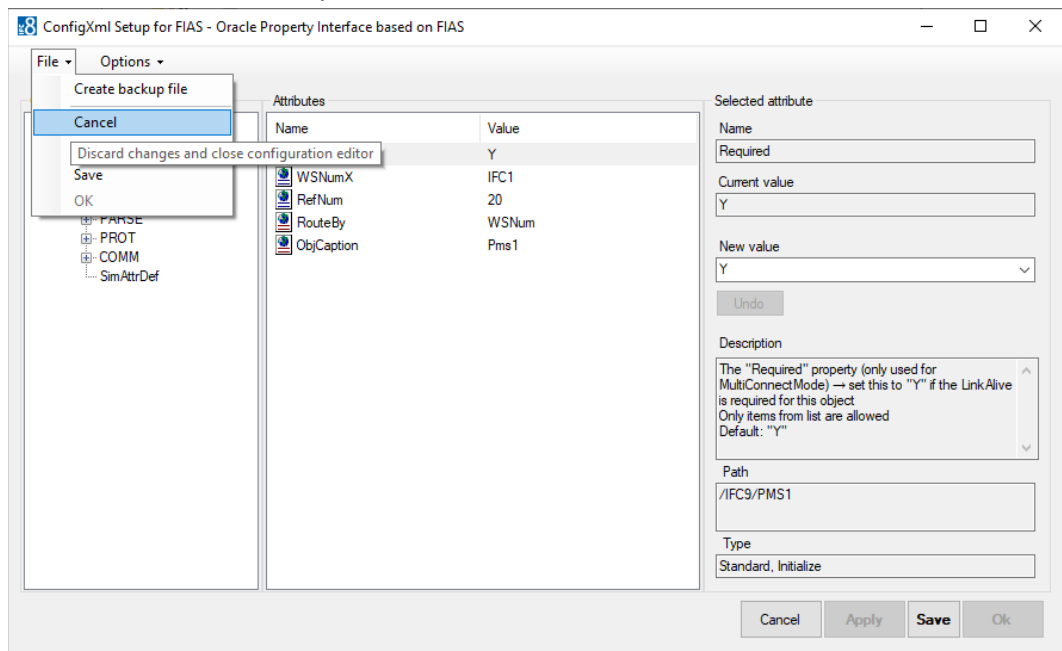
3. Select **Save**.

To create a new xml / backup file there is the create backup file option



4. The **Cancel** button is intended to close the Configuration Editor form without changes.

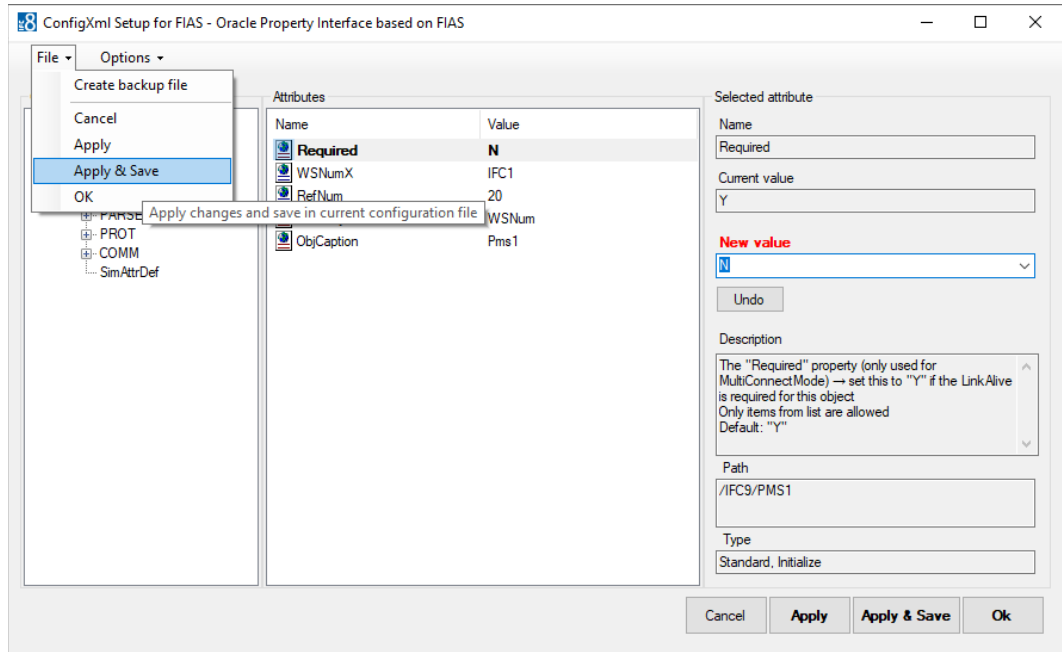
See also related tool tip.



5. The **Apply** button is intended to confirm the parameter changes done.
6. It will force the re-initialization of the interface based on changed parameter
7. The **Save** or **Apply & Save** button is intended to save changes done into the current Config.xml file.

- When pressing the **“Apply & Save”** button, the Apply changes command will also be executed so that changes, which were not yet confirmed by the **“Apply”** button, will be stored.

See also related tool tips.



The button **OK** is intended to close the Config Editor form with the changes done. For this the Apply change's function will also be executed when pressing this button.

4

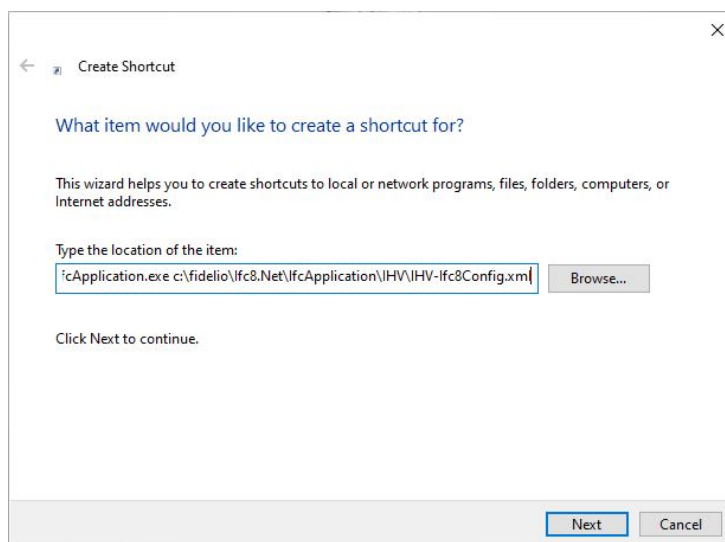
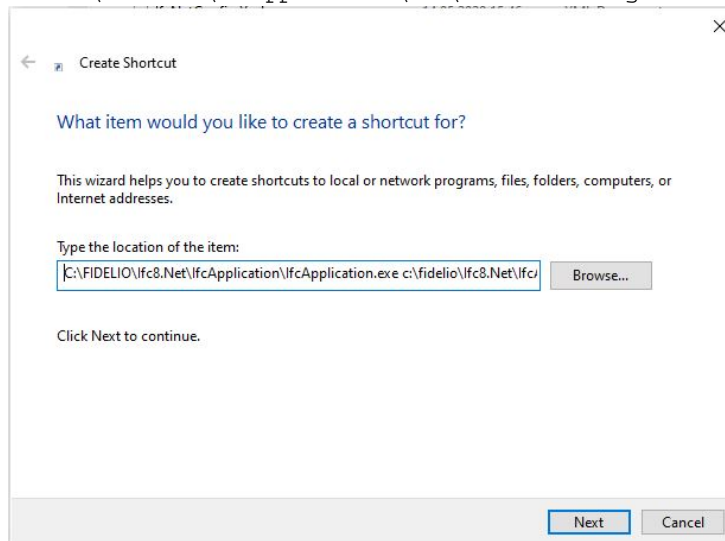
Creating Shortcut

Use a shortcut to start the IfcApplication against a specific Configuration file (Config.xml).

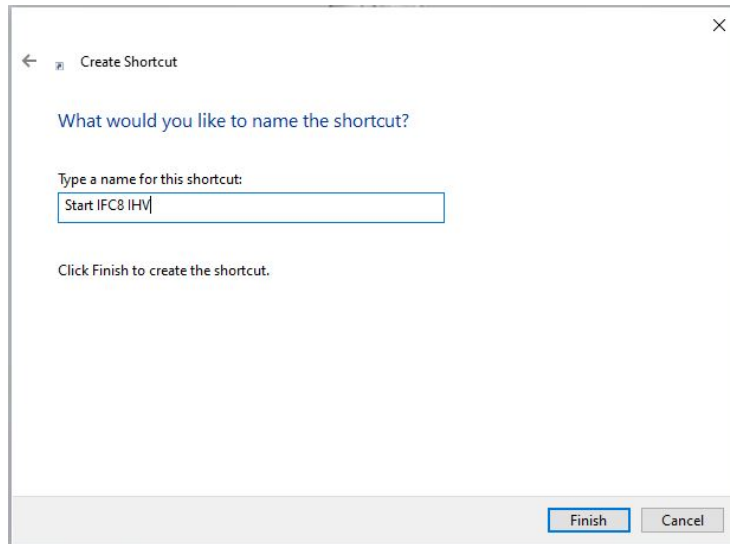
1. In the File Explorer, go where you want to create the shortcut.
2. Right-click in that directory, and the Context Menu, select **New / Create Shortcut**.
3. Type in the location of the item.

Example of a shortcut path.

```
C:\FIDELIO\Ifc8.Net\IfcApplication\IfcApplication.exe  
c:\fidelio\Ifc8.Net\IfcApplication\IHV\IHV-Ifc8Config.xml
```

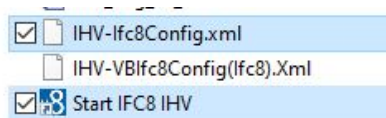


4. Select **Next**.
5. Type a name for this shortcut.



6. Select **Finish** to complete shortcut creation.

Finding the Shortcut



5

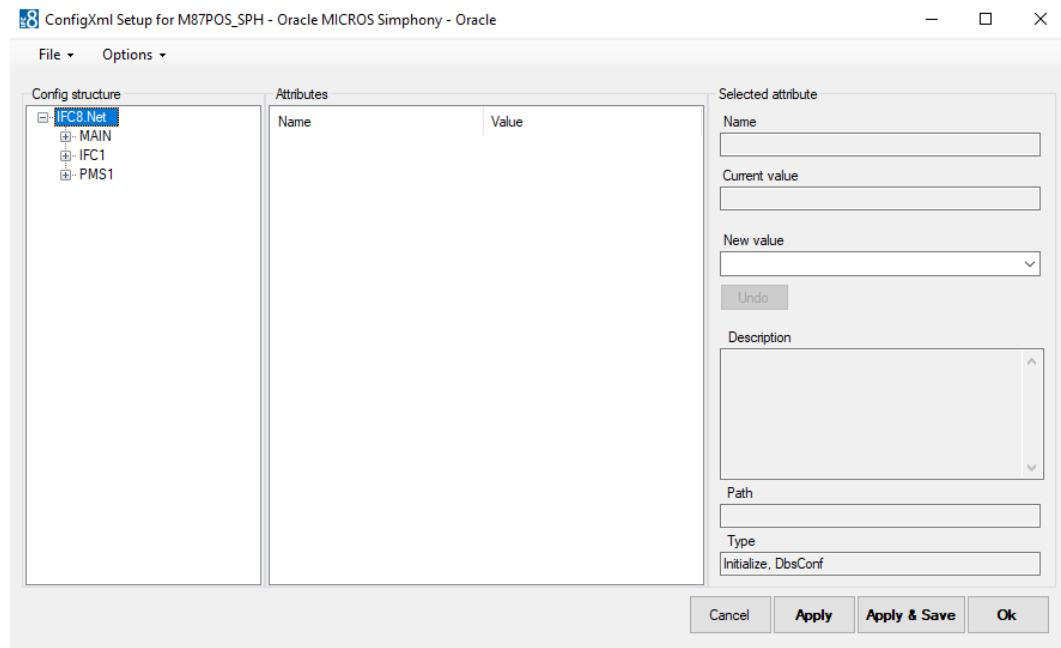
Configuring Editor for Config.XML

In the IFC8 Configuration Editor (Config Editor) the configuration of the IFC8 instance for the communication with the connecting vendor system will be done. With saving the configuration the corresponding configuration file (Config.xml) will be created or updated.

To access the Config Editor, select **Options / Configuration** in the IfcApplication menu bar.

IfcApplication will require user access [authentication](#) to enter the configuration form.

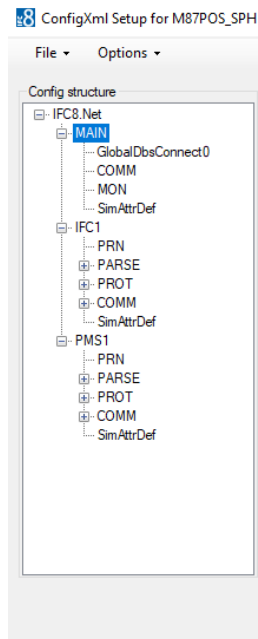
After entering the user credentials, the Config Editor will open:



Configuring Editor Structure

The IFC8 configuration contains 3 sections (nodes).

- **MAIN node:**
Used to configure monitoring settings, Suite8 Database connection, IfcControl connection and other general settings
- **IFC node:**
Used to configure the communication, Parser, Protocol and printer settings with the vendor system
Multiple IFC nodes can be configured (for Multi connections with a vendor system)
- **PMS node:**
Used to configure the communication settings with the PMS System (Suite8 client or OPERA IFC Controller)
Multiple PMS nodes can be configured (for e.g. multi connection to different PMS Properties)



This section describes the main configuration parameter

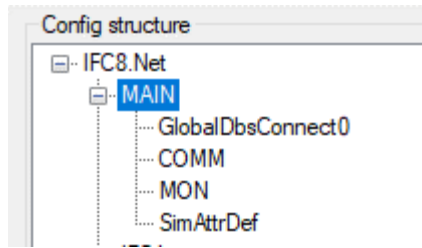


Table 1 MAIN Sub nodes

| MAIN Sub Node | Description | Notes |
|--------------------------|-------------------------------|---|
| GlobalDbsConnect0 | Database credentials | Used to configure the settings to access the Database (Suite8 only) |
| COMM | Communication Settings | Used to configure Connection methods (Database, TCP, RS232, HTTPS) |
| MON | Monitoring settings | Used to configure settings for monitoring |
| Sim/AttrDef | Simulation attribute settings | Used to set default values for internal simulation |

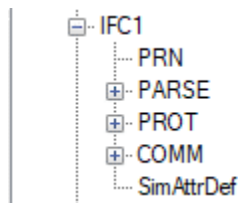


Table 2 - Ifc sub nodes

| IFC Sub Node | Description | Notes |
|--------------|---------------------------------------|---|
| PRN | Printer configuration settings | Used to print to locally installed printers via the IFC application |
| PARSE | Parser configuration settings | Used to configure specific settings for connecting vendor system |
| PROT | Protocol layer configuration settings | Used to setup and configure parser specific protocol settings |
| COMM | Communication settings | Used to configure Connection methods (Database ,TCP, RS232, HTTPS) |

| IFC Sub Node | Description | Notes |
|--------------------|-------------------------------|--|
| Sim/AttrDef | Simulation attribute settings | Used to set default values for internal simulation |

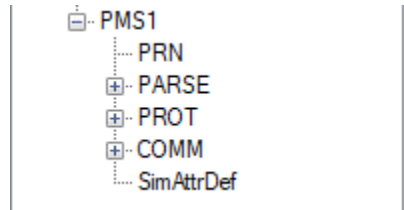
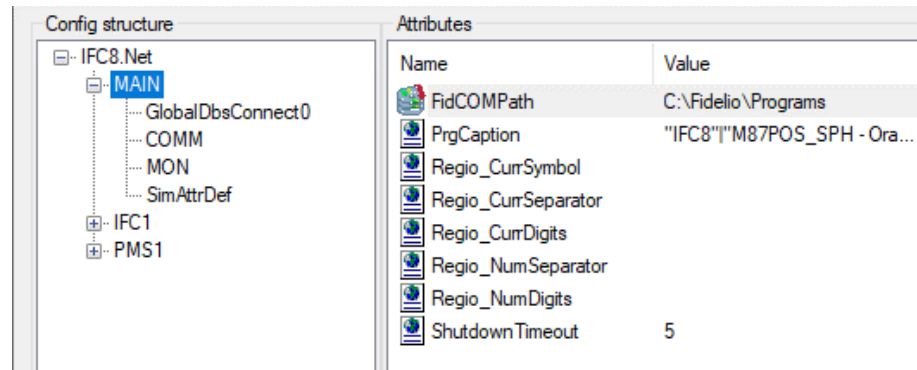


Table 3 - PMS nodes

| PMS1 Sub Node | Description | Notes |
|--------------------|---------------------------------------|--|
| PRN | Printer configuration settings | Used to print to locally installed printers via the IFC application |
| PARSE | Parser configuration settings | Used to configure specific settings for connecting PMS system or other systems |
| PROT | Protocol layer configuration settings | Used to setup and configure parser specific protocol settings |
| COMM | Communication settings | Used to configure Connection methods (Database ,TCP, RS232, HTTPS) |
| Sim/AttrDef | Simulation attribute settings | Used to set default values for internal simulation |

Main Node

Used to configure monitoring settings, Suite8 Database connection, IfcControl connection and other general settings

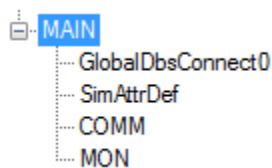


Main Node Attributes

| MAIN Sub Node Parameter | Description |
|----------------------------|--|
| FidCOMPath | Path of the Fidelio-COM.Dll files in Suite8 Programs folder Default: C:\Fidelio\Programs Only available if PMS1 - PARSE = SERV |
| PrgCaption | Define an individual program name / add vendor product name - Format sample:"IFC8" "VENDOR PRODUCT NAME" - (use as separator, each string part with double-quotes, no blanks between separator and double-quote), default = "IFC8" Default: "IFC8" |
| Regio_CurrSymbol | Modify the current user "Regional Settings"/Currency Symbol, default="" -> the current user settings will be used (configuration only necessary in case of service installation) |
| Regio_CurrSeparator | Modify the current user "Regional Settings"/Currency Separator, default="" -> the current user settings will be used (configuration only necessary in case of service installation) |
| Regio_CurrDigits | Modify the current user "Regional Settings"/Currency Digits, default="" -> the current user settings will be used (configuration only necessary in case of service installation) |

| MAIN Sub Node Parameter | Description |
|---------------------------|--|
| Regio_NumSeparator | Modify the current user "Regional Settings"/Numeric Separator, default="" -> the current user settings will be used (configuration only necessary in case of service installation) |
| Regio_NumDigits | Modify the current user "Regional Settings"/Numeric Digits, default="" -> the current user settings will be used (configuration only necessary in case of service installation) |
| ShutdownTimeout | The maximum "ShutdownTimeout" property → wait for selected timeout (in seconds) before a forced shutdown is performed. Default: 5 Numeric only, Max value: 30, Min value: -1 |

Main Sub Nodes



Main GlobalDbsConnect0 Sub Node

Only available when PMS1 PARSE Layer1 = SERV (for connection with Suite8 PMS)

Suite8 Database settings and access to Suite8 IFC Database configuration.

This sub node can be duplicated when Multi PMS Configuration (multiple Suite8 Databases).

Node Attributes

| Attributes | |
|----------------|-----------------------------|
| Name | Value |
| DbsConfig | ICFG(0) |
| User | V8Live |
| Alias | V8 |
| Pwd | FidCryptPBJAQAAANCMnd8BF... |
| OdbcDriverName | Oracle in CLIENT |
| VpdHotelId | |

| GlobalDbsConnect0 Sub node Attributes | Value Description |
|--|---|
| DbsConfig | The global "BusinessLogic" database setup Only items from list are allowed Default: ICFG(0) |
| User | Suite8 Database user name Default: <type your password here> |
| Alias | Suite8 Database alias name Default: <type your password here> |
| Pwd | Suite8 Database user password Default: <type your password here> Password will be encrypted after entering and applying settings and is not visible anymore. |
| OdbcDriverName | Force the ODBC driver name for ORACLE database connection, set this to [Empty] if Ifc8 should select the driver automatically |
| VpdHotelId | The HOTEL_ID for a VPD database context |

Main SimAttrDef Sub Node

Use to define attribute values to send during internal simulations used with the IFC Simulation module

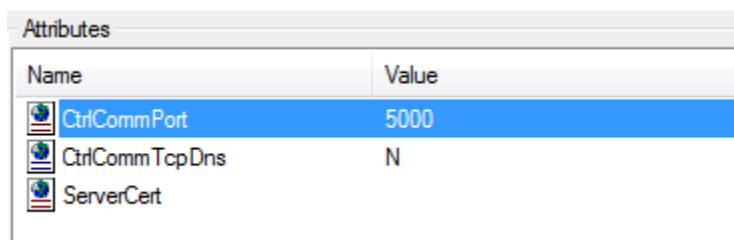
Node Attributes

| SimAttrDef Sub node Attributes | Value Description | Notes |
|---|---|--------------|
| Can be all available schema attribute names for related parser By default, no attributes are defined | Schema attributes based on parser for all supported actions Basically, there are hardcoded attribute values defined in IFC core logic. However, when defining simulation attributes in SimAttrDef node these will be used. In case an attribute is defined in SimAttrDef but has no value defined, then the attribute will be added to the action – without value e.g. RoomNum="" In case the SimAttrDef node is empty or is missing, then Simulation will use the internal hardcoded values. | |

Main COMM Sub Node

Used to configure settings for physical connection with the IfcControl module.

Node Attributes



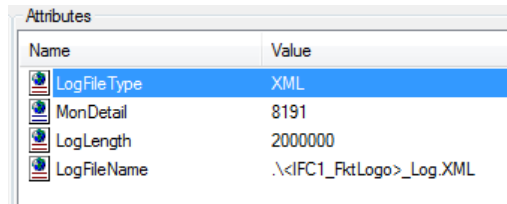
| Name | Value |
|----------------|-------|
| CtrlCommPort | 5000 |
| CtrlCommTcpDns | N |
| ServerCert | |

| COMM Sub node Attributes | Value Description |
|--------------------------|---|
| CtrlCommPort | TCP port used for IfcControl communication Default: 5000 |
| CtrlCommTcpDns | TCP DNS usage of IfcControl communication Only items from list are allowed Default: N |
| ServerCert | The info string of the SSL server certificate location in the PC certificate store (private key must be present). Left blank to disable Secure Socket Layer (SSL). |
| MutualAuth | Define if a SSL mutual authentication via client certificate is required Only items from list are allowed Default: Y |
| MonConnIdFormat | Monitoring: display "IpAddress" or "HostName" in the connection information Only items from list are allowed Default: "IpAddress" |

Main MON Sub Node

Used to configure settings for IFC8 monitoring and log file options.

Node Attributes



| Name | Value |
|-------------|-------------------------|
| LogFileType | XML |
| MonDetail | 8191 |
| LogLength | 2000000 |
| LogFileName | .\<FC1_FktLogo>_Log.XML |

| MON Sub node Attributes | Value Description | Notes |
|-------------------------|--|---|
| LogFile Type | The used logfile type (default="XML") Only items from list are allowed Default: XML | XML is the only value |
| MonDetail | The Monitor & LogFile details → set this to: "DebugLv14" = logging all data "DebugLv13" = out of DbActions data "DebugLv12" = out of Level4 data "DebugLv11" = out of DbActions / Level4 data "AnonymLv12" = out of DbActions / ExtCommData "AnonymLv11" = out of DbActions / Level4/ExtCommData Default: AnonymLv12 | the excluded MonItems are still shown in the synchronously monitoring (like in IfcApplication and IfcControl) but not stored in the XML event logfiles (not shown in the asynchronously monitoring of IfcLogFileBrowser). |
| LogLength | The LogFile length → set this to desired size Default: 5000000 Numeric only, Min value: 1000000 | will create two logs with ½ size of LogLength value each |
| LogFileName | Name of the logfile without path and suffix Default: <Ifc1_FktLogo>_Log.XML (e.g. FIAS_Log.xml) | From LOV |

IFC1 Node

Used to configure the communication, Parser, Protocol and printer settings with the vendor system

Multiple IFC nodes can be configured (for Multi connections with a vendor system)

IFC1 Node Attributes

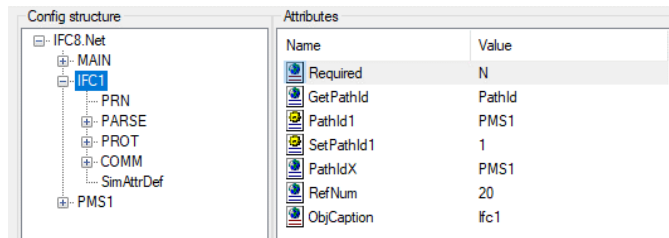
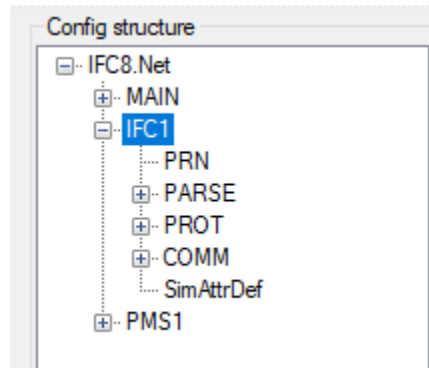


Table 4 - Ifc1 node attributes

| IFC1 Sub Node Parameter | Value Description |
|-------------------------|--|
| ObjCaption | Define an individual object name for the IFCNET.Caption (max. 20 character, default="Ifc1") Default: Ifc1 Will be displayed in the Monitoring Object header |
| Required | The "Required" property (only used for MultiConnectMode) → set this to "Y" if the LinkAlive is required for this object in order to complete initialization with the PMS Only items from list are allowed Default: Y |
| GetPathId | The "GetPathId" property → use this to set/overwrite the "PathId" with the selected attribute (Default="PathId") Only items from list are allowed Default: PathId |
| PathIdX | The "PathIdX" routing property → set this to the corresponding ObjectName to rout messages to. Only items from list are allowed Default: PMS1 |
| RefNum | The maximum "RefNum" property → an error occurs if the "Ref#" counter reach this value. Amount of records stored in internal buffer. Default: 10 Numeric only, Max value: 25000, Min value: 1 |

IFC1 Sub Nodes



IFC1 PRN Sub Node

Used for printing options of the IFCApplication

Node Attributes

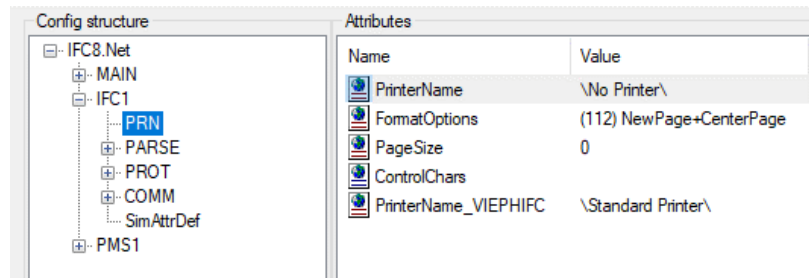


Table 5 - IFC1 PRN node attributes

| PRN Sub node Attributes | Value Description |
|-------------------------|---|
| PrinterName | The standard printer → set this to one of the suggested values Only items from list are allowed Default: \No Printer\ When no printer is set here, IFC8 printing is disabled |
| FormatOptions | The default print formatting → set this to one of the suggested values Only items from list are allowed Default: (112) NewPage+CenterPage |

| PRN Sub node Attributes | Value Description |
|---------------------------|---|
| PageSize | The paper size selection → special for slip printer (usually unused → default="0" Default: 0 Numeric only, Max value: 9999, Min value: 0 |
| ControlChars | Definition of printer control characters currently only value "12" = "FormFeed" supported default=<blank> |
| PrinterName_PCNAME | The Printer routing for WSNum="PCNAME" → Copy/Rename this property to define additional routings Only items from list are allowed Default: \No Printer\ |

IFC1 PARSE Sub Node

Used to define and configure the settings used to connect and communicate with specific vendor system

Node Attributes

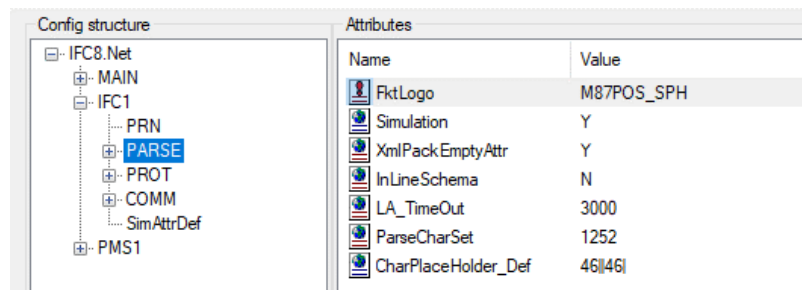


Table 6 – Ifc1 PARSE node attributes

| PARSE Sub node Attributes | Value Description |
|---------------------------|--|
| FktLogo | The parser class → select the corresponding FktLogo Only items from list are allowed Default: FIAS |
| Simulation | Enables/disables the Simulation-Menu in the MainFormular (default="Y") Only items from list are allowed Default: Y |
| XmlPackEmptyAttr | Pack empty xml attributes (default="Y") Only items from list are allowed Default: Y |

| PARSE Sub node Attributes | Value Description |
|----------------------------------|--|
| XmlDecl | Enable/disable XmlDeclaration element <?xml version="1.0"?> for Xml documents (default="N") Only items from list are allowed Default: N |
| InLineSchema | Enable/disable schema definitions in XmlSchemaDef-Element (only for FIAS & SIM-Parser) (default="N") Only items from list are allowed Default: N |
| GetParseConfig | Import the application layer configuration from another config.xml Only items from list are allowed Default: GetParseConfig |
| LA_TimeOut | Define a maximum timeout for PMS-LinkAlive status after Vendor startup (default: 3000ms) Default: 3000 Numeric only, Max value: 10000, Min value: 1000 |
| ParseCharSet | Set the vendor code page definition Default: 850 If vendor system uses specific code page then the same code page value has to be set here (e.g. 1252 for Windows code page) |
| CharPlaceholder_Def | Set character place holder defaults → general place holder "diacritical characters "control characters 00h-08h "control characters 09h-1Fh Default: |

IFC1 PROT Sub Node

Used to configure the protocol layer settings for a specific Parser.

The settings relate to the Parse – FktLogo settings and usually do not need to be changed.

Node Attributes

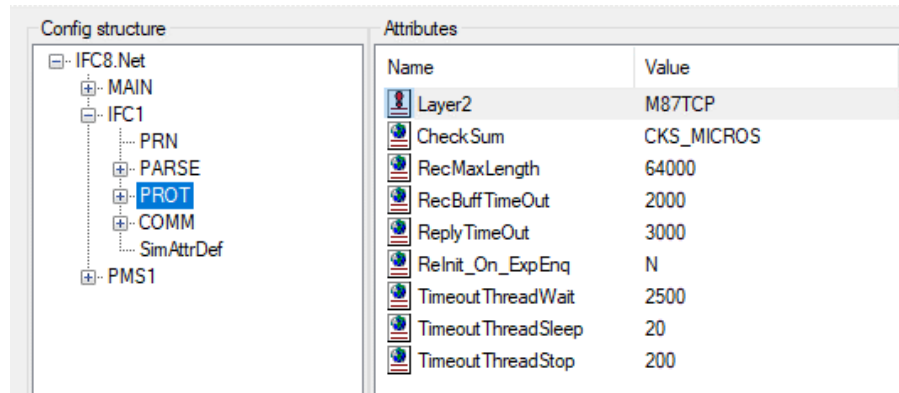


Table 7 – Ifc1 PROT node attributes

| PROT node Attributes | Value Description |
|--------------------------|--|
| Layer2 | The protocol layer → set this to one of the suggested values Value will automatically set with choice of FktLogo in Parse section Only items from list are allowed Default: N |
| CheckSum | Checksum type → set this to one of the suggested values Value will automatically set with choice of FktLogo in Parse section Only items from list are allowed Default: CKS_NONE |
| RecMaxLength | Maximum record length Default: 64000 Numeric only, Min value: 0 |
| RecBuffTimeOut | The maximum time to get the next data byte when a data record is receive → set this to one of the suggested values Default: 2000 Numeric only, Max value: 64000, Min value: 0 |
| ReplyTimeOut | The maximum time waiting for reply record from vendor system → set this in Milliseconds Default: 3000 Numeric only, Max value: 9999, Min value: 0 |
| Reinit_On_ExpEnq | <Enquiry expired> protocol error handling → "N" = disable reinitializing, "X" = reinitialize only if LinkAlive, "Y" = reinitialize always, "[N/X/Y]0...[N/X/Y]60" = additional wait time for retry Only items from list are allowed Default: X |
| TimeoutThreadWait | timeout after which the inbuffer is checked if no signal was received (set to "-1" to wait infinite for signal) Default: 2500 Numeric only, Max value: 64000, Min value: -1 |

| PROT node Attributes | Value Description |
|---------------------------|---|
| TimeoutThreadSleep | sleep timeout for read thread (set to 0, if sleep should not be used) Default: 20 Numeric only, Max value: 1000, Min value: 0 |
| TimeoutThreadStop | timeout waiting for read thread to stop before thread will be aborted Default: 200 Numeric only, Max value: 64000, Min value: 1 |

IFC1 COMM Sub Node

Used to configure settings for physical connection with vendor / external system

Node Attributes

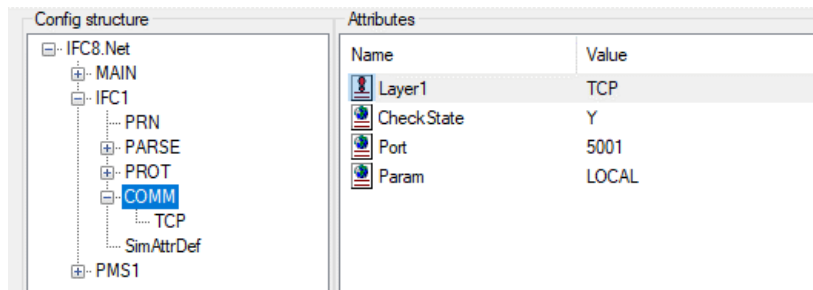


Table 8 Ifc1- COMM node attributes

| COMM node Attributes | Value Description |
|----------------------|---|
| Layer1 | The physical layer → set this to one of the suggested values from the list of available values Typical values are: TCP = for generic TCP/IP Connection COM = generic Serial connection (RS232) HTTP = generic http or https connection TCP/S = specific TCP/IP setting to run as TCP Server TCP/C = specific TCP/IP setting to run as TCP Client |

| | |
|-------------------|--|
| CheckState | <p>The CheckState property → set this to "Y" if the port status should be checked (e.g. the handshake of a RS232 port)</p> <p>Only items from list are allowed</p> <p>Default: Y</p> |
| Port | <p>If Layer1 = TCP / TCP_S / TCP_C: The TCP/IP port number → set to the used port number (typically "5001...5499")</p> <p>Default: 5001</p> <p>Numeric only, Max value: 65535, Min value: 0</p> <p>If Layer1 = COM: The RS232 port number → set to the used port number (typically "1...9")</p> <p>Default: 1</p> <p>Numeric only, Max value: 65535, Min value: 0</p> <p>If Layer1 = HTTP: [ServerUrl][Optional_HttpUser][Optional_HttpPassWord] Default: Http(s)://Url UserName PassWord</p> |
| Param | <p>If Layer1 = TCP / TCP_C: The remote IP-Address or ComputerName → NOT required when the WinSock runs in "Server Mode"</p> <p>Default: LOCAL</p> <p>If Layer1 = COM: The COM parameters → [BaudRate],[Parity],[DataBits],[StopBits] Default: 9600,N,8,1</p> <p>If Layer1 = HTTP: The default HTTP Open method (default is "POST")</p> <p>Default: POST</p> |

COMM Sub Node TCP / TCP_S

Configure connection IFC instance acting as TCP Server.

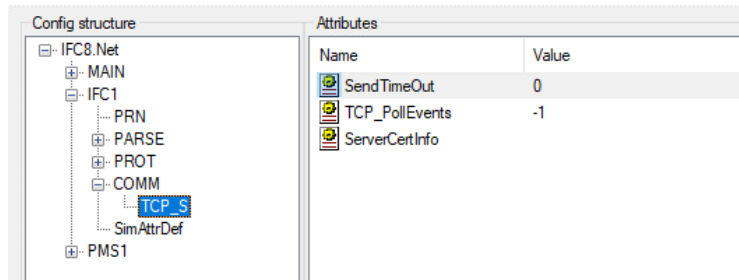
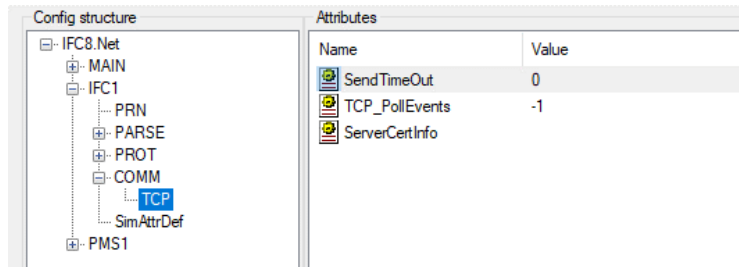


Table 9 TCP / TCP_S node attributes

| TCP / TCP_S node attributes | Value | Description |
|-----------------------------|-------|--|
| SendTimeOut | | TimeOut while waiting for SendComplete in milli seconds., set "0" to disable (default=0) |
| TCP_PollEvents | | TCP poll event timeout in milli seconds. Set "-1" to disable |
| ServerCertInfo | | The server certificate file location for the SSL connection. *.pfx type is required, relative paths are supported. Left blank to disable Secure Socket Layer (SSL) |
| ServerCertPwd | | Server certificate file password for the SSL connection. Not available when no ServerCertInfo value defined |
| ClientCertInfo | | The client certificate file location for mutual authentication of the SSL connection. Typically *.crt , *.cer type, relative paths are supported. Left blank to disable mutual authentication. Not available when no ServerCertInfo value defined |

COMM Sub Node COM / COMEx

Configure connection using serial COM Port.

Use COMEx to configure serial COM Port higher than 15 (e.g. when using MultiPort adapter)

Only specific Vendor systems support connection using serial Ports.

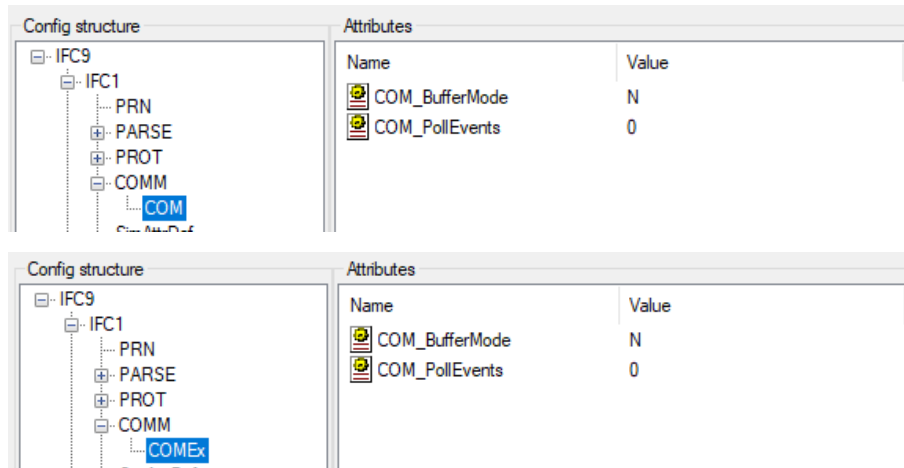


Table 10 COM / COMEx node attributes

| COM / COMEx node attributes | Value | Description |
|-----------------------------|-------|--|
| COM_BufferMode | N | The PollEvents parameter → set "0" to disable PollEvents(default) or >"0" to poll the received buffer in the defined interval (in ms) for incoming data (only in case of problems with Equinox/Digi boxes) |
| COM_PollEvents | 0 | TCP poll event timeout in milli seconds. Set "-1" to disable |

COMM Sub Node TCP_C

Configure connection IFC instance acting as TCP Client.

Only specific vendor systems support TCP connection where IFC instance must be TCP Client.

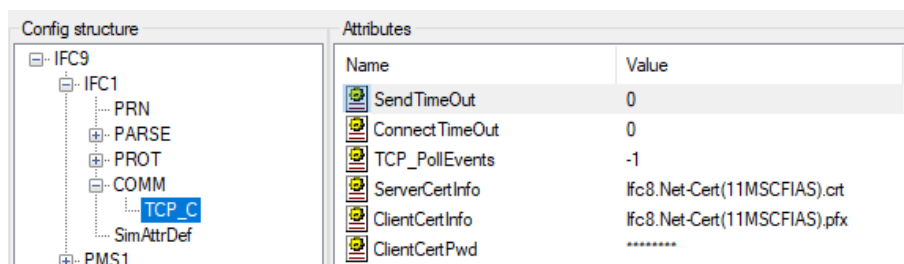


Table 11 TCP_C node attributes

| TCP_C node attributes | Value Description |
|-----------------------|--|
| SendTimeout | The PollEvents parameter → set "0" to disable PollEvents(default) or >"0" to poll the received buffer in the defined interval (in ms) for incoming data (only in case of problems with Equinox/Digi boxes) |
| ConnectTimeout | TimeOut while waiting for server connection in msec. set "0" for automatic handling |
| TCP_PollEvents | TCP poll event timeout in milli seconds. Set "-1" to disable |
| ServerCertInfo | The server certificate file location for the SSL connection. Typically *.crt, *.cer type, relative paths are supported. Left blank to disable Secure Socket Layer (SSL) |
| ClientCertInfo | The client certificate file location for mutual authentication of the SSL connection. *.pfx type is required, relative paths are supported. Left blank to disable mutual authentication. Not available when no ServerCertInfo value defined |
| ClientCertPwd | The client certificate file password for the SSL connection. Not available when no ServerCertInfo value defined |

PMS1 Node

Used to configure the communication settings with the PMS System (Suite8 client or OPERA IFC Controller)

Multiple PMS nodes can be configured (for e.g. multi connection to different PMS Properties)

PMS1 Node Attributes

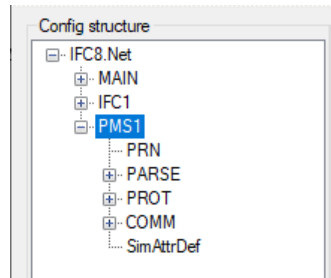
The screenshot shows a configuration window with two panes. The left pane, titled 'Config structure', displays a tree view where 'PMS1' is selected under 'IFC1'. The right pane, titled 'Attributes', shows a table of configuration parameters for the selected node.

| Name | Value |
|------------|-------|
| Required | Y |
| RouteBy | WSNum |
| WSNumX | IFC1 |
| RefNum | 20 |
| ObjCaption | Pms1 |

Table 12 - Pms1 node attributes

| PMS1 node attributes | Description |
|----------------------|---|
| Required | The "Required" property (only used for MultiConnectMode) → set this to "Y" if the LinkAlive is required for this object Only items from list are allowed Default: Y |
| RouteBy | Select the routing attribute. Only items from list are allowed. Default: WSNum |
| WSNumX | The "WSNumX" routing property → set this to the corresponding ObjectName Only items from list are allowed Default: IFC1 |
| RefNum | The maximum "RefNum" property → an error occurs if the "Ref#" counter reach this value Default: 10 Numeric only, Max value: 25000, Min value: 1 |

PMS1 Sub Nodes



PMS1 PRN Sub Node

Used for configuring printing options of IfcApplication using locally installed printer driver.

Node Attributes

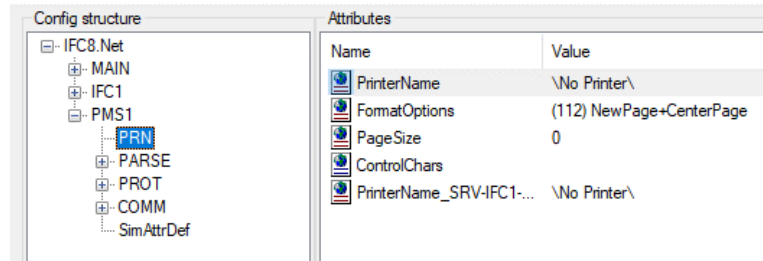


Table 13 - Pms1 PRN node attributes

| | Value Description |
|--------------------------------|---|
| PRN Sub node Attributes | |
| PrinterName | The standard printer → set this to one of the suggested values Only items from list are allowed Default: \No Printer\ When no printer is set here, IFC8 printing is disabled |
| FormatOptions | The default print formatting → set this to one of the suggested values Only items from list are allowed Default: (112) NewPage+CenterPage |
| PageSize | The paper size selection → special for slip printer (usually unused → default="0") Default: 0 Numeric only, Max value: 9999, Min value: 0 |
| ControlChars | Definition of printer control characters currently only value "12" = "FormFeed" supported default=<blank> |
| PrinterName_PCNAME | The Printer routing for WSNuM="PCNAME" → Copy/Rename this property to define additional routings Only items from list are allowed Default: \No Printer\ |

PMS1 PARSE Sub Node

Used to define and configure the settings used to connect and communicate with the PMS system or connecting system.

Node Attributes

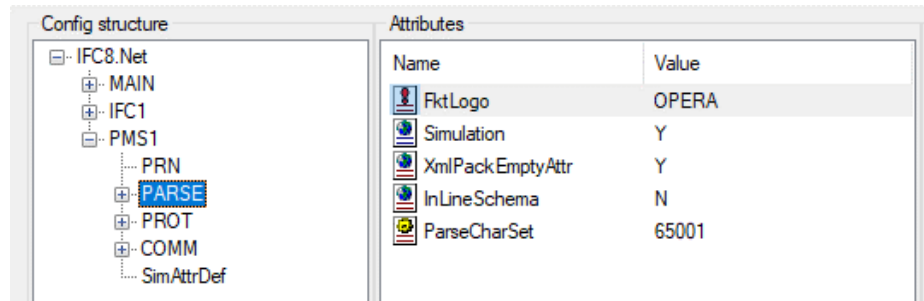


Table 14 - Pms1 PARSE node attributes

| PARSE node attributes | Value Description |
|-------------------------|--|
| FktLogo | The parser class → select the corresponding FktLogo Only items from list are allowed SERV = Suite8 IfcBusi.dll connection OPERA = OperalfcController connection |
| Simulation | Enables/disables the Simulation-Menu in the MainFormular (default="Y") Only items from list are allowed Default: Y |
| XmlPackEmptyAttr | Pack empty xml attributes (default="Y") Only items from list are allowed Default: Y |
| InLineSchema | Enable/disable schema definitions in XmlSchemaDef-Element (only for FIAS & SIM-Parser) (default="N") Only items from list are allowed Default: N |
| ParseCharSet | Set the vendor code page definition Only items from list are allowed Default: 65001 Numeric only |

For Node Attributes of OPERA Parser please see [“The PMS OPERA Parser Node settings”](#) section of this document.

PMS1 PROT Sub Node

Used to set general values for Communication settings with connections on PMS1 object.

The settings relate to the Parse – FktLogo settings and usually do not need to be changed.

Node Attributes

| Name | Value |
|---------------------|----------|
| Layer2 | N |
| CheckSum | CKS_NONE |
| RecMaxLength | 64000 |
| RecBuffTimeOut | 2000 |
| ReplyTimeOut | 1000 |
| ReInit_On_ExpEnq | X |
| Timeout ThreadWait | 2500 |
| Timeout ThreadSleep | 20 |
| Timeout ThreadStop | 200 |

Table 15 - Pms1 PROT node attributes

| PROT node Attributes | Value Description | Notes |
|----------------------|---|-------|
| Layer2 | The protocol layer → set this to one of the suggested values Value will automatically set with choice of FktLogo in PMS - PARSE section Only items from list are allowed | |
| CheckSum | Checksum type → set this to one of the suggested values Only items from list are allowed Value will automatically set with choice of FktLogo in PMS PARSE section Default: CKS_NONE | |
| RecMaxLength | Maximum record length Default: 64000 Numeric only, Min value: 0 | |

| PROT node Attributes | Value Description | Notes |
|---------------------------|---|-------|
| RecBuffTimeOut | The maximum time to get the next data byte when a data record is receive → set this to one of the suggested values Default: 2000 Numeric only, Max value: 64000, Min value: 0 | |
| ReplyTimeOut | The maximum time waiting for reply record from vendor system → set this in Milliseconds Default: 3000 Numeric only, Max value: 9999, Min value: 0 | |
| Reinit_On_ExpEnq | <Enquiry expired> protocol error handling → "N" = disable reinitializing, "X" = reinitialize only if LinkAlive, "Y" = reinitialize always, "[N/X/Y]0...[N/X/Y]60" = additional wait time for retry Only items from list are allowed Default: X | |
| TimeoutThreadWait | timeout after which the inbuffer is checked if no signal was received (set to "-1" to wait infinite for signal) Default: 2500 Numeric only, Max value: 64000, Min value: -1 | |
| TimeoutThreadSleep | sleep timeout for read thread (set to 0, if sleep should not be used) Default: 20 Numeric only, Max value: 1000, Min value: 0 | |
| TimeoutThreadStop | timeout waiting for read thread to stop before thread will be aborted Default: 200 Numeric only, Max value: 64000, Min value: 1 | |

PMS1 COMM Sub Node

Used to configure settings for physical connection with the external side (usually Suite8 IfcBusi.dll or OPERA IfcController)

Node Attributes

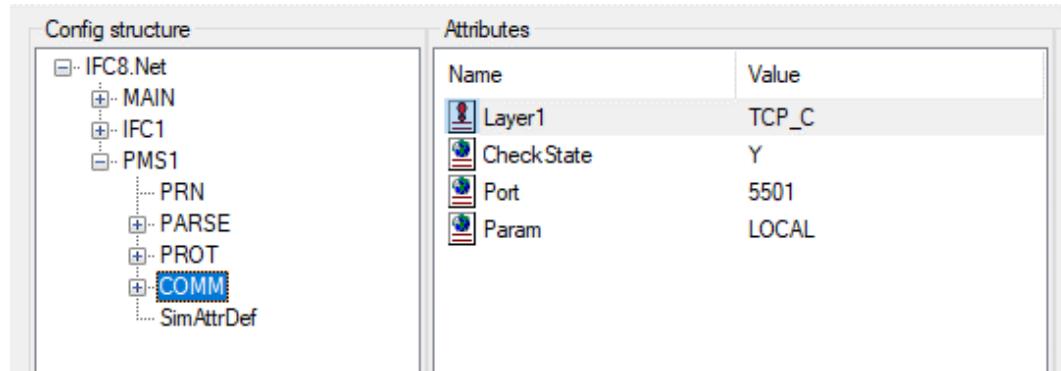


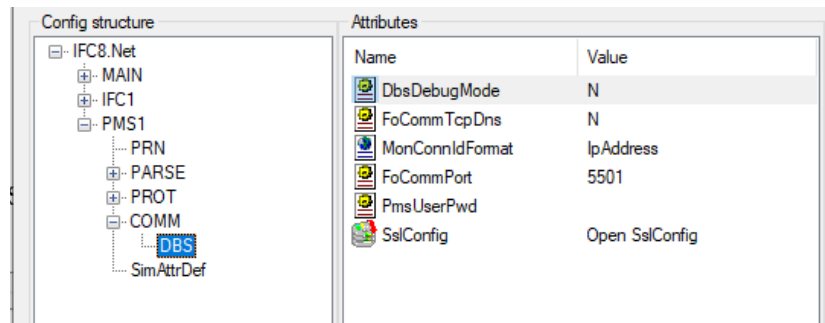
Table 16 - Pms1 COMM node attributes

| COMM node Attributes | Value Description |
|----------------------|--|
| Layer1 | The physical layer → set this to one of the suggested values If Pms1 / PARSE / FktLogo = SERV (for Suite8 PMS) then the only available value = "DBS" If Pms1 / PARSE / FktLogo = OPERA (for OPERA PMS) then the default value = "TCP" |
| CheckState | The CheckState property → set this to "Y" if the port status should be checked (e.g. the handshake of a RS232 port) Only items from list are allowed Default: Y |
| Port | If Layer1 = TCP /TCP_S/TCP_C: The TCP/IP port number → set to the used port number (typically "5001...5499") Default: 5001 Numeric only, Max value: 65535, Min value: 0 If Layer1 = COM: The RS232 port number → set to the used port number (typically "1...9") Default: 1 Numeric only, Max value: 65535, Min value: 0 If Layer1=DBS: Database connection with Suite8 DB. only available value = GlobalDbConnect referring to MAIN / GlobalDbConnectX node |

| COMM node Attributes | Value Description |
|----------------------|--|
| Param | <p>If Layer1 = TCP/TCP_C: The remote IP-Address or ComputerName → NOT required when the WinSock runs in "Server Mode" (Layer1 = "TCP_S" Default: LOCAL</p> <p>If Layer1 = COM: The COM parameters → [BaudRate],[Parity],[DataBits],[StopBits] Default: 9600,N,8,1</p> <p>If Layer1 = DBS: The available GlobalDbsConnect (value must match the MAIN / GlobalDbsConnectX node) Default = 0</p> |

COMM Sub Node DBS

Only available when PMS1/PARSE/FktLogo = SERV (Suite8 PMS)



| DBS node Attributes | Value Description |
|---------------------|---|
| DbsDebugMode | Enable the Fidelio*.DII LogFiles → set the path for the Fidelio*.Log files in "FidelioV8/Setup/Configuration/Global Settings/Miscellaneous/4 Workstation/V8 Log Directories" |
| PmsUserPwd | The "PMS User Password" property. Enter the configured password of the related PMS interface user |
| FoCommPort | The FoComm port definition for IfcBusi.dll connection |
| FoCommTcpDns | PMS/TCP addressing: "Y" → via Computer Name "N" → via IP-Address (automatic selection) via explicit IP-Addressor to force usage of Local-IP: "0" → [IP Address1] (displays current IP Address 1) "1" → [IP Address2] (displays current IP Address 2) |
| SslConfig | The SSL/TLS configuration for IfcBusi communication See documentation for IfcBusi.Net for details |

COMM Sub Node TCP / TCP_C

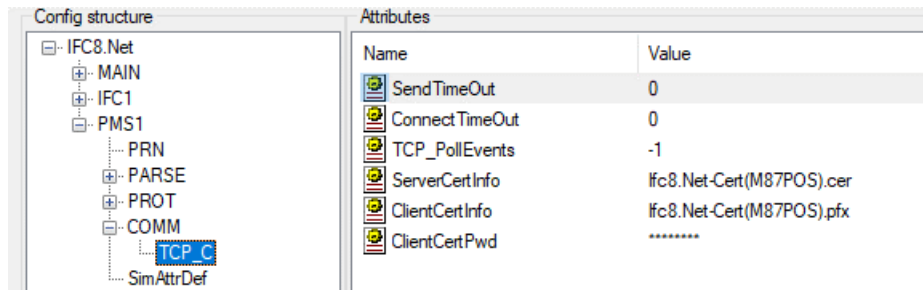
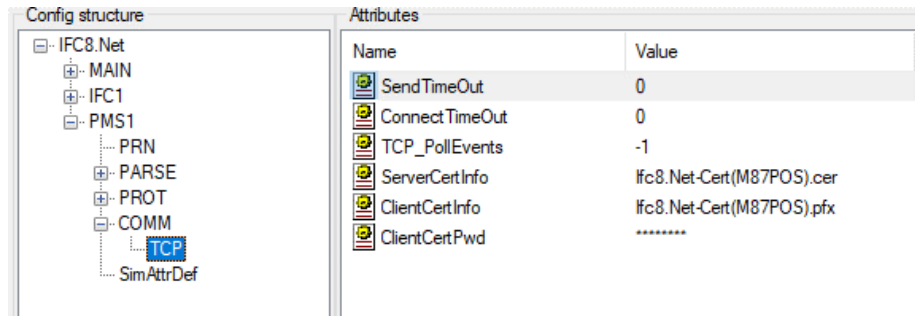


Table 17 TCP / TCP_C node attributes

| TCP / TCP_C node attributes | Value Description |
|-----------------------------|---|
| SendTimeOut | TimeOut while waiting for SendComplete in milli seconds., set "0" to disable (default=0) |
| ConnectTimeOut | TimeOut while waiting for server connection in msec. set "0" for automatic handling |
| TCP_PollEvents | TCP poll event timeout in milli seconds. Set "-1" to disable |
| ServerCertInfo | The server certificate file location for the SSL connection. Typically *.crt, *.cer file type, relative paths are supported. Left blank to disable Secure Socket Layer (SSL) |
| ClientCertInfo | The client certificate file location for mutual authentication of the SSL connection. *.pfx type required, relative paths are supported. Left blank to disable mutual authentication. Not available when no ServerCertInfo value defined |
| ClientCertPwd | Server certificate file password for the SSL connection. Not available when no ServerCertInfo value defined |

COMM Sub Node COM / COMEx

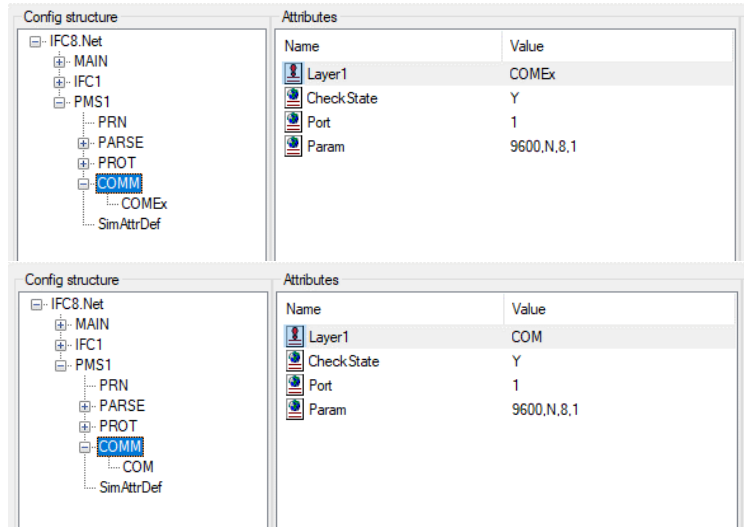


Table 18 COM / COMEx node attributes

| COM / COMEx node attributes | Value Description |
|-----------------------------|--|
| COM_BufferMode | The BufferMode parameter → set "N" to disable BufferMode(default) or "Y" to buffer incoming records for LinkState < LinkAlive |
| COM_PollEvents | The PollEvents parameter → set "0" to disable PollEvents(default) or >"0" to poll the received buffer in the defined interval (in ms) for incoming data (only in case of problems with Equinox/Digi boxes) |

COMM Sub Node TCP_S

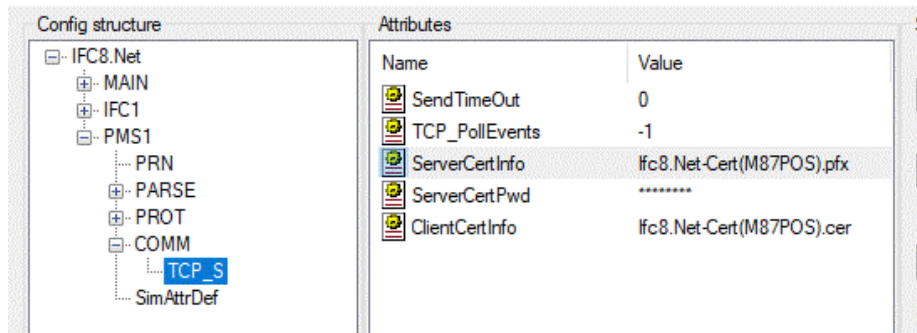


Table 19 TCP_S node attributes

| TCP_C node attributes | Value Description |
|------------------------------|--|
| SendTimeOut | The PollEvents parameter → set "0" to disable PollEvents(default) or >"0" to poll the received buffer in the defined interval (in ms) for incoming data (only in case of problems with Equinox/Digi boxes) |
| ConnectTimeOut | TimeOut while waiting for server connection in msec. set "0" for automatic handling |
| TCP_PollEvents | TCP poll event timeout in milli seconds. Set "-1" to disable |
| ServerCertInfo | The server certificate file location for the SSL connection. Typically *.crt, *.cer type, relative paths are supported. Left blank to disable Secure Socket Layer (SSL) |
| ClientCertInfo | The client certificate file location for mutual authentication of the SSL connection. *.pfx type is required, relative paths are supported. Left blank to disable mutual authentication. Not available when no ServerCertInfo value defined |
| ClientCertPwd | The client certificate file password for the SSL connection. Not available when no ServerCertInfo value defined |

6

Duplicating IFC node

General

Use this option to create additional Ifc objects when Ifc instance shall be used for Multi vendor connections.

A vendor system might require multiple connections to the IFC8 instance based on its internal business logic or functionality.

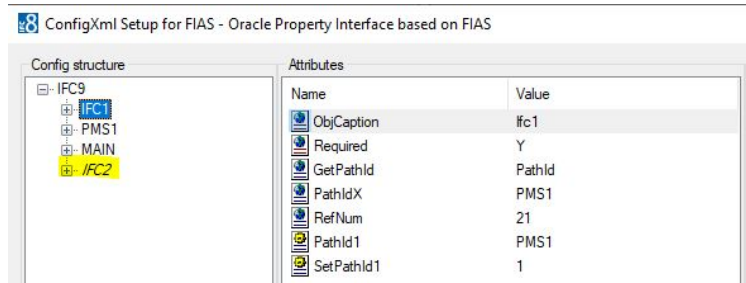
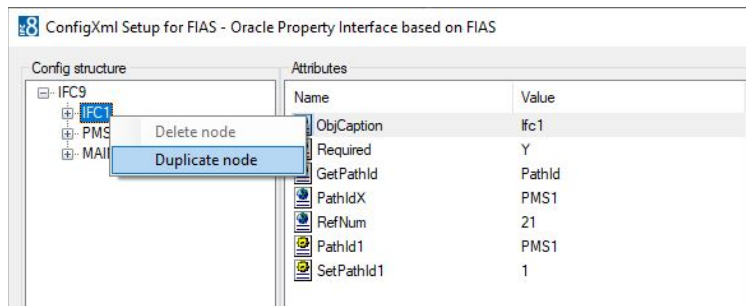
IFC8 can handle such requirements by using multiple Objects.

Adding Additional IFC Node

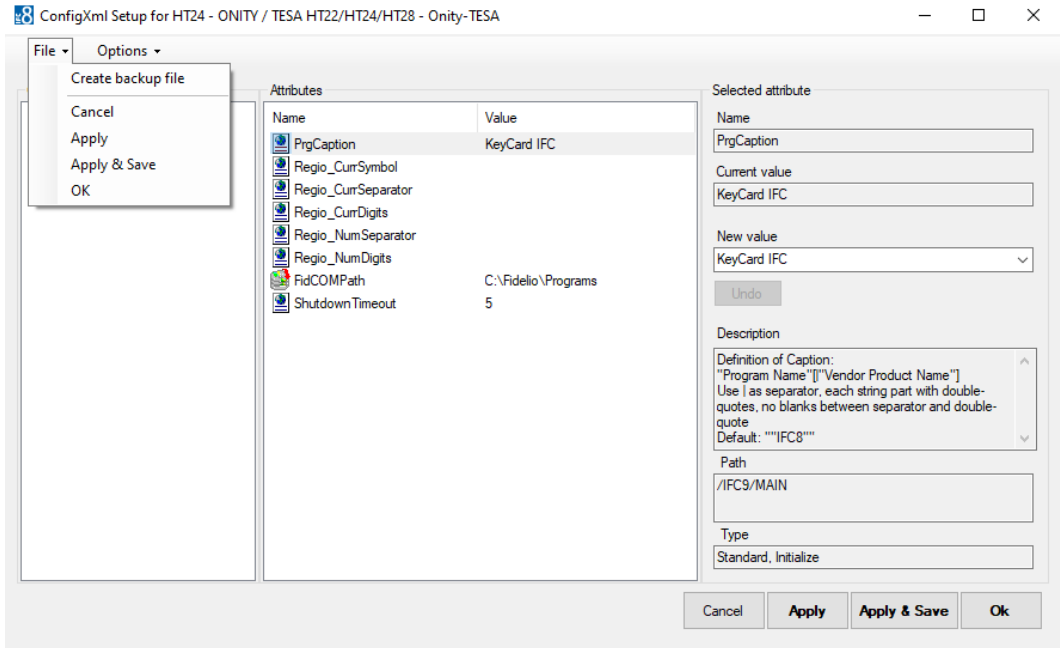
Configure the first IFC node as needed.

To add additional IFC node do following steps:

1. Right-click IFC1 main node.
2. Select **Duplicate node** from the context menu.



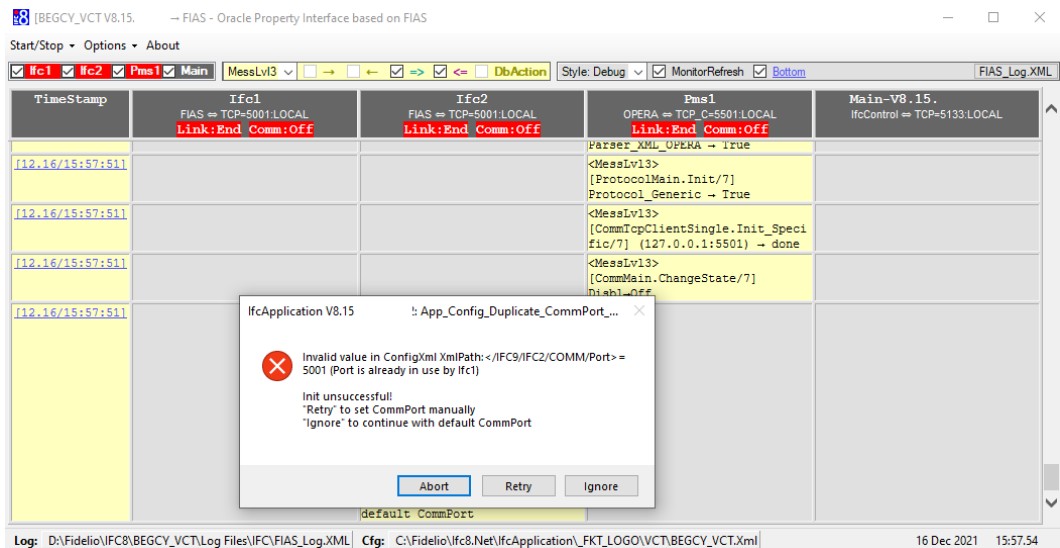
3. Mark the new IFC2 node



4. Select **Apply** or **Apply & Save**.

IFC8 instance reinitializes and will write (and save) the new IFC2 node into the Config.xml file. A warning will open as IFC8 detects the same IP Port used also defined

The Port used in the IFC2 node must be changed at this point.

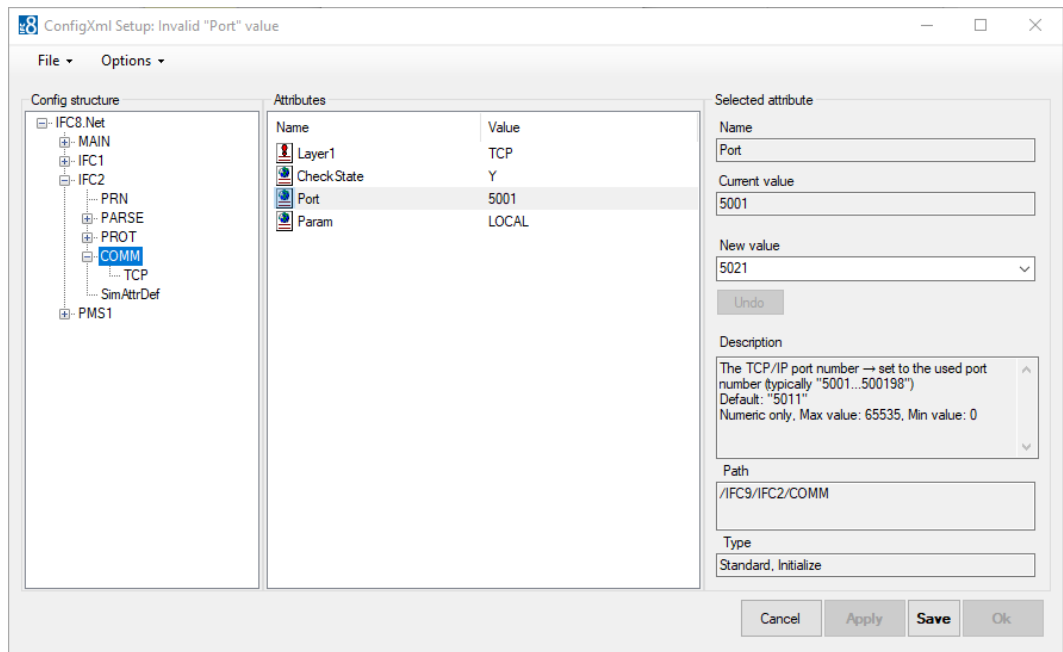


5. Select **Retry** to manually adjust the IP Port now.

The Configuration Editor jumps to the IFC2/COMM/ sub node

6. Select the Parameter Port, and in the New Value field, enter the valid IP Port (must be different from the IP Port defined in IFC1 COMM/Port Parameter)

7. Press **Enter** to set the new value.



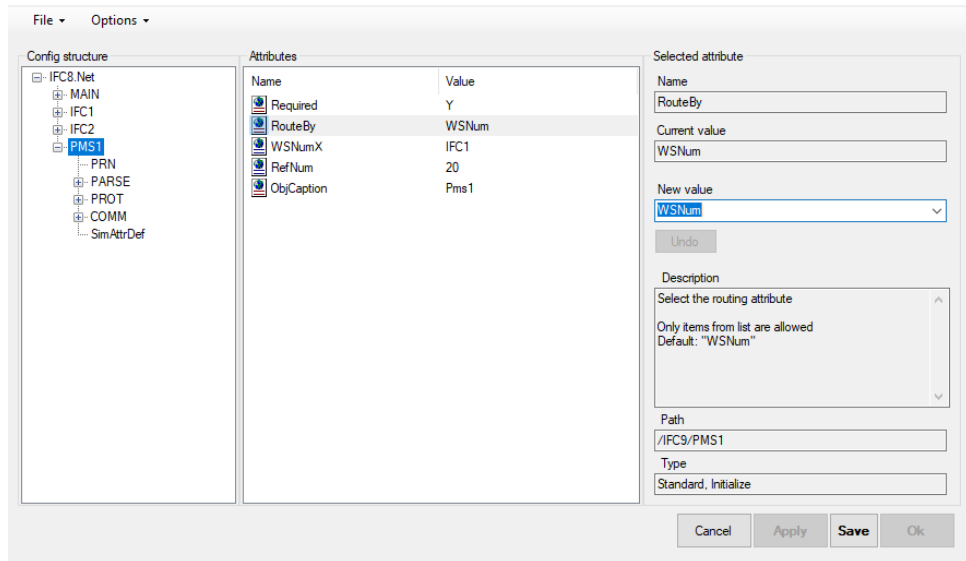
8. Select **Apply** or **Apply & Save** to store the new settings in the Config.xml file.
9. Recommend to adjust the settings where necessary:
 - a. **IFC2/ObjCaption** parameter: define an individual object name
 - b. **IFC2/Required** parameter:
set to Y if this object must initialize with the vendor system to set the whole IFC instance status to LinkAlive
set to N if this object does not need initialization with the vendor system to set the whole IFC instance status to LinkAlive
 - c. **IFC1/Required** parameter:
set to Y if this object must initialize with the vendor system to set the whole IFC instance status to LinkAlive
set to N if this object does not need initialization with the vendor system to set the whole IFC instance status to LinkAlive

Setting Routing Options

When necessary set routing options in PMS1 node when the IFC instance shall send messages only to specific IFC objects.

Thus is used in case where individual Card Readers (EFT) or Key Card makers are addressed directly by the IfcApplication according to the WS sending the request or the Keycoder within that request.

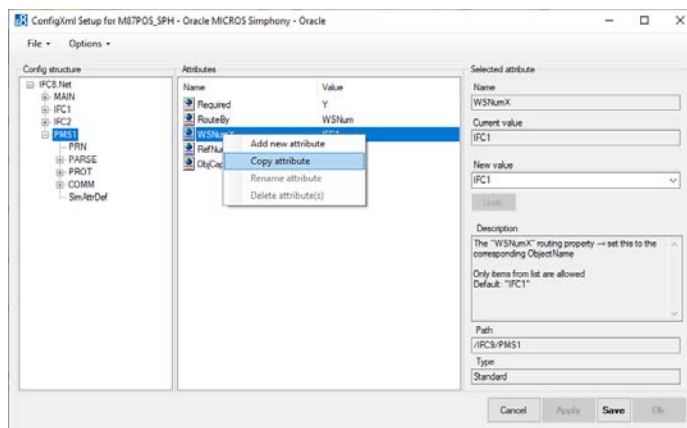
1. Go to the PMS1 node and mark the RouteBy parameter.



2. In the New Value field, choose Route by “WsNum” (Workstation ID) or Route by “KeyCoder” (Door Lock Key Encoder ID).

Route by “WsNum”:

1. Mark the “WSnumX” parameter and right-click this:



2. Select **Copy** attribute.
3. A new form, “Add new attribute,” opens.

Add new attribute

Please enter attribute name:

WNumX

Please enter attribute value:

IFC1

Cancel OK

4. Enter attribute name
Enter the PCName or value which PMS will send in messages in WsNum field
5. Enter attribute value
Enter the IFC object messages from above WsNum value shall be sent to Example:

Add new attribute

Please enter attribute name:

WNumPCNAME1

Please enter attribute value:

IFC1

Cancel OK

6. Select **OK** to confirm.

The new parameter will be added to the list of Attributes.

ConfigXml Setup for MBTPOS_SPH - Oracle MICROS Symphony - Oracle

File Options

Config structure

- IFC2 Net
 - MAIN
 - IFC1
 - IFC2
 - PMS1**
 - PRH
 - PARSE
 - PROT
 - COMM
 - SimAttrDef

| Name | Value |
|--------------------|-------------|
| Required | Y |
| RouteBy | WSNum |
| WNumX | IFC1 |
| RefNum | 20 |
| ObjCaption | Pms1 |
| WNumPCNAME1 | IFC1 |

Selected attribute

Name: WNumPCNAME1

Current value: IFC1

New value: IFC1

Undo

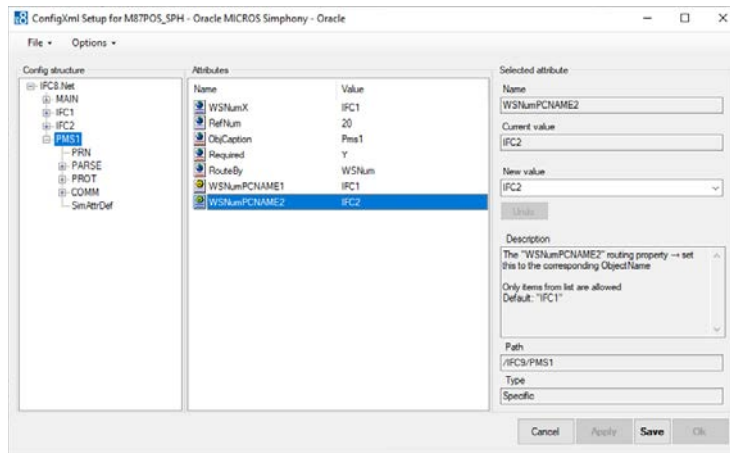
Description:

Path: /IFCS/PMS1

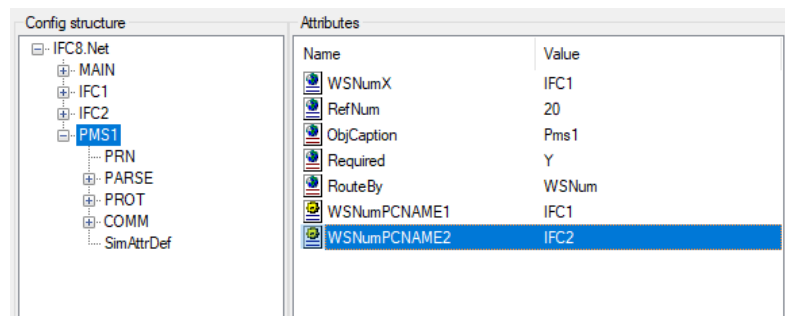
Type:

Cancel Apply Apply & Save OK

7. Select **Apply** or **Apply & Save**.
IFC8 instance reinitializes and will write (and save) the new IFC2 node into the Config.xml file.



8. Repeat the above steps to add more WsNumXXX parameters with routing to a specific IFC object.



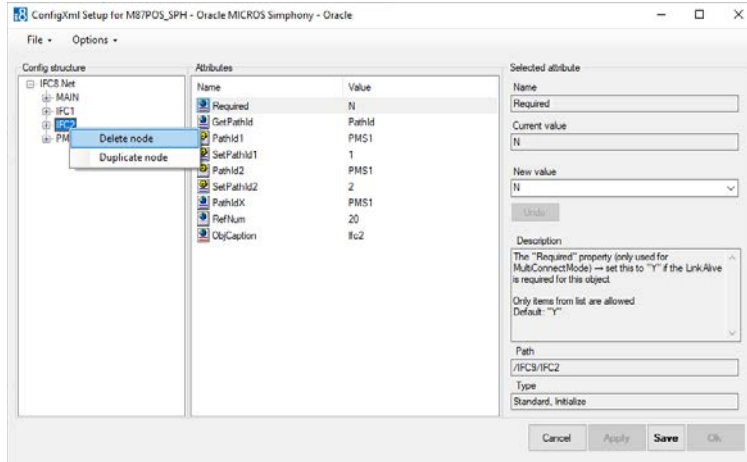
A Message from PMS containing a WsNum value = "PCNAME1" will be sent to the IFC1 object only.

A Message from PMS containing a WsNum value = "PCNAME2" will be sent to the IFC2 object only.

Deleting IFC Node

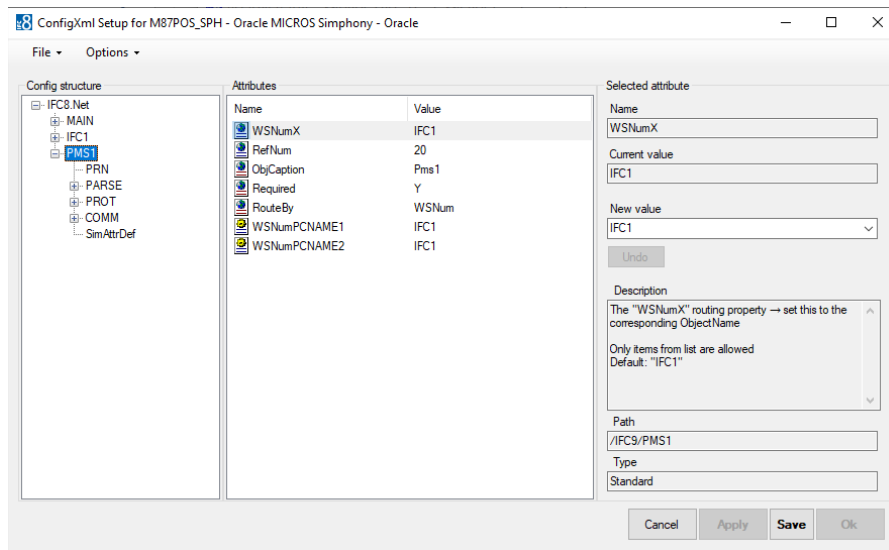
In case an additional IFC object node is no longer needed delete it with the following steps:

1. Mark the IFC node to delete.
2. Right-click the IFC node and select **Delete** node.



3. The IFC node will be removed from the Configuration Editor.
4. Select **Apply** or **Apply & Save**.

IFC8 instance reinitializes and will update /save the updated Config.xml file.



7

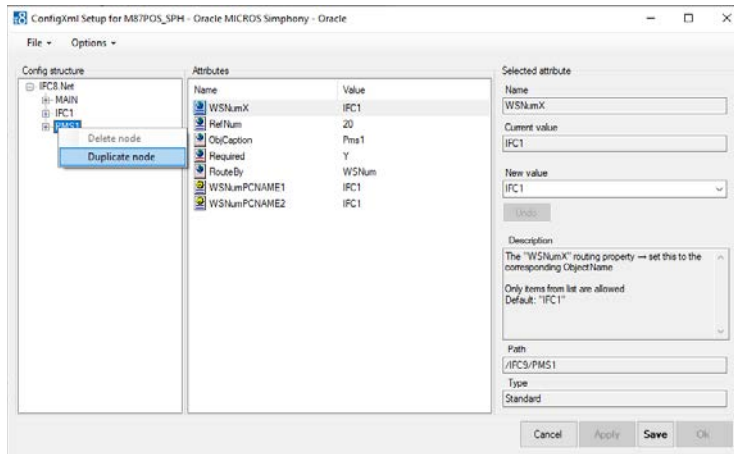
Duplicating PMS node

A vendor system might support exchanging data with multiple hotel instances using one IFC8 connection (e.g. Multi Hotel Cross Posting).

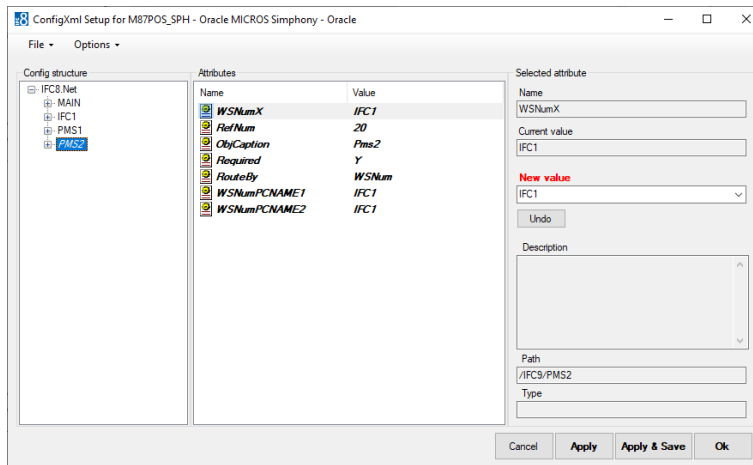
Adding Additional PMS Node for Suite8 IFC

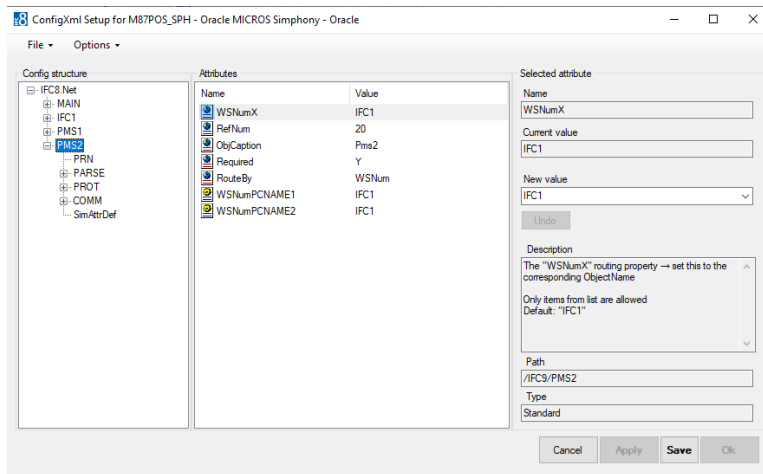
Configure the first PMS node as needed.

1. Right-click PMS1 main node.
2. Select **Duplicate node** from the context menu.



3. Mark the new PMS2 node.

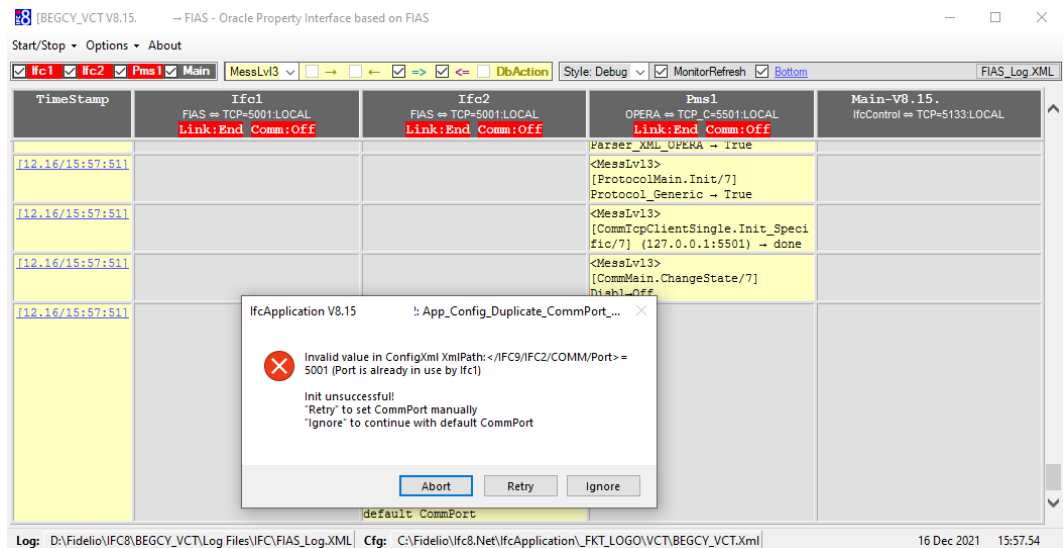




4. Select **Apply** or **Apply & Save**.

IFC8 instance reinitializes and will write (and save) the new PMS2 node into the Config.xml file.

A warning will open as IFC8 detects the same IP Port also defined in the PMS1 node. You must change this

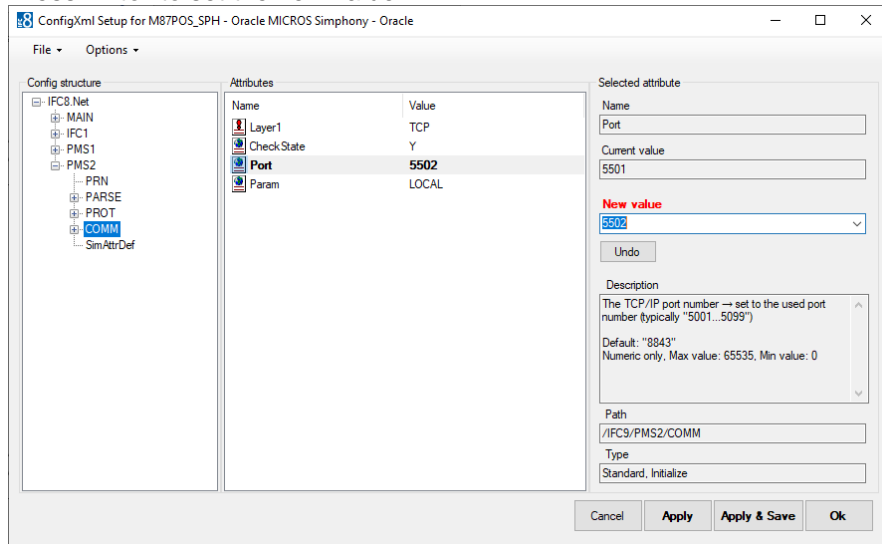


5. Select **Retry** to manually adjust the IP Port now.

The Configuration Editor will jump to the PMS2/COMM/DBS sub node.

6. Select the Parameter FoConnPort and in the New Value field, enter the valid IP Port (must be different from the "FoConnPort" value defined in PMS1 COMM/COMM/DBS node)

7. Press **Enter** to set the new value.



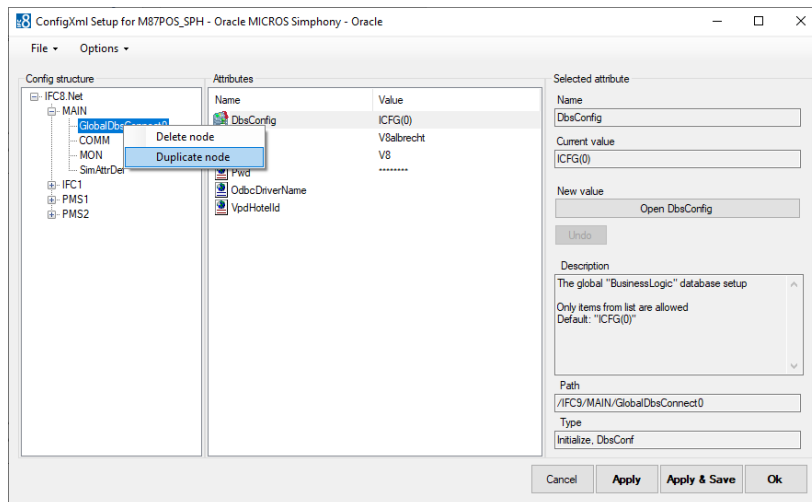
8. Select **Apply** or **Apply & Save** to store the new settings in the Config.xml file.

Required additional Settings

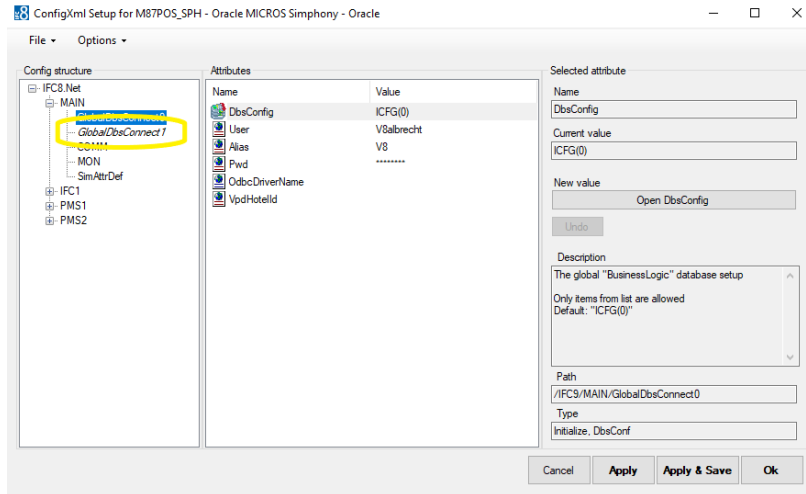
Duplicate GlobalDbsConnect node

Required additional setting as to define additional Database connection for other Suite8 PMS connection

1. In the MAIN node, mark and right-click the existing “GlobalDbsConnect0” subnode opening the context menu.
2. Select **Duplicate node**.

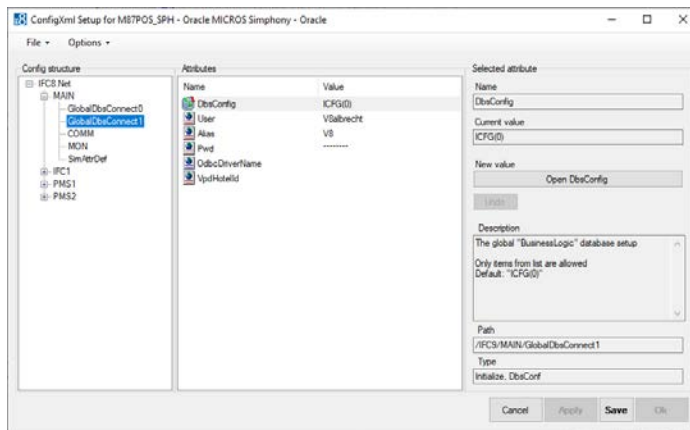


Additional sub node “GlobalDbsConnect1” will be added.

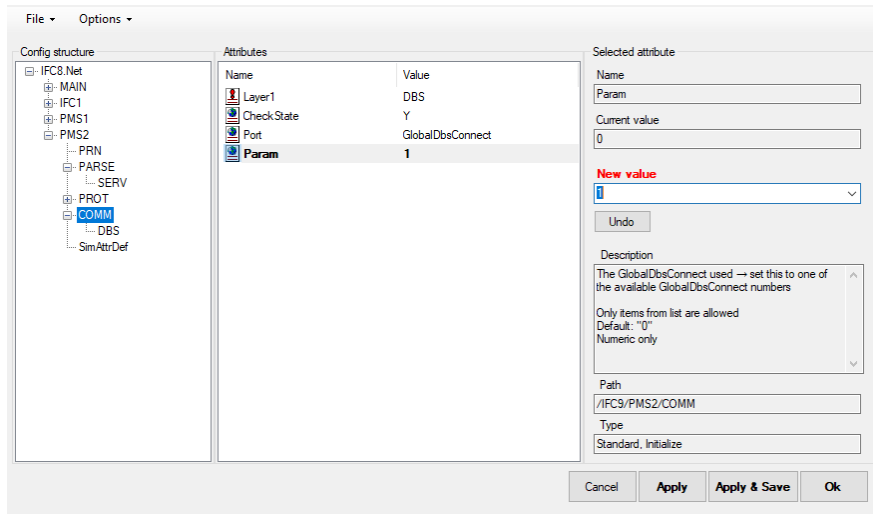


3. Select **Apply** or **Apply & Save**.

IFC8 instance reinitializes and will write (and save) the new sub node into the Config.xml file.



4. Update the Database connection details (“User,” “Alias,” Pwd”) for the GlobalDbsConnect1 parameter.
5. In PMS2 / COMM subnode, change the “Param” parameter to “1” to link the PMS2 node to the new GlobalDbsConnect1 Database connection definitions.

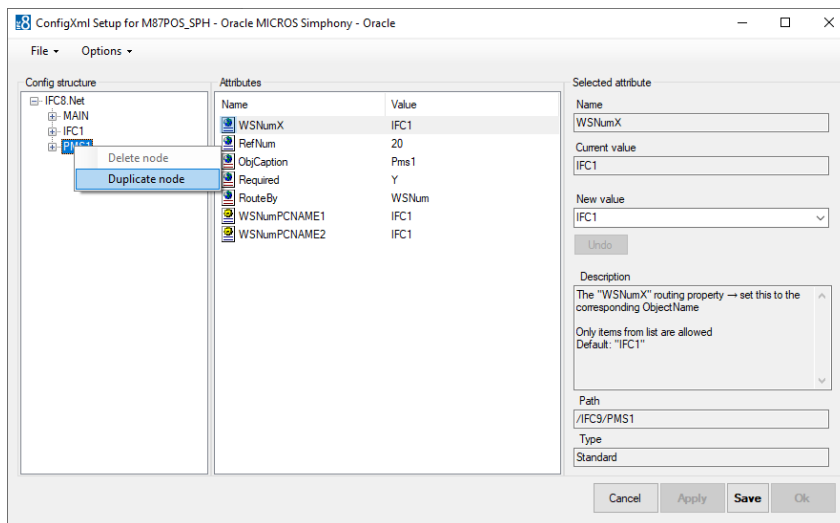


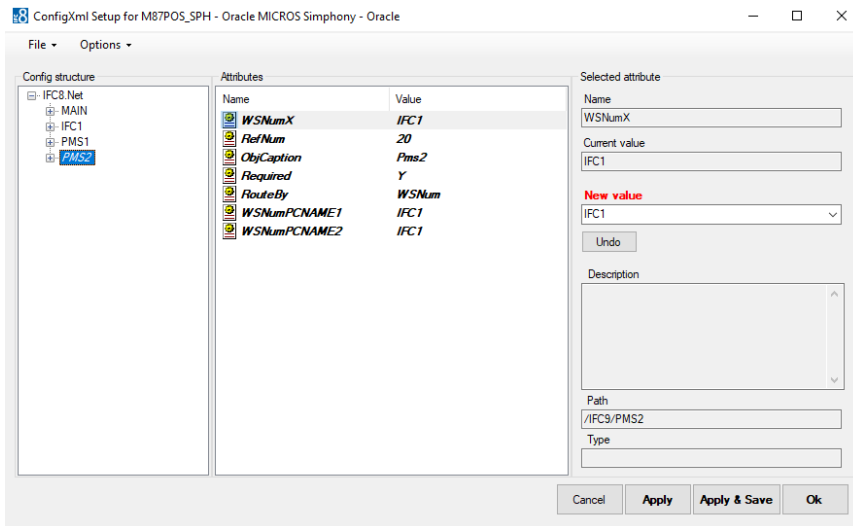
6. Select **Apply** or **Apply & Save** to complete.

Adding Additional PMS Node for OPERA IFC

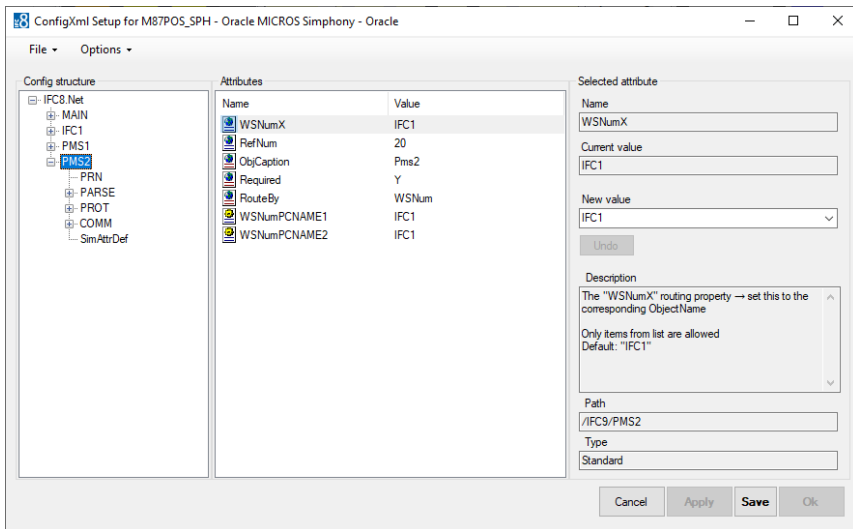
Configure the first PMS node as needed.

1. Right-click PMS1 main node.
2. Select **Duplicate node** from the context menu.





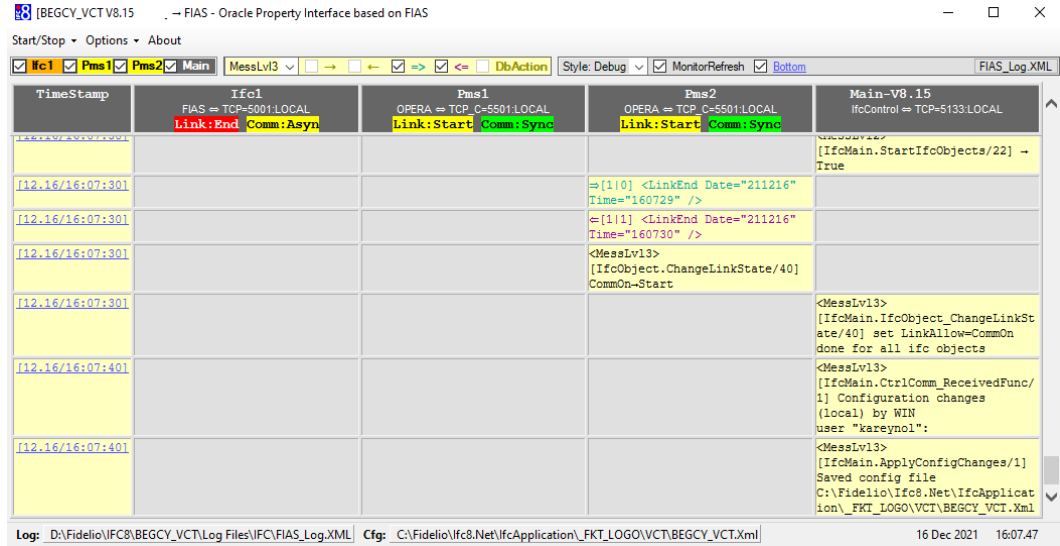
3. Mark the new PMS2 node.



4. Select **Apply** or **Apply & Save**.

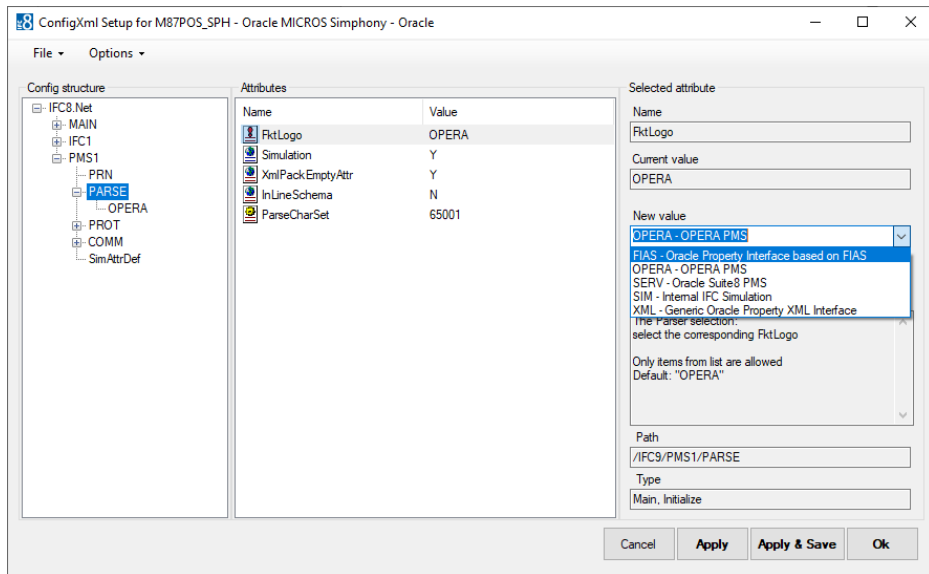
IFC8 instance reinitializes and will write (and save) the new PMS2 node into the Config.xml file.

IfcApplication displays now additional Pms2 object:



8 PMS OPERA Parser Node Settings

IFC Application offers an array of Parsers to be configured in the PMS Object

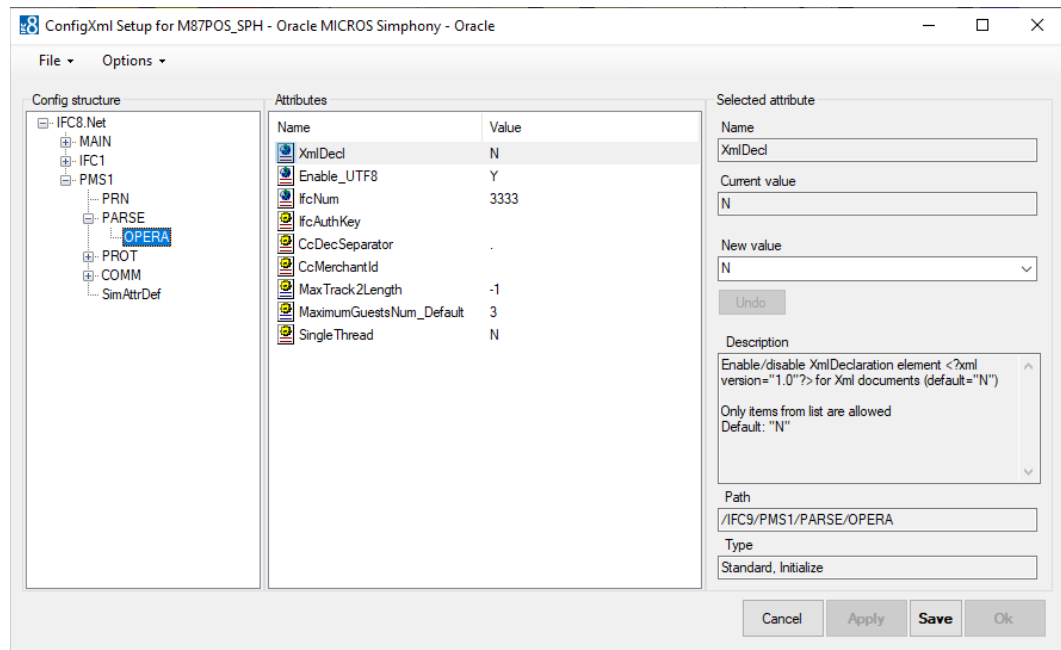


The majority of these are for use in internal, testing or bespoke scenario's.

We will concentrate on the two connections that are valid for connections that are valid for PMS connections. These are:

- OPERA - Opera PMS Property and Opera Cloud PMS Installations
- SERV - Suite 8 PMS Installaion

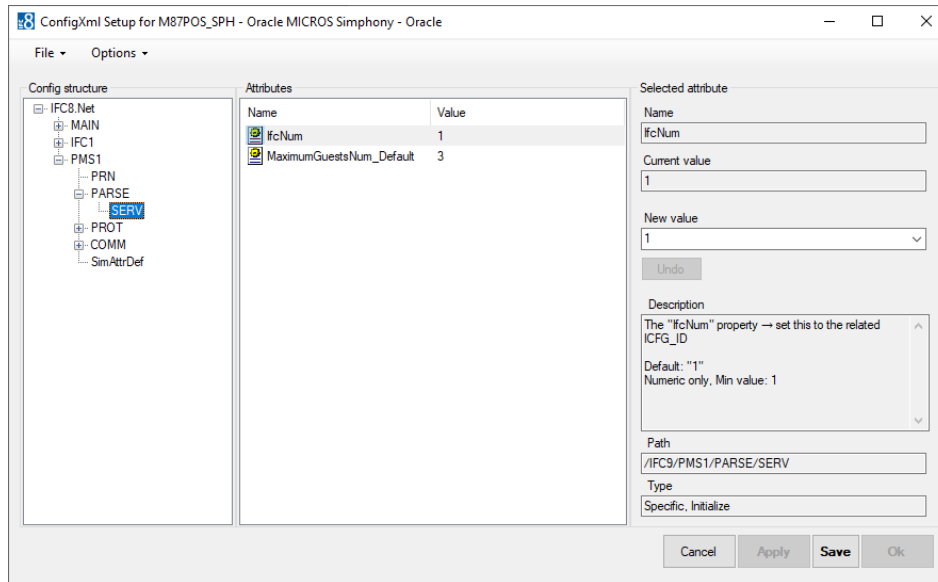
OPERA PMS Parser



| MON Sub node Attributes | Value Description | Notes |
|-------------------------|--|-------------------------------|
| IfcNum | The "IfcNum" property → set this to the related OPERA interface ID Default: "1" Numeric only | Correspond to Row ID in Opera |
| IfcAuthKey | The Ifc authorization key for protected XML communication (currently not used, press 'New IfcAuthKey' button) Only items from list are allowed | |
| CcDecSeparator | Overwrites the definition of OS decimal separator for Cc - Currency attributes("." = default[OPERA], Empty = use OS settings for numerics) Only items from list are allowed Default: "." | |

| MON Sub node Attributes | Value Description | Notes |
|---------------------------------|---|--|
| CcMerchantId | Default MerchantId for EFT actions if does not pass from OPERA Versions< 5.0.02.03 Default: "" | |
| MaxTrack2Length | The maximum length of the Track2 in KeyAnswer reply (default: -1 → disabled) Default: "-1" Numeric only, Max value: 1024, Min value: -1 | |
| Enable_UTF8 | Set "N"(IFC8.VB6 compatibility mode) for send non ASCII characters in XML strings as escape squence like "" (default="Y") Only items from list are allowed Default: "Y" | |
| XmlDecl | Enable/disable XmlDeclaration element <?xml version="1.0"?> for Xml documents (default="N") Only items from list are allowed Default: "N" | |
| MaximumGuestsNum_Default | Default of maximum PostListItems if PostInquiry.MaximumGuestsNum is not defined Default: "3" Numeric only, Max value: 50, Min value: 1 | |
| SingleThread | SingleThread → IFC object works in SingleThread mode (default="N") Only items from list are allowed Default: "N" | Pre-requisite is the transmission of a unique WSNUM entry in every record. |

Suite 8 PMS Parser



| MON Sub node Attributes | Value Description | Notes |
|--------------------------|--|-------|
| IfcNum | The "IfcNum" property → set this to the related ICFG_ID Default: "1" Numeric only, Min value: 1 | |
| MaximumGuestsNum_Default | Default of maximum PostListItems if PostInquiry.MaximumGuestsNum is not defined Default: "3" Numeric only, Max value: 50, Min value: 1 | |