

# Oracle® Hospitality Cruise Shipboard Property Management System Devices Configuration Guide



Release 20.3

F59789-02

January 2023

The Oracle logo, consisting of a solid red square with the word "ORACLE" in white, uppercase, sans-serif font centered within it.

ORACLE®

Oracle Hospitality Cruise Shipboard Property Management System Devices Configuration Guide, Release 20.3

F59789–02

Copyright © 2010, 2023, Oracle and/or its affiliates.

This software and related documentation are provided under a license agreement containing restrictions on use and disclosure and are protected by intellectual property laws. Except as expressly permitted in your license agreement or allowed by law, you may not use, copy, reproduce, translate, broadcast, modify, license, transmit, distribute, exhibit, perform, publish, or display any part, in any form, or by any means. Reverse engineering, disassembly, or decompilation of this software, unless required by law for interoperability, is prohibited.

The information contained herein is subject to change without notice and is not warranted to be error-free. If you find any errors, please report them to us in writing.

If this is software, software documentation, data (as defined in the Federal Acquisition Regulation), or related documentation that is delivered to the U.S. Government or anyone licensing it on behalf of the U.S. Government, then the following notice is applicable:

U.S. GOVERNMENT END USERS: Oracle programs (including any operating system, integrated software, any programs embedded, installed, or activated on delivered hardware, and modifications of such programs) and Oracle computer documentation or other Oracle data delivered to or accessed by U.S. Government end users are "commercial computer software," "commercial computer software documentation," or "limited rights data" pursuant to the applicable Federal Acquisition Regulation and agency-specific supplemental regulations. As such, the use, reproduction, duplication, release, display, disclosure, modification, preparation of derivative works, and/or adaptation of i) Oracle programs (including any operating system, integrated software, any programs embedded, installed, or activated on delivered hardware, and modifications of such programs), ii) Oracle computer documentation and/or iii) other Oracle data, is subject to the rights and limitations specified in the license contained in the applicable contract. The terms governing the U.S. Government's use of Oracle cloud services are defined by the applicable contract for such services. No other rights are granted to the U.S. Government.

This software or hardware is developed for general use in a variety of information management applications. It is not developed or intended for use in any inherently dangerous applications, including applications that may create a risk of personal injury. If you use this software or hardware in dangerous applications, then you shall be responsible to take all appropriate fail-safe, backup, redundancy, and other measures to ensure its safe use. Oracle Corporation and its affiliates disclaim any liability for any damages caused by use of this software or hardware in dangerous applications.

Oracle®, Java, and MySQL are registered trademarks of Oracle and/or its affiliates. Other names may be trademarks of their respective owners.

Intel and Intel Inside are trademarks or registered trademarks of Intel Corporation. All SPARC trademarks are used under license and are trademarks or registered trademarks of SPARC International, Inc. AMD, Epyc, and the AMD logo are trademarks or registered trademarks of Advanced Micro Devices. UNIX is a registered trademark of The Open Group.

This software or hardware and documentation may provide access to or information about content, products, and services from third parties. Oracle Corporation and its affiliates are not responsible for and expressly disclaim all warranties of any kind with respect to third-party content, products, and services unless otherwise set forth in an applicable agreement between you and Oracle. Oracle Corporation and its affiliates will not be responsible for any loss, costs, or damages incurred due to your access to or use of third-party content, products, or services, except as set forth in an applicable agreement between you and Oracle.

# Contents

## Preface

---

### 1 Fargo HDP 5000 Printer

---

|   |     |
|---|-----|
| Prerequisites, Supported Systems and Compatibility for Fargo Printer, Driver, and Firmware Installation | 1-1 |
| Printer Setup   | 1-5 |
| Configuring Hardware in Management module and Report  | 1-8 |

### 2 OMNIKEY RFID Reader

---

|   |     |
|---|-----|
| Prerequisites, Certifications and Compatibility for OMNIKEY | 2-1 |
| Installing OMNIKEY RFID Reader                              | 2-1 |
| Setting Up OMNIKEY RFID Reader in SPMS                      | 2-1 |

### 3 Quick Encode

---

|   |     |
|---|-----|
| Prerequisites, Supported Systems and Compatibility for Quick Encode | 3-1 |
| RFID Encoder Setup  | 3-1 |
| Setting up VisiOnline Door Interface                                | 3-2 |
| Installing the Quick Encode   | 3-3 |
| Customize Labels  | 3-4 |
| Using the Quick Encode Functionality                                | 3-5 |
| Encoding Wearable   | 3-6 |
| Verifying RFID Wearable/Card  | 3-7 |

### 4 Passport Reader 3M AT90000MKII

---

|  |     |
|--|-----|
| Prerequisites, Supported Systems, and Compatibility for 3M | 4-1 |
| Hardware Setup and Usage in SPMS                           | 4-3 |

|   |   |     |
|---|---|-----|
| 5 | Desko Penta   |     |
|   | Prerequisites, Supported Systems, Certification and Compatibility for Desko Penta | 5-1 |
|   | Installing a Driver/Firmware  | 5-1 |
| 6 | FEIG OBID RFID Encoder  |     |
|   | Prerequisites Certifications and Compatibility for FEIG OBID RFID                 | 6-1 |
|   | Installing FEIG OBID RFID Encoder   | 6-1 |

# Preface

This document provides instructions on how to configure the various devices such as Fargo HDP 5000 Printer, OMNIKEY RFID Reader, Quick Encode, Passport Reader 3M AT9000MKII, Desko Penta and FEIG OBID RFID Encoder.

## Audience

This document is intended for application specialists and end-user of the Oracle Hospitality Cruise Shipboard Property Management System (SPMS).

## Customer Support

To contact Oracle Customer Support, access My Oracle Support at the following URL:

<https://support.oracle.com>

When contacting Customer Support, please provide the following:

- Product version and program/module name
- Functional and technical description of the problem (include business impact)
- Detailed step-by-step instructions to re-create
- Exact error message received and any associated logfiles
- Screen shots of each step you take

## Documentation

Oracle Hospitality product documentation is available on the Oracle Help Center at <http://docs.oracle.com/en/industries/hospitality/cruise.html>.

## Revision History

**Table 1 Revision History**

| Date           | Description of Change   |
|----------------|---|
| September 2022 | Initial publication.  |
| October 2022   | Removed Unsupported Devices.  |
| January 2023   | Added information on the 3M™ AT9000MKII Passport Reader, removed information on the CR100M Passport Reader and Gen 3 Desko Penta. |

# 1

## Fargo HDP 5000 Printer

The Fargo HDP 5000 printer not only prints high quality image, it also encodes information for Radio-frequency identification (RFID) and normal magnetic cards.

This document describes the installation and usage of Fargo HDP 5000 Printer.

### Prerequisites, Supported Systems and Compatibility for Fargo

#### Prerequisites

- Fargo HDP 5000 Software Installation CD
- FargoPrinterSDK14.dll
- Management.exe
- Administration.exe

Download the following OMNIKEY website.

- OMNIKEY 5121 Ethernet Driver.exe
- CardMan\_Synchronous\_APR\_V1\_1\_1\_1\_.exe
- CT-API\_V4\_0\_3\_0.exe

#### Compatibility

SPMS version 20.3 or later. For customers operating on a version below 20.3, database upgrade to the recommended or latest version is required.

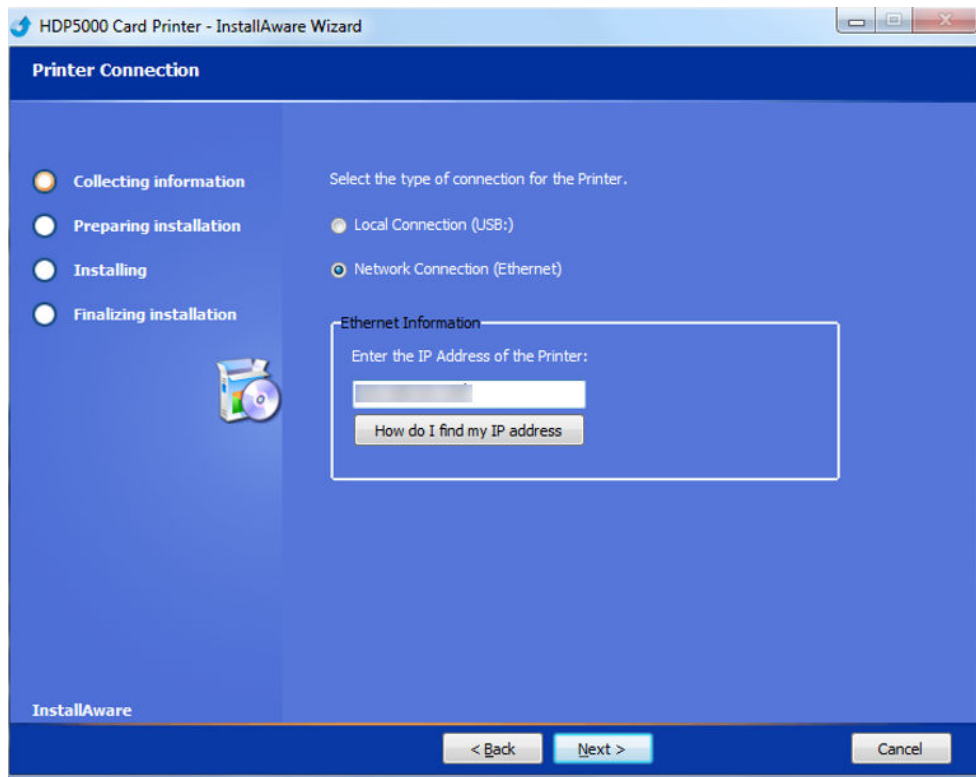
### Printer, Driver, and Firmware Installation

An installation using the correct driver is essential for the printer to work as required. Please contact your hardware supplier to obtain the latest compatible driver.

#### Installing Printer Driver

1. Close all the running programs and insert the Software Installation CD into your PC.
2. At the HDP5000 Card Printer – Installation Wizard screen, accept the License agreement.

**Figure 1-1 Printer Connection Type**



3. At the Printer Connection screen, select the Local Connection type as **Network Connection**, and enter the **IP Address** of the printer.
4. Click **Next** to begin installation.
5. Reboot the PC at the end of the installation.

### Installing the Firmware

Select the right firmware version to determine the functions of the device. See the [Prerequisites](#) page for the certified firmware version.

1. Select **FargoSDK.exe** from the Software Installation CD.
2. On the License Agreement screen, read and accept the license agreement, then click **Next**.
3. Continue with the following topics in the order presented to complete the installation.
4. If you get an error prompt "*FargoCardMove* —> *ActiveX Component error*" when encoding the RFID Card, you must manually register the FargoPrinterSDK14.dll

### Installing Ethernet Driver

In order to encode the RFID card, an additional Ethernet Driver for RFID is required. Follow the steps below to complete the installation.

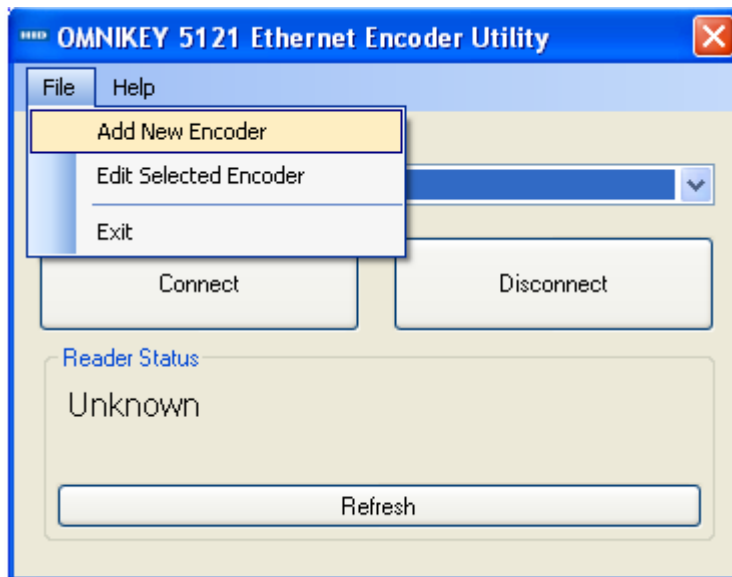
1. Select **OMNIKEY 5121 Ethernet Driver.exe** from the Software Installation CD.
2. At the Welcome to OMNIKEY 5121 Ethernet Driver Setup screen, click **Next** to continue.

3. On the Ready to Install screen, click **Next** to proceed.
4. Continue with the following pages in the order presented to complete the installation.

### Adding and Encoder Instance

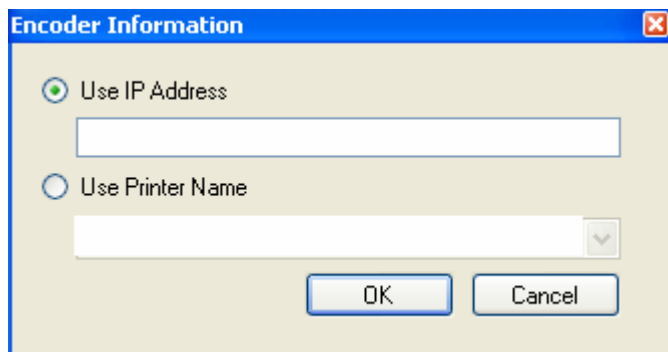
1. Open the **OMNIKEY 5121 Ethernet Driver** folder from **Windows Startup, Program Folder** and select **Omnikey 5121 Ethernet Encoder Utility**
2. On the OMNIKEY 5121 Ethernet Encoder Utility screen, select **Add New Encoder** from the menu-item.

Figure 1-2 Adding New Encoder



3. Enter the IP Address of the printer/encoder or select an installed printer instance to link the encoder and click **OK** to add the instance.

Figure 1-3 Encoder IP Address

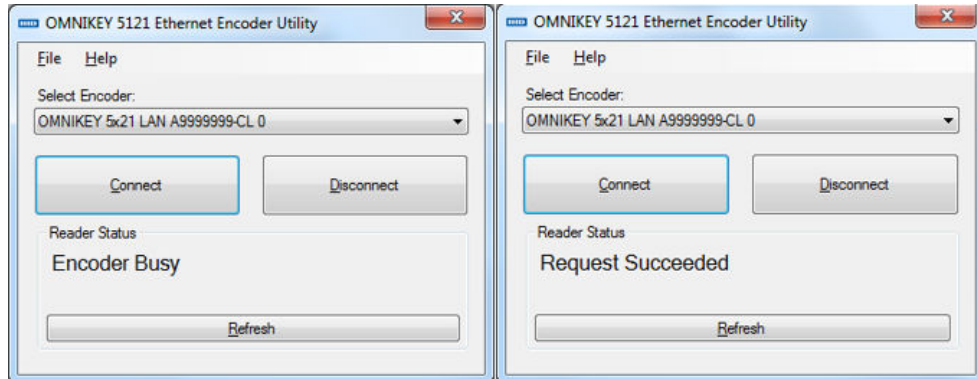


4. Select the **Encoder OMNIKEY 5x21 CL-0** from the drop-down list and click **Connect**
5. Restart the PC.
6. Return to the Ethernet Encoder Utility to confirm the encoder Serial Number appears in the *Select Encoder* field and the Reader Status is 'Request Succeeded'.



7. The Reader Status shows “Encoder Busy” when another PC is connecting to the encoder.

**Figure 1-4 Ethernet Encoder Utility Connection**

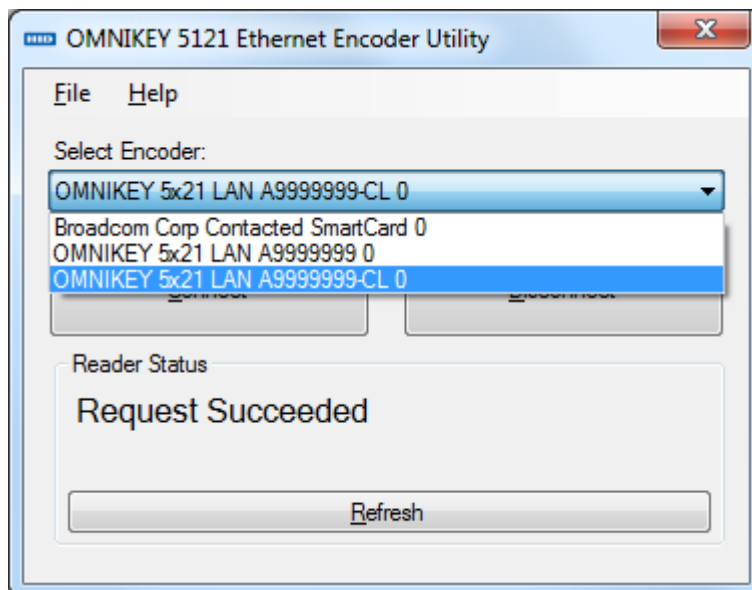


### Editing Encoder Information

When there is change of encoder IP Address, you are required to update the encoder with the new IP Address.

1. Open the **Omnikey 5121 Ethernet Encoder Utility** and select the **Encoder** from the drop-down list.

**Figure 1-5 Encoder Information**



2. Select **Edit Selected Encoder** from the menu-item.
3. Enter the new IP Address or change the printer name and then click **OK** to save.

### Installing CardMan Synchronous API

In order to perform an RFID encoding in SPMS, an API installation is required in order to obtain the Scardsyn.dll

1. Run **CardMan\_Synchronous\_APR\_V1\_1\_1.exe**
2. Select **Setup.exe** and run the installation.
3. On the Welcome to the CardMan Synchronous API Setup Program screen, click **Next**.
4. Select the **DLL's** check box at the Component Selection window.
5. Continue with the following pages in the order presented to complete the installation.

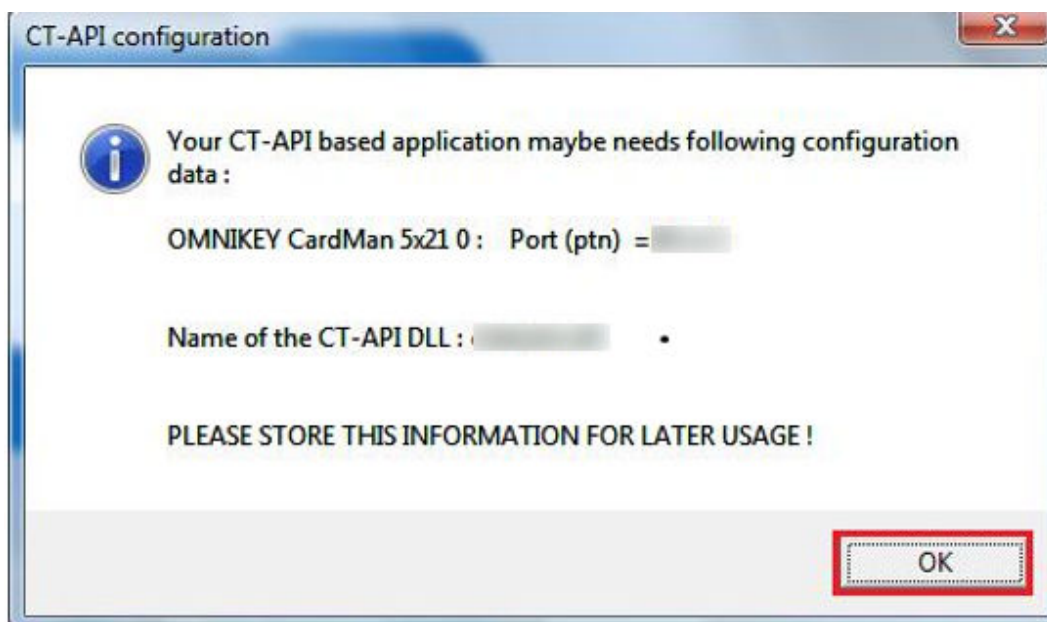
If you get a *scardsyn.dll* error when performing RFID Card printing, manually copy the *scardsyn.dll* to the `C:\windows\system32` folder.

### Installing CT-API Driver

The OMNIKEY Reader requires a CT-API Driver to be installed, which enables you to read the encoded cards.

1. Run the **CT-API\_V4\_0\_3\_0.exe**. The program performs a reader check to ensure the appropriate PC/SC driver is installed.
2. On the Reader Check screen, click **Yes** to continue and follow the steps presented to complete the installation.
3. On the Save the CT-API Configuration screen, click **OK** to close.

**Figure 1-6 CT-API Configuration**



4. Restart the PC.

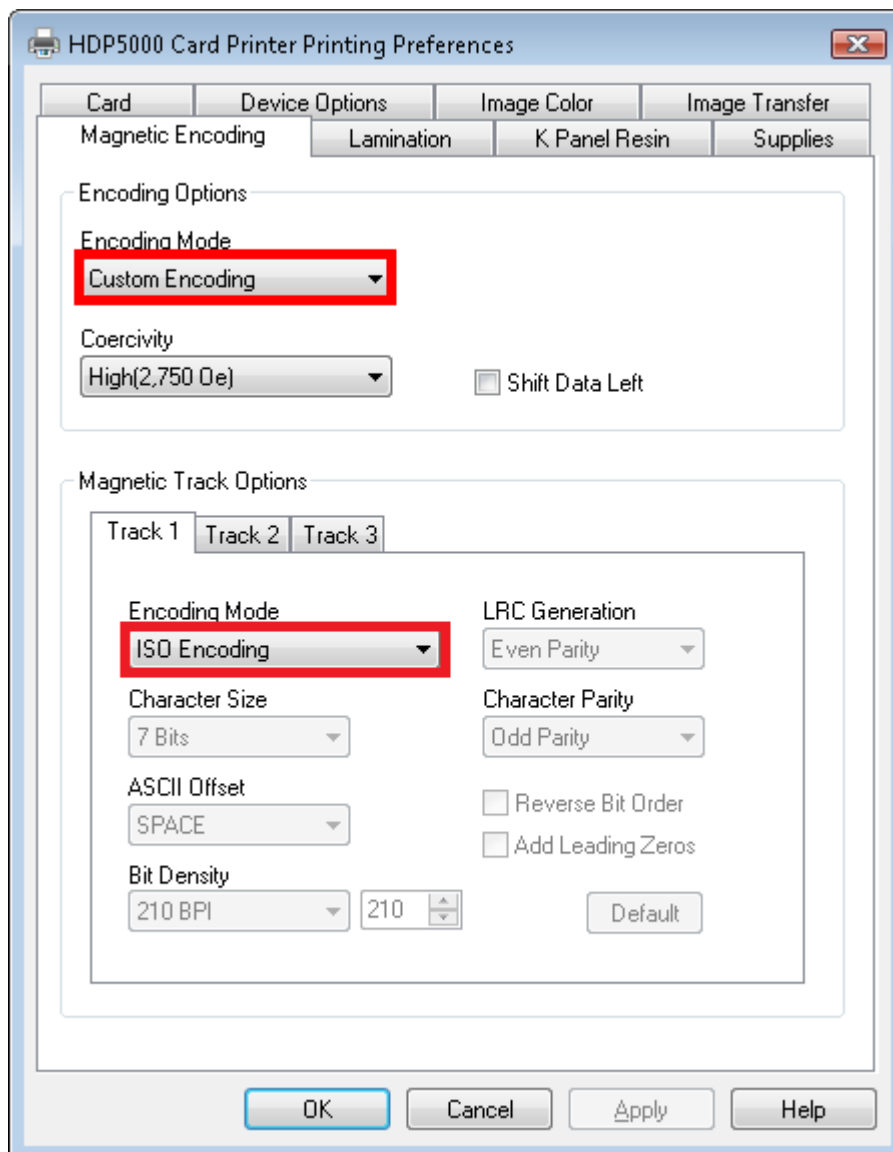
## Printer Setup

Before you begin using the printer, an additional setting is required to handle different type of encoding. Below are the steps to configure the printer for Magnetic Stripe cards and RFID cards.

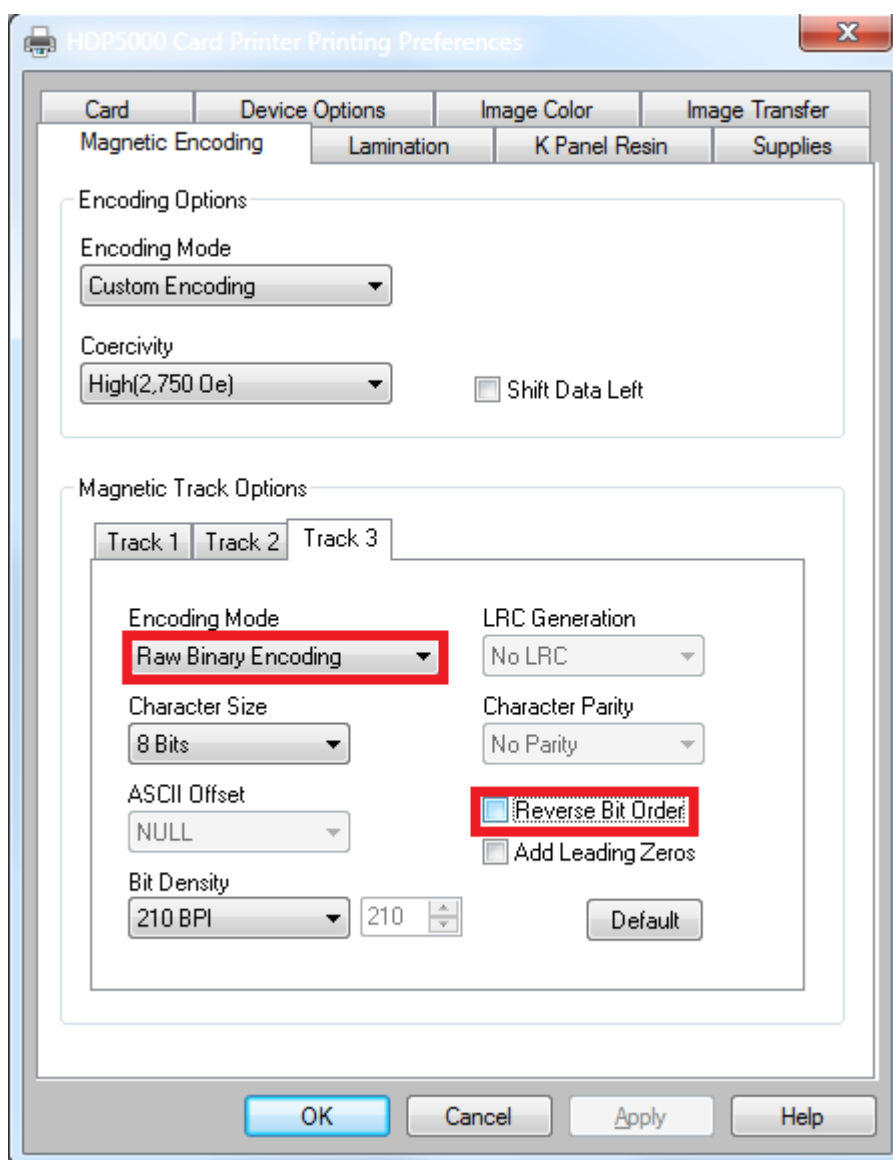
### Configuring Printer to Encode Magnetic Stripe Card

1. Open the **Devices and Printers** panel of the client PC connected with the printer.
2. Click the HDP5000 printer icon, right-click and select **Properties**.
3. Under the Printer Properties, **General** tab, select **Preferences**.
4. In the **Card** tab, **Orientation** section, select print orientation as **Landscape**.
5. Navigate to the **Magnetic Encoding** tab and select **Custom Encoding** from the Encoding Mode drop-down list, and then select **ISO Encoding** in both the **Track 1** and **Track 2** tabs.

**Figure 1-7 Printer Settings for Magnetic Stripe Card**



6. In the **Track 3** tab, select **Raw Binary Encoding** and select the **Reverse Bit Order** check box.

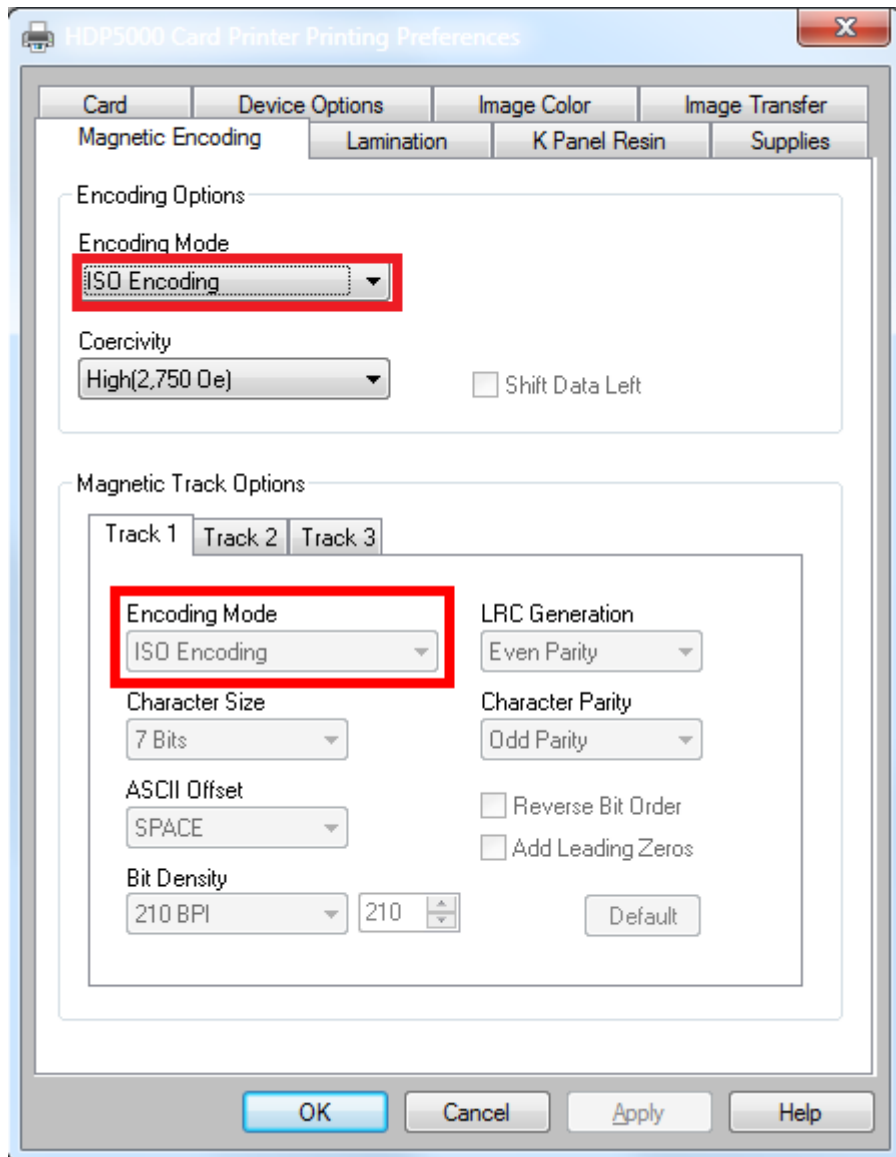
**Figure 1-8 Reverse Bit Order**

7. Click **OK** to save the changes.

### Configuring Printer to Encode RFID Card

1. Repeat step 1 to 4 of the above.

**Figure 1-9 Printer Settings for RFID Card**



2. Navigate to **Magnetic Encoding** tab and select **ISO Encoding** from Encoding Mode drop-down list, and select **ISO Encoding** in **Track 1, Track 2** and **Track 3** tab.
3. Click **OK** to save the changes.

## Configuring Hardware in Management module and Report

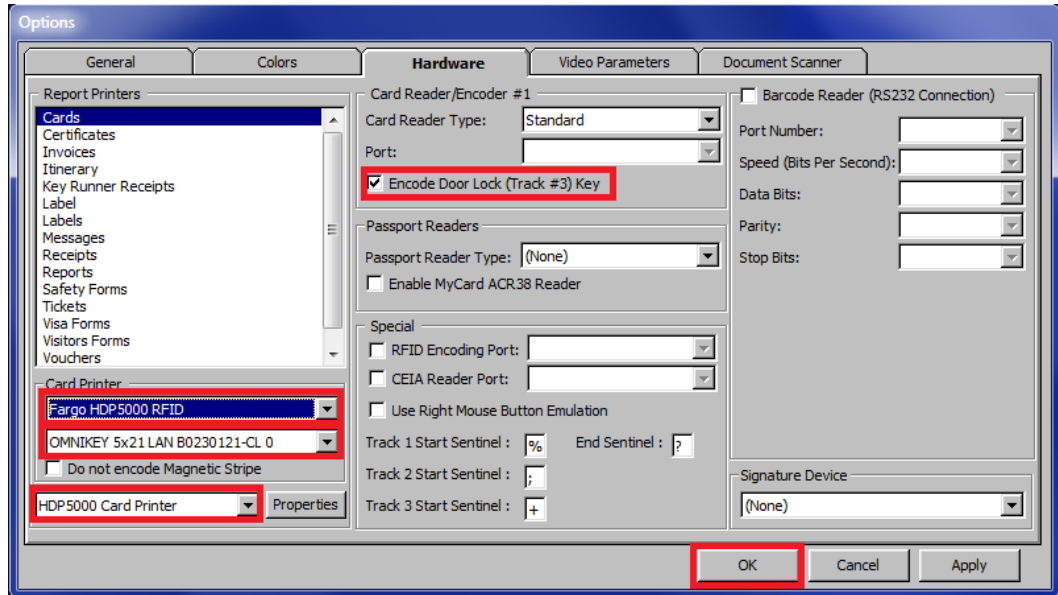
Apart from installing the necessary drivers and setting up the printer, you also must connect and configure the printer in SPMS.

### Configuring Hardware for Magnetic Stripe Card

1. Launch the **Management Module**, and select **Options** from the menu item.
2. In the Options window, select the **Hardware** tab.

- Under the **Report Printers** section, select **Cards**, and then navigate to the **Card Printer** combo box and select “**Fargo HDP 5000**” from the printer drop-down list.

**Figure 1-10 Management Module Hardware Options — MagCard**



- Select **Encode Door Lock (Track #3)** key in the Card Reader/Encoder #1 section.
- Click **Apply** to save the settings, and **OK** to exit.

The printer settings are also saved to *OHCSettings.par* under the parameter setting of the following:

```
[#Fidelio Cruise.Printer.Cards=#]
[#Fidelio Cruise.Printer.BoardCard=#]
```

### Configuring Hardware for RFIDCard

- Repeat steps 1 and 2 above.
- In the **Report Printers** section, select **Cards**, and then navigate to the **Card Printer** combo box and choose “**Fargo HDP 5000**” from the printer drop-down list and Smart Card as **OMNIKEY 5x21 LAN B0230121-CL 0**.
- Select the Printer Name as **HDP 5000 Card Printer**.
- Select **Encode Door Lock (Track #3)** key under Card Reader/Encoder #1 section.
- Click **Apply** to save the settings, and **OK** to exit.

The printer settings are also saved to *OHCSettings.par* under the parameter setting of the following:

```
[#Fidelio Cruise.Printer.BoardCard=#]
[#Fidelio Cruise.Hardware.RFIDEncoder=#]
[#Fidelio Cruise.Printer.BoardCard=#]
```

### Setting Up Report for Magnetic Stripe Card

With every boardcard report layout being different, this section describes the steps to setup a report layout for Fargo HDP 5000 Printer.

1. Open the report template with Crystal Report program.
2. In the Formulas field of the report template, insert the formula. Please obtain from Support / Consultant for the formula statement. The modification of the formula is done in Crystal Report to facilitate the requirements by Fargo to have 14 leading zeros to insert the information into Track 3 Raw encoding for Ving Vision System verification.
3. Begin **Administration** module and select **Systems Setup, Reports Setup** from the menu-item.
4. Under Current Reports List group ‘**\_Onboard Cards**’, locate the **Passenger Door Card** report.
5. In the Formulas field of the report, insert the formula in Crystal Report Formulas section. Please obtain from Support / Consultant for the formula statement.

**Figure 1-11 Report Setup**

The screenshot displays the 'Report Setup' dialog box in Crystal Reports. It is divided into several sections: 'Report Details', 'Print Default', 'SQL', 'Selection Formula', and 'Formulas'. The 'Report Details' section contains the following information: Report ID: PaxDoorCard1, Report File Name: PaxDoorCard1.rpt, Report Title: Passenger Door Card, Report Access: 31, Report Sort: 9999, Report Group: \_Onboard Cards, and Report Comments. The 'Print Default' section shows Printer Type: Cards, Number of Copies: 1, and Orientation: Landscape. The 'SQL' section is for Database SQL. The 'Selection Formula' section is for Crystal Selection Formula. The 'Formulas' section is highlighted with a red box. At the bottom of the dialog are buttons for 'Crystal File OK', 'Apply', and 'Cancel'.

6. Click **Apply** to save the changes.

# 2

## OMNIKEY RFID Reader

This document describes the software installation of the OMNIKEY RFID Reader and hardware settings in Oracle Hospitality Cruise Shipboard Property Management System (SPMS).

### Prerequisites, Certifications and Compatibility for OMNIKEY

This section describes the minimum requirements for the OMNIKEY RFID Reader Installation Guide Module in SPMS.

#### Prerequisites

- Download the following program executables from the OMNIKEY website. <https://www.hidglobal.com/drivers>
  - OMNIKEY\_5x2x\_unattended\_w7\_x64\_r1\_2\_26\_140\_0.zip

#### Certifications

OMNIKEY RFID Reader software version 1.2.26.140

#### Compatibility

SPMS version 20.3 or later. For customer operating on version below 20.3, database upgrade to the recommended or latest version is required.

### Installing OMNIKEY RFID Reader

#### Driver Installation

Please obtain the installation files from your provider and set up per instructions provided/given.

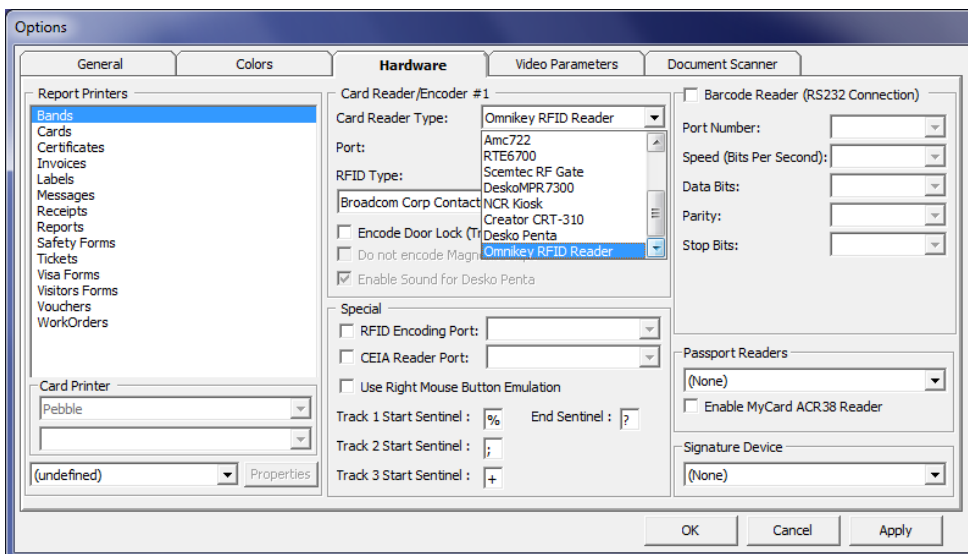
### Setting Up OMNIKEY RFID Reader in SPMS

This section describes the step-by-step instructions for configuring the OMNIKEY RFID Reader settings in the Management, Crew, Advanced Quick Check-In module. After the OMNIKEY RFID Reader settings are configured in the Management module, these settings also apply to the Crew and Advanced Quick Check-In Modules.

1. Run the **Management** program.
2. Select **Options** from the file menu and then select the **Hardware** tab.
3. In the **Card Reader/Encoder #1** section, select **Omnikey RFID Reader** from the Card Reader Type drop-down list.

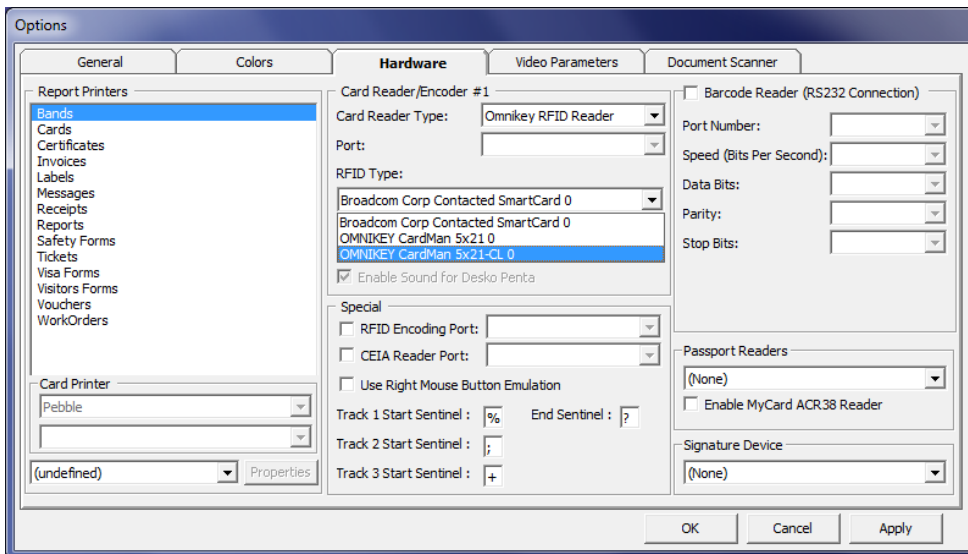


**Figure 2-1 OMNIKEY RFID Reader Setup for Card Reader Type**



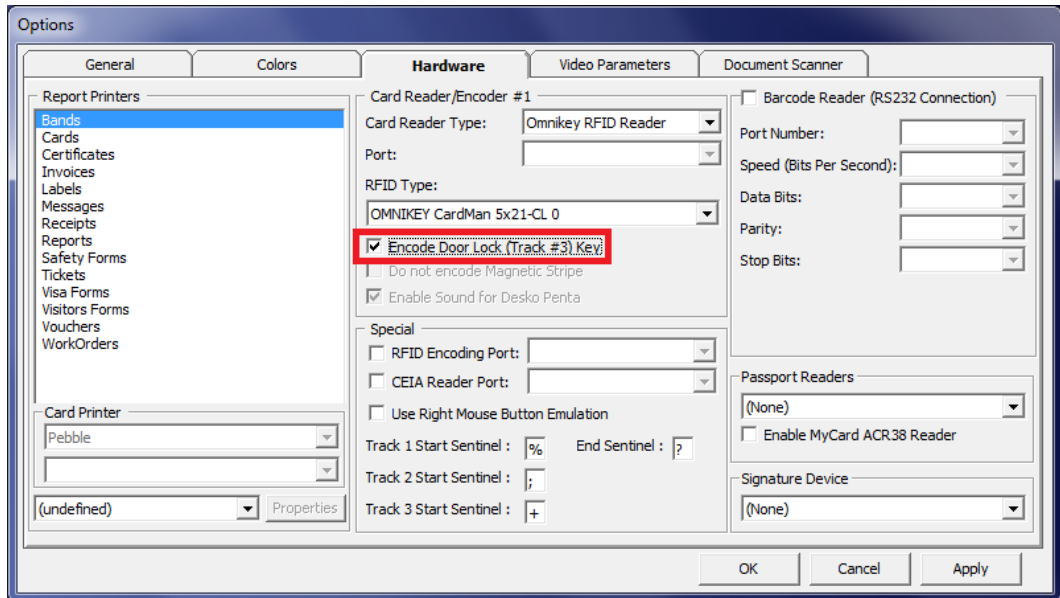
4. Select **OMNIKEY CardMan 5x21-CL 0** from the RFID Type.

**Figure 2-2 OMNIKEY RFID Reader Setup for RFID Type**



5. Select the **Encode Door Lock (Track #3) Key** checkbox if you want to use this terminal to re-encode the door lock for guest.

Figure 2-3 OMNIKEY RFID Setup for Encode Door Lock



6. Click **Apply** to save the settings and then click **OK** to exit.

# 3

## Quick Encode

The Quick Encode is a program designed to transfer the board-card information onto an RFID wearable device, enabling the guest to access their cabin or purchase items from a shop with the RFID wearable tag.

### Prerequisites, Supported Systems and Compatibility for Quick Encode

This section describes the supported system, device, and its configuration requirements and is version compatible with Quick Encode program.

#### Prerequisite

- Quick Encode.exe
- SPMS Parameters:
  - Quick Encode, Encode Mode Interval Time (Default is 5000ms)
  - Quick Encode, Verify Mode Interval Time (Default is 10000ms)
  - Quick Check-in, Extended Search Criteria: Must include the Reservation Board Card number in the value.
- Download the following program executables from OMNIKEY website.
  - OMNIKEY\_5x2x\_unattended\_w7\_x64\_r1\_2\_26\_140\_0.zip

#### Supported Operating Systems

- Microsoft Windows 10 — 32-bit/x64-bit System
- Ving Vision RFID 5.9
- VisiOnline Online & Offline mode
- VDA Micro Master (supports Mifare 1Kcard only)

#### Certifications

- OMNIKEY RFID Reader software version 1.2.26.140

#### Compatibility

SPMS version 20.3 or later. For customer operating on a version below 20.3 database upgrade to the recommended or latest version is required.

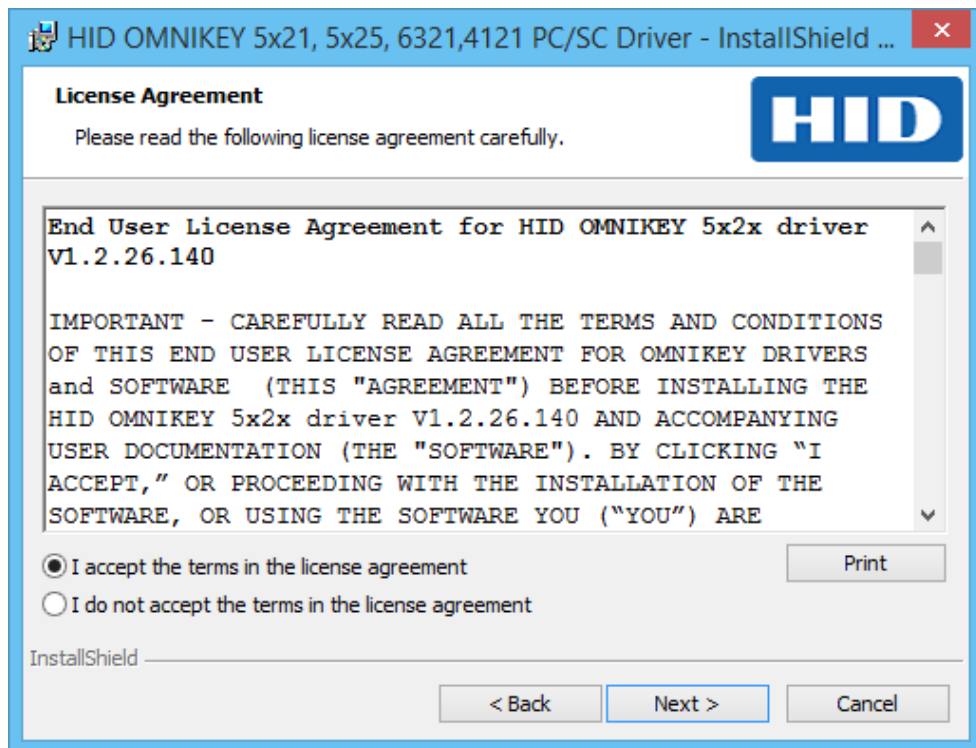
### RFID Encoder Setup

This section describes the steps to set up the OMNIKEY RFID Reader for use in SPMS.

#### Driver Installation

1. Unzip the OMNIKEY\_5x2x\_unattended\_w7\_x64\_r1\_2\_26\_140\_0.zip driver that you downloaded from OMNIKEY website to a temporary folder.
2. Right-click on the **Setup file** and select **Properties**.
3. Navigate to the **Compatibility** tab, select '**Run this program in compatibility mode for**' and then select the operating system from the drop-down list.
4. Run the **HID\_OMNIKEY\_5x2x\_unattended\_w7\_x64\_r1\_2\_26\_140\_0.exe** to install.
5. At the License Agreement screen, accept the license terms and agreement, and then click **Next**.

**Figure 3-1 OMNIKEY License Agreement**



6. On the Ready to Install the Program screen, click **Install** to begin the installation.
7. A **Setup Status** screen appears while the OMNIKEY driver is being installed, indicating the installation progress. Click **Finish** at the Install Shield Wizard Complete screen to exit.

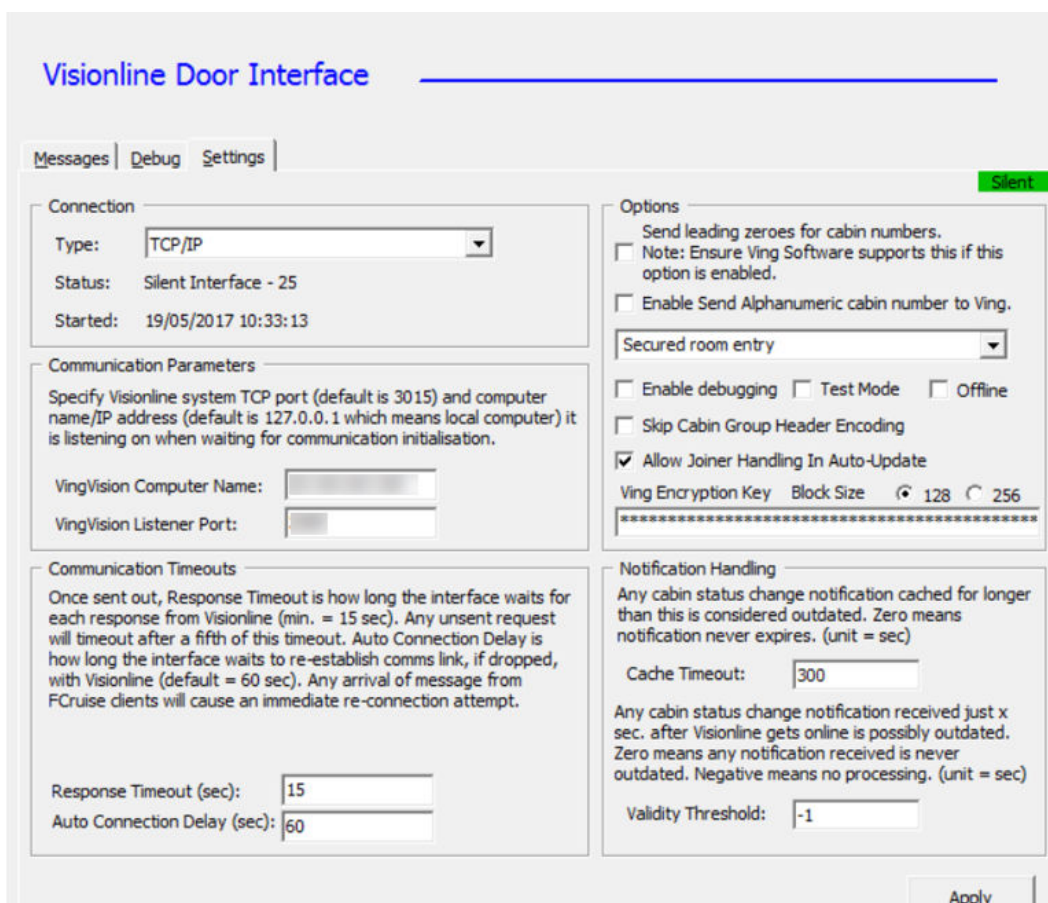
## Setting up VisiOnline Door Interface

This section describes the configuration steps for an SPMS Interface program such as VisiOnline Interface or Ving Vision RFID Interface.

### VisiOnline Door Interface

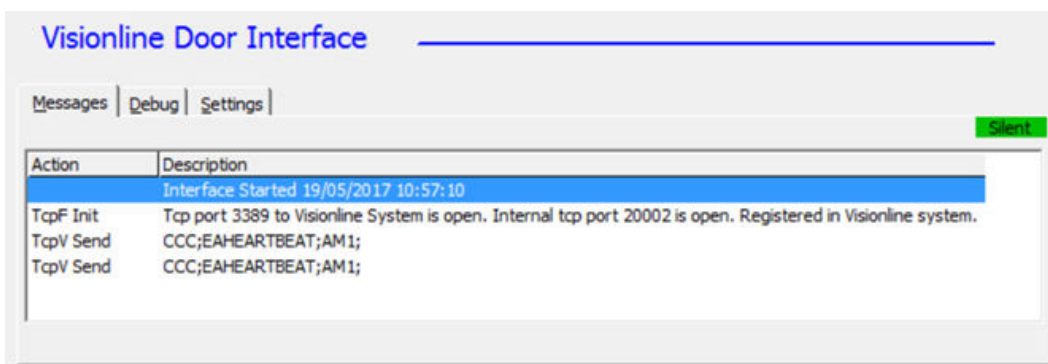
1. Start **VisiOnline Door.exe**.
2. Navigate to the **Settings** tab, **Communication Parameter** section and enter the **VingVision Computer Name** and **port number** in their respective fields.

Figure 3-2 Ving Connection



- Restart the Interface program and ensure the Interface connects to the VisiOnline System when it starts up.

Figure 3-3 Visionline Interface Connection



## Installing the Quick Encode

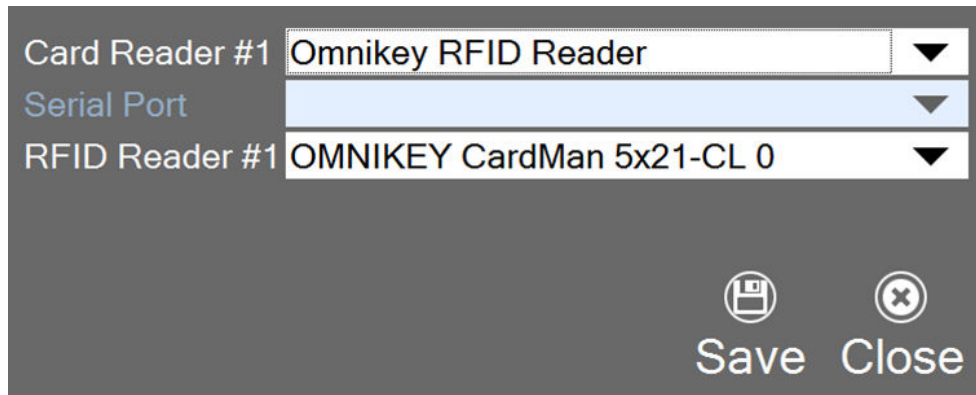
This section describes the steps to setup the Quick Encode software.

### Configuring Quick Encode software

Before you begin, ensure the “**Encode Track 3**” option is enabled in the **Management, Options, Hardware** setting.

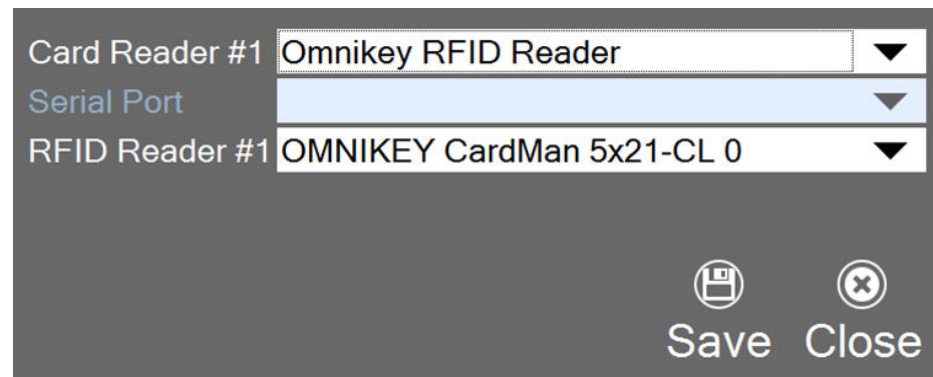
1. Run **Quick Encode.exe**.
2. Click the **Settings** icon.

**Figure 3-4 Device Selection in Software Setup**



3. Select one of the device/reader in the following option.
  - **Card Reader #1:** Select the RFID device to connect to.
  - **RFID Reader #1:** Select the correct RFID reader type.

**Figure 3-5 Device Selection in Software Setup**



- Click **Save** to save the settings.

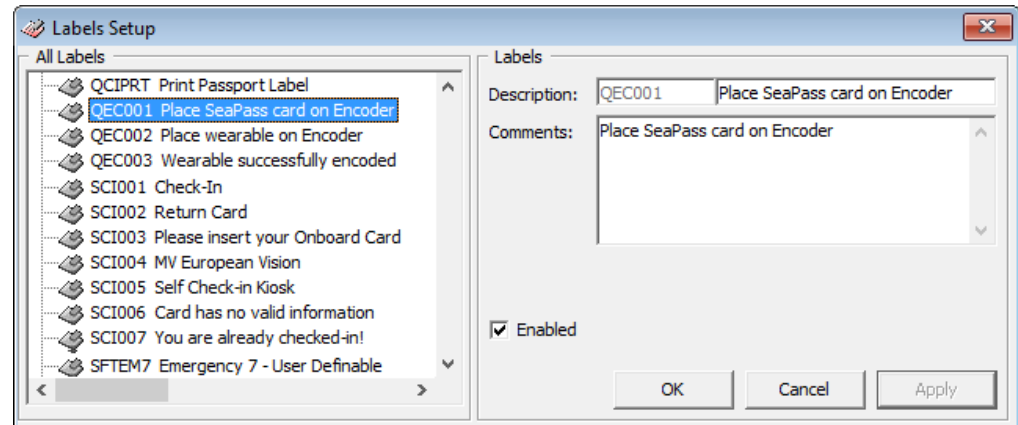
## Customize Labels

The message prompts on the encoder are customizable and this is set up in **Administration module, System Setup, Labels Setup**.

1. Log in to the **Administration Module, System Setup, Labels Setup**.
2. In the Labels Setup window, look up for these labels and edit the text in the Description field.

- QEC001: Place SeaPass card on Encoder
- QEC002: Place Wearable on Encoder
- QEC003: Wearable Successfully encoded

**Figure 3-6 Customize Labels**



3. Click **Apply** to save the changes.

## Using the Quick Encode Functionality

The Quick Encode module has two modes: The Encode Mode that allows you to encode and verify an RFID wearable, and a Verify mode that verifies the encoded information. The mode chosen is shown.

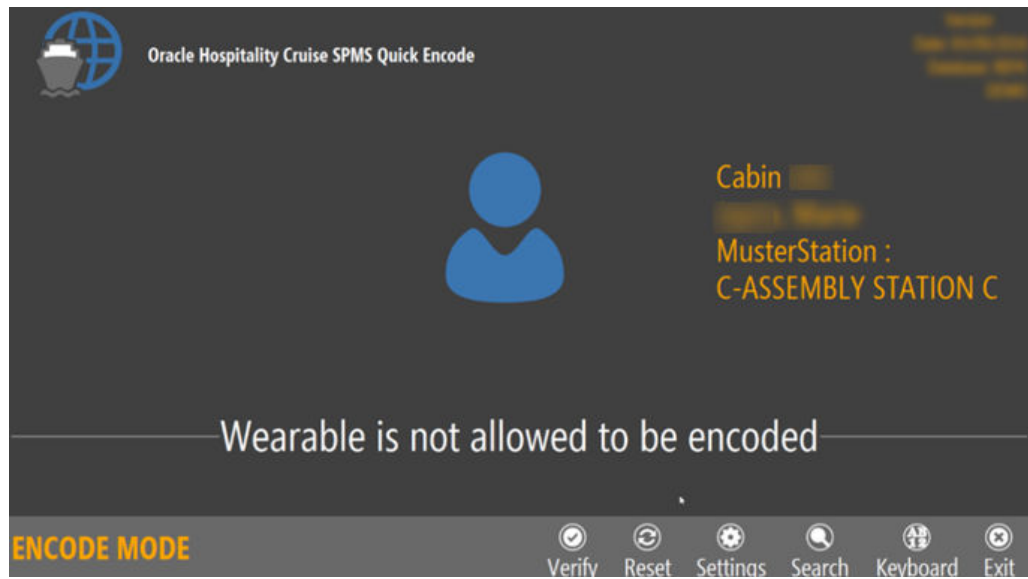
Under the Encode Mode,

- You can perform encoding of the wearable/access card.
- Encodes information encoded to track 1, track 2, and track 3 on the wearable.
- If the wearable RFID ID *does not* exist in the RFID table, the system encodes as a new card by requesting the door lock information from Ving Vision which has RFID record created with RFID PRINTED = "0".
- If the wearable RFID ID exists in the RFID table, the system encodes the card by requesting the door lock information from Ving Vision and updates the existing RFID record.
- If the wearable RFID ID exists in the RFID table and wearable is printed directly from SPMS through a printer (RFID\_PRINTED=1), it prompts the "Wearable is not allowed to be encoded". See [Figure 3-7](#)

If the card is *not* the Ving RFID card type (Mifare 1K), the system encodes the Track 1 and Track 2 data only and skips the Track 3 door encoding.

- If the door system is an Online Lock (from IFC VisiOnline), the system encodes Track 3 door lock for Non Ving RFID card type and personalizes the card for the guest.

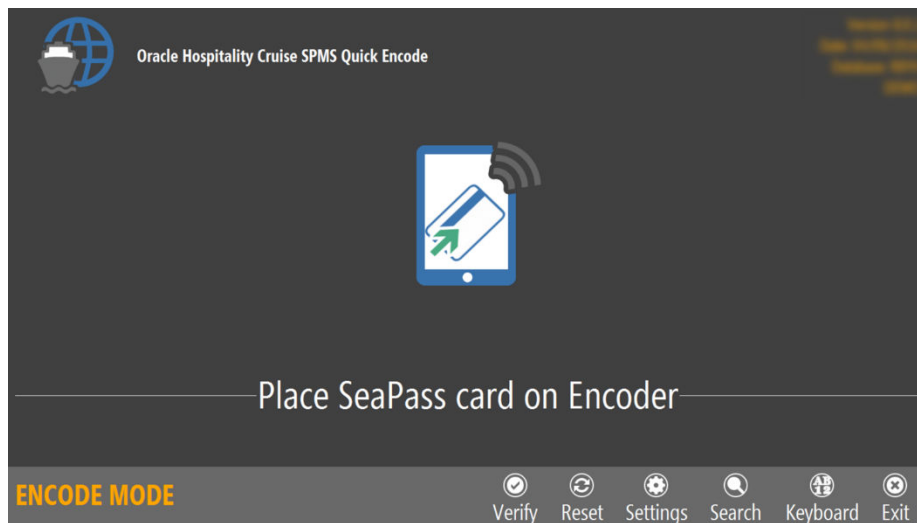
**Figure 3-7 Encode Mode for Non Ving RFID Card**



## Encoding Wearable

1. Place the guest SeaPass Card/Charge Card on the encoder when a message prompts you to do so.

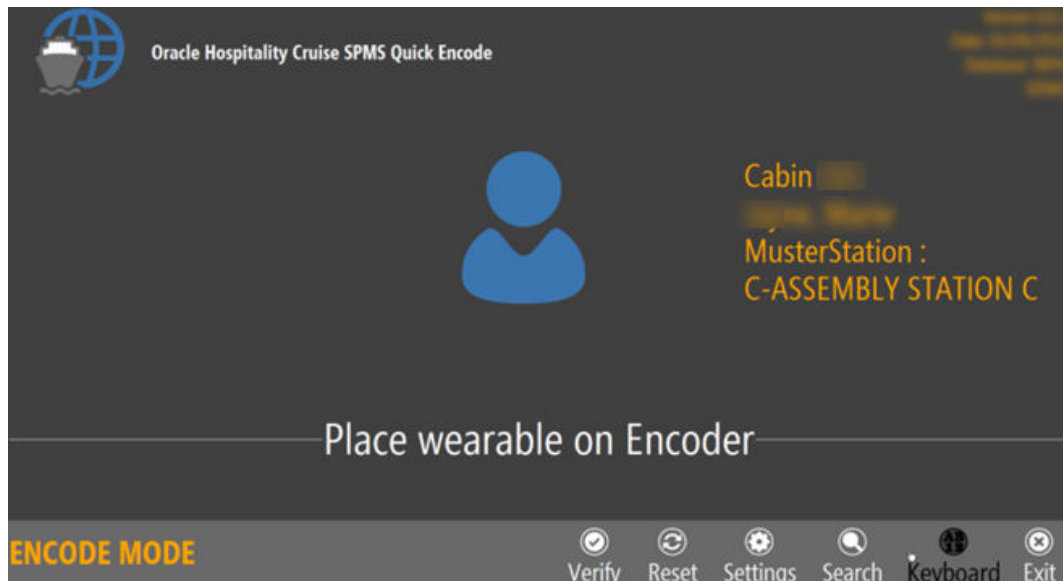
**Figure 3-8 Reading a SeaPass**



2. The system searches for the guest information and displays the details on screen, followed by a request to place the wearable on the Encoder for encoding.



Figure 3-9 Encoding a SeaPass



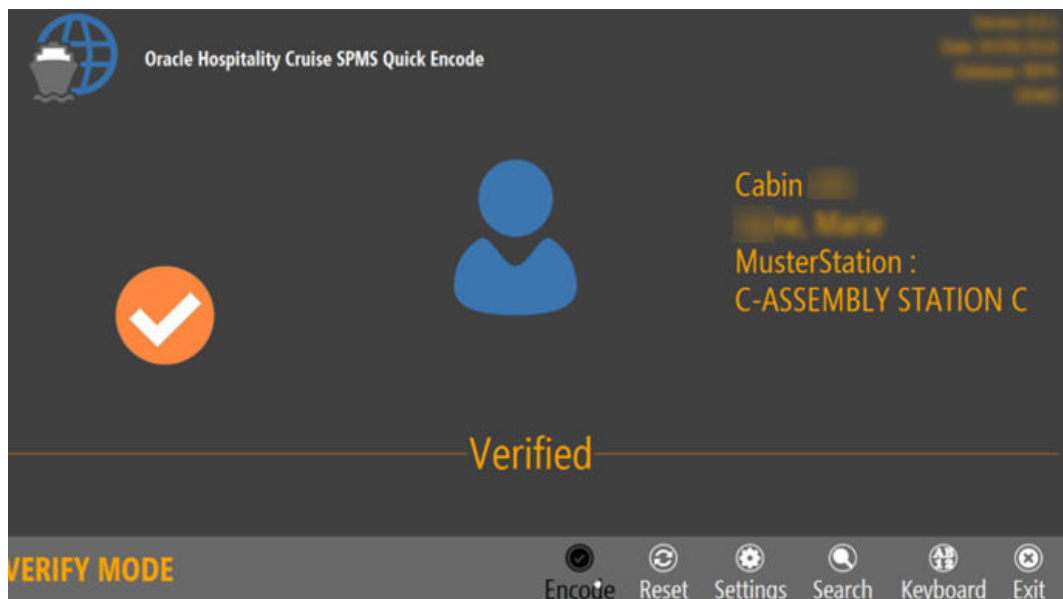
3. Place the wearable on the RFID encoder to encode the Track 1, Track 2 and Track 3 door lock information onto the wearable.
4. After encoding is successful, a **Wearable successfully encoded** is prompted.

## Verifying RFID Wearable/Card

The Verify mode is to determine whether the card/wearable is properly encoded

1. From the Main screen, click the **Verify** button to access the Verify Mode.
2. Place the wearable on the RFID encoder. Information about the guest appears on screen once the reader detects the wearable.

Figure 3-10 Wearable Successfully Verified

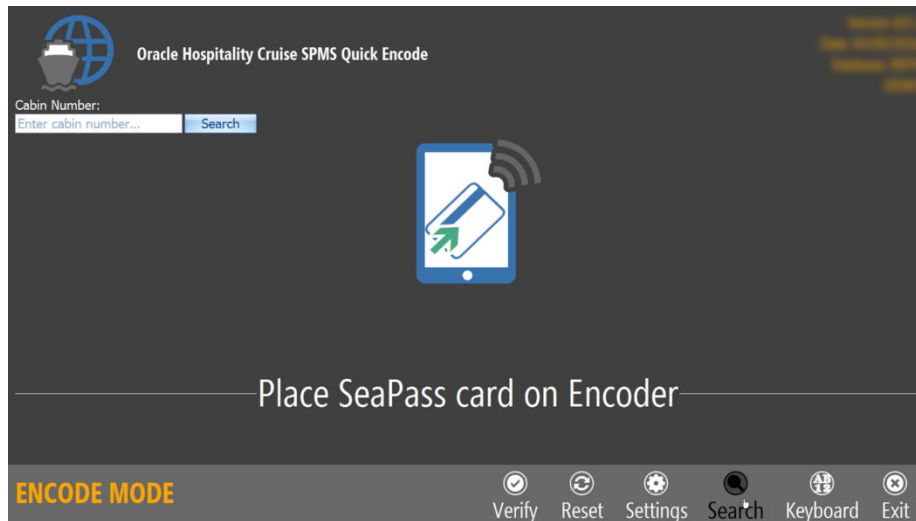


## Search record by Cabin

The Search feature enables you to search for a record using a cabin number and allows you to perform an encoding/verify. When using the Manual Search in Verify mode, the system only looks up the cabin record, displays the passenger names and does not cross check the RFID record.

1. Click the **Search** button to begin the on-screen keyboard.
2. Enter the cabin number in the dialog box and click **Search**.

**Figure 3-11 Manual Cabin Search**



**Figure 3-12 Search Result**

| Name | Chinese Name | Status         | Embark Date | Debark Date |
|------|--------------|----------------|-------------|-------------|
| >    |              | Checked-in     | 23/01/2016  | 17/05/2016  |
|      |              | Checked-in     | 23/01/2016  | 04/09/2017  |
|      |              | Checked-in     | 04/05/2016  | 28/08/2016  |
|      |              | Expected Today | 13/08/2017  | 14/10/2017  |

OK Cancel

- a. Select the name from the grid and click **OK** to proceed.
- b. Place the wearable/card on the RFID encoder to encode.
- c. Remove the wearable/card from the encoder when encoding is successful.

# 4

## Passport Reader 3M AT9000MKII

The Shipboard Property Management System (SPMS) integrates with peripherals such as 3M™ AT9000MKII Passport Reader. The integration not only captures accurate information from the passport reading/scanning, it also provides a switch and an efficient check-in to passengers.

### Prerequisites, Supported Systems, and Compatibility for 3M

This section describes the minimum requirements to operate 3M AT9000MKII Passport scanner on SPMS.

#### Prerequisites

- Setup file: DC 3.3.1.11.zip
- SDK Setup file
  - SDK 3.3.1.11 DC Asian.msi
  - 3M EASI 3.3.1.11.msi
- DCA Patch
- Remove all previously installed driver.

#### Compatibility

SPMS version 20.3 or later. For customer operating on version below 20.3, database upgrade to the recommended or latest version is required.

#### Driver Installation

This section describes the installation steps for 3M SDK and driver for 3M AT9000MKII device..

- Obtain the driver pack DCA 3.3.1.11.zip from 3M vendor.
- Extract the 3M Page Reader SDK 3.3.1.11 DCA Asian.msi and 3M EASI 3.3.1.11.msi file to a Temp folder.
- Obtain DCA Patch from 3M.

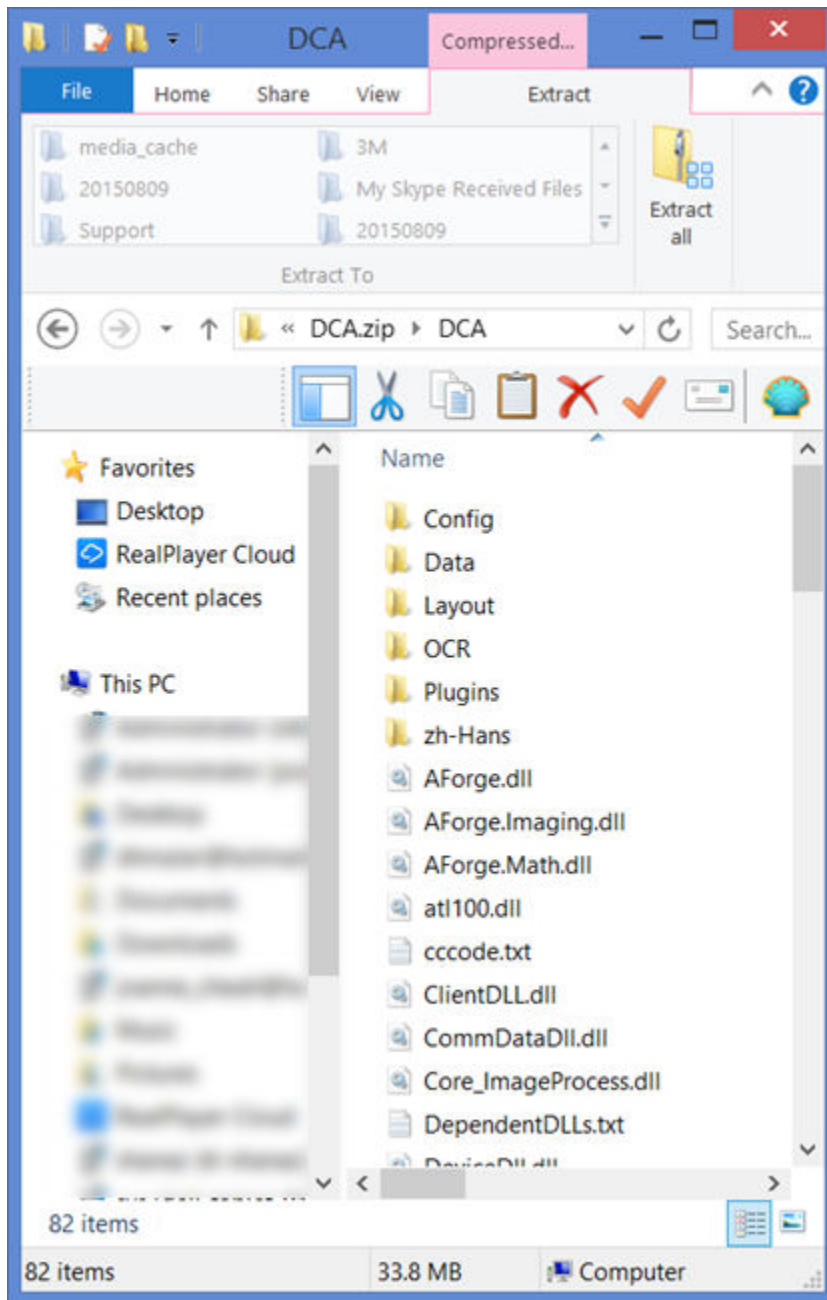
#### Installing 3M Page Reader SDK 3.3.1.11 DCA Asian.msi / 3M EASI 3.3.1.11.msi

1. Double-click the 3M Page Reader SDK 3.3.1.11 DCA Asian.msi to start the installation wizard.
2. Click **Next** to begin the installation and follow the steps in the wizard.
3. Use the default installation path and accept the **License Agreement**.
4. Click **Finish** when the installation is completed.
5. Repeat the steps above to install the 3M EASI 3.3.1.11.msi.

### 3M OCR and Design File

1. Run the DCA Patch obtained from 3M.
2. Copy all sub-folders and files to C:\Program Files (x86)\Oracle Hospitality Cruise folder, where the Oracle Cruise programs reside.

Figure 4-1 DCA Folder Location



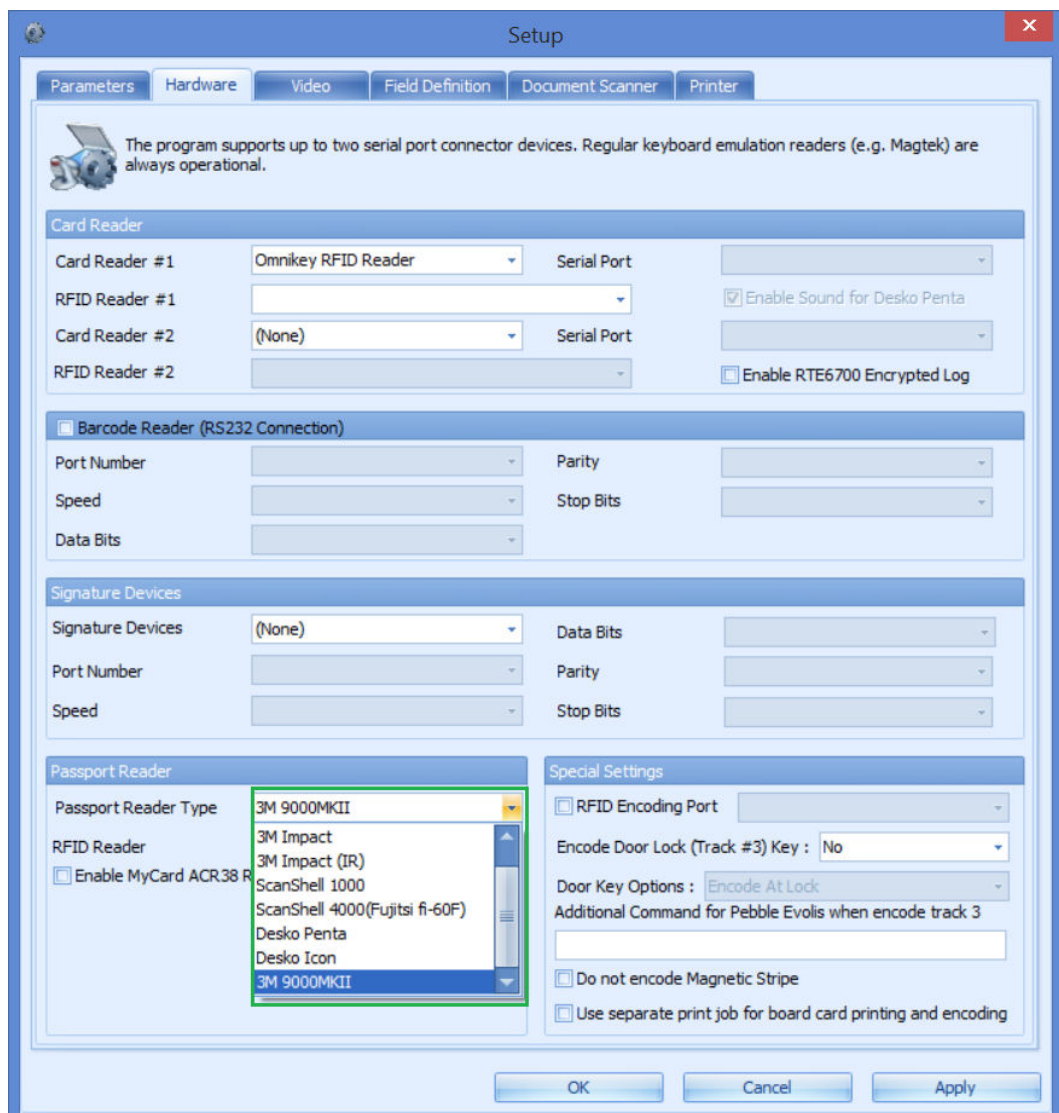
## Hardware Setup and Usage in SPMS

This section describes the setup required in SPMS along with a sample decoded passport information.

### Hardware Configuration in AQCI

1. Connect the 3M reader to the PC.
2. Begin the **OHC Advanced Quick Check In** program.
3. Navigate to **Setup, General Setup, Hardware** options.
4. In the **Passport Reader** section, select **Passport Reader Type** and click **Apply** to save the changes.

Figure 4-2 Hardware Configuration in AQCI



5. Navigate to the **Home** tab and click **New** button on the ribbon bar.
6. Scan the passport when prompted, the following information will populate on screen.
  - Photo
  - Forename
  - Surname
  - Other First Name in Chinese character
  - Birth Nation
  - Birth Date
  - Nationality
  - Passport number
  - Country of Issue
  - Expiry Date

**Figure 4-3 Sample Personal Details Tab from AQCI**

 **Note:**

3M AT9000MKII provides Chinese Name as the Full name and this information populates into Other First Name field.

7. The following are the fields where decoded passport information will show in the Advance Quick Check-In Module (AQCI) Wizard screen.
  - First name
  - Last name
  - Chinese name

- Nationality
- Document Type
- Document Number
- Date of Birth
- Expiry Date
- Country of Birth
- Country of Residence

Figure 4-4 Sample Immigration Details in AQCI Wizard Screen

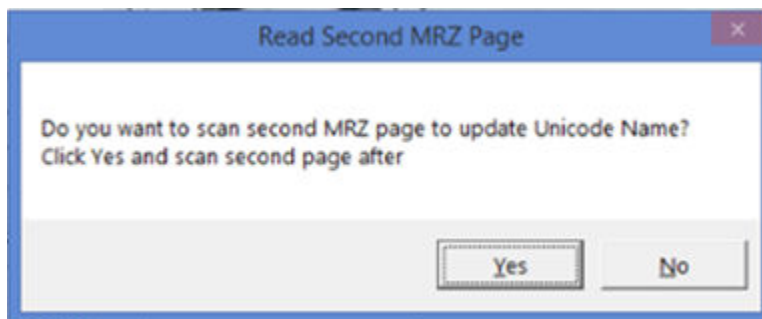
The screenshot displays the '3. IMMIGRATION' step of the AQCI Wizard. At the top, a progress bar shows steps: 1. WELCOME, 2. SELECT GUESTS, 3. IMMIGRATION (highlighted), 4. ONBOARD ACCOUNT, 5. PHOTO, and FINISH. A 'Start Again' button is on the right. Below the progress bar, it says 'Scan document for: (Cabin)'. The main area is titled 'SWIPE DOCUMENT' and contains a form with the following fields: Nationality (dropdown), Document Type (dropdown), Document Number (text), Expiry Date (dropdown), Date of Birth (mm/dd/yy) (dropdown), Gender (dropdown, set to 'Male'), Birth Cert State (dropdown), Photo ID Type (dropdown), Photo ID State (dropdown), Country Of Birth (dropdown), Country of Residence (dropdown), Emergency Contact Name (text), Emergency Phone (text), Email (1) (text), Email (2) (text), Ship Email (text), National ID (text), and FIN Number (text). There are checkboxes for 'Exclude From Quick Billing Printing' and 'Notice and Consent'. A 'Manual' button is next to the Nationality dropdown. A 'Copy to all' button is next to the Emergency Phone field. A 'Next' button is at the bottom right. An image of a document scanner is shown on the left side of the form.



**Note:**

3M AT9000MKII decodes Chinese name from MRZ and returns the decoded Last Chinese Name only.

Figure 4-5 Prompt to Scan MRZ Second Page in Express Reservation



 **Note:**

If the device detects a passport that has more than a page to scan, it sends an indicator with a pop up message, prompting for a second MRZ page to scan in AQCI or the Management Module.



# 5

## Desko Penta

The Desko Penta is a multifunctional printer/scanner that scans and read passports, Identification (ID) cards and visas. This allows a smoother and quicker check-in process during embarkation.

### Prerequisites, Supported Systems, Certification and Compatibility for Desko Penta

#### Prerequisites

Installing the device with a correct version of firmware and driver is essential. Kindly obtain the installation driver from Desko Penta. See *Certified Firmware* for supported firmware version.

- DESKOSW\_6010404000\_PENTA\_Full\_Installer Penta CKI (For Gen 4 device)

#### Certified Firmware

- Firmware version for Gen4 : 03010102.00000002

#### Compatibility

SPMS version 20.3 or later. For customer operating on version below 20.3, database upgrade to the recommended or latest version is required.

### Installing a Driver/Firmware

Installing the correct driver and firmware is essential for the passport scanner to work properly. The following section describes the steps taken to install the driver/firmware.

#### Driver Installation

1. Obtain the correct version of the installation file that matches your device version from the Desko Penta website or contact your local hardware provider.
2. Double-click the executable file *PENTA\_Setup.exe*, and follow the instruction wizard to complete the installation.
3. At the end of the installation, the system prompts a '*Program Compatibility Assistant*' window. Click **Yes, this program worked correctly** and then **Close** to exit.
4. Navigate to C:\Program Files (x86)\DESKO GmbH\PENTA Demo folder and copy all the DLL files to C:\Windows\SysWOW64 and C:\Program Files (x86)\Oracle Hospitality Cruise folders. See below diagram for list of DLL's

**Figure 5-1 PENTA Path for Gen 4 Device**

Program Files (x86) > DESKO GmbH > PENTA Demo

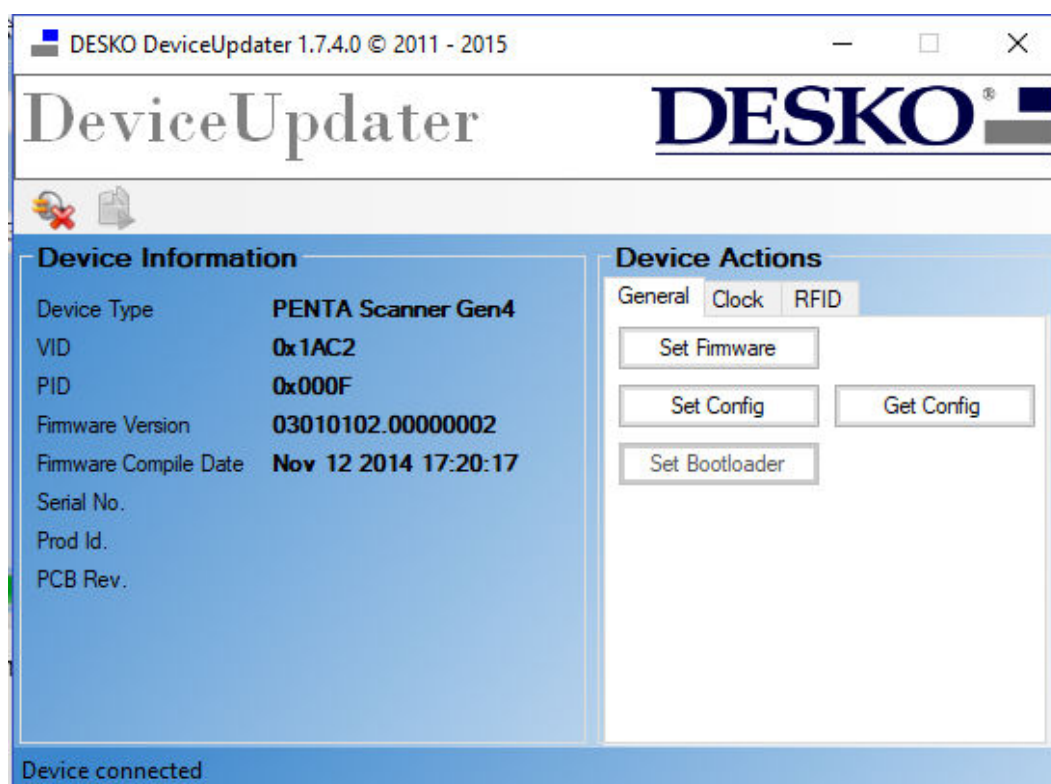
| Name   | Date modified  | Type             | Size     | File version   |
|--|----------------|------------------|----------|----------------|
| Sample Screens   | 8/28/2018 3:06 | File folder      |          |                |
| <input checked="" type="checkbox"/> AlphaBlendTextBox.dll        | 3/17/2015 4:18 | Application exte | 30 KB    | 1.0.4231.12647 |
| <input checked="" type="checkbox"/> ePassApi.dll                 | 3/17/2015 4:18 | Application exte | 2,018 KB | 1.0.1.19       |
| <input checked="" type="checkbox"/> ePassApiCSharp.dll           | 3/17/2015 4:18 | Application exte | 74 KB    |                |
| <input checked="" type="checkbox"/> EPassApiDotNet.dll           | 3/17/2015 4:18 | Application exte | 42 KB    | 1.0.0.1        |
| <input checked="" type="checkbox"/> FactorySettings.config       | 3/17/2015 4:18 | CONFIG File      | 1 KB     |                |
| <input checked="" type="checkbox"/> log4cox.properties           | 3/17/2015 4:18 | PROPERTIES File  | 1 KB     |                |
| <input checked="" type="checkbox"/> log4net.dll                  | 3/17/2015 4:18 | Application exte | 270 KB   | 1.2.10.0       |
| <input checked="" type="checkbox"/> PageScanAPI.dll              | 3/17/2015 4:18 | Application exte | 6,375 KB | 4.1.6.1        |
| <input checked="" type="checkbox"/> PageScanApiDotNet.dll        | 3/17/2015 4:18 | Application exte | 66 KB    | 14.1.6.1       |
| <input checked="" type="checkbox"/> PageScanApiDotNetWrapper.dll | 3/17/2015 4:18 | Application exte | 90 KB    | 4.1.6.1        |
| <input checked="" type="checkbox"/> PentaDemo.exe.config         | 3/17/2015 4:18 | CONFIG File      | 4 KB     |                |
| <input checked="" type="checkbox"/> PentaDemo.exe.log4net        | 3/17/2015 4:18 | LOG4NET File     | 2 KB     |                |
| <input checked="" type="checkbox"/> TravelDocApi.dll             | 3/17/2015 4:18 | Application exte | 606 KB   | 1.0.0.3        |
| <input checked="" type="checkbox"/> TravelDocApiCSharp.dll       | 3/17/2015 4:18 | Application exte | 66 KB    | 1.0.0.2        |

### Firmware and Configuration Update

The device firmware is packaged in the Setup file provided by the vendor. Update is not required unless advised otherwise. Below are the steps to update the firmware when required. See [Prerequisite, Supported Systems, Certification and Compatibility for Desko Penta](#) section for certified firmware.

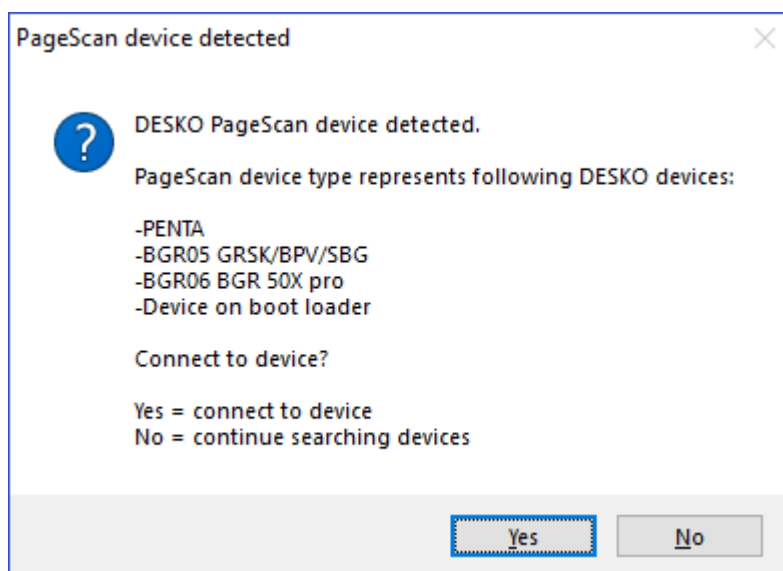
1. Connect the Desko printer using USB to the PC.
2. Locate **DESKO GmbH – DESKO Devices** from the Windows Start option and select Device Updater or double-click the **DeviceUpdater.exe**. Below are the file paths of the Device Updater.
  - a. DESKOSW\_6010404000\_PENTA\_Full\_Installer Penta CKI (For Gen 4 device)  
C:\Program Files (x86)\DESKO GmbH\Device Updater folder.
3. The update tool automatically scans for installed devices and prompts a message for every Desko device detected.

Figure 5-2 Device Information Page



4. At the **PageScan** device detected window, click **Yes** to connect the device.

Figure 5-3 DESKO PageScan Device Detected



5. You can also scan for devices manually by clicking **Connect** button from the Device Updater window. In the **DeviceUpdater** window, the following options are available to connect the device:
  - a. **Firmware Update:** Updates the firmware by selecting the firmware file (.ldr) from an open dialog window.

- b. **Configuration Update:** Updates the configuration by clicking **Set Config**. Select the configuration (.xml) file from an open dialog window.
- c. **Process Desko Device update package:** Updates using a device update package (.dup) file.
- d. Device Configuration and Usage in SPMS Modules.

Apart from installing the correct drive and firmware, you must also configure the hardware for it to work in the Management and Advance Quick Check In (AQCI) module.

### AQCI Module

1. Log in to the **AQCI** module.
2. Navigate to the **Setup** tab and select the **General Setup** button.
3. Select the **Hardware** tab.
4. Select the Desko Penta device in this field enables you to:
  - **Card Reader #1:** Read the card magnetic strip or barcode. (Desko Penta)
  - **Passport Reader**
    - a. Passport Reader Type: (Desko Penta)
    - b. RFID Reader: Read passport using RFID (Auto Detect)
5. In order to read the passport using RFID, select **Auto Detect** from the RFID Reader drop-down list.
6. Click **Apply** to save the settings.
7. In the AQCI main screen, you will see the Passport Reader is ready and the **Scan Passport** icon is enabled at the ribbon bar.
8. To scan the passport, locate the guest account, click the **Scan Passport** button and place the passport on the scanner.
9. Remove the passport once the scanning completes. Scanned information populates into the guest record.
10. To search the guest, swipe the board-card through the magnetic swipe reader at the Main screen. Information of the guest will appear on the screen.

### Management Module

1. Log in to **Management** module.
2. Navigate to the **Options** menu and select the **Hardware** tab.
3. At the **Card Reader/Encoder** section, select the Desko Penta printer in this field for the following:
  - a. **Card Reader #1:** Read the card magnetic strip or barcode.
  - b. **Passport Readers**
    - i. Passport Readers: (Desko Penta)
    - ii. RFID Type: Read passport using RFID (Auto Detect)
  - c. **Enable Sound for Desko Penta:** This field is checked by default and play a sound for good or bad scan. Select the check to disable sound.

4. Click **OK** to save the settings.
5. In the Guest Handling screen, the Passport reader status is shown.
6. To scan a passport, repeat steps 8 and 9 of the AQCI module.
7. To read a magnetic board-card, swipe the card through the magnetic swipe reader at the Guest Handling screen. Guest information appears on the screen.
8. To read a credit card data, click the **Get Credit Card** button and swipe the card through the magnetic swipe reader. Information on the card appears on the screen.
9. To search for a guest using a barcode, place the barcode on the Desko Penta scanner and information will appear on the screen.

# 6

## FEIG OBID RFID Encoder

### Prerequisites Certifications and Compatibility for FEIG OBID RFID

This section describes the minimum requirements for the FEIG OBID RFID encoder Installation module in SPMS.

#### Prerequisites

- Obtain the following program executables from FEIG or your local vendor.
  - OBID driver: `setup_cprusbio_v2.50` (build 20130214)
  - Card reader driver: `ID_CPRStart2014_V090701.msi`
- Download Visual C++ runtime from Microsoft's website.
  - `Vcredist_x86.exe` (8.0.50727.6195)

#### Compatibility

SPMS version 20.3 or later. For customer operating on a version below 20.3 database upgrade to the recommended or latest version is required.

### Installing FEIG OBID RFID Encoder

This section describes the steps to set up the FEIG OBID RFID Encoder for use in SPMS.

#### Visual C++ Runtime Installation

1. Run the `vcredist_x86.exe` (version 8.0.50727.6195) to install.
2. Follow the steps in the setup wizard to complete the installation.

#### FEIG OBID RFID Driver Installation

1. Run the `setup.exe` of the folder `setup_cprusbio_v2.50` (build 20130214) to install.
2. Follow the steps in the setup wizard to complete the installation.
3. Apply the card reader driver patch by running the `ID_CPRStart2014_V090701.msi`.

#### Uploading the DLL files to SPMS database

1. From OHC Launch Panel, press **F12** to start the upload to Special Applications.
2. Upload:
  - a. `fecom.dll`
  - b. `FedmlscCoreVC80.dll`
  - c. `FedmlscMyAxxessVC80.dll`
  - d. `fefu.dll`

- e. feiscl.dll
- f. fetcl.dll
- g. fetcp.dll
- h. feusb.dll
- i. OBIDISC4NET.dll
- j. OBIDISC4NETnative.dll