

Oracle® Enterprise Manager

Enterprise Manager for Oracle Utilities

Quick Install Guide

F70360-01

January 2023

Enterprise Manager for Oracle Utilities extends Oracle Enterprise Manager Cloud Control to allow monitoring and management of Oracle Utilities Application Framework-based products on remote servers.

When Enterprise Manager for Oracle Utilities is deployed, the following features and capabilities are available:

- Product discovery
- Target monitoring
- Environment assessment
- Environment cloning
- Patch identification and installation
- Patch migration from one environment to another
- View product configuration files

This document describes the requirements and tasks related to quickly deploying, configuring, and undeploying Enterprise Manager for Oracle Utilities.

Enterprise Manager for Oracle Utilities extends Oracle Enterprise Manager Cloud Control to allow monitoring and management of Oracle Utilities Application Framework-based products on remote servers.

When Enterprise Manager for Oracle Utilities is deployed, the following features and capabilities are available:

- Product discovery
- Target monitoring
- Environment assessment
- Environment cloning
- Patch identification and installation
- Patch migration from one environment to another
- View product configuration files

Related Documentation and Resources

The **Help** menu provides links to **Enterprise Manager Help**, **Oracle Online Documentation**, **Oracle Online Forums**, and the **Oracle Technology Network (OTN)**, where the complete documentation for Oracle Enterprise Manager 12c is available.

This document and other Enterprise Manager for Oracle Utilities-specific documentation is available on the [Oracle Utilities](#) section of the **Oracle Technology Network (OTN)** documentation site.

Additional information on Oracle Enterprise Manager-specific features and functionality relating to this product is available in the [Enterprise Manager Cloud Control Documentation](#) (<http://docs.oracle.com/en/enterprise-manager/>).

NOTE: The documentation that accompanies this product is subject to revision and updating. Additional information that may relate to the functionality and features in this product may be found on My Oracle Support (MOS) at <https://support.oracle.com> (sign-in required). To find all articles relating to this product, enter the search term "Enterprise Manager for Oracle Utilities" (or for related articles, search on the product's previous name, "Application Management Pack for Oracle Utilities").

Supported Product Versions

This release of Enterprise Manager for Oracle Utilities supports the following Oracle products:

Table 1: Product Support

Product	Version
Oracle Enterprise Manager	13.5.0.0.0
Oracle Utilities Application Framework	4.4.0.3.*, 4.5.0.0.0, 4.5.0.0.1, 4.5.0.1.0

Requirements

The following are the operating system and software requirements for the Enterprise Manager for Oracle Utilities plug-in.

IMPORTANT:

1. Ensure that the latest service packs are installed for all Oracle Utilities Application Framework-based products before installing Enterprise Manager for Oracle Utilities. Refer to the release notes for a list of patches that must be applied to the Oracle Utilities Application Framework product.
2. Installation of Service Packs for any OUAF product is not supported in this release.
3. If you are using WLS 12.2.1.3 and later version for Application deployments, Please install WebLogic Server Patch 29448643. Preferred way is to

install patch instead of setting the WL application server JVM argument "-Dweblogic.oif.serialFilterScope=weblogic".

Oracle Enterprise Manager Requirements with the Enterprise Manager for Oracle Utilities Plug-in

Supported Operating Systems, Database, and Browsers

Refer to the Oracle Enterprise Manager Documentation on [Oracle Help Center](#) and the [Certification Matrix for Oracle Utilities Products \(Doc ID: 1454143.1\)](#) for details around supported versions.

Dependency on Specific EM Components

- This version of the plug-in is incompatible with previous releases of the Oracle Utilities Plugin. Please ensure that all previous versions are undeployed from all Agents and Oracle Management Servers (OMS), and is also deleted from the Software Library before deploying this version.
- Oracle Fusion Middleware plug-in is required.

Oracle Utilities Application Framework Requirements

Refer to the [Certification Matrix for Oracle Utilities Products \(Doc ID: 1454143.1\)](#) for information about Oracle Utilities Application Framework requirements

Oracle Utilities Application Framework 2.2.0 Requirements

Oracle Utilities Customer Care and Billing, Release 2.2.0 and 2.3.1.

Downloading and Importing Enterprise Manager for Oracle Utilities

Checking for Enterprise Manager for Oracle Utilities Availability

Enterprise Manager makes functional updates available by publishing them to the Enterprise Manager Store, an external site that is periodically checked by Cloud Control to obtain information about available updates. Through this facility, Enterprise Manager for Oracle Utilities may be available for immediate deployment on Enterprise Manager.

To check for the availability of Enterprise Manager for Oracle Utilities, follow the instructions in the "[Checking the Availability of Plug-ins](#)" topic (http://docs.oracle.com/cd/E24628_01/doc.121/e24473/plugin_mngr.htm#CJGDBDGD) in the *Enterprise Manager Cloud Control Administrator's Guide* documentation.

If present, Enterprise Manager for Oracle Utilities is already available for deployment, allowing you to bypass the installation procedures described in this section and immediately proceed to the deployment task described in [Deploying Enterprise Manager for Oracle Utilities on OMS](#).

After deploying Enterprise Manager for Oracle Utilities, target environment instances must be added for central monitoring and management.

Installation Procedures If the Management Pack is Not Present

If Enterprise Manager for Oracle Utilities is not available for immediate deployment, it must be downloaded and imported using the instructions provided in the "[Downloading Plug-ins](#)" topic (http://docs.oracle.com/cd/E24628_01/doc.121/e24473/plugin_mngr.htm#CJGBEAHJ) in the *Enterprise Manager Cloud Control Administrator's Guide* documentation.

After downloading and importing Enterprise Manager for Oracle Utilities, the plug-in must be deployed on Management Servers and Management Agents.

After deploying Enterprise Manager for Oracle Utilities, target environment instances must be added for central monitoring and management.

Positioning the Installation File

NOTE: This procedure is not required if Enterprise Manager for Oracle Utilities is available for immediate deployment as described earlier in the topic, *Downloading and Importing Enterprise Manager for Oracle Utilities*.

NOTE: To complete the final step in this procedure, Java JDK must be installed on the machine on which the Enterprise Manager for Oracle Utilities will be downloaded. Java packages may be downloaded from <http://www.oracle.com/technetwork/java/archive-139210.html>.

The installation file for Enterprise Manager for Oracle Utilities (AMP-V13.1.2.1.0-MultiPlatform.jar) is available on the Oracle Software Delivery Cloud site. The jar can be installed using the Enterprise Manager Command Line (EMCLI) utility on either Linux/UNIX or Windows platforms.

To download and position Enterprise Manager for Oracle Utilities for installation:

1. Log in to the Oracle Software Delivery Cloud at <https://edelivery.oracle.com>, and click the boxes on the **Terms and Restrictions** page to access the **Media Pack Search** page.
2. Select **Oracle Utilities Applications** from the product drop-down list, a platform from the **Platform** list, and click **Go** to list downloadable media packs.
3. Locate and click the Enterprise Manager for Oracle Utilities item to advance to the **Download** page.
4. Click the **Download** button and save the file to a temporary location (e.g., `c:/mediapacks`).
5. Extract the `opar` files from the downloaded file (example download location shown below):

```
cd c:/tempdir
jar -xvf AMP-V13.1.2.1.0-MultiPlatform.jar
```

Configuring the Software Library

NOTE: This procedure is *not* required if you configured the software library during Enterprise Manager installation.

To configure the software library, follow the instructions in the "[Configuring an OMS Shared Filesystem Location](http://docs.oracle.com/cd/E24628_01/doc.121/e24473/softwarelib.htm#CHDJGAFB)" topic (http://docs.oracle.com/cd/E24628_01/doc.121/e24473/softwarelib.htm#CHDJGAFB) in the *Enterprise Manager Cloud Control Administrator's Guide* documentation.

Setting Up the EMCLI Utility

NOTE: This procedure is not required if Enterprise Manager for Oracle Utilities is available for immediate deployment as described earlier in the topic, *Downloading and Importing Enterprise Manager for Oracle Utilities*.

The Enterprise Manager Command Line (EMCLI) utility is required to import the plug-in archive for deployment to Enterprise Manager.

To set up EMCLI for Enterprise Manager for Oracle Utilities, follow the instructions in the "[Setting Up the EM CLI Utility](http://docs.oracle.com/cd/E24628_01/doc.121/e25161/package.htm#CACFABCC)" topic (http://docs.oracle.com/cd/E24628_01/doc.121/e25161/package.htm#CACFABCC) in the *Enterprise Manager Cloud Control Extensibility Programmer's Reference* documentation.

Importing Enterprise Manager for Oracle Utilities

NOTE: This procedure is not required if Enterprise Manager for Oracle Utilities is available for immediate deployment as described earlier in the topic, *Downloading and Importing Enterprise Manager for Oracle Utilities*.

Enterprise Manager for Oracle Utilities must be imported into Enterprise Manager Cloud Control using the `emcli import_update` command.

To perform the import for Enterprise Manager for Oracle Utilities, follow the instructions in the "[Importing the Plug-in Archive](http://docs.oracle.com/cd/E24628_01/doc.121/e25161/package.htm#CACGJFHA)" topic (http://docs.oracle.com/cd/E24628_01/doc.121/e25161/package.htm#CACGJFHA) in the *Enterprise Manager Cloud Control Extensibility Programmer's Reference* documentation.

Deploying Enterprise Manager for Oracle Utilities on OMS

Since this release is not compatible with previous releases, you must undeploy previous releases from OMS and from all agents. For details, see the instructions in [Section 16, Managing Plug-Ins](#), in the *Enterprise Manager Cloud Control Administrator's Guide* (http://docs.oracle.com/cd/E24628_01/doc.121/e24473/plugin_mngr.htm#CHDFDJAB).

When undeployment is complete, delete the previous releases from the Self Update Plugin Store (**Setup > Extensibility > Self Update > Plug-in**) before deploying this version.

As with other plugins, Enterprise Manager for Oracle Utilities must be deployed on Oracle Management Service (OMS) and Management Agents before it can be used to monitor targets.

To deploy Enterprise Manager for Oracle Utilities on the management servers Enterprise Manager for Oracle Utilities, follow the instructions in the "[Deploying Plug-ins to Oracle Management Service](http://docs.oracle.com/cd/E24628_01/doc.121/e24473/plugin_mgr.htm#CJGCDHFG)" topic (http://docs.oracle.com/cd/E24628_01/doc.121/e24473/plugin_mgr.htm#CJGCDHFG) in the *Enterprise Manager Cloud Control Administrator's Guide* documentation.

Important Notes Regarding Deployment and Undeployment

- To avoid permission issues, we recommend that the host agent be deployed using the same user name as the OUAF system user (`ciissys`). Alternatively, the agent user must have the same access rights as the OUAF system user of the Oracle Utilities Framework environments to be monitored.
- You can import multiple versions of the same plug-in. Versions can be selected from a list if you are using Cloud Control to deploy the plug-in, or can be specified on the command line if using EMCLI.
- However, only one version can be deployed on the Oracle Management Service (OMS) at any given time. If a later version has been deployed previously, it cannot be downgraded to an earlier version. If you want to deploy a later version, the earlier version must be undeployed from all agents on which it has been deployed, as well as from OMS.
- Due to major differences in the target model in this release of the plug-in, the metrics collected previously do not translate to the new model. Thus, deploying this plug-in results in loss of historical data collected by the previous plug-in releases.
- It is required that OMS and the agent have the same version of the plug-in.
- Available updates are listed on the **Plug-ins** page.

Adding Instances for Monitoring

After successfully deploying the plug-in, add target instances for central monitoring and management.

Environment Discovery

In order for a target to be monitored, it must first be discovered and promoted. Discovery is the process of making a target instance known to OEM. Once this has been done, the target needs to be promoted from an unmanaged to a managed state. This process requires some prerequisite steps.

NOTE: Oracle recommends after upgrading the plugin, delete existing targets and re-discover.

1. All components of the environment should be up, namely, the web application, the web service and batch servers.

2. JMX should be configured on the target environment. To test this, use jconsole and connect to the JMX servers using the JMX URLs. You can search the WebLogic log for the Web and EJB JMX URLs. Examples:

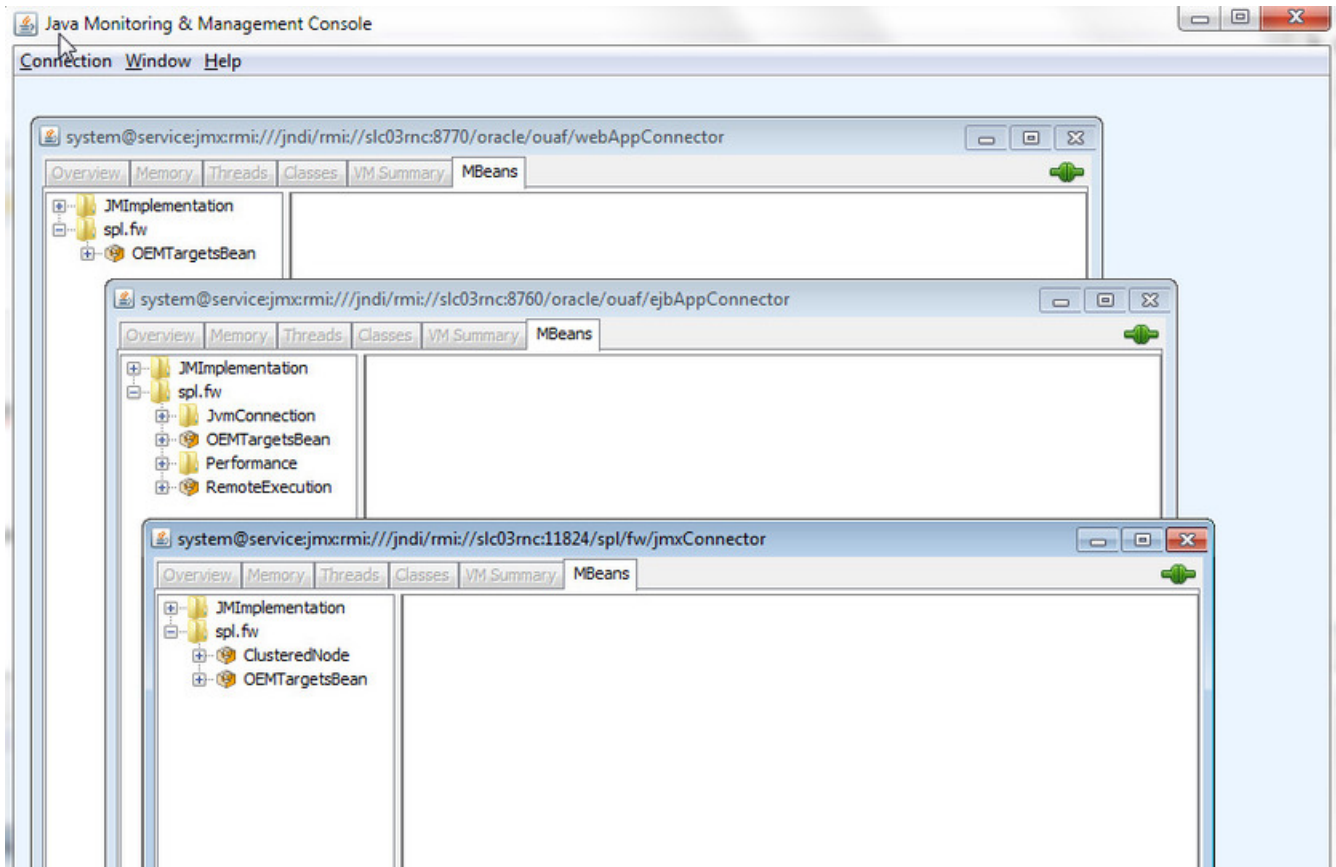
```
service:jmx:rmi:///jndi/rmi://{host}:{ejbJmxPort}/oracle/ouaf/
ejbAppConnector
service:jmx:rmi:///jndi/rmi://{host}:{webJmxPort}/oracle/ouaf/
webAppConnector
```

The threadpoolworker logs would have the batch JMX URLs. For example,
service:jmx:rmi:///jndi/rmi://{host}:{batchJmxPort}/oracle/ouaf/
batchConnector

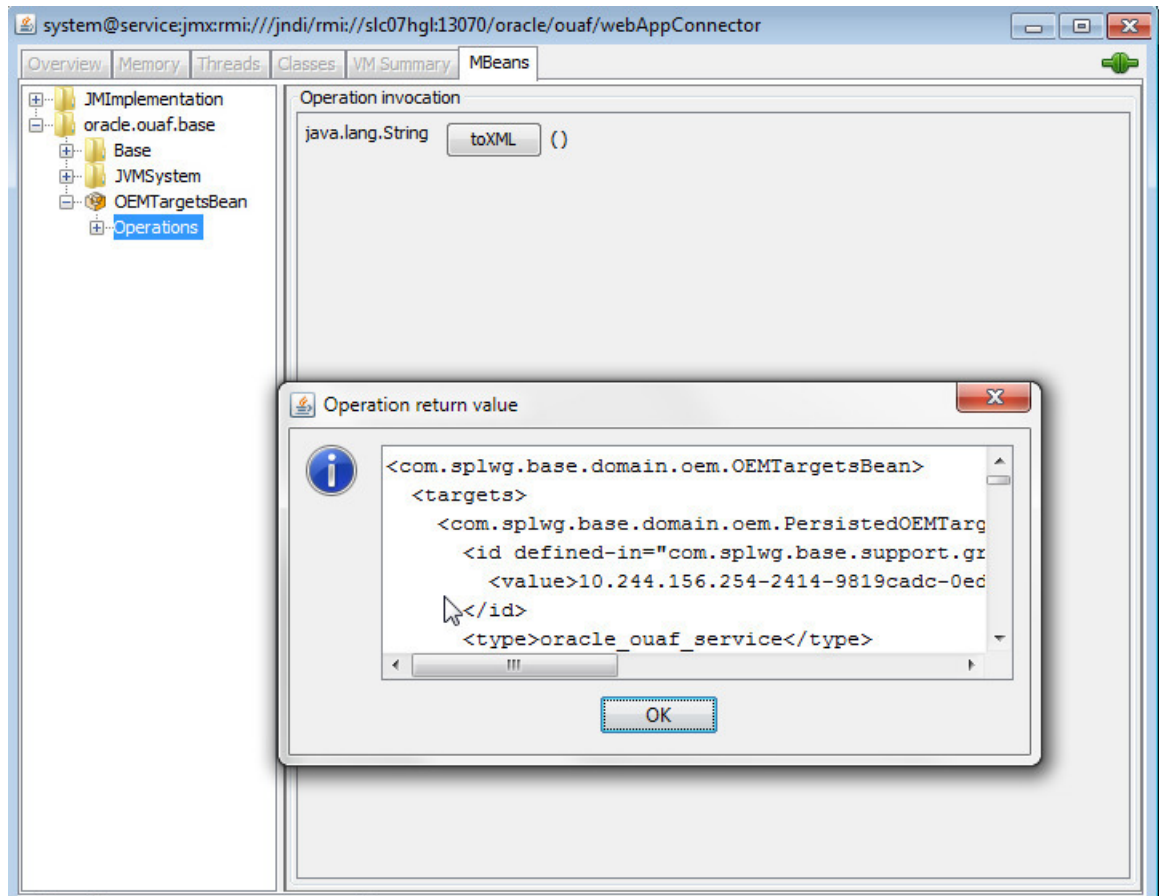
In FW 2.2, this would be service:jmx:rmi:///jndi/rmi://{host} :
{batchJmxPort}/spl/fw/jmxConnector

Make sure you can connect to the URLs and that the OEMTargetsBean is present, as illustrated in the following image:

NOTE: Here, the host should be fully qualified domain name.



Expand the OEMTargetsBean, click **Operations**, then click the **toXML** button. A window should pop up and return the XML of the targets that will be discovered. Do this for each JMX connection.



3. Target monitoring can be performed via JMX or REST API. You can prefer to use REST API option, if you have any firewall restrictions. Details, to enable "JMX over REST" feature, are available below.
 1. Run configureEnv using FW menu options, choose option 57 and provide appropriate values for the displayed variables.
 2. **JMX_REST_SERVICE_FLAG: This flag in the Menu options is to enable the REST API. If this is false, then the communication happens using via JMX, the old way of the plugin communication.**
 3. **JMX_REST_SERVICE_FLAG is true and JMX_HTTPSSL_FLAG false, the communication happens over the HTTP. JMX_REST_SERVICE_FLAG is true and JMX_HTTPSSL_FLAG true, the communication happens over the HTTPS.**
 4. More details are available in respective Utilities FW product documentation.
4. The WebLogic domain/Fusion middleware must be discovered. To do this, perform the following:
 - The WebLogic admin server must be started. Verify that it is by logging into the WebLogic console.
 - Discover the WebLogic domain and Fusion middleware using guided discovery. On the grid console, go to **Setup > Add Targets > Add Targets Manually**. Select the following options on the page:


Add Targets Manually

Page

Overview

Add Host Targets




 **Install Agent on Host**

 **Install Agent Results**

Add Host targets by installing an agent using remote installation process. View status of past Agent installations.

Add Non-Host Targets Using Guided Process




 **Add Using Guided Process**

Run guided discovery on a host to find manageable targets. Choose to promote some or all discovered targets to become managed.

Add Non-Host Targets Using Declarative Process

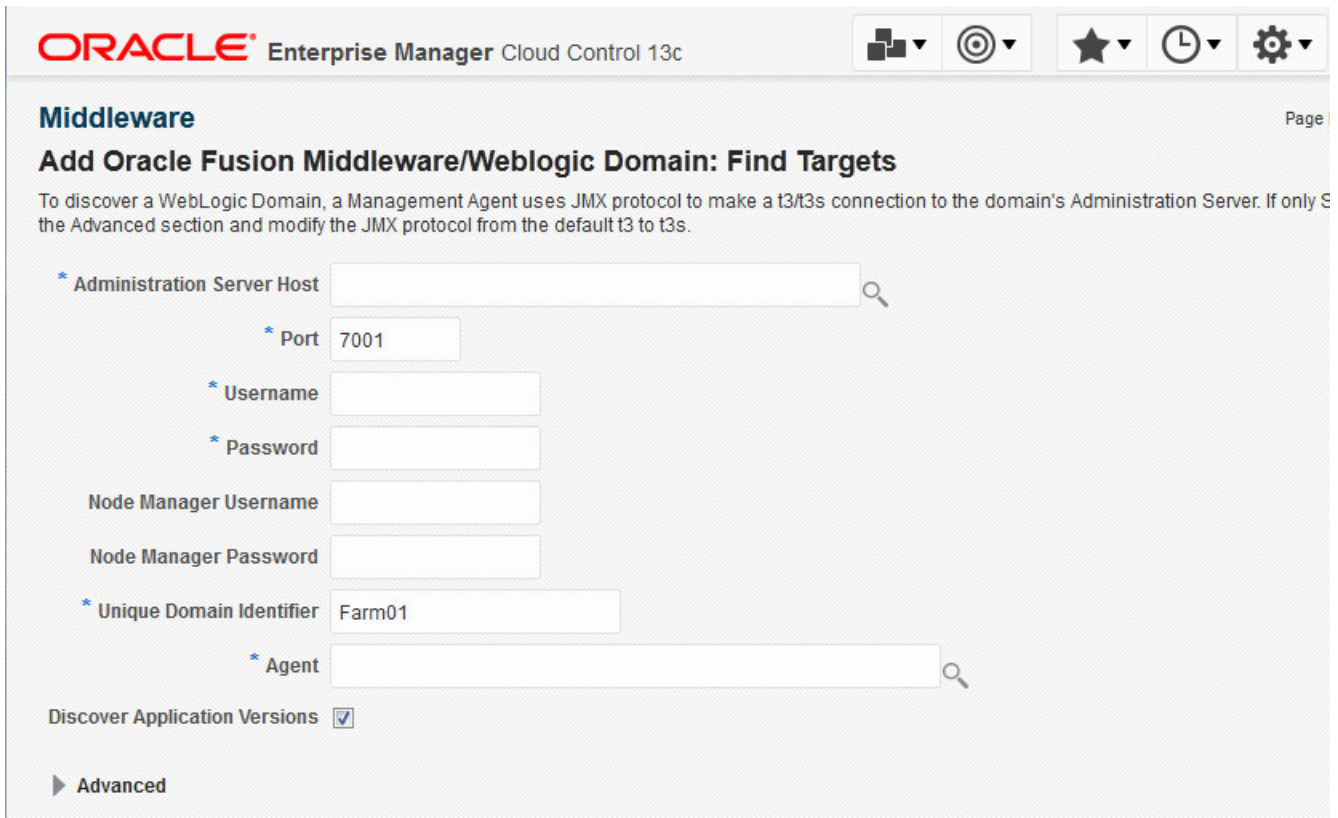


 **Add Target Declaratively**

Add targets by explicitly specifying monitoring properties.

- Click **Add Using Guided Process**, enter the entries for the WebLogic admin server, then continue until the WebLogic domain/Fusion middleware is discovered.

If WebLogic is configured with SSL, use the **t3s** protocol.



To discover OUAF target environments:

1. Log in to Enterprise Manager.
2. Choose **Setup > Add target > Configure Auto Discovery**.

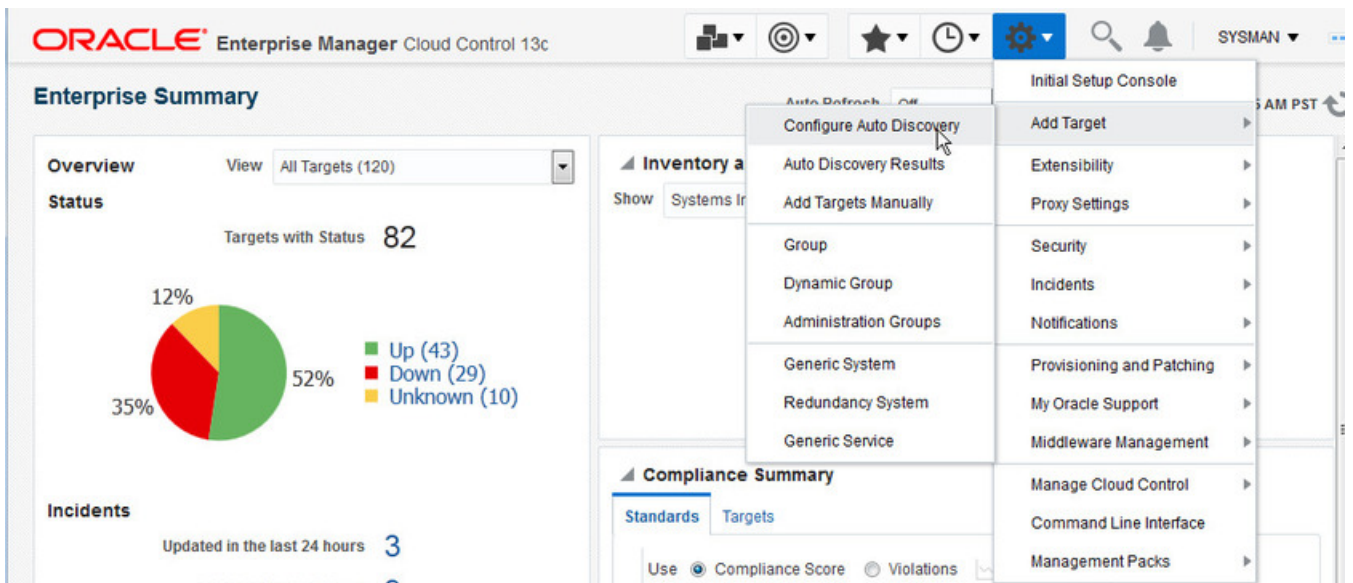


Figure 1: Selecting Auto Discovery

3. On the **Setup Discovery** page, click the host where discovery is to be run, then click the **Discovery Modules** button.

ORACLE Enterprise Manager Cloud Control 13c

Page Refreshed Dec 8, 2015 8:57:06 AM PST

Setup Discovery

Overview

Automatic discovery is a process that detects hosts, virtual servers and other targets so that they can be monitored and managed by Enterprise Manager. Use the following options to configure and schedule automatic discovery.

Configure Auto Discovery

- Setup Network Scan Discovery
- Setup Discovery on Hosts

→

Add Targets from Auto Discovery Results

- Promote Discovered Targets
- Ignore Discovered Targets

→

Add Targets Manually

- Add Targets with Guidance
- Add Targets Declaratively

Servers, Storage and Network | **Targets on Hosts** | Advanced: Discovery Modules

Search

View ▾ | Collection Schedule ▾ | Diagnostic Details | Discover Now | Discovery Modules | Detach

Host	Collection Schedule	Discovered Targets	Managed Targets	Enabled Discovery Modules	Most Recent Ended On
↑ msp52072.us.oracle.com	Every 1 Day	16	3	5	✓ Dec 7, 2015 10:54:38 PM PST
↑ slc03mc.us.oracle.com	Every 1 Day	17	13	1	✓ Dec 8, 2015 3:16:00 PM PST
↑ slc05ynf.us.oracle.com	Every 1 Day	5	11	1	✓ Dec 1, 2015 2:16:24 AM PST
↑ slc06fdt.us.oracle.com	Every 1 Day	4	31	5	✓ Dec 7, 2015 1:35:04 PM PST

Figure 2: Setup Discovery

4. Ensure that the **Enterprise Manager for Oracle Utilities** module is on the **Discovery Module** list.

ORACLE Enterprise Manager Cloud Control 13c SYSMAN ▾ ...

Discovery Modules : slc03rnc.us.oracle.com
 Configure discovery modules and parameters on this host.

View ▾

Discovery Module	En	Target Types	Discovery P
Enterprise Manager for Oracle Utilities Application	<input checked="" type="checkbox"/>	Oracle Utilities Batch Server, Oracle Utilities Home, Oracle Utilities Web Services	
OUAEnvironmentDiscovery	<input type="checkbox"/>	Oracle Utilities Batch Environment, Oracle Utilities Scheduler Environment	
Oracle Cluster and High Availability Service	<input type="checkbox"/>	Cluster, Oracle High Availability Service	
Oracle Database, Listener and Automatic Storage Management	<input type="checkbox"/>	Database Instance, Listener, Pluggable Database	
Oracle Fusion Middleware	<input type="checkbox"/>	Oracle WebLogic Domain	
Oracle Home Discovery	<input type="checkbox"/>	Oracle Home	
Oracle Secure Backup Domain	<input type="checkbox"/>	Oracle Secure Backup Domain	

Figure 3: Verifying the module

- Once back on the **Setup Discovery** page, select the host again to enable the buttons at the top. When the desired host is selected, click the **Discover Now** button.

ORACLE Enterprise Manager Cloud Control 13c

Setup Discovery Page Refreshed Dec 8, 2015 8:58:41 AM PST

Overview

Automatic discovery is a process that detects hosts, virtual servers and other targets so that they can be monitored and managed by Enterprise Manager. Use the following options to configure and schedule automatic discovery.

Configure Auto Discovery

- Setup Network Scan Discovery
- Setup Discovery on Hosts

Add Targets from Auto Discovery Results

- Promote Discovered Targets
- Ignore Discovered Targets

Add Targets Manually

- Add Targets with Guidance
- Add Targets Declaratively

Servers, Storage and Network **Targets on Hosts** Advanced: Discovery Modules

Search

View Collection Schedule Diagnostic Details Discover Now Discovery Modules Detach

Host	Collection Schedule	Discovered Targets	Managed Targets	Enabled Discovery Modules	Most Recent Ended On
msp52072.us.oracle.com	Every 1 Day	16	3	5	✓ Dec 7, 2015 10:54:38 PM PST
slc03mc.us.oracle.com	Every 1 Day	17	13	1	✓ Dec 8, 2015 3:16:00 PM PST
slc05ynf.us.oracle.com	Every 1 Day	5	11	1	✓ Dec 1, 2015 2:16:24 AM PST
slc06fdt.us.oracle.com	Every 1 Day	4	31	5	✓ Dec 7, 2015 1:35:04 PM PST

Rows Selected 1 Hosts 7

Figure 4: Running the discovery

The **Target Discovery (Agent Based)** window opens.

- Click **OK** in the **Discover Now** dialog to confirm that you want to run the discovery.

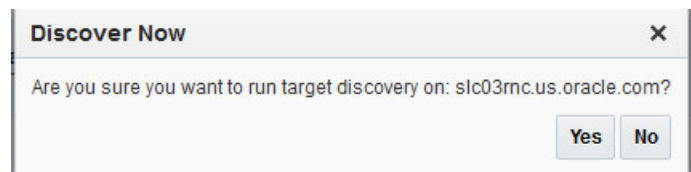


Figure 5: Confirming the discovery

- A confirmation dialog appears on successful discovery of the host. Click **Close** to dismiss the confirmation dialog.

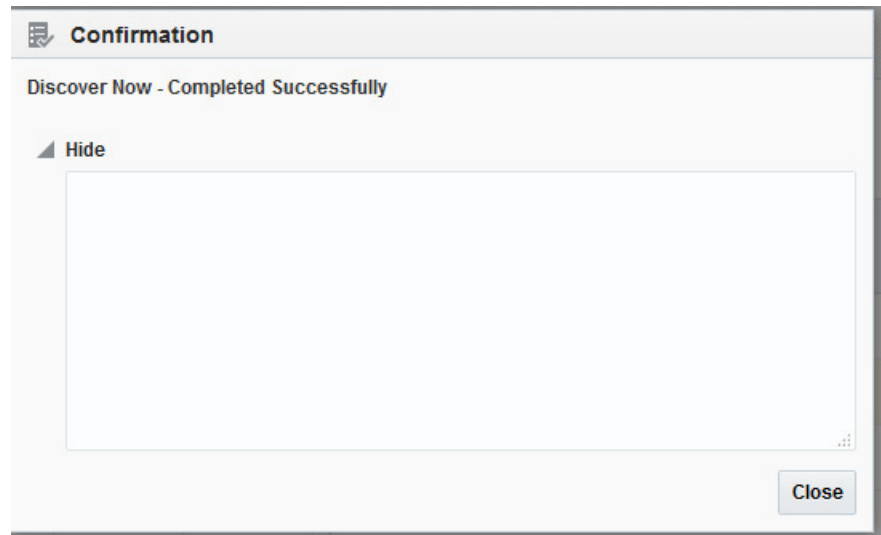


Figure 6: Host discovery confirmation dialog

Promoting Targets

To promote targets so they can be managed:

1. Log in to Enterprise Manager.
2. Choose **Setup > Configure Auto Discovery**.

The **Setup Discovery** window opens. Go to the **Targets on Hosts** tab.

ORACLE Enterprise Manager Cloud Control 13c

Setup Discovery Page Refreshed Dec 8, 2015 8:57:06 AM PST

Overview

Automatic discovery is a process that detects hosts, virtual servers and other targets so that they can be monitored and managed by Enterprise Manager. Use the following options to configure and schedule automatic discovery.

Configure Auto Discovery

- Setup Network Scan Discovery
- Setup Discovery on Hosts

→

Add Targets from Auto Discovery Results

- Promote Discovered Targets
- Ignore Discovered Targets

→

Add Targets Manually

- Add Targets with Guidance
- Add Targets Declaratively

Servers, Storage and Network **Targets on Hosts** Advanced: Discovery Modules

Search

View Collection Schedule Diagnostic Details Discover Now Discovery Modules Detach

Host	Collection Schedule	Discovered Targets	Managed Targets	Enabled Discovery Modules	Most Recent Ended On
↑ msp52072.us.oracle.com	Every 1 Day	16	3	5	✓ Dec 7, 2015 10:54:38 PM PST
↑ slc03mc.us.oracle.com	Every 1 Day	17	13	1	✓ Dec 8, 2015 3:16:00 PM PST
↑ slc05ynf.us.oracle.com	Every 1 Day	5	11	1	✓ Dec 1, 2015 2:16:24 AM PST
↑ slc06fdt.us.oracle.com	Every 1 Day	4	31	5	✓ Dec 7, 2015 1:35:04 PM PST

Figure 7: Setup Discovery window

- For the host on which the discovery was run, click on the number that is in the **Discovered Targets** column.

ORACLE Enterprise Manager Cloud Control 13c

Enterprise Targets

Setup Discovery

Overview

Automatic discovery is a process that detects hosts, virtual servers and other targets so that they can be monitored and managed by Enterprise Manager. Use the following options to

Configure Auto Discovery

- Setup Network Scan Discovery
- Setup Discovery on Hosts

Add Targets from Auto Discovery Results

- Promote Discovered Targets
- Ignore Discovered Targets

Add Targets Manually

- Add Targets with Guidance
- Add Targets Declaratively

Servers, Storage and Network **Targets on Hosts** Advanced: Discovery Modules

Search

View Collection Schedule Diagnostic Details Discover Now Discovery Modules Detach

Host	Collection Schedule	Discovered Targets	Managed Targets	Enabled Discovery Modules	Most Recent Ended On
msp52072.us.oracle.com	Every 1 Day	16	3	5	✓ Dec 7, 2015 10:54:38 PM PST
slc03rnc.us.oracle.com	Every 1 Day	22	8	1	✓ Dec 8, 2015 6:19:48 PM PST
slc05ynf.us.oracle.com	Every 1 Day				✓ Dec 1, 2015 2:16:24 AM PST
slc06fdt.us.oracle.com	Every 1 Day	4	31	5	✓ Dec 7, 2015 1:35:04 PM PST
slc06qad.us.oracle.com	Every 1 Day	7	15	1	✓ Dec 6, 2015 2:41:35 PM PST
slc06wud.us.oracle.com	Every 1 Day	5	9	0	✓ May 14, 2015 11:35:08 PM PDT
slc07gzp.us.oracle.com	Every 1 Day	10	19	0	✓ Dec 1, 2015 3:18:46 AM PST

Figure 8: Choosing a target

- A list of targets that were discovered but not yet promoted is displayed. Select the target you want to promote, then click the **Promote** button.

ORACLE Enterprise Manager Cloud Control 13c

Enterprise Targets

Auto Discovery Results

Overview

Review discovered targets and promote targets to be managed by Enterprise Manager.

Configure Auto Discovery

- Setup Network Scan Discovery
- Setup Discovery on Hosts

Add Targets from Auto Discovery Results

- Promote Discovered Targets
- Ignore Discovered Targets

Add Targets Manually

- Add Targets with Guidance
- Add Targets Declaratively

Servers, Storage and Network (0) **Targets on Hosts (50)** Ignored Targets (0)

Search

View Promote Rename Delete Ignore Detach

Target Name	Environment	Discovered On
V231_CCB_OEM_LIN_ORA_WLS_slc03mc.us.oracle.com_batch	Oracle Utilities Batch Server	Dec 8, 2015 10:19:50 AM PST
V231_CCB_OEM_LIN_ORA_WLS_slc03mc.us.oracle.com_home	Oracle Utilities Home	Dec 8, 2015 10:19:50 AM PST
V231_CCB_OEM_LIN_ORA_WLS_slc03mc.us.oracle.com_service	Oracle Utilities Web Services	Dec 8, 2015 10:19:50 AM PST
V231_CCB_OEM_LIN_ORA_WLS_slc03mc.us.oracle.com_web	Oracle Utilities Web Application	Dec 8, 2015 10:19:50 AM PST
agent12c1_2_slc03mc.us.oracle.com	Oracle Home	Sep 17, 2015 12:34:35 PM PDT
agent12c2_11_slc03mc.us.oracle.com	Oracle Home	Sep 17, 2015 12:34:35 PM PDT

Figure 9: Promoting the target

- All related members of the target system are shown and promoted at the same time. Click the **Promote** button.

ORACLE Enterprise Manager Cloud Control 13c

Enterprise Targets

Promote OUAF System Target

Select the system target and click Promote. 266800CB2A21403FE05326AFF504B11B

Promote Cancel

View

Target Type	Target Name	Host Name	Install Directory	Select
oracle_ouaf_system_util_env	V231_CCB_OEM_LIN_ORA_WLS_slc03mc.u...			<input checked="" type="checkbox"/>
oracle_ouaf_webapp_util_env	V231_CCB_OEM_LIN_ORA_WLS_slc03mc.u...	slc03mc		<input checked="" type="checkbox"/>
oracle_ouaf_service_util_env	V231_CCB_OEM_LIN_ORA_WLS_slc03mc.u...	slc03mc		<input checked="" type="checkbox"/>
oracle_ouaf_home_util_env	V231_CCB_OEM_LIN_ORA_WLS_slc03mc.u...			<input checked="" type="checkbox"/>
oracle_ouaf_batch_util_env	V231_CCB_OEM_LIN_ORA_WLS_slc03mc.u...			<input checked="" type="checkbox"/>

Figure 10: Unmanaged system targets

- A confirmation dialog appears when the promotion is successful.

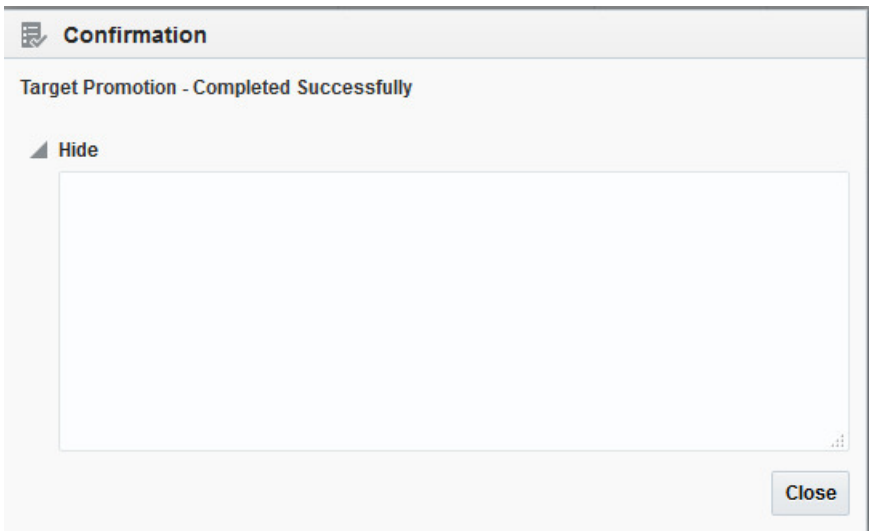


Figure 11: Confirmation dialog

7. Click **Close** to dismiss the confirmation dialog.
8. If any changes are made to the environment configuration using the command-line utilities (e.g., `configureEnv.sh/cmd`), the corresponding changes must also be made to the target properties. The quickest way to do this is to remove the target and perform the discovery and promotion process. You can also make changes by choosing **Target > Setup > Monitoring Configuration** and making the appropriate updates on the UI page.



Figure 12: Monitoring Configuration page

Undeploying Enterprise Manager for Oracle Utilities

To undeploy Enterprise Manager for Oracle Utilities, you must undeploy from both Management Agents and Management Servers.

To undeploy Enterprise Manager for Oracle Utilities from Management Agents, follow the instructions in the ["Undeploying Plug-ins from Oracle Management Agent"](http://docs.oracle.com/cd/E24628_01/doc.121/e24473/plugin_mgr.htm#CJGEFADI) topic (http://docs.oracle.com/cd/E24628_01/doc.121/e24473/plugin_mgr.htm#CJGEFADI) in the *Enterprise Manager Cloud Control Administrator's Guide* documentation.

To undeploy Enterprise Manager for Oracle Utilities from Management Servers, follow the instructions in the ["Undeploying Plug-ins from Oracle Management Service"](http://docs.oracle.com/cd/E24628_01/doc.121/e24473/plugin_mgr.htm#CJGEIECI) topic (http://docs.oracle.com/cd/E24628_01/doc.121/e24473/plugin_mgr.htm#CJGEIECI) in the *Enterprise Manager Cloud Control Administrator's Guide* documentation.

Documentation Accessibility

Our goal is to make Oracle products, services, and supporting documentation accessible to all users, including users that are disabled. To that end, our documentation includes features that make information available to users of assistive technology.

For information about Oracle's commitment to accessibility, visit the Oracle Accessibility Program website at <http://www.oracle.com/pls/topic/lookup?ctx=acc&id=docacc>.

Accessibility of Code Examples in Documentation

Screen readers may not always correctly read the code examples in this document. The conventions for writing code require that closing braces should appear on an otherwise empty line; however, some screen readers may not always read a line of text that consists solely of a bracket or brace.

Accessibility of Links to External Web Sites in Documentation

This documentation may contain links to Web sites of other companies or organizations that Oracle does not own or control. Oracle neither evaluates nor makes any representations regarding the accessibility of these Web sites.

Access to Oracle Support

Oracle customers have access to electronic support through My Oracle Support. For information, visit <http://www.oracle.com/pls/topic/lookup?ctx=acc&id=info> or visit <http://www.oracle.com/pls/topic/lookup?ctx=acc&id=trs> if you are hearing impaired.

Enterprise Manager for Oracle Utilities

Quick Install Guide

Release 13.5.1.0.0

Part number F70360-01

September 2022

Documentation build: 1.17.2023 17:12:31 [AMP_1673997151000]

Copyright © 2022, Oracle and/or its affiliates.

This software and related documentation are provided under a license agreement containing restrictions on use and disclosure and are protected by intellectual property laws. Except as expressly permitted in your license agreement or allowed by law, you may not use, copy, reproduce, translate, broadcast, modify, license, transmit, distribute, exhibit, perform, publish, or display any part, in any form, or by any means. Reverse engineering, disassembly, or decompilation of this software, unless required by law for interoperability, is prohibited.

The information contained herein is subject to change without notice and is not warranted to be error-free. If you find any errors, please report them to us in writing.

If this is software or related documentation that is delivered to the U.S. Government or anyone licensing it on behalf of the U.S. Government, then the following notice is applicable:

U.S. GOVERNMENT END USERS: Oracle programs (including any operating system, integrated software, any programs embedded, installed or activated on delivered hardware, and modifications of such programs) and Oracle computer documentation or other Oracle data delivered to or accessed by U.S. Government end users are "commercial computer software" or "commercial computer software documentation" pursuant to the applicable Federal Acquisition Regulation and agency-specific supplemental regulations. As such, the use, reproduction, duplication, release, display, disclosure, modification, preparation of derivative works, and/or adaptation of i) Oracle programs (including any operating system, integrated software, any programs embedded, installed or activated on delivered hardware, and modifications of such programs), ii) Oracle computer documentation and/or iii) other Oracle data, is subject to the rights and limitations specified in the license contained in the applicable contract. The terms governing the U.S. Government's use of Oracle cloud services are defined by the applicable contract for such services. No other rights are granted to the U.S. Government.

This software or hardware is developed for general use in a variety of information management applications. It is not developed or intended for use in any inherently dangerous applications, including applications that may create a risk of personal injury. If you use this software or hardware in dangerous applications, then you shall be responsible to take all appropriate fail-safe, backup, redundancy, and

other measures to ensure its safe use. Oracle Corporation and its affiliates disclaim any liability for any damages caused by use of this software or hardware in dangerous applications.

Oracle and Java are registered trademarks of Oracle and/or its affiliates. Other names may be trademarks of their respective owners.

Intel and Intel Inside are trademarks or registered trademarks of Intel Corporation. All SPARC trademarks are used under license and are trademarks or registered trademarks of SPARC International, Inc. AMD, Epyc, and the AMD logo are trademarks or registered trademarks of Advanced Micro Devices. UNIX is a registered trademark of The Open Group.

This software or hardware and documentation may provide access to or information about content, products, and services from third parties. Oracle Corporation and its affiliates are not responsible for and expressly disclaim all warranties of any kind with respect to third-party content, products, and services unless otherwise set forth in an applicable agreement between you and Oracle. Oracle Corporation and its affiliates will not be responsible for any loss, costs, or damages incurred due to your access to or use of third-party content, products, or services, except as set forth in an applicable agreement between you and Oracle.

Third-party licenses relating to Enterprise Manager and this plug-in are available for viewing online at: Enterprise Manager Licensing Information (http://docs.oracle.com/cd/E24628_01/doc.121/e24474/title.htm).

NOTE: Prior versions of this product were released as Application Management Pack for Oracle Utilities. Please note that any references to Application Management Pack for Oracle Utilities that may occur within this document or in images within this document refer instead to the product's new name, Enterprise Manager for Oracle Utilities.