

Oracle Banking Origination Installation Guide

Oracle Banking Origination

Release 14.7.0.0.0

Part Number F72113-01

November 2022

Table of Contents

1.	Preface	1-1
1.1	Introduction.....	1-1
1.2	Audience	1-1
1.3	Documentation Accessibility	1-1
1.4	Organization	1-1
1.5	Related documents	1-3
2.	Product Installation Using Installer	2-1
2.1	Introduction.....	2-1
2.2	Prerequisite	2-1
2.3	Installer Path	2-1
3.	Database Setup	3-1
3.1	Introduction.....	3-1
3.2	Prerequisite	3-1
3.3	Database Setup	3-1
4.	Oracle Banking Origination Domains Configuration.....	4-1
4.1	Prerequisites	4-1
4.2	Oracle Banking Origination Domain Creation	4-1
4.3	Steps to Create Domain and Cluster Configuration.....	4-2
5.	Data Sources Creation	5-1
5.1	Prerequisite	5-1
5.2	Data Sources List.....	5-1
5.3	Steps to Create Datasource.....	5-3
5.4	Additional Datasource Mapping	5-3
5.5	User Grants	5-3
6.	Deployments.....	6-1
6.1	Prerequisite	6-1
6.2	Deployments List.....	6-1
6.3	Steps to Deploy as Application	6-3
7.	Workflow Deployments.....	7-1
7.1	Oracle Banking Origination Processes	7-1
7.2	Updating the process	7-2
7.3	Steps to Deploy Conductor Process	7-2
7.3.1	Approach 1 - Postman	7-2
7.3.2	Approach 2 – UI	7-3
8.	Kafka Topics.....	8-1
8.1	Oracle Banking Origination Kafka Topics	8-1
9.	Restarts and Refresh	9-1
9.1	Restarting Servers	9-1
10.	Logging Area	10-1
10.1	Introduction.....	10-1
10.1.1	Logging Area.....	10-1
11.	Launching Oracle Banking Origination from UBS.....	11-1
11.1	Introduction.....	11-1
11.2	Oracle FLEXCUBE Universal Banking Configurations	11-1
11.3	Oracle Banking Microservices Architecture Configurations.....	11-2
12.	OCR Enabled Document Extraction Environment Setup.....	12-3
12.1	Introduction.....	12-3

12.2 Reference Documents 12-3

1.1 Introduction

This guide helps you to install the Oracle Banking Origination services, User Interface, and Conductor Process flow on designated environments. It is assumed that all the prior setup is already done related with WebLogic installation, WebLogic managed server creation and Oracle DB installation.

It is recommended to use dedicated managed server for each of the Oracle Banking Microservices Architecture services, Oracle Banking Origination Services and Oracle Banking Origination User Interface.

1.2 Audience

This document is intended for WebLogic admin or ops-web team who are responsible for installing the OFSS banking products.

1.3 Documentation Accessibility

For information about Oracle's commitment to accessibility, visit the Oracle Accessibility Program website at <http://www.oracle.com/us/corporate/accessibility/index.html>.

1.4 Organization

This installation user guide would allow you to install the below mentioned Oracle Banking Origination services, UI, process flow in same order. Also mentioned is the list of Common Core services required by Oracle Banking Origination services

Common Core Services

1. cmc-account-services
2. cmc-additional-attributes-services
3. cmc-advice-services
4. cmc-base-services
5. cmc-branch-services
6. cmc-businessoverrides-services
7. cmc-checklist-services
8. cmc-comments-services
9. cmc-currency-services
10. cmc-customer-services
11. cmc-datasegment-services
12. cmc-document-services
13. cmc-documentmanagement-services
14. cmc-external-chart-account
15. cmc-ml-indb-services
16. cmc-obcbs-services
17. cmc-obrh-service

18. cmc-opds-services
19. cmc-priority-services
20. cmc-processcode-service
21. cmc-report-services
22. cmc-resource-segment-orchestrator-service
23. cmc-screenclass-services
24. cmc-sequencegenerator-services
25. cmc-sla-services
26. cmc-transactioncontroller-services
27. cmc-resourceclass-services

Oracle Banking Origination Services

1. obremo-rpm-maintenance-services
2. obremo-rpm-process-driver-services
3. obremo-rpm-businessprocess-services
4. obremo-rpm-businessproductdetails-services
5. obremo-rpm-cmn-applicantservices
6. obremo-rpm-cmn-hostservices
7. obremo-rpm-cmn-scorecardservices
8. obremo-rpm-lo-loanapplications
9. obremo-rpm-sav-account-service
10. obremo-rpm-term-deposit-service
11. obremo-rpm-projection-services
12. obremo-rpm-batch-services
13. obremo-rpm-cmn-ipaservices
14. obremo-rpm-cmn-collateralservices
15. obremo-rpm-creditcardapplication
16. obremo-rpm-rule-configurationservice
17. obremo-rpm-cmn-mlservice

User Interface

UI war is split into individual component server war files. All the component server war files should be deployed in the same managed server.

For Common Core war files, deploy the war files mentioned below:

1. app-shell
2. cmc-component-server
3. moc-component-server
4. sms-component-server

For Domain Specific war files, deploy the individual component server war files mentioned below:

1. oboflo-component-server

Oracle Banking Origination Process Workflow

1. CASAHOSTORCH
2. CREDITCARD
3. CURRENTACCOUNT
4. EDUCATIONLOAN
5. HOMELOAN
6. HOSTORCHESTRATOR
7. INITIATION
8. INSTCURACC
9. INSTSAVACC
10. INSTTDACC
11. IPA
12. PERSONALLOAN
13. SAVINGSACCOUNT
14. SMBCURRENTACCOUNT
15. SMBLOAN
16. SMBSAVINGS
17. SMBTD1
18. SMBTERMLOAN
19. TDACCOUNT
20. TDHOSTORCH
21. VEHICLELOAN

1.5 Related documents

For more information, refer to the following documents:

- Getting Started User Guide
- Oracle Banking Origination Pre-Installation Guide
- ANNEXURE-1

2. Product Installation Using Installer

2.1 Introduction

This section provides the systematic information to install Oracle Banking Origination application using installer.

2.2 Prerequisite

Before proceeding with installation setup, make sure that the database installation is completed and required schemas are created.

2.3 Installer Path

The following table provides the download path of the installer:

Application	Archive Name	OSDC Path
OBO	obo.zip & obma.zip	INSTALLER

NOTE: To install the application using installer, refer to Oracle Banking Microservices Architecture Installer Guide.

3. Database Setup

3.1 Introduction

In this section you are going to setup database related configuration for Oracle Banking Origination Installation. It is recommended to create different schema for each application. Below setup is designed to work with separate schema for each application.

3.2 Prerequisite

In this section, you are going to setup database related configuration for Oracle Banking Origination Installation. Before you proceed, ensure pre-installation setup is done. The pre-installation setup includes the configuration of database, setting up the setUserOverrides.sh. After creating the schema for each of the required micro services, DDLs and INCs of each micro-service to be compiled in the respective schemas. The DDLs and INCs ensure the creation of tables and availability of static data required for the execution of services. These are compiled automatically using flyway.

3.3 Database Setup

To setup DB for Oracle Banking Origination schema's to be created:

Service Name	Schema Required
obremo-rpm-maintenance-services	Yes (obremo-rpm-maintenance-services schema)
obremo-rpm-process-driver-services	Yes (obremo-rpm-process-driver-services schema)
obremo-rpm-businessprocess-services	Yes (obremo-rpm-businessprocess-services schema)
obremo-rpm-businessproductdetails-services	Yes (obremo-rpm-businessproductdetails-services schema)
obremo-rpm-cmn-applicantservices	Yes (obremo-rpm-cmn-applicantservices schema)
obremo-rpm-cmn-hostservices	Yes (obremo-rpm-cmn-hostservices schema)
obremo-rpm-cmn-scorecardservices	Yes (obremo-rpm-cmn-scorecardservices schema)
obremo-rpm-lo-loanapplications	Yes (obremo-rpm-lo-loanapplications schema)
obremo-rpm-sav-account-service	Yes (obremo-rpm-sav-account-service schema)
obremo-rpm-term-deposit-service	Yes (obremo-rpm-term-deposit-service schema)
obremo-rpm-projection-services	Yes (obremo-rpm-projection-services schema)
obremo-rpm-batch-services	No (uses the plato batch server schema)

Service Name	Schema Required
obremo-rpm-cmn-ipaservices	Yes (obremo-rpm-cmn-ipaservices schema)
obremo-rpm-cmn-collateralservices	Yes (obremo-rpm-cmn-collateralservices schema)
obremo-rpm-creditcardapplication	Yes (obremo-rpm-creditcardapplication schema)
obremo-rpm-cmn-mlservice	Yes (obremo-rpm-cmn-mlservice schema)
obremo-rpm-rule-configurationservice	No (Plato rule schema)

4. Oracle Banking Origination Domains Configuration

4.1 Prerequisites

1. Machine should have Java JDK to be installed.
2. Oracle Fusion Middleware has to be installed on the machine.

NOTE: Before proceeding with below steps complete Oracle Banking Microservices Architecture installation guided.

3. Steps for creating all Oracle Banking Origination domains, properties like port numbers, names will be changing based on the domain. Screenshots provided for such deviations. Domain creation process remains the same.

NOTE: For the exact version to be installed, refer to **Software Prerequisites** section in **License Guide**.

4.2 Oracle Banking Origination Domain Creation

It is recommended to have separate domain for Oracle Banking Origination application.

Service Name	Domain Name
obremo-rpm-maintenance-services	Oracle Banking Origination Domain
obremo-rpm-process-driver-services	Oracle Banking Origination Domain
obremo-rpm-businessprocess-services	Oracle Banking Origination Domain
obremo-rpm-businessproductdetails-services	Oracle Banking Origination Domain
obremo-rpm-cmn-applicantservices	Oracle Banking Origination Domain
obremo-rpm-cmn-hostservices	Oracle Banking Origination Domain
obremo-rpm-cmn-scorecardservices	Oracle Banking Origination Domain
obremo-rpm-lo-loanapplications	Oracle Banking Origination Domain
obremo-rpm-term-deposit-service	Oracle Banking Origination Domain
obremo-rpm-batch-services	Oracle Banking Origination Domain
obremo-rpm-projection-services	Oracle Banking Origination Domain
obremo-rpm-sav-account-service	Oracle Banking Origination Domain
obremo-rpm-cmn-ipaservices	Oracle Banking Origination Domain
obremo-rpm-cmn-collateralservices	Oracle Banking Origination Domain

Service Name	Domain Name
obremo-rpm-creditcardapplication	Oracle Banking Origination Domain
obremo-rpm-cmn-mlservice	Oracle Banking Origination Domain
obremo-rpm-rule-configurationservice	Oracle Banking Origination Domain
app-shell	Appshell Domain
cmc-component-server	Appshell Domain
moc-component-server	Appshell Domain
sms-component-server	Appshell Domain
oboflo-component-server	Appshell Domain

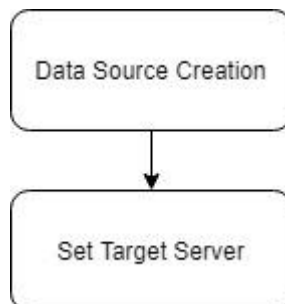
4.3 Steps to Create Domain and Cluster Configuration

For creating and configuring the domain, refer to the **How to Create Domain and Cluster Configuration** section in **ANNEXURE-1**.

5. Data Sources Creation

5.1 Prerequisite

Database setup for Oracle Banking Origination has to be performed prior to deployment setup. The data sources for the respective micro-services must be created first before the application deployment. Each of the data source target to their corresponding servers on which the application will be deployed. The following sections explain the list of data sources required to be created for Oracle Banking Origination services and the steps to configure them in the server.



5.2 Data Sources List

The table below lists the data sources to be created on each domain prior to deployment of applications onto managed servers.

Service Name	Data Source Name	Data Source JNDI	Targets
obremo-rpm-maintenance-services	RPMMAINTENANCE	jdbc/OBREMOMAIN TCE	Oracle Banking Origination Managed Server
obremo-rpm-process-driver-services	RPMProcessDriver	jdbc/RPMPROCESS SSDRIVER	Oracle Banking Origination Managed Server
obremo-rpm-businessprocess-services	RPMBusinessProcesses	jdbc/OBREMOSUB SSPRC	Oracle Banking Origination Managed Server
obremo-rpm-businessproductdetails-services	RPMBusinessProduct	jdbc/OBREMOP DETAILS	Oracle Banking Origination Managed Server
obremo-rpm-cmn-applicantservices	RPMCMnApplicant	jdbc/CMNAPPLIC ANT	Oracle Banking Origination Managed Server
obremo-rpm-cmn-hostservices	RPMHostService	jdbc/RPMHOST	Oracle Banking Origination Managed Server

Service Name	Data Source Name	Data Source JNDI	Targets
obremo-rpm-cmn-scorecardservices	RPMscorecard	jdbc/CMNSCORECARD	Oracle Banking Origination Managed Server
obremo-rpm-lo-loanapplications	RPMLoan	jdbc/LOANAPP	Oracle Banking Origination Managed Server
obremo-rpm-term-deposit-service	RPMTD	Jdbc/TDACC	Oracle Banking Origination Managed Server
obremo-rpm-projection-services	RPMPROJECTION	jdbc/RPMPROJECTION	Oracle Banking Origination Managed Server
obremo-rpm-sav-account-service	RPMSaving	jdbc/SAVACC	Oracle Banking Origination Managed Server
obremo-rpm-cmn-ipaservices	RPMIPA	jdbc/IPA	Oracle Banking Origination Managed Server
obremo-rpm-cmn-collateralservices	RPMCOLLATERAL	jdbc/OBREMOCOLLATERAL	Oracle Banking Origination Managed Server
obremo-rpm-creditcardapplication	RPMCREDITCARD	jdbc/CCAPP	Oracle Banking Origination Managed Server
obremo-rpm-cmn-mlservice	RPMML	jdbc/OBREMOML	Oracle Banking Origination Managed Server, CMC Managed Server
Appshell UI	None	None	Appshell Server
cmc-component-server	None	None	Appshell Server
moc-component-server	None	None	Appshell Server
sms-component-server	None	None	Appshell Server
oboflo-component-server	None	None	Appshell Server

5.3 Steps to Create Datasource

For creating data source, refer to **How to Create Datasource** section in **ANNEXURE-1**.

5.4 Additional Datasource Mapping

As part of Oracle Banking Origination, flyway jndi changes are incorporated. In order to deploy the services successfully, map the following data source to all the newly created managed servers for Oracle Banking Origination.

Data source Name	Data Source JNDI	Targets
PLATO	jdbc/PLATO	Oracle Banking Origination Managed Server
PLATO_UI_CONFIG	jdbc/PLATO_UI_CONFIG	Oracle Banking Origination Managed Server
SMS	jdbc/sms	Oracle Banking Origination Managed Server
PLATOBATCH	jdbc/PLATOBATCH	Oracle Banking Origination Managed Server
PLATORULE	jdbc/PLATORULE	Oracle Banking Origination Managed Server
COMMON CORE	jdbc/CMNCORE	Oracle Banking Origination Managed Server

5.5 User Grants

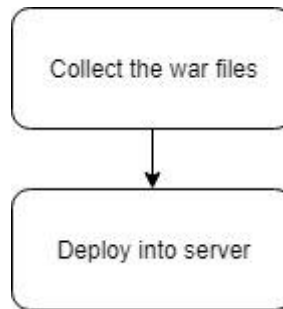
The following grants are provided to the user in the Projection schema which is required for Machine Learning use cases.

- GRANT CREATE MINING MODEL TO <RPMML SCHEMA>;
- GRANT CREATE ANY MINING MODEL TO <RPMML SCHEMA>;
- GRANT ALTER ANY MINING MODEL TO <RPMML SCHEMA>;
- GRANT DROP ANY MINING MODEL TO <RPMML SCHEMA>;
- GRANT SELECT ANY MINING MODEL TO <RPMML SCHEMA>;
- GRANT COMMENT ANY MINING MODEL TO <RPMML SCHEMA>;
- GRANT EXECUTE ON DBMS_DATA_MINING to <RPMML SCHEMA>;
- GRANT CREATE TABLE TO <RPMML SCHEMA>
- GRANT DROP ANY TABLE TO < RPMML SCHEMA>

6. Deployments

6.1 Prerequisite

The database setup and data sources creation have to be performed prior to the application deployment stage. Each of the services corresponds to a specific war file that needs to be deployed into the server. The following sections explain the list of war files of the Oracle Banking Origination application and the steps to deploy them into the server.



6.2 Deployments List

Below table give details of the deployments required on each domain for the Oracle Banking Origination application to run. Deploy one after other in the same given order. The provided archive names are for reference purpose. Refer to the exact archive names available as a part of release.

Application	Archive name	OSDC path	Targets
Maintenance Services	obremo-rpm-maintenance-services-{version}.war	{ unzip the file } OFLO_SERVICES\obremo-rpm-maintenance-services	Oracle Banking Origination Managed Server
Process Driver	obremo-rpm-process-driver-services-{version}.war	{ unzip the file } OFLO_SERVICES\obremo-rpm-process-driver-services	Oracle Banking Origination Managed Server
Business Process	obremo-rpm-businessprocess-services-{version}.war	{ unzip the file } OFLO_SERVICES\obremo-rpm-businessprocess-services	Oracle Banking Origination Managed Server
Business Product details	obremo-rpm-businessproductdetails-services-{version}.war	{ unzip the file } OFLO_SERVICES\ obremo-rpm-businessproductdetails-services	Oracle Banking Origination Managed Server
Common Applicant	obremo-rpm-cmn-applicantservices-{version}.war	{ unzip the file } OFLO_SERVICES\obremo-rpm-cmn-applicantservices	Oracle Banking Origination Managed Server

Application	Archive name	OSDC path	Targets
Host Services	obremo-rpm-cmn-hostservices-{version}.war	{unzip the file} OFLO_SERVICES\obremo-rpm-cmn-hostservices	Oracle Banking Origination Managed Server
ScoreCard	obremo-rpm-cmn-scorecardservices-{version}.war	{unzip the file} OFLO_SERVICES\obremo-rpm-cmn-scorecardservices	Oracle Banking Origination Managed Server
Loan Applicant Services	obremo-rpm-lo-loanapplications-{version}.war	{unzip the file} OFLO_SERVICES\obremo-rpm-lo-loanapplications	Oracle Banking Origination Managed Server
Savings (CASA) Services	obremo-rpm-sav-account-service-{version}.war	{unzip the file} OFLO_SERVICES\obremo-rpm-sav-account-service	Oracle Banking Origination Managed Server
TD Services	obremo-rpm-term-deposit-service-{version}.war	{unzip the file} OFLO_SERVICES\obremo-rpm-term-deposit-service	Oracle Banking Origination Managed Server
Batch Service	obremo-rpm-batch-services-{version}.war	{unzip the file} OFLO_SERVICES\obremo-rpm-batch-services	Oracle Banking Origination Managed Server
PROJECTION Service	obremo-rpm-projection-services-{version}.war	{unzip the file} OFLO_SERVICES\obremo-rpm-projection-services	Oracle Banking Origination Managed Server
IPA Service	obremo-rpm-cmn-ipaservices-{version}.war	{unzip the file} OFLO_SERVICES\obremo-rpm-cmn-ipaservices	Oracle Banking Origination Managed Server
Collateral Service	obremo-rpm-cmn-collateralservices-{version}.war	{unzip the file} OFLO_SERVICES\obremo-rpm-cmn-collateralservices	Oracle Banking Origination Managed Server
Credit Card Service	obremo-rpm-creditcardapplication-{version}.war	{unzip the file} OFLO_SERVICES\obremo-rpm-creditcardapplication	Oracle Banking Origination Managed Server

Application	Archive name	OSDC path	Targets
ML SERVICE	obremo-rpm-cmn-mlservice-{version}.war	{unzip the file} OFLO_SERVICES\ obremo-rpm-cmn-mlservice	Oracle Banking Origination Managed Server
RULE CONFIGURATION SERVICE	obremo-rpm-rule-configurationservice-{version}.war	{unzip the file} OFLO_SERVICES\ obremo-rpm-rule-configurationservice	Oracle Banking Origination Managed Server
OBO UI Components	app-shell-{version}.war cmc-component-server-{version}.war moc-component-server-{version}.war sms-component-server-{version}.war oboflo-component-server-{version}.war	{unzip the file} ui/	Appshell Server

NOTE: Refer to OSDC zip for the exact version number for each service.

6.3 Steps to Deploy as Application

To deploy application, refer to **How to Deploy Application** section in **ANNEXURE-1**.

7. Workflow Deployments

7.1 Oracle Banking Origination Processes

Below are the list of Conductor based processes which have to be deployed for the Oracle Banking Origination.

Serial Number	Process Name	Dependent Process
1	CASAHOSTORCH	None
2	CREDITCARD	None
3	CURRENTACCOUNT	None
4	EDUCATIONLOAN	None
5	HOMELOAN	None
6	HOSTORCHESTRATOR	None
7	INITIATION	None
8	INSTCURACC	None
9	INSTSAVACC	None
10	INSTTDACC	None
11	IPA	None
12	PERSONALLOAN	None
13	SAVINGSACCOUNT	None
14	SMBCURRENTACCOUNT	None
15	SMBLOAN	None
16	SMBSAVINGS	None
17	SMBTD1	None
18	SMBTERMLOAN	None
19	TDACCOUNT	None
20	TDHOSTORCH	None
21	VEHICLELOAN	None

7.2 Updating the process

Before deploying the process, the following section to be updated with the server ip/port for the end points used in the process.

For each process, open the process to find for “http_request” and modify the following in the uri.

```
"uri": "http://{{PROCESS_SERVER_HOST}}:{{PROCESS_SERVER_PORT}}/"
```

{{PROCESS_SERVER_HOST}} - IP of the Plato Orch Service

{{PROCESS_SERVER_PORT}} - Port of the Plato Orch Service

7.3 Steps to Deploy Conductor Process

7.3.1 Approach 1 - Postman

NOTE: Server names, Domain names need not to be same as this doc provides.
Steps to Deploy a process remains the same for all the process files:

1. Launch Postman.
2. Select **POST** method
3. Input the URL in the below format
http://{{PROCESS_SERVER_HOST}}:{{PROCESS_SERVER_PORT}}/plato-orch-service/api/metadata/workflow
4. Input the header params as shown below:

Content-Type:application/json

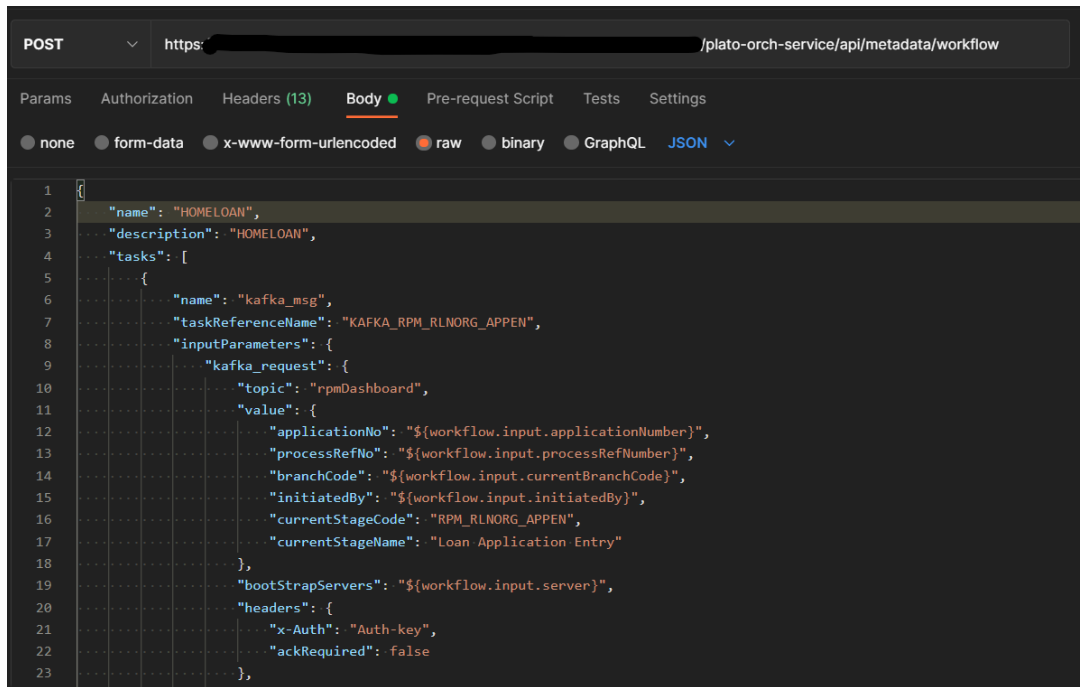
userId:<userId>

appld:platoorch

branchCode:000

entityId:DEFAULTENTITY

- Paste the body of the message with the content from the process file.



```
POST https://[redacted]/plato-orch-service/api/metadata/workflow

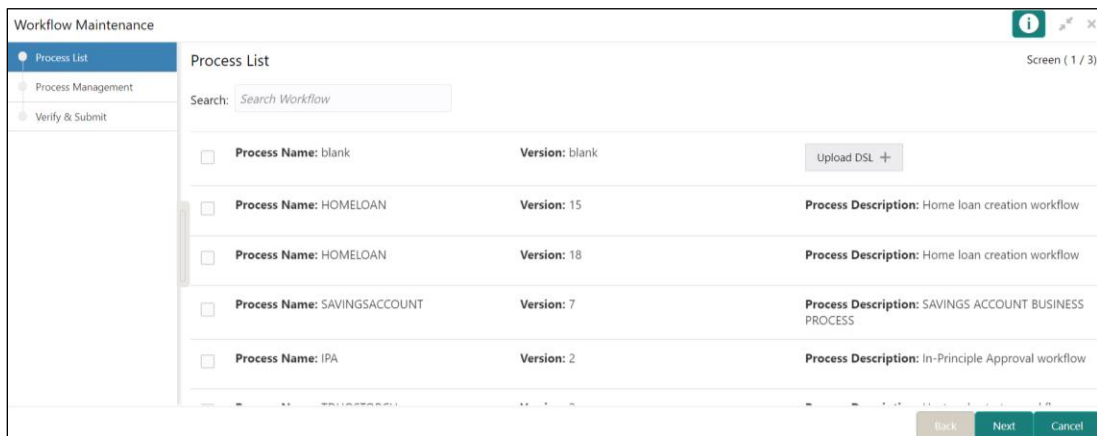
Params Authorization Headers (13) Body Pre-request Script Tests Settings
none form-data x-www-form-urlencoded raw binary GraphQL JSON

1 {
2   "name": "HOMELOAN",
3   "description": "HOMELOAN",
4   "tasks": [
5     {
6       "name": "kafka_msg",
7       "taskReferenceName": "KAFKA_RPM_RLNORG_APPEN",
8       "inputParameters": {
9         "kafka_request": {
10          "topic": "rpmDashboard",
11          "value": {
12            "applicationNo": "${workflow.input.applicationNumber}",
13            "processRefNo": "${workflow.input.processRefNumber}",
14            "branchCode": "${workflow.input.currentBranchCode}",
15            "initiatedBy": "${workflow.input.initiatedBy}",
16            "currentStageCode": "RPM_RLNORG_APPEN",
17            "currentStageName": "Loan Application Entry"
18          },
19            "bootstrapServers": "${workflow.input.server}",
20            "headers": {
21              "x-Auth": "Auth-key",
22              "ackRequired": false
23            }
24          }
25        }
26      ]
27    }
28  }
```

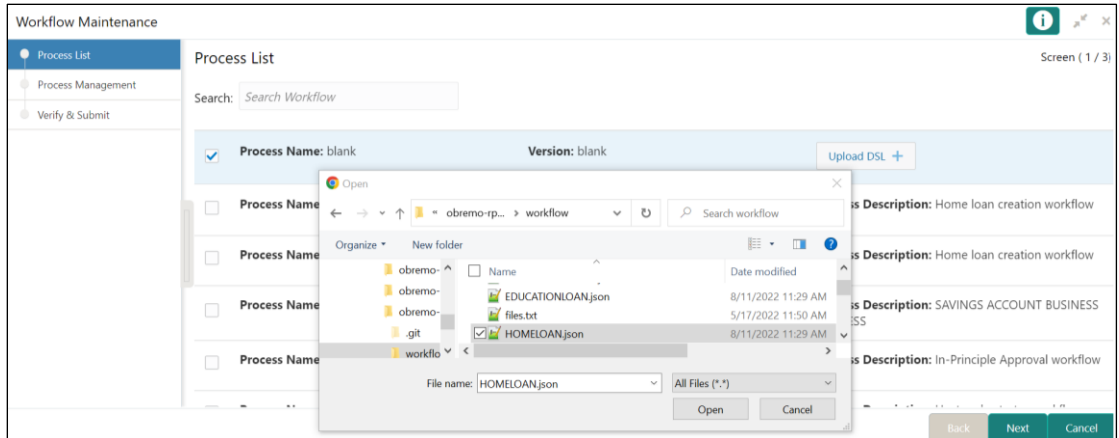
- Click **Send**. Response status **200** returned from server.

7.3.2 Approach 2 – UI

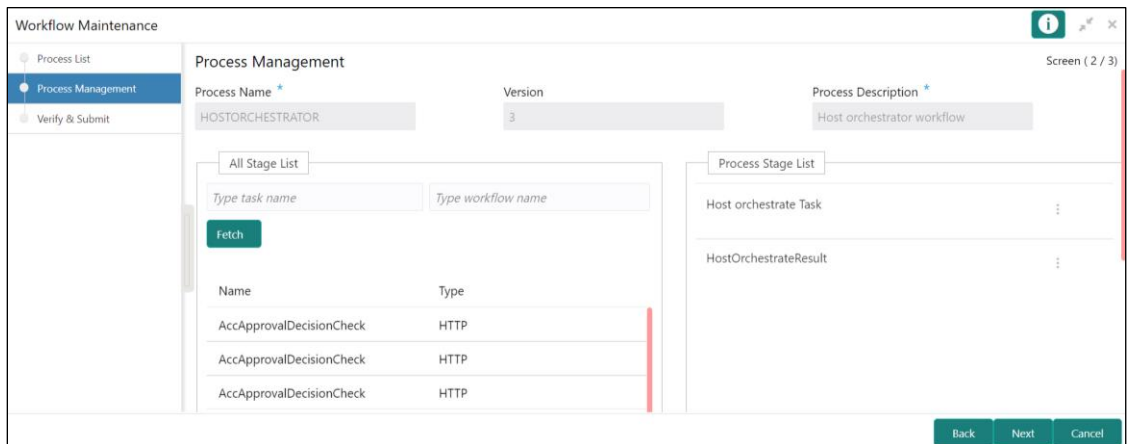
- Launch the menu **Tasks** → **Business Process Maintenance**



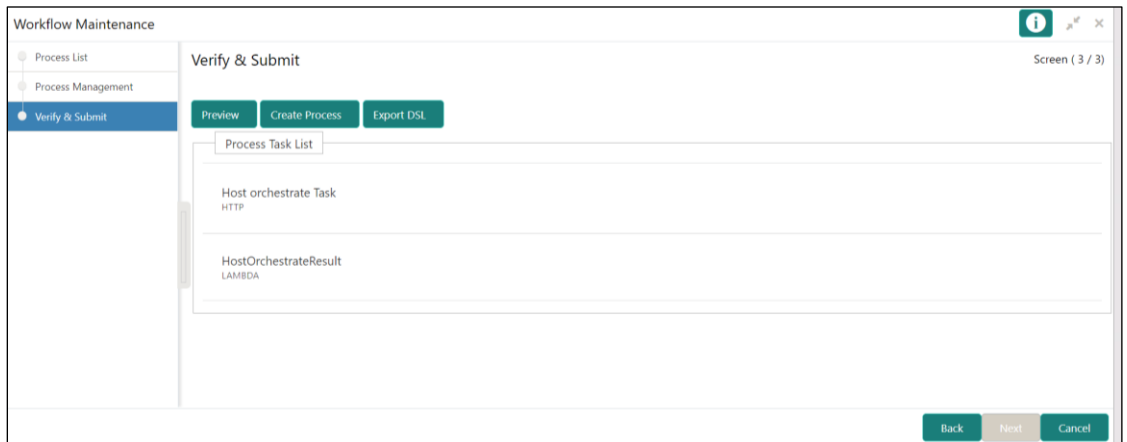
2. Click on the “Process Name” check box and upload the required DSL json file.
3. Click **Next** to navigate to the **Process Management** screen.



4. Click **Next** to navigate to the **Verify & Submit** screen.



5. Click **Create Process**.



8. Kafka Topics

8.1 Oracle Banking Origination Kafka Topics

Below mentioned are the Kafka topics that are used in Oracle Banking Origination. All the below topics are to be created and verified in the Kafka Server by using the command

<Kafka Bin Folder>/kafka-topics.sh --create --bootstrap-server <Broker ip/hostname>:<Broker Port> --replication-factor 1 --partitions 1 --topic <topic name>

S No	Topic Name	Description	Usage
1	rpmDashboard	This event is used for populating projection data for rendering the dashboard.	Updating all the attributes related to a process
2	InitialFundingAck	This event is triggered when TD and savings initial funding option is selected as CASH, Oracle Banking Origination triggers a teller transaction Status change of the same transaction will be updated to Oracle Banking Origination asynchronously	Status change occurrence for an Oracle Banking Origination initiated transaction in Teller
3	PartyKYCStatusUpdate	This event is triggered related to when a customer onboarding request is sent to the party module. Party has its own workflow Whenever the KYC verification is completed from party module, notification will be sent to Oracle Banking Origination	KYC status update for the Customer
4	PartyHandoffNotification	This event is triggered related to when a customer onboarding request is sent to the party module. Party has its own workflow.	Customer accepts the offer

S No	Topic Name	Description	Usage
		A confirmation message will send from Oracle Banking Origination to the party module to notify that party module can proceed with creation of customer in their product processor	
5	PartyHandoffToHostStatus	After creating the customer in the product processor party module will send a message containing the created customer id to Oracle Banking Origination	Customer is created in product processor
6	processTimePredictionMessage	All services updates the required Machine Learning data into ML service table which will further be used for predicting the time required to complete the process	Machine Learning Table Update

9. Restarts and Refresh

Once everything is deployed, restart all the managed servers. And for each application call path “/refresh” for refreshing the configuration properties.

9.1 Restarting Servers

To restart the server, refer to **How to Restart Servers** section in **ANNEXURE-1**.

10. Logging Area

10.1 Introduction

This part of the document will talk about the logs area where after deployment of Oracle Banking Origination Applications in WebLogic server.

10.1.1 Logging Area

Oracle Banking Origination Application writes logs in the below area of the server-

<WEBLOGIC_DOMAIN_CONFIG_AREA/servers/APP/logs/ APP.out

Let's assume a domain has been created **oflo_domain** with **managed_server** name called **OFLOAPP** in the following area of the server

~/middleware/user_projects/domains/**oflo_domain**". Logging area for Oracle Banking Origination applications would be

~/middleware/user_projects/domains/**oflo_domain**/servers/**OFLOAPP**/logs/ **OFLOAPP.out**.

11.Launching Oracle Banking Origination from UBS

11.1 Introduction

This section provides information on how to setup database related configuration for Oracle Banking Origination Installation.

It is recommended to create different schema for each application. Below setup is designed to work with separate schema for each application.

11.2 Oracle FLEXCUBE Universal Banking Configurations

After Login to FLEXCUBE Universal Banking environment click on Next Generation UI Menu and launch the maintenance screen CSDNGUIM. Ensure that user has roles for the screen. Update the Oracle Banking Microservices Architecture Product URL.

Maker	Checker	Date Time:	Date Time:	Mod No	Record Status	Authorization Status

A new Function id NGTELLER is released as Static Data and Ensure user roles has been maintained for the same. Once the roles are maintained Click Next Gen UI on tool bar. Next Gen UI Dashboard will be displayed with the list of products. Click OFLO product, which will Launch Plato Teller Dashboard. Ensure the same user id is maintained in for the Oracle Banking Origination product and it has necessary roles.

11.3 Oracle Banking Microservices Architecture Configurations

SECURITY_CONFIG table in PLATO_SECURITY schema should have the following entries.

Key	Value
INTEGRATION_ENABLED	True
INTEGRATION_CALLBACK_URL	https://FCUBShostname:FCUBSport/FCJNeoWeb/ValidationService/FCNonceValidation/validate

Please update the Oracle FLEXCUBE Universal Banking hostname and port number in the above URL.

12.OCR Enabled Document Extraction Environment Setup

12.1 Introduction

This section provides information on setting up the environment required for OCR enabled document extraction/verification feature used in Oracle Banking Origination. The details of this feature can be obtained from **Operations User Guide**

12.2 Reference Documents

Below are the references for setting up of this environment.

- Common Core Services Installation Guide → Document Verification Framework
- Oracle Banking Common Core User Guide → Document Verification Framework



Oracle Banking Origination Installation Guide

Oracle Financial Services Software Limited

Oracle Park

Off Western Express Highway

Gurgaon (East)

Mumbai, Maharashtra 400 063

India

Worldwide Inquiries:

Phone: +91 22 6718 3000

Fax: +91 22 6718 3001

<https://www.oracle.com/industries/financial-services/index.html>

Copyright © 2021, 2022, Oracle and/or its affiliates. All rights reserved.

Oracle and Java are registered trademarks of Oracle and/or its affiliates. Other names may be trademarks of their respective owners.

U.S. GOVERNMENT END USERS: Oracle programs, including any operating system, integrated software, any programs installed on the hardware, and/or documentation, delivered to U.S. Government end users are "commercial computer software" pursuant to the applicable Federal Acquisition Regulation and agency-specific supplemental regulations. As such, use, duplication, disclosure, modification, and adaptation of the programs, including any operating system, integrated software, any programs installed on the hardware, and/or documentation, shall be subject to license terms and license restrictions applicable to the programs. No other rights are granted to the U.S. Government.

This software or hardware is developed for general use in a variety of information management applications. It is not developed or intended for use in any inherently dangerous applications, including applications that may create a risk of personal injury. If you use this software or hardware in dangerous applications, then you shall be responsible to take all appropriate failsafe, backup, redundancy, and other measures to ensure its safe use. Oracle Corporation and its affiliates disclaim any liability for any damages caused by use of this software or hardware in dangerous applications.

This software and related documentation are provided under a license agreement containing restrictions on use and disclosure and are protected by intellectual property laws. Except as expressly permitted in your license agreement or allowed by law, you may not use, copy, reproduce, translate, broadcast, modify, license, transmit, distribute, exhibit, perform, publish or display any part, in any form, or by any means. Reverse engineering, disassembly, or decompilation of this software, unless required by law for interoperability, is prohibited. The information contained herein is subject to change without notice and is not warranted to be error-free. If you find any errors, please report them to us in writing.

This software or hardware and documentation may provide access to or information on content, products and services from third parties. Oracle Corporation and its affiliates are not responsible for and expressly disclaim all warranties of any kind with respect to third-party content, products, and services. Oracle Corporation and its affiliates will not be responsible for any loss, costs, or damages incurred due to your access to or use of third-party content, products, or services.