

Oracle FLEXCUBE Password Change
Oracle FLEXCUBE Universal Banking
Release 14.6.2.0.0
Part No. F72916-01
[November] [2022]



Table of Contents

1. ABOUT THIS MANUAL.....	1-1
1.1 INTRODUCTION.....	1-1
1.2 AUDIENCE.....	1-1
1.3 ORGANIZATION.....	1-1
1.4 RELATED DOCUMENTS.....	1-1
2. ORACLE FLEXCUBE PASSWORD CHANGE.....	2-1
2.1 INTRODUCTION.....	2-1
3. CHANGING PASSWORDS IN ORACLE WEBLOGIC.....	3-1
3.1 INTRODUCTION.....	3-1
3.2 CHANGING HOST SCHEMA PASSWORD.....	3-1
3.2.1 Prerequisites.....	3-1
3.2.2 Changing Host Schema Password.....	3-1
3.3 CHANGING SCHEDULER DATA SOURCE PASSWORD.....	3-4
3.3.1 Prerequisites.....	3-4
3.3.2 Changing Scheduler Data Source Password.....	3-4
3.4 CHANGING ELCM DATA SOURCE PASSWORD.....	3-6
3.4.1 Prerequisites.....	3-6
3.4.2 Changing ELCM Data Source Password.....	3-7
3.5 CHANGING GATEWAY DATA SOURCE PASSWORD.....	3-8
3.5.1 Prerequisites.....	3-8
3.5.2 Changing Gateway Data Source Password.....	3-8
4. SERVER PASSWORD CHANGE.....	4-1
4.1 INTRODUCTION.....	4-1
4.2 CHANGING SMTP SERVER PASSWORD.....	4-1
4.2.1 Prerequisites.....	4-2
4.2.2 Changing SMTP Server Password.....	4-2
4.3 CHANGING EMS FTP SERVER PASSWORD.....	4-3
4.3.1 Prerequisites.....	4-4
4.3.2 Changing FTP Server Password.....	4-4
4.4 CHANGING DMS SERVER PASSWORD.....	4-5
4.4.1 Prerequisites.....	4-6

1. About this Manual

1.1 Introduction

This manual explains the method of changing the passwords in Oracle FLEXCUBE data sources and the servers associated with it.

1.2 Audience

This manual is intended for the following User/User Roles:

Role	Function
Implementers	Installation and implementation of Oracle FLEXCUBE
System Administrators	System administration

1.3 Organization

This manual is organized into the following chapters:

Chapter 1	About this Manual acquaints you quickly with the purpose, organization and the audience of the manual.
Chapter 2	Oracle FLEXCUBE Password Change gives an outline of the processes involved in changing the passwords of various data sources.
Chapter 3	Changing Passwords in Oracle WebLogic describes the method of changing data source passwords from Oracle WebLogic application server.
Chapter 4	Server Password Change explains the process of changing the passwords of the servers associated with Oracle FLEXCUBE.

1.4 Related Documents

Oracle FLEXCUBE Installation Guide

2. Oracle FLEXCUBE Password Change

2.1 Introduction

This chapter explains the process of changing the passwords of data sources associated with Oracle FLEXCUBE.

You will find the methods to change the passwords of the following components:

- Oracle FLEXCUBE Host Schema
- Scheduler Data Source
- ELCM Data Source
- Gateway Data Source

3. Changing Passwords in Oracle WebLogic

3.1 Introduction

This chapter describes the method of changing data source passwords from Oracle WebLogic application server.

3.2 Changing Host Schema Password

This section explains the method to change the password of Oracle FLEXCUBE Host schema.

If you change the host schema password, you also need to change the passwords of the data sources pointing to the host schema.

3.2.1 Prerequisites

Before you change and test the passwords of the data sources, ensure that the following activities are completed:

1. Determine the downtime for the password change and test activities.
2. Inform all concerned users and groups.
3. Ensure that all users have logged out of Oracle FLEXCUBE system.
4. Stop Oracle FLEXCUBE application.
5. Stop the target server to which the data sources point. To stop the target server, follow the steps below:
 - Login to Oracle WebLogic application server
 - Go to Home > Environments > Servers
 - Select and stop the server by clicking 'Stop' button.

This completes the prerequisites.

3.2.2 Changing Host Schema Password

You need to test whether the data source password change was successful. Follow the steps given below.

1. Login to Oracle WebLogic application server
2. Go to **Home > Services > Data Sources**. You will notice a table that contains the list of all data sources created in the application server.
3. Click the data source *jdbc/fcjdevDS*.
4. Select 'Connection Pool' tab.

The screenshot shows the Oracle WebLogic Server Administration Console interface. The main content area is titled 'Settings for FCUBDs' and has several tabs: 'Configuration', 'Targets', 'Monitoring', 'Control', 'Security', and 'Notes'. The 'Configuration' tab is active, and within it, the 'Connection Pool' sub-tab is selected. The 'URL' field is set to 'jdbc:oracle:thin:@10.184.74.142:1521:KERDEV3'. The 'Driver Class Name' is 'oracle.jdbc.OracleDriver'. The 'Properties' field contains 'use=FC1131IUI'. The 'System Properties' field is empty. The 'Password' and 'Confirm Password' fields are both filled with dots and are highlighted with a red box. The left sidebar shows the 'Domain Structure' tree with 'base_domain' selected, and the 'How do I...' section with links to configure testing options, statement cache, and credential mapping. The 'System Status' section shows 'Health of Running Servers' with 'Failed (0)', 'Critical (0)', 'Overloaded (0)', 'Warning (0)', and 'OK (2)'.

5. Change the password. Use the following fields:

Password

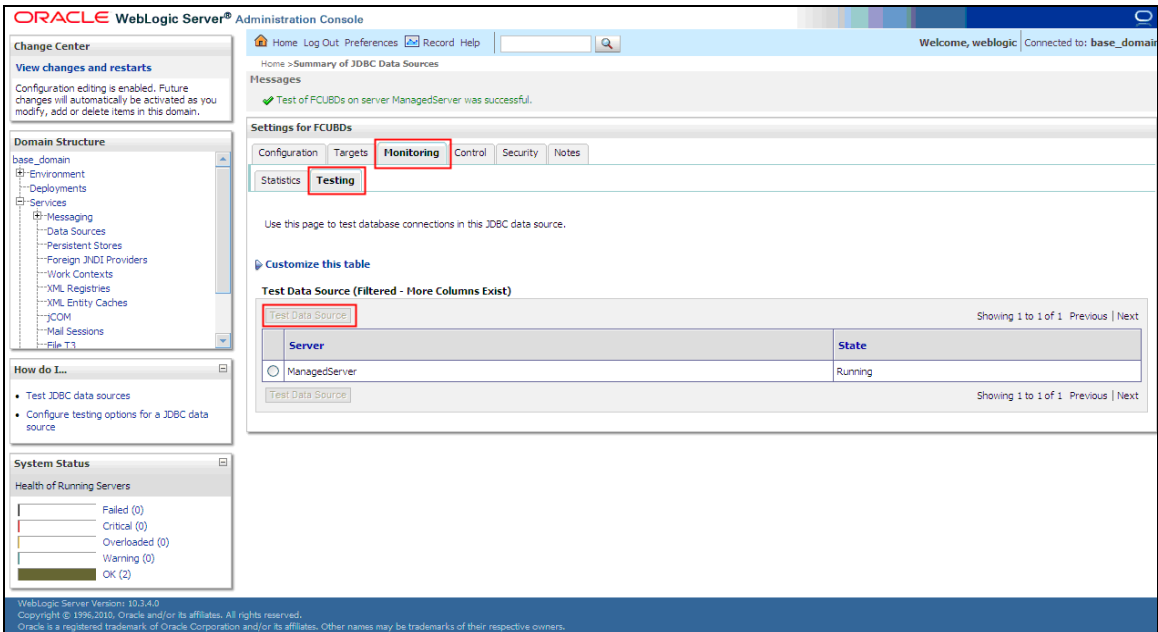
Specify the new password.

Confirm Password

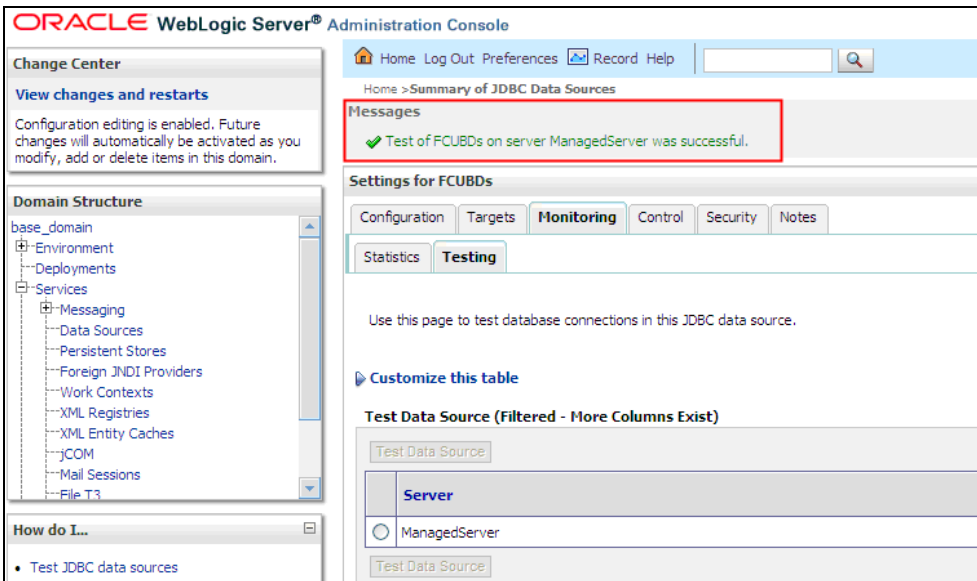
Specify the new password again.

6. Click 'Save'.

7. To test the data source, select 'Monitoring' tab and select 'Testing' tab under it.



8. Select the target server and click 'Test Data Source'.
9. The screen displays a message confirming successful testing.



10. Once you get the message, restart the application server.
11. Start Oracle FLEXCUBE.
12. Log in to Oracle FLEXCUBE. Launch a summary screen or execute a simple transaction to test.



Try the above process in UAT or any other test environment before you change the password in a production environment.

3.3 Changing Scheduler Data Source Password

After changing the host schema password, you need to change the password of scheduler data source.

3.3.1 Prerequisites

Before you change the password of scheduler data source, ensure that the following activities are completed:

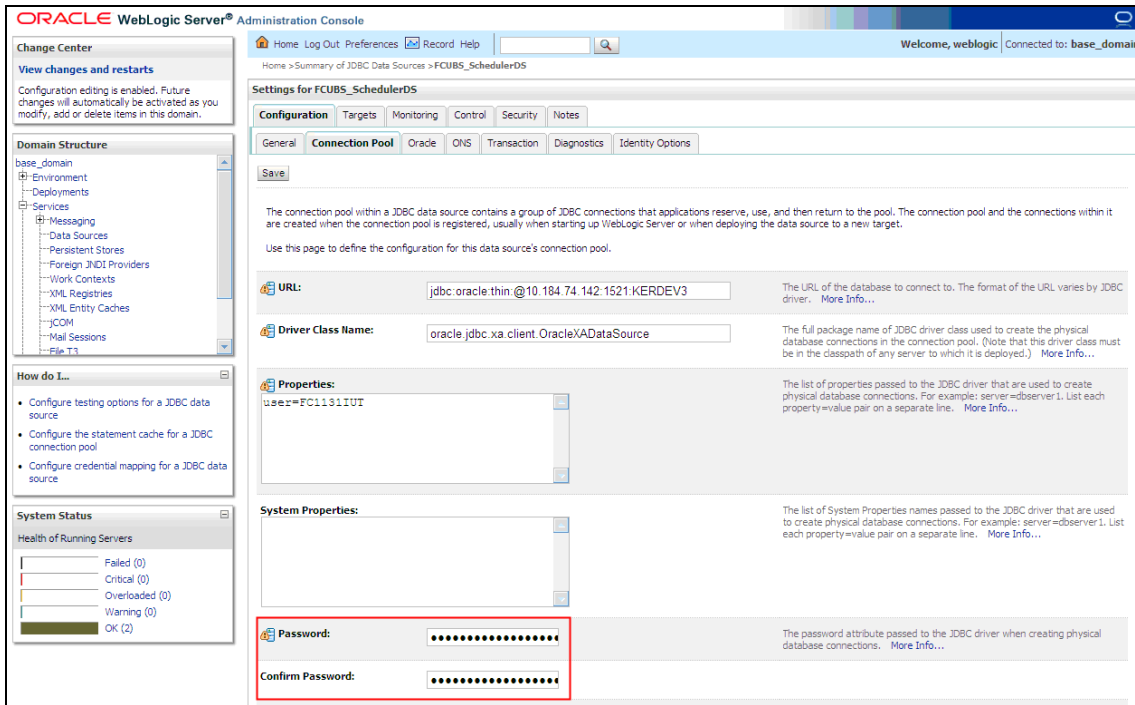
1. Determine the down time for the password change activity.
2. Inform all concerned users and groups.
3. Ensure that all users have logged out of Oracle FLEXCUBE system.
4. Stop Oracle FLEXCUBE application.
5. Stop the target server to which the data sources point. To stop the target server, follow the steps below:
 - Login to Oracle WebLogic application server
 - Go to **Home > Environments > Servers**
 - Select and stop the server by clicking 'Stop' button.

This completes the prerequisites.

3.3.2 Changing Scheduler Data Source Password

You need to change the password of scheduler data source. Follow the steps given below.

1. Login to Oracle WebLogic application server
2. Go to **Home > Services > Data Sources**. You will notice a table that contains the list of all data sources created in the application server.
3. Click the data scheduler source *jdbc/fcjSchedulerDS*.
4. Select **Connection Pool** tab.



5. Change the password. Use the following fields:

Password

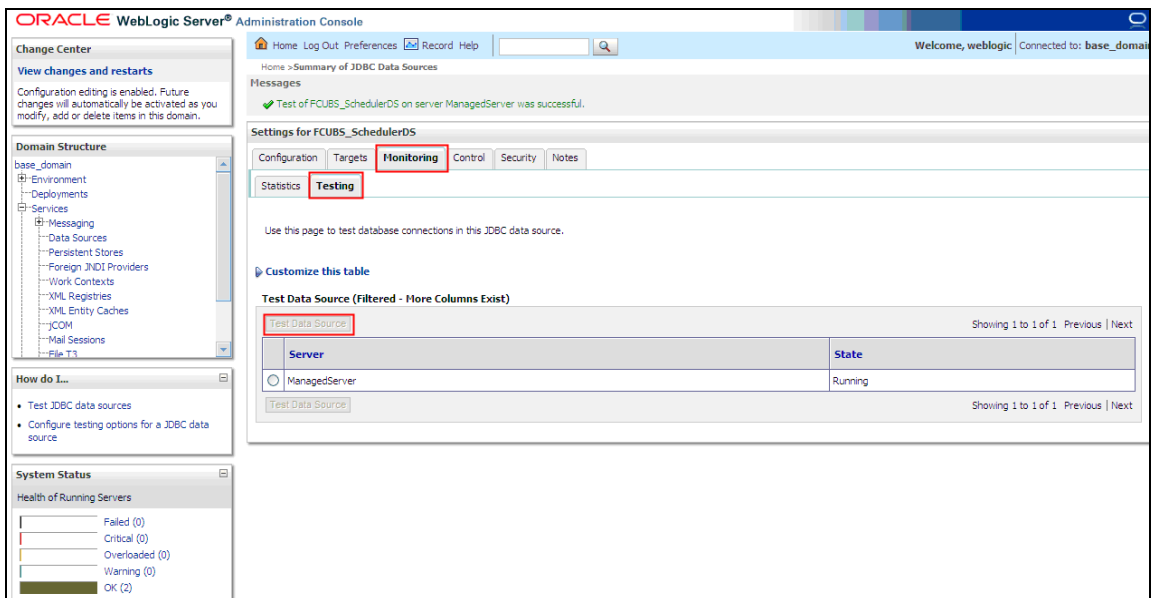
Specify the new password.

Confirm Password

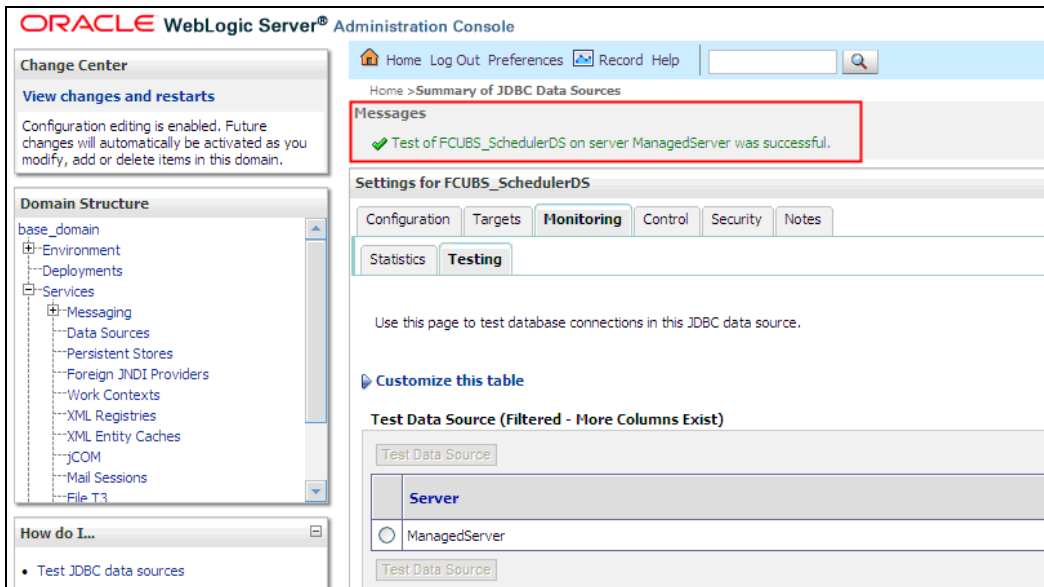
Specify the new password again.

6. Click 'Save'.

7. To test the data source, select 'Monitoring' tab and select 'Testing' tab under it.



8. Select the target server and click 'Test Data Source'.
9. The screen displays a message confirming successful testing.



You need to change the branch schema password after the above steps. Refer to the section 'Changing Password in Decentralized Setup' for information on changing the branch schema password from Oracle FLEXCUBE Universal Banking Solution Installer.



Try the above process in UAT or any other test environment before you change the password in a production environment.

3.4 Changing ELCM Data Source Password

You need to change the password of ELCM data source.

3.4.1 Prerequisites

Before you change the password of ELCM data source, ensure that the following activities are completed:

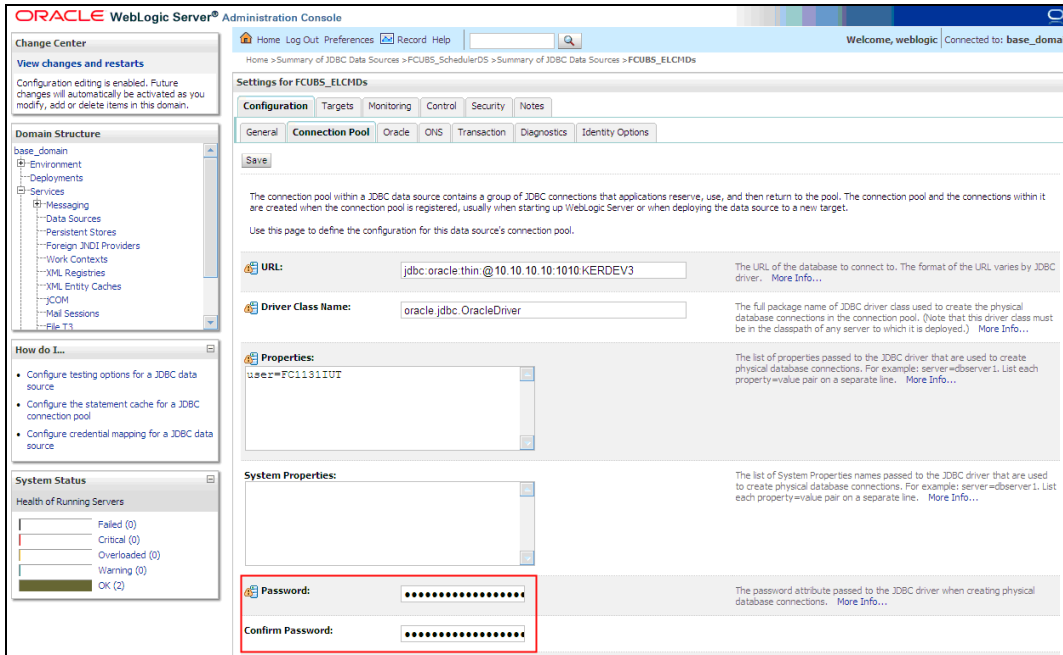
1. Determine the down time for the password change activity.
2. Inform all concerned users and groups.
3. Ensure that all users have logged out of Oracle FLEXCUBE system.
4. Stop Oracle FLEXCUBE application.
5. Stop the target server to which the data sources point. To stop the target server, follow the steps below:
 - Login to Oracle WebLogic application server
 - Go to **Home > Environments > Servers**
 - Select and stop the server by clicking 'Stop' button.

This completes the prerequisites.

3.4.2 Changing ELCM Data Source Password

You need to change the password of ELCM data source. Follow the steps given below.

1. Login to Oracle WebLogic application server.
2. Go to Home > Services > Data Sources. You will notice a table that contains the list of all data sources created in the application server.
3. Click the ELCM data source.
4. Select **Connection Pool** tab.



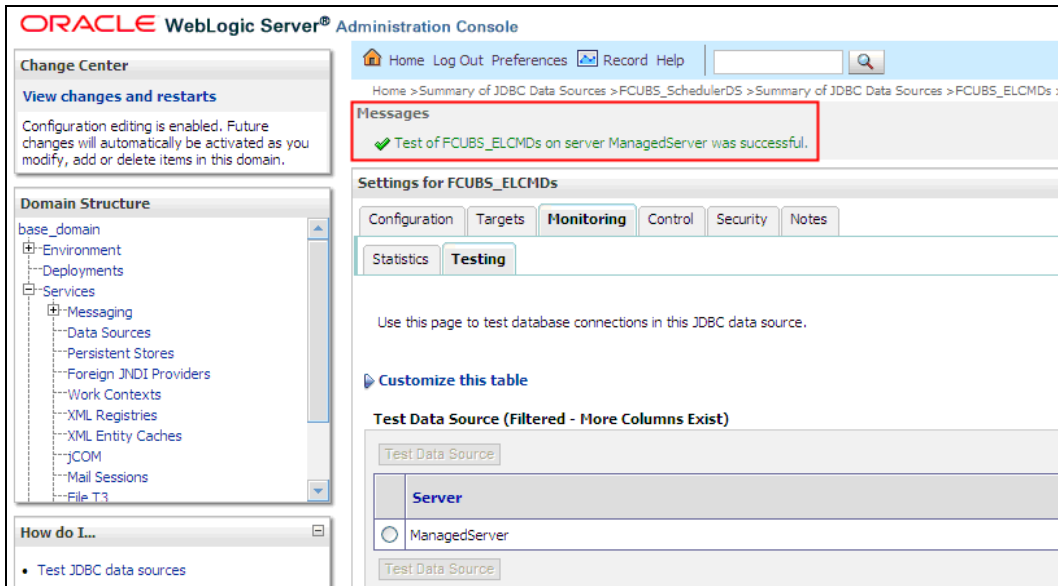
5. Change the password. Use the following fields:

Password

Specify the new password.

Confirm Password

6. Specify the new password again. Click 'Save'.
7. To test the data source, select Monitoring tab and select 'Testing' tab under it.
8. Select the target server and click 'Test Data Source'.
9. The screen displays a message confirming successful testing.



You need to change the branch schema password after the above steps. Refer to the section 'Changing Password in Decentralized Setup' for information on changing the branch schema password from Oracle FLEXCUBE Universal Banking Solution Installer.



Try the above process in UAT or any other test environment before you change the password in a production environment.

3.5 Changing Gateway Data Source Password

If you change the host schema password, you also need to change the gateway password.

3.5.1 Prerequisites

Before you change the gateway password, ensure that the following activities are completed:

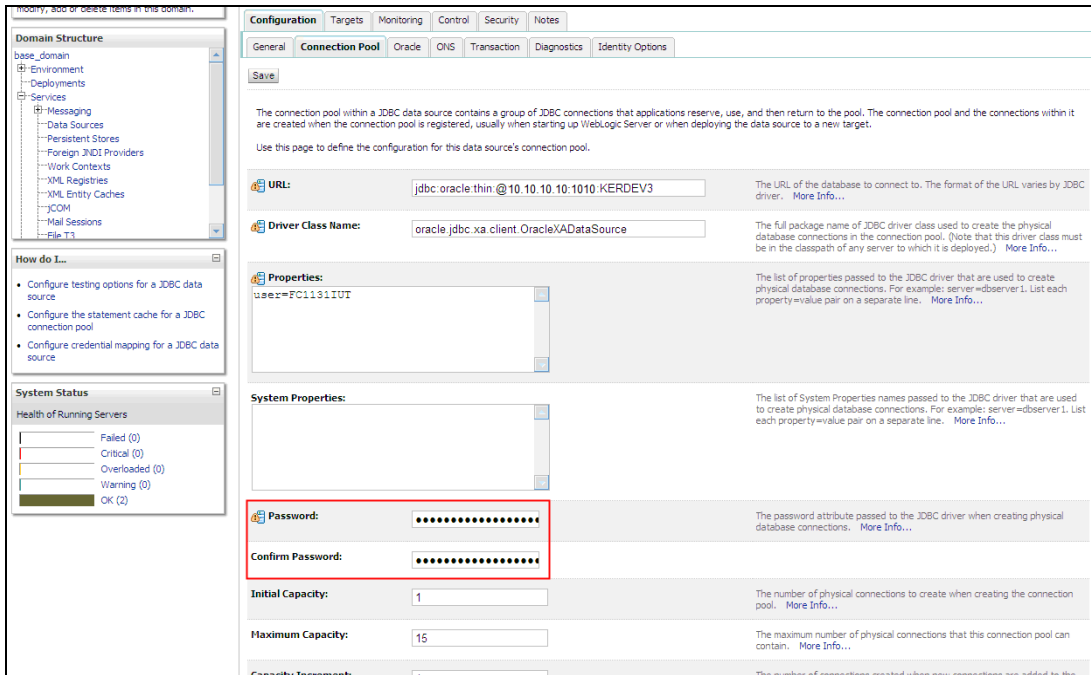
1. Determine the down time for the password change activity.
2. Inform all concerned users and groups.
3. Ensure that all users have logged out of Oracle FLEXCUBE system.
4. Stop Oracle FLEXCUBE application.
5. Stop the target server to which the data sources point. To stop the target server, follow the steps below:
 - Login to Oracle WebLogic application server
 - Go to Home > Environments > Servers
 - Select and stop the server by clicking 'Stop' button.

This completes the prerequisites.

3.5.2 Changing Gateway Data Source Password

You need to change the password of Gateway data source. Follow the steps given below.

1. Login to Oracle WebLogic application server
2. Go to Home > Services > Data Sources. You will notice a table that contains the list of all data sources created in the application server.
3. Select Gateway data source (*FLEXTEST.WORLD*).
4. Select 'Connection Pool' tab.



5. Change the password. Use the following fields:

Password

Specify the new password

Confirm Password

Specify the new password again

6. Click 'Save'.
7. To test the data source, select 'Monitoring' tab and select 'Testing tab' under it.
8. Select the target server and click 'Test Data Source'.
9. The screen displays a message confirming successful testing.

ORACLE WebLogic Server® Administration Console

Home > Summary of JDBC Data Sources > FCUBS_SchedulerDS > Summary of JDBC Data Sources > FCUBS_ELCCMDs > Summary of JDBC Data Sources > Sources > FLEXTEST.WORLD > Summary of JDBC Data Sources > FLEXTEST.WORLD

Messages
 ✓ Test of FLEXTEST.WORLD on server ManagedServer was successful.

Settings for FLEXTEST.WORLD

Configuration | Targets | **Monitoring** | Control | Security | Notes

Statistics | **Testing**

Use this page to test database connections in this JDBC data source.

Test Data Source (Filtered - More Columns Exist)

Test Data Source	Server	State
<input type="radio"/>	ManagedServer	Running

10. Once you get the message, restart the application server.

11. Start Oracle FLEXCUBE. Log in to Oracle FLEXCUBE and test whether the change was successful.

STOP Try the above process in UAT or any other test environment before you change the password in a production environment.

4. Server Password Change

4.1 Introduction

This chapter explains the process of changing the passwords of the servers associated with Oracle FLEXCUBE.

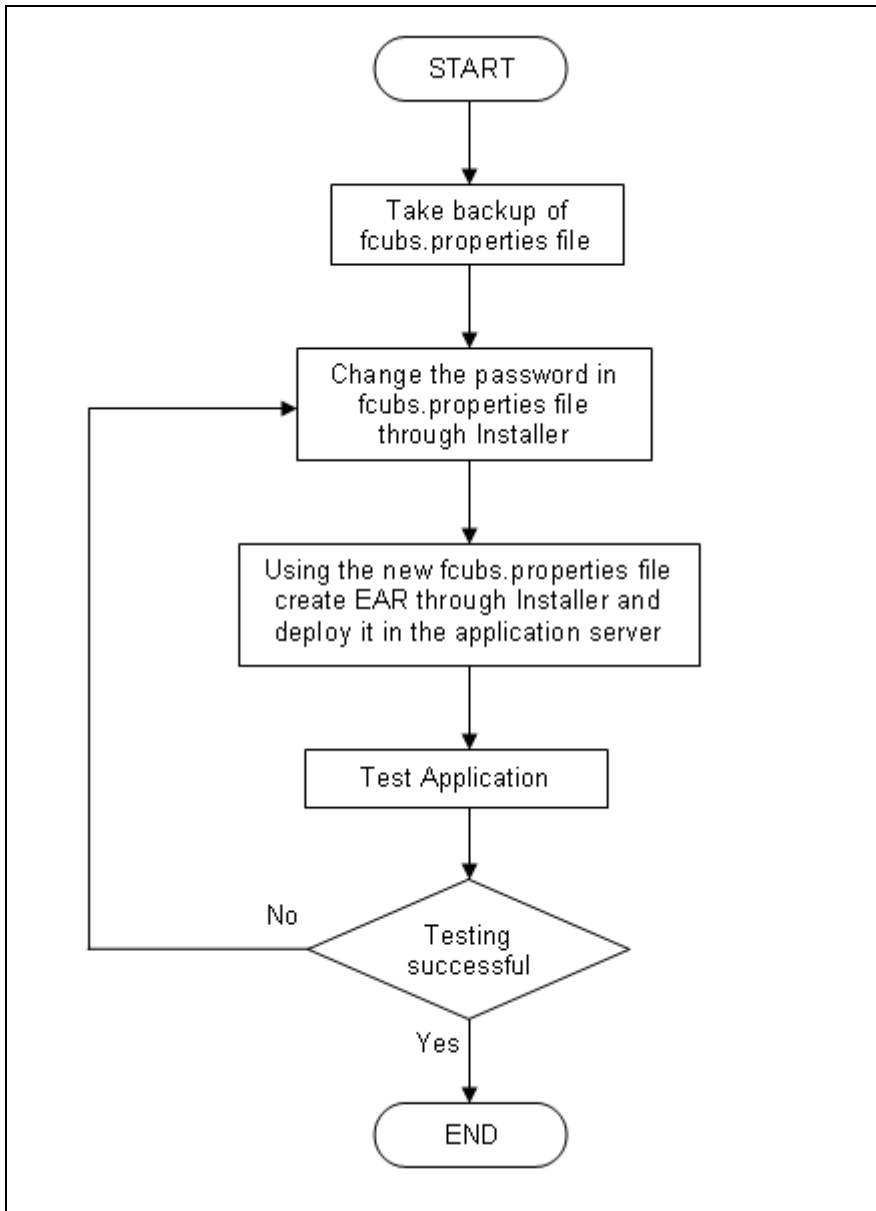
You will find the methods to change the passwords of the following servers:

- SMTP Server
- EMS FTP Server
- DMS Server

4.2 Changing SMTP Server Password

This section describes the process of changing the SMTP server password.

The following diagram briefs the steps involved in changing the passwords of the SMTP server.



4.2.1 Prerequisites

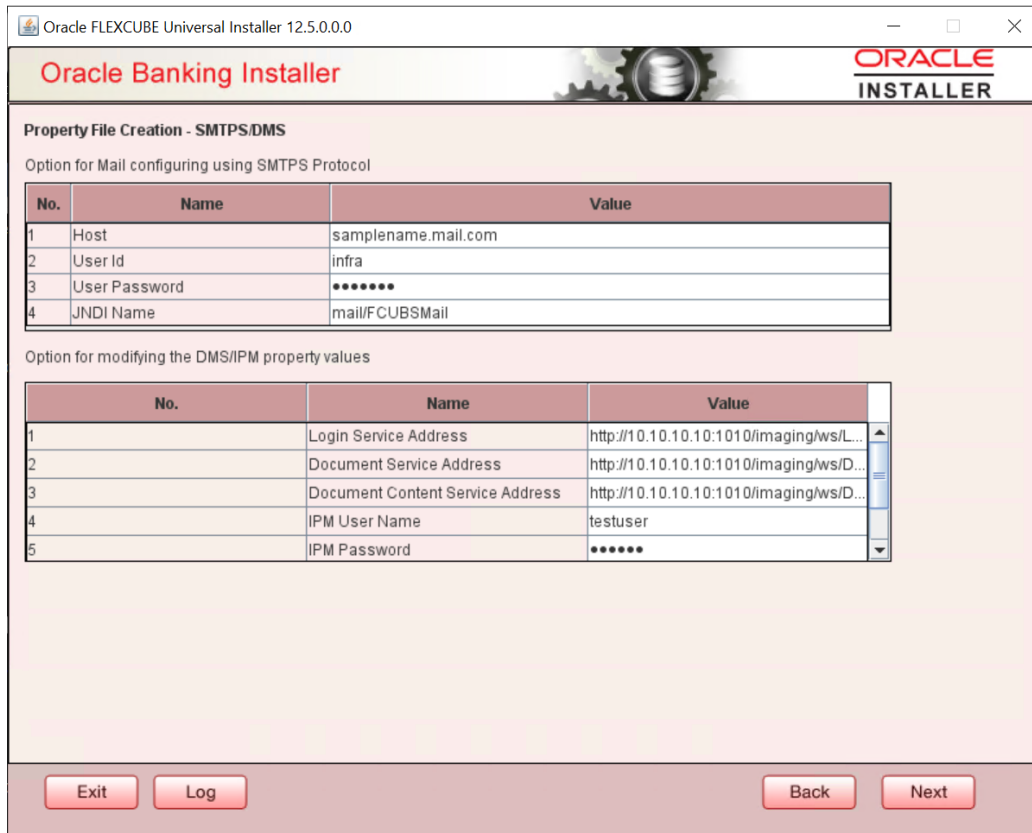
Before you change the password of the SMTP server, ensure that the following activity is completed:

- Take a backup of *fcubs.properties* file from the current EAR file.

4.2.2 Changing SMTP Server Password

To change the password of SMTP server, follow the steps given below:

1. In Oracle FLEXCUBE Universal Banking Solution Installer, load the existing property file. Go to the step where you can define the branch properties.



2. You need to modify the following field:

User Password

Specify the new password

3. Once you have deployed the EAR file, inform the concerned users and groups about the password change.
4. Test whether the password change was successful. In case the test is not successful, repeat the above steps and test again.

Refer to the Installation Guide for further information on the following topics:

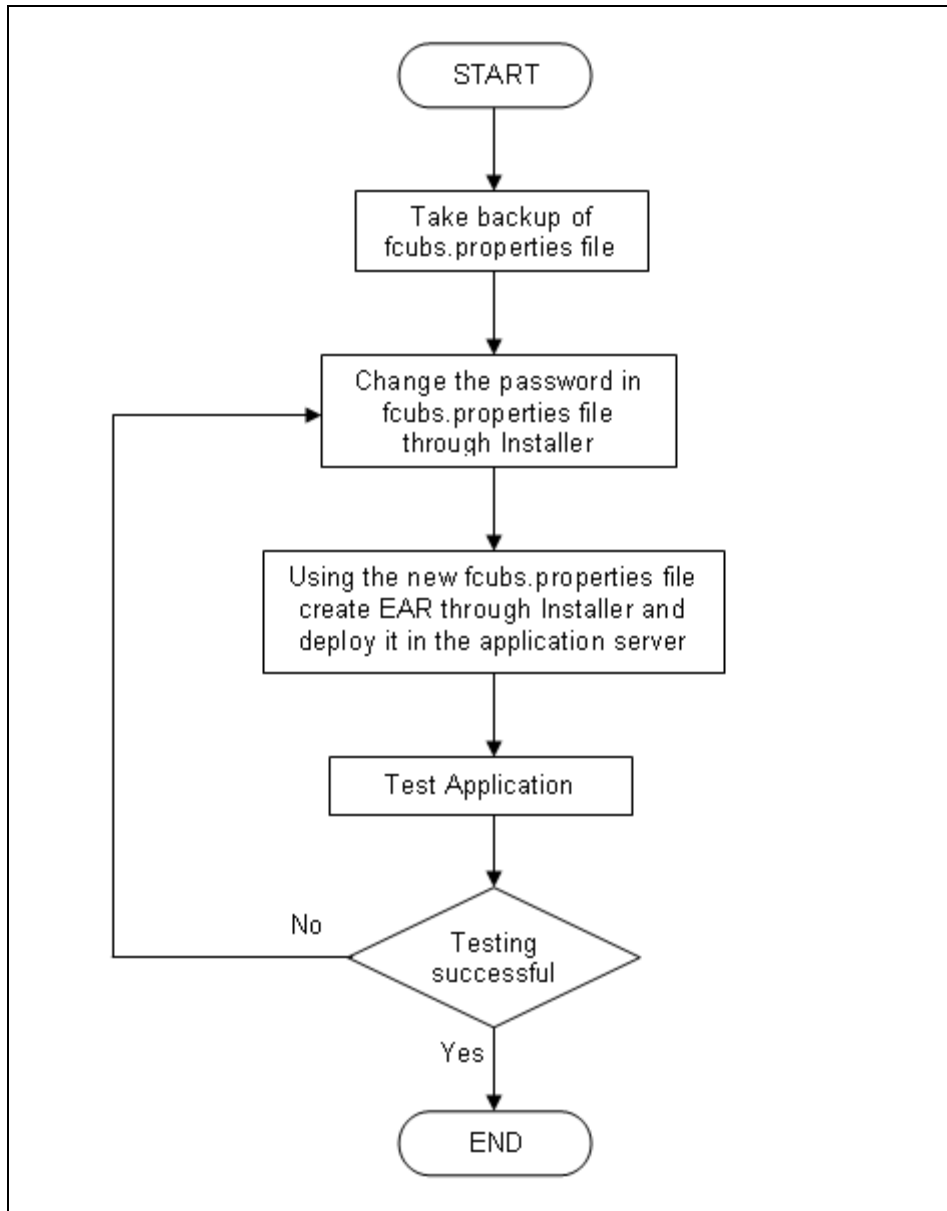
- *Creating EAR file*
- *Loading and editing the property file*
- *Deploying EAR file*

STOP Try the above process in UAT or any other test environment before you change the password in a production environment.

4.3 Changing EMS FTP Server Password

This section describes the process of changing the EMS FTP server password.

The following diagram briefs the steps involved in changing the passwords of the EMS FTP server.



4.3.1 Prerequisites

Before you change the password of the EMS FTP server, ensure that the following activity is completed:

Take a backup of *fcubs.properties* file from the current EAR file.

4.3.2 Changing FTP Server Password

To change the password of EMS FTP server, follow the steps given below:

1. In Oracle FLEXCUBE Universal Banking Solution Installer, load the existing property file. Go to the step where you can define the branch properties.
2. Change the password of the FTP server.

3. Once you have deployed the EAR file, inform the concerned users and groups about the password change.
4. Test whether the password change was successful. In case the test is not successful, repeat the above steps and test again.

Refer to the Installation Guide for further information on the following topics:

- *Creating EAR file*
- *Loading and editing the property file*
- *Deploying EAR file*

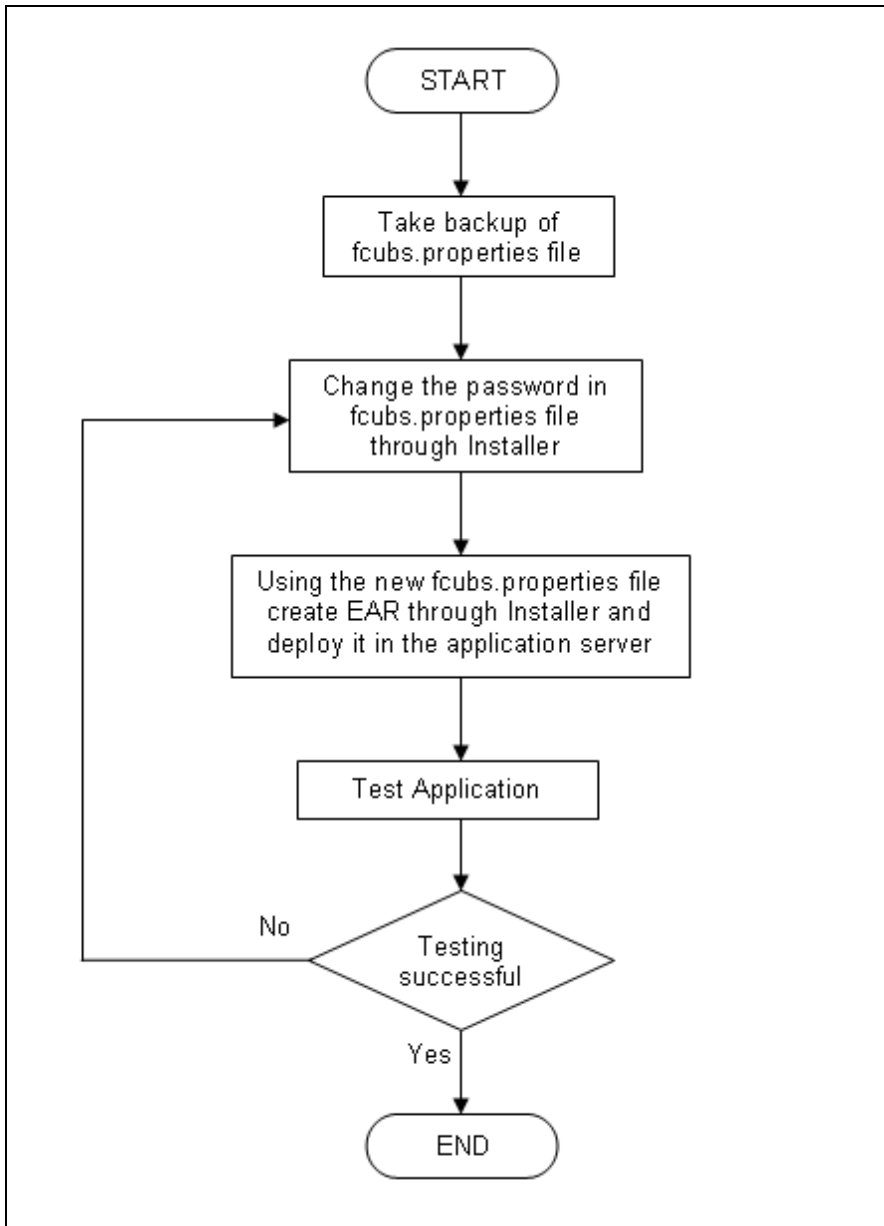


Try the above process in UAT or any other test environment before you change the password in a production environment.

4.4 Changing DMS Server Password

This section describes the process of changing the DMS server password.

The following diagram briefs the steps involved in changing the passwords of the DMS server.



4.4.1 Prerequisites

Before you change the password of the DMS server, ensure that the following activity is completed:

Take a backup of *fcubs.properties* file from the current EAR file.



Oracle FLEXCUBE Password Change
[November] [2022]
Version 14.6.2.0.0

Oracle Financial Services Software Limited
Oracle Park
Off Western Express Highway
Goregaon (East)
Mumbai, Maharashtra 400 063
India

Worldwide Inquiries:
Phone: +91 22 6718 3000
Fax: +91 22 6718 3001
<https://www.oracle.com/industries/financial-services/index.html>

Copyright © [2007], [2022], Oracle and/or its affiliates. All rights reserved.

Oracle and Java are registered trademarks of Oracle and/or its affiliates. Other names may be trademarks of their respective owners.

U.S. GOVERNMENT END USERS: Oracle programs, including any operating system, integrated software, any programs installed on the hardware, and/or documentation, delivered to U.S. Government end users are "commercial computer software" pursuant to the applicable Federal Acquisition Regulation and agency-specific supplemental regulations. As such, use, duplication, disclosure, modification, and adaptation of the programs, including any operating system, integrated software, any programs installed on the hardware, and/or documentation, shall be subject to license terms and license restrictions applicable to the programs. No other rights are granted to the U.S. Government.

This software or hardware is developed for general use in a variety of information management applications. It is not developed or intended for use in any inherently dangerous applications, including applications that may create a risk of personal injury. If you use this software or hardware in dangerous applications, then you shall be responsible to take all appropriate failsafe, backup, redundancy, and other measures to ensure its safe use. Oracle Corporation and its affiliates disclaim any liability for any damages caused by use of this software or hardware in dangerous applications.

This software and related documentation are provided under a license agreement containing restrictions on use and disclosure and are protected by intellectual property laws. Except as expressly permitted in your license agreement or allowed by law, you may not use, copy, reproduce, translate, broadcast, modify, license, transmit, distribute, exhibit, perform, publish or display any part, in any form, or by any means. Reverse engineering, disassembly, or decompilation of this software, unless required by law for interoperability, is prohibited.

The information contained herein is subject to change without notice and is not warranted to be error-free. If you find any errors, please report them to us in writing.

This software or hardware and documentation may provide access to or information on content, products and services from third parties. Oracle Corporation and its affiliates are not responsible for and expressly disclaim all warranties of any kind with respect to third-party content, products, and services. Oracle Corporation and its affiliates will not be responsible for any loss, costs, or damages incurred due to your access to or use of third-party content, products, or services.