

Oracle® Documaker

Enterprise Edition
Installation Guide

12.7.1

Part number: F76382-01

January 2023

Copyright © 2009, 2020, 2021, 2022 Oracle and/or its affiliates. All rights reserved.

The Programs (which include both the software and documentation) contain proprietary information; they are provided under a license agreement containing restrictions on use and disclosure and are also protected by copyright, patent, and other intellectual and industrial property laws. Reverse engineering, disassembly, or decompilation of the Programs, except to the extent required to obtain interoperability with other independently created software or as specified by law, is prohibited.

The information contained in this document is subject to change without notice. If you find any problems in the documentation, please report them to us in writing. This document is not warranted to be error-free. Except as may be expressly permitted in your license agreement for these Programs, no part of these Programs may be reproduced or transmitted in any form or by any means, electronic or mechanical, for any purpose.

If the Programs are delivered to the United States Government or anyone licensing or using the Programs on behalf of the United States Government, the following notice is applicable:

U.S. GOVERNMENT RIGHTS

Programs, software, databases, and related documentation and technical data delivered to U.S. Government customers are "commercial computer software" or "commercial technical data" pursuant to the applicable Federal Acquisition Regulation and agency-specific supplemental regulations. As such, use, duplication, disclosure, modification, and adaptation of the Programs, including documentation and technical data, shall be subject to the licensing restrictions set forth in the applicable Oracle license agreement, and, to the extent applicable, the additional rights set forth in FAR 52.227-19, Commercial Computer Software--Restricted Rights (June 1987). Oracle USA, Inc., 500 Oracle Parkway, Redwood City, CA 94065.

The Programs are not intended for use in any nuclear, aviation, mass transit, medical, or other inherently dangerous applications. It shall be the licensee's responsibility to take all appropriate fail-safe, backup, redundancy and other measures to ensure the safe use of such applications if the Programs are used for such purposes, and we disclaim liability for any damages caused by such use of the Programs.

The Programs may provide links to Web sites and access to content, products, and services from third parties. Oracle is not responsible for the availability of, or any content provided on, third-party Web sites. You bear all risks associated with the use of such content. If you choose to purchase any products or services from a third party, the relationship is directly between you and the third party. Oracle is not responsible for: (a) the quality of third-party products or services; or (b) fulfilling any of the terms of the agreement with the third party, including delivery of products or services and warranty obligations related to purchased products or services. Oracle is not responsible for any loss or damage of any sort that you may incur from dealing with any third party.

Oracle, JD Edwards, and PeopleSoft are registered trademarks of Oracle Corporation and/or its affiliates. Other names may be trademarks of their respective owners.

Contents

- Preface..... 4
 - Audience 4
 - Documentation Accessibility 4
 - Customer Support..... 4
 - Contact..... 5
 - Related Documents..... 6
- Overview 7**
- Product Overview..... 8
- Architecture Overview 9
- Installation Directories..... 10
- Installing ODEE 12**
- Stage 1: Pre-Installation Steps 13
 - Step A: Checking Requirements 13
 - Step B: Downloading the Software 16
- Stage 2: Running ODEE Installer 18
- Stage 3: Post-Setup..... 26
 - Running Database Scripts and Loading the MRL 26
 - Creating the Web Environment..... 33
 - Step D: Starting Documaker Administrator and Dashboard..... 38
 - Step E: Starting Documaker Interactive (Optional) 39
 - Step F: Final Configuration and Validation..... 42
- Maintaining Your System 45**
- Changing the Help Location..... 46
- Downloading Patches 47
- Downloading the Documentation 48
- Deinstalling the Software 49
- Appendix A 51
 - Navigating RCU Screens to Create Schemas 51
- Appendix B 58
 - Navigating Configuration Wizard Screens to Configure the Domain 58
- Appendix C 66
 - Certificates 66

Preface

This document contains information necessary for the installation and configuration of Oracle Documaker Enterprise onto a server environment. The main components of Oracle Documaker Enterprise are Oracle Documaker Document Factory and Documaker Interactive.

AUDIENCE

This document is intended for users who need to install Document Factory and Documaker Interactive. Familiarity with Oracle Documaker configuration is also beneficial; please see the *ODEE Administration Guide*.

DOCUMENTATION ACCESSIBILITY

Accessibility of Links to External Web Sites in Documentation

This documentation may contain links to Web sites of other companies or organizations that Oracle does not own or control. Oracle neither evaluates nor makes any representations regarding the accessibility of these Web sites.

CUSTOMER SUPPORT

If you have any questions about the installation or use of our products, please call +1.800.223.1711 or visit the My Oracle Support website:

<http://www.oracle.com/us/support/index.html>.

Go to My Oracle Support to find answers in the Oracle Support Knowledge Base, submit, update or review your Service Requests, engage the My Oracle Support Community, download software updates, and tap into Oracle proactive support tools and best practices.

Hearing impaired customers in the U.S. who need to speak with an Oracle Support representative may use a telecommunications relay service (TRS); information about TRS is available at <http://www.fcc.gov/cgb/consumerfacts/trs.html>, and a list of phone numbers is available at <http://www.fcc.gov/cgb/dro/trsphonebk.html>. International hearing impaired customers should use the TRS at 1.605.224.1837.

CONTACT

USA: +1.800.223.1711

Canada: 1.800.668.8921 or +1.905.890.6690

Latin America: 877.767.2253

For other regions including Latin America, Europe, Middle East, Africa, and Asia Pacific regions: Visit- <http://www.oracle.com/us/support/contact/index.html>.

Follow us



<https://blogs.oracle.com/insurance>



<https://www.facebook.com/oraclefs>



<https://twitter.com/oraclefs>



<https://www.linkedin.com/groups?gid=2271161>

RELATED DOCUMENTS

The Oracle Documaker documentation set, specifically:

- Documaker Installation Guide
- Documaker Administration Guide
- Documaker Factory Administration Guide.

To make sure you have the latest documentation, visit the Oracle Technology Network:

<http://www.oracle.com/technetwork/documentation/insurance-097481.html>

Conventions

The following text conventions are used in this document:

Convention	Description
bold	Indicates information you enter.
<i>italic</i>	Italic type indicates book titles, emphasis, or placeholder variables for which you supply particular values.
<code>monospace</code>	Monospace type indicates commands, URLs, code in examples, and text that appears on the screen.

Tips, Notes, Important Notes and Warnings

- A Tip provides a better way to use the software.
- A Note contains special information and reminders.
- An Important Note contains significant information about the use and understanding of the software.
- A Warning contains critical information that if ignored, may cause errors or result in the loss of information.

Dialog

“Dialog” is the term used to describe windows, screens and other types of user interface elements used to enable reciprocal communication or “dialog” between a computer and its user. It may communicate information to the user, prompt the user for a response, or both.

Chapter 1

Overview

This document describes how to install and configure Oracle Documaker Enterprise onto a server environment.

This chapter includes the following topics:

- *Product Overview* on page 8
- *Architecture Overview* on page 9
- *Installation Directories* on page 10

This table shows you where to go for information on the steps you take to install and maintain Oracle Documaker Enterprise Edition (ODEE):

For information on	Go to
System requirements	Documaker System Requirements Guide
Installing the system on Linux	Installing ODEE in a Linux Environment
Customizing the location of Help files	<i>Maintaining Your System</i>
Downloading patches	<i>Maintaining Your System</i>
Downloading documentation updates	<i>Maintaining Your System</i>
Uninstalling the software	<i>Deinstalling the Software</i>

PRODUCT OVERVIEW

The main components of Oracle Documaker Enterprise are:

- Oracle Documaker Document Factory
- Oracle Documaker Interactive
- Oracle Documaker Administrator
- Oracle Documaker Web Services (DWS)
- (Optional) Oracle Documaker Interactive (DI)
- Oracle Documaker Docupresentation (to support DI)

Oracle Documaker Document Factory

Oracle Documaker Document Factory is a document automation system that applies the assembly line concept from factory production to document production, delivery and system monitoring.

Oracle Documaker Dashboard

Oracle Documaker Dashboard is a web-based application that provides analytics tracking and insight into the jobs processing within the Document Factory.

Oracle Documaker Administrator

Oracle Documaker Administrator is a web-based application that lets system administrators view and edit Documaker Factory and Documaker Interactive configuration settings, and manage assembly lines.

Oracle Documaker Web Services

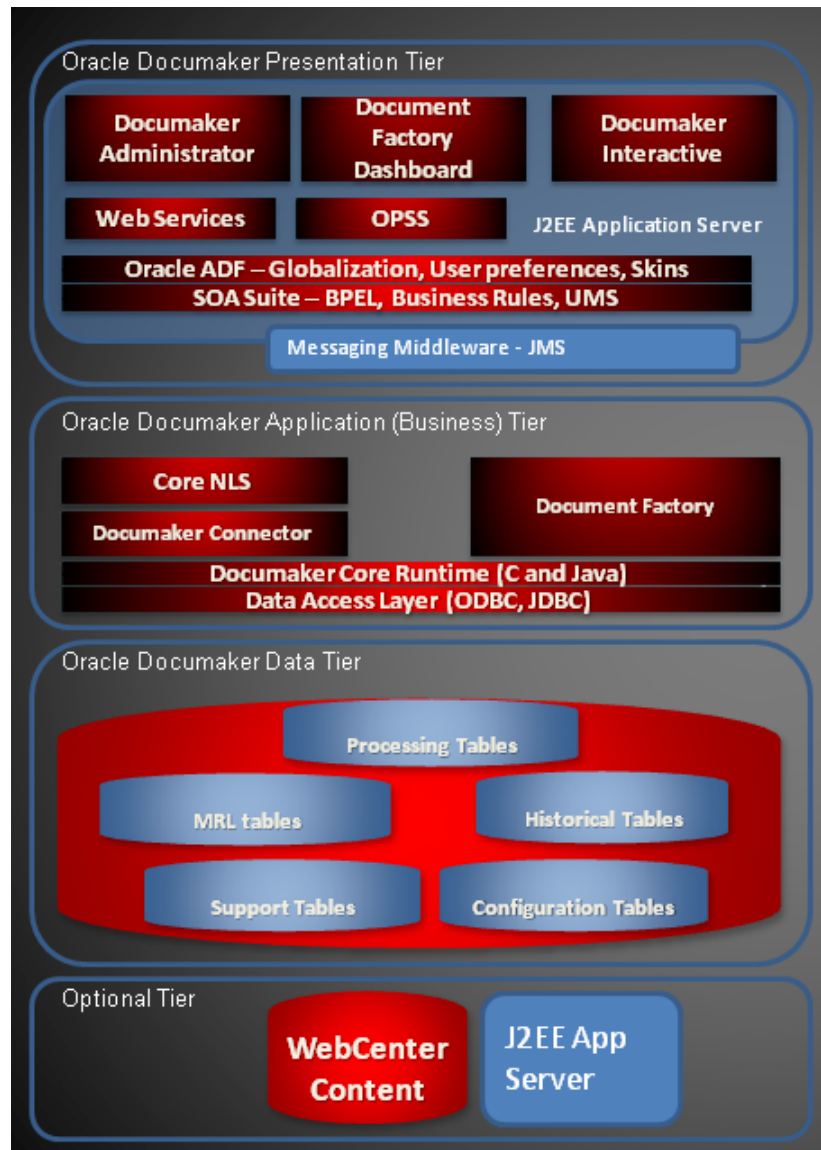
Oracle Documaker Web Services are SOAP web services that can submit jobs and check status of jobs in the Document Factory.

Oracle Documaker Interactive

Oracle Documaker Interactive is a workflow-enabled, web-based application that lets you create personalized customer correspondence by choosing content from a pre-approved library of documents graphics and attachments.

ARCHITECTURE OVERVIEW

This illustration provides an architectural overview of Oracle Documaker Enterprise Edition(ODEE):



INSTALLATION DIRECTORIES

By default Document Factory, Docupresentation and Shared Objects are installed in the following directory structure.

documaker

This directory contains the following subdirectories and files:

Directory	Description
bin	Contains the DLL, EXE, and shared object files for Documaker server processing. Documaker Studio can be used from this location.
database	Contains the SQL script used during the post-setup process that creates the database tables and sample resources which are used to validate the installation.
docfactory	Contains the DLL, EXE, and Java archive (JAR) files needed for Document Factory processing. The subdirectories are: bin, config, deploy, global, internal-db, lib, logs, and temp. Note: There is a directory for each worker within the temp directory. You can find the log information for each worker in these directories, including worker activity and errors.
docupresentation	The directory where Docupresentation (IDS) is installed. This directory includes many files and subdirectories to support IDS processing. These include DAP.INI, LONGCONF.XML, DOCSERV.XML, WIPEDIT.INI (configure auto/default fields), and the following log and debugging files: DPRTRC.LOG, WATCHDOG-STDERR.TXT, and WATCHDOG-STDOUT.TXT.
filesystem-archive	This is the default location for archived documents when using the file system storage destination.
hotdirectory	This is the default location for archived documents when using the file system storage destination. The Receiver monitors this directory for files that it can accept as jobs into the Document Factory. Set up this directory as a networked or shared directory so it can be accessed by applications that submit jobs into the Document Factory. To change the location of the watched directory, update the Receiver's HotDirectories property within the Documaker Administrator web application after you install it.
j2ee	The parent directory for web applications and J2EEcomponents that support the Document Factory and Documaker Interactive: Correspondence processes. Contains the scripts used to create the required and sample users and groups.
jre	Contains the Java archive (JAR) files and resources needed to run the Document Factory workers.
mstres	Contains the sample resources, including a master resource library and supporting runtime files used with Document Factory and Documaker Interactive: Correspondence.

documaker\j2ee

This directory contains the following sub directories and files in the WebLogic directory:

Directory	Description
bpel	The web service Java archive (JAR) files for processing Documaker Interactive: Correspondence requests for approval and rejection. It uses Oracle Business Rules to determine the next step in documents submitted within Documaker Interactive: Correspondence. See the Documaker Enterprise Administration Guide for more information.
dashboard	Contains the enterprise archive (EAR) file for the Document Factory Dashboard web application.
documaker_administrator	Contains the EAR file for the Documaker Administrator web application.
idocumaker_correspondence	Contains the EAR file for the Documaker Interactive: Correspondence web application. Also contains the pass-through web service that can be used to bypass the BPEL approval workflow within Documaker Interactive: Correspondence.
scripts	Contains the command scripts and associated files used to create the required and sample user accounts and establish the WebLogic/ WebSphere domains.

JAR files are used to distribute Java applications or libraries, in the form of Java class files and associated metadata and resources. JAR files are built on the ZIP file format.

An EAR file is a standard JAR file with an *ear* extension, with entries representing the modules of the application, and a metadata directory called META-INF which contains one or more deployment descriptors.

Chapter 2

Installing ODEE

This chapter provides detailed information on how to install and configure Oracle install and configure Oracle Documaker Enterprise Edition (ODEE)

The installation process consists of the following stages:

- *Stage 1: Pre-Installation Steps on page 13*
- *Stage 2: Running ODEE Installer on page 18*
- *Stage 3: Post-Setup on page 26*

STAGE 1: PRE-INSTALLATION STEPS

Before you install Oracle Documaker Enterprise Edition (ODEE), make sure you have completed the following steps. Contact the appropriate system administrator for help with web application server details, database, email, and other connection information.

If using DB2 you need to have your ODEE Administration and Assembly Line users and passwords preconfigured with the integrated security (Default is OS user).

Note:

1. Limitation to consider when using DB2 we had a restriction of limiting the schema name to 8 characters.

2. OS users for each schema to be created on the host where DB2 is installed.

- *Step A: Checking Requirements on page 13*
- *Step B: Downloading the Software on page 16*

STEP A: CHECKING REQUIREMENTS

1. Make sure you have met the required software and hardware as described in the [Documaker System Requirements Guide](#). This includes having the following:

- An installed database.
 - Oracle database
 - IBM DB2
 - LUW
 - DB2 users and groups setup is based on DB2 configuration. Default uses OS users and groups and schema/user names are case sensitive in DB2., Make sure the buffer space and default page size are set to 32K. If the data files are on the same drive as the database executable, DB2 requires an environment variable to be set via a command prompt. Once set, restart the database.
 - SQL Server
- An installed web application server.
 - Oracle Fusion Middleware WebLogic Server and Infrastructure

Note: WebLogic Server will not install to a path with spaces in directory names.

- Windows Only: Microsoft Visual C++ Redistributable Package (vcredist_x86.exe)

Note The installation routine checks for Visual C++ before beginning the installation and attempts to install the necessary run-time components if they are missing. If the installation routine is not able to install these run-time components, you must download and install the latest Microsoft Visual C++ 2013 Redistributable Package (x86) from Microsoft's Download Center:

<http://www.microsoft.com/downloads/>

You can confirm if the necessary Visual C++ run-time components were installed by checking the orainstall*.out log file.

2. Make sure you have the following information available during the installation process:

- The location where you will be installing ODEE. Default installation location is:

Windows: c:\oracle\odee_1

UNIX/Linux: user_homedir/u01/data/domains/odee_1

Note This is the default location unless there is already an ORACLE HOME directory, in which case the default is the existing ORACLE HOME location. The location path cannot contain spaces.

- The display names for the Document Factory System and Assembly Line.
 - The location of the hotfolder directories where extract data files can be picked up by the Document Factory.
3. Make sure you have the necessary the database connection information, including the database host, port, and system ID (SID). For DB2, the DB user ID pre-created for system Admin and user ID pre-created for Assembly Line, which are case sensitive. For SQL server provide new Database user which does not exist.
 4. Make sure you have the necessary web application server connection information including the following:

For	Have this information
WebLogic	Admin User and Password, Host, Oracle Home, Project Path, DomainName, Admin Server Name, Admin Server Port, Main Managed Server NAME, Cluster Name, Machine name, Coherence Cluster Name

5. If you will be using email distribution or notifications, make sure you have the necessary connection information including the host, port, user name, password, and default sender address. The username/password comes from the LDAP system.
6. If you will be using Oracle **WebCenter** Content (WCC) (formerly known as Universal Content Manager- UCM) for attachments, make sure you have the necessary connection information available including the user name, password, connection string, and document URL.
7. If you will be using Short Message System (SMS) notifications, make sure you have the necessary Unified Messaging Service (UMS) connection information including the user name, password, and endpoint.
8. If you will be using Documaker Interactive: Correspondence option and wish to use Oracle SOA BPEL option to process Approval Workflow, make sure you have deployed SOA BPEL and have the necessary connection information. Later you will deploy the BPEL process and Oracle Business Rules to SOA and can configure Documaker Interactive to use those endpoints for approval workflow.

9. Make sure you have the appropriate communication ports open between the servers and the appropriate permissions and rights on the servers. System components will use the credentials and ports entered during the installation; these ports may be blocked by default on servers with advanced security.

In addition, advanced security settings may prevent even administrative users from writing to some directories. Please contact your system administrator and security staff for confirmation.

10. Make sure you have obtained and configured the necessary certificates to enable communications with secured services.

Note Add a common user group for all Oracle installations so the installer files can be shared and recognized within the installed server. Run the installer as a user within this group.

STEP B: DOWNLOADING THE SOFTWARE

The Oracle Software Delivery Cloud (OSDC) site lets you download Oracle software products.

The process of downloading software from OSDC includes following steps:

1. First, go to the Oracle Software Delivery Cloud website:
<https://edelivery.oracle.com>
2. Sign in with your Oracle account. If you do not have an Oracle account, you can register for an account [here](#).
3. Search for the software by typing in the search bar and selecting it. For example, enter 12.6.2 to search for the list of Release 12.6.2 versions of Oracle Documaker software products.
4. Select the platform from the 'Select platform' drop-down.
5. The selected products are then listed under 'Download Queue'. Click the X (cross) which is adjacent to the product in case you want to remove individual files or click 'Remove All' in the lower left corner of the dialog if you want to remove all the listed items.
6. Click 'Continue' to proceed to next screen; you will see a list of the selected software for downloading.
7. Choose the individual software components for download and click 'Continue' if you wish to proceed or 'Return to Search' to review different software for downloading.
8. Read the license agreement carefully; mark the check box to agree with license agreements, and click 'Continue'.
9. Click 'Download' button to download the software or click the filename to individually download the files.

10. While you can save the file on any machine you choose, we recommend you save the file onto the machine where you plan to run it. You must unzip the file on the platform for which it was intended. The length of time it takes to download an application depends on the size of the download, your connection speed, and the amount of traffic on the site.
11. Once the Download has completed, click 'Return to Search' to search and download additional files or click 'Sign Out' to log off Oracle Software Delivery Cloud.

STAGE 2: RUNNING ODEE INSTALLER

In this stage, you run the setup application to install ODEE. You will be prompted to enter the information listed on the previous topic.

During the initial installation, the system creates a registry setting that identifies the Oracle Home directory. This directory is the location of where ODEE will be installed.

Note During the installation process:

- You are prompted to enter various required values. If you need help completing these values, contact the appropriate system administrator.
 - A set of sample resources will be provided. These resources let you deploy the example or Reference Implementation MRL (RI-MRL Correspondence).
-

Follow these steps to run the setup application:

1. From the installation package, on the Application Tier run:

```
Windows: setup.exe
Linux/UNIX: ./runInstaller
```

See Oracle Universal Installer (OUI) User's Guide For Command - Line options

2. On the Welcome Installer Screen click Next.

Note The first time you run an Oracle Installation it will request the location of the Oracle Inventory via the specify Inventory Details Window screen. Review the information and modify if necessary and click next.

3. On the Specify Installation Location installation screen, enter the Installation Path and Click Next.

The Defaults:

For Windows: c:\oracle\odee_1

For Linux/Unix: userhomedir/u01/data/domains/odee_1

Note The name of the installation directory cannot exceed 44 characters. The Oracle limit is 64 characters, but Documaker appends 20 characters to the path.

4. On the Specify Administrator Group and User installation screen, enter the data and click Next:

Field	Description
Group	Enter the group name. This provides the installation user with control over initial Administration group and Administration user
User	Enter the user name for the Administrator Group.
Password	Enter the password for the Administrator Group.

Field	Description
Confirm Password	Re-enter password to confirm.

Note With default WebLogic install and steps, we populate the WebLogic internal LDAP repository with these values and deploy the example/sample to web app users, so that users can get into Dashboard and Administrator, or optional DI if installation was done without any example users.

- On the Database Server Details Installation Screen, indicate the database you will use and click Next:
 - Oracle
 - SQL Server
 - DB2 LUW

6. On the Database Server Details window, enter data and click next:

Field	For an Oracle database	For a DB2 database	For SQL Server
Host	The host name or static IP address of the database server. The default is the computer where the installation is running from.	The host name or static IP address of the database server. The default is the computer where the installation is running from.	The host name or static IP address of the database server. The default is the computer where the installation is running from.
Port	The port number of the database; the default is 1521.	The port number of the database; the default is 50000	The port number of database; the default port is 1433.
Database	Oracle Database	Name of the database to which ODEE will be connected; the default is IDMAKER	Name of the database to which ODEE will be connected; the default is IDMAKER
Advanced Compression	True*	n/a	n/a

Note * The scripts enable advanced compression on certain database columns. If you do not have an Advanced Compression Options license for Oracle 11g, please remove the COMPRESS DEDUPLICATE and COMPRESS HIGH DEDUPLICATE attributes from the scripts in dmkr_asline.sql.

- The Administration Schema Details installation screen contains settings for configuring the Administration Schema where the configuration date is stored. On this screen enter the data and click Next:

Field	Description
DB Index Folder	The database folder where the physical database index files will be created. Note: This is applicable only for SQL server DB.
DB Folder	The database folder location where the physical database files will be created. If blank, the database folder (directory) is created in the working directory of the database installation. For an Oracle database, this is honored. For a DB2 LUW database, this is only honored if you uncomment the dmkr_admin schema portion and create database section to reference another DB Folder location or enable this setting when the DBA creates the database in DB2.
User	Enter the user name/schema name. The application will use to connect to the database for the Administration System DB schema. The default is dmkr_admin. In case of DB2 database, the user name must be less than 8 characters, is case sensitive and must preexist where DB2 server expects it for authentication (e.g. OS user by default).
Password	The password for the user name the application will use to connect to the database. The default is Admin12.
Confirm Password	Re-enter the password to confirm.
System ID	A unique system ID for this Document Factory instance. If other Document Factory instances (not Assembly Lines) are installed, they also require a unique system ID. For initial installations, accept the default of one (1).
System Name	This is the display name for the Document Factory instance within the Documaker Administrator. The default is System 1. Change this name to reflect the Document Factory system in your organization.

8. The Assembly Line Schema Details installation screen contains settings for configuring the Assembly Line schema where the Assembly Line processing (live) tables and historical tables are stored. On this screen enter the required data and click Next:

Field	Description
DB Index Folder	The database folder where the physical database index files will be created. Note: This is applicable only for SQL server DB.
DB Folder	The location where the physical database files will be created. If you leave this field blank, the database folder is created in the working directory of the database installation.

Field	Description
User	Enter the user name and schema name. The application will use to connect to the database for the Assembly Line schema. The default is dmkr_admin. In the case of DB2 database, the user name must be less than 8 characters, is case sensitive and must preexist where DB2 server expects it for authentication (e.g. OS user by default). <ul style="list-style-type: none"> This user name is also used for the: <ul style="list-style-type: none"> Database schema/owner JDBC data source name ODBC data source name Name applied to the Docupresentation service (docupresentation dmkr_asline)
Password	This is the password for this assembly line database. The default for Oracle DB and SQL Server is Asline12. This password is also the Documaker Studio password for the Docucorp user.
Confirm Password	Re-enter the password to confirm.
Assembly Line ID	This is the ID for this Assembly Line. If other assembly lines are installed, they require a unique Assembly Line ID. For initial installations, accept the default of one (1).
Assembly Line Name	The display name for the Assembly Line instance within the Documaker Administrator. The default is Assembly Line 1. Change this name to reflect the name of the assembly line in your organization.

9. The Application Server Details installation screen contains settings for connecting and deploying ODEE web application server resources and applications to WebLogic.

The installer provides a `weblogic_installation.properties` file with this information to for use by the two (convenience) methods pre-configured and provided to deploy to WebLogic Server.

Method 1: `wls_extend_clustered_server`,

Method 2: `wls_create_domain` script.

Select WebLogic Server and enter the required data and click Next.

Field	Description
User	Web Application Server admin user.
Password	Web Application Server admin user password.
Confirm Password	Re-enter the password to confirm.
Host	Web Application Server Host.

Field	Description
Oracle Home	Path to the WebLogic Server's Oracle Home (Example: C:\oracle\middleware\wls_home)
Project Path	Path to where the domains are created (Example: c:\oracle\middleware\wls_home\user_projects\domains)
Admin Server/Port	WebLogic Admin Server Name and Port. (Defaults to hostname_adminserver and port 7001)
Default Server Name	Main Managed Server name to target for the resources and web applications. Will configure in the weblogic_installation.properties file (Defaults to hostname_app_server_1)
Cluster Name	Cluster Name for domain if configured. Required if using wls_extend_clustered_server deployment method. Will configure in the weblogic_installation.properties file. (Defaults to hostname_app_cluster_1)
Machine Name	Machine Name for instance if configured in the domain. Required if using wls_extend_clustered_server deployment method. Will configure in the weblogic_installation.properties file. (Defaults to hostname_node_1)
Coherence Cluster	Coherence Cluster if configured in the domain. Required if using wls_extend_clustered_server deployment method. (Defaults to DataGridConfig)

10. The JMS Details installation screen contains the JMS values. If you need help with these values, contact your web application server administrator. In this installer screen enter the required data and click Next:

Field	Description
Connection Class	The name of the Java class used to connect to the JMS queues. Normally the default value is correct: oracle.documaker.ids.JMSConnection
InitialContextFactory	A Java class used when connecting to the JMS queues. Normally the default value is correct: weblogic.jndi.WLInitialContextFactory

Field	Description
Provider URL Protocol	The protocol used to connect to the JMS queues. Normally the default value is correct: t3
Principal	If JMS is secured then enter the required ID to connect to JMS. Example: weblogic
Credentials	If JMS is secured then enter the password required to connect to JMS. For WebLogic usually the WebLogic Server Admin account.
Confirm Credentials	Re-enter credentials to confirm.

11. On the Hot Directory installation screen enter the HotFolder path and click Next. This path can include more than one directory, each separated by a comma.

This Hot Folder path applies to the Assembly Line in the previous window. The default is:

Window: ODEE_HOME\documaker\hotdirectory

Linux/UNIX: ODEE_HOME/documaker/hotdirectory

Note This directory is monitored for jobs that are waiting to be processed.

12. (Optional) On the optional SMTP Email Server Details Installation screen enter the data and click on next:

Field	Description
Host	Enter the IP address or server name of the SMTP server.
Port	Enter the port number of the SMTP server.
User	Enter the user name for the SMTP server.
Password	Enter the password for the SMTP server.
Confirm Password	Re-enter password to confirm.
Sender	Enter the email address the SMTP server uses as the sender for any email publication from the Documaker Document Factory. The default is: admin@hostname

13. (Optional) On the WebCenter Information installation screen enter the WebCenterContent settings and click Next:

Field	Description
Enable	Select True to enable documents to be archived to WebCenter. The default is False.

Field	Description
User	Enter the WebCenter user name.
Password	Enter the WebCenter password.
Confirm Password	Re-enter password to confirm.
Connection String	Enter the connection string. Here is an example: idc://hostname:4444
Document URL	Enter the document URL. Here is the default: http://hostname:16200/cs/groups/secure/documents/document

14. (Optional) On the UMS Details installation screen enter the User Messaging Services settings and click Next:

Field	Description
Enable	Select True to enable user messaging services. The default is False.
User	Enter the UMS server user name.
Password	Enter the UMS server user password.
Confirm Password	Re-enter password to confirm.
Endpoint	Enter the URL of the UMS server used for notifications. The default is: http://ipaddress of host:port/sdpMessaging/parlayx/SendMessageService

15. On the Installation Summary installation screen, review your installation settings, space requirements, and availability. To make any changes, click Back. Click on Save to save your changes.

Note: You can save a OUI response file that contains the data entered (except passwords) to be used as input to run installer silently or with GUI with data pre-filled. Useful for standing up additional ODEE Factory instances on other nodes. You can manually add passwords in response file if desired to be used in subsequent installs silently

16. Click Install to begin the installation process.
17. The Install Status installation screen indicates the progress of the installation. To stop the installation process, click Cancel.
18. If errors occur during the installation, review the installActions[*date_and_time*].log file. This file is usually located in this directory:

Windows: [drive_letter:] \Program Files\Oracle\Inventory\logs\ or in
 %TEMP%

UNIX/Linux: /tmp/

Note that these standard out files and error logs are also created during the installation process:

- oraInstall[*date_time*].out
- oraInstall[*date_time*].err

19. When the installation process has completed, the Installation complete installation screen appears. Click Finish to close the installation program.

STAGE 3: POST-SETUP

RUNNING DATABASE SCRIPTS AND LOADING THE MRL

The steps you take to run the database scripts and optionally load the Reference Implementation MRL (RI-MRL) master resource library vary, depending on the type of database you are using.

If you are using	Follow these steps
An Oracle database	<i>Running the Oracle Database Scripts</i>
A DB2 database	<i>Running the DB2 Database Scripts</i>
SQL Server database	<i>Running the SQL Server Database Scripts</i>

Note To change the Documaker Studio user passwords from the Assembly Line schema password, update this script before running it by modifying the Insert commands for the DMRES_DMUSER table.

Running the Oracle Database Scripts

Follow these steps to run the Oracle database scripts:

1. Run the scripts located in the \documaker\database\oracle11g directory. You may need to copy these files to the database server. To run these files, you must have permission to create tables and insert data into the database. These scripts create the required Document Factory administrative and processing database tables. Contact your database administrator (DBA) for assistance.

Script	Description
dmkr_admin.sql	Creates the configuration schema and populates the tables with the entries captured during setup
dmkr_asline.sql	Creates the assembly line schema and the Documaker Studio default user accounts

Note The scripts enable advanced compression on certain database columns. If you do not have an Advanced Compression Options license for Oracle 11g, please remove the *COMPRESS DEDUPLICATE* and *COMPRESS HIGH DEDUPLICATE* attributes from the scripts in dmkr_asline.sql.

2. (Optional) To create sample user accounts for demonstration purposes and to test the deployment, run the following as the dmkr_admin user:

```
dmkr_admin_user_examples.sql
```

3. (Optional) ODEE includes database entries that enable the ODEE web applications to be viewed in other languages. To add support for languages other than English, perform these steps:
- a. Make sure the script is executed using UTF-8 encoding so the Unicode text within the script is put into the database properly.

If you are using	Then
SQL Developer to run the script	Change the file encoding option to UTF-8 by selecting the Tools, Preferences, Environment option and then setting the Encoding option to UTF8.
SQL Plus to run the script	Set this environment variable (for Windows): NLS_LANG=AL32UTF8

- b. Run the following scripts as the dmkr_admin user:

- dmkr_admin_xx.sql
- dmkr_asline_xx.sql

Where xx is the abbreviation for the desired language:

Languages	Abbreviation
Dutch	nl
English (Great Britain)	en_GB
French	fr
German	de
Indonesian	in
Japanese	ja
Polish	pl
Portuguese	pt
Russian	ru
Simplified Chinese	zh
Spanish	es

- c. Make sure the insert statements are committed to the database.

4. R4. Run this batch file from the application server to load the Correspondence MRL:

```
\documaker\mstres\dmres\deploysamplemrl.bat
```

This loads the MRL into the database, deploying the sample resources which are used to validate the Document Factory installation.

5. Continue with the steps outlined in Creating the Web Environment on page 29.
6. Run this batch file from the application server to load the Correspondence MRL:

```
\documaker\mstrres\dmres\deploysamplemrl.bat
```

This loads the MRL into the database, deploying the sample resources which are used to validate the Document Factory installation.

Note: Ignore this message while running deploy sample MRL: "Did not promote Older resource, Name <TIMESTAMP> ,Type <SYS> , Ver<00001> ,Rev<00001>."

Running the DB2 Database Scripts

Before you run the scripts, you must create the database. Use the below instructions for installing DB2 LUW:

Creating a DB2 database

1. Add a database in DB2 (Example name:IDMAKER)
2. For this new database, change the default path to be an empty directory such as c:\db2.
3. Set the buffer space and default page size to 32K, then specify where to store the data.

Next, specify the locale and set the Code to UTF-8.

Running the scripts

Note To run the DB scripts, confirm that 2 users have been created on the DB2 server with the names entered on the Installers database schema screens. Names are Case sensitive. These names must be in keeping with the authentication method that will be used by the database and the related length restrictions. For example, if you are using OS authentication for DB2 on operating system such as AIX, the schema names are limited to 8 characters. To run the Sql scripts, the user logged in must have required permissions to create and modify tables.

1. Add the DB2 JDBC drivers into ODEE Factory the classpath locations below for the application to access:

```
documaker\bin\lib
documaker\docfactory\lib
documaker\docupresentment\lib.
```

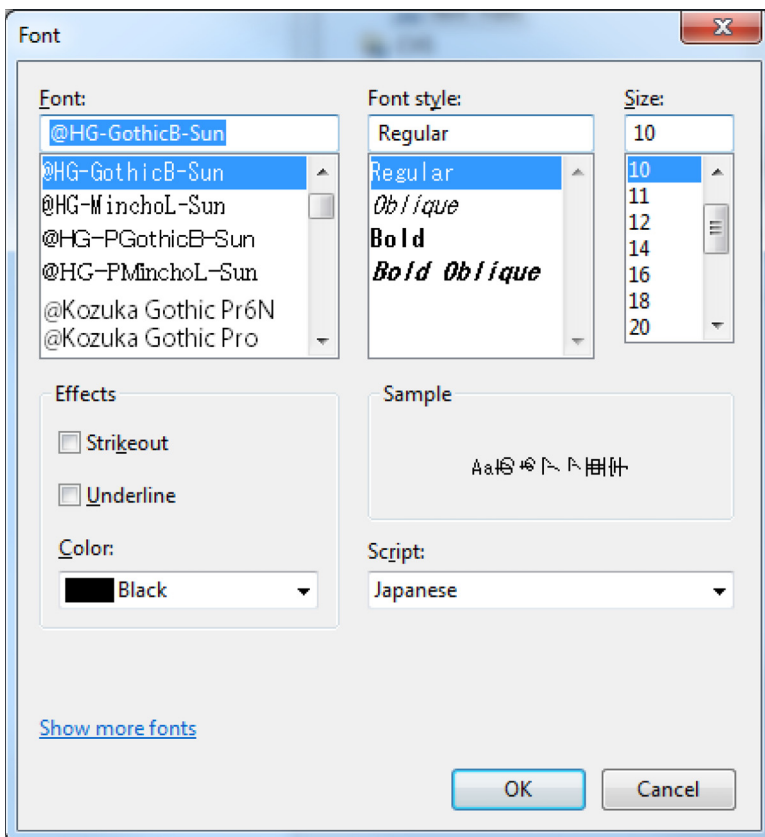
- Example of DB2 LUW jars: db2jcc4.jar and db2jcc_license_cu.jar

Note: Contact your DBA if you need assistance locating the correct files.

2. Run the scripts located in the \documaker\database\db2 directory. You may need to copy these files to the database server. To run these files, you must have permission to create tables and insert data into the database. These scripts create the required Document Factory administrative and processing database tables.

Script	Description
dmkr_admin.sql	Creates the Administration schema and populates the default configuration data.
dmkr_asline.sql	Creates the Assembly line schema

3. (Optional) In order to populate the system with alternative language options, do the following:
 - a. Open IBM Data Studio and set font in editor for properly displaying Japanese (HG-GothicB-Sun).



- b. Open the dmkr_admin_xx.sql in a text editor that displays text correctly (in the example below, Notepad properly displayed Japanese text).
 - c. Copy and paste the content of the script into IBM Data Studio tool editor for SQL and validate the characters are correct.

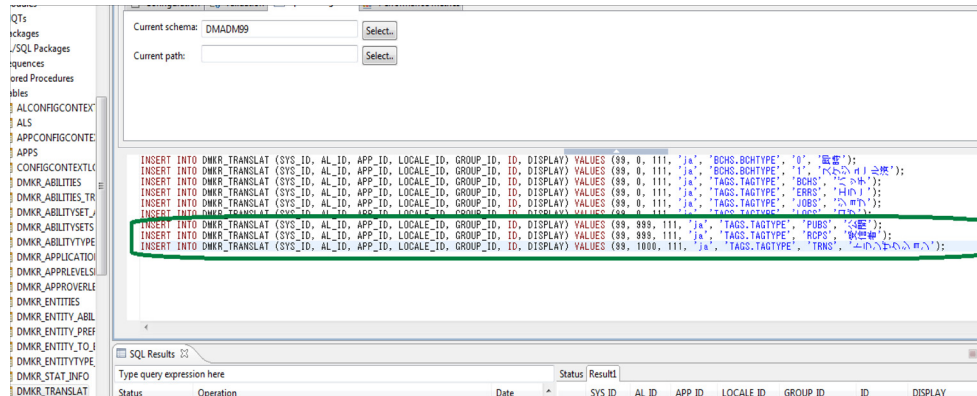
Example from Notepad, dmkr_admin_ja.sql:

```

INSERT INTO DMKR_TRANSLAT (SYS_ID, AL_ID, APP_ID,
LOCALE_ID, GROUP_ID, ID, DISPLAY) VALUES (99, 999, 111,
'ja', 'TAGS.TAGTYPE', 'PUBS', 'ÃÖ`Èñã');
INSERT INTO DMKR_TRANSLAT (SYS_ID, AL_ID, APP_ID, LOCALE_ID,
GROUP_ID, ID, DISPLAY) VALUES (99, 999, 111, 'ja', 'TAGS.TAGTYPE',
'RCPS', 'Ãèø%ø`ÈÄÖ');

INSERT INTO DMKR_TRANSLAT (SYS_ID, AL_ID, APP_ID, LOCALE_ID,
GROUP_ID, ID, DISPLAY) VALUES (99, 1000, 111, 'ja', 'TAGS.TAGTYPE',
'TRNS', '„Èà„É@„ÈŠ„Ç¹„ÇØ„Ç²„Éß„ÈŠ');
From IBM Data Studio:

```



- d. Process the DML statements, inserts, to the correct dmkr_admin schema.
 - e. Validate that the content appear correctly in table by selecting the rows for review.
 - f. Repeat with the dmkr_asline_xx.sql targeting the dmkr_asline schema for inserts.
4. If you are using OS Integrated security for DB2, make sure the Admin and Assembly Line users are also DB2 users.
 5. (Optional) If desiring to deploy the Reference Implementation MRL (RI-MRL) resources then run the deploysamplemrl.bat|.sh) batch|script file on the Application Tier server to load MRL into the Assembly Line database schema. Example:
 Windows: **ODEE_HOME**\documaker\mstres\dmres\deploysamplemrl.bat
 Linux: **ODEE_HOME**/documaker/mstres/dmres/deploysamplemrl.sh
 6. (Optional) To create sample user accounts for demonstration purposes and/or to test the deployment with the RI-MRL, run the following SQL as the DB Admin:
 dmkr_admin_user_examples.sql.

Note Keep in mind that the users and sample data referenced in items 5 and 6 above are example data so that you can get a feel for the system and validate that it is installed correctly. Your Identity Management system and Master Library Resources are necessary for implementation of specific system. Once you have configured to your identity management system, you can safely remove the example users in the entities tables and the sample library in the DMRES_LBY* tables. See the DEAG for more.

7. Continue with the steps outlined in *Creating the Web Environment* section.

Running the SQL Server Database Scripts

Follow these steps to run the SQL Server database scripts:

1. If using DB2 or SQL Server database then it is necessary to add the JDBC drivers from those products into ODEE Factory the classpath locations below for the application to access:

`documaker\bin\lib`

`documaker\docfactory\lib`

`documaker\docupresentment\lib`

Example of SQL Server jars: `sqljdbc4.jar`

2. For For MS SQL Server, copy the `sqljdbc4.jar` file under `wl_server\server\lib` and `idocumaker_domain\lib` if JDBC Component Schema fails to make connection.

In general, copy the **sqljdbc4.jar** file to the appropriate locations in the ODEE installed directories, such as `documaker\bin\lib`, `documaker\docfactory\lib`, and `documaker\docupresentment\lib`.

3. Run the scripts located in the `\documaker\database\sqlserver2012` directory. You may need to copy these files to the database server. To run these files, you must have permission to create tables and insert data into the database. These scripts create the required Document Factory administrative and processing database tables. Contact your database administrator (DBA) for assistance.

Note Installer sets the default index and non index File Group values (SIZE,MAXSIZE, FILEGROWTH) in the admin and as line scripts. User may need to update these values as per requirement prior to the sql file execution.

Script	Description
<code>dmkr_admin.sql</code>	Creates the configuration schema and populates the tables with the entries captured during setup
<code>dmkr_asline.sql</code>	Creates the assembly line schema and the Documaker Studio default user accounts

Note: The names of these scripts are user-defined and may vary.

4. To create sample user accounts for demonstration purposes and to test the deployment, run the following as the DBAdmin user:

```
dmkr_admin_user_examples.sql
```

5. (Optional) ODEE includes database entries that enable the ODEE web applications to be viewed in other languages. To add support for languages other than English, perform these steps:
- Make sure the script is executed using UTF-8 encoding so the Unicode text within the script is put into the database properly.

If you are using	Then
Microsoft SQL Server Management Studio	Change the file encoding option to UTF-8 by selecting the Tools, Preferences, Environment option and then setting the Encoding option to UTF8.

- Run the following scripts as the DB Admin user:

- dmkr_admin_xx.sql
- dmkr_asline_xx.sql

Where xx is the abbreviation for the desired language:

Languages	Abbreviation
Dutch	nl
English (Great Britain)	en_GB
French	fr
German	de
Indonesian	in
Japanese	ja
Polish	pl
Portuguese	pt
Russian	ru
Simplified Chinese	zh
Spanish	es

- Make sure the insert statements are committed to the database.
6. Run this batch file from the application server to load the CorrespondenceMRL:
- ```
\documaker\mstres\dmres\deploysamplemrl.bat
```
- This loads the MRL into the database, deploying the sample resources which are used to validate the Document Factory installation.
7. Continue with the steps outlined in *Creating the Web Environment* section.



## CREATING THE WEB ENVIRONMENT

The steps you take to create the web environment vary, depending on the type of database you are using.

| If you are using | Follow these steps              |
|------------------|---------------------------------|
| WebLogic         | Creating WebLogic User Accounts |

### Creating and Deploying a WebLogic Domain

A WebLogic administrator for the WebLogic server needs to complete the following steps to create the WebLogic domain and deploy these web applications:

- Documaker Dashboard
  - Documaker Administrator
  - Documaker Web Services
  - Documaker Interactive:Correspondence (Optional)
1. Copy the \documaker\j2ee directory from the application (business) tier to the WebLogic server using the same directory structure as on the application tier server, assuming the Application Tier and WebLogic deployment are on separate servers.
  2. Set the variables specific to your environment by editing these files within the ODEE\_HOME documaker\j2ee\weblogic\db-type\scripts directory (where db-type is the type of database chosen during installation)

Example:

Windows:

```
c:\oracle\odee_1\documaker\j2ee\weblogic\oracle11g\scripts Linux/
```

UNIX:

```
/oracle/odee_1/documaker/j2ee/weblogic/oracle11g/scripts
```

| In this file                         | Make these changes                                                                                                                                                     |
|--------------------------------------|------------------------------------------------------------------------------------------------------------------------------------------------------------------------|
| Windows:<br>set_middleware_env.cmd   | Validate the MW_HOME variable's value is set to the full path of your Oracle Middleware Home directory.<br>• Example:<br>SET MW_HOME=c:\oracle\middleware\oracle_home1 |
| Linux/UNIX:<br>set_middleware_env.sh | • Validate the MW_HOME variable's value is set to the full path of your Oracle Middleware Home directory.<br>• Example MW_HOME=/oracle/middleware/oracle_home1         |

| In this file                     | Make these changes                                                                                                                                                                                                                                                                                                                                                                                                                                                                                                                                                                                                                                                                                                                                                                                                                                                                                                                                                                                                                                                                                                                                                                                                                                                                                                                                                                                                                                                                                                                                                                                                                                                                                                                                                                         |
|----------------------------------|--------------------------------------------------------------------------------------------------------------------------------------------------------------------------------------------------------------------------------------------------------------------------------------------------------------------------------------------------------------------------------------------------------------------------------------------------------------------------------------------------------------------------------------------------------------------------------------------------------------------------------------------------------------------------------------------------------------------------------------------------------------------------------------------------------------------------------------------------------------------------------------------------------------------------------------------------------------------------------------------------------------------------------------------------------------------------------------------------------------------------------------------------------------------------------------------------------------------------------------------------------------------------------------------------------------------------------------------------------------------------------------------------------------------------------------------------------------------------------------------------------------------------------------------------------------------------------------------------------------------------------------------------------------------------------------------------------------------------------------------------------------------------------------------|
| weblogic_installation.properties | <p>Validate and change if necessary any of the variable values for all the properties in this file and modify the value to the right of the equal sign if necessary. Replace the '&lt;SECURE VALUE&gt;' (removing the single quotes) with the credentials values used on the installation screens, examples:</p> <p><b>(Note:</b> For Windows values with backslashes (\) directory separators requires escaping with a additional backslash (e.g. \\)).</p> <ul style="list-style-type: none"> <li>• dirWebLogicTemplates</li> <li>• dirDocumakerHome (full path where the root of the j2ee folder resides on the WebLogic server.</li> <li>• jdbcAdminPassword='&lt;SECURE VALUE&gt;'</li> <li>• jdbcAslinePassword='&lt;SECURE VALUE&gt;'</li> <li>• jmsCredential='&lt;SECURE VALUE&gt;'</li> <li>• adminPasswd='&lt;SECUREVALUE&gt;'</li> <li>• weblogicPassword='&lt;SECURE VALUE&gt;'</li> <li>• Verify WebLogic Domain, Managed Servers, Clusters and Appliaiton Names and Port Settings</li> </ul> <p>Verify Database Default Settings:</p> <pre> jdbcDatabase=&lt;value&gt; jdbcDatabaseHost=&lt;value&gt; jdbcDatabaseName=&lt;value&gt; jdbcDatabasePort=&lt;value&gt; jdbcDatabaseNameType=&lt;value&gt; jdbcAdminUsername=&lt;value&gt; jdbcAslineUsername=&lt;value&gt; </pre> <p><b>Note:</b> If JMS connection is not secured, then replace with empty value, e.g. jmsCredential =</p> <p><b>Note:</b> Installer does not set the secure value credentials for security reasons, so they have to be manually entered and secured by the resource deploying the web app.</p> <p>All secure values replaced should be removed from any deployment properties file or the file should be deleted from all locations after web apps are successfully deployed and tested.</p> |

There are two pre-configured, convenience methods for deploying the ODEE resources (DataSources, JMS Servers and JMS Modules, Persistent Stores) and Deployments.

- Method #1 will deploy resources and deployments to target WebLogic Clusters in a pre-configure and prepared domain. This method requires user to have already created a Domain with Managed Servers, Clusters, Coherence Clusters and Machines (Nodes), allowing for WebLogic Clustering. This method uses the `wls_extend_clustered_server(.cmd|.sh)`
- Method #2 will deploy the resources and deployments to a new domain created in processing the script targeting the resources and deployments to Managed Servers instead of Clusters. This Method uses the `wls_create_domain(.cmd|.sh)` script.

## For Method #1

Pre-requisite to have FMW RCU run and a WebLogic Server Domain created before running ODEE Installer with data collected for the WebLogic configuration screen in installer or use values entered in ODEE Installer to create the domain before you process with the `wls_extend_clustered_server` script.

Please refer to Appendix A for "Navigating RCU Screens to Create Schemas" details.

Answer "n" after the RCU has been run. The program will continue to run the Fusion Middleware (FMW) Configuration wizard.

Please refer to Appendix D for "FMW Configuration Wizard" details

Notes on WebLogic Server Domain:

- Domain Name and directory noted, e.g. `dmkr_domain /app/oracle/middleware/wls_home/user_projects/domains/dmkr_domain`
- Oracle JRF added for ADF support
- WebLogic Server admin user and password noted, e.g. `weblogic, @Oracle#1234`
- Admin Server deployed with name and ports noted, e.g. `dmkr_adminserver, port=7001, sslport=7002`
- A Managed Server for Web Applications with name and ports noted. e.g. `dmkr_app_mserver_1 port=8101, sslport=8102`

**Note:** If SOA should be enabled then, under server groups drop down select WSMPPM-MAN-SVR check box

- A Managed Server for JMS resources e.g. `dmkr_jms_mserver_1 port=9101, sslport=9102`
- A Cluster for Web Applications with name noted, e.g. `dmkr_app_cluster_1`
- A Cluster for JMS resources with name noted, e.g. `dmkr_jms_cluster_1`
- Managed Servers associated Clusters app to app and jms to jms
- (Optional) Coherence Cluster with name noted, e.g. `DataGridConfig`
- Machine (Node) configured: e.g. `dmkr_node_1`
- Add all JRF libraries and `opss-Datasource` to `dmkr_app_cluster`

Run the script to deploy the ODEE resources and applications:

`wls_extended_clustered_server(.cmd|.sh)`. Find the file under below mentioned directory.

Example:

Windows: `C:\oracle_homedir\documaker\j2ee\weblogic\  
databasename>\scripts`

Linux/UNIX: `/Oracle_homedir/documaker/j2ee/weblogic/  
oracle11g/scripts`

If adding Optional Documaker Interactive: Correspondence run the script:

`wls_extend_clustered_server_interactive(.cmd|.sh)`

Go to *Creating WebLogic User Accounts* section.

## For Method #2

Run the script: `wls_create_domain(.cmd|.sh)`

**Note** If you already have a domain on the server and you want to create a new domain, you can still use this script, just update the WebLogic domain name at the bottom of the file.

```
weblogicDomain=
```

The program will ask to run the Repository Creation Utility (RCU) to create the Database schema for Middleware. Answer "y" if RCU has not been run or the new schema is required.

Please refer to Appendix A for "Navigating RCU Screens to Create Schemas" details.

Answer "n" after the RCU has been run. The program will continue to run the Fusion Middleware (FMW) Configuration wizard.

Please refer to Appendix B for "Navigating Configuration Wizard Screens to Configure the Domain" details.

3. Run the following script if using Documaker Interactive Correspondence web application;

```
wls_add_correspondence(.cmd|.sh)
```

4. Start the WebLogic AdminServer by running this command from the `[middleware home]\user_projects\domains\your_domain_name\bin` directory:

```
startWebLogic(.cmd|.sh)
```

5. Set the following option in the JVM start up process (in WLS console server startup arguments) :

```
-Djbo.pers.max.active.nodes=-1
```

**Note** This will increase JVM heap usage, so monitor the heap usage as you may need to increase this accordingly,

6. If using MS SQL Server, add EXTRA\_JAVA\_PROPERTIES as '-Djbo.SQLBuilder=SQLServer' in `SetDomainEnv(.cmd|.sh)` file under `\domains\your_domain_name\bin`
7. If using IBM DB2, add EXTRA\_JAVA\_PROPERTIES as '-Djbo.SQLBuilder=DB2' in `SetDomainEnv(.cmd|.sh)` file under `\domains\your_domain_name\bin`
8. Continue with the steps outlined in *Creating WebLogic User Accounts*.

## Adding MS SQL JDBC jar file to the WebLogic classpath

1. Open a browser to obtain the MS-SQL JDBC Type 4 driver from [Microsoft](#). Click the Download button and select `sqljdbc_6.2.1.0_enu.exe`, then click Next. After the file downloads, run the EXE to extract the files into a directory of your choice. Locate the `enu\mssql-jdbc-6.2.1.jre8.jar` file, and copy this file into the following directories:

- a. <ODEE\_HOME>\documaker\bin\lib
  - b. <ODEE\_HOME>\documaker\docfactory\lib
  - c. <ODEE\_HOME>\documaker\docupresentment\lib
  - d. <WLS\_HOME>\wlserver\server\lib
2. Edit the <WLS\_HOME>\oracle\_common\common\bin\commExtEnv.cmd file and locate this line:
 

```
set
WEBLOGIC_CLASSPATH=%JAVA_HOME%\lib\tools.jar;%PROFILE_CLASSPATH%;%ANT_CONTRIB%\ant-contrib-1.0b3.jar;%CAM_NODEMANAGER_JAR_PATH%;
```

 Similar on Linux/Unix.
  3. Edit the line by adding the following to the end of it:
 

```
%WL_HOME%\server\lib\mssql-jdbc-6.2.1.jre8.jar;
```

 Similar on Linux/Unix.
  4. Save the file.

## Creating WebLogic User Accounts

When the AdminServer is able to accept connections, the WebLogic server administrator needs to complete these steps:

---

**Note** To change the web application user passwords from the WebLogic password, update the py files called by each script before running the script.

---

1. To install the standard user accounts, run this command under the j2ee weblogic dbtype scripts directory location:
 

```
create_users_groups (.cmd|.sh)
```

 This script creates the Documaker user account and the Documaker Administrators group. It adds this user to this group in WebLogic's default authenticator.
2. To install a set of users and groups to be used with the example RI-MRL resources for Documaker Interactive: Correspondence, run this command under the j2ee weblogic dbtype scripts directory location:
 

```
create_users_groups_correspondence_example (.cmd|.sh)
```
3. Link the new users and groups to the pre-configured entities in the Document Factory Administration registry database by going to the WebLogic server, opening a browser and going to the WebLogic Admin Server host and port number and context-root of jpsquery, Example URL:
 

```
http://servername:7001/jpsquery
```

---

**Note** You may need to change *localhost* to the name of your WebLogic server.

---

## STEP C: STARTING SERVICES

If the weblogic managed server named 'jms\_server' is not started, start it before starting ODEE Factory services.

1. Go to the bin directory and run this command:

```
startManagedWebLogic(.cmd|.sh) dmkr_jms_mserver_1
```

To start Windows services, perform these steps on your application (business) tier:

2. Choose the Start, Administrative Tools, Services option.
3. Start these Windows services:

| Service                                                                                                     | Description                           |
|-------------------------------------------------------------------------------------------------------------|---------------------------------------|
| ODDF Supervisor<br>(AssemblyLine_Schema_Name:System_ID:AssemblyLine_ID)<br>Example: ODDF (dmkr_asline2:1:2) | The Document Factory Windows service. |
| Docupresentation<br>(AssemblyLine_Schema_Name:System_ID:AssemblyLine_ID)<br>Example: ODDP (dmkr_asline:1:2) | The Docupresentation Windows service. |

Where *dmkr\_asline* is the schema or user name for the assembly line.

- 
- Note** If the Supervisor fails to start one of the Workers, it renames that Worker's JAR file in the docfactory\deploy directory with the suffix "\_bad". For example, if the Supervisor is unable to start the Assembler worker, it renames the "assembler.jar" file to "assembler.jar\_bad". This kind of failure can occur in the following scenarios:
- a. The Worker's JAR file is opened, but a valid configuration is not found.
  - b. The Worker process fails to locate the executable, or the executable fails to start (missing exe, dll, etc.).
  - c. A monitor is started on the Worker process, but the monitor fails to detect that the process is running, or the process is unresponsive.
  - d. The set of information about the Worker process is invalid.
- In such scenarios, examine the "startup.log" file located in the docfactory\logs folder, for additional information or to know the cause of the problem.
- 

## STEP D: STARTING DOCUMAKER ADMINISTRATOR AND DASHBOARD

The steps you take to start the web applications vary, depending on the configuration of the deployment.

- 
- Note** A WebLogic administrator should complete this step.
- 

### Starting with WebLogic

Start the Documaker Administrator and Documaker Document Factory Dashboard web applications by starting the WebLogic Managed Server.

## STEP E: STARTING DOCUMAKER INTERACTIVE (OPTIONAL)

If used Method #1 the steps you take to start the web applications vary, depending on the type of web application server you are using.

**Note** A WebLogic administrator should complete this step *only* if deploying Documaker Interactive.

### Starting with WebLogic

A WebLogic administrator should complete this step *only* if deploying Documaker Interactive.

1. Go to the `dirWeblogicHome\user_projects\domains\your_domain_name` directory and run this command:

```
Windows: start .\bin\startManagedWeblogic.cmd
managed_server_with_DI
```

```
Linux/UNIX: ./bin/startManagedWeblogic.sh managed_server_with_DI
```

2. When prompted, enter the WebLogic user name and password.

In order to prevent generation of files of type BC\*\* include the properties in server start tab as mentioned for each server and then configure WLS to start with nodemanager.

| Server Name | Oracle Database                                                                                  | DB2                                                                                                          |
|-------------|--------------------------------------------------------------------------------------------------|--------------------------------------------------------------------------------------------------------------|
| idm_server  | -Djbo.passivationstore=database<br>-Djbo.pcoll.mgr=oracle.jbo.pcoll.pmgr.SQLServerPersistManager | -Djbo.passivationstore=database<br>-Djbo.pcoll.mgr=<br>oracle.documaker.shared.model.DB2PersistManagerCustom |
| dmkr_server | -Djbo.passivationstore=database<br>-Djbo.pcoll.mgr=oracle.jbo.pcoll.pmgr.SQLServerPersistManager | -Djbo.passivationstore=database<br>-Djbo.pcoll.mgr=<br>oracle.documaker.shared.model.DB2PersistManagerCustom |
| soa_server  | -Djbo.passivationstore=database<br>-Djbo.pcoll.mgr=oracle.jbo.pcoll.pmgr.SQLServerPersistManager | -Djbo.passivationstore=database<br>-Djbo.pcoll.mgr=<br>oracle.documaker.shared.model.DB2PersistManagerCustom |

**Note:** Non-soa users can skip the soa\_server row.

- 
- Note** • When the WebLogic managed server with JMS resource and server deployed is stopped, the queues are no longer available for Document Factory to access and Document Factory will generate errors that it could not connect to the needed queues.
- 

3. Add SOA to the WebLogic domain:

- a. From the [middleware home]\oracle\_common\common\bin directory, run this command:  

```
Config(.cmd|.sh)
```
- b. Choose Update an existing domain, then click Next.
- c. Select <domain\_name>\_domain from the WebLogic Domain Directory window, then click Next.
- d. On the Select Extension Source window, choose Oracle SOA Suite then click Next.
- e. On Templates page, add template "Oracle WSM Policy Manager [oracle\_common]".
- f. On Advanced Configuration page, select "Topology".
- g. On Managed Servers page, under the managed server name for the deployed apps "e.g. dmkr\_app\_mserver\_1"/dmkr\_idm\_mserver\_1, add WSMPM-MAN-SVR to server groups.

- 
- Note** SOA may add the Oracle WSM Policy Manager Extension. If so, this is not an error.
- 

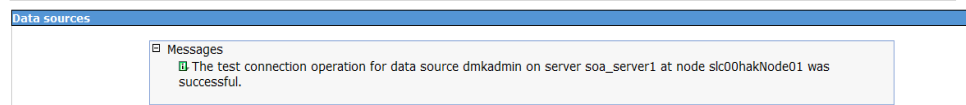
- h. View the Configure JDBC Data Sources options (do not change these values), then click Next.

The connection to the database is tested. When the test finishes, view the results, then click Next.

- i. Copy the sqljdbc4.jar file under wl\_server\server\lib, your\_domain\_name\lib if JDBC Component Schema fails to make connection. This is applicable only for MS SQL Server.
- j. Update the Configure JDBC Component Schema window. This will configure the connections your SOA repository. Click Next.
- k. The connection to the database is tested. When the test finishes, view the results, then click Next.

Cell=slc00hakCell01, Profile=Dmgr01

[Close page](#)



- l. On the Select Optional Configuration window, click Next.
- m. On the Configuration Summary window, click Extend and then Done.
- n. To deploy the Oracle Business Rules into the SOA extension, run this command:

```
documaker\j2ee\weblogic\db-type\bpel\antbuild(.cmd|.sh)
```



4. Start these WebLogic servers (using the same commands as in the previous steps):
  - Oracle Admin Server
  - Managed Servers with ODEE web apps deployed (e.g. dmkr\_app\_mserver\_1)
  - Managed Server with JMS Server and resources deployed (e.g. dmkr\_jms\_mserver\_1)

---

**Note** Restart Oracle Documaker Document Factory Service if you had previously stopped it.

---

5. From the *dirWeblogicHome*\user\_projects\domains\your\_domain\_name directory, run this command:

```
Windows: start .\bin\startManagedWeblogic.cmd soa_server1
Linux/UNIX: ./bin/startManagedWeblogic.sh soa_server1
```

6. Add soa\_server1 as a target for the dmkr\_admin\* data source as follows:
  - a. Make sure the AdminServer is ready to accept connections. Using a browser, log into the WebLogic console:  
`http://servername:adminserverport/console`  
where *servername* is name of the WebLogic server.
  - b. In the Domain Structure panel, expand Services and select Data Sources.
  - c. In the Summary section of JDBC Data Sources panel, click the dmkr\_admin link. This is the name of the administrator schema.
  - d. Select the Targets tab then check the soa\_server1 check box and click Save.
7. Once soa\_server1 is ready to accept connections, deploy the Oracle Business Rule Composites by running this command:

```
documaker\j2ee\weblogic\db-type\scripts\deploy_soa
(.cmd|.sh)
```

## STEP F: FINAL CONFIGURATION AND VALIDATION

Each of the configuration context (SYSCONFIGCONTEXT, ALCONFIGCONTEXT, APPCONFIGCONTEXT) tables has MODIFYTIME, USERTAG1, NOTES, and USER\_NAME columns that can be used to determine what has changed following installation or following another collection of changes. This is helpful to follow-up on when a particular item has changed and why. Additionally, this information can be used to track configuration updates that should be carried forward from one tier environment to another. Therefore, when making changes to the configuration during installation processes or subsequent updates for system maintenance always utilize the USERTAG1 column and/or NOTES columns to group these changes in an identifiable manner. For instance, utilize, initial in the USERTAG1 column for any initial configuration changes following the base installation. Once confirmed and tested, any changes can be updated as ,passed or ready for promotion. Likewise use specific as a USERTAG1 value for any settings that include environment specific data like server names and IP addresses that you may not want to promote to a new environment directly.

1. Make sure you have a network accessible printer available for Document Factory publishing that supports the Multipurpose Internet Mail Extensions (MIME) types the system outputs when you are ready to generate printed output. For more information, see the [Documaker Enterprise Administration Guide](#).
2. Validate the installation of Documaker Administrator by accessing Documaker Administrator from the following link:

`https://servername:managedserverport/DocumakerAdministrator`  
where *servername* is the name of the presentation tier.

Use these credentials to log in:

| For       | Enter                                                                                             |
|-----------|---------------------------------------------------------------------------------------------------|
| User name | documaker                                                                                         |
| Password  | The value entered in JMS Credentials during the installation process, unless it has been changed. |

3. Download and configure the WIP Edit plug-in (if using Documaker Interactive).  
To edit documents within Documaker Interactive, you need the WIP Edit plug-in. You can download the plug-in from the Oracle Software Delivery Cloud web site and provide it to users by:
  - Pushing the installation to your end users.
  - Hosting the installation and allow the web application to provide a download link when requested. Make sure the installation is available on a static content server.

If you are hosting the WIP Edit plug-in installation, use Documaker Administrator to enter the location for the installation:

- a. In the left panel, click the Systems link. In the right panel, expand the System node, if it is not already expanded. Expand the Assembly Line node, if it is not already expanded.
  - b. Select the row containing the newly-installed assembly line. Select the Correspondence application. Click Configure.
  - c. On the Correspondence tab, select the ENTRY\_ACTION\_PLUGIN\_INIT category within the ENTRY context and then select the group name, ENTRY\_ACTION\_PLUG\_INIT.
  - d. In the Properties panel, double-click the row containing the property named installer. Change the installer value to be the hosted location for the plug-in installation.
  - e. In the Properties panel, double-click the row that contains the putURL property. Then change the putURL value to reflect the ipaddress:port of the server for the idm\_server web application and click Save. This must be the secure port for Documaker Interactive. The default port is 12002.
4. Validate your Document Factory installation by the performing these tasks:
- a. Create a copy of the extrfile.xml file with the name *extrfile.tmp*. This file is located in the \documaker\mstres\dmres\input folder.
  - b. Move the extrfile.tmp file into the hotfolder directory on the Document Factory server.
  - c. Rename the *extrfile.tmp* file to *extrfile.xml* in the hotfolder directory.

---

**Note** This step pushes documents through the system. Moving the file with a *tmp* extension makes sure the file is not processed by the Receiver before the file is copied to the hotfolder directory.

---

5. Validate the web applications using these credentials:

| For                                  | Use                                                                                                                                                          |
|--------------------------------------|--------------------------------------------------------------------------------------------------------------------------------------------------------------|
| Documaker Document Factory Dashboard |                                                                                                                                                              |
| URL                                  | https://Servername:managedserverport/DocumakerDashboard                                                                                                      |
| User name                            | documaker                                                                                                                                                    |
| Password                             | The value entered in JMS Credentials during the installation process unless it has been changed.                                                             |
| Documaker Interactive (if installed) |                                                                                                                                                              |
| URL                                  | http://Servername:managedserverport/DocumakerCorrespondence<br>When you access this link, you are redirected to the HTTPS port for a more secure connection. |
| User name                            | documaker                                                                                                                                                    |
| Password                             | The value entered in JMS Credentials during the installation process, unless it has been changed.                                                            |

You have completed the installation and initial configuration of Oracle Documaker Enterprise Edition.

---

**Note** For information on customizing the location of Help files, downloading patches, and downloading documentation updates, see *Maintaining Your System on page 45*.

---

---

## Chapter 3

---

# Maintaining Your System

This chapter provides information on how to maintain your Oracle Documaker Enterprise Edition (ODEE) implementation.

This chapter describes:

- *Changing the Help Location* on page 46
- *Downloading Patches* on page 47
- *Downloading the Documentation* on page 48
- *Deinstalling the Software* on page 49

## CHANGING THE HELP LOCATION

If you want to access the online Help from a location other than the default WebLogic installation, such as on a static content server or via the Oracle Technology Network (OTN), you can modify the online Help configuration as follows:

---

**Note** You can find the various Help files on OTN, on the following Web page:  
<http://www.oracle.com/technetwork/documentation/insurance-097481.html>

---

### Document Factory Dashboard Help

You must define the new location for the Document Factory Dashboard Help content. The Help content is provided with the installation within this file:

```
documaker\j2ee\weblogic\dashboard\ODDF_Dashboard.ear
```

Within the Administrator, set the helpLink property to the hosted Help location for the Document Factory Dashboard configuration within the All Assembly Line.

---

**Note** The configuration within the All Assembly Line applies to the system level applications. Here is the default:

```
http://servername/ODDF_Dashboard_Help/help.html
```

---

### Documaker Interactive: Correspondence Help

You must define the new location for the Documaker Interactive: Correspondence Help content. The Help content is provided with the installation within this file:

```
documaker\j2ee\weblogic\idocumaker_correspondence\idm.ear
```

Within the Administrator, set the helpLink property to the hosted Help location for the SYSTEM\_IDS group in the Correspondence application configuration in the deployed Assembly Line. Here is the default:

```
http://servername:port/DocumakerCorrespondence/static/help/index.html
```

## DOWNLOADING PATCHES

You can download the latest Oracle software patches at the My Oracle Support website. The process includes:

- Going to the My Oracle Support site (requires registration)
- Searching for the patches you want to download
- Downloading those patches

To download Oracle software patches, go to the My Oracle Support website:

<https://support.oracle.com>

## DOWNLOADING THE DOCUMENTATION

You can download the latest Oracle Documaker documentation at the Oracle Technology Network (OTN) web site. The process includes:

- Going to the applicable page on the OTN site
- Searching for the documentation you want to download
- Downloading that documentation

To download Oracle Documaker documentation, go to this page on OTN:

<http://www.oracle.com/technetwork/documentation/insurance-097481.html>



## DEINSTALLING THE SOFTWARE

You can uninstall your Documaker software before making your selection of products to install or after a successful install. To remove Documaker software, follow these steps:

### Step A: Remove ODEE Weblogic Server domain server resources

1. Shutdown all the ODEE Services (e.g. Docupresentation, Document Factory).
2. Unlock any WebLogic Server Admin Server Domain locked from user edit sessions.
3. Run `remove_odee_resources_from_clustered_server.cmd` or `remove_odee_resources_from_clustered_server.sh` script. Run this script if the resources are deployed using method 1.

This process removes:

- The ODEE WebLogic Server domain server resources (e.g. JMS, DataSources, etc)
- Web apps (e.g. Documaker Administrator, Documaker Dashboard, Documaker Web Services, Documaker Interactive, etc)

**Note** ODEE Services will no longer function after completing these steps as they depend on the JMS services but, the domain server components can be redeployed by normal WebLogic Server domain server deployment of the ODEE resources and ODEE Services are restored if needed without full ODEE Services re-installation.

### Step B: Stop the following processes

1. Stop Docupresentation and Supervisor services of ODEE before you start the deinstallation process. If any of the services are running, it may lead to partial deinstallation of ODEE.
2. Stop all application servers before starting deinstallation process of ODEE.
3. From the command prompt access `setup.exe` to start the deinstall process. e.g `C:\Oracle\odee_1\oui\bin\setup.exe -deinstall -jreLoc <path_to_jre>`.

```

Administrator: Command Prompt
Directory of C:\Oracle\odee_1\oui\bin

01/16/2014 02:45 AM <DIR> .
01/16/2014 02:45 AM <DIR> ..
01/23/2013 03:58 AM 411 access_setup.bat
01/16/2014 02:44 AM 88 addLangs.bat
01/23/2013 03:58 AM 26 addLangs.stage
01/16/2014 02:44 AM 63 addNode.bat
01/16/2014 02:44 AM 452 attachHome.bat
01/16/2014 02:44 AM 353 detachHome.bat
01/23/2013 03:58 AM 39,936 lsnodes.exe
01/23/2013 03:58 AM 97,280 oraInstaller.dll
01/23/2013 03:58 AM 2,714 oraparam.stage
01/23/2013 03:58 AM 142,848 orasrvml1.dll
01/23/2013 03:58 AM 9,728 orauts.dll
01/23/2013 03:58 AM 20,480 orawsec11.dll
01/16/2014 02:44 AM 349 ouica.bat
08/12/2008 06:54 AM 326 ouica.sh
01/16/2014 02:44 AM <DIR> resource
01/16/2014 02:44 AM 543 runConfig.bat
01/23/2013 03:58 AM 99,328 setup.exe
 16 File(s) 414,925 bytes
 3 Dir(s) 136,085,188,608 bytes free

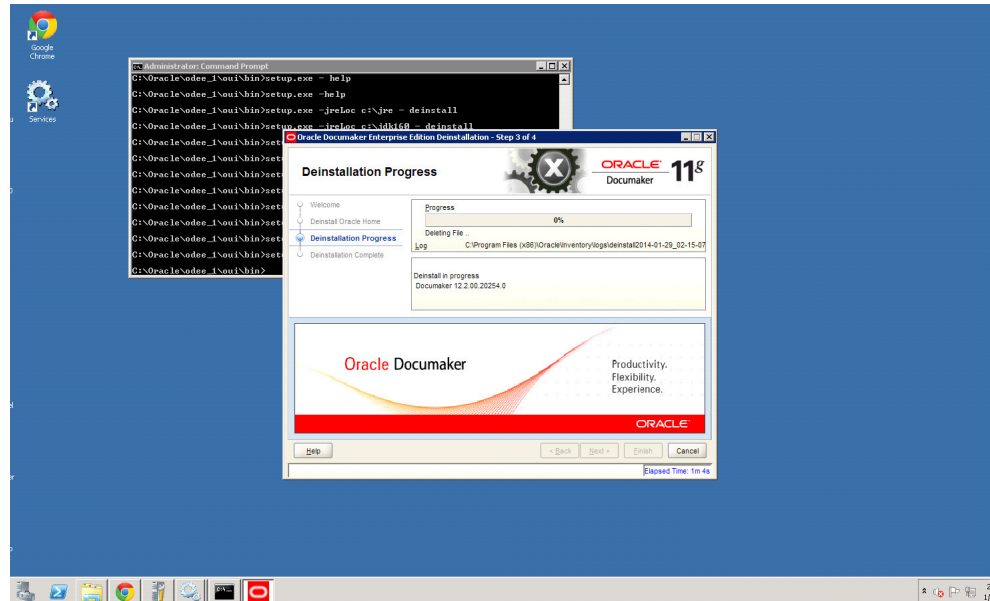
C:\Oracle\odee_1\oui\bin>setup.exe -deinstall -jreLoc c:\jre

```

**Note** If you run the `setup.exe` directly from the installed ODEE path, it may leave empty installation directory after deinstallation process. To avoid this, run the `setup.exe` outside of installation directory.

### Step C: Begin the deinstallation

1. Follow the required steps as shown in the Oracle Documaker Enterprise Edition Deinstallation window.



2. After deinstall, manually delete the ODEE folder: `C:\oracle\odee_1`. The ODEE folder can be deleted as part of de-installation as well but the de-installation has to be invoked from some other folder (other than ODEE).
3. Drop ODEE admin and assembly line schema from the database.

**Note**

- Refer WebLogic documentation for removing domain.
- Ensure that none of the folder/files within ODEE Home are open while running the deinstall, if open then it will fail to remove the directory.

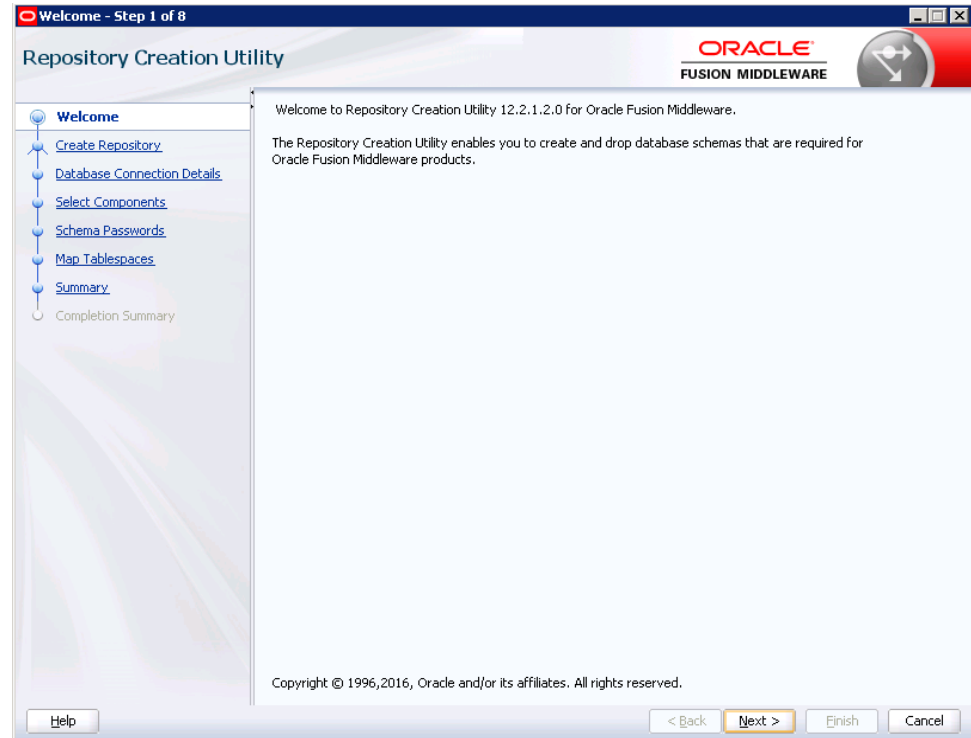
---

## Appendix A

---

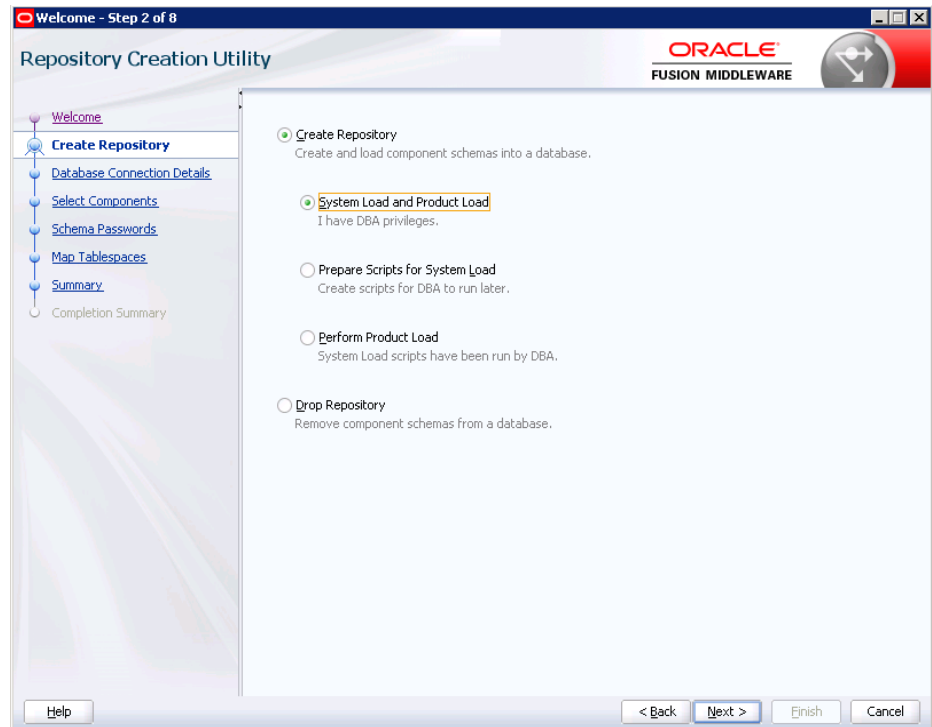
### Navigating RCU Screens to Create Schemas

Once the program has started, you will see following RCU screen.

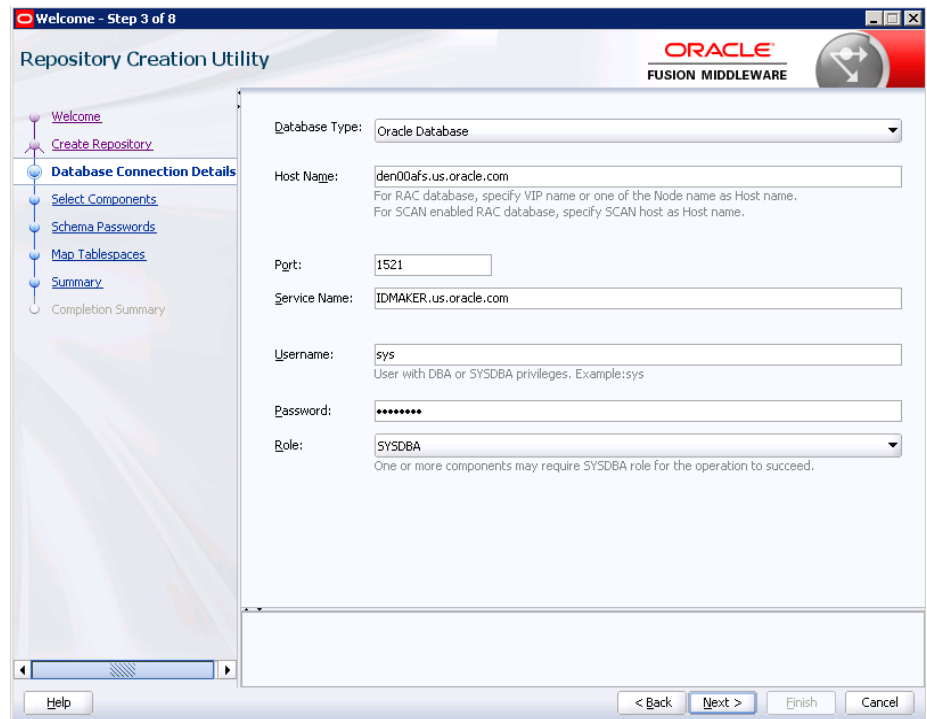


Click 'Next' to continue and follow these steps.

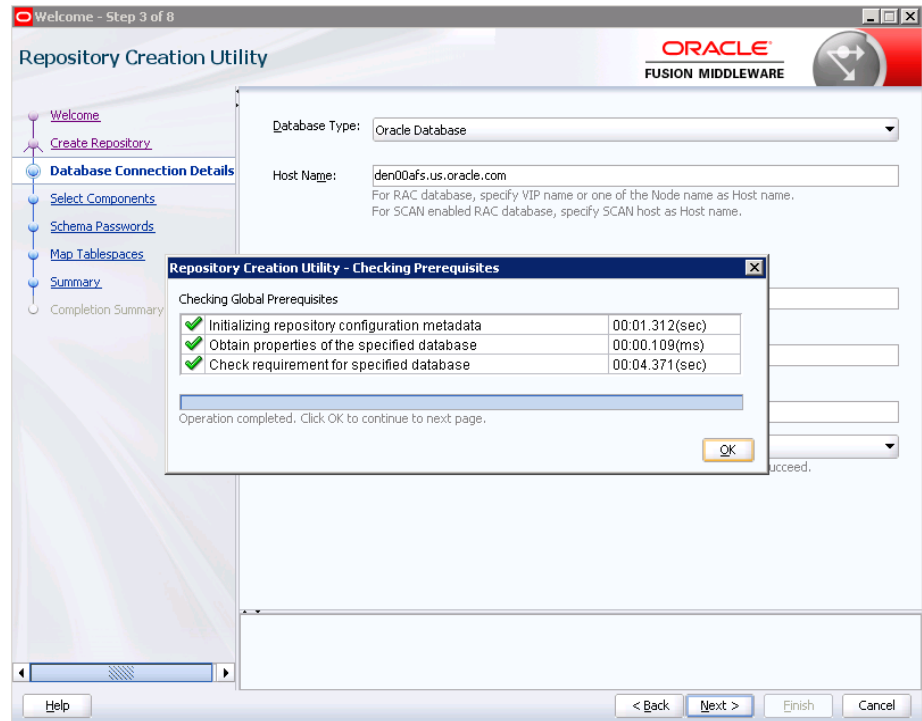
1. Select 'Create Repository' radio button and 'System Load and Product Load' radio button and click Next.



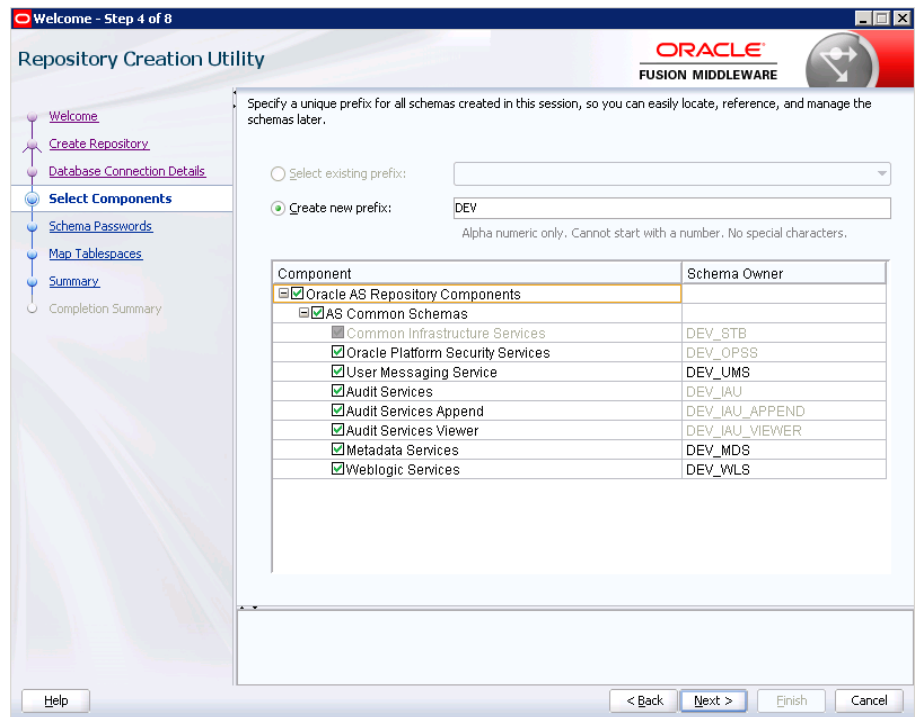
2. Provide database details and click 'Next'.



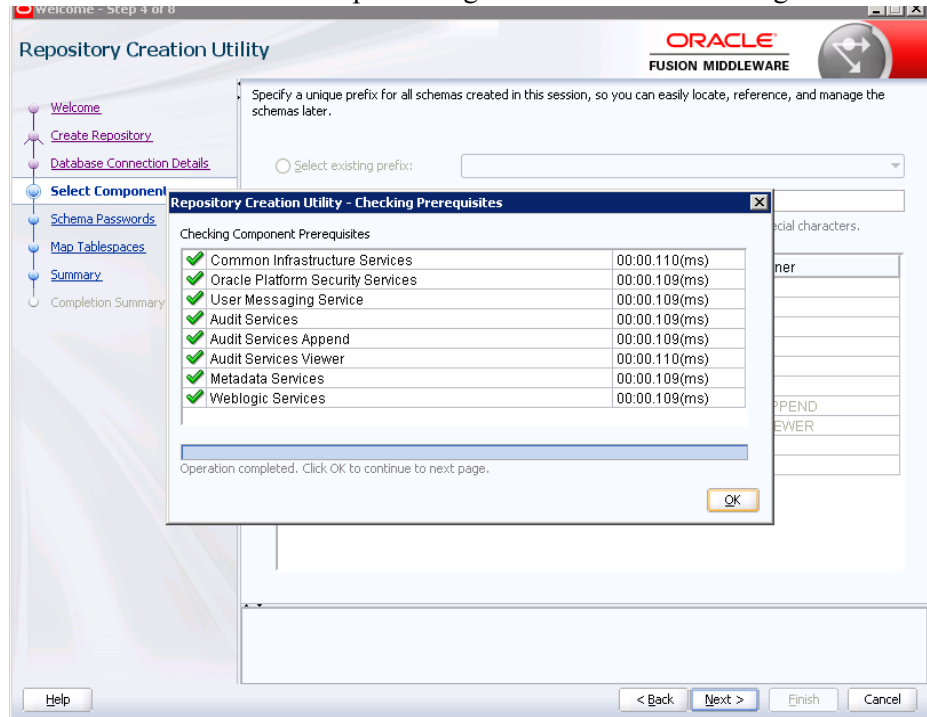
3. Click 'OK'.



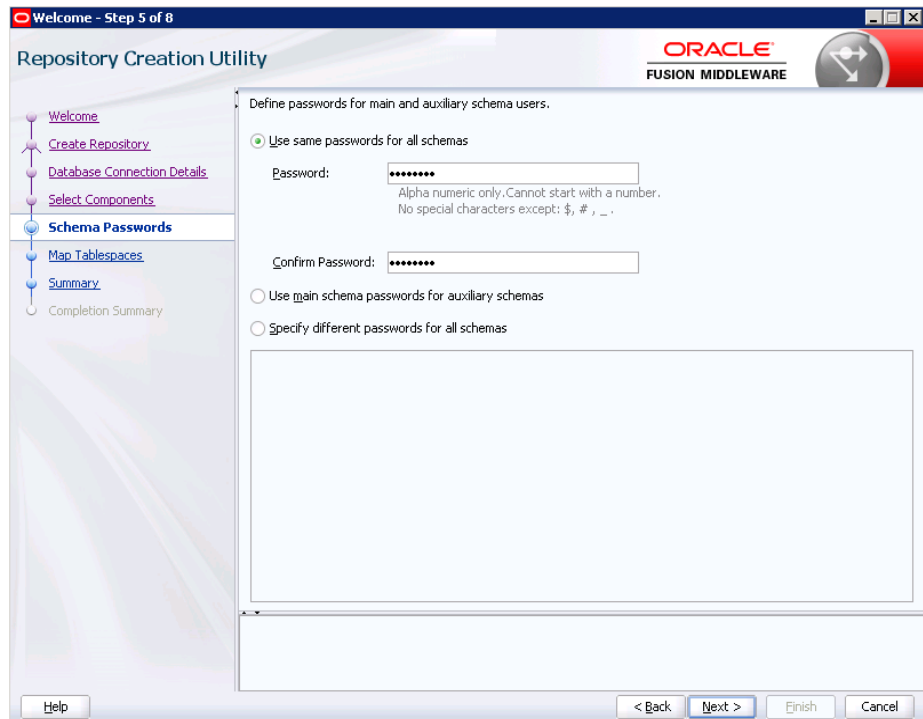
4. Select 'Oracle Platform Security Services' check box, it automatically selects dependent components.



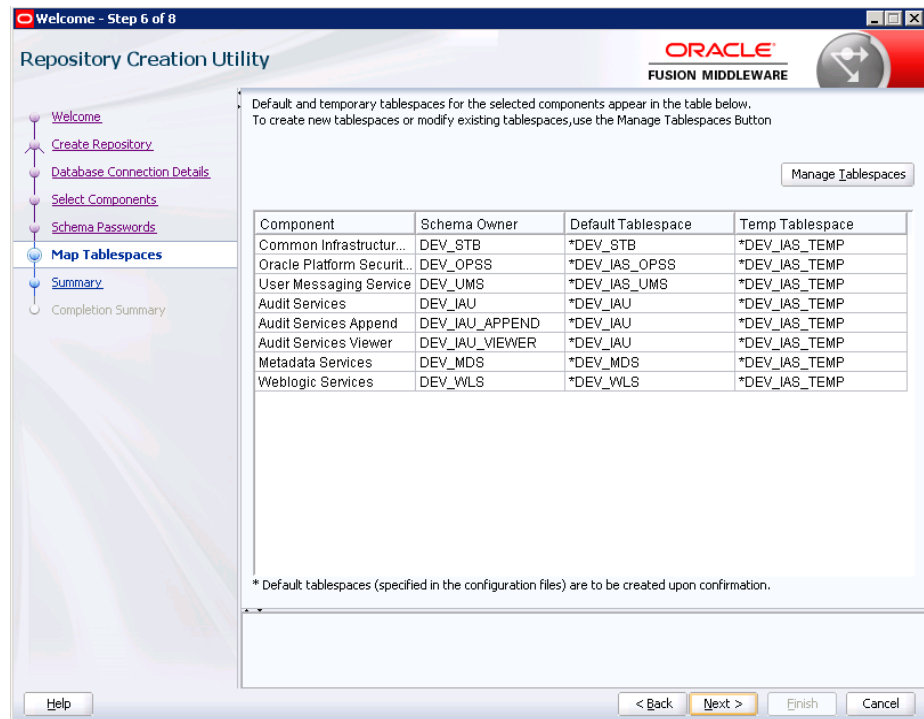
5. Click 'OK' after successful processing as shown in the following screen.



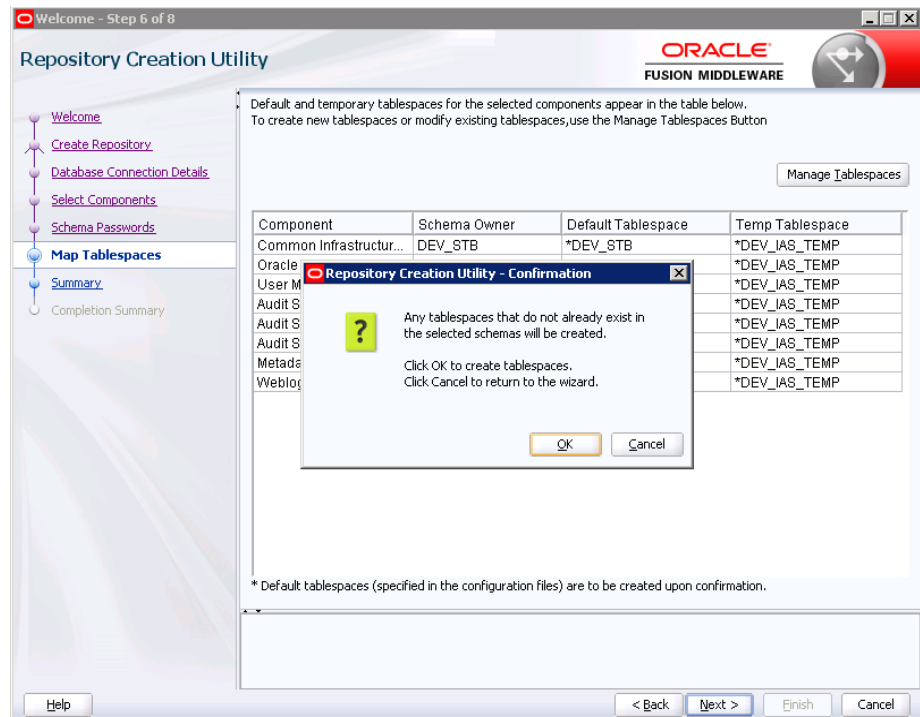
6. Enter password for your schema.



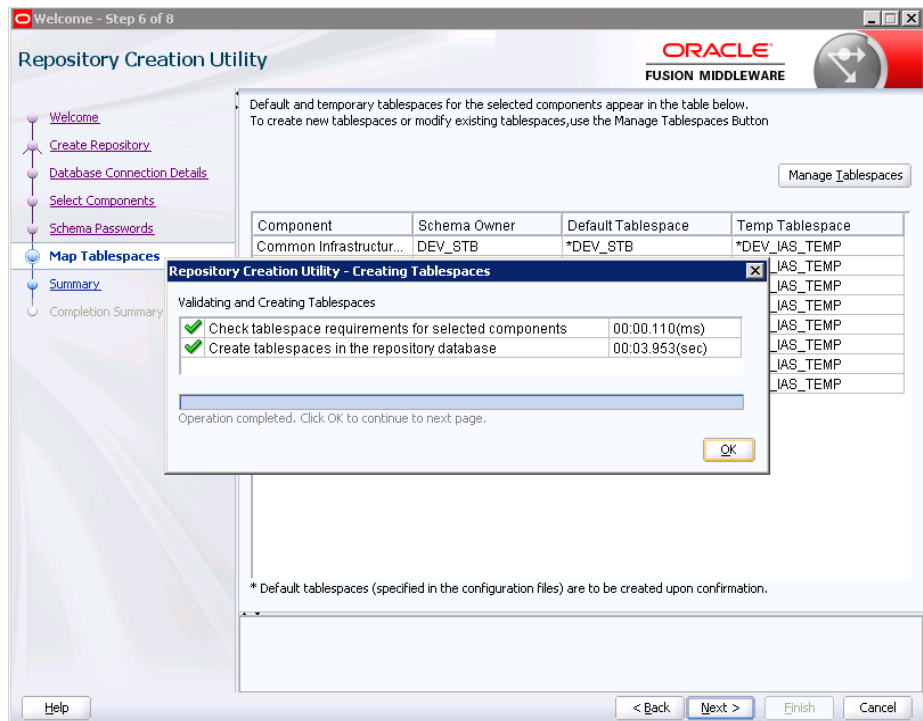
7. Click 'Next'.



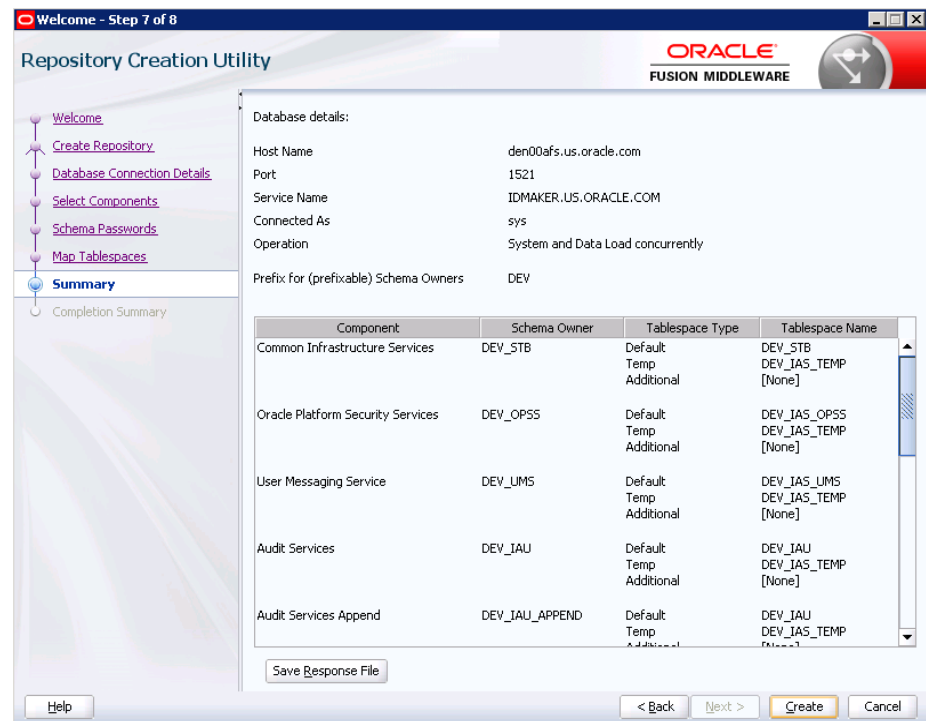
8. Click 'OK'.



9. Click 'OK' again.

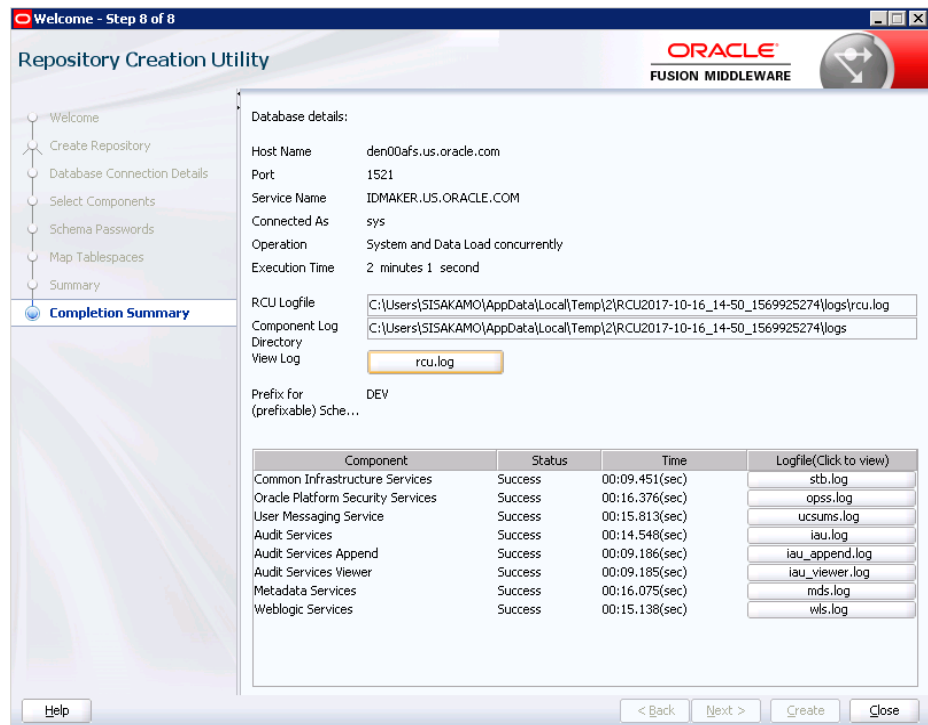


10. Click 'Save Response File' to save the installation information and click 'Create'.





11. Database schema is created. Click 'Close'.



Information on Repository Creation Utility (RCU) is also available on <https://docs.oracle.com/middleware/12212/lcm/INFIN/GUID-CA80A6E9-8903-4E19-81D7-A3647A11D0A6.htm#INFIN358>

---

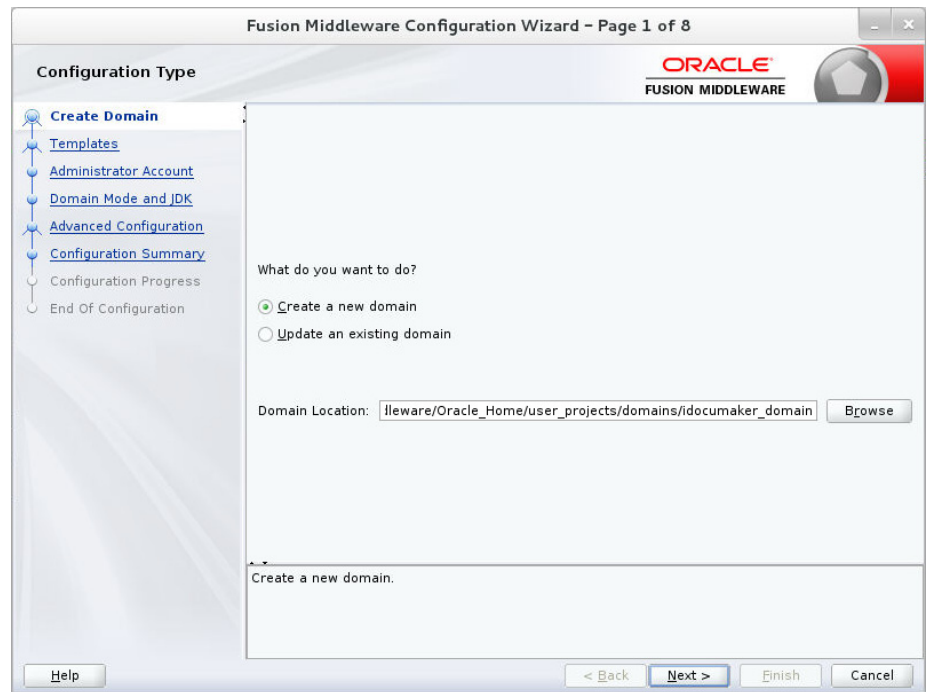
## Appendix B

---

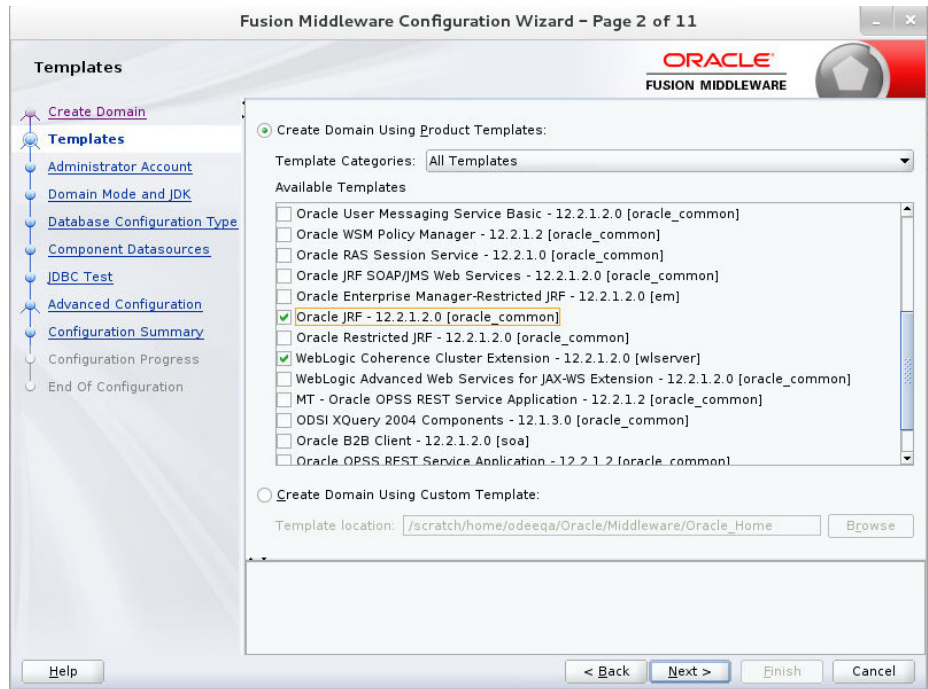
### Navigating Configuration Wizard Screens to Configure the Domain

Following the database schema creation, the Fusion Middleware (FMU) Configuration wizard screen displays. Follow the steps to continue with the FMU configuration:

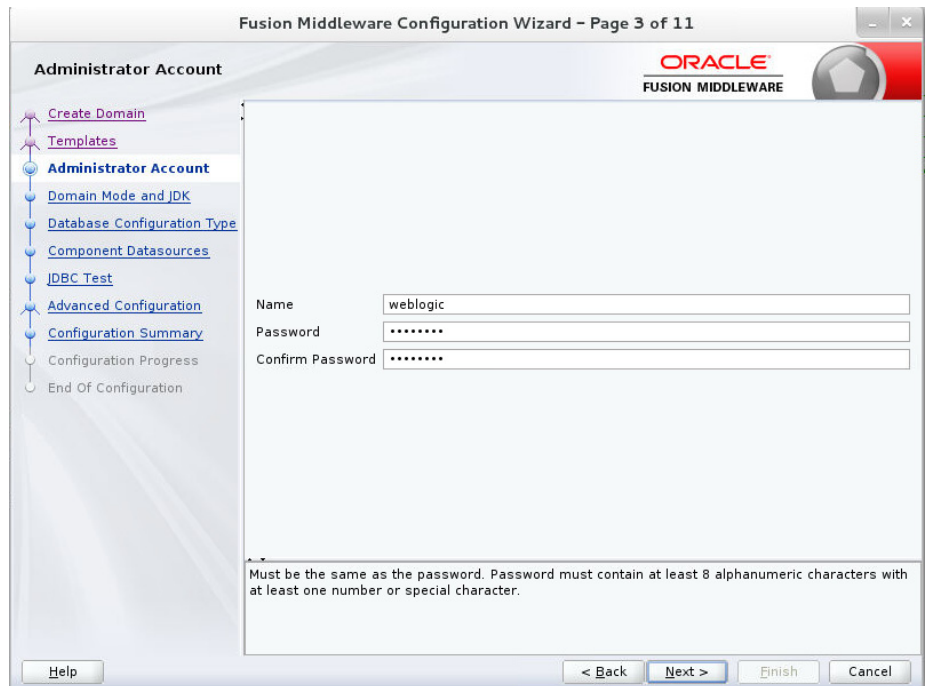
1. Select 'Create a new domain' radio button and provide domain location..



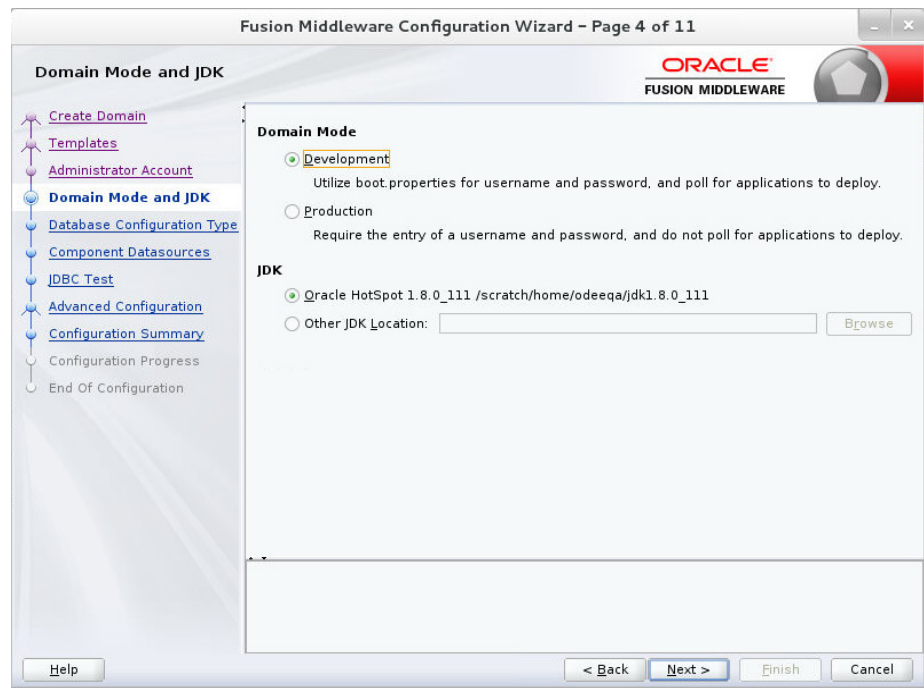
2. Select 'Oracle JRF [oracle\_common]' check box, it automatically selects dependent component. Click 'Next'.



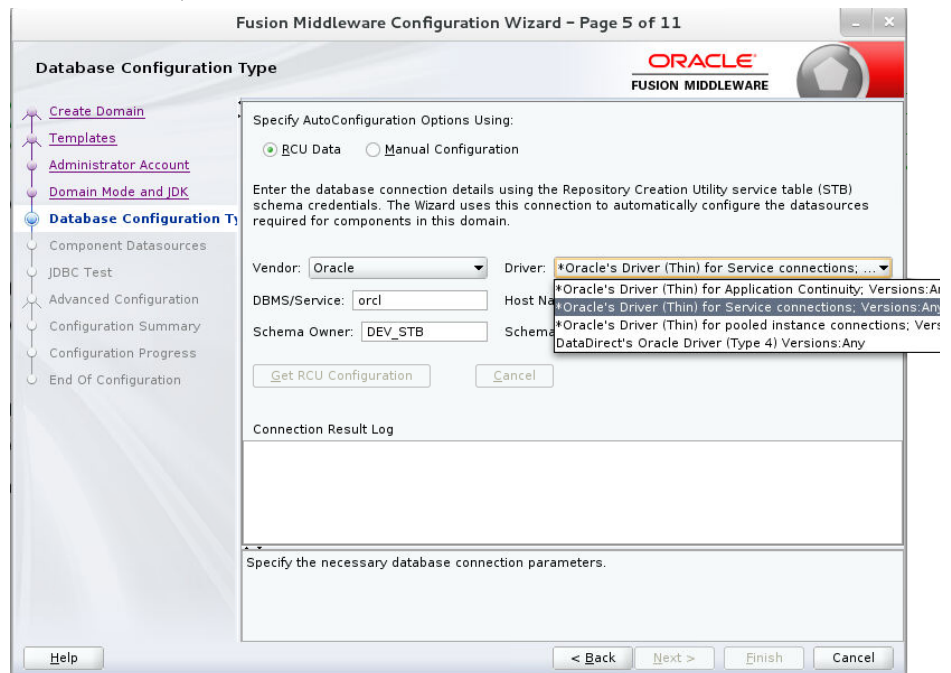
3. Enter weblogic username and password. Click 'Next'.



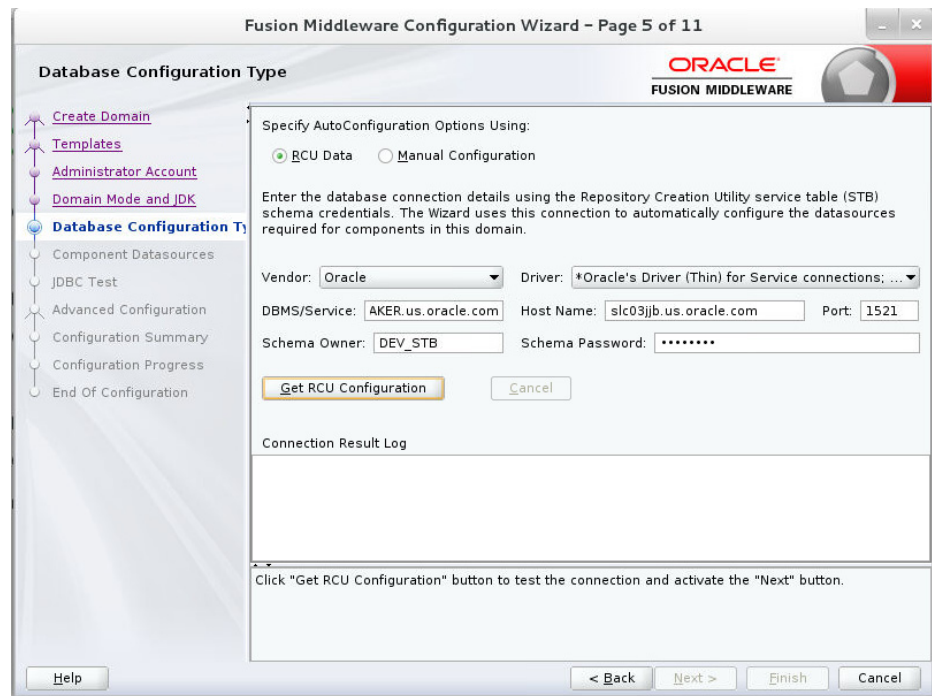
4. Select Development radio button and click 'Next'.



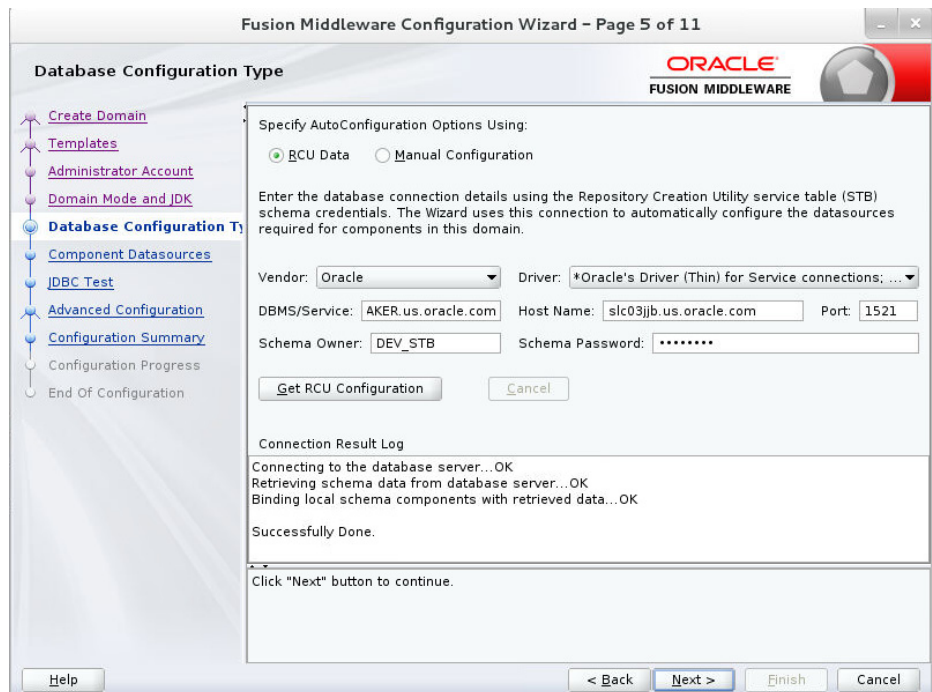
5. Enter database, driver and schema owner details.



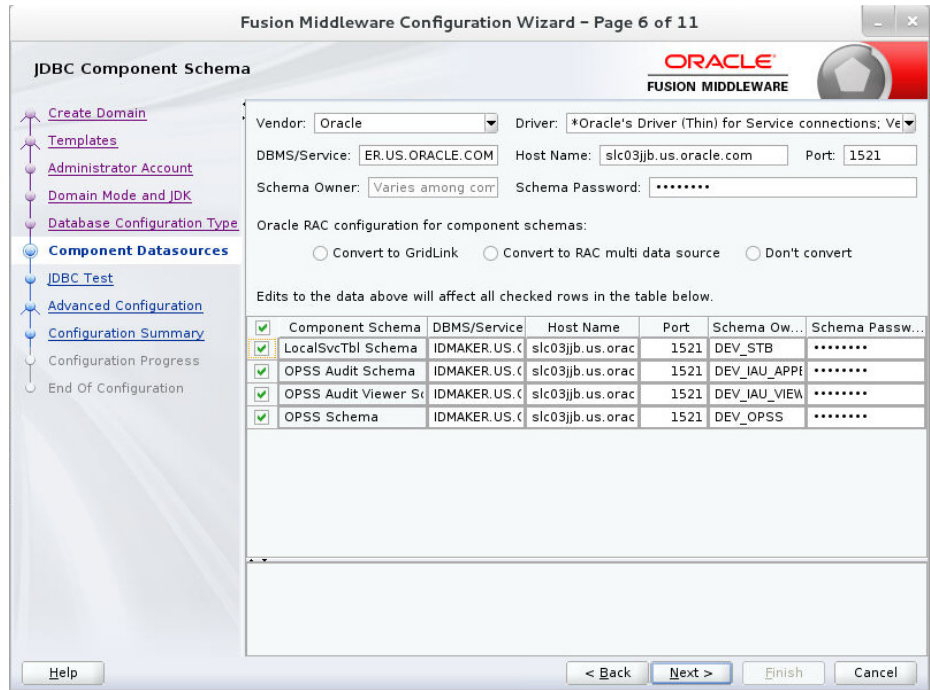
6. Click 'Get RCU Configuration' button.



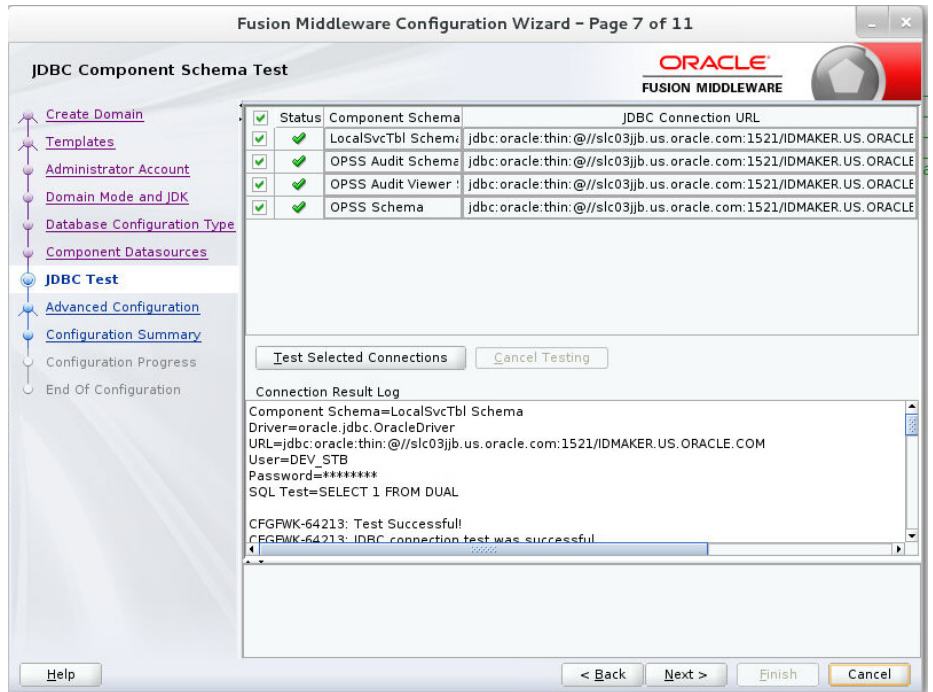
7. If you see Successfully Done in 'Connection result log' click 'Next'.



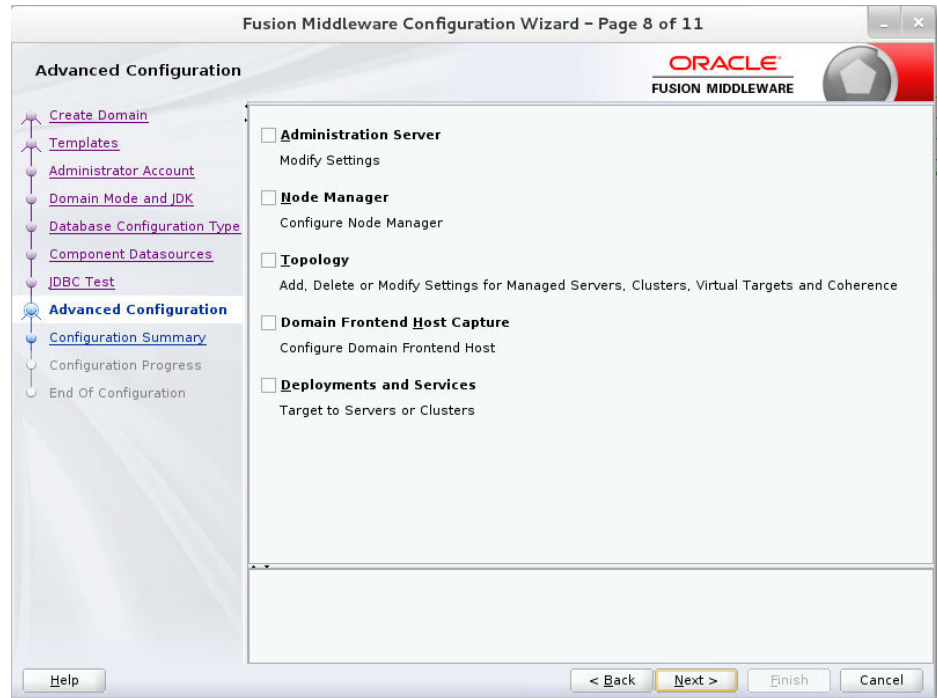
8. Select all check boxes and click 'Next'.



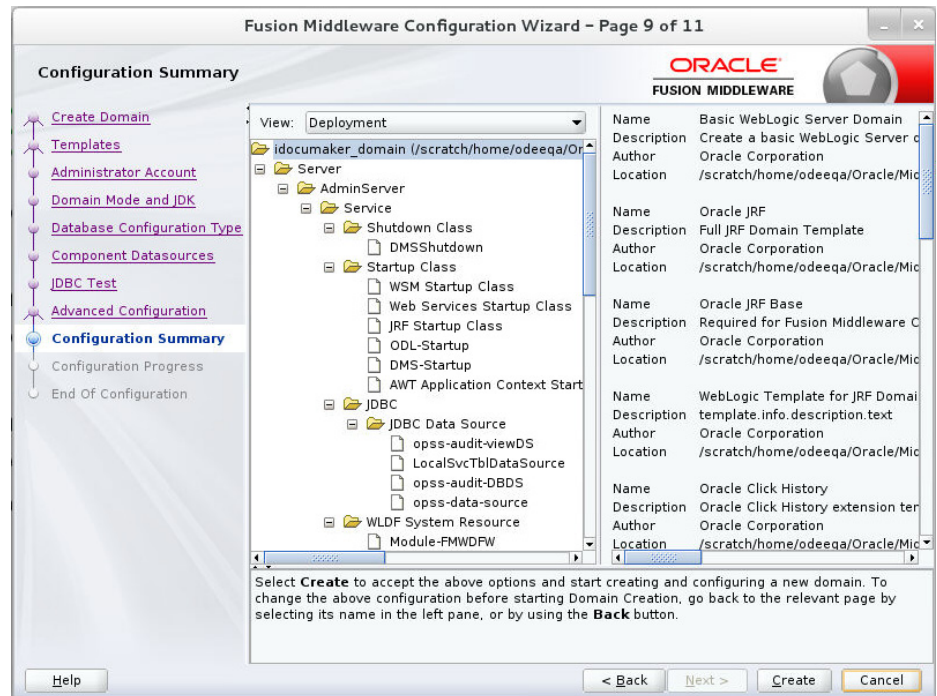
9. Select 'Test Selected Connections' button. If test is successful, then click Next.



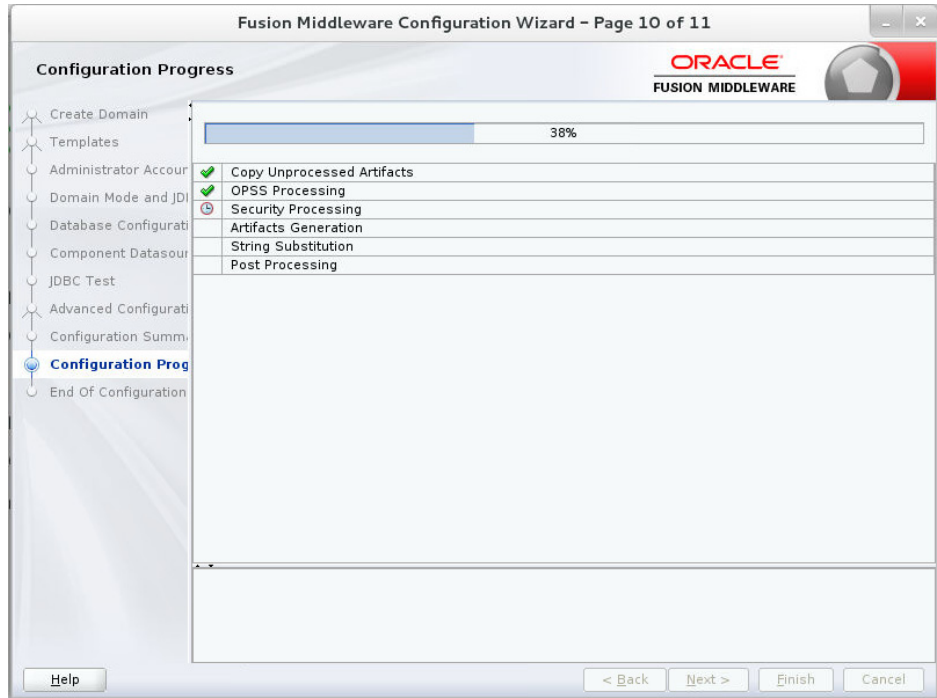
10. Click 'Next'.



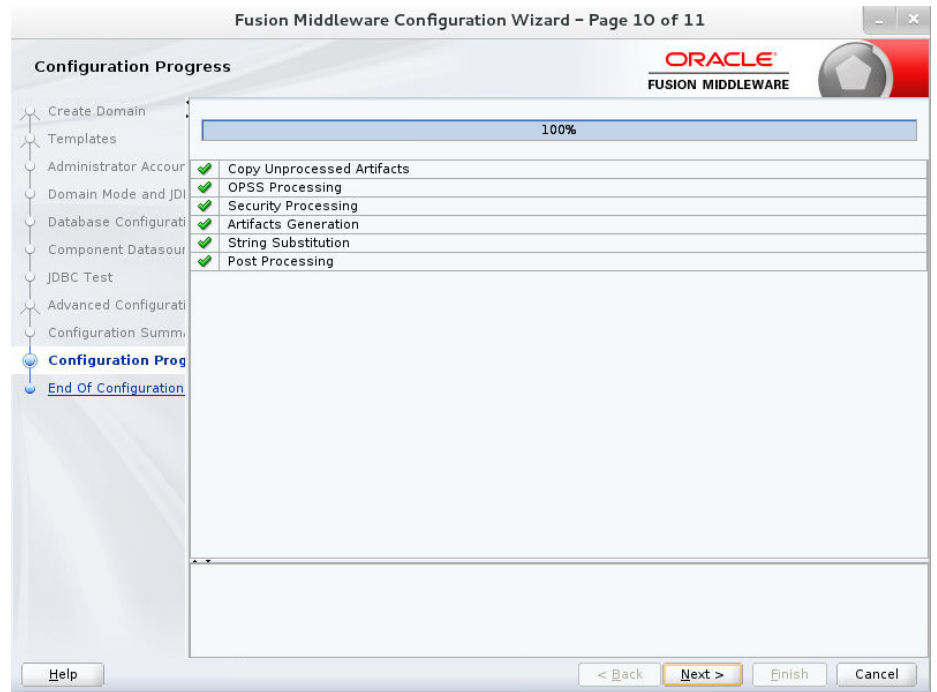
11. Click 'Create'.



Configuration progress bar appears.

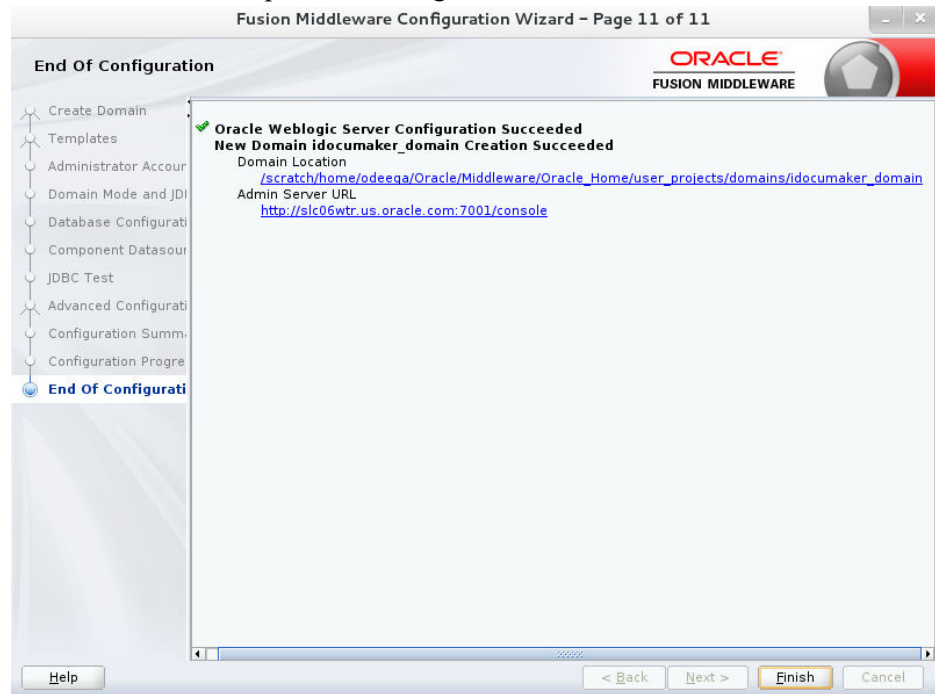


12. Click 'Next'.





13. Click 'Finish' to complete the configuration.



Information on Navigating Configuration Wizard Screens to Configure the Domain is also available on

<https://docs.oracle.com/middleware/12212/lcm/INFIN/GUID-CA80A6E9-8903-4E19-81D7-A3647A11D0A6.htm#INFIN293>

## Appendix C

### Certificates

Security with Secure Sockets Layer (SSL) or Transport Layer Security (TSL) are based on trust.

A computer is allowed to establish a secure connection to a service because the service presents a digital file (certificate) that is digitally "fingerprinted" by a Certificate Authority (CA).

The CA has the responsibility of verifying that applicants for a certificate are who they say they are.

A CA uses a private key to sign every certificate they issue (the aforementioned fingerprint), so that every certificate they issue can be traced back to them. This works by using the CA's public key to validate that a certificate is indeed valid. Services are deployed, by default, with demo certificates.

---

**Note** The demo certificate that ships with Documaker is not a trusted CA; it is self-generated. As such, the hostname of the certificate will not match the hostname on the connection.

---

Most browsers have a trust store that is configured with the necessary fingerprints for CAs that you would need.

In order for a browser to connect successfully to websites with SSL, (e.g. using HTTPS scheme in URL), one (or more) of the solutions can be used:

1. All users' browsers must have the trust store configured with the public key of the root certificate used to generate self-signed certificates, and all services secured by SSL must use certificates generated signed this root certificate.

This is usually an acceptable solution when the number of users is small, or the company has desktop configuration via push enabled, or when the company generates their own internal self-signed certificates to use for non-public facing services.

2. All users' trust stores can be modified to trust the demo certificate.

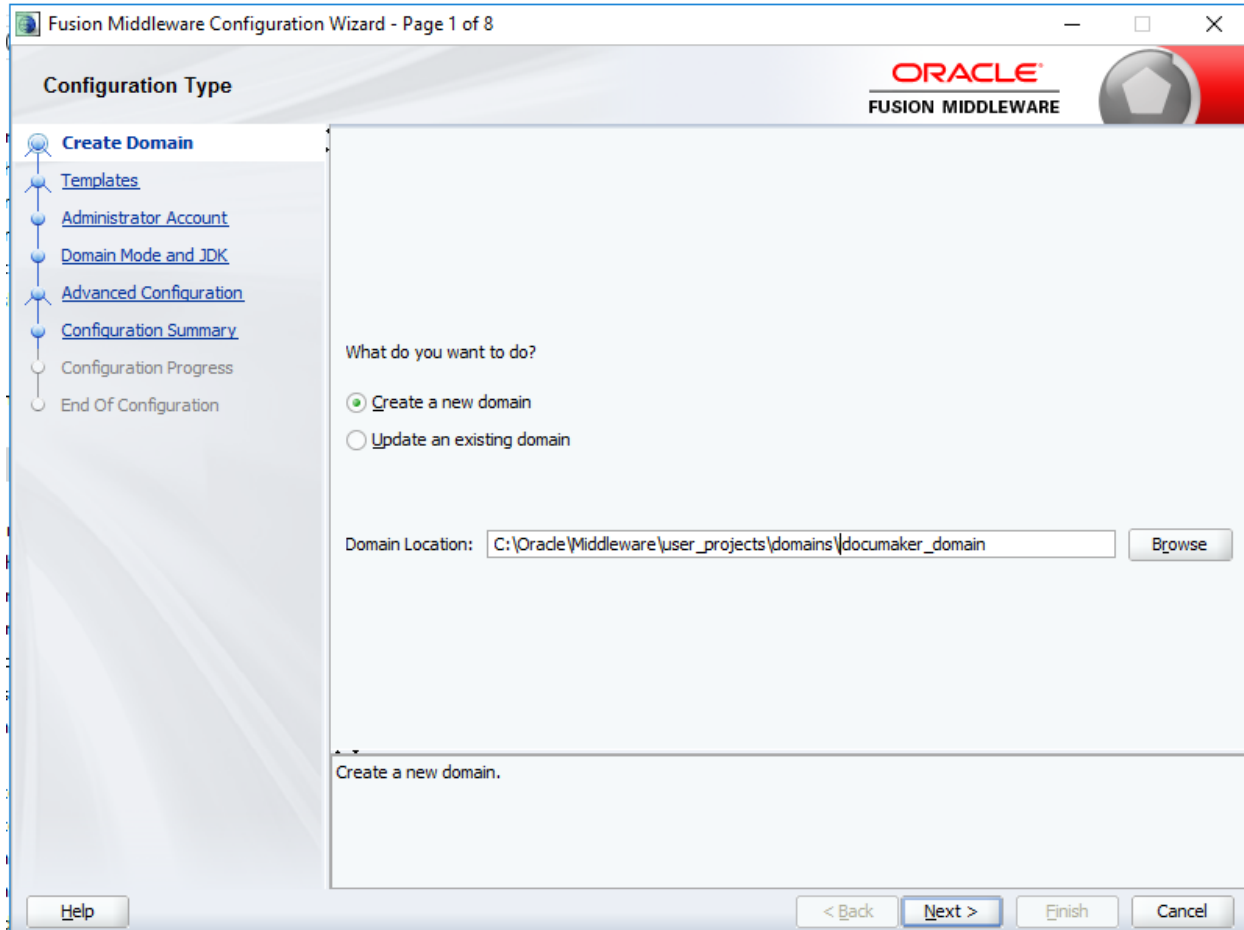
This is usually an acceptable solution in short-lived non-production environments.

It is not recommended to add the demo certificate to user trust stores, as a malicious user could compromise the secure connection by presenting a certificate signed with the same demo root key.

3. Services are configured with certificates issued by CAs that are in the shipping trust store of common browsers. This is usually the solution where services will be public facing. This can be expensive and cumbersome as certificates are issued to specific hosts names. However, it is almost universally sufficient.

Information on Secure Socket Layer is also available in the Oracle [Documaker Enterprise Security Guide](#).

## Appendix D



Fusion Middleware Configuration Wizard - Page 2 of 8

**ORACLE**  
FUSION MIDDLEWARE

### Templates

- Create Domain
- Templates**
- Administrator Account
- Domain Mode and JDK
- Advanced Configuration
- Configuration Summary
- Configuration Progress
- End Of Configuration

**Create Domain Using Product Templates:**

Filter Templates:

Include all selected templates     Include all previously applied templates

Available Templates

- Oracle Enterprise Manager - 12.2.1.3.0 [em]
- Oracle Enterprise Manager-Restricted JRF - 12.2.1.3.0 [em]
- Oracle User Messaging Service Basic - 12.2.1.3.0 [oracle\_common]
- Oracle Enterprise Scheduler Service Basic - 12.2.1.3.0 [oracle\_common]
- Oracle JRF SOAP/JMS Web Services - 12.2.1.3.0 [oracle\_common]
- Oracle RAS Session Service - 12.2.1.0 [oracle\_common]
- Oracle WSM Policy Manager - 12.2.1.3 [oracle\_common]
- WebLogic Advanced Web Services for JAX-WS Extension - 12.2.1.3.0 [oracle\_common]
- Oracle JRF - 12.2.1.3.0 [oracle\_common]
- Oracle Restricted JRF - 12.2.1.3.0 [oracle\_common]
- MT - Oracle OPSS REST Service Application - 12.2.1.3 [oracle\_common]
- OPSS REST Service Application - 12.2.1.3 [oracle\_common]

Create Domain Using Custom Template:

Template location:

Fusion Middleware Configuration Wizard - Page 3 of 11

**Administrator Account**

ORACLE  
FUSION MIDDLEWARE

- Create Domain
- Templates
- Administrator Account**
- Domain Mode and JDK
- Database Configuration Type
- Component Datasources
- JDBC Test
- Advanced Configuration
- Configuration Summary
- Configuration Progress
- End Of Configuration

Name

Password

Confirm Password

Must be the same as the password. Password must contain at least 8 alphanumeric characters with at least one number or special character.

Help < Back Next > Finish Cancel

Fusion Middleware Configuration Wizard - Page 4 of 11

**ORACLE**  
FUSION MIDDLEWARE

### Domain Mode and JDK

- Create Domain
- Templates
- Administrator Account
- Domain Mode and JDK**
- Database Configuration Type
- Component Datasources
- JDBC Test
- Advanced Configuration
- Configuration Summary
- Configuration Progress
- End Of Configuration

**Domain Mode**

Development  
Utilize boot.properties for username and password, and poll for applications to deploy.

Production  
Require the entry of a username and password, and do not poll for applications to deploy.

**JDK**

Oracle HotSpot 1.8.0\_241 C:\Java\jdk18~1.0\_2

Other JDK Location:

### Database Configuration Type

- Create Domain
- Templates
- Administrator Account
- Domain Mode and JDK
- Database Configuration Type**
- Component Datasources
- JDBC Test
- Advanced Configuration
- Configuration Summary
- Configuration Progress
- End Of Configuration

Specify AutoConfiguration Options Using:

RCU Data     Manual Configuration

Enter the database connection details using the schema credentials corresponding to Common Infrastructure Services component in the Repository Creation Utility. The Wizard uses this connection to automatically configure the datasources required for components in this domain.

Vendor:     Driver:

Connection Parameters     Connection UJRL String

Host Name:

DBMS/Service:     Port:

Schema Owner:     Schema Password:

Connection Result Log

Successfully Done.

Click "Next" button to continue.

**JDBC Component Schema**

- [Create Domain](#)
- [Templates](#)
- [Administrator Account](#)
- [Domain Mode and JDK](#)
- [Database Configuration Type](#)
- [Component Datasources](#)**
- [JDBC Test](#)
- [Advanced Configuration](#)
- [Configuration Summary](#)
- [Configuration Progress](#)
- [End Of Configuration](#)

Vendor:  Driver:

Connection Parameters  Connection URL String

Host Name:

DBMS/Service:  Port:

Schema Owner:  Schema Password:

Oracle RAC configuration for component schemas:

Convert to GridLink  Convert to RAC multi data source  Don't convert

Edits to the data above will affect all checked rows in the table below.

| <input type="checkbox"/> | Component Schema        | DBMS/Service | Host Name           | Port | Schema Owner  | Schema Password |
|--------------------------|-------------------------|--------------|---------------------|------|---------------|-----------------|
| <input type="checkbox"/> | LocalSvcTbl Schema      | ORCLPDB      | slc05ddl.us.oracle. | 1521 | DEV27_STB     | *****           |
| <input type="checkbox"/> | WLS Schema              | ORCLPDB      | slc05ddl.us.oracle. | 1521 | DEV27_WLS_RL  | *****           |
| <input type="checkbox"/> | OPSS Audit Schema       | ORCLPDB      | slc05ddl.us.oracle. | 1521 | DEV27_IAU_API | *****           |
| <input type="checkbox"/> | OPSS Audit Viewer Schen | ORCLPDB      | slc05ddl.us.oracle. | 1521 | DEV27_IAU_VIE | *****           |
| <input type="checkbox"/> | OPSS Schema             | ORCLPDB      | slc05ddl.us.oracle. | 1521 | DEV27_OPSS    | *****           |

Help

< Back **Next >** Finish Cancel



### JDBC Component Schema Test

- Create Domain
- Templates
- Administrator Account
- Domain Mode and JDK
- Database Configuration Type
- Component Datasources
- JDBC Test**
- Advanced Configuration
- Configuration Summary
- Configuration Progress
- End Of Configuration

| Status | Component Schema         | JDBC Connection URL                              |
|--------|--------------------------|--------------------------------------------------|
| ✓      | LocalSvcTbl Schema       | jdbc:oracle:thin:@//slc05ddl.us.oracle.com:1521/ |
| ✓      | WLS Schema               | jdbc:oracle:thin:@//slc05ddl.us.oracle.com:1521/ |
| ✓      | OPSS Audit Schema        | jdbc:oracle:thin:@//slc05ddl.us.oracle.com:1521/ |
| ✓      | OPSS Audit Viewer Schema | jdbc:oracle:thin:@//slc05ddl.us.oracle.com:1521/ |
| ✓      | OPSS Schema              | jdbc:oracle:thin:@//slc05ddl.us.oracle.com:1521/ |

Connection Result Log

```
Component Schema=LocalSvcTbl Schema
Driver=oracle.jdbc.OracleDriver
URL=jdbc:oracle:thin:@//slc05ddl.us.oracle.com:1521/ORCLPDB
User=DEV27_STB
Password=*****
SQL Test=SELECT 1 FROM DUAL

CFGFWK-64213: Test Successful!
CFGFWK-64213: JDBC connection test was successful
```

### Advanced Configuration

- Create Domain
- Templates
- Administrator Account
- Domain Mode and JDK
- Database Configuration Type
- Component Datasources
- JDBC Test
- Advanced Configuration**
- Administration Server
- Node Manager
- Managed Servers
- Clusters
- Server Templates
- Coherence Clusters
- Machines
- Virtual Targets
- Partitions
- Deployments Targeting
- Services Targeting
- Configuration Summary

- Administration Server**  
Modify Settings
- Node Manager**  
Configure Node Manager
- Topology**  
Add, Delete or Modify Settings for Managed Servers, Clusters, Virtual Targets and Coherence
- Domain Frontend Host Capture**  
Configure Domain Frontend Host
- Deployments and Services**  
Target to Servers or Clusters

Help

< Back

Next >

Finish

Cancel

Fusion Middleware Configuration Wizard - Page 9 of 22

**Administration Server**

ORACLE  
FUSION MIDDLEWARE

- Create Domain
- Templates
- Administrator Account
- Domain Mode and JDK
- Database Configuration Type
- Component Datasources
- JDBC Test
- Advanced Configuration
- Administration Server**
- Node Manager
- Managed Servers
- Clusters
- Server Templates
- Coherence Clusters
- Machines
- Virtual Targets
- Partitions
- Deployments Targeting
- Services Targeting
- Configuration Summary

Server Name: DEN00ORT\_adminserver

Listen Address: All Local Addresses

Listen Port: 7001

Enable SSL:

SSL Listen Port: 7002

Server Groups: Unspecified

The name must not be null or empty and may not contain any : , = \* ? % / \_cloned.

Help < Back Next > Finish Cancel

Fusion Middleware Configuration Wizard - Page 10 of 22

**ORACLE**  
FUSION MIDDLEWARE

### Node Manager

- Create Domain
- Templates
- Administrator Account
- Domain Mode and JDK
- Database Configuration Type
- Component Datasources
- JDBC Test
- Advanced Configuration
- Administration Server
- Node Manager**
- Managed Servers
- Clusters
- Server Templates
- Coherence Clusters
- Machines
- Virtual Targets
- Partitions
- Deployments Targeting
- Services Targeting
- Configuration Summary

**Node Manager Type**

Per Domain Default Location

Per Domain Custom Location

Node Manager Home:

Manual Node Manager Setup

**Node Manager Credentials**

Username:

Password:

Confirm Password:

Must be the same as the password. Password must contain at least 8 alphanumeric characters with at least one number or special character.

### Managed Servers

- Create Domain
- Templates
- Administrator Account
- Domain Mode and JDK
- Database Configuration Type
- Component Datasources
- JDBC Test
- Advanced Configuration
- Administration Server
- Node Manager
- Managed Servers**
- Clusters
- Server Templates
- Coherence Clusters
- Machines
- Virtual Targets
- Partitions
- Deployments Targeting
- Services Targeting
- Configuration Summary

| Server Name        | Listen Address      | Listen Port | Enable SSL                          | SSL Listen Port | Server Groups |
|--------------------|---------------------|-------------|-------------------------------------|-----------------|---------------|
| dmkr_app_mserver_1 | All Local Addresses | 8101        | <input checked="" type="checkbox"/> | 8102            | Unspecified   |
| dmkr_jms_mserver_1 | All Local Addresses | 9101        | <input checked="" type="checkbox"/> | 9102            | Unspecified   |

### Clusters

- Create Domain
- Templates
- Administrator Account
- Domain Mode and JDK
- Database Configuration Type
- Component Datasources
- JDBC Test
- Advanced Configuration
- Administration Server
- Node Manager
- Managed Servers
- Clusters**
- Server Templates
- Dynamic Servers
- Assign Servers to Clusters
- Coherence Clusters
- Machines
- Virtual Targets
- Partitions
- Deployments Targeting

| Cluster Name       | Cluster Address | Frontend Host | Frontend HTTP Port | Frontend HTTPS Port | Dynamic Server Groups |
|--------------------|-----------------|---------------|--------------------|---------------------|-----------------------|
| dmkr_app_cluster_1 |                 |               | 0                  | 0                   | Unspecified           |
| dmkr_jms_cluster_1 |                 |               | 0                  | 0                   | Unspecified           |

Fusion Middleware Configuration Wizard - Page 13 of 24

**ORACLE**  
FUSION MIDDLEWARE

### Server Templates

- Create Domain
- Templates
- Administrator Account
- Domain Mode and JDK
- Database Configuration Type
- Component Datasources
- JDBC Test
- Advanced Configuration
- Administration Server
- Node Manager
- Managed Servers
- Clusters
- Server Templates**
- Dynamic Servers
- Assign Servers to Clusters
- Coherence Clusters
- Machines
- Virtual Targets
- Partitions
- Deployments Targeting

**+ Add** **X Delete** **Discard Changes**

| Name | Listen Port | SSL Listen Port | Enable SSL               |
|------|-------------|-----------------|--------------------------|
|      |             |                 | <input type="checkbox"/> |

**Help** **< Back** **Next >** **Finish** **Cancel**

### Dynamic Servers

Disard Changes

- Create Domain
- Templates
- Administrator Account
- Domain Mode and JDK
- Database Configuration Type
- Component Datasources
- JDBC Test
- Advanced Configuration
  - Administration Server
  - Node Manager
  - Managed Servers
  - Clusters
  - Server Templates
  - Dynamic Servers**
  - Assign Servers to Clusters
  - Coherence Clusters
  - Machines
  - Virtual Targets
  - Partitions
  - Deployments Targeting

| Cluster Name       | Server Name Prefix | Server Template | Dynamic Cluster Size | Machine Name Match Expression | Calculated Machine Names | Calculated Listen Ports  | Dynamic Cluster          |
|--------------------|--------------------|-----------------|----------------------|-------------------------------|--------------------------|--------------------------|--------------------------|
| dmkr_app_cluster_1 | Disable            | Unspecified     | Disabled             | Disabled                      | <input type="checkbox"/> | <input type="checkbox"/> | <input type="checkbox"/> |
| dmkr_jms_cluster_1 | Disable            | Unspecified     | Disabled             | Disabled                      | <input type="checkbox"/> | <input type="checkbox"/> | <input type="checkbox"/> |



Fusion Middleware Configuration Wizard - Page 15 of 24

**Assign Servers to Clusters**

ORACLE  
FUSION MIDDLEWARE

**Servers**

**Clusters**

- Cluster
  - dmkr\_app\_cluster\_1
    - Server
      - dmkr\_app\_mserver\_1
  - dmkr\_jms\_cluster\_1
    - Server
      - dmkr\_jms\_mserver\_1

Select **one or more** servers in the left pane and **one** cluster in the right pane. Then use the right arrow button (>) to assign the server or servers to the cluster.

Help < Back Next > Finish Cancel



### Coherence Clusters

Discard Changes

- [Create Domain](#)
- [Templates](#)
- [Administrator Account](#)
- [Domain Mode and JDK](#)
- [Database Configuration Type](#)
- [Component Datasources](#)
- [JDBC Test](#)
- [Advanced Configuration](#)
- [Administration Server](#)
- [Node Manager](#)
- [Managed Servers](#)
- [Clusters](#)
- [Server Templates](#)
- [Dynamic Servers](#)
- [Assign Servers to Clusters](#)
- Coherence Clusters**
- [Machines](#)
- [Virtual Targets](#)
- [Partitions](#)
- [Deployments Targeting](#)

| Cluster Name   | Cluster Listen Port |
|----------------|---------------------|
| DataGridConfig | 7574                |

### Machines

- Create Domain
- Templates
- Administrator Account
- Domain Mode and JDK
- Database Configuration Type
- Component Datasources
- JDBC Test
- Advanced Configuration
- Administration Server
- Node Manager
- Managed Servers
- Clusters
- Server Templates
- Dynamic Servers
- Assign Servers to Clusters
- Coherence Clusters
- Machines**
- Assign Servers to Machines
- Virtual Targets
- Partitions

Machine: Unix Machine

| Name        | Node Manager Listen Address | Node Manager Listen Port |
|-------------|-----------------------------|--------------------------|
| dmkr_node_1 | localhost                   | 5556                     |

**Assign Servers to Machines**

ORACLE  
FUSION MIDDLEWARE

**Servers**

**Machines**

- Machine
  - dmkr\_node\_1
    - DEN00ORT\_adminserver
    - dmkr\_app\_mserver\_1
    - dmkr\_jms\_mserver\_1

Select **one or more** servers in the left pane and **one** machine in the right pane. Then use the right arrow button (>) to assign the server or servers to the machine.

Help < Back Next > Finish Cancel

### Virtual Targets

- Create Domain
- Templates
- Administrator Account
- Domain Mode and JDK
- Database Configuration Type
- Component Datasources
- JDBC Test
- Advanced Configuration
- Administration Server
- Node Manager
- Managed Servers
- Clusters
- Server Templates
- Dynamic Servers
- Assign Servers to Clusters
- Coherence Clusters
- Machines
- Assign Servers to Machines
- Virtual Targets**
- Partitions

| Name | Target | Host Names | URI Prefix | Explicit Port | Port Offset |
|------|--------|------------|------------|---------------|-------------|
|------|--------|------------|------------|---------------|-------------|



### Partitions

- Create Domain
- Templates
- Administrator Account
- Domain Mode and JDK
- Database Configuration Type
- Component Datasources
- JDBC Test
- Advanced Configuration
- Administration Server
- Node Manager
- Managed Servers
- Clusters
- Server Templates
- Dynamic Servers
- Assign Servers to Clusters
- Coherence Clusters
- Machines
- Assign Servers to Machines
- Virtual Targets
- Partitions**

+ Add

X Delete

Discard Changes

Name

Help

< Back

Next >

Finish

Cancel

### Deployments Targeting

- Create Domain
- Templates
- Administrator Account
- Domain Mode and JDK
- Database Configuration Type
- Component Datasources
- JDBC Test
- Advanced Configuration
- Administration Server
- Node Manager
- Managed Servers
- Clusters
- Server Templates
- Dynamic Servers
- Assign Servers to Clusters
- Coherence Clusters
- Machines
- Assign Servers to Machines
- Virtual Targets
- Partitions

- #### Deployments
- AppDeployment
    - DMS Application#12.2.1.1.0
    - coherence-transaction-rar
    - opss-rest
    - state-management-provider-memory-rar
  - Library
    - UIX#11@12.2.1.3.0
    - adf.oracle.businesseditor#1.0@12.2.1.3.0
    - adf.oracle.domain#1.0@12.2.1.3.0
    - adf.oracle.domain.groovy#1.0@12.2.1.3.0
    - adf.oracle.domain.webapp#1.0@12.2.1.3.0
    - adf.oracle.domain.webapp.antr-runtime#1.0@12.2.1.3.0
    - adf.oracle.domain.webapp.apache.httpclient
    - adf.oracle.domain.webapp.apache.httpcore
    - adf.oracle.domain.webapp.apache.httpmime
    - adf.oracle.domain.webapp.apache.velocity#1.0@12.2.1.3.0
    - adf.oracle.domain.webapp.batik-bundle#1.0@12.2.1.3.0
    - adf.oracle.domain.webapp.guava#1.0@12.2.1.3.0
    - adf.oracle.domain.webapp.xml-apis-ext#1.0@12.2.1.3.0
    - jsf#2.0@1.0.0.0\_2-2-8
    - istl#1.2@1.2.0.1

- #### DeploymentTargets
- oracle.sdp.messaging#2.0@12.2.1.3.0
  - oracle.wsm.idmrest.sharedlib#1.0@12.2.1.3.0
  - oracle.wsm.seedpolicies#2.0@12.2.1.3.0
  - orai18n-adf#11@11.1.1.1.0
  - owasp.esapi#2.0@12.2.1.3.0
  - Cluster
    - dmkr\_app\_cluster\_1
      - Library
        - UIX#11@12.2.1.3.0
        - adf.oracle.businesseditor#1.0@12.2.1.3.0
        - adf.oracle.domain#1.0@12.2.1.3.0
        - adf.oracle.domain.groovy#1.0@12.2.1.3.0
        - adf.oracle.domain.webapp#1.0@12.2.1.3.0
        - adf.oracle.domain.webapp.antr-runtime#1.0@12.2.1.3.0
        - adf.oracle.domain.webapp.apache.httpclient
        - adf.oracle.domain.webapp.apache.httpcore
        - adf.oracle.domain.webapp.apache.httpmime
        - adf.oracle.domain.webapp.apache.velocity#1.0@12.2.1.3.0
        - adf.oracle.domain.webapp.batik-bundle#1.0@12.2.1.3.0
        - adf.oracle.domain.webapp.guava#1.0@12.2.1.3.0
        - adf.oracle.domain.webapp.xml-apis-ext#1.0@12.2.1.3.0

Select **one or more** Deployments in the left pane and **one** server or cluster in the right pane. Then use the right arrow button (>) to target the Applications to the servers or clusters.

Fusion Middleware Configuration Wizard - Page 22 of 25

**ORACLE**  
FUSION MIDDLEWARE

### Services Targeting

- Create Domain
- Templates
- Administrator Account
- Domain Mode and JDK
- Database Configuration Type
- Component Datasources
- JDBC Test
- Advanced Configuration
- Administration Server
- Node Manager
- Managed Servers
- Clusters
- Server Templates
- Dynamic Servers
- Assign Servers to Clusters
- Coherence Clusters
- Machines
- Assign Servers to Machines
- Virtual Targets
- Partitions

**Services**

- JDBCSystemResource
  - LocalSvcTblDataSource
  - WLSSchemaDataSource
  - opss-audit-DBDS
  - opss-audit-viewDS
  - opss-data-source
- ShutdownClass
- DMSShutdown
- StartupClass
  - AWT Application Context Startup Class
  - DMS-Startup
  - JRF Startup Class
  - ODL-Startup
  - WSM Startup Class
  - Web Services Startup Class
- WLDFSystemResource
  - Module-FMWDFW

**DeploymentTargets**

- opss-audit-DBDS
- opss-audit-viewDS
- opss-data-source
- ShutdownClass
  - DMSShutdown
- StartupClass
  - AWT Application Context Startup Class
  - DMS-Startup
  - JRF Startup Class
  - ODL-Startup
  - WSM Startup Class
  - Web Services Startup Class
- WLDFSystemResource
  - Module-FMWDFW
- Cluster
  - dmkr\_app\_cluster\_1
    - JDBCSystemResource
    - opss-data-source
  - dmkr\_jms\_cluster\_1
- Server
  - dmkr\_app\_mserver\_1
  - dmkr\_jms\_mserver\_1

Select **one or more** Services in the left pane and **one** server or cluster in the right pane. Then use the right arrow button (>) to target the services to the servers or clusters.

Help < Back Next > Finish Cancel



### Configuration Summary

- Create Domain
- Templates
- Administrator Account
- Domain Mode and JDK
- Database Configuration Type
- Component Datasources
- JDBC Test
- Advanced Configuration
- Administration Server
- Node Manager
- Managed Servers
- Clusters
- Server Templates
- Dynamic Servers
- Assign Servers to Clusters
- Coherence Clusters
- Machines
- Assign Servers to Machines
- Virtual Targets
- Partitions

View: Deployment

- test\_domain (C:\Oracle\Middleware\user\_projects\doma
- Server
  - dmkr\_app\_mserver\_1
  - dmkr\_jms\_mserver\_1
- AdminServer
  - den00ort\_adminserver
    - AppDeployment
      - opss-rest
      - state-management-provider-memory-ra
      - DMS Application#12.2.1.1.0
      - coherence-transaction-rar
    - Library
      - oracle.wsm.idmrest.sharedlib#1.0@12
      - oracle.wsm.seedpolicies#2.0@12.2.1.0
      - oracle.sdp.client#2.0@12.2.1.3.0
      - oracle.sdp.messaging#2.0@12.2.1.3.0
      - oracle.pwdgen#2.0@12.2.1
      - owasp.esapi#2.0@12.2.1
      - oracle.adf.dconfigbeans#1.0@12.2.1
      - adf.oracle.domain#1.0@12.2.1.3.0
      - adf.oracle.businesseditor#1.0@12.2.1

|             |                                         |
|-------------|-----------------------------------------|
| Name        | Basic WebLogic Server Domain            |
| Description | Create a basic WebLogic Server domain   |
| Author      | Oracle Corporation                      |
| Location    | C:\Oracle\Middleware\wlserver\commo     |
| Name        | Oracle JRF                              |
| Description | Full JRF Domain Template                |
| Author      | Oracle Corporation                      |
| Location    | C:\Oracle\Middleware\pracle_common\     |
| Name        | Oracle JRF Base                         |
| Description | Required for Fusion Middleware Compo    |
| Author      | Oracle Corporation                      |
| Location    | C:\Oracle\Middleware\pracle_common\     |
| Name        | WebLogic Template for JRF Domain        |
| Description | template.info.description.text          |
| Author      | Oracle Corporation                      |
| Location    | C:\Oracle\Middleware\wlserver\commo     |
| Name        | Oracle Click History                    |
| Description | Oracle Click History extension template |
| Author      | Oracle Corporation                      |
| Location    | C:\Oracle\Middleware\pracle_common\     |

**CFGFWK-40326: Invalid coherence server address.**



### Configuration Progress

- Create Domain
- Templates
- Administrator Account
- Domain Mode and JDK
- Database Configuration Type
- Component Datasources
- JDBC Test
- Advanced Configuration
- Administration Server
- Node Manager
- Managed Servers
- Clusters
- Server Templates
- Dynamic Servers
- Assign Servers to Clusters
- Coherence Clusters
- Machines
- Assign Servers to Machines
- Virtual Targets
- Partitions
- Deployment Targeting

100%

|   |                            |
|---|----------------------------|
| ✓ | Copy Unprocessed Artifacts |
| ✓ | OPSS Processing            |
| ✓ | Security Processing        |
| ✓ | Artifacts Generation       |
| ✓ | String Substitution        |
| ✓ | Post Processing            |

Help

< Back

Next >

Finish

Cancel



### End Of Configuration

- Create Domain
- Templates
- Administrator Account
- Domain Mode and JDK
- Database Configuration Type
- Component Datasources
- JDBC Test
- Advanced Configuration
  - Administration Server
  - Node Manager
  - Managed Servers
  - Clusters
  - Server Templates
  - Dynamic Servers
  - Assign Servers to Clusters
  - Coherence Clusters
  - Machines
  - Assign Servers to Machines
  - Virtual Targets
  - Partitions
  - Deployments Targeting

✔ **Oracle Weblogic Server Configuration Succeeded**  
**New Domain SLC04LPQ\_domain Creation Succeeded**  
Domain Location  
[/scratch/odeeqa/Oracle/Middleware/Oracle\\_Home/user\\_projects/domains/SLC04LPQ\\_domain](#)  
Admin Server URL  
<https://slc04lpq:7002/console>

Help

< Back

Next >

Finish

Cancel



# Index

## A

- Advanced Compression Options 26
- Appendix 36
- Appendix B 36
- Assembly Line
  - ID field 21
  - Name field 21

## B

- bin directory 10
- bpel directory 11

## C

- Configuration Summary window 40
- Configure JDBC Component Schema window 40
- conventions 6
- credentials 43

## D

- dashboard directory 11
- database directory 10
- Database Information window 19
- database scripts 26, 31
- DB Folder Location field 20
- deploysampleml
  - .bat file 32
- directories
  - installation 10
- dmkr\_asline.sql script 26, 31
- dmrk\_admin.sql script 26, 31
- docfactory directory 10
- Documaker Administrator
  - and WebLogic 33
  - overview 8
- documaker directory 10
- Documaker Enterprise
  - architecture 9
  - overview 8
- Documaker Interactive
  - and WebLogic 33
  - overview 8
- documaker\_administrator directory 11
- documakerj2ee directory 11
- Document Factory
  - overview 8
- Document Factory Dashboard
  - and WebLogic 33
  - credentials 43

- documentation
  - downloading 48

## E

- EAR files
  - defined 11
- email address 23
- error logs 25

## F

- filesystem-archive directory 10

## H

- Help
  - changing the location 46
- helpLink property 46
- HotDirectories property 10
- hotdirectory directory 10

## I

- idocumaker\_correspondence directory 11
- installActions file 24
- installation
  - pre-installation steps 13

## J

- j2ee directory 10
- JAR files
  - defined 11
- jre directory 10

## L

- loading the MRL 26

## M

- mstres directory 10
- Multipurpose Internet Mail Extensions (MIME) 42

## O

- Oracle Business Rules
  - composites 41
  - deploying 40
- Oracle database
  - requirements 13
- Oracle Documaker Interactive
  - credentials 43
- Oracle Service Oriented Architecture (SOA)
  - deploying 40
- Oracle Technology Network (OTN) 46
- Oracle Universal Content Management (UCM) 15
- OTN web site 48

## P

- patches
  - downloading 47
- preface 4

py files 37

## R

Registration/Administrator Database Schema window 19

## S

scripts 11, 26, 31

Select Extension Source window 40

Select Optional Configuration window 40

Short Message System (SMS) 15

SMTP Email Server dialog 23

Specify Home Details window 18

Summary dialog 24

## U

Unified Messaging Service (UMS) 15

uninstall the software 49

updates

    downloading 47

Use UMS field 24

user accounts 37

## V

Visual C++ Redistributable Package 14

## W

Web Services window 24

WebLogic

    creating the domain 33

    Help location 46

    Managed Server 38

WebLogic Domain Directory window 40

weblogic\_installation.properties file 34

WIP Edit plug-in

    configuring 42