

Oracle[®] Smart View for Office Installation and Configuration Guide



Release 25.200

G26757-06

November 2025

The Oracle logo, consisting of a solid red square with the word "ORACLE" in white, uppercase, sans-serif font centered within it.

ORACLE[®]

Oracle Smart View for Office Installation and Configuration Guide, Release 25.200

G26757-06

Copyright © 2004, 2025, Oracle and/or its affiliates.

Primary Author: EPM Information Development Team

This software and related documentation are provided under a license agreement containing restrictions on use and disclosure and are protected by intellectual property laws. Except as expressly permitted in your license agreement or allowed by law, you may not use, copy, reproduce, translate, broadcast, modify, license, transmit, distribute, exhibit, perform, publish, or display any part, in any form, or by any means. Reverse engineering, disassembly, or decompilation of this software, unless required by law for interoperability, is prohibited.

The information contained herein is subject to change without notice and is not warranted to be error-free. If you find any errors, please report them to us in writing.

If this is software, software documentation, data (as defined in the Federal Acquisition Regulation), or related documentation that is delivered to the U.S. Government or anyone licensing it on behalf of the U.S. Government, then the following notice is applicable:

U.S. GOVERNMENT END USERS: Oracle programs (including any operating system, integrated software, any programs embedded, installed, or activated on delivered hardware, and modifications of such programs) and Oracle computer documentation or other Oracle data delivered to or accessed by U.S. Government end users are "commercial computer software," "commercial computer software documentation," or "limited rights data" pursuant to the applicable Federal Acquisition Regulation and agency-specific supplemental regulations. As such, the use, reproduction, duplication, release, display, disclosure, modification, preparation of derivative works, and/or adaptation of i) Oracle programs (including any operating system, integrated software, any programs embedded, installed, or activated on delivered hardware, and modifications of such programs), ii) Oracle computer documentation and/or iii) other Oracle data, is subject to the rights and limitations specified in the license contained in the applicable contract. The terms governing the U.S. Government's use of Oracle cloud services are defined by the applicable contract for such services. No other rights are granted to the U.S. Government.

This software or hardware is developed for general use in a variety of information management applications. It is not developed or intended for use in any inherently dangerous applications, including applications that may create a risk of personal injury. If you use this software or hardware in dangerous applications, then you shall be responsible to take all appropriate fail-safe, backup, redundancy, and other measures to ensure its safe use. Oracle Corporation and its affiliates disclaim any liability for any damages caused by use of this software or hardware in dangerous applications.

Oracle®, Java, MySQL, and NetSuite are registered trademarks of Oracle and/or its affiliates. Other names may be trademarks of their respective owners.

Intel and Intel Inside are trademarks or registered trademarks of Intel Corporation. All SPARC trademarks are used under license and are trademarks or registered trademarks of SPARC International, Inc. AMD, Epyc, and the AMD logo are trademarks or registered trademarks of Advanced Micro Devices. UNIX is a registered trademark of The Open Group.

This software or hardware and documentation may provide access to or information about content, products, and services from third parties. Oracle Corporation and its affiliates are not responsible for and expressly disclaim all warranties of any kind with respect to third-party content, products, and services unless otherwise set forth in an applicable agreement between you and Oracle. Oracle Corporation and its affiliates will not be responsible for any loss, costs, or damages incurred due to your access to or use of third-party content, products, or services, except as set forth in an applicable agreement between you and Oracle.

Contents

Documentation Accessibility

Documentation Feedback

1 Welcome to Smart View Installation and Configuration

2 Installing Smart View

About Installing Smart View	1
Installation Guidelines	1
Installation and Windows Access Control Settings	2
Installer Language	3
Microsoft .NET Framework Support	3
Internet Explorer 11 End of Support and Smart View	3
Microsoft Edge WebView2 Support	4
BiDi Support in Installer	5
Upgrading from Smart View 11.1.1.3.x or Earlier	5
Oracle BI EE Extension Users: Upgrading from Smart View 11.1.2.5.500 or Earlier	5
Oracle BI EE Version Requirement for Multiple Connection and View Designer Features	6
Installing from My Oracle Support or Oracle Technical Resources	6
Installing from Oracle Technical Resources	7
Installing from My Oracle Support	8
Installing Browser Add-ons	10
Alternative Methods for Installing Browser Add-ons	12
Installing by Autodeployment in EPM System	14
Server Setup	14
Client Installation	16
Installing from EPM Workspace	17
Installing from Oracle BI EE	19
Configuring the BI Home Page	19
Installing from the BI Home Page	20
Configuring Display of the Save Password Dialog	21

Running Command Line or Silent Installations	23
Installing Smart View Extensions Silently	28
Exporting Default Smart View Options	28
Downloading Help for Local or Web Server Installation	29
Uninstalling Smart View	30

3 Administering Extension Installations and Updates

About Extension Installations and Updates	1
Configuring Manual Extension Updates	2
Manual Update XML Defined	4
Manual Update XML Example	6
Configuring Auto-Update Extensions	6
Auto-Update XML Defined	7
Auto-Update XML Example	8
Administering Extensions When Using Mozilla Firefox	8

4 Accessing Shared Connections from an XML File

About Accessing Shared Connections from an XML File	1
Setting Up the Shared Connections XML File	2
Connection File Syntax and Example	8
Connection File Syntax	8
Connection File Example	10

5 Installing and Configuring Help Locally or on a Web Server

About Installing Help Locally or on a Web Server	1
Setting Up Help Locally or on a Web Server	1
Optional Local Help Configuration via the Shared Connections XML File	4

6 Tips and Troubleshooting

Diagnostics Tools and Health Check	1
Microsoft Considerations	2
Microsoft .NET Requirement when Installing Office	2
Microsoft Office 365 ProPlus Support	3
Windows Registry Access Requirement for Smart View Installation	3
Smart View Display and Operations Issues After Windows 10 Update	3
Problem Opening Files in Excel	4
Excel Process Stops Responding (Hangs) on Shut Down	4
Renaming or Deleting the Excel nn.xlb File	4

Issue Loading Smart View XLA File After Excel 2016 November 12, 2024 Update	5
Smart View Install, Setup, and and Uninstall	5
Smart View cfg Folder and Properties File Access Requirement	6
Installing in the Windows Program Files Folder	6
Outlook Enablement in New Installs and Upgrades	6
Enabling and Disabling Smart View and Other Office Add-ins	6
Disabling the Smart View Add-on in Apps Other than Excel	8
Uninstallation Process Stops Responding	9
Excel Looks for HsTbar.xla File After Uninstall	9
Add-ins Menu Still Displays After Smart View Uninstall	10
Failure Connecting to Oracle Analytics Cloud	10
Language and Locale	12
Windows, Office, and Smart View Locale Settings	12
Installation and Languages	13
Startup and Display	13
Manually Registering HsAddin.dll when Smart View Does Not Start	13
Error When First Launching Excel After Installing Smart View	14
Errors When Launching Office after Installing Smart View	14
Incorrect Parameter Error after Installing Smart View	15
Smart View Ribbon Fails to Display After Non-Admin Installation	16
Ribbon Display Issue After Connecting to Both Smart View and PowerPivot	16
Ribbons Not Selectable After Installation	17
Ribbon Tab for Smart View (Mac and Browser) Displays in Smart View on Windows	17
Two Smart View Instances Appear in Program and Features Window	17
Office Slow to Start when Internet Connectivity is Not Available	17
Login and Connections	18
Diagnosing Login Issues	18
Connection Error	19
Failure to Establish Connection with Integrated Windows Single Signon	20
WebView2 and Kerberos Support	21
Issues When Starting Excel in Automation Mode	21
Fixing Function Links on Machines where Smart View was Reinstalled in a User-specified Location	22
Extensions	22
Slowness with Extension Options Dialog Box	23
Extension Installation from Cloud EPM and Message Window Focus	23
Extension Updates and Office Applications Remaining Open	23
Extension Updates and Outlook	24
Enabling the Smart View Extension for Firefox	25
Performance	26
Performance and Memory Usage Considerations for Smart View with Excel	26
Flickering Issues on Office 2013 and Office 2016	27

Unbalanced Loads in Provider Services Clustered Environments	28
Memory Error on Large Queries	28
Duplicate Queries in Word Slow to Refresh	28
Session Timeout when Connected Using Vanity URLs	30
Enable WebView2 to Prevent Script Error on Launching Certain Dialogs	30
WebView2 and Disconnect Issues	31
Clearing Smart View Cookies	31
Clearing WebView2 Cookies	32
Third-Party Monitoring Tools May Impact Smart View Stability	32
Two-Way SSL and Problematic Certificates	32
Issues with Dynamic Data Exchange Option in Excel	33
Request Timeout Error on Windows 11	33
Browser Settings When Working with XML Files on HTTP Server	34
Smart View HTTP Session Timeout	35
Smart View General	36
Office Unknown Exception Error on a Protected Sheet	36
Bindows Error When Importing Financial Reporting Documents	37
Spreading Issue, Smart View Installation, and HsSpread.dll	37
Working with Custom HTML-based Login Forms	38
Custom Styles and Merged Cells in Forms	38
Drill-through with Chrome: Blocklist and Allowlist for Native Messaging	38
VBA Function Error for Oracle Analytics Cloud or Oracle BI EE	39

7 Frequently Asked Questions (FAQs) about Smart View

Documentation Accessibility

For information about Oracle's commitment to accessibility, visit the Oracle Accessibility Program website at <http://www.oracle.com/pls/topic/lookup?ctx=acc&id=docacc>.

Access to Oracle Support

Oracle customers that have purchased support have access to electronic support through My Oracle Support. For information, visit <http://www.oracle.com/pls/topic/lookup?ctx=acc&id=info> or visit <http://www.oracle.com/pls/topic/lookup?ctx=acc&id=trs> if you are hearing impaired.

Documentation Feedback

To provide feedback on this documentation, click the feedback button at the bottom of the page in any Oracle Help Center topic. You can also send email to epmdoc_ww@oracle.com.

1

Welcome to Smart View Installation and Configuration

This guide includes topics on these subjects:

- Installing Oracle Smart View for Office
- Administering extensions
- Accessing shared connections in an XML file
- Configuring locally-installed help
- Troubleshooting tips

Where to find Smart View documentation

The Smart View for Office documentation is available on the Oracle Help Center on the [Enterprise Performance Management](#) page under the **Smart View for Office** section.

Select a Smart View release library to access release-specific documentation.

- To read this guide online in a browser, click the guide name link.
- To download a PDF file of this guide, click the PDF icon



next to the guide name. You can also download it from the online version by clicking



in the left panel next to the Table of Contents.

How to find information in this guide

To find information in the guide:

- From the online help, in the left frame of the browser window, use the Table of Contents to navigate to topics, or enter a search term in the search text box.
- From the PDF file, navigate to topics from the table of contents, or use your reader's search functionality.

2

Installing Smart View

Related Topics

- [About Installing Smart View](#)
- [Installation Guidelines](#)
- [Installing from My Oracle Support or Oracle Technical Resources](#)
- [Installing Browser Add-ons](#)
- [Installing by Autodeployment in EPM System](#)
- [Installing from EPM Workspace](#)
- [Installing from Oracle BI EE](#)
- [Configuring Display of the Save Password Dialog](#)
- [Running Command Line or Silent Installations](#)
- [Exporting Default Smart View Options](#)
- [Downloading Help for Local or Web Server Installation](#)
- [Uninstalling Smart View](#)

About Installing Smart View

Oracle Smart View for Office uses a single installer for 64-bit and 32-bit versions of Microsoft Office, starting with release 11.1.2.5.

Late-breaking information about the Smart View installation is provided in the *Oracle Smart View for Office Readme*. You should thoroughly review this chapter along with the information in the readme before installing Smart View.

Late-breaking information about installing client products in Oracle Fusion Cloud Enterprise Performance Management environments is provided in the *What's New* document for each service. Review this information thoroughly before installing client products.

Late-breaking information about the installation of Oracle Enterprise Performance Management System products is provided in the *Oracle Enterprise Performance Management System Installation and Configuration Readme*. Review this information thoroughly before installing EPM System products.

Installation Guidelines

Related Topics

- [Installation and Windows Access Control Settings](#)
- [Installer Language](#)
- [Microsoft .NET Framework Support](#)
- [Internet Explorer 11 End of Support and Smart View](#)

- [Microsoft Edge WebView2 Support](#)
- [BiDi Support in Installer](#)
- [Upgrading from Smart View 11.1.1.3.x or Earlier](#)
- [Oracle BI EE Extension Users: Upgrading from Smart View 11.1.2.5.500 or Earlier](#)
- [Oracle BI EE Version Requirement for Multiple Connection and View Designer Features](#)

Installation and Windows Access Control Settings

Starting with the 11.1.2.5.400 release, you can install Oracle Smart View for Office as a System user or as a non-admin user.

Windows User Access Control (UAC) settings can affect Smart View installation. For information on setting UAC, see the Microsoft Windows documentation.

Also, see [Tips and Troubleshooting](#) if you encounter issues related to installation.

Table 2-1 Installation Guidelines for System, Admin, and Non-Admin Users

Installation Context	Scenario	UAC-Enabled	Result
System user	SmartView.exe is launched by the Windows scheduler or PsExec	Not applicable	Smart View is installed on the machine level
Administrator	The user runs SmartView.exe with the "Run as Administrator" command or from an elevated command prompt	Depending on the UAC level, the user may need to go through the UAC UI sequence	Smart View is installed on the machine level
Non-admin user	The user installing Smart View may or may not be a member of the Administrators group. Note: Not supported on Windows server platforms.	No UAC interaction is expected.	Smart View is installed on the current user's level; other users will not be able to run Smart View

Notes:

- This scenario is not supported: A user installs Smart View, and then, on the same machine, another user tries to install Smart View in the same location as the previous installation.
- After non-admin installations:
 - The Smart View ribbon may fail to appear on Windows 10 or 11.
To display the ribbon, see [Smart View Ribbon Fails to Display After Non-Admin Installation](#).
 - Launching Office applications with Smart View content from Internet Explorer will fail in protected mode.

Note

Starting with Oracle Enterprise Performance Management System Release 11.2.2 and the Oracle Fusion Cloud Enterprise Performance Management 20.09 update, Internet Explorer is no longer supported. This guideline is kept here for the purpose of backward compatibility. For more information, see [Internet Explorer 11 End of Support and Smart View](#).

- Upgrade in mixed installation context is not supported. For example, upgrading the previously-installed per-machine installation with a per-user one is not supported (Error 1925).
- Silent installations are not supported for non-admin users. When attempting a silent installation, the /s flag is ignored for non-admin users, causing the Smart View product installer to launch.
- Non-admin users are not authorized to install Smart View in the C:\Program Files or C:\Program Files (x86) folders.

Installer Language

The installer is automatically displayed in the language set in the Format field of the Windows Region and Language dialog box in the Control Panel.

However, some messages, both on-screen and in the log file, cannot be translated and will appear in English.

For more information about language settings, see [Windows, Office, and Smart View Locale Settings](#).

Microsoft .NET Framework Support

Oracle Smart View for Office requires a supported version of Microsoft .NET Framework. Oracle recommends using .NET Framework 4.8 or higher.

Note that Microsoft .NET Framework 4.5.2, 4.6, and 4.6.1 are no longer supported after April 26, 2022. For more information, see [.NET Framework 4.5.2, 4.6, 4.6.1 will reach End of Support on April 26, 2022](#).

Internet Explorer 11 End of Support and Smart View

Microsoft has announced end of support of Internet Explorer 11 by June 15, 2022.

Do not uninstall Microsoft Internet Explorer, even after the end-of support date of June 15, 2022. Instead, you may securely disable Internet Explorer following Microsoft's guidelines. In situations where the Internet Explorer browser would be called, the Edge browser will be launched instead.

Oracle Smart View for Office does not require the Internet Explorer browser specifically. However, Smart View depends on WinInet APIs that may have dependencies on Internet Explorer. Microsoft recommends keeping Internet Explorer installed on the machine since uninstalling may cause other applications that are dependent on it to work incorrectly. Microsoft also recommends updating to the latest security patches as they become available.

For more information, see Oracle Support Document 2877741.1, [Impact on Smart View with Microsoft decommissioning Internet Explorer 11 on June 15, 2022 \(Doc ID 2877741.1\)](#).

Microsoft Edge WebView2 Support

Starting in Oracle Smart View for Office 25.200, Microsoft Edge WebView2 is required to be installed on each user's computer.

Certain authentication schemes require newer controls, such as WebView2, to process a complex login sequence. To use WebView2, ensure that Microsoft Edge WebView2 Runtime is installed and enabled on each Smart View client machine.

During runtime, Smart View detects the presence of Microsoft Edge WebView2 Runtime installed on the machine and launches the WebView2-based dialog to host the login page.

Note

- Smart View began supporting WebView2 in release 21.100. Full support for WebView2 is available in release 23.210 and later.
- WebView2 is supported only on Microsoft Windows 10 and 11.
- Although WebView2 is supported only on Windows 10 and 11, there may be instances where you are working with Smart View on a Windows Server version, such as Windows Server 2022, with WebView2 installed and enabled. In these cases, after initial login to an Office application, such as Excel, if you attempt to use Smart View in another Office application, you will be required to log in again. For example, if you are copying and pasting data points from Excel to Word, you will be required to log in to Excel, and then log in again to Word. This is due to Office applications not sharing the WebView2 data folder. Any functionality that relies on the shared data folder will not work as expected. The result is that users will need to log in and disconnect independently for each Office application on Windows Server.
- In the **Health Check** dialog in Smart View, the **WebView2 Runtime** option is set to **Enable for All** by default.
- For two-factor authentication login scenarios, in the **Health Check** dialog, the **WebView2 Runtime** option must be set to **Enable for UI** or **Enable for All**.

Once WebView2 is installed on Smart View client machines, users can enable or disable it in the **Smart View Options** section of **Health Check** (described in [Performing a Health Check On Your System](#) in *Oracle Smart View for Office User's Guide*).

Administrators can also enable or disable WebView2 by editing the Smart View `properties.xml` file (present by default in `C:\Oracle\SmartView\cfg`) and then distribute this file to users.

These are the configuration settings for enabling and disabling WebView2 in `properties.xml`:

- **Enable For All** (the default setting):

```
<disableWebView2>0</disableWebView2>
```



```
<useWebView2forNetworking>1</useWebView2forNetworking>
```
- **Enable for UI**:

```
<disableWebView2>0</disableWebView2>
```



```
<useWebView2forNetworking>0</useWebView2forNetworking>
```
- **Disable**:

```
<disableWebView2>1</disableWebView2>  
<useWebView2forNetworking>0</useWebView2forNetworking>
```

Administrators: If WebView2 is required to handle the login sequence used by your organization, then you should ensure that Microsoft Edge WebView2 Runtime is installed and enabled on the machines running Smart View. If you are installing Microsoft Edge WebView2 Runtime, Oracle recommends using the Evergreen version.

Once installed, Microsoft distributes WebView2 updates on a regular cadence, unless a fixed version was installed. Administrators can use their own internal procedures to download and distribute Microsoft Edge WebView2 Runtime to Smart View users. The download is here:

<https://docs.microsoft.com/en-us/deployoffice/webview2-install#webview2-runtime-installation>

For more information, see the [WebView2](#) documentation.

Related Topics:

See the following troubleshooting information related to Microsoft Edge WebView2:

- [Clearing WebView2 Cookies](#)
- [Enable WebView2 to Prevent Script Error on Launching Certain Dialogs](#)
- [WebView2 and Disconnect Issues](#)
- [WebView2 and Kerberos Support](#)
- [Bindows Error When Importing Financial Reporting Documents](#)

BiDi Support in Installer

The Oracle Smart View for Office installer does not fully support bidirectional (BiDi) languages. This can result in installer screens containing formatting errors such as misaligned text and icons. The installer can be used, however, and the installed Smart View product will display correctly in BiDi languages.

Upgrading from Smart View 11.1.1.3.x or Earlier

When upgrading from Oracle Smart View for Office release 11.1.1.3.x or earlier, Oracle recommends uninstalling Smart View before installing this release.

Oracle BI EE Extension Users: Upgrading from Smart View 11.1.2.5.500 or Earlier

If you're using the Oracle BI EE extension, and upgrading from Oracle Smart View for Office 11.1.2.5.500 or earlier to Smart View 11.1.2.5.510 or later, a complete uninstall of Smart View is required:

1. Close all Office applications.
2. Uninstall Smart View from the Windows Control Panel.
3. Install Smart View.

See [Installing from My Oracle Support or Oracle Technical Resources](#).

Oracle BI EE Version Requirement for Multiple Connection and View Designer Features

To use the multiple connection and View Designer features described below, ensure that the Oracle Business Intelligence Enterprise Edition 11.1.1.7.140527 patch or higher is installed. Go to My Oracle Support, **Patches & Updates** tab, and search by "Product or Family." In the **Product** field, select **Oracle Business Intelligence Enterprise Edition**; in the **Release** field, select **OBI EE 11.1.1.7.140527**.

- Multiple connections are supported with Oracle BI EE version 11.1.1.7.140527 and higher. If connecting to earlier versions of Oracle BI EE, then only one connection is allowed.
- To use the Oracle BI EE View Designer feature (introduced in the 11.1.1.7.140527 release), the Oracle BI EE 11.1.1.7.140527 patch or higher is required.

You should only use the View Designer in Oracle Smart View for Office to edit views that were *created* and *inserted* using the View Designer.

See "Editing Views Created in View Designer" in the *Oracle Smart View for Office User's Guide* for more information.

Installing from My Oracle Support or Oracle Technical Resources

You can install Oracle Smart View for Office by downloading the installation program from Oracle Technical Resources or from My Oracle Support. See the instructions in:

- [Installing from Oracle Technical Resources](#)
- [Installing from My Oracle Support](#)

Before you begin, review the information in [Prerequisites](#) and [Other Installation Notes](#).

Prerequisites

- Close all Microsoft Office applications, including Outlook.

Note

Oracle recommends ensuring that all Microsoft Office processes are terminated on the machine where you plan to install Smart View. In Windows Task Manager, check for and terminate these Office processes: Excel, Word, PowerPoint, and Outlook.

- Ensure that a supported version of Microsoft .NET Framework is installed on the computer where you are installing Smart View. See [Microsoft .NET Framework Support](#) for .NET requirements.

A supported version of Microsoft .NET Framework is required to install and use Smart View.

- Log in to Oracle.com. If you're not already logged in, you will be prompted for your Oracle credentials during the download process.

Other Installation Notes

- If you are upgrading to this release from an earlier Smart View release, Oracle recommends that you first uninstall the earlier release before installing this release.
 - If you installed using the Smart View installer wizard, see [Uninstalling Smart View](#).
 - If you installed using the command line or silent install, see [Running Command Line or Silent Installations](#).
- If you plan to use drill-through reports or web launch, a browser add-on is required for all supported browsers (Microsoft Edge, Mozilla Firefox, and Google Chrome).
See [Installing Browser Add-ons](#) for more information.
- Starting with Smart View 11.1.2.5.510, the Oracle BI EE per-user extension installer is included with the Smart View client installation. If the extension is not already installed and it is not disabled, then it is installed the first time you start Office.
- Review the information in [Installation Guidelines](#).

Installing from Oracle Technical Resources

Before you begin, be sure to review the information in [Installing from My Oracle Support or Oracle Technical Resources](#).

To install Oracle Smart View for Office directly from Oracle Technology Resources (OTR; formerly Oracle Technology Network, OTN):

1. Go the **Oracle Smart View for Office** information page on OTR:
<https://www.oracle.com/middleware/technologies/epm-smart-view-downloads.html>
2. On the **Oracle Smart View for Office** information page, click **Download Now**.
This action take you to the **Oracle Software Delivery Cloud** page.
If prompted, provide your Oracle login credentials.
3. On the **Oracle Software Delivery Cloud** page:
 - a. Review the Oracle Gadgets License Agreement, and then select the **I reviewed and accept the following license agreements** check box.
 - b. Select the **Oracle Smart View for Office <version>** check box.
 - c. Under **Platforms**, you are required to select an option. However, there is only one Smart View executable file for all platforms, so Oracle recommends selecting the **All** option.
4. Click **Download**, and follow the steps for your browser to download and save the file to a folder on your computer; for example, save the file to the **Downloads** folder.
An Oracle Software Download Manager EXE file is downloaded to your computer.
5. Double-click the EXE file to launch the **Oracle Download Manager**, then perform these steps:
 - a. Under **Destination** click **Browse** and navigate to a folder for the Smart View download ZIP file, and then click **Next**.
 - b. In the **Status** window, allow the ZIP file to download, and then click **Open Destination** to open the ZIP download location in File Explorer.
6. To start the installation wizard, right-click `SmartView.exe` and select **Run as administrator**.

You may also double-click `SmartView.exe` to start the installation wizard; however, some configurations may require **Run as administrator**. Therefore, Oracle recommends using the **Run as administrator** command to ensure that all functionality is properly enabled and all required Windows Registry entries are set. See [Installation and Windows Access Control Settings](#) for more information.

7. Select a destination folder for Smart View, and then click **OK**; for new installations, Smart View is installed by default in:

`C:/Oracle/SmartView`

Note

If you are upgrading an installation of Smart View, then the installer defaults to the folder where you previously installed Smart View.

8. When installation is complete, click **OK**.

The tab for the Smart View ribbon is displayed the next time you open Microsoft Excel, PowerPoint, or Word.

Note

- If the Smart View ribbon does not display, try the procedure in [Smart View Ribbon Fails to Display After Non-Admin Installation](#).
- If you encounter issues related to installation and startup, see [Tips and Troubleshooting](#).

Installing from My Oracle Support

Before you begin, be sure to review the information in [Installing from My Oracle Support or Oracle Technical Resources](#).

To install Oracle Smart View for Office directly from My Oracle Support (MOS):

1. Review the information in the Knowledge Article, *Smart View Support Matrix and Compatibility FAQ (Doc ID 1923582.1)*, on My Oracle Support:
<https://support.oracle.com/oip/faces/secure/km/DocumentDisplay.jspx?id=1923582.1>
This Knowledge Article provides a link to a listing of available versions of Smart View.
2. From the previous Knowledge Article, click the link for *Available Patch Sets and Patch Set Updates for Oracle Smart View for Office (Doc ID 2220997.1)*:
<https://support.oracle.com/oip/faces/secure/km/DocumentDisplay.jspx?id=2220997.1>
3. On *Available Patch Sets and Patch Set Updates for Oracle Smart View for Office (Doc ID 2220997.1)*, in the table under **Details**, click the link for the version of Smart View to download
4. On the MOS **Patch Search** page, click the link for the patch.
This takes you to an MOS page titled in the following format:
Patch <Number>: TRACKING BUG FOR SMART VIEW RELEASE OF <version>
5. In the patch page, click **Download**.
A popup window is launched.

Note

If a popup blocker message prevents you from continuing, follow the steps required for your browser to allow popups to display for the current web address.

6. In the popup window, click the link for the Smart View download ZIP file.

The zip file is named in the following format:

```
p<patch_number>_<smart_view_version>_MSWIN-x86-64.zip
```

7. Follow the steps for your browser to download the ZIP file, and save it to a folder on your computer; for example, save it to the **Downloads** folder, and then unzip the file to a temporary location.
8. To start the installation wizard, right-click `SmartView.exe` and select **Run as administrator**.

You may also double-click `SmartView.exe` to start the installation wizard; however, some configurations may require **Run as administrator**. Therefore, Oracle recommends using the **Run as administrator** command to ensure that all functionality is properly enabled and all required Windows Registry entries are set. See [Installation and Windows Access Control Settings](#) for more information.

9. Select a destination folder for Smart View, and then click **OK**.

For new installations, Smart View is installed by default in:

```
C:\Oracle\SmartView
```

If you are upgrading an existing installation of Smart View, the installer defaults to the folder where Smart View was previously installed.

Note

Oracle recommends installing in the default location or in a location that does not contain any spaces in the installation path. For example, Oracle advises that you do not install in `C:\Program Files` or `C:\Program Files (x86)`.

10. When installation is complete, click **OK**.

The Smart View ribbon is displayed the next time you open Microsoft Excel, PowerPoint, or Word.

Note

- If the Smart View ribbon does not display, try the instructions explained in [Smart View Ribbon Fails to Display After Non-Admin Installation](#).
- If you encounter issues related to installation and startup, see [Tips and Troubleshooting](#).

Installing Browser Add-ons

You can use Oracle Smart View for Office to interact with web browser applications, such as Financial Consolidation and Close or Oracle Hyperion Planning, in two ways:

- Starting in a form or ad hoc grid in Smart View, use drill-through to launch an application web page in a browser
- Starting in a web application, launch a form or ad hoc grid in Smart View for Excel.

Mozilla Firefox, Google Chrome, or Microsoft Edge require a Smart View add-on for drill-through and web launch.

[Table 1](#) summarizes the browser add-on requirements.

Table 2-2 Browser Add-on Requirements for Drill-Through and Web Launch

Browser	Add-on Required?
Mozilla Firefox	Yes
Google Chrome	Yes
Microsoft Edge	Yes
Microsoft Internet Explorer	Not supported

Note

Starting with Oracle Enterprise Performance Management System Release 11.2.2 and the Oracle Fusion Cloud Enterprise Performance Management 20.09 update, Internet Explorer is no longer supported. For more information, see [Internet Explorer 11 End of Support and Smart View](#).

For instructions on obtaining and installing the add-on for Firefox, Chrome, and Edge, see:

- [Mozilla Firefox](#)
- [Google Chrome](#)
- [Microsoft Edge](#)

The following subtopics provide the default instructions for installing the browser add-ons and assume access to web app stores. If your users require a method for installing the add-ons without directly accessing a web app store, see [Alternative Methods for Installing Browser Add-ons](#) to explore other methods for installing the add-ons for Chrome and Edge.

Mozilla Firefox

To use Smart View 11.1.2.5.810+ with Mozilla Firefox ESR 60+, you must install the Oracle Smart View for Office web extension for Firefox.

You can get the extension by searching on "smartview" on the [Firefox Add-ons](#) download site or by going directly to this link:

<https://addons.mozilla.org/en-US/firefox/addon/oracle-smart-view-for-office>

Click the **+ Add to Firefox** button and follow the prompts to add the extension.

Note

If you are using earlier versions of Firefox, then no add-on is required.

Google Chrome

Cloud EPM 17.06+ supports interoperability with Google Chrome and Smart View 11.1.2.5.700+.

To use Google Chrome with Smart View, install the Oracle Smart View for Office web extension from the Chrome Web Store. You can get the extension by searching on "smartview" in the [Chrome Web Store](#) or by going directly to this link:

<https://chrome.google.com/webstore/detail/oracle-smart-view-for-off/cjbpfomijhkmfkembnjejkhpihjnme>

Click the **Add to Chrome** button and follow the prompts to add the extension.

Microsoft Edge

Cloud EPM 20.04+, EPM System 11.2.1+, and EPM System 11.1.2.4.825+ support interoperability with Microsoft Edge based on Chromium 80+ and Smart View 11.1.2.5.910+.

To use Microsoft Edge with Smart View, you must enable Edge to allow extensions from other stores, and then install the Oracle Smart View for Office web extension from the Chrome Web Store.

To enable Edge to allow extensions from other stores, and then install the Chrome extension:

1. Install the latest version of Edge from [Microsoft](#).
2. In the upper right corner of Edge, click **Settings and more**, **⋮**, and then select **Extensions**.
3. In the popup window, click the **Manage extensions** link.
4. On the **Extensions** page, click the **Chrome Web Store** link.
5. Enable the **Allow extensions from other stores** action, and in the confirmation dialog, click **Allow**.
6. Use this link to access the Oracle Smart View for Office web extension:

<https://chrome.google.com/webstore/detail/oracle-smart-view-for-off/cjbpfomijhkmfkembnjejkhpihjnme>

Or, you can get the extension by searching on "smartview" in the Chrome Web Store.

7. Click the **Add to Chrome** button and follow the prompts to add the extension.

Alternative Methods for Installing Browser Add-ons

In some organizations, users are not allowed direct access to the Chrome Web Store where they can download the add-on, or extension file, for Google Chrome or Microsoft Edge. If this is the case in your organization, you can refer to the information in the following Chrome help topic to facilitate installing the add-on for your users:

[Alternative extension distribution options](#)

In particular, Oracle recommends the following two methods to facilitate installing the add-on for your users.

- [Installing the Smart View Chrome Extension Using the Windows Registry](#)
- [Installing the Chrome Extension for Smart View Using the Downloaded CRX File](#)

Note

Both methods can be used with Google Chrome or Microsoft Edge.

Installing the Smart View Chrome Extension Using the Windows Registry

General instructions for installing extensions using the Windows Registry are found in the Chrome help topic, [Using the Windows registry](#).

Information specific to Oracle Smart View for Office is noted in the following procedures.

To install the add-on using the the Windows Registry:

1. Open the Windows Registry Editor.
2. Locate the following key in the registry; create this key if it is not present.

Chrome:

- 32-bit Windows:
`HKEY_LOCAL_MACHINE\Software\Google\Chrome\Extensions`
- 64-bit Windows:
`HKEY_LOCAL_MACHINE\Software\Wow6432Node\Google\Chrome\Extensions`

Edge:

- 32-bit Windows:
`HKEY_LOCAL_MACHINE\Software\Microsoft\Edge\Extensions`
- 64-bit Windows:
`HKEY_LOCAL_MACHINE\Software\Wow6432Node\Microsoft\Edge\Extensions`

3. Under the Extensions key, create a new key (folder) with this name:

`cjbpfomjjhkmfkembnjejkhpihjnme`

The letter combination noted above is specific to the Oracle Smart View for Office extension for Chrome and Edge.

4. In the extension key, create this property:

```
update_url
```

Then set the value of the new property to this URL:

```
https://clients2.google.com/service/update2/crx
```

This URL points to the extension's CRX file in the Chrome Web Store.

5. Verify that the extension is installed.

- **Chrome**

Launch the Chrome browser and, in the address bar, enter:

```
chrome://extensions
```

The **Oracle Smart View for Office** extension is listed in the **Extensions** page.

- **Edge**

Launch the Edge browser, select the **Settings and more** icon, **⋮**, and then select **Extensions**.

The **Oracle Smart View for Office** extension is listed in the **Extensions** page under **Installed extensions**.

Installing the Chrome Extension for Smart View Using the Downloaded CRX File

In this procedure, you work with the downloaded Chrome extension CRX file for Smart View.

1. Download the Smart View extension CRX file from the following location to a temporary location on your computer (such as the Downloads folder):

[Link to Smart View Chrome Extension CRX File](#)

Note

Typically, this step is performed by someone with access to the Chrome Web Store.

The following steps can be automated by an administrator or can be performed by users if they have access to the CRX file and can enable **Developer mode** on their Chrome or Edge browser.

2. Perform the procedure for Chrome or Edge, as you require:

Chrome:

- a. Launch the Chrome browser, click the Chrome menu icon, **⋮**, then select **More tools**, and then select **Extensions**.
- b. Ensure that the **Developer mode** check box in the upper right corner is enabled.
- c. Use drag-and-drop to drag the CRX file from the temporary location you used in step [1](#), and drop it into the **Extensions** window to install.

- d. To verify the install, relaunch the Chrome browser and, in the address bar, enter:

```
chrome://extensions
```

The **Oracle Smart View for Office** extension is listed in the **Extensions** page.

Edge:

- a. Launch the Edge browser, click the **Settings and more** menu icon, **⋮**, and then select **Extensions**.
- b. Ensure that the **Developer mode** check box in the lower left corner is enabled.
- c. Use drag-and-drop to drag the CRX file from the temporary location you used in step [1](#), and drop it into the **Extensions** window to install.
- d. To verify the install, relaunch the Edge browser and, in the address bar, enter:

```
edge://extensions
```

The **Oracle Smart View for Office** extension is listed in the **Extensions** page.

3. **Optional:** In your Chrome or Edge browser, disable the **Developer mode** check box, per your organization's requirements.

Installing by Autodeployment in EPM System

These instructions are for upgrading from Oracle Smart View for Office 11.1.2.1.x and later only. If you are upgrading from Smart View 11.1.2.0.x or earlier, use the autodeployment instructions provided in the documentation for the specific release.

See:

- [Server Setup](#)
- [Client Installation](#)

Server Setup

To set up the server environment for autodeployment of Oracle Smart View for Office:

1. Enable autodeployment for your data provider as follows.
 - **Oracle Essbase:** Choose a method:
 - Use Administration Services Console (if available).
 - a. Connect to the Provider Server, select **Edit**, then **Properties**, then **Client Deployment**.
 - b. Choose either **Force Smart View client to upgrade** or **Warn Smart View client to upgrade**.
 - c. Select the **Apply Smart View client to upgrade** check box, and then click **Apply**.
 - Update `essbase.properties` as follows:
 - a. Navigate to `EPM_ORACLE_INSTANCE\bin\essbase.properties`.

- b. Set either or both of these properties to true:

```
smartview.webservice.autodeploy.force=true
smartview.webservice.autodeploy.warn=true
```

- **Oracle Hyperion Planning:**

- a. Select **Administration**, then **Manage Properties**, and then **System Properties**.
- b. Set these properties:

```
SMART_VIEW_FORCE_INSTALL=true
SMART_VIEW_DISPLAY_WARNING=true
```

- **Oracle Hyperion Financial Management:** Autodeployment is enabled by default starting in Financial Management 11.1.2.4. To configure Financial Management to turn off messages about upgrading Smart View, complete the procedure in Oracle Support Document 1993603.1 on My Oracle Support:

https://support.oracle.com/knowledge/Enterprise%20Performance%20Management%20and%20Business%20Intelligence/1993603_1.html

- **Oracle Hyperion Reporting and Analysis:** Autodeployment is automatic.

2. Make backup copies of your current `SmartView.exe` and `version.xml` before deploying the replacement files.
3. Download the Smart View zip file from either Oracle Technical Resources (OTR) or My Oracle Support (MOS), as described in [Installing from My Oracle Support or Oracle Technical Resources](#).
4. Unzip the downloaded file to a temporary location.
5. Copy `SmartView.exe` and `version.xml` to the location of the Oracle Hyperion Enterprise Performance Management Workspace installation, typically:

```
C:\Oracle\Middleware\EPMSys11R1\common\epmstatic\wspace\SmartView
```

This is the `epmstatic` location specific to Smart View.

6. Depending on which version of Smart View your users are upgrading *from*, perform *either Option A OR Option B*.

- **Option A (Upgrading from 11.1.2.1.x, 11.1.2.2.x, or 11.1.2.3.x)**

If your users are upgrading from an installed Smart View version of 11.1.2.1.x, 11.1.2.2.x, or 11.1.2.3.x, open the `version.xml` file in the `epmstatic` location specific to Smart View (see step 5), and edit the value in the `installFile` tag to point to the location of the Smart View executable file (step 5) as follows:

```
<installFile>
    /epmstatic/wspace/SmartView/SmartView.exe
</installFile>
```

- **Option B (Upgrading from 11.1.2.5.000 or Later)**

If your users are upgrading from an installed Smart View version **11.1.2.5.000** or later, choose only one of the following options and perform the tasks described:

- **OTR Option**

Do not modify the `version.xml` file in the `epmstatic` location specific to Smart View (step 5).

Your users will automatically be directed to the Smart View page on OTR, where they can download the installation zip file to their own machines, unzip the contents, and run the installer.

– "epmstatic" Option

Open the `version.xml` file in the `epmstatic` location specific to Smart View (see step 5) and edit the value in the `installFile` tag to point to the location of the Smart View executable file (step 5) as follows:

```
<installFile>
    /epmstatic/wspace/SmartView/SmartView.exe
</installFile>
```

– Web App Server Option

Post the `SmartView.exe` file to a web app server in your environment, and then modify the `version.xml` file to point to the fully-qualified URL.

- a. Copy only the `SmartView.exe` to the web app server where you will be hosting the file.
- b. Open the `version.xml` file in the `epmstatic` location specific to Smart View (see step 5), and edit the value in the `installFile` tag to point to the fully-qualified URL where you are hosting the Smart View executable file (see [step a](#)); for example:

```
<installFile>
    http://webServerHost:webServerPort/pathToSmartViewExe/
    SmartView.exe
</installFile>
```

Your Smart View users can now proceed with [Client Installation](#).

Client Installation

In the previous section, [Server Setup](#), if you chose the [OTR Option](#) in [Option B](#), then your users will be directed to Oracle Technical Resources (OTR) for the Oracle Smart View for Office download. In that case, your users should follow the instructions for OTR download and installation in [Installing from My Oracle Support or Oracle Technical Resources](#).

If you did not choose the [epmstatic Option](#) or [Web App Server Option](#) in [Option B](#), then complete the following procedure.

To install the Smart View client:

1. In Smart View, select **Panel**.
2. Connect to a data source in one of the following ways:
 - Through a shared connection
 - Through a private connection with the following URL:
 - Oracle Essbase: `http://<server>:19000/aps/SmartView`
 - Oracle Hyperion Planning: `http://<server>:19000/HyperionPlanning/SmartView`

- Oracle Hyperion Financial Management: <http://<server>:19000/hfmofficeprovider/hfmofficeprovider.aspx>
- Oracle Hyperion Reporting and Analysis: <http://<server>:19000/raframework/browse/listxml>

Note

If you are using Reporting and Analysis release 11.1.2.1.000 or earlier, Smart View autodeployment will not work (10233672, 12870087).

3. When the message "New Smart View client version available" is displayed, select **Click here to Install**.
4. In the browser that launches, in **File Download**, select **Run**.
5. If a Microsoft Excel security warning is displayed, select **Run**.
6. When prompted, confirm the upgrade; click **Yes**.
7. The installation wizard is displayed; click **OK**.
The installer is automatically displayed in the language set in the Format field of the Windows Region and Language dialog box in the Control Panel.
8. If prompted, close all open Microsoft Office applications, and then click **OK**.
9. In the installation wizard, click **OK** and follow the prompts to install Smart View.

Note

Oracle recommends installing in the default location or in a location that does not contain any spaces in the installation path. For example, Oracle advises that you do not install in C:\Program Files or C:\Program Files (x86).

10. When installation is complete, click **OK**.
The Smart View ribbon is displayed the next time you open Microsoft Excel, PowerPoint, or Word.
11. Open Excel.
12. On the Smart View ribbon, select the arrow next to **Help**, and then select **About**.
13. Verify the new version of Smart View.

Installing from EPM Workspace

To install Oracle Smart View for Office from Oracle Hyperion Enterprise Performance Management Workspace:

1. Before you begin:
 - The Smart View installer is located on Oracle Technology Resources (OTR). You must be able to access the internet and download files in order to continue with this installation.

- If you are upgrading to this release from an earlier Smart View release, Oracle recommends that you first uninstall the earlier release before installing this release. See [Uninstalling Smart View](#).
 - Ensure that Microsoft .NET Framework 4.5 or higher is installed on the computer where you are installing Smart View.
Microsoft .NET Framework 4.5 or higher is required to install and use Smart View.
 - Review the information in [Installation Guidelines](#).
2. Close all Microsoft Office applications, including Outlook.
 3. In EPM Workspace, select **Tools**, then **Install**, and then **Smart View**.
This takes you to the Oracle Smart View for Office software download page on Oracle Technical Resources (OTR) here:
<https://www.oracle.com/middleware/technologies/epm-smart-view-downloads.html>
 4. On OTR, click the **Download Now** link to begin the download process.
 5. In the Smart View download prompt, click **Oracle License Agreement** and review to ensure that your usage is compliant.
 6. After reviewing the Oracle License Agreement, return to the Smart View software download page and click the **Download svc<version>.zip** button to begin the download.
 7. Using your browser's download procedures, save the file, and then unzip it to a temporary location.
 8. To start the installation wizard, in the temporary location from the previous step, right-click `SmartView.exe` and select **Run as administrator**.
You may also double-click `SmartView.exe` to start the installation wizard; however, some configurations may require **Run as administrator**. Therefore, Oracle recommends using the **Run as administrator** command to ensure that all functionality is properly enabled and all required Windows Registry entries are set. See [Installation and Windows Access Control Settings](#) for more information.
 9. Select a destination folder for Smart View, and then click **OK**.
For new installations, Smart View is installed by default in:

`C:\Oracle\SmartView`

If you are upgrading an existing installation of Smart View, the installer defaults to the folder where Smart View was previously installed.
- Note**

Oracle recommends installing in the default location or in a location that does not contain any spaces in the installation path. For example, Oracle advises that you do not install in `C:\Program Files` or `C:\Program Files (x86)`.
10. When installation is complete, click **OK**.
The Smart View ribbon is displayed the next time you open Microsoft Excel, PowerPoint, or Word.

Note

- If the Smart View ribbon does not display, try the instructions explained in [Smart View Ribbon Fails to Display After Non-Admin Installation](#).
- If you encounter issues related to installation and startup, see [Tips and Troubleshooting](#).

11. If you plan to use drill-through reports or web launch, a browser add-on is required for all supported browsers (Microsoft Edge, Mozilla Firefox, and Google Chrome). See [Installing Browser Add-ons](#) for more information.

Note

Starting with Smart View 11.1.2.5.510, the Oracle BI EE per-user extension installer is included with the Smart View client installation. If the extension is not already installed and it is not disabled, then it is installed the first time you start Office.

Installing from Oracle BI EE

Related Topics

- [Configuring the BI Home Page](#)
- [Installing from the BI Home Page](#)

Configuring the BI Home Page

Note

Configuring a custom download link for the Smart View installer applies to Oracle Business Intelligence Enterprise Edition 11.1.1.7.1 and later versions, and might not be available in earlier versions.

Starting in Oracle BI EE release 11.1.1.9, the **Smart View for MS Office** link on the **Download BI Desktop Tools** drop-down list points to the Oracle Smart View for Office download on Oracle Technology Resources (OTR).

If you do not want to direct your users to OTR, you can configure the **Smart View for MS Office** link to point to a custom download link for the Smart View installer. You can then ensure that the correct version of Smart View for your environment is always available to your users. Do this by adding the `SmartViewInstallerURL` element to `instanceconfig.xml`.

You can configure the download link point to a location where the `smartview.exe` resides; for example:

- An external URL
- An internal URL, such as internal web page or intranet location where the installation can start immediately
- A folder on a local server where the installation can start immediately

To configure a custom download link for the Smart View installer:

1. Open the `instanceconfig.xml` file for editing
Refer to "Where Are Configuration Files Located?" in the *Oracle Fusion Middleware System Administrator's Guide for Oracle Business Intelligence Enterprise Edition*.
2. Locate the `CatalogPath` and `<DSN>AnalyticsWeb</DSN>` sections and add the `SmartViewInstallerURL` element after those sections.
3. Use the syntax in the following examples to add the `SmartViewInstallerURL` element.

Example for download from Oracle Technology Resources:

```
<CatalogPath>/example/path/work/abc/instances/instance1/bifoundation/
OracleBIPresentationServicesComponent/coreapplication_obips1/catalog/
SampleApp</CatalogPath>
<DSN>AnalyticsWeb</DSN>
<SmartViewInstallerURL>http://www.oracle.com/technetwork/middleware/epm/
downloads/smart-view-1112x-1939038.html</SmartViewInstallerURL>
```

Example for download from an intranet site:

```
<CatalogPath>/example/path/work/abc/instances/instance1/bifoundation/
OracleBIPresentationServicesComponent/coreapplication_obips1/catalog/
SampleApp</CatalogPath>
<DSN>AnalyticsWeb</DSN> <SmartViewInstallerURL>http://myserver:8080/
downloads/smartview.exe</SmartViewInstallerURL>
```

Example for download from an internal server:

```
<CatalogPath>/example/path/work/abc/instances/instance1/bifoundation/
OracleBIPresentationServicesComponent/coreapplication_obips1/catalog/
SampleApp</CatalogPath>
<DSN>AnalyticsWeb</DSN> <SmartViewInstallerURL>\
\myserver\downloads\smartview.exe</SmartViewInstallerURL>
```

4. Save your changes and close the file.
5. Restart the Oracle BI EE instance.

Installing from the BI Home Page

To install Oracle Smart View for Office from Oracle Business Intelligence Home:

1. In the BI Home page, click the arrow next to **Download BI Desktop Tools**, and then select **Smart View for MS Office**.

If you are directed to the Smart View download page on Oracle Technology Resources, then follow the procedure in [Installing from My Oracle Support or Oracle Technical Resources](#). Otherwise, proceed with step 2.

2. Choose an option:
 - Click **Run** to run the installer directly.

If the **User Account Control** dialog box is displayed, click **Yes**, and then continue to step 3.

- Click **Save** to save the Smart View installer file to a directory to which you have access and from which you can run executable files.

Open the folder where you saved the Smart View executable and double-click it to run it. Then continue to step [3](#).

3. Select the language to use for the installation wizard.
4. Click **Next**.
5. Follow the prompts in the wizard.
6. When installation is complete, click **Finish**.

The Smart View ribbon is displayed the next time you open Microsoft Excel, PowerPoint, or Word.

Note

Starting with Smart View 11.1.2.5.510, the Oracle BI EE per-user extension installer is included with the Smart View client installation.

The extension is installed the first time you start Office if the Oracle BI EE extension is not already installed and it is not disabled.

Configuring Display of the Save Password Dialog

Administrators can enable a **Save password** dialog that displays to Oracle Fusion Cloud EPM users when signing in to Oracle Smart View for Office.

Once enabled, the **Save password** dialog is displayed the first time a user enters their user name and password in the **Login** dialog.

In the **Save password** dialog, users choose an option:

- **Got it**—Users may choose the **Got it** option to save the password. On future logins to Smart View, users can then choose to populate the user name and password fields automatically, and then click the **Go** button in the **Login** dialog.
- **Never**—Users may choose the **Never** option and continue to enter their credentials each time they sign in.
- **X**—Users may choose to close the **Save Password** dialog by clicking the **X** button in the top right corner of the dialog. This will allow them to make this decision again on the next login attempt.

Note

Clicking the **X** (Close) button on three login attempts will cause the **Save password** dialog to stop displaying from the fourth login attempt and onward.

Note

Password saving is supported for Cloud EPM data sources only.

Administrators enable password saving using these registry values:

- Smart View
Key: Computer\HKEY_CURRENT_USER\Software\Hyperion Solutions\HyperionSmartView\Options
Name: PasswordManagerEnabled
Value: 1 (to enable). Default is 0 (zero).
Type: REG_DWORD
- Microsoft Edge
Key: Computer\HKEY_LOCAL_MACHINE\SOFTWARE\Policies\Microsoft\Edge
Name: PasswordManagerEnabled
Value: 1 (to enable). Default is 0 (zero).
Type: REG_DWORD

When either or both the Registry values are set to 1, the **Save password** dialog will display. If both keys are present in Registry Editor, the Smart View setting will override Edge setting.

[Table 1](#) shows you what to expect when setting the PasswordManagerEnabled values in the Smart View Options and the Edge keys.

Table 2-3 PasswordManagerEnabled Value Setting Outcomes for Edge and Smart View

PasswordManagerEnabled Value Settings	Result
Edge: PasswordManagerEnabled = 1 Smart View: PasswordManagerEnabled = 1	Save password dialog display in Smart View
Edge: PasswordManagerEnabled = 1 Smart View: PasswordManagerEnabled = 0	Save password dialog does not display in Smart View The PasswordManagerEnabled setting in the HyperionSmartView\Options key overrides the PasswordManagerEnabled setting in the Edge key.
Edge: PasswordManagerEnabled = 0 Smart View: PasswordManagerEnabled = 1	Save password dialog does not display in Smart View. The PasswordManagerEnabled setting in the Edge key overrides the PasswordManagerEnabled in the HyperionSmartView\Options key.
Edge: PasswordManagerEnabled = 0 Smart View: PasswordManagerEnabled = 0	Save password dialog does not display in any WebView2 controls, including login to Smart View
Edge: PasswordManagerEnabled = 1 Smart View: PasswordManagerEnabled not defined	Save password dialog displays in Smart View
Edge: PasswordManagerEnabled = 0 Smart View: PasswordManagerEnabled not defined	Save password dialog does not display in Smart View
Edge: PasswordManagerEnabled not defined Smart View: PasswordManagerEnabled = 1	Save password dialog displays in Smart View
Edge: PasswordManagerEnabled not defined Smart View: PasswordManagerEnabled = 0	Save password dialog does not display in Smart View

Table 2-3 (Cont.) PasswordManagerEnabled Value Setting Outcomes for Edge and Smart View

PasswordManagerEnabled Value Settings	Result
Edge: PasswordManagerEnabled not defined Smart View: PasswordManagerEnabled not defined	Save password dialog does not display in Smart View

Administrators should determine the password strategy that you will employ and then use your institution's procedures for distributing these options to your users. The default is not display the **Save password** dialog.

① Note

- There is no option in the Smart View interface for enabling password saving. This feature must be enabled using the registry values noted above.
- Oracle recommends that only administrators set registry values.
- WebView2 must be enabled on each individual user's Smart View installation. On each user's computer, in the **Health Check** dialog, ensure that the **WebView2 Runtime** option is set to either **Enable for UI** or **Enable for All**.
- With WebView2 and the **Save password** dialog enabled, and using a shared connection to connect to an OCI data source, the **Save password** dialog is not displayed.
Workaround: Connect to the OCI data source using a private connection and save the password when prompted. Disconnect or close Excel. Then, log in using the shared connection.

Running Command Line or Silent Installations

Oracle Smart View for Office can be installed from the command line.

Additionally, administrators can enable silent installations—installations that do not require settings to be specified each time—for Smart View and Smart View extensions. The silent installation command can be included in scripts to automate installation.

Related Topics:

- [Before You Begin](#)
- [Command Line and Silent Installation Options](#)
- [Installing Using Command Line or Silent Install Options](#)
- [Installing Smart View Extensions Silently](#)

Before You Begin

- Complete either of the procedures in [Installing from Oracle Technical Resources](#) or [Installing from My Oracle Support](#) in [Installing from My Oracle Support or Oracle Technical Resources](#) to download the Smart View installation zip file and unzip it to the folder you will be working in.

- Oracle recommends ensuring that all Microsoft Office processes are terminated on the machines where a silent installation or upgrade will be running. In Windows Task Manager, the Office processes to check for and terminate are Excel, Word, PowerPoint, and Outlook.

Command Line and Silent Installation Options

Use the options in [Table 1](#) to install Smart View from the command line and for silent installations.

① Note

- The silent installer wrapper follows these rules:
 - It passes the value of the `/v` parameter intact to the MSI.
 - The `/s` flag is converted to `/qn` and passed to the MSI. There is no need to specify the `/qn` parameter if `/s` is already present in your script.
 - Unless the `/v` parameter contains any `/q` specifier, the wrapper passes `/qb+` to the MSI.
- Silent installations are only supported for admin users.
- Users' connection information, both shared and private, is preserved when uninstalling and reinstalling Smart View silently.

Table 2-4 Options for Command Line and Silent Installations of Smart View

Option	Usage
<code>/v "command line options"</code>	<p>Specifies command line options to be passed to the Smart View MSI installer.</p> <p>For example, to specify the installation directory, use:</p> <pre>/v "INSTALLDIR=<target_path>"</pre> <p>To enable logging, use:</p> <pre>/v "l*v <log_file_path_and_name>"</pre> <p>Unless the <code>/v</code> parameter contains any <code>/q</code> specifier, the wrapper passes <code>/qb+</code> to the MSI.</p>
<code>/s</code>	<p>Runs the Smart View installer in silent mode.</p> <p>The <code>/s</code> flag is converted to <code>/qn</code> and passed to the MSI. There is no need to specify the <code>/qn</code> parameter if <code>/s</code> is already present in your script.</p>

Table 2-4 (Cont.) Options for Command Line and Silent Installations of Smart View

Option	Usage
INSTALLDIR=<target_path>	Specifies the installation directory.
<pre> /v"l*v <log_file_path_and_name>" or /v "l*v <log_file_path_and_name>" </pre>	<p>Enables logging. Unless the /v parameter contains any /q specifier, the wrapper passes /qb+ to the MSI.</p> <div data-bbox="1149 401 1273 436" data-label="Section-Header">Note</div> <p>Oracle recommends installing in the default location or in a location that does not contain any spaces in the installation path. For example, Oracle advises that you do not install in C:\Program Files or C:\Program Files (x86).</p>
<pre> /a /i </pre>	<p>Extracts the MSI file. Specifies the path to the extension installer:</p> <pre>i <path to the extension installer></pre> <p>For example:</p> <pre>svlaunch.exe /i C:\Oracle\SmartView\extensions\SVFMJournalInstaller.svext</pre> <p>See Installing Smart View Extensions Silently. Path to UpdateList.xml.</p>
<pre> /extensionupdatelist= </pre>	

Table 2-4 (Cont.) Options for Command Line and Silent Installations of Smart View

Option	Usage
/x	<p>Uninstalls Smart View.</p> <p>Use this command to uninstall Smart View when it has been installed or upgraded using the command line or silent installer.</p> <p>If Smart View was installed using the wizard (described in Installing from My Oracle Support or Oracle Technical Resources), then follow the procedure in Uninstalling Smart View.</p>

Installing Using Command Line or Silent Install Options

To perform command line or silent installations:

1. Open a command prompt using the "Run as administrator" option.
2. Navigate to the directory of the Smart View installer.
3. Run the installation commands in [Table 1](#); for example:

- **To install in the default directory, run:**

Silent:

```
SmartView.exe /s
```

Command line:

```
SmartView.exe
```

- **To install in another directory, run:**

Silent:

```
SmartView.exe /s /v "INSTALLDIR=<target_path>"
```

For example:

```
SmartView.exe /s /v "INSTALLDIR=D:\SmartView"
```

Command line:

```
SmartView.exe /v "INSTALLDIR=<target_path>"
```

For example:

```
SmartView.exe /v "INSTALLDIR=D:\SmartView"
```

- **To specify the location of UpdateList.xml, run:**

Silent:

```
SmartView.exe /s /extensionupdatelist=<path to UpdateList.xml>
```

Command line:

```
SmartView.exe /extensionupdatelist=<path to UpdateList.xml>
```

- **To install Smart View and log the installation sequence:**

Silent:

```
SmartView.exe /s /v"/L*v <log_file_path_and_name>"
```

For example:

```
SmartView.exe /s /v"/L*v C:\install.log"
```

```
SmartView.exe /s "/v/qn /L*v C:\install.log"
```

```
SmartView.exe /s /v"/qn INSTALLDIR=C:\Oracle\SmartView /L*v  
c:\install.log"
```

Command line:

```
SmartView.exe /s /v"/L*v <log_file_path_and_name>"
```

For example:

```
SmartView.exe /s /v"/L*v C:\install.log"
```

```
SmartView.exe /v"/qn INSTALLDIR=C:\Oracle\SmartView /L*v C:\install.log
```

```
SmartView.exe /v" INSTALLDIR=C:\Oracle\SmartView /L*v C:\install.log"
```

- **To uninstall and log the uninstall sequence:**

Silent:

```
SmartView.exe /x /s "/v /L*v C:\Share\uninstall.log"
```

Command line:

```
SmartView.exe /x "/v /L*v C:\Share\uninstall.log"
```

Installing Smart View Extensions Silently

Administrators can push extension installations silently by calling the following command:

```
svlaunch.exe /i <path to the extension installer>
```

For example, after a typical Oracle Smart View for Office installation, Smart View is installed on C:\Oracle\SmartView. In this installation, the extensions included with Smart View are located in C:\Oracle\SmartView\extensions. Using the command above, an admin can silently install the Oracle Journals extension using the following command:

```
svlaunch.exe /i C:\Oracle\SmartView\extensions\SVFMJournalInstaller.svext
```

After installation, the extension files are located on the user's machine here:

```
%APPDATA%\Oracle\SmartView\extensions\Bin
```

Exporting Default Smart View Options

As a service administrator, you can configure default Smart View options and roll them out to users installing Oracle Smart View for Office. With this ability, you can ensure consistent application of Smart View configurations across users in your organization.

You can export options present under **Member Options**, **Data Options**, **Advanced**, and **Formatting** tabs available in the **Options** dialog. The exported options are stored in an options.xml file at <Smart View Install>/cfg folder (for example, C:\Oracle\SmartView\cfg). You can distribute this file to your users, so that they can get the default options you set when they use Smart View.

Note

The following options cannot be exported:

- All options under **Cell Styles** tab and **Extensions** tab
- Following options under **Advanced** tab:
 - Shared Connections URL
 - Log Message Display
 - Show Diagnostics Group on Smart View Ribbon
 - Disable Smart View in Outlook
 - Reduce Excel File Size
 - Improve Metadata Storage
- The **Member Display Name** option under **Member Options** tab

To export default Smart View options and distribute to users:

1. From the Smart View ribbon, click **Options** to open the **Options** dialog.

2. Set the options under the **Member Options**, **Data Options**, **Advanced**, and **Formatting** tabs as per your requirement.

3. Expand the list under **OK** and select **Export Options**.

The configured options are exported in an `options.xml` file located at `C:\Oracle\SmartView\cfg`. You can now distribute this `options.xml` file to the users.

4. Use your organization's process to distribute the `options.xml` to all users who require these options settings.

The `options.xml` file must reside in the `SmartView\cfg` folder on each user's computer.

5. With the `options.xml` file in place, Smart View users take the following actions:

- a. Launch an Office application; for example, launch Excel.
- b. Select the Smart View ribbon, and then click **Options**.
- c. In the **Options** dialog, click **Reset**.

Note

As a best practice, Oracle recommends that admins and users do not modify the options in the `options.xml` file, as it can result in errors and mismatch. If any changes are made manually to the `options.xml` file, you may get the error message *Option data mismatch*. Please check `cfg/options.xml` when you click **Reset**.

- d. Close and reopen the Office application.

Smart View Options are now set to those specified by the service administrator in the `options.xml` file.

Downloading Help for Local or Web Server Installation

After installing Oracle Smart View for Office, the online help is retrieved from a URL hosted on the Oracle.com web site. This is the default behavior for Smart View, and no changes are required by users to launch help.

However, you may require that the help be installed locally or on a web server in your organization. Some examples for the need to access help from a location other than Oracle.com are:

- Help files must be installed on a local drive on an individual's computer for Section 508 accessibility purposes.
- Internet access limitations; for example, your users only have access to URLs on your organization's intranet.

To accommodate the above types of cases, a downloadable help zip file is posted on My Oracle Support as a patch to the current Smart View release.

The procedure below describes downloading the help zip file. Further instructions for installation and configuration are in the following guides:

- [Installing and Configuring Help Locally or on a Web Server](#) in this guide.
- *Oracle Smart View for Office Accessibility Guide*. See "Installing and Configuring Help Locally."

To download the Smart View help zip file from My Oracle Support (MOS):

1. Log in to MOS.
2. Select the **Patches & Updates** tab.
The **Patch Search** area is displayed at the right of the screen with the **Search** tab selected by default.
3. Click **Product or Family (Advanced)**, then do the following:
 - a. In the **Product is** field, type `Smart View`.
 - b. In the **Release is** field, select the release from the drop-down list.
4. Click **Search**.
5. Download the online help patch zip file to a temporary directory.
6. To install and configure the help according to your requirements, follow the instructions in either of the following guides:
 - [Installing and Configuring Help Locally or on a Web Server](#) in this guide.
 - *Oracle Smart View for Office Accessibility Guide*. See "Installing and Configuring Help Locally."

Uninstalling Smart View

This topic describes uninstalling Oracle Smart View for Office. Use this procedure to uninstall Smart View when it has been installed using the wizard (described in [Installing from My Oracle Support or Oracle Technical Resources](#)).

If Smart View was installed using the command line or silent installer, then use the commands described in [Running Command Line or Silent Installations](#) to uninstall.

Note

Non-admin users are not authorized to install Smart View in the `C:\Program Files` or `C:\Program Files (x86)` folders. If a non-admin user has installed in one of those folders, or any folder with spaces in the name, the `SmartView` folder will be left in the `<installation location>\Oracle\` folder, and the `properties.xml` and `SVCRecentlyUsedItems.info` files will be left in the `C:\Users\<user>\AppData\Roaming\Oracle\SmartView` folder. These files will need to be deleted manually. Or, an administrator can run a silent uninstall, which will remove all files.

To uninstall extensions, see [Uninstalling Extensions](#) in the *Oracle Smart View for Office User's Guide*.

To uninstall Smart View:

1. Before you begin, close all Office applications.
2. In your Windows system **Control Panel**, click **Programs and Features**.
3. Locate and select the version of Smart View that applies to your installation:
 - **Oracle Smart View 32-bit for Office**
 - **Oracle Smart View 64-bit for Office**
4. Click **Uninstall**.

3

Administering Extension Installations and Updates

Related Topics

- [About Extension Installations and Updates](#)
- [Configuring Manual Extension Updates](#)
- [Configuring Auto-Update Extensions](#)
- [Administering Extensions When Using Mozilla Firefox](#)

About Extension Installations and Updates

The extension installation and update process described in this chapter enables Oracle Smart View for Office end users to install, update, or uninstall extensions based on parameters set by the Smart View administrator in the manifest file, `UpdateList.xml`.

Auto-Update versus Manual Update

In releases earlier than Smart View 11.1.2.5.400, extensions were updated using the *Auto-Update* process. To update extensions with Auto-Update, Smart View end users could go to the **Extensions** tab of the **Options** dialog box and click the **Check for updates** link or select the **Check for updates when Microsoft Office starts** check box to initiate extension updates. For all extensions, if any updates were available, they were retrieved and installations were automatically initiated.

In release 11.1.2.5.400 and later, you can customize the extension update process so that Smart View end users can control when they install, update, and remove extensions. The Smart View administrator configures attributes in the `UpdateList.xml` manifest file to control the options available to the users. If the administrator does not configure these attributes in `UpdateList.xml`, extensions will continue to be updated using the existing Auto-Update process.

Types of Extensions

There are two types of extensions that can be installed on a Smart View client machine:

- **Provider extensions.** Extensions that are dependent on, or integrated with, Oracle components are *provider* extensions. Examples are the Disclosure Management and Oracle Hyperion Financial Reporting extensions. Provider extensions can be configured as required extensions.
- **Per-user extensions.** Extensions that are installed in the user's application data folder. These extensions may or may not be dependent on Oracle components. Additionally, per-user extensions can also be configured as required extensions.

The Smart View administrator configures the `UpdateList.xml` file to specify the list of provider and per-user extensions available to end users along with options for installing, updating, and removing them. Additionally, per-user extensions can also be configured to display an indicator for required extensions and does not force the installation. The Smart View end user then

accesses the **Options** dialog box and installs, updates, or uninstalls the extensions that are available to him or her in the **Extensions** tab.

To configure provider and per-user extension installation, uninstallation, and updating, complete the procedure in [Configuring Manual Extension Updates](#).

If you do not want to make changes to the extension update process, you may refer to [Configuring Auto-Update Extensions](#) for information on the structure of the XML and examples, but you do not need to take any further action.

For instructions on installing, updating, and removing extensions in Smart View, end users can refer to the procedure topics in "Extensions" in the "Smart View Options" chapter in the *Oracle Smart View for Office User's Guide*.

Note

To troubleshoot any issues related to extension installation and updates, see the topics listed in the [Extensions](#) topic under [Tips and Troubleshooting](#).

About the Oracle Journals for Financial Management Extension

The Oracle Journals extension is unique among Smart View extensions in that the extension installer file is included in the `extensions` folder of the Smart View installation. End users can install the Oracle Journals extension directly from the `extensions` folder of their Smart View installation.

Or, as administrator, you can control how your Smart View end users install the Oracle Journals extension, automatically or manually, via the **Extensions** page of the Smart View **Options** dialog box.

If you choose to set up automatic or manual installations of the Oracle Journals extension, you should install Smart View in a test environment first, then refer to the `UpdateList.xml` file, found in the `extensions` folder of your Smart View installation. Use the entry in this file as a guideline for the Oracle Journals entry you will add to the `UpdateList.xml` file, as described in [Configuring Manual Extension Updates](#).

Configuring Manual Extension Updates

Auto-Update extensions in the `UpdateList.xml` manifest file can be configured so that the Oracle Smart View for Office end user can see the available extensions, including per-user extensions, and install them from the **Extensions** tab of the **Options** dialog box.

You can add two attributes, `visible` and `allowUninstall`, to the `UpdateList.xml` manifest file to change the behavior of the extensions from auto-update to manual update so that the extensions are displayed in the **Options** dialog box:

- **visible**—A value of "1" indicates that the extension will appear in the **Extensions** tab of the Smart View **Options** dialog and will NOT be part of the Auto-Update process.
If the `visible` attribute is missing or the value is not "1", the extension is included in the Auto-Update process.
- **allowUninstall**—A value of "1" indicates that the user can initiate an uninstall through the **Extensions** tab of the **Options** dialog box using the **Remove** link.
If the `allowUninstall` attribute is missing or the value is not "1", the user may not initiate an uninstall in the **Extensions** interface (the **Remove** link will not be there).

This procedure is optional. If you choose not to add the attributes to `UpdateList.xml`, extensions will continue to be updated as they were in releases earlier than 11.1.2.5.400. In pre-11.1.2.5.400 releases, users click the **Check for updates** link or select the **Check for updates when Microsoft Office starts** check box to initiate extension updates.

See [Manual Update XML Defined](#) and [Manual Update XML Example](#) for reference.

To add attributes to the `UpdateList.xml` manifest file for extensions:

1. Open the `UpdateList.xml` file for editing.

The manifest file is found in two locations:

- `epmstatic`:

```
http://server:port/epmstatic/smartview/Client/UpdateList.xml
```

- The location pointed to by the `<extensionupdatelist>` tag in `C:\Oracle\SmartView\cfg\properties.xml`.

To populate the `<extensionupdatelist>` tag, you can either perform a command line installation, as described in [Running Command Line or Silent Installations](#), or manually update the tag in the `properties.xml` file.

Note

In `properties.xml`, if multiple URLs exist for an extension installer, Smart View checks all locations and installs from the location containing the latest version.


If multiple URLs exist for the same version of an extension installer, Smart View installs from the first URL in the list.


2. **Optional:** To display an extension in the **Extensions** tab of the **Options** dialog box, and exclude the extension from the Auto-Update process, add the `visible="1"` attribute to the XML for the extension; for example:

```
<update>
  version="11.1.2.3.500.021"
  extension id="Some.Unique.Id.That.Matches.Extension.Descriptor.Id"
  location="/epmstatic/disclosure_mgmt/svext/DiscManSetup.msi"
  visible="1"
  allowUninstall="1">Oracle Disclosure Management
</extension>
```

[Figure 1](#) shows an example of an extension displayed in the **Extensions** tab.

Figure 3-1 Extension as Displayed in the Extensions Tab

Oracle Predictive Planning	11.1.2.4.000	<input checked="" type="checkbox"/> Enabled
Oracle Predictive Planning Smart View Extension		
 Update Available		

3. **Optional:** To display the **Remove** button,  **Remove**, for an extension, add the `allowUninstall="1"` attribute to the XML for the extension; for example:

```
<update>
  version="11.1.2.3.500.021"
  extension id="A.Unique.Id.That.Matches.Extension.Descriptor.Id"
  location="/epmstatic/disclosure_mgmt/svext/DiscManSetup.msi"
  visible="1"
  allowUninstall="1">Oracle Disclosure Management
</extension>
```

[Figure 2](#) shows an example of an extension displayed in the **Extensions** tab.

Figure 3-2 Extension as Displayed in the Extensions Tab



4. For each provider and per-user extension, repeat [step 2](#) and [step 3](#) according to your requirements.
5. **Optional:** To remove a single extension from the list of extensions available for Auto-Update in the `UpdateList.xml` file, use the alternative method of commenting out the extension with the `<!--` and `-->` characters; for example:

```
<!--
<extension>
location="/epmstatic/disclosure_mgmt/svext/DiscManSetup.msi"
version="11.1.2.4.078" id="nnnnnnnn-nnnn-nnnn-nnnn-nnnnnnnnnnnnn"> Oracle
Disclosure Management
</extension>
-->
```

You can also comment out the entire list of extensions if your goal is to exclude all extensions from the manual update process.

Manual Update XML Defined

- `<update>`
The root node. This is a tag.
- `<extension>`
Parent node for `<extension>` attributes. This is a tag.
Attributes of `<extension>` are:
 - `id`
The extension identifier. The identifier must match the `SVExtensionDescriptor.GUID` defined in the extension. It does not need to be a GUID, it only needs to be unique. This name will appear in the Windows Registry. For this reason, Oracle recommends using readable identifiers; for example, `Oracle.Disclosure.Management`.

- format

A value of "1" indicates that the entry for the extension uses the manual update XML format introduced in Oracle Smart View for Office 11.1.2.5.400. This XML format supports more user interface features than the standard Auto-Update format.
- version

The version number of the extension. The version number must match exactly with the extension descriptor version in the extension assembly.
- svVersion

The Smart View version that the extension works with.
- visible

Set this value to "1" to display the extension in the **Extensions** tab of the **Options** dialog box. When this is set to "1", the extension will NOT be part of the Auto-Update process.
- manualUpdate

Set this value to "1" if the user needs to close Excel for installation update. The update installer file will be downloaded and a message will be displayed indicating the required restart of Office. Also, the download folder will be opened.
- manuallInstall

Set this value to "1" if the user needs to close Excel for installation. The installer file will be downloaded and a message will be displayed indicating the required restart of Office. The download folder will be opened.
- allowUninstall

Set this value to "1" to display the **Remove** button in the **Extensions** tab of the **Options** dialog box.
- type

The type of extension. Valid values are:

 - * 0 = optional extension
 - * 1 = provider extension
 - * 2 = Smart View client
- required

Set to display a "Required" or "Recommended" icon for the extension. No action is done other than the visible icon.
- <name>

The name of the extension. This is a tag.
- <desc>

The extension description. This is a tag.

Uses the "default" attribute. The default description for the extension will be the description displayed in the **Extensions** tab.
- owner

The creator or owner of the extension; for example, Oracle.
- location

The location and file name of the extension installer file. This can be `msi` or `svext`; `exe` is not supported.

- `<uninstallMsg>`

Optional. For uninstalls, displays a custom message to the user.

Uses the "default" attribute. The default description for the `uninstallMsg` will be the custom message displayed during uninstall.

- `<options>`

Optional. For `msi` installations only. All options for the Microsoft Windows Installer Tool, `Msiexec.exe`, are supported.

Manual Update XML Example

```
<update>
<extension id="Oracle.SmartView.ExtensionSamples.PowerPack.AdjustData"
  format="1"
  version="1.1.3.0"
  svVersion="11.1.2.2.310"
  visible="1" allowUninstall="1"
  manualUpdate="0"
  manualInstall="0"
  type="0"
  required="1">
  <name>Adjust Data</name>
  <desc default="Simple data adjustment panel for use with Smart View">
  <owner>Oracle</owner>
  <location>file://server_name/shared/ExtensionInstallers/
AdjustDataInstaller.svext
  </location>
  <uninstallMsg default="This will remove the extension and all its
components"
  </uninstallMsg>
</extension>
</update>
```

Configuring Auto-Update Extensions

You can add the `visible` and `allowUninstall` attributes to the `UpdateList.xml` manifest file to change the behavior of the extensions that are part of the Auto-Update process.

If you do not add the attributes to `UpdateList.xml`, extensions will continue to be updated using the existing Auto-Update process.

To add the `visible` and `allowUninstall` attributes to the Auto-Update extensions, complete the procedure in [Configuring Manual Extension Updates](#).

See [Auto-Update XML Defined](#) and [Auto-Update XML Example](#) for reference.

You can also remove a single extension from the list of extensions available for Auto-Update in the `UpdateList.xml` file by commenting out the extension using the `<!--` and `-->` characters. For example:

```
<!--  
<extension>  
location="/epmstatic/disclosure_mgmt/svext/DiscManSetup.msi"  
version="11.1.2.4.078" id="nnnnnnnn-nnnn-nnnn-nnnn-nnnnnnnnnnn"> Oracle  
Disclosure Management  
</extension>  
-->
```

If you comment out the entire list of extensions, then all extensions are excluded from the manual update process.

Auto-Update XML Defined

- `<update>`

The root node. This is a tag.

- `<extension>`

Text that contains the extension name. This is a tag. The extension name appears in the **Extensions** tab of the **Options** dialog box. Examples of extension names are Oracle Predictive Planning Extension, Disclosure Management, or Adjust Data.

Attributes of `<extension>` are:

- `id`

The extension identifier. The identifier must match the `SVExtensionDescriptor.GUID` defined in the extension. It does not need to be a GUID, it only needs to be unique. This name will appear in the Windows Registry. For this reason, Oracle recommends using readable identifiers; for example, `Oracle.Disclosure.Management`.

- `version`

The version number of the extension.

- `location`

The location and file name of the extension installer file. This can be `msi` or `svext`; `exe` is not supported.

- `operation`

Optional. For Auto-Updates, set this value to "delete" to have the uninstall automatically begin when the user opens Office.

Note

The first time a user opens Office, if Oracle Smart View for Office determines that the extension needs to be uninstalled, the subsequent opening of Office initiates the uninstall process.

- `options`

Optional. For `msi` installations only. All options for the Microsoft Windows Installer Tool, `Msiexec.exe`, are supported.

- visible
Set this value to "1" to display the extension in the **Extensions** tab of the **Options** dialog box. When this is set to "1", the extension will NOT be part of the Auto-Update process.
- allowUninstall
Set this value to "1" to display the **Remove** button in the **Extensions** tab of the **Options** dialog box.

Auto-Update XML Example

```
<update>
<extension id="A.Unique.Id.That.Matches.Extension.Descriptor.Id"
  version="11.1.2.3.500.021"
  location="/epmstatic/disclosure_mgmt/svext/DiscManSetup.msi"
  visible="1"
  allowUninstall="1">Disclosure Management
</extension>

<extension id="Another.Unique.Id"
  version="11.1.2.3.300"
  location="/epmstatic/SomeSetup.msi"
  operation="delete">Crystal Ball EPM
</extension>

<extension id="And.Another.Unique.Id"
  version="11.1.2.3.300"
  location="/epmstatic/SomeSetup.msi"
  options="/promptrestart">Oracle Predictive Planning"
</extension>
</update>
```

Administering Extensions When Using Mozilla Firefox

When using Mozilla Firefox, keep in mind the following:

- Firefox prevents executable files from being copied and installed from the Internet. This results in a failure while attempting to install an .SVEXT extension package with Firefox by selecting the **Open with** option. As a result, when prompted to save or run the file, select the **Save** option, and then double-click the downloaded file to install the extension .
- When using Firefox as your web browser to launch Oracle Smart View for Office, and Firefox opens a browser tab in with an unresolved URL of `oraclesv:\\`, enable the extension for Smart View from the Extensions tab of Firefox Add-ons Manager and restart Firefox.

4

Accessing Shared Connections from an XML File

Related Topics

- [About Accessing Shared Connections from an XML File](#)
- [Setting Up the Shared Connections XML File](#)
- [Connection File Syntax and Example](#)

About Accessing Shared Connections from an XML File

You can use private connection information stored in an XML file to connect to supported Oracle Smart View for Office providers, both cloud and on-premises, using a shared connection. You can add entries for:

- Oracle Fusion Cloud Enterprise Performance Management data sources, including Planning, Planning Modules, Financial Consolidation and Close, Tax Reporting, and Narrative Reporting
- Oracle Enterprise Performance Management System data sources, including Oracle Hyperion Provider Services (Oracle Essbase), Oracle Hyperion Planning, Oracle Hyperion Financial Management, Oracle Hyperion Reporting and Analysis, Oracle Hyperion Strategic Finance
- Oracle Essbase
- Oracle Business Intelligence Enterprise Edition and Oracle Analytics Cloud

The XML file can exist either locally on each individual Smart View client machine or on a web server. Smart View end users point to this XML file in the **Shared Connections URL** field of the **Options** dialog box, and then access the available providers as they would any other shared connection to which they have access.

To connect to an Oracle BI EE or Oracle Analytics Cloud provider from the Shared Connections Panel in Smart View, you *must* follow the procedures in this topic. However, you may also connect to Oracle BI EE or Oracle Analytics Cloud data sources from the Private Connections Panel using the procedures in [Creating Private Connections](#) in the *Oracle Smart View for Office User's Guide*.

Note

Only ASCII characters are supported in the XML file. Do not use non-ASCII characters in any of the entries you make in this file.

Caution

The procedures in this chapter should be completed by the Smart View administrator.

Setting Up the Shared Connections XML File

Setting up the shared connections XML file involves preparing the XML file distributing it to your users.

To set up shared connections in an XML file:

1. Create an empty XML file using any text editor and save it on your Oracle Smart View for Office client machine.

Give the file a meaningful name, such as `SmartViewProviders.xml`, and ensure that it has the `.xml` extension.

Note

Only ASCII characters are supported in the XML file. Do not use non-ASCII characters in any of the entries you make in this file.

2. Add the following line to the beginning of the file:

```
<?xml version="1.0" encoding="UTF-8"?>
```

3. Next, add the opening `res_GetProvisionedDataSources` tag:

```
<res_GetProvisionedDataSources>
```

4. Add entries for the applicable providers.

The XML can contain entries for supported Oracle Fusion Cloud Enterprise Performance Management and Oracle Analytics Cloud data sources, and supported Oracle Enterprise Performance Management System and Oracle Business Intelligence Enterprise Edition data sources.

Note

Entries for each connection use the private connection format.

When you create your entries, copy the syntax exactly and make ONLY these substitutions:

- In the `Product` tag, `name` attribute:
name—An internal identifier for the provider. This will not display to users.
- In the `Product` tag, `displayVersion` attribute:
version—The version number of the specified provider. This will not display to users.
- In the `Server` tag, `name` attribute:
name—The application name the user will see in the Shared Connection drop-down list.

Note

This property does not apply to Essbase. The name that appears in the drop-down list will always be Oracle® Essbase.

- In the `Server` tag, `context` attribute:

serviceURL—The URL for a cloud data source connection.

webServerHost—The web server host machine name for an on-premises data source connection.

webServerPort—The web server port number for an on-premises data source connection. Use the default port number that is already noted in the syntax for each provider. Or, if you have configured your system using non-default port numbers, provide them.

The syntax for each provider type is below.

Planning in Cloud EPM

```
<Product id="HP" name="name" displayVersion="version">
<Server name="Planning" context="https://serviceURL/HyperionPlanning/
SmartView"></Server>
</Product>
```

Planning Modules in Cloud EPM

```
<Product id="HP" name="name" displayVersion="version">
<Server name="Planning Modules" context="https://serviceURL/
HyperionPlanning/SmartView"></Server>
</Product>
```

FreeForm in Cloud EPM

```
<Product id="HP" name="name" displayVersion="version">
<Server name="FreeForm" context="https://serviceURL/HyperionPlanning/
SmartView"></Server>
</Product>
```

Financial Consolidation and Close in Cloud EPM

```
<Product id="HP" name="name" displayVersion="version">
<Server name="Financial Consolidation and Close" context="https://
serviceURL/HyperionPlanning/SmartView"></Server>
</Product>
```

Tax Reporting in Cloud EPM

```
<Product id="HP" name="name" displayVersion="version">
<Server name="Tax Reporting" context="https://serviceURL/HyperionPlanning/
SmartView"></Server>
</Product>
```

Enterprise Profitability and Cost Management in Cloud EPM

```
<Product id="HP" name="name" displayVersion="version">
<Server name="Enterprise PCM" context="https://serviceURL/HyperionPlanning/
SmartView"></Server>
</Product>
```

Narrative Reporting in Cloud EPM

```
<Product id="EPRCS" name="name" displayVersion="version">
<Server name="Narrative Reporting" context="https://serviceURL/epm/
SmartView"> </Server>
</Product>
```

Reporting Settings in Cloud EPM)

```
<Product id="RAFramework" name="name" displayVersion="version">
<Server name="Reporting Settings" context="https://serviceURL/hr/
modules/com/hyperion/reporting/web/repository/HRRepositoryXML.jsp
```

Oracle Analytics Cloud

```
<Product providerType="ExtensionProvider" id="27EE9B0D-D5F5-42c9-
AFC5-44FEA770C693" name="name" displayVersion="version">
<Server name="Oracle Analytics Cloud" context="OBI:https://serviceURL/
analytics/jbips"></Server>
</Product>
```

Oracle Essbase or other cloud version of Essbase

```
<Product id="APS" name="name" displayVersion="version">
<Server name="Oracle® Essbase" context="https://serviceURL/essbase/
smartview"></Server>
</Product>
```

Oracle Hyperion Provider Services (for on-premises Oracle Essbase)

```
<Product id="APS" name="name" displayVersion="version">
<Server name="Oracle® Essbase" context="http(s)://
webServerHost:webServerPort/aps/SmartView"></Server>
</Product>
```

Oracle Hyperion Planning

```
<Product id="HP" name="name" displayVersion="version">
<Server name="Oracle Hyperion Planning, Fusion Edition" context="http(s)://
webServerHost:webServerPort/HyperionPlanning/SmartView"></Server>
</Product>
```

Oracle Hyperion Financial Management

```
<Product id="HFM" name="name" displayVersion="version">
<Server name="Oracle Hyperion Financial Management, Fusion Edition"
context="http(s)://webServerHost:webServerPort/hfmadf/..hfmofficeprovider/
HFMOfficeProvider.aspx"></Server>
</Product>
```

Oracle Hyperion Reporting and Analysis Framework, Reporting Settings (for on-premises Release 11.1.2.4.9xx and later)

```
<Product id="RAFramework" name="name" displayVersion="version">
<Server name="Reporting and Analysis Framework" context="http(s)://
webServerHost:webServerPort/hr/modules/com/hyperion/reporting/web/
repository/HRRepositoryXML.jsp
```

Oracle Hyperion Reporting and Analysis (for on-premises Release 11.1.2.4.7xx and earlier)

```
<Product id="RAFramework" name="name" displayVersion="version">
<Server name="Reporting and Analysis Framework" context="http(s)://
webServerHost:webServerPort/raframework/browse/listXML"></Server>
</Product>
```

Oracle Hyperion Strategic Finance

```
<Product providerType="ExtensionProvider" id="HSF" name="name"
displayVersion="version">
<Server name="Oracle Hyperion Strategic Planning, Fusion Edition"
context="http(s)://webServerHost:webServerPort/StrategicPlanning/
SmartView"></Server>
</Product>
```

Oracle BI EE

```
<Product providerType="ExtensionProvider" id="27EE9B0D-D5F5-42c9-
AFC5-44FEA770C693" name="name" displayVersion="version">
<Server name="Oracle BI, Fusion Edition" context="OBI:http(s)://
webServerHost:webServerPort/analytics/jbips"></Server>
</Product>
```

5. **Optional:** If you are planning to access help locally or from an internal URL, add an entry for locating the help:

- Help installed on a local drive:

```
<helpurlcontext>file:///parent_language_folder_path/</helpurlcontext>
```

For example:

```
<helpurlcontext>file:///C:/Oracle/SmartView/smartview_help/</
helpurlcontext>
```

- Help installed on a web server:

```
<helpurlcontext>http://webServerHost:webServerPort/pathToHelpFiles/  
smartview_help/</helpurlcontext>
```

For example:

```
<helpurlcontext>http://abcxyzco.com:12345/user_documentation/  
smartview_help/</helpurlcontext>
```

Notes:

- Perform this step **ONLY** if you are planning to access shared connections from an XML file **AND** are required to access help either from a local drive or a web server within your organization. See [Installing and Configuring Help Locally or on a Web Server](#) for instructions on setting up help.
- If you use the `<helpurlcontext>` tag, the help location you specify overrides the default or modified location specified in the `<helpurlcontext>` tag in the `properties.xml` file, as described in [Optional Local Help Configuration via the Shared Connections XML File](#).

6. **Optional:** Add an entry for the User Productivity Kit (UPK):

```
<UPK>http://link to User Productivity Kit</UPK>
```

For example:

```
<UPK>http://download.abcxyzco.com/ocomdocs/PlayerPackage/data/toc.html</  
UPK>
```

7. Add the closing `res_GetProvisionedDataSources` tag to complete the file, then save it.

```
</res_GetProvisionedDataSources>
```

See [Connection File Syntax and Example](#) for the full syntax and an example of how this file should be set up.

8. Test the file:

- a. Perform an action:

- If you plan to have users copy the XML file to their local drive, ensure that the file is copied to a local drive on your Smart View client machine.
For example, the file may be copied to the `SmartView\bin` directory.
- Alternatively, if you plan to copy the file to a web server, ensure that the file is accessible to your users from a fully-qualified URL that includes the XML file name and the `.xml` extension.

- b. Start Smart View and in the **Options** dialog box, edit the **Shared Connections URL** to add the full path to the file or a URL, ensuring that the `.xml` file name extension is included.

Note

This feature will not work if the `.xml` file name extension is not included at the end of the local drive path or URL.

- Local drive example:

```
C:/Oracle/SmartView/bin/SmartViewProviders.xml
```

Ensure that you use forward slashes (/) as separators in the file path.

The directory path and file should now be available in the list of shared connections.

- Web server URL syntax:

```
http://webServerHost:webServerPort/pathToFile/filename.xml
```

Web server URL example:

```
http://<webServerHost>:<webServerPort>/SmartViewDataSources/  
SmartViewProviders.xml
```

The URL should now be available in the list of shared connections.

- c. Connect to the file using the **Shared Connections** option in the Smart View Panel, as described in "Connecting to Data Sources" in the *Oracle Smart View for Office User's Guide*.

If you do not see provider entries listed in the **Shared Connections** drop-down list, then the XML file may contain incorrect syntax or invalid characters.

Tip

Verify the XML by opening the file in a browser; for example, in Microsoft Edge. The browser will specify the invalid syntax. Correct any errors in the XML file editor, save, and refresh the browser display.

9. When the XML file is correct and complete, perform one of the following procedures:
 - If you plan to have users copy the XML file to their local drive, distribute the file to your Smart View users with these instructions:
 - a. Do not modify this file in any way.
 - b. Copy the file to a local drive on your Smart View client machine.
For example, the file may be copied to the `SmartView\bin` folder.
 - c. Start Smart View and in the **Options** dialog box, edit the **Shared Connections URL** with the full path to the file on the local drive, including the file name and `.xml` extension; for example:

```
C:/Oracle/SmartView/bin/SmartViewProviders.xml
```

Ensure that you use forward slashes (/) as separators in the file path.

The directory path and file is now available in the list of shared connections.

- d. Test by connecting to the file using the Shared Connections option in the Smart View Panel, as described in "Connecting to Data Sources" in the *Oracle Smart View for Office User's Guide*.

If you have problems connecting, contact your Smart View administrator.

- If you plan to copy the XML file to a web server, notify your Smart View users with these instructions:
 - a. Start Smart View and in the **Options** dialog box, edit the **Shared Connections URL** with the URL provided, including the file name and .xml extension; for example:

```
http://abcxyzcowebserver:1234/SmartViewDataSources/SmartViewProviders.xml
```

- b. Test by connecting to this URL using the Shared Connections option in the Smart View Panel, as described in "Connecting to Data Sources" in the *Oracle Smart View for Office User's Guide*.

If you have problems connecting, contact your Smart View administrator.

- c. Complete the procedure in [Clearing Smart View Cookies](#).

Connection File Syntax and Example

Related Topics

- [Connection File Syntax](#)
- [Connection File Example](#)

Connection File Syntax

Below is the file syntax in its entirety:

```
<?xml version="1.0" encoding="UTF-8"?>
<res_GetProvisionedDataSources>

<Product id="APS" name="name" displayVersion="version">
<Server name="Oracle Hyperion Provider Services" context="http://
webServerHost:webServerPort/aps/SmartView"></Server>
</Product>

<Product id="HP" name="name" displayVersion="version">
<Server name="Oracle Hyperion Planning, Fusion Edition" context="http://
webServerHost:webServerPort/HyperionPlanning/SmartView"></Server>
</Product>

<Product id="HFM" name="name" displayVersion="version">
<Server name="Oracle Hyperion Financial Management, Fusion Edition"
context="http://webServerHost:webServerPort/hfmadf/./hflofficeprovider/
HFMOfficeProvider.aspx"></Server>
</Product>
```

```

<!-- For on-premises Release 11.1.2.4.9xx and later -->
<Product id="RAFramework" name="name" displayVersion="version">
<Server name="Reporting Settings" context="http://
webServerHost:webServerPort/hr/modules/com/hyperion/reporting/web/repository/
HRRepositoryXML"></Server>
</Product>

<!-- For on-premises Release 11.1.2.4.7xx and earlier -->
<Product id="RAFramework" name="name" displayVersion="version">
<Server name="Reporting and Analysis Framework" context="http://
webServerHost:webServerPort/raframework/browse/listXML"></Server>
</Product>

<!-- For EPM Cloud -->
<Product id="RAFramework" name="name" displayVersion="version">
<Server name="Reporting Settings" context="https://serviceURL/hr/modules/com/
hyperion/reporting/web/repository/HRRepositoryXML"></Server>
</Product>

<Product providerType="ExtensionProvider" id="name" name="HSF-11.1.2"
displayVersion="version">
<Server name="Oracle Hyperion Strategic Planning, Fusion Edition"
context="http(s)://webServerHost:webServerPort/StrategicPlanning/SmartView"></
Server>
</Product>

<Product providerType="ExtensionProvider" id="27EE9B0D-D5F5-42c9-
AFC5-44FEA770C693" name="name" displayVersion="version">
<Server name="Oracle BI, Fusion Edition" context="OBI:http://
webServerHost:webServerPort/analytics/jbips"></Server>
</Product>

<Product id="HP" name="name" displayVersion="version">
<Server name="Planning" context="https://serviceURL/HyperionPlanning/
SmartView"></Server>
</Product>

<Product id="HP" name="name" displayVersion="version">
<Server name="Planning Modules" context="https://serviceURL/HyperionPlanning/
SmartView"></Server>
</Product>

<Product id="HP" name="name" displayVersion="version">
<Server name="FreeForm" context="https://serviceURL/HyperionPlanning/
SmartView"></Server>
</Product>

<Product id="HP" name="name" displayVersion="version">
<Server name="Financial Consolidation and Close" context="https://serviceURL/
HyperionPlanning/SmartView"></Server>
</Product>

<Product id="HP" name="name" displayVersion="version">
<Server name="Tax Reporting" context="https://serviceURL/HyperionPlanning/
SmartView"></Server>

```

```

</Product>

<Product id="HP" name="name" displayVersion="version">
<Server name="Enterprise PCM" context="https://serviceURL/HyperionPlanning/
SmartView"></Server>
</Product>

<Product id="EPRCS" name="name" displayVersion="version">
<Server name="Narrative Reporting" context="https://serviceURL/epm/
SmartView"></Server>
</Product>

<Product id="HP" name="name" displayVersion="version">
<Server name="Tax Reporting" context="https://serviceURL/HyperionPlanning/
SmartView"></Server>
</Product>

<Product providerType="ExtensionProvider" id="27EE9B0D-D5F5-42c9-
AFC5-44FEA770C693" name="name" displayVersion="version">
<Server name="Oracle Analytics Cloud" context="OBI:https://serviceURL/
analytics/jbips"></Server>
</Product>

<Product id="APS" name="name" displayVersion="version">
<Server name="Oracle Analytics Cloud - Essbase" context="https://serviceURL/
essbase/smartview"></Server>
</Product>

<helpurlcontext>a valid entry as per optional step 5</helpurlcontext>

<UPK>http://link to User Productivity Kit</UPK>

</res_GetProvisionedDataSources>

```

Connection File Example

The following example includes an entry for each provider type and also includes an entry for accessing help from an organization's internal web server:

```

<?xml version="1.0" encoding="UTF-8"?>
<res_GetProvisionedDataSources>

<Product id="APS" name="APS-11.1.2" displayVersion="11.1.2.4.500">
<Server name="Oracle Hyperion Provider Services" context="http(s)://
<webServerHost>:19000/aps/SmartView"></Server>
</Product>

<Product id="HP" name="HP-11.2" displayVersion="11.2.5">
<Server name="Oracle Hyperion Planning, Fusion Edition" context="http(s)://
<webServerHost>:19000/HyperionPlanning/SmartView"></Server>
</Product>

<Product id="HFM" name="HFM-11.2" displayVersion="11.2.5">
<Server name="Oracle Hyperion Financial Management, Fusion Edition"
context="http(s)://<webServerHost>:19000/hfmadf/../../hflofficeprovider/

```

```
HFMOfficeProvider.aspx"></Server>
</Product>

<!-- For on-premises Release 11.1.2.4.9xx and later -->
<Product id="RAFramework" name="RAFramework-11.1.2.4"
displayVersion="11.1.2.4.9xx">
<Server name="Reporting Settings" context="http(s)://"
<webServerHost><<webServerPort>/hr/modules/com/hyperion/reporting/web/
repository/HRRepositoryXML"></Server>
</Product>

<!-- For on-premises Release 11.1.2.4.7xx and earlier -->
<Product id="RAFramework" name="RAFramework-11.1.2.4.7"
displayVersion="11.1.2.4.7xx">
<Server name="Reporting and Analysis Framework" context="http(s)://"
<webServerHost><webServerPort>/raframework/browse/listXML"></Server>
</Product>

<!-- For EPM Cloud -->
<Product id="RAFramework" name="RAFramework-21.05" displayVersion="21.05">
<Server name="Reporting Settings" context="http://<serviceURL>/hr/modules/com/
hyperion/reporting/web/repository/HRRepositoryXML"></Server>
</Product>

<Product providerType="ExtensionProvider" id="HSF" name="HSF-11.1.2"
displayVersion="11.1.2.2.00.2266">
<Server name="Oracle Hyperion Strategic Planning, Fusion Edition"
context="http(s)://<webServerHost>:8900/StrategicPlanning/SmartView"></Server>
</Product>

<Product providerType="ExtensionProvider" id="27EE9B0D-D5F5-42c9-
AFC5-44FEA770C693" name="OBI EE-11.1.1.7" displayVersion="11.1.1.7">
<Server name="Oracle BI, Fusion Edition" context="OBI:http(s)://"
<webServerHost>:9704/analytics/jbips"></Server>
</Product>

<Product id="HP" name="PBCS" displayVersion="22.06">
<Server name="Planning" context="https://<serviceURL>/HyperionPlanning/
SmartView"></Server>
</Product>

<Product id="HP" name="EPBCS" displayVersion="22.06">
<Server name="Planning Modules" context="https://<serviceURL>/
HyperionPlanning/SmartView"></Server>
</Product>

<Product id="HP" name="FF" displayVersion="22.06">
<Server name="FreeForm" context="https://<serviceURL>/HyperionPlanning/
SmartView"></Server>
</Product>

<Product id="EPRCS" name="NR" displayVersion="21.05">
<Server name="Narrative Reporting" context="https://<serviceURL>/epm/
SmartView"></Server>
</Product>
```

```
<Product id="HP" name="FCCS" displayVersion="22.06">
<Server name="Financial Consolidation and Close" context="https://
<serviceURL>/HyperionPlanning/SmartView"></Server>
</Product>

<Product id="HP" name="TRCS" displayVersion="22.06">
<Server name="Tax Reporting" context="https://<serviceURL>/HyperionPlanning/
SmartView"></Server>
</Product>

<Product id="HP" name="EPCM" displayVersion="22.06">
<Server name="Enterprise PCM" context="https://<serviceURL>/HyperionPlanning/
SmartView"></Server>
</Product>

<Product providerType="ExtensionProvider" id="27EE9B0D-D5F5-42c9-
AFC5-44FEA770C693" name="OAC 22.06" displayVersion="22.06">
<Server name="Oracle Analytics Cloud" context="OBI:https://<serviceURL>/
analytics/jbips"></Server>
</Product>

<Product id="APS" name="Essbase" displayVersion="22.06">
<Server name="Oracle Analytics Cloud - Essbase" context="https://<serviceURL>/
essbase/smartview"></Server>
</Product>

<helpurlcontext>http(s)://<webServerHost>:<port>/user_documentation/
smartview_help/</helpurlcontext>

<UPK>http(s)://download.<webServerHost>/ocomdocs/PlayerPackage/data/toc.html</
UPK>

</res_GetProvisionedDataSources>
```

5

Installing and Configuring Help Locally or on a Web Server

Related Topics

- [About Installing Help Locally or on a Web Server](#)
- [Setting Up Help Locally or on a Web Server](#)
- [Optional Local Help Configuration via the Shared Connections XML File](#)

About Installing Help Locally or on a Web Server

After installing Oracle Smart View for Office, the online help is accessed from a URL hosted on the Oracle.com web site. This is the default behavior for Smart View, and no changes are required by users to launch help.

However, you may require that the help be installed locally or on a web server in your organization. Some examples for the need to access help from a location other than Oracle.com are:

- Help files must be installed on a local drive on an individual's computer for Section 508 accessibility purposes.
- Internet access limitations; for example, your users only have access to URLs on your organization's intranet.

To accommodate the above types of cases, a help zip file can be downloaded from My Oracle Support. You unzip the help to a local drive or web server, and then modify the Smart View `properties.xml` file to point the help location.

Note

Depending on your requirements, you may also want to specify the `<helpurlcontext>` tag in a shared connections XML file, as described in [Setting Up the Shared Connections XML File](#) of [Accessing Shared Connections from an XML File](#). Refer to [Optional Local Help Configuration via the Shared Connections XML File](#) for more information.

Setting Up Help Locally or on a Web Server

To install and configure Oracle Smart View for Office help locally or on a web server:

1. Obtain the help zip file for this release from My Oracle Support.
2. Extract the contents to either a local folder on the computer where Smart View is installed or to a folder accessible by your users on an HTTP web server in your organization.

For example:

- Extract the contents locally to:

```
C:\Oracle\SmartView\
```

The extraction adds an additional folder named `smartview_help`. The result is:

```
C:\Oracle\SmartView\smartview_help
```

- Extract the contents to a web server:

```
http://webServerHost:webServerPort/pathToHelpFiles
```

The extraction adds `smartview_help` after `pathToHelpFiles`. The result is:

```
http://webServerHost:webServerPort/pathToHelpFiles/smartview_help
```

Under the `smartview_help` folder, there are 28 language folders; for example:

```
C:\Oracle\SmartView
    \smartview_help
        \ar
        \cs
        \da
        \de
        \el
        \en
        \es
        \fi
        \fr
        \fr_CA
        \he
        \hu
        \it
        \ja
        \ko
        \nl
        \no
        \pl
        \pt
        \pt_BR
        \ro
        \ru
        \sk
        \sv
        \th
        \tr
        \zh_CN
        \zh_TW
```

The following language folders contain translated versions of the Smart View help:

```
\de  
\es  
\fr  
\it  
\ja  
\ko  
\nl  
\pt_BR  
\zh_CN  
\zh_TW
```

The remaining language folders contain the English version of the help. When you run Smart View in one of those languages (for example, Swedish) and you click a button for Help, the English help is displayed.

Additionally, the English folder contains a copy of the help in PDF format, `smartview_user.pdf`.

3. Modify the `helpurlcontext` property in the Smart View `properties.xml` file:
 - a. In your Smart View installation, navigate to the `SmartView\cfg` folder.
 - b. Make a backup copy of the original `properties.xml` file.
 - c. Open `properties.xml` for editing.
 - d. Modify the `helpurlcontext` property, providing the path to the folder that is parent to the language folders using the following syntax:
 - If installing locally, provide the path to the folder that is parent to the language folders using the following syntax:

```
<helpurlcontext>file:///parent_language_folder_path/</  
helpurlcontext>
```

 **Tip**

Use forward slashes in the syntax and ensure that you enter a final forward slash (/) after the parent language folder path that you provide.

Using the example from step 2, after extracting the zip contents to `C:\Oracle\SmartView`, the `smartview_help` folder is the parent folder of the language folders. Thus, you would modify the `parent_language_folder_path` placeholder as follows:

```
<helpurlcontext>file:///C:/Oracle/SmartView/smartview_help/</  
helpurlcontext>
```

- If installing on a web server, provide the path to the folder that is parent to the language folders using the following syntax:

```
<helpurlcontext>http://webServerHost:webServerPort/pathToHelpFiles/  
smartview_help/</helpurlcontext>
```

✔ Tip

Use forward slashes in the syntax and ensure that you enter a final forward slash (/) after the parent language folder path that you provide.

Using the example from step 2 and substituting `user_documentation` for `pathToHelpFiles`, after extracting the zip contents to `http://abcxyzco.com:12345/user_documentation`, the `smartview_help` folder is the parent folder of the language folders. For example:

```
<helpurlcontext>http://abcxyzco.com:12345/user_documentation/  
smartview_help/</helpurlcontext>
```

4. Restart your Microsoft Office applications and access the help from the Smart View ribbon.
5. Repeat this procedure for each computer that requires Smart View local help.

Optional Local Help Configuration via the Shared Connections XML File

In a new installation, Oracle Smart View for Office help is available as soon as you start Excel. You do not need to be connected to a Smart View provider in order to view the help. After making the changes to the `properties.xml` file described in this chapter, help is accessed from the help location you indicate.

If you are also planning to access shared connections from an XML file (as described in [Accessing Shared Connections from an XML File](#)), AND you require an alternative location for the help, note the following:

- You can add the `<helpurlcontext>` tag to the shared connections XML file. The help location you specify in the shared connections XML file overrides the help location specified in `properties.xml` once you click the **Shared Connections** button in the Smart View Panel. This is true whether or not you modify the `<helpurlcontext>` tag in `properties.xml`.
- If you do not add or specify the `<helpurlcontext>` tag to the shared connections XML file, then the local help defined in the `properties.xml` file will ALWAYS be used and is available as soon as you start Excel.

6

Tips and Troubleshooting

Related Topics

- [Diagnostics Tools and Health Check](#)
- [Microsoft Considerations](#)
- [Smart View Install, Setup, and and Uninstall](#)
- [Language and Locale](#)
- [Startup and Display](#)
- [Login and Connections](#)
- [Extensions](#)
- [Performance](#)
- [Smart View General](#)

Diagnostics Tools and Health Check

[Diagnostic Tools](#)

[Health Check](#)

Diagnostic Tools

When an issue arises while using Oracle Smart View for Office that you cannot resolve on your own, use the Smart View Diagnostic tools to create and collect log files and screenshots to send to Oracle Support. When you are finished collecting diagnostic data, you use the diagnostic tools to zip up the files. Then you transmit the ZIP file to Oracle Support for analysis. The log files and screenshots are used by Oracle Support to troubleshoot and resolve your issue.

The Smart View Diagnostic tools are located in the **Diagnostics** group in the Smart View ribbon. You enable the display of the tools by

You can customize certain features of Smart View Diagnostic tools; for example:

- Hide data values in an Office document.
- Hide member names in an Office document.
- Direct the diagnostics output files to a folder other than the default.
- Allow automatic screenshots for each warning or error message that is displayed.

See [Smart View Diagnostics and Health Check](#) in the *Oracle Smart View for Office User's Guide* for more information on the Diagnostics tools.

Health Check

You can perform a "health check" on your system to optimize performance and to get information about your machine, Microsoft Office version, Smart View version, and the extensions you have installed.

You can view the following information about your system:

- Version Information—Operating System, Excel Version, Smart View Version
- Hardware Information—RAM Memory, Processor, Smart View Installed Drive Space
- Excel Add-ins—Depends on the Excel add-ins that are installed
- COM Add-ins—Depends on the COM add-ins that are installed

You can make the following changes to system settings and Smart View options:

- Registry Information
 - KeepAlive Timeout
 - Receive Timeout
 - ServerInfo Timeout
- Smart View Options
 - Undo Buffer
 - Improve Metadata Storage
- Graphic Setting
 - Disable Windows Transitions on Addin Task Panes
 - Disable Animations

For more information, see [Performing a Health Check on Your System](#) in the *Oracle Smart View for Office User's Guide*.

Microsoft Considerations

Related Topics

- [Microsoft .NET Requirement when Installing Office](#)
- [Microsoft Office 365 ProPlus Support](#)
- [Windows Registry Access Requirement for Smart View Installation](#)
- [Smart View Display and Operations Issues After Windows 10 Update](#)
- [Problem Opening Files in Excel](#)
- [Excel Process Stops Responding \(Hangs\) on Shut Down](#)
- [Renaming or Deleting the Excel nn.xlb File](#)
- [Issue Loading Smart View XLA File After Excel 2016 November 12, 2024 Update](#)

Microsoft .NET Requirement when Installing Office

During Microsoft Office installation, you must enable the .NET installation option. When enabled, files are placed in your Office installation that support interoperability between Office and other programs and add-ins, such as Oracle Smart View for Office and Smart View extensions.

Smart View works with these Office interop files:

- `Microsoft.Office.Interop.Excel`
- `Microsoft.Office.Interop.Powerpoint`

- `Microsoft.Office.Interop.Word`
- `Microsoft.Office.Interop.Outlook`

If these files are not installed, Smart View does not behave as expected. For example, when connected to Narrative Reporting, you may see a blank report package panel, resulting in an exception error when clicking in your Office application. Additionally, in the Smart View log file, you will get errors for an Office interop file; for example:

```
System.IO.FileNotFoundException: Could not load file or assembly
'Microsoft.Office.Interop.PowerPoint
Could not load file or assembly 'Microsoft.Office.Interop.PowerPoint
```

If you see errors in the Smart View log file such as the one shown above, reinstall Office and ensure that the .NET option is enabled.

Microsoft Office 365 ProPlus Support

A known issue with Microsoft Office 365 ProPlus patch 16.0.10228.20051, updated through the insider slow channel, prevents users from accessing Oracle Smart View for Office with Office 365, resulting in the "Member not found" message being displayed. This Microsoft patch was pushed to users who signed up for monthly channel updates between June 12 and June 14, 2018.

Workaround: Update Office with Microsoft Office 365 Version 1806 (Build 10228.20080), which contains the fix for this issue.

Windows Registry Access Requirement for Smart View Installation

The Oracle Smart View for Office installation writes to the Windows Registry.

In order for Smart View to write to the Registry, the following is required:

- The user account from which Smart View is installed must have permission to write to the Windows Registry.
- The "Run as administrator" option is used when installing Smart View.

If a user without the appropriate permissions to the Registry installs Smart View, issues can arise with some Smart View operations, such as drill-through.

Smart View Display and Operations Issues After Windows 10 Update

After a Windows 10 update on some high-resolution displays, drag-and-drop may not work as expected, some controls may look blurry, and some operations may not work properly. For example, an "Invalid selection" error occurs when trying to drag and drop members from the POV.

To avoid the "Invalid selection" error and other display issues after a Windows update:

1. Select the Windows 10 **Start** button, then **Settings**, then **System**, then **Display**, and then **Advanced scaling settings**.
2. Under **Fix scaling for apps**, set **Let Windows try to fix apps so they are not blurry** to **On**.
3. Restart Excel.

Drag-and-drop and other operations should work as expected, and the display of Oracle Smart View for Office controls should be improved.

Problem Opening Files in Excel

Sometimes, temporary files and folders stored in the `C:\Users\UserName\AppData\Roaming\Microsoft\Excel` folder can cause issues when trying to open a workbook file in Excel. You can back up the contents of this folder and then clear the folder to improve performance when opening a workbook.

To improve Excel performance when opening a workbook:

1. Close all applications and restart your computer once.
This is to ensure that there are no hidden instances of Excel running in the background.
2. After the reboot, create a folder on your computer (for example, in the `Desktop` or the `Documents` folder) and give it a descriptive name (for example, `Excel AppData Backup`).
3. Open Windows File Explorer, then select the **View** menu, and then select the check box to show **Hidden items**.
4. Navigate to:

```
C:\Users\User_Name\AppData\Roaming\Microsoft\Excel
```

Replace `User_Name` with your Windows login user name.

5. Use Windows Cut and Paste to move all the files and folders from the directory you created in the previous step to the backup folder that you created in [step 2](#).

The `C:\Users\User_Name\AppData\Roaming\Microsoft\Excel` folder should be empty.

6. In File Explorer, go to the **View** menu and clear the **Hidden items** check box.
7. Close File Explorer, and then start Excel.
8. Try opening the files that you were having problems opening earlier.

Excel Process Stops Responding (Hangs) on Shut Down

Excel may be slow to shut down if the `Excel15.xlb` file is corrupted. This file stores changes to the ribbons in Excel.

A simple fix to this issue is to rename `Excel15.xlb`. A clean `Excel15.xlb` file is rebuilt the next time you start Excel.

The `Excel15.xlb` file is located in the

```
C:\Users\user\AppData\Roaming\Microsoft\Excel
```

 folder.

To rename the `Excel15.xlb` file, see [Renaming or Deleting the Excel xx.xlb File](#).

Renaming or Deleting the Excel *nn*.xlb File

You may need to rename or delete `Excelnn.xlb` if it is determined that this file is causing issues with your Oracle Smart View for Office installation.

Renaming or deleting the existing `Excelnn.xlb` file causes a new `Excelnn.xlb` to be created the next time you start Excel. This usually fixes any issues you may have had with the previous version of the `XLB` file.

To rename or delete the `Excelnn.xlb` file:

1. Close any open Excel applications and ensure that all `excel.exe` processes in the Windows **Task Manager** are ended.
2. Locate the `Excelnn.xlb` file in your AppData folder.

For example, the default location of the `Excelnn.xlb` file is:

`C:\Users\user\AppData\Roaming\Microsoft\Excel`

 **Tip**

You can quickly navigate to this folder by entering `%appdata%\Microsoft\Excel` in the address bar of Windows Explorer.

3. Right-click the `Excelnn.xlb` file name, then perform either of these tasks:
 - Select **Rename**, then enter a new name for the file, and then press **Enter**.

For example, append `.old` to the file name:

`Excel15.xlb.old`

- Select **Delete**.

4. Restart Excel.

A clean `Excelnn.xlb` file is created in the

`C:\Users\user\AppData\Roaming\Microsoft\Excel` folder.

Issue Loading Smart View XLA File After Excel 2016 November 12, 2024 Update

After installing the November 12, 2024 Microsoft Office update for Excel 2016, Excel was not able to locate the Smart View `HsTbar.xla` file upon startup. The issue is described in [Excel 2016 stopped loading .xlam Excel Addins after security update from 12-nov-2024](#).

This issue is fixed by Microsoft in [November 19, 2024, update for Excel 2016 \(KB4484305\)](#). If you are using Excel 2016, Oracle advises that you download and install this fix.

Smart View Install, Setup, and and Uninstall

Related Topics

- [Smart View cfg Folder and Properties File Access Requirement](#)
- [Installing in the Windows Program Files Folder](#)
- [Outlook Enablement in New Installs and Upgrades](#)
- [Enabling and Disabling Smart View and Other Office Add-ins](#)
- [Disabling the Smart View Add-on in Apps Other than Excel](#)
- [Uninstallation Process Stops Responding](#)
- [Excel Looks for HsTbar.xla File After Uninstall](#)
- [Add-ins Menu Still Displays After Smart View Uninstall](#)
- [Failure Connecting to Oracle Analytics Cloud](#)

Smart View cfg Folder and Properties File Access Requirement

Oracle Smart View for Office requires Write access to the `<Smart View Install>/cfg` folder, `properties.xml` file during runtime. An "Access Denied" error may occur if users do not have permission to write to this folder or file when attempting the following operations:

- Saving a file to Oracle Fusion Cloud Enterprise Performance Management using the Save or Save As commands in the Smart View ribbon
- Performing ad hoc analysis

Installing in the Windows Program Files Folder

On Windows operating systems, such as Windows 10, non-administrator users are not authorized to modify the Program Files folder or the Program Files (x86). If an administrator installs Oracle Smart View for Office in Program Files or Program Files (x86), a non-admin user will not be able to uninstall Smart View.

The default installation folder for Smart View is `C:\Oracle\SmartView`.

Oracle advises that you do not install in Smart View in the Program Files or Program Files (x86) folder.

Outlook Enablement in New Installs and Upgrades

For new installations, the **Disable Smart View in Outlook** option is disabled by default. In the Windows Registry, the `HKCU\Software\Hyperion Solutions\HyperionSmartView\Preferences\OutlookDisabled` key is set to non-zero (usually 1).

For upgrades, if the `OutlookDisabled` value in the Registry is set to zero, the Smart View ribbon will still display for the Standard user and the `OutlookDisabled` value remains set to zero.

Enabling and Disabling Smart View and Other Office Add-ins

You can enable and disable Oracle Smart View for Office and other Microsoft Office add-ins from the **Add-Ins** tab in Excel Options. In some cases, Smart View performance can be improved when other Office add-ins are disabled.

To enable or disable Smart View or other Office add-ins for all applicable Office applications (including Outlook):

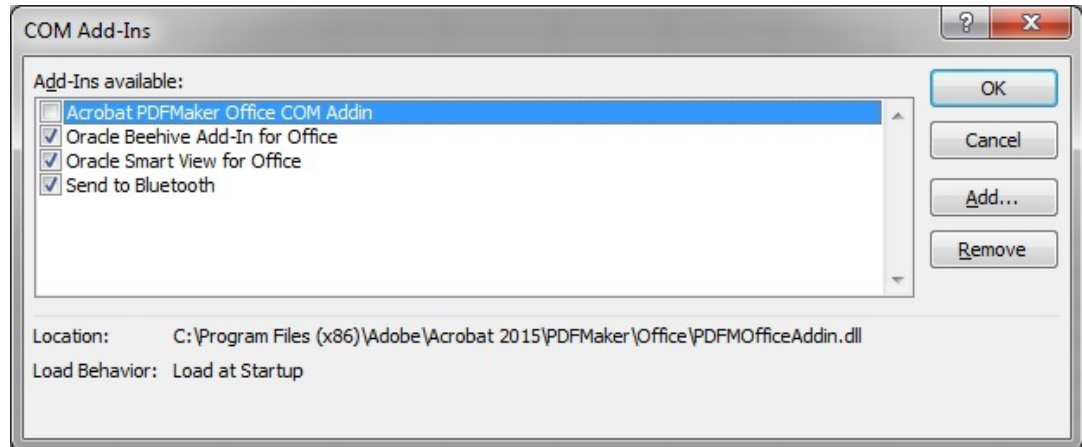
1. Open Excel, Word or PowerPoint.
Do not use Outlook to enable and disable Office add-ins.
2. Go to **File**, then **Options**, and then **Add-Ins**.
Continue with step 3 to work with COM Add-ins. Continue with step 4 to work with Excel Add-ins.
3. To enable or disable COM add-ins, from **Manage**, select **COM Add-ins**, then click **Go** and then perform a task:
 - To enable add-ins, ensure that the check box next to the add-in is checked.
If the check box next to the add-in is cleared, then click the check box to select it, and then click **OK**.

If the add-in you want to enable is not in the list, click **Add**, navigate to the location of the add-in file in your system and select it, then click **OK**, and then click **OK** again in the **COM Add-Ins** dialog to close it.

- To disable add-ins, ensure that the check box next to the add-in is cleared.

If the check box next to the add-in is checked, then click the check box to clear it, and then click **OK**.

In the following example **COM Add-Ins** dialog box, the **Acrobat PDFMaker Office COM Addin**, is disabled; other available add-ins are enabled, including Smart View.



- To enable or disable Excel add-ins, from **Manage**, select **Excel Add-ins**, then click **Go** and then perform a task:

- To enable add-ins, ensure that the check box next to the add-in is checked.

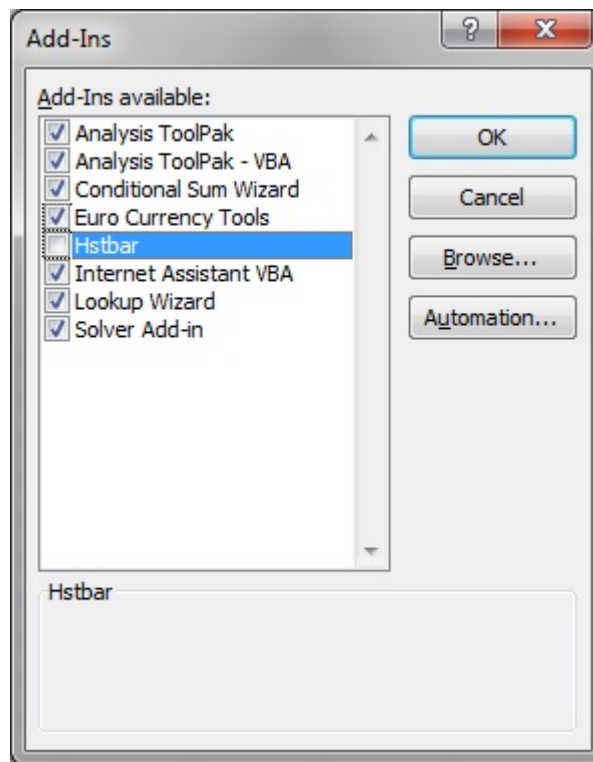
If the check box next to the add-in is cleared, then click the check box to select it, and then click **OK**.

If the add-in you want to enable is not in the list, click **Browse**, navigate to the location of the add-in file in your system and select it, then click **OK**, and then click **OK** again in the **COM Add-Ins** dialog to close it.

- To disable add-ins, ensure that the check box next to the add-in is cleared.

If the check box next to the add-in is checked, then click the check box to clear it, and then click **OK**.

In the following example **Add-Ins** dialog box, the Smart View add-in, **Hstbar**, is disabled; other available add-ins are enabled. Note that these add-ins are not related to Smart View.



5. Restart any open Office applications.

Disabling the Smart View Add-on in Apps Other than Excel

If users plan to work with Oracle Smart View for Office only in Microsoft Excel, and not with Word, PowerPoint, or Outlook, you can edit Windows Registry keys to prevent Smart View from loading into the other Office applications.

Before you edit the Registry, ensure that all Office applications are closed and no Office processes are running in the Task Manager.

To disable loading Smart View into Word, PowerPoint, or Outlook, open the Registry, navigate to each of the Office applications listed below, and set the **LoadBehavior** value for each application to 0.

Word:

```
HKEY_CURRENT_USER\SOFTWARE\Microsoft\Office\Word\Addins\Hyperion.CommonAddin
```

PowerPoint:

```
HKEY_CURRENT_USER\SOFTWARE\Microsoft\Office\PowerPoint\Addins\Hyperion.CommonAddin
```

Outlook:

```
HKEY_CURRENT_USER\SOFTWARE\Microsoft\Office\Outlook\Addins\Hyperion.CommonAddin
```

When **LoadBehavior** is set to 0, the respective Office application will not load the specific add-in.

Restart the affected Office applications and verify that the Smart View ribbon does not display.

You can disable any or all of the above Office applications, as required.

To switch back to loading the Smart View add-on for specific Office applications, set the **LoadBehavior** value for the application to 3. This will cause the Smart View add-on to be loaded when restarting the Office application.

Uninstallation Process Stops Responding

On supported Windows platforms, the Oracle Smart View for Office uninstallation process may stop responding.

If you have experienced this issue, try the following:

1. In the **Windows Task Manager**, kill all occurrences of these processes:
 - **Microsoft Register Server**
 - **Windows Installer**
2. In the **Control Panel**, check **Programs and Features** to verify if **Oracle Smart View for Office** is listed.

If **Oracle Smart View for Office** is not listed, then the uninstallation completed successfully.

If **Oracle Smart View for Office** is listed, select it, and then select **Uninstall** to try the uninstallation again.

Excel Looks for HsTbar.xla File After Uninstall

Sometimes, after uninstalling Oracle Smart View for Office and subsequently launching Excel, Excel may still try to locate the Smart View `HsTbar.xla` file.

To correct this, you must edit the Windows Registry.

To edit the Windows Registry to keep Excel from looking for `HsTbar.xla` file after uninstalling Smart View:

1. Open the Windows Registry Editor (enter `regedit` in a command window).
2. Locate this key:
`HKEY_CURRENT_USER\Software\Microsoft\Office\<OfficeVersion>\Excel\Options`
3. Delete the `OPEN` or `OPEN<n>` entry where the value in the **Data** column contains `HsTbar.xla`.

For example:

```
C:\Oracle\SmartView\bin\HsTbar.xla
```

When there are multiple `OPEN` entries, perform these steps:

- a. Delete all `OPEN` entries where the **Data** column value contains `HsTbar.xla`.
- b. Rename all remaining `OPEN<n>` entries, maintaining their sequential values.

For example, here are six `OPEN` entries, where two of the entries, `OPEN` and `OPEN4`, contain `HsTbar.xla` in the **Data** column.

Name	Value in Data Column
<code>OPEN</code>	Contains <code>HsTbar.xla</code>
<code>OPEN1</code>	Does not contain <code>HsTbar.xla</code>
<code>OPEN2</code>	Does not contain <code>HsTbar.xla</code>
<code>OPEN3</code>	Does not contain <code>HsTbar.xla</code>
<code>OPEN4</code>	Contains <code>HsTbar.xla</code>
<code>OPEN5</code>	Does not contain <code>HsTbar.xla</code>

Delete the `OPEN` and `OPEN4` entries, and then rename the remaining entries as follows, maintaining their sequential order:

- Rename `OPEN1` to `OPEN`
- Rename `OPEN2` to `OPEN1`
- Rename `OPEN3` to `OPEN2`
- Rename `OPEN5` to `OPEN3`

The remaining entries are:

Name	Value in Data Column
<code>OPEN</code>	Does not contain <code>HsTbar.xla</code>
<code>OPEN1</code>	Does not contain <code>HsTbar.xla</code>
<code>OPEN2</code>	Does not contain <code>HsTbar.xla</code>
<code>OPEN3</code>	Does not contain <code>HsTbar.xla</code>

Add-ins Menu Still Displays After Smart View Uninstall

When Oracle Smart View for Office is installed, a Smart View ribbon tab is displayed in Office. This is the expected behavior.

In some cases, after uninstalling Smart View and installing a newer version, an Add-ins ribbon tab is also displayed next to the Smart View ribbon tab. Moreover, in some cases, after uninstalling the newer version of Smart View and restarting Excel, the Smart View ribbon tab is no longer displayed, as expected, but the Add-ins tab remains.

This issue can be caused by a corrupted `Excelnn.xlb` file. This file stores changes to the ribbons in Excel.

You can fix this issue by renaming or deleting the `Excelnn.xlb`. A clean `Excelnn.xlb` file is rebuilt the next time you start Excel.

The `Excelnn.xlb` file is located in the
`C:\Users\user\AppData\Roaming\Microsoft\Excel` folder.

To rename the `Excelnn.xlb` file, see [Renaming or Deleting the Excel nn.xlb File](#).

Failure Connecting to Oracle Analytics Cloud

Issue

In some cases, in an Oracle Analytics Cloud production environment, users may have issues connecting to Oracle Analytics Cloud from their Oracle Smart View for Office installation.

This is the type of scenario where this situation can occur:

- Users connect to Oracle Analytics Cloud via VPN
- Oracle Analytics Cloud is protected by Oracle Identity Cloud Service, which is requested through an Internet Proxy
- Oracle Identity Cloud Service is integrated with a federated single-signon system, such as Ping Identity
- Users on two different domains install Smart View via a package, delivered using Microsoft Application Virtualization (Microsoft App-V)

When trying to connect, an empty login screen pops up repeatedly, and then the login finally fails. This can happen when pasting a connection URL in the Private Connection Panel.

Cause

The root cause for this issue is that the Smart View packaged version, prior to login, opened a browser process named `ielowutil.exe`. The non-packaged local install of Smart View, or packaged install with Microsoft Internet Explorer already running, both launched `iexplore.exe` instead.

The `ielowutil.exe` file is a special protected version of Internet Explorer named "Low MIC [Medium Integrity Cookie] Utility." It prevents the sharing of cookie data between processes of differing integrity.

This can explain why login to Oracle Analytics Cloud likely fails – since it requires cookie information that is set by both Oracle Identity Cloud Service and Ping Identity, and continues to assume the user is not logged in – redirecting back to Oracle Identity Cloud Service in a loop that escapes only after 12 times.

Note

Microsoft discontinued support for Internet Explorer on June 15, 2022. However, you should not uninstall Internet Explorer. For more information, see [Internet Explorer 11 End of Support and Smart View](#).

Solution

Using Process Monitor (Windows Sysinternals), the registry key used to read the browser was different in each case and was identified as followed:

- **Working Key:**

```
HKEY_CLASSES_ROOT\Wow6432Node\CLSID\{0002DF01-0000-0000-C000-000000000046}\
(Default)
```

Presents the value:

```
Internet Explorer(Ver 1.0)
```

- **Non-working Key:**

```
HKEY_CLASSES_ROOT\Wow6432Node\CLSID\{0002DF01-0000-0000-
C000-000000000046}\LocalServer32\Default
```

Presents the value:

```
"%ProgramFiles(x86)%\Internet Explorer\ielowutil.exe" -CLSID:
{0002DF01-0000-0000-C000-000000000046}
```

The registry key:

```
HKEY_CLASSES_ROOT\Wow6432Node\CLSID\{0002DF01-0000-0000-  
C000-000000000046}\LocalServer32\Default)
```

is a pointer to:

```
HKEY_LOCAL_MACHINE\SOFTWARE\Classes\Wow6432Node\CLSID\{0002DF01-0000-0000-  
C000-000000000046}\LocalServer32\Default)
```

Changing this key to a new value of:

```
"%ProgramFiles(x86)%\Internet Explorer\iexplore.exe"
```

results in the Smart View package calling `iexplore.exe` instead, and the login succeeding.

All registry checks and changes must be done in the same App-V Package/Version ID environment as the Smart View package, ensuring that the local system is left intact; that is:

```
regedit /appvve:307790F2-DE31-4EBE-B3BC-4C9337032E73_0BE1C6E6-85CC-48C3-  
A0FF-3BBB789681C3
```

Since users generally do not have admin access, you may roll out the fix to `HKEY_CURRENT_USER` by adding the key to the same path:

```
HKEY_CURRENT_USER\Software\Classes\Wow6432Node\CLSID\{0002DF01-0000-0000-  
C000-000000000046}\LocalServer32\Default)
```

In the case of different Smart View packaged versions (some in an App-V connection group) across different domains, a PowerShell script can be written to identify the Smart View packages and make the correct registry changes.

Testing, this key change should result in Smart View users being able to successfully and consistently log in to Oracle Analytics Cloud.

Language and Locale

Related Topics

- [Windows, Office, and Smart View Locale Settings](#)
- [Installation and Languages](#)

Windows, Office, and Smart View Locale Settings

On each Oracle Smart View for Office client machine, the following locale settings should match:

- Smart View language option
- Microsoft Office language
- Windows Regional Settings
- Windows operating system

Running Smart View in a language other than the language of the machine's Windows operating system, system locale, or Office language, may result in incorrect data being returned. For example, if the Windows operating system, system locale, and Office language are English, and you run Smart View in Russian, reports or chart data may display incorrectly.

Installation and Languages

The Oracle Smart View for Office installer uses the language set in the **Format** field of the Windows **Region and Language** dialog box, **Formats** tab. This language also becomes the default language when running Smart View.

After installation, anytime you change the Smart View language setting (**Options** dialog box, **Advanced** tab), Smart View remembers the new setting on each subsequent launch of Excel.

To return Smart View to the default language, you can use either of the following methods in the **Options** dialog box, **Advanced** tab:

- Click the **Reset** button.
- Select the first option in the **Language** drop-down list. This is always **Default**, which is the language specified in the **Region and Language** dialog box, **Formats** tab

After uninstalling and then reinstalling, Smart View reverts to the language specified in the Windows **Region and Language** dialog box, **Formats** tab, and not the last language specified in the Smart View **Options** dialog box, **Advanced** tab.

Startup and Display

Related Topics

- [Manually Registering HsAddin.dll when Smart View Does Not Start](#)
- [Error When First Launching Excel After Installing Smart View](#)
- [Errors When Launching Office after Installing Smart View](#)
- [Incorrect Parameter Error after Installing Smart View](#)
- [Smart View Ribbon Fails to Display After Non-Admin Installation](#)
- [Ribbon Display Issue After Connecting to Both Smart View and PowerPivot](#)
- [Ribbons Not Selectable After Installation](#)
- [Ribbon Tab for Smart View \(Mac and Browser\) Displays in Smart View on Windows](#)
- [Two Smart View Instances Appear in Program and Features Window](#)
- [Office Slow to Start when Internet Connectivity is Not Available](#)

Manually Registering HsAddin.dll when Smart View Does Not Start

In some cases, the Oracle Smart View for Office add-in file, `HsAddin.dll`, does not register properly with the Windows Registry, and the ribbon tab for Smart View does not appear when launching an Office application, such as Excel. In these cases, try manually registering `HsAddin.dll`.

To register the `HsAddin.dll` with Windows:

1. Close all Office applications.
2. Start a Windows command prompt as administrator.
3. Switch to the `bin` folder of your Smart View installation.

The default location is `Oracle\SmartView\bin`.

4. Run the following command according to the bit version of your Office installation:

```
C:\Windows\System32\regsvr32.exe <--for 64-bit
```

or

```
C:\Windows\SysWOW64\regsvr32.exe <--for 32-bit
```

5. Restart Excel.

If the issue persists, contact Oracle Support.

Error When First Launching Excel After Installing Smart View

After installing Oracle Smart View for Office and launching Excel for the first time, you may get an error message similar to the following: "Unable to set the installed property of the add-in class."

Workarounds:

- Enable the Smart View add-in for Microsoft Office using one of the following methods:
 - [Trust Center Method](#)
 - [COM Add-ins Method](#)
- If the above methods do not resolve the issue, try reinstalling Smart View as administrator. See [Smart View Ribbon Fails to Display After Non-Admin Installation](#).

Trust Center Method

1. In Office (for example, in Excel), go to **File**, then **Options**, and then **Trust Center**.
2. Click the **Trust Center Settings** button.
3. In the left pane, select **Trusted Locations**.
4. Click **Add new location** to launch the **Microsoft Office Trusted Location** dialog box.
5. In **Path**, enter the path to the Smart View bin folder; for example:

```
C:\Oracle\SmartView\bin
```

6. Click **OK**.
7. Click **OK** to close the **Trust Center**, and then click **OK** to close **Excel Options**.

COM Add-ins Method

1. In Office (for example, in Excel), go to **File**, then **Options**, and then **Add-ins**.
2. From **Manage**, select **COM Add-ins**, and then **Go**.
3. In **COM Add-ins**, select the check box to enable the **Oracle Smart View for Office** add-in, and click **OK**.

Errors When Launching Office after Installing Smart View

Two types of errors may occur when launching Oracle Smart View for Office. If you encounter these errors, use the workarounds noted below.

- [Unable to set the installed property of the add-in class](#)
- [Add method of AddIns class failed](#)

Unable to set the installed property of the add-in class

After installing Smart View and launching Excel the first time, you may get an error message similar to the following:

```
Unable to set the installed property of the add-in class.
```

If you see this error, enable the Smart View add-in:

1. Open Excel, Word or PowerPoint.
Do not use Outlook to enable and disable Office add-ins.
2. Go to **File**, then **Options**, and then **Add-Ins**.
3. From **Manage**, select **COM Add-ins**, then click **Go**.
4. Ensure that the check box next to **Oracle Smart View for Office** is checked.
If the check box next to the add-in is cleared, then click the check box to select it, and then click **OK**.
If the **Oracle Smart View for Office** add-in is not in the list, click **Add**, navigate to the location of the add-in file in your system (by default, C:\Oracle\SmartView\bin\HsTbar.xla) and select it, then click **OK**, and then click **OK** again in the **COM Add-Ins** dialog to close it.
5. Restart Office.

Add method of AddIns class failed

After installing Smart View, the following error occurs each time Excel is launched:

```
Add method of AddIns class failed.
```

If you see this message, click **OK** in the error message box. Excel and Smart View will then work properly.

Incorrect Parameter Error after Installing Smart View

After installing Oracle Smart View for Office, you may get the following error while launching Excel:

```
The parameter is incorrect.
```

This error occurs when the latest Microsoft Edge WebView2 version is not installed on your machine before installing or upgrading Smart View.

To resolve this error:

1. Check the Microsoft Edge WebView2 version currently installed on your machine. The **WebView2 Runtime Version** information is available in the **Health Check** dialog under **Version Information**. See [Performing a Health Check On Your System](#).
2. If WebView2 version information is missing or it displays an older version, update WebView2 to the latest version.
Oracle recommends installing the Evergreen version of WebView2 Runtime. Once installed, Microsoft distributes WebView2 updates on a regular cadence. You can also download the latest updates from: <https://developer.microsoft.com/en-us/microsoft-edge/webview2?form=MA13LH#download>.

3. Uninstall Smart View, and then reinstall the latest version of Smart View. Oracle recommends using the **Run as administrator** command to ensure that all functionality is properly enabled and all required Windows Registry entries are set.
4. If the issue persists, try updating or repairing Microsoft Office.

Smart View Ribbon Fails to Display After Non-Admin Installation

In some cases, installing Oracle Smart View for Office on Windows 10 or 11 as a non-admin can cause the Smart View ribbon to fail to display.

In a non-admin install, you double-click the `SmartView.exe` file to launch the installer. In an admin install, you right-click `SmartView.exe` and select **Run as administrator**.

If you installed Smart View as a non-admin and the Smart View ribbon does not display, complete the following procedures to troubleshoot this issue:

[Add the COM Add-in](#)

[Reinstall Smart View as Administrator](#)

Add the COM Add-in

To add the Smart View COM add-in:

1. In Excel, select **File**, then **Options**, and then **Add-ins**.
2. From **Manage**, select **COM Add-ins**, and then click **Go**.
3. In **COM Add-ins**, select the check box to enable the **Oracle Smart View for Office** add-in, and click **OK**.
4. Restart Excel.

If the Smart View ribbon does not display after restarting Excel, proceed to [Reinstall Smart View as Administrator](#).

Reinstall Smart View as Administrator

If the Smart View ribbon still fails to display after adding the COM add-in, perform these steps:

1. Uninstall Smart View.
See [Uninstalling Smart View](#) for more information.
2. Reinstall Smart View by right-clicking `SmartView.exe` and selecting **Run as administrator**.
See [Installing from My Oracle Support or Oracle Technical Resources](#) for more information.
3. Launch Excel and verify that the Smart View ribbon is displayed.

Ribbon Display Issue After Connecting to Both Smart View and PowerPivot

If you are connected to Oracle Smart View for Office and Microsoft PowerPivot at the same time, and then close Excel and reopen Excel, both the Smart View and PowerPivot ribbons are missing from Excel.

Workaround: Terminate the Excel process in Windows Task Manager, then reopen Excel.

Ribbons Not Selectable After Installation

On Windows 10 and 11, after installing Oracle Smart View for Office and starting Excel for the first time, you are not able to select any other Excel ribbons or the Smart View ribbon, or select any menu items on the default Home ribbon.

Workaround: Click the **X** in the top right corner to close Excel, and then restart Excel. Now you should be able to select the Smart View ribbon and any other Excel ribbon.

Ribbon Tab for Smart View (Mac and Browser) Displays in Smart View on Windows

If you are using Office 365 on a Windows machine and have installed Smart View, and you are also provisioned as a Smart View (Mac and Browser) user in a centralized deployment, you may see an additional Smart View ribbon tab when launching Excel application on your Windows machine. Smart View (Mac and Browser) is currently supported only on Mac and browser platforms. Trying to launch the Smart View Panel from a Smart View web add-in ribbon may result in an error message displaying in the panel. On Windows, you should use the Smart View installed version ribbon tab and its associated Smart View ribbon instances; for example, the Planning ribbon or Planning Ad Hoc ribbon.

The manifest file administrator may create specific user groups to avoid the Smart View (Mac and Browser) add-in being deployed to Windows users.

Two Smart View Instances Appear in Program and Features Window

After an install or upgrade, two instances of Oracle Smart View for Office appear in the **Program and Features** window. This occurs when mixing modes (wizard versus silent install) of install, upgrade, and uninstall.

Smart View allows you to install using a wizard, command line, or silent install. Whichever method you choose, you must use the same method to upgrade or uninstall. Mixing methods can result in two instances of Smart View being listed in the **Program and Features** window (also referred to as the **Add/Remove Programs** window).

To install and upgrade using the wizard, see [Installing from My Oracle Support or Oracle Technical Resources](#). To uninstall using the the wizard, see [Uninstalling Smart View](#).

To install, upgrade, and uninstall using the command line or silent installer, see [Running Command Line or Silent Installations](#).

Office Slow to Start when Internet Connectivity is Not Available

When starting Office, Oracle Smart View for Office performs various security checks at startup, including checks on all the installed extensions. Internet connectivity is required in order to perform these checks.

Without internet connectivity, the security checks on extensions cannot be carried out and Office applications will be very slow to launch.

You may disable extensions in order to improve Office startup time, but you will lose the functionality related to those extensions, even if you are still able to connect to data providers through your company's intranet.

Oracle recommends verifying that you can connect to the internet when starting Office with Smart View installed.

Login and Connections

Related Topics

- [Diagnosing Login Issues](#)
- [Connection Error](#)
- [Failure to Establish Connection with Integrated Windows Single Signon](#)
- [WebView2 and Kerberos Support](#)
- [Issues When Starting Excel in Automation Mode](#)
- [Fixing Function Links on Machines where Smart View was Reinstalled in a User-specified Location](#)

Diagnosing Login Issues

Related Topics

- [Smart View Does Not Connect to a Data Source](#)
- [Attempts to Connect to the Server Fail in SSO-Enabled Environments](#)

Smart View Does Not Connect to a Data Source

Oracle Smart View for Office fails to establish a connection with a data source primarily because of errors in the shared or private connection URL that is being used. For information on connection types, see [Shared Connections and Private Connections](#) in the *Oracle Smart View for Office User's Guide*.

- Verify that the connection URL syntax and the credentials being used are accurate.

Consult your Smart View administrator to verify:

- The shared or private connection URL you are using is correct
- You have a valid user name and password to access the connection

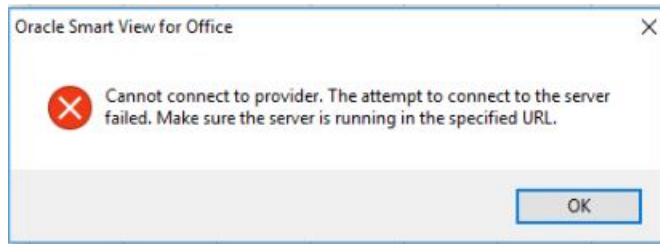
- Using a browser, access the environment that supports the data source. Make sure that you can log in using the credentials that you are using to access the data source through Smart View.

For example, if you are attempting to connect to an Oracle Fusion Cloud Enterprise Performance Management data source, launch a browser and enter the connection URL for the web business process. In the signon screen, enter the user name and password you would use to access that business process as a connection in Smart View. Consult your Smart View administrator if you need help forming the URL or if you do not know the user name and password that you would use to access the connection in Smart View.

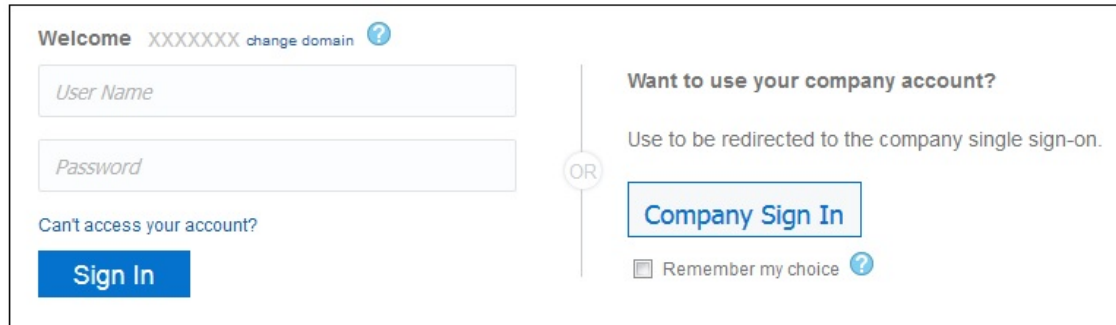
- Cloud EPM: If the issue persists, seek Oracle's help using the steps detailed in [Getting Help](#) in the *Operations Guide*.

Attempts to Connect to the Server Fail in SSO-Enabled Environments

Smart View fails to establish a connection to a Cloud EPM environment that is configured for SSO and displays the following error:



This error is displayed if you previously selected the **Remember my choice** option in a browser while signing into a Cloud EPM environment using the **Company Sign In** button.



To resolve this issue, complete this procedure:

1. Close Microsoft Excel.
2. Delete browsing history, temporary internet files, cookies and site data, and form data.
You can use browser-specific procedures for deleting the above items. Additionally, you can complete the procedure in [Clearing Smart View Cookies](#).
3. Open Excel and sign into Smart View.

Connection Error

Oracle Smart View for Office may fail to connect to Planning or Planning Modules with the script error,

An HTTP error occurred with the code "-1"

The workaround is to set the **Browser Emulation Mode** option in the **Health Check** dialog; for example, set this option to 11001 for Microsoft Internet Explorer 11 compatibility.

For more information on the **Browser Emulation Mode** option in the **Health Check** dialog, see [Performing a Health Check on Your System](#) in the *Oracle Smart View for Office User's Guide*.

Note

Microsoft discontinued support for Internet Explorer on June 15, 2022. However, you should not uninstall Internet Explorer. For more information, see [Internet Explorer 11 End of Support and Smart View](#).

Failure to Establish Connection with Integrated Windows Single Signon

When Oracle Fusion Cloud Enterprise Performance Management is configured to use Windows single signon with Microsoft Azure AD, attempts to establish connection to Cloud EPM using a shared connection can fail and you may see this error message:

```
The provider running at <serviceURL>/workspace/SmartViewProviders is not a Shared Services provider.
```

Using a private connection, the message reads:

```
Unable to connect to the provider.
```

This error is related to Oracle single signon setup, and occurs when users are already logged in to their Microsoft Azure AD account (also known as Microsoft Entra ID).

Workarounds: To resolve this error, try either of the following workarounds:

- Enable "Chooser login page" during Fusion SSO setup. Once enabled, users are brought to the chooser login page and they are able to connect by clicking **Company Sign On**.
- If the "Chooser login page" is not enabled, then add full URLs, including Oracle Smart View for Office shared or private connection URLs, to the secure site list in Windows **Internet Options**.

Be sure to add all URLs that are used during authentication.

Note

Administrators should perform a trace to assist in collecting the URLs of *all* the sites involved in authentication. For example, there should be "oraclecloud" sites for production, possibly a test site, as well as Azure AD sites, along with the Smart View connection URLs.

Do not use an asterisk (*) to abbreviate URLs, for example, do not use *.oraclecloud.com. You must always use the full URL.

To add URLs, including Smart View connection URLs, as secure, or trusted sites, in the Windows Control Panel, go to **Internet Options**, then select the **Security** tab, then select **Trusted Sites**, and then click the **Sites** button. Enter the full URL and click **Add**. Repeat for all required authentication and connection URLs.

Some Smart View connection URL syntax examples follow:

- Shared connection:

```
https://<serviceURL>/workspace/SmartViewProviders
```

- Private connection:

```
https://<serviceURL>/HyperionPlanning/SmartView
```

See [Creating Shared Connections](#) and [Creating Private Connections](#) in the *Oracle Smart View User's Guide* for more information on data source connection syntax.

WebView2 and Kerberos Support

Starting with Oracle Smart View for Office 25.100, Kerberos is supported with Microsoft Edge WebView2. If you experience issues, ensure that the following required registry key and string values are present on the client machine.

- **Registry key:**
HKEY_LOCAL_MACHINE\Software\Policies\Microsoft\Edge\WebView2
- **String Values:**
 - AuthNegotiateDelegateAllowlist—Set to organization authentication server (can contain *)
 - AuthServerAllowlist—Set to organization authentication server (can contain *)

If this key and the string values are not present, create them.

Issues When Starting Excel in Automation Mode

In some cases, third-party software that automates Excel processes, such as exporting to Excel, may cause issues with Excel and a conflict with Oracle Smart View for Office.

Workaround:

To disable Smart View when Excel is started in automation mode, you may enable "DisableInAutomation" by adding a key and key value to the Windows Registry. To do this, create the Options key and DisableInAutomation key value as follows:

- Key Name:

```
[HKEY_CURRENT_USER\Software\Oracle\SmartView\Options]
```
- Key Value:

```
"DisableInAutomation"=dword:00000001
```

When set to 00000001, Smart View is disabled when Excel is started in automation mode. Smart View starts correctly when Excel is started manually, outside of an automated process.

When set to 0 or not created at all, then Smart View is enabled and starts when Excel is started in automation mode, which may cause issues. Smart View starts correctly when Excel is started manually, outside of an automated process.

Creating the Registry Key and Key Value

To create and update the registry key, Options:

1. Click **Start**, click **Run**, type `regedit` in the **Open** box, and then click **OK**.
2. Locate and then select the following registry subkey:

```
HKEY_CURRENT_USER\Software\Oracle\SmartView\
```

3. From the **Edit** menu, select **New**, and then select **Key**.
4. Type `Options`, and then press **Enter**.

5. From the **Edit** menu, select **New**, and then select **DWORD Value**.
6. Type `DisableInAutomation`, and then press **Enter**.
7. In the **Details** pane, right-click **DisableInAutomation**, and then click **Modify**.
8. In the **Value** data box, type `00000001`, and then click **OK**.

The value, `00000001`, enables the **DisableInAutomation** key.

Note

If a zero value is entered, then this option is disabled.

9. Exit Registry Editor.
10. Restart Excel.

Fixing Function Links on Machines where Smart View was Reinstalled in a User-specified Location

When connected to an Oracle Smart View for Office provider, such as Tax Reporting in Oracle Fusion Cloud Enterprise Performance Management or Essbase in EPM System, and using functions on a machine where Smart View was reinstalled in a different location (for example, originally Smart View was installed in the default installation location and then, on the same machine, Smart View was reinstalled in a user-specified, non-default location), the functions may not work correctly after reinstalling Smart View. To fix this issue, perform the following steps:

1. In Excel, go to **File**, then **Options**, then **Add-ins**, then **Excel Add-ins**, and click **Go**.
2. In the **Add-ins** dialog, select the check box for **Hstbar**. This gives an error message stating that "the HsTbar.xla file is not found in the location. Do you want to delete it?" Click **Yes** to delete it.
3. Close and relaunch Excel.
4. Open the saved workbook and connect to the data provider.
5. In the Smart View ribbon, go to **Functions**, and then **Fix Links**.

Fix Links updates the function definitions.

Extensions

Related Topics

- [Slowness with Extension Options Dialog Box](#)
- [Extension Installation from Cloud EPM and Message Window Focus](#)
- [Extension Updates and Office Applications Remaining Open](#)
- [Extension Updates and Outlook](#)
- [Enabling the Smart View Extension for Firefox](#)

Slowness with Extension Options Dialog Box

When opening the **Extensions** tab of the **Options** dialog box or when checking for extension updates, if your system seems to be taking a long time to complete these tasks, ensure that the machine has access to the internet.

Extension Installation from Cloud EPM and Message Window Focus

Installing extensions from supported Oracle Fusion Cloud Enterprise Performance Management services involves downloading an extension installer file and double-clicking it. When double-clicking an extension installer (.svext), a message window is displayed indicating the success or failure of the installation. The message window can sometimes lose focus and go behind another open window, and can easily go unnoticed. This may lead to users trying to install the extension again, causing an error due to the previous open message window having a hold on the folder and files.

To clean up this extension installation issue:

1. Close all Office applications (Excel, Word, PowerPoint, Outlook).
2. Check the Windows task bar for an existing message window, and close it.
3. Remove prior extension installations:
 - a. Navigate to %AppData%\Oracle\SmartView\extensions\bin
 - b. Delete the extension folder.

For example, to delete the Narrative Reporting extension folder, delete the `Oracle.SmartView.EPRCSExtension` folder.
 - c. Delete the extension installation folder.

For example, to delete the Narrative Reporting extension installation folder, delete the `EPRCSPProviderInstaller` folder.
4. Remove pending installations:
 - a. Navigate to %AppData%\Oracle\SmartView\extensions\update
 - b. Delete the pending extension installation folder.

For example, to delete the Narrative Reporting pending extension installation folder, then delete the `Oracle.SmartView.EPRCSExtension` folder.
5. Return to the location where you previously downloaded the extension installer file, and double-click it.

For example, to install the Narrative Reporting extension, double-click `EPRCSPProviderInstaller.svext`.
6. Open Excel, Word, or PowerPoint, and in the Smart View ribbon, click **Options**, then select **Extensions**, and then verify that the extension you installed is listed.

Extension Updates and Office Applications Remaining Open

In order for extensions to be properly installed, removed, or updated, all Office applications must be shut down. When an Office application is reopened, updates for extensions are applied.

Sometimes, even though an Office application has been closed, it does not completely shut down, or does not shut down in a timely manner. In these cases, an instance of Office is still running and Oracle Smart View for Office is unable to apply the extension updates correctly.

For these situations, it may be necessary to open the **Windows Task Manager** and look for possible Office applications that may still be running. For Windows 10 and 11, select the **Details** tab to find the correct process name corresponding to the Office applications. Application names to look for are:

- EXCEL.EXE
- OUTLOOK.EXE
- POWERPNT.EXE
- WINWORD.EXE

If any of these application names are displayed in the Task Manager, click on the name and end the process.

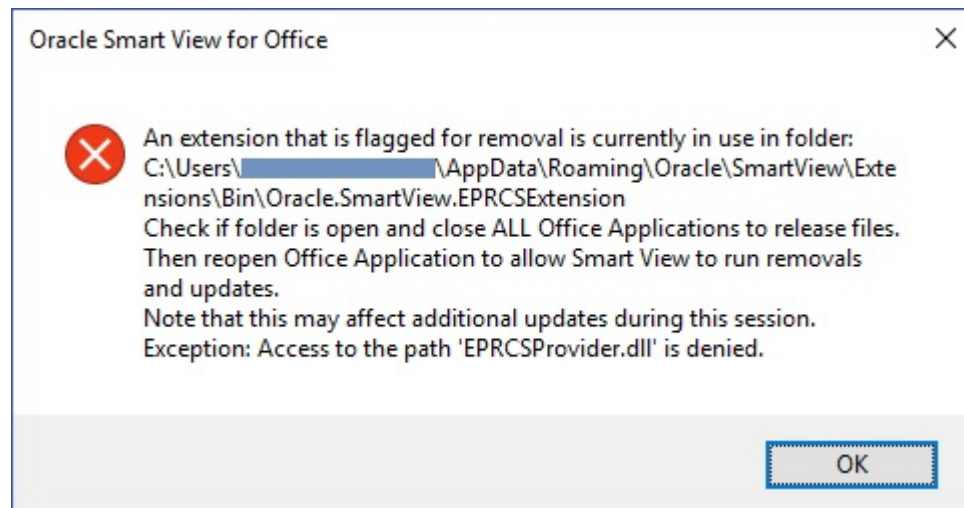
Once all Office applications are closed, reopen one of the applications so that Smart View can apply pending updates.

Extension Updates and Outlook

When applying extension updates, if any Office application is running, including Outlook, a message directs the user to close all Office applications. This includes Outlook, as well as Excel, Word, and PowerPoint.

If the message in [Figure 1](#) is displayed after attempting an extension update, it means that one of the Office applications was *not* closed. Often, the application left open is Outlook.

Figure 6-1 Message - Office Application Open During Extension Update



If Smart View is *not* needed for Outlook, it can be disabled to help avoid this issue during extension updates.

To disable Oracle Smart View for Office in Outlook:

1. In Outlook, go to the Smart View ribbon, then select **Options**, and then select **Advanced**.

2. Under **Display**, select the **Disable Smart View in Outlook** check box.
3. Click **OK**, and then close Outlook.
4. Restart Outlook.
Verify that the Smart View ribbon no longer appears.
5. Start a different Office application to continue the extension update process.

Enabling the Smart View Extension for Firefox


During installation, Oracle Smart View for Office automatically installs an extension for Mozilla Firefox.

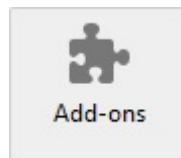
If you specify Firefox as your default browser, Smart View utilizes the extension for Firefox in these scenarios:

- Performing drill-through in Smart View
- Launching forms in Smart View from browser-based applications, such as Oracle Hyperion Financial Management or the Planning business module in Oracle Fusion Cloud Enterprise Performance Management.

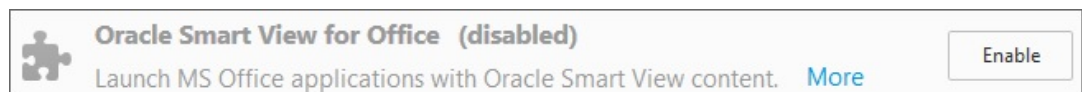
The extension for Firefox is automatically enabled after installing Smart View. However, if the extension should become disabled, follow the procedure in this topic to enable it again.

To enable the Smart View extension for Firefox:

1. In Firefox, in the upper right corner of the browser, click , and then select **Add-ons** from the drop-down menu:

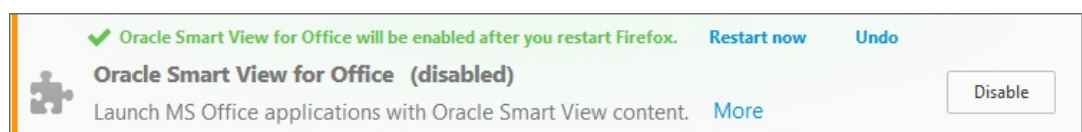


2. In the left pane, select **Extensions**, and then scan or search the list to locate the **Oracle Smart View Office** entry.



3. Click **Enable**, and restart Firefox.

You can restart Firefox immediately using the **Restart now** link, or restart Firefox at your convenience.



Performance

Related Topics

- [Performance and Memory Usage Considerations for Smart View with Excel](#)
- [Flickering Issues on Office 2013 and Office 2016](#)
- [Unbalanced Loads in Provider Services Clustered Environments](#)
- [Memory Error on Large Queries](#)
- [Duplicate Queries in Word Slow to Refresh](#)
- [Session Timeout when Connected Using Vanity URLs](#)
- [Enable WebView2 to Prevent Script Error on Launching Certain Dialogs](#)
- [WebView2 and Disconnect Issues](#)
- [Clearing Smart View Cookies](#)
- [Clearing WebView2 Cookies](#)
- [Third-Party Monitoring Tools May Impact Smart View Stability](#)
- [Two-Way SSL and Problematic Certificates](#)
- [Issues with Dynamic Data Exchange Option in Excel](#)
- [Request Timeout Error on Windows 11](#)
- [Browser Settings When Working with XML Files on HTTP Server](#)
- [Smart View HTTP Session Timeout](#)

Performance and Memory Usage Considerations for Smart View with Excel

Oracle Smart View for Office is a Microsoft Office add-in. As an add-in, it is loaded in to the Microsoft Excel process. When a report is imported into Excel through Smart View, the Excel process consumes memory and this can negatively impact performance.

For example, instances of grids and forms, objects in the Undo buffer, XML parsing, etc., will cause the Excel process to consume memory. Because of this, the Excel or machine memory limit becomes the Smart View memory limit as well. This can severely impact performance.

There is no memory configuration parameter in Smart View to manage this.

Excel 32-bit and 64-bit have different memory limits:

- For Excel 32-bit, the maximum memory limit, or RAM, is 2GB.
Oracle testing showed that when Excel 32-bit memory usage reaches beyond 700 MB, Excel can behave abnormally and can terminate unexpectedly.
- The 64-bit versions of Excel are not constrained to 2 GB of RAM, as are the 32-bit Office applications.

For large reports, Oracle recommends using 64-bit Excel. Or consider reducing the data being sent to Smart View by reducing the number of rows, columns, and POVs in the reports.

Oracle suggests that you consider taking some or all of the actions listed below in an effort to limit memory usage and improve performance.

The following actions can help to limit memory usage:

1. In the Smart View **Options** dialog box, **Advanced** tab, ensure that these options are enabled:
 - **Reduce Excel File Size**
 - **Improve Metadata Options**
2. In the **Options** dialog box, **Advanced** tab, set **Number of Undo Actions** to '0' (zero), if possible, or to a low number such as 1 or 2.
3. Change Excel calculation from Automatic to Manual. Go to the Excel **Formulas** ribbon, then select **Calculation Options**, and then select **Manual**.
4. In the **Options** dialog box, **Formatting** tab,
 - a. If you have selected the **Use Excel Formatting** option, then you should clear the **Move Formatting on Operations** option.
 - b. Clear the **Adjust Column Width** option.
 - c. Clear the **Retain Numeric Formatting** option.
5. In the **Options** dialog box, **Extensions** tab, disable any unneeded extensions.
6. In Excel, to improve performance and stability, disable or uninstall any unused add-ins. For example, disable or uninstall the Oracle Essbase Spreadsheet Add-in. Other possible add-ins to disable or uninstall are, for example, Adobe PDF, WebEx, or Send to Bluetooth
7. Reduce the workbook size.
8. Limit the data imported to Excel:
 - a. Use prompts, filters, POVs, or other ways to reduce the data returned back to Smart View.
 - b. Enable the **Suppress Rows** and **Suppress Columns** options in the **Data Options** tab of the Smart View **Options** dialog box.

The following actions can help to improve performance, as well as limit memory usage:

1. In the **Options** dialog box, **Advanced** tab, set **Number of Undo Actions** to '0' (zero), if possible.
2. In the **Options** dialog box, **Member Options** tab, ensure that these options are cleared:
 - **Preserve Formulas and Comments in ad hoc options**
 - **Formula Fill**

Clear these options only if you do not need to preserve formulas or comments during ad hoc operations.

Also, refer to the following documentation from Microsoft, "Excel 2010 Performance: Performance and Limit Improvements":

[http://msdn.microsoft.com/en-us/library/ff700514\(v=office.14\).aspx](http://msdn.microsoft.com/en-us/library/ff700514(v=office.14).aspx)

Flickering Issues on Office 2013 and Office 2016

When using Oracle Smart View for Office with Microsoft Office 2013 or 2016, 32-bit or 64-bit, flickering occurs with the POV toolbar and the Smart View Panel. The flickering is likely caused by changes in Excel 2013 and Excel 2016.

To reduce flickering, use the Health Check utility in Smart View to specify the settings for "Disable Window Transitions on Addin Task Panes" and "Disable Animations," listed under "Graphics Settings." Oracle advises using the recommended settings for these options. See [Performing a Health Check On Your System](#) for more information.

Unbalanced Loads in Provider Services Clustered Environments

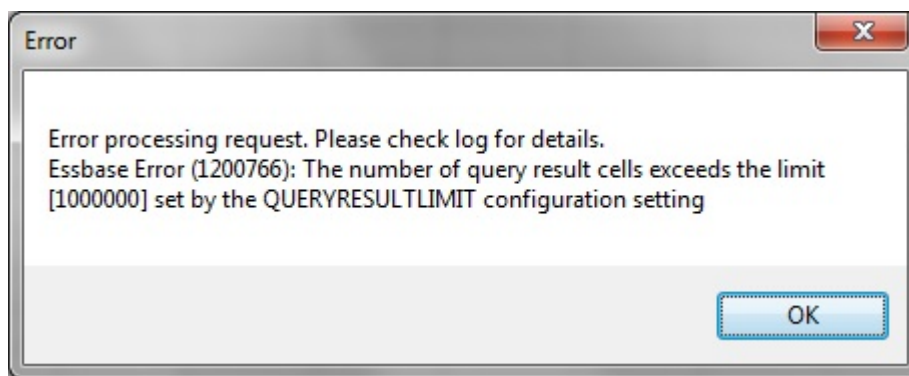
In some Oracle Hyperion Provider Services clustered environments, if Oracle Smart View for Office requests appear to be going to only one server in the cluster (that is, the load is unbalanced), then try changing the Internet Properties security level to Medium.

To do this, in the Control Panel, select **Internet Options**, and then select the **Security** tab. Under **Security levels for this zone**, set the allowed level for the affected zone to **Medium**.

Memory Error on Large Queries

Data source types: Oracle Essbase, Oracle Essbase

When running large MDX queries against an aggregate storage database, you may run in to the following "out of server memory" error:



To resolve this issue, raise the limit in `QUERYRESULTLIMIT` in `essbase.cfg`. See [QUERYRESULTLIMIT](#) in the *Technical Reference for Oracle Analytics Cloud - Essbase* for instructions on this configuration setting.

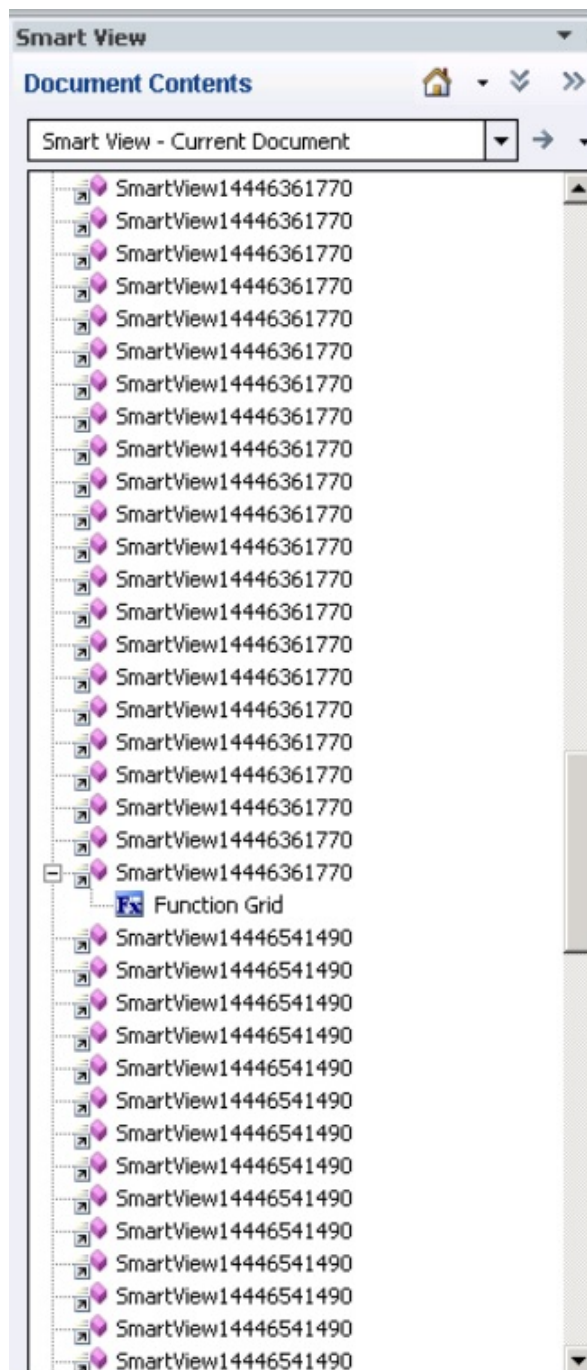
Note

The information in [QUERYRESULTLIMIT](#) applies to both Essbase and these Essbase versions: 11.1.2.4.008, 11.1.2.4.505, and 11.1.2.3.508_22314799.

Duplicate Queries in Word Slow to Refresh

In some Word documents containing a large number of queries and created prior to Oracle Smart View for Office release 11.1.2.5.520, performance may be an issue when refreshing the data in the document. In some cases, instead of re-using existing queries where appropriate, each Smart View data point in the Word document is treated as a separate query. The result is that Refresh operations can be very slow.

If the document contains many duplicate queries (that is, queries with the same name), the duplicate queries are displayed in the Document Contents pane in Word. For example, Document Contents might look like this:



The duplicate queries are SmartView14446361770 and SmartView14446541490.

You can run the Visual Basic macro below to remove the duplicate queries:

```
Sub DeleteExtraQueries()
    ' DeleteExtraQueries Macro
    '

    Dim queriesName As Variant
    Dim uniqueQueriesName As New Collection
    Dim varName, newList As String
    Set vars = ActiveDocument.Variables
```

```

For i = 1 To vars.Count
    varName = vars.Item(i).Name
    If Not StrComp(vars.Item(i).Name, "SV_QUERY_LIST", vbTextCompare) Then
        List = vars.Item(i).Value
        queriesName = Split(List, "<|>")

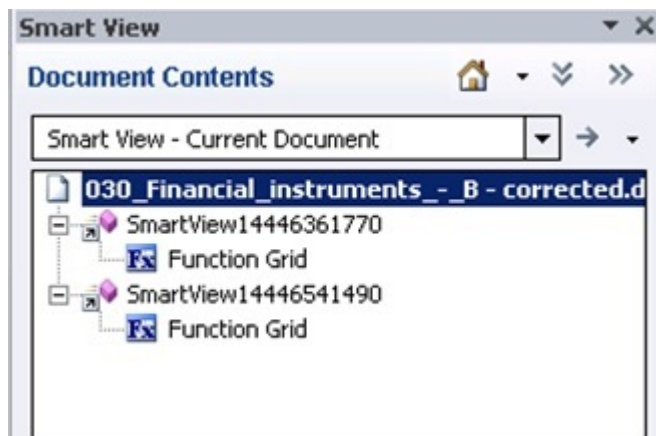
        On Error Resume Next
        For Each queryName In queriesName
            uniqueQueriesName.Add queryName, queryName
        Next
        newList = ""
        For Each queryName In uniqueQueriesName
            newList = newList & queryName & "<|>"
        Next
        newList = Left(newList, Len(newList) - 3)
        vars.Item(i).Value = newList
    End If

Next

End Sub

```

After running the macro, the two queries, SmartView14446361770 and SmartView14446541490, appear only once in Document Contents:



Session Timeout when Connected Using Vanity URLs

You may experience a timeout error when trying to connect in Smart View using a vanity URL. This issue is vendor-specific, as the timeout is occurring on the vanity URL provider. The vendor is delivering the error message in this case.

Enable WebView2 to Prevent Script Error on Launching Certain Dialogs

When attempting to launch certain dialogs, the **Script Error** dialog is displayed if WebView2 is disabled; for example, you launch the **Instructions** dialog, and the instructions area is blank and the **Script Error** dialog is displayed.

Workaround: In the **Health Check** dialog, ensure that WebView2 Runtime is installed and select **Enable for UI**, described in [Performing a Health Check On Your System](#) in the *Oracle Smart View for Office User's Guide*.

WebView2 and Disconnect Issues

If you are using WebView2 and have issues with Disconnect All not working or Excel failing during a Disconnect All, try adding the registry flag, PreserveThirdPartyCookies, and set it to "0".

Add the flag to:

```
HKCU\Software\Hyperion Solutions\HyperionSmartView\Options\
```

And use these values:

Name: PreserveThirdPartyCookies

Value: 0

Type: REG_DWORD

Clearing Smart View Cookies

Occasionally, you may need to clear Oracle Smart View for Office cookies.

For example, after using the **Disconnect All** command and restarting Smart View, you may find that you're not prompted to log in. Clearing cookies will clear the browser cache and facilitate the signoff and subsequent login.

To clear Smart View cookies:

1. Close all Office applications.
2. Use either method to launch the Microsoft Windows Internet Options dialog:
 - In a Windows Command Prompt, enter `inetcpl.cpl`
 - From the Windows Control Panel, select **Internet Options**.

The **Internet Options** dialog is displayed.

3. In the **General** tab, click the **Settings** button.

The **Website Data Settings** dialog is displayed.

4. **Optional:** In the **Temporary Internet Files** tab, under **Check for newer versions of stored pages**, select **Every time I visit the webpage**.
5. In the **Temporary Internet Files** tab, click the **View files** button.

A File Explorer window displays the contents of this folder:

```
C:\User\\AppData\Local\Microsoft\Windows\INetCache
```

6. Delete the contents of the `AppData\Local\Microsoft\Windows\INetCache` folder.
7. Click **OK** to exit the **Website Data Settings** dialog, and then click **OK** to exit the **Internet Properties** dialog.
8. Restart Office, select a data provider, and provide your login credentials when prompted.

If you still experience issues, try clearing the WebView2 cache, described in [Clearing WebView2 Cookies](#).

Clearing WebView2 Cookies

Occasionally, you may need to clear Microsoft WebView2 cookies.

For example, after using the **Disconnect All** command and restarting Oracle Smart View for Office, you may find that you're not prompted to log in. Clearing WebView2 cookies will clear the cache and facilitate the signoff and subsequent login.

To clear WebView2 cookies:

1. Close all Office applications.
2. In File Explorer, navigate to:

```
%AppData%\Oracle\SmartView\WebView
```

3. Clear the contents of the `WebView` folder.

Note

On Windows Server operating systems, clear the content of the `WebView` folder and any other folders under `%AppData%\Oracle\SmartView` where the name begins with `WebView`.

4. Restart Office, select a data provider, and provide your login credentials when prompted.

If you still experience issues, try clearing the Smart View cache, described in [Clearing Smart View Cookies](#).

Third-Party Monitoring Tools May Impact Smart View Stability

Some of the applications monitoring Microsoft Office, such as MacAfee or Trellix, may interfere with Oracle Smart View for Office. Smart View makes many Office and Windows API calls, which may be detected, blocked, or delayed by these applications, causing stability issues for Office and Smart View. Some users may experience Excel failing when Smart View add-in is enabled.

Workaround: Administrators may review other applications running on the machine and adjust the appropriate settings.

For example, for MacAfee, deselect the "Enable deep inspection of Windows API calls EDR policy for affected hosts."

Refer to the documentation for your monitoring tools for information on disabling this option.

Two-Way SSL and Problematic Certificates

If two-way SSL is set up with problematic certificates between Oracle Smart View for Office and other Oracle Enterprise Performance Management System data providers, Smart View will prompt for the client-side certificate with every request. For example, the user will be prompted when connecting to the data source, connecting to an application, connecting to a database, and at every refresh, submit, or zoom operation.

To avoid this situation, you must update the `properties.xml` file on each end user machine to add the `clientCert` name tag. For example:

```
<cfg>
  <provider>
    <url>http://server:port/workspace/SmartViewProviders</url>
  </provider>
  <helpurlcontext></helpurlcontext>
  <extensionupdatelist>http://server:port/extensionupdatelist/
UpdateList.xml|%SVCLIENTINSTALLPATH%/extensions/UpdateList.xml</
extensionupdatelist>
  <!-- Require Smart View to prompt the user for the client-side
certificate -->
  <clientCert name="PROMPT-ONLY"/>
</cfg>
```

Issues with Dynamic Data Exchange Option in Excel

Various issues may arise when the Excel option, **Ignore other applications that use Dynamic Data Exchange (DDE)**, is selected. For example, there are problems launching Excel, launching Excel files from outside of Excel, and using the **Export in Query Ready Mode** option from a browser to export balances from Financial Reporting.

Workaround: Click the Microsoft Office Button (upper left corner of Excel), and then click **Excel Options**. In the **Advanced** category, scroll down to the **General** options, and then clear the **Ignore other applications that use Dynamic Data Exchange (DDE)** check box. Restart Excel.

Request Timeout Error on Windows 11

When connecting to an on-premises Oracle Enterprise Performance Management System data source, such as Oracle Hyperion Financial Management, it's crucial to ensure that your **Internet Options Transport Layer Security (TLS)** settings are compatible with the version required by the on-premises data source. Mismatched TLS settings can lead to errors and performance issues in Oracle Smart View for Office.

Understanding TLS Versions

- **TLS 1.2:** This is the current default version used by Smart View. It provides robust security and is widely supported. However, it's essential to note that TLS 1.2 is not compatible with TLS 1.3.
- **TLS 1.3:** TLS 1.3 is the latest version of the TLS protocol. It offers several improvements over TLS 1.2, including faster handshakes, and dropping support for older, less secure cryptographic features. While TLS 1.3 enhances security, it is the standard on Windows 11. However, it's important to note that **not all on-premises servers may support TLS 1.3**.

If TLS 1.3 is not yet supported on your on-premises servers, configure Smart View client machines to support both TLS 1.2 and TLS 1.3, as described in [Accessing and Verifying TLS Settings](#).

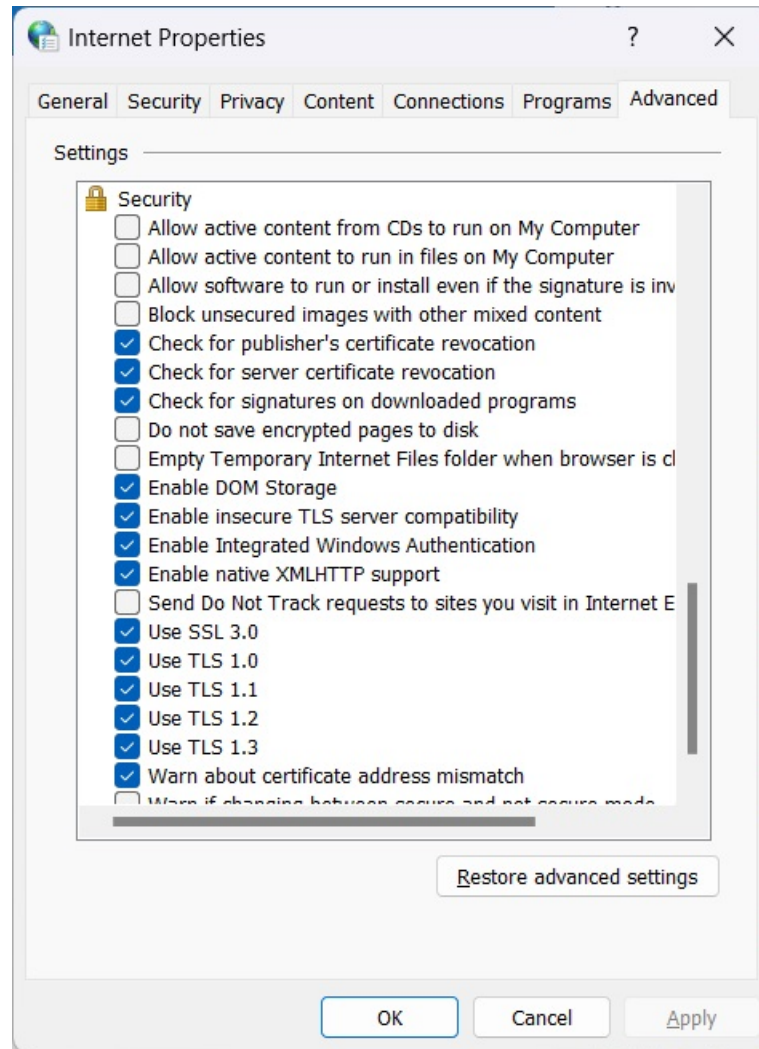
Accessing and Verifying TLS Settings

To access and verify your TLS settings:

1. Launch the Windows Control Panel and select **Internet Properties**, and then select the **Advanced** tab.

2. Scroll to the **Security** settings and ensure that these options are selected:
 - **Use TLS 1.2**
 - **Use TLS 1.3**

In the following example dialog, all available TLS versions are selected:



3. Click **Apply**, and then click **OK** to close the dialog.
4. Restart Excel and attempt a refresh and other operations; note if performance is improved.

If you are still experiencing issues, try updating the registry timeout settings, ReceiveTimeout, KeepAliveTimeout, and ServerInfoTimeout. Instructions for configuring these settings are in [Smart View HTTP Session Timeout](#) in this guide, or [Performing a Health Check On Your System](#) in *Oracle Smart View for Office User's Guide*.

Browser Settings When Working with XML Files on HTTP Server

Web browsers may cache XML files posted on an HTTP server and referenced by Oracle Smart View for Office. This can cause problems when using the following Smart View functionality:

- Accessing shared connections from an XML file
This is the XML file posted on an HTTP server and noted in the **Shared Connections URL** field of the Smart View **Options** dialog box. If you plan to access online help from a local drive or internal web server, this file can also specify the location of the help.
- Updating extensions
Smart View references the `UpdateList.xml` file that is posted on an HTTP server when Smart View end users install, update, and remove extensions in the **Extensions** tab of the **Options** dialog box.

Complete the steps in this topic to clear the browser cache so that the latest version of the XML file is used for the purposes noted above.

To clear the cache so that Smart View is accessing the latest XML file version posted on an HTTP server, set the following options in the **Internet Properties** dialog in the Control Panel

1. Launch the Control Panel, and then select **Internet Options**.
2. In the **General** tab, **Browsing history** group, select **Settings**.
3. In the **Check for newer versions of stored pages** section, select **Every time I visit the webpage**, and then click **OK**.
4. In the **Internet Options** dialog box, select the **Advanced** tab.
5. In the **Security** section, select the **Empty Temporary Internet Files folder when browser is closed** option.
6. Click **OK** to close **Internet Options** and restart the browser.

Smart View HTTP Session Timeout

HTTP session timeouts can occur, for example, when working with large queries that take a long time to run, or when you're experiencing slower internet connections.

Other errors you may see in an HTTP session timeout include:

- An "Invalid pointer" error
- "XML Load Error: XML Document must have a top level element"

To avoid HTTP session timeouts, you may add the following Windows Registry **DWORDS** to the Internet Settings key:

- Key Name:

```
HKEY_CURRENT_USER\Software\Microsoft\Windows\CurrentVersion\Internet  
Settings
```

- Key Values:
 - **DWORD: ReceiveTimeout**
Value data: *value in milliseconds*
 - **DWORD: KeepAliveTimeout**
Value data: *value in milliseconds*
 - **DWORD: ServerInfoTimeout**
Value data: *value in milliseconds*

For example, 900000 milliseconds is the equivalent of 15 minutes. Adjust the timing according to your requirements.

As a guideline, 900000 milliseconds is the equivalent of 15 minutes.

To add the timeout key values to the Internet Settings registry key:

1. Ensure that all Office applications, including Outlook, are closed.
2. Launch the Windows Registry Editor.
3. Locate and then select the following registry subkey:

```
HKEY_CURRENT_USER\Software\Microsoft\Windows\CurrentVersion\Internet  
Settings
```

4. Add the three DWORD key values, `ReceiveTimeout`, `KeepAliveTimeout`, and `ServerInfoTimeout`:
 - a. From the **Edit** menu, select **New**, and then select **DWORD Value**.
 - b. Type the DWORD name, and then press **Enter**.
 - c. In the **Details** pane, right-click DWORD you added in step [4.b](#), and then select **Modify**.
 - d. In the **Value data** text box, type the timeout value in milliseconds, select **Decimal**, and then click **OK**.
 - e. Repeat step [4.a](#) through step [4.d](#) for each of the three required DWORD key values.
5. Exit Registry Editor.
6. Restart Excel.

Smart View General

Related Topics

- [Office Unknown Exception Error on a Protected Sheet](#)
- [Bindows Error When Importing Financial Reporting Documents](#)
- [Spreading Issue, Smart View Installation, and HsSpread.dll](#)
- [Working with Custom HTML-based Login Forms](#)
- [Custom Styles and Merged Cells in Forms](#)
- [Drill-through with Chrome: Blocklist and Allowlist for Native Messaging](#)
- [VBA Function Error for Oracle Analytics Cloud or Oracle BI EE](#)

Office Unknown Exception Error on a Protected Sheet

Upon opening a password-protected worksheet, an exception is thrown as Oracle Smart View for Office tries to set `Range.ID`, required for duplicate (non-unique) member name support. An exception is also thrown by the Excel API on any operation that requires Smart View to write into worksheet if the worksheet is password protected.

Note that Smart View does not work with password-protected worksheets.

If possible, try the following workarounds:

- Remove password protection.

- Rewrite macros in a way that prevents Smart View from trying to write in password-protected worksheets.

Bindows Error When Importing Financial Reporting Documents

When connected to Oracle Fusion Cloud Enterprise Performance Management 22.08+, a Bindows error can occur when importing Oracle Hyperion Financial Reporting documents.

Workaround: To avoid this error, in the **Health Check** dialog, change either the **Browser Emulation Mode** setting or the **WebView2 Runtime** setting, or both:

1. From the Smart View ribbon in Excel, click the arrow next to **Help**, and then select **Health Check** to launch the **Health Check** dialog.
2. In the **Registry Information** group, locate the **Browser Emulation Mode** line, then:
 - a. In the **Fix/Update/Info** column, click in the cell to enable the drop-down list, and select 11001.
 - b. Click the **Update Settings** button.
3. In the **Smart View Options** group, locate the **WebView2 Runtime** line, then:
 - a. In the **Fix/Update/Info** column, click in the cell to enable the drop-down list, and select **Enable for All**.
 - b. Click the **Update Settings** button.
4. Click **Close**, then restart Excel, connect to the data source, and import a Financial Reporting document.

Spreading Issue, Smart View Installation, and HsSpread.dll

In some cases, spreading is not working as expected.

Oracle Smart View for Office is not automatically spreading data from the YearTotal or Quarter level down to the months. Data is spread automatically when entering values into forms on the web, but the same functionality is not working in Smart View.

The issue may be due to the dynamic link library, `HsSpread.dll`, not being registered correctly, which can happen when Smart View is installed by a non-admin user.

This issue affects Planning 18.02.67+ and Planning Modules 17.12.54 and later.

To fix this issue, Oracle recommends the following:

- Uninstall Smart View and reinstall as the Windows administrator. See [Reinstall Smart View as Administrator](#).
- If the spreading issue persists after reinstalling Smart View as the administrator, then manually register the `HsSpread.dll` file. See [Register HsSpread.dll](#).

Reinstall Smart View as Administrator

To reinstall Smart View as administrator, perform these steps:

1. Uninstall Smart View.
See [Uninstalling Smart View](#) for more information.
2. Reinstall Smart View by right-clicking `SmartView.exe` and selecting **Run as administrator**.
See [Installing from My Oracle Support or Oracle Technical Resources](#) for more information.

3. Launch Excel, open a form or ad hoc grid, and verify that spreading is working.
If the spreading issue persists, complete the steps in [Register HsSpread.dll](#).

Register HsSpread.dll

To register the `HsSpread.dll` with Windows:

1. Start a Windows command prompt as administrator.
2. Switch to the `bin` folder in your Smart View installation.

The default location is `Oracle\SmartView\bin`.

3. Run the following command:

```
C:\Windows\Microsoft.NET\Framework\v4.0.30319\regasm.exe /codebase  
HsSpread.dll
```

4. In the command prompt, check for any errors in the output.
5. Test the spreading functionality.
If the issue persists, contact Oracle Support.

Working with Custom HTML-based Login Forms

If you are using a custom HTML-based login form instead of the default Oracle Access Manager login form, ensure that the source of the custom form includes the string `loginform`. This is required for Oracle Smart View for Office integration with Oracle Access Manager to work.

Custom Styles and Merged Cells in Forms

Excel formatting and custom styles are intended for use with static grids. When the grid contains merged cells, then changing the POV can result in invalid formatting. Other operations that can result in invalid formatting are:

- Changes to Suppression options
- Enabling or clearing the Repeat Member Labels options
- Adding members to the form definition

After any of these operations, if you encounter an error, such as "We can't do that to a merged cell" or invalid formatting with your form layout, try the following steps:

1. In the Planning ribbon, **Formatting** group, click **Clear**.
2. In the **Formatting** group, click **Save**.
3. Open the form on a new sheet.

Drill-through with Chrome: Blocklist and Allowlist for Native Messaging

Drill-through with a Google Chrome browser can fail when Chrome is managed by enterprise policy. In this case, native messaging applications can use a blocklist or an allowlist. For example, if an administrator restricts access to all messaging hosts by using a blocklist (by specifying "*" in the blocklist registry key), then drill-through from Oracle Smart View for Office would not work with Chrome.

In order to enable the Smart View native application which supports the Chrome extension (the application is `C:\Oracle\SmartView\bin\SVNatvMsg.exe`), then an administrator must add the

name of the application, `com.oracle.smartview.nmh` (as specified in `C:\Oracle\SmartView\bin\chromenmh.json`) to the allowlist registry key.

Note

For information on managing allowlists and blocklists, see "Allow or block access to websites," available here:

<https://support.google.com/chrome/a/answer/7532419?hl=en>

VBA Function Error for Oracle Analytics Cloud or Oracle BI EE

28791548 -- After uninstalling and reinstalling Oracle Smart View for Office, the following error was displaying when using a VBA function for Oracle Analytics Cloud or Oracle Business Intelligence Enterprise Edition:

Error '-2147024894(800700002)': Automation error The system cannot find the file specified.

In some cases, when Smart View is installed as administrator, the uninstall and reinstall does not handle registration of the Oracle BI EE extension file correctly.

To remedy this issue, after installation, and before starting Office, install the Oracle BI EE extension manually:

1. After uninstalling and reinstalling Smart View, ensure that all Office applications remain closed.
2. Navigate to `C:\Oracle\SmartView\extensions` and double-click on `JBIPSPProviderInstaller.svext`.
3. In the message that indicates successful installation, click **OK**.

The Oracle BI EE extension installation is complete and you may start Office.

7

Frequently Asked Questions (FAQs) about Smart View

This FAQ provides links to helpful resources for frequently asked questions about Oracle Smart View for Office.

Frequently Asked Questions

- [Where can I find the Smart View Support Matrix and Compatibility?](#)
- [Is Smart View compatible with Microsoft Office 32-bit and 64-bit versions?](#)
- [What is the impact on Smart View with Microsoft decommissioning Internet Explorer 11 on June 15, 2022?](#)
- [How to address a provider error in Smart View ad hoc analysis?](#)
- [How to address a Member Out of Place error when refreshing a Smart View ad hoc sheet?](#)
- [How to prevent Smart View from failing when clicking outside a modified cell in a form?](#)
- [How to clear Smart View and WebView2 cookies?](#)
- [How to address the HTTP Error with Code -1 connection error?](#)
- [How to prevent HTTP session timeouts?](#)
- [How to limit memory usage, prevent instability, and improve performance in Smart View?](#)
- [How to enable and disable Smart View and Office Add-ins?](#)
- [How to prevent Excel from failing on using the Disconnect All command while using WebView2?](#)
- [Why is it necessary to enable the .NET installation option while installing Microsoft Office?](#)
- [Why Smart View should not be installed in the Windows Program Files Folder?](#)
- [How to use diagnostics tools and perform health checks in Smart View?](#)
- [How to ensure that all Office applications are closed while installing, updating, or removing extensions?](#)
- [How to clean up any extension installation issues?](#)
- [How do I prevent the add-in or AddIn class error on startup?](#)

Where can I find the Smart View Support Matrix and Compatibility?

Find information on Smart View support matrix and compatibility in the following topics:

- [Smart View Prerequisites](#) in *Getting Started Guide for Administrators*.
- [Installation Information](#) in *Oracle Smart View for Office Readme*.

Is Smart View compatible with Microsoft Office 32-bit and 64-bit versions?

Yes, Smart View uses a single installer for 64-bit and 32-bit versions of Microsoft Office. During Smart View installation, the installer automatically detects the corresponding Operating System

and Microsoft Office bit type and installs accordingly. For more information, see [About Installing Smart View](#) in *Oracle Smart View for Office Installation and Configuration Guide*.

Why Smart View should not be installed in the Windows Program Files Folder?

On Windows operating systems, such as Windows 10, non-administrator users are not authorized to modify the Program Files folder or the Program Files (x86). If an administrator installs Smart View in Program Files or Program Files (x86), a non-admin user will not be able to uninstall Smart View.

The default installation folder for Smart View is C:\Oracle\SmartView. Oracle advises that you do not install in Smart View in the Program Files or Program Files (x86) folder. For guidelines and procedure on installing Smart View, see [Installing Smart View](#) in *Oracle Smart View for Office Installation and Configuration Guide*.

What is the impact on Smart View with Microsoft decommissioning Internet Explorer 11 on June 15, 2022?

Get information and recommendations on this in [Internet Explorer 11 End of Support and Smart View](#) in *Oracle Smart View for Office Installation and Configuration Guide*.

Why is it necessary to enable the .NET installation option while installing Microsoft Office?

During Microsoft Office installation, you must enable the .NET installation option. When enabled, files are placed in your Office installation that support interoperability between Office and other programs and add-ins, such as Smart View and Smart View extensions. For more information, see [Office .NET Installation Option Requirement](#) in *Oracle Smart View for Office Installation and Configuration Guide*.

How to ensure that all Office applications are closed while installing, updating, or removing extensions?

For extensions to be properly installed, removed, or updated, all Office applications must be shut down. If any instance of Office is still running, Smart View is unable to apply the extension updates correctly. To check if all Office instances are closed properly, open the Windows Task Manager and look for Office application names as explained in [Extension Updates and Office Applications Remaining Open](#) in *Oracle Smart View for Office Installation and Configuration Guide*.

How to clean up any extension installation issues?

While installing extensions, the installer message window indicating success or failure status may sometimes lose focus and hide behind other open windows. The inability to see the status message may lead users to try installing the extension again, causing an error due to the previous open message window having a hold on the folder and files. To clean up such extension installation issues, first remove prior and pending extension installations trying the installation again as explained in [Extension Installation from Cloud EPM and Message Window Focus](#) in *Oracle Smart View for Office Installation and Configuration Guide*.

How to enable and disable Smart View and Office Add-ins?

You can enable and disable Smart View and other Microsoft Office add-ins from the **Add-Ins** tab in Excel Options. In some cases, Smart View performance can be improved when other Office add-ins are disabled. For more information, see [Enabling and Disabling Smart View and Other Office Add-ins](#) in *Oracle Smart View for Office Installation and Configuration Guide*.

Smart View ribbon does not display after installation. What should I do?

If you installed Smart View as a non-admin and the Smart View ribbon does not display, try the instructions explained in [Smart View Ribbon Fails to Display After Non-Admin Installation](#) in *Oracle Smart View for Office Installation and Configuration Guide* to troubleshoot this issue.

How do I prevent the add-in or AddIn class error on startup?

You may see either of these errors when starting Office after installing Smart View: "Unable to set the installed property of the add-in class." or "Add method of AddIns class failed." To prevent these errors, follow the instructions in either [Error When First Launching Excel After Installing Smart View](#) or [Errors when Launching Office after Installing Smart View](#) in *Oracle Smart View for Office Installation and Configuration Guide*.

How to address a provider error in Smart View ad hoc analysis?

Verify your connection URL syntax and credentials, and clear Smart View cookies. Find information to address this in these topics in *Oracle Smart View for Office Installation and Configuration Guide*:

- [Diagnosing Login Issues](#)
- [Clearing Smart View Cookies](#)

While performing ad hoc analysis, if an error appears similar to "Ad hoc grid cannot be opened as there are no valid rows of data" then, clear the Suppress Rows, Suppress Columns, and Suppress Missing Blocks options in Smart View Options dialog. For more information, see [Starting Ad Hoc Analysis](#) in *Oracle Smart View for Office User's Guide*.

How to address a Member Out of Place error when refreshing a Smart View ad hoc sheet?

To resolve this error, try the following:

- After copying content from one ad hoc sheet to the other, use the Smart View Import Metadata command to ensure that additional metadata is carried over to the other sheet. For more information, see [Importing Metadata in Office Applications](#) in *Oracle Smart View for Office User's Guide*.
- Set the required alias table at the private connection level, so that it is applied by default every time you open the connection. For more information, see [Selecting an Alias Table for the Connection](#) in *Oracle Smart View for Office User's Guide*.
- In the row drop-down member selector in forms, you can now enter and submit data without facing this error. When selecting and working with shared members or members associated with duplicate alias names, the drop-down member selector now displays member names for shared members and duplicate aliases, not their qualified or distinct alias names. For more information, see [Using the Drop-down Member Selector on Row Dimensions in Forms](#) in *Oracle Smart View for Office User's Guide*.

How to prevent Smart View from failing when clicking outside a modified cell in a form?

Starting Smart View Release 21.110, Excel no longer terminates intermittently after entering data in a form and clicking outside the modified cell. Please ensure that your Smart View version is updated to release 21.110 or later.

How to clear Smart View and WebView2 cookies?

Occasionally, you may need to clear Smart View cookies and WebView2 cookies to facilitate signoff and subsequent login processes. Clearing cookies also works if you are not getting the

login dialog in Smart View for connecting to your business processes. For more information, see the following topics in the *Oracle Smart View for Office Installation and Configuration Guide*:

- [Clearing Smart View Cookies](#)
- [Clearing WebView2 Cookies](#)

How to address the HTTP Error with Code -1 connection error?

Smart View may fail to connect to Planning or Planning Modules with the script error,

An HTTP error occurred with the code "-1"

To resolve this error, see the workaround suggested in [Connection Error](#) in the *Oracle Smart View for Office Installation and Configuration Guide*.

How to prevent HTTP session timeouts?

HTTP session timeouts can occur, for example, when working with large queries that take a long time to run, or when you're experiencing slower internet connections. To prevent HTTP session timeouts, you may add DWORDS values to the Internet Settings key in your Windows Registry as explained in [Smart View HTTP Session Timeout](#) in the *Oracle Smart View for Office Installation and Configuration Guide*.

How to limit memory usage, prevent instability, and improve performance in Smart View?

Smart View is a Microsoft Office add-in. As an add-in, it is loaded in to the Microsoft Excel process. When a report is imported into Excel through Smart View, the Excel process consumes memory and this can negatively impact performance.

To limit memory usage and improve performance, you can take the actions listed in [Performance and Memory Usage Considerations for Smart View with Excel](#) in the *Oracle Smart View for Office Installation and Configuration Guide*.

Some third-party tools monitoring Microsoft Office, such as MacAfee or Trellix, may also interfere with Smart View and cause stability issues for Office and Smart View. For workaround, see [Third-Party Monitoring Tools May Impact Smart View Stability](#) in *Oracle Smart View for Office Installation and Configuration Guide*.

How to prevent Excel from failing on using the Disconnect All command while using WebView2?

If you are using WebView2 and have issues with the Disconnect All command not working or Excel failing during a Disconnect All operation, try adding the registry flag, PreserveThirdPartyCookies, and set it to "0" as explained in [WebView2 and Disconnect Issues](#) in *Oracle Smart View for Office Installation and Configuration Guide*.

How to use diagnostics tools and perform health checks in Smart View?

When an issue arises while using Smart View that you cannot resolve on your own, use the Smart View Diagnostic tools to create and collect log files and screenshots to send to Oracle Support. You can perform a "health check" on your system to optimize performance and to get information about your machine, Microsoft Office version, Smart View version, and the extensions you have installed.

For more information, see the following topics:

- [Diagnostics Tools and Health Check](#) in *Oracle Smart View for Office Installation and Configuration Guide*

- [Using the Smart View Diagnostics Tools](#) in *Oracle Smart View for Office User's Guide*
- [Performing a Health Check On Your System](#) in *Oracle Smart View for Office User's Guide*