
PeopleSoft FSCM 9.2: Approval Framework

December 2025

This software and related documentation are provided under a license agreement containing restrictions on use and disclosure and are protected by intellectual property laws. Except as expressly permitted in your license agreement or allowed by law, you may not use, copy, reproduce, translate, broadcast, modify, license, transmit, distribute, exhibit, perform, publish, or display any part, in any form, or by any means. Reverse engineering, disassembly, or decompilation of this software, unless required by law for interoperability, is prohibited.

The information contained herein is subject to change without notice and is not warranted to be error-free. If you find any errors, please report them to us in writing.

If this is software, software documentation, data (as defined in the Federal Acquisition Regulation), or related documentation that is delivered to the U.S. Government or anyone licensing it on behalf of the U.S. Government, then the following notice is applicable:

U.S. GOVERNMENT END USERS: Oracle programs (including any operating system, integrated software, any programs embedded, installed, or activated on delivered hardware, and modifications of such programs) and Oracle computer documentation or other Oracle data delivered to or accessed by U.S. Government end users are "commercial computer software," "commercial computer software documentation," or "limited rights data" pursuant to the applicable Federal Acquisition Regulation and agency-specific supplemental regulations. As such, the use, reproduction, duplication, release, display, disclosure, modification, preparation of derivative works, and/or adaptation of i) Oracle programs (including any operating system, integrated software, any programs embedded, installed, or activated on delivered hardware, and modifications of such programs), ii) Oracle computer documentation and/or iii) other Oracle data, is subject to the rights and limitations specified in the license contained in the applicable contract. The terms governing the U.S. Government's use of Oracle cloud services are defined by the applicable contract for such services. No other rights are granted to the U.S. Government.

This software or hardware is developed for general use in a variety of information management applications. It is not developed or intended for use in any inherently dangerous applications, including applications that may create a risk of personal injury. If you use this software or hardware in dangerous applications, then you shall be responsible to take all appropriate fail-safe, backup, redundancy, and other measures to ensure its safe use. Oracle Corporation and its affiliates disclaim any liability for any damages caused by use of this software or hardware in dangerous applications.

Oracle®, Java, MySQL, and NetSuite are registered trademarks of Oracle and/or its affiliates. Other names may be trademarks of their respective owners.

Intel and Intel Inside are trademarks or registered trademarks of Intel Corporation. All SPARC trademarks are used under license and are trademarks or registered trademarks of SPARC International, Inc. AMD, Epyc, and the AMD logo are trademarks or registered trademarks of Advanced Micro Devices. UNIX is a registered trademark of The Open Group.

This software or hardware and documentation may provide access to or information about content, products, and services from third parties. Oracle Corporation and its affiliates are not responsible for and expressly disclaim all warranties of any kind with respect to third-party content, products, and services unless otherwise set forth in an applicable agreement between you and Oracle. Oracle Corporation and its affiliates will not be responsible for any loss, costs, or damages incurred due to your access to or use of third-party content, products, or services, except as set forth in an applicable agreement between you and Oracle.

Documentation Accessibility

For information about Oracle's commitment to accessibility, visit the Oracle Accessibility Program website at <https://docs.oracle.com/pls/topic/lookup?ctx=acc&id=docacc>.

Access to Oracle Support

Oracle customers that have purchased support have access to electronic support through My Oracle Support. For information, visit <https://docs.oracle.com/pls/topic/lookup?ctx=acc&id=info> or visit <https://docs.oracle.com/pls/topic/lookup?ctx=acc&id=trs> if you are hearing impaired.

Contents

Preface: Preface.....	ix
Understanding the PeopleSoft Online Help and PeopleBooks.....	ix
Hosted PeopleSoft Online Help.....	ix
Locally Installed PeopleSoft Online Help.....	ix
Downloadable PeopleBook PDF Files.....	ix
Common Help Documentation.....	ix
Field and Control Definitions.....	x
Typographical Conventions.....	x
ISO Country and Currency Codes.....	xi
Region and Industry Identifiers.....	xi
Translations and Embedded Help.....	xii
Using and Managing the PeopleSoft Online Help.....	xii
PeopleSoft Enterprise Components Related Links.....	xii
Contact Us.....	xii
Follow Us.....	xii
Chapter 1: Getting Started with Approval Framework.....	15
Approval Framework Overview.....	15
Approval Framework Implementation.....	15
Configuring Approval Processes.....	15
Creating New Approval Processes.....	16
Chapter 2: Understanding the Approval Framework.....	19
Understanding the Approval Framework Feature.....	19
Understanding the Approval Framework Process Flow.....	20
Understanding Transaction Approval Flows.....	21
Understanding Header- and Line-Level Approvals.....	23
Understanding Criteria for Approval Framework Processes.....	24
Understanding Approval Features.....	24
Understanding Tasks in the Approval Framework.....	28
Chapter 3: Setting Up Approval Framework Process Definitions.....	31
Defining the Setup Process Definitions Component.....	31
Pages Used to Define Approval Framework Processes.....	31
Setup Process Definitions Page.....	31
Criteria Definition Page.....	38
Approval Path Definition Page.....	46
Approval Step Definition Page.....	49
Chapter 4: Defining the Approval Transaction Registry.....	53
Understanding the Approval Transaction Registry.....	53
Prerequisites.....	53
Setting Up the Transaction Registry.....	53
Page Used to Set Up the Transaction Registry.....	54
Register Transactions Page.....	54
Configuring Approval Transactions.....	62
Pages Used to Configure Approval Transactions.....	62
Configure Transactions Page.....	63
Chapter 5: Defining Notification Templates and Users for Approval Framework.....	73
Defining Notification Templates for Approval Framework.....	73

Pages Used to Define Notification Templates for Approval Framework.....	73
Generic Template Definition Page.....	73
Defining Users for Approval Framework.....	75
Pages Used to Define Users for Approval Framework.....	75
User Profiles - Roles Page.....	75
User Profiles - Workflow Page.....	76
User List Definition Page.....	78
Chapter 6: Defining Dynamic Approvals.....	83
Understanding Dynamic Paths.....	83
Understanding Dynamic Approval Authorizations.....	83
Understanding Approval Authorizations.....	85
Defining Dynamic Approvals.....	86
Pages Used to Define Dynamic Approvals.....	86
User List Definition Page.....	86
Approval Authorization Page.....	87
Approval Path Definition Page.....	88
Chapter 7: Using Email Collaboration.....	91
Understanding Email Collaboration.....	91
Setting Up the PSFT_EMG_GETMAIL Node.....	94
Pages used to Set Up the PSFT_EMG_GETMAIL Node.....	94
Setting Up the PSFT_EMG_GETMAIL Node.....	95
Defining Message and Service Operation.....	95
Pages Used to Define Message and Service Operation.....	96
Defining Integration Broker Message.....	96
Defining Service.....	97
Defining Service Operation.....	97
Defining and Mapping EMC Forms.....	99
Pages Used to Define and Map EMC Forms.....	99
EMC Forms.....	99
Form Element Designer Page.....	99
Form Layout Designer Page.....	101
Field Mapping Page.....	101
Triggering Email Collaboration.....	102
Pages Used to Trigger Email Collaboration.....	102
Understanding HTML Email Approvals.....	102
URL Maintenance Page.....	104
Register Transactions Page.....	105
Configure Transactions Page.....	107
Configure Transactions - Edit Template Page.....	110
Scheduling the Application Engine Program EOAWEMC.....	111
Email Addresses Page.....	111
Chapter 8: Using EMC Classes.....	113
Understanding EMC Classes.....	113
EmailFormManager Class.....	113
EmailFormManager Class Methods.....	113
addRecipient.....	113
addCC.....	114
addBCC.....	114
addAttachment.....	115
sendEmails.....	115
EmailFormManager Class Properties.....	116

inlineText.....	116
attachmentText.....	116
subject.....	116
submitMessage.....	116
from.....	117
fromEmail.....	117
replyTo.....	117
prependText.....	117
appendText.....	117
deliveryMethod.....	117
EOAW_EMCA:utils Class.....	117
EOAW_EMCA:utils Class Methods.....	118
getAppRS.....	118
getErrorCodesRS.....	118
getPromptsRS.....	119
getRowFromPath.....	119
Chapter 9: Using the Notification and Escalation Manager.....	121
Understanding Notification and Escalation Manager.....	121
Pages Used to Set Up the Notification and Escalation Manager.....	121
Event Type Page.....	121
Notification and Escalations Page.....	122
Escalations Calendar Setup page.....	124
Chapter 10: Using the Approval Monitor.....	125
Understanding the Approval Monitor.....	125
Understanding Approval Reassignment.....	125
Configuring the Approval Monitor.....	126
Page Used to Configure the Approval Monitor.....	126
Approval Monitor Configuration Page.....	126
Using the Approval Monitor.....	128
Pages Used to Use the Approval Monitor.....	128
Monitor Approvals Page.....	128
Viewing Search Results.....	130
Monitor Approvals Page.....	131
Using the User Monitor.....	136
Page Used to Use the User Monitor.....	136
User Monitor - Monitor Approvals Page.....	136
Chapter 11: Using Approval Framework Base Classes.....	139
Understanding Approval Framework Base Classes.....	139
LaunchManager Class.....	139
LaunchManager Class Methods.....	139
LaunchManager.....	139
DoSubmit.....	140
DoReSubmit.....	141
DoRestart.....	141
PrepareToSubmit.....	142
SetHeader.....	143
Reset.....	143
FindDefinitionID.....	144
TerminateRunningProcess.....	144
LaunchManager Class Properties.....	145
hasTxn.....	145

definition.....	145
hasAppDef.....	145
hasAppInst.....	145
hasEndedAppInst.....	145
EOAW_CORE:DEFN:AppDef appDef.....	146
resubmitEnabled.....	146
submitEnabled.....	146
restartEnabled.....	146
monitorEnabled.....	147
previewEnabled.....	147
EOAW_CORE:ENGINE:AppInst appInst.....	147
EOAW_CORE:DEFN:AWTxn txn.....	147
requester.....	147
Approval Manager Class.....	147
ApprovalManager Class Methods.....	148
ApprovalManager.....	148
DoApprove.....	149
DoApproveRowSet.....	149
DoReassign.....	150
DoReassignAll.....	150
DoDeny.....	151
DoDenyRowset.....	151
DoDenyWithAllowUndeny.....	152
DoHardDeny.....	152
DoLineResubmit.....	153
DoAddNewLine.....	154
GetPending.....	154
DoPushback.....	155
AddComments.....	155
TakeNoAction.....	156
PutOnHold.....	157
PutOnHoldCount.....	157
GetPushedBack.....	158
GetPertinentThreads.....	158
GetStage.....	158
GetPendingSteps.....	159
DoLineTerminate.....	159
GetParticipant.....	160
GetAllActiveParticipants.....	160
RequestInformation.....	161
SetAttributeObject.....	161
ApprovalManager Class Properties.....	162
hasAppInst.....	162
definition.....	162
level.....	162
hasPending.....	162
pushbackEnabled.....	162
EOAW_CORE:ENGINE:AppInst the_inst.....	163
isReviewer.....	163
Approval Event Handler Class.....	163
ApprovalEventHandler Class Methods.....	163

ApprovalEventHandler.....	163
OnProcessLaunch.....	163
OnStepActivate.....	164
OnStepHold.....	165
OnStepReassign.....	165
OnStepComplete.....	166
OnStepPushback.....	166
OnStepReactivate.....	166
OnFinalHeaderDeny.....	167
OnHeaderDeny.....	167
OnHeaderApprove.....	168
OnNoApprovalNecessary.....	168
OnLineDeny.....	168
OnLineApprove.....	169
OnAllLinesProcessed.....	169
OnTerminate.....	170
OnError.....	170
OnStepReview.....	170
OnTimeout.....	171
OnAdHocInsert.....	171
OnAdHocDelete.....	172
OnUserLocked.....	172
OnStepRequestInformation.....	172
OnRequestInformationAdded.....	173
ProcessNotifications.....	173
OnLineTerminate.....	174
ApprovalEventHandler Class Properties.....	174
wlPrefix.....	174
wlBusinessProc.....	174
wlActivityName.....	174

Preface

Understanding the PeopleSoft Online Help and PeopleBooks

The PeopleSoft Online Help is a website that enables you to view all help content for PeopleSoft applications and PeopleTools. The help provides standard navigation and full-text searching, as well as context-sensitive online help for PeopleSoft users.

Hosted PeopleSoft Online Help

You can access the hosted PeopleSoft Online Help on the [Oracle Help Center](#). The hosted PeopleSoft Online Help is updated on a regular schedule, ensuring that you have access to the most current documentation. This reduces the need to view separate documentation posts for application maintenance on My Oracle Support. The hosted PeopleSoft Online Help is available in English only.

To configure the context-sensitive help for your PeopleSoft applications to use the Oracle Help Center, see [Configuring Context-Sensitive Help Using the Hosted Online Help Website](#).

Locally Installed PeopleSoft Online Help

If you're setting up an on-premises PeopleSoft environment, and your organization has firewall restrictions that prevent you from using the hosted PeopleSoft Online Help, you can install the online help locally. Installable PeopleSoft Online Help is made available with selected PeopleSoft Update Images and with PeopleTools releases for on-premises installations, through the [Oracle Software Delivery Cloud](#).

Your installation documentation includes a chapter with instructions for how to install the online help for your business environment, and the documentation zip file may contain a README.txt file with additional installation instructions. See *PeopleSoft 9.2 Application Installation* for your database platform, "Installing PeopleSoft Online Help."

To configure the context-sensitive help for your PeopleSoft applications to use a locally installed online help website, see [Configuring Context-Sensitive Help Using a Locally Installed Online Help Website](#).

Downloadable PeopleBook PDF Files

You can access downloadable PDF versions of the help content in the traditional PeopleBook format on the [Oracle Help Center](#). The content in the PeopleBook PDFs is the same as the content in the PeopleSoft Online Help, but it has a different structure and it does not include the interactive navigation features that are available in the online help.

Common Help Documentation

Common help documentation contains information that applies to multiple applications. The two main types of common help are:

- Application Fundamentals

- Using PeopleSoft Applications

Most product families provide a set of application fundamentals help topics that discuss essential information about the setup and design of your system. This information applies to many or all applications in the PeopleSoft product family. Whether you are implementing a single application, some combination of applications within the product family, or the entire product family, you should be familiar with the contents of the appropriate application fundamentals help. They provide the starting points for fundamental implementation tasks.

In addition, the *PeopleTools: Applications User's Guide* introduces you to the various elements of the PeopleSoft Pure Internet Architecture. It also explains how to use the navigational hierarchy, components, and pages to perform basic functions as you navigate through the system. While your application or implementation may differ, the topics in this user's guide provide general information about using PeopleSoft applications.

Field and Control Definitions

PeopleSoft documentation includes definitions for most fields and controls that appear on application pages. These definitions describe how to use a field or control, where populated values come from, the effects of selecting certain values, and so on. If a field or control is not defined, then it either requires no additional explanation or is documented in a common elements section earlier in the documentation. For example, the Date field rarely requires additional explanation and may not be defined in the documentation for some pages.

Typographical Conventions

The following table describes the typographical conventions that are used in the online help.

<i>Typographical Convention</i>	<i>Description</i>
Key+Key	Indicates a key combination action. For example, a plus sign (+) between keys means that you must hold down the first key while you press the second key. For Alt+W , hold down the Alt key while you press the W key.
. . . (ellipses)	Indicate that the preceding item or series can be repeated any number of times in PeopleCode syntax.
{ } (curly braces)	Indicate a choice between two options in PeopleCode syntax. Options are separated by a pipe ().
[] (square brackets)	Indicate optional items in PeopleCode syntax.
& (ampersand)	When placed before a parameter in PeopleCode syntax, an ampersand indicates that the parameter is an already instantiated object. Ampersands also precede all PeopleCode variables.

<i>Typographical Convention</i>	<i>Description</i>
⇒	This continuation character has been inserted at the end of a line of code that has been wrapped at the page margin. The code should be viewed or entered as a single, continuous line of code without the continuation character.

ISO Country and Currency Codes

PeopleSoft Online Help topics use International Organization for Standardization (ISO) country and currency codes to identify country-specific information and monetary amounts.

ISO country codes may appear as country identifiers, and ISO currency codes may appear as currency identifiers in your PeopleSoft documentation. Reference to an ISO country code in your documentation does not imply that your application includes every ISO country code. The following example is a country-specific heading: "(FRA) Hiring an Employee."

The PeopleSoft Currency Code table (CURRENCY_CD_TBL) contains sample currency code data. The Currency Code table is based on ISO Standard 4217, "Codes for the representation of currencies," and also relies on ISO country codes in the Country table (COUNTRY_TBL). The navigation to the pages where you maintain currency code and country information depends on which PeopleSoft applications you are using. To access the pages for maintaining the Currency Code and Country tables, consult the online help for your applications for more information.

Region and Industry Identifiers

Information that applies only to a specific region or industry is preceded by a standard identifier in parentheses. This identifier typically appears at the beginning of a section heading, but it may also appear at the beginning of a note or other text.

Example of a region-specific heading: "(Latin America) Setting Up Depreciation"

Region Identifiers

Regions are identified by the region name. The following region identifiers may appear in the PeopleSoft Online Help:

- Asia Pacific
- Europe
- Latin America
- North America

Industry Identifiers

Industries are identified by the industry name or by an abbreviation for that industry. The following industry identifiers may appear in the PeopleSoft Online Help:

- USF (U.S. Federal)

- E&G (Education and Government)

Translations and Embedded Help

PeopleSoft 9.2 software applications include translated embedded help. With the 9.2 release, PeopleSoft aligns with the other Oracle applications by focusing our translation efforts on embedded help. We are not planning to translate our traditional online help and PeopleBooks documentation. Instead we offer very direct translated help at crucial spots within our application through our embedded help widgets. Additionally, we have a one-to-one mapping of application and help translations, meaning that the software and embedded help translation footprint is identical—something we were never able to accomplish in the past.

Using and Managing the PeopleSoft Online Help

Select About This Help in the left navigation panel on any page in the PeopleSoft Online Help to see information on the following topics:

- Using the PeopleSoft Online Help.
- Managing hosted Online Help.
- Managing locally installed PeopleSoft Online Help.

PeopleSoft Enterprise Components Related Links

[PeopleSoft Information Portal](#)

[My Oracle Support](#)


[PeopleSoft Training from Oracle University](#)


Contact Us

Send your suggestions to pssoft-infodev_us@oracle.com.

Please include the applications update image or PeopleTools release that you're using.

Follow Us

<i>Icon</i>	<i>Link</i>
	Watch PeopleSoft on YouTube

Icon	Link
	<u>Follow @PeopleSoft_Info on X.</u>
	<u>Read PeopleSoft Blogs</u>
	<u>Connect with PeopleSoft on LinkedIn</u>

Getting Started with Approval Framework

Approval Framework Overview

Use this product documentation for information about the Approval Framework, including:

- Setting up Approval Framework process definitions.
- Defining the approval transaction registry.
- Defining notification templates and users for Approval Framework.
- Defining dynamic approvals.
- Setting up email collaboration.
- Setting up the notification and escalation manager.
- Configuring and use Approval Framework Monitor.
- Using Approval Framework PeopleCode classes.

Approval Framework Implementation

Many PeopleSoft applications are delivered with predefined Approval Framework processes. In order to configure and use predefined processes you will:

Configuring Approval Processes

Use the following steps to configure predefined approval processes for your application:

Step	Reference
Activate workflow	Refer to the appropriate product documentation for your product implementation.
Define user lists	See User List Definition Page .
Set up approval framework	See Defining the Setup Process Definitions Component .
Configure the approval user monitor	See Configuring the Approval Monitor .

Creating New Approval Processes

The approval framework can be used to create new approval processes. Application developers can set up workflow approvals using a transaction-definition component. The following steps are used to create a new approval process.

Step	Reference
Identify the transaction entry component	Identify the component that will be used for transaction entry.
Identify an approval component	Identify or create a component that will be used for transaction approval. This is usually a new component, but can be the same as the transaction component. The approval component will include the necessary push buttons to approve or deny transactions, as well as any other actions that can be taken.
Create an approval cross reference table	The cross reference table must include the subrecord EOAW_XREF_SBR. See Setting Up the Transaction Registry .
Create a view of all users that can be an approval participant	The view is used by the approval monitor to display the person's name and contact information.
Develop an approval transaction handler class	Define an application class used to monitor events for the transaction. The application class must extend the ApprovalEventHandler class and enable applications to receive notifications. See ApprovalEventHandler Class Methods .
Create code to launch approvals	Create the code to launch Approval Framework. The code must extend the LaunchManager application class and at a minimum define a submit button. See LaunchManager Class Methods .
Create code to manage approvals	Create the code to manage the approvals using the ApprovalManager application class. See ApprovalManager Class Methods .
Define notifications	See Defining Notification Templates for Approval Framework .
Create the approvals transaction registry	See Understanding the Approval Transaction Registry .
Configure the approval transactions	See Configuring Approval Transactions .
Define user lists	See User List Definition Page .

Step	Reference
Set up approval framework	See Defining the Setup Process Definitions Component .
Configure the approval user monitor	See Configuring the Approval Monitor .

Understanding the Approval Framework

Understanding the Approval Framework Feature

Many daily tasks are part of a larger process that involves several steps and people working together. The term *workflow* refers to this process, which could encompass, for example, the approval of a purchase requisition or a job change request form. To facilitate this type of multiuser process, the PeopleSoft product can automatically trigger workflow notifications to inform the next approver in the process of work awaiting them.

A specialized designer is available to address workflow approvals. This designer enables you to configure Approval Frameworks using existing components without writing code.

Three types of users come together to set up approvals. They include application developers, functional business analysts, and users, who include requesters, approvers, and reviewers. Approval Framework brings these roles together to define an approval process workflow.

Application developers set up Approval Framework using a transaction-definition component. Examples of a transaction might include a job change request or leave of absence request. Transactions are made up of an approval process, routing rules and steps, and a set of users who approve and review the transaction.

Using Approval Framework, you can:

- Approve or deny individual line items in a transaction.
- Approve and deny multiple transactions one at a time.
- Include multiple approvers for individual steps.
- Assign additional approvers and reviewers during the approval process.
- Escalate approvals.
- Approve, deny, or push back approvals.
- Reassign approval tasks to another approver.
- Use worklist and email notifications.

Note: Oracle PeopleSoft delivers Notification Composer framework to manage the setup and administration of all notifications in one central location. Once you have adopted the Notification Composer feature, you must use it to create new notifications and manage your existing notifications. For more information about Notification Composer, see “Understanding Notification Composer” (Enterprise Components).

Understanding the Approval Framework Process Flow

Approval Frameworks are triggered when requesters originate a transaction, such as a purchase requisition or a job change request, and a set of approvers carry out tasks related to the transaction. The PeopleSoft Approval Framework process is a framework that enables three levels of users to develop, configure, and use transaction approvals that meet their organizational requirements. For example, the process of submitting a job change request and getting it approved requires defining who will approve the request, the order in which they will approve it, and how it will be routed to approvers.

In contrast to the standard PeopleSoft workflow, which requires advanced technical skills in PeopleSoft PeopleTools to create and maintain, the Approval Framework provides an alternative workflow that is much easier to create and maintain. For example, all of the steps in Approval Framework are defined using PeopleSoft pages rather than underlying PeopleSoft PeopleCode, so functional users can design and maintain workflow using these online PeopleSoft pages instead of requiring technical developers to create workflow rules.

Many PeopleSoft products are delivered with integrated Approval Frameworks, consult your application documentation.

To implement the Approval Framework process, the framework for building and interpreting workflow approvals brings together these users:

- Application developers

Application developers adapt applications for approval with minimal coding, using a defined setup process. Making this possible is the Approval Framework, which provides a common implementation that other applications can use. Application developers integrate their applications with the Approval Framework using the Register Transactions page, where they register an application and describe its components, event handler, and records. The register stores the approval process IDs that developers create for applications.

Note: The PeopleSoft product delivers the transaction registry for delivered Approval Framework processes.

After an end user creates an application transaction and submits it for approval, the application hands the transaction over to the Approval Framework, which finds the appropriate approval process definition and launches the Approval Framework.

- Functional business analysts

Functional business analysts design Approval Framework for use with an application. This includes setting up stages, paths, steps, recipients, and notifications for each approval process ID. Analysts identify the application-supplied transaction definition on which to base approval process definitions. They use the Approval Process Definition page to define processes for approving transactions. These processes can be used repeatedly to guide transactions through their approval process.

Many businesses need different approval routings for different types of transactions. To support such variations, you can configure multiple approval process definitions for each transaction within an application. In addition to process IDs, approval process definitions are effective-dated.

- End users

End users create transactions and then use an approval process with approvers and reviewers within an approval flow. Using this process, the different end users can approve or deny requests, monitor transaction statuses, and audit approvals.

Understanding Transaction Approval Flows

After an approval process is defined, validated, and made active, the system can submit a transaction for approval. Each PeopleSoft application typically has a top-level database record that distinguishes one transaction from the next. These top-level records are called header records. When a transaction is submitted for approval, the Approval Framework combines the approval process definition with the header record instance and line records, if line level approval is configured, to create a unique approval process instance. This approval process instance is routed from approver to approver, as configured in the approval process definition.

Approvals use two levels of processing: header and line. Business analysts set up the approval process definition that determines the flow of the approval at both levels. The approval process consists of:

- Stages

A stage is one part of an approval process that can contain multiple parallel paths but must be at the same header or line record level. The system executes stages in sequence where one must complete before the next one begins. A stage can be at either a header level or at a line level. Stages at a line level make it possible for approvers to sign off separately on individual line items for a single transaction. Approval Framework sees each header and each line as individual pieces. A line is a child of the header. A header stage acts on the unique header while a line stage acts on each line. A stage consists of one or more paths.

- Paths

A path contains a sequence of steps. Within a stage, paths execute in parallel. Path entry criteria determines whether or not a path executes for a given transaction or transaction line.

- Steps

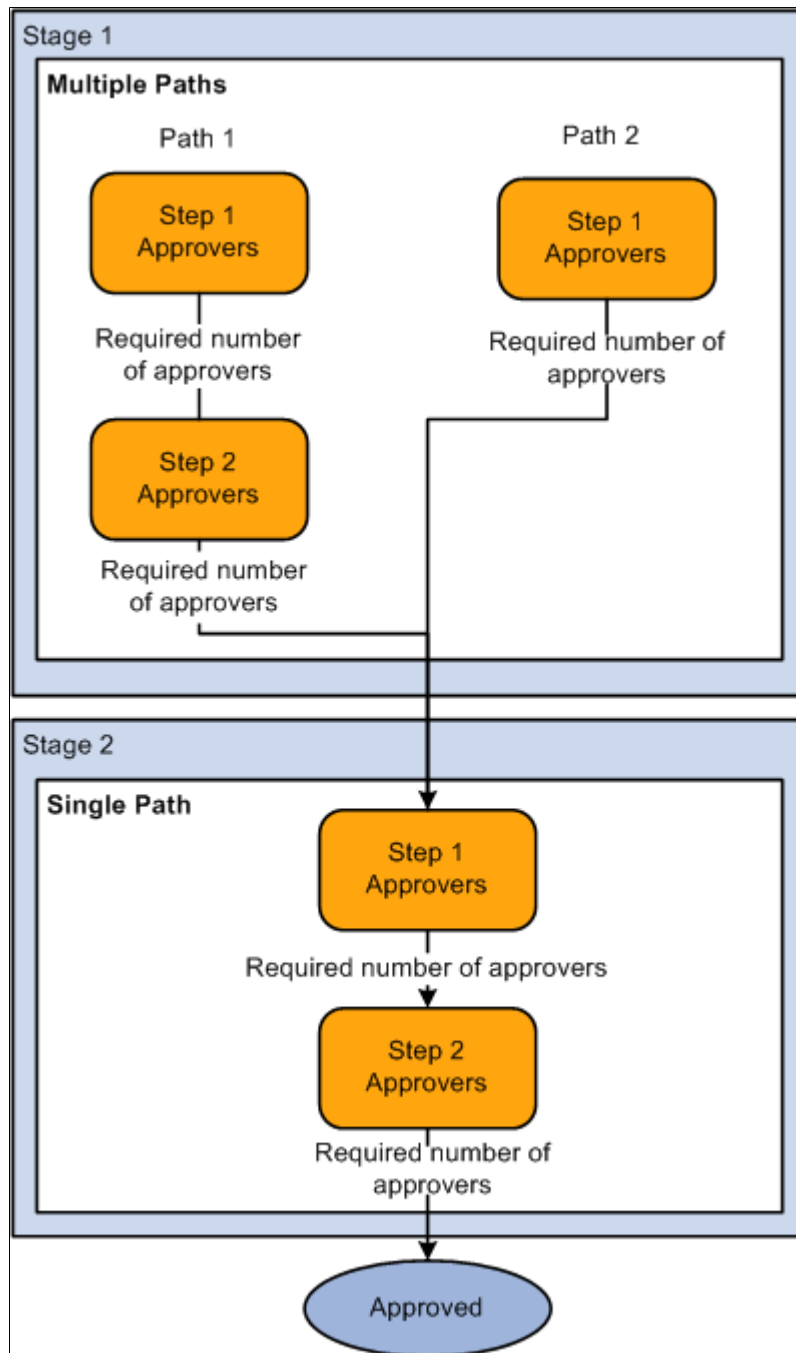
A step represents one or more approvers or reviewers. Steps within a path execute in sequence. Separate criteria for each step determines whether or not that step executes. Each step can also have a set of reviewers. Reviewers are notified about transactions that are pending approval by email, through the worklist, or both. However, the workflow proceeds without waiting for reviewers to act.

The system notifies approvers by using email, worklist, or both, of pending approval steps, which can require one, all, or a fixed number of approvers. You can specify approvers by roles, queries, fixed lists, or by using custom application classes. Once the required number of approvers have approved a step, the Approval Framework advances to the next step. If the workflow has no further steps, it advances to the next stage.

Note: While the configuration may require multiple approvers to approve a step before it advances, any single approver can deny a step. The moment an approver denies a step, the transaction stops moving forward in the approval process. If the transaction is at a line level, other lines will continue to move forward. If the denial is at a header level, the approval process terminates, and the entire transaction is denied.

This diagram illustrates how the approval process uses stages, paths, and steps for routing approvals:

Example Approval Framework showing stages, paths and step



In this example there are 2 stages. In stage 1 there are 2 paths. Each step within the path is executed in sequence, when the required number of approvers have approved a step, it is advanced to the next step within the path. Paths are executed in parallel. When all paths within the stage are approved, the workflow advances to the first step in the next stage.

Understanding Header- and Line-Level Approvals

Many PeopleSoft transactions have a top-level record (known as a header) with keys that uniquely identify a single transaction in an application. In addition to the header record, a transaction may also contain a more detailed line level record (known as line-level).

The Approval Framework process uses an application's header keys to correlate approval processes and application transactions. For example, when you open an application transaction, the Approval Framework enables you to submit the request for approval only if you haven't already submitted it. This check is possible because the system correlates the application header keys with the approval process instance keys.

If a particular transaction supports line level processing, an analyst can configure the approval process so that different line-items in the same request follow different routes.

You can deny some lines of the request and approve others, making line-level approvals independent for each line. For example, a request can contain multiple lines, and you might want to use special approvers for certain lines based on their area of expertise.

Note: If a transaction has multiple line items, 1 of which is denied and the rest are approved, the overall transaction is approved.

An Approval Framework process might have mixed header and line-level approval routings. For example, department managers might exercise budgetary control over the request as a whole, while commodity approvers still examine only those line-items which fall within their expertise. Final approval requires both types of approvers to sign off on the request.

When a request is approved, the Approval Framework notifies the application, which then takes source end actions:

- End actions.

An approval of one transaction often leads to the creation of another transaction, or triggers another business process. The Approval Framework supports this trigger by providing a call-back mechanism for event notification. For example, when a requisition is approved, it can be sourced—an action follows final approval, which is the end action.

- Line-level versus header-level end actions.

Use line-level approvals to make it possible for an action to be taken on different line items upon their approval, without waiting for the approval of other line items in the requisition. You can source line items as soon as they are approved.

This action is possible only if line-level approval routings are at the end of the process and require no further review. In this case, the application can act on the individual lines as they get approved. The Approval Framework notifies the application of significant approval-related events.

Header actions allow the transaction lines to be grouped together and processed as one unit.

Understanding Criteria for Approval Framework Processes

Criteria is an entity that evaluates to true or false. It uses transaction-specific information to determine if a transaction requires approvals and follows the approval paths and steps that evaluate to true. To set the context for the criteria, the approval process definition provides the transaction keys as bind values.

Criteria is set up at three levels as shown in this table:

Set Up Level	Description
Process Definition ID	This criteria is used to determine which Process Definition ID to use to process the approval.
Path	This criteria is used to determine if the approval will follow the path.
Step	This criteria is applied to the individual Approvers defined for the step.

There are 3 different types of criteria you can apply to an approval process.

Criteria Type	Description
Always True	No criteria is needed, the approval process will always be triggered.
Application Class	An application class contains the logic used to determine if the workflow approval task evaluates as true.
User Entered	Criteria is based on record and field combinations. The criteria can be either value or monetary-based. A logical operator and a value are used to evaluate the condition.

Understanding Approval Features

Using a combination of features, you can create rules for different types of approvals. This section discusses:

- Ad hoc path approval
- Ad hoc review
- Self-approval
- Route to requester
- Skip prior path

- Auto approval
- Alternate approvers
- Push back
- Approval comments

Ad Hoc Path Approval

If Ad Hoc Approval Status Monitor is implemented for an approval transaction, then during the approval process, approvers can add other approvers or reviewers to the current or a later stage of the approval process. This action is called *ad hoc approval*, and it only applies to the approval instance in which the addition occurs and does not affect the underlying process definition used for other requests.

You can insert ad hoc approvers and reviewers in serial or parallel with existing approvers:

- For serial approvals, each approval in the process is sequential.

Users can add approvers and reviewers only after the current pending step or later.

- For parallel approvals, the sequence does not matter.

Users can insert an ad hoc step in an ad hoc path in any currently pending or subsequent stage.

You can add ad hoc approvers once the transaction is submitted. The Approval Framework launches the previewed approval process instance if requested by the application developer's code.

If you have an ad hoc approver user list defined in the transaction registry, only the users within that list can be added as an ad hoc approver or reviewer.

See [Register Transactions Page](#).

Ad Hoc Review

Ad hoc reviewers are users that an approver or requester would like to review a transaction. Ad hoc reviewers are notified and provided with a link in a worklist entry or email to the transaction, if the process is so configured. Ad hoc reviewers do not approve or deny transactions, they can add comments. However, the comments should not contain the % symbol as this is not recognized as a valid character and the application will remove this from the comments.

Self-Approval

A requester can also be an approver. If requesters approve their own transactions, it's called self-approval. A check box setting enables self-approval. If enabled, the requester's approval is assumed, and the process continues. However, you can establish criteria that helps control the requester's approval authority. For example, you can place a limit on the dollar amount for the requester so that if the transaction is over that amount, the requester is not used as an approver.

If self-approval is not enabled, then the requester must manually approve the transaction.

If self-approval is enabled, then the self-approval criteria must be specified. Then, if the requester appears as an approver, the criteria is evaluated. If the criteria are met, then the requester's approval is assumed and the minimum approvers for that step decrements by one.

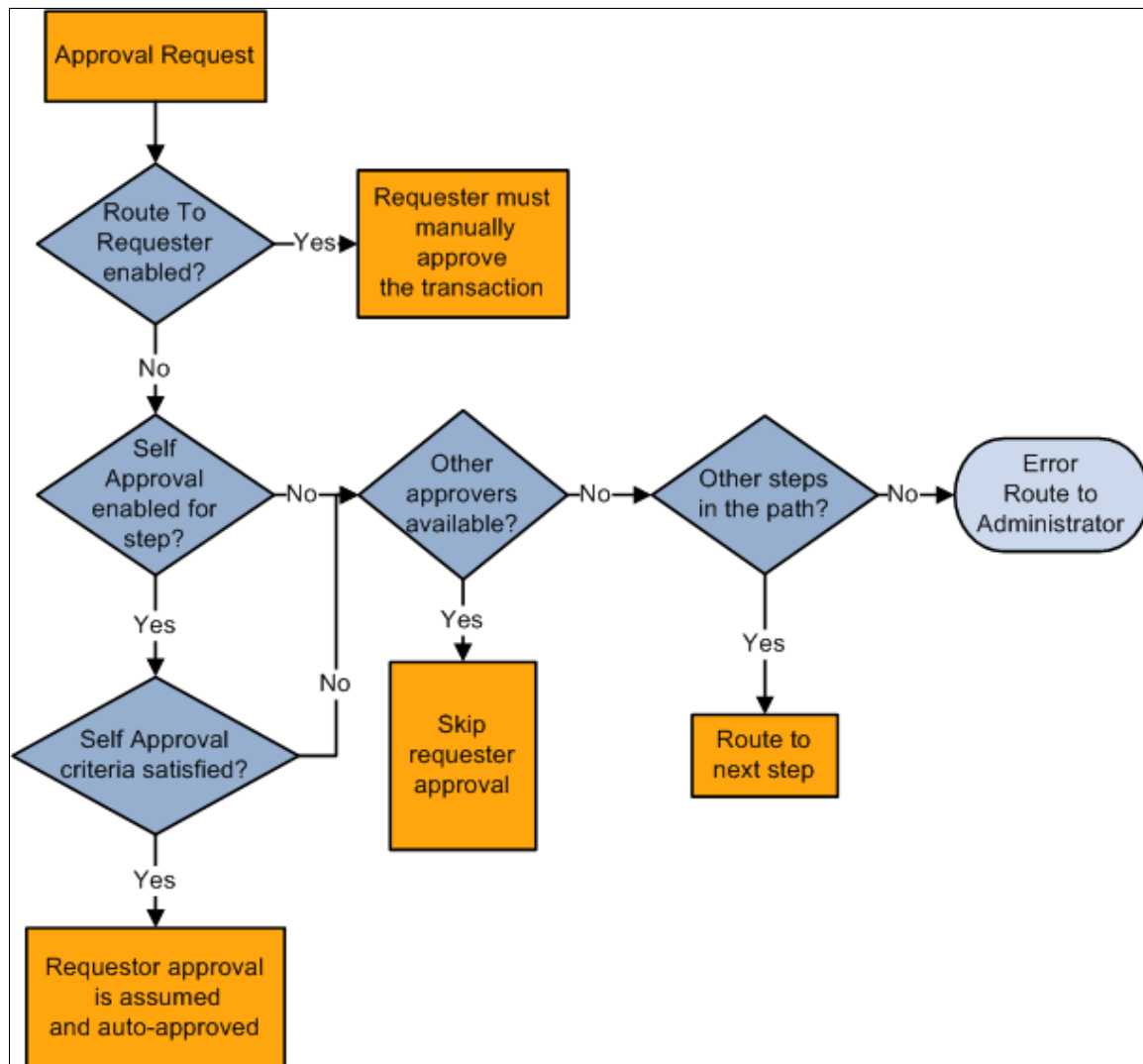
When a requester is an approver, you can configure the path to skip the steps in that path prior to the requester's step.

Self-approval is configured at the step level.

Route to Requester

Route to requester is a feature that informs the system that an approval should be sent to a requester. In some cases the requester may already be listed in the approval path. The flow of this option is also dependant on the self-approval feature as displayed in this diagram:

Diagram illustrating the route to requester and self-approval feature flow.



- If route to requester is selected, the requester must always manually approve the transaction regardless of the self-approval setting.

Note: Even if the self-approval criteria is met, the requester must manually approve the transaction.

- If neither route to requester nor self-approval are selected, and the requester is the only approver, the system tries to identify additional steps in the path and routes the transaction to the next step if

available. If no additional steps are available, it generates an error and routes the transaction to the administrator.

- If neither route to requester nor self-approval are selected, and there are other approvers in the path, the requester approval is skipped.
- If route to requester is not selected and self-approval is selected, the self-approval criteria are checked. If the requester meets the approval criteria, the approval is assumed and auto-approved.

If the requester does not meet the approval criteria, and other approvers are available, the requester approval is skipped. If self approval criteria are not met and there aren't other approvers in the same step, the system routes the transaction to the next step in the process if applicable, or to the administrator if there are no more steps in the path.

Skip Prior Path

When skip prior to requester is enabled, the system begins the approval flow at whatever step in which the requester is an acknowledged approver.

For example, if a vice president orders supplies for herself, the system skips application approval steps leading up to the step for which the vice president is an acknowledged approver.

Auto Approval

When auto approval is enabled, the system remembers an approver's action for that process at the header- or line-level, and applies the same action automatically for any subsequent appearance in the Approval Framework routing.

For example, if the approver approves line one and the line appears again as a required approval for the specific approver, the approval is remembered for the line. In this example, the approval is given only to that specific line in the process. However, if an approval is made at the header level, approval is granted to all of its lines automatically.

As a hierarchical system, the Approval Framework supports auto approval in these situations:

- Header stage that is followed by another header stage.
- Header stage that is followed by a line stage.
- Header stage that is followed by a line stage, which is followed by another header stage.
- Line stage that is followed by another line stage.

Auto approval is not supported in processes where a line stage is followed by a header stage. The reason being that the approver of a line may only have approval privileges to some but not all lines within the same header and therefore should not be given the power to approve the header through the Auto Approval option.

Alternate Approvers

Alternate workflow approvers are users who are assigned to receive emails and worklist notifications for the primary approver when the primary approver is not available. When you identify an alternate approver, you enter a date range during which you want the alternate to fill in. The system determines if the alternate is in place for the date range.

Note: Alternate users are defined in the User Profile. Navigate to **PeopleTools > Security > User Profiles > User Profile**.

You can also use the *FindAlternate* method in the EOAW_CORE:Utils class to select alternate approver.

Push Back

Push back is an optional feature that can be implemented in the Approval Monitor. If implemented, push back takes a currently pending step out of pending status and request the previous step to its approvers. The meaning of push back is that the approver is questioning the prior step's approval and is requesting clarification. Push back is only possible within a path, therefore, the first step of a path cannot push back.

Note: The push back feature ignores auto self-approval.

See [Approval Monitor Configuration Page](#).

Approval Comments

Requesters can add comments to transactions, and approvers can associate their comments with the approval process rather than the request transaction directly. The Approval Framework Monitor provides a mechanism for associating comments with a particular approval process instance, which is tied to a particular application transaction. Approvers can view comments added by another approver, but they cannot change previous comments. Approvers should not use the % symbol while adding comments to transactions as this is not recognized as a valid character by the application and will be removed.

Understanding Tasks in the Approval Framework

This section details the steps to implement and use Approval Framework. It describes tasks that application developers, business analysts, and end users perform in conjunction with Approval Framework.

To implement and use Approval Framework:

1. Application developers register information with the Approval Framework by using the Register Transactions page.
2. Functional business analysts define the approval process definition for an application transaction.

Essentially, analysts determine the approval transaction registry entry on which the process definition is to be based and then define the details of the process. The approval process definition includes definitions of stages, paths, steps, and criteria.

3. Requesters submit a transaction for approval.

This action launches the approval process. The Approval Framework reads the approval process definition and queues the transaction for approvers.

4. The system queues an approval task to an approver or reviewer using email notification, worklist entry, or both.

The URL encoded in the worklist entry points to the corresponding approval component.

5. Approvers and reviewers take actions on transactions using the Approval Monitor. Reviewers may only add comments.

When an error or violation of criteria or rules occurs during the approval process, the error is routed to the administrator for resolution, if there are no additional steps in the path.

Note: The error conditions for static steps are no approvers or not enough approvers at a step.

Setting Up Approval Framework Process Definitions

Defining the Setup Process Definitions Component

Business analysts use the Setup Process Definition page to define an approval definition process. The process is made up of stages and their paths and steps. The approval steps that you place on the approval path represent the approval levels that are required for a transaction.

This section discusses how to define the setup process definitions component.

Pages Used to Define Approval Framework Processes

<i>Page Name</i>	<i>Definition Name</i>	<i>Usage</i>
Setup Process Definitions Page	EOAW_PRCES_MAIN	Define approval process stages.
Criteria Definition Page	EOAW_CRITERIA	Define criteria for workflow approvals.
Notifications Page	EOAW_NOTIFY_DEF	Define notification options.
Timeout Options Page	EOAW_TIMEOUTDEF	Define global timeout and escalation settings. Individual transactions determine their own timeout periods.
Approval Path Definition Page	EOAW_PATH_SEC	Set up workflow approval paths.
Approval Step Definition Page	EOAF_STEP_SEC	Define steps for workflow approvals.

Setup Process Definitions Page

Use the Setup Process Definitions page (EOAW_PRCES_MAIN) to define approval process stages.

Navigation:

Enterprise Components > Approvals > Approvals > Approval Process Setup

This example illustrates the fields and controls on the Setup Process Definitions page. You can find definitions for the fields and controls later on this page.

Manager Self Service Setup Process Definitions

Clone Approval Process | Approval Process Viewer | Preview Approval Process

Process ID: AbsenceManagement
 Definition ID: AbsenceMgmtBySupervisorId
 Effective Date: 10/09/2018
 Description: Abs Mgmt By Supervisor Id

Definition Options

Definition Criteria | Alert Criteria | Definition Notifications | Timeout Options

*Admin Role: AM Administrator
 Error Action: Route to next step on error
 *Status: Inactive
 Priority: 1

☐ Default Process Definition
☒ User Auto Approval
☐ Route to Requester
☐ Include Requester

Stages

*Stage Number: 1
 Description: Abs Mgmt By Supervisor Id
 Level: Header

Paths

Description: Abs Mgmt By Supervisor Id
 *Source: Static

Steps

Description	Approver User List	Details	Criteria
1 Step 1	AbsenceBySupervisorId		

Expand/Collapse All

Save | Return to Search | Previous in List | Next in List | Notify | Add | Update/Display | Include History | Correct History

Business analysts use this page to define an approval definition process. The process is made up of stages and their paths and steps. The approval steps that you place on the approval path represent the approval levels that are required for a transaction.

You can develop approval processes that:

- Meet organizational or tiered approval limits.
- Use parallel processing to allow multiple transaction entities to be processed at the same time.
- Use staged approvals that require one sequence of processing to complete before another can begin.

Typical approval processes might include:

- Monetary based approval criteria.

- Two different approvers for each step, where both approvers at a step must approve the request for it to advance to the next step.

Field or Control	Description
Process ID	The Process ID created on the Register Transactions page. See Understanding the Approval Transaction Registry .
Definition ID	Enter any identification code that provides meaning to you. This identifier is used as a search field on the Monitor Approvals page. Note: When upgrading from a previous release, the SetID field is used for the Definition ID .
Effective Date	Indicates the date on which this approval process became effective and ready for system use. This value applies to approval processes for a particular approval process ID and definition ID, and it includes PeopleSoft functionality associated with effective-dated entities. For instance, if multiple approval processes are active with the approval process ID, definition ID, and effective-date specification, then the system uses the most current effective dated row.
Description	Enter a description for the approval process.
Clone Approval Process	Click this link to clone the approval process.
Approval Process Viewer	Click this link to access a graphical tool, which enables you to view each stage, path, and step of the approval process. Note: An SVG Viewer is required for this feature. Note: When you are viewing the graphic tool in the Approval Process Builder page, if you elect to make changes the system will return you to the standard Approval Process Definition page.
Preview Approval Process	Click this link to view what a workflow instance would look like if it were running.

Definition Options

This section of the page is used to define options for the approval process.

Field or Control	Description
Definition Criteria	<p>Click to access the Criteria Definition page, where you can define user and field criteria along with monetary and application class criteria for this process. This page works similar to the other Criteria Definition pages that are used for paths and steps, however this criteria is used to determine which Definition ID is to be used to process the Approval.</p> <p>See Criteria Definition Page.</p>
Alert Criteria	<p>Click to access the Criteria Definition page, where you can define user and field criteria along with monetary and application class criteria for this process. This criteria can be evaluated by applications to highlight conditions of a transaction to be approved. For example, a one-time shipping address used only on this request.</p> <p>Alert Criteria is not used to determine how an approval should route. It is used by the application to determine if messages (Alerts) should be displayed as part of the approval process.</p>
Definition Notifications	<p>Click to access Approval Framework Notifications page, where you can define notification options to the override one or more of the process definition notification options defined in the Configure Transactions component.</p> <p>See Configure Transactions Page.</p>
Timeout Options	<p>Click to access Approval Framework Timeout Options page, where you can set global timeout and escalation settings at the Approval Definition level. Path level timeout settings will override the Approval Definition level settings if they differ. You can specify the Calendar ID if you want the escalation to be based on a calendar. To set timeout options based on unique calendar, see Escalations Calendar Setup page</p>
Admin Role (administrative role)	<p>Select the PeopleSoft role used by workflow to route the transaction to all users filling that role in case of an error during approval processing.</p> <hr/> <p>Note: The error conditions are no approvers or not enough approvers.</p> <hr/> <p>See User List Definition Page.</p>

Field or Control	Description
Error Action	<p>In the event of an error during the approval process, choose how the approval process should automatically proceed. The options available are:</p> <p><i>Route to next step on error</i> This is the default setup and the system will proceed to the next step in the approval process.</p> <p><i>Route to admin on error</i> The system will route the request to the admin user in the event of an error.</p>
Status	<p>Select the current state of this approval process. The values are:</p> <p><i>Active</i>: Indicates the approval process is available for use.</p> <p><i>Inactive</i>: Indicates the approval process is not available for use.</p> <p>A transaction that has started with a specific definition continues using that definition, even if the status is <i>Inactive</i>.</p>
Priority	<p>Enter the priority for the definition. Priority 1 is the highest.</p> <p>When a definition is not explicitly passed to the Approval Framework by the calling application, the Approval Framework uses the Definition Level Criteria to determine which definition to use. If multiple definitions return a criteria of true, the definition with the highest priority is used.</p> <hr/> <p>Note: Multiple Definition ID's with the same priority may result in inconsistent behavior, in the event that multiple definition ID's match.</p> <hr/>
Default Process Definition	<p>Select to indicate that the system should use this process definition as the default when no other definition ID matches the criteria entered.</p>

Field or Control	Description
Take Action on Line Completion	<p>Select to allow each line to continue to the next step of the approval process, without waiting for other lines within the transaction to complete. This setting applies to approval processes that have a line-level stage at the end of the process.</p> <p>When this check box is selected, the approved lines of a transaction can move forward to the next approval step even though some of the lines in the transaction have not yet completed the approval process. As each line completes the approval process, the header and line status are updated immediately so that the individual line can move forward without having to wait for all the lines of the transaction to complete workflow approval.</p> <p>When this check box is clear, all lines within a transaction must complete the approval process before any line of the transaction can flow to the next approval step. For example, a requisition line cannot be sourced to a purchase order until all lines of the requisition have completed the approval processing. The header and line statuses remain in a pending status until the last line of the transaction has completed the approval process. Once that last line has had an approval action made against it, then the header status is updated, as well as each line status. An approval action could be a denial as well as an approval. For example, if there are two lines on a transaction, one line is approved and the second line is denied, then the approval process is complete and the approved line can move forward to the next step.</p>
User Auto Approval	<p>Select to enable the system to remember an approver's action for this process. The next time this approval process is presented to the approver, the system automatically applies the approver's selections. The automatic application of steps in the process is left in place until you clear the User Auto Approval check box.</p> <p>This setting applies to the specific line or header the approver had previously approved in this process only. A header approval implies line approvals for all lines.</p>

Field or Control	Description
Route to Requester	<p>Select this check box to route this approval to the requester.</p> <p>When this check box is selected and the requester is also an approver, the requester must manually approve the transaction, unless the minimum approvals have already been satisfied.</p> <p>If this check box is not selected and the requester is also an approver, the system will check if self-approval is active. If self-approval is active, the criteria will be checked.</p> <p>See Understanding Approval Features.</p>
Include Requester	Select to enable the user to insert the requester in the event the requester is not equal to the originator.

Stages

This section of the page is used to define the stages. An approval process can contain multiple parallel paths but they must be at the same header or line record level. The system executes stages in sequence where one must complete before the next one begins.

Field or Control	Description
Stage Number	Enter a number indicating sequence for this stage.
Description	Enter a description for the stage.
Level	Select either <i>Line</i> or <i>Header</i> .

The system executes stages in sequence where one must complete before the next one begins. A stage can be at either a header level or at a line level. Stages at a line level make it possible for approvers to sign off separately on individual line items for a single transaction. The Approval Framework sees each header and each line as individual pieces. A line is a child of the header. A header stage acts on the unique header while a line stage acts on each line. A stage consists of one or more paths.

Paths

This section of the page is used to define the paths for the stage. Use the Details and Criteria links to add the information for each path.

See [Criteria Definition Page](#), [Approval Path Definition Page](#).

Steps

This section of the page is used to define the steps for the path. Use the Details and Criteria links to add the information for each step.

See [Criteria Definition Page](#), [Approval Step Definition Page](#).

Criteria Definition Page

Use the Criteria Definition page (EOAW_CRITERIA) to define criteria for workflow approvals.

Navigation:

- Click the **Definition Criteria** link on the Setup Process Definitions page.
- Click the **Alert Criteria** link on the Setup Process Definitions page.
- Click the **Criteria** link from the Setup Process Definitions page in the Path section.
- Click the **Criteria** link from the Setup Process Definitions page in the Steps section.

This example illustrates the fields and controls on the Criteria Definition page. You can find definitions for the fields and controls later on this page.

Use this page to define the different types of criteria you want to apply to an approval process. You can create definitions consisting of a field with a logical operator and a value of definitions consisting of an application class that takes in transaction data to process the approval.

Field or Control	Description
Criteria Type	<p>Select one of these options:</p> <ul style="list-style-type: none"> • <i>Always True</i> informs the system to trigger this approval process. No criteria is needed. The system will only follow paths that evaluate as true. • <i>Application Class</i> requires you to define which specific application class the system uses to determine if the workflow approval task evaluates as true. <hr/> <p>Note: Use the <i>Application Class</i> criteria type when the user entered criteria does not contain the necessary level of detail.</p> <hr/> <ul style="list-style-type: none"> • <i>User Entered</i> requires you to enter all record and field combinations, either value- or monetary-based, that will trigger the workflow to evaluate as true.

Application Class Criteria (Section)

Use this section to assign application packages as criteria for the approval process definition. When you define a class, the system uses it along with other criteria you enter to process the approval.

This example illustrates the fields and controls on the Criteria Definition page showing criteria type Application Class. You can find definitions for the fields and controls later on this page.

Field or Control	Description
Root Package ID	Select the primary application package. This selection is the parent class for other packages or for child application classes.
Application Class Path	Select a path that describes a specific class within the root package.

Application Class: Example

Here is an example of an application class written for approval criteria that extends EOAW_CRITERIA:CriteriaBase and implements the “Check” method. This example can also be found in EOAW_CRITERIA:EXAMPLES.

```
import EOAW_CRITERIA:DEFINITION:*;

class CriteriaClassExample extends EOAW_CRITERIA:DEFINITION:CriteriaBase
  1- method CriteriaClassExample(&rec_ As Record);
  2- method Check(&recBind As Record) Returns boolean;
  3- method CheckwithComments(&recBind As Record) Returns array of string;
private
  instance Record &rec;
  method CheckSQL(&recBind As Record) Returns boolean;
end-class;
```

```

method CriteriaClassExample
    /+ &rec_ as Record +/
    %Super = create EOAW_CRITERIA:DEFINITION:CriteriaBase(&rec_.EOAWCRTA_ID.Value);
    &rec = &rec_;
end-method;

method Check
    /+ &recBind as Record +/
    /+ Returns Boolean +/
    /+ Extends/implements EOAW_CRITERIA:DEFINITION:CriteriaBase.Check +/
    Local boolean &queryStatus;
    rem %This.CheckQuery(&recBind);
    Local boolean &sqlStatus = %This.CheckSQL(&recBind);

    Return &sqlStatus;
end-method;

method CheckwithComments
    /+ &recBind as Record +/
    /+ Returns Array of String +/
    /+ Extends/implements EOAW_CRITERIA:DEFINITION:CriteriaBase.CheckwithComments +/
    Local array of string &aryComments = CreateArrayRept(" ", 0);

    Return &aryComments;
end-method;

method CheckSQL
    /+ &recBind as Record +/
    /+ Returns Boolean +/
    Local string &sqlDef, &SQLText;
    Local integer &i;
    Local Rowset &rsResults;

    &SQLText = "SELECT 'X' FROM PS_INSTALLATION";
    Local string &output;
    REM ***** Specify a query that uses some or all of the transaction keys as input⇒
;
    SQLExec(&SQLText, &output);
    If All(&output) Then
        Return True
    Else
        Return False
    End-If;
end-method;

```

Note that:

1. *CriteriaClassExample* is the class name. It should match at all levels. The input is a record that contains the field EOAWCRTA_ID. The method must have this parameter.
2. The *Check* method is the main method doing the work. It validates if the criteria is true or false. It can call anything you want to add. In this case, it is calling a private method called *CheckSQL*. The *&recBind* parameter is the transaction cross reference record. The cross reference record ties the approval workflow engine to the transaction. The transaction keys are fields on the cross reference record. There is also a field called RECNAME so that it is possible to reconstruct the transaction record.
3. The *CheckwithComments* method is nearly identical to the *Check* method. The difference is that it returns any “descriptions” from the criteria page for criteria that was true. This is useful in the area of *Alert Criteria* on the Approval Process Definition page. If there are simple notifications (messages) that the application wants to display, they can be done with the *CheckwithComments* method. One example of this is the *one-time* address check in eProcurement.

Here is an example of how the call is made from *Self Criteria*:

```
If (All (&c) And
      &c.Check(%This.path.thread.rec)) Then
    &self_ok = %This.utils.SELF_OK;
End-If;
```

And this is the constructor for the Criteria object:

```
&SelfAppCriteria = &fact.GetCriteria(&rec.EOAWSELF_CRTA_ID.Value);
```

User Entered Criteria (Section)

Use this section to define additional criteria for the approval.

This example illustrates the fields and controls on the Criteria Definition page showing criteria type User Entered. You can find definitions for the fields and controls later on this page.

Criteria Definition

*Criteria Type User Entered

☒ All Criteria Needed to Satisfy

User Entered Criteria

Description HRS_JOB_OPENING_ID

+

-

Field Criteria

Record HRS_JOB_OPENING

Field Name HRS_JOB_OPENING_ID

1-2 of 2

	Criteria Operator	Value		
1	Greater Than	9900	+	-
2	Less Than	10000	+	-

Monetary Criteria

Amount Record

Amount Field

Currency Field

Operator Greater Than or Equal To

Amount 0.000

Currency Code

Rate Type

OK

Cancel

Apply

Field or Control	Description
Description	<p>Enter purpose of the alert.</p> <p>For example, if you are using a one-time ship-to address, create a description that indicates that a one-time ship-to address is attached to the requisition.</p>

42

Copyright © 1988, 2025, Oracle and/or its affiliates.

Field or Control	Description
All Criteria Needed to Satisfy	<p>Select to indicate that all criteria defined on the Criteria Definition page must be met in order to trigger the workflow to evaluate as true.</p> <hr/> <p>Note: This check box applies to the outermost group box. This means that for every User Entered Criteria row, the combination of Field Criteria and Monetary Criteria is combined. If there is more than one User Entered Criteria row, then all rows are applied separately.</p> <hr/>

Field Criteria (Section)

Use this section to select a record and field on which to control and filter ranges of data or types of data placed in the file you want to use in the approval process. As you add rows in this section to build your approval criteria, they get translated into a long SQL string by the approval framework, each of them connected by the OR operator. For example, the *where* clause of the SQL generated for the criteria that is specified in the screenshot above looks like this:

“where HRS_JOB_OPENING_ID > '10000' OR HRS_JOB_OPENING_ID < '9900”

Important! If the *Not Equal To* criteria operator is used in a row, subsequent rows will be connected using the AND operator instead of the OR operator. Here is an example of an SQL constructed for field criteria that contains the *Not Equal To* operator:

“where HRS_JOB_OPENING_ID <> '10500' AND HRS_JOB_OPENING_ID > '10000' AND HRS_JOB_OPENING_ID < '11000”

The approval framework *does not* support the insertion of parentheses around specified criteria values in SQLs.

Field or Control	Description
Record Name	<p>Select a record that you want to use in defining approval criteria.</p> <p>For example, if you are indicating a one-time address, identify <i>PO_ADDR_REQ_VW</i> as the record.</p>
Field Name	<p>Select a field you want to use to define approval criteria. The values you define in the remaining field criteria grid are those that are used in determining the approval criteria.</p>

Field or Control	Description
Criteria Operator	<p>Select the operator to build the approval criteria.</p> <p>These operators are available:</p> <ul style="list-style-type: none"> • <i>Between</i>: The specified field has a value that is within the range identified using the Value fields. • <i>Equals</i>: The specified field has the same value that is entered in the Value field. • <i>Greater Than</i>: The specified field has a value that is greater than the value entered in the Value field. <hr/> <p>Note: The <i>greater than or equal to</i> operator (as typically represented by the \geq symbol) is not supported.</p> <hr/> <ul style="list-style-type: none"> • <i>Is Blank</i>: The specified field has no value. When selected, the Value field is not displayed. • <i>Is Not Blank</i>: The specified field has a value. When selected, the Value field is not displayed. • <i>Less Than</i>: The specified field has a value that is less than the value entered in the Value field. <hr/> <p>Note: The <i>less than or equal to</i> operator (as typically represented by the \leq symbol) is not supported.</p> <hr/> <ul style="list-style-type: none"> • <i>Not Equal To</i>: The specified field has a value that is either greater than or less than the value entered in the Value field.
Value	<p>Use the two Value fields to define a range upon which you want the operator criteria to evaluate. The second value is only used when the selected criteria operator is <i>Between</i>.</p>

Monetary Criteria (Section)

Use this section to establish approval criteria for requisition amounts. The system uses the values you define to determine the routing for approving the requisition. When the system evaluates the criteria for an approval process or a step or path within the process, it uses monetary values you define in this section.

Note: AWE performs currency conversion for the approval submitted date and not the entered transactions date if the business unit currency is different from the transaction currency. This causes Approval Workflow to operate different than expected if the effective date of the transaction currency on the Market Rate page has a new effective date and rate. If conversion is expected on the transaction date, you can create a view that has only amounts in the currency used in AWE criteria. This causes the AWE conversion to not run at all.

This example illustrates the fields and controls on the Criteria Definition page showing criteria type User Entered for monetary amount. You can find definitions for the fields and controls later on this page.

Criteria Definition

*Criteria Type

User Entered

☒ All Criteria Needed to Satisfy

User Entered Criteria

1 of 1

View All

Description

Step Criteria Definition for Line level

+ -

Field Criteria

Record

Field Name

1-1 of 1

	Criteria Operator	Value	Value	List Values		
1					+	-

Monetary Criteria

Amount Record

ACTUALS_POOL_VV

Amount Field

POSTED_ENCUMB_#

Currency Field

ACCT_CD

Operator

Greater Than or Equal To

Amount

500,000

Currency Code

USD

Rate Type

CRRNT

OK

Cancel

Apply

The system uses values from fields in this section in conjunction with the Operator field to determine whether to run a step.

Field or Control	Description
Amount Record	Select the record name containing the amount in the original transaction to be used when comparing the minimum amount required to trigger the step.
Amount Field	Select the field within the amount record to be used when comparing the requisition to the minimum amount required to trigger the step. The system uses the value you select to evaluate the Amount field.
Currency Field	Select the currency field that corresponds to the currency code you select in the Currency Code field.

Field or Control	Description
Operator	Select a value that determines how the system processes the values in the Amount fields. Values include <i>Between</i> , <i>Greater Than</i> , and <i>Less Than</i> .
Amount	<p>Use the Amount fields to define an amount range for use with the Operator field.</p> <p>In the first field, enter the minimum amount required on the transaction in order to trigger the step. The system identifies all lines in the transaction that meet the criteria defined in the Amount Record and Amount Field fields. The amounts on these lines are totaled based on the Amount Record and Amount Field specified. If the requisition total is higher than this minimum amount, the criteria is met. If no amount is specified, zero is considered the minimum.</p> <hr/> <p>Note: If you select Operator with a value of <i>Between</i>, a second Amount field becomes active.</p> <hr/>
Currency Code	Select the monetary unit you want to use for the approval.
Rate Type	Select how the system arrives at the currency value, such as the current rate or a financial rate.

Approval Path Definition Page

Use the Approval Path Definition page (EOAW_PATH_SEC) to set up workflow approval paths.

Navigation:

Click the **Details** link within the **Paths** group box on the Setup Process Definitions page.

This example illustrates the fields and controls on the Approval Path Definition page. You can find definitions for the fields and controls later on this page.

Approval Path Definition

Criteria

Approval Path 1

*Step Source Dynamic

Description

Long Description

☐ Notify Admin on No Approvers
☐ Skip Prior Steps for Requester
☐ Check Authorization
☐ Skip Unauthorized Users

Timeout Options

	*Escalate Option	Hours	Days	Reassign To	User List	Use Proxy			
1	Notify Participan	<input type="text"/>	<input type="text"/>		<input type="text"/>	<input type="checkbox"/>	+	-	

OK Cancel

Use this page to set up additional parameters that determine how the system processes an approval path. Use the escalations feature to define time elements for when an approver takes too long to approve or deny a pending request.

Field or Control	Description
Criteria	Click to access the Criteria Definition page where you can define user and field criteria along with monetary and application class criteria.
Approval Path	Displays the path name that you are creating or updating. The path provides the sequence of approvers of a request, usually from a single reporting (or other) hierarchy.
Step Source	<p><i>Static:</i> Select this source to indicate that you want the system to use the individual user-defined steps when it processes an approval.</p> <p><i>Dynamic:</i> A dynamic path definition contains only one step. When begun, the single step definition could yield any number of instances in sequence.</p> <p>When using the <i>Dynamic</i> source, the system uses the user list on the step definition to initialize the steps in the path. The single step definition is repeatedly run, until the step's user list returns no more approvers. All these instances are queued in sequence.</p> <p>See User List Definition Page.</p>

Field or Control	Description
Notify Admin on No Approvers (notify administrator on no approvers)	<p>Select to indicate that the administrator is to be notified if the system does not find an approver for the path. This option is only available when the selected step source is <i>Dynamic</i>.</p> <hr/> <p>Note: This is the default behavior for static paths.</p> <hr/>
Skip Prior Steps for Requester	Select to indicate that if one of the approvers in this path is also the requester, then the system is to skip all steps in this path prior to that approver's step.
Check Authorization	<p>This option is only available when the selected step source is <i>Dynamic</i>.</p> <p>Select to bypass the existing criteria and use the Authorize Approvers component and criteria definitions.</p> <p>Check Authorization enforces an exit point for dynamic paths.</p>
Skip Unauthorized Users	<p>This option is only available when the selected step source is <i>Dynamic</i>.</p> <p>Select to bypass an approver that is not qualified to approve the transaction. and exits when an approver is qualified to approve a transaction.</p> <p>For example, if the first approver can approve transactions less than 500 and the second approver can approve transactions less than 5000 and the transaction is for 675, the first approver would be skipped and the transaction would go directly to the second approver. Since the second approver is qualified, no further approvals are necessary.</p>

Timeout Options

Field or Control	Description
Escalate Option	<p><i>Advanced Approval:</i> Skip the current approver. Advance Approval will not advance if it is on the last step of the last stage.</p> <p><i>Notify Participant:</i> Sends an email, or whatever notification is defined in the transaction registry, to the individual.</p> <p><i>Reassign Approval:</i> Reassigns to a user ID or a user list.</p> <hr/> <p>Note: If you select <i>Advanced Approval</i> and defined a User List, a notification is sent to the user list members.</p> <hr/>

Field or Control	Description
Hours	Enter the number of hours a transaction can remain at one workflow step before being escalated. This field is combined with number of days to determine the total time an approver has to take action on an approval request.
Days	Enter the number of days a transaction can remain at one workflow step before being escalated. This is the length of time an approver has to do something such as approve or deny a transaction.
Reassign To	<p>If you have selected <i>Reassign</i> as the option, you can enter a user name or a specific user list.</p> <hr/> <p>Note: A user list will reassign to the first user in the list that does not match the current user.</p> <hr/>
User List	Select the list of users the workflow should be routed to.
Use Proxy	Select this check box to indicate that the escalation should be routed from the perspective of the current approver (proxy). If the check box is not selected, the escalation is routed from the perspective of the original approver (delegator).

Approval Step Definition Page

Use the Approval Step Definition page (EOAF_STEP_SEC) to define steps for workflow approvals.

Navigation:

Click the **Details** link within the **Steps** group box on the Setup Process Definitions page.

This example illustrates the fields and controls on the Approval Step Definition page. You can find definitions for the fields and controls later on this page.

Use this page to set up additional parameters for the step definition.

Field or Control	Description
Criteria	Click to access the Criteria Definition page, where you can define field criteria along with monetary and application class criteria.
Self-Approval Criteria	Click to access the Criteria Definition page, where you can set up self-approval criteria for a user, including field criteria and monetary and application class criteria.
Sequence Number	Displays the sequence number in which the approval is routed. Each step typically represents a routing to an approver. However, it is possible to route to multiple approvers or reviewers within a step.

Field or Control	Description
Approver User List	Select the type of approver you want to use for this step based on the user list.
Approver Role Name	In addition to a User List, a role can be added to check for additional authorization checking. Select a role that specifies the authority that a user has. The Approval Framework filters approvers returned by the user list for this role. It also enforces the role at the time the approver acts. If the role assignment changes, such as the approver is no longer in the role, the approver is blocked from acting on the requisition.
All Approvers Required	Select to indicate that all approvers at this step are required to approve the transaction at this step. You can select to have all approvers or some approvers approve the transaction at this step.
Some Approvers Required	<p>Select to indicate that it's not required for all approvers to sign off on a transaction. If you select this option, you can define the number of approvers required in the Number of Approvers Needed field.</p> <hr/> <p>Note: After the number is met, the approval advances to the next step.</p> <hr/>
Number of Approvers Needed	Enter the minimum number of approvers you want to sign off for a requisition at this step. When an approval process is launched and this number can't be met, the system notifies the approval <i>Admin Rolename</i> .
Self Approval	<p>Select to indicate that requesters can also approve their own requisition. This setting only applies if the requester also appears as an approver in the step. You can establish criteria that controls the requester's approval authority by using the Self-Approval Criteria link. If the associated criteria evaluate to true, then self-approval is acceptable. For example, you can place a limit on the dollar amount for the requester so that if the transaction is over that amount, the requester is not used as an approver.</p> <p>If you select self-approval and the criteria is not met, the Approval Framework requires that there be at least one more step after this one in the path. This does not apply to ad hoc steps. Clearing the check box means that self approval is never acceptable.</p> <hr/> <p>Note: If the criteria is not met and no later step exists, the system inserts an additional step. This selection is then routed to the administrator.</p> <hr/>

Field or Control	Description
Route to Requester	<p>Select this check box to route this approval to the requester. When this check box is selected, the requester must always manually approve the transaction.</p> <p>Route to requester works in conjunction with the self-approval flag.</p> <p>See Understanding Approval Features.</p>
External Approver	<p>Select to indicate that an external approver is supplied the email information. This feature is used to notify someone that is not part of the Employee Portal.</p> <hr/> <p>Note: Notification information for the external approver must be set up on the Configure Transaction page.</p> <hr/> <p>See Configure Transactions Page.</p>
Filter Requester	<p>This check box is only visible if Route to Requester is not selected. When this check box is selected, requester's user Id is filtered from the result set whenever it is encountered.</p>
Error Action	<p>In the event of an error during the step level approval process, choose how the approval process should automatically proceed. The options available are:</p> <p><i>Route to next step on error</i> This is the default setup and the system will proceed to the next step in the approval process.</p> <p><i>Route to admin on error</i> The system will route the request to the admin user in the event of an error.</p> <p><i>Use process definition setting</i> The system will route the approval as per the error action option set at the process definition level</p> <hr/> <p>Note: When the step is part of a Dynamic path, the error action field is disabled.</p> <hr/>
Reviewer User List	<p>Select the type of reviewer you want to use for this step. Use a user list to map users to certain functional roles. The system then uses the list and its users to run automated business processes. The list defines the user sources who can be used in approval and review steps.</p>

See [Understanding Approval Features](#).

See product documentation for *PeopleTools: Workflow Technology*.

Defining the Approval Transaction Registry

Understanding the Approval Transaction Registry

The approval transaction registry is the interface application that developers use to register an application with the Approval Framework. Transactions that require approvals are candidates for being linked to Approval Framework. You use the Register Transactions page to link the components, event handler, records, and classes that you created into the approval process for an application transaction, such as a requisition or purchase order. Application developers register the main records and components that make up the transaction, then functional business analysts select the approval transaction on which to base the approval process definition.

Note: Any PeopleSoft delivered approvals will already have the Approval Transaction Registry populated. No additional configuration is typically needed.

Prerequisites

Before defining the transaction registry:

1. Create a Transaction Handler Application class that extends an approved event handler class delivered by Approval Framework.
2. Create transaction data sources, as needed.
3. Create views on transaction tables that will serve as criteria sources.

Setting Up the Transaction Registry

Use the Register Transactions component to register an approval transaction. The transaction definition is the metadata that describes the transaction setup to the Approval Framework.

Note: Oracle PeopleSoft delivers Notification Composer framework to manage the setup and administration of all notifications in one central location. Once you have adopted the Notification Composer feature, you must use it to create new notifications and manage your existing notifications. For more information about Notification Composer, see “Understanding Notification Composer” (Enterprise Components).

Page Used to Set Up the Transaction Registry

<i>Page Name</i>	<i>Definition Name</i>	<i>Usage</i>
<u>Register Transactions Page</u>	EOAW_TXN	Register the approval transaction.

Register Transactions Page

Use the Register Transactions page (EOAW_TXN) to register the approval transaction.

Navigation:

Enterprise Components > Approvals > Approvals > Transaction Registry

This example illustrates the fields and controls on the Register Transactions page (1 of 3). You can find definitions for the fields and controls later on this page.

Register Transactions

Process ID

TRApproval

*Description

Time Report Approval Process

Owner ID

Expenses

*Cross Reference Table

EX_TIME_AW

Worklist Prefix

Notification Name

FEX

▼ Notification Options

Enable Notifications

☒ Worklist

*Notification Strategy

Online Processing

Use Email Approvals:

☒

Form Generator Package Root

EX_APPRVL EMC

Form Generator Class Path

OUTBOUND:TRFormGenerator

▼ Internal URL Definition

Internal URL Base

EMP_SERVLET

Internal Portal Name

EMPLOYEE

Internal Node Name

ERP

This example illustrates the fields and controls on the Register Transactions page (2 of 3). You can find definitions for the fields and controls later on this page.

External URL Definitions

External URL Base

EMP_SERVLET

External Portal Name

EMPLOYEE

External Node Name

ERP

URL Appending Parameters

	*Attribute Name	Attribute Value		
1			+	-

Default Approval Component

*Menu Name

APPROVE_EXPENSE_TRANSACTIONS

*Approval Component

EX_TIME_APPR

Approval Event Handler Class

Root Package ID

EX

Class Path

Approval:Callbacks:TRApprovalCallBack

This example illustrates the fields and controls on the Register Transactions page (3 of 3). You can find definitions for the fields and controls later on this page.

Adhoc Package

Q

Adhoc Class

Thread Package

EX_APPROVAL_FL

Q

Thread Class

threadTRDescr

Q

Transaction Approval Levels

	Level	Record (Table) Name		
1	Header	EX_TR_HDR_AW_VW	+	-
2	Line	EX_TR_LN_AW_VW	+	-

Level Record Key Field Label IDs

	Record (Table) Name	Field Name	Field Label ID
1	EX_TR_HDR_AW_VW	TIME_SHEET_ID	TIME_SHEET_ID
2	EX_TR_HDR_AW_VW	VERSION_NUM	VERSION_NUM
3	EX_TR_LN_AW_VW	LINE_NBR	LINE_NBR
4	EX_TR_LN_AW_VW	TIME_SHEET_ID	TIME_SHEET_ID
5	EX_TR_LN_AW_VW	VERSION_NUM	VERSION_NUM

Expand/Collapse All

Application developers use this page to register a PeopleSoft application, such as eProcurement or job offer, with the Approval Framework. Using this page, you can define how the system interacts with portions of the application that you have defined for approvals. The transaction definition is the metadata which describes the transaction make up to the approval framework. In some cases, you might add a transaction to enhance an existing transaction or make changes to a transaction.

Use this page to define:

- Worklist approvals.
- Approval event handler class.
- Transaction approval levels.
- Email notifications.
- Ad hoc approver class logic.

Field or Control	Description
Process ID	Enter a name the system uses to track this Approval Framework process for a transaction. You can also enter a description for the approval process.
Object Owner ID	Select the PeopleSoft application to which this object belongs.
Cross Reference Table	<p>Select the table used to manage application specific transaction records and associate them with the approval process run time instances. Each time a request launches an approval process, the system tracks the process by the header and line-level records of the application. To relate the approval process instance to the transaction instance, the cross-reference table holds the correspondence.</p> <p>For a given application transaction record, this cross-reference information helps you determine the pending Approval Framework process and to define to the application which transaction is being approved or denied.</p> <p>Application developers must create a record containing the applications keys, and include the Approval Framework-supplied subrecord EOAW_XREF_SBR. Developers must also build the underlying table.</p>
Worklist Prefix	<p>Enter a prefix to identify the worklist to a specific application. Every application using the Approval Framework shares the same business process and activities, which can cause a problem identifying specific worklist instances. This prefix will allow worklists to be sorted by application. The prefix should be used:</p> <ul style="list-style-type: none"> • If Enterprise Portal is used and users have worklist items from multiple applications. For example Expenses and HCM in the same portal. • If the application creates dashboards, the dashboard needs to be able to differentiate between the different application's approvals.

Field or Control	Description
Notification Name	<p>Select the Notification Name from the available options.</p> <p>The Notification Name maps the notification preferences like the notification channels and personalization configured at the PeopleTools level. For more information on configuring notification names, see product documentation for <i>PeopleTools: Creating Push Notification Events</i></p> <hr/> <p>Note: The notification name defined in the event level overrides the PeopleTools notification name given in the approval transaction level.</p> <hr/> <p>Note: This field is not visible when you adopt the Notification Composer feature. For more information on Notification Composer, see “Understanding Notification Composer” (Enterprise Components)</p> <hr/>

Notification Options

Identify the notification option or the combination of notification options you will be using.

Field or Control	Description
Enable Notifications	Select the Worklist check box to use the worklist notification.
Notification Strategy	<p>It allows the email to be processed immediately (<i>Online Processing</i>) or offline (<i>Offline Processing</i>) through NEM (Notification and Escalation Manager).</p> <hr/> <p>Note: Offline Processing does not work for Email approvals.</p> <hr/>
Use Email Approvals	Defines that you are going to use email approvals with workflow.
Form Generator Package Root	This package root reads the threads provided by the Form Generator Class, and creates a form from an existing email collaboration definition.
Form Generator Class Path	Calls the From Generator Class which receives a list of threads to be approved and a language code. This class returns a runtime class, which will add the appropriate recipients and send the emails.

Internal URL Definition

Use this section to define the internal URL to identify the URL base, portal and node. Internal URL is used to send email to a user either in batch or Integration Broker process. When the process is run online, the built-in properties %Portal and %Node are used.

External URL Definition

Use this section to define the external URL to identify the URL base, portal and node. External URL is used to notify any step that has a been set to *External*.

Default Approval Component

Identifies the default component that users should go to when selecting a worklist entry.

Field or Control	Description
Menu Name	Select the menu name that contains the component you want to register for the Worklist.
Approval Component	Select the component on which the approval is going to be based.

Approval Event Handler Class

Use this section to define the application class used to monitor events for this transaction. Each time an event occurs, the Approval Framework notifies the application. For applications to receive the notifications, application developers must extend the event handler class, ApprovalEventHandler.

When a transaction results in an action from the Approval Framework, the event handler class you specify how to proceed with the transaction.

The event handler base class defines the handler methods that you can override by extending classes. The extending class must have a no-argument constructor, since the system instantiates the class with no arguments.

This table explains some of the various event handler methods for which the system passes arguments to provide the specific context for each event, and gives examples of how an application, in this case PeopleSoft eProcurement, may act:

Event	Parameters	Possible Application Actions
PROCESS_LAUNCHED	<ol style="list-style-type: none"> Header record Approval Process Instance 	<ul style="list-style-type: none"> Disable edits of the application transaction. Display status information.

Event	Parameters	Possible Application Actions
HEADER_DENIED	Header record	<ul style="list-style-type: none"> Delete transaction. Disable resubmission. Log the event on the transaction, possibly highlighting previous denial if the system allows resubmission.
LINE_DENIED	Line-level record	Deduct the line amount from the header, and delete or otherwise deactivate the line item.
HEADER_APPROVED	Header record	<ul style="list-style-type: none"> Source the transaction if it's a requisition. Reimburse the employee if it's an expense report.
LINE_APPROVED	Line level record	Source the line item if it's configured for sourcing.
PROCESS_TERMINATED	Header record	Log the event on the application, possibly highlighting changes since the previous submission. This might be useful for approvers who acted on the previous submission of this request.
ALL_LINES_PROCESSED	Header record	<p>Note: The system calls this method only if the last stage is at the line-level, and the analyst has configured the process to trigger LINE_APPROVED end calls as individual lines are approved. The action the system takes depends on how the application developer defines the line sourcing. If the lines are sourced as they are approved, then nothing has to be done when all the lines are processed. This event is distinct from HEADER_APPROVED, and having a distinct notification simplifies the process.</p>

Field or Control	Description
Root Package ID	Select the parent application class through which events are exposed. This defines the action to take based on events.
Path	Select a path that uses a specific class within the root package.

See *PeopleTools: PeopleCode Developer's Guide*

See [Understanding Approval Framework Base Classes](#).

Approval Status Monitor

Use this section to control how the system processes ad hoc approvers. Any approver can add or remove ad hoc approvers.

Field or Control	Description
Adhoc Package	Select the ad hoc application class package that you want to use for ad hoc approvals.
Adhoc Class	Select the ad hoc application class path. Adding approvers and reviewers is handled by the class you define here. If no class is specified, then the system default class is used. If the transaction has further restrictions an application developer needs to create a class that will be defined here.
Thread Package	<p>The package here defines how the transaction details are displayed in the system in the status monitor. Behind the scene approvals are defined with a sequence number, this allows for a user friends display.</p> <hr/> <p>Important! Leave this field blank if the transaction is set up on the Configure Transactions page to send notifications to participants with a URL pointing to an alternate page other than the default destination (as specified in the Events section). For example, you might configure the transaction to generate a URL within each notification that takes an approver to the default component page to approve or deny any given request, and generate another URL for other participants to access a separate page (as specified for that group of users in the Notifications section) and perform other actions pertaining to the request. To ensure that the URLs are created correctly for all approval participants, do not enter a thread package.</p> <hr/>

Field or Control	Description
Thread Class	Enter the specific class within the thread description package and the worklist description that sets the display details.

Transaction Approval Levels

Use this section to define if the transaction is to be approved at the header or line level and what level the application supports.

Field or Control	Description
Level	Select <i>Header</i> or <i>Line</i> , which determines the levels that are enabled by the application for approvals. The first row will always be the header level.
Record (Table) Name	Select the database table that represents this transaction level.
Level Record Key Field Label IDs	Use this section to identify the label IDs that are used when viewing the Monitor Approvals page. All key field names appear for each record (table) name that is listed.

Configuring Approval Transactions

Use the Configure Transactions page to select and define elements that determine what triggers a notification, who receives the notification, and the content of the notification. Notifications are mapped to work with the approval transaction registry and include menus and components and SQL definitions.

Note: Oracle PeopleSoft delivers Notification Composer framework to manage the setup and administration of all notifications in one central location. Once you have adopted the Notification Composer feature, you must use it to create new notifications and manage your existing notifications. For more information about Notification Composer, see “Understanding Notification Composer” (Enterprise Components).

Pages Used to Configure Approval Transactions

Page Name	Definition Name	Usage
Configure Transactions Page	EOAW_TXN_NOTIFY	Use the Configuration Transactions page to configure how the system uses the particular implementation of approval triggers.

Configure Transactions Page

Use the Configure Transactions page (EOAW_TXN_NOTIFY) to configure how the system uses the particular implementation of approval triggers.

Navigation:

Enterprise Components > Approvals > Approvals > Approval Setup

This example illustrates the fields and controls on the Configure Transactions page.

Configure Transactions

Process ID AssetCostlUT

Ad Hoc Approver Options

*Approval User Info View PSOPRDEFNVW 🔍

Ad Hoc User List 🔍

Notification Options

☐ Send Email Approvals to All

Email Approval User List 🔍

*Delivery Method Inline - HTML Form ▾

☐ Perform Sent-To Security Check

User Utilities

User Utilities Package 🔍

User Utilities Path 🔍

Events

🔍 | ⏪ ⏩ 1 of 3 ▾ ▶▶ | [View All](#)

*Event On Final Approval ▾ *Level Header ▾ + -

Menu Name EOAWMA_MAIN_FL 🔍

Approval Component EOAWMA_MAIN_FL 🔍

Page Name EOAWMA_MAIN_FL 🔍

Menu Action Update ▾

SQL Object Identifier 🔍

Notifications

🔍 | ⏪ ⏩ 1-1 of 1 ▾ ▶▶ | [View All](#)

Main Template Details Push Notification Frequency ||▶▶

	*Participant	Worklist	Notification Name	Template Name		
1	▾	<input type="checkbox"/>	🔍	🔍	+	-

Use this page to select and define elements that determine what triggers a notification, who receives the notification, and the content of the notification. Notifications are mapped to work with the approval transaction registry and include menus and components and SQL definitions. The events for which the system sends notifications include:

- Launch of the approval process on a transaction.
- Queue of approval step to an approver.
- Queue of a review step to a reviewer.
- Denial of a line or header.
- Approval of a line or header.
- Completion of the approval process.

Recipients of notifications include requesters, approvers, and reviewers, who can receive their notifications through either worklist entries or email notification. When using email notifications, business analysts must create email templates.

Ad Hoc Approver Options

<i>Field or Control</i>	<i>Description</i>
Approver User Info View	Provides details about which view a user sees when using the Approval Monitor. Note: Data in this view dictates what is displayed in the approver links.
Ad Hoc User List	This is a filter used to display only a list of users who can be ad hoc approvers.

Notification Options

This section appears when the **Use Email Approvals** check box is selected for the Process ID on the Register Transactions page.

Field or Control	Description
Send Email Approvals to All	<p>Select to send emails to all the approvers. If you deselect this check box, enter a value in the Email Approval User List field to have the email sent to those defined on a list. This check box is selected by default.</p> <p>See Understanding HTML Email Approvals.</p> <hr/> <p>Note: All transactions are delivered with Use Email Approvals deselected.</p> <hr/>
Delivery Method	<p>Define whether you wish the users to receive their email approvals as text within the email, or as attachments. For email approvals, select the <i>Inline - HTML Links</i> option. The <i>Inline - HTML Links</i> value is provided by default.</p>
Perform Sent-To Security Check	<p>Deselect this check box when using email approvals. With this option deselected, the system will allow the approver to forward the email to other parties other than the intended approver.</p> <p>Select this check box to inform the system that you want it to verify the security of the person to whom the notification is sent and disallow forwarding of the email to other parties other than the intended approver.</p> <p>This check box is deselected by default.</p>

HTML Emails

This section is available only for transactions that use HTML email approvals.

Field or Control	Description
Data Source	<p>Lists the header and support records that the email template uses to display the transaction data.</p>
Email Processing Package and Email Processing Class	<p>Displays the application class used to modify the transaction data and email HTML prior to sending the email.</p>

Field or Control	Description
Allowed Actions	<p>Select the action links that should be available to the approver (s) within the approval request email.</p> <p>These actions are delivered as selected for most online approvals:</p> <ul style="list-style-type: none"> • Approve • Deny • Pushback (for selected transactions)
Edit Template	Click this button to access the Configure Transactions - Edit Template Page to modify the delivered transaction template.

User Utilities

User Utilities are the mechanism that the user changes to modify the behavior of delegation and reassignment.

Field or Control	Description
User Utilities Package	Select the parent application class through which alternate users are selected.
User Utilities Path	Select a path that uses a specific class within the root package.

Events

Use the events section to define event parameters to trigger workflow notification.

Field or Control	Description
Level	Select <i>Header</i> or <i>Line</i> to determine the level at which you want a notification sent for an event. For each of these events to be notified, you must select the level of the transaction.

Field or Control	Description
Event	<p>Select the event for which you want to send a notification. Participants will be notified when the selected event is triggered.</p> <p>Event values include:</p> <p><i>Ad Hoc Delete</i>: Send a notification when a step is removed from the approval process through the status monitor.</p> <p><i>Ad Hoc Insert</i>: Send a notification when a step is added to the approval process through the status monitor.</p> <p><i>Hold Step</i>: Send a notification when a thread is placed on hold.</p> <p><i>Locked Out</i>: Send a notification when the application workflow engine (AWE) encounters a user whose account has been locked out.</p> <p><i>No Approver Necessary</i>: Send a notification when a thread does not route because no approval is necessary.</p> <p><i>On Cancel</i>: Send a notification when a thread is cancelled.</p> <p><i>On Error</i>: Send a notification when a thread encounters a routing error.</p> <p><i>On Escalate</i>: Send a notification when a thread is escalated through the NEM process.</p> <p><i>On Final Approval</i>: Send a notification when a thread is approved and there are no more steps to process.</p> <p><i>On Final Denial</i>: Send a notification when a thread is denied and there are no more steps to process.</p> <p><i>On Process Launch</i>: Send a notification when an approval process is submitted.</p> <p><i>On Reactivate</i>: Send a notification when a step is reactivated for a thread. It is now recommended to not to use this value.</p> <p><i>On Reassign</i>: Send a notification when a thread is reassigned to a new approver. With an <i>On Reassign</i> event notification, AWE will create new worklist for the approvers that are reassigned to the transaction. For an <i>On Reassign</i> event, you can only configure an <i>Approvers</i> notification.</p> <p><i>On Step Complete</i>: Send a notification when a step no long has pending threads.</p> <p><i>On Terminate</i>: Send a notification when a thread is terminated.</p>

Field or Control	Description
	<p><i>Processing Complete:</i> Send a notification when an approval process is complete. It is now recommended to not to use this value.</p> <p><i>Push Back:</i> Send a notification when a thread is pushed back from one step to the prior step.</p> <p><i>Request Information:</i> Send a notification when the Request Information action is called by the application.</p> <p><i>Request Information Added:</i> Send a notification when a comment is added for a thread and that thread has been placed on hold.</p> <p><i>Route for Approval:</i> Send a notification when a thread is routed to an approver.</p> <p><i>Route for Review:</i> Send a notification when a thread is routed to a reviewer.</p> <hr/> <p>Note: The <i>Lock Out</i>, <i>On Process Launch</i>, and <i>Processing Complete</i> events are for header level only.</p> <hr/>
Menu Name	<p>Select the menu name that contains the component you want the notification recipient to link to. This identifies where the person should go upon notification. If you do not enter values, the recipient is sent to the same menu and component that is defined for the Worklist Approval component.</p> <hr/> <p>Note: This field is not visible when you adopt the Notification Composer feature. For more information on Notification Composer, see “Understanding Notification Composer” (Enterprise Components)</p> <hr/>
Approval Component	<p>Select the component you want to make available to the notification recipient.</p> <hr/> <p>Note: This field is not visible when you adopt the Notification Composer feature. For more information on Notification Composer, see “Understanding Notification Composer” (Enterprise Components)</p> <hr/>

Field or Control	Description
Page Name	<p>The page defined is the page approvers are redirected to from the URL sent within the email notification.</p> <hr/> <p>Note: This field is not visible when you adopt the Notification Composer feature. For more information on Notification Composer, see “Understanding Notification Composer” (Enterprise Components)</p>
Menu Action	<p>This is the action of the page users see when directed to the page from the URL sent within the email notification.</p> <hr/> <p>Note: This field is not visible when you adopt the Notification Composer feature. For more information on Notification Composer, see “Understanding Notification Composer” (Enterprise Components)</p>
SQL Object Identifier (structured query language object identifier)	Select the SQL definition identifier you want to use to get content for the email. The SQL must accept bind inputs equal to the number of keys at the notification level. For example, header or line keys.

Notifications

Use Notifications Section to define whom to notify and how the notification message should be composed.

Main Tab

Notifications

1-1 of 2

View All

Main
Template Details
Push Notification
Frequency

	Participant	Worklist	Notification Name	Template Name		
1	Approvers	<input type="checkbox"/>	<input type="text"/>	FluidDelegationApprove	<input type="text"/>	<input type="text"/>

Template Details Tab

Notifications

1-1 of 1



View All

Main
Template Details
Push Notification
Frequency

	Participant	Menu Name	Approval Component	Page Name	Menu Action	SQL Object Identifier	Priority		
1	Requester	<input type="text"/>	<input type="text"/>	<input type="text"/>	U	<input type="text"/>	2-Med	<input type="text"/>	<input type="text"/>

Push Notification Tab

Notifications





1-1 of 1
View All

Main | Template Details | **Push Notification** | Frequency | ||

	Participant	Message Set	Message Number	SQL Object Identifier	Exclude URL		
1	Requester ▼	<input type="text"/>	<input type="text"/>	<input type="text"/>	<input type="checkbox"/>	+	-

Frequency Tab

Notifications



1-1 of 1
View All

Main | Template Details | Push Notification | **Frequency** | ||

	Participant	Number of Hours	Max Notification		
1	<input type="text"/>	<input type="text"/>	<input type="text" value="1"/>	+	-

Field or Control	Description
Participant	<p>Define the user who is notified when this event takes place.</p> <ul style="list-style-type: none"> • <i>A-Delegate</i>: the approver that the approval was originally assigned to. • <i>A-Proxy</i>: the approver who performed the actual approval. • <i>Admin</i> • <i>Approvers</i> • <i>Dynamic</i>: uses the user list defined on the Time Out Options page. • <i>External</i> • <i>R-Delegate</i>: the person who created the request for someone else. • <i>R-Proxy</i>: the person who requested the transaction to be created. • <i>Requester</i> • <i>Reviewers</i> • <i>User List</i>: uses the user list defined on the User List Definition Page. <hr/> <p>Note: If both R-Proxy and Requester are configured, only R-Proxy will get notifications. Similarly, if A-Proxy and Approvers are configured, then only A-Proxy will get notifications.</p> <hr/>
Worklist	<p>Select this check box to include the worklist along with the notification.</p>
Notification Name	<p>Enter the required notification name. The prompt displays only the AWE Notification names.</p> <hr/> <p>Note: The notification name defined in the event level overrides the PeopleTools notification name given in the approval transaction level.</p> <hr/> <p>Note: This field is not visible when you adopt the Notification Composer feature. For more information on Notification Composer, see “Understanding Notification Composer” (Enterprise Components)</p> <hr/>

Field or Control	Description
Notification Event	<p>Enter the AWE notification event, which is defined in Notification Composer.</p> <hr/> <p>Note: This field is only visible when you adopt the Notification Composer feature. For more information about Notification Composer, see “Understanding Notification Composer” (Enterprise Components)</p> <hr/>
Template Name	<p>Select the generic template you want to use for the email content of this notification. You define the contents of the email using the Generic Template page.</p> <p>See Generic Template Definition Page.</p>
Menu Name, Approval Comment, Page Name, Menu Action, and SQL Object Identifier	<p>All of these fields have the same definition as the corresponding fields in the Events section of this page.</p>
Number of Hours	<p>Enter a number that determines how many hours between notifications.</p>
Message Set, Message Number, SQL Object Identifier, and Exclude URL	<p>Enter the message set, Message number and the SQL Object Identifier for the notification. SQL Object Identifier has the same definition as in the Events section of this page.</p> <hr/> <p>Note: Message Set and Message Number cannot be empty if the Push Notification channel is selected. If Exclude URL is selected, the component approval URL will not be attached to the push notification.</p> <hr/>
Number of Hours	<p>Enter a number that determines the maximum waiting time for the notification. If the approver does not take action, an escalation is sent to the person defined by the Participant value.</p> <p>Individual transactions determine their own timeout periods. For instance, the JobOpening transaction might time out after 2 hours, but the JobOffer transaction may time out after 1 hour.</p>
Max Notification (maximum notification)	<p>Enter a number that determines the maximum number of notifications sent. If the approver does not take action, an escalation is sent to the person defined by the Participant value.</p>

Defining Notification Templates and Users for Approval Framework

Defining Notification Templates for Approval Framework

This section discusses how to enter generic template definitions.

Note: Oracle PeopleSoft delivers Notification Composer framework to manage the setup and administration of all notifications in one central location. Once you have adopted the Notification Composer feature, you must use it to create new notifications and manage your existing notifications. For more information about Notification Composer, see “Understanding Notification Composer” (Enterprise Components).

Pages Used to Define Notification Templates for Approval Framework

<i>Page Name</i>	<i>Definition Name</i>	<i>Usage</i>
<u>Generic Template Definition Page</u>	WL_TEMPLATE_GEN	Enter generic template definitions.

Generic Template Definition Page

Use the Generic Template Definition page (WL_TEMPLATE_GEN) to enter generic template definitions.

Navigation:

PeopleTools > Workflow > Notifications > Generic Templates

This example illustrates the fields and controls on the Generic Template Definition page. You can find definitions for the fields and controls later on this page.

Generic Template Definition

Blackberry Email Responses

Template:

HC_TL_EE_PAY_APPROVED

*Description:

Payable Time Approved

Instructional Text:

Type names or email addresses in the To, CC, or BCC fields, using a semi-colon as a separator. Click LOOKUP RECIPIENT to search for a name. Click DELIVERY OPTIONS to view or change the

Priority:

2-Medium

*Sender:

User

Email ID:

Subject:

Payable time approved for payment

Message Text:

This message is to notify you that your payable time for the date: %5 approved for payment. <p> To access the page, click on the following link to view the transaction: %1. This is a system-generated email. Do not reply to this email.

Below is the list of available variables for this template.

You can use template variables within your subject or message text.

The following variables can also be used:

%Date, %DateTime, %Time, %ServerTimeZone, %EmailAddress, %NotificationPriority, %NotificationToList, %NotificationCCList

Template Variables

*Value	*Description		
%1	URL (provided by AWE)	+	-
%2	EMPLID	+	-
%3	EMPL_RCD	+	-
%4	JOB TITLE	+	-
%5	DATE	+	-

You use generic templates to establish common formats for ad hoc notifications.

For approvals, the first bind variable is used to store the URL that appears in the email.

For more information, see product documentation *PeopleTools: Workflow Technology*.

Note: The %NotificationToList and %NotificationCCList template variables are not available for Approval Framework

Defining Users for Approval Framework

This section discusses how to define users for approval framework.

Pages Used to Define Users for Approval Framework

Page Name	Definition Name	Usage
User Profiles - Roles Page	USER_ROLES	Attach workflow roles to users.
User Profiles - Workflow Page	USER_WORKFLOW	Define workflow for user profiles.
User List Definition Page	EOAW_USER_LIST	Define user lists.

User Profiles - Roles Page

Use the User Profiles - Roles page (USER_ROLES) to attach workflow roles to users.

Navigation:

PeopleTools > Security > User Profiles > User Profiles > Roles

This example illustrates the fields and controls on the User Profiles - Roles page. You can find definitions for the fields and controls later on this page.

Role Name	Description	Dynamic	View Definition
Account Administrator	Account Administrator	<input type="checkbox"/>	Route Control View Definition
Account Manager	Account Manager	<input type="checkbox"/>	Route Control View Definition
Advisor Admin	Advisor Admin	<input type="checkbox"/>	Route Control View Definition
Advisor IT	Advisor IT Setup	<input type="checkbox"/>	Route Control View Definition
Advisor User	Advisor User	<input type="checkbox"/>	Route Control View Definition
CRM Dashboard Imple	CRM Dashboard Implementer	<input type="checkbox"/>	Route Control View Definition
CRM Dashboard User	CRM Dashboard User	<input type="checkbox"/>	Route Control View Definition
EOPP_USER	Common Portal User	<input type="checkbox"/>	Route Control View Definition
FSI Administrator	FSI Administrator	<input type="checkbox"/>	Route Control View Definition
FSI Agent	FSI Agent	<input type="checkbox"/>	Route Control View Definition

Use this page to attach workflow roles to users. A role is a class of users who perform the same type of work, such as clerks, buyers, or managers. A role describes how people fit into workflow.

Role user IDs determine how to route worklist items to users and how to track the roles that users play in the workflow.

Field or Control	Description
Role Name	Select a role to assign to this user. Role users are the people who participate in automated business processes.
Dynamic	<p>Appears if the definition of this role is dynamic. This value is driven by PeopleSoft PeopleCode. Dynamic users can obtain membership in a role programmatically. You can run a batch process that executes predefined role rules and assigns roles to user profiles according to these rules. This approach is called dynamic membership, and users who become role users of a particular role programmatically are dynamic role users.</p> <p>Static role users, on the other hand, obtain their membership through an administrator adding a role to their user profile manually.</p>
Route Control	<p>Select to access the User Route Control Profiles page, where you can select a route control profile for the workflow.</p> <p>The PeopleSoft Workflow Administrator enables you to define route controls. For example, suppose you want to route requisitions to different buyers, depending on which vendor supplies the ordered items, which business unit is requesting the items, and which department needs the items. You can define a route control for each factor—vendor ID, business unit, and department—and specify a range of values for each buyer.</p> <hr/> <p>Note: Not used with eProcurement Approval Framework.</p> <hr/>
View Definition	Select to access the Roles - General page, where you can change the role name definition. You can also view the user ID of the role member to ensure that you selected the appropriate definition for inclusion in the role.

User Profiles - Workflow Page

Use the User Profiles - Workflow page (USER_WORKFLOW) to define workflow for user profiles.

Navigation:

PeopleTools > Security > User Profiles > User Profiles > Workflow

This example illustrates the fields and controls on the User Profiles - Workflow page. You can find definitions for the fields and controls later on this page.

GeneralIDRolesWorkflowAuditLinksUser ID Queries

User ID: BCLANG
Description: Clang,Barbara

Workflow Attributes

Alternate User ID:
From Date:
To Date:
Supervising User ID: CC587

Routing Preferences
☒ Worklist User
☒ Email User

Reassign Work

☐ Reassign Work To:

Total Pending Worklist Entries: 0

Use this page to define alternate users who are part of the workflow process. You can define alternate users to handle approvals during the absence of the primary approver and supervisor.

Field or Control	Description
Alternate User ID	<p>Select a user to receive worklist items when this user ID is temporarily unavailable. In situations where the current role user is unavailable, the system automatically forwards the current role user's new work items to the specified alternate role user. The system doesn't reassign items already in the user's worklist.</p> <hr/> <p>Note: For workflows that are built using the Approval Framework, if the current role user is unavailable for assignment, the system checks for a alternate user recursively until it either creates a cycle or finds a valid substitute. In other words, the system sends routings down multiple levels of alternate user IDs if necessary. For example, suppose that user A specifies user B as his alternate user, and user B specifies user C as his alternate user. If both user A and user B are out of the office the same time, the system sends workflow routings originally intended for user A to user C.</p> <hr/>
From Date and To Date	<p>Enter a date range when the current user ID is not going to be available. The system uses these values to forward routings to the alternate user.</p>

Field or Control	Description
Supervising User ID	<p>Select the user ID of this user's supervisor. The system uses this value when forwarding information to the user's supervisor and uses the PERSONAL_DATA record to determine the supervisor.</p> <hr/> <p>Note: If you're using PeopleSoft Human Capital Management (PeopleSoft HCM) applications, this field shouldn't appear. If it does, you must set your workflow system defaults.</p> <hr/>
Worklist User	Select to indicate that this role user can receive approval routings. Clear the check box if the user is not a PeopleSoft user. You can select Worklist User , Email User , or both.
Email User	Select to specify that this role user can receive email. Clear the check box if email is not available.
Reassign Work To	This option is not used in Approval Framework. It will reassign the worklist, but not the underlying data in Approval Framework.

User List Definition Page

Use the User List Definition page (EOAW_USER_LIST) to define user lists.

Navigation:

Enterprise Components > Approvals > Approvals > User List Setup

This example illustrates the fields and controls on the User List Definition page. You can find definitions for the fields and controls later on this page.

User List Definition

User List

*Description

User List Source

☐ Role
☐ SQL Definition
☐ Query
☒ Application Class

Root Package ID

Application Class Path

☒ Include Users as Input
☒ Transaction Keys as Input

User List Attributes

Personalize Find					First	1 of 1	Last
	Attribute Name	Attribute 1	Attribute 2				
1	<input type="text"/>	<input type="text"/>	<input type="text"/>	<input type="button" value="+"/>	<input type="button" value="-"/>		

Use this page to define user sources for use with steps in the approval process. The PeopleSoft product delivers a set of default user list roles corresponding to the roles within an organization.

When you select a user list source type, you must also select a corresponding value. You can add a new user list or change a current list.

Note: You can only select one user list source for a user list.

Note: The SQL Definition, Query, and Application Class user list sources are dynamic, and can use input values to help identify users.

<i>Field or Control</i>	<i>Description</i>
Role	Select to use a role as the source for this user list. A role is a list of users who perform the same type of work, such as buyers or managers. Each role has a set of parameters that determine the limits of the role in the organization and in the workflow process.
SQL Definition (structured query language definition)	Select to use an SQL definition as the source for this user list. The SQL must return OPRID field.

Field or Control	Description
Query	Select to use a query as the source for this user list. When a source is defined as a query, the system determines who should receive a work item based on the field values on the page that triggers the routing.
Application Class	Select to use an application class as the source for this user list. When you select an application class, the system passes the originator of the transaction and then determines the approver for that originator. For subsequent approval steps, the system passes the approver from the previous step.
Include Users as Input	Select to indicate that the system uses the originator of a transaction as the first step in each path. For subsequent steps in each path, the system uses the approver from the previous step. This field is not available when the User List Source is User List.
Transaction Keys as Input	Select to have the system base the approval routing on transaction keys. Transaction keys are key fields in a database table. System actions depend on the approval level at which a user list is being used. If the approval is at the header level, the system uses transaction record keys from the header record. This field is not available when the User List Source is User List.
User List Attributes	This section is only available when the User List Source is Application Class. Note: UserList Attributes are used for application class User Lists and Route Control is used for role based user lists.

Route Attributes

If User List Source is Role, the Route Attributes section is displayed. This option enables the Route Control filters.

Field or Control	Description
Route Control Profile	Select the route control profile to use.

<i>Field or Control</i>	<i>Description</i>
Record Name	Record the user passes in that stores the values used in the route control.
	Note: Route control checks against fields, Approval Framework needs to know which record contains the field.
Route Control Type	Route control attribute.
	Note: Route control attribute is defined on the User Profile Roles page in the route control link.
Field Name	Field on the record mapped to the attribute.

Defining Dynamic Approvals

Understanding Dynamic Paths

To use dynamic approvals, create one approval step that determines a list of approvers without setting up every step individually within the path.

Workflow processes are defined in stages, paths, and steps. The system looks at the stage to determine if the trigger for the workflow is recognized at the header or line level. Within each stage, there is a minimum requirement of one path. The path contains steps, which define the workflow triggers and the action to take if the criteria is met. Without dynamic paths, the administrator creates a step for every possible approver. With dynamic workflow, the administrator creates a single path where the system uses a user list for the approval hierarchy.

Note: When self-approval is used and the transaction creator is on the list of authorized approvers, that role is counted as one approval.

Related Links

[User List Definition Page](#)

Understanding Dynamic Approval Authorizations

PeopleSoft applications can define Approval Framework paths to be either static or dynamic. Static path approvals define every approval in step-by-step fashion. Dynamic approvals enable you to create a single step that systematically identifies every potential approver, searches to find out if that approver has enough authority to complete the approval, and creates a visual path for users to view of all necessary approvers in the process. You can configure a dynamic path allowing supervisor roles to approve or deny a transaction, and stop the approval path when the system has determined that all criteria has been satisfied. The administrator creates a user list that the system uses to select the appropriate supervisory approvers for a transaction and then checks for authorization. The dynamic path takes the prior approver into consideration.

To configure the dynamic approval authorization, the administrator must:

- Define user lists.
- Create an approver authorization.
- Define a dynamic approval path.

Two keys to creating approval authorizations for dynamic paths are the system's ability to:

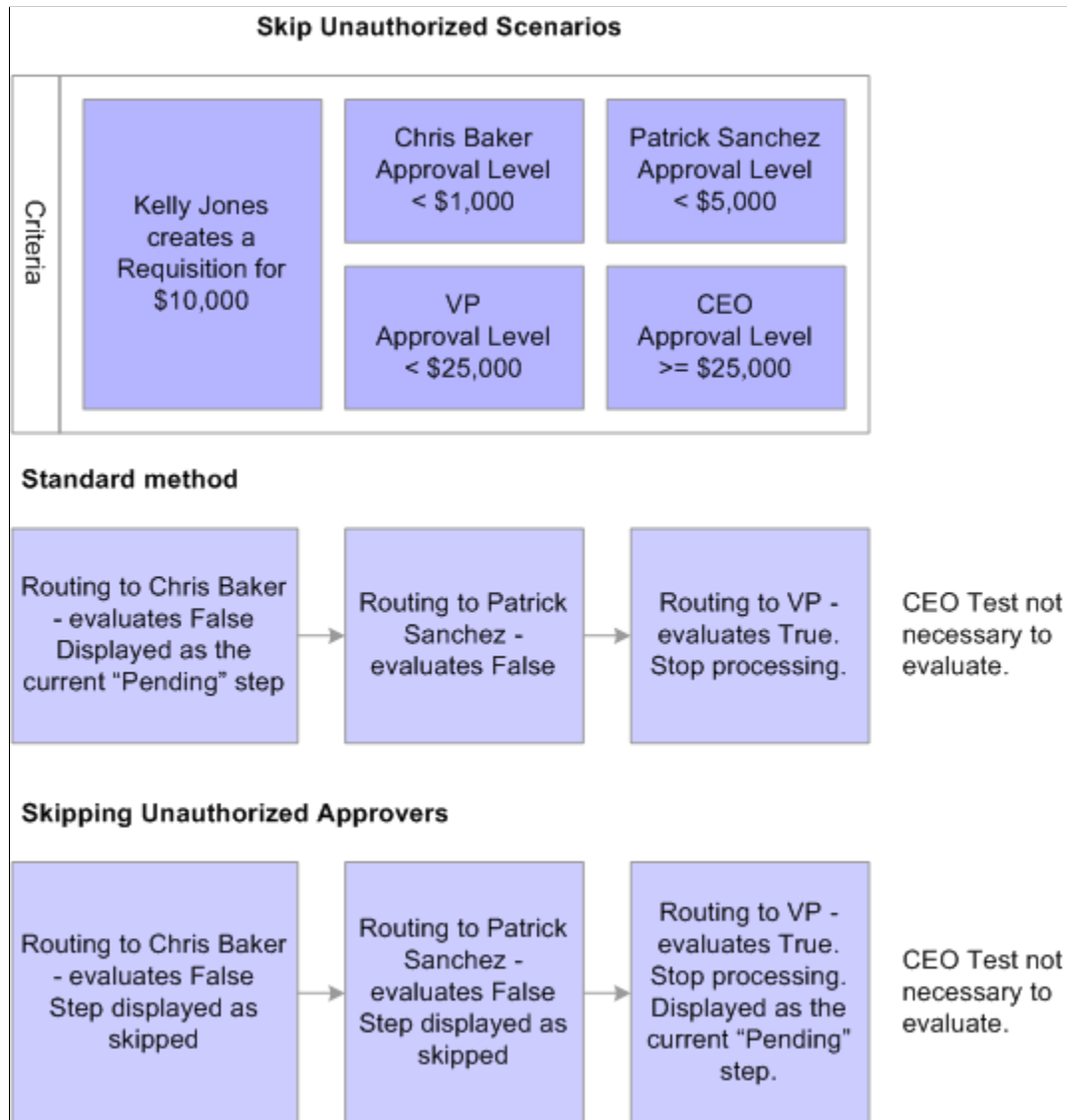
- Check authorizations.

- Skip unauthorized users.

The system looks at the user list and the approval authorization to determine which users are required to complete the authorization. The system displays the non-required users as a skipped step instead of a pending step in the event that **Skip Unauthorized** is selected.

This diagram illustrates an example of a workflow routing setup for the standard method and a workflow routing that skips unauthorized users:

Diagram illustrating an example of a workflow routing setup for the standard method and a workflow routing that skips unauthorized users.



In the example, the criteria for the workflow approval path is set up for Chris Baker to have approval authority for less than 1,000.00 USD, Patrick Sanchez to have authority for less than 5,000.00 USD, VP to have approval for less than 25,000.00 USD, and CEO to have approval for a requisition equal to or more than 25,000.00 USD.

Kelly Jones creates a requisition for 10,000.00 USD.

If the system is not set up to skip unauthorized users, the system displays Chris Baker, Patrick Sanchez, and the VP as pending steps in the approval path.

If the system is set up to skip unauthorized users, the system displays the approval path with the VP as the only listed approver, and will display Chris Baker and Patrick Sanchez as skipped.

Related Links

[User List Definition Page](#)

Understanding Approval Authorizations

You can identify the approval authorization by role or user in conjunction with a dynamic step. To accomplish this, the Approval Framework selects the appropriate supervisory approver from the user list and verifies that the approver meets the criteria for authorization.

You establish approval authorizations for each transaction. The authorization can accommodate approvals by role or user ID.

You can set authorization across **Definition IDs**, which are defined on the Setup Process Definition page.

For each authorization, the system checks the specific user ID to see if that individual can authorize the transaction. If found, it checks the authorization criteria. If criteria are met, the user has authorization.

If no authorization is found for a specific user ID, then the system looks for role-based authorizations using the approval hierarchy.

For approval hierarchy, the system first looks for authorization by Definition ID. If no authorization is found, the system then seeks authorization for rows without a Definition ID. If no authorization approval criteria is matched, the system process is deemed Not Authorized.

You can establish dynamic authorizations for either the header or line level, but not both.

When workflow is initiated for a change order or requisition, the system compares the approval authorization data to the user list to verify the approval process. To verify the approval, the system:

1. Checks the user list and assigns the first approver to the first user that is returned.
2. Looks at the roles that are established for the user ID.
3. Identifies the approval limits that are set for that user ID.
4. Routes the requisition status to the first approver if the amount is satisfied for the requisition and the approver list is complete.
5. Continues to look for additional approvers until all conditions are met.
6. Routes the approval to the administrator if the approver criteria is never met.

Related Links

[User List Definition Page](#)

Defining Dynamic Approvals

This topic discusses how to define dynamic approvals.

Pages Used to Define Dynamic Approvals

<i>Page Name</i>	<i>Definition Name</i>	<i>Usage</i>
<u>Approval Authorization Page</u>	EOAW_AUTH	Authorize roles and approvers for dynamic paths.
Criteria Definition	EOAW_CRITERIA	Click the Criteria link on the Approval Authorization page. Define criteria for the workflow approver.
<u>Setup Process Definitions Page</u>	EOAW_PRCs_MAIN	Define approval process stages.
<u>Approval Path Definition Page</u>	EOAW_PATH_SEC	Click the Path Details button or the Details link on the Setup Process Definitions page. Set up workflow approval paths.
<u>User List Definition Page</u>	EOAW_USER_LIST	Set up list of users for workflow approval.
User Profile - General	USER_GENERAL	PeopleTools > Security > User Profiles > User Profiles > General Set up user IDs and assign roles.

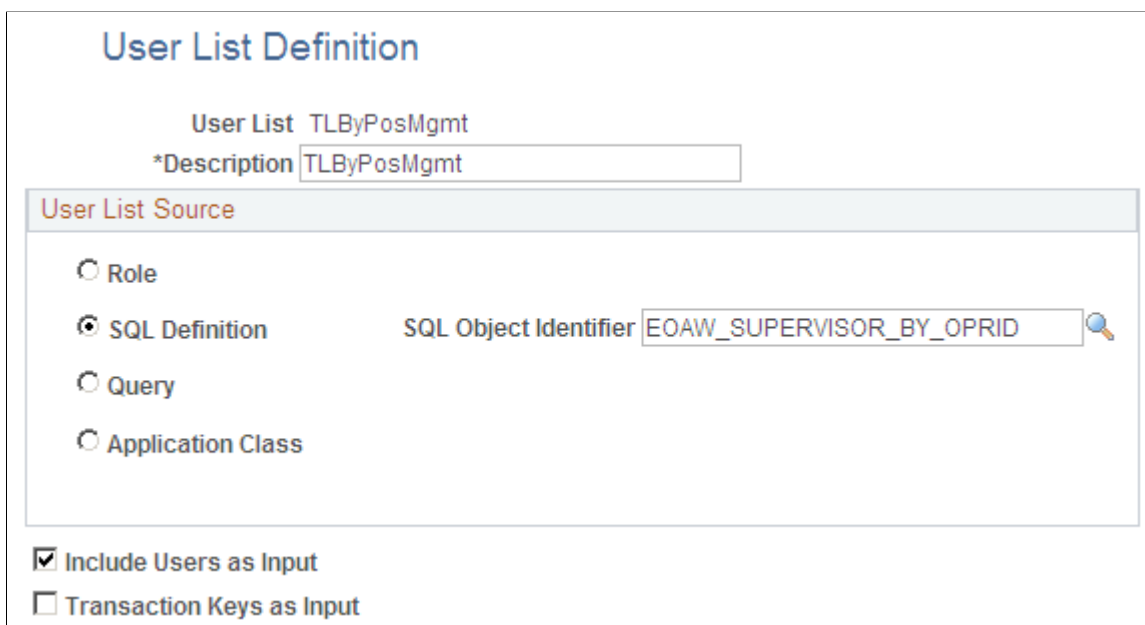
User List Definition Page

Use the User List Definition page (EOAW_USER_LIST) to set up list of users for workflow approval.

Navigation:

Enterprise Components > Approvals > Approvals > User List Setup

This example illustrates the fields and controls on the User List Definition page. You can find definitions for the fields and controls later on this page.




User List Definition

User List TLByPosMgmt

*Description TLByPosMgmt

User List Source

☐ Role
☒ SQL Definition SQL Object Identifier EOAW_SUPERVISOR_BY_OPRID 
☐ Query
☐ Application Class

☒ Include Users as Input
☐ Transaction Keys as Input

Related Links

[User List Definition Page](#)

Approval Authorization Page

Use the Approval Authorization page (EOAW_AUTH) to authorize roles and approvers for dynamic paths.

Navigation:

Enterprise Components > Approvals > Approvals > Authorize Approvers

This example illustrates the fields and controls on the Approval Authorization page. You can find definitions for the fields and controls later on this page.

Approval Authorization

Process ID FormApproval

Approval Authorization Find | View All First 1 of 1 Last

Effective Date 06/10/2013 Status as of Effective Date Active

Criteria Definition					Personalize Find View All 1-4 of 4 Last
Definition ID	Role Name	User ID	Criteria	Self-Approval Criteria	
FormApproval	EOMW_APPROVER		Criteria	Self-Approval Criteria	+ -
FormApproval	FORM_ADMIN		Criteria	Self-Approval Criteria	+ -
FormApproval	FORM_TO_CI_DEVELO		Criteria	Self-Approval Criteria	+ -
FormApproval	Facilities Administrator		Criteria	Self-Approval Criteria	+ -

If you don't specify a Definition ID, the authorization is generic. To create an approval authorization for specific definition IDs, you must add a line for each Definition ID.

Select either a role name or User ID. For each role or user, you can configure the criteria and self-approval criteria, using the links provided.

Note: If you activate self-approval on the Approval Authorization page, it replaces the self-approval on static path steps.

Approval Path Definition Page

Use the Approval Path Definition page (EOAW_PATH_SEC) to set up workflow approval paths.

Navigation:

Click the **Path Details** button or the **Details** link on the Setup Process Definitions page.

This example illustrates the fields and controls on the Approval Path Definition page. You can find definitions for the fields and controls later on this page.

Approval Path Definition

Criteria

Approval Path1

*Step SourceDynamic

DescriptionAbs Mgmt By Supervisor Id

Long Description

Notify Admin on No Approvers

Skip Prior Steps for Requester

Check Authorization

Skip Unauthorized Users

Timeout Options

1-1 of 1

	*Escalate Option	Hours	Days	Reassign To	User List	Use Proxy			
1	Notify Participan						+	-	

OK

Cancel

Field or Control	Description
Step Source	Select <i>Dynamic</i> for a dynamic approval path.
Notify Admin on No Approvers (notify administrator on no approvers)	Select to indicate that the administrator is to be notified if the system does not find an approver for the path. This option is only available when the step source is <i>Dynamic</i> .
Skip Prior Steps for Requester	Select to indicate that if one of the approvers in this path is also the requester, then the system is to skip all steps in the path prior to that approver's step.
Check Authorization	Select to enable the approval authorization. The data set up in Authorize Approvers component is used.
Skip Unauthorized Users	Select to enable the approval process to skip users within the user list if the system determines that they can't satisfy all of the criteria for approval. This field works in conjunction with the field Check Authorization.

Note: When creating criteria within the path that will trigger the approval process to activate, be certain that you set up the final approver as *Greater Than* so that no gaps occur.

Copyright © 1988, 2025, Oracle and/or its affiliates.

89

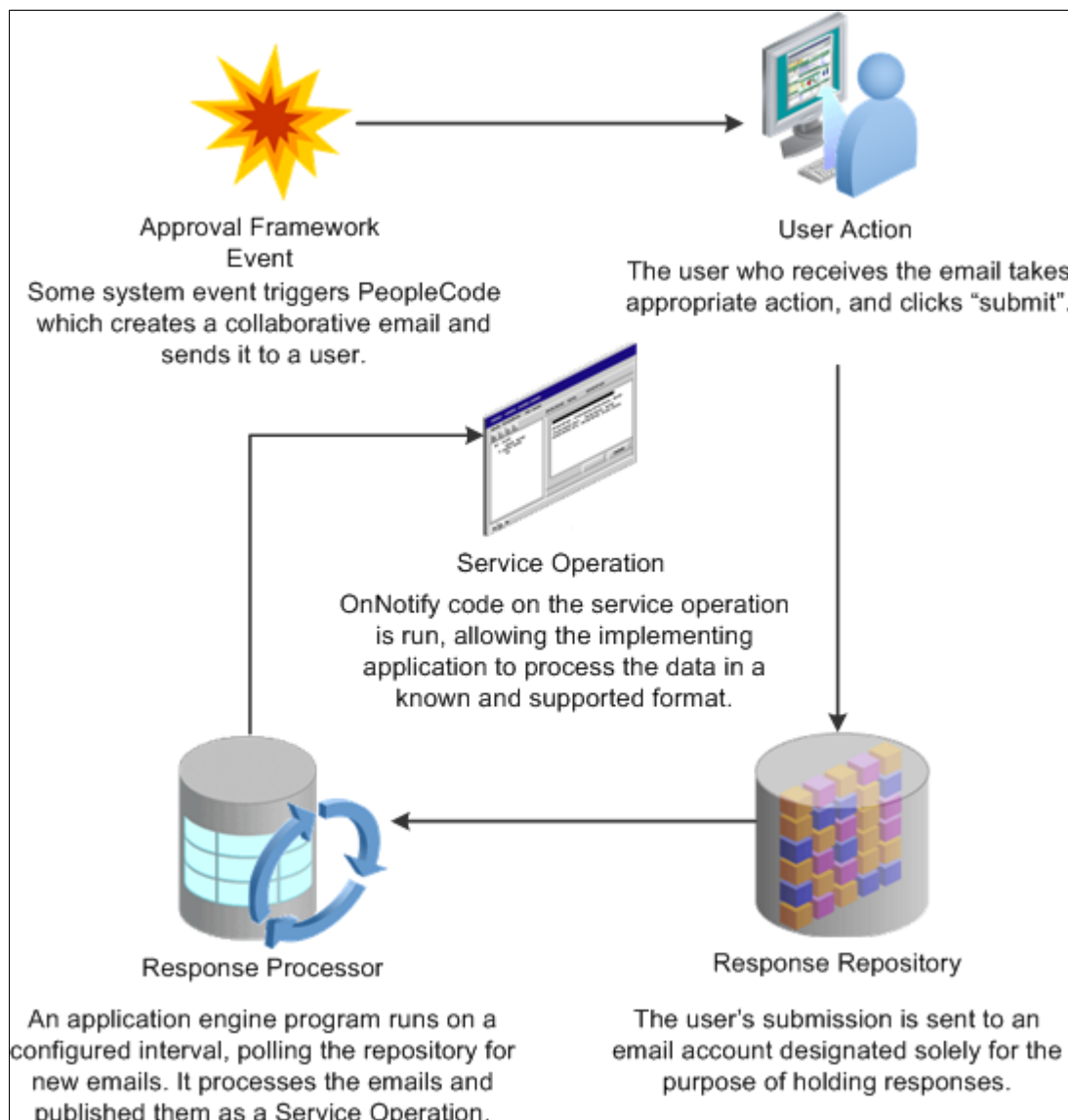
Using Email Collaboration

Understanding Email Collaboration

The Email Collaboration Framework (EMC) allows applications to send, receive, and process emails with interactive content. You can send an HTML form to a user, and they do not need to log into their system to perform tasks.

This diagram shows the email collaboration flow:

Diagram showing the email collaboration flow.



1. A system event triggers PeopleSoft PeopleCode, which creates a collaborative email and sends it to a user.
2. The user who receives the email takes appropriate action and clicks **Submit**.
3. The user's submission is sent to an email account that is designated for holding responses.
4. An application engine program runs on a configured interval, polling the repository for new emails.
It processes the emails and publishes them as service operations.
5. The service operation runs, allowing the implementing application to process the data in a known and supported format.

Email Collaboration Support Matrix

This table covers the general email clients supported for email collaboration.

<i>Client</i>	<i>Inline Link Support</i>	<i>Inline Form Support</i>	<i>Attachment Support</i>	<i>Enhanced Attachment Support</i>
Email clients for Laptop and Desktop —				
The availability or non-availability of Attachment Support or Enhanced Attachment Support means when the item can be attached in the mail can be opened and saved correctly.				
Outlook 2007 <hr/> Note: Outlook 2007 uses an internal tool to render the HTML. The actionable fields (buttons, check boxes, and so on) are rendered as text.	Y	N	Y	Y
Outlook 2010 Outlook 2010 uses an internal tool to render the HTML. The actionable fields (buttons, check boxes, and so on) are rendered as text.	Y	N	Y	Y
Outlook 2013	Y	N	Y	Y
Thunderbird	Y	Y	Y	Y

Client	Inline Link Support	Inline Form Support	Attachment Support	Enhanced Attachment Support
<p>Common Email Web clients —</p> <p>The HTML actions are controlled by the web clients. They might circumvent the form submission calls that are in the HTML client. Here, Y- means the submission will still call the local email client installed, while Y means the submission will be generated by the response email directly by the web client. For attachments, you may need to download the attachment prior to opening.</p>				
Outlook.com (formerly Hotmail)	Y-	N	Y	Y
Gmail	Y	N	Y	Y
Note: Similar to Hotmail.				
Yahoo	Y	N	Y	Y
Note: Similar to Hotmail.				
<p>Web Browsers —</p> <p>The Web Browsers listed here are only for opening the attachment in these browsers. Support or not support means whether the content displays correctly in these browsers and whether the submission call can work.</p>				
Internet Explorer (IE) 9	N/A	N/A	N	Y
Internet Explorer (IE) 10	N/A	N/A	N	Y
Internet Explorer (IE) 11	N/A	N/A	N	Y
FireFox	N/A	N/A	Y	Y
Chrome	N/A	N/A	Y	N
Email client in mobile devices				
iOS	Y	Y	N	N

Client	Inline Link Support	Inline Form Support	Attachment Support	Enhanced Attachment Support
Android	N	N	N	N
Windows Mobile	Y	N	N	Y

Setting Up Email Collaboration

To set up email collaboration, you need to:

- Set up the PSFT_EMG_GETMAIL node.
- Create Integration Broker message.
- Create Integration Broker service operation.
- Define EMC forms, EMC Layout and fields mapping.
- Update an Approval Process notification option.
- Schedule the application engine program EOAWEMC.

Setting Up the PSFT_EMG_GETMAIL Node

Email collaboration uses the Integration Broker framework to retrieve new emails from the response repository. The node PSFT_EMG_GETMAIL is used to retrieve these emails. Integration Broker must be configured and pub/sub must be enabled.

See *PeopleTools: Integration Broker Administration*, Administering Messaging Servers for Asynchronous Messaging.

Pages used to Set Up the PSFT_EMG_GETMAIL Node

Page Name	Definition Name	Usage
Node Definitions	IB_NODE	PeopleTools > Integration Broker > Integration Setup > Nodes Set up the PSFT_EMG_GETMAIL node.
Node Properties	IB_NODEPROP	Click the Properties link on the Node Definitions page. Modify the node properties required for email collaboration to function.

Setting Up the PSFT_EMG_GETMAIL Node

To set up the PSFT_EMG_GETMAIL node:

1. Access the Node Definitions page (**PeopleTools** > **Integration Broker** > **Integration Setup** > **Node Definitions**), activate the *PSFT_EMG_GETMAIL* node.
2. Click the **Properties** link to access the Node Properties page.
3. Enter the email address of the email repository in the **EMC_REPOSITORY_EMAILADDRESS** property.
4. Enter the email address to hold reply emails in the **EMC_REPLYTO** property.

Note: Do not enter the same e-mail address for **EMC_REPOSITORY_EMAILADDRESS** and **EMC_REPLYTO**.

5. (Optional) On the Node Properties page, enter appropriate values (email address) for these properties to automatically send a copy of all collaborative emails to the address specified:
 - **EMC_BCC_LIST**
 - **EMC_CC_LIST**
6. Access the Connector page.

This node uses the GETMAILTARGET target connector. You will need to configure the GETMAILTARGET properties.

See *PeopleTools: PeopleSoft MultiChannel Framework*, Configuring the Email Channel, Configuring PeopleSoft Integration Broker for the Email Channel.

Note: If you want to delete mails after reading them, You need to provide a mail server that supports IMAP4 folders. This feature does not support POP3 protocol.

7. Save the node.

Defining Message and Service Operation

This section provides discusses how to:

- Define Integration Broker message.
- Define service operation.

Pages Used to Define Message and Service Operation

<i>Page Name</i>	<i>Definition Name</i>	<i>Usage</i>
Message Definition	IB_MESSAGE_BUILDER	PeopleTools > Integration Broker > Integration Setup > Messages > Message Definition Define a message.
Services	IB_SERVICEDEFN	PeopleTools > Integration Broker > Integration Setup > Services > Services Define or update a service.
Service Operation Definition - General	IB_SERVICE	PeopleTools > Integration Broker > Integration Setup > Service Operations > General Define or update a service operation.
Service Operation Definition - Handler	IB_SERVICEHDLR	PeopleTools > Integration Broker > Integration Setup > Service Operations > Handler Specify handler name, the handler type, and the implementation method for the handler.
Handler Details	IB_SERVICEHDLR_SEC	Click the Details link on the Service Operation Definition - Handler page. Specify the handler details.

Defining Integration Broker Message

The Integration Broker message created for EMC needs to be a rowset-based message that includes the EMC records listed in this table:

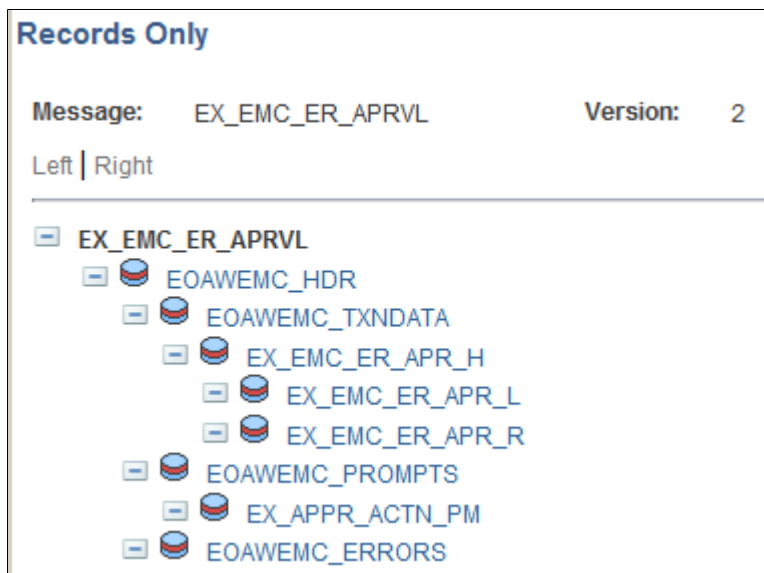
<i>Record</i>	<i>Level</i>	<i>Description</i>
EOAWEMC_HDR	0	Header record for EMC.
EOAWEMC_TXNDATA	1	Transactional data record for EMC.

Record	Level	Description
EOAWEMC_PROMPTS	1	Prompting record for EMC. Application will add records for the specific prompt action.
EOAWEMC_ERRORS	1	Error record for EMC.

The application transaction record structure is added at level 2 under EOAWEMC_TXNDATA.

This example shows the Record Only view for a message created to approve expense reports. In this example, the application records that contain transactional data start with EX_EMC.

This example illustrates the fields and controls on the Records Only view of a message used for EMC. You can find definitions for the fields and controls later on this page.



Defining Service

All service operations must be associated with one or more services. You can create a new service operation for an existing service or create a new service with which to associate your service operation.

See *PeopleTools: PeopleSoft Integration Broker*, Managing Services, Adding and Configuring New Service Operations for Services.

Defining Service Operation

You will need to create an asynchronous one-way service that uses the EMC message structure.

Note: The service operation must have the same name as the message.

See *PeopleTools: PeopleSoft Integration Broker*, Managing Service Operations, Adding Service Operation Definitions.

You will also need to create an application class that will process the EMC form, to be used as the handler.

The application class created to process inbound subscriptions needs to extend the EOAW_EMC:API:emailFormManager and EOAW_EMC:utils classes.

When creating this object, you will need to pass it 2 parameters:

1. Your full instantiated and populated service operation.
2. The language code of the user(s) that will receive this email.

Note: EMC engine will handle transaction of things like field labels , however you will need to translate any values contained within your message yourself.

See [Understanding EMC Classes](#).

EMC Runtime-Inbound

EMC inbound processing takes all the values retrieved from the user's submission and merges them with the values sent out to the user (overriding outbound values with inbound values). It then inserts those values into the same service operation used to define your form, and publishes it. You will need add a piece of subscription code to catch the published message and process the data.

Using the utils class method getErrorCodesRS(), you can get a list of error codes inserted by the EMC engine while the inbound message was being processed. The list of codes is as follows:

Error Code	Description
0	No Error.
1	Duplicate Response Received - The user submitted the form more than once.
2	Sent-To Check Failed - The user to whom the email was sent is not the user from whom the response was received. Keep in mind when dealing with this error that some users have more than one email alias.
3	Invalid date value error.
4	Invalid number value error.

The fields in the error codes rowset are ERROR_CODE, ROW_PATH, RECNAME, FIELDNAME, and RECEIVED_VALUE. Not all fields are used for all errors, though. ROW_PATH, RECNAME and FIELDNAME for instance are only used when an invalid date or number value is received.

Defining and Mapping EMC Forms

This section provides an overview of EMC forms.

Pages Used to Define and Map EMC Forms

Page Name	Definition Name	Usage
Form Element Designer Page	EOAWEMC_ELEMENTS	Define metadata used as system data when you deliver an email collaboration.
Form Layout Designer Page	EOAWEMC_LAYOUT	Define the layout of the email.
Field Mapping Page	EOAWXLAT_SYMBOL	Map field values to the form.

EMC Forms

EMC allows applications to send, receive and process emails with interactive content. The EMC forms are created based on service operations. The service operation defines the messages structure and the handler necessary to process the EMC forms.

Form Element Designer Page

Use the Form Element Designer page (EOAWEMC_ELEMENTS) to define metadata used as system data when you deliver an email collaboration.

Navigation:

Enterprise Components > Approvals > Email Collaboration > EMC Form

To create a new form:

1. Select the Add a New Value page.
2. Enter the Message name.

Note: The message name must be the same as the service operation name.

Upon entering this component, a grid will auto-populate with all of the fields in your message definition , except those that are part of the EMC required records and any that are not marked *include* in your message definition.

<i>Field or Control</i>	<i>Description</i>
Rebuild List	If you change your message definition, use this button to regenerate the field list. Changes are not automatically updated. This will also remove any Form Layout Definitions associated with this message.
Element Type	Select the element type.
Label ID	Label ID prompts against a field's list of available labels. If you leave this field blank, the field will appear on your form without a label.

Element Types

This table lists the valid element types:

<i>Element Type</i>	<i>Description</i>
Blank	A value may be stored in this field by the application, however it will not be transmitted in the email form, and thus may be used to store sensitive data.
Input	Will be represented as a standard text input field.
Output	Will be represented as plain text. This will be the application developers method for providing contextual data to the user.
Secret	Similar to an input field, however it provides superficial security, as the contents of the field appear as a set of masked characters, such as bullets, asterisks, question marks, and so on.
Select	This type of field may be represented in one of two ways: check boxes or multi-select boxes. It gives the user the ability to select multiple values for a single field.
Select1	<p>Similar to the Select, it may be represented in multiple ways: radio buttons or drop-down lists. It gives the user the ability to select a single value for a field from a list of available values.</p> <hr/> <p>Note: While radio buttons are available as a design option, some email servers do not enforce mutual exclusion of radio button selections in HTML.</p> <hr/>

<i>Element Type</i>	<i>Description</i>
Textarea	This field type gets represented as a long edit box, useful for areas where longer strings of text must be entered or displayed to the user.

Form Layout Designer Page

Use the Form Layout Designer page (EOAWEMC_LAYOUT) to define the layout of the email.

Navigation:

Enterprise Components > Approvals > Email Collaboration > EMC Layout

The layout rules are fairly rigid on this page. Grids will be automatically created for each new level and fields may not move outside their current grid. Inserting a line break at the header level has the expected result of simply wrapping information to a new line. Should the line break be inserted inside a grid, however, the effect will be like having a “special grid row.” That is, the fields after the line break will not be shown as grid columns, but rather as label:field, as in level 0.

On this page, you can change grid labels, field sizes, and number of columns for check boxes and radio buttons. You can also add line breaks and move fields up or down.

Use the Preview button to see a preview of your form layout.

Field Mapping Page

Use the Field Mapping page (EOAWXLAT_SYMBOL) to map field values to the form.

Navigation:

Enterprise Components > Approvals > Email Collaboration > Field Mapping

This example illustrates the fields and controls on the Field Mapping page. You can find definitions for the fields and controls later on this page.

Field Name EOAWEMC_ELEM_TYPE				
Personalize Find View All First 1-6 of 6 Last				
*Field Value	Long Name	Symbolic Name	Content Name	
1 I	Input	input		+ -
2 O	Output	output		+ -
3 S	Secret	secret		+ -
4 M	Select	select		+ -
5 N	Select1	select1		+ -
6 T	Textarea	textArea		+ -

Use the field mapping page to define values for fields that are used with drop-down lists in your form.

Triggering Email Collaboration

This section provides an overview of HTML email approvals and discusses how to trigger email collaboration.

Pages Used to Trigger Email Collaboration

<i>Page Name</i>	<i>Definition Name</i>	<i>Usage</i>
URL Maintenance Page	URL_TABLE	Identify the URL for the transaction.
Register Transactions Page	EOAW_TXN	Create and update the transaction registry.
Configure Transactions Page	EOAW_TXN_NOTIFY	Configure how a specific approval process uses email notification options.
Configure Transactions - Edit Template Page	EOAW_EML_TEMPLATE	Edit transaction templates for email approvals.
Recurrence Definition Page	PRCSRECURDEFN	Define how often you want the process scheduler to run processes.
Application Engine Request Page	AE_REQUEST	Set up the Request AE for EOAWEMC.
Email Addresses Page	USER_EMAIL	Modify email addresses.

Understanding HTML Email Approvals

The PeopleSoft Approval Workflow Engine (AWE) enables you to take action on approval requests directly from an email (for example: approve, deny, pushback, enter comments, or other AWE actions). It also provides the functionality of sending notifications to approvers when a requestor submits a transaction for approval. Notifications serve as a reminder to the approver to act upon the request and, unlike the approval email, the approver will need to log into the PeopleSoft classic pages to approve or deny the request.

Video: [PeopleSoft 9.2 HTML Email Approvals](#)

The HTML Email Approval feature delivers HTML email templates for some of the key PeopleSoft HCM transactions. This table lists these transactions, with their corresponding process IDs:

<i>Transaction</i>	<i>Transaction Process ID</i>
Job Opening	JobOpening
Job Offer	JobOffer

Transaction	Transaction Process ID
Absence Request	AbsenceManagement
Extended Absence Request	AM_Extended_Abs
Promote Employee	PromoteEmployee
Transfer Employee	TransferEmployee
Reporting Change	ReportingChgEmployee
Performance Document	PerformanceManagement
Allocate Compensation	ApproveCompensationProposals

Configuring and Managing HTML Email Approvals

The Enterprise Components AWE framework supports the HTML email approvals as delivered. However, after the AWE framework is enabled, you will need to perform the following steps to ensure your system will use this functionality according to your business needs:

1. Identify the URL of the web server running on your HCM instance that will appear within the email using the [URL Maintenance Page](#).
2. Enable HTML email approvals for your transactions on the [Register Transactions Page](#).
3. Review the transaction template to ensure it meets your organization's requirements on the [Configure Transactions Page](#).
4. Run the AE process EOAWEMC periodically to process the approval action emails sent by approvers.

Note: The EOAWEMC process updates the approval status for the approver(s) and will route the approval request to the next person in the approval chain, if applicable. We recommend that you add a recurrence to the process to have it run as often as necessary so that approval responses are handled in a timely manner.

The Approval Email Request Layout

Although each approval email may vary slightly based on the transaction type, these sections are common to all approval request emails:

- Email summary line – identifies the type of transaction that is awaiting your approval.
- A detail or summary section – provides various details about the approval request without having to access the PeopleSoft classic pages.
- An Approval History grid – displays the name of the current approver with a status of Pending. It will also list those that have already responded to the transaction. This grid does not show the approval chain, which consists of approvers that are in the queue to approve.
- A Comments grid – displays comments, if any.

- Action links – lists the Approve and Deny action links. The email may also display other actions, such as Push Back, Request More Information, and Hold, depending on the configuration of the transaction in AWE. The approver can respond (e.g.-approve or deny) directly from the email by clicking a link, which then generates a reply.
- A link to view the transaction request online.

A detail or summary section – provides various details about the approval request without having to access the PeopleSoft application.

- A note indicating if a job opening is associated with multiple positions or job codes.
- Additional information for transfers and reporting changes.
- A Job Offer Components grid to view a person's compensation offer
- The Absence Request Detail grid and requestor comments for extended absence requests.
- An Absence Balances grid and disclaimer statement for absences.

URL Maintenance Page

Use the URL Maintenance page (URL_TABLE) to define the URL for the transaction.

Navigation:

PeopleTools > Utilities > Administration > URLs > URL Maintenance

This example illustrates the fields and controls on the URL Maintenance page

URL Maintenance

URL Identifier: HTML_EMAIL_APPROVAL

*Description:

*URLID:

Comments:

URL Properties

This page is used to determine a URL for many transactions such as email notifications, attachments, and so on.

Set the URL to the URL base of the web server. The user can then use this URL to navigate back into the system to access the PIA, if necessary

Register Transactions Page

Use the Register Transactions page (EOAW_TXN) to register the approval transaction.

Navigation:

Enterprise Components > Approvals > Approvals > Approval Registry

This example illustrates the fields and controls on the Register Transactions page. You can find definitions for the fields and controls later on this page.

Register Transactions

Process ID

PromoteEmployee

*Description

Promotion Transaction Approval

Owner ID

eProfile Manager Desktop

*Cross Reference Table

HR_PROMOTE_XREF

Worklist Prefix

Notification Options

Enable Notifications

☒ Email
 ☒ Worklist
 ☐ Push

*Notification Strategy

Online Processing

Use Email Approvals:

☒

Form Generator Package Root

EOAW_EMAIL_APPROVAL

Form Generator Class Path

emailFormGenerator

Internal URL Definition

Internal URL Base

HTML_EMAIL_APPROVAL

Internal Portal Name

EMPLOYEE

Internal Node Name

HRMS

External URL Definitions

URL Appending Parameters

Default Approval Component

Approval Event Handler Class

Approval Status Monitor

Transaction Approval Levels

[Expand/Collapse All](#)

For more information about additional fields on this page, see [Register Transactions Page](#).

Notification Options

<i>Field or Control</i>	<i>Description</i>
Use Email Approvals	<p>Select this check box to use email Approvals functionality.</p> <p>See Understanding HTML Email Approvals.</p> <hr/> <p>Note: All transactions are delivered with Use Email Approvals deselected.</p> <hr/>
Form Generator Package Root	<p>Enter the package name that contains the class that contains the form generator application class for this transaction, or use the Lookup button to search for and select one.</p> <p>The <i>EOAW_EMAIL_APPROVAL</i> value is provided by default as the package name to support email approvals.</p>
Form Generator Class Path	<p>Enter the application class path that contains the form generator application class for this transaction, or use the Lookup button to search for and select one.</p> <p>The <i>emailFormGenerator</i> value is provided by default as the application class path to support email approvals.</p>

Internal URL Definition

The following values are provided by default to support HTML email approvals:

<i>Field or Control</i>	<i>Description</i>
Internal URL Base	Displays <i>HTML_EMAIL_APPROVAL</i> as the URL base.
Internal Portal Name	Displays <i>EMPLOYEE</i> for the portal name..
Internal Node Name	Displays <i>HRMS</i> as the node name.

Application Class for Form Generator

The application class for the form generator must be an extension of *EOAW EMC:API:formGeneratorBase*. When the approvals engine determines that it needs to send out an email approval, it will create an instance of the class you specify on this page. It will pass to it 2 parameters:

- *&threads* as array of *EOAW_CORE:ENGINE:Thread* - This is an array of Approval Engine Threads.

- &userID as String - The user id of the individual receiving the email.

The base class provided takes the parameters passed in and makes them protected properties. Immediately after instantiating your object, the approvals engine will call the only method defined in the base class: returnEFM(). In this method you should take the threads and userid, create an instance of the emailFormManager, and return it. The approvals engine will then call the sendEmails() method on the object you return.

Configure Transactions Page

Use the Configure Transactions page (EOAW_TXN_NOTIFY) to configure how a specific approval process uses email notification options.

Navigation:

Enterprise Components > Approvals > Approvals > Approval Setup

This example illustrates the fields and controls on the Configure Transactions page when it includes the Notification Options section.

Configure Transactions

Process ID PromoteEmployee

Ad Hoc Approver Options

*Approval User Info View

Ad Hoc User List

Notification Options

☒ Send Email Approvals to All

Email Approval User List

*Delivery Method

☐ Perform Sent-To Security Check

HTML Emails

Data Source		Personalize	Find	View All			First	1-2 of 2	Last
	Record Name								
1	<input type="text" value="HR_PROMAPHST_V"/>								
					Level				
					Support				
2	<input type="text" value="HR_PROMO_DTL_V"/>								
					Header				

Email Processing Package

Email Processing Class

Allowed Actions

☒ Approve
 ☒ Deny
 ☐ Pushback
 ☐ Hold
 ☐ Request Information

[Edit Template](#)

This example illustrates the fields and controls on the Configure Transactions page when it includes the Notification Options section.

The screenshot displays the 'Configure Transactions' page with the 'Notification Options' section expanded. The 'User Utilities' section at the top shows 'User Utilities Package' as 'HCSC_USER_UTILITIES' and 'User Utilities Path' as 'UserUtilities'. The 'Events' section includes fields for '*Event' (On Final Denial), '*Level' (Header), 'Menu Name' (ROLE_MANAGER), 'Approval Component' (HR_PROMOTE_VW), 'Page Name' (HR_PROMOTE_EE), 'Menu Action' (Update), and 'SQL Object Identifier' (HR_PROMOTE_STEP_DENY_EML_BIN). The 'Notifications' section has tabs for 'Main', 'Template Details', 'Push Notification', and 'Frequency'. The 'Main' tab is active, showing a table with one row for 'R-Delegate' with checkboxes for 'User', 'Email', 'Worklist', and 'Push', and a 'Template Name' field set to 'HR_STEP_DENY_SINGLE'.

Use this component to select and define elements that determine what triggers an email request, who receives it, and the content of the email.

The Notification Options section is only available if the *Use Email Approvals* check box is selected for this transaction on the Transaction Registry page.

For more information about additional fields on this page, see [Configure Transactions Page](#).

Notification Options

This section appears when the **Use Email Approvals** check box is selected for the Process ID on the Register Transactions page.

Field or Control	Description
Send Email Approvals to All	<p>Select to send emails to all the approvers. If you deselect this check box, enter a value in the Email Approval User List field to have the email sent to those defined on a list. This check box is selected by default.</p> <p>See Understanding HTML Email Approvals.</p> <hr/> <p>Note: All transactions are delivered with Use Email Approvals deselected.</p> <hr/>

Field or Control	Description
Delivery Method	Define whether you wish the users to receive their email approvals as text within the email, or as attachments. For email approvals, select the <i>Inline - HTML Links</i> option. The <i>Inline - HTML Links</i> value is provided by default.
Perform Sent-To Security Check	<p>Deselect this check box when using email approvals. With this option deselected, the system will allow the approver to forward the email to other parties other than the intended approver.</p> <p>Select this check box to inform the system that you want it to verify the security of the person to whom the notification is sent and disallow forwarding of the email to other parties other than the intended approver.</p> <p>This check box is deselected by default.</p>

HTML Emails

This section is available for transactions that use HTML email approvals.

Field or Control	Description
Data Source	Lists the header and support records that the email template uses to display the transaction data.
Email Processing Package and Email Processing Class	Displays the application class used to modify the transaction data and email HTML prior to sending the email.
Allowed Actions	<p>Select the action links that should be available to the approver (s) within the approval request email.</p> <p>These actions are delivered as selected for most online approvals:</p> <ul style="list-style-type: none"> • Approve • Deny • Pushback (for selected transactions)
Edit Template	Click this button to access the Configure Transactions - Edit Template Page to modify the delivered transaction template.

Configure Transactions - Edit Template Page

Use the Configure Transactions – Edit Template page (EOAW_EML_TEMPLATE) to edit transaction templates for email approvals. Click the Edit Template button on the Configure Transactions page.

Configure Transactions - Edit Template page (1 of 2)

Configure Transactions

Process ID JobOpening

Subject Job Opening for %HRS_JOBOPEN_VW.POSTING_TITLE% is awaiting your approval

Priority

Error Set Number 18081 Error Message Number 5704

Body:

Job Opening for %HRS_JOBOPEN_VW.POSTING_TITLE% is awaiting your approval

Job Posting Title	%HRS_JOBOPEN_VW.POSTING_TITLE%
Job Opening ID	%HRS_JOBOPEN_VW.HRS_JOB_OPENING_ID%
Target Openings	%HRS_JOBOPEN_VW.OPENINGS_TARGET%
Location	%HRS_JOBOPEN_VW.DESCR4%
Department	%HRS_JOBOPEN_VW.DESCR5%
Desired Start Date	%HRS_JOBOPEN_VW.DESCR20%
Hiring Manager	%HRS_JOBOPEN_VW.NAME_DESCR%
Recruiter	%HRS_JOBOPEN_VW.NAME_DISPLAY%
Job Type	%HRS_JOBOPEN_VW.XLATLONGNAME%
Job Code	%HRS_JOBOPEN_VW.DESCR50_1%
Job Family	%HRS_JOBOPEN_VW.DESCR40%

Configure Transactions - Edit Template page (2 of 2)

Body:

Format Normal (...) Font Arial Size 12 B I U [Source](#)

Job Code	%HRS_JOBOPEN_VW.DESCR50_1%
Job Family	%HRS_JOBOPEN_VW.DESCR40%
Position Number	%HRS_JOBOPEN_VW.DESCR45%
Company	%HRS_JOBOPEN_VW.DESCR50_HR1%
Business Unit	%HRS_JOBOPEN_VW.DESCR50%
Job Creation Date	%HRS_JOBOPEN_VW.DESCR25%
Employee(s) Being Replaced	%HRS_JOBOPEN_VW.DESCR254%

Approval History

Name	Status	Status Date
%HRS_JO_APHST_VW.NAME_DISPLAY%	%HRS_JO_APHST_VW.DESCR%	%HRS_JO_APHST_VW.DESCR2
%HRS_JOBOPEN_VW.DESCR_COMMENTS_HIS%		
%COMMENT%		
%ACTION%		

[View Job Opening](#)

Note: The values on this page are configured to support HTML email approvals.

Click the Source button in the RTE toolbar to enter or modify the HTML source. The values between the % symbols map to the header and support record(s) as configured in the Data Source grid on the [Configure Transactions Page](#). The %COMMENT% and %ACTION% elements correspond to the Comments grid and Action links that are inserted in the email prior to sending.

Scheduling the Application Engine Program EOAWEMC

To schedule the application engine program EOAWEMC:

1. (Optional) Access the Recurrence Definition page (**PeopleTools** > **Process Scheduler** > **Recurrences**), and specify an interval for the process scheduler recurrence.
2. Select **PeopleTools** > **Process Scheduler** > **Processes** for the application engine program EOAWEMC and up the process definition.
3. Access the Process Definition Option page and specify the process schedule server and the recurrence.

See *PeopleTools: Process Scheduler*, Defining PeopleSoft Process Scheduler Support Information, Defining Process Definitions.

Email Addresses Page

Use the Email Addresses page (USER_EMAIL) to modify email addresses.

Navigation:

PeopleTools > Security > User Profiles > User Profiles > General



Select the **Edit Email Addresses** link on the User Profiles - General page.



To update your own email address, select System Profile.




This example illustrates the fields and controls on the Email Addresses page. You can find definitions for the fields and controls later on this page.

Email Addresses

User ID: VP1

Personalize | Find | View All |  

First  1 of 1  Last

Primary Email Account	Email Type	Email Address		
<input checked="" type="checkbox"/>	Business 	peoplesoft@peoplesoft.com		

Using EMC Classes

Understanding EMC Classes

EMC classes provide the functions to send and retrieve email approvals. They are included in the application package EOAW_EMC.

EmailFormManager Class

This class provides the utility methods to send collaborative emails.

EmailFormManager Class Methods

This section describes the public methods of interest to application developers for emailFormManager, in alphabetical order.

addRecipient

Syntax

addRecipient(&emailAddress, &userID)

Description

Users added via this method will be allowed to act on the email form.

Parameters

<i>Parameter</i>	<i>Description</i>
&emailAddress	Email address, as string. Required.

<i>Parameter</i>	<i>Description</i>
&userID	User ID, as string. Optional.

Returns

None.

addCC

Syntax

addCC(&emailAddress)

Description

Email addresses added via this method will be copied on every email sent out.

Parameters

<i>Parameter</i>	<i>Description</i>
&emailAddress	Email address, as string. Required.

Returns

None.

addBCC

Syntax

addBCC(&emailAddress)

Description

Email addresses added via this method will be blind copied on every email sent out.

Parameters

<i>Parameter</i>	<i>Description</i>
&emailAddress	Email address, as string. Required.

Returns

None.

addAttachment

Syntax

addAttachment(&filePath, &filePathType, &fileName, &fileTitle)

Description

Adds an attachment to be sent along with the email.

Parameters

<i>Parameter</i>	<i>Description</i>
&filePath	A string consisting of the complete path to the file and the filename itself.
&filePathType	A number representing type of file path used in first parameter. Use tools system variables such as %FilePath_Relative.
&fileName	A string representing the name of the file being attached.
&fileTitle	A string consisting of the title of the file. The titles appear near the attachment icons in place of the fully qualified filename.

Returns

None.

sendEmails

Syntax

sendEmails(&sentToCheckOnReturn)

Description

Does the actual send of the email once all other information is ready.

Parameters

<i>Parameter</i>	<i>Description</i>
<code>&sentToCheckOnReturn</code>	If set to true, the EMC will verify that the user to whom the email was sent is the same as the user who sent the response. If this is not true, an error will be inserted into the error stack allowing the implementing application to handle it as they see fit.

EmailFormManager Class Properties

This section describes the emailFormManager class properties.

inlineText

Description

A string of text that the user will see if the deliveryMethod property is set to inline but their mail client does not support HTML emails. A default is provided. inlineText and attachmentText will never be delivered in the same email.

attachmentText

Description

A string of text that the user will see if the deliveryMethod property is set to attachment. This text will generally be used as instructional text telling them to detach the html form and submit it. A default is provided. inlineText and attachmentText will never be delivered in the same email.

subject

Description

The subject of the email to be sent. Default is *PeopleSoft Collaborative Email Routing*. Keep language considerations in mind when using this property.

submitMessage

Description

A string of text that the user will see if the deliveryMethod property is set to inline but their mail client does not support HTML emails. A default is provided. inlineText and attachmentText will never be delivered in the same email.

from

Description

The name of the person or account sending this email.

fromEmail

Description

The email address of the person or account sending this email.

replyTo

Description

The address users should reply to if there is a problem. This defaults to the same email address that form responses are fielded from.

prependText

Description

Use this variable to include any text you would like inserted before the form being emailed.

appendText

Description

Use this variable to include any text you would like inserted after the form being emailed.

deliveryMethod

Description

Specifies whether to send the emails as inline html or attachments. Attachments will include a better user interface as the browser used to view the html attachment is likely to support more JavaScript and DHTML than email clients like Lotus Notes. Valid values are *I* for Inline and *A* for attachment.

EOAW_EMC:utils Class

This class contains methods that support the main functionality of EMC.

EOAW_EMC:utils Class Methods

This section describes utils class methods.

getAppRS

Syntax

getAppRS(&msgRS)

Description

This method provides a single point from which to retrieve the applications rowset from the message definition rowset, as the message definition should have the application rowset starting at level 2. Given the rowset object representing your entire message, this rowset will return just the part of the overall rowset representing your transaction.

Parameters

<i>Parameter</i>	<i>Description</i>
&msgRS	The rowset object representing your entire message.

Returns

Rowset.

getErrorCodesRS

Syntax

getErrorCodesRS(&msgRS)

Description

This method provides a single point from which to retrieve the error codes rowset from the message definitions rowset.

Parameters

<i>Parameter</i>	<i>Description</i>
&msgRS	The rowset object representing your entire message.

Returns

Rowset.

getPromptsRS

Syntax

getPromptsRS(*&msgRS*)

Description

This method provides a single point from which to retrieve the prompts rowset from the message definition's rowset, as the message definition should have the prompts rowset starting at level 2.

Parameters

<i>Parameter</i>	<i>Description</i>
<i>&msgRS</i>	The rowset object representing your entire message.

Returns

Rowset.

getRowFromPath

Syntax

getRowFromPath(*&startingRS*, *&path*, *&createIfNull*)

Description

This method is useful for error processing. When your message expects a date or number field to be returned by the user, but the EMC cannot cast the value it gets back into one of those data types, it will put an error code in the exceptions stack. Along side that code in the stack, will be a row path. A row path is the path you need to follow to get to a specific row in a rowset. It follows the format (n)SCROLLNAME[(n)...] where n is a row number and SCROLLNAME is the name of the record comprising the rowset you want to retrieve in that row. When you get an error of one of these 2 types, you can call this method, passing in your message rowset, the rowpath in the error stack, and *false*. You will be returned the exact row where the error occurred (the name of the record and field are also in the error stack).

Parameters

<i>Parameter</i>	<i>Description</i>
<code>&startingRS</code>	The rowset from which to start searching for a row, as rowset.
<code>&path</code>	Path to the desired row, as string. Syntax - (n) [SCROLLNAME(n)...] where n is the row in the scroll preceding it. The rowset preceding the first n is <code>&startingRS</code> .
<code>&createIfNull</code>	If set to true, the method will insert as many rows as necessary to retrieve the row successfully. If set to false and the row is not present, an exception will be thrown.

Using the Notification and Escalation Manager

Understanding Notification and Escalation Manager

Notification and Escalation Manager (NEM) is a mechanism used to process notifications and escalations on a specified interval.

For example, escalations are used when an approver has not responded within a specified time period to a transaction that is pending approval. You can specify the time period (timeout) and you can specify alternate approvers to whom to notify and escalate the approval for further action. Timeout Options are defined at both the Approval Path Definition page and the Approval Definition page. The path is now designed to override what is at the Process Definition level. This way you can define Timeout options for the entire process (instead of having to go to each path). If you have a path that is different, you can override at the path level.

Pages Used to Set Up the Notification and Escalation Manager

<i>Page Name</i>	<i>Definition Name</i>	<i>Usage</i>
<u>Event Type Page</u>	EOAW_NEM_EVENTS	Associate events to a server.
<u>Notification and Escalations Page</u>	EOAW_NEM_SETUP	Set up an escalation event and define the evaluation and action details.
Event Status Page	EOAW_NEM_STATUS	Check status of notification.
<u>Escalations Calendar Setup page</u>	EOAW_CALENDAR	Define a custom calendar which can be used to define the timeout options in the Approval Process Setup page.

Event Type Page

Use the Event Type page (EOAW_NEM_EVENTS) to associate events to a server.

Navigation:

Enterprise Components > Approvals > Notification and Escalations > Events

This example illustrates the fields and controls on the Event Type page. You can find definitions for the fields and controls later on this page.

Event Type

APPROVAL ACTIVITY EMAIL

Server Name

PSNT

Event Types

Description

Offline email processing for notification events triggered by the event handler

Field or Control	Description
Event Type	Select an event type. PeopleSoft applications deliver some event types, such as <i>ESCALATION_EVENT</i> and <i>APPROVALACTIVITYEMAIL</i> .
Server Name	Select the server on which to run the notification.

Notification and Escalations Page

Use the Notification and Escalations page (EOAW_NEM_SETUP) to set up an escalation event and define the evaluation and action details.

Navigation:

Enterprise Components > Approvals > Notification and Escalations > Notifications and Escalations

This example illustrates the fields and controls on the Notification and Escalations page. You can find definitions for the fields and controls later on this page.

Event ID

APPROVALACTIVITYEMAIL

*Event Type

APPROVAL ACTIVITY EMAIL

☒ Active

Event Types

Description

Offline email processing for notification events triggered by the event handler

Recurrence

15 Min

Repeat Time

*Evaluation Type

PeopleCode

Package

EOAW_EMAIL

Class

EmailEvaluation

*Action Type

PeopleCode

Package

EOAW_EMAIL

Class

EmailSender

Field or Control	Description
Event Type	The server information that was entered on the Event Type page.
Event Types Description	The value entered in the Description field on the Events Type page.
Active	Select to enable the escalation process.
Recurrence	Enter a time interval at which to run the evaluation process.
Repeat Time	Enter a time period to limit the number of times the action step is run.
Evaluation Type	<p>Select a method for evaluation. Possible values are:</p> <ul style="list-style-type: none"> • <i>PeopleCode</i>: Select if you are using a custom application package or class written using PeopleSoft Application Designer. • <i>Query Object</i>: Select if you are using a query set up using the PeopleSoft Query Manager tool. • <i>SQL View</i>: Select if you are using a record object created using the PeopleSoft Application Designer. <hr/> <p>Note: For escalations, the evaluation type should be <i>SQL View</i>.</p> <hr/>
Name	Displays the name of the query object or SQL view, depending on which is selected as the evaluation type.
Action Type	<p>Select an action:</p> <ul style="list-style-type: none"> • <i>PeopleCode</i>: Select if you are using a custom application package or class written using the PeopleSoft Application Designer. • <i>Email</i>: Enter an email address and notification template. <hr/> <p>Note: For escalations, the action type should be <i>PeopleCode</i>.</p> <hr/>
Package	<p>Select the application package that contains the escalation utility.</p> <hr/> <p>Note: For escalations, the package should be <i>EOAW_CORE</i>.</p> <hr/>
Class	For escalations, select <i>Escalator</i> .

Escalations Calendar Setup page

Use the Escalation Calendar page (EOAW_CALENDAR) to define a custom calendar which can be used to define the timeout options in the Approval Process Setup page

Navigation:

Enterprise Components > Approvals > Notification and Escalations > Escalations Calendar Setup

This example illustrates the fields and controls on the Escalation Calendar page. You can find definitions for the fields and controls later on this page.

Escalation Calendar

Calendar ID WorkDays

*Description

Working Days

☒ Monday
 ☒ Tuesday
 ☒ Wednesday
 ☒ Thursday
 ☒ Friday
 ☐ Saturday
 ☐ Sunday

Working Time

*Start Time
☐ All Day
 *End Time

Field or Control	Description
Calendar ID	Enter a unique id for your calendar. When this field is not blank, The Timeout calculation will be based on the Calendar ID. When this field is blank, the timeout calculation will be based on the 24 hours, 7 days and will use the original functionality.
Description	Provide a description for the calendar
Working Days	Select the working days. The escalation timeout option will refer this to determine the timeout. At least 1 day should be selected.
Working Time	Select the working time. The escalation timeout option will refer this to determine the timeout. if All Day is chosen, then working hours will be taken as 24 hours.

Using the Approval Monitor

Understanding the Approval Monitor

The Approval Monitor gives administrators a view into all approvals to which they have access, as well as the ability to take necessary actions on pending approvals. Administrators are provided access to Approval Transactions based on the Role defined as System Administrator on the Approval Process Definition page. Actions available for the administrator are:

Term	Definition
Reassignment	Allows the system administrator to reassign pending approvals to a new approver based on search criteria.
Approve	Allows the administrator to act on behalf of the assigned approver. The approval is initiated for a specific user, wherever that user may be pending within a specific transaction. Once the administrator takes action, the approval resumes the approval process.
Denial	Allows the administrator to act on behalf of the assigned approver. The denial is initiated for a specific user, wherever that user may be pending within a specific transaction.
Ad Hoc	Allows the administrator to add a reviewer or approver to a specific transaction.
Resubmit	Allows the administrator to resubmit a completed transaction to all approvers in the approval path.
Push Back	Allows the administrator to send the process back to the previous approver.

Understanding Approval Reassignment

The administrator can reassign pending tasks to another approver, or an administrator can reassign all tasks that belong to a specific approver to another approver. Use reassignment in the following situations:

- The approver chooses to redirect the task to another approver, thus delegating a specific task (step) to another approver.
- The administrator decides to reassign all pending tasks within a step that belong to an approver to another approver.

This reassignment usually occurs when an approver is unexpectedly absent and the administrator reassigns all pending tasks to another.

When the administrator redirects a workflow task to another approver, the administrator can modify the approval process map.

Note: The Approval Framework is set up for administrative reassignment and escalations only.

Configuring the Approval Monitor

This section discusses how to configure the Approval Monitor.

You can configure the Approval Monitor to display the information necessary for an administrator to approve a transaction when the original approver is not available. You can also configure the actions that can be performed by the administrator. Each process ID can be configured.

Page Used to Configure the Approval Monitor

<i>Page Name</i>	<i>Definition Name</i>	<i>Usage</i>
Approval Monitor Configuration Page	EOAW_MONDIS_CONFIG	Configure the approval monitor.

Approval Monitor Configuration Page

Use the Approval Monitor Configuration page (EOAW_MONDIS_CONFIG) to configure the approval monitor.

Navigation:

Enterprise Components > Approvals > Approvals > Monitor Configuration

This example illustrates the fields and controls on the Approval Monitor Configuration page. You can find definitions for the fields and controls later on this page.

Approval Monitor Configuration

Process ID TLPayableTime

Configure Monitor Approvals

☒ Include in Search

☐ Display Only

☒ Allow Approve

☒ Allow Resubmit/Restart

☒ Allow Mass Approve

☒ Allow Deny

☒ Allow Reassign

☒ Allow Mass Deny

☒ Allow Pushback

☒ Allow Mass Reassign

Configure User Monitor

User Role DetailsFind | View AllFirst1 of 1Last

User RoleTL Approval Administrator

DescriptionApproval Administrator

☒ Allow Mass Approve

☒ Allow Mass Deny

Transaction Display LevelFind | View AllFirst1 of 2Last

Display Level HeaderRecord Name TL_APP_PAY_HDR

Personalize | Find | View All | First1 of 4Last

	Field Name	Field Label ID	Display		
1	TRANSACTIONID	TRANSACTIONID	Yes	↓	↑

Configure Monitor Approvals

Use this section to control the actions available in the Monitor Approvals page for this approval process.

Field or Control	Description
Include in Search	Select to have the approval process available on the Monitor Approvals page.
Display Only	Select to have approval process available in display only mode.

Field or Control	Description
Allow Approve, Allow Deny, Allow Pushback, Allow Resubmit/Restart, Allow Reassign, Allow Mass Reassign, Allow Mass Approve, and Allow Mass Deny	Select each action that will be available in the Approval monitor for this approval process. See Monitor Approvals Page .

Configure User Monitor

Use this section to assign user roles and approval functions for monitoring this approval process.

Transaction Display Level

Use this section to select which fields at the header and line level should be displayed in the User Monitor for this approval process.

Using the Approval Monitor

This section discusses how to use the Approval Monitor search page, view search results and utilize the Approval Monitor for a specific approval process.

The approval monitor gives administrators a view into all approvals to which they have access, as well as the ability to take necessary actions on pending approvals.

Warning! Due to the complex rules used by PeopleSoft Expenses, the Monitor Approvals page should not be used to approve or deny expense transactions. To approve and deny expense transactions use the PeopleSoft Expenses approval pages.

Pages Used to Use the Approval Monitor

Page Name	Definition Name	Usage
Monitor Approvals Page	EOAW_ADM_MON_SRC	Use the Monitor Approvals page as a system administrator to search approval processes and perform mass reassignments.
Monitor Approvals Page	EOAW_ADM_MON_ACT	Use this page to perform an action on a specific approval process.

Monitor Approvals Page

Use the Monitor Approvals page (EOAW_ADM_MON_SRC) to use the Monitor Approvals page as a system administrator to search approval processes and perform mass reassignments.

Navigation:

- **Enterprise Components > Approvals > Approvals > Monitor Approvals**
- **Enterprise Components > Approvals > Approvals > User Monitor**

This example illustrates the fields and controls on the Monitor Approvals-Search Criteria page. You can find definitions for the fields and controls later on this page.

Monitor Approvals

▼ Search Criteria

Approval Process

AbsenceManagement

Header Status

Approver

Approver Status

Originator

Requester

Definition ID

Last Modified

Search

▼ Administrative Actions

The selected approver does not currently have an alternate approver selected in their user profile. You must manually select an alternate approver to reassign pending tasks.

Approver's Oper ID

Reassign To

Comment

Allow Auto Approval

Allow Self-Approval

Reassign Selected

Approve Selected

Deny Selected

Field or Control	Description
Approval Process	Select an approval process. The list of approval processes available is determined by the administrator role associated with the approval process definition. If a user is associated with the role specified in the Admin Role field on the Setup Process Definitions page, they can view or act on that process ID within the Approval Monitor.
Definition ID	Select the process definition that is determined on the Setup Process Definition page.

Copyright © 1988, 2025, Oracle and/or its affiliates.

129

Field or Control	Description
Header Status	<p>Select a status in this field to display the selected status. Choices are:</p> <ul style="list-style-type: none"> • <i>Approved</i> • <i>Complete</i> • <i>Denied</i> • <i>Hard Deny</i> • <i>Initial</i> • <i>Not Active</i> • <i>Pending</i> • <i>Pending Denial</i> • <i>Suspended/Pending Denial</i> • <i>Terminated</i>
Approver	Select an approver. In order to view or take action on an approval processes for a specific approver this field is required.
Approver Status	<p>Select a status from those available. This field is only available when a specific approver is selected in the Approver field. The statuses available for selection are based on the statuses of that specific approver in the cross-reference table associated with the approval process ID.</p>
Originator	Select the user who entered the transaction that started the approval process.
Requester	Select the user who requested the transaction that started the approval process. The originator is not always the requester.

Reassign Pending Tasks

Use this section to reassign approvals to another user. This section is only available if the process allows reassignment.

Viewing Search Results

After entering the selection criteria on the Monitor Approvals page, click the Search button.

This example illustrates the fields and controls on the Approval Monitor Search results. You can find definitions for the fields and controls later on this page.

Search Results

[Select All](#)
[Deselect All](#)

Approval Process: Absence Management

Transaction Number

Empl ID

Empl Record

Begin Date

Absence Take

End Date

Filter

		Modified	Status	Transaction Number	Empl ID	Empl Record	Begin Date	Absence Take	End Date
1	<input type="checkbox"/>	Never	Pending	510	KUTLWC03	0	2013-05-31	2343	2013-05-31
2	<input type="checkbox"/>	2009-08-11	Pending	86	K0W002	0	2007-02-05	2343	2007-02-05
3	<input type="checkbox"/>	2009-08-11	Pending	89	K0W102	0	2007-02-05	2343	2007-02-05
4	<input type="checkbox"/>	2009-08-11	Pending	92	K0W202	0	2007-02-05	2343	2007-02-05
5	<input checked="" type="checkbox"/>	2009-08-10	Denied	82	K0W207	0	2006-11-29	2343	2006-11-30
6	<input checked="" type="checkbox"/>	Never	Terminated	83	K0W207	0	2007-02-13	2342	2007-02-13
7	<input checked="" type="checkbox"/>	2009-08-10	Approved	84	K0W207	0	2007-03-06	2342	2007-03-06
8	<input checked="" type="checkbox"/>	2009-08-11	Denied	85	K0W207	0	2007-04-24	2342	2007-04-24
9	<input checked="" type="checkbox"/>	Never	Terminated	86	K0W002	0	2007-02-05	2343	2007-02-05

For the approval process selected, specific fields will be displayed based on the transaction display level configured for the approval process.

See [Approval Monitor Configuration Page](#).

Field or Control	Description
Filter	Use this button to filter the result set based on criteria entered.
Toggle Header and Line	If the approval process contains header and line approvals, you can use this button to toggle the display to view the details.

Monitor Approvals Page

Use the Monitor Approvals page (EOAW_ADM_MON_ACT) to use this page to perform an action on a specific approval process.

Navigation:

From the Monitor Approvals Search page, select the link for the approval step you want to modify.

This example illustrates the fields and controls on the Monitor Approvals page for a specific approval process. You can find definitions for the fields and controls later on this page.

Monitor Approvals

Approval Process

AbsenceManagement

Definition ID

AbsMgmtBySupervisorMulti

Transaction Number

386

Empl ID

K0W003

Empl Record

0

Begin Date

2012-06-01

Absence Take

2342

End Date

2012-06-05

Approver

Comment

Reassign Pending Tasks

The selected approver does not currently have an alternate approver selected in their user profile. You must manually select an alternate approver to reassign pending tasks.

Reassign To

Reassign

☐ Allow Self-Approval

☐ Allow Auto Approval

Administrative Approve/Deny

Act on behalf of the approver selected above by selecting the Approve/Deny buttons below. This action will apply to all tasks pending for the approver selected within the context of this transaction.

Approve

Deny

Pushback

Restart

Abs Mgmt By Supervisor Multi

▼ Absence Management: Pending

Abs Mgmt By Supervisor Multi

Pending

Antonio Smith

Absence By Supervisorid

Not Routed

Bruce Way

Absence By Supervisorid

This page will reflect the options selected when you configured the approval monitor for the process. The Reassign Pending Tasks section and the buttons available in the Administrative Approve/Deny section will display as configured on the Approval Monitor Configuration page.

Warning! Due to the complex rules used by PeopleSoft Expenses, the Monitor Approvals page should not be used to approve or deny expense transactions. To approve and deny expense transactions use the PeopleSoft Expenses approval pages.

Field or Control	Description
Approver	Select an approver. All approvers associated with pending steps within the approval process are listed.
Comment	Enter text to appear under the approval graphic in the Approval Comment History section.

132

Copyright © 1988, 2025, Oracle and/or its affiliates.

Reassign Pending Tasks

<i>Field or Control</i>	<i>Description</i>
Reassign To	Select an approver to whom to reassign all pending steps within the approval process.
Reassign	<p>Click the button to initiate task reassignment. At the end of the procedure, all pending task of the corresponding approval process instance is assigned to the user who is specified in the Reassign To field.</p> <p>Reassignment history is captured as comments and viewable in the approval graphic at the bottom of this page.</p>
Allow Self-Approval	Select to enable self-approval. When it is enabled, the approval is assumed and the process continues.
Allow Auto Approval	Select to enable auto-approval. When it is enabled, the system remembers an approver's action for that process at the header or line level, and applies the same action automatically for any subsequent appearance in the Approval Framework routing.

Administrative Approve/Deny

<i>Field or Control</i>	<i>Description</i>
Approve	Click the button to act on behalf of the selected approver. This action applies to all tasks pending for the approver selected within the context of the approval process.
Deny	Click the button to act on behalf of the selected approver. This action will apply to all tasks pending for the approver selected within the context of the approval process.
Pushback	<p>Click to requeue the previous step to its approver. This button is only available at a step that is greater than one.</p> <p>For example, a transaction has three approvers. The first approver has approved the transaction, therefore, the transaction is pending at step two. The administrator needs additional information from the requester and, therefore, pushes the transaction back to the requester.</p>

Field or Control	Description
Restart	Click to restart a pending transaction to all approvers in the approval path. This button is only available when the transaction is pending.
Resubmit	Click to resubmit a completed transaction to all approvers in the approval path. This button is only available when the transaction is complete. The transaction can only be resubmitted in its current state and cannot be modified before resubmitting for approval.
View/Hide Comments	Click to expand the Comments section and view comments regarding reassignment or text that is captured in the Comment field when any of the action buttons is clicked.
Request Information	Click to request additional information about this transaction from another user in the system. This selected user might not be an approver of this transaction, but he or she must respond to the request before the approval process can move forward to the next level. The system displays a new approval graphic, showing that more information has been requested as well as the user responsible for the request. As the requester, you can use the comments section to clarify the type of information you are requesting.

Requesting Additional Information About the Transaction

When you click the **Request Information** link in the approval graphic, the system:

1. Places the current transaction on hold. Doing so prevents anyone from coming in and approving the transaction before the approver (who requested the information) gets the chance to review the returned information.
2. Inserts the requester as a reviewer of the transaction for that step.
3. Triggers the *Request Information* event. Any processing in the applications event handler is triggered; any notifications that is defined in the transaction configuration is sent as well.

The approver (who requested the information) can act on the transaction by clicking any action button at any time.

Here is a use case of the **Request Information** link:

1. Jane Doe submits a requisition request to purchase a monitor and a hard drive.

The request routes to three group managers at step 1. Two of the three managers' approvals are required.

2. Manager Jen Smith wants to know why Jane needs to purchase such a large monitor, so she clicks the **Request Information** link on the approval graphic trying to gather more information about this requisition.

The requisition transaction is now on hold and awaiting her action. The other two managers can still issue their approvals at any time, but the transaction will not move until the hold is lifted.

3. Depending on the how the application implemented the approval feature, Manager Jen Smith can enter comments in the Comments field, which will render in the Status Monitor, or seek information by any other means of communication (for example, by phone, by email, walk to my office and ask).

Similarly, depending on the implementation, Jane Doe can respond by either entering comments through the application (this will trigger the Request Information Added event), or communicating to Jen Smith through other means (for example, by phone, by email, or other).

4. Jen Smith can either approve or deny the transaction after (or before) she receives a response. Normal processing resumes.

See [ApprovalManager Class Methods](#), [ApprovalEventHandler Class Methods](#).

Reassigning Tasks Assigned to You

To reassign your tasks to another approver, select a step assigned to you as an approver and request that the step be reassigned to an alternate. You must have an administrator role to perform this task.

The Approval Framework reassigns that step to the newly appointed approver, and deletes the original approver's worklist entry. The system creates a new worklist entry for the new approver, and notifies the new approver.

The Approval Framework adds a comment to the approval thread to log the reassignment.

Reassigning Tasks as an Administrator

To reassign a specific approver's pending tasks to another approver:

1. Filter the display to present pending approval processes for the specific approver.
2. Indicate the steps to be reassigned and the users affected.

The system submits a request to the Approval Framework to reassign all of the pending steps.

Once you have reassigned the pending tasks to a new approver, the approval path is updated and the approval transaction is routed to the new approver.

Note: You can create reassignments through the user profile. However, workflow reassignments through the user profile don't alter the actual approval process. Reassigning using the Monitor Approvals component performs the reassignment and creates the worklist for the new user.

The administrator can also take action instead of reassigning.

Comment History

Expand the Comment History section to view the previous workflow streams. This section is available when the system has resubmitted the transaction due to a change in the transaction.

For example, a requisition is approved by two out of three approvers. Then the requisition is changed before the third approver sees it. The system resubmits the requisition and begins the approval path from the beginning. The Comment History section retains the original stream, indicating that the first two approvers had approved the original requisition.

Using the User Monitor

This section discusses how to use the User Monitor.

The User Monitor provides a generic approval page that is very similar to the Approval Monitor. The only difference is that is designed to only display approval items where the signed on user is either the approver or the requester.

Page Used to Use the User Monitor

<i>Page Name</i>	<i>Definition Name</i>	<i>Usage</i>
<u>User Monitor - Monitor Approvals Page</u>	EOAW_ADM_MON_SRC	Approve and review transactions.

User Monitor - Monitor Approvals Page

Use the User Monitor - Monitor Approvals page (EOAW_ADM_MON_SRC) to approve and review transactions.

Navigation:

Enterprise Components > Approvals > Approvals > User Monitor

This example illustrates the fields and controls on the User Monitor - Monitor Approvals page for current role Approver. You can find definitions for the fields and controls later on this page.

Monitor Approvals

Approval Process

Delegation

Definition ID

Header Status

Last Modified

Current Role

Approver

Approver Status

Originator

Requester

Search

User Actions

Approver's Oper ID

PS

Comment

Approve Selected

Deny Selected

Search Results

Select All

Deselect All

Approval Process: Delegation

Delegator Emplid

Delegator Record Number

Transaction Name

Transaction Type

From Date

Filter

		Modified	Status	Delegator Emplid	Delegator Record Number	Transaction Name	Transaction Type	From Date
1	<input type="checkbox"/>	2009-05-15	Approved	HXCMPDEL06	0	WCSCCompSubmitter	I	2009-05-15
2	<input type="checkbox"/>	2009-05-15	Approved	HXCMPDEL04	0	WCSCCompReviewer	I	2009-05-15
3	<input type="checkbox"/>	2009-05-15	Approved	HXCMPDEL06	0	WCSCCompSubmitter	I	2009-05-15
4	<input type="checkbox"/>	2009-05-20	Approved	N30017	0	JobOpening	A	2009-05-20
5	<input type="checkbox"/>	2009-05-20	Approved	N30002	0	JobOffer	A	2009-05-20
6	<input type="checkbox"/>	2013-05-28	Approved	K6001	0	GP Payroll Approval CHN	A	2013-05-26

Select your current role, either Approver or Requester and click the search button to display the transactions.

See [Monitor Approvals Page](#).

Using Approval Framework Base Classes

Understanding Approval Framework Base Classes

Approval Framework Base Classes provide functions to launch workflow, manager approvals, display approval monitor. In order to build custom Approval Framework processes, you will need to extend these class in your PeopleCode.

How to Import Approval Framework Base Classes

The Approval Framework base classes are not built-in classes, like Rowset, Field, Record, and so on. They are application classes. Before you can use these classes in your PeopleCode program, you must import them to your program.

An import statement names either all the classes in a package or one particular application class. For importing Approval Framework base classes, Oracle recommends that you import the functions class in the application package that is specific to your needs.

The function classes are stored in EOAW_CORE application packages:

You should use construct your import statement to include the classes necessary for your code. Some examples are:

```
import EOAW_CORE:*;  
import EOAW_CORE:LaunchManager;  
import EOAW_CORE:ApproverManager
```

LaunchManager Class

This class provides the utility methods to launch Approval Framework.

LaunchManager Class Methods

Application developers should instantiate this class as a component-scoped variable. The best place to initialize this class is in the component post-build event. This section describes the LaunchManager class methods. The methods are discussed in alphabetical order.

LaunchManager

Syntax

LaunchManager(*&awprcs_id*, *&hdr_*, *&requester_*)

Description

Launches the Approval Framework process.

Parameters

<i>Parameter</i>	<i>Description</i>
<code>&awprcs_id</code>	The approval Process ID that has been defined in the Transaction Registry, as string.
<code>&hdr_</code>	The header record defined for the approval processes in the Transaction Approval Levels in the Transaction Registry, as record.
<code>&requester_</code>	The Operator ID of the user initiating the approval process, as string.

Returns

None.

Example

This is an example to launch Approval Framework for VoucherApproval.

```
import EOAW_CORE:*;  
Component EOAW_CORE:LaunchManager &launchMgr;  
  
If VOUCHER.VCHR_APPRVL_FLG = "W" Then  
    &vchrRecord = CreateRecord(Record.VCHR_AF_HDR_VW);    GetLevel0() (1).GetRecord(Re=  
cord.VOUCHER).CopyFieldsTo(&vchrRecord);  
    &launchMgr = create EOAW_CORE:LaunchManager("VoucherApproval", &vchrRecord, %Ope=  
ratorId);
```

DoSubmit

Syntax

DoSubmit()

Description

Used to submit a new transaction for approval. An exception is thrown if the property submitEnabled is not true.

Parameters

None.

Returns

None.

Example

This is an example of submitting the transaction.

```
import EOAW_CORE:*;  
  
Component EOAW_CORE:LaunchManager &launchMgr;  
  
&launchMgr.DoSubmit();
```

DoReSubmit

Syntax

DoReSubmit()

Description

Used to resubmit a transaction which was previously submitted, and the previous approval processes have completed (approved, denied or terminated). An exception is thrown if the property resubmitEnabled is false.

Parameters

None.

Returns

None.

Example

This is an example to resubmit a process:

```
import EOAW_CORE:*;  
  
Component EOAW_CORE:LaunchManager &launchMgr;  
  
&launchMgr.DoReSubmit();
```

DoRestart

Syntax

DoRestart()

Description

Used to restart a currently running approval process. An exception is thrown if the property `restartEnabled` is false.

For example, in eProcurement, a requisition can be modified after has been approved. Since it was approved, Approval Framework sees it as closed (ended) and will not allow it to be resubmitted. The only option is to restart the transaction. Restart will reset all approval actions and route to the first approver regardless of the previous approvals.

Parameters

None.

Returns

None.

PrepareToSubmit

Syntax

PrepareToSubmit()

Description

This method instantiates an approval process, but does not save or launch it. Repeated calls to this method do nothing, if an approval process has been instantiated (or if an approval process is running), this method simply returns. The point is that the requester can add ad-hoc approvers while previewing which will be included in the process launched by `DoSubmit()`. The `DoSubmit()`, `DoResubmit()`, `DoPreview()` and `DoRestart()` methods all call this method. So any approval process instantiated by `DoPreview()` will be reused by the above methods. When this behavior is not desired, application developers use the `Reset()` method.

Note: Repeated calls to prepare to submit can result in performance problems. Typically, this method is only used when ready to submit or when previews are necessary.

Parameters

None.

Returns

None.

SetHeader

Syntax

SetHeader(&hdr_)

Description

When creating a new application transaction, some applications do not fully populate the key fields until it is saved. For instance, eProcurement uses a generated id number for requisitions, but does not populate the id field until a new transaction is saved. Since applications need to initialize the LaunchManager object in the component post-build event code, this poses a challenge. In such situations, application developers can safely call this method to reset the header record before submitting a new transaction for approvals. It is always safe to call this method as long as the header record being passed in is valid. However when this method will re-instantiate the approval process, which eliminates any performance improvements achieved by caching previewed instances.

Parameters

<i>Parameter</i>	<i>Description</i>
&hdr_	The header record defined for the approval processes in the Transaction Approval Levels in the Transaction Registry, as record.

Returns

None.

Example

```
&reqRecord = CreateRecord(Record.PV_REQHDR_AW_VW);
GetLevel0() (1).GetRecord(Record.REQ_HDR).CopyFieldsTo(&reqRecord);
&launchMgr.SetHeader(&reqRecord);
&launchMgr.DoSubmit();
```

Reset

Syntax

Reset()

Description

This method clears the approval process instance cached by the DoPreview() method. Approval process instances are cached between DoPreview() and DoSubmit() calls because a requester can add ad-hoc approvers to the previewed process before submitting. If ad-hoc approvers are added, using DoSubmit() to regenerate the approval process instance would cause the ad-hoc approvers to be lost. However, application developers must take care to call Reset() if the requester changes any significant fields

between calls to `DoPreview()` and `DoSubmit()`. Since the Approval Framework does not know which fields are significant, this responsibility falls to the application developer. If concerned about catching all such situations, developers can adopt the strategy of always calling `Reset()` before calling `DoSubmit()` or any of its cousins. But this runs the risk of losing any ad-hoc approvers added by the requester during preview. Finally, if the application allows users to change the requester (for instance, when one user submits a transaction on behalf of another), the `LaunchManager` property *requester* needs to be updated. Updating the requestor property automatically calls the `Reset()` method.

Parameters

None.

Returns

None.

FindDefinitionID

Syntax

FindDefinitionID()

Description

This method will return all definition IDs that have criteria matches. A developer can set the definition ID using the `definitionID` property. If a method such as `DoSubmit` or `DoResubmit` is called before this property is set, Approval Framework will use the first definition ID returned based on priority order.

Parameters

None.

Returns

Array of records.

TerminateRunningProcess

Syntax

TerminateRunningProcess()

Description

Terminates a running process.

Parameters

None.

Returns

None.

LaunchManager Class Properties

This section describes the LaunchManager class properties.

hasTxn

Description

True if the application's process id valid.

definition

Description

Set the definition and re-initialize the AppDef.

hasAppDef

Description

True if an approval process has been defined.

hasApplnst

Description

True if an approval process is currently running on this application transaction.

hasEndedApplnst

Description

True if an approval process has previously been run on this application transaction.

EOAW_CORE:DEFN:AppDef appDef

Description

The approval process definition currently active on this application.

resubmitEnabled

Description

Used to determine if this transaction can be re-submitted for approval. This will be true when:

1. A transaction registry entry exists.
2. An approval process has been defined.
3. One or more approval processes were launched on this transaction, but none are currently running (they were either approved, denied, or terminated).

Example

```
If &launchMgr.resubmitEnabled = True Then  
    &launchMgr.DoReSubmit();  
End-If;
```

submitEnabled

Description

Used to determine if the submit action (which triggers launching of the Approval Framework) is currently enabled on this application transaction. Submit will be enabled when:

1. A transaction registry entry exists.
2. An approval process has been defined.
3. No approval process has previously been launched on this transaction.

Example

```
If (&launchMgr.submitEnabled) Then  
    &launchMgr.DoSubmit();  
End-If;
```

restartEnabled

Description

Used to determine if this transaction's approval process be restarted. This will be true if an approval process is currently running.

monitorEnabled

Description

Used to determine if the Approval Monitor is enabled. The monitor is enabled if an approval process is running.

previewEnabled

Description

Preview is enabled if a process is not currently running on this transaction. The DoPreview() method only presents a preview of the approval process to be launched going forward. It is not meant for a review of prior processes.

Note: DoPreview does not display completed approval processes for this transaction.

EOAW_CORE:ENGINE:ApplInst applInst

Description

The approval process instance currently running. Can be null.

EOAW_CORE:DEFN:AWTxn txn

Description

The application transaction registry entry.

This property is read-only.

requester

Description

Use this property to get or set the requester on whose behalf this transaction is to be submitted for approval. Note that this property is not read-only. Applications may change the requester even after constructing the LaunchManager, but with certain caveats.

Approval Manager Class

This class provides the methods to manage the approval process.

ApprovalManager Class Methods

The approval manager object is the application developers interface to the Approval Framework. Most developers will not find it necessary to directly access any other Approval Framework objects. Application developers should instantiate this class as a component-scoped variable. The best place to initialize this class is in the component post-build event. The class can be instantiated with information readily available to developers at component post-build time. Developers should examine the boolean-valued properties of this object to know whether or not the user entering the approval component has any pending approvals work. If there are any pending approvals, the `GetPending()` method will identify what is pending, and the action methods such as `DoApprove()`, or `DoDeny()`, will enable them to implement the full approval functionality.

This section lists the Approval Manager class methods in alphabetical order.

ApprovalManager

Syntax

ApprovalManager(*&awprcs_id*, *&hdr_*, *&approver_*)

Description

Developers need to know their transaction id, and need to pass in an instance of their application's main record, which describes the request being submitted for approval. They also need to explicitly tell the Approval Framework who the approver is.

Parameters

<i>Parameter</i>	<i>Description</i>
<i>&awprcs_id</i>	The approval Process ID that has been defined in the Transaction Registry, as string.
<i>&hdr_</i>	The header record defined for the approval processes in the Transaction Approval Levels in the Transaction Registry, as record.
<i>&approver_</i>	The Operator ID of the user approving the transaction, as string.

Example

```
import EOAW_CORE:*;  
Component EOAW_CORE:ApprovalManager &approvalMgr;  
&vchrRecord = CreateRecord(Record.VCHR_AF_HDR_VW);  
GetLevel0(1).GetRecord(Record.VCHR_FS).CopyFieldsTo(&vchrRecord);  
&approvalMgr = create EOAW_CORE:ApprovalManager("VoucherApproval", &vchrRecord, %Use⇒  
rId);
```

DoApprove

Syntax

DoApprove(&rec)

Description

Use this method to approve the transaction for the record.

Parameters

<i>Parameter</i>	<i>Description</i>
&rec	The record defined for the approval processes in the Transaction Approval Levels in the Transaction Registry, as record.

DoApproveRowSet

Syntax

DoApproveRowSet(&rs)

Description

Use this method to approve transactions for the entire rowset. If this is a line-level record, then all paths which had routed this record to the approver are advanced.

For example, if an expense report has 3 lines and you want to approve all 3 lines, you would insert the records into a rowset and pass that rowset to DoApproveRowset. Approval Framework will approve each line in that rowset. This avoids repeated calls to Approve.

Parameters

<i>Parameter</i>	<i>Description</i>
&rs	Rowset to approve, as rowset.

Returns

None.

DoReassign

Syntax

DoReassign(*&rec*, *&reassignee*, *&bAllowAutoApprove*, *&bAllowSelfApprove*, *&comment*)

Description

Use this method to reassign the record instance to a different approver.

Parameters

<i>Parameter</i>	<i>Description</i>
<i>&rec</i>	The transaction record to be reassigned, as record.
<i>&reassignee</i>	The user to reassign the approval to, as string.
<i>&bAllowAutoApprove</i>	Indicate whether or not auto approval is active, as boolean.
<i>&bAllowSelfApprove</i>	Indicate whether or not self approval is active, as boolean.
<i>&comment</i>	Include any comments, as string.

Returns

String.

DoReassignAll

Syntax

DoReassignAll(*&reassignee*, *&bAllowAutoApprove*, *&bAllowSelfApprove*, *&comment*)

Description

Note: Use this method to reassign all line items for the transaction to a different user for approval.

Parameters

<i>Parameter</i>	<i>Description</i>
<i>&reassignee</i>	User ID to reassign the transactions to, as string.

<i>Parameter</i>	<i>Description</i>
<code>&bAllowAutoApprove</code>	Indicate whether or not auto approval is active, as boolean.
<code>&bAllowSelfApprove</code>	Indicate whether or not self approval is active, as boolean.
<code>&comment</code>	Include any comments, as string.

Returns

String.

DoDeny

Syntax

DoDeny(*&rec*)

Description

Use this method to deny approval on a record instance. If the record is a header record, then the approval process ends. If the record is a line-level record, that particular line's processing ends, while the other records in that transaction continue.

Parameters

<i>Parameter</i>	<i>Description</i>
<code>&rec</code>	The record name defined for the approval processes in the Transaction Approval Levels in the Transaction Registry, as record.

Returns

None.

Example

```
&approvalMgr.DoDeny (&reqRecord) ;
```

DoDenyRowset

Syntax

DoDenyRowset(*&rs*)

Description

Use this method to deny approval on a rowset. This is used to enable Approval Framework to deny multiple lines at once rather than looping through each line.

Parameters

<i>Parameter</i>	<i>Description</i>
<code>&rs</code>	Name of the rowset, as rowset.

Returns

None.

DoDenyWithAllowUndeny

Syntax

`DoDenyWithAllowUndeny(&rs)`

Description

Use this method to deny approval on a rowset, where resubmits are not allowed.

Parameters

<i>Parameter</i>	<i>Description</i>
<code>&rs</code>	Name of the rowset, as rowset.

Returns

None.

DoHardDeny

Syntax

`DoHardDeny(&rec)`

Description

Use this method to deny approval on a record instance and not allow re-submits. If the record is a header record, then the approval process ends. If the record is a line-level record, that particular line's processing ends, while the other records in that transaction continue.

Parameters

<i>Parameter</i>	<i>Description</i>
&rec	The record name defined for the approval processes in the Transaction Approval Levels in the Transaction Registry, as record.

Returns

None.

DoLineResubmit

Syntax

DoLineResubmit(&rec, &start)

Description

Allows the line being passed in to be resubmitted to a running transaction. The user decides if the line is restarted from the current stage or the beginning. If it starts from the beginning, all history after the first header stage is lost.

Parameters

<i>Parameter</i>	<i>Description</i>
&rec	The record defined for the approval processes in the Transaction Approval Levels in the Transaction Registry, as record.
&start	Use <i>True</i> to start at the beginning of the approval process or <i>False</i> to start at the current stage.

Returns

None.

Example

```
&approvalMgr.DoLineResubmit(&reqLnRecord, True);
```

DoAddNewLine

Syntax

DoAddNewLine(*&rec*, *&start*)

Description

Use to allow the line being passed in to be added to a running transaction. The user decides if the line is restarted from the current stage or the beginning. If it starts from the beginning, all history after the first header stage is lost.

Parameters

<i>Parameter</i>	<i>Description</i>
<i>&rec</i>	The record defined for the approval processes in the Transaction Approval Levels in the Transaction Registry, as record.
<i>&start</i>	Use <i>True</i> to start at the beginning of the approval process or <i>False</i> to start at the current stage.

Returns

None.

GetPending

Syntax

GetPending()

Description

This method returns a rowset in the form of the applications header or line record that includes any header row or line row that is pending.

Parameters

None.

Returns

Rowset containing pending transactions.

Example

```
&LINERS = CreateRowset (Record.PV_REQLIN_AW_VW) ;
&LINERS = &approvalMgr.GetPending() ;
```

DoPushback

Syntax

DoPushback(*&rec*)

Description

Use this method to send the process back to the previous approver. This is used to give the approver a means of requesting a prior approver to make a clearer case for approving the transaction.

Note: Pushback only works to push back the workflow to a prior step in the same path. Calling Pushback() on the first step its path does nothing.

Parameters

<i>Parameter</i>	<i>Description</i>
<i>&rec</i>	The record defined for the approval processes in the Transaction Approval Levels in the Transaction Registry, as record.

Returns

None.

Example

```
&approvalMgr.DoPushback (&reqRecord) ;
```

AddComments

Syntax

AddComments(*&username, &rec, &comments*)

Description

Use this method to add comments in the approval process.

Parameters

<i>Parameter</i>	<i>Description</i>
&username	The user name for the current user, as string.
&rec	The record defined for the approval processes in the Transaction Approval Levels in the Transaction Registry, as record.
&comments	Comments for the approval transaction, as string.

Returns

None.

Example

```
&approvalMgr.AddComments(getUserName(%OperatorId), &reqRecord, PV_REQ_APPPG_WK.COMM→
ENTS_2000);
```

TakeNoAction

Syntax

TakeNoAction(&rec)

Description

Use this method to update the user's status as no action taken. If all approvers at this step take no action, then the step will advance and the current step will store the status for No Action Taken.

Parameters

<i>Parameter</i>	<i>Description</i>
&rec	The record defined for the approval processes in the Transaction Approval Levels in the Transaction Registry, as record.

Returns

None.

PutOnHold

Syntax

PutOnHold(&rec)

Description

Used to put the record instance passed in on hold for this step. If this is a line-level record, then all paths which had routed this record to the approver are advanced.

Parameters

<i>Parameter</i>	<i>Description</i>
&rec	The record defined for the approval processes in the Transaction Approval Levels in the Transaction Registry, as record.

Returns

None.

PutOnHoldCount

Syntax

PutOnHoldCount(&rec)

Description

This method is used to count how many approvers have put an approval transaction on hold. For example, if there are 10 approvers and 5 approvals are needed, checking to see that 3 approvers put it on hold will tell you that there are still 7 approvers that have not looked at the transaction yet.

Parameters

<i>Parameter</i>	<i>Description</i>
&rec	The record defined for the approval processes in the Transaction Approval Levels in the Transaction Registry, as record.

Returns

Array of string.

GetPushedBack

Syntax

GetPushedBack()

Description

Use this method to retrieve all the rows in a transaction that were pushed back.

Returns

Rowset.

GetPertinentThreads

Syntax

GetPertinentThreads(&checkApprover, &userType)

Description

Use this method to determine what threads are pending review or approval.

Parameters

<i>Parameter</i>	<i>Description</i>
&checkApprover	As string.
&userType	As string.

Returns

Rowset.

GetStage

Syntax

GetStage(&rec)

Description

Use this method to retrieve the current stage of the approval process for a transaction.

Parameters

<i>Parameter</i>	<i>Description</i>
&rec	The record defined for the approval processes in the Transaction Approval Levels in the Transaction Registry, as record.

Returns

EOAW_CORE:ENGINE:StageInst

GetPendingSteps

Syntax

GetPendingSteps()

Description

Use this method to determine all pending steps for an approval process. This method returns a list of step-instance objects pending for this transaction.

Parameters

None.

Returns

Array of EOAW_CORE:ENGINE:UserStepInst.

DoLineTerminate

Syntax

DoLineTerminate(&LineRec)

Description

Use this method to terminate the given line level approval.

Parameters

<i>Parameter</i>	<i>Description</i>
&LineRec	The line level record for the approval process.

GetParticipant

Syntax

GetParticipant(&username)

Description

Use this method to determine whether or not the user is a participant in the approval process. This method returns the participation status for a user that is currently pending or has taken an action.

Parameters

<i>Parameter</i>	<i>Description</i>
&username	User ID, as string.

Returns

Returns a string to determine user participation in the approval process:

- *N*- if the user is not a participant in the approval.
- *AA*- if the user is the actual approval.
- *OA*- if the user is the original approval.
- *RR*- if the user is a reviewer.
- *O*- if the user is the originator.
- *R*- if the user is the requestor.

GetAllActiveParticipants

Syntax

GetAllActiveParticipants()

Description

Use this method to retrieve a list of all users that have either been flagged as Approvers, Reviewers, requestor or initiator.

Parameters

None.

Returns

Array of string.

RequestInformation

Syntax

RequestInformation(&*user*, &*rs*)

Description

Use this method to put a step on hold until the specified user provides more information.

Parameters

<i>Parameter</i>	<i>Description</i>
&user	UserID to insert as a reviewer and request information from, as string.
&rs	Rowset to push the reviewer onto the step, as rowset.

Returns

None.

SetAttributeObject

Syntax

SetAttributeObject(&*attrObj*_)

Description

Use this method to set the Approval Attribute class on the Appinst class.

Parameters

<i>Parameter</i>	<i>Description</i>
&attrObj	As EOAW_CORE:ENGINE:AppAttributes.

Returns

None.

ApprovalManager Class Properties

This section describes the ApprovalManager class properties.

hasApplInst

Description

True if the current transaction (header record) has a currently pending Approval Framework instance.

definition

Description

Get the current definition ID set on the App Def.

level

Description

The level of the pending approval work--0 for header, 1 for line-level. The Approval Framework architecture guarantees that header and line-level approval work cannot be pending at the same time.

This property is read-only.

hasPending

Description

True if the user has any pending approval tasks for the current transaction.

Note: Typically this will be the signed on user, but it does not have to be.

pushbackEnabled

Description

This method is used to determine if there is any path that is pending with a step number greater than one. If there is a step greater than one, *True* is returned and push back is enabled.

This is a read-only property.

EOAW_CORE:ENGINE:AppInst the_inst

Description

The current approval process instance.

isReviewer

Description

True if the user is a reviewer in the approval process.

This is a read-only property.

Approval Event Handler Class

This class provides methods to monitor events and notify the approval framework.

ApprovalEventHandler Class Methods

The ApprovalEventHandler class is used to perform actions that are required at the specific points in the process. For instance, if a new Employee has been approved, then the required action would be to activate that user. The purpose of this class is to move the check for specific statuses or actions from the Component to Approval Framework. This sections lists the ApprovalEventHandler class methods.

ApprovalEventHandler

Syntax

ApprovalEventHandler()

Description

This method is the constructor for the ApprovalEventHandler class. Its only purpose is to create an object that can be used to access the other methods.

OnProcessLaunch

Syntax

OnProcessLaunch(*&appInst*)

Description

This method is called with the newly-launched approval process instance, after the launch operation is successful.

Parameters

<i>Parameter</i>	<i>Description</i>
&appInst	As EOAW_CORE:ENGINE:AppInst.

Returns

None.

Example

```
method OnProcessLaunch
    /+ &appInst as EOAW_CORE:ENGINE:AppInst +/
    /+ Extends/implements EOAW_CORE:ApprovalEventHandler.OnProcessLaunch +/
    &appInst.thread.SetAppKeys (&vndrRecord);
    %This.updateProcessFlag (&PENDING);
end-method;
```

OnStepActivate

Syntax

OnStepActivate(&stepinst)

Description

Use this method when a step instance is activated, the approvers and reviewers associated with the step will receive a worklist entry, if they do not already have one). The activated step instance itself is passed in as the argument.

Parameters

<i>Parameter</i>	<i>Description</i>
&stepinst	The activated step instance, as EOAW_CORE:ENGINE:StepInst.

Returns

None.

OnStepHold

Syntax

OnStepHold(*&userinst*)

Description

Use this method to put this step on hold when a user performs an action. On Hold means that the user plans to take action at a later time.

Parameters

<i>Parameter</i>	<i>Description</i>
<i>&userinst</i>	As EOAW_CORE:ENGINE:UserStepInst.

Returns

None.

OnStepReassign

Syntax

OnStepReassign(*&userinst*, *&origApprover*)

Description

Use this method to indicate the action when a step is reassigned.

Parameters

<i>Parameter</i>	<i>Description</i>
<i>&userinst</i>	As EOAW_CORE:ENGINE:UserStepInst.
<i>&origApprover</i>	As string.

Returns

None.

OnStepComplete

Syntax

OnStepComplete(*&stepinst*)

Description

Use this method to indicate the action to take place when the step is complete.

Parameters

<i>Parameter</i>	<i>Description</i>
<i>&stepinst</i>	The active step instance, as EOAW_CORE:ENGINE:StepInst.

OnStepPushback

Syntax

OnStepPushback(*&userinst*)

Parameters

<i>Parameter</i>	<i>Description</i>
<i>&userinst</i>	As EOAW_CORE:ENGINE:UserStepInst.

OnStepReactivate

Syntax

OnStepReactivate(*&stepins*)

Description

Use this method when a step is reactivated.

Parameters

<i>Parameter</i>	<i>Description</i>
&stepinst	The current step instance, as EOAW_CORE:ENGINE:StepInst.

OnFinalHeaderDeny

Syntax

OnFinalHeaderDeny(&appinst As EOAW_CORE:ENGINE:AppInst);

Description

Use this method for the final denial.

Parameters

<i>Parameter</i>	<i>Description</i>
&appinst	Application instance, as EOAW_CORE:ENGINE:AppInst.

Returns

None.

OnHeaderDeny

Syntax

OnHeaderDeny(&userinst)

Description

Use this method for header denial.

Parameters

<i>Parameter</i>	<i>Description</i>
&userinst	As EOAW_CORE:ENGINE:UserStepInst.

OnHeaderApprove

Syntax

OnHeaderApprove(*&appinst*)

Description

Use this method to indicate the action to take when the header is approved.

Parameters

<i>Parameter</i>	<i>Description</i>
<i>&appinst</i>	Application instance, as EOAW_CORE:ENGINE:AppInst.

OnNoApprovalNecessary

Syntax

OnNoApprovalNecessary(*&appinst*)

Description

Use this method when no approval is necessary.

Parameters

<i>Parameter</i>	<i>Description</i>
<i>&appinst</i>	Application instance, as EOAW_CORE:ENGINE:AppInst.

OnLineDeny

Syntax

OnLineDeny(*&userstep*)

Description

Use this method to indicate the action to take when a line is denied.

Parameters

<i>Parameter</i>	<i>Description</i>
&userstep	User step, as EOAW_CORE:ENGINE:UserStepInst.

OnLineApprove

Syntax

OnLineApprove(&appinst, &thread)

Parameters

<i>Parameter</i>	<i>Description</i>
&appinst	Application instance, as EOAW_CORE:ENGINE:AppInst.
&thread	As EOAW_CORE:ENGINE:Thread.

OnAllLinesProcessed

Syntax

OnAllLinesProcessed(&appinst, &approved, &denied)

Description

Use this method when all lines are processed.

Parameters

<i>Parameter</i>	<i>Description</i>
&appinst	Application instance, as EOAW_CORE:ENGINE:AppInst.
&approved	As array of EOAW_CORE:ENGINE:Thread.
&denied	As array of EOAW_CORE:ENGINE:Thread.

OnTerminate

Syntax

OnTerminate(*&appinst As EOAW_CORE:ENGINE:AppInst*)

Description

Use this method when the application instance is terminated.

Parameters

<i>Parameter</i>	<i>Description</i>
<i>&appinst</i>	Application instance, as EOAW_CORE:ENGINE:AppInst.

OnError

Syntax

OnError(*&stepinst*)

Description

Use this method when an error occurs in a step.

Parameters

<i>Parameter</i>	<i>Description</i>
<i>&stepinst</i>	Step instance, as EOAW_CORE:ENGINE:StepInst.

OnStepReview

Syntax

OnStepReview(*&stepinst, &reviewers*)

Description

Use this method to indicate the action to take when the step instance is reviewed.

Parameters

<i>Parameter</i>	<i>Description</i>
&stepinst	Step instance, as EOAW_CORE:ENGINE:StepInst.
&reviewers	UserIds for the reviewers, as an array of string.

OnTimeout

Syntax

OnTimeout(*&userinst*, *¬ify*)

Parameters

<i>Parameter</i>	<i>Description</i>
&userinst	As EOAW_CORE:ENGINE:UserStepInst.
¬ify	As string.

OnAdHocInsert

Syntax

OnAdHocInsert(*&stepinst*, *&approver*)

Description

Use this method when new adhoc reviewers are inserted.

Parameters

<i>Parameter</i>	<i>Description</i>
&stepinst	As EOAW_CORE:ENGINE:AdHocStepInst.
&approver	UserID for approvers, as an array of string.

OnAdHocDelete

Syntax

OnAdHocDelete(&stepinst)

Description

Use this method when an adhoc step is deleted.

Parameters

<i>Parameter</i>	<i>Description</i>
&stepinst	As EOAW_CORE:ENGINE:AdHocStepInst.

OnUserLocked

Syntax

OnUserLocked(&userinst)

Description

Use this method to indicate the action to be taken if a user is locked out. If a user is locked out, then the administrator should be notified. This acts more as a warning because the system will still route the approval to that person.

Parameters

<i>Parameter</i>	<i>Description</i>
&userinst	As EOAW_CORE:ENGINE:UserStepInst.

OnStepRequestInformation

Syntax

OnStepRequestInformation(&userinst)

Description

Use this method when there is a request for information.

Parameters

<i>Parameter</i>	<i>Description</i>
&userinst	As EOAW_CORE:ENGINE:UserStepInst.

OnRequestInformationAdded

Syntax

OnRequestInformationAdded(&appinst As EOAW_CORE:ENGINE:AppInst, &level As number, ¬ifyList As array of string);

Description

Use this method when request information has been added.

Parameters

<i>Parameter</i>	<i>Description</i>
&appinst	Application instance, as EOAW_CORE:ENGINE:AppInst.
&level	Approval level, as number.
¬ifyList	UserIds to notify, as array of string.

ProcessNotifications

Syntax

ProcessNotifications(&appinst)

Description

Use this method to process notifications.

Parameters

<i>Parameter</i>	<i>Description</i>
&appinst	Application instance, as EOAW_CORE:ENGINE:AppInst.

OnLineTerminate

Syntax

OnLineTerminate(&appinst, &thread)

Description

Use this method when a line is terminated.

Parameters

<i>Parameter</i>	<i>Description</i>
&appinst	Application instance, as EOAW_CORE:ENGINE:AppInst.
&thread	As EOAW_CORE:ENGINE:Thread.

ApprovalEventHandler Class Properties

This section lists the ApprovalEvent Handler Class properties.

wlPrefix

Description

Worklist prefix.

wlBusinessProc

Description

Business process.

wlActivityName

Description

Activity name.