

Development Workbench – Getting Started
Oracle FLEXCUBE Universal Banking
Release 14.8.2.0.0
Part No. G52361-01
[April] [2026]



Contents

1	Preface	2
1.1	Audience	2
1.2	Related Documents	2
2	Introduction	2
3	Explanation of Some Basic Icons and Jargons.....	3
4	Client Browser Settings	4
4.1	Browser Specific Settings	4
5	Login.....	8
6	Browser.....	10
7	Windows	11
8	Launch FCUBS	11
9	User Preferences.....	12
10	Change Password.....	14
11	Sign Out.....	15
12	About	16

1 Preface

This document helps developers familiarize themselves with ORACLE FLEXCUBE Development Workbench for Universal Banking.

1.1 Audience

This document is intended for FLEXCUBE Application developers/users who use Development Workbench to develop various FLEXCUBE components.

To Use this manual, you need conceptual and working knowledge of the below:

<i>Proficiency</i>	<i>Resources</i>
FLEXCUBE Functional Architecture	Training programs from Oracle Financial Software Services.
FLEXCUBE Object Naming conventions	Development Overview Guide
Working knowledge of Web based applications	Self-Acquired
Working knowledge of XML files	Self-Acquired

1.2 Related Documents




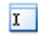







[*Open Development Tool Installation*](#)
[*Development Workbench – Administration*](#)

2 Introduction

This document contains information about the following topics:

- [Chapter 2, "Introduction"](#)
- [Chapter 3, "Explanation of Some Basic Icons"](#)
- [Chapter 4, "Login"](#)
- [Chapter 5, "Browser"](#)
- [Chapter 6, "Windows"](#)
- [Chapter 7, "Launch FCUBS"](#)
- [Chapter 8, "User Preferences"](#)
- [Chapter 9, "Change Password"](#)
- [Chapter 10, "Sign Out"](#)
- [Chapter 11, "About"](#)

3 Explanation of Some Basic Icons and Jargons

Icons	Function
	New Button used to add new User, Environment, Release etc
	Save button used to save the work done by user.
	Close button clears all the data in the screen and all buttons will be reset to initial position.
	Enter query button to retrieve existing data from the screen. Primary key field will be get enabled.
	Execute query button. This gets enabled on click of enter query button. On click of this button it will retrieve the required data and displays on the screen.
	Unlock button used to modify the existing record. On click of this , all fields except primary key fields gets enabled.
	List Of Values
	To add new labels or modify existing labels in FLEXCUBE schema
	Generate Files.
	Deploy Files.
	Release Files.

Radxml: Workbench saves all the activities carried out by the developer in an xml file referred to as radxml.

Rad/RadTool/ODT: These terms also refer to FLEXCUBE Development Workbench for Universal Banking.

4 Client Browser Settings

➤ Recommended Browsers:

- Mozilla Firefox
- Google Chrome

➤ Recommended Screen Resolution:

1280*1024 pixels

4.1 Browser Specific Settings

ActiveX Scripting must be enabled to read and write files in Client Machine. Therefore, if you have to generate the files in client machine (instead of downloading as zip from server); certain settings have to be done in the browser. Settings required in browser for enabling writing to Client Machines is explained below:

MSXML 6.0 : Microsoft Core XML Services (MSXML 6.0) needs to be installed in the system. It can be downloaded from,

<http://www.microsoft.com/en-us/download/details.aspx?id=3988>

The following internet settings need to be done to launch the Workbench Login page.

- 1) Go to Start Menu→Control Panel→Internet Options→Internet Properties
- 2) Click on Security tab, select Internet and click on Custom level button as shown below:

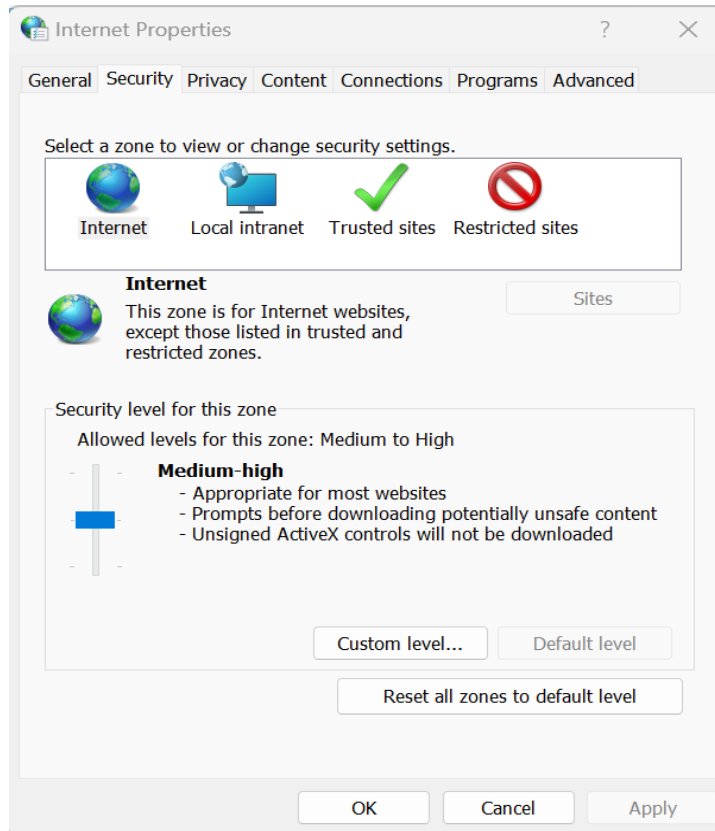


Figure 4.1

3) As security settings make all settings as enabled except use **Pop-up Blocker** as shown below:

Make sure following things are enabled.

- Allow previously unused active controls to run
- Allow script lets
- Automatic prompting for active control
- Binary and script behaviors.
- Only allow approved domains to use active control without prompting.
- Run active controls and plug-ins.
- Script active controls marked for saving.

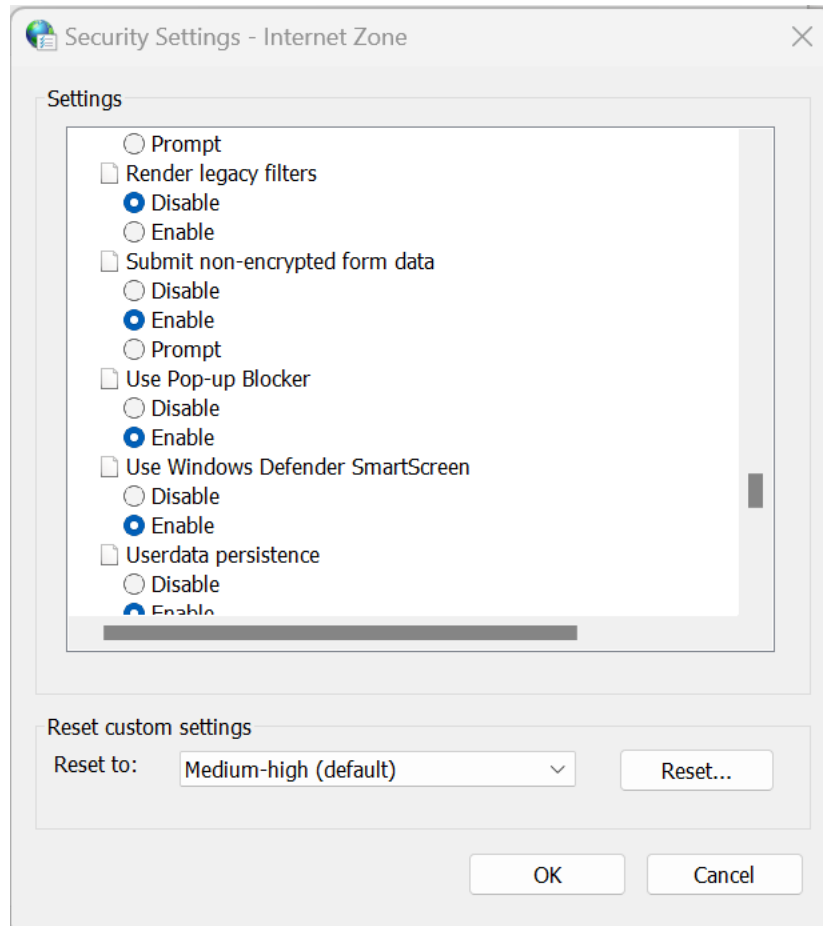


Figure 4.2

4) Repeat the same steps for Local Internet by selecting the same as shown below:

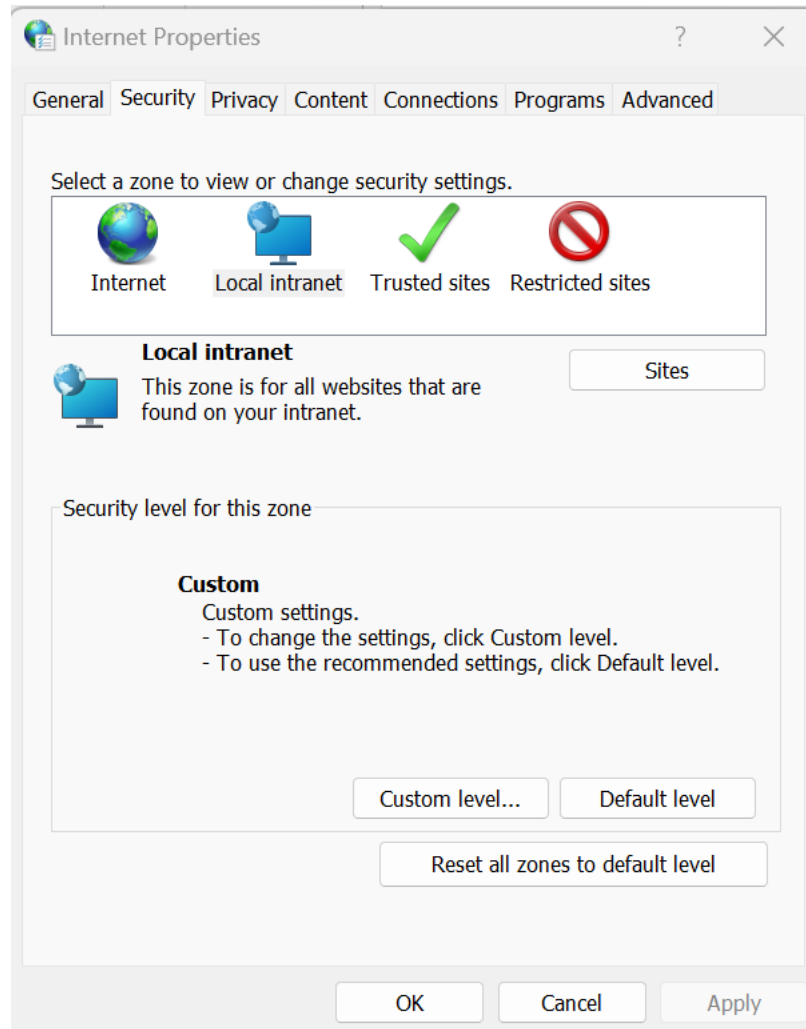


Figure 4.3

- 5) After all these settings are done, go to **Advanced** tab and check whether the checkbox 'Use JRE (Version) for <applet>(requires restart)' is checked or not. If its not checked, then it has to be checked as shown below.

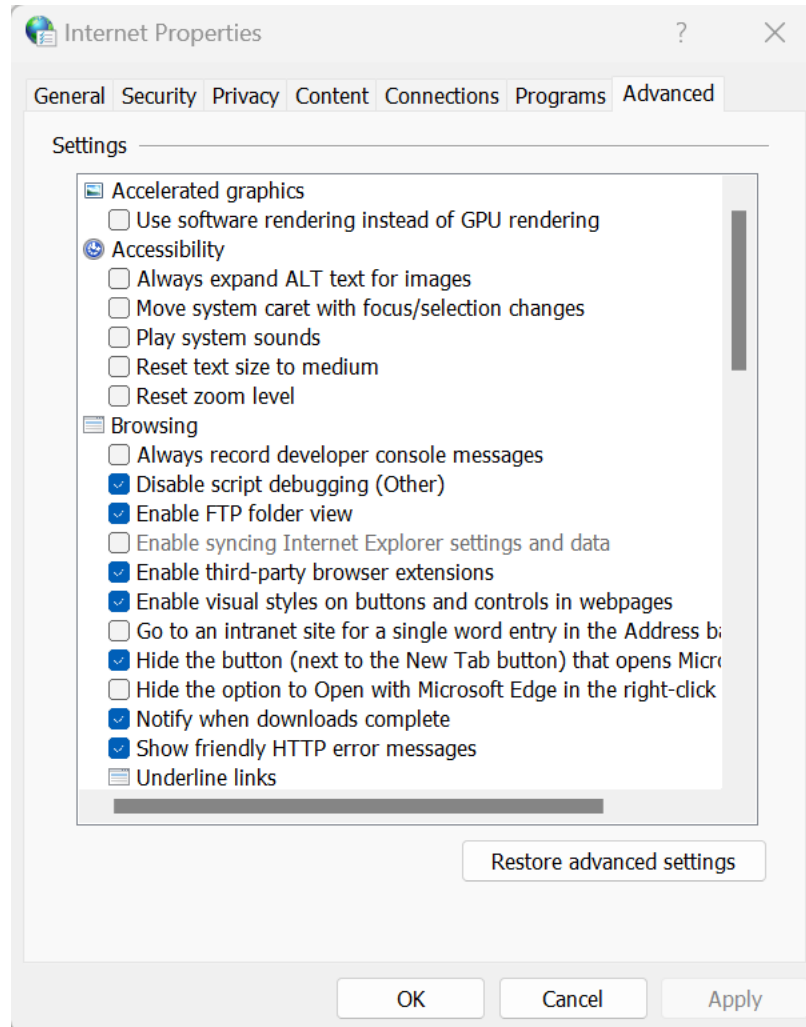


Figure 4.4

5 Login

Developers will be provided with Login credentials for Workbench which has to be used for accessing the Tool.

Initial login credentials, after installation, will be RADTOOL/RADTOOL. Using this credential; developer must create release, environment, and users. Refer [Development Workbench – Administration](#) for further details.

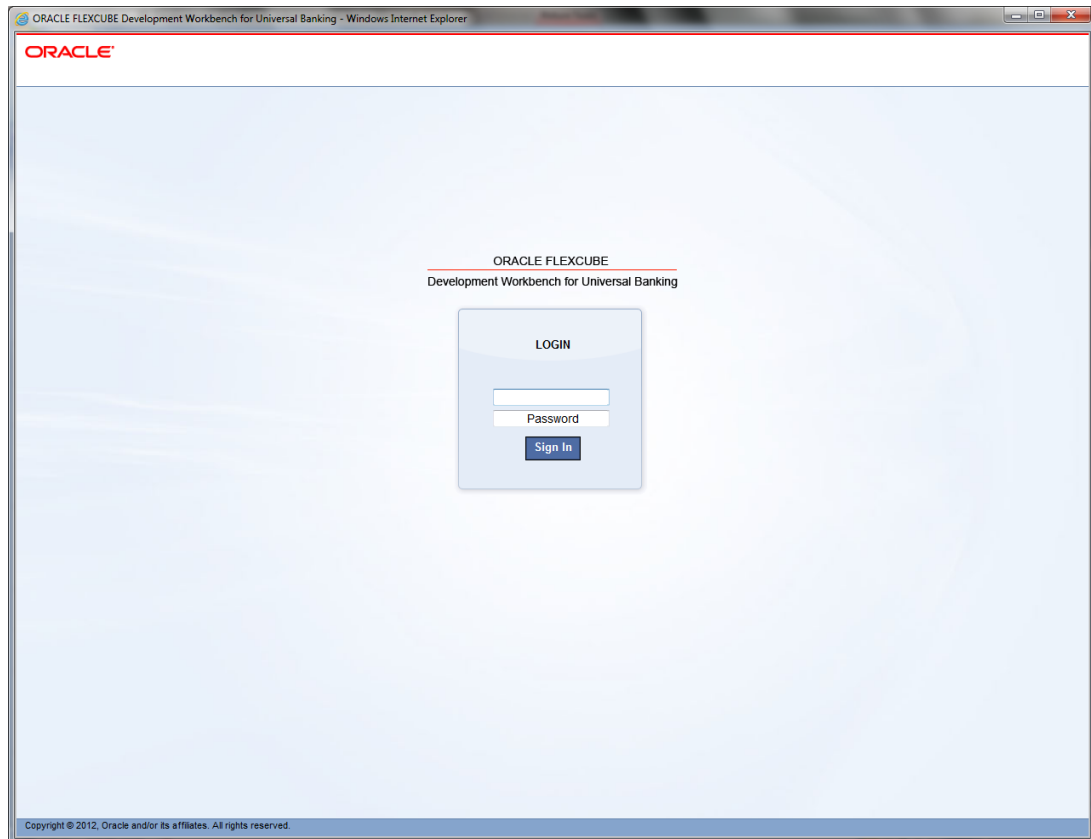


Figure 5.1

On successful login Workbench landing page will be displayed as shown below. Browser will display the available options to user in tree view based on role.

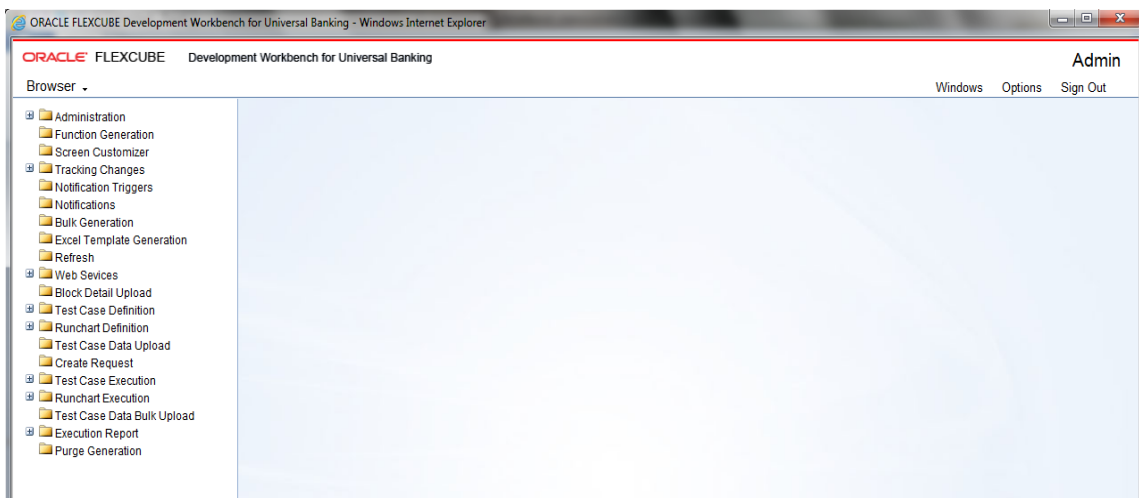


Figure 5.2

Below options are available in landing page.

6 Browser

It is drop down tree menu. Based on role of the user, Workbench displays the options in tree.

- **Administration:** This is used to add releases, environments, and users.
- **Function Generation:** This is used to design FLEXCUBE screens.
- **Screen Customizer:** This is used to design FLEXCUBE screens. Main Difference between function generation and screen customizer is in screen customizer user can just modify the screen lay out. No additions and deletions allowed.
- **Tracking Changes:** This module helps in tracking the changes done in a particular release. A Change Report can be generated OR the changes can be viewed.
- **Notification Triggers:** This will be used to create notification triggers.
- **Notification:** This will be used to create notification xml.
- **Bulk Generation:** This option used to generate all output files for a set of radxmls at one time.
- **Excel Template Generation:** This option will be used to generate excel template out of radxml which can be used to upload data into FLEXCUBE.
- **Refresh:** This option will be used to upgrade Radxml from lower version to higher version and to update child RADxml with parent changes.
- **Web Services:** Artifacts required for creation of a Web service can be generated using this feature.
- **Block Detail Upload:** This option will be used to upload block detailed information into schema from a set of radxml at one time.
- **Test Case Definition:** This option will be used to define new test case and modify existing test cases.
- **Run Chart Definition:** This option will be used to define run charts for test cases.
- **Test Case Data Upload:** This option will be used to upload test case data for the defined test cases. Data must be uploaded in the standard excel formats.
- **Create Request:** This option will be used to create request xml (compatible with FLEXCUBE) for a test case data set.
- **Test Case Execution:** This option is used to execute test case on FLEXCUBE environment.
- **Run Chart Execution:** This option will be used to execute run chart on FLEXCUBE environment.
- **Test Case Data Bulk Upload:** This option will be used to upload multiple test case data at one time.

- **Execution Report:** This option generates report for the executed test cases and run charts.

7 Windows

It will display all opened windows in drop down menu. User can select the required window to show on top of the tool.

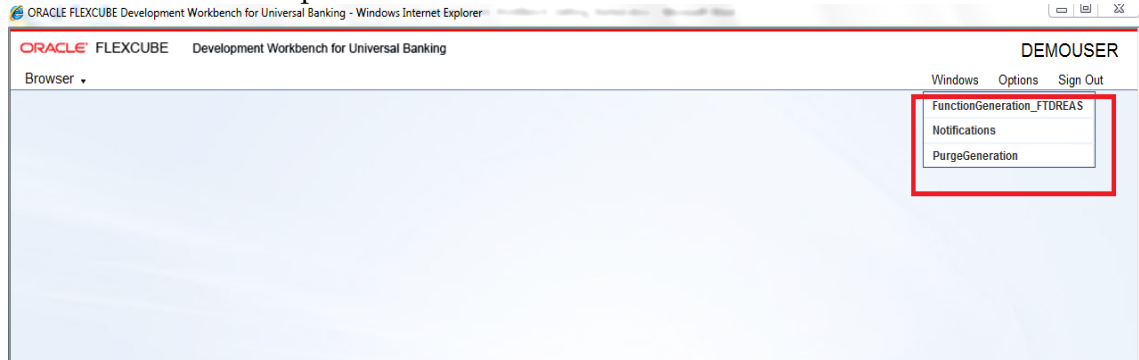


Figure 7.1

8 Launch FCUBS

This will be used to launch FLEXCUBE link directly from Workbench. User has to maintain correct FLEXCUBE url while adding environment. Refer [Development Workbench – Administration](#) details on environment creation.

The screenshot shows the 'Environment Master' application window with the following configuration details:

Section	Field	Value
Environment Details	Environment Code *	FCUBS_12.0.2_DEV12
	Release Code *	FCUBS_12.0.2
	Language Code *	ENG
	Description	12.0.2 DEV
JNDI name	JNDI Name *	jdbc/DEV1202
Database Details	Database Instance	FCUBSDEV
	Database Port	1521
	Database IP Address	10.184.132.131
	Database Host Name	10.184.132.131
	Database Name	DEV1202
	Database Password	*****
	Modification Number	5
Application Details	Application URL	https://10.184.132.129:7
	Application IP Address	10.184.132.129
	Application Name	FCUBS 12.0.2
	Application OS	Unix
	Application Transfer Type	File Manager
	JS Directory Path	/scratch/app/w1032/us
	UI XML Directory Path	/scratch/app/w1032/us
	Server User Name	tpani
	Server Password	*****
	Server Filemanager URL	https://10.184.132.129:7
File Manager User Name		
File Manager Password		
Maker Id		RADTOOL
Maker Date Stamp		2013-09-04 11:31:52

Buttons: Test Environment, Close

Figure 8.1

9 User Preferences

This option will be used to set user preferences. By default user will be mapped to a release code and its corresponding environment.

If developer wants to change the working release or environment, he has to set it in this screen.

Language Code: Default Language of the environment can be changed if required

Save Mode: Default Save Mode of the user would be displayed here. This can be changed if required

Work Directory: Work Directory can be modified if the Save Mode.

Excel Format: Excel Format can be changed from the value defined at User Definition screen

XML Indentation: If the generated Xmls has to intended, this option can be checked. Note that XML indentation feature won't be available if Save Mode ids Client

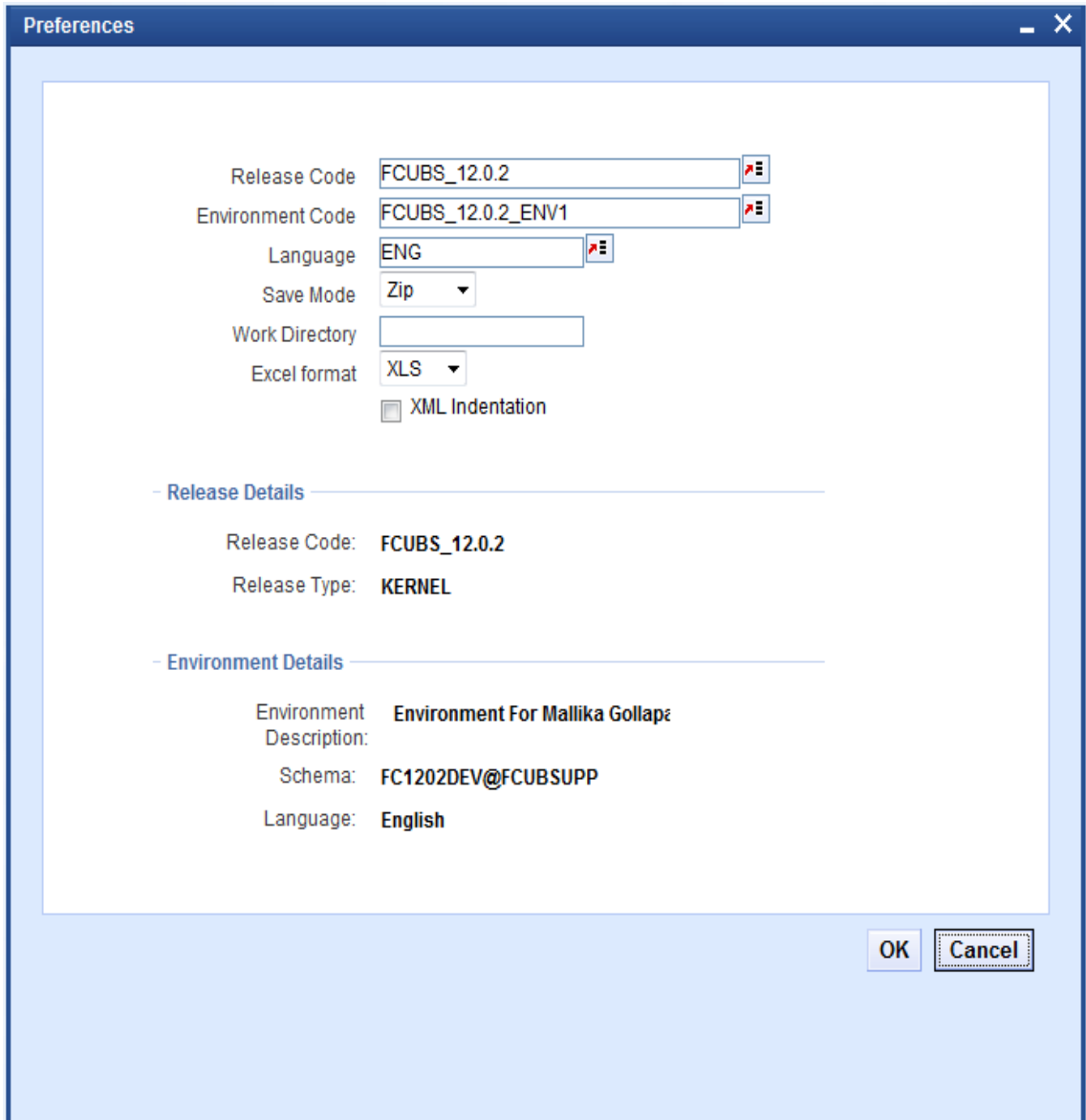


Figure 9.1

After changing required fields click on **Set** button for changing the details

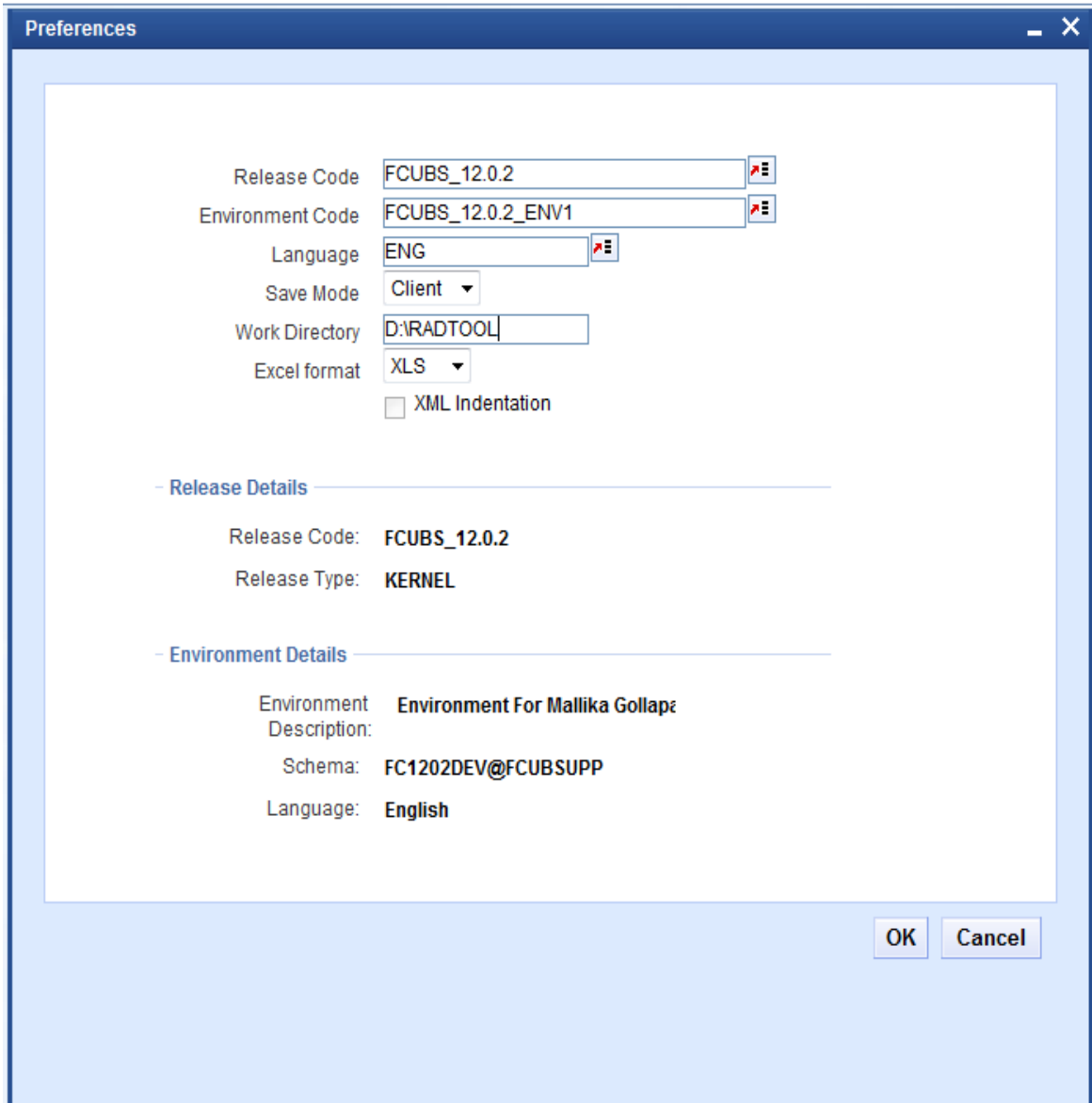


Figure 9.2

Changes done in user preferences on release, environment or work directory will effect only to the current session. On sign out and re-login, default release details will be assigned again. If developer wishes to change default settings for the user, same can be done by modifying the default options for the User in Administration section.

10 Change Password

This option can be used to change User Password. Enter old password and new password and confirm password.

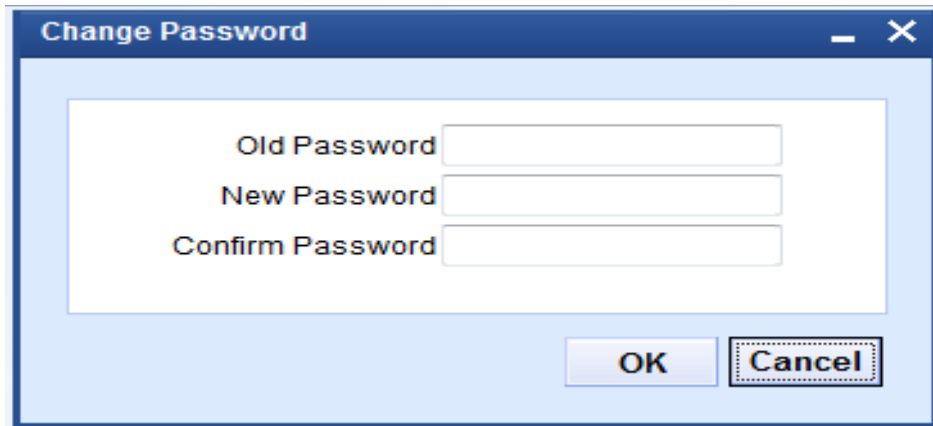


Figure 10.1

Click on change button. On successful change it will display message.

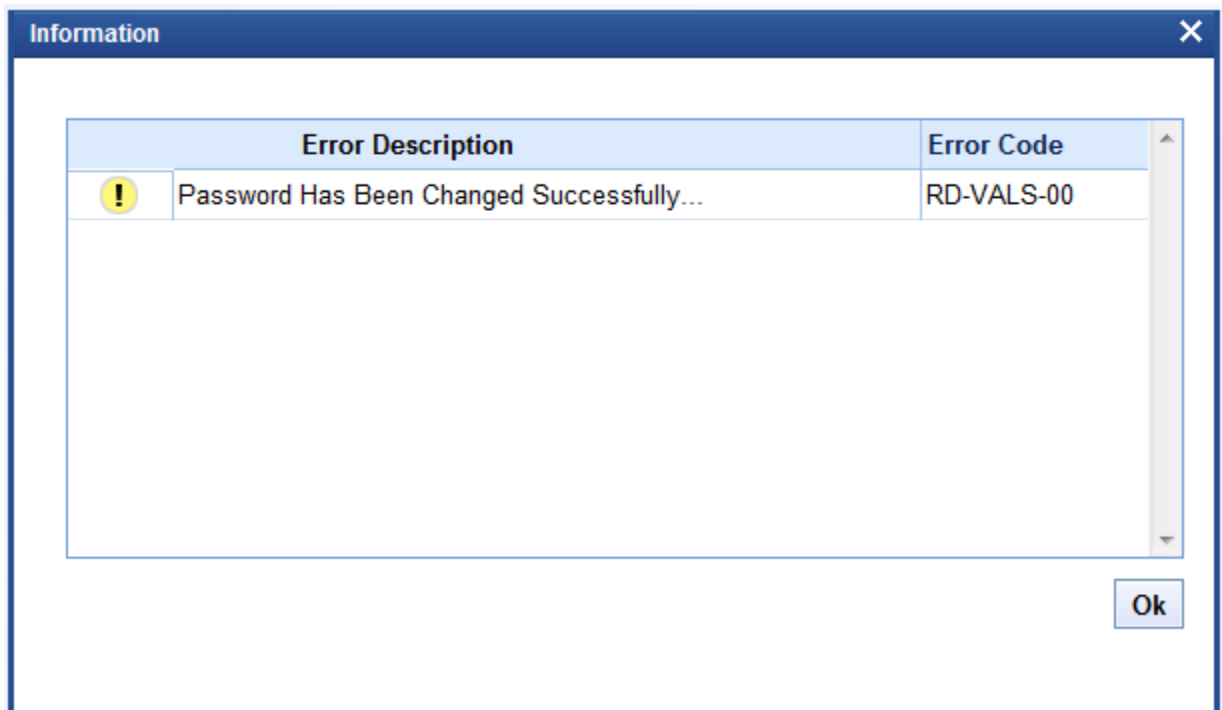


Figure 10.2

11 Sign Out

On click of sign out button user will logout from FLEXCUBE Development Workbench. All opened windows will get closed automatically. It will redirect to login page.

12 About

On click of this, Development Workbench version information popup window will get displayed.

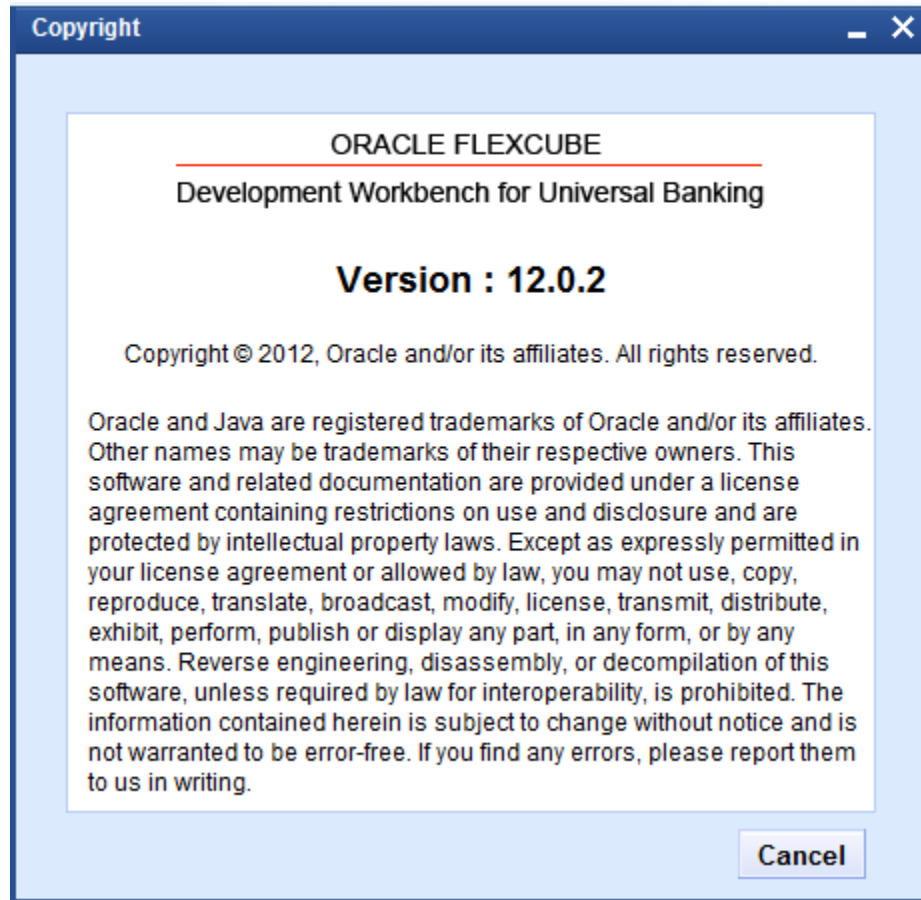


Figure 12.1



Development Workbench - Getting Started
[April] [2026]
Version 14.8.2.0.0

Oracle Financial Services Software Limited
Oracle Park
Off Western Express Highway
Goregaon (East)
Mumbai, Maharashtra 400 063
India

Worldwide Inquiries:
Phone: +91 22 6718 3000
Fax: +91 22 6718 3001
www.oracle.com/financialservices/

Copyright © 2007, 2026, Oracle and/or its affiliates. All rights reserved.

Oracle and Java are registered trademarks of Oracle and/or its affiliates. Other names may be trademarks of their respective owners.

U.S. GOVERNMENT END USERS: Oracle programs, including any operating system, integrated software, any programs installed on the hardware, and/or documentation, delivered to U.S. Government end users are "commercial computer software" pursuant to the applicable Federal Acquisition Regulation and agency-specific supplemental regulations. As such, use, duplication, disclosure, modification, and adaptation of the programs, including any operating system, integrated software, any programs installed on the hardware, and/or documentation, shall be subject to license terms and license restrictions applicable to the programs. No other rights are granted to the U.S. Government.

This software or hardware is developed for general use in a variety of information management applications. It is not developed or intended for use in any inherently dangerous applications, including applications that may create a risk of personal injury. If you use this software or hardware in dangerous applications, then you shall be responsible to take all appropriate failsafe, backup, redundancy, and other measures to ensure its safe use. Oracle Corporation and its affiliates disclaim any liability for any damages caused by use of this software or hardware in dangerous applications.

This software and related documentation are provided under a license agreement containing restrictions on use and disclosure and are protected by intellectual property laws. Except as expressly permitted in your license agreement or allowed by law, you may not use, copy, reproduce, translate, broadcast, modify, license, transmit, distribute, exhibit, perform, publish or display any part, in any form, or by any means. Reverse engineering, disassembly, or decompilation of this software, unless required by law for interoperability, is prohibited.

The information contained herein is subject to change without notice and is not warranted to be error-free. If you find any errors, please report them to us in writing.

This software or hardware and documentation may provide access to or information on content, products and services from third parties. Oracle Corporation and its affiliates are not responsible for and expressly disclaim all warranties of any kind with respect to third-party content, products, and services. Oracle Corporation and its affiliates will not be responsible for any loss, costs, or damages incurred due to your access to or use of third-party content, products, or services.