

**Oracle® Communications
Performance Intelligence Center**

Browser Export Guide

Release 10.5.0

G10349-01

June 2024

ORACLE®

Oracle® Communications Performance Intelligence Center Browser Export Guide, Release 10.5.0

Copyright © 2003, 2024 Oracle and/or its affiliates. All rights reserved.

This software and related documentation are provided under a license agreement containing restrictions on use and disclosure and are protected by intellectual property laws. Except as expressly permitted in your license agreement or allowed by law, you may not use, copy, reproduce, translate, broadcast, modify, license, transmit, distribute, exhibit, perform, publish, or display any part, in any form, or by any means. Reverse engineering, disassembly, or decompilation of this software, unless required by law for interoperability, is prohibited.

The information contained herein is subject to change without notice and is not warranted to be error-free. If you find any errors, please report them to us in writing.

If this is software or related documentation that is delivered to the U.S. Government or anyone licensing it on behalf of the U.S. Government, the following notices are applicable:

U.S. GOVERNMENT END USERS: Oracle programs, including any operating system, integrated software, any programs installed on the hardware, and/or documentation, delivered to U.S. Government end users are "commercial computer software" pursuant to the applicable Federal Acquisition Regulation and agency-specific supplemental regulations. As such, use, duplication, disclosure, modification, and adaptation of the programs, including any operating system, integrated software, any programs installed on the hardware, and/or documentation, shall be subject to license terms and license restrictions applicable to the programs. No other rights are granted to the U.S. Government.

This software or hardware is developed for general use in a variety of information management applications. It is not developed or intended for use in any inherently dangerous applications, including applications that may create a risk of personal injury. If you use this software or hardware in dangerous applications, then you shall be responsible to take all appropriate fail-safe, backup, redundancy, and other measures to ensure its safe use. Oracle Corporation and its affiliates disclaim any liability for any damages caused by use of this software or hardware in dangerous applications.

Oracle and Java are registered trademarks of Oracle and/or its affiliates. Other names may be trademarks of their respective owners.

Intel and Intel Xeon are trademarks or registered trademarks of Intel Corporation. All SPARC trademarks are used under license and are trademarks or registered trademarks of SPARC International, Inc. AMD, Opteron, the AMD logo, and the AMD Opteron logo are trademarks or registered trademarks of Advanced Micro Devices. UNIX is a registered trademark of The Open Group.

This software or hardware and documentation may provide access to or information about content, products, and services from third parties. Oracle Corporation and its affiliates are not responsible for and expressly disclaim all warranties of any kind with respect to third party content, products, and services unless otherwise set forth in an applicable agreement between you and Oracle. Oracle Corporation and its affiliates will not be responsible for any loss, costs, or damages incurred due to your access to or use of third-party content, products, or services, except as set forth in an applicable agreement between you and Oracle.



CAUTION: Use only the guide downloaded from Oracle Help Center (OHC).

Refer to Appendix section for instructions on accessing My Oracle Support and Oracle Help Center.

Table of Contents

Chapter 1: About this Help Text 18

Scope and Audience 18

Information 18

Chapter 2: Understanding Browser Export Application 19

About Browser Export Functionality 19

Opening the Browser Export Application..... 19

Chapter 3: Using Browser Export Application..... 22

Creating Table Filters for Browser Export and Scheduler Tasks 22

Downloading Exported Files..... 26

Uploading Files..... 27

Deleting Exported Files 29

APPENDIX A: My Oracle Support 31

Chapter 1: About this Help Text

Scope and Audience

This guide is designed to assist the user, with roles nspUser (read only), nspPowerUser, nspManager and Administrator, in working with the Browser Export application. Beginners and experienced users alike should find the information they need to cover important administration activities required to manage the Browser Export application.

Information

You can find general information about Oracle® Communications Performance Intelligence Center, such as product overview, list of other guides, workstation requirements, login and logout procedures, user preference settings, in the Quick Start Guide. This document is available from the Portal menu or can be downloaded from Oracle Help Center (OHC).

Chapter 2: Understanding Browser Export Application

About Browser Export Functionality

The Browser Export application enables you to manage exported files. You can browse, download, upload and delete the exported files produced by the Troubleshooting and Scheduler applications. The application utilizes a wizard to guide you through the export process using the navigation buttons (previous / next) on the bottom of each screen. The type of export can be in a variety of formats such as: XML, XLS, CSV, HTML, TXT or ZIP.

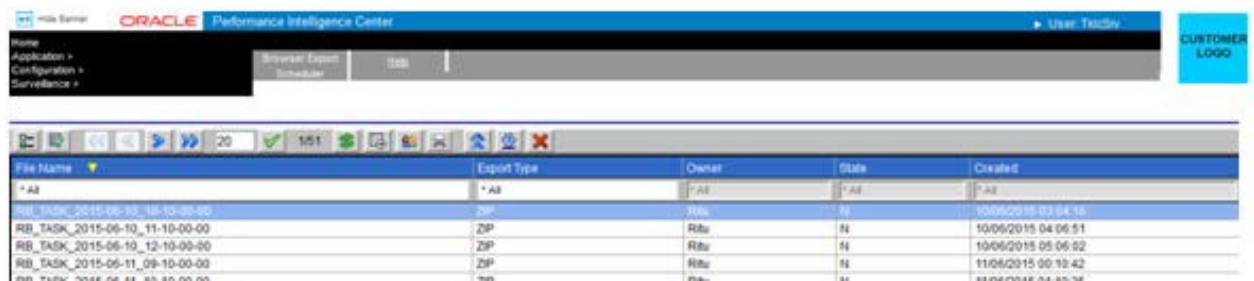
Note: On the initial screen the previous button is not functional (grayed out).

Opening the Browser Export Application

Note: Management Application only supports versions of IE 11.0 or later and Firefox 3.6 or later. Before using Management Application, turn off the browser pop up blocker for the Management Application site.

Note: To log into Management Application, you must have a Management Application user id and password provided by your system administrator.

Once you have logged into Management Application, the Application Board opens.



File Name	Export Type	Owner	State	Created
* All	* All	* All	* All	* All
RB_TASK_2015-06-10_10-10-00-00	ZIP	Rfbz	All	10/06/2015 03:04:16
RB_TASK_2015-06-10_11-10-00-00	ZIP	Rfbz	All	10/06/2015 04:06:51
RB_TASK_2015-06-10_12-10-00-00	ZIP	Rfbz	All	10/06/2015 05:06:52
RB_TASK_2015-06-11_09-10-00-00	ZIP	Rfbz	All	11/06/2015 00:10:42

Figure 1: Main Screen

To open the Exported application, click on the **Browser Export** icon, in the Application section of the page. The Main screen opens.

Browser Export Main Screen

The Browser Export application main screen has the following main functional components:

- Menu bar - that has two menus
- Toolbar - that provides a variety of feature buttons for navigating through records, exporting, and uploading, downloading and deleting exported files.
- Browser Export list table - that lists, in table format, exported files

Note: Do not use the Function Keys (F1 through F12) when using the Management Application. Function keys work in unexpected ways. For example, the F1 key will not open Management Application help but will open help for the browser in use. The F5 key will not refresh a specific screen, but will refresh the entire session and will result in a loss of any entered information.

Menu Bar

Note: Both the Browser Export and the Scheduler applications can have two menu options under the Schedule menu depending on the role that is accessing the application. For the purposes of this help topic, only the Browser Export option is discussed (for the user who has a role of either nspPowerUser or nspManager)

- Browser Export - opens the list of exported files that have been exported from Troubleshooting or Scheduler. From this screen you can manage the files.
- Help - provides information about Browser Export and opens online help.

Tool Bar



Figure 2: Browser Export Toolbar

The tool bar has the following function buttons (from left to right on the tool bar):

Icon	Explanation
	Select Column - enables you to select only those columns which you want to view and the order in which the columns will appear.
	Filter - enables you to create filters for data records to make searches convenient if you have a large number of records.
	First Page - takes you to the first record of the first page if you multiple pages of records. Previous Page - takes you to the first record of the previous page of records if you have multiple pages of records. Next Page - takes you to the first record of the next page of records if you have multiple pages of records. Last Page - takes you to the first record of the last page of records if you have multiple pages of records.
	RECORDS PER PAGE -- Can show up to 500 records on a page.
	Refresh - enables you to refresh the current screen to see all recent changes.
	Export - enables you to export the content of the Browser Export table.
	Roles - enables you to set privacy settings to users to view and work with your sessions you have created.
	Print - to provide facility to print current list.
	Upload file - enables you to copy an exported file to the network (Management Application) where you can view it in the Browser Export application.
	Download file - enables you to download an exported file from the network to your computer (local drive).
	Delete - enables you to delete an exported file.

Table 1: Toolbar Icons

Record Table

The record table provides several columns that you can organize your data records.

Note: All columns can be sorted in ascending or descending order by clicking the column header. The columns are:

- File Name - shows the name of the exported file
- Export Type - shows the file format (txt, csv, xls, xml, html, zip)
- Owner - shows the owner/creator of the session/query
- State - Shows state of the object that can be obsolete, normal or modified
- Creation Time - shows the date and time when the file was created

Chapter 3: Using Browser Export Application

Creating Table Filters for Browser Export and Scheduler Tasks

You can create filters to use with your files or tasks. Filters enable you to quickly sort through large numbers of files or tasks. Complete these steps to create a filter to be used with a file or task.

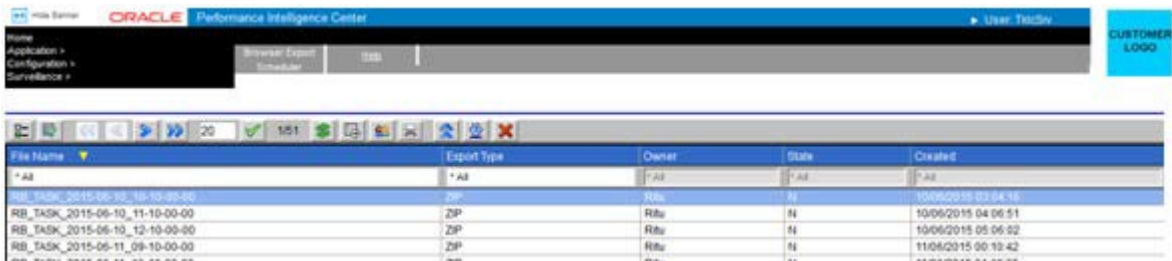
- 1. Select a **file** or **task** from the interface.

The figures show Browser Export and Scheduler screens at the first file record highlighted.

Note: The only files that you can view are those that fit your privacy role. For more information on privacy, contact your System Administrator.

- 2. Click the **Filtering** icon on the tool bar.

The System Query Dialog screen opens. With the name of the query in the Name field.



The screenshot shows the Oracle Performance Intelligence Center interface. The top navigation bar includes 'Home', 'Application', 'Configuration', and 'Surveillance'. The 'Browser Export' tab is selected. Below the navigation bar is a toolbar with various icons. The main area displays a table with the following columns: File Name, Export Type, Owner, State, and Created. The first row is highlighted.

File Name	Export Type	Owner	State	Created
* All	* All	* All	* All	* All
RB_TASK_2015-06-10_10-10-00-00	ZIP	Ritu	N	10/06/2015 03:04:16
RB_TASK_2015-06-10_11-10-00-00	ZIP	Ritu	N	10/06/2015 04:06:51
RB_TASK_2015-06-10_12-10-00-00	ZIP	Ritu	N	10/06/2015 05:06:52
RB_TASK_2015-06-11_09-10-00-00	ZIP	Ritu	N	11/06/2015 00:10:42

Figure 3: Browser Export Interface with File List



The screenshot shows the Oracle Performance Intelligence Center interface. The top navigation bar includes 'Home', 'Application', 'Configuration', and 'Surveillance'. The 'Scheduler' tab is selected. Below the navigation bar is a toolbar with various icons. The main area displays a table with the following columns: File Name, Export Type, Owner, State, and Created. The first row is highlighted.

File Name	Export Type	Owner	State	Created
* All	* All	* All	* All	* All
RB_TASK_2015-06-10_10-10-00-00	ZIP	Ritu	N	10/06/2015 03:04:16
RB_TASK_2015-06-10_11-10-00-00	ZIP	Ritu	N	10/06/2015 04:06:51
RB_TASK_2015-06-10_12-10-00-00	ZIP	Ritu	N	10/06/2015 05:06:52

Figure 4: Scheduler Task Interface with Task List

- 3. (Optional) Enter a **Description**.

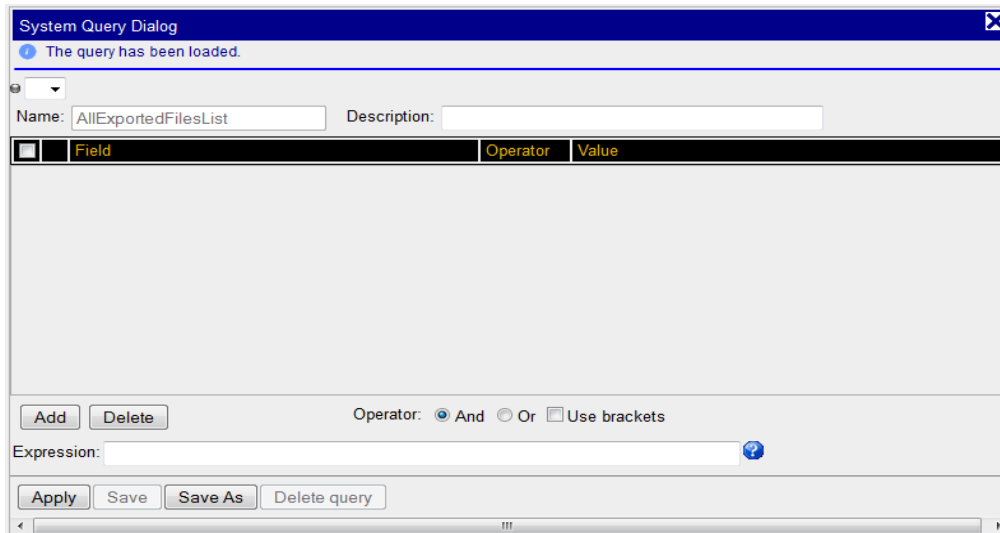


Figure 5: Query Dialog Screen

Note: If select xDR field reduced session, filter tab and displayed fields tab have only reduced fields.

4. Click **Add** to create a condition.

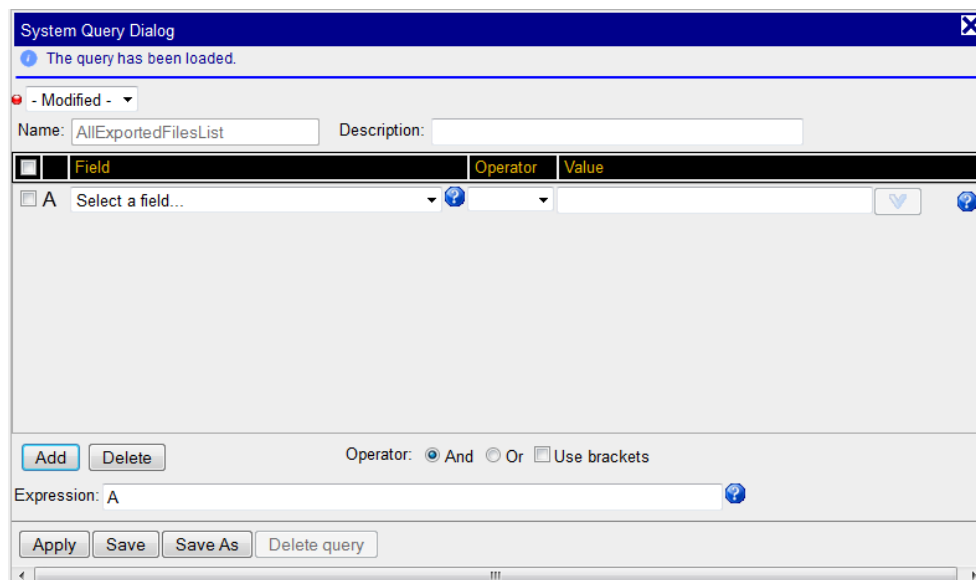


Figure 6: Query Dialog with Filter Parameters

The filter field changes to Modified and the condition parameters appear shown in the figure

Note: The condition will be added to the expression with the operator "And" or "Or" selected in the radio buttons.

Note: If select xDR field reduced session, filter tab and displayed fields tab have only reduced fields.

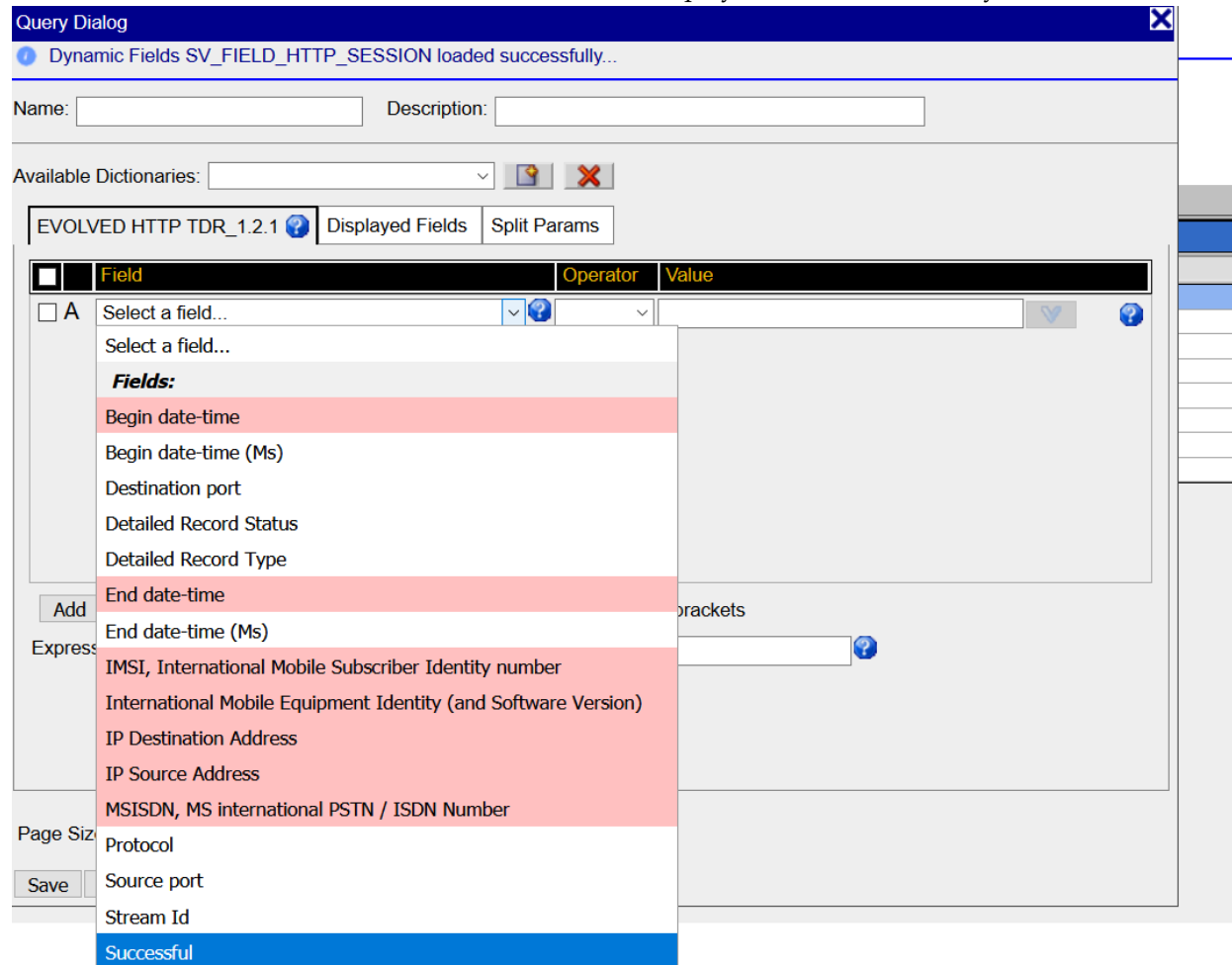


Figure 7: Apply Filter – xDR Field Reduced session

5. Select a **Field**, **Operator** and **Value** for the condition.

Repeat steps 4-5 to create multiple conditions.

6. If needed, manually edit the **expression** in the expression field.

7. To save the filter to be used with files, click **Save As**.

Note: To use the filter for immediate use without saving, click **Apply**.

Renaming a Query

When you rename an existing query, a new query is created. As a result, two queries will exist. One with the old name and one with the new name.

Modifying a Query

Complete these steps to modify a query.

1. Click **filtering** on the tool bar.

The System Query Dialog Screen opens.

2. Select the query from the query drop-down list

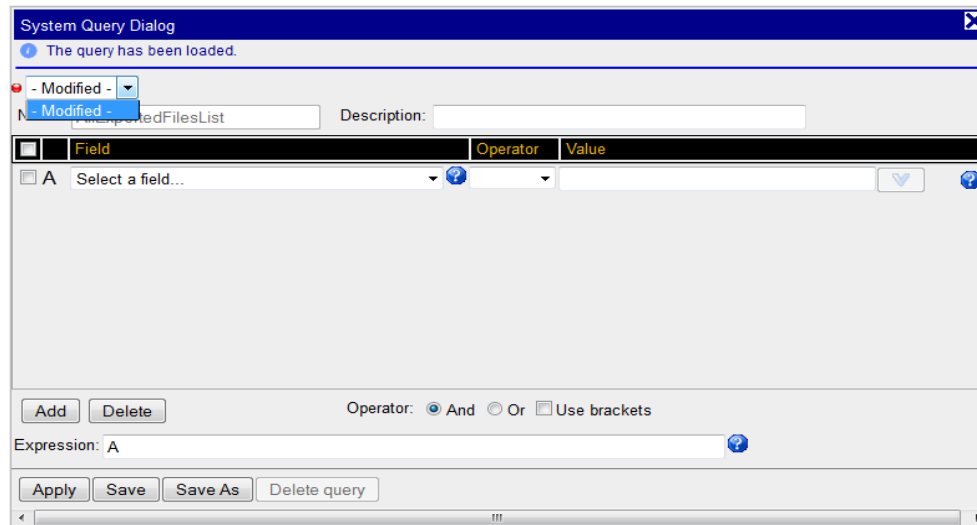


Figure 8: System Query Dialog Screen with Drop-Down List

3. Make the necessary modifications.
4. If user select xDR reduced session, then select a query and click edit filter and Modify popup open.
 - Edit wizard shows only reduced session fields for xDR reduced session.
 - When select a query, if query does not contain reduced session fields then shows message “Please create a new query with reduced session”.

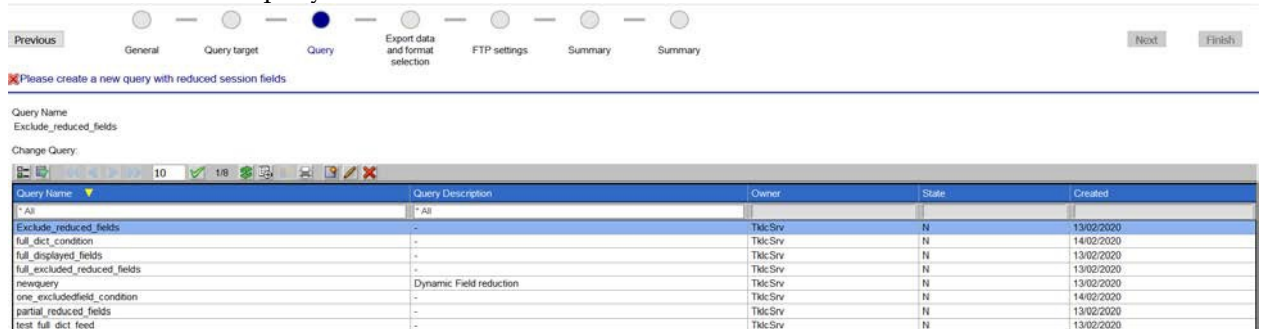


Figure 9: Display message for incompatible query

- When select a query, if query contains reduced session fields then next button enabled.
- When select a query, query contains fields which does not exists in xDR reduction session, then click modify button wizard shows only with reduced fields.

4. Click **Save Query**. The query is modified.

Exporting the Content of the Files List

Complete these steps to export a file.

1. Select the query from the query drop-down list.
2. Click Export on the tool bar.
3. Select the Choice of data to be exported. You can choose:
 - a) Current page
 - b) All results
 - c) First records

Note: If you select *First records* type in a number for the number of records that will be exported. For example, entering the number 100 designates that only the first 100 records are to be exported.

3. (Optional - dependent on export format) Select "Enter" a title and enter the **title** of the export.
4. (Optional-dependent on export format) You can select whether to have the title **inserted at the beginning of the exported file** by selecting the option by the Title field.
5. (Optional-dependent on export format) You can type a **comment or description** in the *Comments* field.

Note: The file is saved in the same extension **type as in the list**.

6. Select the *format* type in the Choose an Export Type section: Formats are listed here:
 - a) XML
 - b) XLS
 - c) CSV
 - d) HTML
 - e) TXT
7. Click **Export** to make the export effective.

Downloading Exported Files

You can use the download file function to download exported files to your local drive. Complete these steps to download an exported file.

1. Click the **Download Files** icon from the tool bar. The Download prompt appears prompting you to Save or Cancel.

Note: Optionally, you can select **Open** to view the contents of the file.

2. To open the file, click **open**. You can view the contents of the file.
 3. To save the file, click **Save**. The Save As screen opens where you can save it to the directory on your local drive.
- Note:** The file is saved in the same extension type as in the list.
4. Once you have selected the directory, click **Save**.

Uploading Files

Complete these steps to upload a XML, XLS, CSV, HTML , TXT file from your local drive to the system (Management Application) to view in the file list.

Note: When uploading ZIP files there are two other scenarios that can occur. See [Uploading Files - Defining a Dictionary](#) for more information uploading a ZIP file.

Note: You can only upload files that were exported from Management Application (Troubleshooting, Browser Export or Scheduler).

1. Click the **Upload File** icon on the tool bar. The Upload File Dialog screen opens.
2. Click **Browse...** to open the directory where the file resides.
3. Click **Import**. The import process begins.
4. Click the **Refresh** icon on the tool bar to refresh the screen. The file will appear in the table section of the screen.

Uploading Files - Defining a Dictionary

There are instances when you are uploading (importing) a zip file that the archived dictionary in Management Application server is not recognized. In this instance you need to manually specify the dictionary parameters.

Complete these steps to specify dictionary parameters when you upload a zip file from your local drive to the system (Management Application) to view in the file list.

Note: When uploading ZIP files there are two other scenarios that can occur. See [Uploading Files - Defining a Dictionary](#) for more information uploading a ZIP file.

1. Click the Upload File icon on the tool bar. The Upload File Dialog screen opens.
2. Click **Browse...** to open the directory where the file resides.
3. Click **Import**. The import process begins.

Note: If the dictionary cannot be found, as in the case where dictionaries are generated with Mediation Protocol from a previous release, a choose dictionary screen opens.



Figure 10: Choose Dictionary Screen - ASCII not shown

Choose dictionary

Specify the dictionary properties

Dictionary Name

Dictionary Types

CAPTURE
CAPTURE
RECONSTITUTION
STATISTICS
SUDR

Available protocols

AIN ANSI

Dictionary Version

Dictionary ASCII source

FILE_PTR:FsUnitLink:Fs unit link:FsUnitLink:Internal use
SIZE:64
UNIX_TIME:TimeTag:End date-time:End time:Date and time
of the last event in the call (message or timeout)
accurate to one second. Calls are stored at the time of
the last event and arranged chronologically in that
order.
SIZE:32
PRIMARY
UNIX_TIME:StartDate:Begin date-time:Begin time:Date and
time of the first message in the call (IAM), accurate to
one second
SIZE:32
UNSIGNED:DiallingTime:Dialling time:Dialling:Time
between Initial Address Message (IAM) and the last
...

OK
Cancel

Figure 11: Choose Dictionary Screen - ASCII Expanded

- Enter the Dictionary Name.
- Select the Dictionary Type.
- Select the proper Available Protocol from the available protocols.
- Select a Stack.

Note: If a dictionary is selected that was generated with a previous version of Mediation Protocol, you must select the "GENERIC" option in the Stack field.

- Enter the Version of the dictionary.
- Click OK. The search process begins select the dictionary.
- Click the Refresh icon on the tool bar to refresh the screen. The file will appear in the table section of the screen.

A new xDR session is created. The session name is the same as the archived name + timestamp and is appended. You can then browse this session in Troubleshooting like any other session. In Troubleshooting, the format will appear as "Archive" (shown in the Format Column).

Note: Any session name created for this file is greater than 30 characters is truncated.

Note: The xDR session is created if the Mediation subsystem is available and the session does not already exist which would give an error.

Uploading Files - Selecting a Dictionary

There are instances in the upload process that the system recognizes more than one dictionary matching the archived dictionary. In this instance you need to select the specific dictionary.

Complete these steps to select a dictionary when you upload a file from your local drive to the system (Management Application) to view in the file list.

Note: When uploading ZIP files there are two other scenarios that can occur. See [Uploading Files - Defining a Dictionary](#) and **Error! Reference source not found.** for more information uploading a ZIP file.

1. Click the **Upload File** icon on the tool bar. The Upload File Dialog screen opens.
2. Click **Browse...** to open the directory where the file resides.
3. Click **Import**.

The import process begins. If more than one dictionary is found, a list screen opens.



Figure 12: Dictionary List Screen

4. Select the **dictionary** that you want from the list.
5. Click **OK**. The dictionary is selected.
6. Click the **Refresh** icon on the tool bar to refresh the screen. The file will appear in the table section of the screen.

A new xDR session is created. The session name is the same as the archived name + timestamp and is appended. You can then browse this session in Troubleshooting like any other session. In Troubleshooting, the format will appear as "Archive" (shown in the Format Column).

Note: Any session name created for this file is greater than 30 characters is truncated.

Note: The xDR session is created if the Mediation subsystem is available and the session does not already exist which would give an error.

Deleting Exported Files

Note: If you choose to delete a xDR session from the table in Browser Export application, you will also delete the session in Troubleshooting.

Complete these steps to delete an xDR session.

1. Select the **Session** to be deleted.
2. Click the **Delete Files** icon on the tool bar.
3. Click **OK** at the prompt.

The session is deleted from both Browser Export and Troubleshooting.

APPENDIX A: My Oracle Support

MOS (<https://support.oracle.com>) is your initial point of contact for all product support and training needs. A representative at Customer Access Support (CAS) can assist you with MOS registration.

Call the CAS main number at 1-800-223-1711 (toll-free in the US), or call the Oracle Support hotline for your local country from the list at <http://www.oracle.com/us/support/contact/index.html>. When calling, make the selections in the sequence shown below on the Support telephone menu:

1. Select 2 for New Service Request
2. Select 3 for Hardware, Networking and Solaris Operating System Support
3. Select 2 for Non-technical issue

You will be connected to a live agent who can assist you with MOS registration and provide Support Identifiers. Simply mention you are a Tekelec Customer new to MOS.

MOS is available 24 hours a day, 7 days a week.