

Oracle® Communications Network Charging and Control Security Guide



Release 15.2

January 2026

ORACLE®

Copyright

Copyright © 2026, Oracle and/or its affiliates.

This software and related documentation are provided under a license agreement containing restrictions on use and disclosure and are protected by intellectual property laws. Except as expressly permitted in your license agreement or allowed by law, you may not use, copy, reproduce, translate, broadcast, modify, license, transmit, distribute, exhibit, perform, publish, or display any part, in any form, or by any means. Reverse engineering, disassembly, or decompilation of this software, unless required by law for interoperability, is prohibited.

The information contained herein is subject to change without notice and is not warranted to be error-free. If you find any errors, please report them to us in writing.

If this is software or related documentation that is delivered to the U.S. Government or anyone licensing it on behalf of the U.S. Government, then the following notice is applicable:

U.S. GOVERNMENT END USERS: Oracle programs (including any operating system, integrated software, any programs embedded, installed or activated on delivered hardware, and modifications of such programs) and Oracle computer documentation or other Oracle data delivered to or accessed by U.S. Government end users are "commercial computer software" or "commercial computer software documentation" pursuant to the applicable Federal Acquisition Regulation and agency-specific supplemental regulations. As such, the use, reproduction, duplication, release, display, disclosure, modification, preparation of derivative works, and/or adaptation of i) Oracle programs (including any operating system, integrated software, any programs embedded, installed or activated on delivered hardware, and modifications of such programs), ii) Oracle computer documentation and/or iii) other Oracle data, is subject to the rights and limitations specified in the license contained in the applicable contract. The terms governing the U.S. Government's use of Oracle cloud services are defined by the applicable contract for such services. No other rights are granted to the U.S. Government.

This software or hardware is developed for general use in a variety of information management applications. It is not developed or intended for use in any inherently dangerous applications, including applications that may create a risk of personal injury. If you use this software or hardware in dangerous applications, then you shall be responsible to take all appropriate fail-safe, backup, redundancy, and other measures to ensure its safe use. Oracle Corporation and its affiliates disclaim any liability for any damages caused by use of this software or hardware in dangerous applications.

Oracle and Java are registered trademarks of Oracle and/or its affiliates. Other names may be trademarks of their respective owners.

Intel and Intel Inside are trademarks or registered trademarks of Intel Corporation. All SPARC trademarks are used under license and are trademarks or registered trademarks of SPARC International, Inc. AMD, Epyc, and the AMD logo are trademarks or registered trademarks of Advanced Micro Devices. UNIX is a registered trademark of The Open Group.

This software or hardware and documentation may provide access to or information about content, products, and services from third parties. Oracle Corporation and its affiliates are not responsible for and expressly disclaim all warranties of any kind with respect to third-party content, products, and services unless otherwise set forth in an applicable agreement between you and Oracle. Oracle Corporation and its affiliates will not be responsible for any loss, costs, or damages incurred due to your access to or use of third-party content, products, or services, except as set forth in an applicable agreement between you and Oracle.

Contents

About This Document	v
Document Conventions	vi
Chapter 1	
Introduction to Security	1
Chapter Overview	1
Basic Security Considerations	1
About Security	2
Understanding the Environment	2
Recommended Deployment Configurations	2
Operation System and Database Security	6
Oracle Security Documentation	6
Chapter 2	
Performing a Secure NCC Installation	7
Chapter Overview	7
Installing NCC Securely	7
Post-Installation Configuration	8
NCC Backup	8
Chapter 3	
Implementing Security	11
Chapter Overview	11
Product Design	11
Implementation Options	12
Access Control Mechanism	12
Configuring and Using Authentication	12
Configuring and Using Access Control	13
Configuring and Using Security Audit	13
Security Considerations for Developers	14
Appendix A	
Secure Deployment Checklist	15

About This Document

Audience

The audience for this document includes system administrators responsible for the monitoring, maintenance, and configuration of the Oracle Communications Network Charging and Control IN applications. The reader will have a sound knowledge of Cisco IOS and Intelligent Network concepts.

Scope

The scope of this document includes all the information required to install and operate the Oracle Communications Network Charging and Control platform securely.

Related Documents

The following documents are related to this document:

- *Installation Guide*

Document Conventions

Typographical Conventions

The following terms and typographical conventions are used in the Oracle Communications Network Charging and Control (NCC) documentation.

Formatting Convention	Type of Information
Special Bold	Items you must select, such as names of tabs. Names of database tables and fields.
<i>Italics</i>	Name of a document, chapter, topic or other publication. Emphasis within text.
Button	The name of a button to click or a key to press. Example: To close the window, either click Close , or press Esc .
Key+Key	Key combinations for which the user must press and hold down one key and then press another. Example: Ctrl+P or Alt+F4 .
Monospace	Examples of code or standard output.
Monospace Bold	Text that you must enter.
<i>variable</i>	Used to indicate variables or text that should be replaced with an actual value.
menu option > menu option >	Used to indicate the cascading menu option to be selected. Example: Operator Functions > Report Functions
hypertext link	Used to indicate a hypertext link.

Specialized terms and acronyms are defined in the glossary at the end of this guide.

Introduction to Security

Chapter Overview

Introduction

This chapter provides an overview of Oracle Communications Network Charging and Control security.

In this chapter

This chapter contains the following topics.

Basic Security Considerations.....	1
About Security	2
Understanding the Environment.....	2
Recommended Deployment Configurations	2
Operation System and Database Security	6
Oracle Security Documentation.....	6

Basic Security Considerations

Basic Security

Follow these fundamental principles to use any application securely:

- Keep your software up-to-date including the latest product release and any patches that apply to it. See <https://edelivery.oracle.com> and <https://support.oracle.com> for more information. These sites also include many of the documents referred to in this guide.
- Limit privileges as much as possible. Give users only the level of security access necessary for them to perform their work. Review user privileges periodically to determine the relevance to current work requirements.
- Monitor system activity. Establish who should access which system components and how often and monitor those components.
- Install software securely. For example, use firewalls, secure protocols such as SSL, and secure passwords. See *Installing NCC Securely* (on page 7) for more information.
- Learn about and use the security features. See *Implementing Security* (on page 11) for more information.
- Use secure development practices. For example, take advantage of existing database security functionality rather than creating your own application security. See *Security Considerations for Developers* (on page 14) for more information.
- Keep up-to-date on security information. Oracle regularly issues security-related patch updates and security alerts. You must install all security patches as soon as possible. See the "Critical Patch Updates and Security Alerts" on the Oracle Technology Network Web site:
<http://www.oracle.com/technetwork/topics/security/alerts-086861.html>

About Security

Security Overview

NCC uses database as middleware. System security is managed in the following ways:

- To access the database, NCC uses OPS\$ accounts.
- User access to the graphical user interface screens is managed through username and password that are stored in the database.
- Batch scripts access are managed through read and write access granted to the specific directory where the scripts are stored.
- Batch provisioning is managed through limited read and execute rights to the executable program in the /IN/service_packages/PI/bin directory.
- External systems connecting to NCC through Diameter, SIP, and the SOAP interface are identified by their IP addresses or hostname by the system.

The NCC product is typically located and managed within the internal corporate network. The external connections to other non-management systems are also protected through other network elements, for example, by firewalls. For each interface, configurable overload protection is available to prevent the system from overloading.

Understanding the Environment

Planning Considerations

When planning your NCC implementation, consider the following:

Which resources need to be protected?

- Customer data, such as traffic history.
- Internal data, such as proprietary source code.
- System components from being disabled by external attacks on the system or intentional system overloads.

Who are you protecting data from?

- You need to protect subscribers' data for others, but people in your organization will need to access that data to manage it.
- You can analyze workflows to determine who needs access to the data; for example, it is possible for a system administrator to manage system components without needing access to system data.

What will happen if the protection of a strategic resource fails?

In some cases, a fault in your security scheme is nothing more than an inconvenience. In other cases, a fault might cause extensive damage to either your business or to one or more of your customers. Understanding the security ramifications of each resource will help you protect your business properly.

Recommended Deployment Configurations

Introduction

This section describes recommended deployment configuration options for your NCC system.

Test Bed Deployment

The simplest test bed architecture is shown here. This single-server deployment is cost effective and provides a functional test environment; however, it only provides limited hardware redundancy as all nodes are installed on the same server.



Single Server Deployment

The single-server deployment reduces the network vulnerability as the inter-node communication does not leave the server. This does not mean that network security is not required for such a deployment.

Generally, a test bed is only used inside a controlled environment within the company's intranet. The network access that must be controlled by a firewall includes the following interfaces: provisioning, Diameter, SOAP, REST, and the screen access for SMS, ACS, CCP and VPN.

Depending on the Oracle virtualization technology used, good security practices related to the chosen technology need to be put in place. More information on best practices for these technologies is available in the Oracle guide: Secure Deployment of Oracle VM Server for SPARC.

Production Deployment

For the production environment, Oracle recommends the use of the Firewall-DMZ-Firewall-Intranet architecture shown in Figure 2, for all non-voice and data-based connections, with the exception of the SOAP interface. Servers can be deployed in a single location or be geographically distributed. This implies that there is a requirement for additional firewalls to handle access between sites.

The NCC product is designed to handle real time telecommunication traffic, so it is essential that any security infrastructure is designed for optimal performance. The implementation of firewall rules must be effective, but also efficient. For this reason, the platform should be deployed inside a DMZ.

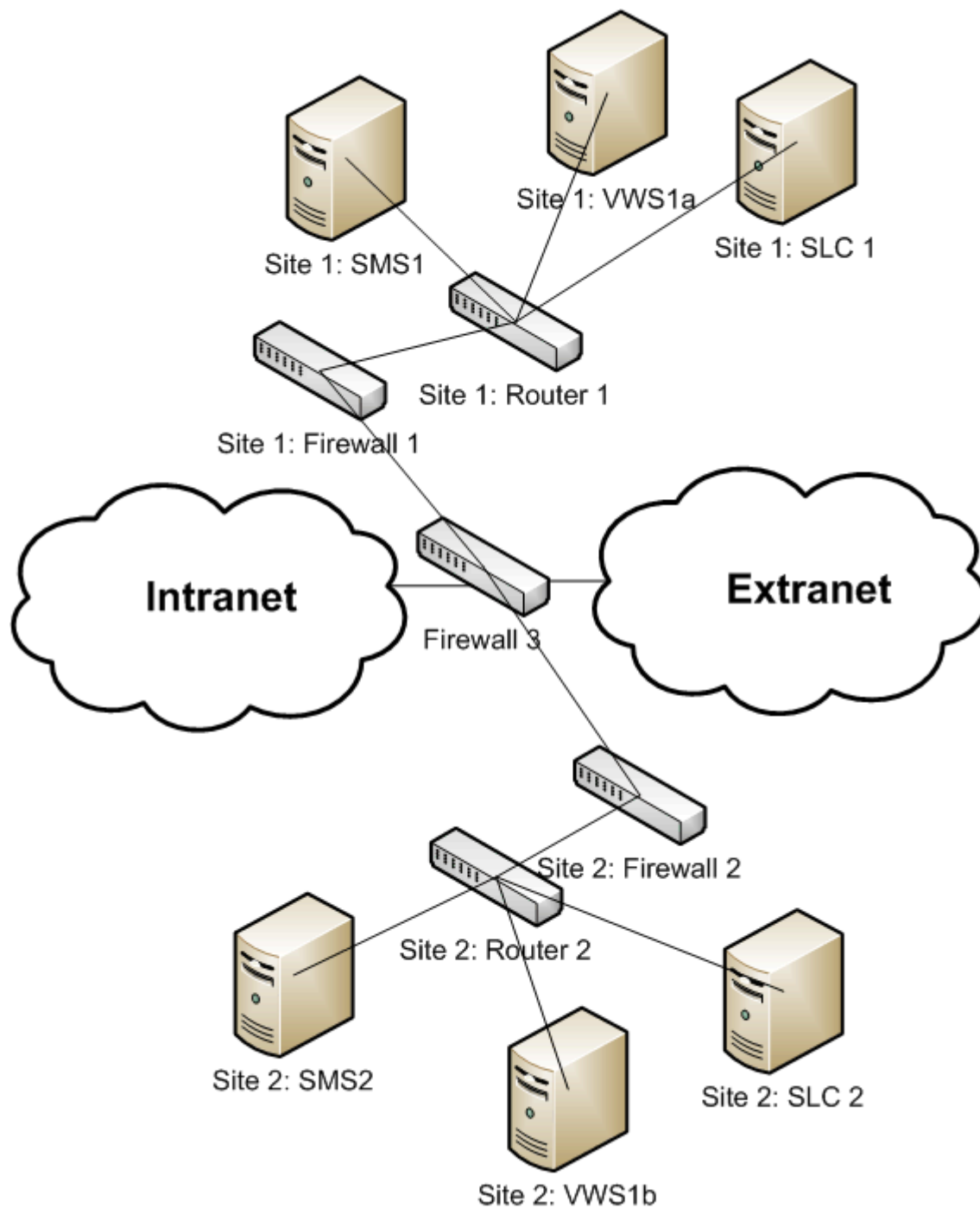
When considering a disaster recovery strategy for the SMS, the requirement for sufficient bandwidth to handle fail over in the event of a problem occurring in the primary node is essential.

Firewalls separating DMZ zones provide two essential functions:

- Blocking traffic types known to be illegal
- Providing intrusion containment, should a successful attack take over processes or processors

Network Access

The product specific network access should be controlled by a firewall on the following interfaces: provisioning, diameter, SOAP, REST, and the screen access for SMS, ACS, CCP and VPN.



Oracle Database Security

Overview

This section describes how to securely install and configure the database infrastructure component.

For a secure installation of the database, refer to *Oracle 12c Database Security Guide*. Archive logging should be enabled on the SMS and VWS as explained in *Oracle Database Administrator's Guide*. This allows a second layer of redundancy. More product specific information is available in *Installation Guide*.

Example configuration files for the database can be found in *Installation Guide*.

The product is designed to be easily adapted and flexible. Depending on the node type (SMS, VWS, or SLC) and the services configured, a number of options to optimize the security of the system are possible. More information on these options is provided in this document.

Oracle Security Documentation

Overview

To implement security, NCC uses Oracle Database. See the following documents:

- *Oracle 12c Database Security Guide*
- *Oracle 12c Database Administrator's Guide*

Oracle documentation is available from Oracle Help Center: <http://docs.oracle.com>

Performing a Secure NCC Installation

Chapter Overview

Introduction

This chapter describes how to install the NCC and provides overall guidelines to configure the platform components securely.

The installation of the product is done through the use of the NCC Installation Manager. The usage is described in *Installation Guide*.

In this chapter

This chapter contains the following topics.

Installing NCC Securely	7
Post-Installation Configuration	8
NCC Backup	8

Installing NCC Securely

Pre-Installation Configuration

The planning and preparation required prior to installing NCC is explained in the pre-installation tasks of *Installation Guide*.

Installing Securely

When installing NCC using the installer, you can choose to install:

- Each component separately
- Only the packages
- The packages and some basic component configuration
- A full installation which includes all of the packages, basic component configuration and installation of the service templates

For the first three options, the installation will need to be correctly configured to interact with the non NCC elements in the network. The default parameters will need to be modified and are documented in the component administration guides.

By choosing to install each component separately, you should be aware of the component dependencies, which are described in the component release notes and *Installation Guide*.

Installing only the packages will allow you to configure only what is required by your business without the need to be concerned with the component dependencies.

Post-Installation Configuration

Post-install Security

This section documents any post-installation security amendments.

After the installation of the full platform, some security actions need to be undertaken:

- Change the default password for the all x_oper usernames on each product server:
 - acs_oper
 - smf_oper
 - ebe_oper
 - ccs_oper
 - uis_oper
 - upc_oper
 - rim_oper
 - xms_oper
 - lcp_oper
 - is41_oper
 - ses_oper
- Ensure that su is used so that if off root permissions are needed, all actions can be tracked.
- Set the security levels of the file and directory permissions of /IN and all child sub-directories:
 - All NCC installed directories need to be set to permission level 750.
 - All executables need to be set to permission level 750.
 - All other files need to be set to permission level 640.
 - The system and application password stored in the /etc/shadow file are encrypted.
- Set the password policy "all passwords for system users and application users should be changed."
- Disable remote access for root user.
- Network
 - Only essential traffic should be allowed, especially on the NCC external network.
 - Network requirements are described in *Installation Guide*, where more specific information about latency, bandwidth, security, redundancy and routing can be found.
 - It is recommended that an internal LAN is used for the HTTP/SOAP traffic from the VWS and SMS to the SLC nodes, if available.
 - Use an external encrypted connection (VPN, SSL,...) for the HTTP/SOAP/REST traffic coming from external system.
 - Make sure that the internal networks described in *Installation Guide* are only reachable by the NCC servers and any directly linked servers, such as a third-party billing server, in the case of converged billing.
 - The access for administration of the platform is enabled on the management network through secure protocols only: ssh, sftp, scp.
 - Protocols such as ftp and telnet are blocked from external networks.
 - To allow easy access for the Oracle Advanced Customer Care VPN, check with their latest requirements.
 - For REST security, refer *REST Technical Guide*.

NCC Backup

Backup Overview

Database

- Enable database archive logging on the SMS and VWS nodes.

- Make sure that database backups are taken from the SMS and the non-active of each VWS pair. These live backups need to be planned in off peak hours to keep the impact of the additional traffic as low as possible. See Oracle *Database Backup and Recovery User's Guide* for more information.
- The Oracle Secure Backup literature provides extensive information on how to securely backup your data.

Flat file

Run the Remote Diagnostic Agent on all NCC nodes. The tool will collect flat file configuration and other useful system information. For more information, see Oracle Support.

The following configuration items are described in *Installation Guide*:

- On each node, add SSH host keys to the SSH known hosts file, and set SSH `StrictHostKeyChecking` for user `smf_oper` on each node. More detailed information on this topic can be found in Oracle Support Documentation.
- Set up IP addresses and hostnames for servers.
- Update the tablespace storage allocation on each node in accordance with system implementation type.
- Update Oracle SGA parameters on each node.
- Set shared memory limits for the NCC system.

Implementing Security

Chapter Overview

Introduction

This chapter provides an overview of the threats that the system is designed to counter and how the individual security features combine to prevent attacks.

To prevent loss and corruption of data, the design of the product is discussed together with a number of the implementation options.

In this chapter

This chapter contains the following topics.

Product Design	11
Implementation Options	12
Access Control Mechanism	12
Configuring and Using Authentication	12
Configuring and Using Access Control	13
Configuring and Using Security Audit.....	13
Security Considerations for Developers	14

Product Design

Functional Layers

The design of NCC can be viewed in multiple functional layers. On the server, which is designed to provide redundancy, there is:

- The VWS 2N design. The VWS nodes are always installed as a pair (primary and secondary) where the secondary VWS node works in active stand-by mode at the application level.
- The SMS node or the SMS cluster. The SMS cluster can be installed in either active/active or active/passive mode.
- The SLC nodes. All SLC nodes are designed to receive the same data through replication of the database.

At the application level additional functionality is provided:

- All SLC have a read-only database. Writes to these databases are only allowed through replication application, which is controlled by the SMS
- Data update requests from the network coming in through the SLCs are sent to the SMS and from SMS pushed through replication to all nodes that require the data.
- In the case where SMS and VWS data inconsistency or loss occurs, the primary subscriber data is held on the SMS and the error can be corrected by the use of the replication and resynchronization mechanisms: options include: enhanced, compare and full resynchronization.
- PI commands are processed in serial mode to prevent data inconsistency.

Implementation Options

Common Options

This section focuses on the most common implementation options. To prevent data loss, some examples of the most common implementation strategies are:

- Usage of internal SSDs storage for SLCs, VWSs, and SMS with a data redundant and fast RAID configuration.
- Usage of disk arrays for SMS. Install the VWSs primary and secondary on a different disk array.
- Raid configuration on all nodes, which are also focused on data redundancy, for example, RAID 10 or 0+1.
- Geographical spread of servers over several locations to prevent a service outage in event of a catastrophic failure at a site. Make sure the network requirements, as described in the installation guide, are also followed for inter-site connectivity.
- The implementation of Oracle Disaster Recovery solution can provide an extra layer of security. For information on how to setup such a solution, see Oracle *Database Backup and Recovery User's Guide*.
- Activation of database logs.

Access Control Mechanism

Rejection Levels

To prevent overload of the systems coming from the external network, connection rejection levels can be set. The rejection level on the interfaces will reject all new incoming traffic on the specified interface.

Interfaces also need to be considered with network details such as IP addresses, ports, and point codes required to connect the user or network element to the product. The technical and operational guides provide more information on how to configure traffic rejection levels and network parameters.

The kernel settings are a deeper layer of protection for your systems. See *Advanced Control Services Technical Guide* for a collection of kernel settings and *Installation Guide* for example values.

Configuring and Using Authentication

Introduction

This topic explains how to configure the authentication mechanism.

Command Line

The operating system permits the database to use information it maintains to authenticate users. This has the following benefits:

- Once authenticated by the operating system, users can connect to the Oracle systems more conveniently, without specifying a username or password. For example, an operating-system-authenticated user can invoke SQL*Plus and skip the username and password prompts by entering the following:
SQLPLUS /
- With control over user authentication centralized in the operating system, the Oracle database does not need to store or manage user passwords, though it still maintains usernames in the database.
- Audit trails in the database and operating system can use the same usernames.

For more information on this subject, see *Oracle Database 2 Day + Security Guide*.

GUI Access

For all screens that can be started independently (VPN, CCP, ACS, SMS), usernames and passwords are setup by the primary user through the Service Management System GUI.

When logging on, these passwords are encrypted before sending over the network to the SMS.

Configuring and Using Access Control

Authorization Systems

This section explains the authorization system used to control access to data, resources and processes for NCC users.

The NCC system administrator can set the resource limits for each user through the GUI. Defining roles and creating the appropriate user templates for them on the system is advised. More information on this topic and on how to set this up is available can be found in these guides:

- *Service Management System User's Guide*
- *Advanced Control Services Technical Guide*

It is important when setting up a new MNVO Telco ACS customer in a MVNE that the following configuration options are considered:

- Create a 'Termination Number Range Rule' for this new Telco ACS customer. See *Advanced Control Services User's Guide*.
- To select **Own Range** in the **Termination Number Range Rules** frame of the ACS New Customer screen, refer to *Advanced Control Services User's Guide*.
- Never grant level 7 access.

For network access by a non-administrator, it is recommended that you:

- Work with a VPN connection.
- Connect on the external IP address defined for each server.

More details about the configuration of network ports for the product can be found on **Oracle Support**. This information can be used to restrict network traffic rules and control access to the network to a specific subset of known network connections.

Another layer of network security can be achieved by separating the different network domains, which can be achieved by using a number of virtual LANs, designed to carry very specific traffic such as:

- Management
- Billing
- Internal
- Signaling
- Cluster Inter-connect

It is advised, for performance reasons, that cluster inter-connect is separated from the other networks.

Configuring and Using Security Audit

About Middleware

NCC is based on Oracle Database middleware. The security audit capabilities of this middleware are utilized to provide the ability to audit NCC at the system level.

For more information on database audit, refer to *Oracle Database Security Guide* for information on guidelines for auditing.

You can enable the User Audit features to get more visibility of the security status of the system, which will allow you to take remedial action if required.

Security Considerations for Developers

Developer Information

This section provides information useful to developers using the Oracle Communications Network Charging and Control Software Development Kit and PI programming options. For more information, see *Oracle Communications Network Charging and Control SDK Developer's Guide* and *Oracle Communications Network Charging and Control Provisioning Interface User's & Technical Guide*.

- General vulnerabilities such as buffer overflow, error exceptions, and SQL injections must be prevented and/or correctly processed. Guidelines for secure coding can be found at:
The CERT C++ Secure Coding Standard available at the CERT website: <https://www.cert.org/>
- Oracle Multithreaded Programming Guide when using Oracle T series hardware

Through the SDK, new database tables can be created. For secure setup and usage of database tables, see *Oracle Database Security Guide*.

Secure Deployment Checklist

Checklist

The following security checklist includes guidelines that help secure your database:

- Install only what is required.
- Lock and expire default user accounts.
- Enforce password management.
- Enable data dictionary protection.
- Practice the principles of least privilege:
 - Grant necessary privileges only.
 - Revoke unnecessary privileges from the PUBLIC user group.
 - Restrict permissions on run-time facilities.
- Enforce access controls effectively and authenticate clients stringently.
- Restrict network access:
 - Use a firewall.
 - Never poke a hole through a firewall.
 - Protect the Oracle listener.
 - Monitor listener activity.
 - Monitor who accesses your systems.
 - Check network IP addresses.
 - Encrypt network traffic.
 - Harden the operating system.
- Apply all security patches and workarounds.
- Contact Oracle Security Products if you come across vulnerability in Oracle Database.

Refer to the security checklist in *Oracle Database Security Guide*.