

JD Edwards EnterpriseOne Applications

Bulk Stock Inventory Implementation Guide

9.2

Copyright © 2011, 2022, Oracle and/or its affiliates.

This software and related documentation are provided under a license agreement containing restrictions on use and disclosure and are protected by intellectual property laws. Except as expressly permitted in your license agreement or allowed by law, you may not use, copy, reproduce, translate, broadcast, modify, license, transmit, distribute, exhibit, perform, publish, or display any part, in any form, or by any means. Reverse engineering, disassembly, or decompilation of this software, unless required by law for interoperability, is prohibited.

The information contained herein is subject to change without notice and is not warranted to be error-free. If you find any errors, please report them to us in writing.

If this is software or related documentation that is delivered to the U.S. Government or anyone licensing it on behalf of the U.S. Government, then the following notice is applicable:

U.S. GOVERNMENT END USERS: Oracle programs (including any operating system, integrated software, any programs embedded, installed or activated on delivered hardware, and modifications of such programs) and Oracle computer documentation or other Oracle data delivered to or accessed by U.S. Government end users are "commercial computer software" or "commercial computer software documentation" pursuant to the applicable Federal Acquisition Regulation and agency-specific supplemental regulations. As such, the use, reproduction, duplication, release, display, disclosure, modification, preparation of derivative works, and/or adaptation of i) Oracle programs (including any operating system, integrated software, any programs embedded, installed or activated on delivered hardware, and modifications of such programs), ii) Oracle computer documentation and/or iii) other Oracle data, is subject to the rights and limitations specified in the license contained in the applicable contract. The terms governing the U.S. Government's use of Oracle cloud services are defined by the applicable contract for such services. No other rights are granted to the U.S. Government.

This software or hardware is developed for general use in a variety of information management applications. It is not developed or intended for use in any inherently dangerous applications, including applications that may create a risk of personal injury. If you use this software or hardware in dangerous applications, then you shall be responsible to take all appropriate fail-safe, backup, redundancy, and other measures to ensure its safe use. Oracle Corporation and its affiliates disclaim any liability for any damages caused by use of this software or hardware in dangerous applications.

Oracle and Java are registered trademarks of Oracle and/or its affiliates. Other names may be trademarks of their respective owners.

Intel and Intel Inside are trademarks or registered trademarks of Intel Corporation. All SPARC trademarks are used under license and are trademarks or registered trademarks of SPARC International, Inc. AMD, Epyc, and the AMD logo are trademarks or registered trademarks of Advanced Micro Devices. UNIX is a registered trademark of The Open Group.

This software or hardware and documentation may provide access to or information about content, products, and services from third parties. Oracle Corporation and its affiliates are not responsible for and expressly disclaim all warranties of any kind with respect to third-party content, products, and services unless otherwise set forth in an applicable agreement between you and Oracle. Oracle Corporation and its affiliates will not be responsible for any loss, costs, or damages incurred due to your access to or use of third-party content, products, or services, except as set forth in an applicable agreement between you and Oracle.

Contents

Preface	i
<hr/>	
1 Introduction to JD Edwards EnterpriseOne Bulk Stock Inventory	1
JD Edwards EnterpriseOne Bulk Stock Inventory Overview	1
JD Edwards EnterpriseOne Bulk Stock Inventory Integrations	1
JD Edwards EnterpriseOne Bulk Stock Inventory Implementation	2
2 Understanding Bulk Stock Inventory	5
Bulk Stock Inventory System Functionality	5
Bulk Stock Inventory System Tasks	6
Tables Used by the Bulk Stock Inventory System	7
3 Understanding Intra-Depot Stock Movements	11
Intra-Depot Stock Movements	11
Bulk Stock	11
Commingled Stock	16
Examples of Intra-Depot Stock Movements	17
4 Setting Up the Bulk Stock Inventory System	23
Activating the Bulk Stock Inventory System	23
Setting Up AAIs for the Bulk Stock Inventory System	23
Setting Up UDCs for the Bulk Stock Inventory System	24
Setting Up Next Numbers for the Bulk Stock Inventory System	26
5 Setting Up Bulk Depots	29
Understanding Bulk Depot Setup	29
Setting Up Depot Constants for Bulk Products	29
Setting Up Depot Locations	32
6 Setting Up Bulk Items	35
Understanding Bulk Item Setup	35

Setting Up Standard Conversions for Bulk Items	35
Setting Up a Bulk Item	36
Setting Up Item Information by Depot	53
7 Setting Up Tanks and Flow Meters	59
Understanding Tank and Flow Meter Setup	59
Setting Up a Tank	59
Defining Tank Temperature and Density	66
Defining Product Groups	68
Setting Up a Flow Meter	69
8 Moving Stock	73
Understanding Stock Movement	73
Recording Intra-Depot Stock Movements	73
Recording an Intra-Depot Stock Movement for a Kit	78
Recording a Gain or Loss on an Intra-Depot Stock Movement	80
Calculating Volume from Dip Readings	82
Calculating Volume from Weighbridge Information	86
9 Working with Bulk Product Receipts	89
Understanding Bulk Product Receipts	89
Recording Bulk Product Receipts	89
Calculating Gain or Loss for Received Products	102
10 Working with Reconciliations	107
Understanding Reconciliations	107
Understanding Reconciliations Status	112
Recording Closing Meter Readings	112
Updating Throughput Transaction Status	114
Updating Throughput Reconciliations	122
Recording Tank Dip Readings	124
Updating Operational Transaction Status	126
Updating Operational Reconciliations	132
Reviewing Gains and Losses	134
Reviewing Operational Reconciliation History	136
Reviewing Reconciliation Status	137

11	Reviewing Bulk Stock Information	141
	Understanding Bulk Stock Information Review	141
	Reviewing Product Transactions	141
	Reviewing Monthly Tank Stock Status	142
	Reviewing Meter Readings	144
	Reviewing Location Segment Inquiry	145
	Reviewing Tank Readings	146
12	Appendix A - Unit of Measure Conversion Tables	149
	Converting Lengths	149
	Converting Volume and Capacity	150
	Index	153

Preface

Welcome to the JD Edwards EnterpriseOne documentation.

Documentation Accessibility

For information about Oracle's commitment to accessibility, visit the Oracle Accessibility Program website at <http://www.oracle.com/pls/topic/lookup?ctx=acc&id=docacc>.

Access to Oracle Support

Oracle customers that have purchased support have access to electronic support through My Oracle Support. For information, visit <http://www.oracle.com/pls/topic/lookup?ctx=acc&id=info> or visit <http://www.oracle.com/pls/topic/lookup?ctx=acc&id=trs> if you are hearing impaired.

Related Information

For additional information about JD Edwards EnterpriseOne applications, features, content, and training, visit the JD Edwards EnterpriseOne pages on the JD Edwards Resource Library located at:

<http://learnjde.com>

Conventions

The following text conventions are used in this document:

Convention	Meaning
Bold	Boldface type indicates graphical user interface elements associated with an action or terms defined in text or the glossary.
<i>Italics</i>	Italic type indicates book titles, emphasis, or placeholder variables for which you supply particular values.
Monospace	Monospace type indicates commands within a paragraph, URLs, code examples, text that appears on a screen, or text that you enter.
> Oracle by Example	Indicates a link to an Oracle by Example (OBE). OBEs provide hands-on, step-by-step instructions, including screen captures that guide you through a process using your own environment. Access to OBEs requires a valid Oracle account.

1 Introduction to JD Edwards EnterpriseOne Bulk Stock Inventory

JD Edwards EnterpriseOne Bulk Stock Inventory Overview

The JD Edwards EnterpriseOne Bulk Stock Inventory system from Oracle controls the storage, measurement, and movement of bulk inventory. The JD Edwards EnterpriseOne Bulk Stock Inventory system is designed for energy and chemical bulk products. You can tailor the system to handle the complexities of constantly changing inventory in the business environment. You can also track bulk inventory so that you always know the location and amount of each product that is available for sale or production.

The JD Edwards EnterpriseOne Bulk Stock Inventory system works in conjunction with other JD Edwards EnterpriseOne systems in order to:

- Manage an immense volume of product sales, purchases, movements, and adjustments.
- Provide an efficient means for initial system setup and long-term maintenance.
- Provide timely information and reports to review inventory status.
- Improve communication and quality control.

JD Edwards EnterpriseOne Bulk Stock Inventory Integrations

The JD Edwards EnterpriseOne Bulk Stock Inventory system integrates with these EnterpriseOne systems from Oracle:

- JD Edwards EnterpriseOne Inventory Management
- JD Edwards EnterpriseOne Procurement
- JD Edwards EnterpriseOne Sales Order Management

We discuss integration considerations in the implementation chapters in this implementation guide. Supplemental information about third-party application integrations is located on the My Oracle Support website.

JD Edwards EnterpriseOne Inventory Management

You set up bulk items, including the characteristics, unit of measure, and costs using the JD Edwards EnterpriseOne Inventory Management system.

JD Edwards EnterpriseOne Procurement

The JD Edwards EnterpriseOne Procurement system enables you to purchase products as well as services from suppliers. It can help you determine how much and when to purchase goods and services, the actual purchasing of goods and services, and the process of receiving the requested goods or services. The purchasing cycle ensures that the appropriate quantity and quality of equipment, material, supplies, or services are acquired at the best price and from the most appropriate source.

JD Edwards EnterpriseOne Sales Order Management

The JD Edwards EnterpriseOne Sales Order Management system enables you to set up different document types on sales orders to identify orders for bulk products. The system automatically creates a shipment for an order based on the order type and line type combination that you define. From there you can revise or add to the shipment or even create loads with the shipments on them.

JD Edwards EnterpriseOne Bulk Stock Inventory Implementation

This section provides an overview of the steps that are required to implement the JD Edwards EnterpriseOne Bulk Stock Inventory system.

In the planning phase of implementation, take advantage of all JD Edwards EnterpriseOne sources of information, including the installation guides and troubleshooting information.

When determining which electronic software updates (ESUs) to install for JD Edwards EnterpriseOne Bulk Stock Inventory, use the EnterpriseOne and World Change Assistant. EnterpriseOne and World Change Assistant, a Java-based tool, reduces the time required to search and download ESUs by 75 percent or more and enables you to install multiple ESUs at one time.

See [JD Edwards EnterpriseOne Tools Software Updates Guide](#) .

Global Implementation Steps

This following list discusses the global implementation steps for the JD Edwards EnterpriseOne Bulk Stock Inventory system.

1. Set up fiscal date patterns, companies, and business units.
See ["Setting Up Organizations" in the JD Edwards EnterpriseOne Applications Financial Management Fundamentals Implementation Guide](#) .
2. Create the chart of accounts and set up accounts and subledgers.
See ["Creating the Chart of Accounts" in the JD Edwards EnterpriseOne Applications Financial Management Fundamentals Implementation Guide](#) .
3. Set up the General Accounting constants.

See *"Setting Up the General Accounting System, Setting Up Constants for General Accounting"* in the *JD Edwards EnterpriseOne Applications Financial Management Fundamentals Implementation Guide* .

4. Set up Multicurrency Processing.

See *"Setting Up General Accounting for Multicurrency Processing"* in the *JD Edwards EnterpriseOne Applications Multicurrency Processing Implementation Guide* .

5. Set up ledger type rules.

See *"Setting up ledger type rules"* in the *JD Edwards EnterpriseOne Applications General Accounting Implementation Guide* .

6. Enter Address Book records.

See *"Entering Address Book Records"* in the *JD Edwards EnterpriseOne Applications Address Book Implementation Guide* .

7. Set up Manufacturing Constants.

See *"Setting Up Manufacturing Constants"* in the *S JD Edwards EnterpriseOne Applications Shop Floor Management Implementation Guide* .

JD Edwards EnterpriseOne Bulk Stock Inventory Implementation Steps

This following list discusses the implementation steps for JD Edwards EnterpriseOne Bulk Stock Inventory.

- 1.** Set Up the Bulk Stock Management System
See *Setting Up the Bulk Stock Inventory System*.
- 2.** Set Up Bulk Depots
See *Setting Up Bulk Depots*.
- 3.** Set Up Bulk Items
See *Setting Up Bulk Items*.
- 4.** Set Up a Tank
See *Setting Up Tanks and Flow Meters*.

2 Understanding Bulk Stock Inventory

Bulk Stock Inventory System Functionality

This section discusses:

- Features of the JD Edwards Bulk Stock Inventory system.
- Intra-depot stock movements.
- Bulk product receipts.
- Reconciliations.

Features of the Bulk Stock Inventory System

With the JD Edwards Bulk Stock Inventory system, you can:

- Control the storage and movement of liquids at varying temperatures from one container to another.
- Calculate the volume for each transaction (sale, receipt, movement, and so on) for each product and for each container (tank, truck, and so on).
- Perform volume and density conversions to any base temperature using international standard algorithms.
- Calculate product gain or loss accurately for each stock movement.
- Track inventory balances for each product in various units of measure, and show the details of the transactions that create the balance.
- Track commingled or custody stock in a tank and manage the transactions associated with each product by owner.

Intra-Depot Stock Movements

Intra-depot stock movements track inventory within a depot. The primary transactions, receiving new product and selling to customers, add or decrease inventory into and out of a depot.

You record an intra-depot stock movement whenever you need to account for stock that can no longer be found in the location or container to which it was previously assigned.

Bulk stock movements include:

- Tank-to-tank transfers
- Repacking
- Rebranding
- Regrading
- Decanting
- Filling
- Simple blending
- General stock adjustments

Movements can occur at numerous points within a depot. The General Stock Movements programs allow you to record the various types of movements, convert them to standard quantities by using calculation programs, and record any gains or losses that might have occurred.

Bulk Product Receipts

You record the receipt of bulk products requested on a purchase order as they arrive at the depot. You can confirm the receipt of the products requested on the purchase order, record the volumes received, and make adjustments to correct variances. Additionally, you can calculate any gains or losses that might have occurred during transportation.

As product moves between storage locations, gains or losses might occur due to spillage, theft, faulty meters, and so on. Four-Point Analysis Maintenance helps you track these gains or losses. You perform a four-point analysis primarily for long voyages to determine the product lost in transit, but you can record the data for any movement.

Receipts is a standard JD Edwards program. However, when you record the receipt of a bulk product, the JD Edwards Bulk Stock Inventory system version of the program displays the Bulk Product Receipts form. This form allows you to record product volumes and temperatures that were recorded when the product was received.

Reconciliations

The reconciliation process attempts to reconcile confirmed sales figures for a given period. During this process, the system should identify discrepancies due to transactions not being entered (lost invoices), theft, leakage, or faulty meters.

Throughput Reconciliations

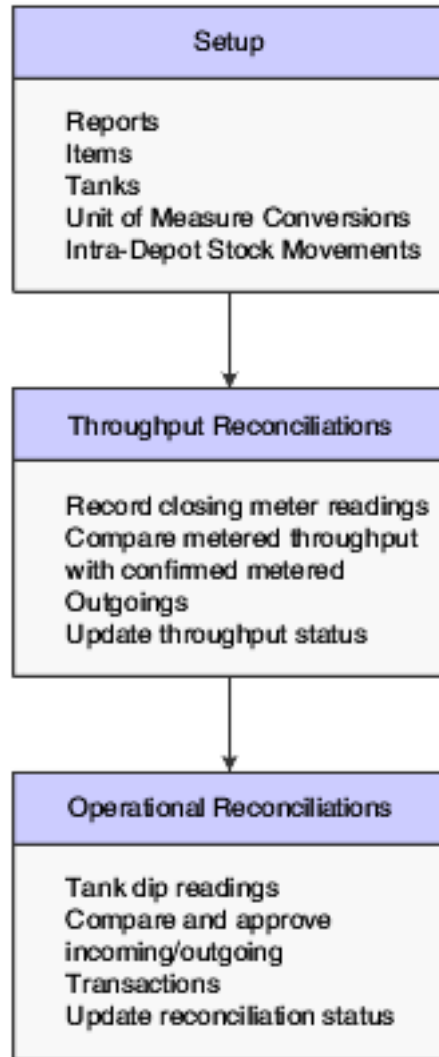
The throughput reconciliation process compares confirmed sales figures and other metered outgoings with the measured throughput based on the meter readings for a given period. The comparison identifies discrepancies due to transactions not being entered, theft, leakage, or faulty meters.

Operational Reconciliations

The operational reconciliation process performs the actual reconciliations. From all inbound and outbound transactions (since the last reconciliation), the JD Edwards Bulk Stock Inventory system calculates the amount that should be in physical inventory and compares it to the actual amount in the tanks (from the final physical tank dip). In other words, the system measures and compares the physical inventory levels with the book inventory levels, so that differences can be reconciled and operational gains or losses recorded. It then updates the book inventory to reflect the current physical inventory.

Bulk Stock Inventory System Tasks

This diagram illustrates the tasks for managing bulk stock:



Tables Used by the Bulk Stock Inventory System

Information used in the JD Edwards Bulk Stock Inventory system is stored in either master maintenance or transaction processing tables. The JD Edwards Bulk Stock Inventory system uses these tables:

- Item Cost Component Add-Ons (F30026)
- Price Adjustment Ledger File (F4074)
- Location Master (F4100)
- Inventory Constants (F41001)
- Item Master (F4101)
- Bulk Item Master (F41011)
- Conversions Table Interface File (F41012)
- Item Branch File (F4102)

- Item Location File (F41021)
- Bulk Depot/Product Information (F41022)
- Item Cost File (F4105)
- Item Base Price File (F4106)
- Lot Master (F4108)
- Location Detail Information (F4602)

Master Maintenance Tables

The master maintenance tables store constants and setup information for the JD Edwards Bulk Stock Inventory system:

Table	Description
Item Master (F4101)	Stores product information specific to bulk products.
Conversion Table Interface File (F41012)	Stores conversion information for bulk products.
Item Branch File (F4102)	Stores item information specific to a depot (branch/plant).
Bulk Depot/Product Information (F41022)	Stores information specific to a depot and product for all bulk items.
Item Location File (F41021)	Stores information for an item at a specific location. The main purpose of this table is to store inventory balances on an item or location level. The table also stores basic item information that is identical to information found in the Item Master table. This information provides the default values for the Item Location table from the Item Master table. You can override the default values here.
Inventory Constants (F41001)	Stores various branch/plant constants. Each branch/plant represents a depot.
Item Units of Measure Conversion Factors (F41002)	Stores Unit of Measure conversion information about each item of inventory stored in the depot.
Unit of Measure Standard Conversion (F41003)	Stores standard Unit of Measure conversion information.
Location Master (F4100)	Stores basic information about all warehouse and tank locations for each branch/plant.
Tank Master File (F41500)	Stores structural information about the physical tank and information required for volume calculations. The system uses this table, in conjunction with the Tank Strapping table and the Default Tank Information table, to validate any products entered for bulk transactions.
Tank Strapping Table Maintenance (F41503)	Stores the gauging increments (physical dimensions) of the tank. This table is used in volume calculations.
Blend Category File (F41501)	Stores information on the allowed blend categories for blending tanks.
Default Tank Information (F41508)	Stores the default temperature and density and gravity information used in conversion routines.

Table	Description
Meter Master (F41506)	Stores information concerning the in a depot. This table is required for processing and reconciliations.
Allowed Products Matrix File (F41505)	Identifies the product groups that can be contained in the tanks and the order they can be used.
Item Cost File (F4105)	Stores the cost of products received into and sold out of the system.
Item Cost Components Add-Ons (F30026)	Defines the cost components to be updated when receiving product.
Location Detail Information (F4602)	Defines the locations used in warehousing to store product.
Lot Master (F4108)	Defines the detail lot locations that identify batches of product received.
Four-Point Analysis Maintenance File (F41509)	Stores the volumes recorded at different points in the movement of products.
Four-Point Temperature Maintenance (F415091)	Stores the temperatures recorded at different points in the movement of products.

Transaction Processing Tables

These tables store information from product transactions:

Table	Description
P. O. Detail Ledger File - Flexible Version (F43199)	Stores detail information for each purchase order line (item number, price, quantity ordered, and so forth).
Purchase Order Receiver File (F43121)	Stores details about the volume of product received.
Sales Order Header File (F4201)	Stores the header information for each sales order (sales order number, customer number, shipment date, default shipping locations, and so forth).
Sales Order Detail File (F4211)	Stores detail information for each sales order line (item number, quantity ordered, price, and so forth).
Item Ledger File (F4111)	Stores history information for all inventory transactions. Any change to the bulk inventory is recorded in this table. Some examples are purchase order receipt and inventory adjustment.
Bulk Product Transaction File (F41511)	Stores supplemental information that pertains to bulk transactions only, such as temperature and density information, ambient and standard volumes, tank dip information, weighbridge information, and so forth.

Table	Description
Gain/Loss Transactions File (F41512)	Tracks all gains and losses for analysis and reconciliations. Information used in the four-point analysis is tracked with a separate table.
Multi-Meter Readings (F41515)	Stores information regarding opening and closing meter readings.

3 Understanding Intra-Depot Stock Movements

Intra-Depot Stock Movements

The primary transactions, receiving new product and selling to customers, add or decrease inventory into and out of a depot. Intra-depot stock movements track inventory within a depot.

You record an intra-depot stock movement whenever you need to account for stock that can no longer be found in the location or container to which it was previously assigned.

A single intra-depot movement can be a from transaction, a to transaction, or both, and can have multiple lines for each entry. From transactions reduce inventory in a location. To transactions increase inventory in a location.

Before you record volumes, you may need to calculate the volume from a dip reading or weighbridge information. The system performs conversions based on a standard temperature in order to record volumes for bulk stock.

Note:

- *"Working With Inventory Transactions" in the JD Edwards EnterpriseOne Applications Inventory Management Implementation Guide .*

Bulk Stock

The volume of a bulk product changes in relation to ambient temperature. Ambient temperature is the temperature of the environment surrounding a product, such as a tank or a compartment of a vehicle. To record volume at a common base for all stock movements, you need to convert the volume that you have calculated at ambient temperatures to volume calculated at a standard temperature. The JD Edwards EnterpriseOne Bulk Stock Inventory system uses only standard volumes to make adjustments to bulk inventory.

This section discusses:

- How temperature and density affect volume.
- How the system converts volume.
- How volume is measured.
- How temperature and density are measured.

How Temperature and Density Affect Volume

Temperature has a unique effect on liquids. A liquid product expands when its temperature rises and contracts when its temperature falls. The degree to which a product expands or contracts depends on its relative density. The denser the liquid, the less the liquid expands or contracts.

When you measure liquid products, you need to convert the volume measured at the ambient temperature of the liquid to its volume based on a standard temperature. The system performs this conversion using standard tables or algorithms. You define the standard temperature to which you want to convert for each product at each depot.

How the System Converts Volume

When you record an intra-depot stock movement, a receipt of stock, or other volume entry for bulk stock, you can enter volumes calculated at ambient or standard temperatures. The system uses the temperature and density table indicated on the Bulk Information tab of the Additional System Information form of the Item Master to calculate a Volume Correction Factor (VCF). It then multiplies the VCF by the ambient quantity to get the standard quantity. If the depot's standard temperature is different from the temperature used in the table, a secondary conversion is made to convert from the base temperature to the standard temperature:

$$\text{Ambient Volume} \times \text{VCF} = \text{Standard Volume}$$

If no table is indicated, the system uses the coefficient of expansion to calculate the standard volume.

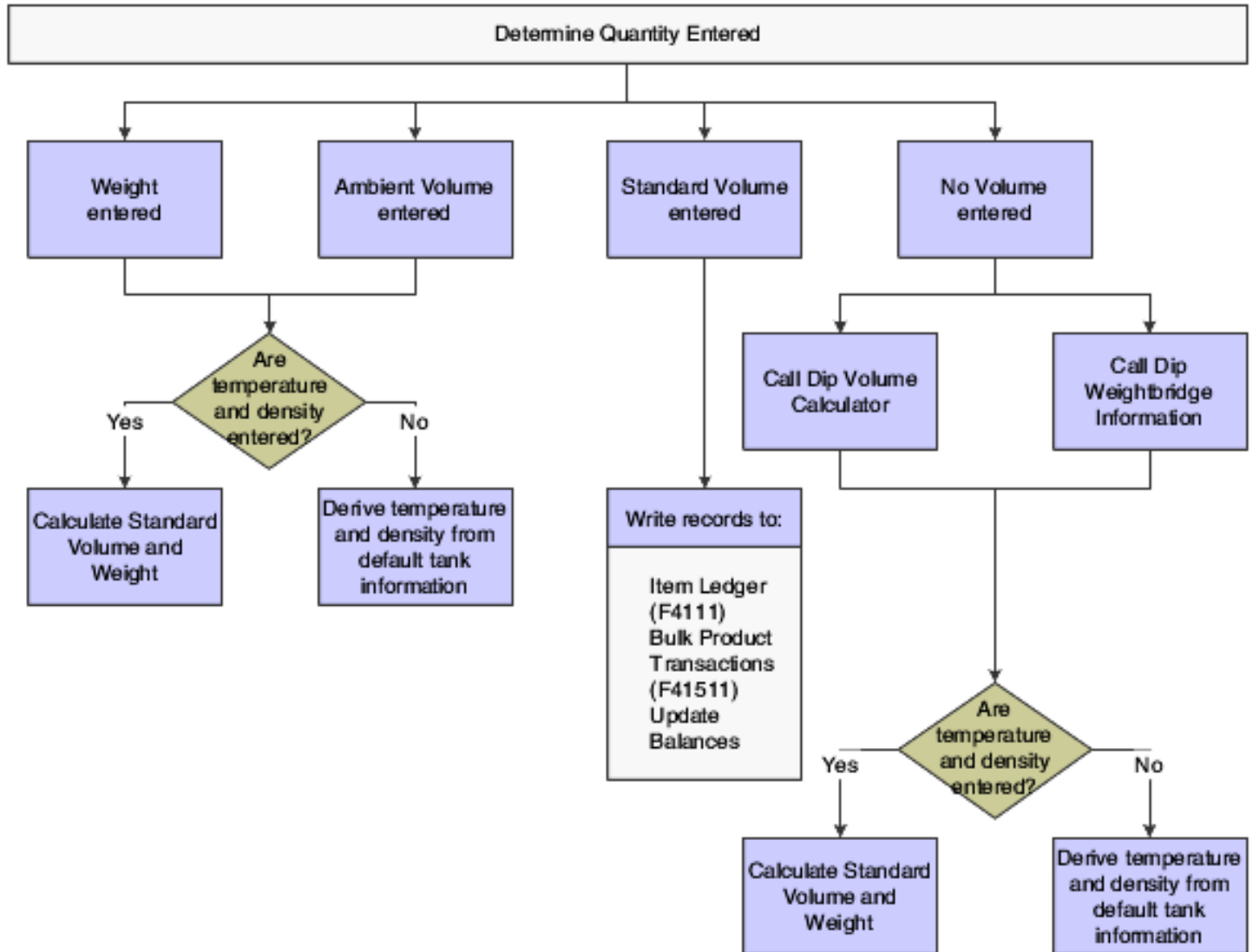
The system also calculates the weight of the product and converts the standard quantity to the Primary Stock Accounting Unit (PSAU) quantity for the product.

To calculate volume for asphalt and bitumen products or other products stored in heated tanks, the system also applies an expansion factor to account for the tank temperature.

The system records these conversions:

Unit of Measure	Calculation
Ambient volume	Ambient volume = Standard volume \times VCF
Standard volume	Standard volume = Ambient volume \times VCF
Weight	Weight = Standard volume \times Corrected density
PSAU quantity	Calculated by either volume or weight

This diagram illustrates the process that the system uses to calculate volume and weight:



How Volume Is Measured

To measure the volume of bulk products, you can perform various types of dips or use a weighbridge to weigh the product. Tank dip readings include the pipeline and discharge volumes plus the initial dip volume.

Dip Measurement

A wet dip (innage) measures the liquid height in the tank. You measure the liquid height by lowering the innage tape and bob to the gauge striking point of the tank, pulling it out, and noting where the liquid marks the tape.

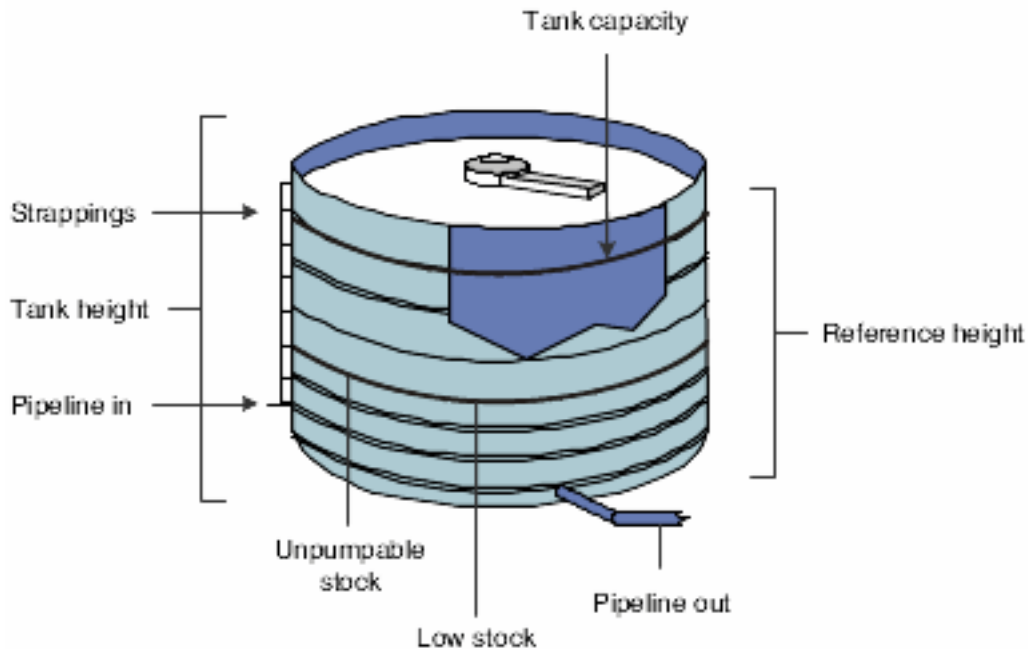
A dry dip (ullage) measures the space between the liquid and a reference point at the top of the tank. You perform this type of dip when the product is too thick to be accurately measured. You measure the space between the top of the

liquid and the reference point, and then determine the liquid height by subtracting the dry dip measurement from the reference height.

Tank Gauging and Strapping

After you measure the height of the liquid in the tank, you refer to the strapping table computed specifically for that tank. A strapping table is a record of volume capacity in a tank by height increments. The strapping table accounts for imperfections in the shell of the tank. The strapping table converts tank dip readings to gross volumes for a particular tank.

This diagram illustrates measurements used for bulk stock in a tank:



Strapping tables might be set up in these ways:

Height Designation	Description
Shell height.	Distance between the bottom of the bottom angle of the tank and the top of the top angle of the tank.
Gauging height or Reference height.	Distance from the striking point on the tank floor (or strike plate) to a designated reference point on the gauge hatch.
Effective Inside Tank height.	Distance from the strike plate to the top angle, or where the product would begin to overflow. This height defines the upper and lower limits of the tank table.

Water and Sediment Height

When determining the gross amount of product in a tank, you must subtract the water and sediment from the total amount of product in the tank. To do this, you cover the innage tape with a water-finding paste, and then perform a wet dip. The paste reacts with the sediment, dissolves, and turns the tape red.

Floating Roof Tanks

Floating roof tanks are normally used for aviation fuels or other products for which the amount of water in the product must be minimized.

Floating roof tanks have a moveable roof that floats on top of the product in the tank. A tank with a floating roof displaces a certain amount of liquid around its edges and up into the tank hatch. With such tanks, you must make a correction to the product measurement. The amount of displacement depends on the weight of the roof.

Heated Tank

A depot uses heated tanks for bulk products that need to be kept heated, such as asphalt and bitumen. A depot might also use a heated tank for any bulk product that might be abnormally expanded, as would occur in a cold environment.

Weighbridge Measurement

You can use a weighbridge to weigh the product in a tank. For example, you can use a weighbridge to weigh the product in a tank on a truck. To do so, you subtract the weight of the vehicle from the total weight. The system uses the weight to calculate volume. Weight is typically standard. It is not subject to volume changes in relation to temperature and density.

How Temperature and Density Are Measured

Many types of thermometers are available for measuring the temperature of liquid in a tank. Some thermometers are standard for a particular type of tank. Because the temperature of liquid in a tank might vary throughout its depth, you might need to perform readings at various depths and calculate an average reading.

You use a hydrometer to measure the density of liquids. A hydrometer floats vertically in liquid. The buoyancy of the hydrometer depends on the density of the liquid. You first take a sample of the liquid from the tank and put it in a glass cylinder. Then you lower the hydrometer into the tank and take a reading. You also take a temperature reading using a thermometer. You use the temperature reading to convert from the density at the liquid's ambient temperature to the density at its standard temperature.

Note:

- *Defining Depot Temperature and Density.*
- *Defining Default Units of Measure for Bulk Items.*
- *Calculating Volume from Dip Readings.*
- *Calculating Volume from Weighbridge Information.*
- *Setting Up Basic Tank Information.*

Commingled Stock

You might hold stock belonging to another company at the depot within the same tank as your own stock. This is known as commingled stock. Trading partners for whom you hold stock typically do not find it feasible to carry all of the products that they want to sell. Or they might have a dry depot, in which they carry no stock at all.

When the company enters a sales order, a driver might be required to pick up the stock at the depot. When the driver picks up the stock, you can enter an inventory transaction to take stock out of the tank or enter a sales order and create a trip to download to a gantry. If the driver is delivering the stock, you can enter a sales order and create a trip if you want to include the trip in the dispatch planning. If you enter a sales order, you can charge a handling fee as the sales price.

Whenever you make a stock movement, record receipt of a product, load stock, or record a disposition, you must specify the owner of the product if the tank in use is set up for commingled stock. These transactions should be reflected in inventory, but not in accounts receivable or the general ledger.

Energy and Chemical Solutions tracks the two types of commingled stock:

- Commingled for custody
- Commingled for duty

Commingled for custody refers to stock that is owned by a trading partner but stored in your tank. The trading partner might not have a depot in your area but still needs to serve its customers.

Commingled for duty refers to stock in tanks that hold both duty-free and duty-paid stock. For example, you might sell duty-paid stock to domestic customers and duty-free stock to international customers or the government.

Stock can also be both commingled for custody and for duty. For example, you might hold duty-free stock in your tank for the trading partner.

To correctly account for the two types of commingled stocks, you can set a processing option in these systems:

System	Programs
Bulk Stock Inventory	<ul style="list-style-type: none"> • General Stock Movements (P415101) • Enter Receipts by Purchase Order (P4312)
Transportation Management	<ul style="list-style-type: none"> • Confirm Load (P4960) • Disposition Load (P4960)

Note:

- *Setting Up Depot Locations.*
- *Setting Up Additional Tank Information.*
- *Reviewing Location Segment Inquiry.*

Examples of Intra-Depot Stock Movements

To ensure accurate accounting of your inventory, you can record intra-depot stock movements by using various versions of the General Stock Movements program (P415101). Select the appropriate stock movement version, on the Stock Movement menu, based on the type of stock movement that you want to perform. Following each movement version is an explanation of how to record the type of movement, including the From (F) or To (T) required lines, document type, examples, and whether the movement results in a gain or loss.

If you are using the JD Edwards EnterpriseOne Agreement Management system, you can set the processing option on the Agreements tab to specify how the system searches for agreements.

See *"Understanding JD Edwards Agreement Management" in the JD Edwards EnterpriseOne Applications Agreement Management Implementation Guide* .

Bulk Stock Adjustments

This table is an example of bulk stock adjustments:

Description	Details
Any adjustment to inventory.	<p>You can record a From or a To (not both).</p> <p>Example:</p> <ul style="list-style-type: none"> • F: Spillage line loss • T: Receipt of product <p>No gain or loss.</p> <p>Document Type: BJ</p>

Consumed in Operations - Own Use

This table is an example of consumed in operations - own use adjustments:

Description	Details
Used in internal operations.	<p>You can record a From or a To (not both).</p> <p>On a From transaction, you can specify the account to be expensed.</p> <p>Examples: Cleaning tanks, running vehicles</p> <ul style="list-style-type: none"> • F: Tank • T: Return to tank <p>No gain or loss.</p>

Description	Details
	Document Type: BO

Tank-to-Tank Transfer

This table is an example of tank-to-tank transfer adjustments:

Description	Details
Transfer from one tank to another within the same depot.	<p>You can record a From and a To.</p> <p>Examples: Maintenance, replenishing of commingled stock</p> <ul style="list-style-type: none"> • F: Tank A • T: Tank B <p>Gain or loss.</p> <p>Document Type: BT</p>

Repack

This table is an example of repack adjustments:

Description	Details
Repack from one package size to another.	<p>You can record a From and a To. The program enables multiple From and To lines.</p> <p>Example: Drums to other containers, such as cans.</p> <ul style="list-style-type: none"> • F: 10W40 drums • T: 10W40 cans <p>Gain or loss due, for example, to spillage.</p> <p>Document Type: BP</p>

Rebrand

This table is an example of rebrand adjustments:

Description	Details
Change to stock item (no physical movement).	<p>You can record a From and a To.</p> <p>Examples: Change due to confirming supply under incorrect item or renaming an item.</p> <ul style="list-style-type: none"> • F: Base Oil A • T: Base Oil B <p>No gain or loss.</p> <p>Document Type: BR</p>

Regrade

This table is an example of regrade adjustments:

Description	Details
Change to stock item (no physical movement).	<p>You can record a From and a To.</p> <p>Regrades are normally due to customer demand.</p> <p>Example: Take a higher grade product and sell as lower grade.</p> <ul style="list-style-type: none"> • F: Premium • T: Unleaded <p>No gain or loss.</p> <p>Document Type: BG</p>

Decant

This table is an example of decant adjustments:

Description	Details
Empty a packaged item.	<p>You can record a From and a To. The program enables multiple From and To lines.</p> <p>Example: Convert additives from drums to bulk storage.</p> <ul style="list-style-type: none"> • F: Package product decanted • T: Bulk product • T: Empty container <p>Gain or loss due to loss in process, for example, spillage.</p>

Description	Details
	Document Type: BD

Fill

This table is an example of fill adjustments:

Description	Details
Take bulk product in tank and fill drums or canisters.	<p>You can record a From and a To. The program enables multiple From and To lines.</p> <p>Examples:</p> <ul style="list-style-type: none"> • F: Empty containers • F: Bulk stock • T: Filled package product <p>Gain or loss due to loss in process, for example, spillage.</p> <p>Document Type: BL</p>

Simple Blend

This table is an example of simple blend adjustments:

Description	Details
Blend multiple products to make another.	<p>You can record a From and a To. The program enables multiple From and To lines.</p> <p>Simple blends increase the quantity on hand of the current product in the tank.</p> <p>Examples:</p> <ul style="list-style-type: none"> • F: Bulk Product A • F: Additive 1 • T: Bulk Product C <p>No gain or loss.</p> <p>Document Type: BB</p>

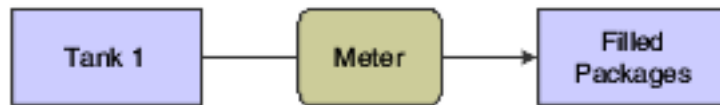
Stock Movements in Various Situations

This diagram illustrates the movement of stock in various situations:

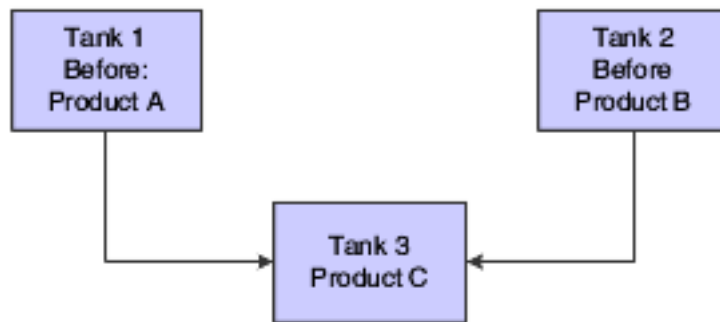
Tank-to-Tank Transfer



Repack, Decant, or Fill Transaction



Simple Blend



4 Setting Up the Bulk Stock Inventory System

Activating the Bulk Stock Inventory System

This section discusses how to activate the JD Edwards EnterpriseOne Bulk Stock Inventory system.

Form Used to Activate the Bulk Stock Inventory System

Form Name	FormID	Navigation	Usage
EnterpriseOne System Control – Revisions	W99410B	<p>In the Fast Path, enter P99410.</p> <p>On the Work With EnterpriseOne System Control form, select the row for Bulk Stock Management and click Select.</p> <p>On the EnterpriseOne System Control – Revisions form select Yes and then click OK</p>	Activate the Bulk Stock Inventory system.

Activating the Bulk Stock Inventory System

Access the Work With EnterpriseOne System Control form.

Setting Up AAIs for the Bulk Stock Inventory System

You need to set up the AAIs for the JD Edwards EnterpriseOne Bulk Stock Inventory system. The AAIs for the JD Edwards EnterpriseOne Bulk Stock Inventory system identify the general ledger accounts that the system updates when recording transactions. You must create AAIs for each unique combination of company, document type, and general ledger class code that you use.

This table identifies the AAIs used in the JD Edwards EnterpriseOne Bulk Stock Inventory system:

AAI	Description
4122	Provides the inventory offset account. The General Stock Movements program (P415101) uses this AAI.

AAI	Description
4124	Provides the offset account for expense or cost of goods sold. The General Stock Movements program uses this AAI.
4152	Provides the inventory account used in the reconciliations process.
4182	Provides the physical gain/loss account. The General Stock Movements and Reconciliations programs use this AAI.
4184	Provides the work-in-process account to record the interim gain or loss on bulk items. The General Stock Movements program uses this AAI.

This example illustrates the accounting transactions for these AAIs:

Transaction	Description
If decreasing inventory	Debit AAI = 4182 Gain/Loss Credit AAI = 4152 Inventory
If increasing inventory	Debit AAI = 4152 Inventory Credit AAI = 4182 Gain/Loss

Note:

- "Setting Up Automatic Accounting Instructions" in the *JD Edwards EnterpriseOne Applications Financial Management Fundamentals Implementation Guide* .

Setting Up UDCs for the Bulk Stock Inventory System

The UDCs program (P0004A) enables you to establish and maintain a table that defines valid codes for various types of information. Codes are categorized by system and code type. You might need to review or revise codes for the JD Edwards EnterpriseOne Bulk Stock Inventory system. In addition, you need to define the UDCs for the various document types used by the system.

The JD Edwards EnterpriseOne Bulk Stock Inventory system uses these UDCs:

UDC	Description
Blending Categories (Type BC)	Identifies valid product groups that can be put into a specific blending tank
Dispatch Group (Type DG)	Used by the Transportation Management system to group bulk products for dispatch
Density Table (Type DN)	Indicates the density conversion algorithm to be used in calculations

UDC	Description
Dip Type (Type DP)	Identifies the method of measurement when calibrating volumes from tank dips
Density Type (Type DT)	Identifies the type of density
Fill Category (Type FC)	Identifies the different filling categories
Gauging Method (Type GM)	Indicates the method used to measure product
Meter Status (Type MS)	Indicates whether the meter is active or inactive
Product Group (Type PG)	Identifies the line of products with similarities enabling them to be grouped
Replenishment Type (Type RT)	Indicates the type of supply, such as blended product, purchased, and filled
Tank Status (Type ST)	Indicates whether the tank is active or inactive
Strapping Units (Type SU)	Indicates the size of the strapping table increments, such as centimeters
Tank Location (Type TL)	Identifies the location of the tank
Temperature Type (Type TL)	Identifies the type of temperature, such as Celsius or Fahrenheit
Temperature Conversion Table (Type TT)	Indicates which standard ASTM-IP-API table to invoke for calculation of standard stock accounting units
Tank Usage (Type TU)	Indicates the primary usage for the tank-for example, storage, blending, and holding
Tank Type (Type TY)	Identifies the physical shape of the tank

This UDC table indicates document types for System 41B:

UDC	Description
Load Confirmed Sales (Type LC)	Includes all of the codes for the document types for load-confirmed sales that will go through the meter
Other Metered Outgoings (Type OM)	Includes all document types for all other types of transactions that will go through the meter
Non-Metered Outgoings (Type NM)	Includes all document types for transactions that left the tank but did not go through the meter
Incomings (Type IN)	Identifies the document types to include in the incoming transactions

UDC	Description
Outgoings (Type OT)	Identifies all document types to include in the outgoing transactions
Throughput Reconciliation (Type TR)	Identifies any documents for which you must complete throughput reconciliation before completing operational reconciliation

In the Fast Path, enter UDC.

Note:

- [JD Edwards EnterpriseOne Tools Foundation Guide](#)

Setting Up Next Numbers for the Bulk Stock Inventory System

When you create a document such as an invoice, a voucher, or a journal entry, you can assign a document number or let the Next Numbers program (P0002) assign one.

Next numbers is an automatic numbering feature. The Next Numbers program assigns numbers to documents using either or both of these types of numbers:

- Standard next numbers.
The system finds the next available number in the Next Numbers - Automatic table (F0002) and assigns that number to the document.
- Next numbers by company and fiscal year.
The system finds the next available number by company and fiscal year, or by company only, in the Next Numbers by Company/Fiscal Year - Automatic table (F00021).

Next numbers work in conjunction with the data dictionary. Each data dictionary item that uses next numbers contains a next numbering index value that corresponds to the line number that contains the next number value for that data item.

When you set up next numbers:

- Do not use blank as a next number value.
- Do not change a next number.
Changing the numbers can result in duplicate numbers, as well as the inability to locate previously added numbers. If you must change a next number, change it to a greater value only.
- Do not delete next number values. If you delete a next number value, you might get unexpected results.
- Do not change the sequence of the next numbers in the table.
Each next number must remain on its current line because programs reference a specific line in the table. For example, in the JD Edwards EnterpriseOne General Accounting system, the next number for journal entries must be on the second line.

You can have the system assign check digits for any set of standard next numbers. Check digits prevent errors caused by transposition during data entry. For example, activating check digits in the address book for suppliers prevents a voucher from being assigned to the wrong supplier if digits are transposed during voucher entry. It is recommended that you use check digits for next numbers only when a transposition error is likely to occur during data entry.

Note: If you choose to manually assign a document number instead of using next numbers, you must enter the number during data entry.

In the Fast Path, enter NN.

Note:

- *"Setting Up Next Numbers" in the JD Edwards EnterpriseOne Applications Financial Management Fundamentals Implementation Guide* .

5 Setting Up Bulk Depots

Understanding Bulk Depot Setup

Managing bulk inventory transactions is key to controlling inventory and product movements. To successfully manage transactions, you must first set up the depots.

You set up each depot to supply the default information that is used throughout the JD Edwards EnterpriseOne Bulk Stock Inventory system. The system loads these default values whenever you perform a bulk transaction, print reports, or use programs to locate information. You can revise this information as the business situations change.

You can set up separate depots for bulk and packaged products or set up one depot for both. The company's business processes determine how you set up depots.

Prerequisites

Before you complete the tasks in this section:

- Create an Address Book record for each depot (branch/plant) or owner for commingled stock.
See "Entering Address Book Records" in the JD Edwards EnterpriseOne Applications Address Book Implementation Guide .
- Set up each depot as a business unit to define information about inventory, expense, and revenue entries. Even if the company chooses not to post any accounts at the depot level or wants to record accounting activity to another business unit, you must set up each depot as a business unit.
See "Setting Up Organizations" in the JD Edwards EnterpriseOne Applications Financial Management Fundamentals Implementation Guide .
- Define a default branch/plant.
See "Setting Up the Inventory Management System" in the JD Edwards EnterpriseOne Applications Inventory Management Implementation Guide .

Setting Up Depot Constants for Bulk Products

This section provides overviews of depot constants for bulk products, format specifications for a depot location, and depot temperature and density and discusses how to:

- Define format specifications for a depot location.
- Define depot temperature and density.

Understanding Depot Constants for Bulk Products

The system uses the constants that you set up on Branch/Plant Constants as the default values for bulk products. You must define constants for each depot. The system loads the default values whenever you perform bulk transactions, but you can override the values in various bulk programs.

For depots with bulk products, you must define the format specifications for the stocking locations, the default temperature, and density information.

Note:

- *"Setting Up the Inventory Management System" in the JD Edwards EnterpriseOne Applications Inventory Management Implementation Guide .*

Understanding Format Specifications for a Depot Location

You must define the format specifications for the stocking locations before setting up the locations for this depot. Format specifications are values that store the numbering scheme used for stocking locations. You also define the units of measure that this depot uses for volume, weight, and dimensions of the stocking items.

Understanding Depot Temperature and Density

You must define the default values that the depot uses for temperature, density, and measurement of bulk products.

Prerequisite

Define the depot default values used for managing inventory, processing orders and recording to the general ledger.

Forms Used to Set Up Depot Constants for Bulk Products

Form Name	FormID	Navigation	Usage
Branch Location Definition	W41001A	Bulk Stock Control Setup (G415041), Branch/Plant Constants On Work With Branch/Plant Constants, locate a branch/plant and select Location Def from the Row menu.	Define format specifications for a depot location.

Form Name	FormID	Navigation	Usage
Bulk Product Constants	W41001C	On Work With Branch/ Plant Constants, locate a branch/plant and select Page 3 from the Row menu.	Define depot temperature and density.

Defining Format Specifications for a Depot Location

Access the Branch Location Definition form.

Location Format Specification

Click the Location Format Specification tab.

Separator Character

Enter the character you use as a separator that divides the elements of the location when you display them on forms or reports. For example, you might use a / as a separator character to divide elements such as aisle, bin, and shelf in a location code.

The location code can contain up to 20 characters, including separators.

Separators are not stored in the tables, but are used to edit a location on a form or report. If you do not want to use separators, leave this field blank.

However, you must enter characters and spaces to equal the correct length of each element in the location code. The system then displays the location as one string of characters.

The system uses the character you enter in this field to separate the combination of tank/owner and aisle/bin as it appears on forms or reports.

Companies commonly use a . as the separator character.

Aisle

Enter the number of characters to represent the tank (or aisle for packaged stock). Values are numbers 1 through 8.

To determine the location ownership, the Aisle or Bin field must contain the Address Book number.

Bin

Enter the number of characters to represent the owner for commingled bulk stock (or bin for packaged stock). Values are numbers 1 through 8.

Code 3

Enter the number of characters to represent Code 3 in the location format specification.

Location Segment Specification

Click the Location Segment Specification tab.

Blank Location Allowed

Enter a code that indicates whether you allow a blank location or a segment to contain a blank value for this Branch/Plant. If you leave this option blank, the system will not allow a blank location.

If you check this option, the system allows a blank location or a segment to contain a blank value for this Branch/Plant.

Aisle, Bin, and Code 3

Enter a code that represents which edit rule the system uses for validating segment 1, segment 2, or segment 3. Values are:

Blank: Does not perform any validation

1: Uses an address book number

2: Uses a user-defined code

3: Uses a numeric range

4: Uses an alphanumeric

5: Uses an item number

Note: You can use this edit rule with product variants, but you cannot use this rule with location segment specification.

Defining Depot Temperature and Density

Access the Bulk Product Constants form.

Standard Temperature

Specify the temperature to which the system converts all volumes for inventory purposes. This is the depot (branch/plant) standard. You can convert volumes to a baseline temperature using the Petroleum Measurement Table routines (for example, 60 degrees Fahrenheit or 15 degrees Centigrade) and then convert to the depot standard (for example, 20 degrees Centigrade).

U.S. Increments Delimiter

Enter a character that separates feet from inches and fractions when entering U.S. increments in tank strappings and the dip volume calculator. The integer to the left of the delimiter is feet. The integer to the right is inches. Another delimiter denotes fractions of an inch in sixteenths. You can use any character except a period (.) or a comma (,). If you leave this field blank, the system uses a forward slash (/).

Setting Up Depot Locations

This section provides an overview of depot location setup and discusses how to set up depot locations.

Understanding Depot Location Setup

After you set up the location format specifications for the depots, you set up locations, such as tank farms, for the depots. The system stores the locations that you define in the Location Master table (F4100) . All programs that require location specifications use this table to verify locations.

In addition to setting up physical locations for the depots, you need to set up logical locations. A logical location stores the gains and losses for each product resulting from the various stock movements. The system records gains and losses in the Gain/Loss Transactions File table (F41512) .

When you set up the logical location in the Location Master table, you do not specify item location records and associated tanks. Therefore, if you search for inventory by location, the system does not include the inventory from the logical location because there are no item or location records. Most users set up a separate logical location for each product in the depot. For commingled stock (product with multiple owners), set up a logical location at the owner level.

As part of setting up a depot location, you must assign a name to the location. To name a location, identify the tank, or if the tank has commingled stock, identify both the tank and owner.

The name that you assign can be the same as the tank ID. However, the location name can also designate the owner.

This table lists some typical conventions for naming locations:

Convention	Description
TNK1A	Use this convention to identify a single tank that contains product with only a single owner.
TNK1C.Owner1 TNK1C.Owner2	Use this convention to identify a single tank that contains commingled stock. The period (.) between the tank ID and the owner corresponds to the separator character that you defined when you set up the depot constants.
* (blank location)	Use an asterisk (*) in the Location field to define a blank location. The system uses a blank location for the initial soft commit when you enter sales orders.

Prerequisite

Define the format specifications for locations.

Note:

- *"Setting Up Warehouse Locations" in the JD Edwards EnterpriseOne Applications Inventory Management Implementation Guide .*
- *Commingled Stock.*
- *Defining Format Specifications for a Depot Location.*

Form Used to Set Up Depot Locations

Form Name	FormID	Navigation	Usage
Enter Location Information	W4100B	Inventory Setup (G4141), Define Warehouse Locations	Set Up Depot Locations

Form Name	FormID	Navigation	Usage
		On Work With Location Master, click Add.	

Setting Processing Options for Define Warehouse Locations (P4100)

Processing options enable you to specify the default processing for programs and reports.

Display

Enter **1** to omit item location records with no quantity available and no quantity inbound/outbound when calling Availability by Location.

Setting Up Depot Locations

Access the Enter Location Information form.

Location

Specify the area in the warehouse where you receive inventory. The format of the location is user-defined and you enter the location format for each branch/plant.

A location format comprises elements and, optionally, a separator character.

Elements represent more specific locations in a branch/plant. If the tank contains commingled stock, include the separator character defined on Branch/Plant Constants - Page 2 and identify the owner.

The total length of all elements in this field, including separators, cannot exceed 20 characters. The location for a single tank can contain up to the number of characters identified in the Length of Tank/Aisle field on Branch/Plant Constants - Page 2.

The owner ID can contain up to the number of characters identified in the Length of Owner/Bin field on Branch/Plant Constants - Page 2.

If you leave this field blank and do not use a separator character, the system displays the location as an asterisk. If you use a separator character, the system displays the location with the correct number of spaces for each element, followed by the separator character.

LOD

Enter a code that summarizes or classifies locations and provides a hierarchy of locations for review purposes. For example, you can assign aisles to level 2, and individual bins within the aisle as level 3.

Use the Detail Level field to specify the beginning level of detail that you want the system to display for the location.

6 Setting Up Bulk Items

Understanding Bulk Item Setup

When you set up an item, you define basic information and specify how the system should process transactions for the item. Setting up a bulk item provides the item-level default values used throughout the various processing programs for bulk transactions. In addition, you set up item information specific to a depot.

Setting Up Standard Conversions for Bulk Items

This section provides an overview of standard conversion setup for bulk items and discusses how to set up standard conversions for bulk items.

Understanding Standard Conversion Setup for Bulk Items

You set up standard unit of measure conversions for conversions that are constant. For example, if 100 centimeters always equals 1 meter, you set this up as a standard unit of measure conversion.

To set up conversions, define all common volume-to-volume and weight-to-weight conversions that the company needs for bulk item transactions. You can also set up volume-to-weight conversions for bulk items.

Whenever a conversion is needed for recording a transaction, the system uses standard unit of measure conversions if it is unable to find item-specific conversions. The system stores standard conversions in the Unit of Measure standard conversion table (F41003) .

The system processes transactions according to this hierarchy of conversion factors:

1. Use the unit of measure at the item or item/branch level from the Item Units of Measure Conversion Factors table (F41002).
2. If this table does not exist, use the standard units of measure from the Unit of Measure standard conversion table.
3. If this table does not exist, the system displays an error message.

Note: No special logic in the program keeps you from creating conflicting conversion factors, so use care when setting them up.

You can set up an unlimited number of conversion factors. However, you must set up conversion factors that calculate each unit of measure back to the primary unit of measure.

For example:

- 1 BX = 2 UN
- 1 CR = 2 BX
- 1 PL = 2 CR

To perform volume-to-weight conversions for bulk items:

- Set up conversion factors from cubic meters to all other units of measure used for volume calculations.
Use the abbreviation *M3* for cubic meters.
- Set up a unit of measure conversion from kilograms to all other units of measure used for weight calculations.
Use the abbreviation *kg* for kilograms.

Note:

- *Understanding Unit of Measure Conversion Setup by Bulk Item.*

Form Used to Set Up Standard Conversions for Bulk Items

Form Name	FormID	Navigation	Usage
Standard Units of Measure Revisions	W41003B	Inventory Setup (G4141), Standard Units of Measure On the Work With Standard Units of Measure form, click Add.	Set up standard conversions for bulk items.

Setting Up Standard Conversions for Bulk Items

Access the Standard Units of Measure Revisions form.

From Unit of Measure

Enter a user-defined code (UDC), 00/UM, that identifies the unit of measure for an item. For example, it can be each, cases, boxes, and so on.

Conversion Factor

Enter a factor that the system uses to convert one unit of measure to another unit of measure.

Setting Up a Bulk Item

This section provides overviews of bulk item setup, basic bulk item information setup, default units of measure for bulk items, unit of measure conversion setup by bulk item, item temperature and density, and conversion table setup, lists prerequisites, and discusses how to:

- Set processing options for Item Master (P4101).
- Set up basic bulk item information.

- Define default units of measure for bulk items.
- Set up unit of measure conversions by bulk item.
- Define item temperature and density.
- Set up conversion tables.

Understanding Bulk Item Setup

You set up all bulk item information in the Item Master program (P4101) on the Inventory Master/Transaction menu G4111. You define the basic information that the system uses to process transactions. This information includes:

- Item number and description.
- Price and cost rules.
- Availability and inventory commitment rules.
- Item-specific system messages.

You can set the processing options for the Item Master program, to display certain forms automatically when you enter information. Otherwise, you can select the forms that you need from the Item Master form.

Note:

- *"Entering Item Master Information" in the JD Edwards EnterpriseOne Applications Inventory Management Implementation Guide* .

Understanding Basic Bulk Item Information Setup

You must set up basic item information, such as stocking information and pricing groups that the system needs to process transactions for stock and nonstock items.

You can use an existing item setup as a model for a new item to speed data entry. Locate an item previously entered, copy the record, add the new item, and complete any of the information specific to the new item.

You cannot delete an item record if the item is referenced as an Item Branch/Plant record, Bill of Material item, or Item Cross-Reference.

Recording Quantities When the Meter Is Out of Service

If the meter is out of service, you can estimate the amount of product that passed through the meter and still perform throughput reconciliation. To do so, you:

- Access the Out of Service Meter Quantity form.
- Record the meter number and estimated quantity.
- Return to the Throughput Reconciliation program.

The Throughput Reconciliation program performs the conversions, and then displays the default tank information and the calculated ambient volume, standard volume, and weight.

Understanding Default Units of Measure for Bulk Items

Each item in the Item Master table (F4101) can have several units of measure associated with it for different situations. For example, you can purchase and ship an item in cases, stock it in individual units, and sell it by the dozen. The system retrieves the item-level units of measure throughout the JD Edwards EnterpriseOne Inventory Management and JD Edwards EnterpriseOne Sales Order Management systems. You need to define the units of measure associated with each item.

You can define additional units of measure in UDC table 00/UM. To do so, add the special handling code in the detail area of the User Defined Codes form. The weight and volume units of measure must have a special handling code of W (weight) or V (volume). The weight-to-volume conversion process must be able to determine whether to treat a unit of measure as weight or volume.

Understanding Unit of Measure Conversion Setup by Bulk Item

In addition to the standard unit of measure conversions, you need to set up unit of measure conversions that are item specific. For example, a drum of additive might have a different conversion factor than a drum of oil. You set up conversions that are unique for an item at the item level or item branch/plant level. The system stores this information in the Item Units of Measure Conversion Factors table (F41002) . If you do not set up unit of measure conversions by item, the system uses the standard unit of measure conversions.

If you record fill, repack, and decant stock movements for a bulk item, you must also set up unit of measure conversions for the package quantity. For example, you can set up 1 DR (drum) = 209 LT (liters).

The system processes transactions according to this hierarchy of conversion factors:

1. Use the unit of measure at the item or item/branch level from the Item Units of Measure Conversion Factors table.
2. If this table does not exist, use the standard units of measure from the Unit of Measure standard conversion table.
3. If this table does not exist, the system displays an error message.

You can set up an unlimited number of conversion factors. However, you must set up conversion factors that calculate each unit of measure back to the primary unit of measure.

For example:

- 1 BX = 2 UN
- 1 CR = 2 BX
- 1 PL = 2 CR

Note:

- *Setting Up Standard Conversions for Bulk Items.*

Understanding Item Temperature and Density

For each item, you must define the default values that the system uses for temperature, density, and measurement. In addition, you specify the density and temperature tables to use for each item. You can also create your own temperature and density tables, as necessary.

The system uses these temperature and density tables for most bulk products. Allowable ranges are shown for each table.

Temperature Range

This table shows temperature ranges in Fahrenheit (F) and Celsius (C):

Conversion Tables	Range: Minimum – Maximum
24B	0 to 300 °F 23B
54B	-18 to 150 °C 53B
54C	-18 to 150 °C
54D	-20 to 150 °F 54B
LPG	-50 to 50 °C LPG
D4311	Table 1-1 to 500 °F Table 2 -25 to 275 °C

Density Range

This table shows density ranges:

Density Tables	Range: Minimum – Maximum
23B	.6535 to 1.0750 Relative Density – 4 decimal places
53B	653 to 1075 Absolute Density – 1 decimal place
53D	800 to 1164 Absolute Density – 1 decimal place
LPG	.5000 to .6530 Relative Density – 4 decimal places
D4311	Up to 14.9 American Petroleum Institute (API) specific gravity 15.0 to 34.9 API specific gravity

Creating a New Conversion Table

You can add a conversion routine that you have written. You must write the C code for the conversion routine yourself. After you have created your own routine, you can use it to define item temperature and density.

Note: When you select a table on the Work with Conversion Table Interfaces form, a warning appears. The message warns you that the table is shipped with data that the system needs to perform bulk temperature and density conversions. Any changes you make to the table can cause the system to be inoperable.

Item Temperature and Density Definition

For each item, the system uses default values that you define for temperature, density, and measurement.

When defining item temperature and density, consider these guidelines:

- When you enter a transaction, the system verifies that the temperature or density that you enter is within the range from the table that you select for the item.
- When you add an item, click the Bulk Information tab on the Additional System Information form. When you use this method, you can add or change information only for that specific item.
- If an item currently exists in the Item Master table F4101 , you can access the item information using the Bulk Product Information selection on the Bulk Stock Control Setup menu.
- You cannot delete an item on the Bulk Product Information form. You can delete items only from the Item Master form.
- You can use a different temperature table for reporting purposes, such as government reporting requirements. Specify this table in the Reporting Temperature Table field.
- You can access Conversion Tables from the Bulk Information tab on the Additional System Information form to set up or edit your own conversion tables.

Note:

- *Setting Up Conversion Tables.*

Understanding Conversion Table Setup

You can add your own conversion tables to customize your operations. During item setup, you can specify the conversion tables to use on the Bulk Information tab that you set up on the Conversion Table Interface Revisions form.

Prerequisites

Before you complete the tasks in this section:

- Add an item to the Item Master table (F4101).
See *Setting Up Bulk Items*.

- Set up standard unit of measure conversions.
See *Setting Up Standard Conversions for Bulk Items*.

Forms Used to Set Up a Bulk Item

Form Name	FormID	Navigation	Usage
Item Master Revisions	W4101A	Inventory Master/ Transactions (G4111), Item Master On the Work With Item Master Browse form, click Add.	Set up basic bulk item information.
Item Master Revisions	W4101AD	Inventory Master/ Transactions (G4111), Item Master On the Work With Item Master Browse form, locate an item and select Item Revisions from the Row menu.	Define default units of measure for bulk items.
Item Unit Of Measure Conversions	W41002D	Inventory Master/ Transactions (G4111), Item Master On the Work With Item Master Browse form, locate an item and select Item Revisions from the Row menu. On the Item Master Revisions form, select the Weights and Measures tab and then select Conversions from the Form menu. On the Work With Item Unit of Measure Conversions form, click Add.	Set up unit of measure conversions by bulk item.
Additional System Information	W4101C	Inventory Master/ Transactions (G4111), Item Master On the Work With Item Master Browse form, locate an item and select Addl System Info from the Row menu.	Define item temperature and density.

Form Name	FormID	Navigation	Usage
Conversion Table Interface Revisions	W415004A	<p>Bulk Stock Control Setup (G415041), Bulk Conversion Table</p> <p>On the Work with Conversion Table Interfaces form, locate and select a density table.</p> <p>On the Warning message form, click OK.</p>	Set up conversion tables.

Setting Processing Options for Item Master (P4101)

Processing options enable you to specify the default processing for programs and reports.

Defaults

These processing options define the default information that the system uses, such as unit of measure.

1. Primary Unit of Measure

Identify the primary unit of measure that the system uses. If you leave this processing option blank, the system uses **EA** (each).

2. Weight Unit of Measure

Identify the unit of measure for weight that the system uses. If you leave this processing option blank, the system uses **LB** (pounds).

3. Volume Unit of Measure

Enter a UDC from 00/UM that indicates the unit of measure by metric conversion for ambient volume. For example, the unit of measure code for a gallon might be **GL** and for a liter it might be **LT**. If you leave this processing option blank, the system uses **GA**.

4. Template

Enter a template name that you can use when entering items on Item Master Revisions (P4101). This name is case sensitive. If you use any capital letters in the template name when you add it, you must enter those letters in capitals whenever you search for or attach the template to Item Master Revisions. If you leave this processing option blank, the system uses **None**.

Process

These processing options enable you to specify the effective from and thru dates that the system uses in the Item Notes table and whether the system displays certain forms when you add or change information on the Item Master Revisions form.

1. Notes From Date

Specify the effective from date that the system uses in the Print Messages table (F4016). If you leave this processing option blank, the system uses the system date.

2. Notes Thru Date

Specify the effective through date that the system uses in the Print Messages table (F4016). If you leave this processing option blank, the system uses the last day of the default century.

3. Category Codes

Specify whether the system displays the Category Codes form when you add or change information on the Item Master Revisions form. Values are:

Blank: Do not display

1: Display

4. Additional System Information

Specify whether the system displays the Additional System Information form when you add or change information on the Item Master Revisions form. Values are:

Blank: Do not display

1: Display

5. Storage/Shipping

Specify whether the system displays the Storage/Shipping form when you add or change information on the Item Master Revisions form. Values are:

Blank: Do not display

1: Display

6. Cost Revisions (Conditional)

Specify whether the system displays the Cost Revisions form when you add or change information on the Item Master Revisions form. Values are:

Blank: Do not display

1: Display

Note: For the system to display the Cost Revisions form, you must also set the value for the Inventory Cost Level field to **1** on the Item Master Revisions form.

7. Price Revisions (Conditional)

Specify whether the system displays the Price Revisions form when you add or change information on the Item Master Revisions form. Values are:

Blank: Do not display

1: Display

Note: For the system to display the Price Revisions form, you must also set the value for the Sales Price Level field to **1** on the Item Master Revisions form.

8. Unit Of Measure Conversions (Conditional)

Specify whether the system displays the Item Branch form when you add or change information on the Item Master Revisions form. Values are:

Blank: Do not display the Item Branch form.

1: Display the Item Branch form, but return to the Item Master form.

2: Display and remain on the Item Branch form.

9. Item Branch

Specify whether the system displays the Item Notes form when you select a media object on the Work With Item Master Browse form. Values are:

Blank: Display only the internal attachments.

1: Display the Item Notes form.

10. Attachments

Specify whether the system displays the Attachments form when you select a media object on the Work With Item Master Browse form.

11. Templates

Specify whether you want to use templates for segmented items. Values are:

Blank: Do not use templates.

1: Use templates.

Global Update

This processing option enables you to update changes made to the second or third item numbers to records in selected tables.

1. Transfer Changes

Specify which tables the system updates when you have made changes to item numbers in the item branch records. You use the UDC table 40/IC to compile the list of tables. Values are:

Blank: The system does not update any tables.

1: The system updates only those tables that contain item branch information with changes to the second and third item numbers.

2: The system updates only selected tables that contain item branch information with changes to the second and third item numbers.

Versions

These processing options enable you to specify the versions for various programs that you access from the Item Master program. Versions control how the system processes and displays information. Therefore, you might need to set the processing options to meet your specific needs.

1. Item Availability (P41202), 2. Item Branch (P41026), 3. Cost Revisions (P4105), and 4. Segmented Item Availability (P41206)

Specify the version that the system uses for the Item Availability program (P41202) and the Item Branch program (P41026). If you leave this processing option blank, the system uses version **ZJDE0001**.

Note: Before you define cost methods for bulk items, you must specify the version that the system uses for the Cost Revisions program (P4105).

Interop

These processing options enable you to specify whether the system performs outbound interoperability processing and whether the system creates a record of a transaction before changes are made to the transaction.

1. Transaction Type

Specify the type of document for which you want the system to search.

The transaction type is a UDC (00/TT) that identifies the type of transaction, such as an invoice or a sales order. You can either enter the transaction type or select it from the Select User Defined Code form. The system uses the transaction type as the default. If you leave this processing option blank, the system does not perform export processing.

2. Before/After Image Processing

Specify whether the system creates a record of a transaction after the transaction is changed, or whether the system creates records of a transaction before and after a transaction is changed. Values are:

Blank: Create a record of a transaction after changes.

1: Create two records, one record before changes and one record after changes.

Setting Up Basic Bulk Item Information

Access the Item Master Revisions form.

Item Master - Item Master Revisions

Work With Item Master Browse **Item Master Revisions**

✓ ✕ ⏪ ⏩ ⚙️ Tools

Item Number (Short) 60011

Item Number 210

Basic Item Data Additional Info. Weights and Measures Lot Processing

Catalog Number 210
 Description * Mountain Bike, Red
 Description Search Text Bike, Mountain

Stocking Type *	P	Purchased inc. Raw Material	Inventory Cost Level	2	Item/Branch Only
G/L Class	IN30	Manufactured Finished Goods	Sales Price Level	3	Item/Branch/Location/Lot
Unit of Measure	EA	Each	Purchase Price Level	3	Inventory Cost Level
Line Type	S	Stock Inventory Item	Kit/Configurator Pricing Method	1	Total Components List Prices
Bulk/Packed Flag	P	Packaged Item	Configurator Costing Method		Non Configured Item
Planner Number	8444	O'Malley, James	Commitment Method	1	Location With Most Quantity
Buyer Number	8444	O'Malley, James	Print Message		
			Item Flash Message		
			Std UOM Conversion		Item Specific UOM

Backorders Allowed
 Check Availability

1. Complete these fields on the Item Master Revisions form:
 - a. Item Number
 - b. Description
 - c. Stocking Type

- d. G/L Class
 - e. Line Type
 - f. Bulk/Packed Flag
2. Complete these optional fields:
 - a. Catalog Number
 - b. Search Text
 - c. Unit of Measure
 - d. Inventory Cost Level
 - e. Sales Price Level
 - f. Purchase Price Level
 - g. Item Number (Short)
3. Select these options:
 - a. Backorders Allowed
 - b. Check Availability
4. Click the Additional Info tab.
5. Select the appropriate option to rank the item as A, B, C, or D under each of these headings and click OK:
 - a. Sales
 - b. Margin
 - c. Investments

Item Number (Short), Item Number, and Catalog Number

Enter an identifier for an item.

Search Text

Specify how the system searches for an item. The entry should be specific and descriptive of the item. Type the words in the order a user is likely to enter them.

In single-byte environments, where computer storage space can hold only Latin-based language character sets, the system inserts the first 30 characters from the item's description if you do not enter search text.

In double-byte environments, where computer storage space can hold more complex language character sets (in languages such as Japanese, Chinese, and Korean), you must complete this field. It is a single-byte field that you complete with single-byte characters to phonetically represent the item description (which can be single-byte, double-byte, or both).

Stocking Type

Enter a UDC (41/I) that indicates how you stock an item, for example, as finished goods or as raw materials. These stocking types are hard-coded and you should not change them:

- O:** Phantom item
- B:** Bulk floor stock
- C:** Configured item
- E:** Emergency/corrective maintenance
- F:** Feature
- K:** Kit parent item
- N:** Nonstock

The first character of Description 2 in the UDC table indicates if the item is purchased (P) or manufactured (M).

G/L Class

Enter a UDC (41/9) that indicates which general ledger accounts receive the dollar amount of inventory transactions for this item.

Unit of Measure

Enter a UDC (00/UM) that indicates the primary unit of measure for the item. The primary unit of measure must be the smallest unit of measure in which you handle the item.

This is the primary stock accounting unit (PSAU) of measure that the system uses to store all inventory. If you change the primary unit of measure, the conversion factors in the item-level conversion table are no longer valid.

The default value for this field is the unit of measure that you specify for the item on Item Master form.

Line Type

Enter a code that controls how the system processes lines on a transaction. It controls the systems with which the transaction interacts, such as General Ledger, Job Cost, Accounts Payable, Accounts Receivable, and Inventory Management. It also specifies the conditions under which a line prints on reports, and it is included in calculations. Codes include:

S: Stock item

J: Job cost

N: Nonstock item

F: Freight

T: Text information

M: Miscellaneous charges and credits

W: Work order

Bulk/Packed Flag

Enter a code that indicates if the item is a bulk liquid product. If it is a bulk product, you must perform temperature and density/gravity conversions. To record the movement of bulk products, you must use forms designed specifically for bulk products. If you try to record movement using standard inventory forms, the system prevents the movement. Values are:

P: Packaged

B: Bulk liquid

If you leave this field blank, the system uses **P**.

Backorders Allowed

Specify whether to allow backorders for this item. You can allow backorders by item using the Item Master (P4101) or Item Branch/Plant (P41026) programs, by customer using the Customer Billing Instructions program (P03013), or by branch/plant using the Branch/Plant Constants program (P41001).

Check Availability

Specify whether the system performs availability checking. You might want to select availability checking for certain items. For other items, if you assume that an adequate supply is available, leave availability checking disabled.

Inventory Cost Level

Enter a code that indicates whether the system maintains one overall inventory cost for the item, a different cost for each branch/plant, or a different cost for each location and lot within a branch/plant. The system maintains inventory costs in the Inventory Cost table (F4105). Codes are:

- 1: Item level
- 2: Item/Branch level
- 3: Item/Branch/Location level

Sales Price Level

Enter a code that indicates whether the system maintains standard sales prices for an item, different sales prices for each branch/plant, or different sales prices for each location and lot within a branch/plant. The system maintains sales prices in the Base Price file (F4106). Valid codes are:

- 1: Item level
- 2: Item/Branch level
- 3: Item/Branch/Location level

Purchase Price Level

Enter a code that indicates where to retrieve the purchase price for an item when you enter a purchase order. Codes are:

- 1: Use the supplier/item price from the Purchase Price table (F41061).
- 2: Use the supplier/item/branch price from the Purchase Price table (F41061).
- 3: Use the inventory cost from the Inventory Cost table (F4105). This cost is based on the inventory cost level and the purchasing cost method you specify for the item.

The first two codes are applicable only if you set up supplier costs in the JD Edwards EnterpriseOne Procurement system. If you do not set up supplier costs, the system uses the inventory cost as the default for the purchase order.

Defining Default Units of Measure for Bulk Items

Access the Item Master Revisions form.

Unit of Measure

Enter a UDC (00/UM) that indicates the primary unit of measure for the item. The primary unit of measure must be the smallest unit of measure in which you handle the item.

This is the PSAU of measure that the system uses to store all inventory. If you change the primary unit of measure, the conversion factors in the item-level conversion table are no longer valid.

The default value for this field is the unit of measure that you specify for the item on the Item Master form.

Weight

Enter a UDC (00/UM) that identifies the unit of measure that the system uses to indicate weight for this item. You can specify ounces, grams, kilograms, and so on as weight standards. The system uses this unit of measure for the item or overrides it for an individual item or container.

The default value for this field is the weight unit of measure that you specify in processing options for the Item Master program.

Volume

Enter a UDC (00/UM) that indicates the unit of measure by metric conversion for ambient volume. For example, the unit of measure code for a gallon might be **GL** and for a liter it might be **LT**.

Setting Up Unit of Measure Conversions by Bulk Item

Access the Item Unit Of Measure Conversions form.

Item Master - Item Unit Of Measure Conversions Query: All Records

Item Number * 1001 Bike Rack - Trunk Mount
 Primary UOM EA Each DisplayStructuredUoM

Records 1 - 1 Customize Grid

	From UoM	=	Quantity	To UoM	Structure Code	Exclude from SO	Exclude from PO	Sales UOM Seq.	Procurement UOM Seq.
1									

From UoM (from unit of measure)

Enter a UDC (00/UM) that identifies the unit of measure for an item. For example, it can be each, cases, boxes, and so on.

Quantity

Enter the factor that the system uses to convert one unit of measure to another unit of measure.

To UoM (to unit of measure)

Enter a UDC (00/UM) that indicates a secondary unit of measure.

Defining Item Temperature and Density

Access the Additional System Information form and click the Bulk Information tab.

Product Group

Enter a value that indicates a line of products whose similarity enables them to be grouped together. This grouping can be used to select products for other tasks or processes, such as reporting.

Density

Specify the density conversion algorithm to be used in calculations.

Reporting Temperature

Specify the temperature table to use for reporting purposes. Fill in this field only if you use a table that is different than the Temperature Conversion table. This table is usually used for government reporting.

Density Temperature

Enter the temperature at which the density was measured. The system uses the density temperature type from the Bulk Product Constants form.

Density Minimum

Enter a value that specifies the minimum density that is allowed for a product.

You can enable the value to be provided by default from the table that you are working with.

The table values and their corresponding ranges are:

5B 0 – 85 API Gravity

23B .6535 – 1.0760 Relative Density

53B 653 – 1075 Density in kg/M3

53D 800 – 1164 Density in kg/M3

BIT 700 – 1200 Density in kg/M3

Note: For most tables, there are multiple ranges that depend on temperature. The ranges listed are the lowest and highest numbers for all ranges within each specified table.

Density Maximum

Enter a value that specifies the maximum density that is allowed for a product.

You can allow the value to default from the table that you are working with.

The table values and their corresponding ranges are:

5B: 0 – 85 API Gravity

23B: .6535 – 1.0760 Relative Density

53B: 653 – 1075 Density in kg/M3

53D: 800 – 1164 Density in kg/M3

BIT: 700 – 1200 Density in kg/M3

Note: For most tables, multiple ranges depend on temperature. The ranges listed are the lowest and highest numbers for all ranges within each specified table.

Temperature Minimum and Temperature Maximum

Enter the minimum or maximum temperature allowed for the product. If provided by default from the table entered, the values are:

Table Min./Max.

6B: 0 – 300 degrees Fahrenheit

24B: 0 – 300 degrees Fahrenheit

54B: 18 – 150 degrees Celsius

54C: 18 – 150 degrees Celsius

54D: 20 – 150 degrees Celsius

56: N/A

BIT: 25 – 275 degrees Celsius

Note: Multiple ranges exist for most tables based on density, so we have taken the lowest and highest values within the ranges. You may want to narrow the range for each specific product.

Calculate Vapour

Specify whether the product requires a calculation of the vapor volume. Values are:

Y or 1: Requires the calculation.

N or 0: Does not require the calculation.

Vapour Temperature

Enter the standard vapour temperature at the item level. The observed temperature of the vapour in the LPG tank is recorded as part of the tank dip and is used to calculate the liquid equivalent volume of the vapour.

If you calculate LPG vapour, enter the standard LPG vapour. The observed vapour from the Dip Volume Calculator and Multimeter Reading is compared to this value.

Setting Up Conversion Tables

Access the Conversion Table Interface Revisions form.

Table

Specify the density conversion algorithm to be used in calculations.

Minimum and Maximum

Enter a value that specifies the minimum density that is allowed for a product.

You can allow the value to be provided by default from the table that you are working with.

The table values and their corresponding ranges are:

5B: 0 - 85 API Gravity

23B: .6535 – 1.0760 Relative Density

53B: 653 - 1075 Density in kg/M3

53D: 800 - 1164 Density in kg/M3

BIT: 700 - 1200 Density in kg/M3

Note: For most tables, multiple ranges exist that depend on temperature. The ranges listed are the lowest and highest numbers for all ranges within each specified table.

Type

Enter a code used to identify the type of density that the Density Table expects as input. If this density type is different than the Density Table, results will be unpredictable. Values are:

A: Absolute Density

G: API Specific Gravity

R: Relative Density

Business Function

Enter a value that specifies whether a JD Edwards EnterpriseOne business function or an outside executable is used for conversions related to the specified table. Values are:

Y or **1:** A business function is used.

N or **0:** A third-party executable is used.

Setting Up Item Information by Depot

This section provides an overview of item information setup by depot, lists a prerequisite, and discusses how to:

- Set up basic item information by depot.
- Define a primary depot location.
- Setting Processing Options for Cost Revisions (P4105).
- Define cost methods for bulk items.
- Set up additional item and depot information.

Understanding Item Information Setup by Depot

As part of bulk item setup, you must set up item information specific to a depot (branch/plant), such as stocking information, primary locations, cost methods, and pricing groups.

Basic Item Information Setup by Depot

The system stores the depot-specific information in the Item Branch File table (F4102) .

The system retrieves item information in this order:

1. Item Branch File table.
2. If no information exists, it retrieves item information from Item Master table (F4101).
3. If no information exists, the system displays an error message.

When processing transactions, the system retrieves item information specific to a depot from the Item Branch File table. If none is found, the system retrieves item information from the Item Master table.

To delete an item from Item Branch/Plant Information, verify:

- All associated balances for the item must be zero.
- All on-hand balances, backordered quantities, and any commitments must be transferred or satisfied.
- The Average Cost Work File table (F41051) must not contain any transactions for the item and branch.

If the requirements have been met, the system deletes the records from these tables:

- Item Cost File (F4105) if the cost level is 2 or 3.
- Item Location File (F41021).

Primary Depot Location Definition

You can define a primary depot location and assign a lot number when you add an item branch/plant record.

After you assign an item to a location on the Location Revisions form, you can change the primary depot location for the item from the Work With Item Locations form. The primary location designates a specific location in the depot where you will store the item.

You can assign a lot number to bulk products. However, the system will not select bulk products by lot, nor does the Bulk Load Confirm process enable you to load confirm bulk products by lot. Therefore, although you can set up bulk products by lot, you will not be able to use this information for sales transactions.

See *Setting Up Basic Item Information by Depot*.

Cost Methods Definition for Bulk Items

You need to define all cost methods specific to an item. You can create an unlimited number of cost methods. The system stores cost methods in the Item Cost File table (F4105).

If you delete the Sales and Inventory cost method, a warning appears indicating that the inventory value will drop to zero. The system does not delete the cost record, but updates it to a zero cost.

If you change the Sales and Inventory cost method, the system creates general ledger and item ledger transactions to reflect the change.

You can set processing options to display these formats:

- One cost method at a time, which also displays all locations and lots for the item.
- Multiple cost methods per item.

Additional Item and Depot Information Setup

You need to set up additional information by depot that is specific to bulk items. The information includes additional volume conversion information, automated depot processes, and blending and filling categories.

When you access the Depot/Product Information tab on the Additional System Info form, the system updates the Reconciled Through Date based on the Operational Reconciliations program.

Note:

- *Setting Up Basic Item Information by Depot*.
- *"Entering Item Information" in the JD Edwards EnterpriseOne Applications Inventory Management Implementation Guide*.

Prerequisite

Add or locate an item on the Item Master form. When you access Item Branch/Plant Information and specify the depot for which you want to complete item information, the item and depot that you specify provide the default values for the next form or window that you access.

Forms Used to Set Up Item Information by Depot

Form Name	FormID	Navigation	Usage
Item/Branch Plant Info.	W41026A	Inventory Master/ Transactions (G4111), Item Branch/Plant On the Work With Item Branch form, click Add.	Set up basic item information by depot.
Work With Item Master Browse	W4101JA	Inventory Master/ Transactions (G4111), Item Master	Define a primary depot location.
Cost Revisions	W41051A	Inventory Master/ Transactions (G4111), Item Master On the Work With Item Master Browse form, locate an item and select Cost Revisions from the Row menu. On the Work With Item Cost form, click Add.	Define cost methods for bulk items.
Additional System Info	W41026D	Inventory Master/ Transactions (G4111), Item Master On the Work With Item Master Browse form, locate an item and select Item Branch from the Row menu. On the Work With Item Branch form, select a row and then Addl System Info from the Row menu.	Set up additional item and depot information.

Setting Up Basic Item Information by Depot

Access the Item/Branch Plant Info. form.

Stocking Type

Enter a UDC (41/I) that indicates how you stock an item, for example, as finished goods or as raw materials. These stocking types are hard-coded and you should not change them:

- O:** Phantom item
- B:** Bulk floor stock
- C:** Configured item
- E:** Emergency/corrective maintenance
- F:** Feature
- K:** Kit parent item
- N:** Nonstock

The first character of Description 2 in the UDC table indicates if the item is purchased (P) or manufactured (M).

G/L Class

Enter a UDC (41/9) that controls which general ledger accounts receive the dollar amount of inventory transactions for this item.

Line Type

Enter a code that controls how the system processes lines on a transaction. It controls the systems with which the transaction interfaces, such as General Ledger, Job Cost, Accounts Payable, Accounts Receivable, and Inventory Management. It also specifies the conditions under which a line prints on reports, and it is included in calculations. Codes include:

- S:** Stock item
- J:** Job cost
- N:** Nonstock item
- F:** Freight
- T:** Text information
- M:** Miscellaneous charges and credits
- W:** Work order

Supplier Number

Enter a user-defined name or number that identifies an address book record. You can use this number to locate and enter information about the address book record. If you enter a value other than the address book number (AN8), such as the long address or tax ID, you must precede it with the special character that is defined in the Address Book constants. When the system locates the record, it returns the address book number to the field.

For example, if address book number 4100 (Total Solutions) has a long address TOTAL and an * distinguishes it from other entries (as defined in the Address Book constants), you could type *TOTAL into the field, and the system would return 4100.

Print Message

Enter a UDC (40/PM) that represents a predefined message set up on Print Message Revisions. You can print the message on sales orders, purchase orders, and so forth.

Sales Taxable

Enter a code that indicates whether the item is subject to sales tax when you sell it. The system calculates tax on the item only if the customer is also taxable.

Purchasing Taxable

Enter a code that indicates whether the item is subject to sales tax when you purchase it. The system calculates tax on the item only if the supplier is also taxable.

Defining a Primary Depot Location

Access the Work With Item Master Browse form.

1. Locate an item and then select Item Branch from the Row menu on the Work With Item Master Browse form.
2. Select the branch/plant and then select Location Revisions from the Row menu on Work With Item Branch.
3. Select the location and then Change Primary from the Row menu on Work With Item Locations.
4. Click Close.

Setting Processing Options for Cost Revisions (P4105)

Specify the version of Cost Revisions on the Versions tab of the processing options for Item Master program (P4101). Access Interactive Versions to set the processing options for Cost Revisions.

Process

1. Process

Enter **1** to prevent the standard cost from being changed.

2. Interop (interoperability)

Enter the transaction type for the interoperability transaction. If left blank, outbound interoperability processing will not be performed.

3. Flex Acct (flex accounting)

Specify whether you want to activate flex accounting. Values are:

Blank: Do not activate

1: Activate

Defining Cost Methods for Bulk Items

Access the Cost Revisions form.

Setting Up Additional Item and Depot Information

Access the Additional System Info form and click the Depot/Product Information tab.

Strategic Volume

Enter the government-mandated, strategic stock level assigned to the depot for a specific product. The system displays a warning message when the stock level falls below government-required minimums.

Replenishment Type

Specify the replenishment type that indicates the method of supply, for example, blended product, purchased product, or filled product. The Replenishment Type field is also used in conjunction with the blend and fill categories. A blended product requires a blend category. A filled product requires a fill category. A purchased product prevents the use of either a blend or fill category. Values for replenishment type are:

B: Blended products

F: Filled products

P: Purchased product

Blend Category

Enter a UDC (39/BC) that indicates the valid product groups (or categories) that can be put into a specific blending tank. It is used to specify compatible or incompatible groups for blended stock items and blending equipment (tanks).

Fill Category

Enter a UDC (39/FC) that identifies the different filling categories. Fill categories are used to specify compatible/incompatible groups for filled stock items and filling equipment. This field also identifies the different types of fillings (for example DRUM, TIN) and matches a filling of a particular stock item against the equipment (filling line) used.

Hydrometer Correction

Select to indicate that this product must include the appropriate stem correction for the thermal expansion of the glass hydrometer. Clear to indicate that this product does not include the appropriate stem correction for the thermal expansion of the glass hydrometer.

Gantry/Load Rack Flag

Select to indicate that a gantry (loading rack) is used. Clear to indicate that a gantry (loading rack) is not used.

Auto Warehouse

Select to indicate that this product at this depot will be used by an automated warehouse system. Clear to indicate that this product at this depot will not be used by an automated warehouse system.

Air Correction

Select to indicate that an air correction must be applied in the volume-to-weight conversion. The weight in air of a liquid differs from its mass (weight in a vacuum) because of the effects of air buoyancy. Thus, the calculation changes slightly if an air correction is required. Clear to indicate that an air correction is not applied in the volume-to-weight conversion.

Auto Batch Blend

Select to indicate that this product at this depot will be used by an automated batch blending system. Clear to indicate that this product at this depot will not be used by an automated batch blending system.

7 Setting Up Tanks and Flow Meters

Understanding Tank and Flow Meter Setup

A depot consists of tanks that hold various products. You must define the tanks, the allowed products, and the flow meter setup at the depot location. The system uses this information to calculate volumes and optimize tank usage.

Prerequisites

Before you complete the tasks in this section:

- Set up the depot and tank locations.
See *Setting Up Depot Constants for Bulk Products*.
- Set up the items that will be placed in the tanks.
See *Setting Up Bulk Items*.

Setting Up a Tank

This section provides an overview of tank setup and discusses how to:

- Set up basic tank information.
- Set up a blending tank.
- Set up additional tank information.
- Set up tank strapping information.

Understanding Tank Setup

To set up a tank, you specify the structural information about the tank, such as capacity, height, and tank specifications. The system uses this information to calculate volume and optimize tank usage.

Basic Tank Information Setup

You must define the basic structural information about a tank. The system retrieves this information when processing transactions to calculate volume. The system stores this information in the Tank Master File table (F41500) . If the tanks are set up as fixed assets, you can record the asset number when you set up basic tank information. You can also record whether a tank is heated and requires an expansion correction factor to calculate volume, such as tanks containing asphalt or bitumen products. If you set up a heated tank, you must also record an expansion correction factor and a strapping temperature.

When you delete the record for a tank, the system automatically deletes the corresponding records in the Tank Strapping Table Maintenance (F41503) and the Default Tank Information (F41508) tables.

While you use the Tank Master Maintenance program, you can access the Fixed Assets Master program and locate or record fixed asset information, such as depreciation and accounting values, for the tank.

See *"Creating Asset Identification Information" in the JD Edwards EnterpriseOne Applications Fixed Assets Implementation Guide* .

Blending Tank Setup

A blending tank is a tank that can hold more than one product. When you set up a blending tank, you define the blending categories that are allowed in that tank.

Additional Tank Information Setup

You must define additional information about a tank that the system uses to calculate volume and manage depot transactions. This information includes discharge and filling rates, tank status, and commingled stock.

If you set up a tank to accommodate commingled stock, all transactions, such as general stock movements, load confirm, and disposition require you to enter the owner of the product. You must define all tanks that contain the product as commingled because any of them could be the current tank at any time.

Tank Strapping Information Setup

You must set up the strapping (reading height) information for the storage, blending, and holding tanks in a depot. The system uses tank strapping to convert tank dip readings to gross volumes when you record tank dips .

You can enter information in both metric and U.S. measurements. The delimiter for U.S. measurements is the one that you defined in the U.S. Increments Delimiter field on Branch/Plant Constants - Bulk Product Constants form.

Note:

- *Defining Depot Temperature and Density.*

Forms Used to Set Up a Tank

Form Name	FormID	Navigation	Usage
Tank Master Maintenance	W415001D	Bulk Stock Control Setup (G415041), Tank Master Maintenance On Work With Tank Master, click Add.	Set up basic tank information.
Blend Categories	W415001B	On the Processing tab of the Tank Master Maintenance form, enter a code for a blending tank in the Tank Usage field and select Blending Category from the Form menu.	Set up a blending tank.

Form Name	FormID	Navigation	Usage
Tank Master Maintenance	W415001D	Bulk Stock Control Setup (G415041), Tank Master Maintenance On Work With Tank Master, click Add.	Set up additional tank information after setting up basic tank information.
Tank Strapping Table Maintenance	W415003B	On Tank Master Maintenance, after setting up basic tank information, click Cancel to return to Work With Tank Master. Select the tank you set up and select Tank Strapping from the Row menu.	Set up tank strapping information.

Setting Up Basic Tank Information

Access the Tank Master Maintenance form.

Select the Processing tab.

Tank Master Maintenance

Work With Tank Master | Tank Master Maintenance

✓ ✗ F Form < > ⚙ Tools

Tank ID * AP5000 Depot * 570
Description Unleaded Gasoline Measurement U U.S. Measurement

Processing | Measurements | Levels | Additional Info | Lots

Categories

Tank Type VER Vertical
Tank Usage BLD Blending Tank
Tank Location TF1 Tank Farm1

Product

Current
Previous

Reconcile

Throughput
 Operational

Options

Tank Active
 Heated Tank
 Pressurized
 Current Tank

Commingled

For Custody
 For Duty

Tank ID

Enter a value in the 8-character field that identifies the tank as defined on the Branch/Plant Constants form.

Tank Type

Enter a user-defined code from 39/TY that indicates the physical shape of the tank and whether the tank is on scale.

Tank Usage

Enter a user-defined code from 39/TU that identifies how the tank is used.

A blending tank should be identified with a code that begins with the letter B. If the tank is a blending tank, the Blend Categories Window appears when you press Enter at tank setup time.

Note: Blending tanks allow more than one product to be put in the tank. All other tanks can contain only one product, which is considered the current product.

Tank Location

Enter a user-defined code from 39/TL that indicates the tank's location, for example, Tank Farm 1, Tank Farm 2, and so forth.

Measurements Tab

Select the Measurements tab.

Tank Height

Enter the distance from the bottom to the top of a tank and the unit of measure. These fields are display-only fields.

Units

Enter a user-defined code that identifies strapping table increments (for example, centimeters, millimeters, half inches, or quarter inches). If the depot uses U.S. increments, you must enter **FF** in this field.

Dip Type

Enter a user-defined code from 39/DP that identifies the method of measurement that the system uses to calculate the volume from tank dips. Values are:

W: Wet Dip Reading

U: Ullage Dip Reading

R: Roto Gauge Percent Reading

S: Slip Tube Reading

E: Electronic Gauge Reading

If the Dip is **E**, you must select the user-defined code for Gauging Method as ambient volume, standard volume, or weight electronic.

Gauging Method

Enter a user-defined code that identifies the measuring method that the system uses to determine the quantity of liquid in the tank. Values are:

A: Ambient Volume - Electronic

H: Hydrostatic Gauging

M: Manual Dip

S: Standard Volume - Electronic

W: Weight - Electronic

X: Mechanical Gauging

If the Dip Type is **E**, you must select Gauging methods **A**, **S**, or **W**.

Apply Calc. (apply calculation)

Specify whether a floating roof calculation is required. This is a value in the detail column Floating Roof (FR) in Dip Volume Calculator.

Y or **1**: A floating roof calculation is applied.

Nor 0: No floating roof calculation is applied.

S or **2**: Strapping already accounts for floating roof calculation. No floating roof calculation is required.

If you enter **Y** or **1**, the system requires that you provide roof weight and floating height entries.

Weight

Enter the unit of measure for the roof weight. If you use a unit of measure that is not equal to kilograms, you must set up a conversion between the unit of measure and kilograms in the Standard Unit of Measure Conversion program. The Roof Weight field is required if the Floating Roof field is set to **Y** or **1**. This value is used to calculate the roof displacement correction.

Levels Tab

Select the Levels tab.

Tank Capacity

Enter the total volumetric storage capacity of a tank. Tank capacity consists of two fields. The first is the total storage capacity of the tank. The second is the unit of measure associated with the capacity measurement. The capacity is checked while receiving products and recording general stock movements. If you enter a value that is greater than the tank's capacity, the system displays an error message and will not allow you to record the transaction.

The system uses the unit of measure as the basic unit of measure for the tank.

All other volume units of measure associated with the tank must match this unit of measure.

If the dip type is slip tube or normal dip, then the Tank Capacity field is informational only. If the dip type is roto percent (for LPG bullets/spheres only), then liquid volume equals roto percent multiplied by gross capacity. Vapour space equals gross capacity minus liquid volume.

Additional Information Tab

Select the Additional Information tab.

Process Control ID

Enter a value that identifies the process control system. You can identify one or more process control systems associated by depot, tank, or mode of transport. The system uses this field for downloads of automated gantry information.

Setting Up a Blending Tank

Access the Blend Categories form.

Setting Up Additional Tank Information

Access the Tank Master Maintenance form.

Current Product

Enter a number that the system assigns to an item. It can be in short, long, or third item number format.

Identifies the current product that the tank contains. When you enter a product, the system checks the current product associated with a tank. If the new product differs from the current product, you cannot enter it into the tank unless the quantity of the current product is zero. Also, when you enter a product, the system checks the Allowed Products matrix to determine if the product group that this product is attached to is allowed to enter the tank, based upon the tank's previous contents.

If the tank is set up as a blending tank, it has no current product. You can enter any product.

Commingled for Custody

Enter a value or select an option that indicates the type of commingled stock. If any tank for a product contains commingled stock, you must set up all tanks for that product to indicate that they contain commingled stock. You also use this field to divide product in the tank into two quantities. For example, enter a value if you want to separate duty-paid product from unpaid product in the same tank.

Select the appropriate option to indicate whether stocks are commingled for custody or for duty. If stocks are not commingled, clear both options. If stocks are commingled for both custody and duty, select both options.

Note: If you want to indicate that a tank is a commingled tank on Commingled Stocks Inquiry, you must identify the tank as commingled. You do so on the Additional Tank Information form.

Commingled for Duty

Enter a value or select an option that indicates the type of commingled stock. If any tank for a product contains commingled stock, you must set up all tanks for that product to indicate that they contain commingled stock. You also use this field to divide product in the tank into two quantities. For example, enter a value if you want to separate duty-paid product from unpaid product in the same tank.

If the stocks are commingled, you must record all of the product movements at the owner level.

Select the appropriate option to indicate whether stocks are commingled for custody or for duty. If stocks are not commingled, clear both options. If stocks are commingled for both custody and duty, select both options.

Note: If you want to indicate that a tank is a commingled tank on the Location Segment Inquiry form, you must first identify the tank as a commingled tank on the Additional Tank Information form.

Tank Status

Enter a value or select an option that indicates whether the tank is active or inactive. A tank must have a status of active to assign product to it. A tank that has a status of inactive is empty and not being used. Multiple tanks can be active for a product, but only one tank can be defined as the current, or default, tank.

Select this option to indicate that the tank is active. Clear this option to indicate that the tank is inactive.

Unpumpable Volume

Enter the volume in the tank that is below the level of the discharge pipeline and, therefore, cannot be removed by the normal discharge pump. The system edits this volume during load confirmation, but it is not used when calculating tank dip volumes. The unpumpable volume quantity is used for informational purposes only.

Pipeline Volume

Enter the volume of product held in the pipeline that is connected to the subject tank. The tank's content capacity includes the volume capacity of the pipeline. To reflect the total product volume in the tank and pipeline, pipeline volume is added to the observed (ambient) volume calculated on the Tank Dip form.

Low Stock Warning

Enter the volume of product below which a low stock warning is issued. A low stock warning indicates that the volume is close to the safety stock level.

Enter the quantity and unit of measure that the system uses to provide a low stock warning. This field information is used during the Load Confirm process.

If the quantity being loaded will bring the tank to the low stock point, a soft error occurs. That is, the user can press Enter and continue with load confirm.

Fill Rate Per Hour

Enter the maximum rate at which the tank can be filled.

Discharge Volume

Enter the volume of the product in a tank's discharge pipeline. The system adds this value to obtain the total ambient volume.

Discharge / Hour

Enter the rate per hour at which product can be discharged from the tank. This rate is used in the blending/filling process to calculate lead time.

Date Cleaned

Enter the date when the tank was last cleaned. This field is for reference purposes only.

Temp Exp Period (temperature expiration period)

Enter the number of hours the tank temperature remains valid. This number is used to calculate the next expiration date/time on the Default Tank Information screen. It is also checked at load confirm time to ensure that the default temperature reading is valid. Enter **99999** if no expiration exists (for example, stocks are stored at a third-party site).

Setting Up Tank Strapping Information

Access the Tank Strapping Table Maintenance form.

Reading Height

Enter a linear measurement that represents either the depth of oil or free space (ullage) available in a tank.

Volume at Point

Enter a number that indicates the volume contained in the tank at this reading height. You can enter an amount or have the system calculate it. If you want the system to calculate the volume, you must enter information in the Volume per Increment field.

Volume per Increment

Enter a number that is the gradient above a strapping point in terms of volume increase per strapping unit. If you enter a value in this field, the system calculates the volume at this point.

Chart ID

Indicate the person responsible for the strapping. This field is for reference only

Initial Volume

Specify the volume of liquid below the zero reference point. The initial volume is added to the total tank volume. When taking a dip reading, this volume is added to the Volume at Point to arrive at the ambient value.

Chart Prep. By (chart prepared by)

Enter your user ID. user identification. This field is used in the Lease Master Validation file and indicates the user who initially set up the record.

Defining Tank Temperature and Density

This section provides an overview of tank temperature and density and discusses how to define tank temperature and density.

Understanding Tank Temperature and Density

The system uses the default temperature and density that are specific to a tank to calculate volume and to process the stock movements. If you do not enter the temperature and density information when performing a stock movement, the system retrieves the default temperature and density for the tank from the Default Tank Information table (F41508).

If you enter the date and time, the system uses this information in all records added in all detail lines.

If you enter the date and time on the form, you can display different information for each record.

To delete a record, select only the line for the tank to delete on the Work With Default Tank Information form.

Note:

- [Setting Up a Tank.](#)
- [Setting Up a Bulk Item.](#)
- [Setting Up Additional Tank Information.](#)

Form Used to Define Tank Temperature and Density

Form Name	FormID	Navigation	Usage
Default Tank Information Revision	W415108B	Bulk Stock Control Setup (G415041), Default Tank Information On the Work With Default Tank Information form, click Add.	Define tank temperature and density.

Defining Tank Temperature and Density

Access the Default Tank Information Revision form.

Tank Temperature

Enter the temperature of the product in the tank. The temperature type specified on the Branch/Plant Constants - Bulk Product Constants form is the default value. The system checks this entry against the minimum and maximum temperature range.

Density

Enter the company's standard for density. You can also use this field for pack size and weight information.

Temperature Expiration Date

Enter the number of hours that the tank temperature remains valid. The system uses this number to calculate the next expiration date and time on Default Tank Information form. The system also checks the temperature expiration period at load confirm time to ensure that the default temperature reading is valid. If you do not require an expiration (for example, stocks are stored at a third-party site), enter **99999**.

Temperature Expiration Time

Enter the time beyond which this default temperature is invalid. This field is normally calculated based upon the Temperature Expiration Period on the Additional Tank Information form. The user may override the calculated values.

Defining Product Groups

This section provides an overview of product groups and discusses how to:

- Set processing options for Allowed Product Matrices (P415005).
- Define product groups.

Understanding Product Groups

You must define the product groups that a tank or filling line can hold. You must also specify the order in which products can be put into the tank without requiring the tank to be cleaned. The system displays a warning message if you need to flush the tank before adding another product.

The system uses the information about product groups and fill order whenever you perform any of these activities:

- Transfer product into the tank as part of a general stock movement.
- Receive product into the tank.
- Change the current product in the tank on the Additional Tank Information form.

You can set up the product groups for individual tanks or by tank type, depending on your business needs.

Form Used to Define Product Groups

Form Name	FormID	Navigation	Usage
Allowed Product Matrices	W415005D	Bulk Stock Control Setup (G415041), Allowed Product Matrices On the Work With Product Matrices form, click Add.	Define product groups.

Setting Processing Options for Allowed Product Matrices (P415005)

Processing options enable you to specify the default processing for programs and reports.

Process

Enter the type of matrix to be displayed. Values are:

T: Tanks (default)

F: Filling Line (future)

Defining Product Groups

Access the Allowed Products Matrices form.

Product Group

Enter a line of products whose similarity allows them to be grouped together (UDC 41B/PG). This grouping can be used to select products for other tasks or processes such as reporting.

To

A line of products whose similarity enable them to be grouped together (UDC 41B/PG).

I V (intersection value)

Enter a code that specifies what product groups are allowed and in what order (UDC 41B/IV). Values are:

Y: Can fill the tank/line/vehicle with the To product after the From product (default).

F: Can fill the tank/line/vehicle with that product group, but have to flush the tank/line/vehicle first.

N: Do not allow To product to be placed in the tank/line/vehicle after the From product.

Setting Up a Flow Meter

This section provides an overview of flow meter setup and discusses how to set up a flow meter.

Understanding Flow Meter Setup

You set up a flow meter to define such information as the current product, location, and calibration dates. The system uses this information during the throughput reconciliation process.

If you want to change the current product of an existing meter, you must enter a closing meter reading for the previous product.

You can attach notes about the meter from the Work With Meter Master Maintenance form.

Form Used to Set Up a Flow Meter

Form Name	FormID	Navigation	Usage
Meter Master Maintenance Revision	W415006B	Bulk Stock Control Setup (G415041), Meter Master Maintenance On Work With Meter Master Maintenance, click Add.	Set up a flow meter.

Setting Up a Flow Meter

Access the Meter Master Maintenance Revision form.

Meter Master Maintenance Revision

Work With Meter Master Maintenance **Meter Master Maintenance Revision**

✓ ✗ < > ⚙️ Tools

Meter Number *	M5300	Depot	510
Serial Number		Meter Status	A Active
Description/Location	TF1		

Current Product *	5300	Unleaded Fuel
Previous Product		

Date Last Calibrated	
Throughput Since Last Calibration	.0000 GA

Meter Units *	1 GA	<input type="checkbox"/> Temperature Compensated
Maximum Reading	999999	<input type="checkbox"/> Load Rack Interface
Date Installed		

Meter Units

Enter the number of meter units used to calculate the quantity that passes through the meter. Meter units can differ from the units used to calculate volume or weight. For example, one meter unit can equal three volumetric units.

Date Last Calibrated

Enter the last date that the meter flow was tested and calibrated. Whenever this date is changed, the system resets the entry in the Throughput Since Last Calibration field to zero.

Throughput Since Last Calibration

Enter a valid number and the unit of measure in these fields. If you leave the first field blank, the system uses zero. You can enter values in these fields only during initial meter setup. After you have set up the meter, the total throughput is a rolling figure from the Meter Master table (F41506). As the system calculates volumes from closing readings, it adds them to the previous total to obtain a current figure for this record. If you change the date in the Date Last Calibrated field, the system clears this field.

Maximum Reading

Enter the largest reading on the meter before it rolls back to one. If you leave this field blank, the system uses the value assigned in the data dictionary for this field.

Temperature Compensated

Specify whether the throughput volume is already at the standard temperature and a temperature conversion is required. Values are:

Y or **1**: Yes.

N or **0**: No.

Load Rack Interface

Specify whether the product is being loaded using a loading rack (gantry). Values are:

Y or **1**: Loading rack interface in place.

N or **0**: Loading rack interface not in place.

8 Moving Stock

Understanding Stock Movement

For a fill, decant, or repack, if you must record a gain or loss, you need to perform a conversion at the item level for the volume of each unit of the packaged product. You also need to set up a conversion factor of .0000001 per one empty package so that the system can convert each subfile line to the unit of measure of the bulk gain or loss item. Set this up at the system level for each empty package unit of measure. For example, set up .0000001 liter (LT) per 1.0 item.

Packaged items contain bulk stock at standard temperature, not ambient temperature, because the temperature of the product in the package cannot be determined.

Record a rebrand when product is mislabeled as it arrives at the depot and needs to be renamed. Alternatively, you might want to record a rebrand if the same product is sold under different names to different customers for marketing reasons. One way to handle this circumstance is to designate one product to be a parent item and the other to be a component of a kit.

The system requires that all volume and weight units of measure have conversions to kilograms (kg) and cubic meters (M3) for calculation purposes.

Additionally, you can account for gains or losses that might occur during a stock movement and record stock movements involving kit items.

When you record stock movements, the system updates these tables:

- Item Ledger File (F4111).
- Bulk Product Transaction File (F41511) if moving a bulk item.
- Gain/Loss Transactions File (F41512) if the system creates a gain or loss.
- Account Ledger (F0911).
- Item Location File (F41021).
- Location Detail Information (F4602) if warehouse control is active for the branch/plant.

Note: You can record stock movements only to the current accounting period.

Six processing groups exist. They are defined by the processing options that determine how each of the stock movements is processed.

Recording Intra-Depot Stock Movements

This section provides an overview of intra-depot stock movements and discusses how to:

- Set processing options for General Stock Movements (P415101).
- Record intra-depot stock movements.

Understanding Intra-Depot Stock Movements

Record stock movements whenever you must account for stock that can no longer be found in the location or container to which it was previously assigned.

For each type of intra-depot stock movement, you complete the same basic steps to record the movement. The version that you use and the information that you need to enter vary, depending on the type of movement that you are recording. The stock movement types are defined by the processing type and the processing option settings for the General Stock Movements program (P415101).

When you enter an intra-depot stock movement, you can select an option to display the Journal Entries program to review the accounting information for the transaction.

You cannot change or delete the transactions in the system because transactions create inventory and general ledger records in the system. If you enter a transaction in error, you must:

- Locate the transaction.
- Reverse the entry.
- Enter information on a blank line to correct the error.

When you reverse a transaction, post the batch created by the reversal to update the general ledger. For a reversal, the program stores the general ledger date from the original transaction as the historical date.

Note:

- *Calculating Volume from Dip Readings.*
- *Calculating Volume from Weighbridge Information.*

Forms Used to Record Intra-Depot Stock Movements

Form Name	FormID	Navigation	Usage
General Stock Movements	W415101B	Stock Movements (G415011), Bulk Stock Adjustments, Consumed In Operations-Own Use, Tank to Tank Transfer, Repacking, Rebrand, Regrade, Decanting, Filling, or Simple Blending. Click Add on the Work With General Stock Transactions form.	Record intra-depot stock movements.
Work With Item Availability	W41202A	On the General Stock Movements form, select an item and then select Availability from the Row menu.	Review item availability.

Setting Processing Options for General Stock Movements (P415101)

Processing options enable you to specify the default processing for programs and reports.

Process Type

Processing Type

Enter the processing type. Values are:

Blank: No processing type

1: Adjustments

2: Consumed in Op

3: Tank to Tank Transfer

4: Repack, Decant, Fill

5: Rebrand, Regrade

6: Blending

Default Values

1. Document Type

Enter a document type. A document type is a code from UDC 00/DT that identifies the origin and purpose of the transaction.

2. Reason Code

Specify the purpose for a transaction from UDC 42/RC.

3. Gain/Loss Location

Specify a gain/loss location.

Inventory

1. Transfers greater than quantity available

Specify whether to allow a transfer that is greater than the quantity available. Values are:

Blank: No transfers

1: Allow transfers

2. From and To quantities

Specify whether the From and To quantities must balance to zero. Values are:

Blank: Quantities do not need to balance.

1: Quantities must balance to zero.

3. From and To lines

Specify whether the From and To lines must have the same packaged items. Values are:

Blank: Lines do not have the same packaged items.

1: Lines have the same packaged items.

4. Update the Item History file

Specify whether the system updates the Item History table. Values are:

Blank: No update

1: Update the file

Lot Options

1. Lot expiration date assignment

Specify how to assign the lot expiration date. Values are:

Blank: No lot expiration date assignment.

1: Assign Manually.

2: Newest From Expiration.

3: Oldest From Expiration.

4: Trans (transaction) date + shelf life.

2. Transfers from held lots

Specify whether the system allows transfers from held lots. Values are:

Blank: No transfers

1: Allows transfers

G/L Info

1. Summarize journal entries by account within document

Specify whether the system summarizes journal entries by account within the document. Values are:

Blank: Does not summarize

1: Summarizes

2. Account number information

Specify whether the system allows entry of account number information. Values are:

Blank: Does not allow entry

1: Allows entry

Agreements

Agreement assignment

Specify how the system assigns an agreement. Values are:

Blank: No agreement assignment

1: Assign agreement if only one is found.

2: Always display all applicable agreements. If you enter a **2**, the system finds multiple agreements and displays a check mark in the row header that is located in the detail area and in the Agreements Exists column. You must use a Row exit to select an agreement.

3: Assign agreement with the earliest expiration date.

Recording Intra-Depot Stock Movements

Access the General Stock Movements form.

F T (From line or To line)

Enter a code that indicates whether a line in a transaction is a From line or a To line. This field enables you to combine multiple existing products or locations into a single product or location. For example, you can create three From lines and one To line. You can also split one existing product or location into several new products or locations. For example, you can create one From line and two To lines. The information contained in a From transaction line is always existing item location information.

Depending on the type of intra-depot stock movement, the transaction can be a From, a To, or both. A From transaction reduces the inventory in that location. A To transaction increases the inventory in that location.

Processing Groups 1 and 2 can have either a From or a To transaction, but not both.

Processing Groups 3, 4, 5, and 6 must have both a From and a To transaction.

Location

Specify the storage location from which goods will be moved.

Ambient Volume

Enter the volume as measured for density and temperature before conversion. You can enter the ambient quantity or let the system automatically calculate it.

Standard Volume

Enter the volume after it has been converted to a standard base. Conversions are made according to published standard routines for density, gravity, and temperature.

Normally, you leave the Standard Volume field blank and allow the system to calculate it. However, if you enter the volume and unit of measure, the system accepts it as valid and performs no calculation.

Weight Result

Enter the weight of the product at standard temperature. The system calculates the weight by multiplying the volume by the density and applying an air correction, if necessary (all at the base temperature).

Unit Cost

Enter the amount per unit, derived by dividing the total cost by the unit quantity.

A processing option controls whether this field appears. If you leave this field blank, the system uses the cost setup for the item in the Cost Ledger field, based on the costing method for the item branch being used.

Extended Cost/Price

Enter the extended cost or price value of an inventory transaction for an inventory item.

U F (update control flag)

Specify whether to update the general ledger for commingled product.

Typically, you update the general ledger for the product that belongs to the company's inventory, not the product that belongs to another owner. Values are:

Y or 1: A journal entry is written.

N or 0: A journal entry is not written.

Agreement Number

Enter a unique number that the company assigns to identify a particular agreement. You might want to assign some significance to the agreement number (for example, an agreement type code, location, year, and so forth). An agreement might have multiple supplements to record changes.

Supp No (supplement number)

Enter the supplement number that identifies any changes or addendum to agreements that occur over time or by item. It can also indicate individual agreements that are tied to a master agreement. The system allows up to 999 different supplements per base agreement number.

Lot Serial Number

Enter a number that identifies a lot or a serial number. A lot is a group of items with similar characteristics.

A processing option controls whether the Lot field appears. Complete the lot information only if you are using lot processing.

Expiration Date

Enter the date on which a lot of items expires.

The system automatically enters this date if you have specified the shelf life days for the item on the Item Master form or the Item Branch/Plant Information form.

The system calculates the expiration date by adding the number of shelf life days to the date that you receive the item.

You can commit inventory based on the lot expiration date for items. You select how the system commits inventory for an item on the Item Master form or the Item Branch/Plant Information form.

Lot Status Code (Release 9.2 Update)

A user defined code (41/L) that indicates the status of the lot. When NBLLOTSTS is set to **No** or NBLLOTSTS is not present in EnterpriseOne Control System program (P99410), you leave this field blank to indicate that the lot is approved. All the other codes indicate that the lot is on hold.

When NBLLOTSTS is set to **Yes**, the lot status is validated by a special handling code in 41/L. All codes containing the special handling code **1** indicate that the lot is approved. All codes containing special handling codes other than **1** indicate that the lot is on hold.

On the Item/Location Information (P41024) or Location Lot Status Change (P4108) forms, you can assign a different status code to each location in which a lot resides.

Reason Code

Enter a user-defined code (42/RC) that explains the purpose for a transaction. For example, you can indicate the reason that you are returning items.

Recording an Intra-Depot Stock Movement for a Kit

This section provides an overview of intra-depot stock movements for a kit and discusses how to record an intra-depot stock movement for a kit.

Understanding Intra-Depot Stock Movements for a Kit

You might need to record a stock movement that involves a kit item, such as when entering a simple blend transaction. When you enter a transaction that includes a kit item in the movement, you first copy a bill of material to obtain the parent item information for the kit. Then, you enter detail information for the stock movement.

Note: If you specify detail information before you copy a bill of materials, the system deletes the information. You must enter it again.

Forms Used to Record an Intra-Depot Stock Movement for a Kit

Form Name	FormID	Navigation	Usage
General Stock Movements	W415101B Stock Movements (G415011), Bulk Stock Adjustments, Consumed In Operations-Own Use, Tank to Tank Transfer, Repacking, Rebrand, Regrade, Decanting, Filling, or Simple Blending	Stock Movements (G415011), Bulk Stock Adjustments, Consumed In Operations-Own Use, Tank to Tank Transfer, Repacking, Rebrand, Regrade, Decanting, Filling, or Simple Blending Click Add on the Work With General Stock Transactions form.	Enter general stock movement information. After copying a bill of material for a kit, finish recording the intra-depot stock movement.
Copy Bill of Materials	W415101D	From the Form menu on the General Stock Movements form, select Copy BOM.	Copy a bill of material for a kit.

Recording an Intra-Depot Stock Movement for a Kit

Access the General Stock Movements form.

1. Complete the header fields as for an intra-depot stock movement on the General Stock Movements form.
2. Select Copy BOM from the Form menu.
3. Complete one or more of these fields, and click OK on the Copy Bill of Materials form:
 - o Business Unit
 - o Item Number
 - o Transaction Quantity

See *Forms Used to Record Intra-Depot Stock Movements*.

Recording a Gain or Loss on an Intra-Depot Stock Movement

This section provides an overview of intra-depot stock movement gains and losses and discusses how to record a gain or loss on an intra-depot stock movement.

Understanding Intra-Depot Stock Movement Gains and Losses

When product is moved from one location, tank, or container to another, a change in volume can occur due to spillage, leakage, evaporation, and temperature changes. You can account for these gains or losses when recording the from and to movements of the product.

You can specify gains or losses for these stock movements:

- Tank-to-tank transfer
- Repack
- Decant
- Fill

You use the processing options for P415101 to control how gains or losses are recorded:

- Set the Gain/Loss Location processing option on the Defaults tab to specify a default gain/loss location.
- Set the From and To quantities processing option on the Inventory tab to ensure that the From, To, and Gain/Loss quantities equal zero.
- Set a processing option to require that the From quantity, the To quantity, and the gain/loss quantity balance.

The system calculates gains and losses as follows:

- The sum of all To transactions (converted to a standard unit of measure and temperature) minus the sum of all From transactions (converted to a standard unit of measure and temperature) equals the gain or loss.
- You record gains and losses to a logical location instead of a physical location to prevent the gains and losses from adjusting actual inventory.

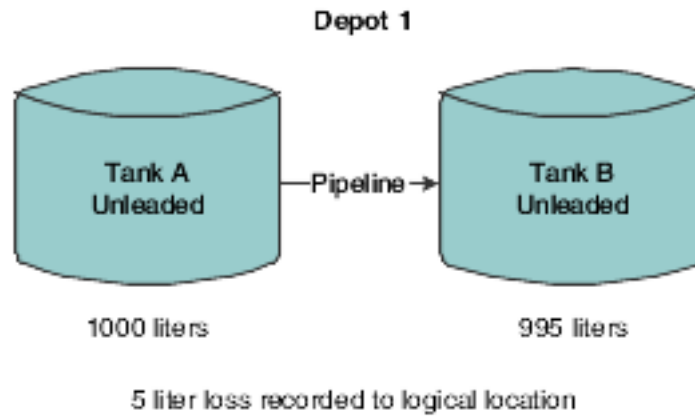
Because no item or location record exists, searching by location will not display the inventory for the location.

- The program converts all products within a transaction to the primary unit of measure associated with the gain or loss bulk product.

If the unit of measure conversion is not set up by item, the system uses the standard unit of measure conversions.

Example: Recording Loss

This diagram illustrates the transfer of 1000 LT from Tank A to Tank B. After the transfer, Tank B reports receiving only 995 liters. To accurately account for the transfer, you record a 5-liter loss to the logical location:



You do not record a 5-liter loss to Tank A because 1000 liters actually left Tank A. Likewise, you do not record a gain of 5 liters to Tank B because only 995 liters actually entered Tank B.

Note:

- *Setting Up Depot Locations.*
- *Recording Intra-Depot Stock Movements.*

Form Used to Record a Gain or Loss on an Intra-Depot Stock Movement

Form Name	FormID	Navigation	Usage
General Stock Movements	W415101B	Stock Movements (G415011), Bulk Stock Adjustments, Consumed In Operations-Own Use, Tank to Tank Transfer, Repacking, Rebrand, Regrade, Decanting, Filling, or Simple Blending Click Add on the Work With General Stock Transactions form.	Record an intra-depot stock movement that includes both a From and a To transaction on two lines. The system calculates the gain/loss quantity and displays it in the primary unit of measure. Enter the item number and location for gain/loss information.

Recording a Gain or Loss on an Intra-Depot Stock Movement

Access the General Stock Movements form.

Item Number

Enter a number that the system assigns to an item. It can be in short, long, or third item number format.

Identifies the product to be adjusted. If this is a stock movement for a bulk item, the system uses the product number from the Current Product field on the Tank Master form as the default value when you enter the transaction.

The gain/loss product must be a bulk product. An entry in this field is required for repack, decant, or fill transactions, but not for tank-to-tank transfer.

Location

Enter the storage location from which goods will be moved.

Calculating Volume from Dip Readings

This section provides an overview of volume calculations from dip readings and discusses how to:

- Calculate volume for a stock movement.
- Calculate volume for a simultaneous movement.

Understanding Volume Calculations from Dip Readings

You use the Dip Volume Calculator form to calculate volume for stock movements when you obtain dip readings based on tank strapping information.

Typically, a dip reading is taken before and after a movement occurs. After you enter these readings, the program calculates:

- Ambient volume.
- Standard volume.
- Primary stock accounting unit (PSAU) volume.
- Weight.

It also calculates the difference between the before and after quantities. An after dip that is lower than the before dip is considered a discharge from the tank. The reverse is considered a receipt of product.

When you enter before and after dip readings, the program uses the tank strapping information to calculate the ambient volume for each dip reading. The system takes the tank type and the dip type into account, and applies the floating roof displacement correction, if necessary.

You can calculate volume from dip readings while recording stock movements or receiving products, or as a single step from the Bulk Stock Management menu. When you calculate volume as a single step, the program acts as a calculation tool only. It does not store the values. When you use the Dip Volume Calculator program while recording stock movements or receiving products, the calculations are stored in the Bulk Product Transactions File table (F41511).

You can access the Dip Volume Calculator form directly from the Bulk Stock Management menu (G41501) or by selecting Dip/Meter from the row menu on any stock movement form on the Stock Movements menu (G415011). Alternatively, from the Purchase Order Receipts form, select Bulk, and then Dip Volume Calc from the Row menu.

For liquefied petroleum gas (LPG) products, the Dip Volume Calculator program:

- Corrects the liquid volume to 15° Celsius using the LPG tables.
- Calculates liquid mass (weight).

- Determines the presence of inert gas that affects vapor density calculation.
- Derives vapor density.
- Calculates vapor mass (weight).
- Calculates vapor volume.
- Calculates volume as: total volume = liquid volume + vapor volume.
- Calculates weight as: total weight = liquid weight + vapor weight.
- Calculates the liquid volume from the strapping tables.

Volume Calculation for a Stock Movement

To calculate volume for a stock movement, use information from the tank strapping table and enter the dip readings. You must enter the dip readings in the same units that are set up in the system's tank strapping table: centimeters, feet or inches, and fractions. The calculation program will not convert dip readings.

You might not need to take tank strappings. Alternatively, you can enter the ambient volume directly in the Other Volume field. The program will convert ambient volume to standard volume. If you directly enter ambient volume, you must also enter the before and after dip readings as zero.

If the dip type is E for an electronic gauge reading, the system considers the gross dip readings that you enter as volumes, not strappings, and does not make strapping conversions. It only makes the conversion to standard volume. The program uses the unit of measure from the default tank strappings. You can enter electronic gauge readings in ambient volume, standard volume, or weight.

If you record an electronic reading in weight, enter the weight in the Gross Dip field. The Gauging Method in the Tank Master must be specified as W (weight). The program uses the entry as a weight (where the unit of measure is the weight unit of measure specified in the Item Master) and enters the appropriate amounts in the Bulk Item ledger.

If you are moving a large quantity of product, you can enter the Before reading now and record the After reading at a later time.

If you use an LPG item and if vapor calculations are active, the program processes the entry as if the entry has no vapor. If you enter a total weight (liquid + vapor), the program cannot determine which portion is liquid and which is vapor, so vapor calculations are invalid, regardless of whether vapor calculations are active.

When you calculate volume for a stock movement, the system performs volume calculations and retrieves values for these fields:

- Ambient Volume
- Volume - Standard
- Weight Result
- Quantity - Primary Stock Accounting Unit

Volume Calculation for a Simultaneous Movement

You can calculate volume for a simultaneous movement, such as simultaneously receiving and withdrawing product from the same tank.

When you calculate volume from dip readings, you can also record the meter readings from a withdrawal of product. When you enter these readings, the system adds the quantity that you withdraw back into the quantity calculated from the dip readings. A message appears to indicate that a simultaneous withdrawal occurred.

You cannot calculate volume for a simultaneous movement if you select Dip Volume Calculator from the Bulk Stock Management menu.

You must record any gain or loss associated with this type of transaction to the outturn gain/loss.

See *Recording a Gain or Loss on an Intra-Depot Stock Movement*.

Note:

- *Understanding Bulk Stock Inventory*.

Forms Used to Calculate Volume from Dip Readings

Form Name	FormID	Navigation	Usage
General Stock Movements	W415101B	Stock Movements (G415011), Select either: Bulk Stock Adjustments, Consumed In Operations-Own Use, Tank to Tank Transfer, Repacking, Rebrand, Regrade, Decanting, Filling, or Simple Blending Click Add on the Work With General Stock Transactions form.	Enter general stock movement information.
Dip Volume Calculator	W415102A	On the General Stock Movements form, select Dip/Meters from the Row menu.	Calculate volume for a stock movement.
Discharge Meter Readings	W415102B	On the Dip Volume Calculator form, select Meter Readings from the Form menu.	Calculate volume for a simultaneous movement.

Calculating Volume for a Stock Movement

Access the Dip Volume Calculator form.

Gross Dip

Enter a number that represents the total dip reading of a tank. (Net volume = gross dip volume – water dip volume + other volumes.)

You can enter a number for a single dip or multiple dip reading. Enter dip readings in increments consistent with the strapping units on the tank strapping table (for example, centimeters or feet/inches/fractions).

For U.S. increments, Branch/Plant Constants controls the delimiter that indicates the separator between the units of measure (for example, between feet, inches, and fractions). Therefore, if you used / as the delimiter, for:

15 feet 10 1/2 inches, enter 15/10/8

15 feet, enter 15//

6 feet 4 13/16 inches, enter 6/4/13

12 feet and 5/16 inches, enter 12//5

Fractions are shown in sixteenths of an inch.

Water Dip

Enter a number that represents the total dip reading of water in the tank.

Net volume = gross dip volume – water dip volume + other volumes.

This can be a single dip or a multiple dip reading.

You might need to review the strapping information for the tank. You can select an option to access the Tank Strapping Table program. In addition, you might need to review default information for the tank. You can select an option to access the Default Tank Information program.

The Temperature and TT fields are provided by default from the Default Tank Information table (F41508).

Other Volume

Enter a number that represents any volumes that will affect the net volume calculation. The default value equals the pipeline volume plus the discharge volume. The pipeline and discharge volumes are from Additional Tank Information data. (Net volume = gross dip volume – water dip volume + other volumes.)

Pipeline plus discharge volume is added to the volume entered or retrieved from the strapping table.

If you enter a weight, the value is converted to a weight unit of measure using temperature and density information. It is then added to the quantity entered.

Display Density

Enter the company's standard for density. You can also use this field for pack size and weight information.

D T (density type)

Enter a code used to identify the type of density. Values are:

A: Absolute Density

G: API Specific Gravity

R: Relative Density

Density Temp (density temperature)

Enter the temperature at which the density was measured. The system uses the density temperature type from Branch/Plant Constants - Page 3 Row exit.

T U (thermometer used)

Specify the scale type of the thermometer being used to measure temperature. Values are:

F: Fahrenheit

C: Celsius

Vapour Pressure

Enter the observed LPG vapour pressure. The system compares this value to the equilibrium vapour pressure to check for inert gases. The observed pressure of the LPG vapour is recorded as part of the tank dip, and it is used in the calculation of the liquid equivalent volume of the vapour.

LPG Vap Temp (LPG vapour temperature)

Enter the standard vapour temperature at the item level. The observed temperature of the vapour in the LPG tank is recorded as part of the tank dip and is used to calculate the liquid equivalent volume of the vapour.

If you calculate LPG vapour, enter the standard LPG vapour. The observed vapour from the Dip Volume Calculator and Multimeter Reading is compared to this value.

S T (slip tube)

Enter the slip tube type for a dip reading for an LPG Slip Tube type tank. This field denotes whether this is a long or short slip tube reading. Values are:

L: Long

S: Short. If you leave this field blank, the system uses **S**.

Vapour Weight

Enter the weight of the vapour within a tank or containers.

Calculating Volume for a Simultaneous Movement

Access the Discharge Meter Readings form.

Meter Number

Specify the meter.

Opening Reading

Enter the beginning (opening) meter reading before the product flows through a pipeline. To calculate the ambient volume, an after (closing) meter reading is required.

Closing Reading

Enter the closing reading of the meter at the date and time specified by the user.

This value indicates the quantity of product that has flowed through the meter when the closing readings are taken. To calculate the ambient volume, an after (closing) meter reading is required.

Calculating Volume from Weighbridge Information

This section provides an overview of volume calculation from weighbridge information and discusses how to calculate volume from weighbridge information.

Understanding Volume Calculation from Weighbridge Information

You use the Weighbridge Information program (F41511) to calculate volume for stock movements when you have weight readings from a weighbridge. This program calculates the weight or volume of the product by subtracting the weight

of the vehicle. The program stores weighbridge calculations in the Bulk Product Transaction File table (F41511) when calculating volume is performed as part of a stock movement.

The system calculates:

- Weight (by subtracting the weight before loading from the weight after loading).
- Ambient volume.
- Standard volume.
- PSAU quantity (either weight or volume).

The Weighbridge Information program requires that:

- The Before Loading weight cannot be below the empty weight of the vehicle.
- The After Loading weight cannot exceed the weight capacity or maximum gross weight of the vehicle.
- The volume the system calculates cannot exceed the volume capacity of the vehicle.

You can access the Weighbridge Information program directly from the Bulk Stock Management menu (G41501), by selecting Weighbridge from the row menu on any stock movement form on the Stock Movements menu (G415011). Alternatively, from the Purchase Order Receipts form, select Bulk, and then Weighbridge from the Row menu.

If you access Weighbridge Information directly from the Bulk Stock Management menu, the program serves as a calculation tool only. It does not store the values.

When you calculate volume from weighbridge information, the system provides temperature type values by default from the Default Tank Information table.

The system performs volume calculations and retrieves values for these fields:

- Weight of Product
- Primary Stock UOM (unit of measure) (PSAU)
- Product Volume (Ambient)
- Product Volume (Standard)
- Volume Correction Factor

If you need to review information for the vehicle, you can select Weight Information from the Form menu to access the Vehicle Master program.

Note:

- *"Setting Up Vehicles" in the JD Edwards EnterpriseOne Applications Transportation Management Implementation Guide .*

Forms Used to Calculate Volume from Weighbridge Information

Form Name	FormID	Navigation	Usage
General Stock Movements	W415101B	Stock Movements (G415011), Bulk Stock Adjustments, Consumed	Enter general stock movement information.

Form Name	FormID	Navigation	Usage
		In Operations-Own Use, Tank to Tank Transfer, Repacking, Rebrand, Regrade, Decanting, Filling, or Simple Blending Click Add on the Work With General Stock Transactions form.	
Weighbridge Information	W415104A	On the General Stock Movements form, select Weighbridge from the Row menu.	Calculate volume from weighbridge information.

Calculating Volume from Weighbridge Information

Access the Weighbridge Information form.

9 Working with Bulk Product Receipts

Understanding Bulk Product Receipts

You record the receipt of bulk products requested on a purchase order as they arrive at the depot. You can confirm the receipt of the products requested on the purchase order, record the volumes received, and make adjustments to correct variances.

You can also calculate any gains or losses that might have occurred during transportation, such as losses due to spillage, theft, and faulty meters. To do so, you perform a four-point analysis. *Four-point* refers to the opening and closing readings at a supplying location, and the opening and closing readings at a receiving location. *Analysis* refers to the variance between the two results (that is, the gain or loss). You perform a four-point analysis primarily to determine the quantity of stock lost in transit during a lengthy voyage, but you can record the data for any movement.

If you take ownership of the product when it is loaded onto a vehicle at a supplier's depot, you can track the quantity loaded onto the vehicle and record it as a liability. Then you can calculate and record any gain or loss that might have occurred at the time of delivery at the depot.

Note:

- *"Using Receipt Processing" in the JD Edwards EnterpriseOne Applications Procurement Management Implementation Guide*

Recording Bulk Product Receipts

This section provides an overview of the recording of bulk product receipts, lists a prerequisite, and discusses how to:

- Set processing options for Purchase Order Receipts (P4312).
- Record bulk product receipts.

Understanding the Recording of Bulk Product Receipts

You record the receipt of bulk products requested on a purchase order as they arrive at the depot. You can confirm the receipt of the products or make adjustments to correct variances. The system updates the Item Ledger File table (F4111), the Purchase Order Receiver File table (F43121), and the Bulk Product Transaction File table (F41511).

When you record bulk product receipts, you can display all purchase order lines that have an open quantity or amount to be received, and record the receipt of a bulk product. An open quantity is the purchase order quantity minus the previous quantities received.

When you receive a bulk item, the Bulk Product Receipts form enables you to record temperature and density information and to calculate standard volume and weight. A bulk item is defined by the Bulk/Packed field on the Item Master form.

You can set a processing option to record differences in receiving as a temperature gain or loss, to recalculate the unit cost, or to receive as standard quantities for the items that were purchased in standard quantities.

You might want to receive the entire amount ordered and not perform a temperature or density conversion from ambient to standard. If you record a gain or loss, the amount is calculated as follows:

$$[(\text{Standard Quantity} - \text{Ambient Quantity}) \times \text{Unit Cost}] - \text{Temperature Gain or Loss}$$

This amount is debited to the temperature gain or loss Automatic Accounting Instruction (AAI) account, with the offset as a credit to Inventory AAI. Quantities are stored as a temperature gain or loss.

If you choose to recalculate the unit cost for bulk products that require a temperature conversion, the unit cost is recalculated as follows:

$$\text{Unit Cost} = (\text{Extended Cost}) / (\text{Standard Quantity})$$

The unit cost is recalculated in receiving, and no variance exists in voucher match. The difference is recorded to the Item Ledger File table (F4111) and the Bulk Product Transaction File table (F41511).

If you choose to receive as standard quantities, the items are purchased in standard quantities and the product is received as if it were a packaged product. No gain or loss occurs, and no adjustment to unit cost is made.

Additionally, you can access the Dip Volume Calculator form or the Weighbridge Information form from the Purchase Order Receipts form via the Row menu if you need to calculate the volumes to enter. You can also access the Four-Point Analysis Maintenance form from the Purchase Order Receipts form via the Row menu if you need to calculate gains or losses.

Prerequisite

Verify that purchase orders are entered into the system.

Note:

- *"Creating Receipt Routes" in the JD Edwards EnterpriseOne Applications Procurement Management Implementation Guide .*
- *Calculating Volume from Dip Readings.*
- *Calculating Volume from Weighbridge Information.*
- *Calculating Gain or Loss for Received Products.*

Form Used to Record Bulk Product Receipts

Form Name	FormID	Navigation	Usage
Purchase Order Receipts	W4312F	Purchase Order Processing (G43A11), Enter Receipts by PO.	Record bulk product receipts.

Form Name	FormID	Navigation	Usage
		<p>On the Work With Purchase Orders to Receive form, locate open purchase order detail lines that correspond to a receipt. (Only those detail lines appear that have a next status code that is equal to the processing options specifications.) Select a detail line. (If you enter receipts by order number, all detail lines appear that are on the same order as the detail line that you selected. If you enter receipts by item, all detail lines appear that contain the item that is on the detail line that you selected.)</p>	

Setting Processing Options for Purchase Order Receipts (P4312)

Processing options enable you to specify the default processing for programs and reports.

Defaults

These processing options define the default information that the PO Receipts program (P4312) uses.

1. Inquiry Order Type and 2. Receipt Document Type

Specify the type of document. This user-defined code from 00/DT also indicates the origin of the transaction. The system has reserved document type codes for vouchers, invoices, receipts, and time sheets that create automatic offset entries during the post program. (These entries are not self-balancing when you initially enter them.) These prefixes for document types are defined by the system, and it is recommended that you not change them:

P: Accounts Payable

R: Accounts Receivable

T: Payroll

I: Inventory

O: Purchase Order

J: General Accounting/Joint Interest Billing

S: Sales Order Processing

You must enter a value that has been set up in UDC 00/DT.

Status Default

These processing options control which status codes the system uses for receipts.

1. Acceptable Incoming Status Code 1 through 3. Acceptable Incoming Status Code 3

Specify a next status. Orders are eligible for receipt when they have the next status that you specify for this processing option.

Before you complete this processing option, review the order activity rules that you have set up.

4. Outgoing Status for Partial Receipts

Specify the next status that the order moves to after a partial receipt.

Before you complete this processing option, review the order activity rules that you have set up.

5. Outgoing Status for Closing and 6. Outgoing Status for Canceling

Specify the next status that the order moves to after the system closes or fully receives, or cancels the detail line.

It is recommended that you use status code 999 for closed or fully received detail lines.

Display

These processing options control whether these types of information appear in the PO Receipts program (P4312) and whether they can be changed:

1. Sales Order Backorders

Specify how you want to release backordered sales orders. Values are:

Blank: Do not release sales orders.

1: Automatically display the Sales Order Backorder Release form.

2. Lot Information

Specify whether you want the system to display lot information, such as the Lot field and the Expiration Date field. Values are:

Blank: Do not display.

1: Display the lot information fields.

2: Display and protect the lot information fields.

3. Cost Protection

Specify whether you can change costs. Values are:

Blank: The cost fields appears on the form and can be overridden.

1: The cost fields appear on the form, but they cannot be changed.

2: The system hides cost information. The cost fields do not appear.

4. Kits

Specify whether the system displays kit component lines or only the parent line.

1: Displays kit parents (FUTURE).

2: Displays kit components.

For the B73.3 version of the software, you can only receive kits at the component level.

5. Receiving Mode

Specify the mode that the system uses to receive detail lines. Values are:

- 1: Receive by purchase order.
- 2: Receive by item.
- 3: Receive by general ledger account.
- 4: Receive by shipment number.

When you select only one detail line on the Work With Receipts menu, the system displays all the detail lines on the Receipt Revisions menu that meet the criteria of the mode that you have entered.

For example, if you enter **1** for the receiving mode and select one detail line on the Work With Receipts form, the system displays all lines for the purchase order. If you enter **2** for the receiving mode and select one detail line on the Work With Receipts form, the system displays all lines for the selected item.

If you enter **3** for the receiving mode and select one detail line on the Work With Receipts form, the system displays all lines for the general ledger account. If you enter **4** for the receiving mode and select one detail line on the Work With Receipts form, the system displays all lines for the shipment number.

Process

These processing options control whether you are able to perform procedures:

1. Supplier Update Mode

Specify whether to update the supplier number in the Item/Branch table (F4102).

Blank: Do not update.

- 1: Update the supplier number in the Item/Branch table (F4102) if the value for the supplier number is zero.
- 2: Update the supplier number in the Item/Branch table (F4102) regardless of the value for the supplier number.

2. Lot Default

Specify whether the system uses default lot and location information in the Purchase Order Receipts program (P4312).

Blank: Do not use default lot and location information.

- 1: The system uses the location and lot number from the primary item balance location in the Item Location table (F41021).

3. Option Default

Specify whether you want the system to automatically select all detail lines for receipt, which prevents you from having to manually select each detail line.

Blank: Do not automatically select

- 1: Automatically select

4. Serial Numbers

Specify whether you want the system to enable you to enter serial number information. Note that before you enter serial number information, you should verify that you have entered **Y** (yes) in the Serial Number Required Y/N field on the Item Branch Revisions form (F4102).

Blank: You cannot enter serial number information in the Serial Number table (F4220).

- 1: You can enter serial number information in the Serial Number table (F4220).

5. Quantity Entry

Specify whether you want manual or automatic entry of quantity information.

Blank: The system uses the open quantity as the default value for this field.

1: Enter the quantity manually.

6. Landed Costs

Specify whether you want to manually apply landed costs or whether the system automatically applies landed costs. Note that you can manually apply landed costs after a receipt on the Receipts Inquiry form, which you access through the Standalone Landed Cost program (P43214).

Blank: Do not: apply any landed costs.

1 Display the Landed Cost Selection form, where you can review or update the information.

2: Automatically apply the landed cost rule without displaying the Landed Cost Selection form.

If you are applying landed costs to an item that is in the Receipt Routing process, you must specify a value of **2** for this processing option.

7. Receipt Traveler Document

Specify whether you want the system to print a receipt traveler document after each receipt.

Blank: Do not print

1: Automatically print. The system uses the version that you specified on Versions.

8. Supplier Analysis

Specify whether you want the system to capture supplier analysis information.

Blank: Does not capture supplier analysis information.

1: Records information such as item numbers, dates, and quantities for every purchase order in the Supplier/Item Relationships table (F43090). To make supplier analysis most effective, enter **1** for this processing option and set the processing options for the Purchase Order Entry program (P4310) and the Voucher Match program (P4314) to capture the same information.

9. Text Deletion

Reserved for future use.

10. Direct Ship Status

Specify the sales order status for direct ship receipt. The status that you enter in this field determines the next status of the sales order.

Before you complete this processing option, review the order activity rules.

11. Receipt Routing

Specify whether to activate receipt routing. If you enter **1** in this processing option, the system activates receipt routing.

13. Journal Entries

Specify whether to summarize journal entries. If you are tracking commitments using the PA (purchase amount) or PU (purchase units) ledgers, you cannot use this processing option.

Blank: Do not summarize

1: Summarize

14. Activate Blind Materials Issue (EPM)

Specify whether to activate the Materials Issue function. You can activate the Material Issue function only if you are using the JD Edward EnterpriseOne Engineer to Order (ETO) system and are working with an ETO receipt. Also, you must set the Call Materials Issue flag in the Line Type Control Constants File table (F40205). Values are:

Blank: Do not activate

1: Activate

15. Allow Negative On-Hand Quantity

Specify whether the system will continue processing a receipt if the system calculates negative on-hand quantity. Values are:

Blank: The system will continue processing the receipt, and will not issue a warning or an error.

1: The system will continue processing the receipt, but will issue a warning.

2: The system will not continue processing the receipt, and will issue an error.

16. Activate Automatic G/L Batch Posting

Specify whether to enable the automatic posting of General Ledger batches when the program exits. Values are:

Blank: Manual post (do not automatically post the batch).

1: Automatically post the batch.

Tolerance

These processing options control how the system performs tolerance checking for detail lines.

1. Quantity and Amount

Specify whether the system checks to determine if a detail line's quantity and amount exceed the tolerance percentage. To check the tolerance, you can access the Tolerance Setup program (P4322).

Blank: Do not check quantities and amounts.

1: Display a warning.

2: Display an error message.

2. Date

Specify whether the system checks if a detail line's date is outside of the tolerance date range. To check the tolerance date range, you can access the Supplier/Item Information program (P43090).

Blank: Do not check receipt dates.

1: Display a warning.

2: Display an error message.

Warehousing

These processing options control how the Purchase Order Receipts program (P4312) interfaces with the JD Edwards EnterpriseOne Warehouse Management system.

1. Putaway Mode

Specify how the system processes putaway requests.

Blank: Do not create a putaway request. If you do not create putaway using the Purchase Order Receipts program (P4312), the items that you receive will remain in the receiving location. Then you can create putaway requests manually

or create them by reversing the receipt of the purchase order, setting this processing option to create putaway requests by reversing the purchase order receipt, and receiving the purchase order again.

- 1: Create a putaway request only. You must create location suggestions and confirm location suggestions separately.
- 2: Create a putaway request and process the request using the subsystem.
- 3: Receive goods directly into the reserved locations, and do not create requests or suggestions.

2. License Plate Number Generation Method

Enter a UDC (46L/LG) to specify the license plate generation method. Values are:

00: Use license plate constants.

01: Manual entry.

02: Create a user-defined formula

03: Create Electronic Product Code.

3. Build default UOM structure (build default unit of measure structure)

Enter a code that indicates the unit of measure (UOM) structure to be used to create license plate numbers automatically. License plates are only created for item UOMs that have the license plate check box selected in the U/M definition application P46011. Values are:

- 1: The default item UOM structure, excluding levels higher than the transaction UOM is used.

Blank: The default item UOM structure is used.

4. Assign Items to License Plate Window (P46L30)

Specify whether the system enables you to assign items to the License Plate Window (P46L30). Values are:

- 1: Display the window.

Blank: Do not display the window.

Currency

These processing options control which date the system uses as the effective date and whether the exchange rate can be changed.

1. Effective Date

Specify which date the system uses as the effective date. Values are:

Blank: Use today's date.

- 1: Use the general ledger date.

2. Protect Rate

Specify whether you can change the exchange rate.

Blank: You can change the exchange rate.

- 1: You cannot change the exchange rate.

Versions

These processing options enable you to enter the version for each application. If you leave any of these processing options blank, the system uses the ZJDE0001 version.

1. Open Order Inquiry (P4310)

Specify the version that the system uses when you are using the Open Order Inquiry program.

2. Sales Order Backorder Release (P42117)

Specify the version that the system uses when you are using the Sales Order Backorder Release program.

3. Receipt Traveler (P43512)

Specify the version that the system uses when you are using the Receipt Traveler Release program.

4. Receipt Routing (P43250)

Specify the version that the system uses when you are using the Receipt Routing program.

5. Putaway Requests (R46171)

Use this processing option when you are processing putaway requests using the subsystem and need to specify the version of Location Selection that you want to use. If you leave this processing option blank, the system uses XJDE0001.

6. Pick Requests (R46171)

Specify which version of the Location Selection Driver program (R46171) that the system uses to create pick requests during planned cross docking. If you leave this processing option blank, the system uses version ZJDE0001.

7. Online Reservations (P46130)

Specify the version of Online Reservations that the system uses. If you leave this processing option blank, the system uses ZJDE0001.

8. Purchase Order Entry (P4310)

Specify the version that the system uses when you are using the Purchase Order Entry program.

9. G/L Journal Entries (P0900049)

Specify the version that the system uses when you are using the G/L Journal Entries program. You can only review versions for this program in the interactive versions list.

10. Landed Cost Selection (P43291)

Specify the version that the system uses when you are using the Landed Cost Selection program.

11. Test Results Revisions (P3711)

Specify the version that the system uses when you are using the Test Results Revision program.

12. Blind Materials Issue (P31113)

Specify which version the system uses when performing the Materials Issue from Receipts function.

13. General Ledger Post (R09801) (ZJDE0009 if blank)

Specify the version of the General Ledger Post Report program (R09801) to use for automatic posting of the G/L batch. If left blank, the program uses version ZJDE0009.

Note: When you select a version, review the version's processing options to ensure that the version meets your business needs.

Flex Acct

This processing option controls whether you are working with flexible accounting.

1. Flex Accounting (flexible accounting)

Specify whether flexible accounting is activated. Activate flexible accounting if you are using the JD Edwards EnterpriseOne Cost Management System or if you are working with flexible sales accounting.

Blank: Do not activate

1: Activate

Bulk

This processing option controls how the system processes bulk transaction information.

1. Quantities

Specify how the system records bulk transaction quantities.

Blank: Quantities are purchased and received in standard mode.

1: Record the difference between ambient and standard quantities received as a temperature gain or temperature loss.

2: Update the unit cost as the extended cost divided by the standard quantity.

2. Variance Limit (Release 9.1 Update)

Specify the variance limit to be allowed in the system while receiving the bulk items. Values are:

Blank or 0: Do not allow variance.

Numeric value: Allow variance. Enter a numeric value to specify its absolute value as the variance limit. For example, if you enter 1.00 as the numeric value, the system considers the variance limit from -1.00 to 1.00. If the variance amount is within the specified limit, the system uses DMAAI 4332 to write the variance amounts to the appropriate tables.

Note: Numeric Value option is applicable only if the `#GUID-62C5DEDE-CFAD-4E71-B322-1BC11B4BB74C/CIHBCEFE` processing option is set to **1** (Calculate temperature gain or loss) or **2** (Update unit cost).

Interop

This processing option controls whether the system performs outbound interoperability processing.

1. Transaction Type

Specify a transaction type for the interoperability transaction. If you leave this processing option blank, the system will not perform outbound interoperability processing.

Workflow

These processing options control how the system performs the workflow notification process.

1. Receipt Email

Specify the recipient of the email that the system automatically sends when goods are received.

1: Send email to the buyer.

2: Send email to the person who originated the transaction.

3: Send email to both the buyer and the person who originated the transaction.

2. Completion Email

Specify the recipient of the email that the system automatically sends when an item is received that is related to a work order.

Blank: Do not send email.

1: Send email to the planner.

3. Notify Unit Cost Changes and 4. Notify Quantity Changes

Specify the recipient of the email that the system automatically sends when the Unit Cost/Lump Sum changes on a purchase order detail line during receipts. Values are:

Blank: Do not send email.

- 1: Send email to the purchase order originator.
- 2: Send email to the project manager (ETO only).
- 3: Send email to the buyer.
- 4: Send email to the purchase order originator, project manager (ETO only), and buyer.

Cross Docking

These processing options control how the system performs cross docking operations.

1. Cross Docking

Specify the cross docking operations for the sales order only if you are using cross docking during the purchase order receipts process.

2. Pick Request

Specify whether the system creates a pick request when performing cross docking during the purchase order receipts process. Values are:

Blank: Does not create a pick request.

- 1: Creates a pick request.

3. Override Next Status for Sales Orders

Specify the default next status code (40/AT) for the sales order only if you are using cross docking during the purchase order receipts process. If you leave this processing option blank, the system uses the sales order next status that is contained in the order activity rules.

4. From Sales Order Status and 5. Thru Sales Order Status

Specify the from status code and through status code (40/AT) for the sales order only if you are using planned cross docking during the purchase order receipts process.

Cascade Receipt

These processing options control how the system processes cascading receipts.

1- Cascade Receipt

Specify whether the system activates the cascade receipts process. In addition to setting this processing option, you must also set the processing option for receiving mode (located on the Display tab) to **2** if you want the system to activate the cascade receipts process. Values are:

Blank: Do not activate

- 1: Activate

2- Tolerance Checking

Specify whether to prevent the system from applying a quantity that has slightly exceeded the customer's required shipment quantity to the next open purchase order during the cascading receipts process. Values are:

Blank: Applies the quantity in excess to the next open purchase order.

- 1: Performs tolerance checking by quantity.

2: Performs tolerance checking by percentage.

3- Tolerance Checking by Quantity

Specify whether the system performs tolerance checking. Values are:

Blank: Does not perform tolerance checking.

1: Performs tolerance checking.

4- Tolerance Checking by Percentage

Specify the percentage that the system uses for tolerance checking. If you leave this processing option blank, the system does not perform tolerance checking.

WIM

This processing option specifies whether you are processing standard receipts or wine industry receipts.

Wine Industry Module (WIM)

Specify whether the system activates wine industry module processing, or if this is a regular item receipt. Values are:

Blank: Do not activate Wine Industry Module processing. (This is a receipt for a regular item, not a wine-related item.)

1: Activate Wine Industry Module processing.

Matrix

1. Inventory Parent

Specify whether the system displays the matrix order form for the inventory parent. Values are:

Blank: Display Matrix Order form.

1: Do not display Matrix Order form.

2. Receipt Option for Inventory Parent

Specify the receiving options for a purchase order line by selecting a value from UDC 43/PR.

Configurator

These processing options specify how the system processes receipts for components of configured items.

1. Update Related Orders

Specify whether the system updates the work order parts list or sales order detail lines related to the receipt of purchase orders for the components of configured items. The relationship between orders is established by the Configured Item Revisions program (P3210) during configured item order entry. Values are:

Blank: Do not update related orders.

1: Update related orders.

2. Process Work Order Inventory Issues

Specify whether the system automatically processes work order inventory issues if there is a related work order generated by the JD Edwards EnterpriseOne Configurator system and the work order has an attached parts list. Values are:

Blank: Do not process work order inventory issues.

1: Process work order inventory issues.

Selecting a value of **1** auto issues purchase order receipt items to the work order parts list.

3. Version of Work Order Inventory Issues

Specify the version of the Work Order Inventory Issues program (P31113) the system uses to perform the Materials Issue function. Review the processing options for the specified version to ensure that they are set appropriately. If you leave this processing option blank, the system uses version ZJDE0001.

4. Version of Sales Order Entry

Specify the version of the Sales Order Entry program, either P4210 or P42101, the system uses to perform the Sales Order Detail update function. Review the processing options for the specified version to ensure that they are set appropriately. If you leave this processing option blank, the system uses version ZJDE0001.

5. Sales Order Cutoff Status

Specify the sales order cutoff status. If a sales order has the next status (NXTR) value that is beyond the value specified in this processing option, then the sales order detail lines will not be updated. Review the order activity rules before completing this processing option. If you leave this processing option blank, the system uses status **999**.

6. Work Order Cutoff Status

Specify the work order cutoff status. If a work order is at a status that is beyond the value specified in this processing option, then the work order parts list will not be updated. If you leave this processing option blank, the system uses the value specified in the manufacturing constants (SRS1 field in the F3009 table).

See *"Understanding Purchase Orders for Components of a Configured Item" in the JD Edwards EnterpriseOne Applications Configurator Implementation Guide* .

See *"Working with Configured Items" in the JD Edwards EnterpriseOne Applications Configurator Implementation Guide* .

Recording Bulk Product Receipts

Access the Purchase Order Receipts form.

1. Complete these fields:
 - o G/L Date
 - o Receipt Date
2. Compare the receipt details to the detail line information and adjust these fields, as necessary:
 - o Quantity
 - o Trans UOM
 - o Unit Cost
 - o Amount
3. Adjust the remaining information for each detail line, as necessary.

4. Enter **1** in the Rec Opt field for each detail line that you want to receive, and click OK.

- o **Receipt Date**

Enter the date you received this purchase order line.

- o **Rec Opt** (receipt option)

Specify the actions you can perform for a receipt. The value that you enter determines whether the system leaves the balance of the line open (**1**), closes the balance (**7**), or cancels the line entirely (**9**).

- o **Quantity**

Enter the quantity of an item that is available to receive.

- o **Trans UOM**

Enter a user-defined code from 00/UM that indicates the quantity in which to express an inventory item, for example, CS (case) or BX (box).

- o **Unit Cost**

Enter an amount that represents the unit cost of the item that you received.

- o **Amount**

Enter the monetary amount of the items that you have received.

Calculating Gain or Loss for Received Products

This section provides an overview of gain and loss calculations for received products and discusses how to calculate gain or loss for received products.

Understanding Gain and Loss Calculations for Received Products

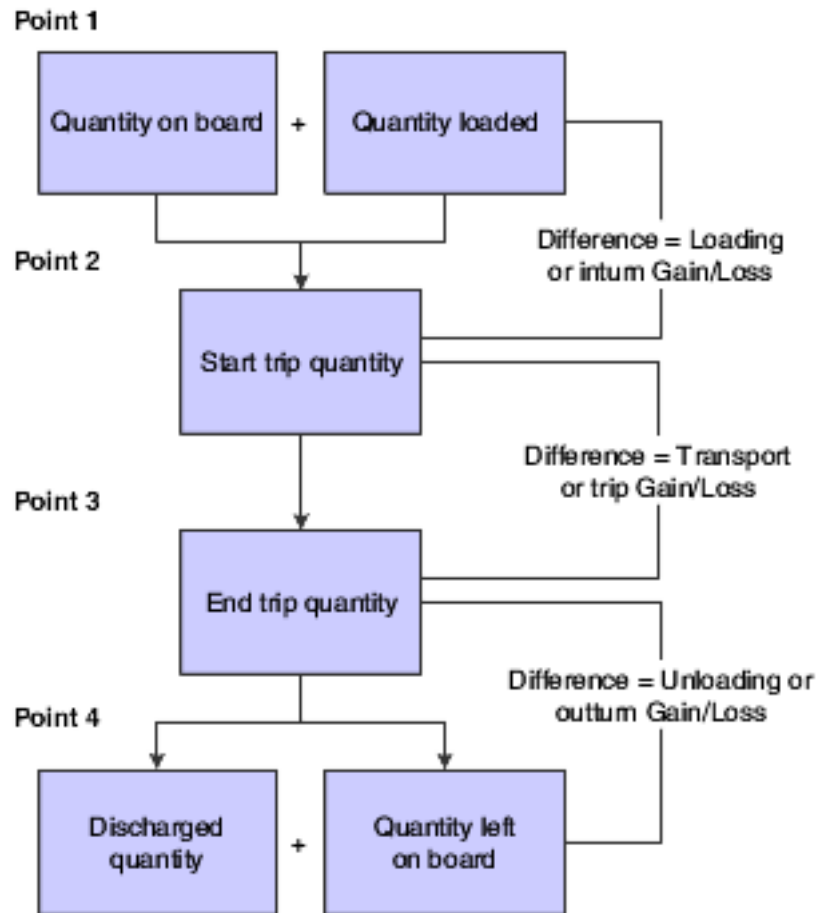
Use four-point analysis when you record received products to calculate any gains or losses that might have occurred during shipment. *Four-point* refers to the opening and closing readings at a supplying location, and the opening and closing readings at a receiving location. *Analysis* refers to the variance between the two results (that is, the gain or loss).

You can choose to perform a four-point analysis for each line item on a purchase order. You can also perform a four-point analysis on partial receipts. The program creates a four-point record for each receipt.

The data from a four-point analysis is informational only. It does not update the gain/loss table or the general ledger, and you cannot retrieve this data for other programs. If you need the output elsewhere, for example, to enter a gain or loss manually, print the form and enter the data in the required program.

If you receive an item that is set up for receipt routing, you can set a processing option in receipts entry to call the Four-Point Analysis program when product is routed to the payment eligible and on-hand steps.

This diagram illustrates a four-point analysis:



During four-point analysis, the system:

- Adds the opening on-board quantity to the quantity loaded (Point 1) and compares the total to the start trip quantity (Point 2).
Any difference represents the loading (inturn) gain or loss. The system calculates a percentage based on the sum of opening on-board plus loaded quantities.
- Compares the start trip quantity (Point 2) to the end trip quantity (Point 3).
Any difference represents the transport (trip) gain or loss. The system calculates a percentage based on the opening on-board quantity.
- Compares the end trip quantity (Point 3) with the sum of the discharged (Point 4) and left-on-board quantities.
Any difference represents the unloading (outturn) gain or loss. The system calculates a percentage based on the end trip quantity.
- Calculates the total gain or loss, both in volume and percent.

Recording Standard Quantities

You can enter standard quantities if you already have them. If you enter standard quantities, you do not need to access the Four-Point Temperature/Density form to convert ambient quantities to standard quantities.

Volume Calculations for Four-Point Analysis

You can use Dip Volume Calculator to enter the opening and closing dip readings of any supplying or receiving point, and calculate volumes. You can then print the dip calculations, return to the Four-Point Analysis form, and enter the quantities in the appropriate fields.

Receipt Reversal

If you reverse a receipt entry for a bulk product, the system calls the Four-Point Analysis program and reverses the four-point analysis record.

Note:

- *"outing Receipts" in the JD Edwards EnterpriseOne Applications Procurement Management Implementation Guide .*

Form Used to Calculate Gain or Loss for Received Products

Form Name	FormID	Navigation	Usage
Four Point Analysis	W415109A	Bulk Stock Management (G41501), Four Point Analysis On Work with Four Point Records, click Add.	Calculate gain or loss for received products.

Calculating Gain or Loss for Received Products

Access the Four Point Analysis form.

T T (type of temperature)

Enter a code that specifies the type temperature. Values are:

F: Fahrenheit

C: Celsius

Density

Enter the company's standard for density. You can also use this field for pack size and weight information.

D T (density type)

Enter a code used to identify the type of density. Values are:

A: Absolute Density

G: API Specific Gravity

R: Relative Density

Density Temp (density temperature)

Enter the temperature at which the density was measured. The system uses the density temperature type from Branch/Plant Constants - Page 3 Row exit.

T U (type of temperature)

Enter a code that specifies the type temperature. Values are:

F; Fahrenheit

C; Celsius

10 Working with Reconciliations

Understanding Reconciliations

As part of the management of bulk stock, you must reconcile sales figures for a given period. To do so, you compare the transactions and inventory levels in the system to the actual inventory levels in the depot. During the reconciliation process, the system identifies any discrepancies. A gain might be due to missing transactions, for example, lost invoices. A loss might be due to theft, leakage, or faulty meters.

A processing option enables reconciliation of the document types for load-confirmed sales, non-metered outgoings, and other metered outgoings.

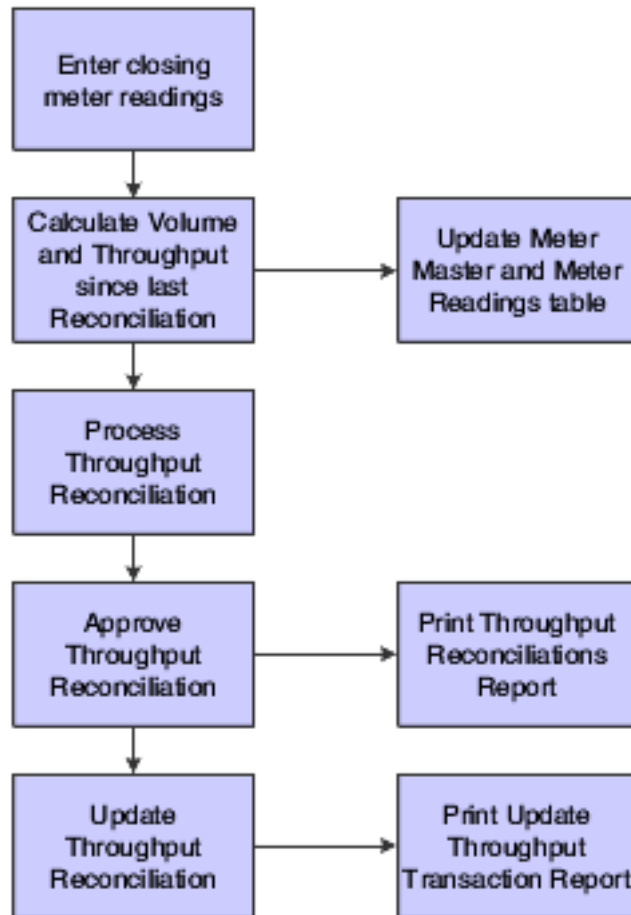
Understanding Throughput Reconciliations

Throughput reconciliation compares sales figures and other metered outgoing transactions for a given period with the metered throughput at the point of reconciliation. The comparison identifies discrepancies due to missing transactions, theft, leakage, or faulty meters.

Throughput reconciliation is optional. However, if you perform throughput reconciliation through the time period in which you begin operational reconciliation, the operational reconciliation process will be more accurate.

Throughput reconciliation compares the transactions in the system with the throughput meter readings. Throughput reconciliation does not update inventory and general ledger tables. Upon review and approval, the program updates the reconciliation status in the Bulk Product Transaction File table (F41511) and the Gain/Loss Transactions File table (F41512).

This flowchart illustrates the throughput reconciliation process:



Processing Throughput Reconciliations

You process throughput reconciliations to reconcile the metered throughput with load-confirmed sales transactions and other metered transactions for a given period. The throughput reconciliation provides an information process to verify that all outgoing movements through meters were recorded.

Recording Out-of-Service Meter Quantities

If the meter is out of service, you can estimate the amount of product that passed through the meter and still perform throughput reconciliation. To do so:

1. Access the Out of Service Meter Quantity form.
2. Record the meter number and estimated quantity.
3. Return to Throughput Reconciliations program.

The estimated quantity appears next to Corrections under Metered Throughput on the Work With Throughput Reconciliations form.

The program performs the conversions, and then displays the default tank information and the calculated ambient volume, standard volume, and weight.

Reviewing Transaction Details

During throughput or operational reconciliations, you can access the Transaction Details Window form to determine whether a transaction was missed or a reading was entered incorrectly. You can review this information:

From the Throughput Reconciliations form:

- Load Confirmed Sales Transaction details.
- Other Metered Outgoing Transaction details.
- Non-Metered Outgoing Transaction details.

From the Operational Reconciliations form:

- Incoming Transaction details
- Outgoing Transaction details

The option that you select from the appropriate reconciliation form determines which detail information displays.

Understanding Operational Reconciliations

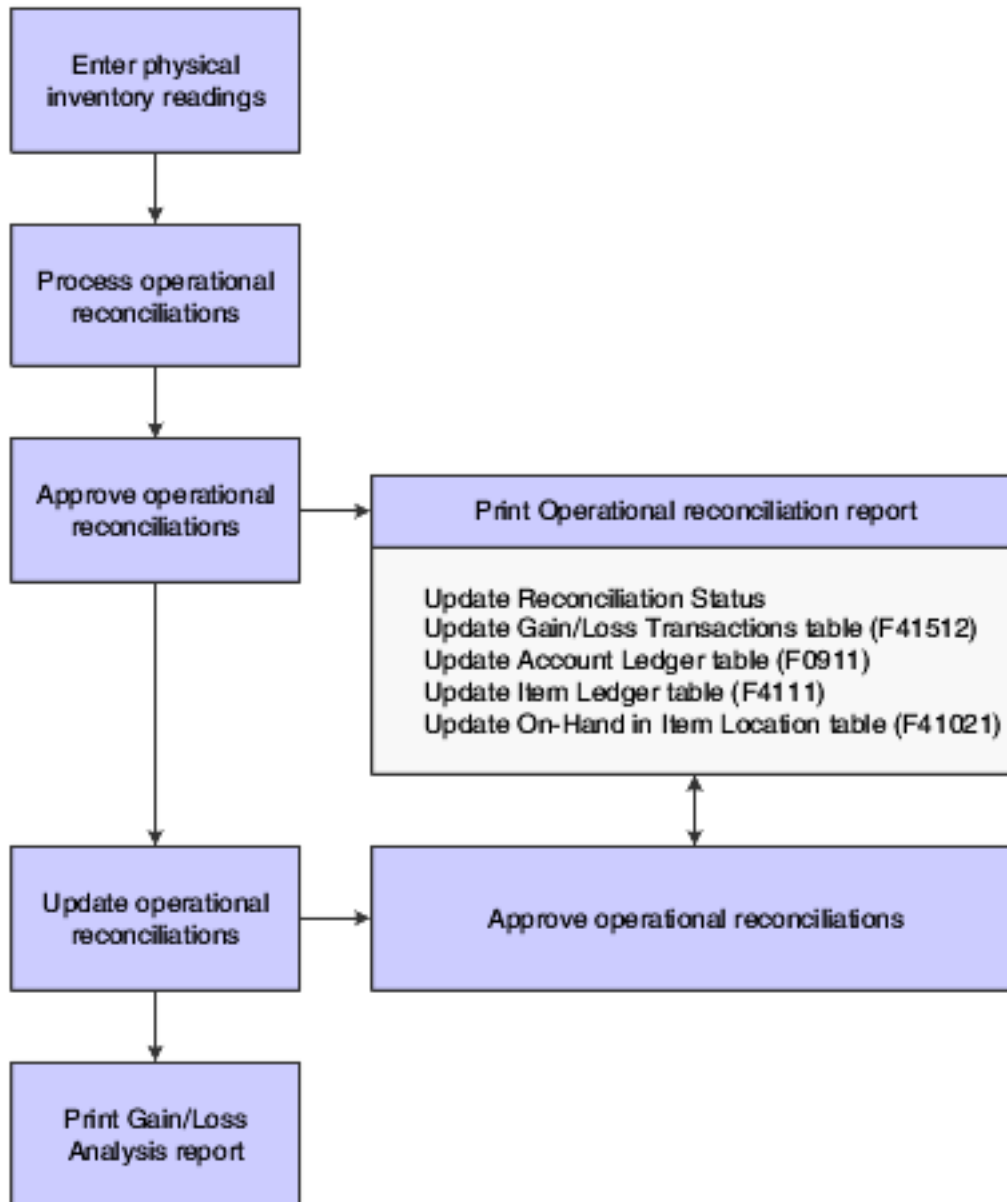
Operational reconciliation updates inventory and general ledger tables. Using all inbound and outbound transactions since the previous reconciliation, the system calculates the amount that should be in physical inventory and compares it with the actual amount in the tanks (from the final physical tank dip). In other words, it measures and compares the physical inventory levels with the book inventory levels so that you can reconcile any differences and record operational gains or losses. The system then updates inventory tables to reflect the current physical stock levels. Although most companies perform operational reconciliations daily, some companies perform them monthly.

During operational reconciliation, the system can include the throughput gains and losses with the operational gains and losses and update the general ledger.

Operational reconciliation updates these tables:

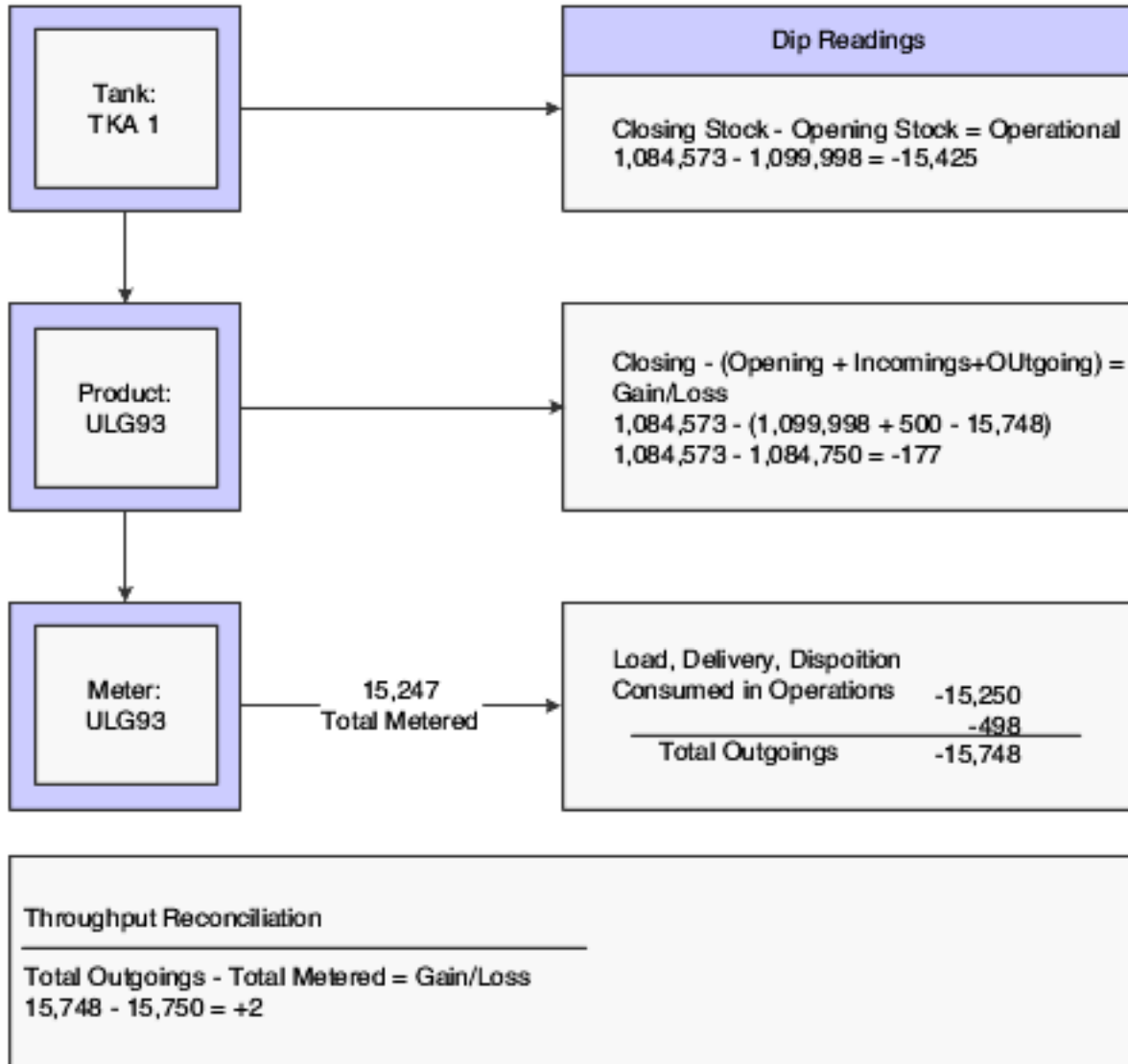
- Gain/Loss Transactions File (F41512)
- Account Ledger (F0911)
- Item Location File (F41021)
- Bulk Depot/Product Information (F41022)
- Item Ledger File (F4111)
- Bulk Product Transaction File (F41511)

This flowchart illustrates operational reconciliation:



Example: Calculating Reconciliations

This diagram illustrates how the system calculates reconciliations for bulk products. The quantities (in liters) are shown to help you understand the process:



Processing Operational Reconciliations

The operational reconciliation process calculates the amount that should be in physical inventory, based on all inbound and outbound transactions since the previous reconciliation, and compares the amount with the actual amount in the tanks (from the final tank dip). In other words, it measures and compares the physical inventory levels with the book inventory levels so that you can reconcile differences and record operational gains or losses. The process then updates inventory to reflect the current physical stock levels. The operational reconciliation process uses only standard volumes, but it displays ambient and weight values.

Note:

- *Setting Up UDCs for the Bulk Stock Inventory System.*

Understanding Reconciliations Status

As part of depot operations, you might need to review totals of transactions that have been processed through operational reconciliations. Additionally, you might need to review or change a reconciliation status.

Prerequisites

Before you complete the tasks in this chapter:

- Set up the user-defined code (UDC) tables for throughput reconciliation.
- Set up the UDC tables to define the document types to include in the operational reconciliation.
See *Setting Up UDCs for the Bulk Stock Inventory System*.
- Set up the gain/loss and inventory automatic accounting instructions (AAIs).
See *Setting Up AAIs for the Bulk Stock Inventory System*.

Recording Closing Meter Readings

This section provides an overview of closing meter readings, lists a prerequisite, and discusses how to:

- Set processing options for Meter Readings (P415105).
- Record closing meter readings.

Understanding Closing Meter Readings

To determine the amount of product that has passed through a meter, use the Multi-Meter Readings program to record the most current closing meter readings. This program enables you to update the throughput volume since it was previously reconciled.

You can enter readings in volume or weight. When you enter a reading, the program retrieves the current tank information and performs volume to weight conversions. The converted quantities are stored in the Multi-Meter Readings table (F41515) and used later for throughput reconciliations.

You update metered throughput by entering closing meter readings for the period. The system multiplies the meter units you enter by the number of units per meter unit in the Meter Master (F41506). For example, the closing reading is 500 and the meter units are 2 liters/unit, then the throughput is 1,000.

If no previous readings exist for a particular meter, the system updates the meter status with an I for inactive and does not calculate throughput for the initial reading. You must enter the initial reading as the closing reading. The system sets the previous reading to equal the closing reading and changes the Reconciliation Yes/No status to Y.

You can enter transactions for a tank before an initial meter reading. Be sure to enter an initial reading date and reading time that is prior to the transaction dates. If the initial meter reading date is not prior to the transaction dates, the system treats the transactions as retroactive (that is, before the last reconciliation) and does not include the transactions in the current reconciliation.

You might need to review or make a change to a meter reading. To locate previous meter readings, enter the date for the readings in the Skip To Date field. The system locates all meter readings from this date to the current date.

The Multi-Meter Readings program enables you to review readings by product or by meter.

Prerequisite

Set the processing option for this program to specify the current status for transactions in the reconciliation process.

Forms Used to Record Closing Meter Readings

Form Name	FormID	Navigation	Usage
Multi-Meter Readings Revision	W415105B	Bulk Stock Reconciliations (G41502), Meter Readings On the Work With Multi-Meter Readings form, locate and select an item or, to add a new reading, click Add.	Record closing meter readings.
Meter Master Maintenance Revision	W415006B	From the Form menu on the Multi-Meter Readings Revision form, select Meter Master	Review or change meter information.

Setting Processing Options for Meter Readings (P415105)

Processing options enable you to specify the default processing for programs and reports.

Default

Multi-Meter Readings

Enter a UDC for the current status in the reconciliation process.

The Reconciliation Status Code indicates the transaction has been throughput reconciled. Records with this status (and any status greater than the one entered) will be protected from changes.

Note: Set up Reconciliation Status - Current UDCs sequentially in the same order as the process flow. The same codes are used for Reconciliation Status - Next.

Recording Closing Meter Readings

Access the Multi-Meter Readings Revision form.

Closing Reading

Enter the closing reading of the meter at the date and time specified by the user.

This value indicates the quantity of product that has flowed through the meter when the closing readings are taken. To calculate the ambient volume, an after (closing) meter reading is required.

Updating Throughput Transaction Status

This section provides overviews of throughput transaction status update and the Throughput Reconciliations Report, lists prerequisites, and discusses how to:

- Set processing options for Throughput Reconciliations (P415111).
- Reconcile throughput transactions.
- Set processing options for Review/Approve Variances (P415112).
- Approve throughput reconciliations.
- Set processing options for Throughput Reconciliations Report (R415403).
- Run the Throughput Reconciliations Report.

Understanding Throughput Transaction Status Update

After you record closing meter readings, you need to compare the metered throughput with the outgoings to update the transaction status and approve the transactions for reconciliation. The program retrieves the metered throughput from the Multi-Meter Readings table (F41515) .

In the comparison, the system includes only transactions with the document types that you specify in the processing options. The system also includes only those transactions that have a last reconciliation status equal to the last reconciliation status that you specify in the processing options.

You can view throughput reconciliations in standard volume or ambient volume. The standard volume displays in the primary stock accounting unit of measure. The ambient volume appears in the volume unit of measure that is set up for the item.

If you are using a gantry interface, temperature-compensated meters return the quantity in the standard volume, not the ambient volume. The system does not convert from ambient volume to standard volume. To perform throughput reconciliations, you view the data in standard quantities and compare the difference to the standard throughput quantities rather than the ambient throughput quantities.

The quantities for nonmetered outgoings are informational only. The system does not calculate these quantities in the metered throughput withdrawals or the throughput gain or loss.

If the meter is out of service, you can estimate the amount of product that passed through the meter and still reconcile throughput by:

- Accessing the Out of Service Meter Quantity form.

- Recording the meter number and estimated quantity.
- Returning to the Throughput Reconciliations program.

The Throughput Reconciliation program performs the conversions and calculations and then displays the default tank information, ambient volume, and standard volume.

After you reconcile the throughput transactions, you approve the information to update the transaction status and move the reconciliations to the next step in the process. Depending on the status codes set up for throughput reconciliations and those you specify in the processing options, the update process moves the reconciliations to either:

- An additional approval step.
- The Update Throughput Reconciliations program (R415020), which updates the Gain/Loss Transactions File (F41512) table.

Some companies prefer to include an additional approval step to enable a manager to approve the reconciliations before running Update Throughput Reconciliations. In this case, a person with the proper authority approves the reconciliations from Review/Approve Variances and updates the transaction status to proceed to Update Throughput Reconciliations.

If you want to approve and update the transaction status in a separate step, you must set an additional current and next status step in the processing options and set the processing option to approve reconciliations in a separate step. This action creates two different versions of the Throughput Reconciliations program.

Understanding the Throughput Reconciliations Report

After you approve throughput reconciliations, you can run the Throughput Reconciliations Report. This report provides:

- Detailed transactions that make up a throughput reconciliation.
- Totals for a throughput reconciliation.

The report displays the transactions with the document types that you selected in the processing options. It also displays the transactions with a last reconciliation status equal to the last reconciliation status you selected in the processing options. The metered withdrawals appear as standard volumes only.

Alternatively, you can run the Throughput Reconciliations Report from the Review/Approve Variances form after you approve the throughput reconciliations or you can print it from the Throughput Reconciliations program if the reconciliation process is not set up to require approvals.

Prerequisites

Before you complete the tasks in this section:

- Perform load confirmations on all sales transactions for the items that you want to reconcile.
See *"Planning Transportation" in the JD Edwards EnterpriseOne Applications Transportation Management Implementation Guide* .
- Verify that the document types for the transactions that you want to reconcile are set in the processing options.
- Verify that the correct beginning and next reconciliation status codes are set in the processing options.
- Record closing meter readings to calculate metered throughput.

See *Recording Closing Meter Readings*.

- Verify that the last reconciliation status for the transactions is set in the processing options.

Form Used to Update Throughput Transaction Status

Form Name	FormID	Navigation	Usage
Work With Throughput Reconciliations	W41511B	Bulk Stock Reconciliations (G41502), Throughput Reconciliations	Reconcile throughput reconciliations.
Work With Throughput Reconciliations	W41511B	Reconciliations (G41502), Review/Approve Variances	Approve throughput reconciliations.

Setting Processing Options for Throughput Reconciliations (P415111)

Processing options enable you to specify the default processing for programs and reports.

Document Types

1. List the User-Defined Code containing the document types for:

Load Confirmed Sales,

System Code, and Record Type

Other Metered

System Code and Record Type

Non Metered

System Code and Non-Metered Record Type

Values are:

41B: Bulk stock management

LC: Load confirmed - reconciliation

OM: Other metered - reconciliation

NM: Nonmetered - reconciliation

Status

1. Please enter the current reconciliation status and 2. Please enter the next reconciliation status

Enter the current status or next status in the reconciliation process. Entries in this processing option are user-defined codes from UDC table 41B/RC.

Note: Set up Reconciliation Status - Current UDCs sequentially in the same order as the process flow. The same codes are used for Reconciliation Status - Next.

Reconciling Throughput Transactions

Access the Work With Throughput Reconciliations form.

Work With Throughput Reconciliations

Update Form Tools

Item Depot

Status Current/Next

As of Date Time

Last Recon Date

Gain/Loss Percentage

Ambient Standard

Records 1 - 10 ⌂ ↑ ↓ ⌂

<input type="checkbox"/>	Throughput Description	Ambient Quantity	Amb UOM	Standard Quantity	Std UOM
<input type="radio"/>	Metered Throughput				
<input type="radio"/>	Withdrawals				
<input type="radio"/>	Corrections				
<input type="radio"/>	Total				
<input type="radio"/>	Σ Metered Outgoings				
<input type="radio"/>	Load Confirm Sales				
<input type="radio"/>	Other Metered Outgoings				
<input type="radio"/>	Total				
<input type="radio"/>	Σ Non Metered Outgoings				
<input checked="" type="radio"/>	Gain/Loss Total				

1. Locate an item on the Work With Throughput Reconciliations form.
2. If the variance is correct, click Update to update the transaction status.

3. If the variance is not correct, perform these steps to correct the variance and then resume the reconciliation:

- a. From the Form menu, select Corrections, Load Confirmed Sale, Other Metered Outgoing, or Non-Metered Outgoing.

On the transaction details form determine whether a transaction is missing or an incorrect reading exists.

- b. Exit the program and correct the variance if the cause is known (for example, an order that was shipped but not load-confirmed).

As of Date

Enter the date of the new closing reading.

Time

Displays the last time the system updated this record.

Setting Processing Options for Review/Approve Variances (P415112)

Processing options enable you to specify the default processing for programs and reports.

Document Types

1. List the User-Defined Code containing the document types for:

Load Confirmed Sales

System Code and Record Type

Other Metered

System Code and Record Type

Non Metered

System Code and Non-Metered Record Type

Values include:

41B: Bulk stock management

LC: Load confirmed - reconciliation

OM: Other metered - reconciliation

NM: Nonmetered - reconciliation

Throughput Rec

These processing options specify the user-defined code for document types that must be throughput reconciled prior to being processed by operational reconciliations and the status of records that have been throughput reconciled.

Throughput Reconciliation - System Code

Specify the system code to use for throughput reconciliation.

Throughput Reconciliation - Record Type

Specify the user-defined code table to use for throughput reconciliation.

Throughput Reconciliation - Status

Specify the status that the system assigns to records that have been throughput-reconciled. The status is a value from UDC 41B/RC.

Note: Enter a value in this processing option if the Outgoings (Record Type or System Code) processing options on the Document Types tab are non-blank.

Status

1. Please enter the current reconciliation status and 2. Please enter the next reconciliation status

Enter the current status or next status in the reconciliation process. Entries in this processing option are user-defined codes from UDC table 41B/RC.

Note: Set up Reconciliation Status - Current UDCs sequentially in the same order as the process flow. The same codes are used for Reconciliation Status - Next.

Processing Mod

1. Processing Mode Selection Value

0 = Review and Approve Updates: Reconciliation Flag and to NEXT status. 1 = Approve Updates: Reconciliation Flag and to NEXT status.

Specify whether the system updates the reconciliation status, the reconciliation flag, or both for transactions. Values are:

Blank: Review only. The system selects outgoing transactions that are at the status as specified on the Throughput Rec tab, Status processing option. The system also selects all other outgoing and incoming transactions that are at the current status as specified on the Status tab, Current Reconciliation Status processing option. The system then moves the transactions to the next status as specified on the Status tab, Next Reconciliation Status processing option.

0: Review and approve. The system selects all outgoing and incoming transactions that are at the current status as specified on the Status tab, Current Reconciliation Status processing option. The system then moves the transactions to the next status as specified on the Status tab, Next Reconciliation Status processing option. The system also updates the Reconciliation flag field to the value of **1**.

1: Approve only. The system selects all outgoing and incoming transactions that are at the current status as specified on the Status tab, Current Reconciliation Status processing option. The system then updates the Reconciliation flag field to the value of **1**.

Approving Throughput Reconciliations

Access the Work With Throughput Reconciliations form.

1. Locate an item.
2. If Gain/Loss is correct, click Update to update the transaction status.

Setting Processing Options for Throughput Reconciliations Report (R415403)

Processing options enable you to specify the default processing for programs and reports.

UDC Options

1. List the User-Defined Code containing the document types for:

Load Confirmed Sales,

System Code, and Record Type

Other Metered

System Code and Record Type

Non Metered

System Code and Non-Metered Record Type

Values include:

41B: Bulk stock management

LC: Load confirmed - reconciliation

OM: Other metered - reconciliation

NM: Non-metered - reconciliation

Job Options

A variety of options are available. Enter the appropriate values.

1. Enter a '1' to print the detailed transactions or a '2' to print totals only. The default is to print totals only.

Specify whether to print detailed transactions or totals only. Values are:

1: Print detailed transactions.

2: Print totals only (default).

2. Enter the current reconciliation status.

Enter the current status in the reconciliation process. Entries in this field are UDCs.

Note: Set up Reconciliation Status - Current UDCs sequentially in the same order as the process flow. The same codes are used for Reconciliation Status - Next.

3. Enter the As Of date thru which you want records to be included.

Enter the date that an order was entered into the system. This date determines which effective level the system uses for inventory pricing.

4. Enter '1' to print all quantities as ambient. BLANK is the default and will print quantities as standard.

Specify whether to print quantities as ambient or standard. Values are:

Blank: Print quantities as standard (default).

1: Print quantities as ambient.

Running the Throughput Reconciliations Report

From the Bulk Stock Management Reports menu (G415012), select Throughput Reconciliations Report.

Updating Throughput Reconciliations

This section provides an overview of the throughput reconciliation update and discusses how to: update throughput reconciliations.

- Set processing options for Update Throughput Reconciliation Report (R415020).
- Update throughput reconciliations.

Understanding the Throughput Reconciliation Update

Run the Update Throughput Reconciliation program to perform these processes:

- Update the reconciliation status on the Multi-Meter Readings table (F41515).
- Update the reconciliation status on transactions.
- Update reconciliation status in the Bulk Product Transaction File table (F41511).
- Update each transaction and reading with the reconciliation date.
- Update the Gain/Loss Transactions File table (F41512) with the calculated gain or loss values.
- Print the Update Throughput Reconciliations Report.

You can run this program in proof mode before you complete the actual update. This enables you to review each transaction and verify the information before updating the tables. To run in proof mode, add a proof version and leave the processing option to update tables blank.

Setting Processing Options for Update Throughput Reconciliation Report (R415020)

Processing options enable you to specify the default processing for programs and reports.

UDC Tables

1. List the User-Defined Code containing the document types for:

Load Confirmed Sales,

System Code, and Record Type

Other Metered

System Code and Record Type

Non Metered

System Code and Non-Metered Record Type

Values include:

41B: Bulk stock management

LC: Load confirmed - reconciliation

OM: Other metered - reconciliation

NM: Nonmetered - reconciliation

Status

1. Reconciliation Status and 2. Next Reconciliation Status

Enter the current or next reconciliation status.

3. Transaction Date

This date determines which effective level the system uses for inventory pricing.

Enter the Transaction Date to use when selecting records.

The system includes all records that are not reconciled through this date.

Print Options

1. Report Data at Ambient

Enter **1** to print the report data at ambient volume.

The default (blank) will print the report data at standard volume.

Update Options

1. Update Gain/Loss File

Enter **1** to update the Gain/Loss file.

The default (blank) will run the report in proof mode.

2. Reconciliation Date in Update Mode

Enter the Reconciliation Date to use when in update mode.

If no date is entered, the current system date is used.

Update Throughput Reconciliations

From the Bulk Stock Reconciliations menu (G41502), select Update Throughput Reconciliation.

Recording Tank Dip Readings

This section provides an overview of tank dip readings and discusses how to:

- Set processing options for Tank Dip Readings (P415106).
- Record tank dip readings.

Understanding Tank Dip Readings

Use the Tank Dip Readings program to record the physical stock (dip) levels in the tanks. The system uses the dip readings to calculate tank volume, which is necessary to process operational reconciliations.

After you record the readings, the system checks these factors to calculate volume:

- Gross dip reading against the tank height and the tank reference height.
- Water dip reading against the gross dip height.
- Dip temperature against the minimum and maximum temperatures set for the tank.
- Density temperature against the minimum and maximum temperatures set for the tank.

For Liquefied Petroleum Gas (LPG) products, the system uses the vapor pressure and temperature to calculate the liquid equivalent of the vapor portion of the product. It then adds this liquid amount to the liquid volume which it calculates from the dip reading to calculate the total volume of product in the LPG tank.

The system retrieves existing tank levels from the Bulk Product Transaction File table (F41511). You can change this information and enter dip readings to record the current stock levels. You cannot change the tank levels that appear after the reconciliation process has begun.

If no previous readings exist for a particular tank, the system updates the tank status to inactive.

You can record transactions for the tank before an initial dip reading. If the initial reading is not before the transaction dates, the system treats the transactions as retroactive (that is, before the last reconciliation) and does not include them in the reconciliation.

Forms Used to Record Tank Dip Readings

Form Name	FormID	Navigation	Usage
Work with Tank Dip Readings	W415106D	Bulk Stock Reconciliations (G41502), Tank Dip Readings	Review tank dip readings after recording them.
Multi-Tank Dip Readings	W415106A	On Work with Tank Dip Readings, click Add.	Record tank dip readings.
Tank Strapping Table Maintenance	W415003B	On Work with Tank Dip Readings, select an item	Review tank information.

Form Name	FormID	Navigation	Usage
		and select Strappings from the Row menu	
Tank Master Maintenance	W415001D	On the Work with Tank Dip Readings form, select an item and select Tank Master from the Row menu.	Review tank information.
Default Tank Information Revision	W415108B	On Work with Tank Dip Readings, select an item and select Default Tank Info from the Row menu.	Review tank information.

Setting Processing Options for Tank Dip Readings (P415106)

Processing options enable you to specify the default processing for programs and reports.

Processing

1. Enter the status code beyond which a dip reading cannot be changed. Indicates the point at which a reading has been operationally reconciled.

Enter the current status in the reconciliation process from UDC 41B/RC.

Note: Set up your Reconciliation Status - Current UDCs sequentially in the same order as the process flow. The same codes are used for Reconciliation Status - Next.

Recording Tank Dip Readings

Access the Multi-Tank Dip Readings form.

Gross Dip

Represents the total dip reading of a tank. (Net volume = Gross dip volume - water dip volume + Other volumes)

You can enter a number for a single dip or multiple dip reading. Enter dip readings in increments consistent with the strapping units on the tank strappings table (for example, centimeters or feet/inches/fractions).

For U.S. increments, Branch/Plant Constants controls the delimiter that indicates the separator between the units of measure (for example, between feet, inches, and fractions). Therefore, if you used / as the delimiter, for:

15 feet 10 1/2 inches, enter 15/10/8.

15 feet, enter 15//.

6 feet 4 13/16 inches, enter 6/4/13.

12 feet and 5/16 inches, enter 12//5.

Fractions are shown in sixteenths of an inch.

If the dip type is electronic) and the gauging method is weight in the Tank Master, the program considers the dip type a weight. The unit of measure comes from the weight unit of measure specified in the Item Master.

If you record an electronic reading in weight, enter the weight in this field. The gauging method in the Tank Master must be specified as W (weight). The program considers the entry to be a weight (where the unit of measure is the weight unit of measure specified in the Item Master) and enters the appropriate amounts in the Bulk Product Transaction File table (F41511).

Water Dip

Represents the total dip reading of water in the tank.

(Net volume = gross dip volume – water dip volume+ other volumes)

This value can be a single dip or a multiple dip reading.

Reading Date

Enter a date with or without a slash (/) or dash (-) as separators.

If you leave a date entry field blank, the system supplies the current date.

Vapour Pressure

Represents the observed LPG vapour pressure. The system compares this value to the equilibrium vapour pressure to check for inert gases. The observed pressure of the LPG vapour is recorded as part of the tank dip, and is used in the calculation of the liquid equivalent volume of the vapour.

LPG Vapour Temperature

At the item level, this is the standard vapour temperature. The observed temperature of the vapour in the LPG tank is recorded as part of the tank dip and is used to calculate the liquid equivalent volume of the vapour.

If you calculate LPG vapour, enter the standard LPG vapour. The observed vapour from the Dip Volume Calculator and Multimeter Reading is compared to this value.

Slip Tube Type

Enter the slip tube type for a dip reading for an LPG Slip Tube type tank. This field denotes whether this is a long or short slip tube reading. Values are:

L: Long.

S: Short (if you leave this field blank, the system uses **S**).

Updating Operational Transaction Status

This section provides overviews of operational transaction status update and operational reconciliations reports, lists prerequisites, and discusses how to:

- Set processing options for Operational Reconciliations (P415112).
- Reconcile operational transactions.
- Set processing options for Review/Approve Variances (P415111).
- Approve operational reconciliations.
- Run the Operational Reconciliation Detail Report.

- Run the Operational Reconciliations Report.

Understanding Operational Transaction Status Update

After you record tank dip readings, you need to compare all incoming and outgoing transactions in the system since the last reconciliation with the physical stock levels in each tank. Then, you can update the transaction status and approve the transactions for reconciliation.

In the comparison, the system includes only transactions with the document types you specify in the processing options. The system also includes those transactions that have a last reconciliation status equal to the last reconciliation status you specify in the processing options. You must reconcile any differences prior to recording any operational gains or losses.

After you reconcile the operational transactions, you update the transaction status to send the reconciliations to the next step in the process. Depending on the status codes set up for operational reconciliations and those you specify in the processing options, the update process moves the reconciliations to either an additional approval step or the Update Operational Reconciliations program.

Some companies prefer to include an additional approval step to enable a manager to approve the reconciliations before running the Update Operational Reconciliations program. In this case, a person with the proper authority approves the reconciliations from the Review/Approve Variances form and updates the transaction status and moves the transactions to the Update Operational Reconciliations program. If you want to approve and update the transaction status in a separate step, you must set the current and next status processing options differently, and set the processing option to approve reconciliations in a separate step. This action creates two different versions of the Operational Reconciliations program.

The Operational Reconciliations program displays values in standard volume, ambient volume, and weight. Standard volume appears in the accounting unit of measure. Ambient volume appears in the volume unit of measure set up for the item. When resolving discrepancies, use the ambient volume.

If the variance in the comparison is not correct, perform these steps to correct the variance, and then resume the reconciliation:

1. Access the transaction details forms to review incomings and outgoings, and determine if a transaction is missing or a reading is incorrect.

Select Incomings or Outgoings from the Row menu to access the appropriate detail form.

2. Exit the Operational Reconciliations program and correct any variance if the cause is known.

After you approve the reconciliations, you can print the operational reconciliations reports.

Understanding Operational Reconciliations Reports

After you approve operational reconciliations, you can print the Operational Reconciliations Detail Report and the Operational Reconciliations Report.

You can use both reports to compare all incoming and outgoing transactions to the physical stock levels in each tank. Volumes appear as standard volumes only. The Operational Reconciliations Detail Report displays the detailed transactions for incoming and outgoing products. The Operational Reconciliations Report displays only summary information.

The reports display the transactions with the document types that you enter in the processing options. The reports also display those transactions with a last reconciliation status equal to the last reconciliation status that you entered in the

processing options. The program selects the records with operational reconciliation dates within the From and Thru dates that you specify in the processing options.

Prerequisites

Before you complete the tasks in this section:

- (Optional) Perform throughput reconciliation through the time period that you perform operational reconciliations.
See *Understanding Throughput Reconciliations*.
- Verify that all previous operational reconciliations are complete using the Update Operational Reconciliations program.
- Verify that the correct beginning and next reconciliation status codes are set in the processing options.
- Verify that the document types for the reconciled transactions that you want to view are set in the processing options.
- Verify that the last reconciliation status for the transactions is set in the processing options.
- Verify that the From and Thru dates in the processing options are correct for the reconciliations.

Forms Used to Update Operational Transaction Status

Form Name	FormID	Navigation	Usage
Operational Reconciliation	W415112A	Bulk Stock Reconciliations (G41502), Operational Reconciliations	Reconcile operational transactions.
Operational Reconciliation	W415112A	Bulk Stock Reconciliations (G41502). Select Review/Approve Variances under the Operational Reconciliations Details Rpt menu selection.	Approve operational reconciliations.

Setting Processing Options for Operational Reconciliations (P415112)

Processing options enable you to specify the default processing for programs and reports.

Document Types

1. UDCs Containing Document Types

List the UDC containing the document types for these transactions:

Incomings - System Code

Specify the system code for incoming transactions.

Incomings - Record Type

Specify the UDC table to use for incoming transactions.

Outgoings - System Code

Specify the system code for outgoing transactions.

Outgoings - Record Type

Specify the UDC table to use for outgoing transactions.

Throughput Rec

1. UDC for Document Types

Enter the UDC for document types that must be reconciled before being processed by the Operational Reconciliations program:

System Code:

Specify the system code to use for throughput reconciliation.

Record Type:

Specify the UDC table to use for throughput reconciliation.

2. Reconciliation Status of Throughput Reconciled Records

If outgoing values (Record Type or System Code) are non-blank on the Document Types tab, enter the reconciliation status of records that have been reconciled.

Status:

Specify the status that the system assigns to records that have been reconciled. The status is a UDC from 41B/RC.

Status

1. Enter the CURRENT reconciliation status: and 2. Enter the NEXT reconciliation status:

Specify the current reconciliation status or next reconciliation status. The status is a UDC from 41B/RC.

Processing Mode

1. Enter one of these valid processing modes:

Specify whether the system updates the reconciliation status, the reconciliation flag, or both for transactions. Values are:

Blank: Review only. The system selects outgoing transactions that are at the status as specified on the Throughput Rec tab, status processing option. The system also selects all other outgoing and incoming transactions that are at the current status as specified on the Status tab, current reconciliation status processing option. The system then moves the transactions to the next status as specified on the Status tab, next reconciliation status processing option.

0: Review and approve. The system selects all outgoing and incoming transactions that are at the current status as specified on the Status tab, current reconciliation status processing option. The system then moves the transactions to

the next status as specified on the Status tab, next reconciliation status processing option. The system also updates the reconciliation flag field to the value of **1**.

1: Approve only. The system selects all outgoing and incoming transactions that are at the current status as specified on the Status tab, current reconciliation status processing option. The system then updates the reconciliation flag to **1**.

Reconciling Operational Transactions

Access the Operational Reconciliation form.

1. Locate an item.

The system displays Current and Next Status information.

2. Compare the transactions to the physical stock levels.
3. Click Update to update the reconciliation status if the variance is correct.

Setting Processing Options for Review/Approve Variances (P415111)

Processing options enable you to specify the default processing for programs and reports.

Document Types

1. UDCs Containing Document Types

Enter the UDCs for system code and record types for these categories:

Load Confirmed Sales

Other Metered

Non Metered

Enter a UDC for both the system code (UDC 98/SY) and document type.

Status

1. Please enter the current reconciliation status and 2. Please enter the next reconciliation status

Enter the current status or next status in the reconciliation process. Entries in the Please enter the current reconciliation status field are UDCs.

Note: Set up Reconciliation Status - Current UDCs sequentially in the same order as the process flow. The same codes are used for Reconciliation Status - Next.

Approving Operational Reconciliations

Access the Operational Reconciliation form.

1. Locate an item.

The system displays Current and Next Status information in the detail area.

2. Compare the transactions to the physical stock levels.
3. Click Update to update the transaction status if the variance is correct.

Setting Processing Options for Operational Reconciliation Detail Report (R415407)

Processing options enable you to specify the default processing for programs and reports.

These processing options are the same as those set for the Operational Reconciliations Report (R415404).

UDC Codes

Document Types

Enter the UDC containing the document types for:

Incomings - system code

Incomings - record type

Outgoings - system code

Outgoings - record type

Status

Current Reconciliation Status

Enter the current reconciliation status.

Date

From Reconciliation Date

Enter the From reconciliation date to use when selecting records.

Thru Reconciliation Date

Enter the Thru reconciliation date to use when selecting records.

Processing Mode

Review and Approval

Enter the point through which records have been processed. This option controls the retrieval of records.

Blank: Review (default)

0: Approval without prior review

1: Approval with prior review

Total Depot UOM

Unit of Measure

Enter the unit of measure, UDC 00/UM, in which you want the Total Depot Gain/Loss to display.

Running the Operational Reconciliation Detail Report

From the Bulk Stock Reconciliations menu (G41502), select Operational Reconciliations Detail Rpt.

Running the Operational Reconciliations Report

From the Bulk Stock Management Reports menu (G415012), select Operational Reconciliations Report.

Updating Operational Reconciliations

This section provides an overview of operational reconciliation update and discusses how to:

- Set processing options for Update Operational Reconciliations Report (R415021).
- Update operational reconciliations.

Understanding Operational Reconciliation Update

Run the Update Operational Reconciliations report to update:

- Reconciliation status on transactions.
- Transactions with the operational reconciliation date.
- Gain/Loss Transactions File table (F41512).
- Inventory balances to reflect physical stock levels.
- Adjusting entries to the Item Ledger File table (F4111).
- Account Ledger (F0911) with adjustments to the Bulk Gain/Loss and the Physical Inventory accounts.
- Reconciled Thru Date on the Depot/Product Information form (after all tanks for a product are reconciled).
- Item Location File table (F41021) with the quantity on hand.
- Bulk Product Transaction File table (F41511) with the reconciliation status, reconciled flag, and the operational reconciled date.

The program does not enable retroactive adjustments. It rejects any record with a general ledger date that precedes the current accounting period.

You can run this program in proof mode before you complete the actual update. Proof mode enables you to review each transaction and verify the information before you update the tables. To run in proof mode, add a proof version and leave the Update Records processing option blank.

Failure of operational reconciliations might be due to:

- Company dates that are not current.

- AAls that are not set up.
- Missing branch/plant constants.
- Lot numbers in transactions.
- A blank account unit of measure on AAI accounts or a missing conversion factor.

Setting Processing Options for Update Operational Reconciliations Report (R415021)

Processing options enable you to specify the default processing for programs and reports.

Date/Time

As of Date

Specify the date the transaction was operationally reconciled. The Update Operational Reconciliations process updates this processing option.

As of Time

Specify the time through which to reconcile all transactions.

Status

Enter the current reconciliation status and Enter the next reconciliation status

Specify the current status or next status in the reconciliation process. Entries in the Enter the current reconciliation status field are UDCs.

Note: Set up Reconciliation Status - Current UDCs sequentially in the same order as the process flow. The same codes are used for Reconciliation Status - Next.

Update - Y/N

Update Records

Specify whether you want the system to update records. Values are:

Blank: Do not update records (default value).

1: Update records.

Document Type

Document Type

Specify the document type to be used for creating the adjusting entry.

A UDC from 00/DT that identifies the origin and purpose of the transaction.

G/L Information

1. Date for Processing Update and 2. Date for Processing Retroactive Gain/Loss

Specify the General Ledger date for processing the update or the retroactive gain/loss. If left blank, the system provides the current system date by default.

3. Summary or Detail Mode

Specify whether the report runs in summary or detail mode. Values are:

Blank: Run the report in detail mode, and the general ledger accounts will be produced for each detail line.

1: Run the report in summary mode, and the general ledger accounts will be summarized within each document number.

4. Version

Enter the Processing Option version to use for the G/L Functional Server XT0911Z1. If you leave this processing option blank, the default version ZJDE0001 is used.

UDC Information

Document Types

Enter the UDC containing the document types for:

Incomings: system code

Incomings: record type

Outgoings: system code

Outgoings: record type

Updating Operational Reconciliations

From the Bulk Stock Reconciliations menu (G41502), select Update Oper Reconciliations.

Reviewing Gains and Losses

This section provides an overview of the Gain/Loss Analysis report and discusses how to:

- Set processing options for Gain/Loss Analysis Report (R415402).
- Run the Gain/Loss Analysis report.
- Review the Gain/Loss inquiry.

Understanding the Gain/Loss Analysis Report

You can run the Gain/Loss Analysis Report or review the Gain/Loss Inquiry to examine the overall gains and losses for a depot and product based on the Gain/Loss Transactions File table (F41512).

The Gain/Loss Analysis report shows the quantity and financial affect of gains and losses.

Depending on how you set processing options, you can compare either the volume difference or the percent variance.

The system performs variance (or tolerance) checking as follows:

- For a volume difference, the system compares the total gain or loss for each product with the quantity in the processing options.
This comparison produces a report in which variances are greater than, equal to, or less than a certain volume.

- For a percent variance, the system compares the total gain or loss as a percent of total outgoings with the quantity in the processing options.

This comparison produces a report in which the variance is greater than, equal to, or less than a percentage that you specify.

- If you do not enter a quantity for comparison in the processing options, the report displays all records.

Form Used to Review Gains and Losses

Form Name	FormID	Navigation	Usage
Work With Gain/Loss Transactions	W41512A	Bulk Stock Management (G41501), Gain/Loss Inquiry	Review gains and losses.

Setting Processing Options for Gain/Loss Analysis Report (R415402)

Processing options enable you to specify the default processing for programs and reports.

UDC Codes

Enter the range of transaction dates for inclusion of records. The default is the system date.

From Date and Thru Date

Specify the From or Thru transaction date for inclusion of records.

Variance

Relation to Use

Specify the relation to use for variance selection. Values are:

GT: Greater than

LT: Less than

EQ: Equal to

Volume or Percent Variance

Specify whether you want to compare the volume difference or the percent variance. Values are:

A: Volume difference.

%: Percent variance.

Comparison Quantity

Specify the quantity to compare the variance to (either a volume amount or a percentage amount).

Running the Gain/Loss Analysis Report

From the Bulk Stock Management Reports menu (G415012), select Gain/Loss Analysis Report.

Reviewing the Gain/Loss Inquiry

Access the Work with Gain/Loss Transactions form.

Reviewing Operational Reconciliation History

This section provides an overview of operational reconciliation history review and discusses how to review operational reconciliation history.

Understanding Operational Reconciliation History Review

When you process operational reconciliations, the system creates a historical record for each depot, item, tank, reconciliation date, and reconciliation time. The system tracks data for the total of incoming transactions, outgoing transactions, opening quantity, closing quantity, and gain or loss quantity. The Reconciliation History Review process uses this data to display the historical record of past operational reconciliations.

You can choose to view all history by item or by tank within a depot. Alternatively, you can display the history by date.

You can review totals to locate discrepancies in the current reconciliation period.

Form Used to Review Operational Reconciliation History

Form Name	FormID	Navigation	Usage
Work with Reconciliation History Review	W415114A	Bulk Stock Reconciliations (G41502), Reconciliations History Review	Review operational reconciliation history.

Reviewing Operational Reconciliation History

Access the Work with Reconciliation History Review form.

Skip To Date

Enter the date to operationally reconcile the transaction. The Update Operational Reconciliations process updates this field.

Skip To Time

Enter the time through which you want to reconcile all transactions.

Reviewing Reconciliation Status

This section provides an overview of reconciliation status review and discusses how to review reconciliation status.

Understanding Reconciliation Status Review

You can review or change the status of a reconciliation record if necessary. You can accomplish both tasks using the Reconciliations Status Inquiry/Change program (P415113). You can review the reconciliation status of a transaction in the system by item number, tank ID, or last status. The system displays the reconciliation status according to the selection criteria.

You can manually change the reconciliation status of a transaction in the system, which is useful, for example, if you approve reconciliations prematurely. You can reset the reconciliation status, enter missing transactions or other information, and then approve the reconciliations again. You should not use this program to change a reconciliation status after you run the update reconciliations program. Manually changing the reconciliation status of a record without running the appropriate processes to update the status could create inaccurate records in the system.

Note: If you inquire on a record and click OK, the information in the record changes to the default information in the New Reconciliation Status field.

Form Used to Review Reconciliation Status

Form Name	FormID	Navigation	Usage
Reconciliation Status Inquiry/Change	W415113A	Bulk Stock Reconciliations (G41502), Reconciliations Status Inquiry/Change	Review reconciliation status.

Reviewing Reconciliation Status

Access the Reconciliation Status Inquiry/Change form.

Reconciliation Status Inquiry/Change

✓ 🔍 ✕ ⏪ Row ⚙️ Tools

Depot *	<input type="text"/>
Tank ID	<input type="text"/>
Product *	<input type="text"/>
Reconciliation Status	<input type="text"/>
New Reconciliation Status	<input type="text"/>
Document Type	<input type="text"/>

Date Range - Based On

From Date Thru Date

- Transaction Date
- General Ledger Date
- Throughput Reconciliation Date
- Operational Reconciliation Date
- User Defined Date

Records 1 - 1

<input type="checkbox"/>	<input type="checkbox"/>	Document Number	Do Ty	Trans. Date	R T	Tank ID	Lot Number	Ambient Volume
<input type="checkbox"/>	<input type="checkbox"/>							

Reconciliation Status

Enter the current status in the reconciliation process. Entries in this field are UDCs.

Note: Set up Reconciliation Status - Current UDCs sequentially in the same order as the process flow. The same codes are used for Reconciliation Status - Next.

New Reconciliation Status

Enter the current status in the reconciliation process. Entries in this field are UDCs.

Note: Set up Reconciliation Status - Current UDCs sequentially in the same order as the process flow. The same codes are used for Reconciliation Status - Next.

11 Reviewing Bulk Stock Information

Understanding Bulk Stock Information Review

Several programs enable you review information about your bulk stock. You can review bulk product transactions, monthly tank stock statuses, meter readings, tank readings, and inventory balances for tanks containing commingled or custody stock.

Reviewing Product Transactions

This section provides an overview of product transaction review and discusses how to: review product transactions.

- Set processing options for Bulk Product Transaction Inquiry (P415201).
- Review product transactions.

Understanding Product Transaction Review

You can review the history of all transactions for a specific bulk product or product and location. These transactions might be the result of an intra-depot stock movement, a sale (which posts after the customer sales update process), or a purchase receipt.

You can access Bulk Product Transaction Inquiry from the Bulk Stock Management menu or the Intra-Depot Stock Movements menu.

To work with meter readings, you can access the Work With Multi-Meter Readings form directly from the Bulk Stock Reconciliations menu.

Form Used to Review Product Transactions

Form Name	FormID	Navigation	Usage
Work with Bulk Transaction Inquiry	W415201A	Bulk Stock Management (G41501), Bulk Product Transaction Inquiry	Review product transactions.

Setting Processing Options for Bulk Product Transaction Inquiry (P415201)

Processing options enable you to specify the default processing for programs and reports.

Default

Document Type

Specify a document type.

Version

Specify the version of the Load & Delivery Ledger Inquiry (P49511) program. If you leave this processing option blank, the system uses **ZJDE0001**.

Reviewing Product Transactions

Access the Work With Bulk Transaction Inquiry form.

Reviewing Monthly Tank Stock Status

This section provides an overview of reviewing monthly tank stock status and discusses how to:

- Set processing options for Monthly Tank Stock Status (P415205).
- Review monthly tank stock status.

Understanding Reviewing Monthly Tank Stock Status

Use the Monthly Tank Stock Status form to review a monthly summary of all transactions that affect tank stocks. You can review only transactions that have been operationally reconciled. You can run the Monthly Tank Stock Movements report from the Work with Monthly Tank Stock Status form.

Form Used to Review Monthly Tank Stock Status

Form Name	FormID	Navigation	Usage
Work with Monthly Tank Stock Status	W415205A	Bulk Stock Management (G41501), Monthly Tank Stock Status	Review monthly tank stock status.

Setting Processing Options for Monthly Tank Stock Status (P415205)

Processing options enable you to specify the default processing for programs and reports.

UDC Doc. Types

1. User-Defined Code for document types

Enter document types for incomings and outgoings.

The system code is a user-defined code (UDC) from table 98/SY that identifies a system. Values include:

01: Address Book

03B: Accounts Receivable

04: Accounts Payable

09: General Accounting

11: Multicurrency

Record Type identifies the table that contains UDCs. The table is also referred to as a UDC type.

Versions

Bulk Product Transaction Inquiry Version

Specify the version the system uses for Bulk Product Transaction Inquiry (P415201). If you leave this field empty, the system uses **ZJDE0001**.

Recon. Status

Enter reconciliation range:

Enter a reconciliation range for From and To that identifies the current status in the reconciliation process.

Note: Set up Reconciliation Status - Current UDCs sequentially in the same order as the process flow. The same codes are used for Reconciliation Status - Next.

Reviewing Monthly Tank Stock Status

Access the Work with Monthly Tank Stock Status form.

Reviewing Meter Readings

This section provides an overview of reviewing meter readings and discusses how to:

- Set processing options for Meter Readings (P415105).
- Review meter readings.

Understanding Reviewing Meter Readings

You can review meter readings for a given product or meter for a specific time period. You can view records of reconciled stock, unreconciled stock, or both, depending on the status codes set in the processing options. You cannot delete meter readings from the Work With Multi-Meter Readings form. The system stores records in the Multi-Meter Readings table (F41515).

Form Used to Review Meter Readings

Form Name	FormID	Navigation	Usage
Work With Multi-Meter Readings	W415105A	Bulk Stock Reconciliations (G41502), Meter Readings	Review meter readings.

Setting Processing Options for Meter Readings (P415105)

Processing options enable you to specify the default processing for programs and reports.

Default

Multi-Meter Readings

Specify the Reconciliation Status Code that indicates that the transaction has been throughput reconciled. Records with this status (and any status greater than the one entered) will be protected from changes.

Identifies the current status in the reconciliation process. Entries in this field are UDCs.

Note: Set up Reconciliation Status - Current UDCs sequentially in the same order as the process flow. The same codes are used for Reconciliation Status - Next.

Reviewing Meter Readings

Access the Work With Multi-Meter Readings form.

Reading Date

Enter the date of the new closing reading.

Meter Number

Enter a number that identifies the meter.

Reviewing Location Segment Inquiry

This section provides an overview of reviewing location segment inquiry and discusses how to review location segment inquiry.

Understanding Reviewing Location Segment Inquiry

Use the Location Segment Inquiry form to review the inventory balances for tanks containing commingled or custody stock.

Balances for some tanks by owner might be negative. A negative balance occurs when only one tank is current and all product is withdrawn from that tank, regardless of ownership.

Form Used to Review Location Segment Inquiry

Form Name	FormID	Navigation	Usage
Location Segment Inquiry	W4100142B	Inventory Inquiries (G41112), Location Segment Inquiry	Review location segment inquiry.

Reviewing Location Segment Inquiry

Access the Location Segment Inquiry form.

Bin

Enter an address book number for the owner of the commingled stock.

You can review quantity information for commingled stock and determine current and future needs with the Item Availability program (P41202) from the Bulk Stock Management menu (G41501).

Reviewing Tank Readings

This section provides an overview of reviewing tank readings and discusses how to:

- Set processing options for Tank Dip Readings (P415106).
- Review tank readings.

Understanding Reviewing Tank Readings

Use the Tank Dip Readings program (P415106) to view all of the physical tank dip readings as of a specific date and time. The system displays information from the Tank Master File table (F41500) and the Bulk Product Transaction File table (F41511). If no dip reading is available as of the specified date, the system retrieves the data from the Default Tank Information table (F41508).

Form Used to Review Tank Readings

Form Name	FormID	Navigation	Usage
Work with Tank Dip Readings	W415106D	Bulk Stock Reconciliations (G41502), Tank Dip Readings	Review tank readings.

Setting Processing Options for Tank Dip Readings (P415106)

Processing options enable you to specify the default processing for programs and reports.

Process

1. Status Code for Dip Reading

Specify the status code beyond which a dip reading cannot be changed. This code indicates the point at which a reading has been operationally reconciled.

Identifies the current status in the reconciliation process. Entries in this field are UDCs.

Note: Set up Reconciliation Status - Current UDCs sequentially in the same order as the process flow. The same codes are used for Reconciliation Status - Next.

Reviewing Tank Readings

Access the Work with Tank Dip Readings form.

12 Appendix A - Unit of Measure Conversion Tables

Converting Lengths

This table contains conversion information for lengths.

To Convert	To Length	Multiply By
Meters	Yards	1.0936
	Feet	2.3808
	Inches	39.370
Yards	Meters	0.9144
Feet	Meters	0.3048
Inches	Centimeters	2.54
To Convert	To Weight	Multiply By
Long tons	Pounds (avoirdupois)	2240
	Short tons	1.12
	Metric tons (tonnes)	1.01605
Short tons	Pounds (avoirdupois)	2000
	Long tons	0.892857
	Metric tons (tonnes)	0.907185
Metric tons (tonnes)	Long tons	0.984206
	Short tons	1.10231
Pounds (avoirdupois)	Kilograms	0.453592
Kilograms	Pounds (avoirdupois)	2.20462

Converting Volume and Capacity

This table contains conversion information for volume and capacity.

To Convert	To Volume & Capacity	Multiply By
U.S. gallons	Cubic inches	231
	Cubic feet	0.133681
	Imperial gallons	0.832674
	U.S. barrels	0.0238095
	Liters	3.78541
U.S. barrels	U.S. gallons	42
	Cubic inches	9702
	Cubic feet	5.61458
	Imperial gallons	34.9723
	Liters	158.987
Imperial gallons	Cubic inches	277.42
	Cubic feet	0.160544
	U.S. gallons	1.20095
	U.S. barrels	0.0285941
	Liters	4.54596
Cubic feet	Imperial gallons	6.22883
	U.S. gallons	7.48052
	U.S. barrels	0.178108
	Liters	28.3169
	Cubic meters	0.0283169
Cubic inches	Imperial gallons	0.00360465
	U.S. gallons	0.0043290
	Liters	0.0163871
Liters	Cubic inches	61.0238

To Convert	To Volume & Capacity	Multiply By
	Cubic feet	0.0353147
	Imperial gallons	0.219969
	U.S. gallons	0.264172
	U.S. barrels	0.00628981
Cubic meters	Imperial gallons	219.969
	U.S. gallons	264.172
	U.S. barrels	6.28981
	Cubic feet	35.3147

Note: The factors in the To Volume & Capacity column are for conversion at the same temperature only.

Index

A

- Account Ledger table (F0911)
 - stock movement updates [73](#)
 - updated during operational reconciliations [109](#)
- adjustments
 - rebrand description [18](#)
 - repack description [18](#)
- Allowed Product Matrices program (P415005)
 - processing options [69](#)
- Allowed Products Matrix File table (F41505) [9](#)
- asphalt and bitumens
 - heated tanks [13](#)
- automatic accounting instructions
 - used in the Bulk Stock Inventory system [23](#)
- Average Cost Work File table (F41051) [53](#)

B

- Base Price File table (F4106) [49](#)
- Blend Category File table (F41501) [8](#)
- blending tank
 - definition [60](#)
- Bulk Depot/Product Information (F41022)
 - updated during operational reconciliations [109](#)
- Bulk Depot/Product Information table (F41022) [8](#)
- bulk item
 - setup [37](#)
- bulk item setup
 - additional information [54](#)
 - additional units of measure [38](#)
 - by depotassigning lot numbers [54](#)
 - copying a record [37](#)
 - defining cost methods [54](#)
 - defining density [50](#)
 - defining temperature [50](#)
 - deleting [53](#)
 - deleting a record [37](#)
 - density [39](#)
 - for fill, repack, and decant movements [38](#)
 - item units of measure [50](#)
 - temperature [39](#)
- bulk items
 - default units of measure [38](#)
- bulk product receipts
 - overview [6](#)
- Bulk Product Transaction File table (F41511) [9](#), [87](#), [90](#), [126](#)
 - existing tank levels [124](#)
 - recording bulk product receipts [89](#)
 - reviewing tank readings [146](#)
 - stock movement updates [73](#)
 - updated during operational reconciliations [109](#)
- Bulk Product Transaction File table (F42511)
 - throughput records updated [107](#)
- Bulk Product Transaction Inquiry program (P415201)
 - processing options [142](#)
- Bulk Product Transactions File table (F41511)
 - dip volume records [82](#)

C

- commingled stock
 - tank setup [60](#)
- commingled stocks
 - tank inventory balances [145](#)
- control
 - user-defined code lists [24](#)
- Conversion Table Interface File table (F41012) [8](#)
- conversion tables
 - setup [40](#)
- conversions
 - special handling codes [38](#)
 - volume to weight [36](#)
- Copy Bill Of Materials form [79](#)
- cost methods
 - defining [54](#)
- Cost Revisions program (P4105)
 - processing options [57](#)

D

- Default Tank Information table (F41508) [8](#), [85](#), [146](#)
 - tank temperature and density [67](#)
- Define Warehouse Locations program (P4100)
 - processing options [34](#)
- defining tank temperature and density [67](#)
- deleting an item [53](#)
- density
 - defining [40](#)
 - deleting tank values [67](#)
 - density range table [39](#)
- depot setup
 - additional information [54](#)
 - bulk products [30](#)
- Depot/Product Information form
 - updating reconciled through date [54](#)
- depots
 - location naming conventions [33](#)
- diagrams
 - strapping tables [14](#)
- dip readings
 - calculating volume [82](#)
 - electronic tank gauging device [126](#)
 - moving large quantities [83](#)
- dry dip [14](#)

E

- EnterpriseOne System Control program (P99410) [23](#)

F

- F0911 table (Account Ledger)
 - stock movement updates [73](#)
 - updated during operational reconciliations [109](#)
- F30026 table (Item Cost Components Add-Ons) [9](#)
- F4016 table (Print Messages) [42](#)
- F4100 table (Location Master) [8](#)
 - depot location setup [32](#)
- F41001 table (Inventory Constants) [8](#)

F41002 table (Item Units of Measure Conversion Factors) 8
 F41003 table (Unit of Measure Standard Conversion) 8
 F41003 table (Unit of Measure)
 standard conversion setup 35
 F4101 table (Item Master) 8
 defining temperature and density 40
 item setup by depot 53
 F41012 table (Conversion Table Interface File) 8
 F4102 table (Item Branch File) 8
 item setup by depot 53
 F41021 table (Item Location File) 8, 54
 stock movement updates 73
 updated during operational reconciliations 109
 F41022 table (Bulk Depot/Product Information) 8
 updated during operational reconciliations 109
 F4105 table (Item Cost File) 9, 54, 54
 F41051 table (Average Cost Work File) 53
 F4106 table (Base Price File) 49
 F41061 table (Purchase Price) 49
 F4108 table (Lot Master) 9
 F4111 table (Item Ledger File) 9, 90
 recording bulk product receipts 89
 stock movement updates 73
 updated during operational reconciliations 109
 F41500 table (Tank Master File) 8
 reviewing tank readings 146
 tank setup 59
 F41501 table (Blend Category File) 8
 F41503 table (Tank Strapping Table Maintenance) 8
 deleting tank records 59
 F41505 table (Allowed Products Matrix File) 9
 F41505 table (Inventory Cost) 49
 F41506 table (Meter Master) 9
 total throughput 71
 update metered throughput 112
 F41508 table (Default Tank Information) 8, 85
 reviewing tank readings 146
 tank temperature and density 67
 F41509 table (Four-Point Analysis Maintenance File) 9
 F415091 table (Four-Point Temperature Maintenance) 9
 F41511 table (Bulk Product Transaction File) 9, 87, 90, 126
 existing tank levels 124
 recording bulk product receipts 89
 reviewing tank readings 146
 stock movement updates 73
 updated during operational reconciliations 109
 F41511 table (Bulk Product Transactions File)
 dip volume records 82
 F41512 table (Gain/Loss Transaction File)
 stock movement updates 73
 F41512 table (Gain/Loss Transactions File) 10
 basis of gains and losses 134
 depot location setup 33
 reconciling throughput transactions 115
 throughput records updated 107
 updated during operational reconciliations 109
 F41515 table (Multi-Meter Readings) 10
 retrieving metered throughput 114
 reviewing overview 144
 volume to weight conversions 112
 F4201 table (Sales Order Header File) 9
 F4211 table (Sales Order Detail File) 9
 F42511 table (Bulk Product Transaction File)
 throughput records updated 107
 F43090 table (Supplier/Item Relationships) 94

F43121 table (Purchase Order Receiver File) 9
 recording bulk product receipts 89
 F4602 table (Location Detail Information) 9
 stock movement updates 73
 fixed assets 60
 flow meter setup
 changing product 69
 prerequisites 59
 four-point analysis 102
 Four-Point Analysis Maintenance File table (F41509) 9
 Four-Point Temperature Maintenance table (F415091) 9

G

gain or loss
 calculate for received products 102
 common unit of measure 80
 four-point analysis 102
 Gain/Loss Analysis report 134
 Gain/Loss Analysis report (R415402)
 processing options 135
 Gain/Loss Transactions File table (F41512) 10
 basis of gains and losses 134
 depot location setup 33
 reconciling throughput transactions 115
 stock movement updates 73
 throughput records updated 107
 updated during operational reconciliations 109
 General Stock Movements program (P415101)
 processing options 75

I

intra-depot stock movements
 overview 5
 Inventory Constants table (F41001) 8
 Inventory Cost table (F4105) 49
 Inventory Cost table (F41505) 49
 Item Availability program (P41202)
 determining current and future needs 145
 Item Branch File table (F4102) 8
 item setup by depot 53
 Item Cost Components Add-Ons table (F30026) 9
 Item Cost File table (F4105) 9, 54, 54
 Item Ledger File table (F4111) 9, 90
 recording bulk product receipts 89
 stock movement updates 73
 updated during operational reconciliations 109
 Item Location File (F41021)
 stock movement updates 73
 Item Location File table (F41021) 8, 54
 updated during operational reconciliations 109
 Item Master program (P4101)
 processing options 42
 Item Master table (F4101) 8
 defining temperature and density 40
 item setup by depot 53
 Item Units of Measure Conversion Factors table (F41002) 8
 F41002 table (Item Units of Measure Conversion Factors) 38

L

Location Detail Information table (F4602) 9
 stock movement updates 73

Location Master table (F4100) *8*
 depot location setup *32*
 Lot Master table (F4108) *9*

M

Meter Master table (F41506) *9*
 total throughput *71*
 update metered throughput *112*
 meter reading, initial *112*
 meter readings
 initial reading *112*
 Meter Readings program (P415105)
 processing options *113, 144*
 Monthly tank stock movements report *142*
 Monthly Tank Stock Status program (P415205)
 processing options *143*
 multi-meter readings *113*
 Multi-Meter Readings table (F41515) *10*
 retrieving metered throughput *114*
 reviewing overview *144*
 volume to weight conversions *112*

N

Next Numbers program (P0002) *26*

O

operational reconciliation
 approving *127, 131*
 diagram *109*
 reconciling transactions *130*
 Operational Reconciliation Detail report *132*
 Operational Reconciliation Detail report (R415407)
 processing options *131*
 operational reconciliations
 tables used *109*
 Operational Reconciliations program (P415112)
 processing options *128*
 Operational Reconciliations report *132*
 Operational Reconciliations report (R415404)
 processing options *131*

P

P.O. Detail Ledger File — Flexible Version table (F43199) *9*
 P0002 program (Next Numbers) *26*
 P4015 program (Cost Revisions)
 processing options *57*
 P4100 program (Define Warehouse Locations)
 processing options *34*
 P4101 program (Item Master)
 processing options *42*
 P415005 program (Allowed Product Matrices)
 processing options *69*
 P415101 program (General Stock Movements)
 processing options *75*
 P415105 program (Meter Readings)
 processing options *113, 144*
 P415106 program (Tank Dip Readings)
 processing options *125, 146*
 P415111 program (Review/Approve Variances)
 processing options *130*

P415111 program (Throughput Reconciliations)
 processing options *116*
 P415112 program (Operational Reconciliations) *128*
 P415112 program (Review/Approve Variances)
 processing options *119*
 P415201 program (Bulk Product Transaction Inquiry)
 processing options *142*
 P415205 program (Monthly Tank Stock Status)
 processing options *143*
 P4312 program (Purchase Order Receipts)
 processing options *91*
 P99410 program (EnterpriseOne System Control) *23*
 Print Messages table (F4016) *42*
 processing options
 Allowed Product Matrices (P415005) *69*
 Bulk Product Transaction Inquiry (P415201) *142*
 Cost Revisions (P4105) *57*
 Define Warehouse Locations (P4100) *34*
 General Stock Movements (P415101) *75*
 Item Master (P4101) *42*
 Meter Readings (P415105) *113, 144*
 Monthly Tank Stock Status (P415205) *143*
 Operational Reconciliations (P415112) *128*
 Purchase Order Receipts (P4312) *91*
 Review/Approve Variances (P415111) *130*
 Review/Approve Variances (P415112) *119*
 Tank Dip Readings (P415106) *125, 146*
 Throughput Reconciliations (P415111) *116*
 Update Throughput Reconciliation *122*
 Purchase Order Entry program (P4310)
 supplier analysis *94*
 Purchase Order Receipts program (P4312)
 processing options *91*
 Purchase Order Receiver File table (F43121) *9*
 recording bulk product receipts *89*
 Purchase Price table (F41061) *49*

R

R415021 report (Update Operational Reconciliations)
 processing options *133*
 R415402 report (Gain/Loss Analysis)
 processing options *135*
 R415403 report (Throughput Reconciliations)
 processing options *121*
 R415404 report (Operational Reconciliations)
 processing options *131*
 R415407 report (Operational Reconciliation Detail)
 processing options *131*
 reading height/tank strapping *60*
 rebrand adjustments
 description *18*
 receipts
 calculating gain or loss *102*
 described *6*
 repack adjustments
 description *18*
 reports
 Gain/Loss Analysis *134*
 Operational Reconciliation Detail *132*
 Operational Reconciliations *132*
 Throughput Reconciliations Report *115*
 Review/Approve Variances program (P415111)
 processing options *130*
 Review/Approve Variances program (P415112)
 processing options *119*

S

- Sales Order Detail File table (F4211) [9](#)
- Sales Order Header File table (F4201) [9](#)
- setting up basic tank information [59](#)
- setting up next numbers [26](#)
- setup
 - additional units of measure [38](#)
 - bulk item [37](#)
 - copying an existing item [37](#)
 - conversion table [40](#)
- Standalone Landed Cost program (P43214) [94](#)
- stock movement
 - calculating volume [83](#)
- stock movements
 - bulk item setupfillrepackdecant [38](#)
 - common unit of measure [80](#)
 - deleting [74](#)
 - large quantities [83](#)
 - recording [74](#)
 - recording intra-depot [17](#)
 - requiring quantities to balance [80](#)
 - reviewing journal entries [74](#)
 - types of [17](#)
 - types of movements [5](#)
- strapping tables
 - described [14](#)
 - diagram [14](#)
- Supplier/Item Information program (P43090)
 - tolerance date range [95](#)
- Supplier/Item Relationships table (F43090) [94](#)

T

- Table F43199 (P.O. Detail Ledger File — Flexible Version) [9](#)
- Tank Dip Readings program (P415106)
 - processing options [125](#), [146](#)
- Tank Master File table (F41500) [8](#)
 - reviewing tank readings [146](#)
 - tank setup [59](#)
- tank setup
 - calculating volume [59](#)
 - deleting a tank record [59](#)
 - prerequisites [59](#)
 - reviewing fixed assets [60](#)
 - tank master maintenance [59](#)
- Tank setup
 - deleting a tank record [67](#)
- tank stock status
 - review [142](#)
- tank strapping
 - defined [60](#)
 - setup [60](#)
- Tank Strapping Table Maintenance table (F41503) [8](#)
 - deleting tank records [59](#)
- tanks [13](#)
- temperature
 - defining [40](#)
 - deleting tank values [67](#)
- throughput reconciliation
 - correcting variances [119](#)
 - diagram [107](#)
- throughput Reconciliation
 - meter out of service [115](#)
- Throughput Reconciliations program (P415111)
 - processing options [116](#)

- Throughput Reconciliations Report [115](#)
- Throughput Reconciliations report (R415403)
 - processing options [121](#)
- Tolerance Setup program (P4322)
 - tolerance checking [95](#)
- transactions
 - correcting variances [119](#)

U

- U.S. measurements delimiter [60](#)
- unit of measure conversions
 - default [38](#)
- Unit of Measure Definition program (P46011)
 - license plate functionality [96](#)
- Unit of Measure Standard Conversion table (F41003) [8](#)
- Unit of Measure table (F41003)
 - standard conversion setup [35](#)
- Update Operational Reconciliations report (R415021)
 - processing options [133](#)
- Update Throughput Reconciliation report (R415020)
 - processing options [122](#)
- user-defined codes
 - setting up [24](#)
 - table [24](#)

V

- volume
 - calculating from dip readings [82](#)
- volumes
 - measurementweighbridge [13](#)
- Voucher Match program (P4314)
 - supplier analysis [94](#)