

JD Edwards EnterpriseOne Applications

Grower Pricing and Payments Implementation Guide

9.2

Part Number: E63903-05

Copyright © 2011, 2022, Oracle and/or its affiliates.

This software and related documentation are provided under a license agreement containing restrictions on use and disclosure and are protected by intellectual property laws. Except as expressly permitted in your license agreement or allowed by law, you may not use, copy, reproduce, translate, broadcast, modify, license, transmit, distribute, exhibit, perform, publish, or display any part, in any form, or by any means. Reverse engineering, disassembly, or decompilation of this software, unless required by law for interoperability, is prohibited.

The information contained herein is subject to change without notice and is not warranted to be error-free. If you find any errors, please report them to us in writing.

If this is software or related documentation that is delivered to the U.S. Government or anyone licensing it on behalf of the U.S. Government, then the following notice is applicable:

U.S. GOVERNMENT END USERS: Oracle programs (including any operating system, integrated software, any programs embedded, installed or activated on delivered hardware, and modifications of such programs) and Oracle computer documentation or other Oracle data delivered to or accessed by U.S. Government end users are "commercial computer software" or "commercial computer software documentation" pursuant to the applicable Federal Acquisition Regulation and agency-specific supplemental regulations. As such, the use, reproduction, duplication, release, display, disclosure, modification, preparation of derivative works, and/or adaptation of i) Oracle programs (including any operating system, integrated software, any programs embedded, installed or activated on delivered hardware, and modifications of such programs), ii) Oracle computer documentation and/or iii) other Oracle data, is subject to the rights and limitations specified in the license contained in the applicable contract. The terms governing the U.S. Government's use of Oracle cloud services are defined by the applicable contract for such services. No other rights are granted to the U.S. Government.

This software or hardware is developed for general use in a variety of information management applications. It is not developed or intended for use in any inherently dangerous applications, including applications that may create a risk of personal injury. If you use this software or hardware in dangerous applications, then you shall be responsible to take all appropriate fail-safe, backup, redundancy, and other measures to ensure its safe use. Oracle Corporation and its affiliates disclaim any liability for any damages caused by use of this software or hardware in dangerous applications.

Oracle and Java are registered trademarks of Oracle and/or its affiliates. Other names may be trademarks of their respective owners.

Intel and Intel Inside are trademarks or registered trademarks of Intel Corporation. All SPARC trademarks are used under license and are trademarks or registered trademarks of SPARC International, Inc. AMD, Epyc, and the AMD logo are trademarks or registered trademarks of Advanced Micro Devices. UNIX is a registered trademark of The Open Group.

This software or hardware and documentation may provide access to or information about content, products, and services from third parties. Oracle Corporation and its affiliates are not responsible for and expressly disclaim all warranties of any kind with respect to third-party content, products, and services unless otherwise set forth in an applicable agreement between you and Oracle. Oracle Corporation and its affiliates will not be responsible for any loss, costs, or damages incurred due to your access to or use of third-party content, products, or services, except as set forth in an applicable agreement between you and Oracle.

Contents

Preface	i
<hr/>	
1 Introduction to JD Edwards EnterpriseOne Grower Pricing and Payments	1
JD Edwards EnterpriseOne Grower Pricing and Payments Overview	1
JD Edwards EnterpriseOne Grower Pricing and Payments Business Process	1
JD Edwards EnterpriseOne Grower Pricing and Payments Features	2
JD Edwards EnterpriseOne Grower Pricing and Payments Integrations	4
JD Edwards EnterpriseOne Grower Pricing and Payments Implementation	6
2 Setting Up Grower Pricing and Payments	9
Prerequisite	9
Setting Up UDCs for Grower Pricing and Payments	9
Setting Up Contract Payment Rules	11
Setting Up Standard Assessments and Donations	15
Setting Up Clauses	17
3 Creating Grower Contracts	19
Understanding Grower Contracts	19
Understanding the Relationship Among Contracts, Blocks, and Harvests	20
Adding Contracts	21
Adding Grower Blocks to Contracts	28
Adding Grower Harvests to Contract Blocks	34
4 Managing Grower Contracts	41
Understanding Valid Start and End Dates	41
Reviewing Contracts	41
Managing Contract Headers	43
Adding Text to Amendments	47
Managing Contract Blocks	48
Managing Contract Harvests	51

Performing Mass Updates for Grower Contracts	52
Renewing Contracts	61
Terminating Contracts	62
Deleting Contracts	63
5 Managing Contract Pricing	65
Understanding Contract Pricing	65
Understanding JD Edwards EnterpriseOne Advanced Pricing	65
Using JD Edwards EnterpriseOne Advanced Pricing with Grower Pricing and Payments	67
6 Processing Advance Payments	75
Understanding Advance Payments	75
Reviewing Transactions for Advance Payments	76
Revising Transactions Before Generating Vouchers	80
Generating Vouchers for Advance Payments	81
Creating Advance Payments	82
7 Validating Price and Receipt Information	85
Understanding the Price Review Process	85
Understanding the Receipt Review/Interim Payments Program	86
Reviewing Harvest Receipts	86
Reviewing Quality Results for Harvest Receipts	89
Reviewing Weigh Tags	90
Revising Contract Harvest Records	91
Adding Price Adjustments to Receipts	92
Approving Receipts and Adjustments	94
8 Pay on Proceeds	97
Understanding Pay on Proceeds	97
Managing Proceed Payments	100
9 Processing Interim Payments	103
Understanding Interim Payments	103
Managing Cash Flow	103
Generating Vouchers for Interim Payments	105

Creating Interim Payments	106
10 Performing Final Settlements	109
Understanding Final Settlements	109
Reviewing Harvest Receipts	110
Reviewing Final Settlements	110
Revising Assessments or Donations	115
Changing Voucher Due Dates and Amounts	115
Generating Vouchers for Final Payments	116
Creating Final Payments	118
Printing Final Settlement Statements	118
Releasing and Closing Out Prepayment Vouchers	119
11 Appendix A - JD Edwards EnterpriseOne Grower Pricing and Payments Reports	121
JD Edwards EnterpriseOne Grower Pricing and Payments Reports: A to Z	121
JD Edwards EnterpriseOne Grower Pricing and Payments Report Processing Options	122
12 Appendix B - Delivered User Defined Objects for Grower Pricing and Payments (Release 9.2 Update)	125
Delivered User Defined Objects for Grower Pricing and Payments (Release 9.2 Update)	125
Grower Pricing and Payments Notifications	125
13 Glossary	127
Block Code	127
Contract ID	127
Contract Code	127
Contract Name	127
Contract Status	127
Geographic ID	127
Harvest Name	128
Harvest Period	128
Renew Type	128
Index	129

Preface

Welcome to the JD Edwards EnterpriseOne documentation.

Documentation Accessibility

For information about Oracle's commitment to accessibility, visit the Oracle Accessibility Program website at <http://www.oracle.com/pls/topic/lookup?ctx=acc&id=docacc>.

Access to Oracle Support

Oracle customers that have purchased support have access to electronic support through My Oracle Support. For information, visit <http://www.oracle.com/pls/topic/lookup?ctx=acc&id=info> or visit <http://www.oracle.com/pls/topic/lookup?ctx=acc&id=trs> if you are hearing impaired.

Related Information

For additional information about JD Edwards EnterpriseOne applications, features, content, and training, visit the JD Edwards EnterpriseOne pages on the JD Edwards Resource Library located at:

<http://learnjde.com>

Conventions

The following text conventions are used in this document:

Convention	Meaning
Bold	Boldface type indicates graphical user interface elements associated with an action or terms defined in text or the glossary.
<i>Italics</i>	Italic type indicates book titles, emphasis, or placeholder variables for which you supply particular values.
Monospace	Monospace type indicates commands within a paragraph, URLs, code examples, text that appears on a screen, or text that you enter.
> Oracle by Example	Indicates a link to an Oracle by Example (OBE). OBEs provide hands-on, step-by-step instructions, including screen captures that guide you through a process using your own environment. Access to OBEs requires a valid Oracle account.

1 Introduction to JD Edwards EnterpriseOne Grower Pricing and Payments

JD Edwards EnterpriseOne Grower Pricing and Payments Overview

Agribusiness companies that create and maintain contracts with growers, monitor the compliance of terms and conditions of the contract, and pay growers for their products in accordance with the contract terms, use the JD Edwards EnterpriseOne Grower Pricing and Payments system from Oracle. Grower contracts include details such as contract terms and renewal extensions, payment terms, contract clauses, action dates for reminders of required signatures, responses, reviews, and amendments.

Throughout the growing cycle, you can review information online and in report format that shows payments that are due, payments that are coming due, and payments that have been issued thus far for a given contract or grower.

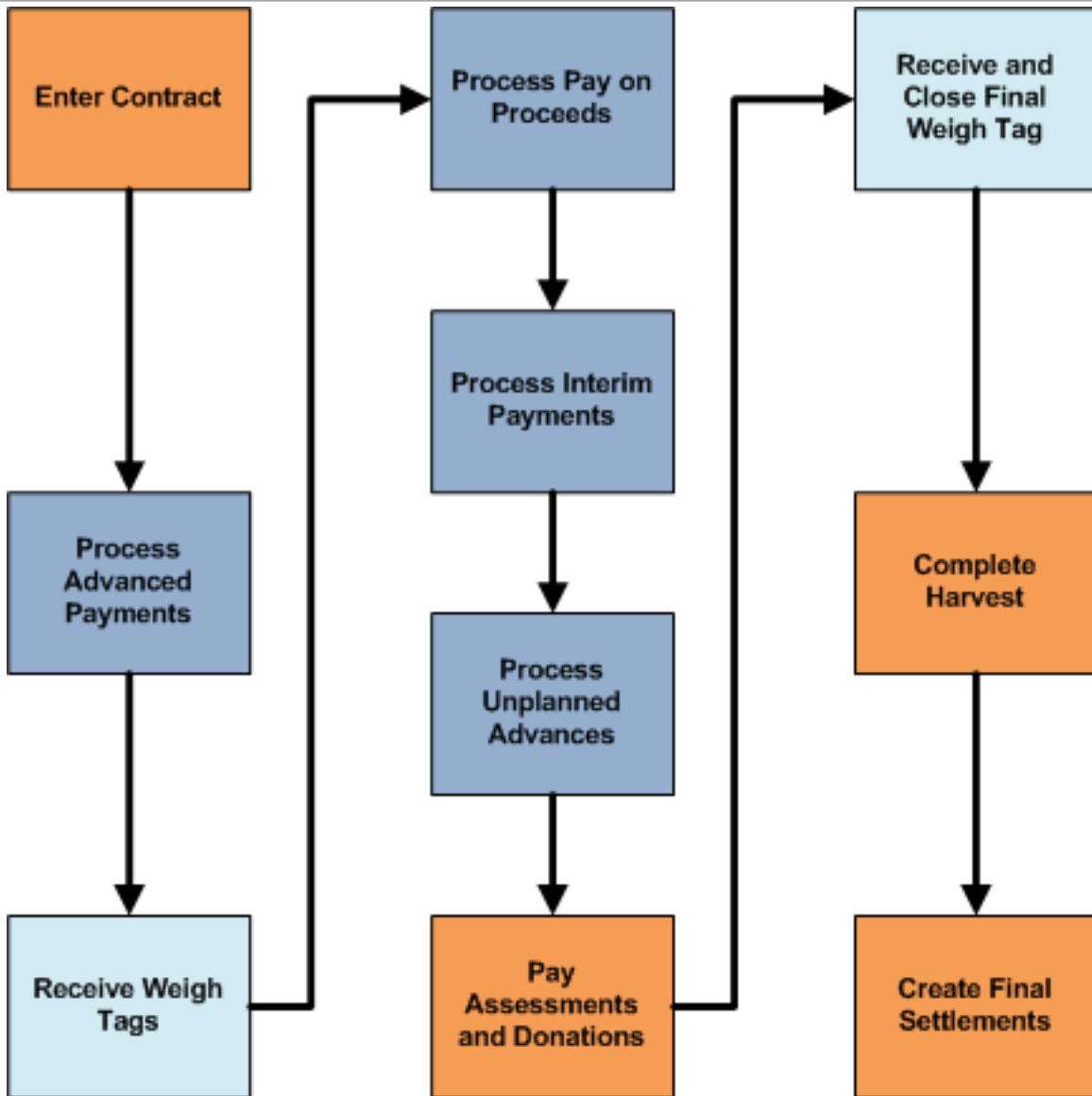
The JD Edwards EnterpriseOne Grower Pricing and Payments system provides a flexible payment schedule that enables you to pay multiple payees with multiple payment dates throughout the growing cycle. Payment terms and due date rules for payees can be set up for advance payments, interim payments, proceed payments, and final payments.

When you review the harvest receipts, you can waive penalties or bonuses or add adjustments to the final price. During the final settlement, the JD Edwards EnterpriseOne Grower Pricing and Payments system generates final vouchers and issues payments to pay the remaining amount owed to payees, and amounts owed for assessments and deductions.

After the remaining amount owed on a contract is zero and you have created final payments, you submit a final settlement statement to the grower. Because the final settlement statement provides a "snapshot" in time, you can submit it with advance and interim payments as an interim statement.

JD Edwards EnterpriseOne Grower Pricing and Payments Business Process

This process flow illustrates the JD Edwards EnterpriseOne Grower Pricing and Payments business processes:



JD Edwards EnterpriseOne Grower Pricing and Payments Features

This table lists several features of the JD Edwards EnterpriseOne Grower Pricing and Payments system:

Feature	Description
Contract Creation.	Contract entry enables you to record information about your agreement with your grower. After you create a contract, you can attach one or more blocks that contain details about the plots of land. You can then attach harvests, which are associated with date ranges, to the contract blocks.

Feature	Description
	The blocks and harvests are created in the JD Edwards EnterpriseOne Grower Management system and attached to contracts in the Grower Pricing and Payments system.
Contract maintenance.	<p>After you create a contract, you can create a copy of the contract and modify certain information to streamline the data entry process. You can change or update specific information, such as the effective dates, price type, and payment schedule. You can also add a contract block to the existing blocks on a contract or add an amendment to the contract to provide an audit trail for a change made to the contract.</p> <p>The system enables you to renew, extend, or terminate contracts and blocks.</p>
Contract reporting.	You can review your contract terms and conditions using the contract summary and detail reports. You can track action items using the action date listing report.
Payment terms.	You can set up payment terms to define the due date rules for contract payments.
Assessments and donations.	You can set up standard assessments and donations for commonly used cost adjustments.
Clauses.	You can standardize messages that describe the conditions and provisions of contracts.
Advance payments.	You might have an agreement with a grower specifying that you issue advance payments before any interim and final payments. The system tracks all advance payments and subtract them during the final settlement process.
Price reviews.	The settlement review process often involves multiple steps. You might have one person conduct an internal review of the harvest receipts, potentially waiving penalties, or adding or subtracting adjustments. Another person may conduct the final settlement review and review transactions against the contract, such as receipts, penalties, assessments, and deductions.
Interim payments.	Your contract with your grower may include payments for receipt of the product throughout the harvest cycle. Interim payments enable you to review receipts and apply adjustments before you generate a voucher for partial contract payments.
Proceed payments.	Your contract with your grower may include proceed payments because of fluctuating market prices. Pay on proceeds is a process which enables you to pay growers based on the price that you sell the crop. You can match the crop receipt to an associated sales order.
Final settlements.	You can review the transactions, such as receipts, penalties, assessments, and deductions, that were applied to the contract and make final changes to the contract. The final step is to generate your voucher for the final harvest payment.
Settlement reports.	Throughout the harvest cycle, you can produce reports that show payments that are due, payments that are coming due, and payments issued thus far to a specific contract or grower.

JD Edwards EnterpriseOne Grower Pricing and Payments Integrations

JD Edwards EnterpriseOne Grower Pricing and Payments integrates with these JD Edwards EnterpriseOne systems:



The JD Edwards EnterpriseOne Grower Pricing and Payments system works with other JD Edwards EnterpriseOne systems to ensure that all information is fully integrated. We discuss integration considerations in the implementation chapters in this implementation guide.

Advanced Pricing

You use the JD Edwards EnterpriseOne Advanced Pricing system to create pricing adjustment schedules. When you review harvest receipts, you review and adjust the pricing schedule based on the quality test results for the receipts.

Inventory Management

The JD Edwards EnterpriseOne Inventory Management system stores current item information along with item costs. The harvest records use item records to retrieve item descriptions and costs.

Procurement

You use the JD Edwards EnterpriseOne Procurement system to create purchase orders when you close weigh tags in the JD Edwards EnterpriseOne Grower Management system. In the JD Edwards EnterpriseOne Grower Pricing and Payments system, you close out the purchase orders during the final settlement process.

Grower Management

You use the JD Edwards EnterpriseOne Grower Management system to track crops from cultivation to harvest.

JD Edwards EnterpriseOne Grower Management enables you to set up and maintain farms, blocks, and harvest records. A farm consists of one or more blocks that grow the crop harvest that is then supplied to the processing entity. Adding farms in the system is optional. The system uses some attributes that are assigned to a farm as defaults for a block that is associated with the farm.

Accounts Payable

The JD Edwards EnterpriseOne Accounts Payable system is used to set up payment terms, due date rules, and generate vouchers and payments.

Sales Order Management

The JD Edwards EnterpriseOne Sales Order Management system is used to update proceed payment information for sales orders, transfer orders, interbranch orders, and credit orders to the Pay on Proceeds Log File table (F40G95).

JD Edwards EnterpriseOne Grower Pricing and Payments Implementation

This section provides an overview of the steps that are required to implement the JD Edwards EnterpriseOne Grower Pricing and Payments system. In the planning phase of your implementation, take advantage of all JD Edwards EnterpriseOne sources of information, including the installation guides and troubleshooting information.

When determining which electronic software updates (ESUs) to install for JD Edwards EnterpriseOne Grower Pricing and Payments, use the EnterpriseOne and World Change Assistant. EnterpriseOne and World Change Assistant, a Java-based tool, reduces the time that is required to search and download ESUs by 75 percent or more and enables you to install multiple ESUs simultaneously. See [JD Edwards EnterpriseOne Tools Software Updates Guide](#)

Global Implementation Steps

The suggested implementation steps for the JD Edwards EnterpriseOne Grower Pricing and Payment system:

1. Set up branch/plant constants.
See ["Defining Branch, Plant Constants" in the JD Edwards EnterpriseOne Applications Inventory Management Implementation Guide](#) .
2. Set up item master and item branch.
See ["Entering Item Master Information" in the JD Edwards EnterpriseOne Applications Inventory Management Implementation Guide](#) .
3. Set up grower harvest patterns.
See ["Setting Up Grower Pricing and Payments"](#).
4. Set up price adjustment schedule and pricing matrix.
See ["Working with Schedules and Adjustments" in the JD Edwards EnterpriseOne Applications Advanced Pricing Implementation Guide](#) and ["Working with the Price Matrix" in the JD Edwards EnterpriseOne Applications Advanced Pricing Implementation Guide](#) .

Implementation Steps for Grower Pricing and Payments

This table lists the suggested application-specific implementation steps for JD Edwards EnterpriseOne Grower Pricing and Payments:

1. Set up UDCs for Grower Pricing and Payments.
See [Setting Up UDCs for Grower Pricing and Payments](#).
2. Set up due date rules.
See [Setting Up a Due Date Rule for Contracts](#).
3. Set up payment terms for installments.
See [Setting Up a Payment Term for Installments](#).
4. Set up assessments and donations.

See *Setting Up Standard Assessments and Donations*.

5. Set up clauses.

See *Setting Up Clauses*.

2 Setting Up Grower Pricing and Payments

Prerequisite

Set up next numbers for system 43C (Contracts).

See *"Setting Up Next Numbers by System" in the JD Edwards EnterpriseOne Applications Financial Management Fundamentals Implementation Guide* .

Setting Up UDCs for Grower Pricing and Payments

The following table lists the UDCs for system 43C that are used by programs in the JD Edwards EnterpriseOne Grower Pricing and Payments system. The table lists predefined codes that are shipped with the software. You can change or delete a predefined code if it is not hard-coded, or you can add a code to suit your business needs. This table specifies whether the UDCs are hard-coded:

User-Defined Code	Description	Examples
43C/AD	An action or task that must be performed.	This value is not hard-coded: RN: Renew Reminder
43C/AT	Types of adjustments that are added or deducted from a contract.	These values are not hard-coded: <ul style="list-style-type: none"> • ASM: Assessment • DON: Donation
43C/BO	An amount that is based on the estimated quantity or the actual quantity received.	These values are hard-coded: <ul style="list-style-type: none"> • CE: Current Estimate • RE: Receipts • TD: Total Receipts to Date • TR: Total Receipts
43C/CS	The status of a contract.	These values are not hard-coded: <ul style="list-style-type: none"> • AT: Active • DR: Draft • EX: Expired • TR: Terminated
43C/CT	A group of similar types of contracts.	These values are not hard-coded:

User-Defined Code	Description	Examples
		<ul style="list-style-type: none"> LT: Long-term. OY: One-year.
43C/ET	The equity type associated with pay on proceeds.	These values are hard-coded: <ul style="list-style-type: none"> 1: No payments on proceeds. 2: 100 percent of net proceeds. 3: Percentage of net proceeds.
43C/GN	The price that an assessment or donation is based on.	These values are hard-coded: <ul style="list-style-type: none"> BP: Base (gross) Price. NP: Net Price.
43C/PP	The type of pool that is associated with items.	These values are not hard-coded. Use any value to group growers, for example BROCCOLI.
43C/PT	The type of price that is associated with a contract.	These values are not hard-coded: <ul style="list-style-type: none"> DP: District Price SP: Set Price
43C/RT	The life of a contract and whether it can be extended.	These values are hard-coded: RN: Renewable NT: Non-renewable RL: Roll
43C/RU	Renew expressed in a measure of time.	These values are not hard-coded: <ul style="list-style-type: none"> WK: Weeks MO: Months YR: Years

Special Handling Code Field

The following UDC tables have program logic built into the Special Handling Code field:

UDC Table	Special Handling Code Description
43C/CS	The value in the Special Handling Code field of UDC table 43C/CS identifies the status. The value A identifies active, X identifies terminated or expired, and any value other than A or X identifies a draft status.

UDC Table	Special Handling Code Description
43C/RT	The value in the Special Handling Code field of UDC table 43C/RT identifies the renew type. The value 1 identifies a renewable contract, 2 identifies a roll contract, and any value other than 1 or 2 identifies a nonrenewable contract.

Setting Up Contract Payment Rules

This section provides overviews of contract payment rules and (AUS) contract payment rules for Australia and discusses how to:

- Set processing options for Due Date Rules Revisions (P00146).
- Set up a due date rule for contracts.
- Set up a payment term for installments.
- (AUS) Set up a payment term for installments.

Understanding Contract Payment Rules

When a harvest is completed, growers are paid for their products based on the terms of the contract. Each contract includes payment schedules with the payment terms that affect the final amount paid to contract payees or a contracting entity.

To simplify and easily maintain the different types of payment terms for contracts, you set up due date rules. With due date rules, you can set up multiple types of payment terms for advance, interim, and final payments. You can issue advance payments before you receive any product and after you receive a percentage of the product and before you issue interim payments. Oftentimes, you set up interim payments, for example, to pay a percentage of receipts after each fiscal period. You set up due date rules using the Due Date Rules Revisions program (P00146) and assign the rules to payment terms.

To issue multiple payments to a payee at different times throughout the growing cycle, you must set up advanced payment terms for installments and assign the payment term to each payee schedule record on the grower contract. If you issue one lump sum payment only to a payee, set up and assign a regular payment term instead.

The due date rules and advanced payment terms provide flexibility so that you can, for example:

- Pay a fixed amount on a specific date.
- Pay 45 days after a specific date.
- Pay 20 percent of the contract after 30 percent of the product is received.
- Pay 50 percent of the contract 45 days from when the product was received and the balance by a specific date.
- Pay a certain percent multiple times.

For example, pay 25 percent of the total for each payment and spread the payments over four installments.

- Pay 33 percent of the estimate harvest after the first month that the product was received and the remaining amount (67 percent) on a specific date.

You set up due date rules for payment terms using the Due Date Rules Revision program (P00146). You specify whether the payment for a due date rule is based on the quantity received or an estimated quantity. The systems stores due date rules in the Due Date Rules table (F00142).

If a grower is eligible for advance payment, the due date rule can further specify that payment is based on, for example:

- A percent of the estimated harvest yield that must be received.

For example, a payee is eligible for an advance payment of 25 percent of the contract after total receipts reach 10 percent of the estimated harvest.

- A flat or fixed amount and a specific date.

For example, a payee is eligible for an advance payment of 25,000 USD on June 12th.

After you set up due date rules, you set up advanced payment terms codes for installments using the Advanced Payment Terms program (P00145). The system stores installment records in the Installment Payment Terms table (F00144).

(AUS) Understanding Contract Payment Rules for Australia

In Australia, companies are required to pay growers in three equal payments. To accommodate this requirement, Australian companies use the same programs and functionality in the JD Edwards EnterpriseOne Grower Pricing and Payments system that other companies use. The programs and functionality are described throughout this book.

In Australia, you must set up advanced payment terms with installments so that you can pay your growers in these three installments:

1. Thirty-three percent of the actual receipts.
2. Thirty-three percent of the actual receipts to date.

The payment amount to date must equal 66 percent. If the payment amounts for the first installment equal less than 33 percent, you must adjust the payment amounts for the second installment accordingly. So, if the payments for the first installment equaled 31 percent of the receipts, you must increase your payment amounts for the second installment by 2 percent, so that total payments equal 66 of the total receipts to date.

3. Thirty-four percent of the actual receipts for a period.

The payment amount must equal 100% of the total harvest receipts.

Forms Used to Set Up Contract Payment Rules

Form Name	Form ID	Navigation	Usage
Work with Due Date Rules	W00146A	Payment Terms Revisions (G00141), Due Date Rules Revisions	Review a list of existing due date rules.
Due Date Rules Revision	W00146B	On Work with Due Date Rules, click Add.	Set up a due date rule.

Form Name	Form ID	Navigation	Usage
Work with Advanced Payment Terms	W00145A	Payment Terms Revisions (G00141), Advanced Payment Terms	Review a list of existing payment terms.
Advanced Payment Term Revision	W00145B	On Work with Advanced Payment Terms, click Add.	Set up advanced payment term codes.
Installment Revision	W00145D	On Advanced Payment Term Revision, select Installments from the Form menu.	Set up an installment payment term.

Setting Processing Options for Due Date Rules Revisions (P00146)

Processing options enable you to specify the default processing for programs.

Display

1. Grower Contract Payment Attributes

Specify whether the system displays the due date rule fields for grower contract payments on the Due Date Rules Revision form. Values are:

Blank: Do not display.

1: Display.

Setting Up a Due Date Rule for Contracts

Access the Due Date Rules Revision form.

Many of the fields on the Due Date Rules Revision form are described in another task.

See *"Setting Up Due Date Rules" in the JD Edwards EnterpriseOne Applications Financial Management Fundamentals Implementation Guide* .

The fields that are specifically used for contract payments are described in this task. You must set a processing option for the following fields to appear on the Due Date Rules Revision form:

Advance Payment

Select this check box if the payee on the contract is eligible for advance payments. This check box works in combination with the Based On field.

The amount of an advance payment is based on the due date rule that is assigned to a payee, distribution percent on the payment schedule, and the current harvest estimate or actual receipts received.

CAUTION: If you change this check box after you have issued payments for a contract with this due date rule, the system issues a warning message that quantity-based calculations may have been calculated using the previous values. Ensure that you intend to change this check box. The system does not automatically recalculate values and amounts for payments that have been issued.

Distribution Date

Enter the specific date that the payee should be paid. If you enter a date in this field, the date overrides other day and date values that are entered on this form.

Delivery Percent

Enter a value that represents the percent of the estimated quantity that must be received before the payee can be issued an advance payment.

This field applies only to advance payments that are based on receipts and a percentage of product received. If you enter a value in this field, you must enter **CE** (current estimate) in the Based On field.

Do not enter a value in this field if the value in the Based On field is **RE** or **TD**.

Based On

Enter a code from UDC table 43C/BO to specify whether the payment is based on an estimated quantity or a quantity received. Hard-coded values are:

Blank or CE: Current Estimate. Use this code for advance payments only.

RE: Receipts. Use this code for interim payments.

TD: Total Receipts to Date. Use this code for interim payments.

TR: Total Receipts. Use this code only for final settlements.

If you enter **RE**, **TD**, or **TR** in this field, leave the Advance Payment check box clear. The system determines advance payments based upon current estimates (CE) only.

CAUTION: If you change the value in this field after you have issued payments for a contract with this due date rule, the system issues a warning message that quantity-based calculations may have been calculated using the previous values. Ensure that you intend to change the code in this field. The system does not automatically recalculate values and amounts for issued payments.

Distribution Amount

Enter the amount that the payee should receive for the contract. The currency for the amount equals the domestic currency of the contract. This amount paid is on the date that appears in the Distribution Date field, if applicable, or is calculated based on other field values on this form. A value in this field overrides the based on rule.

If you enter an amount in this field, the system ignores the amount in the Delivery Percent field.

Setting Up a Payment Term for Installments

Access the Installment Revision form.

The fields on this form are described in another task.

See *"Setting Up Installments for Payment Term Codes" in the JD Edwards EnterpriseOne Applications Financial Management Fundamentals Implementation Guide* .

(AUS) Setting Up A Payment Term for Installments

Access the Installment Revision form.

Typically, Australian companies set up a payment term for installments as follows:

Sequence Number	Percent of Installment	Net Due Date Rule
1	33	Based on RE (receipts).
2	33	Based on TD (total receipts to date).
3	34	Based on TR (total receipts)

Setting Up Standard Assessments and Donations

This section provides an overview of assessments and donations and discusses how to set up standard assessments and donations.

Understanding Assessments and Donations

Assessments and donations are additional costs or deductions that affect the final payment amount. These costs and deductions affect the payment amount of a contract, but do not affect the item price. Some companies may choose to track these costs and deductions separately for reporting purposes by using both assessment and donation adjustment types, while other companies may choose to track all costs and deductions by using one adjustment type only.

If you commonly use an assessment or donation, you can set up a standard assessment or donation and assign it to multiple contracts. For example, assume that your company pays an annual state assessment fee to all growers in the state. You set up a standard assessment that contains default information such as the amount (as a percentage or a flat amount), the effective and expiration dates, and the account. Then you assign the assessment name to the contract. For seldom-used or one-time only assessments or donations, you can enter the information when you attach a contract block to a contract. All assessments and donations are stored in the Assessment Donations table (F43C30).

When you enter an assessment or donation, you enter either a positive or a negative amount. The system subtracts negative amounts and adds positive amounts during the settlement process.

Assessments and donations apply to the harvest record, but you can assign both to the block record to serve as default values for the harvest record.

This table shows the differences between standard assessments and donations and those that are not standard:

Difference	Standard Assessments and Donations	Assessments and Donations (Nonstandard)
When Used	These are commonly used assessments and donations that you set up with default values for frequent use.	These are seldom-used or one-time-only assessments and donations.
Setup Required	You set up the assessment or donation on the Standard Assessment & Donations form. You enter a unique name and a type when you set up the assessment or donation. If you change the name, the system automatically updates existing contracts with the new name.	Not applicable.
Currency Codes	You assign a currency code to the amount of the assessment or donation that you set up.	You assign a currency code when you enter the assessment or donation. It must be the same as the currency code of the contract.
Where Assigned	You enter the name of an existing assessment or donation on the contract block.	You enter the type, description (without a name), and other details for an assessment or donation on the contract block.
Deletions	You cannot delete a standard assessment or donation if it is attached to a contract.	You can delete the assessment or donation on the Update Contract Block form.

Forms Used to Set Up Standard Assessments and Donations

Form Name	Form ID	Navigation	Usage
Standard Assessment and Donation Find	W43C30B	Grower Pricing and Payments Setup (G40G241), Standard Assessment and Donations	Review a list of existing assessments and donations.
Standard Assessment and Donation	W43C30A	On Standard Assessment and Donation Find, click Add.	Set up a standard assessment or donation.

Setting Up a Standard Assessment or Donation

Access the Standard Assessment and Donation form.

If you change the name or the default value for an assessment or donation on this form, the system updates existing contracts that have the same assessment or donation.

Type

Enter the type of adjustment from UDC table 43C/AT. For example:

ASM: Assessment.

DON: Donation.

Assessment/Donation Percent

Enter an amount that represents a percentage of the total gross or net amount to be paid for the assessment or donation.

Gross or Net

Specify which price the assessment or donation is based on by entering a value from UDC table 43C/GN. For example:

BP: Base Price.

NP: Net Price.

Amount Per and Amount Per UOM (amount per unit of measure)

Enter an amount that represents a percentage of the unit of measure amount in the Amount Per field. In the Amount Per UOM field, enter a code from UDC table 00/UM that corresponds to the value in the Amount Per field.

Flat Amount

Enter either a positive amount (no sign) or negative amount (minus sign) to specify whether the system adds or subtracts the amount during settlement.

Currency

Enter the currency code of the amount in the Amount Per field or Flat Amount field. If you assign a standard assessment or donation to a contract, the currency of the assessment or donation and the domestic currency of the contract must be the same.

Account Number

Enter the account number in which to record the additions or deductions from the assessments or donations.

Setting Up Clauses

This section provides an overview of clauses and discusses how to set up a clause.

Understanding Clauses

Clauses describe any special conditions or provisions that relate to the fulfillment of a contract. Some clauses specify the terms under which a product is not acceptable. For example, your company might abide by a quality clause which states that a product must meet certain federal and state requirements. If your company fails to meet the quality

requirements, the customer has the right to return the product and receive full credit. Other clauses might relate to the timeliness in which you receive a product. For example, your company might have a penalty clause whereby the contracting entity incurs a penalty of a certain amount for failing to deliver the product by the agreed upon delivery date.

Each clause must have a unique name. You set up the name and enter the text for the clause using the Print Message program (P40162). Then when you enter a contract, you assign the contract clause or, if applicable, multiple contract clauses to the contract.

Forms Used to Set Up Clauses

Form Name	Form ID	Navigation	Usage
Work With Print Message	W40162D	Grower Pricing and Payments Setup (G40G241), Clauses	View a list of existing messages.
Print Message Revisions	W40162C	On Work With Print Message, click Add.	Set up a clause.

Setting Up a Clause

Access the Print Message Revisions form.

After you set up general information for a clause on the Print Message Revisions form, select Attachments from the Form menu to enter the text for the clause.

Effective Date and Expired Date

Enter the beginning and ending dates for which this clause is valid.

To Language

Enter a code from UDC table 01/LP that specifies the language in which to print the message.

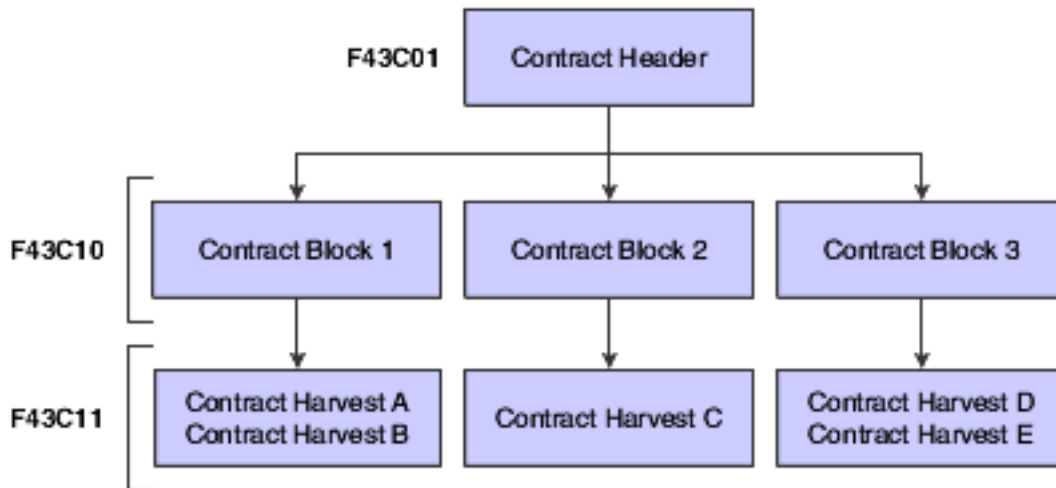
3 Creating Grower Contracts

Understanding Grower Contracts

A contract is an agreement between two or more entities, usually between an agribusiness and a farmer or grower. The contract is the central repository for all terms and conditions of an agreement, including pricing and payment schedules. Negotiating a contract for products occurs at both the regional and corporate level. External growers or internally owned farms may have a contract with the product.

After an agribusiness determines whom to contract with for a product, both parties agree upon one or more contracts. The contracts contain information about the plot of land, also referred to as the block, on which the product is grown. For each growing period, associate a harvest with a block. The harvest identifies the product and growing period. Because a contract can span several growing periods, a block might have several harvests associated with it. Typically, the contract manager manages the harvests at the block level because most harvests for a block have similar characteristics such as price. A grower contract is a contract associated with a block and harvest.

A grower contract consists of these three components:



This table describes contract components:

Component	Description
Contract Header	Includes general information about the contract, clauses, payment schedules, and action dates. Provides many of the default field values to the block records that are associated with the contract. The system stores contract header information in the Contract Header table (F43C01).
Contract Block	Includes information about the grower and the parcel of land, and enables you to manage the corresponding harvests for a contract. Provides many of the default field values to the harvest records that are associated with the block. The system stores contract block information in the Contract Block table (F43C10).

Component	Description
Contract Harvest	Includes detailed information about the grower harvest, the product and quantity expected for a growing cycle, and so on. The system stores contract harvest information in the Contract Detail table (F43C11).

These three components form a hierarchy. The contract header is a parent to the contract block and the contract block is a parent to the contract harvest. The system passes many of the parent attributes on to its children so that the information from one level of the hierarchy becomes default information for another.

One component in the hierarchy depends on the existence of another component. You cannot add a contract block without a contract header, nor can you add a contract harvest without a contract block.

After you create the contract header, you can add one or more blocks to the contract. Similarly, after you create the contract block, you can add one or more harvest to the contract. After completing all three components of the contract, you can begin transacting against the contract.

Before the interested parties review and agree upon the terms of a contract, you can enter the contract into the JD Edwards EnterpriseOne Grower Pricing and Payments system and assign draft status to it. You can create the contract header, block, and harvest with a minimal amount of information or you can create the contract header and later add the block and harvest. The interested parties review the contract and, if necessary, revise the agreement and then sign it. When the interested parties sign the agreement or contract, you change the draft status to active status. Throughout the life cycle of the contract, you can closely monitor the details of the contract, including receipts and payments for the contracted items.

Understanding the Relationship Among Contracts, Blocks, and Harvests

A one-for-one relationship exists between these components:

- Contract block and grower block.
- Contract harvest and grower harvest.

When you add a contract block and contract harvest, the system uses information from the grower block and grower harvest created in the JD Edwards EnterpriseOne Grower Management system.

A contract can have only one header record; however, it can have multiple blocks and harvests. You can add the same block to multiple contracts, although this would probably occur only if you renegotiated a contract and wanted to create an additional contract and retain the block from the previous contract.

The following table shows the different types of information that appear on a contract. As the table indicates, the system passes default values for general information, clauses, and payment schedules from the contract header to the contract block to the contract harvest. The system passes the default values for pricing and assessments and donations from the contract block to the contract harvest. You can override the default values and update information based on the form that you access:

Type of Information	Contract Header	Contract Block	Contract Harvest
General Information	x	x	x

Type of Information	Contract Header	Contract Block	Contract Harvest
Clauses	x	x	x
Pricing		x	x
Assessments and Donations		x	x
Payment Schedule	x	x	x
Action Date	x		
Pay on Proceeds		x	x

Adding Contracts

This section provides overviews of contract headers and payment schedules and discusses how to:

- Set processing options for Contract Workbench (P43C00).
- Add a contract header.
- Attach a clause to a contract.
- Enter payees and payment schedules.
- Enter action dates.

Understanding Contract Headers

The contract header contains general information about the contract, such as contract name, contracting entity, start and end dates, and terms for renewal. The contract header also includes clauses to attach to the contract, payment terms, and action items and dates that are used to track common tasks or actions related to the contract. This information is stored in the Contract Header table (F43C01).

Typically, you enter a contract header and assign the contract a draft status while negotiating the contract. After you enter a start and end date on the contract header, you can change the contract from a draft to an active status. You cannot process any transactions against the contract until it has an active status.

The system passes some information that you enter in the contract header on to the contract block, for example, dates and payment schedule.

Understanding Payment Schedules

You can issue payment for a contract directly to the contracting entity, or you can issue payments to one or multiple payees. For example, you could issue payments for a contract to a manager, grower, and a bank (on behalf of the grower). Additionally, you can assign each payee a different payment term and schedule. The system stores payee information in the following tables:

- Contract Payee (F43C20)
- Payee Date Schedule (F43C25)

For example, assume that the first payee record on a payment schedule has a due date rule of DEL 30 and is attached to a payment term code with multiple installments. The rule specifies a delivery percent of 30. The first payee record has a distribution percent of 20. The estimated harvest yield for the contract is 100 tons at 500 USD per ton (50,000 USD total).

According to the due date rule, the payee cannot receive payment until at least 30 tons of product have been received. At that time, the payee would receive 10,000 USD (20 percent of 50,000 USD).

Forms Used to Add Contracts

Form Name	Form ID	Navigation	Usage
Contract Search	W43C00A	Grower Pricing and Payments Daily Processing (G40G211), Contract Workbench	View a list of existing contracts by contract header, block, or harvest.
Add Contract Header	W43C01A	On the Contract Search form, click Add Contract.	Add a contract header. Attach a clause to a contract. Enter pages and payment schedules. Enter action dates.
Header Additional Information	W43C01C	On the Add Contract Header form, click Additional Information.	Enter additional contract address book numbers, contract properties, contract dates, and contract codes.

Setting Processing Options for Contract Workbench (P43C00)

These processing options control default values that appear in fields on the Contract Search and Add Contract Header forms, and specify whether to display certain fields on the Add Contract Header form.

Contract Search

1. Default Search Contract Status

Enter a code from UDC table 43C/CS to specify the status of the contract. Examples **AT** for active and **DR** for draft.

The value that you enter in this field appears when you view contracts on the Contract Search form.

Note: You can create multiple UDCs for a status. The value in the Special Handling Code field of UDC table 43C/CS identifies the status. The value **A** identifies active, **X** identifies terminated or expired, and any value other than **A** or **X** identifies draft

Options

1. Display Amendments on Update

Specify whether to display amendments when you revise information on an active contract. Values are:

Blank: Do not display.

1: Display.

2. Default Geographic ID

Specify the default geographic code that appears on the Contract Search form when you search for an existing contract or on the Add Contract Header form when you add a contract. This is a code from UDC table 40G/GI that corresponds to a geographic area.

3. Default Price Adjustment Schedule

Enter a code from UDC table 40/AS that specifies the default name of the advanced pricing adjustment schedule for the contract.

4. Default Adjustment Schedule Prefix

Specify the two-character string to use as a prefix when you generate adjustment schedules. The system concatenates this prefix with the next number of the schedule.

5. Default Pay on Proceeds Adjustment Schedule

Enter a code from UDC 40/AS that specifies the default advanced pricing adjustment schedule the system uses for the contract for proceeds payment processing. All adjustments on the default schedule must have the target application type set to Procurement.

Contract Header

1. Display Contract ID

Specify whether to display the Contract ID field on the Add Contract Header form. Values are:

Blank: Display.

1: Do not display.

2. Default Draft Contract Status

Enter a code from UDC table 43C/CS that specifies the draft status the system should display on the Add Contract Header form when you add a contract. You can change the status of the contract after you enter start and end dates in the contract header.

3. Default Contract Type

Specify the default contract type that appears on the Add Contract Header form when you add a contract.

Contract Block

1. Display Disallow Over Receipt

Specify whether to display the Disallow Over Receipt check box on the Contract Block form. Values are:

Blank: Display.

1: Do not display.

2. Display an Error or Warning Message when attaching an inactive Grower Block

Specify whether to display an error or a warning when you attempt to attach an inactive grower block to a contract block. Values are:

Blank: Display an error.

1: Display a warning.

Contract Detail

1. Display or Hide Date Fields

Specify whether to display the date fields on the Contract Harvest form. Values are:

Blank: Display.

1: Do not display.

2. Display Disallow Over Receipt

Specify whether to display the Disallow Over Receipt check box on the Contract Harvest form. Values are:

Blank: Display.

1: Do not display.

Versions

If you leave any of the following processing options blank, the system uses version ZJDE0001.

1. Grower Block Maintenance (P40G02), 2. Grower Harvest Maintenance (P40G03), 3. Reprice Purchase Orders/ Receipts Batch (R45620), and 4. Supply and Demand Inquiry (P4021).

Specify the version of the program to use. If left blank, the system uses version ZJDE0001 of the respective program.

Adding a Contract Header

Access the Add Contract Header form.

You can review a summary of contract header information on the Contract Summary Report (R43C10).

See *JD Edwards EnterpriseOne Grower Pricing and Payments Reports: A to Z*.

Contract ID

Enter a numeric value to uniquely identify the contract. If you leave this field blank, the system generates an ID using next numbers when you save the contract header. After you save a contract, you cannot change the contract ID.

This field appears only if the Display Contract ID processing option is set accordingly in the Contract Workbench program (P43C00).

Contract Code

Enter an alphanumeric value to uniquely identify the contract. The contract code can be up to 12 characters.

Contract Name

Enter an alphanumeric value to uniquely identifies the contract. The contract name can be up to 30 characters.

Contracting Entity

Enter the address book number of the grower or supplier that has entered into this contract. This information is for reference only, you enter the payees for the contract on the Payment Schedule tab.

Business Unit

Enter the branch/plant entity within the company that is responsible for the contract.

Contract Status

Enter a code from UDC table 43C/CS to specify the status of the contract. Examples are **AT** for active and **DR** for draft.

When you add a contract, the system displays the status for draft in this field. You cannot change the status of a contract to active until you enter a start and end date on the contract header.

You set the default draft value that appears in this field in the processing options for the Edit Header Contract program (P43C01).

Contract Type

Enter the type of contract from UDC table 43C/CT. Examples are LT for long-term and OY for one-year.

General Information

Select the General Information tab.

Ownership

Enter a code from UDC table 43C/OS to identify the type of entity of the grower. Examples are CP for Corporation, PT for partnership, and SP for sole proprietorship.

Delivery Form

Enter a code from UDC table 43C/DF to identify the form in which the product is to be delivered, for example, JU for juice. A period (.), which is hard-coded, represents a blank value.

Contract Manager

Enter the address book number of the person within the company who is responsible for the contract.

Contract Buyer

Enter the address book number of the person within the company who is the buyer for the contract.

Commodity Code

Enter a code that represents the type of commodity, such as fruit or vegetable, that is associated with the contract.

Geographic ID

Enter a code from UDC table 40G/GI to identify the geographic region related to the contract. You cannot change the value in this field after you save the contract. You can only associate blocks and harvests that have the same geographic ID to the contract.

Contract Currency Code

Enter the currency code for all amounts that are associated with the contract. You cannot change the value in this field after you save the contract.

Start Date and End Date

Enter the dates when the contract becomes effective and when it expires. The dates that you enter for the contract block and contract harvest records must be within this date range.

These fields work with the Contract Status field to control when the system allows transactions against the contract. You cannot change the contract status to Active unless these fields contain dates.

Renew Type

Enter a code from UDC table 43C/RT to specify whether the system allows extended life on the contract. These values are hard-coded:

RN: Renewable. The contract end date can be extended but not past the renewable end date.

NR: Non-Renewable. The contract end date should not be extended; however, the system does not prevent you from extending the date.

RL: Roll. The contract end date should be equal to the current harvest period plus the renew term; however, the system does not validate this.

Renewable End Date

Enter a date that indicates the latest possible end date for the contract. The system requires that this date comes after the end date. This field is input capable only if the system has assigned a renew or roll type to the contract.

Renew Term and Renew Period

Enter a numeric value in the Renew Term field to specify the amount of time that should be added to the contract end date if it is renewed. Enter a code from UDC table 43C/RU to identify the measure of time in the Renew Period field.

For example, if you enter **3** in the Renew Term field, you might enter **WK** (weeks) for the Renew Period field.

If the contract is nonrenewable (NR), these fields are not required.

Review Date

Enter the date to review the contract. This date is informational only.

Note: After you enter values in the fields on this form, click Save and Continue and then select the Clauses tab, the Payment Schedule tab, or Action Dates tab to continue entering contract header information.

Attaching a Clause to a Contract

Access the Add Contract Header form, and select the Clauses tab.

Contract Clause

Click the link to review the media object information for the clause. Enter the name that identifies a special consideration or provision of the contract. A clause can be a quality requirement, penalty clause, and so on. The system stores clauses in the Contract Clauses table (F43C60). To remove a clause from a contract, select the row and click Delete.

Entering Payees and Payment Schedules

Access the Add Contract Header form, and select the Payment Schedule tab.

The contract payee information that you enter on the contract header appears on the contract block and contract harvest records.

Contract Payees

Payee Number

Enter the address book number of the payee if it is different as the contracting entity. You can enter multiple payees if the contract amount is to be distributed among multiple contract payees. If the amount is to be distributed between the contracting entity and another payee, enter each as a contract payee.

Pymt Terms (payment terms)

Enter the code that specifies the terms of payment for the contract payee.

After you assign a payment term code to the contract payee, the system displays the payment schedule for the payee for your review. The payment schedule shows the due date rules for the payment term. You cannot change the payment schedule on the Add Contract Header form, Payment Schedule tab. Instead, you must use the Advanced Payment Terms or Due Date Rule Revisions program.

Distribution Percent

Enter the percentage of the payment that the payee should receive. The total distribution percent must equal 100, regardless of whether you are paying one or multiple payees.

Assigned

Select this check box to indicate payment issued to an alternate payee, such as a bank, instead of the payee. If you select this check box, you must assign an alternate payee.

Interest

Select this check box if this payee should receive interest on past due amounts. This check box is informational only.

Broker

Select this check box if the payee is a broker. This check box is informational only.

Alternate Payee

Enter the address book number of the person or entity that is to receive payment on behalf of the payee. If you enter a value in this field, you must also select the Assigned check box. An alternate payee is typically a bank or other financial institution.

Entering Action Dates

Access the Add Contract Header form, and select the Action Dates tab.

The Action Date Listing report (R43C05) provides a report of action dates and codes. The system stores action dates in the Contract Action Dates table (F43C05).

See *JD Edwards EnterpriseOne Grower Pricing and Payments Reports: A to Z*.

Action Dates

Action Date Code

Enter a code from UDC table 43C/AD that identifies an action you want the system to perform, such as a renewal reminder.

Recurring

Select this check box to have the system create an action record by copying all of the fields that are associated with the action date code and advancing the date required by one year. The system creates the new action record when you select the Closed check box to close the action.

Date Required

Enter the due date you want the system to perform or complete a task.

Closed

Select this check box when you have completed the task that is associated with the action date code. The system populates the Date Complete field when you select this check box.

Date Complete

Enter the date you completed the action item. If you leave this field blank, the system populates the field when you select the Closed check box.

Person Responsible

Enter the address book number of the person who is responsible for the action or task. If you leave this field blank, the system assigns the address book number associated to the user who created the action record.

Adding Grower Blocks to Contracts

This section provides overviews of contract blocks and price adjustment schedules and discusses how to:

- Attach an existing grower block to a contract.
- Add a price adjustment schedule to a block.
- Add an assessment or a donation to a block.
- Add a new grower block to a contract.

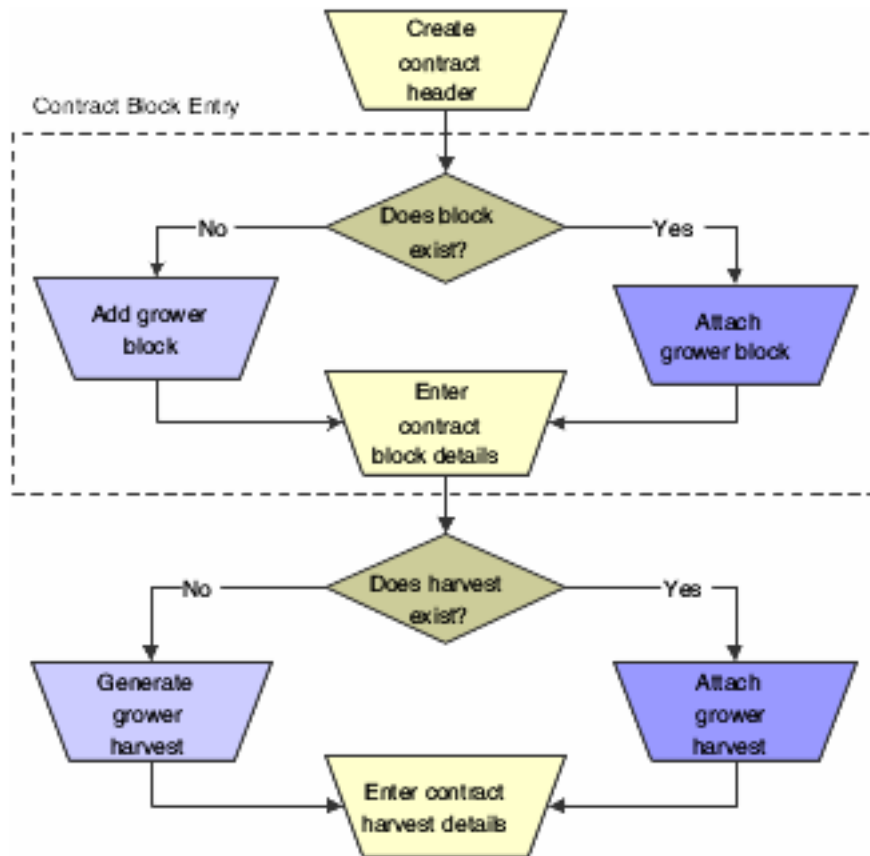
Understanding Contract Blocks

After you enter a contract header, you can add the contract block that contains information about the grower. You must add at least one contract block to a contract. If a contract is not at a terminated status, you can add a block to it.

The contract block is the second component of a contract and exists primarily for you to manage pricing and the detail records for the harvests related to the contract. Although the contract block is directly associated with the grower block, the contract block includes attributes from the contract header such as start and end dates and contract terms.

General information, clauses, and payment schedules are passed from the contract header to the contract block. Contract block information is stored in the Contract Block table (F43C10).

To add a block to a contract, you either attach an existing grower block or create one when you add the contract, as shown in this diagram:



If you create a grower block when you add the contract, the system requires that you enter a minimum amount of information. Then, at a later time, you can complete the grower block record in the JD Edwards EnterpriseOne Grower Management system.

The grower block that you add to a contract must be at an active status. If the grower block is inactive, the system issues either a warning or an error message based on a processing option setting for the Contract Workbench program (P43C00). If the grower block that you add to the contract is at a status other than active or terminated, the system prompts you to make the grower block active.

Understanding Price Adjustment Schedules

You use the JD Edwards EnterpriseOne Advanced Pricing system to create the price adjustment schedules that you add to contract blocks. You can have two types of price adjustments on the schedule; one is associated with the weigh tag receipt and one for proceed payments.

You add an adjustment schedule, associated with the weigh tag receipt, to increase or decrease the price that you pay for a product, based on predefined conditions. For example, you might have an adjustment schedule that depends on quality test results. After you receive shipment for the product and perform quality tests, your final settlement amount includes any price adjustments based on this schedule.

You add an adjustment schedule for proceed payments to enable you to pay growers based on the price that you sell the crop. After you sell the crop, you can match the crop receipt to an associated sales order.

You can set a default price adjustment schedule in a processing option for the Contract Workbench program (P43C00). You can change or override the price adjustment schedule on the contract block and contract harvest records.

Forms Used to Add Blocks to Contracts

Form Name	Form ID	Navigation	Usage
Contract Search	W43C00A	Grower Pricing and Payments Daily Processing (G40G211), Contract Workbench	View a list of existing contracts by contract header, block, or harvest.
Edit Contract Header	W43C01A	On the Contract Search form, find and select a grower contract.	Update a grower contract.
Add Contract Block	W43C10A	On the Edit Contract Header form, scroll down to the Blocks area of the form and click Attach Block.	Attach an existing grower block to a contract.
Update Contract Block	W43C10A	On the Add Contract Block form, enter the block code, and then click Save and Continue. On the Update Contract Block form, select the Pricing tab.	Add a price adjustment schedule to a block. Add an assessment or a donation to a contract.
Add/Edit Grower Block	W40G02B	On the Add Contract Block form, click Add New Grower Block.	Add a new grower block to a contract.

Attaching an Existing Grower Block to a Contract

Access the Add Contract Block form.

When you add a grower block to a contract, the system displays default values from the contract header and default values from the grower block in many of the fields on the form. You can change some default values.

See *"Creating a Block" in the JD Edwards EnterpriseOne Applications Grower Management Implementation Guide*.

Block Code

Enter the unique identifier or name of the grower block. To select from a list of block codes, use the search button to access the Grower Block Search & Select form.

General Information

Start Date and End Date

If necessary, enter new start and end dates in these fields. The dates must be within the date range in the contract header.

Note: When you save the record, the system compares the start dates on the block to the contract header and issues an error message if the start date or end date on the contract block is before or after the dates on the contract header.

Contract Price Group

Enter a code from UDC table 43C/PG to identify matrix pricing, for example, IL (internal).

Price Override

Enter the unit price for the product. You can apply adjustments to this price if a price adjustment schedule is defined on the Pricing tab.

Price Level

Enter a code from UDC table 45/PL for the price level, for example, 1 (Level I) and 2 (Level II). The price level determines the price on a receipt line. Transactions made against a contract use the price associated with this price level unless you specify an override price in the Price Override field.

Minimum Price and Maximum Price

Enter the smallest and largest base prices that the system should use for transactions against the contract. To use this feature, you must associate an adjustment schedule to the contract that has a minimum and maximum price adjustment defined within the schedule. If you do not have an adjustment schedule, the fields are informational.

Memo Price and Memo Price Level

Enter an additional price for the contract for reference purposes. For example, you could enter the district average price and compare it to the actual price that you pay the grower.

Enter a code from UDC table 45/PL to identify the price level of the memo price.

Price Override Comment

Enter any free-form text about the price override, such as a short description of the purpose of the price override.

Purchasing UOM (purchasing unit of measure)

Enter a code from UDC table 00/UM that identifies the unit of measure in which you usually purchase the product. Examples are BL (barrels) and GA (gallons).

This field is not required if the contract status is draft. The system requires a value in this field to calculate the contract price.

Price Type

Enter a code from UDC table 43C/PT that represents the type of price that the contract uses. For example, DP (district price) is the price that is set by a district, whereas SP (set price) is a price that is agreed upon between you and the grower.

Contract Quantity and Transaction UOM (transaction unit of measure)

Enter the number of items or products that you expect to receive for the contract and enter the corresponding measurement from UDC table 00/UM in these fields. For example, if you enter **2** and **TN** in these fields respectively, the contract quantity is two tons.

The default value for the Transaction UOM is from the Purchasing UOM field.

Minimum Quantity and Maximum Quantity

Enter the smallest and largest amounts that can be transacted against the contract if a contract quantity exists (the Contract Quantity field contains a value).

Disallow Receipt

Select this check box if you want the system to validate transactions against the minimum and maximum quantities.

Note: To add another grower block to the contract, click Save and Attach Another. Click Save and Continue and scroll down to generate or add a grower harvest record to the block. Otherwise, click Save and Close.

Adding a Price Adjustment Schedule to a Block

Access the Update Contract Block form and select the Pricing tab.

Note: The system uses the adjustment schedule on the Pricing to price the received product on the associated purchase order.

If a processing option is set in the Contract Workbench program, the system displays a default adjustment schedule on this tab. To remove the schedule and add a new one, click Remove Schedule and continue to the next step.

1. Click Select Schedule.
2. On the Adjustment Schedule Search and Select form, select the adjustment schedule.
The system displays the records that are associated with the schedule on the Pricing tab.
3. Change the effective and expired dates for the record, if applicable.
4. To revise a record, click the name of the record in the Description column to drill down to the Price Adjustment Detail Revisions form.

We discuss price adjustment schedules in another task.

See *"Working with Schedules and Adjustments" in the JD Edwards EnterpriseOne Applications Advanced Pricing Implementation Guide* .

Adding an Assessment or a Donation to a Contract

Access the Update Contract Block form, and select the Assessments/Donations tab.

You can add an existing standard assessment or donation, or create an assessment or donation to use for this contract only.

Note: Typically, assessments and donations are applicable to the contract harvest record. However, you can assign them to the contract block record so that the system pushes the assessment or donation to the contract harvest record.

Assessments/Donations

Type

Select a value from UDC table 43C/AT to identify the type of adjustment.

Standard Assessment/Donation Name

Enter the name that uniquely identifies the standard assessment or donation.

You set up commonly used assessments or donations on the Standard Assessment & Donations form.

Assessment/Donation Description

The system displays the description of the assessment or donation if you enter a value in the Standard Assessment/Donation Name field.

The system stores assessments and donations in the Assessment Donations table (F43C30).

Note: For nonstandard assessments, enter a description in this field only if the assessment or donation applies to this block and has not been set up as a standard assessment or donation. If you enter a description in this field, you must leave the Standard Assessment/Donation Name field blank.

Amount Per and Flat Amount

Enter either a positive amount (no sign) or negative amount (minus sign) to specify whether the system adds or subtracts an amount during settlement.

Assessment/Donation Percent

Enter a number that represents the percentage of the total transaction amount that should apply to the assessment or donation.

Managing Pay Proceeds

Access the Update Contract Block form, and select the Pay on Proceeds tab.

Grower Equity Type

Specify a user defined code (43C/ET) that defines the type of contractual agreement between a customer and a grower.

Grower Equity Percent

Enter a number that indicates the percentage of equity in a crop that is owned by the grower. Enter percents as a whole numbers; for example enter 5 for 5 percent.

Pay on Proceeds Pool

Enter a user defined code (43C/PP) that defines a group of growers across which you spread the payments from the proceeds of accumulated sales for a crop.

Payment Terms

Specify the terms of payment, including the percentage of discount available if the invoice is paid by the discount due date. Use a blank code to indicate the most frequently-used payment term. You define each type of payment term on the Payment Terms Revisions form.

Select Schedule

Click this button to search for pricing schedules.

Remove Schedule

Click this button to remove pricing schedules.

Adding a New Grower Block to a Contract

Access the Add/Edit Grower Block form.

When you add a new grower block record, the system requires that you enter values in a minimum number of fields. Later, you can enter the details for the record in the JD Edwards EnterpriseOne Grower Management system.

We discuss the fields on the Add/Edit Grower Block form in another task.

See *"Creating a Block" in the JD Edwards EnterpriseOne Applications Grower Management Implementation Guide* .

Note: To add another grower block to the contract, click Save and Attach Another. Click Save and Continue and scroll down to generate or add a grower harvest record to the block. Otherwise, click Save and Close.

Adding Grower Harvests to Contract Blocks

This section provides an overview of contract harvests and discusses how to:

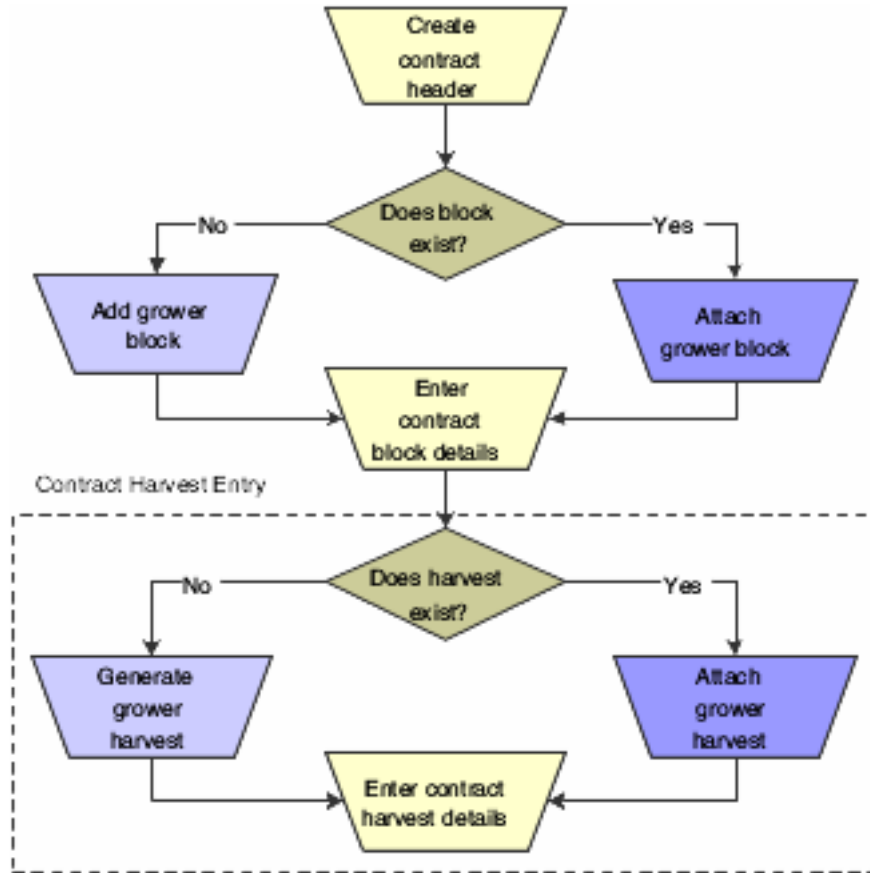
- Attach an existing grower harvest to a contract block.
- Generate new grower harvests for a contract block.

Understanding Contract Harvests

After you enter a contract block, you must add a harvest record to the contract. The harvest record contains information about the growing cycle of the crop for a particular block and the pricing. The contract harvest is the third component of a contract and contains the detail records for the grower harvests. Much as the contract block inherits attributes from the contract header, the contract harvest inherits attributes from the contract block.

The system passes general information, clauses, pricing, assessments and donations, pay on proceeds, and payment schedules from the contract block to the contract harvest. The system stores contract harvest records in the Contract Detail table (F43C11).

To add a harvest to a contract, you either attach an existing grower harvest or generate new harvest records when you add the contract, as shown in this diagram:



If you generate new harvest records, the system generates records for both the JD Edwards EnterpriseOne Grower Management and Grower Pricing and Payment systems.

You must add at least one harvest record to a block; however, you cannot add the same harvest record to multiple contracts. That is, a grower harvest can be associated with only one contract block.

You can only generate new harvests if Item Number field on the contract block is not blank. If the Item Number field is blank, the system disables the Attach/Generate Harvests button. However, you can manually add harvests.

Forms Used to Add Grower Harvests to Contracts Blocks

Form Name	Form ID	Navigation	Usage
Contract Search	W43C00A	Grower Pricing and Payments Daily Processing (G40G211), Contract Workbench	View a list of existing contracts by contract header, block, or harvest.
Add Contract Header	W43C01A	On the Contract Search form, click Add Contract.	Add a contract header.

Form Name	Form ID	Navigation	Usage
Add Contract Block	W43C10A	On the Add Contract Header form, scroll down to the Blocks area of the form and click Attach Block.	Attach an existing grower block to a contract.
Update Contract Block	W43C10A	On the Add Contract Block form, enter the block code, and then click Save and Continue. On the Update Contract Block form, select the Pricing tab.	Add a price adjustment schedule to a block. Add an assessment or a donation to a contract.
Add Contract Harvest	W43C11A	On the Update Contract Block form, scroll down to the Contract Harvests area of the form and click Attach Harvest to manually add harvest records to the block.	Add an existing grower harvest to a contract block.

Attaching an Existing Grower Harvest to a Contract Block

Access the Add Contract Harvest form.

You can review a detailed report that shows contract header, block, and harvest information on the Contract Detail Report (R43C15).

See *JD Edwards EnterpriseOne Grower Pricing and Payments Reports: A to Z*.

Harvest Period

Enter the period for a harvest, such as **Q1** or **2007**.

Use the search button to access the Detail Harvest Search & Select form and view the harvests that are available for selection for the block. Alternatively, you can view all harvests on the Detail Harvest Search & Select form, regardless of whether they are available for selection. A harvest record can be associated with only one block.

Harvest Suffix

Enter a suffix to include in the identification of the harvest. A harvest record consist of a unique combination of the block code, harvest period, and harvest suffix. The value that you enter in this field appends to the block code and harvest period.

Start Date and End Date

You cannot change the harvest start and end dates. The harvest start and end dates are associated with the harvest start and end dates in the Grower Harvest table (F40G03).

Price Approved

Select this option to indicate whether the pricing associated to the contract has been approved. If this option is not set, you cannot process receipts against the contract.

General Info

Purchasing UOM (purchasing unit of measure)

Enter a code from UDC table 00/UM that identifies the unit of measure in which you usually purchase the product. For example, BL (barrels) or GA (gallons).

This field is not required if the contract status is draft. The system requires a value in this field to calculate the contract price.

Note: To add another harvest, click Save and Attach Another. To revise the harvest record, click Save and Continue and the system displays the Edit Contract Harvest form. We discuss this form in another task.

See *Revising a Contract Harvest Record*.

Clauses

Contract Clause

Enter a UDC value (40/PM) to indicate the type of article, stipulation, or provision to attach to the contract.

Contract Clause Description

Specify the details of the article, stipulation, or provision.

Pricing

Select Schedule

Click this button to locate a pricing schedule.

Assessments / Donations

Standard Assessment/Donation Name

Enter the name of the Assessment or Donation.

Assessment / Donation Description

Enter a short description of the Assessment or Donation.

Assessment / Donation Effective Date

A date that signifies when the Assessment/Donation is valid to start applying.

Assessment / Donation Expire Date

A date that signifies when the Assessment/Donation expires and should no longer be applied.

Assessment / Donation Percent

A percentage that represents the total dollar transaction that the addition/deduction should equate to.

Gross or Net

A user defined code (43C/GN) that specifies whether the assessment or donation percent is taken from the base or net price of the item.

Amount Per

An amount that represents the per unit addition/deduction amount.

Amount Per UOM (amount per unit of measure)

A unit of measure that corresponds to the value in the Amount Per field.

Flat Amount

A specific dollar amount to be paid for the assessment or donation.

Assessment / Donation Currency Code

A code that designates the currency code that corresponds to the assessment, donation, flat amount, or amount per. to.

Account Number

A value that identifies an account in the general ledger. Use one of the following formats to enter account numbers:

- Standard account number (business unit.object.subsidiary or flex format).
- Third G/L number (maximum of 25 digits).
- Account ID number. The number is 8 digits long.
- Speed code, which is a two-character code that you concatenate to the AAI item SP. You can then enter the code instead of an account number.

The first character of the account number indicates its format. You define the account format in the General Accounting constants.

Payment Schedule

Pymt Terms (payment terms)

A code that specifies the terms of payment, including the percentage of discount available if the invoice is paid by the discount due date.

Distribution Percent

The percentage of the payment the payee should receive.

Assigned

Select this option to indicate the payment is taxable income for the payee.

Interest

Select this option to indicate the payee receives interest on deferred payments.

Broker

Select this option to indicate the payee is a broker.

Pay On Proceeds

Grower Equity Type

A user defined code (43C/ET) that defines the type of contractual agreement between a customer and a grower.

Grower Equity Percent

A number that indicates the percentage of equity in a crop that is owned by the grower. Enter percents as whole numbers.

Pay on Proceeds Pool

A user defined code (43C/PP) that defines a group of growers across which payments from the proceeds of accumulated sales for a crop are spread.

Payment Terms

A code that specifies the terms of payment, including the percentage of discount available if the invoice is paid by the discount due date.

Generating New Grower Harvests for a Contract Block

On the Add Contract Block form, scroll down and click Generate/Attach Harvest to automatically generate new grower and contract harvest records or attach existing records.

If grower harvest records exist in the JD Edwards EnterpriseOne Grower Management system, the system attaches the existing future harvest records to the contract block.

If grower harvest records do not exist, the system generates grower harvest records in the JD Edwards EnterpriseOne Grower Management system and block harvest records in the JD Edwards EnterpriseOne Grower Pricing and Payment system and attaches the block harvest records to the contract block. The system generates harvests based on:

- The maximum number of harvests that are specified in a processing option for Grower Harvest Maintenance (P40G03)
- The block renewable end date, if one exists, or the block end date.
- The harvest period patterns that you have set up.

If the harvest start and end dates for the patterns in the Harvest Period Patterns program (P40G003) do not cover the date range, the system does not generate harvest records, regardless of the processing option setting or block end date.

Note: If there is no item number, the system disables the Generate/Attach Harvest button.

Example: Generate New Grower Harvests

For example, assume the contract block has a start date of June 1, 2007 and an end date of May 31, 2010. The block renewable end date is 2015. If you set the processing option to 7, the system generates harvest records for 2008–2014.

Using the same example with no renewable end date (blank), the system generates harvest records for 2008–2010.

Note:

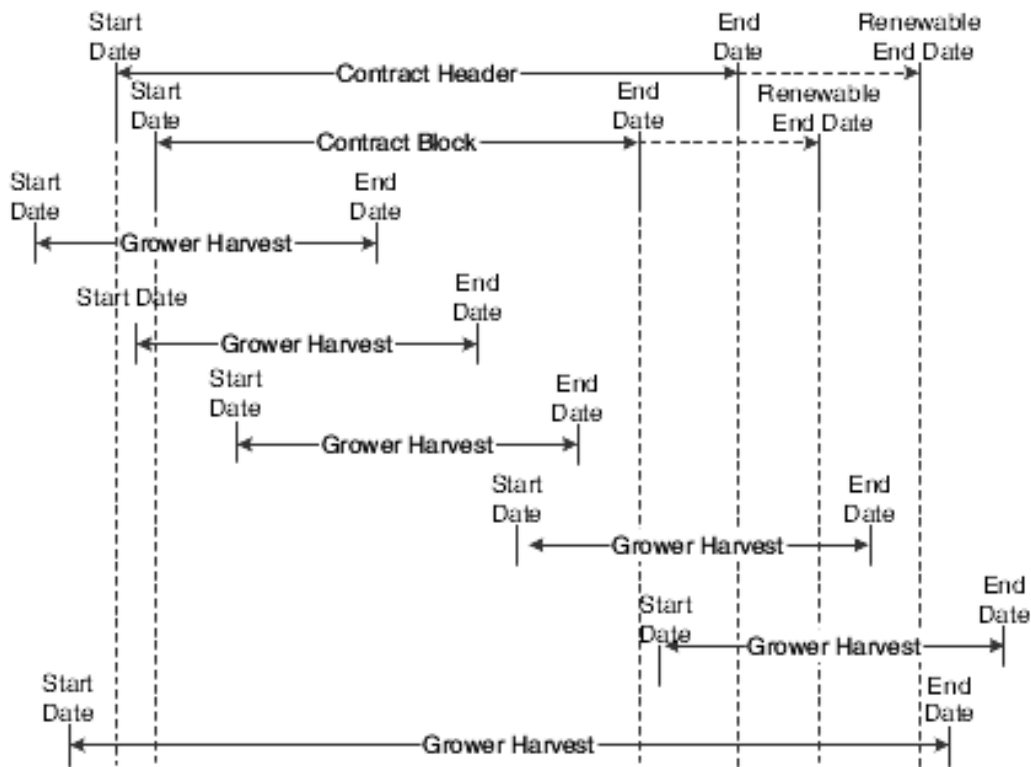
- *"Creating a Harvest" in the JD Edwards EnterpriseOne Applications Grower Management Implementation Guide .*

4 Managing Grower Contracts

Understanding Valid Start and End Dates

As part of managing your grower contracts, you might revise start and end dates.

This diagram shows valid start and end dates among contract headers, contract blocks, and contract harvest records:



As illustrated in this diagram, the harvest end date must be greater than the contract block start date. The contract renewable end date must be greater than the harvest start date.

You can attach harvest records with dates after the contract block end date. However, the system does not allow transactions to the contract after the contract block end date. The system also prevents generated weigh tags after the contract block end date.

Reviewing Contracts

This section provides an overview of the Contract Workbench program and discusses how to review contracts.

Understanding the Contract Workbench Program

A grower contract consists of a header record with block and harvest records. The Contract Workbench program (P43C00) provides a single entry point for all of the forms and programs that are available for managing grower contracts.

For example, from the Contract Workbench program, you can:

- Review a list of existing contract headers, blocks, or harvests.
- Use search criteria to limit the list to specific headers, blocks, or harvests.
- Copy or delete a grower contract.
- Access a form to add a header, terminate a contract, or renew a contract.

After you add grower contracts, you can update information on the contract, block, and harvest records if the contract status is draft or active. The system updates these tables:

- Contract Header (F43C01)
- Contract Block (F43C10)
- Contract Detail (F43C11)

Form Used to Review Contracts

Form Name	Form ID	Navigation	Usage
Contract Search	W43C00A	Daily Processing (G40G211), Contract Workbench	Review a list of contracts.

Reviewing Contracts

Access the Contract Search form.

Click the Contract Headers tab, the Contract Blocks tab, or the Contract Harvests tab to review contracts.

Note:

- *Setting Processing Options for Contract Workbench (P43C00).*

Managing Contract Headers

This section provides an overview of contract header revisions and discusses how to:

- Revise a contract header.
- Push contract header revisions to contract blocks and harvests.
- Copy a contract header and blocks.
- Delete a contract header.

Understanding Contract Header Revisions

After you add a contract, you can change information on the contract header if the contract status is draft or active.

Because the contract header and the contract block and harvest records have identical attributes or fields, you can change an attribute on the contract header and, optionally, have the system update the same attribute on corresponding block and harvest records. In this way, the system *pushes* the changes from the contract header to selected block and harvest records. For example, if you change or update the payment schedule on the contract header, you can selectively update block records and harvest records with the same information.

Forms Used to Manage Contract Headers

Form Name	Form ID	Navigation	Usage
Contract Search	W43C00A	Grower Pricing and Payments Daily Processing (G40G211), Contract Workbench	View a list of existing contracts by contract header, block, or harvest.
Edit Contract Header	W43C00A	On the Contract Search form, select the Contract Headers tab and then select a contract name.	Access the Contract Header form.
Contract Header	W43C50A	On the Edit Contract Header form, select the Update Block and Harvest check box and click Save and Continue.	Push contract header revisions to contract blocks and harvests.
Header Additional Information	W43C01C	On the Edit Contract Header form, click Additional Information.	Enter additional contract addresses, dates, properties, and codes.
Copy Contract	W43C00CA	On the Contract Search form, select the Contract Headers tab and then	Copy a contract header and blocks.

Form Name	Form ID	Navigation	Usage
		select a contract record to copy. Click Copy Contract.	

Revising a Contract Header

Access the Edit Contract Header form.

Update Contract Harvest and Block

Select this check box to update some or all of the associated blocks and harvests with the information that you revise on the Edit Contract Header form.

If you select this check box, the system displays the Contract Header form, which you use to *push* revisions from the contract header to corresponding contract blocks and harvests.

See [Pushing Contract Header Revisions to Contract Blocks and Harvests](#).

Contract Status

To change the status of a contract from draft to active, enter a date range in the Start Date and End Date fields, and then change the status in this field.

To change the status of a contract from active to draft, the system validates that no purchase orders are associated with the contract. The system does not validate whether payments exist for the contract.

Date and Renew Fields

The status of a contract determines which of the following fields on the Edit Contract Header form are required and whether the system validates the field values.

Start Date and End Date

Draft status: The Start Date and End Date fields are not required. However, if you enter a value in either field, the other field is required. If both fields contain dates, the system validates that the end date is after the start date.

Active status: If you revise the contract end date, the system validates that the block dates that are associated with the contract are within the revised date range. If the contract end date is earlier than any of the attached block end dates, the system issues an error message and you cannot change the contract end date.

Renewable End Date, Renew Term, and Renew Period

Draft status: If the renew type is renew or roll, the Renewable End Date, Renew Term, and Renew Period fields are not required. However, if you enter a value in the Renewable End Date field, the system validates that the date is greater than or equal to the contract end date in the End Date field. If you enter a value in the Renew Term field, the Renew Period field is required.

Active status: If the renew type is renew, the Renewable End Date, Renew Term, and Renew Period fields are required. (These fields are not required if the renew type is roll.) If you revise the Renewable End Date field, the system validates that the date is greater than or equal to the contract end date.

Note:

The Renew Term and Renew Period fields are for information only. The system does not validate the contract end date against these fields.

If you change the renewable end date to a date that is before the current date and contract harvests exist, the system deletes the contract harvests.

Pushing Contract Header Revisions to Contract Blocks and Harvests

Access the Contract Header form.

When you first access the Contract Header form, the system displays the payee field values from the contract header. Scroll down to the Push Selection group box of the form.

Push Selection Area

In the Push Selection area of the Contract Header form, the system displays check boxes that correspond to the field values that you can *push* from the contract header to the contract block and harvest.

To push price type and payment schedule fields to the contract block and harvest:

1. Select the check boxes that correspond to the information to push to a block or harvest record.
2. Select the block and harvest records to update.
3. Click Update Selected.
4. To review the updated block record, on the Add Contract Header form, scroll down and select the block or harvest record to access the Update Contract Block form.

Copying a Contract Header and Blocks

Access the Copy Contract form.

The system sets the status of a copied contract to draft and the renew type to nonrenewable.

You can copy an existing contract header to use as a template for another contract header and minimize redundant data entry. The system copies the following information from the original contract header to the new contract header:

- Business unit, currency code, and geographic ID.
You cannot change the business unit, currency code, and geographic ID of a copied contract, so ensure that the contract that you are copying from has the correct values.
- Contract type, ownership, delivery form, price type, contract manager and buyer, and commodity code.
You can change this information:
- Clauses.
- Payment schedule.
- Action dates.
- Additional information.

- Block records that are associated with the contract header.

The system does not copy the contracting entity, contract start and end dates, amendments, or harvest records that are associated with the blocks.

Copy To Fields

The fields listed in the following table are required:

Contract Code

Enter a code that uniquely identifies the new contract.

Contract Name

Enter the name of the contract.

Contracting Entity

Enter the supplier number of the contracting entity.

Deleting a Contract Header

Access the Contract Search form.

You can delete a contract header only if the system has not applied purchase orders or payments to the contract header, block, and harvest records. If one or more records do not meet this criteria, the system does not delete the contract header.

When you delete a contract header in the F43C01 table, the system deletes the entire contract. This includes the contract block records in the F43C10 table and the contract harvest records in the F43C11 table, and these records:

- Contract action dates from the F43C05 table.
- Contract clauses from the F43C60 table.
- Contract payees from the F43C20 table.
- Payment schedules from the F43C25 table.
- Assessments and donations from the F43C40 table.

The system disassociates the contract ID from the corresponding grower harvest record in the Grower Harvest table (F40G03). This causes the link between the contract harvest record and grower harvest record to be broken. The system does not delete the grower block and harvest records that are associated with the contract block and harvest records.

When you delete a contract header, you can optionally have the system set the status of the associated grower harvest to terminate in the F40G03 table.

To delete a contract header:

1. Select the contract header record, and click Delete Contract.
2. In the Delete Confirmation window, click Yes to proceed.
3. In the Message window, click Yes or No to specify whether to set the status of the associated grower harvest to terminate.

If you click Yes, the system terminates the record in the Grower Harvest table (F40G03).

Note: Alternatively, you can delete a single block or harvest record that is associated with a contract header, instead of deleting the entire contract.

Note:

- *Deleting a Contract Block Record.*
- *Deleting a Contract Harvest Record.*

Adding Text to Amendments

This section provides an overview of contract amendments and discusses how to add text to an amendment.

Understanding Contract Amendments

If you set the Display Amendments on Update processing option for the Contract Workbench program (P43C00), every time that a contract header, block, or harvest is revised, the system logs the user ID and date on which the revision was made. You can review this log on the Amendments form, which is a media object. You can also use the Amendments form to add text to describe revisions. For example, you might add text to describe why you changed the contract and who approved the change or to explain why you issued a manual payment outside of the general contract terms.

You can access the Amendments form in either of these ways:

- Click the link for Add Amendments (or Edit Amendments) from the contract header, block, or harvest record.
- Set a processing option so that the system automatically displays the form when the system saves a contract header, block, or harvest record.

Forms Used to Add Text to Amendments

Form Name	Form ID	Navigation	Usage
Contract Search	W43C00A	Grower Pricing and Payments Daily Processing (G40G211), Contract Workbench	View a list of existing contracts by contract header, block, or harvest.
Edit Contract Header	W43C00A	On the Contract Search form, select the Contract Headers tab and then select a contract name.	Add text to an amendment.
Update Contract Block	W43C10A	On the Contract Search form, select the Contract Blocks tab. Enter search criteria and click Find. Select a block. On the Edit Contract Header form, scroll down and select a block.	Revise a contract block.

Form Name	Form ID	Navigation	Usage
Edit Contract Harvest	W43C11A	On the Contract Search form, select the Contract Harvests tab and then select a harvest record.	Add text to an amendment.

Adding Text to an Amendment

Access the Edit Contract Header form, Update Contract Block form, or Edit Contract Harvest form. Click Add Amendments or, if applicable, Edit Amendments.

Managing Contract Blocks

This section provides an overview of contract block revisions and discusses how to:

- Revise a contract block.
- Push contract block revisions to contract harvests.
- Copy values from one contract block to another.
- Delete a contract block record

Understanding Contract Block Revisions

You revise and update existing information throughout the life cycle of most grower contracts. After you add a contract, you can revise information on the contract block record if the contract status is draft or active.

Because the contract block and harvest records have identical attributes or fields, you can change an attribute on the block record and, optionally, have the system update the same attribute on corresponding harvest records with a current or future status. In this way, the system *pushes* the changes from the contract header to selected harvest records. For example, if you change or update the minimum and maximum quantities on the contract block, you can selectively update harvest records with the same information. The system updates both the F43C10 and F43C11 tables.

Note: You cannot change the grower block that is associated with the contract block. To assign a different grower block to a contract, you must delete the contract and add a new one.

Forms Used to Manage Contract Blocks

Form Name	Form ID	Navigation	Usage
Contract Search	W43C00A	Daily Processing (G40G21), Contract Workbench	Review a list of contract blocks.

Form Name	Form ID	Navigation	Usage
		Select the Contract Blocks tab.	
Update Contract Block	W43C10A	On the Contract Search form, select the Contract Blocks tab. Enter search criteria and click Find. Select a block. On the Edit Contract Header form, scroll down and select a block.	Revise a contract block.
Push From Contract Block	W43C80A	On the Update Contract Block form, revise fields as necessary. Select the Update Contract Harvest check box, and click Save and Continue.	Push contract revisions to contract harvests.
Select Contract Block	W43C10SSC	On the Update Contract Block form, click Copy Contract Block.	Select the contract block record in which to copy values.
Edit Contract Header	W43C00A	On the Contract Search form, select the Contract Headers tab and then select a contract name.	Delete a contract block.

Revising a Contract Block

Access the Update Contract Block form.

You can revise fields on a contract block with a status of draft or active only.

Start Date and End Date

You can change the start and end dates on the block record only if the dates that you enter remain within the contract header date range.

If you change the end date to a date later than the current date, the system validates that the date is within the contract header date range.

If you change the block end date to a date before the attached harvest end dates, the system issues a warning message.

Ensure that you generate new harvest records, if necessary. Click the Generate/Attach Harvest button on the Update Contract Block form.

See *Generating New Grower Harvests for a Contract Block*.

Pushing Contract Block Revisions to Contract Harvests

Access the Push From Contract Block form.

When you first access the Push From Contract Block form, the system displays the field values from the contract block. Scroll down to the Push Selection area of the form.

Push Selection Area

In the Push Selection area of the Push From Contract Block form, the system displays check boxes that correspond to the field values that you can *push* to a harvest record.

To select the values to push from the contract block to the contract harvest:

1. Select the check boxes that correspond to the information to push to a harvest record.
2. Select the current or future harvest records to update.
3. Click Update Selected.
4. To review the updated harvest record, on the Update Contract Block form, scroll down and select the harvest record to access the Edit Contract Harvest form.

Note: The system pushes the start and end dates from a contract block to a new harvest record; however, it does not push dates if the harvest record exists. You cannot *push* clauses from the contract block to the harvest record.

Copying Values from One Contract Block to Another

Access the Update Contract Block form. Click Copy Contract Block.

You can copy values from an existing contract block to another block and minimize redundant data entry. When you copy a block, the system copies most of the values from the original contract block, except for the block code, business unit, harvest records, and amendments, to the block that you have selected and overrides any values that exist on the selected block. A block record must exist in the Contract Block table (F43C10) before you can use it to copy values.

Because contract blocks can look very similar, you should consider setting up *model* contract blocks to use as templates so that you can quickly copy the values from the model to another block and then update that block with specific information.

Deleting a Contract Block Record

Access the Edit Contract Header form. Select the block record to delete from the contract header and click Remove.

You can delete a contract block only if no purchase orders or payments have been applied to the contract harvest records. When you delete a contract block, the system deletes the block in the F43C10 table and all harvest records associated with the block in the F43C11 table, and payment schedules in the F43C25 table.

To delete an entire contract including the contract block and harvest records, you must delete the contract header.

See *Deleting a Contract Header*.

Managing Contract Harvests

This section provides an overview of contract harvest revisions and discusses how to:

- Revise a contract harvest record.
- Delete a contract harvest record.

Understanding Contract Harvest Revisions

The agribusiness is unique in that it has one or multiple harvests per year. For long-range planning, you typically have multiple contract harvest records that represent future years. Over time, you may have to revise these records. For example, you might revise contract harvest records if you extend the date range of a contract block and, subsequently must add or generate harvest records.

After you add a contract, you can revise information on the contract harvest if the contract status is draft or active.

Note: You cannot copy an existing contract harvest record.

Forms Used to Manage Contract Harvests

Form Name	Form ID	Navigation	Usage
Contract Search	W43C00A	Daily Processing (G40G21), Contract Workbench	Review a list of contract harvests.
Edit Contract Harvest	W43C11A	On the Contract Search form, select the Contract Harvest tab and select a harvest record.	Revise a contract harvest record.
Update Contract Block	W43C10A	On the Contract Search form, select the Contract Blocks tab and select a contract block record.	Delete a harvest record.

Revising a Contract Harvest Record

Access the Edit Contract Harvest form.

General Info

Select this tab.

Start Date and End Date

The Start Date and End Date fields appear on the Edit Contract Harvest form only if a processing option is set to display them.

After you create a harvest record, you cannot change the harvest start and end dates. The harvest start and end dates are associated with the harvest dates which are set up in the JD Edwards EnterpriseOne Grower Management system.

Reprice PO/Receipts

Click this button to run the Reprice Procurement/Receipts program (R45620) if you change the price on a contract. This program processes the price changes on purchase orders and receipts.

See *"Repricing Purchase Orders and Receipts" in the JD Edwards EnterpriseOne Applications Advanced Pricing Implementation Guide* .

If the version of the Reprice Procurement/Receipts program has the Recost Blend Lots processing option set to do so, the system also runs the Recost Blend Lot program (R31B30) after it reprices receipts.

See *"Applying Harvest Cost-Component Changes to Blend Lots" in the JD Edwards EnterpriseOne Applications Blend Management Implementation Guide* .

Pricing

Select this tab.

Set as Base Price

Select an adjustment record, and click the Set as Base Price button to select the price that is associated with the record as the new base price.

The system places a check mark in the New Base Price check box for the adjustment record.

Deleting a Contract Harvest Record

Access the Update Contract Block form.

On the Update Contract Block form, scroll down to the Contract Harvests area of the form. Select the harvest record and click Remove.

You can delete a contract harvest record only if no purchase orders or payments have been applied to the record. To delete an entire contract including the block and harvest records, you must delete the contract header.

See *Deleting a Contract Header*.

Performing Mass Updates for Grower Contracts

This section provides an overview of mass updates for grower contracts and discusses how to:

- Set up a mass update profile for contract headers.

- Set processing options for Contract Header Mass Update (R43C010).
- Perform a mass update for contract headers.
- Set up a mass update profile for contract blocks.
- Set processing options for Contract Block Mass Update (R43C100).
- Perform a mass update for contract blocks.
- Set up a mass update profile for contract harvests.
- Set processing options for Contract Harvest Mass Update (R43C110).
- Perform a mass update for contract harvests.

Understanding Mass Updates for Grower Contracts

To streamline the maintenance of grower contracts, you can perform mass updates. Mass updates enable you to update several contracts at the same time. You can perform mass updates at these three levels:

- Contract header
- Contract block
- Contract harvest

To customize mass updates, you can set up different mass update profiles. In the mass update profile, you specify which fields should be updated and which replacement value you want the system to use. For example, you can set up a mass update profile for price information on the contract block. You can set up different mass update profiles at the contract header, block, and harvest level.

You can set up mass update profiles to push changes down to the lower levels. For example, you can specify that the system updates price type on the contract header field at the block and harvest level as well. By the same token, you can specify whether the system pushes updated values on the contract block down to the harvest level. The system stores the mass update profiles in these tables:

- Contract Header Profile table (F43C010)
- Contract Block Profile table (F43C100)
- Contract Harvest Profile table (F43C110)

After you have set up a mass update profile for contract headers, blocks, or harvest, you run the corresponding mass update batch program to update the contract header, block, or harvest tables with the updated values in the selected fields.

Prerequisite

Set up grower contract header, block, and harvest information.

See *Creating Grower Contracts*.

Forms Used to Set Up Contract Mass Update Profiles

Form Name	Form ID	Navigation	Usage
Add/Edit Contract Header Update Profile	W43C010B	Periodic Contract Processing (G40G222), Contract Header Update Profile	Set up a mass update profile for contract headers.
Update from Header	W43C010	Select the Update Contract Block and Harvest check box on the Add/Edit Contract Header Update Profile form, enter the update information, and click Save and Close.	Select the levels to which you want to push down the price type from the contract header.
Add/Edit Contract Block Update Profile	W43C100B	Periodic Contract Processing (G40G222), Contract Block Update Profile	Set up a mass update profile for contract blocks.
Update Harvest	W43C100C	Select the Update Contract Harvest check box on the Add/Edit Contract Block Update Profile form, enter the update information, and click Save and Close.	Select the harvest fields to update from the block.
Add/Edit Contract Harvest Update Profile	W43C110B	Periodic Contract Processing (G40G222), Contract Harvest Update Profile	Set up a mass update profile for contract harvests.

Setting Up a Mass Update Profile for Contract Headers

Access the Add/Edit Contract Header Update Profile form.

Contract Header Profile Description

Enter a name for the mass update profile for contract headers that you are setting up. The system automatically generates a profile ID.

Update Contract Block and Harvest

Select to push contract header updates to contract block and harvest fields.

If you select this option, enter update information, and click Save and Close, the system opens the Update from Header form where you can select whether to push changes to both contract block and contract harvest or only to the contract harvest.

This option is available only if you want to push price type updates to contract blocks and harvests. For any other update fields, this option is disabled.

General

Select the General tab.

Select the check box for each of the fields to update and enter the update value where applicable:

- Contract Status
- Contract Type
- Contract Ownership
- Delivery Form
- Price Type
- Contracting Entity
- Contract Manager
- Contract Buyer
- Commodity Code
- Renew Type
- Renew Term
- Renew Period
- Start Date
- End Date
- Renewable End Date
- Review Date

Note: You cannot use the mass update to update business unit, payment schedules, and action dates for the contract header.

Additional Info

Select the Additional Info tab.

Select the check box for each of the fields to update and enter the update value where applicable.

You can update twelve address book numbers that are associated with the contract, six contract properties, fifteen contract codes, and six contract dates.

Clauses

Select the Clauses tab.

Contract Clause

Enter the name of the contract clause to update for the contract.

Action

For each contract clause that you specify in the Contract Clause field, specify whether to add the clause to the contract or whether to delete the clause from the contract.

Setting Processing Options for Contract Header Mass Update (R43C010)

These processing options control default processing for the Contract Header Mass Update program.

Process

These processing options control how the system process mass update for contract headers.

1. Contract Header Profile ID

Specify the mass update profile that the Contract Header Mass Update program uses to determine which fields to update.

2. Terminate Associated Grower Harvests

Specify whether the system terminates a grower harvest that is associated with a contract harvest. Use this processing option for either of the following scenarios:

- You update the status of the contract header to **Closed** and want to terminate associated grower harvests.
- You move the end date for a contract header or block for which contract harvest have been created and associated with grower harvests. If you shorten an existing contract, the system deletes all contract harvests outside the contract date range. You should delete the grower harvests associated with deleted contracts.

Values are:

Blank: Do not terminate associated grower harvests.

1: Terminate associated grower harvests.

Versions

This processing option controls the version that the system uses when calling other programs.

1. Search For Contracts (P43C00)

Specify the version that the system uses to call the Search for Contracts program. If you leave this processing option blank, the system uses the default version.

Performing a Mass Update for Contract Headers

Select Periodic Contract Processing (G40G222), Contract Header Mass Update.

Setting Up a Mass Update Profile for Contract Blocks

Access the Add/Edit Contract Block Update Profile form.

Contract Block Profile Description

Enter a name for the mass update profile for contract blocks that you are setting up. The system automatically generates a profile ID.

Update Contract Harvest

Select to push contract block updates to contract harvest. If you select this option, enter updated values, and click Save and Close, the system opens the Update Harvest form. On this form, you can select which updates you want to push to the associated contract harvests. The updates you can push from the block to associated harvests include:

- Commodity.
- Delivery form.
- Contracted quantity.
- Minimum and maximum quantity.
- Transaction and pricing unit of measure.
- Pricing adjustment.
- Price type.
- Minimum, maximum, and override price.
- Price level and price group.
- Memo price and memo price level.
- Pricing comment.
- Grower Pool.
- Equity Type.
- Equity Percent.
- POP Payment Terms.
- POP Pricing Schedule.

Note: If receipts exist for the harvest, the system does not update pay on proceeds information.

General

Select the General tab.

Select the check box for each of the fields to update and enter the update value where applicable:

- Commodity Code
- Delivery Form
- Renew Type
- Renew Term
- Renew Period
- Start Date
- End Date
- Renewable End Date
- Contract Price Group
- Price Schedule
- Price Override
- Price Level

- Minimum Price
- Maximum Price
- Memo Price
- Memo Price Level
- Purchasing UOM (purchasing unit of measure)
- Price Type
- Override Comment
- Grower Pool
- Equity Type
- Equity Percent
- POP Payment Terms
- POP Pricing Schedule
- Disallow Over Receipt
- Contract Quantity
- Transaction UOM (transaction unit of measure)
- Minimum Quantity
- Maximum Quantity

Note: You cannot use the mass update to update business unit, assessments and donation, and payment schedules for the contract block.

Additional Info

Select the Additional Info tab.

Select the check box for each of the fields to update and enter the update value where applicable.

You can update twelve address book numbers that are associated with the contract, six contract properties, fifteen contract codes, and six contract dates.

Clauses

Select the Clauses tab.

Contract Clause

Enter the name of the contract clause to update for the contract block.

Action

For each contract clause that you specify in the Contract Clause field, specify whether to add the clause to the contract block or whether to delete the clause from the contract block.

Setting Processing Options for Contract Block Mass Update (R43C100)

These processing options control default processing for the Contract Block Mass Update program.

Process

These processing options control how the system process mass update for contract blocks.

1. Contract Block Profile ID

Specify the mass update profile that the Contract Block Mass Update program uses to determine which fields to update.

2. Delete Associated Contract Harvests

Specify whether you want the system to delete contract harvests that are associated with the contract block when you change the renewable end date of the contract block to an earlier date. If you enter **1**, the system deletes all associated contract harvests that fall outside the revised time frame. If you try to change the renewable end date to an earlier date and leave this processing option blank, the mass update does not update the renewable end date. Values are:

Blank: Do not delete associated contract harvests.

1: Delete associated contract harvests.

Versions

This processing option controls the version that the system uses when calling other programs.

1. Search For Contracts (P43C00)

Specify the version that the system uses to call the Search for Contracts program. If you leave this processing option blank, the system uses the default version.

Performing a Mass Update for Contract Blocks

Select Periodic Contract Processing (G40G222), Contract Block Mass Update.

Setting Up a Mass Update Profile for Contract Harvests

Access the Add/Edit Contract Harvest Update Profile form.

Contract Harvest Profile Description

Enter a name for the mass update profile for contract harvests that you are setting up. The system automatically generates a profile ID.

General

Select the General tab.

Select the check box for each of the contract harvest fields to update and enter the update value where applicable:

- Commodity Code
- Delivery Form
- Contract Price Group
- Price Schedule
- Price Override
- Price Level

- Minimum Price
- Maximum Price
- Memo Price
- Memo Price Level
- Purchasing UOM (purchasing unit of measure)
- Price Type
- Override Comment
- Contract Quantity
- Transaction UOM (transaction unit of measure)
- Minimum Quantity
- Maximum Quantity
- Disallow Over Receipt
- Price Approved
- Grower Pool
- Equity Type
- Equity Percent
- POP Payment Terms
- POP Pricing Schedule

Note: You cannot use the mass update to update business unit, assessments and donation, and payment schedules for the contract harvest. Also, the system does not update pay on proceeds values to the harvest if receipts exist for the harvest.

Additional Info

Select the Additional Info tab.

Select the check box for each of the fields to update and enter the update value where applicable.

You can update twelve address book numbers that are associated with the contract, six contract properties, fifteen contract codes, and six contract dates.

Clauses

Select the Clauses tab.

Contract Clause

Enter the name of the contract clause to update for the contract block.

Action

For each contract clause that you specify in the Contract Clause field, specify whether to add the clause to the contract block or whether to delete the clause from the contract block.

Setting Processing Options for Contract Harvest Mass Update (R43C110)

These processing options control default processing for the Contract Harvest Mass Update program.

Process

These processing options control how the system process mass update for contract blocks.

1. Contract Harvest Profile ID

Specify the mass update profile that the Contract Harvest Mass Update program uses to determine which fields to update.

Performing a Mass Update for Contract Harvests

Select Periodic Contract Processing (G40G222), Contract Harvest Mass Update.

Renewing Contracts

This section provides an overview of contract renewal and discusses how to renew a contract.

Understanding Contract Renewal

To renew or extend a contract, you change the end date on the contract. The contract can have one of these renew types:

Renew Type	Allowed Actions
Renew	You can change the contract end date in the End Date field to a date that is greater than the existing date. The date that you enter must be less than or equal to the renewable end date.
Roll	You can change the contract end date in the End Date field to a date that is greater than the existing date if no renewable end date exists. If a renewable end date exists, the contract end date must be less than or equal to the renewable end date.
Nonrenewable	You can change the contract end date in the End Date field to any date that is greater than the existing date.

Forms Used to Renew Contracts

Form Name	Form ID	Navigation	Usage
Contract Search	W43C00A	Daily Processing (G40G211), Contract Workbench Select the Contract Harvest tab and select a harvest record.	Review a list of contracts.
Edit Contract Header	W43C00A	On the Contract Search form, select the Contract Headers tab and then select a contract.	Renew a contract.

Renewing a Contract

Access the Edit Contract Header form. Scroll down to the Dates area of the form.

Note:

- *Adding a Contract Header.*

Terminating Contracts

This section provides an overview of contract termination and discusses how to terminate a contract.

Understanding Contract Termination

To terminate a contract, you terminate the contract header in the F43C01 table. The system disassociates the contract ID from the corresponding grower harvest record in the Grower Harvest table (F40G03). When you terminate a contract, you can optionally have the system set the status of the associated grower harvest to terminate.

The following rules apply to contract termination:

- You can terminate a contract if purchase orders that are applied to the contract are fully paid.
If fully paid, the associated harvest record is no longer open and you can terminate the contract.

- You cannot terminate a contract if purchase orders that are applied to the contract are partially paid. If partially paid, the associated harvest record is open and shows purchase order or payment activity. You cannot terminate the contract.

You can continue to view contracts that have been terminated. You can also copy the values from a terminated contract to another contract. You cannot, however, revise a terminated contract.

Forms Used to Terminate a Contract

Form Name	Form ID	Navigation	Usage
Contract Search	W43C00A	Daily Processing (G40G211), Contract Workbench	Review a list of contracts.
Edit Contract Header	W43C00A	On the Contract Search form, select the Contract Headers tab and then select a contract.	Terminate a contract.

Terminating a Contract

Access the Edit Contract Header form.

Contract Status

Select the status for terminated.

Deleting Contracts

This section provides an overview of contract deletion and discusses how to delete a contract.

Understanding Contract Deletion

You can delete a contract header only if the system has not applied purchase orders or payments to the contract header, block, and harvest records. If one or more records do not meet this criteria, the system does not delete the contract header.

When you delete a contract header in the Contract Header table (F43C01), the system deletes the entire contract. This includes the records in the Contract Block table (F43C10) and the records in the Contract Harvest table (F43C11), and records in these tables:

- Contract Action Dates (F43C05).
- Contract Clauses (F43C60).

- Contract Payees (F43C20).
- Payee Date Schedule (F43C25).
- Contract Assessments Donations (F43C40).

The system disassociates the contract ID from the corresponding grower harvest record in the Grower Harvest table (F40G03). This causes the link between the contract harvest record and grower harvest record to be broken. The system does not delete the grower block and harvest records that are associated with the contract block and harvest records.

When you delete a contract header, you can optionally have the system set the status of the associated grower harvest to terminate in the F40G03 table.

Note: Alternatively, you can delete a single block or harvest record that is associated with a contract header, instead of deleting the entire contract.

- Note:**
- *Deleting a Contract Block Record.*
 - *Deleting a Contract Harvest Record.*

Form Used to Delete a Contract

Form Name	Form ID	Navigation	Usage
Contract Search	W43C00A	Daily Processing (G40G211), Contract Workbench	Delete a contract.

Deleting a Contract

Access the Contract Search form.

To delete a contract:

1. Select the contract header record, and click Delete Contract.
2. In the Delete Confirmation window, click Yes to proceed.
3. In the Message window, click Yes or No to specify whether to set the status of the associated grower harvest to terminate.

If you click Yes, the system terminates the record in the Grower Harvest table (F40G03).

5 Managing Contract Pricing

Understanding Contract Pricing

In the JD Edwards EnterpriseOne Grower Pricing and Payments system, you have multiple options to price your contracts:

- Enter a price on the contract block and harvest record.
- Use base price for the associated item on the contract.
- Use the JD Edwards EnterpriseOne Advanced Pricing system to calculate prices using schedules and adjustments.

Understanding JD Edwards EnterpriseOne Advanced Pricing

Pricing is probably the most complex aspect of the business; it may take you considerable time to plan, set up, and maintain pricing information. You can use JD Edwards EnterpriseOne Advanced Pricing system to manage pricing in the JD Edwards EnterpriseOne Grower Pricing and Payments, and Blend Management systems.

With JD Edwards EnterpriseOne Advanced Pricing, you can:

- Adjust prices for each promotion or deal, and then combine adjustments into a pricing structure or schedule
- Define unlimited price adjustments and combine regular discounts and promotions within the same schedule.

When you enter a purchase order, the system retrieves the unit cost for the item based on characteristics, such as the branch/plant, the supplier, the quantity, and the item, or a contract. Before the system processes any type of advanced price adjustment to the purchase order, it must first retrieve the unit cost. Depending on the purchase price level for the item, the system retrieves the unit cost from either the Supplier Price/Catalog File (F41061) table or the Item Cost File (F4105) table. After the system retrieves the unit cost, it verifies that Advanced Procurement Pricing is active. If Advanced Procurement Pricing is active, the system bypasses the standard price adjustments that you set up in JD Edwards EnterpriseOne Procurement and searches for applicable schedules and adjustments in JD Edwards EnterpriseOne Advanced Pricing.

When you enter an item in the Item Master Revisions program, you must enter the purchase price level. The purchase price level determines how you define the base price for an item. The base price is the unit cost on a purchase order. This table shows at which levels you can define the purchase price:

Purchase Price Level	Description
Supplier/Item	Define one overall price for an item from a supplier. The system retrieves the supplier cost from the F41061 table.
Supplier/Item/Branch	Set up different prices for each supplier, item, and branch combination. The system retrieves the supplier cost from the F41061 table.

Purchase Price Level	Description
Inventory Cost	Set up the cost based on the inventory cost level and the purchase cost method you specify for the item. The system retrieves the inventory cost from the F4105 table. If you do not set up prices for suppliers, the system uses the inventory cost as the default for the purchase order.

The Pricing Workbench enables you to view all pricing scenarios on one form; you can locate all pricing-related information for a supplier and different scenarios and avoid conducting numerous customer inquiries. The Price Matrix enables you to add and edit multiple pricing records on one form.

Using the JD Edwards EnterpriseOne Advanced Pricing system for grower contract pricing, you can base the price you pay for crops on information in a contract, minimum and maximum prices you set, and quality tests you perform on crop receipt. You can also change the price during receipts entry and override the price that you pay for crops. Additionally, you can base the proceed payments on the price on the sales orders that the product is sold on.

Using the JD Edwards EnterpriseOne Advanced Pricing for procurement pricing, you can process adjustments per line item or change the price on a batch of purchase orders or receipts. You can also create hierarchical search sequences. You can conduct an online review of adjustment history as well.

Supplier Prices

You can set up prices for an item based on the supplier from whom you purchase the item. When you enter a purchase order, the system can retrieve the unit cost for an item for the supplier. You must set up the purchase price level so that the system retrieves unit costs for purchase orders based on suppliers. If you maintain supplier prices at the branch/plant level, you must enter a branch/plant when you add an item to a catalog. You can enter a different branch/plant for each item in a catalog.

A catalog is a group of items along with the price for each item. Each catalog is unique to a supplier. You must enter supplier prices by catalog. You can enter all of the items that you purchase from a supplier in one catalog, or you can create multiple catalogs to classify a supplier's items by seasonal changes, different product lines, and so on. You can enter the same item at different prices in multiple catalogs with different effective dates for each price. Additionally, you can specify price breaks based on the quantity purchased.

If you enter item prices for a supplier without specifying the name of a catalog, the system automatically creates a default catalog for the supplier. You might want to use default catalogs if you plan to maintain only one catalog for each supplier. When you enter an item on a purchase order, the system searches the supplier catalogs to retrieve the unit cost. It searches the default catalog first (if it exists) and then all other catalogs in alphabetical order. After the system locates a unit cost, it verifies the effective dates. If the current date falls within the effective dates, the system enters the unit cost on the purchase order.

Procurement-Specific Implementation Steps

This table lists the required implementation steps to use the JD Edwards EnterpriseOne Advanced Pricing and Procurement systems:

Step	Reference
1. Set up order line types.	See <i>"Setting Up the Procurement System" in the JD Edwards EnterpriseOne Applications Procurement Management Implementation Guide</i> .
2. Set up supplier and item information.	See <i>"Entering Supplier Information" in the JD Edwards EnterpriseOne Applications Accounts Payable Implementation Guide</i> . See <i>"Managing Suppliers" in the JD Edwards EnterpriseOne Applications Procurement Management Implementation Guide</i> .
3. Define supplier prices.	See <i>"Entering Item Information" in the JD Edwards EnterpriseOne Applications Inventory Management Implementation Guide</i> . See <i>"Managing Suppliers" in the JD Edwards EnterpriseOne Applications Procurement Management Implementation Guide</i> .
4. (Optional) Define supplier rebate agreements.	See <i>"Managing Suppliers" in the JD Edwards EnterpriseOne Applications Procurement Management Implementation Guide</i> .
5. (Optional) Set up landed costs.	See <i>"Managing Suppliers" in the JD Edwards EnterpriseOne Applications Procurement Management Implementation Guide</i> .

Using JD Edwards EnterpriseOne Advanced Pricing with Grower Pricing and Payments

This section provides an overview on using JD Edwards EnterpriseOne Advanced Pricing with Grower Pricing and Payments.

Understanding JD Edwards EnterpriseOne Advanced Pricing with Grower Pricing and Payments

A contract with a grower may span several years or growing periods and you want to maintain the contract and the price you pay for crops over a long period. You can use the features of the JD Edwards EnterpriseOne Advanced Pricing system with the JD Edwards EnterpriseOne Grower Pricing and Payments system:

- Price matrix to maintain adjustment detail records.
- Minimum or maximum price adjustment to maintain minimum or maximum pricing on receipts for crops.
- Reprice on receipts after the weigh tag operation is closed.
- Price based on quality tests.
- Manually override the price on a contract and apply adjustments.

Price Matrix

The price matrix is a two dimensional view of price adjustment detail records based on item group, purchase order detail group, or receipt order detail group combinations. To use a price matrix, you can set up an adjustment definition

to act as an override price of the contract price attached to a purchase order. You must specify that the adjustment definition uses a price matrix. You can then set up an order detail group to include category codes, such as District, Variety, or Level on which the system bases the contract price. To use the price matrix, you specify:

- Pricing hierarchy
- Price override
- Order detail group, which might include the District or Variety fields.

See *"Working with the Price Matrix" in the JD Edwards EnterpriseOne Applications Advanced Pricing Implementation Guide* .

See *"Working with Adjustment Definitions" in the JD Edwards EnterpriseOne Applications Advanced Pricing Implementation Guide* .

Minimum or Maximum Price Adjustment

You can use a minimum or maximum price adjustment to ensure that the system uses the contract prices as the minimum or maximum base price or to ensure that the base price is within the minimum or maximum range. You use the Min Adjustment and Max Adjustment options with the Min/Max Rule field on the Price Adjustment Definition form to ensure that the base price is from the contract or is within the valid range. The sequence of this adjustment on the adjustment schedule also impacts the final price for the product. For example, if the base price is less than the minimum price you set on another price adjustment, then the system uses the minimum price on the contract as the base price. Similarly for maximum pricing, if the base price is greater than the maximum price you set on another price adjustment, then the system uses the maximum price on the contract as the base price. When the system verifies the minimum or maximum price, the system uses this adjustment as the base price on the receipt. You must enter a value of 5 (add-on amount) in the Basis Code field in the price adjustment details as the system does not accept any other value in the Basis Code field for minimum and maximum pricing.

Repricing

You can use the JD Edwards EnterpriseOne Advanced Pricing system to integrate procurement tasks with the JD Edwards EnterpriseOne Grower Pricing and Payments system. When you create a weigh tag operation in the JD Edwards Grower Management system, the system creates purchase orders. The purchase orders link information from the JD Edwards Grower Management and JD Edwards Grower Pricing and Payments systems and can have procurement adjustments that affect pricing. Likewise, when the weigh tag operation closes, the system creates purchase order receipts. The receipts link information from the JD Edwards EnterpriseOne Grower Management and JD Edwards EnterpriseOne Grower Pricing and Payments systems and can have receipt adjustments that affect pricing.

The system determines a price when it creates receipts using the information in a harvest record. When changes to the harvest occur, the grower harvest record is updated, which ensures the most up-to-date pricing information for receipts. The system searches for the following pricing information in the JD Edwards Grower Pricing and Payments system:

- Price override.
- Minimum or maximum price adjustment.
- Price level.
- Purchasing unit of measure.
- Pricing group.

You can create adjustments to apply a penalty or award a bonus on the price of a shipment of crops. The system can search for additional information—for example, information in the Variety, District, Target Quality, Current Quality, and Region fields. You can set up order detail groups using values from the contract harvest record, and the system resolves the adjustments when the values match. However, the price on the receipt is based on the original order quantity on

the purchase order. Any adjustments that you manually change or add on the Price History form for the purchase order remain on the receipt record.

When you reprice receipts, you have the option to recost the harvest cost-component for your blend lots. You can set a processing option in the Reprice Procurement/Receipts program (R45620) to recost the harvest cost-component when you reprice your receipts, or you can run the Recost Blend Lots Batch program (R31B30) as a separate step. See *"Applying Harvest Cost-Component Changes to Blend Lots" in the JD Edwards EnterpriseOne Applications Blend Management Implementation Guide* .

Note: The adjustment schedules that you attach to the contract harvest override the schedules on the Supplier Master for purchase orders and receipts.

Quality Tests

You can base the price you pay for crops on quality tests you perform when you receive the crops. Using this type of adjustment definition enables you to reduce or increase the price for crops. For example, you can base the price for crops on your specifications of quality test results for rot or Brix. Use this feature with the JD Edwards EnterpriseOne Advanced Pricing, Procurement, and Quality Management systems.

You create a receipt adjustment definition with a quality level break type, assign the test result names to the adjustment definition, and choose whether to adjust the quantity to pay at receipts entry. When you set up the price adjustment details, you can define the adjustment using a percentage, a formula, or an add-on amount using the Basis Code and Factor Value Numeric fields. Use the add-on amount to adjust the quantity with a quantity-to-pay adjustment. However, if you select the Adjust Quantity to Pay option on the Price Adjustment Definition form, you can enter only 5 (add-on amount) or 7 (formula) in the Basis Code field. On the Receipt Order Detail Group Definition form, you also select whether to base the adjustment on the Pricing Control 01 (Directed Harvest) and Pricing Control 02 (Inspection) fields.

When you enter a Weigh Tag Operation in the JD Edwards EnterpriseOne Grower Management system, you add the quality tests you plan to perform to the operation. As you receive shipments of crops, you perform the quality tests and enter the test results in the operation. After you receive all shipments of crops and close this operation, the system creates a receipt using this adjustment definition to determine the price. Use the Price History form to view the deduction in the transaction unit of measure in the Quantity To Pay field. Verify that the JD Edwards EnterpriseOne Quality Management system is active and set up quality tests on the Blend Management Quality Management Setup menu (G31B41) before you define this type of adjustment. You cannot use this type of adjustment definition with advanced preferences or as a price override.

Pay on Proceeds

Using this type of adjustment definition enables you to pay growers based upon the price at which you sell your crop. You create a pay on proceeds adjustment definition with a quantity level break, weight level break, or amount level break. The stem calculates the proceed payment by retrieving the pricing schedule and the equity percent from the contract harvest.

Note:

Oracle recommends that pricing schedules for the pay on proceeds process contain pay on proceeds adjustment types only. You must select the Procurement option as the target application for all of the adjustment types in the pay on proceeds pricing schedule.

See

JD Edwards EnterpriseOne Applications Advanced Pricing Implementation Guide

Manual Override

You can choose to manually override the price on a contract and choose which adjustments apply to receipts when the weigh tag operation closes. This feature enables you to adjust the price of crops for penalties or bonuses. To use this feature, you must first select the Procurement Pricing on Override Price field on the Pricing Constants form. When you create the adjustment definition, you select the Line Level Adjustment and Apply on override price options. The system stores the new price as the base price in the price history and accumulates accrual amounts.

Considerations

The system validates the base price against the minimum and maximum price on the contract. You must:

- Set the Min/Max Rule on the minimum or maximum price adjustment to a 2 for a purchasing contract.
- In the JD Edwards Grower Pricing and Payments system, ensure that the contract contains:
 - An adjustment schedule.
 - A harvest record for the crop.

If you base prices for crops on quality test results, you can attach the adjustment schedule, which contains adjustments for quality, to a contract. This process enables you to use the contract price as the base price.

Understanding JD Edwards EnterpriseOne Advanced Pricing Setup

The JD Edwards EnterpriseOne Advance Pricing system is simple, yet complex. Mandatory set up requirements include:

- Preference Hierarchy.
- Preference Master.
- Adjustment Definitions.
- Adjustment Details.
- Adjustment Schedules.

Preference Hierarchy

Based on the preference hierarchy, the system applies the pricing adjustments to the unit cost in the purchase order. The system uses this pricing structure to retrieve unit cost and to calculate adjustments and updates. You should set up the hierarchy to search from specific combinations to general combinations.

This diagram shows a typical supplier pricing hierarchy:



Note: After you activate the Advanced Procurement Pricing constant, you create purchase order adjustments on the same forms and in the same manner as you would for sales order adjustments. However, the system processes information in the Customer and Customer Group fields as Supplier and Supplier Group.

For example, you can set up the preference hierarchy so that when you enter a purchase order, the system first searches for a specific supplier for that item. If the system finds an adjustment for the supplier and item, then it applies the adjustment to the unit cost. If not, the system can then search for a price adjustment for this specific supplier and the item group to which this item might belong. The sequence for the preference hierarchy for purchase order adjustments could be:

- Supplier and item.
- Supplier and item group.
- All suppliers and item.

See *"Setting Up Advanced Pricing Hierarchies" in the JD Edwards EnterpriseOne Applications Advanced Pricing Implementation Guide* .

Preference Master

Before you define each pricing hierarchy, you must create a master record, known as the Preference Master, for that hierarchy. In base pricing, you are limited to one preference hierarchy (51). In the JD Edwards EnterpriseOne Advanced Pricing system, you can create as many different preference hierarchies as you need.

Alternatively, you can select the Skip-To End field for an adjustment definition and the system bypasses all subsequent adjustment definitions. You might choose to do this to bypass mutually exclusive adjustments. Using the Skip-To field functionality can also improve system performance when calculating prices.

Note: You cannot use the Skip-To field functionality with Buying Structures, Direct Price Adjustments, and Advanced Preferences.

If you use minimum or maximum price adjustment, you can enter this price adjustment at any point in the schedule and the system validates the price adjustment and calculate the unit price at that point in the schedule.

Additionally, on the Price Adjustment Schedule Revisions form you can use the Set New Base Price selection on the Row menu to create a base price for the item. You can select this feature for only one adjustment definition in the adjustment schedule. The system determines the new base price by calculating all of the adjustment definitions in the schedule through and including the row with the New Base Price selection.

Adjustment Definitions

An adjustment definition is a record that describes a special pricing situation, such as a pricing plan or promotion. You create adjustment definitions by specifying the characteristics of the adjustment. The characteristics of the definitions determine:

- The sequence that the system uses to search for prices using the pricing hierarchy.
- Whether the adjustment uses a price matrix.
- Whether the adjustment applies to an override price.
- Which general ledger offset directs the advanced pricing entries to the appropriate general ledger accounts based on AAls.
- Whether a minimum and maximum price is to be paid for an item.
- Whether the adjustment is mandatory.

See *"Working with Adjustment Definitions" in the JD Edwards EnterpriseOne Applications Advanced Pricing Implementation Guide* .

Adjustment Details

Adjustment details provide the parameters for calculating price adjustments. Advanced pricing adjustment details contain basis codes that add pricing flexibility. You can define adjustment details when you add adjustment definitions to adjustment schedules. Adjustment details enable you to define special processing such as free goods, pricing formulas, or variable tables. The pricing hierarchy defines in what order the system uses the adjustments you list in the adjustment details. After you define adjustment details you can create a price matrix to add or change multiple adjustment detail records.

See *"Setting Up Adjustment Details" in the JD Edwards EnterpriseOne Applications Advanced Pricing Implementation Guide* .

Adjustment Schedules

An adjustment schedule contains one or more adjustment definitions for which a customer or an item is eligible. An adjustment schedule consists of adjustment definitions and adjustment details.

You assign customers to adjustment schedules so the system can calculate prices. In the adjustment schedule, you specify the sequence that the system uses to apply adjustment definitions to sales order prices. You assign customers

to an adjustment schedule through the customer billing instructions. When you enter a sales order, the system copies the schedule to the Sold To address into the order header.

See *"Building Adjustment Schedules" in the JD Edwards EnterpriseOne Applications Advanced Pricing Implementation Guide* .

Complex Groups

For JD Edwards EnterpriseOne Grower Pricing and Payments, you can use these complex groups:

- Item Price Groups.
- Purchase Order Detail Groups.
- Receipt Order Detail Groups

The Purchase Order Detail Group and Receipt Order Detail Group definitions contain fields that are specific to grower contracts. You can use these fields to create pricing based on information on the purchase order or the receipt created from a weigh tag. To reprice receipts based on actual quality result information, set up pricing using Receipt Order Detail Groups.

Considerations

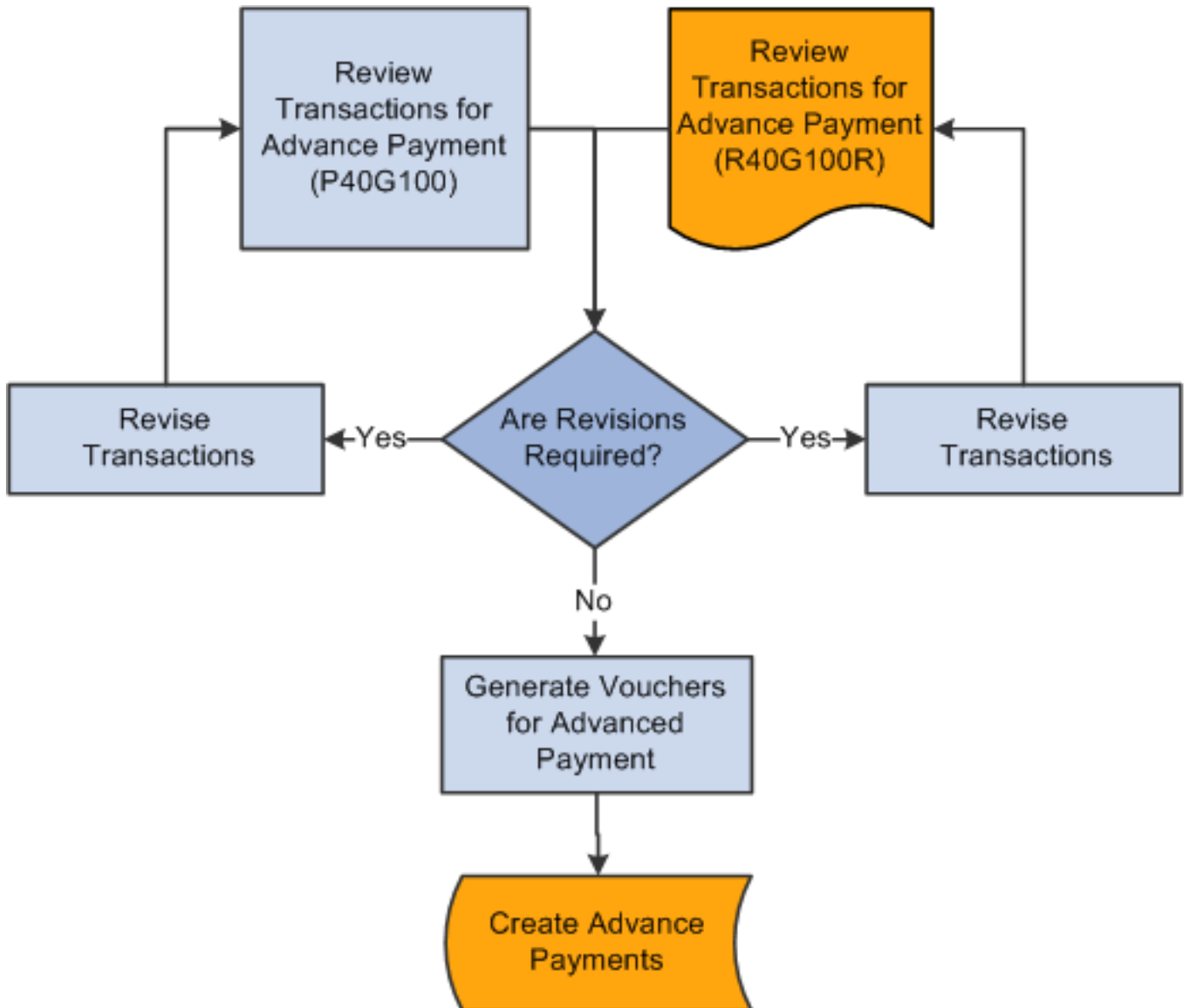
You assign adjustment schedules to suppliers so the system can calculate prices. In the adjustment schedule, you specify the sequence that the system applies the adjustment definitions to purchase order prices. You assign an adjustment schedule to a supplier using the Supplier Master Revision form. When you enter a purchase order, the system copies the schedule to the supplier address into the order header. In addition, you can override the schedule from the Supplier Master by attaching an adjustment schedule to a purchasing contract in the JD Edwards Grower Pricing and Payments system.

Note: If you use JD Edwards EnterpriseOne Advanced Pricing and Procurement, you can assign only one adjustment schedule to each supplier. The system does not enable all of the JD Edwards EnterpriseOne Advanced Pricing functionality for use with Procurement. For example, on the Price Adjustment Definition, the system allows only the Line Level Adjustment option for the Procurement or Receipt target applications.

6 Processing Advance Payments

Understanding Advance Payments

This diagram illustrates the advance payments process:



You might have an agreement with a grower that you issue an advance payment before interim and final payments. For example, you might issue an advance payment when the grower delivers 30 percent of the estimated harvest yield. Or you might issue a specific monetary amount to the grower on a certain date.

The amount for an advance payment is based on:

- The due date rule that is assigned to the installment payment term that is associated with the payment schedule record.
- The distribution percent on the payment schedule record.
- The current estimate amount on the harvest record.

To be eligible for an advance payment, these conditions must exist:

- The contract must be active.
- The due date rule, which is assigned to the payment term on the payee payment schedule, must have the advance payment check box selected and be based on the current estimate (CE or blank).
- If the payment term is based on a percent of the product received, the due date rule must include a delivery percent amount.
- The harvest record, on which the payment is based, must have a current estimate amount.

The record cannot be for a continuous harvest. The system retrieves the current estimate amounts from the grower harvest record.

- A GL distribution account must be assigned to the corresponding prepayment processing option for Standard Voucher Entry (P0411).
- If you set up multi-currency processing, the payee record must have an assigned currency code.

When you issue an advance payment, the system creates a voucher record in the Accounts Payable Ledger table (F0411) with the contract code, block code, harvest period, and harvest suffix. This information is necessary for the system to deduct the advance payment from the final payment when you process the final settlement for a contract. The system does not link advance payments with receipts for voucher match until the final settlement.

Throughout the harvest cycle, you can print the Advance Payment Report (R40G4100R) to review advance payments that are due.

Note: If a payee requests a payment during the harvest cycle and an advance or interim payment was not specified in the payment schedule, you can create a manual voucher in the JD Edwards EnterpriseOne Accounts Payable system. You must identify the contract on the voucher to deduct the corresponding payment from the final payment during the final settlement process. Using the Prepayment Voucher Entry program (P0411), specify the contract code, block code, harvest period, and harvest suffix on the Enter Voucher - Payment Information form. This information links the voucher and, later, the payment to the specific contract block; and ensures payment deduction from the final settlement amount.

Reviewing Transactions for Advance Payments

This section provides an overview of transactions for advance payments and discusses how to:

- Set processing options for Advance Payment (P40G100).
- Review payees who are eligible for advance payments.
- Run the Advance Payment Report.
- Set Processing Options for Advance Payment Report (R40G100R).

Understanding Transactions for Advance Payments

You can review contracts requiring advance payments either online or in report format. The Advance Payment Search form and the Advance Payment Report (R40G100R) show transactions that are eligible for advance payment and for which a voucher has not yet been generated or paid. The system shows transactions for active contracts and the current harvest year and includes detail such as the contract price, due date, harvest estimate, quantity received, and so on.

You can set a processing option for both the program and the report to show only those contracts that have reached their delivery percent and are eligible for advance payments. Otherwise, the system shows all advance payments, regardless of the delivery percent. For the Advance Payment Report, you can also print a report that shows all payment schedules, instead of schedules for advance payments only.

From the Advance Payment Search form, you can access the Advance Voucher Review form where you can revise a transaction and generate a voucher for an advance payment. To generate a voucher, the system uses the Prepayment Voucher Entry program (P0411).

Alternate Tax Rate/Area Assignment Functionality for Advance Payment Vouchers

When you generate vouchers, the system will retrieve the alternate tax rate/area assignment if the company of the transaction is set up to do so.

See *"Setting Up Alternate Tax Rate/Area Assignment Functionality"* and *"Grower Management"* in the *JD Edwards EnterpriseOne Applications Tax Processing Implementation Guide*.

Forms Used to Review Transactions for Advance Payments

Form Name	Form ID	Navigation	Usage
Advance Payment Search	W40G100B	Periodic Settlement Processing (G40G221), Advance Payment	Review a list of all payees who are eligible for advance payments, or limit your search to certain payees.
Advance Voucher Review	W40G100A	On the Advance Payment Search form, select one or more transactions and click Voucher Review.	Review transactions that are eligible for advance payment. You can also revise transactions and generate vouchers from the Advance Voucher Review form.

Setting Processing Options for Advance Payment (P40G100)

Processing options enable you to specify default values for programs.

Display

The processing options on this tab control the default values that appear in fields on the Advance Payment Search form and specify whether the user can revise certain fields or generate vouchers on the Advance Voucher Review form.

1. Geographic ID

Enter a code that specifies a geographic area for growers.

2. Delivery Percent

Specify whether the system displays only contracts for advance amounts that have reached the delivery percent. Values are:

Blank: Display all contracts.

1: Display only contracts that have reached the delivery percent.

3. Change Advance Amount

Specify whether the user is allowed to change the advance amount. Values are:

Blank: Allowed.

1: Not allowed.

4. Over Pay

Specify whether the system enables the user pay more than the harvest estimate. Values are:

Blank: Allowed.

1: Not allowed.

5. Active Contract Status

Enter a code from UDC table 43C/CS that specifies the status of an active contract.

6. Advance Voucher Mode

Specify whether a user can view contracts that are eligible for advance payment or revise and generate vouchers for advance payment. Values are:

Blank: User can review contracts and generate vouchers for advance payments on the Advance Voucher Review form.

1: User can only view contracts on the Advance Payment Search form.

7. Harvest Period

Enter the harvest period in which you want to review and generate vouchers for advance payments.

Versions

1. Accounts Payable MBF Version (P0400047) and 2. General Ledger MBF Version (P0900049)

Specify the versions that the system uses for these programs. If you leave these processing options blank, the system uses version ZJDE0001.

3. Pre-payment Voucher Version (P0411)

Enter the version of the Standard Voucher Entry program (P0411) that you use for prepayments.

When you generate vouchers using the Advance Payment program, the system uses the GL distribution account that you assign to the corresponding prepayment processing options for P0411. The system does not use AAIs for these accounts, so ensure that the version that you enter for this processing option has the correct accounts.

Reviewing Payees Who Are Eligible for Advance Payments

Access the Advance Payment Search form.

The Preview Review button appears on the Advance Payment Search form only if the Advance Voucher Mode processing option for the Advance Payment program is set accordingly. Otherwise, the button does not appear and you cannot access the Advance Voucher Review form to review, revise, or generate vouchers.

Advance Amount and Advance Percent

Displays the scheduled amount of the advance payment, which is based on the due date rule that is assigned to the installment payment term, the distribution percent on the contract payment schedule, and the current estimate amount on the harvest record.

Displays the advance amount as a percentage of the current estimate amount.

Delivery Percent

Displays the delivery percent you must receive in order for a payee to become eligible for an advance payment. This amount is from the due date rule, which is assigned to the payment term.

You can set a processing option to display only those contracts that have reached a certain delivery percent.

Price

Shows the unit price for the product.

Received Quantity

Shows the total amount of actual receipt records.

Received Percent

Shows the percentage received of actual receipt records, which uses this formula:

Quantity Received ÷ Harvest Estimate × 100

Estimated Amount and Percent Pay Due

Shows the harvest estimate and the payee percentage due from the contract harvest record.

Running the Advance Payment Report

Select Periodic Settlement Processing Reports (G40G2211), Advance Payment Report.

Set Processing Options for Advance Payment Report (R40G100R)

Processing options enable you to specify the default processing for reports.

Display

1. Delivery Percent

Specify whether the system prints only contracts that have reached the delivery percent for advance payments. Values are:

Blank: Print all contracts. This report prints all eligible contracts for advance payments, regardless of the advance payment delivery percent.

1: Print only contracts that have reached the delivery percent.

2. Show All Payments

Specify whether the system prints only advance payments. Values are:

Blank: Print only the advance payment schedule.

1: Print the entire payment schedule.

Revising Transactions Before Generating Vouchers

This section discusses how to revise transactions before generating vouchers for advance payments.

Form Used to Revise Transactions Before Generating Vouchers

Form Name	Form ID	Navigation	Usage
Advance Payment Search	W40G100B	Periodic Settlement Processing (G40G221), Advance Payment	Review a list of all payees who are eligible for advance payments, or limit your search to certain payees.
Advance Voucher Review	W40G100A	On the Advance Payment Search form, select a record and click Voucher Review.	Revise a transaction before generating a voucher for an advance payment. You can also create a voucher for a transaction from the Advance Voucher Review form. See <i>Generating a Voucher for an Advance Payment</i> .

Revising Transactions Before Generating a Voucher for an Advance Payment

Access the Advance Voucher Review form.

You can access this form only if the Advance Voucher Mode processing option for the Advance Payment program (P40G100) is set accordingly.

You can revise certain fields on the Advance Voucher Review form before you create a voucher for an advance payment.

Select

Clear the Select check box for a payee record if you do not want to generate a voucher for an advance payment now. The payee record continues to appear on the Advance Payment Search form and the Advance Payment Report, until paid.

Advance Amount

Enter a new amount for the advance payment if you do not want to pay the full amount scheduled.

The Change Advance Amount processing option for the Advance Payment program determines whether the system allows changes to the value in this field.

Due Date

Displays the due date for the voucher that the system calculates based on the payment terms. You can change the due date, if necessary.

Reason for Change

Enter an explanation that describes why you changed the amount or due date.

Hold Status

Change the value in this field to **H** (Held/Pending Approval) to place the advance payment for the payee on hold.

Generating Vouchers for Advance Payments

This section provides an overview of voucher generation for advance payments and discusses how to:

- Generate a voucher for an advance payment.
- Review vouchers for advance payments.

Understanding Voucher Creation for Advance Payments

When you generate vouchers from the Advance Voucher Review form, the system uses the version of the Prepayment Voucher Entry program (P0411) that you specify in a processing option for the Advance Payment program. After you generate a voucher for the advance payment, the system links the voucher to the contract so that future inquiries reflect the voucher amount and, when applicable, the payment.

If you generate a voucher for the full advance amount, the system marks the payee schedule record as advance paid.

Forms Used to Generate Vouchers for Advance Payments

Form Name	Form ID	Navigation	Usage
Advance Payment Search	W40G100B	Periodic Settlement Processing (G40G221), Advance Payment	Review a list of all payees who are eligible for advance payments, or limit your search to certain payees.

Form Name	Form ID	Navigation	Usage
Advance Voucher Review	W40G100A	On the Advance Payment Search form, select a record and click Voucher Review. On the Advance Voucher Review form, select the record and click Create Voucher.	Generate vouchers that are eligible for advance payments.
Supplier Ledger Inquiry	W0411G	Periodic Settlement Processing (G40G221), AP Voucher Review Ensure that the Prepay check box is selected on the Supplier Ledger Inquiry form.	Review vouchers that are eligible for advance payments.

Generating a Voucher for an Advance Payment

Access the Advance Voucher Review form.

A processing option for the Advance Payment program (P40G100) controls whether a user is allowed to access this form and revise transactions or generate vouchers.

Generate Voucher

Select one or more transactions and click the Create Voucher button to create vouchers in the Accounts Payable Ledger table (FO411) for advance payments.

Reviewing Vouchers for Advance Payments

Access the Supplier Ledger Inquiry form.

This form displays several fields that are used specifically for grower contracts. The fields, which are in the detail area of the Supplier Ledger Inquiry form, are Contract Code, Block Code, Harvest Period, Harvest Suffix, Contract ID, and Harvest ID. You can use any of these fields to inquire on specific vouchers for advance payments. For example, to review all generated vouchers for advance payment for a specific contract, enter a value in the Contract Code field.

Creating Advance Payments

This section provides an overview of advance payments and discusses how to create an advance payment.

Understanding Advance Payments

After you generate vouchers for contracts that are eligible for advance payments and review and approve the vouchers, you can create the advance payments. To create advance payments, you can use either the manual payment program (P0413M) or the automatic payment program (R04570). These are the same programs that you use to process other types of payments. No special processing is required for advance payments.

Form Used to Create Advance Payments

Form Name	Form ID	Navigation	Usage
Work with Payments	W0413MB	Periodic Settlement Processing (G40G221), Work with Payments	Create an advance payment manually.

Creating an Advance Payment

Access one of the following:

- Work with Payments form (for manual payments).

See *"Processing Manual Payments" in the JD Edwards EnterpriseOne Applications Accounts Payable Implementation Guide* .

- Create Payment Control Groups (for automatic payments).

Select Automatic Payment Processing menu (G0413), Create Payment Control Groups.

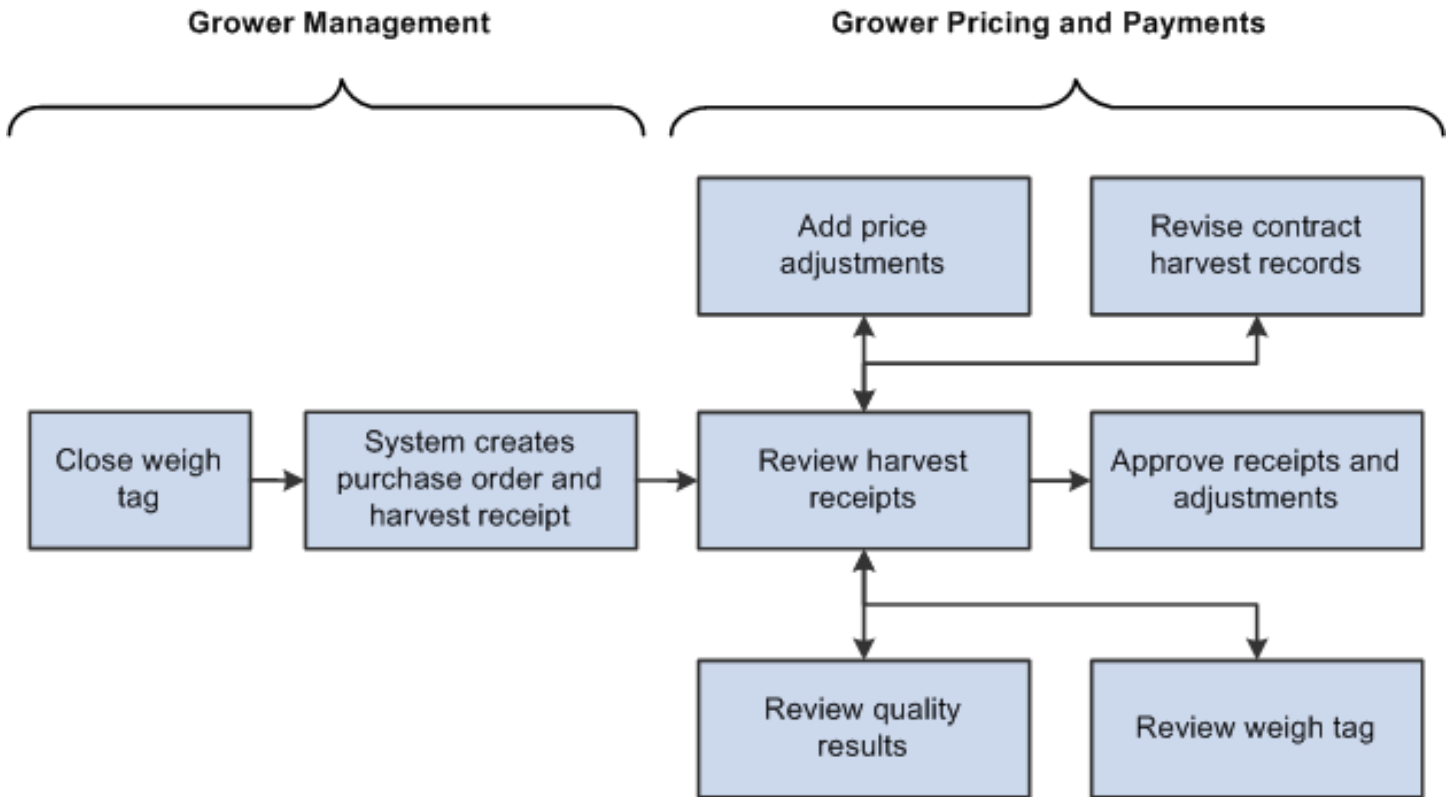
See *"Processing Automatic Payments" in the JD Edwards EnterpriseOne Applications Accounts Payable Implementation Guide* .

These programs include these fields that are used specifically for contracts: Contract Code, Block Code, Harvest Period, Harvest Suffix, Contract ID, and Harvest ID.

7 Validating Price and Receipt Information

Understanding the Price Review Process

After you close a weigh tag, the system creates a purchase order and receipt. You must review the harvest receipts and, if applicable, add adjustments to the receipts. This graphic illustrates the price review process:



Typically, you conduct an internal price review before you issue interim payments to payees. Internal price reviews are usually performed by a manager, such as the contract manager or area manager. The manager reviews the harvest receipts, weigh tags, and quality results. Based on the quality results, the manager might waive a penalty or bonus or add another type of adjustment to increase or decrease the amount of the receipt.

After entering adjustments, the manager marks the receipt as reviewed. Another manager may have responsibility for approving the receipt before a voucher is generated and an interim payment issued.

Understanding the Receipt Review/Interim Payments Program

The Receipt Review/Interim Payments program (P40G200) serves two primary purposes:

- To conduct reviews for harvest receipts.

From the Receipt Review form, you can select a receipt and add adjustments, waive penalties or bonuses, or change any adjustments to a receipt.

The tasks for conducting price reviews and adding price adjustments are described in this chapter.

- To generate vouchers for interim payments.

See *Generating Vouchers for Interim Payments*.

Processing options for the Receipts Review/Interim Payments program control whether certain information appears on the Receipt Price Review form and prints on the Receipts Review Report. The processing options also control whether the system enables you to review only receipts for harvest records with a complete status and whether the system enables you to generate vouchers for interim payments.

Reviewing Harvest Receipts

This section provides an overview of harvest receipts review and discusses how to:

- Set processing options for Receipts Review/Interim Payments (P40G200).
- Review a harvest receipt.
- Run the Receipts Review Report.
- Set processing options for Receipts Review Report (R40G200).

Understanding Harvest Receipts Review

You can conduct an internal price review of your harvest receipts by reviewing the records online using the Receipts Price Review form, printing the Receipts Review Report (R40G200), or a combination of the two. You can use search criteria such as block, contract, harvest, and fiscal period, grower representative, contract manager, and contract buyer to limit your review to specific receipt records.

Each receipt shows a weigh tag number, receipt date, quantity received, unit price, receipt number, and other detailed information from the receipt, grower harvest, contract header, and contract harvest records in these tables:

- Purchase Order Receiver File (F43121)
- Grower Harvest (F40G03)
- Contract Header (F43C01)
- Contract Detail (F43C11)

From the Receipt Price Review form, you can access multiple forms in which to review and revise price history, contract harvest information, quality results and weigh tag information.

You also use the Receipt Price Review form to mark a receipt as reviewed and approved after you conduct a price review for the receipt.

Form Used to Review Harvest Receipts

Form Name	Form ID	Navigation	Usage
Receipt Price Review	W40G200C	Periodic Settlement Processing menu (G40G221), Receipt Review/Interim Payments	Review harvest receipts.

Setting Processing Options for Receipts Review / Interim Payments (P40G200)

Processing options enable you to set default values for programs.

Display

1. Harvest period

Enter the harvest period in which you want to review receipts or generate interim vouchers.

2. Enable Generate Voucher button

Specify whether to allow the user to generate interim vouchers. Values are:

Blank: Allow. The system displays the Preview Voucher button on the Receipt Price Review form, which enables the user to access the Interim Voucher Review form.

1: Do not allow.

3. Review receipts

Specify whether the user is allowed to review receipts for all harvests. Values are:

Blank: Allowed to review receipts for harvests of all statuses.

1: Allowed to review receipts for harvests with a complete status only.

4. Dual UOM Costing

Specify whether to display the secondary unit cost field in addition to the current unit cost field. Values are:

Blank: Do not display the secondary unit cost field.

1: Display the secondary unit cost field.

Versions

1. APMBF Version (P0400047) and 2. GLMBF Version (P0900049)

Specify the master business function (MBF) to use for Accounts Payable (P0400047) and General Ledger (P0900049).

3. P0411 Version

Specify the version of the Prepayment Voucher Entry program (P0411) that the system uses to generate vouchers.

4. Receipts version (P4312)

Specify the version of the Purchase Receipts program that the system uses to record receipts.

5. Adjustment App Version (P4074)

Specify the version of the Check Price and Availability program (P4070) that the system uses to apply new adjustments or waive existing adjustments.

6. Contract Search app version (P43C00)

Specify the version of the Contract Search program (P43C00) that the system uses to show grower contract details.

Reviewing a Harvest Receipt

Access the Receipt Price Review form.

A processing option controls whether you can review receipts for all harvest records or for only those records that are complete. A processing option also controls whether the Preview Voucher button appears on the form.

Receipt Review Options

Select one of the following programs:

Price History (P4074)

See *Adding Price Adjustments to Receipts*.

View Quality Results (P3711A)

See *Reviewing Quality Results for Harvest Receipts*.

View Weigh Tag (P40G33)

See *Reviewing Weigh Tags*.

View/Edit Contract (P43C11)

See *Revising a Contract Harvest Record*.

You can access these programs to review and revise price history, contract harvest information, quality results and weigh tag information.

Running the Receipts Review Report

Select Periodic Settlement Processing, Reports (G40G221), Receipts Review Report.

Setting Processing Options for Receipts Review Report (R40G200)

The processing options for the Receipts Review Report are the same as those for Receipts Review (P40G200).

See *Setting Processing Options for Receipts Review / Interim Payments (P40G200)*.

Reviewing Quality Results for Harvest Receipts

This section provides an overview of quality results and discusses how to review quality results for a harvest receipt.

Understanding Quality Results

If you set up the JD Edwards EnterpriseOne Quality Management system to track quality and process test results for products that you receive, you should review the test results when you review the harvest receipt records. The test results might affect the amount that you pay to the grower.

After a product is delivered and a quality test is performed, the test results are entered on the weigh tag and processed in the JD Edwards EnterpriseOne Grower Management system. The system compares the results to the minimum and maximum values and the acceptable quantity or percentage that are defined for the test. The test results for a receipt appear on the View Results form, which you access from the Receipt Price Review form.

After you review the quality results for a product, you might want to review the details of the weigh tag record before you add adjustments to the receipt record.

Form Used to Review Quality Results for Harvest Receipts

Form Name	Form ID	Navigation	Usage
Receipt Price Review	W40G200C	Periodic Settlement Processing menu (G40G221), Receipt Review/Interim Payments	Review harvest receipts.
View Results	W3711AB	On the Receipt Price Review form, select View Quality Results from the Receipt Review Options field.	Review quality results.

Reviewing Quality Results for a Harvest Receipt

Access the View Results form.

The fields on the View Results form are the same as the fields on the Test Results Revisions form.

See [JD Edwards EnterpriseOne Applications Quality Management Implementation Guide](#) .

Reviewing Weigh Tags

This section provides an overview of weigh tags and discusses how to review a weigh tag.

Understanding Weigh Tags

The weigh tag process begins when a supplier delivers a harvested crop or product and gives a delivery tag to the scale operator. The delivery is weighed and a weigh tag is created with information from the delivery tag and the weigh-in process. The weigh tag includes information about the quality of the received crop.

Weigh tags are described in another task.

See ["Entering Weigh Tag Receipt Operations" in the JD Edwards EnterpriseOne Applications Grower Management Implementation Guide](#) .

When a weigh tag is closed, the system creates a purchase order and receipt for the delivery. (On subsequent deliveries, the system creates a receipt only.) These are the harvest receipts that appear on the Receipt Price Review form. From the Receipt Price Review form, you can access the View Weigh Tags form to review the weigh tags that are associated with a harvest receipt.

For partial receipts weigh tags, the system creates a purchase order and receipt when the weigh tag status is greater than *Draft*.

Form Used to Review Weigh Tags

Form Name	Form ID	Navigation	Usage
Receipt Price Review	W40G200C	Periodic Settlement Processing menu (G40G221), Receipt Review/Interim Payments	Review harvest receipts.
View Weigh Tags	W40G33A	On the Receipt Price Review form, select View Weigh Tag from the Receipt Review Options field.	Review weigh tags.

Form Name	Form ID	Navigation	Usage

Reviewing a Weigh Tag

Access the View Weigh Tags form.

The fields on this form are the same as the fields on the Edit Weigh Tag Master form. The fields are described in another task.

See *"Editing Weigh Tag Master" in the JD Edwards EnterpriseOne Applications Grower Management Implementation Guide* .

Revising Contract Harvest Records

This section discusses how to review and revise a contract harvest record.

Form Used to Revise Contract Harvest Records

Form Name	Form ID	Navigation	Usage
Receipt Price Review	W40G200C	Periodic Settlement Processing menu (G40G221), Receipt Review/Interim Payments	Review harvest receipts.
Edit Contract Harvest	W43C11A	On the Receipt Price Review form, select View/Edit Contract from the Receipt Review Options field.	Review and revise contract harvest records.

Reviewing and Revising a Contract Harvest Record

Access the Edit Contract Harvest form.

See *Managing Contract Harvests*.

Adding Price Adjustments to Receipts

This section provides an overview of price adjustments and discusses how to add a price adjustment to a receipt.

Understanding Price Adjustments

Typically, the contract manager reviews harvest receipts and is responsible for adjusting any amounts that are associated with the receipt record. Adjustments are amounts that are added to or subtracted from a harvest receipt and affect the price of the product and the amount owed to a grower.

For example, a contract manager might add an adjustment record to waive a penalty that was previously applied to the receipt or to pay the grower a bonus for delivering product two days early. Or, if the brix content for a harvest of grapes exceeded the maximum allowable amount, the manager might add an adjustment record to decrease the unit price.

You review and adjust prices on the Price History form. The Price History form displays the original harvest receipt with the unit price and any previously entered adjustment records. The system stores price history information in the Price Adjustment Ledger File (F4074).

Forms Used to Add Price Adjustments to Receipts

Form Name	Form ID	Navigation	Usage
Receipt Price Review	W40G200C	Periodic Settlement Processing menu (G40G221), Receipt Review/Interim Payments	Review harvest receipts.
Price History	W4074D	On the Receipt Price Review form, select Price History from the Receipt Review Options field.	Add a price adjustment to a receipt.
Adjustment Type Quantity Breaks	W40722E	On the Price History form, select a record and then select Quantity Break from the Row menu.	Review quantity level break information for an adjustment.
Base Price Adjustment Audit Window	W4074A	On the Price History form, select the base price record and then select Price Audit Trail from the Row menu.	Review how a base price or adjustment was determined.

Adding a Price Adjustment to a Receipt

Access the Price History form.

To add a price adjustment, select Insert Adjustment from the Row menu or select the check box that is associated with the first available line in the detail area of the form.

See *"Understanding Adjustment Revisions" in the JD Edwards EnterpriseOne Applications Advanced Pricing Implementation Guide* .

Sequence No. (sequence number)

Enter a sort number to sequence the adjustment records. The number that you enter must be greater than the sequence number of the previous record.

Adjustment Name

Enter a code from user-defined code (UDC) table 40/TY that identifies the adjustment.

Factor Value Numeric

Enter a positive number for markups, for example, 10. Enter a negative number for discounts, for example, 10-.

Unit Price

Enter the base price to be charged for one unit of the item.

BC (basis code)

Enter a basis code. The basis code works in combination with the Factor Value Numeric field. Values are:

- 1:** Multiply the base price by the factor value. The adjusted price is a percentage of the base price.
- 2:** Multiply the current net price by the factor value. The adjusted price is a percentage of the current net price.
- 5:** Adjust the price by the factor value. If the value is positive, it increases the price by that amount; if the value is negative, it decreases the price by that amount.
- 6:** Use the adjustment amount from the variable table. You specify the variable table in the Factor Value Numeric field.
- 7:** Use a formula to calculate the adjustment. You specify the name of the formula in the Factor Value Numeric field.
- 8:** Use a custom, user-defined program to calculate the adjustment. You specify the program ID in the Object Library field.

Note: If you define an adjustment that uses a custom program, the program must be one that you developed for this purpose and are prepared to support. Oracle is not responsible for providing custom programs or for supporting programs that you have developed.

9: Calculate the adjustment so that the resulting unit price has a gross profit margin that equals the factor value. You cannot use this basis code for a basket-level or order-level adjustment, or for a sliding rate adjustment.

Reason Code

Enter a code from UDC table 40/AR to identify the reason for the adjustment.

Row Menu

From the Price History form, you can access other forms and perform other functions by choosing these selections from the Row menu:

- Select Quantity Break to access the Adjustment Type Quantity Breaks form.

The fields on this form are the same as the fields on the Price Adjustment Detail Revisions form in the JD Edwards EnterpriseOne Advanced Pricing system.

See *"Setting Up an Adjustment Detail" in the JD Edwards EnterpriseOne Applications Advanced Pricing Implementation Guide* .

- Select Price Audit Trail to access the Base Price Adjustment Audit Window.
- Select Cancel Adj (cancel adjustment) to cancel an adjustment record.

The system strikes through the values that are associated with the record and changes the unit price to zero.

Approving Receipts and Adjustments

This section discusses how to approve receipts and adjustments.

Form Used to Approve Receipts and Adjustments

Form Name	Form ID	Navigation	Usage
Receipt Price Review	W40G200C	Periodic Settlement Processing menu (G40G221), Receipt Review/Interim Payments	Approve receipts and adjustments.

Approving Receipts and Adjustments

Access the Receipt Price Review form.

Reviewed Flag

Select this check box and click Save after you review the receipts and add any adjustments. This check box is informational only and can be used for audit purposes.

Approved Flag

Select this check box and click Save after you approve the receipt as is or after you approve adjustments that were made to the receipt. This check box is informational only and can be used for audit purposes.

Note: After you review and approve a receipt and any adjustments, you can generate a voucher and create an interim payment.

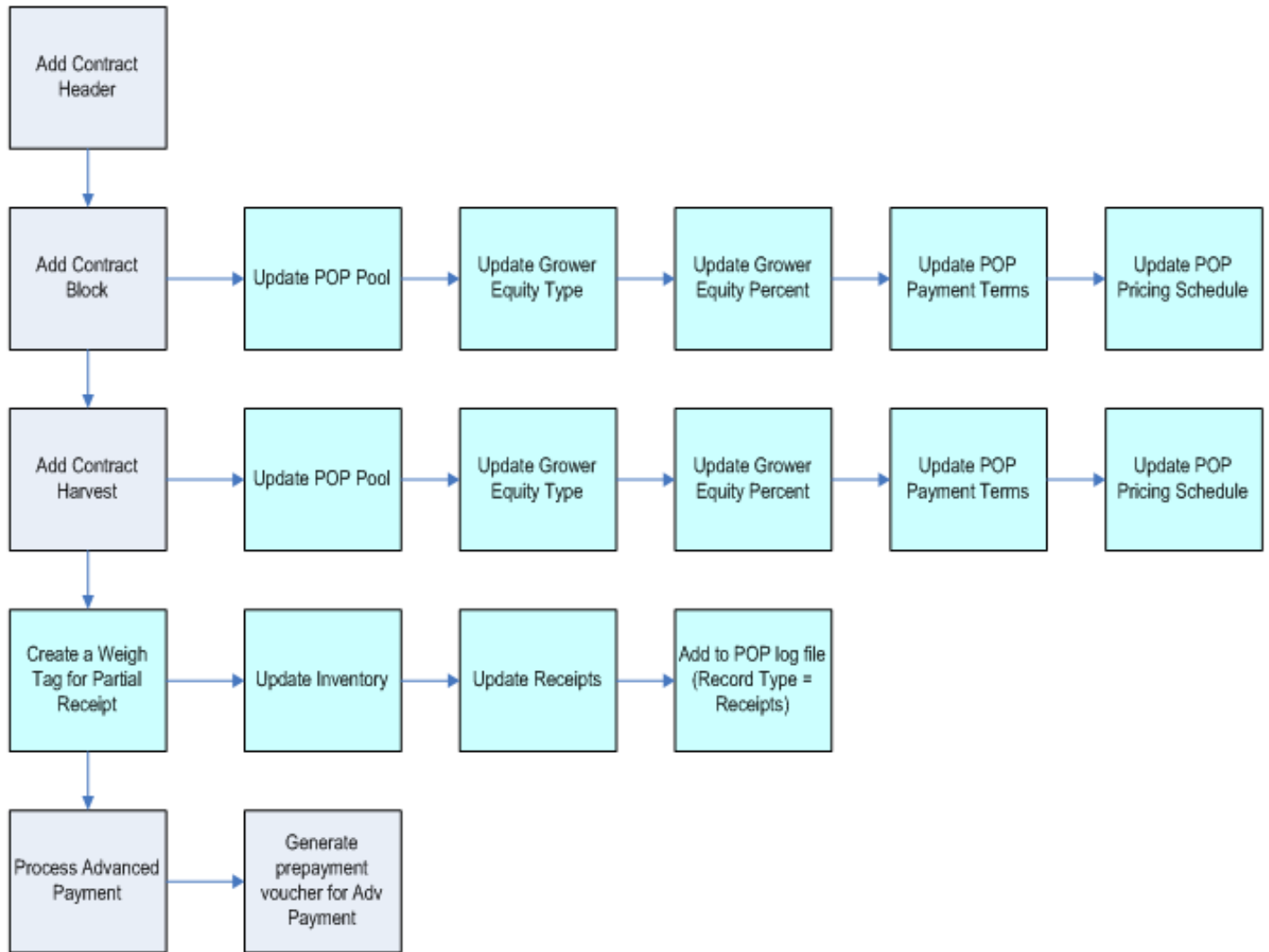
See *Processing Interim Payments*.

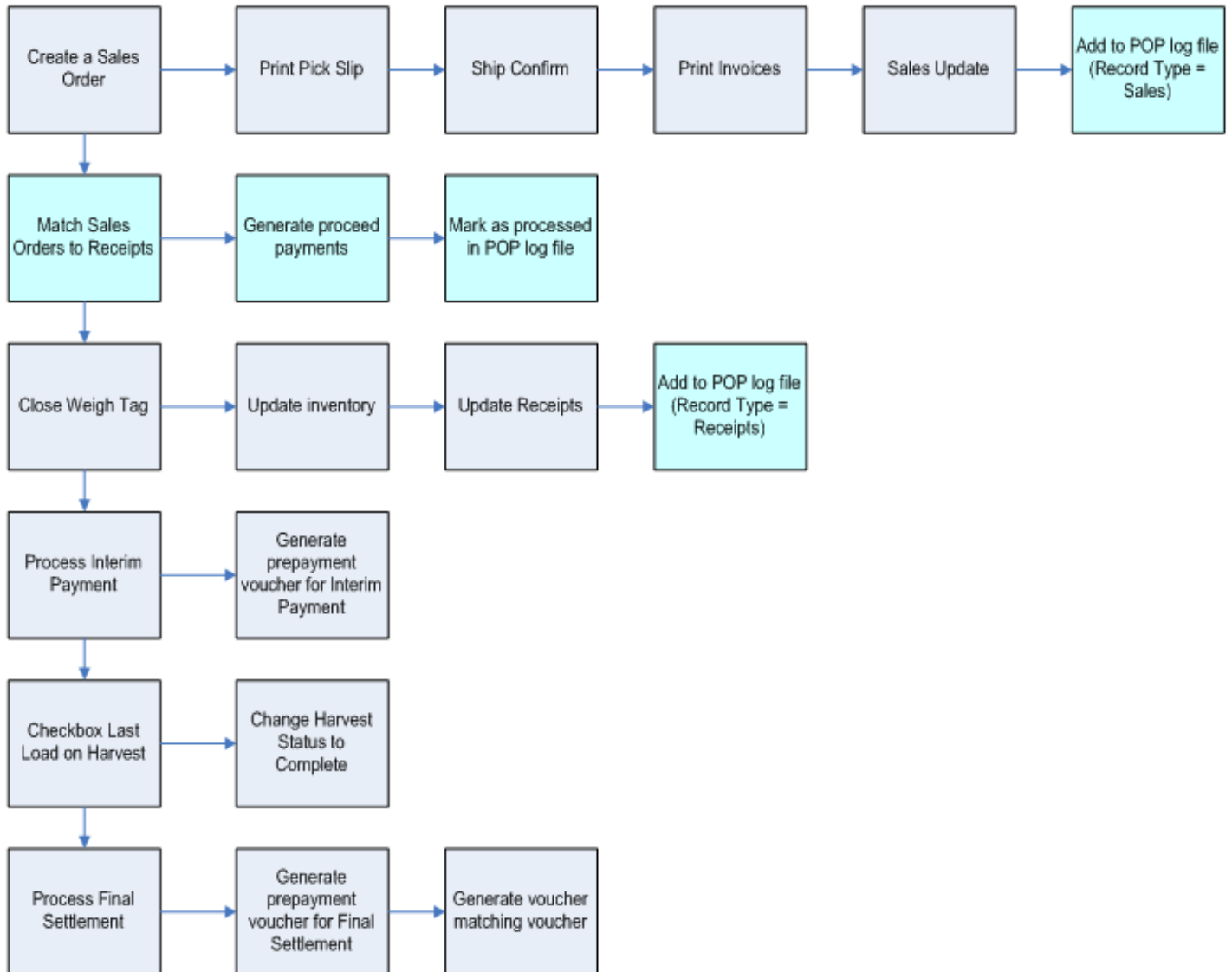
8 Pay on Proceeds

Understanding Pay on Proceeds

Fluctuating market prices have a major impact on fresh produce and the ability to pay growers based on the price at which you sell the crop. Pay on proceeds is a process which enables you to pay growers based on the price that you sell the crop. You can match the crop receipt to an associated sales order. You can also create a grower pool to represent multiple growers. When you create a grower pool, the system enables you to compile sales for all the growers in the pool, average the sales price from the sales orders, and spread the payments across the pool of growers.

These diagrams illustrate the pay on proceeds process flow:





Managing Proceed Payments

You use the Pay On Proceeds Item Cross Reference Update program (P40G90) to set up item cross reference information for items that are eligible for pay on proceeds processing. The system updates this information to the Grower POP Item Cross Reference table (F40G90). However, this system does not update this information to the Item Master table (F4101) or the Item Branch table (F4102).

You use the Proceed Payments program (P40G95) to manage proceeds payments. The Pay Proceeds program enables you to:

- Review net payment owed to the growers based on the accumulated sales and standard grower payments. The payment reflects any adjustments that are applied based on the advanced price schedule.
- Create a voucher for each grower based on the market price. The system calculates the price using an average or percent of each sales order as defined at the grower contract harvest level. You can access an advance price schedule which enables you to attach additional adjustments, deductions, and charges.

For proceed payment calculation, the system retrieves the pricing schedule and the equity percent from the contract harvest.

Note:

Oracle recommends that pricing schedules for the pay on proceeds process contain pay on proceeds adjustment types only. You must select the Procurement option as the target application for all of the adjustment types in the pay on proceeds pricing schedule.

See

*JD Edwards EnterpriseOne Applications Advanced Pricing
Implementation
Guide*

- Review that the payment reflects any adjustments that are applied based on the advanced price schedule.

When you run the Sales Update program (R42800), the system adds the sales orders to the Pay on Proceeds Log File table (F40G95). When you close a standard weigh tag or advance a partial receipts weigh tag beyond *Draft* status, the system adds receipts to the Pay on Proceeds Log File table.

To determine the proceed payment created by the system:

1. Select sales orders from the Pay on Proceeds Sales Orders section.
2. Select weigh tag receipts from the Pay on Proceeds Receipts section.

3. Click the Calc Total (calculate total) button for each section.

In the Pay on Proceeds Sales Orders section, the system displays the total sales quantity, total actual sales amount, and the average sales amount for the selected sales orders.

In the Pay on Proceeds Receipts section, the system displays the total quantity receipt quantity for the selected weigh tag receipts.

4. Click the Review Proceed Payments button.

Note: If the quantities for the sales orders and weigh tag receipts do not match, the system displays a warning indicating which quantity is greater. Review the information before proceeding to create a voucher.

The system displays the Review Proceed Payments form.

5. On the Review Proceed Payments, you can enter an invoice voucher number.
6. Click the Generate Vouchers button to generate a voucher for processing through the accounts payable system.

Forms Used to Set Up Pay on Proceeds

Form Name	Form ID	Navigation	Usage
Pay on Proceeds Item Cross Reference Update	W40G90A	Setup (G40G141), Pay on Proceeds Item Cross Reference Update	Set up pay on proceeds item cross reference.
Proceed Payments	W40G95A	Periodic Settlement Processing (G40G221),	Create proceed payments.
Review Proceed Payments	W40G95B	On the Proceed Payments form, select sales orders and weight tag receipts. Click the Calc Total button for both categories. Click the Review Proceed Payments button.	Review proceed payments and generate payment vouchers.

Setting Up Pay on Proceeds Item Cross Reference Update

Access the Pay on Proceeds Item Cross Reference Update form.

Setting Processing Options for Proceed Payments (P40G95)

Use these processing options to specify program versions.

Versions

1. A/P MBF (P0400047)

Specify the version of the Accounts Payable MBF to use. If left blank, the system uses version ZJDE0001.

2. G/L MBF (P0900049)

Specify the version of the General Ledger MBF to use. If left blank, the system uses version ZJDE0001.

3. Voucher Entry (P0411)

Specify the prepayment version of Voucher Entry (P0411) to use. If left blank, the system uses version ZJDE0009.

4. Sales Order Entry (P4210)

Specify the version of Sales Order Entry (P4210) to use. If left blank, the system uses version ZJDE0001.

5. View Weigh Tags (P40G33)

Specify the version of View Weigh Tags (P40G33) to use. If left blank, the system uses version ZJDE0001.

Creating Proceed Payments

Access the Proceed Payments form.

Pay on Proceeds Pool

Enter a user defined code (43C/PP) that defines a group of growers across which payments from the proceeds of accumulated sales for a crop are spread.

Contracting Entity

Enter the address book number that represents the person or company being contracted.

From Actual Ship and Through Actual Ship

Enter a range of dates on which the shipment to the customer is confirmed as shipped. During shipment confirmation, the system updates the Sales Order Detail table (F4211) with this date.

From Receipt Transaction and Through Receipt Transaction

Enter a range of dates that an order was entered into the system. This date determines which effective level the system uses for inventory pricing.

Proceeds Hold

This option determines whether a Pay on Proceeds Log file record is available for payment processing. If you select this option the record is on hold and must be released before it can be selected for proceeds payment processing. If left blank, the record may be selected for inclusion in the proceed payment calculations.

Reviewing Proceed Payments

Access the Review Proceed Payments form

Generate Vouchers

Click this button to generate vouchers for proceed payments.

9 Processing Interim Payments

Understanding Interim Payments

After you conduct price reviews for your receipts, add any adjustments to increase or decrease the amount due, and approve the receipts, you can begin to process the interim payments. Typically, companies process interim payments after the month, but they can be processed at any other time during the month.

You use the same program, Receipt Review/Interim Payments (P40G200), to create vouchers for interim payments and to review and adjust harvest receipts. You must generate a voucher for the receipts before you can create the interim payment.

Typically, you create vouchers for interim payments when the due date rule that is assigned to the payment term is based on receipts (RE) or total receipts to date (TD). However, you can also use the Receipt Review/Interim Payment program to create vouchers for interim payments when the due date rule is based on advance payments (CE). Advance payments are based on harvest estimates, whereas interim payments are based on receipts. The system displays records for RE, TD, and CE on the Receipt Price Review form. It does not display records for TR. Instead, those records appear on the Settlement By Harvest Block form during final settlement.

To be eligible for an interim payment, these conditions must exist for the payee record that is associated with the harvest receipt:

- The contract must be active.
- The due date rule, which is assigned to the payment term on the payee payment schedule, must be based on RE, TD, or CE.
- A GL distribution account must be assigned to the corresponding prepayment processing option on the Standard Voucher Entry program (P0411).
- A currency code must be assigned to the payee record if multicurrency processing is set up.

Note: If a payee requests a payment during the harvest cycle and an advance or interim payment was not specified in the payment schedule, you can create a manual voucher in the JD Edwards EnterpriseOne Accounts Payable system. You must identify the contract on the voucher so that the corresponding payment is deducted from the final payment when you process the final settlement. Using the Prepayment Voucher Entry program (P0411), specify the contract code, block code, harvest period, and harvest suffix on the Enter Voucher - Payment Information form. This information links the voucher and, later, the payment to the specific contract block and ensures that the payment is deducted from the final settlement amount.

Managing Cash Flow

This section provides an overview of the Projected Grower Payment Liability report and discusses how to:

- Run the Projected Grower Payment Liability report.
- Set processing options for Projected Grower Payment Liability (R40G401).

Understanding the Projected Grower Payment Liability Report

You can print a Projected Grower Payment Liability report (R40G401) at any time during the harvest cycle. This is a projected cash flow report that shows the estimated amounts due for the harvest period by fiscal period and year. These estimated amounts are based on the current harvest estimate, contract price, and payment schedule information.

The processing option for the fiscal period number enables you to specify a different starting period for the report.

Running the Projected Grower Payment Liability Report

Select Periodic Settlement Processing, Reports (G40G2211), Projected Grower Payment Liability.

Setting Processing Options for Projected Grower Payment Liability (R40G401)

Processing options enable you to specify the default processing for reports.

Date

1. Harvest Period

Specify the harvest period to use to select grower contract records for processing.

Note: Use this processing option to select the harvest period; do not use the data selection.

2. Fiscal Date Pattern

Specify a date pattern from the Date Fiscal Patterns table (F0008). The system uses the date pattern to establish the date boundaries for the periods that appear on the report. Specify only a 12-period date pattern. The report processes only 12 periods and data might be omitted if you specify a 13 or 14-period date pattern.

3. Fiscal Year

Specify a fiscal year to associate with the date pattern.

4. Fiscal Period Number

Specify the period number that is associated with the fiscal date pattern. If you leave this processing option blank, the report prints information for the first period of the fiscal year.

5. Transaction Date

Specify the transaction date that the system uses to determine the payment due date, based on the due date rules.

The system follows this hierarchy to determine the transaction date:

- a. Uses the distribution date that is assigned to the due date rule in the Due Date Rules table (F00142). If there is no date:
- b. Uses the planned maturity date for the grower harvest in the Grower Harvest table (F40G03). If there is no date:
- c. Uses the date that is entered for this processing option. If this processing option is blank:
- d. Uses the current system date.

Print

1. Hide Contract Level Output

Specify whether the system shows the grower contract payments or the grand total for all grower contracts. Values are:

Blank: Show grower contract payments and grand totals for all contracts (default).

1: Show only the grand totals for all contracts.

Generating Vouchers for Interim Payments

This section discusses how to:

- Preview a receipt before generating a voucher.
- Generate a voucher for an interim payment.
- Review a voucher for an interim payment.

Forms Used to Generate Vouchers for Interim Payments

Form Name	Form ID	Navigation	Usage
Receipt Price Review	W40G200C	Periodic Settlement Processing (G40G221), Receipt Review/Interim Payments	Preview a receipt before generating a voucher. You can also use this form to review all of the receipts for a block.
Interim Voucher Review	W40G200B	On the Receipt Price Review form, click the Preview Voucher button or the Generate Voucher button.	Generate a voucher for an interim payment. You can also use this form to preview a receipt before generating a voucher.
Supplier Ledger Inquiry	W0411G	Periodic Settlement Processing (G40G221), AP Voucher Review Periodic Settlement Processing (G40G221), Release Held Vouchers	Review a voucher for an interim payment. You can also release a voucher for an interim payment on this form.

Previewing a Receipt Before Generating a Voucher

Access the Receipt Price Review form.

1. Enter the grower block code for the receipt to pay.
 Alternatively, enter different search criteria if you do not want to review receipts by block.

2. For the Receipt Period field, do one of the following:
 - o Enter a fiscal period in this field if the due date rule that is associated with the receipts is RE (receipts).
The system displays all receipts that are due within the date range for the period.
 - o Leave this field blank if the due date rule that is associated with the receipts is **TD** (total receipts to date).
The system displays all receipts that are due to date, which could include receipts for multiple months.
- Note:** Avoid leaving the Receipt Period field blank. The system displays total receipts to date as the default, which might not be the expected result.
3. Click Find.
 4. Click the Preview Voucher button.
 5. On the Interim Voucher Review form, change the due date or change the pay status to **H** to put the voucher on hold, if applicable.

Generating a Voucher for an Interim Payment

Access the Interim Voucher Review form.

Click the Generate Voucher button.

After successful processing, the system displays a window with a batch number and a message that the voucher was generated successfully.

Reviewing a Voucher for an Interim Payment

Access the Supplier Ledger Inquiry form.

Creating Interim Payments

This section provides an overview of interim payment creation and discusses how to create an interim payment.

Understanding Interim Payment Creation

After you generate vouchers for receipts that are eligible for interim payments and review and approve the vouchers, you can create the interim payments. To create interim payments, you can use either the manual payment program (P0413M) or the automatic payment program (R04570). These are the same programs that you use to process other types of payments. No special processing is required for interim payments.

Form Used to Create Interim Payments

Form Name	Form ID	Navigation	Usage
Work with Payments	W0413MB	Periodic Settlement Processing (G40G221), Work with Payments	Create an interim payment manually.

Creating an Interim Payment

Access one of the following:

- Work with Payments form (for manual payments).

See *"Processing Manual Payments" in the JD Edwards EnterpriseOne Applications Accounts Payable Implementation Guide* .

- Create Payment Control Groups (for automatic payments).

Select Automatic Payment Processing menu (G0413), Create Payment Control Groups.

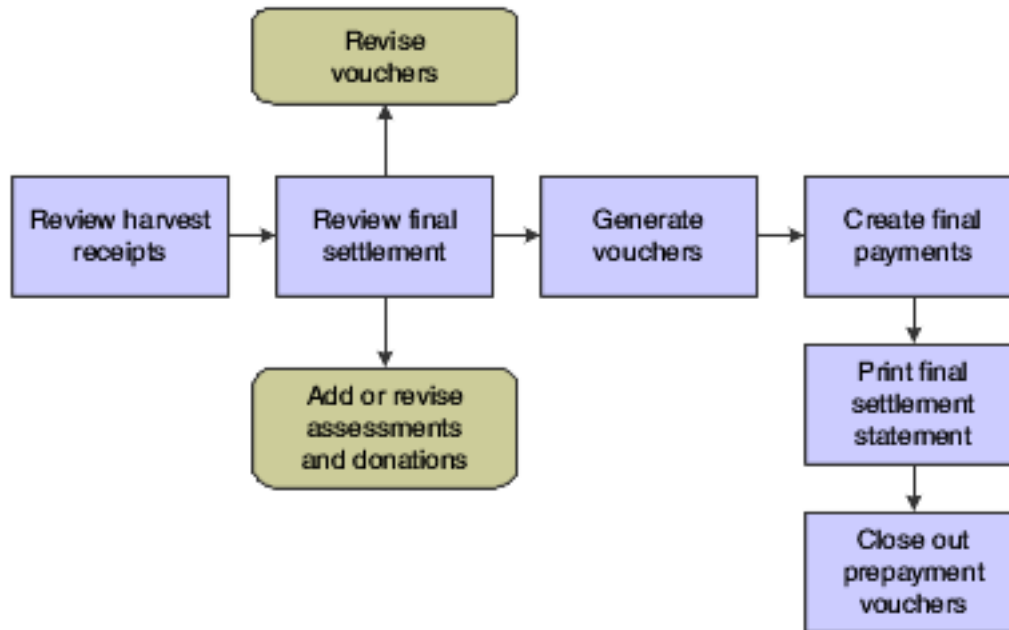
See *"Creating Payment Groups" in the JD Edwards EnterpriseOne Applications Accounts Payable Implementation Guide* .

These programs include these fields, which are specifically used for contracts: Contract Code, Block Code, Harvest Period, Harvest Suffix, Contract ID, and Harvest ID.

10 Performing Final Settlements

Understanding Final Settlements

The last step is processing the final settlement for the contract harvest. Typically, the settlement process is a multistep process that is performed by multiple people or roles and consists of these steps:



In preparation of the final settlement, you perform a final settlement review, which includes reviewing all harvest receipts, assessments and donations, and all vouchers that are ready for final payment.

At final review, you revise or add assessments or donations and generate vouchers for the payee amounts that have not yet been paid on the contract.

Ensure that the harvest record is at a complete status so that when your final review is complete, you can generate final vouchers for your payees and issue final payments. After you generate final vouchers for payees and the remaining amount is zero, the system adds a voucher line item for the assessments and donations so that they can be paid.

When the remaining amount is zero, print a final settlement statement to send to the grower. The Final Settlement Statement (R40G400) shows all transactions that were applied throughout the growing cycle, including advance and interim payments, proceed payments, adjustments, bonuses, penalties, and the final settlement amount, which shows the assessments, donations and final payments that are due.

You use the Final Settlement program (P40G300) to review transactions that have been paid and transactions that have not yet been paid for a contract harvest. The final settlement is your last opportunity to revise or add assessments and donations and change payment due dates or amounts.

Reviewing Harvest Receipts

This section discusses how to review a harvest receipt.

Form used to Review Harvest Receipts

Form Name	Form ID	Navigation	Usage
Receipt Price Review	W40G200C	Periodic Settlement Processing menu (G40G221), Receipt Review/Interim Payments	Review harvest receipts.

Reviewing a Harvest Receipt

Access the Receipt Price Review form.

This form is described in another task.

See *Reviewing Harvest Receipts*.

Reviewing Final Settlements

This section provides an overview of the Settlement by Contract program (P40G310) and discusses how to:

- Set processing options for Final Settlement (P40G300).
- Set processing options for Settlement by Contract (P40G310).
- Review a final settlement by harvest block.
- Review a final settlement by contract.

Understanding the Settlement By Contract Program

You can use the Settlement By Contract program to review settlements by contract instead of by block. You can use these header area fields to enter search criteria:

- Block Code
- Harvest Period
- Harvest Suffix
- Contract Code

- Variety Code
- Harvest Status

After you locate the record to work with, you can use options in the Receipt Review Options list to access forms to review these elements:

- Price History
- View Quality Results
- View Weigh Tag
- View/Edit Contract

You can preview settlements by contract for only the records at status Complete. Select individual records or click the Select All button to select the records at status Complete.

After you select records, click the Preview Settlement button to access the Settlement By Contract form. The Settlement By Contract form displays the subtotal for each payee included in the contracts, and the grand total for all payees. You can enter payment information for each unpaid payee line on the Settlement By Contract form

When you are ready to generate a voucher for the settlement, click the Generate Voucher button on the Settlement By Contract form. The program displays the Final Settlement Confirmation form with the batch number for the voucher.

Alternate Tax Rate/Area Assignment Functionality for Final Settlement Vouchers

When you generate vouchers, the system will retrieve the alternate tax rate/area assignment if the company of the transaction is set up to do so.

See *"Setting Up Alternate Tax Rate/Area Assignment Functionality"* and *"Grower Management"* in the *JD Edwards EnterpriseOne Applications Tax Processing Implementation Guide* .

Form Used to Review Final Settlements

Form Name	Form ID	Navigation	Usage
Settlement By Harvest Block	W40G300A	Periodic Settlement Processing (G40G221), Final Settlement	Review a receipt.
Receipt Price Review	W40G310A	Periodic Settlement Processing (G40G221), Settlement by Contract	Search for and select a contract to review. Select an option in the Receipt Review Options list to review specific information about the receipt.
Settlement Contract	W40G310AA	Select the records to review and click Preview Settlement on the Receipt Price Review form.	Review the settlement.

Setting Processing Options for Final Settlement (P40G300)

Processing options control the default settings for programs.

Processing

1. Harvest Period

Enter the current harvest period in which to review final settlements and generate vouchers. The harvest period number that you specify appears on the Settlement By Harvest Block form.

2. Update Harvest Status

Specify whether to update the harvest record to a close status. Values are:

Blank: Update.

1: Do not update.

If the system does not close the harvest record, you must do so manually using the Add/Edit Grower Harvest form from the Harvest Workbench program (P40G032).

3. Voucher Generation Mode

Use this processing option to specify whether the system enables you to generate vouchers during final settlement. Values are:

Blank: Allow.

1: Do not allow.

Versions

1. AP MBF Version (P0400047) and 2. GL MBF Version (P0900049)

Enter the version of the master business functions for the Voucher Entry (P0400047) and Journal Entry (P0900049) programs.

3. P0411 Version

Enter the version of the Prepayment Voucher Entry program to use.

4. Voucher Match Version (P4314)

Enter a specific version number for the Voucher Match program. If you leave this processing option blank, the system uses ZJDE0001.

Setting Processing Options for Settlement by Contract (P40G310)

Processing options control the default settings for programs.

Display

1. Harvest Period

Enter the current harvest period in which to review final settlements and generate vouchers. The harvest period number that you specify appears on the Settlement By Harvest Block form.

2. Update Harvest Status

Specify whether to update the harvest record to a close status. Values are:

Blank: Update.

1: Do not update.

If the system does not close the harvest record, you must do so manually using the Add/Edit Grower Harvest form from the Harvest Workbench program (P40G032).

3. Enable Generate Voucher functionality

Use this processing option to specify whether the system enables you to generate vouchers during final settlement. Values are:

Blank: Allow.

1: Do not allow.

4. Dual UOM Costing

Use this processing option to specify whether to display the secondary unit cost field. Values are:

Blank: Do not display the secondary unit cost field.

1: Display the secondary unit cost field.

Versions

1. AP MBF Version (P0400047) and 2. GL MBF Version (P0900049)

Enter the version of the master business functions for the Voucher Entry (P0400047) and Journal Entry (P0900049) programs.

3. Voucher Entry (P0411)

Enter the version of the Prepayment Voucher Entry program to use.

4. Voucher Match (P4314)

Enter a specific version number for the Voucher Match program. If you leave this processing option blank, the system uses ZJDE0001.

5. PO Receipts (P4312)

Enter a specific version number for the PO Receipts program. If you leave this processing option blank, the system uses ZJDE0001.

6. Adjustments (P4074)

Enter a specific version number for the Adjustments program. If you leave this processing option blank, the system uses ZJDE0001.

7. Contract Search (P43C00)

Enter a specific version number for the Contract Search program. If you leave this processing option blank, the system uses ZJDE0001.

Reviewing a Final Settlement by Harvest Block

Access the Settlement By Harvest Block form.

Receipt Summary Averages

The fields in this area of the Settlement By Harvest Block form show the base and final prices for a contract harvest, penalty and bonus amounts, quantity received and quantity to pay, manual adjustments, item related to the harvest, and the gross amount.

Penalties and Bonus

Displays amounts for penalties and bonuses, which are often affected by quality test results.

Manual Adjustments

Displays the total amount for manual adjustments that are not associated with the contract price. This amount reflects the adjustments that you entered on the Price History form when you conducted the receipt review.

Gross Amount

Displays the total receipt amount.

Assessments

The fields in this area of the Settlement By Harvest Block form show amounts due for individual assessments and donations.

Unlabeled Fields

The fields in this area of the Settlement By Harvest Block form show the currency code of the contract, total amount of assessments, net payment, amount paid-to-date, pay on proceeds paid amount, and the remaining amount.

Total Assessments

Displays the total amount due for the assessments and donations that appear in the Assessments area of the form.

Net Payment

Displays the payment amount that has been issued to growers and other payees. This amount includes assessments and donations.

Formula: Gross Amount + or – Assessments and Donations = Net Payment

Amount Paid to Date

Displays the total amount paid to date. This amount is the cumulative total of the amounts that appear in the Amount Paid to Date field in the voucher detail area of the form.

Pay on Proceeds Paid Amount

Displays the portion of the amount paid to date total that was paid through proceed payments processing.

Remaining Amount

Displays the remaining amount owed on the contract.

Formula: Net Payment – Total Amount Paid to Date = Remaining Amount

If the remaining amount is zero, the system creates voucher matches for all receipts and adds a line item for assessments and donations.

Vouchers and Payments

The fields in this area of the Settlement By Harvest Block form show all payments that have been issued to date and voucher amounts that are still owed to payees. The system calculates the amount due for all payees based on harvest amount received and amount paid-to-date to the payee.

See *Changing Voucher Due Dates and Amounts*.

Reviewing Final Settlements by Contract

Access the Settlement By Contract form to review final settlements.

Revising Assessments or Donations

This section discusses how to revise an assessment or a donation.

Form Used to Revise Assessments or Donations

Form Name	Form ID	Navigation	Usage
Settlement By Harvest Block	W40G300A	Periodic Settlement Processing (G40G221), Final Settlement	Review a final settlement.
Edit Contract Harvest	W43C11A	On the Settlement By Harvest Block form, click Add Assessments. Click the Assessments/Donations tab.	Revise an assessment or donation for the final settlement. You can also add an assessment or donation on this form.

Revising an Assessment or a Donation

Access the Add Contract Harvest form.

After you revise the amount for an assessment or donation, or add a new one, the system automatically refreshes the Settlement By Harvest Block form and displays it for your review.

See *Adding an Assessment or a Donation to a Contract*.

Changing Voucher Due Dates and Amounts

This section provides an overview of voucher changes and discusses how to change a voucher due date and amount.

Understanding Voucher Changes

During the final settlement, you can:

- Change the amount due or the due date on a voucher.

- Deselect a voucher.

If you change the amount due on a voucher and create a partial payment, the remaining amount of the voucher continues to appear on the Settlement By Harvest Block form until it is fully paid. Similarly, if you change the due date or deselect a voucher to prevent it from being paid, the voucher continues to appear on the form until it is fully paid.

Form Used to Change Voucher Due Dates and Amounts

Form Name	Form ID	Navigation	Usage
Settlement By Harvest Block	W40G300A	Periodic Settlement Processing (G40G221), Final Settlement	Change a voucher due date and amount.

Changing a Voucher Due Date and Amount

Access the Settlement By Harvest Block form.

Voucher records that are fully paid are disabled on this form.

Select

Clear this check box to deselect a voucher and prevent it from being paid now.

Amount Due

Enter a new amount. For example, assume that a voucher amount is 500.00 USD and you decide to pay half. You would change the value in this field to 250.00.

The remainder that is owed for the voucher continues to appear on the Settlement By Harvest Block form until it is fully paid.

Due Date

Enter a new date. The voucher continues to appear on the Settlement By Harvest Block form until it is fully paid.

Generating Vouchers for Final Payments

This section provides an overview of vouchers for final payments and discusses how to generate a voucher for a final payment.

Understanding Vouchers for Final Payments

To generate vouchers for final payments, these conditions must exist:

- The harvest status must be complete.
- A GL distribution account must be assigned to the prepayment processing option in Standard Voucher Entry (P0411).

- A currency code must be assigned to the payee record if multicurrency processing is set up.
- The due date rule, which is assigned to the payment term on the payee payment schedule, must be based on total receipts (TR).

When you click the Generate Voucher button on the Settlement by Harvest Block form, the system:

- Creates prepayment vouchers for final payments that are due.
 You can put these vouchers on hold, if necessary.
- Creates prepayment vouchers for partial payments if you pay only part of the amount due to a payee.
- Marks the payee record as paid if the full amount for the payee on the contract is paid.
- If the remaining amount due on the contract is zero, the system:
 - Processes three-way voucher match for all receipts.
 This closes out the purchase orders.
 - Adds a voucher line item for assessments and donations.
 You must create payments for these assessments and donations.
- Updates the harvest status to closed if a processing option is set accordingly.
- Marks the contract harvest as paid.

Note: If the remaining amount due on the contract is not zero, the remaining amounts that are owed to growers and payees continue to appear on the Settlement By Harvest Block form until they are paid. The final settlement is not complete until the remaining amount due is zero and all transactions have been processed.

Form Used to Generate Vouchers for Final Payments

Form Name	Form ID	Navigation	Usage
Settlement By Harvest Block	W40G300A	Periodic Settlement Processing (G40G221), Final Settlement	Change a voucher due date and amount.

Generating a Voucher for a Final Payment

Access the Settlement By Harvest Block form.

Generate Voucher

Click the Generate Voucher button.

When you click this button, the system creates prepayment vouchers for final payments due. If the remaining amount on the settlement is zero, the system also creates voucher matches for assessments and donations.

Creating Final Payments

This section provides an overview of final payments and discusses how to create a final payment.

Understanding Final Payments

After you generate vouchers for final payments, the next step is to create the payments using either the Manual Payment program (P0413M) or the Automatic Payment program (R04570). These are the same programs that you use to create other types of payments. No special processing is required to create the final payments.

Form Used to Create Final Payments

Form Name	Form ID	Navigation	Usage
Work with Payments	W0413MB	Periodic Settlement Processing (G40G221), Work with Payments	Create a final payment manually.

Creating a Final Payment

Access one of the following:

- Work with Payments form (for manual payments).
See *"Processing Manual Payments" in the JD Edwards EnterpriseOne Applications Accounts Payable Implementation Guide* .
- Create Payment Control Groups (for automatic payments).
Select Automatic Payment Processing menu (G0413), Create Payment Control Groups.
See *"Processing Automatic Payments" in the JD Edwards EnterpriseOne Applications Accounts Payable Implementation Guide* .

These programs include these fields, which are specifically used for contracts: Contract Code, Block Code, Harvest Period, Harvest Suffix, Contract ID, and Harvest ID.

Printing Final Settlement Statements

This section provides an overview of final settlement statements and discusses how to:

- Print the Final Settlement Statement.

- Set data selection for the Final Settlement Statement.

Understanding Final Settlement Statements

When the final settlement is complete and the contract harvest is closed, you should print the Final Settlement Statement and send it to the grower. The Final Settlement Statement shows all of the transactions for the harvest period, including the final payments.

The information that appears on the Final Settlement Statement is the same information that appears on the Settlement By Harvest Block form, with these exceptions:

- The Final Settlement Statement report shows the payment schedule from the contract harvest record.
This includes the distribution date, delivery percent, days add, months add, fixed days, and percent of split, from the payment schedule and the based on code from the advanced payment term.
- The Final Settlement Statement does not show the account number that appears on the Settlement By Harvest Block form, because that is needed for internal purposes only.

Many of the fields that appear on the Final Settlement Statement are described in another task.

See [Reviewing Final Settlements](#).

Note: You can print the Final Settlement Statement report throughout the growing cycle to review a "snapshot" of the transactions at a certain point in time. For example, you might print the Final Settlement Statement and send it with an advance or interim payment to a grower.

Printing the Final Settlement Statement

Select Periodic Settlement Processing, Report (G40G2211), Final Settlement Statement.

Setting Data Selection for Final Settlement Statement

No processing options exist for the Final Settlement Statement report. Use the data selection to identify the contract code, block code, and harvest period to include on the Final Settlement Statement.

Releasing and Closing Out Prepayment Vouchers

This section provides an overview of prepayment vouchers and lists the forms that are used to release and close out prepayment vouchers.

Understanding Prepayment Vouchers

When the remaining settlement amount equals zero and you generate vouchers for final payments, the system automatically generates a voucher that equals the total of the advance, interim, and final payments on the contract. This

voucher is used to close out the purchase order by matching the voucher pay items to the purchase order and purchase order receipt lines. This is considered a three-way matched voucher.

Previously, when you created vouchers for advance and interim payments, the system generated prepayment vouchers (in a negative amount) and placed them on hold. It also generated prepayment vouchers when you created vouchers for final payments and placed them on hold as well. To close out your negative prepayment vouchers you must release these prepayment vouchers from hold. Then you must create a payment that includes your negative prepayment vouchers and your three-way matched voucher. The difference between these vouchers must net to zero.

To create zero amount payments automatically to close out prepayment, you use the Create Payment Control Groups program (R04570) on the Automatic Payment Processing menu (G0413).

Forms Used to Release and Close Out Prepayment Vouchers

Form Name	Form ID	Navigation	Usage
Supplier Ledger Inquiry	W0411G	Periodic Settlement Processing (G40G221), Release Held Vouchers	Release prepayment vouchers that are on hold.
Work with Payments	W0413MB	Periodic Settlement Processing (G40G221), Work with Payments	Create zero amount payments manually to close out prepayment vouchers.

11 Appendix A - JD Edwards EnterpriseOne Grower Pricing and Payments Reports

JD Edwards EnterpriseOne Grower Pricing and Payments Reports: A to Z

This table lists the JD Edwards EnterpriseOne Grower Pricing and Payments reports. The reports are listed alphanumeric by report ID:

Report ID and Report Name	Description	Navigation
R40G100R Advance Payment Report	Prints all contracts that are eligible for advance payments or only contracts that have reached their delivery percent for advance payments. A processing option controls whether you print the advance payment schedule only or the entire payment schedule.	Grower Pricing and Payments, Periodic Settlement Processing, Reports (G40G2211), Advance Payment Report
R40G200 Receipts Review Report	Prints receipts with weigh tag numbers, receipt date, quantity received, unit price, and other detailed information from the receipt, grower harvest, contract header, and contract harvest records. You can choose whether to include quality test results and price adjustment information.	Grower Pricing and Payments, Periodic Settlement Processing, Reports (G40G2211), Receipts Review Report
R40G400 Final Settlement Statement	Prints the payment schedule from the harvest in addition to the same information that appears on the Settlement By Harvest Block form. You can submit the Final Settlement Statement to a payee with the final payment and final settlement, and when you submit advance and interim payments. This report has no processing options.	Grower Pricing and Payments, Periodic Settlement Processing, Reports (G40G2211), Final Settlement Statement
R40G401 Projected Grower Payment Liability	Prints a projected cash flow report that shows the estimated amounts that are due for the harvest period by fiscal period and year. You can print this report at any time during the growing cycle.	Grower Pricing and Payments, Periodic Settlement Processing, Reports (G40G2211), Projected Grower Payment Liability

Report ID and Report Name	Description	Navigation
R43C05 Action Date Listing	Prints actions, dates, and optionally, comments. You can print all action dates or specify a date range to limit the records that print on the report. You can use data selection to select certain action date attributes. For example, you can specify whether to include only open actions, closed actions, or all actions. Or include actions for only one person responsible.	Grower Pricing and Payments, Daily Processing, Reports (G40G211), Action Date Listing
R43C10 Contract Summary	Prints summary information for a contract. Information includes status, start and end dates, renewable terms, contract type, delivery form, commodity code, and optionally, contract comments and amendments. The summary does not include price information. You can use data selection to select contract review dates, a specific contract name or contract manager, and so on.	Grower Pricing and Payments, Daily Processing, Reports (G40G211), Contract Summary
R43C15 Contract Detail	Prints contract detail information for all harvest records or for only current and future records. Includes most of the same information that prints on the Contract Summary with additional information about the block, harvest, and prices. Prints the contract detail in a report format that can be submitted to a grower.	Grower Pricing and Payments, Daily Processing, Reports (G40G211), Contract Detail

JD Edwards EnterpriseOne Grower Pricing and Payments Report Processing Options

The reports in this section are listed alphanumeric by report ID.

R40G100R - Processing Options for Advance Payment Report

The processing options for this report are described in another task.

See [Set Processing Options for Advance Payment Report \(R40G100R\)](#).

R40G200 - Processing Options for Receipts Review Report

The processing options for this report are described in another task.

See *Setting Processing Options for Receipts Review Report (R40G200)*.

R40G401 - Processing Options for Projected Grower Payment Liability

The processing options for this report are described in another task.

See *Setting Processing Options for Projected Grower Payment Liability (R40G401)*.

R43C05 - Processing Options for Action Date Listing

Processing options enable you to set default values for reports.

Options

Select the Options tab.

1. Display Action Date Comments

Specify whether to print the comments for the action date. Values are:

Blank: Do not print.

1: Print.

Starting Date and Ending Date

Enter the earliest and latest dates that are required. The action dates that appear on the report are later than or equal to and before or equal to the dates that you enter. If you leave these processing options blank, the report prints all action date records.

R43C10 - Processing Options for Contract Summary

Processing options enable you to specify default values for reports.

Options

Select the Options tab.

1. Display Contract Comments and 2. Display Contract Amendments

Specify whether to print the contract comments and contract amendments. Values are:

Blank: Do not print.

1: Print.

R43C15 - Processing Options for Contract Detail

Processing options enable you to specify default values for reports.

Options

Select the Options tab.

Harvests to be displayed.

Specify which harvest records to print on the report. Values are:

Blank: Print all records.

1: Print only current and future records.

12 Appendix B - Delivered User Defined Objects for Grower Pricing and Payments (Release 9.2 Update)

Delivered User Defined Objects for Grower Pricing and Payments (Release 9.2 Update)

This appendix discusses delivered user defined objects (UDOs) that you can use with the Grower Pricing and Payments system.

Grower Pricing and Payments Notifications

JD Edwards EnterpriseOne notifications enable you to improve your business efficiency through the use of proactive notifications that are actionable. Proactive notifications enable the system to notify users of business events as they happen without the need for the user to be online.

This section discusses delivered notifications that you can use with the Grower Pricing and Payments system. For a complete listing of available notifications, along with additional information about them, see the Notifications Cross Reference in Oracle Support (Document 2365066.1 - JD Edwards EnterpriseOne Delivered Notifications), which can be found at:

<https://support.oracle.com/epmos/faces/DocumentDisplay?id=2365066.1>

For additional information about using and subscribing to notifications, see these topics:

- *Creating a Notification* in the *JD Edwards EnterpriseOne Tools Notifications Guide* .
- *Testing Notifications* in the *JD Edwards EnterpriseOne Tools Notifications Guide* .
- *Subscribing to Notifications (Release 9.2.2)* in the *JD Edwards EnterpriseOne Tools Foundation Guide* .

This table describes notifications that you can use with the Grower Pricing and Payments system:

Notification	Description
JDE_NOTIFY_43C_Pending_Payment	Notifies subscribers that there are pending grower payments assigned to the Contract Manager ID in the subscription. This notification runs every weekday at 8:00 am.

13 Glossary

Block Code

Enter the unique identifier or name of the grower block.

Contract ID

Enter a numeric value that uniquely identifies the contract. If you leave this field blank, Next Numbers generates an ID when you save the contract header.

Contract Code

Enter an alphanumeric value to uniquely identify the contract. The contract code can be up to 12 characters.

Contract Name

Enter an alphanumeric value to uniquely identify the contract. The contract name can be up to 30 characters.

Contract Status

Enter a code from user-defined code (UDC) table 43C/CS to specify the status of the contract. Examples are **AT** for active and **DR** for draft.

Geographic ID

Enter a code from UDC table 40G/GI that corresponds to a geographic area, such as **EUR** (Europe) or **USA** (United States).

Harvest Name

Enter an alphanumeric value to uniquely identify the harvest. The harvest name can be up to 40 characters.

Harvest Period

Enter the period for a harvest, such as **Q1** or **2007**.

Renew Type

Enter a code from UDC table 43C/RT to specify whether the system extends the life of the contract. These values are hard-coded:

RN: Renewable. The contract end date can be extended, but not past the renewable end date.

NR: Non-Renewable. The contract end date is not extendable; however, the system does not prevent you from extending the date.

RL: Roll. The contract end date should be equal to the current harvest period plus the renew term; however, the system does not validate this.

Index

A

Action Date Listing program (R43C05)
 processing options *123*
 usage *122*

action dates
 adding *27*
 codes *28*

Add/Edit Contract Block Update Profile form *54*
 Add/Edit Contract Harvest Update Profile form *54*
 Add/Edit Contract Header Update Profile form *54*

adjustments *85*

Advance Payment (P40G100)
 processing options *77*
 usage *79*

Advance Payment Report (R40G100R)
 processing options *79*
 usage *77, 121*

advance payments *14*
 Advance Payment Report (R40G100R) *77*
 creating *83*
 current estimates *76*
 generating vouchers *81, 82*
 manual entry *76, 103*
 overview *75*
 reviewing payee records *79, 79*
 reviewing transactions *77*
 reviewing vouchers *82*
 revising transactions *80*

advanced payment termspayment terms *11*

amendments
 adding text *48*
 overview *47*

assessments *32*
 adding to a contract *32*
 final settlement *115*
 nonstandard *33*
 overview *15*
 standard *33*

Australia
 payment rules *12*
 payment terms *15*

B

business processes *1*

C

clauses *18*

Contract Block Mass Update Profile program (P43C100) *52*
 Contract Block Mass Update program (R43C100)
 processing options *58*
 usage *52*

Contract Block Profile table (F43C100) *53*

contract blocks
 attaching grower harvests *36*
 contract harvests *39*
 copying *45, 50*
 deleting *50*
 grower harvests *39*
 managing *48*

overview *19, 20, 28*
 pushing revisions to contract harvests *50*
 revising *48, 49*

Contract Detail program (R43C015)
 processing options *124*
 usage *122*

Contract Harvest Mass Update Profile program (G43C110) *52*
 Contract Harvest Mass Update program (R43C110)
 processing options *61*
 usage *52*

Contract Harvest Profile table (F43C110) *53*
 contract harvests
 deleting *52*
 harvest periods *36*
 managing *51*
 overview *20, 20, 34*
 revising *51*
 revisions *51*

Contract Header Mass Update Profile program (P43C010) *52*
 Contract Header Mass Update program (R43C010)
 processing options *56*
 usage *52*

Contract Header Profile table (F43C010) *53*
 contract headers *21*
 adding *24*
 attaching a clause *26*
 copying *45*
 deleting *46*
 managing *43*
 overview *19, 20*
 pushing revisions to contract blocks and harvests *45*
 revising *43, 44*

contract status *10*

Contract Summary program (R43C10)
 processing options *123*
 usage *122*

Contract Workbench program (P43C00)
 processing options *23*
 usage *42*

contracts
 amendments *47*
 attaching grower blocks *30*
 components *19*
 contract blocks *19, 28*
 contract harvests *19*
 contract headers *19*
 contract renewals *61*
 deleting *63, 64*
 harvests *34*
 overview *19*
 payment rules *11, 11*
 payment schedules *27*
 reviewing *42*
 terminating *62, 63*

current estimates *76*

D

donations
 adding to a contract *32*
 contract block *32*
 final settlement *115*

overview [15](#)

due date rules [11](#), [22](#), [22](#)

Due Date Rules Revisions program (P00146)

processing options [13](#)

usage [12](#)

E

end dates [41](#), [44](#), [49](#), [52](#)

F

F43C010 table [53](#)

F43C100 table [53](#)

F43C110 table [53](#)

final payments [118](#)

final settlement

changing voucher dates and amounts [115](#)

generating vouchers for final payments [117](#)

Final Settlement Statement (P40G300)

processing options [112](#)

usage [109](#)

Final Settlement Statement (R40G400) [109](#), [119](#), [121](#)

final settlements

closing out prepayment vouchers [120](#)

Final Settlement Statement (P40G300) [109](#)

Final Settlement Statement (R40G400) [109](#)

final settlement statements [119](#)

overview [109](#)

releasing prepayment vouchers [120](#)

reviewing [110](#), [113](#)

G

grower blocks [34](#)

grower harvests

attaching to a contract block [36](#)

generating [39](#)

H

harvest receipts

approving [94](#)

overview [86](#)

previewing transactions [105](#)

price adjustments [92](#)

quality results [89](#)

Receipt Price Review form [87](#)

reviewing [88](#), [110](#)

reviewing quality results [90](#)

I

installments

Australia [15](#)

payment rules [12](#)

installmentspayment terms [14](#)

integrations [4](#)

interim payments

creating [106](#)

generating vouchers [105](#), [106](#)

overview [103](#)

reviewing vouchers [106](#)

P

P43C010 program [52](#)

P43C100 program [52](#)

P43C110 program [52](#)

payment rules

Australia [12](#)

contracts [11](#)

payment schedules

entering [27](#)

overview [22](#)

payment terms

due date rules [11](#)

installments [11](#), [14](#)

overview [11](#)

paymentsadvance payments [76](#)

Prepayment Voucher Entry program (P0411) [103](#)

prepayment vouchers

closing out [120](#)

releasing [120](#)

price adjustments

adding [92](#), [93](#)

approving [94](#)

schedules [29](#), [32](#)

price reviews [85](#)

Print Message program (P40162) [18](#)

processing options

Action Date Listing program (R43C05) [123](#)

Contract Detail program (R43C015) [124](#)

Contract Summary program (R43C10) [123](#)

Contract Workbench program (P43C00) [23](#)

Due Date Rules Revisions program (P00146) [13](#)

Final Settlement Statement (P40G300) [112](#)

Receipts Review Report (R40G200) [89](#)

Receipts Review/Interim Payments (P40G200) [87](#)

Projected Grower Payment Liability (R40G401) [121](#)

Q

quality results

overview [89](#)

R

R43C010 program

processing options [56](#)

usage [52](#)

R43C100 program

processing options [58](#)

usage [52](#)

R43C110 program

processing options [61](#)

usage [52](#)

Receipt Review/Interim Payments (P40G200) [86](#), [103](#)

Receipts Review Report (R40G200)

processing options [89](#)

usage [86](#), [121](#)

Receipts Review/Interim Payments (P40G200)

processing options [87](#)

usage [87](#)

renew types [11](#), [26](#), [61](#)

reports [121](#)

S

setup

- assessments *15*
- clauses *18*
- donations *15*
- user-defined codes *9*

Special Handling Code field *10*standard assessments *15, 33*start dates *41, 44, 49, 52***T**test results *89***U**UDCuser-defined codes *9*Update from Header form *54*Update Harvest form *54*

user-defined codes

- 00/UM *31, 37*
- 40/AS *23*
- 40G/GI *23, 25*
- 43C/AD *9, 28*
- 43C/AR *9*
- 43C/AT *17*
- 43C/BO *9, 14*
- 43C/CS *9, 10, 23, 24, 25*
- 43C/CT *9, 25*
- 43C/DF *25*
- 43C/GN *10, 17*
- 43C/OS *25*
- 43C/PT *10, 31*
- 43C/RT *10, 11, 26*
- 43C/RU *10, 26*
- 45/PL *31*

Vvouchers for interim payments *105***W**

weigh tag

- harvest delivery *90*
- harvest receipt *86*
- reviewing *91*

