

Oracle® Cloud

Implementing Oracle Fusion Data Intelligence



G52685-01
May 2026



Oracle Cloud Implementing Oracle Fusion Data Intelligence,

G52685-01

Copyright © 2023, 2026, Oracle and/or its affiliates.

Primary Author: CEAL Team

Contributors: User Assistance Team

This software and related documentation are provided under a license agreement containing restrictions on use and disclosure and are protected by intellectual property laws. Except as expressly permitted in your license agreement or allowed by law, you may not use, copy, reproduce, translate, broadcast, modify, license, transmit, distribute, exhibit, perform, publish, or display any part, in any form, or by any means. Reverse engineering, disassembly, or decompilation of this software, unless required by law for interoperability, is prohibited.

The information contained herein is subject to change without notice and is not warranted to be error-free. If you find any errors, please report them to us in writing.

If this is software, software documentation, data (as defined in the Federal Acquisition Regulation), or related documentation that is delivered to the U.S. Government or anyone licensing it on behalf of the U.S. Government, then the following notice is applicable:

U.S. GOVERNMENT END USERS: Oracle programs (including any operating system, integrated software, any programs embedded, installed, or activated on delivered hardware, and modifications of such programs) and Oracle computer documentation or other Oracle data delivered to or accessed by U.S. Government end users are "commercial computer software," "commercial computer software documentation," or "limited rights data" pursuant to the applicable Federal Acquisition Regulation and agency-specific supplemental regulations. As such, the use, reproduction, duplication, release, display, disclosure, modification, preparation of derivative works, and/or adaptation of i) Oracle programs (including any operating system, integrated software, any programs embedded, installed, or activated on delivered hardware, and modifications of such programs), ii) Oracle computer documentation and/or iii) other Oracle data, is subject to the rights and limitations specified in the license contained in the applicable contract. The terms governing the U.S. Government's use of Oracle cloud services are defined by the applicable contract for such services. No other rights are granted to the U.S. Government.

This software or hardware is developed for general use in a variety of information management applications. It is not developed or intended for use in any inherently dangerous applications, including applications that may create a risk of personal injury. If you use this software or hardware in dangerous applications, then you shall be responsible to take all appropriate fail-safe, backup, redundancy, and other measures to ensure its safe use. Oracle Corporation and its affiliates disclaim any liability for any damages caused by use of this software or hardware in dangerous applications.

Oracle®, Java, MySQL, and NetSuite are registered trademarks of Oracle and/or its affiliates. Other names may be trademarks of their respective owners.

Intel and Intel Inside are trademarks or registered trademarks of Intel Corporation. All SPARC trademarks are used under license and are trademarks or registered trademarks of SPARC International, Inc. AMD, Epyc, and the AMD logo are trademarks or registered trademarks of Advanced Micro Devices. UNIX is a registered trademark of The Open Group.

This software or hardware and documentation may provide access to or information about content, products, and services from third parties. Oracle Corporation and its affiliates are not responsible for and expressly disclaim all warranties of any kind with respect to third-party content, products, and services unless otherwise set forth in an applicable agreement between you and Oracle. Oracle Corporation and its affiliates will not be responsible for any loss, costs, or damages incurred due to your access to or use of third-party content, products, or services, except as set forth in an applicable agreement between you and Oracle.

Contents

1 Introduction

About Fusion Data Intelligence	1
Learn About Fusion Data Intelligence	2
About this Guide	2
Implementation Cheatsheet	2

2 Plan the Implementation Process

Decide on the Implementation Approach	1
Phased Approach	2
Rollout of the Prebuilt Content	3
Full-Fledged Approach	4
Accelerated Implementation Approach	4
□ Create Your Implementation Team	5
□ Select a Partner	6
Gather Basic Information	7
Define the Business Requirements and Use Cases	7
Define the Functional Requirements	7
Define the Non-Functional Requirements	8
Define the Use Cases	8
Determine the Success Criteria	9
Create the Project Plan	9
Set Up the Support Process	12
Manage Application Updates	12

3 □ Learn About Oracle Cloud Infrastructure Basics

Cloud Accounts	1
Regions	2
Identity Services	3
Environment Families and Environments	3
Fusion Data Intelligence Environments	4
Oracle Fusion Cloud Applications Environments	4
Environment Pairing	4

Compartments	5
Groups	5
Policies	6

4 Perform the Fusion Data Intelligence Implementation Activities

Establish Environment Implementation Sequence	1
Prepare for Implementation	2
Prepare Your Oracle Fusion Cloud Applications	4
Create an Instance	5
Configure	6
Perform Data Validation	6
Configure Content	7
Configure Private Network Access (Optional)	7
Enable the Preview Features (Optional)	8
Customize	8
Custom Reports	8
Data Extensions	9
Custom Data Configurations	9
Data Augmentation	10
Self-Service using Fusion Data Intelligence Datasets and Dataflows	10
Third-Party ETL (Extract, Transform, and Load) Tool	11
Semantic Model Extensions	11
Security Extensions	12
Test	13
Migrate	14

5 Plan the Go Live Activities

Evaluate Go Live Readiness	1
Go Live	1
Plan for Onboarding Fusion HCM Analytics Users	3

6 Plan the Post Go Live Activities

Engage with Oracle Support	1
Update Fusion Data Intelligence	1
Track User Adoption	2
Implement a Governance Program	3

A Resources

Recommendations	A-1
Recommendations for the Planning Stage	A-1
Recommendations for the Preparing Stage	A-3
Recommendations for the Performing Stage	A-4
Recommendations for the Validating Stage	A-6
Recommendations for the Migrating Stage	A-8
Trainings	A-8
Checklists	A-9
Community	A-19
Oracle Help Center	A-19

Abstract

Documentation for IT administrators, power business analysts, and stakeholders who are about to implement Oracle Fusion Data Intelligence for the first time.

Preface

Learn how to implement Oracle Fusion Data Intelligence for the first time.

Audience

This document is intended for IT administrators, power business analysts, and stakeholders who are about to implement Oracle Fusion Data Intelligence for the first time.

Related Documentation

These related Oracle resources provide more information.

- Oracle Cloud <http://cloud.oracle.com>
- Getting Started with Oracle Cloud
- [Managing and Monitoring Oracle Cloud](#)
- Using Oracle Fusion Data Intelligence
- Getting Started with Oracle Analytics Cloud
- Visualizing Data and Building Reports in Oracle Analytics Cloud
- Preparing Data in Oracle Analytics Cloud

Conventions

The following text conventions are used in this document.

Convention	Meaning
boldface	Boldface type indicates graphical user interface elements associated with an action, or terms defined in text or the glossary.
<i>italic</i>	Italic type indicates book titles, emphasis, or placeholder variables for which you supply particular values.
monospace	Monospace type indicates commands within a paragraph, URLs, code in examples, text that appears on the screen, or text that you enter.

1

Introduction

Let's explore the concepts and procedures you need to implement Oracle Fusion Data Intelligence (Fusion Data Intelligence).

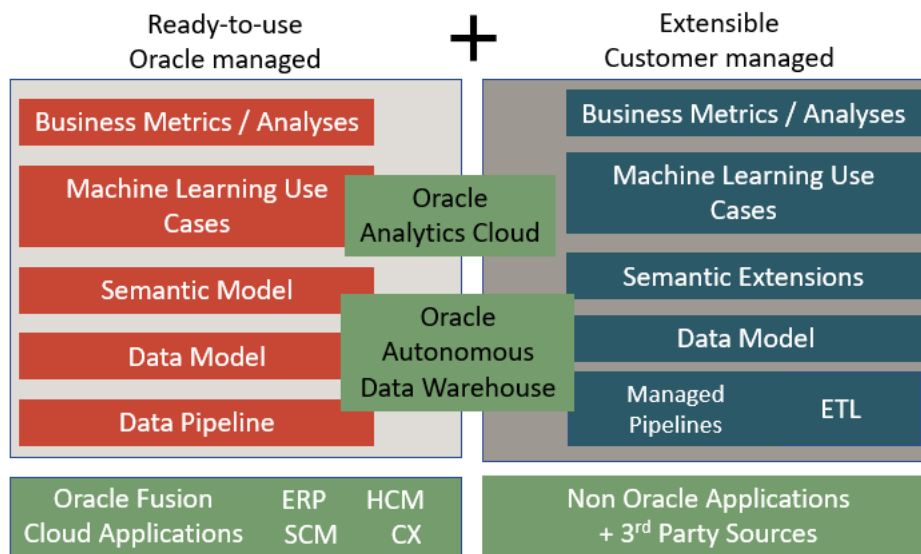
Topics:

- [About Fusion Data Intelligence](#)
- [Learn About Fusion Data Intelligence](#)
- [About this Guide](#)
- [Implementation Cheatsheet](#)

About Fusion Data Intelligence

Fusion Data Intelligence is a set of prebuilt, cloud-native analytics applications for Oracle Fusion Cloud Applications that provide line-of-business users with prebuilt insights to improve decision-making.

Powered by Oracle Autonomous AI Lakehouse and Oracle Analytics Cloud, it offers a library of over 2000 prebuilt, best practice key metrics across HR, finance, supply chain, and customer experience to make quick and collaborative decisions.



You gain a prebuilt, single analytics data model for all your Oracle Fusion Cloud Applications data that is extensible to include any external data. You can predict how business processes affect company goals by leveraging prebuilt machine learning to predict business outcomes, mitigate risk, and detect anomalies.

Review these:

- [Fusion Data Intelligence](#)

- [About Oracle Fusion Data Intelligence](#)

Learn About Fusion Data Intelligence

Oracle offers many ways to learn about Fusion Data Intelligence.

See [Trainings](#).

About this Guide

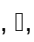
This guide enables you to consider, plan, and complete your first implementation of Fusion Data Intelligence for all your business users.

It leverages experiences from successful implementations and provides practical guidance on all phases of the implementation in the form of best practices, recommendations, considerations, references, and required resources. You can follow the same practices to expand beyond your initial implementation.

In the Resources section, you'll find handy resources such as recommended training and links to useful information. See [Resources](#). This section also has checklists for each activity to help you assess the status of activity completion and capture activity details. See [Checklists](#). Ensure to consider the recommendations for a smooth implementation process. See [Recommendations](#).

Note

If you're looking for an accelerated rollout of the prebuilt content to your business, then see [Decide on the Implementation Approach](#).

An icon, , in a section heading denotes that the section is part of an accelerated, phased rollout approach.

Implementation Cheatsheet

Use the implementation cheatsheet table as a quick reference to understand the stages in a Fusion Data Intelligence implementation and plan accordingly.

The following table displays the implementation process in its entirety.

Sequence	Stage	Tasks	More Information
1	Strategy and Training	<p>This stage includes these tasks:</p> <ul style="list-style-type: none"> Identify the implementation team Identify the implementation rollout strategy Identify the requirements Sign-off the scope and project timelines Define change management and support processes Identify trainings for the implementation team and business users Discuss need for a partner and identify a partner 	<p>See:</p> <ul style="list-style-type: none"> □ Create Your Implementation Team Decide on the Implementation Approach Define the Business Requirements and Use Cases Create the Project Plan Set Up the Support Process Trainings □ Select a Partner
2	Foundation	<p>This stage includes these tasks:</p> <ul style="list-style-type: none"> Pair Oracle Fusion Cloud Applications environment with the Fusion Data Intelligence environment Use the same cloud account for Oracle Fusion Cloud Applications and Fusion Data Intelligence Use the region that hosts Oracle Fusion Cloud Applications Decide on the compartment for Fusion Data Intelligence 	<p>See:</p> <ul style="list-style-type: none"> Environment Pairing Compartments

Sequence	Stage	Tasks	More Information
3	Preparation and Provisioning	<p>This stage includes these tasks:</p> <ul style="list-style-type: none"> • Activate Fusion Data Intelligence subscription • Configure single sign-on • Prepare Oracle Fusion Cloud Applications • Prepare to deploy Fusion Data Intelligence privately (Optional) • Create Fusion Data Intelligence instance (public or private) 	<p>See:</p> <ul style="list-style-type: none"> • Prepare for Implementation • Prepare Your Oracle Fusion Cloud Applications • Create an Instance
4	Configuration and Customization	<p>This stage includes these tasks:</p> <ul style="list-style-type: none"> • Set up prerequisites. • Configure Fusion Data Intelligence with private endpoints, if using • Configure Fusion Data Intelligence (prebuilt rollout) • Customize Fusion Data Intelligence (tailored rollout) 	<p>See:</p> <ul style="list-style-type: none"> • Prerequisites for Fusion CX Analytics • Prerequisites for Fusion ERP Analytics • Prerequisites for Fusion HCM Analytics • Prerequisites for Fusion SCM Analytics • Configure • Customize
5	Migration	<p>This stage includes these tasks:</p> <ul style="list-style-type: none"> • Finalize configuration • Finalize customization • Generate and migrate bundles 	<p>See:</p> <ul style="list-style-type: none"> • Migrate
6	Testing Strategy	<p>This stage includes these tasks:</p> <ul style="list-style-type: none"> • Validate data • Test functionality • Test performance • Complete user acceptance testing 	<p>See:</p> <ul style="list-style-type: none"> • Test
7	Go Live Readiness	<p>This stage includes these tasks:</p> <ul style="list-style-type: none"> • Evaluate the project • Evaluate the requirements • Evaluate the success criteria • Evaluate the customizations 	<p>See:</p> <ul style="list-style-type: none"> • Plan the Go Live Activities

Sequence	Stage	Tasks	More Information
8	Go Live and Post Go Live	<p>This stage includes these tasks:</p> <ul style="list-style-type: none">• Prepare the production environment• Engage and train end users• Communicate the go live date in your organization• Schedule the roll out• Engage Oracle Support, if required• Utilize community and forums• Keep the troubleshooting information handy	<p>See:</p> <ul style="list-style-type: none">• Plan the Post Go Live Activities

2

Plan the Implementation Process

A well-thought out implementation strategy is key to a successful implementation.

Your implementation strategy must cover these:

- Planning activities
- Rollout approaches
- Team roles
- Use of checklists
- Basic information needs
- Requirements
- Success criteria
- Timelines

Topics:

- [Decide on the Implementation Approach](#)
- [Create Your Implementation Team](#)
- [Select a Partner](#)
- [Gather Basic Information](#)
- [Define the Business Requirements and Use Cases](#)
- [Determine the Success Criteria](#)
- [Create the Project Plan](#)
- [Set Up the Support Process](#)
- [Manage Application Updates](#)

Decide on the Implementation Approach

As you plan your implementation of Fusion Data Intelligence, you must decide on the implementation approach.

Consider these approaches:

- Phased approach
- Rollout of the prebuilt content in the phased approach
- Full-fledged approach

This task requires:

- Project Manager
- Fusion Data Intelligence Functional Administrator
- Fusion Data Intelligence Service Administrator

Phased Approach

The phased approach rolls out the implementation sequentially, gradually introducing the new system, allowing you to achieve the same results at a slower, more deliberate pace.

Rather than having one go-live for the entire system, a phased implementation approach has several smaller go-live events in each project phase. Because users must perform different functions during a phased implementation, preparation typically includes training on the various standard operating procedures used in each phase. This way, you can choose to set milestones based on your circumstances. Start small and review the prebuilt content (Phase A) for the first rollout.

The phased approach can be broadly classified into these phases:

Category	Phase	Name	Description
Prebuilt	A	Prebuilt content	Implementing the ready-to-use content and rolling out to a handful of business users.
Customization	B	Report customization	Tasks include: <ul style="list-style-type: none"> • Creating custom reports on the prebuilt content. • Creating custom key metrics and workbooks on the prebuilt content.
Customization	C	Semantic layer customizations	Performing semantic model extensions.
Customization	D	Security customizations and advanced security configurations	Tasks include: <ul style="list-style-type: none"> • Setting up custom data security. • Setting up custom object security. • Rolling out to additional users.
Customization	E	Data customizations	Tasks include: <ul style="list-style-type: none"> • Bringing additional data from Oracle Fusion Cloud Applications using the Data Augmentation functionality. • Bringing additional data using the self-service connectors. • Bringing additional data from external sources.
Maintenance	F	Maintenance	Tasks include: <ul style="list-style-type: none"> • Uptake of the newer prebuilt functional areas. • Uptake of the newer platform features.

Use the checklist to confirm that the action items are planned for. See [Phased Implementation Approach Checklist](#).

Rollout of the Prebuilt Content

Phase A, the first phase, in the phased implementation approach is rolling out the prebuilt content. This enables business users to experience Fusion Data Intelligence much faster. They can familiarize themselves with the ready-to-use content prior to reviewing other use cases.

This phase has these steps:

Phase A Steps	Step Name	Task	Description
Step 1	Activate and Create Instance	Tasks include: <ul style="list-style-type: none"> Ordering Activating Ensuring prerequisites Creating instances 	This step ensures that the: <ul style="list-style-type: none"> Order is completed. Order is activated. Single sign-on is configured. Functional prerequisites are met. Development and production environments are made available.
Step 2	Configure and Validate	Tasks include: <ul style="list-style-type: none"> Setting up the development environment Testing the non-production environments 	This step ensures that the: <ul style="list-style-type: none"> Data pipeline is configured and activated. Security setup is completed. Extracted data is validated.
Step 3	Ready for Production	Tasks include: <ul style="list-style-type: none"> Setting up the production environment Going live and adopting 	This step ensures that the: <ul style="list-style-type: none"> Production environment is configured and migration process is set up. Testing is completed and product readiness is evaluated. Product is rolled out to business users. Planning is completed for user training and production support activities.

Note

Whether planning a phased approach or a full-fledged approach, you must complete Steps 1 and 2.

Full-Fledged Approach

The full-fledged approach rolls out implementation as one extensive project.

This approach enables a quicker and lower-cost process but comes with risks such as issues caused between interdependent customization-related or security-related tasks. Full-fledged implementations work best for organizations with one application and just a few functional areas and customizations. If you plan to follow this approach, then:

- Evaluate if a full-fledged rollout approach is a proper strategy for your implementation.
- Identify all implementation dependencies.
- Consider availability of business users and key project stake holders.

Use the checklist to confirm that the action items are planned for. See [Full-Fledged Implementation Approach Checklist](#).

Accelerated Implementation Approach

If you want to roll out the Fusion Data Intelligence prebuilt content to a few business users as soon as possible, then follow the accelerated implementation approach.

Ensure you complete these steps in this sequence:

Task	Sequence Number	Step Name	More information
Get started	1	Steps in this task are: <ul style="list-style-type: none"> • Learn about Fusion Data Intelligence • Identify the implementation team • Select a partner • Create a project plan • Understand the essential infrastructure components required for implementation 	See: <ul style="list-style-type: none"> • Training • Create Your Implementation Team • Select a Partner • Create the Project Plan • Learn About Oracle Cloud Infrastructure Basics

Task	Sequence Number	Step Name	More information
Activate and create instance	2	Steps in this task are: <ul style="list-style-type: none"> • Activate the Fusion Data Intelligence subscription • Synchronize users and set up single sign-on • Authenticate Oracle Fusion Cloud Applications • Set up the prerequisites in Oracle Fusion Cloud Applications • Create Fusion Data Intelligence instances 	See: <ul style="list-style-type: none"> • About Activating Your Oracle Fusion Intelligence Subscription • Set Up User Access to Oracle Fusion Data Intelligence Using Single Sign-On • Prepare Your Oracle Fusion Cloud Applications • Create an Instance
Configure and validate	3	Steps in this task are: <ul style="list-style-type: none"> • Configure security • Configure data pipelines • Validate data 	See: <ul style="list-style-type: none"> • Configure • Perform Data Validation
Assess production readiness and go live	4	Steps in this task are: <ul style="list-style-type: none"> • Perform user acceptance testing • Migrate • Evaluate the project • Prepare the production environment • Rollout to business users 	See: <ul style="list-style-type: none"> • Test • Migrate • Evaluate Go Live Readiness • Go Live

Use the checklist to confirm that the action items are planned for. See [Accelerated Implementation Approach Checklist](#).

Create Your Implementation Team

Your implementation team creates and executes the implementation plan and makes most of the implementation decisions.

Ensure that the team is broad-based, with representatives from your user community, application functional leadership, and cloud administrative specialists. Ideally, the team is composed of those who can dedicate significant time to the implementation.

The leader of your team acts as a liaison between your organization, your implementation partner, Oracle's worldwide customer support, your customer success team, and the engineering community. Refer to the recommended implementation roles and their responsibilities while forming your implementation team. One person can perform some of the roles and responsibilities listed in the recommendations. For example, a service administrator can also serve as a security administrator.

Role	Responsibilities - Initial Phase (ready-to-use content rollout)	Responsibilities - Customizations	Responsibilities - Maintenance
Executive Sponsor	Signs off on the project, overall scope, and timelines	Same	Same
Project Manager	Manages the overall project plan	Same	Not applicable
Business Lead	Signs off on the functional content	Same	Same
Business Analyst	Defines the functional requirements	Same	Same
Service Administrator	Initial configuration	Configurations	Release updates and deployments
Security Administrator	Security assignments	Same	Life cycle management
Functional Administrator	Pre-requisites and data validation	Data validation	Same
Business User	Data configuration and parameter definitions	Same	Not applicable
Enterprise Architect	Not applicable	Provides integration with other tools	Not applicable
Data Engineer or Model Administrator	Not applicable	ETL and semantic modeling specialist	Not applicable
QA Specialist	Not applicable	Data and usability quality assurance	Not applicable
Change Management Lead	Defines new processes and manages support	Same	Same

This task requires inputs from:

- Project Manager
- Executive Sponsor
- Business Lead

Use the checklist to confirm that the action items are planned for. See [Create Your Implementation Team Checklist](#).

Select a Partner

Planning the implementation with an Oracle partner enables you to optimize every stage of an implementation project; from planning and building to transitioning and training. This saves you frustration and time, provides insights, and opens possibilities.

Review the [Oracle Analytics partner directory](#) to find a suitable partner.

This task requires:

- Executive Sponsor
- Project Manager

Use the checklist to confirm that the action items are planned for. See [Select Your Partner Checklist](#).

Gather Basic Information

Prior to planning the implementation, gather essential information regarding your Fusion Data Intelligence implementation requirements to create an effective implementation plan.

While creating the implementation plan, you must have information such as:

- The Oracle Fusion Cloud Applications that you've subscribed to in Fusion Data Intelligence.
- The implementation status of each Oracle Fusion Cloud Applications you subscribed to.
- The date when each Oracle Fusion Cloud Applications subscribed to has data available for extraction.
- The requirement to implement Fusion Data Intelligence applications concurrently with the corresponding Oracle Fusion Cloud Applications.
- The requirement to implement Fusion Data Intelligence applications such as Fusion HCM Analytics and Fusion ERP Analytics simultaneously or sequentially.
- The sequence of implementing Fusion Data Intelligence applications, if sequentially.
- The desired Fusion Data Intelligence implementation completion date.

This task requires:

- Fusion Data Intelligence Service Administrator
- Project Manager

Use the checklist to confirm that the action items are planned for. See [Gather Basic Information Checklist](#).

Define the Business Requirements and Use Cases

Define the business requirements and use cases to state the project's business needs and success criteria clearly.

Ensure that the requirements and use cases identify the critical business processes and the plan to monitor these processes. You must specify the functional and non-functional requirements in your implementation plan.

This task requires:

- Business Users
- Project Manager
- Business Leads

Define the Functional Requirements

Establish the business objectives to determine the success criteria and measure the success of your Fusion Data Intelligence solution.

The implementation team must identify all the functional requirements and get approval from all the stakeholders to ensure that the project team fully understands what is required to be built. It's also important to agree upon the testing scenarios for each of the functional requirements.

Follow these steps to determine the business objectives:

- Review the end-to-end process maps with the Oracle Fusion Cloud Applications functional administrator for each area. Agree on the analytical reporting requirements and how they're measured.
 - Determine the business metrics that you want to monitor.
 - Agree on the analytical workbooks functionality that complements the business metrics and provides further insight into the process.
 - Agree on the applicable security setup such as permissions and data restrictions.
 - Confirm the data sources for each reporting area.
 - Agree on the frequency of the data load required to meet the reporting requirements.
- Map the Fusion Data Intelligence modules to the configured Oracle Fusion Cloud Applications modules. You must ensure that the Fusion Data Intelligence modules that you plan to activate relate to the Oracle Fusion Cloud Applications functional modules. This enables the data pipelines to function effectively.
- Do a fit-gap analysis to identify the gaps in the solution and initiate the conversation to remediate the feasibility gaps.
- Document these requirements and test them during the appropriate test phase of the project.

Use the checklist to confirm that the action items are planned for. See [Define the Functional Requirements Checklist](#).

Define the Non-Functional Requirements

Non-functional requirements are related to the Fusion Data Intelligence system functionality and how Fusion Data Intelligence is expected to perform.

Consider the non-functional requirements such as performance, security, and reliability in your implementation plan. Identify all non-functional requirements and ensure that all senior stakeholders on the project, ranging from the business community to the security teams agree on these requirements. Based on the documented non functional requirements inventory, ensure that you check for the Oracle Fusion Cloud Applications source objects that don't have the corresponding view objects available for reporting. Flag these technical gaps during the early stages of implementation to accommodate the turn around time required for implementing enhancement requests in Oracle Fusion Cloud Applications. This will ensure that the project team fully understands the non-functional objectives and how these are measured. It's also important to agree upon the testing scenarios for each of the non-functional requirements. Document these requirements and test them during the appropriate test phase of the project.

Use the checklist to confirm that the action items are planned for. See [Define the Non-Functional Requirements Checklist](#).

Define the Use Cases

Use cases describe the interaction between Fusion Data Intelligence and the user to achieve a business process goal.

Identify all use case requirements and ensure that all stakeholders agree on them. The use cases can be related to an agreed business process map such as:

- Steps to create and deploy business metrics to a new or existing workbook.

- Steps to create new application roles and assign them to groups and users.
- Steps to monitor business metrics and related workbooks for a particular business process, such as monitoring headcount turnover.

Document the use cases to ensure that the project team fully understands the objectives and how these use cases would be fulfilled.

Determine the Success Criteria

The success of your Fusion Data Intelligence implementation heavily relies on you choosing the proper criteria.

This enables you to evaluate and determine the working practices you need to continue working on and improve in the future. You must've qualitative and quantitative ways of determining your project's success. Track the following to measure the success of the implementation:

- Scope – Identify and achieve the intended results of the implementation.
- Schedule – Ensure that all the milestones are met with ample time for contingencies.
- Budget – Ensure that the project is delivered within the estimated cost.
- Satisfaction - Ensure that the key stakeholders are satisfied with the implementation.

This task requires a project manager.

Use the checklist to confirm that the action items are planned for. See [Determine the Success Criteria Checklist](#).

Create the Project Plan

Create the project plan with clearly defined project milestones.

Communicate these milestones to the implementation team to enable the team to understand and plan for interdependencies of external IT systems within the organization landscape. Ensure that each of the milestones have a clear breakdown of tasks. Map the activities to specific resource ownership to effectively track the execution and progress of implementation activities.

Align the project implementation plan activities with the phased approach tasks. See [Phased Approach](#). Ensure that the project timelines include additional time to cover pipeline activations, initial data loads, and any issues found. Plan for contingencies during the testing cycles and go-live preparation.

You may choose to create plans for quick or standard implementations based on your business requirements. Quick implementation is limited in scope, users, and may not involve customizations whereas a standard implementation goes through the entire implementation lifecycle.

Customer Responsibilities

To manage your service, take the actions in the following tables.

▮ Quick Implementation Plan

The following table explains the initial phase of a quick implementation plan:

Category	Task
Order and Activation	<p>Ordering tasks in this category are:</p> <ol style="list-style-type: none"> 1. Create a draft order with Oracle Sales. 2. If no Universal Credits (UCC) subscription exists in the Oracle Fusion Cloud Applications cloud account, then add a Pay-as-you-Go (PAYGO) UCC subscription to the order. 3. Add Fusion Data Intelligence to the order. 4. Place the order. 5. Watch for welcome emails to the administrator's email address. <p>Activation tasks in this category are:</p> <ol style="list-style-type: none"> 1. Verify the prerequisites for order activation. 2. If you ordered PAYGO UCC: <ol style="list-style-type: none"> a. Activate it first into the Oracle Fusion Cloud Applications cloud account. b. Wait until you receive an activation confirmation email for UCC. 3. Activate Fusion Data Intelligence into the Oracle Fusion Cloud Applications cloud account.
Development and Production Environments	<p>Common tasks for both environments are:</p> <ol style="list-style-type: none"> 1. Synchronize Oracle Fusion Cloud Applications users and roles and enable single sign-on. 2. Create a Fusion Data Intelligence instance. 3. Configure pipeline settings and activate the initial application functional area pipeline. Wait for the pipeline to complete. 4. Configure initial reporting configurations. 5. Configure initial security. <ol style="list-style-type: none"> a. Assign initial Oracle Fusion Cloud Applications business users to the license groups. b. Create user credentials for the partner and Oracle resources. c. Assign internal, partner, and Oracle resources to system groups. d. Assign initial business users to appropriate security context values from the initial security context. 6. Validate the prebuilt functional area. <ol style="list-style-type: none"> a. Validate the analytic content. b. Validate the data content. c. Validate content and data security assignments.

Category	Task
Development Environment	Tasks in this category are: <ol style="list-style-type: none"> 1. Perform user acceptance testing (UAT). 2. Perform user training. 3. Develop support procedures.
Production Environment	Tasks in this category are: <ol style="list-style-type: none"> 1. Have initial business users perform sanity checks on the initial content and data. 2. Roll out to the remaining business users.

Standard Implementation Plan

The following table explains the standard implementation plan:

Category	Task
Order and Activation	Tasks in this category are: <ol style="list-style-type: none"> 1. Place the order. 2. Verify the prerequisites for order activation. 3. Activate the order.
Development	Tasks in this category are: <ol style="list-style-type: none"> 1. Verify the prerequisites for the Fusion Data Intelligence applications. 2. Synchronize the identity service and enable single sign-on. 3. Create a development instance. 4. Set up pipeline and reporting configurations. 5. Activate the data pipelines. 6. Set up the security assignments for the ready-to-use content.
Non-production Testing	Tasks in this category are: <ol style="list-style-type: none"> 1. Conduct user testing on the subject areas and metrics. 2. Conduct user testing on the prebuilt reports. 3. Create reports. 4. Document the testing feedback. 5. Create and configure the additional testing instance (if purchased). 6. Secure user acceptance testing sign off. 7. Sign off for production connection.

Category	Task
Production	<p>Tasks in this category are:</p> <ol style="list-style-type: none"> 1. Upgrade the development instance to the latest application release level. 2. Synchronize the identity service and enable single sign-on. 3. Create a production instance. 4. Set up pipeline and reporting configurations. 5. Activate the data pipelines. 6. Set up the security assignments for the ready-to-use content. 7. Complete the pre-go-live activities. 8. Roll out to business users. 9. Complete the post go live activities.

Use the checklist to confirm that the action items are planned for. See [Create the Project Plan Checklist](#).

Set Up the Support Process

My Oracle Support is your initial point of contact for all product support needs.

If you encounter any issues with the product at any point in time, as a Fusion Data Intelligence administrator, file an SR so that Oracle Analytics support can help you. The contact details of Oracle support are available in the Fusion Data Intelligence Welcome email that you receive after Oracle processes your subscription order.

Review these:

- [My Oracle Support](#)
- [Customer Access Support](#)
- [How to Add a Support Identifier to a My Oracle Support User Account](#)
- [What to do now that you have your Support Identifier \[VIDEO\]](#)

This task requires a Fusion Data Intelligence service administrator.

Use the checklist to confirm that the action items are planned for. See [Set Up the Support Process Checklist](#).

Manage Application Updates

As a service and functional administrator, ensure that you periodically check the Release Updates tile on the Console in Fusion Data Intelligence for new releases and plan the update activities.

Fusion Data Intelligence provides quarterly application updates with the control and flexibility to choose when to apply the updates within the scheduled auto-update date. Oracle applies any critical security patches automatically. These updates have zero downtime. The auto-update process updates the data model, immediately adds new content, and replaces existing content

with the latest updates. The process preserves the activated functional area data pipelines and resets the functional area data pipelines in Saved or Scheduled status to the Saved status. See [About Application Updates](#) and [Update Your Application](#).

You can view the notifications displayed on the Data Configuration page when application updates are available for major releases (quarterly basis), patches (monthly basis), and emergency fixes (as needed). You must plan and communicate decisions on when you perform the updates. Ensure that the update activities align with your overall governance and compliance policies.

Use the checklist to confirm that the action items are planned for. See [Manage Application Updates Checklist](#).

3

□ Learn About Oracle Cloud Infrastructure Basics

Understand the essential components of Oracle Cloud Infrastructure that lay the foundation of a successful implementation.

Setting up the essential components requires:

Oracle Cloud Infrastructure Component	Resource
Cloud accounts	Cloud Account Administrator
Regions	Cloud Account Administrator
Identity services	Cloud Account Security Administrator and Fusion Data Intelligence Cloud Account Security Administrator, if using two accounts
Environments	Fusion Data Intelligence Cloud Account Administrator
Compartments	Fusion Data Intelligence Cloud Account Administrator
Groups	Fusion Data Intelligence Cloud Account Administrator
Policies	Cloud Account Administrator

Topics:

- [Cloud Accounts](#)
- [Regions](#)
- [Identity Services](#)
- [Environment Families and Environments](#)
- [Compartments](#)
- [Groups](#)
- [Policies](#)
- [Oracle Cloud Foundation](#)

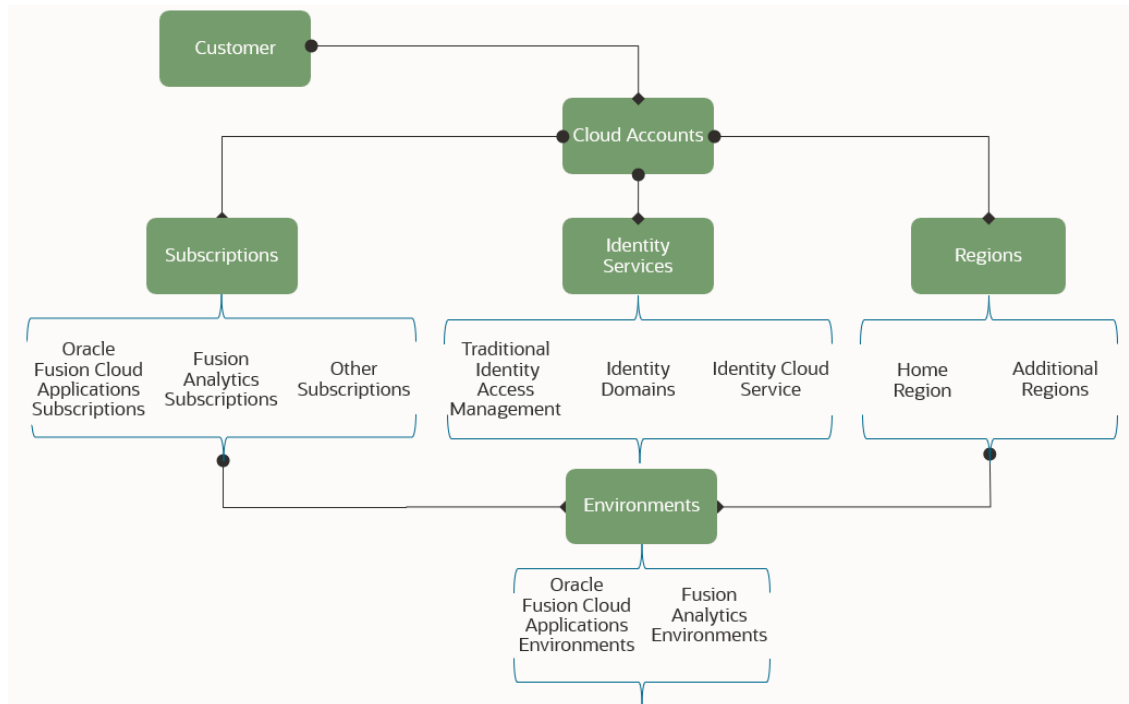
Cloud Accounts

Cloud accounts enable organizations to access and utilize the Oracle Cloud services.

They provide a flexible and cost-effective way to build, test, and deploy applications and services on the cloud. The name "Cloud Account" is synonymous with tenancy. Cloud account is often used in Oracle Sales documents to order and activate cloud service subscriptions. The term tenancy is most often used in Oracle Cloud Infrastructure technical documents.

Oracle recommends using one cloud account for all cloud services. For Fusion Data Intelligence, consider using the Oracle Fusion Cloud Applications cloud account. A single cloud

account lowers administrative costs, provides synergies between all cloud services, and increases security. There is no way of imposing cross-cloud account policies or governance.



See [Cloud Accounts](#) and [Tenancies](#).

Use the checklist to confirm that the action items are planned for. See [Cloud Accounts Checklist](#).

Regions

An Oracle Cloud Infrastructure region is a localized geographic area that can be separated from other regions by vast distances across countries and continents.

Your cloud account has a home region, and you can subscribe to additional regions. The Oracle Cloud Infrastructure Console shows both subscribed and unsubscribed regions.

Know these components of regions:

- **Region Infrastructures** - Regions contain physical data centers. Some data centers contain the first generation of Oracle Cloud Infrastructure (generation 1 or Classic), whereas most data centers contain the second or later generations of Oracle Cloud Infrastructure (generation 2). Fusion Data Intelligence instances exist in generation 2 regions and Oracle Fusion Cloud Applications instances exist in both generation 1 and 2 regions.
- **Cloud Realms** - Oracle Cloud regions are organized into separate cloud realms for customers with differing security and compliance needs. Realms are isolated from each other and share no physical infrastructure, accounts, data, resources, or network connections. Customer tenancies exist in a single realm and can only access regions that belong to that realm. The following realms are available:
 - **Commercial Realm** - These regions are accessible to any customer. Fusion Data Intelligence instances exist in the commercial realm.

- Sovereign European Union Realm - These regions are separated from the commercial regions and operate entirely within the European Union.
- US Government - These regions are isolated from commercial customers. Multiple realms are certified under different compliance standards for the US government. These regions support regulatory-compliant, mission-critical US public sector workloads.
- UK Government - These regions are designed in collaboration with multiple UK government and defense ministries. These regions are for the UK government and defense customers.

See [Regions and Availability Domains](#).

Use the checklist to confirm that the action items are planned for. See [Regions Checklist](#).

Identity Services

Cloud accounts use either Oracle Identity Cloud Service or Oracle Cloud Infrastructure identity domains.

Fusion Data Intelligence depends on identity service instances to:

- Manage users, groups, and application roles.
- Provide an integrated and synchronized single sign-on configuration.
- Provide user authentication and authorization services.

If you use a single cloud account for Oracle Fusion Cloud Applications and Fusion Data Intelligence, then both use the same identity service and it eases administration.

See [Identity Cloud Service](#) and [Identity Domains](#).

Use the checklist to confirm that the action items are planned for. See [Identity Services Checklist](#).

Environment Families and Environments

Fusion Data Intelligence and Oracle Fusion Cloud Applications provide environment families that are a set of production and non-production (test or development) environments.

An environment family is the set of environments a service uses in a cloud account. It eases administration of the environments within the family. It ensures environments are supported, upgraded, and patched at the proper times and levels.

An environment supplies a single management interface for the various services and a platform where services are provisioned. Environments are either production or non-production.

- Production Environment - The production environment supports your day-to-day real-time business operations by authorized users. An environment family is allotted one production environment.
- Non-Production Environments - Test and Development are examples of non-production environments. These can support the development of new capabilities and the final pre-production acceptance testing.

Fusion Data Intelligence Environments

Fusion Data Intelligence has one non-production environment and one production environment. You can subscribe to additional test environments for quality assurance and other needs such as pre-production staging of functionality and maintenance updates.

The default instances are named "Development/Test" and "Production". If you've an additional test environment, then Oracle names it "Additional Test Environment".

Use the checklist to confirm that the action items are planned for. See [Fusion Data Intelligence Environments Checklist](#).

Oracle Fusion Cloud Applications Environments

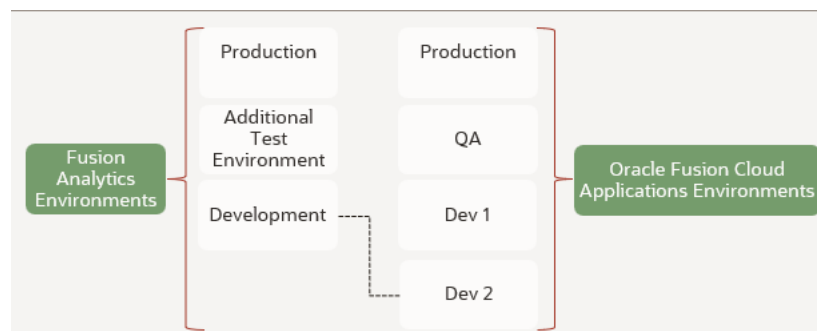
Oracle Fusion Cloud Applications environments typically have several non-production environments and a production environment. For example, if an Oracle Fusion Cloud Applications cloud account is named ABCD, then you can name two of the environments in that family ABCD-TEST and ABCD-PRODUCTION.

Use the checklist to confirm that the action items are planned for. See [Oracle Fusion Cloud Applications Environments Checklist](#).

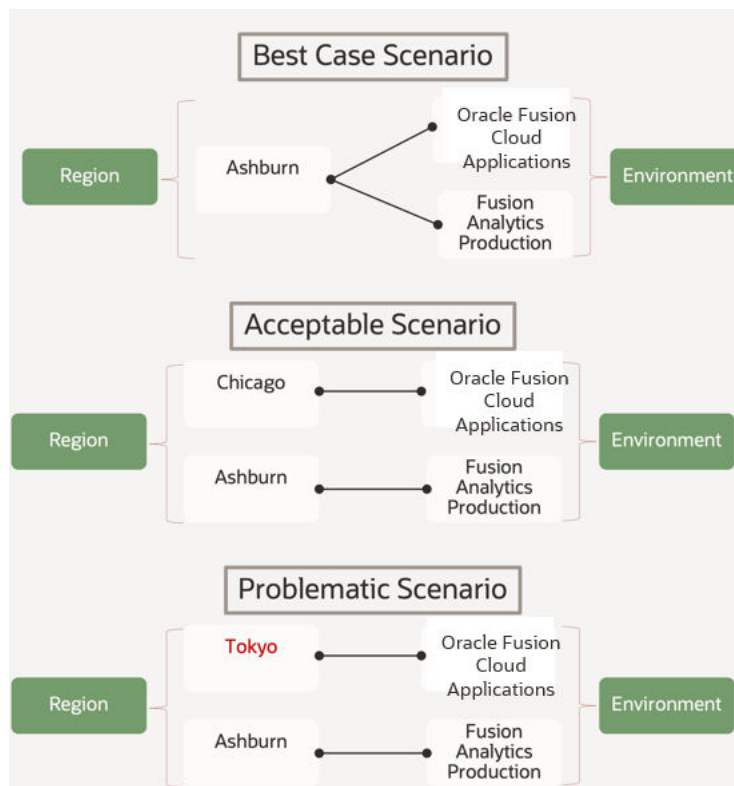
Environment Pairing

Each Fusion Data Intelligence environment is paired with an Oracle Fusion Cloud Applications environment.

You can pair a Fusion Data Intelligence non-production environment with any of the Oracle Fusion Cloud Applications non-production environments.



Review these pairing scenarios:



Use the checklist to confirm that the action items are planned for. See [Environments Pairing Checklist](#).

Compartments

Compartments are cross-region logical partitions within a cloud account. They control access to and set usage quotas for the Fusion Data Intelligence environments.

As a Fusion Data Intelligence cloud account administrator, create each Fusion Data Intelligence environment in a separate compartment. For example, create the Fusion Data Intelligence development environment in a compartment named FAW_Development. Create the Fusion Data Intelligence production environment in a compartment named FAW_Production. This separation ensures administrators of each environment have unique privileges.

See [Compartments](#).

Use the checklist to confirm that the action items are planned for. See [Compartments Checklist](#).

Groups

Groups are collections of users who receive privileges to access and perform tasks in tenancies, compartments, and applications.

As a Fusion Data Intelligence cloud administrator, create a Fusion Data Intelligence Service Administrator group for the administrators of each of the Fusion Data Intelligence environments; for example, FAW_Development_Administrators and

FAW_Production_Administrators. These groups provide the privileges necessary to create and administer the Fusion Data Intelligence environments.

See [Groups](#).

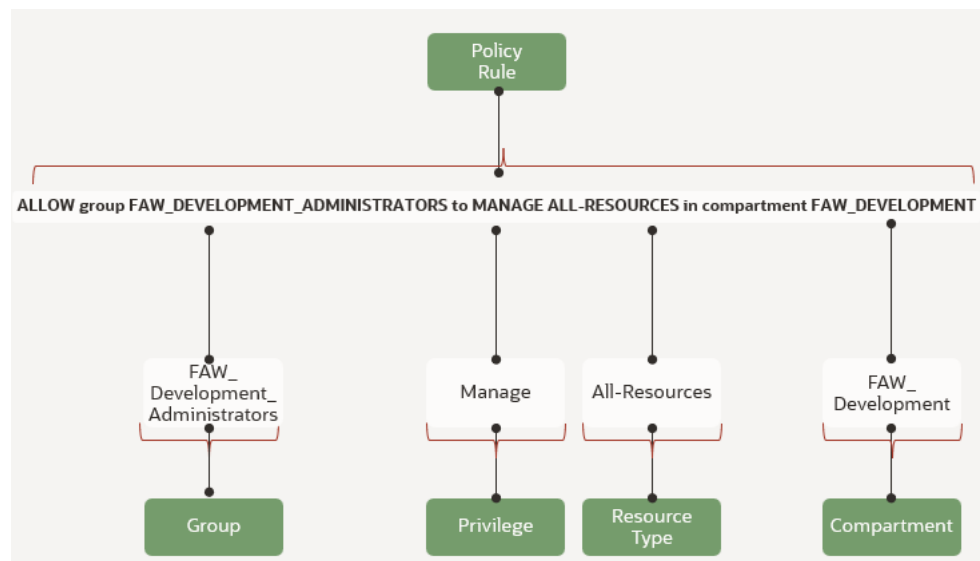
Use the checklist to confirm that the action items are planned for. See [Groups Checklist](#).

Policies

Policies are collections of rules that specify what groups can access which Oracle Cloud Infrastructure compartment resources and how. A policy rule allows a group to interact with a specific type of resource in a particular compartment.

As an Oracle Cloud Infrastructure administrator, create a rule for each compartment and group such as:

Allow group FAW_DEVELOPMENT_ADMINISTRATORS to MANAGE-ALL-RESOURCES in compartment FAW_DEVELOPMENT



See [Policies](#).

Use the checklist to confirm that the action items are planned for. See [Policies Checklist](#).

4

Perform the Fusion Data Intelligence Implementation Activities

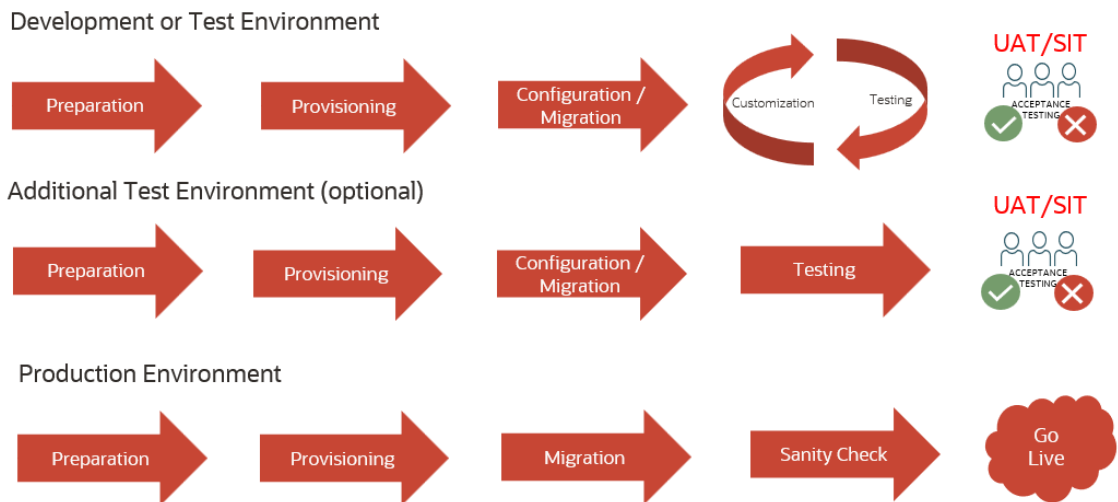
Perform these activities to successfully implement Fusion Data Intelligence.

Topics:

- [Establish Environment Implementation Sequence](#)
- [Prepare for Implementation](#)
- [Create an Instance](#)
- [Configure](#)
- [Customize](#)
- [Test](#)
- [Migrate](#)

Establish Environment Implementation Sequence

As individual environment administrators, start by implementing your development or test environment and then implement the production environment.



The development or test environment is a controlled environment where developers can create, test, and modify the data models, extensions, and customizations before moving them into the production environment or other additional test environments, if any. This helps to identify and fix any issues before they impact the live system.

Determine the resources for performing the tasks illustrated in the implementation journey and to administer the development or test environment, optional additional test environment, and

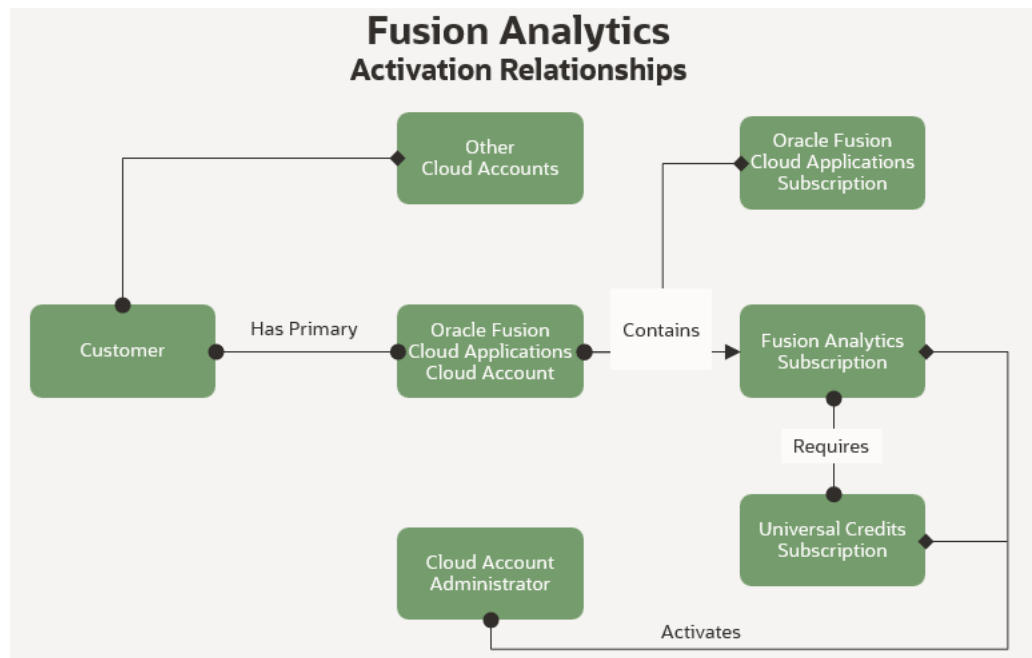
the production environment. For migrations, develop a coordination plan for the administrators of the different environments. Utilize an additional test environment, if necessary, for quality assurance and testing. See [Implementation Cheatsheet](#).

Use the checklist to confirm that the action items are planned for. See [Establish Environment Implementation Sequence Checklist](#).

Prepare for Implementation

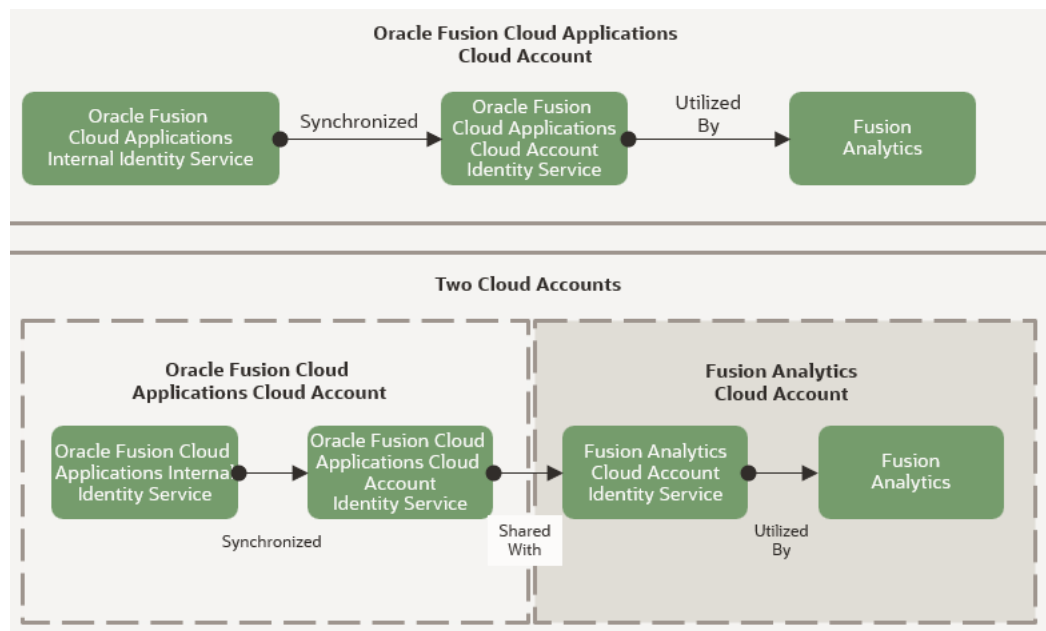
Prior to creating the Fusion Data Intelligence instances, you must complete these preparatory tasks:

1. ☐ Activate a Fusion Data Intelligence subscription.



See [About Activating Your Oracle Fusion Intelligence Subscription](#). This task requires:

- Fusion Data Intelligence Cloud Account Administrator
 - Oracle Fusion Cloud Applications Cloud Account Administrator
2. ☐ Set up user synchronization and single sign-on.



See these:

- Set Up User Access to Oracle Fusion Data Intelligence Using Single Sign-On
- [Using the SCIM Interface with IDCS](#)
- [Federating with Identity Providers](#)
- [Best Practices for Administering Fusion Analytics](#)
- [Setting up Fusion Analytics and Single Sign-On](#)
- [IDCS Sync and SSO](#)
- [How to add the FA_GSI_ADMINISTRATOR role to a user](#)

This task requires:

- Fusion Data Intelligence Service Administrator
 - Fusion Data Intelligence Cloud Account Identity Administrator
 - Third-Party Identity Administrator
 - Oracle Fusion Cloud Applications Cloud Account Identity Administrator
 - Oracle Fusion Cloud Applications Administrator
3. Prepare Oracle Fusion Cloud Applications. See [Prepare Your Oracle Fusion Cloud Applications](#).
 4. Optionally, prepare to deploy Fusion Data Intelligence with a private endpoint if you don't want it accessible from the internet. This type of deployment requires additional network preparation. You can use existing virtual cloud network components or create additional components. See [Deploy Oracle Fusion Data Intelligence with a Private Endpoint](#). This task requires a cloud account network administrator.

Use the checklist to confirm that the action items are planned for. See [Prepare for Implementation Checklist](#).

Prepare Your Oracle Fusion Cloud Applications

Oracle Fusion Cloud Applications is the primary source of Fusion Data Intelligence data. As the Oracle Fusion Cloud Applications cloud administrator and functional administrator, ensure you configure the functional and non-functional components of Oracle Fusion Cloud Applications.

Review these configurations and modify, if required:

- Functional configurations - Examples of functional configurations that can increase the value of your analytics are:
 - Enterprise Calendar across all the Fusion Data Intelligence applications.
 - Exchange rates from Enterprise Resource Planning.
 - Age bands from Human Capital Management.
 - Opportunity and revenue snapshots from Customer Experience.

See these resources for the subscribed applications to determine if you need to modify the configurations:

- Prerequisites for Fusion CX Analytics
- Prerequisites for Fusion ERP Analytics
- Prerequisites for Fusion HCM Analytics
- Prerequisites for Fusion SCM Analytics

This task requires:

- Oracle Fusion Cloud Applications Administrator
 - Fusion Data Intelligence Functional Administrator
- Network preparation - As an Oracle Fusion Cloud Applications cloud network administrator, prepare the Oracle Fusion Cloud Applications networking components such as the access control lists and location-based access control to allow Fusion Data Intelligence to connect to Oracle Fusion Cloud Applications and extract data. See [Overview of Location-Based Access Control](#) and [Verify LBAC Setting](#).

This task requires an Oracle Fusion Cloud Applications cloud network administrator.

- Authentication preparation - As the Oracle Fusion Cloud Applications security administrator, prepare Oracle Fusion Cloud Applications to authenticate Fusion Data Intelligence to orchestrate data pipeline extractions and perform health checks. Authentication is possible through a JSON web token-based public key certificate and associated private key, or through a service account and password. Oracle recommends using the JSON web token-based authentication method because it increases security and decreases password administration. See [JWT-based documentation](#) to create the X.509 components and upload the public key certificate to Oracle Fusion Cloud Applications. Develop a certificate maintenance schedule to replace the certificate before it expires. An expired certificate impacts the data refresh processes and health checks. This task requires an Oracle Fusion Cloud Applications security administrator.

Use the checklist to confirm that the action items are planned for. See [Prepare Your Oracle Fusion Cloud Applications Checklist](#).

Create an Instance

As a Fusion Data Intelligence cloud account administrator and service administrator, typically, you create a Fusion Data Intelligence instance with public IP addresses. Optionally, you can create a Fusion Data Intelligence instance with private IP addresses. You may also plan for additional test environments.

In your Oracle Fusion Cloud Applications service, if you've selected integration with Oracle Fusion Data Intelligence, then you can create an integrated Oracle Fusion Data Intelligence instance. See [Create an Integrated Oracle Fusion Data Intelligence Instance](#).

Public Environment

Fusion Data Intelligence, by default, is a public service deployed in the Oracle Services Network with public IP addresses.

Private Environment

This instance is deployed in a virtual cloud network with private IP addresses in your Fusion Data Intelligence cloud account.

For both types of instances, you need the following information:

- The environment type, for example, development or test.
- The Oracle Fusion Cloud Applications environment name and URL.
- The JWT (JSON web token) certificate that was uploaded to Oracle Fusion Cloud Applications and the associated private key. The recommended authentication type is JWT token-based with security certificate and private key renewal.
- The identity stripe or domain name used for the Fusion Data Intelligence environment.
- The compartment name.
- The region name.
- An Oracle Autonomous AI Lakehouse password.
- An email address for provisioning and any future updates.

To create the Fusion Data Intelligence instance with private IP addresses, you need these details in addition to the details required for a public instance:

- The compartment hosting the virtual cloud network.
- The compartment hosting the private subnet.
- The compartment hosting the network security group.
- The virtual cloud network name.
- The private subnet name.
- The network security group name.

Create the production instance along with the development and additional test instances simultaneously.

See [Create an Oracle Fusion Data Intelligence Subscription Instance](#) and [Create an Oracle Fusion Data Intelligence Private Instance](#).

Use the checklist to confirm that the action items are planned for. See [Create Fusion Data Intelligence Instance Checklist](#).

Configure

Configuring the Fusion Data Intelligence instances after they have been provisioned includes the following:

- A Fusion Data Intelligence service administrator configures data extraction, pipelines, reporting parameters, and security assignments.
- An Oracle Cloud Infrastructure administrator configures network access to the services.

Fusion Data Intelligence configurations comprise:

1. Prerequisites.
2. Data configuration.
3. Reporting configuration.
4. Security configuration.

Oracle Cloud Infrastructure configurations comprise:

- Access configuration for Fusion Data Intelligence with private endpoints.
- Network security configuration for Fusion Data Intelligence.

Use the checklist to confirm that the action items are planned for. See [Configure Checklist](#).

Perform Data Validation

Data validation helps confirm that the data loaded into Fusion Data Intelligence is complete and accurate and that there are no data losses or discrepancies.

This process reviews the initial extract date parameter value selection to bring in all open transactions data from Oracle Fusion Cloud Applications so that no data mismatch between both the applications happens. Data validation testing ensures that data has been loaded correctly and accurately into the Fusion Data Intelligence applications such as Oracle Fusion CX Analytics, Oracle Fusion SCM Analytics, Oracle Fusion ERP Analytics, and Oracle Fusion HCM Analytics.

As a Fusion Data Intelligence system administrator and functional administrator, use the Data Validation feature to compare metrics between your Fusion Data Intelligence instance and your Oracle Transactional Business Intelligence instance, which is an authoritative data validation check. Ensure that the user security setup in Oracle Fusion Cloud Applications and Fusion Data Intelligence is at the same access level for functional validation checks.

Review these:

- Validate Oracle Fusion Data Intelligence Data
- Data Validation for CX
- [Using Oracle Fusion HCM Analytics to Help Manage Data Integrity for Oracle Fusion Cloud HCM Records](#)
- Data Validation for HCM
- Data Validation for ERP
- Data Validation for SCM

Use the checklist to confirm that the action items are planned for. See [Perform Data Validation Checklist](#).

Configure Content

Content in this context refers to the prebuilt analytical visualizations, dashboards, and reports.

Oracle recommends modifying content in the customization phase. However, minor exceptions allow modifying prebuilt content immediately after provisioning.

Ensure that you:

- Delay any content modifications to the customization phase.
- If necessary, modify only reporting objects, not the underlying semantic model.
- Document the modifications so they are included in the customization phase.

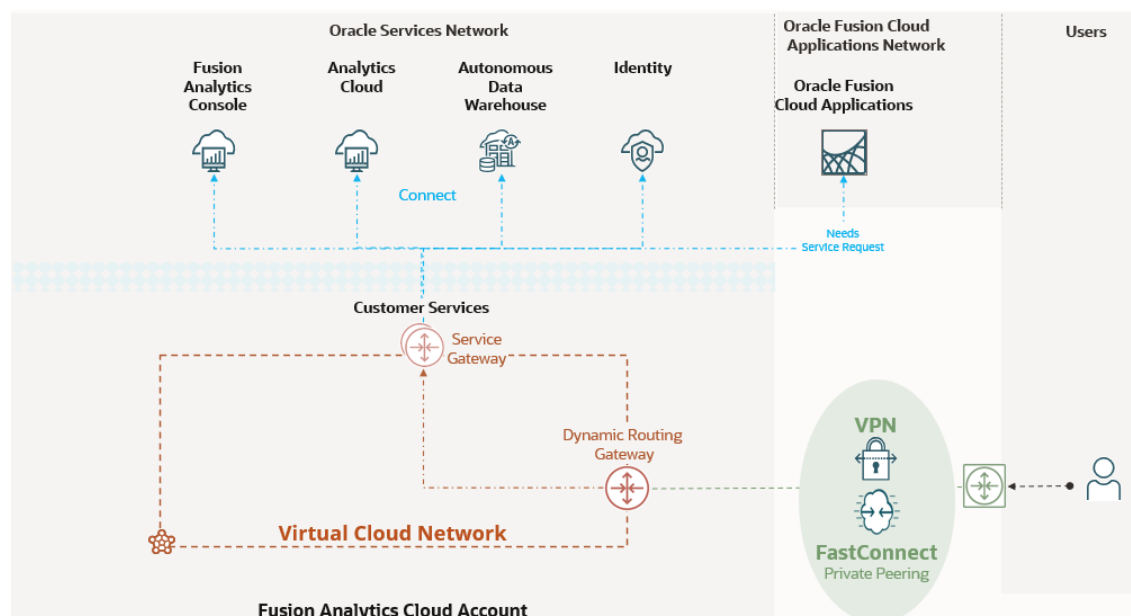
See Orientation Get Started with Key Metrics.

This task requires the Fusion Data Intelligence service administrator and Fusion Data Intelligence functional administrator.

Configure Private Network Access (Optional)

This information applies to Fusion Data Intelligence environments provisioned with public IP addresses.

Private Access to Oracle Services, also known as Transit Routing, refers to a network topology in the customer's network that uses an intermediary to reach the Fusion Data Intelligence services without the network traffic going over the public internet. In this scenario, the intermediary is a dynamic routing gateway attached to both the customer's network and a virtual cloud network in the Fusion Data Intelligence cloud account. Traffic travels over a FastConnect private virtual circuit or Site-to-Site VPN, through the dynamic routing gateway and a service gateway to the Fusion Data Intelligence services. This topology may currently exist in a cloud account containing services other than Fusion Data Intelligence.



Review these prior to providing private access:

- [Private Access to Public Fusion Analytics](#)

- [Dynamic Routing Gateway](#)
- [Virtual Cloud Network](#)
- [FastConnect](#)
- [Site-to-Site VPN](#)
- [Service Gateway](#)

This task requires a Fusion Data Intelligence service administrator, cloud account network administrator, and on-premises network administrator.

Enable the Preview Features (Optional)

As the Fusion Data Intelligence service administrator or functional administrator, you can view all preview features and choose which ones to enable based on your business requirements.

You can monitor which features have been enabled or disabled through an activity report available under the Activity tab on the Enable Features page. Ensure that you:

- Review and perform the prerequisites for the features you enable.
- Enable preview features on a development or test environment first.
- Allow enough time in your project plan to thoroughly test the preview feature and ensure it is suitable for your needs.
- Enable the preview features in a production environment only after they have been thoroughly tested and functionality confirmed.

See [Preview Features](#).

Customize

You can customize Fusion Data Intelligence to satisfy business requirements and increase reporting capabilities.

Oracle recommends following the phased implementation approach and perform the customizations after the two prebuilt content rollouts. Performing customizations before signing off on the first two prebuilt content phases adds unnecessary risks to an implementation project. You must perform customization activities in an environment that you consider the master development environment.

You can extend Fusion Data Intelligence to modify and create reporting content, data content, semantic model content, and security assignments. These types don't necessarily depend on each other, aren't necessarily sequential, and may not all apply to the business requirements.

Custom Reports

Fusion Data Intelligence includes prebuilt reports and subject areas that allow users to create reports. As users create custom reports using the prebuilt subject areas, it's important to organize them and secure them adequately to ensure that the correct business users with the correct permissions are allowed access to the custom reports and projects.

There are multiple types of custom reports. Plan to save each type in specific folders with adequate permission.

Ensure that:

- Developers or key power users define reports to be shared with specific groups of consumers.
- An application role is available to identify all the consumers that must have read access to these reports.
- A role is available for users who must have write access.
- Shared folders with appropriate read or write access to store these reports for each role are available.
- Service administrators always have full control for the folders.
- Ad hoc reports created by business users for themselves are saved in the user's folder.
- Ad hoc reports created by a business user to be shared are stored in specific shared folders with write access to everyone. If needed, the user who creates the report can configure permissions to give access only to the selected users.

See:

- [Begin to Build a Workbook](#)
- [Assign shared catalog folder and workbook permissions](#)

This task requires Fusion Data Intelligence service administrator, Fusion Data Intelligence security administrator, and Fusion Data Intelligence authors.

Data Extensions

As a service administrator and data engineer, use data extensions to add additional data for analytics.

The storage capacity in Oracle Autonomous AI Lakehouse is planned to support data coming from your subscribed Oracle Fusion Cloud Applications sources. However, if you add data coming from another source, you need to ensure that you have enough storage available. Fusion Data Intelligence includes 50 GB of storage for external data. If you're planning to load more volume, you need to add additional capacity to the database (in storage and potentially OCPU). Adding capacity will consume Universal Credits. Plan to extend data using any or all of these options in the same environment for different use cases:

- Custom Data Configurations
- Data Augmentation
- Self-service using Oracle Analytics Cloud Datasets and Dataflows
- Third-party ETL tool such as Oracle Data Integrator

See:

- [Custom Data Configurations](#)
- [Data Augmentation](#)
- [Self-Service using Fusion Data Intelligence Datasets and Dataflows](#)
- [Third-Party ETL \(Extract, Transform, and Load\) Tool](#)

Custom Data Configurations

Custom data configurations are ready-to-use templates that enable you to bring data into the autonomous data warehouse quickly.

Currently the only template available is for Descriptive Flex Fields (also referred to as DFF). You only need to select the list of DFF columns you want to import for each object. Data is loaded in the pipeline managed by Oracle and added to the semantic layer automatically.

See [Extend Data with Custom Applications](#).

Data Augmentation

Use data augmentation to add additional data from a supported data source that doesn't require transformation. Oracle Fusion Cloud Applications data must be available in a view object to be loaded through data augmentation. Data augmentation can extend existing dimensions, create new dimensions, and create new facts.

There are many benefits to using data augmentation:

- Oracle manages the execution.
- It's scheduled with the prebuilt pipelines, which is essential for data consistency (extract dates are the same).
- There is no need to buy, learn, or manage another extraction tool.

But data augmentation has these limitations currently:

- No data transformation.
- No joining with other tables and data sources.
- A limited number of supported data sources, most available in preview only.

Leverage views in the OAX_USER schema built on the augmentation tables to implement transformations and joins. Depending on the performance requirements, these views can be materialized. However, this is useful only for simple use cases. Performance and maintenance quickly become issues if the transformations are too complex (multiple joins, aggregates). In that case, using a third-party extraction tool is the best option.

See [About Augmenting Your Data](#).

Self-Service using Fusion Data Intelligence Datasets and Dataflows

Fusion Data Intelligence allows users to upload datasets directly and use them for reporting or joining them with existing subject areas.

These datasets can come from a file or be defined using a connection to an external application. Datasets are designed to provide self-service extension capabilities to business users to bring in external data that's not in the semantic model. Dataflows transform and load datasets data, for instance, into a custom schema in the Fusion Data Intelligence database. Dataflows can load only a small volume of data and are currently accessible only by their owner. But once loaded in the database, the corresponding table can be added in the semantic layer. Depending on the mode selected, a dataflow can drop and recreate the target table when executed. Since tables used in the semantic layer must have access granted to user OAX\$OAC, granting access by default to the entire custom schema is safer. Otherwise, execute the grant SQL statement after each execution of the data flow.

See:

- [What are Datasets](#)
- [Create datasets using dataflows](#)

Third-Party ETL (Extract, Transform, and Load) Tool

Fusion Data Intelligence allows users to upload datasets directly and use them for reporting or joining them with existing subject areas.

Any third-party extraction tool that supports Oracle Autonomous AI Lakehouse can load external data into the Fusion Data Intelligence database. Oracle Data Integrator is an example of an extraction tool.

Plan to use an extraction tool to load external data as a last resort when none of the other solutions are appropriate. You must review data augmentation and connectors first and if you can't use either of these capabilities, then plan to use Oracle Data Integrator for Marketplace and other ETL tools.

There are a few elements that are important when loading data into the Fusion Data Intelligence database with an extraction tool:

- Ensure that custom data loads don't run simultaneously with pipelines to avoid contention on database resources. You can determine that an incremental pipeline is finished when a new record is inserted into table `DW_WH_REFRESH_SUMMARY` with the process name `_REFRESH_SCHEDULED`.
- Use the Low service connection to the autonomous data warehouse. Using the High or Medium service consumes too many resources and can cause performance issues for other processes running on the database.
- Depending on the design of your load process, data inconsistencies and performance issues can appear in reports if users access the custom tables while they are being loaded. Try to load the data outside of business hours.

Semantic Model Extensions

Plan to extend the semantic model to meet your business requirements. This entails creating and modifying subject areas to leverage the data extensions.

Some examples are:

- Add or extend subject areas
- Add or extend dimensions
- Add facts
- Add or extend hierarchies
- Add session variables
- Add derived columns

Explore these options to extend the semantic model:

- Use data augmentation to automatically add new data into the semantic layer in some situations. When you use data augmentation to load additional information, you can use it sometimes to extend the semantic layer. There are three different types of data augmentation:
 - **Extend Entity:** Use this to add additional attributes to existing dimensions. Attributes loaded with this type of data augmentation are automatically in subject areas in the selected folder. This extension type is possible only with a join on the entity's primary key.

- Custom Dimension: Use this to create an entirely new dimension. Attributes loaded with this type of data augmentation are added in subject areas only if they are joined with a custom fact created with data augmentation.
- Custom Fact: Use this to create a new fact table. Attributes and measures loaded with this type of data augmentation are automatically added to the subject areas selected. Note that specifying a subject area is not mandatory.

A common usage of data augmentation is to extend a dimension with additional attributes, assuming that the join key is included in the data source.

- Use the Semantic Model Extension wizards that can use tables created by the data augmentation processes. This is the primary tool to use to modify the semantic layer. Below are some examples, but they are not exhaustive:
 - Data is loaded through data augmentation, but data augmentation cannot make the appropriate modifications in the semantic model. For instance, the join with the existing dimension isn't based on the primary key, or some transformations must be applied after loading the data.
 - Extensions need to be added in prebuilt subject areas.
 - Calculations are based on prebuilt facts.

A common usage of this tool is to create derived metrics based on existing fact metrics or to extend a dimension with attributes that can't be joined through data augmentation.

You can use them together in the same Fusion Data Intelligence environment. Though each possibility is helpful for specific use cases, review these recommendations:

- When creating a custom model, a custom fact in particular, ensure that you join it with prebuilt dimensions so that prebuilt columns and custom columns are used in the same report.
- Minimize the number of semantic layer customization steps as much as possible by applying all the required modifications to the corresponding object in each step. When additional customizations on the same object are added later, modify the existing step instead of adding a new one.

This task requires:

- Fusion Data Intelligence Service Administrator
- Data Engineer

See:

- [About Augmenting Your Data](#)
- Customize Oracle Fusion Data Intelligence

Security Extensions

You can use new and existing application roles to configure data and object security for the data and semantic model extensions.

As a service administrator, security administrator, and semantic modeler administrator, you can:

- Provide data security by restricting user access to data using application data roles. This filters the data presented to users based on their application data roles. Data security configuration is significantly different depending on the source Oracle Fusion Cloud Applications. Each Fusion Data Intelligence application has its way of handling data security. Even though Fusion Data Intelligence platform features are always the same, they

are used differently depending on the application. Security assignment configuration is fully, partially, or not automated, depending on the Fusion Data Intelligence application.

- Set up object permissions to restrict user access to catalog content (reports and visualizations) and subject area content (subject area, folders, and columns) using the prebuilt and custom duty roles. Duty roles set either "Default (inherits from the parent element)", "No access", or "Read-only" permission levels to the objects they protect.
- Customize the permissions for the prebuilt duty roles and create permissions for custom roles.

You must:

- Assess the prebuilt data security configuration and determine what business requirements it satisfies. Use data security extensions for any requirements that aren't satisfied with the prebuilt data security configuration.
- Document all security extensions.
- Maintain matrices of the extensions and the corresponding application roles that secure them.
- Validate the security extensions by testing them before publishing them to production.

See:

- [Configuring Custom Data Security in Fusion Data Intelligence in Nine Steps](#)
- [Configure Data Security](#)
- [Configure Object Security](#)
- [Configure Object Permissions](#)

Test

Complete the functional, performance, and user acceptance testing for a successful implementation. The specific testing requirements may vary depending on the implementation and customization of the application.

Ensure that you:

- Use a variety of testing techniques. In addition to functional and performance testing, consider using other testing techniques such as usability testing, security testing, system integration testing, and regression testing to ensure that the Fusion Data Intelligence artifacts are meeting all business requirements.
- Use realistic test data that accurately reflects the data used in the production Fusion Data Intelligence instance. This will help ensure that the workbooks are working as expected and the results are accurate.
- Involve business stakeholders in testing to ensure the development objects meet business needs and requirements.

Review the following for:

- Functional testing - As a functional administrator:
 - Plan to grant appropriate application roles for each functional activity.
 - Plan to test the typical functional activities, such as creating a diversity report.
 - Perform role-based testing of Fusion Data Intelligence metrics.

- Validate data after loading it into Fusion Data Intelligence. Validate the common library of metrics that exist in both Fusion Data Intelligence and Oracle Transactional Business Intelligence.
- Validate the functional security setup in Fusion Data Intelligence and the alignment with the source system data.
- Clearly define functional scenarios and use cases.

See [Validate Your Data](#).

- Performance testing - As a service administrator and functional administrator:
 - Once you configure the Fusion Data Intelligence test environment, you must execute the performance tests. This involves running the performance testing scenarios and recording the performance metrics. Ensure you scale up the additional test environment (ATE) storage, CPUs, and memory as needed to achieve desired results. While connecting to Oracle Autonomous AI Lakehouse to query the Fusion Data Intelligence data, ensure that you select the service level as Low.
 - After completing performance testing, you must analyze the results to identify performance issues or bottlenecks. The recommendation is to use the Warehouse Refresh Statistics subject area for analysis. This may involve reviewing performance metrics, analyzing system logs, performing root cause analysis, and analyzing the size and customizations complexity of the source system.
 - If testing identifies performance issues or bottlenecks, then you must work with the development team to optimize system performance. This may involve changing the system configuration, activating only the required functional areas, modifying the ETL process, or changing the data sources. Note that patching of source or target systems might impact the performance, hence avoid benchmarking the performance during this time window.

See [About Data Refresh Performance](#).

- User acceptance testing - As a functional administrator and quality assurance specialist:
 - Ensure that the testing end users have the necessary groups and roles to perform the tests.
 - Develop a set of test scenarios covering all aspects of Fusion Data Intelligence. Test scenarios should be written in a way that's easy to understand and follow. They should also be representative of real-life scenarios that users will encounter.
 - Perform tests based on the test scenarios that were created. This includes performing functional tests, usability tests, and performance tests. It's essential to document any issues or defects that are encountered during testing.
 - After all the tests have been completed and any high priority issues resolved, review and approve the application for production release.

Use the checklist to confirm that the action items are planned for. See [Test Checklist](#).

Migrate

There are times when you need to migrate application artifacts across environments even during your first implementation. Use Bundles, which are snapshots of your application artifacts at a certain point in time to migrate application artifacts or to back up your application artifacts.

You may need to do a complete system restore when something goes wrong with an environment. As a service administrator, review your environment strategies and plan for

migration activities for each environment. You must allocate the necessary time for migration activities in your implementation project.

Review these:

- [Bundle Your Application Artifacts](#)
- [Best Practices for Administering Fusion Analytics Warehouse](#)

Use the checklist to confirm that the action items are planned for. See [Migrate Checklist](#).

5

Plan the Go Live Activities

Prior to going live, as a project manager, you must ensure that the service is ready to go live and then rollout the service to your business users.

Topics:

- [Evaluate Go Live Readiness](#)
- [Go Live](#)

Evaluate Go Live Readiness

Evaluate the go live readiness to ensure that the business is ready to accept and manage the application in production.

Assess these stages of the project to prepare for the adoption phase:

- Evaluate the project - This is an ongoing process and as the project manager, you must:
 - Gather the reviews from all the stakeholders from the project to have a successful project evaluation. Create a report with actual project timelines, cost, and resources. This report will help with proper evaluation.
 - Ensure all the test cases are completed.
 - Plan change management and user training.
 - Communicate the timelines to the stakeholders and IT leader.
 - Have a contingency plan ready in case of any delay.
 - Run the pipeline full load in production and check the rejected records in the subject area warehouse refresh statistics. Rejected records should be investigated and fixed in Oracle Fusion Cloud Applications.
 - Ensure that the Fusion Data Intelligence prerequisites are implemented in the Oracle Fusion Cloud Applications production environment.
- Evaluate the requirements - As a project manager, business user, or business lead, review the functional requirements defined previously and ensure that all the required functionality has been implemented. Also, verify that all non-functional requirements such as performance, security, and network-related are implemented.
- Evaluate the success criteria - As a project manager, business lead, or executive sponsor, assess whether the goals and objectives of the project have been met within the success criteria defined for the project.

Use the checklist to confirm that the action items are planned for. See [Evaluate Go Live Readiness Checklist](#).

Go Live

Planning your rollout to users is essential for a successful Fusion Data Intelligence implementation. This includes assessing system readiness, preparing your user community,

scheduling go-live, and preparing for an audit. By adequately preparing for go-live, you can establish a solid foundation for the rollout of Fusion Data Intelligence.

Complete these tasks:

- □ Prepare the production environment - As a service administrator, you can create the production environment along with the development and additional test environments simultaneously. This avoids last-minute issues and provides sufficient time for unanticipated events. You must:
 - Ensure your Fusion Data Intelligence production environment is in place. This means configurations are enabled, users are set up, and data security roles are turned on. It also means all the content is migrated.
 - Update the production environment with the latest release and align with the development environment release version to facilitate migration activities. If required, keep resources ready for migration.
 - Ensure all the configurations and migrations are complete.
 - Ensure the descriptive flex fields configuration migration is complete.
 - Confirm that there are no open issues.
 - Confirm that the Fusion Data Intelligence URL is accessible.
- Establish collaboration - As a project manager, establish collaboration between all parties. Successful Fusion Data Intelligence implementations revolve around building a mutual understanding of the goals and objectives of the implementation. It is crucial for everyone, from the sponsor to end users, to be in synchronization. Everyone needs a clear understanding of the implementation plan, its benefits, and what to expect during the Fusion Data Intelligence implementation process.
- Prepare the business users - As business leads and service administrators, prepare your business users because this is a crucial task for successful application go-live and adoption. You must engage users at the outset of the project, and at key milestones, especially during user acceptance testing. Have a plan for business user preparation, training, and revised operating procedures communication and confirm that the plan is executed before go-live. Share the go live plans with the user community. Ensure that the user community is well aware of the organizational support process and reaches out to the core implementation team for assistance. This helps ensure a smooth go-live experience. Review the sample plan to onboard the Fusion HCM Analytics users, see [Plan for Onboarding Fusion HCM Analytics Users](#).
- Prepare organizational communication - The implementation team should assess organizational preparation for go-live readiness early and frequently. It must communicate early and often regarding each activity's status, readiness, completeness, and maturity to the project stakeholders and the steering committee. Based on this information, the executive sponsor must communicate with a focus on the benefits to the organization and what's in it for the business users. The project manager must:
 - Set up a communication plan for project stakeholders.
 - Ensure that the solution has been validated.
 - Assign at least one person whose priority is to respond to inbound communications.
 - Ensure organizational change control processes are in place.
 - Plan to mitigate external dependencies across the organization.
 - Create Post Go-Live standard operating procedures.
 - Confirm that a change management process is in place.

- Plan for user training and adoption.
- Plan to review accessibility requirements.
- Create a monitoring and maintenance routine for production.
- Build excitement and set expectations.
- Conduct user demos of the Fusion Data Intelligence application navigation and functionality. Make these demos a part of organization communication events to promote data-driven culture.
- Build metrics to show alignment with organization goals, and arrange display monitors across organization premises to showcase the organization's broad key metrics tracking adoption.
- Recommend users to set up and use mobile application features to view the refreshed data daily and host office hours sessions with business users to clarify open questions to drive adoption.

This task requires:

- Service Administrator
- Change Management Team
- Project Management Team
- IT Support Team

See [Accelerate Oracle Fusion Analytics customer journey](#).

- Schedule the rollout - Communicate the schedule to the impacted business units.
- Support go live - Plan for the first few weeks after your Fusion Data Intelligence implementation goes live for the core implementation team to provide go-live support. The goal of the go-live support is to have the implementation team quickly address any issues as the business users start to use the service.
- Track usage - As the implementation and business leaders, plan to consistently track the system using the Usage Tracking workbook that offers user-level audit reports. To keep an audit log of users who have logged in to the system, Fusion Data Intelligence service administrators can use the Usage Analytics page. This capability is essential for protecting the organization's data by identifying roles that have access to sensitive information. The sensitive data identifier enhances the user logging experience by producing audit logs that show which users have access to sensitive data. This feature is particularly beneficial for organizations that have multiple roles with varying levels of access to certain data and require detailed auditing to track users who have accessed sensitive information. To maintain segregation of duties between roles, Fusion Data Intelligence service administrators can download the security duty roles assignment report in the non-production and production environments to view all the duties assigned to a role. You can configure this report to run on any collection of roles.
- Consult the audit logs - As a service administrator and security administrator, consult the different audit logs that you can generate for troubleshooting purposes.

Use the checklist to confirm that the action items are planned for. See [Go Live Checklist](#).

Plan for Onboarding Fusion HCM Analytics Users

Review this sample onboarding plan while preparing your plan to onboard administrator and business users. The sample plan discusses how to onboard Fusion HCM Analytics users.

Plan user onboarding as follows:

- Administrators - Include around 1 to 10 users who are either a service administrator, security administrator, and functional administrator, or all.
- HR, HR Analyst, Analyst - Include around 0.3% to 3% of the workforce with the following access:
 - HR Analyst – All Access
 - AOR based access (Recommended)
 - * Set up Area of Responsibility (AOR) in HCM Cloud
 - * Set up custom security using AOR
 - * AOR changes will automatically be updated unless AOR structure changes
 - Other Options (Ongoing maintenance)
 - * Prebuilt predicates such as Business Unit (BU), Legal Entity (LE), Country, Department
 - * Custom security in Fusion Data Intelligence
 - * Extract, Transfer, and Load (ETL)
- Line managers - Include upto 10% of the workforce with the following:
 - Supervisor Hierarchy
 - * Automatic with Abstract Line Manager Role in Cloud HCM
 - * Quick setup in Fusion Data Intelligence for HCM Cloud users with custom line manager role
 - Override as needed using AOR, prebuilt objects, custom security, or ETL
- Non-HCM users - Include users such as Taleo User, Survey Analyst, SI partners depending on your business requirements. Plan to:
 - Create user account in Fusion Data Intelligence
 - Grant access using custom security
- Functional analyst - includes Payroll Analyst, Recruitment Analyst, Talent and Development, and Learning Analyst. Plan to:
 - Grant functional access to respective content area
 - Grant data access using AOR, prebuilt objects, custom security, or ETL

Plan for these additional controls:

- Author versus Consumer
- Access by functional areas such as Recruiting, Talent, and Compensation
- Access by objects such as Aggregate versus Detailed Reports and Hide prebuilt reports

6

Plan the Post Go Live Activities

"Post Go Live" refers to the period after a phase of the implementation has been put into production use.

During this period, you must plan to:

- Monitor the service closely.
- Track the system performance, user adoption, and user feedback.
- Address any problems promptly.
- Provide ongoing training, user manuals, and online support for the new business users to ensure they're comfortable using the new system correctly.

Topics:

- [Engage with Oracle Support](#)
- [Update Fusion Data Intelligence](#)
- [Track User Adoption](#)
- [Implement a Governance Program](#)

Engage with Oracle Support

As Fusion Data Intelligence users, if you come across any issues while using Fusion Data Intelligence, it's recommended that you reach out to Oracle Support for assistance. When creating a support ticket, be sure to provide an accurate description of the issue and specify the severity based on the project timelines.

Review these:

- [Creating a Fusion Analytics Service Request with Oracle Product Support](#)
- [Fusion Analytics Issue Categorization](#)
- [How to collect browser logs](#)
- [Request Management Attention to a Service Request](#)

Use the checklist to confirm that the action items are planned for. See [Engage with Support Checklist](#).

Update Fusion Data Intelligence

After the initial implementation, service administrators can update Fusion Data Intelligence by uptaking the latest releases, modifying the number of subscribed Fusion Data Intelligence users, and adding Fusion Data Intelligence applications.

Complete these tasks:

- To update Fusion Data Intelligence content, periodically check for notifications regarding new releases, plan and communicate decisions on when updates are performed, and

discuss and ensure these align with your overall governance and compliance policies. See [Update Your Application](#) and About Oracle Fusion Data Intelligence Releases.

- To modify the number of subscribed Fusion Data Intelligence users and add new applications such as Oracle Fusion HCM Analytics to your existing Fusion Data Intelligence subscriptions that contains Oracle Fusion ERP Analytics, see [Update Your Subscriptions](#).

Use the checklist to confirm that the action items are planned for. See [Update Fusion Analytics Checklist](#).

Track User Adoption

Measuring adoption of the service by users is critical, both immediately after go-live and over time.

Your organization must:

- Have a plan to manage user adoption.
- Support new business users in the production environment with training, communication, and issue resolution through your support team.
- Set up usage reports and use adoption dashboards to track progress.
- Consult the standard metrics that include the daily, weekly, and monthly active users, number of logins, and frequently accessed visualizations.
- Boost user retention by providing valuable content, building strong relationships, and creating a positive user experience.
- Create individualized user experience to drive adoption.
- Recognize users and offer rewards and incentives for usage and adoption.
- Solicit user feedback.
- Set up feedback mechanisms with the users to retain them. Ask what they want to see next to enhance their productivity and the data-driven culture in the organization.
- As part of soliciting feedback, iterate and make improvements that improve reports, customizations, additional data, etc.
- Provide internal “Office Hours” where success and new knowledge are demonstrated.

This task requires:

- Functional Administrators
- Training Leaders
- Power Users
- User Retention Team
- Support Leaders
- Project Managers
- Technical Administrators

Use the checklist to confirm that the action items are planned for. See [Track User Adoption Checklist](#).

Implement a Governance Program

Governance plays a critical role in enforcing regional compliance requirements.

A well-planned governance program can keep all your sensitive corporate data private and comply with regional compliance laws such as HIPAA or FedRAMP. It also supports data protection laws such as CCPA in California and GDPR in international markets such as the European Union, which impose strict customer data privacy and security compliance requirements on businesses. See [About Data Governance](#).

Fusion Data Intelligence data governance involves managing and controlling data assets, including their collection, storage, use, and distribution. The goal is to ensure that Fusion Data Intelligence data is accurate, complete, secure, and used in compliance with relevant laws and regulations. Your organization must:

- Define the scope of the Fusion Data Intelligence data governance program and the goals you want to achieve. This involves identifying the types of Fusion Data Intelligence data that need to be governed, the business processes and systems that use the data, and the stakeholders impacted by the program.
- Establish a data governance framework management plan, including policies, procedures, and Fusion Data Intelligence data management standards. This framework includes roles and responsibilities for data stewards and custodians, who oversee the data's use and management.
- Develop a data governance strategy for the organization.
- Choose the best governance model for your organization.
- Build a data-driven culture.
- Develop plans for the Fusion Data Intelligence data that needs to be governed. These plans specify the business rules and data quality metrics that must be followed.
- Implement controls and monitoring mechanisms to ensure compliance with Fusion Data Intelligence data management plans. This includes automated data quality checks, access controls, and usage monitoring.
- Improve the Fusion Data Intelligence data governance program by continuously monitoring and evaluating its effectiveness.

This task requires:

- Business Executives
- Project Managers
- Fusion Data Intelligence Functional Administrators
- Fusion Data Intelligence Security Administrators

Use the checklist to confirm that the action items are planned for. See [Implement a Governance Plan Checklist](#).

A

Resources

Use the resources such as recommended training, checklists, and links to useful information to help you implement Fusion Data Intelligence effectively.

Recommendations

Oracle recommends that you evaluate and apply the points listed in this section from the planning to the go-live stage of the Fusion Data Intelligence implementation for a smooth implementation experience.

Recommendations for the Planning Stage

Carefully consider and apply these recommendations when planning your implementation.

Review the phased approach and limit the scope of the phase

In this task, evaluate and ensure that:

- You've used the phased approach for prebuilt and customization phases.
- The scope of the customization phase is limited as much as possible to a subset of functional areas.
- The scope of the customization phase is limited to a single Fusion Data Intelligence application such as Fusion ERP Analytics.
- A previous phase, containing only prebuilt content with the same scope, was rolled out successfully into the production environment.
- The prebuilt phase content is a baseline for developing custom functional and non-functional requirements.

Review the functional requirements

In this task, evaluate and ensure that:

- All functional requirements are satisfied.
- Data validations confirm prebuilt Fusion Data Intelligence metrics return the same results as Oracle Transactional Business Intelligence (OTBI).
- The same customizations exist in Oracle Fusion Cloud Applications and the custom metrics return the same results as OTBI.
- Custom queries return accurate results for users with prebuilt and custom security profiles.
- Prebuilt and custom privileges secure the semantic model, catalog, and report content according to group assignments; for example, Modelers, Authors, and Consumers.
- Where applicable, users have the same object and data privileges that they have in Oracle Fusion Cloud Applications.

Review the non-functional requirements

In this task, evaluate and ensure that:

- All non-functional requirements are satisfied.
- A full data load is completed in the required time frame using prebuilt and custom data pipelines.
- Incremental data loads, using prebuilt and customized data pipelines, complete in the required time frame.
- SQL queries using custom security predicates respond in the required time frame.
- Network latency times satisfy requirements.

Review the support procedures

My Oracle Support is the initial point of contact for all product support needs.

In this task, evaluate and ensure that:

- A support process exists for users to report issues, and that appropriate mitigation actions are taken.
- Administrators understand the process of creating a service request.
- Outstanding customization issues are within allowable severity limits.
- If there are open severity-one service requests related to customizations, then specify and share:
 - The Fusion Data Intelligence OCID (Oracle Cloud Infrastructure Identifier), the number of concurrent users, and the number of Oracle compute units (OCPU) for Autonomous AI Lakehouse and Analytics Cloud.
 - A document summarizing the customizations.
 - Any recent environmental changes, such as patching, upgrade, test to production move in Oracle Fusion Cloud Applications, that might have contributed to the issue.
 - For dashboard issues:
 - * Affected workbooks, canvases, visualizations, analyses, and key metrics.
 - * Workbook and analysis session logs containing logical and physical SQL queries.
 - * Exports of workbooks and archives of analyses.

Review the release management procedures

Fusion Data Intelligence provides quarterly application updates with the control and flexibility to choose when to apply the update. Oracle applies critical security patches automatically with zero downtime.

In this task, evaluate and ensure that:

- Administrators can apply the Fusion Data Intelligence releases.
- You've planned, applied, and communicated releases and patches appropriately within your organization.
- You've ensured that all environments are on the same release and patch level.
- You've applied the appropriate release or patch to the customized environment.
- Your existing customizations work as expected after applying the latest releases and patches.

Recommendations for the Preparing Stage

Carefully consider and apply these recommendations when planning your implementation.

Review impact on the OCI environments

In this task, evaluate and ensure that:

- The production Fusion Data Intelligence environment is ready for rollout.
- The release version of the production environment of Fusion Data Intelligence matches that of the test environment.
- The Fusion Data Intelligence cloud account production environment preparations are complete.
- The Oracle Fusion Cloud Applications production environment preparations are complete.
- The Oracle Fusion Cloud Applications production URL and credentials are correct.
- The JSON Web Token (JWT) or password-based authentication methods test successfully.

Review the production capacity estimation and increase it, if required

In this task, evaluate and ensure that:

- You engage the Oracle sales and product managers to analyze consumption patterns and estimate additional capacity.
- You estimate the Autonomous AI Lakehouse compute units (CPUs), memory, and storage requirements.
- You estimate the Analytics Cloud CPUs and memory requirements.
- The increased capacity allows for projected data and user growth.
- You scale up Analytics Cloud and Autonomous AI Lakehouse in the Fusion Data Intelligence production environment based on the estimates,

Review whether an additional test environment (ATE) is ordered with required production capacity

In this task, evaluate and ensure that you ordered an ATE with the estimated capacity and that you've activated, prepared, provisioned, and configured it.

Review single sign-on and user group synchronization

In this task, evaluate and ensure that:

- You've synchronized the Fusion Data Intelligence users, job-specific groups, and roles with the Oracle Fusion Cloud Applications production environment.
- You've configured single sign-on.
- The Fusion Data Intelligence administrators are successfully using their Oracle Fusion Cloud Applications production credentials.
- The production Autonomous AI Lakehouse is accessible, and the administrative user credentials are correct.

Review whether audit and diagnostic logging is enabled

In this task, evaluate and ensure that you enable the audit, network, and diagnostic logs in all environments to assist internal and Oracle support activities.

Recommendations for the Performing Stage

Carefully consider and apply these recommendations when planning your implementation.

Review your data augmentation process

In this task, evaluate and ensure that:

- You've followed the recommendations for data augmentation.
- You've consulted the relevant documentation, such as the implementation guide, administration guide, and application reference guides and selected the best solution for each augmentation.
- You've leveraged the Oracle Fusion Cloud Applications data augmentations.
- You've leveraged the prebuilt Fusion Data Intelligence components such as custom data configurations, dimension aliases, connectors, and security configuration pipelines.
- You've ensured the customer-managed data loads are synchronized with the Fusion Data Intelligence pipelines.
- You've ensured the custom primary key column values are populated and don't contain null values.
- You've used the custom prefixes when naming the custom data objects.
- You've joined the custom fact tables to the relevant dimension tables.
- You've joined the custom dimension tables to the relevant fact tables.
- The implementation team has Fusion Data Intelligence data augmentation training and experience.

Review your semantic model extensions process

In this task, evaluate and ensure that:

- The implementation team has the training and experience of working with the Fusion Data Intelligence semantic model.
- You've secured the custom semantic model objects using the Fusion Data Intelligence object permissions.
- You've developed the custom semantic model objects according to the recommendations and prebuilt design principles.
- You've used the custom prefixes when naming the custom semantic model objects.

Review your security extensions process

In this task, evaluate and ensure that:

- The implementation team has training and experience of security in Fusion Data Intelligence.
- You've developed the custom security extensions according to the recommendations and prebuilt design principles.
- You've leveraged the prebuilt security configurations as much as possible (especially regarding Fusion HCM Analytics).
- You've leveraged the Upload option on the Console to upload security assignments into the prebuilt security context tables.

- You've ensured the custom security assignments secure access to custom subject areas, reporting content, and data.
- You've ensured the security assignments for custom attributes are loaded into a custom warehouse table.
- You've used the network access control and security lists to secure access to the custom data.
- You've assigned users to the custom security assignments.
- You've granted appropriate permissions to the custom user groups.
- You've performed the network threat testing and all services are protected from unauthorized access.

Review the custom report content creation process

In this task, evaluate and ensure that:

- The implementation team has the training and experience to create reports and visualizations.
- You've reviewed the latest reference guides to get an overview of the tables, subject areas, and prebuilt analytics to use the most appropriate objects and methods when you customize. See Reference Guides.
- You've reviewed the report authoring tips explained in each subject area and follow the recommendations in the workbooks.
- You've developed the custom visualizations and reports according to the recommendations and prebuilt design principles.
- You've stored the custom report content in custom shared folders in the catalog.
- You've used the custom prefixes when naming the custom shared folders.
- You've modeled the custom hierarchical shared folder tree structure after the prebuilt Oracle shared folder structure.
- You've used the prebuilt metrics wherever possible instead of creating custom calculations.
- You've ensured the custom shared folder tree uses inheritance to pass permissions to lower levels.
- You've ensured the custom application roles follow the prebuilt recommendations such as usage of duty roles.
- The Fusion Data Intelligence service administrator has exclusive read-write access to the root folder and inherits read-write privileges to the entire tree through inheritance.
- You've leveraged the prebuilt groups and application duty roles as much as possible.
- You've assigned users to the prebuilt and custom groups that contain prebuilt and custom duty roles.
- You've granted authors and consumers appropriate access to first-level pillar folders, such as ERP, through duty roles.

Applicable to Fusion HCM Analytics

Always filter on specific dates when using Headcounts or Person counts facts. Within Fusion HCM Analytics, when selecting the metric Headcount, the value returned is always the value as on the last day of the selected period. There is a snapshot for each day, but only the last snapshot of the selected period is useful.

For instance, instead of filtering on a year, filter on the last day of that year. When you display the result by month, filter on the last day of each month. To get the current values filter on `Date = To_DateTime(VALUEOF(NQ_SESSION.CURRENT_GREGORIAN_DAY), 'DD-Mon-YY')` to select the day of the last pipeline refresh. With these filters, the query reads only a few days instead of reading all the days of the selected period.

Recommendations for the Validating Stage

Carefully consider and apply these recommendations when planning your implementation.

Review the user acceptance process

In this task, evaluate and ensure that:

- The Oracle Fusion Data Intelligence customer success manager (CSM), where applicable, assisted in developing a successful user adoption plan.
- The custom subject areas, visualizations, and data are available to appropriate user groups.
- The unaffected prebuilt content was reaccepted.
- You've validated the custom metrics.
- Query response times are acceptable.
- All users with all security profiles accepted the custom content.
- You've explained the proper use of the shared folder structure to the authors.
- Custom data is available to appropriate user groups.

Review the full and incremental data load performance

In this task, evaluate and ensure that:

- You've scheduled enough time for the initial full data load in the production environment.
- You've synchronized the custom data loads with the Fusion Data Intelligence pipelines.
- The full data load using prebuilt and custom data pipelines completed successfully within the required time constraint.
- The incremental data loads using prebuilt and custom data pipelines completed successfully within the required time constraints.

Review that all queries meet performance requirements

In this task, evaluate and ensure that:

- All custom SQL queries, including those using custom security predicates, return correct results within the required time frames for concurrent users.
- The prebuilt SQL queries are unaffected by the customizations.

Review the capacity sizing

In this task, evaluate and ensure that:

- You're able to monitor the Autonomous AI Lakehouse memory, compute units (CPU), and storage capacity.
- You're able to monitor the Analytics Cloud memory and CPU capacity.

- The Autonomous AI Lakehouse and Analytics Cloud sizing is sufficient for the projected data and user growth over the next 90 days.
- The system raises proactive alerts when usage reaches thresholds that indicate capacity must be increased.
- You've tested the capacity of the environment where customizations matches the capacity of the production environment.

Review the object and data security profiles

In this task, evaluate and ensure that:

- Users with custom security profiles can access the same data in Fusion Data Intelligence and the data source environment.
- Users with custom security profiles can access appropriate subject areas, folders, and report content with proper read and write privileges.
- Users with prebuilt security profiles aren't affected by the customizations.

Review the accuracy of your data

In this task, evaluate and ensure that:

- The custom data in Fusion Data Intelligence is as accurate as it is in the data's source system.
- You've rerun the prebuilt data validations in the production environment and aren't affected by the customizations.

Review the functional requirements

In this task, evaluate and ensure that:

- You're able to complete the custom visualizations and reports successfully and they return accurate data, hierarchies, and aggregations.
- The custom metrics are validated.
- The prebuilt critical metrics are validated and aren't affected by the customizations.
- The custom subject areas are available for analysis.
- The custom visualizations are available and informative.

Review the non-functional requirements

In this task, evaluate and ensure that:

- Full and incremental data loads meet performance requirements.
- Visualizations and reports meet performance requirements.
- Network latency meets performance requirements.
- Capacity and sizing are sufficient for the expected growth in the next 90 days.
- You've secured the Fusion Data Intelligence services from outside threats.
- The Fusion Data Intelligence services are creating and receiving network connections as required.
- The user security profiles properly allow and restrict access to subject areas, visualizations, and data.

Review the success criteria

In this task, evaluate and ensure that:

- You're able to attain the overall success criteria determined for the customization phase.
- You're able to achieve user experience and satisfaction criteria.
- You've met the customization phase timeline.
- Any outstanding issues are within the allowable range of severity.

Recommendations for the Migrating Stage

Carefully consider and apply these recommendations when planning your implementation.

Verify the release and patch version

In this task, evaluate and ensure that the production environment is on the same release and patch level before migrating.

Review the artifact backup and restore process

In this task, evaluate and ensure that you've:

- Completely backed up the production environment before migrating the customized content from the test environment.
- Completely backed up the test environment.
- Bundled and exported the artifacts in the test environment.
- Successfully imported the artifact bundles from the test environment into the production environment.

Verify whether the data pipelines are activated

In this task, evaluate and ensure that:

- You've activated the data pipelines after importing the migrated bundles.
- The data pipelines completed successfully.

Verify whether the object and data security profiles are activated

In this task, evaluate and ensure that:

- You've configured single sign-on and it's functional in the production environment.
- You've synchronized the users and job roles (groups) from the production Oracle Fusion Cloud Applications environment.
- The pipelines extracted the Oracle Fusion Cloud Applications data and duty application roles.
- You've activated the security contexts and profiles in the production environment.

Trainings

Oracle offers many ways for users and partner implementation teams to learn about Fusion Data Intelligence and Oracle Fusion Cloud Applications capabilities. The implementation team

members, administrators, partners, and business users must complete the trainings listed in this section before going through the implementation stages.

Follow the [Oracle Analytics Trainings Forum](#) for notifications of upcoming training offerings.

□ Introductory Training

The following courses are designed to help the learner understand and familiarize themselves with Fusion Data Intelligence and its architecture. See [Getting Started with Fusion Data Intelligence](#).

□ Implementer Training

This training enables implementers to acquire the knowledge and skills to prepare, configure, and maintain Fusion Data Intelligence.

- [Fusion Data Intelligence Implementers Series](#)
- [Become an Oracle Cloud Fusion Data Intelligence Professional](#)

Business User Training

Business user training for Fusion Data Intelligence and Oracle Analytics Cloud (on-demand, live training, and replays of live training) empowers business users to use Fusion Data Intelligence seamlessly and confidently. See [Going Further with Fusion Data Intelligence](#).

Workshop Registration

Follow the [Oracle Analytics Trainings Forum](#) to receive upcoming training notifications. Use the checklist to confirm that the action items are planned for. See [Trainings Checklist](#).

Checklists

Use the checklists to confirm that the action items for each implementation task are completed. The checklists summarize and gather the information needed in subsequent sections and ensures that the implementation runs smoothly. Each checklist contains tasks and a checkbox to record their response.

Phased Implementation Approach Checklist

- Are you implementing just the prebuilt content as your first rollout?

Full-Fledged Implementation Approach Checklist

- Are minimal or no customizations envisioned?
- Are you implementing just one analytics application?
- Is there a dependency on other deliverables?
- Are you implementing all functional areas?
- Have you reviewed all the customization requirements?

Accelerated Implementation Approach Checklist

- Have you confirmed you are good to get started with just Phase A rollout?

Create Your Implementation Team Checklist

- Have you finalized the implementation team roles?

- Have you assigned non-partner members to the roles?

Select Your Partner Checklist

- Do you need an implementation partner to assist with Fusion Data Intelligence?
- Did you email opartners_us@oracle.com for partner assistance?
- Did you review the referenced [partner network website](#)?

Gather Basic Information Checklist

- List the applications on the Fusion Data Intelligence subscription.
- Are all Fusion Data Intelligence applications implemented simultaneously?
- If not, list the applications to be implemented first.
- Is Fusion Data Intelligence implemented concurrently with the corresponding Oracle Fusion Cloud Applications?
- If so, (1) what is the planned provisioning date for Oracle Fusion Cloud Applications?
- And (2) when is Oracle Fusion Cloud Applications to be configured and have data available for extraction?
- What is the intended initial go-live date for Fusion Data Intelligence?

Define the Functional Requirements Checklist

- Have all the available functional areas been reviewed?
- Have all the available subject areas been reviewed?
- Have all the available critical metrics been reviewed?
- Are there hierarchies required that are not available out of the box?
- Have security rules been confirmed?

Define the Non-Functional Requirements Checklist

- Are there data residency requirements that affect region selection?
- Are there additional security requirements?
- Are there disaster recovery requirements?
- Are there specific performance requirements?
- Are there availability requirements because Fusion Data Intelligence has a service-level objective (SLO) of 99.9%?
- Are there scalability requirements?

Determine the Success Criteria Checklist

- Who are the key stakeholders that need to weigh in?
- What is the project budget?
- Has the schedule been determined?
- What is the project scope?

Create the Project Plan Checklist

- Is the project plan ready?

- Is resource planning completed?
- Is the project plan scheduled by activity?
- Do you have a contingency plan?
- Do you have approval from the project stakeholders?

Set Up the Support Process Checklist

- Do you have a Customer Support Identifier, and can you see Fusion Data Intelligence in the product list?

Manage Application Updates Checklist

- Have you read and do you understand the Fusion Data Intelligence update activities?
- Have you established a communication and scheduling plan for the updates?

Cloud Accounts Checklist

- Are you planning to follow the recommendation and use a single cloud account for Fusion Data Intelligence and Oracle Fusion Cloud Applications?
- What is the name of the cloud account that contains the primary Oracle Fusion Cloud Applications subscriptions?

Regions Checklist

- What region is the paired Oracle Fusion Cloud Applications environment in?
- Is it a generation 1 or a generation 2 region?
- If it is generation 2, is it a supported Fusion Data Intelligence region?
- If it is a generation 1 region or a generation 2 region that isn't supported, what is the supported generation 2 region you plan to use?

Identity Services Checklist

- Does the Oracle Fusion Cloud Applications cloud account use Oracle Identity Cloud Service or identity domains?
- If using two accounts, does the Fusion Data Intelligence cloud account use Oracle Identity Cloud Service or identity domains?

Fusion Data Intelligence Environments Checklist

- Have you subscribed to an additional test environment?

Environments Pairing Checklist

- What is the Oracle Fusion Cloud Applications environment paired with the additional test environment, if subscribed?
- What is the Oracle Fusion Cloud Applications environment paired with the development environment?

Oracle Fusion Cloud Applications Environments Checklist

- What is the Oracle Fusion Cloud Applications cloud account name?
- What is the name of an Oracle Fusion Cloud Applications environment used for the Fusion Data Intelligence development or test environment?

- If subscribed, what is the Oracle Fusion Cloud Applications environment paired with the additional test environment?
- What is the name of the Oracle Fusion Cloud Applications production environment?

Compartments Checklist

- What compartment is used for the Fusion Data Intelligence development instance?
- What compartment is used for the Fusion Data Intelligence additional test instance if subscribed?
- What compartment is used for the Fusion Data Intelligence production instance?

Groups Checklist

- What group contains the Fusion Data Intelligence development administrators?
- What group contains the Fusion Data Intelligence additional test environment administrators, if subscribed?
- What group contains the Fusion Data Intelligence production administrators?

Policies Checklist

- Have you implemented the recommended rule for each Fusion Data Intelligence environment?

Establish Environment Implementation Sequence Checklist

- Have you determined the resources needed for performing individual tasks from the implementation workflow?
- Have you determined an individual administrator for each of your environments?
- Do you have additional test environments?
- Have administrators prepared a migration handoff plan for migrations from development or test and additional test environments to production?

Prepare for Implementation Checklist

- Has the Fusion Data Intelligence subscription been activated in the recommended Oracle Fusion Cloud Applications cloud account?
- If not, what is the name of the cloud account where it is activated?
- Does an Oracle Cloud Infrastructure administrator have the activation welcome email?
- Based on the documentation, what user synchronization scenario number or method must be utilized?
- If Oracle Identity Cloud Service is being used, does the administrator setting up user synchronization have the FA_GSI_ADMINISTRATOR and the IDCS Identity Domain Administrator roles?
- Are existing virtual cloud networking components used for deploying Fusion Data Intelligence with private endpoints?
 - If so, do the components adhere to the requirements listed in the references? Is the virtual cloud network preparation complete?
- Is the virtual cloud network preparation complete?

Prepare Your Oracle Fusion Cloud Applications Checklist

- List the necessary configuration modifications and confirm whether the modifications are complete.
- List the network components requiring modification and confirm whether the modifications are complete.
- Have you configured the JSON Web Token-based authentication in Oracle Fusion Cloud Applications?

Create Fusion Data Intelligence Instance Checklist

- What identity stripe or domain are you provisioning into?
- Is this the identity stripe or domain you signed into?
- What region are you provisioning into?
- What compartment are you provisioning into?
- What is the instance display name?
- What is the instance name?
- What is the type of environment (intended use)?
- What is the name of the Oracle Fusion Cloud Applications environment?
- What is the Oracle Fusion Cloud Applications URL?
- Are the JWT public-key certificate and private key available?
- What is the Oracle Autonomous AI Lakehouse administrator password you plan to use?
- What is the notification email address for provisioning status updates?

Create Fusion Data Intelligence Instance with Private IP Addresses (Optional)

- What is the compartment hosting the virtual cloud network?
- What is the compartment hosting the private subnet?
- What is the compartment hosting the network security group?
- What is the virtual cloud network name?
- What is the private subnet name?
- What is the network security group name?

Configure Checklist

- Which user access methods are configured in the case of Fusion Data Intelligence with private IP addresses?
- Which users are participating in each rollout phase?
- What are the users' system-specific and job-specific group assignments?
- What are the security assignments granted to users?
- What is the analytics currency specified?
- What is the exchange rate type specified?
- What is the initial extract date specified?
- What is the data refresh interval specified?

- What is the timezone specified?
- What enterprise calendar is specified?
- List the reporting configurations for each application such as Oracle Fusion CX Analytics and Oracle Fusion HCM Analytics.
- List the functional areas and their activation sequence for each application such as Oracle Fusion CX Analytics and Oracle Fusion HCM Analytics.
- Are there any modifications to the prebuilt reporting content that must be done before a customization phase?
 - If so, have the changes been documented?
- Are you planning to use Private Network Access?
 - If so, is the topology currently configured for other services?
- Are you planning to use the preview features?
 - If so, list the features.
 - Have you developed a plan to sufficiently test the features?
 - Are the prerequisites performed for each of the enabled preview feature?

Perform Data Validation Checklist

- Have the prerequisites for data validation been run?
- Are the data sources identified for validation?
- Do Oracle Fusion Cloud Applications users have corresponding security roles in both Oracle Fusion Cloud Applications and Fusion Data Intelligence?
- Is the initial extract date pulling all the Oracle Fusion Cloud Applications transactions for validation?

Customize Checklist

- Have you decided which application roles are used to secure read and write access to custom reports?
- Have you created custom folders with appropriate permissions for each domain or set of users?
- Have you explained how to use their folder and the shared folder structure to authors?
- Have you reviewed the options to select the best solution for each additional data type that Fusion Data Intelligence needs to include?
- Did you enable the descriptive flex field columns needed in the custom data application?
- Is your data coming from a source supported in data augmentation?
- Do you need to transform your additional data significantly before loading it into Fusion Data Intelligence?
- Can data augmentation be used to modify your semantic model?
- Did you define the overall model design required for your external data for new dimensions and facts?
- Did you combine your custom facts with the prebuilt dimensions for cross-subject area analysis?
- Did you review the prebuilt security configurations available?

- Do you need to create security assignments for each user or not?

Test Checklist

- Are the focus areas (data, visualizations) for testing identified?
- Are testing objectives defined?
- Have you defined the development and review process for approval?
- Are functional, user, and data volume testing approaches in place?
- Do you have a plan for test data creation?
- Are defect tracking and resolution processes defined?
- Did you complete the stakeholder assessment on the testing strategy?
- Did you run through functional scenarios?
- Did you run through functional use cases?
- Is functional validation aligned with operating business processes defined?
- Are functional security roles restricting access to Fusion Data Intelligence content, as required?
- Are functional filters and prompts working correctly and returning the expected data?
- Are cross application functional scenarios captured for testing?
- Are functional content extensions adequately tested?
- How many concurrent users load is expected?
- List the data augmentations that were reviewed.
- List the number of descriptive flex fields in the custom data application that were reviewed.
- Did you use "low service" while connecting to the autonomous data warehouse schema?
- Have you benchmarked the performance of the prebuilt subject areas?
- Do you have customizations?
- Do you have custom schema development driven by external extraction tools?
- Have you followed semantic model best practices?
- Have you followed data augmentation best practices?
- Is the performance of the Fusion Data Intelligence application degraded when multiple users access it simultaneously?
- Do you use any artificial intelligence and machine learning use cases as part of functional preview features?
 - If yes, then are these features tested for performance benchmarks?
- Is the performance of transactional grain reports tested to ensure they load promptly?
- How many business users are testing?
- Is the scope of user acceptance training defined?
- Are the users and roles identified for user acceptance training?
- Is the preparation of the test scenarios complete?
- Is the execution of test cases complete?

- Is testing cycle feedback collected from the begin date to the end date of user acceptance training?
- Is the scope and approach of the testing signed off?

Migrate Checklist

- Are all the required functional areas activated in the source and the target Fusion Data Intelligence environment?
- Are all the required descriptive flexfields in the Fusion Data Intelligence source environment enabled in the Fusion Data Intelligence target environment?
- Does the user performing bundle migration belong to the Fusion Data Intelligence service administrator group?
- Are the Fusion Data Intelligence source and target environments on the same release version?

Evaluate Go Live Readiness Checklist

- Have you confirmed the production migration date?
- Has the Fusion Data Intelligence instance been provisioned in production with a single sign-on?
- Are functional and nonfunctional requirements completed?
- Are customizations complete and deployed to the production environment?
- Have you confirmed the user readiness?
- Have the best practices been implemented?
- Is there any open severity 1 issue?
- Are pipeline configuration parameters validated?
- Is there a backup plan defined?
- Have you scheduled enough time for the initial full data load?
- Have you applied the Oracle Fusion Cloud Applications prerequisites in production?
- Is there a group of users identified so that you can communicate the status if there are potential issues when Fusion Data Intelligence is live?
- Do you have all information required to file support tickets with Oracle?
- Have you registered on the Oracle community?
- Have all the critical metrics been validated?
- Have all the analyses, visualizations, and workbooks been validated?
- Are user experiences satisfactory?
- Have you confirmed that the pipeline start time is set early enough to finish at the expected time?
- Have the performance test results met the requirements?
- Have threat detection test results validated the security configurations?
- Is incremental data available to users in the required time?
- Have the overall predefined success criteria been achieved?
- Have the predefined success criteria for the current phase been achieved?

- If not, list the criteria needing attention.
- Have you confirmed the go-live date?

Go Live Checklist

- Is the production environment up-to-date with the latest release?
- Are the bundles, if required, migrated to production?
- Is the production environment configured?
- Are the pipelines activated and executed?
- Are users, groups, and data security contexts in place?
- Are all communication templates and distribution lists in place for issue resolution and mitigation?
- Do users understand the scope of the Fusion Data Intelligence solution?
- Are the business user and power-user training complete?
- Are the administrators trained to handle the post-go live issues?
- Is the go live date communicated to users?
- Is there a communication plan with implementation stakeholders?
- Is there a business sign-off on the solution? Is there a change control process in place?
- Is there a plan to align external dependencies?
- Are post-go live standard operating procedures in place?
- Is there a plan for user training and adoption?
- Is there a plan to mitigate accessibility needs?
- Is there a plan to track the completion of all pre-go live change management activities?
- Have you examined the audit reports for any changes to security settings?
- Have you examined the Security Activity log?
- Have you examined the Request History log?
- Have you examined the Console Audit log?
- Have you examined the Upload Activity log?
- Have you examined the bundle activity log?
- Have you examined the Semantic Model Extensions activity log?
- Have you examined the Enable Features activity log?

Engage with Support Checklist

- Does the service request provide information about the impact on your business or the risk to your implementation plans?
- Is the severity level of the service request appropriate?
- If there is a workaround or suggestion, is it practical and appropriate?
- Is the calendar date specified in the service request after a business milestone or implementation milestone?
- Is the problem statement accurately described in the service request?

User Assistance Checklist

- Is the implementation team aware of any known issues?
- Has the implementation team reviewed Oracle Help Center?

Trainings Checklist

- Have the business users undergone training?
- Are processes developed for communicating available training?
- Have users completed the introductory training?
- Has the implementation team reviewed administrator training and best practices?
- Has the implementation partner completed the specialized training?
- Have you set targets for business users to complete the training?
- Has the team subscribed to Fusion Data Intelligence Events?

Community Checklist

- Is the implementation team aware of the Fusion Data Intelligence Community?
- Does the implementation team have permission to post in the Community?
- Do you have knowledge of Cloud Customer Connect?
- Do you have access to Cloud Customer Connect?
- Have you been informed of the Oracle Idea Lab, a forum-based feedback channel for submitting new ideas, commenting on existing ideas, voting for favorites, and seeing which requests have been implemented by Oracle?
- Have you signed up for Fusion Data Intelligence events?
- Does the implementation team have access to Cloud Customer Connect?

Track User Adoption Checklist

- Have you established programs to help ensure user adoption?
- Have you established programs to add additional users?
- Have you established ongoing training and development programs?
- Have you established plans to recognize users and offer rewards and incentives for usage and adoption?
- Have you established a program to solicit user feedback?
- Are you taking action on feedback?
- Are you communicating with the users when the next enhancement or release addresses their feedback?
- Have you established a support team?
- Have you established communication channels and schedules for planned and emergency downtime and maintenance?
- Have you established methods for users to provide feedback and receive acknowledgments?
- Have you established an easy way for users to find answers to frequently asked questions?

- Have you established internal office hours?
- Is there a community for learning?
- Have you established a clear and concise method for users to request help?
- Have you considered Lunch and Learn sessions?
- Have you established user onboarding procedures?

Implement a Governance Plan Checklist

- Have you defined the scope and goals of the Fusion Data Intelligence data governance program?
- Which data governance tool are you using?
- Have you established a Fusion Data Intelligence data governance framework?
- Have you determined what Fusion Data Intelligence data needs to be governed?
- Have you implemented processes to ensure Fusion Data Intelligence data governance compliance?
- Have you developed plans to continuously improve the Fusion Data Intelligence data governance program?

Update Fusion Analytics Checklist

- Have you read and do you understand the Fusion Data Intelligence update activities?
- Have you established a communication and scheduling plan for the updates?
- How many Fusion Data Intelligence user licenses do you have currently?
- What is the new number of Fusion Data Intelligence user licenses?
- List the current application subscriptions.
- What are the new application subscriptions?

Community

The implementation team benefits from joining the Fusion Data Intelligence community. This is a platform where Fusion Data Intelligence users and implementors interact with one another and post questions and feature requests. The implementation team can watch for upcoming Tech Talks, events, training, share product knowledge, and look for implementation recommendations.

See [Oracle Analytics Community](#).

Use the checklist to confirm that the action items are planned for. See [Community Checklist](#).

Oracle Help Center

Oracle Help Center is Oracle's official website that offers a variety of content and user assistance assets, including product documentation, API documentation, tutorials, hands-on labs, reference architectures, solution playbooks, best practices, integration design patterns, and videos.

Fusion Data Intelligence Help

See [Fusion Data Intelligence](#).

Oracle Analytics Cloud Help

See [Analytics Cloud](#).

Oracle Cloud Infrastructure Help

See [Oracle Cloud Infrastructure Documentation](#).

Use the checklist to confirm that the action items are planned for. See [User Assistance Checklist](#).