

Oracle Fusion Cloud Financials

Using Subledger Accounting

26B

Oracle Fusion Cloud Financials
Using Subledger Accounting

26B

G51882-01

Copyright © 2011, 2026, Oracle and/or its affiliates.

Author: Vineeta Kumar

Contents

Get Help	i
<hr/>	
1 Introduction to Subledger Accounting	1
Overview	1
2 Create Accounting	3
How You Submit Accounting Process	3
Create Accounting Execution Report	5
Examples of Accrual Reversal	5
How You Submit the Create Accrual Reversal Accounting Process	7
Overview of Sequencing of Accounting Entries	8
Post Subledger Transactions to the General Ledger	9
Diagnose Subledger Accounting Event Data	12
Review and Correct Accounting Exceptions	13
Online Accounting Engine	14
Resolve Issues with Transferring Journal Entries to General Ledger	15
3 Subledger Journal Adjustments	17
How You Manage Subledger Journal Adjustments	17
How You Create a Manual Subledger Journal Entry	18
How Foreign Currency Journals are Balanced	19
Considerations for Supporting Reference Assignments	21
Guidelines for Validating a Third-Party Control Account	22
4 Subledger Journal Entries	23
Overview of Subledger Journal Entry	23
Guidelines for Reviewing a Subledger Journal Entry	23
Analyze Journal Entry	24
Projected Balances	27
Manage Accounting Reversals	27

5	Subledger Balances	29
	Adjust Supporting Reference Initial Balances	29
	Adjust Control Balances	32
	Third-Party Control Account Balances Report	35
	Update Subledger Accounting Balances Process	38
	Carry Forward Subledger Accounting Balances Process	38
6	Advanced Features	41
	Multiperiod Accounting	41
	Example of Multiperiod Accounting	44
	Considerations for Multiperiod Accounting	49
	How to Enable Third Party Control Account	50
7	Subledger Accounting Reporting	53
	Subledger Accounting Predefined Reports	53
	Subledger Accounting Subject Areas, Folders, and Attributes	54
	Account Analysis Reports	57
	Journal Reports	61
	Third-Party Detail and Balances Reports	65
	Access the Create Multiperiod Accounting Execution Report	70
	Use the Supporting References Report	71

Get Help

There are a number of ways to learn more about your product and interact with Oracle and other users.

Get Help in the Applications

Some application pages have help icons  to give you access to contextual help. If you don't see any help icons on your page, click your user image or name in the global header and select Show Help Icons. If the page has contextual help, help icons will appear.

Get Training

Increase your knowledge of Oracle Cloud by taking courses at [Oracle University](#).

Join Our Community

Use [Cloud Customer Connect](#) to get information from industry experts at Oracle and in the partner community. You can join forums to connect with other customers, post questions, suggest [ideas](#) for product enhancements, and watch events.

Share Your Feedback

We welcome your feedback about Oracle Applications user assistance. If you need clarification, find an error, or just want to tell us what you found helpful, we'd like to hear from you.

You can email your feedback to oracle_fusion_applications_help_ww_grp@oracle.com.

Thanks for helping us improve our user assistance!

1 Introduction to Subledger Accounting

Overview

The Manage Subledgers task enables you to generate journal entries for Oracle Fusion subledger transactions. You can also create adjustment entries, and review accounting results using a standard set of features.

You can:

- Create accounting entries online for a specific transaction from a transaction view.
- Create accounting for a batch of transactions by submitting an offline process.
- Create manual adjustment entries.
- Review generated journal entries and projected balances on views and reports.

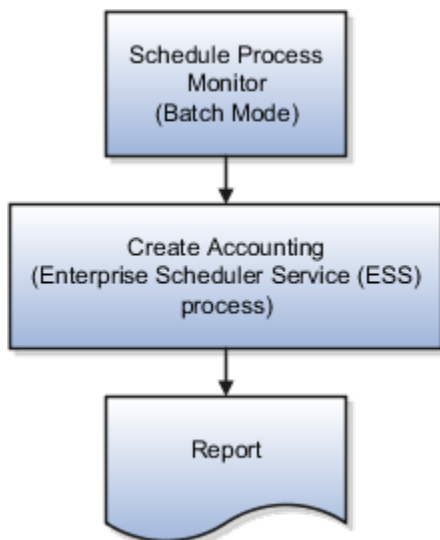
2 Create Accounting

How You Submit Accounting Process

The Create Accounting process is an Oracle Enterprise Scheduler process. It can be submitted as a request from the Scheduled Processes Monitor window to create journal entries for a batch of events.

It has input parameters that determine the execution mode and the selection criteria for events.

This figure illustrates the submission of the Create Accounting process.



This table contains the parameters for the Create Accounting process as submitted in the Scheduled Processes Monitor window.

Prompt	Description
Subledger Application	Source system for which the Create Accounting process is being executed.
Ledger	Ledger name for which the Create Accounting process is being executed.
Process Category	Selecting a process category indicates that all associated accounting event classes and their accounting event types are selected for processing.
End Date	End date puts a filter on the selection of events. Only events having an event date on or before the end date are selected for accounting. Default value is current system date. If the process is scheduled to execute periodically, after the initial process, the End Date for each subsequent scheduled process is incremental.
Accounting Mode	Accounting mode; Draft or Final

Prompt	Description
	Default value is Final.
Process Events	<p>Adds other filter criteria for the Create Accounting process to select events:</p> <p>All: Process all events.</p> <p>Errors: Process only those events that have previously been processed in error.</p> <p>Invalid Accounts: Process only those events that have previously been processed in error. Replace any invalid accounts with the suspense account.</p> <p>Default value is All.</p>
Report Style	<p>Users can select the type of details to display on the execution report. The report can be printed in Summary, Detail, or No report.</p> <p>Default value is Summary.</p>
Transfer to General Ledger	<p>Indicates whether the Create Accounting process should submit the Transfer to GL process; Yes, No.</p> <p>Default value is Yes.</p>
Post in General Ledger	<p>Indicates if users, who have been granted the posting privilege (GL_POST_JOURNAL_PRIV), want to submit General Ledger posting; Yes or No.</p> <p>Default value is Yes.</p>
Journal Batch	<p>Batch name used by Transfer to GL to decide on the batch name for the batch created in Oracle Fusion General Ledger.</p> <p>When a value for the batch name isn't provided, the journal import default is used.</p> <p>Free text field.</p>
Include User Transaction Identifiers	Default value is No.

Related Topics

- [Post Subledger Transactions to the General Ledger](#)
- [Guidelines for Reviewing a Subledger Journal Entry](#)
- [How You Manage Subledger Journal Adjustments](#)
- [Resolve Issues with Transferring Journal Entries to General Ledger](#)
- [Disable Posting Subledger Transactions to the General Ledger](#)

Create Accounting Execution Report

When you submit the Create Accounting process, the Create Accounting Execution Report is submitted automatically if the Create Accounting process completes with a success or warning status. The Create Accounting process output contains a message with the Create Accounting Execution Report request identifier.

Use this request identifier to retrieve the execution report output.

Create Accounting Execution Report

Besides the automatic generation, you can also generate the Create Accounting Execution Report using these criteria:

- Submit the Create Accounting process.
- Use the request identifier of the wanted Create Accounting process that was run previously by the same user. However, no other Create Accounting process should have been run with the same criteria.

Examples of Accrual Reversal

The following examples describe how accrual reversals are scheduled and accounted.

Example 1

A company receives materials worth 100 (USD) on the 30th of the month but hasn't been invoiced. The following journal entry is created when the material is received to record the accrual.

This table contains a journal entry.

Account	Entered DR	Entered CR	Accounted DR (USD)	Accounted CR (USD)
Accrual Expense	100.00		100.00	
Accrual Liability		100.00		100.00

The accrual reversal accounting date is set to First Day of Next Accounting Period. The following journal entry is created to reverse the accrual.

This table contains the reversal journal entry.

Account	Entered DR	Entered CR	Accounted DR (USD)	Accounted CR (USD)
Accrual Liability	100.00		100.00	

Account	Entered DR	Entered CR	Accounted DR (USD)	Accounted CR (USD)
Accrual Expense		100.00		100.00

Example 2

Future trading requires a margin account that's market-to-market on a daily basis. This means that the investor or ledger's gains or losses on the position are reflected on a daily basis. If the margin account is less than a specified amount (the maintenance of the margin), a margin call is issued. This requires the holder of the account to replenish the account to the initial margin level or close out the position.

The investor or ledger must mark the account to market each day. The entry booked from the day before must be reversed to reflect the new position.

Journal Entry Creation

- The following journal entry creation date is June 1, 2006.
- Accounting date: 01-Jun-2006

This table contains the journal entry.

Account	Entered DR	Entered CR	Accounted DR (USD)	Accounted CR (USD)
Loss	100.00		100.00	
Margin Liability		100.00		100.00

Reverse the Journal Entry

- The accrual reversal accounting date is set to Next Day. The following journal entry is created to reverse the journal entry from June 1.
- Accounting Date: 02-Jun-2006

This table contains the journal entry.

Account	Entered DR	Entered CR	Accounted DR (USD)	Accounted CR (USD)
Margin Liability	100.00		100.00	
Loss		100.00		100.00

Reflect the New Position

- On June 2, a new journal entry is created to reflect the new position, which will be reversed on June 3.
- Accounting Date: 02-Jun-2006

This table contains the journal entry.

Account	Entered DR	Entered CR	Accounted DR (USD)	Accounted CR (USD)
Loss	105.00		105.00	
Margin Liability		105.00		105.00

Reverse the Accrual

- On June 3, the following journal entry is created to reverse the accrual from June 2.
- Accounting Date: 03-Jun-2006

This table contains the journal entry.

Account	Entered DR	Entered CR	Accounted DR (USD)	Accounted CR (USD)
Margin Liability	105.00		105.00	
Loss		105.00		105.00

Related Topics

- [How You Submit the Create Accrual Reversal Accounting Process](#)
- [Accrual Reversals](#)

How You Submit the Create Accrual Reversal Accounting Process

The Create Accrual Reversal Accounting process processes incomplete accrual reversal journal entries with accounting dates that fall on or before the End Date parameter specified.

If the incomplete accrual reversal accounting entries are validated successfully, they're set to Final status and then posted to the general ledger, dependent on the parameters.

Report Parameters

This table contains the parameters for the Create Accrual Reversal Accounting process.

Prompt	Description
Subledger Application	Source system for which the Create Accrual Reversal Accounting process is being executed.

Prompt	Description
Ledger	Ledger name for which the Create Accrual Reversal Accounting process is being executed.
Process Category	The process category indicates that all associated accounting event classes and their accounting event types are selected for processing.
End Date	End date puts a filter on the selection of journal entries. Only incomplete journal entries having an accounting date on or before the end date are selected for accounting. Default value is current system date.
Process Events	Adds other filter criteria for the Create Accounting process to specific events: <ul style="list-style-type: none"> All: Process all incomplete journal entries and meets the End Date selection criteria Errors: Process only those entries that have previously been processed in error. Invalid Accounts: Process only those events that have previously been processed in error. Replace any invalid accounts with the suspense account. Default value is All.
Report	Identify the type of details to display on the execution report. The report can be printed in Summary, Detail, or No report. Default value is Summary.
Transfer to General Ledger	Indicates whether the Create Accrual Reversal Accounting process should submit the Transfer to GL process; Yes, No. Default value is Yes.
Post in General Ledger	Indicates whether to submit General Ledger posting after Transfer to GL process is complete. Default value is Yes.
Journal Batch	Batch name for General Ledger journal entries.

Related Topics

- [Examples of Accrual Reversal](#)
- [Accrual Reversals](#)

Overview of Sequencing of Accounting Entries

The following sequences are attached to subledger journal entries or general ledger journal entries. These two sequences aren't mutually exclusive and can coexist in the same journal entry.

Accounting Sequence

The accounting sequence is assigned to subledger journal entries at the time that the journal entry is completed. The sequence is assigned in the completion date order using the accounting date as the date criterion for determining the sequence to be used.

Reporting Sequence

The reporting sequence is assigned to both subledger journal entries and general ledger journal entries when the accounting period is closed. This sequence is used by most of the legal reports required in some countries as the main sorting criterion to display the journal entries.

Note: In some related documents, this sequence is referred to as the chronological sequence.

Related Topics

- [Overview of Accounting and Reporting Sequences](#)
- [How to Define Journal Sequences Manually](#)

Post Subledger Transactions to the General Ledger

Post subledger journals to the general ledger when you create accounting, or run the Post Subledger Journal Entries process to transfer and post at a later time.

To post to General Ledger:

- Make sure that the **Enable Posting from Subledger** option is enabled so that you can automatically post subledger journals to GL.
 - **Note:** If the **Enable Posting from Subledger** option is disabled, you can't post the subledger journal to GL but you can transfer the subledger journal to GL.
- Alternatively, you must have the privilege to execute this task.

With the required privileges and settings, you can select the Account and Post to Ledger option to create and post journal entries to the general ledger, during the online Create Accounting process.

- If you don't have the post to GL (GL_POST_JOURNAL_PRIV) privilege, select Account in Final to create journal entries and transfer to General Ledger.
- You can view the output of the Post Subledger Journal Entries process for the summary of the transfer process.

You can manually run the Create Accounting process to create accounting for a batch of transactions. Set the following parameters to create journal entries and post to the general ledger.

- Accounting Mode is set to Final.
- Transfer to General Ledger is set to Yes.
- Post in General Ledger is set to Yes.
 - If you don't have the post to GL (GL_POST_JOURNAL_PRIV) privilege or posting from the Enable Posting from Subledger option is disabled, the Post in General Ledger parameter isn't available.

Transfer Manual Subledger Journal to General Ledger By Preparer

You can transfer manual subledger journal entries to the general ledger immediately while creating subledger journals using the UI or a spreadsheet. You may also choose to create the manual subledger journal entries in Final status and use the Post Subledger Journal Entries process to transfer the manual subledger journal entries to the general ledger later. Manual journal entries created by different users are split into separate general ledger journal batches. This facilitates routing the journal batches to different approvers or reviewers based on the preparer. You can also choose to transfer all subledger journals or exclude manual journal entries while submitting the Post Subledger Journal Entries process.

Here are the changes applied after enabling this feature:

- When you create subledger journals using a spreadsheet with Completion Status as 'Final and Transfer' or 'Final and Post,' eligible manual subledger journals created by the same user will only be transferred to the general ledger. Manual subledger journals created by other users will not be transferred.
- In the Journal Batch field, you can optionally enter any text as a prefix to the General Ledger journal batch.
- You can select one of the following options from Journal Entries to Transfer while submitting the Post Subledger Journal Entries ESS Parameter:
 - All - Transfer all subledger journals.
 - All except Manual Journals - Exclude manual subledger journals from transferring to the general ledger.
 - Manual Journals created by me - Only transfer manual subledger journals created by the current user.

Tips and Considerations

- You can also create manual subledger journal entries using the Create Subledger Journal page and group them into one GL batch by posting them using the Post Subledger Journal Entries process. When you select the option Manual Journals created by me, in the Journal Entries to Transfer parameter, all manual adjustments entered through UI or spreadsheet are grouped into one GL batch.
- To group all non-transferred accounting hub transactions into one GL batch, you can account the transactions in Final status and then submit the Post Subledger Journal Entries ESS program with Journal Entries to Transfer set to All except Manual Journals. This option will not transfer manual subledger journal entries to GL. It will not select eligible journals by the preparer.
- If a Journal Batch is not specified in the spreadsheet or you're using an old template, a system-generated batch name will be assigned to the GL journal batch. The maximum length for a Journal Batch should be 50 characters or less.

Directly Transfer Subledger Entries to General Ledger

You can transfer subledger accounting entries directly to General Ledger without running the Post Subledger Journal Entries and Journal Import processes.

Create Accounting generates subledger accounting entries, which are summarized and transferred to the General Ledger through the Post Subledger Journal Entries process and its subsequent Journal Import process.

When you submit the Create Accounting process with the Transfer to General Ledger parameter set to Yes, the Create Accounting sub-process summarizes and transfers the subledger accounting entries to General Ledger without launching the Post Subledger Journal Entries and Journal Import processes. If you submit the standalone Post Subledger Journal Entries process, the subledger accounting entries are transferred to General Ledger without launching the Journal Import process.

This feature also includes the following changes:

- When a subledger accounting entry points to an invalid account but an alternate account is specified, the system automatically switches to the alternate account for General Ledger journal creation.
- In cases where validation errors occur while creating General Ledger journal batches from subledger accounting entries, only the valid entries are moved to the General Ledger, excluding any invalid entries.
- Validation errors encountered during the subledger accounting entries' transfer to the General Ledger can be examined on the Manage Accounting Errors page.

These enhancements lead to quicker processing times for accounting and journal postings, optimizing the utilization of system resources.

Steps to Enable

Here are the steps to enable this feature for all Subledger and Accounting Hub applications:

1. Navigate to Setup and Maintenance.
2. Select the Setup Offering: Fusion Accounting Hub.
3. Click on the Functional Area: Accounting Transformation.
4. Click on the Setup Task: Manage Subledger Accounting Lookups.
5. Search the Lookup Type: ORA_XLA_PROMOTIONAL_OPTIONS.
6. Define the following Lookup Code under the above Lookup Type –
 - Lookup Code: XLA_PROMO_31776850_ON
 - Reference Data Set: Common Set
 - Enabled: <Checked>
 - Meaning: Skip Post Subledger Journal Entries and Journal Import
7. Save the changes.

Tips and Considerations

- This feature does not apply under any of the following conditions:
 - When accounting entries are directly submitted online from the Transaction pages.
 - During the submission of the Multiperiod Accounting process, which doesn't skip the Post Subledger Journal Entries process but does skip the Journal Import process.
 - For subledger accounting transfers outside of Fusion General Ledger, such as EBS General Ledger and PeopleSoft General Ledger.
- If this feature is enabled and Transfer to General Ledger is set to Yes during submission of the Create Accounting process, the Processing Unit Size specified in the Create Accounting Processing Options section of the Subledger Accounting System Options page is used to transfer journals to General Ledger.

Note: This may affect the number of journal batches that are generated when the feature is enabled. For example, if the Create Accounting processing unit size is set to 1000 and the General Ledger Transfer processing unit size is set to 2000, enabling the feature may result in twice the number of journal batches when a batch contains more than 2000 events.

- If this feature is enabled and the Post Subledger Journal Entries process is used to transfer journals to General Ledger, the Processing Unit Size specified in the Transfer to General Ledger Processing Options section of the Subledger Accounting System Options page is used.

Related Topics

- [Resolve Issues with Transferring Journal Entries to General Ledger](#)
- [Disable Posting Subledger Transactions to the General Ledger](#)

Diagnose Subledger Accounting Event Data

You can use the diagnostic framework to know why the accounting was created in a particular way or why there are errors.

The diagnostic framework stores data that is used in the creation of a journal entry so you can use the data to analyze accounting issues. It provides the transaction data that is referenced during accounting through accounting rules and ledger setup. Most errors occur because either the source system information or the accounting rules are not as expected.

Here are some ways in which you can use the diagnostic framework.

- In the implementation phase, you can launch the Accounting Event Diagnostic report to review the source values available in the transaction objects.
- On a daily basis, you can use the Accounting Event Diagnostic report to troubleshoot exceptions.

Diagnostic Framework Features

The diagnostic framework features are as follows:

- **SLA: Diagnostic Enabled:** This option controls whether diagnostic information is gathered by the Create Accounting process. Use with caution. Selecting this option can cause slow performance.
- **Diagnostic Framework Execution:** When the SLA: Diagnostic Enabled option is set to Yes, the diagnostic framework is executed simultaneously with the Create Accounting process. The diagnostic framework data is stored in the diagnostic tables.
- **Accounting Event Diagnostic Report:** To view the diagnostic framework report, users submit the Accounting Event Diagnostic process with the appropriate report parameters.
- **Purge Accounting Event Diagnostic Data:** Purging is useful when accounting is successfully created so that the volume of information in the report does not increase to a point where it becomes unusable.
Diagnostic framework data purged:
 - When the data collected can be purged by running the process.
 - When the administrator launches the Purge Accounting Event Diagnostic Data process.

Diagnostic Framework Business Process Flow

The following steps describe the diagnostic framework business process flow:

1. The administrator sets the SLA: Diagnostics Enabled option to Yes for the user or responsibility.

2. Users submit the Create Accounting process that automatically executes the diagnostic framework to populate the diagnostic tables. The diagnostic framework gathers source values and other information from the transaction objects.
3. Users submit the Accounting Event Diagnostic process to view the diagnostic report. Based on the information in the diagnostic report, users may determine if additional or resubmission of information from source systems is required. They may also determine if any updates to the accounting rules is required.
4. Users run the Create Accounting process again to generate subledger journal entries for events that had an error.
5. The administrator submits the Purge Accounting Event Diagnostic Data process to purge the results of the diagnostic framework.

Review and Correct Accounting Exceptions

You can use the Manage Accounting Errors page to search for exceptions generated by the Create Accounting, Create Multiperiod Accounting, and Post Subledger Journal Entries processes. The Manage Accounting Errors page lets you streamline and centralize exception handling.

You can view all the accounting exceptions for a particular ledger and subledger in one page, and review and take suggested action to resolve the issue.

Manage Accounting Errors

1. From the General Ledger Journals work area, select the Manage Accounting Errors task.
2. On the Manage Accounting Errors page, search for errors in primary ledgers and subledgers. Optionally you can narrow down the search result by error category.
Note: When you search for exceptions in a primary ledger, accounting errors in the subledger-level reporting currency or secondary ledgers are also displayed.
3. Review the recommended action and alternate actions, and determine which one is more appropriate for the exception scenario.
4. Depending on the error and the action you decide to take, select the recommended action, or manually navigate to the required task to make the correction.
Note: You can also select the Action Taken option to mark whether the corrective action has been performed for the particular error. Later, when you search again for errors with the value of action taken as No, the errors for which corrective action hasn't been taken are displayed. This helps you to focus on errors that still require your attention.

After you have corrected the accounting errors, you can submit the Create Accounting or Create Multiperiod Accounting process again by selecting the Action button. Use any of the following options to run these processes:

- Select Create Accounting to submit the Create Accounting process in Final mode and close all error records up to the current date.
- Select Create Draft Accounting to submit the Create Accounting process in Draft mode and close all error records up to the current date.
- Select Create Accounting and Replace Invalid Account to submit the Create Accounting process in Final mode and close all error records up to the current date. In this case, if an invalid account is encountered, the application replaces the invalid account with the suspense account defined for the ledger.

- Select Create and Post Multiperiod Accounting to submit the Create Multiperiod Accounting process in Final mode and transfer the multiperiod journals to General Ledger.
- Select Create Draft Multiperiod Accounting to submit the Create Multiperiod Accounting process in Draft mode.

Tips and Considerations

- The Manage Accounting Errors page can only display up to 1000 records. When you resolve these errors and submit the Create Accounting process for them again, other error records will be displayed on the page as the one you corrected will be removed unless the issue isn't fully resolved yet. Alternately, if you select the Export to Excel option, all the accounting errors are exported to a spreadsheet.
- Accounting exceptions occurred prior to enabling this feature won't be displayed in the Manage Accounting Errors page unless accounting automation is enabled. You must submit the Create Accounting or Post Subledger Journals process again after enabling this feature to review existing exceptions in the Manage Accounting Errors page.
- Use the Transaction Information field in the Search section to search for accounting errors for a particular transaction. Enter a number that can identify the transaction, for example, the invoice number or receipt number.
- If you have the related privileges, use the Recommended Actions hyperlink, to navigate directly to the suggested actions such as to setup the UI, to submit the ESS process, or to download.

Online Accounting Engine

The online accounting engine supports online accounting for subledger transactions.

Any user who submits the online accounting for the first time launches this process that stays running in the background. The subsequent user who submits online accounting uses the same process to generate online accounting until this process is terminated. Then the following user who submits online accounting relaunches this background process.

This process generates accounting when you choose to either Account in Draft or Post to Ledger from the Subledger Transaction UI.

If any error/exception is encountered during event processing, the Provide Online Transaction Engine exits, and the system invokes another process to replace it, waiting for another online accounting request. You can always run Create Accounting in batch mode to get more details if you encounter an online engine error or an online accounting request error.

The enhanced Provide Online Transaction Engine Functionality program allows submission of the program by a predefined user FUSION_APPS_FIN_ODI_ESS_APPID with the appropriate privileges to run, create accounting, and post to General Ledger. This prevents users who access a subledger user interface without the appropriate privileges from causing online accounting to fail.

The accounting period status and other setups may be cached if the accounting period is open. If you get an error, terminate the 'Provide Online Transaction Engine Functionality' process and trigger online accounting or submit the Create Accounting process to generate accounting.

Why is Provide Online Transaction Engine Functionality (XLAOTEC) process not completed?

This is the expected behavior of an online accounting engine. By design, you should see four processes running in the background, ready to accept online accounting requests initiated from the UI. You can configure the four running engines based on the environmental needs.

If system or ESS issues require stopping or canceling running processes, these processes can be ended manually. Once a user initiates another online accounting request, the system brings up another set of processes titled 'Provide Online Transaction Engine Functionality.'

How can I provide users access to the output and log files for the Provide Online Transaction Engine Functionality ESS process?

Sign in to the Security Console as a security manager and perform the following steps:

1. Create a job role for the users who require access.
2. Create a data security policy for the ESS_REQUEST_HISTORY object. The Policy page has General Information, Role, Rule, and Action tabs.
 - a. Assign the new job role to the policy.
 - b. Create a rule and select this value for the condition: ESS requests submitted by the Accounting Automation process.
 - c. To allow users to view the log and output files, select these actions: ESS_REQUEST_READ, ESS_REQUEST_OUTPUTREAD.
 - d. To allow users to cancel the Accounting Automation job, select the ESS_REQUEST_CANCEL action.

Resolve Issues with Transferring Journal Entries to General Ledger

When attempting to transfer journal entries from subledgers to the general ledger, you may encounter issues that prevent successful processing, such as journal entries remaining untransferred in the subledger and failures in the Create Accounting Process to transfer these entries to the General Ledger.

The Create Accounting process offers final and draft modes. If Final mode is selected, the Transfer to General Ledger parameter can be used to automatically transfer the accounting entries generated by that particular run. However, this process only transfers entries created during the specific run that initiates the transfer. The accounting entries generated by previous runs that were not transferred remain unprocessed and require the Post Subledger Journal Entries program to be executed separately for transfer.

Note: If accounting is created in error by any mode, they are treated as draft entries. These entries can be viewed but not transferred until corrected. Any changes will need to be made to the transaction or journal line definition/rules to correct the accounting. After corrections, entries can be recreated in either draft or final mode, depending on their accuracy.

Possible Causes of Untransferred Journal Entries:

- The accounting is created in Draft mode and can't be transferred.

- The accounting is created in error and can't be transferred.
- The accounting was created by the Create Accounting process without selecting the Transfer to General Ledger option.
- Journal Import failed/had errors. If the Journal Import spawned by the Post Subledger Journal Entries program fails/has errors, All data included in the transfer and import is rolled back/not transferred. However, if the Subledger Lookup Code XLA_PROMO_31776850_ON is activated, only entries with errors are rolled back.

Resolution

Here's how you can resolve this issue:

1. Submit the Post Subledger Journal Entries process to transfer any accounting that is created in Final mode, but not transferred.
2. Navigate to Scheduled Processes.
3. Select and Submit the Post Subledger Journal Entries process, ensuring to include the parameters to transfer the journal entries that were created in Final mode but not transferred.

Note: If the Post Subledger Journal Entries process triggers a Journal Import: Child process, this indicates that subledger entries have been selected for transfer. Examine the Journal Import: Child process report (.txt) output for any import errors. If any errors are detected, the entire import and transfer is rolled back. However, if the Subledger Lookup Code XLA_PROMO_31776850_ON is enabled, only entries with errors are rolled back. Hence the Create Accounting subprocess summarizes and transfers the subledger accounting entries to the General Ledger without launching the Post Subledger Journal Entries and Journal Import processes.

3 Subledger Journal Adjustments

How You Manage Subledger Journal Adjustments

Subledger journal adjustments enable easier audit and reconciliation because you can store transaction information directly with journal adjustments. You can enter and complete subledger journal adjustment entries from the user interface or upload using a spreadsheet.

You can perform the following actions on your subledger journal adjustments, depending on their status:

- Edit
- Duplicate
- Reverse
- Delete
- Complete

Editing a Subledger Journal Adjustment

When editing a subledger journal adjustment, you can perform the following tasks:

- Edit the journal header information, if the status isn't Final.
- Edit and create journal lines, including accounts.
- Enter the debit, and credit amounts.
- Enter the accounting class.
- View the impact on general ledger account balances should the adjustment be completed.
- Post the journal.

Note: If the Enable Posting from Subledger option is disabled or you don't have posting privilege (GL_POST_JOURNAL_PRIV), the adjustment journal is transferred to GL but not posted.

You can also edit incomplete subledger journal adjustments.

- Examples of header information which can be updated:
 - Ledger
 - Accounting date
 - Accounting period

Note: If the accounting date falls in both the non-adjusting and adjusting periods, the value of accounting period on the Create Subledger Journal Entry page defaults to the non-adjusting period. You can overwrite it with the adjusting period if required.

- Category

- Description
- Examples of subledger journal adjustment line information which can be updated:
 - Account
 - Accounting class
 - Entered amount
 - Journal adjustment lines
 - Select supporting references and assign values to them.
- Edit default currency options to be assigned to a subledger journal adjustment.
- Edit or redefine the subledger journal adjustment description.

Duplicating Subledger Journal Adjustments

As a time saving feature, you may copy an existing adjustment.

The duplication feature is enabled for all existing subledger journal adjustments, regardless of status. It includes the ability to copy complete information required for a subledger journal adjustment header and line.

Note: All fields can be edited when an adjustment is duplicated.

Reversing Subledger Journal Adjustments

You can reverse subledger journal adjustments in Final status. Reversal options are populated from accounting options.

- Switch debit and credit.
- Change sign.

Deleting Subledger Journal Adjustments

Oracle Fusion Subledger Accounting provides the ability to delete a subledger journal adjustment that's not in Final status. The ability to delete subledger journal adjustments ensures that users have the flexibility to correct errors without technical support.

Completing Subledger Journal Adjustments

You can complete subledger journal adjustments in Final and Post to General Ledger status.

Related Topics

- [Projected Balances](#)

How You Create a Manual Subledger Journal Entry

The application enables the user to create manual subledger journal entries online.

Creating a Manual Subledger Journal Entry

This includes the ability to:

- Enter the complete information required for a manual subledger journal entry.
- Enter subledger journal entry descriptions.
- Select a supporting reference and supply the supporting reference value to a subledger journal entry line.
- Assign a descriptive flexfield to a subledger journal entry header or subledger journal entry line.
- Populate default values for an entered currency for a created subledger journal entry line.
- Enter default conversion type, date, and rate information to establish a default currency for the journal that's different than its associated ledger currency.
- View projected balances of entered and accounted journal line amounts.
- Complete and post subledger journal entries.

Note: The ability to post subledger journals to the General Ledger is dependent on your security profile. If you don't have the post to GL (GL_POST_JOURNAL_PRIV) privilege, creating a manual subledger journal entry with a Final completion status includes the transfer to General Ledger.

Related Topics

- [Projected Balances](#)
- [Post Subledger Transactions to the General Ledger](#)

How Foreign Currency Journals are Balanced

Whenever you enter a foreign currency journal on the Create Subledger Journal Entry page or spreadsheet, the system automatically calculates any currency exchange gain or loss and records it as a balancing line.

This ensures that the journal entry is always balanced, and that any exchange gains or losses are tracked and reported accurately. The system takes into account current exchange rates when calculating the gain or loss.

When suspense is not enabled, currency gain or loss balances are automatically rounded to a user-defined rounding account. You can transfer currency exchange gain or loss balances to another account using a manual journal entry.

When suspense is enabled, the system will still record currency gains or losses against the suspense account.

Some advantages:

- Supports manual journal entries with currency exchange gains and losses.
- Automatically record currency gains and losses when entering foreign currency journals.

Note: Define a rounding account for the ledger to record exchange gains and losses automatically.

Consider a manual foreign currency journal, as shown below. The exchange rate for entered currency Singapore Dollar to the ledger currency US Dollar is 2.045 on line 1 and 2.05 on the remaining lines. The journal is balanced in entered amounts but is out of balance in accounted amounts due to currency exchange gain or loss.

Line	Account	Accounting Class	Currency	Entered Debit	Entered Credit	Accounted Debit (USD)	Accounted Credit (USD)
------	---------	------------------	----------	---------------	----------------	-----------------------	------------------------

							(USD)
1	01-000-1140-0000-000	Accrual	SGD	130			265.85
2	01-000-1150-0000-000	Accrual	SGD		50.00		102.5
3	01-000-1160-0000-000	Accrual	SGD		40.00		82.0
4	01-000-1170-0000-000	Accrual	SGD		10.00		20.5
5	01-000-1130-0000-000	Accrual	SGD		30.00		61.5
Total							265.85

When the journal is saved in final status, the system automatically calculates the currency exchange gain or loss and records it as a balancing line in the user-defined rounding account.

Line	Account	Accounting Class	Currency	Entered Debit	Entered Credit	Accounted Debit (USD)	Accounted Credit (USD)
1	01-000-1140-0000-000	Accrual	SGD	130		265.85	
2	01-000-1150-0000-000	Accrual	SGD		50.00		102.5
3	01-000-1160-0000-000	Accrual	SGD		40.00		82.0
4	01-000-1170-0000-000	Accrual	SGD		10.00		20.5
5	01-000-1130-0000-000	Accrual	SGD		30.00		61.5
6	01-000-7826-0000-000	Balance	SGD	0.00		0.65	
Total						266.50	266.5

Let's take a look at some more examples:

Example 1 -Both unrounded and rounded accounted amounts are not balanced. Suspense enabled.

Account	Currency	Rate	Entered Debit	Entered Credit	Unrounded Debit	Unrounded Credit	Accounted Debit	Accounted Credit
01-E1	EUR	1.465	1170.85		1715.29525		1715.30	
01-E2	EUR	1.465	17.69		25.91585		25.92	
01-E3	EUR	1.465	54.88		80.3992		80.40	
01-E4	EUR	1.465	5599.14		8202.7401		8202.74	
01-E5	EUR	1.465	5599.14		8202.7401		8202.74	

01-E6	EUR	1.465004		12441.70		18227.14027		18227.14
01-suspense	EUR	1	0		0.0497668		0.04	
			12441.7	12441.70	18227.14027	18227.14027	18227.14	18227.14

Example 1 - Both unrounded and rounded accounted amounts not balanced that infers currency gain or loss. Suspense not enabled- Single BSV

Account	Currency	Rate	Entered Debit	Entered Credit	Unrounded Debit	Unrounded Credit	Accounted Debit	Accounted Credit
01- E1	EUR	1.465	1170.85		1715.29525		1715.30	
01-E2	EUR	1.465	17.69		25.91585		25.92	
01-E3	EUR	1.465	54.88		80.3992		80.40	
01-E4	EUR	1.465	5599.14		8202.7401		8202.74	
01-E5	EUR	1.465	5599.14		8202.7401		8202.74	
01-E6		1.465004		12441.70		18227.14027		18227.14
01- rounding (level1)					0.0497668		0.05	
01- rounding(level 2)								0.01
			12441.7	12441.70	18227.14027	18227.14027	18227.15	18227.15

Considerations for Supporting Reference Assignments

You may want to analyze account balances and financial results by different transaction attributes. However, transaction information such as salesperson, customer, or supplier are typically not stored in the general ledger because of the volume of general ledger balances it would create.

Therefore, you're not able to analyze general ledger data categorized by transaction attributes.

You can perform this type of reporting and analysis using supporting reference information from subledger transactions. This feature enables you to create balances based upon transaction attributes not typically stored as segments in the general ledger chart of accounts.

For example, you can report on receivables balances by salesperson, customer, credit risk category, item, or any other combination of transaction attributes.

Supporting references can be used to:

- Provide additional information about a subledger journal entry line.
- Establish a subledger balance for a particular supporting reference value.
- Assist with reconciliation of account balances.
- Provide additional detail information for financial managerial analysis.

You can assign supporting references at the subledger journal entry line level.

Tips for Assigning Supporting References

- You can add or delete supporting reference assignments for user-defined journal entry rule set only.
- The Manage Supporting References page can only display up to 1000 assignments. Provide additional search criteria to narrow down your search results, especially when you need to add or delete assignments.

Assigning Supporting References at the Subledger Journal Entry Line

Assigning supporting references to subledger journal entry lines enables you to maintain detailed balances, by supporting reference value, for general ledger accounts.

Related Topics

- [Supporting References](#)
- [Assign Supporting References](#)

Guidelines for Validating a Third-Party Control Account

If third-party control accounts are enabled, and the account entered is a third-party control account, you must enter third-party information in the journal entry.

Example

If an account is defined as a Supplier type third-party control account the subledger journal entry lines that use that account must include supplier information.

When a valid third-party control account is assigned to a journal line, you're required to provide third-party information, such as name and site.

Submit the Third-Party Balances Report to display subledger balances and account activity information for suppliers and customers.

The Customer or Supplier subledger third-party balances are updated when the journal is completed to a Final status.

4 Subledger Journal Entries

Overview of Subledger Journal Entry

You can create subledger journal entries by using one of two methods:

- Use the Create Accounting process to process accounting events using accounting rules.
- Create manual subledger journal entries.

Subledger journal entries are always created in a given subledger application context. When the subledger journal entry is complete, the appropriate sequence names and numbers are assigned. If applicable, corresponding secondary ledger and reporting currency journal entries are also created.

Manual journal entries can be entered for primary ledgers or for secondary ledgers. Manual journals for primary ledgers are automatically created only for associated reporting currencies, not secondary ledgers.

Related Topics

- [How You Create a Manual Subledger Journal Entry](#)
- [Guidelines for Reviewing a Subledger Journal Entry](#)
- [Guidelines for Validating a Third-Party Control Account](#)

Guidelines for Reviewing a Subledger Journal Entry

Subledger journal entries can be reviewed whether they were created from processing accounting events, or manually entered.

You can search subledger journal entries directly, or search for journal entries with a specific status, unprocessed accounting events, or subledger journal entry lines.

Advanced search functionality, including the ability to use multiple search criteria is available.

Review Subledger Journal Entries

Perform an inquiry on unprocessed accounting events, subledger journal entries and subledger journal entry lines based on multiple selection criteria.

- Create, edit, duplicate, reverse or delete a manual subledger journal entry
- View detailed information about the subledger journal entry
- View a subledger journal entry in the T-Accounts format
- View transactions underlying the accounting event or the subledger journal entry
- View supporting references associated with the subledger journal entry and lines
- View tagged subledger journal entries or create a tag on the subledger journal entry

- Perform subledger journal corrections by editing the account directly on a completed journal entry. Review the original entry together with the correction for easier reconciliation.
 - To correct the account on a subledger journal you must have the Override Subledger Journal Entry (XLA_OVERRIDE_SUBLEDGER_JOURNAL_ENTRY_PRIV) privilege.

Note: If the Enable Posting from Subledger option is enabled, the corrected entry is transferred and posted to GL. However if the option is disabled, the corrected entry is transferred to GL but not posted.

Related Topics

- [Considerations for Supporting Reference Assignments](#)

Analyze Journal Entry

Using analyze journal entry feature, you can understand how the accounting engine evaluates the different rules, conditions, and accounting attribute assignments to derive the journal header and lines in an accounting entry.

You can view the source values and understand how a particular condition, formula got evaluated successfully between others or why a particular rule priority was evaluated successfully. This can help you diagnose any rule setup-related accounting errors or explain why the accounting entries were generated in a specific manner.

Enable Feature

Here are the steps to enable analyze journal entry feature:

1. From the Navigator menu, select Tools > Security Console.
2. Navigate to the Roles tab and click on the Create Role button.
3. Enter basic role information and select Role Category > Financials - Job Roles.
4. Navigate to the Function Security Policies train stop and add the function security policy > Review Accounting Diagnostic.
5. Navigate to the Users train stop and add the user to which you want to provide access to the Analyze Journal Entry page.
6. Navigate to Summary train stop and click on the Save and Close button.
7. From the Navigator menu, select Tools > Scheduled Processes.
8. Click on the Schedule New Process button, search and submit the process > Import User and Role Application Security Data.

Navigate to Analyze Journal Entry Page

You can navigate to the Analyze Journal Entry page in the following ways:

- **From View Accounting pop-up window**

You can navigate to the Analyze Journal Entry page from the existing View Accounting pop-up window accessible from the Subledger Transaction pages after accounting transactions in Draft or Final status. You can

select any journal line in the window and click on the Analyze Journal Entry button to view the specific journal line analysis.

Note: The View Accounting window may display journal lines of multiple event classes or event types which could pertain to different journal entries; however, the Analyze Journal Entry page is always displayed in the context of a specific journal entry. So, all journal lines displayed in the View Accounting window may not always be displayed on the Analyze Journal Entry page.

- **From Review Journal Entries page**

You can also navigate to the Analyze Journal Entry page from the existing Review Journal Entries page, which is accessible from the Subledger Transaction or the General Accounting Journals Work area, after accounting transactions in Draft or Final status. To navigate to the Analyze Journal Entry page, query any journal entry using the search parameters and then select the record in the Search Results table. Click on the Analyze Journal Entry button in the Journal Entry Details section to view the specific journal entry analysis.

- **From Manage Accounting Errors page**

You can also navigate to the Analyze Journal Entry page from the new Manage Accounting Errors page, which is accessible from the General Ledger Journals Work area, after accounting transactions in Draft or Final status. To navigate to the Analyze Journal Entry page, query accounting errors using the search parameters, select the appropriate record in the Search Results table and click on the Analyze Journal Entry button.

Note: You can view Journal Entry Analysis for Invalid accounting entries if a journal entry was created for the event. No details would be displayed if a journal entry creation was unsuccessful.

Subledger Journal Header Analysis

Every Subledger Journal Entry consists of a journal header and its corresponding journal lines. The Analyze Journal Entry page is divided into two tabs - The Journal Header tab and the Journal Lines tab, which render details about subledger accounting rules used in the subledger journal header vis-a-vis in the subledger journal lines region.

The Journal Header tab displays the following information about the journal entry :

- Overall Information about the Subledger Journal Entry is displayed in the topmost section. It displays details of the Subledger Accounting Method, Journal Entry Rule Set, and other details for the specific Event Class and Event Type.
- Subledger Accounting Rules section displays the Description Rule, and Accounting Attributes information in 2 different sub-tabs.
- The Description Rule tab displays the description rule details used to generate the Journal Entry Description.
- The Accounting Attributes tab displays the journal header related accounting attributes (For example: Accounting Date) along with the source values used.
- Rule Details section is a child section of the Subledger Accounting Rules section displaying further details about a rule.
- In a specific Description Rule, the Rule Details section displays the Priorities and Formula defined in the description rule.
- You can view the evaluation status of the priorities and review the source values to understand why a specific rule priority got applied successfully.

Subledger Journal Lines Analysis

The Journal Lines tab displays details about subledger accounting rules used to generate all the journal lines for a specific journal entry. The page follows a hierarchical structure where you can select specific records in the upper sections to view the subledger accounting rules and further details in child sections.

The Journal Lines tab displays the following information :

- The Journal Lines section is displayed as the topmost section, and it shows all the journal lines for the subledger journal entry being analyzed.
- The Source Distribution section is a child section of the Journal Lines section. It displays all the distributions that were merged to generate a specific journal line. A single record would be displayed with line-level details for subledgers where distribution level information isn't captured
 - This section has a custom implementation for Payables and Receivables (exceptions include - Bills Receivable transactions) distributions fetching the distribution details from their respective distribution tables.
 - For other subledgers, a generic layout has been used to display the source distribution identifiers and distribution type, and distribution amount.
- Subledger Accounting Rules section is a child section of the Source Distribution section. It displays the Journal Line Rule, Description Rule, Account and/or Segment Rules, and Supporting Reference details in different sub-tabs, which were used for a specific source distribution.
 - Journal Line Rules tab displays the journal line rule details used to generate the specific journal line.
 - Description Rules tab displays the description rule details, which were used to generate the Journal Line Description.
 - The Account Rules tab displays all the account and/or segment rules, generating the account combination on the journal line.
 - The Supporting References tab displays the supporting reference details along with the source value used.
- Special Cases \ Exceptions:
 - For business flow based accounting entries, since the account or description may be based on a related accounting entry from the upstream transaction, no subledger accounting rules would be displayed.
 - For reversal accounting entries where the subledger uses a transaction or line reversal, a message will be displayed indicating the entry was generated due to reversal.
 - For certain other cases (Multi-period Accounting, Account Override, Intercompany or Intracompany Balancing, Entered Currency, Balancing, and so on) where the accounting entry is system generated and no subledger accounting rules are used in the process, a message will be displayed indicating the same.
- Rule Details section is a child section of the Subledger Accounting Rules section displaying further details about any specific rule.
 - In the context of a specific Journal Line Rule, the Rule Details section displays the Condition, Advanced Options, Accounting Attributes, and Formula defined in the journal line rule.
 - In a specific Description Rule, the Rule Details section displays the Priorities and Formula defined in the description rule.
 - In a specific Account or Segment Rule, the Rule Details section displays the Priorities and Formula defined in the account or segment rule.
 - In the Supporting References tab, the Rule Details section displays the formula defined in the supporting references.

- You can view the evaluation status of the priorities, review the source values to understand why a specific rule priority or condition got applied successfully.

Projected Balances

Use the projected balances feature to view the impact on account balances for selected subledger journal entry lines.

The projected balances flow has the following business benefits:

- The creation and validation of unposted manual journal entries by providing immediate information about the account balances for the selected journal lines.
- The validation and reconciliation of posted journal entries by providing immediate information about the account balances for the selected journal lines.

Projected Balances

Subledger Accounting manual journal entry and General Ledger manual journal entry, approval, and inquiry pages display projected or current balances including the current journal entry line amounts. Depending on whether the journal is posted or not, the current balance (for the period of the journal) is displayed or calculated.

The projected balance region displays the projected balances for the account that includes the amounts of the selected journal entry line. Additionally, if more than one journal line for same account of the selected journal line exists, then the projected balance amount includes the impact from each journal line. The Period To Date, Quarter To Date, and Year To Date balances are also available.

- For unposted journals, the period balance is projected by summing the current balance with the subledger journal entry line amounts
- For posted journals, the opening balance and the period activity are calculated using the current balance and journal line amount

Projected balances increases accuracy when booking entries to reconcile accounts.

Manage Accounting Reversals

To create an accounting reversal for a transaction or transaction distribution, the transaction objects should include the appropriate header or line level accounting reversal options.

Accounting reversals enables you to reverse the accounting impact of a previously accounted transaction distribution or all existing accounting for a transaction.

Accounting reversal terminology includes the following:

- Reversed (original) Distribution
 - Refers to a transaction distribution that although successfully accounted, is either incorrect or canceled. The transaction distribution is therefore reversed.

- Reversal Distribution
 - Refers to a transaction distribution which reverses the effect of the original distribution on transaction balances. Typically, reversal distributions are identical to the reversed distributions in all respects except for entered (ledger) amounts that reverse the sign of the original.
- Replacement Distribution
 - Refers to a transaction distribution which replaces the reversed distribution with the correct value.

Distribution Examples

This table contains distribution examples.

Invoice Distribution Line Number	Invoice Line Type	Accounting Date	Amount	Description
1	Item	10-Jan-2013	1000	Reversed
2	Item	12-Jan-2013	-1000	Reversal (of line 1)
3	Item	12-Jan-2013	2000	Replacement (of line 1)
Transaction Total			2000	

Note that the original accounting impact of the reversed distributions is undone, even if the subledger journal setups or accounting configurations have changed since the original subledger journal entry was generated.

Related Topics

- [How You Manage Subledger Journal Adjustments](#)

5 Subledger Balances

Adjust Supporting Reference Initial Balances

Supporting References provides you the flexibility to store and report on additional information about a subledger journal at the journal line level.

You can choose to use supporting references with balances to record subledger balances for a source using a combination of supporting references plus the chart of account combination.

The Import Supporting Reference Initial Balances spreadsheet lets you upload the initial balances for Supporting References. The initial balance is the starting balance for a supporting reference in the context of an application, ledger, and account combination.

Note: When using the Manage Configuration Packages task to export or import setup data, initial balances that have been imported into one environment aren't going to be migrated into another. You must import balances separately into each environment you maintain.

Access the task from the Setup and Maintenance work area.

Initialize Supporting Reference Balances when no balances exist

Let's say you already maintain a balance for certain dimensions in the legacy system which aren't available in Oracle Fusion and want to bring in those balances when migrating to Oracle Fusion Cloud ERP. Let's assume supporting reference balances are to be initialized against the supporting references - Account Number, Customer Category, Line Type, Country Code, State Code as follows:

Ledger	Subledger	Period	Account Combination	Currency	Balance (Debit)	Balance (Credit)	Account Number	Customer Category	Line Type	Country Code	State Code
Vision Operations	Payables	Jun-20	01-120-2210	USD	12654		76768	Gold	Goods	US	NY
Vision Operations	Payables	Jun-20	01-120-2210	USD		2030	76576	Silver	Services	US	CA

You must navigate to the Adjust Supporting Reference Balances task and download the spreadsheet template. Use the Adjust Supporting Reference Balances ADFdi spreadsheet to initialize supporting reference balances for the supporting references - Account Number, Customer Category, Line Type, Country Code, State Code. The journal entry that gets created in the background doesn't have supporting reference information for both sides that's, the supporting reference is NULL for the offsetting entry. In this example journal entries get created as follows:

Period	Account Combination	Entered (Debit)	Entered (Credit)	Currency	Account (Debit)	Account (Credit)	ANALYTICAL BALANCE FLAG	SR1	SR2	SR3	SR4	SR5
6/20/2022	01-120-22	12654		EUR	15050		P	76768	Gold	Goods	US	NY

Period	Account Combina	Entered (Debit)	Entered (Credit)	Currency	Accounte (Debit)	Accounte (Credit)	ANALYTIC BALANCE FLAG	SR1	SR2	SR3	SR4	SR5
6/20/202	01-120-22		12654	EUR		15050						
6/20/202	01-110-22		2030	USD		2030	P	76456	Silver	Services	US	CA
6/20/202	01-110-22	2030		USD	2030							

The journal entries created for initializing the supporting reference balances are created in Final status but not transferred to GL, if all validations are successful. If you don't want balances to be maintained in the entered currency (XLA_ENABLE_ENTERED_CURR_BAL_SUPP_REF is disabled), the supporting reference balances table is updated as follows on initialization:

LEDGER_ID	APPL_ID	PERIOD	CCID	PERIOD_BALANCE_DR	PERIOD_BALANCE_CR	SR1	SR2	SR3	SR4	SR5
1	200	6/20/2021	01-120-2210	15050		76768	Gold	Goods	US	NY
1	200	6/20/2021	01-110-2240		2030	76456	Silver	Services	US	CA

If you maintain balances in the entered currency (XLA_ENABLE_ENTERED_CURR_BAL_SUPP_REF is enabled), the supporting reference balances table is updated as follows on initialization:

LEDGER_ID	APPL_ID	PERIOD	CCID	PERIOD_BALANCE_DR	PERIOD_BALANCE_CR	PERIOD_ENTERED_BALANCE_DR	PERIOD_ENTERED_BALANCE_CR	ENTERED_CURRENCY_CODE	SR1	SR2	SR3	SR4	SR5
1	200	6/20/2021	01-120-2210	15050		12654		EUR	12654	Gold	Goods	US	NY
1	200	6/20/2021	01-110-2240		2030		2030	USD	76456	Silver	Services	US	CA

Adjust Supporting Reference Balances when balances exist

Let's say supporting reference balances already exist and you just want to adjust the balances. Assuming supporting reference balances are existing for the following account and supporting reference combination in the XLA_AC_BALANCES table and you want to do an upward adjustment of 200.00 USD.

LEDGER_ID	APPL_ID	PERIOD	CCID	PERIOD_BALANCE_DR	PERIOD_BALANCE_CR	SR1	SR2	SR3	SR4	SR5
1	200	6/20/2021	01-120-1210	12354		76768	Bronze	Goods	US	NY

LEDGER_ID	APPL_ID	PERIOD	CCID	PERIOD_BALANCE_DR	PERIOD_BALANCE_CR	SR1	SR2	SR3	SR4	SR5

Navigate to the Adjust Supporting Reference Balances task and download the spreadsheet template. Use the Adjust Supporting Reference Balances ADFdi spreadsheet to update supporting reference balances.

Manual journal entry is created in the background having supporting reference information for one of the lines which is used to adjust balances, supporting reference is NULL for the offsetting entry. In this example journal entries get created as follows:

Period	Account Combination	Entered (Debit)	Entered (Credit)	Currency	Account (Debit)	Account (Credit)	ANALYTICAL BALANCE FLAG	SR1	SR2	SR3	SR4	SR5
6/20/202	01-120-12	200		USD	200		P	76768	Bronze	Goods	US	NY
6/20/202	01-120-12		200	USD		200						

The journal entries created for adjusting the supporting reference balances are created in Final status but not transferred to GL, if all validations are successful. If you don't want balances to be maintained in the entered currency (XLA_ENABLE_ENTERED_CURR_BAL_SUPP_REF is disabled), the supporting reference balances table is updated as follows on initialization:

LEDGER_ID	APPL_ID	PERIOD	CCID	PERIOD_BALANCE_DR	PERIOD_BALANCE_CR	SR1	SR2	SR3	SR4	SR5
1	200	6/20/2021	01-120-1210	12554		76768	Bronze	Goods	US	NY

Correct Supporting Reference Balances

Let's say the supporting reference balances have been entered for an incorrect supporting reference combination. You would want to correct the balance so that it is represented against the correct supporting reference combination.

Assuming supporting reference balances exist for the following account and supporting reference combination in the XLA_AC_BALANCES table:

LEDGER_ID	APPL_ID	PERIOD	CCID	PERIOD_BALANCE_DR	PERIOD_BALANCE_CR	SR1	SR3	SR4
1	200	Jun-21	01-120-12	16200		76768	Goods	US

It was observed that the supporting reference combination used above is incorrect since the value for the supporting reference SR2 was not entered while entering or initializing the balances.

Navigate to the Adjust Supporting Reference Balances task and download the spreadsheet template. Use the Adjust Supporting Reference Balances ADFdi spreadsheet to update supporting reference balances as follows:

LEDGER_ID	APPL_ID	PERIOD	CCID	ENTERED_BALANCE_DR	ENTERED_BALANCE_CR	SR1	S
1	200	Jun-21	01-120-124		16200	76768	
1	200	Jun-21	01-120-124	16200		76768	S

In this case, two manual journal entries are created in the background with supporting reference information for one of the lines, which is used to update the balances. The supporting reference is NULL for the offset entry.

Period	Account Combination	Entered (Debit)	Entered (Credit)	Currency	Accounted (Debit)	Accounted (Credit)	ANALYTICAL_BALANCE_FLAG	SR1	S
Jun-21	01-120-1240-0000-		16200	USD		16200	P	76768	
Jun-21	01-120-1240-0000-	16200		USD	16200				
Jun-21	01-120-1240-0000-	16200		USD	16200		P	76768	S
Jun-21	01-120-1240-0000-		16200	USD		16200			

The journal entries created for adjusting the supporting reference balances are created in Final status but not transferred to GL if all validations succeed. If you don't want balances maintained in the entered currency (XLA_ENABLE_ENTERED_CURR_BAL_SUPP_REF is disabled), the supporting reference balances table is updated as follows on initialization:

LEDGER_ID	APPL_ID	PERIOD	CCID	PERIOD_BALANCE_DR	PERIOD_BALANCE_CR	SR1	S
1	200	Jun-21	01-120-124	16200	16200	76768	
1	200	Jun-21	01-120-124	16200		76768	S

Related Topics

- [Update Subledger Accounting Balances Process](#)

Adjust Control Balances

The volume of transactions to be processed using control balance transfer is significantly lower as journals are created in summary mode to transfer the balance.

Irrespective of which transactions are updated; the Unpaid Invoice, Paid Invoices or Historical transactions, you have the flexibility to choose for which period and account combination you want to transfer balances. An audit trail is maintained because existing journals in final status aren't impacted, for control account balance transfer operation new SLA journals are created. You can adjust control balances as needed using the spreadsheet interface regardless of accounting period status since entries aren't transferred to GL.

Transfer Control Balances due to Party Merge

Suppose a party merge was triggered and you want to transfer control balances from the old party and site to the new party and site. In this example, let's assume Vision Corporation, NY site is merged with Big Computers, NY site. Vision Corporation, NY site has the following control balance records in the SLA control balances table.

LEDGER_ID	APPL_ID	PERIOD	CCID	BEGINNING_BALANCE_DR	BEGINNING_BALANCE_CR	PERIOD_BALANCE_DR	PERIOD_BALANCE_CR	PARTY	PARTY_SITE
1	200	4/20/2021	01-110-2210-0000-000			1200	2200	Vision Corporation	NY
1	200	4/20/2021	01-110-2240-0000-000				2030	Vision Corporation	NY
1	200	5/20/2021	01-000-1210-0000-000		1000		200	Vision Corporation	NY
1	200	5/20/2021	01-000-1220-0000-000			500	100	Vision Corporation	NY

Vision Corporation is acquired by Big Computers. Vision Corporation, NY site is merged with Big Computers, NY site. You can use the Adjust Control Balances ADFdi spreadsheet to transfer control balances to the new supplier, Big Computers, NY site.

The journal entries created for transferring control balances are created in Final status but not transferred to GL. The control balances table is updated as follows on transfer:

LEDGER_ID	APPL_ID	PERIOD	CCID	BEGINNING_BALANCE_DR	BEGINNING_BALANCE_CR	PERIOD_BALANCE_DR	PERIOD_BALANCE_CR	PARTY	PARTY_SITE
1	200	4/20/2021	01-110-2210-0000-000			1200	2200	Vision Corporation	NY
1	200	4/20/2021	01-110-2240-0000-000				2030	Vision Corporation	NY
1	200	5/20/2021	01-000-1210-0000-000		1000		200	Vision Corporation	NY
1	200	5/20/2021	01-000-1220-0000-000			500	100	Vision Corporation	NY
1	200	4/20/2021	01-110-2210-0000-000			1000		Vision Corporation	NY
1	200	4/20/2021	01-110-2210-0000-000				1000	Big Computers	NY
1	200	4/20/2021	01-110-2240-0000-000			2030		Vision Corporation	NY
1	200	4/20/2021	01-110-2240-0000-000				2030	Big Computers	NY

LEDGER_ID	APPL_ID	PERIOD	CCID	BEGINNING BALANCE_ DR	BEGINNING BALANCE_ CR	PERIOD_ BALANCE_ DR	PERIOD_ BALANCE_ CR	PARTY	PARTY_ SITE
1	200	5/20/2021	01-000-1210-0000-000			1200		Vision Corporation	NY
1	200	5/20/2021	01-000-1210-0000-000				1200	Big Computers	NY
1	200	5/20/2021	01-000-1220-0000-000				400	Vision Corporation	NY
1	200	5/20/2021	01-000-1220-0000-000			400		Big Computers	NY

Adjust Control Balances for a Party and Site

Suppose you didn't initially enable control accounts but afterwards you want to initialize control balances for a party and site. Or you already maintain control account balances in a legacy system and want to bring in those balances while upgrading to Oracle Fusion Cloud ERP. Let's assume control balances are to be initialized against First Software, San Jose site as follows:

Ledger	Subledger	Period	Account Combination	Accounted (Debit)	Accounted (Credit)	Supplier	Site
Vision Operations	Payables	6/20/2021	01-120-2210-0000-000	12654		First Software	San Jose
Vision Operations	Payables	6/20/2021	01-110-2240-0000-000		2030	First Software	San Jose

The Application Implementation Consultant (ORA_ASM_APPLICATION_IMPLEMENTATION_CONSULTANT_JOB) configures the natural accounts 2210 and 2240 as control accounts in the FND setup and submits the Inherit Segment Value attributes program. You can use the Adjust Control Balances ADFdi spreadsheet to initialize control balances for First Software, San Jose site.

As in the initialize case, the created journal entry doesn't have party information for both sides. So in this example, journal entries are created as follows:

Period	Account Combination	Accounted (Debit)	Accounted (Credit)	Supplier	Site
6/20/2021	01-120-2210-0000-000	12654		First Software	San Jose
6/20/2021	01-120-2210-0000-000		12654		

Period	Account Combination	Accounted (Debit)	Accounted (Credit)	Supplier	Site
6/20/2021	01-110-2240-0000-000		2030	First Software	San Jose
6/20/2021	01-110-2240-0000-000	2030			

The journal entries created for initializing control balances are created in Final status but are not transferred to GL. The control balances table is updated as follows on initialization:

LEDGER_ID	APPL_ID	PERIOD	CCID	BEGINNING_BALANCE_DR	BEGINNING_BALANCE_CR	PERIOD_BALANCE_DR	PERIOD_BALANCE_CR	PARTY	PARTY_SITE
1	200	6/20/2021	01-120-2210-0000-000			12654		First Software	San Jose
1	200	6/20/2021	01-110-2240-0000-000				2030	First Software	San Jose

Third-Party Control Account Balances Report

This topic includes details about how you use the Third-Party Balances Report.

Overview

You can use the Third-Party Control Account Balances Report to review subledger accounting third-party control account balances and activity for suppliers and customers.

Here is a screenshot of the Third-Party Control Account Balances Report.

ORACLE		Third Party Balances Report			Report Date 04-18-2019 4:59 PM		
Vision Operations (USA)					Page 1 of 3		
Ledger Name Vision Operations (USA)		Ledger Currency USD					
Account 01-000-2210-0000-000		Description Operations-No Department-Accounts Payable-No Sub Account-No Product					
Third Party Name Advanced Network Devices		Third Party Number 1013					
Third Party Site FRESNO		Third Party Site Number					
Beginning Balance for Period Feb-19						15,092,518.50	
Journal Category	GL Date	Event Class	Transaction Number	Transaction Date	Line Description	Debit	Credit
Supplier Cost	02-21-2019	Invoices	SR_INV_SK1	02-21-2019	Full Distribution Set with one Line Full Distribution Set with one Line		100.00
Supplier Cost	02-21-2019	Invoices	SR_INV_SK1	02-21-2019	FUS_STCC_REGIME-UES - FUS_STCC_TAX-UES FUS_STCC_REGIME-UES - FUS_STCC_TAX-UES		10.00
Total for Period						0.00	110.00
Ending Balance for Period Feb-19						0.00	15,092,628.50
Total for Account						0.00	15,092,628.50
Account 02-000-2210-0000-000		Description Distributor-SGD-No Department-Accounts Payable-No Sub Account-No Product					
Third Party Name Advanced Network Devices		Third Party Number 1013					
Third Party Site FRESNO		Third Party Site Number					
Beginning Balance for Period Feb-19						1,204.44	
Journal Category	GL Date	Event Class	Transaction Number	Transaction Date	Line Description	Debit	Credit
Supplier Cost	02-21-2019	Invoices	SR_INV_SK2	02-21-2019	Full D1013		50.00
Supplier Cost	02-21-2019	Invoices	SR_INV_SK2	02-21-2019	FUS_STC1013		5.00
Supplier Cost	02-21-2019	Invoices	SR_INV_SK2	02-21-2019	FUS_STC1013	5.00	
Total for Period						5.00	55.00
Ending Balance for Period Feb-19						1,154.44	0.00
Total for Account						1,154.44	0.00
Account 01-600-2210-0000-800		Description Operations-Leasing-Accounts Payable-No Sub Account-Loan					
Third Party Name Advanced Network Devices		Third Party Number 1013					
Third Party Site FRESNO		Third Party Site Number					

Key Insights

You can view these information in the Third-Party Control Account Balances Report:

- Third-party balances for subledger accounting third-party control accounts.
- Subledger journal entry lines that add up to the total period activity for each control account, third party, and third-party site.
- Third party and third-party site information.
- User transaction identifiers for the associated entries.

Report Parameters

Let's look at the parameters of the Third-Party Control Account Balances Report.

Name	Description
Journal Source	Select from a list of enabled journal sources mapped to an accounting generating subledger application.
Ledger	Select a ledger. You must have access to the ledger either directly through a GL Data Access Set or through a: <ul style="list-style-type: none"> • Business unit • Asset book • Payroll security assignment
From Accounting Period	Indicate the beginning period for the report data.

Name	Description
To Accounting Period	Indicate the ending period for the report data.
Third-Party Type	Select the type of third party defined for the subledger application for the journal source. Values are Customer , Supplier , and All .
Third-Party Name	Select a customer or supplier based on the third party type.
Third-Party Site	Select a third-party site for the supplier or customer identified by third-party name.
From Third-Party Number	Indicate the beginning of the range of customer or supplier numbers based on the third party type.
To Third-Party Number	Indicate the ending of the range of customer or supplier numbers greater than or equal to the From value.
Include User Transaction Identifier	Specify whether the user transaction identifiers are included in the report data.
Account Filter	Enter the filtering conditions on the account. You can select all segments for the selected ledger and define conditions including account value ranges.

Frequently Asked Questions

These are some frequently asked questions about the Third-Party Control Account Balances Report.

FAQ	Answer
How do I find this report?	Schedule and run this report from the Scheduled Processes work area on the Navigator menu.
Who uses this report?	<ul style="list-style-type: none"> • Financial Accountant • Financial Manager • Financial Specialist
When do I use this report?	Use this report when you want to review subledger accounting third-party control account balances and activity for suppliers and customers.
What type of report is this?	Oracle Business Intelligence Publisher

Related Topics

- [Guidelines for Validating a Third-Party Control Account](#)
- [Third-Party Detail and Balances Reports](#)
- [Accounting Attribute Assignments](#)

Update Subledger Accounting Balances Process

Use the Update Subledger Accounting Balances process (XLABABUP) to update subledger supporting reference balances and third-party control account balances.

This process is run automatically following the Create Accounting process. It should be run manually if the auto run fails for any reason.

Run the report from the Scheduled Processes page and optionally schedule the process to run periodically.

Note: Draft entries do not update balances. To include accurate balances, transactions must be accounted in Final.

Parameters

Subledger Application

List of all user accessible accounting generating subledgers.

Ledger

The list of ledgers is based on the user accessible business units, asset books or legal entities. Only the list of ledgers associated with those business units, asset books or legal entities is shown.

Related Topics

- [Adjust Supporting Reference Initial Balances](#)

Carry Forward Subledger Accounting Balances Process

The Carry Forward Subledger Accounting Balances process will carry forward supporting reference balances and third-party control account balances to the current period for a ledger. This process is automatically initiated when the accounting period is newly opened.

Note: The process can also be submitted manually if the initial process executed abnormally when the accounting period was opened.

Parameters

Ledger

The list of ledgers is based on the business units, asset books or legal entities that a subledger user has access to. Only the list of ledgers associated with those business units, asset books or legal entities is shown.

Accounting Period

All periods for the accounting calendar and period type associated with the selected ledger.

Related Topics

- [Projected Balances](#)

6 Advanced Features

Multiperiod Accounting

Multiperiod accounting enables you to create accounting entries across more than one accounting period for a single accounting event. The functionality is primarily used to defer the recognition of revenue or prepaid expense across multiple accounting periods.

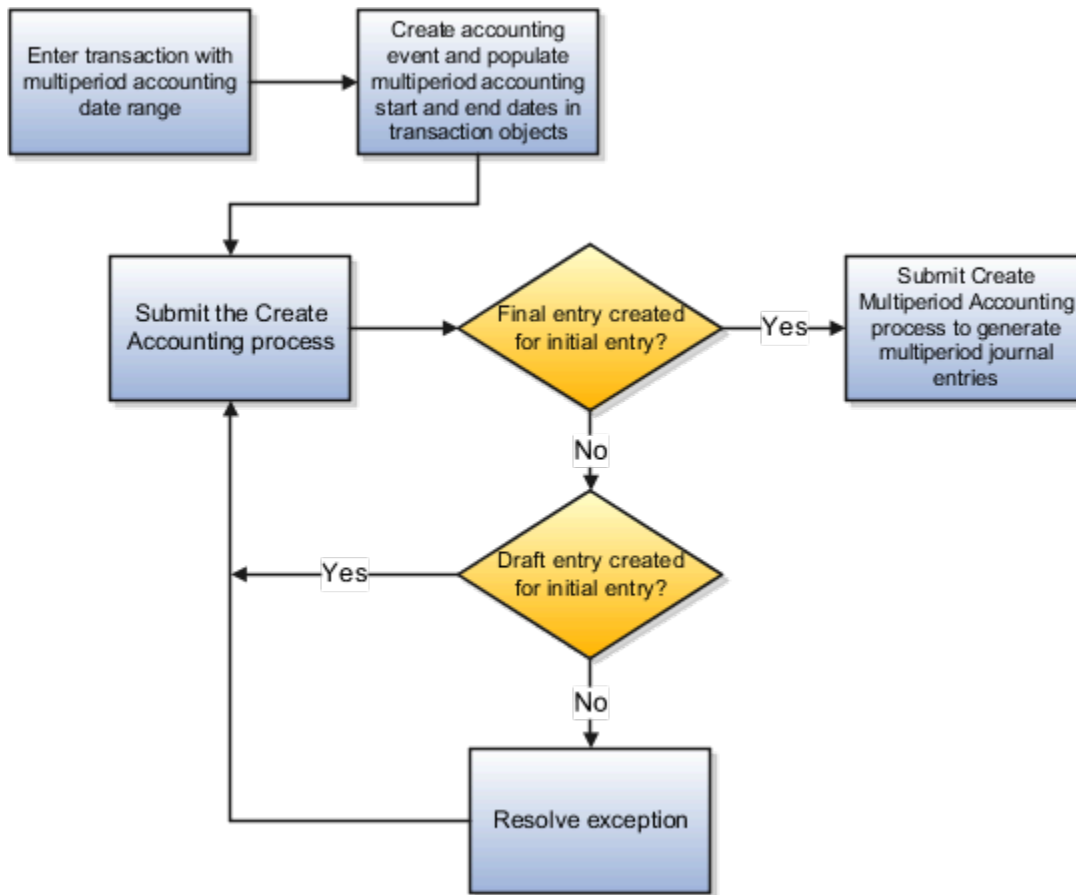
You can:

- Determine how to distribute the amount across accounting periods.
- Specify a prepaid expense or deferral account.
- Preview multiperiod journal entries before creating and posting final entries:
 - Submit the Create Multiperiod Accounting process in Draft mode.
 - Review the multiperiod journal entries in the Create Multiperiod Accounting Execution Report.

Note: You can only preview multiperiod journal entries for a single accounting period.

Multiperiod Accounting Process Flow

This figure illustrates the multiperiod accounting process flow.

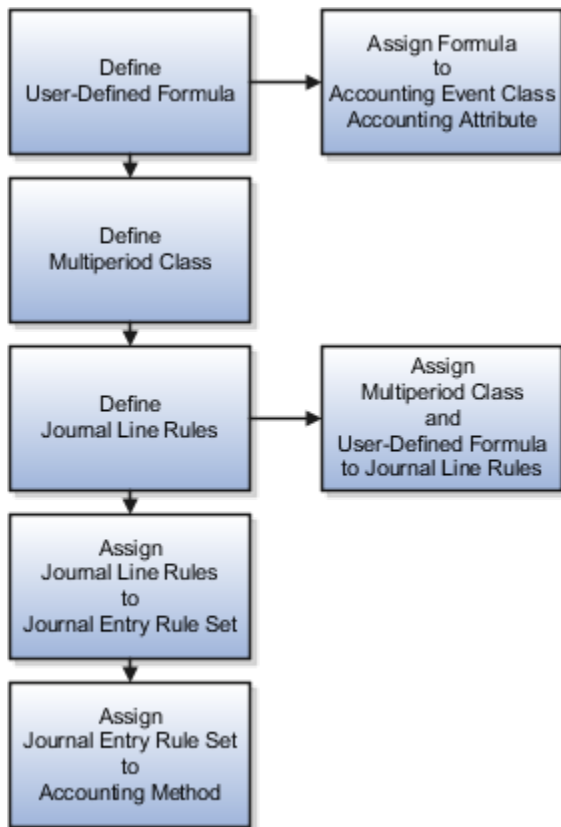


1. Enter transaction with multiperiod accounting date range.
2. Create accounting event. Populate multiperiod accounting Start and End dates in transaction objects.
3. Submit the Create Accounting process.
 - o Final entry created for initial entry? Yes
 - Submit Create Accounting process to generate multiperiod journal entries
 - o Final entry created for initial entry? No
 - Draft entry created for initial entry? Yes
 - o Resolve exception.
 - Draft entry created for initial entry? No
 - o Submit the Create Multiperiod Accounting process to generate multiperiod journal entries.

Implementation Steps

Implementation Step Process Flow

This figure illustrates the implementation steps.



1. Define a user-defined formula determining how to distribute the entered amount across accounting periods. If required, you can use the new multiperiod predefined sources. For example:
 - Multiperiod Original Entered Amount
 - Multiperiod Recognized Entered Amount
 - Last Multiperiod Accounting Date
 - Number of Days in Current Accounting Period

Assign the formula or source to the Entered Amount accounting attribute in the Manage Accounting Attributes task.

2. Assign a source to each of the following accounting attributes to indicate the multiperiod date range.
 - Multiperiod Start Date
 - Multiperiod End Date
3. Define Multiperiod Classes using the Manage Subledger Accounting Lookups task.
 - Lookup Type: ORA_XLA_MULTIPERIOD_CLASS
4. Define a non-multiperiod Journal Line Rule for the deferral entry specifying the Multiperiod Class. This rule is used to post the fee amount to the deferral account.

Define a non-multiperiod Journal Line Rule for the accrual entry:

- Disable the Multiperiod option and specify a Multiperiod Class.
- Assign a source that has the accrual amount to the Entered Amount accounting attribute.
- Assign relevant sources to the Multiperiod Start Date and Multiperiod End Date accounting attributes.

5. Define a multiperiod Journal Line Rule for the recognition entry:
 - o Enable the Multiperiod option and assign the same Multiperiod Class as in the non-multiperiod Journal Line Rule created in step 4 above.
 - o Assign the user-defined formula to the Entered Amount accounting attribute.
 - o Assign relevant sources to the Multiperiod Start Date and Multiperiod End Date accounting attributes.
6. Assign both journal line rules to the same journal entry rule set with:
 - o A deferral account rule assigned to the non-multiperiod journal line rule.
 - o A revenue or expense account rule assigned to the multiperiod journal line rule.
7. Assign the journal entry rule set to the accounting method.
8. Schedule the Create Multiperiod Accounting process to run after the Create Accounting process so that recognition journal entries are properly booked each period. If multiperiod accounting is also implemented in any of the subledger level secondary ledgers, you must schedule the Create Multiperiod Accounting process for the primary ledger as well as each of its subledger level secondary ledgers.

Related Topics

- [Example of Multiperiod Accounting](#)
- [Considerations for Multiperiod Accounting](#)

Example of Multiperiod Accounting

The subledger multiperiod accounting and user-defined formula features provide the ability to satisfy the FASB 91 accounting requirement. This requirement of deferred recognition of fee and direct loan cost is met by modifying the recognition of fee amounts with user-defined formulas.

Example

A personal loan was originated with the following information:

- Origination date: 01-Jul-2016
- Origination fee: USD 300.00
- Loan duration: 6 months
- Maturity date: 31-Dec-2016

Upon loan origination on 01-JUL-2016 the origination fee must be booked as unearned income:

Initial Journal Entry for Loan Fee

This table contains the journal that is created when the loan is originated.

	Entered DR (USD)	Entered CR (USD)
Receivable	300.00	
Unearned Fee Income		300.00

	Entered DR (USD)	Entered CR (USD)

The unearned fee income must be split over the life of the loan. Each portion must be recognized as income in the corresponding accounting periods, between Jul-2016 and Dec-2016. The amounts in each period would depend on the proration formula used. For example:

Monthly Journal Entry for Loan Fee

This table contains of the journal achieved using a user-defined formula.

	Entered DR (USD)	Entered CR (USD)
Unearned Fee Income	50.00	
Loan Fee Income		50.00

Using Multiperiod Subledger Accounting Rules

Accounting Hub users can define subledger accounting rules to create the multiperiod accounting entries. For example:

This table contains the usage of journal lines rules, account rules and the usage associated with multiperiod accounting.

Journal Line Rules	Account Rules	Usage
<p>Unearned Fee Income</p> <ul style="list-style-type: none"> Side = Credit Multiperiod Option = No Multiperiod Class = Loan Fee <p>The Entered Amount accounting attribute is mapped to a source that provides the fee amount.</p>	Unearned Fee Income Account	<p>Journal line rule for the deferral entry.</p> <p>Used to generate a credit line to the unearned fee income account.</p>
<p>Loan Fee Income</p> <ul style="list-style-type: none"> Side = Credit Multiperiod Option = Yes Multiperiod Class = Loan fee Accounting attributes: <ul style="list-style-type: none"> Multiperiod Start Date = Origination date Multiperiod End Date = Maturity date <p>The Entered Amount accounting attribute is mapped to a formula to prorate the fee amount.</p>	Loan Fee Income Account	<p>Journal line rule for the recognition entry.</p> <p>Used by the Create Multiperiod Accounting process to generate future entries with prorate amounts, such as the CR 50.00 (USD) in the example.</p>

- Define a user-defined formula to calculate the total entered amount to be recognized from the multiperiod start date until the end of current accounting period.
- Assign the user-defined formula to the Entered Amount accounting attribute.
- The Create Multiperiod Accounting process calculates entered amount for the multiperiod entries as:

$$\text{Entered Amount} = \text{Amount Returned by User-Defined formula} - \text{Multiperiod Recognized Entered Amount}$$

- Where the:
 - Multiperiod Recognized Entered Amount is calculated and stored in the Accounting Hub data model as the total amount recognized for the transaction in prior periods.
- The approach handles any rounding differences in prorated entered currency amounts.

Sample User-Defined Formulas

These sample user-defined formula definitions can be used to prorate the loan fee amount.

Prorate by Number of Periods

- To prorate the entered amount evenly across each period:

$$\text{" Multiperiod Original Entered Amount" * NumberofGLPeriod ("Origination Date", "Last Day of Current Accounting Period")} / \text{NumberofGLPeriod ("Origination Date", "Maturity Date")}$$

- Where the:
 - Multiperiod Original Entered Amount, Origination Date and Maturity Date are standard application sources (Application: Loans).
 - Last Day of Current Accounting Period is a system source (Application: Subledger Accounting).
 - NumberofGLPeriod is a predefined numeric function.
- The entered amount for the multiperiod journal would be calculated as follows:

This table contains the Multiperiod Accounting amount computed if recognition is defined to Prorate by Number of Periods.

Accounting Date	Number of Periods Since Multiperiod Start Date	Multiperiod Recognized Entered Amount (A)	Amount Returned from User-Defined Formula (B)	Multiperiod Journal Entered Amount (B-A)
31-Jul-16	1	0.00	300.00*1/6=50.00	50.00
31-Aug-16	2	0.00+50.00=50.00	300.00*2/6=100.00	100.00-50.00=50.00
30-Sep-16	3	50.00+50.00=100.00	300.00*3/6=150.00	150.00-100.00=50.00
31-Oct-16	4	100.00+50.00=150.00	300.00*4/6=200.00	200.00-150.00=50.00
30-Nov-16	5	150.00+50.00=200.00	300.00*5/6=250.00	250.00-200.00=50.00

Accounting Date	Number of Periods Since Multiperiod Start Date	Multiperiod Recognized Entered Amount (A)	Amount Returned from User-Defined Formula (B)	Multiperiod Journal Entered Amount (B-A)
31-Dec-16	6	200.00+50.00=250.00	300.00*6/6=300.00	300.00-250.00=50.00

Note: These columns are calculated by the Create Multiperiod Accounting process:

- Amount Returned from User-Defined Formula (B)
- Multiperiod Journal Entered Amount (B-A)

Prorate by Number of Days

- To prorate entered amount by the actual number of days in each period:

" Multiperiod Original Entered Amount" * ("Last Day of Current Accounting Period" - "Origination Date" + 1) / ("Maturity Date" - "Origination Date" + 1)

- The entered amount for the multiperiod journal is calculated as follows:

This table contains the Multiperiod Accounting amount computed if recognition is defined to Prorate by Number of Days.

Accounting Date	Number of Days Since Multiperiod Start Date	Multiperiod Recognized Entered Amount (A)	Amount Returned from User-Defined Formula (B)	Multiperiod Journal Entered Amount (B-A)
31-Jul-16	31	0.00	300.00*31/184.00=50.54	50.54
31-Aug-16	62	0.00+50.54=50.54	300.00*62/184.00=100.09	100.09-50.54=50.55
30-Sep-16	92	50.54+50.55=100.09	300.00*92/184.00=150	150.00-100.09=48.91
31-Oct-16	123	100.09+48.91=150.00	300.00*123/184.00=200.54	200.54-150.00=50.54
30-Nov-16	153	150.00+50.54=200.54	300.00*153/184.00=249.46	249.46-200.54=48.92
31-Dec-16	184	200.54+48.92=249.46	300.00*184/184.00=300.00	300.00-249.46=50.54

- Note that rounding differences, if any, are included in the resulting entered amount for the multiperiod journals.

Using Multiperiod Accounting for Foreign Currency

In the multiperiod accounting journal for foreign currency, the accounted amount is derived from the accrued amount / entered amount on the accrual line.

To calculate the accounted amount for multiperiod recognition entries, follow this logic:

1. Calculate the unrounded entered amount to be recognized from the multiperiod start date to the last day of the current period.

2. Calculate the unrounded entered amount to be recognized for the current period as Step 1 minus the total rounded entered amount from all multiperiod recognition lines in previous periods.
3. Calculate the unrounded accounted amount for the current period as Step 2* accrual accounted amount/ accrual entered amount.
4. The last multiperiod recognition entry will include a rounding difference, so it's calculated as: 'accrual amount' minus 'total amount from all multiperiod recognition lines in previous periods', for both entered and accounted amounts.

Here's an example illustrating the exact amount on a customer's invoice.

Invoice:

Accrual amount in USD	Accrual amount in JPY	MPA start date	MPA start date
4016.25	457612	1-Jan-21	31-Dec-21

Formula (Prorate by number of GL period)

((("Multiperiod Original Entered Amount" * NumberOfGLPeriod("Invoice Distribution Multiperiod Accounting Start Date","Last Day of Current Accounting Period")) / NumberOfGLPeriod("Invoice Distribution Multiperiod Accounting Start Date","Invoice Distribution Multiperiod Accounting End Date"))

Period	Entered amount to be recognized from Day1 to last day of current period (USD)	MPA journal unrounded entered amount (USD)	MPA journal unrounded accounted amount (JPY)	MPA journal rounded entered amount (USD)	MPA journal rounded accounted amount (JPY)	Total Recognized amount to-date (USD)	Total Recognized amount to-date(JPY)
1	334.6875	334.6875	38134.33333	334.69	38134	334.69	38134
2	669.375	334.685	38134.04848	334.69	38134	669.38	76268
3	1004.0625	334.6825	38133.76363	334.68	38134	1004.06	114402
4	1338.75	334.69	38134.61818	334.69	38135	1338.75	152537
5	1673.4375	334.6875	38134.33333	334.69	38134	1673.44	190671
6	2008.125	334.685	38134.04848	334.69	38134	2008.13	228805
7	2342.8125	334.6825	38133.76363	334.68	38134	2342.81	266939
8	2677.5	334.69	38134.61818	334.69	38135	2677.5	305074
9	3012.1875	334.6875	38134.33333	334.69	38134	3012.19	343208
10	3346.875	334.685	38134.04848	334.69	38134	3346.88	381342
11	3681.5625	334.6825	38133.76363	334.68	38134	3681.56	419476
12	4016.25	334.69	38134.61818	334.69	38136	4016.25	457612

Prerequisites

- Provide date format sources to store the multiperiod start and end dates in transaction objects.
- For the event class that supports multiperiod accounting, assign these sources to the accounting attributes:
 - Multiperiod Start Date
 - Multiperiod End Date
- Define the multiperiod class in the subledger accounting lookup. The multiperiod class is used to identify the journal line for which the amount is prorated across multiple accounting periods.

Tip: Accounted amounts for multiperiod journals are calculated by the Create Multiperiod Accounting process prorating proportionally to the entered amount. Rounding error differences are included in the prorated amount. Multiperiod transaction data must be available in transaction objects until the last multiperiod entry has been accounted in final status.

Related Topics

- [Multiperiod Accounting](#)
- [Considerations for Multiperiod Accounting](#)
- [Manage User-Defined Formulas](#)

Considerations for Multiperiod Accounting

To achieve a successful implementation of multiperiod accounting, the following points must be taken into consideration.

Deferring the multiperiod end date

When you're deferring the multiperiod end date, then the recognition amount has to be adjusted. As the recognition line isn't generated based on the journal line rule, the switch debit and credit option isn't applicable. The appropriate offsetting entry for the positive or negative amount is generated to offset the extra recognition.

For example, if you're extending for 3 months and have already run the multiperiod accounting for the first 2 months, you would have recognized more than the amount required to offset; hence a negative entry will be generated.

Process the multiperiod accounting

Multiperiod recognition entries are created based on transaction objects data and accounting rule definition at the time the Create Multiperiod Accounting process is executed.

- The entered amount value for the multiperiod journal is calculated by a formula. This formula is assigned to the Entered Amount accounting attribute on the multiperiod journal line rule.

- The accounted amount value for multiperiod journals is calculated by the Create Multiperiod Accounting process, prorating proportionally to the entered amount, including rounding differences.

Multiperiod accounting entries aren't created:

- If any subledger level reporting currency or secondary ledger is disabled, although the multiperiod transaction may not be fully recognized yet.
- If subledger level reporting currency is added after the journal is created in Final status, the multiperiod journal isn't created for the new reporting currency.
- If the transaction accounting date is prior to the first open period of a reporting currency or secondary ledger, the journal isn't created for the reporting currency or secondary ledger.

Multiperiod transactions are processed by the Create Multiperiod Accounting process only once for each accounting period and transaction.

- Don't modify the multiperiod start date for a transaction to a date in a prior accounting period of the last multiperiod journal in primary and secondary ledgers.
- If the multiperiod start date for a transaction is modified to a date in a prior accounting period, accounting periods that were previously processed for the transaction by the Create Multiperiod Accounting process aren't processed, regardless of the period status. Any adjustment in the prorated amount due to change of start date will be accounted in the next accounting period.

Related Topics

- [Example of Multiperiod Accounting](#)
- [Multiperiod Accounting](#)

How to Enable Third Party Control Account

The Third Party Control Account attribute enables you to maintain detailed balances by third party for an account combination.

Valid third-party information must be associated with the journal line if the account is a third party control account. General Ledger prevents manual journal entries from posting to third party control accounts. This ensures that journal lines that post to control accounts such as the supplier liability account and the customer receivables account, are associated with valid third-party information in the respective subledgers.

You can select one of the following options:

- Customer Control Account: Customer information is required when such accounts are used in subledger transactions or subledger journals.
- Supplier Control Account: Supplier information is required when such accounts are used in subledger transactions or subledger journals.
- Third Party Control Account: Third-party information is required when such accounts are used in subledger transactions or subledger journals.
- Restrict GL Manual Journals: Third-party information isn't required when such accounts are used in subledger transactions or subledger journals.
- No: Not a control account.

Note:

- Don't enable the third party control account type for exchange gain or loss accounts because third-party information is required when a control account is used and this information isn't available for exchange gain or loss journal lines.
- General Ledger account used to account for subledger transactions that are not associated with any supplier or customer should not be configured with customer, supplier or third party control type. For example, AP payment request invoices and AR miscellaneous receipts.

General Ledger prevents manual journal entries to all of the accounts whose Third Party Control Account attribute is set to a value other than No.

Note:

- If you change the Third Party Control Account attribute setting for a segment value, then run the Inherit Segment Value Attributes process to replicate the changes to the account combinations that contain that segment value.
- Best practice is to define value set values after the value set has been assigned to a chart of accounts structure instance. Otherwise you can't define the required value attributes, such as the summary indicator, the posting allowed indicator, and the account type for natural account segments. The attributes must be added after the value set is assigned to a chart of accounts structure instance.
- Run the Publish Chart of Account Dimension Members and Hierarchies to Balances Cubes process with the Publish Detail Values Only parameter set to Yes before you post journals to accounts with newly created value set values. The process creates and updates chart of accounts dimension members and hierarchies for GL balances cubes.

Related Topics

- [Guidelines for Validating a Third-Party Control Account](#)
- [Update Subledger Accounting Balances Process](#)

7 Subledger Accounting Reporting

Subledger Accounting Predefined Reports

Oracle Subledger Accounting provides accounting reports for fiscal and internal control purposes.

The reports are comprehensive from a financial standpoint and include the best source of information for each type of journal entry. These reports can be used in lieu of the General Ledger-based journals and account analysis reports to see detailed subledger journal entries as well as supporting transaction information.

Scheduled Processes work area

Reports can be scheduled and run from the Scheduled Processes work area found in Tools on the Navigator.

Reports and Analytics work area

In some cases, reports are also:

- These reports are available from the Reports and Analytics work area, found in Tools on the Navigator, or from other work areas.
- Opened using links that deploy the business intelligence (BI) catalog.

The following table contains the primary predefined reports by type:

Account Analysis Reports

This table contains a listing of Subledger Accounting account analysis reports.

Display Name	Description
Account Analysis Report	Provides drill down information about the movement on a particular account for a period or range of periods. It only includes journal entries posted to general ledger.
Account Analysis by Legal Entity Report	Prints account balances by account combination and selected segments with subledger journal details, including third-party information and sequences. Flexible grouping and sorting options are provided at submission.

Journal Reports

This table contains a listing of Subledger Accounting journal reports.

Display Name	Description
Daily Journals Report	Lists subledger journal activity for a given period or date range, journal source, entered currency, and journal batch. Report prints detailed subledger journal lines prior to general ledger summarization. Third party and transaction details are also listed for the journal lines.
Journal Entries Report	Displays detailed information for subledger and general ledger journal entries. Groups report by ledger, journal source, journal category, and event class at submission.

Display Name	Description
Journal Ledger Report	Lists the accounting entries with subledger details like transaction number, transaction date, and line description, using flexible sorting options that are provided at report submission. This report provides a real audit trail between general ledger and subledgers to satisfy legal and business requirements.
Journals and Third Party Report	Prints all journals posted in Oracle Fusion General Ledger for the accounting period. The report provides accounting and reporting sequence details, detailed subledger accounting entry lines reporting level regardless of the ledger journals summarization. Assists in verifying that all journals are accurately recorded in chronological order with no gaps. It uses legal sequencing rules for both accounting entries and source documents.
Subledger Detail Journal Report	Displays information about the posted general ledger journal batches that originate from Oracle Fusion Receivables and Oracle Fusion Payables subledgers. The report prints subledger details like transaction number, transaction date, transaction amount in entered and ledger currency.

Other Subledger Accounting Reports

This table contains a listing of other Subledger Accounting reports.

Display Name	Description
Accounting Event Diagnostic Report	Shows the transaction data used in accounting. The data is collected when the profile option SLA: Enable Diagnostics is set and the Create Accounting process is run.
Subledger Accounting Method Setups Report	Displays the accounting setups for a subledger application and accounting method.
Subledger Period Close Exceptions Report	Lists all accounting events and journal entries that fail period close validation. Groups report by ledger, period, journal source, journal category, and event class at submission.

To run predefined reports, navigate to the Scheduled Processes work area and follow these steps:

1. Click the **Schedule New Process** button
2. Search on the process name.
3. Enter your parameters.
4. Enter your process options and schedule.
5. Click Submit.

Subledger Accounting Subject Areas, Folders, and Attributes

To create real-time analyses for Oracle Fusion Subledger Accounting you should be familiar with subject areas, folders, and attributes.

Subject Areas

To create an analysis, you begin by selecting a subject area from which you select columns of information to include in the analysis. For example, to create an analysis of journal information, you begin by selecting a Subledger Accounting- Journals Real Time subject area. Subject areas are based around a business object or fact. In this example, the subject area is based on the column in the subledger entries tables.

Subledger Accounting has 2 specific subject areas:

- Subledger Accounting- Journals Real Time
- Subledger Accounting - Supporting References Real Time

Folders

Each subject area has one fact folder and a number of dimension folders. Fact folders contain attributes that can be measured, meaning that they're numeric values like journal debit and credit amounts. Fact folders are in the list of folders and are usually named after the subject area. Dimension folders contain attribute and hierarchical columns like journal name and accounting period.

Some folders appear in more than one subject area, such as Time. These are referred to as common folders or common dimensions.

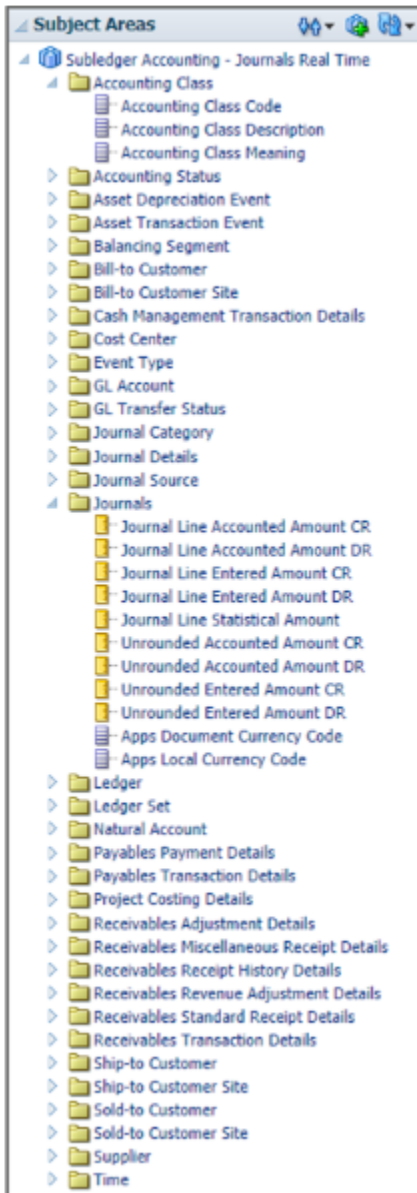
Each folder within a subject area may have a different level of granularity. For example:

- Accounting Class has accounting class attributes.
- Bill-to Customer has subfolders and attributes within the subfolders.

Attributes

Finally, each dimension folder contains attributes (columns), such as balance type and posting date. This figure illustrates the structure of subject areas, folders, and attributes.

This figure illustrates the subject area listing that includes the Subledger Accounting - Journals Real Time subject area, folders, and attributes.



The figure illustrates these components:

- Subject area: Subledger Accounting - Journals Real Time
- Dimension - Presentation Folder: Accounting Class
- Dimension - Attributes: Accounting Class Code, Accounting Class Description and Accounting Class Meaning.
- Fact - Presentation Folder: Journals
- Fact - Measures: Journal Line Accounted Amount CR, Journal Line Accounted Amount DR, Journal Line Entered Amount CR, Journal Line Entered Amount DR, Journal Line Statistical Amount, Unrounded Accounted Amount CR, Unrounded Accounted Amount DR, Unrounded Entered Amount CR, and Unrounded Entered Amount DR.

Related Topics

- [How Data Is Structured for Analytics](#)

Account Analysis Reports

This topic includes details about how you use account analysis reports.

Overview

You can use account analysis reports to provide a complete set of reports that support fiscal verification processes in countries in Europe and South America. You can also use these reports to inform shareholders about the financial results in other countries, including the United States.

Account analysis reports include the following reports:

- **General Ledger and Subledger Account Analysis Report:** You can view account balances by account with subledger journal details. The report displays entered amounts, third-party information, sequences, and total number of debit and credit documents.

Here is a screenshot of the General Ledger and Subledger Account Analysis Report.

Accounting Date	Subledger Date	General Ledger Sequence Number	Reporting Sequence Number	Subledger Sequence Number	Transaction Number	Source	Category	Tax Code	Line Number	Description	Currency	Entered Debit	Entered Credit	Accounted Debit	Accounted Credit	Balance
1/2/14	1/2/14				TR140103	Supplier	Supplier Card		3.00	WVT FR WVT	EUR	100.00		100.00		7,720,064,270.53
1/2/14	1/2/14				TR140104	Supplier	Sales Invoices		1		EUR		160.00		160.00	7,720,064,270.53
Ending Balance												7,720,064,270.53	20,300.00	7,740,364,270.53		
Total for Jan-14												160.00	160.00		0.00	
Ending Balance for Jan-14												7,720,064,270.53	20,300.00	7,740,364,270.53		
Total Debit Documents												1				
Total Credit Documents													1			
Total For Report												160.00	160.00		0.00	

- **General Ledger and Subledger Accounting by Journal Lines Report:** You can view account balances or selected segment balances with subledger journal details including entered amounts, third-party name, journal source,

journal category, and reporting and accounting sequences. Total number of debit and credit documents is also listed in this report.

Here is a screenshot of the General Ledger and Subledger Accounting Journal Lines Report.

General Ledger and Subledger Accounting by Journal Lines Report													Report Date: 2/19/14 9:21 AM
													Page: 1 of 2
													Brought Forward
Period: 2/1-14													
Balancing Description: -01 Spain													
Natural Account Description: 470000 Domestic Suppliers													
Account Description: 40470000.000.001 Spain Domestic Suppliers No Cost Center No Product													
Line	Accounting Date	Document Sequence	Reporting Sequence	Subledger Sequence	Line Description	Category	Transaction Date/Number	Currency	Entered Debit	Entered Credit	Accounted Debit	Accounted Credit	Net Balance
1	10/14				Supplier Cost	Supplier Cost	1/2/14 TE1401123	EUR		1,000.00		1,000.00	-1,000.00
4	10/14				ES VAT - ES VAT	Supplier Cost	1/2/14 TE1401123	EUR		160.00		160.00	-1,160.00
7	10/14				Supplier Cost	Supplier Cost	1/2/14 TE1401123	EUR	160.00		160.00		960.00
Total For Category Supplier Cost											180.00	1,160.00	960.00
Total For Source Payables											180.00	1,160.00	960.00
Total For Currency EUR											180.00	1,160.00	960.00
Total For Account 000000											180.00	1,160.00	960.00
Total For 40470000.000.000											180.00	1,160.00	960.00
Balancing Description: -01 Spain													
Natural Account Description: 470000 Property (Input VAT)													
Account Description: 40470000.000.001 Spain Property (Input VAT) No Cost Center No Product													
Line	Accounting Date	Document Sequence	Reporting Sequence	Subledger Sequence	Line Description	Category	Transaction Date/Number	Currency	Entered Debit	Entered Credit	Accounted Debit	Accounted Credit	Net Balance
2	10/14				ES VAT - ES VAT	Supplier Cost	1/2/14 TE1401123	EUR	160.00		160.00		160.00
Total For Category Supplier Cost											160.00	0.00	160.00
Total For Source Payables											160.00	0.00	160.00
Page Total											340.00	1,160.00	960.00
Carried Forward											340.00	1,160.00	960.00

- Account Analysis by Legal Entity Report: Use this report to view account balances by account combination and selected segments with subledger journal details, including third-party information and sequences. Flexible grouping and sorting options are provided at submission.

This is a screenshot of the Account Analysis by Legal Entity Report.

Account Analysis by Legal Entity Report													Report Date: 2/19/14 9:07 AM			
													Page: 1 of 2			
													Brought Forward			
Period: 2/1-14																
Account Description: 47470000.000.000 Spain Domestic Suppliers No Cost Center No Product																
Beginning Balance													0,686,000,000.76	00,000,000.00	4	47,288,000,000.00
Beginning Balance													0,686,000,000.76	00,000,000.00	4	47,288,000,000.00
Accounting Date	Creation Date	Accounting Sequence	Reporting Sequence Name/Number	Subledger Sequence Number	Journal Batch	Category	Transaction Number/Line Number	Line Number Description	Tax Code	Currency	Accounted Debit	Accounted Credit	Balance			
1/2/14	1/11/14				Payable S/A 10138 103045 M	Supplier Cost	1/2/14 TE1401123 7	7		EUR	160.00		47,288,000,210.00			
1/2/14	1/11/14				Payable S/A 10138 103045 M	Supplier Cost	1/2/14 TE1401123 4	4 ES VAT - ES VAT		EUR		160.00	47,288,000,370.00			
1/2/14	1/11/14				Payable S/A 10138 103045 M	Supplier Cost	1/2/14 TE1401123 1	1		EUR	1,000.00		47,289,000,370.00			
Ending Balance 40470000.000.000											0,686,000,000.76	00,000,000.00	4	47,289,000,370.00		
Ending Balance Jan-14											0,686,000,000.76	00,000,000.00	4	47,289,000,370.00		
Page Total											160.00	1,160.00	960.00			
Carried Forward											160.00	1,160.00	960.00			

Key Insights

The account analysis reports enable you to do these tasks:

- Provide a legal account ledger
- Reconcile subledger balances with the general ledger balances
- Maintain an audit trail
- Allow a periodic internal verification

You can view these information for each account:

- Account identification
- Account beginning balances for the reporting period
- Period transactions with subledger and general ledger information
- Resulting account ending balances

In addition, you can use the General Ledger and Subledger Accounting by Journal Lines Report to get these information:

- Details of subledger accounting entry lines, regardless of the general ledger journals summarization.
- Audit trail information about the original business documents or transactions to support each accounting entry line. This information varies across countries.

Report Parameters

Let's look at the common parameters for the account analysis reports.

Parameter	Description
Ledger	Specify the ledgers for the selected data access set. Ledger is required for all general ledger reports.
Legal Entity	Specify the legal entity. You can control the report output through this parameter only if you have associated balancing segment values to your legal entities.
From Period and To Period	Indicate the period range for the report data.
Flexfield Filter Conditions	Enter the filtering conditions on the accounting flexfield. You can select all segments for the selected ledger and define conditions including account value ranges.

Here are some selected General Ledger and Subledger Accounting account analysis report parameters.

Parameter	Description
Include Legal Entity Information	Select Yes to print the legal entity on the report.
Balance Type	Specify whether the balance type is budget, encumbrance, or actual amounts.

Parameter	Description
Display Tax Rate Code	Select Yes to include the tax rate code details.
Document Sequence Name	Enter the name of the document sequence used to generate unique number for the journal.

Here are some selected parameters of the General Ledger and Subledger Accounting journal lines report.

Parameter	Description
Accounting Sequence Name	Indicate the name of the sequence used to generate a unique number for the subledger journal.
Posting Status	Indicate whether the posting status is transferred but not posted, not transferred, or posted.
Journal Entry Status	Indicate whether the journal entries are in draft, final or invalid status.
Third-Party Type	Select the party type as customer or supplier. Optional parameter. May be blank.
Journal Source	Enter the source of journal entries, such as payables, receivables, or manual.
Journal Category	Select journal category when you want to report on a specific subledger journal category. Leave it blank when you want to include all the journal categories.

Let's look at some account analysis by legal entity report parameters.

Parameter	Description
Balance Type	Specify whether the balance type is budget, encumbrance, or actual amounts.
Include Zero Amount Lines	Indicate whether the report should include accounts with no activity in the selected period or zero amount lines.
Report Heading	Accept the default value or modify the report page heading by selecting one of the available values. The default value is the legal entity name.

Frequently Asked Questions

These are some frequently asked questions about account analysis reports.

FAQ	Answer
How do I find these reports?	Schedule and run this report from the Scheduled Processes work area on the Navigator menu.
Who uses these reports?	<ul style="list-style-type: none"> • Financial Accountant • Financial Manager • Financial Specialist
When do I use these reports?	<p>Use the account analysis reports to:</p> <ul style="list-style-type: none"> • Collect and report information about all posted journal transactions in the general ledger for a selected period and range of accounts. • Verify that transactions are recorded systematically, and ensure an audit trail from general ledger to the subledger. • Perform validation for each accounting period once it's closed. • Verify the accounting entry lines before their approval.
What type of reports are these?	Oracle Analytics Publisher

Related Topics

- [General Ledger and Subledger Accounting Reports for EMEA](#)

Journal Reports

This topic includes details about the journal reports.

Overview

Use Journal reports to verify that your journals, accounting entries, and source documents are in compliance with the legal requirements.

Journal reports include the following reports:

- **Daily Journals Report:** Lists subledger journal activity for a given period or date range, journal source, entered currency, and journal batch. Report prints detailed subledger journal lines prior to general ledger summarization. Third party and transaction details are also listed for the journal lines.

The following figure shows an example of the Daily Journals Report. The report has columns for the journal line, account, account description, line description, transaction date or number, tax

code, third-party name and number, entered currency, and entered and accounted amounts.

ORACLE Daily Journals Report												
Vicen Spain											Report Date: 7/10/14 11:24 AM	Page: 1 of 2
											Brought Forward	
GL Date:	1/3/14	Currency:	EUR	Document Sequence Name								
Subj Name:	FYDOLIA R 1-8891227614	Default Rate:		Document Sequence Number								
Journal Name:	Jan-14 Supplier Cost	Default Rate Type:	1/3/14	Accounting Sequence Name								
Journal Category:	Supplier Cost	Default Rate Date:	1/3/14	Accounting Sequence Number								
Journal Description:	Invoice 5283863 , Invoice Number: TS1401123 , Invoice Date: 05-JAN-14 , Invoice Description:	User:		GL Document Sequence Name								
Journal Status:	Final	GL Document Sequence Number										
Posting Date:	7/9/14											
Line	Account	Account Description	Line Description	Transaction Date Number	Tax Code	Third Party Number	Third Party Name	Entered Currency	Entered Debit	Entered Credit	Accounted Debit	Accounted Credit
1	40 400000 000	Spain Economic Supplies/No Cost Center/No Product		1/3/14 TS1401123		1000000 1156021 1	Advanced Release Debitc_FIN	EUR		1,000.00		1,000.00
2	40 011000 000	Spain Variation of expense of No Cost Center/No Product		1/3/14 TS1401123		1000000 1156021 1	Advanced Release Debitc_FIN	EUR	1,000.00		1,000.00	
3	40 473000 000	Spain Property (real VAT)/No Cost Center/No Product	ES VAT - ES VAT	1/3/14 TS1401123		1000000 1156021 1	Advanced Release Debitc_FIN	EUR	100.00		100.00	
4	40 400000 000	Spain Economic Supplies/No Cost Center/No Product	ES VAT - ES VAT	1/3/14 TS1401123		1000000 1156021 1	Advanced Release Debitc_FIN	EUR		100.00		100.00
Page Total											1,100.00	1,100.00
Brought Forward											1,100.00	1,100.00

- Subledger Detail Journal Report: Displays information about the posted general ledger journal batches that originate from Oracle Fusion Receivables and Oracle Fusion Payables subledgers. The report prints subledger details like transaction number, transaction date, and transaction amount in entered and ledger currency.

The following figure shows an example of the Subledger Detail Journal Report. The report has columns for the journal line, subledger line, account, account description, tax code, transaction number and date, currency, conversion rate, and entered and accounted amounts.

ORACLE Subledger Detail Journal Report												
Vicen Spain											Report Date: 6/10/14 12:51 PM	Page: 1 of 1
Period Name: 6/8-14												
GL Date:	6/10/2014	Journal Number	Journal Number									
Journal Name:	6/8-14 Supplier Cost	Subledger Journal Number	Subledger Journal Number									
Journal Category:	Supplier Cost											
Line	Subledger Line Number	Account	Account Description	Tax Code	Transaction Number	Transaction Date	Currency	Conversion Rate	Entered Amount	Accounted Debit	Accounted Credit	
1	1	40 400000 000	Spain Economic Supplies/No Cost Center/No Product		TS1401123	1/3/14	EUR		1,000.00		1,000.00	
2	2	40 011000 000	Spain Variation of expense of No Cost Center/No Product		TS1401123	1/3/14	EUR		1,000.00	1,000.00		
3	3	40 473000 000	Spain Property (real VAT)/No Cost Center/No Product		TS1401123	1/3/14	EUR		100.00	100.00		
4	4	40 400000 000	Spain Economic Supplies/No Cost Center/No Product		TS1401123	1/3/14	EUR		-100.00		100.00	
5	5	40 011000 000	Spain Variation of expense of No Cost Center/No Product		TS1401123	1/3/14	EUR		0.00	0.00		
Journal Total										1,100.00	1,100.00	
Total For Jan-14										1,100.00	1,100.00	
Total General Ledger Accounting Entries										0.00	0.00	
Total Subledger Accounting Entries										1,100.00	1,100.00	

- Journal Ledger Report: Lists the accounting entries with subledger details like transaction number, transaction date, and line description, using flexible sorting options provided at report submission. This report provides a real audit trail between general ledger and subledgers to satisfy legal and business requirements.

The following figure shows an example of the Journal Ledger Report. The report has columns for the journal line, account, account description, line description, internal reference,

third-party name and number, entered currency, and entered and accounted amounts.

ORACLE		Journal Ledger Report				Report Date: 7/15/14 3:06 PM		Page: 1 of 2			
								Year To Date: 0 0			
Period Name: Jan-14		GL Date: 1/3/14		Source: Payables		Accounting Sequence Name					
Journal Status: Batch is posted		Journal Category: Supplier Cost		Event Class: Invoices		Accounting Sequence Number					
Journal Description: Invoice Validated . Invoice Number: TE1401123 , Invoice Date: 03-JAN-14 , Invoice Description:		Batch Name: Payables A 14839 22703 N		Created By:		Reporting Sequence Name					
Reference Date:						Reporting Sequence Number					
						Subledger Sequence Name					
						Subledger Sequence Number					
Line	Account	Account Description	Line Description	Internal Reference	Third Party Number	Third Party Name	Entered Currency	Entered Debit	Entered Credit	Accounted Debit	Accounted Credit
1	40.4720 00.000. 000	Spain Property (Input VAT) No Cost Center No Product	ES VAT - ES VAT	TE1401123	10000011596211	Advanced Network Services FI N	EUR	160.00		160.00	
2	40.4000 00.000. 000	Spain Domestic Suppliers No Cost Center No Product		TE1401123	10000011596211	Advanced Network Services FI N	EUR		1,000.00		1,000.00

Key Insights

The Daily Journals Report provides:

- Subledger accounting entry lines regardless of the general ledger journals summarization.
- Audit trail information about the original business documents or transactions to support each accounting entry line.
- Verification details that all journals are recorded in chronological order with no gaps. It uses legal sequencing rules for both journal or accounting entries and source documents.
- Flexible sorting options to help you with reconciliation. Report data is sorted by period end document sequence name and number, accounting sequence, accounting date, and journal name.

The Journal Ledger Report provides an audit trail between the general ledger and subledgers to satisfy legal and business requirements. This report lists the accounting entries in general ledger with subledger details.

Use the Journal Ledger Report to:

- Maintain an audit trail.
- Perform periodic internal verification.
- Reconcile subledger accounting activity with general ledger journals.
- Sort data to audit and reconcile subledger data. You can sort data by period end document sequence name and number, accounting sequence, accounting date, and journal name.

Report Parameters

The following table lists selected parameters for the Daily Journals Report.

Parameter	Description
Posting Status	Select the applicable posting status. Valid values are Error Status, Posted Journals, and Unposted Journals.
Journal Entry Status	Indicate whether the journal entries are in draft, final or invalid status.
Third-Party Name	Select the name of the third party for whom you want to generate the report.
Summarization Level	Select: <ul style="list-style-type: none"> • Detail: Displays details of each transaction line. • Summary: Summarizes the transaction lines by specific accounting flexfield segments.
Show Account Recapitulation	Select Yes to print the report summary at the accounting flexfield level.

The following table lists selected parameters for the Subledger Detail Journal Report.

Parameter	Description
Journal Entry Status	Indicate whether the journal entries are in draft, final or invalid status.
Accounting Sequence Name	Specify the accounting sequence name for which you want to run the journals.

The following table lists selected parameters for the Journal Ledger Report.

Parameter	Description
Accounting Period Type	Indicate whether to submit the report for all, standard, or adjustment accounting period types.
Show Running Totals	Select Yes to print running totals in the report.
Summarize by Account	Select Yes to print summarized debit and credit lines per account for a single journal. The default value is No .

Frequently Asked Questions

The following table lists frequently asked questions about the journal reports.

FAQ	Answer
How do I find this report?	Schedule and run this report from the Scheduled Processes work area on the Navigator menu.

FAQ	Answer
Who uses this report?	<ul style="list-style-type: none"> Financial Accountant Financial Manager Financial Specialist
When do I use this report?	Use the journal reports to verify whether your journals, accounting entries, and source documents comply with the legal requirements.
What type of reports are these?	Oracle Analytics Publisher

Related Topics

- [General Ledger and Subledger Accounting Reports for EMEA](#)

Third-Party Detail and Balances Reports

This topic includes details about third-party detail and balances reports.

Overview

The third-party detail and balances reports include:

- **Third-Party Balances Summary Report:** Displays information for each account of the third party and third-party site, and account identification. This report is a tool for auditing third-party accounts.

The following figure is an example of the report.

Brought Forward							
<p>Period: Jan-14 Account: 40.300000.000.000 Account Description: Spain Renditeac and /No Cost Center No Product Third Party: Gulk Foods S.A. Third Party Number: 0078 Third Party Site: 14200 Third Party Site Number: 14200</p>							
Balances For	Beginning Debit	Beginning Credit	Period Debit	Period Credit	Ending Debit	Ending Credit	
Balances For Gulk Foods S.A.	0.00	0.00	1,100.00	0.00	1,100.00	0.00	
Balances For 40.300000.000.000	0.00	0.00	1,100.00	0.00	1,100.00	0.00	
Balances For Jan-14	0.00	0.00	1,100.00	0.00	1,100.00	0.00	
Report Total	0.00	0.00	1,100.00	0.00	1,100.00	0.00	

- **Third-Party Detail and Balances Report:** Provides third-party account balances and accounting activity details for a period. You can review the accounting process details by third party and audit third-party accounts in detail.

The following figure is an example of the report.

ORACLE		Third Party Detail and Balances Report										Report Date: 7/17/14 9:03 AM			
Vikas Sarda		Brought Forward										Page: 1 of 2			
Period:		Jun-14													
Account:		40,000000.000.000													
Account Description:		Spain,Realcua,etc./No Cost Center:No Product													
Third Party:		Bulk Foods S.A.													
Third Party Number:		0072													
Tax Registration Number:		P30010002													
Third Party Site:		14280													
Third Party Site Number:															
Tax Registration Number:															
Journal Category	Journal Number	Journal Description	Transaction Date/Number	Document Sequence Number	Event Class	Event Type	Status	Accounting Date	Posted Date	Line Number/Description	Entered Currency	Entered Debit	Entered Credit	Accounting Debit	Accounting Credit
Sales Invoices		INVOICE Bulk Foods S.A. n/typo 00000 INVOICE Bulk Foods S.A. n/number: 11401000 1 Document sequence: 000001 Document number: 0	1/31/14 1-3010001		INVOICE	INV_C INSTAT	Final	1/31/14	7/17/14	3	EUR	1,150.00	0.00	1,150.00	0.00
Balances For		Beginning Debit		Beginning Credit		Period Debit		Period Credit		Ending Debit		Ending Credit			
		0.00		0.00		1,150.00		0.00		1,150.00		0.00			
Balances For Bulk Foods		Beginning Debit		Beginning Credit		Period Debit		Period Credit		Ending Debit		Ending Credit			
		0.00		0.00		1,150.00		0.00		1,150.00		0.00			
				Page Total		1,150.00		0.00		1,150.00		0.00			
				Carried Forward		1,150.00		0.00		1,150.00		0.00			

- **Third-Party Account Balance Report:** Prints account and original third-party transactions impacting the account during a particular period. The report is run to ensure that subledger and general ledger balances reconcile, and to identify possible reasons for any discrepancies.

The following figure is an example of the report.

ORACLE Third Party Account Balance Report													Report Date: 3/16/14 11:14 AM		
													Page: 1 of 2		
													Drought Forward		
Period: Jan-14													Beginning Balance for Jan-14		
Third Party: 3M Health Care_FIN Third Party Number: 16003011666437													Beginning Balance For 3M Health Care_FIN		
Third Party Site: LA PALMAS-51 Third Party Site Number:													Beginning Balance For LA PALMAS-51		
Date	Transaction Type	Transaction Number	Subledger Sequence Name/Number	Event Type	Tax Type	Tax Code	Accounting Date	Line	Description	Account	Entered Debit	Entered Credit	Accounted Debit	Accounted Credit	Balance
										-0.472000	0.00	0.00			-16.00
													Ending Balance For LA PALMAS-51		
													Ending Balance For 3M Health Care_FIN		
Third Party: Advanced Network Devices_FIN Third Party Number: 16003011666511													Beginning Balance For Advanced Network Devices_FIN		
Third Party Site: BARCELONA-51 Third Party Site Number:													Beginning Balance For BARCELONA-51		
Date	Transaction Type	Transaction Number	Subledger Sequence Name/Number	Event Type	Tax Type	Tax Code	Accounting Date	Line	Description	Account	Entered Debit	Entered Credit	Accounted Debit	Accounted Credit	Balance
													Carried Forward		
										0.00	0.00	0.00			0.00

- **Journals and Third-Party Report:** Prints all the journals posted to the general ledger for an accounting period. It provides detailed subledger accounting entry lines regardless of the general ledger journals summarization. Transaction line description, third-party name and number, and transaction amounts in entered and ledger currency. The report uses legal sequencing rules for both accounting entries and source documents to verify

if all journals are recorded in a chronological order without gaps. The report lets you create various views of reported information based on seven flexible sorting rules that help with reconciliation and auditing.

The following figure is an example of the report.

Line	Account	Account Description	Line Description	Third Party Number	Third Party Name	Entered Currency	Entered Debit	Entered Credit	Accounted Debit	Accounted Credit
1	40 470000.000.00.0	Spain Property (input VAT) Job Cost Control Product		2272	Bulk Foods S.A.	EUR		0.00		0.00
2	40 750000.000.00.0	Spain Foreign Exchange Gain Job Cost Control Product		2272	Bulk Foods S.A.	EUR		60.00		60.00
3	40 350000.000.00.0	Spain Reserves Job Cost Control Product		2272	Bulk Foods S.A.	EUR	68.00			68.00
Journal Total							68.00	68.00	68.00	68.00
Total For 2014									68.00	68.00
Total For Mar-12									68.00	68.00

Key Insights

Before submitting the reports, complete the following tasks:

- Ensure that the third-party control account balances are available for printing for the selected date and account range.
- Manually run the Update Subledger Account Balances process for your ledger and application, if you accounted your third-party transactions online.

Note: You must set up a third-party control account. You can set it up as supplier control account, customer control account, or both.

During the accounting process, run the reports to ensure that subledger and general ledger balances reconcile, and to identify discrepancies such as:

- Transaction amounts are assigned to incorrect accounts. For example, an invoice distribution amount is assigned to a liability account.
- Transactions aren't posted to the general ledger.
- Journal batches aren't posted in the general ledger.

For each account, the report displays beginning balance, period activity, and period end balance.

Report Parameters

The following table lists selected parameters for the Third-Party Balances Summary Report:

Parameter	Description
Report Heading	Print report headings, select one of the following options: Ledger, Legal Entity, and Statutory Header for Italy.
Journal Entry Source	Enter the source of journal entries, such as payables, receivables, or manual.
Third-Party Type	Indicate the party type, such as supplier or customer.
Third-Party Name	Submit the report for a specific third party, or leave this field blank for all third parties.

The following table lists selected parameters for the Third-Party Detail and Balances Report:

Parameter	Description
Journal Entry Source	Enter the source of journal entries, such as payables, receivables, or manual.
Third-Party Type	Indicate the party type, such as supplier or customer.
Third-Party Name	Submit the report for a specific third party, or leave this field blank for all third parties.

The following table lists selected parameters for the Third-Party Account Balance Report:

Parameter	Description
Report Heading	Print report headings, select one of the following options: Ledger, Legal Entity, and Statutory Header for Italy.
Journal Entry Source	Enter the source of journal entries, such as payables, receivables, or manual.
Third-Party Type	Indicate the party type, such as supplier or customer.

The following table lists selected parameters for the Journals and Third-Party Report:

Parameter	Description
Journal Entry Source	Enter the source of journal entries, such as payables, receivables, or manual.
Event Class	Indicate the event class, such as credit memos and debit memos.
Group by Period	Indicate whether to group the journal entries by period.

Frequently Asked Questions

The following table lists frequently asked questions about third-party detail and balances reports.

FAQ	Answer
How do I find this report?	Schedule and run this report from the Scheduled Processes work area on the Navigator menu.
Who uses this report?	<ul style="list-style-type: none"> • Financial Accountant • Financial Manager • Financial Specialist
When do I use this report?	<p>Use the third-party detail and balances reports to:</p> <ul style="list-style-type: none"> • Review the accounting process details by third party and third-party site. • Audit third-party accounts in detail. • Reconcile transactions accounted by an audited company with transactions accounted by the third parties.
What type of reports are these?	Oracle Analytics Publisher

Related Topics

- [General Ledger and Subledger Accounting Reports for EMEA](#)

Access the Create Multiperiod Accounting Execution Report

When you submit the Create Multiperiod Accounting process, the Create Multiperiod Accounting Execution Report is automatically submitted. In this report, you can see entries created by the Create Multiperiod Accounting process.

Here is what you do to recreate a Create Multiperiod Accounting Execution Report.

- Submit the Create Multiperiod Accounting process.
- Use the same request identifier of the required Create Multiperiod Accounting process that was run previously by the same user. Also, no other Create Multiperiod Accounting process should have been run with the same criteria.

To get the best performance, we recommend using the predefined version of the data model and report.

Here are the steps you need to take to remove any customizations already made to the Create Multiperiod Accounting Execution Report::

1. Log in to BI Publisher Enterprise through the BI Publisher URL.
2. Locate /Shared Folders/Custom/Financials/Fusion Accounting Hub in the Folders pane.
3. Delete Create Multiperiod Accounting Execution Report from this folder.

4. Delete Create Multiperiod Accounting Data Model under/Shared Folders/Custom/Financials/Fusion Accounting Hub/Data Models folder.

Related Topics

- [Multiperiod Accounting](#)
- [Example of Multiperiod Accounting](#)
- [Considerations for Multiperiod Accounting](#)

Use the Supporting References Report

In this procedure, you create and view the supporting references report in OTBI (Oracle Transactional Business Intelligence).

Create a Supporting References Report

Before you create a supporting reference report, you must ensure that supporting references are assigned to journal lines in the journal entry rule set and then the accounting created .

1. From the **Home** page, click **Navigator > Reports and Analytics**.
2. Open the **Create** drop down.
3. Select **Analysis**.
4. Select **Subject Area: Subledger Accounting - Supporting Reference Real Time**.
 - a. In the **Create Analysis** region of the **Select Columns** page, expand the **Subject Area**.
 - b. Expand the folders and select the desired columns.
 - Click the **Add** icon to move columns to the **Selected Columns** region.
 - To rename columns, select the column row and click the **Edit** icon.
 - Resequence columns by using the arrows.

This table contains column names used in the supporting references report.

Folder	Column
Journal Source	Journal User Source Name
Ledger	Ledger Name
Supporting Reference Balance Details	Select the appropriate supporting references Rename as wanted.
GL Account	Concatenated Segments

Folder	Column
Ledger	Ledger Currency
Time	Accounting Period Name
Supporting Reference Balances	Period Balance Dr Period Balance Cr

- c. Click **Next** button.
5. On the **Select Views** page:
 - a. Enter the report **Title**.
 - b. Select **Table** option.
 - c. Click **Next**.
 - d. Click the **Next** button again to skip the **Edit Table** page.
6. On the **Sort and Filter** page:
 - a. Click **Add Filter**.
 - b. Select **Ledger Name**.
 - c. Select **Operator** 'is equal to'.
 - d. Enter wanted ledger name.
 - e. To add another filter. Click **Add Filter**.
 - f. Select **Journal User Source Name**.
 - g. Select **Operator** 'is equal to'.
 - h. Enter wanted journal user source name.
 - i. Click **Submit**.
7. On the **Create Analysis** page:
 - a. Enter **Analysis Name**.
 - b. In the **Save In** region, select **My Folders**.
 - c. Click **Submit**.
 - d. Click **OK**.

View the Supporting References Report

View the supporting reference report from the navigation pane.

1. Expand the navigation pane.
2. Expand **My Folders**.
3. Click your report name.
4. Click **View** action.
5. The supporting reference balances report is displayed.

Note: If you don't see any data, the balances may not yet be updated. In that case, you must run the **Update Subledger Accounting Balances** process and then view again.

Related Topics

- [Supporting References](#)

