

Oracle Fusion Cloud Financials

Implementing Subledger Accounting

26C

Oracle Fusion Cloud Financials
Implementing Subledger Accounting

26C

G56252-01

Copyright © 2011,2026, Oracle and/or its affiliates.

Author: Barbara Kostelec

Contents

Get Help	i
<hr/>	
1 Subledger Application and Sources	1
Accounting Attribute Assignments	1
2 Subledger Accounting Setup	9
Manage Accounting Rules	9
Migrate the Configuration	48
Manage Transaction Account Builder	49
Manage Other Setup Options	51
Tips to Improve Accounting Performance	56
3 Security for Subledger Accounting	59
Security for Subledger Accounting	59
Disable Posting Subledger Transactions to General Ledger	60
Subledger Accounting-Specific Considerations for Segment Value Security	60
Segment Value Security by Business Function Implementation in Subledger Accounting	61
4 Advanced Features	67
Subledger Accounting Profile Options	67
Accrual Reversals	68
5 FAQs	73
How can I disable posting to the Oracle Fusion General Ledger for Oracle Fusion Subledger Accounting users?	73
What is the impact of changing General Ledger Journal Entry Summarization from Summarization to Grouping?	73
How do the Subledger Journal Entry Descriptions Get Translated?	73

Get Help

There are a number of ways to learn more about your product and interact with Oracle and other users.

Get Help in the Applications

Some application pages have help icons  to give you access to contextual help. If you don't see any help icons on your page, click your user image or name in the global header and select Show Help Icons. If the page has contextual help, help icons will appear.

Get Training

Increase your knowledge of Oracle Cloud by taking courses at [Oracle University](#).

Join Our Community

Use [Cloud Customer Connect](#) to get information from industry experts at Oracle and in the partner community. You can join forums to connect with other customers, post questions, suggest [ideas](#) for product enhancements, and watch events.

Share Your Feedback

We welcome your feedback about Oracle Applications user assistance. If you need clarification, find an error, or just want to tell us what you found helpful, we'd like to hear from you.

You can email your feedback to oracle_fusion_applications_help_ww_grp@oracle.com.

Thanks for helping us improve our user assistance!

1 Subledger Application and Sources

Accounting Attribute Assignments

The Create Accounting process uses the values of sources assigned to accounting attributes and accounting rules to create subledger journal entries.

The Create Accounting process uses the sources assigned to accounting attributes to copy values from transaction data to subledger journal entries. For example, you may map the invoice entered currency to the subledger journal entry entered currency.

Each accounting attribute is associated with a level:

1. Header: Used when creating subledger journal entry headers.
2. Line: Used when creating subledger journal entry lines.

Minimum Required Accounting Attribute Assignments

To create a valid journal entry the following accounting attribute assignments are required. Accounting Hub predefines the values:

This table contains the required accounting attributes.

Accounting Attribute	Predefined Source Assignment
Accounting Date	Transaction Date
Distribution Type	Accounting Event Type Code
Entered Amount	Default Amount
Entered Currency Code	Default Currency
First Distribution Identifier	Line Number

The details and descriptions of these attributes are included in the Accounting Attributes section.

Accounting Attributes

Accounting attribute groups are represented in these tables.

Accounting Date

- Accounting Hub predefines Transaction Date as the Accounting Date. The Create Accounting process uses it to derive the accounting date of journal entries.

- The Accrual Reversal Accounting Date Source attribute is relevant to applications that must perform automatic reversal on accrued journal entries at a specified date or period. You can assign application and standard date sources to the Accrual Reversal Accounting Date in the Accounting Attribute Assignments page. When the Accrual Reversal Accounting Date Source attribute returns a value, the Create Accounting process generates an entry that reverses the accrual entry.

CAUTION: If the application requires automatic reversal on accrued journal entries at a specified date or period, you must configure the Accrual Reversal Accounting Date Source attribute before configuring the journal entry rules for an event class.

- Accounting Hub doesn't predefine any source assignment to the Accrual Reversal Accounting Date Source accounting attribute.

This table contains the valid accounting attributes for the Accounting Date group.

Accounting Attributes	Data Type	Journal Entry Level	Assignment to Rules	Assignment Required?	Validation Rules
Accounting Date	Date	Header	Event Class Journal Entry Rule Set	Yes	Should be in open general ledger period.
Accrual Reversal Accounting Date Source	Date	Header	Event Class Journal Entry Rule Set	No	Should be later than the accounting date.

Distribution Identifier

- The distribution identifier information links subledger transaction distributions to their corresponding journal entry lines.
- The Accounting Event Type Code and First Distribution Identifier accounting attributes are predefined to the Distribution Type and Line Number sources.

This table contains the valid accounting attributes for the Distribution Identifier group.

Accounting Attributes	Data Type	Journal Entry Level	Assignment to Rules	Assignment Required?	Validation Rules
Accounting Event Type Code	Alphanumeric	Line	Event Class	Yes	
First Distribution Identifier	Alphanumeric	Line	Event Class	Yes	

Entered Currency

- Entered currency accounting attributes are required for all applications. The Create Accounting process uses them to populate the journal entry line entered currency and amounts.

- The entered currency accounting attributes must always be assigned to sources. The sources assigned to the entered currency accounting attributes must always contain a value.
- Accounting Hub predefines source assignment to these accounting attributes. Additional sources can be manually assigned to support cross-currency transactions.

The table contains the valid accounting attributes for the Entered Currency group.

Accounting Attributes	Data Type	Journal Entry Level	Assignment to Rules	Assignment Required?	Validation Rules
Entered Currency Code	Alphanumeric	Line	Event Class Journal Line Rule	Yes	A valid currency.
Entered Amount	Number	Line	Event Class Journal Line Rule	Yes	

Ledger Currency

- The Create Accounting process uses the ledger currency accounting attributes to calculate journal entry accounted amounts.
- Accounting Hub calculates the accounted amount as entered amount multiplied by the conversion rate. If the entered currency is the same as the ledger currency, the Create Accounting process ignores the conversion type and conversion rate.
- For event classes that support foreign currency transactions, and therefore more than one conversion rate and reporting currency amount, multiple event class accounting attribute assignments are created.
 - If a single line of transaction data is provided and the entered currency for debit and credit lines are different, then more than one Entered Currency accounting attribute assignment is required.

This table contains the valid accounting attributes for the Ledger Currency group.

Accounting Attributes	Data Type	Journal Entry Level	Assignment to Rules	Assignment Required?	Validation Rules
Accounted Amount	Number	Line	Event Class Journal Line Rule	No	
Conversion Date	Date	Line	Event Class Journal Line Rule	No	
Conversion Rate	Number	Line	Event Class Journal Line Rule	No	
Conversion Rate Type	Alphanumeric	Line	Event Class Journal Line Rule	No	A valid general ledger conversion rate type or user.

Accounting Attributes	Data Type	Journal Entry Level	Assignment to Rules	Assignment Required?	Validation Rules

Exchange Gain Account, Exchange Loss Account

Note: If implementing the exchange gain and loss feature, you can assign predefined account sources as the exchange gain or loss account.

- The Create Accounting process determines whether there is an exchange gain or loss. The process derives the account based on the account rule assigned to the journal line rule with the Gain or Loss side in the journal entry rule set.
- If Gain or Loss journal line rules aren't defined, then the value from the source mapped to the accounting attribute, Exchange Gain Account and Exchange Loss Account, are used as the exchange gain or loss account.
- The Create Accounting process raises an exception if unable to create exchange gain or loss line for the transaction in these cases:
 - If Gain or Loss journal line rules aren't defined and sources haven't been mapped to these accounting attributes
 - If the mapped source doesn't contain any value.
- Predefined assignments aren't provided for these accounting attributes.
- If the subledger supports foreign currency or cross-currency transactions that may result in exchange gain or loss, Oracle recommends that you perform one of the following:
 - a. Define accounting rules to generate exchange gain or loss lines whenever applicable for the transaction.
 - Define two journal line rules if you would like to use separate account and accounting class for exchange gain and loss. Journal line rules with side Gain are used for the exchange gain. Journal line rules with the side Loss are used for the exchange loss. Optionally, you can define just one journal line rule with side the Gain or Loss if only one accounting class is used.
 - Define two account rules to return the exchange gain account and the exchange loss account. Optionally, define just one account rule if the same account is used for both the exchange gain and loss.
 - Assign the exchange gain or loss journal line rules and appropriate account rule to the journal entry rule set.
 - b. Assign sources to the Exchange Gain Account and Exchange Loss Account. Populate the sources with the account combination ID of the exchange gain or loss account already defined in Oracle General Ledger.

This table contains the valid accounting attributes for the Exchange Gain Account, Exchange Loss Account group.

Accounting Attributes	Data Type	Journal Entry Level	Assignment to Rules	Assignment Required?	Validation Rules
Exchange Gain Account	Number	Header	Event Class	No	
Exchange Loss Account	Number	Header	Event Class	No	

Accounting Attributes	Data Type	Journal Entry Level	Assignment to Rules	Assignment Required?	Validation Rules

Gain or Loss Reference

- The Create Accounting process groups lines with the same Gain or Loss Reference together when calculating exchange gain or loss. The total of the accounted debit amount and the accounted credit amount are calculated for lines with the same Gain or Loss Reference within a journal entry. Then, the difference between the total of the accounted debit amount and the accounted credit amount is considered the exchange gain or loss amount and the exchange gain or loss line is created if applicable.
- Predefined assignments aren't provided for this accounting attribute.
- Oracle recommends that you assign a header level source to this accounting attribute so that only one exchange gain or loss line is created for a subledger journal entry, should there be any exchange gain or loss.

This table contains the valid accounting attributes for the Gain or Loss Reference group.

Accounting Attributes	Data Type	Journal Entry Level	Assignment to Rules	Assignment Required?	Validation Rules
Gain or Loss Reference	Alphanumeric	Line	Event Class	No	

Multiperiod Accounting

- The multiperiod accounting attributes are relevant to applications that require the multiperiod accounting feature to generate accounting in more than one accounting period, for a single transaction.
- Either no multiperiod accounting attributes should be assigned to sources or all multiperiod accounting attributes should be assigned to sources.

This table contains the valid accounting attributes for the Multiperiod Accounting group.

Accounting Attributes	Data Type	Journal Entry Level	Assignment to Rules	Assignment Required?	Validation Rules
Multiperiod Start Date	Date	Line	Event Class Journal Line Rule	Yes, if another accounting attribute in the same group has an assignment.	Required if the Multiperiod End Date has a value.
Multiperiod End Date	Date	Line	Event Class Journal Line Rule	Yes, if another accounting attribute in the same group has an assignment.	Required if the Multiperiod Start Date has a value. Must be later than Multiperiod Start Date.

Reconciliation Reference

- The Reconciliation Reference accounting attribute is relevant to all subledger applications to enable clearing account reconciliation from subledgers.
- The reconciliation reference is stored on subledger journal entry lines and subsequently passed to general ledger for use in the clearing account reconciliation feature.
- To start populating reconciliation references on subledger journal entry lines, perform these steps in Subledger Accounting:
 - a. Assign sources to the Reconciliation Reference accounting attribute for the event class in the Manage Accounting Attributes page.
 - b. Define a new journal line rule and assign a source to the Reconciliation Reference accounting attribute.
 - c. Add the journal line rule to the journal entry rule set assigned to your ledger's accounting method and activate the assignment.

Accounting Attributes	Data Type	Journal Entry Level	Assignment to Rules	Assignment Required?	Validation Rules
Reconciliation Reference	Alphanumeric	Line	Event Class Journal Line Rule	No	

Transfer to GL indicator

- This accounting attribute is used to indicate whether the journal entry created by the Create Accounting process will be transferred to General Ledger. Valid values are
 - Y or NULL - Subledger journal will be transferred to GL.
 - N - Subledger journals won't be transferred to GL. The untransferred journal won't appear in the subledger period close exception report, and it won't prevent the GL period close.
- When source isn't assigned to this accounting attribute, the subledger journal entry will be transferred to General Ledger.

Accounting Attributes	Data Type	Journal Entry Level	Assignment to Rules	Assignment Required?	Validation Rules
Transfer to GL Indicator	Alphanumeric	Header	Event Class	No	

Control Reference

- Create Accounting uses control reference accounting attributes to check control totals for a transaction by summing up the line-level source values and comparing to the header-level source value.
- In case of a difference, the process reports an error to indicate a potential data issue such as a missing transaction line.
- Sources with no values populated are treated as zeroes by the calculation.

This table contains the valid control reference accounting attributes.

Accounting Attributes	Data Type	Journal Entry Level	Assignment to Rules	Assignment Required?	Validation Rules
Control Header Reference	Number	Header	Event Class	No	Must be equal to the sum of Control Line Reference values for the transaction.
Control Line Reference	Number	Line	Event Class	No	

Here are some examples of using control reference:

- Check control totals for a transaction: Assign a header level Total Line Amount source to control header reference and a line level Default Amount source to control line reference. For a transaction of three lines with Default Amount 100, 200 and 150 respectively populate Total Line Amount in the header file with 450.
- Check missing transaction lines: Assign a header level Total Line Count source to control header reference and a line level Line Count source to control line reference. Populate Line Count with 1 for each line and Total Line Count in the header file with the total number of lines.

Note: As a best practice, always review the subledger period close exception report before closing the accounting period.

Related Topics

- [How Clearing Accounts Are Reconciled Automatically](#)
- [Reconciliation References and Journal Lines](#)

2 Subledger Accounting Setup

Manage Accounting Rules

Manage Accounting Methods

Create an Accounting Method



Watch video

In this procedure, you create an accounting method.

Create an Accounting Method

Navigate to the Manage Journal Entry Rule Set page.

1. From the **Setup and Maintenance** work area, click the **Implementation Projects** button.
2. Search for the **FAH Implementation project**.
3. Expand the task list: **Define Accounting Configuration for Rapid Implementation**.
4. Expand the task list: **Define Accounting Rules for Rapid Implementation**.
5. Select the task: **Manage Accounting Methods**.
6. Click **Go to Task**.

Create an accounting method.

1. Click **Create** icon.
2. Enter **Name**.
3. Enter **Short Name**.
4. Select **Chart of Accounts**.
5. In the **Journal Entry Rule Set Assignments** region:
 - a. Click **Create** icon.
 - b. Enter **Event Class**.
 - c. Enter **Event Type**.
 - d. Enter **Rule Set**.
 - e. Click **Save**.
6. Activate the rule set assignment.
 - a. In the **Assignments** region click **Activate**.
7. Click **Save and Close**.

Assign the Accounting Method to the Ledger

You must assign this accounting method to the ledger you use for accounting and posting journal entries.

1. From the **Setup and Maintenance** work area, click the **Implementation Projects** button.
2. Search for the **FAH Implementation project**.

3. Expand the task list: **Define Ledgers**.
4. Select the task: **Specify Ledger Options**.
5. Click **Go to Task**.
6. On the **Specify Ledger Options** page, **Subledger Accounting** region, select the new **Accounting Method**.
7. Click **Save and Close**.

Related Topics

- [Accounting Method](#)

Accounting Method

Accounting methods group subledger journal entry rule sets. This facilitates the definition of consistent accounting treatment for each accounting event class, and accounting event type, for all subledger applications.

This grouping enables a set of subledger journal entry rule sets to be assigned collectively to a ledger.

For example:

- A subledger accounting method can be defined to group subledger journal entry rule sets that adhere to and comply with US Generally Accepted Accounting Principles (GAAP) criteria.
- By assigning a different subledger accounting method to each related ledger, you can create multiple accounting representations of transactions.

Accounting rules can be defined with either a top-down, or a bottom-up approach.

- Top-Down: Define the accounting method, followed by components of each rule that must be assigned to it.
- Bottom-Up: Define components for each rule and then assign them as required.

The Create Accounting process uses the accounting method definition with active journal entry rule set assignments to create subledger journal entries.

When an accounting method is initially defined its status changes to Incomplete. The status will also be Incomplete after modifying a component of any accounting rule associated with the assigned journal entry rule set.

CAUTION: The accounting method must be completed, by activating its journal entry rule set assignments, so that it can be used to create accounting.

The following definitions are used to define the journal entries, and are applied as updates to the accounting method:

- Updates to the predefined accounting method
- Assignment of journal entry rule sets for an accounting event class and accounting event type from the accounting methods page
- Assignment of accounting methods to ledgers
- Activation of subledger journal entry rule set assignments

Updates to the Predefined Accounting Method

You may update a predefined accounting method by end dating the existing assignment and creating an assignment with an effective start date.

Assignment of Journal Entry Rule Set for Accounting Event Class and Accounting Event Type

You create the assignment of a journal entry rule set for an accounting event class and accounting event type using the accounting method page.

The following should be considered for assigning rule sets:

- If the accounting method has an assigned chart of accounts you can use journal entry rule sets that:
 - Use the same chart of accounts
 - Are not associated with any chart of accounts
- You can assign to existing journal entry rule sets or create a new one.

Assignment of Accounting Methods to Ledgers

If the accounting method has an assigned chart of accounts, it may only be used by ledgers that use the same chart of accounts.

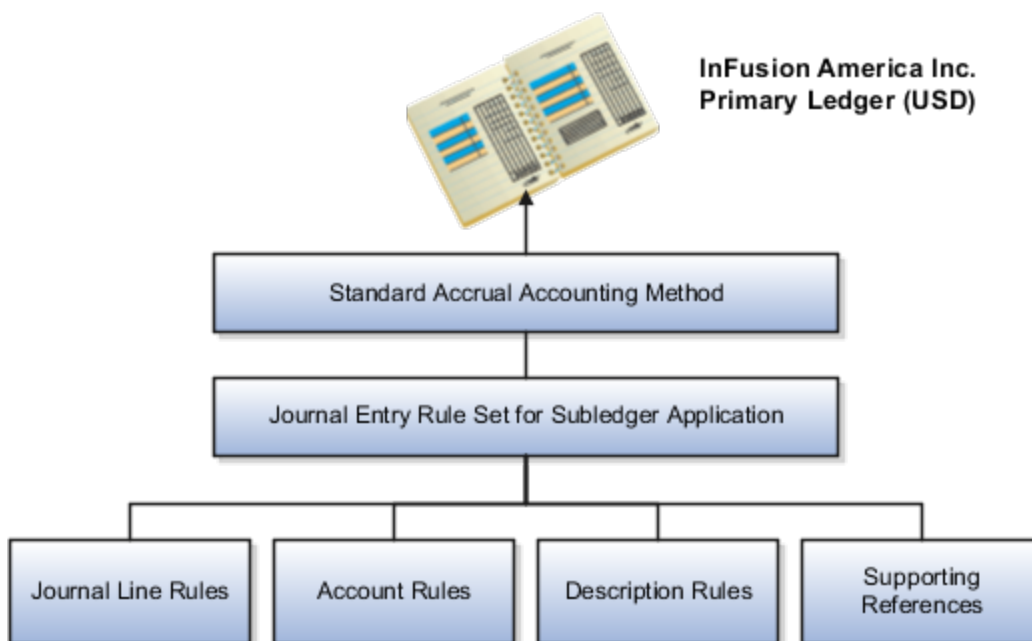
If the accounting method doesn't have an assigned chart of accounts, the accounting method can be assigned to any ledger.

Activation of Subledger Journal Entry Rule Set Assignments

You can activate the subledger journal entry rule set assignments from the Accounting Method page. You can also submit the Activate Subledger Journal Entry Rule Set Assignments process to validate and activate your accounting set ups.

Accounting Method and Accounting Rules

This figure illustrates the relationship of the components used in an accounting method.



Related Topics

- [Subledger Journal Entry Rule Set](#)
- [Journal Line Rules](#)
- [Account Rules](#)
- [Description Rules](#)

Manage Journal Entry Rule Sets

Create a Journal Entry Rule Set



In this procedure, you create a journal entry rule set.

Navigate to the Manage Journal Entry Rule Set page.

1. From the **Setup and Maintenance** work area, click the **Implementation Projects** button.
2. Search for the **FAH Implementation project**.
3. Expand the task list: **Define Accounting Configuration for Rapid Implementation**.
4. Expand the task list: **Define Accounting Rules for Rapid Implementation**.
5. Select the task: **Manage Journal Entry Rule Set**.
6. Click **Go to Task**.

Create a journal entry rule set.

1. Click **Create** icon.
2. Enter **Name**.
3. Enter **Short Name**.
4. Select **Event Class**.
5. Select **Event Type**.
6. Select **Chart of Accounts**.
7. In the **Journal Entry** region:
 - a. Select **Description Rule** you created for the header..
8. In the Journal Lines region create a credit line.
 - a. Click **Create** icon.
 - b. Select **Line Type = Credit**.
 - c. Select **Journal Line Rule**.
 - d. Select **Account Combination Rule**.
 - e. Select **Line Description Rule**.
9. In the Journal Lines region create a debit line.
 - a. Click **Create** icon.
 - b. Select **Line Type = Debit**.
 - c. Select **Journal Line Rule**.
 - d. Select **Account Combination Rule**.

- e. Select **Line Description Rule**.
 - f. Select **Segment Rule**.
10. In the Supporting References region:
 - a. Click **Create** icon.
 - b. Select **Supporting Reference**.
 - c. Click **Create** icon.
 - d. Select another **Supporting Reference**.
11. Click **Save**.
12. From the **Actions** menu select **Activate**.
13. Click **Yes**.
14. Click **Save and Close**.
15. Click **Done**.

Related Topics

- [Subledger Journal Entry Rule Set](#)

Subledger Journal Entry Rule Set

Subledger journal entry rule sets provide the definition for generating a complete journal entry for an accounting event.

Select the option to define the subledger journal entry rule set for a particular accounting event class or accounting event type.

If you're using multiple ledgers to meet divergent and mutually exclusive accounting requirements, you can vary journal entry rule sets by ledger. Each of the subledger journal entry rule sets can meet a specific type of accounting requirements.

For example, use US Generally Accepted Accounting Principles (GAAP) oriented subledger journal entry rule sets for a ledger dedicated to US GAAP reporting. Use French statutory accounting conventions for a ledger dedicated to French statutory reporting. These two sets of definitions have differences based on the setup of the various components that make up their subledger journal entry rule sets.

Predefined subledger journal entry rule sets are provided for all Oracle subledgers. If specific requirements aren't met by predefined subledger journal entry rule sets, create a copy of the predefined definitions, rename, and modify the copied definitions and their assignments.

Subledger journal entry rule set assignments can be made at two levels, header and line. The following are the subcomponents of a subledger journal entry rule set:

- Description rules
- Journal line rules
- Account rules

Assignment at Header Level

Header assignments define subledger journal header information and line assignments define journal line accounting treatment.

A header assignment includes the following:

- Accounting date (required)

- Accrual reversal accounting date (optional)
- Description rule (optional)

Assignment at Line Level

You can define multiple subledger journal entry rule sets for an accounting event class or accounting event type. Using the line assignment of the journal entry rule set assigned to the accounting event class or type, a single journal entry is generated per accounting event per ledger.

The following can be assigned to a journal entry line:

- Journal line description rule
- Journal line rule
- Account rule
- Supporting references

Assignment of Description Rules

If a description rule is defined with sources, the sources must also be assigned to the accounting event class that's assigned to the journal entry rule set. The description rule may be assigned at either the header or line level of the journal entry or to both levels.

Assignment of Journal Line Rules

When assigning the journal line rule, you must identify the line type: Gain, Loss, Gain or Loss, Credit, or Debit. The journal line rule must be assigned to the same accounting event class as the one assigned to the subledger journal entry rule set.

When assigning a journal line rule that's enabled for accounting for a business flow, the account combination and certain accounting attribute values are copied from its related journal line having the same business flow class as the current line. Optionally, copy the description rule into the current line instead of assigning a separate description rule.

When assigning a journal line rule that's enabled to copy from the corresponding line within the same journal entry, you have the option to copy the account combination, the segment value, or the line description from the corresponding line into the current line.

Assignment of Account Rules

The account rule assignment defines which accounts are used for the subledger journal line. If the account rule is set up with a chart of accounts, it must have the same chart of accounts as the one assigned to the journal entry rule set. When account rules are defined with sources, the sources must also be assigned to the accounting event class that's assigned the journal entry rule set.

There are two types of account rules:

- Account Combination Rule: Assign an account combination rule to derive the account combination.
- Segment Rule: Assign a segment rule to derive a specific segment of an account. For example, a cost center or a natural account segment.

Assignment of Supporting References

Supporting references may be used to capture transaction values on journal entry lines. A supporting reference can be used on a journal entry rule set only if it's assigned a source from the event class of the journal entry rule set.

Related Topics

- [Description Rules](#)
- [Journal Line Rules](#)
- [Account Rules](#)
- [Supporting References](#)

Manage Journal Line Rules

Create a Journal Line Rule

In this procedure you create a journal line rule.

Navigate to the Manage Journal Line Rules page.

1. From the **Setup and Maintenance** work area, click the **Implementation Projects** button.
2. Search for the **FAH Implementation project**.
3. Expand the task list: **Define Accounting Configuration for Rapid Implementation**.
4. Expand the task list: **Define Accounting Rules for Rapid Implementation**.
5. Select the task: **Manage Journal Line Rules**.
6. Click **Go to Task**.

Create a journal line rule on the Manage Journal Line Rules page:

1. Click **Create** icon.
2. Enter **Name**.
3. Enter **Short Name**.
4. Enter **Event Class**.
5. Enter **Side = Credit**.
6. Enter **Accounting Class**.
7. Click **Save and Create Another**.

Repeat these steps to create another journal line rule, with a **Side = Debit**.

Related Topics

- [Journal Line Rules](#)

Journal Line Rules

Journal line rules are defined within the context of accounting event classes. A journal line rule can be used in a subledger journal entry rule set that has the same event class. You may also assign conditions to the journal line rule.

How You Create Journal Line Rules

Journal line rules are assigned to journal entry rule sets.

To create a journal line rule, select values for options such as:

- Side (Debit, Credit, Gain or Loss)
For example, when a payables invoice is generated, the liability account should normally be credited. The journal line rule must therefore specify the Side option as Credit. On the other hand, the payment of the

Payables invoice must be accounted with a debit to the liability account. A separate journal line rule must be defined to create this debit line.

- Merge Matching Lines: To summarize subledger journal entry lines within each subledger entry. Journal entry lines with matching criteria are merged. Here is the list of matching criteria that are used:
 - Account combination
 - Accounting class
 - Anchor line (for PeopleSoft Accounting Hub Cloud)
 - Budgetary control status
 - Business flow class
 - Conversion date
 - Conversion rate
 - Conversion rate type
 - Currency
 - Description
 - Encumbrance type
 - Gain or loss
 - Gain or loss reference
 - Merge matching lines
 - Multiperiod accounting class
 - Reconciliation reference
 - Replaced account
 - Rounding class
 - Supporting references
 - Switch side
 - Third party
 - Third-party site
 - Third-party type
 - Transaction rounding reference

When Merge Matching Lines = All, DR and CR lines with the same merge criteria are merged together with a net amount. It will only result in 1 line, either in DR or CR.

When Merge Matching Lines = No, accounting lines are not merged even when merge criteria have the same values.

When Merge Matching Lines = Debit or Credit, DR and CR lines with the same merge criteria are merged separately by the side. DR lines are merged to DR and CR lines are merged to CR. It may result in both debit and credit lines.

- Accounting Class
 - Select an accounting class to classify journal entry lines.
 - For example, when a validated Payables invoice is accounted, the Item Expense and Liability journal lines are created. In this case, the journal line rules used in the accounting rules are assigned Item Expense and Liability accounting classes respectively.
- Switch Debit and Credit: Reverses a debit for a credit and a credit for a debit. For example, you can select this option to ensure that if a negative amount is entered for a journal, the journal line is created with positive amount in the opposite side.
- Conditions: To restrict the use of a journal line rule by controlling when a particular journal line rule is used by the Create Accounting process.
- Accounting Attributes: When creating a journal line rule, accounting attribute assignments are automatically established. These are based on the default accounting attribute assignments for that journal line rule's accounting event class. You can override this default mapping of standard sources to accounting attributes. The list of values for the source override includes all sources assigned to the accounting attribute, for the event class associated with the journal line rule.
- Advanced Options
 - The Subledger Gain or Loss Option: Applies only to amount calculations for the primary ledger. Gain or loss amounts aren't converted to reporting currency or nonvaluation method secondary ledgers. If the option is selected, the journal line holds the gain or loss amounts calculated by the subledger.

The gain or loss amount is calculated as the difference in applied amounts due to fluctuations in conversion rates, based upon conversion to the ledger currency. Foreign exchange gain or loss amounts occur when two related transactions, such as an invoice and its payment, are entered in a currency other than the ledger currency, and the conversion rate fluctuates between the times that the two are accounted.
 - The Rounding Class Option: Along with transaction rounding, groups journal lines together and calculates transaction rounding. Subledger transaction rounding differences can occur when a transaction has multiple-related applied-to transactions, such as a Receivables invoice that has multiple associated receipts.
 - The Link Journal Lines Option: Determines whether the journal line rule is set up to establish a link between the accounting of transactions that are related both within the same application, and across applications. The alternatives are described in this table:

This table contains the Link Journal Line Options and their descriptions.

Link Journal Lines Option	Description
None	Retains the existing business rules enforced by the journal line rule definition. Choose this option when the journal line doesn't rely on any other journal entry.
Copy from corresponding line	Copies the GL account combination or specific segment values from the offsetting line of the current journal entry. For example, you can overlay the balancing segment value on the credit line with the balancing segment value from the debit line. This option works only when there is exactly one offsetting line in the journal entry.

Link Journal Lines Option	Description
Business flow	Establishes a link between accounting entries of related transactions within the same application or across applications. This allows key accounting attributes, such as GL account, currency conversion rate, and supporting references, to be preserved across related transactions instead of being rederived. This helps maintain consistent balances throughout the lifecycle of a business flow.

Note: In Accounting Hub, only None and Copy from corresponding line advanced options are supported. The Business flow option isn't available for Accounting Hub implementations.

Defining Conditions for Journal Line Rules

You may set conditions to specify whether the journal line rule is used to create a subledger journal entry line. If the conditions are true, the line rule is used to create a subledger journal entry line. Use sources to create these conditions.

For example, you can set up a condition that creates a journal line to record tax, only if there's tax for an invoice. The line type and account class mentioned here are examples of sources.

- The condition for a Payables invoice tax journal line rule could be:
 - Where Line Type = Tax
 - When this condition is true, there's tax for a payables invoice line. A journal entry line is created to record the accounting impact of the tax.
- Similarly, the condition for an invoice tax journal line rule could be:
 - Where Account Class = Tax
 - In this case, if there's an account class of Tax, the journal line is used to record the accounting impact of the tax.

Another example is a condition that creates a journal line for freight when there are freight charges on an invoice.

Journal line rule conditions determine whether a journal line rule and its associated account rules and description rules are used to create the subledger journal entry line. If the conditions of all the journal line rules assigned to the journal entry rule set aren't met, the transaction is processed without the creation of any subledger journal entries, and the event status is set to Processed.

Note: Constant values that are used in any Conditions region must not contain the following characters:

- "
- ,
- &
- |
- (
-)
- '

For example, in the condition "Project Type" = ABC (123), the constant value following the equal sign, ABC (123), contains restricted characters () that enclose 123 and is invalid.

Related Topics

- [Examples of Creating Condition](#)

Manage Account Rules and Mapping Sets

Create Account Rules and Mapping Set



[Watch video](#)

In this procedure you create a mapping set and account rules.

Create a Mapping Set

Navigate to the Manage Mapping Sets page.

1. From the **Setup and Maintenance** work area, click the **Implementation Projects** button.
2. Search for the **FAH Implementation project**.
3. Expand the task list: **Define Accounting Configuration for Rapid Implementation**.
4. Expand the task list: **Define Accounting Rules for Rapid Implementation**.
5. Select the task: **Manage Mapping Set**.
6. Click **Go to Task**.

Create a mapping set on the Manage Mapping Sets page.

1. Click **Create** icon.
2. Enter **Name**.

3. Enter **Short Name**.
4. Enter **Output Type**.
 - In the Input Source region:
 - a. Select **Actions > Select and Add**.
 - b. Search and select **Source**.
 - c. Click **OK**
 - In the Chart of Accounts region:
 - a. Click **Create** icon.
 - b. Enter **Chart of Accounts**.
 - c. Enter **Segment**.
 - d. Click **Save**.
 - In the Mappings region:
 - a. Click **Create** icon.
 - b. Enter **Loan Type**.
 - c. Enter **Output for Department**.
 - d. Click **Create** icon.
 - e. Enter additional **Loan Type** and **Output for Department**.
 - f. Click **Save and Close**.
 - g. Click **Done**.

Create Account Rules

Create an account rule with a Constant value type on the Manage Account Rule page.

1. Select the **Manage Account Rules** task.
2. Click **Create** icon.
3. Enter **Name**.
4. Enter **Short Name**.
5. Enter **Chart of Accounts**.
6. Enter **Rule Type**.
7. Click **Save**.
 - In the Rules region:
 - a. Click **Create** icon.
 - b. Enter **Value Type = Constant**.
 - c. Enter **Chart of Account**.
 - d. Click **Save and Create Another**.

Create an account rule using a segment rule type and a mapping set.

1. Enter **Name**.
2. Enter **Short Name**.
3. Enter **Chart of Accounts**.
4. Enter **Rule Type = Segment**.
5. Enter **Segment**.

6. Click **Save**.

- In the Rules region:
 - a. Click **Create** icon.
 - b. Enter **Value Type = Mapping Set**.
 - c. Enter **Value = Mapping Set name**.
 - d. Click **Save and Create Another**.

Create an account rule using an account combination rule type:

1. Click **Create** icon.
 2. Enter **Name**.
 3. Enter **Short Name**.
 4. Enter **Chart of Accounts**.
 5. Enter **Rule Type = Account Combination**.
 6. Click **Save**.
- In the Rules region:
 - a. Click **Create** icon.
 - b. Enter **Value Type = Constant**.
 - c. Enter **Value**.
 - d. Click **Save and Close**.
 - e. Click **Done**.

Related Topics

- [How You Define Account Rules](#)

Account Rules

Account rules are used to determine the accounts for subledger journal entry lines. In addition, you can specify the conditions under which these rules apply. Using these capabilities, you can develop complex rules for defining accounts under different circumstances to meet your specific requirements.

You can define account rules for an account, segment, or value set.

Account Rules by Account

Define account rules by account to determine the entire account combination. For example, an account rule defined by account can be used to determine the complete supplier liability account in Oracle Fusion Payables.

Account Rules by Segment

Define segment rules to derive a specific segment of the general ledger account. For example, a particular segment like the company segment can be determined from the distribution account.

Another segment can be determined with the use of a constant value. Creating the account one segment at a time offers greater flexibility, but also requires more setup.

Use both segment based and account based rules to derive a single account. Segment-specific rules are used, where they're defined, and take the remaining values from an account-based rule. For example, you can use an account rule which is for all segments and also separately use a rule which is for one particular segment. Segment-specific rules take precedence over the all segments account based rule.

Combine account rules with segment rules. In this case, the segment value is derived from the segment rule to override the corresponding segment of the account. If the segment rule has conditions associated with the priorities and none are met, no override occurs and the segment value is derived from the account rule.

Note:

- If the returned account is end dated with a date that's the same or before the subledger journal entry accounting date, and an alternate account is defined in the general ledger, the alternate account is used. The original account is stored on the journal line for audit purposes
- If the alternate account is invalid, the Create Accounting process creates the journal in the invalid status. An error message is displayed to indicate the GL account is invalid.
- If the derived account or the alternate account is invalid and the Create Accounting process is submitted with the process event parameter set to Invalid Account, the invalid account is replaced with the suspense account defined in the ledger option for the ledger.

Account Rules by Value Sets

In the absence of a chart of accounts, you may define account rules based upon value sets. This enables you to share the same rule between more than one chart of accounts if the segments in these charts of accounts share the same value set.

Note: Account derivation rules support a maximum of two levels of account rule references. For example, if one account rule references another account rule, and that account rule references a third account rule, this configuration isn't supported. If more than two levels of account rule references are defined, errors may occur during rule compilation or activation.

Sharing Account Rules across Applications

You may share account rules across applications in the following ways.

- Assign an account rule from the same or a different application to a journal line rule in the subledger journal entry rule set. For example, to derive an expense account for journal line rule Expense, assign the Projects Cost Account rule owned to the Payables journal line rule Expense.
- Create an account rule based on an account rule from another application and assign it to a journal line rule. For example, you may create an account rule Invoice Expense Account referencing Project Cost Account assigned in the Priorities region. You may attach the Invoice Expense Account rule to the journal line rule Expense in the journal entry rule set.
- You can assign an account rule only if it doesn't reference another account rule that itself references a different account rule. In other words, account rule references can't exceed two levels. For example, you can define an account rule that references another account rule only if the referenced account rule doesn't further reference another account rule.

Note:

- To share an account rule across applications, all sources used by the account rule must be available for the event class.
- If the sources are available, an account rule is assigned to a journal line rule in the journal entry rule set. Verification occurs to confirm that all sources used by the account rule are available for the journal line rule accounting event class. Journal line rules are only available if the sources are shared; such as reference objects.

Account Rules and Mapping Sets

Mapping sets can be used to associate a specific output value for an account or segment. You can use mapping sets in account rules to build the account.

Account Rules Conditions

In the account rules you may specify conditions for each rule detail line. Priorities determine the order in which account rule conditions are examined. When the condition is met, the rule associated with that priority is used. Depending on which of the defined conditions is met, a different account rule detail is employed to create the account.

The Create Accounting process evaluates conditions based on the priority of the rule detail. When the condition is met, the rule detail is applied.

Note: Constant values that are used in any Conditions region must not contain the following characters:

- "
- ,
- &
- |
- (
-)
- '

For example, in the condition "Project Type" = ABC (123), the constant value following the equal sign, ABC (123), contains restricted characters () that enclose 123 and is invalid.

Related Topics

- [Examples of Creating Condition](#)
- [How You Define Account Rules](#)

How You Define Account Rules

You can define an account rule using the following rule types:

- Account combination
- Segment
- Value Set

Account Combination Rules

Set up account combination rules based upon the following value types:

1. **Source Value Type:** Derive the account combination by specifying a source.

Sources that have been set up as accounts can be assigned to an account combination rule. Subledger Accounting then obtains the account combination identifier from the source.

2. **Constant Value Type:** Establish the account as a constant value.

For example, the constant could be a completed account combination from the chart of accounts specified. An example is the account combination, 01.000.2210.0000.000. This is the simplest way to derive an account.

3. **Mapping Set Value Type:** Derive the account combination by referencing a mapping set.

Set up a mapping set to determine the complete account combination from the chart of accounts specified.

4. **Account Rule Value Type:** Derive the account by referencing another account rule.

The chart of accounts is optional when defining this type of rule. If the account rule has a chart of accounts assigned, then all the related account rules must use the same or no chart of accounts.

Note: A chart of accounts must be specified for account combination rules using constants.

Segment Rules

Set up segment rules as follows:

- When a chart of accounts is specified, create a rule to derive the value for a specific segment from the chart of accounts.
- If the chart of accounts isn't specified, create a rule to derive the value for an account segment with a specific qualifier.

Set up segment rules using the same methods discussed in the preceding Account Combination Rules section. By specifying different value types, users can select the way in which the segment value is derived.

Note: A chart of accounts must be specified for segment rules using constants.

Value Set Rules

Value set based rules can be created when a chart of accounts isn't specified, enabling you to share the same rule between more than one chart of accounts. But, only if the segments in these charts of accounts share the same value set.

Set up value set based rules using the same methods discussed in the preceding Account Combination Rules section.

Related Topics

- [Account Rules](#)

Mapping Sets

Mapping sets provide an efficient way to define a segment or account combination value for one or more transaction or reference attribute values. Using such input and output mappings is simpler than using complex conditions on account rules.

Based on the value of the source input, a single segment or a full account is derived.

Examples of source input value types:

- Transaction attributes
- Reference attributes

With mapping sets you can:

- Use up to 10 transaction or reference attributes as inputs into a mapping.
- Define default output value to use when actual input values don't match the mappings.
- Use wildcards for multiple input mapping sets to indicate that the value of a particular input should be ignored for certain mappings.
- Enter the mappings directly on the user interface or use the spreadsheet available in the Export option, and then import.

Export allows:

- Exporting a template to create mappings.
- Exporting all mappings created for the mapping set to add or edit the current mappings.

Example

Assume a business operates in several regions, including:

- East
- South
- West

The business has a Region segment in their chart of accounts.

The region name can be the input for the mappings to derive the value of the region segment. You can create a mapping set that maps region names to the corresponding region code.

This table contains region names and segment values used in this example.

Input Value (Region Name)	Segment Value
East	01
South	02
West	03

Input Value (Region Name)	Segment Value

Additional transaction information, such as transaction type and salesperson name, could also be used as inputs to help derive a different segment value for each combination of the input values.

Note: Constant values that are used in any Conditions region must not contain the following characters:

- "
- ,
- &
- |
- (
-)
- '

For example, in the condition "Project Type" = ABC (123), the constant value following the equal sign, ABC (123), contains restricted characters () that enclose 123 and is invalid.

Related Topics

- [How You Define Mapping Sets](#)
- [Accounting Sources](#)

How You Define Mapping Sets

Define a mapping set when you have a matrix of input values that produce distinct output values. For each input value, specify a corresponding account combination or segment output value.

One or more related pairs of these input values with the segment or account combination output values form a mapping set.

To define a mapping set, select the input sources, output type, and mappings. The mappings section displays how input values are mapped to output values. You can define multiple mapping sets for different combinations of input sources.

To define mapping sets:

- Specify the output type:
 - The output type for a mapping set can be an account combination, segment, or value set.
 - Use value set:
 - If the value set is used by more than one chart of accounts,
 - And the mapping set can be reused across multiple charts of accounts.
 - Expected input or output combinations are constant across the charts of accounts.
 - Based on the selection, the mapping set provides the value for an account, segment, or value set.
- Select the input source:
 - Specify the input source for mapping.
 - The input source is provided for predefined mapping sets. You can select input sources through a lookup or value set.
 - You can add up to 10 input sources in a mapping set.
- Select either the chart of accounts, segment, or value set for which mappings are to be defined depending on the output type entered.
- Define the mappings:
 - For a given set of input values, enter the corresponding output value.
 - The account rule uses this value to populate either the account or the segment.
 - If the output type is a value set, the output value is an individual value from the value set entered.
 - If the output type is a segment, the output value is an individual segment value.
 - If the output type is an account combination, the output value is an entire account.
 - If the input source is a GL account, enter a Transaction Chart of Accounts and a GL account in the context of the transaction chart of accounts. The transaction chart of accounts refers to the chart of accounts with which the transaction is associated, and this is usually the primary ledger's chart of accounts.

Mapping set with account combination output type can be assigned to account rule if:

- The account rule type is account combination, and it's not associated with any chart of accounts, or
- The account rule type is account combination, and it has been assigned the same chart of account as the mapping set.

Mapping set with segment output type can be assigned to account rule if:

- The account rule type is a segment, and it's not associated with any chart of accounts, and the segment label matches with the segment in the mapping set, or
- The account rule type is a segment, and it has the same chart of accounts and segment of the mapping set.

Mapping set with value set output type can be assigned to account rule if:

- The account rule type is value set, and the value set on the account rule and mapping set is the same, or
- The account rule type is a segment, and the value set on the mapping set is assigned to the chart of account and segment of the account rule.

Assign a default value to the mapping set

- In certain situations, one of the rows can be assigned as a default value in the mapping set. This can be used in cases where it's not possible to define all the values. When defining a row as default, enter the output value and select the Set Default button. it's not required to enter any input values.

Identifying the Sources for New Mapping Sets

- When creating a new mapping set, the input sources have to be selected based upon the Event Class, where the mapping set will eventually be used.
- Sources may or may not have a value set or lookup type assigned. You can assign a value set or lookup type if the input source doesn't have one assigned yet. However, the mapping set works only if the value defined in the value set or the lookup code matches with the input source value.

Example to Create Mapping Set with Single Source

In the following example, the chart of accounts is set up with four segments. A mapping set is defined with a value set for Supplier Type as described in the following table.

This table contains examples of input values and output values.

Input Value	Output Value
Services	01-100-6120-000
Consulting	01-400-6110-000

Assume that two invoices are entered, one for a supplier with a type of Services and one for a supplier with a type of Manufacturing.

When using the mapping set, the source value Supplier Type is compared with the mapping set input values to determine the account.

In this example, there's a match for the first case; the invoice with a supplier type of Services maps to an input value. However, the invoice with a supplier type of Manufacturing doesn't map to an input value.

This table contains the derived accounts based on the example.

Invoice	Supplier Type	Output Value
1	Services	01-100-6120-000
2	Manufacturing	No account generated

To ensure that invoice 2 is accounted, you may want to define a default output in the existing mapping set, or modify the account rule to which the mapping set is assigned so that a different account rule priority is applied when supplier type is Manufacturing.

Note: When a match isn't found in the mapping set, and there's no default value, and:

- If an account combination rule is assigned to the journal line, then the segment value from the account combination account rule will be used on the accounting entry.
- If an account combination rule isn't assigned to the journal line, then an exception will be raised for the accounting entry.

Example to Create Mapping Set with Multiple Sources

In the following example, multiple input sources are set up with an account combination. This table contains examples of input values and output values.

Inventory Organization Code	Sub inventory Code	Costing Category Identifier	Item Number	Output Value
M1	*	*	*	99-100-1110-00
M2	LAA019	*	*	99-100-1120-00
M2	*	*	*	99-100-1110-00
P1	UXA843	L100	*	99-120-1110-00
P1	UXA843	L200	A92348425	99-220-1110-00
P1	*	*	*	99-130-1110-00
*	*	*	*	99-000-1290-00

In some cases, all the input values might not be relevant. For example,

- If inventory organization is M1, then always map to 99-199-1110-00 regardless of the sub inventory, cost category, and item number, then use * (any value) for the last three sources.
- If inventory organization is M2 and sub inventory is LAA019, then map M2 to 99-100-1120-00, and other sub inventory codes to 99-100-1110-00.
- If inventory organization is P1
 - And if sub inventory is UXA843, and cost category L100, then for any item number map to 99-120-1110-00
 - And if sub inventory is UXA843, and cost category L200, and item number A92348425, then map to 99-220-1110-00
 - For other sub inventory, cost category, and item number, map to 99-130-1110-00
- For any other input value combination, map to 99-000-1290-00. The last row can be entered with output value and then select the Set Default button.

Use any value (*) for multiple input mapping sets to indicate that the value of a particular input should be ignored for certain mappings. Don't leave them blank. When * is used in one of the input sources, subsequent input value must also be *. For example, the following mappings are invalid and can't be entered.

Inventory Organization Code	Sub inventory Code	Costing Category Identifier	Item Number	Output Value
*	XXX123	*	*	99-100-1110-00
M	*	A1234	*	99-100-1110-00
*	*	*	99999999	99-100-1110-00
*		A1234	*	99-100-1110-00

Note: If the account rule is already assigned to the journal entry rule set, and if the accounting method is active, then run Create Accounting to verify if the mapping set is working as expected. there's no need to activate the accounting method again after modifying or adding any mapping.

Related Topics

- [Mapping Sets](#)
- [Manage Transaction Objects](#)

Import Subledger Accounting Mappings

You can import high volume mappings that are greater than 2,000 lines using the subledger accounting import mappings spreadsheet template.

To do this, you must first use the Create Mapping Set page to create a mapping set rule definition with the corresponding input sources and output types.

Let's walk through the steps to access the template:

1. Navigate to the File-Based Data Import for Oracle Financials Cloud guide.
2. In the Table of Contents, click **File-Based Data Imports**.
3. Click **Subledger Accounting Mappings Import**.
4. In the File Links section, click the link to the Excel template.

Here are few things to keep in mind when preparing your data in the worksheet:

- Enter the required information for each column. Refer to the tool tips on each column header for detailed instructions.
- Don't change the order of the columns in the template.
- You can hide or skip the columns you don't need to use, but don't delete them.

Settings That Affect the Subledger Accounting Mappings Import Process

The Subledger Accounting Mappings Import template contains an instructions tab, a tab that represents the table where the data is loaded, and some example tabs that contain sample mappings for different scenarios. This table shows the tabs in the Subledger Accounting Mappings Import template and their descriptions:

Spreadsheet Tab	Description
Instructions and CSV Generation	Contains information about using the template and generating CSV files.
Mappings	Enter information about the subledger accounting mappings you're importing into the interface table.
Example1_CCID_Output	Contains an example of mappings for a mapping set rule with the account combination output type.
Example2_Segment_Output	Contains an example of mappings for a mapping set rule with the segment output type.
Example3_Value_Set_Output	Contains an example of mappings for a mapping set rule with the value set output type.
Example4_FlexAccountComb_Input	Contains an example of mappings for a mapping set rule with the account combination input source type.
Example5_FlexfieldSegment_Input	Contains an example of mappings for a mapping set rule with the segment input source type.

How Subledger Accounting Mappings Is Processed

Create the Spreadsheet

Enter the mapping information in the Mappings worksheet. Refer to the tool tips on column headers for detailed instructions. Here are some best practices that you must follow to minimize errors while uploading the mapping data:

- Make sure that **Mapping Set Short Name** is in the upper case.
- Confirm that the format for the **Start Date** and **End Date** columns is YYYY-MM-DD.
- If the end date value is given for a mapping line, you must also provide a start date value.
- Make sure that the Default Mapping column has only one of the following values:
 - Blank
 - N
 - Y

Note: Don't use values such as No, n, Yes, or y because they're invalid.

- Specify only one mapping line as the default mapping.

- You must provide values for all mandatory fields. The mandatory fields can differ based on the output type of the mapping set. Here are the details of mandatory fields for different output types:

Mapping Set Output Type	Mandatory Fields for Output Type	Mandatory Fields for Output Value
Account Combination	Chart of Accounts	Account Combination
Segment	Chart of Accounts Segment	Segment or Value Set
Value Set	Chart of Accounts Value Set	Segment or Value Set

- Make sure that no space or new line character is appended to the actual data as it may result in import failure because of value mismatch.
- To delete an existing row from the Mappings sheet, select and right-click the row. Then, click Delete. Don't press the Delete key to delete a row because the application can consider such rows as blanks on validation.

You can also refer the example worksheets for more information. For example, how to use the account combination or segment value as the output for the mappings.

After you finish preparing the mapping data, click the Validate button to validate date format, line numbers, required fields, and default mapping. Correct the reported errors and save the spreadsheet template.

Generate the Zip File

After you finish preparing the spreadsheet template, you need to generate a Zip file that's used to import data into the application. Here is how you generate the Zip file:

1. On the Instructions and CSV Generation tab of the template, click the **Generate CSV File** button to generate a Zip file containing one CSV file.

You can also enter mapping information directly in a CSV file instead of the spreadsheet template. To do this, you must enter mapping information in the CSV file in the same format as in the Subledger Accounting Mappings Import template. Here is the order of columns in the Accounting Mappings Import template:

- o Line Number
 - o Application Name
 - o Mapping Set Short Name
 - o Chart of Accounts Short Name
 - o Transactions Chart of Accounts Short Name
 - o Value Set Short Name
 - o Segment Short Name
 - o Account Combination
 - o Segment or ValueSet
 - o Source Value 1
 - o Source Value 2
 - o Source Value 3
 - o Source Value 4
 - o Source Value 5
 - o Source Value 6
 - o Source Value 7
 - o Source Value 8
 - o Source Value 9
 - o Source Value 10
 - o Effective Start Date
 - o Effective End Date
 - o Default Mapping
2. Review the generated XlImportMappingsTemplate.csv that's appended as a worksheet in the same spreadsheet. It must have the same number of mapping lines that exist in the Mappings worksheet.

Load File for Import

After you generate the Zip file and verify the CSV file, you must load the Zip file to the interface and application database tables. Let's look at the steps to load the Zip file.

1. Navigate to **Tools > Scheduled Processes**.
2. Click **Schedule New Process**.
3. Select the **Load Interface File for Import** process and then click **OK**.
4. In the Process Details dialog box, select **Import Accounting Setup** process.
5. Upload the Zip file that you generated and click **Submit**.

The mapping details are imported to the interface and application database tables.

Correct Import Errors

Here is how you can correct errors that occurred while loading the CSV file:

- Review the log and output files of the Load File to Interface child process for information about the data that caused the failure.
- The Load Interface File for Import process ends in error and the Load File to Interface child process ends in either warning or error.
- All rows that were loaded from the CSV file are deleted, even those rows that loaded successfully. This lets you edit the erroneous data in the spreadsheet and resubmit without having to separate the successful rows from the rows that need modification.

These are the steps to correct errors caused when validations are performed by the application:

- Review the log and output files of the Import Accounting Setup process.
- The output file provides the summary and details of the uploaded files, including any reported error.

Secure the Upload Mapping Process

You can use the Application Implementation Consultant role to upload the mapping template. However, you can also define new roles to do this task. Make sure that you assign these rights to the new roles:

- The privileges to manage mapping sets such as the Manage Subledger Mapping Sets (XLA_MANAGE_SUBLEDGER_MAPPING_SET_PRIV) and Manage Subledger Mapping Set Value (XLA_MANAGE_SUBLEDGER_MAPPING_SET_VALUE_PRIV) privileges.
- A duty role to load interface file for import such as the FSCM Load Interface Administration duty.

Manage Description Rules

Create Description Rules and a User-Defined Formula

In this procedure you create a user-defined formula and description rules.

Create a User-Defined Formula

Navigate to the Manage Mapping Sets page.

1. From the **Setup and Maintenance** work area, click the **Implementation Projects** button.
2. Search for the **FAH Implementation project**.
3. Expand the task list: **Define Accounting Configuration for Rapid Implementation**.
4. Expand the task list: **Define Accounting Rules for Rapid Implementation**.
5. Select the task: **Manage User-Defined formulas**.
6. Click **Go to Task**.

Create a formula on the Manage Formulas page.

1. Click **Create** icon.
2. Enter **Name**. The Short Name is created but can be updated.
3. Enter **Data Type**.

4. Enter **Event Class**.

5. Click **Save**.

- In this formula you abbreviate a loan type value. For example, if the loan type is Fixed Rate, then its new value is FR; otherwise the value is AR.

In the Expression region:

- a. Click **Insert Function**.
 - i. Enter **Type = Conditional**.
 - ii. Click **Search**.
 - iii. Select **IF THEN ELSE**
 - iv. Click **OK**.
- b. Place the cursor after the **IF**.
- c. Click **Source**.
 - i. Select **Subledger Application**.
 - ii. Select **Name = Loan Type**.
 - iii. Click **Search**.
 - iv. Select **Loan Type**.
 - v. Click **OK**.
- d. Click **More**.
- e. Select **Equal To (=)**.
- f. On the IF line, after the = enter '**Fixed Rate**' including the single quotes.
- g. On the THEN line, enter '**FR**'.
- h. On the ELSE line, enter '**AR**'.
- i. Validate the formula.
 - i. Click **Validate**.
 - ii. Click **OK** on the Information message.
 - iii. Click **Save**.
- j. Activate the formula.
 - i. Click **Actions > Change Status > Activate**.
- k. Click **Save and Close**.

Create Description Rules

In this exercise, you create a header description rule for an accounting event. In this example, we display the loan type, event type, and the customer number at the header level of the journal entry.

Navigate to the Manage Description Rules page.

1. Click **Go to Task** for the **Manage Description Rules** task.
2. Click **Create** icon.
3. Enter **Name**.
4. Enter **Short Name**.
5. Click **Save**.
6. In the **Rules** region, enter the description rule components.
 - a. Click **Create** icon.

- b. In the **Description Details** text box enter **Loan Type**.
- c. Click **Source**.
 - i. In the **Source Search** enter **Type, Formula**.
 - ii. Select the formula you created in the prior step.
 - iii. Click **OK**.
- d. In the **Description Details** text box, place your cursor at the end of the text and append:
- e. Click **Source**.
- f. Search by **Name: Accounting Event Type Name**.
- g. Click **OK**.
- h. In the **Description Details** text box, place your cursor at the end of the text and append:
 - i. Click **Source**.
 - j. Search by **Name: Customer Number**.
 - k. Click **OK**.
7. Click **Save and Close**.
8. Click **Save and Create Another**.

In this exercise, you create a line description for an accounting event. In this example, we display the loan rate at the line level of the journal entry.

1. Click **Create** icon.
2. Enter **Name**.
3. Enter **Short Name**.
4. Click **Save**.
5. In the **Rules** region, enter the description rule components.
 - a. Click **Create** icon.
 - b. In the **Description Details** text box enter **Rate:**.
 - c. Click **Source**.
 - i. In the **Source Search** enter **Name, Loan Rate**.
 - ii. Click **OK**.
6. Click **Save and Close**.
7. Click **Save and Close**.
8. Click **Done**.

Related Topics

- [Description Rules](#)

Description Rules

Use descriptions rules to define the elements of a description that appears on the subledger journal entry at the header or the line. The definition determines both the content and sequence in which the elements of the description appear.

You can assign a condition to a description rule to determine that the description is selected for display if the condition is satisfied.

Description Rule Definition

A description rule can be defined with combinations of source and literal values. If sources are used in the rule, the accounting event class associated with the sources determines in which subledger journal entry rule set the description rule can be selected and used.

Build descriptions using the available sources for the application.

The following is the description details that have been entered, using a literal and a source:

- Loan Origination Date = Origination Date
 - Literal = Loan Origination Date
 - Source = Origination Date

For example:

- Source value of the Origination Date = 11/01/11
- Journal entry description = Loan Origination Date 11/01/11

Note: Transaction reversal copies the journal header and line attributes from the original event to create an offset entry with the same information. This is standard behavior.

Related Topics

- [Examples of Creating Condition](#)

Examples of Creating Condition

The following provides examples of defining an account rule with a condition.

Example 1: User-Defined Real Estate Application Account Rule Condition Example

This example defines an account rule for assignment to a loan journal line. The account rule has two priorities, a mapping set and a constant.

- The first priority creates an output for an account based on the mapping set rule definition.
 - A condition is created using the first priority rule. This rule is only used if the condition is met.
 - The condition is **Credit Status** must not be null.
 - The accounts derived from the mapping set rule are used if the Credit Status has a valid value. Otherwise, the accounts derived from the entered constants value from the second priority are used.
 - This table contains the setup of the condition for the first priority:

(Source	Operator	Value)
("Credit Status"	isn't null)

(Source	Operator	Value)

- The second priority creates an output from a constant value (0.9100030.50034206331.0.0.0). No condition is associated with the second priority.

Example 2: Oracle Fusion Assets Account Rule Condition Example

This example defines a rule for a capital purchase. The rule is applied if the distribution account cost center is the same as the liability account cost center, and the asset tracking option is Yes.

This condition can be expressed as:

- Where Distribution Cost Center = Liability Cost Center and Asset Tracking option = Yes

This table contains the setup of the condition formula.

(Source	Delimiter	Segment	Operator	Value	Delimiter	Segment)	And Or
("Distribution Account"	.	"Cost Center"	=	"Liability Account"	.	"Cost Center")	'AND'
("Asset Indicator"			=	Yes)	

The following two rows of data are used in the accounting event, to which the account rule and condition applies.

Account Rule Condition Example: Accounting Event Data

This table contains the values to which the condition is applied.

Account	Invoice 1	Invoice 2	Asset Indicator
Distribution Account	02-640-2210-1234	01-780-6120-0000	Yes
Liability Account	01-640-2210-0000	02-782-2210-0000	Yes

In the Accounting Event Data table, assume the cost center segment is the second segment. When the account rule with this condition is used the account rule is applied to derive the account of Invoice 1 only. For Invoice 2, (assets tracking option = Yes), the cost center for the Distribution and Liability accounts aren't the same. Both conditions must be met in order for the rule to apply.

Note:

- When an account source is used, you must also use a specific segment. Select All if the full account is required to be used in the condition instead of a specific segment.
- The condition uses the account source and distribution account, along with a segment that you must provide. In this example, the cost center segment is provided.
- When adding a user-defined formula or a condition to other setup rules, after selecting a source, the source name is suffixed by an additional string such as (Payable, S, S) if the same source name is used in more than one subledger. This additional string indicates:
 - which subledger owns the source,
 - whether it's a system source(S) or application source(A), and
 - what's its type, S for source, F for user defined formula.

If the source is a GL account source, then:

- <SOURCE_CODE>. All means the entire GL account combination is used.
- <SOURCE_CODE>.<SEGMENT_QUALIFIER> means one of the segments from the GL account combination is used.

Manage User-Defined Formulas

Create a User-Defined Formula

In this procedure, you create a user-defined formula for an existing Payables description rule.

Create a User-Defined Formula

Navigate to the Manage Formulas page.

1. In the Setup and Maintenance work area, go to the following:
 - Offering: Financials
 - Functional Area: Any subledger (for example, Payables, Receivables, Projects, Fixed Assets, Collections, and so on)
 - Task: Manage User-Defined Formulas

Create a formula on the Manage Formulas page.

1. Click **Create** icon.
 2. Enter **Name**. The Short Name is created but can be updated.
 3. Enter **Data Type**.
 4. Enter **Event Class**.
 5. Click **Save**.
- This formula is used in a description rule for the Invoices event class.

In the Expression region:

- a. Click **Insert Function**.
 - i. Enter **Type = Conditional**.
 - ii. Click **Search**.
 - iii. Select **IF THEN ELSE**
 - iv. Click **OK**.
- b. Place the cursor after the **IF**.
- c. Click **Source**.
 - i. Select **Subledger Application**.
 - ii. Select **Name = Intercompany**.
 - iii. Click **Search**.
 - iv. Select **Intercompany Invoice Indicator**.
 - v. Click **OK**.
- d. Click **More**.
- e. Select **Equal To (=)**.
- f. On the IF line, after the = enter **'Y'** including the single quotes.
- g. On the THEN line, click **Insert Function**.
 - i. Select **Type = Alphanumeric**.
 - ii. Click **Search**.
 - iii. Select **Concatenate**.
 - iv. Click **OK**.
- h. Double-click **String1**, and replace with **'Intercompany Invoice'**.
- i. Double-click **String2**.
 - i. Double-click **Source**.
 - ii. Select **Subledger Application = Payables**.
 - iii. Enter **Name = Invoice Number**.
 - iv. Click **Search**.
 - v. Select **Invoice Number**.
 - vi. Click **OK**.
- j. Copy and paste the **THEN** clause **Concatenate('Intercompany Invoice','Invoice Number')** to the **ELSE** clause.
- k. Remove **'Intercompany Indicator'**.
- l. Validate the formula.
 - i. Click **Validate**.
 - ii. Click **OK** on the Information message.
 - iii. Click **Save**.
- m. Activate the formula.
 - i. Click **Actions > Change Status > Activate**.
- n. Click **Save and Close**.

Add the User-Defined Formula to a Description Rule

Add the user-defined formula to an existing description rule.

1. In the Setup and Maintenance work area, go to the following:
 - o Offering: Financials
 - o Functional Area: Any subledger (for example, Payables, Receivables, Projects, Fixed Assets, Collections, and so on)
 - o Task: Manage Description Rules
2. Click **Edit** on the **Invoice Type** description rule.
 - a. Remove the existing source.
 - b. Click **Source** button.
 - c. Search by **Type**
 - d. Select **Invoice Header with Type**.
 - e. Click **Save and Close**.
3. Click Save and Close.

Note: When defining a user-defined formula or a condition to other setup rules, after selecting a source, the source name is suffixed by an additional string such as (Payable, S, S) if the same source name is used in more than one subledger. This additional string indicates:

- which subledger owns the source,
- whether it's a system source(S) or application source(A), and
- what's its type, S for source, F for user defined formula.

If the source is a GL account source, then

- <SOURCE_CODE>.All means the entire GL account combination is used.
- <SOURCE_CODE>.<SEGMENT_QUALIFIER> means one of the segments from the GL account combination is used.

Note: A user-defined formula isn't supported in the transaction account builder.

Related Topics

- [Manage User-Defined Formulas](#)

Manage User-Defined Formulas

You can use Subledger Accounting user-defined formulas to derive a value that's used in a journal entry, such as a journal amount or description.

Formula Usage and Assignments

A user-defined formula can be used to:

- Calculate a numeric value
- Derive an alphanumeric value
- Return a date value

It can also be used in any of the following accounting rule components:

- Journal line rule
- Account rule
- Mapping set
- Description rule
- Supporting reference

Formula Definition

Define user-defined formulas using sources for the selected event class. Predefined functions and conditions can also be used to derive the resulting value.

- Enter source in double quotes ("").
- Enter constant values in single quotes ('').
- Enter date values in the format YYYY-MON-DD.

Example 1

A user-defined formula has been defined to use in the description rule for the journal entry rule set for the Invoice event class.

Steps:

1. Define a formula:

```
o IF "Project Number" IS NOT NULL AND "Invoice Date" >= '2015-Jan-01'  
    THEN Concatenate("Project Number", "Invoice Number")  
    ELSE Concatenate("Supplier Name", "Invoice Number")
```

2. Use the formula in a description rule.

3. Assign the description rule to a journal entry rule set.

Results:

Accounting is created for two project invoices and one nonproject invoice.

This table contains the invoices created by example 1.

Invoice	Invoice Details	Journal Entry Description
1	Invoice number = MA0024 Invoice date = 2014-Dec-11 Supplier name = ABC Inc. Project number = 12345	ABC Inc.MA0024
2	Invoice number = MA0045 Invoice date = 2015-Jan-30 Supplier name = ABC Inc. Project number = 12345	12345MA0045
3	Invoice number = MA0012 Invoice date = 2015-Jan-15 Supplier name = ABC Inc.	ABC Inc.MA0012

Example 2

A journal entry is recorded for the actual 401k funding every quarter. The monthly accrued amount entry is created for each month of the quarter using the following user-defined formula.

Note that the accrual entry is to be reversed at the beginning of the next month by the accrual reversal feature.

Steps:

1. Define a formula:
 - o "Fund Balance" / 3 * "Month Number in the Quarter"
2. Assign the formula to the Entered Amount accounting attribute for the event class.
3. Use the formula as the Entered Amount for the journal line rule.
4. Assign the journal line rule to the journal entry rule set.

Fund balance = 1,200 USD

This table contains the monthly entries created using example 2.

Month	Results
1	Accrual amount for the first month in the quarter: $1200 / 3 * 1 = 400$
2	Accrual amount for the second month in the quarter: $1200 / 3 * 2 = 800$
3	Accrual amount for the third month in the quarter: $1200 / 3 * 3 = 1200$

Predefined Formula Functions

The following predefined functions are available to be used in user-defined formulas.

This table contains a listing of predefined formula functions.

Type	Function	Description	Example
Alphanumeric	Concatenate	Concatenate two strings into one single string.	Concatenate('This is ', 'a test.') returns 'This is a test'.
Alphanumeric	Substring	Extract part of a string.	Substring('How are you?', 3,5) returns 'w are'.
Alphanumeric	ToText	Convert a numeric value to text.	ToText("Tax Rate") returns the tax rate in text format. Note: A formula with ToText can't be used in a rule condition.
Date	FirstDayOfYear	Return the first day of the calendar year based on the parameter.	FirstDayOfYear('2013-Jul-11') returns '01-Jan-2013' in date format.
Date	LastDayOfYear	Return the last day of the calendar year based on the parameter.	LastDayOfYear('2013-Jul-11') returns '31-Dec-2013' in date format.
Date	FirstDayOfMonth	Return the first day of the month based on the parameter.	FirstDayOfMonth('2013-Jul-11') returns '01-Jul-2013' in date format.
Date	LastDayOfMonth	Return the last day of the month based on the parameter.	LastDayOfMonth('2013-Jul-11') returns '31-Jul-2013' in date format.
Date	AddMonth	Return the date of specified number of months after the date in parameter.	AddMonth('2013-Jul-11',2) returns 11-Sep-2013 in date format.
Numeric	YearNum	Return the year of a date source in 4-digit format.	YearNum('2012-Feb-28') returns the number 2012.
Numeric	MonthNum	Return the month of a date source in numeric format.	MonthNum('2012-Feb-28') returns the number 2.
Numeric	DayNum	Return the day of date source in numeric format.	DayNum('2012-Feb-28') returns the number 28.

Type	Function	Description	Example
Numeric	Round	Round a number to a specific decimal place.	Round(183.1123, 2) returns 183.11 Round(183.1123, -1) returns 180
Numeric	RoundUp	Round up a number to integer.	RoundUp(0.01) returns 1. RoundUp(1.50) returns 2.
Numeric	RoundDown	Round down a number to integer.	RoundDown(0.01) returns 0. RoundDown(1.50) returns 1.
Numeric	Power	Return the power of a number.	Power(3,2) returns 9.
Numeric	NumberOfGLPeriod	Return the number of nonadjustment accounting periods between two dates. <ul style="list-style-type: none"> If start date isn't the first day of an accounting period it's counted as one period. If end date isn't the last day of an accounting period, it's counted as one period. 	If accounting calendar is defined as Monthly, NumberOfGLPeriod('2013-Jul-11', '2013-Oct-10') returns 4.
Numeric	ToInteger	Convert a text value to integer.	ToInteger("Cost Center Segment") returns the cost center segment value as a numeric value.

Related Topics

- [Accrual Reversals](#)
- [Create a User-Defined Formula](#)
- [Overview of Subledger Journal Entry](#)
- [How You Create a Manual Subledger Journal Entry](#)

Manage Supporting References

Supporting References

Supporting references are used to store additional source information about a subledger journal entry at the line level.

Supporting references are a powerful tool to capture transaction attributes in journal lines. You can use these tags to report on entries, reconcile entries back to source systems, or even maintain balances at the attribute level.

- Define supporting references once and reuse by assigning sources of different event classes or source systems to the same supporting reference.

- You can link one source per event class to each supporting reference. The subledger or source system uses the supporting reference name to store the source values. This standardizes supporting reference information, even if it comes from disparate source systems.

Supporting references can be defined using either of these options (located on tabs):

- With Balances:
 - Select the With Balances tab in the supporting reference definition to have balances maintained when the supporting reference is associated.
 - For balance sheet accounts, supporting reference balances are carried forward to the first period of the accounting calendar's year.
 - For Profit and Loss accounts, supporting reference balances are set to zero in the first period of the accounting calendar's year.
 - A limit of thirty supporting references with balances can be defined. You can consider adding more source assignments to predefined supporting references, rather than creating a new one.

Supporting references with balances establish subledger balances for a particular source and account for a particular combination of supporting references plus the account combination.

For example:

- If a journal line contains a supporting reference that includes two sources, Customer Type and Customer Name.
 - Balances are created for the account combination, plus customer name and customer type.
- Without Balances:
 - You can assign up to 30 SR without balance to each journal line.
 - Consider using a journal entry header or line description if:
 - No balance is maintained for a supporting reference.
 - No supporting reference details are needed for reports.

Note: Caution: Using supporting references instead of descriptions may impact accounting engine performance.

Examples of how you may want to use supporting reference balances are to:

- Facilitate reconciliation back to the subledgers and source systems by tagging journal entries with the transaction and reference attributes.
- Create balances by dimensions not captured in the chart of accounts.
- Reporting using dimensions not captured in the chart of accounts.
- Enrich Oracle Fusion Business Intelligence Applications reporting on subledger journals.
- Profit and loss balances by dimensions not captured in the chart of accounts.

Define supporting references to hold additional supporting information for detailed account balance maintenance or reconciliation and reporting requirements.

Note: Supporting Reference Balances do not update the Subledger tables for future enterable periods. When the period is open then, the Subledger tables are updated.

Related Topics

- [Considerations for Supporting Reference Assignments](#)

Create Supporting References

Here's how you can create supporting references:

1. Navigate to the **Manage Supporting References** page.
2. Click the **With Balances** tab.
3. Click **Create** icon.
4. Enter **Name**.
5. Enter **Short Name**.
6. In the **Sources** region:
 - a. Search **Subledger Application**.
 - b. Source and select **Source**.
 - c. Click **OK**.
7. Repeat these steps to create another supporting reference.
8. Click **Save and Close**.

Related Topics

- [Supporting References](#)
- [Adjust Supporting Reference Initial Balances](#)
- [Update Subledger Accounting Balances Process](#)

Assign Supporting References

Supporting References can be assigned to journal line rules. Here's how you can assign supporting references:

1. On the **Manage Supporting References** page, navigate to the **Assignments** tab.
2. Click on the **Add Assignments** button.
3. In the Select Scope pop-up window, select the Subledger Application and Event Class to limit the scope for which supporting references are to be assigned.
4. In the new pop-up window, select the associated supporting references and the configured journal line rules.
5. Click save to assign the supporting references to the selected journal line rules.

Note: Journal Line Rules can span across different Journal Entry Rule sets.

View and Delete Supporting Reference Assignments

You can use the Assignments tab to view and delete the existing supporting reference assignments also.

View Supporting Reference Assignments

- Select supporting references from the search criteria to view assignments across all subledger applications.
- Alternatively, select subledger application and event class to view the assignments for a particular subledger application.

Delete Supporting Reference Assignments

To delete an existing supporting reference assignment, select the required supporting reference and click on the Delete Assignments button.

Migrate the Configuration

Considerations for Migrating Accounting Rules

Use the export and import functionality in the Setup and Maintenance work area to perform migration of setup data. When migrating accounting rules, you must migrate task lists in entirety and fulfill some requirements.

Full Task List Migration

This table contains the task lists used to migrate in full, depending on the offering.

Offering	Task List
Oracle Fusion Accounting Hub	Define Accounting Transformation Configuration
Oracle Fusion Financials	Define Subledger Accounting Rules Define Transaction Account Rules

Support isn't provided for a partial task list migration.

You may migrate setup data for specific applications only. Note that supporting references, accounting options, and accounting class usages are migrated for all applications, regardless of the applications specified.

Migration Requirements

Prior to migration, journal entry rule sets and accounting methods must be successfully activated. Invalid journal entry rule sets or accounting methods cause import failure.

Ensure that your setup data migration includes all dependent business objects from other required setup modules, such as Define Ledgers. The import sequencing of these dependent business objects must be prior to accounting rules business objects.

Manage Transaction Account Builder

Transaction Account Builder

Use the Transaction Account Builder to derive default accounts for Oracle Fusion Common Module: Intercompany and Oracle Fusion Purchasing transactions before they're accounted.

Define Transaction Account Rules

Transaction account definitions are assigned at the ledger and subledger levels. Transaction attributes are used in account rules, which are used in transaction account definitions.

Transaction account types are predefined by the Subledger Accounting application, and categorize different accounts generated for transactions. Sources are assigned to transaction account types.

Transaction account types allow subledger applications to categorize different accounts that are generated for transactions. Accounts that require a consistent derivation throughout the application should share the same transaction account type. This also provides the ability to view or manually override an account on the transaction.

Transaction account types are assigned to transaction account definitions. Assign account combination or segment rules to each transaction account type assignment in a transaction account definition. Assigned sources in each transaction account type are available for use in account rules to derive accounts for a transaction account type.

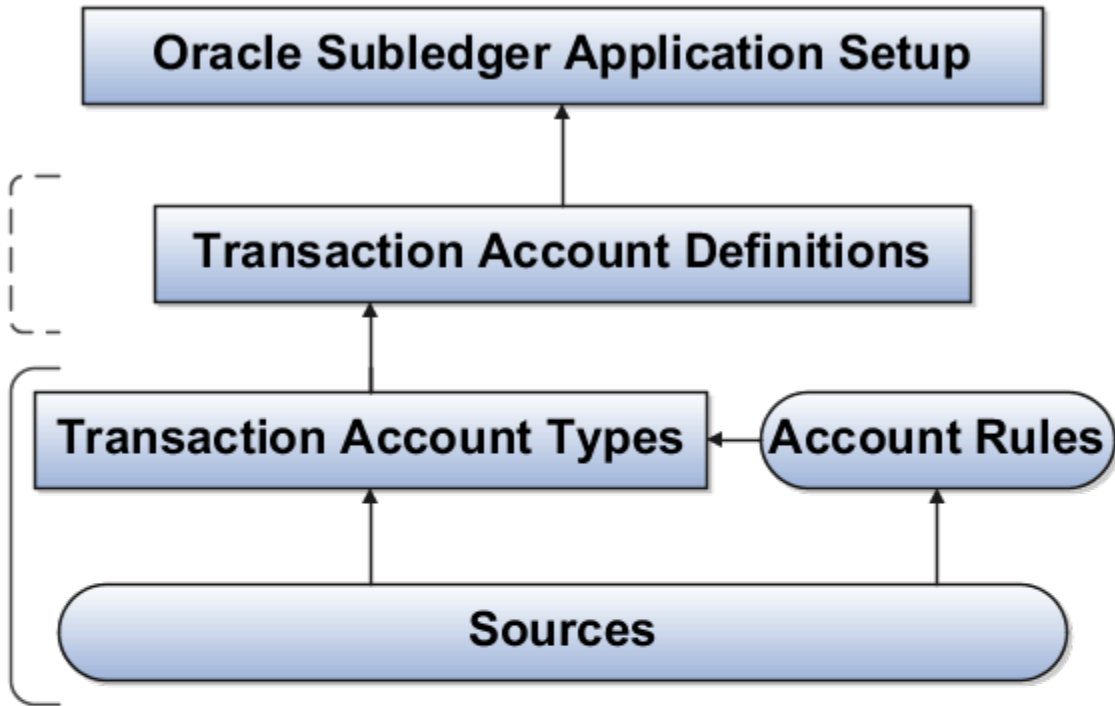
This setup is accomplished using the **Define Transaction Account Rules** task list in the **Setup and Maintenance** work area.

Transaction account rules are used by:





- Oracle Fusion Common Module: Intercompany
- Oracle Fusion Purchasing

Transaction Account Builder Components

This figure illustrates the transaction account builder components.



Legend

-  Introduced by Transaction Account Rules
-  Indicates component assignment
-  Predefined and Users
-  Users

- **Transaction Account Type:** Predefined.
- **Account Rules:** Users and Predefined.
- **Sources:** Predefined.

Manage Other Setup Options

Accounting Class Usages

Accounting class usages is a classification or grouping of accounting event classes to be used in a report or process based on subledger journal entries.

A report or process referring to such a group would only process subledger journal entries tagged with the accounting event classes defined in the group.

Manage Accounting Class Usages Task

The Manage Accounting Class Usages task enables you to group accounting event classes. Use Accounting Class Usages assignments to determine which subledger journal entry lines to retrieve for a particular process. For example, for mass additions a subledger can define accounting class usages to identify the journal entry lines that must be processed to create records for another subledger.

Defining Accounting Class Usages

Use the Manage Accounting Class Usages task to create assignments that may be associated with a ledger. In the Accounting Class Assignments region, assign accounting classes to an assignment definition.

Predefined processes and assignment definitions cannot be deleted or updated. You can copy a predefined assignment definition and modify if necessary.

Subledger Accounting Options

Subledger accounting options define how certain accounting processing should be done for transactions of a given subledger at a ledger level. These options are set up for the primary and secondary ledgers only.

Manage Subledger Accounting Options

This task is accessed from the Setup and Maintenance work area. The page is displayed in the context of a primary or secondary ledger. All registered subledger applications are displayed. If you created additional accounting event classes after initial ledger setup, run the Update Subledger Accounting Options process to incorporate these event classes.

The Manage Subledger Accounting Options task provides the ability to edit:

- Accounting Options
- System Options

Note: For both Summarize by general ledger period and Summarize by general ledger date options, journal header descriptions aren't copied from subledger journals to general ledger journals. Subledger journal line descriptions, if present, are copied to general ledger journal lines only when using Group by general ledger period or Group by general ledger date options.

Edit Accounting Options

This page displays the subledger accounting options for the ledger. You can review and update the options. The view for this page depends on the subledger application type and the ledger type (primary or secondary).

The views are as follows:

- The Defaults and Ledger options view displays the accounting program defaults and the event class options for the following:
 - A primary ledger for a subledger application.
 - A secondary ledger for a subledger application.
- The Ledger options view displays the event class options for a subledger application, and secondary ledger.

General Options

- Subledger Accounting Enabled
This option is visible only for secondary ledgers in the ledger options view. Enable or disable the subledger application for the ledger. No entries are generated by subledger accounting for an application if subledger accounting is disabled for the secondary ledger.
- General Ledger Journal Entry Summarization
 - This option determines whether subledger journal entries are summarized or grouped when they're transferred to General Ledger. Subledger journal line description isn't transferred to GL with Summarize by GL Period and Summarize by GL Date options. Note that subledger journal line descriptions are copied to General Ledger Journal Line only for the Group by general ledger period and Group by general ledger date options.

This table contains the General Ledger Journal Entry Summarization options and a description of those options.

Option	Description
Summarize by general ledger period	Default option. Indicates that all subledger entry lines are summarized into a single general ledger entry if they have the same: <ul style="list-style-type: none"> ◦ Accounting period ◦ General ledger journal category ◦ Account ◦ Entered currency ◦ Side ◦ Balance type Disabled if the ledger uses daily balancing. The general ledger effective date defaults to the last date of the accounting period.

Option	Description
Summarize by general ledger date	<p>Indicates that all subledger entry lines are summarized into a general ledger entry if they have the same:</p> <ul style="list-style-type: none"> ○ Accounting date ○ General ledger journal category ○ Account ○ Entered currency ○ Side ○ Balance type <p>The general ledger effective date is equal to the subledger accounting date.</p>
Group by general ledger period	<p>Indicates that all subledger journal entries with the same accounting period are grouped together.</p> <p>Each subledger journal entry line is transferred into the general ledger with the same granularity as the original lines.</p> <p>This option is available only for Oracle subledgers.</p>
Group by general ledger date	<p>Indicates that all subledger journal entries with the same accounting date are grouped together.</p> <p>Each subledger journal entry line is transferred into the general ledger with the same granularity as the original lines.</p> <p>This option is available only for Oracle subledgers.</p>

- Reversal Method

Use the Reversal Method option to determine how the reversal subledger journal entries are generated in subledger accounting. The options are:

- Switch debit and credit (default): reverses a debit for a credit and a credit for a debit.
- Change Sign: The reversal entry keeps the same side as the original entry, but the sign is changed.

- Enable Posting from Subledger

Use the Enable Posting from Subledger option to enable or disable posting of subledger journals to GL.

This option is selected by default and allows subledger users to:

- Create subledger adjustment journals from UI or spreadsheet and post them to GL.
- Create subledger journals from the import accounting transactions process and post them to GL.
- Create subledger journals from the create accounting process and post them to GL.

If you disable this option, subledger users can:

- Create subledger adjustment journals from UI or spreadsheet and transfer them to GL but not post to GL.
- Create subledger journals from the import accounting transactions process and transfer them to GL but not post to GL.
- Create subledger journals from the create accounting process and transfer them to GL but not post to GL.

Note: Users must have the Post to GL (GL_POST_JOURNAL_PRIV) privilege to effectively use the Enable Posting from Subledger option. If you already have two segregated roles for subledger users and GL users, the users can continue to perform their roles.

- Rounding Rule

Use the Rounding Rule option to determine which option to use for rounding. Subledger accounting rounds to the minimum accountable unit or ledger currency precision.

Tip: For examples described in the Rounding Rule Options table, assume that the precision is 2 and the minimum account unit is 0.01.

This table contains the Rounding Rule options and a description of those options.

Option	Description
Up	Amount rounded up. For example, 5.983 (USD) is rounded to 5.99 (USD).
Down	Amount rounded down. For example, 5.988 (USD) is rounded to 5.98 (USD).
Nearest	Amount rounded to nearest number. However, if the difference between Up and Down options is equal, the amount is rounded up. For example, 5.985 (USD) is rounded to 5.99 (USD).

Journal Categories Options

- The table describes the event class option that can be overridden. Note that only the Journal Category event class can be overridden.

This table contains the Journal Categories Options, and a description of those options.

Option	Description
Journal Category	Defined in the accounting rules for an event class. Any valid journal category defined in General Ledger can be used.

Edit System Options

The following three regions are available:

- Create Accounting Processing Options
- Event Class Options
- Transfer to General Ledger Processing Options

Create Accounting Processing Options

- Number of Create Accounting Workers
- Processing Unit Size

This table contains the Create Accounting Processing options and a description of those options.

Column Name	Description
Processing Unit Size	Approximate batch size for high volume general ledger transfer flow, and is also the general ledger import batch size. If not specified, the corresponding accounting processing unit size is used.

- You can define the processing unit size to process a large number of items in one commit cycle. A processing unit is the number of transactions processed by the Create Accounting process in one commit cycle. Create Accounting processes the default processing unit size at the application level.
- Stop at Error Limit
 - Maximum number of events allowed to fail before canceling account program.

Note: In actual cases, the Create Accounting process may continue to process transactions even after the Stop at Error Limit is reached and may result in more errors than the error limit. This happens because transactions are processed in batches. If the application starts processing a batch, it continues to process all the transactions in the batch even if the Stop at Error Limit is reached.

Event Class Options

- Event Class
- Processing Unit Size

On the **Manage Subledger Accounting Options** page, you can select the subledgers for each ledger or ledger set, and specify the **Processing Unit Size** for each event class.

Transfer to General Ledger Processing Options

- Number of General Ledger Transfer Workers
- Processing Unit Size

Importing information from subledgers is done using subledger accounting. Posting from the subledger application transfers data to the general ledger interface and journal entry tables.

As part of your configuration, you can specify whether the Create Accounting process is to split the creation process into multiple workers (processors). The benefit of splitting the creation process is that:

- Accounting can be generated more efficiently with more resources allocated to complete the process.
- You can have multiple processors running in parallel to create the entries in a shorter period of time.

One restriction is the capacity of the hardware that's being used by the application. The more available processors, the more you can allocate to the Create Accounting process.

The decision for how many processors to use is made based upon expected volumes and the processing window. In other words, how much time is allocated to creating accounting. Accounting is often done as a nightly batch process, to facilitate application availability during work hours.

Dependencies exist between the overall completion status of the Create Accounting process and the workers. In general, the parent doesn't update to the Completed status until all the workers successfully complete.

The process that allows transfer of subledger journal entries to general ledger uses separate processing workers that are specialized in general ledger transfer. A lightweight general ledger transfer parent process is used to distribute the workload to the workers. To transfer entries even faster, you can have a number of parallel processing workers used for high volume general ledger transfer flow. If not specified, the corresponding accounting processors are used.

Related Topics

- [Update Subledger Accounting Balances Process](#)

Tips to Improve Accounting Performance

Here are some tips and recommendations to improve Create Accounting program performance:

- You must control the Create Accounting job submission. For example, only submit the Create Accounting jobs for the same application/same ledger simultaneously if the application is in row lock mode.
- You must understand that the maximum volume for an application is equal to the number of ledger combinations. So, for example, if an application with a ledger has 1000 mn and 1 mn volume, you should consider 1mn as your target volume and set workers accordingly.
 - For volume up to few thousand, you can restrict 1 worker.
 - For volume > 50K, increase CA workers to 3 with processing unit size 1000, GL_transfer workers 2 processing unit size 10K.
 - For volume > 100K, increase CA workers to 5 with processing unit size 5000, GL_transfer workers 3 processing unit size 40K.
 - For volume > 500K, increase CA workers to 7 with processing unit size 5000, GL_transfer workers 4 processing unit size 40K.

You can achieve optimum performance by staggering the Create Accounting runs for various application-ledger combinations.

- Set up Manage Subledger Accounting Options UI in Functional Setup Manager (FSM) to control multiple accounting sub-processes per Create Accounting process request.
- You can change the Number of Create Accounting Workers from the System Options in the Manage Subledger Accounting Options page. The number of workers default is 1. Be careful while changing this parameter. For

example, if the production environment is of M6 size and Create Accounting takes a long time as there is only one worker set up now, it could help if you increase it up to 4 or 6.

- The Create Accounting program performance also depends on the number of Accounting Hub applications available and transaction volume being processed at a time. For example, if transaction volume is high (100,000 +) in one of the Create Accounting request scope, increase the workers incrementally to improve the performance. Note that a large number (> 10) of workers per Accounting hub application running Create Accounting in parallel can have contention and can adverse the performance.

Best Practices

Here are some best practices to deal with Create Accounting program performance issues:

- The performance of the Create Accounting program depends on the time taken by various child jobs spawned by the program. Therefore, follow the below steps to increase the number of workers for Create Accounting and transfer to the GL subprogram:
 - a. From the Setup and Maintenance work area, navigate to the Define Accounting Transformation Configuration task and go to Manage Subledger Accounting Options. Search for your ledger, expand and open the Cost Management application. Edit the System options to change the Number of Create Accounting Workers from 1 to 10 and change the Number of General Ledger Transfer Workers to 2.
 - b. Cancel the running Create Accounting job and resubmit a new one.
- Ensure the profile option Enable SLA debug mode is turned off.
- Ensure no Finest log levels are enabled.
- Select the Transfer to GL option as No.

3 Security for Subledger Accounting

Security for Subledger Accounting

Oracle Fusion Subledger Accounting features require both function and data security privileges.

Overview

Security for Subledger Accounting includes:

- Setup task security
 - Security to configure accounting rules to define accounting treatments for transactions.
- Transaction task security
 - Security to create subledger journal entries (manual subledger journal entries or those generated by the Create Accounting process or Online Accounting).
 - Security to review and generate reports of subledger journal entries and lines.

Security to Perform Setup Tasks

Use the Define Subledger Accounting Rules task in the Setup and Maintenance work area to configure subledger accounting rules.

To configure subledger accounting rules, the setup user must be provisioned with a role that includes the Subledger Accounting Administration duty role.

- In the security reference implementation, the Financial Application Administrator job role hierarchy includes the Subledger Accounting Administration duty role. This role provides the access to configure your accounting rules.
- For more information about available setup job roles, duty roles and privileges, see the Oracle Financial Security Reference Manual.

Security to Perform Transactional Tasks

To create and view subledger journal entries, you must have the necessary access to perform the tasks in the relevant subledger work areas. Predefined subledger job roles include the entitlement to create and view subledger journal entries for subledger transactions you are authorized to access.

Disable Posting Subledger Transactions to General Ledger

Predefined subledger job roles are granted the privileges to create accounting and post to the general ledger.

Predefined subledger job roles such as:

- Accounts Payable Supervisor
- Accounts Receivable Manager

To implement the segregation between create accounting and post to the general ledger, use the Oracle Authorization Policy Manager to revoke the grant to post to the general ledger.

To disable posting for subledger users, remove the Journal Posting Program Duty inherited by any application roles granted to the users, such as:

- Subledger Accounting Duty
- Subledger Accounting Manager Duty

Alternatively, you can also deselect Enable posting from subledger option on the Subledger Accounting Options page.

Related Topics

- [How can I disable posting to the Oracle Fusion General Ledger for Oracle Fusion Subledger Accounting users?](#)
- [Subledger Accounting Options](#)
- [How You Submit Accounting Process](#)
- [How You Create a Manual Subledger Journal Entry](#)

Subledger Accounting-Specific Considerations for Segment Value Security

This section explains the purpose of Segment Value Security by Business Function and provides an overview of Subledger Accounting, including its activities, setup, transaction processing, and how data security is applied.

Oracle Subledgers such as Payables, Receivables, and so on, and Fusion Accounting Hub subledgers are used to capture transaction information which is then processed by the Subledger Accounting engine to generate detailed subledger accounting entries.

In general, Subledger Accounting activities include:

- **Setup:** Configuring subledger applications, accounting options, accounting rules, mapping sets and supporting references.
- **Transaction:** Fusion Accounting Hub transaction import, create accounting and posting to the General Ledger, manual adjustment entry, maintaining control balances and supporting reference balances.

- **Inquiry and Reporting:** Review subledger accounting entries and drill down to source transactions, reviewing reports such as the Subledger Period Close Exception report, Account Analysis report, OTBI reporting on Subledger Accounting Entries and Supporting Reference balances, and so on.

Subledger Accounting doesn't deliver any job roles for Fusion Applications. Applications such as Payables, Receivables, and so on, which consume Subledger Accounting services grant access to accounting related activities for their application specific job roles by inheriting the duty roles provided by Subledger Accounting.

Accounting Hub users are required to define custom job roles and assign the appropriate duty roles as needed to perform accounting activities.

No data security is applied for the setup related activities; however, data security is applied on the Ledger and Journal Source LOVs for the Transaction, Inquiry and Reporting activities listed above. Data security is implemented through grants against the job roles which perform subledger transaction, inquiry and reporting activities. For example – Accounts Payable Supervisor requires access to account payables invoices, view accounting, review the subledger accounting entries created or create adjustment accounting entries for Payables journal source.

Here is a summary of how data security is applied on Subledger Accounting for General Ledger and Subledger Job Roles:

Job Role	Default Data Security
General Ledger Job Roles (General Accounting Manager, Financial Specialist, and so on.)	For the ledgers to which user has data access: <ul style="list-style-type: none"> • Review or create subledger accounting entries for ALL subledger applications. • Account transactions, transfer to general ledger and drill down to view transaction page for ALL subledger applications. • Inquiry and reporting pages for ALL subledger applications.
Oracle Subledger Job Roles (Payables Supervisor, Receivables Specialist, and so on.)	For the specific security context (i.e. Business Unit, Intercompany Organization, Asset Book, and so on.) to which user has data access: <ul style="list-style-type: none"> • Review or create subledger accounting entries for the subledger application. • Account transactions, transfer to general ledger and drill down to view transaction page for the subledger application. • Inquiry and reporting pages for the subledger application.

Segment Value Security by Business Function Implementation in Subledger Accounting

This topic outlines how Segment Value Security is implemented in Subledger Accounting and how it affects different setup, transaction, and reporting areas.

Subledger Accounting is an intermediate processing layer which converts the transaction information from different Oracle and Accounting Hub subledgers into accounting entries based on the accounting rules defined in the system. The Subledger Accounting user interfaces and reports do not enforce data security through a specific data security context such as Data Access Set or Business Unit. Data Security in Subledger Accounting is governed by the data security policies associated with the Job Role which has associated subledger functions.

Subledger Accounting doesn't have any associated business function. For some of the Subledger Accounting pages such as the ones associated with adjustment subledger accounting entry creation or review, the General Ledger business function context is applied. General Ledger enforces data security through Data Access Sets which control read and write access to the entire ledger, or just to certain primary balancing segment values. When the General Ledger business function is applied on subledger accounting pages, a cumulative effect of all the Data Access Set grants for the user will be applied since subledger accounting pages do not have a Data Access Set context. They provide access for the associated ledger only.

If the subledger accounting entries are viewed in the context of a transaction for Oracle Subledgers such as View Accounting window, the business function of the associated subledger shall be applied.

If the segment value security policies are defined for All business functions, access to the secured segment values is based on the applicable Security Context is applied. For example, if the Security Context is set to Data Access Set, subledger accounting pages which enforce General Ledger business function (Create Subledger Journal, Review Subledger Journals, and so on.) will restrict access to the corresponding secured segment values on these pages. However, in the View Accounting page which applies the Subledger business function, these values would not be accessible to users.

If the segment value security policies are defined for All business functions and All security contexts, then access will be restricted to the corresponding secured segment values in all subledger accounting pages where Segment Value Security by Business Function is enforced.

Here is a summary of how Subledger Accounting implements Segment Value Security by Business Function in the different Setup, Transaction and Reporting areas where chart of accounts segments is involved –

Area	User Interface	Segment Value Security by Business Function	Business Function Context Applied
Setup	All Setup Pages	Not Applied	Not Applicable
Transaction	Create Manual Subledger Journal using UI or Spreadsheet	Applied	General Ledger
	Create Accounting Online / Batch process	Not Applied	Not Applicable
	Create Accrual Reversal Accounting process	Not Applied	Not Applicable
	Create Multiperiod Accounting process	Not Applied	Not Applicable
	Update Subledger Balances process	Not Applied	Not Applicable
	Import Accounting Transactions	Not Applied	Not Applicable
Inquiry and Reporting	Review / View Subledger Journal	Applied	General Ledger
	Review / View Subledger Journal – Account Override	Applied	General Ledger
	View Accounting	Applied	Subledger Context is applied for the supported subledgers (For example: Payables, Receivables, and so on.)
	View Accounting – Account Override	Applied	Subledger Context is applied for the supported subledgers (For

Area	User Interface	Segment Value Security by Business Function	Business Function Context Applied
			example: Payables, Receivables, and so on.)
	Drill Down – Subledger Journal Lines	Applied	General Ledger
	Drill Down – View Transaction	Applied	Subledger Context is applied for the supported subledgers (For example: Payables, Receivables, and so on.)
	T-Account Report – Review Subledger Journals	Applied	General Ledger
	T-Account Report – View Accounting	Applied	Subledger Context is applied for the supported subledgers (For example: Payables, Receivables, and so on.)
	Journal Entries Report	Applied	General Ledger
	Account Analysis Report	Applied	General Ledger
	Create Accounting Execution Report	Applied	General Ledger
	Create Multiperiod Accounting Execution Report	Applied	General Ledger
	Create Accrual Reversal Accounting Execution Report	Applied	General Ledger
	Subledger Accounting Methods Setup Report	Not Applied	Not Applicable
	Accounting Event Diagnostics Report	Not Applied	Not Applicable
	Third Party Control Account Balances Report	Not Applied	Not Applicable

Case Study: Application of Segment Value Security

Joe and Cassie are employees of the Vision Corporation organization.

Vision Operations business unit is one of many business units under the **Vision Corporation US** ledger which manages the Payables and Payment business functions specifically. To streamline access for accounting users based on balancing segment values, the **Vision Corporation US** ledger has 3 Data Access Sets defined – **Vision Corp DAS A**, **Vision Corp DAS B** and **Vision Corp DAS C**, other than the implicit DAS **Vision Corporation US**.

Joe has been hired as a Payables Specialist of Vision Operations in the US to manage payables invoicing related activities such as verifying and recording supplier invoices in the system, making payments timely, monitoring expenses, and keeping a track of all the documents for tax purposes. In certain cases, Joe may be required to enter subledger adjustment accounting entries if the invoice was not captured directly in the Payables – Invoices application.

Cassie has been hired as a General Accountant of Vision Corporation in the US for reviewing account statements, conducting data analysis with financial transactions, and generating reports on revenues, expenses, asset, liability, and equity accounts. She is also responsible for recording accounting adjustments, accruals, allocations, currency

reevaluations and translations as part of accounting period closure activities. Occasionally, she may create subledger adjustment accounting entries during subledger to general ledger reconciliation.

The following are the job roles and data security assignments provided to Joe and Cassie for managing the responsibilities related to Payables Specialist and General Accountant job roles –

User	Job Role	Data Security Context
Joe	Employee	NA
	Payables Specialist	Vision Operations (BU)
Cassie	Employee	NA
	General Accountant	Vision Corp DAS A
	General Accountant	Vision Corp DAS C

Subledger Accounting doesn't have any separate data security context or business function. By default, all segment values corresponding to the secured segments in the account combination are accessible to perform the activities which are accessible to the Payables Specialist and General Accountant job roles on the Vision Operations business unit and Vision Corporation US ledger respectively. Access to specific segment values of the secured segments while entering an account combination in Payables and General Ledger pages would be restricted based on the respective policies assigned to each user.

Following segment value security policies are assigned to Joe and Cassie –

User	Job Role	Data Security Context	Business Function	Segment	Segment Value	Access Level
Joe	Employee	NA	NA	NA	NA	NA
	Payables Specialist	Vision Operations (BU)	Payables	Cost Center	110	Read/Write
					120	Read Only
Payables Specialist	Vision Corporation US (DAS)	General Ledger		130	Read/Write	
Cassie	Employee	NA	NA	NA	NA	NA
	General Accountant	Vision Corp DAS A (DAS)	General Ledger	Cost Center	110	Read/Write
					120	Read/Write
					130	Read Only
					140	Read Only
					160	Read/Write
	Vision Corp DAS C (DAS)			170	Read/Write	

Here are some sample examples of how the above policy definition would provide access to different subledger accounting pages to Joe and Cassie respectively –

User	User Interface	Access
Joe	View Accounting	This page is read-only, and the Subledger business function is applied here. Since the user has access to read both the cost center values 110 and 120 for Payables business function, they will be able to access those account combinations which use these cost center values.
	View Accounting – Account Override	This page supports read\write and the Subledger business function is applied here. Since the user has access to read\write to the cost center value 110 only, they will be able to access those account combinations which use this cost center value.
	Review Journal Entries / Journal Lines	This page is read-only, and the General Ledger business function is applied here. Since the user has access to read the cost center value 130 for General Ledger business function, they will be able to access those account combinations which use this cost center value.
	Account Analysis Report	This is a read-only report, and the General Ledger business function is applied here. Since the user has access to read the cost center value 130 for General Ledger business function, they will be able to access those account combinations which use this cost center value.
	Create Subledger Journal	This page supports read\write and the General Ledger business function is applied here. Since the user has access to read\write the cost center value 130 only, they will be able to access those account combinations which use this cost center value.
Cassie	Review Journal Entries / Journal Lines	This page is read-only, and the General Ledger business function is applied here. The user has access to read the cost center values 110, 120, 130, 140 through the data access set Vision Corp DAS A and the cost center values 160, 170 through the data access set Vision Corp DAS C . So, a cumulative effect of all the Data Access Set grants will be applied for the General Ledger business function here, thereby allowing the user to access those account combinations which use the cost center values – 110, 120, 130, 140, 160 and 170.
	Account Analysis Report	This is a read-only report, and the General Ledger business function is applied here. Like the above scenario, a cumulative effect of all the Data Access Set grants will be applied for the General Ledger business function here, thereby allowing the user to access those account combinations which use the cost center values – 110, 120, 130, 140, 160 and 170.
	Create Subledger Journal	This page supports read\write and the General Ledger business function is applied here. The user has access to read\write the cost center

User	User Interface	Access
		<p>values 110, 120 through the data access set Vision Corp DAS A and the cost center values 160, 170 through the data access set Vision Corp DAS C.</p> <p>As a cumulative effect of all the Data Access Set grants applied for the General Ledger business function here, the user gets access to those account combinations which use the cost center values – 110, 120, 160 and 170.</p>

4 Advanced Features

Subledger Accounting Profile Options

Set values for each profile option to specify how Oracle Fusion Subledger Accounting controls access to and processes data.

Profile Options

The table contains the profile options that are available for subledger accounting.

Profile Option	Profile Display Name	Profile Description
XLA_DIAGNOSTIC_MODE	Diagnostics Enabled	Control whether transaction data used in accounting generation should be gathered for diagnostics.
XLA_ENABLE_TRANSFER_TO_EBS_GL	Enable Transfer to Oracle EBS GL	Specify whether the target for transfer and post subledger journal entries is Oracle E-Business Suite General Ledger.
XLA_ENABLE_TRANSFER_TO_PSFT_GL	Enable Transfer to Oracle PeopleSoft GL	Specify whether the target for transfer and post subledger journal entries is Oracle PeopleSoft General Ledger.
XLA_OTE_OLA_POLLING_INTERVAL	Online Accounting Request Polling Interval	Set the interval in seconds for online accounting engine to check for incoming accounting requests.
XLA_OTE_OLA_PROCS	Number of Online Accounting Processes	Set the number of processes for online accounting.
XLA_OTE_OLA_TIMEOUT_LIMIT	Online Accounting Processing Timeout Limit	Set the number of seconds online accounting engine attempts to process a transaction before timing out.
XLA_SHOW_ZERO_AMT_JRNL	Zero Amount Journal Lines Displayed	Show zero amount journal lines.
ORA_XLA_DELETE_TARGET_MAPPINGS_ON_IMPORT	Delete and Upload Mapping Set Values on Import	Enable the deletion of existing mapping set values in the target environment when importing mapping sets.

Note: When the XLA_DIAGNOSTIC_MODE profile option is enabled, the Create Accounting process captures real-time transaction data for diagnostics. This can impact performance, so enable it only when needed to troubleshoot accounting issues.

Related Topics

- [Overview of Profile Options](#)

Accrual Reversals

To use accrual reversal, you assign application or standard date sources to the Accrual Reversal Accounting Date Source accounting attribute. When this accounting attribute has a value, the Create Accounting process generates an entry that reverses the accrual entry.

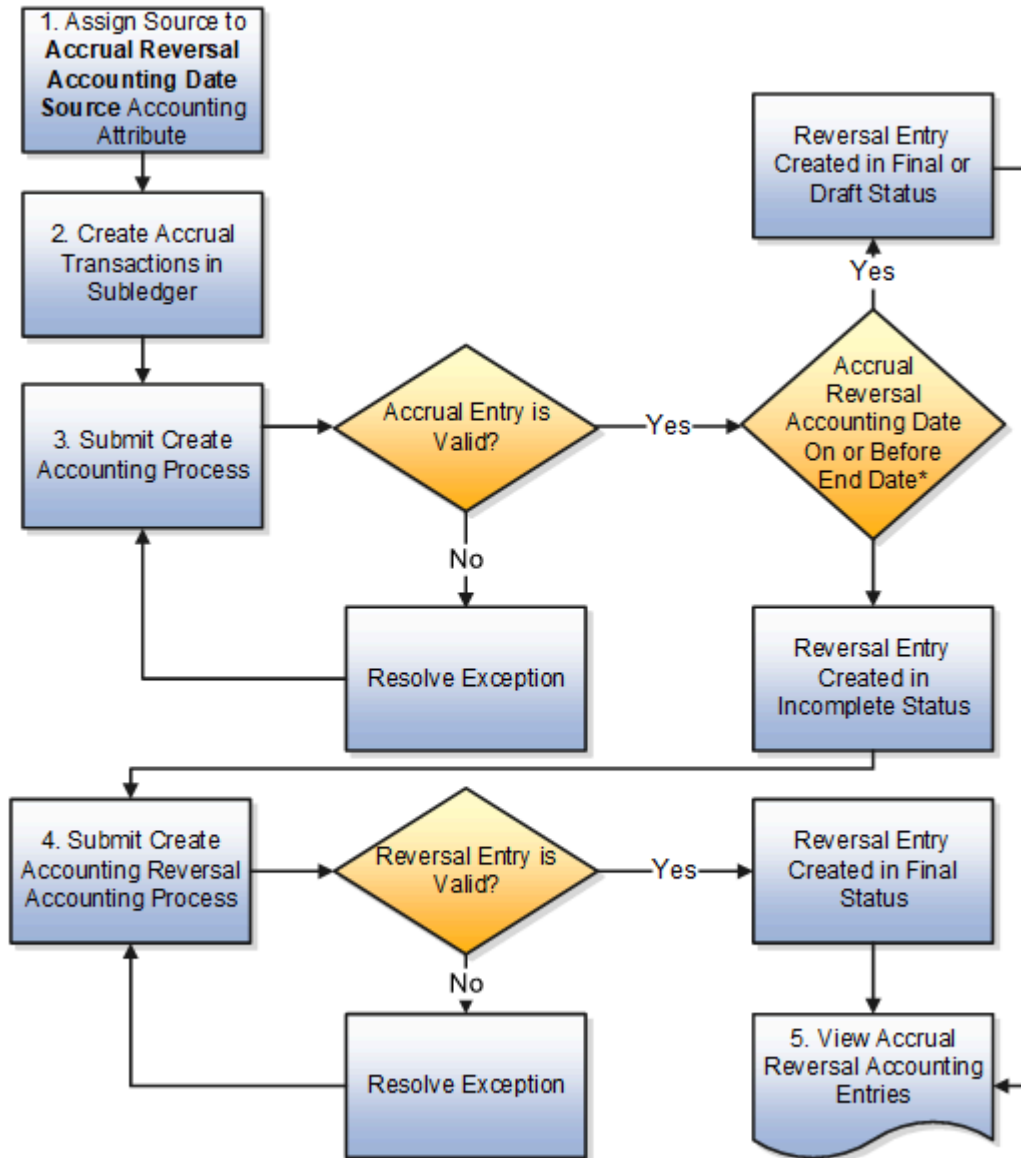
Here's what you do to define how and when accrual reversals are automatically performed:

- Indicate that an accounting event is eligible for accrual reversal.
- Determine when the accrual is reversed.
- Schedule the Create Accrual Reversal Accounting process to generate the reversal entries of the accrual.

Note: You must not enable reversal in General Ledger journal for the journal source and category if accrual reversal is implemented in subledger.

Accrual Reversal Process Steps

This flow chart shows the accrual reversal process.



* Accrual Reversal Accounting date on or before end date and in open or future period.

Note: End Date: The date till when the Create Accounting process selects accounting events for processing.

1. Assign a date source to the Accrual Reversal Accounting Date Source accounting attribute at the event class level.

Use this attribute to schedule the automatic reversal of a journal entry. On the Manage Accounting Attributes page, assign any standard date source or one of these application sources to the Accrual Reversal Accounting Date Source accounting attribute as a nondefault assignment:

- Next Day: The accounting date of the accrual reversal is the next day following the accounting date of the accrual entry.
- First Day of Next Accounting Period: The accounting date of the accrual reversal entry is the first day of the following accounting period.
- Last Day of Next Accounting Period: The accounting date of the accrual reversal entry is the last day of the following accounting period.

Note: If a default source is assigned to the Accrual Reversal Accounting Date Source accounting attribute, it will be assigned to all the journal entry rule set defined for the event class.

2. Define a journal entry rule set for the event type for which you would like to use the accrual reversal feature and select an accrual reversal accounting date source.
3. Create accrual transaction in subledger.
4. The Create Accounting process creates both accrual and reversal journal entries.

If that accrual entry has exceptions, you must resolve the exceptions and then manually submit the Create Accounting process again.

For all valid accrual journal entries, the Create Accounting process also creates the accrual reversal journal entry. Reversals can either be done by switching the debit and credit side on entries or by using negative amounts. You use the Reversal Method option on the Manage Subledger Accounting Options page to specify the method to use for reversals.

Here are the factors that affect the status of the accrual reversal journal entry:

- The status of the accounting period of the accrual reversal journal entry
- The end accounting date specified in the Create Accounting request parameters

This table summarizes how the application sets the status of an accrual reversal journal entry in different conditions:

Condition	Open or Future Entry Accounting Period	Closed Accounting Period	Never Opened Accounting Period
The Create Accounting process is submitted separately and accrual reversal date is on or before the end accounting date.	Creates the reversal entry with the status specified in the Create Accounting request.	Adjusts the accounting date to the next open or future period. Creates the reversal entry with the status specified in the Create Accounting request.	<ul style="list-style-type: none"> ○ Adjusts the accounting date to the next open period. - If the adjusted accounting date is before end date of the Create Accounting process, creates the reversal entry with the status specified in the Create Accounting request. - If the adjusted accounting date is after end date of the Create Accounting process,

Condition	Open or Future Entry Accounting Period	Closed Accounting Period	Never Opened Accounting Period
			creates the reversal entry with the incomplete status. <ul style="list-style-type: none"> ○ If no open period is found, creates the journal entry with the incomplete status.
The Create Accounting process is submitted separately and accrual reversal date is after the end accounting date.	Creates the reversal entry with the incomplete status.	<ul style="list-style-type: none"> ○ Adjusts the accounting date to the next open or future period. Creates the reversal entry with the incomplete status. ○ If no open period is found, creates the journal entry with the error status. 	Creates the reversal entry with the incomplete status.

5. Submit Create Accrual Reversal Accounting to process any incomplete accrual reversal journal entries. This process validates the reversal entry and changes the reversal entry to Final status, if it passes validation.
6. Schedule the Create Accrual Reversal Accounting process to run automatically in each accounting period. As a best practice, run before closing the period.
7. View accrual reversal accounting entries.

Related Topics

- [Subledger Accounting Options](#)
- [Accounting Attribute Assignments](#)
- [Examples of Accrual Reversal](#)
- [How You Submit the Create Accrual Reversal Accounting Process](#)
- [Overview of Subledger Journal Entry](#)

5 FAQs

How can I disable posting to the Oracle Fusion General Ledger for Oracle Fusion Subledger Accounting users?

Use the Oracle Authorization Policy Manager page to disable posting to the Oracle Fusion General Ledger for Subledger Accounting users. Open the Subledger Accounting Duty, XLA_SUBLEDGER_ACCOUNTING_DUTY. Then, you select the Application Hierarchy tab and delete the Journal Posting Program Duty row.

Related Topics

- [Disable Posting Subledger Transactions to the General Ledger](#)

What is the impact of changing General Ledger Journal Entry Summarization from Summarization to Grouping?

When you change the General Ledger Journal Entry Summarization option from Summarization to Grouping, the following Create Accounting process groups the journals in the General Ledger Journal Batch by journal category and balance type.

This means the general ledger journal line will be at the same level as the subledger journal line. We recommend making this change if you need the journal line description.

How do the Subledger Journal Entry Descriptions Get Translated?

In the journal entry description, the Journal Language determines which language is used to retrieve and store the subledger journal sources.

All predefined subledgers support multiple languages. When the Create Accounting process is submitted, the sources used in the journal entry description are retrieved in the language assigned to the ledger and saved as the description. You can change the journal description language setting in the Specify Ledger Options task.

Related Topics

- [How You Configure the Language for Subledger Journal Descriptions](#)

