

Public Sector Compliance and Regulation

File-Based Data Import for Oracle Public Sector Compliance and Regulation

19C

19C

Part Number: F16734-01

Copyright © 2018, 2019, Oracle and/or its affiliates. All rights reserved

This software and related documentation are provided under a license agreement containing restrictions on use and disclosure and are protected by intellectual property laws. Except as expressly permitted in your license agreement or allowed by law, you may not use, copy, reproduce, translate, broadcast, modify, license, transmit, distribute, exhibit, perform, publish, or display in any part, in any form, or by any means. Reverse engineering, disassembly, or decompilation of this software, unless required by law for interoperability, is prohibited.

The information contained herein is subject to change without notice and is not warranted to be error-free. If you find any errors, please report them to us in writing.

If this is software or related documentation that is delivered to the U.S. Government or anyone licensing it on behalf of the U.S. Government, the following notice is applicable:

U.S. GOVERNMENT END USERS: Oracle programs, including any operating system, integrated software, any programs installed on the hardware, and/or documentation, delivered to U.S. Government end users are "commercial computer software" pursuant to the applicable Federal Acquisition Regulation and agency-specific supplemental regulations. As such, use, duplication, disclosure, modification, and adaptation of the programs, including any operating system, integrated software, any programs installed on the hardware, and/or documentation, shall be subject to license terms and license restrictions applicable to the programs. No other rights are granted to the U.S. Government.

This software or hardware is developed for general use in a variety of information management applications. It is not developed or intended for use in any inherently dangerous applications, including applications that may create a risk of personal injury. If you use this software or hardware in dangerous applications, then you shall be responsible to take all appropriate fail-safe, backup, redundancy, and other measures to ensure its safe use. Oracle Corporation and its affiliates disclaim any liability for any damages caused by use of this software or hardware in dangerous applications.

Oracle and Java are registered trademarks of Oracle Corporation and/or its affiliates. Other names may be trademarks of their respective owners.

Intel and Intel Xeon are trademarks or registered trademarks of Intel Corporation. All SPARC trademarks are used under license and are trademarks or registered trademarks of SPARC International, Inc. AMD, Opteron, the AMD logo, and the AMD Opteron logo are trademarks or registered trademarks of Advanced Micro Devices. UNIX is a registered trademark of The Open Group.

This software or hardware and documentation may provide access to or information about content, products, and services from third parties. Oracle Corporation and its affiliates are not responsible for and expressly disclaim all warranties of any kind with respect to third-party content, products, and services unless otherwise set forth in an applicable agreement between you and Oracle. Oracle Corporation and its affiliates will not be responsible for any loss, costs, or damages incurred due to your access to or use of third-party content, products, or services, except as set forth in an applicable agreement between you and Oracle.

The business names used in this documentation are fictitious, and are not intended to identify any real companies currently or previously in existence.

Contents


Preface	i
<hr/>	
1 Overview	1
External Data Integration Services for Oracle Cloud	1
Loading Data into Tables	2
2 Community Development	5
Import Agency Staff	5
Import Property Information	5


Preface

This preface introduces information sources that can help you use the application.

Using Oracle Applications

Using Applications Help

Use help icons  to access help in the application. If you don't see any help icons on your page, click your user image or name in the global header and select **Show Help Icons**. Not all pages have help icons. You can also access [Oracle Applications Help](#).

 **Watch:** This video tutorial shows you how to find help and use help features.

You can also read [Using Applications Help](#).

Additional Resources

- Community: Use [Oracle Cloud Customer Connect](#) to get information from experts at Oracle, the partner community, and other users.
- Guides and Videos: Go to the [Oracle Help Center](#) to find guides and videos.
- Training: Take courses on Oracle Cloud from [Oracle University](#).

Conventions

The following table explains the text conventions used in this guide.

Convention	Meaning
boldface	Boldface type indicates user interface elements, navigation paths, or values you enter or select.
monospace	Monospace type indicates file, folder, and directory names, code examples, commands, and URLs.
>	Greater than symbol separates elements in a navigation path.

Documentation Accessibility

For information about Oracle's commitment to accessibility, visit the [Oracle Accessibility Program website](#).

Videos included in this guide are provided as a media alternative for text-based help topics also available in this guide.

Contacting Oracle

Access to Oracle Support

Oracle customers that have purchased support have access to electronic support through My Oracle Support. For information, visit [My Oracle Support](#) or visit [Accessible Oracle Support](#) if you are hearing impaired.

Comments and Suggestions

Please give us feedback about Oracle Applications Help and guides! You can send an e-mail to: PSCR_US@oracle.com.

1 Overview

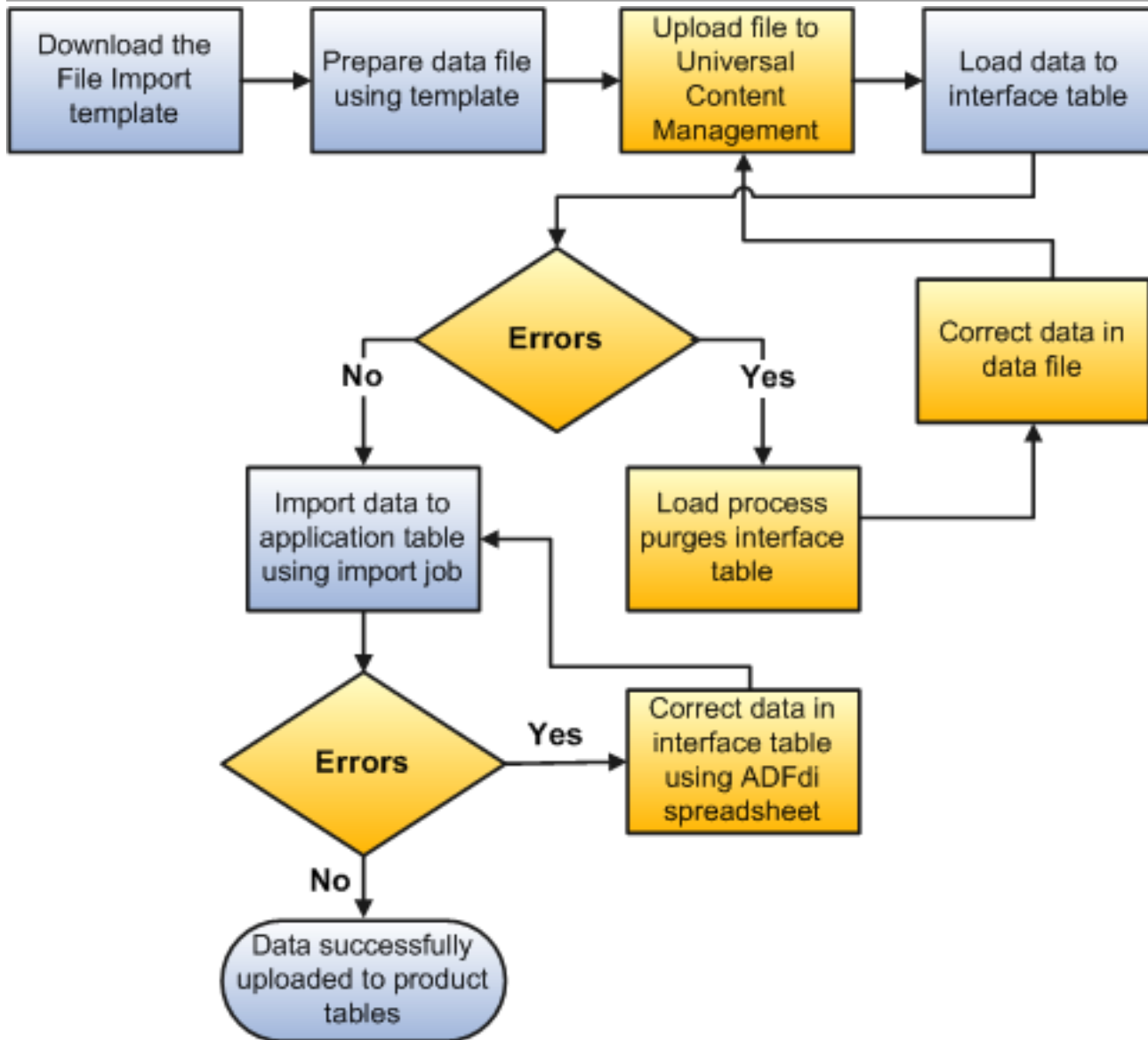
External Data Integration Services for Oracle Cloud

Use External Data Integration Services for Oracle Cloud to load data into Oracle Fusion Applications from external sources, such as legacy systems and third-party applications.

External Data Integration Services for Oracle Cloud include the following components:

- Templates to structure, format, and generate the data file according to the requirements of the target application tables.
- File-based load process to load the data files into the interface tables.
- Application-specific data import processes to transfer data from interface tables to the application tables in your Oracle Fusion Applications.

The following flow diagram outlines the steps involved in loading data from external sources.



Related Topics

Loading Data into Tables


Use the file-based data import feature to import large volumes of data from third-party or other Oracle applications, or create new data in Oracle Public Sector Compliance and Regulation. For example, you can import address, parcel, and owner (APO) data into the PSC_COM_PARCEL_B, PSC_COM_PARCEL_ADDRESS, PSC_COM_PARCEL_OWNER, and PSC_COM_PARCEL_VALUE_F tables using the AddressParcelOwnerImportTemplate.xlsm template.

You can also use certain file-based data import features to update large volumes of existing data in the application.

Load Data into Interface Tables

Perform the following steps to load data to the interface tables:


1. Download the relevant file-based data import template.
2. Enter data in the template.
3. Click the Generate CSV File button on the Instructions and CSV Generation worksheet in the template to create the CSV files in a zip file format.
4. Save the zip file locally.
5. Sign in to Oracle Applications Cloud as a user with the `ORA_PSC_SYSTEM_ADMINISTRATOR_JOB` role.
6. From the Navigator menu, click File Import and Export in the Tools section.
7. Click the Upload icon. Click Browse to search for and select the zipped data file you saved.
8. Select the account for the applicable file-based import process.
9. Click Save and Close to transfer the zipped data file to the Oracle Universal Content Management Cloud server.
10. Navigate to the Scheduled Processes page, and click the Schedule New Process button.
11. Select Job in the Type field, and Load Interface File for Import in the Name field. Click OK to upload your data from the CSV files to the interface tables.

 **Note:** Some data import processes will prompt you to select additional parameters before submitting the process. In this case, the process also loads data from the interface tables to the product tables.

Load Data into Product Tables

Perform the following steps to load data from the interface tables to the product tables:

1. Navigate to the Scheduled Processes page.
2. Verify that the Load Interface File for Import process completed successfully.
3. Submit the product-specific import process.
4. Verify that the import process completed successfully.

 **Note:** Not all Public Sector Compliance and Regulation file-based data imports require you to perform these steps.

Manage Data in Interface Tables

To manage the growth of product interface tables, there is an automatic purge interface table process that is initiated for each file-based data import process for data records older than 30 days. You can also use the Purge Interface Tables process to manually delete data from the tables.

Use Web Services

You can automate the entire inbound data flow using web services as an alternative to the manual approach outlined above. In addition, you can manage data from product interface and error tables with streamlined purge capabilities.

For additional details, see Using External Data Integration Services for Oracle ERP Cloud (2102800.1) on My Oracle Support (<https://support.oracle.com>).

2 Community Development

Import Agency Staff

Imports Agency Staff into the PSCR master tables.

Details

- Object owner: PSC-Public Sector Common Components
- UCM account: psc/commoncomponents/import

File Links

File	Link
XLSM template	AgencyStaffImportTemplate.xlsm
Control files	<ul style="list-style-type: none">• Agency Staff generic attributes Import Control File• Agency Staff Job attributes Import Control File• Agency Staff Access Import Control File

Job and Table Links

Name	Link
Scheduled process	Import Agency Staff
Tables	<ul style="list-style-type: none">• PSC_COM_JOB_ASGT_INT• PSC_COM_PRSN_ACS_INT• PSC_COM_PRSN_PRFL_INT

Import Property Information

Imports property information into the PSCR parcel master tables.

Details

- Object owner: PSC-Public Sector Common Components
- UCM account: psc/commoncomponents/import

File Links

File	Link
XLSM template	AddressParcelOwnerImportTemplate.xlsx
Control files	<ul style="list-style-type: none">• Parcel Import Control File• Owner Import Control File• Address Import Control File• Value Import Control File

Job and Table Links

Name	Link
Scheduled process	Import Property Information
Tables	<ul style="list-style-type: none">• PSC_COM_PARCEL_ADDRESS_INT• PSC_COM_PARCEL_INT• PSC_COM_PARCEL_OWNER_INT• PSC_COM_PARCEL_VALUE_INT