

# Oracle Permitting and Licensing

---

## **File-Based Data Import for Oracle Permitting and Licensing**

23C



Copyright © 2023, Oracle and/or its affiliates.

Author: Oracle Permitting and Licensing User Assistance

This software and related documentation are provided under a license agreement containing restrictions on use and disclosure and are protected by intellectual property laws. Except as expressly permitted in your license agreement or allowed by law, you may not use, copy, reproduce, translate, broadcast, modify, license, transmit, distribute, exhibit, perform, publish, or display any part, in any form, or by any means. Reverse engineering, disassembly, or decompilation of this software, unless required by law for interoperability, is prohibited.

The information contained herein is subject to change without notice and is not warranted to be error-free. If you find any errors, please report them to us in writing.

If this is software, software documentation, data (as defined in the Federal Acquisition Regulation), or related documentation that is delivered to the U.S. Government or anyone licensing it on behalf of the U.S. Government, then the following notice is applicable:

U.S. GOVERNMENT END USERS: Oracle programs (including any operating system, integrated software, any programs embedded, installed, or activated on delivered hardware, and modifications of such programs) and Oracle computer documentation or other Oracle data delivered to or accessed by U.S. Government end users are "commercial computer software," "commercial computer software documentation," or "limited rights data" pursuant to the applicable Federal Acquisition Regulation and agency-specific supplemental regulations. As such, the use, reproduction, duplication, release, display, disclosure, modification, preparation of derivative works, and/or adaptation of i) Oracle programs (including any operating system, integrated software, any programs embedded, installed, or activated on delivered hardware, and modifications of such programs), ii) Oracle computer documentation and/or iii) other Oracle data, is subject to the rights and limitations specified in the license contained in the applicable contract. The terms governing the U.S. Government's use of Oracle cloud services are defined by the applicable contract for such services. No other rights are granted to the U.S. Government.

This software or hardware is developed for general use in a variety of information management applications. It is not developed or intended for use in any inherently dangerous applications, including applications that may create a risk of personal injury. If you use this software or hardware in dangerous applications, then you shall be responsible to take all appropriate fail-safe, backup, redundancy, and other measures to ensure its safe use. Oracle Corporation and its affiliates disclaim any liability for any damages caused by use of this software or hardware in dangerous applications.

Oracle®, Java, and MySQL are registered trademarks of Oracle and/or its affiliates. Other names may be trademarks of their respective owners.

Intel and Intel Inside are trademarks or registered trademarks of Intel Corporation. All SPARC trademarks are used under license and are trademarks or registered trademarks of SPARC International, Inc. AMD, Epyc, and the AMD logo are trademarks or registered trademarks of Advanced Micro Devices. UNIX is a registered trademark of The Open Group.

This software or hardware and documentation may provide access to or information about content, products, and services from third parties. Oracle Corporation and its affiliates are not responsible for and expressly disclaim all warranties of any kind with respect to third-party content, products, and services unless otherwise set forth in an applicable agreement between you and Oracle. Oracle Corporation and its affiliates will not be responsible for any loss, costs, or damages incurred due to your access to or use of third-party content, products, or services, except as set forth in an applicable agreement between you and Oracle.

# Contents


<b>Get Help</b>	<b>i</b>
<hr/>	
<b>1 Overview</b>	<b>1</b>
External Data Integration Services for Oracle Cloud	1
Loading Data into Tables	2
<b>2 Community Development</b>	<b>5</b>
Import Agency Staff	5
Import Property Information	5



# Get Help

There are a number of ways to learn more about your product and interact with Oracle and other users.

## Get Help in the Applications

Use help icons  to access help in the application. If you don't see any help icons on your page, click your user image or name in the global header and select Show Help Icons.

## Get Support

You can get support at [My Oracle Support](#). For accessible support, visit [Oracle Accessibility Learning and Support](#).

## Get Training

Increase your knowledge of Oracle Cloud by taking courses at [Oracle University](#).

## Join Our Community

Use [Cloud Customer Connect](#) to get information from industry experts at Oracle and in the partner community. You can join forums to connect with other customers, post questions, suggest [ideas](#) for product enhancements, and watch events.

## Learn About Accessibility

For information about Oracle's commitment to accessibility, visit the [Oracle Accessibility Program](#). Videos included in this guide are provided as a media alternative for text-based topics also available in this guide.

## Share Your Feedback

We welcome your feedback about Oracle Applications user assistance. If you need clarification, find an error, or just want to tell us what you found helpful, we'd like to hear from you.

You can email your feedback to [oracle\\_fusion\\_applications\\_help\\_ww\\_grp@oracle.com](mailto:oracle_fusion_applications_help_ww_grp@oracle.com).

Thanks for helping us improve our user assistance!



# 1 Overview

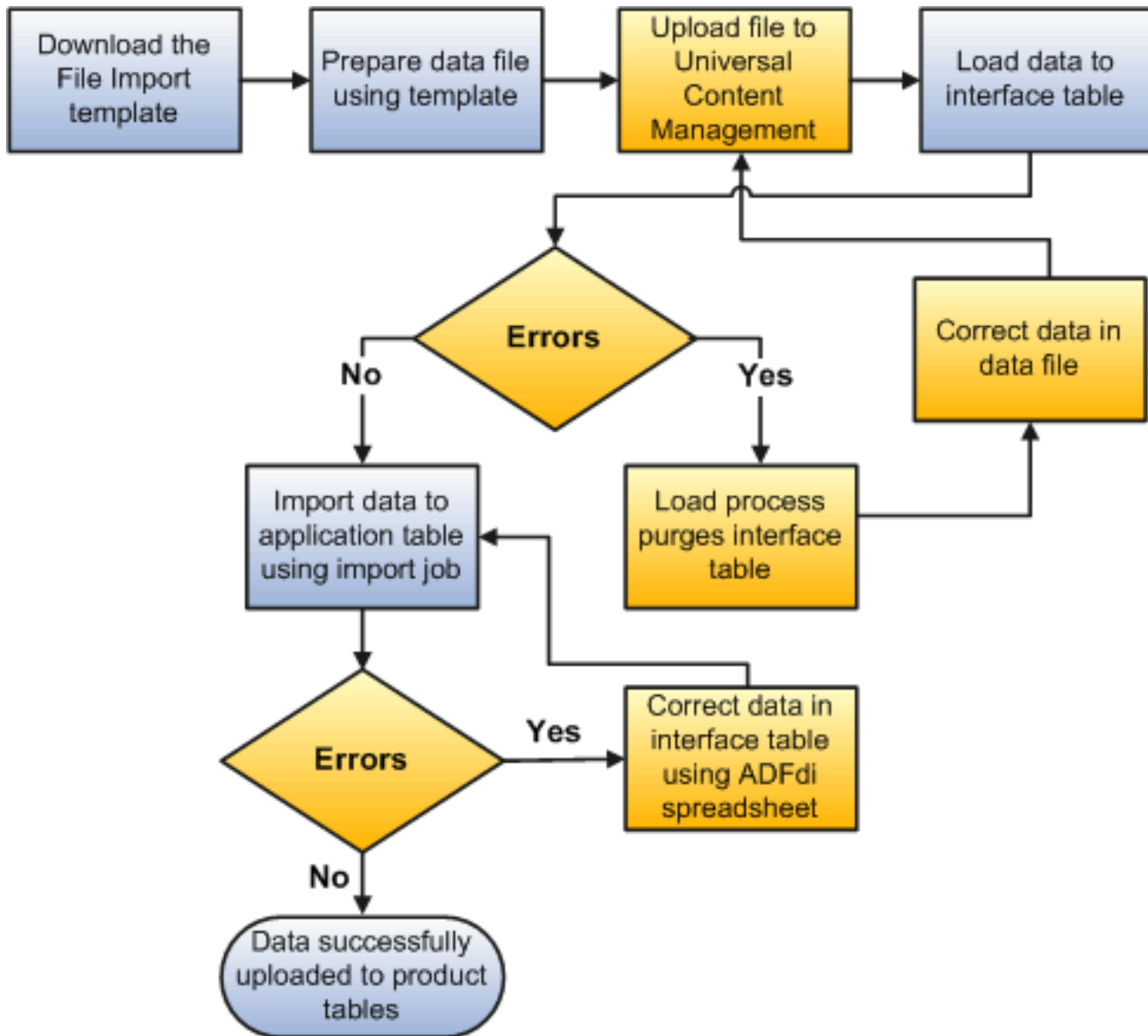
## External Data Integration Services for Oracle Cloud

Use External Data Integration Services for Oracle Cloud to load data into Oracle Fusion Applications from external sources, such as legacy systems and third-party applications.

External Data Integration Services for Oracle Cloud include the following components:

- Templates to structure, format, and generate the data file according to the requirements of the target application tables.
- File-based load process to load the data files into the interface tables.
- Application-specific data import processes to transfer data from interface tables to the application tables in your Oracle Fusion Applications.

The following flow diagram outlines the steps involved in loading data from external sources.



#### Related Topics

- [Using External Data Integration Services for Oracle ERP Cloud](#)

## Loading Data into Tables

Use the file-based data import feature to import large volumes of data from third-party or other Oracle applications, or create new data in Oracle Permitting and Licensing. For example, you can import address, parcel, and owner (APO) data into the PSC\_COM\_PARCEL\_B, PSC\_COM\_PARCEL\_ADDRESS, PSC\_COM\_PARCEL\_OWNER, and PSC\_COM\_PARCEL\_VALUE\_F tables using the AddressParcelOwnerImportTemplate.xlsm template.

You can also use certain file-based data import features to update large volumes of existing data in the application.



## Load Data into Interface Tables

Perform the following steps to load data to the interface tables:

1. Download the relevant file-based data import template.
2. Enter data in the template.
3. Click the Generate CSV File button on the Instructions and CSV Generation worksheet in the template to create the CSV files in a zip file format.
4. Save the zip file locally.
5. Sign in to Oracle Applications Cloud as a user with the ORA\_PSC\_SYSTEM\_ADMINISTRATOR\_JOB role.
6. From the Navigator menu, click File Import and Export in the Tools section.
7. Click the Upload icon. Click Browse to search for and select the zipped data file you saved.
8. Select the account for the applicable file-based import process.
9. Click Save and Close to transfer the zipped data file to the Oracle Universal Content Management Cloud server.
10. Navigate to the Scheduled Processes page, and click the Schedule New Process button.
11. Select *Job* in the Type field, and *Load Interface File for Import* in the Name field. Click OK to upload your data from the CSV files to the interface tables.

**Note:** Some data import processes will prompt you to select additional parameters before submitting the process. In this case, the process also loads data from the interface tables to the product tables.

## Load Data into Product Tables

Perform the following steps to load data from the interface tables to the product tables:

1. Navigate to the Scheduled Processes page.
2. Verify that the Load Interface File for Import process completed successfully.
3. Submit the product-specific import process.
4. Verify that the import process completed successfully.

**Note:** Not all Oracle Permitting and Licensing file-based data imports require you to perform these steps.

## Manage Data in Interface Tables

To manage the growth of product interface tables, there is an automatic purge interface table process that is initiated for each file-based data import process for data records older than 30 days. You can also use the Purge Interface Tables process to manually delete data from the tables.

## Use Web Services

You can automate the entire inbound data flow using web services as an alternative to the manual approach outlined above. In addition, you can manage data from product interface and error tables with streamlined purge capabilities.

For additional details, see Using External Data Integration Services for Oracle ERP Cloud (2102800.1) on My Oracle Support (<https://support.oracle.com>).



## 2 Community Development

### Import Agency Staff

Imports Agency Staff into the PSCR master tables.

#### Details

- Object owner: PSC-Public Sector Common Components
- UCM account: psc/commoncomponents/import

#### File Links

File	Link
XLSM template	<a href="#">AgencyStaffImportTemplate.xlsm</a>
Control files	<ul style="list-style-type: none"><li>• <a href="#">Agency Staff generic attributes Import Control File</a></li><li>• <a href="#">Agency Staff Job attributes Import Control File</a></li><li>• <a href="#">Agency Staff Access Import Control File</a></li></ul>

#### Job and Table Links

Name	Link
Scheduled process	Import Agency Staff
Tables	<ul style="list-style-type: none"><li>• PSC_COM_JOB_ASGT_INT</li><li>• PSC_COM_PRSN_ACS_INT</li><li>• PSC_COM_PRSN_PRFL_INT</li></ul>

### Import Property Information

Imports property information into the PSCR parcel master tables.

#### Details

- Object owner: PSC-Public Sector Common Components

- UCM account: `psc/commoncomponents/import`

## File Links

File	Link
XLSM template	<i><a href="#">AddressParcelOwnerImportTemplate.xlsm</a></i>
Control files	<ul style="list-style-type: none"><li>• <i><a href="#">Parcel Import Control File</a></i></li><li>• <i><a href="#">Owner Import Control File</a></i></li><li>• <i><a href="#">Address Import Control File</a></i></li><li>• <i><a href="#">Value Import Control File</a></i></li></ul>

## Job and Table Links

Name	Link
Scheduled process	<a href="#">Import Property Information</a>
Tables	<ul style="list-style-type: none"><li>• <a href="#">PSC_COM_PARCEL_ADDRESS_INT</a></li><li>• <a href="#">PSC_COM_PARCEL_INT</a></li><li>• <a href="#">PSC_COM_PARCEL_OWNER_INT</a></li><li>• <a href="#">PSC_COM_PARCEL_VALUE_INT</a></li></ul>